



# Lahar events in the last 2,000 years from Vesuvius eruptions. Part 3: Hazard assessment over the Campanian Plain

Laura Sandri<sup>1</sup>, Mattia de' Michieli Vitturi<sup>2</sup>, Antonio Costa<sup>1</sup>, Mauro A. Di Vito<sup>3</sup>, Ilaria Rucco<sup>4</sup>, Domenico M. Doronzo<sup>3</sup>, Marina Bisson<sup>2</sup>, Roberto Gianardi<sup>2</sup>, Sandro de Vita<sup>3</sup>, Roberto Sulpizio<sup>5</sup>

5 <sup>1</sup>Istituto Nazionale di Geofisica e Vulcanologia, Sezione di Bologna, Bologna, Italy

<sup>2</sup>Istituto Nazionale di Geofisica e Vulcanologia, Sezione di Pisa, Pisa, Italy

<sup>3</sup>Istituto Nazionale di Geofisica e Vulcanologia, Osservatorio Vesuviano, Napoli, Italy

<sup>4</sup>School of Engineering and Physical Sciences, Heriot-Watt University, Edinburgh, UK

<sup>5</sup>Dipartimento di Scienze della Terra e Geoambientali, University of Bari, Bari, Italy

10 *Correspondence to:* Laura Sandri (laura.sandri@ingv.it)

**Abstract.** In this study we present a novel general methodology for Probabilistic Volcanic Hazard Assessment (PVHA) for lahars. We apply the methodology to perform a probabilistic assessment in the Campanian Plain (Southern Italy), focussing on syn-eruptive lahars from a reference-size eruption from Somma-Vesuvius. We take advantage of new field data relative to volcanoclastic flow deposits in the target region and recent improvements in modelling lahars. We explore the effect of uncertainty on the flow initial conditions on the invasion of lahar in the target area, by sampling coherent sets of values for the input model parameters and performing a large number of simulations. We analyse the simulation outputs to produce hazard curves, hazard maps and probability maps for the maximum flow thickness, and hazard surface and probability maps for joint thresholds in flow thickness and dynamic pressure. We believe the latter hazard products represent, on one hand, a novel product in PVHA for lahars, and, on the other hand, a useful means for impact assessment.

## 20 1 Introduction

Lahars are flows of water and entrained sediments that originate from the remobilization of volcanoclastic deposits by water, either from rain, melting ice or snow, or a sudden release by a crater lake (see the companion paper by de' Michieli Vitturi et al., this issue, and references therein). They represent one of the highest death-toll processes among volcanic phenomena. According to the analysis by Auken et al. (2013), syn-eruptive lahars are responsible for about 14% of the fatalities in their database, whereas post-eruptive or inter-eruptive lahars cause another 3%.

25 Hazard assessment for lahars needs to consider: i) the identification of potential source regions for volcanic material and for water, including snowcaps and glaciers; ii) the potential magnitude and characteristics of the flow; iii) the topography between the source region and the potential targets at risk; iv) the potential for modification of the flow properties along the path; v) the frequency of such events in the past; vi) the meteorological data at the source region and along the potential path of such flows, especially for extreme events.

30 As explained in the companion paper by de' Michieli Vitturi et al. (this issue), lahars can change character downstream, through processes of flow bulking and debulking, generating high variability in both time (i.e. unsteadiness) and space (i.e.



non-uniformity) for variables pivotal for hazard assessment, such as particle concentration, granulometry and componentry, bulk rheology, and velocity. The full complexities associated with these processes prevent our ability to effectively model these flows for quantitative hazard assessment purposes. At present, even if we could describe all the underlying physics, a full 3D simulation of all these phenomena would require prohibitive computational costs, and current numerical models describe only a part of the observed phenomena or use simplified approaches (see the companion paper by de' Michieli Vitturi et al., this issue). In terms of numerical modelling, a good compromise between the completeness of the physics behind these phenomena and the computational feasibility is represented by the shallow water approach (de' Michieli Vitturi et al., this issue), where model complexity is reduced with a depth-averaging of flow properties. This approach approximates the original 3D problem with a 2D model, and it is the one we apply in this work.

In the Campania region, which is largely covered by fallout and pyroclastic density current (PDCs) deposits from eruptions of Somma Vesuvius, Campi Flegrei, and Ischia volcanoes, the signature of several syn- and post-eruptive lahars has been found in the geological record (Di Vito et al, this issue, Sulpizio et al., 2006; Zanchetta et al., 2004a,b). Furthermore, detailed lists of documented lahars in the 20th century are available in the literature (Fiorillo & Wilson, 2004). Despite such evidence, up to now most of the Probabilistic Volcanic Hazard Assessments (PVHA) for this region has mostly focussed on PDCs (e.g., Neri et al., 2008; Gurioli et al, 2010; Neri et al., 2015; Sandri et al., 2018; Tierz et al, 2017) and tephra fallout (e.g., Costa et al., 2009; Selva et al., 2010; Sandri et al., 2016; Selva et al., 2018; Massaro et al, 2023), while systematic quantitative hazard assessments from lahars (see for example Jenkins et al., 2022) have been lacking. An exception is provided by Tierz et al. (2017), who applied a Bayesian Belief Network to assess the effect of different factors (linked to rainfall intensity and volcanoclastic volume) on the probability of different initial volumes of lahars. However, that study did not explore the variability in the hazard assessment related to the initial flow conditions (mostly linked to the flow volume, detachment area, and volumetric solid fraction).

PVHA for lahars needs performing a high number of simulations in order to enable a quantification of the uncertainty linked to model parameters.

Recent technical improvements (e.g. code parallelization) and generalisations (e.g. description of erosion and deposition during the flow) of lahar models, such as that implemented in the most recent version of the IMEX-SfloW2D model, described in the companion paper by de' Michieli Vitturi et al. (this issue), permit the simulations of hundreds of simulations from different catchments, with different initial and boundary conditions in reasonable times, necessary for characterising the intrinsic variability and for the production of hazard maps.

Following several surveying campaigns carried out for characterising lahar deposits in natural exposures, archaeological excavations, and ad hoc trenches in the plain surrounding the Vesuvius edifice and along the Apennine valleys, Di Vito et al (this issue) present the results of a multidisciplinary study which shows the presence of volcaniclastic deposits (mostly debris and mud flows but also from hyperconcentrated flood flows) even in areas very far from both the Apennine hills and the valleys of Somma-Vesuvius, demonstrating the high mobility of these flows. In particular Di Vito et al (this issue) focused on the analysis of the syn- and post-eruptive lahar deposits generated by the two sub-Plinian eruptions of Vesuvius, 472 AD and 1631. Thicknesses, sedimentological features (lithic content, pumice provenance, grain size, boulder entrainment) and vertical/lateral continuity of the deposits were reported during the campaigns, in order to establish characteristic facies (massive-to-structured, poorly- to better-sorted with respect to the primary pyroclastic deposits and topography) and general



70 flow dynamics (velocity, dynamic pressure, thickness) of those volcanoclastic systems. It results that the inclusion of the fine ash into the whole deposits distribution, the depositional mechanism of the primary pyroclastic deposits (fallout vs. current), and the large-scale topographic effects (plain vs. valley) are the main geological features affecting the size and style of the remobilization occurred for the two eruptions (Pollena and 1631).

75 In this work, we take advantage of these new field data analyses and recent improvements in modelling lahar flows (de' Michieli Vitturi et al., this issue), to explore the effect of uncertainty on the flow initial conditions on the invasion of lahar in the Campanian Plain (Fig. 1a), by sampling coherent sets of values for the input model parameters, and subsequently performing a large number of lahar simulations needed for the production of hazard maps.

We present a novel general methodology for PVHA for lahar flows but we focus on syn-eruptive lahars, conditional to the  
80 reference eruption for Somma-Vesuvius (that is the Medium Magnitude Scenario by Cioni et al., 2008; Macedonio et al., 2008; Sandri et al., 2016).

In particular, we account for:

- 11 different catchments (Fig. 1b) where lahars could originate and impact the target area of the Campanian Plain, both from the Somma-Vesuvius edifice and from the Apennines sectors to the East and South;
- deposits from PDCs (mostly on the Somma-Vesuvius catchments) and from tephra fallout (on the Apennines catchments) from the reference eruption of Somma-Vesuvius;
- the maximum expected rainfall in a few days, taken on the order of 500 mm, as extracted from the rainfall record in  
85 the last 70 years in the Campania Region (Fiorillo & Wilson, 2004);

coherence among the initial values of the flow (initial thickness, detachment area, and volumetric solid fraction), the deposit  
90 porosity (water-saturated) and the available water from rainfall and volcanoclastic sediments from the reference eruption. In order to do so, we build up a strategy to sample the input model parameters, which will be illustrated in Section 4.1.

The goal of the study is to quantify the conditional probability of invasion by at least one lahar originating from the remobilization of tephra deposits due to the reference eruption at Somma-Vesuvius (Sandri et al., 2016). In order to provide useful results for future quantification of the impact of syn-eruptive lahars, we express our results in terms of exceedance  
95 probability for selected thresholds of two variables pivotal for hazard assessment, such as maximum flow thickness and dynamic pressure. The domain of interest, covering the Campanian Plain (see Fig. 1a), was discretized, for computational reasons, on a 50 m × 50 m grid. This resolution represents a good compromise between solution accuracy and computational time required for a simulation (see companion paper, de' Michieli Vitturi et al., this issue). As we mentioned above, we also compute the exceedance probability of selected pairs of critical thresholds in dynamic pressure and flow thickness, that  
100 jointly are key parameters for lahar impact assessment (e.g., Wilson et al, 2014). In other words, we take into account the flow "history" in every target grid point, and we compute the probability of the flow to simultaneously exceed (in at least one time step of the simulated flow) two values of flow thickness and dynamic pressure, repeating this for several pairs of values.



105 The paper is organised as follows: first we very briefly summarise the geological information and the features of the model, second, we present the method used for the PVHA, and then, we show the results as maps. Finally, we present a Discussion and conclusion in order to highlight the main achievements and the current limitations, which will be addressed in future works.

## 2 Field data and transport model

110 The code developed by generalising the ImexSFlow-2D model for describing lahar flows, described in the companion paper by de' Michieli Vitturi et al. (this issue), was calibrated using the field data presented by De Vito et al. (this issue). The field data were used also to define the available initial deposit from a reference eruption from Somma-Vesuvius in the different catchments, from PDC and tephra fallout deposits.

### 2.1 Remobilizable PDCs and tephra deposits

115 In this study, for hazard assessment purposes we considered a reference eruption belonging to the Medium Magnitude Scenario (MMS; Sandri et al., 2016). The initial volumes that can be remobilized as lahars come from PDC and tephra fallout deposits and from the available water (rain in our case). PDC deposits are more relevant for Somma-Vesuvius catchments, which are proximal to the source; tephra fall deposits, dispersed by the local wind fields, are mostly relevant for the Apennines catchments, where PDCs from a MMS eruption do not leave any appreciable deposit.

120 As regards the PDC deposits, we used the field data from the most recent subplinian eruptions, which are the 472 CE (Pollena; Sulpizio et al, 2005) and the 1631 CE (Rosi et al, 1993) eruptions. Cautiously in each grid cell of a given catchment we considered as available PDC deposit the maximum thickness between those from these two PDC events, as mapped by Gurioli et al. (2010).

125 As regards tephra fall deposits, we rely on the results of the simulations presented in Sandri et al. (2016), where 1000 simulations were performed for the MMS considering variability of the meteorological conditions and ESPs (total erupted mass, mass eruption rate, total grain size distribution). Specifically, we randomly sampled (without repetition) 100 fallout deposits from the 1000 available. Hence we used those deposit distributions for the simulations performed with the generalised IMEX-SfloW2D model.

### 2.2 Lahar runout

130 A massive set of lahar runout estimations inferred from the deposits in the Campanian Plain (see Fig. 2), associated to the 472 and 1631 eruptions (Di Vito et al., this issue), were used to calibrate the empirical parameters needed for friction, erosion, and deposition terms (de' Michieli Vitturi et al., this issue).



### 2.3 Grain size distribution

The Grain Size Distribution (GSD) is another critical input for modelling lahar transport (de' Michieli Vitturi et al., this issue). For this study we used those reconstructed by Di Vito et al. (this issue) based on the field data from the catchments  
135 around Somma-Vesuvius (catchments 1 to 6 in Fig. 1b) integrated with those from Pozzelle quarry (Sulpizio et al., 2006),  
and from Vallo di Lauro valley (at the basis of catchment 8 in Fig. 1b). In particular, both types of GSDs have been  
reconstructed by fitting a mixture of two Weibull distributions and then to average the values of the local grain sizes sampled  
in the field at the basis of these catchments, separately. The reconstructed GSDs are reported in Fig. 3: for the Apennine  
catchments (7-11 in Fig. 1b) we used the GSD reconstructed from the field data taken in Vallo di Lauro (Fig.3b), while for  
140 the Vesuvian catchments (1-6 in Fig.1b) we obviously use the GSD reported in Fig.3a and reconstructed on field data taken  
there.

Finally, in order to assess the effect of the uncertainty on the reconstructed GSDs we performed a sensitivity test (see  
Supplementary Material 1) on the weight of the coarse and fine populations on the simulated deposits, showing that is not  
very critical in terms of simulated deposit, maximum thickness and dynamic pressure after 24 hours from the flow  
145 mobilization.

### 2.4 Digital Elevation Model

For a correct modelling of the areas invaded by lahars it is necessary to use a Digital Elevation Model (DEM) as accurate as  
possible. To this end we used a Digital Terrain Model (DTM) derived from an airborne LiDAR survey of 2012 combined  
with the TIN Italy Topography (Tarquini et al., 2007) in a portion of the sub-Apennine areas where the LiDAR data were not  
150 available. The LiDAR data were provided by the Italian Ministero dell'Ambiente e della Tutela del Territorio e del Mare  
(MATTM) through a series of ASCII files storing the elevation data in the latitude-longitude WGS84 reference system. The  
tiles, each covering 1 km<sup>2</sup>, have been processed to create a single elevation matrix geo-referenced in the WGS84-UTM-  
Zone 33N geodetic cartographic system and memorising the elevation data at 32 bit. The obtained matrix, with spatial  
resolution of 1 m and vertical accuracy < 30 cm (Pizzimenti et., al 2016), was cleaned from residual anthropic or artificial  
155 features and subsequently resampled at 10 m cell size in order to be combined with the TIN Italy model. The resulting matrix  
(4129 × 5088 cells), covering 1600 km<sup>2</sup>, was used as the topography model for the area (Fig. 1c) for the simulations,  
discretized at a computational grid of 50 m × 50 m, which was tested by de' Michieli Vitturi et al. (this issue) as a good  
resolution able to reproduce the main features of the flow in reasonable computational times.



### 3 Methods

#### 160 3.1 Sampling strategy

In order to explore the natural variability in the processes governing lahar initiation, we first identify the key independent parameters. Given a catchment, the key parameters are the initial flow volume and initial solid volumetric fraction ( $\alpha_s$ ); the first depends on the initial area of lahar detachment, on the thickness of the available remobilizable deposits, and on the available water from both rain or other external water sources and water content filling soil pores.

165 The initial value of  $\alpha_s$  is very variable and hard to assess, thus we uniformly sample it on the range [0.10-0.60], which are general limits for a lahar, encompassing a wide range of flows, from debris flows (solid concentration  $\alpha_s > 0.5$ ) to hyperconcentrated flows ( $\alpha_s = 0.5-0.1$ ) to muddy streamflows ( $\alpha_s < 0.1$ ) (Vallance and Iverson, 2015; Neglia et al., 2022).

Volcanoclastic deposits from Vesuvius are characterised by an effective porosity ( $\alpha_d$ ) that has been estimated as  $0.37 \pm 0.10$  (Di Vito et al, this issue). Thus,  $\alpha_d$  is sampled from a Gaussian distribution with mean 0.37 and standard deviation equal to  
170 0.03, so that 99% of the sampled values are within the above estimate.

To identify the possible initial area of lahar formation in a given catchment, we first select the grid points (Figure 1a,b) falling within the catchment. Then, we rely on three empirical assumptions based on field evidence (Bisson et al, 2014): (i) only grid cells that are “steep enough”, i.e., having a slope larger than a 20-30 degrees, can be the site of remobilization, (ii) the steeper a cell, the more likely its deposits will be remobilized, however (iii) on very steep cells (slope  $>40$  degrees),  
175 deposits tend not to accumulate, thus we assume no deposit available for remobilization on such grid cells.

In order to define the potential initial area of lahar generation accounting for the points (i) to (iii) above, we assume that remobilization can occur in a grid cell if it is steeper than a given  $\delta_{min}$  and less steep than 40 degrees. Then we distinguish between Somma-Vesuvius catchments, where most of the deposits are fine-grained PDC deposits and are thus easier to be remobilized, and Apennines catchments, where deposits are coarser-grained fallout layers, more difficult to be remobilized.

180 To reflect this feature, for each catchment and simulation, the slope threshold  $\delta_{min}$  is sampled randomly from a triangular distribution, independently for Somma-Vesuvius and Apennines catchments. For Somma-Vesuvius we considered a lower bound distribution  $\delta_{min}$  of [20-30] degrees and for the Apennines [20-35] degrees. In this way, steeper cells are much more likely to be the site of remobilization (to reflect point ii), that can never occur at slopes lower than 20 degrees (to reflect point i) and that definitely occurs above 30 and 35 degrees respectively (to reflect the difference in type of deposits).Having

185 defined the initial solid volumetric fraction and the area of lahar initiation, we can univocally define the initial flow volume, by keeping into consideration some physical constraints given by the availability of solid deposits and of water from pores and from rain in the domain of remobilization. As typical conditions during lahar flows we assume that the deposits are already water-saturated by an extra amount of water from previous rain when the lahar is triggered (e.g., Fiorillo and Wilson, 2004; Di Vito et al., this issue). Following de' Michieli Vitturi et al. (this issue), the thickness of available compacted deposit  
190 (i.e. devoid of the water filling its pore),  $\bar{h}_s$ , can be bounded as:



$$\bar{h}_s \leq \min \left\{ h_d (1 - \alpha_d), \frac{\alpha_s (1 - \alpha_d)}{1 - \alpha_s - \alpha_d} h_r \right\} \quad (1)$$

being  $h_d$  the thickness of the water-saturated deposit,  $h_r$  the column of available rainwater,  $\alpha_d$  the deposit effective porosity, and  $\alpha_s$  the initial solid volumetric fraction. Following the considerations reported in de' Michieli Vitturi et al. (this issue), we set  $h_r$  equal to 500 mm as a conservative value corresponding to the maximum 2-day accumulated rainfall over the Somma-  
195 Vesuvius area in the last 70 years in the region, although in principle can be sampled from a suitable distribution (in this case assumed a Dirac delta distribution).

### 3.2 PVHA workflow and combination of the model simulation output

After the sampling of the relevant parameters, for our PVHA we follow the step of the workflow illustrated in Figure 4. For each catchment, run  $N_s=100$  simulations with the generalised ImexSFlow-2D model (see purple box in Figure 4), each  
200 with a different set of initial values for the model parameters. The simulations are run over a sub-domain with a resolution of 50 m × 50 m, cut in order to save computational time to avoid simulating negligible flow thicknesses over very distal grid points from a given catchment.

For each source catchment  $i$ , we compute the probability (given  $N_s$  simulations) of overcoming a given threshold  $h_j$  in maximum flow thickness, in a target-grid point  $x$ , as

$$p_{i,h_j}(x) = \frac{\sum_{k=1}^{N_s} \theta_{ik}}{N_s} \quad (2)$$

where  $\theta_{ik}$  is 1 respectively if, in the  $k^{\text{th}}$  simulation from catchment  $i$ , the maximum simulated flow thickness in  $x$  was larger than  $h_j$ , or 0 otherwise. The set of thresholds in flow thickness used is composed by 21 values: from 0.1m to 1m at a step of 0.1m, from 1.5m to 4m at a step of 0.5m, from 6m to 10m at a step of 2m, and the last values at 15m and 20m.

Similarly, for each source catchment  $i$ , we compute the probability of simultaneously overcoming a pair  $(h_j, P_l)$  of threshold  
210 values in flow thickness and dynamic pressure, in a target-grid point  $x$ , as

$$p_{i,h_j,P_l}(x) = \frac{\sum_{k=1}^{N_s} \theta_{ik}}{N_s} \quad (3)$$

Here  $\theta_{ik}$  is 1 respectively if, in the  $k^{\text{th}}$  simulation for catchment  $i$ , the pair  $(h_j, P_l)$  has been overcome in  $x$  at least once, or 0 otherwise. In this case the set of threshold pairs in flow thickness and dynamic pressure simultaneously overcome is composed of 36 values, consisting of all the possible combinations of the values 0, 0.1, 0.5, 1, 2 and 5 m of thickness, and 0,  
215 0.5, 1, 2, 5, 30 kPa for dynamic pressure. The value equal to 0 in one of the two target variables allows computing the



probability maps of overcoming the six thresholds in the other variable. In other words, by selecting a threshold value equal to 0 in one variable and a given threshold  $t_i$  in the other variable, we can visualise the probability of a maximum value larger or equal than  $t_i$  in the latter variable.

We then combine all the  $N_c=11$  catchments together by computing

$$220 \quad p_{h_j}(x) = 1 - \prod_{i=1}^{N_c} (1 - p_{i,h_j}(x)) \quad (4)$$

and

$$p_{h_j, P_i}(x) = 1 - \prod_{i=1}^{N_c} (1 - p_{i,h_j, P_i}(x)) \quad (5)$$

225 which respectively yield the probability of overcoming the maximum flow thickness  $h_j$ , and the probability of overcoming simultaneously the pair  $(h_j, P_i)$  in flow thickness and dynamic pressure, in the target-grid point  $x$  from at least one catchment, given the remobilization of the volcanoclastic deposits from a medium-size eruption at Somma-Vesuvius.

#### 4 Results

230 Following the approach described above, for each target-grid point we can build a hazard curve (e.g., Tonini et al., 2015) for the maximum flow thickness from each different catchment (equations 2 and 3) and one from at least one catchment (equations 4 and 5). As an example, we show these results on the grid point located in San Marzano sul Sarno (S in Figure 1a), an inhabited town in the Campanian plain, in figure 5: in panels b-c-d-e we show the hazard curves only relative to the catchments that are able to generate a lahar reaching this target point, and do not show the hazard curves for the other catchments, whereas in panel f we show the hazard curve from any catchment. These hazard curves can be cut at different thresholds in exceedance probability or thickness thresholds, and mapped on the whole target domain, to obtain hazard or probability maps respectively, such as those in figures 6a-k (at 5% exceedance probability) and 7a-k (for a flow maximum thickness of 1 m).

In figures 6l and 7l we show the same hazard and probability maps for at least one lahar from any catchment, deriving from equation 5.

240 Similarly to hazard curves, we can think of a “hazard surface” in terms of pairs of threshold values, in flow thickness and dynamic pressure, simultaneously overcome at every grid point. These hazard surfaces aim at an easier visualisation for impact assessment: in reality, in order to evaluate the impact of a lahar on the built environment, it is the joint effect of these two parameters that gives a more relevant measure of the impact.

An example for a Vesuvian location (the Casilli train station, point C) is shown in figure 8, from specific catchments (panels b and c) and from any catchment (panel d). This location has been selected as it is impacted by more than one catchment,





245 which is not common on the studied domain. By cutting these surfaces at specific pairs of values for the flow thickness and flow dynamic pressure, we achieve maps showing the probability of simultaneously overcoming the pair of threshold values selected.

In Figure 9 we show the example for 0.5 m of flow thickness and 1 kPa in flow dynamic pressure, from each different catchment (panels a-k) and from any catchment, deriving from catchment (panel l).

250 Typically, the output of probabilistic hazard studies are a portfolio of scientific products (different hazard and/or probability maps at different thresholds in exceedance probability and/or intensity, respectively, corresponding to different average return times). In this respect, the present study is no different, and in the Appendice A we provide the whole set (apart from those already given in Figs. 6, 7 and 9) of:

- probability maps for the maximum flow thickness (respectively at the other 20 thresholds in thickness considered except the one in Fig. 7 -Figs. SM7 to SM26),
- 255 • hazard maps for the maximum flow thickness at the exceedance probability thresholds of 1%, 2%, 10%, 50% and 90% -Figs. SM27 to SM31, and
- probability maps for the simultaneous overcoming of flow thickness and dynamic pressure threshold pairs (at the other 35 threshold pairs considered except the one in Fig. 9, Figs. SM32 to SM65).

260 The visual inspection of the portfolio of probabilistic maps for lahar maximum thickness shows that, in case of a reference size eruption at Vesuvius and heavy rain, flows of maximum thickness of half a metre (e.g., Figure SM11) are to be expected in the SouthWestern, NorthWestern, Northern, NorthEastern and Eastern sectors around Vesuvius, having conditional probabilities very close to 1 even in valleys down to 10-15 km from the volcano summit. On the SouthWestern sector they would likely reach the shoreline with decimetric maximum thickness. In such sectors, the hazard maps (e.g., Figure SM30) tell us that a flow of metric maximum thickness has 50% chances to be exceeded, in case of a primary lahar from the reference eruption. In the areas threatened by Apennine catchments, the highest conditional probability for such scale in maximum flow thickness is found in valleys, especially in the Vallo di Lauro, Sarno and Castellammare di Stabia areas, with values up to 50%.

270 Flows of maximum thickness of the order of 1-2 m (e.g., Figures 7 and SM17) have conditional probability close to 1 only in the bottom of valleys from NorthWest to SouthEast (clockwise) sectors around Somma-Vesuvio, up to 5 km approximately. In the other Vesuvian valleys around the volcano they have 10-50% conditional probabilities, whereas in the Apennine valleys the maximum conditional probability is about 30% for this order of flow thickness, again in Vallo di Lauro, Sarno and Castellammare di Stabia areas. Flows of maximum thickness of the order of 5 m or more are conditionally unlikely (probability less than 10%) and confined to valley bottoms, at least at the resolution used in this study.



When accounting for the simultaneous overcoming of conjoint thresholds in flow thickness and dynamic pressure, we can see that for the Vesuvian area the maximum conditional probability for flows of 0.5-1 m and 0.5-5 kPa are found downhill in valley bottoms (e.g., Figures 9, SM45 to SM47, SM50 to SM53), being the highest values located well below 500 m altitude: these areas are densely populated and built. In these areas, these ranges of conjoint thresholds have conditional probability close to 1 in the bottom of the valleys. High dynamic pressure values (e.g. 5 kPa or larger, e.g., Figures SM41-SM42-SM47-SM48-SM53-SM54) are overcome only in steep slopes, where presumably the flow speeds up. Their conditional probability is quite low in Apennine steep flanks, where such dynamic pressure thresholds are anyway overcome with very thin flows (of the order of 0.1 m, Figure SM42). In steep flanks of Vesuvian catchments 1 to 4, high dynamic pressure flows (5kPa or larger) are more probable than in the Apennines, still associated with flows of 0.1-0.5 m (Figures SM42 and SM47). In Di Vito et al (this issue), a reverse engineering approach is used to invert the occurrence of external clasts (bricks, walls, limestone fragments, etc...) into the volcanoclastic deposits to estimate the local flow dynamic pressure, velocity and thickness. For flows with an estimated thickness of 0.5-1 m, the most characteristic range of dynamic pressure is 4-8 kPa, corresponding to a representative range of velocity of 2-4 m/s. This means that the higher the velocity (and dynamic pressure) the higher the capability of the flow to entrain accidental clasts (or damage infrastructures). Comparing such estimates with the probabilistic maps from the present study, we see that the probability to overcome these combinations of thresholds in thickness and dynamic pressure (0.5-1 m; 2-30 kPa, Figures SM46 to SM48, SM52 to SM54) is statistically significant, being larger than 5% in several grid points. In particular, the pairs of lower thresholds (e.g., 0.5m and 2kPa, Fig. SM46) have a probability larger than 5% in steep valleys throughout the domain and in some locations at the mouth of the narrowest and steepest valleys (e.g., the Vesuvian ones or in Vallo di Lauro). The pairs of higher thresholds (e.g., 1m and 5kPa, Fig. SM53) have a probability larger than 5% only in the steepest valleys on Vesuvius slopes. As a concluding remark, we can state that the estimated combined values of flow thickness and dynamic pressure from field data in Di Vito et al (this issue) are well captured by our probabilistic maps, and do not represent outliers or unlikely values with respect to them.

As mentioned above, the probability maps shown in Figures SM32 to SM37 (where the threshold in maximum flow thickness is 0m) in practice show the probability of flows with maximum dynamic pressure overcoming the 6 thresholds considered (see section 3.2). It is important to highlight that where high values of dynamic pressure are overcome, it may be due to simulated flows of negligible thickness: this is the reason why we decided to consider the simultaneous overcoming of non-0 thresholds in thickness and dynamic pressure (e.g., in Figure 9 and SM38 to SM65). We think that this type of information could be of great importance when incorporating probabilistic hazard into impact and quantitative risk assessment (e.g., Zuccaro et al, 2008; Zuccaro and De Gregorio, 2013).

Comparing the different catchments, the catchments threatening the largest areas (e.g., where the area invaded by at least 10 cm thick flows with exceedance probability of 10%, Figure SM29) are the Apennine sectors 7 (Vallo di Avella), 8 (Vallo di Lauro) and 9 (upward the towns of Nocera Inferiore, Gragnano and Castellammare di Stabia, a very dense inhabited area).



Overall, the Vesuvian sectors 2 (North), 3 (NorthEast) and 4 (East) show the largest maximum expected thickness in hazard maps, given an exceedance probability (e.g., Figures 6, SM27 to SM31), and the largest probability of given maximum thickness in probability maps (e.g., Figures 7, SM7 to SM26). In few words, the smaller conditional hazard ubiquitously found in the Apennine areas, compared to the Vesuvian ones, is due to the smaller amount of available sediments to be remobilized (only from medio-distal fallout, whereas on Somma-Vesuvio both proximal fallout and PDC deposits are available) and to their coarser grain size. In our simulation strategy scheme, the latter feature has been assumed as a higher resistance to remobilization.

310

In a few points (such as S and C, respectively shown in Figs. 5 and 8) the hazard is significantly due to more than one catchment, but this appears to be an exception: overall, most of the inspected domain is threatened by one catchment.

## 315 5 Discussion and conclusions

The present study aims at providing a probabilistic assessment of lahar hazard conditional to the occurrence of a medium size reference eruption from Somma-Vesuvius. For the first time, such an hazard assessment has considered several sources of uncertainties previously overlooked, such as uncertainties on the initial volumes and initial detach areas of lahars, and effects of erosion and deposition processes. This has been possible thanks to both the model formulation (de' Michieli Vitturi et al., this issue) and the availability of relatively fast computational resources at INGV. Both factors enabled the simulation, in a reasonable time, of 100 different scenarios from each of the 11 catchments examined here, totalling to a larger-than-ever number of simulations for a lahar hazard assessment.

320

Where possible, constraints on the range of parameters values, or constraints on the probabilistic distribution describing relevant parameters, were obtained by comparison with field data (for example, the GSD or the sediment porosity  $\alpha_d$ ). For other parameters, only loose constraints were possible, and a maximum-ignorance uniform probability distribution has been used to describe such cases.

325

Under the hazard/risk separation principle (Jordan et al, 2014, Marzocchi et al, 2021), we remark that this is the role of volcanologists, that is to quantify uncertain scientific information in a way that can be used to mitigate risk.

Finally we remark that, in the present study, two limitations are related to (i) the number of simulations performed from each catchment, and (ii) the assumption of available rainfall, that we have fixed at 50 cm. As for the former limitation, it is mainly dictated by the availability of computational resources. Such a number has been chosen to carry out the simulations in a reasonable time, and it may be overcome in the future as more performing codes and resources are available. At the same time, the exploration of lahar hazard in case of other possible eruptive size classes from Somma-Vesuvius (Sandri et al, 2016) could be examined in future developments of this work. As for the latter limitation, we have also assessed that the

330



335 possible rain due to condensation of magma-exsolved water vapour in the umbrella region, that we have roughly estimated in  
an extra 5 to 10 cm of water, does not significantly increase such an upper limit. We analysed the data from the rain gauge  
operating at the historical building of the Osservatorio Vesuviano on Mt Vesuvius since 1940 (Ricciardi et al., 2007), finding  
that this amount represents approximately the maximum recorded accumulated rain over 2 days since about 1950 in the  
Campanian region. This value is similar to the maximum rainfall among the episodes of lahars reported by Fiorillo & Wilson  
340 (2004). In this perspective, this limit has been taken as conservative. In fact, it implies that the simulated lahars have larger  
initial volumes, since more water is available, compared to cases with a smaller amount of rainfall. However, due to climate  
change, the 2 day intensity of rain may be larger over this area in the coming decades. Furthermore, the comparison of the 2  
days accumulated rainfall at Vesuvius with the occurrence of lahar cases in Campania shows very little correlation in time  
(Cantelli, 2021). Following these considerations, we acknowledge that relaxing this assumption, on the one hand, would  
345 allow simulating more frequent and smaller size lahars, that appear to have occurred in the last 50 years even with smaller  
rainfall intensity (e.g., the Sarno event in 1998), and, on the other hand, would allow accounting for potentially larger rainfall  
intensities expected in the future by the ongoing climate change, subject of a future work.

### Supplementary Material

See attached PDF

### 350 Author Contribution

*Conceptualization:* L. Sandri, A. Costa, M. de' Michieli Vitturi, M.A. Di Vito

*Data curation:* A. Costa, L.Sandri, M. de' Michieli Vitturi, M.A. Di Vito. D. M. Doronzo, I. Rucco, M. Bisson, R. Gianardi,  
R. Sulpizio, S. De Vita

*Formal analysis:* L. Sandri, A. Costa, M. de' Michieli Vitturi

355 *Funding acquisition:* M.A. Di Vito, A. Costa, L.Sandri

*Methodology:* L. Sandri, A. Costa, M. de' Michieli Vitturi

*Manuscript curation:* L. Sandri, A. Costa

### Competing interests

360

The contact author has declared that none of the authors has any competing interests

### Acknowledgments

365 DPC-INGV Allegato B



De Gregorio Daniela, Nardone Stefano, Zuccaro Giulio, Ylenia Cantelli

## References

1. Auken M.R., Sparks R.S.J., Siebert L., Crosweller H.S., Ewert J. (2013) A statistical analysis of the global historical volcanic fatalities record. *J Appl. Volcanol.* **2**, 2 (2013). <https://doi.org/10.1186/2191-5040-2-2>
- 370
- Bisson M, Spinetti C, Sulpizio R (2014) Volcaniclastic flow hazard zonation in the Sub-Apennine Vesuvian area using GIS and remote sensing, *Geosphere* 10 (6), 1419-1431
- Cantelli Y (2021) Analisi statistica degli eventi di precipitazione associati alla generazione di lahar nell'area del Vesuvio, Master Thesis, Alma Mater Studiorum - Università di Bologna, in Italian
- Cioni R, Bertagnini A, Santacroce R, Andronico D (2008) Explosive activity and eruption scenarios at Somma-Vesuvius (Italy): towards a new classification scheme. *J Volcanol Geotherm Res* 178:331– 346. doi:10.1016/j.jvolgeores.2008.04.024
- 375
- Costa A, Dell'Erba F, Di Vito MA, Isaia R, Macedonio G, Orsi G, Pfeiffer T (2009) Tephra fallout hazard assessment at the Campi Flegrei caldera (Italy). *Bull Volcanol* 71, 259–273
- 380
- de' Michieli Vitturi M., Costa A., Di Vito M.A., Sandri L., Doronzo D. (this issue) Lahar events in the last 2,000 years from Vesuvius eruptions. Part 2: Formulation and validation of a computational model based on a shallow layer approach, *Solid Earth*
- Di Vito M.A., Rocco I., de Vita S., Doronzo D.M., Bisson M., de' Michieli Vitturi M., Rosi M., Sandri L., Zanchetta G., Zanella E., Costa A. (this issue) Lahar events in the last 2,000 years from Vesuvius eruptions. Part 1: Distribution and impact on densely-inhabited territory estimated from field data analysis, *Solid Earth*
- 385
- Fiorillo F., Wilson R. C. (2004). Rainfall induced debris flows in pyroclastic deposits, Campania (southern Italy). *Engineering Geology* 75 (2004) 263–289
- Gurioli, L., Sulpizio, R., Cioni, R., Sbrana, A., Santacroce, R., Luperini, W., & Andronico, D. (2010). Pyroclastic flow hazard assessment at Somma–Vesuvius based on the geological record. *Bulletin of Volcanology*, 72(9), 1021-1038. <https://doi.org/10.1007/s00445-010-0379-2>
- 390

Jenkins, S. F., Biass, S., Williams, G. T., Hayes, J. L., Tennant, E., Yang, Q., Burgos, V., Meredith, E. S., Lerner, G. A., Syarifuddin, M. & Verolino, A. (2022). Evaluating and ranking Southeast Asia's exposure to explosive volcanic hazards. *Natural Hazards and Earth System Sciences*, 22(4), 1233-1265. <https://dx.doi.org/10.5194/nhess-22-1233-2022>

395 Jordan T.H., Marzocchi W., Michael A., Gerstenberger M. (2014) Operational earthquake forecasting can enhance earthquake preparedness. *Seismol. Res. Lett.* 85, 955–959

Macedonio G, Costa A, Folch A (2008) Ash fallout scenarios at Vesuvius: Numerical simulations and implications for hazard assessment. *J Volcanol Geotherm Res* 178, 366–377

400 Marzocchi W., Papale P., Sandri L., Selva J. (2021) Reducing the volcanic risk in the frame of the hazard/risk separation principle, in *Forecasting and Planning for Volcanic Hazards, Risks, and Disasters*, Editors: Schroeder JF, Papale P, Volume 2, 978-0-12-818082-2, <https://doi.org/10.1016/B978-0-12-818082-2.00014-7>

Massaro S., Stocchi M., Martínez Montesinos B., Sandri L., Selva J., Sulpizio R., Giaccio B., Moscatelli M., Peronace E., Nocentini M., Isaia R., Titos Luzón M., Dellino P., Naso G., Costa A. (2023) Assessing long-term tephra fallout hazard in Southern Italy from Neapolitan volcanoes, *Natural Hazards and Earth System Science*, <https://doi.org/10.5194/nhess-2023-3>

405 Neglia, F., Dioguardi, F., Sulpizio, R., Ocone, R., & Sarocchi, D. (2022). Computational fluid dynamic simulations of granular flows: Insights on the flow-wall interaction dynamics. *International Journal of Multiphase Flow*, 157, 104281. <http://dx.doi.org/10.1016/j.ijmultiphaseflow.2022.104281>

Neri A, Aspinall WP, Cioni R, Bertagnini A, Baxter PJ, Zuccaro G, Andronico D, Barsotti S, Cole PD, Esposti Ongaro T, Hincks TK, Macedonio G, Papale P, Rosi M, Santacroce R, Woo G (2008) Developing an event tree for probabilistic hazard and risk assessment at Vesuvius. *J Volcanol Geotherm Res* 178:397–415. doi:10.1016/j.jvolgeores.2008.05.014

410 Neri, A., Bevilacqua, A., Esposti Ongaro, T., Isaia, R., Aspinall, W. P., Bisson, M., Flandoli, F., Baxter, P. J., Bertagnini, A., Iannuzzi, E., Orsucci, S., Orsucci, S., Pistolesi, M., Rosi, M., Vitale, S. (2015). Quantifying volcanic hazard at Campi Flegrei caldera (Italy) with uncertainty assessment: 2. Pyroclastic density current invasion maps. *J. Geophys. Res. Solid Earth* 120, 2330–2349

415 Pizzimenti L., Tadani A., Gianardi R., Spinetti C., Bisson M., Brunori C.A. (2016). "Digital Elevation Models derived by ALS data: Sorrentina Peninsula test areas". *Rapporto Tecnico INGV – N° 361*. ISSN 2039 – 7941

Ricciardi, G.P., Siniscalchi, V., Cecere, G., and Macedonio, G., 2007, *Meteorologia Vesuviana dal 1864 al 2001 (Dataset)*



- Rosi M., Principe C., Vecci R. (1993) The 1631 Vesuvius eruption. A reconstruction based on historical and stratigraphical data, *J Volcanol Geotherm Res*, 58, 1–4, 151-182, [https://doi.org/10.1016/0377-0273\(93\)90106-2](https://doi.org/10.1016/0377-0273(93)90106-2)
- Sandri L., Costa A., Selva J., Tonini R., Macedonio G., Folch A., Sulpizio R. (2016) Beyond eruptive scenarios: assessing tephra fallout hazard from Neapolitan volcanoes. *Sci Rep* 6:24271, doi: 10.1038/srep24271
- Sandri L., Tierz, P., Costa, A., Marzocchi, W. (2018). Probabilistic hazard from pyroclastic density currents in the Neapolitan area (Southern Italy), *Journal of Geophysical Research: Solid Earth*, 123, 3474-3500, doi: 10.1002/2017JB014890
- Selva J, Costa A, Marzocchi W, Sandri L (2010) BET VH: exploring the influence of natural uncertainties on long-term hazard from tephra fallout at Campi Flegrei (Italy). *Bull Volcanol* 72:717–733. doi:10.1007/s00445-010-0358-7
- Selva J, Costa A, De Natale G, Di Vito MA, Isaia R, Macedonio G (2018) Sensitivity test and ensemble hazard assessment for tephra fallout at Campi Flegrei, Italy, *J Volcanol Geotherm Res* 351, 1-28, DOI:10.1016/j.jvolgeores.2017.11.024
- Sulpizio R., Mele D., Dellino P., La Volpe L. (2005) A complex, Subplinian-type eruption from low-viscosity, phonolitic to tephri-phonolitic magma: the AD 472 (Pollena) eruption of Somma-Vesuvius, Italy. *Bull Volcanol* 67, 743–767 (2005). <https://doi.org/10.1007/s00445-005-0414-x>
- Sulpizio R., Zanchetta G., Demi F., Di Vito M.A., Pareschi M.T., Santacroce R. (2006) The Holocene syneruptive volcanoclastic debris flows in the Vesuvian area; geological data as a guide for hazard assessment. In: Neogene-Quaternary continental margin volcanism; a perspective from Mexico, Claus Siebe (editor), Jose Luis Macias (editor) and Gerardo J. Aguirre-Diaz(editor), Special Paper - Geological Society of America (2006) 402: 217-235
- Tarquini S., Isola I., Favalli M., Mazzarini F., Bisson M., Pareschi M.T., Boschi E. (2007). “TINITALY/01: a new Triangular Irregular Network of Italy”, *Annals of Geophysics*, 50, 3: 407 – 425
- Tierz P., Woodhouse M.J., Phillips J. C., Sandri L., Selva J., Marzocchi W., Odbert H.M. (2017) A framework for probabilistic multi-hazard assessment of rain-triggered lahars using Bayesian Belief Networks, *Front Earth Sci*, <https://doi.org/10.3389/feart.2017.00073>
- Tonini R, Sandri L, Thompson M. (2015) PyBetVH: A Python tool for probabilistic volcanic hazard assessment and for generation of Bayesian hazard curves and maps. *Comput Geosci*. 79:38–46



Vallance J.W. and Iverson R.M.: Lahars and their deposits, in : The encyclopedia of volcanoes, edited by Haraldur Sigurdsson, Academic Press, 649-664, <https://doi.org/10.1016/B978-0-12-385938-9.00037-7>, 2015.

445 Wilson G., Wilson T.M., Deligne N.I., Cole J.W. (2014) Volcanic hazard impacts to critical infrastructure: A review, *J Volcanol Geotherm Res*, 286, 1, 148-182, <https://doi.org/10.1016/j.jvolgeores.2014.08.030>

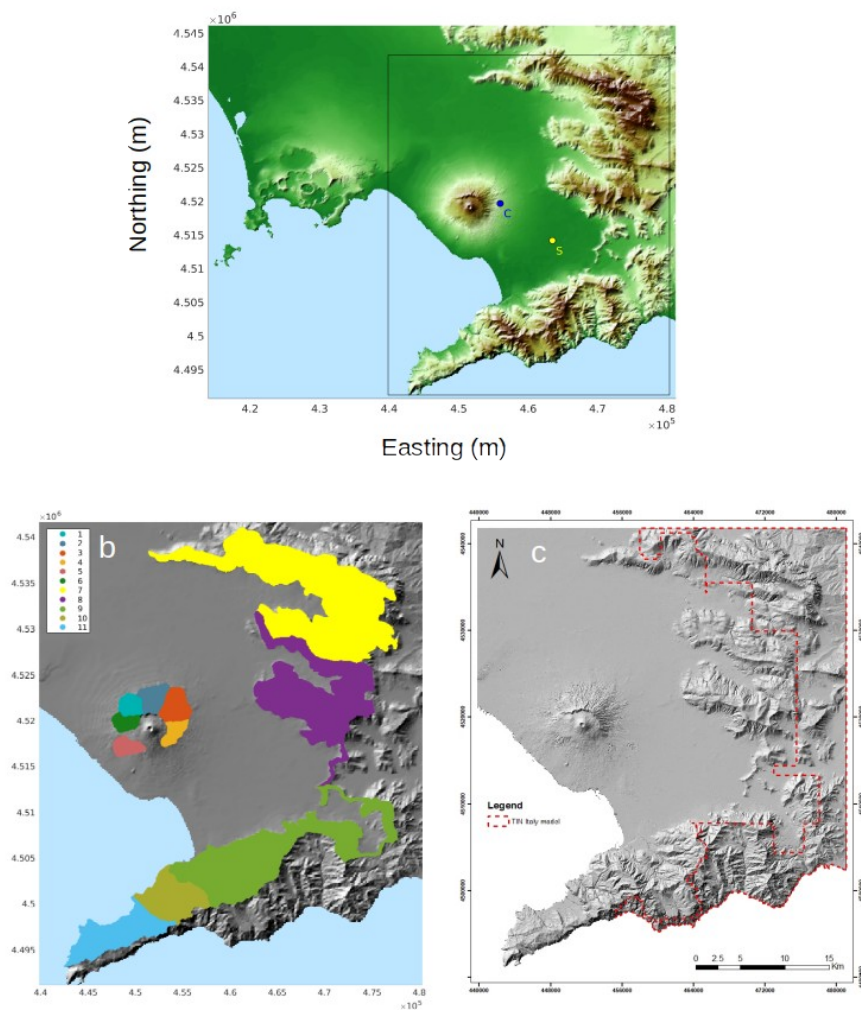
Zanchetta G., Sulpizio R., Di Vito M.A. (2004a) The role of volcanic activity and climate in alluvial fan growth at volcanic areas: an example from southern Campania (Italy), *Sedimentary Geology* 168 (3-4), 249-280

Zanchetta G., Sulpizio R., Pareschi M.T., Leoni F.M., Santacroce R. (2004b) Characteristics of May 5–6, 1998 volcanoclastic debris flows in the Sarno area (Campania, southern Italy): relationships to structural damage and hazard zonatio, *Journal of volcanology and geothermal research* 133 (1-4), 377-393

Zuccaro G., Cacace F., Spence R.J.S., Baxter P.J. (2008) Impact of explosive eruption scenarios at Vesuvius, *J. Volcanol. Geotherm. Res.*, 178, 416-453

450 Zuccaro G. and D. De Gregorio (2013) Time and space dependency in impact damage evaluation of a sub-Plinian eruption at Mount Vesuvius, *Nat. Hazards*, 68, 1399-1423

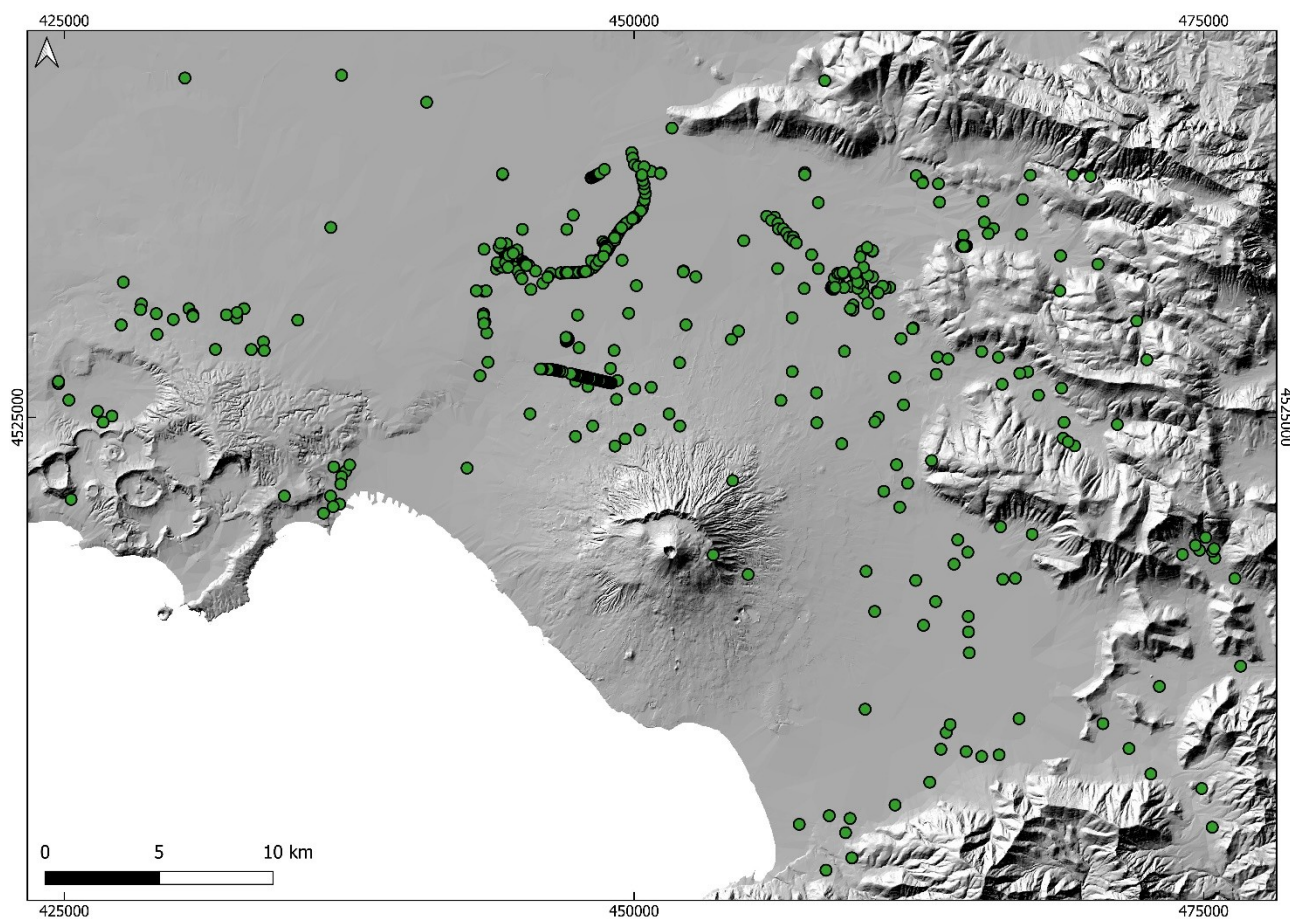




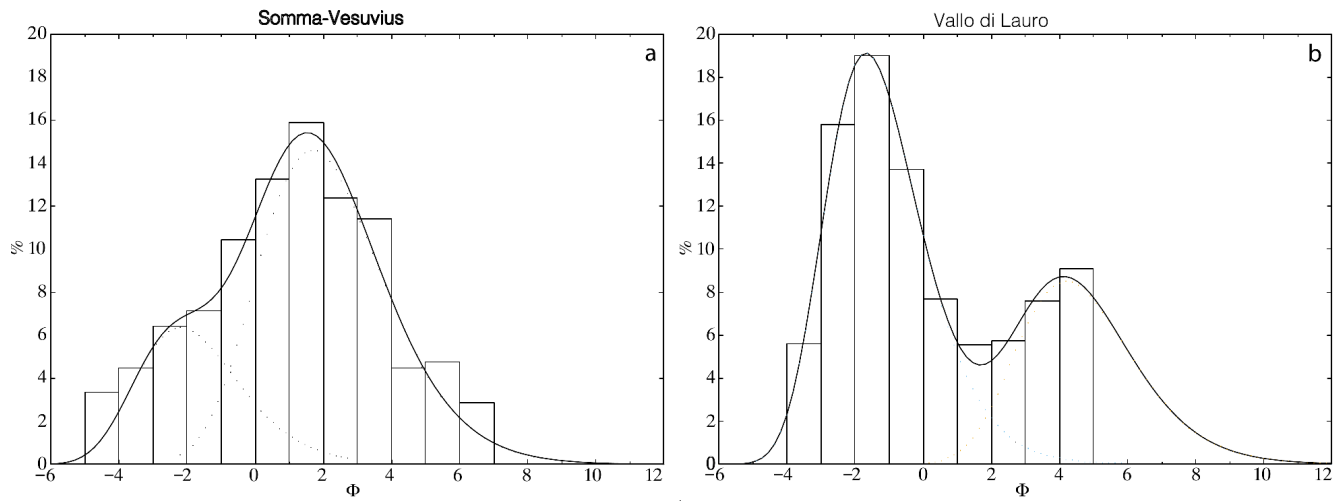
455 **Figure 1:** **a:** Campanian Plain highlighting the target area of the present study (black rectangle) covered by a  $50\text{ m} \times 50\text{ m}$  grid; the coloured dots show respectively the location of four illustrative points, that are San Marzano sul Sarno (S) town and Casilli (C) train station, that will be used as examples in the paper. **b:** DEM zoom on the target area highlighting the 11 catchments considered (1-6 and 7-



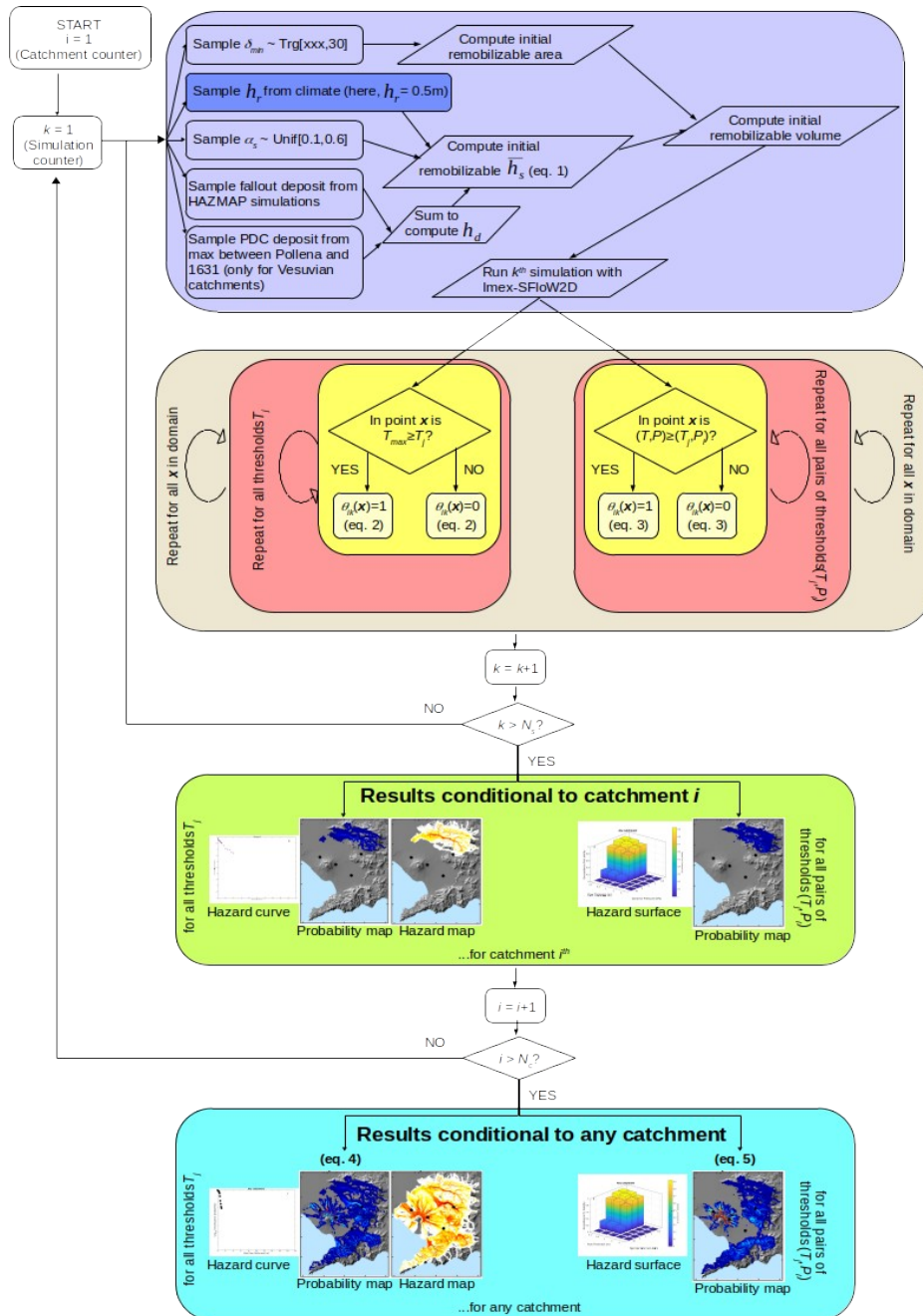
11 respectively for Vesuvius and Apennines catchments). **c**: the red dashed line encompasses the part of the domain where the TIN Italy DEM has been used.



**Figure 2:** The dots highlight the locations of field data analysed in Di Vito et al (2023), where measurements and facies analyses of lahar deposit features were taken or retrieved by an inverse engineering approach.

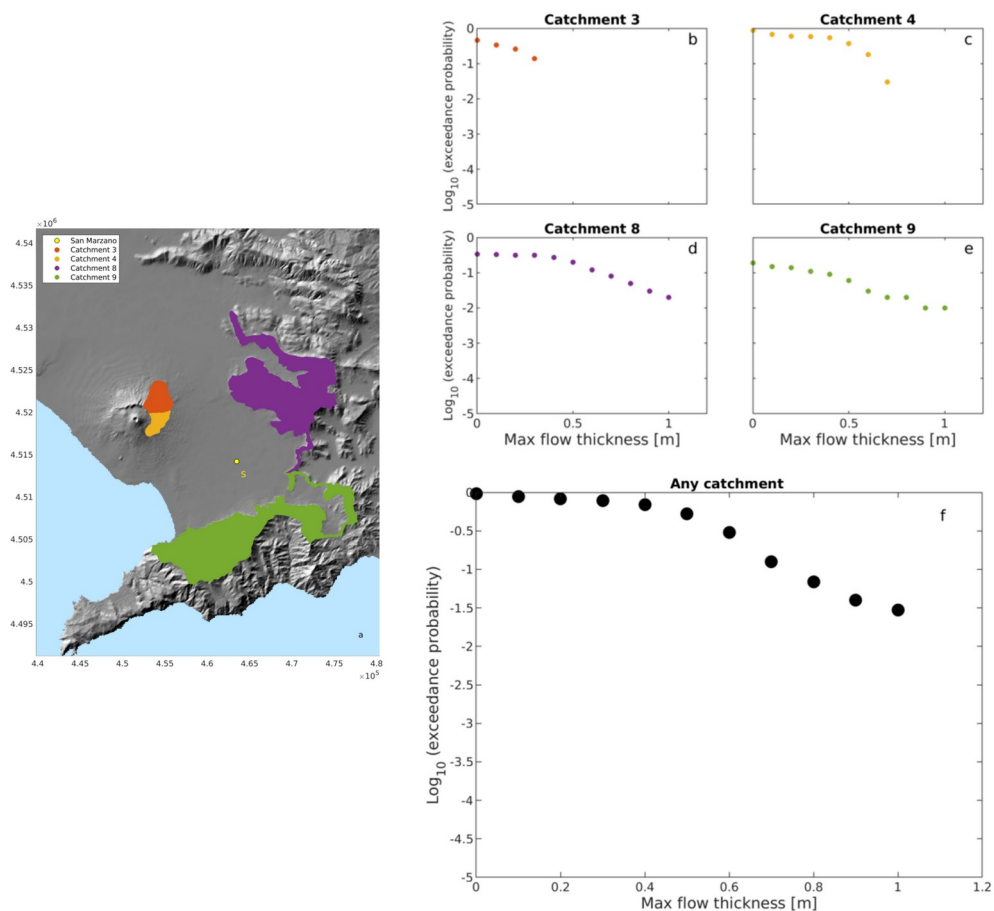


**Figure 3:** Grain Size Distribution used for Vesuvian (a) and Appenine (b) catchments. The former has been derived from local samples from the Somma-Vesuvius catchments, while the latter from samples from Vallo di Lauro (located at the basis of catchment 8 in [Fig.1b](#))

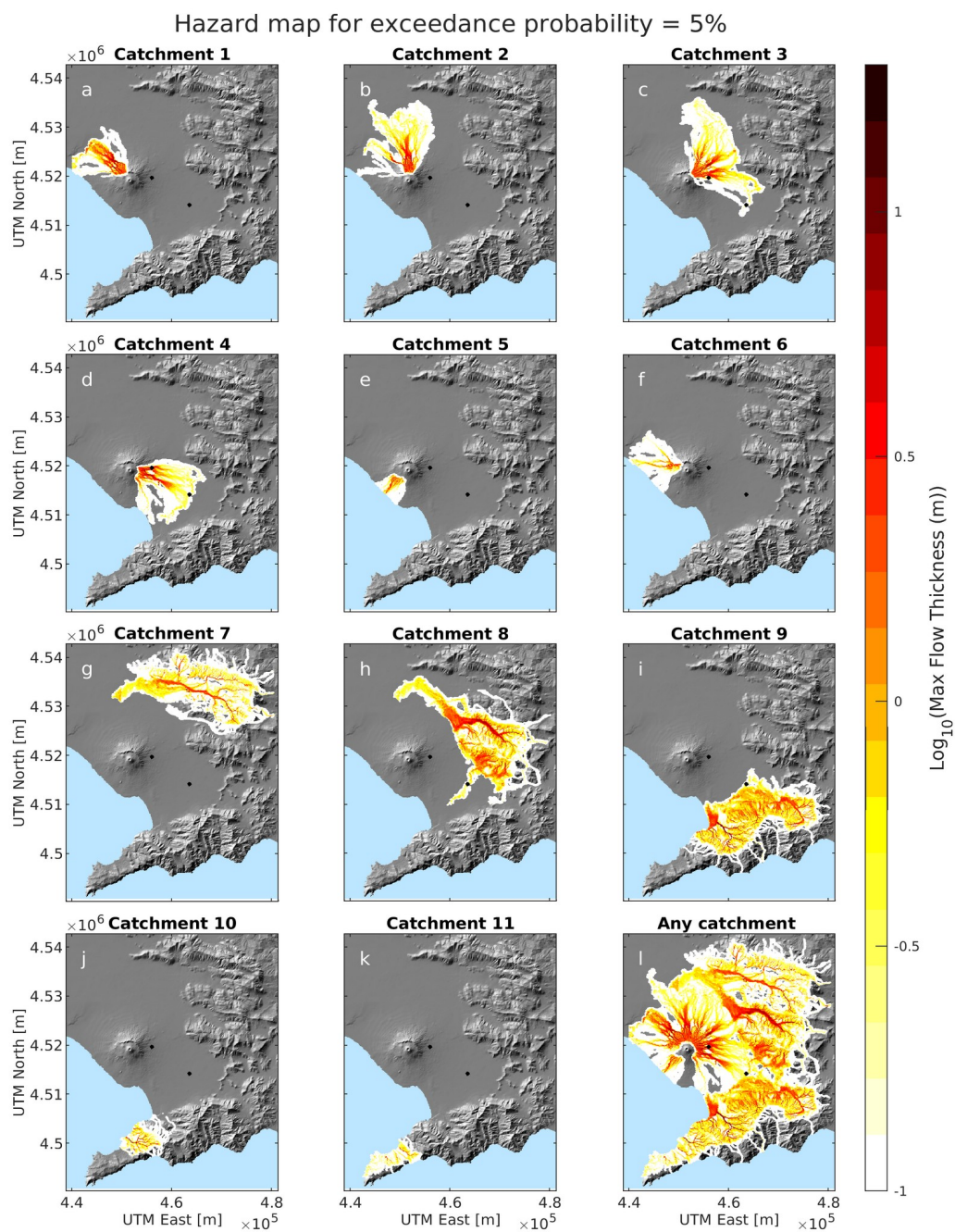


465

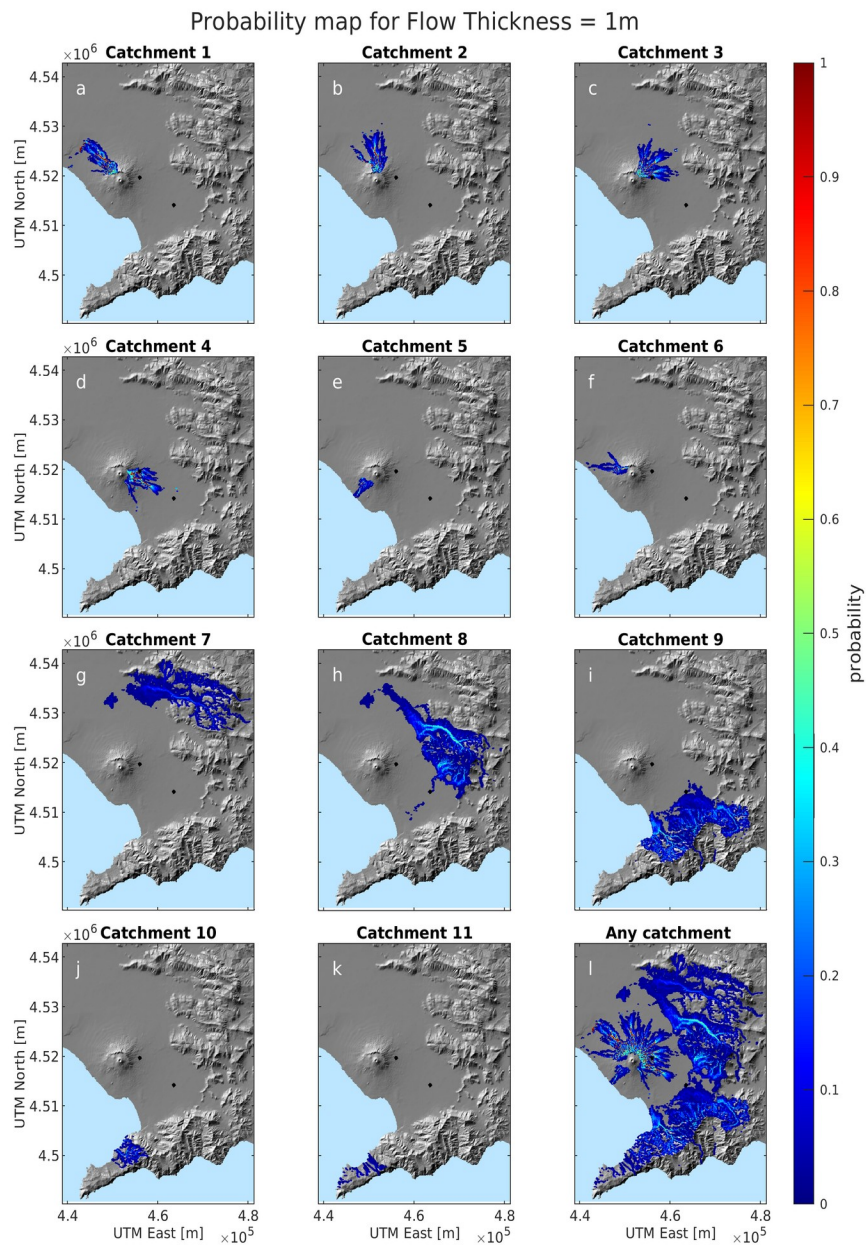
**Figure 4:** Workflow describing the sampling of ESP (and their combination through [equation 1](#)) and Imex-SFloW2D simulation (purple box), the postprocessing of the simulation outputs (brown, pink and yellow boxes) to apply [equations 2 and 3](#) to achieve the hazard curves, maps and surfaces, and probability maps for a given catchment (green box), and the further processing through [equations 4 and 5](#) to achieve those for any catchment (cyan box). The number of catchments  $N_c$  considered in this application is  $N_c=11$ , and the number of simulations for each catchment  $N_{sim}=100$ . The darker purple sub-box indicates that, in the present study, we set  $h_r$  fixed at 0.5 m, but it can ideally be sampled from climatological distributions.



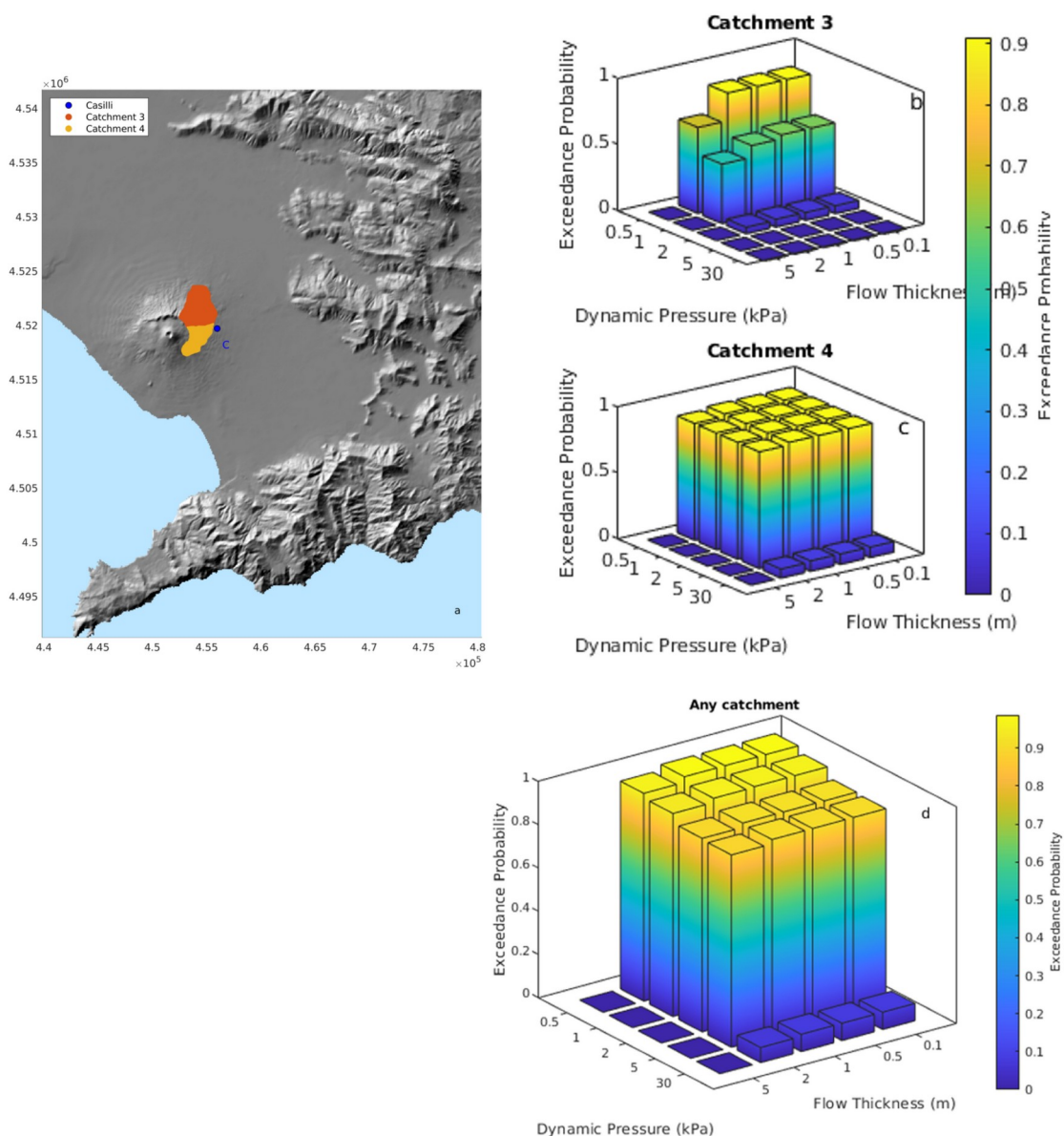
470 **Figure 5:** Hazard curves for the maximum flow thickness from the catchments 3-4-8-9 (shown in panel a) insisting on San Marzano sul Sarno (point S) (the hazard curves are shown respectively in panels b, c, d, e) and from any catchment (f).



**Figure 6:** Hazard map at the 5% probability level, showing the maximum flow thickness having that probability to be exceeded given a lahar from specific catchments (a-k) and from any catchment (l).

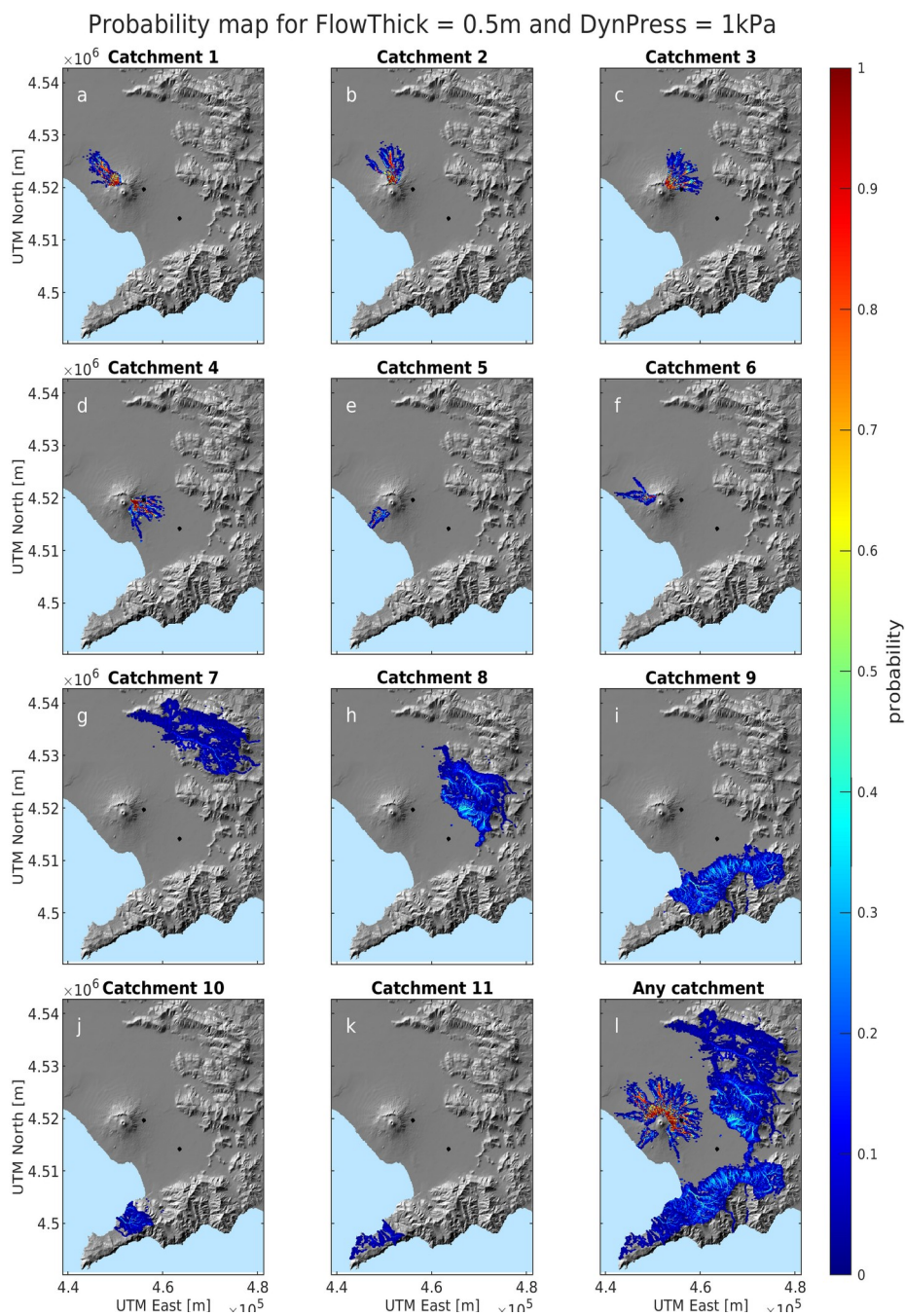


**Figure 7:** Probability map for the maximum flow thickness of 1 m, showing the probability to exceed it given a lahar from specific catchments (a-k) and from any catchment (l).

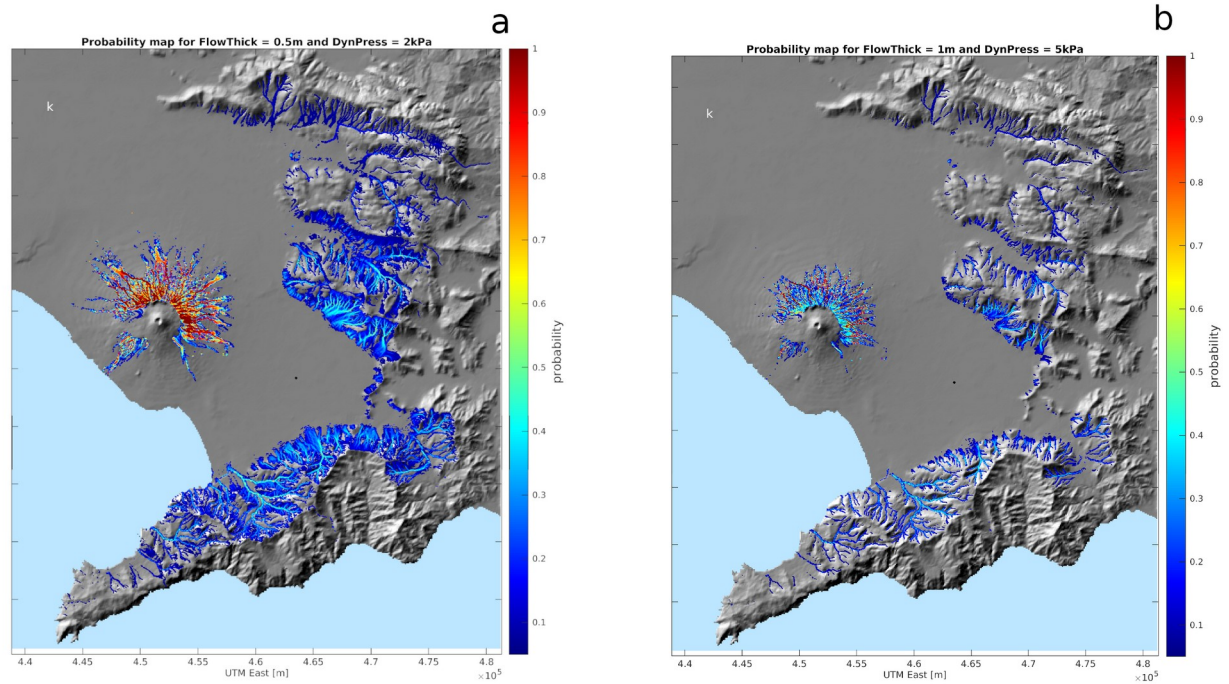


475 **Figure 8:** Hazard surface for the simultaneous overcoming of different pairs of values in maximum flow thickness and flow dynamic pressure, in the Casilli (C) train station. The panels b and c respectively show the probability to simultaneously exceed the threshold pairs at least once during the flow, given a lahar from catchments 3 and 4 (location of catchments shown in panel a). The panel d shows the hazard surface from all the catchments.





480 **Figure 9:** Probability map for the simultaneous overcoming of 0.5m in maximum flow thickness and 1kPa in flow dynamic pressure, showing the probability to simultaneously exceed the two thresholds at least once during the flow, given a lahar from specific catchments (a-k) and from any catchment (l).



**Figure 10:** Probability maps for the simultaneous overcoming of (a) 0.5m in maximum flow thickness and 2kPa in flow dynamic pressure, and (b) 1m and 5kPa. The maps show only points where the probability to simultaneously exceed the two thresholds at least once during the flow is larger than 5%, given a lahar from any catchment.

485