

Charcoal morphologies and morphometrics of a Eurasian grass-dominated system for robust interpretation of past fuel and fire type

5 Angelica Feurdean^{1,2*}, Richard S. Vachula³, Diana Hanganu^{4,5}, Astrid Stobbe⁶, Maren Gunnior⁶,

¹Department of Physical Geography, Goethe University, Altenhöferallee 1, 60438 Frankfurt am Main, Germany

²STAR-UBB Institute, Babeş-Bolyai University, Kogălniceanu 1, 400084, Cluj-Napoca, Romania

³Department of Geosciences, Auburn University, 2070 Beard Eaves Coliseum USA

10 ⁴ICUB Research Institute of the University of Bucharest, Panduri 90-92, Bucharest, Romania

⁵Emil Racoviță Institute of Speleology, Frumoasă 31, 010986, Bucharest, Romania

⁶Archaeobotanical Laboratory, Institute for Archaeological Sciences, Goethe University, Norbert-Wollheim-Platz 160629 Frankfurt am Main, Germany

15 *Correspondence to:* Angelica Feurdean (feurdean@em.uni-frankfurt.de)

20

25

30

35 **Abstract.**

Reconstructing past fire regimes by quantifying charcoal fragments is a commonly used approach, and recent developments in morphological and morphometric analyses of charcoal particles have improved our ability to discern characteristics of burnt plant fuel and interpret fire-type changes. However, burning experiments linking known plants to these metrics are limited, particularly in open ecosystems. This study presents novel analyses of laboratory-produced charcoal of 22 plant species from the steppe regions of Eurasia (Romania and Russia), along with selected samples from three Holocene charcoal and pollen records from the same areas. We characterize charcoal production, morphologies, and morphometrics in these grass-dominated environments, thereby enabling more robust interpretations of fuel sources and fire types for palaeofire research. Our experiments demonstrate that fire temperature can introduce biases in charcoal produced depending on species. Grass charcoal production was significantly lower and decreased more strongly with fire temperature compared to forbs. This suggests an underrepresentation of terrestrial graminoids in sedimentary charcoal assemblages. While charcoal morphologies enable finer distinctions between fuel types than morphometrics, both approaches are complementary for fuel identification. Morphometric analyses revealed that graminoid charcoal particles were more elongated (length-to-width ratio $L/W = 4$) and narrower (width-to-length ratio $W/L = 0.38$) than forbs ($L/W=3.1$ and $W/L=0.42$, respectively), in agreement with a global compilation for graminoids ($L/W = 4.3$ for grass 5.4 grass and wetland graminoids) and forbs ($L/W = 2.9$). However, overlapping L/W values present a challenge for establishing cut-off values for fuel type identification in charcoal assemblages with mixed fuel sources. Based on our analyses and compiled datasets from experimental burns, L/W values above 3.0 may indicate predominantly herbaceous morphologies in temperate grassland-dominated ecosystems, though values are likely to be higher for grass than forb-dominated vegetation. Notably, terrestrial grasses exhibit shorter aspect ratios (4.3) than wetland graminoids (6.4), highlighting that the aspect ratio needs tailoring to the specific environment of its application, i.e., wetland vs. terrestrial ecosystems. The long forms of graminoid charcoal particles also suggest their potential for atmospheric longer-distance transport compared to more spherical particles meaning they likely provide insights into regional fire history. An important finding is that charcoal morphology and morphometrics of herbaceous plants closely corresponded to the dominant plant communities indicated by the pollen record, highlighting a solid link between the dominant vegetation type and fuel burnt in grassland-dominated environments. However, the relationship between woody charcoal and tree pollen may be more complex, as tree pollen can travel atmospherically longer distances compared to woody charcoal. Our results also highlight the complex interplay between local vegetation and charcoal composition with human fire use that needs to be considered when interpreting charcoal morphological records. A critical takeaway from this study is the importance of not assuming the universality of previous research findings and instead employing experimental approaches to characterize charcoal particles in new ecosystems prior to the application of these techniques. Furthermore, this study also highlights recommendations for further research in new geographical areas and proposes methodological adjustments to enhance the usefulness of charcoal analysis in fire research.

1 Introduction

70 Fire plays a crucial role in shaping open ecosystems like grasslands and grass-tree mosaics (i.e., steppe, savanna, forest-steppe, woodlands) at evolutionary to ecological timescales (Bond et al., 2004). One of the largest extents of open systems is in Eurasia, which has been heavily impacted by human activities for millennia. Consequently, little is known about the natural occurrence and intensity of fires in relation to climate, biomass amount and vegetation composition in these ecosystems (Feurdean et al., 2013; 2021; Leys et al., 2018; Unkelbach et al., 2018; Feurdean and Vasiliev, 2019; Lukanina et al., 2023). Long-term records of wildfire activity are essential for understanding how fire regimes vary with changes in climate, vegetation, and human-
75 vegetation interactions (Bowman et al., 2009).

Charcoal, a by-product of the incomplete combustion of plant tissues, is the most widely used proxy for the reconstruction of past fire activity (Whitlock and Larsen 2001). A few keys for identifying small charcoal particles in natural sedimentary archives have been made available. They are either based on quantitative characteristics of charcoal size and form (morphometrics such as aspect ratio, surface area, area-to-perimeter ratio), or qualitative morphological characteristics such
80 as edge aspects, surface features, cleavage, luster, tracheids with border pits, leaf veins, cuticles, etc. (Umbanhowar and Mcgrath, 1998; Enache and Cumming, 2006; Jensen et al., 2007; Courtney-Mustaphi and Pisaric, 2014; Pereboom et al., 2020; Feurdean, 2021). These keys can help link charcoal particles to characteristics of the plants burnt, such as plant types (moss, graminoids, forbs, shrubs/trees) or plant parts (stems, branches, roots, leaves, wood). Most of the available keys for identifying charcoal morphologies and morphometries have been developed based on the description of sedimentary charcoal from boreal
85 forests, with a few emerging studies focusing on experimentally produced charcoal of known plants or in other ecosystems (Umbanhowar and Mcgrath, 1998; Jensen et al., 2007; Crawford and Belcher, 2014; Li et al., 2019; Pereboom et al., 2020; Feurdean, 2021). As a result, the accuracy and applicability of charcoal morphometries in ecosystems with different dominant plant compositions still need to be determined. Moreover, the threshold values of the aspect ratio i.e, length-to-width (L/W), or width-to-length (W/L) of sedimentary charcoal for fuel identification often contrast with those shown by laboratory
90 experiments, highlighting the need for further research (see review by Vachula et al., 2021). Other metrics, such as surface area and area-to-perimeter ratio (A/P), have also been explored to describe regular versus irregular charcoal shapes (Lestienne et al., 2020; Pereboom et al., 2020; Feurdean, 2021), but their full potential requires further evaluation. Another uncertainty in charcoal-based fire reconstruction is how charcoal production is affected by the biomass quantity, density, moisture content, and fire temperature (Simpson et al., 2016; Pereboom et al., 2020; Feurdean, 2021; Hudspith et al., 2018). Finally, the size,
95 shape, and density of the charcoal fragments can cause substantial differences in particle dispersal and incorporation into sediments (Clark and Hussey, 1988; Vachula and Richter, 2018; Vachula and Rehn, 2023). Microscopic particles may be transported considerable distances and deposited into various sedimentary environments such as peats, lakes, and rivers, in contrast to larger particles that tend to be deposited nearer to the source of the fire (Scott, 2000, Scott, 2010). Additionally, the morphology of charcoal characterised by longer and thinner shapes, typical of grass, allows for longer-distance atmospheric
100 transport compared to spherical or denser particles, such as those from leaves and wood (Clark and Hussey, 1988; Pisaric, 2002; Scott, 2000; Vachula and Richter, 2018; Courtney-Mustaphi et al., 2022; Vachula and Rehn, 2023). Conversely, water

favours the transport of wood charcoal (Scott et al., 2000). Thus, a better understanding of the factors influencing charcoal production, morphometries, and dispersal is essential for more accurate reconstructions of past fire activity.

105 This study presents the first analyses of laboratory-produced (muffle oven) charcoal from a variety of grass, forb, and shrub
taxa from Eurasian steppe to better understand the diversity of charcoal morphologies and morphometrics in grassland-
dominated ecosystems and facilitate more robust interpretations of fuel sources. By comparing the results to sedimentary
charcoal morphologies, morphometrics, and pollen assemblages from the same regions, we aim to provide more accurate
interpretations of past vegetation, fuel sources and fire types. The study also compares aspect ratio results to a compiled
literature dataset to evaluate this metric's universality. Specifically, we determine i) morphometric and morphological
110 distinction between taxa and plant parts, including photographic plates; ii) thresholds in charcoal morphometrics such as L/W ,
 W/L , and A/P ratios indicative of systems dominated by grasslands or a grass-tree mosaic such as steppe, savanna, forest-
steppe, woodlands; iii) a determination of the effect of combustion temperature on the charred mass of various taxa relative to
the quantity of unburned biomass. Ultimately, our approach aims to provide an accessible tool to understand fire regimes in
temperate grass-dominated ecosystems.

115

2 Material and methods

2.1 Laboratory analysis

We collected plant specimens from seven graminoid, fifteen forb, and one shrub species from the steppe area in the Dobrogea,
Black Sea, Romania, and Konoplyanka, Trans-Urals, Russia (Table 1). These specimens are representative of the most
120 prevalent plant taxa in the study area; however, this taxa list constitutes only a partial representation of common grasses and
forbs. Many of these species are distributed in small patches due to the extensive conversion of natural steppe into agricultural
fields. Tree patches of *Quercus* and *Carpinus* occur in Dobrogea, and *Betula* and *Salix* are present near the Russian sites.
However, at the Romania sites, the forest zone (thermophilous broadleaved) is closer (ca. 100 km) than for the sites (*Pinus-
Betula*) in Russia (150 km).

125 To determine the effect of increasing temperatures on the mass, morphometric characteristics, and morphologies of charred
plant material, we dried these plants in a desiccator (40°C) for 24 h. Subsequently, following the protocol of Feurdean (2021),
we roasted the plant material in a muffle furnace at five distinct temperature settings: 250, 300, 350, 400, and 450°C. For each
temperature subset, remains of individual plant species from the entire plant or as selected plant parts (Table 1), were placed
in ceramic crucibles, weighed, then placed into the cold muffle oven covered with a lid to limit oxygen availability and avoid
130 mixing the charred particles. The temperature was gradually raised for one hour, after which it was held constant for a duration
of two hours. Crucibles with charred plants were cooled in a desiccator, then weighed to calculate the charred to pre-burning
mass ratio. A small part of the charred mass was gently disaggregated with a mortar and pestle to mimic the natural breakage
that charcoal particles experience over time through sedimentation processes (Umbanhowar and McGrath, 1998; Crawford
and Belcher, 2014; Belcher et al., 2015). The charred and disaggregated sample was then washed through a 125 µm sieve to
135 remove smaller fragments. This charcoal size fraction (>125 µm) is directly comparable to the size fraction analysed by the

bulk of palaeofire studies (Vachula 2018). Morphometric measurements of individual charred particles were obtained from photographs taken at 4X magnification with a digital camera (KERN ODC 241 tablet camera). On average, more than 100 charcoal particles larger than 150 μm were automatically detected in most samples, except those burnt at higher temperatures, where particles were more prone to breaking or were ashed. We measured the major (L) and minor (W) axes and surface area (A), and perimeter (P), of each particle following the algorithm of Feurdean (2021) and then calculated the aspect (L/W ; W/L) and A/P ratios. A limited number of charcoal particles were excluded from these quantifications because they could not be adequately identified. This misclassification was due to their blurred aspect, partial overlapping particles, or particles positioned partially outside of the picture frame. Finer diagnostic features such as shape, and surface features (e.g., reticulates, leaf veins), the arrangement of epidermal cells, and cuticles with stomata were characterised by observing the charred particles under a stereomicroscope.

To evaluate the comparability of our aspect ratio values with published experimental charcoal data derived from known plant taxa, we used a global dataset compiled by Vachula et al. (2021), supplemented by data collected from boreal Siberia (Feurdean, 2021). We classified the mean L/W values into distinct growth forms, which included dry grasses (n=16), wetland graminoids (n=12), forbs (n=24), as well as plant parts, encompassing leaves (n=33), and wood (n=31). To assess how the L/W values of Eurasian grasslands compare with global values, we aggregated growth forms and plant parts separately within Eurasian grasslands and the global dataset. To identify a potential threshold aspect ratio value that could distinguish grass or grass-tree-dominated vegetation, we assembled L/W values of charcoal derived from grasses and forbs into the non-woody category and those from tree trunks and branches into woody types. Where available, we included error ranges for the L/W values of the experimental charcoal; however, not all publications provided these values. To visually compare the aspect ratio of various categories, we generated boxplots using the mean L/W values.

To demonstrate the applicability of experimental charcoal morphologies and morphometrics for the identification of fuel burnt in sedimentary records, we randomly selected five Holocene samples from a core taken from Mangalia Herghelie wetland, Romania, and six samples from wetland sites near the Karagaily-Ayat river (profile Tom and profile SH), where our plant material samples were collected. We first bleached the samples for 6 h and washed them using a 125 μm sieve. Pollen analysis was additionally carried out on these samples to examine the correlation between the predominant vegetation types and burnt fuel, as indicated by charcoal morphometrics. The pollen taxa were categorized into wood, including the pollen percentages of tree taxa; forbs, representing the pollen percentages of flowering herbaceous plants; and graminoids, encompassing both terrestrial (Poaceae, Cereals) and wetland (Cyperaceae, *Typha*) types.

2.2 Numerical analysis

The medians and standard deviations of the following charcoal morphometrics (L/W , W/L , A/P) were aggregated for each species, growth habit, and plant type for all burn temperatures and displayed as box plots. We used a two-tailed Mann–Whitney test to determine whether the medians of the charcoal morphometrics of the growth groups and plant types were equal (Table S1). This test does not assume a normal distribution, only similar distributions in both groups.

170 3 Results

3.1 Fuel-dependent influence of temperature on charred-mass production

All plant material burnt had a typical charcoal appearance i.e., black, opaque, angular, planar (Whitlock and Larsen 2001) after being subjected to a temperature of 250°C. Most materials turned to ash at 400°C, and all plant tissue became ash at 450°C. Plant material burnt at higher temperatures (400-450°C) tended to break more easily during manipulation. Grouped by growth form, the percentage of charred mass retained at 300°C (intermediate temperature) was lower for graminoids (34%) than for shrubs (39%) and forbs (42%) (Fig. 1b; Table S2). Within the forb group, members of Asteraceae (*Anthemis*, *Xeranthemum*, *Achillea*, *Artemisia*) and *Chenopodium* had greater charred mass retained than other forb families (Lamiaceae, Fabaceae). Grouped by plant parts, the percentage of charred mass retained at 300°C was lower for grass stems and leaves (33%) than grass inflorescence (37%; Fig. 1b; Table S2). This trend in the loss of charred mass was consistent at all temperatures (Fig. 1af; Table S2).

3.2 Fuel-dependent variations in aspect (L/W ; W/L) and area to perimeter (A/P) ratios

Grouped by growth form, the aspect ratio (L/W) of grass charcoals at all temperatures combined were consistently more elongated (mean=4.0±2.5, median=3.1±1.4) than for forbs (mean=3.1±2.2, median=2.4±1.2), and twigs of shrubs (mean=3.5±2.3, median=3.1±2.3; Table S2). These trends in L/W are valid for all temperature increments (Fig. 2; Table S2). Within forbs, Asteraceae has more narrow leaves and shows high values in the L/W ratio relative to other forb families, i.e., Fabaceae and Lamiaceae (Fig. 2). When grouped by plant parts, the L/W ratio of grass stems and leaves (mean=4.2±2.8, median=3.4±2.8) at all temperatures combined was higher than that of grass inflorescence (mean=2.9±1.9, median=2.6±1.9; Fig. 2). Although individual measurements varied greatly, the mean values among species of grass and forbs are consistent (File S1; Table S2). The Mann-Whitney test confirmed that the L/W ratios of grass were significantly different from forbs and that grass stems and leaves were significantly different from those of grass inflorescence at all temperatures (Table S1). The width-to-length ratio (W/L), an inverse way to report the aspect ratio of charred particles in the literature, shows that grass charcoal is narrower (mean=0.38±0.2, median=0.3±0.2) than forbs (mean=0.42±0.2, median=0.4±0.2), and grass stems and leaves (mean=0.34±0.24, median=0.29±0.24) are narrower than graminoid inflorescence (mean=0.42±0.16, median=0.40±0.16) and twigs of shrub (mean=0.36±0.18, median=0.32±0.18; File S2; Table S2).

The area-perimeter-ratio (A/P), which describes more regular (smaller A/P values) versus irregular (larger A/P values) surfaces of charcoal, was only slightly smaller for grass (mean=50±30, median=45±30); stems and leaves (mean=47±29, median=40±29), and inflorescence (mean=52±25, median=40±25) than forbs (mean=53±25, median=43±34) and twigs of shrubs (mean=54±28, median=44±35; File S3; Table S2). There is also a clear tendency for A/P ratio to decrease with increased temperature.

3.3 Finer diagnostic features of the charcoal morphologies of various fuel types

Graminoid charred particles from stems and leaves were consistently flat, rectangular, and elongated (Fig. 3a). They mostly broke parallel to the long axis, resulting in elongated pieces with straight margins. They can also appear as featureless, long and thin filaments. The most common preserved surface features were rectangular epidermal cells or contained oval voids, reticulated or mesh patterns, and/or isolated veins.

Charcoal particles from the forb stems were cylindrical and rectangular, whereas fragments of leaves were mostly polygonal. Forbs with pinnate leaf shapes (Asteraceae, *Eryngium*), were generally more elongated than members of the Fabaceae and Lamiaceae families which had more rounded and polygonal leaf shapes (Fig. 3b). Edges were undulate, smooth, or denticulate. Surface textures were generally smooth (featureless), however, charcoal burnt at higher temperatures and those from sedimentary leaf charcoal had more frequently visible venation and ridges. When broken, these particles showed voids and reticulated mesh patterns. Twigs of *Ephedra* shrub showed both quadrilateral shape and layered or foliate structure. The edges and surface textures were smooth (Fig. 3b).

3.4 Morphometrics and finer diagnostic features of fossil charcoal

The aspect ratio of the sedimentary charcoal samples from Mangalia Herghelie, Romania varied between 3.0 and 5.5 (L/W) or 0.35-0.43 (W/L), whereas A/P ratio was between 28 to 40 (Table 2). Samples with elongated (L/W) and narrower particles (W/L) contained abundant morphologies of graminoid leaves (34-44%) and graminoid and forb stems (44-50%) as well as pollen from graminoids and forbs but had no charred wood morphologies (Table 2). The Tom and SH sedimentary charcoal profiles from Russia showed aspect ratios ranging between 3.6 and 5.0 (L/W), 0.3-0.4 (W/L), and A/P ratios between 23 to 34 and numerous particles larger than 1 mm (Table 2). Samples with the highest L/W ratios showed the highest proportion of graminoid leaves (41-55%) and high proportions of graminoid and forb stems (37-50%) morphologies. There was a low proportion of wood charcoal morphologies (6-12%) but a highly variable tree pollen percentage (16-41%).

4 Discussion

4.1 The influence of combustion temperature on charcoal production for graminoids and forbs

The relationship between charcoal production and the quantity of unburned biomass and fire temperature varies among fuel types due to variations in biomass moisture content, density, structure, chemistry, leaf-surface-area to volume ratio (Walsh and Li, 1994; Hudpith et al., 2018; Simpson et al., 2016). These are considered essential plant traits that influence the key components of fuel flammability, namely ignitability, combustibility and fire spread (Simpson et al., 2016; Pausas et al., 2017). While laboratory burning experiments only approximate some aspects of the heating conditions of vegetation, they provide valuable information on the amount of charcoal production with incremental rises in the fire temperature. Therefore, understanding species-specific charred mass production is crucial for interpreting charcoal-based fire reconstructions.

Our experimental charcoal production shows that grasses, particularly their leaves and stems, produced lower amounts of charcoal per unit biomass than grass inflorescences, forbs, and shrub wood (Fig. 1; Table S2). Grasses also lost their charred mass more rapidly with increasing burning temperature, from 45–55% at 250 °C to 1–3% at 450°C compared to forbs, 45–

65% at 250°C to 5–15% at 450°C. Among forbs, members of the Asteraceae family and *Chenopodium* have higher charcoal production than members of the families Fabaceae and Lamiaceae. These results support laboratory burning experiments in a muffle oven and under open-flame conditions on several grass species from forest-steppe in North America showing that the charcoal mass retention of grass was significantly lower than that of wood (Umbanhowar and McGrath, 1998), a pattern also replicated in a calorimetric combustion study including graminoid, wood, needles, and deciduous leaves (Hudspith et al., 2018). Similarly, burning experiments in a muffle oven on wetland graminoids from Alaska tundra (Pereboom et al., 2020) and Siberian taiga (Feurdean, 2021) demonstrate that these graminoids have significantly lower charred-mass retention per unit biomass than other growth forms (forbs, shrubs/trees) or plant parts (leaves and wood). Another experimental study conducted in laboratory settings using undried grasses has shown that the fuel moisture content significantly impacts ignition probability, the higher the moisture content, the longer ignition times. Biomass quantity predominantly governs combustibility and fire spread, whereas biomass density exerts a less pronounced effect on flammability (Simpson et al., 2016). In our experiments, utilizing considerably smaller quantities of lightly dried plant material (40°C), the lower bulk density and water content of graminoid compared to forb biomass may explain the observed reduction in grass charcoal production, aligning with findings from similar studies. Incorporating a broader range of fuel moisture conditions that closely resemble real-world scenarios may need to be considered to enhance the relevance of experimental laboratory research on charcoal production. This aspect may be particularly relevant when distinguishing between fires in terrestrial and wetland habitats dominated by graminoids. Given their high fuel moisture, wetland graminoids may exhibit higher charcoal production than dry graminoids, which may be overlooked when using dried samples.

The chemical composition of plants, including their mineral constituents, lignin, cellulose, nitrogen, and phosphorous content, plays a pivotal role in charcoal production. In laboratory experiments, forbs yielded more charcoal than wood, likely because their cellulose and hemicellulose-rich composition pyrolysing at lower and narrower temperature ranges (200°C to 400°C), as opposed to wood, which is rich in lignin (160°C to 900°C; Yang et al., 2007). However, in the oven settings, plant tissue is converted to ash more rapidly (typically between 450°C and 500°C) compared to natural fire conditions (around 800°C) due to reduced influences of flame dynamics and turbulent airflow (Belcher et al., 2015; Hudpith et al., 2018). One possible explanation for the lower wood charcoal production may be attributed to the faster combustion rates observed in oven settings, resulting in wood being ashed at the lower end of its temperature range. Field research has provided evidence that prolonged combustion through smouldering can also transform wood into white ash (Mustaphi et al., 2022). Investigations involving chemical analyses of unburnt biomass can enhance our understanding of how plants' chemical composition influences charcoal production.

4.2 Fuel-dependent variability in charcoal morphometrics

We observed consistent L/W (elongation) or W/L (narrowness) ratios of charred fragments among our Eurasian species of the same plant group (genus or family), growth type, and plant parts at all temperatures (Fig. 2, Table S2). This consistency suggests that aspect ratio could be a useful morphometric for fuel type separation in palaeoenvironments dominated by

grasslands. We found that the charred Eurasian grasses are more elongated (L/W 4.0 ± 2.5) and narrower (W/L 0.38 ± 0.2) than forbs (L/W 3.1 ± 2.2 , W/L 0.42 ± 0.2), in agreement with a global compilation for graminoids (5.4 ± 2.3 ; grass exclusively 4.3 ± 1.7) and forbs (2.9 ± 0.4 ; Fig. 4; Table 3). We also found differentiation of aspect ratio between parts of the same plant, with grass stems and leaves being more elongated (4.2 ± 2.8) and narrower (0.34 ± 0.24) than grass inflorescence (2.9 ± 1.9 ; 0.42 ± 0.1 ; Fig. 2; Table S1, 2). Thinner-leaved forb species in the Asteraceae family also have a higher aspect ratio than members of the families Fabaceae and Lamiaceae, which have more polygonal or rounded leaves. Our L/W values for temperate grasses agree with individual experimental laboratory burning of *Poa trivialis* (3.7) from a UK botanical garden (Crawford and Belcher, 2014), and several temperate grass species from North America (3.6 from furnace versus 4.8 from open flame combustion; Umbanhowar and McGrath, 1998). Crucially, our global compilation shows that grasses, *Poa*, *Stipa*, *Agropyron*, etc., are shorter and bulkier (4.3 ± 1.7) than wetland graminoids, Cyperaceae, *Eriophorum*, and *Phragmites* (7.6 ± 0.6 for boreal and 6.4 ± 3 global wetland graminoids; Fig. 4, Table 3). The consistency in L/W values for graminoids from temperate grasslands, on the one hand, and of wetland graminoids on the other hand, may suggest differences in the evolutionary developments in the physiology of dryland graminoids relative to that of wetlands graminoids (Hedges and Mann, 1979; Vachula et al., 2021). Both charcoal types have elongated vascular bundles connected to the occurrence of veins parallel to the long axis (Umbanhowar and McGrath, 1998). However, the stems of grasses are more robust, with developed resistance tissue, than those of wetland graminoids. Wetland graminoids mass loss during senescence may also explain their lesser robustness (Tanner, 2001; Vernescu et al., 2005). The comparison of L/W ratio of charcoal particles produced in a muffle oven with those generated under open flames conditions reported in literature reveals slightly longer L/W values for particles produced in the open flames. Although this observation underscores the varying fragility of charcoal produced under different burning conditions, it also highlights that the relative proportion of the L/W ratio between different fuel types remain consistent.

In contrast to Lestienne et al. (2020), working in Mediterranean ecosystems, we found little differentiation in A/P between taxa and plant parts. The A/P for grass charcoal (50 ± 25) shows that they only have a slightly more regular form than forbs (52 ± 30), suggesting that A/P may not be as helpful for fuel differentiation in ecosystems dominated by grasses and forbs (Table S2; File S3). However, there is a tendency for A/P ratio to decrease with increasing temperature, which is more evident for forbs (from 59 to 40) than for grass (from 53 to 44). This characteristic, combined with the fact that fossil samples have much lower A/P values (23-40) than those from experimental burns, suggests higher wildfire temperatures than experimental burns and/or some edge rounding (degree angles are eroded) during transportation and deposition. A decreased surface area and increased roundness with transportation have also been documented (Vanni re et al., 2003; Crawford and Belcher, 2014; Courtney Mustaphi et al., 2015).

300

4.3 Finer diagnostic features of the charcoal morphologies for fuel-type identification comparison with keys from literature

Feurdean (2021) provided detailed examinations of the morphological characteristics of experimentally produced charcoal from various taxa and plant parts from the boreal zone, including wetland graminoids, leaves of mosses, ferns, forbs and trees,

305 and the wood of trees and shrubs. The present study improves the link between the grass and forb species from Eurasian open ecosystems and their charcoal morphologies. Similar to charred wetland graminoids, charred temperate graminoids can be distinguished by their flat appearance and tendency to break into thin filaments (Fig. 3a). The grass stems and leaves were not burned separately in this study. However, comparison with previous publications and atlases (Schweingruber, 1987) indicates that grass leaves can often be distinguished by rectangular epidermal cells, reticulate meshes, and oval voids of former epidermal stomata, whereas grass stems display layered, foliated textures that share the appearance of wood (Fig. 3a). This feature contrasts with wetland graminoid charcoal which have a more elongated, fragile form (Feurdean, 2021). The grass inflorescence charcoal is irregular in shape with foliated polygons (Fig. 3a). The grass charcoals produced here are like type B (B2, B3, B4, B5), which is attributed to wood, type D (D1, D2, D3, F), which are attributed to monocotyledon leaves, and type E (E1, E2) mostly related to seeds (Fig. 4; Enache and Cumming, 2006; Courtney-Mustaphi and Pisaric, 2014).

315 Typical features of forb leaves include their polygonal shapes (Fig. 3b). Netted venation with three branches diverging from a node and surfaces characterised by void spaces are visible in particles charred at higher temperatures as well as sedimentary particles. Forb stems are cylindrical (unbroken) and layered with foliated textures. Our forb charcoals are most like morphologies type A (A1, A2, A3, A4, A5), which are mostly attributed to leaves and wood, type B (B2, B3, B4), and type C (C5, C6), which are connected to leaves, stems, and veins (Courtney-Mustaphi and Pisaric, 2014), whereas some fragments resemble types M and P (Enache and Cumming, 2006).

320 In summary, our charcoal morphological analysis demonstrates that grass leaves are easily distinguished from forb leaves. However, there is an overlap between stems of grass and forb indicating that the two groups are difficult to discriminate based on charcoal morphologies. There is also some overlap between stems of grass and forb with wood morphologies, particularly in more mature plants, raising the possibility of misclassifying some stems of herbs and grass as wood morphologies (Fig. 3).

325 To improve the accuracy of attributing charcoal morphologies to specific fuel types, we recommend enhancing the classification of charcoal morphologies by further examining particles generated from burning known plant materials.

4.4 The morphometrics and morphologies of fossil charcoal particles: implications for fuel-type identification

All analysed sedimentary charcoal samples show a significant presence of graminoid and forb morphologies, with aspect ratios ranging between 3.0 and 5.5, though the aspect ratio is slightly higher at the Russian sites (Table 2). These findings align well with the pollen records at these sites, which also demonstrate a high proportion of these plant types (Table 2). Nonetheless, notable discrepancies between the Romanian and Russian sites are also evident. At the Mangalia Herghelie site in Romania, samples with the highest aspect ratios (4.4-5.5) exhibit a considerable abundance of graminoid leaf morphologies (34-44%) and pollen from both dry (23-25%, Poaceae, Cereals) and wetland (9-23%, Cyperaceae, *Typha*) graminoids. Additionally, the stratigraphy at this site indicates the presence of peat with abundant remains of another wetland graminoid, *Phragmites*, which has a similar pollen morphology to Poaceae. Based on the evidence above, we propose that fires likely occurred in both dry grassland areas and within the reed and sedge vegetation that developed around and on this site. Historically, burning reed vegetation to access water was a common practice among past societies (Feurdean et al., 2013; Sim et al., 2023). The low

335

percentages of wood morphologies (0-7%) and low to moderate tree pollen percentages (26-36%) in samples from Mangalia
340 Herghelie indicate the scarcity of local woody vegetation, and the burning of woody fuel was limited. In contrast, the sites in
Russia display a slightly higher percentage of woody morphologies (6-12%) that do not always match the highly variable
abundance of tree pollen percentages (19-41%). The presence of fortified and unfortified settlements, along with kurgans
dating back to the Middle Bronze Age, has been documented in the vicinity of these sites. A nomadic lifestyle is also postulated
for the Iron Age in this region (Stobbe et al., 2016). It is, therefore, plausible that household burning, combined with the
345 selective water transport of charcoal, have increased representation of woody charcoal in the samples from this region.
Our findings indicate that the charcoal morphologies and morphometrics largely reflect the dominant plant communities shown
by the pollen record, particularly for herbaceous vegetation suggesting a robust link between the dominant vegetation type and
fuel burnt in grass-dominated environments. However, the proportion of tree pollen matches less than that of woody charcoal,
which suggests that atmospheric transport of tree pollen over longer distances compared to woody charcoal. These observations
350 also highlight the complex interplay between local vegetation and charcoal composition with human activities and the need to
consider site-specific factors when interpreting charcoal records.

4.5 Application of charcoal morphologies and morphometric for fuel- and fire-type reconstructions in grassland-dominated ecosystems

Our experimental production of charcoal has three primary applications for past fire reconstruction in grass-dominated systems.
355 Firstly, it can improve the identification of fuel types based on charcoal morphologies and morphometrics. Secondly, it can
determine the effect of biomass and fire temperatures on taxa-specific charcoal production. Thirdly, it can assess the influence
of charcoal shape from different fuel types on the spatial scale of fire regime reconstructions.

Our analyses demonstrate that charcoal morphologies provide a finer distinction between fuel types than morphometrics. Grass
leaf morphologies can be easily distinguished from forb leaves. However, morphologies of stems of grass and forb are more
360 challenging to differentiate from each other. Charcoal morphometry also shows promising results in establishing threshold
values for discriminating individual fuel types. Limitations, however, may arise when analysing charcoal assemblages from
mixed fuel sources due to overlapping L/W values. We identified a mean L/W value of 4.0 ± 2.5 for laboratory produced grasses
and 3.1 ± 2.2 for forbs charcoal (Fig. 4; Table 3). These values largely agree with the values generated from a literature
compilation of laboratory-produced charcoal, 5.4 ± 2.3 for graminoids (4.3 ± 1.7 for grasses; 6.4 ± 3 for wetland graminoids),
365 2.9 ± 0.4 for forbs, and 2.2 ± 0.1 for leaves (Fig. 4; Table 3). While our study used only a single woody shrub species (*Ephedra*;
 L/W 3.5 ± 2.3), the literature compilation of woody particles revealed L/W 3.04 ± 0.4 , meaning an overlap with non-woody
vegetation, especially forbs (Table 3; Fig.4). We propose that L/W values above 3 (W/L below 0.40) can indicate predominantly
charcoal morphologies from grass and forbs in temperate grassy-dominated ecosystems. However, values can be higher in
grass relative to forb-dominated vegetation within this ecosystem. Our proposed cut-off values to separate non-woody from
370 woody fuels, based on experimental studies with known fuel types, are closest to those applied to a wide range of ecosystems
in Europe (Marriner et al., 2019; Lebreton et al., 2019) and Canada (Umbanhowar and McGrath, 1998), and partially to those

from the USA (Leys et al., 2017) and Asia (Miao et al., 2019, 2020), and differ the most from those commonly applied in Africa (Aleman et al., 2013; Daniau et al., 2007, 2013, 2023; Thevenon et al., 2003), particularly those using L/W above 2 or $W/L > 0.5$ for non-woody vegetation (see also review by Vachula et al., 2021). Therefore, the morphometric cut-off values
375 are not universally valid but vary with the dominant ecosystem type. Hydroclimatic conditions and taphonomy have also been identified to contribute to these differences (Mustaphi and Pisaric, 2014). Consequently, the analysis of charcoal morphotypes and morphotype assemblages in sedimentary records requires the adoption of a more adaptable framework.

Comparing sedimentary charcoal morphometrics and morphologies with pollen and plant macrofossils can aid in interpreting the fuel source, and our assessment in the Eurasian steppe sites shows great potential (Table 2). For example, comparison of
380 the abundance of graminoid morphologies with that of pollen of grasses and wetland graminoids improved the determination of the origin of the charred graminoids. Vice versa, variability in charred morphologies and morphometrics can signal changes in the main vegetation composition over time. The morphologies of graminoids and forbs alongside high aspect ratios at our fossil sites appear to indicate the expansion of open grassy habitats. Conversely, the expansion of woody vegetation may be reflected by an increase in woody morphologies and a decrease in particle aspect ratio, however this relationship is not always
385 straightforward.

Secondly, the quantity of charcoal produced varies depending on the traits of the vegetation burned and fire temperature, which can induce biases in charcoal-based fire reconstructions. Our experimental burnings using lightly dried biomass reveal that grass fuels from all taxonomic groups exhibit low post-fire charred-mass retention and rapidly lose mass with increasing temperature. Grasses have developed strategies for rapid flammability, including quick curing (dry out), easy ignition, rapid
390 burning, and fire spread (Pausas et al., 2017; Bond et al., 2019; Stevens et al., 2022). Given that grasses tend to dry out rapidly after flowering, they are likely to leave little charcoal or turn into ashes even in relatively low-intensity field fires, leading to an underrepresentation of grass charcoal in sedimentary records. On the other hand, wetland graminoids such as reeds and sedges, thriving in areas with elevated soil and fuel moisture, may possess higher resistance to combustion compared to terrestrial grasses, thus contributing a higher proportion to locally produced charcoal. In contrast to grasses, forbs tend to
395 retain a higher proportion of their biomass in our experiments even when subject to high temperatures, suggesting that the forbs component of grasslands is more likely to be incorporated into sediments and may also lower the L/W values. Consequently, lower quantities of charred graminoids relative to forbs and wood may signify high-intensity fires occurring within a tree-grass matrix rather than an absence of grass fires. These complexities underscore the importance of considering the diverse behaviors of different grassland components when studying their flammability and response to fire.

Thirdly, dispersal models accounting for shapes, sizes, and densities of charcoal, show that small differences in shape and density of charcoal can cause substantial differences in particle source area (Vachula and Richter, 2018; Vachula and Rehn, 2023). Elongated, lighter particles such as those from graminoids, tend to have higher residence time in the atmosphere and can travel longer distances than spherical or heavier particles, such as those from leaves or wood (Clark and Hussey, 1988; Pisaric, 2002; Vachula and Richter, 2018; Mustaphi et al., 2022; Vachula and Rehn, 2023). Charcoal particles produced by
400 grassland fires tend to be smaller than those produced by forest fires (Belcher et al., 2005; Leys et al., 2017), and our results
405

show that the size of charcoal particles decreased with the increased fire temperature. Consequently, sedimentary charcoal in grass-dominated and mixed woody-grass ecosystems may represent a more regional fire history compared to forested ecosystems. This in turn may affect the reconstruction of local fire events using the decomposition method in peak and background charcoal (Vachula and Rehn, 2023). The decomposition methods were originally developed for North American forest ecosystems characterised by mixed conifer trees (Gavin et al., 2005; Higuera et al., 2009). These forests typically experience high intensity fires with fire return intervals exceeding 100 years. In contrast, grass fires are characterised by low intensity and high frequency, although our understanding of these metrics in temperate grasslands remains limited (Pausas et al., 2005; Feudean et al., 2018; Stevens et al., 2022). A more precise determination of the form and density of charcoal from various fuel types can be invaluable for understanding its transport and interpreting the spatial scale of fire histories in the context of major ecosystem shifts.

5. Conclusions

This study provides novel insights into charcoal mass production, morphometrical aspects, and morphologies of several grass and forb species from the Eurasian grasslands. It highlights the practical application of morphometry and morphology in enhancing the understanding of fuel composition and fire dynamics in grass-dominated ecosystems.

The impact of fire temperature on charcoal production varies depending on the characteristics of the fuel type. Grasses exhibit significantly lower charcoal production and decrease more prominently with increasing fire temperature than forbs. This suggests an under-representation of grass morphologies in the sedimentary charcoal record relative to forbs. However, in field settings, wetland graminoids thriving in areas with elevated soil moisture, may exhibit greater resistance to combustion and thus have a higher charcoal production. The decrease in the size of grass and forb charcoal particles with the increased fire temperature and the elongated form of grass charcoal suggests that reconstructing fire regimes in grass-dominated and mixed woody-grass ecosystems may provide insights into more regional fire history than forested systems.

Charcoal morphologies offer a more detailed taxonomical and plant parts distinction for identifying the vegetation burnt (fuel types) types than morphometrics. However, both morphologies and morphometrics can complement each other in fuel identification. Leaf morphologies of grass can be easily distinguished from forb, but differentiating between the stem morphologies of grass and forbs presents challenges. Morphometric analysis indicates that graminoid charcoal particles are more elongated (4.0 ± 2.5) than forbs (3.1 ± 2.2); however, literature compilation shows some overlap with the global aspect ratio of wood (3.04 ± 0.4). Nevertheless, L/W values above 3 (W/L below 0.40) may indicate predominantly herbaceous morphologies in temperate open ecosystems (steppe, forest steppe). In addition, grasses exhibiting shorter aspect ratios (4.3 ± 1.7) than wetland graminoids (6.4 ± 3). The cut-off values may need adjustment and should not be universally applied to other ecosystems without a reasonable rationale. In research conducted within grass-dominated and mixed woody-grass systems, adopting lower threshold values for aspect ratios might be more appropriate than in ecosystems primarily dominated by wetland vegetation. As morphologies provide a more effective way of distinguishing charred particles from forbs, grasses, and wood, we recommend integrating these analyses to enhance distinctions between groups with overlapping morphometrics.

440 Variability in charred morphology assemblages and aspect ratios also holds promise in reconstructing changes in vegetation
composition, particularly in areas with poor pollen preservation. Our preliminary results suggest that the morphologies of
graminoids and forbs are more closely linked to their local abundance as indicated by pollen. However, the relationship
between woody charcoal and pollen may be more complex for trees, as their pollen can travel longer distances within the
445 atmosphere compared to woody charcoal. A more precise determination of the form and density of charcoal from various plant
types can be invaluable for understanding dispersal, transportation, and fragility, with implications for the spatial scale of
charcoal reconstructions.

A critical point arising from this study is the need to avoid assuming the universality of research findings and instead apply
experimental approaches to characterizing charcoal particles in new ecosystem types. Future efforts to determine fuel sources
based on analyses of charcoal fragment morphologies and morphometries should consider the investigation of taxa and plant
450 parts from tropical grasslands, which have been largely overlooked in previous studies. Future analyses that incorporate the
use of new image recognition or artificial intelligence software to collect and identify charcoal particles could aid in the
differentiation of fuel types at the particle scale. While analysis of sedimentary charcoal requires a degree of aggregation and/or
human interpretation related to fuel type changes, automated approaches could allow for the identification of the fuel source
of individual charcoal particles with greater accuracy.

455 Laboratory experiments that incorporate a broader range of plant traits, such as fuel moisture, chemical components (nitrogen,
phosphorus, and tannins), and plant architecture, pivotal in determining flammability, have the potential to contribute to a more
comprehensive understanding of the variation in charcoal abundance and morphometrics from diverse fuel types. Furthermore,
it is essential to recognize that field conditions can substantially differ from controlled experimental settings, which may impact
charcoal production, fragility, and morphometry. While it is challenging to replicate the complexity of real-world scenarios
460 due to numerous uncontrollable factors, future research should consider incorporating field studies that account for factors
such as fire spread dynamics, variability fuel quantity and quality, and fluctuating temperature conditions within the
experimental design.

Data availability: All raw measurements of length, width, area, perimeter, and ratios of L/W , W/L , and A/P for all taxa and
465 temperatures are presented in File S1

Sample availability: A limited amount of burnt plant material can be made available upon request.

Author contribution: AF designed the study and performed the burning experiments, the morphometrical, morphological and
numerical analyses, and data presentation; DH, AS, MG, and AF collected the modern plants and performed pollen analysis.
RSV compiled the morphometrics database from literature; AF wrote the manuscript with contributions from RSV; all the
470 authors reviewed and edited the manuscript and agreed with its content.

Competing interests: The author declare that they have no conflict of interest.

Acknowledgements I would like to thank Markus Rosensthil for the help to develop the code for automatic detection of charred particles; Doris Bergmann- Dörr for help with burning plant material in muffle oven.

Financial support: This work was supported from the Deutsche Forschungsgemeinschaft grant number FE_1096/6 and
475 FE_1096/9, RSV was supported by start-up funds from Auburn University, DH by PN-III-P4-ID-PCE-2020-2282 (ECHOES).

References

- Aleman, J. C., Blarquez, O., Bentaleb, I., Bonté, P., Brossier B., Carcaillet, C., Gond, V., Gourlet-Fleury, S., Kpolita, A.,
Lefèvre, I., and Oslisly, R.: Tracking landcover changes with sedimentary charcoal in the Afrotropics, *Hol.*, 23, 1853–
480 1862, <https://doi.org/10.1177/0959683613508159>, 2013.
- Bond, W.J., Woodward, F.I., and Midgley, G.F.: The global distribution of ecosystems in a world without fire. *New Phytol.*,
165, 525e538. <https://doi.org/10.1111/j.1469-8137.2004.01252.x>, 2005.
- Bond, W.J., Keeley, J.E.: Fire as a global ‘herbivore’: the ecology and evolution of flammable ecosystems, *Trends in Ecology
and Evolution*, 20, 387-394, <https://www.sciencedirect.com/science/article/pii/S0169534705001321>, 2005.
- 485 Bowman, D. M. J. S., Balch, J. K., Artaxo, P., Bond, W. J., Carlson, J. M., Cochrane, M. A., D’Antonio, C. M., DeFries, R. S.,
Doyle, J. C., Harrison, S. P., Johnston, F. H., Keeley, J. E., Krawchuk, M. A., Kull, C. A., Marston, J. B., Moritz, M. A.,
Prentice, I. C., Roos, C. I., Scott, A. C., Swetnam, T. W., van der Werf, G. R., and Pyne, S. J.: Fire in the Earth System,
Science, 324, 481–484, <https://doi.org/10.1126/science.1163886>, 2009.
- Belcher, C. M., Hadden, R. M., Rein, G., Morgan, J. V., Artemieva, N., and Goldin, T.: An experimental assessment of the
490 ignition of forest fuels by the thermal pulse generated by the Cretaceous–Palaeogene impact at Chicxulub, *J. Geol. Soc.*,
172, 175–185, <https://doi.org/10.1144/jgs2014-082>, 2015.
- Belcher, C.M., Collinson, M.E., and Scott, A.C.: Constraints on the thermal energy released from the Chicxulub impactor:
new evidence from multi-method charcoal analysis. *Journal of the Geological Society*, 162, 591-602.
<http://ejournals.ebsco.com/direct.asp?IssueID=F0600DB99465>, 2005.
- 495 Clark, J. S. and Hussey, T. C.: Estimating the mass flux of charcoal from sedimentary records: effects of particle size,
morphology, and orientation, *Hol.*, 6, 129–44, <https://doi.org/10.1177/095968369600600201>, 1996.
- Courtney Mustaphi, C. J. and Pisaric, M. F.: A classification for macroscopic charcoal morphologies found in Holocene
lacustrine sediments, *Prog. Phys. Geogr.*, 38, 734–754, 65 <https://doi.org/10.1177/0309133314548886>, 2014.
- Courtney Mustaphi, C. J., Davis, E. L., Perreault, J. T., and Pisaric, M. F. J.: Spatial variability of recent macroscopic charcoal
500 deposition in a small montane lake and implications for reconstruction of watershed-scale fire regimes, *J. Paleolimnol.*,
54, 71–86, <https://doi.org/10.1007/s10933-015-9838-2>, 2015.

- Courtney Mustaphi, C.J., Vos, H.C., Marchant, R., and Beale, C.: Charcoal Whirlwinds and Post-Fire Observations in Serengeti National Park Savannahs, Tanzania Journal of Science, 48, 460-473, <https://dx.doi.org/10.4314/tjs.v48i2.20>, 2002.
- 505 Crawford, A. J. and Belcher, C. M.: Charcoal morphometry for paleoecological analysis: the effects of fuel type and transportation on morphological parameters, *Appl. Plant Sci.*, 2, 1400004, <https://doi.org/10.3732/apps.1400004>, 2014.
- Daniau, A.-L., Sanchez-Goni, M.F., Beaufort, L., Laggoun-D efrage, F., Loutre, M.-F., and Duprat, J.: Dansgaard Oeschger climatic variability revealed by fire emissions in southwestern Iberia. *Quat. Sci. Rev.* 26, 1369e1383. [ff10.1016/j.quascirev.2007.02.005ff. fpha](https://doi.org/10.1016/j.quascirev.2007.02.005), 2007.
- 510 Daniau, A.-L., Goñi, M. F. S., Martinez, P., Urrego, D. H. 80 V., Bout-Roumazeilles, V., Desprat, S., and Marlon, J. R.: Orbital-scale climate forcing of grassland burning in southern Africa, *P. Natl. Acad. Sci., USA*, 110, 5069–5073, <https://doi.org/10.1073/pnas.1214292110>, 2013.
- Daniau, A.-L., Loutre, M.L., Swingedouw, D., Laepple, T., Bassinot, F., Malaizé, B., Kageyama, M., Charlier, K., and Carfantan, H.: Precession and obliquity forcing of the South African monsoon revealed by sub-tropical fires *Quat. Sci. Rev.*, 315 108128. <https://doi.org/10.1016/j.quascirev.2023.108128>, 2023.
- 515 Feurdean, A., Liakka, J., Vanniere, B., Marinova, E., Hutchinson, S. M., Mossbruger V., and Hickler, T.: 12,000-Years of fire regime drivers in the lowlands of Transylvania (Central-Eastern Europe): a data-model approach, *Quat. Sci. Rev.*, 81, 48–61, <https://doi.org/10.1016/j.quascirev.2013.09.014>, 2013.
- Feurdean, A. and Vasiliev, I.: The contribution of fire to the late Miocene spread of grasslands in eastern Eurasia (Black Sea region), *Sci. Rep.-UK*, 9, 1–7, <https://doi.org/10.1038/s41598-019-43094-w>, 2019.
- 520 Feurdean, A., Grindean, R., Florescu, G., Tanțau, I., Niedermeyer, E. M., Diaconu, A.C., Hutchinson, S. M., Nielsen, A. B., Sava, T., Panait, A., Braun, M., and Hickler, T.: The transformation of the forest steppe in the lower Danube Plain of southeastern Europe: 6000 years of vegetation and land use dynamics, *Biogeosciences*, 18, 1081–1103, <https://doi.org/10.5194/bg-18-1081-2021>, 2021.
- 525 Feurdean, A.: Experimental production of charcoal morphologies to discriminate fuel source and fire type: an example from Siberian taiga, *Biogeo.*, 18, 3805–3821, <https://doi.org/10.5194/bg-18-3805-2021>, 2021.
- Hedges, J.I. and Mann, D.C.: The characterization of plant tissues by their lignin oxidation products. *Geochem. Cosmochim. Acta* 43, 1803e1807. [http://dx.doi.org/10.1016/0016-7037\(79\)90028-0](http://dx.doi.org/10.1016/0016-7037(79)90028-0), 1979.
- Hudspith, V. A., Hadden, R. M., Bartlett, A. I., and Belcher, C. M.: Does fuel type influence the amount of charcoal produced in wildfires? Implications for the fossil record, *Palaeontology*, 61, 159–171, <https://doi.org/10.1111/pala.12341>, 2018.
- 530 Jensen, K., Lynch, E., Calcote, R., and Hotchkiss, S. C.: Interpretation of charcoal morphotypes in sediments from Ferry Lake, Wisconsin, USA: do different plant fuel sources produce distinctive charcoal morphotypes?, *Holocene*, 17, 907–915, <https://doi.org/10.1177/0959683607082405>, 2007.
- Leys, B.A., Commerford, J., and McLauchlan, K.: Reconstructing grassland fire history using sedimentary charcoal: 535 Considering count, size and shape. *PLoS One*, 12, e0176445. <https://doi.org/10.1371/journal.pone.0176445>, 2017.

- Leys, B.A., Marlon, J.R., Umbanhowar, C., and Vanniere, B.: Global fire history of grassland biomes. *Ecol. Evol.*, 8, 8831e8852. <https://doi.org/10.1002/ece3.4394>, 2018.
- 540 Lebreton, V., Bertini, A., Ermolli, E.R., Stirparo, C., Orain, R., Vivarelli, M., Combourieu-Nebout, N., Peretto, C., and Arzarello, M.: Tracing Fire in Early European Prehistory: Microcharcoal Quantification in Geological and Archaeological Records from Molise (Southern Italy). *J Archaeol. Method Theory*, 26, 247–275, <https://doi.org/10.1007/s10816-018-9373-3>, 2019.
- Lestienne, M., Jouffroy-Bapicot, I., Leysenne, D., Sabatier, P., Debret, M., Albertini, P.-J., Colombaroli, D., Didier, J., Hély, C., and Vannière, B.: Fires and human activities as key factors in the high diversity of Corsican vegetation. *Holocene*, 30, 244–257. <https://doi.org/10.1177/0959683619883025>, 2020.
- 545 Lukanina, E., Lyubichev, M., Schneeweiss, J., Schultze, E., Myzgin, K., and Shumilovskikh, L.: Did Holocene climate drive subsistence economies in the East-European forest-steppe? Case study Omelchenki, Kharkiv region, Ukraine. *Quat. Sci. Rev.*, 305, 108004, <https://doi.org/10.1016/j.quascirev.2023.108004>, 2023.
- Pausas, J.G., Keeley, J.E., and Schwilk, D.W.: Flammability as an ecological and evolutionary driver, *J Ecol*, 105, 289–297. <https://doi.org/10.1111/1365-2745.12691>, 2017.
- 550 Pereboom, E. M., Vachula, R. S., Huang, Y., and Russell, J.: The morphology of experimentally produced charcoal distinguishes fuel types in the Arctic tundra, *Holocene*, 7, 1–6, <https://doi.org/10.1177/0959683620908629>, 2020.
- Marriner, N., Kaniewski, D., Gambin, T., Gambin, B., Vanniere, B., Morhange, C., Djamali, M., Tachikawa, K., Robin, V., and Rius, D.: Fire as a motor of rapid environmental degradation during the earliest peopling of Malta 7500 years ago. *Quat. Sci. Rev.* 212, 199e205. <https://doi.org/10.1016/j.quascirev.2019.03.001>, 2019.
- 555 Miao, Y., Song, Y., Li, Yue, Yang, S., Li, Yun, Zhao, Y., and Zeng, M.: Late Pleistocene fire in the Ili Basin, Central Asia, and its potential links to paleoclimate change and human activities. *Palaeogeogr. Palaeoclimatol. Palaeoecol.*, 109700. <https://doi.org/10.1016/j.palaeo.2020.109700>, 2020.
- Miao, Y., Wu, F., Warny, S., Fang, X., Lu, H., Fu, B., Song, C., Yan, X., Escarguel, G., and Yang, Y.: Miocene fire intensification linked to continuous aridification on the Tibetan Plateau. *Geology* 47, 303e307. <https://doi.org/10.1130/G45720.1>, 2019.
- 560 Schweingruber, F. H.: *Mikroskopische Holz Anatomie Formenspektren mitteleuropäischer Stamm- und Zweighölzer zur Bestimmung von rezentem und subfossilem*, Zürcher AG, 6301, Zug, 1978.
- Scott, A.C., Cripps, J.A., Collinson, M.E., and Nichols, G.J.: The taphonomy of charcoal following a recent heathland fire and some implications for the interpretation of fossil charcoal deposits. *Palaeogeogr., Palaeoclimatol., Palaeoecol.*, 164, 1-31. [https://doi.org/10.1016/S0031-0182\(00\)00168-1](https://doi.org/10.1016/S0031-0182(00)00168-1), 2000.
- 565 Scott, A.C.: Charcoal recognition, taphonomy and uses in palaeoenvironmental analysis. *Palaeogeogr., Palaeoclimatol., Palaeoecol.*, 291, 11-39. <https://doi.org/10.1016/j.palaeo.2009.12.012>, 2010.
- Sim, T.G., Swindles, G.T., Morris, P.J., Baird, A.J., Gallego-Sala, A.V., Wang, Y., Blaauw, M., Camill, P., Garneau, M., Hardiman, M., Loisel, J., Väiliranta, M., Anderson, L., Apolinarska, K., Augustijns, F., Aunina, L., Beaulne, J., Bobek,

- 570 P., Borken, W., Broothaerts, N., Cui, Q.Y., Davies, M.A., Ejarque, A., Farrell, M., Feeser, I., Feurdean, A., Fewster, R.E., Finkelstein, S.A., Gaillard, M.J., Gałka, M., Heffernan, L., Hoevers, R., Jones, M., Juselius-Rajamäki, T., Karofeld, E., Knorr, K.H., Korhola, A., Kupriyanov, D., Kylander, M., Lacourse, T., Lamentowicz, M., Lavoie, M., Lemdahl, G., Łuców, D., Magnan, G., Maksims, A., Mansilla, C.A., Marcisz, K., Marinova, E., Mathijssen, P., Mauquoy, D., Mazei, Y.A., Mazei, N., McCarroll, J., McCulloch, R.D., Milner, A.M., Miras, Y., Mitchell, F., Novenko, E., Pelletier, N., Peros, M.C., Piilo, S.R., Pilote, L.M., Primeau, G., Rius, D., Robin, V., Robitaille, M., Roland, T.P., Ryberg, E., Sannel, A.B., Schitteck, K., Servera-Vives, G., Shoty, W., Słowiński, M., Stivrins, N., Swinnen, W., Thompson, G., Tiunov, A., Tsyganov, A., Tuittila, E.S., Verstraeten, G., Wallenius, T., Webb, J., Willard, D., Yu, Z., Zaccone, C., and Zhang, H.: Regional variability in peatland burning at mid-to high-latitudes during the Holocene. *Quat. Sci. Rev.*, 305, p.108020. <https://doi.org/10.1016/j.quascirev.2023.108020>, 2023.
- 575 Simpson, K.J., Ripley, B.S., Christin, P.-A., Belcher, C.M., Lehmann, C.E.R., Thomas, G.H., and Osborne, C.P.: Determinants of flammability in savanna grass species, *J Ecol*, 104, 138-148. <https://doi.org/10.1111/1365-2745.12503>, 2016.
- Stobbe, A., Gunnior, M., Rühl, L., and Schneider, H.: Bronze Age human–landscape interactions in the southern Transural steppe, Russia—Evidence from high-resolution palaeobotanical studies. *Hol.*, 26, 1692-1710. DOI: 10.1177/0959683616641740, 2016.
- 585 Tanner, C. C.: Growth and nutrient dynamics of soft-stem bulrush in constructed wetlands treating nutrient-rich wastewaters. *Wetlands Ecology and Management*, 9, 49-73, <https://doi.org/10.1023/A:1008454901954>. 2001.
- Thevenon, F., Williamson, D., Vincens, A., Taieb, M., Merdaci, O., Decobert, M., and Buchet, G.: A late-Holocene charcoal record from Lake Masoko, SW Tanzania: climatic and anthropologic implications. *Holocene*, 13, 785e792. <https://doi.org/10.1191/0959683603hl6>, 2003.
- 590 Umbanhowar, C. E. and McGrath, M. J.: Experimental production and analysis of microscopic charcoal from wood, leaves and grasses, *Hol.*, 8, 341–346, <https://doi.org/10.1191/095968398666496051>, 1998.
- Unkelbach, J., Dulamsuren, C., Punsalpaamuu, G., Saindovdon, D., and Behling, H.: Late Holocene vegetation, climate, human and fire history of the forest-steppe-ecosystem inferred from core G2-A in the “Altai Tavan Bogd” conservation area in Mongolia, *Veget. Hist. Archaeobot.*, 27, 665–677, <https://doi.org/10.1007/s00334-017-0664-5>, 2018.
- 595 Vachula, R. S. and Richter, N.: Informing sedimentary charcoal-based fire reconstructions with a kinematic transport model, *Holocene*, 28, 173–178, <https://doi.org/10.1177/0959683617715624>, 2018.
- Vachula, R.S.: A usage-based size classification scheme for sedimentary charcoal. *The Holocene*. <https://doi.org/10.1177/0959683618816520,095968361881652>, 2018.
- Vachula, R.S., Sae-Lim, J., and Li, R.: A critical appraisal of charcoal morphometry as a paleofire fuel type proxy. *Quat. Sci. Rev.* 262: 106979. <https://doi.org/10.1016/j.quascirev.2021.106979>, 2021.
- 600 Vachula, R. S. and Rehn, E.: Modeled dispersal patterns for wood and grass charcoal are different: Implications for paleofire reconstruction. *Hol.*, 33, 159–166. <https://doi.org/10.1177/09596836221131708>, 2003.

- 605 Vannière, B., Bossuet, G., Walter-Simonnet, A.V., Gauthier, E., Barral, P., Petit, C., Buatier, M., and Daubigney, A.: Land use change, soil erosion and alluvial dynamic in the lower Doubs Valley over the 1st millenium AD (Neublans, Jura, France), *J. Archaeol. Sci.*, 30, 1283–1299, 2003.
- Vernescu, C., Coulas, J., and Ryser, P.: Leaf mass loss in wetland graminoids during senescence. *Oikos*, 109, 187-195 <https://doi.org/10.1111/j.0030-1299.2005.13511.x>, 2005.
- 610 Walsh, P.M. and Li, T.: Fragmentation and attrition of coal char particles undergoing collisions during combustion at temperatures from 900–1100 K . *Combustion and Flame* 99, 749–757. [https://doi.org/10.1016/0010-2180\(94\)90070-1](https://doi.org/10.1016/0010-2180(94)90070-1), 1994.
- Whitlock, C. and Larsen, C.: Charcoal as a fire proxy. In Smol, JP, Birks, HJB and Last, WM., editors, *Tracking environmental change using lake sediments. Volume 3: terrestrial, algal, and siliceous indicators*. Kluwer Academic Publishers, 75-97, [10.1007/0-306-47668-1](https://doi.org/10.1007/0-306-47668-1), https://doi.org/10.1007/0-306-47668-1_5, 2002.
- 615 Yang, H., Yan, R., Chen, H., Lee, D.H., and Zheng, C.: Characteristics of hemicellulose, cellulose and lignin pyrolysis. *Fuel*, 86, 1781– 1788. <https://doi.org/10.1016/j.fuel.2006.12.013>. 2007.

620

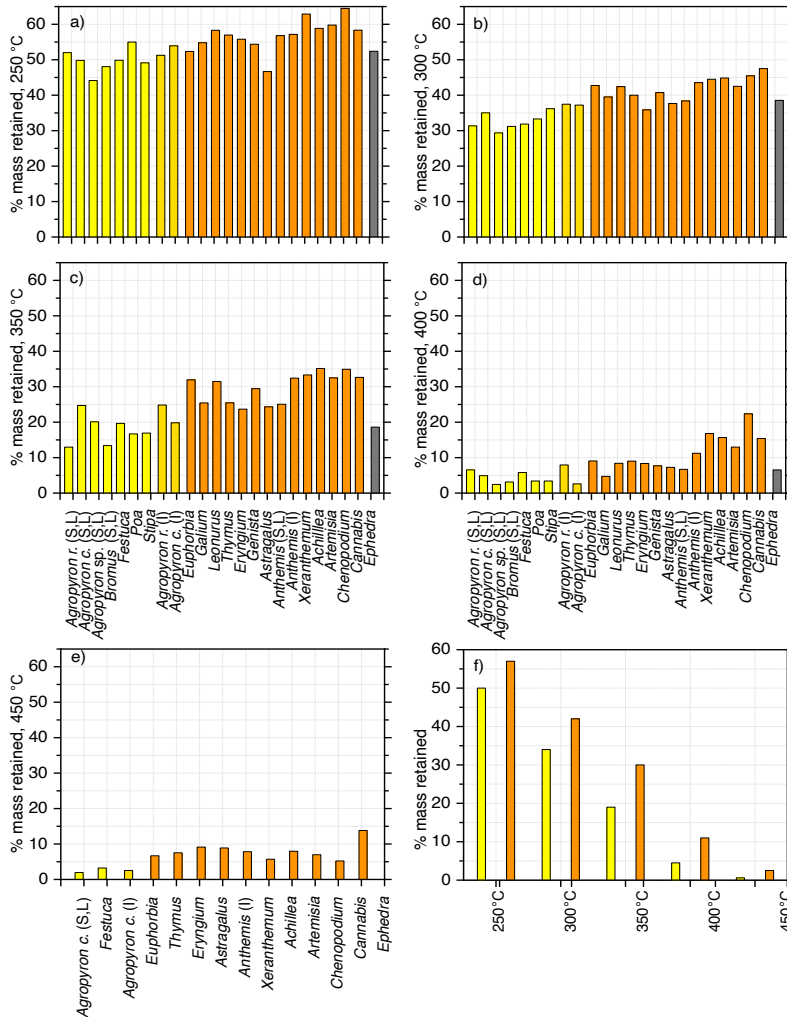
625

630

635

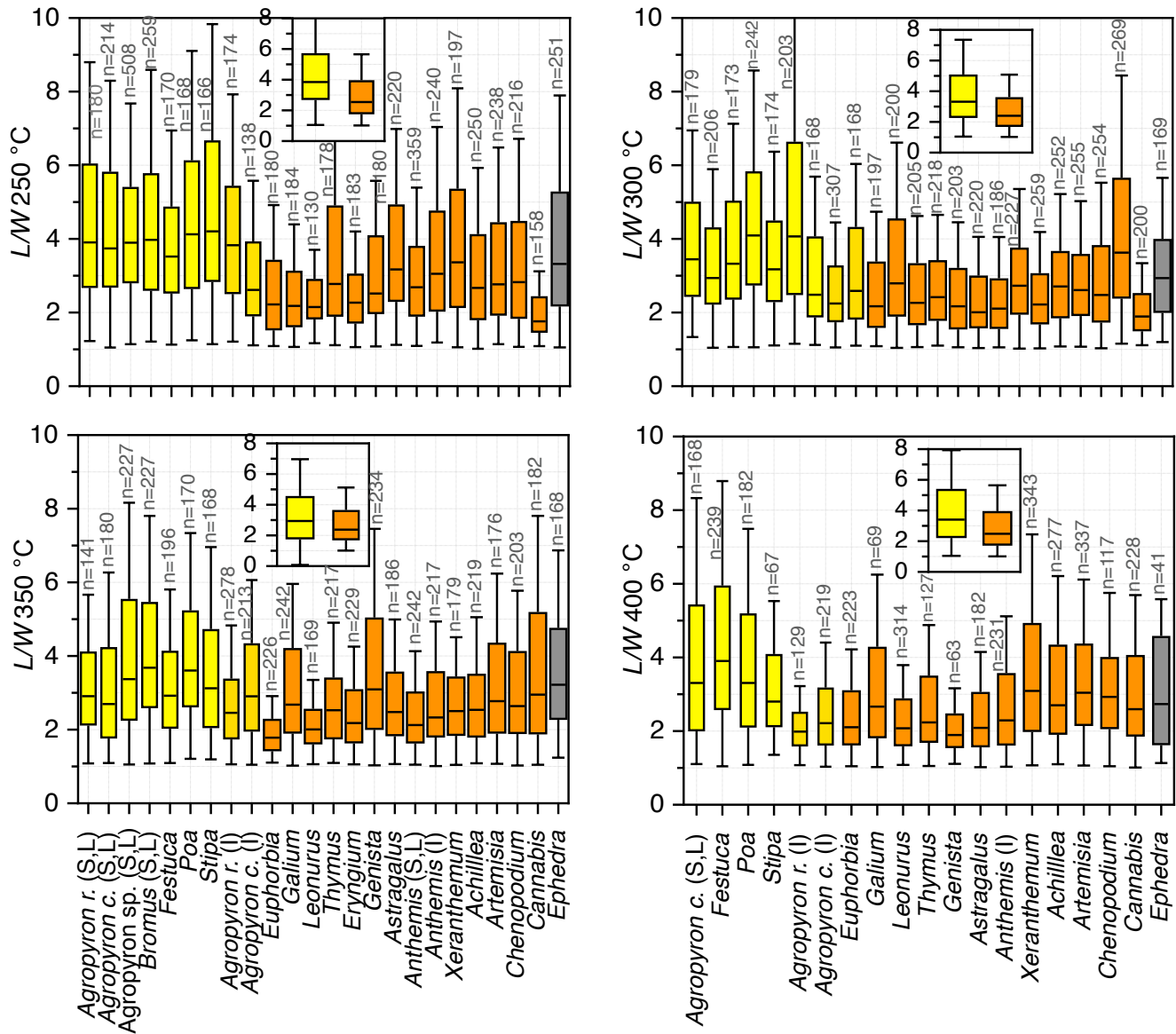
640 **Figure legends and embedded figures**

Figure 1. The percent of charred mass retained after burning individual plant taxa in a muffle oven at 250°C, 300°C, 350°C, 400°C, and 450°C (a-e). The abbreviations used in the figure are S & L – stem and leaf, I-inflouescence; where this is not noted it implies mixed plant parts. Mean charred mass values grouped by grasses and forbs, the main growth habits, at increasing temperature from 250°C to 450°C are also presented (f). Grass taxa are represented in yellow (light yellow for S & L, dark yellow for I), forbs in orange, and shrubs in grey. The full names of plant species burnt, and their geographic origins are presented in Table 1.

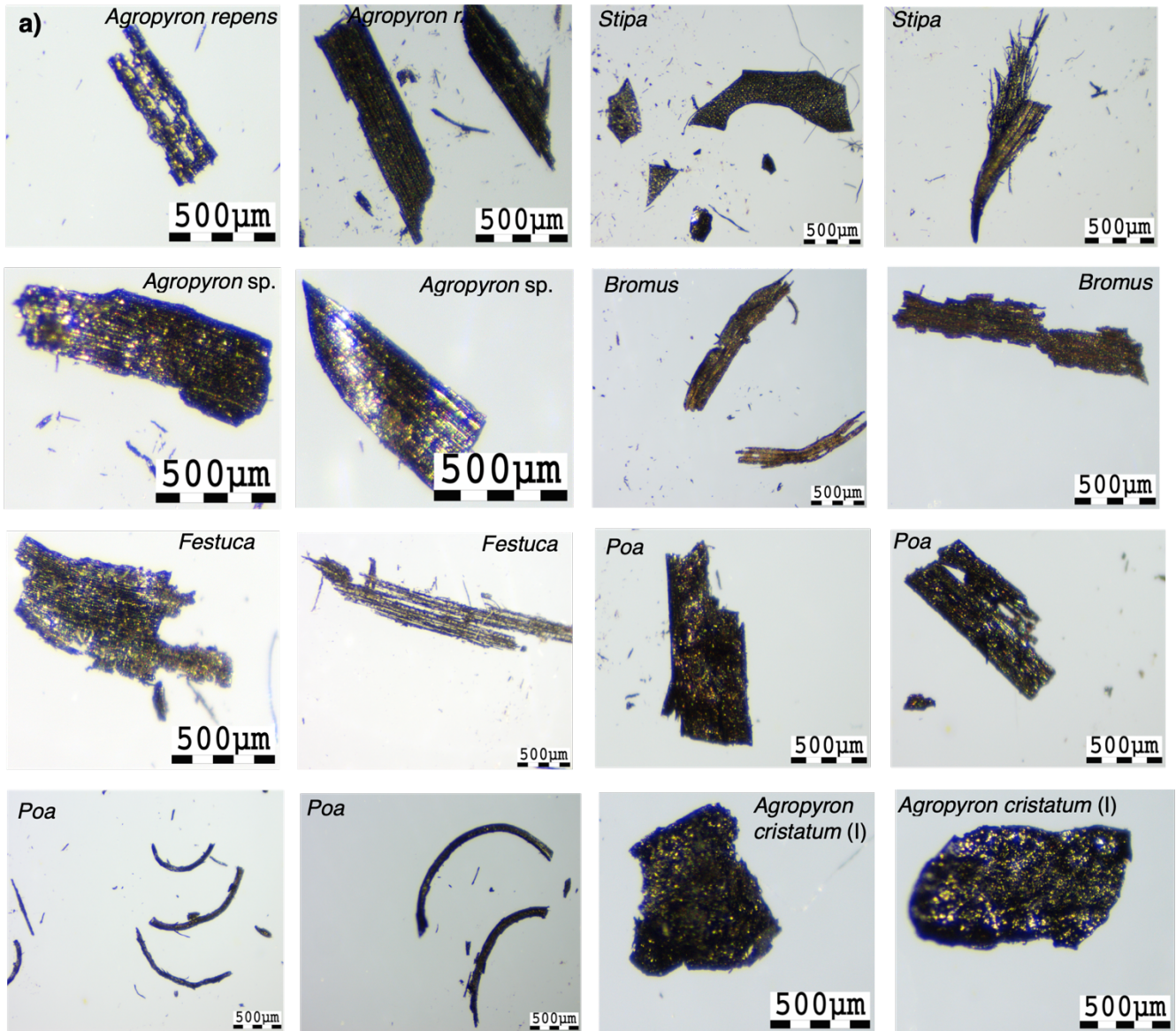


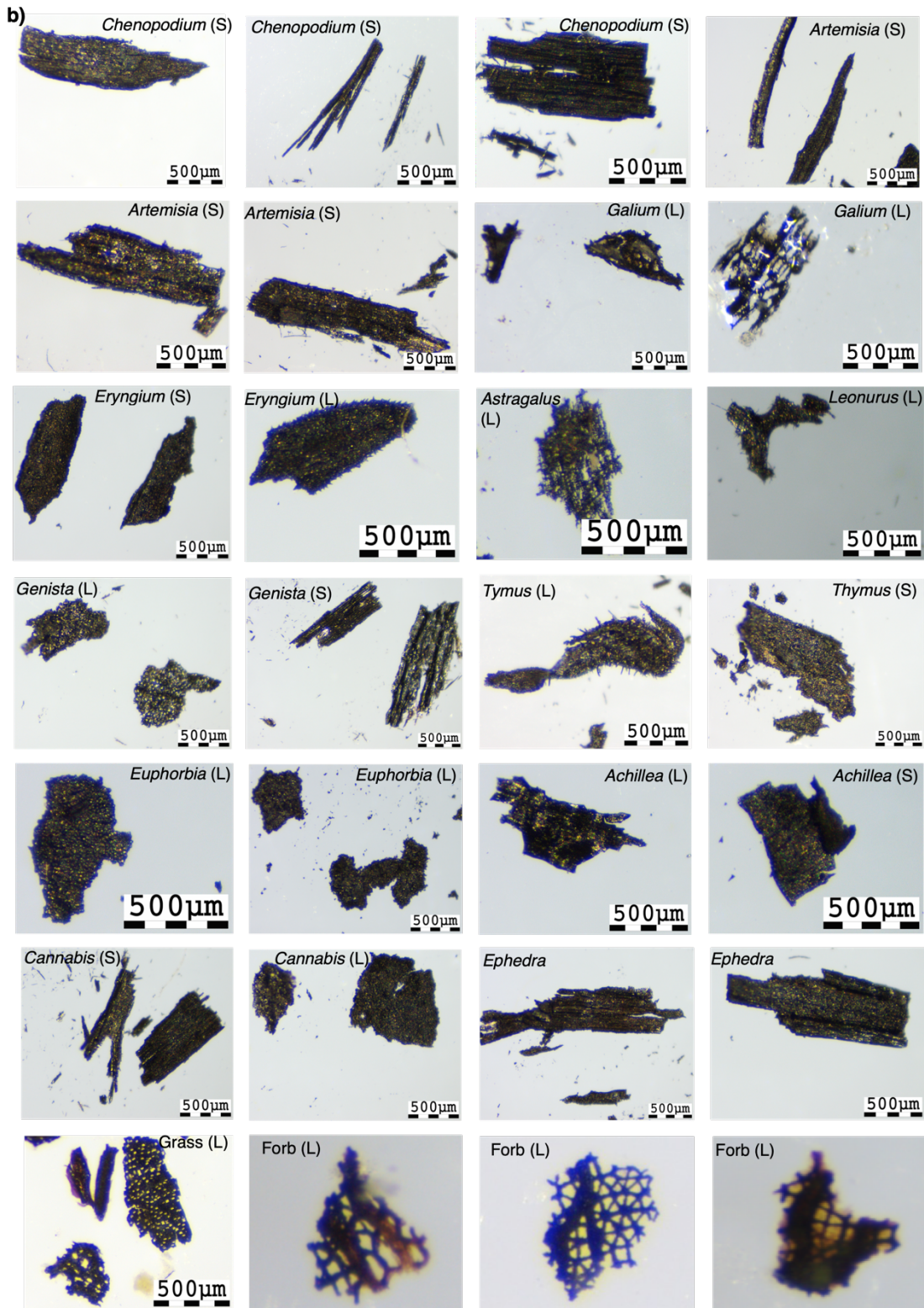
650 **Figure 2.** The median aspect ratios (L/W) of charred particles from the individual taxa combusted at 250°C, 300°C, 350°C, and 400 °C, respectively. Insets in each panel represent the median values of grass and forb taxa, with the same colour scheme as in individual measurements. Box plots represent the distribution of data as follows: the horizontal line in each box denotes the median, the upper quartile is the median value of the upper half of the data points, the lower quartile is the median value of the lower half of the data points, and whiskers represent the respective minimum and the maximum values. Individual and mean L/W values for each temperature are presented in Table S2, whereas mean L/W values for all temperatures combined are shown in Fig. 4. Abbreviations and colour coding as in Fig. 1. n=indicates the number of charcoal particles measured for each taxon and temperature.

655

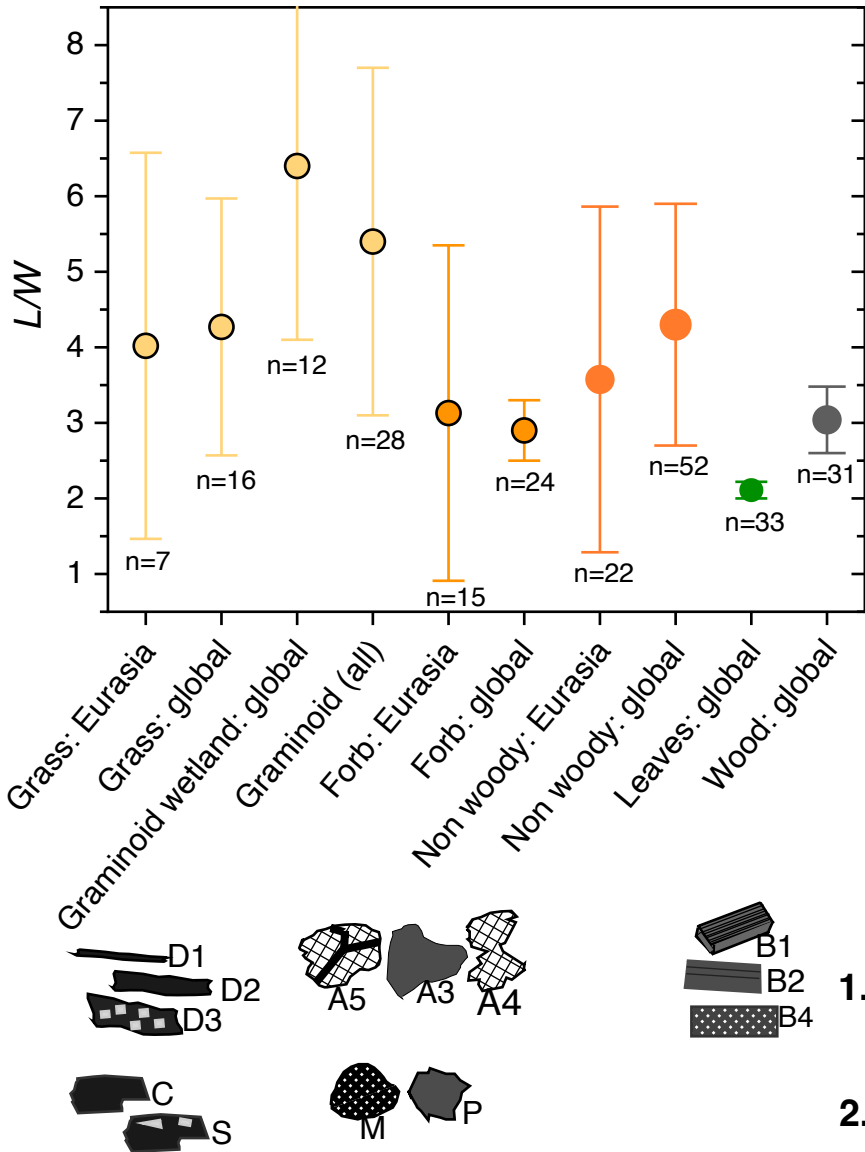


660 **Figure 3.** Photomicrographs of characteristic charcoal morphotypes under stereomicroscope (4 ×). (a) Grass and (b) Forbs. The last row on panel b) presents sedimentary charcoal. L-Leaf, S-Stem, I=Inflorescence.





670 **Figure 4.** Mean L/W values from experimental charcoal produced from known plants for main growth habits (terrestrial grasses, wetland graminoids, forbs) and plant types (leaves, wood) from this study (Eurasia) and the compilation from literature (see details Table 3). Comparison with selected charcoal morphotypes of 1. Courtney-Mustaphi and Pisaric (2014) and 2. Enache and Cumming (2006) and is also shown.



680 TABLES

Table 1. List of plants burned from Dobrogea, the Black Sea, Romania (Ro) and Konoplyanka, Trans-Urals, Russia (Ru). All grasses are C3.

	Plant type	Scientific name	Family	Common name	Plant burned
685	Grass				
	Grass_RO	<i>Agropyron repens</i>	Poaceae	Couch grass	Stem/leaves
	Grass_RO	<i>Agropyron repens</i>	Poaceae	Couch grass	Inflorescence
	Grass_RO	<i>Agropyron cristatum</i>	Poaceae	Crested wheatgrass	Stem/Leaves
	Grass_RO	<i>Agropyron cristatum</i>	Poaceae	Crested wheatgrass	Inflorescence
690	Grass_RO	<i>Agropyron</i> sp.	Poaceae	Wheatgrass	Stem/Leaves
	Grass_RO	<i>Festuca</i> sp.	Poaceae	Creeping bent grass	Stem/Leaves
	Grass_RO	<i>Poa</i> sp.	Poaceae	Meadow-grass	Stem/Leaves
	Grass_RO	<i>Bromus sterilis</i> / <i>tectorum</i>	Poaceae	Bromegrass	Stem/Leaves
	Grass_RU	<i>Stipa capilata</i>	Poaceae	Feder grass	Whole
695	Forbs				
	Forb_RO	<i>Anthemis tinctoria</i>	Asteraceae	Golden marguerite	Stem/Leaves
	Forb_RO	<i>Anthemis tinctoria</i>	Asteraceae	Golden marguerite	Inflorescence
	Forb_RO	<i>Artemisia campestris</i>	Asteraceae	Field wormwood	Whole
700	Forb_RO	<i>Xeranthemum annuum</i>	Asteraceae	Annual everlasting	Whole
	Forb_RO	<i>Achillea</i> sp.	Asteraceae	Yarrows	Whole
	Forb_RO	<i>Leonurus</i> sp.	Lamiaceae		Whole
	Forb_RO	<i>Eryngium campestre</i>	Apiaceae	Field eryngo	Whole
	Forb_RO	<i>Chenopodium</i>	Chenopodiaceae	Goosefoot	Whole
705	Forb_RO	<i>Euphorbia glareosa</i>	Euphorbiaceae	Spurge	Whole
	Forb_RU	<i>Genista tinctoria</i>	Fabaceae	Dyer's greenweed	Whole
	Forb_RU	<i>Astragalus</i> sp.	Fabaceae	Milkvetch	Whole
	Forb_RU	<i>Galium</i> sp.	Rubiaceae	Bedstraw	Whole
	Forb_RU	<i>Cannabis ruderalis</i>	Cannabaceae	Hemp	Whole
710	Forb_RU	<i>Thymus</i> cf. <i>hirsutus</i>	Lamiaceae	Thyme	Whole
	Shrubs				
	Shrub_RU	<i>Ephedra distachya</i>	Ephedraceae	Joint pine	Twigs

715

720

Table 2. Charcoal morphometrics: the mean aspect ratio (L/W , W/L) and area to the perimeter (A/P) ratio, and percentage of main charcoal morphotypes in the Holocene samples from Mangalia Herghelie, Black Sea, SE Romania, and Konoplyanka, sites Tom and SH, Trans-Urals, Russia.

	Age (cal yr BP)	2350	2950	3150	3950	5850
	Mangalia Herghelie, Romania					
730	Charcoal morphometrics					
	<i>L/W</i>	5.5	4.4	3.2	3.3	3.0
	<i>W/L</i>	0.37	0.34	0.43	0.41	0.35
	<i>A/P</i>	40	34	37	37	28
735	Charcoal morphologies (%)					
	Wood	0	0	7	6	4
	Leaf (forb & tree) 7	22	12	15	7	
	Leaf graminoid	43	34	26	34	48
	Stem graminoid & forb	50	44	55	45	41
740	Pollen (%)					
	Trees	26	26	29	34	36
	Shrub	0.0	0.5	1	1	0.6
	Grass	23	25	38	7	23
745	Graminoid wetlands	23	9	11	2	25
	Forb	52	48	32	58	40
	Age (cal yr BP)	1700	1800	1750	2050	2830
	Konoplyanka, Russia	Tom	Tom	Tom	SH	SH
750	Charcoal morphometrics					
	<i>L/W</i>	5.0	3.7	3.6	4.0	4.8
	<i>W/L</i>	0.3	0.4	0.36	0.3	0.3
	<i>A/P</i>	24	34	31	27	23
755	Charcoal morphologies (%)					
	Wood	6	10	10	12	7
	Leaf (forb & tree)	2	0	0	1	1
	Leaf graminoid	55	17	17	23	41
760	Stem graminoid & forb	37	73	73	64	50
	Pollen (%)					
	Trees	20	41	16	31	36
	Shrub	0	0	0	0	0
765	Grass	31	24	50	16	19
	Graminoid wetlands	7	3	2	9	1
	Forb	49	35	34	53	45

770

Table 3. Comparative L/W values of experimental charcoal produced from known plants in this study with those compiled from literature by Vachula et al. (2021) and new Feurdean (2021) results. Graminoid all global includes grass and graminoid wetland type. L/W value for non-woody type combines charcoal of grasses and forbs, whereas the L/W value in parentheses combines grasses, wetland graminoids and forbs. The wood sums the L/W values of trunks and twigs.

	Fuel type	Zone	L/W	References
780	Graminoid (grass)	Eurasia	4.0±2.5	This study
	Graminoid (grass)	Global	4.27±1.7	This study; Vachula et al., 2021
	Graminoid (wetland)	Boreal	7.64±0.6	Pereboom et al. 2020, Feurdean, 2021
	Graminoid (wetland)	Global	6.4±3	Vachula et al., 2021
	Graminoid (all)	Global	5.4±2.3	See above
785	Forb	Eurasia	3.1±2.2	This study
	Forb	Global	2.9±0.4	This study; Vachula et al., 2021; Feurdean, 2021
790	Non-woody (graminoid & forb)	Eurasia	3.6±2.4	This study
	Non woody (graminoid & forb)	Global	3.6 ±1.1 (4.3±1.6)	This study; Vachula et al., 2021 Feurdean, 2021
795	Leaf (forbs, shrub & trees)	Global	2.1±0.1	Vachula et al., 2021; Feurdean 2021
	Wood (shrub & tree)	Global	3.4±0.4	This study; Vachula et al., 2021; Feurdean 2021

