

Measurement report: Dust and anthropogenic aerosols vertical distributions over Beijing—dense aerosols gathered at the top of the mixing layer

5 Zhuang Wang^{1,2,3}, Chune Shi^{1,2,3}, Hao Zhang^{1,2,3}, Congzi Xia⁹, Yujia Chen^{1,2,3}, Yizhi Zhu^{4,5}, Suyao Wang¹⁰, Xiyuan Chi⁸, Kaidi Zhang^{1,2,3}, Xintong Chen^{1,2,3}, Chengzhi Xing^{4*}, Cheng Liu^{5,4,6,7*}

¹Anhui Province Key Laboratory of Atmospheric Science and Satellite Remote Sensing, Anhui Institute of Meteorological Sciences, Hefei 230031, China

²Shouxian National Climatology Observatory, Shouxian 232200, China

10 ³Huaihe River Basin Typical Farmland Ecological Meteorological Field Science Experiment Base of CMA, Shouxian 232200, China

⁴Key Lab of Environmental Optics and Technology, Anhui Institute of Optics and Fine Mechanics, Hefei Institutes of Physical Science, Chinese Academy of Sciences, Hefei 230031, China

⁵Department of Precision Machinery and Precision Instrumentation, University of Science and Technology of China, Hefei, 230026, China.

15 ⁶Center for Excellence in Regional Atmospheric Environment, Institute of Urban Environment, Chinese Academy of Sciences, Xiamen 361021, China

⁷Key Laboratory of Precision Scientific Instrumentation of Anhui Higher Education Institutes, University of Science and Technology of China, Hefei, 230026, China.

⁸National Meteorological Center, Beijing 100081

20 ⁹GBA Branch of Aerospace Information Research Institute, Chinese Academy of Sciences, Guangzhou 510530, China.

¹⁰Huaibei Meteorological Bureau, Huaibei 235000, Anhui, China

Correspondence to: Chengzhi Xing (xingcz@aiofm.ac.cn), Cheng Liu (chliu81@ustc.edu.cn)

Section S1. Polarization lidar photometer networking (POLIPHON) method

25 The polarization lidar photometer networking (POLIPHON) method was applied to retrieve dust and anthropogenic aerosols mass concentration (Tesche et al., 2009; Sugimoto et al., 2003; Shimizu, 2004; Ansmann et al., 2012; Tesche et al., 2017; Ansmann et al., 2019). Assuming that dust and anthropogenic aerosols are externally mixed, there are two steps to obtain dust and anthropogenic aerosols mass concentration by the POLIPHON method. In the first step, the contributions of dust and anthropogenic aerosols to the total backscatter coefficient are separated. The key principle of this step is to obtain priori information on the particle depolarization ratio (PDR) of dust and anthropogenic aerosols. The dust backscatter coefficient
30 (β_d) is expressed as

$$\beta_d = \beta_p \frac{(\delta_p - \delta_{ap})(1 + \delta_d)}{(\delta_d - \delta_{ap})(1 + \delta_p)} \quad (1)$$

In equation 1, the β_p and δ_p are aerosol backscatter coefficient and PDR retrieved by polarization Raman Lidar,

respectively. δ_d and δ_{ap} are PDR typical values of dust and anthropogenic aerosols, respectively. It's worth noting that, if $\delta_p < \delta_{ap}$, we set $\beta_d = 0$, and if $\delta_p > \delta_d$, we set $\beta_d = \beta_p$. Thus, the anthropogenic aerosols backscatter coefficient (β_{ap}) can be calculated by

$$\beta_{ap} = \beta_p - \beta_d \quad (2)$$

5 The dust extinction coefficient (α_d) and anthropogenic aerosols extinction coefficient (α_{ap}) profile can be estimated by

$$\alpha_d = \beta_d \times S_d \quad (3)$$

$$\alpha_{ap} = \beta_{ap} \times S_{ap} \quad (4)$$

S_d and S_{ap} are lidar ratio typical values of dust and anthropogenic aerosols, respectively. All of these aerosol optical parameters can be determined by polarization Raman Lidar. The lidar ratio and PDR typical values of anthropogenic aerosols/dust particles are $S_{ap} = 52.1 \pm 11.3$ sr, $S_d = 45.7 \pm 5.1$ sr, $\delta_{ap} = 0.043 \pm 0.021$, and $\delta_d = 0.287 \pm 0.430$, both of which are retrieved by limiting the PDR less than 0.09 and greater than 0.23.

In the second step, converting the extinction coefficient of dust and anthropogenic aerosols into mass concentration (Ansmann et al., 2012; Mamouri and Ansmann, 2014). The dust mass concentration (M_d), anthropogenic aerosols mass concentration (M_{nd}), and total aerosol mass concentration (M_p) can be estimated by

$$15 \quad M_d = \rho_d \times (\overline{v_c / \tau_c}) \times \alpha_d \quad (5)$$

$$M_{ap} = \rho_{ap} \times (\overline{v_f / \tau_f}) \times \alpha_{ap} \quad (6)$$

$$M_p = M_d + M_{ap} \quad (7)$$

ρ_d and ρ_{ap} are dust and anthropogenic aerosols mass density, respectively. where $\rho_d = 2.6 \pm 0.6$ g/cm³, and $\rho_{ap} = 1.5 \pm 0.3$ g/cm³ (Ansmann et al., 2012). v and τ are volume concentration and AOD observed by sun-photometer, the subscript c and f represent the coarse and fine mode particles, respectively.

25

Figures:

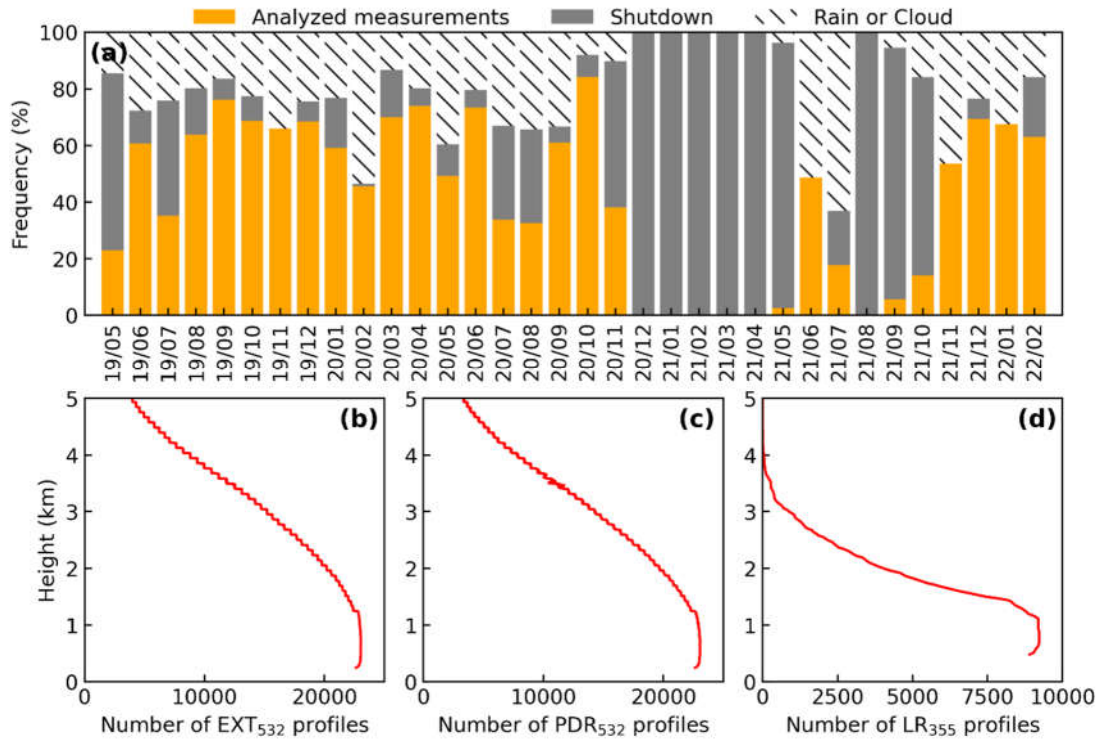


Fig.S1. Coverage of Polarized Raman Lidar (PRL) measurements from May 2019 to February 2022. **(a)** Percentage of analyzed PRL measurements, the unanalyzed measurements of “Shutdown” and “Rain or Cloud” are due to instrument failure or weather conditions. The analyzed number of **(b)** EXT₅₃₂, **(c)** PDR₅₃₂, and LR₃₅₅ points at different heights. The PRL detection error increases with the increase of height, and the number of points also decreases with the increase of height.

5

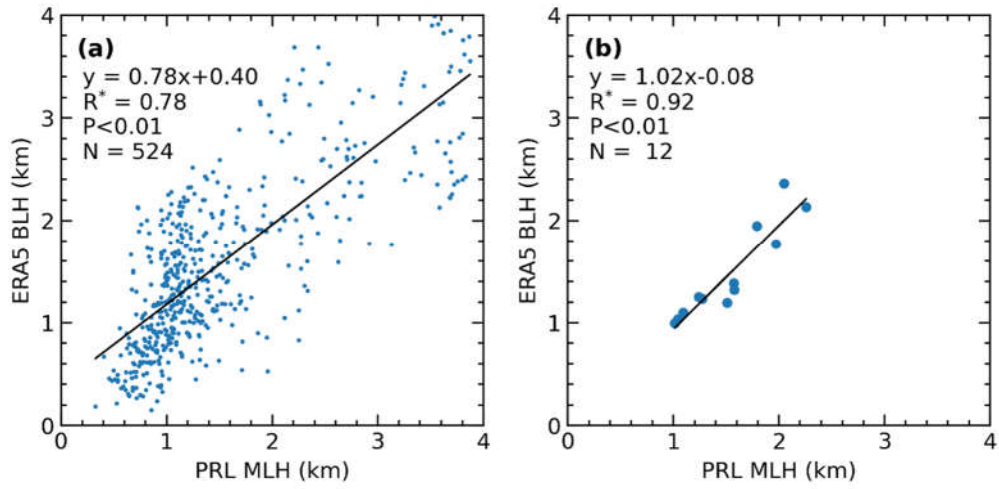


Fig.S2. Data comparison of (a) daily and (b) monthly BLH from ERA5 and MLH retrieved by PRL. Note that the MLH and BLH are the values at 15:00 LT. The correlation coefficients are shown in the top left, N = number of samples, the asterisk on correlation coefficients R stands for $P < 0.01$.

5

10

15

20

25

30

Table S1. Mean values and one standard deviation of input parameters in dust and anthropogenic aerosols mass concentration retrieval.

Parameter	Value	Reference
Anthropogenic aerosols lidar ratio S_{ap}	52.1±11.3 sr	PRL observations
Asian dust lidar ratio S_d	45.7±5.1 sr	PRL observations
Anthropogenic aerosols particle depolarization ratio δ_{nd}	0.043±0.021	PRL observations
Asian dust particle depolarization ratio δ_d	0.287±0.430	PRL observations
Anthropogenic aerosols mass density ρ_{nd}	1.5±0.3 g/cm ³	(Ansmann et al., 2012)
Asian dust mass density ρ_d	2.6±0.6 g/cm ³	(Ansmann et al., 2012)
Anthropogenic aerosols conversion factor $\overline{v_f / \tau_f}$	Monthly average	Sun–photometer observations
Asian dust conversion factor $\overline{v_c / \tau_c}$	Monthly average	Sun–photometer observations

5

10

15

20

25

30

35

References

- Ansmann, A., Seifert, P., Tesche, M., and Wandinger, U.: Profiling of fine and coarse particle mass: case studies of Saharan dust and Eyjafjallajökull/Grimsvötn volcanic plumes, *Atmospheric Chemistry and Physics*, 12, 9399-9415, 10.5194/acp-12-9399-2012, 2012.
- 5 Ansmann, A., Mamouri, R.-E., Hofer, J., Baars, H., Althausen, D., and Abdullaev, S. F.: Dust mass, cloud condensation nuclei, and ice-nucleating particle profiling with polarization lidar: updated POLIPHON conversion factors from global AERONET analysis, *Atmospheric Measurement Techniques*, 12, 4849-4865, 10.5194/amt-12-4849-2019, 2019.
- Mamouri, R. E. and Ansmann, A.: Fine and coarse dust separation with polarization lidar, *Atmospheric Measurement Techniques*, 7, 3717-3735, 10.5194/amt-7-3717-2014, 2014.
- 10 Shimizu, A.: Continuous observations of Asian dust and other aerosols by polarization lidars in China and Japan during ACE-Asia, *J. Geophys. Res.*, 109, 10.1029/2002jd003253, 2004.
- Sugimoto, N., Uno, I., Nishikawa, M., Shimizu, A., Matsui, I., Dong, X., Chen, Y., and Quan, H.: Record heavy Asian dust in Beijing in 2002: Observations and model analysis of recent events, *Geophys. Res. Lett.*, 30, 2003.
- Tesche, M., Ansmann, A., Müller, D., Althausen, D., Engelmann, R., Freudenthaler, V., and Groß, S.: Vertically resolved separation of dust and smoke over Cape Verde using multiwavelength Raman and polarization lidars during Saharan Mineral Dust Experiment 2008, *Journal of Geophysical Research: Atmospheres*, 114, 2009.
- 15 Tesche, M., Müller, D., Gross, S., Ansmann, A., Althausen, D., Freudenthaler, V., Weinzierl, B., Veira, A., and Petzold, A.: Optical and microphysical properties of smoke over Cape Verde inferred from multiwavelength lidar measurements, *Tellus B: Chemical and Physical Meteorology*, 63, 677-694, 10.1111/j.1600-0889.2011.00549.x, 2017.