

Radiative ~~impact~~ effect of thin cirrus clouds in the extratropical lowermost stratosphere and tropopause region

Reinhold Spang¹, Rolf Müller¹, and Alexandru Rap²

¹Forschungszentrum Jülich GmbH, IEK-7, 52425 Jülich, Germany

²School of Earth and Environment, University of Leeds, Leeds LS2 9JT, United Kingdom

Correspondence: Reinhold Spang (r.spang@fz-juelich.de)

Abstract.

Cirrus clouds play an important role in the radiation budget of the Earth. ~~Despite recent progress in remote sensing observations of cirrus in general,~~ nonetheless, the radiative ~~impact of~~ effect of ultra thin cirrus clouds in the tropopause region and in the lowermost stratosphere remains poorly constrained. ~~This is due to their~~ These clouds have a small vertical extent and optical depth, ~~which make them very difficult to observe for most instruments and are frequently neither observed even by sensitive sensors nor considered in climate model simulations.~~ In addition, their shortwave (cooling) and longwave (warming) radiative effects (RE) are often in approximate balance, ~~which together with uncertainties regarding and their net effect strongly depends on the shape and size of cirrus particles, make their overall impact on climate difficult to quantify.~~

~~In this study the SOCRATES (the cirrus particles. However, the CRYogenic Infrared Spectrometers and Telescopes for the Atmosphere instrument (CRISTA-2) allows ultra thin cirrus clouds to be detected. Here we use CRISTA-2 observations in summer 1997 in the northern hemisphere midlatitudes together with the Suite Of Community RAdiative Transfer codes based on Edwards and Slingo (SOCRATES) radiative transfer model was used to calculate the shortwave and longwave RE for observed thin cirrus during the second space shuttle mission by the CRYogenic Infrared Spectrometers and Telescopes for the Atmosphere (CRISTA-2) instrument. Unusual high cloud top heights with respect to the tropopause and rather high occurrence rates have been retrieved in earlier studies. However, the question remained open if these optically radiative effect of observed ultra thin cirrus clouds (UTC), so far not considered in global model calculation, are of importance for the Earth's radiation budget.~~

~~Using sensitivity simulations with different ice effective particle size and shape, we provide an uncertainty range for the RE of UTCs in the estimate for the uncertainty of the radiative effect of ultra thin cirrus in the extratropical lowermost stratosphere and tropopause region during both summer and winter months (in a more limited way) winter. Cloud top height and ice water content are based on CRISTA-2 retrievals measurements, while the cloud vertical thicknesses were assumed thickness was predefined to be 0.5 or 2 km. Our results indicate that if the ice crystals of these thin cirrus clouds are assumed to be spherical, then their net RE their net cloud radiative effect is generally positive (warming). In contrast, if they are assumed to be aggregates, a less likely habit for this high altitude cirrus type, then their net RE assuming aggregates or a hexagonal shape, their net radiative effect is generally negative (cooling) during summer months and very likely positive (warming) during winter months. The cooling or warming RE. The radiative effect is in the order of $\pm(0.1-0.01)$ W/m²-W/m² for a realistic~~

global cloud coverage of 10%, similar to the magnitude of the contrail cirrus radiative forcing best-estimate (of $\sim 0.1 \text{ W/m}^2$ -RE- W/m^2). The radiative effect is also dependent on the cloud vertical extent and consequently the optical thickness and effective radius (r) of the particle size distribution (e.g. increase from 10 effective radius increase from 5 to $30 \mu\text{m}$ results in a factor $\simeq 3$ smaller short and longwave effects). We argue that the radiative impact of UTC ~ 6 smaller long and shortwave effect respectively). The properties of ultrathin cirrus clouds in the lowermost stratosphere and tropopause region needs need to be better addressed in observations and observed and ultra thin cirrus clouds need to be taken into account in climate simulations. considered in climate model simulations.

1 Introduction

35 Cirrus clouds are an important contributor to the radiation budget of the Earth (e.g., Liou, 1986; Heymsfield et al., 2017). While there has been Despite recent progress in understanding cloud formation processes, aerosol-cloud interactions, and cirrus cloud radiative effects, cirrus clouds are still one of the major uncertainties in climate model projections (Forster et al., 2021) (Forster et al., 2021), uncertainties for climate predictions are still large. From several positive feedbacks induced by doubling of CO_2 , the cloud feedback has the largest spread between different GCMs and thus is the most uncertain (Vial et al., 2013; Boucher et al., 2006).

40 The classification of different cirrus cloud classes with respect to optical thickness (τ) has been defined by Sassen and Cho (1992) and is based on lidar observations at visible wavelengths, where an optically thick cloud is defined for $\tau > 3$, opaque cirrostratus for $0.3 < \tau < 3$, transparent or thin cirrus for $0.03 < \tau < 0.3$, and subvisible cirrus (SVC) for $\tau < 0.03$. More recent observations with infra-red limb sounders found even optically thinner cirrus clouds in the range $10^{-6} < \tau < 10^{-2}$ in the tropopause region and partly significantly above the tropopause (Spang et al., 2002, 2008, 2015; Zou et al., 2020; Bartolome Garcia et al., 2021). These observations were obtained by space and airborne limb sounders. These clouds have been also detected by in situ particle measurements (Krämer et al., 2016) but are only observable to a moderate extent by space borne lidars (Davis et al., 2010; Spang et al., 2015) (Davis et al., 2010; Spang et al., 2015; Balmes and Fu, 2018). To better discriminate the optically extremely thin clouds from most of the cirrus defined above, these clouds are referred to in the following as ultra thin cirrus (UTC), which is in line with the optical thickness definition ($\tau = 10^{-3}$ to 10^{-4}) of the ultrathin tropical tropopause cirrus (UTTC) (Peter et al., 2003) detected with airborne lidar and in situ particle measurements. Luo et al. (2003) have shown the dehydration potential of UTTCs in the tropics. Consequently, cirrus clouds in the tropopause region may have a general and significant imprint on the water vapour amount and in the stratosphere, and consequently via radiation effects of the water vapour on the surface temperature (Riese et al., 2012).

50 Assuming UTCs at the tropopause (TP) to be a common cloud type, the question arises about the radiative effect (RE) of these clouds – cooling or warming. The imprint of UTCs on the radiative net effect of cirrus is not well constrained due to the difficulties to characterise microphysical as well as macrophysical quantities of UTCs. Hong et al. (2016) reported a detailed analysis on RE of the ice cloud radiative effect over a wide range of optical thickness of ice clouds based on space borne Cloud–Aerosol Lidar and Infrared Pathfinder Satellite Observations (CALIPSO) lidar and CloudSAT radar data. They

60 computed the ~~cirrus cloud~~ radiative effect (CRE) of ice clouds for a global multiyear climatology of retrieved ice water content, effective radius, and extinction covering low-level optically thick to high-level thin cirrus clouds. For the 2008 period, they found the warming effect (21.8 W/m^2) induced by ice clouds trapping longwave radiation exceeds their cooling effect (16.7 W/m^2) caused by shortwave reflection, resulting in a net warming effect (5.1 W/m^2) globally on the earth–atmosphere system. ~~But the~~ The study does not include the optically thinnest cirrus (UTCs), which clouds like the lower-end in optically thickness

65 of UTCs. These are hard to detect and may systematically for CALIOP and may be underestimated in the dataset. Davis et al. (2010) showed the difficulties to observe optically very thin cirrus clouds around the tropopause with the CALIOP lidar in comparison to in situ particle measurements. The analysis suggests that a majority ($>50\%$) of SVCs around the tropopause ($\tau < 0.01$) could be unaccounted for in studies using CALIPSO data. Consequently, Hong et al. (2016) show only data for $\tau > 0.01$.

70 A similar study by Matus and L’Ecuyer (2017) is focusing not only on ice clouds but liquid, ice, multi-layer, and mixed-type clouds. Results of the global mean cloud radiative effects show only for ice a cooling effect and of comparable size to Hong et al. (2016) (3.4 W/m^2). Balmes and Fu (2018) show that the difficulties for the detection of very thin cirrus clouds still exist in newer versions of the CALIOP cloud data products. They used ground based Raman lidar measurements and found significant deficiencies in the occurrence frequency compared to CALIOP (global estimates $+0.13 - +0.17$). A more

75 recent analysis of stratospheric ice clouds (SIC) based on the CALIOP cloud product shows rather high occurrence frequencies ($2\text{-}20\%$) nearly all over the globe (Zou et al., 2020, 2022), with maxima in the tropics but local maxima at mid latitudes at the storm track regions, with a preference for the tropics but reasonable occurrence frequencies at mid and high latitudes ($2\text{-}10\%$). In addition, the CALIOP shows less SICs at mid-latitudes than the Michelson Interferometer for Passive Atmospheric Sounding (MIPAS) on the Envisat satellite (IR-limb sounder) if both data sets are normalized in the tropics (Zou et al., 2020).

80 Cirrus cloud occurrence frequencies retrieved with the CRyogenic Infrared Spectrometers and Telescopes for the Atmosphere (CRISTA) instrument showed for the first time on global scales significant numbers of cirrus occurrence at and above the tropopause (Spang et al., 2002, 2015) and present IR limb sounder as one of the most sensitive measurements for the detection of cirrus clouds. Due to its better vertical resolution than MIPAS these data allow a better and more sophisticated quantification of the radiative effect of the proven optically thinnest cirrus clouds. ~~The~~

85 So far it is unacknowledged if climate models would need to consider UTCs as a separate cirrus type. Some of the models show the capability to form optically and vertically thin clouds around the tropopause for a relatively coarse GCM resolutions (e.g. Gasparini et al., 2018), fine-resolution cloud models (Gasparini et al., 2022), and global storm resolving models (Nugent et al., 2022; 7). The global radiative effect of these clouds is an open question, and the validation of cloud occurrence frequencies and cloud fraction compared with global measurements are still needed.

90 The present study is structured in the following way: Section 2 describes the instrument data and corresponding analyses and retrievals for setting up most realistic optically thin cloud profiles in the tropopause region at mid and high latitudes. Section 3 presents radiative transfer calculations with the SOCRATES model and the results in context of the warming and cooling potential of the corresponding macro and micro physical cirrus characteristics, followed by a discussion regarding limitations and uncertainties of the statistics as well as the estimation of the overall cloud radiation effect of the specific cirrus types.

2.1 CRISTA instrument

The CRISTA instrument was flown twice on space shuttle missions in 1994 and 1997 in a free-flyer configuration (Offermann et al., 1999; Grossmann et al., 2002). During both missions the instrument made around 8 days of nearly global measurements in the mid-IR (5-15 micron), with still today an unprecedented horizontal resolution for a limb sounder. This was possible
 100 by the implementation of three telescopes with crossing viewing directions, which results in a rather dense measurement net (Fig. 1) - even in the tropics (not presented). With an along track sampling of 200/400 km and three viewing directions the typical gaps between the orbits in the equator and mid-latitude region are filled with measurements. Additionally, the pointing capability of the satellite allowed CRISTA-2 to extent the latitudinal coverage up to 74°N/S away from the more restricted coverage defined by the orbit inclination of 57° (fixed value for CRISTA-1 coverage). The rather good vertical resolution and
 105 sampling of 1.5 km and 2.0 km respectively, helps cirrus clouds to be detected and the exact location with respect to the tropopause to be determined with rather high accuracy (Spang et al., 2002, 2015)(Spang et al., 2002, 2015).

The typical horizontal averaging along the line of sight of a limb sounder is in the order of 200-300 km, where the narrow field of view helps to keep this uncertainty in an adequate range but this limits the accuracy of the retrieved limb ice water path (IWP) (see also Sec 2.3 for details) from CRISTA. ~~Where along the limb path (line of sight) the cloud is located, and more important, for example in front of or behind the tangent point, and how long the path length through the cloud is, can not be retrieved because of the CRISTA limb geometry. Although, these are typical caveats for cloud and trace gas retrievals of limb sounders, modified cloud is extended along the line sight is unknown in limb measurements and cannot be retrieved. Simplified assumptions, e.g. a fixed horizontal cloud extent, are necessary to solve this issue in a retrieval process for target parameter like IWC or extinction (e.g. Wu et al., 2008; Spang et al., 2015; Bartolome Garcia et al., 2021). Modified instruments like limb~~
 115 imager allow substantial improvements of macroscopic cloud parameter with refined observation and retrieval techniques (e.g. 2D/3D and tomographic retrieval techniques, Ungermann et al., 2020). However, the CRISTA measurement capabilities are still unique for the limb IR technique. Extremely low cloud optical thicknesses are detectable which results in a very high detection sensitivity for IWC ($> 5 \cdot 10^{-6} g/m^3$), vertical IWP ($2 \cdot 10^{-4} g/m^2$), and extinction ($8 \cdot 10^{-4} - 10^{-2} km^{-1}$) (Spang et al., 2012, 2015). ~~The latter extinction values constitute IWC value represents only 1/10 of the CALIOP detection threshold (Gasparini et al., 2018) and the extinction threshold represents~~
 120 ~~the upper limit of the measurement range of IR limb sounders. For extinctions $> 10^{-2} km^{-1}$ the IR spectrum saturates and, becomes optically thick in the limb, and the instrument loses sensitivity for optically thicker clouds.~~

2.2 SOCRATES radiation model

Radiative flux calculations have been performed using the offline version of the SOCRATES (Suite Of Community Radiative
 125 Transfer codes based on Edwards and Slingo) radiative transfer model (Edwards and Slingo, 1996) with six bands in the shortwave (SW), nine bands in the longwave (LW) and a delta-Eddington two-stream scattering solver at all wavelengths. This version has been used extensively in previous studies for calculating radiative effects from several atmospheric agents,

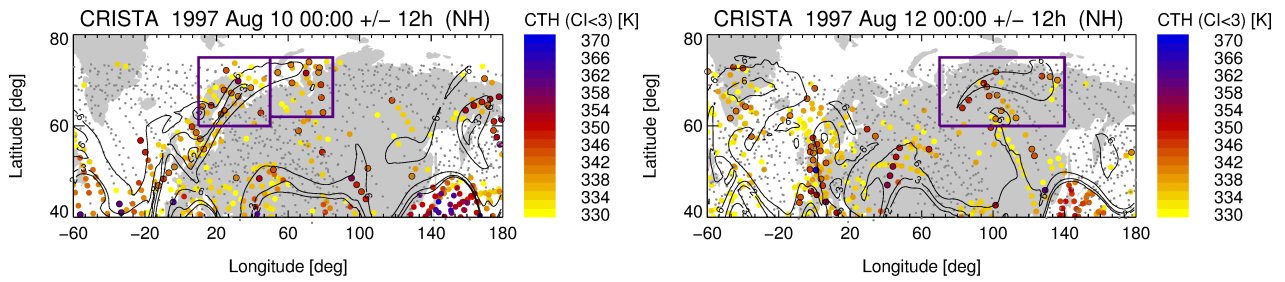


Figure 1. Regions of interest with high altitude cirrus clouds coverage for August 10 and August 12 1997 with high altitude cirrus clouds - The maps are adapted from Spang et al. (2015) highlighted in the in the purple boxes. Cloud top heights (CTH) are given in potential temperature coordinates - Colored by colored dotted symbols. Symbols with a black circle are highlighting CTHs above the lapse rate tropopause based on ERA5 reanalysis data and CRISTA-2 cloud. Grey dots represent non-cloudy observations. Black lines show contours of the potential vorticity (PV) at 350 K altitude for 2, 3, and 6 PV units, highlighting dynamical features like Rossby wave breaking events. The maps are adapted from Spang et al. (2015) where more details are presented.

including contrails (e.g. Myhre et al., 2009a; Rap et al., 2010), water vapour (e.g. Myhre et al., 2009b; Riese et al., 2012; Kunz et al., 2013), ozone (e.g. Rap et al., 2015a; Riese et al., 2012), or aerosols (Rap et al., 2013, 2015b, 2018).

130 The model simulates ice clouds radiative effects using the Baran et al. (2014) parameterisation for ice clouds bulk optical properties. Radiative flux calculations are performed for specified ice cloud fraction, ice crystal effective radius and mass mixing ratio. Spherical or aggregate Our sensitivity simulations consider three different ice crystal shapes can be simulated based on the Baran (2003) database of aggregates, using: spherical particles, hexagonal cylinders (Yang et al., 2000; Rodríguez De León et al., 2018), and aggregates based on 83 representative size distributions measured during the CEPEX campaign Baran (2003). The di-
 135 urnal variations in the SW are simulated by calculating the daily average SW radiative effects based on 24 instantaneous values (i.e. model runs with a 1-hour time resolution) using pre-calculated solar zenith angles (SZAs) at profile location. Clear-sky conditions below the cloud base are assumed in the radiative calculations. For the sake of a simplified setup we ignored multi-layer clouds. This disregards a potentially reduced radiative input in the longwave from underlying cold cloud tops with lower temperatures than the surface. Changes in the albedo with time or geographical location are considered by an
 140 incorporated time dependent 2D model of global albedo values.

2.3 Data preparation and model setup

In order to guide the model in a realistic clouds parameter space, the simulations were set up based on the CRISTA-2 measurements. IWC and extinction estimates, as well as accurate cloud top heights with respect to the tropopause height, are retrieved from the satellite and meteorological reanalysis datasets. ECMWF's fifth-generation reanalysis, ERA5 (Hersbach et al., 2020),
 145 is used for temperature, ozone and specific humidity information at the profile location of CRISTA-2. Additionally, ERA5 pressure and geopotential height are applied to transform between the vertical coordinate altitude for the satellite and pres-

sure levels for the model. The derivation of lapse rate tropopause height and pressure from ERA5 is following the method of Hoffmann and Spang (2022).

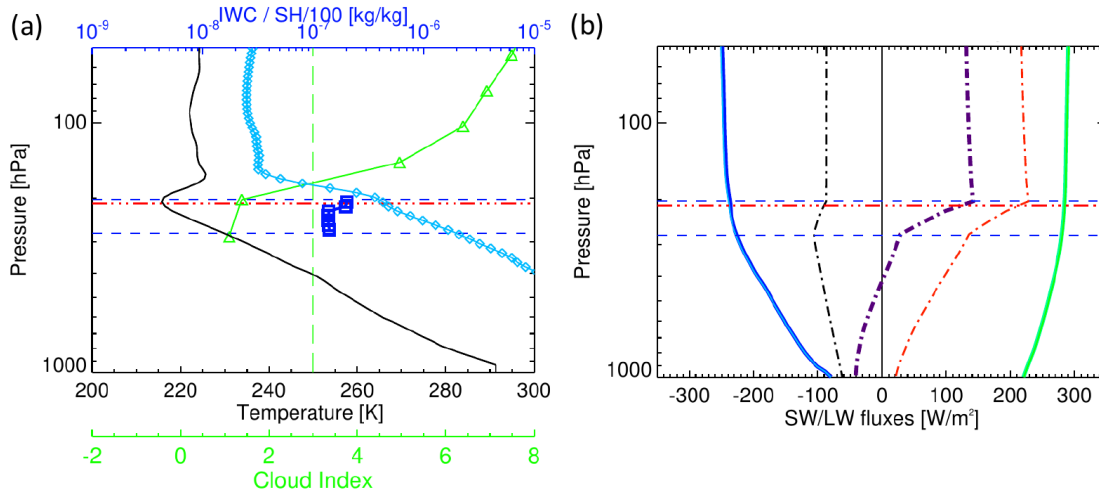


Figure 2. (a): Input profiles for the SOCRATES model runs for the 9th August 1997 13:47:13, 23.2°E and 68.6°N, with temperature (black) and SH (light blue) from ERA5, IWC (blue) retrieved for CRISTA-2 (like SH presented in kg/kg) and additional information like the cloud index profile for cloud detection (CI, in green - dimensionless - and threshold value CI=3 by a dashed green line) as well as cloud top and base height (blue dashed) and ERA5 based lapse rate tropopause (red dash-dotted) (following Hoffmann and Spang, 2022). All information are interpolated on the SOCRATES pressure grid. (b): Output profiles for spherical particles of SW (blue) and LW (green) all-sky and clear-sky fluxes by the model. The difference of all-sky and clear-sky (SW-black and LW-red) and the sum of SW and LW (purple) are shown by dash-dotted lines and are scaled by a factor of 100. Top of atmosphere total radiative effect result results to $\text{RECRE}_{\text{SW}} + \text{RECRE}_{\text{LW}} = -0.86 + 2.14 = 1.28 \text{ W/m}^2$.

The cloud detection capabilities and the high detection sensitivity for cirrus clouds by IR limb sounders, have been demonstrated in various studies (Spang et al., 2002; Massie et al., 2010; Spang et al., 2015; Zou et al., 2020) and for various instruments. The detection method is based on a color ratio of the emissions in a CO₂ and minor ozone band at a wavenumber region around 792 cm⁻¹ and an atmospheric window region at 830 cm⁻¹. The so-called cloud index (Spang et al., 2004) is high (CI>4) for optically thin and cloud free conditions and is shrinking to values close to one when getting optically thick in the limb direction. We applied a cloud index threshold of 3 for cloud top height detection, a robust threshold, applied and evaluated in various studies (e.g. Spang et al., 2004, 2012). The method was developed originally for the CRISTA satellite instrument but has been successfully adopted due to its high efficiency to other IR limb sounder, like the Michelson Interferometer for Passive Atmospheric Sounding (MIPAS) instrument (Fischer et al., 2008) on the Envisat satellite (Spang et al., 2004, 2012; Zou et al., 2020) or more recently on airborne instruments (Spang et al., 2008; Bartolome Garcia et al., 2021).

The CRISTA observations are used to define the macro and microphysical cloud parameter required for the SOCRATES run. In total 161 profiles with cirrus clouds around the tropopause have been selected from the CRISTA-2 dataset in the

regions highlighted in Fig. 1. These regions are restricted to latitudes $>60^\circ$ N, which are not well covered by in situ instruments. The clouds have formed under specific dynamical situation where a Rossby wave breaking event over the Atlantic transported a high water vapour amount to high latitudes over Europe and triggered the ice cloud formation in regions with sufficient cold temperatures, although the temperatures were usually too warm and additional temperature fluctuation by gravity waves would be necessary but were not resolved in the applied reanalysis data (Spang et al., 2015). To keep the amount of modelled profiles for our study in a reasonable size as well as to choose well characterised UTC events we limited our analysis to two days and defined regions as highlighted in Figure 1. This restriction allows sensitivity studies over various micro and macro-physical parameters with the SOCRATES model.

Spang et al. (2012) showed, that the cloud index value in the optical thin part of cloud measurement correlates well with the limb integrated surface area density along the limb path (ADP) (equivalent to a limb IWP) and generated look-up tables for various altitudes and latitudes. In addition, taken the effective radius of the particles into account (predefined for the model runs with 5, 10, and 30 μm) it is possible to estimate the mean IWC along the line of sight under the assumption of a tangent height layer homogeneously covered by the cirrus cloud. A constant path length through the cloud of 200 km has been applied. Usually, the path length depends on the tangent point altitude with respect to the real cloud top (not the detected instrument based cloud top height, because of the limited vertical resolution and sampling of the instrument the real CTH can be lower or higher than the detected CTH). In addition, the cloud path length depends on the size of the field of view. Consequently, for a horizontally and/or vertically large cloud extent the limb cloud path can become extremely long (150 to 400 km for 1 to 3 km respectively vertical resolution). In the current analysis, we are mainly interested in the cloud top region, up to 1-2 km below the cloud top, where the cloud is usually still optically thin and an effective cloud path of ≈ 200 km is a reasonable assumption for the rather small field of view of 1.5 km of CRISTA (Spang et al., 2012, 2015). Finally, it needs to be highlighted that the cloud base height is difficult to retrieve for limb measurements. Obviously, for optically thick clouds in the limb (and nadir) direction the cloud bottom is not visible. In addition, for optically thinner clouds limited altitude coverage ($h_{min} > \text{CBH}$) makes it impossible to determine a CBH for many limb sounders (e. g. MIPAS, CRISTA) especially for vertically thick clouds. Consequently, for the sensitivity study with SOCRATES we decided to use predefined cloud thicknesses (Δz) of 0.5 and 2 km.

Bartolome Garcia et al. (2021) showed for a newer and airborne based IR limb sounder the ability to retrieve CTH and CBH. The predefined thicknesses for the SOCRATES study are in the range of the maximum of the Δz probability density ($\sim 600\text{m}$) and $\Delta z = 2$ km is in the maximum range of the UTC thickness detected by the airborne instrument, where roughly 5-6% of the events show a $\Delta z > 2$ km.

The following procedure is applied for the interpolation of the CRISTA IWC to the SOCRATES grid. If more than one tangent height in a single profile is affected by clouds then the values (IWC) are used for the linear interpolation on the vertical grid down to cloud bottom altitude. If the predefined cloud thickness overlaps the minimum altitude of the measurement with $\text{IWC} > 0$ then the model levels of the cloud are kept constant with the IWC of the lowest altitude.

In summary, IWC is estimated from the retrieved CTH and ADP or the ADP-equivalent limb IWP, where the effective radius and cloud thickness \ominus are predefined (0.5 and 2 km). The CRISTA measurements were taken in August 1997, which means

under rather high solar zenith angle conditions with many hours of sunlight. For contrast we mirrored the CRISTA observation to February conditions to simulate contrapuntal winter-like events with respect to meteorological (ERA5) and solar conditions and used these for a rough estimate of the seasonal dependence of the CRE of UTCs (see Sec.4).

200 Particle shape and roughness are very important parameters for correctly modelling the radiative effect of cirrus clouds ~~(Yi et al. (2013), and references therein)~~(Yi et al., 2013, and references therein). Cirrus particles can have very complex particles shapes (for a review see Lawson et al., 2019). Various studies show less complexity for the cold cloud top regions, especially in the tropical tropopause region where quasi spherical particles with radii smaller than $50 \mu\text{m}$ seems to dominate the particle size distribution and complex ice aggregates are less frequently observed (Woods et al., 2018). It is reasonable that cirrus at the tropopause and lower stratosphere (cloud top) at mid and high latitude have also less complex shapes than optically
205 thick ice clouds in the free troposphere.

In this study we ~~decided to use the scattering properties of two extreme~~use properties of three particle shapes: (a) aggregates, a specific composition of ice crystal habits (Baran, 2003; Baran et al., 2014, 2016; Yang et al., 2005), ~~and in contrast~~ (b) spherical ice particles as a simplification for the in situ ~~measurements~~ observed quasi-spherical particles in the cloud top region, which are typically best described by droxtals (Yang et al., 2003; Zhang et al., 2004) or Chebyshev particles (Rother
210 et al., 2006; McFarquhar et al., 2002)~~), and (c) hexagonal cylinders (or columns, or prisms). Heymsfield and Platt (1984) reported that the ice crystals observed in high cirrus clouds (with cloud temperature $< -50^\circ\text{C}$) were predominantly hollow or solid hexagonal columns. As described for example by Rodríguez De León et al. (2018) the parameterised optical properties for the hexagonal ice particle are based on Baran et al. (2001) and Yang et al. (2000) over a parameterised bimodal particle size distribution from McFarquhar and Heymsfield (1997).~~

215 Cloud optical depth (τ) is an important parameter when investigating the cooling or warming potential of cirrus clouds (e.g. Hong et al., 2016). We computed τ from the CRISTA cirrus cloud ~~detections~~detection by the CI-IWC relation prepared in look up tables of ADP or limb IWP versus CI with respect to cloud altitude and a further correlation between extinction k_e and $\text{IWC}/R_{\text{eff}}$ with $k_e = \text{const} \cdot \text{IWC}/R_{\text{eff}}$, with $\text{const} = 1.4 \cdot 10^3$, IWC in g/m^3 , R_{eff} in μm , and k_e in km^{-1} (Spang et al., 2012). Finally, a simple integration of k_e over the cloud layer thickness (Δz) results in the vertical optical depth $\tau = \int k_e dz$ which
220 is used for the SOCRATES input (Figure 3). The vertical information content of the ice parameters measured by CRISTA is limited. If more than one tangent height is affected by clouds in a single profile then the values (IWC and consequently k_e and τ) are used for the interpolation on the vertical grid of SOCRATES. If the predefined cloud thickness Δz overlaps the minimum altitude of CRISTA then the model levels of the cloud are kept constant with the IWC of lowest altitude. The CRISTA based optical depth (Figure 3b) covers the full range of UTCs from extremely low ~~$\tau < 0.001$~~ $\tau < 0.0005$ up to a maximum of
225 $\tau \simeq 0.05$, ~~which where the maximum~~ is still in the range of SVCs.

(a) ————— (b) PDFs of CRE for various setups of the SOCRATES runs for $10 \mu\text{m}$ effective radius of the particles, August (a) and February (b) background atmosphere, for aggregates (black, separated in cloud thickness = 0.5 km and = 2 km in blue and red) in comparison to spherical particles (0.5/2 km in light blue/orange).

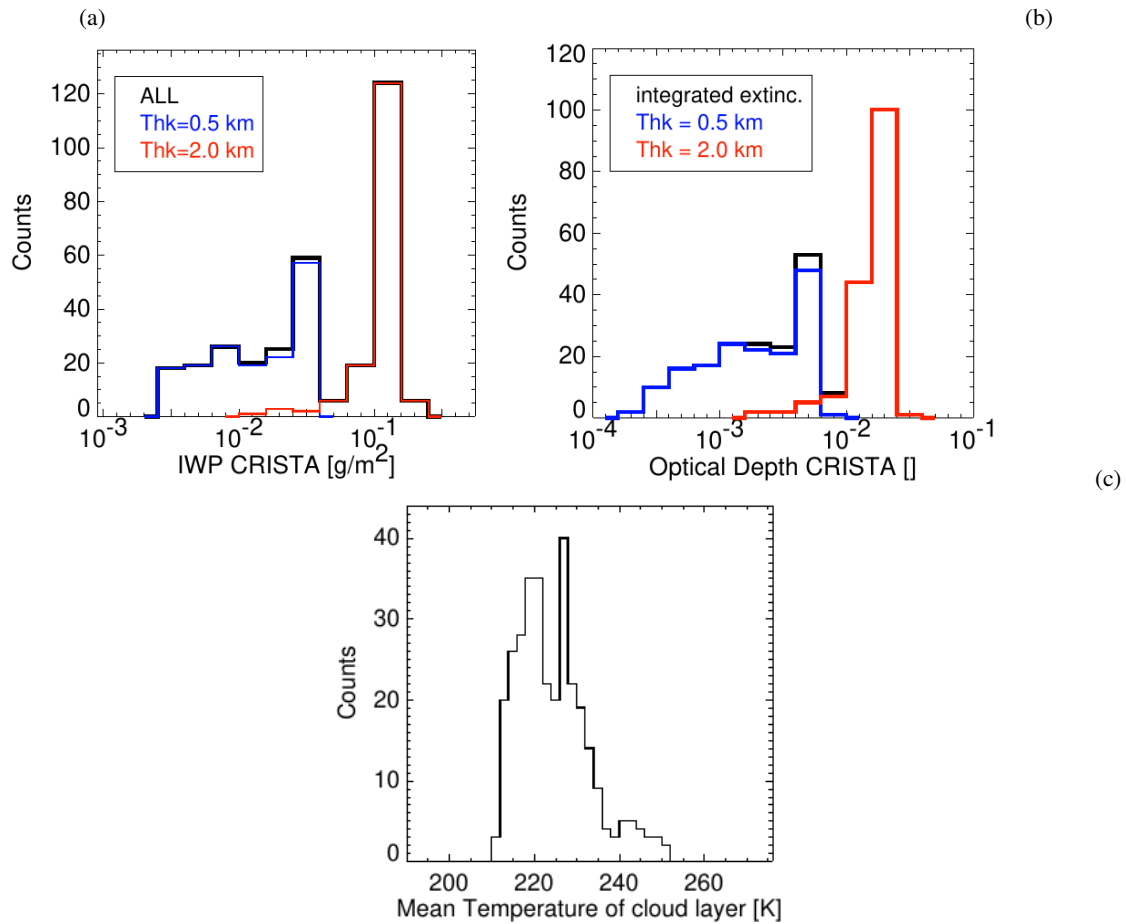


Figure 3. CRISTA based ice water path (a) and optical depth (b) distribution applied to the SOCRATES runs for $\Delta z=0.5$ km (blue) and $\Delta z=2.0$ km (red) and all together in black. (c) PDF of the mean cloud temperature used in the study for August conditions (ERA5 1997 data).

230 ~~For comparison an estimate of the optical depth~~ For a crosscheck of the τ approach we also followed an estimation method
for the optical depth by $\tau = 1.5 \cdot \text{IWP} / (\rho_{\text{ICE}} \cdot R_{\text{eff}})$ (e.g. Baran and Francis, 2004) with R_{eff} in μm and ρ_{ICE} the mass density of
ice in g/cm^3 ~~was also applied to the data. Although, the formula is only strictly correct for ultra violet and visible wave lengths,~~
~~Baran and Francis (2004) argued that the formula is a reasonable approximation in the infrared as well, if the ice crystals~~
~~are sufficiently large and the absorption is strong (e.g. around $11 \mu\text{m}$).~~ PDFs of retrieved (Fig. 3a) and estimated (not shown)
235 τ are looking very similar, which gives us confidence that the retrieved IWC, IWP and extinctions retrieved from CRISTA are
in a reasonable range. Figure 3a and b show the distribution of IWP and optical thickness retrieved from the CRISTA data. The
similarities in the PDFs highlight the close link between both parameters.

Table 1. Median ~~cirrus~~-cloud radiative effect of 161 cirrus cloud profiles, as well as separated LW and SW effect in W/m^2 for various scenarios of the SOCRATES runs

Scenario: shape / R_{eff}	AUG 0.5 km	AUG 2.0 km	FEB 0.5 km	FEB 2.0 km	month cloud depth
hex / $5 \mu m$	33	34	35	36	<i>Scene ID</i>
	0.56	3.86	0.24	1.71	LW
	-0.78	-6.33	-0.16	-1.09	SW
	-0.25	-2.18	0.04	0.59	CRE
agg / $5 \mu m$	25	26	27	28	<i>Scene ID</i>
	0.64	4.49	0.29	2.07	LW
	-0.90	-7.20	-0.09	-0.63	SW
	-0.29	-2.43	0.06	0.81	CRE
sph / $5 \mu m$	29	30	31	32	<i>Scene ID</i>
	0.57	3.99	0.29	2.18	LW
	-0.20	-1.71	-0.04	-0.29	SW
	0.35	2.28	0.26	1.86	CRE
hex / $10 \mu m$	17	18	19	20	<i>Scene ID</i>
	0.36	2.50	0.18	1.34	LW
	-0.38	-3.15	-0.08	-0.57	SW
	-0.05	-0.48	0.08	0.75	CRE
agg / $10 \mu m$	1	2	3	4	<i>Scene ID</i>
	0.40	2.72	0.19	1.46	LW
	-0.44	-3.44	-0.09	-0.63	SW
	-0.06	-0.64	0.09	0.81	CRE
sph / $10 \mu m$	9	10	11	12	<i>Scene ID</i>
	0.28	1.99	0.14	1.09	LW
	-0.10	-0.85	-0.02	-0.15	SW
	0.17	1.15	0.13	0.93	CRE
hex / $30 \mu m$	21	22	23	24	<i>Scene ID</i>
	0.13	0.92	0.07	0.51	LW
	-0.11	-0.93	-0.02	-0.17	SW
	0.00	0.01	0.04	0.33	CRE
agg / $30 \mu m$	5	6	7	8	<i>Scene ID</i>
	0.14	1.01	0.07	0.54	LW
	-0.14	-1.17	-0.03	-0.20	SW
	-0.01	-0.10	0.04	0.33	CRE
sph / $30 \mu m$	13	14	15	16	<i>Scene ID</i>
	0.09	0.65	0.05	0.35	LW
	-0.03	-0.27	-0.01	-0.04	SW
	0.06	0.37	0.04	0.31	CRE

A summary of all different model scenarios (36 in total) for SOCRATES is presented in Tab. 1 together with the mean model results of the cloud radiative effect (**CRE**) of all CRISTA profiles with cirrus clouds in the regions of interest (see Fig. 1) accounted for in the simulations. An example of the model input profiles (cloud index, temperature, specific humidity, and IWC) and the output profiles of SW and LW flux profiles for all-sky (as) cloudy and clear-sky (cs) none-cloudy conditions are presented in Fig. 2. CRE is defined as the sum of SW and LW effect of the all-sky minus clear-sky fluxes (F) at the top of atmosphere in W/m^2 :

$$CRE = (F_{SW_{as}} - F_{SW_{cs}}) + (F_{LW_{as}} - F_{LW_{cs}})$$

LW, SW and total flux (CRE) are saturating above the cloud top (<100 hPa) with virtually constant values (Fig. 2b), and a simple definition of the top of atmosphere (ToA) radiative effect is applicable by means of the pressure levels 20 to 0.6 hPa. The latter pressure value is the minimum pressure level in the model run.

Figure 3a gives an overview of the range and occurrence in the vertical IWP from the CRISTA estimates. The obviously very different vertical cloud thicknesses of 0.5 and 2.0 km result in a separation in the PDF of IWP with very small IWPs between $3 \cdot 10^{-3}$ and $5 \cdot 10^{-2} g/m^2$ for the 0.5 km cloud layers and an IWP $\simeq 10^{-1} g/m^2$ for the 2 km extended cirrus. All modelled respectively observed cirrus clouds are optically thin in the limb and nadir direction and will be invisible for most passive nadir instruments. The lowest IWP values are equivalent to an IWC of $10^{-5} g/m^3$ which is one order of magnitude larger than the detection sensitivity of IR limb sounders (Spang et al., 2015) and close to the so far lowest IWC values observed in situ measurements ($10^{-6} g/m^3$, Krämer et al., 2020).

The mean temperature of the modelled cloud layers are for August in the range of 210 to 250 K (Fig. 3c) peaking around 220 K, which is a typical tropopause temperature at this time of season (s. Fig. 2, **Hoffmann and Spang (2022)**). Hoffmann and Spang, 2022). We applied no pre-selection based on temperature for the CRISTA cloud detection, consequently a few (11 out of 162) lower altitude and warm cirrus are part of the SOCRATES calculations and are visible in the presented PDF at $T > 240$ K. These events have been detected 2 to 4 km below the tropopause but at cloud top heights of 8 to 9 km, which is relatively close to the typical tropopause height at the relatively high latitudes (60-70°N) of the measurements.

February temperature profiles have been selected from ERA5 and are not observational based (longitude and latitude of the August cloud observations). The corresponding estimated cloud temperatures are lower than in August (the maximum of the probability distribution peaks at 210 K, not shown). Although the selected temperature profiles for February may not be realistic for the microphysical formation of a cirrus (e.g. frequent CTHs are modelled in February significantly above the tropopause) it seems reasonable to use the profiles for T, SH, and O_3 to define the background atmosphere conditions for the February scenarios in SOCRATES.

However, these February simulations are only intended to provide rough CRE estimates for the discussion on the overall differences between summer and winter conditions.

3 Cloud radiative effect of optically thin cirrus

270 An overview of CRE of the individual profiles is presented for selected model setups in Figure 4 by probability density functions (PDF) for various Δz and particle shapes (color-coded) and effective radius as well as for August and February (a, b) and February (c) background conditions. ~~Obviously, February and August show a contrasting behaviour, with relatively~~ Relatively broad distributions of negative CRE for aggregates from -2.5 to 0 hexagonal particles from -2 to 0.5 W/m² were ~~found for $\Delta z=2$ km, changing to positive CRE for spherical particles (+0.5 to 2 W/m²). For winter conditions all profiles~~ show a positive CRE, not a single event is reaching negative CRE. For $R_{\text{eff}}=30 \mu\text{m}$ the distributions are looking very similar ~~, only the distribution width is roughly half of the smaller particle mode (not shown). The striking change in CRE between~~ winter and summer conditions is now investigated, Fig. 4a) for effective radius of $10 \mu\text{m}$. Overall, our simulations indicate contrasting behaviours between spherical and hexagonal particle shape and between August and February conditions. Very similar distribution were found between hexagonal shapes and aggregates like shown for the large mode ($R_{\text{eff}}=30 \mu\text{m}$) but with similar agreement for both other size modes (Fig. 4b). Finally, for the small mode ($R_{\text{eff}}=5 \mu\text{m}$) and February conditions the PDFs of spherical and hexagonal particles are shifted to positive CREs, only a minor contribution of the scenarios with hexagonal particles is able to produce a net cooling effect. The results are discussed in more detail in the discussion of Section 4.

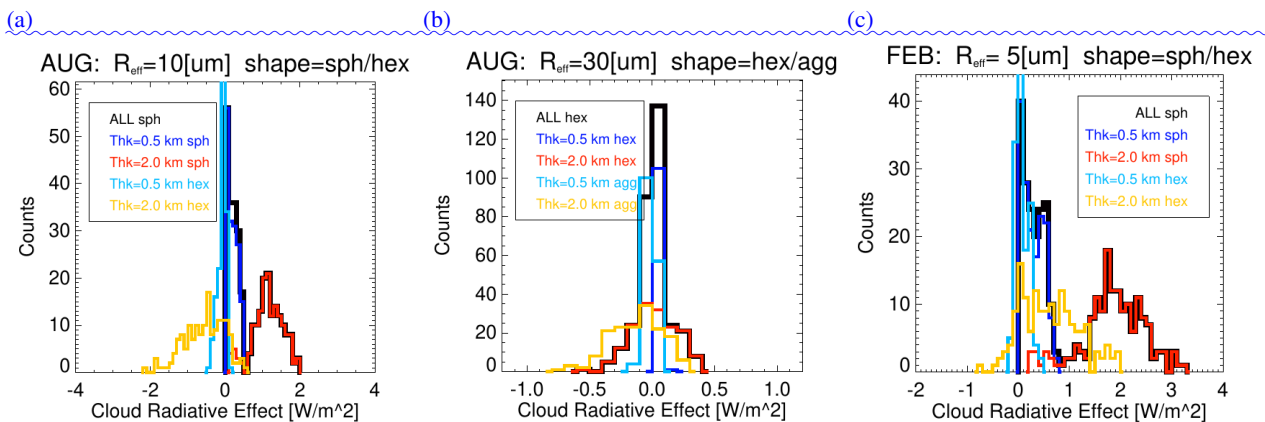


Figure 4. PDFs of CRE for various setups of the SOCRATES runs for $10 \mu\text{m}$ effective radius of the particles for spherical and hexagonal particle shapes (see color code) and (b) with effective radius of $30 \mu\text{m}$ for hexagonal and spherical particles, both for August conditions and (c) February background atmosphere for spherical and hexagonal particles. Separation in cloud thickness $\Delta z=0.5$ km and $\Delta z=2$ km in blue and red for spherical/hexagonal/spherical (a-c) (total in black) in comparison to hexagonal/aggregates/hexagonal particles (0.5/2km in light blue/orange).

Figure 5 gives a better representation of the SW, LW and net effect with respect to the optical depth (Sec. 2.3) of the modelled clouds. The left column shows CRE versus optical depth for ~~five respectively 10 4 respectively 8~~ model scenes, always for $\Delta z=0.5$ and 2 km, August, and August conditions with $R_{\text{eff}}=10 \mu\text{m}$ and $30 \mu\text{m}$, with shape aggregate ; August, $R_{\text{eff}}=10 \mu\text{m}$ and

30 μm with shape spherical; and February, $R_{\text{eff}} = 10 \mu\text{m}$ with shape aggregate (a, b), spheres (c, d), and hexagonal particle shape (e, f), and finally for the large particle mode 30 μm and hexagonal particle shape. The exponential growth of SW and LW effects with increasing $\log(\tau)$ is obvious for all setups, especially well pronounced for the combination of August and aggregates combination of $R_{\text{eff}} = 10 \mu\text{m}$ and aggregates as well as hexagonal particles. SW and LW effect are nearly in balance and changes in shape or radius can significantly change the net effect (black symbols in Fig. 5 (a, c, e, g, i) and g) from cooling to warming and vice versa. The interplay of SW and LW effect is visualized in more detail in the right column of Figure 5 (b, d, f, h, and j and h). Deviations from the one-to-one line are highlighting the warming (above) and cooling (below) of the net (cirrus) radiative effect cirrus CRE for each single cloud event modelled with SOCRATES. Smaller Δz induces a very similar ratio between LW and SW effect, illustrated by rather similar gradients and only smaller amplitudes in the LW-SW correlation. For summer conditions and particle shapes of aggregates the short wave scattering effect can reach a very large cooling (extended day length), especially for larger optical depth values ($\tau > 0.01$). This results in the only 4 scenarios (10 scenarios (Tab. 1: Scene 01, 02, 05 and, 06, 17, 18, 25, 26, 33, 34) with an overall mean cooling potential (AUG, aggregates, = 30 and aggregates for 5, 10, and 30 μm , hexagonal shape only for 5 and 10 μm) presented in Figure 5(a-d). However, even smaller effective radii ($< 10 \mu\text{m}$) will result in even larger cooling effects for aggregates or similar complex particle shapes. In situ measurements show for optically thin cirrus clouds (SVC and/or UTC) typically $R_{\text{eff}} < \simeq 100 \mu\text{m}$ and quasi-spherical with some plates and rare triangular shapes (Lawson et al., 2019). Thus, aggregates are not a very plausible particle shape for the optically thinnest cirrus clouds observed by CRISTA.

~~For spheres instead of aggregates-~~

305 For spheres Figure 5 (c, d) compared to aggregates (a, b) or hexagonal particles (e, f) the SW scattering efficiency is less pronounced and cooling effects are the cooling effect is generally smaller in amplitude and usually smaller than the LW warming for spheres. Hexagonal shaped particles are more realistic for high altitude cirrus cloud particles (Heymsfield and Platt, 1984) although usually observed at colder temperatures and not necessarily generally representative for UTCs at mid and high latitudes. Figure 5(e-h)). For winter (FEB) conditions the short wave cooling becomes smaller due to reduced daylight hours (taking also into account the rather high geographical latitudes) which results in a general warming for all winter scenarios and the change from cooling to warming for aggregates with e) represents an example the optical depth versus CRE and LW versus SW effect for 10 μm . The results are very similar to the aggregates, although the amplitude for SW, LW and total CRE are slightly larger for aggregates than for hexagonal particles. As a consequence, for hexagonal ice crystal shapes a few more profiles with LW > SW are present (f, h). The larger effective radius ($R_{\text{eff}} = 10 \mu\text{m}$ (Fig. 5 e, f) 30 μm (h, f)) results in significantly smaller surface area densities which reduces the SW effect. The LW can now dominate the SW more frequently and results for nearly 50% of the profiles a net warming effect (h) -Enlarged compared to the 10 μm runs (f) with cooling for most of the profiles.

320 In addition, we present in Figure 6 the CRE versus optical depth relation for R_{eff} from = 5 μm and 10 to 30 μm results in a general reduction of SW and LW effect, but a significantly larger decrease in the SW than the LW (Fig. 5 (g,h)). This gives an overall net cooling of for August profiles of aggregates but with a significant number of warming events compared to the 10 μm scenario (Fig. 5 (e,d)) - μm of hexagonal and spherical particles for August and February conditions. The small mode

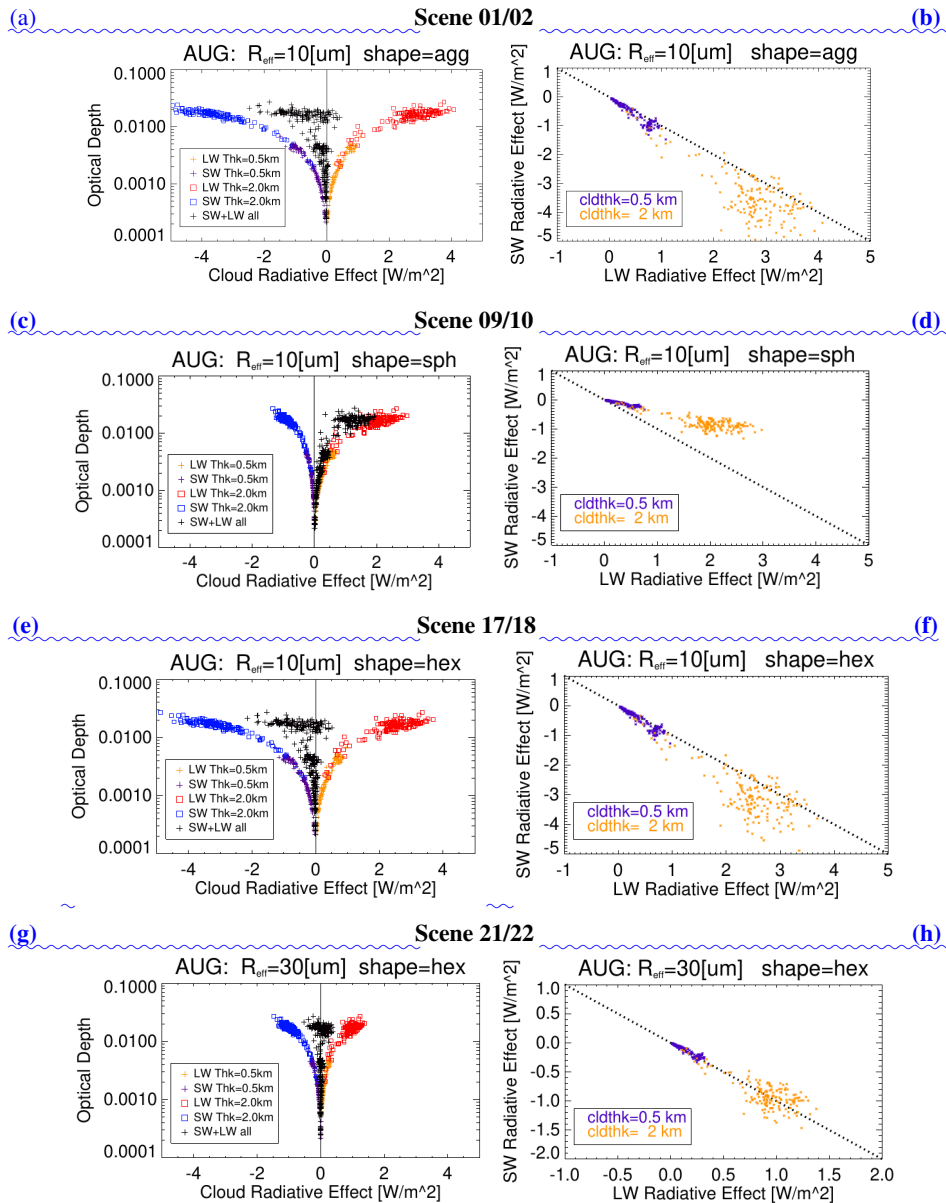


Figure 5. Cloud radiative effect for cirrus (colour coded LW, SW in blue/purple, red/orange ($\Delta z = 2/0.5$ km) and total in black) with respect to optical depth (left column) and LW versus SW radiative effect (right column). (a, b) aggregates, (c, d) spherical, and (e, f) hexagonal particles shape with $R_{\text{eff}} = 10 \mu\text{m}$ for August conditions, as well as (g, h) hexagonal particles with $R_{\text{eff}} = 30 \mu\text{m}$. The black vertical line in the figures of the left column is highlighting $\text{CRE} = 0 \text{ W/m}^2$. Attention, the y-axis range has changed for (h).

shows again opposing effects for hexagonal and spherical particles, here with an extremely high SW cooling (up to 10 W/m^2)

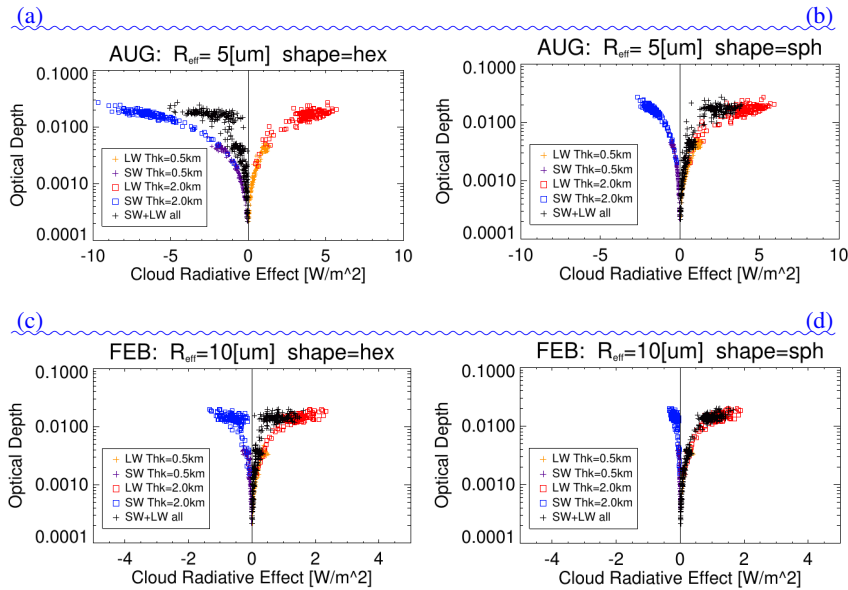


Figure 6. Cloud radiative effect for cirrus (colour coded LW, SW and total in blue/purple, red/orange ($\Delta z = 2/0.5$ km) and total in black) with respect to optical depth in August with $R_{\text{eff}} = 5 \mu\text{m}$ for hexagonal (a) and spherical particles (b). (c) and (d) show also hexagonal and spherical particles for $R_{\text{eff}} = 10 \mu\text{m}$ but February conditions (for details see text). The black vertical line in the figures is highlighting $\text{CRE} = 0 \text{ W/m}^2$. Keep attention to the factor 2 expanded CRE range in (a) and (b).

for hexagonal particles. Latter results for all profiles in a net cooling and in contradiction for the spheres where the majority creates a net warming effect.

325 There is a strong R_{eff} dependency on the SW effect, where larger particles correspond to smaller surface area densities for constant IWC and consequently smaller SW scattering. Generally, 0.5 and 2 km cloud layers behave very similar to changes in the parameter settings (LW: orange and red, SW: lilac and blue in Fig. 5, Fig. 6). Whereby, τ is a significant factor of 4-smaller ~ 4 smaller in CRE for $\Delta z = 0.5$ than for the $\Delta z = 2$ km cloud layers.

In addition, we tried to find a relation between CRE and macro-physical parameters like the distance to the tropopause as well the mean cloud top temperature difference between cloud top and surface temperature. Figure ??-7 presents only results for $R_{\text{eff}} = 10 \mu\text{m}$ (5 and 30 μm differs-differ only by an enhancement and reduction in magnitude respectively and no change in sign) for spherical particles and aggregates. Corresponding CRE versus optical depth like in Figure 5 is presented as well in Figure ?? (e) and (f). By an additional binning along the corresponding y-axis and the computation of median and percentiles per bin, a) and hexagonal (b) particles for cloud top pressure minus tropopause pressure in pressure altitudes. Although the interquartile range (percentile p75—p25) is presented as an error bar to better visualize the variability for constant optical depth. Median and interquartile range are better suited than mean and standard deviation to characterize data with high internal variability, extreme outliers, or skewed distributions.

(a) ————— (b)

340 (e) ————— (d)
 (e) ————— (f)
 (g) ————— (h)
 (i) ————— (j)

Cirrus radiative effect (colour coded LW, SW and total in blue/purple, red/orange (= 2/0.5 km) and black) with respect to optical depth (left) and LW versus SW radiative effect (right column) with aggregates in August with $R_{\text{eff}} = 10 \mu\text{m}$ (a, b) and 30 μm (c, d), with spherical particles for August for $R_{\text{eff}} = 10 \mu\text{m}$ (e, f) and 30 μm , and (g, h), as well as aggregates for February conditions and $R_{\text{eff}} = 10 \mu\text{m}$ (i, j):

350 (a) ————— (b)
 —————
 (e) ————— (d)
 —————
 (e) ————— (f)

————— Cirrus radiative effect with respect to the distance to the tropopause (a, b), cloud mean temperature (c, d) and the optical depth (e, f) for August, = 10 μm spherical and aggregate particle shape in the left and right column. The error bars represent the interquartile range. CRE versus the distance to the tropopause in log-pressure coordinates shows no obvious correlation or trend. The interquartile range is rather large and the distance to the TP seems not to correlate strongly with CRE. However, of the median values of CRE are rather large (error bars), for $\Delta z = 2$ km there is a distinctive correlation starting a few kilometers (2-3 km) below the TP up to 0.5 km above the tropopause. In addition, for spherical as well for hexagonal particle shapes the median indicates a weak negative gradient with cooling in CRE with larger distances above the tropopause. This is more strongly pronounced for aggregates than for spheres, and only significant for 2 km cloud thickness (>0.5 to 2 km). $\Delta z = 0.5$ km events show smaller tendencies, a negative gradient but with smaller tendencies in the range of -1 km to 3 km with respect to the tropopause. The gradient looks for aggregates even and hexagonal particle shape opposite to spheres. So far there is no explanation found for this behaviour. Below the tropopause (≈ -1.5 km) the gradient is negative for most of the scenarios.

365 Mean cloud temperature should have an imprint on CRE, because the emitted radiation of the cloud is directly related to the temperature. One of the major radiation effects by high cold clouds is a warming potential due to the emission at lower temperatures around the tropopause (Heymsfield et al., 2017). Although, in Figure ??e and d, the scatter is still large, the (e.g. Heymsfield et al., 2017). Cloud radiative effect with respect to the cloud top temperature (CTT) minus surface temperature at profile location are presented in Figure 8. CTT is not directly related to the LW effect of clouds, it is the temperature difference between the cloud top and the LW emitting layer in the atmosphere, an underlying cloud layer or the surface temperature under clear-sky conditions (e.g. Gettelman and Sherwood, 2016). In addition, the optical thickness of the cloud layer is also an important parameter in this representation, the smaller the optical thickness the smaller the LW effect and consequently with smaller and less significant sensitivity to the temperature difference. A completely transparent cloud ($\tau = 0$) has an negligible LW effect. This appears nicely in the different behaviour of the $\Delta z = 2$ km clouds nicely show a

larger-mean-LW warming with colder cloud temperatures, which results in the observed negative gradient for CRE. The and
 375 $\Delta z=0.5$ km clouds give some indications for a similar pattern with significantly smaller amplitudes, but only aggregates show a
 mean negative gradient. Again, the sign of CRE for 0.5 km scenarios in Figure 8, where the vertically thin clouds (red, scaled
 by a factor 4) show no or only weak trends in CRE with respect to the temperature difference. For all particle sizes and shapes
 for the vertically thick and consequently optically thicker cloud layers (blue) a linear relation becomes obvious, the different
 setups is not changing over the analysed altitude range. smaller the negative temperature difference the smaller CRE. Although,
 380 the scatter - the error bars represent the interquartile range - is sometimes even large for the 2 km cloud cases, this appears
 only for temperature bins with small event numbers ($N<5$). In contrast, the $\Delta z=0.5$ km scenes show always a relatively large
 interquartile range with respect to the median and only weak indication for similar trends (significantly smaller gradients) like
 in the $\Delta z=2$ km scenes (Fig. 8a and d).

Finally, CRE versus optical depth is presented similar to Figure 5 but now including the binning for τ is presented Figure 9
 385 with an additional binning along the corresponding y-axis and the computation of median and percentiles per bin for CRE.
 Median and the interquartile range are presented, with interquartile range and median as an error measure to better visualize
 the variability for constant optical depth. Median and interquartile range are better suited than mean and standard deviation
 to characterize data with high internal variability, extreme outliers, or skewed distributions. The median follows for spherical
 particles the exponential increase in CRE from the 0.5 and very-low-relatively small τ over the 2 km scenarios up to $\tau \simeq 0.02$
 390 and CRE up to 2 W/m^2 , whereby the aggregates show the nearly opposite behaviour in CRE, with smaller amplitude and larger
 scatter (interquartile range error bars).

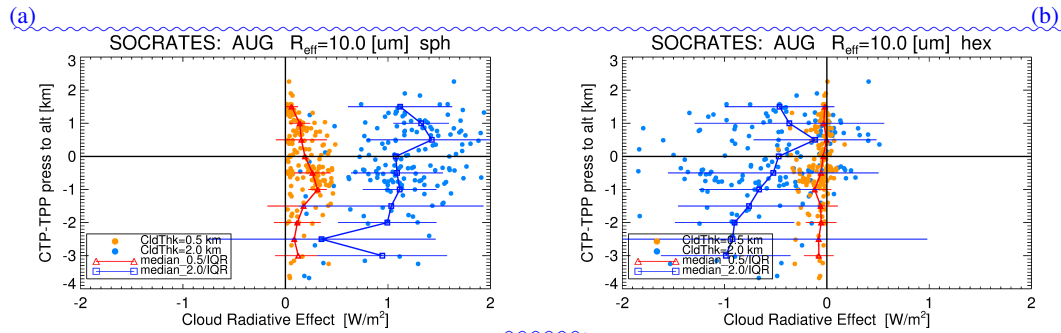


Figure 7. Cloud radiative effect with respect to the distance to the tropopause cloud top pressure minus tropopause pressure (CTP-TPP) for $R_{\text{eff}}=10 \mu\text{m}$ spherical (a) and hexagonal (b) particle shape in the left and right column. Vertical line in middle highlights $\text{CRE}=0$.

3.1 Statistics of modelled cloud radiative effect

Table 1 summarises all SOCRATES setups and mean results on LW, SW and net radiative effect. The median values of the
 selected areas (Sec. 2.3) give distinctive tendencies of the overall cloud warming or cooling effect for the UTCs. In total 161
 395 cloud profiles have been selected from the CRISTA-2 data and represent variable conditions where optical thin cirrus clouds

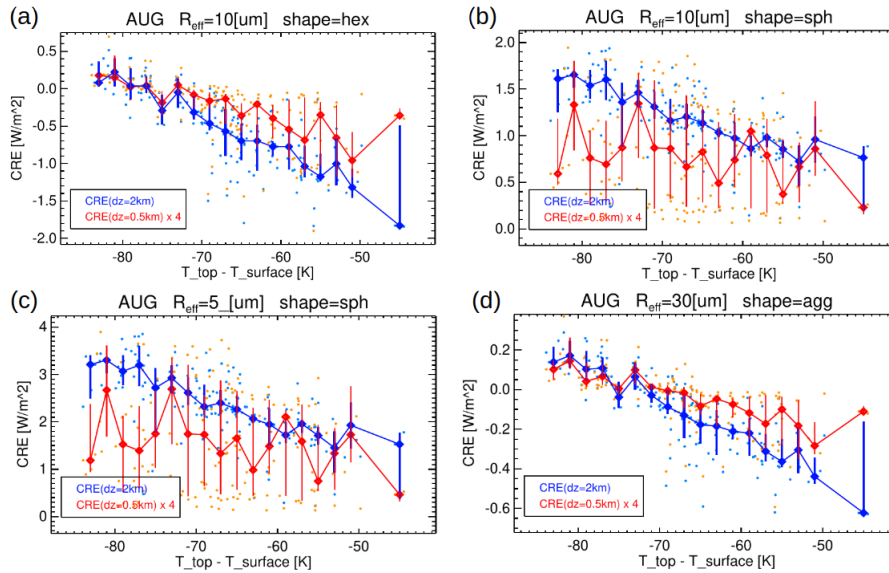


Figure 8. Cloud radiative effect with respect to cloud top temperature minus surface temperature (based on ERA5) for August, $R_{\text{eff}} = 10 \mu\text{m}$ hexagonal (a) and spherical (b) particle shape, as well as for $5 \mu\text{m}$ spheres (c) and $30 \mu\text{m}$ aggregates (d). Cloud thickness is highlighted in blue for $\Delta z = 2 \text{ km}$ and red for $\Delta z = 0.5 \text{ km}$. All numbers for $\Delta z = 0.5 \text{ km}$ events are scaled by a factor 4 in the CRE domain for simpler comparison. Median CREs for a temperature grid with a width of 2 K are superimposed by large symbols and error bars for the interquartile range.

were formed at and above the tropopause north of 60°N . Using more realistic cloud occurrence frequencies would allow a more realistic assessment of the CRE of the UTCs.

The LW effect of scattering and trapping the IR radiation back into the direction of the ground is dominating the SW cooling effect for most of the model scenes. For spherical particle shapes all scenarios, Winter and Summer, result in a net warming effect in the range of 0.17 to 1.15 W/m^2 (AUG) and 0.13 to 0.93 W/m^2 (FEB) for $R_{\text{eff}} = 10 \mu\text{m}$. These are generally larger values than the mean effects for aggregates or hexagonal particles, especially for Summer conditions.

The LW warming is even more effective for larger particles where the resulting smaller surface area densities reduce the SW cooling. However, the SW cooling is also more effective for larger particles. Tab. 1 shows this fact for all simulations of spherical particles and, for example between 10 and $30 \mu\text{m}$ effective radius with a ~ 3 times higher SW and LW effect for the $10 \mu\text{m}$ effective radius (e.g. factor 6 higher for 30 to $5 \mu\text{m}$).

The shortwave scattering effect depends strongly on the solar zenith angle and the duration of sunlit hours. For winter conditions the mean SW effect cannot compensate the LW effect for aggregates and spheres, whereby for summer conditions the aggregates can change the sign for CRE from warming to cooling. SW is enlarged from -0.63 to -3.44 W/m^2 and results in a mean CRE of $+0.81$ (FEB) to -0.64 W/m^2 (AUG). This change of sign – from warming to cooling – does not appear for spherical particles. In contrast to aggregates the CRE stays positive from Winter to Summer and shows even slightly enhanced

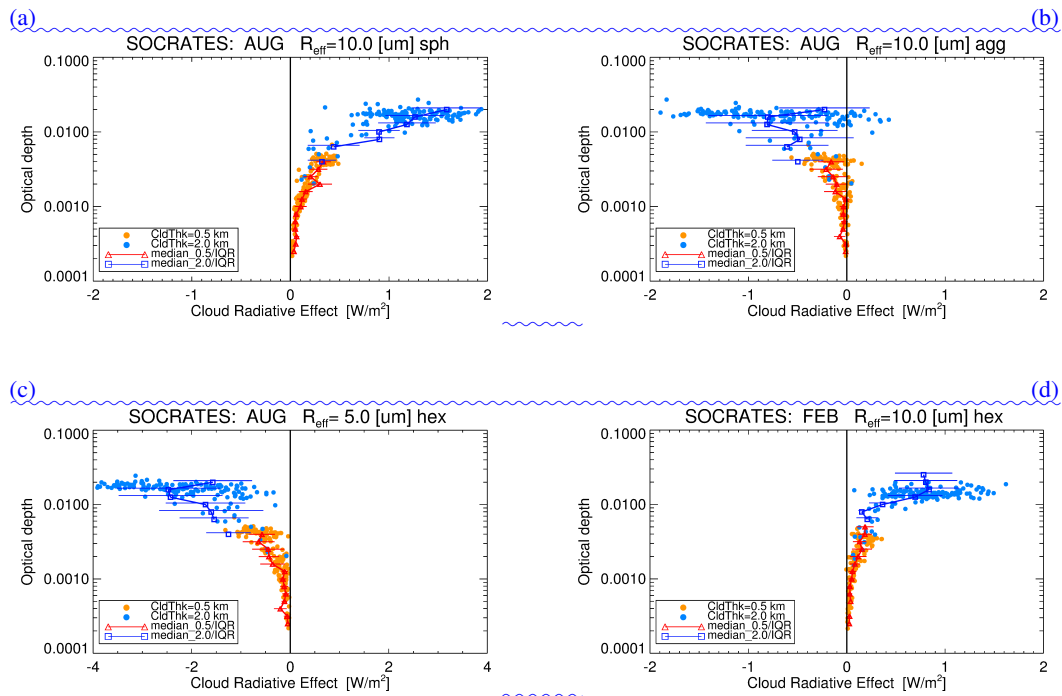


Figure 9. Cloud radiative effect with respect optical depth (a, b) for August, $R_{eff} = 10 \mu m$ spherical and aggregate particle shape in the left and right, and (c, d) with hexagonal particle shapes for $R_{eff} = 5 \mu m$ and August conditions as well as February for $R_{eff} = 10 \mu m$. The error bars represent the interquartile range of the corresponding vertical grid box.

CRE (e. g. 0.93 to 1.15 W/m^2 for 10 ~~μm~~ μm and $\Delta z = 2$ km). The SW effect of spherical particles is by far smaller than the one for aggregates.

4 Discussion

4.1 Winter condition experiments

415 As mentioned in Section 2, we used the profiles for T, SH, and O_3 to define the background atmosphere conditions for February scenarios in SOCRATES. The CRISTA based input (CTH and IWC, indirectly IWP, extinction, optical depth) are simply mirrored into these February conditions. While these simulations do not represent actual February UTC CRE simulations, they are intended to provide a basis for discussions on the more general differences between summer and winter conditions.

420 For winter (February) conditions the short wave cooling becomes smaller due to reduced daylight hours (taking also into account the rather high geographical latitudes) which results in a general warming effect for all particle shapes and effective radii. The change from cooling to warming for aggregates and hexagonal particles with $R_{eff} = 10 \mu m$ is illustrated in Figure 6c and d. In addition, the albedo is varying for this change from a mean $\alpha = 0.15$ to 0.5, which has a drastic effect on the LW

radiance input coming from below the cloud. Similar to an underlying cloud, this can make a significant effect on the net SW/LW effect.

425 The change from net cooling to warming simulated for February conditions has been compared with long time record analysis of CALIPSO by Hong et al. (2016). It should be recapped that the cloud optical thicknesses <0.01 (mainly UTCs) plays only a minor role for the total CALIPSO based CRE. Hong et al. (2016) showed the zonal mean seasonal variation of the total SW, LW and net effect of ice cloud radiative effect, latitudinal resolved (Fig. 4). For ~ 50 to 75° N significant changes over the seasonal cycle, from cooling in summer (March to August) and warming in winter (September to February), are observable.

430 A net warming effect of $10\text{--}20 \text{ W/m}^2$ is observed during winter and net cooling effect can exceed 30 W/m^2 in southern mid to high latitudes and 20 W/m^2 in the northern mid to high latitudes. In the tropics, strong net warming effect ($10\text{--}20 \text{ W/m}^2$) persists over the whole year, mainly caused by high ice clouds with negligible seasonal variation in the zonal mean (Hong et al., 2016). Consequently, the CALIPSO results are in-line with the simplified mirroring of the CRISTA measurements from summer to winter conditions for UTCs. While, the amplitudes for UTCs are obviously much smaller, which is mainly a result of the

435 different optical thicknesses of UTCs compared to ice clouds observed by CALIPSO. Tendency for a change from cooling to warming is identical.

4.2 Uncertainty in cloud thickness

Various settings of UTC clouds have been modelled with SOCRATES for a first quantification of cloud radiative effect of UTCs at mid and high latitudes. The original CRISTA-2 data have already been analysed regarding the cloud occurrence with respect to the tropopause by Spang et al. (2015). However, the CRE was not analysed for these unexpected observations of UTCs well above the tropopause and with unprecedented high occurrence rates at high northern latitudes. A comprehensive study was missing where the cooling or warming potential of these clouds is investigated.

440

For larger effective radii as well for vertical thinner cloud layers (0.5 km) we observe smaller cooling and warming effects in the mean SOCRATES results (Tab.: 1 and Sec. 3.1). The determination of Δz would be an important parameter for a better future quantification of the CRE of UTCs. So far, there is no validated statistical information of the cloud thickness of UTCs available. Although the CALIOP data may miss a rather large part of the optically thinnest UTCs (Davis et al., 2010) (Davis et al., 2010; Balmes and Fu, 2018), the dataset is still the best set available for such an analysis. Zou et al. (2020, 2021, 2022) have analysed cloud occurrence of stratospheric ice clouds (SICs) based on CALIOP data products. The Zou et al. studies have not focused on the vertical extent of these clouds. Zou et al. (2020) showed for mid latitudes that the IR limb measurements by MIPAS give higher occurrence rates on SICs than CALIOP, if both cloud occurrence frequencies are normalised in the tropics. This supports the notion that IR limb sounder are under specific conditions more sensitive in the detection of cirrus cloud than recent lidar in space instruments. This circumstance was already discussed in earlier studies (Spang et al., 2012, 2015; Bartolome Garcia et al., 2021).

450

The best information on the Δz of UTCs retrieved from IR limb measurements is the more recent analysis of Bartolome Garcia et al. (2021) with data from the airborne GLORIA (Gimballed Limb Observer for Radiance Imaging of the Atmosphere) instrument (Riese et al., 2014) during the airborne campaign WISE (Wave-driven ISentropic Exchange) in the North Atlantic

in September/October 2017. Due to the excellent vertical resolution and fine sampling using a 2D infrared imaging detector, the data achieve a vertical sampling and resolution of 140 m. For the first time cloud bottom information was retrieved from extinction profiles.

460 The analysis shows that in the region investigated by WISE there is a maximum likelihood in cloud extent Δz of 500-625 m with likelihoods for $\Delta z > 1.5 > 1.5$ km of less than 25% of the peak likelihood and in total only 10% of all measured cloud events (Bartolome Garcia et al., 2021, Figure 8a). Note that for a typical Δz of 0.5 to 1 km a lower CRE is calculated than for $\Delta z = 2$ km (Figure 5). Generally, optical depth is a good estimator for the strength of the CRE even at very low optical depth, but the cloud vertical extent is obviously a critical parameter for τ and CRE and there seems a functional relation between
465 CRE, Δz , and τ , respectively (Figure 5).

4.3 Estimates of UTC fraction and global CRE

Cloud top heights with respect to the tropopause show a weak correlation with CRE in the SOCARTES results especially below the tropopause with a decrease in mean CRE with warmer cloud temperatures (Figure ~~??e-d~~7). The variability in the net effect is very large (profile to profile variability), which makes it difficult to draw a final conclusion on a mean effect with cloud
470 top position with respect to the tropopause, but we found clear indications for an enhanced warming effect for optically thicker events at higher altitudes with respect to the tropopause .

The CRE is not only affected by τ but the atmospheric background conditions (temperature profile, CTH location, surface albedo, microphysical quantities) can result in conditions situations, where even similar background conditions and constant τ result in very different CRE. This makes the prediction of a net cooling or warming difficult. Even LW and SW effect turn out
475 to be very different depending on the optical depth (Figure 5). Global measurements with a sophisticated occurrence frequency statistic, where the cloud detection is weighted with the covered area by clouds, are necessary. The subsequent radiation model runs would then allow the overall CRE of UTCs in the tropopause region to be better quantified.

Hong et al. (2016) followed a very similar procedure with the combined CALIPSO/CloudSAT ice cloud data products (DARDAR: Delanoë and Hogan (2008) and 2C-ICE: Deng et al. (2010)). These data may not include the correct amount of
480 UTCs due to a lack of detection sensitivity (see Sec. 1) and will consequently underestimate to some extent the total cloud coverage/occurrence of cirrus clouds. The Hong et al. results are presented for ice cloud optical depths $\tau > 10^{-2}$, a value where the limb measurements are starting to saturate. The Hong et al. analysis lacks the optically thinnest range of $\tau = 10^{-4} - 10^{-2}$ where IR limb sounders are most sensitive. A combination of IR limb and space lidar measurements would be an excellent combination to cover the full range of optical depth of cirrus clouds ($\tau = 10^{-4}$ to > 20) for a comprehensive view on the cirrus
485 radiative effect radiative effect of cirrus clouds. Hong et al. (2016) argue that subvisual cirrus ($\tau < 0.03$) display only weak SW and LW radiative effects because of their infrequent occurrence (global mean $< 5\%$, Hong and Liu, 2015) and this results in a global mean value of $CRE = 0.05 \text{ W/m}^2$ (Hong et al., 2016, Table 4). However, as already argued above, the applied cloud dataset misses a significant number of UTCs and the overall radiative effect for SVCs and UTCs is underestimated. Our study shows that these additional UTC radiative effect the radiative effect of these additional UTCs will be small but relevant, in the
490 range of -0.64 to 0.93 CRE median of -2.43 to 2.28 W/m^2 ($R_{\text{eff}} = 5 \mu\text{m}$) assuming 100% occurrence rate (with a single profile

maximum of ~~4-net cooling of -9 W/m²~~). ~~Only aggregates for summer conditions and net warming of ~6 W/m²~~, Fig. 6). For ~~summer conditions only aggregates and hexagonal particles~~ have the potential for a net cooling effect. If a more realistic UTC coverage of 10 (20)% is assumed (Zou et al., 2020) the CRE is reduced to a still not irrelevant range of ~~-0.06 (-0.12) to 0.09 (0.18-0.24 (-0.48) to 0.22 (0.45) W/m²~~.

495 The numbers of the radiative forcing caused by UTC calculated here can be put into perspective of the radiative forcing determined for CO₂ and other greenhouse gases. Myhre et al. (2009b) analysed in a similar designed study SW, LW, and net radiative effect of a stratospheric water vapour (SWV) enhancement as well as effects of contrail cirrus in a comparison of various radiative transport models. An overall global change of SWV from 3.0 to 3.7 ppmv has resulted in a net RF (LW+SW) of 0.22 to 0.49 W/m² depending on the specific model. This is of similar value and range as ~~the for the 10 μm particle size in~~
500 ~~the CRE results for UTCs presented above (Tab. 1), with a mean 100% cloud-cover-based-cloud-cover~~ - clearly an overestimate for the real atmosphere-~~CRE results for UTCs presented above~~. A typical contrail cirrus with optical depth of 0.3 and 100% coverage resulted in a CRE of -14 to -7 W/m² for high SZA (75°) and positive CRE of 12 - 23 W/m² for low SZA (30°). Similar to the UTCs focused on for this study, the CRE of optically thin contrails is very sensitive to the SZA, depending on the sunlight hours and the maximum SZA the overall CRE can change from negative to positive effects. Finally, Myhre et al. did a
505 more realistic estimate of the global coverage of contrails and the resulting CRE. Four models deliver a rather good consistency in the range of 9.3 to 15 mW/m² (warming), which is significantly smaller than the estimates found above for 10 and 20% coverage of global UTCs ~~with R_{eff}=10 μm~~. Only, if we further reduce the global coverage to 1% (to be consistent with the contrails coverage) the CRE of UTCs is in the range of ~~-6 to +9~~ ~~-22 to 18 mW/m² for R_{eff}=5 μm and -5 to 9 mW/m² for~~
510 ~~10 μm~~, where the warming of ~~hexagonal shape and aggregates~~ fits well with the contrails. However, these estimates indicate a significant larger CRE for UTCs than contrails.

Although the presented study specifies only first estimates for the CRE under various conditions, the results presented here show the priority to better constrain the amount (coverage) and vertical thickness of UTCs in the lower stratosphere and tropopause region. This would help to determine how important it is to consider UTCs in future climate model simulations. This would also help to prove if UTCs are at least to some extent considered in the current very common cloud dataset composed
515 from radar and lidar space measurements (e.g. Delanoë and Hogan, 2008; Deng et al., 2010).

5 Summary and Conclusions

The present study reports the radiative effect of optically ultra thin cirrus clouds. Our sensitivity simulations with different ice particle sizes and shapes for those clouds provide an uncertainty range for their ~~RE-CRE~~ during both summer and winter months. Cloud top height and ice water content are based on CRISTA-2 retrievals, while the cloud vertical thicknesses were
520 assumed to be 0.5 or 2 km. Most of the model scenarios ~~(Aug+Feb)~~ result in a positive cloud radiative effect (warming) in the mean range of ~~-0.64 to 0.96~~ ~~-2.43 to 2.28 W/m² for August conditions~~ (Tab.1) ~~for and~~ 100% cloud coverage. ~~Only ice aggregates-R_{eff} is the leading parameter for maximum cooling and warming, the smaller the particles the larger the amplitude of the CRE. Ice aggregates and hexagonal particles showed the ability to change the sign of CRE from warming to cooling~~

525 ~~cooling to warming when estimating February conditions with a simplified approach by mirroring the CRISTA observation~~
~~into the winter atmosphere and considering albedo changes.~~ Summer conditions with extended sunlit hours are producing
large cooling rates over the day so that the SW cooling effect ~~is dominating can dominate~~ the LW warming effect~~-, although,~~
~~spherical particles always show a mean net warming effect.~~

530 Overall, the cooling and warming effects are nearly in balance for UTCs and the typical uncertainties of the various input pa-
rameters of the radiative transport calculation (e.g. particle type, effective radius or cloud layer thickness) makes it problematic
to reliably quantify the net radiative effect.

So far UTCs are an unnoticed cirrus cloud type in many fields from cloud microphysical modelling to the parameterisation
of the formation processes for various types in global models. Further investigations on the particle shape, effective radius,
cloud coverage, and vertical thickness of UTCs are suggested here to minimize the uncertainties in the radiative transport
calculations. Finally, such work should allow a more accurate quantification of the cooling or warming potential of UTCs
535 which is so far not included in climate models.

Code and data availability. SOCRATES is a model hosted by the UK Meteorological Office and accessible after registration from <https://code.metoffice.gov.uk/trac/socrates/wiki>. Model input (CRISTA-2 and meteorological reanalysis data) and output data by SOCRATES used in this study are available on request from the first author. In addition, all program codes in IDL used for the data analysis are available from the first author.

540 *Author contributions.* All authors designed the study. RS analysed and prepared the CRISTA data for the model runs. AR performed the SOCRATES runs and prepared the output files for radiative effect calculations. RS together with AR analysed the model output. All authors contributed to data interpretation and writing of the paper.

Competing interests. At least one of the (co-)authors is a member of the editorial board of Atmospheric Chemistry and Physics.

545 *Acknowledgements.* The authors like to thank D. Offermann and the former CRISTA team at the University of Wuppertal, Germany, for the realization of two successful instrument missions and the subsequent data processing. Thanks to the UK Meteorological Office for providing and supporting the SOCRATES radiative transport model. The authors are grateful to the European Centre for Medium-Range Weather Forecasts (ECMWF) for providing reanalysis data.

References

- Balmes, K. A. and Fu, Q.: An Investigation of Optically Very Thin Ice Clouds from Ground-Based ARM Raman Lidars, *Atmosphere*, 9, 550 <https://doi.org/10.3390/atmos9110445>, 2018.
- Baran, A. J.: Simulation of infrared scattering from ice aggregates by use of a size-shape distribution of circular ice cylinders, *Appl. Opt.*, 42, 2811–2818, <https://doi.org/10.1364/AO.42.002811>, 2003.
- Baran, A. J. and Francis, P. N.: On the radiative properties of cirrus cloud at solar and thermal wavelengths: A test of model consistency using high-resolution airborne radiance measurements, *Quarterly Journal of the Royal Meteorological Society*, 130, 763–778, 555 <https://doi.org/https://doi.org/10.1256/qj.03.151>, 2004.
- Baran, A. J., Havemann, S., and Mackowski, D.: A database of hexagonal column optical properties for wavelengths ranging between 0.2 microns to 30 microns, produced for ANNEX 7. Contract No. 4b/3/02, DEFRA, UK, 2001.
- Baran, A. J., Hill, P., Furtado, K., Field, P., and Manners, J.: A Coupled Cloud Physics–Radiation Parameterization of the Bulk Optical Properties of Cirrus and Its Impact on the Met Office Unified Model Global Atmosphere 5.0 Configuration, *Journal of Climate*, 27, 7725 560 – 7752, <https://doi.org/10.1175/JCLI-D-13-00700.1>, 2014.
- Baran, A. J., Hill, P., Walters, D., Hardiman, S. C., Furtado, K., Field, P. R., and Manners, J.: The Impact of Two Coupled Cirrus Microphysics–Radiation Parameterizations on the Temperature and Specific Humidity Biases in the Tropical Tropopause Layer in a Climate Model, *Journal of Climate*, 29, 5299 – 5316, <https://doi.org/10.1175/JCLI-D-15-0821.1>, 2016.
- Bartolome Garcia, I., Spang, R., Ungerer, J., Griessbach, S., Krämer, M., Höpfner, M., and Riese, M.: Observation of cirrus clouds 565 with GLORIA during the WISE campaign: detection methods and cirrus characterization, *Atmospheric Measurement Techniques*, 14, 3153–3168, <https://doi.org/10.5194/amt-14-3153-2021>, 2021.
- Boucher, O., Randall, D., Artaxo, P., Bretherton, C., Feingold, G., Forster, P., Kerminen, V.-M., Kondo, Y., Liao, H., Lohmann, U., Rasch, P., Satheesh, S. K., Sherwood, S., Stevens, B., and Zhang, X. Y.: Clouds and aerosols, pp. 571–657, Cambridge University Press, Cambridge, UK, <https://doi.org/10.1017/CBO9781107415324.016>, 2013.
- 570 Davis, S., Hlavka, D., Jensen, E., Rosenlof, K., Yang, Q., Schmidt, S., Borrmann, S., Frey, W., Lawson, P., Voemel, H., and Bui, T. P.: In situ and lidar observations of tropopause subvisible cirrus clouds during TC4, *Journal of Geophysical Research: Atmospheres*, 115, <https://doi.org/https://doi.org/10.1029/2009JD013093>, 2010.
- Delanoë, J. and Hogan, R. J.: A variational scheme for retrieving ice cloud properties from combined radar, lidar, and infrared radiometer, *Journal of Geophysical Research: Atmospheres*, 113, <https://doi.org/https://doi.org/10.1029/2007JD009000>, 2008.
- 575 Deng, M., Mace, G. G., Wang, Z., and Okamoto, H.: Tropical Composition, Cloud and Climate Coupling Experiment validation for cirrus cloud profiling retrieval using CloudSat radar and CALIPSO lidar, *Journal of Geophysical Research: Atmospheres*, 115, <https://doi.org/https://doi.org/10.1029/2009JD013104>, 2010.
- Edwards, J. M. and Slingo, A.: Studies with a flexible new radiation code. I: Choosing a configuration for a large-scale model, *Q. J. R. Meteorol. Soc.*, 122, 689–719, <https://doi.org/10.1002/qj.49712253107>, 1996.
- 580 Fischer, H., Birk, M., Blom, C., Carli, B., Carlotti, M., von Clarmann, T., Delbouille, L., Dudhia, A., Ehhalt, D., Endemann, M., Flaud, J. M., Gessner, R., Kleinert, A., Koopmann, R., Langen, J., López-Puertas, M., Mosner, P., Nett, H., Oelhaf, H., Perron, G., Remedios, J., Ridolfi, M., Stiller, G., and Zander, R.: MIPAS: An instrument for atmospheric and climate research, *Atmos. Chem. Phys.*, 8, <https://doi.org/10.5194/acp-8-2151-2008>, 2008.

Forster, P., Storelvmo, T., Armour, K., Collins, W., Dufresne, J.-L., Frame, D., Lunt, D., Mauritsen, T., Palmer, M., Watanabe, M., Wild,
585 M., and Zhang, H.: The Earth's Energy Budget, Climate Feedbacks, and Climate Sensitivity, p. 923–1054, Cambridge University Press,
Cambridge, United Kingdom and New York, NY, USA, <https://doi.org/10.1017/9781009157896.009>, 2021.

Gasparini, B., Meyer, A., Neubauer, D., Münch, S., and Lohmann, U.: Cirrus Cloud Properties as Seen by the CALIPSO Satellite and
ECHAM-HAM Global Climate Model, *Journal of Climate*, 31, 1983 – 2003, <https://doi.org/https://doi.org/10.1175/JCLI-D-16-0608.1>,
2018.

590 Gasparini, B., Sokol, A. B., Wall, C. J., Hartmann, D. L., and Blossey, P. N.: Diurnal Differences in Tropical Maritime Anvil Cloud Evolution,
Journal of Climate, 35, 1655 – 1677, <https://doi.org/https://doi.org/10.1175/JCLI-D-21-0211.1>, 2022.

Gottelman, A. and Sherwood, S.: Processes Responsible for Cloud Feedback, *Current Climate Change Reports*, 2, 179–189,
<https://doi.org/https://doi.org/10.1007/s40641-016-0052-8>, 2016.

Grossmann, K. U., Offermann, D., Gusev, O., Oberheide, J., Riese, M., and Spang, R.: The CRISTA-2 Mission, *J. Geophys. Res.*, 107,
595 <https://doi.org/10.1029/2001JD000667>, 2002.

Hersbach, H., Bell, B., Berrisford, P., Hirahara, S., Horányi, A., Muñoz-Sabater, J., Nicolas, J., Peubey, C., Radu, R., Schepers, D., Simmons,
A., Soci, C., Abdalla, S., Abellan, X., Balsamo, G., Bechtold, P., Biavati, G., Bidlot, J., Bonavita, M., De Chiara, G., Dahlgren, P., Dee,
D., Diamantakis, M., Dragani, R., Flemming, J., Forbes, R., Fuentes, M., Geer, A., Haimberger, L., Healy, S., Hogan, R. J., Hólm, E.,
Janisková, M., Keeley, S., Laloyaux, P., Lopez, P., Lupu, C., Radnoti, G., de Rosnay, P., Rozum, I., Vamborg, F., Villaume, S., and Thépaut,
600 J.-N.: The ERA5 global reanalysis, *Q. J. R. Meteorol. Soc.*, 146, 1999–2049, <https://doi.org/10.1002/qj.3803>, 2020.

Heymsfield, A. J. and Platt, C. M. R.: A Parameterization of the Particle Size Spectrum of Ice Clouds in Terms of the Ambient Tem-
perature and the Ice Water Content, *Journal of Atmospheric Sciences*, 41, 846 – 855, [https://doi.org/https://doi.org/10.1175/1520-0469\(1984\)041<0846:APOTPS>2.0.CO;2](https://doi.org/https://doi.org/10.1175/1520-0469(1984)041<0846:APOTPS>2.0.CO;2), 1984.

Heymsfield, A. J., Krämer, M., Luebke, A., Brown, P., Cziczko, D. J., Franklin, C., Lawson, P., Lohmann, U., McFarquhar, G., Ulanowski, Z.,
605 and Tricht, K. V.: Cirrus Clouds, *Meteorological Monographs*, 58, 2.1 – 2.26, <https://doi.org/10.1175/AMSMONOGRAPHIS-D-16-0010.1>,
2017.

Hoffmann, L. and Spang, R.: An assessment of tropopause characteristics of the ERA5 and ERA-Interim meteorological reanalyses, *Atmo-
spheric Chemistry and Physics*, 22, 4019–4046, <https://doi.org/10.5194/acp-22-4019-2022>, 2022.

Hong, Y. and Liu, G.: The Characteristics of Ice Cloud Properties Derived from CloudSat and CALIPSO Measurements, *Journal of Climate*,
610 28, 3880 – 3901, <https://doi.org/10.1175/JCLI-D-14-00666.1>, 2015.

Hong, Y., Liu, G., and Li, J.-L. F.: Assessing the Radiative Effects of Global Ice Clouds Based on CloudSat and CALIPSO Measurements,
J. Climate, 29, 7651–7674, <https://doi.org/10.1175/JCLI-D-15-0799.1>, 2016.

Krämer, M., Rolf, C., Luebke, A., Afchine, A., Spelten, N., Costa, A., Meyer, J., Zöger, M., Smith, J., Herman, R. L., Buchholz, B., Ebert,
V., Baumgardner, D., Borrmann, S., Klingebiel, M., and Avallone, L.: A microphysics guide to cirrus clouds – Part 1: Cirrus types, *Atmos.
615 Chem. Phys.*, 16, 3463–3483, <https://doi.org/10.5194/acp-16-3463-2016>, 2016.

Krämer, M., Rolf, C., Spelten, N., Afchine, A., Fahey, D., Jensen, E., Khaykin, S., Kuhn, T., Law-
son, P., Lykov, A., Pan, L. L., Riese, M., Rollins, A., Stroh, F., Thornberry, T., Wolf, V.,
Woods, S., Spichtinger, P., Quaas, J., and Sourdeval, O.: A microphysics guide to cirrus – Part 2:
Climatologies of clouds and humidity from observations, *Atmospheric Chemistry and Physics*, 20, 12 569–12 608,
620 <https://doi.org/10.5194/acp-20-12569-2020>, 2020.

- Kunz, A., Müller, R., Homonnai, V., Jánosi, I., Hurst, D., Rap, A., Forster, P., Rohrer, F., Spelten, N., and Riese, M.: Extending water vapor trend observations over Boulder into the tropopause region: trend uncertainties and resulting radiative forcing, *J. Geophys. Res.*, 118, 11 269–11 284, <https://doi.org/10.1002/jgrd.50831>, 2013.
- 625 Lawson, R. P., Woods, S., Jensen, E., Erfani, E., Gurganus, C., Gallagher, M., Connolly, P., Whiteway, J., Baran, A. J., May, P., Heymsfield, A., Schmitt, C. G., McFarquhar, G., Um, J., Protat, A., Bailey, M., Lance, S., Muehlbauer, A., Stith, J., Korolev, A., Toon, O. B., and Krämer, M.: A Review of Ice Particle Shapes in Cirrus formed In Situ and in Anvils, *Journal of Geophysical Research: Atmospheres*, 124, 10 049–10 090, <https://doi.org/https://doi.org/10.1029/2018JD030122>, 2019.
- Liou, K.-N.: Influence of Cirrus Clouds on Weather and Climate Processes: A Global Perspective, *Monthly Weather Review*, 114, 1167 – 1199, [https://doi.org/10.1175/1520-0493\(1986\)114<1167:IOCCOW>2.0.CO;2](https://doi.org/10.1175/1520-0493(1986)114<1167:IOCCOW>2.0.CO;2), 1986.
- 630 Luo, B. P., Peter, T., Fueglistaler, S., Wernli, H., Wirth, M., Kiemle, C., Flentje, H., Yushkov, V. A., Khattatov, V., Rudakov, V., Thomas, A., Borrmann, S., Toci, G., Mazzinghi, P., Beuermann, J., Schiller, C., Cairo, F., Di Donfrancesco, G., Adriani, A., Volk, C. M., Strom, J., Noone, K., Mitev, V., MacKenzie, R. A., Carslaw, K. S., Trautmann, T., Santacesaria, V., and Stefanutti, L.: Dehydration potential of ultrathin clouds at the tropical tropopause, *Geophysical Research Letters*, 30, <https://doi.org/https://doi.org/10.1029/2002GL016737>, 2003.
- 635 Massie, S. T., Gille, J., Craig, C., Khosravi, R., Barnett, J., Read, W., and Winker, D.: HIRDLS and CALIPSO observations of tropical cirrus, *Journal of Geophysical Research: Atmospheres*, 115, <https://doi.org/https://doi.org/10.1029/2009JD012100>, 2010.
- Matus, A. V. and L'Ecuyer, T. S.: The role of cloud phase in Earth's radiation budget, *Journal of Geophysical Research: Atmospheres*, 122, 2559–2578, <https://doi.org/https://doi.org/10.1002/2016JD025951>, 2017.
- McFarquhar, G. M. and Heymsfield, A. J.: Parameterization of Tropical Cirrus Ice Crystal Size Distributions and Implications for Radiative Transfer: Results from CEPEX, *Journal of the Atmospheric Sciences*, 54, 2187 – 2200, [https://doi.org/https://doi.org/10.1175/1520-0469\(1997\)054<2187:POTCIC>2.0.CO;2](https://doi.org/https://doi.org/10.1175/1520-0469(1997)054<2187:POTCIC>2.0.CO;2), 1997.
- 640 McFarquhar, G. M., Yang, P., Macke, A., and Baran, A. J.: A New Parameterization of Single Scattering Solar Radiative Properties for Tropical Anvils Using Observed Ice Crystal Size and Shape Distributions, *Journal of the Atmospheric Sciences*, 59, 2458 – 2478, [https://doi.org/10.1175/1520-0469\(2002\)059<2458:ANPOSS>2.0.CO;2](https://doi.org/10.1175/1520-0469(2002)059<2458:ANPOSS>2.0.CO;2), 2002.
- 645 Myhre, G., Berglen, T. F., Johnsrud, M., Hoyle, C. R., Berntsen, T. K., Christopher, S. A., Fahey, D. W., Isaksen, I. S. A., Jones, T. A., Kahn, R. A., Loeb, N., Quinn, P., Remer, L., Schwarz, J. P., and Yttri, K. E.: Modelled radiative forcing of the direct aerosol effect with multi-observation evaluation, *Atmospheric Chemistry and Physics*, 9, 1365–1392, <https://doi.org/10.5194/acp-9-1365-2009>, 2009a.
- Myhre, G., Kvalevg, M., Rädcl, G., Cook, J., Shine, K. P., Clark, H., Karcher, F., Markowicz, K., Kardas, A., Wolkenberg, P., Balkanski, Y., Ponater, M., Forster, P., Rap, A., and Leon, R. R.: Intercomparison of radiative forcing calculations of stratospheric water vapour and contrails, *Meteorologische Zeitschrift*, 18, 585–596, <https://doi.org/10.1127/0941-2948/2009/0411>, 2009b.
- 650 Nugent, J. M., Turbeville, S. M., Bretherton, C. S., Blossey, P. N., and Ackerman, T. P.: Tropical Cirrus in Global Storm-Resolving Models: 1. Role of Deep Convection, *Earth and Space Science*, 9, e2021EA001 965, <https://doi.org/https://doi.org/10.1029/2021EA001965>, e2021EA001965 2021EA001965, 2022.
- Offermann, D., Grossmann, K.-U., Barthol, P., Knieling, P., Riese, M., and Trant, R.: Cryogenic Infrared Spectrometers and Telescopes for the Atmosphere (CRISTA) experiment and middle atmosphere variability, *J. Geophys. Res.*, 104, 16,311–16,325, 1999.
- 655 Peter, T., Luo, B. P., Wirth, M., Kiemle, C., Flentje, H., Yushkov, V. A., Khattatov, V., Rudakov, V., Thomas, A., Borrmann, S., Toci, G., Mazzinghi, P., Beuermann, J., Schiller, C., Cairo, F., Di Donfrancesco, G., Adriani, A., Volk, C. M., Strom, J., Noone, K., Mitev, V.,

- MacKenzie, R. A., Carslaw, K. S., Trautmann, T., Santacesaria, V., and Stefanutti, L.: Ultrathin Tropical Tropopause Clouds (UTTCs): I. Cloud morphology and occurrence, *Atmospheric Chemistry and Physics*, 3, 1083–1091, <https://doi.org/10.5194/acp-3-1083-2003>, 2003.
- 660 Rap, A., Forster, P. M., Jones, A., Boucher, O., Haywood, J. M., Bellouin, N., and De Leon, R. R.: Parameterization of contrails in the UK Met Office Climate Model, *Journal of Geophysical Research: Atmospheres*, 115, <https://doi.org/https://doi.org/10.1029/2009JD012443>, 2010.
- Rap, A., Scott, C. E., Spracklen, D. V., Bellouin, N., Forster, P. M., Carslaw, K. S., Schmidt, A., and Mann, G.: Natural aerosol direct and indirect radiative effects, *Geophysical Research Letters*, 40, 3297–3301, <https://doi.org/https://doi.org/10.1002/grl.50441>, 2013.
- 665 Rap, A., Richards, N. A. D., Forster, P. M., Monks, S. A., Arnold, S. R., and Chipperfield, M. P.: Satellite constraint on the tropospheric ozone radiative effect, *Geophysical Research Letters*, 42, 5074–5081, <https://doi.org/https://doi.org/10.1002/2015GL064037>, 2015a.
- Rap, A., Spracklen, D. V., Mercado, L., Reddington, C. L., Haywood, J. M., Ellis, R. J., Phillips, O. L., Artaxo, P., Bonal, D., Restrepo Coupe, N., and Butt, N.: Fires increase Amazon forest productivity through increases in diffuse radiation, *Geophysical Research Letters*, 42, 4654–4662, <https://doi.org/https://doi.org/10.1002/2015GL063719>, 2015b.
- 670 Rap, A., Scott, C., Reddington, C., Mercado, L., Ellis, R., Garraway, S., Evans, M., Beerling, D., MacKenzie, A., Hewitt, C., and Spracklen, D.: Enhanced global primary production by biogenic aerosol via diffuse radiation fertilization, *Nature Geosci.*, 11, 640–644, <https://doi.org/https://doi.org/10.1038/s41561-018-0208-3>, 2018.
- Riese, M., Ploeger, F., Rap, A., Vogel, B., Konopka, P., Dameris, M., and Forster, P.: Impact of uncertainties in atmospheric mixing on simulated UTLS composition and related radiative effects, *J. Geophys. Res.*, 117, D16305, <https://doi.org/10.1029/2012JD017751>, 2012.
- 675 Riese, M., Oelhaf, H., Preusse, P., Blank, J., Ern, M., Friedl-Vallon, F., Fischer, H., Guggenmoser, T., Höpfner, M., Hoor, P., Kaufmann, M., Orphal, J., Plöger, F., Spang, R., Sumińska-Ebersoldt, O., Ungermann, J., Vogel, B., and Woiwode, W.: Gimballed Limb Observer for Radiance Imaging of the Atmosphere (GLORIA) scientific objectives, *Atmos. Meas. Tech.*, 7, 1915–1928, <https://doi.org/10.5194/amt-7-1915-2014>, 2014.
- Rodríguez De León, R., Lim, L. L., Lee, D. S., Bennett, M., and Krämer, M.: Simple Versus Complex Physical Representation of the Radiative Forcing From Linear Contrails: A Sensitivity Analysis, *Journal of Geophysical Research: Atmospheres*, 123, 2831–2840, <https://doi.org/https://doi.org/10.1002/2017JD027861>, 2018.
- 680 Rother, T., Schmidt, K., Wauer, J., Shcherbakov, V., and Gayet, J.-F.: Light scattering on Chebyshev particles of higher order, *Appl. Opt.*, 45, 6030–6037, <https://doi.org/10.1364/AO.45.006030>, 2006.
- Sassen, K. and Cho, B. S.: Subvisual-thin cirrus lidar data set for satellite verification and climatological research, *J. Appl. Meteorol.*, 31, 1275–1285, [https://doi.org/https://doi.org/10.1175/1520-0450\(1992\)031<1275:STCLDF>2.0.CO;2](https://doi.org/https://doi.org/10.1175/1520-0450(1992)031<1275:STCLDF>2.0.CO;2), 1992.
- 685 Spang, R., Eidmann, G., Riese, M., Offermann, D., Preusse, P., Pfister, L., and Wang, P.-H.: CRISTA observations of cirrus clouds around the tropopause, *Journal of Geophysical Research: Atmospheres*, 107, CRI 2–1–CRI 2–18, <https://doi.org/https://doi.org/10.1029/2001JD000698>, 2002.
- Spang, R., Remedios, J., and Barkley, M.: Colour indices for the detection and differentiation of cloud types in infra-red limb emission spectra, *Advances in Space Research*, 33, 1041–1047, [https://doi.org/https://doi.org/10.1016/S0273-1177\(03\)00585-4](https://doi.org/https://doi.org/10.1016/S0273-1177(03)00585-4), climate Change Processes in the Stratosphere, Earth-Atmosphere-Ocean Systems, and Oceanographic Processes from Satellite Data, 2004.
- 690 Spang, R., Hoffmann, L., Kullmann, A., Olschewski, F., Preusse, P., Knieling, P., Schroeder, S., Stroh, F., Weigel, K., and Riese, M.: High resolution limb observations of clouds by the CRISTA-NF experiment during the SCOUT-O3 tropical aircraft campaign, *Advances in Space Research*, 42, 1765–1775, <https://doi.org/https://doi.org/10.1016/j.asr.2007.09.036>, 2008.

- 695 Spang, R., Arndt, K., Dudhia, A., Höpfner, M., Hoffmann, L., Hurley, J., Grainger, R. G., Griessbach, S., Poulsen, C., Remedios, J. J., Riese, M., Sembhi, H., Siddans, R., Waterfall, A., and Zehner, C.: Fast cloud parameter retrievals of MIPAS/Envisat, *Atmos. Chem. Phys.*, 12, 7135–7164, <https://doi.org/10.5194/acp-12-7135-2012>, 2012.
- Spang, R., Günther, G., Riese, M., Hoffmann, L., Müller, R., and Griessbach, S.: Satellite observations of cirrus clouds in the Northern Hemisphere lowermost stratosphere, *Atmospheric Chemistry and Physics*, 15, 927–950, <https://doi.org/10.5194/acp-15-927-2015>, 2015.
- 700 Turbeville, S. M., Nugent, J. M., Ackerman, T. P., Bretherton, C. S., and Blossey, P. N.: Tropical Cirrus in Global Storm-Resolving Models: 2. Cirrus Life Cycle and Top-of-Atmosphere Radiative Fluxes, *Earth and Space Science*, 9, e2021EA001978, <https://doi.org/https://doi.org/10.1029/2021EA001978>, e2021EA001978 2021EA001978, 2022.
- Ungermann, J., Bartolome, I., Griessbach, S., Spang, R., Rolf, C., Krämer, M., Höpfner, M., and Riese, M.: Cirrus cloud shape detection by tomographic extinction retrievals from infrared limb emission sounder measurements, *Atmospheric Measurement Techniques*, 13, 7025–7045, <https://doi.org/10.5194/amt-13-7025-2020>, 2020.
- 705 Vial, J., Dufresne, J.-L., and Bony, S.: On the interpretation of inter-model spread in CMIP5 climate sensitivity estimates, *Climate Dyn.*, 41, 3339–3362, <https://doi.org/doi:10.1007/s00382-013-1725-9>, 2013.
- Woods, S., Lawson, R. P., Jensen, E., Bui, T. P., Thornberry, T., Rollins, A., Pfister, L., and Avery, M.: Microphysical Properties of Tropical Tropopause Layer Cirrus, *Journal of Geophysical Research: Atmospheres*, 123, 6053–6069, <https://doi.org/https://doi.org/10.1029/2017JD028068>, 2018.
- 710 Wu, D. L., Jiang, J. H., Read, W. G., Austin, R. T., Davis, C. P., Lambert, A., Stephens, G. L., Vane, D. G., and Waters, J. W.: Validation of the Aura MLS cloud ice water content measurements, *Journal of Geophysical Research: Atmospheres*, 113, <https://doi.org/https://doi.org/10.1029/2007JD008931>, 2008.
- Yang, E.-S., Cunnold, D. M., Newchurch, M. J., and Salawitch, R. J.: Change in ozone trends at southern high latitudes, *Geophys. Res. Lett.*, 32, L12812, <https://doi.org/doi:10.1029/2004GL022296>, 2005.
- 715 Yang, P., Liou, K. N., Wyser, K., and Mitchell, D.: Parameterization of the scattering and absorption properties of individual ice crystals, *Journal of Geophysical Research: Atmospheres*, 105, 4699–4718, <https://doi.org/https://doi.org/10.1029/1999JD900755>, 2000.
- Yang, P., Baum, B. A., Heymsfield, A. J., Hu, Y. X., Huang, H.-L., Tsay, S.-C., and Ackerman, S.: Single-scattering properties of droxtals, *Journal of Quantitative Spectroscopy and Radiative Transfer*, 79-80, 1159–1169, [https://doi.org/https://doi.org/10.1016/S0022-4073\(02\)00347-3](https://doi.org/https://doi.org/10.1016/S0022-4073(02)00347-3), electromagnetic and Light Scattering by Non-Spherical Particles, 2003.
- 720 Yi, B., Yang, P., Baum, B. A., L'Ecuyer, T., Oreopoulos, L., Mlawer, E. J., Heymsfield, A. J., and Liou, K.-N.: Influence of Ice Particle Surface Roughening on the Global Cloud Radiative Effect, *Journal of the Atmospheric Sciences*, 70, 2794 – 2807, <https://doi.org/10.1175/JAS-D-13-020.1>, 2013.
- Zhang, Z., Yang, P., Kattawar, G. W., Tsay, S.-C., Baum, B. A., Hu, Y., Heymsfield, A. J., and Reichardt, J.: Geometrical-optics solution to light scattering by droxtal ice crystals, *Appl. Opt.*, 43, 2490–2499, <https://doi.org/10.1364/AO.43.002490>, 2004.
- 725 Zou, L., Griessbach, S., Hoffmann, L., Gong, B., and Wang, L.: Revisiting global satellite observations of stratospheric cirrus clouds, *Atmos. Chem. Phys.*, 20, 9939–9959, <https://doi.org/10.5194/acp-20-9939-2020>, 2020.
- Zou, L., Hoffmann, L., Griessbach, S., Spang, R., and Wang, L.: Empirical evidence for deep convection being a major source of stratospheric ice clouds over North America, *Atmos. Chem. Phys.*, 21, 10457–10475, <https://doi.org/10.5194/acp-21-10457-2021>, 2021.
- 730 Zou, L., Griessbach, S., Hoffmann, L., and Spang, R.: A global view on stratospheric ice clouds: assessment of processes related to their occurrence based on satellite observations, *Atmospheric Chemistry and Physics*, 22, 6677–6702, <https://doi.org/10.5194/acp-22-6677-2022>, 2022.