

Impact of climate change on persistent cold-air pools in an alpine valley during the 21st century

Sara Bacer¹, Julien Beaumet^{2,3}, Martin Ménégoz², Hubert Gallée², Enzo Le Bouëdec¹, and Chantal Staquet¹

¹Univ. Grenoble Alpes, CNRS, Grenoble INP, LEGI, 38000 Grenoble, France

²Univ. Grenoble Alpes, CNRS, IRD, Grenoble INP, IGE, 38000 Grenoble, France

³Atmo Auvergne-Rhône-Alpes, 38400 Grenoble, France

Correspondence: Sara Bacer (sara.bacer@gmail.com)

Abstract. When anticyclonic conditions persist over mountainous regions in winter, cold-air pools (i.e. thermal inversions) develop in valleys and persist from a few days to a few weeks. During these persistent cold-air pool (PCAP) episodes the atmosphere inside the valley is stable and vertical mixing is prevented, promoting the accumulation of pollutants close to the valley bottom and worsening air quality. The purpose of this paper is to address the impact of climate change on PCAPs until the end of this century for the alpine Grenoble valleys.

The long-term projections produced with the general circulation model MPI (from the Max-Planck Institute) downscaled over the Alps with the regional climate model MAR (Modèle Atmosphérique Régional) are used to perform a statistical study of PCAPs over the period 1981-2100. The trends of the main characteristics of PCAPs, namely their intensity, duration, and frequency, are investigated for two future scenarios, SSP2-4.5 and SSP5-8.5. We find that the intensity of PCAPs displays a statistically significant decreasing trend for the SSP5-8.5 scenario only, albeit with a very weak decay rate of 0.058 K km^{-1} per decade. This decay is explained by the fact that air temperature ~~increases more~~ over the century increases more at 2 m above the valley bottom than in the free air at mid-altitudes in the valley; this might be due to the increase of specific humidity near the ground.

The vertical structure of two PCAPs, one in the past and one around 2050, is next investigated in detail. For this purpose, the WRF (Weather Research and Forecasting) model, forced by MAR for the worst-case scenario (SSP5-8.5), is used at a high resolution (111 m). The PCAP episodes are carefully selected from the MAR data so that a meaningful comparison can be performed. The future episode is warmer at all altitudes than the past episode (by at least $4 \text{ }^\circ\text{C}$) and displays a similar inversion height, which are very likely generic features of future PCAPs. The selected episodes have also similar along-valley wind but different stability, with the future episode being more stable than the past episode.

Overall, this study shows that the atmosphere in the Grenoble valleys during PCAP episodes tends to be slightly less stable in the future under the SSP5-8.5 scenario, and statistically unchanged under the SSP2-4.5 scenario, but that very stable PCAPs can still form.

1 Introduction

Mountain valleys are subject to cold-air pools during wintertime when an anticyclonic synoptic regime sets in over the valley region. An anticyclonic episode is associated with mid-level warming and -often- weak synoptic winds, making the valley atmospheric boundary layer nearly decoupled from the synoptic flow. The boundary layer dynamics is then controlled by local thermal winds (see Whiteman and Doran, 1993, for a fuller discussion), which result from the cooling (at night) and the warming (during daytime) of the slopes of the valley. During wintertime when solar insolation is weak and shadow effects are important, down-slope winds due to cooling dominate over up-slope winds, ceasing only for a few hours around noon (f.i. Largeron and Staquet, 2016b). These down-slope winds bring cold air down to the valley bottom, thereby forming cold-air pools which trap pollutants. These cold-air pools are persistent during anticyclonic episodes, namely they are not fully destroyed during the day by convective motions at the ground or turbulent erosion at the top (Whiteman and McKee, 1982). They can last from a few days to even a few weeks depending upon the length of the episode. The link between anticyclonic wintertime episodes and persistent cold-air pools (PCAPs) was indeed clearly assessed by several authors such as Milionis and Davies (2008) using radiosoundings in the UK over five years and by Reeves and Stensrud (2009) using a three-year climatology of PCAPs from valleys and basins in the Western United States. In urbanized areas, the formation of PCAPs leads to pollution episodes of similar duration to the PCAP episodes. Air quality degrades all along the episode because the along-valley or basin ventilation is generally weak. PCAPs are thus of primary societal and environmental importance. They have been the subject of many studies addressing questions related to boundary-layer dynamics in complex terrain and associated pollutant distribution and air quality. The reader is referred to, f.i., Whiteman et al. (2014) and Neemann et al. (2015) for the Utah's Salt Lake valley, Largeron and Staquet (2016a) for the Grenoble valley system and Chemel et al. (2016), Sabatier et al. (2020), and Quimbayo-Duarte et al. (2021) for the Arve River valley in the Northern French Alps.

Over the last 50 years, the European Alps have experienced a winter warming of 0.3 to 0.4 K per decade, stronger at lower elevations due to surface feedbacks (Monteiro and Morin, 2023; Beaumet et al., 2021). The impact of climate change on PCAPs is an intriguing issue. Using simple arguments, PCAPs may indeed become more intense in a changing climate because of mid-tropospheric warming. But the PCAP intensity may possibly hardly vary because of surface-based warming. However, surface-based warming may also promote convective motions and mixing thereby reducing the strength of the inversion. Considering an urbanized valley and assuming that pollutant emissions remain the same over time, each case has a very different impact on air quality.

Let us introduce some terminology. Because the temperature profile has a positive gradient with altitude in a PCAP, the name *thermal inversion* is used in the literature to refer to this profile. The qualificative *ground-based*, *surface-based* or *near-surface* is often added to make the difference with elevated thermal inversions. In the literature, a PCAP is also referred to as a persistent inversion (or a stagnation) episode.

So far, little has been published on how PCAPs can change in a future warming climate and on PCAP climatology in general. Most studies actually focus on the occurrence and intensity of thermal inversions, those in the past being based on observations and reanalysis. Whiteman et al. (2014) analyse the intensity of PCAPs during winter over forty years (1971-2013) in the Salt

Lake Valley (USA) using twice-daily meteorological and air quality data; these authors do not find any statistically significant long-term trend. Hou and Wu (2016) study the thermal inversions over six decades (1951-2010) simulated worldwide with reanalysis data at 2.5° resolution and find a general increase of the occurrence of thermal inversions, except for high latitudes; such an increase is not significant in winter. Yu et al. (2017) use the North American Regional Reanalysis (of resolution 32 km) for the period 1979-2012 to study PCAPs in valleys in the Western United States from October to March. A significant interannual variability is found which the paper mainly aims to link to the large-scale circulation by means of statistical analysis. Rasilla et al. (2022) use temperature measurements of two meteorological stations located at the bottom (about 600 m) and at the top (about 1900 m) of the southern Spanish Plateau to study the climatology of frequency and intensity of cold-air pools over the past sixty years (1961-2020). No statistically significant trend is found during the night, while the intensity increases during the day because of enhanced warming at the high-elevation site.

The impact of future climate change on thermal inversions has been addressed in very few papers, for the Po valley basin (Caserini et al., 2017) and for southeast Australia (Ji et al., 2019). Caserini et al. (2017) analyse meteorological data recorded at stations in the Po valley over the 1985-2013 period and outputs from a regional climate model (RCM) over the 1950-2100 period (at resolution 0.44°). Two different future scenarios, associated with different greenhouse gases emissions, are considered: a “middle-of-the-road” one (SSP2-4.5) and an extreme one (SSP5-8.5). Caserini et al. (2017) find a weak change in PCAPs frequency at the end of the century compared to the 1986-2005 average, of +10% for SSP2-4.5 and even less for SSP5-8.5. Ji et al. (2019) use data from a RCM (with three sets of physical parameterizations) forced by four different general circulation models (GCMs) from the CMIP3 database. Their objective is to analyse the impact of climate warming on thermal inversions at nine different locations in cities of southeast Australia (such as Canberra and Melbourne), over thirty year periods, in the past and in the future, for a greenhouse gas emission scenario similar to SSP5-8.5. In the future, the results show that there is a substantial increase in the strength of thermal inversions, implying that poor air quality episodes will be intensified. However, the authors note that the largest differences between simulations during the second half of the century are associated with the use of different driving GCMs.

To the best of our knowledge, no study addresses the impact of future climate change on PCAPs in a mountain valley in winter. The width of the valleys is of a few tens of km in the Rocky mountains and a few kms in the Alps implying that an additional downscaling is required from the scales simulated by RCMs. The Grenoble valley system considered in this paper is about 2–3 km wide with largest width of about 6 km. The objective of the paper is to address the impact of climate change on PCAP episodes in the Grenoble valley system over the century. For this purpose, two distinct analyses are carried out: (i) a statistical analysis of PCAP intensity, duration, and frequency from RCM predictions forced by a GCM over the period 1981-2100; (ii) a deterministic analysis of two carefully selected PCAP episodes, one in the past and one around 2050, simulated via fine-scale numerical modelling of the valley boundary layer forced by outputs of a RCM.

The outline of the paper is the following. The data and methodology are described in section 2. The reliability of the chain of models to predict the stability of the Grenoble valley atmosphere is discussed in section 3. The statistical analysis of PCAP features over the period 1981-2100 is reported in Section 4. The vertical structure of the two selected PCAPs is investigated in Section 5. A discussion and conclusions are reported in section 6.

2 Data and Methodology

2.1 Measurement site and meteorological data

This study focuses on the alpine area of Grenoble (France), which is the largest city in the French Alps with about half a million inhabitants and many industries. The city is located at 210 m above sea level (a.s.l.) at the confluence of three valleys, referred to as Grésivaudan (North-East oriented), Voreppe (North-West oriented), and Drac (North-South oriented) (Figure 1). These valleys are 2 to 6 km wide and about 20 km (for Voreppe and Drac) and 40 km (for Grésivaudan) long. The valleys delimit three mountain ranges, Belledonne, Vercors, and Chartreuse, with steep topography and high peaks up to 3000 m a.s.l. in Belledonne and 2000 m a.s.l. in Vercors and Chartreuse. In the following, the three valleys will be called the *Grenoble valley system* or simply the *Grenoble valleys*, and the geographical location of the Grenoble city will be referred to as the *Grenoble basin*.

The city of Grenoble experiences poor air quality in winter when PCAPs form and ventilation of pollutants, mainly from wood combustion and traffic, is limited. It was shown by Largeron and Staquet (2016b), when analysing nine PCAPs of the winter of 2006-2007, that these PCAPs display characteristics (intensity and height) comparable to those of valleys in the Rocky mountains documented by Whiteman et al. (1999b).

Several ground-based automatic weather stations are installed in the Grenoble valleys, operated by the air quality agency of the région Auvergne Rhône-Alpes (Atmo AuRA) and by the French weather forecast service (Météo-France). Measurements are air temperature at 2 m from the ground (T_{2m}) and wind speed at 10 m, with hourly frequency. In this paper, temporal series of T_{2m} recorded at two stations located at different altitudes are used to derive an indicator of the stability of the boundary layer when a cold-air pool forms (see section 3). The two stations are Pont de Claix (PoC) at 237 m a.s.l. and Peuil de Claix (PeC) at 935 m a.s.l. (Figure 1). It was shown in Largeron and Staquet (2016a) that the temperature field is nearly homogeneous horizontally during inversion periods, thus, a vertical gradient can be derived from stations located at different horizontal positions in the valley.

2.2 The model chain

In this study, three different numerical models are used. The outputs of a GCM at a resolution of ~ 100 km are dynamically downscaled with a RCM at a resolution of 7 km over the Alps. The latter data set is further dynamically downscaled with a third atmospheric model at a high resolution (about 100 m) to investigate the atmospheric circulation in the Grenoble boundary layer. The latter simulations are relatively short (about one week long) because of their high computing time. The details of these three atmospheric models are described below. The notation “A \leftarrow B” indicates that the model A is forced by the model B, and the *model chain* is denoted as A \leftarrow B \leftarrow C.

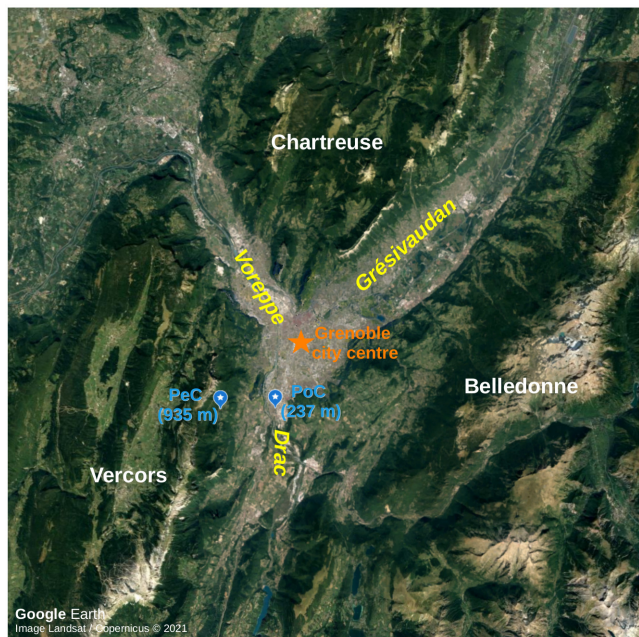


Figure 1. Satellite view of the Y-shape Grenoble valley system from Google Earth. The location of the weather stations is indicated in blue; the names of the valleys and mountain chains are indicated in yellow and white, respectively.

2.2.1 The MPI-ESM1.2-HR GCM

The Max Planck Institute Earth System Model version 1.2 – Higher Resolution (MPI-ESM1.2-HR) is a coupled GCM (Müller et al., 2018). This model was run with a 100-km resolution (in the atmosphere) within the Coupled Model Intercomparison Project – Phase 6 (CMIP6; Eyring et al., 2016), providing both historical simulations from 1850 and future projections based on different SSP-RCP scenarios (O’Neill et al., 2016). MPI-ESM1.2-HR was chosen for this study because it is one of the GCMs showing a limited bias over the Europe-North-Atlantic area (Cannon, 2020; Fernandez-Granja et al., 2021). This GCM shows also a climate sensitivity (i.e. a temperature response to a doubling of carbon dioxide emissions) compatible with the observations (Mauritsen et al., 2019), while many other CMIP6 models have instead a too large climate sensitivity (Zelinka et al., 2020). Moreover, MPI-ESM1.2-HR captures well anticyclonic episodes associated to European atmospheric blocking, as shown in Bacer et al. (2022).

Ensemble member experiments have been produced with MPI-ESM1.2-HR within the CMIP6, but due to the large computational cost of the dynamical downscaling, we consider only the first member (r1i1p1f1¹). The experiments used in this paper are a historical run (Jungclaus et al., 2019) and two future runs based on SSP2-4.5 (Schupfner et al., 2020a) and SSP5-8.5 (Schupfner et al., 2020b). We will refer to the MPI-ESM1.2-HR model simply as “MPI” for conciseness and to the three experiments over their respective periods as MPI_HIST, MPI_SSP2 and MPI_SSP5.

¹where r: initial conditions; i: initialization method; p: physical scheme; and f: forcing configuration.

2.2.2 The MAR RCM

The RCM used in the present study is the Modèle Atmosphérique Régional (MAR; Gallée and Schayes, 1994; Gallée et al., 2005).

140 **A brief overview of the MAR model.** MAR is a hydrostatic, primitive equation model with constant sigma coordinates on the vertical axis. MAR has been developed in particular for polar regions (f.i. Gallée et al. 1996; Fettweis et al. 2017) including a multi-layer snow cover model (Brun et al. 1992) with prognostic equations for snow density, temperature, water content, and albedo that allows an estimation of the surface mass balance of ice sheets and a realistic representation of snow covered area. MAR has also been used to downscale atmospheric reanalysis in high mountain areas, over the Himalayas (Ménégoz et al.,
145 2013) and over the Alps (Ménégoz et al., 2020), and has been shown to provide an accurate estimation of precipitation rates including snowfall rates.

In the Alpine region, MAR is used with a 7-km resolution, which was chosen as a trade off between (i) the minimum resolution compatible with the hydrostatic approximation and the activation of the convective scheme and (ii) an accurate representation of the alpine topography and the atmospheric variables at different elevated areas. In winter, the model shows a
150 fairly good agreement at intermediate elevations, but presents a warm bias close to the surface (of about 2.5°C) and a cold bias at higher elevations, around 3000 m a.s.l. (Beaumont et al., 2021).

The MAR model in the present study. The version 3.9 of MAR is used to downscale the outputs of MPI in the three experiments mentioned above, MAR←MPI_HIST (1981-2014), MAR←MPI_SSP2 (2015-2100), and MAR←MPI_SSP5 (2015-2100), for a domain extending from 1.5°E to 18.5°E and 41.5°N to 49.5°N (Figure 2, left). A spin-up of one year is required
155 for the MAR experiments to ensure an equilibrium of the soil hydrothermal regime.

The 7-km resolution smoothes the topography, which reaches a maximum altitude of 3500 m a.s.l. over the Western Alps (Figure 2, left), while the highest summit (Mont Blanc) peaks at 4808 m. Regarding the representation of the Grenoble valley system, the surrounding summits reach at most 1700 m a.s.l. in Belledonne and 1200 m a.s.l. in Vercors and Chartreuse. Nevertheless, this resolution allows for a good representation of the Y-shape of the Grenoble valley system (Figure 2, right).
160 As for Grenoble basin, the lowest altitude is 422 m a.s.l., i.e. about 200 m higher than the real altitude. The grid box in the center of the basin, representative for the Grenoble city centre, is labeled with “GR” in Figure 2 (right).

The vertical resolution is distributed through 24 levels, from the surface to 0.1 hPa. The outputs of the three experiments MAR←MPI_HIST, MAR←MPI_SSP2, and MAR←MPI_SSP5 are available with daily resolution at different elevations (2, 10, 50, 100 m a.s.l.) and pressure levels (925, 850, 800, 700, 600, 500, 200 hPa). A data set for a limited number of variables
165 and levels is available online (see *Data availability* at the end of this paper).

These daily outputs are used to identify PCAP episodes during the 21st century in section 2.3.1 and to analyse the trends of the PCAP characteristics in section 4. Experiments MAR←MPI_HIST and MAR←MPI_SSP5 are used to laterally force the third atmospheric model applied at high resolution; in this case, MAR is rerun saving hourly data distributed on 36 levels for the period of the selected PCAPs (more details on the MAR downscaling are provided in the supplementary material).

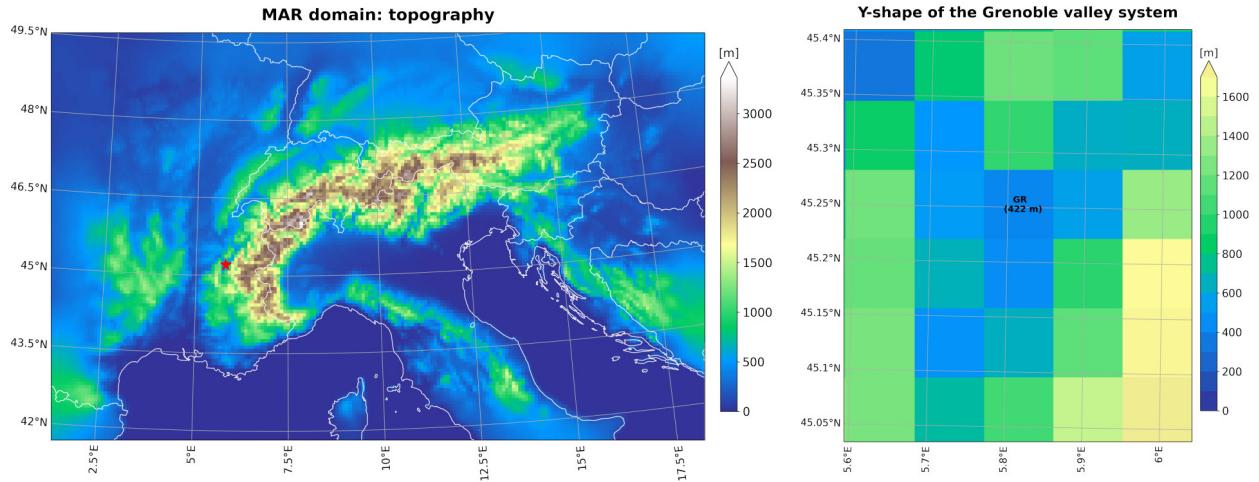


Figure 2. MAR domain with horizontal resolution of 7 km x 7 km (left); the red star indicates the location of Grenoble. Representation of the Y-shape Grenoble valley system in MAR (right); the grid box labeled with GR is in the center of the Grenoble basin and stands at the location of the Grenoble city, with altitude 422 m a.s.l.

170 2.2.3 The WRF model

The Weather Research and Forecasting (WRF) model is a state-of-the-art atmospheric modeling system designed for both meteorological research and numerical weather prediction. It is a fully compressible, non-hydrostatic model with a terrain-following, hybrid sigma-pressure vertical coordinate and the Arakawa-C grid staggering. The dynamical solver is the Advanced Research WRF (ARW). A detailed description of the model can be found in Skamarock et al. (2019). In the present work, version 4.1 is used, with the 3rd-order Runge-Kutta time integration scheme and a 5th-order Weighted Essentially Non-Oscillatory (WENO) scheme with a positive definite filter for the advection terms. The model topography is based on the NASA Shuttle Radar Topography Mission (SRTM) digital elevation (version 4) with a resolution of 3 arc seconds (i.e. approx. 90 m).

Sub-kilometer simulations with WRF have been performed for worldwide mountain valleys, f.i. the Salt Lake Valley at 250 m of resolution in the USA (Crosman and Horel, 2017). In Europe, alpine valleys such as the Bolzano basin (300 m, Tomasi et al., 2019), the Passy valley (111 m, Arduini et al., 2020; Quimbayo-Duarte et al., 2021), and the Inn valley (40 m, Umek et al., 2021) have been addressed. In this study, thanks to the definition of three online one-way nested domains (Figure 3, left), a resolution of 111 m is reached in the innermost domain covering the Grenoble valleys (Figure 3, right). Table 1 provides the details of spatial and temporal resolutions in each domain. Along the vertical, 91 model levels are defined up to 50 hPa (approx. 19 km a.s.l.). The thickness of the vertical model layers (Δz) increases approximately linearly in the first 50 layers before being stretched; the first 1000 m above ground level (a.g.l.) are discretized into 22 model levels, with the first mass point being located at about 17 m above the surface.

The presence of steep slopes can generate numerical instabilities, even for high vertical resolution (see f.i. Connolly et al., 2021, for a discussion). To prevent these instabilities, a smoothing algorithm is applied to the topography of the innermost domain based on an optimization method in which the maximum slope angle is prescribed (Le Bouède et al., 2023). The latter angle is set to 28° in the present work. For that angle, the smoothing procedure affects mainly the highest peaks, in the Belledonne chain in particular; the lowest parts of the valley slopes and the valley floors are only moderately or not affected. As discussed in Le Bouède et al. (2023), quite remarkably, the atmospheric circulation within a cold-air pool is found similar to the case of a maximum slope angle of 42° .

Since an accurate land use description is also important to correctly resolve the valley winds (Schmidli et al., 2018), the updated and high resolution Corine Land Cover (CLC2018) data set with a horizontal resolution of 100 m is used. Land surface processes are modelled using the Noah land surface model (Chen and Dudhia, 2001), with four soil layers, and the Monin-Obukhov similarity theory (Jiménez et al., 2012) is used to couple the land surface to the atmosphere. Slope effects on radiation and the topographic shading are also considered.

For the two outermost domains the planetary boundary layer (PBL) is parameterised with the Yonsei University (YSU) scheme (Hong et al., 2006). For the higher-resolution simulations in the innermost domain, a three-dimensional turbulent kinetic energy (TKE) 1.5-order closure scheme is used (and no PBL scheme).

The WRF←MAR←MPI model chain has been designed to simulate PCAP episodes during past and future climate (the dynamical downscaling of MAR with WRF is described in the supplementary material). In particular, two WRF simulations have been run to describe one PCAP in the past and one around the middle of the 21st century. The identification and the selection of the episodes is described in subsection 2.3.2. The WRF simulations are five days long, after a spin-up time of one day.

Set-up	Description	D ₁	D ₂	D ₃
Δt [s]	model integration time step	12	2	0.2
Δx [m]	horizontal resolution	3000	1000	111.111
Δz_{m0} [m]	minimum and maximum height of the first mass point	[16.0-17.9]	[15.6;17.9]	[16.5;17.8]
n_z	number of vertical levels	91	91	91
$n_x = n_y$	number of grid points in the W-E and S-N directions	208	340	406

Table 1. Numerical parameters of the WRF simulations. D₁, D₂, D₃ are three one-way nested domains.

2.3 Detection of PCAPs

2.3.1 Identification of PCAPs from MAR←MPI over the 21st century

In order to detect PCAP episodes in the Grenoble valley system during winter, we rely on the methodology proposed by Largeron and Staquet (2016a). These authors study persistent cold-air pools in the Grenoble valley boundary layer during the

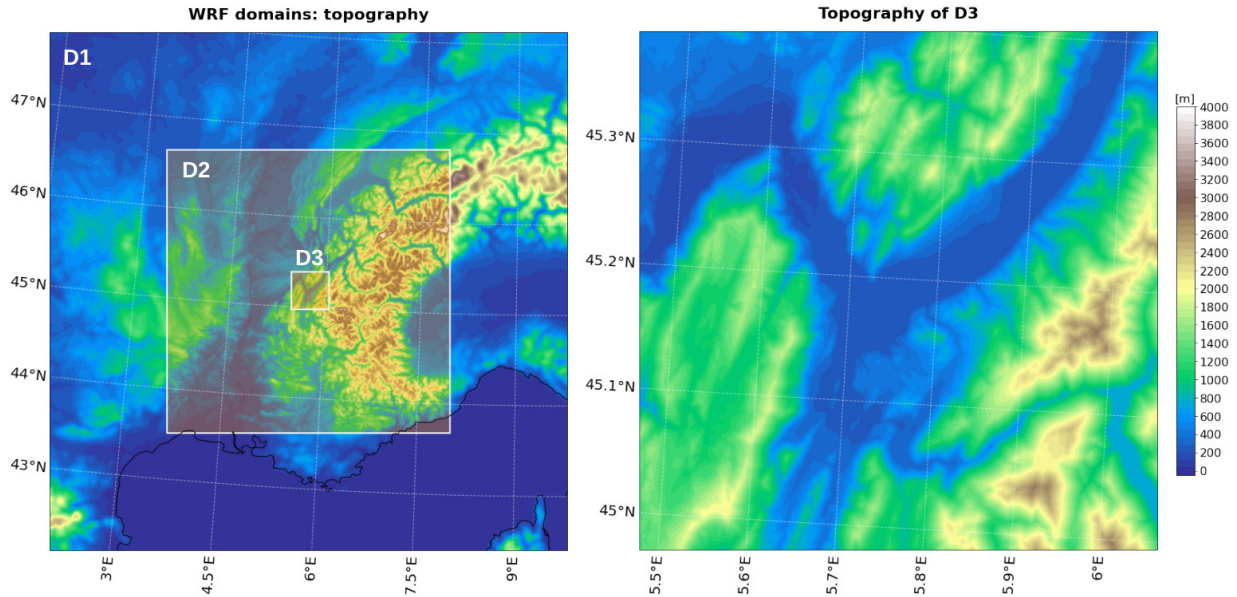


Figure 3. Topography in the three nested WRF domains (left) and in the innermost domain, D3, with horizontal resolution 111 m x 111 m (right).

winter of 2006-2007. Winter encompasses the months from November to March and is denoted as NDJFM in their paper, and we adopt here the same definition and notation. Largeron and Staquet (2016a) use hourly temperature measurements recorded by meteorological stations located in the Grenoble valleys at different elevations and define PCAPs as periods during which the 24-h running mean of the ratio ($\Delta T/\Delta z$) is above the winter average, close to -3 K km^{-1} , for at least three days. By assuming
 215 horizontal homogeneity of temperature within the valleys, $\Delta T/\Delta z$ is defined as the ratio of the T_{2m} difference between one station at high elevation and one station at low elevation and the difference in altitude of the two stations. Such a ratio is shown to be a good indicator of the stability of the atmosphere when a PCAP occurs (Largeron and Staquet, 2016a).

Since long-term MAR outputs are daily means and temperature at high elevation is available only at specific pressure levels (this is common in RCMs and GCMs), we adapt the method described above to our data set. We observe that the mean heights
 220 of the 925 hPa and 850 hPa levels for the past thirty years (1981-2010) are equal to $787 \pm 91 \text{ m a.s.l.}$ and $1472 \pm 95 \text{ m a.s.l.}$, respectively. The 850 hPa level is on average higher than Vercors and Chartreuse in MAR (Figure 2, right), while a PCAP height is usually close to the mean height of the mountains surrounding the valley (Whiteman, 1982; Largeron and Staquet, 2016b; Rasilla et al., 2022). On the contrary, the 925 hPa level should always be below the PCAP top observed in Grenoble. Since the temperature profile is approximately linear during inversions (Whiteman, 1982; Largeron and Staquet, 2016a), this
 225 level is chosen to compute the vertical temperature gradient modeled by MAR, which we assume to be representative for the entire PCAP height. Therefore, the modeled $\Delta T/\Delta z$ is defined as:

$$(\Delta T/\Delta z)_{\text{MAR}} = \frac{T_{925\text{hPa}} - T_{2m}}{Z_{925\text{hPa}} - z_{2m}} \quad (1)$$

where $T_{925\text{hPa}}$ is the temperature at 925 hPa, $Z_{925\text{hPa}}$ is the geopotential height at 925 hPa and $z_{2\text{m}}$ is the altitude at 2 m above the ground. $(\Delta T/\Delta z)_{\text{MAR}}$ is computed at the GR grid box; hence $z_{2\text{m}} = 424$ m a.s.l.

230 PCAP episodes are identified with the following criterion:

$$(\Delta T/\Delta z)_{\text{MAR}} > \langle (\Delta T/\Delta z)_{\text{MAR}} \rangle_{30\text{winters}}^{\text{HIST}} \text{ for at least 5 consecutive days} \quad (2)$$

where $\langle (\Delta T/\Delta z)_{\text{MAR}} \rangle_{30\text{winters}}^{\text{HIST}}$ is the winter average computed over 30 years (1981-2010) with MAR←MPI_HIST, rounded to -3 K km⁻¹. This value is fully consistent with the winter average computed from the observations over 30 years (1985-2014) (see section 3). Also, it is in agreement with Largeron and Staquet (2016a), who considered only one winter of observations, and
 235 close to Le Bouëdec (2021) (-2.5 K km⁻¹), who considered six winters of observations. Note that in the two latter references, the highest elevation station to compute the temperature gradient is at a higher altitude than PeC, about 1700 m.

A similar method is used by Iacobellis et al. (2009) to detect thermal inversions in California. These authors consider the temperature at 850 hPa and detect inversions if a ratio similar to (1) is greater than zero. By applying the same relation and condition for the Po Valley basin, (Caserini et al., 2017) obtain a strong underestimation of inversion frequency with the
 240 regional climate model they consider. Largeron and Staquet, 2016a, who tested different thresholds, also find that the condition “greater than zero” is too restrictive as too few PCAP episodes are detected. This discussion stresses the importance of testing and choosing the best threshold for the inversion detection.

In this work, PCAPs are identified for the entire 21st century, from 1981 until 2100, using MAR←MPI_HIST, MAR←MPI_SSP2 and MAR←MPI_SSP5.

245 **2.3.2 Selection of two PCAP episodes to be simulated with WRF in the past and around 2050**

The careful selection of two PCAPs, one in the past and one around 2050, to be simulated with WRF is an essential step to allow a meaningful comparison of the two episodes (see section 5). Therefore, criteria are defined here in order to select two PCAPs that present common characteristics.

First, the episodes must be associated with a similar synoptic situation. The sensitivity of thermal inversion formation
 250 to large-scale atmospheric circulation and their higher occurrence during an anticyclonic regime have indeed already been demonstrated, as stressed in the Introduction. Wintertime anticyclonic conditions over the Grenoble area can occur during the Scandinavian atmospheric blocking, when it expands southwards. In this work, atmospheric blocking episodes are identified by applying the so-called weather type decomposition (WTD), a methodology that classifies the atmospheric circulation into discrete weather regimes (Michelangeli et al., 1995). The WTD consists of two steps: the dimensional reduction of the data
 255 set via the principal component analysis (PCA) and the clustering via the k -means algorithm. The data set involves here daily anomalies of geopotential height at 500 hPa. In this work, the number of clusters (k) is set to 4 in order to detect the four well-known weather types of the Euro-Atlantic sector, positive and negative North Atlantic Oscillations, Atlantic ridge, and Scandinavian atmospheric blocking; anticyclonic episodes are then selected during Scandinavian blocking.

In the present work, the WTD and the identification of blocking episodes follow the methodology used in Bacer et al. (2022).
 260 We apply the WTD to the data sets produced by MPI_HIST over the period 1981–2014 and by MPI_SSP5 over two successive

30-year periods, 2015–2045 and 2035–2065. We next select the blocking episodes that are at least 10 days long and, among them, retain those satisfying the following criteria:

1. Since these episodes are centered over western or northern Europe, in order to consider anticyclonic conditions in Grenoble, only those days characterised by daily sea level pressure (SLP) higher than 1030 hPa in Grenoble are kept; this criterion is applied by using the temporal series of SLP extracted at the GR grid box of the MAR outputs.
2. Only those days with $(\Delta T/\Delta z)_{\text{MAR}} > -3 \text{ K km}^{-1}$ in GR are considered.
3. Conditions 1 and 2 must be satisfied for at least 5 consecutive days to define a PCAP.
4. The PCAPs must occur during the same period of the year, so that the incident solar radiation, which drives the thermal forcings of the valley circulation, is comparable among the episodes.

In this work, we look for PCAPs preferably around the years 2000 and 2050, in order to consider one episode in the near past and one episode in the middle of the century. We find that only two episodes satisfy all criteria, one in 1988 (14–21/12/1988) and one in 2043 (4–15/12/2043), as visible in Figure S1. We decide to consider 5 days in the center of the episodes for the WRF simulations, therefore, the dates of the two selected PCAP episodes are: 16–20 December 1988 and 8–12 December 2043.

During both episodes, the daily blocking patterns show a strong positive geopotential anomaly centered over central Europe, extending to the Iberian peninsula (Figure S2). The winds at 500 hPa over South-East France are lower than 10 m s^{-1} except during the first two days of the episode in 1988, when the winds are stronger. In particular, the atmospheric blocking is not well structured in the first day (16/12/1988) yet, and westerlies still cross France zonally; this will affect the structure of the thermal inversions formed in the Grenoble valleys during these days (see section 5).

3 Reliability of MAR←MPI to predict the stability of the valley atmosphere

Before analysing the PCAPs predicted by MAR in the future and downscaling MAR with WRF, an essential step is to check the reliability of MAR←MPI in the past. For this purpose, the daily temperature gradient computed with MAR ←MPI_HIST (see definition (1)) is compared with the observed vertical temperature gradient, noted $(\Delta T/\Delta z)_{\text{obs}}$, during NDJFM over the period 1985–2014. This gradient is computed with daily means of $T_{2\text{m}}$ measured at the two weather stations presented in subsection 2.1 as

$$(\Delta T/\Delta z)_{\text{obs}} = (T_{2\text{m}}^{\text{PeC}} - T_{2\text{m}}^{\text{PoC}})/(z^{\text{PeC}} - z^{\text{PoC}}), \quad (3)$$

z being the altitude of the two stations (237 m a.s.l. and 935 m a.s.l.).

Figure 4 displays the probability density functions (PDFs) of both data sets over the 30 winters of the 1985–2014 period, which contain 4447 days. The agreement between the PDFs is remarkable. The mean values are equal to -3.2 K km^{-1} for the model results and to -3.1 K km^{-1} for the observations. The winter days characterised by $\Delta T/\Delta z > -3 \text{ K km}^{-1}$ represent 43.5% of the data set according to MAR and 41.6% according to the observations, which corresponds to a difference of about

80 days. The MAR distribution is slightly shifted to the right with respect to the observations until about 4 K km^{-1} but presents a shorter tail for higher values (the number of winter days with $\Delta T/\Delta z > 4 \text{ K km}^{-1}$ represents 2.2% of the MAR data and 5.7% of the observation). This underestimation of the model could be due to the warmer bias of MAR close to the ground (see subsection 2.2.2), which leads MAR to slightly underestimate the atmospheric stability in the valley. Moreover, it should be reminded that the level of the valley bottom in MAR is about 200 m higher than the actual topography (see subsection 2.2.2); during PCAP days (when temperature increases with altitude), this could also cause an overestimation of the modeled T_{2m} , contributing to reduce $(\Delta T/\Delta z)_{\text{MAR}}$.

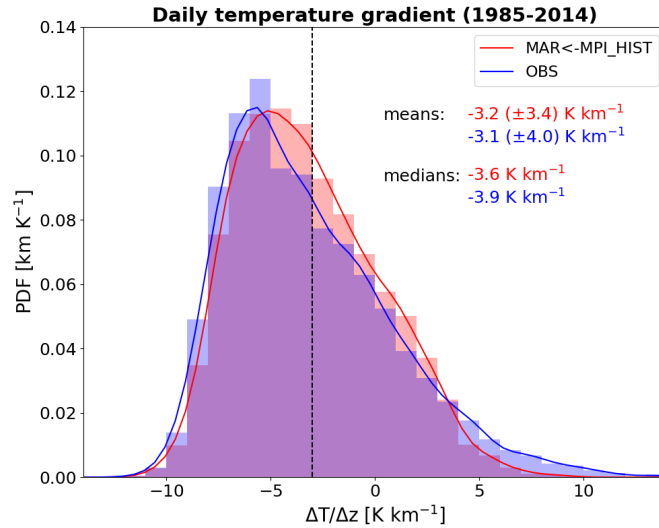


Figure 4. Normalized probability density functions (PDFs) of daily temperature gradient computed with MAR←MPL_HIST, *i.e.* $(\Delta T/\Delta z)_{\text{MAR}}$ defined by (1) (red), and observations, *i.e.* $(\Delta T/\Delta z)_{\text{obs}}$ defined by (3) (blue), over 30 years (1985-2014) during winter (NDJFM). The vertical line indicates the value -3 K km^{-1} (*i.e.* the threshold used to identify the PCAP episodes); the standard deviation is in parenthesis.

A further comparison between model results and observations is performed by considering only the PCAP episodes (defined by criterion (2)) during the same 30 winters. The total number of days belonging to PCAPs derived from MAR is 886, while the one derived from the observations is 1040. Since the number of winter days with $\Delta T/\Delta z > -3 \text{ K km}^{-1}$ is similar as indicated above, we deduce that several of these days in MAR are not consecutive and, therefore, do not belong to a PCAP episode. The total number of episodes, 119 according to MAR and 91 according to the observations, indeed indicates that MAR simulates shorter episodes. This is confirmed by the PDF of the duration of the PCAPs in Figure 5 (left). Since this analysis concerns the right tails of the PDFs in Figure 4, only the median values are computed. The simulated and observed PCAPs are finally compared in terms of *intensity*, defined as the temporal mean of the daily vertical temperature gradients over the duration of the PCAP. As expected from Figure 4, the modeled PCAPs tend to be less intense than the observed ones, with an intensity median smaller by 0.2 K km^{-1} (Figure 5, right).

Overall, we can conclude that MAR←MPI_HIST reproduces well the vertical temperature gradient in the Grenoble basin. Therefore, MAR←MPI outputs can be reasonably used to (i) analyse future PCAPs and (ii) force WRF. Moreover, we prove
 310 that definition (1), with temperature at 925 hPa, is a good alternative to compute the vertical temperature gradient in the absence of temperature at specific altitudes or vertical temperature profiles.

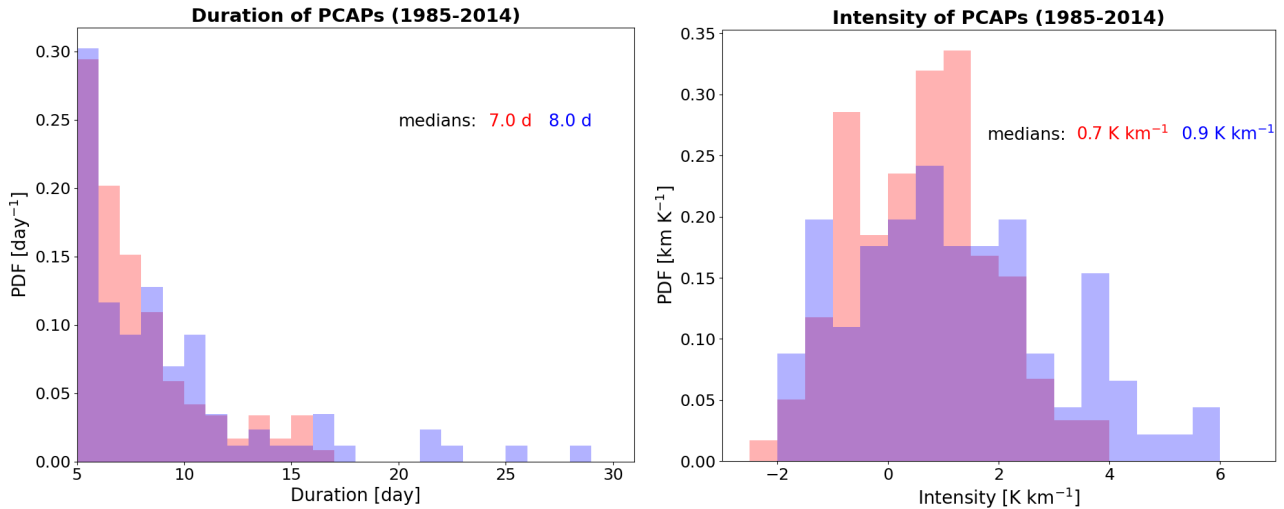


Figure 5. PDF of duration (left) and intensity (right) of the PCAP episodes identified over 30 years (1985-2014) during winter with MAR←MAR_HIST (red) and observations (blue).

4 Impact of climate change on PCAPs in the Grenoble basin over the 21st century

4.1 Trends of $(\Delta T/\Delta z)_{\text{MAR}}$ over the 21st century

We analyse the impact of climate change on the vertical temperature gradient in the centre of the Grenoble valleys (i.e. in GR)
 315 over the winters during the 21st century. We simplify the notation by referring to the 120-year long simulations from 1981 to 2100 as MAR←MPI_SSP2 and MAR←MPI_SSP5 (thus abandoning MAR←MPI_HIST as this historical run is common to both periods).

The temporal series of $(\Delta T/\Delta z)_{\text{MAR}}$ during this period are presented in Figure 6. Under both future scenarios, the series
 320 have a temporal mean of about -3 K km^{-1} , with a standard deviation also equal to about -3 K km^{-1} . They both present a statistically significant negative trend indicating a decreasing atmospheric stability, with the slope of the trend being larger for MAR←MPI_SSP5 than for MAR←MPI_SSP2 ($-0.059 \pm 0.007 \text{ K km}^{-1}$ per decade versus $-0.017 \pm 0.007 \text{ K km}^{-1}$ per decade), consistent with global warming being larger for SSP5-8.5 than for SSP2-4.5. The analysis of $(\Delta T/\Delta z)_{\text{MAR}}$ distributions over 30-years around 2000, 2050, and 2085 highlights a gradual decrease of strong inversion days in the worst-case scenario (Figure S3, right).

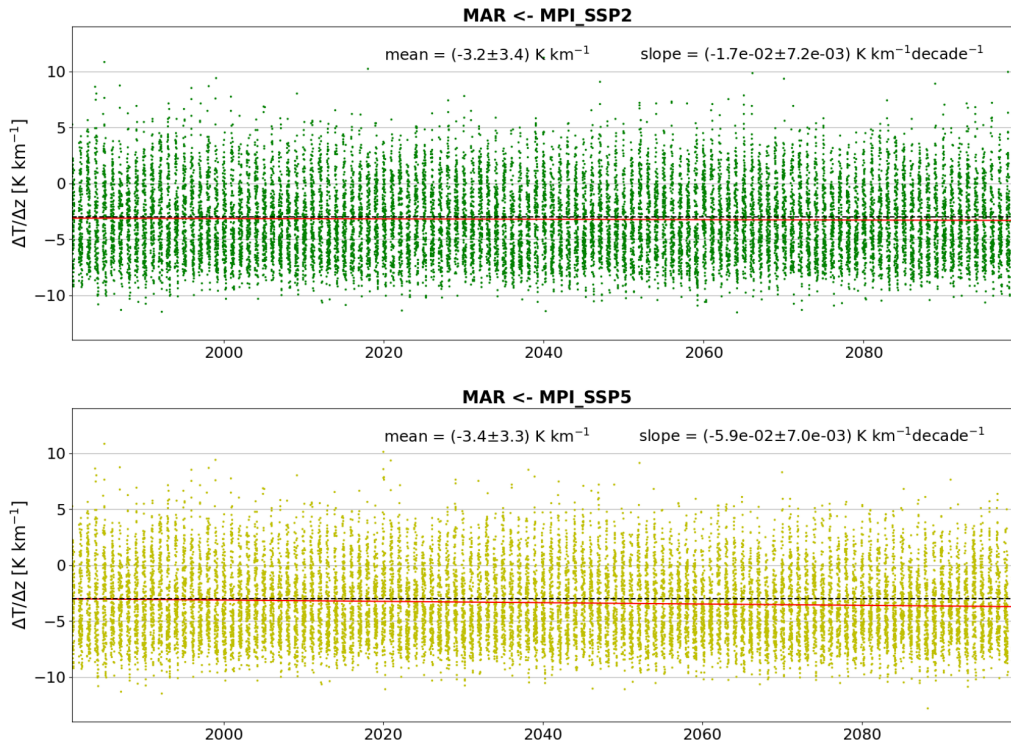


Figure 6. Temporal series of daily winter $(\Delta T/\Delta z)_{\text{MAR}}$ for MAR←MPI_SSP2 (top) and MAR←MPI_SSP5 (bottom). The horizontal black dashed line refers to the value $\Delta T/\Delta z = -3 \text{ K km}^{-1}$. The red line is the trend [computed as linear regression](#) (which is statistically significant at 95%, with p-value equal to 0.017, for SSP2-4.5 and at 99%, with p-value of the order of 10^{-17} , for SSP5-8.5). The mean and the slope of the trend (\pm standard deviation) refer to the entire time series (i.e. 120 winters).

325 Trends of the $(\Delta T/\Delta z)_{\text{MAR}}$ temporal series obtained with MAR←MPI_SSP2 and MAR←MPI_SSP5 are also computed in sliding windows with a 10-year step and of variable length, from 30 years to the length of the entire time series (Figure 7, first row). In the past, three windows can be considered: 1981-2010 and 1991-2020 (30-year long) and 1981-2020 (40-year long). For these periods, the vertical temperature gradient trends are negative, although not always statistically significant. Figure 7 (first row) confirms the long-term tendency of the vertical temperature gradient to decrease, thereby reducing the atmospheric

330 stability in the valley, especially for SSP5-8.5. Under the latter scenario indeed, the trends are almost always negative whatever the window and always statistically significant with windows longer than 70 years. The slope coefficients are larger in the second half of the century, with values up to $-0.208 \pm 0.036 \text{ K km}^{-1}$ per decade with windows of 40 years. With respect to this scenario, the trends in MAR←MPI_SSP2 are less often statistically significant; the slope coefficients are smaller and always negative with windows longer than 40 years.

335 The behavior of $(\Delta T/\Delta z)_{\text{MAR}}$ is further analysed by comparing the time series of $T_{2\text{m}}$ to those at mid-altitudes in the free air. The time series of $T_{2\text{m}}$ are displayed in Figure S4 for the two scenarios. As expected, the near-surface temperature is

projected to increase, especially for the worst-case scenario. The trends computed for T_{2m} in the same sliding windows as for $(\Delta T/\Delta z)_{MAR}$ are displayed in Figure 7 (second row). This Figure shows that T_{2m} increases until the middle of the century under the SSP2-4.5 scenario, while the increasing trend persists until the end of the century under SSP5-8.5.

340 The temperature at higher altitudes in the free air is available on pressure surfaces (i.e. not at fixed altitudes) from the MAR data. The time-averaged value of Z_{925hPa} is $794 \text{ m} \pm 91.6 \text{ m a.s.l.}$, which makes T_{925hPa} a proxy for the temperature at about 800 m a.s.l. The time series of T_{925hPa} in GR are displayed in Figure S5 for the two scenarios. The trends are statistically significant for both scenarios; they are positive and of lower value than the T_{2m} trends. For SSP5-8.5, for instance, the trends are equal to $(0.37 \pm 0.01) \text{ K per decade}$ for T_{2m} and to $(0.34 \pm 0.01) \text{ K per decade}$ for T_{925hPa} . The difference between these
345 trends is very weak, but it is quantitatively consistent with the trend of $(\Delta T/\Delta z)_{MAR}$. (Similar results are obtained when the time series of T_{850hPa} is considered: the trend is equal to $(0.14 \pm 0.01) \text{ K per decade}$ for SSP2-4.5 and $(0.33 \pm 0.01) \text{ K per decade}$ for SSP5-8.5.) This result shows that the decaying trend of $(\Delta T/\Delta z)_{MAR}$ over the century is due to the fact that air temperature close to the surface increases more than in the free atmosphere at mid-altitude in the valley. This higher increase of T_{2m} over the century may be related to the increase of the specific humidity (which is a greenhouse gas) at the same location
350 (see Figure S6) and the consequent reduction of the radiative cooling of the ground (Philipona, 2013).

4.2 Characteristics of PCAP episodes over the 21st century

We now investigate the impact of climate change on the characteristics of the PCAP episodes identified over the 21st century (see criterion (2)). We focus on the intensity (i.e. the temporal mean of the daily vertical temperature gradients over the duration of the PCAP), the duration and the frequency (i.e. the number of episodes in a given time period). Figure 8 displays the temporal
355 series of these quantities per year, i.e. the annual mean intensities, mean durations, and frequencies, where “annual” always refers to wintertime. The time series of intensity and duration are displayed in Figure S7 for all identified PCAPs. All time series show a large interannual variability (as in Yu et al., 2017). As expected from the previous analysis, PCAPs will be less intense for the worst-case scenario, changing from a 30-year mean of $0.62 \pm 1.26 \text{ K km}^{-1}$ around the year 2000 to a 30-year mean of $0.27 \pm 1.06 \text{ K km}^{-1}$ at the end of the century (Table 2). Also in this case, the decrease is more evident in the second
360 half of the century (Table 2 and Figure S7). On the contrary, PCAP intensities for the SSP2-4.5 scenario do not present any significant change, and extreme episodes occur all along the century (Table 2 and Figure S7).

The annual mean PCAP duration (Figure 8, middle row) varies between 5 and 10 days during the historical period, while it can be longer in the future for both scenarios (up to 15 days under SSP2 and 17 days under SSP5), with no statistically significant trend. Considering all PCAPs occurring in periods of 30 years, the mean duration is between 7 and 8 days for both
365 scenarios (Table 2).

The annual number of PCAPs (Figure 8, bottom row) varies between 2 and 6 during the historical period and is comprised (almost always) between 1 and 7 during both future periods. More precisely, this quantity shows a statistically significant negative trend for the worst-case scenario only. This is evident also in Table 2, where the total number of episodes over a 30-year period decreases from 121 in the past to 94 at the end of the century. Since the PCAP duration remains essentially
370 stable, this reduction implies that the annual number of PCAP days also tends to decrease.

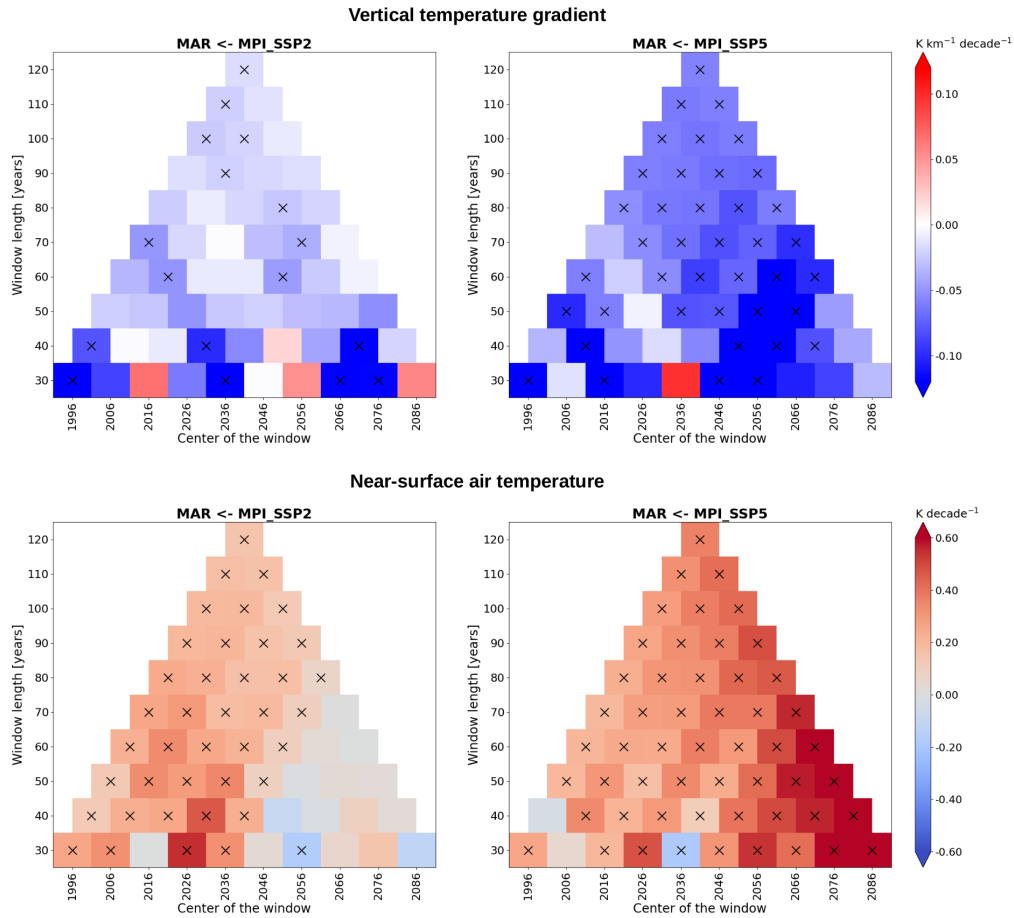


Figure 7. Slope coefficients of the trends computed in sliding windows of variable length for $(\Delta T/\Delta z)_{\text{MAR}}$ (first row) and $T_{2\text{m}}$ (second row) for MAR←MIPi_SSP2 and MAR←MIPi_SSP5. The windows have a minimal length of 30 years; they slide with a step of 10 years along the entire time series (1981-2100). The windows have also a variable length, increasing by 10 years until they reach the maximum length equal to the length of the entire time series. The years that are central in the windows are on the x-axis, the length of the windows is on the y-axis. The black crosses mark trends that are statistically significant at 95%.

5 Vertical structure of two PCAP episodes in the Grenoble valleys

The analysis now focuses on five days of two PCAP episodes (see section 2.3.2 for the selection method of these episodes) that have been simulated at high resolution with the model chain WRF←MAR←MIPi_SSP5 (see subsection 2.2.3 for the WRF setup). These five days are in the middle of each PCAP episode, when the PCAP stability is largest. One episode occurs in the past (16-20 December 1988) and the other one in the future (8-12 December 2043). In the following, these five-day periods are referred to as Ep1988 and Ep2043, respectively.

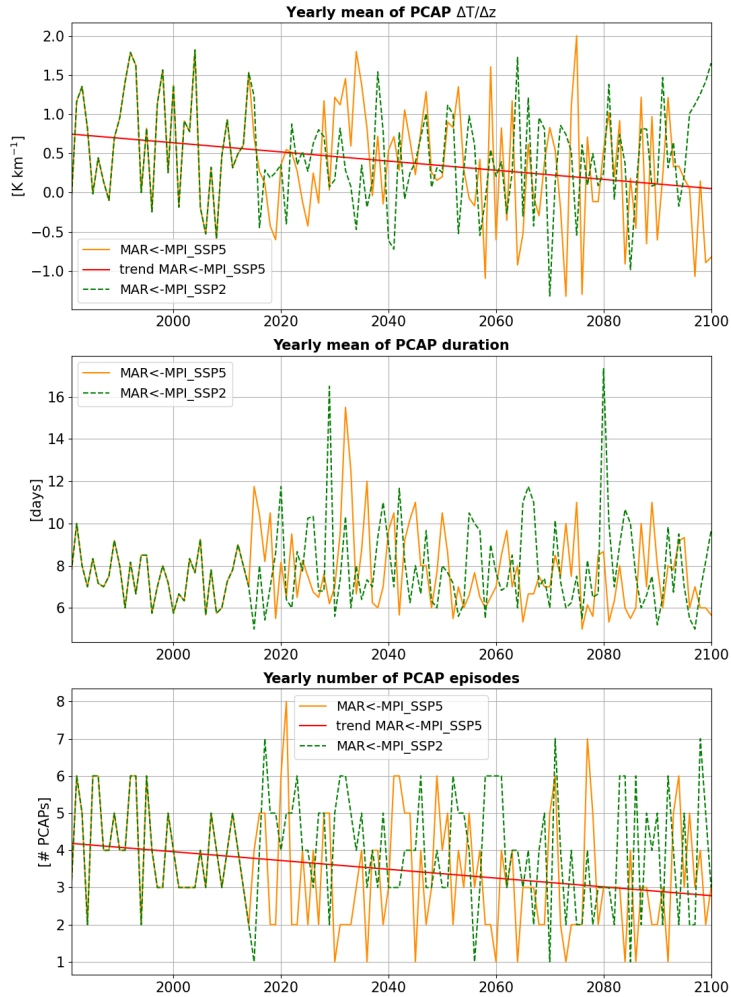


Figure 8. Temporal series of annual means of PCAP intensities (top), annual means of PCAP durations (middle), and annual number of PCAP episodes (bottom). The trends in red ([computed as linear regressions](#)) are statistically significant at 99%, with p-value equal to 0.002 and slope (-0.058 ± 0.019) K km^{-1} per decade (top) and p-value equal to 0.003 and slope (-0.118 ± 0.039) # PCAPs per decade (bottom).

5.1 General features of the two PCAP episodes

An overview of the two episodes is provided in Figure 9 through vertical profiles (up to 2000 m a.g.l.) of temperature and horizontal wind speed over the five selected days of each episode. These fields are averaged over the two main Grenoble valleys, Grésivaudan and Voreppe, and over the Grenoble basin (these areas are displayed in Figure S8). The averaged profiles thus obtained are assumed to be representative of each valley section.

Quantity	30-yr period	SSP2	SSP5
Mean intensity [K km ⁻¹]	around 2000	0.62 ± 1.26 [-2.22; 3.60]	
	around 2050	0.37 ± 1.13 [-2.18; 3.21]	0.51 ± 1.16 [-2.38; 3.43]
	around 2085	0.49 ± 1.22 [-2.02; 4.47]	0.27 ± 1.06 [-2.01; 2.51]
Mean duration [days]	around 2000	7.4 ± 2.8 [5; 16]	
	around 2050	7.6 ± 3.3 [5; 24]	7.9 ± 3.7 [5; 29]
	around 2085	8.0 ± 4.1 [5; 27]	7.3 ± 2.7 [5; 18]
Number of episodes	around 2000	121	
	around 2050	122	103
	around 2085	109	94

Table 2. Mean values (\pm standard deviation and [minimum; maximum]) of intensity, duration, and number of the PCAP episodes occurring over 30-year periods (see also Figure S7). The terms “around 2000” refer to the 1985–2014 period, “around 2050” to the 2035–2064 period, and “around 2085” to the 2070-2099 period.

As shown in Figure 9 the arrival of the anticyclone over Grenoble is associated with that of a warm air mass around 1000 m a.g.l., from December 18 in Ep1988 and from December 8 in Ep2043. This warm air layer persists at mid-altitude over the remaining days of the episode and maintains the thermal inversion.

385 The thermal inversion of Ep2043 is stronger than that of Ep1988. This is attested in Figure S9 which displays the temperature and potential temperature profiles of each episode averaged over three days (see next section for the choice of these days). The vertical gradients of these profiles, which are positive in the cold-air pool (below about 800 m a.g.l.), are indeed stronger for Ep2043 than for Ep1988. This implies that the statistical trend observed over the century, indicating a slightly decreasing stability, is not recovered. There is not contradiction because only two (past and future) PCAP episodes are selected. This
390 implies that some of the results inferred from this analysis, which aims at comparing the vertical structure of the future episode against that of the past one, will not apply to all PCAP episodes of the century.

The striking feature of Figure 9 is the difference in temperature between the two episodes: Ep2043 is warmer than Ep1988 up to 2000 m a.g.l. Figure S9 helps quantifying this temperature difference: it is larger than about 4 K at all altitudes whatever the time of the day. This is consistent with the projection of T_{2m} (Figure S4, bottom row) and T_{925hPa} (Figure S5, bottom row),
395 which display an increasing trend over the century for the SSP5-8.5 scenario. Around 800 m a.g.l., near the top of the cold-air pool, this temperature difference is even larger, 8 K or so, a value which depends upon the difference in stability between the two episodes.

The along-valley wind is very weak within the cold-air pool for both episodes, less than 2 m s⁻¹. It increases above for the two episodes, still remaining lower than $\simeq 8$ m s⁻¹, consistent with the synoptic regime being anticyclonic. Hence, as opposed
400 to the temperature field, the atmospheric circulation in the cold-air pool of the Grenoble valleys appears to be similar in the two episodes (see also Figure S10).

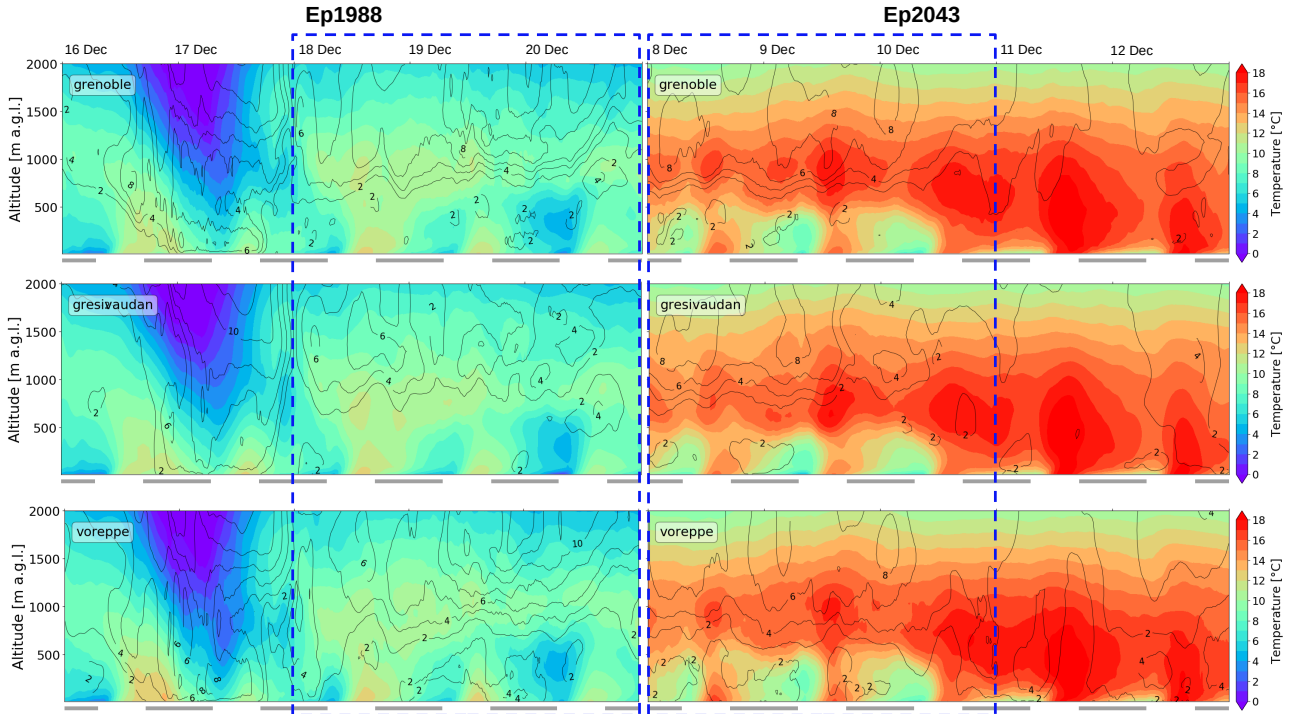


Figure 9. Vertical profiles of temperature (color shading) and wind speed (black contours from 0 to 14 m s^{-1} , every 2 m s^{-1}) as functions of time for Ep1988 and Ep2043. These quantities are spatially averaged over the Grenoble basin, Grésivaudan valley and Voreppe valley (these areas are displayed in Figure S8). The horizontal grey lines along the x-axis indicate the nighttime period, between 17:00 UTC and 7:00 UTC; the rectangles in dashed blue line indicate the three selected days for each episode.

Although the five days of the PCAP episodes were carefully chosen (see the criteria discussed in subsection 2.3.2) and were in the middle of an anticyclonic period, a **cold-air subsidence cold air intrusion** occurs during Ep1988: stronger winds and cold air enter in the valleys on 17 December 1988, perturbing the atmosphere. Note that this event could not be detected from the large-scale wind pattern at 500 hPa.

5.2 Height and strength of the two PCAP episodes

The three main characteristics of the PCAPs, atmospheric stability, inversion height, and inversion strength, are now considered for a more quantitative analysis.

The atmospheric stability is now expressed in terms of the vertical gradient of potential temperature, $\partial\theta/\partial z$, with respect to the adiabatic lapse rate for dry atmosphere, $\Gamma_d (\simeq -9.8 \text{ K m}^{-1})$: $\partial\theta/\partial z > |\Gamma_d|$ is associated to an inversion, $0 < \partial\theta/\partial z < |\Gamma_d|$ to a moderately stable atmosphere, and $\partial\theta/\partial z < 0$ to an unstable atmosphere. The inversion height, denoted H_{inv} , is computed as the highest elevation where $\partial\theta/\partial z > |\Gamma_d|$ below 1500 m a.g.l (as in Largeron and Staquet, 2016a). The strength of the

inversion is quantified by the valley heat deficit (VHD; Whiteman et al., 1999a):

$$\text{VHD} = c_p \int_{z_0}^{z_T} \rho(z) [\theta(z_T) - \theta(z)] dz \quad [\text{J m}^2] \quad (4)$$

415 where $c_p = 1005 \text{ J K}^{-1}\text{kg}^{-1}$ is the specific heat capacity of air at constant pressure and ρ is the air density; the lower bound z_0 is set to 0 (ground level) and the upper bound z_T is set to the maximum value among the six 95th percentiles of H_{inv} (one per episode and per area displayed in Figure S8), leading to $z_T = 1050 \text{ m}$. The quantity VHD is the amount of heat per unit area necessary to bring the temperature gradient of the fluid column extending from z_0 to z_T to the dry adiabatic lapse rate; in other words, it is the energy required to fully mix this air column and destroy the inversion.

420 Figure 10 displays the temporal evolution of $\partial\theta/\partial z$, H_{inv} , and VHD, spatially averaged over the Grenoble basin, the Grésivaudan valley, and the Voreppe valley. The inversion in Ep1988 is temporarily disturbed and destroyed between the night of December 17 and the morning of December 18 (as previously observed in Figure 9), while the inversion height in Ep2043 decays down to a few hundred meters a.g.l. from December 10 and is disturbed on December 12. Therefore, we focus on the last three days (18-20 December) of Ep1988 and the first three days (8-10 December) of Ep2043 in the following analysis.

425 The $\partial\theta/\partial z$ values show that the atmosphere below the top of the cold-air pool is more stable in Ep2043 than in Ep1988, as already discussed in section 5.1, with $\partial\theta/\partial z$ reaching values greater than 29.4 K km^{-1} not only in the surface layer during nighttime but also in a layer around 500 m a.g.l. (where the temperature abruptly changes in Figure 9). This difference in stratification between the two episodes is also attested in Figure S9 (bottom row).

A specific feature of a PCAP episode is that H_{inv} is insensitive to the diurnal cycle. As noted in section 2.3.1 the height of a
 430 PCAP is set by the mean height of the surrounding summits or plateaux (Whiteman, 1982). This is illustrated in Figure 10 for both episodes. During daytime, the cold-air pool is eroded close to the surface by a shallow convective layer, of at most 50 m, while the atmosphere above remains stable. As a result, H_{inv} hardly varies between night and day. Figure 10 also shows that the inversion height is slightly lower in Ep2043 than in Ep1988 by about 100 m on average (see Table 3); these differences are however not significant due to the variability of the inversion height.

435 By contrast, the VHD displays a diurnal cycle, with local minima during daytime (when the cold-air pool is eroded from below) and local maxima during nighttime. When VHD is averaged over each episode, higher values are found for Ep2043 than for Ep1988 (see Table 3), consistent with the former PCAP being more stable than the latter. This range of values is of the same order of magnitude as those computed for real episodes (i.e. real-case simulations run with WRF forced by reanalysis): for the Grenoble valleys, values equal to $10\text{--}20 \text{ MJ m}^{-2}$ have been found by Llargeron and Staquet (2016b) for PCAPs of the
 440 2006-2007 winter (with $z_T = 1500 \text{ m a.g.l.}$); for the Arve River valley (also in the French Alps), values equal to $8\text{--}12 \text{ MJ m}^{-2}$ have been computed in Arduini et al. (2020) during a PCAP in February 2015 (with $z_T \simeq 1000 \text{ m a.g.l.}$).

The link between PCAP stability, height, and strength (VHD) can be qualitatively accounted for by noting that, when the potential temperature profile is linear, these three quantities are related by $\text{VHD} = 0.5\rho c_p H_{inv} \Delta\theta$, where $\Delta\theta$ is the potential temperature difference across the cold-air pool (Whiteman et al., 1999b).

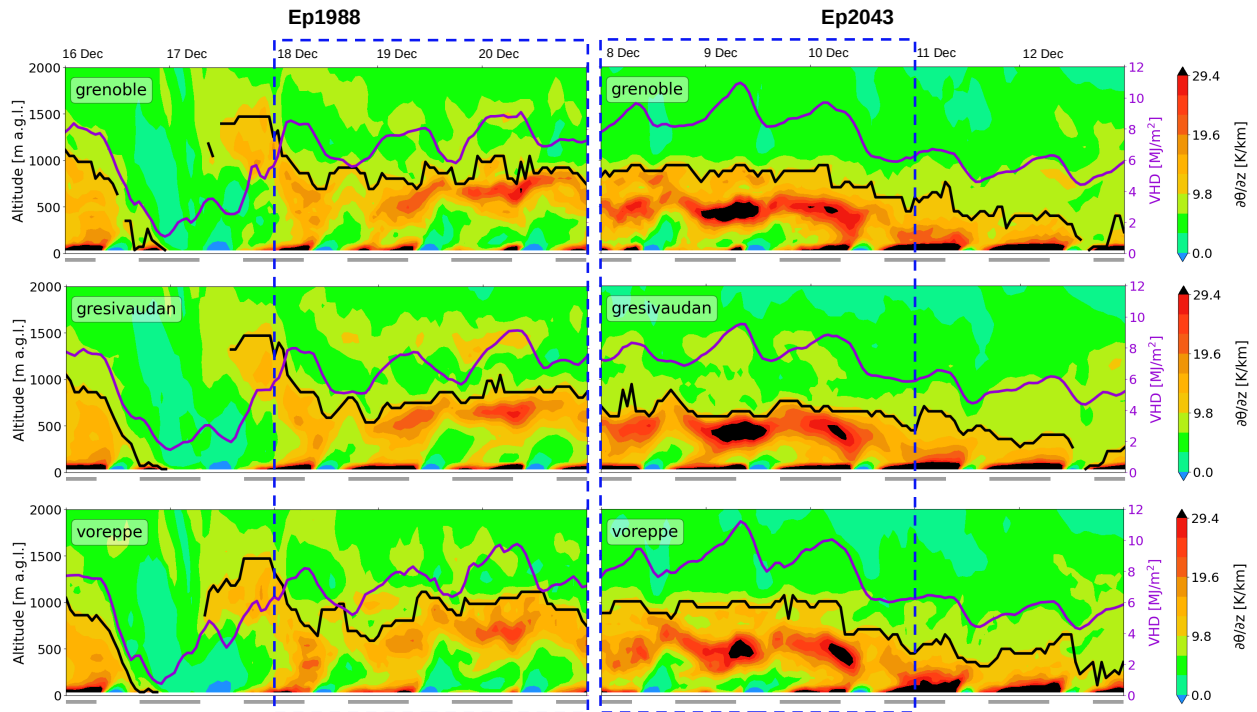


Figure 10. Vertical gradient of the potential temperature $\partial\theta/\partial z$ (color shading), inversion height (black line, left y -axis), and valley heat deficit VHD (purple line, right y -axis) for Ep1988 and Ep2043. These quantities are computed from the potential temperature, once temporally averaged (over one hour) and spatially averaged over the Grenoble basin, Grésivaudan valley, and Voreppe valley (see Figure S8). The horizontal grey segments along the x -axis indicate the time between 17:00 UTC and 7:00 UTC; the rectangles in dashed blue line indicate the three selected days for each episode.

	H_{inv} [m]		VHD [MJ m^{-2}]	
	Ep1988	Ep2043	Ep1988	Ep2043
Grenoble basin	877 ± 122	820 ± 123	7.4 ± 1.0	8.4 ± 1.3
Grésivaudan valley	824 ± 153	660 ± 88	7.0 ± 1.1	7.6 ± 1.0
Voreppe valley	922 ± 161	884 ± 155	7.4 ± 1.1	8.5 ± 1.3
Overall	874 ± 49	788 ± 115	7.3 ± 0.2	8.2 ± 0.5

Table 3. Temporal mean (\pm standard deviation) of the inversion height and VHD computed over three days (18-20 December 1988 and 8-10 December 2043) and spatially averaged over the Grenoble basin, Grésivaudan valley, and Voreppe valley (see Figure S8).

We investigate the impact of climate change on persistent cold-air pools (PCAPs) in winter in the Grenoble valleys during the 21st century. For this purpose, two distinct analyses are carried out. We first perform a statistical analysis of PCAP characteristics over the century from data of a regional climate model. The vertical structure of two carefully selected PCAPs, one in the past and one around 2050, is next investigated using high resolution simulations for the SSP5-8.5 scenario.

450 The statistical analysis of the PCAP characteristics relies on outputs of the regional climate model MAR forced by the general circulation model MPI (MAR←MPI) from 1981 to 2100 for two different future scenarios, SSP2-4.5 and SSP5-8.5. We propose a simple methodology to identify PCAPs from the MAR data, which we validate against observations. This methodology consists in computing wintertime daily-averaged vertical temperature gradients between the ground and the 925 hPa pressure level (i.e. about 800 m a.s.l., see subsection 2.3.1) assuming the temperature profile is linear during PCAP episodes and using a threshold lower than 0 to detect the inversions (see relation (2) for more details). As shown in the literature (f.i. Caserini et al., 2017), using a threshold equal to 0 leads to an underestimation of the number of PCAP episodes.

The statistical analysis of the wintertime vertical temperature gradients reveals a significant decreasing trend over the century for both SSP2-4.5 and SSP5-8.5. However, decay rates are very weak: 0.059 K km^{-1} per decade for SSP5-8.5 and about 3.5 times lower for SSP2-4.5. Focusing on PCAP episodes, only the former scenario shows a statistically significant decreasing trend, with a similar decay rate. Hence, the stability of PCAP episodes is projected to be statistically stationary for SSP2-4.5 and to slightly decrease for SSP5-8.5. We show that the tendency to a less stable atmosphere is due to the temperature increasing more at 2 m than at mid-altitudes (925 hPa and 850 hPa). This higher increase of the air temperature near the surface with respect to mid-altitudes can be related to the positive trend of the specific humidity (which is a greenhouse gas) at 2 m over the century (see Philipona, 2013). We also find that the PCAP mean duration remains basically unchanged for both scenarios but 465 that the annual number of PCAPs is projected to decrease for SSP5-8.5, implying a smaller number of PCAP days in winter for the latter scenario.

Criteria are then defined to select PCAPs in the past and in the future around 2050 sharing common characteristics (see subsection 2.3.2). This procedure leads to the selection of two PCAPs only, one in the past in December 1988 and one in the future in December 2043. We next run the atmospheric numerical model WRF (using the model chain WRF←MAR←MPI) at 470 high resolution (111 m) in order to simulate and compare the valley circulation and thermal structure of these two episodes.

This analysis shows that the future selected episode is more stable than the past one, as quantified by valley heat deficit. Thus the statistical trend observed over the century, a slightly decreasing stability, is not recovered. There is no contradiction because only two (past and future) PCAP episodes are selected. This implies that some of the results inferred from the comparison between the two episodes will not apply to all PCAP episodes of the century. Two features, which are very likely generic, can 475 still be identified. First, the future episode is warmer than the past one, the temperature difference being larger than 4 K at all altitudes up to 2000 m a.g.l. (the highest altitude considered in our analysis). This is consistent with the positive trend of air temperature at 2 m and at mid-altitudes over the century for the SSP5-8.5 scenario. Second, the height of the PCAP is similar for the two episodes, consistent with this height being controlled by the surrounding topography (Whiteman, 1982). We also

find that the along-valley wind is similar for the two episodes, being vanishingly small in the cold-air pool and increasing up
480 to about 8 m s^{-1} above.

To the best of our knowledge, this is the first study that investigates vertical temperature gradients and PCAP characteristics
in an alpine mountain valley in a future warming climate. We anticipate that our results on the frequency of the PCAPs in the
Grenoble valleys can be extended to other mountain valleys of the Alps and other mountain groups that are subject to the same
large-scale atmospheric circulation (f.i. Massif Central or Pyrénées in France). The occurrence and stability of PCAPs are in
485 fact strongly related to the weather pattern affecting the local climate. In the Iberian peninsula, for example, the most persistent
and stable cold-air pools develop during anticyclonic conditions of the positive NAO phase (Rasilla et al., 2022). It must be
also kept in mind that our results are based on one GCM only, the MPI model, while an ensemble of GCMs would take into
account the inter-model variability and would allow for the estimate of the model uncertainty; the EURO- and Med-CORDEX
projects would contribute to extend the analysis in this sense, by providing simulations coming from different model chains.
490 On the other hand, the downscaling of MPI with MAR shows a very good performance compared to observations (section
3). Moreover, since the valley atmosphere will be less stable because of the increasing near-surface temperature and since all
GCMs project such an increase until the end of the century, similar results for the vertical gradient trends may be obtained
considering other model chains.

Overall this study shows that the atmosphere in the Grenoble valleys during PCAP episodes tends to be as stable (for SSP2-
495 4.5) or slightly less stable (for SSP5-8.5) over the decades during the 21st century. Hence climate change should have no
significant impact on air quality in the Grenoble valleys until the end of century for either scenario, assuming anthropogenic
emissions remain the same. This does not imply that PCAP episodes with a strong stability, therefore prone to poor air quality,
will not occur in the future.

Data availability. The MAR experiments over the Alpine domain are available on zenodo repositories for a limited number of levels and vari-
500 ables. MAR-MPI-ESM-HR, SSP2: <https://doi.org/10.5281/zenodo.5834221>; MAR-MPI-ESM-HR, SSP5: <https://doi.org/10.5281/zenodo.5834376>.
More variables can be accessed by contacting the contact author. WRF outputs can be provided upon request to the contact author as well.

Author contributions. All authors contributed to designing the study. SB run WRF and JB run MAR. SB analysed the data and produced
the figures, together with ELB. SB, JB, MM, HG, ELB, and CS discussed the results. SB and CS wrote the paper. All the authors provided
assistance in finalizing the article.

505 *Competing interests.* The contact author has declared that neither they nor their co-authors have any competing interests.

Acknowledgements. This work was performed using HPC resources from GENCI-IDRIS (Grant 2021-A0080107161). The authors thank Michael Duda (NCAR) and Dave Gill (NCAR) for the discussion we had at the beginning of this project and for their help to create the WPS intermediate file format. The authors thank also Milton Gomez (University of Lausanne) for having computed the vertical temperature gradients with the observations. SB thanks the Laboratory of Geophysical and Industrial Flows (LEGI) in Grenoble and the ADEME (PACC-510 MACS project) for having funded her scientific stay at the LEGI.

References

- Arduini, G., Chemel, C., and Staquet, C.: Local and non-local controls on a persistent cold-air pool in the Arve River Valley, *Quarterly Journal of the Royal Meteorological Society*, 146, 2497–2521, <https://doi.org/10.1002/qj.3776>, 2020.
- Bacer, S., Jomaa, F., Beaumet, J., Gallée, H., Le Bouëdec, E., Ménégos, M., and Staquet, C.: Impact of climate change on wintertime
515 European atmospheric blocking, *Weather and Climate Dynamics*, 3, 377–389, <https://doi.org/10.5194/wcd-3-377-2022>, 2022.
- Beaumet, J., Ménégos, M., Morin, S., Gallée, H., Fettweis, X., Six, D., Vincent, C., Wilhelm, B., and Anquetin, S.: Twentieth century temperature and snow cover changes in the French Alps, *Regional Environmental Change*, 21, 1–13, <https://doi.org/10.1007/s10113-021-01830-x>, 2021.
- Cannon, A. J.: Reductions in daily continental-scale atmospheric circulation biases between generations of global climate models: CMIP5 to
520 CMIP6, *Environmental Research Letters*, 15, 064006, <https://doi.org/10.1088/1748-9326/ab7e4f>, 2020.
- Caserini, S., Giani, P., Cacciamani, C., Ozgen, S., and Lonati, G.: Influence of climate change on the frequency of daytime temperature inversions and stagnation events in the Po Valley: historical trend and future projections, *Atmospheric Research*, 184, 15–23, <https://doi.org/10.1016/j.atmosres.2016.09.018>, 2017.
- Chemel, C., Arduini, G., Staquet, C., LARGERON, Y., Legain, D., Tzanos, D., and Paci, A.: Valley heat deficit as a
525 bulk measure of wintertime particulate air pollution in the Arve River Valley, *Atmospheric Environment*, 128, 208–215, <https://doi.org/10.1016/j.atmosenv.2015.12.058>, 2016.
- Chen, F. and Dudhia, J.: Coupling an Advanced Land Surface–Hydrology Model with the Penn State–NCAR MM5 Modeling System. Part I: Model Implementation and Sensitivity, *Monthly Weather Review*, 129, 569 – 585, [https://doi.org/10.1175/1520-0493\(2001\)129<0569:CAALSH>2.0.CO;2](https://doi.org/10.1175/1520-0493(2001)129<0569:CAALSH>2.0.CO;2), 2001.
- 530 Connolly, A., Chow, F., and Hoch, S.: Nested Large-Eddy Simulations of the Displacement of a Cold-Air Pool by Lee Vortices, *Boundary Layer Meteorology*, 178, 91–118, <https://doi.org/10.1007/s10546-020-00561-6>, 2021.
- Crosman, E. T. and Horel, J. D.: Large-eddy simulations of a Salt Lake Valley cold-air pool, *Atmospheric Research*, 193, 10–25, <https://doi.org/10.1016/j.atmosres.2017.04.010>, 2017.
- Eyring, V., Bony, S., Meehl, G. A., Senior, C. A., Stevens, B., Stouffer, R. J., and Taylor, K. E.: Overview of the Coupled Model
535 Intercomparison Project Phase 6 (CMIP6) experimental design and organization, *Geoscientific Model Development*, 9, 1937–1958, <https://doi.org/10.5194/gmd-9-1937-2016>, 2016.
- Fernandez-Granja, J., Casanueva, A., Bedia, J., and Fernandez, J.: Improved atmospheric circulation over Europe by the new generation of CMIP6 earth system models, *Climate Dynamics*, 56, 3527–3540, <https://doi.org/10.1007/s00382-021-05652-9>, 2021.
- Fettweis, X., Box, J. E., Agosta, C., Amory, C., Kittel, C., Lang, C., van As, D., Machguth, H., and Gallée, H.: Reconstructions of
540 the 1900–2015 Greenland ice sheet surface mass balance using the regional climate MAR model, *The Cryosphere*, 11, 1015–1033, <https://doi.org/10.5194/tc-11-1015-2017>, 2017.
- Gallée, H. and Schayes, G.: Development of a three-dimensional meso-gamma primitive equations model, katabatic winds simulation in the area of Terra Nova Bay, Antarctica, *Mon. Weath. Rev.*, 122, 671–685, 1994.
- Gallée, H., Pettré, P., and Schayes, G.: Sudden Cessation of Katabatic Winds in Adélie Land, Antarctica, *Journal of Applied Meteorology and Climatology*, 35, 1142–1152, [https://doi.org/10.1175/1520-0450\(1996\)035<1142:SCOKWI>2.0.CO;2](https://doi.org/10.1175/1520-0450(1996)035<1142:SCOKWI>2.0.CO;2), 1996.
- 545 Gallée, H., Peyaud, V., and Goodwin, I.: Simulation of the net snow accumulation along the Wilkes Land transect, Antarctica, with a regional climate model, *Annals of Glaciology*, 41, 17–22, <https://doi.org/10.3189/172756405781813230>, 2005.

- Hong, S.-Y., Noh, Y., and Dudhia, J.: A New Vertical Diffusion Package with an Explicit Treatment of Entrainment Processes, *Monthly Weather Review*, 134, 2318 – 2341, <https://doi.org/10.1175/MWR3199.1>, 2006.
- 550 Hou, P. and Wu, S.: Long-term Changes in Extreme Air Pollution Meteorology and the Implications for Air Quality, *Scientific Reports*, 6, 23 792, <https://doi.org/10.1038/srep23792>, 2016.
- Iacobellis, S. F., Norris, J. R., Kanamitsu, M., Tyree, M., and Cayan, D. C.: Climate variability and California low-level temperature inversions, *California Climate Change Center*, 48, 2009.
- Ji, F., Evans, J., Di Luca, A., Jiang, N., Olson, R., Fita, L., Argüeso, D., Chang, L.-C., Scorgie, Y., and Riley, M.: Projected change in characteristics of near surface temperature inversions for southeast Australia, *Climate Dynamics*, 52, 1487–1503, <https://doi.org/10.1007/s00382-018-4214-3>, 2019.
- 555 Jiménez, P. A., Dudhia, J., Gonzalez-Rouco, J. F., Navarro, J., Montavez, J. P., and Garcia-Bustamante, E.: A Revised Scheme for the WRF Surface Layer Formulation, *Monthly Weather Review*, 140, 898 – 918, <https://doi.org/10.1175/MWR-D-11-00056.1>, 2012.
- Jungclaus, J., Bittner, M., Wieners, K.-H., Wachsmann, F., Schupfner, M., Legutke, S., Giorgetta, M., Reick, C., Gayler, V., Haak, H., de Vrese, P., Raddatz, T., Esch, M., Mauritsen, T., von Storch, J.-S., Behrens, J., Brovkin, V., Claussen, M., Crueger, T., Fast, I., Fiedler, S., Hagemann, S., Hohenegger, C., Jahns, T., Kloster, S., Kinne, S., Lasslop, G., Kornblueh, L., Marotzke, J., Matei, D., Meraner, K., Mikolajewicz, U., Modali, K., Müller, W., Nabel, J., Notz, D., Peters-von Gehlen, K., Pincus, R., Pohlmann, H., Pongratz, J., Rast, S., Schmidt, H., Schnur, R., Schulzweida, U., Six, K., Stevens, B., Voigt, A., and Roeckner, E.: MPI-M MPI-ESM1.2-HR model output prepared for CMIP6 CMIP historical, <https://doi.org/10.22033/ESGF/CMIP6.6594>, 2019.
- 560 Largeron, Y. and Staquet, C.: Persistent inversion dynamics and wintertime PM10 air pollution in Alpine valleys, *Atmospheric Environment*, 135, 92–108, <https://doi.org/10.1016/j.atmosenv.2016.03.045>, 2016a.
- Largeron, Y. and Staquet, C.: The atmospheric boundary layer during wintertime persistent inversions in the Grenoble valleys, *Frontiers in Earth Science*, <https://doi.org/10.3389/feart.2016.00070>, 2016b.
- Le Bouëdec, E.: Wintertime characteristic atmospheric circulation in the Grenoble basin and impact on air pollution, Ph.D. thesis, Université Grenoble Alpes, 2021.
- 570 Le Bouëdec, E., Chemel, C., and Staquet, C.: Dealing with steep slopes when modelling stable boundary layer flow in narrow and deep terrain, *Quarterly Journal of the Royal Meteorological Society*, Submitted, 2023.
- Mauritsen, T., Bader, J., Becker, T., Behrens, J., Bittner, M., Brokopf, R., Brovkin, V., Claussen, M., Crueger, T., Esch, M., Fast, I., Fiedler, S., Fläschner, D., Gayler, V., Giorgetta, M., Goll, D. S., Haak, H., Hagemann, S., Hedemann, C., Hohenegger, C., Ilyina, T., Jahns, T., Jimenéz-de-la Cuesta, D., Jungclaus, J., Kleinen, T., Kloster, S., Kracher, D., Kinne, S., Kleberg, D., Lasslop, G., Kornblueh, L., Marotzke, J., Matei, D., Meraner, K., Mikolajewicz, U., Modali, K., Möbis, B., Müller, W. A., Nabel, J. E. M. S., Nam, C. C. W., Notz, D., Nyawira, S.-S., Paulsen, H., Peters, K., Pincus, R., Pohlmann, H., Pongratz, J., Popp, M., Raddatz, T. J., Rast, S., Redler, R., Reick, C. H., Rohrschneider, T., Schemann, V., Schmidt, H., Schnur, R., Schulzweida, U., Six, K. D., Stein, L., Stemmler, I., Stevens, B., von Storch, J.-S., Tian, F., Voigt, A., Vrese, P., Wieners, K.-H., Wilkenskield, S., Winkler, A., and Roeckner, E.: Developments in the MPI-M
- 580 Earth System Model version 1.2 (MPI-ESM1.2) and Its Response to Increasing CO₂, *Journal of Advances in Modeling Earth Systems*, 11, 998–1038, <https://doi.org/10.1029/2018MS001400>, 2019.
- Ménégoz, M., Gallée, H., and Jacobi, H. W.: Precipitation and snow cover in the Himalaya: from reanalysis to regional climate simulations, *Hydrology and Earth System Sciences*, 17, 3921–3936, <https://doi.org/10.5194/hess-17-3921-2013>, 2013.

- Ménégoz, M., Valla, E., Jourdain, N. C., Blanchet, J., Beaumet, J., Wilhelm, B., Gallée, H., Fettweis, X., Morin, S., and Anquetin, S.:
585 Contrasting seasonal changes in total and intense precipitation in the European Alps from 1903 to 2010, *Hydrology and Earth System Sciences*, 24, 5355–5377, <https://doi.org/10.5194/hess-24-5355-2020>, 2020.
- Michelangeli, P.-A., Vautard, R., and Legras, B.: Weather regimes: Recurrence and quasi stationarity, *Journal of the atmospheric sciences*,
52, 1237–1256, 1995.
- Milionis, A. E. and Davies, T. D.: The effect of the prevailing weather on the statistics of atmospheric temperature inversions, *International*
590 *Journal of Climatology*, 28, 1385–1397, <https://doi.org/10.1002/joc.1613>, 2008.
- Monteiro, D. and Morin, S.: Multi-decadal analysis of past winter temperature, precipitation and snow cover data in the European Alps from
reanalyses, climate models and observational datasets, *The Cryosphere*, 17, 3617–3660, <https://doi.org/10.5194/tc-17-3617-2023>, 2023.
- Müller, W. A., Jungclaus, J. H., Mauritsen, T., Baehr, J., Bittner, M., Budich, R., Bunzel, F., Esch, M., Ghosh, R., Haak, H., Ilyina, T.,
Kleine, T., Kornblueh, L., Li, H., Modali, K., Notz, D., Pohlmann, H., Roeckner, E., Stemmler, I., Tian, F., and Marotzke, J.: A Higher-
595 resolution Version of the Max Planck Institute Earth System Model (MPI-ESM1.2-HR), *Journal of Advances in Modeling Earth Systems*,
10, 1383–1413, <https://doi.org/10.1029/2017MS001217>, 2018.
- Neemann, E., Crosman, E., Horel, J., and Avey, L.: Simulations of a cold-air pool associated with elevated wintertime ozone in the Uintah
Basin, Utah., *Atmospheric Chemistry & Physics*, 15, 2015.
- O’Neill, B. C., Tebaldi, C., van Vuuren, D. P., Eyring, V., Friedlingstein, P., Hurtt, G., Knutti, R., Kriegler, E., Lamarque, J.-F., Lowe,
600 J., Meehl, G. A., Moss, R., Riahi, K., and Sanderson, B. M.: The Scenario Model Intercomparison Project (ScenarioMIP) for CMIP6,
Geoscientific Model Development, 9, 3461–3482, <https://doi.org/10.5194/gmd-9-3461-2016>, 2016.
- Philipona, R.: Greenhouse warming and solar brightening in and around the Alps, *International Journal of Climatology*, 33, 1530–1537,
<https://doi.org/https://doi.org/10.1002/joc.3531>, 2013.
- Quimbayo-Duarte, J., Chemel, C., Staquet, C., Troude, F., and Arduini, G.: Drivers of severe air pollution events in a
605 deep valley during wintertime: A case study from the Arve river valley, France, *Atmospheric Environment*, 247, 118030,
<https://doi.org/10.1016/j.atmosenv.2020.118030>, 2021.
- Rasilla, D. F., Martilli, A., Allende, F., and Fernández, F.: Long-term evolution of cold air pools over the Madrid basin, *International Journal*
of Climatology, n/a, 1–19, <https://doi.org/10.1002/joc.7700>, 2022.
- Reeves, H. D. and Stensrud, D. J.: Synoptic-scale flow and valley cold pool evolution in the Western United States, *Weather and Forecasting*,
610 24, 1625–1643, 2009.
- Sabatier, T., Llargeron, Y., Paci, A., Lac, C., Rodier, Q., Canut, G., and Masson, V.: Semi-idealized simulations of wintertime flows and
pollutant transport in an Alpine valley. Part II: Passive tracer tracking, *Quarterly Journal of the Royal Meteorological Society*, 146, 827–
845, <https://doi.org/https://doi.org/10.1002/qj.3710>, 2020.
- Schmidli, J., Böing, S., and Fuhrer, O.: Accuracy of Simulated Diurnal Valley Winds in the Swiss Alps: Influence of Grid Resolution,
615 Topography Filtering, and Land Surface Datasets, *Atmosphere*, 9, <https://doi.org/10.3390/atmos9050196>, 2018.
- Schupfner, M., Wieners, K.-H., Wachsmann, F., Steger, C., Bittner, M., Jungclaus, J., Früh, B., Pankatz, K., Giorgetta, M., Reick, C., Legutke,
S., Esch, M., Gayler, V., Haak, H., de Vrese, P., Raddatz, T., Mauritsen, T., von Storch, J.-S., Behrens, J., Brovkin, V., Claussen, M.,
Crueger, T., Fast, I., Fiedler, S., Hagemann, S., Hohenegger, C., Jahns, T., Kloster, S., Kinne, S., Lasslop, G., Kornblueh, L., Marotzke,
J., Matei, D., Meraner, K., Mikolajewicz, U., Modali, K., Müller, W., Nabel, J., Notz, D., Peters, K., Pincus, R., Pohlmann, H., Pongratz,
620 J., Rast, S., Schmidt, H., Schnur, R., Schulzweida, U., Six, K., Stevens, B., Voigt, A., and Roeckner, E.: CMIP6 ScenarioMIP DKRZ
MPI-ESM1-2-HR ssp245 - RCM-forcing data, https://doi.org/10.26050/WDCC/RCM_CMIP6_SSP245-HR, 2020a.

- Schupfner, M., Wieners, K.-H., Wachsmann, F., Steger, C., Bittner, M., Jungclaus, J., Früh, B., Pankatz, K., Giorgetta, M., Reick, C., Legutke, S., Esch, M., Gayler, V., Haak, H., de Vrese, P., Raddatz, T., Mauritsen, T., von Storch, J.-S., Behrens, J., Brovkin, V., Claussen, M., Crueger, T., Fast, I., Fiedler, S., Hagemann, S., Hohenegger, C., Jahns, T., Kloster, S., Kinne, S., Lasslop, G., Kornblueh, L., Marotzke, J., Matei, D., Meraner, K., Mikolajewicz, U., Modali, K., Müller, W., Nabel, J., Notz, D., Peters, K., Pincus, R., Pohlmann, H., Pongratz, J., Rast, S., Schmidt, H., Schnur, R., Schulzweida, U., Six, K., Stevens, B., Voigt, A., and Roeckner, E.: CMIP6 ScenarioMIP DKRZ MPI-ESM1-2-HR ssp585_r1i1p1f1 - RCM-forcing data, https://doi.org/10.26050/WDC/RCM_CMIP6_SSP585-HR_r1i1p1f1, 2020b.
- Skamarock, W., Klemp, J., Dudhia, J., Gill, D., Liu, Z., Berner, J., Wang, W., Powers, J., Duda, M., Barker, D., and Huang, X.: A Description of the Advanced Research WRF Model Version 4, University Corporation for Atmospheric Research, near technical notes – ncar/tn-556+str edn., 2019.
- Tomasi, E., Giovannini, L., Falocchi, M., Antonacci, G., Jiménez, P. A., Kosovic, B., Alessandrini, S., Zardi, D., Delle Monache, L., and Ferrero, E.: Turbulence parameterizations for dispersion in sub-kilometer horizontally non-homogeneous flows, *Atmospheric Research*, 228, 122–136, <https://doi.org/10.1016/j.atmosres.2019.05.018>, 2019.
- Umek, L., Gohm, A., Haid, M., Ward, H. C., and Rotach, M. W.: Large-eddy simulation of foehn–cold pool interactions in the Inn Valley during PIANO IOP 2, *Quarterly Journal of the Royal Meteorological Society*, 147, 944–982, <https://doi.org/10.1002/qj.3954>, 2021.
- Whiteman, C. and Doran, J.: The Relationship between Overlying Synoptic-Scale Flows and Winds within a Valley., *Journal of Applied Meteorology*, 32, 1669–1682, [https://doi.org/10.1175/1520-0450\(1993\)032<1669:TRBOSS>2.0.CO;2](https://doi.org/10.1175/1520-0450(1993)032<1669:TRBOSS>2.0.CO;2), 1993.
- Whiteman, C. and McKee, T.: Breakup of Temperature Inversions in Deep Mountain Valleys: Part II. Thermodynamic Model., *Journal of Applied Meteorology*, 21, 290–302, [https://doi.org/10.1175/1520-0450\(1982\)021<0290:BOTIID>2.0.CO;2](https://doi.org/10.1175/1520-0450(1982)021<0290:BOTIID>2.0.CO;2), 1982.
- Whiteman, C. D.: Breakup of temperature inversions in deep mountain valleys: Part I. Observations, *Journal of Applied Meteorology*, 21, 270–289, 1982.
- Whiteman, C. D., Bian, X., and Zhong, S.: Wintertime Evolution of the Temperature Inversion in the Colorado Plateau Basin, *Journal of Applied Meteorology*, 38, 1103–1117, [https://doi.org/10.1175/1520-0450\(1999\)038<1103:WEOTTI>2.0.CO;2](https://doi.org/10.1175/1520-0450(1999)038<1103:WEOTTI>2.0.CO;2), 1999a.
- Whiteman, C. D., Zhong, S., and Bian, X.: Wintertime Boundary layer structure in the Grand Canyon, *Journal of Applied Meteorology*, 38, 1084–1102, 1999b.
- Whiteman, C. D., Hoch, S. W., Horel, J. D., and Charland, A.: Relationship between particulate air pollution and meteorological variables in Utah’s Salt Lake Valley, *Atmospheric Environment*, 94, 742–753, 2014.
- Yu, L., Zhong, S., and Bian, X.: Multi-day valley cold-air pools in the western United States as derived from NARR, *International Journal of Climatology*, 37, 2466–2476, <https://doi.org/10.1002/joc.4858>, 2017.
- Zelinka, M. D., Myers, T. A., McCoy, D. T., Po-Chedley, S., Caldwell, P. M., Ceppi, P., Klein, S. A., and Taylor, K. E.: Causes of Higher Climate Sensitivity in CMIP6 Models, *Geophysical Research Letters*, 47, e2019GL085782, <https://doi.org/10.1029/2019GL085782>, 2020.