

We would like to thank the reviewers for their constructive criticism to improve the manuscript. Original comments from the reviewers are in black and our responses are in red.

Reviewer 1:

This is a nice summary of what is known about natural sources of aerosols and their uncertainties. I recommend publication. I unfortunately was unable to get a copy of the Kok et al. 2023 preprint, so I could not check on many of the facts noted in this paper which were based on that paper. However, assuming it is well written, I have no problem with publishing this.

Thank you for your helpful comments. It is unfortunate that the Kok et al., 2023 review article was hard to get, but it is now available at:
https://jasperkok.files.wordpress.com/2023/07/kok_et_al_2023_nature_reviews_dust_impacts_on_climate.pdf

I note the follow which should be clarified:

Line 47: Van Marle et al 2017 is not in the reference list.

Thank you for this point: we add this paper to the reference list.

Line 72-74: point 1 mentions natural aerosol feedbacks, and this is repeated in point 2

We agree: we remove it from point 1.

Line 81: you mention “among others”, which made me think about DMS (sulfate), NO_x lightning (nitrate). Might be better to list a few of these, even though you don’t really discuss them in the paper.

We add in sulfate and NO_x as examples.

Line 133: process rather than processes? Or restate

We agree: process is correct.

Line 153: change “that is” to “that it is”

Changed.

Line 210: you mention the timescale in (ii) and again in (iii). If there is a different point you are trying to make, please explain.

We agree that it makes sense to mention timescale only in (iii).

Line 221-222: why do you conclude that it is best to treat the historical dust change as a forcing when you don't know whether it is due to a forcing or a feedback. This should be clearly argued as opposed to just saying it should be treated as a forcing when you don't know.

We try to rephrase this to be more clear by changing these lines to:

New lines 235-239:

Considering these important issues discussed above, we argue that model simulations should include historical dust changes as an external forcing for two reasons: 1) because it is unlikely that the anthropogenic forcing and the climate feedback components of the historical dust loading change can be reliably separated in the near future and 2) because climate models currently cannot reproduce the historical dust changes (Kok et al., 2023; Mahowald et al., 2010).

Line 931: should "ranges" be "range"?

Corrected.

Line 248: Reword/Expand on the explanation that much of anthropogenic radiative forcing is from fires and how this explains the large emission uncertainty from fires.

We try to clarify (new lines 263-267)

"If we sum the sources of uncertainty currently available in the literature ($\Sigma_{Fires}^{PD-PI} = 2.8 \text{ W/m}^2$ from fires, $\Sigma_{Dust}^{PD-PI} = 0.4 \text{ W/m}^2$ from dust (Hamilton et al., 2018; Wan et al., 2021; Kok et al., 2023) and here we assume a 10% error for industrial emissions for $\Sigma_{Industry}^{PD-PI} = 0.2 \text{ W/m}^2$ using Eq. (1), we obtain 2.8 W/m^2 , clearly dominated by fires (see Table 1 for terms). This is consistent also with attribution literature, which shows that much of the anthropogenic radiative forcing is from the biomass burning source (Figure 1a in Unger et al., 2010).

"

Line 311-313: I think you mean to say that estimates of anthropogenic aerosol radiative forcing today would be smaller. If I'm not correct, please explain more thoroughly.

We try to make this more clear:

New lines 331-334: "Thus, if we take the case of high wildfires in the preindustrial (-2 W/m^2 in Fig. 4), this could imply that estimates of aerosol radiative forcing from purely anthropogenic sources today which are large (-2 W/m^2) would be more likely; the 1850 to 2000 aerosol radiative forcing would be the same as assumed now, but the 1850 aerosol radiative forcing would already be large."

Line 961,962: the gold oval makes sense if you read the explanation for B) (i.e. the last glacial maximum had higher dust), but not if you look at the y-axis (the gold oval is not the present day/preindustrial or present day/last glacial maximum)

Agreed: we correct.

Line 353: change describe to described; also, why wouldn't increased knowledge reduce these uncertainties? Please clarify.

We try to be more clear:

New lines 375-377: “The uncertainties in emissions in PI are driving the uncertainties in PD-PI describe above and are about 2.8W/m^2 (Σ_{Emis}^{PI}): since these uncertainties are due to variability not a lack of information, increased knowledge is unlikely to reduce these uncertainties (only if the new studies show less variability). “

Line 401-402: are you missing a word? Or should “one of the largest aerosols” be “one of the largest uncertainties”

Agreed: “aerosols” should be “uncertainties”

Line 516: CACTI stands for Composition, Air quality, Climate inTeractions Initiative

Thank you, we correct.

Reviewer 2:

The authors highlight the uncertainties in evolution of aerosol radiative forcing, particularly due to aerosols from natural systems (using dust and wildfire as example) and review the current status of paleo observations to constrain past modeled aerosols and their radiative effects. They argue for dust and wildfire emissions to be considered as external forcing driving the climate system rather than as feedbacks. The primary premise of this paper to recognize and quantify the cascade of uncertainties in aerosols radiative effects beginning from emissions to radiative effects. I think this will be a very useful review for the community. I recommend publication after consideration of my comments below.

Thank you for your constructive suggestions.

L26: This may work in theory but we know that there is variation across models in the simulation of aerosols even with the same emissions dataset. How would good model-obs comparison of one model with one emissions dataset be reconciled with another model using another emissions dataset?

We agree with the reviewer. We propose that several Earth system models be used with several emission datasets. We don't think this clarification should be in the abstract, but add it into the conclusion more clearly.

New lines 538-541: “Several Earth system models should not only conduct ensemble members of one aerosol emission scenario, but also use multiple aerosol emission scenarios to better understand the uncertainty in aerosol radiative forcing and climate response due to the uncertainties in aerosol emissions in different time periods. “

L33-35: It would be helpful to cite the specific IPCC 2021 chapter(s) being referred to here and throughout the paper.

We actually are citing the summary for policymakers in the reference list, but we agree that the underlying chapters could be more useful to be cited directly, and have added the two IPCC state of the climate and short-lived chapter citations as suggested below.

L43-45: Following on from the previous sentence, it may be more logical to discuss uncertainties in these natural emissions and then relate to uncertainties in radiative forcing.

Good point. We rewrite the sentence as follows:

New lines 56-59: “On the other hand, the uncertainty in aerosol emissions that are usually considered natural, such as from dust storms or wildfires, are likely larger, and contribute to larger uncertainties in aerosol radiative forcing (Carslaw et al., 2010; Mahowald et al., 2011a; Regayre et al., 2018). “

L45-47 – This sentence is focused on past climates but is referencing Gidden et al which deals with future projections of emissions.

We remove reference to Gidden et al. and replace with Hoesly et al.

L50-59 – Note that most ESMs in CMIP6 include interactive representation of many natural aerosol emissions or their precursors (e.g., dust, DMS, sea-salt, BVOCs...). This implies that constraining models’ past emissions of natural aerosols would require constraining the parameterizations to the limited and uncertain paleo-observations. And it is possible that when constrained to paleo obs, these parametrizations may not represent the modern day emissions (as evaluated against current observations). It would be helpful if authors could shed light on this catch-22 situation.

This is a good point. We don’t think the introduction is the place to go into this, but added the following text in the forcer or feedback section:

New lines 331-335: “Since many models include prognostic schemes for dust, we propose that models add a temporally varying emissions factor obtained from constraints on the historical evolution of atmospheric dust deposition (e.g., Mahowald et al., 2010). This would enable models to both reproduce the historical change in dust, yet to also predict future changes in dust forced by climate and land use changes. A similar approach could be used for other natural aerosol emissions, such as from wildfires.”

And in the conclusion section when we talk about forcing the models to match observations:

New lines 662-665: “Note that many ‘natural’ aerosols are prognostic in the models (e.g. dust), and therefore to in order to match available scenarios, the prognostic aerosol schemes may require to be corrected using a temporally varying emission factor to simulate the correct temporal trends (e.g. Mahowald et al., 2010).”

L66-67 – My understanding is that attribution of forcing (or specifically climate change) is needed to inform climate change mitigation policies. It is therefore important to attribute the

radiative perturbations in aerosols to either natural processes or human activities. However, quantifying the extent of human modification of dust, wildfire or any naturally occurring process emissions is difficult and is largely uncertain (the authors note this difficulty on L180-L183). This then translates into large uncertainties in the attribution of forcing for natural system emissions perturbed by human activities. In principle, I agree with the authors' argument that forcing due to perturbations in any natural system emissions modified by human activities should be quantified but I am not convinced that we have reached a point in our state of knowledge to be able to do this without large uncertainties.

We agree completely with the reviewer, and this a main theme of this article. We add the following to the conclusions:

New line 679-681 "Any inability of existing models to simulate observations, as well as other remaining uncertainties, should be carefully assessed: it may not be possible for the models to simulate the observed changes."

L74 – note that the CMIP6 emissions did not include dust emissions

This is an important point that we think is covered by our response to the reviewer's comment about how to get prognostic aerosols to be 'forced'.

L99-100 – Note that there are proxies for other aerosols such as black carbon and sulphate assessed by Gulev et al. (2021) (section 2.2.6).

We add a reference to this section of the Gulev et al., 2021 chapter in lines 190, where we discuss the uncertainties also in fossil fuel sources and how few observations there are in Figure 2.9a and 2.9b to compare against available observations.

IPCC AR6 WGI Chapter 6 should be cited as Szopa et al (2021) here and throughout the paper.

We add a citation of these chapters.

L122-123 – What drove this large increase in dust – land use changes, climate change or both?

No one knows for sure: We discuss this in Section 3, so in order to not be repetitive we don't add it here.

L125-128: All models or a subset? There were a number of models that prescribed aerosol properties to capture the influence of aerosols on climate. These models presumably did not simulate dust.

Good point. We correct to:

New lines 160-164: "Unfortunately, the model simulations from the last Climate Model Intercomparison Project (CMIP6) that include prognostic dust do not match these changes, either because of the lack of

correct inclusion of the impact of land use onto dust, or incorrect simulation of the feedbacks of natural and anthropogenic climate changes onto dust (Fig. 1). Indeed, the CMIP6 models show relatively constant dust amounts in contrast to the large change that is observed (Kok et al., 2023).”

L148-153 – sentence is too long, revise. Define AEROCOM and provide a reference for the emissions dataset

We correct to:

New lines 185-190: Indeed, those fire models which include a more realistic representation of how fires and human population density are related simulate a much higher amount of fires during the pre-industrial (c. 1850) than the CMIP6 (or AEROCOM) emission dataset suggests (Hamilton et al., 2018; Hoesly et al., 2018; Dentener et al., 2006). Including larger past fire emissions in aerosol models also improves the match of simulated data to the available ice core data of the deposition ratio between present day to preindustrial of black carbon (yellow and red symbols) than using the default CMIP6 datasets (blue symbols) (Hamilton et al., 2018; Liu et al., 2021) (Fig. 2). This suggests that it is probable that there were more open fire emissions during the preindustrial than accounted for in the emission inventories used for CMIP6 simulations (Hoesly et al., 2018; van Marle et al., 2017).

L155 – is Gidden et al the correct reference here?

Thanks for pointing this out: we switch to Hoesley et al., 2018.

L159-160 – This reasoning is not clear to me – how could higher fire amounts during 1850 be due to less land use change? Wouldn't land-use require clearing of land and therefore more fires?

Yes, the text is unclear. We rewrite to:

New lines 221-224: “One study suggests that higher fire amounts in 1850 relative to today could be due to more land use change today than in 1850. In other words, today there is less natural area available for fires than 1850 (van der Werf et al., 2013) which is consistent with the decreased fire burn area observed over the satellite era (Andela et al., 2017).”

L172-174 – Please specify the IPCC 2021 chapter that assessed the radiative effect of fire aerosols to be -2 Wm^{-2} . Are there any uncertainties associated with this estimate? Ditto for IPCC 2019 and -1 Wm^{-2} .

The manuscript cited the SPM, but we add citations of the chapters as suggested by the reviewer. We clarify to:

Lines 233-237: In addition, wildfires and open fires represent some of the most important aerosols for direct and aerosol-cloud radiative effects, with a total radiative effect in the current climate of -2 W/m^2 (IPCC, 2021; Gulev et al., 2021; Szopa et al., 2021; Penner et al., 1992). Changes in wildfires and open fires represent about -1 W/m^2 or 50% of the anthropogenic aerosol radiative forcing since 1850, and all of these estimates have very large uncertainties (Unger et al., 2010; IPCC, 2019, 2021; Gulev et al., 2021; Szopa et al., 2021).

L189-192 – Although the radiative forcing due to changes in dust emissions is not explicitly accounted for, the IPCC assesses the influence of human activities on emissions and the large

associated uncertainties (section 6.2.2.4) – “In summary, there is high confidence that atmospheric dust source and loading are sensitive to changes in climate and land use, however, there is low confidence in quantitative estimates of dust emission response to climate change.”

We add this point:

New lines 285-288: “For instance, in the Sixth Assessment Report, the radiative perturbation due to the ~50% increase in dust over the historical record (Hooper and Marx, 2018; Mahowald et al., 2010; Kok et al., 2023) is not explicitly accounted for as a radiative forcing of the climate system, although the dust-climate feedback was quantified (Forster et al., 2021; Naik et al., 2021) and the report does highlight that there is substantial uncertainty in this feedback (Szopa et al., 2021).”

L223-225 – It would be also helpful to recommend a specific dust emissions dataset that the modelers could use to prescribe dust emissions. This could inform the CMIP7 process.

Good point. We point out in the conclusion, section a, the reference to Kok et al., for the dust, although as discussed before, this should be a combination of forcing and prognostic aerosol.

New lines 658-662: “Characterize historical uncertainties in aerosol and aerosol precursor emissions, using available knowledge of emissions, and how they might have changed. These estimates should include some versions which are consistent with available paleodata (e.g. for dust Kok et al., 2023; and for wildfires Hamilton et al., 2018 and Liu et al., 2021). “

L245-249 – It would be helpful to place the relevant citation next to the uncertainty estimate from the literature so that the source of these numbers is clear. What is the source of the 10% error for industrial emissions? Note that the Unger et al reference is now 13 years old...emission estimates have changed, models have changed. Any updates to that study?

We just assume 10% error: must be at least that. We move the parenthesis to make it more clear that there is no citation for that error estimate, but is just assumed here. We do not know of an update to Unger et al.

New lines 373-377: “If we sum the sources of uncertainty currently available in the literature ($\Sigma_{Fires}^{PD-PI} = 2.8 \text{ W/m}^2$ from fires, $\Sigma_{Dust}^{PD-PI} = 0.4 \text{ W/m}^2$ from dust (Hamilton et al., 2018; Wan et al., 2021; Kok et al., 2023) and here we assume a 10% error for industrial emissions for $\Sigma_{Industry}^{PD-PI} = 0.2 \text{ W/m}^2$ using Eq. (1), we obtain 2.8 W/m^2 , clearly dominated by fires (see Table 1 for terms). This is consistent also with attribution literature, which shows that much of the anthropogenic radiative forcing is from the biomass burning source (Figure 1a in Unger et al., 2010).”

254 – “...emission scenario for the historical period...” it would be better to replace scenario with another word to avoid confusion with future scenarios.

We disagree: we do not know what will happen in the future and we do not know what happened in the past. We need a term to indicate that, which scenario does. We add a clarification:

New line 394-396: “Note that here we use the same term ‘scenario’ for what happened in the past as what we use for choices in the future, to emphasize that we do not know these past emissions. “

L281 – Gidden et al should be replaced with van Marle et al (2017).

We agree: we correct this.

L402 – “aerosol uncertainties remain one of the largest aerosols in those times...” largest aerosols?

Corrected: should be uncertainties.

L511 – The success of the proposed AEROHISTMIP will depend on the availability of multiple emission realizations for the historical period. It would be helpful to provide some indication of how these datasets will be put together and who would be responsible for making the files available to the CMIP effort. Without this information, I don’t see this recommendation leading to a tangible action. Additionally, if specific simulations are being suggested, I would recommend adding them to the AerChemMIP2

(<https://airtable.com/shrtJ4jc08OEK7Vcq/tblAfxwzZTy4soluj>) effort rather than a new intercomparison.

It will actually take the community some time to come up with new emission datasets that span the whole observational uncertainty, although we have proposed here some ideas. It is beyond the scope of this paper to solve this problem. We add this point to the text.

New lines 670-671: “Note that developing these new emission pathways is likely to be beyond one or two group’s capabilities and thus may require a workshop or other community activity.”

L518-521 – This goes back to my earlier point, models vary in their representation of aerosol processes in part driven by lack of full understanding of the various processes that determine the evolution of their atmospheric burden and radiative effects. With such gaps in process understanding can we really characterize the reliability of models for aerosols? I think some thought needs to be given to this recommendation.

We clarify: if we are unable to constrain the past emissions well enough, we need to make sure that the uncertainties are accurately assessed and passed to the physical climate scientists.

New lines 680-681: “Any inability of existing models to simulate observations, as well as other remaining uncertainties should be carefully assessed.”

L542 – It is not clear if Hodzic et al is in preparation or submitted?

We clarify: it is submitted.

Figure 3 – It should be noted somewhere on the figure that Σ represents uncertainties to avoid confusion.

Excellent point: corrected.

Finally, the paper needs a thorough proof-read and editing to improve the quality of text.

Thank you for your helpful comments: we have carefully reviewed the text for errors.

References:

Please provide the full reference for Kok et al 2023 - Kok, J.F., Storelvmo, T., Karydis, V.A. *et al.* Mineral dust aerosol impacts on global climate and climate change. *Nat Rev Earth Environ* 4, 71–86 (2023). <https://doi.org/10.1038/s43017-022-00379-5>

We correct.

Gulev, S.K., P.W. Thorne, J. Ahn, F.J. Dentener, C.M. Domingues, S. Gerland, D. Gong, D.S. Kaufman, H.C. Nnamchi, J. Quaas, J.A. Rivera, S. Sathyendranath, S.L. Smith, B. Trewin, K. von Schuckmann, and R.S. Vose, 2021: Changing State of the Climate System. In *Climate Change 2021: The Physical Science Basis. Contribution of Working Group I to the Sixth Assessment Report of the Intergovernmental Panel on Climate Change* [Masson-Delmotte, V., P. Zhai, A. Pirani, S.L. Connors, C. Péan, S. Berger, N. Caud, Y. Chen, L. Goldfarb, M.I. Gomis, M. Huang, K. Leitzell, E. Lonnoy, J.B.R. Matthews, T.K. Maycock, T. Waterfield, O. Yelekçi, R. Yu, and B. Zhou (eds.)]. Cambridge University Press, Cambridge, United Kingdom and New York, NY, USA, pp. 287–422, doi:10.1017/9781009157896.004.

We add this reference.

Szopa, S., V. Naik, B. Adhikary, P. Artaxo, T. Berntsen, W.D. Collins, S. Fuzzi, L. Gallardo, A. Kiendler-Scharr, Z. Klimont, H. Liao, N. Unger, and P. Zanis, 2021: Short-Lived Climate Forcers. In *Climate Change 2021: The Physical Science Basis. Contribution of Working Group I to the Sixth Assessment Report of the Intergovernmental Panel on Climate Change* [Masson-Delmotte, V., P. Zhai, A. Pirani, S.L. Connors, C. Péan, S. Berger, N. Caud, Y. Chen, L. Goldfarb, M.I. Gomis, M. Huang, K. Leitzell, E. Lonnoy, J.B.R. Matthews, T.K. Maycock, T. Waterfield, O. Yelekçi, R. Yu, and B. Zhou (eds.)]. Cambridge University Press, Cambridge, United Kingdom and New York, NY, USA, pp. 817–922, doi:10.1017/9781009157896.008.

We add this reference.

Opinion: The importance of historical and paleoclimate aerosol radiative effects

Natalie Mahowald¹, Longlei Li¹, Samuel Albani², Douglas S. Hamilton³, Jasper F. Kok⁴

¹ Department of Earth and Atmospheric Sciences, Cornell University, Ithaca, NY, USA

² Department of Environmental and Earth Sciences, University of Milano-Bicocca, Milan, Italy

³ Department of Marine, Earth and Atmospheric Sciences, North Carolina State, Raleigh, NC, USA.

⁴ Department of Atmospheric Sciences, University of California, Los Angeles, CA, USA

Correspondence to: Natalie Mahowald (mahowald@cornell.edu).

Abstract. Estimating the past aerosol radiative effects and their uncertainties is an important topic in climate science. Aerosol radiative effects propagate into large uncertainties in estimates of how present and future climate evolves with changing greenhouse gas emissions. A deeper understanding of how aerosols affected the atmospheric energy budget under past climates is hindered in part by a lack of relevant paleo observations and in part because less attention has been paid to the problem. Because of the lack of information we do not seek here to determine the change in the radiative forcing due to aerosol changes, but rather to estimate the uncertainties in those changes. Here we argue that current uncertainties from emission uncertainties (90% confidence interval range spanning 2.8 W/m²) are just as large as model spread uncertainties (2.8 W/m²) in calculating preindustrial to current day aerosol radiative effects. There are no estimates for radiative forcing for important aerosols such as wildfire and dust aerosols in most paleoclimate time periods. However, qualitative analysis of paleoclimate proxies suggests that changes in aerosols between different past climates are similar in magnitude to changes in aerosols between preindustrial and current day, plus there is the added uncertainty from the variability in aerosols and fires in the preindustrial. From the limited literature we crudely estimate a paleoclimate aerosol uncertainty for the last glacial maximum relative to preindustrial of 4.8 W/m², and we estimate the uncertainty in the aerosol feedback in the natural Earth system over the paleoclimate (last glacial maximum to preindustrial) to be about 3.2 W/m²/°K. In order to more accurately assess the uncertainty in historical aerosol radiative effects, we propose a new model intercomparison project, which would include multiple plausible emission scenarios tested across a range of state-of-the-art climate models over the historical period. These emission scenarios would then be compared to the available independent aerosol observations to constrain which are most probable. In addition, future efforts should work to characterize and constrain paleo-aerosol forcings and uncertainties. Careful propagation of aerosol uncertainties in the literature is required to ensure an accurate quantification of uncertainties in projections of future climate changes.

Formatted: English (US)

Formatted: English (US)

Formatted: English (US)

Deleted: interacted with

Deleted: show

Deleted: just

Deleted: in

Deleted: times

Deleted: . The

Formatted: Superscript

Deleted: is estimated

Deleted: as a first estimate of the 90% confidence interval range.

Formatted: Superscript

Deleted:

Deleted: paleoaerosol

Deleted: consideration

Deleted: all the

45 1 Introduction

While CO₂ radiative forcing has been the most important driver of the observed climate warming, aerosol interactions with radiation and cloud properties represent the largest source of uncertainty in the Intergovernmental Panel on Climate Change (IPCC) estimates of present day to preindustrial radiative forcing (e.g. IPCC, 2021). This large uncertainty is driven by the heterogeneity of aerosols in space, time, composition, size and shape in the current climate, complexity in aerosol impacts on radiation and clouds, poor knowledge of aerosols in historical and past conditions, and how aerosol processes have changed over time (Albani et al., 2018; Bellouin et al., 2020; IPCC, 2021; Carslaw et al., 2017; [Gulev et al., 2021](#); [Szopa et al., 2021](#)). Substantial research emphasis has been placed on understanding the direct changes in emissions from human activities (e.g. fossil fuel combustion); these emissions are estimated based on many processes, including emission factors for different industries, estimates of the changes in location and intensity of different industrial facilities, as well as time dependent changes in technologies (e.g. Bond et al., 2007; Klimont et al., 2017). On the other hand, the [uncertainty in aerosol emissions](#) that are usually considered natural, such as from dust storms or wildfires, are [likely larger, and contribute to larger uncertainties in aerosol radiative forcing](#) (Carslaw et al., 2010; Mahowald et al., 2011a; Regayre et al., 2018). Because of limited paleo-observations, we currently rely on emission models that were calibrated using current observations and apply them to past climates, not only for industrial sources but also for wildfire and dust aerosols (Van Marle et al., 2017; Turnock et al., 2020; [Zhao et al., 2022](#)).

However, the dominant mechanisms for natural emission processes are unlikely to have remained constant over time, and thus using present day observations to constrain past model predictions is biased towards the present day and thus anthropogenic influenced aerosol behavior (e.g. Hamilton et al., 2018). We therefore advocate that past model simulations should, as much as possible, be constrained using paleoenvironmental archives of past aerosol. Note that for IPCC estimates, most models use the same emission dataset(s) to drive emissions meaning that the aerosol radiative forcing uncertainty estimates based on Climate Model Intercomparison Project (CMIP6) estimates tend to accurately represent the uncertainty due to model spread using the same emission dataset, but do not necessarily aim to include the uncertainty due to emission uncertainties ([Hoesly et al., 2018](#); Bellouin et al., 2020; Thornhill et al., 2020; Pincus et al., 2016), which are especially large in preindustrial or paleoclimate climates (Li et al., 2019; Kok et al., 2023).

Deleted:).

Deleted: radiative forcing due to changes

Deleted: sources

Deleted: arguably less well understood

Deleted: Gidden et al., 2019;

Deleted: Gidden

Deleted: 2019

Here we argue that an improved characterization of the evolution of ‘natural’ aerosols, especially dust and wildfire aerosols, is needed to improve our understanding of aerosol radiative effects over the historical and paleoclimate time periods. Before we can seek to constrain the uncertainties (e.g. Bellouin et al., 2020), we need to first characterize the different sources of uncertainties and their magnitude (Carslaw et al., 2017), especially emissions of natural aerosols (e.g. Hamilton et al., 2018; Kok et al., 2023), and propagate these uncertainties into the climate simulations. Additionally, we argue that radiative perturbations due to changes in natural aerosols that are affected by human actions, such as dust and wildfire aerosols, should be treated as a radiative forcing. Note that we use the IPCC glossary definition of radiative forcing, as the change in the top of atmosphere radiative balance due to the addition of a species (IPCC, 2021; Gulev et al., 2021; Szopa et al., 2021), and use the term radiative forcing instead of effective radiative forcing, for which the same arguments apply. In our discussion here, we include both direct effects and aerosol-cloud interactions, realizing that the largest uncertainties are often associated with aerosol-cloud interactions. We 1) discuss the limited available data constraining the changes in dust and wildfire aerosol emissions over the historical time period and how those compare to the CMIP6 emission datasets; 2) consider whether aerosols can be considered as feedbacks or forcings; 3) propagate the uncertainty in emissions of natural aerosols to create more realistic estimates of aerosol radiative effect uncertainties; 4) estimate for the uncertainties in aerosol radiative effects for paleoclimate time periods; 5) point out other sources of aerosol uncertainties and 6) the importance of accurate aerosol radiative effect uncertainties for climate science. Finally, 7) we propose a path forward to improve the characterization of the uncertainties in aerosol radiative effects, which would then allow us to start constraining the uncertainties with observations.

Deleted:

Deleted: 1)

Deleted: and whether natural aerosols can be considered climate feedbacks...

Deleted: propagating

Deleted: ,

Deleted: estimates

Deleted: ,

Deleted: .

2 Observations of natural aerosol changes since 1850

Natural aerosols include dust, wildfire emissions, sea salts and biogenic organic aerosols, among others (e.g. dimethyl sulfide, lightning NO_x). Aerosols such as dust or carbonaceous and sulfur species emitted by wildfires can be generated under natural conditions. As such, these aerosols can produce important feedbacks in a changing climate (Allen et al., 2016; Kok et al., 2018; Thornhill et al., 2021). However, some of these aerosols, notably dust and wildfire aerosols, are also directly or indirectly affected by human actions. For instance, dust emissions can be increased substantially both by human disturbance of the natural landscape and by anthropogenic diversions of surface water flows (Lee et al., 2012; Ginoux et al., 2012; Xi and Sokolik, 2016). Similarly, wildfire emissions can be increased by open fires set by humans as part of deforestation or agricultural practices (van der Werf et al., 2010). Additionally, natural wildfire emissions can be suppressed by human activity, for example active firefighting or removal of forests and grasslands due to agricultural and urban development (Knorr et al., 2014; Bistinas et al., 2013). As such, the radiative perturbation due to historical changes in these natural aerosols can be partially due

to both human-[induced land cover and](#) land use changes (a forcing) and natural and anthropogenic climate changes (a feedback).

2.1 Historical changes in desert and agricultural dust

125 While the global concentration of long lived and well-mixed species such as CO₂ can be retrieved from ice cores, aerosols in the troposphere have lifetimes of only a few days to two weeks (Textor and others, 2006), meaning that aerosol observations need to be available across the globe in dozens or hundreds of locations at a high temporal frequency before we can begin to build a reasonable understanding of their distribution and behavior. Unfortunately, for most aerosol species we do not have that kind of coverage for most time periods, including the present day (e.g. see spatial coverage in Naik et al., 2021). Dust is an exception in some respects, in that dust is preserved to some extent in several natural archives, and thus there are compilations of dust changes over different time periods. For paleoclimate conditions (e.g. the last glacial cycle, the Holocene, etc.) the main natural archives for dust include ice cores and marine and terrestrial (loess/paleosol) sediment records, for which paleodust compilations exist (e.g. Albani et al., 2015). [Most](#) of those natural archives do not have the potential to cover the last few centuries, including the late Holocene to preindustrial to modern transitions, due to issues with dating or disturbance of surface sediments (e.g. for many marine sediment records the core top is lost during retrieval and thus the last 100 or so years are not easily obtainable; loess provides the substrate for very fertile soils exploited for agriculture in the last millennia) (Maher et al., 2010). Other archives, such as in particular firn cores from the polar areas, ice cores from mountain glaciers, and ombrotrophic peat bogs, have the potential to preserve dust deposition records over the last decades/centuries, although they are still affected by major uncertainties when it comes to retrieving accurate deposition records (Albani et al., 2015). With these caveats in mind, there is still paleo data that can be compiled to infer the evolution of desert dust in different regions across the globe since the pre-industrial, [albeit with large uncertainties](#) (Kok et al., 2023).

145 Desert dust is generated in dry, [poorly-vegetated](#) regions with strong winds, and the generation of dust may be enhanced in regions with human land use (Ginoux et al., 2012). Between the 1960s and 1980s dust was observed to have changed by a factor of 4 over the North Atlantic region, perhaps due to expansion of land use, [precipitation](#) changes during the Sahel drought, or [changes in winds](#) (Mahowald et al., 2002; Prospero and Lamb, 2003; Evan et al., 2016). Paleoclimate evidence also suggests that dust [emissions are](#) very sensitive to both climate change as well as land use (Lambert et al., 2008; Neff et al., 2008; Mulitza et al., 2010).

Deleted: Because of their nature, most

Deleted: unvegetated

Deleted: due to

Deleted: due to

Deleted: is

A recent synthesis of dust deposition observations suggests a $55 \pm 30\%$ (90% confidence interval) increase in dust globally since preindustrial times (Kok et al., 2023). While there is not sufficient data for each source to have complete confidence in such estimates, they still represent our best knowledge of the state of changes in dust since 1850s. Unfortunately, the model simulations from the last Climate Model Intercomparison Project (CMIP6) that include prognostic dust do not match these changes, either because of the lack of correct inclusion of the impact of land use onto dust, or incorrect simulation of the feedbacks of natural and anthropogenic climate changes onto dust (Fig. 1). Indeed, the CMIP6 models show relatively constant dust amounts in contrast to the large change that is observed (Kok et al., 2023).

2.2 Historical changes in wildfire and open fires

Paleoenvironmental archives for wildfires and other open fires include charcoal records near the source regions (Marlon et al., 2008), ice cores (McConnell et al., 2007), tree ring scars, and speleothems. Wildfire is a natural ecosystem process but also susceptible to human influence (Bowman et al., 2009, Pechony and Shindell 2010). For example, while humans are responsible for many fire ignitions today, the conversion of natural landscapes to managed lands reduces the area available for wildfire to spread, before reaching a break in vegetation. In addition, humans may prematurely suppress or extinguish a fire once it starts, particularly in regions closer to urban development (Bowman et al., 2009; Kloster et al., 2010). Such contrasting influences on fire activity help highlight the complex interactions between humans and fire. Satellite observations over the last 20 years show a strong interannual variability in fire activity with 50% of the observed change in emissions correlated with climate signals, although human contributions could have played a vital role (van der Werf et al., 2006). The open fire emission data used for the CMIP6 uses data from satellites to predict emissions from 1997 onwards, however, prior to the Satellite fire Era the emissions are generated from several different fire models with some additional proxy evidence. These fire models include a range of representations of how fires have evolved since the Industrial Revolution but not all account for active or passive fire suppression by humans. Overall, this results in CMIP6 fire emissions increasing since 1850s (Van Marle et al., 2017). However, there is ample evidence that the relationship between human population growth, land use change, and fire activity may be much more nuanced. Paleoclimate data from charcoal records suggests a maximum in open fires in the 1850s, and a decrease since then (Marlon et al., 2008). Satellite data shows a global decrease in burned area over the last decades, driven primarily from the conversion of natural lands to agricultural and pastoral lands (Andela et al., 2017, Jones et al. 2022). Indeed, those fire models which include a more realistic representation of how fires and human population density are related simulate a much higher amount of fires during the pre-industrial (c. 1850) than the CMIP6 (or AEROCOM)

Deleted: The

Deleted: While wildfire

Deleted: processes, humans can modify the frequency and intensity of fires through many mechanisms

Deleted: Humans

Deleted: much of the ignition of fires

Deleted: but also convert land from

Deleted: land, reducing

Deleted: wildfires

Deleted: fires

Deleted: they start

Deleted: Observations

Deleted: from satellites

Deleted: changes

Deleted: observed

Deleted:). It has long been the assumption in the atmospheric chemistry and aerosol community that open fires have increased due to humans (Knorr et al., 2014; Bistinas et al., 2013).

Deleted: current

Deleted: limited

Deleted: with increasing human population density, and

Deleted:

Deleted:

emission dataset suggests (Hamilton et al., 2018; Hoesly et al., 2018; Dentener et al., 2006). Including larger past fire emissions in aerosol models also improves the match of simulated data to the available ice core data of the deposition ratio between present day to preindustrial of black carbon (yellow and red symbols) than using the default CMIP6 datasets (blue symbols) (Hamilton et al., 2018; Liu et al., 2021) (Fig. 2). This suggests that it is probable that there were more open fire emissions during the preindustrial than accounted for in the emission inventories used for CMIP6 simulations (Hoesly et al., 2018; van Marle et al., 2017).

Deleted: , and including these

Deleted: emission simulations

Deleted: PI

Deleted: Gidden

Deleted: 2019

Is it plausible that emissions from wildfires and other open fires, such as agricultural fires, could be so much larger in preindustrial times than currently being accounted for in climate model emission datasets? It is difficult to know for certain of course, but a few examples show the possibility, using different mechanisms. One study suggests that higher fire amounts in 1850 relative to today could be due to more land use change today than in 1850. In other words, today there is less natural area available for fires than 1850 (van der Werf et al., 2013) which is consistent with the decreased fire burn area observed over the satellite era (Andela et al., 2017). Other studies have suggested that wildfire suppression has been important for reducing fires in North America for example over the last 50 years (Marlon et al., 2012). In addition, agricultural open burning could be important; today, northern India represents the region with some of the highest aerosol optical depths and worst air quality (Li et al., 2022; Burnett et al., 2018). Despite the area having large population centers and industrial emissions, one of the largest sources in that region is agricultural burning (Cusworth et al., 2018). Similarly, the ban on straw burning, a primary source of pollutants in central and eastern China (Wu et al., 2018), has become a national policy for air pollution control, as in many other countries. This suggests that indeed, the high emission factors of open burning make it a very effective source of aerosols.

Formatted: Font color: Auto

Deleted: during

Deleted: less

Deleted: , reducing the

Formatted: Font color: Auto

Formatted: Font color: Auto

Formatted: Font color: Auto

Deleted: today

Deleted: causing a decrease in

Formatted: Font color: Auto

Formatted: Font color: Auto

Formatted: Font color: Auto

Formatted: Font color: Auto

Formatted: Font color: Auto

Formatted: Font color: Red

Deleted: wildfire

Deleted:).

In addition, wildfires and open fires represent some of the most important aerosols for direct and aerosol-cloud radiative effects, with a total radiative effect in the current climate of -2 W/m^2 (IPCC, 2021; Gulev et al., 2021; Szopa et al., 2021; Penner et al., 1992). Changes in wildfires and open fires represent about -1 W/m^2 or 50% of the anthropogenic aerosol radiative forcing since 1850, and all of these estimates have very large uncertainties (Unger et al., 2010; IPCC, 2019, 2021; Gulev et al., 2021; Szopa et al., 2021). The overall negative forcing results from the effect of an increasing aerosol burden increasing cloud albedo, and from the prevailing effects of preferentially scattering sulfates and particulate organic matter (secondary aerosol from fire emission of precursors such as biogenic volatile organic compounds), over the preferentially absorbing black carbon emissions from fires (Hamilton et al., 2018; Carslaw et al., 2017; Penner et al., 1992; IPCC, 2021; Gulev et al., 2021; Szopa et al., 2021).

Deleted:

Deleted:).

Deleted:).

In summary, trade-offs between the effects of climate change and land use make it difficult to estimate past changes in the loading of dust, and smoke from open fires. Changes in other aerosols (fossil fuels, biofuels, biogenic aerosols, sea spray), are difficult to estimate as well (e.g. Figure 2.9a and b in Gulev et al., 2021). Without observations of these aerosols in past climates, it is difficult to have confidence in our existing emission models and their past and future emissions projections.

Deleted: tradeoffs

Deleted: .

3 Are dust and other natural aerosols forcers or feedbacks?

The nomenclature that dust and wildfire aerosols are natural aerosols is perhaps misleading and might have caused the important changes that have occurred in these aerosols to receive insufficient consideration by climate scientists. For instance, in the Sixth Assessment Report, the radiative perturbation due to the ~50% increase in dust over the historical record (Hooper and Marx, 2018; Mahowald et al., 2010; Kok et al., 2023) is not explicitly accounted for as a radiative forcing of the climate system, although the dust-climate feedback was quantified (Forster et al., 2021; Naik et al., 2021) and the report does highlight that there is substantial uncertainty in this feedback (Szopa et al., 2021).

Deleted:).

There are several reasons why not explicitly accounting for the historical dust increase as a radiative forcing could be problematic. First, although the exact proportion of modern dust that can be considered anthropogenic is uncertain (Tegen et al., 2004; Mahowald, 2007; Ginoux et al., 2012; Stanelle et al., 2014), a large body of work indicates that human-induced land cover and land use changes in semi-arid and arid lands can produce a large increase in dust aerosol emissions (Neff et al., 2008; Webb and Pierre, 2018). Such land cover and land use changes have been widespread since the Industrial Revolution (Klein-Goldewijk, 2001) making it likely that a substantial part of the historical dust increase – perhaps even most of it – was driven by human-induced land cover and land use changes (Ginoux et al., 2012; Hooper and Marx, 2018; Kok et al., 2023), which thus constitutes a radiative forcing.

A second reason is that not accounting for the historical dust increase as a radiative forcing implicitly assumes that the historical dust increase has been due to a climate feedback. However, the dust change per degree global surface temperature warming is inconsistent between different time periods. Indeed, the dust increase during the planetary warming of the past century is opposite to what is seen in the paleo-record, for which cold periods like the Last

Deleted: why

Deleted: explicitly

Deleted: might be problematic is that this

Glacial Maximum (LGM) coincide with high dust loadings (Albani et al., 2014). Moreover, there is no model consensus on whether dust will increase or decrease under future climate warming, in part because of large uncertainties in how precipitation in arid regions will change (IPCC, 2019). This inconsistency in the dust change per unit global surface temperature warming could be due to a number of factors: (1) the historical dust increase was primarily driven by human land use changes, not climate changes; (2) the dust feedback is highly dependent on the climate state; or (3) the dust feedback occurs over much longer timescales than the observed ~century-scale dust increase. Whatever the reason, the fact that the dust change per unit surface temperature change is not consistent between different time periods undermines both the plausibility and the usefulness of classifying historical dust changes as a feedback in the context of future climate predictions.

Deleted: i

Deleted: ii

Deleted: either

Deleted: the timescale; or (iii)

The final, and most important, reason why not explicitly accounting for the historical dust increase as a radiative forcing might be problematic is that the dust increase indicated by dust deposition records (McConnell et al., 2007a; Mulitza et al., 2010; Mahowald et al., 2010; Hooper and Marx, 2018) is not captured by climate models (Kok et al., 2023) (Fig. 1). These models therefore also predict a dust-climate feedback that is indistinguishable from zero (Thornhill et al., 2021; Kok et al., 2023). As such, not explicitly accounting for dust changes as a radiative forcing has the net effect of omitting this potentially important perturbation to Earth's energy balance. This can bias climate sensitivity constraints and projections of future climate changes (Kok et al. 2023).

Deleted: Finally

Deleted: importantly,

Deleted: in dust

Deleted: is

Considering these important issues discussed above, we argue that model simulations should include historical dust changes as an external forcing for two reasons: 1) because it is unlikely that the anthropogenic forcing and the climate feedback components of the historical dust loading change can be reliably separated in the near future, and 2) because climate models currently cannot reproduce the historical dust changes (Kok et al., 2023; Mahowald et al., 2010). Since many models include prognostic schemes for dust, we propose that models add a temporally varying emissions factor obtained from constraints on the historical evolution of atmospheric dust deposition (e.g., Mahowald et al., 2010). This would enable models to both reproduce the historical change in dust, yet to also predict future changes in dust forced by climate and land use changes. A similar approach could be used for other natural aerosol emissions, such as from wildfires.

Deleted: Because

Deleted: component

Deleted: component

Deleted: , the best remedy to this problem would be for future climate assessments to explicitly treat the historical dust change as a radiative forcing. Furthermore,

Deleted:), we also recommend that climate models use a dust reconstruction to externally force the historical dust increase

However, when models do treat changes in aerosols as feedbacks, the full uncertainty in the feedback should be included. For example, from this analysis, the feedback uncertainty should be +/- 1.6 W/m² uncertainty from

Deleted: If

Deleted: are considered

preindustrial to current (see Section 4), over which time [the global surface](#) temperatures increased by about 1/°K, so that means an uncertainty in the feedback of +/- 1.6 W/m²/°K (90% confidence).

345 4 Characterizing preindustrial to current aerosol forcing uncertainty

Since CMIP6 aerosol simulations are not consistent with available observations for dust and open fires, it is clear that additional uncertainty needs to be added to the aerosol radiative forcing estimates for the preindustrial to present day in order to make sure that the uncertainty [ranges include](#) available observations. This is a substantial 350 undertaking, but here we show schematically a back-of-the-envelope calculation of how including the observations would affect estimates of aerosol radiative forcing uncertainty (Fig. 3).

We use here a slightly different nomenclature than [Sherwood et al., \(2020\)](#) for example, to emphasize the uncertainties in radiative forcing, without introducing too much nomenclature, and thus define ΔF as the change in 355 radiative forcing between two different times, and Σ is the uncertainty in that estimate using the 90% confidence intervals.

If we sum the sources of uncertainty currently available in the literature ($\Sigma_{Fires}^{PD-PI} = 2.8 \text{ W/m}^2$ from fires, $\Sigma_{Dust}^{PD-PI} = 0.4 \text{ W/m}^2$ from dust [\(Hamilton et al., 2018; Wan et al., 2021; Kok et al., 2023\)](#) and here we assume a 360 10% error for industrial emissions for $\Sigma_{Industry}^{PD-PI} = 0.2 \text{ W/m}^2$ using Eq. (1), we obtain 2.8 W/m², clearly dominated by fires [\(see Table 1 for terms\)](#). This is consistent also with attribution literature, which [shows that](#) much of the anthropogenic radiative forcing is from [the biomass burning](#) source [\(Figure 1a in Unger et al., 2010\)](#).

$$\Sigma_{Emis}^{PD-PI} = [(\Sigma_{Fires}^{PD-PI})^2 + (\Sigma_{Dust}^{PD-PI})^2 + (\Sigma_{Industry}^{PD-PI})^2]^{1/2}, \quad (1)$$

365 The uncertainty in radiative forcing from uncertainty in preindustrial emissions ($\Sigma_{Emis}^{PD-PI} = 2.8 \text{ W/m}^2$) is similar in magnitude to the uncertainty from using one emission scenario for the historical time period (2.8 W/m² which is the unconstrained model uncertainty using 90% confidence intervals) (Bellouin et al., 2020; Sherwood et al., 2020), which we refer to here as the unconstrained aerosol process uncertainty for present day to preindustrial ($\Sigma_{Process}^{PD-PI}$). 370 The model spread in radiative forcing with the same emission scenario is due to differences in model simulations of concentration, radiation and cloud interactions using the same emission change, which are large, because these

Deleted: range includes

Deleted: (

Moved (insertion) [1]

Deleted: a10

Moved up [1]: 2018; Wan et al., 2021; Kok et al.,

Deleted: (Hamilton et al.,

Deleted: 2023)

Deleted: makes sense, since

Deleted: this

Deleted:) (see Table 1 for terms

processes are poorly understood (Li et al., 2022; Pincus et al., 2016). Note that here we use the same term ‘scenario’ for what happened in the past as what we use for choices in the future, to emphasize that we do not know the emissions. The models make different assumptions about aerosol lifetime, size distribution, aerosol microphysics, which results in different radiative forcings, so we assume this spread in models is the uncertainty in processes

385 $(\Sigma_{Process}^{PD-PI})$, which is 2.8 W/m^2 . One could also think of this uncertainty in the process as coming from two sources: variability in present day processes in simulating aerosols (e.g. that radiative forcing is sensitive not just to the total emissions, but also to where, what kind and what else is in the region (Li et al., 2022; Bellouin et al., 2020) and one part that is proportional to the strength of the change in aerosols, which could be proportional to the change in radiative forcing (ΔF) times some factor γ (Eq. 2).

Formatted: Superscript

$$\Sigma_{Process}^{PD-PI} = [(\Sigma_{Process}^{PD})^2 + (\Delta F * \gamma)^2]^{1/2}, \quad (2)$$

We propose that future studies should identify the strength of the base uncertainty ($\Sigma_{Process}^{PD}$) and the portion of this process uncertainty that is proportional to the strength of the change in the radiative forcing $((\Delta F * \gamma)^2)$.

395 The total unconstrained uncertainty due to aerosol changes could be estimated as being 4 W/m^2 using equation 3, assuming the uncertainties are orthogonal (Eq. 3).

$$\Sigma_{TotalUNC}^{PD-PI} = [(\Sigma_{Process}^{PD-PI})^2 + (\Sigma_{Emis}^{PD-PI})^2]^{1/2}, \quad (3)$$

Emissions from industry (which are likely better known) have been increasing since 1850 in the CMIP6 simulations from which we estimated the aerosol radiative forcings. But aerosol from wildfires have also been increasing during this historical period in these simulations (van Marle et al., 2017). As discussed in Section 1, the paleoclimate data (and fire models which explicitly account for passive fire suppression effects of land use change) suggest that open fires have been decreasing since 1850, potentially offsetting the increase in industrial emissions (Fig. 4b). In contrast, the CMIP6 wildfire emissions assume large increases since 1850 in wildfires and open fires (Van Marle et al., 2017). This produces a large uncertainty in the time series of aerosol forcing over the historical period.

410 Notice that since wildfire emissions can vary strongly over a couple of years or decades (van der Werf et al., 2004),

Deleted: Gidden

Deleted: 2019

it should not be assumed (without observations) that the radiative forcing from wildfires follows either the top or the bottom of the error bar, but rather could vary from one year to the other over the whole range.

415

Some of the difficulty of looking at preindustrial to present day aerosol changes is simply understanding what ‘natural’ aerosols would look like without humans. Unfortunately, there are strong fluctuations across the time period just before the industrial era (e.g. 1500-1850) in fires (Fig. 5), some potentially associated with humans (e.g. perhaps the increase in 1850 and decrease after this time period), but a large change during the little ice age suggests that climate change can radically change the fires (van der Werf et al., 2013). While the IPCC has used 1850 to 1900 as the preindustrial period for climate simulations (e.g. Allen et al., 2018), for aerosols this is not an ideal time period, as it is likely that aerosols are already elevated due to anthropogenic activities during this time period, while 1750 could be better, although still part of the little ice age. The issue of what is the right baseline for preindustrial aerosols is important also for considering paleoclimates (Section 5). As shown in Fig. 3 and 5, the uncertainty in preindustrial to present day emission changes in aerosols is driven by preindustrial emission uncertainties, which is partly associated with variability across the preindustrial time period.

420

425

There are, of course, constraints on present day radiative effects from aerosols from satellites and other tools, which can constrain the last 30-40 years (e.g. Bellouin et al., 2020). And there are energy constraints on the present day to preindustrial change in aerosol radiative forcing using energy balance constraints (Smith et al., 2021; Sherwood et al., 2020) which result in an 57% reduction in the uncertainty using fixed emissions ($\Sigma_{Const_Process}^{PD-PI}=1.6 \text{ W/m}^2$). Unconstrained emission uncertainties and unconstrained process uncertainties have yet to be combined in a rigorous method like Bellouin et al. (2020) did for process uncertainties (in that study they assume that emissions are well known), but this should be done in the future. Adding in the uncertainties in emissions, especially from wildfires, would mean that while directly emitted anthropogenic aerosols are going up (as estimated in CMIP6), wildfire emissions may be going down. The wildfire aerosols resulting from these emissions would thus partially offset the radiative cooling from the increase in anthropogenic aerosols. Thus, if we take the case of high wildfires in the preindustrial (-2 W/m^2 in Fig. 4), this could imply that estimates of aerosol radiative forcing from purely anthropogenic sources today which are large (-2 W/m^2) would be more likely; the 1850 to 2000 aerosol radiative forcing would be the same as assumed now, but the 1850 aerosol radiative forcing would already be large. This would have important implications for climate warming over the next few decades, as anthropogenic emissions of aerosols are likely to decrease, leading to more warming than projected without including preindustrial aerosol emission uncertainties.

430

435

440

Deleted: anthropogenic

445

5 Characterizing paleoclimate aerosol forcing uncertainty

Unfortunately, except for dust or wildfires in certain time periods (Albani et al., 2015; Power et al., 2007; Zennaro et al., 2014; Marlon et al., 2008), there is very little information about the distribution or amount of aerosols in different climate regimes, and therefore we do not know the emissions well, nor then the impact of those emissions onto climate. We can envision these uncertainties are mostly unknown unknowns. We have some information that they are likely to be large (since aerosol uncertainties today are so large, and we know less about paleoclimate aerosols), but we cannot yet directly constrain these. We do know that there were large fluctuations: for example, dust was likely 2-4x higher in the last glacial maximum than today (Lambert et al., 2015; Mahowald et al., 1999; Albani et al., 2014; Albani and Mahowald, 2019), while between preindustrial and present day, the change is smaller at only approximately 2x (Kok et al., 2023) (Fig. 6). For dust, we have estimates at the LGM and 6000 bpa (Albani and Mahowald, 2019; Albani et al., 2014), which suggest that the changes in radiative forcing could be on the order of 0 to -2 W/m² (Albani et al., 2018), although studies using carefully compared dust optics show smaller radiative forcings, because dust both absorbs and reflects both short and long wave radiation (Albani and Mahowald, 2019; Braconnot et al., 2021).

But changes between preindustrial and present day aerosol radiative forcings are dominated by changes in fires (Section 1 and 2): are these changes are large in the paleodata as seen in the last 150 years? The limited paleodata suggests large changes in fires during different time periods in the past (Fischer et al., 2015; van der Werf et al., 2013; Zennaro et al., 2014; Arienzo et al., 2017). For example, in considering cold periods like the last glacial maximum, there is likely a large reduction in fires in high latitudes, due to the presence of the Laurentide and Fenno-Scandinavian icesheets, which is consistent with fire proxies in Greenland ice cores (e.g. the ammonium record for the North Greenland Ice core Project (Fischer et al., 2015) . Generally, the charcoal record suggests lower fire frequency in the last glacial maximum than preindustrial (Marlon et al., 2016), although ice sheets could have removed sediment records of wildfires (Fig. 6). For climate impacts, the low and mid latitude fires tend to be more important today (Hamilton et al., 2018), so more information on the frequency and extent of wildfires in those regions are the most important, and difficult to retrieve from ice cores. The changes seen in wildfires between preindustrial and for example, last glacial maximum are as large if not larger than those seen between preindustrial and present day (Fig. 6). These studies suggest qualitatively that the changes we have seen in fires over the preindustrial to present day are not unprecedented in size, but rather are similar to paleoclimate changes.

Deleted: last glacial maximum (

Deleted:)

In addition, paleoclimate data such as temperature changes or aerosol changes are done relative to preindustrial changes, and as discussed in Section 2, and shown in Fig. 5, there is substantial variability in preindustrial fires. It is unclear what value to use for preindustrial aerosol emissions to compare to paleodata values: do we use 1850 values or values from the little ice age? Or some average? One can think of the variability in changes in emissions between some time (T) and PI as being shown in Equation 4. The uncertainties in emissions in PI are driving the uncertainties in PD-PI describe above and are about 2.8W/m^2 (Σ_{Emis}^{PI}): since these uncertainties are due to variability not a lack of information, increased knowledge is unlikely to reduce these uncertainties (only if the new studies show less variability). In addition, the changes in emissions between PI and any other time period are likely to be similarly large, but may not be orthogonal (Σ_{Emis}^T). Adding these together (using Eq. 4), we obtain $\Sigma_{Emis}^{T-PI}=4.0\text{W/m}^2$. Note that the uncertainties in emissions proposed here for different time periods could be constrained to some extent (Σ_{Emis}^T), but uncertainties due to the variability in PI emissions (Fig. 5) would be difficult to constrain, and there may be substantial variability as well as uncertainty in emissions during different time periods, so the values proposed here may actually underestimate the uncertainty.

$$\Sigma_{Emis}^{T-PI} = [(\Sigma_{Emis}^{PI})^2 + (\Sigma_{Emis}^T)^2]^{1/2}, \quad (4)$$

Once we have paleoproxies to provide data about changes in fire emissions, especially, we can constrain the emission uncertainties for paleo time periods relative to present day, hopefully. Unfortunately knowing the emissions does not translate into knowing the radiative forcing in past times, as we known from our experience simulating preindustrial to present day emission changes in existing models using the same emissions (Bellouin et al., 2020). There are uncertainties of translating these changes in emissions into changes in direct radiative and aerosol-cloud interactions or process uncertainties, which we assume here, since we do not have better information, that these are a similar size to present day to preindustrial uncertainties ($\Sigma_{Process}^{PD-PI}=\Sigma_{Process}^{T-PI}= 2.8\text{W/m}^2$). These uncertainties are due to differences in the modeling of aerosols, and assumptions about size and how aerosols interact with clouds which can be different depending on where the aerosols are emitting: this uncertainty will remain in paleoclimates, and might even become larger, since the aerosol size, composition and mixing state could be quite different and the very important impact of aerosols onto clouds is sensitive to the background conditions (Carslaw et al., 2017). Fires from different ecosystems, or even different types of fires in the same ecosystems,

Deleted: from

Deleted: .

510 have very different emissions of black carbon, organic carbon and sulfate, and thus different effects, but we do not know how these will change in different time periods. Natural aerosols are the source of much the uncertainty in today's climate compared to anthropogenic aerosols, because of the difficulty of estimating the exact timing and distribution of emissions, as well as the sources are more complicated in composition and location (e.g. Mahowald et al., 2011b; Carslaw et al., 2017; Rathod et al., 2020). Similar to the present day relative to preindustrial, we can estimate the paleotime to preindustrial radiative forcing uncertainty using equation 3 and obtain 4.8 W/m^2 as the range of uncertainty for paleotime periods. (Notice that if we can constrain the change in radiative forcing from changing emissions of aerosols to be smaller than that between preindustrial and present day, using observations and equation 2, it is possible we could proportionately reduce the uncertainty in radiative forcing from aerosols from process uncertainties, see equation 2.) Converting this radiative forcing uncertainty into a feedback uncertainty requires knowing the temperature change, which is also uncertain, but if we use 3C as a reasonable value, the aerosol feedback uncertainty derived from the last glacial maximum to PI is $\pm 1.6 \text{ W/m}^2/\text{K}$, similar to the value derived from the PD-PI time period. If we add in the uncertainty in temperature change between preindustrial and last glacial maximum, this estimate would be even larger, of course.

Deleted: the

525 It seems likely that aerosol emissions from fires during the last glacial maximum are much smaller than preindustrial or present day values, while estimates suggest dust is $\sim 3\text{x}$ larger in the last glacial maximum than the present day. Will these changes in aerosols balance out? That is unlikely but vital to consider. Dust is by mass the most important aerosol in the atmosphere, and contributes substantial to direct forcing and ice nucleation processes, but fire emissions are important for liquid aerosol-cloud processes (Mahowald et al., 2011a; Carslaw et al., 2010). Because of the non-linearity in aerosol-cloud interactions, small changes in fire emissions in pristine environments, like the last glacial maximum, might be even more important than estimated here (Carslaw et al., 2017). Understanding the aerosol interactions with clouds especially for the last glacial maximum is both important and intriguing.

Deleted: observations

535 Since today the largest uncertainties in the radiative forcing come from aerosol uncertainties, estimates in past climates should ensure that aerosol uncertainties remain one of the largest uncertainties in those times as well: how could we know the change of aerosols from some paleoclimate to preindustrial better than we know the change in aerosol forcing between preindustrial to present day? If ice sheets or insolation or continental distributions are different and causing large changes in top of atmosphere fluxes and thus climate regime, most likely aerosol changes are equally large, but we do not know in what direction. More analysis might result in even larger changes

Deleted: aerosols

in radiative forcing and its uncertainty in some time periods, since here we are assuming, without prior information, that the radiative forcing of any paleotime period relative to preindustrial is around 0.0 W/m^2 . For the LGM, for example, if we only include dust, a more negative value should be chosen as the mean, since we have evidence of increased dust in the paleorecord (Albani et al., 2018). On the other hand, the limited data suggests that fires have substantially decreased relative to preindustrial, which would warm the climate. It is beyond the scope of this opinion piece to characterize the central estimate, but rather here we just point out the many uncertainties in these estimates.

6 Aerosol processes and other sources of uncertainty

So far here we have focused on the more frequently studied processes of aerosol direct radiative effects, and aerosol-cloud interactions with an emphasis on cloud condensation nuclei. However there remain substantial uncertainties in these aerosol radiative effects even in the current climate (Bellouin et al., 2020; Li et al., 2022). Aerosols are spatially and temporally heterogeneous in composition, size and amount, leading to vastly different physical and chemical properties. They are in general poorly observed compared to meteorological phenomenon (e.g. Naik et al., 2021). Not only the bulk composition matters but the details of the mixing state and size are vital for radiative and cloud interactions (Matsui et al., 2018; Bond et al., 2013; Li et al., 2022, 2021). In addition, in preindustrial times, the impact of aerosols, for example on cloud properties, can be different than present day because of a lower background aerosol amount (Carslaw et al., 2017; Hamilton et al., 2014).

The impacts of large changes in important ice nuclei such as dust or primary biogenic particles is likely to be large but has yet to be fully assessed (Burrows et al., 2013; Murray et al., 2021; Storelvmo, 2017). Another important feedback that is relatively well known but not included in most climate models is due to nitrogen aerosols such as ammonium or nitrate (e.g. Bauer et al., 2007; Paulot et al., 2016). Future concentrations of aerosols deriving from land use practices such as ammonia or nitrate are not likely to decrease as quickly as from fossil fuels (Gidden et al., 2019). Indeed, as sulfate is phased out, more nitric acid will form nitrate aerosols (due to higher pH), partially buffering decreases in aerosol AOD (Paulot et al., 2016; Pye et al., 2009). Including better parameterizations of ice nucleating particles and nitrogen aerosols is key to improving future aerosol projections.

In addition, aerosols can provide nutrients and pollutants to different ecosystems (Mahowald et al., 2017; Hamilton et al., 2021), linking aerosol changes to changes in biogeochemistry and the carbon cycle. These effects could

potentially be quite large ($0.5 \text{ W/m}^2 \pm 0.4 \text{ W/m}^2$) (Mahowald, 2011), but are poorly constrained, and do not explicitly appear in the standard radiative forcing diagram, since they reflect CO_2 that is not in the atmosphere, but could have been (Mahowald, 2011).

Deleted: +/-

580

Another natural emission to which estimates of radiative forcing are sensitive to is biogenic volatile organic compound emissions (BVOCs). BVOCs are a major source of new aerosol particles in the atmosphere. (Guenther et al., 2006; Arneth et al., 2010). Furthermore, biogenic particle formation processes contributed more to the aerosol burden in the PI than the PD (Gordon et al., 2016). Estimates of the radiative forcing of BVOC are sensitive to how well characterized new particle formation processes are in a model. The recent addition of an organic particle formation pathway, which occurs in the absence of SO_2 (such the PI), results in an increased aerosol burden in the past than the present. Once more increasing the PI aerosol burden reduces the estimate of the aerosol forcing over the historical period, this time by reducing the cloud forcing by $\sim 0.2 \text{ W/m}^2$ (Zhu et al., 2019).

585

590 7 Implications of including uncertainty in emissions in radiative forcing estimates

Aerosol radiative forcing and its uncertainty is used extensively in climate change science, including to constrain climate sensitivity (Sherwood et al., 2020) and thereby future climate changes (IPCC, 2021; Gulev et al., 2021; Szopa et al., 2021). Because the published aerosol uncertainties tend not to include poorly constrained uncertainties such as discussed here, this information is not effectively passed to physical climate scientists who use these estimates. For example, a recent review of climate sensitivity (Sherwood et al., 2020) focused on using independent methods to reduce uncertainty in climate sensitivity. In that paper, aerosol radiative forcing uncertainties for different time periods are mentioned in several different places. They use the unconstrained model range of the aerosol radiative forcing obtained by (Bellouin et al., 2020), which as discussed above, does not account for emission uncertainties. Paleoclimate constraints are often used for constraining climate sensitivity, as discussed in (Sherwood et al., 2020). Currently there exist estimates for dust aerosol radiative forcing changes between last glacial maximum and current, which is included in (Sherwood et al., 2020) as $-1.0 \pm 1.6 \text{ W/m}^2$ (90% confidence intervals: they report 1 sigma values of $\pm 1 \text{ W/m}^2$ in Section 5.2.2 which are converted to 90% confidence here by multiplying by 1.6 as a first estimate) but no mention is made of the potential for changes in the more important wildfires. As discussed in Section 4, estimates for radiative forcing of aerosols for paleotime periods especially wildfires are missing, but should be estimated to be $0.0 \pm 2.4 \text{ W/m}^2$ (90% confidence interval). In addition, the aerosol feedback within the system is assumed in Sherwood et al., 2020 to have an uncertainty of $\pm 0.22 \text{ Wm}^2$

600

605

(they report 1 sigma values of +/-0.15 W/m² in section 3.2 which here we convert to 90% confidence intervals) whereas here we estimated the aerosol feedback uncertainty to be +/-1.6 W/m² (90% confidence), substantially larger. Including more realistic aerosol uncertainties into estimates of climate sensitivity should be done to ensure adequate propagation of errors, although they are unlikely to change the central estimates (Sherwood et al., 2020).

In addition, some authors argue that there were not significant changes in aerosol radiative forcing during the 1970s and 1980s, using standard CMIP6-type estimates, and try to estimate climate sensitivity in this time period (Jiménez-de-la-Cuesta and Mauritsen, 2019). As noted above, however, the 1970s is a time period of the Sahel drought, and dust radiative forcing between 1960s and 1980s changed by perhaps -0.57 +/- 0.46 W/m² (Mahowald et al., 2010), suggesting that is not an ideal time period to target. One should add onto this estimate the possibly important changes in wildfires which could have occurred over this time period but for which we do not have data.

In addition to climate sensitivity, some studies use the CMIP6 simulations to constrain past aerosol radiative forcing changes (e.g. Smith et al., 2021). Since the simulations do not include different spatial and temporal uncertainties in emissions, they are not including the real uncertainty in the aerosol forcing. Other studies use CMIP6 or similar simulations to attribute the change in temperatures or precipitation to different forcings (e.g. Biasutti and Giannini, 2006; Undorf et al., 2018; Hegerl et al., 2019), and these attempts to attribute changes could be based on a poor representation of the real uncertainty in the preindustrial of the aerosol forcing. Aerosol radiative forcing uncertainty cannot be constrained easily by [global surface](#) temperature time series, since other uncertainties can be difficult to pull apart from aerosol uncertainties (Kiehl, 2007; Lee et al., 2016).Attributing climate at a regional scale is the next frontier of detection and attribution, but this cannot be done without accurate aerosol histories (Lehner and Coats, 2021).

In summary, we argue that it is critical that the full uncertainty deduced in the aerosol literature, including due to changes in natural aerosols, be passed to physical climate scientists so that they can accurately account for these in constraints on climate sensitivity and in projections of future climate changes.

8 Conclusions: Pathway to improve historical and paleoclimate characterization of uncertainties

How can we address the systematic underestimate in the uncertainty of changes in aerosol radiative effects between different time periods? Here we propose some steps towards first characterizing the true uncertainties, including

640 emission uncertainties, and then using observations to constrain these aerosol pathways to constrain the radiative forcing and uncertainties.

645 a. Characterize historical uncertainties in aerosol and aerosol precursor emissions, using available knowledge of emissions, and how they might have changed. These estimates should include some versions which are consistent with available paleodata (e.g., for dust Kok et al., 2023; and for wildfires Hamilton et al., 2018 and Liu et al., 2021). The uncertainties from emissions should be combined with uncertainties in aerosol processes to create a more robust uncertainty bound for different time periods. Note that many ‘natural’ aerosols are prognostic in the models (e.g. dust), and therefore to in order to match available scenarios, the prognostic aerosol schemes may require to be corrected using a temporally varying emission factor to simulate the correct temporal trends (e.g. Mahowald et al., 2010).

650 b. Characterize paleoclimate emissions of aerosols and the resulting radiative forcing at important past climates, such as last glacial maximum and last interglacial. These estimates should be based as much as possible on observations, and possible ranges.

655 c. We propose a new intercomparison project (AEROHISTMIP) which would include multiple emission pathways in the historical model simulations conducted for CMIP exercises. Note that developing these new emission pathways is likely to be beyond one or two group’s capabilities and thus will require a workshop or other community activity. Several Earth system models should not only conduct ensemble members of one aerosol emission scenario, but also use multiple aerosol emission scenarios to better understand the uncertainty in aerosol radiative forcing and climate response due to the uncertainties in aerosol emissions in different time periods. The evolution of several related past model intercomparison projects under one umbrella (e.g. Composition, Air quality, Climate inTeractions Initiative: CACTI) provides the ideal opportunity now to include such simulations.

660 d. Constrain preindustrial to present day aerosol radiative effects. From (c), combined with observations (a), the most likely past emissions scenarios can be identified, and we can make the first steps towards constraining uncertainty, similar to the efforts underway to characterize which of the climate models are most reliable (e.g. IPCC, 2021). Any inability of existing models to simulate observations, as well as other remaining uncertainties, should be carefully assessed: it may not be possible for the models to simulate the observed changes.

670 e. Obtain more paleoclimate proxies for aerosol concentrations. Here we have focused mostly on wildfires and dust, since there is enough paleoclimate data to show that CMIP6 does not represent historical changes in

Deleted: Some

Deleted: resulting

Deleted: to likely

Deleted: Cloud Aerosol and Terrain Interactions

675 these aerosols well, but indeed it is not possible currently to validate the changes in emissions for other natural
(e.g., sea spray) and anthropogenic (e.g., sulfate) aerosols as well. We need the development of more proxies
for historical and paleoclimate changes in aerosols to increase confidence in our estimates of aerosol radiative
forcing.

f. Continue to improve aerosol measurement databases, including more in situ observations of the aerosol
680 composition in more locations (Snider et al., 2016), as well as continued use of satellite observations to
constrain the magnitude of aerosol radiative forcing (e.g. Smith et al., 2021). We encourage more observations
for variables directly related to the radiative forcing (e.g., aerosol optical depth) and those that could help
narrow uncertainties in crucial parameters that describe related physiochemical processes. Some of these data
685 can also be used to assess the model performance, narrowing the model spread, and validate satellite
retrievals. As aerosol number concentration, the determinant of the change in cloud properties to emission
changes, cannot be retrieved from paleo proxies (d) there needs to be a simultaneous effort in understanding
natural aerosol processes and impacts on clouds under pristine “PI-like” present day conditions (Hamilton et
al., 2014; McCoy et al., 2020)

g. Characterize current model direct aerosol radiative effects and aerosol cloud interactions using new tools.
690 Currently meteorological models are tightly connected to the aerosol models they host, making it difficult to
independently evaluate the structural differences between aerosol models. Recent efforts to develop
generalized chemical and aerosol interfaces would allow more effective evaluation of chemical and aerosol
schemes separate from their host models (Hodzic et al., [submitted](#)). A generalized framework could also
allow artificial intelligence methods to be integrated into multiple models and model-data comparisons or
695 assimilations to be used across models.

Deleted: n.d.).

In summary: while there has been substantial progress in aerosol-climate science over the past 20 years, aerosols
remain one of the most important uncertainties in climate change science, and are likely to continue to be important
to study for at least the next 20 years.

700

Data Availability

N/A

Author contribution

705

NMM conceived of the idea and created the first draft, with substantial improvements from LL, SA, [DSH](#) and JFK.

Competing interests

710 None

Acknowledgements

NMM and LL would like to acknowledge support from DOE DE-SC0021302. JFK acknowledges support from
715 NSF grants 1856389 and 2151093. We acknowledge helpful [discussions](#) with Flavio Lehner and Steve Sherwood.

Deleted: discussion

References

- Albani, S. and Mahowald, N. M.: Paleodust insights onto dust impacts on climate, *J Clim*, 7897–7913, <https://doi.org/10.1175/jcli-d-18-0742.1>, 2019.
- 720 Albani, S., Mahowald, N. M., Perry, A. T., Scanza, R. A., Zender, C. S., Heavens, N. G., Maggi, V., Kok, J. F., and Otto-Bliesner, B. L.: Improved dust representation in the Community Atmosphere Model, *J Adv Model Earth Syst*, 6, 541–570, <https://doi.org/10.1002/2013MS000279>, 2014.
- 725 Albani, S., Mahowald, N. M., Winckler, G., Anderson, R. F., Bradtmiller, L. I., Delmonte, B., Francois, R., Goman, M., Heavens, N. G., Hesse, P. P., Hovan, S. A., Kang, S. G., Kohfeld, K. E., Lu, H., Maggi, V., Mason, J. A., Mayeswki, P., McGee, D., Miao, X., Otto-Bliesner, B. L., Perry, A. T. A., Pourmand, A., Roberts, H. M., Rosenbloom, N., Stevens, T., Sun, J., François, R., Goman, M., Heavens, N. G., Hesse, P. P., Hovan, S. A., Kang, S. G., Kohfeld, K. E., Lu, H., Maggi, V., Mason, J. A., Mayewski, P. A., McGee, D., Miao, X., Otto-Bliesner, B. L., Perry, A. T. A., Pourmand, A., Roberts, H. M., Rosenbloom, N., Stevens, T., and Sun, J.: Tweleve thousand years of dust: the Holocene global dust cycle constrained by natural archives, *Climate of the Past*, 11, 869–2015, <https://doi.org/10.5194/cp-11-869-2015>, 2015.
- 730 Albani, S., Balkanski, Y., Mahowald, N., Winckler, G., Maggi, V., and Delmonte, B.: Aerosol-Climate Interactions During the Last Glacial Maximum, *Curr Clim Change Rep*, 4, 99–114, <https://doi.org/10.1007/s40641-018-0100-7>, 2018.
- 735 Allen, M. R., Dube, O. P., Solecki, W., Aragón-Durand, F., Cramer, W., Humphreys, S., Kainuma, M., Kala, J., Mahowald, N., Mulugetta, Y., Perez, R., Wairiu, M., and Zickfeld, K.: Framing and Context, in: *Global Warming of 1.5°C. An IPCC Special Report on the impacts of global warming of 1.5°C above pre-industrial levels and related global greenhouse gas emission pathways, in the context of strengthening the global response to the threat of climate change*, edited by: [Masson-Delmotte, V., P. Zhai, H.-O. Pörtner, D. Roberts, J. Skea, P. R. S., A. Pirani, W. Moufouma-Okia,

- C. Péan, R. Pidcock, S. Connors, J.B.R. Matthews, Y. Chen, X. Zhou, M.I. Gomis, E. L., and T. Maycock, M. Tignor, and T. W., World Meteorological Organization (WMO), Geneva, Switzerland, 45–91, 2018.
- 740 Andela, N., Morton, D. C., Giglio, L., Chen, Y., Van Der Werf, G. R., Kasibhatla, P. S., DeFries, R. S., Collatz, G. J., Hantson, S., Kloster, S., Bachelet, D., Forrest, M., Lasslop, G., Li, F., Mangeon, S., Melton, J. R., Yue, C., and Randerson, J. T.: A human-driven decline in global burned area, *Science* (1979), 356, 1356–1362, <https://doi.org/10.1126/science.aal4108>, 2017.
- Arienzo, M. M., McConnell, J. R., Murphy, L. N., Chellman, N., Das, S., Kipfstuhl, S., and Mulvaney, R.: Holocene black carbon in Antarctica paralleled Southern Hemisphere climate, *J Geophys Res*, 122, 6713–6728, <https://doi.org/10.1002/2017JD026599>, 2017.
- 745 Armeth, A., Harrison, S., Zaehle, S., Tsigaridis, K., Menon, S., Bartlein, P., Feichter, J., Korhola, A., Kulmala, M., O'Donnell, D., Schurgers, G., Sorvari, S., and Vesala, T.: Terrestrial biogeochemical feedbacks in the climate system, *Nature-geoscience*, 3, 525–532; DOI: 10.1038/NNGEO905, 2010.
- 750 Bauer, S. E., Koch, D., Unger, N., Metzger, S. M., Shindell, D. T., and Streets, D. G.: Atmospheric Chemistry and Physics Nitrate aerosols today and in 2030: a global simulation including aerosols and tropospheric ozone, *Atmos. Chem. Phys.*, 5043–5059 pp., 2007.
- Bellouin, N., Quaas, J., Gryspeerdt, E., Kinne, S., Stier, P., Watson-Parris, D., Boucher, O., Carslaw, K. S., Christensen, M., Daniau, A. L., Dufresne, J. L., Feingold, G., Fiedler, S., Forster, P., Gettelman, A., Haywood, J. M., Lohmann, U., 755 Malavelle, F., Mauritsen, T., McCoy, D. T., Myhre, G., Mülmenstädt, J., Neubauer, D., Possner, A., Rugenstein, M., Sato, Y., Schulz, M., Schwartz, S. E., Sourdeval, O., Storelvmo, T., Toll, V., Winker, D., and Stevens, B.: Bounding Global Aerosol Radiative Forcing of Climate Change, <https://doi.org/10.1029/2019RG000660>, 1 March 2020.
- Biasutti, M. and Giannini, A.: Robust Sahel drying in response to late 20th century forcings, *Geophys Res Lett*, 33, [doi:10.1029/2006GL026067](https://doi.org/10.1029/2006GL026067), 2006.
- 760 Bistinas, I., Oom, D., Sá, A. C. L., Harrison, S. P., Prentice, I. C., and Pereira, J. M. C.: Relationships between human population density and burned area at continental and global scales, *PLoS One*, 8, 1–12, <https://doi.org/10.1371/journal.pone.0081188>, 2013.
- Bond, T., Bhardwaj, E., Dong, R., Jogani, R., Jung, S., Roden, C., Streets, D., and Trautman, N.: Historical emissions of black and organic carbon aerosol from energy-related combustion, 1850-2000, *Global Biogeochem Cycles*, 21, 765 [doi:10.1029/2006GB002840](https://doi.org/10.1029/2006GB002840), 2007.
- Bond, T., Doherty, S. J., Fahey, D., Forster, P., Bernsten, T., DeAngelo, B., Flanner, M., Ghan, S., Karcher, B., Koch, D., Kinne, S., Kondo, Y., Quinn, P. K., Sarofim, M., Schultz, M., Venkataraman, C., Zhang, H., Zhang, S., Bellouin, N., Guttikunda, S., Hopke, P., Jacobson, M., Kaiser, J. W., Klimont, Z., Lohman, U., Schwartz, J., Shindell, D., Storelvmo, T., Warren, S., and Zender, C.: Bounding the role of black carbon in the climate system: A scientific assessment, *J Geophys Res*, D118, 5380–5552; [doi:10.1002/jgrd_50171](https://doi.org/10.1002/jgrd_50171), 2013.
- 770

- Bowman, D. M. J. S., Artaxo, P., Bond, W. J., Carlson, J. M., Cochrane, M. a, D-Antoio, C., DeFries, R. S., Doyle, J. C., Harrison, S. P., Johnson, F., Keeley, J. E., Krawchuk, M. a, Kull, C. a, MArtson, J., Mortiz, M., Prentice, I. C., Roos, C. I., Scott, A. C., Swetnam, T. W., Werf, G. van der, Pyne, S. J., Blach, J., Bowman, D. M. J. S., Balch, J. K., Artaxo, P., Bond, W. J., Carlson, J. M., Cochrane, M. a, D'Antonio, C. M., DeFries, R. S., Doyle, J. C., Harrison, S. P., Johnston, F. H., Keeley, J. E., Krawchuk, M. a, Kull, C. a, Marstone, J., Moritz, M. a, Prentice, C., Roos, C. I., Scott, A. C., Swetnam, T. W., G.R., van der W., Pyne, S. J., Marston, J. B., Moritz, M. a, Prentice, I. C., Roos, C. I., Scott, A. C., Swetnam, T. W., van der Werf, G. R., and Pyne, S. J.: Fire in the Earth System, *Science* (1979), 324, 10.1126/science.1163886, <https://doi.org/10.1126/science.1163886>, 2009.
- 775 Braconnot, P., Albani, S., Balkanski, Y., Cozic, A., Kageyama, M., Sima, A., Marti, O., and Peterschmitt, J. Y.: Impact of dust in PMIP-CMIP6 mid-Holocene simulations with the IPSL model, *Climate of the Past*, 17, 1091–1117, <https://doi.org/10.5194/cp-17-1091-2021>, 2021.
- Burnett, R., Chen, H., Szyszkwicz, M., Fann, N., Hubbell, B., Pope, C. A., Apte, J. S., Brauer, M., Cohen, A., Weichenhal, S., Coggins, J., Di, Q., Brunekreef, B., Frostad, J., Lim, S. S., Kan, H., Walker, K. D., Thurston, G. D., Hayes, R. B., Lim, C. C., Turner, M. C., Jerrett, M., Krewski, D., Gapstur, S. M., Diver, W. R., Ostro, B., Goldberg, D., Crouse, D. L., Martin, R. V., Peters, P., Pinault, L., Tjepkema, M., Van Donkelaar, A., Villeneuve, P. J., Miller, A. B., Yin, P., Zhou, M., Wang, L., Janssen, N. A. H., Marra, M., Atkinson, R. W., Tsang, H., Thach, T. Q., Cannon, J. B., Allen, R. T., Hart, J. E., Laden, F., Cesaroni, G., Forastiere, F., Weinmayr, G., Jaensch, A., Nagel, G., Concin, H., and Spadaro, J. V.: Global estimates of mortality associated with longterm exposure to outdoor fine particulate matter, *Proc Natl Acad Sci U S A*, 115, 9592–9597, <https://doi.org/10.1073/pnas.1803222115>, 2018.
- 785 Burrows, S. M., Hoose, C., Pöschl, U., and Lawrence, M. G.: Ice nuclei in marine air: Biogenic particles or dust?, *Atmos Chem Phys*, 13, 245–267, <https://doi.org/10.5194/acp-13-245-2013>, 2013.
- Carslaw, K. S., Boucher, O., Spracklen, D., Mann, G., Rae, J. G., Woodward, S., and Kumala, M.: A review of natural aerosol interactions and feedbacks within the Earth System, *Atmos Chem Phys*, 10, 1701–1737, <https://doi.org/https://doi.org/10.5194/acp-10-1701-2010>, 2010.
- 795 Carslaw, K. S., Gordon, H., Hamilton, D. S., Johnson, J. S., Regayre, L. A., Yoshioka, M., and Pringle, K. J.: Aerosols in the Pre-industrial Atmosphere, *Curr Clim Change Rep*, 3, 1–15, <https://doi.org/10.1007/s40641-017-0061-2>, 2017.
- Cusworth, D. H., Mickley, L. J., Sulprizio, M. P., Liu, T., Marlier, M. E., Defries, R. S., Guttikunda, S. K., and Gupta, P.: Quantifying the influence of agricultural fires in northwest India on urban air pollution in Delhi, India, *Environmental Research Letters*, 13, <https://doi.org/10.1088/1748-9326/aab303>, 2018.
- 800 [Dentener F, Kinne S, Bond T, Boucher O, Cofala J, Generoso S, Ginoux P, Gong S, Hoelzemann J J, Ito A, Marelli L, Penner J E, Putaud J-P, Textor C, Schulz M, Van Der Werf G R and Wilson J 2006 *Atmospheric Chemistry and Physics Emissions of primary aerosol and precursor gases in the years 2000 and 1750 prescribed data-sets for AeroCom vol 6* Online: \[www.atmos-chem-phys.net/6/4321/2006/\]\(http://www.atmos-chem-phys.net/6/4321/2006/\)](#)

- 805 Ferretti, D. F., Miller, J. B., White, J. W. C., Etheridge, D. M., Lassey, K. R., Lowe, D. C., Meure, C. M. M., Dreier, M. F.,
Trudinger, C. M., Van Ommen, T. D., and Langenfelds, R. L.: Unexpected Changes to the Global Methane Budget
over the Past 2000 Years, *Science* (1979), 309, 1714–1717, <https://doi.org/doi:10.1126/science.1115193>, 2005.
- Fischer, H., Schüpbach, S., Gfeller, G., Bigler, M., Röthlisberger, R., Erhardt, T., Stocker, T. F., Mulvaney, R., and Wolff, E.
W.: Millennial changes in North American wildfire and soil activity over the last glacial cycle, *Nat Geosci*, 8, 723–
727, <https://doi.org/10.1038/ngeo2495>, 2015.
- 810 Forster, P., Alterskjaer, K., Smith, C., Colman, R., Damon Matthews, H., Ramaswamy, V., Storelvmo, T., Armour, K., Collins,
W., Dufresne, J., Frame, D., Lunt, D., Mauritsen, T., Watanabe, M., Wild, M., Zhang, H., Pirani, A., Connors, S.,
Péan, C., Berger, S., Caud, N., Chen, Y., Goldfarb, L., Gomis, M., Huang, M., Leitzell, K., Lonnoy, E., Matthews, J.,
Maycock, T., Waterfield, T., Yelekçi, O., Yu, R., and Zhou, B.: Chapter 7: The Earth’s Energy Budget, Climate
815 Feedbacks and Climate Sensitivity, in: *Climate Change 2021: The Physical Science Basis. Contribution of Working
Group I to the Sixth Assessment Report of the Intergovernmental Panel on Climate Change*, edited by: Masson-
Delmotte, V., P. Zhai, A. Pirani, S.L. Connors, C. Péan, S. Berger, N. Caud, Y. Chen, L. Goldfarb, M.I. Gomis, M.
Huang, K. Leitzell, E. Lonnoy, J.B.R. Matthews, T.K. Maycock, T. Waterfield, O. Yelekçi, R. Yu, and Zhou, B.,
Cambridge University Press, Cambridge, United Kingdom and New York, NY, USA, 923–1054,
<https://doi.org/10.1017/9781009157896.009>, 2021.
- 820 Gidden, M. J., Riahi, K., Smith, S. J., Fujimori, S., Luderer, G., Kriegler, E., Van Vuuren, D. P., Van Den Berg, M., Feng, L.,
Klein, D., Calvin, K., Doelman, J. C., Frank, S., Fricko, O., Harmsen, M., Hasegawa, T., Havlik, P., Hilaire, J.,
Hoesly, R., Horing, J., Popp, A., Stehfest, E., and Takahashi, K.: Global emissions pathways under different
socioeconomic scenarios for use in CMIP6: A dataset of harmonized emissions trajectories through the end of the
century, *Geosci Model Dev*, 12, 1443–1475, <https://doi.org/10.5194/gmd-12-1443-2019>, 2019.
- 825 Ginoux, P., Prospero, J., Gill, T. E., Hsu, N. C., and Zhao, M.: Global scale attribution of anthropogenic and natural dust
sources and their emission rates based on MODIS deep blue aerosol products, *Reviews of Geophysics*, 50,
DOI:10.1029/2012RG000388, 2012.
- Gordon, H., Sengupta, K., Rap, A., Duplissy, J., Frege, C., Williamson, C., Heinritzi, M., Simon, M., Yan, C., Almeida, J.,
Tröstl, J., Nieminen, T., Ortega, I. K., Wagner, R., Dunne, E. M., Adamov, A., Amorim, A., Bernhammer, A.-K.,
830 Bianchi, F., Breitenlechner, M., Brilke, S., Chen, X., Craven, J. S., Dias, A., Ehrhart, S., Fischer, L., Flagan, R. C.,
Franchin, A., Fuchs, C., Guida, R., Hakala, J., Hoyle, C. R., Jokinen, T., Junninen, H., Kangasluoma, J., Kim, J.,
Kirkby, J., Krapf, M., Kürten, A., Laaksonen, A., Lehtipalo, K., Makhmutov, V., Mathot, S., Molteni, U., Monks, S.
A., Onnela, A., Peräkylä, O., Piel, F., Petäjä, T., Praplan, A. P., Pringle, K. J., Richards, N. A. D., Rissanen, M. P.,
Rondo, L., Sarnela, N., Schobesberger, S., Scott, C. E., Seinfeld, J. H., Sharma, S., Sipilä, M., Steiner, G., Stozhkov,
835 Y., Stratmann, F., Tomé, A., Virtanen, A., Vogel, A. L., Wagner, A. C., Wagner, P. E., Weingartner, E., Wimmer,
D., Winkler, P. M., Ye, P., Zhang, X., Hansel, A., Dommen, J., Donahue, N. M., Worsnop, D. R., Baltensperger, U.,
Kulmala, M., Curtius, J., and Carslaw, K. S.: Reduced anthropogenic aerosol radiative forcing caused by biogenic

new particle formation, *Proceedings of the National Academy of Sciences*, 113, 12053–12058, <https://doi.org/10.1073/pnas.1602360113>, 2016.

840 [Gulev, S.K., P.W. Thorne, J. Ahn, F.J. Dentener, C.M. Domingues, S. Gerland, D. Gong, D.S. Kaufman, H.C. Nnamchi, J. Quaas, J.A. Rivera, S. Sathyendranath, S.L. Smith, B. Trewin, K. von Schuckmann, and R.S. Vose, 2021: Changing State of the Climate System. In *Climate Change 2021: The Physical Science Basis. Contribution of Working Group I to the Sixth Assessment Report of the Intergovernmental Panel on Climate Change* \[Masson-Delmotte, V., P. Zhai, A. Pirani, S.L. Connors, C. Péan, S. Berger, N. Caud, Y. Chen, L. Goldfarb, M.I. Gomis, M. Huang, K. Leitzell, E. Lonnoy, J.B.R. Matthews, T.K. Maycock, T. Waterfield, O. Yelekçi, R. Yu, and B. Zhou \(eds.\)\]. Cambridge University Press, Cambridge, United Kingdom and New York, NY, USA, pp. 287–422, \[doi:10.1017/9781009157896.004\]\(https://doi.org/10.1017/9781009157896.004\).](#)

Hamilton, D. S., Lee, L. A., Pringle, K. J., Reddington, C. L., Spracklen, D. V., and Carslaw, K. S.: Occurrence of pristine aerosol environments on a polluted planet., *Proc Natl Acad Sci U S A*, 111, 18466–71, <https://doi.org/10.1073/pnas.1415440111>, 2014.

Hamilton, D. S., Hantson, S., Scott, C. E., Kaplan, J. O., Pringle, K. J., Nieradzik, L. P., Rap, A., Folberth, G. A., Spracklen, D. V., and Carslaw, K. S.: Reassessment of pre-industrial fire emissions strongly affects anthropogenic aerosol forcing, *Nat Commun*, 9, <https://doi.org/10.1038/s41467-018-05592-9>, 2018.

855 Hamilton, D. S., Perron, M. M. G., Bond, T. C., Bowie, A. R., Buchholz, R. R., Guieu, C., Ito, A., Maenhaut, W., Myriokefalitakis, S., Olgun, N., Rathod, S. D., Schepanski, K., Tagliabue, A., Wagner, R., and Mahowald, N. M.: Earth, Wind, Fire, and Pollution: Aerosol Nutrient Sources and Impacts on Ocean Biogeochemistry, <https://doi.org/10.1146/annurev-marine-031921>, 2021.

Hegerl, G. C., Brönnimann, S., Cowan, T., Friedman, A. R., Hawkins, E., Iles, C., Müller, W., Schurer, A., and Undorf, S.: Causes of climate change over the historical record, <https://doi.org/10.1088/1748-9326/ab4557>, 9 December 2019.

860 Hodzic, A., Mahowald, N., Dawson, M., Johnson, J., Bernardet, L., Bosler, P. A., Clune, T., Fast, J. D., Fierce, L., Liu, X., Ma, P.-L., Murphy, B., Riemer, N., and Schulz, M.: Generalized Aerosol/chemistry iNterface (GIANT): a community effort to advance collaborative science across weather and climate models, [submitted, Bulletin of the American Meteorological Society](#).

865 [Hoesly R M, Smith S J, Feng L, Klimont Z, Janssens-Maenhout G, Pitkanen T, Seibert J J, Vu L, Andres R J, Bolt R M, Bond T C, Dawidowski L, Kholod N, Kurokawa J I, Li M, Liu L, Lu Z, Moura M C P, O'Rourke P R and Zhang Q 2018 Historical \(1750-2014\) anthropogenic emissions of reactive gases and aerosols from the Community Emissions Data System \(CEDS\) *Geosci Model Dev* **11** 369–408](#)

870 Hooper, J. and Marx, S.: A global doubling of dust emissions during the Anthropocene?, *Glob Planet Change*, 169, 70–91, <https://doi.org/10.1016/j.gloplacha.2018.07.003>, 2018.

Deleted: n.d

- IPCC: IPCC, 2019: Summary for Policymakers., in: IPCC Special Report on the Ocean and Cryosphere in a Changing Climate, edited by: Pörtner, H.-O., Roberts, D. C., Masson-Delmotte, V., Zhai, P., Tignor, M., Poloczanska, E., Mintenbeck, K., Alegria, A., Nicolai, M., Okem, A., Petzold, J., Rama, B., and Weyer, N. M., 2019.
- 875 IPCC: Summary for Policymakers, in: Climate Change 2021: The Physical Science Basis. Contribution of Working Group I to the Sixth Assessment Report of the Intergovernmental Panel on Climate Change, edited by: Masson-Delmotte, V., P. Zhai, A. Pirani, S.L. Connors, C. Péan, S. Berger, N. Caud, Y. Chen, L. Goldfarb, M.I. Gomis, M. Huang, K. Leitzell, E. Lonnoy, J.B.R. Matthews, T.K. Maycock, T. Waterfield, O. Yelekçi, R. Yu, and B. Zhou, Cambridge University Press, Cambridge, UK, 3–32, <https://doi.org/10.1017/9781009157896.001>, 2021.
- 880 Jiménez-de-la-Cuesta, D. and Mauritsen, T.: Emergent constraints on Earth’s transient and equilibrium response to doubled CO₂ from post-1970s global warming, *Nat Geosci*, 12, 902–905, <https://doi.org/10.1038/s41561-019-0463-y>, 2019.
- Kiehl, J. T.: Twentieth century climate model response and climate sensitivity, *Geophys Res Lett*, 34, <https://doi.org/10.1029/2007GL031383>, 2007.
- 885 Klein-Goldewijk, K.: Estimating global land use change over the past 300 years: the HYDE database, *Global Biogeochem Cycles*, 15, 417–434, 2001.
- Klimont, Z., Kupiainen, K., Heyes, C., Purohit, P., Cofala, J., Rafaj, P., Borken-Kleefeld, J., and Schöpp, W.: Global anthropogenic emissions of particulate matter including black carbon, *Atmos Chem Phys*, 17, 8681–8723, <https://doi.org/10.5194/acp-17-8681-2017>, 2017.
- Kloster, S., Mahowald, N. M., Randerson, J. T., Thornton, P. E., Hoffman, F. M., Levis, S., Lawrence, P. J., Feddema, J. J., 890 Oleson, K. W., and Lawrence, D. M.: Fire dynamics during the 20th century simulated by the Community Land Model, *Biogeosciences*, 7, <https://doi.org/10.5194/bg-7-1877-2010>, 2010.
- Knorr, W., Kaminski, T., Arneth, A., and Weber, U.: Impact of human population density on fire frequency at the global scale, *Biogeosciences*, 11, 1085–1102, <https://doi.org/10.5194/bg-11-1085-2014>, 2014.
- 895 ~~Kok, J.F., Storelvmo, T., Karydis, V.A., *et al* Mineral dust aerosol impacts on global climate and climate change, *Nat Rev Earth Environ* 4, 71–86 (2023). <https://doi.org/10.1038/s43017-022-00379-5>.~~
- Lambert, F., Delmonte, B., Petit, J. R., Bigler, M., Kaufmann, P. R., Hutterli, A. M. A., Stocker, T. F., Ruth, U., Steffensen, J. P., and Maggi, V.: Dust-climate couplings over the past 800,000 years from the EPICA Dome C ice core, *Nature*, 452, 616–619, 2008.
- 900 Lambert, F., Tagliabue, A., Shaffer, G., Lamy, F., Winckler, G., Farias, L., Gallardo, L., and De Pol-Holz, R.: Dust fluxes and iron fertilization in Holocene and Last Glacial Maximum climates, *Geophys Res Lett*, 42, 6014–6023, <https://doi.org/10.1002/2015GL064250>, 2015.
- Lee, L. A., Reddington, C. L., and Carslaw, K. S.: On the relationship between aerosol model uncertainty and radiative forcing uncertainty, *Proc Natl Acad Sci U S A*, 113, 5820–5827, <https://doi.org/10.1073/pnas.1507050113>, 2016.
- Lehner, F. and Coats, S.: Does Regional Hydroclimate Change Scale Linearly With Global Warming?, *Geophys Res Lett*, 48, <https://doi.org/10.1029/2021GL095127>, 2021.
- 905

Deleted:

Deleted:

Deleted: , Adebisi, A. A., Mahowald, N. M., Evan, A. T., He, C., and Leung, D. M.:

Deleted: ,

Formatted: Dutch

Formatted: Dutch

Formatted: Dutch

Deleted: , 2023.

- Li, F., Val Martin, M., Andreae, M. O., Arneth, A., Hantson, S., Kaiser, J. W., Lasslop, G., Yue, C., Bachelet, D., Forrest, M., Kluzek, E., Liu, X., Mangeon, S., Melton, J. R., Ward, D. S., Darmanov, A., Hickler, T., Ichoku, C., Magi, B. I., Sitch, S., Van Der Werf, G. R., Wiedinmyer, C., and Rabin, S. S.: Historical (1700-2012) global multi-model
915 estimates of the fire emissions from the Fire Modeling Intercomparison Project (FireMIP), *Atmos Chem Phys*, 19, 12545–12567, <https://doi.org/10.5194/acp-19-12545-2019>, 2019.
- Li, J., Carlson, B. E., Yung, Y. L., Lv, D., Hansen, J., Penner, J. E., Liao, H., Ramaswamy, V., Kahn, R. A., Zhang, P., Dubovik, O., Ding, A., Laci, A. A., Zhang, L., and Dong, Y.: Scattering and absorbing aerosols in the climate system,
<https://doi.org/10.1038/s43017-022-00296-7>, 1 June 2022.
- 920 Li, L., Mahowald, N. M., Miller, R. L., Pérez García-Pando, C., Klose, M., Hamilton, D. S., Gonçalves Ageitos, M., Ginoux, P., Balkanski, Y., Green, R. O., Kalashnikova, O., Kok, J. F., Obiso, V., Paynter, D., and Thompson, D. R.: Quantifying the range of the dust direct radiative effect due to source mineralogy uncertainty, *Atmos Chem Phys*, 21, 3973–4005, <https://doi.org/10.5194/acp-21-3973-2021>, 2021.
- Liu, P., Kaplan, J. O., Mickley, L. J., Li, Y., Chellman, N. J., Arienzo, M. M., Kodros, J. K., Pierce, J. R., Sigl, M., Freitag, J.,
925 Mulvaney, R., Curran, M. A. J., and McConnell, J. R.: Improved estimates of preindustrial biomass burning reduce the magnitude of aerosol climate forcing in the Southern Hemisphere, *Sci. Adv*, 2021.
- Maher, B., Prospero, J., Mackie, D., Gaiero, D., Hesse, P., and Balkanski, Y.: Global connections between aeolian dust, climate and ocean biogeochemistry at the present day and at the last glacial maximum, *Earth Sci Rev*, 99, 61–97, 2010.
- Mahowald, N.: Anthropocene changes in desert area: sensitivity to climate model predictions, *Geophys Res Lett*, 34,
930 [doi:10.1029/2007GL030472](https://doi.org/10.1029/2007GL030472), <https://doi.org/10.1029/2007GL030472>, 2007.
- Mahowald, N.: Aerosol indirect effect on biogeochemical cycles and climate, *Science* (1979), 334, <https://doi.org/10.1126/science.1207374>, 2011.
- Mahowald, N., Kohfeld, K., Hansson, M., Balkanski, Y., Harrison, S. P., Prentice, I. C., Schulz, M., and Rodhe, H.: Dust sources and deposition during the last glacial maximum and current climate: A comparison of model results with
935 paleodata from ice cores and marine sediments, *Journal of Geophysical Research Atmospheres*, 104, <https://doi.org/https://doi.org/10.1029/1999JD900084>, 1999.
- Mahowald, N., Ward, D. S., Kloster, S., Flanner, M. G., Heald, C. L., Heavens, N. G., Hess, P. G., Lamarque, J.-F., and Chuang, P. Y.: Aerosol impacts on climate and biogeochemistry, *Annu Rev Environ Resour*, 36, <https://doi.org/10.1146/annurev-environ-042009-094507>, 2011a.
- 940 Mahowald, N., Lindsay, K., Rothenberg, D., Doney, S. C., Moore, J. K., Thornton, P., Randerson, J. T., and Jones, C. D.: Desert dust and anthropogenic aerosol interactions in the Community Climate System Model coupled-carbon-climate model, *Biogeosciences*, 8, <https://doi.org/10.5194/bg-8-387-2011>, 2011b.
- Mahowald, N. M., Zender, C. S., Luo, C., Savoie, D., Torres, O., Corral, J. D., and Del Corral, J.: Understanding the 30-year Barbados desert dust record, *Journal of Geophysical Research Atmospheres*, 107,
945 <https://doi.org/10.1029/2002JD002097>, 2002.

- Mahowald, N. M., Kloster, S., Engelstaedter, S., Moore, J. K. K., Mukhopadhyay, S., McConnell, J. R. R., Albani, S., Doney, S. C. C., Bhattacharya, A., Curran, M. A. J. A. J., Flanner, M. G. G., Hoffman, F. M. M., Lawrence, D. M. M., Lindsay, K., Mayewski, P. A. A., Neff, J., Rothenberg, D., Thomas, E., Thornton, P. E. E., and Zender, C. S. S.: Observed 20th century desert dust variability: impact on climate and biogeochemistry, *Atmos Chem Phys*, 10, 10875–10893, <https://doi.org/10.5194/acp-10-10875-2010>, 2010.
- 950 Mahowald, N. M., Scanza, R., Brahney, J., Goodale, C. L., Hess, P. G., Moore, J. K., and Neff, J.: Aerosol Deposition Impacts on Land and Ocean Carbon Cycles, *Curr Clim Change Rep*, 3, 16–31, <https://doi.org/10.1007/s40641-017-0056-z>, 2017.
- Van Marle, M. J. E., Kloster, S., Magi, B. I., Marlon, J. R., Daniau, A. L., Field, R. D., Arneth, A., Forrest, M., Hantson, S., Kehrwald, N. M., Knorr, W., Lasslop, G., Li, F., Mangeon, S., Yue, C., Kaiser, J. W., and Van Der Werf, G. R.: Historic global biomass burning emissions for CMIP6 (BB4CMIP) based on merging satellite observations with proxies and fire models (1750-2015), *Geosci Model Dev*, 10, 3329–3357, <https://doi.org/10.5194/gmd-10-3329-2017>, 2017.
- 965 Marlon, J., Bartlein, P., Carcaillet, C., Gavin, D., Harrison, S., Higuera, P., Joos, F., Power, M., and Prentice, I. C.: Climate and human influences on global biomass burning over the past two millennia, *Nature-Geosciences*, 1, 697–701, <https://doi.org/https://doi.org/10.1029/PA005i001p00001>, 2008.
- Marlon, J. R., Bartlein, P. J., Gavin, D. G., Long, C. J., Anderson, R. S., Briles, C. E., Brown, K. J., Colombaroli, D., Hallett, D. J., Power, M. J., Scharf, E. A., and Walsh, M. K.: Long-term perspective on wildfires in the western USA, *Proceedings of the National Academy of Sciences*, 109, E535–E543, <https://doi.org/10.1073/pnas.1112839109>, 2012.
- 965 Marlon, J. R., Kelly, R., Daniau, A. L., Vanniire, B., Power, M. J., Bartlein, P., Higuera, P., Blarquez, O., Brewer, S., Brifischer, T., Feurdean, A., Romera, G. G., Iglesias, V., Yoshi Maezumi, S., Magi, B., Mustaphi, C. J. C., and Zhihai, T.: Reconstructions of biomass burning from sediment-charcoal records to improve data-model comparisons, *Biogeosciences*, 13, 3225–3244, <https://doi.org/10.5194/bg-13-3225-2016>, 2016.
- Matsui, H., Hamilton, D. S., and Mahowald, N. M.: Black carbon radiative effects highly sensitive to emitted particle size when resolving mixing-state diversity, *Nat Commun*, 9, 3446, <https://doi.org/10.1038/s41467-018-05635-1>, 2018.
- McConnell, J. R., Aristarain, A., Banta, J., Edwards, P., and Simoes, J.: 20th Century doubling in dust archived in an Antarctic Peninsula ice core parallels climate change and desertification in South America, *PNAS*, 104, 5743–5748, <https://doi.org/https://doi.org/10.1073/pnas.0607657104>, 2007a.
- 975 McConnell, J. R., Edwards, R., Kok, G., Flanner, M., Zender, C. S., Saltzman, E., Banta, J. R., Pasteris, D. R., Carter, M. M., and Kahl, J. D. W.: 20th-century industrial black carbon emissions altered Arctic climate forcing, *Science (1979)*, 317, 1381–1384, 2007b.
- McCoy, S. L., McCoy, D. T., Wood, R., Regayre, L., Watson-Parris, D., Grosvenor, D., Mulcahy, J., Hu, Y., Bender, F., Field, P., Carslaw, K., and Gordon, H.: The hemispheric contrast in cloud microphysical properties constrains aerosol

- forcing., *Proceedings of the National Academy of Science*, 117, <https://doi.org/10.1073/pnas.1922502117/-DCSupplemental>, 2020.
- 980 Mulitza, S., Heslop, D., Pittauerova, D., Fischer, H., Meyer, I., Stuut, J.-B., Zabel, M., Mollenhauer, G., Collins, J., Kuhnert, H., and Schulz, M.: Increase in African dust flux at the onset of commercial agriculture in the Sahel region., *Nature*, 466, doi:10.1038/nature09213, 226-228, 2010.
- Murray, B. J., Carslaw, K. S., and Field, P. R.: Opinion: Cloud-phase climate feedback and the importance of ice-nucleating
985 particles, *Atmos Chem Phys*, 21, 665–679, <https://doi.org/10.5194/acp-21-665-2021>, 2021.
- Naik, V. , S., Szopa, S., Adhikary, B., P. Artaxo, T. Bernsten, W. D. Collins, S. Fuzzi, L. Gallardo, A. Kiendler Scharr, Z. Klimont, H. Liao, N. Unger, and P. Zanis: Chapter 6: Short-Lived Climate Forcers, in: *Climate Change 2021: The Physical Science Basis. Contribution of Working Group I to the Sixth Assessment Report of the Intergovernmental Panel on Climate Change*, 10–171, 2021.
- 990 Neff, J. C., Ballantyne, A. P., Farmer, G. L., Mahowald, N. M., Conroy, J. L., Landry, C. C., Overpeck, J. T., Painter, T. H., Lawrence, C. R., and Reynolds, R. L.: Increasing eolian dust deposition in the western United States linked to human activity, *Nat Geosci*, 1, <https://doi.org/10.1038/ngeo133>, 2008.
- Paulot, F., Ginoux, P., Cooke, W. F., Donner, L. J., Fan, S., Lin, M. Y., Mao, J., Naik, V., and Horowitz, L. W.: Sensitivity of nitrate aerosols to ammonia emissions and to nitrate chemistry: Implications for present and future nitrate optical
995 depth, *Atmos Chem Phys*, 16, 1459–1477, <https://doi.org/10.5194/acp-16-1459-2016>, 2016.
- Penner, J., Dickinson, R., and O'Neill, C. A.: Penneretal1992.science.256.5062.1432, *Science* (1979), 256, 1432–1434, 1992.
- Pincus, R., Forster, P. M., and Stevens, B.: The Radiative Forcing Model Intercomparison Project (RFMIP): experimental protocol for CMIP6, *Geosci Model Dev*, 9, 3447–3460, <https://doi.org/10.5194/gmd-9-3447-2016>, 2016.
- Power, M., Marlon, J., Ortiz, N., Bartlein, P., Harrison, S., Mayle, F., A. Ballouche, R. H. W. Bradshaw C. Carcaillet S.
1000 Mooney, P. I. Moreno, I. C. Prentice, C. C., K. Thonicke W. Tinner Y. Zhang, Y. Zhao, A. A. Ali, R. S. Anderson, R. Beer, C. W., H. Behling C. Briles A. Brunelle, M. Bush, P. Camill, G. Q. Chu, J. Clark, K. J. B., D. Colombaroli S. Connor M. Daniels, J. Dodson, E. Doughty, M. E. Edwards, A.-L. D., W. Finsinger D. Foster M.-J. Gaillard, D. G. Gavin, E. Gobet, S. Haberle, J. F., D. J. Hallett P. Higuera S. Horn, J. Inoue, P. Kaltenrieder, L. Kennedy, Z. C. Kong, G. H., C. Larsen C. J. Long E. A. Lynch, M. McGlone, S. Meeks, S.
1005 Mensing, G. Meyer, J. L., T. Minckley J. Mohr J. New, R. Newnham, R. Noti, W. Oswald, J. Pierce, D. M. N., P. J. H. Richard C. Rowe B. N. Shuman, H. Takahara, J. Toney, M. F. S. G. i, C. Turney D. H. Urrego-Sanchez M. Vandergoes, B. Vanniere, E. Vescovi, C. U., and M. Walsh X. Wang J. Wilmshurst, J. H. Zhang, N. W.: Changes in fire regimes since the Last Glacial Maximum: an assessment based on a global synthesis and analysis of charcoal data, *Clim Dyn*, DOI 10.1007/s00382-007-0334-x, 2007.
- 1010 Prospero, J. and Lamb, P.: African droughts and dust transport to the Caribbean: climate change implications, *Science* (1979), 302, 1024–1027, <https://doi.org/10.1126/science.1089915>, 2003.

- Pye, H., Liao, H., Wu, S., Mickle, L., Jacob, D., Henze, D., and Seinfeld, J.: Effect of changes in climate and emissions on future sulfate-nitrate-ammonium aerosol levels in the United States, *J Geophys Res*, 114, doi:10.1029/2008JD010701, 2009.
- 1015 Rathod, S., Hamilton, D. S. D. S., N. Mahowald, Klimont, Z., Corbett, J. J., and Tami Bond: A mineralogy-based anthropogenic combustion-iron emission inventory, *Journal of Geophysical Research Atmospheres*, 125, <https://doi.org/10.1029/2019JD032114>, 2020.
- Regayre, L. A., Johnson, J. S., Yoshioka, M., Pringle, K. J., Sexton, D. M. H., Booth, B. B. B., Lee, L. A., Bellouin, N., and Carslaw, K. S.: Aerosol and physical atmosphere model parameters are both important sources of uncertainty in aerosol ERF, *Atmos Chem Phys*, 18, 9975–10006, <https://doi.org/10.5194/acp-18-9975-2018>, 2018.
- 1020 Sherwood, S. C., Webb, M. J., Annan, J. D., Armour, K. C., Forster, P. M., Hargreaves, J. C., Hegerl, G., Klein, S. A., Marvel, K. D., Rohling, E. J., Watanabe, M., Andrews, T., Braconnot, P., Bretherton, C. S., Foster, G. L., Hausfather, Z., von der Heydt, A. S., Knutti, R., Mauritsen, T., Norris, J. R., Proistosescu, C., Rugenstein, M., Schmidt, G. A., Tokarska, K. B., and Zelinka, M. D.: An Assessment of Earth's Climate Sensitivity Using Multiple Lines of Evidence, *Reviews of Geophysics*, 58, 1–92, <https://doi.org/10.1029/2019RG000678>, 2020.
- 1025 Smith, C. J., Harris, G. R., Palmer, M. D., Bellouin, N., Collins, W., Myhre, G., Schulz, M., Golaz, J. C., Ringer, M., Storelvmo, T., and Forster, P. M.: Energy Budget Constraints on the Time History of Aerosol Forcing and Climate Sensitivity, *Journal of Geophysical Research: Atmospheres*, 126, <https://doi.org/10.1029/2020JD033622>, 2021.
- Snider, G., Weagle, C. L., Murdymootoo, K. K., Ring, A., Ritchie, Y., Stone, E., Walsh, A., Akoshile, C., Anh, N. X., Balasubramanian, R., Brook, J., Qonitan, F. D., Dong, J., Griffith, D., He, K., Holben, B. N., Kahn, R., Lagrosas, N., Lestari, P., Ma, Z., Misra, A., Norford, L. K., Quel, E. J., Salam, A., Schichtel, B., Segev, L., Tripathi, S., Wang, C., Yu, C., Zhang, Q., Zhang, Y., Brauer, M., Cohen, A., Gibson, M. D., Liu, Y., Martins, J. V., Rudich, Y., and Martin, R. V.: Variation in global chemical composition of PM_{2.5}: emerging results from SPARTAN, *Atmos Chem Phys*, 16, 9629–9653, <https://doi.org/10.5194/acp-16-9629-2016>, 2016.
- 1030 Stanelle, T., Bey, I., Raddatz, T., Reick, C., and Tegen, I.: Anthropogenically induced changes in twentieth century mineral dust burden and the associated impact on radiative forcing, *J Geophys Res*, 119, 13,526-13,546, <https://doi.org/10.1002/2014JD022062>, 2014.
- Storelvmo, T.: Aerosol Effects on Climate via Mixed-Phase and Ice Clouds, *The Annual Review of Earth and Planetary Sciences* is online at earth.annualreviews.org, 45, 199–222, <https://doi.org/10.1146/annurev-earth-060115>, 2017.
- 1040 [Szopa, S., V. Naik, B. Adhikary, P. Artaxo, T. Berntsen, W.D. Collins, S. Fuzzi, L. Gallardo, A. Kiendler-Scharr, Z. Klimont, H. Liao, N. Unger, and P. Zanis, 2021: Short-Lived Climate Forcers. In *Climate Change 2021: The Physical Science Basis. Contribution of Working Group I to the Sixth Assessment Report of the Intergovernmental Panel on Climate Change* \[Masson-Delmotte, V., P. Zhai, A. Pirani, S.L. Connors, C. Péan, S. Berger, N. Caud, Y. Chen, L. Goldfarb, M.I. Gomis, M. Huang, K. Leitzell, E. Lonnoy, J.B.R. Matthews, T.K. Maycock, T. Waterfield, O. Yelekçi, R. Yu,](#)

[and B. Zhou \(eds.\)\]. Cambridge University Press, Cambridge, United Kingdom and New York, NY, USA, pp. 817–922, doi:10.1017/9781009157896.008.](#)

- Tegen, I., Werner, M., Harrison, S. P., Kohfeld, K. E., Mahowald, N. M., Rivera Rivera, G. D., and Luo, C.: Relative importance of climate and land use in determining present and future global soil dust emission, *Geophys Res Lett*, 31, L05105, doi:10.1029/2003GL019216, 2004, <https://doi.org/10.1029/2004GL021272>, 2004.
- 1050 Textor, C. and others, and: Analysis and quantification of the diversities of aerosol life cycles within AeroCOM, *Atmos Chem Phys*, 6, 1777–1813, 2006.
- Thornhill, G., Collins, W., Oliví, D., Archibald, A., Bauer, S., Checa-Garcia, R., Fiedler, S., Folberth, G., Gjernmunsen, A., Horowitz, L., Lamarque, J.-F., Michou, M., Mulcahy, J., Nabat, P., Naik, V., O'Connor, F., Paulot, F., Schulz, M., Scott, C., Seferian, R., Smith, C., Takemura, T., Tilmes, S., and Weber, J.: Climate-driven chemistry and aerosol feedbacks in CMIP6 Earth system models, *Atmos Chem Phys*, 1–36, <https://doi.org/10.5194/acp-2019-1207>, 2020.
- 1055 Thornhill, G., Collins, W., Oliví, D., B. Skeie, R., Archibald, A., Bauer, S., Checa-Garcia, R., Fiedler, S., Folberth, G., Gjernmunsen, A., Horowitz, L., Lamarque, J. F., Michou, M., Mulcahy, J., Nabat, P., Naik, V., M. O'Connor, F., Paulot, F., Schulz, M., E. Scott, C., Séférian, R., Smith, C., Takemura, T., Tilmes, S., Tsigaridis, K., and Weber, J.: Climate-driven chemistry and aerosol feedbacks in CMIP6 Earth system models, *Atmos Chem Phys*, 21, 1105–1126, <https://doi.org/10.5194/acp-21-1105-2021>, 2021.
- 1060 Turnock, S. T., Allen, R. J., Andrews, M., Bauer, S. E., Deushi, M., Emmons, L., Good, P., Horowitz, L., John, J. G., Michou, M., Nabat, P., Naik, V., Neubauer, D., O'Connor, F. M., Oliví, D., Oshima, N., Schulz, M., Sellar, A., Shim, S., Takemura, T., Tilmes, S., Tsigaridis, K., Wu, T., and Zhang, J.: Historical and future changes in air pollutants from CMIP6 models, *Atmos Chem Phys*, 20, 14547–14579, <https://doi.org/10.5194/acp-20-14547-2020>, 2020.
- 1065 Undorf, S., Polson, D., Bollasina, M. A., Ming, Y., Schurer, A., and Hegerl, G. C.: Detectable Impact of Local and Remote Anthropogenic Aerosols on the 20th Century Changes of West African and South Asian Monsoon Precipitation, *Journal of Geophysical Research: Atmospheres*, 123, 4871–4889, <https://doi.org/10.1029/2017JD027711>, 2018.
- Unger, N., Bond, T., Wang, J. S., Koch, D. M., Menon, S., Shindell, D., and Bauer, S.: Attribution of climate forcing to economic sectors, *Proceedings of the National Academy of Science USA*, 107, 3382–3387, 2010.
- 1070 Wan, J. S., Hamilton, D. S., and Mahowald, N. M.: Importance of Uncertainties in the Spatial Distribution of Preindustrial Wildfires for Estimating Aerosol Radiative Forcing, *Geophys Res Lett*, 48, <https://doi.org/10.1029/2020GL089758>, 2021.
- Wang, Z., Chappellaz, J., Park, K., and Mak, J. E.: Large Variations in Southern, *Science* (1979), 205, 1663–1666, <https://doi.org/10.1126/science.1197257>, 2010.
- 1075 Webb, N. P. and Pierre, C.: Quantifying Anthropogenic Dust Emissions, *Earths Future*, 6, 286–295, <https://doi.org/10.1002/2017EF000766>, 2018.

- 1080 van der Werf, G. R., Randerson, J., Collatz, G. J., Giglio, L., Kasibhatla, P., Arrellano, A., Olson, S., and Kasischke, E.:
Continental-scale partitioning of fire emissions during the 1997 to 2001 El Nino/La Nina Period, *Science* (1979), 303,
73–76, 2004.
- van der Werf, G. R., Randerson, J. T., Giglio, L., Collatz, G. J., Kasibhatla, P. S., and Arellano Jr., A. F. : Interannual variability
in global biomass burning emissions from 1997-2004, *Atmos Chem Phys*, 6, 3423–3441, doi: 10.5194/acp-6-3423–
2006, 2006.
- 1085 van der Werf, G. R., Randerson, J. T., Giglio, L., Collatz, G. J., Mu, M., Kasibhatla, P. S., Morton, D. C., DeFries, R. S., Jin,
Y., and van Leeuwen, T. T.: Global fire emissions and the contribution of deforestation, savanna, forest, agricultural
and peat fires (1997-2009), *Atmos Chem Phys*, 10, 11707–11735, doi:10.5194/acp-10-11707–2010, 2010.
- van der Werf, G. R., Peters, W., van Leeuwen, T. T., and Giglio, L.: What could have caused pre-industrial biomass burning
emissions to exceed current rates?, *Climate of the Past*, 9, 289–306, <https://doi.org/10.5194/cp-9-289-2013>, 2013.
- 1090 [Van Marle M J E, Kloster S, Magi B I, Marlon J R, Daniau A L, Field R D, Armeth A, Forrest M, Hantson S, Kehrwald N M,
Knorr W, Lasslop G, Li F, Mangeon S, Yue C, Kaiser J W and Van Der Werf G R 2017 Historic global biomass
burning emissions for CMIP6 \(BB4CMIP\) based on merging satellite observations with proxies and fire models
\(1750-2015\) *Geosci Model Dev* **10** 3329–57](#)
- Wu, J., Kong, S., Wu, F., Cheng, Y., Zheng, S., Yan, Q., Zheng, H., Yang, G., Zheng, M., Liu, D., Zhao, D., and Qi, S.:
1095 Estimating the open biomass burning emissions in central and eastern China from 2003 to 2015 based on satellite
observation, *Atmos Chem Phys*, 18, 11623–11646, <https://doi.org/10.5194/acp-18-11623-2018>, 2018.
- Zennaro, P., Kehrwald, N., McConnell, J. R., Schüpbach, S., Maselli, O. J., Marlon, J., Vallelonga, P., Leuenberger, D.,
Zangrando, R., Spolaor, A., Borrotti, M., Barbaro, E., Gambaro, A., and Barbante, C.: Fire in ice: Two millennia of
boreal forest fire history from the Greenland NEEM ice core, *Climate of the Past*, 10, 1905–1924,
<https://doi.org/10.5194/cp-10-1905-2014>, 2014.
- 1100 Zhao, A., Ryder, C. L., and Wilcox, L. J.: How well do the CMIP6 models simulate dust aerosols?, *Atmos Chem Phys*, 22,
2095–2119, <https://doi.org/10.5194/acp-22-2095-2022>, 2022.
- Zhu, J., Penner, J. E., Yu, F., Sillman, S., Andreae, M. O., and Coe, H.: Decrease in radiative forcing by organic aerosol
nucleation, climate, and land use change, *Nat Commun*, 10, <https://doi.org/10.1038/s41467-019-08407-7>, 2019.

1105

Figure captions

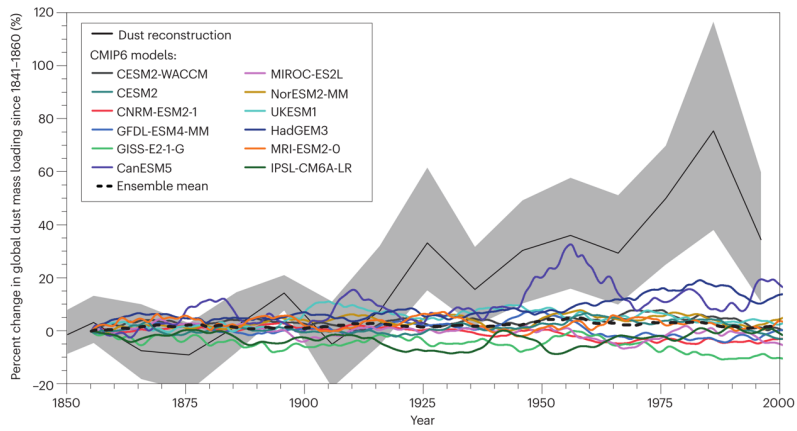


Figure 1. Annual global mean dust aerosol loading from the observationally based reconstruction (Kok et al., 2023) in black, ~~grey shading represents the 90% confidence interval~~, compared against 10-year running means from historical runs of Climate Model Intercomparison Project (CMIP6) ensemble members. Reproduced with permission from (Kok et al., 2023).

Deleted: with

Deleted: error bars (representing

1110

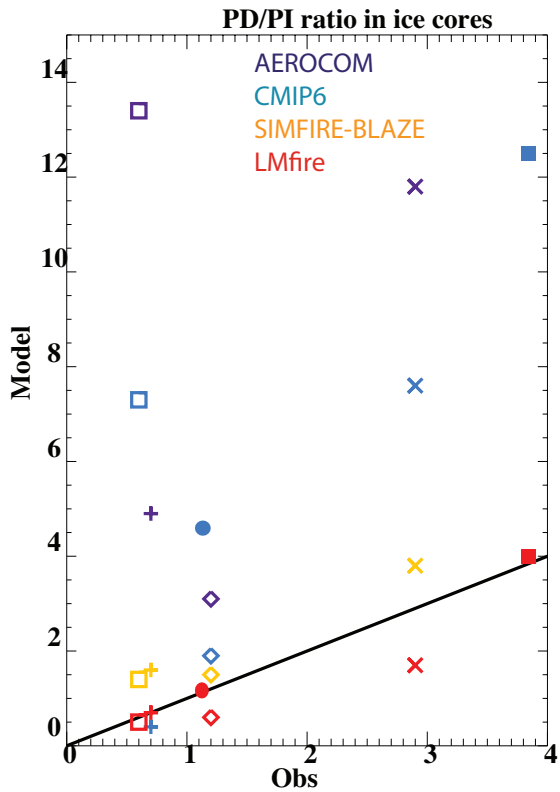
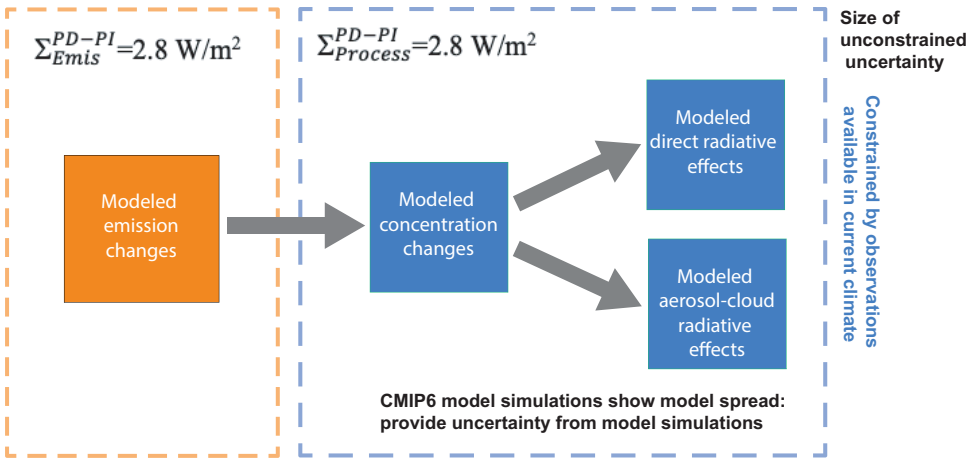


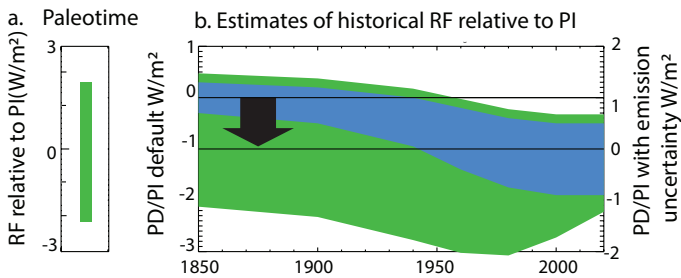
Figure 2: Observed and modeled present day to preindustrial ratios (PD/PI) for black carbon in ice cores using different open fire emissions. Ice cores sites are from Greenland (open square and plus signs), Wyoming (diamond) and France (x's) for 4 different model simulations: AEROCOM (purple), CMIP6 (blue), SIMFIRE-BLAZE (yellow) and LMfire (red) are taken from (Hamilton et al., 2018). Ice core sites from Bolivia (solid circle) and Antarctica (solid square) using CMIP6 (blue) and LMfire (red) are taken from (Liu et al., 2021). The solid black line shows the 1:1 line.

1115

Full uncertainty of aerosol changes requires multiple emission pathways and comparisons to observations



1120 Figure 3: Schematic of the sources of uncertainties in aerosol radiative effects, from emission models to modeled concentration changes to modeled direct and aerosol-cloud radiative effects. The CMIP6 unconstrained uncertainties using a single emission scenario have a 90% confidence interval range of 2.8 W/m^2 (Bellouin et al., 2020; Sherwood et al., 2020). For the uncertainty summed over different aerosol species (Σ) using different emission scenarios for the past climate, the 90% confidence interval ranges from wildfires of 2.8 W/m^2 (Hamilton et al., 2018; Wan et al., 2021) is added in quadrature to uncertainties from dust of 0.4 W/m^2 (Kok et al., 2023) and an estimate of industrial emission uncertainties (assuming 10% error) of 0.2 W/m^2 , obtaining a 2.8 W/m^2 uncertainty in emissions.

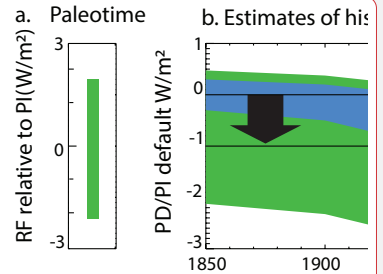


Deleted:

Deleted: added to

Deleted: . We square these errors and take the square root to obtain...

Formatted: Superscript



Deleted:

Figure 4: Estimates of the unconstrained aerosol radiative forcing and its uncertainties for (a) different paleoclimate time periods relative to preindustrial (PI; 1850) and (b) present day (PD) relative to 1850 based on CMIP6 model spread (schematic based on (Smith et al., 2021) in blue) and including the emission uncertainties (90% confidence intervals) from wildfires, dust and anthropogenic aerosols as described in Fig. 3 (green), using the time series for wildfires from (Marlon et al., 2008). The left vertical axis represents the present day minus preindustrial radiative forcing (blue area) following (Smith et al., 2021; Sherwood et al., 2020), and the right axis adds in the emission uncertainties for the preindustrial (from Fig. 3; Hamilton et al., 2018), shifting the preindustrial baseline of aerosol radiative effects (black arrow; green area). Notice that the size of the black arrow and shift in the preindustrial state is not known, and this is a schematic to illustrate how the uncertainties in emissions in the preindustrial impact understanding of the radiative forcing.

Deleted: of aerosols

Deleted: radiative forcings and uncertainties

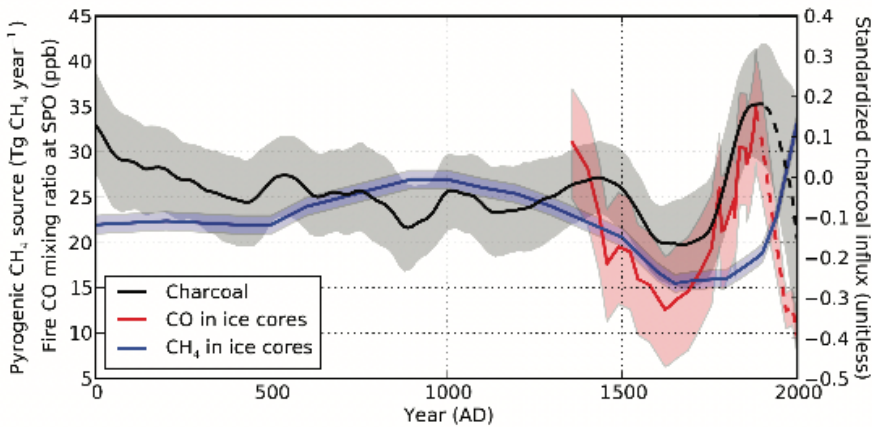


Figure 5. Variability of biomass burning rates over the last centuries based on a worldwide compilation of charcoal records (Marlon et al., 2008), CO mixing ratios from fires using CO concentration measurements at the South Pole (SPO), its isotopic signature, and a mass balance model (Wang et al., 2010) and a similar approach but based on CH₄ (Ferretti et al., 2005). The CO ice core data ended in 1897 but were extended (dashed line) by Wang et al. (2010) to present-day using firn samples (1968 and 1986) as well as modelling (year 2000). Shaded areas indicate reported uncertainty. Note that the datasets have different footprints and that absolute values cannot be compared directly. Reproduced with permission from (van der Werf et al., 2013) under CCC3.0.

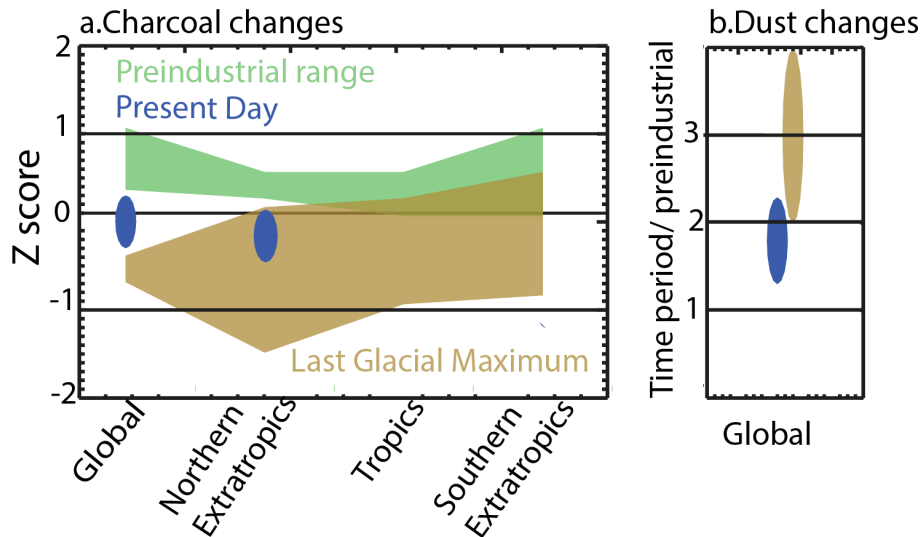
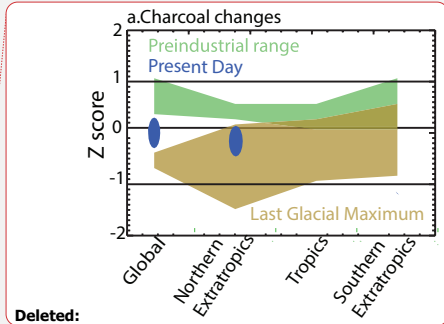


Figure 6: Relative size of paleoclimate and historical changes in aerosols. A) Based on z scores from charcoal records, the variability across preindustrial time periods (green), present day (blue) and last glacial maximum is shown in global, northern extratropics, tropics, and southern extratropics based on data from (Marlon et al., 2008, 2016). Charcoal reconstructions use z-scores, which are normalized by the mean value at a site, divided by the variability, and thus a -2 z-score for LGM suggests significantly lower charcoal amounts. B) global dust changes ratio of deposition between present day and preindustrial (blue oval; Mahowald et al., 2010; Kok et al., 2023), and for the last glacial maximum relative to preindustrial (gold oval) (Mahowald et al., 1999; Albani et al., 2014, 2018; Lambert et al., 2015).



Deleted:

Deleted: normalize around

Deleted: (

Table 1. Estimates of aerosol radiative forcing uncertainty, symbols, and citations. These represent the 90% confidence intervals.

Aerosol radiative forcing uncertainty term	Symbol	Estimate (range of 90% confidence interval)	Source
Unconstrained process uncertainty: Present day to preindustrial unconstrained model spread with fixed emissions from CMIP6	$\Sigma_{Process}^{PD-PI}$	2.8 W/m ²	(Bellouin et al., 2020; Sherwood et al., 2020)
Unconstrained emission uncertainty: Present day to preindustrial uncertainty in emission changes unconstrained	Σ_{Emiss}^{PD-PI}	2.8 W/m ²	Equation 1 and. (Hamilton et al., 2018; Wan et al., 2021; Kok et al., 2023)
Total unconstrained uncertainty: Present day to preindustrial	Σ_{Total}^{PD-PI}	4.0 W/m ²	Equation 2
Constrained process uncertainty: Present day to preindustrial constrained with	$\Sigma_{Const_Process}^{PD-PI}$	1.6 W/m ²	(Bellouin et al., 2020)

Formatted: French

observations using CMP6 emissions			
Unconstrained emission uncertainty: preindustrial time period	Σ_{Emis}^{PI}	2.8 W/m ²	PI uncertainties in emission drive uncertainties in PD-PI
Unconstrained process uncertainty: Paleotime T to preindustrial	$\Sigma_{Process}^{T-PI}$	2.8 W/m ²	Assume same as PD to PI
Unconstrained emission uncertainty: Paleotime T to preindustrial uncertainty	Σ_{Emis}^{T-PI}	4.0 W/m ²	Equation 4
Unconstrained total uncertainty: Paleotime T to preindustrial uncertainty	Σ_{Total}^{T-PI}	4.8 W/m ²	Equation 3, using Σ_{Emis}^{T-PI} and $\Sigma_{Process}^{T-PI}$

1185