

Editor decision: Publish subject to revisions (further review by editor and referees)

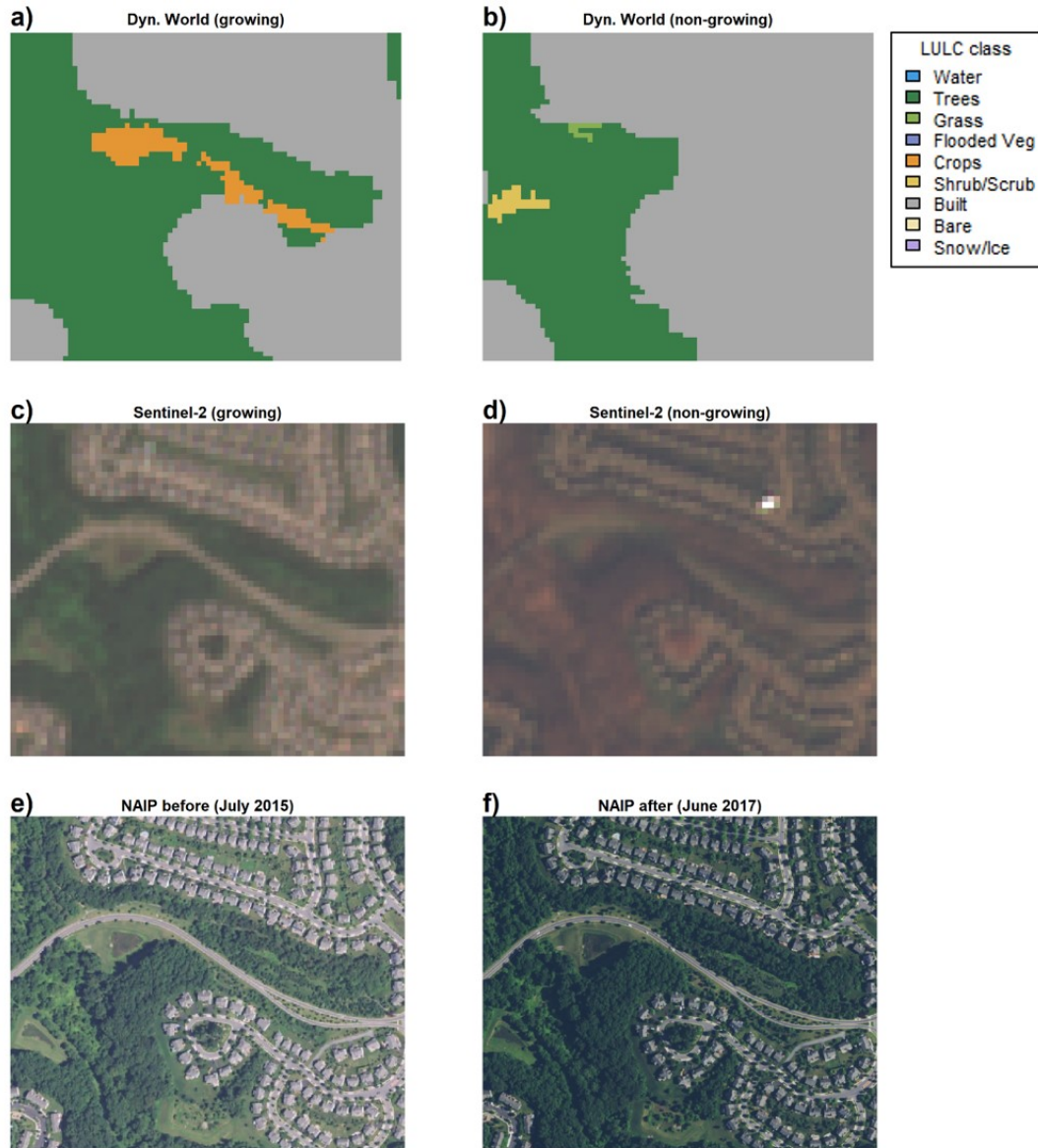
Public justification (visible to the public if the article is accepted and published):

The authors have clearly addressed the comments by the reviewer, the manuscript will be reviewed by this reviewer and the editor only

Notification to the authors:

Regarding panels a, b of figure S3: please ensure that the colour schemes used in your maps and charts allow readers with colour vision deficiencies to correctly interpret your findings. Please check your figures using the Coblis – Color Blindness Simulator (<https://www.color-blindness.com/coblis-color-blindness-simulator/>) and revise the colour schemes accordingly with the next revision.

Response: Thank you Dr. Wanders for the positive feedback on our manuscript. We have updated Figure S3 a&b with a new color palette (green-grey instead of green-red) and checked it with the color blindness simulator. We hope you are having a good summer.



**Figure S3.** Visual comparison of LULC classification in a mixed landuse area of Maryland, USA showing (a,b) differences in Dynamic World data between growing (spring equinox 2016 to autumn equinox 2016) and non-growing (autumn equinox 2015 to spring equinox 2016) seasons. (c,d) Sentinel-2 imagery examples for growing (20 July, 2016) and non-growing (23 November, 2015) seasons. And, (e,f) before-and-after images from the National Agriculture Imagery Program (NAIP).