



A rise in subweekly temperature variability over Southern Hemisphere landmasses detected in multiple reanalyses

Patrick Martineau¹, Swadhin K. Behera¹, Masami Nonaka¹, Hisashi Nakamura², and Yu Kosaka²

¹Japan Agency for Marine-Earth Science and Technology, Yokohama, Japan

5 ²Research Center for Advanced Science and Technology, The University of Tokyo, Japan

Correspondence to: Patrick Martineau (pmartineau@jamstec.go.jp)

Abstract. The inter-dataset agreement of trends in subweekly near-surface (850 hPa) temperature variability over Southern Hemisphere midlatitude land masses is assessed among twelve global atmospheric reanalysis datasets. First, a comparison of the climatological temperature variance and dominant sources and sinks of variance reveals that, except for NCEP-NCAR (R1) and NCEP-DOE (R2), there is a relatively good agreement for both their magnitudes and spatial distributions over the satellite era (1980–2022), which indicates that the key features of subweekly variability are sufficiently well represented. Concerning trends, there is a good agreement for the positive trends in subweekly variability over the satellite era affecting South Africa in September-October-November (SON) and Southern America in December-January-February (DJF). Although most reanalyses agree concerning the positive trend affecting Australia in SON, it has not yet emerged from the noise associated with interannual variability when considering only the satellite era. It is significant, however, when the period is extended (1954–2022) or the most recent decades (1990–2022). The trends are explained primarily by a more efficient generation of subweekly temperature variance by horizontal temperature advection. This generation is also identified as a source of bias among the datasets. The trends are found to be reproduced even in those reanalyses that do not assimilate satellite data (JRA-55C) or that assimilate surface observations only (ERA-20C, 20CRv2c, and 20CRv3).

20 **1 Introduction**

Subweekly variability in the extratropics is produced by transient weather systems such as tropical storms, midlatitude cyclones, anticyclones, and polar lows and has strong social impacts through the accompanying temperature and precipitation anomalies. Subweekly temperature variability, the focus of this work, is primarily generated by horizontal temperature advection. Amplification of temperature variance occurs when the advection of the climatological temperature gradient by subweekly wind anomalies acts to enhance subweekly temperature anomalies, i.e. when they induce fluxes of heat against the mean temperature gradients (Oort, 1964). This process describes the conversion of the available potential energy (APE) from the basic-state circulation to subweekly disturbances (or eddies), or in other words, the baroclinic conversion of energy. It is the dominant source of APE for eddies with periods shorter than 10 days (Sheng and Derome, 1991). Whereas horizontal motion generates temperature variance, vertical motion acts to dissipate it. Subweekly wind anomalies are generally upward



30 where and when subweekly temperature anomalies are positive, counteracting the latter through adiabatic cooling to maintain thermal wind balance. The process primarily represents the conversion from APE to kinetic energy (KE) and is of a similar order of magnitude to baroclinic generation.

Trends in large-scale temperature gradients, brought about by human-induced radiative forcing, may alter the flow of energy
35 between the mean state (mean APE) and transient eddies, and thus could potentially alter subweekly temperature variability. Global warming simulations based on CMIP5 models project an amplification of subweekly temperature variability in the Southern Hemisphere (SH), which is mostly concentrated over the subpolar ocean (~55-60°S) in DJF but may impact landmasses such as South Africa and Australia in JJA (Schneider et al., 2015). It is associated in part with an amplification of the meridional temperature gradient. Such amplification has been observed already in extratropical cyclone activity (Reboita
40 et al., 2015). Subweekly variability, as observed in the eddy kinetic energy, is also projected to amplify in CMIP6 models over the SH, but this increase is strongly underrepresented in contrast to three reanalysis datasets (Chemke et al., 2022). It is generally not well known, however, how well subweekly temperature variability is represented in reanalyses and whether there is a good agreement concerning the trends observed in the past decades.

45 Discrepancies among reanalysis outputs may arise from differences in the representation of sub-grid-scale physical processes among the forecast models, differences in their data assimilation system, and differences in observations being assimilated (Fujiwara et al., 2017, 2022). It is well known that conventional observation data are scarce in the SH in contrast to the Northern Hemisphere (NH), which can lead to comparatively larger uncertainties in the representation of atmospheric variability over the SH. Atmospheric circulation variability at the largest spatial scale, as captured by the annular mode indices (Northern
50 Annular Mode in the NH and Southern Annular Mode in the SH), was shown to be more uncertain in the SH upper troposphere (Gerber and Martineau, 2018), especially before satellite observations became available for data assimilation. The agreement among the reanalysis datasets concerning synoptic-scale subweekly variability near the surface was assessed in the context of extratropical storm tracks, with better agreement found in the NH compared to the SH (Wang et al., 2016). For example, Sang et al. (2022) found that inter-dataset differences in the representation of baroclinicity were more pronounced in the SH than in
55 the NH. Notably, in contrast to higher-resolution (newer) products, lower-resolution (older) products were found to underrepresent baroclinicity as well as eddy APE (i.e., 2-8 day temperature variance), especially in the upper troposphere. Their diagnostics, however, were either shown as zonal averages, or vertically-averaged quantities. The representation of the detailed spatial distributions of near-surface temperature variance and its trends in reanalyses remains largely unknown.

60 A comprehensive inter-comparison of the climatological properties of SH subweekly temperature variability and its recent trends in twelve major global reanalysis datasets is thus carried out in this study. First, the climatological spatial distribution in the SH of near-surface (850 hPa) temperature variability and its dominant sources/sinks from 1980 to 2010 are investigated in a reanalysis ensemble mean (REM) of the most recent reanalysis products, and the deviation of each reanalysis therefrom



is also investigated. Then, the inter-reanalysis agreement in the trends is assessed with emphasis on midlatitude landmasses
65 (South America, South Africa, and Australia), in recognition of the important socioeconomic impacts associated with trends
in subweekly temperature variance and the associated temperature extremes.

2 Methods

2.1 Reanalysis data

The reanalysis datasets used in this study are listed in Table 1. They can be classified into three categories depending on the
70 type of data assimilated. Full input reanalyses are the standard reanalyses that assimilate all available observations. Most of
them span the satellite era starting in 1979 and onward, but some also provide data before (ERA5 in the form of a back
extension; JRA-55 and NCEP-NCAR (R1) as standard output). Surface input reanalyses assimilate only surface data and are
typically used to investigate atmospheric variability over the past century, including long periods when satellite observations
75 nor conventional observations were available. Finally, conventional-input reanalyses assimilate only conventional
observations but not satellite measurements. JRA-55C is a conventional-input reanalysis that was produced to assess the impact
of satellite data assimilation by contrast to JRA-55. Since ERA5, JRA-55, and NCEP-NCAR (R1) do not assimilate satellite
observations before 1979, they can be considered as conventional-input reanalyses before the satellite era. More details about
which observations are assimilated by reanalyses datasets can be found in Fujiwara et al. (2017). Data sources for each
reanalysis are listed in Table 2.

80

To ensure fairness in our comparison and reduce computational costs, the reanalyses are first interpolated onto a 2.5° by 2.5°
horizontal grid that matches that of the products provided on the coarsest grid (NCEP-NCAR (R1) and NCEP-DOE (R2)). We
note that it is the original model resolution of each product, not that of the interpolated data onto which we apply our
diagnostics, that influences atmospheric variability at short time scales (Sang et al., 2022). Our analyses focus on the 850-hPa
85 pressure level, which is close enough to the surface but also sufficiently high to avoid missing data due to topography. Pressure
level diagnostics are used to allow for an investigation of the processes responsible for temperature variability and its trends.
Data at 925, 850, and 700 hPa are used to evaluate vertical derivatives. Variables analyzed include temperature (T), meridional
wind (v), zonal wind (u), and pressure velocity (ω).

90



Table 1: Reanalysis datasets investigated.

Name	Period	Assimilation	Reference
20CRv2c	1948-2014	Surface input	Compo et al. (2011)
20CRv3	1948-2015	Surface input	Slivinski et al. (2019)
CFSR/CFSv2*	1979-2022	Full input	Saha et al. (2010, 2014)
ERA-Interim	1979-2019	Full input	Dee et al. (2011)
ERA5	1959-2022	Full input	Hersbach et al. (2020)
ERA-20C	1948-2010	Surface input	Poli et al. (2016)
NCEP-NCAR (R1)	1948-2022	Full input	Kalnay et al. (1996)
NCEP-DOE (R2)	1979-2022	Full input	Kanamitsu et al. (2002)
JRA-55	1958-2022	Full input	Kobayashi et al. (2015)
JRA-55C	1958-2012	Conventional input	Kobayashi et al. (2014)
MERRA**	1979-2016	Full input	Rienecker et al. (2011)
MERRA-2**	1980-2022	Full input	Gelaro et al. (2017)

*CFSR/CFSv2c is obtained by merging CFSR and CFSv2c. We note that model resolution changed between the two and minor changes were made to parameterizations.

**Only assimilated (ASM) products are used.

95 **Table 2: Data source for each reanalysis**

Dataset	URL/DOI	Date accessed
20CRv2c	https://psl.noaa.gov/data/gridded/data.20thC_ReanV2c.html	13 April 2020
20CRv3	https://psl.noaa.gov/data/gridded/data.20thC_ReanV3.html	12 May 2022
CFSR/CFSv2	https://doi.org/10.5065/D69K487J https://doi.org/10.5065/D6N877VB	5 December 2022
ERA-Interim	https://apps.ecmwf.int/datasets/data/interim-full-daily/levtype=pl/	21 September 2017
ERA5	https://doi.org/10.24381/cds.bd0915c6	29 October 2022
ERA-20C	https://doi.org/10.5065/D6VQ30QG	31 December 2015
NCEP-NCAR (R1)	http://www.esrl.noaa.gov/psd	4 December 2022
NCEP-DOE (R2)	http://www.esrl.noaa.gov/psd	7 November 2022
JRA-55	https://doi.org/10.5065/D6HH6H41	26 October 2017
JRA-55C	https://doi.org/10.5065/D67H1GNZ	5 November 2017
MERRA	https://doi.org/10.5067/8D4LU4390C4S	4 October 2017
MERRA-2	https://doi.org/10.5067/QBZ6MG944HW0	22 November 2022



To assess whether the trends observed at 850 hPa in reanalyses are consistent with those observed at the surface we investigate surface temperature data from the Berkeley Earth temperature record, a gridded station-based dataset (Rohde and Hausfather, 2020).

2.2 Subweekly temperature variability and its sources/sinks

100 By applying temporal filtering to the atmospheric thermodynamic equation to decompose temperature and wind variability into various frequency bands, one can obtain a budget for subweekly temperature variance ($\overline{T'^2}$ or T_{VAR}) as

$$\frac{\partial \overline{T'^2}}{\partial t} = \underbrace{-2\overline{T'\mathbf{v}' \cdot \nabla \bar{T}}}_{F_{\text{horiz}}} + \underbrace{2\overline{T'\omega'} \left(\frac{R\bar{T}}{c_p p} - \frac{\partial \bar{T}}{\partial p} \right)}_{F_{\text{vert}}} + \chi, \quad (1)$$

where overbars denote the seasonal mean, and primes denote subweekly variability extracted with a 10-day high-pass filter. Here χ represents forcing terms of comparatively lesser importance such as diabatic heating, cross-frequency interactions, and
 105 advection of T_{VAR} by the seasonal-mean circulation. When using reanalysis data, χ also includes the analysis increment, i.e., the correction performed during data assimilation, which may introduce an imbalance between the observed tendency and the generation/dissipation terms. The two leading forcing terms considered here include contributions from the horizontal advection of the seasonal-mean horizontal temperature gradient by the horizontal subweekly wind component (1st right-hand
 110 side term; horizontal term or F_{horiz}) and from the vertical advection and adiabatic expansion/compression of the seasonal-mean vertical temperature gradient by the vertical subweekly wind component (2nd right-hand side term; vertical term or F_{vert}). In eq. (1), the temporally-filtered thermodynamic equation is multiplied by T' to obtain the tendency for temperature variance. As a consequence, F_{horiz} and F_{vert} are functions of horizontal and vertical fluxes of heat, respectively.

In the framework of atmospheric energetics (Lorenz, 1955; Oort, 1964), F_{horiz} represents the APE conversion from the time-
 115 mean flow to subweekly eddies by horizontal winds. F_{vert} represents both the conversion of eddy APE to eddy KE as well as the APE conversion from the seasonal-mean flow to subweekly eddies by vertical motions. The latter is in practice substantially smaller than the former and can be excluded from the energetics budget under scaling arguments (Tanaka et al., 2016). Thus F_{vert} is considered here to primarily represent the conversion of eddy APE ($\sim T_{\text{VAR}}$) to eddy KE.

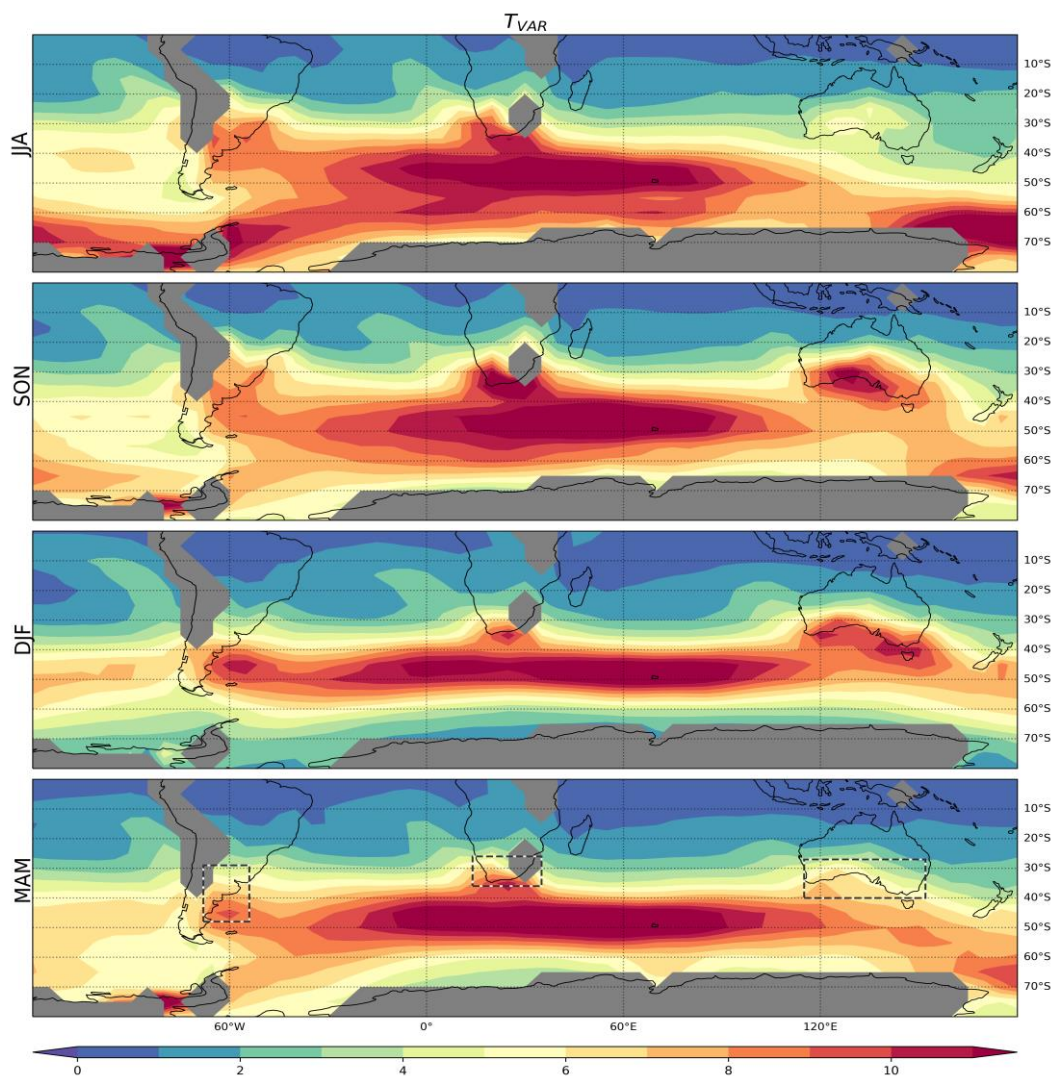
120 In this work, eq. (1) is evaluated at 850 hPa to have sufficient spatial coverage above the Earth's surface while still representing near-surface processes. It is assessed for each season (DJF, MAM, JJA, SON) separately.



3 Results

3.1 Climatological properties of subweekly temperature variability

Climatological properties of subweekly temperature variability at 850 hPa (T_{VAR}) are first investigated for the period 1980-
125 2010 for which all datasets are provided. They are assessed using the reanalysis ensemble mean (REM) which includes
CFSR/CFSv2, ERA5, JRA-55, and MERRA-2, the current flagships from each reanalysis center (Fig. 1). T_{VAR} is generally
maximized at around 45°S over the South Atlantic and Indian Oceans in all seasons. This maximum is explained by the
presence of the Antarctic polar frontal zone, a sharp gradient of sea surface temperature that anchors the midlatitude storm
track (Nakamura et al., 2004; Nakamura and Shimpo, 2004), and accordingly, subweekly variability. Another prominent
130 maximum in T_{VAR} is observed over the Southern Pacific at around 65°S. It exhibits a strong seasonality with a maximum in
JJA and owes its existence to the amplified thermal contrasts at the sea-ice margin (Nakamura et al., 2004; Nakamura and
Shimpo, 2004). Interestingly, secondary maxima are sometimes observed over or near landmasses in eastern South America,
South Africa, and southern Australia. Their presence indicates that land-sea contrasts, like the Antarctic polar frontal zone,
have the potential to anchor subweekly variability. The South-American maximum exhibits some seasonality, spreading over
135 a greater land surface in JJA and SON, while being more concentrated and shifted to the south in DJF and MAM. The South-
African maximum tends to be stronger in SON and weakest in DJF and MAM. Of all three sectors, the Australian maximum
shows the greatest seasonality with greatly amplified T_{VAR} in SON and DJF and a clear minimum in JJA (Nakamura and
Shimpo, 2004).



140 **Figure 1: Climatology (1980-2010) of T_{VAR} assessed at 850 hPa (shadings; K^2) with the REM for the different seasons (rows). Areas below the Earth's surface are masked in grey.**

The spatial distribution and seasonality of T_{VAR} correspond well to those of F_{horiz} (Fig. 2). Maxima are found in the mid-latitude South Atlantic – Indian Ocean sector (year-round) and the subpolar South Pacific (especially in JJA) when and where the horizontal gradients of the climatological seasonal-mean temperature ($\nabla \cdot \bar{T}$; assessed with the spacing of \bar{T} contours in Fig. 2) are stronger, providing favorable conditions for the baroclinic development of weather systems. Other maxima in F_{horiz} and this gradient found over eastern South America, South Africa, and southern Australia exhibit the same seasonality as T_{VAR} . These local maxima, which are comparatively greater than the gradient found over the oceans at similar latitudes, owe their existence to stationary waves associated with the distribution of oceans, landmasses, and topography. These are also sectors



150 where the correlation between v' and T' tends to be large and negative, indicating that the baroclinic structure of subweekly eddies is efficient in producing poleward fluxes of heat against the background temperature gradient (not shown).

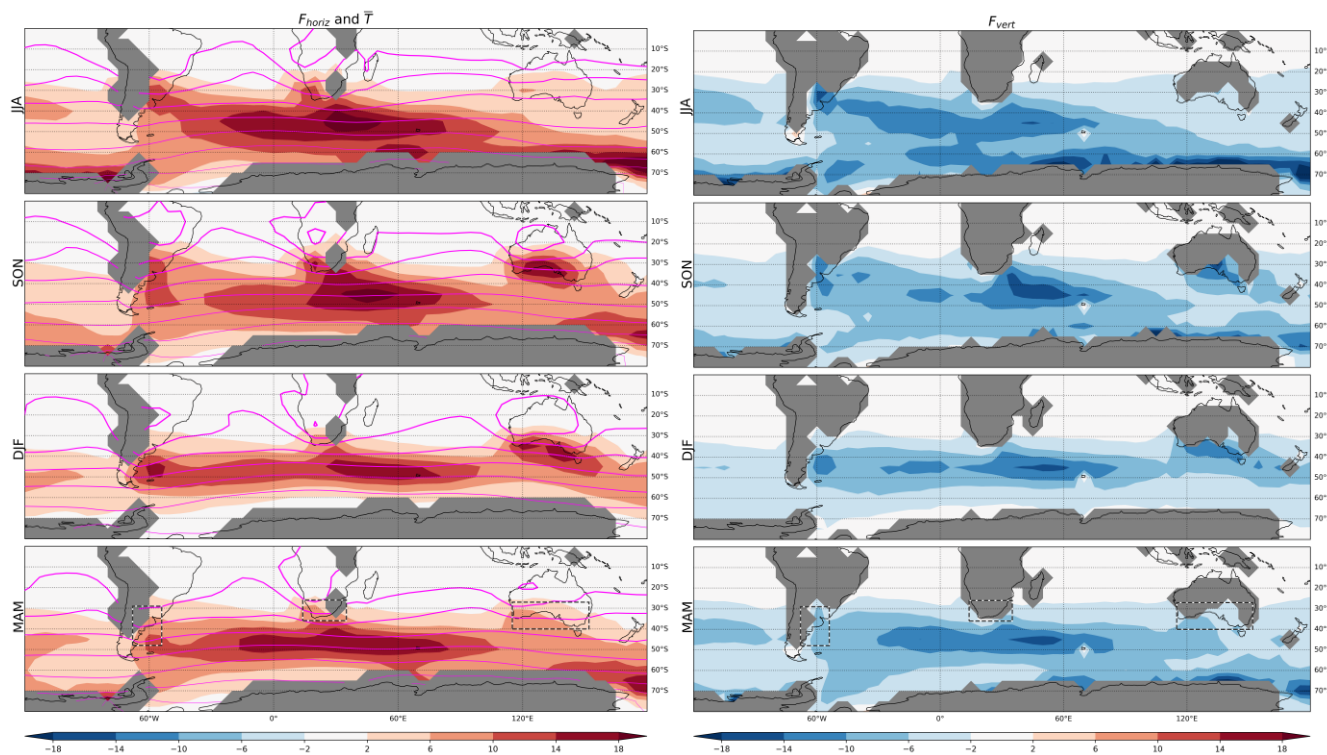
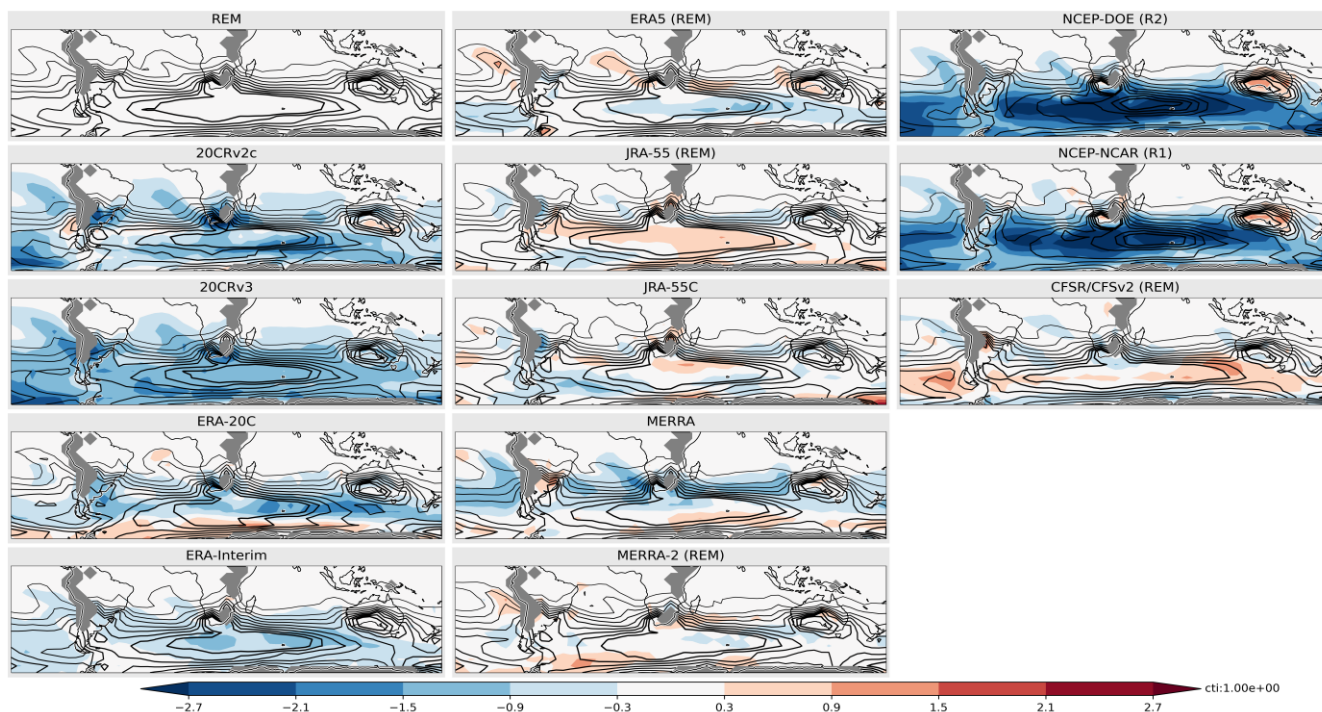


Figure 2: Same as in Fig. 1, but for (left) F_{horiz} (shadings; $\text{K}^2 \text{ day}^{-1}$) and (right) F_{vert} (shadings; $\text{K}^2 \text{ day}^{-1}$). The seasonal temperature climatology is overlaid over F_{horiz} with purple contours at an interval of 5 K. Thicker contours indicate warmer temperatures.

155

As evident in the right column in Fig. 2, F_{vert} displays a similar spatial distribution to F_{horiz} but of the opposite sign, contributing to dissipating T_{VAR} over the vast majority of the SH. From an energetics perspective, it indicates the conversion from APE (temperature anomalies) to KE (wind anomalies) of subweekly eddies. The similarity between F_{horiz} and F_{vert} indicates that a significant fraction of eddy APE ($\sim T_{\text{VAR}}$) gained from the basic-state circulation by baroclinic energy conversion ($\sim F_{\text{horiz}}$) is immediately converted ($\sim F_{\text{vert}}$) to eddy KE. We note that F_{vert} does not perfectly offset F_{horiz} , indicating that either other forcings or the analysis increments (both included in χ in eq. 1) are not necessarily negligible. It is in fact known that diabatic processes, including heat exchanges with the underlying ocean (Nonaka et al., 2009), tend to dissipate temperature anomalies at that timescale.

160



165 **Figure 3: SON climatology (1980-2010) of T_{VAR} (contours; 1 K^2 intervals) for the REM and individual reanalyses and biases from the REM (shadings; K^2). The reanalyses included in the REM are labeled with (REM). Areas below the Earth's surface are masked in grey.**

Inter-reanalysis uncertainties in these basic properties of subweekly variability are then investigated further in SON, when T_{VAR} is maximized in South Africa and southern Australia (Fig. 3). In general, there is a relatively good agreement about T_{VAR} among the various reanalysis datasets. Even the surface-input reanalyses (20CRv2c, 20CRv3, ERA-20C), despite a deficit in the midlatitudes, overall capture the distribution of T_{VAR} . The modern full-input datasets tend to present only small biases relative to the REM climatology. Among all datasets, NCEP-NCAR (R1) and NCEP-DOE (R2) show the largest bias from the REM with negative biases reaching up to $\sim 2.7 \text{ K}^2$, which corresponds to up to $\sim 50\%$ of the REM climatology in some sectors. Whereas negative biases were found mostly over the ocean, weak positive biases were found over South Africa and southern Australia, which could be attributed to a greater density of observations available for assimilation. Comparing biases in the main generation term F_{horiz} (Fig. 4) and T_{VAR} (Fig. 3), we find a general correspondence between the two; biases in T_{VAR} usually correspond to areas of same-signed biases in F_{horiz} . This is, however, not always the case. 20CRv2c, for instance, shows positive bias over the Indian Ocean, where T_{VAR} is negatively biased. Biases in other forcing terms or compensation from the reanalysis increment (both included in χ in eq. 1) may contribute to this mismatch.

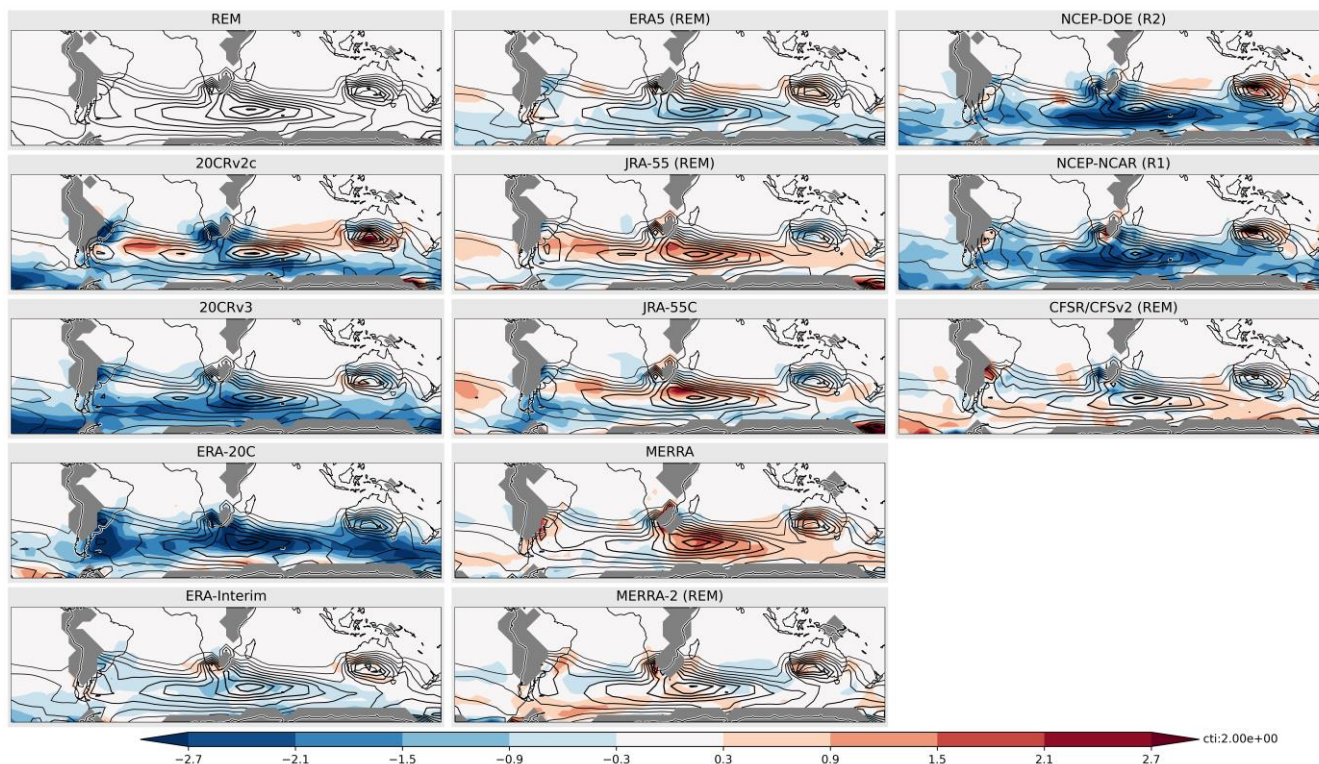


Figure 4: Same as in Fig. 3, but for F_{horiz} ($\text{K}^2 \text{ day}^{-1}$). The climatology is contoured at intervals of $2 \text{ K}^2 \text{ day}^{-1}$ with solid and dashed lines for positive and negative values, respectively. Thicker contours indicate larger magnitudes.

185 3.2 Trends in subweekly temperature variability

In this section, we investigate trends in T_{VAR} over the SH. We first focus on the period from 1980 to 2022 to assess the most recent trends during the satellite era. The trends are found spatially inhomogeneous with sectors of both decreasing and increasing T_{VAR} (Fig. 5). Considering the entire SH, however, positive trends appear to dominate. This is especially true for the midlatitude storm track ($\sim 40^\circ\text{-}60^\circ\text{S}$). Over extratropical land masses, we observe significant positive trends over midlatitude South America in DJF for which the reanalyses agree well. Positive trends are also observed in MAM, but the maximum is shifted southward ($\sim 50^\circ\text{S}$) and not as widespread and significant over land compared to DJF. Of all sectors, South Africa shows some of the largest positive trends in T_{VAR} with significant positive trends in SON. While most reanalyses agree on positive trends in JJA, they are not statistically significant. Although Australia is also found to be affected by positive trends in SON with a good agreement among reanalyses, they are not statistically significant, either, for the period considered. Weaker trends are however observed in JJA over the southeastern Australian coast with more robust statistical evidence.

190

195



Most reanalyses agree concerning negative T_{VAR} trends affecting eastern South America in SON, South Africa in DJF and MAM, as well as northern Australia in SON, but only the trend in Australia is statistically significant in the REM. Some of the most robust negative trends in T_{VAR} are observed in DJF over the southern Indian Ocean, and in JJA over the South Pacific and South Atlantic, far away from land masses.

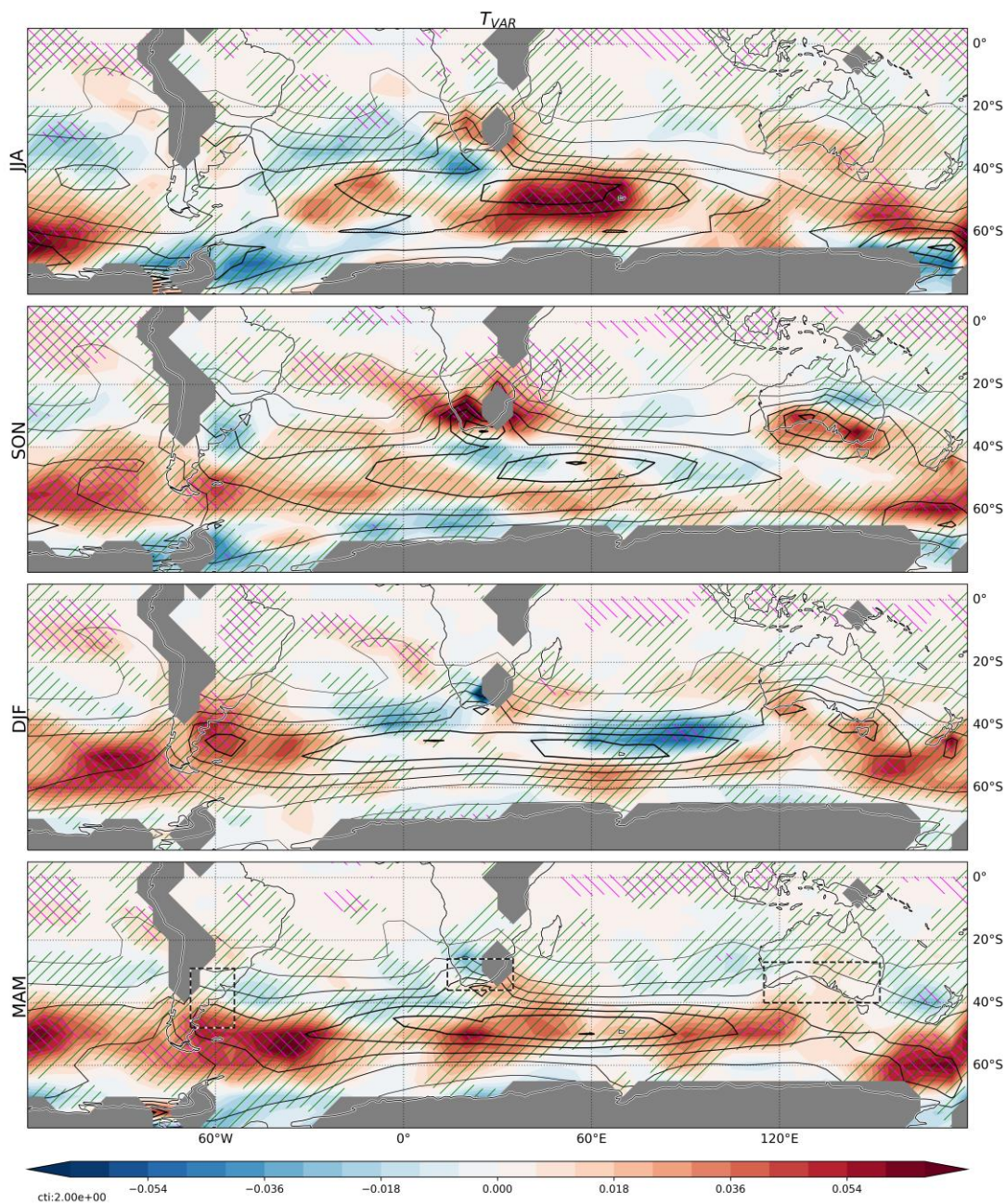
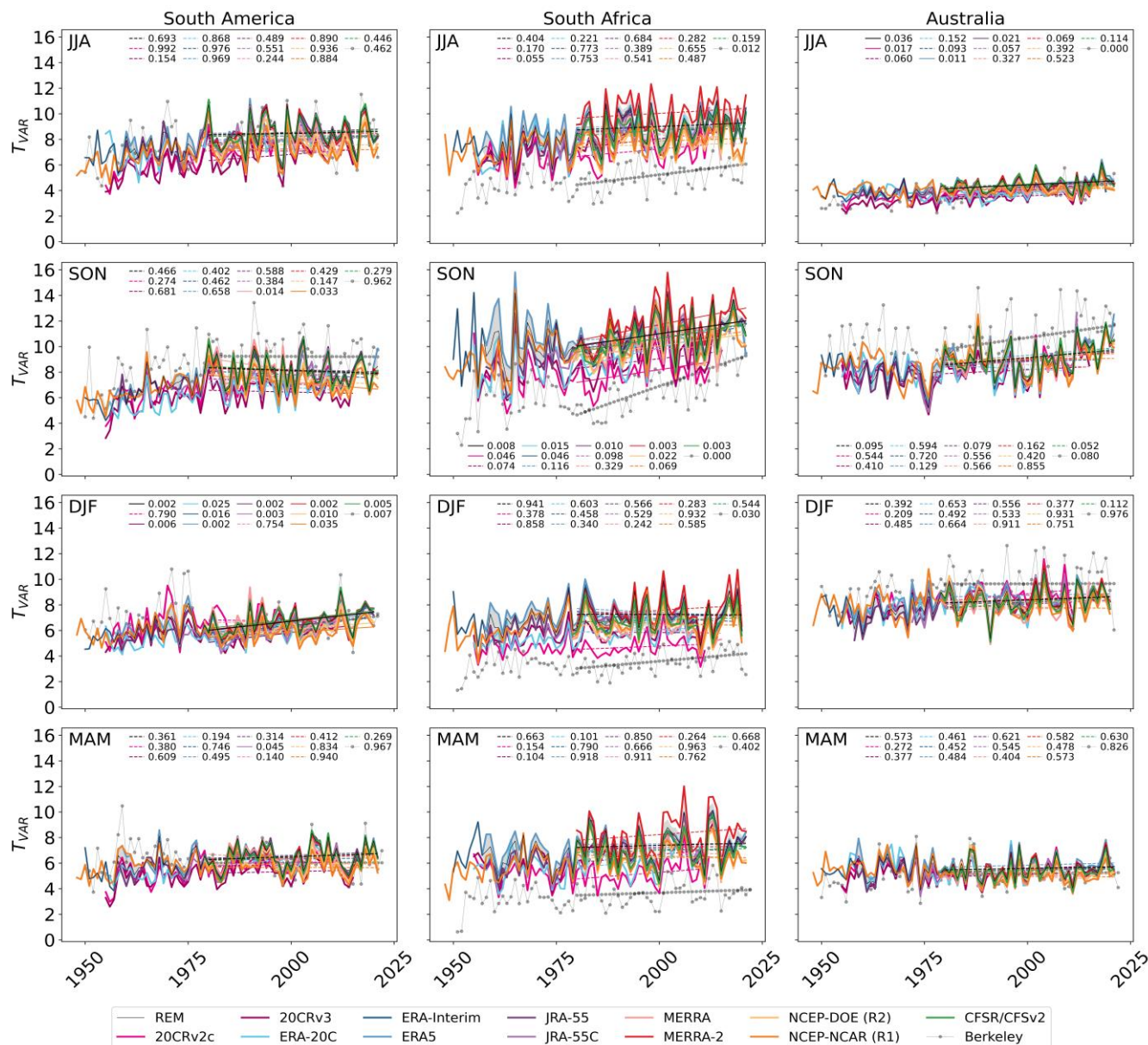


Figure 5: Trends of T_{VAR} (shadings; $K^2 year^{-1}$) over 1980-2022 are shown for the REM for the different seasons (rows). The climatology is overlaid with contours at 2 K^2 intervals. Thicker contours indicate larger magnitudes. Significant trends (p -value <



205 **0.05) are indicated with purple hatching. Areas where more than $\frac{3}{4}$ of reanalyses agree on the sign of the trends are hatched in green.**

The evolution of T_{VAR} is investigated in more detail in Fig. 6 for the three land sectors of interest. Despite the presence of time-mean biases in reanalyses as documented in the previous section, the year-to-year variability of T_{VAR} is relatively similar among the various datasets over 1980-2022 in all the sectors. Over South Africa, however, surface-input datasets such as
210 20CRv2c and to a lesser extent ERA-20C show weaker interannual variability and tend to be biased negatively, although we note an improvement in 20CRv3 over 20CRv2c. Over the other sectors, there is marked agreement between full-input and surface-input datasets, indicating that surface observations alone are sufficient to constrain T_{VAR} over these sectors.



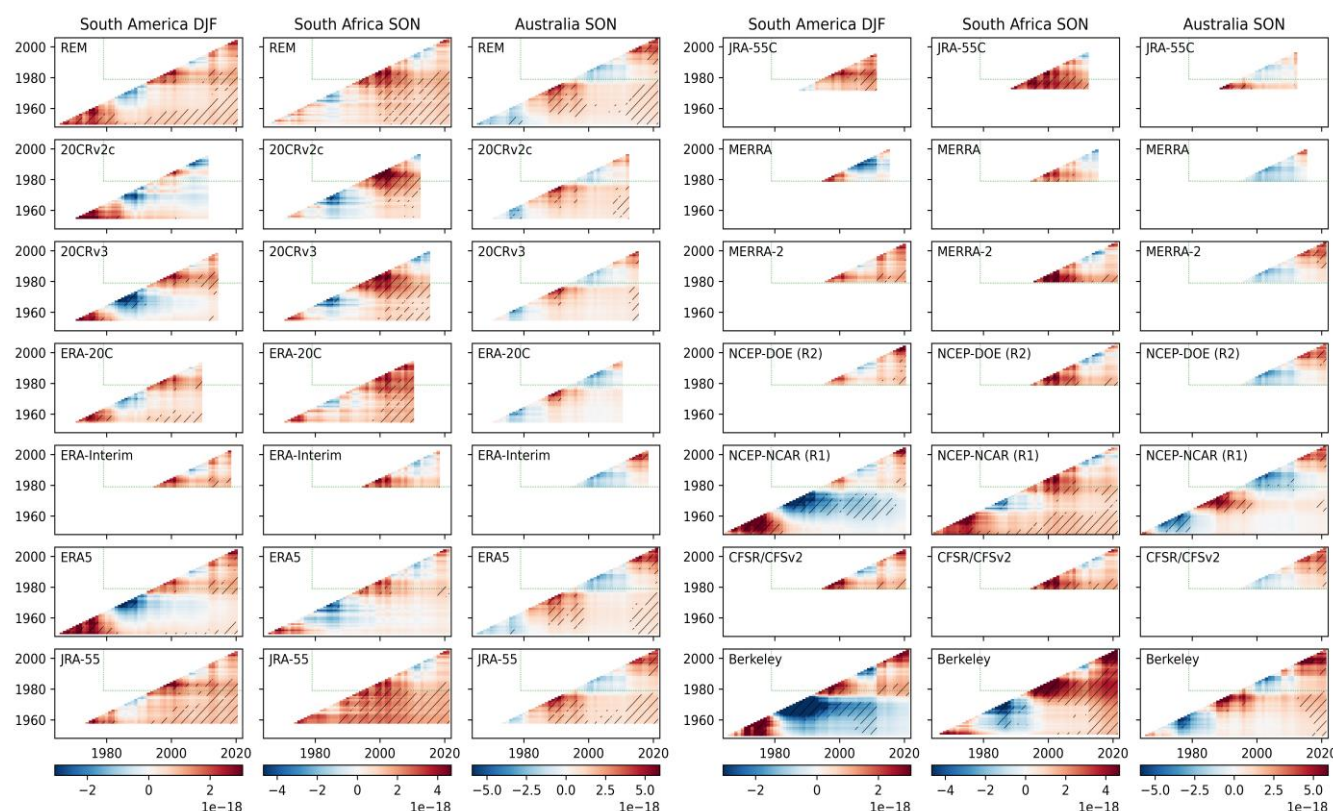
215 **Figure 6: Time series of T_{VAR} (K^2) and its trend at three representative regions -- South America (left), South Africa (middle), and Australia (right) -- for different seasons (rows). The sectors over which T_{VAR} is averaged are illustrated with dashed boxes in the lower panels of Figs. 1-2 and 5. Trends are computed for the period 1979-2022 (except for when datasets do not provide data for the full period) and illustrated with solid or dashed lines whether they are statistically significant or not (significant when p -value < 0.05). The p -value corresponding to each reanalysis is indicated in each panel. T_{VAR} from Berkeley Earth is assessed from observation-based data at the surface and scaled here by 2.5 for qualitative comparison with 850-hPa T_{VAR} in reanalyses.**

220



Trends in T_{VAR} are generally similar among the reanalysis datasets over the satellite era and tend to be consistent with the trends observed in station-based surface data (Berkeley Earth). Over South Africa, surface T_{VAR} trends are clearer than the 850 hPa T_{VAR} trends in the reanalyses and they are significant in JJA and DJF, seasons for which the reanalysis-based trends are not. SON T_{VAR} trends observed over Australia at the surface are also more obvious than those seen at 850 hPa. They are, however, not significant, most likely because they have not emerged yet from the large interannual variability. It is also important to mention that the positive trends observed over South America in DJF, and South Africa in SON appear to be stronger in the satellite era (1980-2022) compared to the prior decades. What appeared to be a positive trend affecting T_{VAR} over South America in SON before the satellite era has come to a halt afterward.

225



230

Figure 7: The sensitivity of trends in T_{VAR} ($K^2 \text{ year}^{-1}$) to the period sampled is assessed over South America in DJF (left), South Africa in SON (middle), and Australia in SON (right). The sectors over which T_{VAR} is averaged are illustrated with dashed boxes in the lower panels of Figs. 1-3, 5, and 8-9. Significant trends (p -value < 0.05) are hatched in black. Trends assessed within the satellite era are delimited by dashed green lines. The y and x axes indicate the beginning and end, respectively, of the periods over which trends are assessed. T_{VAR} from Berkeley Earth is assessed from observation-based data at the surface and scaled here by 2.5 for qualitative comparison with 850-hPa T_{VAR} trends in reanalyses.

235

The sensitivity of T_{VAR} trends to the periods considered is confirmed by Fig. 7, which illustrates trends and their significance as computed for various periods. Many of the full-input reanalyses that extend back before the satellite era show negative trends over ~1970-1990 over South America (DJF) and South Africa (SON), as well as for ~1960-1978 over Australia (SON).

240

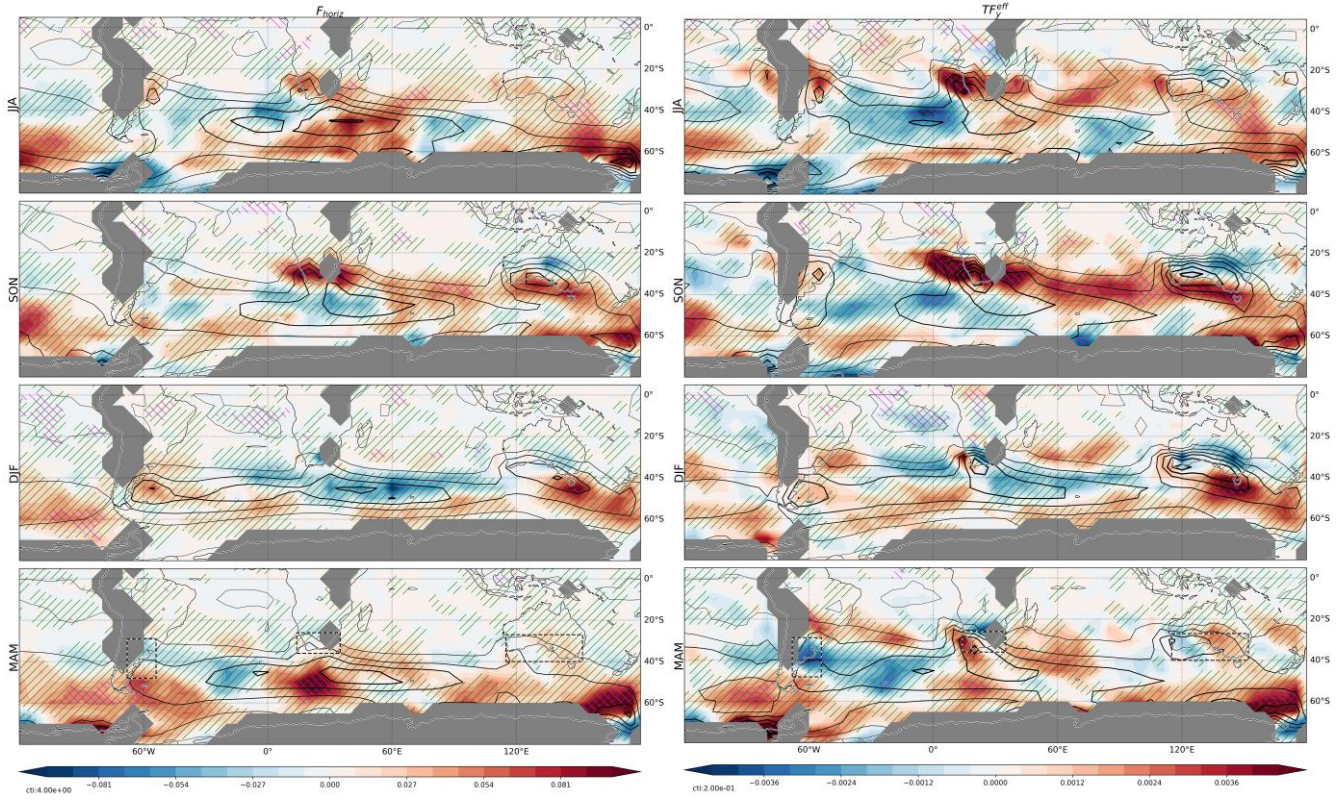


The South-American trends are, however, positive when assessed for the ~1954-1980 period. Assessing trends over such short periods, however, may capture inter-decadal variability not associated with climate change or discontinuities in assimilated observations, such as the beginning of satellite assimilation in 1979 in full-input datasets providing data before the satellite era. Discontinuities in assimilation, however, may not be the main factor here, since T_{VAR} in Berkeley Earth tends to show similar long-term tendencies. Fig. 7 also reveals that trends affecting Australia are significant when assessing them for the whole period (1954-2022) or the most recent decades (1990-2022), which shows the most rapid intensification in ERA5, JRA-55, and the REM (see also Fig. 6 for Australia in SON). We note that NCEP-NCAR (R1) shows more negative trends for South America in DJF over 1960-2022 compared to other reanalyses that provide extended data (Fig. 7). It appears to be linked with a negative T_{VAR} bias in the satellite era in contrast to the earlier period (Fig. 6). The corresponding negative trends are also observed, though to a lesser extent, in ERA5, but not in JRA-55. The negative trend in NCEP-NCAR (R1) is very similar to the surface T_{VAR} trends assessed in the Berkeley Earth dataset. Nevertheless, this does not mean that NCEP-NCAR (R1) is closer to reality in that sector compared to other reanalyses. It may be that it fails to adequately capture the differences in mechanisms driving surface and 850 hPa variabilities. Over other sectors, T_{VAR} trends in Berkeley Earth and reanalyses are qualitatively similar.

255

We then turn our attention to the role of F_{horiz} in driving the observed T_{VAR} trends (Fig. 8). It is assessed by contrasting their spatial distributions (comparing Fig. 8 left column to Fig. 5). Those two have remarkably similar distributions in the extratropics (pattern correlation of 0.62 for trends ranging from 80°S to 20°S), confirming that the T_{VAR} trends primarily result from modulations of the baroclinic development of subweekly weather systems, i.e., changes in the associated heat fluxes against the background temperature gradient. Reanalyses agree about the prominent positive trends affecting southern Australia in SON, South Africa in SON and JJA, and midlatitude South America in DJF. However, the trends in F_{horiz} over landmasses are significant only over South Africa in SON for the period shown. Inspection of the meridional and zonal components of F_{horiz} (not shown) reveals that the trends over the SH are mainly contributed by trends in the meridional heat fluxes against the meridional gradient of seasonal-mean temperature ($-2\overline{v'T'} \partial\bar{T}/\partial y$).

260



265

Figure 8: Same as in Fig. 5, but for (left) F_{horiz} ($\text{K}^2 \text{ day}^{-1} \text{ year}^{-1}$; shading) and (right) F_y^{eff} ($\text{K m}^{-1} \text{ decade}^{-1}$; shading).

One may consider that the T_{VAR} and F_{horiz} trends shown above tend to exhibit good correspondence simply because they may both capture trends in subweekly eddy amplitudes. For instance, eddies of the same structure, if of larger amplitude, will yield both larger T_{VAR} and F_{horiz} . This example illustrates that F_{horiz} is inadequate to identify the source of the amplified T_{VAR} . To factor out the impact of eddy amplitude from F_{horiz} and thereby obtain an appropriate measure of T_{VAR} generation efficiency, we here divide F_{horiz} by the square root of the product of local eddy wind and temperature variance. For the meridional component of F_{horiz} , this efficiency (F_y^{eff}) takes the form $-2 \left(\overline{T'v'} / \sqrt{\overline{T'^2} \overline{v'^2}} \right) \partial \bar{T} / \partial y$, which is essentially the product of the local correlation between T' and v' and the meridional temperature gradient in the background state. The spatial distribution of trends in the efficiency thus defined (Fig. 8, right column) is qualitatively similar to trends in F_{horiz} and thus explains well the T_{VAR} trends. We note that, when expressed as efficiency, trends in F_{horiz} become significant over Australia in SON and in the midlatitude South Indian Ocean. This enhanced generation efficiency can contribute to the Australian T_{VAR} trends through the upstream generation of subweekly disturbances and the subsequent advection of T_{VAR} by the westerly winds.

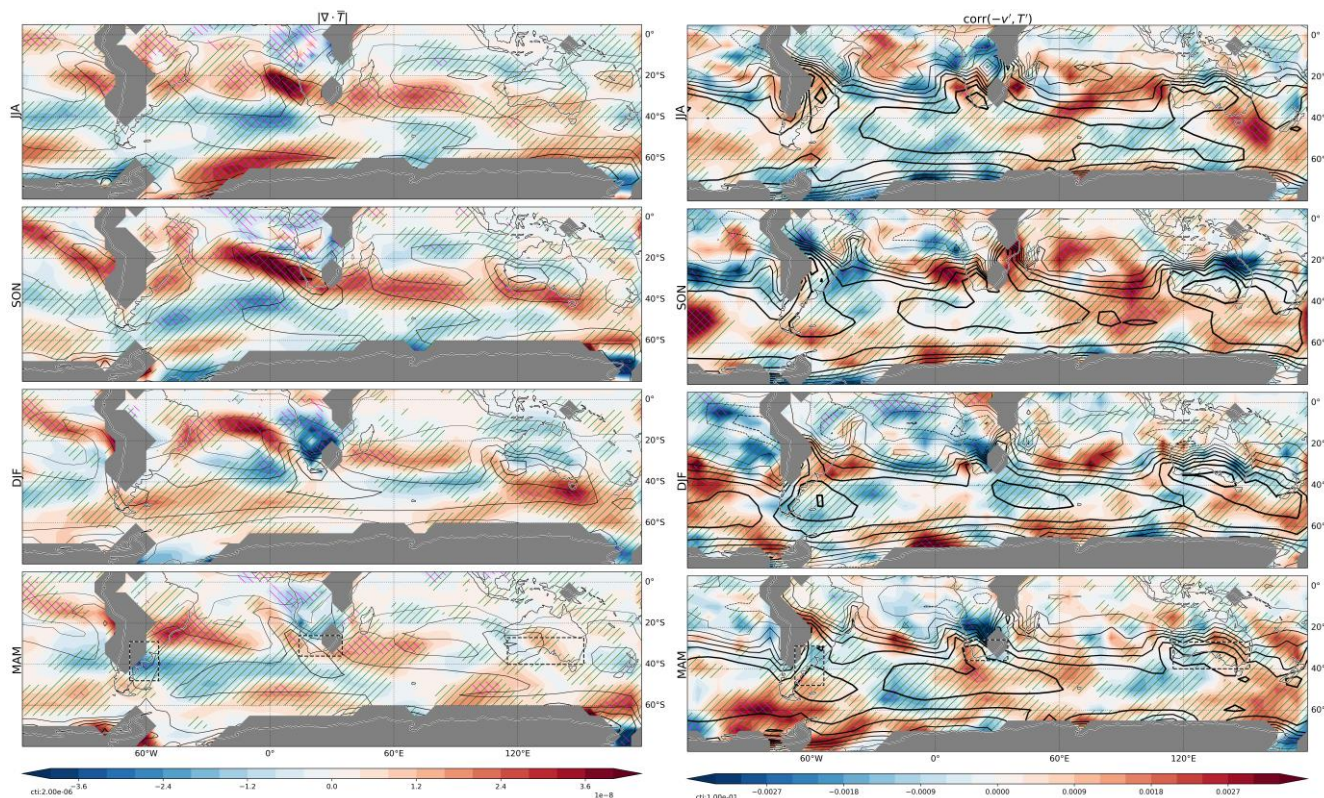
275



280 In the extratropics, positive trends in F_{horiz} efficiency are generally collocated with trends in the magnitude of the climatological temperature gradient (Fig. 9, left column). Most of these changes are explained by trends in the meridional gradient of temperature ($|\partial\bar{T}/\partial y|$, not shown). Amplified gradients are notably observed along the southern coast of Australia in SON, and South Africa in JJA and SON. In South America, by contrast, the correspondence between the trends in $|\nabla\bar{T}|$ and F_{horiz} is not clear. For instance, the temperature gradient in DJF is found to weaken over sectors of positive F_{horiz} trends. We find that

285 over that sector, the amplifying generation is attributable to the more favorable structure of subweekly anomalies. The correlation between $-v'$ and T' shows positive trends (red shading in Fig. 9, right column). Since their correlation is typically positive over that sector (southward eddy heat fluxes), it represents an increase in the efficiency of subweekly eddies to produce heat fluxes against the equator-to-pole temperature contrast. Trends in F_{horiz} over South Africa and Australia, in contrast, are dominated by the strengthening of the meridional temperature gradient, and only weak trends in the correlation between $-v'$

290 and T' are observed over these sectors. We note, however, that just west of South Africa in SON, the correlation between $-v'$ and T' significantly becomes more positive, which may, in combination with the amplified temperature gradient, contribute to increasing South African T_{VAR} through enhanced generation efficiency (see right column of Fig. 8 in SON) and subsequent downstream advection.

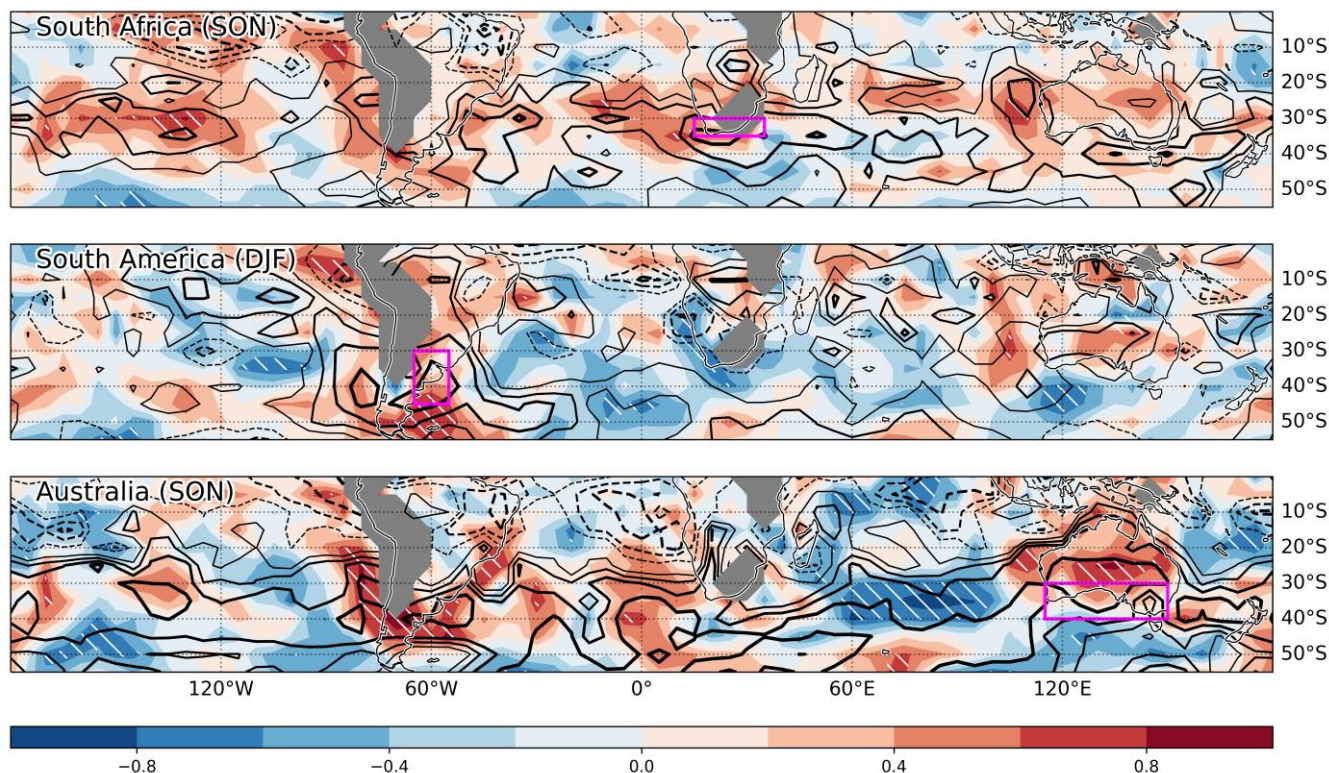


295 **Figure 9:** Same as in Fig. 8, but for (left) $|\nabla\bar{T}|(\text{K m}^{-1} \text{ year}^{-1})$ and (right) the correlation between $-v'$ and T' .



The role of F_{horiz} is further assessed by investigating how it affects biases in T_{VAR} among the reanalyses. It is achieved here by correlating the trends in T_{VAR} averaged over a reference region with trends in F_y^{eff} at each grid point (heterogeneous correlation; Fig. 10). The correlation is evaluated in the dataset space, indicating the relationship between reference T_{VAR} and F_y^{eff} trend biases among reanalyses. Since the correlation is assessed for each grid point, a map showing the relationship between F_y^{eff} trends and reference T_{VAR} trend is obtained. The use of such a map is motivated by the fact that remotely generated T_{VAR} by F_{horiz} may affect the reference region through horizontal advection of T_{VAR} by the basic-state circulation. The same analysis is repeated for the three regions of interest (panels of Fig. 10). An assessment of the spatial extent of T_{VAR} trend biases is also performed by correlating T_{VAR} trends at each grid point with the reference T_{VAR} trend (homogeneous correlation; contours of Fig. 10).

We find from the homogeneous correlation that T_{VAR} trend biases in SON over South Africa (Fig. 10, first row) are not geographically confined but tend to accompany, as indicated by large areas of positive correlation, biases of the same sign around 30°S at almost all longitudes. Similarly, we also observe from the heterogeneous correlation a generally positive association with F_y^{eff} trends at a similar latitude band. In other words, biases affecting South Africa tend to be part of SH-wide biases at similar latitudes. The biases affecting T_{VAR} trends in DJF around eastern South America (Fig. 10, second row) are more geographically confined in comparison with a more modest correlation with T_{VAR} trends (homogeneous correlation) over other SH sectors as well as positive correlations with F_y^{eff} trends (heterogeneous correlation) that are more concentrated near South America. Finally, T_{VAR} trend biases in SON over southern Australia (Fig. 10, third row) tend to be associated with T_{VAR} trend biases (homogeneous correlation) of the same sign in midlatitudes $\sim 40\text{--}55^\circ\text{S}$ over the South Pacific, Atlantic, and Indian oceans, and those of the opposite sign over the subtropics. Concerning the relationship with F_y^{eff} (heterogeneous correlation), there is notably a covariability with F_y^{eff} biases around South America. These findings indicate that biases in T_{VAR} trends in reanalyses are not locally confined. Instead, they are part of broad biases in mean-state trends and their interactions with subweekly variability.



325 **Figure 10: Sources of inter-reanalysis bias evaluated by correlating among reanalyses trends in F_y^{eff} at each grid point with trends (1980–2010) in T_{VAR} (shadings; heterogeneous correlation) averaged over three representative regions as indicated in individual panels with purple rectangles. Significant correlations (p -value < 0.05) are indicated with white hatching. Note that the season, which is also indicated in each panel, differs among the regions. For reference, the correlation is also assessed for T_{VAR} trends at each grid point (homogeneous correlation; black contours; 0.2 intervals; solid and dashed lines for positive and negative correlations, respectively; the 0 lines are omitted).**

4 Discussion and conclusions

In summary, reanalysis datasets generally agree well concerning the climatological features (1980–2010) of T_{VAR} in the SH (Fig. 3). It is maximized in the South Atlantic and Indian Oceans. Local maxima are also observed near or over land masses, specifically in SON and DJF over southern Australia, year-round around South Africa, and in JJA and SON around Argentina, indicating an anchoring of subweekly variability by land/sea thermal contrasts (Fig. 1). T_{VAR} is primarily generated through horizontal advection (F_{horiz}) and offset by vertical motion (F_{vert}) (Fig. 2). Among all datasets considered, NCEP-NCAR (R1) and NCEP-DOE (R2) show noticeable negative biases around the mid-latitude T_{VAR} maximum that is associated with the storm track over the ocean (Fig. 4). This finding is in agreement with the substantial reduction of eddy APE identified in NCEP-DOE (R2) (Sang et al., 2022), which is attributed to its coarser model resolution. Over SH landmasses, however, the biases are greatly reduced, which may be due to the greater availability of observations.



We find a good agreement concerning the significant positive T_{VAR} trends (1980–2022) affecting South America in DJF and
340 South Africa in SON (Fig. 5). Although most reanalyses agree concerning positive trends over southern Australia in SON,
they are not statistically significant for the satellite era (1980–2022). The latter trends are, however, significant when
considering a longer period (1954–2022) provided by some of the datasets (Fig. 7), likely due to the larger sample size, and
for the most recent decades when the amplification of T_{VAR} has accelerated. These trends are also observed in gridded, station-
based temperature records, indicating that they are not the result of discontinuities in data assimilation. Station-based T_{VAR}
345 trends are more pronounced than those at 850 hPa in reanalyses for South Africa and southern Australia in SON. It may indicate
that changes in land surface processes amplify trends in subweekly variability. Those three sectors sometimes exhibit
discontinuities in T_{VAR} trends. For instance, T_{VAR} in SON over South America tends to amplify before the satellite era but
decreases afterward (Fig. 7). We observe similar discontinuities in trends surrounding the beginning of the satellite era in
surface observations and reanalyses, indicating that these are not the result of discontinuities introduced by the advent of the
350 assimilation of satellite observations. They are more likely due to multidecadal variability. This is also supported by the fact
that surface-input reanalyses, whose assimilated observations are more constant over the period considered, also capture
similar modulations in the trends.

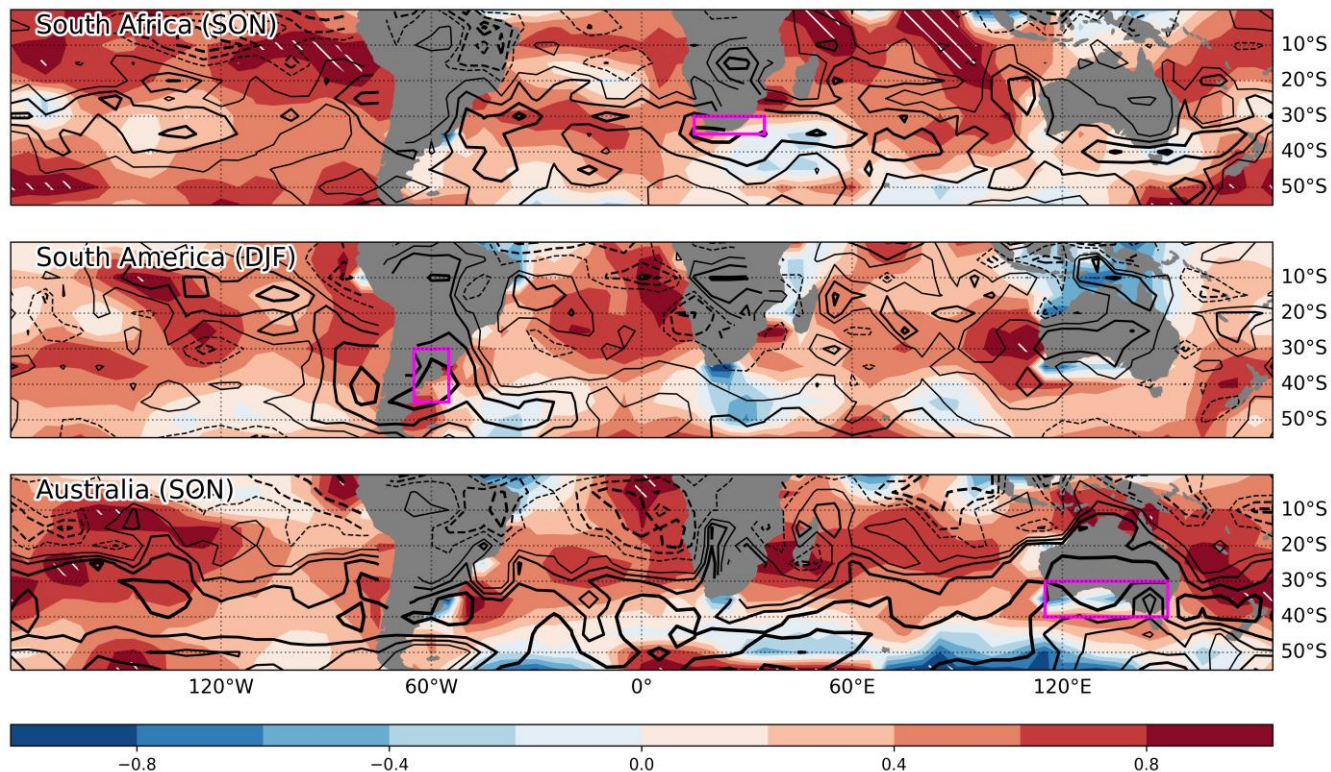
Our results appear consistent with the column-integrated SH-wide increases in wintertime EKE and moist static energy fluxes
355 observed over 1979–2018 in reanalyses and to a lesser extent in CMIP6 model projections (Chemke et al., 2022), though not
in line with CMIP5 model projections (difference of mean EKE between 2080–2100 and 1980–2000) of a SH-wide summertime
poleward shift of EKE (Chemke, 2022) which one may expect to result in reduced variability over South America. One possible
explanation may be that the anticipated decrease in variability is being overpowered by a positive natural multidecadal trend
in variability during the satellite era, but observations suggest that may unlikely be the case. Intensification and poleward shift
360 of the summertime (DJF) polar-front jet were overall observed as a result of the stratospheric ozone depletion (Orr et al., 2021),
though pausing since 2000 due to a hint of its recovery (Banerjee et al., 2020). Perhaps more plausibly, it indicates that
vertically-integrated EKE, or shifts in the jetstream, are not necessarily good indicators for near-surface temperature variance.
The projected (2080–2099 compared to 1980–1999) summertime increase in 850-hPa temperature variance over South America
documented by Schneider et al. (2015) seems to support the latter since it is projected despite the poleward shift of EKE
365 (Chemke, 2022). It is worth noting that the prominent spatial inhomogeneities observed in T_{VAR} trends suggest that it is
necessary to avoid using large-scale spatial averaging, such as the zonal mean or column-integral, when interested in the
potential socioeconomic impacts of changing atmospheric variability.

Overall, the spatial patterns of F_{horiz} trends and their efficiency are similar to those of T_{VAR} trends, indicating that fluxes of heat
370 against the seasonal-mean gradient of temperature are the prime driver of amplified subweekly temperature variance. Whereas
over South Africa and Australia it is concomitant with a local amplification of the meridional temperature gradient, it is
ascribed primarily to a change in the structure of subweekly eddies over South America that enhances their efficiency in



transporting heat across the seasonal-mean temperature gradient. While the former can be deduced simply from large-scale
temperature trends, the latter requires more detailed knowledge of how eddies react to seasonal-mean flow changes and cannot
375 be inferred from future trends in temperature gradients alone.

One potential source of bias in T_{VAR} and F_{horiz} trends among reanalyses is the impact of the representation of sea surface
temperature (SST) on the development of atmospheric eddies. Masunaga et al. (2018) showed that a version of JRA-55C with
improved SST resolution, JRA-55CHS, better represents mesoscale atmospheric structures up to the mid-troposphere. Many
380 of the reanalysis products considered, transitioned through different SST datasets throughout their integration period (table 4
of Fujiwara et al., 2017) and these discontinuities could have introduced changes in T_{VAR} . It is, however, challenging to assess
the impact of SST representation in the context of this comprehensive comparison of reanalyses because of a lack of controlled
experiments. We found, however, a tendency for datasets with amplified SST trends in the SH to also show amplified T_{VAR}
trends (Fig. 11). For instance, we find evidence that reanalyses with more pronounced SST trends in the subtropical Pacific
385 and Indian Oceans tend to have greater T_{VAR} trends over South Africa. This simple analysis, however, does not account for
SST resolution and suffers from a small sample size (five reanalyses). Further confirmation of the role of SST is required in
future work by carefully considering the transitions in the assimilation of various SST products.



390 **Figure 11:** Same as in Fig. 10, but for SST trends (1980-2010; heterogeneous correlation; shading) based on a subset of reanalyses
(ERA5, ERA-Interim, JRA-55, MERRA-2, NCEP-NCAR). For references, the correlation is also assessed for T_{VAR} trends at each



grid point (homogeneous correlation, black contours; 0.2 intervals; solid and dashed lines for positive and negative correlations, respectively).

Concerning the value of surface-input reanalyses (20CRv2c, 20CRv2, and ERA-20C), we have found that they capture
395 relatively well both the climatology and trends in T_{VAR} despite the limited observations being assimilated. In fact, their
representation of T_{VAR} is similar to or sometimes even better than that of NCEP-NCAR (R1) and NCEP-DOE (R2), which
benefit from full data assimilation over the 1979–2022 period. This suggests that they could potentially be used to reliably
assess long-term changes in T_{VAR} over the past century, either due to external forcing or multidecadal variability. Similarly,
the conventional-input JRA-55C, which does not assimilate satellite observations, also agrees well with other reanalyses,
400 indicating that satellite observations are not absolutely necessary to constrain T_{VAR} near the surface over the sectors studied
here.

It is important to mention that by comparing seasonally-averaged T_{VAR} and generation/dissipation terms among the reanalyses,
we are assessing their statistical representation of subweekly variability, not their ability to capture specific weather events.
405 Observations in some sectors may sometimes insufficiently resolve migratory weather systems so that the model component
of reanalyses is primarily responsible for generating dynamical variability. This model dependence may be especially
important in surface-input reanalyses over vast oceanic sectors. In ensemble-based reanalyses, such as 20CR, this could
contribute to suppressing a part of internal variability that is not properly constrained by observations. Assessing the ability of
reanalysis datasets to adequately capture subweekly variability in a deterministic sense, i.e. capturing the occurrence of specific
410 events, will be the topic of future work.

Code availability

Code can be provided upon request.

Data availability

JRA-55, JRA-55C, CFSR, CFSv2, and ERA-20C were obtained from the research data archive (<https://rda.ucar.edu/>). MERRA
415 and MERRA-2 were obtained from the NASA Goddard Earth Sciences Data and Information Services Center
(<https://disc.gsfc.nasa.gov/>). ERA5 was obtained from the climate data store (<https://doi.org/10.24381/cds.bd0915c6>). ERA-
Interim was obtained from the ECMWF data server (<https://apps.ecmwf.int/datasets/data/interim-full-daily/levtype=pl/>).
NCEP-NCAR (R1), NCEP-DOE (R2), 20CRv2c, and 20CRv3 were obtained from NOAA's Physical Sciences Laboratory
(<https://psl.noaa.gov/data/gridded/>).



420 **Author contribution**

P.M. led and coordinated the various components of the study throughout. All authors (P.M., S.B., M.N., H.N., Y.K.) discussed the results and aided in their interpretation. P.M. took the lead in writing the manuscript.

Competing interests

The authors declare that they have no conflict of interest.

425 **Acknowledgments**

This study was supported in part by the Japan Society for the Promotion of Science through Grants-in-Aid for Scientific Research (JP19H05702, JP19H15703, JP22H01292, and JP23H01241), by the Japan Science and Technology Agency through COI-NEXT JPMJPF2013, and by the Ministry of Education, Culture, Sports, Science and Technology of Japan (JPMXD0722680395).

430 **References**

- Banerjee, A., Fyfe, J. C., Polvani, L. M., Waugh, D. and Chang, K. L.: A pause in Southern Hemisphere circulation trends due to the Montreal Protocol, *Nature*, 579(7800), 544–548, doi:10.1038/s41586-020-2120-4, 2020.
- Chemke, R.: The future poleward shift of Southern Hemisphere summer mid-latitude storm tracks stems from ocean coupling, *Nat. Commun.*, 13(1), 1–9, doi:10.1038/s41467-022-29392-4, 2022.
- 435 Chemke, R., Ming, Y. and Yuval, J.: The intensification of winter mid-latitude storm tracks in the Southern Hemisphere, *Nat. Clim. Chang.*, 12(6), 553–557, doi:10.1038/s41558-022-01368-8, 2022.
- Compo, G. P., Whitaker, J. S., Sardeshmukh, P. D., Matsui, N., Allan, R. J., Yin, X., Gleason, B. E., Vose, R. S., Rutledge, G., Bessemoulin, P., Brönnimann, S., Brunet, M., Crouthamel, R. I., Grant, A. N., Groisman, P. Y., Jones, P. D., Kruk, M. C., Kruger, A. C., Marshall, G. J., Mauerer, M., Mok, H. Y., Nordli, Ø., Ross, T. F., Trigo, R. M., Wang, X. L., Woodruff, S. D.
- 440 and Worley, S. J.: The Twentieth Century Reanalysis Project, *Q. J. R. Meteorol. Soc.*, 137(654), 1–28, doi:10.1002/qj.776, 2011.
- Dee, D. P., Uppala, S. M., Simmons, A. J., Berrisford, P., Poli, P., Kobayashi, S., Andrae, U., Balmaseda, M. A., Balsamo, G. and Bauer, P.: The ERA-Interim reanalysis: configuration and performance of the data assimilation system, *Q. J. R. Meteorol. Soc.*, 137, 553–597, doi:10.1002/qj.828, 2011.
- 445 Fujiwara, M., Wright, J. S., Manney, G. L., Gray, L. J., Anstey, J., Birner, T., Davis, S., Gerber, E. P., Harvey, V. L., Hegglin, M. I., Homeyer, C. R., Knox, J. A., Krüger, K., Lambert, A., Long, C. S., Martineau, P., Molod, A., Monge-Sanz, B. M., Santee, M. L., Tegtmeier, S., Chabrilat, S., Tan, D. G. H., Jackson, D. R., Polavarapu, S., Compo, G. P., Dragani, R.,



- Ebisuzaki, W., Harada, Y., Kobayashi, C., McCarty, W., Onogi, K., Pawson, S., Simmons, A., Wargan, K., Whitaker, J. S. and Zou, C.-Z.: Introduction to the SPARC Reanalysis Intercomparison Project (S-RIP) and overview of the reanalysis systems, *Atmos. Chem. Phys.*, 17(2), 1417–1452, doi:10.5194/acp-17-1417-2017, 2017.
- 450 Fujiwara, M., Manney, G. L., Gray, L. J. and Wright, J. S.: SPARC Reanalysis Intercomparison Project (S-RIP) Final Report, SPARC Repo., SPARC, 2022., 2022.
- Gelaro, R., McCarty, W., Suárez, M. J., Todling, R., Molod, A., Takacs, L., Randles, C. A., Darmenov, A., Bosilovich, M. G., Reichle, R., Wargan, K., Coy, L., Cullather, R., Draper, C., Akella, S., Buchard, V., Conaty, A., da Silva, A. M., Gu, W., Kim, 455 G.-K., Koster, R., Lucchesi, R., Merkova, D., Nielsen, J. E., Partyka, G., Pawson, S., Putman, W., Rienecker, M., Schubert, S. D., Sienkiewicz, M. and Zhao, B.: The Modern-Era Retrospective Analysis for Research and Applications, Version 2 (MERRA-2), *J. Clim.*, 30(14), 5419–5454, doi:10.1175/JCLI-D-16-0758.1, 2017.
- Gerber, E. P. and Martineau, P.: Quantifying the variability of the annular modes: reanalysis uncertainty vs. sampling uncertainty, *Atmos. Chem. Phys.*, 18(23), 17099–17117, doi:10.5194/acp-18-17099-2018, 2018.
- 460 Hersbach, H., Bell, B., Berrisford, P., Hirahara, S., Horányi, A., Muñoz-Sabater, J., Nicolas, J., Peubey, C., Radu, R., Schepers, D., Simmons, A., Soci, C., Abdalla, S., Abellan, X., Balsamo, G., Bechtold, P., Biavati, G., Bidlot, J., Bonavita, M., Chiara, G., Dahlgren, P., Dee, D., Diamantakis, M., Dragani, R., Flemming, J., Forbes, R., Fuentes, M., Geer, A., Haimberger, L., Healy, S., Hogan, R. J., Hólm, E., Janisková, M., Keeley, S., Laloyaux, P., Lopez, P., Lupu, C., Radnoti, G., Rosnay, P., Rozum, I., Vamborg, F., Villaume, S. and Thépaut, J.: The ERA5 Global Reanalysis, *Q. J. R. Meteorol. Soc.*, 465 doi:10.1002/qj.3803, 2020.
- Kalnay, E., Kanamitsu, M., Kistler, R., Collins, W., Deaven, D., Gandin, L., Iredell, M., Saha, S., White, G., Woollen, J., Zhu, Y., Leetmaa, A., Reynolds, R., Chelliah, M., Ebisuzaki, W., Higgins, W., Janowiak, J., Mo, K. C., Ropelewski, C., Wang, J., Jenne, R. and Joseph, D.: The NCEP/NCAR 40-Year Reanalysis Project, *Bull. Am. Meteorol. Soc.*, 77(3), 437–471, doi:10.1175/1520-0477(1996)077<0437:TNYRP>2.0.CO;2, 1996.
- 470 Kanamitsu, M., Ebisuzaki, W., Woollen, J., Yang, S.-K., Hnilo, J. J., Fiorino, M. and Potter, G. L.: NCEP–DOE AMIP-II Reanalysis (R-2), *Bull. Am. Meteorol. Soc.*, 83(11), 1631–1644, doi:10.1175/BAMS-83-11-1631, 2002.
- Kobayashi, C., Endo, H., Ota, Y., Kobayashi, S., Onoda, H., Harada, Y., Onogi, K. and Kamahori, H.: Preliminary Results of the JRA-55C, an Atmospheric Reanalysis Assimilating Conventional Observations Only, *SOLA*, 10, 78–82, doi:10.2151/sola.2014-016, 2014.
- 475 Kobayashi, S., Ota, Y., Harada, Y., Ebata, A., Moriya, M., Onoda, H., Onogi, K., Kamahori, H., Kobayashi, C., Endo, H., Miyaoka, K. and Takahashi, K.: The JRA-55 Reanalysis: General Specifications and Basic Characteristics, *J. Meteorol. Soc. Japan. Ser. II*, 93(1), 5–48, doi:10.2151/jmsj.2015-001, 2015.
- Lorenz, E. N.: Available Potential Energy and the Maintenance of the General Circulation, *Tellus*, 7(2), 157–167, doi:10.3402/tellusa.v7i2.8796, 1955.
- 480 Masunaga, R., Nakamura, H., Kamahori, H., Onogi, K. and Okajima, S.: JRA-55CHS: An atmospheric reanalysis produced with high-resolution SST, *Sci. Online Lett. Atmos.*, 14, 6–13, doi:10.2151/sola.2018-002, 2018.



- Nakamura, H. and Shimpo, A.: Seasonal Variations in the Southern Hemisphere Storm Tracks and Jet Streams as Revealed in a Reanalysis Dataset, *J. Clim.*, 17(9), 1828–1844, doi:10.1175/1520-0442(2004)017<1828:SVITSH>2.0.CO;2, 2004.
- Nakamura, H., Sampe, T., Tanimoto, Y. and Shimpo, A.: Observed associations among storm tracks, jet streams and
485 midlatitude oceanic fronts, *Geophys. Monogr.*, 147, 329–345, doi:10.1029/147GM18, 2004.
- Nonaka, M., Nakamura, H., Taguchi, B., Komori, N., Kuwano-Yoshida, A. and Takaya, K.: Air-sea heat exchanges characteristic of a prominent midlatitude oceanic front in the South Indian Ocean as simulated in a high-resolution coupled GCM, *J. Clim.*, 22(24), 6515–6535, doi:10.1175/2009JCLI2960.1, 2009.
- Oort, A. H.: On Estimates Of The Atmospheric Energy Cycle, *Mon. Weather Rev.*, 92(11), 483–493, doi:10.1175/1520-
490 0493(1964)092<0483:OEOTAE>2.3.CO;2, 1964.
- Orr, A., Lu, H., Martineau, P., Gerber, E., Marshall, G. and Bracegirdle, T.: Is our dynamical understanding of the circulation changes associated with the Antarctic ozone hole sensitive to the choice of reanalysis dataset?, *Atmos. Chem. Phys.*, 1–35, doi:10.5194/acp-2020-1288, 2021.
- Poli, P., Hersbach, H., Dee, D. P., Berrisford, P., Simmons, A. J., Vitart, F., Laloyaux, P., Tan, D. G. H., Peubey, C., Thépaut,
495 J. N., Trémolet, Y., Hólm, E. V., Bonavita, M., Isaksen, L. and Fisher, M.: ERA-20C: An atmospheric reanalysis of the twentieth century, *J. Clim.*, 29(11), 4083–4097, doi:10.1175/JCLI-D-15-0556.1, 2016.
- Reboita, M. S., da Rocha, R. P., Ambrizzi, T. and Gouveia, C. D.: Trend and teleconnection patterns in the climatology of extratropical cyclones over the Southern Hemisphere, *Clim. Dyn.*, 45(7–8), 1929–1944, doi:10.1007/s00382-014-2447-3, 2015.
- 500 Rienecker, M. M., Suarez, M. J., Gelaro, R., Todling, R., Bacmeister, J., Liu, E., Bosilovich, M. G., Schubert, S. D., Takacs, L., Kim, G. K., Bloom, S., Chen, J., Collins, D., Conaty, A., Da Silva, A., Gu, W., Joiner, J., Koster, R. D., Lucchesi, R., Molod, A., Owens, T., Pawson, S., Pegion, P., Redder, C. R., Reichle, R., Robertson, F. R., Ruddick, A. G., Sienkiewicz, M. and Woollen, J.: MERRA: NASA’s modern-era retrospective analysis for research and applications, *J. Clim.*, 24(14), 3624–3648, 2011.
- 505 Rohde, R. A. and Hausfather, Z.: The Berkeley Earth Land/Ocean Temperature Record, *Earth Syst. Sci. Data*, 12(4), 3469–3479, doi:10.5194/essd-12-3469-2020, 2020.
- Saha, S., Moorthi, S., Pan, H.-L., Wu, X., Wang, J., Nadiga, S., Tripp, P., Kistler, R., Woollen, J., Behringer, D., Liu, H., Stokes, D., Grumbine, R., Gayno, G., Wang, J., Hou, Y.-T., Chuang, H.-Y., Juang, H.-M. H., Sela, J., Iredell, M., Treadon, R., Kleist, D., Van Delst, P., Keyser, D., Derber, J., Ek, M., Meng, J., Wei, H., Yang, R., Lord, S., Van Den Dool, H., Kumar, A.,
510 Wang, W., Long, C., Chelliah, M., Xue, Y., Huang, B., Schemm, J.-K., Ebisuzaki, W., Lin, R., Xie, P., Chen, M., Zhou, S., Higgins, W., Zou, C.-Z., Liu, Q., Chen, Y., Han, Y., Cucurull, L., Reynolds, R. W., Rutledge, G. and Goldberg, M.: The NCEP Climate Forecast System Reanalysis, *Bull. Am. Meteorol. Soc.*, 91(8), 1015–1057, doi:10.1175/2010BAMS3001.1, 2010.
- Saha, S., Moorthi, S., Wu, X., Wang, J., Nadiga, S., Tripp, P., Behringer, D., Hou, Y. T., Chuang, H. Y., Iredell, M., Ek, M., Meng, J., Yang, R., Mendez, M. P., Van Den Dool, H., Zhang, Q., Wang, W., Chen, M. and Becker, E.: The NCEP climate
515 forecast system version 2, *J. Clim.*, 27(6), 2185–2208, doi:10.1175/JCLI-D-12-00823.1, 2014.



- Sang, X., Yang, X. Q., Tao, L., Fang, J. and Sun, X.: Evaluation of synoptic eddy activities and their feedback onto the midlatitude jet in five atmospheric reanalyses with coarse versus fine model resolutions, *Clim. Dyn.*, 58(5–6), 1363–1381, doi:10.1007/s00382-021-05965-9, 2022.
- Schneider, T., Bischoff, T. and Płotka, H.: Physics of Changes in Synoptic Midlatitude Temperature Variability, *J. Clim.*, 28(6), 2312–2331, doi:10.1175/JCLI-D-14-00632.1, 2015.
- Sheng, J. and Derome, J.: An observational study of the energy transfer between the seasonal mean flow and transient eddies, *Tellus A*, 43(2), 128–144, doi:10.1034/j.1600-0870.1991.t01-1-00004.x, 1991.
- Slivinski, L. C., Compo, G. P., Whitaker, J. S., Sardeshmukh, P. D., Giese, B. S., McColl, C., Allan, R., Yin, X., Vose, R., Titchner, H., Kennedy, J., Spencer, L. J., Ashcroft, L., Brönnimann, S., Brunet, M., Camuffo, D., Cornes, R., Cram, T. A., Crouthamel, R., Domínguez-Castro, F., Freeman, J. E., Gergis, J., Hawkins, E., Jones, P. D., Jourdain, S., Kaplan, A., Kubota, H., Blancq, F. Le, Lee, T. C., Lorrey, A., Luterbacher, J., Maugeri, M., Mock, C. J., Moore, G. W. K., Przybylak, R., Pudmenzky, C., Reason, C., Slonosky, V. C., Smith, C. A., Tinz, B., Trewin, B., Valente, M. A., Wang, X. L., Wilkinson, C., Wood, K. and Wyszynski, P.: Towards a more reliable historical reanalysis: Improvements for version 3 of the Twentieth Century Reanalysis system, *Q. J. R. Meteorol. Soc.*, 145(724), 2876–2908, doi:10.1002/qj.3598, 2019.
- Tanaka, S., Nishii, K. and Nakamura, H.: Vertical structure and energetics of the Western Pacific teleconnection pattern, *J. Clim.*, 29(18), 6597–6616, doi:10.1175/JCLI-D-15-0549.1, 2016.
- Wang, X. L., Feng, Y., Chan, R. and Isaac, V.: Inter-comparison of extra-tropical cyclone activity in nine reanalysis datasets, *Atmos. Res.*, 181, 133–153, doi:10.1016/j.atmosres.2016.06.010, 2016.