

Influences of sources and weather dynamics on atmospheric deposition of Se species and other trace elements

Esther S. Breuninger^{1,2}, Julie Tolu^{1,2}, Iris Thurnherr³, Franziska Aemisegger³, Aryeh Feinberg⁴, Sylvain Bouchet^{1,2}, Jeroen E. Sonke⁵, Véronique Pont⁶, Heini Wernli³ and Lenny H.E. Winkel^{1,2}

5 ¹Eawag, Swiss Federal Institute of Aquatic Science and Technology, Ueberlandstrasse 133, 8600 Dübendorf

²Institute of Biogeochemistry & Pollutant Dynamics, ETH Zurich, 8092 Zurich, Switzerland

³Institute for Atmospheric and Climate Science, ETH Zurich, 8092 Zurich, Switzerland

⁴Institute for Data, Systems, and Society, Massachusetts Institute of Technology, Cambridge, MA 02142, USA

⁵Géosciences Environnement Toulouse, CNRS/IRD/Université de Toulouse, 31400 Toulouse, France

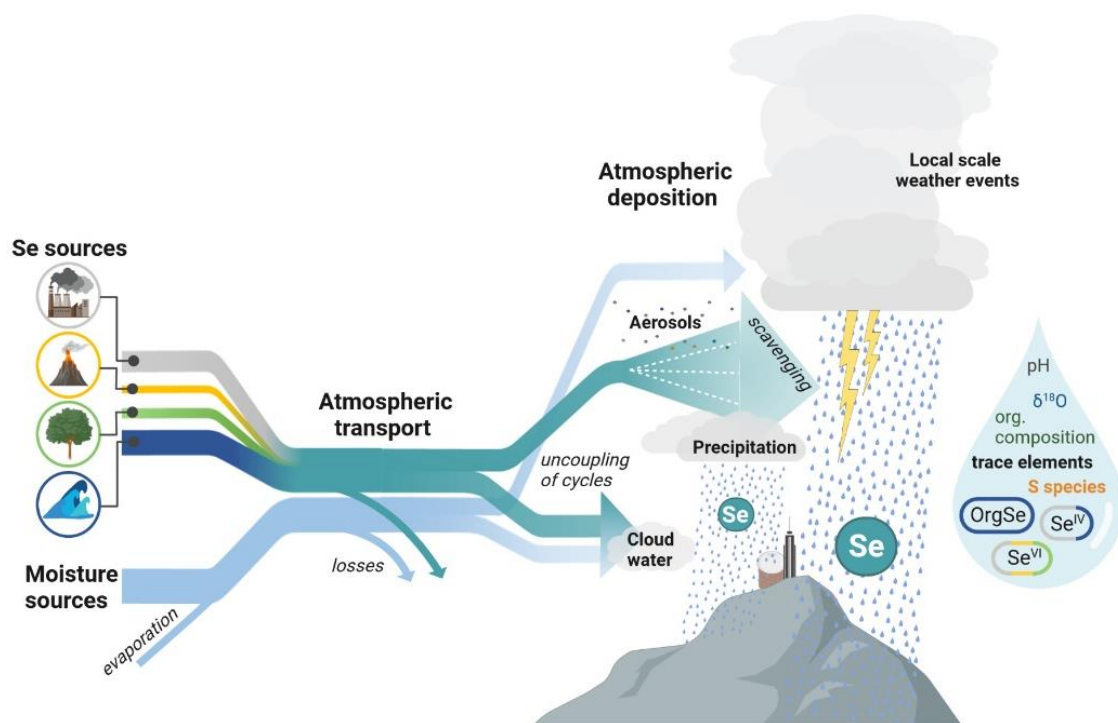
10 ⁶LAERO, Université de Toulouse, CNRS, IRD, UT3, 31400 Toulouse, France

Correspondence to: Esther S. Breuninger, Julie Tolu, Lenny H.E. Winkel

Abstract.

15 Atmospheric deposition is an important source of the essential trace element selenium (Se) to terrestrial ecosystems and
food chains. The fate of Se supplied to surface environments by atmospheric deposition strongly depends on total Se
concentrations as well as its chemical form (speciation). However, the factors determining total Se and its speciation in
atmospheric deposition remain poorly understood. Here, we applied different chemical measurements to aerosol samples taken
20 at a weekly resolution over 5 years (2015-2020), as well as precipitation and cloud water samples taken during a field campaign
of two months in 2019 at Pic du Midi Observatory (French Pyrenees; 2877 m a.s.l.) and combined these observations with
sophisticated modelling approaches. The high-altitude site enables the investigation of local and long-range elemental transport
from both marine and continental sources and the role of different weather systems in elemental deposition. Se speciation was
obtained with an optimized chromatographic method coupled to inductively coupled plasma tandem mass spectrometry (LC-
ICP-MS/MS). Furthermore, we analysed total element concentrations and organic compounds For modelling the source
25 contributions to Se, we used a combination of i) a Eulerian approach with the atmospheric aerosol-chemistry-climate model
SOCOL-AERv2, and ii) a Lagrangian approach with air parcel backward trajectories and a moisture source diagnostics. While
aerosol Se measurements agreed very well ($r \sim 0.8$) with Socol-AERv2 model results, the higher Se concentrations
($>0.05 \text{ ng}\cdot\text{m}^{-3}$) observed in summer were underestimated by the model. We could explain these higher concentrations in
summer by convection related to thunderstorms that led to high aerosol loadings and which are not resolved explicitly in the
30 model. In addition, convective events, associated with continental moisture sources, also explained the highest concentrations
of Se and most other trace elements in wet deposition, due to efficient below cloud scavenging, indicating the importance of
local cloud dynamics on the supply of Se and other, essential and non-essential, trace elements to surface environments.
Correlations between cloud water isotopes and trace elements indicate that the water and trace element cycles are coupled from
the source to the formation of clouds, with possible decoupling during precipitation in relation to below cloud scavenging.
35 With this comprehensive set of observations and model diagnostics we could explain inorganic Se speciation in unprecedented
detail by linking moisture sources and organic chemical compounds in aerosols to speciation data of Se and S, indicating local
vs long-range transport and anthropogenic vs natural Se sources. We report for the first time organic Se in precipitation (and
aerosols), for which we could elucidate a marine biogenic source. Our study thus provides new insights into the factors
explaining atmospheric deposition of Se and other trace elements and highlights the importance of weather system dynamics
40 in addition to source contributions for the atmospheric supply of trace elements to surface environments.

Graphical Abstract



1 Introduction

Selenium (Se) is a key micronutrient used in the production of selenoproteins that serve essential biochemical functions in humans and many other organisms (Lobanov et al., 2009; Lazard et al., 2017). Plant-based food products are an important dietary source of Se. In turn, atmospheric deposition is an important source of Se to terrestrial ecosystems, including agricultural soils, with an estimated Se amount of 11.9-14.6 Gg being annually deposited on terrestrial environments, mostly by wet deposition (~80%) (Wen and Carignan, 2007; Feinberg et al., 2020a). Although atmospheric Se deposition affects Se levels in plant-based food products, the atmospheric Se cycle is scarcely understood. It is known that gaseous methylated selenide species, including dimethyl selenide (DMSe), can be emitted from both marine and terrestrial environments, such as wetlands (Amouroux and Donard, 1996; Amouroux et al., 2001; Vriens et al., 2014a). In contrast, volcanic degassing and anthropogenic activities have been suggested to emit inorganic Se, in the form of elemental Se (Se^0), selenium dioxide (SeO_2), hydrogen selenide, and seleno-carbonyl compounds (Yan et al., 2004; Pavageau et al., 2004). Volatile Se species emitted from both natural and anthropogenic sources are expected to quickly oxidize under atmospheric conditions, eventually forming the species Se^0 , SeO_2 , selenite (Se^{IV}) and/or selenate (Se^{VI}) (Wen and Carignan, 2007; Feinberg et al., 2020b; Atkinson et al., 1990; Heine and Borduas-Dedekind, 2023), which are less volatile and likely undergo gas-particulate conversion (Wen and Carignan, 2007). Recently, Feinberg et al. (2020a; 2020b) created a global atmospheric Se model by implementing Se chemistry in an aerosol-chemistry climate model, thus updating estimates of Se emission sources: in their simulations, 65% of atmospheric Se is emitted by natural sources, including emissions from the marine and terrestrial biosphere, volcanoes, and minor contributions from sea salt and dust. The remaining 35% of total Se emissions originate from anthropogenic activities, mainly fossil fuel combustion, metal smelting, biomass burning, and manufacturing (Feinberg et al. (2020a; 2020b)). The Se model was calibrated with measurements of total Se concentration in aerosols, mostly from air quality monitoring networks, but also individual studies (Feinberg et al. (2020a) and references therein). Observations from Se in rainfall are available from limited point measurements (De Gregori et al., 2002; Wallschläger and London, 2004) and seasonal-accumulated measurements (Suzuki et al., 1981; Weller et al., 2008; Suess et al., 2019; Roulier et al., 2021). However, despite these recent estimates of emission sources and available observations, the factors driving total and Se species in atmospheric deposition remain insufficiently constrained by observations, particularly due to a lack of field measurements that separate source contributions of Se. Furthermore, atmospheric dynamics, e.g., horizontal long-range transport and local vertical transport and precipitation due to convection, can play a role in the atmospheric distribution and deposition of trace elements; however, this factor has been scarcely investigated for trace elements.

Besides knowing total Se concentrations, it is of equal importance to understand Se speciation as this dictates Se mobility in soil, uptake by plants, and ultimately health impact (Fernández-Martínez and Charlet, 2009; Winkel et al., 2015). For example, Se^{VI} is highly mobile in soils and available for plant uptake, while Se^{IV} is efficiently retained by sorption on oxide minerals and thus less available to plants (Ali et al., 2017). Much of the knowledge on atmospheric Se speciation has been derived from what is known for sulfur (S), a well-studied element sharing chemical properties (e.g., redox-sensitivity) and

important cycling pathways (e.g., biogenic methylation and volatilisation) with Se (Vriens et al., 2014b). Only a few studies
80 reported Se speciation in rainfall (Cutter and Church, 1986; De Gregori et al., 2002; Suess et al., 2019; Roulier et al., 2021),
cloud water (Kagawa et al., 2022) and aerosols (Kagawa et al., 2003; De Santiago et al., 2014), which solely detected inorganic
Se (predominantly Se^{VI}), with substantial amounts of Se remaining unidentified (59-80% species unidentified compared to
total Se concentrations) (Wallschläger and London, 2004; Suess et al., 2019; Roulier et al., 2021). This limited knowledge can
be attributed to the lack of analytical techniques enabling the determination of Se speciation at ultra-trace levels (sub-ng·L⁻¹
85 for precipitation and sub-pg·m⁻³ for cloud water and aerosols). Se^{IV} has been reported in atmospheric samples in urban
environments (Suzuki et al., 1981; De Santiago et al., 2014) and/or samples associated to anthropogenic emissions (Cutter and
Church, 1986; De Gregori et al., 2002; Kagawa et al., 2003; De Santiago et al., 2014; Kagawa et al., 2022). In this context,
Se^{IV} and/or the ratio of Se^{IV}:Se^{VI} in aerosols have been suggested as a tracer for coal emissions (Kagawa et al., 2003; De
Santiago et al., 2014) as well as a potential redox tracer in rain and cloud water (Cutter and Church, 1986; Kagawa et al.,
90 2022).

Although each previous study advanced the knowledge of atmospheric Se cycling, every approach used in these studies
has shortcomings. Measurements give very precise information but are limited in scope and lack analysis of factors that inform
on source contributions and atmospheric processing, whereas modelling offers information on a larger but coarser scale. For
example, the global atmospheric Se model developed by Feinberg et al. (2020b) has a resolution of 2.8° x 2.8° and does not
95 include specific Se species in atmospheric deposition, apart from fractions defined as “oxidized inorganic” and “oxidized
organic” Se. Therefore, the understanding of atmospheric Se cycling is fragmented, and many open questions remain, as
outlined below.

Understanding the factors controlling Se speciation in atmospheric deposition, and generally atmospheric Se cycling,
needs a combination of various methods targeting aerosols and wet deposition. We thus designed a methodological framework
100 that includes different chemical measurements and modelling approaches (Fig. 1), integrating chemistry and atmospheric
dynamics to get insights into the factors controlling atmospheric Se deposition. Parameters derived from chemical analyses
included total concentrations of various (trace) elements, stable water isotopes, Se and S speciation obtained via improved
(ultra)sensitive methods based on liquid chromatography and inductively coupled plasma tandem mass spectrometry (LC-ICP-
MS/MS), as well as organic molecular composition of aerosols based on pyrolysis-gas chromatography mass spectrometry
105 (Py-GC-MS). These analyses are combined with modelling of Se source contributions using the atmospheric aerosol-
chemistry-climate model SOCOL-AERv2 and air parcel trajectory calculations based on the Lagrangian analysis tool
LAGRANTO (Sprenger and Wernli, 2015; Wernli and Davies, 1997) with three-dimensional wind fields from the atmospheric
reanalysis dataset ERA5 to estimate dominant moisture sources and atmospheric transport patterns.

We applied this framework to field sampling campaigns that we carried out at the high-altitude Pic du Midi Observatory
110 (French Pyrenees; 2877 m a.s.l.). This site is ideally located to study long versus short-range contributions of moisture and
(trace) elements from both continental (e.g., from Western Europe and North Africa) and marine sources (Atlantic Ocean and
Mediterranean Sea) (Fu et al., 2016). Furthermore, this high-altitude site enables the investigation of the effect of different

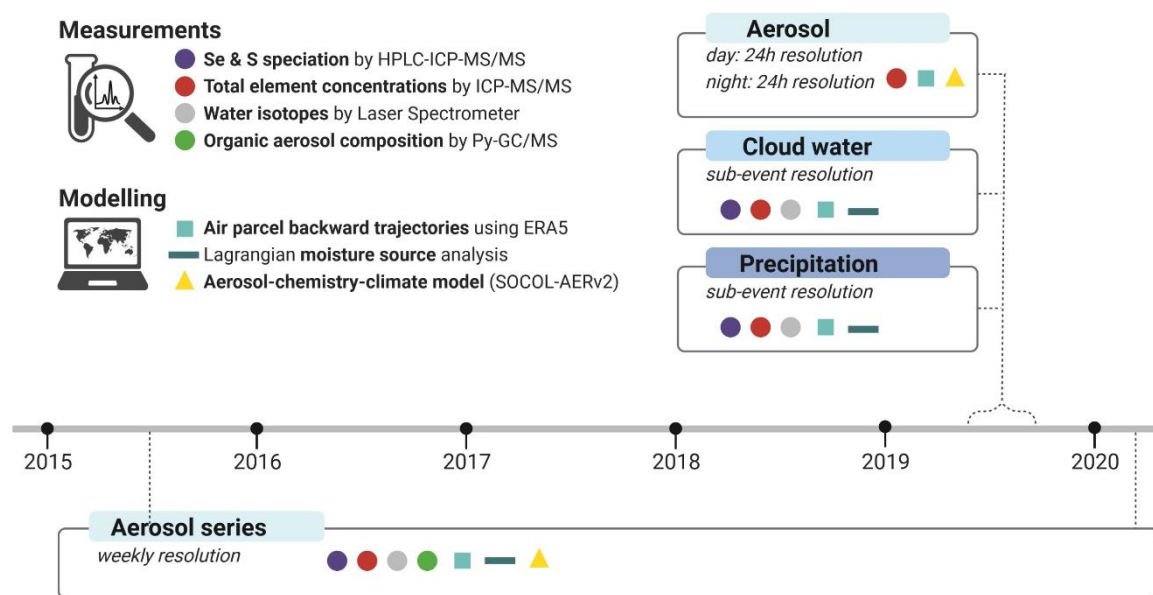
weather systems (e.g., enhanced convection or frontal passages over mountainous terrain), on trace element and moisture source cycling. We created a unique dataset of aerosols samples (n=134) taken at a weekly resolution over 5 years, as well as samples of precipitation (n=26), cloud water (n=56), and aerosol (n=48) taken at high temporal resolution (sub-event based sampling of wet deposition or separate day and night sampling of aerosols).

Our objective in this study is to comprehensively investigate the role of different source factors and weather dynamics on the observed variability in trace element concentrations and Se speciation in atmospheric deposition. Specifically, the combined investigation of aerosol, cloud water and precipitation offers unique insights into the evolution of atmospheric deposition, by looking at effects on trace element cycling by changing air masses as well as in-cloud and below-cloud processes. Our specific research questions were: (1) What is the contribution of different atmospheric sources to measured Se concentrations in aerosols? (2) How do different physical and chemical parameters modulate the signals of moisture and trace elements in wet deposition? (3) How do local weather events such as thunderstorms influence atmospheric deposition fluxes of Se and other trace elements? (4) What are the proportions of Se and S species in atmospheric deposition and how do these vary as a function of different chemical proxies and contributing moisture sources? The research questions (1), (2) and (3) are discussed in Sect. 3.1, while Sect. 3.2 is focused on the last research question (4).

2 Methods

2.1 Sampling of atmospheric deposition

130 Two series of atmospheric samples were collected at the summit of the Pic du Midi Observatory monitoring station, which is located at 2877 m a.s.l. in the central Pyrenees Mountains. This high-altitude monitoring station is only occasionally influenced by the boundary layer through convection or by anabatic (i.e. upslope or valley) wind systems (Gheusi et al., 2011; Hulin et al., 2019), making it particularly suitable to investigate long-range transport as it is mostly exposed to free tropospheric air (Marenco et al., 1994; Henne et al., 2010; Fu et al., 2016). The first series consists of aerosol samples collected weekly
135 between 23th June 2015 and 24th April 2020, and is referred to as the “2015-2020 aerosol time series”. The second series consists of precipitation, cloud water and aerosols collected at high temporal resolution between 28th August and 13th October 2019, and is referred to as the “2019 campaign”. An overview of the measurements and modelling approaches applied to both series is given in Fig. 1.



140 **Fig. 1.** Overview of the measurements and modelling approaches applied to the 2015-2020 aerosol time series and 2019 campaign, in which aerosol, cloud water and precipitation samples were collected. Figure created with BioRender.com.

2.1.1 Weekly sampling of aerosols (2015-2020)

Two different systems were used to sample aerosols during warm (summer and autumn) and cold months (winter and spring). A total of 70 weekly aerosol samples were collected from June-October between 2015 and 2019 (referred to as warm
145 season samples) by using a TISCH high-volume PM10 sampler located on the backside of the Bernard Lyot Telescope tower (south-west of the summit; distance of approximately 60 m from wet deposition sampling). With this system, 8×10 inch quartz filters (QM-A, Whatman) were used after muffling them at 550°C. The weekly sample collection of warm season samples was

conducted between specific times, i.e. from 22:00 to 15:00 UTC between the years 2015 and 2018, and from 20:00 to 08:00 UTC during 2019. Sampling throughout the entire day was not possible due to noise interferences of the high-volume sampler on the telescope observatory activities on the station. On average, warm season samples were collected over 7 ± 2 days with a collection volume of 7197 ± 1816 m³. A total of 64 aerosol samples were collected from November through May between 2016 and 2020 (referred to as cold season samples) by using 90 mm single stage Teflon filter packs (Savillex) with pre-muffled 90 mm diameter quartz filters (QM-A, Whatman). The filter packs, which were pre-cleaned before the campaign (with 10% HNO₃ and then ultrapure water), were connected to a Tekran 1104 Teflon-coated, heated manifold (necessary for sampling during cold temperatures). Ambient air was pulled through the manifold at a constant flow rate of ~ 100 L·min⁻¹ using a blower unit. Total sampling volumes were recorded using gas meters that were installed at the outlets of the vacuum pumps (KNF™ Aluminium/Chromium Diaphragm Pump, ~ 55 L·min⁻¹). On average cold season samples were collected over 6.9 ± 0.4 days (24 h·day⁻¹) with a collection volume of 518 ± 32 m³.

2.1.2 High temporal resolution sampling of precipitation, cloud water and aerosols (2019 campaign)

Precipitation and cloud water samples were collected on a (sub-)event basis at the aerology platform at Pic du Midi Observatory. Precipitation was sampled using 2-3 custom-made plastic (polypropylene) collectors that were pre-cleaned (with 10% HNO₃ and then ultrapure water) and only opened during precipitation events (surface area per collector: 0.159 m²). Cloud water samples were taken using a CASCC2 bulk fog/cloud sampler (air volume flow: 1470 m³·h⁻¹) (Collett et al., 1990). Throughout the campaign, a total of 18 precipitation and 12 cloud water events were sampled, consisting of 26 and 58 sub-events, respectively. Aerosol filters were separately sampled during day- and night-time over 2 days (8:00/20:00 UTC, each 24 h in total) on 47 mm single stage filter Teflon packs (Savillex, pre-burned filters: quartz QM-A Whatman) using the same system described above for the collection of cold season samples. The mean sampling volumes were 54 ± 3 m³ over a collection period of 24 h.

2.2 Sample processing

2.2.1 Aerosol samples

All aerosol filters were collected and stored in aluminium foil in the dark at -20°C. For the warm season aerosol samples, two types of extractions were performed for 1) total element analysis (using microwave assisted acid digestion), and 2) water-soluble Se and S speciation. This latter extraction was solely performed on the warm season samples due to limited sample material and lower concentrations in the cold season samples. For total element analysis (sub-samples 1), all aerosol samples were extracted with 4 mL HNO₃ (69%, ROTIPURAN®supra, Roth) and 1 mL H₂O₂ (30%, for ultra-trace analysis, Sigma-Aldrich) in a microwave oven (UltraClave IV, MLS). The digestion program of Kulkarni et al. (2007) was followed, which included a first temperature increase to 180°C (15 min ramp, temperature held for 15 min) followed by a final increase to 210°C (15 min ramp, temperature held for 45 min). Acid digestions of warm season samples were done using a 3.8 cm² (filter

area):25 mL⁻¹(digestion volume) ratio. The digestion volume of cold season samples was increased after 2017 from 5 to 15 mL
180 to increase available extraction volume for further analysis (final extraction ratio: 7.069 cm²·15 mL⁻¹). For the water-soluble
Se and S speciation analysis (sub-samples 2), all samples were extracted using a ratio of 11.404 cm²·(filter area):15 mL⁻¹
(ultrapure water volume). The filter:water suspensions were sonicated for 20 min at 20°C (repeated twice) and the resulting
extracts were filtered (0.22 µm, 25 mm syringe filters, Nylon, BGB). 9 mL of the extracts were used for pre-concentration and
subsequent Se and S speciation, while the remaining sample volume was used for total element analysis to determine extraction
185 efficiencies.

Furthermore, warm season aerosol filters were analysed by Py-GC-MS to identify organic compounds previously used as
proxies for aerosol sources (e.g., Zhao et al. (2009)), for which 1.539 cm² of aerosol filters were punched and folded into
pyrolyzer cups (Eco-cup SF, Frontier Laboratories, Japan).

2.2.2 Precipitation and cloud water samples

190 Precipitation as well as cloud water samples were processed within 2 h after collection. Snow and hail samples were
thawed in closed sampling bottles before further processing. The total deposition amount of collected samples was determined
by weight. At each sub-event, 4 sub-samples were taken for 1) quantification of total elements, 2) speciation of Se and S, 3)
stable water isotopes and 4) pH measurement. All plastic storage containers were pre-cleaned using 1% HNO₃, rinsed with
ultrapure water and air dried. Sub-samples 1) used for total element quantification were filtered (0.22 µm, 25 mm syringe
195 filters, Cellulose Acetate (CA), BGB), stabilized (1% v/v HNO₃ of 69%, ROTIPURAN® Supra, Roth) and stored at 4°C until
analysis. Sub-samples 2) used for speciation analyses were filtered (0.22 µm, CA), immediately frozen and stored at -20°C.
Sub-samples 3) used for stable water isotopes analysis were stored in closed air-tight sampling bottles until resampling into
Parafilm sealed glass vials within a few hours after collection. pH measurements were done immediately after sampling with
a field meter probe (Multi 3430 with pH electrode Sentix 940-3, WTW) that was calibrated daily. To enable pH measurement
200 of wet deposition samples, it was necessary to add a few drops of 3 mol·L⁻¹ KCl (Sigma Aldrich) solution to sub-samples to
increase ionic strength (Thermo Fisher, 2014).

2.3 Chemical analysis

2.3.1 Quantification of total element concentration

Total element concentrations (i.e., Li, Na, Mg, Al, Si, K, P, S, Ti, V, Cr, Mn, Fe, Co, Ni, Cu, Zn, As, Se, Br, Rb, Sr, Nb,
205 Mo, Ag, Cd, I, Cs, Ba, Pb) were quantified using an Agilent 8900 ICP-MS/MS instrument equipped with an SPS4 introduction
system, and using hydrogen (H₂, 5 mL·min⁻¹, MS/MS mode), oxygen (O₂, 30 mL·min⁻¹ MS/MS mode), and helium (He,
5.5 mL·min⁻¹, single quad) as reaction gases depending on the element (Supplement S1, Table S1). The instrument was tuned
daily before analysis with a solution containing 10 µg·L⁻¹ of Mg, Li, Tl, Y, Co and Ce. Instrument drift was monitored and
corrected using internal standards (i.e., 1 mg·L⁻¹ Sc; 0.1 mg·L⁻¹ In, Lu; 50 µg·L⁻¹ Y; Supplement S1, Table S2). Instrument

210 performance was checked with two certified reference materials for trace elements in surface waters with dilutions of 1:10 and
1:100 (SRM NIST 1643f; TMDA 51.2, National Water Research Institute Environment Canada). Se yielded recoveries of
99±2% for a concentration range of 0.12 - 1.20 µg·L⁻¹. Recoveries of other (trace) elements are listed in Supplement S1, Table
S3.

2.3.2 Sample pre-concentration and determination of Se and S speciation

215 Sub-samples used for Se speciation analysis, were pre-concentrated by lyophilisation of frozen samples from an initial
volume of 12 mL (for precipitation) or 9 mL (for water extract of aerosol filter) to a residual volume of 1.5 mL (pre-
concentration factor of 8 or 6) to which ammonium citrate was added to increase ionic strength. The initial volume of cloud
water samples was variable depending on sampled amounts. Further details on optimized protocol and stability of Se species
during pre-concentration are given in Supplement S2. S speciation was analysed directly in all atmospheric samples (i.e.,
220 without the pre-concentration step). Speciation of Se and S was analysed by High Pressure Liquid Chromatography (Agilent
1260 Infinity II Bio-inert HPLC System) coupled to either an 8900 (Se speciation) or Agilent 8800 (S speciation) ICP-MS/MS.
We optimized the chromatographic separations of Se species based on the method published by Tolu et al. (2011). The detailed
optimizations of the chromatographic separation of Se are described in detail in Supplement S3, including specific HPLC-ICP-
MS/MS operating conditions for speciation analysis of Se and S (Supplement S3, Tables S5-6). The optimized
225 chromatographic method includes separation of Se species by anion exchange using a PRPX-100 column (Hamilton, 2.1 x
150 mm, 5 µm) equipped with an in-line filter (Titanium Frit 0.5 µm, 10-32 Waters type, BGB). Se separation was done by
gradient elution with ammonium citrate (5.2-13 mM, 2% MeOH, pH 5.2) delivered at 0.5 mL·min⁻¹ and an injection volume
of 20 µL. For S, the chromatographic separation method developed by Müller et al. (2019) was applied, which includes gradient
elution with formic acid (from 24 to 240 mM) delivered at 1 mL·min⁻¹ and an injection volume of 50 µL, using a Hypercarb
230 column (100x 4.6 mm, 5 µm, ThermoFisher) equipped with guard column. For Se species detection, the ICP-MS/MS operated
in MS/MS mode with H₂ as a reaction gas (5 mL·min⁻¹) and an acquisition time of 100 ms for all Se isotopes: (*m/z* 74→74,
76→76, 77→77, 78→78, 80→80 and 82→82). To check for potential interferences, Br was monitored during all Se analyses
(acquisition time: 50 ms, *m/z* 79→79, 81→81). For S species detection, the ICP-MS/MS operated in MS/MS mode with a
mixture of O₂ (30%) and H₂ (1 mL·min⁻¹) and an acquisition time of 50 ms for S (*m/z* 32→48). To monitor changes in
235 sensitivity, a solution containing 30 µg·L⁻¹ of Y (acquisition time: 10 ms, *m/z* 89→89) and 14% v/v tetramethylammonium
hydroxide was continuously supplied post-column by using the peristaltic pump of the ICP-MS/MS. Both Se and S speciation
analyses were measured in duplicates (i.e., two injections per sample).

All stock solutions of Se and S were prepared by weighing analytical grade reagents and ultrapure water (18.2 mΩ·cm
Thermo Fisher, Barnstead NANOpure DIamond) in acid-cleaned vials and stored in the dark at 4°C. The following standards
240 were used: Se: selenite (Se^{IV}, 99%) and selenate (Se^{VI}, 99.99%), *D,L*-selenomethionine (SeMet, ≥99%), seleno-*L*-cystine
(SeCys₂, 95%); S: dimethyl sulfoxide (DMSO, ≥99.9%), dimethyl sulfone (DMSO₂, ≥99%), methanesulfonic acid (MSA,

≥99.5%), methanesulfinic acid (MSIA, 85%), sodium formaldehyde bisulfite (i.e., hydroxymethanesulfonate: HMS, 95%) and sulfate (SO₄²⁻, 99%). All standards were purchased from Sigma Aldrich, except for SO₄²⁻ and DMSO₂, which were purchased from Merck. Stock solutions of SeCys₂ were dissolved in 0.2% HCl for stabilization purposes. Working standard solutions were prepared on the day of analysis by dilution in ultrapure water. Quantification of Se and S species was done by external species-specific calibration (i.e., mixed Se or S species standards prepared in the corresponding LC eluent). Data treatment was performed using the MassHunter 4.6 (Agilent) software. SeCys₂ was used for the quantification of “OrgSe” peak by anion exchange as further described in Sect. 3.2.1. Limits of detection (LODs) were calculated according to IUPAC recommendations, i.e., the LOD equals three times the standard deviation of the blank baseline signal divided by the calibration slope based on peak height.

2.3.3 Determination of organic compounds in aerosol samples

The analysis of organic compounds in aerosols was performed with a FrontierLab pyrolyzer equipped with a FrontierLab AS-1020E autosampler and connected to a ThermoScientific Trace 1310 GC coupled to a ThermoScientific ISQ 7000 MS. The operating conditions and subsequent data processing method were done according to Tolu et al. (2015) (see detailed description in Supplement S4).

2.3.4 Analysis of stable water isotopes

Stable water isotopes in precipitation and cloud water samples were measured using a wavelength-scanned cavity ring-down spectrometer (L2130-i, Picarro Inc., Santa Clara, California, USA). Measurements and calibration was done following the protocol by von Freyberg et al. (2022). Briefly, samples were injected six times, from which the first three were discarded to take into account potential memory effects. Measurements were calibrated to the VSMOW2-SLAP scale as described by the International Atomic Energy Agency (IAEA, 2017). The isotopic abundances of ¹⁸O and ²H are reported using the δ notation relative to the IAEA standard Vienna Standard Ocean Water 2 (VSMOW2) as described in Gat and Gouffon (1981).

2.4 Data and modelling

2.4.1 Particle number, black carbon and observational meteorological data

A wide range of meteorological and other parameters characterizing the physical properties and chemical composition of the atmosphere at Pic du Midi Observatory are routinely monitored and are available through an internet database (<https://p2oa.aeris-data.fr>). For this study, we used equivalent black carbon (BC) mass concentrations that were analysed by an Aethalometer (Magee Scientific Co. AE 33) with a time resolution of 15 min as described in Hulin et al. (2019). The particle number (PN) was analysed by a condensation particle counter (TSI, Inc., 3010, 3750) with a time resolution of 5 min.

Considered meteorological data included air temperature (Vaisala QMH 101), relative humidity and atmospheric pressure (both measured with Vaisala MAWS 301), which were all extracted with a time resolution of 60 min.

2.4.2 Air parcel back trajectories and moisture source analysis

275 To estimate dominant moisture sources of precipitation and atmospheric transport patterns, trajectories were calculated with the Lagrangian analysis tool LAGRANTO (Sprenger and Wernli, 2015; Wernli and Davies, 1997) with three-dimensional wind fields from the atmospheric reanalysis dataset ERA5 (Hersbach et al., 2020) interpolated to a $0.5^\circ \times 0.5^\circ$ horizontal grid on 137 vertical levels. The air parcels' hourly position (longitude, latitude, pressure) are calculated for 7 d backward in time from a set of five starting points including the location of the Pic du Midi Observatory ($42^\circ 56' 11.4'' \text{N } 0^\circ 08' 31.1'' \text{E}$) as well as four other points shifted by 0.5° in the horizontal to take into account uncertainties in the origin of air at the synoptic scale due to turbulent mixing in the boundary layer and the impact of orography. A set of variables is interpolated along the trajectories, namely, specific humidity, relative humidity, as well as the boundary layer height. Trajectories were started at the surface to assist the interpretation of the aerosol data, as well as from a vertical stack of 9 points every ~ 80 hPa between 900 hPa and 300 hPa for assessing the origin of precipitating air. The trajectories were started every hour for the 2019 campaign period, and every 6 h for the climatological period between 2015 and 2020 of the aerosol time series.

285 The moisture sources of precipitation and cloud water were calculated using the algorithm developed by Sodemann et al. (2008). In short, the mass budget of water vapour in an air parcel is considered and moisture uptakes are registered whenever the specific humidity along an air parcel trajectory increases. The weight of each uptake depends on its contribution to the specific humidity of the trajectory upon arrival. If precipitation occurs underway (manifesting itself by a decrease in specific humidity along the trajectory) after one or several uptakes, the weight of all previous uptakes is reduced proportionally to their respective contribution to the loss.

290 The position and intensity of the precipitation systems in ERA5 are not always placed at the correct geographical location, in particular if they are of convective nature. For example, no precipitating cloud may be present in ERA5 at Pic du Midi when precipitation was actually sampled. Therefore, we used a slightly different approach than Sodemann et al. (2008) to select precipitation and cloud water events. We based our event selection criteria on the actual precipitation and cloud water sampling and diagnose the origin of water vapour during the respective sampling periods (similar to the approach in Aemisegger et al. (2014); Pfahl and Wernli (2008)). For precipitation we use all available trajectories in the vertical column for which the relative humidity at arrival is close to saturation ($>80\%$) during the sampling time interval and for the cloud water samples we use near-surface water vapour. In both cases, we weight the contribution of individual moisture uptakes along each trajectory according to its specific humidity at arrival.

300 2.4.3 Chlorophyll-*a* exposure in marine moisture source regions

To investigate a potential link between marine productivity and Se (speciation) in rainfall, chlorophyll-*a* (Chl-*a*) air exposure in marine moisture source regions was diagnosed with the same approach as in Suess et al. (2019). Sea surface water

305 Chl-*a* concentrations from the Ocean Colour Climate Change Initiative dataset, version 3.1 from the European Space Agency (available online at <http://www.esa-oceancolour-cci.org/>) were used to estimate the air parcels' exposure to Chl-*a* in marine moisture source regions. The chosen CHL-OC5 Chl-*a* product (0.01°x 0.015° gridded data) is based on daily remote-sensing reflectance data of MODIS/Aqua and MERIS/ENVISAT.16,17. To minimize the impact of regions with missing data due to cloud cover in all seasons, two-weekly composites were computed to estimate the time mean moisture source Chl-*a* exposure. A similar approach to determine air exposure to marine Chl-*a* was used in Blazina et al. (2017), with the difference that the exposure of the air was computed based on trajectory points located in the boundary layer. Here, we focus on Chl-*a* exposure of air at instances when they have taken up humidity along their paths. We thus use humidity uptake along the trajectories as an analogue for enhanced uptakes of biogenically derived compounds from the ocean to the atmosphere.

2.4.4 Data sources for thunderstorms

Lightning data was used to detect thunderstorm activity in the vicinity of Pic du Midi Observatory. Two-hourly lightning maps and data from the nearest radio antenna stations were extracted from the Meteo60 website (315 <https://www.meteo60.fr/orages-archives/>, accessed 24th November 2022), which take their data from the Blitzortung network (list of stations: https://www.blitzortung.org/en/station_list, accessed 24th November, 2022). Atmospheric deposition samples were classified as thunderstorm events, if lightning activity was reported in the vicinity of Pic du Midi Observatory (within 3 km) during the time that a sample was collected. The vicinity was defined by comparing detected lightning with on-site observations during the 2019 campaign.

320 2.4.5 Atmospheric Se modelling with SOCOL-AERv2

We conducted 2015–2020 simulations in the aerosol-chemistry-climate model SOCOL-AERv2, which includes Se chemistry (Feinberg et al., 2019; Feinberg et al., 2020b). Selenium cycling is modelled with 7 gas phase species, 40 particulate tracers in size bins between 0.39 nm and 3.2 μm, and 17 chemical reactions (Feinberg et al., 2020b). Global simulations are conducted at T42 horizontal resolution (2.8° × 2.8°) with 39 vertical levels up to 80 km. Model dynamical variables (vorticity and divergence of the wind fields, temperature, and surface pressure) are nudged towards ERA5 reanalysis data (Hersbach et al., 2019) in order to minimize the differences between observed and modelled meteorology in these simulations. Emissions of Se from anthropogenic, marine biogenic, terrestrial biogenic, and volcanic sources are considered, with emission totals constrained by a previous study applying Bayesian inference methods with available Se observations (Feinberg et al., 2020a). The SOCOL-AERv2 Se simulation has been thoroughly validated against available particulate and wet deposition Se measurements (330 Feinberg et al., 2020a; Feinberg et al., 2020b; Feinberg et al., 2021). The spatial distribution and trend in anthropogenic Se emissions are based on the CAMS-GLOB-ANT-v4.2 SO₂ emissions inventory for 2015–2020 (Granier et al., 2019). The spatial distribution of marine biogenic emissions is calculated online by applying a wind-driven parametrization (Nightingale et al., 2000) to a marine DMS climatology (Lana et al., 2011). Terrestrial biogenic emissions of Se are distributed following the mean monthly emissions of volatile organic carbon (VOC) emissions from the MEGAN-MACC inventory

335 (Feinberg et al., 2020a; Sindelarova et al., 2014). Volcanic degassing emissions of Se are temporally constant and distributed
according to the magnitude of volcanic SO₂ emissions (Andres and Kasgnoc, 1998; Dentener et al., 2006). Selenium is removed
from the atmosphere through wet and dry deposition parametrizations which depend on the calculated grid cell meteorology.
Source tracking simulations were conducted by turning on only one of the four Se emission sources (anthropogenic, marine,
terrestrial, or volcanic). Modelled particulate Se concentrations at the grid cell and altitude of Pic du Midi were extracted and
340 compared to measured quantities.

2.5 Statistical analysis

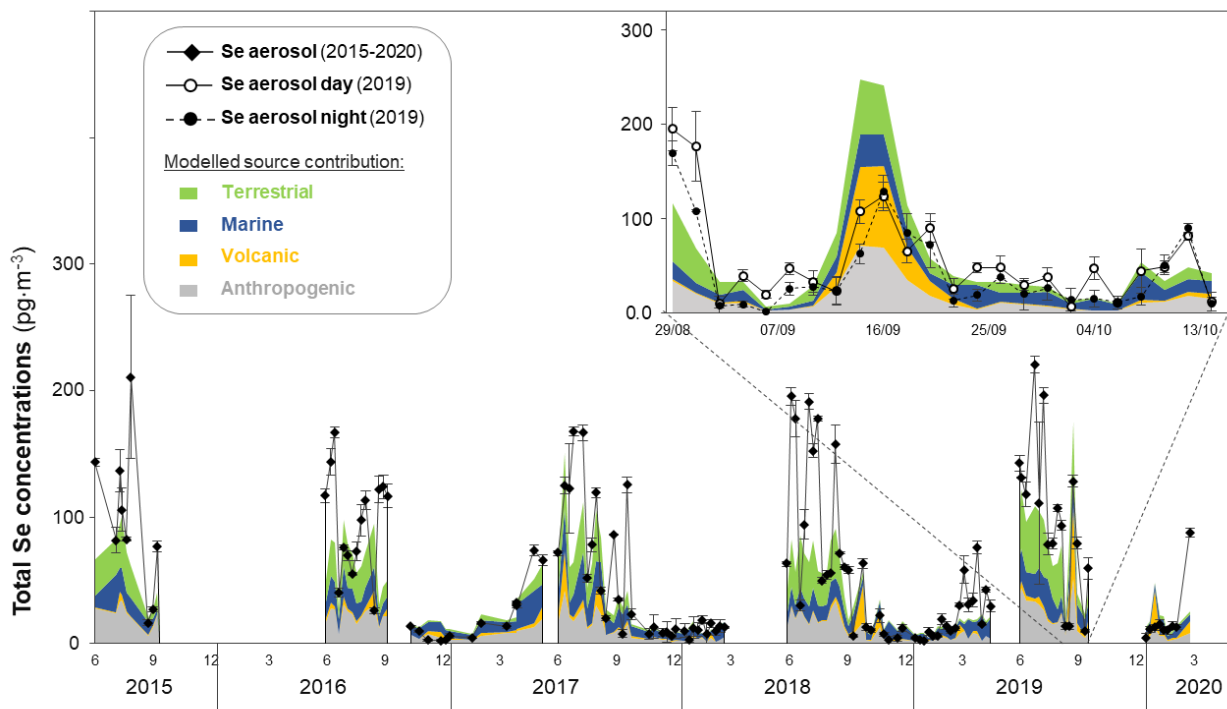
All statistical analyses were performed using IBM SPSS Statistics 26. Principal component analysis (PCA) was performed
on the precipitation data set given in mass per volume (g·L⁻¹) or per area (g·m⁻²). Prior to the PCA, the data was converted to
Z-scores (average=0, variance=1). Principal components (PCs) with eigenvalues > 1 were selected and extracted using a
345 Varimax rotated solution. A significance threshold value of > 0.39 was chosen. Other variables, e.g., precipitation volume,
black carbon and total column ice cloud water contents and moisture sources, were included passively in the PC-loading plots
by using bivariate correlation coefficients between these variables and the PC scores of each PC. Correlations were performed
as Spearman rank correlations (correlation coefficient indicated by r_s). Significance levels (2-tailed) of performed correlations
are indicated by $p < 0.05$ or $p < 0.01$.

3.1 Factors driving total Se deposition fluxes

3.1.1 Variability in total Se concentrations and source contribution of Se in aerosols

In a first step, we investigated Se concentrations in aerosols taken at weekly resolution over 5 years (2015-2020) to get insights into the synoptic timescale variability of total Se deposition at Pic du Midi Observatory and how this is affected by different sources. Total Se concentrations (after digestion using HNO_3 and H_2O_2) ranged from 2 to 221 $\text{pg}\cdot\text{m}^{-3}$ in the 2015-2020 aerosol time series ($n=134$; average: 58 ± 57 $\text{pg}\cdot\text{m}^{-3}$, median: 33 $\text{pg}\cdot\text{m}^{-3}$; Fig. 2 and in Supplement S5, Fig. S4). We clearly see higher Se concentrations in summer (June-August; average: 114 ± 50 $\text{pg}\cdot\text{m}^{-3}$, median: 111 $\text{pg}\cdot\text{m}^{-3}$) than during spring (March-May; average: 32 ± 24 $\text{pg}\cdot\text{m}^{-3}$, median: 30 $\text{pg}\cdot\text{m}^{-3}$), autumn (September-November; average: 49 ± 44 $\text{pg}\cdot\text{m}^{-3}$, median: 27 $\text{pg}\cdot\text{m}^{-3}$) and winter (December-February; average: 9 ± 5 $\text{pg}\cdot\text{m}^{-3}$, median: 9 $\text{pg}\cdot\text{m}^{-3}$). Similar seasonal differences, with highest Se levels in summer, was also observed in an aerosol time series collected at the Neumayer station in Antarctica (Weller et al., 2008), for which the authors suggested that this seasonal trend is driven by biogenic Se emissions. In our study, we compared Se concentrations to many other (trace) elements and most of them show a similar pattern with higher concentrations in summer (see data for S, Fe and Pb in Supplement S5, Fig. S5). This is interesting as it is likely that these elements are derived from different sources, e.g., mineral dust (e.g., Fe and Mn) or anthropogenic activities (e.g., Pb, which would indicate that elemental concentration patterns are not only driven by sources but also other (physical) processes. Higher aerosol loadings are likely related to direct exports from the boundary layer through convection or by anabatic (i.e. upslope or valley) wind systems (Hulin et al., 2019).

To determine the main Se source contributions of the 2015-2020 aerosol time series, we used the aerosol-chemistry-climate model SOCOL-AERv2. It should be noted that model grid cells represent an area of $\sim 300\times 300$ km^2 , which is much larger than our sampling site and thus give regional averaged rather than site-specific information. The SOCOL-AERv2 model identifies four major Se sources: anthropogenic, volcanic, marine, and terrestrial sources (Fig. 2). We found that proportions of terrestrial contributions are highest in summer with $41\pm 7\%$ (of total estimated sources) followed by autumn ($21\pm 10\%$), spring and winter (both: $9\pm 4\%$), as can be expected from a previous study conducted at Pic du Midi (Suess et al., 2019). In contrast, marine sources are relatively more important in spring ($53\pm 20\%$) and winter ($48\pm 14\%$) compared to autumn ($34\pm 15\%$) and summer ($24\pm 7\%$). Anthropogenic and volcanic sources (for our study site this is mainly the Etna volcano in Sicily) do not show clear seasonal variations, with average contributions of $32\pm 8\%$ and $8\pm 10\%$, respectively.



380 **Fig. 2.** Comparison of Se aerosol measurement with modelled Se data. Data shown for 2015-2020 aerosol time series (filled diamond) as well as day (outlined circles with continuous line) and night (filled circles with dashed line) aerosol measurements in 2019 campaign (campaign period shown in top right corner). Modelled source contributions by SOCOL-AERv2 are shown as stacked areas, including biogenic terrestrial (green), marine (blue), volcanic (yellow) and anthropogenic activities (grey).

Overall, the agreement between the weekly Se measurements in the 2015-2020 aerosol time series and the model is high ($r_s=0.822$; Supplement S6, Fig. S6). A previous SOCOL-AERv2 evaluation found similar correlation values ($r\sim 0.8$) in a spatial comparison with annual means from measurement stations worldwide (Feinberg et al., 2020a). Our comparison here with
 385 higher time resolution measurements acts as an additional test of the model's ability to capture the temporal variability of Se sources and transport. The overall good correlation provides confidence in the model's predictions of Se source contributions at Pic du Midi Observatory. For example, lower Se concentrations ($<0.05 \text{ ng}\cdot\text{m}^{-3}$) are well captured by the model and are predominantly characterized by marine source contributions (Fig. 2 and in Supplement S6, Fig. S7b). However, the model displays a negative bias ($-0.016 \text{ ng}\cdot\text{m}^{-3}$), underestimating the higher Se concentrations ($>0.05 \text{ ng}\cdot\text{m}^{-3}$) observed in summer (Fig.
 390 2). Such a bias is to be expected when comparing a relatively coarse global model simulation with observations from a mountain station. At the horizontal grid spacing of 300 km the model does not capture the complex terrain and associated boundary layer dynamics around Pic du Midi that lead to enhanced boundary layer contributions and higher aerosol loadings. In addition, a model grid point value always represents an area average, in contrast to point measurements. Particularly terrestrial source contributions seem to be underestimated (Supplement S6, Fig. S7a), whereas volcanic source contributions
 395 tend to be overestimated by the model (particularly during the 2019 campaign period in Fig. 2; and Supplement S6, Fig. S7c).

This discrepancy is likely related to the (spatially and temporally) dynamic nature of volcanic emissions. So far, the model only considers constant Se degassing emissions from volcanoes with a globally uniform Se:SO₂ emission ratio, due to very limited available emission data (Feinberg et al., 2020a).

400 The aerosol data are thus useful to understand seasonal variability in Se concentrations, however, Se deposition to the surface occurs predominantly via wet deposition (~80%) (Wen and Carignan, 2007; Feinberg et al., 2020a), and therefore it is also important to further understand what drives concentrations in wet deposition.

3.1.2 Variability of elemental concentrations and moisture sources in wet deposition

During the campaign in 2019, total Se concentrations in precipitation ranged from 12 to 84 ng·L⁻¹, resulting in total Se deposition of 11 to 428 ng·m⁻² (n=26, average 42±21 ng·L⁻¹ and 85±92 ng·m⁻², respectively; Supplement S5, Fig. S4). It should be noted that concentrations in aerosols and wet deposition cannot be directly compared because they are given in different units. These Se concentrations are similar to ranges reported for precipitation at remote and/or continental sites (6-85 ng·L⁻¹; Suess et al. (2019); Roulier et al. (2021)) and the open ocean (20-40 ng·L⁻¹; Pacific: Arimoto et al. (1985), Atlantic Ocean: Cutter (1993); Cutter and Church (1986)). They are, however, much lower than the Se concentrations found at coastal (310-2830 ng·L⁻¹; Blazina et al. (2017)) and urban sites (50-1010 ng·L⁻¹; Tokyo Japan: Suzuki et al. (1981), Sri Lanka : Savage et al. (2017)). Selenium concentrations in cloud water ranged between 0.018 and 0.967 µg·L⁻¹, corresponding to 1-16 pg·m⁻³ (n=56 samples, 5±4 pg·m⁻³; Supplement S5, Fig. S4). To the best of our knowledge, there are no previous studies on Se concentrations in cloud water in Europe. Only a small number of samples have been collected at mountain sites in Japan (Kagawa et al., 2022), Pakistan (Ghauri et al., 2001) and the USA (Richter et al. (1998); Yang and Husain (2006)), with higher Se concentrations (0.2-9.2 µg·L⁻¹) that the authors related to anthropogenic sources.

415 To investigate potential parallels between trace element cycling and the atmospheric water cycle, we studied the variability of elemental concentration in wet deposition under different contributing moisture sources and used water isotope signals as indicators of precipitation formation conditions. Precipitation and cloud water samples collected at Pic du Midi were influenced by both land and oceanic moistures sources with approximately equal contributions for both sample types (Supplement S7, Fig. S8). Most precipitation samples were characterized by high contributions of more remote moisture sources coming from the North Atlantic (Precipitation events: P2-5, P13-18, average moisture contribution: 58±17% versus 8±7% in other events) or North Africa (P6-P10, average moisture contribution: 26±9% versus 1±1% in other events). In contrast, most cloud water samples were predominantly influenced by regional sources (Spain north of 41.8°N and France south of 43.6°N, C1-3, C8-10; average moisture contribution: 51±12% versus 34±15% in other events), with remaining events showing high contributions from the North Atlantic (C4, 9, 11, average moisture contribution: 69±8% versus 35±19% in other events). The isotope signatures in precipitation (δ²H=-45.4±15.6‰ and δ¹⁸O=-7.6±1.9‰) showed a larger and more depleted range than cloud water (δ²H=-26.7±13.4‰ and δ¹⁸O=-5.3±1.6‰), which is likely due to higher precipitation formation altitudes with the contributing air being more depleted due to the rainout effect with increasing height (Dansgaard, 1964). In cloud water, we observed a positive correlation between water isotopes and concentrations of Se (*p*<0.01) as well as with almost all analysed

(trace) elements, except for Si ($\delta^2\text{H}$: $p=0.054$) and Fe ($\delta^2\text{H}$: $p=0.046$), which are mineral dust indicators. This correlation, which seems to be mainly arising from cloud water events with regional moisture sources (Supplement S7, Fig. S9), was not observed for precipitation (Supplement S7, Fig. S10). The link between (trace) elements and water isotopes in cloud water is likely explained by the predominantly regional/local sources (in a 0.5° radius around Pic du Midi Observatory) of both trace elements and atmospheric water, except for mineral dust (Si, Fe) that is derived from more long-distance sources. In the case of precipitation, low $\delta^2\text{H}$ and $\delta^{18}\text{O}$ indicate a loss in heavy water isotopes during long-range transport (e.g., due to rainout or mixing of air underway). Below-cloud processes may further alter trace element and water isotope signals in precipitation, including (i) below cloud scavenging of aerosols containing trace elements, and (ii) rain droplet evaporation and equilibration, which may lead to a pre-concentration of elements and complex alteration of the isotopic signatures. These processes lead to a decoupling of transport pathways for stable water isotopes and (trace) elements in precipitation in contrast to cloud water.

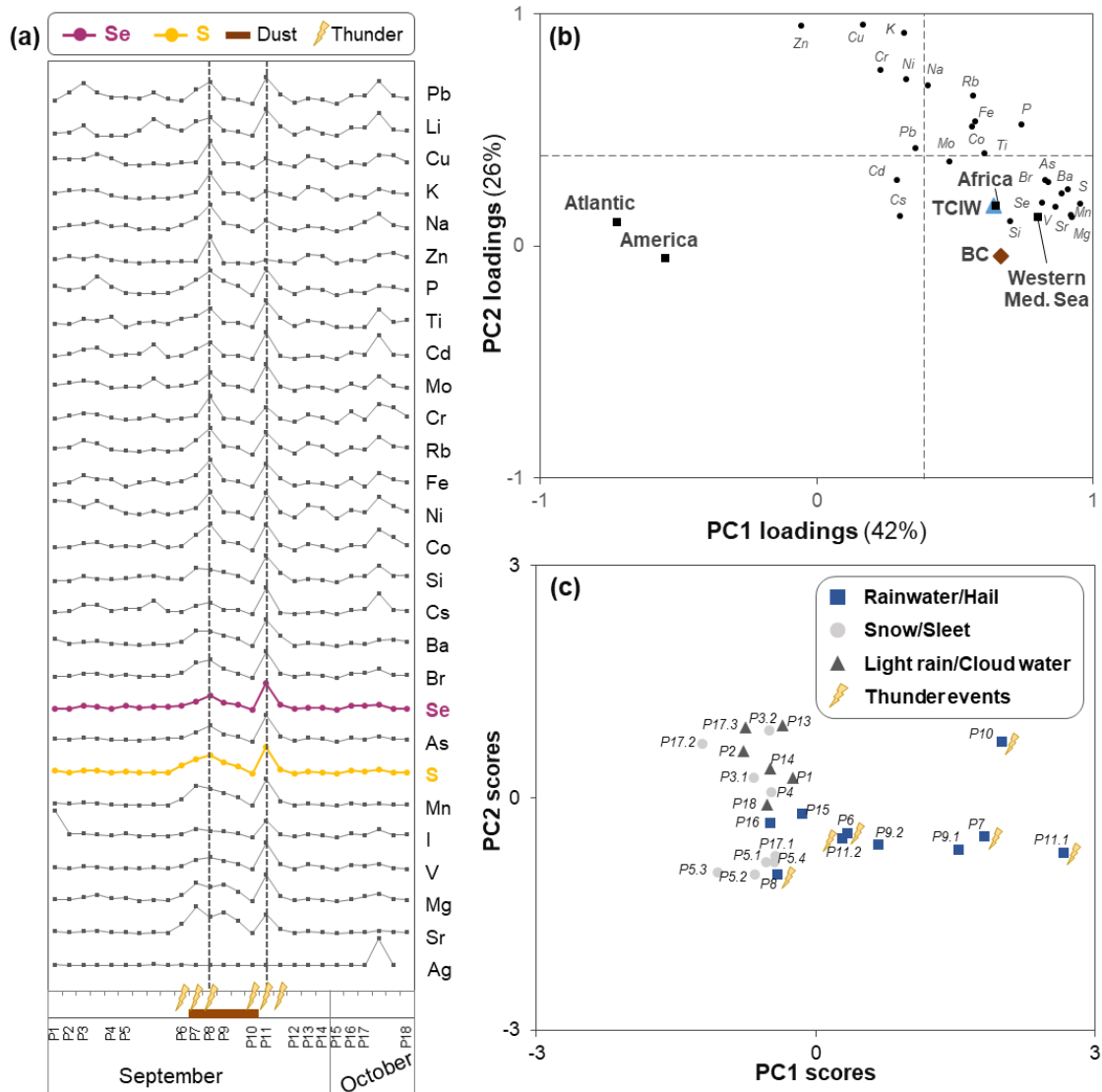
3.1.3 High Se and other elements deposition associated with deep convective activity during thunderstorms

To get a better insight into processes affecting Se concentrations in wet deposition, we analysed chemical and physical characteristics of precipitation events sampled during the campaign in 2019. Even though our study focuses on Se, we also investigated other (trace) elements in wet deposition which have been used as source indicators in previous studies, e.g., mineral dust (e.g., Fe and Mn) or anthropogenic activities (e.g., Pb).

During this campaign, different (mixed-) precipitation types including rain, hail, snow, sleet, light rain and/or cloud water (fog) were collected with precipitation rates ranging between 0.1 and $10.2 \text{ mm}\cdot\text{h}^{-1}$; the highest rates occurred during events that included hail (Supplement S7, Table S8). Variability in both elemental concentrations in precipitation (given in $\mu\text{g}\cdot\text{L}^{-1}$) and deposition fluxes (given in $\mu\text{g}\cdot\text{m}^{-2}$) were explored using principal component analysis (PCA). Elemental concentrations in precipitation are expected to be influenced by the dilution effect (Gatz and Nelson Dingle, 1971), which predicts lower concentrations for increasing rain volumes. While many major and trace elements (e.g. Na, K, P, Fe, Cu, Zn, As, Pb) showed a significant negative correlation with precipitation ($p<0.05$), Se concentrations did not significantly decrease with increasing precipitation amount. To the best of our knowledge, the role of different precipitation types on this effect has not been investigated before. Our data suggests that for events with light rain and/or cloud water, concentrations of the majority of analysed (trace) elements are significantly affected by precipitation volume, while no effect was observed for other precipitation types (PCA description in Supplement S8.1).

Element deposition fluxes (in $\mu\text{g}\cdot\text{m}^{-2}$, not influenced by the dilution effect) were generally high between the 14th and 19th September 2019 with two characteristic maxima for most (trace) elements (events P8 and P11.1, highlighted by a vertical line in Fig. 3a). The precipitation events with high elemental deposition (P6-P11) plot on the positive side of the first principal component (PC1: 42% of total variance; Fig. 3b), indicating similar source or process factors. A positive correlation to PC1 groupings was observed for moisture sources coming from North Africa ($p<0.01$, Fig. 3b) as well as the western Mediterranean, which is expected as it follows the same trajectory from Africa to Pic du Midi. During this period we visually

observed a brownish-red colour of collected samples (i.e., precipitation P7-10, cloud water C5, and aerosols A9-11) as well as higher pH values in precipitation (pH 6.2-7.2 in P8-10 versus pH 5.4-5.8 in all other events), which is a known effect of dust deposition during so called “red-rains” (Chester et al., 1996), indicating increased dust loadings. Furthermore, these events were characterized by significantly higher contents of black carbon (BC, Mann-Whitney-U test, $p < 0.01$) and total column ice water contents (TCIW given in mm, integrated over the troposphere from the ERA 5 reanalysis dataset; Supplement S8.2, Fig. S12), which both positively correlate with PC1 groupings ($p < 0.01$; Fig. 3b). Both mineral dust and BC aerosols are known to play an important role in heterogeneous nucleation by acting as effective ice nucleating particles (Kanji et al., 2017). Apart from the presence of dust, BC, and TCIW, precipitation events with high elemental deposition in this period were associated to thunderstorms (thunderstorms identified both from visual observations during sampling and from lightning data of the Blitzortung’s network; Mann-Whitney-U test, $p < 0.01$; Supplement S8.2, Fig. S13). PC scores of sub-events classified by their precipitation type, including events with rainwater/hail, light rain/cloud water, snow/sleet or thunderstorms, show groupings on PC1 and PC2. Particularly sub-events with thunderstorms show positive PC scores on PC1, which indicates a significant influence of this factor on the element grouping of PC1 (Fig. 3c). Thunderstorms were predominantly related to continental moisture sources (70% versus 46% in non-thunderstorms) and much less to Atlantic moisture sources (7% versus 47% in non-thunderstorms). With respect to the higher elemental contents in wet deposition, thunderstorm clouds extend to the upper troposphere and are generally characterized by higher rainfall rates and larger rain droplets (Tost et al., 2006) leading to efficient below-cloud scavenging of aerosols. A previous study observed high mercury (Hg) concentrations in wet deposition during thunderstorms in the eastern United States, which the authors explained by scavenging of gaseous Hg^{II} and Hg^{II} aerosols in updrafts and downward mixing of tropospheric Hg (as Hg^{II}) to lower altitudes (Holmes et al., 2016).



480

Fig. 3. Precipitation chemistry and (sub-)event characteristics. **(a)** Variability in concentrations of all measured elements in precipitation collected during the 2019 campaign. **(b)** Loading and **(c)** score plots for PCs 1–2 of the elemental deposition data set. Four PCs were retained, i.e., PC1: 42%, PC2: 26%, PC3: 25%, PC4: 2% of total variance. For the PC loadings, black circles correspond to active variables, the variables black carbon (BC, brown diamond), total column ice water contents (TCIW, blue triangle) as well as moisture sources (including Atlantic, America, Africa and Western Med. Sea, shown as filled squares) were added passively ($p < 0.01$). Significance level of > 0.39 is indicated by a horizontal and vertical dashed line in the loading plot. Additional information on precipitation events in (a, c) include: observed dust colour in samples (brown bar), thunderstorms (lightning bolts), and precipitation type (rain/hail: blue squares, snow/sleet: light grey circles; light rain/ cloud water: dark grey triangles). Two significant elemental deposition increases discussed in the text are highlighted by dashed line in (a).

485

490

In a next step, we investigated the importance of thunderstorms for elemental concentration trends in aerosols in the 2015-2020 time series. Also for this dataset, elemental concentrations in aerosols were significantly higher during weeks in which thunderstorms occurred than for samples that were not related to thunderstorms (selection of major and trace elements in Fig.

4; Mann-Whitney-U test, $p < 0.01$; data for all analysed elements in Supplement S8.3). For Se, these highest concentrations were generally underestimated in the SOCOL-AERv2 model (Supplement S8.3, Fig. S16). Significantly higher elemental concentrations associated with thunderstorms were not only observed when considering the full aerosol time series, but also when only considering measurements in summer (Mann-Whitney-U test, $p < 0.05$ except $p = 0.06$ for Ni and $p > 0.2$ for Ti, Zn and Mo; Supplement S8.3, Table S9), during which average concentrations are generally higher. Higher elemental concentrations are a clear indicator of higher aerosol loadings. Previous studies suggested that high aerosol loading may trigger a chain of processes that ultimately increase the strength of convective updrafts. Related to this, higher frequencies of lightning has been linked to high aerosol loadings (Williams and Stanfill, 2002; Zhao et al., 2015; Thornton et al., 2017; Pan et al., 2022). Within the cloud and updrafts, condensed water and ice can efficiently scavenge soluble gases and aerosols containing elements (as previously observed for Hg, Holmes et al. (2016)). Notably, we found a positive correlation between the occurrence of thunderstorms and the absolute humidity at Pic du Midi (Supplement S8.3, Fig. S17). Higher humidity likely favours stronger convection and finally wash-out of aerosols via precipitation.

505

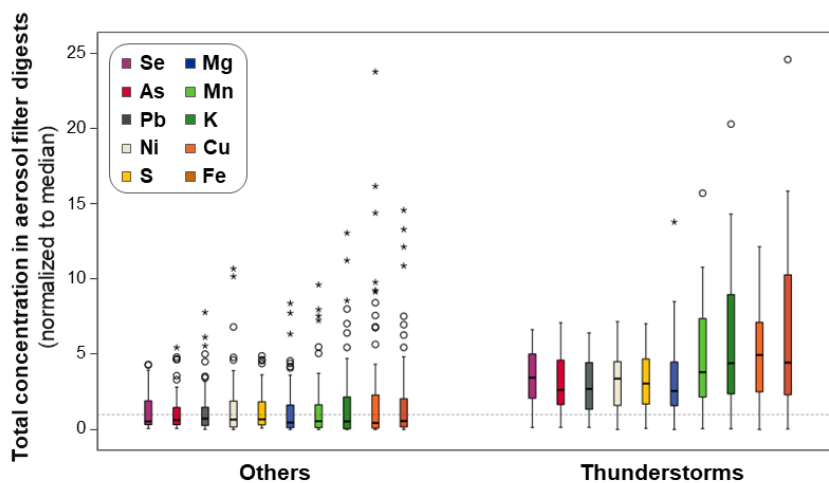


Fig. 4. Comparison between normalized total concentrations of different major and trace elements in aerosol filter digests sampled during weeks with thunderstorms (right side). All other aerosol measurements without detected thunderstorms during sampling are shown on the left (“others”). Shown total concentrations were normalized by median of respective element (values equal to median indicated as a horizontal dashed line; $y=1$). All shown aerosols measurements during weeks with thunderstorms are significantly different (Mann-Whitney-U test; $p < 0.01$).

Apart from the finding that deep convective activity during thunderstorms lead to significantly higher elemental deposition, thereby impacting supply of micronutrients and potentially toxic elements to the surface, our results imply that high elemental concentrations do not necessarily indicate a source signal in deposition data. More specifically, our data suggests that while element concentrations in the atmosphere may be primarily determined by the element fluxes at the source, local cloud dynamics of different weather events control the amounts of Se and other (trace) elements in atmospheric deposition

515

fluxes. This implies that variability in elemental concentrations in wet deposition does not reflect changes in strengths of emission sources alone but also weather conditions during atmospheric removal.

3.2 Factors driving the deposited chemical form of Se

520 We further investigated the chemical forms (speciation) of Se in atmospheric samples and compared these to speciation data for S to further investigate potential source signatures. Furthermore, speciation in atmospheric deposition is relevant for the bioavailability of Se delivered via rainfall to soils and crops, as elemental speciation is an important factor for plant-uptake and mobility in soils.

3.2.1 Detection of inorganic and organic Se species

525 To determine Se speciation in atmospheric samples at ultra-trace levels, we developed (1) an extraction method for the water-soluble fraction of aerosols, (2) a pre-concentration method based on volume reduction by lyophilisation, which was applied to aerosol water extracts, precipitation and cloud water, and (3) an optimized a LC-ICP-MS/MS method (detailed procedure in method section and in Supplements S2-3). Our optimized procedure reaches a detection limit of 1-2 ng·L⁻¹ depending on Se species, which is 5 to 10 times lower than existing methods (Suess et al., 2019; Roulier et al., 2021). Thus, we could detect not only the oxyanions Se^{IV} and Se^{VI} in all sample types, but also a third Se peak that is likely of organic nature, here further defined as OrgSe (see chromatograms in Supplement S9, Fig. S18a). Further analysis using a cation exchange column showed several unknown peaks, with one found to co-elute with an in-house synthesized standard of the metabolite dimethylselenium propionate (DMSeP), which could indicate that this peak consists of small methylated Se compound(s) (Supplement S9, Fig. S19). With our method, Se species recoveries accounted for 65±13% of total Se concentrations in aerosol water extracts, 77±14% in cloud water, and 66±10% in precipitation (Supplement S9, Fig. S20). Previous studies solely detected inorganic Se, mostly Se^{VI} (Se^{IV} being below detection limits in 89-96% of samples) and had much lower Se species recoveries (20-42%) (Suess et al., 2019; Roulier et al., 2021). To achieve full identification of the organic Se species, high-resolution mass spectrometry may further be used given that sufficient pre-concentration can be reached.

540 Average concentrations of Se^{VI}, Se^{IV} and OrgSe accounted for 44±28 pg·m⁻³, 5±4 pg·m⁻³ and 3±2 pg·m⁻³ in aerosol water extracts; 3±2 pg·m⁻³, 0.7±0.8 pg·m⁻³, and 0.3±0.2 pg·m⁻³ in cloud water; and 44±55 ng·m⁻², 10±10 ng·m⁻² and 2±2 ng·m⁻² in precipitation, respectively. We investigated proportions of Se species rather than absolute concentrations for further data analysis to allow comparison between different atmospheric samples, since the use of species proportions removes influences by e.g., variability of aerosol loading or precipitation volume (dilution effect) among specific seasons and events. The main Se species in all analysed atmospheric samples is Se^{VI}, followed by Se^{IV} and OrgSe (Fig. 5). Se^{VI} accounts for 53±13 (aerosol), 49±13 (precipitation) and 63±14 (cloud water) % of total Se concentrations, while Se^{IV} represents 8±8 (aerosol), 13±12 (precipitation) and 15±9 (cloud water) % of total Se concentrations. OrgSe accounts for the smallest fraction with 3±2 (aerosol), 4±2 (cloud water) and 2±1 (precipitation) % of total Se concentrations (Fig. 5). Besides Se species, we detected the

S species sulfate (SO_4^{2-}) and methanesulfonic acid (MSA), as can be expected in atmospheric samples. We could also detect dimethyl sulfone (DMSO_2) and hydroxymethanesulfonate (HMS) (see chromatograms in Supplement S9, Fig. S18b). To ensure correct quantification of MSA and HMS, which elute very close to each other, species-specific calibration standards (i.e., mixed S species standards) were used.

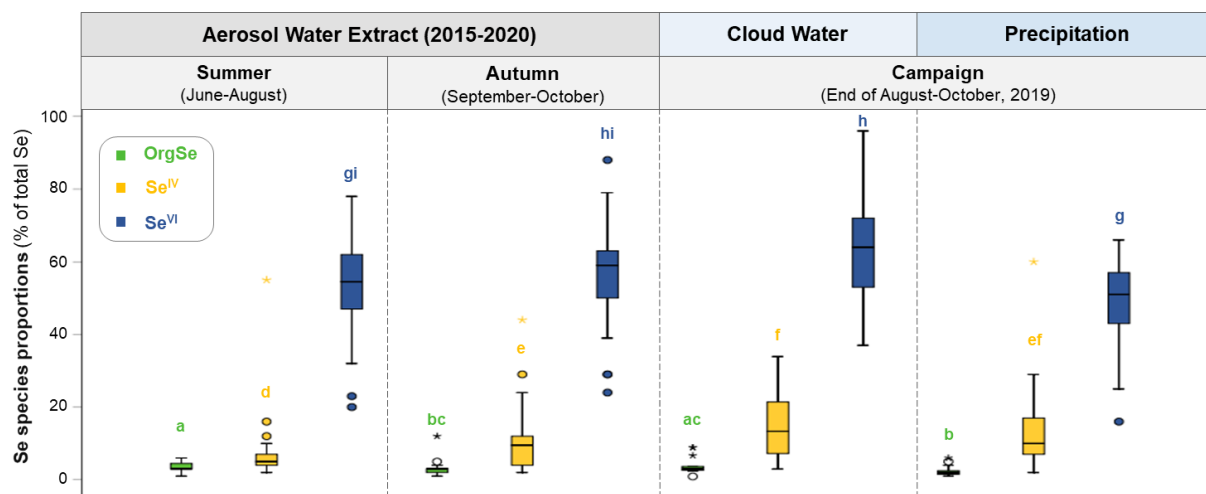


Fig. 5. Variability of proportions of Se species in different collected atmospheric samples. Shown Se species include: OrgSe (green), Se^{IV} (yellow) and Se^{VI} (blue) in the water extracts of 2015-2020 aerosol time series as well as precipitation and cloud water collected during the campaign in 2019. Se speciation in aerosols is separately displayed for summer (June-August) and autumn (September-October). The letters (a-i) denote significant differences in species proportions (Mann-Whitney-U test; $p < 0.01$).

3.2.2 Inorganic Se speciation is not only influenced by emission source but also by pH

To get insights into processes and/or sources affecting inorganic Se in atmospheric deposition, we investigated the species variability in different atmospheric samples and their potential links to different source indicators. Fig. 5 shows the proportions of Se species (% of total Se concentrations) in the water-extracts of the 2015-2020 aerosol time series as well as in precipitation and cloud water from the campaign in 2019. No clear seasonal differences were observed for proportions of Se^{VI}, but Se^{IV} had significantly lower proportions in aerosol samples collected in summer ($7 \pm 7\%$) than in autumn ($11 \pm 9\%$).

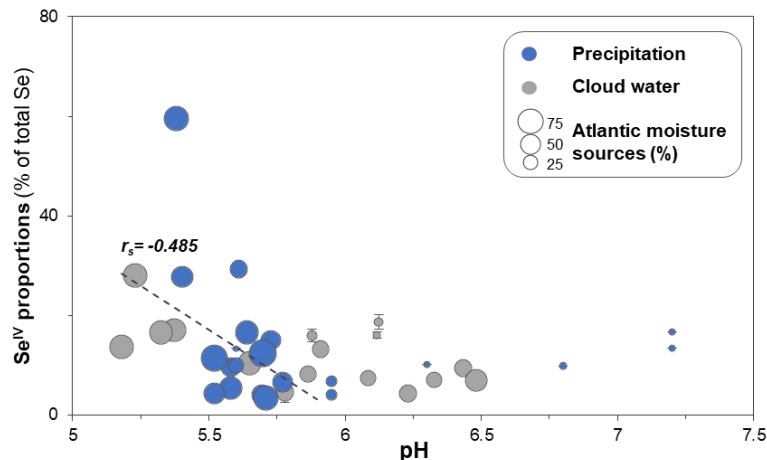
To test for potential sources of inorganic Se, we studied correlations between inorganic speciation, moisture sources and Py-GC-MS data in aerosols. For the 2015-2020 aerosol time series, proportions of Se^{VI} positively correlate with continental moisture sources from Spain ($r_s = 0.263$, $p < 0.05$), Portugal ($r_s = 0.327$, $p < 0.01$) and Northern Africa (crossing over the MedSea, $r_s = 0.336$, $p < 0.01$). Furthermore, Se^{VI} proportions positively correlate with both aliphatic and aromatic compounds ($p < 0.05$), which have been linked to various continental sources, including both urban/anthropogenic and biogenic land emissions (e.g., Zhao et al. (2009)). Proportions of Se^{IV} showed no link to moisture sources, but positively correlate with proportions of HMS ($r_s = 0.509$, $p < 0.01$) and SO_4^{2-} ($r_s = 0.440$, $p < 0.01$). HMS is formed in an aqueous-phase reaction between formaldehyde and dissolved sulfur dioxide (e.g., Dovrou et al. (2019)). Proportions of HMS positively correlate with continental moisture sources

575 from Western Europe ($p < 0.01$), particularly France (local source, in France south of 43.6°N). The link between Se^{IV} and HMS may indicate an anthropogenic source contributing to the Se^{IV} signal in aerosols. This is also suggested from the positive correlation of Se^{IV} proportions with the abundance of (poly)aromatics ($r_s = 0.434$, $p < 0.01$), toluene ($r_s = 0.312$, $p < 0.05$) and S-compounds ($r_s = 0.353$, $p < 0.01$; Supplement S10, Table S10). Indeed, toluene and alkyl substituted benzenes identified by Py-GC-MS have been previously linked to kerogen and black carbon (Zhao et al., 2009). Besides this, Se^{IV} proportions negatively correlate with Py-products of proteins ($r_s = -0.306$, $p < 0.05$) and levoglucosan ($r_s = -0.354$, $p < 0.01$), indicating no link to fresh biomass and/or biomass burning (Fraser and Lakshmanan, 2000; Giannoni et al., 2012; Fabbri et al., 2008; Schkolnik and Rudich, 2006). To summarize, higher proportions of Se^{VI} in aerosols were related to continental moisture sources and Py-compounds from land emissions, whereas for Se^{IV} , a likely anthropogenic contribution was observed.

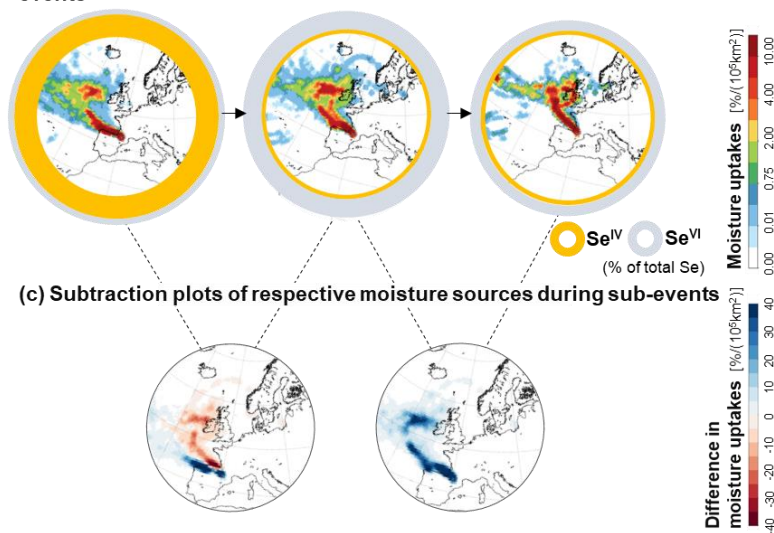
585 Contrary to what we found for aerosols and to previous observations for precipitation samples by Suess et al. (2019), the proportions of Se^{VI} in precipitation showed no link to continental sources, which is likely related to the limited number of precipitation events during our campaign with predominant moisture sources from Western Europe.. Sub-events that showed relatively high proportions of Se^{IV} (28-60%) in precipitation were characterized by higher moisture uptakes over coastal northern Spain (P16-P17.1, Fig. 6a,b). Particularly coastal marine emissions seem to influence the Se^{IV} signal according to the observed correlation with coastal oceanic moisture uptakes (within 30 km from the coast, only considering uptakes over the ocean; $r_s = 0.411$, $p < 0.05$). Notably, these relatively high Se^{IV} proportions changed significantly during sub-events (see evolution of Se^{IV} proportions during P17 in Fig. 6b and relative changes in moisture sources during sub-events in Fig. 6c). No HMS was detected in sub-events that showed relatively high proportions of Se^{IV} , indicating a different origin of Se^{IV} in wet deposition than for the 2015-2020 aerosol dataset.

595 The long-term weekly resolved aerosol and high-resolution precipitation data thus indicate different sources for Se^{IV} . The 2015-2020 aerosol time series mainly has an anthropogenic signature of Se^{IV} , whereas the (sub)event-based sampling in 2019 enabled elucidating other sources and processes. In particular, marine coastal emissions (potentially in relation to sea spray emission) seem to contribute to higher Se^{IV} proportions in wet deposition.

(a) Marine influenced pH-effect on Se^{IV} proportions in precipitation & cloud water



(b) Evolution of inorganic Se species & moisture sources during sub-precipitation events



(c) Subtraction plots of respective moisture sources during sub-events

Fig. 6. Inorganic Se speciation in precipitation and cloud water as a function of dominating moisture sources. (a) Proportions of Se^{IV} (% total Se) as a function of pH in precipitation (blue circles) and cloud water (grey circles) during the high-resolution campaign in 2019. Size of data points correspond to proportions of Atlantic moisture sources (% total moisture sources). (b) Evolution of proportions of inorganic Se species, Se^{IV} (yellow) and Se^{VI} (grey) during sub-precipitation events (P17.1: 270 min, P17.2: 380 min, P17.3: 110 min duration) with corresponding moisture source plots (shown in colour scale 0-10 $\% / 10^5 \text{ km}^2$). (c) Subtraction plots of relative moisture source changes (shown in red-blue colour scale from -40 to 40 $\% / 10^5 \text{ km}^2$) during sub-precipitation events shown in (b).

600

605

Although we can link inorganic Se speciation to specific marine/coastal sources, we further found an effect of pH in wet deposition (pH in aerosols was not determined). Oxidation-reduction reactions are strongly influenced by the redox potential (pe) and pH in natural waters. From the pe-pH stability field diagram (Séby et al., 2001), it is clear that the speciation of Se is likely quite sensitive to pH under atmospheric conditions. For a redox potential of $pe \sim 10$ (range of rainwater pe : 8-11; Willey et al. (2012)), Se^{IV} is the thermodynamically favoured species at acidic pH values (~ 2.5 -5.5), whereas Se^{VI} is favoured for pH

values >6 (Séby et al., 2001). Fig. 6 shows the proportions of Se^{IV} in relation to pH of precipitation (blue circles) and cloud water (grey circles). Precipitation and cloud water with predominant Atlantic moisture sources (size of data points correspond to percentages of Atlantic moisture sources) show a negative correlation between pH and Se^{IV} proportions ($r_s = -0.485$, $p < 0.05$), indicating a marine influenced pH-effect on Se speciation in precipitation and cloud water. Although sea salt aerosols are generally thought to be in the alkaline pH range (Pye et al., 2020), a recent study showed that pH values of freshly emitted sea spray aerosols are significantly lower than that of sea water (approximately pH 4 versus pH 8), with even lower pH values for aerosol particles below $1 \mu\text{m}$ in diameter (Angle et al., 2021). Thus, the observed link between pH and Se^{IV} proportions in precipitation events with predominant Atlantic moisture (Fig. 6a), might be related to the influence of sea spray. To further investigate potential influences of atmospheric sources on inorganic Se speciation, we did a literature review of previously reported ratios of Se^{IV} to Se^{VI} and classified the sampling sites into urban, industrial, marine, forested area and remote (Fig. 7). Higher proportions of Se^{IV} have been reported in urban, industrial and marine environments ($\text{Se}^{\text{IV}} : \text{Se}^{\text{VI}} = 2.2 \pm 2.4$) compared to the precipitation samples collected at Pic du Midi (this study; $\text{Se}^{\text{IV}} : \text{Se}^{\text{VI}} = 0.4 \pm 0.7$) as well as ratios reported in remote and forested areas ($\text{Se}^{\text{IV}} : \text{Se}^{\text{VI}} = 0.4 \pm 0.3$). Despite the small number of samples in referred study, the relatively high ratios previously reported in a marine environment (western North Atlantic) (Cutter and Church, 1986) agree with our observations above, i.e., higher proportions of Se^{IV} for precipitation events with predominantly Atlantic moisture.

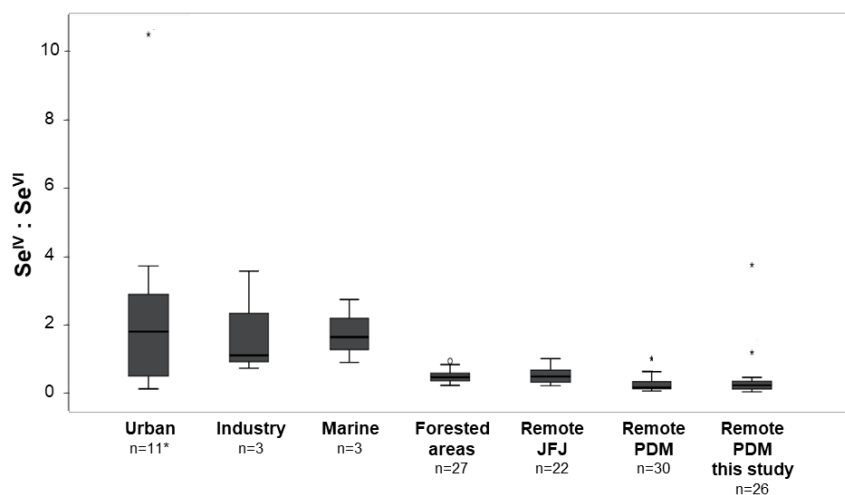


Fig. 7. Previously reported ratios of Se^{IV} to Se^{VI} concentrations classified by sampling sites: urban, industry, marine, forested area, remote. Number of data points indicated for each source class is indicated by n. *Urban data derived from 5 different studies (Cutter, 1978; Cutter and Church, 1986; Wang et al., 1994; Wallschläger and London, 2004; Donner and Siddique, 2018). Other classifications comprise data from industry (De Gregori et al., 2002), marine (Cutter and Church, 1986) and forested areas (Roulier et al., 2021). Remote data refers to this study and previous study by Suess et al. (2019) conducted on two high altitude stations: Jungfraujoch (JFJ, Switzerland) and Pic du Midi (PDM, France).

3.2.3 Sources of organic Se

We further investigated potential source signatures of the OrgSe fraction in the 2015-2020 aerosol time series. Proportions of OrgSe in aerosols collected in summer ($3.5 \pm 1.3\%$) had higher proportions than aerosols collected in autumn ($2.8 \pm 2.0\%$; Fig.

5). Similar to OrgSe, higher MSA concentrations were observed in summer compared to autumn (i.e., 5.3 ± 2.5 versus 2.3 ± 1.3 $\text{ng} \cdot \text{m}^{-3}$), and the proportions of MSA and OrgSe ($r_s=0.369$, $p<0.01$) correlate significantly, suggesting that OrgSe may originate from a similar biogenic source as MSA, which is an oxidation product of DMS (Chen et al., 2018).

To further investigate a potential biogenic source of OrgSe in aerosols, we studied links to dominant moisture sources and other identified organic compounds by Py-GC-MS. Proportions of OrgSe in the water-soluble aerosol extracts correlate with Atlantic moisture sources ($r_s=0.242$, $p<0.05$), similarly to MSA ($r_s=0.328$, $p<0.01$). Furthermore, the proportions of OrgSe positively correlate ($r_s=0.532$, $p<0.01$; Supplement S10, Table S10) with the relative abundance of Py-products that are specifically derived from proteins and amino acids (i.e., 2,5-diketopiperazine noted DKP (Voorhees et al., 1997; Voorhees et al., 1992; Fabbri et al., 2012).

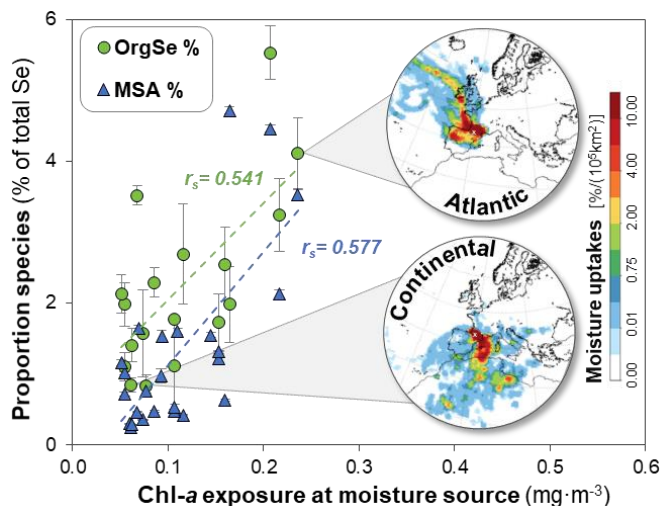


Fig. 8. Proportions of OrgSe (green circles) and MSA (blue triangles) as a function of Chl-*a* exposure at moisture source of precipitation. Two examples of low and high values of OrgSe proportions are shown with corresponding moisture plots. Example of high OrgSe proportions shows high Atlantic moisture sources (37% of total moisture sources, P5.2), whereas low OrgSe example is dominated by continental moisture (22% North Africa and 44% Western Europe, P9.2). It should be noted that moisture uptakes are displayed as % uptakes per area (10^5km^2), thus depending on defined size of areas, high moisture uptakes (red) don't necessarily correspond to predominant sources. The error bars represent the standard deviation values resulting from quantification by LC-ICP-MS/MS in duplicate.

For the precipitation and cloud water samples collected during the campaign in 2019, there is no significant correlation between the proportions of OrgSe and Atlantic moisture sources, in contrast to MSA ($r_s=0.705$, $p<0.01$) and DMSO_2 ($r_s=0.730$, $p<0.01$). Instead, the proportions of OrgSe and chlorophyll *a* (Chl-*a*) exposure at the moisture source ($r_s=0.541$, $p<0.05$; Fig. 8) significantly correlate. Both MSA ($r_s=0.577$, $p<0.01$; Fig. 8) and DMSO_2 ($r_s=0.494$, $p<0.05$) also show significant correlations to Chl-*a*, which was expected, since they originate from a known (marine) biogenic S source (Harvey and Lang, 1986; Pszenny et al., 1990; Watts et al., 1987). Further analysis of the Chl-*a* content showed that exposure originated almost completely from the Atlantic (particularly Bay of Biscay), with little contributions from the subtropical North Atlantic and the Mediterranean Sea (approximately 6% of total exposure) and no detectable exposure over land from lakes and wetlands.

Both results from the 2015-2020 aerosol time series and the 2019 campaign generally imply that OrgSe originates from a marine biogenic source. The identified OrgSe may represent oxidation products of DMSe and/or other methylated selenides (Heine and Borduas-Dedekind, 2023). OrgSe in aerosols may also originate from a marine particulate source such as bacteria and algae cells or from associated biomolecules emitted to the atmosphere together with seaspray (similar to the Py-products of proteins) (Aller et al., 2017).

4 Conclusions and environmental implications

Our approach of combining multiple measurement and modelling techniques to study the atmospheric trace element cycling offers new insights into the complex processes influencing the atmospheric deposition of trace elements in general, and Se in particular. Past research in this field has often been based on the assumption that significant positive correlations between elemental concentrations in atmospheric deposition solely reflect specific source contributions. Our data shows that total Se concentrations (and other elements) in atmospheric deposition rather mirrors a combination of contributing source emissions, atmospheric processing during local versus long-range transport and local cloud dynamics associated with specific weather events (i.e., deep convective activity during thunderstorms or large-scale uplift during frontal passages). We demonstrate that aerosol loading and elemental concentrations in wet deposition were highest during thunderstorms at our sampling site, thereby impacting the supply of micronutrients and potentially toxic elements to surface environments.

We show that speciation techniques in combination with other chemical proxies, and trajectory modelling offer a unique tool for separating source contributions and atmospheric processes affecting Se concentrations. The main Se species, Se^{VI} is primarily linked to continental sources and for the first time we could detect a new Se fraction likely of organic nature, which appears to be a biomarker for marine biogenic sources. Further work is required to investigate the molecular composition of this Se fraction and its role in atmospheric cycling. Identified Se^{IV} in aerosols had a primarily anthropogenic source signature, whereas coastal emissions seem to particularly contribute to Se^{IV} proportions in precipitation. Nevertheless, it should be noted that inorganic Se species (Se^{IV} or Se^{VI}) are also affected by atmospheric processing, such as atmospheric oxidative transformations and pH changes, thereby losing their source information with increasing distance to emission sources. Therefore, it is likely that Se^{IV} indicates more local sources, whereas Se^{VI} could also be transported over longer distances.

Since Se^{IV} and Se^{VI} are the dominant species in atmospheric deposition, they are of particular interest for assessing the fate of deposited Se in soil-plant systems. Selenium uptake by plants is largely controlled by its concentration, its speciation and the concentration of other chemical species competing for plant-uptake (Winkel et al., 2015). On a global level, atmospheric inputs largely exceeding Se inputs from bedrock according to a previous estimate (870 vs. 35 $\text{mg}\cdot\text{ha}^{-1}\text{yr}^{-1}$; Feinberg et al. (2020a)), although regionally, Se can be predominantly of geogenic origin or derived from fertilizers. Due to chemical similarity, the more mobile species, i.e., Se^{VI} , is taken up via the SO_4^{2-} transporter by plants and thus competes with SO_4^{2-} for plant uptake (Winkel et al., 2015). We investigated the ratio of Se^{VI} to SO_4^{2-} in precipitation from different moisture sources and found that predominantly Atlantic moisture sources led to the highest ratios of plant-available Se (Supplement S10, Fig.

S21). Therefore, even though Atlantic moisture sources generally supplied lower Se levels than continental moisture sources
690 for our study site, it supplied the highest fraction of bioavailable Se in precipitation. This understanding is important in the
context of predicted changes in emission sources (e.g., shifts in anthropogenic versus natural emissions, Feinberg et al. (2021))
and deposition of Se as micronutrient to surface environments. Furthermore, the finding of coupling versus uncoupling
of hydrological and trace element cycling based on stable water isotope analysis represents an interesting research avenue
695 considering expected future changes in precipitation patterns and how these will affect atmospheric deposition of (trace)
elements.

Data availability

All chemical data of this study are available on the ETH Research Collection with the DOI xxx.

700 Supplement

The supplement related to this article is available online at xxx.

Authors contributions

E.S.B., J.T and L.H.E.W. conceptualized the study, with inputs from H.W., F.A., I.T., and A.F. E.S.B. created visualizations, and wrote the manuscript with contributions from all the co-authors. J.E.S. conceptualized the observational
705 setup and provided all aerosols samples. V.P. managed all observational measurements of particle number, black carbon and meteorological data onsite. E.S.B. and I.T. performed the fieldwork during the 2019 campaign. E.S.B. carried out sample preparation, chemical analysis and data treatment with inputs from J.T. and S.B. J.T. conducted the Py-GC-MS analysis and data treatment. F.A. provided air parcel back-trajectories, moisture sources and Chl-*a* data and A.F. performed all SOCOL-AER simulations. E.S.B. conducted all statistical analysis with inputs from J.T. E.S.B. interpreted all findings with help from
710 J.T., L.H.E.W. and with contributions from I.T., F.A., A.F., S.B., J.E.S, V.P. and H.W.

Competing interests

At least one of the (co-)authors is a member of the editorial board of Atmospheric Chemistry and Physics.

Acknowledgments

Samples and observation data were collected at the Pyrenean Platform for Observation of the Atmosphere P2OA
715 (<https://p2oa.aeris-data.fr>). We especially acknowledge Francois Gheusi and and Serge Soula for managing observational measurements onsite and maintaining the P2OA database, as well as the technical support from the UMS 831 Pic du Midi Observatory team. The authors are grateful to their colleagues at Eawag and ETH, especially Björn Studer for carrying out the stable water isotope analysis, Elyssa Beyrouti for her contributions to the Py-GC-MS measurements, Pauline Béziat for providing the DMSeP standard and Caroline Stengel for general lab support.

720 Financial support

This study was funded by the Swiss National Science Foundation (project number 179104) and internal funds from Eawag and ETH Zurich. I.T. was partially funded by the Swiss Polar Foundation (project DAWATEC). P2OA facilities and staff are

funded and supported by the University Paul Sabatier, Toulouse, France, and CNRS (Centre National de la Recherche Scientifique). P2OA is part of the national research infrastructure ACTRIS-France.

725

References

- Aemisegger, F., Pfahl, S., Sodemann, H., Lehner, I., Seneviratne, S. I., and Wernli, H.: Deuterium excess as a proxy for continental moisture recycling and plant transpiration, *Atmos. Chem. Phys.*, 14, 4029-4054, 10.5194/acp-14-4029-2014, 2014.
- 730 Ali, F., Peng, Q., Wang, D., Cui, Z., Huang, J., Fu, D., and Liang, D.: Effects of selenite and selenate application on distribution and transformation of selenium fractions in soil and its bioavailability for wheat (*Triticum aestivum* L.), *Environmental Science and Pollution Research*, 24, 8315-8325, 10.1007/s11356-017-8512-9, 2017.
- Aller, J. Y., Radway, J. C., Kiltthau, W. P., Bothe, D. W., Wilson, T. W., Vaillancourt, R. D., Quinn, P. K., Coffman, D. J., Murray, B. J., and Knopf, D. A.: Size-resolved characterization of the polysaccharidic and proteinaceous components of sea spray aerosol, *Atmospheric Environment*, 154, 331-347, <https://doi.org/10.1016/j.atmosenv.2017.01.053>, 2017.
- 735 Amouroux, D. and Donard, O. F. X.: Maritime emission of selenium to the atmosphere in Eastern Mediterranean seas, *Geophysical Research Letters*, 23, 1777-1780, <https://doi.org/10.1029/96GL01271>, 1996.
- Amouroux, D., Liss, P. S., Tessier, E., Hamren-Larsson, M., and Donard, O. F. X.: Role of oceans as biogenic sources of selenium, *Earth and Planetary Science Letters*, 189, 277-283, [https://doi.org/10.1016/S0012-821X\(01\)00370-3](https://doi.org/10.1016/S0012-821X(01)00370-3), 2001.
- 740 Andres, R. J. and Kasgnoc, A. D.: A time-averaged inventory of subaerial volcanic sulfur emissions, *Journal of Geophysical Research: Atmospheres*, 103, 25251-25261, <https://doi.org/10.1029/98JD02091>, 1998.
- Angle, K. J., Crocker, D. R., Simpson, R. M. C., Mayer, K. J., Garofalo, L. A., Moore, A. N., Garcia, S. L. M., Or, V. W., Srinivasan, S., Farhan, M., Sauer, J. S., Lee, C., Pothier, M. A., Farmer, D. K., Martz, T. R., Bertram, T. H., Cappa, C. D., Prather, K. A., and Grassian, V. H.: Acidity across the interface from the ocean surface to sea spray aerosol, *Proceedings of the National Academy of Sciences*, 118, e2018397118, doi:10.1073/pnas.2018397118, 2021.
- 745 Arimoto, R., Duce, R. A., Ray, B. J., and Unni, C. K.: Atmospheric trace elements at Enewetak Atoll: 2. Transport to the ocean by wet and dry deposition, *Journal of Geophysical Research: Atmospheres*, 90, 2391-2408, <https://doi.org/10.1029/JD090iD01p02391>, 1985.
- Atkinson, R., Aschmann, S. M., Hasegawa, D., Thompson-Eagle, E. T., and Frankenberger, W. T.: Kinetics of the atmospherically important reactions of dimethyl selenide, *Environmental Science & Technology*, 24, 1326-1332, 10.1021/es00079a005, 1990.
- 750 Blazina, T., Läderach, A., Jones, G. D., Sodemann, H., Wernli, H., Kirchner, J. W., and Winkel, L. H. E.: Marine Primary Productivity as a Potential Indirect Source of Selenium and Other Trace Elements in Atmospheric Deposition, *Environmental Science & Technology*, 51, 108-118, 10.1021/acs.est.6b03063, 2017.
- Chen, Q., Sherwen, T., Evans, M., and Alexander, B.: DMS oxidation and sulfur aerosol formation in the marine troposphere: a focus on reactive halogen and multiphase chemistry, *Atmos. Chem. Phys.*, 18, 13617-13637, 10.5194/acp-18-13617-2018, 2018.
- 755 Chester, R., Keyse, S., and Nimmo, M.: The Influence of Saharan and Middle Eastern Desert-Derived Dust on the Trace Metal Composition of Mediterranean Aerosols and Rainwaters: An Overview, in: *The Impact of Desert Dust Across the Mediterranean*, edited by: Guerzoni, S., and Chester, R., Springer Netherlands, Dordrecht, 253-273, 10.1007/978-94-017-3354-0_26, 1996.
- 760 Collett, J. L., Daube, B. C., and Hoffmann, M. R.: The chemical composition of intercepted cloudwater in the Sierra Nevada, *Atmospheric Environment. Part A. General Topics*, 24, 959-972, [https://doi.org/10.1016/0960-1686\(90\)90298-2](https://doi.org/10.1016/0960-1686(90)90298-2), 1990.
- Cutter, G. A.: Species determination of selenium in natural waters, *Analytica Chimica Acta*, 98, 59-66, [https://doi.org/10.1016/S0003-2670\(01\)83238-4](https://doi.org/10.1016/S0003-2670(01)83238-4), 1978.
- 765 Cutter, G. A.: Metalloids in wet deposition on Bermuda: Concentrations, sources, and fluxes, *Journal of Geophysical Research: Atmospheres*, 98, 16777-16786, <https://doi.org/10.1029/93JD01689>, 1993.
- Cutter, G. A. and Church, T. M.: Selenium in western Atlantic precipitation, *Nature*, 322, 720-722, 10.1038/322720a0, 1986.
- 770 Dansgaard, W.: Stable isotopes in precipitation, *Tellus*, 16, 436-468, <https://doi.org/10.1111/j.2153-3490.1964.tb00181.x>, 1964.
- De Gregori, I., Lobos, M. a. G., and Pinochet, H.: Selenium and its redox speciation in rainwater from sites of Valparaíso region in Chile, impacted by mining activities of copper ores, *Water Research*, 36, 115-122, [https://doi.org/10.1016/S0043-1354\(01\)00240-8](https://doi.org/10.1016/S0043-1354(01)00240-8), 2002.

- 775 De Santiago, A., Longo, A. F., Ingall, E. D., Diaz, J. M., King, L. E., Lai, B., Weber, R. J., Russell, A. G., and Oakes, M.: Characterization of Selenium in Ambient Aerosols and Primary Emission Sources, *Environmental Science & Technology*, 48, 8988-8994, 10.1021/es500379y, 2014.
- Dentener, F., Kinne, S., Bond, T., Boucher, O., Cofala, J., Generoso, S., Ginoux, P., Gong, S., Hoelzemann, J. J., Ito, A., Marelli, L., Penner, J. E., Putaud, J. P., Textor, C., Schulz, M., van der Werf, G. R., and Wilson, J.: Emissions of primary
780 aerosol and precursor gases in the years 2000 and 1750 prescribed data-sets for AeroCom, *Atmos. Chem. Phys.*, 6, 4321-4344, 10.5194/acp-6-4321-2006, 2006.
- Donner, M. W. and Siddique, T.: A rapid and sensitive IC-ICP-MS method for determining selenium speciation in natural waters, *Canadian Journal of Chemistry*, 96, 795-802, 10.1139/cjc-2017-0637, 2018.
- Dovrou, E., Lim, C. Y., Canagaratna, M. R., Kroll, J. H., Worsnop, D. R., and Keutsch, F. N.: Measurement techniques
785 for identifying and quantifying hydroxymethanesulfonate (HMS) in an aqueous matrix and particulate matter using aerosol mass spectrometry and ion chromatography, *Atmos. Meas. Tech.*, 12, 5303-5315, 10.5194/amt-12-5303-2019, 2019.
- Fabbri, D., Adamiano, A., Falini, G., De Marco, R., and Mancini, I.: Analytical pyrolysis of dipeptides containing proline and amino acids with polar side chains. Novel 2,5-diketopiperazine markers in the pyrolysates of proteins, *Journal of Analytical and Applied Pyrolysis*, 95, 145-155, <https://doi.org/10.1016/j.jaap.2012.02.001>, 2012.
- 790 Fabbri, D., Modelli, S., Torri, C., Cemin, A., Ragazzi, M., and Scaramuzza, P.: GC-MS determination of levoglucosan in atmospheric particulate matter collected over different filter materials, *Journal of Environmental Monitoring*, 10, 1519-1523, 10.1039/B808976K, 2008.
- Feinberg, A., Stenke, A., Peter, T., and Winkel, L. H. E.: Constraining Atmospheric Selenium Emissions Using Observations, Global Modeling, and Bayesian Inference, *Environmental Science & Technology*, 54, 7146-7155,
795 10.1021/acs.est.0c01408, 2020a.
- Feinberg, A., Maliki, M., Stenke, A., Sudret, B., Peter, T., and Winkel, L. H. E.: Mapping the drivers of uncertainty in atmospheric selenium deposition with global sensitivity analysis, *Atmos. Chem. Phys.*, 20, 1363-1390, 10.5194/acp-20-1363-2020, 2020b.
- 800 Feinberg, A., Stenke, A., Peter, T., Hinckley, E.-L. S., Driscoll, C. T., and Winkel, L. H. E.: Reductions in the deposition of sulfur and selenium to agricultural soils pose risk of future nutrient deficiencies, *Communications Earth & Environment*, 2, 101, 10.1038/s43247-021-00172-0, 2021.
- Feinberg, A., Sukhodolov, T., Luo, B. P., Rozanov, E., Winkel, L. H. E., Peter, T., and Stenke, A.: Improved tropospheric and stratospheric sulfur cycle in the aerosol-chemistry-climate model SOCOL-AERv2, *Geosci. Model Dev.*, 12, 3863-3887, 10.5194/gmd-12-3863-2019, 2019.
- 805 Fernández-Martínez, A. and Charlet, L.: Selenium environmental cycling and bioavailability: a structural chemist point of view, *Reviews in Environmental Science and Bio/Technology*, 8, 81-110, 10.1007/s11157-009-9145-3, 2009.
- Fraser, M. P. and Lakshmanan, K.: Using Levoglucosan as a Molecular Marker for the Long-Range Transport of Biomass Combustion Aerosols, *Environmental Science & Technology*, 34, 4560-4564, 10.1021/es991229l, 2000.
- Fu, X., Maruszczak, N., Wang, X., Gheusi, F., and Sonke, J. E.: Isotopic Composition of Gaseous Elemental Mercury in
810 the Free Troposphere of the Pic du Midi Observatory, France, *Environmental Science & Technology*, 50, 5641-5650, 10.1021/acs.est.6b00033, 2016.
- Gat, J. R. and Gonfiantini, R.: Stable isotope hydrology Deuterium and oxygen-18 in the water cycle, IAEA, International Atomic Energy Agency (IAEA)1981.
- Gatz, D. F. and Nelson Dingle, A.: Trace substances in rain water: concentration variations during convective rains, and
815 their interpretation, *Tellus*, 23, 14-27, 10.3402/tellusa.v23i1.10286, 1971.
- Ghauri, B. M., Ishaq Mirza, M., Richter, R., Dutkiewicz, V. A., Rusheed, A., Khan, A. R., and Husain, L.: Composition of aerosols and cloud water at a remote mountain site (2.8 kms) in Pakistan, *Chemosphere - Global Change Science*, 3, 51-63, [https://doi.org/10.1016/S1465-9972\(00\)00038-6](https://doi.org/10.1016/S1465-9972(00)00038-6), 2001.
- Gheusi, F., Ravetta, F., Delbarre, H., Tsamalis, C., Chevalier-Rosso, A., Leroy, C., Augustin, P., Delmas, R., Ancellet,
820 G., Athier, G., Bouchou, P., Campistron, B., Cousin, J. M., Fourmentin, M., and Meyerfeld, Y.: Pic 2005, a field campaign to investigate low-tropospheric ozone variability in the Pyrenees, *Atmospheric Research*, 101, 640-665, <https://doi.org/10.1016/j.atmosres.2011.04.014>, 2011.

- 825 Giannoni, M., Martellini, T., Del Bubba, M., Gambaro, A., Zangrando, R., Chiari, M., Lepri, L., and Cincinelli, A.: The use of levoglucosan for tracing biomass burning in PM2.5 samples in Tuscany (Italy), *Environmental Pollution*, 167, 7-15, <https://doi.org/10.1016/j.envpol.2012.03.016>, 2012.
- Granier, C., Darras, S., Denier van der Gon, H., Doubalova, J., Elguindi, N., Galle, B., Gauss, M., Guevara, M., Jalkanen, J.-P., Kuenen, J., Lioussé, C., Quack, B., Simpson, D., and Sindelarova, K.: The Copernicus Atmosphere Monitoring Service global and regional emissions (April 2019 version) Copernicus Atmosphere Monitoring Service 10.24380/d0bn-kx16, 2019.
- 830 Harvey, G. R. and Lang, R. F.: Dimethylsulfoxide and dimethylsulfone in the marine atmosphere, *Geophysical Research Letters*, 13, 49-51, <https://doi.org/10.1029/GL013i001p00049>, 1986.
- Heine, P. A. and Borduas-Dedekind, N.: The Ozonolysis of Methylated Selenide Compounds in the Atmosphere: Isotopes, Kinetics, Products, and Mechanisms, *Environmental Science & Technology*, 57, 13079-13087, 10.1021/acs.est.3c01586, 2023.
- 835 Henne, S., Brunner, D., Folini, D., Solberg, S., Klausen, J., and Buchmann, B.: Assessment of parameters describing representativeness of air quality in-situ measurement sites, *Atmos. Chem. Phys.*, 10, 3561-3581, 10.5194/acp-10-3561-2010, 2010.
- Hersbach, H., Bell, B., Berrisford, P., Horányi, A. J. M. S., Sabater, J. M., Nicolas, J., Radu, R., Schepers, D., Simmons, A., Soci, C., and Dee, D.: Global reanalysis: goodbye ERA-Interim, hello ERA5, *ECMWF newsletter*, pp.17-24, <https://doi.org/10.21957/vf291hehd7> 2019.
- 840 Hersbach, H., Bell, B., Berrisford, P., Hirahara, S., Horányi, A., Muñoz-Sabater, J., Nicolas, J., Peubey, C., Radu, R., Schepers, D., Simmons, A., Soci, C., Abdalla, S., Abellan, X., Balsamo, G., Bechtold, P., Biavati, G., Bidlot, J., Bonavita, M., De Chiara, G., Dahlgren, P., Dee, D., Diamantakis, M., Dragani, R., Flemming, J., Forbes, R., Fuentes, M., Geer, A., Haimberger, L., Healy, S., Hogan, R. J., Hólm, E., Janisková, M., Keeley, S., Laloyaux, P., Lopez, P., Lupu, C., Radnoti, G., de Rosnay, P., Rozum, I., Vamborg, F., Villaume, S., and Thépaut, J.-N.: The ERA5 global reanalysis, *Quarterly Journal of the Royal Meteorological Society*, 146, 1999-2049, <https://doi.org/10.1002/qj.3803>, 2020.
- 845 Holmes, C. D., Krishnamurthy, N. P., Caffrey, J. M., Landing, W. M., Edgerton, E. S., Knapp, K. R., and Nair, U. S.: Thunderstorms Increase Mercury Wet Deposition, *Environmental Science & Technology*, 50, 9343-9350, 10.1021/acs.est.6b02586, 2016.
- 850 Hulin, M., Gheusi, F., Lathon, M., Pont, V., Lohou, F., Ramonet, M., Delmotte, M., Derrien, S., Athier, G., Meyerfeld, Y., Bezombes, Y., Augustin, P., and Ravetta, F.: Observations of Thermally Driven Circulations in the Pyrenees: Comparison of Detection Methods and Impact on Atmospheric Composition Measured at a Mountaintop, *Journal of Applied Meteorology and Climatology*, 58, 717-740, 10.1175/jamc-d-17-0268.1, 2019.
- IAEA: International Atomic Energy Agency: Reference sheet for VSMOW2 and SLAP2 international measurement standards, Vienna, 8pp., 2017.
- 855 Kagawa, M., Ishizaka, Y., and Ohta, K.: Sources of sulfate in winter aerosols over the Sea of Japan, as inferred from selenium composition, *Atmospheric Environment*, 37, 1593-1600, [https://doi.org/10.1016/S1352-2310\(03\)00006-2](https://doi.org/10.1016/S1352-2310(03)00006-2), 2003.
- Kagawa, M., Katsuta, N., and Ishizaka, Y.: Selenite and selenate in clouds at a high-altitude mountain location in central Japan, *Atmospheric Research*, 276, 106253, <https://doi.org/10.1016/j.atmosres.2022.106253>, 2022.
- 860 Kanji, Z. A., Ladino, L. A., Wex, H., Boose, Y., Burkert-Kohn, M., Cziczo, D. J., and Krämer, M.: Overview of Ice Nucleating Particles, *Meteorological Monographs*, 58, 1.1-1.33, 10.1175/amsmonographs-d-16-0006.1, 2017.
- Kulkarni, P., Chellam, S., Flanagan, J. B., and Jayanty, R. K. M.: Microwave digestion—ICP-MS for elemental analysis in ambient airborne fine particulate matter: Rare earth elements and validation using a filter borne fine particle certified reference material, *Analytica Chimica Acta*, 599, 170-176, <https://doi.org/10.1016/j.aca.2007.08.014>, 2007.
- 865 Lana, A., Bell, T. G., Simó, R., Vallina, S. M., Ballabrera-Poy, J., Kettle, A. J., Dachs, J., Bopp, L., Saltzman, E. S., Stefels, J., Johnson, J. E., and Liss, P. S.: An updated climatology of surface dimethylsulfide concentrations and emission fluxes in the global ocean, *Global Biogeochemical Cycles*, 25, <https://doi.org/10.1029/2010GB003850>, 2011.
- Lazard, M., Dauplais, M., Blanquet, S., and Plateau, P.: Recent advances in the mechanism of selenoamino acids toxicity in eukaryotic cells, 10.1515/bmc-2017-0007, 2017.
- 870 Lobanov, A. V., Hatfield, D. L., and Gladyshev, V. N.: Eukaryotic selenoproteins and selenoproteomes, *Biochimica et Biophysica Acta (BBA) - General Subjects*, 1790, 1424-1428, <https://doi.org/10.1016/j.bbagen.2009.05.014>, 2009.

- Marenco, A., Gouget, H., Nédélec, P., Pagés, J.-P., and Karcher, F.: Evidence of a long-term increase in tropospheric ozone from Pic du Midi data series: Consequences: Positive radiative forcing, *Journal of Geophysical Research: Atmospheres*, 99, 16617-16632, <https://doi.org/10.1029/94JD00021>, 1994.
- 875 Müller, E., von Gunten, U., Bouchet, S., Droz, B., and Winkel, L. H. E.: Hypobromous Acid as an Unaccounted Sink for Marine Dimethyl Sulfide?, *Environmental Science & Technology*, 53, 13146-13157, 10.1021/acs.est.9b04310, 2019.
- Nightingale, P. D., Malin, G., Law, C. S., Watson, A. J., Liss, P. S., Liddicoat, M. I., Boutin, J., and Upstill-Goddard, R. C.: In situ evaluation of air-sea gas exchange parameterizations using novel conservative and volatile tracers, *Global Biogeochemical Cycles*, 14, 373-387, <https://doi.org/10.1029/1999GB900091>, 2000.
- 880 Pan, Z., Mao, F., Rosenfeld, D., Zhu, Y., Zang, L., Lu, X., Thornton, J. A., Holzworth, R. H., Yin, J., Efrain, A., and Gong, W.: Coarse sea spray inhibits lightning, *Nature Communications*, 13, 4289, 10.1038/s41467-022-31714-5, 2022.
- Pavageau, M.-P., Morin, A., Séby, F., Guimon, C., Krupp, E., Pécheyran, C., Poulleau, J., and Donard, O. F. X.: Partitioning of Metal Species during an Enriched Fuel Combustion Experiment. Speciation in the Gaseous and Particulate Phases, *Environmental Science & Technology*, 38, 2252-2263, 10.1021/es034408i, 2004.
- 885 Pfahl, S. and Wernli, H.: Air parcel trajectory analysis of stable isotopes in water vapor in the eastern Mediterranean, *Journal of Geophysical Research: Atmospheres*, 113, <https://doi.org/10.1029/2008JD009839>, 2008.
- Pszenny, A. A. P., Harvey, G. R., Brown, C. J., Lang, R. F., Keene, W. C., Galloway, J. N., and Merrill, J. T.: Measurements of dimethyl sulfide oxidation products in the summertime North Atlantic marine boundary layer, *Global Biogeochemical Cycles*, 4, 367-379, <https://doi.org/10.1029/GB004i004p00367>, 1990.
- 890 Pye, H. O. T., Nenes, A., Alexander, B., Ault, A. P., Barth, M. C., Clegg, S. L., Collett Jr, J. L., Fahey, K. M., Hennigan, C. J., Herrmann, H., Kanakidou, M., Kelly, J. T., Ku, I. T., McNeill, V. F., Riemer, N., Schaefer, T., Shi, G., Tilgner, A., Walker, J. T., Wang, T., Weber, R., Xing, J., Zaveri, R. A., and Zuend, A.: The acidity of atmospheric particles and clouds, *Atmos. Chem. Phys.*, 20, 4809-4888, 10.5194/acp-20-4809-2020, 2020.
- Richter, R. C., Swami, K., Chace, S., and Husain, L.: Determination of arsenic, selenium, and antimony in cloud water by inductively coupled plasma mass spectrometry, *Fresenius' Journal of Analytical Chemistry*, 361, 168-173, 895 10.1007/s002160050856, 1998.
- Roulier, M., Bueno, M., Coppin, F., Nicolas, M., Thiry, Y., Rigal, F., Le Hécho, I., and Pannier, F.: Atmospheric iodine, selenium and caesium depositions in France: I. Spatial and seasonal variations, *Chemosphere*, 273, 128971, <https://doi.org/10.1016/j.chemosphere.2020.128971>, 2021.
- 900 Savage, L., Carey, M., Hossain, M., Islam, M. R., de Silva, P. M. C. S., Williams, P. N., and Meharg, A. A.: Elevated Trimethylarsine Oxide and Inorganic Arsenic in Northern Hemisphere Summer Monsoonal Wet Deposition, *Environmental Science & Technology*, 51, 12210-12218, 10.1021/acs.est.7b04356, 2017.
- Schkolnik, G. and Rudich, Y.: Detection and quantification of levoglucosan in atmospheric aerosols: a review, *Analytical and Bioanalytical Chemistry*, 385, 26-33, 10.1007/s00216-005-0168-5, 2006.
- 905 Séby, F., Potin-Gautier, M., Giffaut, E., Borge, G., and Donard, O. F. X.: A critical review of thermodynamic data for selenium species at 25°C, *Chemical Geology*, 171, 173-194, [https://doi.org/10.1016/S0009-2541\(00\)00246-1](https://doi.org/10.1016/S0009-2541(00)00246-1), 2001.
- Sindelarova, K., Granier, C., Bouarar, I., Guenther, A., Tilmes, S., Stavrakou, T., Müller, J. F., Kuhn, U., Stefani, P., and Knorr, W.: Global data set of biogenic VOC emissions calculated by the MEGAN model over the last 30 years, *Atmos. Chem. Phys.*, 14, 9317-9341, 10.5194/acp-14-9317-2014, 2014.
- 910 Sodemann, H., Schwierz, C., and Wernli, H.: Interannual variability of Greenland winter precipitation sources: Lagrangian moisture diagnostic and North Atlantic Oscillation influence, *Journal of Geophysical Research: Atmospheres*, 113, <https://doi.org/10.1029/2007JD008503>, 2008.
- Sprenger, M. and Wernli, H.: The LAGRANTO Lagrangian analysis tool – version 2.0, *Geosci. Model Dev.*, 8, 2569-2586, 10.5194/gmd-8-2569-2015, 2015.
- 915 Suess, E., Aemisegger, F., Sonke, J. E., Sprenger, M., Wernli, H., and Winkel, L. H. E.: Marine versus Continental Sources of Iodine and Selenium in Rainfall at Two European High-Altitude Locations, *Environmental Science & Technology*, 53, 1905-1917, 10.1021/acs.est.8b05533, 2019.
- Suzuki, Y., Sugimura, Y., and Miyake, Y.: The Content of Selenium and Its Chemical Form in Rain Water and Aerosol in Tokyo, *Journal of the Meteorological Society of Japan. Ser. II*, 59, 405-409, 10.2151/jmsj1965.59.3_405, 1981.
- 920 Thermo Fisher: Measuring pH of Pure Water and Other Low Conductivity Waters, *Water Analysis Instruments*, Application Note 005, 2014.

- Thornton, J. A., Virts, K. S., Holzworth, R. H., and Mitchell, T. P.: Lightning enhancement over major oceanic shipping lanes, *Geophysical Research Letters*, 44, 9102-9111, <https://doi.org/10.1002/2017GL074982>, 2017.
- 925 Tolu, J., Gerber, L., Boily, J.-F., and Bindler, R.: High-throughput characterization of sediment organic matter by pyrolysis–gas chromatography/mass spectrometry and multivariate curve resolution: A promising analytical tool in (paleo)limnology, *Analytica Chimica Acta*, 880, 93-102, <https://doi.org/10.1016/j.aca.2015.03.043>, 2015.
- Tolu, J., Le Hécho, I., Bueno, M., Thiry, Y., and Potin-Gautier, M.: Selenium speciation analysis at trace level in soils, *Analytica Chimica Acta*, 684, 126-133, <https://doi.org/10.1016/j.aca.2010.10.044>, 2011.
- 930 Tost, H., Jöckel, P., Kerkweg, A., Sander, R., and Lelieveld, J.: Technical note: A new comprehensive SCAVenging submodel for global atmospheric chemistry modelling, *Atmos. Chem. Phys.*, 6, 565-574, 10.5194/acp-6-565-2006, 2006.
- von Freyberg, J., Rücker, A., Zappa, M., Schlumpf, A., Studer, B., and Kirchner, J. W.: Four years of daily stable water isotope data in stream water and precipitation from three Swiss catchments, *Scientific Data*, 9, 46, 10.1038/s41597-022-01148-1, 2022.
- 935 Voorhees, K. J., DeLuca, S. J., and Noguerola, A.: Identification of chemical biomarker compounds in bacteria and other biomaterials by pyrolysis—tandem mass spectrometry, *Journal of Analytical and Applied Pyrolysis*, 24, 1-21, [https://doi.org/10.1016/0165-2370\(92\)80001-3](https://doi.org/10.1016/0165-2370(92)80001-3), 1992.
- Voorhees, K. J., Basile, F., Beverly, M. B., Abbas-Hawks, C., Hendricker, A., Cody, R. B., and Hadfield, T. L.: The use of biomarker compounds for the identification of bacteria by pyrolysis-mass spectrometry, *Journal of Analytical and Applied Pyrolysis*, 40-41, 111-134, [https://doi.org/10.1016/S0165-2370\(97\)00035-1](https://doi.org/10.1016/S0165-2370(97)00035-1), 1997.
- 940 Vriens, B., Lenz, M., Charlet, L., Berg, M., and Winkel, L. H. E.: Natural wetland emissions of methylated trace elements, *Nature Communications*, 5, 3035, 10.1038/ncomms4035, 2014a.
- Vriens, B., Ammann, A. A., Hagendorfer, H., Lenz, M., Berg, M., and Winkel, L. H. E.: Quantification of Methylated Selenium, Sulfur, and Arsenic in the Environment, *PLOS ONE*, 9, e102906, 10.1371/journal.pone.0102906, 2014b.
- 945 Wallschläger, D. and London, J.: Determination of inorganic selenium species in rain and sea waters by anion exchange chromatography-hydride generation-inductively-coupled plasma-dynamic reaction cell-mass spectrometry (AEC-HG-ICP-DRC-MS), *Journal of Analytical Atomic Spectrometry*, 19, 1119-1127, 10.1039/B401616E, 2004.
- Wang, D., Alfthan, G., and Aro, A.: Determination of total selenium and dissolved selenium species in natural waters by fluorometry, *Environmental Science & Technology*, 28, 383-387, 10.1021/es00052a007, 1994.
- 950 Watts, S. F., Watson, A., and Brimblecombe, P.: Measurements of the aerosol concentrations of methanesulphonic acid, dimethyl sulphoxide and dimethyl sulphone in the marine atmosphere of the British Isles, *Atmospheric Environment* (1967), 21, 2667-2672, [https://doi.org/10.1016/0004-6981\(87\)90198-3](https://doi.org/10.1016/0004-6981(87)90198-3), 1987.
- Weller, R., Wöltjen, J., Piel, C., Resenberg, R., Wagenbach, D., König-Langlo, G., and Kriews, M.: Seasonal variability of crustal and marine trace elements in the aerosol at Neumayer station, Antarctica, *Tellus B: Chemical and Physical Meteorology*, 60, 742-752, 10.1111/j.1600-0889.2008.00372.x, 2008.
- 955 Wen, H. and Carignan, J.: Reviews on atmospheric selenium: Emissions, speciation and fate, *Atmospheric Environment*, 41, 7151-7165, <https://doi.org/10.1016/j.atmosenv.2007.07.035>, 2007.
- Wernli, H. and Davies, H. C.: A Lagrangian-based analysis of extratropical cyclones. I: The method and some applications, *Quarterly Journal of the Royal Meteorological Society*, 123, 467-489, <https://doi.org/10.1002/qj.49712353811>, 1997.
- 960 Willey, J. D., Mullaugh, K. M., Kieber, R. J., Avery, G. B., Jr., and Mead, R. N.: Controls on the redox potential of rainwater, *Environ Sci Technol*, 46, 13103-13111, 10.1021/es302569j, 2012.
- Williams, E. and Stanfill, S.: The physical origin of the land–ocean contrast in lightning activity, *Comptes Rendus Physique*, 3, 1277-1292, [https://doi.org/10.1016/S1631-0705\(02\)01407-X](https://doi.org/10.1016/S1631-0705(02)01407-X), 2002.
- 965 Winkel, L. H. E., Vriens, B., Jones, G. D., Schneider, L. S., Pilon-Smits, E., and Bañuelos, G. S.: Selenium Cycling Across Soil-Plant-Atmosphere Interfaces: A Critical Review, 7, 4199-4239, 2015.
- Yan, R., Gauthier, D., Flamant, G., and Wang, Y.: Behavior of selenium in the combustion of coal or coke spiked with Se, *Combustion and Flame*, 138, 20-29, <https://doi.org/10.1016/j.combustflame.2004.03.010>, 2004.
- Yang, K. X. and Husain, L.: Ultratrace Determination of Selenium by Hydride Generation–Inductively Coupled Plasma Mass Spectrometry Operated Under Nonrobust Plasma Conditions, *Spectroscopy Letters*, 39, 187-201, 10.1080/00387010500531233, 2006.

970 Zhao, J., Peng, P. a., Song, J., Ma, S., Sheng, G., and Fu, J.: Characterization of organic matter in total suspended particles by thermodesorption and pyrolysis-gas chromatography-mass spectrometry, *Journal of Environmental Sciences*, 21, 1658-1666, [https://doi.org/10.1016/S1001-0742\(08\)62470-5](https://doi.org/10.1016/S1001-0742(08)62470-5), 2009.

Zhao, P., Yin, Y., and Xiao, H.: The effects of aerosol on development of thunderstorm electrification: A numerical study, *Atmospheric Research*, 153, 376-391, <https://doi.org/10.1016/j.atmosres.2014.09.011>, 2015.