

# Preamble

## This author response will be structured as follows:

There will be a succession of:

1. The editor review comment in question in a quotation block
2. The author response to that comment in [blue](#)
3. The possible changes made in the manuscript related to the comment in *italics*

for each of the editor review comments made. In addition, the manuscript marked up with changes will be appended in its entirety.

---

## Author Response

Dear topic editor,

Thank you for your thoughtful comments and suggestions, which we have gone through. Our comments and revisions are detailed below.

---

1. For Figures 7, 8, and B2, please superposition the observation (isotherms of 15, 25, 35, and 45 dBZ) on the probability plots. This will help to compare the probability and observation.

[Thank you for the suggestion. The comparison is indeed easier to make when overlaying the observation isotherms upon predicted exceedance probabilities.](#)

- *We changed Figure 7, Figure 8, Figure B2, and Figure B3, as well as their captions.*
- 

2. I suggest incorporating the findings associated with the second case in the discussion section. In particular, DEUCE lost the skill at small scales after 30 minutes and the skill in the area with substantial precipitation growth. It is also worth mentioning that LINDA-P provides a good reflectivity forecast on small scales, even with a smaller ensemble spread.

[Thank you. We added a discussion on those aspects. Losing the skill at small scales after 30 minutes was linked to the original discussion on small scale variability. A new paragraph touching upon the lack of ability in predicting convective initiation was added to the discussion. The last comment was handled by shortly summarizing the pros and cons of STEPS and LINDA at the beginning of the discussion section.](#)

- L495-498: Adding the pros and cons of STEPS, LINDA, and mentioning that DEUCE offers a seemingly good compromise.
  - L520-521: Mention that losing small-scale variability is esp. noticeable for lead times over 30 minutes.
  - L554-558: Paragraph on the difficulty of predicting convective initiation.
- 

3. Line 156: Doesn't Lout correspond to the number of "output" timesteps? Is it a typo?

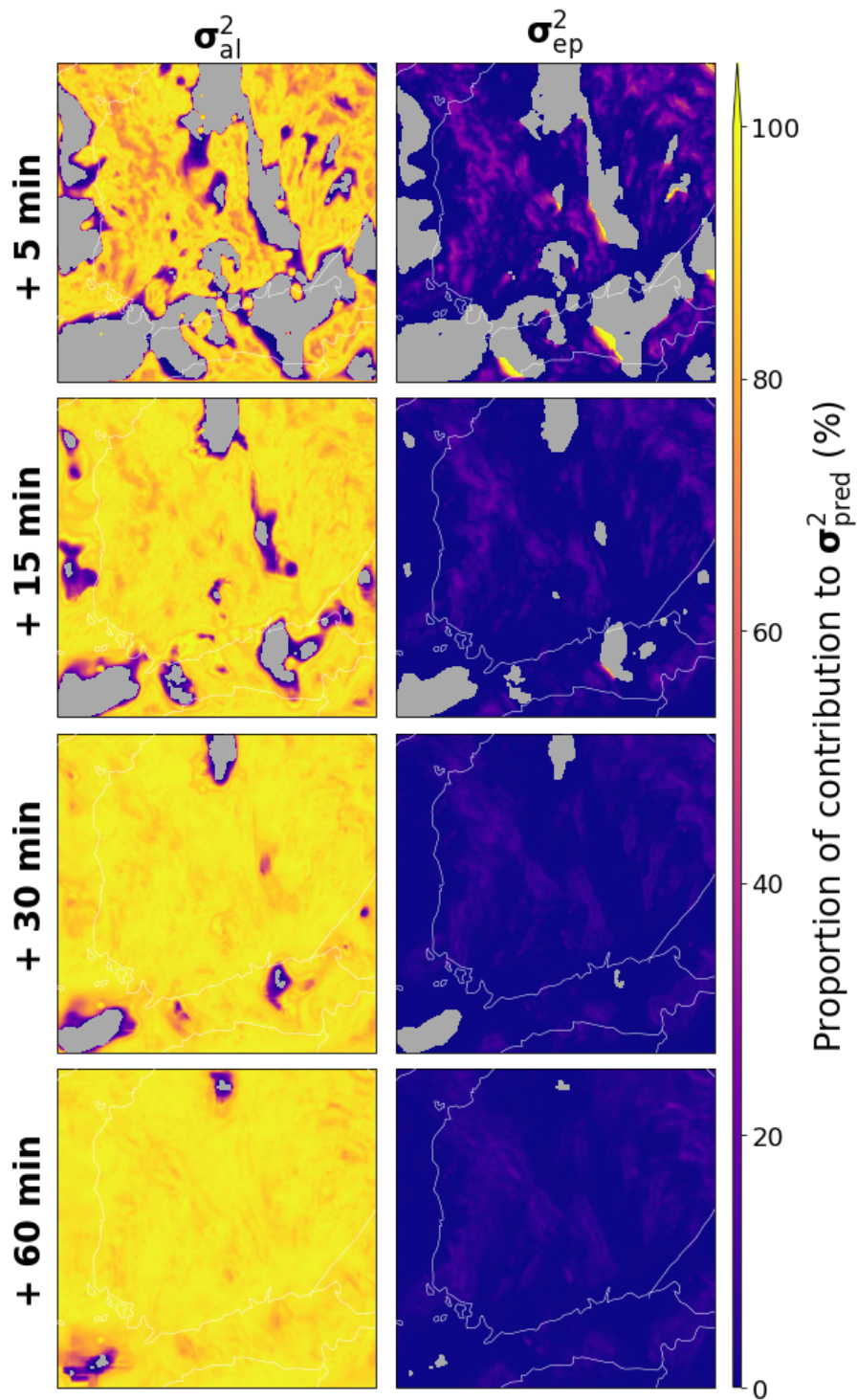
Thank you. This was indeed a typo, which has now been fixed.

- Line 156: *input* -> *output*
- 

4. For clarification, does DEUCE provide the deterministic predictive precipitation ( $y_{\text{mean}}$ ), and the ensemble is then determined by the breadth ( $\sigma^2_{\text{pred}}$ , a combination of aleatoric and epistemic uncertainties)? Is the probability forecast (Fig. 7 and 8) determined more by epistemic uncertainties at the later forecast lead time and for the more vigorous intensity?

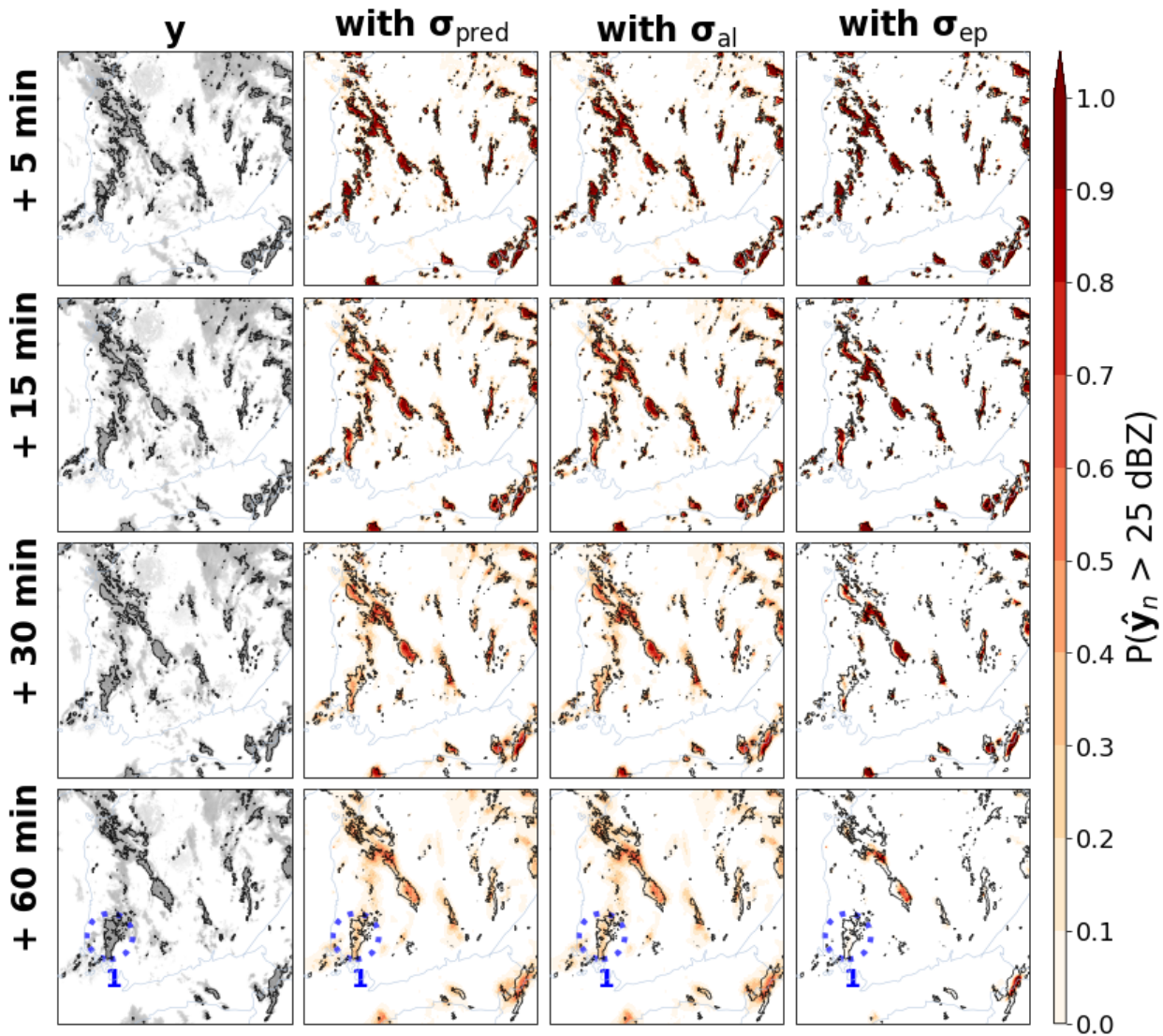
Thank you for the good questions. For the first one, the answer is yes, as DEUCE provides a predictive mean and variance, and the ensemble nowcast is determined by the predictive distribution parametrized as  $\sim N(y_{\text{mean}}, \sigma^2_{\text{pred}})$ . However, we believe that it would be potentially misleading to call  $y_{\text{mean}}$  in its current form deterministic, as its values still depend on the weights drawn. An explanation for the process of using DEUCE to generate ensemble nowcasts is given in Sect. 2.3.

As for the second question about whether the probability forecast of the first case is determined more by epistemic or aleatoric uncertainty, it helps to take a look at Figures 9 and 10 as well. Figure 9 shows the composition of the standard deviation for case 1. There, we see that because the square of the aleatoric standard deviation is much larger than that of the epistemic standard deviation, the predictive standard deviation consists almost exclusively of aleatoric uncertainty ( as  $\sigma_{\text{pred}} = \sqrt{\sigma_{\text{ep}}^2 + \sigma_{\text{al}}^2}$ ). The figure below, showing the proportion of both components in the predictive variance, helps illustrating the same effect. From this figure, it also becomes clear that the contribution of epistemic uncertainty actually decreases with lead time in this case.



The proportion of epistemic and aleatoric variance inside of the predictive variance. Grey areas indicate pixels where these proportions could not be calculated due to the variance summing to zero.

Figure 10 shows that the same trend can be observed across diverse circumstances, with solely the proportion of aleatoric uncertainty increasing with lead time (top right chart). Finally, we show here in the figure below how the effect is seen in exceedance probabilities. Only utilizing aleatoric uncertainty yields exceedance probabilities very close to predictive uncertainty, but epistemic uncertainty by itself looks very different, with narrower distributions, close to predictive means (The effect of prediction smoothing can be clearly seen, as smaller features are not predicted well by the mean anymore).



25dBZ exceedance probabilities for the first case using predictive SD, separate aleatoric SD, and separate epistemic SD.

- L431-432: Added a sentence about aleatoric uncertainty overshadowing epistemic uncertainty in probabilistic nowcasts, because of their overlapping spatial extent.

5. The central innovative part of the methodology is considering aleatoric and epistemic uncertainties for probabilistic forecasts. However, given that DEUCE still has the issue of losing small-scale skill, can the authors briefly comment on how such limitation is linked to aleatoric and epistemic uncertainties in the conclusion section?

Thank you for the comment. Although the relationship between the smoothing of predictions and uncertainties was already touched upon in the discussion section (L517-527), a small paragraph further discussing the subject from the point of view proposed was added in conclusions. It was discussed that not accounting for any increase in prediction skill, sharper predictions would likely increase epistemic uncertainty but not affect aleatoric uncertainty, except for circumstances where excessive smoothing is the mechanism limiting the prediction of high enough reflectivity values.

- *L600-606: Added a small paragraph on the effect of smoothing on aleatoric and epistemic uncertainties.*
- 

6. The predictive variance in DEUCE determines the ensemble distribution (Eq. 7). This differs from the spread definition in the traditional NWP-based ensemble forecast used for the probabilistic forecast. This may be worth to be mentioned or emphasized in the introduction.

Thank you for the suggestion. Changes in wording have been made in the abstract and introduction to make it clearer that with DEUCE, ensembles follow from the estimated predictive distribution and not the other way around. Also, the contrast with NWP is highlighted in Sect. 2.3, where the generation of ensemble nowcasts is described.

- *L12 : and produces -> using them to produce*
  - *L129-130: Change in the wording to make it clear that the predictive distribution leads to the ensemble nowcast. Also, removal of out-of-place explanation of the role of radar nowcasting w.r.t. precipitation nowcasting (already present at L39-41).*
  - *L242-245: Mentioning the difference between the DEUCE ensemble definition just presented above, and the NWP-based ensemble definition.*
- 

**The manuscript marked-up with changes made by the authors**

# DEUCE v1.0: A neural network for probabilistic precipitation nowcasting with aleatoric and epistemic uncertainties

Bent Harnist<sup>1</sup>, Seppo Pulkkinen<sup>1</sup>, and Terhi Mäkinen<sup>1</sup>

<sup>1</sup>Finnish Meteorological Institute, Erik Palménin aukio 1, FI-00560 Helsinki, Finland

**Correspondence:** Bent Harnist (bent.harnist@fmi.fi)

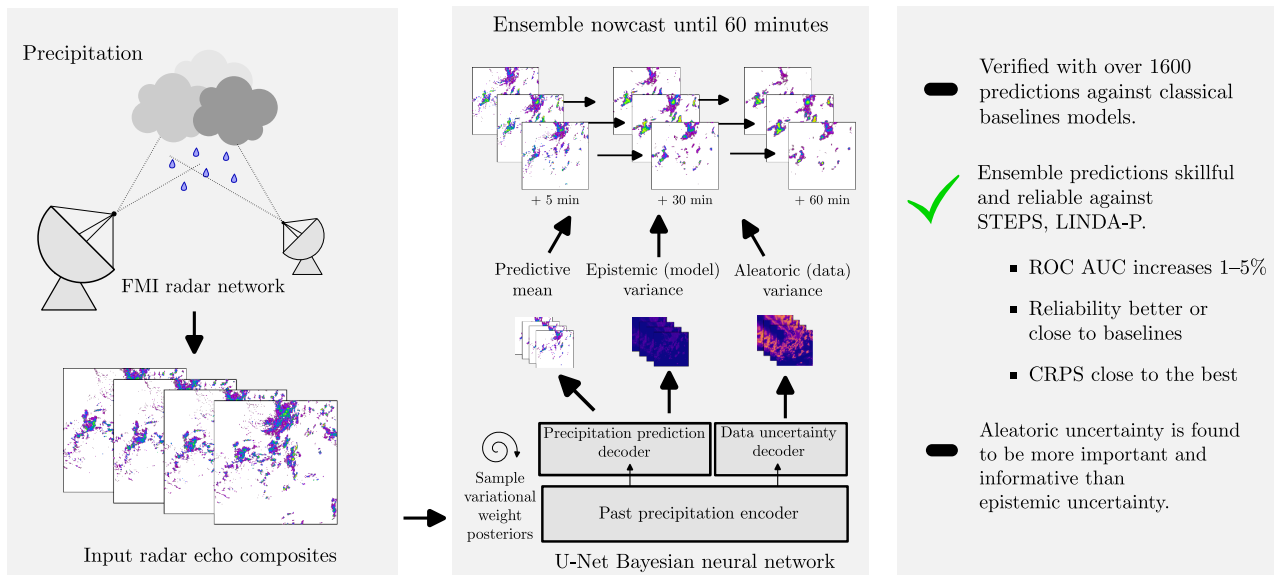
## Abstract.

Precipitation nowcasting (forecasting locally for 0–6h) serves both public security and industries, facilitating the mitigation of losses incurred due to e.g. flash floods, and is usually done by predicting weather radar echoes, which provides better performance than NWP at that scale. Probabilistic nowcasts are especially useful as they provide a desirable framework for operational decision-making. Many extrapolation-based statistical nowcasting methods exist, but they all suffer from a limited ability to capture the nonlinear growth and decay of precipitation, leading to a recent paradigm shift towards deep learning methods which are more capable of representing these patterns.

Despite of its potential advantages, the application of deep learning in probabilistic nowcasting has only recently started to be explored. Here we develop a novel probabilistic precipitation nowcasting method, based on Bayesian neural networks with variational inference and the U-Net architecture, named DEUCE. The method estimates the total predictive uncertainty of precipitation by combining estimates of the epistemic (knowledge-related, reducible) and heteroscedastic aleatoric (data-dependent, irreducible) uncertainties, ~~and produces~~ using them to produce an ensemble of development scenarios for the following 60 minutes.

DEUCE is trained and verified using Finnish Meteorological Institute radar composites against established classical models. Our model is found to produce both skillful and reliable probabilistic nowcasts based on various evaluation criteria. It improves ROC Area Under the Curve scores 1–5% over STEPS and LINDA-P baselines, and comes close to the best-performer STEPS on a CRPS metric. The reliability of DEUCE is demonstrated with, e.g., having the lowest Expected Calibration Error at 20 and 25 dBZ reflectivity thresholds, and coming second at 35 dBZ. On the other hand, deterministic performance of ensemble means is found to be worse than that of extrapolation and LINDA-D baselines. Lastly, the composition of the predictive uncertainty is analysed and described, with the conclusion that aleatoric uncertainty is more significant and informative than epistemic uncertainty in the DEUCE model.

# DEUCE v1.0: A neural network for probabilistic precipitation nowcasting with aleatoric and epistemic uncertainties



## 1 Introduction

Predicting the amount and location of precipitation at local scales of a few kilometres for lead times ranging from minutes to 25 hours, i.e., *precipitation nowcasting* has recently grown into an important component of severe weather early warning systems, particularly those focused on predicting flash floods. Because of the intensification coupled with increased frequency of extreme precipitation events brought by climate change, accurate estimates of future precipitation have increased in importance. However, the capacity of any nowcasting model to produce accurate estimates is limited, and thus having additionally an idea of the reliability of the nowcast is operationally important. This can be addressed with ensemble nowcasts, which generate a 30 set of possible scenarios, with which it is possible to estimate the probability of certain events.

Numerical Weather Prediction (NWP) is widely used for forecasts at longer timescales and with coarser grids (Bauer et al., 2015), with regional high-resolution models model generally having a grid resolution of a few kilometres and a refresh rate of typically one hour. For example, the High Resolution Rapid Refresh (HRRR) model developed by the United States National Oceanic and Atmospheric Administration (NOAA) has a grid resolution of 3km and a refresh rate of one hour (Alexander et al., 2020). However, NWP does not achieve sufficient performance at the spatio-temporal scales typical of nowcasts, due to not yet having achieved numerical stability in these first few hours, and due to the computational complexity of resolving atmospheric equations at sub-hour temporal resolutions and grid resolutions approaching the micro-scale ( $\leq 1\text{km}$ ) (Sun et al., 2014; Radhakrishnan and Chandrasekar, 2020). Specialized nowcasting methods for precipitation have been developed in parallel of NWP and may be used in order to circumvent its problems in the domain. These mainly rely on forecasting the

40 evolution of radar echo image sequences, that act as a good proxy for ground-level precipitation, and usually have a spatial resolution of  $\sim 1$  km and a temporal resolution of  $\sim 5$  min, which are characteristic of weather radar observations.

### 1.1 Extrapolation-based precipitation nowcasting

The most important class of precipitation nowcasting models is based on the extrapolation of radar echoes along the background advection field. These models first estimate the advection field from a sequence of past radar images, with methods such as  
45 Variational Echo Tracking (Laroche and Zawadzki, 1995) or optical flow-based methods like the Lucas-Kanade method (Lucas and Kanade, 1981; Bouguet et al., 2001). In the classical case of the pure extrapolation nowcast, the most recently observed frame is simply extrapolated along the estimated advection field, often using a Semi-Lagrangian Scheme (Staniforth and Côté, 1991). Extrapolation nowcasting doesn't model the growth and decay of precipitation, so many extensions attempting to make up for that have been developed. One important method is Spectral Prognosis (S-PROG) by Seed (2003). S-PROG is based on  
50 the scale-dependence of the lifetime and evolution of features, decomposing the field into additive components corresponding to different spatial scales and evolving each of them separately using an autoregressive (AR2) model in Lagrangian (flow frame of reference) coordinates, enabling modeling the scale-dependent behavior of precipitation.

STEPS (Short-Term Ensemble Prediction System) by Bowler et al. (2006), is an influential ensemble nowcasting model based on S-PROG. In STEPS, stochastic perturbations are added to the motion field in order to model its uncertainty. Just like  
55 with S-PROG, the growth and decay of the precipitation field is modeled by decomposing it using a cascade of scales with the autoregressive model applied to each of these scales separately in Lagrangian coordinates. Unlike in S-PROG, stochastic noise is injected at each scale, concurrently with the AR modeling. Over time, various models have expanded upon STEPS; one recent example being LINDA (Lagrangian INtegro-Difference equation model with autoregression) (Pulkkinen et al., 2021), which uses an integro-difference equation model with rain cell detection and convolutions for modeling the loss of predictability at  
60 small scales. LINDA produces nowcasts particularly well-suited to the prediction of strong localized rainfall.

### 1.2 Deep Learning approaches to precipitation nowcasting

With significant recent advances in deep learning, the interest in its use for precipitation nowcasting has increased. One of the first deep learning model to have been used explicitly for precipitation nowcasting is the Convolutional LSTM (ConvLSTM) model (Shi et al., 2015), which combines the temporal prediction capacity of the Long Short-Term Memory (LSTM) neural  
65 networks with 3D convolutions modeling spatiotemporal features in one model for spatiotemporal nowcasting. ConvLSTM has later been improved by the TrajGRU model (Shi et al., 2017), that replaces the heavy LSTM structure with a lighter GRU (Gated Recurrent Unit) structure and is capable of learning an active location variant structure for the recurrent connections.

Apart from doing the temporal modeling using recurrent units, a popular approach has been to use fully convolutional neural networks, often two-dimensional, thus avoiding the modeling of explicit temporal dependencies. These networks have often  
70 been based on U-Net-type architectures, one early example of which is the model by Agrawal et al. (2019), which predicts the exceedance of rainfall over three distinct intensity thresholds for a one hour lead time. A more useful model is RainNet by Ayzel et al. (2020). RainNet nowcasts rainfall continuously one timestep at a time, inserting the predicted frames back into the



network in order to make multiple lead time predictions. Similarly FureNET by Pan et al. (2021) nowcasts rainfall one hour at a time using polarimetric input variables in addition to observed rain rates, via multiple encoder branches and late fusion in the decoder of a residual U-Net architecture and brings improvement compared to using plain rain rates.

The principal problem of using the above deep learning models for deterministic precipitation nowcasting is that of the increasing blurring of nowcasts with lead time. This is the natural consequence of attempting to minimize the pixel-wise forecasting error in the presence of uncertainties inherent to the task of predicting precipitation. Such loss functions thus behave in the same fashion as S-PROG and STEPS explicitly filtering out scales through their loss of predictability. One way to resolve the problem is to use generative modeling, which is the one taken by Ravuri et al. (2021) with their Deep Generative Model of Radar (DGMR). DGMR is an adversarially trained convGRU-based generative model, capable of generating realistic time series of future radar observations, that outperform both classical and deep learning baseline models. In addition to deterministic nowcasts, DGMR is also capable of making ensemble-based probabilistic nowcasts.

Making probabilistic precipitation nowcasts using deep learning has been explored less than deterministic nowcasts, despite of the clear benefit of the probabilistic approach in operational use. In addition to DGMR, other existing probabilistic models are MetNet (Sønderby et al., 2020) and its successor MetNet-2 (Espeholt et al., 2022). MetNet aggregates weather radar, satellite, and orographic information over a large area to predict a probability distribution of rain rate per pixel in one forward pass for a single lead time, with an architecture consisting of a spatial aggregator of inputs, a convLSTM spatial encoder, and a spatial decoder with axial attention. The model is shown to outperform the HRRR NWP model on an F1 metric for lead times up to 8 hours. MetNet-2 improves upon its predecessor by adding data assimilation context as an input and aggregating data over a larger area. This enables it to outperform or at worst rival HRRR and HREF models in CRPS and CSI metrics for lead times up to 12 hours.

### 1.3 Uncertainty quantification and Bayesian deep learning

In addition to playing an important role in precipitation nowcasting, the importance of uncertainty quantification (UQ) has also been recognized in deep learning (Abdar et al., 2021). In the field of machine learning, the uncertainty of predictions can be divided into two separate components: epistemic and aleatoric uncertainty. Epistemic uncertainty represents the lack of knowledge in the model, and it is reducible through improving the model or bringing in more training data. Aleatoric uncertainty on the other hand is inherent to the input data, and no amount of additional training data or model improvement will reduce it. Aleatoric uncertainty that varies over the input data is said to be heteroscedastic; a constant uncertainty is called homoscedastic.

Many approaches to the quantification of uncertainty have been developed on the deep learning side. One particularly important theme driving the development in this realm has been operational safety and countering overconfident predictions made by black box models overfitting the training data. Bayesian neural networks (BNN) have emerged as a candidate for addressing that issue. They work by placing probability distributions over the weights, which are estimated via the means of Bayesian inference and yield a predictive distribution for data through their marginalization.

Although exact Bayesian inference is intractable for large neural networks, suitable approximations exist. These are commonly divided into Markov Chain Monte Carlo (MCMC) and variational inference (VI) based methods (Jospin et al., 2022). MCMC methods predict better weight distributions but are more computationally expensive and thus often reserved for small-scale problems, where performance is key. VI on the other hand is more scalable and has been applied to larger neural networks. 110 The idea behind variational inference is to approximate the true posterior of weights with a simpler analytic one (the variational posterior), and to estimate the variational posterior which is the closest to the true one. Thanks to advances by Graves (2011) and subsequently Blundell et al. (2015) with the Bayes-By-Backprop (BBB) algorithm, it is now possible to use mini-batch optimization for mean-field VI (i.e., assuming fully factorizable variational posteriors) on large networks, opening up possibilities for the use of VI in problems such as precipitation nowcasting, that require large amounts of input data and numerous 115 model parameters.

Later, Monte Carlo Dropout (Gal and Ghahramani, 2016) techniques among other variants have been identified as being equivalent to approximate Bayesian inference, losing some model expressivity but gaining ease of implementation. Based on this, Kendall and Gal (2017) have developed a technique for estimating the epistemic and heteroscedastic aleatoric variance components separately in deep learning regression tasks. They estimate the epistemic uncertainty with the variance of predictions made via Monte Carlo Dropout, and add a separate component to their network for predicting the aleatoric component. 120 The predictions are modeled as having Gaussian likelihoods, with means equal to the prediction point estimates and variances equal to the aleatoric term described. These terms are then learned by minimizing a Gaussian Negative Log likelihood loss function taking them and observations as inputs. This approach has recently started to be applied to problems such as the segmentation of satellite images (Dechesne et al., 2021), remaining useful life prognostics (Caceres et al., 2021), and long-term 125 synoptic scale precipitation forecasts (Xu et al., 2022).

#### 1.4 Model idea and research questions

We propose the **Deep Ensemble-based Uncertainty Combining radar Echo nowcasting (DEUCE)** model for probabilistic precipitation nowcasting. The idea of the model is to apply the aleatoric and epistemic decomposition of uncertainty by Kendall and Gal (2017) to a Bayesian Convolutional neural network with mean-field variational inference for producing [a predictive 130 distribution of radar reflectivity. This distribution is then sampled to generate](#) ensemble nowcasts of weather radar echo images; ~~which represent the reflected power to the radar, often indicative of precipitation.~~ The research questions to which we will attempt to answer are the following:

1. *Can we produce both powerful and reliable ensemble precipitation nowcasts using Bayesian neural networks with uncertainty decomposition?* Specifically, is such a model competitive against classical baseline models when assessed with a variety of quantitative probabilistic prediction skill metrics as well as based on a qualitative assessment? 135
2. *What are the characteristics of the aleatoric/epistemic decomposition?* We are interested in the evolution of uncertainties with prediction lead time, and whether they capture different and complementary features of the total predictive uncertainty.

140 3. Can the model additionally be useful in producing deterministic precipitation nowcasts by means of averaging multiple predictions, leveraging the regulatory effect of probability distributions placed on weights? Do such predictions perform competitively when assessed against classical baseline models using quantitative verification metrics? Also, what can those metrics tell about the nature of the predictions?

## 2 Model description

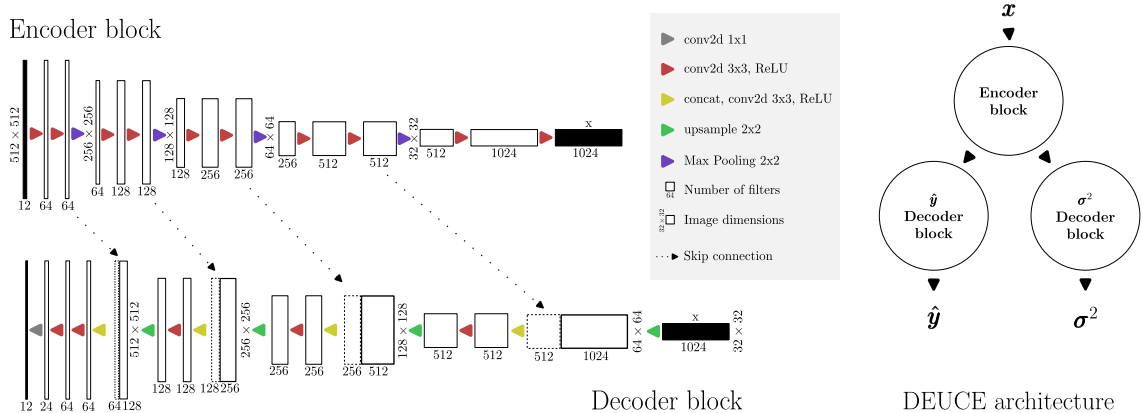
DEUCE builds upon a U-Net-based convolutional neural network (CNN) model of deterministic precipitation nowcasting, and turns it into a Bayesian neural network with variational inference for making the predictions stochastic, enabling us to model the uncertainty of this U-Net model. As mentioned, we build upon the work of Kendall and Gal (2017) for quantifying the uncertainty of the nowcasting task. Particularly, DEUCE attempts to decompose predictive uncertainty into aleatoric uncertainty (originating from data, irreducible) and epistemic uncertainty (induced by lacking knowledge, reducible) by predicting reflectivity fields along with the aleatoric uncertainty associated with them explicitly. Epistemic uncertainty in turn is estimated from the variance of the reflectivity fields sampled, and it is combined with aleatoric uncertainty at inference time in order to yield an approximation of the total predictive uncertainty.

### 2.1 Functional model

A neural network  $f_{\theta}(\mathbf{x}) = \hat{\mathbf{y}}$  is a universal function approximator, which can be used for regression tasks, mapping an input tensor  $\mathbf{x}$  to a predicted output tensor  $\hat{\mathbf{y}}$  approximating a ground-truth output tensor  $\mathbf{y}$  using its learned network parameters  $\theta$ , represented as a list of tensors. In the case of radar-based precipitation nowcasting with neural networks, we approximate a function mapping the spatio-temporal time series of past radar observation images  $\mathbf{x} = \mathbf{x}_1, \mathbf{x}_2, \dots, \mathbf{x}_{L_{\text{in}}}$ , where  $L_{\text{in}}$  corresponds to the number of input timesteps, to future radar observation images  $\mathbf{y} = \mathbf{y}_1, \mathbf{y}_2, \dots, \mathbf{y}_{L_{\text{out}}}$ , where  $L_{\text{out}}$  corresponds to the number of ~~input-output~~ timesteps. In the DEUCE model, both  $\mathbf{x}$  and  $\mathbf{y}$  represent processed radar reflectivity data, and the network  $f_{\theta}(\mathbf{x}) = \hat{\mathbf{y}}, \sigma^2$  outputs a tuple of predicted reflectivity field time series  $\hat{\mathbf{y}} = \hat{\mathbf{y}}_1, \hat{\mathbf{y}}_2, \dots, \hat{\mathbf{y}}_{L_{\text{out}}}$  along with fields estimating the aleatoric uncertainties  $\sigma^2 = \sigma_1^2, \sigma_2^2, \dots, \sigma_{L_{\text{out}}}^2$  corresponding to each of the pixels of  $\hat{\mathbf{y}}$ .

For the task of precipitation nowcasting, the neural network has to be capable of outputting predictions for multiple *lead times*, i.e., discrete time steps in the future, corresponding to future radar observations. DEUCE achieves this by using a variant of U-Net as its functional architecture, taking in a sequence of 12 radar reflectivity fields  $\mathbf{x}$ , predicting  $\hat{\mathbf{y}}, \sigma^2$  corresponding to the nowcast for the next 12 timesteps in a single forward pass.

165 A schematic representation of the the main components of DEUCE and how they are connected is presented in Fig. 1. The architecture consists of a single encoder branch, extracting features from  $\mathbf{x}$  at different spatial scales and semantic levels. The feature maps from these different scales are preserved for later use through skip-connections. The (largest scale) latent state produced by the encoder, as well as intermediate feature maps mediated by skip-connections, are then fed to two independent decoders: one outputting  $\hat{\mathbf{y}}$  and the other outputting  $\log \sigma_{al}^2$ . Using separate decoders for the outputs is preferable over a single combined decoder to avoid the blending of adjacent features, which would be detrimental to the expressivity of the model.



**Figure 1.** The DEUCE encoder and decoder architectural components depicted on the left, along with the architectural diagram making use of those components on the right. Feature maps at different scales are extracted in the encoder branch, before being passed to decoder branches, providing the outputs of the network.

The network contains two-dimensional (spatial) convolutions. These are represented by `conv2d 3x3` and `conv2d 1x1` labels denoting layers with filter sizes 3 and 1, respectively. By using 2D convolutions, temporal dependencies are only present implicitly. This approximation casts the nowcasting task as a simple image sequence-to-sequence translation problem, which reduces the computational resources needed compared to explicit modeling of the temporal aspect. The convolutional layers use *partial convolutions* (Liu et al., 2018), in which missing values are masked and only valid values are used to normalize the convolutions. Although we do not work with missing data, this design choice helps in providing better quality predictions near image borders by reducing, e.g., various artifacts related to them. ReLU denotes the activation function of the same name, `concat` concatenation along the channel dimension, `upsample` nearest-neighbor upsampling by a scale of 2, and `Max Pooling` maximum pooling by a scale of 2.

## 180 2.2 Stochastic model

Conventional neural networks are deterministic in their nature, meaning that they only ever yield the same output  $\hat{y}$  for a given input  $x$  and parameters  $\theta$ . Our goal is to produce a reliable estimate of the uncertainty associated with the approximation produced by the neural network. Because this approximation is merely a function of the input data and the functional model including parameters, considering the uncertainty of these sources separately should allow the approximation of the total predictive uncertainty of nowcasts.

Hence, epistemic uncertainty is modeled by placing probability distributions on functional model parameters  $\theta$ , effectively turning the model stochastic. A Bayesian approach is taken in this regard, placing a prior distribution upon the weights, and estimating the most likely posterior distribution given that prior and the training data. The estimation of the true posterior is an intractable task for a large-scale neural network, which is why variational inference (VI) is used to learn approximate

190 posterior estimates for weights. VI limits the space of acceptable posterior distributions to a parameterized family, whose learned parameters replace the point estimates of classical neural network weights. Here, we aim to minimize the Kullback-Leibler (KL) divergence (Kullback and Leibler, 1951)  $D_{\text{KL}}$  between the true and variational posteriors, which is a measure of the similarity between two probability distributions. As such, the objective is stated as

$$\boldsymbol{\theta}^* = \arg \min_{\boldsymbol{\theta}} D_{\text{KL}}[q(\mathbf{w} | \boldsymbol{\theta}) || p(\mathbf{w} | \mathcal{D})] = \arg \min_{\boldsymbol{\theta}} \int q(\mathbf{w} | \boldsymbol{\theta}) \log \frac{q(\mathbf{w} | \boldsymbol{\theta})}{p(\mathbf{w} | \mathcal{D})} d\mathbf{w} \quad (1)$$

195 where  $\boldsymbol{\theta}$  denotes the variational posterior parameters,  $\boldsymbol{\theta}^*$  the optimal parameters,  $\mathbf{w}$  the sampled network weights,  $\mathcal{D} = (\mathbf{x}, \mathbf{y})$  the problem data,  $q(\mathbf{w} | \boldsymbol{\theta})$  the variational posterior, and  $p(\mathbf{w} | \mathcal{D})$  the exact posterior of network weights. In practice, this is not directly solvable, so the optimization is accomplished through the maximization of an evidence lower bound (ELBO) proxy objective. The objective is defined as

$$\text{ELBO}(\mathcal{D}, \boldsymbol{\theta}) = \mathbf{E}_{q(\mathbf{w} | \boldsymbol{\theta})}[\log p(\mathbf{w}, \mathcal{D})] - \mathbf{E}_{q(\mathbf{w} | \boldsymbol{\theta})}[\log q(\mathbf{w} | \boldsymbol{\theta})] \quad (2)$$

$$200 = \underbrace{\mathbf{E}_{q(\mathbf{w} | \boldsymbol{\theta})}[\log p(\mathcal{D} | \mathbf{w})]}_{\text{likelihood}} + \underbrace{\mathbf{E}_{q(\mathbf{w} | \boldsymbol{\theta})}[\log p(\mathbf{w})]}_{\text{prior}} - \underbrace{\mathbf{E}_{q(\mathbf{w} | \boldsymbol{\theta})}[\log q(\mathbf{w} | \boldsymbol{\theta})]}_{\text{posterior}}, \quad (3)$$

$= -\mathbf{E}_{q(\mathbf{w} | \boldsymbol{\theta})} D_{\text{KL}}[q(\mathbf{w} | \boldsymbol{\theta}) || p(\mathbf{w})]$ , i.e., the complexity term

consisting of the log-likelihood, log-prior, and log-posteriors, with the last two terms commonly grouped together as the complexity term. Here  $\mathbf{E}_{q(\mathbf{w} | \boldsymbol{\theta})}$  denotes the expected value of the probability density of interest over the variational posteriors.

According to Blundell et al. (2015), in Bayesian neural networks and using mini-batch optimization, the ELBO objective as stated in Eq. 3 can be approximated as

$$205 \text{ELBO}_i^\pi(\mathcal{D}_i, \boldsymbol{\theta}) \approx \frac{1}{N} \sum_{n=1}^N \left( \log p(\mathcal{D}_i | \mathbf{w}_{i,n}) + \pi_i \log p(\mathbf{w}_{i,n}) - \pi_i \log q(\mathbf{w}_{i,n} | \boldsymbol{\theta}) \right), \quad (4)$$

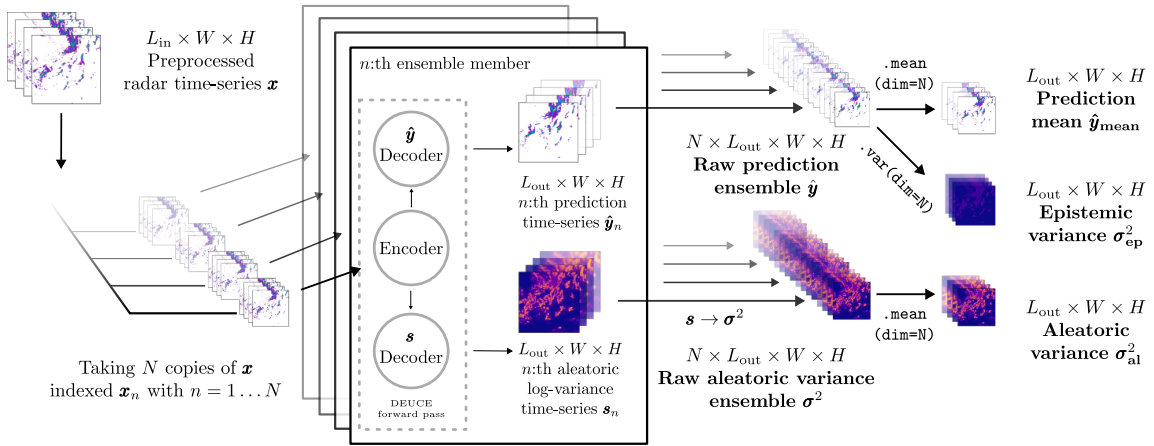
which acts as an unbiased Monte Carlo estimator of the ELBO, and is our final loss function. Here, the cost is calculated for each  $i$ :th of the  $M$  mini-batches in an epoch, each time drawing  $N$  Monte Carlo samples of the variational posteriors of weights.  $\pi_i$  denotes an arbitrary weighting of the complexity term, using in this work the same rule as in Blundell et al. (2015), which is  $\pi_i = 2^{M-i} / (2^M - 1)$ . This serves to make the regularization effect of the prior stronger earlier, allowing data to be  
 210 more important later in the training. In DEUCE, the variational posterior distributions  $q$  are modeled as diagonal Gaussian distributions, and the Bayes-By-Backprop (BBB) algorithm using the re-parametrization trick by Blundell et al. (2015) is employed for their optimization. The prior distribution  $p(\mathbf{w})$  on the contrary is fixed as a hyperparameter, and is identically as well as independently distributed for each parameter as a normal distribution with zero-mean and a variance of 0.1. This allows us to potentially calculate the complexity cost in closed form (Hershey and Olsen, 2007), rather than with the Monte  
 215 Carlo estimate of Eq. 4, hence reducing the computational cost of training.

The likelihood cost of Eq. 4, similarly to Kendall and Gal (2017), is modeled for the  $i$ :th mini-batch and the  $n$ :th Monte Carlo sample as the Gaussian log likelihood

$$\log P(\mathcal{D} | \mathbf{w}) = -\frac{1}{P} \sum_{p=1}^P \frac{1}{2} e^{-\mathbf{s}_p} (\mathbf{y}_p - \hat{\mathbf{y}}_p)^2 + \frac{1}{2} \mathbf{s}_p, \quad (5)$$

where the cost is averaged over  $p = 1 \dots P$  pixels of the  $L_{out} \times W \times H$  spatio-temporal time series  $\mathbf{s}$ ,  $\mathbf{y}$  and  $\hat{\mathbf{y}}$ ;  $L_{out}$  referring  
 220 to the length of the time series,  $W$  to the width of the images, and  $H$  to the height of the images.  $i$  and  $n$  indices of fields  
 are omitted here for clarity. Here,  $\mathbf{y}$  denotes the observed reflectivity fields,  $\hat{\mathbf{y}}$  the predicted reflectivity fields using the  $n$ :th  
 weights sampled from the network, and  $\mathbf{s} := \log \sigma^2$  refers to the corresponding logarithm of the aleatoric variances predicted  
 by the network with those weights. The logarithm of the aleatoric variances estimate is taken because optimizing using it is  
 225 more computationally stable, and was found to work better than simply using variance constrained to be positive with a ReLU  
 output activation function, especially dealing with variances approaching zero.

### 2.3 Generation of ensemble nowcasts



**Figure 2.** The prediction procedure for the primary outputs of the DEUCE model illustrated. Each sampled output is computed separately with a forward pass through the network, yielding a time series of the predictions and the logarithmic aleatoric variances, which are converted back to variances. After agglomeration into a pair of raw 'ensembles', the prediction mean  $\hat{\mathbf{y}}_{\text{mean}}$ , as well as the two types of uncertainties, the epistemic variances  $\sigma_{\text{ep}}^2$  and aleatoric variances  $\sigma_{\text{al}}^2$  are computed from the pair. These three quantities are the ones used for producing the final prediction ensemble.

The procedure for producing the primary outputs of DEUCE for making probabilistic nowcasts is presented in Fig. 2. First,  $N$  raw network outputs are produced, which are stochastic pairs of reflectivity field sequences  $\hat{\mathbf{y}}_n$  and logarithmic aleatoric variance field sequences  $\sigma_n$ . Each  $n$ :th of those sampled outputs draws different weights from the learned variational posterior  
 230 distributions, which is reflected in the output distribution. The  $\sigma_n$  are converted to their non-logarithmic version  $\sigma_n^2$ , and individual stochastic runs are stacked into a pair of raw 'ensembles'  $\hat{\mathbf{y}}, \sigma^2$ . At this point, the epistemic uncertainty is embedded in  $\hat{\mathbf{y}}$ , but the aleatoric uncertainty is separate, only present in  $\sigma_{\text{al}}^2$ . Hence, in order to allow for the combination of these uncertainties,  $\hat{\mathbf{y}}$  is divided into the prediction mean  $\hat{\mathbf{y}}_{\text{mean}}$  and the epistemic variance  $\sigma_{\text{ep}}^2$  by taking the mean and variance over  $\hat{\mathbf{y}}$  respectively. Additionally, the aleatoric variance  $\sigma^2$  is summarized by taking its mean, denoted  $\sigma_{\text{al}}^2$ . These three outputs:  
 235  $\hat{\mathbf{y}}_{\text{mean}}, \sigma_{\text{ep}}^2$ , and  $\sigma_{\text{al}}^2$  form the base from which probabilistic nowcasts are computed.

The total mean and uncertainty of the prediction can thus be estimated as

$$\hat{\mathbf{y}}_{\text{mean}} = \frac{1}{N} \sum_{n=1}^N \hat{\mathbf{y}}_n, \quad \sigma_{\text{pred}}^2 \approx \overbrace{\frac{1}{N} \sum_{n=1}^N \hat{\mathbf{y}}_n^2}^{\sigma_{\text{ep}}^2} - \left( \frac{1}{N} \sum_{n=1}^N \hat{\mathbf{y}}_n \right)^2 + \overbrace{\frac{1}{N} \sum_{n=1}^N \sigma_n^2}^{\sigma_{\text{al}}^2}, \quad (6)$$

where  $\sigma_{\text{pred}}^2$  denotes the predictive variance. This means that the predictive variance can be estimated as the sum of the variance of the predicted reflectivity fields, which is the epistemic variance, and of the mean of the predicted aleatoric variance fields.

240 These quantities are sufficient for making probabilistic nowcasts such as calculating exceedance probabilities for future radar reflectivity values, allowing us to model the predictive distribution of this reflectivity as normally distributed with mean  $\hat{\mathbf{y}}_{\text{mean}}$  and variance  $\sigma_{\text{pred}}^2$ . This formulation is admissible as reflectivity of precipitation in dBZ units is known to have a normal distribution, which follows from the distribution of precipitation rate being log-normal (Kedem and Chiu, 1987). [Additionally, it is interesting to note that the relationship between the ensemble and the predictive distribution here is opposite to that of NWP, where perturbations to initial conditions lead to ensembles that themselves define the predictive distribution \(Bauer et al., 2015\)](#)

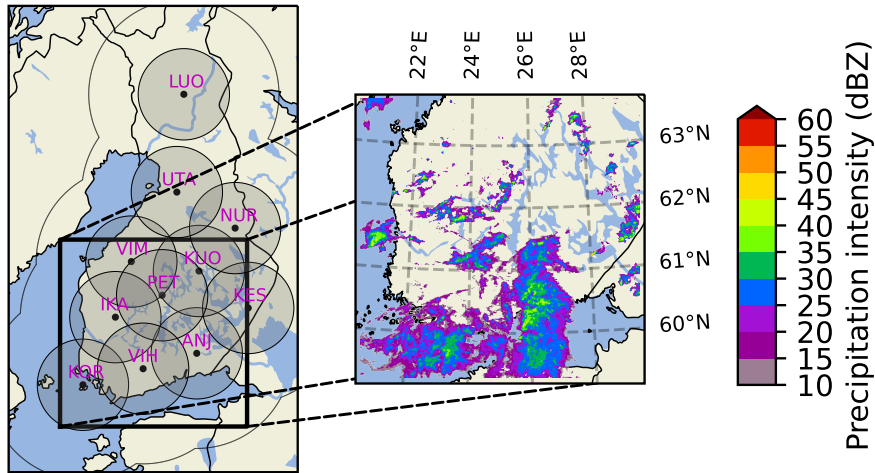
245 Nevertheless, some applications of probabilistic precipitation nowcasting — such as flood modeling — assume ensemble-based nowcasts where each member of the ensemble represents a physically plausible precipitation scenario. One could of course randomly sample the predictive distribution to generate an ensemble, which would correctly approximate pixel-wise statistics, but the spatio-temporal structure of the fields would be lost. In an attempt to remedy to this, we post-process outputs to generate ensemble members respecting the spatial covariance structure of the input field  $\mathbf{x}$  as

$$\hat{\mathbf{y}}_n^{\text{ens}} = \hat{\mathbf{y}}_{\text{mean}} + \sqrt{\sigma_{\text{pred}}^2} \otimes \boldsymbol{\epsilon}_{\text{corr},n}, \quad (7)$$

255 where  $\hat{\mathbf{y}}_n^{\text{ens}} = \hat{\mathbf{y}}_{n,1}^{\text{ens}}, \hat{\mathbf{y}}_{n,2}^{\text{ens}}, \dots, \hat{\mathbf{y}}_{n,L_{\text{out}}}^{\text{ens}}$  denotes the newly generated ensemble member,  $\otimes$  an element-wise multiplication broadcast over  $L_{\text{out}}$  frames, and  $\boldsymbol{\epsilon}_{\text{corr},n}$  is a correlated Gaussian random field of shape  $W \times H$ .  $\boldsymbol{\epsilon}_{\text{corr},n}$  is generated to match the average spatial correlation structure of  $\mathbf{x}$  using Fast Fourier Transform (FFT) filtering. The structure is obtained non-parametrically from the power spectrum of  $\mathbf{x}$  (Seed et al., 2013). The technique is equivalent to that used to generate perturbation fields in STEPS (Pulkkinen et al., 2019). Even though this method accounts for the spatial structure of the precipitation time series, it is not capable of modeling its temporal structure, which is assumed constant. The ensembles produced this way shall be denoted  $\hat{\mathbf{y}}^{\text{ens}}$ , in contrast to the raw predicted reflectivity fields denoted  $\hat{\mathbf{y}}$ .

### 260 3 Experimental details

This section presents the experiments performed. First, in Sect. 3.1, we present the dataset used, followed by the details related to the training of DEUCE in Sect. 3.2, and the verification experiments in Sect. 3.3. Additional technical details can on the other hand be found in Sect. A.



**Figure 3.** The Finnish Meteorological Institute radar network with its 11 radars and the bounding box used. Each radar is described by its three-letter code, with their 120km coverage radii for snowfall in gray and the intersection of 250km coverage radii for rainfall as the black outline. An example radar composite crop from a precipitation event (15 August 2019 at 15:00:00 UTC) is visualized in the zoom onto the bounding box in the right.

### 3.1 Data

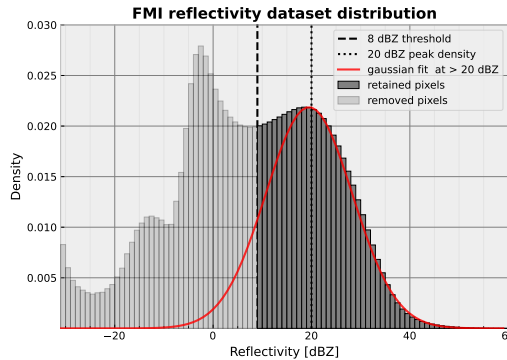
265 The dataset used for this work comes from the Finnish Meteorological Institute radar network. It consists of cropped lowest-altitude radar reflectivity composites, chosen from rainy days during the summer period of years 2019–2021. The dataset is identical to that used by Ritvanen et al. (2023), only using longer time series. The composites are built from the two lowest elevation angle scans, interpolated into an 1x1 km Cartesian grid. The chosen area covers southern Finland, with the bottom left corner at coordinates (59.01°N, 20.55°E) and the top right corner at coordinates (63.62°N, 30.27°E). The spatial extent of  
 270 this crop is 512x512 km, corresponding to 512x512 pixel square images, suitable for training a neural network. The composites are available with a temporal resolution of five minutes. The extent of the bounding box is additionally illustrated in Fig. 3 along with the coverage of Finnish Meteorological Institute radars. From this, we see that the advantage of the crop is that it has a higher density radar cover than its surroundings.

The data was selected on a day-by-day basis, selecting the 100 days with the most pixels having reflectivity values over  
 275 35 dBZ. The days were then divided into six hour long blocks, from which blocks with less than one percent of pixels with reflectivity values over 20 dBZ were removed. These remaining blocks were then randomly split into training, validation, and verification datasets with a ratio of 6:1:1. The division into blocks was done in order to limit the number of successive time series present in different splits, as they exhibit high correlation, and not using any blocks would make the training, validation, and verification sets dependent as the same events would be present in all of them. Six hours was deemed a sufficient time  
 280 for temporal correlations to mostly disappear. Lastly, two-hour long time series, corresponding to 24 images each, were then



extracted from these blocks using a sliding window principle, with a stride of one, omitting those time series with missing data. The final training, validation, and verification datasets ended up containing 10780, 1813, and 1666 time series respectively.

The input time series were read from HDF5 files, stored there with an 8-bit scale-offset lossy compression scheme, ranging from -32 to 96 dBZ at a resolution of 0.5 dBZ. The images were then converted to floating point values and a threshold of 8 dBZ was applied, replacing values below the threshold with -10 dBZ. This served as a simple way to remove non-meteorological targets and other clutter that could interfere with the training and prediction, while maintaining most of the relevant precipitation echoes. Finally, the reflectivity values were normalized between zero and one. Computed predictions were converted back into reflectivity values by applying the inverse of the transformation, before saving them using the same scheme as with the input data.



**Figure 4.** Finnish Meteorological Institute composite crop dataset distribution of reflectivity. The threshold chosen below which the data is set to -10 dBZ is shown with a dashed line. Additionally, a Gaussian PDF fit on the data above 20 dBZ is shown in red, which serves to illustrate the Gaussian distribution of *precipitation* reflectivity.

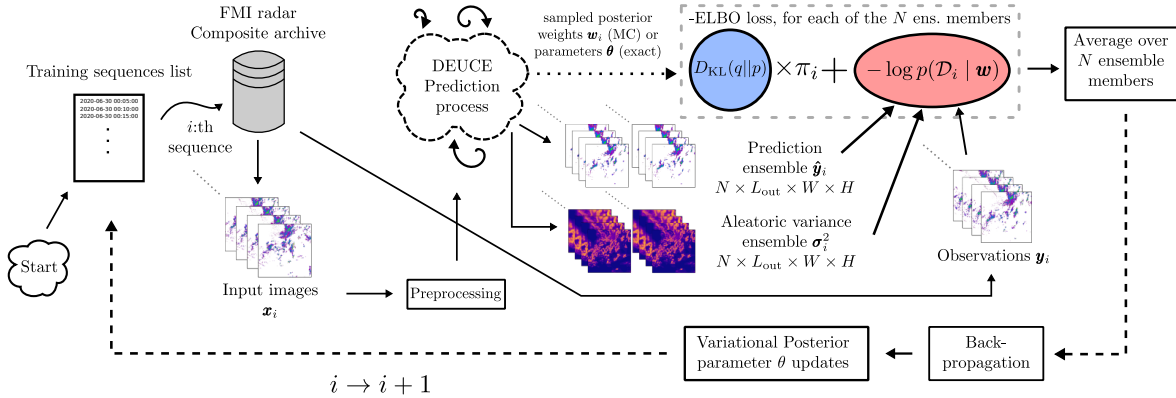
The dataset reflectivity distribution is depicted in Fig. 4, with the -32 dBZ minimum value pixels left out of the histogram for clarity. The threshold is shown to divide the data into retained and discarded parts, and a Gaussian density is fitted to the part most likely to purely consist of precipitation, exceeding 20 dBZ. Below the threshold, there seems to be multiple peaks in density, likely involving insects, birds, miscellaneous clutter as well as increasing noise the lower we go on the scale. While the highest reflectivity density values seem to follow well the Gaussian fit, part of the density between 10 and 20 dBZ remains unexplained, and this range is likely to contain a mixture of precipitation and clutter. Still, this is not a major issue since the most interesting precipitation to predict corresponds to reflectivity values well above 20 dBZ.

### 3.2 Training

For the training of the network, the Adam optimizer (Kingma and Ba, 2015) was used with an initial learning rate of  $1e-4$  and other parameters set to their PyTorch default values. The network was trained with that learning rate for 20 epochs, after which the learning rate was lowered to  $1e-5$  for 8 more epochs, and finally further lowered to  $1e-6$  for one final epoch. A validation

epoch was carried out after each epoch, in which Equivalent Threat Score (ETS) (Hogan et al., 2010) metrics were calculated for converted precipitation estimates (Sect. A1) of predictions, and summed over thresholds of 0.5, 1.0, 5.0, 10.0, 20.0, and 30.0  $\text{mmh}^{-1}$  as well as each lead time. This validation score showed improvement over the whole training process.

The training procedure for DEUCE is presented in Fig. 5 for a single epoch. Both input sequence lengths  $L_{\text{in}}$  as well as output sequence lengths  $L_{\text{out}}$  were 12, corresponding to one hour each. Both for the training and validation epochs, the batch size was set to two and the number of produced Monte Carlo samples of posteriors  $N$  to two as well, which was the most that our GPU could fit during training. In order to increase the variance between the gradients of mini-batch members, Flipout re-parametrization (Wen et al., 2018) was applied to the sampled weights, multiplying the random sampling coefficient of weights with a random sign matrix, effectively adding randomness inside batches for a low computational cost. The closed-form of the KL divergence between two Gaussian distributions was used for the calculations of the ELBO complexity term instead of Monte Carlo estimates in the final model training.



**Figure 5.** A training epoch for DEUCE illustrated. One loop corresponds to a single training sequence, which can be substituted for a single training mini-batch, taking multiple sequences in one batch. The DEUCE prediction process refers to that illustrated in Fig. 2, without the post-processing. The blue box labeled  $D_{\text{KL}}(q||p)$  corresponds to the complexity term of the negative ELBO loss (to minimize),  $\pi_i$  to its weighting coefficient, and the red box labeled  $-\log p(\mathcal{D}_i | \mathbf{w})$  to the likelihood term of the negative ELBO loss. Monte Carlo estimates of the complexity term use sampled weights  $\mathbf{w}_i$ , whereas the closed-form expression that we use is a function of parameters  $\theta$ .

The input time series  $X_i$  was pre-processed first as described in Section 3.1, and in the case of training data, was then augmented by applying in succession a random horizontal flip, a random vertical flip, and a rotation by an angle randomly chosen between 0, 90, 180, and 270 degrees. This was done to improve the variety of the training dataset and consequently improve the generalization performance of the trained network.

### 3.3 Verification

The performance of the DEUCE model is verified against the pySTEPS (Pulkkinen et al., 2019) implementation of multiple extrapolation-based precipitation methods. The verification is divided into the qualitative inspection of ensembles produced in two case studies, into an analysis of DEUCE uncertainty composition, into the verification of the (probabilistic) performance of the whole ensemble, and the verification of the (deterministic) performance of the ensemble mean, i.e., its fidelity in representing the true variation of the radar images. The four types of verification performed, along with the relevant DEUCE product, the baseline models used, and the evaluation criteria are summarized in Table 1.

	<i>DEUCE product</i>	<i>Baseline models (Sect. A2)</i>	<i>Evaluation criteria</i>
Case studies (Sect. 3.3.1)	$\hat{\mathbf{y}}^{\text{ens}}$	STEPS, LINDA-P	Ensemble mean/STD, exceedance probabilities
Uncertainty composition (Sect. 3.3.2)	$\hat{\mathbf{y}}, \sigma^2$	-	case decomposed mean/STD & statistics
Probabilistic perf. (Sect. 3.3.3)	$\hat{\mathbf{y}}^{\text{ens}}$	STEPS, LINDA-P	CRPS, Reliability diagram, ROC AUC, Rank hist.
Deterministic perf. (Sect. 3.3.4)	$\hat{\mathbf{y}}_{\text{mean}}$	Extrapolation, LINDA-D	ME, ETS, RAPSD

**Table 1.** The four components of the verification process for DEUCE summarized.

In probabilistic verification experiments,  $N = 48$  ensemble members are used both for producing the raw outputs  $\hat{\mathbf{y}}, \sigma^2$  and for drawing the post-processed ensemble  $\hat{\mathbf{y}}^{\text{ens}}$ , as well as for making the baseline ensemble model predictions. All of the predictions made for the verification of DEUCE are made until 60 minute lead time and thresholded at 8 dBZ, serving as an estimate for minimum observable precipitation. Four precipitation thresholds are considered where the verification involves evaluating the quality of a prediction exceeding a particular reflectivity value. Converted using the Z-R relationship presented in Sect. A1, these are 20 dBZ ( $\approx 0.5 \text{ mmh}^{-1}$ ), 25 dBZ ( $\approx 1.3 \text{ mmh}^{-1}$ ), 35 dBZ ( $\approx 5.7 \text{ mmh}^{-1}$ ), and 45 dBZ ( $\approx 25.5 \text{ mmh}^{-1}$ ), which correspond to very light, light, moderate, and heavy rain respectively.

#### 3.3.1 Case studies

Two distinct rainfall events are chosen as case studies to provide a qualitative assessment, as well as a comparison, of DEUCE nowcasts against the baseline probabilistic methods. The case studies each focus on an ensemble nowcast at a particular timestep during the precipitation event, chosen such as to include both large-scale weaker precipitation, characteristic of stratiform rainfall, or localized heavy precipitation, characteristic of convective rainfall. The latter has a shorter lifetime and has been traditionally harder to predict, but it is of interest to observe the performance of the model with both types. In addition, we include both instances of weakening and of intensification of echoes in the case studies. The cases are chosen from radar composite crops with the area described in Sect. 3.1 over the verification split, as well as the summer of the year 2022, which is separate from the dataset used for training, validation, and quantitative verification. The timestamp of the first case chosen is July 9 2022 at 15:00:00 UTC. This case contains mostly convective rainfall, with some localized high rain rates. The second

340 case chosen is August 17 2021 at 16:50:00 UTC, which represents a very different scenario with large scale, mostly stratiform rainfall. The radar images of the hour leading upto the timestamps are used as inputs and the following one hour of radar images are predicted.

Three different visualizations of the cases are made at 5, 15, 30, and 60 minute lead times, using the post-processed DEUCE ensembles  $\hat{y}^{\text{ens}}$ , and the probabilistic baseline models STEPS and LINDA-P described in Sect. A2 when appropriate. The first visualization is that of predictive means and standard deviations of the ensembles in dBZ units. Here, DEUCE, STEPS, and LINDA-P are compared side-by-side. The second visualization is that of exceedance probabilities of DEUCE, STEPS, and LINDA-P ensemble nowcasts at a 25 dBZ reflectivity threshold. The third and last of the visualizations depicts the exceedance probability of DEUCE in predicting reflectivity above 20, 25, 35, and 45 dBZ thresholds.

### 3.3.2 Uncertainty composition analysis

350 The composition of the DEUCE predictive uncertainty is analyzed both using the prediction of the first case study, and using statistics aggregated over the verification dataset. For the case study prediction, the aleatoric and epistemic components of the predictive standard deviation are visualized next to the combined predictive uncertainty, the mean predictions, and the observations, at lead times of 5, 15, 30, and 60 minutes. The statistics collected are average magnitude of the aleatoric and epistemic standard deviation components under different conditions. These magnitudes are divided into bins corresponding to the prediction lead time and the observed reflectivity matching the pixel in question (5 dBZ bin width from 5 to 60 dBZ), and are collected for each prediction timestamp. The resulting statistics are visualized in the form of a histogram aggregated over the whole dataset, and as bar plots showing the contribution of the uncertainties against lead time and observed reflectivity.

### 3.3.3 Probabilistic performance verification

Probabilistic verification serves to assess the probabilistic predictive power of DEUCE ensembles, mostly in terms of prediction reliability and discrimination ability. In other words, it determines the quality and the variety of produced ensembles with regard to the true distribution of different future scenarios. Here, the DEUCE prediction is represented by the post-processed ensemble  $\hat{y}^{\text{ens}}$ . Probabilistic baseline models used are STEPS (Bowler et al., 2006; Seed et al., 2013) and LINDA-P (Pulkkinen et al., 2021). The description and configuration of those models are given in Sect. A2.

The probabilistic performance metrics used are the Continuous Ranked Probability score (CRPS) (Hersbach, 2000; Wilks, 2011), which generalizes the Mean Absolute Error of deterministic forecasts to probability distributions, and is calculated for lead times until 60 minutes. Next, the Receiver Operating Characteristic (ROC) curve (Mason, 1982; Wilks, 2011) along with the area under it (AUC) quantify the discriminative power of the ensembles for predicting reflectivity values exceeding a certain threshold. ROC AUC is computed for reflectivity thresholds of 20, 25, 35, and 45 dBZ at lead times of 5, 15, 30, and 60 minutes. For measuring forecast reliability and sharpness, we used the reliability diagram along with its sharpness histogram (Wilks, 2011) as well as the Expected Calibration Error (ECE) score (Naeini et al., 2015), which we computed for the same threshold and lead times as ROC curves. Finally, rank histograms (Wilks, 2011) were calculated for measuring the

bias and spread of ensembles at lead times of 5, 15, 30, and 60 minutes. A detailed description of these metrics along with the configurations used is found in Sect. A3.

### 3.3.4 Deterministic performance verification

375 Deterministic verification serves to assess whether DEUCE ensemble means are useful themselves. It also gives insight into many interesting aspects of predictions, such as systematic biases and the possible loss of small-scale variability. Here, the DEUCE prediction is represented by the ensemble mean  $\hat{y}_{\text{mean}}$ . Deterministic baselines used are an extrapolation nowcast and LINDA-D (Pulkkinen et al., 2021). The description and configuration of those models is again described in Sect. A2.

380 Three deterministic metrics are used to assess DEUCE ensemble means. The first is the Mean Error (ME) (Wilks, 2011), measuring the bias of nowcasts produced. The Equitable Threat Score (ETS) (Hogan et al., 2010; Wilks, 2011) then provides an estimate of the deterministic skill in forecasting reflectivity above a certain intensity threshold. It is calculated for lead times up to 60 minutes and thresholds of 20, 25, 35, and 45 dBZ. Finally, the Radially-Averaged Power Spectral Density (RAPSD) (Ruzanski and Chandrasekar, 2011; Ulichney, 1988) measures how well the power spectrum of reflectivity is maintained. It is summarized with a relative MAE score. We compute RAPSD for prediction lead times of 5, 15, 30, and 60 minutes. RAPSD is  
385 also calculated for individual  $\hat{y}^{\text{ens}}$  members to analyse the possible contribution of the spatially correlated noise to maintaining the power spectrum. A detailed description of these metrics along with the configurations used is found in Sect. A4.

## 4 Results

The results of the quantitative and qualitative analyses of model performance and fitness to the task indicate that DEUCE succeeds in its primary task of providing reasonably reliable probabilistic precipitation nowcasts, but not in that of producing  
390 skillful deterministic nowcasts. This is illustrated by the summary of quantitative verification results is provided in Table 2. These results will then be elaborated in detail and presented as figures in the following four subsections. Starting by the qualitative case study results in Sect. 4.1, we then present the composition of the uncertainty in Sect. 4.2, before continuing with the probabilistic performance metric results in Sect. 4.3, and finally presenting the deterministic performance metric results in Sect. 4.4.

### 395 4.1 Case Studies

The results of the first case study in Fig. 6, 7, and 8 suggest that DEUCE ensemble nowcasts are able to give reasonable uncertainty and exceedance probability estimates at multiple thresholds and lead times, and that DEUCE nowcasts look similar to those given by STEPS, albeit being less grainy. The results of the second case study are detailed in Sect. B. Figure C1 shows an example of what individual ensemble members look like at different prediction lead times for the first case. The predictions  
400 all start quite similar, but they eventually diverge, driven by the increasing predictive uncertainty and different patterns of correlated noise. The ensemble members exhibit variety while preserving a moderate amount of realism, nevertheless limited by the increasing smoothing of the predictive mean and variance fields with lead time.

	Probabilistic models			Deterministic models		
	DEUCE (ours)	STEPS	LINDA-P	DEUCE mean (ours)	Extrapolation	LINDA-D
CRPS ↓	1.29	<b>1.27</b>	1.43	AME ↓	1.31 (-)	0.53 (+)
ECE 20 ( $\times 10^3$ ) ↓	<b>6.88</b>	9.45	13.36	ETS 20 ↑	0.442	<b>0.454</b>
ECE 25 ( $\times 10^3$ ) ↓	<b>5.36</b>	6.64	8.44	ETS 25 ↑	0.299	<b>0.371</b>
ECE 35 ( $\times 10^3$ ) ↓	1.97	<b>1.13</b>	2.04	ETS 35 ↑	0.047	<b>0.162</b>
ECE 45 ( $\times 10^4$ ) ↓	-	-	-	ETS 45 ↑	0.006	<b>0.056</b>
ROC AUC 20 ↑	<b>0.968</b>	0.957	0.943	RAPSD rel. MAE 5 ↓	0.55	<b>0.08</b>
ROC AUC 25 ↑	<b>0.960</b>	0.938	0.926	RAPSD rel. MAE 15 ↓	0.74	<b>0.08</b>
ROC AUC 35 ↑	<b>0.885</b>	0.784	0.840	RAPSD rel. MAE 30 ↓	0.84	<b>0.07</b>
ROC AUC 45 ↑	<b>0.706</b>	0.610	0.689	RAPSD rel. MAE 60 ↓	0.90	<b>0.11</b>

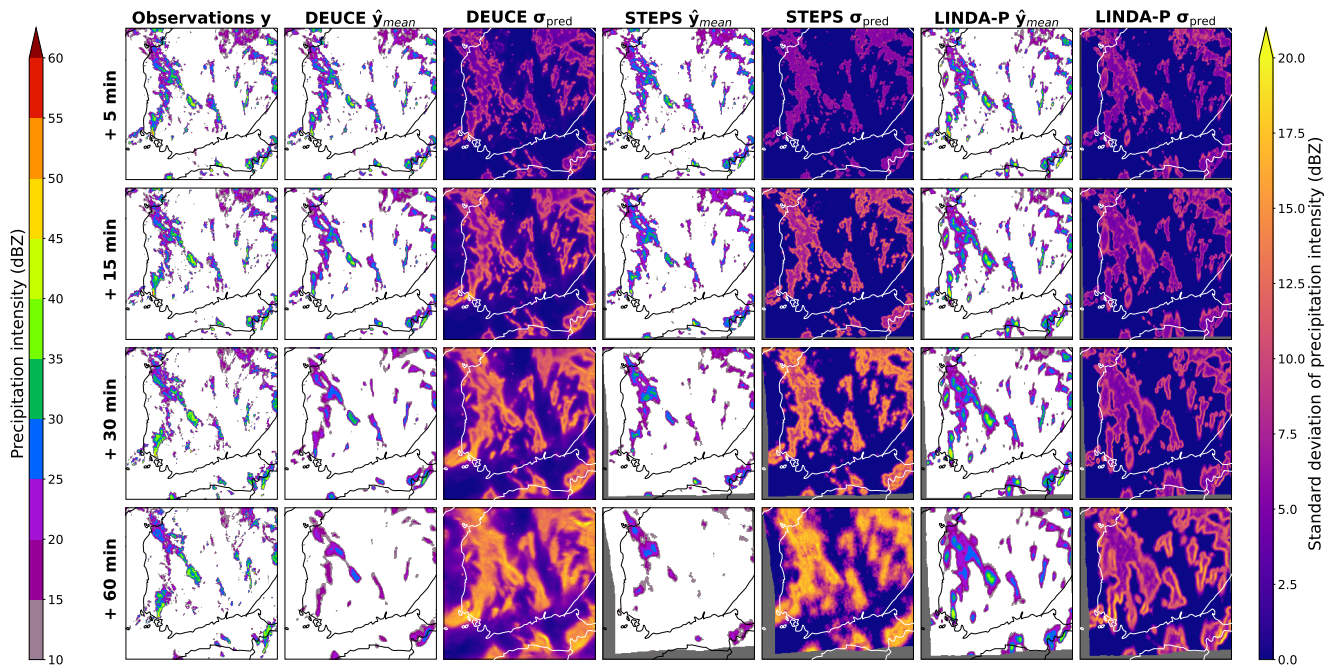
**Table 2.** Quantitative verification metrics summarized. ↑ indicates that a higher score is better, while ↓ indicates that a lower score is better. The best score amongst models is marked using a **bold** font. ECE scores indicate the Expected Calibration Error, an aggregate measure of reliability. AME stands for Absolute Mean Error and RAPSD rel. MAE score summary values indicate the relative Mean Absolute Error between the PSD of observation and predictions. For AME, the sign of the mean error is reported in parentheses. Scores are averaged over lead times for which they were calculated, except for RAPSD rel. MAE scores, in which they are averaged over frequencies. Numerical values in ECE, ROC AUC, and ETS score names indicate dBZ threshold values, and in RAPSD lead time in minutes. ECE 45 results are omitted because results are not comparable for cause of missing data in some of the bins of the DEUCE reliability diagrams.

#### 4.1.1 Ensemble mean and breadth

Ensemble mean and breadth as units of standard deviation is shown for the first case in Fig. 6. Here, we can see in all models a trend towards a loss of predicted reflectivity intensity and a disappearance of heavily localized echoes. However, these are in all models compensated by an increase in the spatial extent and the magnitude of the ensemble standard deviation. In LINDA-P, the effect of predicting in rain rate units ( $\text{mmh}^{-1}$ ) is seen as the uncertainty of cell borders emphasized. LINDA-P also generally exhibits smaller and more uniform standard deviation than the other models. For a one hour lead time, DEUCE seems to have a generally an ensemble breadth a bit smaller than STEPS but higher than LINDA-P, with the most heterogeneity in standard deviation values.

#### 4.1.2 Reflectivity exceedance probabilities

Reflectivity probabilities of exceeding 25 dBZ predicted by the different models for the first case are shown in Fig. 7. Overall, DEUCE seems to provide balanced exceedance probabilities, not missing any significant areas even after one hour, but not covering excessively large areas. Comparatively, STEPS tends to completely miss some significant portions such as in the area highlighted in the south-west of Finland at one hour, and generally seems to predict eventually smaller probabilities for the evolution of smaller cells. LINDA-P on the other hand suffers from overconfidence and misplaces the evolution of multiple precipitation areas after one hour. On a general level for all models compared, the advection field is well captured, while the



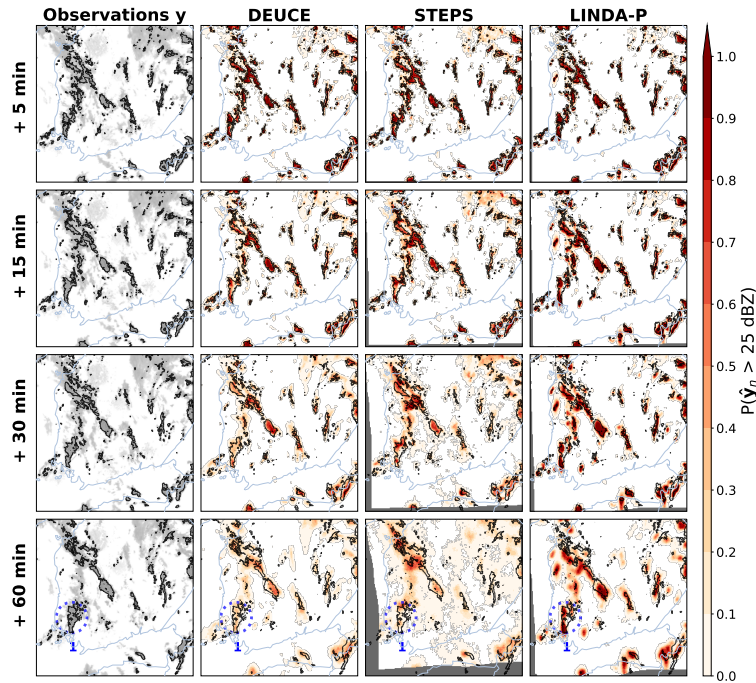
**Figure 6.** The first case study ensemble means and breadths of DEUCE compared against STEPS and LINDA-P model predictions and observations for multiple lead times. The area covers southern Finland, starting at 15:00:00 UTC on the 9 July 2022. The rows represent lead time and columns different instances of observations, model mean and standard deviations. Missing values are indicated by a dark gray color.

growth and decay of echoes is often not very effectively forecast. The anisotropic structure of the uncertainty shown through exceedance probabilities is also much better captured by DEUCE and LINDA-P than STEPS. In addition, because it is not based on the extrapolation of radar echoes, there are no "dead zones" filled with NaN values (dark gray color) and DEUCE is able to provide nowcasts to varying success in border regions where STEPS and LINDA-P predictions are not necessarily defined.

Lastly, The exceedance probabilities of DEUCE nowcasts for 15, 25, 35, and 45 dBZ reflectivity thresholds for the first case are shown in Fig. 8. We can see that DEUCE is able to nowcast an exceedance probability at all thresholds (which are indeed all exceeded at some place and point in the observations). Higher thresholds exhibit lower values and some misplacement of exceedance probabilities, as precipitation exceeding those are more difficult to predict and have smaller areas.

## 4.2 Analysis of the aleatoric and epistemic uncertainty dichotomy

The relative contribution of aleatoric and epistemic uncertainty for the first case study is presented in Fig. 9. We can see that most of the predictive uncertainty in fact comes from the aleatoric part. Epistemic uncertainty is of much smaller magnitude, and its contribution is further reduced when working in terms of variance in the calculation of predictive uncertainty. We can see

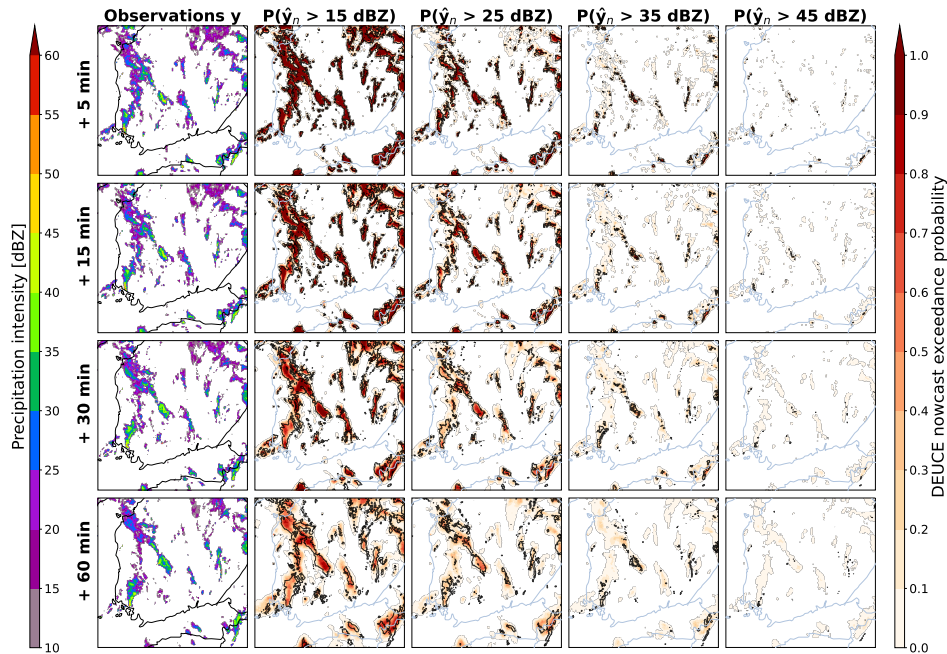


**Figure 7.** The first case study reflectivity exceedance probabilities of 25 dBZ for DEUCE against STEPS and LINDA-P model predictions and observations for multiple lead times. The area covers southern Finland, starting at 15:00:00 UTC on 9 July 2022. The rows represent lead time. In the leftmost column, actual threshold-exceeding-precipitation-echoes-observations are shown in colors, with non-exceeding echoes additionally shown faintly in light gray in, with echo isotherms corresponding to the background threshold marked in black. In other columns, threshold-exceeding-precipitation-echoes the same isotherms are again shown overlaid with overlaid on the exceedance probabilities of the models, depicted in shades of red. Missing values are indicated by a dark gray color. The blue circles labeled 1 highlight a case of DEUCE model improvement over baselines.

that epistemic uncertainty does not extend as much away from the core of predicted reflectivity as aleatoric uncertainty, which reflects a small variance in the raw  $\hat{y}$  ensemble. This overlap can be seen in probabilistic nowcasts as aleatoric uncertainty overshadowing the contribution of epistemic uncertainty.

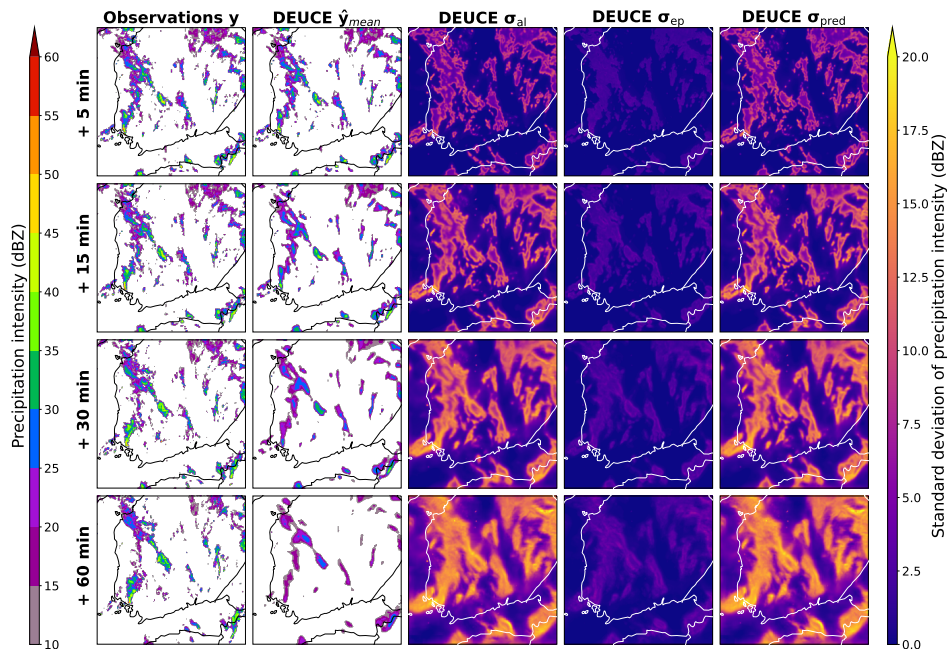
A more detailed view into the contribution of aleatoric and epistemic components is provided in Fig. 10, with statistics over the whole verification dataset. A histogram of the uncertainties aggregated over all lead times and observed reflectivity values is shown on the left of Fig. 10. Epistemic uncertainty has a very narrow distribution mostly between 0–5 dBZ, which means that its average value could not have varied much in different cases, lead times, and observed reflectivity values, pointing to small model uncertainty response to these factors. Aleatoric uncertainty on the other hand has a long-tail distribution, centered around 10 dBZ, but going up until values over 30 dBZ, which means that we cannot exclude a dependence on these external factors.





**Figure 8.** The first case study reflectivity exceedance probabilities of DEUCE against observations for multiple lead times and reflectivity thresholds. The area covers southern Finland, starting at 15:00:00 UTC on 9 July 2022. The rows represent lead time. The leftmost column is observations, and the rest are exceedance probabilities at different thresholds. As in Fig. 7, observations exceeding the observation isotherms corresponding to the threshold in question are plotted in shades of gray, overlaid with overlay the exceedance probabilities depicted in shades of red.

Such dependencies are confirmed when inspecting the bar plots on the right of of Fig. 10, where mean aleatoric uncertainty shows a clear dependence on prediction lead time and to some degree on observed reflectivity. Aleatoric uncertainty seems to clearly increase with lead time and to first slightly decrease, before increasing again in relation to observed reflectivity. One possible explanation for this last observation is that reflectivity values below 20 dBZ often correspond to the edges of precipitation cells, which are difficult to predict, and that reflectivity values over 35 dBZ often correspond to heavy precipitation with short lifetime and thus bad predictability. In between those, there is more predictable precipitation patterns, such as the interior of stratiform precipitation cells. Epistemic uncertainty on the other hand does not seem to show any particular dependence on prediction lead time, which might have to do with the fact that the model predicts all lead times at once, making it possibly more difficult for the predictions to vary depending on lead time. There is on the other hand a slight increase of epistemic uncertainty with observed reflectivity, which might be an accurate reflection of the relatively smaller amount of training data available for high observed reflectivity values.



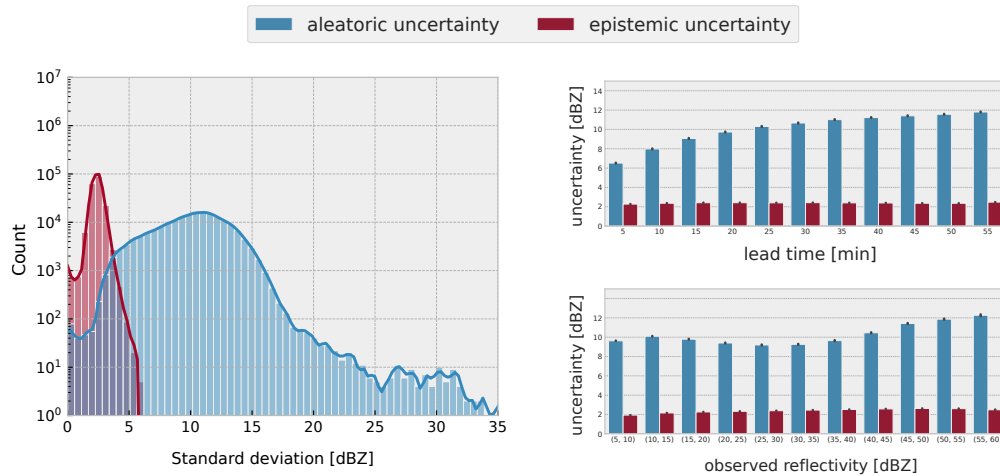
**Figure 9.** Composition of the predictive uncertainty for the first case study. The area covers southern Finland, starting at 15:00:00 UTC on 9 July 2022. The rows represent lead time and columns observations (ground truth), the mean prediction, aleatoric and epistemic standard deviation components, and the combined predictive standard deviation.

### 4.3 Probabilistic skill verification

The reliability diagrams and sharpness histograms for probabilistic nowcasts are depicted in Fig. 11. It can first be noted that in general, DEUCE nowcasts are very close to the dashed black line indicating a perfectly reliable forecast. Sometimes, this is to a similar degree as baseline models, but in some cases, such as a long lead time and a high threshold, DEUCE is closer to the diagonal than baselines. This is however not reflected in the ECE scores at 35 dBZ, shown in Table 2, as smaller forecast probabilities are weighted much higher due to their sample count here, making STEPS the most reliable model at 35 dBZ by this metric. An important pattern is that compared to baseline models, DEUCE is prone to slight under-forecasting of the exceedance probabilities. This is particularly the case for a short lead time (5 min), where the effect is the most pronounced.

As lead times grow longer and thresholds get higher, nowcasting gets harder and there is an overall tendency in all models, but particularly LINDA-P, to over-forecast threshold exceedance.

From the sharpness histogram, it is seen that the distribution of forecast probabilities is more or less uniform at low thresholds, but more biased towards small exceedance probabilities at higher thresholds. These higher thresholds are where the difference between DEUCE and baselines are visible, there being a considerably lower number of cases of high forecast probability in DEUCE than in baselines.



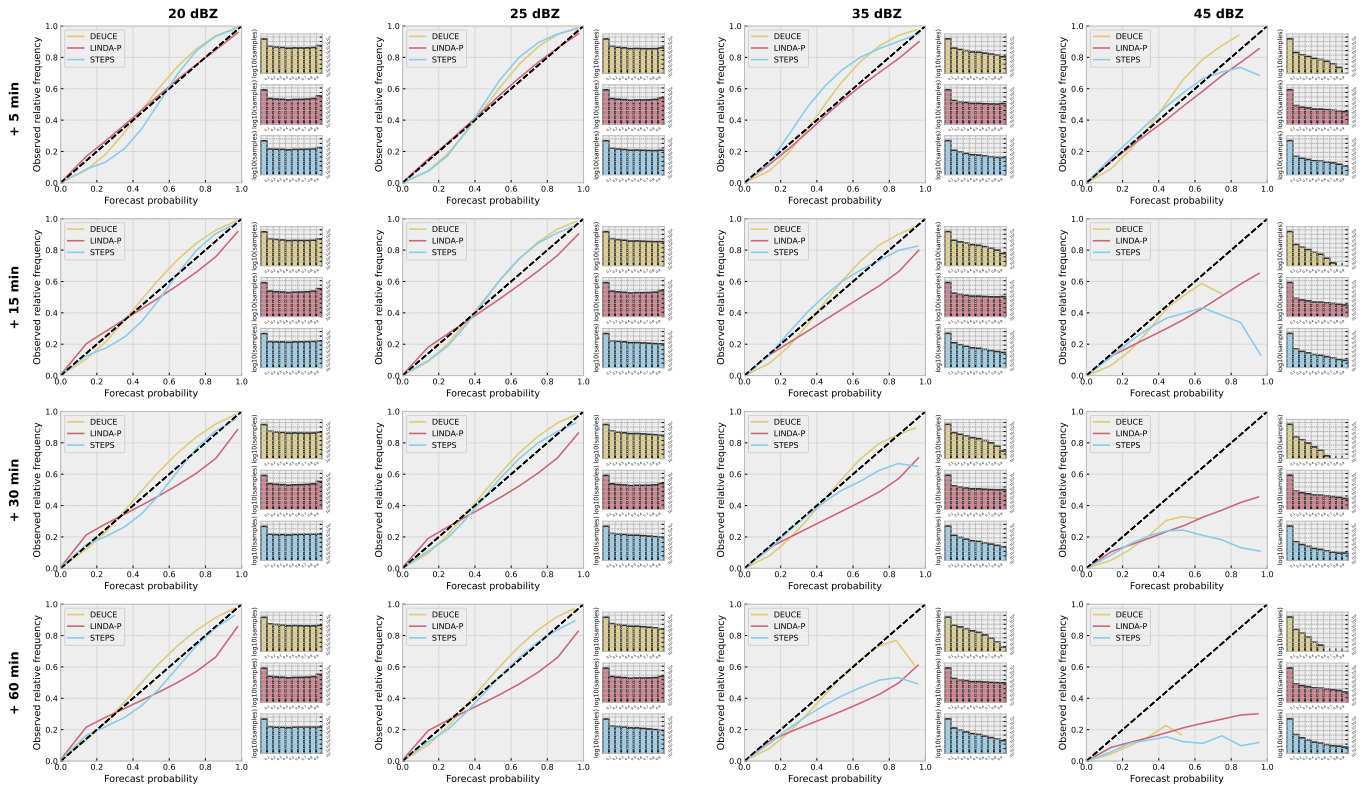
**Figure 10.** Visualization of the statistics on the composition of predictive uncertainty over the verification dataset. On the left, a histogram of aleatoric and epistemic standard deviation (SD) aggregated over all lead times and observed reflectivity values is shown. On the right, we arrange the same data into bar plots to show the relationship of the type of the uncertainty SD with prediction lead time (top) and observed ground truth radar reflectivity (bottom).

The rank histogram of nowcasts is shown in Fig. 12. It is apparent here that DEUCE is constantly slightly biased towards predicting too low reflectivity values, and that the spread is large at short lead times, but less significant later on. STEPS exhibits a very balanced flat histogram, but LINDA on the other hand has a U-shaped histogram, characteristic of a too small ensemble breadth in general.

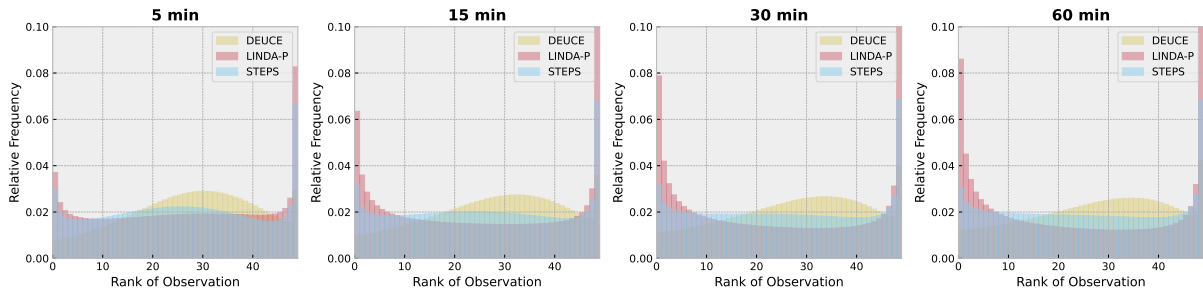
470 The results for the ROC area under the curve probabilistic nowcast metric are shown in Fig. 13. In this benchmark DEUCE achieves the best results at all thresholds. We can notice that STEPS has good discriminative power at low thresholds but that it does not scale well to higher ones, and that LINDA-P is not competitive at lower thresholds but excels as the threshold grows. Nevertheless, DEUCE manages to perform better than both in their skillful areas.

475 Lastly, the CRPS verification metric is depicted in Fig. 14. It can be seen that the lowest and best score is achieved by STEPS at all lead times. DEUCE comes then second, slightly above STEPS, and LINDA-P lags far behind. Overall with CRPS, it can be seen that DEUCE achieves adequate results in the order of baseline models.

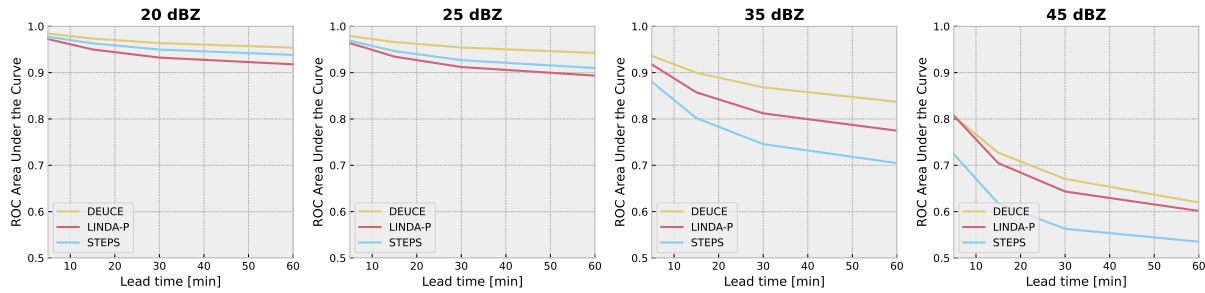
From the quantitative probabilistic verification, it can be summarized that DEUCE achieves satisfactory and well-rounded performance. The model does not significantly lack in any category in particular, and offers a good trade-off between forecast reliability and discriminatory power.



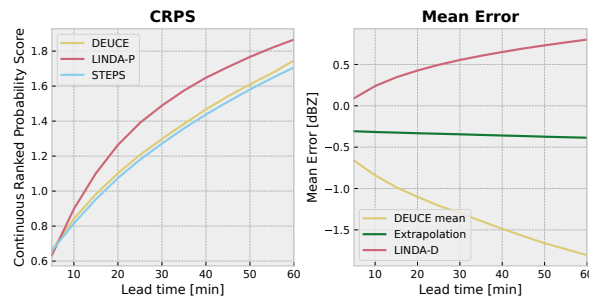
**Figure 11.** The reliability diagrams and sharpness histograms for DEUCE (yellow), STEPS (blue), and LINDA-P (red) model nowcasts at exceedance probability thresholds of 20, 25, 35, and 45 dBZ at lead times of 5, 15, 30, and 60 minutes. Rows indicate lead time and columns the exceedance probability threshold. The diagonal dashed black lines indicate perfect reliability.



**Figure 12.** Rank histograms of ensemble nowcasts, including DEUCE, STEPS, and LINDA-P, at lead times of 5, 15, 30, and 60 minutes over the verification set.



**Figure 13.** The ROC Area under the Curve (AUC) values at lead times until 60 minutes for DEUCE (yellow), STEPS (blue), and LINDA-P (red) model nowcasts at exceedance probability thresholds of 20, 25, 35, and 45 dBZ.

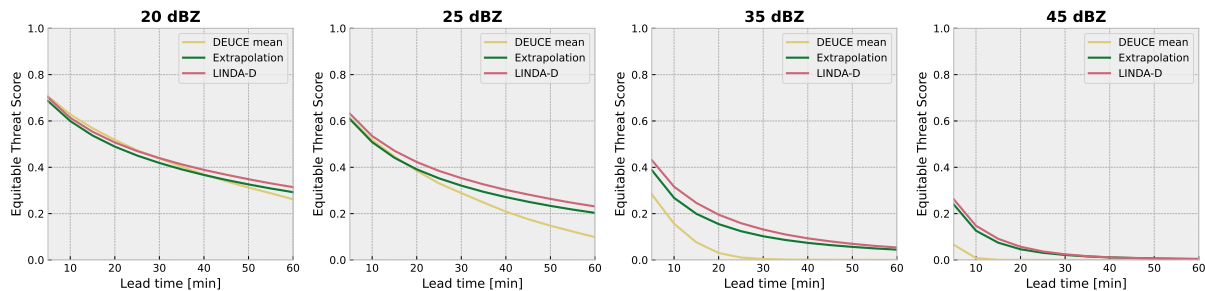


**Figure 14.** The CRPS score of DEUCE (yellow) against the ensemble baselines STEPS (blue) and LINDA-P (red) is shown on the left. The Mean Error (ME) score for non-augmented ensemble mean predictions of DEUCE (yellow) against deterministic baseline extrapolation (green) and LINDA-D (red) nowcasts is shown on the right.

#### 480 4.4 Deterministic skill verification

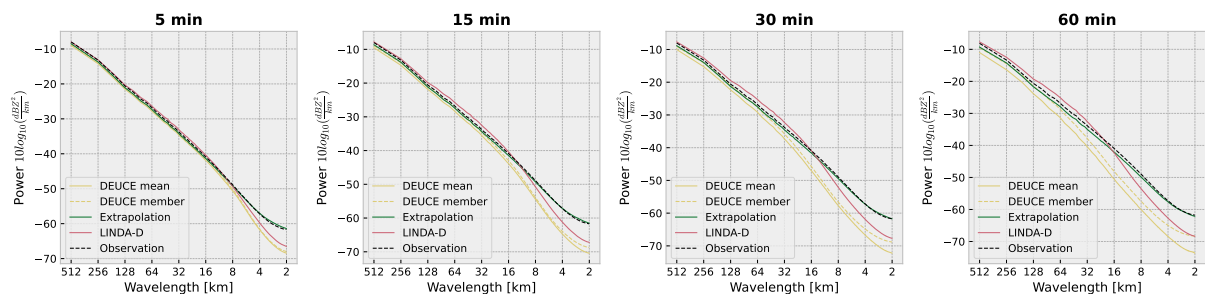
Here, we analyse the results of the comparison of the deterministic nowcast skill between DEUCE non-augmented mean predictions  $\hat{y}_{\text{mean}}$  and baseline predictions. First off, a depiction of the mean nowcasting error (ME) until a 60 minute lead time is presented in Fig. 14. While extrapolation nowcasts have on average a ME slightly below zero, DEUCE is more strongly negatively biased, while LINDA-D is strongly positively biased.

485 Further, the equivalent threat score (ETS) results for reflectivity thresholds of 20, 25, and 35 dBZ are shown in Fig. 15. The ETS score of DEUCE is competitive for the 20 dBZ threshold, but at 25 dBZ its progression at lead times longer than 30 minutes is already worse than baselines. At 35 and 45 dBZ, DEUCE already performs worse than baselines at any lead time examined. The reason for this weakness is the compound effect of intrinsic CNN prediction smoothing and the averaging of ensemble members. This smoothing effect is also visible in the Radially-averaged power spectral density (RAPSD) results for nowcasts, presented in Fig. 16. Average RAPSD is computed for nowcasts at lead times of 5, 15, 30, and 60 minutes. It can  
 490 clearly be seen that compared to baselines, the fields predicted by DEUCE lose more power at small spatial scales, and that this effect is heavily amplified at longer lead times, which again illustrates the above compound effect. However, this effect



**Figure 15.** Equivalent Threat Scores (ETS) as a function of lead time for non-augmented DEUCE ensemble means (yellow) compared against those of extrapolation (green) and LINDA-D (red) deterministic baseline models for reflectivity thresholds of 20, 25, 35, and 45 dBZ at lead times until 60 minutes. DEUCE ensemble means perform competitively for predicting reflectivity exceeding 20 dBZ, but see their relative performance drop at higher reflectivity thresholds.

seems to be damped by augmenting the mean prediction with uncertainty-weighted correlated noise following the structure of the input field, especially at longer lead times.



**Figure 16.** Radially averaged power spectral density (RAPSD) for non-augmented DEUCE ensemble means (yellow solid), individual augmented DEUCE ensemble members (yellow dashed) compared against those of extrapolation (green) and LINDA-D (red) deterministic baseline models at lead times of 5, 15, 30, and 60 minutes. The observation RAPSD is shown as a black dashed line.

## 495 5 Discussion

DEUCE probabilistic ensemble nowcasts proved to be both relatively reliable and skillful compared to STEPS and LINDA. [In comparison, STEPS was often reliable but struggled to capture small-scale high reflectivity, and LINDA was better at this task but sometimes suffered from overconfidence. DEUCE seems to offer a good compromise, not suffering too much from either of those two defects.](#) Nevertheless when analysing the reliability diagram, it is apparent that DEUCE is under-confident especially at short lead times. Further inspection of rank histograms (Fig. 12)— showing the distribution of the rank of observations among ensemble members— indicated that this under-confidence is expressed by 1) a too large ensemble spread, and 2) a slight bias

towards ensembles producing too weak estimates, as was also visible in the ensemble mean Mean Error score. The too large ensemble spread may be a byproduct of attempting to predict the ensemble mean and aleatoric variances all at once, with the prior placed on weights placing a limit on the complexity of the model, in effect privileging the learning of longer lead times  
505 where the average errors are of bigger magnitude.

We can also observe that most of the uncertainty is of aleatoric nature, and that the contribution of epistemic variance is universally low. In addition to having trained with a large amount of data, low epistemic variance is probably related to the variational inference mechanism, as the combination of Bayes-By-Backprop and Flipout reparametrization have been shown to yield too small epistemic uncertainty estimates by Valdenegro-Toro and Mori (2022), when compared to MC Dropout,  
510 Deep Ensembles, and Markov Chain Monte Carlo. Another factor that might have played a role in this is again predicting all lead times at once, because adopting the iterative approach of RainNet (Ayzel et al., 2020) would have propagated previous epistemic uncertainties to subsequent lead times, possibly balancing out the contributions, also allowing making predictions for an arbitrary number of timesteps. On the other hand, abandoning the recursive prediction scheme of RainNet significantly reduces the time complexity of computing  $\hat{\mathbf{y}}, \sigma^2$  from  $\mathcal{O}(NL)$  to  $\mathcal{O}(N)$  where  $N$  is the sample size and  $L$  is the number of  
515 prediction lead times.

Contrary to the preliminary iteration of the model focusing only on modeling epistemic uncertainty (Harnist, 2022), the current model better captures the increased spread of the predictive distribution with lead time through the aleatoric component. An alternative model — without a separate decoder branch for  $\sigma^2$  and only allocating a separate output channel to it — was not successful because the  $\hat{\mathbf{y}}$  and  $\sigma^2$  that it learned were highly correlated, more blurry, and lacked expressivity. It is for this  
520 reason that the two-branch version was adopted.

In DEUCE, small-scale variability is steadily lost with increasing lead time, [which is especially noticeable for lead times over 30 minutes](#). This is a problem for the production of realistic nowcasts, as loss of small-scale variability is synonymous to loss of information, limiting the expressivity of the model. However, the smoothing of radar image predictions can be justified in the case of a probabilistic model, assuming that the breadth of the ensemble is preserved despite of the loss of high  
525 frequencies. This is because information will invariably be lost with time as we attempt to predict the evolution of a chaotic system through imperfect measurements. In the present case of DEUCE, the predictive distribution is modeled explicitly, giving us the ability to arbitrarily sample from it, so this loss of high-frequency components is not a major issue. For the preliminary version of the model (Harnist, 2022) however, losing small-scale details had adverse effects. This was because the model was trained with homoscedastic (fixed as a hyperparameter) aleatoric uncertainty modeling, which was not taken into account  
530 when making predictions, resulting in a too small ensemble spread of smooth predictions leading to vastly underestimated exceedance probabilities. The spatially correlated noise scheme for sampling the predictive uncertainty may help integrate DEUCE into applications where physically plausible ensemble members are necessary. Still, the lack of temporal correlation modeling inside of post-processed ensemble members and the smoothing of the predictive means and variances themselves limit realism, pointing to the limits of the taken approach. One grounded method for resolving this problem is to either implicitly  
535 or explicitly constrain the predictions to replicate the power spectrum of observations. Generative models such as GANs fall into the category of implicit constraining. For example, the DGMR model by ~~(Ravuri et al., 2021)~~ [Ravuri et al. \(2021\)](#) learns

to model realistic spatial and temporal correlations by adversarially training the generator with two discriminators designed to discern those aspects.

We see that the issues of underforecasting at short lead times and lacking small scale variability could be linked and related to the model training settling to underperforming local optima. Avenues to mitigate this include longer training and different training strategies, using a bigger and more varied dataset, adapting the loss function, and improving the model itself. DEUCE was trained with only 29 epochs, which is a relatively small number. We attempted to train for a higher number of epochs, but this did not result in consistent improvement in model validation performance metrics. However, this behavior might have been related to our choice of learning rate scheduling. On the other hand, it might also be worthwhile to attempt to implement a curriculum learning strategy where easier to learn, earlier lead times would be learned first, before allowing the network to learn to predict longer lead times. The dataset size itself may be increased by covering a variety of bounding boxes in the composite area, and by including precipitation events from outside the summer period. The likelihood part of the loss function may be adapted such that higher weight is given to higher reflectivity pixels. We nevertheless found this tricky to get right, as experiments that we performed with weighting proportional to the inverse of the density of the reflectivity in the dataset distribution failed to produce reasonable nowcasts. From the perspective of the model, underforecasting and lack of small-scale details could be reduced by including spatial and channel (temporal for us) attention mechanisms, such as the Convolutional Block Attention Module (CBAM) (Woo et al., 2018), which has been applied to improve (deterministic) precipitation nowcasting performance (Trebing et al., 2021). CBAM might enable, e.g., sharper forecasts with smaller aleatoric uncertainties at short lead times, without affecting the reliability at longer lead times.

It is important to notice that all models, DEUCE included, are generally not able to predict convective initiation, which is a notoriously hard problem to solve (Prudden et al., 2020). This is clearly illustrated with the new echoes appearing in the north-west (continuously) and south (between 30 and 60 minutes) parts of the second case (Fig. B2), for which very low exceedance probabilities are predicted. Adding polarimetric or vertical profile information as additional input channels and adopting a model less susceptible to blurring might improve this aspect of predictions.

With regard to the model development in general, some amount of hyper-parameter optimization was performed. Those hyper-parameters related to the functional model as well as the optimizer are mainly inherited from RainNet (Ayzel et al., 2020), and those related to variational inference mostly originate from the preliminary version of the model (Harnist, 2022). There, the VI related parameters specifically demanded non-trivial tuning for model converge and acceptable result production, which might limit the immediate applicability of the model in its default state. Also, the local optimality of the current hyper-parameters is not assured. Despite of this, VI and epistemic uncertainty are not decisive factors in the model performance, and swapping out those components is a potential way forward. Moreover, 60 minutes (12 frames) of input data and the same length for predictions was picked without optimization in an attempt to preserve some symmetry between the network inputs and outputs. Although there is yet no consensus on how many frames are needed, as little as four input frames have be enough to saturate model performance in some conditions (Ravuri et al., 2021), so tuning the ratio of input to output frames could be a viable thing to try.



Regarding the verification process, it is a pertinent question to ask whether the used baseline models were sufficient to validate the performance of DEUCE. Particularly, the lack of deep learning ensemble baselines is one weakness of the performed verification. It would have been particularly interesting to use the Deep Generative Model of Radar (DGMR) by Ravuri et al. (2021) as a baseline, as it represents the current state-of-the-art in deep learning based precipitation nowcasting, and is capable of producing ensemble nowcasts. Unfortunately, we were not able to successfully train DGMR on our dataset using the resources that we had allocated for the task. Other models of interest that were not included in the verification are MetNet by Sønderby et al. (2020) and its successor MetNet-2 by Espeholt et al. (2022), which use, e.g., orographic and satellite data in addition to radar data. We hope that further work will make possible the comparison of DEUCE probabilistic nowcasting performance to other deep learning based models.

One last point of concern is in the validity of the verification metrics used. The potential issues here mostly relate to the summarizing quantitative metrics of Table 2. Firstly, the relative RAPSD MAE metric for measuring power-spectrum fidelity of predictions uses a tighter sampling of points towards wavelengths representing small spatial scales, which biases it to give a higher weight to those scales. Although we are indeed mostly interested in small-scale variations, this property means that even big discrepancies in the power of large spatial scales will be under-represented. Next, the ECE metric used to summarize the reliability of ensemble models is very sensitive to variations in the order of magnitude of the number of samples per bin. This behaviour is significant especially at higher exceedance thresholds, where almost all prediction probabilities are concentrated in the smallest probability bin, giving almost no weight to even mildly successful nowcasting of rare but significant events of high heavy precipitation probability. This means that ECE doesn't necessarily provide a complete assessment of model reliability in the context of probabilistic precipitation nowcasting.

## 6 Conclusions

We developed a probabilistic precipitation nowcasting model named DEUCE, based on a Bayesian neural network with variational inference, and featuring the combination of epistemic and aleatoric uncertainty estimates in an attempt to yield reliable yet powerful probabilistic predictions. The model succeeded at this primary task, performing competitively against the baseline STEPS and LINDA-P models, judged both using qualitative and quantitative evaluation.

It was found that DEUCE had issues with the representation of epistemic uncertainty, leading to most of the uncertainty ending up appearing as aleatoric uncertainty, maybe due to the variational inference used. The aleatoric uncertainty exhibited a clear dependence on lead time and corresponding observed reflectivity, which are factors heavily influencing the predictability. The epistemic uncertainty on the other hand showed little dependence on these factors, with the exception of a slight increase with observed reflectivity, which might reflect the distribution of the training data. Based on this, aleatoric and epistemic uncertainties do indeed seem to capture complementary features of the predictive uncertainty. **Finally**

Deterministically, the ensemble means were found to perform worse compared to extrapolation and LINDA-D baselines, showing that the model in its current state is not useful in the deterministic case due to the excessive smoothing of predictions. This smoothing may also affected the uncertainty composition, such that assuming the predictive mean to be fixed, i.e.,

with no improvement in skill, sharper reflectivity predictions would increase the epistemic uncertainty. As for the aleatoric uncertainty, the variation between individual draws would increase, but their average would not necessarily, except for cases where smoothing is the mechanism that hinders the prediction of large enough reflectivity values. In those cases, average aleatoric uncertainty might decrease.

Looking into future research directions, DEUCE has a number of different facets upon which its performance could be improved. First, the underlying U-Net could potentially be replaced by an more powerful architecture capable of modeling explicit temporal dependencies. The spatio-temporal extent could be enlarged, and additional orographic, polarimetric, or satellite input channels could improve parts of the nowcasts. It is possible to additionally try to leverage other patterns for increasing predictability, such as operating in Lagrangian coordinates as shown by Ritvanen et al. (2023), for increasing prediction performance. From a probabilistic aspect, certain alternative inference methods, such as Radial Bayesian Neural Networks (Farquhar et al., 2020) or Deep Ensembles look promising as a potential way to ease the training and improve the representation of epistemic uncertainty. We could also think of directly appending the post-processing sampling with spatially correlated noise to the neural network, or even learning context-dependent spatiotemporal correlation structures. The sampled outputs could then be, e.g., fed to a GAN-like discriminator module, which would drive the processed outputs to be more realistic while retaining the uncertainty decomposition.

Regardless of its shortcomings, DEUCE is a first step in ensemble-based probabilistic precipitation nowcasting using Bayesian neural networks. The concurrent modeling of aleatoric and epistemic uncertainties has the potential to be useful for operational forecasters, and the model in its current state forms a strong yet relatively lightweight baseline for future developments in deep learning based probabilistic precipitation nowcasting.

*Code and data availability.* The data used for the production of the results is available online (Harnist et al., 2023) at <https://doi.org/10.23728/fmi-b2share.3efcfc9080fe4871bd756c45373e7c11>. This data includes the input data used for the training of DEUCE, prediction generation, and observations for the verification. Pre-trained model checkpoints, the script used to gather neural network inputs into an HDF5 file, as well as computed metric data are also included.

The source code with instructions for the reproduction of results is available online (Harnist, 2023) at <https://doi.org/10.5281/zenodo.7961954> and on Github at <https://github.com/fmidev/deuce-nowcasting>. This code is used for the training and nowcast generation of DEUCE, the production of baseline nowcasts, the computation of metrics, and the creation of figures presenting these metrics.

## 630 **Appendix A: Additional technical details**

### **A1 Ground precipitation estimates from reflectivity**

The formula  $R = (10^{z/10}/223)^{1/1.53}$  was used in cases where an estimate of ground precipitation corresponding to lowest level radar reflectivity composites was needed. Here R denotes precipitation estimates in  $\text{mmh}^{-1}$  units, and z denotes radar reflectivity in dBZ units. The parameters of the Z–R relationship employed in the formula come from the work of Leinonen et al.

635 (2012) and aim to estimate the amount of rainfall corresponding to radar reflectivity measurements from Finnish Meteorological Institute polarimetric C-band radars in Finland.

## A2 Baseline models

There are two deterministic baseline models: a simple extrapolation nowcast and the deterministic variant of LINDA (LINDA-D). The extrapolation nowcast extrapolates the last input reflectivity field along a motion field calculated from the last four  
640 elements of the input time series. In the extrapolation nowcast and all other baseline methods, we use the dense Lucas-Kanade optical flow method with its default pySTEPS parameters for the computation of the motion field. In addition, all baseline nowcasting methods use the semi-Lagrangian integration scheme from pySTEPS for performing the extrapolation, with cubic interpolation and other parameters left to their default values.

LINDA, being a more advanced extrapolation-based method capable of predicting high-intensity rainfall more accurately,  
645 serves as a natural benchmark both in the deterministic and probabilistic cases, for the ability of the model to capture convective rainfall evolution. LINDA predictions are made using reflectivity fields converted to rain rate using the method described in Sect. A1, as it is required for the model to work. The LINDA models here use the last three input rain rate fields as input in addition to the motion field. They do not use feature detection in order to reduce the prediction computation time over the verification set to more practical durations. The ensemble-producing version of LINDA: LINDA-P is used as a probabilistic  
650 baseline model. While LINDA-D deterministic nowcasts do not add any perturbations, LINDA-P does add them, as well as BPS velocity perturbations with `lucaskanade/fmi+mch` parameters (Pulkkinen et al., 2019). Other parameters are set to be data specific or to their default values.

The STEPS model is used in addition to LINDA-P as a probabilistic baseline. While being a bit older and having lower discriminative power, it is a popular method for making reliable probabilistic precipitation nowcasts to this day. STEPS is  
655 applied to dBZ reflectivity fields, also taking in the last three input images in addition to the motion field. Field perturbations as well as motion field perturbations are applied with the same parameters as with LINDA-P. Six cascade levels are used for the cascade decomposition, and the precipitation threshold of 8 dBZ is given as the lowest observable precipitation intensity.

## A3 Details on probabilistic verification metrics

### A3.1 Continuous Ranked Probability Score (CRPS)

660 The CRPS generalizes the Mean Absolute Error to probability distributions by calculating the sum of the difference between the cumulative density function (CDF) of the nowcast and the empirical CDF of observations. It is defined as

$$\text{CRPS}(F, y) = \int_{-\infty}^{\infty} (F(\hat{y}) - \mathbb{1}(y \geq \hat{y}))^2 d\hat{y}, \quad (\text{A1})$$

where  $\hat{y}$  denote possible forecast values,  $F(\hat{y})$  the forecast CDF, and  $\mathbb{1}(y \geq \hat{y})$  the empirical CDF of observations  $y$ .

### A3.2 Receiver Operating Characteristic (ROC) curve

665 The Receiver Operating Characteristic (ROC) curve (Mason, 1982; Wilks, 2011) quantifies the discriminative power of an ensemble for predicting over a certain threshold, by keeping track of the False Alarm Rate (FAR), i.e.,

$$\text{FAR} = \frac{\text{FP}}{\text{FP} + \text{TN}}, \quad (\text{A2})$$

where the rate of false positives is indicated by FP, and the rate of true negatives is indicated by TN, against the the Probability of Detection (POD), i.e.,

670 
$$\text{POD} = \frac{\text{TP}}{\text{TP} + \text{FN}}, \quad (\text{A3})$$

where TP is the rate of true positives and FN is the rate of false negatives. POD is regularly binned, and FAR is averaged over those bins, making a curve, the area under which (AUC, Area Under the Curve) summarizes the overall discriminative power of the nowcasting method. An ROC AUC of 0.5 indicates zero skill, whereas a value of 1.0 indicates a perfect forecast. For ROC curve computations, we use 10 bins.

### 675 A3.3 Reliability diagram

The reliability diagram (Wilks, 2011) measures the reliability of the forecast by presenting the observed relative frequencies of dBZ threshold exceedance events against the forecast probability of those events. Having these two values strongly correlate makes the forecast reliable. Reliability diagrams are built by dividing the forecast probabilities into bins (we choose 10), and incrementing them with associated binary indicators of whether the event happened. Sharpness histograms represent the number of events recorded in each forecast probability bin. They measure the relative "decisiveness" of the forecast, where a high decisiveness is associated with a convex histogram shape. A low decisiveness on the other hand can be discerned from a more uniform, or in the extreme case, a concave histogram shape.

680

### A3.4 Expected Calibration Error (ECE)

The Expected Calibration Error (ECE) (Naeini et al., 2015) quantitatively summarizes the reliability of a model indicated by a reliability diagram. It is defined as

685

$$\text{ECE} = \frac{1}{N} \sum_{b=1}^B n_b | f_b - o_b |, \quad (\text{A4})$$

with a total of  $N$  pairs of forecast probability and observation, forecast probabilities divided into  $B$  bins, with  $n_b$  observations per bin,  $f_b$  mean bin forecast probability, and  $o_b$  corresponding observation frequency in the bin. ECE corresponds to the MAE of the reliability diagram to the diagonal, weighted by the number of observations per bin.

### 690 A3.5 Rank histogram

Rank histograms (Wilks, 2011) measure the bias and spread of ensemble nowcasts. They present a histogram of the rank of the true observed echo reflectivity among all ensemble members, where a convex histogram indicates a small spread and a concave

histogram indicates a small spread. On the other hand, a skew towards the left indicates a positive bias of predictions, and a skew towards the right indicates a negative bias.

## 695 **A4 Details on deterministic verification metrics**

### **A4.1 Mean Error (ME)**

The mean Error (ME) (Wilks, 2011) measures the bias of deterministic predictions. It is defined as

$$\text{ME} = \frac{1}{P} \sum_{p=1}^P \mathbf{y}_p - \hat{\mathbf{y}}_p. \quad (\text{A5})$$

for images or time series of them with  $P$  pixels. This metric tells us about the mean bias of nowcasts produced. The absolute  
700 value of ME is used to give a quantitative summary of the bias of predictions made.

### **A4.2 Equitable Threat Score (ETS)**

The Equitable Threat Score (ETS) (Hogan et al., 2010; Wilks, 2011) is an extension of the Threat Score, also known as the  
critical success index (Schaefer, 1990). ETS aims to provide an estimate of deterministic skill in forecasting precipitation above  
a certain intensity threshold. This extension takes into account the effect of randomly occurring true positives. ETS is defined  
705 as

$$\text{ETS} = \frac{\text{TP} - \text{rnd}}{\text{TP} + \text{FN} + \text{FP} - \text{rnd}},$$

where  $\text{rnd} = \frac{(\text{TP} + \text{FN})(\text{TP} + \text{FP})}{\text{TP} + \text{FN} + \text{FP} + \text{TN}}, \quad (\text{A6})$

where the rnd term estimates the influence of random true positives.

### **A4.3 Radially-Averaged Power Spectrum Density (RAPSD)**

The Radially-Averaged Power Spectrum Density (RAPSD) (Ruzanski and Chandrasekar, 2011; Ulichney, 1988) measures how  
710 well the power spectrum of precipitation is maintained, when calculated for nowcasts at different lead times. RAPSD fidelity  
is summarized as

$$\text{RAPSD rel. MAE} = \frac{1}{F} \sum_{f=1}^F \frac{|P_f^{\text{obs}} - P_f^{\text{pred}}|}{P_f^{\text{obs}}} \quad (\text{A7})$$

which is the absolute error between the observed and predicted PSD, relative to observed PSD, averaged over frequencies.  
Here,  $F$  denotes the number of frequencies of the power spectrum,  $P_f^{\text{obs}}$  the power of the observed field at the  $f$ :th frequency,  
715 and  $P_f^{\text{pred}}$  the power of the predicted field at the  $f$ :th frequency. Taking the relative values allows comparing spectral densities  
on multiple scales. In the present case, PSD frequencies are sampled linearly, weighting corresponding wavelengths towards  
smaller scales, effectively biasing small-scale errors to be more important. This is however not necessarily a problem, as  
prediction fidelity at small scales is the most important question we seek to answer with RAPSD.

## **A5 Hardware and software packages used**

720 The DEUCE model was built on PyTorch (version 1.12.1). PyTorch Lightning (version 1.7.7) was used to organize the neural network training and prediction workflow, and the TyXe library (version 0.0.1) was used to turn DEUCE Bayesian, making use of the Pyro (version 1.4.0) probabilistic programming language as its back-end for variational inference. The DEUCE training and prediction were performed using the Finnish IT Center for Science (CSC) supercomputer Puhti, using one NVIDIA V100 GPU with 32GB of VRAM, 64GB of RAM, and 10 cores from a 2.1 GHz Intel Xeon Gold 6230 CPU.

725 For the evaluation of the model performance, we used the pySTEPS library (version 1.6.1). It served to produce baseline extrapolation-based model nowcasts, to calculate verification metrics, and to help with their visualization. The pySTEPS-based verification pipeline was run on a computational server of the Finnish Meteorological Institute, equipped with two Intel Xeon Gold 6138 2.0 GHz CPUs with each 20 cores and two threads by core, as well as with 192GB of RAM.

## **Appendix B: Results of the second case study**

730 The results of the second case study show a similar behavior as with the first case study (Sect. 4.1), but generally lower uncertainty values, especially on the inside of the areas containing precipitation.

### **B1 Ensemble mean and breadth**

Ensemble mean and breadth as units of standard deviation is shown for the second case in Fig. B1. Here, we observe a generally similar trend as with the first case (Sect. 4.1), with the difference that the ensemble breadth of STEPS is only higher than that of DEUCE towards the center of the rainfall areas, as it tends to be similar at the outskirts of those larger areas. Among the different models, we can also here observe the most heterogeneity and anisotropy in the predictive distribution of DEUCE.

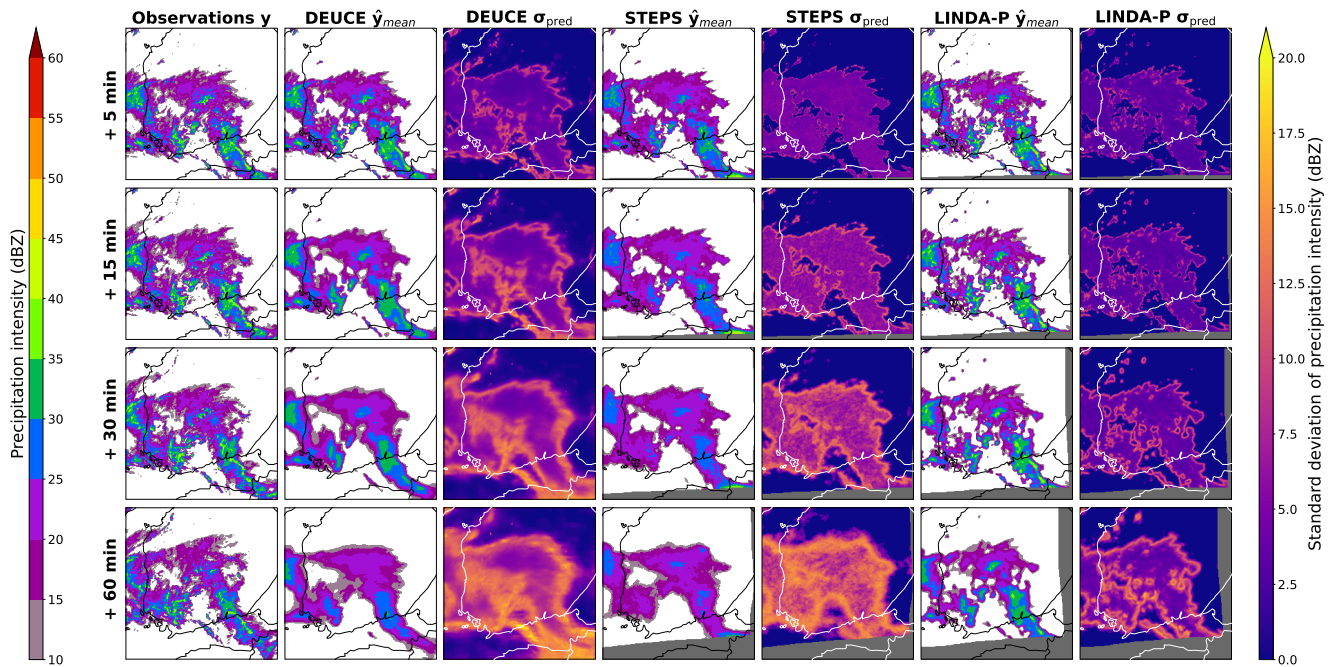
735

### **B2 Reflectivity exceedance probabilities**

Reflectivity probabilities of exceeding 25 dBZ predicted by the different models for the second case are depicted in Fig. B2, and many of the same comments can be made as with the first case (Sect. 4.1), with DEUCE seeming to offer the best balance between accuracy and lacking too many false positives.

740

For this second case study, the exceedance probabilities of DEUCE at thresholds of 15, 25, 35, and 45 dBZ are shown in Fig. B3. It is here noteworthy to point that DEUCE was not able to predict the growth of a substantial new rainfall area in the northwest of the composite, despite of the predictive uncertainty being significant there, as shown in Fig. B1, which can be understood because the predictive means under the 8 dBZ threshold were generally closer to the minimum value of -10 dBZ.

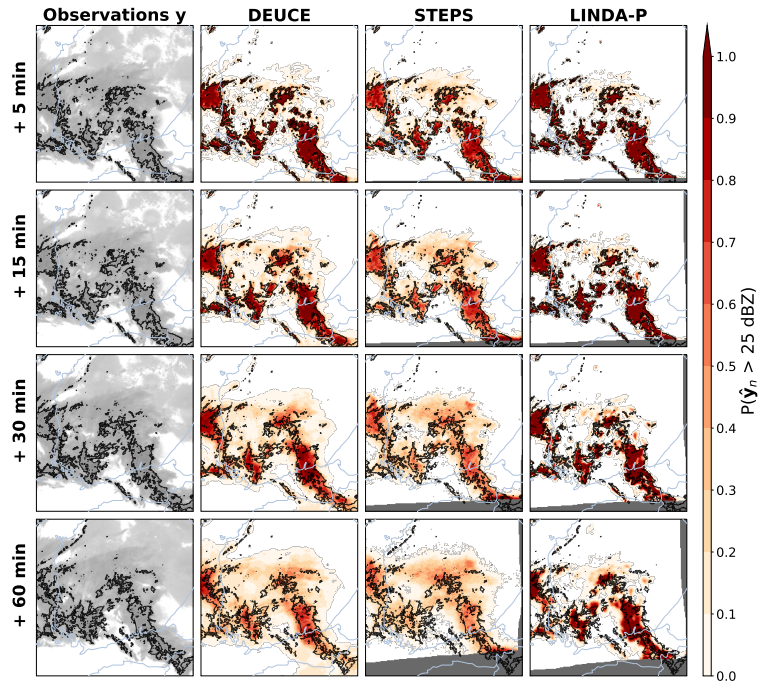


**Figure B1.** The second case study ensemble means and breadths of DEUCE compared against STEPS and LINDA-P model predictions and observations for multiple lead times. The area covers southern Finland, starting at 16:50:00 UTC on August 17 2021. The rows represent lead time and columns different instances of observations, model mean and standard deviations. Missing values are indicated by a dark gray color.

745 **Appendix C: Additional figures**

*Author contributions.* BH performed the experiments and analysis, developed the methodology, wrote and maintained software, performed the validation as well as the visualization work, and wrote the original draft. SP acquired funding and resources, and in addition administrated the project. SP and TM jointly supervised BH in the work. All authors: BH, SP, and TM, took part in the conceptualization, as well as in the review & editing of the manuscript.

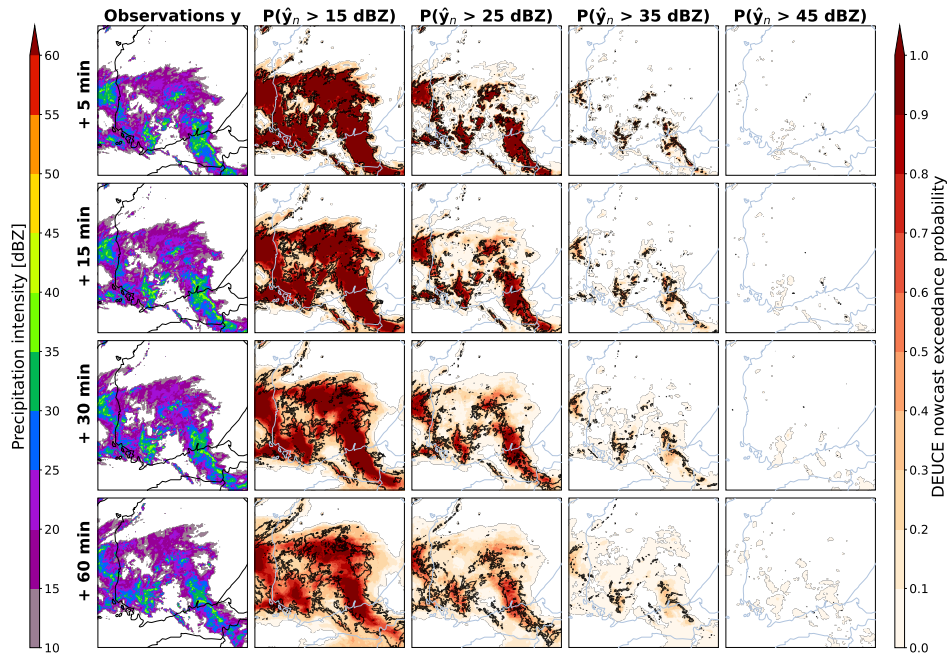
750 *Competing interests.* The authors declare that they have no conflict of interest.



**Figure B2.** The second case study reflectivity exceedance probabilities of 25 dBZ for DEUCE against STEPS and LINDA-P model predictions and observations for multiple lead times. The area covers southern Finland, starting at 16:50:00 UTC on August 17 2021. The rows represent lead time. In the leftmost column, actual ~~threshold-exceeding precipitation echoes observations~~ are shown in ~~colors, with non-exceeding echoes additionally shown faintly in light gray in,~~ with echo isotherms corresponding to the ~~background~~ threshold marked in black. In other columns, ~~threshold-exceeding precipitation echoes the same isotherms~~ are ~~again shown overlaid with overlaid on the~~ exceedance probabilities of ~~the~~ models, depicted in shades of red. Missing values are indicated by a dark gray color.

*Acknowledgements.* We gratefully acknowledge the Finnish CSC — IT Center For Science for providing us with the computational resources used for the training and inference of the model developed, as well as V. Chandrasekar for his advice and critical comments regarding the work.

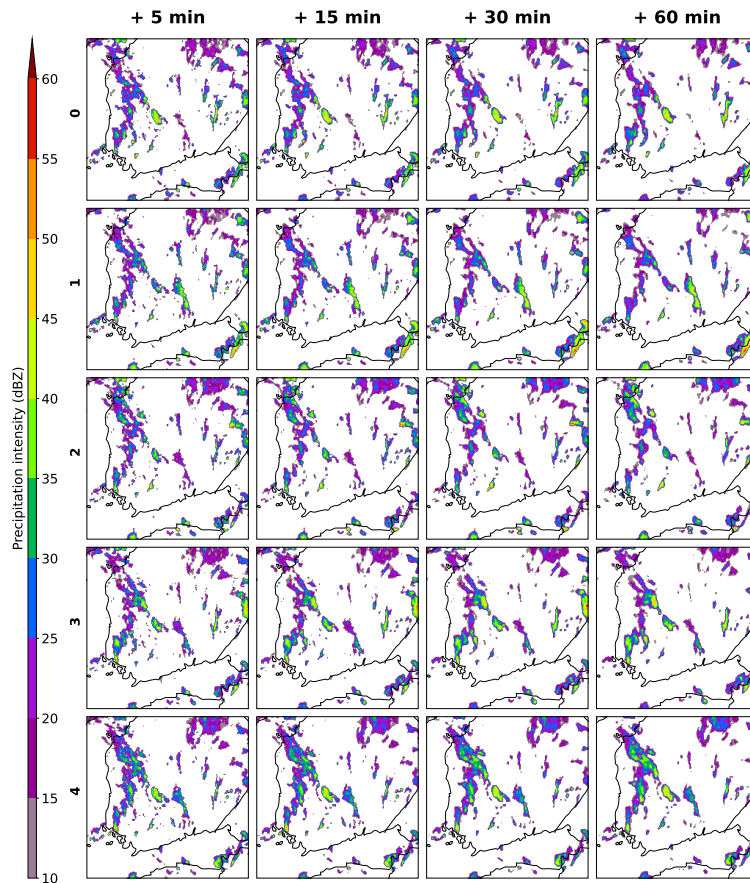




**Figure B3.** The second case study reflectivity exceedance probabilities of DEUCE against observations for multiple lead times and reflectivity thresholds. The area covers southern Finland, starting at 16:50:00 UTC on August 17 2021. The rows represent lead time. The leftmost column is observations, and the rest are exceedance probabilities at different thresholds. As in Fig. B2, observations exceeding the observation isotherms corresponding to the threshold in question are plotted in shades of gray, overlaid with overlay the exceedance probabilities depicted in shades of red.

## References

- 755 Abdar, M., Pourpanah, F., Hussain, S., Rezazadegan, D., Liu, L., Ghavamzadeh, M., Fieguth, P., Cao, X., Khosravi, A., Acharya, U. R., Makarenkov, V., and Nahavandi, S.: A review of uncertainty quantification in deep learning: Techniques, applications and challenges, *Information Fusion*, 76, 243–297, <https://doi.org/10.1016/j.inffus.2021.05.008>, 2021.
- Agrawal, S., Barrington, L., Bromberg, C., Burge, J., Gazen, C., and Hickey, J.: Machine Learning for Precipitation Nowcasting from Radar Images, <https://doi.org/10.48550/arXiv.1912.12132>, arXiv:1912.12132 [cs, stat], 2019.
- 760 Alexander, C., Dowell, D. C., Hu, M., Olson, J., Smirnova, T., Ladwig, T., Weygandt, S., Kenyon, J. S., James, E., Lin, H., Grell, G., Ge, G., Alcott, T., Benjamin, S., Brown, J. M., Toy, M. D., Ahmadov, R., Back, A., Duda, J. D., Smith, M. B., Hamilton, J. A., Jamison, B. D., Jankov, I., and Turner, D. D.: Rapid Refresh (RAP) and High Resolution Rapid Refresh (HRRR) Model Development, [https://rapidrefresh.noaa.gov/pdf/Alexander\\_AMS\\_NWP\\_2020.pdf](https://rapidrefresh.noaa.gov/pdf/Alexander_AMS_NWP_2020.pdf), 370205, 2020.
- Ayzel, G., Scheffer, T., and Heistermann, M.: RainNet v1.0: a convolutional neural network for radar-based precipitation nowcasting, *Geoscientific Model Development*, 13, 2631–2644, <https://doi.org/10.5194/gmd-13-2631-2020>, publisher: Copernicus GmbH, 2020.
- 765 Bauer, P., Thorpe, A., and Brunet, G.: The quiet revolution of numerical weather prediction, *Nature*, 525, 47–55, <https://doi.org/10.1038/nature14956>, number: 7567 Publisher: Nature Publishing Group, 2015.



**Figure C1.** Five randomly selected examples of post-processed DEUCE ensemble members on the first case studied, whose area covers southern Finland, starting at 15:00:00 UTC on 9 July 2022. The prediction lead times illustrated are 5, 15, 30, and 60 minutes.

- Blundell, C., Cornebise, J., Kavukcuoglu, K., and Wierstra, D.: Weight Uncertainty in Neural Network, in: Proceedings of the 32nd International Conference on Machine Learning, pp. 1613–1622, PMLR, Lille, France, <https://proceedings.mlr.press/v37/blundell15.html>, iSSN: 1938-7228, 2015.
- 770 Bouguet, J.-Y. et al.: Pyramidal implementation of the affine lucas kanade feature tracker description of the algorithm, Intel corporation, 5, 4, 2001.
- Bowler, N. E., Pierce, C. E., and Seed, A. W.: STEPS: A probabilistic precipitation forecasting scheme which merges an extrapolation nowcast with downscaled NWP, Quarterly Journal of the Royal Meteorological Society, 132, 2127–2155, <https://doi.org/10.1256/qj.04.100>, 2006.
- 775 Caceres, J., Gonzalez, D., Zhou, T., and Droguett, E. L.: A probabilistic Bayesian recurrent neural network for remaining useful life prognostics considering epistemic and aleatory uncertainties, Structural Control and Health Monitoring, 28, e2811, <https://doi.org/10.1002/stc.2811>, \_eprint: <https://onlinelibrary.wiley.com/doi/pdf/10.1002/stc.2811>, 2021.

- Dechesne, C., Lassalle, P., and Lefèvre, S.: Bayesian U-Net: Estimating Uncertainty in Semantic Segmentation of Earth Observation Images, *Remote Sensing*, 13, 3836, <https://doi.org/10.3390/rs13193836>, number: 19 Publisher: Multidisciplinary Digital Publishing Institute, 2021.
- Espeholt, L., Agrawal, S., Sønderby, C., Kumar, M., Heek, J., Bromberg, C., Gazen, C., Carver, R., Andrychowicz, M., Hickey, J., Bell, A., and Kalchbrenner, N.: Deep learning for twelve hour precipitation forecasts, *Nature Communications*, 13, 5145, <https://doi.org/10.1038/s41467-022-32483-x>, number: 1 Publisher: Nature Publishing Group, 2022.
- Farquhar, S., Osborne, M. A., and Gal, Y.: Radial Bayesian Neural Networks: Beyond Discrete Support In Large-Scale Bayesian Deep Learning, in: *Proceedings of the Twenty Third International Conference on Artificial Intelligence and Statistics*, pp. 1352–1362, PMLR, Online, <https://proceedings.mlr.press/v108/farquhar20a.html>, iSSN: 2640-3498, 2020.
- Gal, Y. and Ghahramani, Z.: Dropout as a Bayesian Approximation: Representing Model Uncertainty in Deep Learning, in: *Proceedings of The 33rd International Conference on Machine Learning*, pp. 1050–1059, PMLR, New York, New York, USA, <https://proceedings.mlr.press/v48/gal16.html>, iSSN: 1938-7228, 2016.
- Graves, A.: Practical Variational Inference for Neural Networks, in: *Advances in Neural Information Processing Systems*, vol. 24, pp. 2348–2356, Curran Associates, Inc., Granada, Spain, [https://papers.nips.cc/paper\\_files/paper/2011/hash/7eb3c8be3d411e8ebfab08eba5f49632-Abstract.html](https://papers.nips.cc/paper_files/paper/2011/hash/7eb3c8be3d411e8ebfab08eba5f49632-Abstract.html), 2011.
- Harnist, B.: Probabilistic Precipitation Nowcasting using Bayesian Convolutional Neural Networks, Master's thesis, Aalto University. School of Science, <http://urn.fi/URN:NBN:fi:aalto-202208285227>, 2022.
- Harnist, B.: `fmidev/deuce-nowcasting`: Initial release of the source code for the manuscript, <https://doi.org/10.5281/zenodo.7961955>, 2023.
- Harnist, B., Pulkkinen, S., and Mäkinen, T.: Data for the manuscript "DEUCE v1.0: A neural network for probabilistic precipitation nowcasting with aleatoric and epistemic uncertainties" by Harnist et al. (2023), <https://doi.org/10.23728/FMI-B2SHARE.3EFCFC9080FE4871BD756C45373E7C11>, 2023.
- Hersbach, H.: Decomposition of the Continuous Ranked Probability Score for Ensemble Prediction Systems, *Weather and Forecasting*, 15, 559–570, [https://doi.org/10.1175/1520-0434\(2000\)015<0559:DOTCRP>2.0.CO;2](https://doi.org/10.1175/1520-0434(2000)015<0559:DOTCRP>2.0.CO;2), publisher: American Meteorological Society Section: Weather and Forecasting, 2000.
- Hershey, J. R. and Olsen, P. A.: Approximating the Kullback Leibler Divergence Between Gaussian Mixture Models, in: *2007 IEEE International Conference on Acoustics, Speech and Signal Processing - ICASSP '07*, vol. 4, pp. IV–317–IV–320, Honolulu, HI, USA, <https://doi.org/10.1109/ICASSP.2007.366913>, iSSN: 2379-190X, 2007.
- Hogan, R. J., Ferro, C. A. T., Jolliffe, I. T., and Stephenson, D. B.: Equitability Revisited: Why the "Equitable Threat Score" Is Not Equitable, *Weather and Forecasting*, 25, 710–726, <https://doi.org/10.1175/2009WAF2222350.1>, publisher: American Meteorological Society Section: Weather and Forecasting, 2010.
- Jospin, L. V., Laga, H., Boussaid, F., Buntine, W., and Bennamoun, M.: Hands-On Bayesian Neural Networks—A Tutorial for Deep Learning Users, *IEEE Computational Intelligence Magazine*, 17, 29–48, <https://doi.org/10.1109/MCI.2022.3155327>, conference Name: IEEE Computational Intelligence Magazine, 2022.
- Kedem, B. and Chiu, L. S.: On the lognormality of rain rate, *Proceedings of the National Academy of Sciences*, 84, 901–905, <https://doi.org/10.1073/pnas.84.4.901>, publisher: Proceedings of the National Academy of Sciences, 1987.
- Kendall, A. and Gal, Y.: What uncertainties do we need in Bayesian deep learning for computer vision?, in: *Proceedings of the 31st International Conference on Neural Information Processing Systems, NIPS' 17*, pp. 5580–5590, Curran Associates Inc., Red Hook, NY, USA, 2017.

- Kingma, D. P. and Ba, J.: Adam: A Method for Stochastic Optimization, in: Proceedings of the 3rd International Conference on Learning Representations (ICLR), San Diego, CA, USA, <https://doi.org/10.48550/arXiv.1412.6980>, arXiv:1412.6980 [cs], 2015.
- Kullback, S. and Leibler, R. A.: On Information and Sufficiency, *The Annals of Mathematical Statistics*, 22, 79–86, <https://doi.org/10.1214/aoms/1177729694>, publisher: Institute of Mathematical Statistics, 1951.
- 820 Laroche, S. and Zawadzki, I.: Retrievals of Horizontal Winds from Single-Doppler Clear-Air Data by Methods of Cross Correlation and Variational Analysis, *Journal of Atmospheric and Oceanic Technology*, 12, 721–738, [https://doi.org/10.1175/1520-0426\(1995\)012<0721:ROHWFS>2.0.CO;2](https://doi.org/10.1175/1520-0426(1995)012<0721:ROHWFS>2.0.CO;2), publisher: American Meteorological Society Section: Journal of Atmospheric and Oceanic Technology, 1995.
- Leinonen, J., Moisseev, D., Leskinen, M., and Petersen, W. A.: A Climatology of Disdrometer Measurements of Rainfall in Finland  
825 over Five Years with Implications for Global Radar Observations, *Journal of Applied Meteorology and Climatology*, 51, 392–404, <https://doi.org/10.1175/JAMC-D-11-056.1>, publisher: American Meteorological Society Section: Journal of Applied Meteorology and Climatology, 2012.
- Liu, G., Reda, F. A., Shih, K. J., Wang, T.-C., Tao, A., and Catanzaro, B.: Image Inpainting for Irregular Holes Using Partial Convolutions, in: *Computer Vision – ECCV 2018 Proceedings, Part XI*, edited by Ferrari, V., Hebert, M., Sminchisescu, C., and Weiss, Y., *Lecture Notes in Computer Science*, pp. 89–105, Springer International Publishing, Munich, Germany, [https://doi.org/10.1007/978-3-030-01252-6\\_6](https://doi.org/10.1007/978-3-030-01252-6_6),  
830 2018.
- Lucas, B. D. and Kanade, T.: An Iterative Image Registration Technique with an Application to Stereo Vision, in: *IJCAI’81: Proceedings of the 7th international joint conference on Artificial intelligence*, vol. 2, p. 674, University of British Columbia Vancouver, B.C., Canada, <https://hal.science/hal-03697340>, 1981.
- 835 Mason, I.: A model for assessment of weather forecasts, *Aust. Meteor. Mag.*, 30, 291–303, 1982.
- Naeini, M. P., Cooper, G., and Hauskrecht, M.: Obtaining Well Calibrated Probabilities Using Bayesian Binning, *Proceedings of the AAAI Conference on Artificial Intelligence*, 29, <https://doi.org/10.1609/aaai.v29i1.9602>, number: 1, 2015.
- Pan, X., Lu, Y., Zhao, K., Huang, H., Wang, M., and Chen, H.: Improving Nowcasting of Convective Development by Incorporating Polarimetric Radar Variables Into a Deep-Learning Model, *Geophysical Research Letters*, 48, e2021GL095302,  
840 <https://doi.org/10.1029/2021GL095302>, eprint: <https://onlinelibrary.wiley.com/doi/pdf/10.1029/2021GL095302>, 2021.
- Prudden, R., Adams, S., Kangin, D., Robinson, N., Ravuri, S., Mohamed, S., and Arribas, A.: A review of radar-based nowcasting of precipitation and applicable machine learning techniques, <https://doi.org/10.48550/arXiv.2005.04988>, arXiv:2005.04988 [physics, stat], 2020.
- Pulkkinen, S., Nerini, D., Pérez Hortal, A. A., Velasco-Forero, C., Seed, A., Germann, U., and Foresti, L.: Pysteps: an open-source Python  
845 library for probabilistic precipitation nowcasting (v1.0), *Geoscientific Model Development*, 12, 4185–4219, <https://doi.org/10.5194/gmd-12-4185-2019>, publisher: Copernicus GmbH, 2019.
- Pulkkinen, S., Chandrasekar, V., and Niemi, T.: Lagrangian Integro-Difference Equation Model for Precipitation Nowcasting, *Journal of Atmospheric and Oceanic Technology*, 38, 2125–2145, <https://doi.org/10.1175/JTECH-D-21-0013.1>, publisher: American Meteorological Society Section: Journal of Atmospheric and Oceanic Technology, 2021.
- 850 Radhakrishnan, C. and Chandrasekar, V.: CASA Prediction System over Dallas–Fort Worth Urban Network: Blending of Nowcasting and High-Resolution Numerical Weather Prediction Model, *Journal of Atmospheric and Oceanic Technology*, 37, 211–228, <https://doi.org/10.1175/JTECH-D-18-0192.1>, publisher: American Meteorological Society Section: Journal of Atmospheric and Oceanic Technology, 2020.

- Ravuri, S., Lenc, K., Willson, M., Kangin, D., Lam, R., Mirowski, P., Fitzsimons, M., Athanassiadou, M., Kashem, S., Madge, S., Prudden, R., Mandhane, A., Clark, A., Brock, A., Simonyan, K., Hadsell, R., Robinson, N., Clancy, E., Arribas, A., and Mohamed, S.: Skilful precipitation nowcasting using deep generative models of radar, *Nature*, 597, 672–677, <https://doi.org/10.1038/s41586-021-03854-z>, number: 7878 Publisher: Nature Publishing Group, 2021.
- Ritvanen, J., Harnist, B., Aldana, M., Mäkinen, T., and Pulkkinen, S.: Advection-Free Convolutional Neural Network for Convective Rainfall Nowcasting, *IEEE Journal of Selected Topics in Applied Earth Observations and Remote Sensing*, pp. 1–16, <https://doi.org/10.1109/JSTARS.2023.3238016>, conference Name: IEEE Journal of Selected Topics in Applied Earth Observations and Remote Sensing, 2023.
- Ruzanski, E. and Chandrasekar, V.: Scale Filtering for Improved Nowcasting Performance in a High-Resolution X-Band Radar Network, *IEEE Transactions on Geoscience and Remote Sensing*, 49, 2296–2307, <https://doi.org/10.1109/TGRS.2010.2103946>, conference Name: IEEE Transactions on Geoscience and Remote Sensing, 2011.
- Schaefer, J. T.: The Critical Success Index as an Indicator of Warning Skill, *Weather and Forecasting*, 5, 570–575, [https://doi.org/10.1175/1520-0434\(1990\)005<0570:TCSIAA>2.0.CO;2](https://doi.org/10.1175/1520-0434(1990)005<0570:TCSIAA>2.0.CO;2), publisher: American Meteorological Society Section: Weather and Forecasting, 1990.
- Seed, A. W.: A Dynamic and Spatial Scaling Approach to Advection Forecasting, *Journal of Applied Meteorology and Climatology*, 42, 381–388, [https://doi.org/10.1175/1520-0450\(2003\)042<0381:ADASSA>2.0.CO;2](https://doi.org/10.1175/1520-0450(2003)042<0381:ADASSA>2.0.CO;2), publisher: American Meteorological Society Section: Journal of Applied Meteorology and Climatology, 2003.
- Seed, A. W., Pierce, C. E., and Norman, K.: Formulation and evaluation of a scale decomposition-based stochastic precipitation nowcast scheme, *Water Resources Research*, 49, 6624–6641, <https://doi.org/10.1002/wrcr.20536>, <https://agupubs.onlinelibrary.wiley.com/doi/pdf/10.1002/wrcr.20536>, 2013.
- Shi, X., Chen, Z., Wang, H., Yeung, D.-Y., Wong, W.-k., and Woo, W.-c.: Convolutional LSTM Network: a machine learning approach for precipitation nowcasting, in: *Proceedings of the 28th International Conference on Neural Information Processing Systems - Volume 1, NIPS'15*, pp. 802–810, MIT Press, Cambridge, MA, USA, 2015.
- Shi, X., Gao, Z., Lausen, L., Wang, H., Yeung, D.-Y., Wong, W.-k., and Woo, W.-c.: Deep learning for precipitation nowcasting: a benchmark and a new model, in: *Proceedings of the 31st International Conference on Neural Information Processing Systems, NIPS'17*, pp. 5622–5632, Curran Associates Inc., Red Hook, NY, USA, 2017.
- Staniforth, A. and Côté, J.: Semi-Lagrangian Integration Schemes for Atmospheric Models - A Review, *Monthly Weather Review*, 119, 2206–2223, [https://doi.org/10.1175/1520-0493\(1991\)119<2206:SLISFA>2.0.CO;2](https://doi.org/10.1175/1520-0493(1991)119<2206:SLISFA>2.0.CO;2), publisher: American Meteorological Society Section: Monthly Weather Review, 1991.
- Sun, J., Xue, M., Wilson, J. W., Zawadzki, I., Ballard, S. P., Onvlee-Hoimeyer, J., Joe, P., Barker, D. M., Li, P.-W., Golding, B., Xu, M., and Pinto, J.: Use of NWP for Nowcasting Convective Precipitation: Recent Progress and Challenges, *Bulletin of the American Meteorological Society*, 95, 409–426, <https://doi.org/10.1175/BAMS-D-11-00263.1>, publisher: American Meteorological Society Section: Bulletin of the American Meteorological Society, 2014.
- Sønderby, C. K., Espeholt, L., Heek, J., Dehghani, M., Oliver, A., Salimans, T., Agrawal, S., Hickey, J., and Kalchbrenner, N.: MetNet: A Neural Weather Model for Precipitation Forecasting, <https://doi.org/10.48550/arXiv.2003.12140>, arXiv:2003.12140 [physics, stat], 2020.
- Trebing, K., Stanczyk, T., and Mehrkanoon, S.: SmaAt-UNet: Precipitation nowcasting using a small attention-UNet architecture, *Pattern Recognition Letters*, 145, 178–186, 2021.

- Ulichney, R.: Dithering with blue noise, *Proceedings of the IEEE*, 76, 56–79, <https://doi.org/10.1109/5.3288>, conference Name: Proceedings of the IEEE, 1988.
- Valdenegro-Toro, M. and Mori, D. S.: A Deeper Look into Aleatoric and Epistemic Uncertainty Disentanglement, in: *2022 IEEE/CVF Conference on Computer Vision and Pattern Recognition Workshops (CVPRW)*, pp. 1508–1516, IEEE, New Orleans, LA, USA, 895 <https://doi.org/10.1109/CVPRW56347.2022.00157>, 2022.
- Wen, Y., Vicol, P., Ba, J., Tran, D., and Grosse, R. B.: Flipout: Efficient Pseudo-Independent Weight Perturbations on Mini-Batches, in: *6th International Conference on Learning Representations, ICLR 2018, Vancouver, BC, Canada, April 30 - May 3, 2018, Conference Track Proceedings*, OpenReview.net, <https://openreview.net/forum?id=rJNpifWAb>, 2018.
- Wilks, D. S.: *Statistical Methods in the Atmospheric Sciences*, Academic Press, third edn., google-Books-ID: IJuCVtQ0ySIC, 2011.
- 900 Woo, S., Park, J., Lee, J.-Y., and Kweon, I. S.: Cbam: Convolutional block attention module, in: *Proceedings of the European conference on computer vision (ECCV)*, pp. 3–19, Munich, Germany, 2018.
- Xu, L., Chen, N., Yang, C., Yu, H., and Chen, Z.: Quantifying the uncertainty of precipitation forecasting using probabilistic deep learning, *Hydrology and Earth System Sciences*, 26, 2923–2938, <https://doi.org/10.5194/hess-26-2923-2022>, publisher: Copernicus GmbH, 2022.