

# Projecting sediment export from two highly glacierized alpine catchments under climate change: Exploring non-parametric regression as an analysis tool

Lena Katharina Schmidt<sup>1</sup>, Till Francke<sup>1</sup>, Peter Martin Grosse<sup>1</sup>, Axel Bronstert<sup>1</sup>

<sup>1</sup>Institute of Environmental Sciences and Geography, University of Potsdam, Potsdam, 14476, Germany

Correspondence to: L. Katharina Schmidt (leschmid@uni-potsdam.de)

**Abstract.** Future changes in suspended sediment export from deglaciating high-alpine catchments affect downstream hydropower ~~and~~ reservoirs, flood hazard, ecosystems and water quality. Yet ~~so far~~, quantitative projections of future sediment export have ~~so far~~ been hindered by the lack of ~~physical-process-based~~ models that can take into account all relevant processes within the complex systems determining sediment dynamics at the catchment scale. As a promising alternative, machine-learning (ML) approaches have recently been successfully applied to modeling suspended sediment yields (SSY).

This study is the first to our knowledge exploring machine-learning approach to derive sediment export projections until the year 2100. We employ Quantile Regression Forest (QRF), which proved to be a powerful method to model past SSY in previous studies, ~~for~~ two nested ~~glaciated~~ high-alpine ~~gauges-catchments~~ in the Ötztal, Austria, ~~i.e., above~~ -gauge Vent (98.1 km<sup>2</sup> ~~catchment area, 28 % glacier cover in 2015~~) and gauge Vernagt (11.4 km<sup>2</sup> ~~catchment area, 64 % glacier cover~~). As predictors, we use temperature and precipitation projections (EURO-CORDEX) and discharge projections (AMUNDSEN physically-based hydroclimatological and snow model) for the two gauges. We address uncertainties associated with ~~the~~ known limitation of QRF, ~~i.e.~~ that underestimates can be expected if ~~out-of-observation-range (OOOR) data points (i.e. values in the projection period exceeding the range represented in the training data (out-of-observation-range days, OOOR)) occur in the application period~~. For this, we assess the frequency and extent of these exceedances and the sensitivity of the resulting mean annual suspended sediment concentration (SSC) estimates. We examine the resulting SSY projections for trends, the estimated timing of 'peak sediment' and changes in the seasonal distribution.

Our results show that the uncertainties associated with the OOOR data points are small before 2070 (max. 3 % change in estimated mean annual SSC). Results after 2070 have to be treated more cautiously, as OOOR data points occur more frequently and as glaciers are projected to have (nearly) vanished by then in some projections, which likely substantially alters sediment dynamics in the area. The resulting projections suggest decreasing sediment export at both gauges in the coming decades, regardless of the emission scenario, which implies that 'peak sediment' has already passed or is underway. This is linked to substantial decreases in discharge volumes, especially during the glacier melt phase in late summer, as a result of increasing temperatures and thus shrinking glaciers. Nevertheless, high(er) annual yields can occur in response to heavy summer precipitation, and both developments would need to be considered in managing sediments as well as e.g. flood hazard. While we chose the predictors to act as proxies for sediment-relevant processes, future studies are encouraged to try and include geomorphological changes more explicitly, e.g. changes in connectivity, landsliding, ~~+~~ rockfalls, or vegetation colonization, as these could improve the reliability of the projections.

## 1 Introduction

40 Fluvial suspended sediment export from glacierized, high-alpine areas can be up to an order of magnitude higher (per unit area) than in non-glacierized downstream areas (Hinderer et al., 2013; Beniston et al., 2018). Thus, sediment dynamics in these high-alpine areas and changes therein have important implications for downstream hydropower generation and reservoir sedimentation (Schöber and Hofer, 2018; Guillén-Ludeña et al., 2018; Li et al., 2022), water quality (as well as nutrient and contaminant transport) (Bilotta and Brazier, 2008), aquatic species  
45 and riverine ecosystems (Milner et al., 2009, 2017; Gabbud and Lane, 2016; Huss et al., 2017), but also flood hazard (Nones, 2019) and carbon cycling (Tan et al., 2017; Syvitski et al., 2022).

High-alpine areas are particularly sensitive to climate change, experience above-average warming (Gobiet et al., 2014) and hence crucial cryospheric changes, such as ongoing and accelerating deglaciation, permafrost melt and snow cover changes (Huss et al., 2017; Beniston et al., 2018; Abermann et al., 2009). These changes go hand in  
50 hand with induce changes in discharge volumes, timing and magnitude (Vormoor et al., 2015; Kuhn et al., 2016; van Tiel et al., 2019; Rottler et al., 2020; Hanus et al., 2021). This in turn affects sediment export, and past changes have been observed frequently, e.g. due to enhanced subglacial sediment evacuation and increased sediment accessibility  
55 availability in expanding erodible landscapes, as receding glaciers and melting permafrost e.g. expose glacial till and weaken rockwalls (Micheletti and Lane, 2016; Carrivick and Heckmann, 2017; Lane et al., 2017, 2019; Costa et al., 2018; Delaney and Adhikari, 2020; Li et al., 2020; Vergara et al., 2022).

Nevertheless, future changes in sediment export are understudied (Zhang et al., 2022) and questions such as “Are sediment yields from deglaciating catchments increasing, decreasing or is there no pattern?” or “to what extent is it possible to quantify spatio-temporal patterns of future sediment yields?” (Carrivick and Tweed, 2021) have yet to be answered – although projections of climatological (e.g. Gobiet and Kotlarski, 2020; Gobiet et al., 2014),  
60 glaciological (e.g. Stoll et al., 2020; Bolibar et al., 2022; Huss, 2011) and hydrological changes (e.g. Madsen et al., 2014; Hanzer et al., 2018; Hanus et al., 2021; Huss and Hock, 2018; Tecklenburg et al., 2012; Wijngaard et al., 2016), that could serve as a basis for estimating future changes in sediment export, are numerous.

The main reason why answering such questions is challenging is that modeling sediment export at the catchment scale with process-based models remains difficult – if not impossible – because it is determined by a complex  
65 system of interconnected processes that is not straightforward to capture model. For example, the relationship between suspended sediment concentrations and discharge is most often nonlinear in time and space, and univariate models relying solely on discharge are often insufficient (Vercruyse et al., 2017; Zhang et al., 2021). Hence, in addition to variations in discharge, changes in sediment availability, entrainment, transport and deposition would have to be considered, there may be threshold effects and nonlinear responses of geomorphic  
70 processes (e.g. triggering of mass movements or debris flows), correlated influencing factors, hysteresis and seasonality (Huggel et al., 2012; Landers and Sturm, 2013; Vercruyse et al., 2017; Costa et al., 2018; Schmidt et al., 2023; Zhang et al., 2022). Additionally, long-term field observations (i.e. several decades and covering a wide range of conditions) that provide enough training and validation data to develop sediment-yield models or to analyze trends are very rare (Zhang et al., 2022; Schmidt et al., 2023).

75 There are conceptual models on (suspended) sediment export from deglaciating areas (Antoniazza and Lane, 2021; Carrivick and Tweed, 2021; Zhang et al., 2022), which expect an initial increase in sediment export as glaciers begin to retreat, and an eventual decrease – after ‘peak sediment’ – once the glaciers have disappeared and the

Formatiert: Englisch (Vereinigte Staaten)

landscape stabilizes. The timing of 'peak sediment' relative to 'peak meltwater' and the completion of deglaciation is presumed to depend ~~in a~~ on changes in erosive precipitation, i.e. a negative trend in erosive precipitation implies that peak meltwater and peak sediment may co-occur, while a positive trend or no change in erosive precipitation result in a lag between peak meltwater and peak sediment. However, deducing estimates of future sediment export and implications for individual catchments based on these conceptual considerations is not straightforward or even possible.

Common approaches to model sediment yields at the catchment scale, such as SWAT (e.g. Vigiak et al., 2017), BQART (Syvitski and Milliman, 2007), WBMsed (Cohen et al., 2013), WASA-SED (Mueller et al., 2010) or SAT (Zhang et al., 2021), are mostly empirical or conceptual in their sediment modules, do not consider all relevant erosion processes (i.e. neglecting glacial, gully erosion and landslides in the case of SWAT) and often concentrate on large spatial scales (i.e. sediment fluxes to the oceans for large basins, entire continents or at global scale) and / or large temporal scales (i.e. multiyear averages and long-term fluxes). On the other end of the spectrum, models for individual parts or processes within glacierized catchments exist, as for example a numerical approach to model subglacial fluvial sediment transport (Delaney et al., 2019) that has also been coupled with models for ice dynamics and bedrock erosion (Delaney et al., 2021), or e.g. probabilistic or physical models of mass wasting processes, such as landslide or debris flows (Iverson and George, 2014; Hirschberg et al., 2021; Campforts et al., 2022). However, as of yet, there is no all-in-one physical model (fully-distributed, incorporating thermal and pluvial drivers of sediment mobilization and transport) to simulate sediment export from cryospheric basins (Zhang et al., 2022) at the catchment scale.

Accordingly, studies that have attempted to project future suspended sediment yields (SSY) chose rather qualitative approaches, such as comparing sediment yield observations of warmer and colder ablation seasons (Stott and Mount, 2007; Bogen, 2008), using responses of SSY to past predictor changes and applying this to projected changes in the future (Li et al., 2021b) or fitting a multiple regression model to past data (of only one year) and increasing the temperature input in the model (Stott and Convey, 2021). However, these approaches may preclude modeling decreases or accounting for interactions between variables.

As a promising alternative, geoscientific machine-learning approaches have emerged, and have recently been acknowledged for their potential in applications to Earth System Science (Reichstein et al., 2019). Indeed, first studies showed that machine-learning approaches can easily outperform well-known existing models for sediment yield (Gupta et al., 2021; Rahman et al., 2022; Jimeno-Sáez et al., 2022; Schmidt et al., 2023). Such black box approaches tend to perform well for black box problems such as high-alpine sediment dynamics, 'where the input data and output data are well-understood or at least fairly simple, yet the process that relates the input to output is extremely complex' (Lantz, 2019). ~~;~~ In a previous study, we have developed and validated a Quantile Regression Forest (QRF) approach to model SSY in two nested high-alpine catchments and estimate yields for the past five decades (Schmidt et al., 2023). This showed that the QRF model outperformed commonly applied sediment rating curves by about 20 % of explained variance, and other studies found that regression trees and Random Forest models (which QRF is based on) even outperformed other machine learning approaches in modeling sediment dynamics (Talebi et al., 2017; Al-Mukhtar, 2019).

Thus, the present study is motivated to explore QRF to model future SSY based on measurement data, emission scenarios and subsequent hydrological model results. We test the approach in two glacierized high-alpine

Formatiert: Englisch (Vereinigte Staaten)

Formatiert: Englisch (Vereinigte Staaten)

Formatiert: Englisch (Vereinigte Staaten)

catchments in the Ötztal in Austria, where projections of future climatological and glacio-hydrological conditions from the AMUNDSEN model are available (Hanzer et al., 2018), and where we have successfully trained and applied QRF models to reconstruct past sediment export, using records of discharge, precipitation and air temperature (Schmidt et al., 2023).

The goals of the present study are (i) to assess uncertainties of the model due to known limitations of the QRF method in order to identify the limitations of the approach to derive estimates of future changes in sediment export with respect to trends in annual yields, shifts in the seasonal distribution and the timing of 'peak sediment' and (ii) to derive estimates of future changes in sediment export with respect to trends in annual yields, shifts in the seasonal distribution and the timing of 'peak sediment' to assess uncertainties of the model due to known limitations of the QRF method in order to identify the limitations of the approach.

## 2 Methods

In a previous study, we trained and validated quantile regression forest models to retrospectively estimate SSY at two gauges for the past 5 decades, using the available records of turbidity-derived suspended sediment concentrations (four and 15 years) and long-term records of the predictors, i.e. discharge, precipitation and temperature (Schmidt et al., 2023) (Figure 2, dashed-line box). In the present study, we use these models and apply them to downscaled and bias-corrected EURO-CORDEX temperature and precipitation projections that were used as input data for the glacio-hydrological model AMUNDSEN as well as the discharge projections of AMUNDSEN (Hanzer et al., 2018) (Figure 1). In the following, we outline the Quantile Regression Forest approach including its advantages and limitations with respect to modeling suspended sediment dynamics and the choice of predictors to model sediment dynamics in high-alpine areas. Then, we describe the study area, input data and necessary adjustments, as well as how we analyzed the limitations, sensitivities and the resulting SSY estimates.

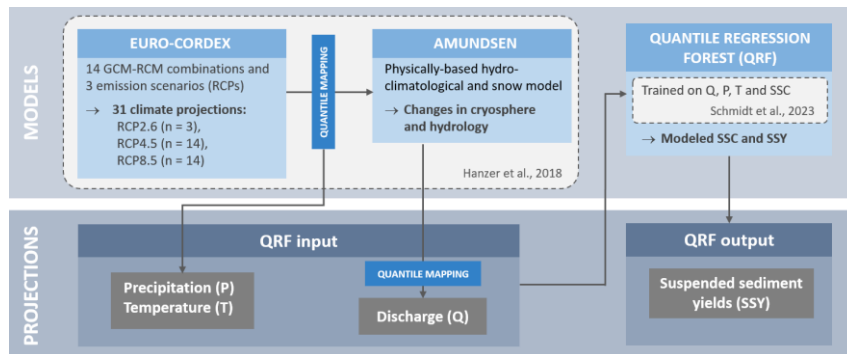


Figure 1 Overview of models and resulting projections used in this study. Bias-corrected EURO-CORDEX climate projections and AMUNDSEN model results serve as input data for the QRF models. Q: discharge, P: precipitation, T: temperature, SSC: suspended sediment concentrations, SSY: suspended sediment yields.

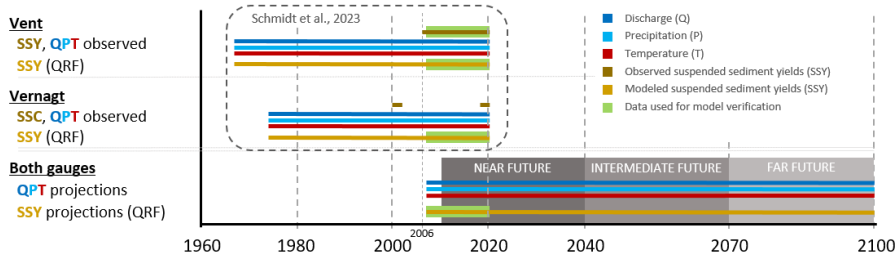


Figure 2 Temporal extent of input data as well as modeled suspended sediment yields (SSY) in the previous study (dashed-line box, topleft), as well as projections (discharge (Q), precipitation (P), temperature (T)) as input data and SSY estimates from this study. 2006 – 2020 is the training data period at gauge Vent. At gauge Vernagt, the QRF model was trained on the years 2000, 2001, 2019 and 2020, when SSC data were available. Thus, to verify model results in the present study, we use the QRF estimated yields at gauge Vernagt of the years overlapping with the climate and hydrology projections, i.e. the “overlap period” 2007 – 2020 (section 2.4.1).

## 2.1 Quantile Regression Forest for suspended sediment concentration modelling

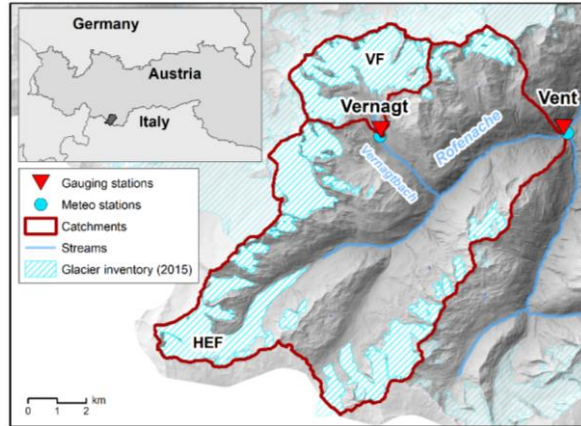
Quantile Regression Forest (QRF) (Meinshausen, 2006) is a non-parametric regression technique, that is based on Random Forest (RF) and can be classified as a machine-learning approach. It learns from the training data by growing ensembles of regression trees on random subsets (bootstrap samples) of the training data (Francke et al., 2008a; Schmidt et al., 2023). In each regression tree, the data are recursively partitioned based on splitting rules, where both RF and QRF randomly select the predictors used for splitting. In contrast to Random Forest, QRF keeps all observations within a node (whereas RF only keeps the mean), which allows to construct prediction intervals and to assess uncertainty (ibid.).

The advantages of QRF include that it can handle multiple input variables, makes no assumptions on distributions and can deal with interactions, non-linearity and non-additive behavior. As limitations, it does not allow for easy interpretation of effects of single predictors and model predictions will always be within the range of observations, i.e. if the predictors in the period of application exceed the range represented in the training dataset (hereafter called “out-of-observation-range (OOR) data points”), we can expect over- (or under-) estimations (ibid.) of the target variable, if the respective predictor has a continuing monotonic effect in this range.

With respect to modelling suspended sediment concentrations, studies have shown that QRF is very well-suited to model sedigraphs and estimate annual SSY (Francke et al., 2008b, a; Zimmermann et al., 2012) and that it performs favourably compared to sediment rating curves and generalized linear models (Francke et al., 2008a; Schmidt et al., 2023). On a related note, RF (which QRF is based on) outperformed support-vector machines and artificial neural networks (Al-Mukhtar, 2019) in modelling suspended sediment concentrations.

In a previous study (Schmidt et al., 2023), we trained QRF models [at daily resolution](#) on data of the two gauges Vent and Vernagt, using the limited available time series of turbidity (4 and 15 years) and long records of the primary predictors, discharge (Q), precipitation (P) and air temperature (T) (Figure 2). These can be seen as drivers or proxies for processes and catchment conditions crucial to sediment dynamics in high-alpine areas: e.g. discharge determines sediment transfer and erosion within the channel, precipitation is key for runoff formation and hillslope erosion, hillslope-channel coupling and the triggering of mass movement events, and air temperature controls the activation of sediment sources (e.g. sub- and proglacial sediments and their transport by glacier meltwaters or hillslope destabilization by permafrost thaw) and whether precipitation occurs as rain or snow. In addition to these





215 *Figure 3 Map of the catchment area above gauge Vent, with nested catchment above gauge Vernagt and major glaciers Vernagtferner (VF) and Hintereisferner (HEF). Meteo stations recording precipitation and temperature are located close to the gauges. (Map based on 10 m DEM of Tirol (Land Tirol, 2016), glacier inventory of 2015 (Buckel and Otto, 2018) and river network from tiris open government data (Land Tirol, 2021).)*

## 2.3 Input data

### 2.3.1 Climate projections

220 We used projections of air temperature and precipitation of the European part of the COordinated Regional  
 Downscaling Experiment (EURO-CORDEX) (Jacob et al., 2014), that have been downscaled and bias-corrected  
 for use in their hydrological model by Hanzer et al., 2018. The EURO-CORDEX initiative provides regional  
 climate model results to enable exploring impacts of future climate change at comparatively high horizontal  
 225 simulations provide higher precipitation intensities, which are entirely missing in the global climate model  
 simulations (Jacob et al., 2014), and are thus more likely to capture erosion-relevant changes in precipitation. The  
 data used in this study and by Hanzer et al. (2018) were the result of six different regional climate models (RCMs)  
 driven by five different global climate models (GCMs), resulting in a total of 14 different GCM-RCM modeling  
 chains (Table 1). These are forced by three different emission scenarios expressed as representative concentration  
 230 pathways (RCP), which correspond to an added radiative forcing of 2.6, 4.5 and 8.5 W/m<sup>2</sup> at the end of the 21<sup>st</sup>  
 century relative to pre-industrial conditions, i.e. RCP2.6 (intervention scenario assuming peak CO<sub>2</sub> concentrations  
 in the middle of the century, followed by slow decline and negative emissions), RCP4.5 (intermediate scenario  
 with peak emissions mid-century followed by strong decline) and RCP8.5 (assuming no implementation of climate  
 mitigation policies, considerably and steadily increasing emissions and greenhouse gas concentrations over time)  
 235 (Jacob et al., 2014; Hanzer et al., 2018). This results in a total of 31 RCP-GCM-RCM combinations. The horizontal  
 resolution of the EURO-CORDEX data is 25 km. In addition, RCM outputs for the period 1971 to 2005 were used to  
 Hanzer et al. (2018) used statistical downscaling to represent the local scale. For this, they, i.e. quantile mapping,  
 to bias-corrected all RCM outputs using at least 20 years of observations in the period 1971 to 2005, by using  
 240 quantile mapping, match which matches the distributions of the climate model simulations of the current climate  
 to the distributions of observations from stations. This is necessary, especially in Alpine regions, because the 12.5

km spatial resolution of RCMs (despite being comparatively high) can-not sufficiently resolve topographical and climatological heterogeneities (Hirschberg et al., 2021). [Hanzer et al. concluded that the corrected RCM outputs adequately represent the mean and variability of the observed climate.](#) ~~Hanzer et al.~~They interpolated the meteorology to a 100 m grid and we used the projections for the two grid cells that are located closest to the gauges Vent and Vernagt. EURO-CORDEX simulations are provided at daily resolution, and Hanzer et al., have disaggregated them to 3 h resolution to capture diurnal variability in the energy fluxes. We re-aggregated these data to daily resolution to match the temporal resolution of our QRF models (see section 2.3.3).

Table 1 Overview of EURO-CORDEX scenario simulations used in this study (unaltered from Hanzer et al. (2018), distributed under CC BY 3.0 <https://creativecommons.org/licenses/by/3.0/>).

ID	RCM	GCM	RCPs
1	CCLM4-8-17	CNRM-CM5	4.5, 8.5
2	CCLM4-8-17	EC-EARTH	4.5, 8.5
3	CCLM4-8-17	HadGEM2-ES	4.5, 8.5
4	CCLM4-8-17	MPI-ESM-LR	4.5, 8.5
5	HIRHAM5	EC-EARTH	2.6, 4.5, 8.5
6	RACMO22E	EC-EARTH	4.5, 8.5
7	RACMO22E	HadGEM2-ES	4.5, 8.5
8	RCA4	CNRM-CM5	4.5, 8.5
9	RCA4	EC-EARTH	2.6, 4.5, 8.5
10	RCA4	CM5A-MR	4.5, 8.5
11	RCA4	HadGEM2-ES	4.5, 8.5
12	RCA4	MPI-ESM-LR	4.5, 8.5
13	REMO2009	MPI-ESM-LR	2.6, 4.5, 8.5
14	WRF331F	CM5A-MR	4.5, 8.5

### 2.3.2 Hydrological projections

We used discharge projections of the physically-based hydroclimatological and snow model AMUNDSEN (Hanzer et al., 2018), which is a fully distributed energy and mass balance model including glacier evolution ( $\Delta h$  method) and particularly adapted to high mountain catchments of small to regional scale. It comprises a glacier retreat module and has been extensively validated for historic conditions, especially with respect to snow distribution (Hanzer et al., 2016). This is especially beneficial for modeling sediment dynamics, since AMUNDSEN can model processes such as changes in glacier melt that govern discharge dynamics and are crucial to sediment fluxes in these high-alpine areas. AMUNDSEN was forced by the downscaled, bias-corrected and temporally disaggregated EURO-CORDEX simulations of precipitation and air temperature described above (as well as relative humidity, global radiation and wind speed), and modeled snow, glaciers and hydrology in the Ötztal Alps until 2100 (ibid.). ~~Hanzer et al. have bias corrected all RCM outputs using at least 20 years of observations in the period 1971 to 2005, and concluded that the corrected RCM outputs adequately represent the mean and variability of the observed climate.~~The AMUNDSEN model was calibrated and extensively validated for the period 1997 – 2013, using water-balance-derived mean areal precipitation, snow depth recordings, Landsat and MODIS-derived snow extent maps, glacier mass balances and runoff recordings (Hanzer et al., 2016).

The temporal extent of both the meteorological and the hydrological projections is 2006 to 2100, but since data are not available for the entire year of 2006, we use the period of 2007 to 2100. Additionally, three HadGEM-driven models ended in November 2009. The years 2007 to 2020 overlap with observation data at gauge Vent and



270 results of the previous study at gauge Vernagt (Figure 2Figure-2), which we utilize to verify our model results (see sections 2.4.1 and 3.2).

### 2.3.3 Adjustment of input data for the QRF model

275 As the QRF models were trained at daily resolution, we aggregated the Q and T projections from 3 h resolution to daily means and P projections to daily sums. However, comparing the AMUNDSEN Q projections to observations in the overlap period (2007 – 2020; see Figure 2Figure-2), showed that underestimation of Q during the glacier melt period at gauge Vernagt and substantial overestimation of Q during the snowmelt period at gauge Vent. Hanzer et al. (2018) have acknowledged that, but have left the overestimations (percent bias (PBIAS) of up to 23 %) unaltered, since “mainly changes than absolute values are analyzed; these partial biases likely do not affect the main conclusions”. However, in our case, it is necessary to correct the discharge data, since SSY are sensitive to discharge amounts and additionally, unrealistic discharge amounts exceeding the maximum discharge value in the 280 training data represent a challenge (see section 2.4.2). Also, it is necessary to represent discharge seasonality, and thus discharge origins, as accurately as possible, as usually more sediment is exported during glacier melt than at similar discharge levels during snowmelt (Schmidt et al., 2023).

285 For consistency, we applied the same bias-correction as Hanzer et al., i.e. quantile mapping, using the methodology by (Gudmundsson et al., 2012) as implemented in the R package *qmap* (Gudmundsson, 2016). Due to strong season-dependent biases, Hanzer et al. have performed quantile mapping for each season individually. We followed this approach, yet in order to best represent discharge seasonality, we shifted the limits of the seasons by one month (NDJ, FMA, MJJ, ASO instead of DJF, MAM, JJA, SON), as this corresponded better to seasons with similar characteristics of over- or underestimation.

## 2.4 Analyses of model limitations and uncertainties

290 To analyze model performance and identify the limits of the applicability of the presented QRF modeling approach, we verified the modeled SSY against measurement data in the overlap period (2007 – 2020) (section 2.4.1), assessed the frequency of OOR data points as well as by how much the observation range of the predictors is exceeded in the projections and analyzed whether the modeled SSY are sensitive to changes in these predictors (section 2.4.2).

### 2.4.1 Verification of model results based on observed data

295 To determine how well the obtained SSY projections ~~of our QRF models~~ correspond to SSY derived from turbidity measurements, we compared the model results in the overlap period (2007 to 2020) to measurements at gauge Vent. Lacking continuous direct measurements at gauge Vernagt, we used estimated SSY for the years 2007 - 2020 from the QRF model trained on measurements for the years 2000, 2001, 2019 and 2020 (Schmidt et al., 2023) 300 for the comparison (see also Figure 2Figure-2). To simplify the descriptions in the results, we hereafter refer to these estimates as “observations” as well. As the hydroclimatic projections (and, thus, the SSY projections resulting from thereof) do not mimic the characteristics of single years (let alone month or days), but merely reproduce their distribution, we compared the distributions of observed and simulated annual SSY. To test for significant differences between these distributions, we used the two-sample Kolmogorov-Smirnov test, which is able to handle

Feldfunktion geändert

Formatiert: Englisch (Vereinigte Staaten)

305 the non-normal distribution of some groups, as implemented in the R package *stats* version 3.5.1 (R Core Team, 2018). Additionally, we assessed whether the seasonality of sediment export is accurately represented in the model results, by comparing mean monthly SSY.

#### 2.4.2 Assessment of limits of applicability

310 As mentioned in section 2.1, a known limitation of QRF is that model bias can **potentially** result if the predictors in the **application-projection** period exceed the range of observed values used as training data. This limitation is a direct consequence of the numerical characteristics of RF and QRF, which are incapable of extrapolation. In order to assess, how often and to what extent the model results are affected, we performed a series of analyses (overview in **Figure 4**Figure 4), described in the following.

##### Analysis of out-of-observation-range days

315 First, we quantified how often OOR days occurred for each projection *proj* and predictor *p* (i.e. Q, P or T), as the mean annual number of OOR days per year:

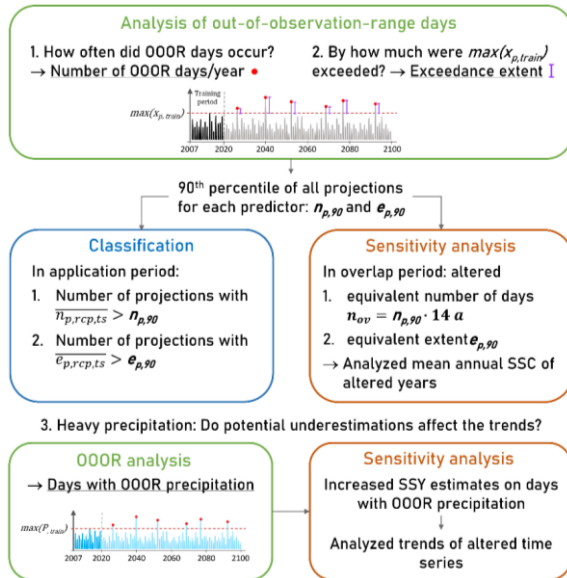
$$\overline{n_{p,proj}} = \frac{1}{n_{years}} \cdot \sum_{i=1}^{n_{years}} n_{p,proj,i}, \quad (1)$$

where  $n_{years}$  is the number of years, and  $n_{p,proj,i}$  is the number of OOR days in a given predictor and projection in a given year  $i$ . Additionally, we determined the **exceedance extent** (in % of the maximum value in the training data  $\max(x_{p,train})$ ), i.e. by how much the maxima in the observations (i.e. the training period)  $\max(x_{p,train})$  were exceeded on the OOR days  $j$  (i.e. in the projection period),

$$e_{p,j} = \frac{x_{p,j} - \max(x_{p,train})}{\max(x_{p,train})} \cdot 100 \quad \forall \quad x_{p,j} > \max(x_{p,train}), \quad (2)$$

where  $x_{p,j}$  is the value of the predictor  $p$  on OOR day  $j$ .

325 Although the same limitations of QRF theoretically also apply to predictors falling *below* the training minima, we did not consider them, since Q and P already contained very low or zero values and cannot fall below zero. Likewise, for T, minimum temperatures are already well below zero and further decrease (if it occurs) is not further physically relevant to sediment transport. Similarly, we only considered summer precipitation at both gauges (i.e. May – September), to exclude snowfall events that are not directly relevant to sediment dynamics.



330 Figure 4 Overview of analyses performed with respect to OOR days.  $\text{Max}(x_p, \text{train})$  denotes the maximum value in the training data,  $n$  refers to the number of OOR days and  $e$  to the exceedance extent. Subscripts:  $p$  for predictor,  $rcp$  for emission scenario,  $ts$  for time slice. The analysis of OOOR precipitation days (3.) is described in section 2.5.

### Sensitivity analysis

335 To assess the potential effects of the abovementioned OOR days on the model results, Second, we performed a sensitivity analysis for the primary predictors Q and T (Figure 4) based on the 90th percentile of the number of exceedances OOR days  $\overline{n_{p,proj}}$ , and the exceedance extents  $e_{p,j}$  of all projections, i.e.  $n_{p,90}$  (in  $\text{d a}^{-1}$ ) and  $e_{p,90}$  (in % of  $\text{max}(x_p, \text{train})$ ), for each predictor  $p$ . These values were considered to represent a severe case for possible model deficits due to lacking extrapolation capability. We created a respective test datasets for the sensitivity analysis from the training data in the 14-year overlap period (2007 – 2020): We selected the corresponding number of days  $n_{ov}$  with the highest values of the respective predictor in the overlap period, as

340 
$$n_{ov} = \overline{n_{p,90}} \cdot t_{ov} \cdot 14 \alpha \quad (\text{rounded to integers whole days}), \quad \text{with } t_{ov} = 14 \text{ a, as the length of the overlap period.} \quad (3)$$

and altered them by adding or subtracting the respective  $e_{p,90}$ . For example,  $n_{p,90}$  of Q in Vent is  $0.55 \text{ d a}^{-1}$ , therefore we changed  $n_{ov} = 0.55 \cdot 14 \approx 8$  days by the  $e_{p,90}$  of  $9.6 \text{ m}^3 \text{ s}^{-1}$  (Table 2/ Table 2).

345 We used the resulting altered time series of the primary predictors to compute the corresponding ancillary predictors (that describe antecedent conditions, see section 2.1), ran the QRF model with them and compared mean annual SSC after the alterations to the original dataset. Thus, we performed six individual runs for the sensitivity assessment at each gauge, two (one where the predictor was increased and one where it was reduced) for each of the three primary predictors Q, P and T. We chose to compare mean annual SSC instead of annual SSY, as discharge is needed to compute SSY so that the alterations in Q would have affected the estimated SSY twice.

Formatiert: Schriftart: Kursiv

Formatiert: Schriftart: Kursiv, Tiefgestellt

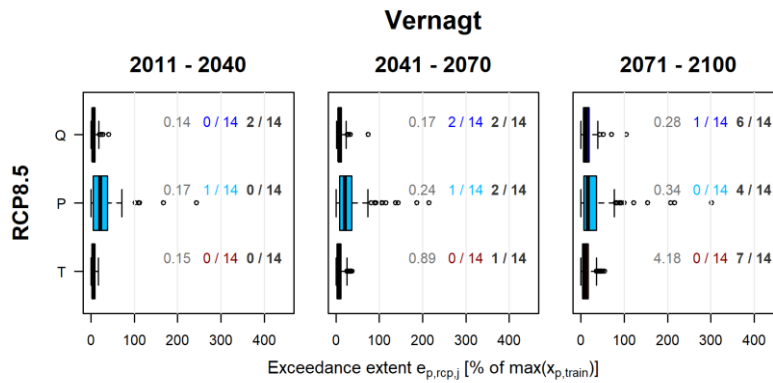
Formatiert: Schriftart: Kursiv

Table 2. Amount of reduction/increase in the sensitivity models (average exceedance extent  $\bar{e}_p$  in units of the corresponding predictor) and number of days with reduction/increase on average per year ( $\bar{n}_p$ ) and in total in the 14-year period ( $n_{ov}$ ).

	Q			P (summer)			T		
	$e_{Q,90}$ [m <sup>3</sup> s <sup>-1</sup> ]	$n_{Q,90}$ [d a <sup>-1</sup> ]	$n_{ov}$ [d]	$e_{P,90}$ [mm]	$n_{P,90}$ [d a <sup>-1</sup> ]	$n_{ov}$ [d]	$e_{T,90}$ [°C]	$n_{T,90}$ [d a <sup>-1</sup> ]	$n_{ov}$ [d]
Vernagt	1.5	0.32	4	28.86	0.45	6	3.3	2.75	38
Vent	9.6	0.55	8	25.95	0.54	8	2.02	0.22	3

### Classification

355 Third, we assessed whether the sensitivity analysis was informative for the different RCPs, time slices and predictors, i.e. if the sensitivity analyses contained sufficiently extreme conditions to represent the projections. For this, we determined the mean exceedance extent per predictor  $p$ , emission scenario  $rcp$  and time slice  $ts$   $\bar{e}_{p,rcp,ts}$  and the mean number of OOR days per year  $\bar{n}_{p,rcp,ts}$ . We compared these to the  $e_{p,90}$  and  $n_{p,90}$ , and marked the respective predictor-time slice-RCP combination yellow, if  $\geq 1/3$  of projections had  $\bar{n}_{p,rcp,ts} > n_{p,90}$  or  $\bar{e}_{p,rcp,ts} > e_{p,90}$ , and red if this applied to  $\geq 2/3$  of the projections (see Figure 5 and Table 5).



365 Figure 5 Example of the classification based on the OOR analysis. The boxplots show the distribution of exceedance extents  $e_{p,rcp,j}$  per RCP and predictor on all days  $j$  within the respective time slice  $ts$ . Grey numbers denote the average  $\bar{e}_{p,rcp,ts}$  of all projections within the respective RCP, time slice and predictor. Colored numbers indicate the number of projections with mean exceedance extent  $\bar{e}_{p,rcp,ts} > e_{p,90}$ , i.e. projections more extreme than the sensitivity analysis. Black numbers indicate the number of projections with the mean number of OOR days per year  $\bar{n}_{p,rcp,ts} > n_{p,90}$ , i.e. projections with more OOR days more extreme than the sensitivity analysis.

### 2.5 Analysis of model results

370 We analyzed the model results, i.e. estimated annual yields in the application-projection period for trends as well as shifts in seasonality. To assess trends, we used two methods implemented in the R package FUME (Santander Meteorology Group, 2012): the Mann-Kendall test, which is a non-parametric tool to detect linear trends (specifically, we used a version that was modified to detect trends in serially correlated time series (Madsen et al., 2014; Yue et al., 2012)) and Sen's slope estimator (Sen, 1968) to assess trend magnitude. Further, we compared the estimated yields in three time slices (near future: 2011 – 2040, intermediate future: 2041 – 2070, and far future: 2071 – 2100; see also Figure 2), comparable e.g. to Jacob et al. (2014) and Hanzer et al. (2018). To assess

Formatiert: Tiefgestellt

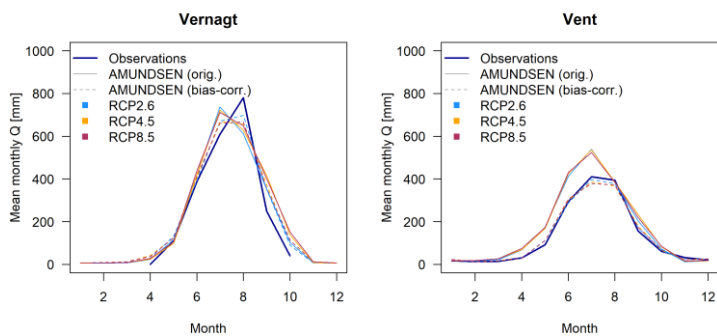
changes or shifts in the seasonality of sediment export, we compared the mean monthly yields of the observations and the projections.

To assess whether the detected trends are sensitive to the potential underestimation of yields on OOR precipitation days, we multiplied the daily yields estimated by our QRF model on these days by a factor of 5, i.e. assuming a very severe underestimation in the original estimates (Figure 4). We chose this factor, as it is close to the most severe exceedance extents in precipitation at both gauges, which are 456 % at gauge Vernagt and 442 % at gauge Vent (see also section 3.3). We then compared the trends in annual SSY of the altered time series to the trends in the original QRF estimates. All analyses were conducted with the statistical software R (R Core Team, 2018).

### 385 3 Results

#### 3.1 Verification of bias-corrected discharge for the present climate (2007 – 2020)

The bias-corrected discharge data yield more adequate representations of measured monthly discharge amounts and their seasonal distribution (Figure 6), as well as mean annual discharge volumes (Table 3). At gauge Vernagt for example, maximum mean monthly Q in the observations and the bias-corrected data is in August, whereas the original AMUNDSEN simulations suggested a maximum in July. Nevertheless, some underestimation of August discharge remains at gauge Vernagt. At gauge Vent, the original AMUNDSEN simulations substantially overestimated discharge amounts in April to July, i.e. the snowmelt period, which was successfully corrected by the bias-correction.



395 Figure 6 Comparison of mean monthly discharge [mm] at gauge Vernagt (left) and Vent (right) derived from measurements, unaltered multi-model means of the original AMUNDSEN output (solid lines) and multi-model means of the bias-corrected AMUNDSEN output (dashed lines) in the overlap period (2007-2020).

Table 3 Comparison of mean annual discharge volumes based on the original AMUNDSEN output, observations and bias-corrected AMUNDSEN estimates in the overlap period (2007 - 2020).

Mean annual Q (2007 – 2020) [mm]	Vernagt	Vent
AMUNDSEN (orig.)	2530	1990
Observations	2310	1537
AMUNDSEN (corr.)	2400	1555

400

### 3.2 Verification of modeled SSY for the present climate (2007 – 2020)

We find good agreement between observed and modeled annual SSY at both gauges (Figure 7), and the Kolmogorov-Smirnov test does not yield significant differences between the observations and model results in mean annual sediment yields. Nevertheless, years with extremal annual yields (both lower and higher) occur in the model results, especially under RCP4.5 and RCP8.5 (e.g. for Vent, max. 3250 t a<sup>-1</sup> in RCP4.5 vs. 2120 t a<sup>-1</sup> in the observations), likely due to the higher sample size in the projections (42 or 196 years in the projections compared to 14 years in the observations, see also description of Figure 7).

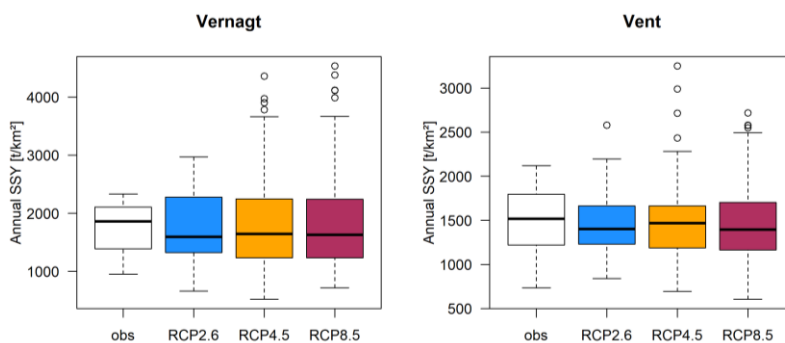


Figure 7 Comparison of annual specific SSY in the overlap period (2007 - 2020) derived from measurements ("obs", n = 14 years) and QRF modelling results per RCP (n = 42 for RCP2.6 and n = 196 for RCP4.5 and RCP8.5, resp.) at gauges Vernagt (left) and Vent (right).

Similarly, the seasonality of sediment export is well represented in overlap period of the projections (Figure 8), and the Kolmogorov-Smirnov test does not yield significant differences to the seasonal distribution of the measurements. Monthly SSY tend to be slightly lower in the projections in August at gauge Vernagt and in July and August at gauge Vent. Similar patterns had already become apparent in the comparison of mean monthly discharges at gauge Vernagt (Figure 6).

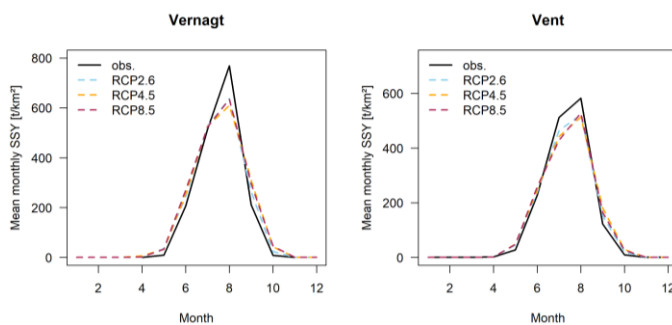


Figure 8 Comparison observations (see also Figure 2) to QRF model forced by climate projections (multi-model means per emission scenario) during the overlap period (2007-2020).

420 **3.3 Assessment of limits of applicability**

**Out-of-observation-range days**

Generally, we find more frequent OOR days and higher exceedance extents in later time slices and in the higher emission scenarios (Figure A1 Figure A-1). At both gauges, OOR days in Q are relatively rare, but in the higher emission scenarios and later time slices, OOR days become more frequent and individual exceedance extents of more than 100 % occur (Figure A1 Figure A-1 and Table 4 Table 4). Exceedances in temperature are more frequent at gauge Vernagt, especially under RCP8.5 and after 2040. At gauge Vent, there are only few OOR days in T, except under RCP8.5 after 2070.

OOOR data points in summer precipitation are rather rare at both gauges. However, precipitation shows very high exceedances extents of up to ca. 450 % (RCP4.5 after 2070 and RCP8.5 before 2040 at gauge Vent; RCP4.5 after 2070 at gauge Vernagt, Figure A1 Figure A-1 and Table 4 Table 4). This corresponds to daily precipitation sums of approx. 280 and 240 mm/day at gauge Vent and Vernagt, respectively, and is equivalent to over a third of the current mean annual precipitation at gauge Vent (687 mm (Hydrographic yearbook of Austria, 2016)). Yet even without the most extreme cases, exceedance extents in precipitation can be quite severe, which corresponds to very heavy precipitation events.

435 Table 4 Mean and maximum exceedance extents  $e_p$  of the three primary predictors discharge (Q), precipitation (P) and air temperature (T) across all emission scenarios and time slices, in percent of the maximum during the training period  $\max(x_{p,train})$  and original units.

	$e_p$	Q [%]	Q [ $m^3 s^{-1}$ ]	P [%]	P [mm]	T [%]	T [°C]
Vernagt	Mean	10.1	0.7	29.3	12.8	10	1.4
	Max	105	6.9	456	199.8	54.4	7.9
Vent	Mean	11.8	4.4	24.8	13.1	4.2	0.9
	Max	123	45.4	442	233	16.3	3.6

**Sensitivity analysis**

440 Figure 9 shows the results of the sensitivity analysis, which indicates the extent to which annual SSY estimates may be affected by underestimations on days with OOR observations for the different predictors. P is the most sensitive predictor at gauge Vernagt. Yet although precipitation amounts were altered quite substantially on the six days with the highest precipitation in the overlap period (by almost 29 mm, see Table 2) the effect on mean annual SSC is small ( $\leq 3\%$ ). The same applies to Q, the most sensitive predictor at gauge Vent, which was altered by almost 10  $m^3/s$  on eight days. Given the alterations corresponding to the respective  $n_{p,oo}$  and  $e_{p,oo}$ , the most sensitive predictor is P at gauge Vernagt and Q at gauge Vent (Figure 9). Yet although the reductions on the days with the highest P in the overlap period were quite substantial (Table 2), the maximum effect on the mean annual SSC is  $\leq 3\%$  at both gauges. Temperature is the second most sensitive parameter at gauge Vernagt, while at gauge Vent, the temperature alterations at gauge Vent had little effect on mean annual SSC. At gauge Vent, P is the second most sensitive parameter, but with a maximum effect of  $< 2\%$  on mean annual SSC.

450 The results of the sensitivity analysis also give indication of the behavior of the QRF model in response to OOR data points: as expected, we generally observe a decrease in mean annual SSC if we decrease the predictor values on the selected days (Q, P and T), and vice versa. However, for most predictors, the decrease is more pronounced than the increase (although the same days were altered by the same extent). We presume that this is due to the

Feldfunktion geändert  
Feldfunktion geändert

described incapability of QRF to extrapolate. Thus, we can expect to underestimate the additional effect, e.g. of precipitation exceeding  $\max(P_{train})$ .

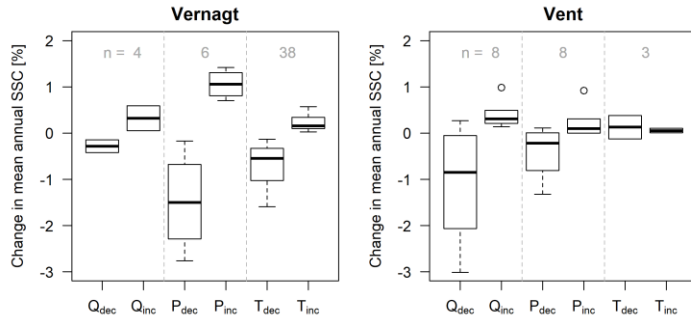


Figure 9 Results of the sensitivity analysis for gauges Vernagt (left) and Vent (right) with respect to mean annual SSC of the years with altered days. Subscripts signify increase (inc) and decrease (dec) in the predictors by the respective average exceedance extent  $e_{p,90}$  and frequency  $n_{p,90}$  as identified based on the exceedance analysis. Grey numbers represent the number of altered days in the test data set (2007 – 2020).

#### Classification

Table 5 shows, that until 2070, all predictors and RCPs fall within the conditions covered by the sensitivity analysis (with the exception of Q after 2040 at gauge Vent under RCP8.5). This implies that the results of the sensitivity analysis are informative in these cases, and that we expect similar or smaller effects of OOR days on mean annual SSC or SSY in the application-projection period. After 2070, exceptions occur at both gauges in two out of three RCPs and several predictors, which implies that the uncertainty is higher than in the results of the sensitivity analysis.

Table 5 Results of the classification per emission scenario, predictor and time slice. The color of the field denotes more than 1/3 (yellow) and 2/3 (red, does not occur) of the projections with  $\bar{e}_{p,r,c,p,t,s} > e_{p,90}$  (assumed in sensitivity); N denotes more than 1/3 (yellow) and 2/3 (red, does not occur) of the projections with  $\bar{n}_{p,r,c,p,t,s} > n_{p,90}$ .

		Vernagt			Vent		
		2011 – 2040	2041 – 2070	2071 – 2100	2011 – 2040	2041 – 2070	2071 – 2100
RCP2.6	Q						N
	P			N			
	T						
RCP4.5	Q						
	P						
	T						
RCP8.5	Q			N		N	N
	P			N			
	T			N			N

The OOR analysis showed that very high exceedance extents occur in precipitation and that precipitation is a sensitive parameter at both gauges (although the effect on mean annual SSC was small). Additionally, we find that heavy summer precipitation becomes more intense (and only slightly more frequent) (Figure A2Figure A-2 in



475 appendix): the 99.95<sup>th</sup> percentile of the summer precipitation projections increases over time, which suggests that precipitation events become more intense. At the same time, the number of precipitation events that exceed the 99.95<sup>th</sup> percentile determined from the precipitation observations in the overlap period (2007 – 2020) hardly increases on average, which suggest that precipitation events of a certain strength do not become (much) more frequent. We also find an increase in daily SSY associated with heavy precipitation events (Figure A2Figure A-2 in appendix).

480 Thus, we additionally assessed whether the trends in annual yields were sensitive to changes in yields on days with OOR precipitation (sections 2.5 and 3.4.1), as extreme precipitation can be very important for sediment dynamics (e.g. by triggering mass movements).

### 3.4 Projections of future sediment export: changes in annual yields, timing of peak sediment and changes in seasonality

#### 485 3.4.1 Changes in annual yields and timing of peak sediment

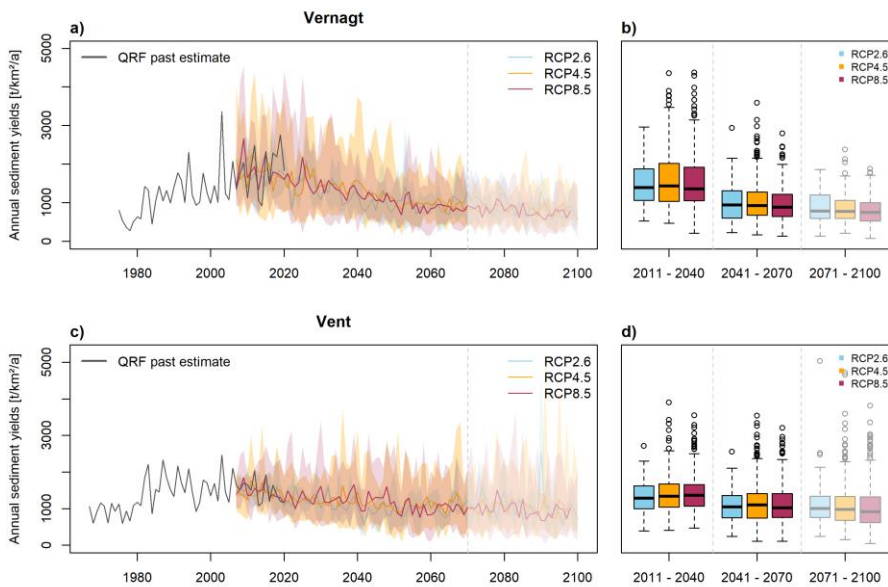
The resulting projections suggests an overall decrease in mean annual SSY for both gauges and each of the three emission scenarios, which is more pronounced at gauge Vernagt (Figure 10Figure 10 and Table 6Table 6). Accordingly, we consistently find significant negative trends in the projections (2007 – 2100) in mean annual SSY (Table 6Table 6). The differences between the RCPs are small, and smaller than the spread within individual RCPs (Figure 10Figure 10). Accordingly, trends of mean annual SSY are only slightly more negative in the high-emission scenarios. With respect to the 99<sup>th</sup> percentile of annual SSY estimates, trends are less strong than for mean SSY estimates at gauge Vent, while at gauge Vernagt, the trends in the 99<sup>th</sup> percentile are even stronger than for mean annual SSY estimates.

495 Negative trends were detected for all individual projections as well: at gauge Vent, 26 (out of 31) are significant ( $\alpha = 0.05$ , Sen's slope ranging from -10.8 to -3.8 t km<sup>-2</sup> a<sup>-2</sup>), and at gauge Vernagt, 30 of 31 are significant ( $\alpha = 0.05$ , Sen's slope ranging from -15.2 to -6.1 t km<sup>-2</sup> a<sup>-2</sup>).

Table 6 Trends in mean and 99<sup>th</sup> percentile of annual specific SSY projections (2007 – 2100) given as Sen's Slope [t km<sup>-2</sup> a<sup>-2</sup>] for the original estimates and the altered estimates (5-fold increased SSY on days with OOR precipitation). Significance levels: \* = 0.05, \*\* = 0.01, \*\*\* = 0.001.

Sen's Slope of mean annual SSY [t km <sup>-2</sup> a <sup>-2</sup> ]		RCP2.6		RCP4.5		RCP8.5	
		Original	Altered	Original	Altered	Original	Altered
Vernagt	Mean	-10.6***	-10.7***	-11.6***	-11.5***	-12.4***	-12.1***
	99 percentile	-12.3***	-12.3***	-22.6***	-22.3***	-22.3***	-21.3***
Vent	Mean	-4.85**	-4.97**	-5.0***	-4.67***	-6.41***	-5.6***
	99 percentile	-4.5**	-5.1***	0.5	2.3	-3.1*	0.1**

500 The trend in the altered time series (with 5-fold increased daily yields on days with OOR precipitation; see section 2.5) hardly differs from the trend in the original time series (Table 6Table 6). Specifically, at gauge Vernagt, trend characteristics are basically unchanged. The only trend reversal occurs in the 99<sup>th</sup> percentile at gauge Vent under RCP8.5, where the trend is slightly positive (and significant) instead of negative. We conclude that the overall trend characteristics remain very robust, even if we assume as severe underestimation of the model on days with OOR values in the predictors. Thus, the overall future sediment budget seems to be governed by their mean behavior rather than solitary extreme events.



510 *Figure 10 a) and c): Left: Mean annual suspended sediment yields per RCP, with the entire range from minima and to maxima of the individual projections indicated by the colored envelopes. The period after 2070 is faded due to lower confidence in model results, as pointed out in section 4.3. b) and d) Right: Annual SSY of all respective years and projections within the three time slices.*

The synopsis with estimates of annual SSY for the past decades shows that we find increases in annual yields at both gauges up until sometime between 2000 and 2020, and decreases afterwards, which is much more distinct at gauge Vernagt (Figure 10, Figure 10 and Figure 11). This suggests, that 'peak sediment' has already been reached or is underway at both gauges and occurs simultaneously with 'peak water' (Figure 11).

515

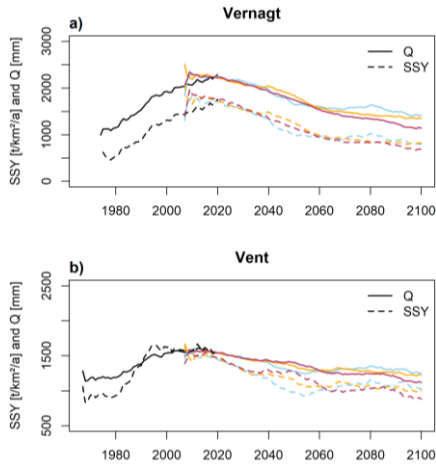
Formatiert: Nicht Hervorheben

Feldfunktion geändert

Formatiert: Englisch (Vereinigte Staaten)

Feldfunktion geändert

Formatiert: Englisch (Vereinigte Staaten)



520 *Figure 11. Estimated timings of peak water and peak sediment. Black lines indicate past mean annual Q from measurements and mean annual SSY estimates of ORF model; colored lines correspond to different RCPs (compare to Figure 10). Underlying data have been smoothed using a 15-year moving average.*

### 3.4.2 Changes in seasonality

525 Mean monthly SSY is projected to decrease substantially during the glacier melt period in August in all RCPs and at gauge (Guelz) and (Hillemont) and (Vernagt) and (Vent) as well as the mean monthly SSY in August to a value under RCP8.5 after 2070 at both gauges. Additionally, the spring onset of sediment export is projected to occur at a higher rate and slightly earlier in the year in the high-emission scenarios under RCP8.5 after 2070. This represents a decrease in importance of glacier melt for sediment export. After 2070, only relatively minor further changes are projected under RCP2.6 and RCP4.5, whereas RCP8.5 experiences further decreases in mean monthly SSY throughout the year.

530 At gauge Vent, a slight increase in mean July SSY is projected after 2070 under RCP2.6. This is likely related to an increase in discharge, since this increase is not visible in mean monthly concentrations (not shown Fig. A3 in the Appendix). It also has to be considered that only three projections are averaged for RCP2.6 (as compared to 14 in the other RCPs), which makes it less robust with respect to outliers.

535 A comparison to the seasonal distributions determined from the altered time series (5-fold increased SSY on days with OOR precipitation), showed only very slight differences, which indicates that the seasonal distribution is also insensitive to underestimations of SSY on days with heavy precipitation.

Formatiert: Zentriert, Nicht vom nächsten Absatz trennen

Formatiert: Englisch (Vereinigte Staaten)

Feldfunktion geändert

Formatiert: Englisch (Vereinigte Staaten)

Formatiert: Englisch (Vereinigte Staaten)

Formatiert: Beschriftung;MS\_Abb.Beschriftung

Formatiert: Englisch (Vereinigte Staaten)

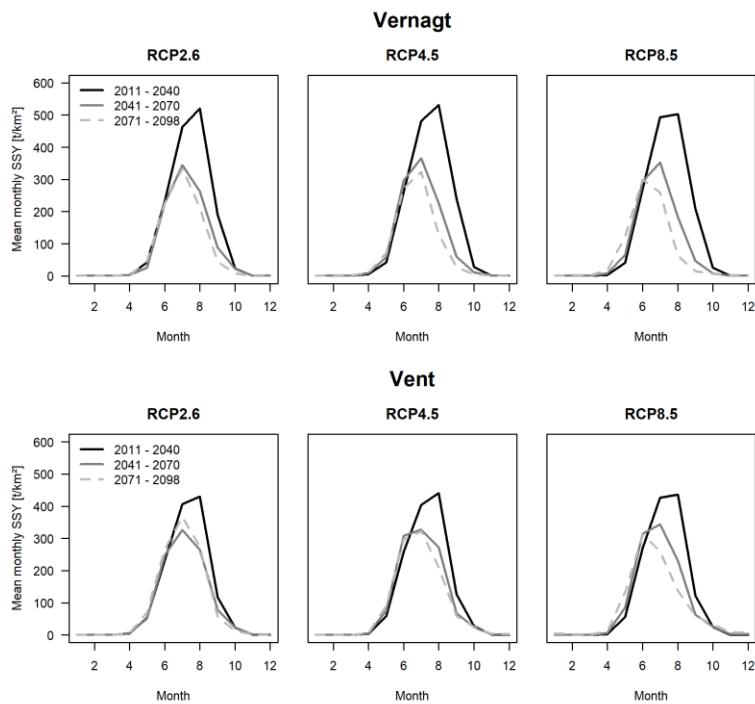


Figure 12: Seasonality of mean monthly SSY in three time slices and emission scenarios (as the monthly mean of all respective modeling chains).

#### 4 Discussion

540 Testing new methods to estimate future suspended sediment export from glacierized high-alpine areas can provide important information, e.g. to flood hazard, sediment or water quality management, since estimating such changes had so far been limited to relatively rough approximations. This study represents the first attempt to our knowledge to derive SSY projections using a machine-learning approach and investigate them in synopsis with reconstructed past SSY.

##### 545 4.1 Projected changes in sediment export and location of peak sediment

The presented SSY projections in the Ötztal, Austria, suggest an overall decrease in annual SSY (Figure 10). This is consistent across emission scenarios (i.e. with respect to the ensemble means) as well as all individual projections (i.e. based on the 31 different RCP-GCM-RCM-chains). This is linked to shrinking of glaciers and thus decreases in glacier melt, as temperature is projected to increase in all models (between +1.1 (RCP2.6) to +3.8°C (RCP8.5) in the annual mean) (Hanzer et al., 2018). Accordingly, snow cover is projected to decline, especially in low elevations. With respect to precipitation, there is no clear general trend with respect to annual sums: both decreases and increases are projected by individual models (-14% to +24%) and multi-model averages are close to zero for all scenarios, yet with a general shift of precipitation from summer to winter

Formatiert: Mit Gliederung + Ebene: 2 + Nummerierungsformatvorlage: 1, 2, 3, ... + Beginnen bei: 1 + Ausrichtung: Links + Ausgerichtet an: 0 cm + Einzug bei: 1,02 cm

555 The modelled decrease in SSY is much more distinct at gauge Vernagt, where a trend analysis in the previous study (Schmidt et al., 2023) showed significant positive trends in the period until 2020. At gauge Vent, significant positive trends were detected if all data points since the 1970s are-were considered (ibid.). However, if only the years after the distinct increase around 1980 were considered, the trend was slightly negative (ibid.). This suggests that 'peak sediment' has already been reached or is underway at both gauges and occurs simultaneously with 'peak water'.

Feldfunktion geändert

560 These findings match expectations of conceptual models, that sediment yield from deglaciating basins will initially increase (due to increases in glacial erosion, sediment supply accessibility, transport capacity and occurrences of extreme floods) and subsequently decrease, as glacier masses decline, meltwater volumes and freeze-thaw weathering decrease, and vegetation colonizes (Antoniazza and Lane, 2021; Zhang et al., 2022). It is expected that peak sediment may lag behind peak meltwater, with a lag that can be up to decades or centuries (Delaney and Adhikari, 2020). This lag is hypothesized to be scale-dependent, i.e. will be shorter for areas closer to the glacierized regions, and to depend on the changes in erosive precipitation: if erosive precipitation decreases, peak sediment occurs simultaneously with peak water, while increasing or stable erosive rainfall scenarios are associated with a lag (Zhang et al., 2022). Indeed, for the study area of this study, a decrease in summer precipitation sums (i.e. June to August, which is the time of minimum snow-cover and thus maximum erodibility) is projected (Hanzer et al., 2018). At the same time, heavy precipitation events are projected to become more intense (and only slightly more frequent, Figure A2 in the appendix). However, the negative trend in discharge appears to prevail, as- and our estimates suggest that 'peak sediment' coincides with 'peak meltwater' (Figure 11).

Feldfunktion geändert

Formatiert: Englisch (Vereinigte Staaten)

575 Sediment export projections differed only slightly (if at all) between emission scenarios, i.e. the spread between projections within one emission scenario is much larger than differences between ensemble means of the three RCPs (Figure 10). This is due to irreducible internal climate variability, which has been acknowledged in climate modeling (Deser et al., 2012) as well as erosion modeling (Hirschberg et al., 2021). It should be noted, that comparisons to RCP2.6 need to be treated with care, as it comprises less GCM-RCM combinations (only 3 as compared to 14 in the higher emission RCPs). Nevertheless, the absence of major differences between RCPs is in accordance with findings by Gobiet & Kotlarski (2020), that "until the middle of the 21st century [...] it is projected that climate change in the Alpine area will only slightly depend on the specific emission scenario." Accordingly, Hanzer et al. (2018) projected glacier volumes to decline by 60-65-% until 2050 "largely independent of the emission scenario".

#### 585 4.2 Changes in seasonality and response to heavy precipitation events

Formatiert: Mit Gliederung + Ebene: 2 + Nummerierungsformatvorlage: 1, 2, 3, ... + Beginnen bei: 1 + Ausrichtung: Links + Ausgerichtet an: 0 cm + Einzug bei: 1,02 cm

590 Despite the overall decrease in SSY, our results suggest that high annual SSY are possible, especially at gauge Vent and towards the end of the century (Figure 10). Additionally, and that yields on days with heavy precipitation may increase at both gauges – in absolute terms and in relation to the annual export (Figure A2 in appendix). This is reasonable, given that increases in heavy precipitation intensity and/or frequency in the European Alps have been detected in measurement data from the past (e.g. (Hiebl and Frei, 2018; Scherrer et al., 2016; Gobiet and Kotlarski, 2020)), as well as future projections (Gobiet and Kotlarski, 2020; Jacob et al., 2014; Kotlarski et al., 2023) – despite the overall decrease in summer precipitation mentioned above. As a result, we can expect an increase in sediment-related harmful events triggered by heavy precipitation, such as flash floods and gravitational mass movements (i.e. debris flows, landslides) (Huggel et al., 2012; Savi et al., 2020; Gobiet and Kotlarski, 2020).

Similar expectations, i.e. increasing high-magnitude transport events in the context of an overall decrease, have e.g. been expressed with respect to bedload in South Tyrol (Coviello et al., 2022). Such a development would have important implications e.g. for sediment management in hydropower production, and flood hazard management, as the flood risk can increase if cross-sections are reduced after sedimentation and potential backwater effects need to be considered (Nones, 2019), and where-as much of the damage is associated with transported solids rather than the water itself (Badoux et al., 2014).

Our findings suggest a shift in sediment export seasonality, since the highest mean monthly SSY shifts from August to July (or even June), due to substantial reductions in sediment export in July, August and September at both gauges (Figure 12). This is linked to the projected distinct reductions in glacier melt (Hanzer et al., 2018) and appears reasonable given that glacier melt has so far been the dominant transport medium of suspended sediments at these gauges (Schmidt et al., 2023). These results are not sensitive to potential underestimations of SSY on days with very heavy precipitation. Such shifts in seasonality and the concomitant overall reduction in fluvial sediment transport will likely have severe effects on biodiversity, i.e. flora and fauna of glacier-fed streams (Milner et al., 2009, 2017; Gabbud and Lane, 2016; Huss et al., 2017).

### 4.3 Limitations

As a potential limitation to the presented Quantile Regression Forest approach, out-of-observation-range data points in the predictors can lead to underestimates in SSY on the affected days. Yet, the analysis of such incidents in synopsis with the results of the sensitivity analysis showed that before 2070, the effect on annual yield estimates is  $\leq 3\%$  (Figure 9). This is very small given the overall high variability in SSC (Vercruyssen et al., 2017; Delaney et al., 2018; Schmidt et al., 2023). On a similar note, even assuming rather generous increases of yields on days with OOR precipitation altered the trends only marginally, which shows that underestimations on individual days with OOR precipitation has little effect on long-term annual averages. However, we have less confidence in the model results after 2070 for two reasons. First, more frequent and severe OOR incidents occur during this time, especially in the high-emission scenarios, and fewer projections are covered by the assumptions of the sensitivity analysis. We can therefore expect a higher uncertainty in the model results. Specifically, the effect of underestimation for single large events will aggravate. Second, more than a few glacier simulations suggest that glaciers could have disappeared almost entirely by 2070 (Hanzer et al., 2018), which implies a major shift in the hydro-sedimentological-geomorphic functioning of these catchments. While our QRF models were able to model threshold effects better than sediment rating curves (Schmidt et al., 2023) (likely because they are not bound to linear or monotonous relationships), this is only true for effects that are represented in the training data. Thus, the results for the period after 2070 need to be treated with caution. We have indicated this in the presentation of our results by using transparency or dashed instead of solid lines.

As a more general limitation, there are several other factors with the potential to substantially alter and influence sediment dynamics in the study area, which we cannot consider in our models. This concerns geomorphological changes, such as increased paraglacial erosion: debuttressed slopes may trigger landslides and rockfalls, and indeed, increased debris flow and rockfall activity have been shown in response to warming in other areas, likely associated with intensified alpine permafrost thaw (Savi et al., 2020; Hartmeyer et al., 2020; Huggel et al., 2012). Additionally, sediment availability and accessibility increase as erodible landscapes expand (Li et al., 2021a), and subglacial sediment availability might also increase (more subglacial sediment can be accessed by meltwaters as

Formatiert: Mit Gliederung + Ebene: 2 + Nummerierungsformatvorlage: 1, 2, 3, ... + Beginnen bei: 1 + Ausrichtung: Links + Ausgerichtet an: 0 cm + Einzug bei: 1,02 cm

Formatiert: Englisch (Vereinigte Staaten)

the equilibrium line altitude retreats upslope) until the glacier size becomes smaller than a critical size (Delaney and Adhikari, 2020; Zhang et al., 2022). Although these processes are likely already partially reflected in the observations used for the model training, their intensity may still be too low to be sufficiently learned by the model.

635 Thus, future intensification of these processes could lead to higher sediment export rates than our estimates suggest, and might thereby affect the estimated location of 'peak sediment'. Notwithstanding, there are also several factors that could lead to decreases in sediment export, such as decreases in connectivity (such as the formation of supra-, sub- or proglacial lakes or outwash fans which act as sediment traps) or decreasing glacial erosion as glaciers recede (Zhang et al., 2022). Additionally, freeze-thaw weathering may decrease (Hirschberg et al., 2021) and it is not clear how quickly the deglaciating landscapes will stabilize, e.g. through eluviation of fine materials and fluvial sorting of sediment, which progressively increases the resistance to entrainment and transport (Ballantyne, 2002; Lane et al., 2017), or vegetation colonization (Haselberger et al., 2021; Altmann et al., 2023; Musso et al., 2020; Eichel et al., 2018). Many of these processes are ultimately governed by temperature and/or precipitation, and we have chosen the predictors to act as proxies (e.g. antecedent moisture and temperature conditions could be crucial for mass movements). While this is out of scope of the presented study, we encourage 645 future studies to work towards including more advanced proxies for geomorphological changes.

#### 4.4 Uncertainties

The presented results are associated with uncertainties, which are a combination of uncertainties inherited from the underlying climatological and hydrological projections and uncertainties inherent in the QRF approach.

650 Climate model uncertainty represents a combination of uncertainties in assumptions of future anthropogenic greenhouse gas emission, GCM uncertainty (different GCMs produce different responses to the same radiative forcing) and RCM uncertainty (different RCMs forced by same GCM produce different regional responses) (Evin et al., 2021; Gobiet et al., 2014). It has been found that EURO-CORDEX simulations may be biased towards "too cold, too wet, too windy", but that these uncertainties are mostly within the observational uncertainties, and that simulations "reproduce fairly well the recent past climate despite some biases" (Vautard et al., 2021). To address this, it was recommended to carry out bias-correction, which has been performed by means of quantile mapping for the precipitation and temperature projections (Hanzer et al., 2018). The hydrological model results are also associated with uncertainties, such as the tendency to overestimate spring runoff, winter snow accumulation and glacier mass balances. We have addressed this through bias-correcting the discharge projections, which resulted 660 in a more adequate representation of discharge seasonality and volumes. Certainly, bias-correction methods such as quantile mapping in turn introduce uncertainties, e.g. by assuming that the biases are stationary, i.e. do not change over time (Gudmundsson et al., 2012). Hydrological simulations that do not show the necessity for this correction could eliminate this issue. Uncertainties in the QRF approach have been addressed in a previous study, and include the tendency to underestimate rare, high-magnitude daily SSY (albeit with small effects on the respective annual yields), the underestimates on days with OOR values (which had small effects until 2070, as discussed in detail above) and the choice of temporal resolution (i.e. daily compared to hourly resolution involves some loss of information, e.g. on precipitation intensities, but the effect was also found to be small) (Schmidt et al., 2023). Since QRF is a data-driven approach, the quality of the estimates hinges on the underlying training data set as well as the choice of predictors, i.e. a large and varied enough dataset in combination with predictors that 670 meaningfully represent the most important processes improve the quality of the estimates (ibid.). Thus, future

**Formatiert:** Mit Gliederung + Ebene: 2 + Nummerierungsformatvorlage: 1, 2, 3, ... + Beginnen bei: 1 + Ausrichtung: Links + Ausgerichtet an: 0 cm + Einzug bei: 1,02 cm

studies are recommended to explicitly sample extreme events, and/or verify the representativity of the training dataset.

## 5 Conclusion

675 We found decreasing trends in annual SSY at both gauges regardless of the emission scenario, which suggests that  
680 peak sediment was already reached between 2000 and 2020. [This is linked to substantial decreases in discharge volumes especially during the glacier melt phase in late summer, as glaciers continue to melt as a result of increasing temperatures.](#) These findings persist even if yields on days with projected heavy precipitation are inflated by a factor of five. Despite the projected overall decrease, high(er) annual yields are possible, likely in response to heavy summer precipitation, [which could become more intense according to the projections.](#) This discrepancy has important implications for sediment management, but also e.g. of flood management.

685 To our knowledge, this study represents the first attempt to combine machine learning for suspended sediment modeling with climate and hydrological projections, in order to derive projections of sediment export in high-alpine areas. It demonstrated that Quantile Regression Forest can be a valuable tool for this application. We addressed known issues of QRF, i.e. underestimations on days where predictors in the ~~application-projection~~ period exceed the range represented in the training data. The influence [of such underestimations](#) on the results showed to be negligible until 2070. We conclude that the presented results are much more uncertain after 2070, partly because of more frequent and severe out-of-observation-range data points, but mainly since a major shift in the functioning of the hydro-~~sedimentological-geomorphic~~ system can be expected as deglaciation is quasi completed.

690 However, while the chosen predictors represent proxies for crucial processes controlling sediment transport in these high-alpine environments, several potentially crucial geomorphological factors, that could increase or decrease sediment export (and thereby change the projected trends and location of peak sediment) could not be taken into account. These include increases in rockfalls and landsliding, changes in connectivity or vegetation colonization. Future studies are encouraged include these factors more explicitly.

## 695 Code and data availability

The model code, input data and results are published under DOI [10.23728/b2share.5f706863fc5041c49cb8d1a8cd55f613](https://doi.org/10.23728/b2share.5f706863fc5041c49cb8d1a8cd55f613).

## Author contributions

700 LKS developed the general idea and conceptualized the study with TF and PG, with mentoring and reviewing of AB. LKS requested the necessary input data, PG adapted and extended the model code under supervision of TF and LKS, and PG and LKS performed the model runs. LKS developed and conducted the analysis of model limitations and conducted the statistical analyses with support and supervision by TF. LKS prepared the original draft of the manuscript including all figures, and all authors contributed to writing this paper.



### Competing interests

705 The contact author has declared that none of the authors has any competing interests.

### Acknowledgements

This research was funded within the DFG Research Training Group “Natural Hazards and Risks in a Changing World” (grant nos. NatRiskChange GRK 2043/1 and GRK 2043/2) and by a fieldwork fellowship of the German Hydrological Society (DHG).

710 The authors would like to thank Florian Hanzer and Ulrich Strasser for providing the projections required as input data for this study. We thank the Hydrographic Service of Tyrol, Austria, and the Bavarian Academy of Sciences and Humanities for the provision of data as well as logistical support. We thank Marvin Teschner for his support in data analyses. [We would like to thank Mustafa Al-Mukhtar, Ting Zhang and an anonymous referee for their constructive and detailed comments that helped to improve this manuscript.](#)

### 715 References

- Abermann, J., Lambrecht, A., Fischer, A., and Kuhn, M.: Quantifying changes and trends in glacier area and volume in the Austrian Ötztal Alps (1969-1997-2006), *The Cryosphere*, 3, 205–215, <https://doi.org/10.5194/tc-3-205-2009>, 2009.
- 720 Al-Mukhtar, M.: Random forest, support vector machine, and neural networks to modelling suspended sediment in Tigris River-Baghdad, *Environ. Monit. Assess.*, 191, 673, <https://doi.org/10.1007/s10661-019-7821-5>, 2019.
- Altmann, M., Ramskogler, K., Mikolka-Flöry, S., Pfeiffer, M., Haas, F., Heckmann, T., Rom, J., Fleischer, F., Himmelstoß, T., Pfeifer, N., Ressler, C., Tasser, E., and Becht, M.: Quantitative Long-Term Monitoring (1890–2020) of Morphodynamic and Land-Cover Changes of a LIA Lateral Moraine Section, *Geosciences*, 13, 95, <https://doi.org/10.3390/geosciences13040095>, 2023.
- 725 Antoniazza, G. and Lane, S. N.: Sediment yield over glacial cycles: A conceptual model, *Prog. Phys. Geogr. Earth Environ.*, 58, 842–865, <https://doi.org/10.1177/0309133321997292>, 2021.
- Badoux, A., Andres, N., and Turowski, J. M.: Damage costs due to bedload transport processes in Switzerland, *Nat. Hazards Earth Syst. Sci.*, 14, 279–294, <https://doi.org/10.5194/nhess-14-279-2014>, 2014.
- 730 Ballantyne, C. K.: Paraglacial geomorphology, *Quat. Sci. Rev.*, 21, 1935–2017, [https://doi.org/10.1016/S0277-3791\(02\)00005-7](https://doi.org/10.1016/S0277-3791(02)00005-7), 2002.
- Beniston, M., Farinotti, D., Stoffel, M., Andreassen, L. M., Coppola, E., Eckert, N., Fantini, A., Giacona, F., Hauck, C., Huss, M., Huwald, H., Lehning, M., López-Moreno, J.-I., Magnusson, J., Marty, C., Morán-Tejeda, E., Morin, S., Naaim, M., Provenzale, A., Rabatel, A., Six, D., Stötter, J., Strasser, U., Terzago, S., and Vincent, C.: The European mountain cryosphere: a review of its current state, trends, and future challenges, *The Cryosphere*, 12, 759–794, <https://doi.org/10.5194/tc-12-759-2018>, 2018.
- 735 Bilotta, G. S. and Brazier, R. E.: Understanding the influence of suspended solids on water quality and aquatic biota, *Water Res.*, 42, 2849–2861, <https://doi.org/10.1016/j.watres.2008.03.018>, 2008.
- Bogen, J.: The impact of climate change on glacial sediment delivery to rivers. In: *Sediment Dynamics in Changing Environments* (Proceedings of a symposium held in Christchurch, New Zealand, December 2008), IAHS Publ., 740 325, 432–439, 2008.
- Bolibar, J., Rabatel, A., Gouttevin, I., Zekollari, H., and Galiez, C.: Nonlinear sensitivity of glacier mass balance to future climate change unveiled by deep learning, *Nat. Commun.*, 13, 409, <https://doi.org/10.1038/s41467-022-28033-0>, 2022.

- 745 Braun, L. N., Escher-Vetter, H., Siebers, M., and Weber, M.: Water Balance of the highly Glaciated Vernagt Basin, Ötztal Alps, in: *The water balance of the alps: what do we need to protect the water resources of the Alps?* Proceedings of the conference held at Innsbruck university, 28–29 September 2006, Univ. Press, Innsbruck, <https://diglib.uibk.ac.at/ulbdok/content/pageview/268995> (last access: 8 May 2023), Univ. Press, Innsbruck, 33–42, 2007.
- 750 Buckel, J. and Otto, J.-C.: The Austrian Glacier Inventory GI 4 (2015) in ArcGis (shapefile) format [data set], <https://doi.org/10.1594/PANGAEA.887415>, 2018.
- Campforts, B., Shobe, C. M., Overeem, I., and Tucker, G. E.: The Art of Landslides: How Stochastic Mass Wasting Shapes Topography and Influences Landscape Dynamics, *J. Geophys. Res. Earth Surf.*, 127, e2022JF006745, <https://doi.org/10.1029/2022JF006745>, 2022.
- 755 Carrivick, J. L. and Heckmann, T.: Short-term geomorphological evolution of proglacial systems, *Geomorphology*, 287, 3–28, <https://doi.org/10.1016/j.geomorph.2017.01.037>, 2017.
- Carrivick, J. L. and Tweed, F. S.: Deglaciation controls on sediment yield: Towards capturing spatio-temporal variability, *Earth-Sci. Rev.*, 221, 103809, <https://doi.org/10.1016/j.earscirev.2021.103809>, 2021.
- 760 Cohen, S., Kettner, A. J., Syvitski, J. P. M., and Fekete, B. M.: WBMsed, a distributed global-scale riverine sediment flux model: Model description and validation, *Comput. Geosci.*, 53, 80–93, <https://doi.org/10.1016/j.cageo.2011.08.011>, 2013.
- Costa, A., Anghileri, D., and Molnar, P.: Hydroclimatic control on suspended sediment dynamics of a regulated Alpine catchment: a conceptual approach, *Hydrol. Earth Syst. Sci.*, 22, 3421–3434, <https://doi.org/10.5194/hess-22-3421-2018>, 2018.
- 765 Coviello, V., Vignoli, G., Simoni, S., Bertoldi, W., Engel, M., Buter, A., Marchetti, G., Andreoli, A., Savi, S., and Comiti, F.: Bedload Fluxes in a Glacier-Fed River at Multiple Temporal Scales, *Water Resour. Res.*, 58, e2021WR031873, <https://doi.org/10.1029/2021WR031873>, 2022.
- Delaney, I. and Adhikari, S.: Increased Subglacial Sediment Discharge in a Warming Climate: Consideration of Ice Dynamics, Glacial Erosion, and Fluvial Sediment Transport, *Geophys. Res. Lett.*, 47, e2019GL085672, <https://doi.org/10.1029/2019GL085672>, 2020.
- 770 Delaney, I., Bauder, A., Werder, M., and Farinotti, D.: Regional and annual variability in subglacial sediment transport by water for two glaciers in the Swiss Alps, *Front. Earth Sci.*, 6, 175, <https://doi.org/10.3929/ethz-b-000305762>, 2018.
- Delaney, I., Werder, M. A., and Farinotti, D.: A Numerical Model for Fluvial Transport of Subglacial Sediment, *J. Geophys. Res. Earth Surf.*, 124, 2197–2223, <https://doi.org/10.1029/2019JF005004>, 2019.
- 775 Delaney, I., Anderson, L. S., and Herman, F.: The spatially distributed nature of subglacial sediment dynamics: using a numerical model to quantify sediment transport and bedrock erosion across a glacier bed in response to glacier behavior and hydrology (preprint), *Earth Surf. Dyn. Discuss.*, 1–37, <https://doi.org/10.5194/esurf-2021-88>, 2021.
- 780 Deser, C., Phillips, A., Bourdette, V., and Teng, H.: Uncertainty in climate change projections: the role of internal variability, *Clim. Dyn.*, 38, 527–546, <https://doi.org/10.1007/s00382-010-0977-x>, 2012.
- Eichel, J., Draebing, D., and Meyer, N.: From active to stable: Paraglacial transition of Alpine lateral moraine slopes, *Land Degrad. Dev.*, 29, 4158–4172, <https://doi.org/10.1002/ldr.3140>, 2018.
- Escher-Vetter, H. and Siebers, M.: Sensitivity of glacier runoff to summer snowfall events, *Ann. Glaciol.*, 46, 309–315, <https://doi.org/10.3189/172756407782871251>, 2007.
- 785 Evin, G., Somot, S., and Hingray, B.: Balanced estimate and uncertainty assessment of European climate change using the large EURO-CORDEX regional climate model ensemble, *Earth Syst. Dyn.*, 12, 1543–1569, <https://doi.org/10.5194/esd-12-1543-2021>, 2021.

- 790 Francke, T., López-Tarazón, J. A., and Schröder, B.: Estimation of suspended sediment concentration and yield using linear models, random forests and quantile regression forests, *Hydrol. Process.*, 22, 4892–4904, <https://doi.org/10.1002/hyp.7110>, 2008a.
- Francke, T., López-Tarazón, J. A., Vericat, D., Bronstert, A., and Batalla, R. J.: Flood-based analysis of high-magnitude sediment transport using a non-parametric method, *Earth Surf. Process. Landf.*, 33, 2064–2077, <https://doi.org/10.1002/esp.1654>, 2008b.
- 795 Gabbud, C. and Lane, S. N.: Ecosystem impacts of Alpine water intakes for hydropower: the challenge of sediment management, *WIREs Water*, 3, 41–61, <https://doi.org/10.1002/wat2.1124>, 2016.
- Gobiet, A. and Kotlarski, S.: Future Climate Change in the European Alps, vol. A. Gobiet&S. Kotlarski (Eds.), Oxford research encyclopedia of climate science. DOI: 10.1093/acrefore/9780190228620.013.767, Oxford University Press, 2020.
- 800 Gobiet, A., Kotlarski, S., Beniston, M., Heinrich, G., Rajczak, J., and Stoffel, M.: 21st century climate change in the European Alps—A review, *Sci. Total Environ.*, 493, 1138–1151, <https://doi.org/10.1016/j.scitotenv.2013.07.050>, 2014.
- Gudmundsson, L.: qmap: Statistical transformations for post-processing climate model output. R package version 1.0-4. [code], <https://CRAN.R-project.org/package=qmap> (last access: 18 May 2023), 2016.
- 805 Gudmundsson, L., Bremnes, J. B., Haugen, J. E., and Engen-Skaugen, T.: Technical Note: Downscaling RCM precipitation to the station scale using statistical transformations; a comparison of methods, *Hydrol. Earth Syst. Sci.*, 16, 3383–3390, <https://doi.org/10.5194/hess-16-3383-2012>, 2012.
- Guillén-Ludeña, S., Manso, P. A., and Schleiss, A. J.: Multidecadal Sediment Balance Modelling of a Cascade of Alpine Reservoirs and Perspectives Based on Climate Warming, *Water*, 10, 1759, <https://doi.org/10.3390/w10121759>, 2018.
- 810 Gupta, D., Hazarika, B. B., Berlin, M., Sharma, U. M., and Mishra, K.: Artificial intelligence for suspended sediment load prediction: a review, *Environ. Earth Sci.*, 80, 346, <https://doi.org/10.1007/s12665-021-09625-3>, 2021.
- Hanus, S., Hrachowitz, M., Zekollari, H., Schoups, G., Vizcaino, M., and Kaitna, R.: Future changes in annual, seasonal and monthly runoff signatures in contrasting Alpine catchments in Austria, *Hydrol. Earth Syst. Sci.*, 25, 3429–3453, <https://doi.org/10.5194/hess-25-3429-2021>, 2021.
- 815 Hanzer, F., Helfricht, K., Marke, T., and Strasser, U.: Multi-level spatiotemporal validation of snow/ice mass balance and runoff modeling in glacierized catchments, <https://doi.org/10.5194/tc-2016-58>, 2016.
- Hanzer, F., Förster, K., Nemeč, J., and Strasser, U.: Projected cryospheric and hydrological impacts of 21st century climate change in the Ötztal Alps (Austria) simulated using a physically based approach, *Hydrol. Earth Syst. Sci.*, 22, 1593–1614, <https://doi.org/10.5194/hess-22-1593-2018>, 2018.
- 820 Hartmeyer, I., Delleske, R., Keuschnig, M., Krautblatter, M., Lang, A., Schrott, L., and Otto, J.-C.: Current glacier recession causes significant rockfall increase: the immediate paraglacial response of deglaciating cirque walls, *Earth Surf. Dyn.*, 8, 729–751, <https://doi.org/10.5194/esurf-8-729-2020>, 2020.
- 825 Haselberger, S., Ohler, L.-M., Junker, R. R., Otto, J.-C., Glade, T., and Kraushaar, S.: Quantification of biogeomorphic interactions between small-scale sediment transport and primary vegetation succession on proglacial slopes of the Gepatschferner, Austria, *Earth Surf. Process. Landf.*, 46, 1941–1952, <https://doi.org/10.1002/esp.5136>, 2021.
- Hiebl, J. and Frei, C.: Daily precipitation grids for Austria since 1961—development and evaluation of a spatial dataset for hydroclimatic monitoring and modelling, *Theor. Appl. Climatol.*, 132, 327–345, <https://doi.org/10.1007/s00704-017-2093-x>, 2018.
- 830 Hinderer, M., Kastowski, M., Kamelger, A., Bartolini, C., and Schlunegger, F.: River loads and modern denudation of the Alps — A review, *Earth-Sci. Rev.*, 118, 11–44, <https://doi.org/10.1016/j.earscirev.2013.01.001>, 2013.

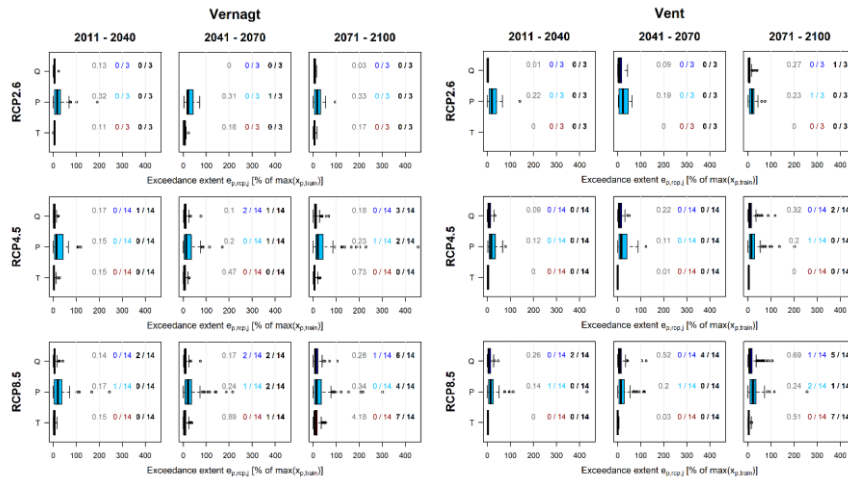
- 835 Hirschberg, J., Fatichi, S., Bennett, G. L., McArdeall, B. W., Peleg, N., Lane, S. N., Schlunegger, F., and Molnar, P.: Climate Change Impacts on Sediment Yield and Debris-Flow Activity in an Alpine Catchment, *J. Geophys. Res. Earth Surf.*, 126, <https://doi.org/10.1029/2020JF005739>, 2021.
- Huggel, C., Clague, J. J., and Korup, O.: Is climate change responsible for changing landslide activity in high mountains?, *Earth Surf. Process. Landf.*, 37, 77–91, <https://doi.org/10.1002/esp.2223>, 2012.
- Huss, M.: Present and future contribution of glacier storage change to runoff from macroscale drainage basins in Europe, *Water Resour. Res.*, 47, W07511, <https://doi.org/10.1029/2010WR010299>, 2011.
- 840 Huss, M. and Hock, R.: Global-scale hydrological response to future glacier mass loss, *Nat. Clim. Change*, 8, 135–140, <https://doi.org/10.1038/s41558-017-0049-x>, 2018.
- Huss, M., Bookhagen, B., Huggel, C., Jacobsen, D., Bradley, R. S., Clague, J. J., Vuille, M., Buytaert, W., Cayan, D. R., Greenwood, G., Mark, B. G., Milner, A. M., Weingartner, R., and Winder, M.: Toward mountains without permanent snow and ice, *Earth's Future*, 5, 418–435, <https://doi.org/10.1002/2016EF000514>, 2017.
- 845 Hydrographic yearbook of Austria: Hydrographisches Jahrbuch von Österreich, Hydrographischer Dienst in Österreich, Bundesministerium für Land- und Forstwirtschaft, Umwelt und Wasserwirtschaft Abteilung VII/3, <https://wasser.umweltbundesamt.at/hydjb/> (last access: 8 May 2023), 2016.
- Iverson, R. M. and George, D. L.: A depth-averaged debris-flow model that includes the effects of evolving dilatancy. I. Physical basis, *Proc. R. Soc. Math. Phys. Eng. Sci.*, 470, 20130819, <https://doi.org/10.1098/rspa.2013.0819>, 2014.
- 850 Jacob, D., Petersen, J., Eggert, B., Alias, A., Christensen, O. B., Bouwer, L. M., Braun, A., Colette, A., Déqué, M., Georgievski, G., Georgopoulou, E., Gobiet, A., Menut, L., Nikulin, G., Haensler, A., Hempelmann, N., Jones, C., Keuler, K., Kovats, S., Kröner, N., Kotlarski, S., Kriegsmann, A., Martin, E., van Meijgaard, E., Moseley, C., Pfeifer, S., Preuschmann, S., Radermacher, C., Radtke, K., Rechid, D., Rounsevell, M., Samuelsson, P., Somot, S., Soussana, J.-F., Teichmann, C., Valentini, R., Vautard, R., Weber, B., and Yiou, P.: EURO-CORDEX: new high-resolution climate change projections for European impact research, *Reg. Environ. Change*, 14, 563–578, <https://doi.org/10.1007/s10113-013-0499-2>, 2014.
- 855 Jimeno-Sáez, P., Martínez-España, R., Casali, J., Pérez-Sánchez, J., and Senent-Aparicio, J.: A comparison of performance of SWAT and machine learning models for predicting sediment load in a forested Basin, Northern Spain, *CATENA*, 212, 105953, <https://doi.org/10.1016/j.catena.2021.105953>, 2022.
- 860 Kotlarski, S., Gobiet, A., Morin, S., Olefs, M., Rajczak, J., and Samacoïts, R.: 21st Century alpine climate change, *Clim. Dyn.*, 60, 65–86, <https://doi.org/10.1007/s00382-022-06303-3>, 2023.
- Kuhn, M., Helfricht, K., Ortner, M., Landmann, J., and Gurgiser, W.: Liquid water storage in snow and ice in 86 Eastern Alpine basins and its changes from 1970–97 to 1998–2006, *Ann. Glaciol.*, 57, 11–18, <https://doi.org/10.1017/aog.2016.24>, 2016.
- 865 Lalk, P., Haimann, M., and Habersack, H.: Monitoring, Analyse und Interpretation des Schwebstofftransportes an österreichischen Flüssen, *Österr. Wasser- Abfallwirtsch.*, 66, 306–315, <https://doi.org/10.1007/s00506-014-0175-x>, 2014.
- 870 Land Tirol: Digital terrain model of Tyrol, 10m resolution, EPSG 31254 [data set], [https://www.data.gv.at/katalog/dataset/land-tirol\\_tirolgelnde](https://www.data.gv.at/katalog/dataset/land-tirol_tirolgelnde) (last access; 8 May 2023), 2016.
- Land Tirol: tiris OGD map service “Wasser” [data set], <https://www.data.gv.at/katalog/dataset/0b5d6529-d88c-46c0-84f7-b37282e96ce8> (last access: 5 July 2021), 2021.
- 875 Landers, M. N. and Sturm, T. W.: Hysteresis in suspended sediment to turbidity relations due to changing particle size distributions: Hysteresis Suspended Sediment-Turbidity With Particle Size, *Water Resour. Res.*, 49, 5487–5500, <https://doi.org/10.1002/wrcr.20394>, 2013.
- Lane, S. N., Bakker, M., Gabbud, C., Micheletti, N., and Saugy, J.-N.: Sediment export, transient landscape response and catchment-scale connectivity following rapid climate warming and Alpine glacier recession, *Geomorphology*, 277, 210–227, <https://doi.org/10.1016/j.geomorph.2016.02.015>, 2017.

- 880 Lane, S. N., Bakker, M., Costa, A., Girardclos, S., Loizeau, J.-L., Molnar, P., Silva, T., Stutenbecker, L., and Schlunegger, F.: Making stratigraphy in the Anthropocene: climate change impacts and economic conditions controlling the supply of sediment to Lake Geneva, *Sci. Rep.*, 9, 8904, <https://doi.org/10.1038/s41598-019-44914-9>, 2019.
- Lantz, B.: *Machine Learning with R: Expert techniques for predictive modeling*, 3rd Edition, Packt Publishing Ltd, 459 pp., 2019.
- 885 Li, D., Li, Z., Zhou, Y., and Lu, X. X.: Substantial Increases in the Water and Sediment Fluxes in the Headwater Region of the Tibetan Plateau in Response to Global Warming, *Geophys. Res. Lett.*, 47, e2020GL087745, <https://doi.org/10.1029/2020GL087745>, 2020.
- Li, D., Overeem, I., Kettner, A., Zhou, Y., and Xixi, L.: Air Temperature Regulates Erodible Landscape, Water, and Sediment Fluxes in the Permafrost-Dominated Catchment on the Tibetan Plateau, *Water Resour. Res.*, 57, e2020WR028193, <https://doi.org/10.1029/2020WR028193>, 2021a.
- 890 Li, D., Lu, X., Overeem, I., Walling, D. E., Syvitski, J., Kettner, A. J., Bookhagen, B., Zhou, Y., and Zhang, T.: Exceptional increases in fluvial sediment fluxes in a warmer and wetter High Mountain Asia, *Science*, 374, 599–603, <https://doi.org/10.1126/science.abi9649>, 2021b.
- Li, D., Lu, X., Walling, D. E., Zhang, T., Steiner, J. F., Wasson, R. J., Harrison, S., Nepal, S., Nie, Y., Immerzeel, W. W., Shugar, D. H., Koppes, M., Lane, S., Zeng, Z., Sun, X., Yegorov, A., and Bolch, T.: High Mountain Asia hydropower systems threatened by climate-driven landscape instability, *Nat. Geosci.*, 15, 520–530, <https://doi.org/10.1038/s41561-022-00953-y>, 2022.
- 895 Madsen, H., Lawrence, D., Lang, M., Martinkova, M., and Kjeldsen, T. R.: Review of trend analysis and climate change projections of extreme precipitation and floods in Europe, *J. Hydrol.*, 519, 3634–3650, <https://doi.org/10.1016/j.jhydrol.2014.11.003>, 2014.
- 900 Meinshausen, N.: Quantile Regression Forests, *J. Mach. Learn. Res.*, 7, 983–999, 2006.
- Micheletti, N. and Lane, S. N.: Water yield and sediment export in small, partially glaciated Alpine watersheds in a warming climate, *Water Resour. Res.*, 52, 4924–4943, <https://doi.org/10.1002/2016WR018774>, 2016.
- 905 Milner, A. M., Brown, L. E., and Hannah, D. M.: Hydroecological response of river systems to shrinking glaciers, *Hydrol. Process.*, 23, 62–77, <https://doi.org/10.1002/hyp.7197>, 2009.
- Milner, A. M., Khamis, K., Battin, T. J., Brittain, J. E., Barrand, N. E., Füreder, L., Cauvy-Fraunié, S., Gíslason, G. M., Jacobsen, D., Hannah, D. M., Hodson, A. J., Hood, E., Lencioni, V., Ólafsson, J. S., Robinson, C. T., Tranter, M., and Brown, L. E.: Glacier shrinkage driving global changes in downstream systems, *Proc. Natl. Acad. Sci.*, 114, 9770–9778, <https://doi.org/10.1073/pnas.1619807114>, 2017.
- 910 Mueller, E. N., Güntner, A., Francke, T., and Mamede, G.: Modelling sediment export, retention and reservoir sedimentation in drylands with the WASA-SED model, *Geosci. Model Dev.*, 3, 275–291, <https://doi.org/10.5194/gmd-3-275-2010>, 2010.
- Musso, A., Ketterer, M. E., Greinwald, K., Geitner, C., and Egli, M.: Rapid decrease of soil erosion rates with soil formation and vegetation development in periglacial areas, *Earth Surf. Process. Landf.*, 45, 2824–2839, <https://doi.org/10.1002/esp.4932>, 2020.
- 915 Nones, M.: Dealing with sediment transport in flood risk management, *Acta Geophys.*, 67, 677–685, <https://doi.org/10.1007/s11600-019-00273-7>, 2019.
- R Core Team: *R: A language and environment for statistical computing* [code], <https://www.R-project.org/> (last access: 10 May 2023), 2018.
- 920 Rahman, K. U., Pham, Q. B., Jadoon, K. Z., Shahid, M., Kushwaha, D. P., Duan, Z., Mohammadi, B., Khedher, K. M., and Anh, D. T.: Comparison of machine learning and process-based SWAT model in simulating streamflow in the Upper Indus Basin, *Appl. Water Sci.*, 12, 178, <https://doi.org/10.1007/s13201-022-01692-6>, 2022.

- Reichstein, M., Camps-Valls, G., Stevens, B., Jung, M., Denzler, J., Carvalhais, N., and Prabhat: Deep learning and process understanding for data-driven Earth system science, *Nature*, 566, 195–204, <https://doi.org/10.1038/s41586-019-0912-1>, 2019.
- 925 Rottler, E., Francke, T., Bürger, G., and Bronstert, A.: Long-term changes in central European river discharge for 1869–2016: impact of changing snow covers, reservoir constructions and an intensified hydrological cycle, *Hydrol. Earth Syst. Sci.*, 24, 1721–1740, <https://doi.org/10.5194/hess-24-1721-2020>, 2020.
- Santander Meteorology Group: fume: FUME package. R package version 1.0. [code], <https://CRAN.R-project.org/package=fume> (last access: 10 May 2023), 2012.
- 930 Savi, S., Comiti, F., and Strecker, M. R.: Pronounced increase in slope instability linked to global warming: A case study from the eastern European Alps, *Earth Surf. Process. Landf.*, 46, 1328–1347, <https://doi.org/10.1002/esp.5100>, 2020.
- Scherrer, S. C., Fischer, E. M., Posselt, R., Liniger, M. A., Croci-Maspoli, M., and Knutti, R.: Emerging trends in heavy precipitation and hot temperature extremes in Switzerland, *J. Geophys. Res. Atmospheres*, 121, 2626–2637, <https://doi.org/10.1002/2015JD024634>, 2016.
- 935 Schmidt, L. K., Francke, T., Grosse, P. M., Mayer, C., and Bronstert, A.: Reconstructing five decades of sediment export from two glacierized high-alpine catchments in Tyrol, Austria, using nonparametric regression, *Hydrol. Earth Syst. Sci.*, 27, 1841–1863, <https://doi.org/10.5194/hess-27-1841-2023>, 2023.
- 940 Schöber, J. and Hofer, B.: The sediment budget of the glacial streams in the catchment area of the Gepatsch reservoir in the Ötztal Alps in the period 1965–2015, in: ICOLD (International Commission on Large Dam Systems) Proceedings, TwentySixth International Congress on Large Dams, Vienna, Austria, ISBN 9780429465086, 1–21, 2018.
- Sen, P. K.: Estimates of the Regression Coefficient Based on Kendall’s Tau, *J. Am. Stat. Assoc.*, 63, 1379–1389, <https://doi.org/10.1080/01621459.1968.10480934>, 1968.
- 945 Stoll, E., Hanzer, F., Oesterle, F., Nemeč, J., Schöber, J., Huttenlau, M., and Förster, K.: What Can We Learn from Comparing Glacio-Hydrological Models?, *Atmosphere*, 11, 981, <https://doi.org/10.3390/atmos11090981>, 2020.
- Stott, T. and Convey, P.: Seasonal hydrological and suspended sediment transport dynamics and their future modelling in the Orwell Glacier proglacial stream, Signy Island, Antarctica, *Antarct. Sci.*, 33, 192–212, <https://doi.org/10.1017/S0954102020000607>, 2021.
- 950 Stott, T. and Mount, N.: Alpine proglacial suspended sediment dynamics in warm and cool ablation seasons: Implications for global warming, *J. Hydrol.*, 332, 259–270, <https://doi.org/10.1016/j.jhydrol.2006.07.001>, 2007.
- Strasser, U., Marke, T., Braun, L., Escher-Vetter, H., Juen, I., Kuhn, M., Maussion, F., Mayer, C., Nicholson, L., Niedertscheider, K., Sailer, R., Stötter, J., Weber, M., and Kaser, G.: The Rofental: a high Alpine research basin (1890–3770 m a.s.l.) in the Ötztal Alps (Austria) with over 150 years of hydrometeorological and glaciological observations, *Earth Syst. Sci. Data*, 10, 151–171, <https://doi.org/10.5194/essd-10-151-2018>, 2018.
- 955 Syvitski, J., Ángel, J. R., Saito, Y., Overeem, I., Vörösmarty, C. J., Wang, H., and Olago, D.: Earth’s sediment cycle during the Anthropocene, *Nat. Rev. Earth Environ.*, 3, 179–196, <https://doi.org/10.1038/s43017-021-00253-w>, 2022.
- 960 Syvitski, J. P. M. and Milliman, J. D.: Geology, Geography, and Humans Battle for Dominance over the Delivery of Fluvial Sediment to the Coastal Ocean, *J. Geol.*, 115, 1–19, <https://doi.org/10.1086/509246>, 2007.
- Talebi, A., Mahjoobi, J., Dastorani, M. T., and Moosavi, V.: Estimation of suspended sediment load using regression trees and model trees approaches (Case study: Hyderabad drainage basin in Iran), *ISH J. Hydraul. Eng.*, 23, 212–219, <https://doi.org/10.1080/09715010.2016.1264894>, 2017.
- 965 Tan, Z., Leung, L. R., Li, H., Tesfa, T., Vanmaercke, M., Poesen, J., Zhang, X., Lu, H., and Hartmann, J.: A Global Data Analysis for Representing Sediment and Particulate Organic Carbon Yield in Earth System Models, *Water Resour. Res.*, 53, 10674–10700, <https://doi.org/10.1002/2017WR020806>, 2017.

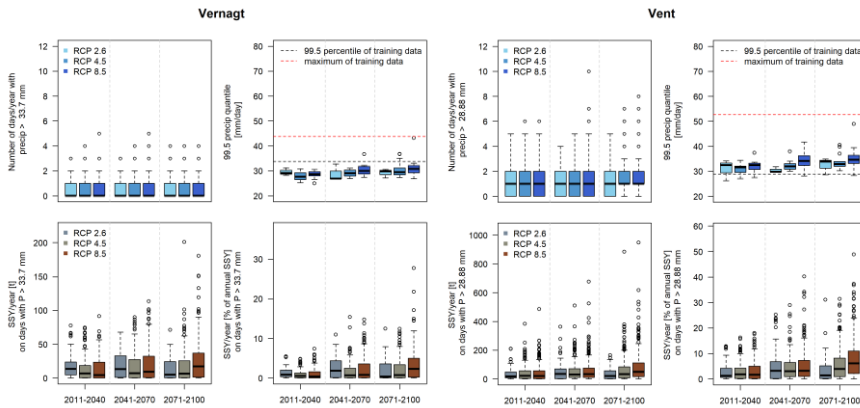
- Tecklenburg, C., Francke, T., Kormann, C., and Bronstert, A.: Modeling of water balance response to an extreme future scenario in the Ötztal catchment, Austria, in: *Advances in Geosciences, Proceedings of the 15th Workshop on Large-scale Hydrological Modelling*, Innsbruck, Austria, 2011, 63–68, <https://doi.org/10.5194/adgeo-32-63-2012>, 2012.
- van Tiel, M., Kohn, I., Loon, A. F. V., and Stahl, K.: The compensating effect of glaciers: Characterizing the relation between interannual streamflow variability and glacier cover, *Hydrol. Process.*, 34, 553–568, <https://doi.org/10.1002/hyp.13603>, 2019.
- Vautard, R., Kadyrov, N., Iles, C., Boberg, F., Buonomo, E., Bülow, K., Coppola, E., Corre, L., van Meijgaard, E., Nogherotto, R., Sandstad, M., Schwingshackl, C., Somot, S., Aalbers, E., Christensen, O. B., Ciarlo, J. M., Demory, M.-E., Giorgi, F., Jacob, D., Jones, R. G., Keuler, K., Kjellström, E., Lenderink, G., Levvasseur, G., Nikulin, G., Sillmann, J., Solidoro, C., Sørland, S. L., Steger, C., Teichmann, C., Warrach-Sagi, K., and Wulfmeyer, V.: Evaluation of the Large EURO-CORDEX Regional Climate Model Ensemble, *J. Geophys. Res. Atmospheres*, 126, e2019JD032344, <https://doi.org/10.1029/2019JD032344>, 2021.
- Vercruyse, K., Grabowski, R. C., and Rickson, R. J.: Suspended sediment transport dynamics in rivers: Multi-scale drivers of temporal variation, *Earth-Sci. Rev.*, 166, 38–52, <https://doi.org/10.1016/j.earscirev.2016.12.016>, 2017.
- Vergara, I., Garreaud, R., and Ayala, Á.: Sharp Increase of Extreme Turbidity Events Due To Deglaciation in the Subtropical Andes, *J. Geophys. Res. Earth Surf.*, 127, e2021JF006584, <https://doi.org/10.1029/2021JF006584>, 2022.
- Vigiak, O., Malagó, A., Bouraoui, F., Vanmaercke, M., Obreja, F., Poesen, J., Habersack, H., Fehér, J., and Grošelj, S.: Modelling sediment fluxes in the Danube River Basin with SWAT, *Sci. Total Environ.*, 599–600, 992–1012, <https://doi.org/10.1016/j.scitotenv.2017.04.236>, 2017.
- Vormoor, K., Lawrence, D., Heistermann, M., and Bronstert, A.: Climate change impacts on the seasonality and generation processes of floods - projections and uncertainties for catchments with mixed snowmelt/rainfall regimes, *Hydrol. Earth Syst. Sci.*, 19, 913–931, <https://doi.org/10.5194/hess-19-913-2015>, 2015.
- Wijngaard, R. R., Helfricht, K., Schneeberger, K., Huttenlau, M., Schneider, K., and Bierkens, M. F. P.: Hydrological response of the Ötztal glacierized catchments to climate change, *Hydrol. Res.*, 47, 979–995, <https://doi.org/10.2166/nh.2015.093>, 2016.
- Yue, S., Kundzewicz, Z. W., and Wang, L.: Detection of Changes, in: *Changes in Flood Risk in Europe*, edited by: Kundzewicz, Z. W., IAHS Press, Wallingford, 387–408, ISBN 9780203098097, 2012.
- Zhang, T., Li, D., Kettner, A. J., Zhou, Y., and Lu, X.: Constraining Dynamic Sediment-Discharge Relationships in Cold Environments: The Sediment-Availability-Transport (SAT) Model, *Water Resour. Res.*, 57, e2021WR030690, <https://doi.org/10.1029/2021WR030690>, 2021.
- Zhang, T., Li, D., East, A. E., Walling, D. E., Lane, S., Overeem, I., Beylich, A. A., Koppes, M., and Lu, X.: Warming-driven erosion and sediment transport in cold regions, *Nat. Rev. Earth Environ.*, 3, 832–851, <https://doi.org/10.1038/s43017-022-00362-0>, 2022.
- Zimmermann, A., Francke, T., and Elsenbeer, H.: Forests and erosion: Insights from a study of suspended-sediment dynamics in an overland flow-prone rainforest catchment, *J. Hydrol.*, 428–429, 170–181, <https://doi.org/10.1016/j.jhydrol.2012.01.039>, 2012.

Appendix



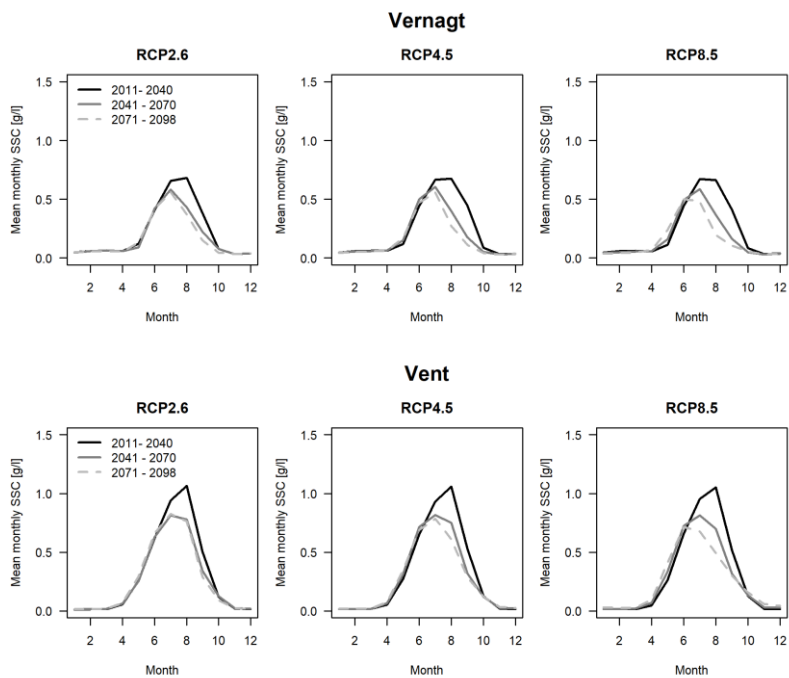
1010 Figure A-1 Results of the classification, based on the sensitivity and OOR analyses. The boxplots show the distribution of exceedance extents for each RCP and predictor on all days  $j$  within the respective time slice  $t_s$ . Grey numbers denote the average  $\bar{n}_{p,RCPT,TS}$  of all projections within the respective RCP, time slice and predictor. Colored numbers indicate the number of projections with mean exceedance extent  $\bar{e}_{p,TS} > e_{p,90}$  (as used for the sensitivity analysis). Black numbers indicate the number of projections with the mean number of OOR days per year  $\bar{n}_{p,TS} > n_{p,90}$  (as used for the sensitivity analysis).

1015



1020 Figure A-2 Analysis of summer precipitation projections (top) and SSY projections (bottom) at gauges Vernagt and Vent. Top left of each panel: frequency of days with heavy summer precipitation ( $> 99.5$  percentile of the training data, i.e. and 33.7 mm/d (Vernagt) and 28.88 mm/d (Vent)). Top right: intensity of heavy summer precipitation events over time, expressed as the 99.5 percentile. Bottom left: Sediment export on days with precipitation  $> 99.5$  percentile of the training data. Bottom right: Sediment export on days with precipitation  $> 99.5$  percentile of the training data relative to the respective annual yields.





*Figure A3 Seasonality of mean monthly SSC in three time slices and emission scenarios.*

Formatiert: Nicht vom nächsten Absatz trennen