



# **An inverse model to correct for the effects of post-depositional processing on ice-core nitrate and its isotopes: model framework and applications at Summit, Greenland and Dome C, Antarctica**

5

Zhuang Jiang<sup>1</sup>, Becky Alexander<sup>2</sup>, Joel Savarino<sup>3</sup>, Lei Geng<sup>1,4,5\*</sup>

<sup>1</sup> Deep Space Exploration Laboratory/School of Earth and Space Sciences, University of Science and Technology of China, Hefei, Anhui, China

10 <sup>2</sup>Department of Atmospheric Sciences, University of Washington, Seattle WA, USA

<sup>3</sup>Univ. Grenoble Alpes, CNRS, IRD, G-INP, Institut des Géosciences de l'Environnement, Grenoble, France

<sup>4</sup> Laboratory for Ocean Dynamics and Climate, Pilot National Laboratory for Marine Science and Technology (Qingdao), Qingdao, Shandong, China

15 <sup>5</sup>CAS Center for Excellence in Comparative Planetology, University of Science and Technology of China, Hefei, Anhui, China

*Correspondence to:* Lei Geng (genglei@ustc.edu.cn)

## **Abstract**

Comprehensive evaluation of the effects of post-depositional processing is a prerequisite for appropriately interpreting ice-core records of nitrate concentration and isotopes. In this study, we developed an inverse model that uses archived snow/ice-core nitrate signals to reconstruct primary nitrate flux and its isotopes ( $\delta^{15}\text{N}$  and  $\Delta^{17}\text{O}$ ). The model was then applied to two polar sites, Summit, Greenland and Dome C, Antarctica using measured snowpack nitrate concentration and isotope profiles in the top few meters. At Summit, the model successfully reproduced the observed atmospheric  $\delta^{15}\text{N}(\text{NO}_3^-)$  and  $\Delta^{17}\text{O}(\text{NO}_3^-)$  and their seasonality. The model was also able to reasonably reproduce the observed snowpack nitrate profiles at Dome C as well as the skin layer and atmospheric  $\delta^{15}\text{N}(\text{NO}_3^-)$  and  $\Delta^{17}\text{O}(\text{NO}_3^-)$  at the annual scale. The calculated  $F_{\text{pri}}$  at Summit was  $6.9 \times 10^{-6} \text{ kgN m}^2 \text{ a}^{-1}$  and the calculated  $\Delta^{17}\text{O}(\text{NO}_3^-)$  of  $F_{\text{pri}}$  is consistent with atmospheric observations in the northern hemisphere. However,

20  
25  
30



the calculated  $\delta^{15}\text{N}(\text{NO}_3^-)$  of  $F_{\text{pri}}$  displays an opposite seasonal pattern to atmospheric observations in the northern mid-latitudes, but is consistent with observations in two Arctic coastal sites. The calculated  $F_{\text{pri}}$  at Dome C varies from  $1.5$  to  $2.2 \times 10^{-6} \text{ kgN m}^{-2} \text{ a}^{-1}$ , with  $\delta^{15}\text{N}(\text{NO}_3^-)$  of  $F_{\text{pri}}$  varying from  $6.2$  to  $29.3 \text{ ‰}$  and  $\Delta^{17}\text{O}(\text{NO}_3^-)$  of  $F_{\text{pri}}$  varying  
35 from  $48.8$  to  $52.6 \text{ ‰}$ . The calculated  $F_{\text{pri}}$  at Dome C is close to previous estimated stratospheric denitrification flux in Antarctica, and the high  $\delta^{15}\text{N}(\text{NO}_3^-)$  and  $\Delta^{17}\text{O}(\text{NO}_3^-)$  of  $F_{\text{pri}}$  at Dome C also point towards the dominate role of stratospheric origin of primary nitrate to Dome C.

## 40 1. Introduction

Nitrate ion ( $\text{NO}_3^-$ ) is routinely measured in polar snow and ice cores. The precursor of atmospheric nitrate is nitrogen oxides  $\text{NO}_x$  ( $=\text{NO}+\text{NO}_2$ ), which plays a fundamental role in the production of tropospheric ozone and interconversion of atmospheric  $\text{HO}_x$  ( $=\text{OH}+\text{HO}_2$ ) radicals (Seinfeld et al., 2016; Sillman, 1999). Given the potential link  
45 between ice-core nitrate and atmospheric  $\text{NO}_x$ , some previous studies proposed that ice-core nitrate records could be used to derive information regarding past atmospheric  $\text{NO}_x$  abundance (Dibb et al., 1998; Röthlisberger et al., 2000). In addition, the oxygen isotope mass-independent fractionation signal ( $\Delta^{17}\text{O} = \delta^{17}\text{O} - 0.52 \times \delta^{18}\text{O}$ ) of nitrate is a reliable proxy of atmospheric  $\text{O}_3/\text{HO}_x$  ratio and is directly related to atmospheric oxidizing  
50 environment (Alexander et al., 2004; Alexander et al., 2015; Geng et al., 2017; Sofen et al., 2014). These unique features render ice core nitrate a potentially useful proxy to retrieve information on atmospheric oxidation environment in the past (Alexander et al., 2015).

Interpretations of ice-core nitrate records are, however, not straightforward (Wolff  
55 et al., 2008). Unlike other less reactive species in ice cores such as sulfate or ammonia, ice-core nitrate may not be able to directly track its atmospheric abundance (Iizuka et al., 2018). To link ice-core nitrate to atmospheric  $\text{NO}_x$  abundance, other information including the conversion rate of  $\text{NO}_x$  to nitrate, the mean lifetime of atmospheric nitrate, and the impact of post-depositional processing must be considered (Wolff, 1995; Wolff



60 et al., 2008). Among these factors, the post-depositional processing of snow nitrate is the first gap in linking ice-core nitrate to atmospheric nitrate and/or  $\text{NO}_x$ .

Snow nitrate is reactive under exposure to sunlight and can be photolyzed to form  $\text{NO}_x$  and HONO (Honrath et al., 2002; Chu and Anastasio, 2003), which is rapidly transported to the overlying atmosphere via diffusion and convection (Zatko et al., 2013). These photoproducts subsequently reform nitrate (i.e., snow-sourced nitrate) and ~~deposit~~ locally or ~~be~~-exported away, leading to a recycling of nitrate at the air-snow interface (Erbland et al., 2013; Frey et al., 2009). This post-depositional processing not only disturbs the link between nitrate in snow and its atmospheric precursors but also alters its isotopic signals (Erbland et al., 2013; Jiang et al., 2021; Jiang et al., 2022; Shi et al., 2015).

It is expected that the degree of post-depositional processing varies with changes in factors such as snow accumulation rate under different climates (Akers et al., 2022; Geng et al., 2015), causing corresponding shifts in the preserved nitrate signals. For example, the lower snow accumulation rate in glacial times would favor a higher degree of post-depositional processing with elevated  $\delta^{15}\text{N}(\text{NO}_3^-)$  relative to the Holocene as reflected by the GISP2 ice-core records (Geng et al., 2015; Hastings et al., 2005). Moreover, both observational and modeling studies have suggested that at sites with relatively high snow accumulation rates such as Summit, Greenland, the post-depositional processing of snow nitrate under present day conditions also has a significant impact on seasonal  $\delta^{15}\text{N}(\text{NO}_3^-)$  variations, although its integral effects at the annual scale are limited (Jiang et al., 2021; Jiang et al., 2022). In addition, the  $\Delta^{17}\text{O}$  of snow nitrate would also be altered via secondary chemistry during photolysis on snow grain (i.e., the cage effect) and this effect is enhanced with lower snow accumulation rates (Erbland et al., 2013; Frey et al., 2009; McCabe et al., 2005; Meusinger et al., 2014). Thus, it is critical to evaluate the impact of post-depositional processing on ice core nitrate records before interpretation, especially for records covering different climates with changes in snow accumulation rates.

Primary nitrate to the polar ice sheets mainly originates from midlatitudes via long-



range transport and with extra contributions from stratospheric input (Lee et al., 2014;  
90 Legrand and Delmas, 1986; Fischer et al., 1998; Savarino et al., 2007). To build the link  
between ice-core and atmospheric nitrate, Geng et al. (2015) proposed a simple method  
of using  $\delta^{15}\text{N}(\text{NO}_3^-)$  to estimate the fractional loss of snow nitrate caused by post-  
depositional processing. This method takes advantage of the high sensitivity of  
 $\delta^{15}\text{N}(\text{NO}_3^-)$  to the degree of photolytic loss (Erbland et al., 2013; Frey et al., 2009). If  
95  $\delta^{15}\text{N}$  of the initially deposited nitrate can be assumed, the residual fraction of snow  
nitrate can be calculated by applying a Rayleigh type isotope fractionation model. The  
photolysis fractionation constant ( $^{15}\epsilon_p$ ) can be estimated via the prescribed actinic flux  
spectrum and the absorption cross section for different nitrate isotopologues (Berhanu  
et al., 2014). Based on this method, Geng et al. (2015) estimated that as much as 45-  
100 53% of snow nitrate was lost after deposition during the last glacial time in the GISP2  
ice core record. However, it's difficult to justify the assumed  $\delta^{15}\text{N}$  of deposited nitrate  
under different climates, and the method cannot correct for post-depositional  
modification of  $\Delta^{17}\text{O}(\text{NO}_3^-)$ .

Erbland et al. (2015) developed a 1-D snow photochemistry model (TRANSITS,  
105 <https://github.com/JZxxhh/TRANSITS-model>) that quantifies the effects of post-  
depositional processing on the preservations of nitrate and its isotopes in ice cores. The  
model comprises a series of physicochemical processes, including UV photolysis of  
snow nitrate, emission of  $\text{NO}_x$  to the overlying atmosphere, local oxidation and nitrate  
deposition. In addition, changes in the isotopic composition of nitrate ( $\delta^{15}\text{N}$  and  $\Delta^{17}\text{O}$ )  
110 at each step of the post-depositional processing are also explicitly incorporated. The  
model has been applied in various locations with different snow accumulation rates and  
well reproduced the observed snowpack nitrate and isotope profiles (Erbland et al.,  
2015; Jiang et al., 2021; Winton et al., 2020; Zatkan et al., 2016). Based on model  
sensitivity tests, Erbland et al. (2015) proposed a framework to correct for the effects  
115 of post-depositional processing and to retrieve atmospheric information related to  $F_{\text{pri}}$   
at Dome C. However, the framework is rather complicated, and it assumes  $\delta^{15}\text{N}$  of the  
archived nitrate is exclusively determined by the degree of nitrate post-depositional



processing. Therefore, the framework cannot be applied to sites with moderate or high  
 snow accumulation rates such as WAIS Divide, Antarctica and Summit, Greenland,  
 120 where factors other than post-depositional processing may also contribute to  $\delta^{15}\text{N}$   
 variations across different periods and/or climates (Hastings et al., 2005; Jiang et al.,  
 2021).

In summary, TRANSITS is a forward model, and it requires prior knowledge of the  
 distribution (e.g., weekly or monthly) of primary nitrate flux and isotopes as model  
 125 inputs, which is usually unavailable due to the lack of direct observations. In this study,  
 we developed an inverse modeling framework (i.e., the inverse of the TRANISTS  
 model) that uses snowpack and/or ice-core preserved nitrate signals (concentrations and  
 isotopes) as model inputs, and properties of primary nitrate including its flux and  
 isotopes ( $\delta^{15}\text{N}$  and  $\Delta^{17}\text{O}$ ) can be directly retrieved with constraints from snow  
 130 accumulation rate and other known parameters (e.g., snow physicochemical properties).  
 We assessed the model with observations at Summit, Greenland and Dome C,  
 Antarctica, two representative sites with approximately the high-end and low-end snow  
 accumulation rates at present day conditions.

## 2. Model description

135 **Table 1.** List of major parameters used in the inverse model.

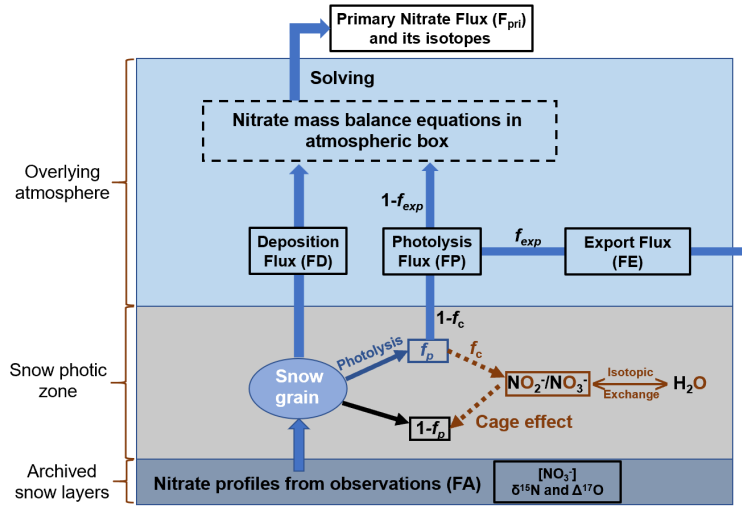
| Compartment                                       | Parameter                        | Unit                                | Definition  |
|---|----------------------------------|-------------------------------------|---|
|   | FA                               | kgN m <sup>-2</sup> a <sup>-1</sup> | Archived nitrate flux   |
|   | $\delta^{15}\text{N}(\text{FA})$ | ‰                                   | $\delta^{15}\text{N}$ of archived nitrate flux                  |
|   | $\Delta^{17}\text{O}(\text{FA})$ | ‰                                   | $\Delta^{17}\text{O}$ of archived nitrate flux                  |
| Input (could be<br>obtained from<br>measurements) | $A$                              | kg m <sup>-2</sup> a <sup>-1</sup>  | Snow accumulation rate  |
|   | $\rho$                           | kg m <sup>-3</sup>                  | Snow density  |
|   | TCO                              | DU                                  | Total column ozone  |
|   | LAI <sup>a</sup>                 | ng g <sup>-1</sup>                  | Light absorption impurities                                     |
|   | $\Phi$                           | Dimensionless                       | Quantum yield of nitrate photolysis                             |
|   | $\sigma$                         | cm <sup>-2</sup>                    | Absorption cross section for NO <sub>3</sub> <sup>-</sup>       |
| Input<br>(constrained by<br>observations)         | $\varepsilon_d$                  | ‰                                   | Nitrogen isotope fractionation factor<br>for nitrate deposition |
|   | $\Delta^{17}\text{O}(\text{FP})$ | ‰                                   | $\Delta^{17}\text{O}$ of photolytic nitrate flux                |
|   | $f_c$                            | Dimensionless                       | Cage effect factor  |
|   | $f_{\text{exp}}$                 | Dimensionless                       | Exported nitrate factor   |
| Model output                                      | F <sub>pri</sub>                 | kgN m <sup>-2</sup> a <sup>-1</sup> | Primary nitrate flux  |



|  |   |  |
|--|---|--|
| $\delta^{15}\text{N}(\text{F}_{\text{pri}})$ | ‰   | $\delta^{15}\text{N}$ of primary nitrate flux      |
| $\Delta^{17}\text{O}(\text{F}_{\text{pri}})$ | ‰   | $\Delta^{17}\text{O}$ of primary nitrate flux      |
| FD   | $\text{kgN m}^{-2} \text{ a}^{-1}$            | Deposition nitrate flux                            |
| $\delta^{15}\text{N}(\text{FD})$             | ‰   | $\delta^{15}\text{N}$ of deposition nitrate flux   |
| $\Delta^{17}\text{O}(\text{FD})$             | ‰   | $\Delta^{17}\text{O}$ of deposition nitrate flux   |
| FP   | $\text{kgN m}^{-2} \text{ a}^{-1} / \text{‰}$ | Photolytic nitrate flux                            |
| $\delta^{15}\text{N}(\text{FP})$             | ‰   | $\delta^{15}\text{N}$ of photolytic nitrate flux   |
| $\delta^{15}\text{N}(\text{NO}_3^-)_a$       | ‰   | $\delta^{15}\text{N}$ of local atmospheric nitrate |
| $\Delta^{17}\text{O}(\text{NO}_3^-)_a$       | ‰   | $\Delta^{17}\text{O}$ of local atmospheric nitrate |

<sup>a</sup>Three types of light absorption impurity are considered in the inverse mode: black carbon, mineral dust and organic humic-like substance (HULIS).

The inverse model is designed based on the framework of the TRANSITS model  
 140 but in an opposite direction of operating flows. The principle of the inverse model is  
 that the archived snow nitrate concentration and isotope profiles from measurements  
 are treated as model input, and they evolve inversely over time through the snow photic  
 zone (defined as 3 times of the snow e-folding depth where the radiation decreases to  
 1/e of its initial intensity at snow surface) to recover their initial states at the time of  
 145 deposition, thus providing the initial isotope compositions and deposition fluxes before  
 being affected by any post-depositional effects. **The primary nitrate flux and its isotopes  
 can be further obtained by solving the mass balance equations in the atmosphere box.**  
 A schematic view of the inverse model is shown in Fig. 1 with arrows pointing toward  
 the model direction flow (i.e. inverse of the real physical processes). Major parameters  
 150 in the inverse model and their definitions are listed in Table 1.



**Figure 1.** Schematic plot of the model domains of the inverse model including the atmospheric box, the snow photic zone and the archived snow layers, where  $f_{exp}$  represents the fraction of nitrate exported from the site of photolysis. The nitrate isotopic and mass balance relationships on snow grains during photolysis are also shown, where  $f_p$  represents the fraction of snow nitrate being photolyzed, and  $f_c$  represents the fraction of photolyzed nitrate experiencing the cage effect (i.e., exchange of oxygen isotopes with snow water). FA represents the archived nitrate flux.

155  
160

The inverse model inherits most of the original processes and features in TRANSITS but with several modifications. In accordance with the TRANSITS model, the domains of the inverse model are represented by a 1-D atmosphere and snow column. As shown in Fig. 1, the model contains three vertical parts, including the overlying atmospheric boundary layer which is treated as a single well-mixed box, and the underlying snowpack which is further separated into a snow photic zone and the archived snow layers beneath the photic zone. The model time step is set to be one week by default. During each time step, the mass conservation equations in the atmospheric box are represented as follows:

170

$$\frac{dm_a}{dt} = F_{pri} + FP - FE - FD \quad (1)$$

$$\frac{d(m_a \times \delta^{15}N_a)}{dt} = F_{pri} \times \delta^{15}N(F_{pri}) + FP \times \delta^{15}N(FP) - FE \times \delta^{15}N(FP) - FD \times \delta^{15}N(FD) \quad (2)$$



$$\frac{d(m_a \times \Delta^{17}O_a)}{dt} = F_{pri} \times \Delta^{17}O(F_{pri}) + FP \times \Delta^{17}O(FP) - FE \times \Delta^{17}O(FE) - FD \times \Delta^{17}O(FD) \quad (3)$$

where the subscript “a” represents the atmospheric box, i.e.,  $m_a$  refers to the mass of atmospheric nitrate, and  $\delta^{15}N_a$  and  $\Delta^{17}O_a$  refer to  $\delta^{15}N$  and  $\Delta^{17}O$  of atmospheric nitrate, respectively. Different nitrate fluxes transported in and out of the atmospheric box are denoted as FP, FE, and FD, where FP refers to the photolytic nitrate flux (the snow-sourced nitrate), FD refers to the atmospheric deposition nitrate flux, and FE refers to the exported nitrate flux that is horizontally transported out of the atmospheric box via air flow. Following Erbland et al. (2015), FE is assumed to be a portion ( $f_{exp}$ ) of FP (i.e.,  $FE = f_{exp} \times FP$ ) and maintains the isotopic signatures of FP.

In Eq. (1-3), the LHS (left-hand side) terms are two to three orders of magnitude smaller than nitrate fluxes in and out of the atmospheric box. Erbland et al. (2015) showed that the atmospheric nitrate mass was a factor of  $\sim 10^{-3}$  smaller than the surface snow nitrate reservoir at Dome C, and similar results were also found at Summit in Jiang et al. (2021). Thus,  $d(x)/dt$  is assumed to be zero at each time step (i.e. species and isotope compositions in the atmosphere are considered at steady state), which leads to simplified formulas for calculating  $F_{pri}$  via Eq. (4-6) as follows:

$$F_{pri} \approx FD - FP(1 - f_{exp}) \quad (4)$$

$$\delta^{15}N(F_{pri}) \approx \frac{FD \times \delta^{15}N(FD) - FP \times (1 - f_{exp}) \times \delta^{15}N(FP)}{FD - FP \times (1 - f_{exp})} \quad (5)$$

$$\Delta^{17}O(F_{pri}) \approx \frac{FD \times \Delta^{17}O(FD) - FP \times (1 - f_{exp}) \times \Delta^{17}O(FP)}{FD - FP \times (1 - f_{exp})} \quad (6)$$

Hence, if the magnitude and isotopic compositions of FP and FD in each time step are known,  $F_{pri}$  can be calculated. FP and FD are calculated from the inverse evolution of snowpack nitrate ~~are~~ described in the following sections.

## 2.1 The backward evolution of snowpack nitrate

Starting with an arbitrary snowpack nitrate depth profile at a given time step, changes in nitrate concentration and isotopic compositions ( $\delta^{15}N$  and  $\Delta^{17}O$ ) in a certain snow layer in the photic zone induced by photolysis can be calculated as follows:





$$c(SN'_n) = \frac{c(SN_n)}{(1 - f_p) + f_c f_p} \quad (7)$$

$$\delta^{15}N(SN'_n) = \delta^{15}N(SN_n) - \frac{(1 - f_p)(1 - f_c)\bar{\epsilon}_p \ln(1 - f_p)}{(1 - f_p) + f_c f_p} \quad (8)$$

$$\Delta^{17}O(SN'_n) = \Delta^{17}O(SN_n) \frac{(1 - f_p) + f_c f_p}{(1 - f_p) + \frac{2}{3} f_c f_p} \quad (9)$$

where  $c$  represent the nitrate concentration and  $SN_n$  refers to the  $n^{\text{th}}$  snowpack layer, respectively, and the quotation mark in superscript refers to the initial state before being photolyzed at each time step. These equations are based on the nitrate mass and isotopic balances on snow grains during photolysis as shown in Fig. 1, and detailed derivations of these equations can be found in Appendix A.

In Eq (7-9),  $f_p$  represents the fraction of snow nitrate that undergoes photolysis at each time step, and  $f_c$  represents the fraction of nitrate photolysis intermediate undergoing the cage effect (Meusinger et al., 2014) which leads to apparent oxygen isotope exchange with water and lowers  $\Delta^{17}O$  by a factor of 2/3. The potential isotope effect on  $\delta^{15}N$  during cage effect remains unknown and is not considered. The value of  $f_p$  is calculated by the first-order reaction of nitrate photolysis:

$$f_p = 1 - \exp\left(-\int_0^{dt} J(t, z) dt\right) \quad (10)$$

where  $J$  represents the rate constant of nitrate photolysis that varies with time and depth of the snow layer.  $J$  is calculated from actinic flux ( $I$ ), the quantum yield ( $\Phi$ ), and the absorption cross section ( $\sigma$ ) of nitrate photolysis as follows:

$$J(t, z) = \int_{280 \text{ nm}}^{350 \text{ nm}} \Phi(\lambda) \times \sigma_{NO_3^-}(\lambda) \times I(z, \lambda) d\lambda \quad (11)$$

The rate constant of  $^{15}NO_3^-$  photolysis ( $J^*$ ) is also calculated from the absorption cross section of the heavy isotopologue from Berhanu et al. (2014), and the photolysis fractionation constant for nitrogen isotope  $\epsilon_p$  is calculated via:

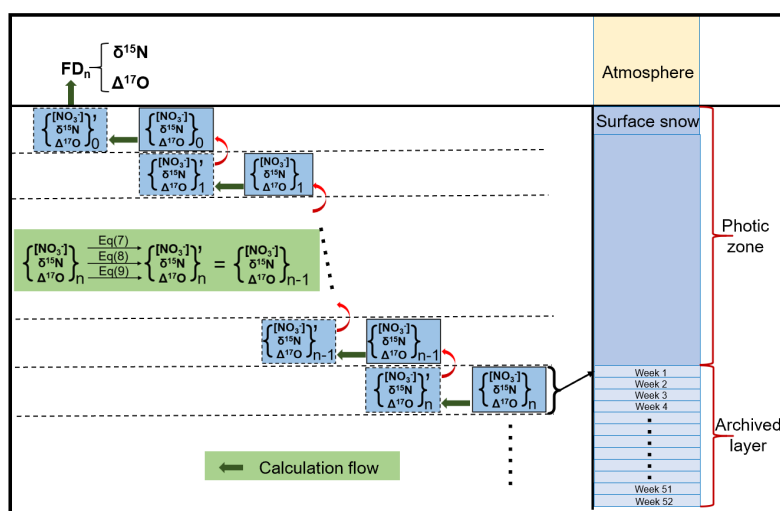
$$\epsilon_p(t, z) = \frac{J^*(t, z)}{J(t, z)} - 1 \quad (12)$$

The solar zenith angle changes with time during each time step, leading to changes



in the spectrum of actinic flux and subsequently changes in  $\epsilon_p$ . To simplify the calculation, in Eq. (8) the **weighted average** of nitrogen isotope fractionation constant ( $\bar{\epsilon}_p$ ) over different solar zenith angle is used. The radiative transfer in snowpack is calculated using the parameterization from Zatko et al. (2013) to achieve fast online calculations, and this parameterization has been shown to be capable of providing consistent results with a high-order snowpack radiative transfer model DISORT (Zatko et al., 2013). The upper boundary conditions for the parameterization, i.e., the direct and diffuse components of the irradiance at the snow surface, are calculated offline using the Troposphere Ultraviolet and Visible (TUV) radiation model (Madronich et al., 1998) at different total column ozone (TCO) and solar zenith angle conditions.

The relationships between  $c(SN_n)$ ,  $\delta^{15}N(SN_n)$ ,  $\Delta^{17}O(SN_n)$  and  $c(SN_{n-1})$ ,  $\delta^{15}N(SN_{n-1})$ ,  $\Delta^{17}O(SN_{n-1})$  in the snowpack are illustrated in Fig. 2, where  $c(SN_n)$ ,  $\delta^{15}N(SN_n)$ ,  $\Delta^{17}O(SN_n)$  are the values after photolysis in the  $n^{\text{th}}$  layer at a certain time step, and  $c(SN_{n-1})$ ,  $\delta^{15}N(SN_{n-1})$ ,  $\Delta^{17}O(SN_{n-1})$  are the values before photolysis (calculated by Eq (7-9)) and are also the values after photolysis in the prior time step when it was in the  $(n-1)^{\text{th}}$  layer. By repeating this operation, the initially deposited values of nitrate concentration and isotopes for a given snow layer without influence from the photo-driven post-depositional processing (i.e., when this layer was at the surface) can be calculated, which is further linked to FD.





**Figure 2.** Schematic of the evolution of snowpack nitrate from the archived layer to its initial state at the snow surface. The quotation mark in the superscript of the bracket represents the status of snow nitrate before photolysis at each time step.

## 2.2 Determinations of FP and FD

FP and FD are determined during the inverse evolution of snowpack nitrate profiles. As shown in Fig. 1, photolytic nitrate flux and its  $\delta^{15}\text{N}$  from the  $n^{\text{th}}$  snow layer can be calculated via the mass balance relationships:

$$FP_n = c(SN'_n)f_p(1 - f_c)\rho_{\text{snow}}d_n/\Delta t \quad (13)$$

$$\delta^{15}\text{N}(FP_n) = \delta^{15}\text{N}(SN'_n) - \frac{\bar{\epsilon}_p(1 - f_p)\ln(1 - f_p)}{f_p} \quad (14)$$

In Eq (13),  $\rho_{\text{snow}}$  is the density of snow,  $d_n$  is the thickness of the  $n^{\text{th}}$  snow layer, which is equal to the accumulated snow thickness at one time step, and  $\Delta t$  is the default model time step (1 week). Eq (14) implicitly assumes that the reformed nitrate in the overlying atmosphere keeps the same  $\delta^{15}\text{N}$  signals of the snow-emitted photoproduct of  $\text{NO}_2$  because of isotope mass balance, i.e., essentially all  $\text{NO}_2$  is oxidized into nitrate at one time step. FP emitted from the whole snowpack and its  $\delta^{15}\text{N}$  can be calculated by:

$$FP = \sum FP_n \quad (15)$$

$$\delta^{15}\text{N}(FP) = \frac{\sum FP_n * \delta^{15}\text{N}(FP_n)}{\sum FP_n} \quad (16)$$

For  $\Delta^{17}\text{O}$  of FP, extra knowledge of the oxidizing agent concentrations in the local atmosphere including  $\text{HO}_2$ ,  $\text{RO}_2$  and  $\text{O}_3$  must be provided (Appendix B). This is because the emitted  $\text{NO}_x$  would achieve photochemical steady state rapidly, thus erasing any original  $\Delta^{17}\text{O}$  signal inherited from the snowpack nitrate. The subsequent conversion of  $\text{NO}_2$  to nitrate would also determine 1/3 of the oxygen atom of the newly formed nitrate.

FD and its isotopic signals can be obtained from the uppermost snow layer before photolysis occurs as illustrated in Fig.2:

$$FD = c(SN'_0)\rho_{\text{snow}}d_0/\Delta t \quad (17)$$

$$\delta^{15}\text{N}(FD) = \delta^{15}\text{N}(SN'_0) \quad (18)$$



270 
$$\Delta^{17}O(FD) = \Delta^{17}O(SN'_0) \quad (19)$$

The calculated FP and FD in each time step are further used to calculate  $F_{pri}$  according to Eq (4-6).

### 2.3 The choice of model initial conditions

To run the model, an appropriate archival snow nitrate profile with known  
275 concentration and isotopic composition ( $\delta^{15}N$  and  $\Delta^{17}O$ ) should be assigned as model  
initial conditions with seasonal or monthly resolution, though ideally weekly or finer  
resolution data are the best. The archived nitrate profile could be dated by using various  
types of seasonal markers, such as the  $\delta^{18}O$  of  $H_2O$ , the ion concentrations or their ratios,  
and the snow accumulation rates (Hastings et al., 2004; Furukawa et al., 2017; Dibb et  
280 al., 2007).

### 3. Model evaluations

Because ~~there~~ lack direct observations of primary nitrate, we evaluated the model  
performance with other kinds of observations, including nitrate isotopes in surface  
snow and the overlying atmosphere. The deposited nitrate flux FD represents the state  
285 of nitrate that has just deposited onto the surface snow and is close to the definition of  
the skin layer of snowpack, i.e., the uppermost several millimeters of surface snow  
(Erbland et al., 2013; Winton et al., 2020). Thus, if there are sufficient high-resolution  
skin layer observations, a direct comparison with the model output can be performed  
(i.e., FD vs. skin layer measurements). Moreover, since FD originates from the local  
290 atmosphere, if the air-snow nitrate transfer function (i.e., the mass and isotope  
relationships between atmospheric nitrate and the deposited nitrate) is known, the  
calculated FD could be used to infer the state of local atmospheric nitrate. In this study,  
the isotope transfer function is applied instead of the mass transfer function because of  
its simplicity, especially for  $\Delta^{17}O$ , which is assumed to be conserved during deposition  
295 owing to its mass-independent nature. For  $\delta^{15}N$ , we assume that the **deposition of  
atmospheric nitrate** is associated with a fractionation constant ( $\epsilon_a$ ) of +10 ‰ following  
Erbland et al. (2013). ~~In all~~, we can either directly compare the modeled isotopes of FD  
with the observed values in the skin layer or with local atmospheric signals by including



the differences (only for  $\delta^{15}\text{N}$ ) between FD and atmospheric nitrate.

300 In this study, we chose two typical polar sites, Summit, Greenland, and Dome C, Antarctica to conduct case studies in order to test the performance of the inverse model. These two sites were chosen for several reasons. First, these two sites represent typical polar sites with both relatively high (Summit) and extremely low (Dome C) snow accumulation rates. Second, there are sufficient atmospheric and/or snow observations  
305 at these two sites, which informs model input parameters and allows for comparison of the model results with observations. Third, these two sites are hot spots of ice core drilling, and future work using the inverse model on ice core nitrate records from these sites can be performed. In addition, there have already been studies simulating the post-depositional processing of snow nitrate at these two sites by using the forward  
310 TRANSITS model (Erbland et al., 2015; Jiang et al., 2021). Most of the model parameters in this study are kept the same as the original TRANISTS simulation unless otherwise mentioned. The major parameters used in this study are summarized in Table 2. Below, we specifically describe how we chose the initial model values/conditions for simulations at these two sites.

315

**Table 2.** Values of major parameter used in the model simulations at two different sites.

| Parameter                                  | Dome C, Antarctica                    |                       | Summit, Greenland   |                       |
|--|---------------------------------------|-----------------------|---|-----------------------|
|  | Value                                 | Reference             | Value   | Reference             |
| $A$  | 28 kg m <sup>-2</sup> a <sup>-1</sup> | Erbland et al. (2015) | 250 kg m <sup>-2</sup> a <sup>-1</sup>                    | Dibb et al., (2014)   |
| $\Phi$                                     | 0.015                                 | Adjusted <sup>a</sup> | 0.002   | Jiang et al., (2021)  |
| $f_c$                                      | 0.15                                  | Erbland et al. (2015) | 0.15  | Erbland et al. (2015) |
| $f_{\text{exp}}$                           | 0.2                                   | Erbland et al. (2015) | 0.35  | Jiang et al., (2021)  |
| $\varepsilon_d$                            | +10 ‰                                 | Erbland et al. (2013) | +10 ‰   | Erbland et al. (2013) |
| $\Delta^{17}\text{O}(\text{NO}_3^-)$ of FP | Calculated                            | Erbland et al. (2013) | Observed atmospheric $\Delta^{17}\text{O}(\text{NO}_3^-)$ | Jiang et al., (2021)  |

<sup>a</sup>Adjusted according to the best fit of snowpack nitrate  $\delta^{15}\text{N}$  profile at Dome C (Appendix C).



### 3.1 Summit, Greenland

320 Summit, Greenland is a typical site with high snow accumulation rate ( $250 \text{ kg m}^{-2}$   
 $\text{a}^{-1}$ , Dibb et al., 2004) at present, and weekly resolved snow accumulation data exists  
(Burkhart et al., 2004), allowing for the precise dating of the snowpack nitrate profile  
(Jiang et al., 2022). The weekly archival snowpack nitrate records at Summit compiled  
in Jiang et al. (2022) were adapted as initial model values.

### 3.2 Dome C, Antarctica

325 The present snow accumulation rate at Dome C, Antarctica is extremely low ( $28$   
 $\text{kg m}^{-2} \text{a}^{-1}$ , Erbland et al., 2013), and it is currently impossible to discern seasonal or  
sub-seasonal nitrate patterns owing to the limited resolution of snowpack measurements.  
Erbland et al. (2013) reported five snowpack nitrate depth profiles at Dome C that  
330 extended just below the photic zone. To predict the final archived nitrate concentration  
and isotopes, Erbland et al. (2013) fitted these depth profiles with an exponential  
function, and the obtained asymptotic values were regarded as the final preserved  
nitrate signal. The average asymptotic values for the five snowpacks were ( $21.2 \pm 18.1$ )  
 $\text{ng g}^{-1}$ , ( $273.6 \pm 64.0$ ) ‰ and ( $26.0 \pm 1.9$ ) ‰ for nitrate concentration,  $\delta^{15}\text{N}$  and  $\Delta^{17}\text{O}$ ,  
335 respectively. These values were used as the annual averages of the preserved nitrate at  
Dome C in this study.

We note the seasonality of the archived nitrate concentration is important because  
it determines the magnitude of FP and FD at each time step in the model. In simulations  
of Dome C, we designed three cases with different weekly concentration distributions  
340 in a year. In case 1, the weekly nitrate concentrations were assumed to be uniform  
throughout a year. In case 2, the weekly archival nitrate concentrations were assumed  
to be a Gaussian-type distribution to match the observed seasonality in skin layer nitrate  
concentrations at Dome C (Erbland et al., 2013):

$$c(n) = c_a \times \left( a + b \times \exp\left(-\frac{(n - n_0)^2}{\sigma^2}\right) \right) \quad (20)$$

345 In Eq (20),  $c_a$  represents the annual average snow nitrate concentration,  $n$  represents  
the week number (1 to 52) and the shape parameters ( $a$ ,  $b$ ,  $\sigma$ ) were determined by the  
best fit of skin layer nitrate concentrations (Appendix D).  $n_0$  represents the week when



nitrate concentration peaks in a year and was set to be 26 according to the observed maximum nitrate concentrations in the skin layer in local midsummer (Erbland et al., 2013). However, since nitrate deposited in different weeks of a year would have experienced different amounts of total actinic flux and nitrate deposited in autumn undergoes minimal degree of photolysis (Jiang et al., 2022), it is likely that the summer peak would shift toward autumn by final preservation. As such, we also prescribed a “shifted peak” distribution in case 3, and in this case  $n_0$  was set equal to 35 in Eq. (20), while other parameters were the same as in case 2.

To determine the uncertainties in the model results caused by these artificially assumed nitrate profiles, we applied a Monte Carlo method, i.e., the exact initial value in snow at each week was set arbitrarily as follows:

$$c_r = c_a + \mathbf{U}(-\sigma, \sigma) \quad (21)$$

where  $c_a$  represents the prescribed initial value of annual-mean snow nitrate concentration in each case as described above,  $\mathbf{U}$  represents a uniformly distributed random variable and  $\sigma$  represents the standard error of the observed  $c_a$ . The obtained time series with random error was normalized again as final model inputs. All three cases were repeated 1000 times, and the model results were used to evaluate the uncertainties.

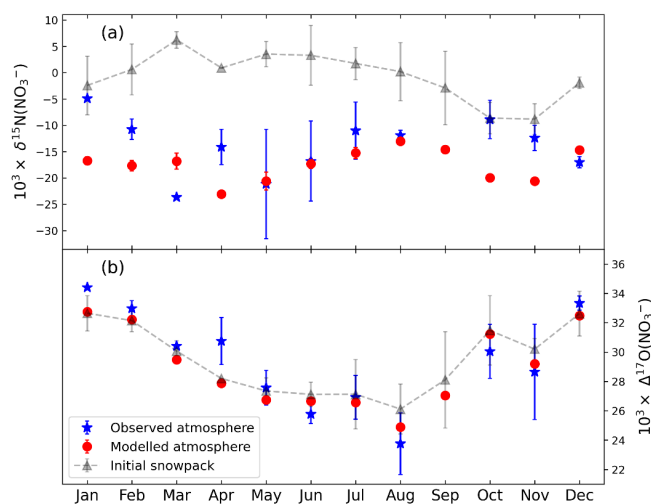
For isotopic ratios ( $\delta^{15}\text{N}$  and  $\Delta^{17}\text{O}$ ) of the archived nitrate, their seasonality was omitted in this study to simplify the model calculations, and for the results at Dome C we only compared the modeled results with observations at annual scale given the unknown seasonal inputs of these parameters. Note that reconstruction of atmospheric signals of  $\delta^{15}\text{N}$  and  $\Delta^{17}\text{O}$  from ice core records usually use a coarser resolution than sub-annual variations, justifying our annual averaging approach.

## 4. Results and discussion

### 4.1 Model results at Summit, Greenland



### 4.1.1 Comparison of local atmospheric variations



375

**Figure 3.** Comparison between the modeled (red dots) and observed (blue stars) seasonal variations in atmospheric nitrate (a)  $\delta^{15}\text{N}$  and (b)  $\Delta^{17}\text{O}$  at Summit Greenland. The dashed line with gray triangle represents the snowpack measurements as model inputs (i.e., the monthly archived snow nitrate  $\delta^{15}\text{N}$  and  $\Delta^{17}\text{O}$  from snowpack observations) (Jiang et al. 2022). The atmospheric observations were from Jiang et al. (2022).

380

Currently there are no skin layer observations at Summit and the atmospheric nitrate isotopes reported by Jiang et al. (2022) were used for model comparison. To reduce the uncertainty of model results owing to uncertainties associated with the weekly dating of snowpack, we only compared the modeled monthly averages with observations, and the uncertainties of the monthly model results were calculated as one standard error of the mean of results from different weeks. As shown in Fig. 3, the modeled seasonal variations in atmospheric  $\delta^{15}\text{N}(\text{NO}_3^-)$  and  $\Delta^{17}\text{O}(\text{NO}_3^-)$  agree well with the observed seasonality. In addition, the modeled and observed atmospheric  $\Delta^{17}\text{O}(\text{NO}_3^-)$  are both close to snowpack  $\Delta^{17}\text{O}(\text{NO}_3^-)$ . This is just as expected at Summit since the deposition of atmospheric nitrate is assumed to be a mass-dependent process. The only process that can alter  $\Delta^{17}\text{O}(\text{NO}_3^-)$  in snow is the cage effect (McCabe et al., 2005), which is negligible under present Summit conditions. The inverse model calculated a small cage effect of 0.15 ‰ on  $\Delta^{17}\text{O}(\text{NO}_3^-)$  by comparing the annual weighted average of FA and FD, which is close to the value of 0.19 ‰ predicted by the

395





TRANSITS model (Jiang et al., 2021).

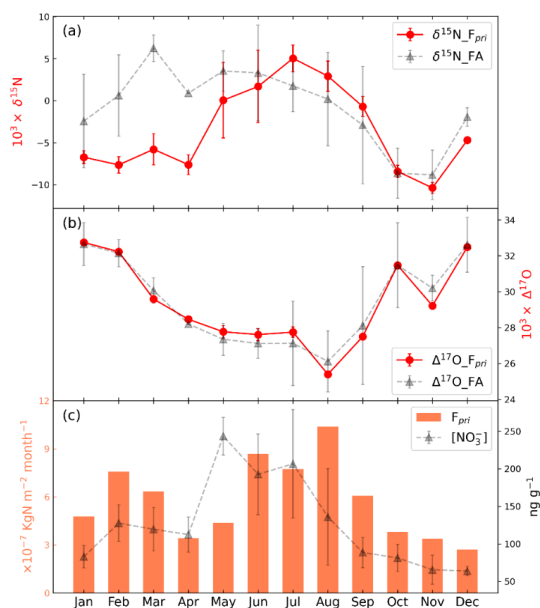
For  $\delta^{15}\text{N}(\text{NO}_3^-)$ , the modeled atmospheric  $\delta^{15}\text{N}(\text{NO}_3^-)$  seasonality is comparable to the observations, but the absolute values display some discrepancies in autumn and winter. In particular, the modeled and observed average  $\delta^{15}\text{N}(\text{NO}_3^-)$  values in the  
400 summer half-year (from March to August) are  $-17.6 \pm 3.5 \text{ ‰}$  and  $-16.0 \pm 7.8 \text{ ‰}$ , respectively, while in the winter half-year they are  $-16.0 \pm 7.8 \text{ ‰}$  and  $-12.0 \pm 4.1 \text{ ‰}$ , respectively. The model-observation difference in the winter half year may be related to the model set-up of a constant  $\epsilon_d$  of +10 ‰. As discussed by Jiang et al. (2022), the partition between nitrate deposition mechanisms (i.e., wet vs. dry deposition) may result  
405 in seasonally different air-snow transfer functions for  $\delta^{15}\text{N}(\text{NO}_3^-)$ . It has been observed that  $\delta^{15}\text{N}(\text{NO}_3^-)$  of dry deposition is generally higher than wet deposition (Beyn et al., 2014; Heaton, 1987). This implies that dry deposition likely possesses a larger  $\epsilon_d$ , perhaps because wet deposition can scavenge all or most of atmospheric nitrate, leading to small to no isotope fractionation. Given the potential seasonal changes in the relative  
410 fraction of dry versus wet deposition at Summit, using a constant  $\epsilon_d$  in the model would likely cause discrepancies in one season but not in the other. Some observations at Summit indicate that snowfall activities are more frequent and severe in summer months (June-September) than in winter (Castellani et al., 2015; Bennartz et al., 2019), which implies that dry deposition of atmospheric nitrate is more important in winter  
415 instead of summer. Thus, the model-observation discrepancies in the winter half year cannot be explained by the seasonal shift in the ratio between wet and dry deposition, as more dry deposition should result in a larger isotope effect in winter.

Alternatively, we note the  $\epsilon_d$  itself may have a seasonality which could be caused by the temperature dependence of nitrate absorption onto ice grains (Abbatt, 1997) or  
420 be influenced by other mechanisms such as the stability of the boundary layer. In fact, observations at Dome C indicated the averaged enrichment in skin layer  $\delta^{15}\text{N}(\text{NO}_3^-)$  related to atmospheric  $\delta^{15}\text{N}(\text{NO}_3^-)$  is +25 ‰ in summer, while in winter the value is +10 ‰ (Erbland et al., 2013). This may indicate a larger  $\epsilon_d$  in summer than in winter, though the summer skin layer  $\delta^{15}\text{N}(\text{NO}_3^-)$  is probably more or less influenced by



425 photolysis which tends to increase  $\delta^{15}\text{N}(\text{NO}_3^-)$ . However, in the inverse model,  $\epsilon_d$  was  
 set as +10 ‰ throughout the year for Summit (note this value is consistent with the  
 observed difference between surface snow and local atmospheric  $\delta^{15}\text{N}(\text{NO}_3^-)$  at Summit  
 in May and June (Fibiger et al., 2016)). If at Summit the  $\epsilon_d$  in winter is lower than that  
 in summer, the modeled average  $\delta^{15}\text{N}(\text{NO}_3^-)$  in the winter half year would have been  
 430 underestimated. This at least explains in part the model-observation discrepancies in  
 winter half year  $\delta^{15}\text{N}(\text{NO}_3^-)$ . Future work on the degree of nitrogen isotope fractionation  
 during atmospheric nitrate deposition and the causal factors are necessary to further  
 investigate this issue.

#### 4.1.2 Flux and isotopes of primary nitrate



435

**Figure 4.** The modeled monthly (a)  $\delta^{15}\text{N}$ , (b)  $\Delta^{17}\text{O}$  and (c) fluxes of primary nitrate ( $F_{\text{pri}}$ ) to Summit Greenland. The concentration,  $\delta^{15}\text{N}$  and  $\Delta^{17}\text{O}$  values of the archived snow nitrate as model inputs are also shown for comparison (gray triangle with dashed line).

440

The major function of the inverse model is to reconstruct the primary nitrate flux and its isotopes by using ice core nitrate records. Primary nitrate flux is closely associated with atmospheric nitrate at a regional scale and could be further linked to the



atmospheric abundance of its precursor  $\text{NO}_x$ . The isotopic composition of  $F_{\text{pri}}$  could  
445 provide extra information. For example, the  $\delta^{15}\text{N}$  of  $F_{\text{pri}}$  may be used to infer the  
variations in  $\text{NO}_x$  source emissions if other factors influencing isotope fractionation  
during the atmospheric conversion of  $\text{NO}_x$  to nitrate can be constrained. The  $\Delta^{17}\text{O}$  of  
 $F_{\text{pri}}$  depends on the relative concentration of major atmospheric oxidations such as  $\text{O}_3$   
and  $\text{HO}_2/\text{RO}_2$  radicals and thus could be used to reflect regional atmospheric oxidation  
450 environment (Geng et al., 2017; Sofen et al., 2014).

The model-calculated seasonal variations in  $F_{\text{pri}}$  to Summit are shown in Fig. 4.  
The annual flux of primary nitrate was calculated to be  $6.96 \times 10^{-6} \text{ kgN m}^{-2} \text{ a}^{-1}$ , which is  
similar ( $\approx 2\text{-}3 \times 10^{-6} \text{ kgN m}^{-2} \text{ a}^{-1}$ ) to model results from Zatzko et al. (2016) using the  
GEOS-Chem model but is about two orders of magnitude lower than the atmospheric  
455 nitrate deposition flux in mid-latitude area (Gao et al., 2019; Zhang et al., 2012). The  
seasonality of  $F_{\text{pri}}$  displays a bimodal mode with a major summer peak and a secondary  
peak in late winter/early spring, in contrast the preserved snowpack nitrate  
concentration which peaks in spring/summer. The maximum  $F_{\text{pri}}$  in summer could be  
caused by the enhanced temperature-dependent precursor  $\text{NO}_x$  emissions such as from  
460 soil microbes (Pilegaard et al., 2006) as well as the more active photochemistry in  
summer, both of which would promote more efficient atmospheric nitrate production.  
It is interesting that the secondary  $F_{\text{pri}}$  peak in early spring is coincident with the timing  
of the spring Arctic haze phenomenon (Quinn et al., 2007), as well as the occasional  
spring nitrate concentration peak in snowpack and ice cores at Summit (Geng et al.,  
465 2014), though the exact timing of the seasonal peaks needs further investigation.

The modeled  $\Delta^{17}\text{O}$  of  $F_{\text{pri}}$  is close to the measurement in snowpack with minimum  
values in summer, suggesting the  $\Delta^{17}\text{O}$  signal of primary nitrate is well preserved under  
current Summit conditions. The seasonal variations in  $\Delta^{17}\text{O}$  of  $F_{\text{pri}}$  can be understood  
in terms of the different production mechanisms of atmospheric nitrate (Alexander et  
470 al., 2020). In summer, ample solar radiation enhances the photochemical production of  
 $\text{HNO}_3$  from the  $\text{NO}_2+\text{OH}$  pathway, the  $\Delta^{17}\text{O}$  of which is lowest compared with other  
nitrate formation pathways. While in winter, the dominant  $\text{N}_2\text{O}_5$  hydrolysis pathway



produces nitrate with high  $\Delta^{17}\text{O}$ . Such seasonal patterns have been widely observed globally as summarized in Alexander et al. (2020).

475 The modeled  $\delta^{15}\text{N}$  of  $F_{\text{pri}}$  ranges from  $-10.3\text{‰}$  to  $5.0\text{‰}$  which falls well within the reported atmospheric  $\delta^{15}\text{N}(\text{NO}_3^-)$  values in continental and marine boundary layer in both hemispheres in regions not impacted by snowpack emission (Li et al., 2022; Lim et al., 2022; Morin et al., 2009; Shi et al., 2021). However, the seasonal pattern of  $\delta^{15}\text{N}$  of  $F_{\text{pri}}$  which displays a summer maximum is opposite to the typical seasonal  
480 pattern of atmospheric  $\delta^{15}\text{N}(\text{NO}_3^-)$  found in mid-latitude continental areas, where higher  $\delta^{15}\text{N}(\text{NO}_3^-)$  values in winter and lower  $\delta^{15}\text{N}(\text{NO}_3^-)$  values in summer are widely observed (e.g., Beyn et al., 2014; Freyer, 1991; Fang et al., 2021; Lim et al., 2022; Esquivel Hernández et al., 2022). This summer high and winter low  $\delta^{15}\text{N}(\text{NO}_3^-)$  in  $F_{\text{pri}}$  is instead consistent with the observations at two Arctic coastal sites (Morin et al., 2012;  
485 Morin et al., 2008), where the summer high atmospheric  $\delta^{15}\text{N}(\text{NO}_3^-)$  is strongly correlated with air temperature. Morin et al. (2008) suggest the  $\delta^{15}\text{N}(\text{NO}_3^-)$ -temperature relationship observed at the Arctic coastal sites may be related to physicochemical transformations of nitrate in Arctic and during the transport of nitrate and reactive nitrogens from the mid-latitudes, though the specific mechanisms is unknown.

490 Another possibility to explain the modeled summer ~~higher~~  $\delta^{15}\text{N}(\text{NO}_3^-)$  in  $F_{\text{pri}}$  is that there may be more anthropogenic nitrate transported from mid-latitudes to Greenland in summer than in winter.  $F_{\text{pri}}$  is comprised of nitrate originating from the mid-latitudes as well as nitrate formed in the Arctic region. Morin et al. (2009) suggested that air parcels originating from regions with more anthropogenic impacts  
495 carries nitrate with higher  $\delta^{15}\text{N}$ , which was confirmed by subsequent studies (Li et al., 2022; Vicars and Savarino, 2014; Shi et al., 2021). The increased frequency of air sources originating from the North America in summer compared to winter (Kahl et al., 1997) could thus lead to more anthropogenic nitrate to Greenland in summer, resulting in higher summer  $\delta^{15}\text{N}$  of primary nitrate than winter.

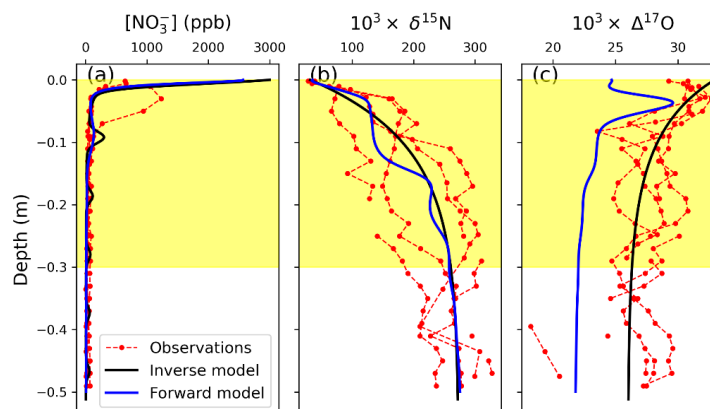
500 The potential link between  $\delta^{15}\text{N}$  of  $F_{\text{pri}}$  and its precursor  $\text{NO}_x$  emissions is not further discussed here, as recent studies have shown that the isotopic effect during  $\text{NO}_x$



photo-recycling is complex (Li et al., 2020) and may dominate  $\delta^{15}\text{N}$  variations in atmospheric nitrate (Fang et al., 2021; Li et al., 2021). More comprehensive studies on the isotopic effects during atmospheric nitrate formation as well as the potential  
 505 fractionation during transport are required to further link  $\delta^{15}\text{N}$  of  $F_{\text{pri}}$  with its precursors and/or source regions.

## 4.2 Model results at Dome C, Antarctica

### 4.2.1 Snowpack nitrate profile in the photic zone



510 **Figure 5.** Comparison between the observed and modeled snowpack nitrate concentrations,  $\delta^{15}\text{N}$ , and  $\Delta^{17}\text{O}$  at Dome C. The red lines with circles represent four observed snowpack nitrate profiles at Dome C from Erbland et al. (2013) and Frey et al. (2009), while the blue and black lines are modeled results from the forward model (i.e., the TRANSITS model) and the inverse model in this study, respectively. The  
 515 yellow background represents the depth of the photic zone.

Since Dome C snowpack exhibits very distinct trends in the concentration and isotopic ratio of nitrate in the photic zone, we first examine the modeled summer  
 snowpack nitrate profile at Dome C in comparison with the previous observations  
 520 (Erbland et al., 2013; Frey et al., 2009) in Fig. 5. The TRANSITS model results (Erbland et al., 2015) are also shown in Fig. 5 for comparison. Both models reproduce the observed decrease in nitrate concentration and the large enrichments in  $\delta^{15}\text{N}(\text{NO}_3^-)$  well. We note that the predicted surface snow nitrate concentration is higher than the observations by both models. This is because the modeled concentration represents the



525 state that atmospheric nitrate has just deposited onto the snow surface, while the  
observed skin layer snow may have already undergone snow metamorphism and/or  
post-depositional processing (Winton et al., 2020). This is also supported by recent  
observations at Dome C that newly deposited diamond dust could possess nitrate  
concentrations up to 2000 ppb (Winton et al., 2020), within the range of model  
530 predictions.

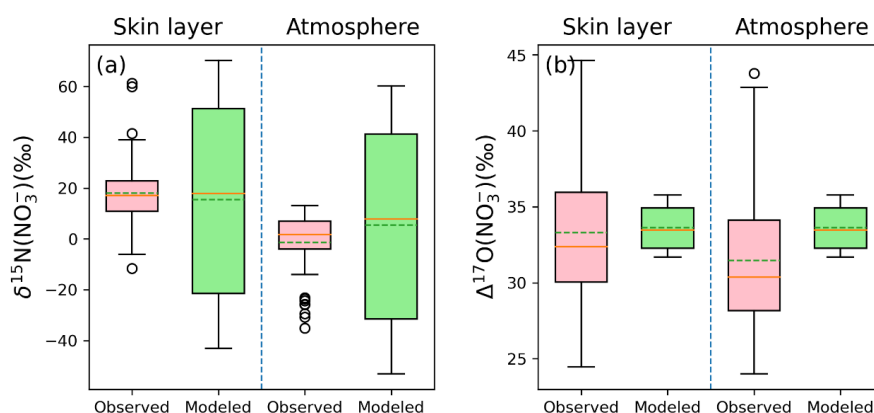
The decreasing trend in  $\Delta^{17}\text{O}(\text{NO}_3^-)$  within the photic zone is also reproduced by  
these two models, caused by the cage effect during nitrate photolysis. However, the  
TRANSITS model appears to underestimate snowpack  $\Delta^{17}\text{O}(\text{NO}_3^-)$  while the inverse  
model performs better in snowpack  $\Delta^{17}\text{O}(\text{NO}_3^-)$  simulation. This is because in the  
535 TRANSITS model, snow  $\Delta^{17}\text{O}(\text{NO}_3^-)$  is controlled by a combination of  $\Delta^{17}\text{O}(\text{NO}_3^-)$  of  
FD and the subsequent cage effect after deposition. At Dome C,  $\Delta^{17}\text{O}(\text{NO}_3^-)$  of FD is  
dominated by locally formed atmospheric nitrate (i.e., FP) (Erbland et al., 2015), which  
is in turn determined by the prescribed  $\Delta^{17}\text{O}$  transfer during NO-NO<sub>2</sub> cycling and the  
subsequent OH oxidation of NO<sub>2</sub> under sunlight conditions in the model. However,  
540 Savarino et al. (2016) demonstrated that the standard chemistry (i.e., exclusive  
oxidation of NO<sub>2</sub> by OH in summer) and the associated isotopic mass balance applied  
to  $\Delta^{17}\text{O}$  (i.e., the one used by the direct model) does not hold in the Dome C atmosphere,  
with this standard approach systematically underestimating the observations. Our  
inverse model is in line with this conclusion. The inverse model calculates atmospheric  
545  $\Delta^{17}\text{O}(\text{NO}_3^-)$  from the archived snow  $\Delta^{17}\text{O}(\text{NO}_3^-)$  by subtracting the cage effect but does  
not assume any specific chemical reaction in the atmospheric box, contrary to the  
forward model. Therefore, although the inverse model uses the same method as the  
TRANSITS model to calculate  $\Delta^{17}\text{O}(\text{NO}_3^-)$  of locally formed atmospheric nitrate (FP),  
it does not include any hypothesis of how local nitrate is formed. The good match  
550 between observations and inverse model output is a further demonstration that  
atmospheric  $\Delta^{17}\text{O}(\text{NO}_3^-)$  is not in agreement with the standard daylight chemistry of  
nitrate formation (i.e. NO<sub>2</sub>+OH).

Overall, the consistency of the modeled and observed snowpack nitrate profiles



suggests that the effect of post-depositional processing is properly represented by the  
 555 inverse model. This confirms that the inverse model can properly reproduce snow  
 nitrate concentrations and isotopes in the photic zone, which are intermediate ~~status~~  
 between archived and atmospheric nitrate.

#### 4.2.2 Skin layer and atmospheric nitrate



560 **Figure 6.** Comparison between the observed and modeled annual averages of  $\delta^{15}\text{N}(\text{NO}_3^-)$  and  $\Delta^{17}\text{O}(\text{NO}_3^-)$  in the atmosphere and snow skin layer at Dome C. The solid line in the box plot indicates the median value, while the dash line represents the average value.

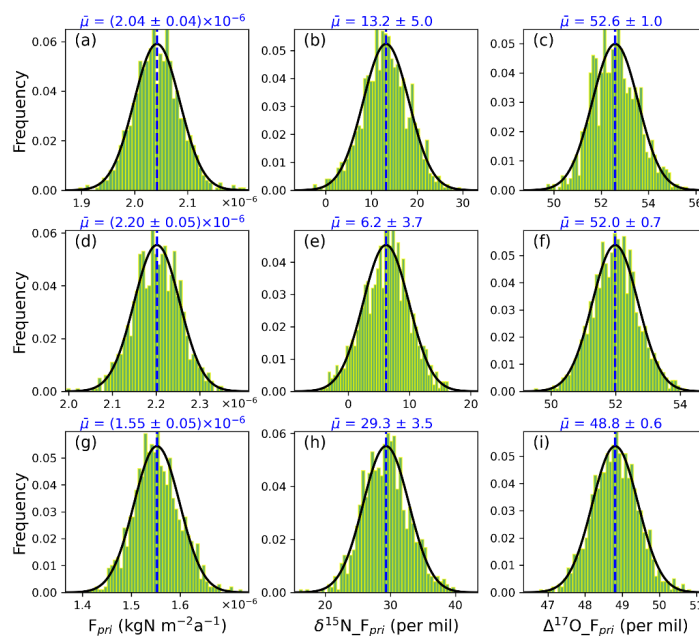
565 For Dome C, since the seasonal information of the archived nitrate profiles is unknown, although the time step in the model was set to one week, we mainly focus on the annual average values. We note that the modeled isotopic compositions of snowpack and skin layer nitrate are irrelevant to the prescribed nitrate concentration seasonality. This is because the total nitrate loss fraction and the induced isotopic effect only depend  
 570 on the total amount of actinic flux received during snow burial. In the following discussion we only report and discuss the modeled isotopes of local atmospheric and skin layer nitrate from case 1, i.e., the archived snow nitrate concentration was assumed to be constant throughout the year.

The observed annual average  $\delta^{15}\text{N}(\text{NO}_3^-)$  and  $\Delta^{17}\text{O}(\text{NO}_3^-)$  values in the skin layer  
 575 at Dome C are  $18.0 \pm 11.7 \text{ ‰}$  and  $33.6 \pm 1.4 \text{ ‰}$ , respectively (Erbland et al., 2013), while the modeled skin-layer values are  $15.7 \pm 38.6 \text{ ‰}$  and  $33.3 \pm 4.7 \text{ ‰}$ , respectively,



in good agreement with the observations. The observed annual average atmospheric  $\delta^{15}\text{N}(\text{NO}_3^-)$  and  $\Delta^{17}\text{O}(\text{NO}_3^-)$  values are  $-1.3 \pm 11.6 \text{ ‰}$  and  $31.4 \pm 4.6 \text{ ‰}$ , respectively, while the modeled values are  $8.0 \pm 11.7 \text{ ‰}$  and  $33.6 \pm 1.4 \text{ ‰}$ , respectively. Note the average observed  $\delta^{15}\text{N}$  values in this study were calculated as arithmetic mean instead of mass-weighted mean reported in Erbland et al. (2013) since the inverse model cannot directly calculate the nitrate concentration in the atmosphere. Nevertheless, the modeled averages are similar to the observed averages except for atmospheric  $\delta^{15}\text{N}(\text{NO}_3^-)$ . The difference between the modeled and observed atmospheric  $\delta^{15}\text{N}(\text{NO}_3^-)$  could be again related to constant  $\varepsilon_d$  used in the model. As discussed earlier, in the model we followed Erbland et al. (2015) to set  $\varepsilon_d = 10 \text{ ‰}$  throughout the year, while observations at Dome C indicate that  $\varepsilon_d$  could be as large as 25 ‰ in summer instead of 10 ‰ (Erbland et al., 2013). Hence the modeled atmospheric  $\delta^{15}\text{N}(\text{NO}_3^-)$  could be overestimated. This reinforces that it is necessary to further explore the isotope effects on  $\delta^{15}\text{N}(\text{NO}_3^-)$  during atmospheric nitrate deposition.

#### 4.2.3 Flux and isotopes of primary nitrate



**Figure 7.** Frequency histogram of the calculated primary nitrate flux and its mean





595  $\delta^{15}\text{N}/\Delta^{17}\text{O}$  values at Dome C under three different archival snow nitrate concentration distributions: **(a-c)** Case 1: uniform distribution, **(d-f)** Case 2: Gaussian-type function, **(g-i)** Case 3: shifted Gaussian-type function. The black solid lines represent the fitted Gaussian function of the frequency distribution. The blue dashed lines represent the mean values of  $F_{\text{pri}}$  and its  $\delta^{15}\text{N}$  and  $\Delta^{17}\text{O}$ , which are labeled on the top of each subplot.

600

In Fig. 7, the flux of primary nitrate ( $F_{\text{pri}}$ ) and its mean isotopes from the 3 difference cases (i.e., different nitrate concentration seasonality in archived snow) are displayed. Similar to the previous section, we only focus on their annual means. Note when calculating  $\Delta^{17}\text{O}(\text{NO}_3^-)$  of  $F_{\text{pri}}$ ,  $\Delta^{17}\text{O}$  values of locally formed nitrate are necessary. As discussed in 4.2.1, ~~that~~ following the ~~same~~ method in the TRANSITS model to calculate  $\Delta^{17}\text{O}(\text{NO}_3^-)$  of locally formed atmospheric nitrate would underestimate  $\Delta^{17}\text{O}(\text{NO}_3^-)$  of FP at Dome C. This is especially evident in summer when the snow sourced nitrate (i.e., FP) dominates the atmospheric nitrate budget, and the calculated  $\Delta^{17}\text{O}(\text{NO}_3^-)$  of FP by the TRANSITS model is about 6 ‰ lower than observed atmospheric  $\Delta^{17}\text{O}(\text{NO}_3^-)$  (Erbland et al., 2015). Thus, in the inverse model, when calculating  $\Delta^{17}\text{O}(\text{NO}_3^-)$  of  $F_{\text{pri}}$  at Dome C,  $\Delta^{17}\text{O}(\text{NO}_3^-)$  of FP was not calculated using the model default method as in the TRANSITS, but prescribed as the observed atmospheric summer  $\Delta^{17}\text{O}(\text{NO}_3^-)$ . Otherwise, the modeled  $\Delta^{17}\text{O}(\text{NO}_3^-)$  of  $F_{\text{pri}}$  would be higher than 70 ‰, which is highly unrealistic. Note, this is not an issue at Summit Greenland because FP doesn't dominate the atmospheric nitrate budget in summer there.

As shown in Fig. 7, although the prescribed archived nitrate concentration seasonality does not alter the modeled snowpack and atmospheric nitrate isotopes, it has a profound impact on the modeled primary nitrate flux and its isotopes. In particular, under the three cases of different seasonal distributions of the archived snow nitrate concentrations, the modeled  $F_{\text{pri}}$  and its annual mean  $\delta^{15}\text{N}$  and  $\Delta^{17}\text{O}$  range from 1.5 to  $2.2 \times 10^{-6} \text{ kgN m}^{-2} \text{ a}^{-1}$ , 6.2 to 29.3 ‰ and 48.8 to 52.6 ‰, respectively. The inverse model calculated  $F_{\text{pri}}$  is smaller than the value used in the original TRANSITS ( $8.2 \times 10^{-6} \text{ kgN m}^{-2} \text{ a}^{-1}$ ) in Erbland et al. (2015), but this is easily resolved given the large uncertainty in the archived nitrate concentration used as model input.

625 The modeled annual mean  $\delta^{15}\text{N}$  of  $F_{\text{pri}}$  ranges from 6.2-29.3 ‰, in contrast with the



observed atmospheric  $\delta^{15}\text{N}(\text{NO}_3^-)$  in southern mid-latitude area or the Southern Ocean where  $\delta^{15}\text{N}(\text{NO}_3^-)$  is in general negative or close to 0 (Morin et al., 2009; Shi et al., 2018; Shi et al., 2021). The modeled positive  $\delta^{15}\text{N}$  of  $F_{\text{pri}}$  is however consistent with the wintertime atmospheric  $\delta^{15}\text{N}(\text{NO}_3^-)$  observed in Antarctica when the effect of  
630 photolysis is null and local atmospheric nitrate likely reflects  $F_{\text{pri}}$ . The maximum atmospheric  $\delta^{15}\text{N}(\text{NO}_3^-)$  in winter was found to be 10.8 ‰ at DDU (Savarino et al., 2007), 12.8 ‰ at Dome C (Erbland et al., 2013) and 13.9 ‰ at Zhongshan station (Shi et al., 2022). These positive  $\delta^{15}\text{N}$  values have been link to stratospheric denitrification as nitrate produced in stratosphere is suggested to be  $19 \pm 3$  ‰ by considering the  
635 fractionation induced by different of  $\text{N}_2\text{O}$  photolysis channels (Savarino et al., 2007). Therefore, the modeled flux and  $\delta^{15}\text{N}$  of  $F_{\text{pri}}$  points towards the dominance of stratospheric denitrification in nitrate budget at Dome C.

The modeled  $\Delta^{17}\text{O}$  of  $F_{\text{pri}}$  is also very high for all three cases (48.8-52.6 ‰). The measured bulk  $\Delta^{17}\text{O}$  of surface ozone in Antarctica is about 26 ‰ (Ishino et al., 2017;  
640 Savarino et al., 2015) that fits well with the global tropospheric average of 25.4 ‰ (Vicars and Savarino, 2014). Given that the oxygen mass-independent fractionation signal of ozone is mainly occupied by the terminal oxygen atom and transferred to other molecular, atmospheric nitrate of tropospheric origin should possess a  $\Delta^{17}\text{O}$  signal less than 39 ‰ (Mauersberger et al., 2003; Savarino et al., 2008), which cannot explain our  
645 calculated high  $\Delta^{17}\text{O}$  of  $F_{\text{pri}}$ . However, the bulk  $\Delta^{17}\text{O}$  of stratospheric ozone was measured to be  $34.3 \pm 3.6$  ‰ (Lämmerzahl et al., 2002; Krankowsky et al., 2000), which indicated that nitrate produced in the stratosphere could gain a higher  $\Delta^{17}\text{O}$  signature from ozone (Lyons, 2001). It has been observed in Antarctica that the atmospheric  $\Delta^{17}\text{O}(\text{NO}_3^-)$  could exceed 40 ‰ in winter and early spring when stratospheric  
650 denitrification occurs (Ishino et al., 2017; Walters et al., 2019; Erbland et al., 2013; Savarino et al., 2007; Shi et al., 2022). A recent study also revealed that the surface snow  $\Delta^{17}\text{O}(\text{NO}_3^-)$  at Dome C frequently exceeds 40 ‰ during winter/spring and could sometimes reach up to 50 ‰ (Akers et al., 2022). As we mentioned previously, these winter  $\Delta^{17}\text{O}(\text{NO}_3^-)$  observations likely reflect the primary nitrate signal at that time

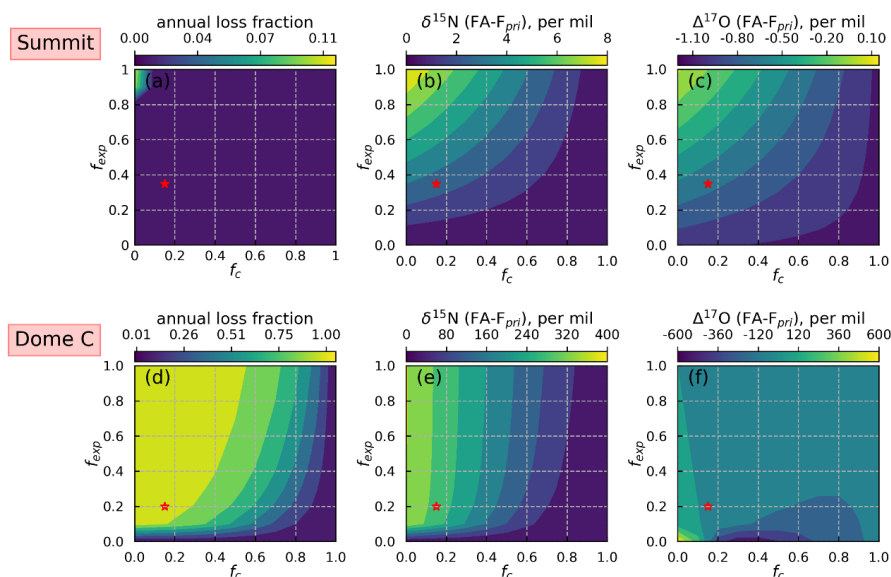


655 since the photolysis of snow nitrate does not occur due to lack of sunlight. Thus, the  
 high modeled  $\Delta^{17}\text{O}$  of  $F_{\text{pri}}$  seems to again indicate a dominant role of stratosphere  
 denitrification in external nitrate source to Dome C, similar to what can be reflected  
 from the modeled  $\delta^{15}\text{N}$  of primary nitrate. In addition, Erbland et al (2015) estimated  
 that stratospheric denitrification nitrate flux is  $(4.1 \pm 2.5) \times 10^{-6} \text{ kgN m}^{-2} \text{ a}^{-1}$  in Antarctica,  
 660 while our calculated  $F_{\text{pri}}$  of  $1.5 - 2.2 \times 10^{-6} \text{ kgN m}^{-2} \text{ a}^{-1}$  at Dome C is within the same  
 range.

Finally, we acknowledge that there are many factors that would affect the model  
 results, such as the archived snow nitrate concentration and isotopes, the export fraction  
 ( $f_{\text{exp}}$ ), and the cage effect fraction ( $f_c$ ). These need to be further explored by observations  
 665 to improve the model performance.

### 5. Model sensitivity tests: the impact of $f_{\text{exp}}$ and $f_c$

In this section, we report the sensitivity test results to elucidate the impact of two  
 model parameters that lack of direct observational constraints, the export fraction ( $f_{\text{exp}}$ )  
 and the cage effect fraction ( $f_c$ ). We mainly focus on the annual net loss and the  
 670 differences in isotopes between  $F_{\text{pri}}$  and FA in accordance with the resolution of ice core  
 measurements.





**Figure 8.** Model sensitivity test results of two parameters  $f_{\text{exp}}$  and  $f_c$  for Summit (**a-c**) and Dome C (**d-f**). The annual nitrate loss fraction is defined as  $1-FA/F_{\text{pri}}$  following Jiang et al. (2021). Red stars represent the values of  $f_{\text{exp}}$  and  $f_c$  used in model simulations.

The sensitivity test results are shown in Fig 8. The annual loss fraction (defined as  $1-FA/F_{\text{pri}}$ ) represents the final preservation of primary nitrate after post-depositional processing (Jiang et al., 2021). The inverse model predicts an annual loss fraction of 3.5% under present Summit conditions, which is close to the TRANSITS model prediction of 4.1% (Jiang et al., 2021). This small discrepancy is likely caused by the use of simplified snow radiative transfer parameterization in the inverse model. In addition, the differences of  $\delta^{15}\text{N}$  and  $\Delta^{17}\text{O}$  between FA and  $F_{\text{pri}}$  are also in good agreement with the TRANSITS model. As expected, larger  $f_{\text{exp}}$  and smaller  $f_c$  would result in a higher degree of net loss in  $F_{\text{pri}}$  and larger isotopic effects in both  $\delta^{15}\text{N}$  and  $\Delta^{17}\text{O}$ . However, under present-day conditions at Summit, the preserved snow nitrate concentrations and isotopes at the annual scale is only altered slightly and the degree of changes is insensitive to  $f_{\text{exp}}$  and  $f_c$ .

For Dome C, the model results are sensitive to  $f_{\text{exp}}$  when  $f_c$  is small, and becomes sensitive to  $f_c$  when  $f_{\text{exp}}$  is larger. In addition, the  $\Delta^{17}\text{O}$  results display a non-monotonic response to these two parameters, especially when  $f_{\text{exp}}$  approaches zero (Fig. 8f). A similar phenomenon was seen in the TRANSITS model simulations in Erbland et al. (2015), where they found that the model results could not converge when  $f_{\text{exp}}$  was set to zero. The high sensitivity of model parameters renders difficult to reconstruct the historical variations in primary nitrate based on ice core records at Dome C unless these parameters are precisely constrained. For present day conditions,  $f_{\text{exp}}$  and  $f_c$  could be constrained by atmospheric and snowpack observations (Erbland et al., 2015) but it is unknown if these values could be applied to different climate conditions. In addition, the difficulties in choosing an appropriate archival nitrate concentration profile as model initial conditions would add extra uncertainties to the model results.

## 6. Conclusions and implications

In this study, we introduce an inverse model which is designed to correct for the



effects of post-depositional processing on ice-core nitrate concentration and its isotopes.

705 The model was tested against present-day Summit, Greenland and Dome C, Antarctica conditions to validate its performance under different snow accumulation rates. Model results compared to observations demonstrate that the inverse model is capable of adequately correcting the effect of post-depositional processing. The modeled atmospheric nitrate  $\delta^{15}\text{N}/\Delta^{17}\text{O}$  at Summit are generally in good agreement with

710 observations but with slight underestimate in winter  $\delta^{15}\text{N}(\text{NO}_3^-)$ , which is likely because the model doesn't treat ~~the~~ correctly the seasonal differences in nitrogen isotope fractionation during deposition ( $\epsilon_d$ ). At Dome C, the model also well reproduced the observed snowpack nitrate profiles in the photic zone, the annual skin layer  $\delta^{15}\text{N}/\Delta^{17}\text{O}(\text{NO}_3^-)$ , and atmospheric  $\Delta^{17}\text{O}(\text{NO}_3^-)$  at Dome C, but again overestimated the

715 average atmospheric  $\delta^{15}\text{N}(\text{NO}_3^-)$  probably also due a low bias in  $\epsilon_d$  used in the model. A better quantification on the isotope fractionation of  $\delta^{15}\text{N}(\text{NO}_3^-)$  during deposition is therefore needed.

The inverse working flow of this new model also enables us to qualitatively retrieve information regarding primary nitrate from the archived snow nitrate. The calculated

720 seasonality in  $\delta^{15}\text{N}$  of  $F_{\text{pri}}$  at Summit displays a maximum in mid-summer that is distinct from the observed spring  $\delta^{15}\text{N}(\text{NO}_3^-)$  peak in snowpack. This seasonal pattern is in contrast with observed atmospheric  $\delta^{15}\text{N}(\text{NO}_3^-)$  variations in mid-latitudes which is thought to be the major aerosol source region to Summit, but is consistent with the atmospheric  $\delta^{15}\text{N}(\text{NO}_3^-)$  variations observed in the high-latitude Arctic region. The  $\delta^{15}\text{N}$

725 of  $F_{\text{pri}}$  may reflect seasonally-varied main source regions to Greenland or a dominate role of high-latitude nitrate transport to Summit. At Dome C, both the magnitude of  $F_{\text{pri}}$  and its  $\delta^{15}\text{N}/\Delta^{17}\text{O}$  indicate a dominant role of stratospheric denitrification on nitrate budget at Dome C.

The inverse model is designed to help interpret ice core nitrate records. Applying

730 the inverse model to ice core nitrate records needs knowledge of initial conditions. In particular, archived snow nitrate concentration and its  $\delta^{15}\text{N}$  and  $\Delta^{17}\text{O}$ , the snow accumulation rate and light absorption impurity concentrations should be known for a



735 given ice core. In addition, chemistry-climate models such as the ICECAP or GCAP  
model (Murray et al., 2014; Murray et al., 2021) would be also necessary to provide  
extra constraints, such as the oxidizing agent concentrations, total column ozone (TCO),  
wind field and boundary layer heights for the past climates and are required to estimate  
 $\Delta^{17}\text{O}$  of FP and  $f_{\text{exp}}$  (Alexander et al., 2020; Jiang et al., 2021). The calculated primary  
nitrate flux and its  $\delta^{15}\text{N}$  and  $\Delta^{17}\text{O}$  can be further combined with the chemistry-climate  
740 model results to interpret its climate implications such as the variations in tropospheric  
 $\text{NO}_x$  and oxidant abundance, which would improve our understanding of key factors  
controlling the variability in atmospheric oxidation capacity under different climates.

#### **Appendix A: derivation of the nitrate mass and isotopic balance equations during photolysis (Eq (7-9))**

In the inverse model, we follow Erbland et al. (2015) to separate the photolysis of  
745 nitrate on ice grain into two steps, i.e., the direct photolysis followed by a subsequent  
cage effect (Fig. A1). It is well-documented that secondary chemistry can occur during  
snow nitrate photolysis to reform nitrate and alter the isotopes of the remaining nitrate,  
which is termed as the cage effect (McCabe et al., 2005; Meusinger et al., 2014). To  
quantify this effect, Erbland et al. (2015) assigned an empirical parameter ( $f_c$ ) to  
750 represent the fraction of the nitrate photoproduct that would undergo cage effect, and  
derived a value of 0.15 for  $f_c$  based on the observed decreasing trend of  $\Delta^{17}\text{O}$  ( $\text{NO}_3^-$ ) in  
snowpack at Dome C. Assuming a fraction ( $f_p$ ) of initial snow nitrate was photolyzed  
and undergone cage effect, the mass balance equation for snow nitrate can be written  
as:

$$755 \quad c(\text{SN}) = c(\text{SN}') (1 - f_p + f_c f_p) \quad (\text{A1})$$

~~We follow the previous appoint that the~~ superscript represents the state before being  
photolyzed. It can be easily seen that Eq (A1) is equal to Eq (7).

The direct photolysis of snow nitrate obeys the Rayleigh equation with a nitrogen  
fractionation constant of  $\bar{\epsilon}_p$ . The  $\delta^{15}\text{N}$  of the photoproduct ( $\text{NO}_2$ ) and the remaining  
760 nitrate on snow ( $\text{SN}_r$ ) can be approximated by:



$$N(NO_2) \approx \delta^{15}N(SN') + \frac{\bar{\epsilon}_p(1-f_p)\ln(1-f_p)}{f_p} \quad (A2)$$

$$\delta^{15}N(SN_r) \approx \delta^{15}N(SN') - \bar{\epsilon}_p \ln(1-f_p) \quad (A3)$$

Here we use the mathematic approximation of  $\ln(1+x) \sim x$ . The  $\delta^{15}N$  of the state after photolysis can be calculated via isotopic mass balance equation:

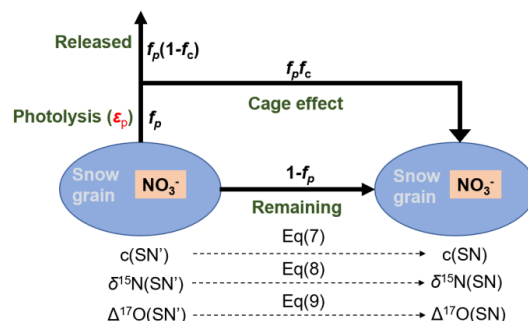
$$\begin{aligned} \delta^{15}N(SN) &= \frac{(1-f_p)\delta^{15}N(SN_r) + f_c f_p \delta^{15}N(NO_2)}{1-f_p + f_c f_p} \\ &= \delta^{15}N(SN') + \frac{(1-f_p)(1-f_c)\bar{\epsilon}_p \ln(1-f_p)}{(1-f_p) + f_c f_p} \end{aligned} \quad (A4)$$

which is equal to Eq (8).

For  $\Delta^{17}O$ , it is assumed that direct photolysis of nitrate will only induce mass-dependent fractionation and has no impact on  $\Delta^{17}O$ . However, the produced  $NO_2$  which is re-oxidized by OH radical would lower its  $\Delta^{17}O$  by 2/3 since OH radical rapidly archives isotope equilibrium with the surrounding water molecule and erase its  $\Delta^{17}O$  signal. Hence, by again using the isotopic mass balance equation, it can be shown that:

$$\begin{aligned} \Delta^{17}O(SN) &= \frac{(1-f_p)\Delta^{17}O(SN') + \frac{2}{3}f_c f_p \Delta^{17}O(SN')}{1-f_p + f_c f_p} \\ &= \frac{1-f_p + \frac{2}{3}f_c f_p}{1-f_p + f_c f_p} \Delta^{17}O(SN') \end{aligned} \quad (A5)$$

which is equal to Eq (9).



775 **Figure A1.** Sketch of the mass and isotopic transfer relationship during nitrate photolysis on snow grains. The black italic variables near the arrows indicate the fractional change in each subprocess.

**Appendix B: method for calculating  $\Delta^{17}O(NO_3^-)$  of FP**



The  $\Delta^{17}\text{O}(\text{NO}_3^-)$  of FP is required to solve the mass balance equations. We follow  
780 the standard algorithm to calculate atmospheric  $\Delta^{17}\text{O}(\text{NO}_3^-)$  that has been widely used  
by previous studies (Alexander et al., 2020 and reference within). Atmospheric  $\text{NO}_2$  is  
assumed to rapidly achieve photochemical steady state (PSS) so that its  $\Delta^{17}\text{O}$  can be  
represented as follow:

$$\Delta^{17}\text{O}(\text{NO}_2) = \frac{k_{\text{NO}+\text{O}_3}[\text{O}_3] + k_{\text{NO}+\text{BrO}}[\text{BrO}]}{k_{\text{NO}+\text{O}_3}[\text{O}_3] + k_{\text{NO}+\text{BrO}}[\text{BrO}] + k_{\text{NO}+\text{RO}_2}[\text{RO}_2]} \Delta^{17}\text{O}(\text{O}_3^*) \quad (\text{B1})$$

785 where  $k$  represents different oxidation channel for NO in atmosphere and  $\Delta^{17}\text{O}(\text{O}_3^*)$   
represents  $\Delta^{17}\text{O}$  of the terminal oxygen in ozone molecule, and  $\text{RO}_2$  includes both  $\text{HO}_2$   
and other organic peroxy radicals. Thus, to obtain  $\Delta^{17}\text{O}(\text{NO}_2)$ , concentrations of ozone  
and oxidizing radicals are necessary. For the subsequent oxidation of  $\text{NO}_2$ , only  
790  $\text{NO}_2+\text{OH}$  channel is considered, and  $\Delta^{17}\text{O}$  of OH is assumed to be zero owing to its  
equilibrium with atmospheric  $\text{H}_2\text{O}$ . Thus,  $\Delta^{17}\text{O}$  of the locally formed atmospheric  
nitrate (i.e., FP) can be calculated by:

$$\Delta^{17}\text{O}(\text{NO}_3^-) = \frac{2}{3} \Delta^{17}\text{O}(\text{NO}_2) \quad (\text{B2})$$

### Appendix C: adjusting the photolysis quantum yield used in Dome C simulations

The photolysis quantum yield ( $\Phi$ ) previously used in TRANSITS model simulation  
795 at Dome C was set to 0.026 in Erbland et al. (2015), which was adjusted to 0.015 in this  
study. Both values are obtained by best fitting the observed snowpack nitrate  
concentration and its  $\delta^{15}\text{N}$  profiles with model output, and are within the range of  
measured quantum yield (0.003-0.44) of Dome C snow nitrate (Meusinger et al., 2014).  
However, using a value of 0.026 in the inverse model would largely overestimate the  
800 photolytic loss of snow nitrate, resulting in unrealistically high nitrate concentration in  
skin layer ( $>15000$  ppb) and excessive fractionation in  $\delta^{15}\text{N}(\text{NO}_3^-)$  (500 ‰) and  
 $\Delta^{17}\text{O}(\text{NO}_3^-)$  (-18 ‰). Adjusting the quantum yield to 0.015 could well reproduce the  
observed nitrate concentration and  $\delta^{15}\text{N}(\text{NO}_3^-)$  in skin layer and snowpack.

The discrepancy in the chosen quantum yield between these two models is caused  
805 by whether the diffusion process of snow nitrate is included, as diffusion would tend to  
smooth the entire snowpack nitrate profiles and decrease the asymptotic values

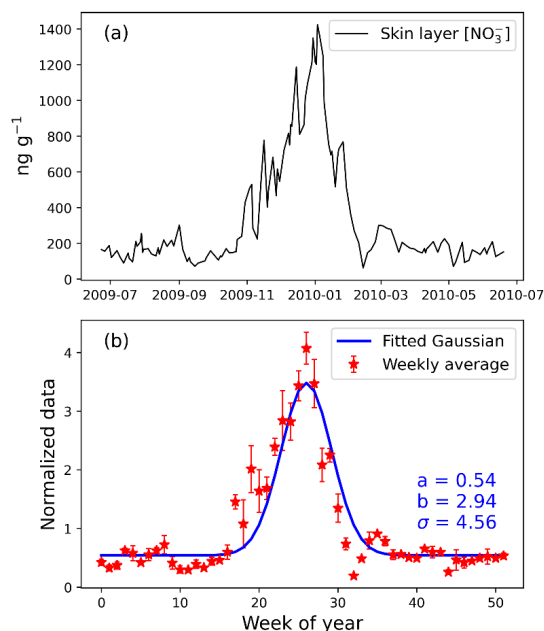




(Erbland et al., 2015). The omission of the diffusion process in the inverse model is based on the following considerations. First, the snowpack nitrate profile at sites with even lower accumulation rates (Dome A in East Antarctica, with accumulation rate of  $\sim 19 \text{ kg m}^{-2} \text{ a}^{-1}$ ) does not display detectable smoothing effect on snowpack nitrate or its  $\delta^{15}\text{N}$  and  $\delta^{17}\text{O}$  (Shi et al., 2015), suggesting that diffusion is not as important as assumed in the TRANSIST<sub>1</sub> model. Second, the TRANSIST<sub>1</sub> model would induce numerical diffusion during the division of snow layers in each time step, which results in rapid decreases in the amplitude of the simulated seasonality in snow nitrate, as can be seen in the simulated snowpack profiles in Winton et al. (2020).

#### Appendix D: fitting the shape parameters of skin layer nitrate concentration distributions at Dome C

To obtain a hypothetical seasonal pattern in the archived nitrate concentration, we assume that the normalized archived nitrate concentrations (by its arithmetic mean) would follow a same Gaussian-type distribution as nitrate concentrations in the skin layer. The shape parameters ( $a$ ,  $b$ ,  $\sigma$ ) of the Gaussian distribution are determined by using the least square regression method.



**Figure D1.** (a) Observed annual variations of skin layer nitrate concentration at Dome



825 C (Erbland et al., 2013). **(b)** Normalized skin layer nitrate concentration by its  
arithmetic mean (red star) and the fitted Gaussian curve, with the shape parameters (a,  
b,  $\sigma$ ) labeled in blue text.

*Code/data availability.* The codes for the numerical simulations and their analysis will  
830 be provided upon direct request to the corresponding author.

*Author contributions.* L.G conceived this study. Z.J. wrote the code, performed the  
model simulations, analyzed the data, and wrote the manuscript with L.G. J. S. and B.A.  
provided suggestions for model development and result interpretation. All authors gave  
835 feedback on the paper writing.

*Competing interests.* The contact author has declared that none of the authors has any  
competing interests.

#### 840 **Acknowledgements:**

L.G. acknowledges financial support from the National Natural Science  
Foundation of China (Awards: 41822605 and 41871051) and the Strategic Priority  
Research Program of Chinese Academy of Sciences (XDB 41000000), and the National  
Key R&D Program of China (2022YFC3700701). This work was partially supported  
845 by the French national programme LEFE/INSU (IMAGO), the ANR grants ANR-15-  
IDEX-02 (project IDEX Université Grenoble Alpes) and Labex OSUG@2020  
(Investissements d’avenir – ANR10 LABX56), the support of the overwintering staffs  
and the French polar institute IPEV through the SUNNITEDC (1011) and CAPOXI  
programs (1177) (J.S.). B. A. acknowledges support from NSF PLR 1542723 and AGS  
850 2202287 and 1702266.

#### **References**

Abbatt, J. P. D.: Interaction of  $\text{HNO}_3$  with water-ice surfaces at temperatures of the free troposphere,  
Geophys. Res. Lett., 24(12), 1479-1482., <https://doi.org/10.1029/97GL01403>, 1997.  
855 Akers, P. D., Savarino, J., Caillon, N., Magand, O., and Le Meur, E.: Photolytic modification of seasonal



- nitrate isotope cycles in East Antarctica, *Atmos. Chem. Phys.*, 22, 15637-15657, <https://doi.org/10.5194/acp-22-15637-2022>, 2022.
- 860 Akers, P. D., Savarino, J., Caillon, N., Servettaz, A. P. M., Le Meur, E., Magand, O., Martins, J., Agosta, C., Crockford, P., Kobayashi, K., Hattori, S., Curran, M., van Ommen, T., Jong, L., and Roberts, J. L.: Sunlight-driven nitrate loss records Antarctic surface mass balance, *Nature Communications*, 13, 4274, <https://doi.org/10.1038/s41467-022-31855-7>, 2022.
- Alexander, B., Savarino, J., Kreutz, K. J., and Thiemens, M. H.: Impact of preindustrial biomass-burning emissions on the oxidation pathways of tropospheric sulfur and nitrogen, *J. Geophys. Res. Atmos.*, 109, <https://doi.org/10.1029/2003JD004218>, 2004.
- 865 Alexander, B., Sherwen, T., Holmes, C. D., Fisher, J. A., Chen, Q., Evans, M. J., and Kasibhatla, P.: Global inorganic nitrate production mechanisms: comparison of a global model with nitrate isotope observations, *Atmos. Chem. Phys.*, 20, 3859-3877, <https://10.5194/acp-20-3859-2020>, 2020.
- Barbero, A., Savarino, J., Grilli, R., Blouzon, C., Picard, G., Frey, M. M., Huang, Y., and Caillon, N.: New Estimation of the NO<sub>x</sub> Snow-Source on the Antarctic Plateau, *J. Geophys. Res. Atmos.*, 126, e2021JD035062, <https://doi.org/10.1029/2021JD035062>, 2021.
- 870 Bennartz, R., Fell, F., Pettersen, C., Shupe, M. D., and Schuettemeyer, D.: Spatial and temporal variability of snowfall over Greenland from CloudSat observations, *Atmos. Chem. Phys.*, 19, 8101-8121, <https://10.5194/acp-19-8101-2019>, 2019.
- Berhanu, T. A., Meusinger, C., Erbland, J., Jost, R., Bhattacharya, S., Johnson, M. S., & Savarino, J.: Laboratory study of nitrate photolysis in Antarctic snow. II. Isotopic effects and wavelength dependence, *J. Chem. Phys.*, 140, 244306, <https://doi.org/10.1063/1.4882899>, 2014.
- Beyn, F., Matthias, V., and Dähnke, K.: Changes in atmospheric nitrate deposition in Germany – An isotopic perspective, *Environ. Pollut.*, 194, 1-10, <https://doi.org/10.1016/j.envpol.2014.06.043>, 2014.
- 880 Burkhart, J. F., Hutterli, M., Bales, R. C., & McConnell, J. R.: Seasonal accumulation timing and preservation of nitrate in firn at Summit, Greenland, *J. Geophys. Res. Atmos.*, 109, D22309, <https://doi.org/10.1029/2004JD004658>, 2004. Castellani, B. B., Shupe, M. D., Hudak, D. R., and Sheppard, B. E.: The annual cycle of snowfall at Summit, Greenland, 120, 6654-6668, <https://doi.org/10.1002/2015JD023072>, 2015.
- 885 Chu, L. and Anastasio, C.: Quantum Yields of Hydroxyl Radical and Nitrogen Dioxide from the Photolysis of Nitrate on Ice, *J. Phys Chem. A.*, 107, 9594-9602, <https://doi.org/10.1021/jp0349132>, 2003.
- Dibb, J. E., Talbot, R. W., Munger, J. W., Jacob, D. J., and Fan, S. M.: Air-snow exchange of HNO<sub>3</sub> and NO<sub>y</sub> at Summit, Greenland, *J. Geophys. Res. Atmos.*, 103, 3475-3486, <https://doi.org/10.1029/97JD03132>, 1998.
- 890 Dibb, J. E., Talbot, R. W., Whitlow, S. I., Shipham, M. C., Winterle, J., McConnell, J., and Bales, R.: Biomass burning signatures in the atmosphere and snow at Summit, Greenland: An event on 5 August 1994, *Atmos. Environ.*, 30, 553-561, [https://doi.org/10.1016/1352-2310\(95\)00328-2](https://doi.org/10.1016/1352-2310(95)00328-2), 1996.
- Dibb, J. E., Whitlow, S. I., and Arsenault, M.: Seasonal variations in the soluble ion content of snow at Summit, Greenland: Constraints from three years of daily surface snow samples, *Atmos. Environ.*, 41, 5007-5019, <https://doi.org/10.1016/j.atmosenv.2006.12.010>, 2007.
- 895 Elliott, E. M., Yu, Z., Cole, A. S., and Coughlin, J. G.: Isotopic advances in understanding reactive nitrogen deposition and atmospheric processing, *Science of The Total Environment*, 662, 393-403, <https://doi.org/10.1016/j.scitotenv.2018.12.177>, 2019.



- 900 Erbland, J., Savarino, J., Morin, S., France, J. L., Frey, M. M., and King, M. D.: Air–snow transfer of nitrate on the East Antarctic Plateau – Part 2: An isotopic model for the interpretation of deep ice-core records, *Atmos. Chem. Phys.*, 15, 12079-12113, <https://doi.org/10.5194/acp-15-12079-2015>, 2015.
- 905 Erbland, J., Vicars, W. C., Savarino, J., Morin, S., Frey, M. M., Frosini, D., Vince, E., and Martins, J. M. F.: Air–snow transfer of nitrate on the East Antarctic Plateau &ndash; Part 1: Isotopic evidence for a photolytically driven dynamic equilibrium in summer, *Atmos. Chem. Phys.*, 13, 6403-6419, <https://doi.org/10.5194/acp-13-6403-2013>, 2013.
- 910 Esquivel-Hernández, G., Matiatos, I., Sánchez-Murillo, R., Vystavna, Y., Balestrini, R., Wells, N. S., Monteiro, L. R., Chantara, S., Walters, W., and Wassenaar, L. I.: Nitrate isotopes ( $\delta^{15}\text{N}$ ,  $\delta^{18}\text{O}$ ) in precipitation: best practices from an international coordinated research project, *Isotopes in Environmental and Health Studies*, 59, 127-141, <https://doi.org/10.1080/10256016.2023.2177649>, 2023.
- 915 Fang, H., Walters, W. W., Mase, D., and Michalski, G.: iNRACM: incorporating  $^{15}\text{N}$  into the Regional Atmospheric Chemistry Mechanism (RACM) for assessing the role photochemistry plays in controlling the isotopic composition of  $\text{NO}_x$ ,  $\text{NO}_y$ , and atmospheric nitrate, *Geosci. Model Dev.*, 14, 5001-5022, <https://doi.org/10.5194/gmd-14-5001-2021>, 2021.
- Fibiger, D. L., Dibb, J. E., Chen, D., Thomas, J. L., Burkhart, J. F., Huey, L. G., & Hastings, M. G.: Analysis of nitrate in the snow and atmosphere at Summit, Greenland: Chemistry and transport, *J. Geophys. Res. Atmos.*, 121, 5010-5030, <https://doi.org/10.1002/2015JD024187>, 2016.
- 920 Fischer, H., Wagenbach, D., and Kipfstuhl, J.: Sulfate and nitrate firn concentrations on the Greenland ice sheet: 2. Temporal anthropogenic deposition changes, *J. Geophys. Res. Atmos.*, 103, 21935-21942, <https://doi.org/10.1029/98JD01886>, 1998.
- 925 Frey, M. M., Brough, N., France, J. L., Anderson, P. S., Traulle, O., King, M. D., Jones, A. E., Wolff, E. W., and Savarino, J.: The diurnal variability of atmospheric nitrogen oxides ( $\text{NO}$  and  $\text{NO}_2$ ) above the Antarctic Plateau driven by atmospheric stability and snow emissions, *Atmos. Chem. Phys.*, 13, 3045-3062, <https://doi.org/10.5194/acp-13-3045-2013>, 2013.
- 930 Frey, M. M., Roscoe, H. K., Kukui, A., Savarino, J., France, J. L., King, M. D., Legrand, M., and Preunkert, S.: Atmospheric nitrogen oxides ( $\text{NO}$  and  $\text{NO}_2$ ) at Dome C, East Antarctica, during the OPALE campaign, *Atmos. Chem. Phys.*, 15, 7859-7875, <https://doi.org/10.5194/acp-15-7859-2015>, 2015.
- Frey, M. M., Savarino, J., Morin, S., Erbland, J., and Martins, J. M. F.: Photolysis imprint in the nitrate stable isotope signal in snow and atmosphere of East Antarctica and implications for reactive nitrogen cycling, *Atmos. Chem. Phys.*, 9, 8681-8696, <https://doi.org/10.5194/acp-9-8681-2009>, 2009.
- 935 Freyer, H. D.: Seasonal variation of  $^{15}\text{N}/^{14}\text{N}$  ratios in atmospheric nitrate species, *Tellus B: Chemical and Physical Meteorology*, 43, 30-44, <https://doi.org/10.3402/tellusb.v43i1.15244>, 1991.
- Furukawa, R., Uemura, R., Fujita, K., Sjolte, J., Yoshimura, K., Matoba, S., and Iizuka, Y.: Seasonal-Scale Dating of a Shallow Ice Core From Greenland Using Oxygen Isotope Matching Between Data and Simulation, *J. Geophys. Res. Atmos.*, 122, 10,873-810,887, <https://doi.org/10.1002/2017JD026716>, 2017.
- 940 Gao, Y., Zhou, F., Ciais, P., Miao, C., Yang, T., Jia, Y., Zhou, X., Klaus, B.-B., Yang, T., and Yu, G.: Human activities aggravate nitrogen-deposition pollution to inland water over China, *National science review*, 7, 430-440, <https://doi.org/10.1093/nsr/nwz073>, 2019.



- 945 Geng, L., Alexander, B., Cole-Dai, J., Steig, E. J., Savarino, J., Sofen, E. D., & Schauer, A. J.: Nitrogen isotopes in ice core nitrate linked to anthropogenic atmospheric acidity change, *Proc. Natl. Acad. Sci.*, 111, 5808-5812. <https://doi.org/10.1073/pnas.1319441111>, 2014.
- Geng, L., Murray, L. T., Mickley, L. J., Lin, P., Fu, Q., Schauer, A. J., and Alexander, B.: Isotopic evidence of multiple controls on atmospheric oxidants over climate transitions, *Nature*, 546, 133-136, <https://doi.org/10.1038/nature22340>, 2017.
- 950 Geng, L., Zatko, M. C., Alexander, B., Fudge, T. J., Schauer, A. J., Murray, L. T., and Mickley, L. J.: Effects of post-depositional processing on nitrogen isotopes of nitrate in the Greenland Ice Sheet Project 2 ice core, 42, 5346-5354, <https://doi.org/10.1002/2015GL064218>, 2015.
- Grisart, A., Casado, M., Gkinis, V., Vinther, B., Naveau, P., Vrac, M., Laepple, T., Minster, B., Prié, F., Stenni, B., Fourré, E., Steen-Larsen, H. C., Jouzel, J., Werner, M., Pol, K., Masson-Delmotte, V., 955 Hoerhold, M., Popp, T., and Landais, A.: Sub-millennial climate variability from high-resolution water isotopes in the EPICA Dome C ice core, *Clim. Past*, 18, 2289-2301, <https://doi.org/10.5194/cp-18-2289-2022>, 2022.
- Hastings, M. G., Steig, E., & Sigman, D. M.: Seasonal variations in N and O isotopes of nitrate in snow at Summit, Greenland: Implications for the study of nitrate in snow and ice cores, *J. Geophys. Res. Atmos.*, 109, D20306, <https://doi.org/10.1029/2004JD004991>, 2004.
- 960 Hastings, M. G., Sigman, D. M., & Steig, E. J.: Glacial/interglacial changes in the isotopes of nitrate from the Greenland Ice Sheet Project 2 (GISP2) ice core, *Global Biogeochemical Cycles*, 19, GB4024, <https://doi.org/10.1029/2005GB002502>, 2005.
- Heaton, T. H. E.:  $^{15}\text{N}/^{14}\text{N}$  ratios of nitrate and ammonium in rain at Pretoria, South Africa, *Atmospheric Environment* (1967), 21, 843-852, [https://doi.org/10.1016/0004-6981\(87\)90080-1](https://doi.org/10.1016/0004-6981(87)90080-1), 1987.
- 965 Honrath, R., Lu, Y., Peterson, M. C., Dibb, J. E., Arsenault, M., Cullen, N., & Steffen, K.: Vertical fluxes of  $\text{NO}_x$ , HONO, and  $\text{HNO}_3$  above the snowpack at Summit, Greenland, *Atmos. Environ.*, 36, 2629-2640, [https://doi.org/10.1016/S1352-2310\(02\)00132-2](https://doi.org/10.1016/S1352-2310(02)00132-2), 2002.
- Iizuka, Y., Uemura, R., Fujita, K., Hattori, S., Seki, O., Miyamoto, C., et al.: A 60 Year Record of 970 Atmospheric Aerosol Depositions Preserved in a High-Accumulation Dome Ice Core, Southeast Greenland, *J. Geophys. Res. Atmos.*, 123, 574-589, <https://doi.org/10.1002/2017JD026733>, 2018.
- Ishino, S., Hattori, S., Savarino, J., Jourdain, B., Preunkert, S., Legrand, M., Caillon, N., Barbero, A., Kuribayashi, K., and Yoshida, N.: Seasonal variations of triple oxygen isotopic compositions of atmospheric sulfate, nitrate, and ozone at Dumont d'Urville, coastal Antarctica, *Atmos. Chem. Phys.*, 975 17, 3713-3727, <https://doi.org/10.5194/acp-17-3713-2017>, 2017.
- Jaffrezo, J.-L., Davidson, C. I., Kuhns, H. D., Bergin, M. H., Hillamo, R., Maenhaut, W., Kahl, J. W., and Harris, J. M.: Biomass burning signatures in the atmosphere of central Greenland, 103, 31067-31078, <https://doi.org/10.1029/98JD02241>, 1998.
- Jiang, Z., Alexander, B., Savarino, J., Erbland, J., and Geng, L.: Impacts of the photo-driven post-depositional processing on snow nitrate and its isotopes at Summit, Greenland: a model-based study, *The Cryosphere*, 15, 4207-4220, <https://doi.org/10.5194/tc-15-4207-2021>, 2021.
- 980 Jiang, Z., Savarino, J., Alexander, B., Erbland, J., Jaffrezo, J. L., and Geng, L.: Impacts of post-depositional processing on nitrate isotopes in the snow and the overlying atmosphere at Summit, Greenland, *The Cryosphere*, 16, 2709-2724, <https://doi.org/10.5194/tc-16-2709-2022>, 2022.
- 985 Kahl, J. D. W., Martinez, D. A., Kuhns, H., Davidson, C. I., Jaffrezo, J.-L., and Harris, J. M.: Air mass trajectories to Summit, Greenland: A 44-year climatology and some episodic events, *J. Geophys. Res.*, 102, 26861-26875, <https://doi.org/10.1029/97JC00296>, 1997.



- 990 Kaufmann, P. R., Federer, U., Hutterli, M. A., Bigler, M., Schüpbach, S., Ruth, U., Schmitt, J., and  
Stocker, T. F.: An Improved Continuous Flow Analysis System for High-Resolution Field  
Measurements on Ice Cores, *Environmental Science & Technology*, 42, 8044-8050,  
<https://doi.org/10.1021/es8007722>, 2008.
- Krankowsky, D., Lämmerzahl, P., and Mauersberger, K.: Isotopic measurements of stratospheric ozone,  
*Geophys. Res. Lett.*, 27, 2593-2595, <https://doi.org/10.1029/2000GL011812>, 2000.
- 995 Kunasek, S., Alexander, B., Steig, E., Hastings, M., Gleason, D., & Jarvis, J.: Measurements and  
modeling of  $\Delta 17\text{O}$  of nitrate in snowpits from Summit, Greenland, *J. Geophys. Res. Atmos.*, 113,  
D24302, <https://doi.org/10.1029/2008JD010103>, 2008.
- Lämmerzahl, P., Röckmann, T., Brenninkmeijer, C. A. M., Krankowsky, D., and Mauersberger, K.:  
Oxygen isotope composition of stratospheric carbon dioxide, *Geophys. Res. Lett.*, 29, 23-21-23-24,  
<https://doi.org/10.1029/2001GL014343>, 2002.
- 1000 Lee, H.-M., Henze, D. K., Alexander, B., and Murray, L. T.: Investigating the sensitivity of surface-level  
nitrate seasonality in Antarctica to primary sources using a global model, *Atmos. Environ.*, 89, 757-  
767, <https://doi.org/10.1016/j.atmosenv.2014.03.003>, 2014.
- Legrand, M. R. and Delmas, R. J.: Relative contributions of tropospheric and stratospheric sources to  
nitrate in Antarctic snow, *Tellus B: Chemical and Physical Meteorology*, 38, 236-249,  
1005 <https://doi.org/10.3402/tellusb.v38i3-4.15132>, 1986.
- Li, J., Davy, P., Harvey, M., Katzman, T., Mitchell, T., and Michalski, G.: Nitrogen isotopes in nitrate  
aerosols collected in the remote marine boundary layer: Implications for nitrogen isotopic  
fractionations among atmospheric reactive nitrogen species, *Atmos. Environ.*, 245, 118028,  
<https://doi.org/10.1016/j.atmosenv.2020.118028>, 2021.
- 1010 Li, J., Zhang, X., Orlando, J., Tyndall, G., and Michalski, G.: Quantifying the nitrogen isotope effects  
during photochemical equilibrium between NO and NO<sub>2</sub>: implications for  $\delta 15\text{N}$  in tropospheric  
reactive nitrogen, *Atmos. Chem. Phys.*, 20, 9805-9819, <https://doi.org/10.5194/acp-20-9805-2020>,  
2020.
- Li, Y., Shi, G., Chen, Z., Lan, M., Ding, M., Li, Z., and Hastings, M. G.: Significant Latitudinal Gradient  
of Nitrate Production in the Marine Atmospheric Boundary Layer of the Northern Hemisphere,  
1015 *Geophys. Res. Lett.*, 49, e2022GL100503, <https://doi.org/10.1029/2022GL100503>, 2022.
- Lim, S., Lee, M., Savarino, J., and Laj, P.: Oxidation pathways and emission sources of atmospheric  
particulate nitrate in Seoul: based on  $\delta 15\text{N}$  and  $\Delta 17\text{O}$  measurements, *Atmos. Chem. Phys.*, 22, 5099-  
5115, <https://doi.org/10.5194/acp-22-5099-2022>, 2022.
- 1020 Lyons, J. R.: Transfer of mass-independent fractionation in ozone to other oxygen-containing radicals in  
the atmosphere, *Geophys. Res. Lett.*, 28, 3231-3234, <https://doi.org/10.1029/2000GL012791>, 2001.
- Madronich, S., McKenzie, R. L., Björn, L. O., and Caldwell, M. M.: Changes in biologically active  
ultraviolet radiation reaching the Earth's surface, *Journal of Photochemistry and Photobiology B:  
Biology*, 46, 5-19, [https://doi.org/10.1016/S1011-1344\(98\)00182-1](https://doi.org/10.1016/S1011-1344(98)00182-1), 1998.
- 1025 Mauersberger, K., Krankowsky, D., and Janssen, C.: Oxygen Isotope Processes and Transfer Reactions,  
*Space Science Reviews*, 106, 265-279, <https://doi.org/10.1023/A:1024650007258>, 2003.
- McCabe, J. R., Boxe, C. S., Colussi, A. J., Hoffmann, M. R., and Thiemens, M. H.: Oxygen isotopic  
fractionation in the photochemistry of nitrate in water and ice, *J. Geophys. Res. Atmos.*, 110,  
<https://doi.org/10.1029/2004JD005484>, 2005.
- 1030 Meusinger, C., Berhanu, T. A., Erbland, J., Savarino, J., & Johnson, M. S.: Laboratory study of nitrate  
photolysis in Antarctic snow. I. Observed quantum yield, domain of photolysis, and secondary



- chemistry, *J. Chem. Phys.*, 140, 244305, <https://doi.org/10.1063/1.4882898>, 2014.
- 1035 Morin, S., Erbland, J., Savarino, J., Domine, F., Bock, J., Friess, U., Jacobi, H.-W., Sihler, H., and Martins, J. M. F.: An isotopic view on the connection between photolytic emissions of NO<sub>x</sub> from the Arctic snowpack and its oxidation by reactive halogens, *J. Geophys. Res. Atmos.*, 117, <https://doi.org/10.1029/2011JD016618>, 2012.
- Morin, S., Savarino, J., Frey, M. M., Domine, F., Jacobi, H.-W., Kaleschke, L., and Martins, J. M. F.: Comprehensive isotopic composition of atmospheric nitrate in the Atlantic Ocean boundary layer from 65°S to 79°N, *J. Geophys. Res. Atmos.*, 114, <https://doi.org/10.1029/2008JD010696>, 2009.
- 1040 Morin, S., Savarino, J., Frey, M. M., Yan, N., Bekki, S., Bottenheim, J. W., & Martins, J. M.: Tracing the origin and fate of NO<sub>x</sub> in the Arctic atmosphere using stable isotopes in nitrate, *Science*, 322, 730-732, <https://doi.org/10.1126/science.1161910>, 2008.
- Murray, L. T., Leibensperger, E. M., Orbe, C., Mickley, L. J., and Sulprizio, M.: GCAP 2.0: a global 3-D chemical-transport model framework for past, present, and future climate scenarios, *Geosci. Model Dev.*, 14, 5789-5823, <https://doi.org/10.5194/gmd-14-5789-2021>, 2021.
- 1045 Murray, L. T., Mickley, L. J., Kaplan, J. O., Sofen, E. D., Pfeiffer, M., and Alexander, B.: Factors controlling variability in the oxidative capacity of the troposphere since the Last Glacial Maximum, *Atmos. Chem. Phys.*, 14, 3589-3622, <https://doi.org/10.5194/acp-14-3589-2014>, 2014.
- Muscari, G., de Zafra, R. L., and Smyshlyaev, S.: Evolution of the NO<sub>y</sub>-N<sub>2</sub>O correlation in the Antarctic stratosphere during 1993 and 1995, *J. Geophys. Res. Atmos.*, 108, <https://doi.org/10.1029/2002JD002871>, 2003.
- 1055 Pilegaard, K., Skiba, U., Ambus, P., Beier, C., Brüggemann, N., Butterbach-Bahl, K., Dick, J., Dorsey, J., Duyzer, J., Gallagher, M., Gasche, R., Horvath, L., Kitzler, B., Leip, A., Pihlatie, M. K., Rosenkranz, P., Seufert, G., Vesala, T., Westrate, H., and Zechmeister-Boltenstern, S.: Factors controlling regional differences in forest soil emission of nitrogen oxides (NO and N<sub>2</sub>O), *Biogeosciences*, 3, 651-661, <https://doi.org/10.5194/bg-3-651-2006>, 2006.
- Quinn, P. K., Shaw, G., Andrews, E., Dutton, E. G., Ruoho-Airola, T., and Gong, S. L.: Arctic haze: current trends and knowledge gaps, *Tellus B: Chemical and Physical Meteorology*, 59, 99-114, <https://doi.org/10.1111/j.1600-0889.2006.00238.x>, 2007.
- 1060 Röthlisberger, R., Hutterli, M. A., Sommer, S., Wolff, E. W., and Mulvaney, R.: Factors controlling nitrate in ice cores: Evidence from the Dome C deep ice core, *J. Geophys. Res. Atmos.*, 105, 20565-20572, <https://doi.org/10.1029/2000JD900264>, 2000.
- Savarino, J., Bhattacharya, S. K., Morin, S., Baroni, M., and Doussin, J.-F.: The NO+O<sub>3</sub> reaction: A triple oxygen isotope perspective on the reaction dynamics and atmospheric implications for the transfer of the ozone isotope anomaly, *The Journal of chemical physics*, 128, 194303, <https://doi.org/10.1063/1.2917581>, 2008.
- 1065 Savarino, J., Kaiser, J., Morin, S., Sigman, D. M., and Thiemens, M. H.: Nitrogen and oxygen isotopic constraints on the origin of atmospheric nitrate in coastal Antarctica, *Atmos. Chem. Phys.*, 7, 1925-1945, <https://doi.org/10.5194/acp-7-1925-2007>, 2007.
- 1070 Savarino, J., Vicars, W. C., Legrand, M., Preunkert, S., Jourdain, B., Frey, M. M., Kukui, A., Caillon, N., and Gil Roca, J.: Oxygen isotope mass balance of atmospheric nitrate at Dome C, East Antarctica, during the OPALE campaign, *Atmos. Chem. Phys.*, 16, 2659-2673, <https://doi.org/10.5194/acp-16-2659-2016>, 2016.
- 1075 Seinfeld, J. H. and Pandis, S. N.: *Atmospheric chemistry and physics: from air pollution to climate change*, John Wiley & Sons, 2016.





- Shi, G., Buffen, A. M., Hastings, M. G., Li, C., Ma, H., Li, Y., Sun, B., An, C., and Jiang, S.: Investigation of post-depositional processing of nitrate in East Antarctic snow: isotopic constraints on photolytic loss, re-oxidation, and source inputs, *Atmos. Chem. Phys.*, 15, 9435-9453, <https://doi.org/10.5194/acp-15-9435-2015>, 2015.
- 1080 Shi, G., Buffen, A. M., Ma, H., Hu, Z., Sun, B., Li, C., Yu, J., Ma, T., An, C., Jiang, S., Li, Y., and Hastings, M. G.: Distinguishing summertime atmospheric production of nitrate across the East Antarctic Ice Sheet, *Geochimica et Cosmochimica Acta*, 231, 1-14, <https://doi.org/10.1016/j.gca.2018.03.025>, 2018.
- 1085 Shi, G., Li, C., Li, Y., Chen, Z., Ding, M., Ma, H., Jiang, S., An, C., Guo, J., Sun, B., and Hastings, M. G.: Isotopic constraints on sources, production, and phase partitioning for nitrate in the atmosphere and snowfall in coastal East Antarctica, *Earth and Planetary Science Letters*, 578, 117300, <https://doi.org/10.1016/j.epsl.2021.117300>, 2022.
- 1090 Shi, G., Ma, H., Zhu, Z., Hu, Z., Chen, Z., Jiang, S., An, C., Yu, J., Ma, T., Li, Y., Sun, B., and Hastings, M. G.: Using stable isotopes to distinguish atmospheric nitrate production and its contribution to the surface ocean across hemispheres, *Earth and Planetary Science Letters*, 564, 116914, <https://doi.org/10.1016/j.epsl.2021.116914>, 2021.
- Sillman, S.: The relation between ozone, NO<sub>x</sub> and hydrocarbons in urban and polluted rural environments, *Atmos. Environ.*, 33, 1821-1845, [https://doi.org/10.1016/S1352-2310\(98\)00345-8](https://doi.org/10.1016/S1352-2310(98)00345-8), 1999.
- 1095 Sofen, E. D., Alexander, B., Steig, E. J., Thiemens, M. H., Kunasek, S. A., Amos, H. M., Schauer, A. J., Hastings, M. G., Bautista, J., Jackson, T. L., Vogel, L. E., McConnell, J. R., Pasteris, D. R., and Saltzman, E. S.: WAIS Divide ice core suggests sustained changes in the atmospheric formation pathways of sulfate and nitrate since the 19th century in the extratropical Southern Hemisphere, *Atmos. Chem. Phys.*, 14, 5749-5769, [10.5194/acp-14-5749-2014](https://doi.org/10.5194/acp-14-5749-2014), 2014.
- 1100 Vicars, W. C. and Savarino, J.: Quantitative constraints on the 17O-excess ( $\Delta 17O$ ) signature of surface ozone: Ambient measurements from 50°N to 50°S using the nitrite-coated filter technique, *Geochimica et Cosmochimica Acta*, 135, 270-287, <https://doi.org/10.1016/j.gca.2014.03.023>, 2014.
- 1105 Walters, W. W., Michalski, G., Böhlke, J. K., Alexander, B., Savarino, J., and Thiemens, M. H.: Assessing the Seasonal Dynamics of Nitrate and Sulfate Aerosols at the South Pole Utilizing Stable Isotopes, *J. Geophys. Res. Atmos.*, 124, 8161-8177, <https://doi.org/10.1029/2019JD030517>, 2019.
- Winton, V. H. L., Ming, A., Caillon, N., Hauge, L., Jones, A. E., Savarino, J., Yang, X., and Frey, M. M.: Deposition, recycling, and archival of nitrate stable isotopes between the air-snow interface: comparison between Dronning Maud Land and Dome C, Antarctica, *Atmos. Chem. Phys.*, 20, 5861-5885, <https://doi.org/10.5194/acp-20-5861-2020>, 2020.
- 1110 Wolff, E. W., Jones, A. E., Bauguitte, S. J. B., and Salmon, R. A.: The interpretation of spikes and trends in concentration of nitrate in polar ice cores, based on evidence from snow and atmospheric measurements, *Atmos. Chem. Phys.*, 8, 5627-5634, <https://doi.org/10.5194/acp-8-5627-2008>, 2008.
- Wolff, E. W.: Nitrate in polar ice, *Ice core studies of global biogeochemical cycles* (pp. 195-224). Springer, Berlin, Heidelberg, [https://doi.org/10.1007/978-3-642-51172-1\\_10](https://doi.org/10.1007/978-3-642-51172-1_10), 1995.
- 1115 Zatko, M. C., Grenfell, T. C., Alexander, B., Doherty, S. J., Thomas, J. L., and Yang, X.: The influence of snow grain size and impurities on the vertical profiles of actinic flux and associated NO<sub>x</sub> emissions on the Antarctic and Greenland ice sheets, *Atmos. Chem. Phys.*, 13, 3547-3567, <https://doi.org/10.5194/acp-13-3547-2013>, 2013.
- Zatko, M., Erbland, J., Savarino, J., Geng, L., Easley, L., Schauer, A., Bates, T., Quinn, P. K., Light, B.,





- 1120 Morison, D., Osthoff, H. D., Lyman, S., Neff, W., Yuan, B., and Alexander, B.: The magnitude of the snow-sourced reactive nitrogen flux to the boundary layer in the Uintah Basin, Utah, USA, *Atmos. Chem. Phys.*, 16, 13837-13851, <https://doi.org/10.5194/acp-16-13837-2016>, 2016.
- Zhang, L., Jacob, D. J., Knipping, E. M., Kumar, N., Munger, J. W., Carouge, C. C., van Donkelaar, A., Wang, Y. X., and Chen, D.: Nitrogen deposition to the United States: distribution, sources, and processes, *Atmos. Chem. Phys.*, 12, 4539-4554, <https://doi.org/10.5194/acp-12-4539-2012>, 2012.
- 1125