

Channel cross-section heterogeneity of particulate organic carbon transport in the Huanghe

Yutian Ke^{1†}, Damien Calmels¹, Julien Bouchez², Marc Massault¹, Benjamin Chetelat³, Aurélie Noret¹, Hongming Cai², Jiubin Chen³, Jérôme Gaillardet², Cécile Quantin¹

¹GEOPS, Université Paris-Saclay-CNRS, 91405 Orsay, France

²Université de Paris, Institut de Physique du Globe de Paris, CNRS, 75005 Paris, France

³School of Earth System Science, Institute of Surface-Earth System Science, Tianjin University, 300072 Tianjin, China

[†]Present address: Division of Geological and Planetary Science, California Institute of Technology, Pasadena, CA 91125, USA

Corresponding author: Yutian KE (yutianke@caltech.edu)

Abstract. The Huanghe (Yellow River), one of the largest turbid river systems in the world, has long been recognized as a major contributor of suspended particulate matter (SPM) to the ocean. However, over the last few decades, the SPM export flux of the Huanghe has decreased over 90% due to the high management, impacting the global export of particulate organic carbon (POC). To better constrain sources and modes of transport of POC beyond the previously investigated transportation of POC near the channel surface, SPM samples were for the first time collected over a whole channel cross-section in the lower Huanghe. Riverine SPM samples were analyzed for particle size and major element contents, as well as for POC content and dual carbon isotopes (¹³C and ¹⁴C). Clear vertical and lateral heterogeneities of the physical and chemical properties of SPM are observed within the river cross-section. For instance, finer SPM carry in general more POC with higher ¹⁴C activity near the surface of the right bank. Notably, we discuss how bank erosion in the alluvial plain is likely to generate lateral heterogeneity in POC composition. The Huanghe POC is millennial-aged ($4,020 \pm 500$ radiocarbon years), dominated by organic carbon (OC) from the biosphere, while the lithospheric fraction reaches up to ca. 33%. The mobilization of aged and refractory OC, including radiocarbon-dead biospheric OC, from deeper soil horizons of the loess-paleosol sequence through erosion in the Chinese Loess Plateau is an important mechanism contributing to fluvial POC in the Huanghe drainage basin. Altogether, anthropogenic activities can drastically change the compositions and transport dynamics of fluvial POC, consequentially altering the feedback of the source-to-sink trajectory of a river system to regional and global carbon cycles.

29 **1 Introduction**

30 Rivers are the main conveyor of rock and soil debris eroded from the continents to the ocean. Along with inorganic
31 material, river sediments host particulate organic carbon (POC) derived mainly from three major sources: 1) recently
32 photosynthesized OC of the biosphere, 2) aged and altered OC from soils, and 3) ancient OC contained in sedimentary
33 rocks (Blair et al., 2010). The net effect of riverine POC transport on the carbon cycle and thus on the evolution of
34 Earth's climate depends on POC provenance and fate. The effective sedimentary burial of POC derived from the
35 terrestrial biosphere (biospheric OC, OC_{bio}) represents a net, long-term sink of atmospheric CO_2 (Galy et al., 2007,
36 Bouchez et al., 2014; Hilton et al., 2015), whereas the oxidation of POC derived from continental rocks (petrogenic
37 OC, OC_{petro}) acts as a net, long-term source of CO_2 to the atmosphere (Hilton et al., 2014). The erosion and burial of
38 OC_{petro} escaping from oxidation has no net effect on the long-term carbon cycle (Galy et al., 2008a; Bouchez et al.,
39 2010; Hilton et al., 2011; Horan et al., 2019). In addition, the reactive nature of OC_{bio} might also result in short-term
40 CO_2 emission during transport from both river channels and recently-deposited sediments (Mayorga et al., 2005; Galy
41 and Eglinton, 2011; Blair and Aller, 2012).

42 Globally, rivers transport a total POC flux of *ca.* 200 Tg C/year, consisting of 157^{+74}_{-50} Tg C/year of OC_{bio} and 43^{+61}_{-25}
43 Tg C/year of OC_{petro} (Galy et al., 2015; Ludwig et al., 1996). Source-to-sink processes controlling the origin and fate
44 of riverine POC are prominently river-specific, suggesting that the impact of POC on regional and global carbon
45 cycles might significantly vary both spatially and temporally (Blair and Aller, 2012). It is thus crucial to understand
46 the mechanisms controlling the POC export by large rivers that integrate vast portions of the land surface, and quantify
47 the differing sources of carbon exported by those large river systems.

48 The Huanghe (Yellow River) is a highly turbid river system that exports over 85% of its OC as particulate matter,
49 with efficient deposition and preservation in the ocean (Cauwet and Mackenzie, 1993; Bianchi, 2011; Zhang et al.,
50 2013; Ran et al., 2013). The Huanghe has been highly managed over the last few decades through water and soil
51 conservation measures as well as reservoir construction, leading to a decrease of nearly 90% of its sediment load
52 (Wang and Fu et al., 2016; Wang et al., 2007; Milliman et al., 1987) and a significant decrease in its POC delivery to
53 the ocean (Zhang et al., 2013). Reservoir construction dramatically affects the transport and fate of both sediment load
54 and POC in large rivers (Syvitski et al., 2005; Li et al., 2015). The estimated POC flux of the Huanghe is thought to
55 have shifted from 4.5 Tg C/yr in the 1980s (Cauwet and Mackenzie, 1993) to 0.34-0.58 Tg C/yr nowadays (Tao et al.,
56 2018) in response to both anthropogenic influence (Hu et al., 2015; Tao et al., 2018; Yu et al., 2019a) and natural
57 variability of the regional hydrological cycle (Qu et al., 2020). These large-scale perturbations have likely modified
58 the OC input from the different terrestrial pools as well as the fate of exported POC that was previously reaching
59 deposition centers in the ocean and that now remains stuck on land. Those alterations of the carbon cycle remain to
60 be addressed.

61 Over the last decade, POC transport in the Huanghe has been investigated for 1) determination and quantification of
62 POC sources, based on bulk or molecular carbon isotopic composition (Tao et al., 2015; Yu et al., 2019b; Ge et al.,
63 2020; Qu et al., 2020); 2) temporal and spatial variations in POC export and distribution among different size fractions
64 (Ran et al., 2013; Wang 2012; 2016; Yu et al., 2019a, b ; Qu et al., 2020); 3) impact of anthropogenic activities (Hu

65 et al., 2015; Tao et al., 2018; Yu et al., 2019a); and 4) burial efficiency and preservation in the ocean (Sun et al., 2018;
66 Tao et al., 2016; Ge et al., 2020). However, all these previous studies rely on suspended sediment samples collected
67 near the channel surface or at a single, intermediate depth in the river channel, further assuming a homogeneous
68 distribution of suspended sediment characteristics in the water column, both vertically and laterally. It is now well
69 recognized that suspended sediments present physical, mineralogical, chemical, and isotopic heterogeneities across
70 river transect due to hydrodynamic sorting and tributary mixing (Galy et al., 2008b; Garzanti et al., 2010; Bouchez et
71 al., 2010, 2011a). This is also true for POC, whose age and composition vary following vertical water depth (e.g.,
72 Galy et al., 2008b; Bouchez et al., 2014; Hilton et al., 2015; Repasch et al., 2021; Schwab et al., 2022), and lateral
73 river transect (e.g., Bouchez et al., 2014; Baronas et al., 2020), and between sediment size fractions separated in the
74 laboratory (Yu et al., 2019b; Ge et al., 2020). Such heterogeneity warrants a re-evaluation of POC transport in the
75 Huanghe, accounting for the variability in suspended sediment characteristics over the channel cross-section.
76 In this study, we take advantage of in-river hydrodynamic sorting to access the full range of suspended sediment size
77 fractions by collecting suspended particulate matter (SPM) samples along several river depth profiles distributed
78 across a channel transect (e.g., Bouchez et al., 2014; Freymond et al., 2018; Baronas et al., 2020). We apply this
79 sampling scheme to a cross-section of the Huanghe located 200 km upstream from the river mouth and report SPM
80 OC content, stable isotope composition, and radiocarbon activity as well as total nitrogen, major element composition
81 (aluminum and silicon), and particle size distribution. Based on these novel samples and data sets, this study aims at
82 1) determining the controls on POC content in the Huanghe; 2) tracing and quantifying the sources of riverine POC
83 in the Huanghe; and 3) providing depth-integrated estimates of POC fluxes in the most turbid large river system.

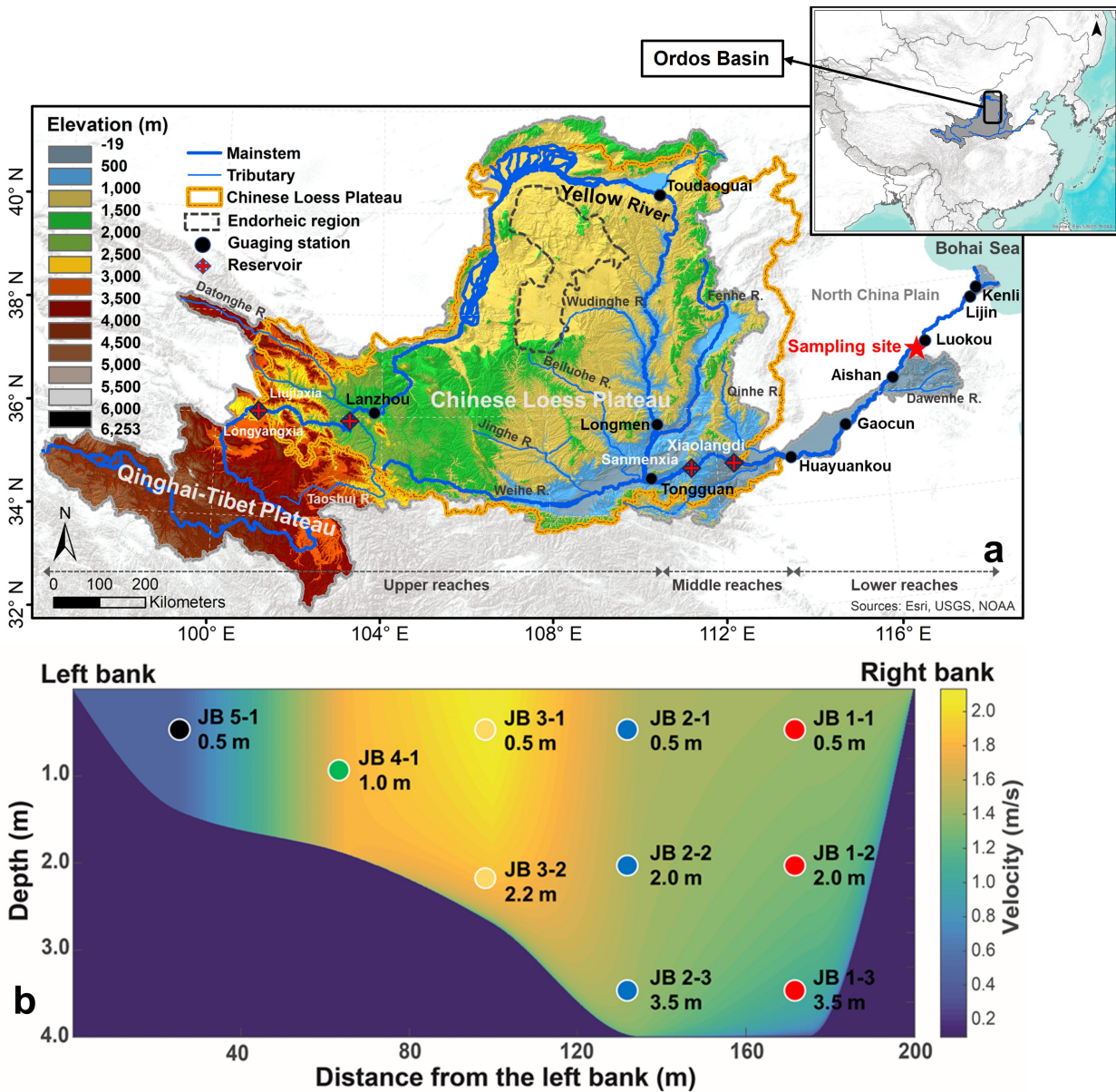
84 **2 Study area**

85 The Huanghe originates from the north-eastern Qinghai-Tibet Plateau (QTP) and runs through the Chinese Loess
86 Plateau (CLP) and the North China Plain (NCP) to the Bohai Sea (Figure 1a). It is 5,464 km long and drains a basin
87 area of 79.5×10^4 km². The Huanghe drainage basin can be subdivided into three main geomorphic units: 1) the high-
88 relief upper reaches spanning from the source region (elevation of 4,500 m) to the city of Toudaoguai (located 3,472
89 km downstream at an elevation of 1,000 m); 2) the middle reaches with a channel length of 1,206 km, ending at
90 Huayuankou (elevation of 110 m) draining landscapes characterized by relatively gentle slopes; and 3) the lower
91 reaches where the river flows eastwards across a fluvial plain over a length of 786 km. These three sections drain
92 53.8%, 43.3%, and 2.9% of the whole Huanghe basin area, respectively (Wang et al., 2007; YRCC, 2016). Most
93 second-order tributaries drain the CLP region and feed the main channel in the middle reaches, the Dawenhe River
94 being the only tributary of the lower reaches, with negligible water and sediment supply due to upstream trapping in
95 lakes and reservoirs. It is worth noting that more than 50% of the water discharge at the Huanghe's mouth comes from
96 the QTP, whereas over 90% of the sediment load originates from the CLP (Wang et al., 2010, 2017; Pan et al., 2016).
97 The CLP is thus the principal source area of sediment to the Huanghe (Shi and Shao, 2000; Guo et al., 2002; Wang
98 and Fu et al., 2016).

99 The Huanghe drainage basin is mostly underlain by the North China craton, and is bounded by several mountain belts.
100 The watershed encompasses 46% of sedimentary rock outcrops (mainly siliciclastic rocks with minor carbonates), and

101 about 45% of unconsolidated sediments (mainly Quaternary loess deposits). The remaining outcrops include
102 metamorphic, plutonic, and volcanic rocks formed from the Archean to the Tertiary (Figure S1). Although river
103 incision is strong in the QTP, a substantial part of the corresponding eroded material is not effectively transferred to
104 the lower reaches due to deposition in the CLP and the western Mu-Us desert, a situation that has prevailed since at
105 least the middle Pleistocene (Nie et al., 2015; Licht et al., 2016; Pan et al., 2016). In addition, recent anthropogenic
106 disturbance such as constructions of large dams in the upper reaches has profoundly modified the export of solid
107 materials from the basin (Wang et al., 2007). The Huanghe then flows through the CLP that has acted as the major
108 supplier of sediment to the system since at least the Calabrian Pleistocene (Stevens et al., 2013; Bird et al., 2015).
109 There, an easily erodible loess-paleosol formation has accumulated since 2.58 Ma (Guo et al., 2002), over a thickness
110 ranging from a few meters to more than 500 m, with an average of 100 m. This loess-paleosol formation and underlying
111 Cretaceous sedimentary rocks are actively incised by the main stem and its tributaries (Shi and Shao, 2000; Guo et
112 al., 2002; Wang and Fu et al., 2016). Notably, the Ordos Basin underlying the CLP is rich in oil and gas (Guo et al.,
113 2014). In the lower reaches, the river drains Quaternary fluvial deposits and sedimentary rocks.

114 The Huanghe drainage basin encompasses the entire arid and semi-arid region of northern China in the upper and
115 middle reaches, and is characterized by more humid climate conditions in the lower reaches. Annual average
116 precipitation (over the period 1950 - 2000) in the upper, middle and lower reaches regions is 368 mm, 530 mm, and
117 670 mm, respectively (Wang et al., 2007). As a result of the East Asian summer and winter monsoon circulations, the
118 rainy season (June to September) contributes 85% of the annual precipitation (Wang et al., 2007). During the rainy
119 season, frequent storm events lead to concentrated flows (relatively high discharge) in vulnerable gully-hill systems,
120 the dominant regional geomorphic landscape, and actively participates in soil erosion in the CLP (Shi and Shao, 2000;
121 He et al., 2004; Qu et al., 2020). The present-day (2002 to 2016) suspended sediment flux delivered by the Huanghe
122 to the sea is about 0.12 Gt/yr, which implies a decrease of nearly 90% in sediment export compared to the widely cited
123 estimate of 1.08 Gt/yr (average value between 1950 to 1980, Milliman and Farnsworth, 2011). This massive decrease
124 in sediment export mostly results from human perturbations, including soil conservation practices in the CLP and
125 retention in large reservoirs, rather than from climatic variations such as the decreasing precipitation observed in the
126 region over the last decades (Wang et al., 2007; Ran et al., 2013; Wang and Fu et al., 2016; Li et al., 2022). A scheme
127 for water and sediment regulation (WSR) has been implemented through the construction of the Xiaolangdi Reservoir
128 since 2002, aiming to mitigate water and sediment imbalances in the lower reaches. This regulation has resulted in a
129 modification of the flux of sediment delivered to the lower reaches and estuary, making the Huanghe a highly human-
130 regulated river system. However, no WSR was implemented in 2016, the year of our sampling campaign, suggesting
131 that the collected SPM samples are not significantly affected by retention in dams, and thus are representative of the
132 fluvial transport of terrestrial materials eroded from the CLP.



133 Figure 1: (a) Elevation map of the Huanghe drainage basin showing the main reservoirs and gauging stations along the
 134 main stem as well as our sampling site (36.75°N, 117.02°E, near the Luokou gauging station); and (b) channel cross-section
 135 sampled for this study showing the depth and lateral distribution of suspended particulate matter (SPM) samples and
 136 modeled velocity distribution based on the "law of the wall", using the point velocity data measured by a current velocity
 137 meter attached to the sampler.
 138

139 3 Sampling and analytical methods

140 3.1 Sampling strategy

141 Detailed sampling of a cross-section of the Huanghe was carried out on the 17th of July, 2016, during the flood season
 142 (Figure S2). Samples were collected along five depth profiles near the Luokou hydrological station (36.75°N, 117.02°E),
 143 250 km upstream from the river mouth (Figure 1). This sampling strategy allows for accessing the full range of
 144 suspended sediment particle size (Bouchez et al., 2014). The cross-section is 200-meters wide at the surface and 4

145 meters deep at most (Figure 1; YRCC, 2016). As in previous studies, we used a home-made, 10-liter, point-sediment
146 horizontal Niskin-type sampler attached to a current velocity meter, to collect river water samples and measure the
147 water velocity simultaneously. Subsequently, two water samples were collected at the surface near the right bank in
148 May and June 2017 before the flooding season, to retrieve fine suspended particulate matter. For each sample,
149 approximately 30 liters of river water were collected and were then filtered through pre-weighed 0.22- μm porosity
150 cellulose acetate membrane filters within 24 hours. After rinsing the filters with filtered water, all sediment samples
151 were transferred into centrifuge tubes and freeze-dried before weighing and analysis. A bed sediment (BS) sample
152 was collected on an exposed, recently flooded sediment bar of the riverbed.

153 **3.2 Physical and geochemical analysis**

154 Apart from a 50-mg aliquot of SPM samples preserved for particle size analysis, samples were finely ground using an
155 agate mortar and pestle prior to chemical and isotopic analyses. The particle size distribution of the unground aliquots
156 was measured using a Laser Diffraction Particle Size Analyzer (Beckman Coulter LS-12 320) at the École Normale
157 Supérieure (ENS), Paris, France. Before analysis, unground SPM aliquots were dispersed in deionized water and then
158 in sodium hexametaphosphate in an ultrasonic bath. For each sample, we measured three replicates and report the
159 average median particle size (D50, μm) with an uncertainty better than 2% (Table 1). The chemical composition of
160 SPM samples was measured on ground aliquots at the Centre de Recherches Pétrographiques et Géochimiques
161 (CRPG), Vandoeuvre-lès-Nancy, France, using inductively coupled plasma atomic emission spectroscopy (ICP-OES)
162 for major elements with typical uncertainties of 3% (Carignan et al., 2001).
163 For particulate organic carbon content (POC%, wt.), stable carbon isotope $\delta^{13}\text{C}$ (in ‰_{VPDB}, *i.e.*, in ‰ relative to Vienna
164 Pee Dee Belemnite) and radiocarbon isotope $\Delta^{14}\text{C}$ (expressed as fraction modern, Fm), ground homogenized samples
165 were fumigated using 12M HCl fumes in a closed Teflon tank at 60 °C for 48 hours to remove the carbonate fraction,
166 and were then dried under vacuum prior to analysis. Total nitrogen content (TN%, wt.) was measured on non-acidified
167 samples (Komada et al., 2008). Triplicate analysis on POC% and $\delta^{13}\text{C}$ of POC (acidified aliquots) as well as TN%
168 (non-acidified aliquots) were carried out on an Organic Elemental Analyzer (OEA) coupled with Isotope Ratio Mass
169 Spectrometry (IRMS, Thermo Scientific Flash 2000) under continuous flow mode at Géosciences Paris Saclay
170 (GEOPS), Orsay, France. Subjected to the blank subtraction by linearity test, two international standards including
171 USGS-40 and IAEA-600 as well as an internal standard (GG-IPG) were used to build linear regression equations to
172 calibrate the elemental and isotopic values for both carbon and nitrogen. Uncertainties on POC%, $\delta^{13}\text{C}$, and TN%,
173 based on replicate measurements (1σ , $n=3$), are lower than 0.02%, 0.06‰, and 0.02‰, respectively. The ^{14}C activity
174 of POC was measured on a new compact accelerator mass spectrometry (AMS), *ECHoMICADAS* (Hatté et al., 2023),
175 using a gas ion source interface system (GIS) at the Laboratoire des Sciences du Climat et de l'Environnement (LSCE),
176 Gif-sur-Yvette, France, with an absolute uncertainty of max $\pm 0.5\%$. Aside from the gas bottles of prepared blank PhA
177 and standard NIST OX II which are permanently connected to the GIS and, used for normalization and corrections for
178 fractionation and background, international standards including IAEA-C5, IAEA-C7, IAEA-C8, and blank PhA were
179 prepared in different sizes (10 to 100's $\mu\text{g C}$) to match the amount of OC found in the sediment samples.

180 3.3 POC source apportionment

181 To quantify the contribution and associated uncertainties of various sources to POC transported in the Huanghe, a
182 Bayesian Markov Chain Monte Carlo (MCMC) based on a three-end member (Appendix A) mixing scheme was
183 adopted. This approach considers the variability on each end member contribution, assuming this variability can be
184 represented by a normal distribution. Prior information is assumed to be unknown. We computed the posterior
185 distribution of the Bayesian formulation using the MCMC method, facilitated by the *rjags* package ([https://cran.r-](https://cran.r-project.org/web/packages/rjags/index.html)
186 [project.org/web/packages/rjags/index.html](https://cran.r-project.org/web/packages/rjags/index.html), Andersson et al., 2015), all computations were performed in the R
187 environment (<http://www.r-project.org/>). To ensure reliable simulation, the model was run with 5,000,000 iterations,
188 using a burn-in of 1000 steps, and a data thinning of 100 for each sample. The mixing model was constructed on the
189 dual stable and radioactive isotope of the riverine POC pool ($\delta^{13}\text{C}$ and $\Delta^{14}\text{C}$) and of the three potential source pools
190 (section 5.2) by the following equations:

$$\begin{aligned} \text{Isotope_ratio}_{\text{sample}} &= \sum_{\text{source}} (f_{\text{source}} * \text{Isotope_ratio}_{\text{source}}) \\ \sum_{\text{source}} f_{\text{source}} &= 1 \end{aligned}$$

193 where $\text{Isotope_ratio}_{\text{sample}}$ is either the $\delta^{13}\text{C}$ or $\Delta^{14}\text{C}$ value of the sample, $\text{Isotope_ratio}_{\text{source}}$ is either the $\delta^{13}\text{C}$ or
194 $\Delta^{14}\text{C}$ value of different possible sources of POC and f_{source} the relative contribution of each source of POC.

195 3.4 Depth-integrated fluxes

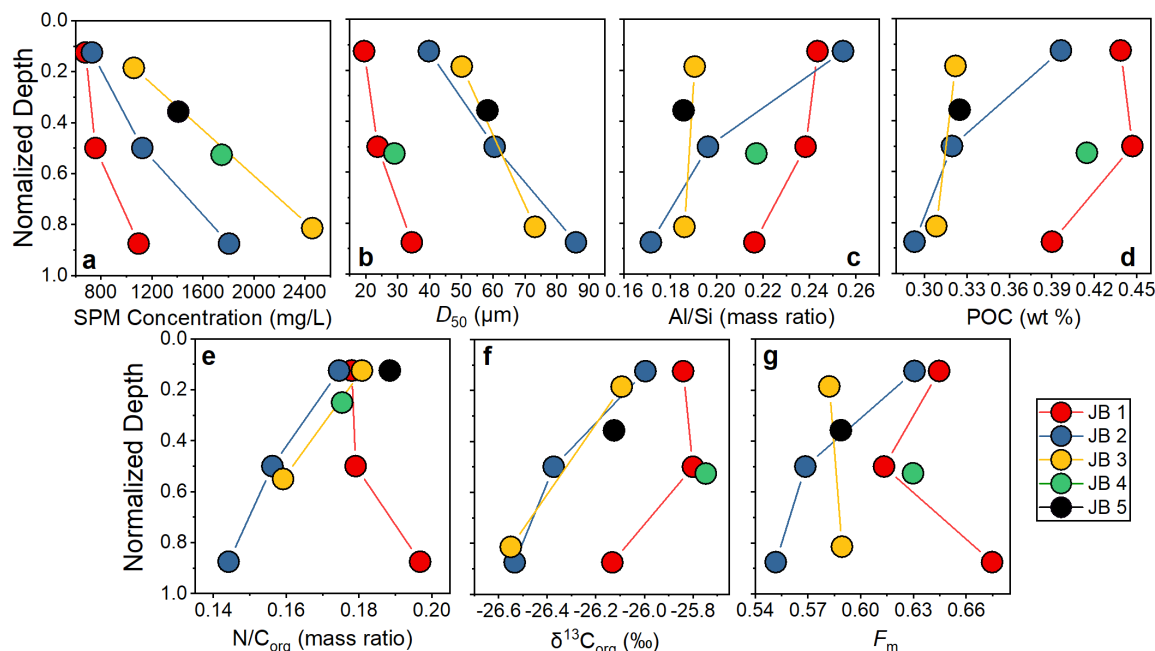
196 Instantaneous depth-integrated fluxes of SPM and POC sources were calculated for the cross-section using a method
197 developed by Bouchez et al. (2011a, b). This method is based on the systematic variation of SPM concentration in the
198 water column (Figure 2) applying a Rouse-based model (Rouse, 1937). We first constructed a bathymetric profile of
199 the river cross-section based on the depth information collected in the field and then modeled the velocity distribution
200 across the transect (Figure 1b) through fits of the so-called "law of the wall" to water velocity measured at the location
201 of each sample within the cross-section using a current meter. Afterward, the concentration of total SPM and various
202 particle size fractions could be estimated by applying the so-called Rouse model (Rouse, 1937) to each particle size
203 fraction separately (Bouchez et al., 2011a), resulting in a map of the particle size distribution in the river cross-section
204 (Figure S3). The aluminum to silicon ratio (Al/Si mass ratio) is inversely related to the particle size of river SPM in
205 the Ganges-Brahmaputra, the Amazon, and the Mackenzie Rivers (Galy et al., 2007; Bouchez et al., 2014; Hilton et
206 al., 2015). Such a linear relationship between D50 and Al/Si was also observed in our dataset, allowing for computing
207 the spatial distribution of POC content in the cross-section, based on the linear relationship between POC and Al/Si
208 (Figure 3). Finally, combining modeled water velocity, SPM concentration, and POC distribution we calculated a
209 depth-integrated, instantaneous POC flux for the whole river channel (Figure S3, detail in supplementary material).

210 4 Results

211 We report the first isotopic dataset of POC samples collected along several depth profiles distributed over a cross-
212 section of the Huanghe (Table 1). SPM concentrations range from 679 to 2,459 mg/L (avg. $1,286 \pm 572$ mg/L, reported
213 with average value with one standard deviation, herein after) and show an obvious increase from the surface to the
214 bottom and from the right bank to the left bank (Figure 1b and 2a). The surface SPM concentration (*i.e.*, samples
215 collected 0.5 m below the surface) decreases laterally as the water column deepens. The range of measured Huanghe
216 SPM D50, *i.e.* the median particle size (19.5-86.0 μm , Figure 2b) agrees with that (16.6-120.1 μm) of SPM collected
217 at Lijin during the same flooding season by Moodie et al. (2022). In each depth profile, SPM is consistently coarsening
218 with depth as revealed by the evolution of grain size parameters such as D10, D50, and D90 (Table 1, Figure 2 and
219 Figure S4). The finest SPM is transported on the right bank and at the surface, while the coarsest SPM is found at the
220 bottom of the middle profile (sample JB 2-3). Two types of depth profiles can be distinguished at Luokou based on
221 particle size distributions (Figure S4) and the relationship between D50 and water depth (Figure 2b). On the one hand,
222 the JB 1 and JB 4 profiles show a well-marked, bi-modal distribution of particle size (Figure S4) together with
223 relatively low and consistent D50 (Figure 2b). On the other hand, the JB 2, JB 3, and JB 5 profiles show a more
224 unimodal distribution of particle size (Figure S4) and a unique D50 - sampling depth relationship (Figure 2b).
225 Interestingly, these two groups can also be distinguished in terms of relationships between POC% and $\delta^{13}\text{C}$ with water
226 depth (Figures 2d and 2f). As expected, the Al/Si ratio is well-related to the particle size, and the ratios measured in
227 the middle profile SPM samples (0.17 for JB 2-3 and 0.26 for JB 2-1) encompass the full range of Al/Si found in the
228 whole cross-section (Figure 2c). The relatively low Al/Si ratios are comparable to that of the middle Huanghe (Qu et
229 al., 2020) and other large turbid river systems such as the Ganges-Brahmaputra (Galy et al., 2008b), Salween, and
230 Irrawaddy (Tipper et al., 2021).

231 SPM in the Huanghe is characterized by low TN and POC content (wt.%), ranging from 0.04% to 0.08% ($0.06 \pm$
232 0.01%) and from 0.29% to 0.42% ($0.37 \pm 0.06\%$), respectively (Figure 2d; Table 1). POC content generally decreases
233 from the surface to the river bed, with quantitative differences from one profile to another (Figure 2d). Notably, the
234 JB 1 profile shows the highest POC% and TN%. In addition, the ratio of TN% to POC%: $\text{N}/\text{C}_{\text{org}}$ increases with depth
235 in the JB 1 profile (from top to bottom), while it decreases in the JB 2 and JB 3 profiles (Figure 2e). The $\delta^{13}\text{C}$ of POC
236 varies over a narrow range from -26.55% to -25.75% ($-26.12 \pm 0.29\%$, Figure 2f) and becomes lighter with depth,
237 showing that fine SPM has higher $\delta^{13}\text{C}$ than coarse SPM. These values are lower than those previously reported for
238 other Huanghe sampling sites upstream: $-24.7 \pm 0.4\%$ at Toudaoguai, $-24.9 \pm 0.6\%$ at Longmen, and $-23.8 \pm 0.6\%$
239 at Lijin (Qu et al., 2020, Hu et al., 2015; Tao et al., 2015; Yu et al., 2019a; Ge et al., 2020). The radiocarbon activity
240 of POC of the Huanghe at Luokou is relatively low (Figure 2g), with F_m ranging from 0.552 ($\Delta^{14}\text{C} = -453\%$; sample
241 JB2-3) to 0.675 ($\Delta^{14}\text{C} = -331\%$; sample JB1-3), spanning from 3,160 to 4,780 ^{14}C yr, and the average value is 0.607
242 ± 0.038 ($\Delta^{14}\text{C} = -412\%$). This range of radiocarbon activity is consistent with published values for POC collected at
243 the river surface downstream of Toudaoguai (Qu et al., 2020). All the POC radiocarbon activity data reported so far
244 for the Huanghe are comparable to mean values for Arctic large rivers ($\Delta^{14}\text{C} = -397\%$, ca. 4,480 ^{14}C yrs, Ke et al.,
245 2022), revealing the multimillennial-age nature of POC transported by the Huanghe. The elemental and isotopic
246 signatures of the two fine SPM samples HH 17.05 and HH 17.06 (on average POC% = 1.07%, $\delta^{13}\text{C} = -25.67\%$, F_m

247 = 0.720; and Al/Si = 0.37) are significantly different from those of the depth profile samples (Table 1). The bed
 248 sediment sample has a comparatively low POC% (0.21%), $\delta^{13}\text{C}$ (-27.35%), F_m (0.099), and Al/Si ratio (0.17).



249
 250 **Figure 2: Variation of physical and chemical parameters in the river cross-section, shown as a function of sampling depth**
 251 **normalized to total depth of the water column at the location of the considered depth-profile, for the Luokou cross-section**
 252 **on the Huanghe (June 16, 2017). (a) SPM concentration; (b) particle size distribution (shown as D50); (c) Al/Si mass ratio;**
 253 **(d) POC content (weight %); (e) N/C_{org} mass ratio; (f) stable carbon isotope ratio $\delta^{13}\text{C}_{\text{org}}$ (‰); (g) radiocarbon activity F_m .**

254 **Table 1: SPM characteristics and POC properties of the river-cross-section sampling.**

Sample ID	Type	Depth (m)	SPM mg/L	POC (%)	SD	$\delta^{13}\text{C}_{\text{org}}$ (‰)	SD	F_m	$\Delta^{14}\text{C}$ (‰)	SD	^{14}C age	TN (%)	N/C _{org}	Al/Si	D50 μm
JB 1-1	SPM	0.5	679	0.44	0.02	-25.84	0.03	0.645	-360	7	3527	0.078	0.178	0.243	19.5
JB 1-2	SPM	2	757	0.45	0.01	-25.80	0.06	0.613	-392	11	3929	0.080	0.179	0.238	23.7
JB 1-3	SPM	3.5	1095	0.39	0.01	-26.13	0.04	0.675	-331	7	3161	0.077	0.197	0.216	34.5
JB 2-1	SPM	0.5	730	0.40	0.03	-26.00	0.01	0.631	-374	7	3703	0.069	0.175	0.255	39.8
JB 2-2	SPM	2	1124	0.32	0.01	-26.37	0.06	0.569	-436	13	4537	0.050	0.156	0.196	60.4
JB 2-3	SPM	3.5	1806	0.29	0.01	-26.53	0.06	0.552	-453	38	4779	0.042	0.144	0.172	86.0
JB 3-1	SPM	0.5	1058	0.32	0.02	-26.09	0.03	0.582	-422	12	4346	0.058	0.181	0.190	50.1
JB 3-2	SPM	2.2	2459	0.31	0.02	-26.55	0.04	0.589	-415	11	4247	0.049	0.159	0.186	73.1
JB 4-1	SPM	1	1747	0.41	0.02	-25.75	0.06	0.630	-375	8	3714	0.073	0.175	0.217	29.0
JB 5-1	SPM	0.5	1406	0.32	0.01	-26.12	0.05	0.589	-416	11	4256	0.061	0.188	0.186	58.2
HH 17.05	SPM	0	83	0.92	0.00	-25.73	0.14	0.711	-295	19	2740	0.184	0.200	0.358	5.2
HH 17.06	SPM	0	54	1.21	0.01	-25.60	0.07	0.729	-277	25	2539	0.261	0.215	0.377	4.3
HH	BS			0.21	0.03	-27.35	0.05	0.099	-901	7	18539	0.019	0.087	0.175	44.4

255 5 Discussion

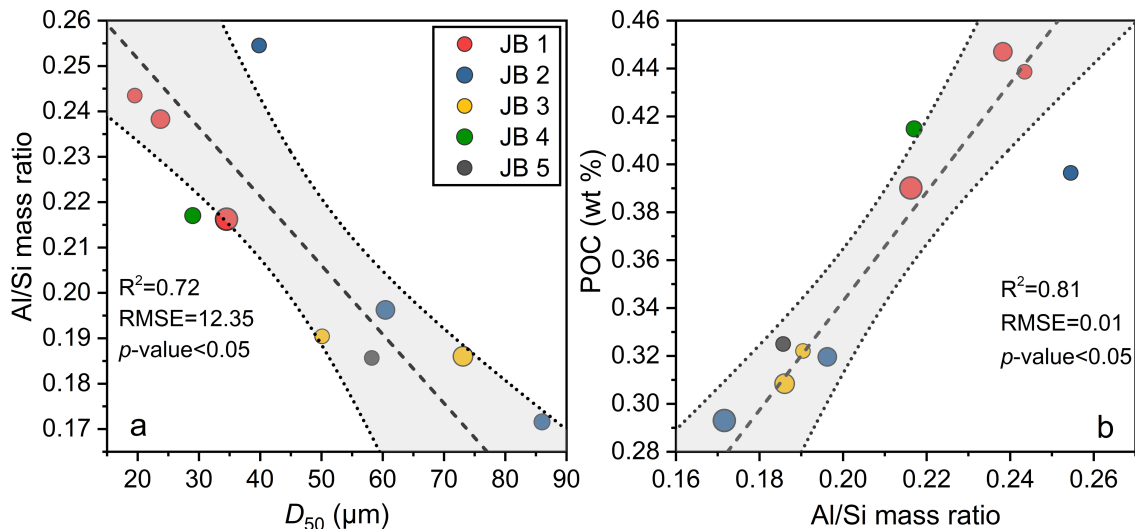
256 We observe significant heterogeneities of elemental and isotopic carbon composition as well as inorganic chemistry
 257 over the studied river cross-section. The possible mechanisms behind these variations are assessed hereafter. Then,
 258 sources of riverine POC are determined and quantified, confirming that erosion of the loess-paleosol sequence of the
 259 CLP is a major source of aged and refractory biospheric OC to the Huanghe. Finally, we assess the POC load and its

260 variability over the transect profile, inferring the importance of the supply of POC from the river bottom in the
261 Huanghe.

262 5.1 Transportation mode of POC in the Huanghe

263 5.1.1 POC loading and its controls

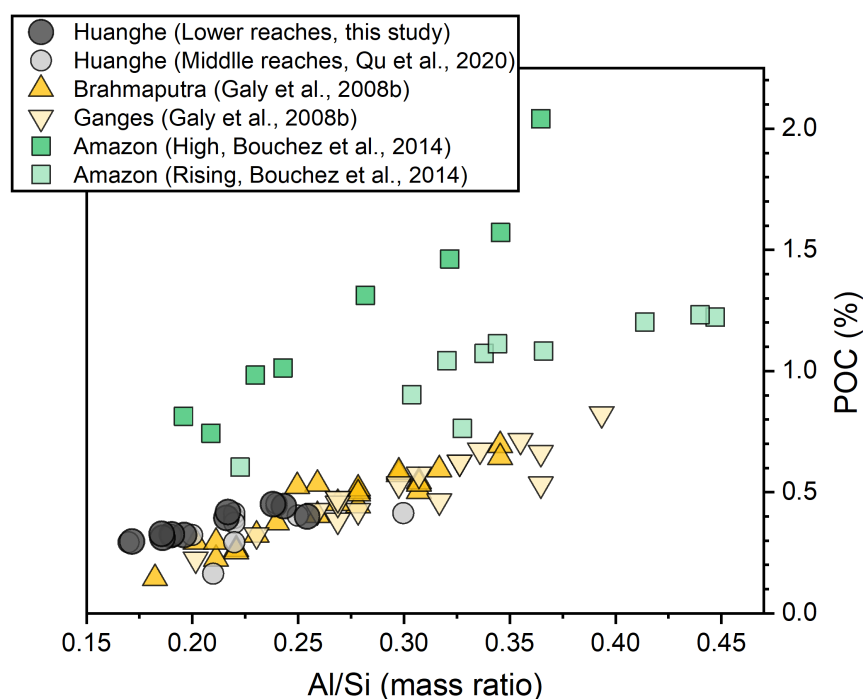
264 The Huanghe is characterized by a high SPM load with relatively low POC% ($0.37 \pm 0.06\%$). In the Luokou cross-
265 section, POC content generally increases with decreasing particle size (Figure S5), with the two clay-sized ("HH")
266 samples showing the largest POC content (Table 1). Consistently, the Al/Si ratio of Huanghe sediments, which varies
267 as an inverse linear function of the median particle sizes D_{50} ($R^2=0.72$, p -value <0.05 , Figure 3a), positively correlates
268 with POC% ($R^2=0.81$, p -value <0.05 , Figure 3b), a pattern observed globally (Galy et al., 2008b; Bouchez et al., 2014;
269 Hilton et al., 2015; Repasch et al., 2021). This pattern is consistent with POC variability in the Huanghe reported for
270 manually separated size fractions of sediments (Yu et al., 2019b).



271
272 **Figure 3: Relationships between (a) particle size D_{50} and Al/Si mass ratio; (b) Al/Si mass ratio and POC content for the**
273 **Luokou cross-section on the Huanghe (July 17, 2016). Size of circles represents water depth of the corresponding SPM.**
274 **The grey shade represents the 95% confidence area of the linear best-fit (black dashed line), the upper and lower bound**
275 **are marked by grey dotted lines.**

276 The first reason for the low POC content of Huanghe sediments is therefore their relatively low values of Al/Si
277 compared to other systems - a feature than can be related to the quartz-rich, OC-poor nature of the loess-paleosol
278 formations of the CLP (Jahn et al., 2021; Huang and Ren, 2006; He et al., 2006; Ning et al., 2006; Wang and Fu,
279 2016). However, Huanghe sediments are relatively poor in POC, even considering their low Al/Si, compared to other
280 rivers globally. To that effect, the so-called "POC loading" can be characterized by the slope described by sediment
281 data in an Al/Si-POC diagram (Galy et al., 2008b; Figure 4). For a given Al/Si ratio, the POC% in the Luokou cross-
282 section is similar to that of the middle Huanghe (Qu et al., 2020), indicating the relatively invariant transport mode of
283 POC between the middle and lower reaches. Previous studies have shown that the positive relationship between POC%
284 and Al/Si can be partially explained by OC adsorption onto the mineral surface (Curry et al., 2007; Galy et al., 2008b;
285 Blair and Aller, 2012; Bouchez et al., 2014; Qu et al., 2020). In the loess-paleosol deposits acting as a source of

286 sediments to the Huanghe, OC is mostly preserved and stabilized by forming organo-aggregates with kaolinite and
 287 through adsorption onto iron oxides (Wang et al., 2013).
 288 However, POC loading in the Huanghe is small compared to that of the Amazon (Bouchez et al., 2014), but similar
 289 to that of the Ganges-Brahmaputra system (Galy et al., 2008b). While many factors could influence POC loading
 290 across these catchments, we note that another similarity between the Huanghe and Ganges-Brahmaputra fluvial
 291 systems is their millennial-aged OC_{bio} (Galy et al., 2007; Tao et al., 2016). This is in stark contrast with the Amazon,
 292 where younger OC_{bio} ages have been reported (Bouchez et al., 2014). Given that younger OC_{bio} recently
 293 photosynthesized in terrestrial or aquatic ecosystems can be readily oxidized within catchments (Mayorga et al., 2005),
 294 the relatively low POC loading observed at the mouth of the Ganges-Brahmaputra and the Huanghe (Figure 4) could
 295 be related to the predominance of refractory, aged OC_{bio} and OC_{petro} in those systems, while the Amazon sediments
 296 would still contain significant amount of younger, more labile OC_{bio} .



297
 298 **Figure 4: "POC loading" of river SPM of large rivers. The POC loading is estimated from the slope of the relationship**
 299 **between POC content and the Al/Si ratio of each fluvial system (Galy et al., 2008b). All SPM samples were collected along**
 300 **depth profiles except for the middle Huanghe (Qu et al., 2020).**

301 In detail, and as explained in more detail below (**Section 5.1.2**) we also observe a significantly different POC loading
 302 between the JB 1 and JB 2 depth profiles at the Luokou station (Figure 3). This difference in POC loading in the cross-
 303 section of the Huanghe might indicate the delivery of recent OC_{bio} , specifically near the right bank (the closest to the
 304 JB 1 profile) for the Luokou site, a scenario which is supported by the comparatively younger age of POC in profile
 305 JB 1. Consistently with this interpretation, temporally variable POC loading at a given site has been reported for the
 306 Amazon (Bouchez et al., 2014), where higher POC loading during the high-water stage compared to the rising water
 307 stage has been attributed to the erosion of discrete organic debris from riverbanks.

308 Variable POC loading amongst large catchments has implications for evaluating the likelihood of POC preservation
 309 in estuaries. The Ganges-Brahmaputra system delivers relatively old, refractory OC_{bio} to the Bengal Fan with an almost

310 complete burial efficiency (Galy et al., 2007). Given the observed similarity in POC loading and age, we can thus
311 expect a similar, efficient preservation for the Huanghe offshore depositional system. In addition to the low reactivity
312 of the POC transported by the Huanghe, the high sediment accumulation rates in the Huanghe coastal domain might
313 further inhibit OC oxidation (Blair and Aller, 2012). Consequently, the case of the Huanghe differs drastically from
314 that of the Amazon, where higher POC loading is observed, with a larger contribution of young, labile OC_{bio} either as
315 discrete organic matter or associated with mineral surfaces, leading to low POC burial efficiency in the ocean
316 (Bouchez et al., 2014; Blair and Aller, 2012).

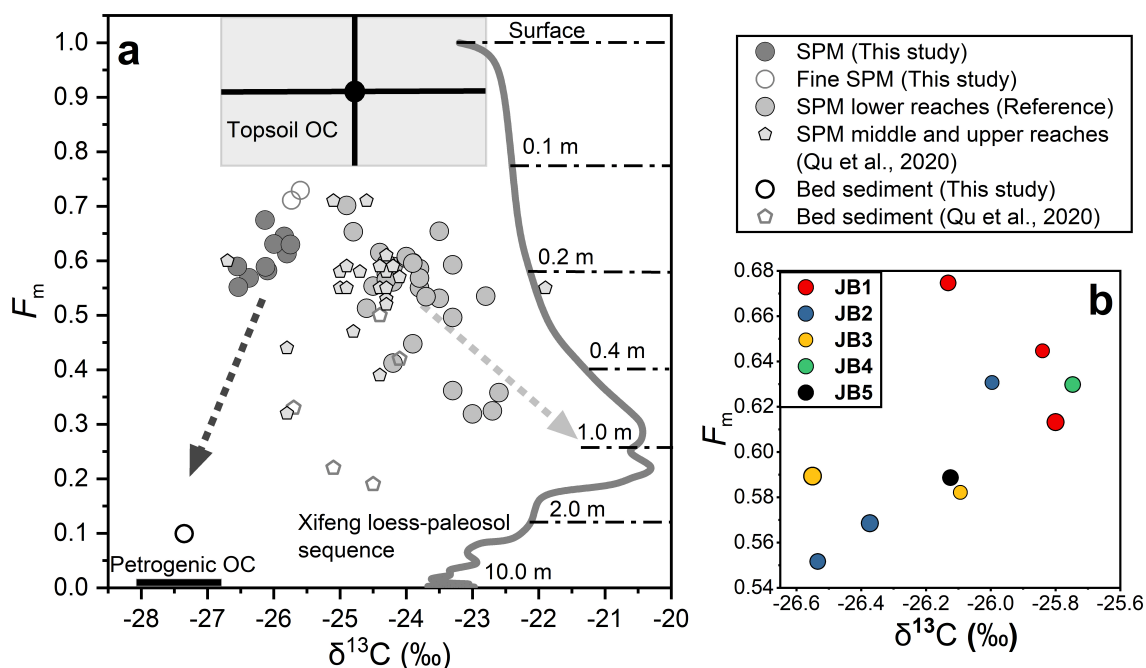
317 **5.1.2 Chemical heterogeneity within the transect**

318 There is clear lateral and vertical variability of POC content and SPM inorganic chemistry across the Luokou cross-
319 section of the Huanghe. For each vertical depth profile, clay-rich fine particles are transported near the channel surface,
320 and quartz-rich coarse particles flow near the river bottom. Accordingly, the Al/Si ratio, POC content and POC
321 radiocarbon activity generally decrease with depth. Elemental (POC%) and isotopic POC signatures (¹³C and ¹⁴C) are
322 inversely related to the particle size (D50; Figure S5). These patterns are observed in other large fluvial systems, e.g.,
323 Ganges and Brahmaputra, Amazon and Mackenzie (Galy et al., 2008b; Bouchez et al., 2014, Hilton et al., 2015),
324 showing that hydrodynamic sorting is the primary control on suspended sediment OC content, segregating inorganic
325 and organic material according to particle size (Bouchez et al., 2011a, 2014).

326 At the Luokou sampling site, lateral variability at the channel surface shows that POC-rich fine particles are
327 preferentially transported near the right bank (Figure 2 and Figure S3). This pattern is validated by the Rouse model
328 provided in Text S1, the Rouse number (Z_R) is 0.137, 0.236, and 0.284 for JB-1, JB-2, and JB-3, respectively. In
329 essence, the Rouse number (Z_R) can reflect the balance between gravitation settling and upward turbulent diffusion.
330 Z_R is smaller near the right bank while larger near the left bank, showing heterogeneity across the transect. Larger
331 particles exhibit a faster settling velocity due to their increased weight, leading to a higher Z_R . On the other hand, the
332 lighter ones settle more slowly, resulting in Z_R approaching 0. This means that their concentration remains relatively
333 constant along a given depth profile. However, as depth increases and the concentration of larger particles grows, the
334 proportion of these finer particles in the overall sediment decreases (Bouchez et al., 2011a). The channel geometry
335 thus needs to be examined as a potential factor to produce such lateral heterogeneity, in particular the mechanisms of
336 bed sediment resuspension and bank erosion.

337 Resuspension of bed sediments is also a possible mechanism that could explain the lateral heterogeneity in POC
338 content in the study cross-section of the Huanghe. Indeed, scouring of channel bed sediment at high water flow may
339 also shift POC to more negative radiocarbon and stable isotope signatures. Our sample set collected in July 2016
340 during a flooding period (water flow velocity up to 2.1 m/s, Figure 1) supports this scenario. Indeed, the increase in
341 D50 of surface SPM samples from right to the left bank, that is with total channel depth decrease, is consistent with
342 coarse sediment resuspension from the bed. This is also supported by the Rouse model, where higher Z_r in the shallow
343 water near the left bank indicates a greater likelihood of sediment settling to the bed, lower Z_r suggests that there is
344 enhanced SPM supply from the riverbed. Such a scenario is also supported by the three-fold increase in SPM flux

345 observed from the upstream Huayuankou station to the downstream Lijin station in July 2016, despite a four-fold
 346 decrease in water discharge (Figure S2).
 347 Bank erosion can be a significant mechanism for the delivery of sediments to river systems (Guo et al., 2007). Bank
 348 erosion at Luokou would make OC from the lower Huanghe alluvial plain a potential source of POC in the lower
 349 reaches of the Huanghe. Frequent inundation to the adjacent riparian zones in flooding seasons, surface runoff driven
 350 by storm events, and agriculture irrigation etc., can mobilize young soil OC and discrete organic matter debris (*e.g.*,
 351 plant-driven debris) to riverine POC (Hilton et al., 2011; Turowski et al., 2016). This mechanism provides a possible
 352 explanation for the opposite trends displayed by samples from the JB 1 and JB 2 profiles in the F_m vs. $\delta^{13}C$ space
 353 (Figure 5). The youngest POC was found at the bottom of the JB 1 profile (JB 1-3). Meanwhile, the JB 1 samples have
 354 comparatively higher N/C_{org} ratios and $N\%$, consistent with the input of discrete plant-derived debris from the bank
 355 in addition to rock-derived detrital clastic material in the coarse fractions ($> 32 \mu m$, Yu et al., 2019b). The transport
 356 and entrainment of plant debris deep in the water column has been evidenced in many large river systems, such as the
 357 Amazon (Feng et al., 2016), the Ganges-Brahmaputra (Lee et al., 2019), the Mackenzie (Schwab et al., 2022), the Rio
 358 Bermejo River (Repasch et al., 2021). Such input would also provide an explanation for the higher POC loading of
 359 the JB 1 profile (Section 5.1.1).



360
 361 **Figure 5:** (a) ^{14}C activity (expressed as F_m) vs. $\delta^{13}C$ for a compilation of POC data collected over the 2011-2016 period in
 362 the lower Huanghe, including samples from this study and previous studies at Huayuankou, Lijin, and Kenli (Hu et al.,
 363 2015; Tao et al., 2015; Yu et al., 2019a; and Ge et al., 2020); SPM and bed sediment (BS) collected by Qu et al., 2020 at
 364 Toudaoguai (most downstream location of the upper reaches) and Longmen in the middle reaches (Table S1). The grey
 365 curve corresponds to $\delta^{13}C_{org}$ of the top 10 m of the Xifeng loess-paleosol (Ning et al., 2006), and the corresponding F_m was
 366 calculated from ^{10}Be -derived ages following 'Age = $-8033 \cdot \ln(F_m)$ '. The soil depth is marked above the dot-dash line (Zhou
 367 et al., 2010). Topsoil OC represents OC from the upper 10 cm of the loess-paleosol sequence with standard deviation marked

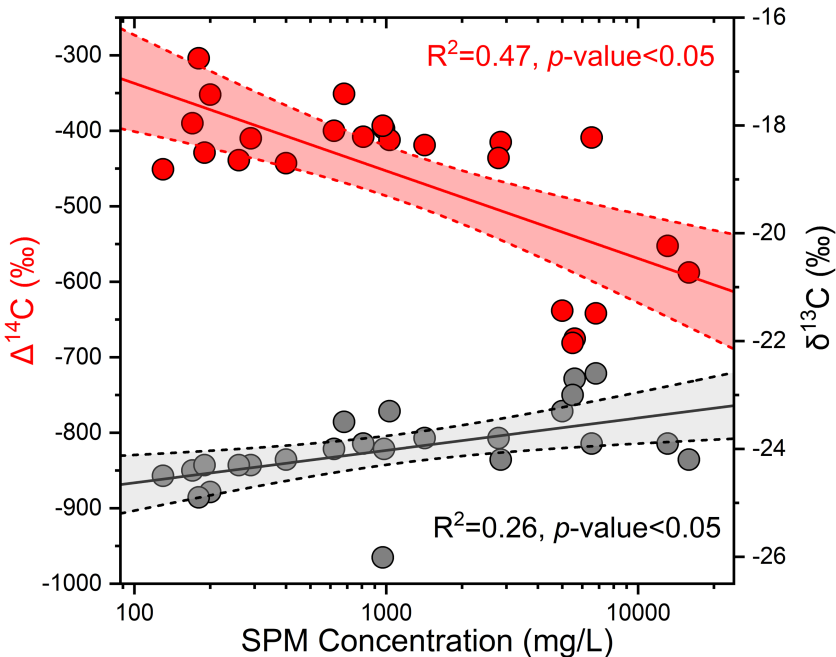
368 with black lines. (b) ^{14}C activity (expressed as Fm) vs. $\delta^{13}\text{C}$ diagram for the Huanghe sediment samples collected in this
369 study at the Luokou cross-section. Size of circles represents water depth of the corresponding SPM.

370 5.2 POC provenance in the Huanghe: the significance of loess-paleosol-derived OC

371 5.2.1 Physical erosion of the loess-paleosol sequence

372 Over decennial to centennial time scales, the POC export of the Huanghe is mainly controlled by erosion of the CLP.
373 Throughout the Quaternary, the erosion rate in the Huanghe basin has been mainly driven by climate shifts until human
374 activities started and profoundly impacted sediment fluxes in the mid-Holocene (He et al., 2006). The Huanghe has
375 experienced a 90% decrease in annual sediment load since the 1950s (Wang et al., 2015), caused by weakened soil
376 erosion to the CLP and sediment retention by dams (Wang et al., 2007; Ran et al., 2013; Wang and Fu et al., 2016; Li
377 et al., 2022). To determine the contributions of the various terrestrial OC components to Huanghe POC, we compiled
378 published POC carbon isotope data for sediments collected in the lower reaches from 2011 to 2016, after the
379 Xiaolangdi Reservoir was operated (Figures 5 and 6). This dataset shows that the radiocarbon ages of Huanghe POC
380 are considerably old ($5,100 \pm 1,700$ ^{14}C yr, $n=29$), with a minor fraction of modern photosynthesized OC_{bio} (Tao et
381 al., 2015; Yu et al., 2019a, b). This relatively ^{14}C -depleted POC suggests the significant contribution of OC originated
382 from deep soil horizons within the catchment. Given that loess is easily erodible and that there is widespread gully
383 erosion in the catchment, more intensive erosion of the CLP can mobilize more soils as well as older OC from deep
384 soil horizons to fluvial transport. Therefore, higher sediment load in the river can be characterized by radiocarbon-
385 depleted POC. This is evidenced by the negative trend between ^{13}C and Fm of POC for sediment samples collected in
386 the Huanghe over the 2011-2016 period (Figure 5a), suggesting that deep horizons of the loess-paleosol formations
387 are a plausible source for the ^{14}C -depleted end member. Besides, the preferential erosion of bomb carbon affected,
388 recently photosynthesized and possibly degraded OC_{bio} from the overlying topsoils (< 10 cm) most likely contributes
389 to riverine POC (Tao et al., 2015).

390 As such, variable contribution of aged and radiocarbon-free OC from deep horizons of loess-paleosol formations of
391 the CLP should have a significant impact on the elemental and isotopic signature of POC in the lower Huanghe.
392 Erosion of loess-paleosol can also explain the decreasing POC% with increasing SPM concentration at different sites
393 of the main channel (Ran et al., 2013; Qu et al., 2020), the negative relationship between SPM concentration and
394 corresponding POC Fm at Luokou ($R^2=0.47$, $p\text{-value}<0.05$, Figure 6), and the low POC loading of the Huanghe
395 (section 5.1.1), as the deep horizons of the loess-paleosol sequences are OC-poor, and mostly host OC that is highly
396 degraded and refractory (Liu et al., 2012; Wang et al., 2013; Cheng et al., 2020). However, the slight increase of POC
397 $\delta^{13}\text{C}$ with increasing SPM concentration ($R^2=0.26$, $p\text{-value}<0.05$,) might indicate a significant supply of soil OC from
398 loess-paleosol shallower depth, as inferred from the $\delta^{13}\text{C}$ variation within the Xifeng loess-paleosol sequence (Figure
399 5a).



400
 401 **Figure 6:** ^{14}C activity (expressed as Fm; red circles) and $\delta^{13}\text{C}$ (grey circles) of POC vs. SPM concentration for surface
 402 samples from the Huanghe collected from 2011 to 2016 (average SPM concentration of surface samples in this study and
 403 from Hu et al. (2015), Tao et al. (2015), Yu et al. (2019a), and Ge et al. (2020)). These paired dual carbon isotope data
 404 corresponds to the group ‘SPM lower reaches’ in Figure 5. Straight lines correspond to best-fit logarithmic curves, and
 405 shaded areas represent the 95% confidence interval.

406 The $\text{N}/\text{C}_{\text{org}}$ ratio provides additional evidence for the significant contribution of loess-paleosol material to Huanghe
 407 POC (Figure S6). Indeed, the $\text{N}/\text{C}_{\text{org}}$ ratios of SPM collected in the lower reaches ranges from 0.10 to 0.23 (this study,
 408 Ran et al., 2013; Yu et al., 2019a), whereas topsoils of the CLP are characterized by $\text{N}/\text{C}_{\text{org}}$ lower than 0.14 (Liu and
 409 Liu, 2017) and sedimentary rocks typically have very low $\text{N}/\text{C}_{\text{org}}$ (Hilton et al., 2015). Soil OC input from the North
 410 China Plain is also unlikely given its $\text{N}/\text{C}_{\text{org}}$ of 0.10-0.13 (Shi et al., 2017). Therefore, all these possible sources cannot
 411 explain the high $\text{N}/\text{C}_{\text{org}}$ signatures of riverine SPM. In addition, the high turbidity of the Huanghe ($> 600 \text{ mg/L}$) during
 412 the sampling season is likely to inhibit *in-situ* primary production ($\text{N}/\text{C}_{\text{org}} > 0.13$) (Zhang et al., 2013; Hu et al., 2015).
 413 As a result, only soil OC from deep loess-paleosol horizons appears as a plausible supplier to downstream Huanghe
 414 POC, given the high $\text{N}/\text{C}_{\text{org}}$ ratios previously reported for various loess-paleosol sequences (Figure S6, Ning et al.,
 415 2006).

416 Geomorphic processes in the CLP region support the erosion of deep soil horizons. There, gully erosion is thought to
 417 be responsible for more than 80% of the total sediment yield in the CLP (He et al., 2006; Li et al., 2022). Gullies are
 418 densely distributed and cover about 42% of the total area of the CLP and up to 60% in hilly regions (Huang and Ren,
 419 2006; He et al., 2006). Nowadays, the well-developed gully geomorphic system of the CLP is characterized by gullies
 420 with a depth of about 10 m on average and represents the most active vertical and regressive erosion of loess (Huang
 421 and Ren, 2006). This incision process erodes all types of unconsolidated materials, including the loess-paleosol
 422 sequence, underlying red clays, and colluvial deposits in the form of creeps, falls, and slides in the watershed (Zhu,
 423 2012). From 1925 to 1981, the erosion rate of the CLP was $6,318 \text{ t km}^{-2} \text{ yr}^{-1}$, compared to $10,770 \text{ t km}^{-2} \text{ yr}^{-1}$ in the
 424 hilly and gully plateau (Li et al., 2022). While the CLP's erosion rate dropped to $3,476 \text{ t km}^{-2} \text{ yr}^{-1}$ between 1982 and

2016, the rate in the hilly and gully plateau remained significantly high at $6,146.5 \text{ t km}^{-2} \text{ yr}^{-1}$ (Li et al., 2022). All these observations suggest that gully erosion can strongly impact the composition of riverine POC. As gully erosion is sensitive to climate change and anthropogenic activities, soil dynamics in the Huanghe basin have been altered since the mid-Holocene (He et al., 2006; Li et al., 2022). Notably, the strengthening of the East Asian Monsoon in coming decades (Li et al., 2022; Xue et al., 2023) could potentially enhance this process. However, in recent years, soil and water conservation and environmental rehabilitation campaigns (Wang et al., 2007) largely contributed to the reduction of SPM export by the Huanghe with a transfer to the estuary of 10.6 Mt in 2016, which is one order of magnitude lower than the annual sediment flux measured in 2013 (172.8 Mt) and two orders or magnitude lower compared to the flux of the 1950s (*ca.* 1,340 Mt; Wang et al., 2015). This sediment load reduction is consistent with the weakened erosion rate observed in the CLP, such modifications should thus have drastically inhibited the OC mobilization from the CLP and the POC export by the Huanghe.

5.2.2 POC source determination and end member apportionment

Considering the SPM geochemistry and the basin characteristics, three terrestrial sources can be identified as necessary to form the composition of the Huanghe POC at the Luokou cross-section. As discussed in Section 5.2.1 and shown in Figure 5a, two of these sources are (a) topsoil-derived OC (OC_{ts}) and (b) OC from deeper horizons of the loess-paleosol sequence (OC_{lps}) excluding topsoil. In addition, at the Luokou cross-section, bed OC shows lower $\delta^{13}\text{C}$ values compared to that of SPM, suggesting a significant contribution of (c) rock-derived OC from erosion in the middle reaches (OC_{petro}).

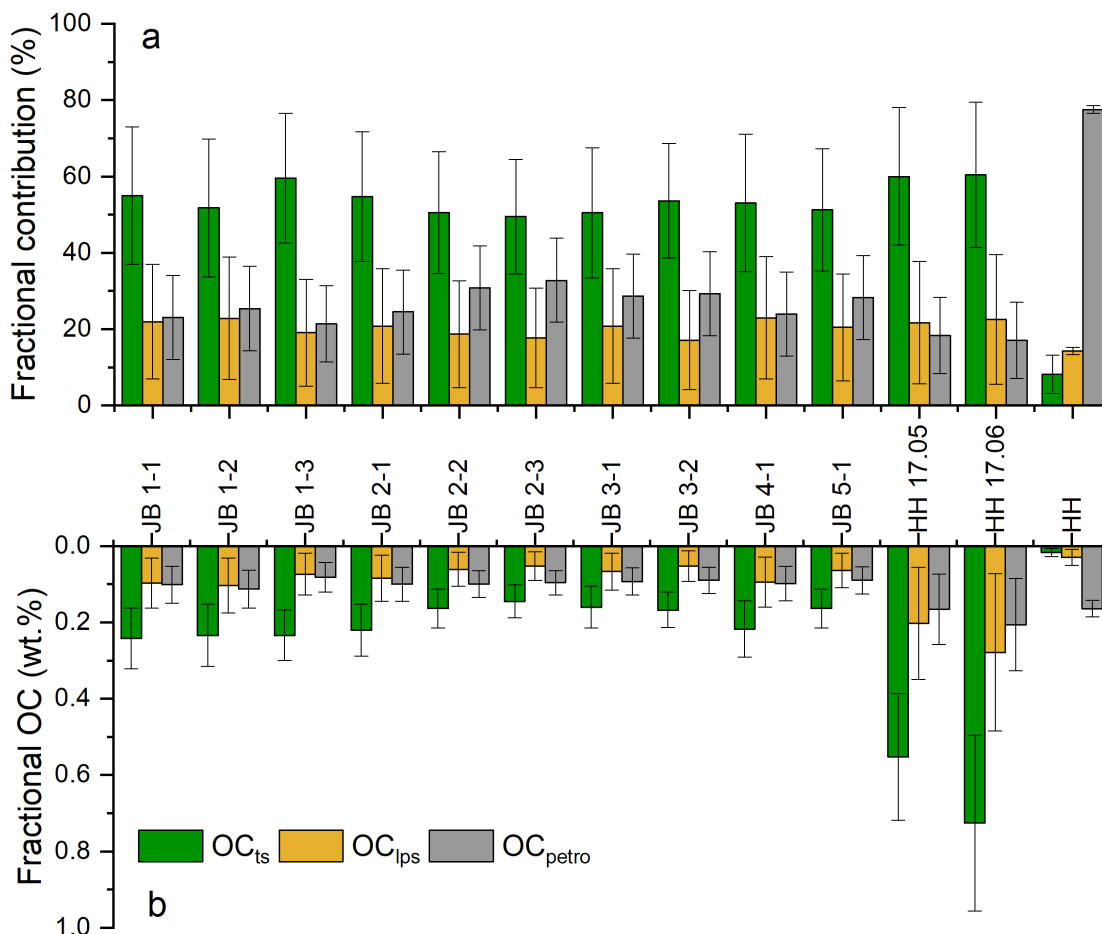
We adopted a Bayesian Monte-Carlo model to reconstruct source apportionment based on the mass balance of carbon isotopes ($\delta^{13}\text{C}$ and $\Delta^{14}\text{C}$) of our three defined end members (section 3.3, Table. 2, Appendix A). Modeling results are shown in Figure 7 as relative contributions (Figure 7a) and weight percentage (Figure 7b) of OC_{ts} , OC_{lps} , and OC_{petro} (Table S2). The contribution of OC_{petro} to total Huanghe POC at Luokou varies between 21% and 33% in the cross-section, which is higher than the contribution calculated for in the two fine SPM samples (17% on average) and much smaller than for the bed sediment sample ($78 \pm 10\%$). The inferred OC_{petro} concentration in the sediment is remarkably uniform in the cross-section, representing $0.10 \pm 0.01\%$ of SPM (Figure 7b). This result is consistent with the OC contents of midstream sedimentary rocks at $0.09 \pm 0.08\%$ (Qu et al., 2020). In addition, these findings imply that OC_{petro} concentration does not depend on particle size and confirm previous findings of OC_{petro} being present in a range of clastic particles or as discrete particles (Galy et al., 2008a; Bouchez et al., 2014). In other words, the rock-derived OC has a relatively invariant contribution with depth (Galy et al., 2008a; Bouchez et al., 2014), meaning that biospheric OC exerts a first-order control on POC content and isotopic variations throughout the cross-section.

Table 2: Summary of $\delta^{13}\text{C}$ and $\Delta^{14}\text{C}$ of source end members for POC in the Huanghe.

End member	$\delta^{13}\text{C}$	$\Delta^{14}\text{C}$
OC_{ts}	$-24.8 \pm 1.9\text{‰}$	$-90 \pm 130\text{‰}$
OC_{lps}	$-22.7 \pm 1.0\text{‰}$	$-610 \pm 390\text{‰}$
OC_{petro}	$-29.2 \pm 0.9\text{‰}$	-1000‰

At the study cross-section, OC_{ts} and OC_{lps} contribute 50%-60% and 17%-23% to the total POC, respectively (Figure 7a). The sum of these two components can be considered as OC_{bio} , which varies between 67% and 77%. The

458 corresponding OC_{bio} content of sediment is quite variable, ranging from 0.20% (sample JB 2-3) to 0.34% (sample JB
 459 1-1), and generally decreases from the river surface to the bottom. Given the rather invariant OC_{petro} concentration in
 460 the sediment, there are thus marked heterogeneities of POC provenance in the cross-section. For instance, POC
 461 transported close to the right bank and in the finer SPM samples show a higher contribution from OC_{bio} . From the
 462 knowledge of the relative contributions of OC_{ts} and OC_{lps} and their corresponding ^{14}C activity, the Fm values for the
 463 bulk OC_{bio} can be estimated based on mass balance. The modeled radiocarbon activity of OC_{bio} is relatively
 464 homogeneous with an average $\Delta^{14}C$ value of $-178 \pm 11\%$ ($1,510 \pm 110$ ^{14}C yr) whereas a greater variance is observed
 465 in the bulk ^{14}C content. In summary, our results support the first-order control of OC_{bio} abundance on POC content
 466 and age in the Huanghe.



467 **Figure 7: (a) Relative contributions of the three different sources of Huanghe POC, (b) fractional OC weight percentage**
 468 **Huanghe POC at the Luokou cross-section, as inferred from a mixing model. OC_{ts} is the topsoil-derived OC, OC_{lps}**
 469 **represents the loess-paleosol sequence OC excluding topsoil, and OC_{petro} is the rock-derived OC eroded from the Huanghe**
 470 **middle reaches.**
 471

472 Applying the same mixing model to previously published Huanghe POC data (2011-2016, Table S1) shows (1)
 473 dominance of the OC_{bio} contribution to POC, (2) variable relative mixing proportions of OC_{ts} and OC_{lps} ; (3) a wide
 474 range of ^{14}C age for OC_{bio} (from 1,040 to 8,050 yr). In particular, OC_{ts} and OC_{lps} contributed 20%-30% and 46%-68%
 475 to POC collected in 2013 (Hu et al., 2015), leading to 75-89% of OC_{bio} . Yu et al. (2019a) estimated that OC_{bio}
 476 contributed 63%-81% to the lower Huanghe POC (2015-2016) using a different mixing model. Using their data in our

477 mixing model results in a slightly higher OC_{bio} contribution of 77%-87%, consisting of 39%-53% for OC_{ts} and 30%-
478 47% for OC_{lps} . The small difference in source contribution mainly results from the fact that old OC_{bio} from loess-
479 paleosol sequences was not considered in Yu et al. (2019a), and from the different isotopic signatures chosen for the
480 POC endmembers. However, both estimates ignore the possible presence of rock-derived OC in soils. In any case, our
481 results suggest that the Huanghe transports more OC_{bio} -derived POC than previously thought, with more aged, soil-
482 derived OC.

483 It is worth noticing that these calculations suggest that the OC_{lps} fraction in the Huanghe was significantly higher in
484 2013 than in 2016. As most Huanghe sediments are derived from the CLP, higher physical erosion in the CLP should
485 enhance supply of aged, refractory OC_{bio} to the river system. Consequently, the decrease in sediment supply from the
486 CLP initiated a few decades ago (Wang and Fu et al., 2016), which is likely to continue in the future, will probably
487 lead to the reduction of the contribution of OC_{lps} to total POC export from the Huanghe. This might have an impact
488 on the burial efficiency of riverine POC on the continental margins, as OC_{ts} is more labile than OC_{lps} , and thus more
489 prone to the remineralization process before burial. Moreover, decreasing erosion rate in the Huanghe basin will lead
490 to decreasing sediment accumulation rate in the estuary, which potentially favors the oxidation of all POC components
491 before burial (Blair and Aller, 2012). The time scale over which such effect could take place is yet unknown, as
492 anthropogenic intervention is the primary reason for the sediment yield reduction, through afforestation and soil and
493 water conservation measures in the CLP and reservoir operation in the middle reaches of the Huanghe. However, it is
494 plausible that in response to decreased terrestrial physical erosion on the Loess Plateau over at least decadal timescales,
495 an increased proportion of Huanghe POC will be oxidized before burial in the ocean, thereby leading to a weakened
496 preservation efficiency for the terrestrial eroded POC.

497 **5.3 POC export by the Huanghe**

498 In the Huanghe, POC content varies both vertically and laterally throughout the cross-section (Figure 2). This spatial
499 variability of both physical and chemical SPM characteristics must be considered when estimating integrated
500 instantaneous POC concentration and flux (Section 3.4).

501 We calculate that (Text S1) at the sampling time (July 2016), the Huanghe at Luokou transported 1,075 kg/s of SPM
502 for a water discharge of 731 m³/s, such that the spatially-integrated SPM concentration over the cross section (SPM_{int})
503 was 1,472 mg/L, a value relatively close to the straightforward average concentration of our 10 samples (1,286 mg/L).
504 The Luokou gauging station records a monthly SPM load of 1,826 kg/s in July 2016, and the daily average SPM load
505 of 1,096 kg/s for a daily average water discharge of 643 m³/s on the 16th and 17th of July 2016 (method: three water
506 samples collected at 0.5 m below the channel surface across the transect profile, data available at
507 <http://www.yrcc.gov.cn>). Even though the latter estimate neglects the vertical heterogeneity within this relatively
508 shallow river (< 5.0 m), estimates give similar results.

509 We further obtain an instantaneous POC flux of 3.69 kg/s, corresponding to a cross-section integrated average POC
510 content ($POC_{int}\%$) of 0.34% when dividing this instantaneous POC flux by the instantaneous SPM load. Given the
511 relatively homogenous distribution of OC_{petro} , the instantaneous flux of OC_{petro} was calculated by multiplying the
512 average OC_{petro} content by the instantaneous cross-section integrated SPM flux, yielding 1.07 ± 0.11 kg/s. The

513 instantaneous OC_{bio} flux was then calculated by subtracting the instantaneous flux of OC_{petro} from the instantaneous
514 POC flux, yielding 2.61 ± 0.26 kg/s. Assuming that our SPM samples are representative in terms of POC content
515 exported in July 2016, and taking the SPM flux of the gauging station for July, then the estimated fluxes of POC,
516 OC_{bio} , and OC_{petro} for the flood period of July 2016 are 6.1, 4.3, and 1.8 kg/s, respectively. Taking POC_{int} content for
517 estimating the annual POC flux yields a value of 1.1 kg/s consisting of 0.8 and 0.3 kg/s for OC_{bio} and OC_{petro} fluxes,
518 respectively. Note that these numbers are lower-bound estimates because POC content in Huanghe SPM collected
519 during flood periods is generally the lowest (Ran et al., 2013). Taking the highest POC content 0.75% reported in the
520 lower Huanghe in 2016 (Yu et al., 2019a), the estimated annual POC flux is 2.4 kg/s.

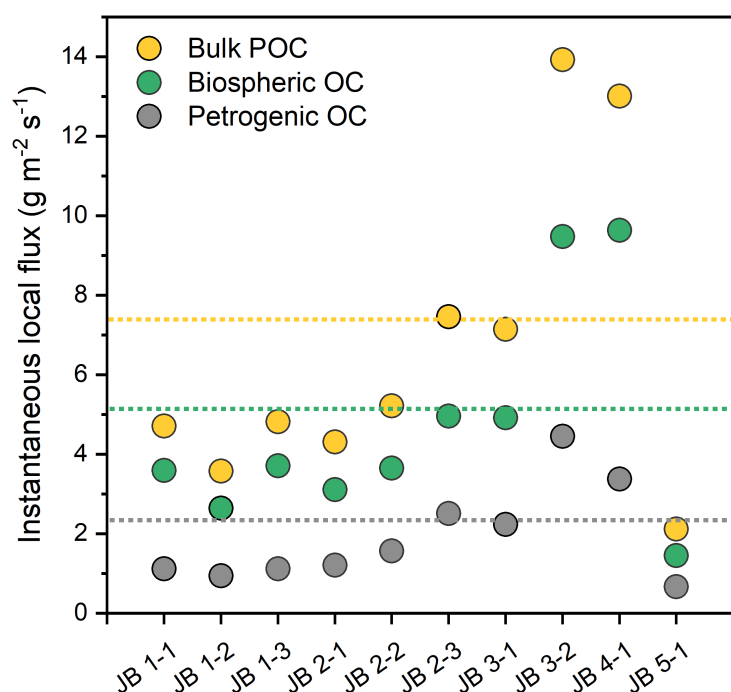
521 The above numbers present a sharp decrease compared to the estimated POC and OC_{bio} fluxes transported by the
522 Huanghe over the period 2008 to 2013. Galy et al. (2015) estimated an OC_{petro} flux of 1.9 kg/s and an OC_{bio} flux of
523 11.4 kg/s from 2008 to 2012 (SPM flux: 3,655 kg/s, YRCC 2016), while Tao et al. (2018) reported an OC_{petro} flux of
524 5.8 kg/s and a similar OC_{bio} flux of 12.6 kg/s from June 2012 to May 2013 (SPM flux: 5,723 kg/s, YRCC 2016).

525 We first note that previous estimates of POC flux in the Huanghe might be biased as these estimates neglect the
526 variability over the cross-section (*e.g.*, Hu et al., 2015; Ran et al., 2013; Tao et al., 2015), SPM samples analyzed so
527 far for the Huanghe were generally collected within the first 0.5 m below the surface, meaning that previous POC
528 estimates did not consider the observed vertical and lateral POC heterogeneities and have thus misestimated POC
529 sources and fluxes. Those estimates were calculated by multiplying an individual surface POC content by the
530 corresponding monthly or weekly suspended sediment load, as provided by hydrological stations. Such estimates can
531 be problematic because POC content in SPM generally decreases from top to bottom (Figure 2), resulting in biased
532 surface-based estimates of fluxes (Bouchez et al., 2014). Using our cross-section data, we can estimate the bias in
533 POC flux estimates when a single sample is used for such flux estimates, by multiplying depth-integrated sediment
534 flux by the POC content of each sample. Such calculation shows different POC fluxes ranging from -15% to +30%
535 compared to the depth-integrated estimate, which is mostly influenced by the variable POC content. Considering SPM
536 collected at the channel surface, POC flux estimates using samples JB 1-1 and JB 2-1 are 28% and 15% higher,
537 respectively, and are 6% and 5% lower using samples JB 3-1 and JB 5-1, respectively, than the depth-integrated
538 estimate. This simple sensitivity analysis shows that channel surface sampling of SPM alone does not necessarily
539 result in an overestimation of POC flux because of lateral heterogeneity, even though the POC content of SPM is
540 generally higher at the surface than at the bottom (Figure 2). As a consequence, and although accurate estimation of
541 POC fluxes requires grain-size variations to be accounted for, the corresponding bias cannot explain the large
542 difference between our estimates of Huanghe POC export for the year 2016 and previous estimates for preceding
543 years. The SPM flux is 336 kg/s in 2016 and 762 kg/s over the period 2014 to 2016, which is one order of magnitude
544 lower than values reported from 2008 to 2013 (YRCC 2016). The dramatic decrease in sediment load of the Huanghe
545 (Wang and Fu et al., 2016) has most likely exerted a first-order control on the reduction in POC export from the
546 Huanghe river system, and will probably continue to do so in the near future.

547 In the lower Huanghe, the POC content is very low and has small variance among different size fractions (Get et al.,
548 2020), such that the POC flux is controlled by the SPM flux. In particular, it is worth noting that the Huanghe displays
549 strong density stratification effects compared to other rivers (Moodie et al., 2022), with near-bed flow dominating the

550 transport of SPM. In order to appraise how spatial and temporal variability in SPM flux could influence POC export,
 551 "local" POC loads can be calculated throughout the cross-section using the local water velocity, SPM concentration,
 552 and POC content (Figure 8). In general, in the lower Huanghe more POC is transported near the riverbed and above
 553 shallower bathymetry on the left side of the channel (except for profile JB 5). For instance, there is a nearly two-fold
 554 increase in POC export from the surface to the bottom for the JB 2 and JB 3 profiles. The maximum local bulk POC
 555 export (sample JB 3-2), OC_{bio} (sample JB 3-2), and OC_{petro} (sample JB 4-1) are over 6 times higher than the
 556 corresponding minimum values (sample JB 5-1). This spatial pattern of POC load is almost the reverse of the POC%
 557 variation over the cross-section, again stressing the importance of sediment river dynamics in POC delivery. From
 558 these considerations, it could be anticipated that during the low-water season, when water velocity is slower, near-
 559 bottom Huanghe SPM is deposited on the channel bed, withdrawing a significant fraction of the POC export, as shown
 560 in other large rivers (Ke et al., 2022). This topic should be further examined in future research, in order to
 561 systematically investigate the stratification of sediment and associated OC transport dynamics in lowland and high-
 562 turbidity fluvial systems.

563



564

565 **Figure 8: Estimates of instantaneous “local” fluxes of Huanghe bulk POC, OC_{bio} and OC_{petro} , calculated for each sample of**
 566 **the Luokou cross-section. The three dotted lines marked in orange, green, and grey represent the corresponding**
 567 **instantaneous, cross-section integrated fluxes.**

568 Interestingly, anthropogenic activities may have antagonistic effects on POC export. Deforestation, agriculture, and
 569 mining have considerably enhanced the sediment yield from the CLP since the mid-Holocene (He et al., 2006) while
 570 the construction of large dams, soil and water conservation measures, and afforestation has considerably reduced the
 571 sediment yield since the 1950s (Wang and Fu et al., 2016; Wang et al., 2007; Syvitski et al., 2005). Yet the Huanghe
 572 exports substantial OC_{bio} and OC_{petro} with a significantly higher burial efficiency (~42% on average; Sun et al., 2018)
 573 than other large fluvial systems entering passive continental margins, such as the Changjiang, Amazon, and

574 Mississippi (Blair and Aller, 2012). It is reported that aged soil OC is nearly fully preserved in continental margins
575 and that OC_{petro} has a *ca.* 70% burial efficiency (Tao et al., 2016). However, the contribution of the Huanghe OC burial
576 to the global C sink is likely to be lower in the future as the consequence of 1) sharp decrease in SPM and POC export
577 due to weakened physical erosion in the CLP; 2) reduced sediment accumulation rate favoring OC remineralization
578 in estuaries (Blair and Aller, 2012; Walling and Fan, 2003; Milliman and Farnsworth, 2011; Galy et al., 2015).

579 **6 Conclusions**

580 In this contribution, we present the first detailed study of particulate organic carbon (POC) over a complete river cross-
581 section of the Huanghe, providing new perspectives on the transport mode, source, and instantaneous fluxes of POC
582 in this highly turbid large river.

583 At the scale of a cross-section, physical and chemical properties of SPM are heterogeneous both vertically and
584 laterally, a feature that is mainly controlled by bathymetry and hydrodynamic sorting. Resuspension of bed sediment
585 and local erosion of the right bank together impact the suspended POC composition at the sampled location. This
586 spatial heterogeneity shows that near-bottom SPM plays a dominant role in the delivery of OC_{bio} (topsoil and deep
587 soil OC combined) and OC_{petro} . Despite a relatively shallow river channel (< 5.0 m) and narrow width (< 200 m), we
588 show how the heterogeneity of POC transport over a cross-section needs to be considered in constraining POC
589 transport mode and estimating POC fluxes.

590 Despite its millennial age, POC in the Huanghe is dominated by OC_{bio} with a contribution of from 67% to 79%. OC_{petro}
591 content in SPM is relatively homogeneous (0.08% - 0.11%) over the cross-section, indicating that the variability in
592 bulk POC age is mainly controlled by the variability in OC_{bio} content, especially in the finest SPM fraction. OC_{bio} ages
593 deduced from the application of a mixing model to previously published data (record period 2011-2016) are highly
594 variable, ranging from 1,040 to 8,050 ^{14}C yr. We interpret this feature as resulting from the erosion of deep horizons
595 by gully systems in the loess-paleosol sequences containing ^{14}C -dead OC_{bio} . Enhanced erosion of deep loess-paleosol
596 horizons mobilizes aged and refractory OC to the ocean, with high burial efficiency on the passive margin. The erosion
597 of loess-paleosol horizons is thus an efficient process of CO_2 burial. However, the construction of large dams has
598 drastically affected the sediment load of the Huanghe system and retains substantial quantities of sediments that were
599 previously exported to the ocean. Future work is needed to further quantify how these anthropogenic modifications
600 alter POC composition and transport, by conducting comprehensive cross-section sampling campaigns over extended
601 time series upstream and downstream from dams.

602 **Appendix A**

603 Fluvial POC delivered in the Huanghe POC could originate from three terrestrial sources (Table. 2). As topsoil
604 typically contains recently photosynthesized OC_{bio} , we used a $\delta^{13}\text{C}$ value of $-24.8 \pm 1.9\text{‰}$ ($n=166$) according to the
605 subsurface soil OC values measured across the Huanghe basin (Rao et al., 2017). Over the sampled cross-section, the
606 depleted ^{13}C values indicate the dominant and almost exclusive input of C3 plant-derived material to the Huanghe
607 POC in the lower reaches. Based on ^{14}C (Liu et al., 2012) and ^{10}Be (Zhou et al., 2010) dating of < 10 cm-deep soil

608 horizons in the Huanghe Basin, the average age of topsoil was chosen as being younger than 2,000 yr (*i.e.*, $\Delta^{14}\text{C} >$
609 -220%). As the topsoil end member includes modern biospheric material ($\Delta^{14}\text{C}$ around 40‰, Hua et al., 2013), we
610 assigned a $\Delta^{14}\text{C}$ value of $-90 \pm 130\%$ ($F_m = 0.91 \pm 0.13$) to this endmember. This range also includes the range of
611 $\Delta^{14}\text{C}$ values of pre-aged soil OC indicated by the long-chain n-C₂₄₊₂₆₊₂₈ alkanols of the Huanghe POC reported by Tao
612 et al. (2015) and Yu et al. (2019a). Their results show consistent POC $\Delta^{14}\text{C}$ values in the lower reaches of $-204 \pm$
613 20% ($F_m = 0.80 \pm 0.03$, n=7) from June 2015 to May 2016 and $-219 \pm 33\%$ ($F_m = 0.79 \pm 0.04$, n=4) at Kenli and of
614 $-198 \pm 15\%$ ($F_m = 0.81 \pm 0.02$, n=6) from June 2015 to April 2016 at Huayunkou.

615 The second end member should be characterized by aged and refractory OC from the loess-paleosol sequence
616 excluding topsoil (upper 10 m) of the CLP. Radiocarbon dating has an upper age limit of around 50,000 yr, age above
617 which F_m is equal to 0. However, radiocarbon-free OC spanning from 50,000 to 100,000 yr must still be considered
618 as OC_{bio} in the long-term carbon cycle. Here, we name this ignored OC as the “dormant” OC, without which the OC_{bio}
619 (*i.e.*, less than 100,000 yr old) would be underestimated to some extent because the radiocarbon-free OC would be
620 misinterpreted as having a petrogenic origin. To consider this “dormant” OC, a $\delta^{13}\text{C}$ values of $-22.7 \pm 1.0\%$ and a
621 $\Delta^{14}\text{C}$ values of $-610 \pm 390\%$ ($F_m, 0.39 \pm 0.39$) were adopted based on an average of values over the whole loess-
622 paleosol sequence. Although radiocarbon-free (*i.e.*, older than 100,000 yr) OC overlaps with this endmember, such
623 old soil organic carbon is probably not mobilized as modern gully erosion mainly concerns the upper 10 m of the
624 loess-paleosol sequences, where soil OC_{bio} is assumed to be significantly younger comparatively (Figure 5).

625 Rock-derived OC from the QTP and the CLP, as well as kerogen from oil-gas fields from the Ordos Basin,
626 were all considered to be possible contributors to the OC_{petro} endmember. The $\delta^{13}\text{C}$ of OC_{petro} greatly varies between
627 the QTP ($-21.2 \pm 1.2\%$, n=11, Liu et al., 2007) and the CLP ($-26.8 \pm 0.5\%$, n=8, Qu et al., 2020). However, most of
628 the sediments eroded from the QTP are not transferred to the lower reaches as they remain trapped in the CLP and the
629 western Mu Us desert (Nie et al., 2015; Licht et al., 2016; Pan et al., 2016). In addition, the construction of large dams
630 in the upper reaches has considerably reduced the transfer of solid materials downstream (Wang et al., 2007).
631 Therefore, rock-derived OC inherited from the denudation of the QTP region is not further considered. Kerogen from
632 the oil-gas fields of the Ordos Basin in the CLP region (Figure 1) has $\delta^{13}\text{C}$ values of $-29.2 \pm 0.9\%$ (n=10, Guo et al.,
633 2014). Taking these constraints together, we consider a $\delta^{13}\text{C}$ value of $-28.1 \pm 1.5\%$ for the OC_{petro} end member, and
634 a $\Delta^{14}\text{C}$ value of -1000% ($F_m = 0$) by definition.

635 Key Points

- 636 • Bank erosion in lower Huanghe provides recent organic carbon to fluvial transport, altering the particulate
637 organic carbon transport over a river channel cross-section;
- 638 • Erosion of deep soil horizons of the loess-paleosol sequence contributes radiocarbon-dead organic carbon
639 from the biosphere to the Huanghe;
- 640 • Channel-bottom transport in the Huanghe is the primary process of exporting fluvial particulate organic
641 carbon to the estuary.

642 **Data availability**

643 All datasets are included in the paper and the supplementary materials.

644 **Author contributions**

645 DC, JB, CQ, and YK conceptualized the study. DC, JB, YK, MM, and BC determined the methodology. HC and JC
646 collected the sediment samples. YK, MM, and AN assisted with elemental and isotopic carbon analysis. DC and CQ
647 supervised the work. KY performed data analysis and wrote the original draft, and all authors contributed to the review
648 and editing of the paper.

649 **Competing interests**

650 We declare there is no competing interest.

651 **Acknowledgments**

652 We thank Yulong Liu and Shengliu Yuan for their help during sampling and filtering. We also thank François Thil
653 and Nadine Tissenerat for invaluable help when running the ECHOMICADAS, and Pierre Barré for use of the
654 Beckman Coulter's LS 13 320 for particle size analysis at École normale supérieure.

655 **Financial support**

656 This study was financially supported by the Agence Nationale de la Recherche (ANR) SEDIMAN (Grant ANR-15-
657 CE01-0012), the National Natural Science Foundation of China (NSFC), grants 41561134017, 41625012, and the
658 China Scholarship Council (CSC) to Yutian Ke (No.201706180008).

659 **References**

- 660 Andersson, A., Deng, J., Du, K., Zheng, M., Yan, C., Sköld, M., and Gustafsson, Ö.: Regionally-Varying Combustion
661 Sources of the January 2013 Severe Haze Events over Eastern China, *Environ. Sci. Technol.*, 49, 2038–2043,
662 <https://doi.org/10.1021/es503855e>, 2015.
- 663 Baronas, J. J., Stevenson, E. I., Hackney, C. R., Darby, S. E., Bickle, M. J., Hilton, R. G., Larkin, C. S., Parsons, D.
664 R., Myo Khaing, A., and Tipper, E. T.: Integrating Suspended Sediment Flux in Large Alluvial River Channels:
665 Application of a Synoptic Rouse-Based Model to the Irrawaddy and Salween Rivers, *Journal of Geophysical Research:*
666 *Earth Surface*, 125, <https://doi.org/10.1029/2020jf005554>, 2020.
- 667 Bianchi, T. S.: The role of terrestrially derived organic carbon in the coastal ocean: A changing paradigm and the
668 priming effect, *Proceedings of the National Academy of Sciences*, 108, 19473–19481,
669 <https://doi.org/10.1073/pnas.1017982108>, 2011.
- 670 Bird, A., Stevens, T., Rittner, M., Vermeesch, P., Carter, A., Andò, S., Garzanti, E., Lu, H., Nie, J., Zeng, L., Zhang,
671 H., and Xu, Z.: Quaternary dust source variation across the Chinese Loess Plateau, *Palaeogeography,*
672 *Palaeoclimatology, Palaeoecology*, 435, 254–264, <https://doi.org/10.1016/j.palaeo.2015.06.024>, 2015.
- 673 Blair, N. E. and Aller, R. C.: The Fate of Terrestrial Organic Carbon in the Marine Environment, *Annual Review of*
674 *Marine Science*, 4, 401–423, <https://doi.org/10.1146/annurev-marine-120709-142717>, 2012.

675 Blair, N. E., Leithold, E. L., Brackley, H., Trustrum, N., Page, M., and Childress, L.: Terrestrial sources and export of
676 particulate organic carbon in the Waipaoa sedimentary system: Problems, progress and processes, *Marine Geology*,
677 270, 108–118, <https://doi.org/10.1016/j.margeo.2009.10.016>, 2010.

678 Bouchez, J., Galy, V., Hilton, R. G., Gaillardet, J., Moreira-Turcq, P., Pérez, M. A., France-Lanord, C., and Maurice,
679 L.: Source, transport and fluxes of Amazon River particulate organic carbon: Insights from river sediment depth-
680 profiles, *Geochimica et Cosmochimica Acta*, 133, 280–298, <https://doi.org/10.1016/j.gca.2014.02.032>, 2014.

681 Bouchez, J., Gaillardet, J., France-Lanord, C., Maurice, L., and Dutra-Maia, P.: Grain size control of river suspended
682 sediment geochemistry: Clues from Amazon River depth profiles, *Geochemistry, Geophysics, Geosystems*, 12, n/a-
683 n/a, <https://doi.org/10.1029/2010gc003380>, 2011a.

684 Bouchez, J., Lupker, M., Gaillardet, J., France-Lanord, C., and Maurice, L.: How important is it to integrate riverine
685 suspended sediment chemical composition with depth? Clues from Amazon River depth-profiles, *Geochimica et*
686 *Cosmochimica Acta*, 75, 6955–6970, <https://doi.org/10.1016/j.gca.2011.08.038>, 2011.

687 Carignan, J., Hild, P., Mevelle, G., Morel, J., and Yeghicheyan, D.: Routine Analyses of Trace Elements in Geological
688 Samples using Flow Injection and Low Pressure On-Line Liquid Chromatography Coupled to ICP-MS: A Study of
689 Geochemical Reference Materials BR, DR-N, UB-N, AN-G and GH, *Geostandards Newsletter*, 25, 187–198,
690 <https://doi.org/10.1111/j.1751-908X.2001.tb00595.x>, 2001.

691 Cauwet, G. and Mackenzie, F. T.: Carbon inputs and distribution in estuaries of turbid rivers: the Yang Tze and Yellow
692 rivers (China), *Marine Chemistry*, 43, 235–246, [https://doi.org/10.1016/0304-4203\(93\)90229-h](https://doi.org/10.1016/0304-4203(93)90229-h), 1993.

693 Cheng, P., Burr, G. S., Zhou, W., Chen, N., Hou, Y., Du, H., Fu, Y., and Lu, X.: The deficiency of organic matter 14C
694 dating in Chinese Loess-paleosol sample, *Quaternary Geochronology*, 56, 101051,
695 <https://doi.org/10.1016/j.quageo.2019.101051>, 2020.

696 Curry, K. J., Bennett, R. H., Mayer, L. M., Curry, A., Abril, M., Biesiot, P. M., and Hulbert, M. H.: Direct visualization
697 of clay microfabric signatures driving organic matter preservation in fine-grained sediment, *Geochimica et*
698 *Cosmochimica Acta*, 71, 1709–1720, <https://doi.org/10.1016/j.gca.2007.01.009>, 2007.

699 Dellinger, M., Gaillardet, J., Bouchez, J., Calmels, D., Galy, V., Hilton, R. G., Louvat, P., and France-Lanord, C.:
700 Lithium isotopes in large rivers reveal the cannibalistic nature of modern continental weathering and erosion, *Earth*
701 *and Planetary Science Letters*, 401, 359–372, <https://doi.org/10.1016/j.epsl.2014.05.061>, 2014.

702 Feng, X., Feakins, S. J., Liu, Z., Ponton, C., Wang, R. Z., Karkabi, E., Galy, V., Berelson, W. M., Nottingham, A.
703 T., Meir, P., and West, A. J.: Source to sink: Evolution of lignin composition in the Madre de Dios River system
704 with connection to the Amazon basin and offshore, *Journal of Geophysical Research: Biogeosciences*, 121, 1316–
705 1338, <https://doi.org/10.1002/2016JG003323>, 2016.

706 Freymond, C. V., Lupker, M., Peterse, F., Haghypour, N., Wacker, L., Filip, F., Giosan, L., and Eglinton, T. I.:
707 Constraining Instantaneous Fluxes and Integrated Compositions of Fluvially Discharged Organic Matter, *Geochem*
708 *Geophys Geosy*, 19, 2453–2462, <https://doi.org/10.1029/2018gc007539>, 2018.

709 Gaillardet, J., Dupré, B., Louvat, P., and Allègre, C. J.: Global silicate weathering and CO₂ consumption rates deduced
710 from the chemistry of large rivers, *Chemical Geology*, 159, 3–30, [https://doi.org/10.1016/s0009-2541\(99\)00031-5](https://doi.org/10.1016/s0009-2541(99)00031-5),
711 1999.

712 Galy, V. and Eglinton, T.: Protracted storage of biospheric carbon in the Ganges–Brahmaputra basin, *Nature Geosci*,
713 4, 843–847, <https://doi.org/10.1038/ngeo1293>, 2011.

714 Galy, V., Beyssac, O., France-Lanord, C., and Eglinton, T.: Recycling of graphite during Himalayan erosion: a
715 geological stabilization of carbon in the crust, *Science*, 322, 943–5, <https://doi.org/10.1126/science.1161408>, 2008a.

716 Galy, V., France-Lanord, C., and Lartiges, B.: Loading and fate of particulate organic carbon from the Himalaya to
717 the Ganga–Brahmaputra delta, *Geochimica et Cosmochimica Acta*, 72, 1767–1787,
718 <https://doi.org/10.1016/j.gca.2008.01.027>, 2008b.

719 Galy, V., France-Lanord, C., Beyssac, O., Faure, P., Kudrass, H., and Palhol, F.: Efficient organic carbon burial in the
720 Bengal fan sustained by the Himalayan erosional system, *Nature*, 450, 407–10, <https://doi.org/10.1038/nature06273>,
721 2007.

722 Galy, V., Peucker-Ehrenbrink, B., and Eglinton, T.: Global carbon export from the terrestrial biosphere controlled by
723 erosion, *Nature*, 521, 204–7, <https://doi.org/10.1038/nature14400>, 2015..

724 Garzanti, E., Andò, S., France-Lanord, C., Vezzoli, G., Censi, P., Galy, V., and Najman, Y.: Mineralogical and
725 chemical variability of fluvial sediments: 1. Bedload sand (Ganga–Brahmaputra, Bangladesh), *Earth and Planetary*
726 *Science Letters*, 299, 368–381, <https://doi.org/10.1016/j.epsl.2010.09.017>, 2010.

727 Garcia, M.: Sedimentation Engineering, American Society of Civil Engineers, (pp. 21-163)
728 <https://doi.org/10.1061/9780784408148>, 2008.

729 Ge, T., Xue, Y., Jiang, X., Zou, L., and Wang, X.: Sources and radiocarbon ages of organic carbon in different grain
730 size fractions of Yellow River-transported particles and coastal sediments, *Chemical Geology*, 534, 119452,
731 <https://doi.org/10.1016/j.chemgeo.2019.119452>, 2020.

732 Gu, Z., Duan, X., Shi, Y., Li, Y., and Pan, X.: Spatiotemporal variation in vegetation coverage and its response to
733 climatic factors in the Red River Basin, China, *Ecological Indicators*, 93, 54–64,
734 <https://doi.org/10.1016/j.ecolind.2018.04.033>, 2018.

735 Guo, H., Jia, W., Peng, P., Lei, Y., Luo, X., Cheng, M., Wang, X., Zhang, L., and Jiang, C.: The composition and its
736 impact on the methane sorption of lacustrine shales from the Upper Triassic Yanchang Formation, Ordos Basin, China,
737 *Marine and Petroleum Geology*, 57, 509–520, <https://doi.org/10.1016/j.marpetgeo.2014.05.010>, 2014.

738 Guo, K., Zou, T., Jiang, D., Tang, C., and Zhang, H.: Variability of Yellow River turbid plume detected with satellite
739 remote sensing during water-sediment regulation, *Continental Shelf Research*, 135, 74–85,
740 <https://doi.org/10.1016/j.csr.2017.01.017>, 2017.

741 Guo, L., Ping, C.-L., and Macdonald, R. W.: Mobilization pathways of organic carbon from permafrost to arctic rivers
742 in a changing climate, *Geophysical Research Letters*, 34, <https://doi.org/10.1029/2007GL030689>, 2007.

743 Guo, Z. T., Ruddiman, W. F., Hao, Q. Z., Wu, H. B., Qiao, Y. S., Zhu, R. X., Peng, S. Z., Wei, J. J., Yuan, B. Y., and
744 Liu, T. S.: Onset of Asian desertification by 22 Myr ago inferred from loess deposits in China, *Nature*, 416, 159–163,
745 <https://doi.org/10.1038/416159a>, 2002.

746 Hatté, C., Arnold, M., Dapoigny, A., Daux, V., Delibrias, G., Boisgheueuc, D. D., Fontugne, M., Gauthier, C.,
747 Guillier, M.-T., Jacob, J., Jaudon, M., Kaltnecker, É., Labeyrie, J., Noury, C., Paterne, M., Pierre, M., Phouybanhdyt,
748 B., Poupeau, J.-J., Tannau, J.-F., Thil, F., Tisnérat-Laborde, N., and Valladas, H.: Radiocarbon dating on
749 ECHOMICADAS, LSCE, Gif-Sur-Yvette, France: new and updated chemical procedures, *Radiocarbon*, 1–16,
750 <https://doi.org/10.1017/RDC.2023.46>, 2023.

751 He, X., Zhou, J., Zhang, X., and Tang, K.: Soil erosion response to climatic change and human activity during the
752 Quaternary on the Loess Plateau, China, *Reg Environ Change*, 6, 62–70, <https://doi.org/10.1007/s10113-005-0004-7>,
753 2006.

754 Hemingway, J. D., Hilton, R. G., Hovius, N., Eglinton, T. I., Haghpor, N., Wacker, L., Chen, M. C., and Galy, V.
755 V.: Microbial oxidation of lithospheric organic carbon in rapidly eroding tropical mountain soils, *Science*, 360, 209–
756 212, <https://doi.org/10.1126/science.aao6463>, 2018.

757 Hemingway, J. D., Rothman, D. H., Grant, K. E., Rosengard, S. Z., Eglinton, T. I., Derry, L. A., and Galy, V. V.:
758 Mineral protection regulates long-term global preservation of natural organic carbon, *Nature*, 570, 228–231,
759 <https://doi.org/10.1038/s41586-019-1280-6>, 2019.

760 Hilton, R. G., Gaillardet, J., Calmels, D., and Birck, J.-L.: Geological respiration of a mountain belt revealed by the
761 trace element rhenium, *Earth and Planetary Science Letters*, 403, 27–36, <https://doi.org/10.1016/j.epsl.2014.06.021>,
762 2014.

763 Hilton, R. G., Galy, A., Hovius, N., Horng, M.-J., and Chen, H.: Efficient transport of fossil organic carbon to the
764 ocean by steep mountain rivers: An orogenic carbon sequestration mechanism, *Geology*, 39, 71–74,
765 <https://doi.org/10.1130/g31352.1>, 2011.

766 Hilton, R. G., Galy, V., Gaillardet, J., Dellinger, M., Bryant, C., O'Regan, M., Grocke, D. R., Coxall, H., Bouchez, J.,
767 and Calmels, D.: Erosion of organic carbon in the Arctic as a geological carbon dioxide sink, *Nature*, 524, 84–7,
768 <https://doi.org/10.1038/nature14653>, 2015.

769 Hu, B., Li, J., Bi, N., Wang, H., Wei, H., Zhao, J., Xie, L., Zou, L., Cui, R., Li, S., Liu, M., and Li, G.: Effect of
770 human-controlled hydrological regime on the source, transport, and flux of particulate organic carbon from the lower
771 Huanghe (Yellow River), *Earth Surface Processes and Landforms*, 40, 1029–1042, <https://doi.org/10.1002/esp.3702>,
772 2015.

773 Hua, Q., Barbetti, M., and Rakowski, A. Z.: Atmospheric Radiocarbon for the Period 1950–2010, *Radiocarbon*, 55,
774 2059–2072, https://doi.org/10.2458/azu_js_rc.v55i2.16177, 2013.

775 Huang, C. C., and Ren, Z.: Fluvial erosion and the formation of gully systems over the Chinese Loess Plateau, *WSEAS*
776 *Transactions on Environment and Development*, 2(2), 141–145, 2006.

777 Jahn, B., Gallet, S., and Han, J.: Geochemistry of the Xining, Xifeng and Jixian sections, Loess Plateau of China:
778 eolian dust provenance and paleosol evolution during the last 140 ka, *Chemical Geology*, 178, 71–94,
779 [https://doi.org/10.1016/S0009-2541\(00\)00430-7](https://doi.org/10.1016/S0009-2541(00)00430-7), 2001.

780 Ke, Y., Calmels, D., Bouchez, J., and Quantin, C.: MODern River archivEs of Particulate Organic Carbon:
781 MOREPOC, *Earth System Science Data Discussions*, 1–19, <https://doi.org/10.5194/essd-2022-161>, 2022.

782 Keil, R. G., Mayer, L. M., Quay, P. D., Richey, J. E., and Hedges, J. I.: Loss of organic matter from riverine particles
783 in deltas, *Geochimica et Cosmochimica Acta*, 61, 1507–1511, [https://doi.org/10.1016/S0016-7037\(97\)00044-6](https://doi.org/10.1016/S0016-7037(97)00044-6), 1997.

784 Gen Li, X. T. W., Zhongfang Yang, Changping Mao, A. Joshua West, Junfeng Ji: Dam-triggered organic carbon
785 sequestration makes the Changjiang (Yangtze) river basin (China) a significant carbon sink, *Journal of Geophysical*
786 *Research: Biogeosciences*, 2015.

787 Li, P., Chen, J., Zhao, G., Holden, J., Liu, B., Chan, F. K. S., Hu, J., Wu, P., and Mu, X.: Determining the drivers and
788 rates of soil erosion on the Loess Plateau since 1901, *Science of The Total Environment*, 823, 153674,
789 <https://doi.org/10.1016/j.scitotenv.2022.153674>, 2022.

790 Licht, A., Pullen, A., Kapp, P., Abell, J., and Giesler, N.: Eolian cannibalism: Reworked loess and fluvial sediment as
791 the main sources of the Chinese Loess Plateau, *GSA Bulletin*, 128, 944–956, <https://doi.org/10.1130/B31375.1>, 2016.

792 Liu, G., Xu, W., Zhang, Q., & Xia, Z. : Holocene Soil Chronofunctions, *Luochuan, Chinese Loess Plateau.*
793 *Radiometric Dating*, 41, 2012.

794 Liu, J. and Liu, W.: Soil nitrogen isotopic composition of the Xifeng loess-paleosol sequence and its potential for use
795 as a paleoenvironmental proxy, *Quaternary International*, 440, 35–41, <https://doi.org/10.1016/j.quaint.2016.04.018>,
796 2017.

797 Liu, W., Yang, H., Ning, Y., and An, Z.: Contribution of inherent organic carbon to the bulk $\delta^{13}\text{C}$ signal in loess
798 deposits from the arid western Chinese Loess Plateau, *Organic Geochemistry*, 38, 1571–1579,
799 <https://doi.org/10.1016/j.orggeochem.2007.05.004>, 2007.

800 Ludwig, W., Probst, J.-L., and Kempe, S.: Predicting the oceanic input of organic carbon by continental erosion,
801 *Global Biogeochemical Cycles*, 10, 23–41, <https://doi.org/10.1029/95gb02925>, 1996.

802 Mayorga, E., Aufdenkampe, A. K., Masiello, C. A., Krusche, A. V., Hedges, J. I., Quay, P. D., Richey, J. E., and
803 Brown, T. A.: Young organic matter as a source of carbon dioxide outgassing from Amazonian rivers, *Nature*, 436,
804 538–41, <https://doi.org/10.1038/nature03880>, 2005.

805 Milliman, J. D. and Farnsworth, K. L.: *River discharge to the coastal ocean: a global synthesis*, Cambridge University
806 Press, 2011.

807 Milliman, J. D., Yun-Shan, Q., Mei-E, R., and Saito, Y.: Man’s Influence on the Erosion and Transport of Sediment
808 by Asian Rivers: The Yellow River (Huanghe) Example, *The Journal of Geology*, 95, 751–762,
809 <https://doi.org/10.1086/629175>, 1987.

810 Moodie, A. J., Nittrouer, J. A., Ma, H., Carlson, B. N., Wang, Y., Lamb, M. P., and Parker, G.: Suspended Sediment-
811 Induced Stratification Inferred From Concentration and Velocity Profile Measurements in the Lower Yellow River,
812 China, *Water Resources Research*, 58, e2020WR027192, <https://doi.org/10.1029/2020WR027192>, 2022.

813 Ning, Y., Liu, W., and An, Z.: Variation of soil $\delta^{13}\text{C}$ values in Xifeng loess-paleosol sequence and its
814 paleoenvironmental implication, *CHINESE SCI BULL*, 51, 1350–1354, <https://doi.org/10.1007/s11434-006-1350-7>,
815 2006.

816 Pan, B., Pang, H., Gao, H., Garzanti, E., Zou, Y., Liu, X., Li, F., and Jia, Y.: Heavy-mineral analysis and provenance
817 of Yellow River sediments around the China Loess Plateau, *Journal of Asian Earth Sciences*, 127, 1–11,
818 <https://doi.org/10.1016/j.jseae.2016.06.006>, 2016.

819 Qu, Y., Jin, Z., Wang, J., Wang, Y., Xiao, J., Gou, L.-F., Zhang, F., Liu, C.-Y., Gao, Y., Suarez, M. B., and Xu, X.:
820 The sources and seasonal fluxes of particulate organic carbon in the Yellow River, *Earth Surface Processes and*
821 *Landforms*, <https://doi.org/10.1002/esp.4861>, 2020.

822 Ran, L., Lu, X. X., and Xin, Z.: Erosion-induced massive organic carbon burial and carbon emission in the Yellow
823 River basin, China, *Biogeosciences*, 11, 945–959, <https://doi.org/10.5194/bg-11-945-2014>, 2014.

824 Ran, L., Lu, X. X., Sun, H., Han, J., Li, R., and Zhang, J.: Spatial and seasonal variability of organic carbon transport
825 in the Yellow River, China, *Journal of Hydrology*, 498, 76–88, <https://doi.org/10.1016/j.jhydrol.2013.06.018>, 2013.

826 Rao, Z., Guo, W., Cao, J., Shi, F., Jiang, H., and Li, C.: Relationship between the stable carbon isotopic composition
827 of modern plants and surface soils and climate: A global review, *Earth-Science Reviews*, 165, 110–119,
828 <https://doi.org/10.1016/j.earscirev.2016.12.007>, 2017.

829 Repasch, M., Scheingross, J. S., Hovius, N., Lupker, M., Wittmann, H., Haghypour, N., Gröcke, D. R., Orfeo, O.,
830 Eglinton, T. I., and Sachse, D.: Fluvial organic carbon cycling regulated by sediment transit time and mineral
831 protection, *Nat. Geosci.*, 14, 842–848, <https://doi.org/10.1038/s41561-021-00845-7>, 2021.

832 Rouse, H.: Modern Conceptions of the Mechanics of Fluid Turbulence, *Transactions of the American Society of Civil*
833 *Engineers*, 102, 463–505, <https://doi.org/10.1061/TACEAT.0004872>, 1937.

834 Schwab, M. S., Hilton, R. G., Haghypour, N., Baronas, J. J., and Eglinton, T. I.: Vegetal Undercurrents—Obscured
835 Riverine Dynamics of Plant Debris, *Journal of Geophysical Research: Biogeosciences*, 127, e2021JG006726,
836 <https://doi.org/10.1029/2021JG006726>, 2022.

837 Shi, H. and Shao, M.: Soil and water loss from the Loess Plateau in China, *Journal of Arid Environments*, 45, 9–20,
838 <https://doi.org/10.1006/jare.1999.0618>, 2000.

839 Stevens, T., Carter, A., Watson, T. P., Vermeesch, P., Andò, S., Bird, A. F., Lu, H., Garzanti, E., Cottam, M. A., and
840 Sevastjanova, I.: Genetic linkage between the Yellow River, the Mu Us desert and the Chinese Loess Plateau,
841 *Quaternary Science Reviews*, 78, 355–368, <https://doi.org/10.1016/j.quascirev.2012.11.032>, 2013.

842 Sun, D., Tang, J., He, Y., Liao, W., and Sun, Y.: Sources, distributions, and burial efficiency of terrigenous organic
843 matter in surface sediments from the Yellow River mouth, northeast China, *Organic Geochemistry*, 118, 89–102,
844 <https://doi.org/10.1016/j.orggeochem.2017.12.009>, 2018.

845 Syvitski, J. P. M., Vörösmarty, C. J., Kettner, A. J., and Green, P.: Impact of Humans on the Flux of Terrestrial
846 Sediment to the Global Coastal Ocean, *Science*, 308, 376–380, <https://doi.org/10.1126/science.11109454>, 2005.

847 Tao, S., Eglinton, T. I., Montluçon, D. B., McIntyre, C., and Zhao, M.: Pre-aged soil organic carbon as a major
848 component of the Yellow River suspended load: Regional significance and global relevance, *Earth and Planetary
849 Science Letters*, 414, 77–86, <https://doi.org/10.1016/j.epsl.2015.01.004>, 2015.

850 Tao, S., Eglinton, T. I., Montluçon, D. B., McIntyre, C., and Zhao, M.: Diverse origins and pre-depositional histories
851 of organic matter in contemporary Chinese marginal sea sediments, *Geochimica et Cosmochimica Acta*, 191, 70–88,
852 <https://doi.org/10.1016/j.gca.2016.07.019>, 2016.

853 Tao, S., Eglinton, T. I., Zhang, L., Yi, Z., Montluçon, D. B., McIntyre, C., Yu, M., and Zhao, M.: Temporal variability
854 in composition and fluxes of Yellow River particulate organic matter, *Limnology and Oceanography*, 63, S119–S141,
855 <https://doi.org/10.1002/lno.10727>, 2018.

856 Turowski, J. M., Hilton, R. G., and Sparkes, R.: Decadal carbon discharge by a mountain stream is dominated by
857 coarse organic matter, *Geology*, 44, 27–30, 2016.

858 Walling, D. E. and Fang, D.: Recent trends in the suspended sediment loads of the world’s rivers, *Global and Planetary
859 Change*, 39, 111–126, [https://doi.org/10.1016/S0921-8181\(03\)00020-1](https://doi.org/10.1016/S0921-8181(03)00020-1), 2003.

860 Wang, C., Li, F., Shi, H., Jin, Z., Sun, X., Zhang, F., Wu, F., and Kan, S.: The significant role of inorganic matters in
861 preservation and stability of soil organic carbon in the Baoji and Luochuan loess/paleosol profiles, Central China,
862 *CATENA*, 109, 186–194, <https://doi.org/10.1016/j.catena.2013.04.001>, 2013.

863 Wang, G., Feng, X., Han, J., Zhou, L., Tan, W., and Su, F.: Paleovegetation reconstruction using $\delta^{13}\text{C}$ of Soil Organic
864 Matter, *Biogeosciences*, 5, 1325–1337, <https://doi.org/10.5194/bg-5-1325-2008>, 2008.

865 Wang, H., Bi, N., Saito, Y., Wang, Y., Sun, X., Zhang, J., and Yang, Z.: Recent changes in sediment delivery by the
866 Huanghe (Yellow River) to the sea: Causes and environmental implications in its estuary, *Journal of Hydrology*, 391,
867 302–313, <https://doi.org/10.1016/j.jhydrol.2010.07.030>, 2010.

868 Wang, H., Wu, X., Bi, N., Li, S., Yuan, P., Wang, A., Syvitski, J. P. M., Saito, Y., Yang, Z., Liu, S., and Nittrouer, J.:
869 Impacts of the dam-orientated water-sediment regulation scheme on the lower reaches and delta of the Yellow River
870 (Huanghe): A review, *Global and Planetary Change*, 157, 93–113, <https://doi.org/10.1016/j.gloplacha.2017.08.005>,
871 2017.

872 Wang, H., Yang, Z., Saito, Y., Liu, J. P., Sun, X., and Wang, Y.: Stepwise decreases of the Huanghe (Yellow River)
873 sediment load (1950–2005): Impacts of climate change and human activities, *Global and Planetary Change*, 57, 331–
874 354, <https://doi.org/10.1016/j.gloplacha.2007.01.003>, 2007.

875 Wang, S., Fu, B., Piao, S., Lü, Y., Ciais, P., Feng, X., and Wang, Y.: Reduced sediment transport in the Yellow River
876 due to anthropogenic changes, *Nature Geosci*, 9, 38–41, <https://doi.org/10.1038/ngeo2602>, 2016.

877 Wang, X., Xu, C., Druffel, E. M., Xue, Y., and Qi, Y.: Two black carbon pools transported by the Changjiang and
878 Huanghe Rivers in China, *Global Biogeochemical Cycles*, 2016.

879 Weiguo, L., Xiahong, F., Youfeng, N., Qingle, Z., Yunning, C., and Zhisheng, A. N.: $\delta^{13}\text{C}$ variation of C3 and C4
880 plants across an Asian monsoon rainfall gradient in arid northwestern China, *Global Change Biology*, 11, 1094–1100,
881 <https://doi.org/10.1111/j.1365-2486.2005.00969.x>, 2005.

882 Xiubin, H., Tang, K., and Zhang, X.: Soil Erosion Dynamics on the Chinese Loess Plateau in the Last 10,000 Years,
883 *mred*, 24, 342–347, [https://doi.org/10.1659/0276-4741\(2004\)024\[0342:SEDOTC\]2.0.CO;2](https://doi.org/10.1659/0276-4741(2004)024[0342:SEDOTC]2.0.CO;2), 2004.

884 Xue, D., Lu, J., Leung, L. R., Teng, H., Song, F., Zhou, T., and Zhang, Y.: Robust projection of East Asian summer
885 monsoon rainfall based on dynamical modes of variability, *Nat Commun*, 14, 3856, [https://doi.org/10.1038/s41467-
886 023-39460-y](https://doi.org/10.1038/s41467-023-39460-y), 2023.

887 YRCC (Yellow River Conservation Committee): Annual Sediment Report for the Yellow River, 2016.

888 Yu, M., Eglinton, T. I., Haghypour, N., Montluçon, D. B., Wacker, L., Hou, P., Zhang, H., and Zhao, M.: Impacts of
889 Natural and Human-Induced Hydrological Variability on Particulate Organic Carbon Dynamics in the Yellow River,
890 *Environ Sci Technol*, 53, 1119–1129, <https://doi.org/10.1021/acs.est.8b04705>, 2019a.

891 Yu, M., Eglinton, T. I., Haghypour, N., Montluçon, D. B., Wacker, L., Wang, Z., Jin, G., and Zhao, M.: Molecular
892 isotopic insights into hydrodynamic controls on fluvial suspended particulate organic matter transport, *Geochimica et
893 Cosmochimica Acta*, 262, 78–91, <https://doi.org/10.1016/j.gca.2019.07.040>, 2019b.

894 Zhang, L. J., Wang, L., Cai, W. J., Liu, D. M., and Yu, Z. G.: Impact of human activities on organic carbon transport
895 in the Yellow River, *Biogeosciences*, 10, 2513–2524, <https://doi.org/10.5194/bg-10-2513-2013>, 2013.
896 Zhu, T. X.: Gully and tunnel erosion in the hilly Loess Plateau region, China, *Geomorphology*, 153–154, 144–155,
897 <https://doi.org/10.1016/j.geomorph.2012.02.019>, 2012.