

Evaporative controls on Antarctic precipitation: An ECHAM6 model study using innovative water tracer diagnostics

Qinggang Gao^{1, 2}, Louise C. Sime¹, Alison McLaren¹, Thomas J. Bracegirdle⁴, Emilie Capron⁵, Rachael H. Rhodes², Hans Christian Steen-Larsen⁶, Xiaoxu Shi³, and Martin Werner³

¹Ice Dynamics and Paleoclimate, British Antarctic Survey, Cambridge, United Kingdom

²Department of Earth Sciences, University of Cambridge, Cambridge, United Kingdom

³Alfred Wegener Institute, Helmholtz Centre for Polar and Marine Research, Bremerhaven, Germany

⁴Atmosphere, Ice and Climate, British Antarctic Survey, Cambridge, United Kingdom

⁵Université Grenoble Alpes, CNRS, IRD, Grenoble INP, IGE, Grenoble, France

⁶Geophysical Institute, University of Bergen and Bjerknes Centre for Climate Research, Bergen, Norway

Correspondence: Qinggang Gao (qino@bas.ac.uk)

Abstract.

Improving our understanding of the controls on Antarctic precipitation is critical for gaining insights into past and future polar, and global environmental changes. Here we develop innovative water tracing diagnostics in the atmospheric general circulation model ECHAM6. These tracers provide new detailed information on moisture source locations and properties of Antarctic precipitation. In the preindustrial simulation, annual mean Antarctic precipitation originating from the open ocean has a source latitude range of 49-35° S; a source sea surface temperature range of 9.8-16.3°C; a source 2 m relative humidity range of 75.6-83.3%; and a source 10 m wind ~~speed (wind10)~~velocity (vel10) range of 10.1 to 11.3 m s⁻¹. These results are consistent with estimates from existing literature. Central Antarctic precipitation is sourced from more equatorward (distant) sources via elevated transport pathways than coastal Antarctic precipitation. This has been attributed to a moist isentropic framework, *i.e.* poleward vapour transport tends to follow constant equivalent potential temperature. However, we find notable deviations from this tendency especially in the lower troposphere, likely due to radiative cooling. Heavy precipitation is sourced by longer-range moisture transport: it comes from 2.9° (300 km, averaged over Antarctica) more equatorward (distant) sources compared to the rest of precipitation. Precipitation during negative phases of the Southern Annular Mode (SAM) also comes from more equatorward moisture sources (by 2.4°, averaged over Antarctica) than precipitation during positive SAM phases, likely due to amplified planetary waves during negative SAM phases. Moreover, source ~~wind10-vel10~~ of annual mean precipitation is on average 2.1 m s⁻¹ higher than annual mean ~~wind10-vel10~~ at moisture source locations from which the precipitation originates. This shows that the evaporation of moisture driving Antarctic precipitation occurs under windier conditions than average. ~~This is the first time~~We quantified this particular dynamic control of Southern Ocean surface wind on moisture availability for Antarctic precipitation~~has been quantified~~. Overall, the innovative water tracing diagnostics enhance our understanding of the controlling factors of Antarctic precipitation.

1 Introduction

Antarctic climate is changing. The years 2022 and 2023 both witnessed new minima in sea ice extent and some of the largest extreme heat and ~~precipitation events~~ melt events (Purich and Doddridge, 2023; Gorodetskaya et al., 2023). Increased moisture in Antarctic regions can directly drive warming: a range of model simulations show that increased poleward moisture transport in a warmer world is the largest contributor to Antarctic warming (Hahn et al., 2021). ~~On top of this~~ Furthermore, the warming ocean around Antarctica is very likely to lead to ice mass loss via sub-shelf melting and calving (DeConto and Pollard, 2016; DeConto et al., 2021). These Southern Ocean changes may impact local evaporation to drive Antarctic precipitation changes and therefore influence the Antarctic surface mass balance (Mottram et al., 2021; Lenaerts et al., 2019). It is possible that under a warmer future increases in Antarctic vapour and precipitation may contribute to changes in surface mass balance and extreme warming episodes (Davison et al., 2023; Medley and Thomas, 2018; Frieler et al., 2015; Winkelmann et al., 2012). Overall, projections of Antarctic contribution to future sea level rise due to these surface mass balance processes remain uncertain (IPCC, 2022).

Antarctic precipitation can manifest in various forms. It frequently falls as near-continuous clear-sky precipitation, so-called diamond dust (Bromwich, 1988). However, there are also relatively short-lived intrusions of maritime air, which can lead to episodes of heavier precipitation (Turner et al., 2019). Indeed, these events may contribute to 30-70% of total precipitation across Antarctica, with likely more than 30% of precipitation in the interior, and up to 70% in coastal regions (Turner et al., 2019). Whilst the mass balance of Antarctica can be estimated from satellite altimetry, gravimetry, and interferometry measurements (The IMBIE team, 2018), ~~we still know surprisingly little about our understanding of~~ thermodynamic and dynamic drivers of Antarctic precipitation factors driving Antarctic precipitation remains limited.

Marine air intrusions (~~Schlosser et al., 2010~~), ~~sometimes in the form of atmospheric rivers (Gorodetskaya et al., 2014; Wille et al., 2021)~~, ~~tend to occur during periods of strong meridional flow (Noone et al., 1999; Adusumilli et al., 2021)~~. ~~This is conducive for the advection of~~ are efficient at transporting moist and warm air from ~~relatively low latitudes (Schlosser et al., 2010; Dittmann et al., 2016)~~. ~~These conditions can occur alongside periods of~~ subtropics to Antarctica (Schlosser et al., 2010; Dittmann et al., 2016). ~~The intrusions generally occur alongside strong meridional flow during~~ planetary wave amplification (Massom et al., 2004) (Adusumilli et al., 2021), ~~sometimes in the form of atmospheric rivers (Gorodetskaya et al., 2014; Wille et al., 2021)~~. Indeed, persistent ridges or dipolar patterns (with high pressure to the east and low to the west) are known to have contributed to heavy precipitation events across a range of Antarctic sites, including EPICA Dome Concordia (EDC, Schlosser et al., 2016), Dome Fuji (Dittmann et al., 2016), and Dronning Maud Land (Gorodetskaya et al., 2014; Terpstra et al., 2021; Kurita et al., 2016; Noone et al., 1999). ~~Thus while these~~ The marine air intrusions ~~are mainly known for heavy precipitation events at coastal locations, they also play~~ a major role in heavy precipitation events ~~in the interior of Antarctica at both coastal locations and Antarctic interior~~ (Genthon et al., 1998; Gorodetskaya et al., 2014; Stohl and Sodemann, 2010). ~~The identification of source properties associated with these events is useful for predicting the evolution of precipitation across the whole of Antarctica under global and polar warming.~~

Compared to heavy precipitation events, light precipitation events such as diamond dust seem to have received less attention. However, dependent on the definitions used, light precipitation may contribute significantly to total precipitation over inland Antarctica (Stenni et al., 2016); and similar to heavy precipitation, light precipitation also depends on synoptic conditions (Schlosser et al., 2010). Developing an improved understanding of drivers of light precipitation is thus also important.

Variations in Antarctic precipitation have been linked to the principal modes of atmospheric circulation variability at southern ~~high latitudes~~mid-latitudes, particularly SAM and Pacific-South American patterns associated with El Niño–Southern Oscillation (Marshall et al., 2017). The variations are associated with changes in ~~the~~ zonal and meridional flows of atmospheric moisture around and towards Antarctica. While positive SAM polarity is linked to increased cyclogenesis and poleward storm track migration (Uotila et al., 2013; Fogt and Marshall, 2020), Antarctic regions do not show a uniform relationship between SAM and precipitation (Marshall et al., 2017; Medley and Thomas, 2018). ~~It is not yet clear how SAM variations, and associated changes in~~To project Antarctic precipitation changes, it is important to understand how SAM impacts moisture transport paths, ~~will impact precipitation across Antarctica.~~

Insights into Antarctic precipitation can be gleaned through its evaporative source regions and properties obtained from modelling studies. One of the widely applied tools for this is backward trajectory models (Sodemann and Stohl, 2009; Gimeno et al., 2010). Of backward trajectory studies, results regarding Antarctic precipitation sources from Sodemann and Stohl (2009) are probably more reliable than other Lagrangian studies with shorter (usually five-day) backward trajectories (*e.g.* Gimeno et al., 2010). Based on a meteorological analysis dataset from October 1999 to April 2005, Sodemann and Stohl (2009) diagnosed moisture sources and sinks through changes in specific humidity along transport pathways of air parcels. While only ~90% of total precipitation can be attributed to specific sources with 20-day backward trajectories, annual moisture source latitudes of precipitation over Antarctic Plateau were estimated to be 45 to 40° S. Moisture source longitudes were generally located at 20 to 60° to the west of precipitation locations. They also pointed out seasonal variations in moisture source latitudes of Antarctic precipitation, which are related to Antarctic topography, sea ice, baroclinicity, and mid-latitude land-sea distributions.

In addition to the Lagrangian trajectory approach, general circulation models (GCMs) can be equipped with water tracers to identify moisture sources. The water tracers track moisture that is evaporated from prescribed regions until it precipitates (*e.g.* Koster et al., 1986, 1992; Delaygue et al., 2000; Werner et al., 2001; Singh et al., 2016; Wang et al., 2020). Typically, the globe is divided into multiple source regions, and then the contribution of each region to total precipitation at any location can be quantified. This Eulerian method is complementary to the Lagrangian one and offers an elegant online diagnostic of moisture sources. For example, Koster et al. (1992) divided the globe into multiple regions based on climatological SST bins, and they approximated moisture source SST of precipitation from each prescribed region as the middle value of the bin. Then mass-weighted average moisture source sea surface temperature (SST) of Antarctic July precipitation was estimated to be around 11.6°C.

Recently, Fiorella et al. (2021) introduced a new approach to using water tracers in GCMs. Their process-oriented water tracers can track moisture properties related to evaporation, transport, and condensation. This approach is more computationally efficient than the previous approach of tagging moisture from individual prescribed regions, and it prevents ~~biases~~bias while

estimating evaporative source properties (see Section 2.2.1 for details). Here, we employ and further develop this approach to
90 quantify moisture source regions, locations, and properties of Antarctic precipitation in preindustrial climate.

The manuscript is organised as follows: Section 2 introduces the materials and methods, and Section 3 presents the results; conclusions and perspectives are given in Section 4.

2 Materials and methods

2.1 Model and simulation

95 For this study, we use the ECHAM6 atmospheric GCM, which was developed by the Max-Planck-Institute for Meteorology (MPI-M) in Hamburg (Stevens et al., 2013). In ECHAM6, the primitive equations are formulated in a mixed finite-difference and spectral discretisation with a semi-implicit time scheme. The dynamical part is represented by truncated series of spherical harmonics in the horizontal and a finite-difference scheme in the vertical. Moisture transport is treated using a mass-conserving flux form semi-Lagrangian algorithm on a Gaussian grid. The vertical coordinate consists of a hybrid sigma-pressure coordinate
100 system, which is terrain-following at lower levels and flattens to surfaces of constant pressure at upper levels. We use a T63L47 resolution, *i.e.* a resolution equivalent to $1.87^\circ \times 1.87^\circ$ horizontal grid size and 47 vertical levels extending to 0.01 hPa. This resolution captures the overall shape of the Antarctic ice sheet with the caveat that complex coastal topography is not captured well (Fig. B1).

We set up a preindustrial condition simulation using sea surface temperature (SST) and sea ice concentration (SIC) data
105 from the Atmospheric Modelling Intercomparison Project (AMIP, Fig. B2a and B2b). These are climatological monthly mean data from 1870 to 1899 (Durack et al., 2022). For sea ice-covered areas, SST is set to -1.8°C . We run the simulation for 60 years and use the last 50 years in the analysis. Daily ECHAM6 model output is used for the analyses.

The formulation of air-sea moisture fluxes in the model is relevant for moisture source properties. In ECHAM6, oceanic evaporation is estimated based on bulk parameterisation (Hoffmann et al., 1998; Liu et al., 1979; Yu and Weller, 2007):

$$110 \quad E = \rho C_e |V| (q_{\text{sat}}^{\text{sf}c} - q^{\text{near_sf}c}), \quad (1)$$

where E represents evaporation, ρ the air density, C_e the turbulent exchange coefficient related to atmospheric stability (Fairall et al., 2003), $|V|$ the wind speed at the lowest model level, $q_{\text{sat}}^{\text{sf}c}$ the saturation specific humidity at the surface, and $q^{\text{near_sf}c}$ temperature, and q the specific humidity at the lowest model level.

2.2 Water tracing methods

115 Previous versions of ECHAM had both water isotopes and standard water tracers incorporated (Hoffmann et al., 1998; Werner et al., 2001). However, the latest version of ECHAM, ECHAM6, has so far only been equipped with water isotope tracers (Cauquoin et al., 2019). Building upon the model code infrastructure of water isotopes, for this work we implemented two types of water tracers: 1) standard water tracers, which are usually applied to track water evaporating from prescribed regions;

and b) scaled-flux water tracers, which follow the concepts of Fiorella et al. (2021) and were referred to as process-oriented tracers in their paper. These two tracer sets are used together here in a new and complementary approach.

For the standard water tracers (hereafter "prescribed-region" tracers), we prescribe seven complementary regions. These are: the open ocean south of 50° S; Southern Hemisphere (SH) sea ice; Pacific, Indian, and Atlantic oceans north of 50° S; the Antarctic ice sheet (AIS); and land exclusive of AIS. As sea ice changes at each time step, the prescribed SH sea ice region follows the changes. This is in itself a new form of dynamic prescribed-region water tracing. Where a grid cell contains both open ocean and sea ice, we track these sub-grid-scale fluxes separately.

The implementation of scaled-flux water tracers follows Fiorella et al. (2021), with some modifications for ECHAM6 as described in Appendix A. For example, we only trace moisture evaporated from the open ocean, and we use three water tracers for each source property to ensure the conservation of water masses and limit the propagation of numerical errors. The scaled-flux tracing method can be used to tag any property associated with evaporation. Given recent interests in how the changing Southern Ocean will affect Antarctic precipitation, we focus here on properties which are most closely associated with evaporation. Based on Eq. 1, in ECHAM6 $|V|$ is approximated as 10 m wind speed (`wind10`); q_{sat}^{sfc} velocity (`vel10`); q_s depends on SST; and $q^{near.sfc}$ is approximated as 2 m specific humidity, which is linked to 2 m relative humidity (`rh2m`) and associated air temperature (Yu and Weller, 2007). So, we chose to trace source longitude, latitude, SST, `rh2m`, and `wind10``vel10`. Please see Appendix A for a fuller description of how the scaled-flux water tracers are implemented in ECHAM6.

Based on the source latitude and longitude of precipitation and precipitation site location, a source-sink distance can be estimated by calculating the geographical distance from moisture source to precipitation site assuming a spherical earth surface. Note that this geographical distance is smaller than the actual transport distance of the moisture. Nevertheless, this source-sink distance is physically meaningful and is likely very closely associated with the actual modelled moisture transport distance.

2.2.1 Evaluating the scaled-flux water tracing method

To evaluate the performance of the scaled-flux water tracing method, we compare it with results from the prescribed-region water tracing method.

Prescribed-region water tracers can also be used to estimate evaporation source properties (Koster et al., 1992; Delaygue et al., 2000, see Section 1). As an example, we divide the global open ocean into multiple regions based on 10° latitude bins. We assume source latitude of precipitation from each region as the middle value of the bin (e.g. 5° for the latitude bin 0-10°). Then we estimate mass-weighted mean source latitude of precipitation from all regions (Fig. 1b). The results are quite close to results close to those from scaled flux water tracers (Fig. 1a). ~~The~~: the maximum absolute difference between the two estimates is less than 2.8°, and the mean absolute difference is 0.6° (Fig. 1c). Comparisons of source longitude, SST, `rh2m`, and `wind10``vel10` from the two approaches show similar results.

The comparison provides some insights regarding properties of the two water tracing approaches. Firstly, since two different methods provide very similar results comparable estimates, we are confident that the tracers correctly reflect moisture sources in ECHAM6. Secondly, the scaled-flux water tracing method is more computationally efficient than the prescribed-region water tracing method. Fig. 1a is obtained with three water tracers, whereas Fig. 1b is obtained with 18 water tracers, where

each water tracer needs $\sim 10\%$ additional computational time. Thirdly, the scaled-flux water tracing method is more precise than the prescribed-region water tracing method. The colour strips in Fig. 1c with alternating signs in one each 10° bin are bias associated with prescribed-region water tracers. The bias results from the approximation of moisture source latitude from each region as the middle value of the bin. It can be reduced by decreasing bin intervals (not shown), which demands even more water tracers and more computational resources. In the study of Koster et al. (1992), temporal variations of SST might lead to even larger bias. Furthermore, while While the prescribed-region water tracers can provide information regarding contributions of each prescribed region and thus the distribution of moisture sources, the scaled-flux water tracing method can only obtain mass-weighted mean moisture source locations and properties. Finally In addition, compared to Lagrangian trajectory diagnostics, the Eulerian water tracing methods cannot infer transport pathways of moisture.

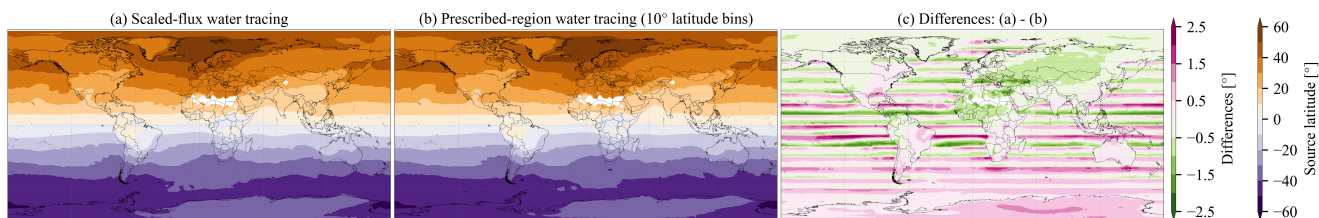


Figure 1. Mass-weighted mean open-oceanic evaporative source latitude of annual mean precipitation estimated from (a) the scaled-flux water tracing approach and (b) the prescribed-region water tracing approach using 10° latitude bins. (c) The differences between (a) and (b). We utilised only one-year simulation data here with a one-year spin-up period to save computational resources. Positive source latitude difference means more northward.

2.3 Defining heavy and light precipitation

To define heavy and light precipitation, we firstly need to define a "precipitation day". Turner et al. (2019) defined a precipitation day in Antarctica to have more than 0.02 mm day^{-1} precipitation. However, a threshold of 0.02 mm day^{-1} excludes low daily precipitation amounts that can contribute to more than 10% of total precipitation amount over the Antarctic interior in both the ERA5 reanalysis (Hersbach et al., 2020) and the simulation. We therefore use a lower threshold of $0.002 \text{ mm day}^{-1}$. This ensures we account for more than 99.7% of the total Antarctic precipitation amount. We note that this definition has limited transferability to station observations.

We define light precipitation as that which cumulatively contributes to 10% of total precipitation, while all other precipitation days have higher precipitation rates. For the definition of heavy precipitation, we follow the Turner et al. (2019) definition and use the top 10% precipitation days. Note the definition of light precipitation, based on precipitation amount, is different from that of heavy precipitation, based on precipitation rates. This is because a definition of light precipitation as the 10% lowest precipitation days would contribute to less than 0.3% of total Antarctic precipitation, and less than 1.1% of total precipitation at individual grid boxes.

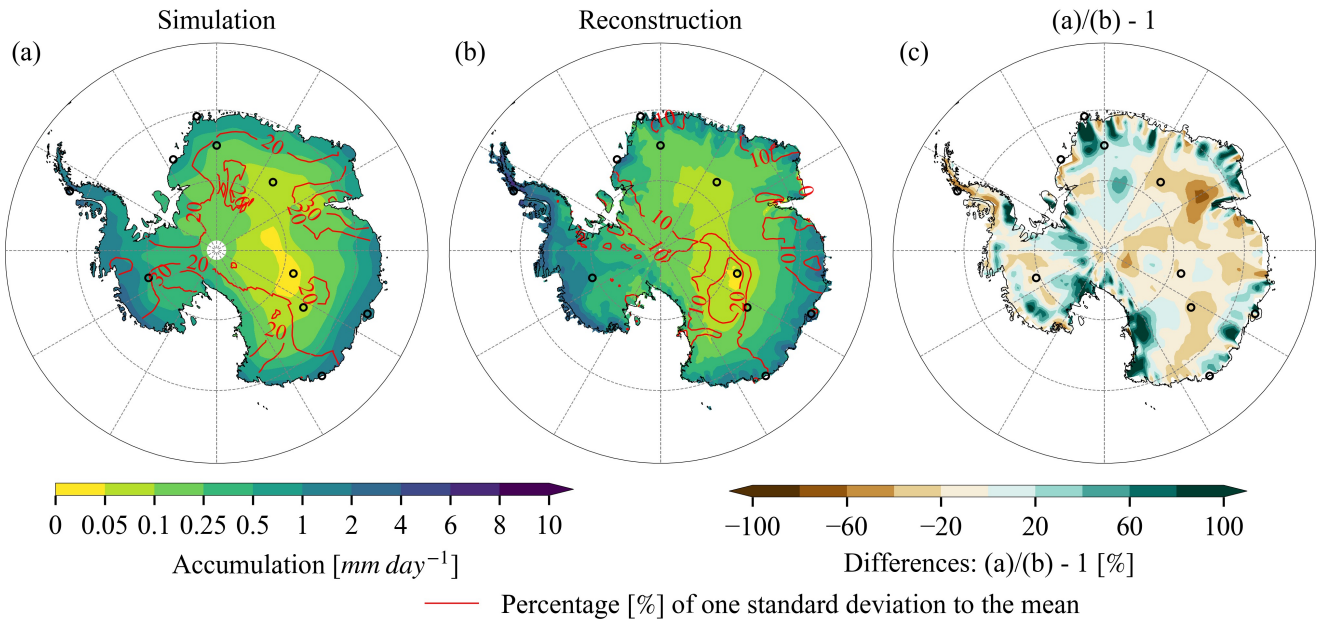


Figure 2. Annual mean accumulation rate over Antarctica in (a) the preindustrial simulation, and (b) the reconstruction of Medley and Thomas (2018) for the period 1800-1900. The Medley and Thomas (2018) dataset is based on combining ice core data with spatial patterns of accumulation derived from the MERRA-2 reanalysis (Gelaro et al., 2017). (c) Differences as a percentage of the Medley and Thomas (2018) reconstruction. For the comparison, both datasets are regridded to $1^\circ \times 1^\circ$ grids using a bilinear method. Accumulation in the simulation is defined as differences between precipitation and evaporation, while post-depositional effects are not considered. Black empty circles represent ten sites whose names are given in Fig. B1b.

175 2.4 The Southern Annular Mode (SAM) index

We calculate monthly SAM values as the difference in normalised zonal mean sea level pressure at 40° S and 65° S (Gong and Wang, 1999). We define SAM+ and SAM- months as months with SAM values deviating more than one standard deviation from the mean (calculated from the 50-year period) in the positive and negative directions, respectively.

3 Results

180 3.1 The simulation of Antarctic precipitation and the SAM

The overall spatial patterns of accumulation are captured in the ECHAM6 model results (Fig. 2a vs. 2b). ~~Though it~~ The simulated accumulation is lower than the Medley and Thomas (2018) reconstruction over the Antarctic plateau and the Antarctic Peninsula (AP) and is higher than the reconstruction across some coastal areas (Fig. 2c). ~~This could be partly due to the~~ The relatively coarse (T63) spatial resolution of the simulation ~~, though it could also be related to uncertainties that afflict all~~

185 reconstructions might not be adequate to simulate coastal precipitation. Furthermore, the reconstruction of Antarctic accumulation might be affected by limited ice core records and local processes such as melt events in coastal regions (Monaghan et al., 2006). Interannual variability, measured as the percentage of annual standard deviation to the annual mean, is slightly higher in the ECHAM6 simulation ($\sim 20\%$) than in the Medley and Thomas (2018) dataset ($\sim 10\%$, Fig. 2a vs. 2b).

The annual cycle of Antarctic precipitation in the simulation is similar to ERA5 (Fig. B3), with precipitation averaged over 190 Antarctica exceeding 15 mm month^{-1} from March to August; a peak in May; and a minimum in December-January. Spatial patterns of heavy precipitation contributions to total precipitation in the simulation are likewise very similar to those in Turner et al. (2019), with high values around major ice shelves (not shown).

We evaluated the modelled SAM index against the SAM index based on station observations between 1971-2000 (Marshall, 2003). Due to the SAM definition, both datasets have similar mean values and standard deviations. We therefore look at 195 monthly zonal mean sea level pressure (MSLP) at 40° S and 65° S to check whether the simulation features realistic pressure fields (Fig. B4). Simulation results deviate less than one standard deviation from ERA5 for both MSLP at 40° S and 65° S (Fig. B4a) and for their differences (Fig. B4b). Root mean squared errors between simulated and assimilated MSLP at 40° S and 65° S , and their differences, are 1.0, 1.4, and 1.5 hPa , respectively.

3.2 Moisture source regions and locations of Antarctic precipitation

200 Prescribed-region water tracers are used here to infer moisture source region information. We find that 89% of modelled annual mean Antarctic precipitation comes from oceanic evaporation (Fig. 3a and Fig. 4), which is obtained by summing up contributions from all ocean basins. Less than 1% of the precipitation is sourced from continental sublimation over Antarctica (Fig. 3c and Fig. 4). The continental recycling occurs mainly around major ice shelves in December and January (up to 3%) with the most intense solar insolation. The magnitude of continental recycling depends on the parameterisation of surface 205 sublimation fluxes (Gerber et al., 2023) and thus requires further investigation, *e.g.* intermodel comparisons or sensitivity tests of surface schemes. Antarctic precipitation sourced from other land masses is higher (by $\sim 4\%$) than that from Antarctica itself (Fig. 3b and Fig. 4). Similar to the CESM1 simulation of Wang et al. (2020), in the ECHAM6 simulation most of the non-Antarctica land-sourced precipitation arrives in austral summer (contributing to 8% of summer precipitation, compared to only 2% of winter precipitation). Moisture originating from these other land masses has a relatively larger contribution to 210 the East AIS (EAIS) precipitation (5.6%), compared to the West AIS (WAIS, 2.6%) and AP (2.7%). The remaining Antarctic precipitation (6.1%) is sourced from SH sea ice areas (Fig. 3d and Fig. 4). This surface type has notably larger contributions in coastal regions. Precipitation sourced from sea ice reaches its maximum between September and December ($\sim 10\%$), due to combined influences of a relatively large sea ice area and increased solar insolation.

Regarding precipitation sourced from the open ocean, 28% of this precipitation comes from the open ocean south of 50° S 215 (Fig. 3e and Fig. 4). This region contributes a larger proportion of precipitation over WAIS (35%) and AP (36%) compared to EAIS (23%). Contributions from both the Indian Ocean (23%) and the Pacific Ocean (28%) are two to three times that from the Atlantic Ocean (10%) north of 50° S (Fig. 4). This is at least partly attributable to the sizes of these ocean basins: between the equator and 50° S , areas of the Indian and Pacific Oceans are 1.4 and 2.3 times that of the Atlantic Ocean, respectively. The

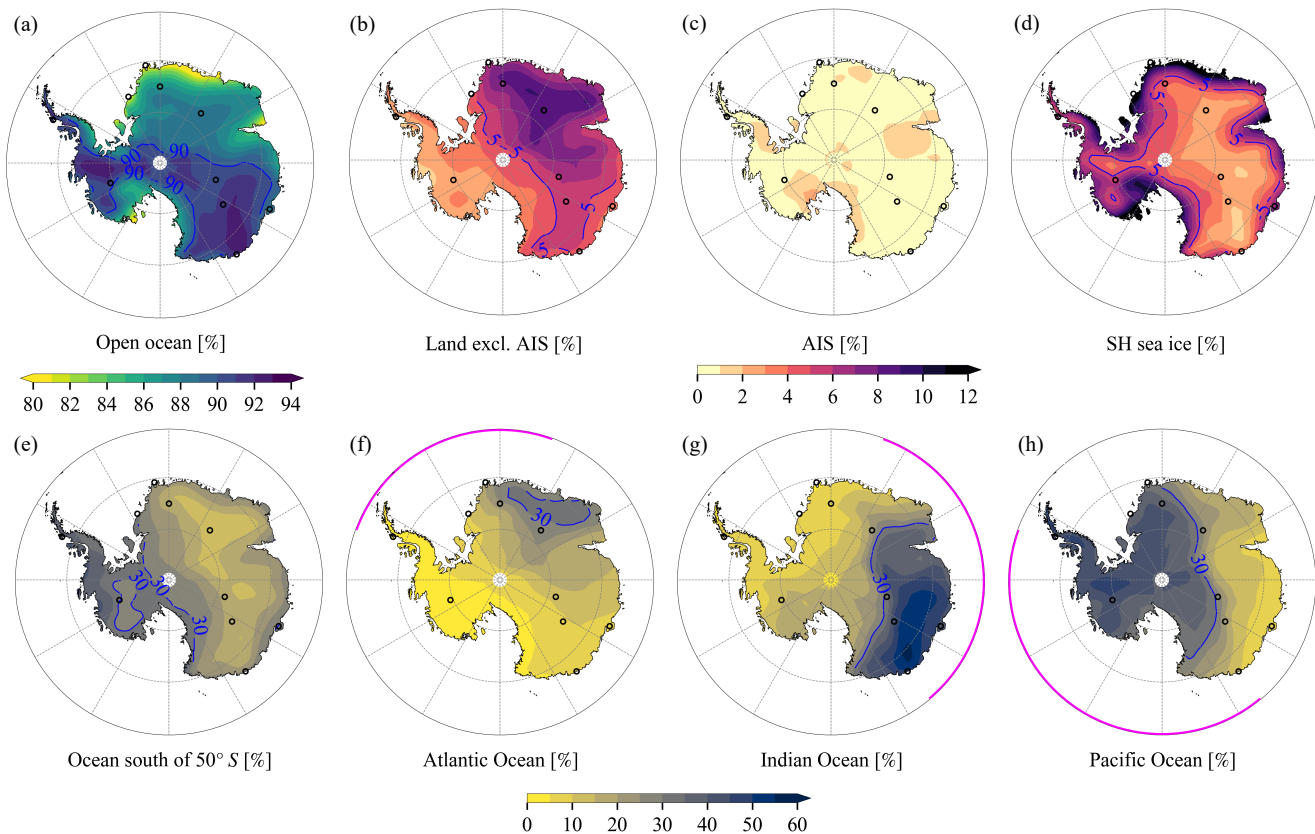


Figure 3. Relative contributions of prescribed regions to annual mean precipitation across Antarctica. The prescribed regions include (a) the open ocean, (b) land exclusive of AIS, (c) AIS, (d) SH sea ice, (e) the open ocean south of 50° S, (f) Atlantic, (g) Indian, and (h) Pacific ocean north of 50° S. Relative contributions from the open ocean (a) are the sum of (e)-(h). Magenta lines in (f)-(h) represent the Atlantic, Indian, and Pacific Ocean sectors, respectively. Blue lines in each figure are contours of relative contributions. Moisture source region information is derived from the prescribed-region water tracers.

three ocean basins contribute relatively more precipitation within their corresponding Antarctic sectors, though with a tendency to an eastward shift ($\sim 30\text{-}60^{\circ}$) due to the predominant eastward transport of water vapour around Antarctica (Fig. 3f-h).

Water vapour has to rise to higher altitudes to reach central Antarctica (Noone and Simmonds, 2002; Stohl and Sodemann, 2010; Wang et al., 2020; Terpstra et al., 2021). As a result, the higher, remote central regions of Antarctica tend to receive moisture sourced from more equatorward regions. Moisture sourced from more poleward regions, *e.g.* ocean south of 50° S and SH sea ice compared to land exclusive of AIS, is transported at lower altitudes to Antarctica, therefore its precipitation contributions are larger over WAIS and AP with lower elevations than EAIS (Fig. 3b, 3d, and 3e). This pattern has been attributed to a moist isentropic framework (Pauluis et al., 2010; Bailey et al., 2019; Wang et al., 2020), which suggests that poleward moisture transport approximates a moist adiabatic poleward ascent, *i.e.* following contours of equivalent potential

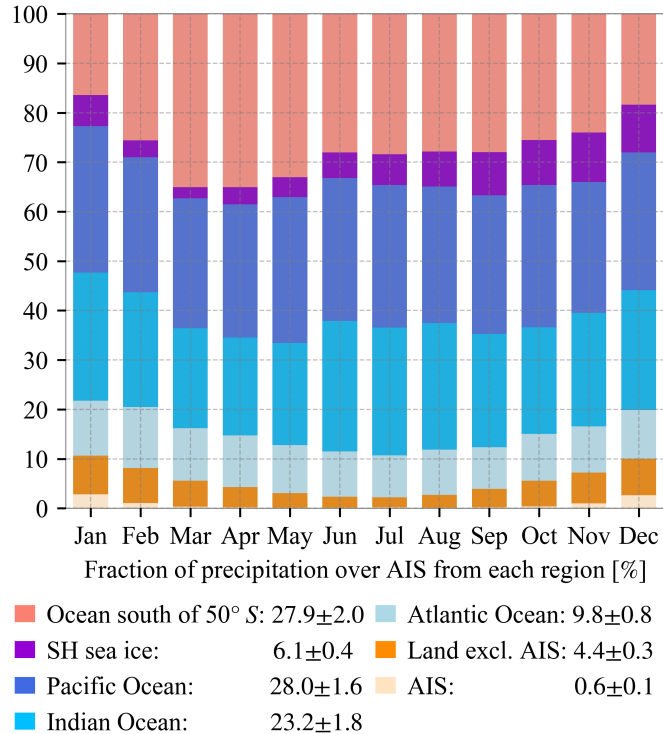


Figure 4. Relative contributions of seven prescribed regions to monthly mean precipitation integrated over Antarctica. The contributions (\pm one standard deviation) to annual mean precipitation over Antarctica are given in the legend. Moisture source region information is derived from the prescribed-region water tracers.

temperature. While it is a useful framework to conceptualize the broad scope of the atmospheric moisture transport, we find notable deviations from this framework in Fig. 5. The moisture transport pathways intersect moist isentropes in the lower troposphere, which might be expected due to radiative cooling effects of water vapour (Manabe and Strickler, 1964).

Elevated transport pathways to central Antarctic regions also impact mass-weighted mean open-oceanic evaporative source latitude (source latitude thereafter). Source latitude of annual mean precipitation ranges from 49 to 35° S across Antarctica, and averages to 41° S over entire Antarctica (Fig. 6a). These values are close to the estimate from Sodemann and Stohl (2009) of 45 to 40° S across the Antarctic Plateau, though their study was for present-day climate rather than preindustrial climate as in this study. The elevated transport pathways mean that source latitude of EAIS precipitation is more equatorward by $\sim 3^\circ$ compared to that of WAIS and AP (40° S vs. 43° S). Also, Antarctic precipitation at surface elevations above 2250 m comes from more equatorward regions by 4° compared to precipitation occurring below 2250 m (38° S vs. 42° S).

Regarding seasonality, source latitudes are most equatorward in December-January-February (DJF) and most poleward in March-April-May (MAM) and June-July-August (JJA) (Fig. B5a; an average 3.3° DJF to JJA shift over Antarctica). This cannot be explained through Antarctic sea ice extent, as the minimal sea ice extent during austral summer DJF is favourable

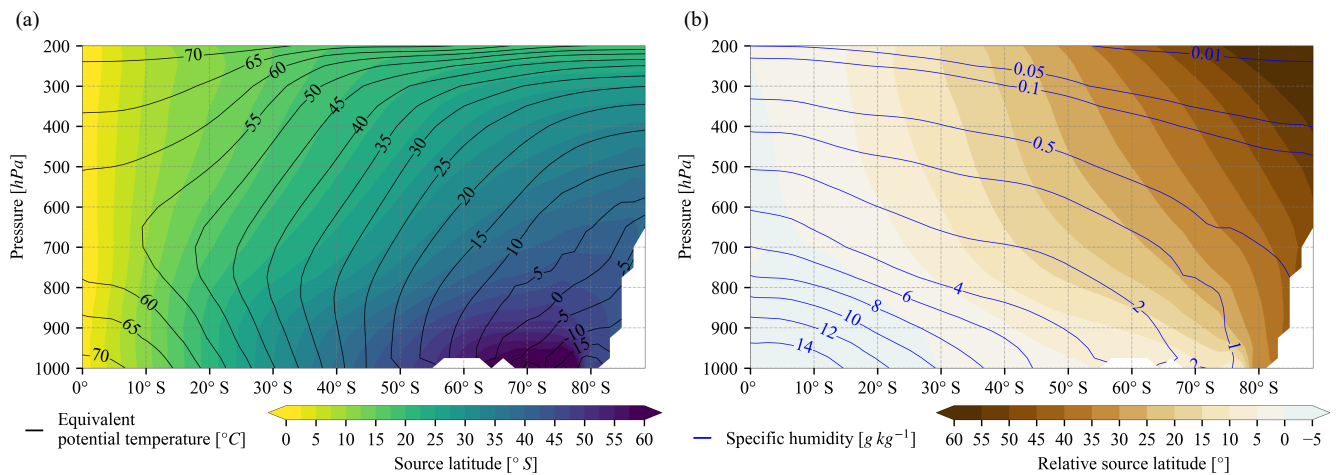


Figure 5. Zonal-averaged mass-weighted mean open-oceanic evaporative (a) source latitude and (b) relative source latitude of annual mean atmospheric humidity originated from the open ocean. Black contours in (a) show the zonal mean annual mean equivalent potential temperature at an interval of 5°C . Blue contours in (b) show zonal mean annual mean atmospheric specific humidity at values of $[0.01, 0.05, 0.1, 0.5, 1, 2, 4, 6, 8, 10, 12, 14] \text{ g kg}^{-1}$. Relative source latitude is defined as differences between source latitude and local latitude. Positive source latitude difference means more equatorward. Moisture source latitude information is derived from the scaled-flux water tracers.

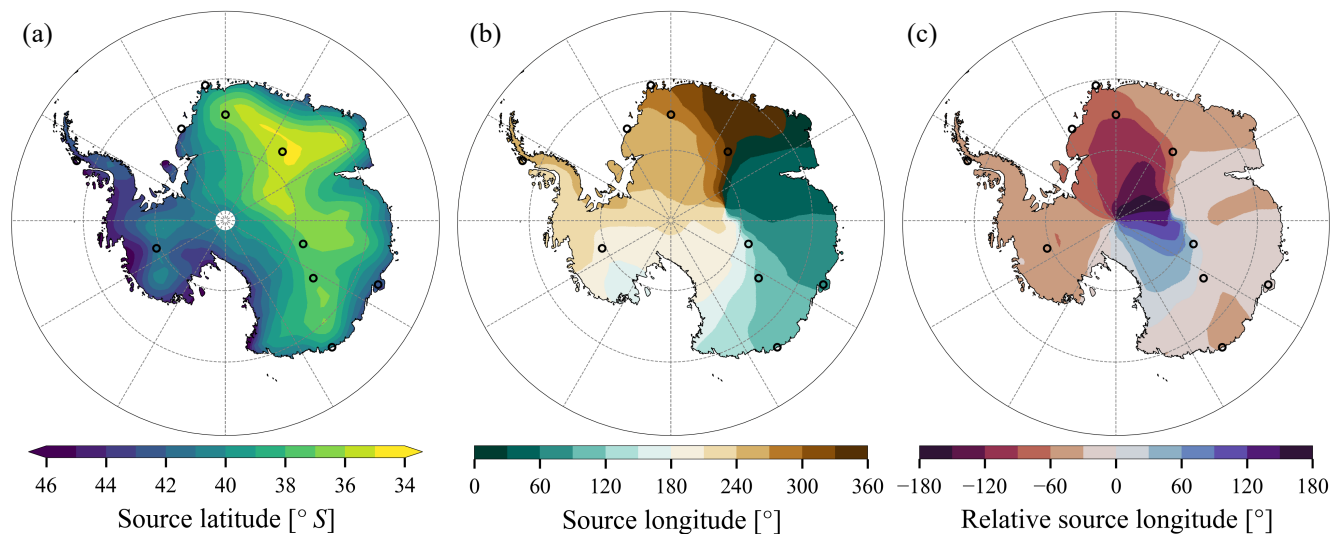


Figure 6. Mass-weighted mean open-oceanic evaporative (a) source latitude, (b) source longitude, and (c) relative source longitude of annual mean precipitation. Relative source longitude is estimated as differences between source longitude and local longitude. Positive source longitude difference means more eastward. Moisture source location information is derived from the scaled-flux water tracers.

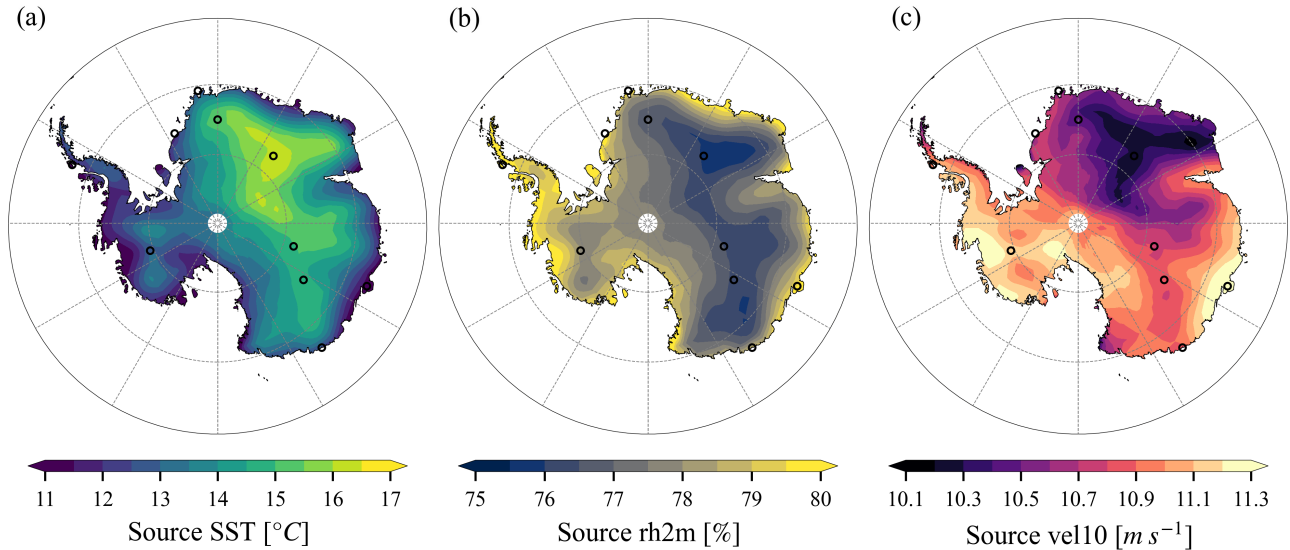


Figure 7. Mass-weighted mean open-oceanic evaporative (a) source SST, (b) source rh2m, and (c) source ~~wind10~~ vel10 of annual mean precipitation. Moisture source property information is derived from the scaled-flux water tracers.

for more evaporation from polar oceans. We propose that weaker westerlies in DJF compared to JJA, induced by smaller meridional thermal gradients, may promote equatorward shifted moisture sources (see Section 3.5 for details).

Antarctic precipitation generally comes from the west (Fig. 6b-c), except for precipitation in a sector between the South Pole and EDC which appears to originate from the east. This pattern is also observed in the results of Sodemann and Stohl (2009) for
 245 DJF precipitation (see their Fig. 2c). We speculate that this might be from the far west, with a rotation of more than 180 degrees, probably under impacts of the Amundsen Sea Low. This would need to be investigated through Lagrangian moisture trajectory diagnostics. Source longitude over Antarctica displays the largest inter-annual variability of all source properties (Fig. B5b).
~~It suggests that the strength of southern westerlies and the storm track dynamics are likely important for modulating moisture sources.~~

250 3.3 Moisture source properties of Antarctic precipitation

After studying moisture source regions and locations, we now consider other oceanic source properties which control evaporation: ~~wind10~~ vel10, rh2m, and SST.

Source SST of annual mean precipitation varies between 9.8 and 16.3°C across Antarctica, averaging to 12.8°C (Fig. 7a). This lies within the range of estimates from the literature: 15-22°C by Petit et al. (1991), 9-14°C by Koster et al. (1992), and
 255 10-12°C by Delaygue et al. (2000). Analogous to source latitude, EAIS precipitation originates from warmer oceans by ~1°C than WAIS and AP (13.3 vs. 12.1 and 12.4°C), and Antarctic regions at altitudes higher than 2250 m receive precipitation from warmer oceans by 2°C than lower regions (14.5 vs. 12.5°C). Source rh2m of annual mean precipitation ranges from 75.6% to

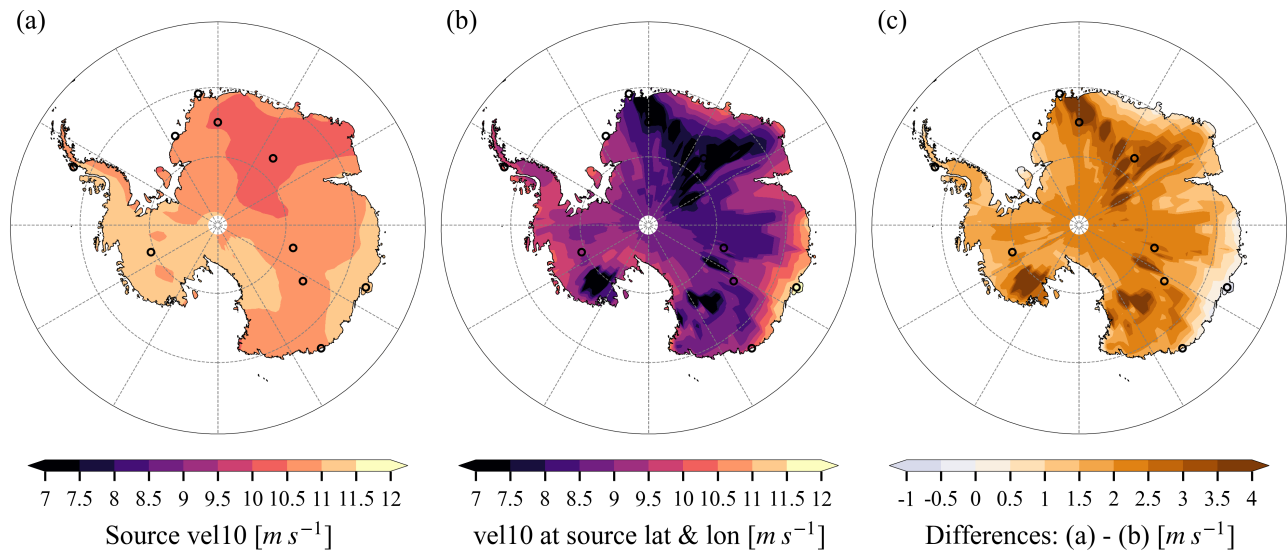


Figure 8. (a) Mass-weighted mean open-oceanic evaporative source wind10-vel10 of annual mean precipitation. (b) Annual mean wind10-vel10 at source locations of annual mean precipitation. (c) Differences between (a) and (b). The average difference over Antarctica is ~ 2.1 m s^{-1} .

83.3% across Antarctica, and averages to 78.3% (Fig. 7b). Again, EAIS derives its precipitation from oceans with lower $\text{rh}_{2\text{m}}$ than WAIS and AP by 1% and 1.5%, respectively (77.9% vs. 78.9% and 79.4%), and Antarctic regions above 2250 m elevations obtain precipitation from oceans with lower $\text{rh}_{2\text{m}}$ by 1.7% than lower regions (76.9% vs. 78.6%). Interestingly, source wind10-vel10 of annual mean precipitation has a very narrow range over Antarctica of just 10.1 to 11.3 m s^{-1} , 11 m s^{-1} on average (Fig. 7c). Source wind10-vel10 of EAIS precipitation (10.8 m s^{-1}) is only marginally lower than that of WAIS (11.2 m s^{-1}) and AP (10.9 m s^{-1}), and the difference is also small for regions above and below 2250 m (10.7 vs. 11 m s^{-1}). ~~This narrow range might be reflective of the role that cyclones and storm tracks play in influencing moisture availability for Antarctica through evaporation and moisture transport (Aemisegger and Papritz, 2018; Sinclair and Dacre, 2019). Investigation of the relationship between extratropical cyclones propagating along the Southern Ocean storm track and this unexpectedly~~ Further studies are merited to investigate the relationship between this narrow band of source wind10-vel10 of annual mean precipitation over Antarctica ~~is merited in further studies and extratropical cyclones propagating along the Southern Ocean storm tracks (Aemisegger and Papritz, 2018; Sinclair and Dacre, 2019).~~

Moisture source locations and properties can be affected by different factors. ~~Firstly, as wind10 controls oceanic evaporation (Eq. 1), moisture source wind10 is decoupled from moisture source locations.~~ As evaporation occurs preferentially during higher wind speeds at a oceanic grid cell (Eq. 1), moisture source wind10-vel10, which is weighted by evaporation fluxes, is larger than mean wind10-vel10 at this grid cell. Indeed, differences between moisture source wind10-vel10 and climatological wind10-vel10 at moisture source locations of annual mean precipitation are generally positive, with an

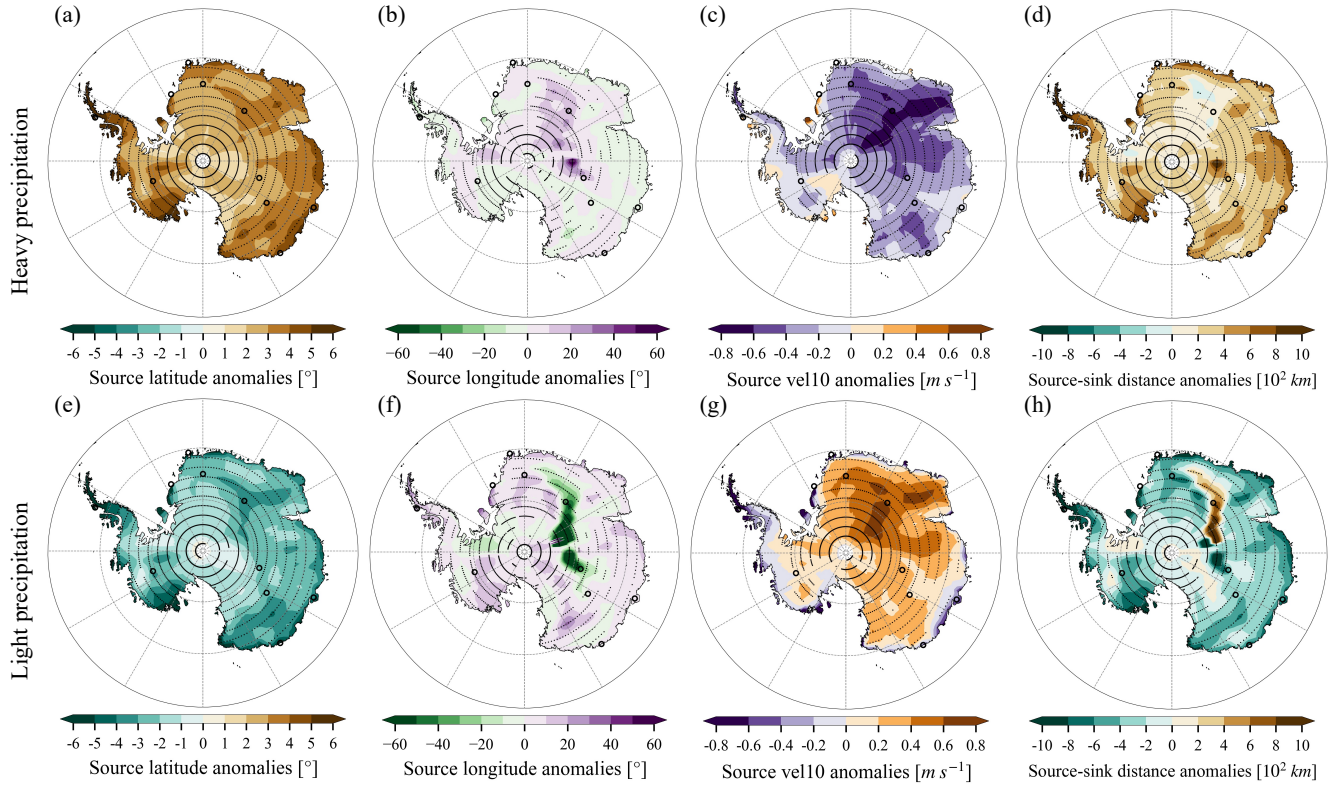


Figure 9. Moisture source anomalies of (a-d) heavy precipitation and (e-h) light precipitation. Heavy precipitation and light precipitation source anomalies are relative to non-heavy precipitation and non-light precipitation days, respectively. Source properties include mass-weighted mean open-oceanic evaporative (a, e) source latitude, (b, f) source longitude, (c, g) source $wind_{10}vel_{10}$, and (d, h) source-sink distance. Stippling points represent significant differences at 5% significance level based on statistical tests: for all variables except source longitude, student's t-test with Benjamini-Hochberg Procedure controlling false discovery rates (Benjamini and Hochberg, 1995) is adopted; for source longitude, Watson-Williams F-test for circular statistics (Watson and Williams, 1956) is employed. Positive source latitude difference means more equatorward, and positive source longitude difference means more eastward.

275 Antarctic average value of 2.1 m s^{-1} (Fig. 8). There are seasonal variations in the impact of source $wind_{10}vel_{10}$: Antarctic mean differences are $+2.9 \text{ m s}^{-1}$ in DJF, $+1.6 \text{ m s}^{-1}$ in MAM, $+1.3 \text{ m s}^{-1}$ in JJA, and $+2.2 \text{ m s}^{-1}$ in September-October-November (SON). The consistent $1\text{-}3 \text{ m s}^{-1}$ offset in all seasons suggests that Southern Ocean surface wind exerts a dynamic control on moisture availability for Antarctic precipitation. Secondly, annual cycles of source latitude and properties are controlled by meridional thermal gradients, sea ice variations, and seasonal climate variations at mid-latitudes. For example, precipitation is from more southern oceans in MAM because of less sea ice than in JJA (Fig. B5a3 vs. a4); precipitation is from warmer oceans in MAM due to higher SST at mid-latitudes than in JJA (Fig. B5d3 vs. d4); and precipitation is from less windy regions in DJF due to weaker meridional thermal gradients and weaker westerlies than in JJA (Fig. B5f2 vs. f4).

280

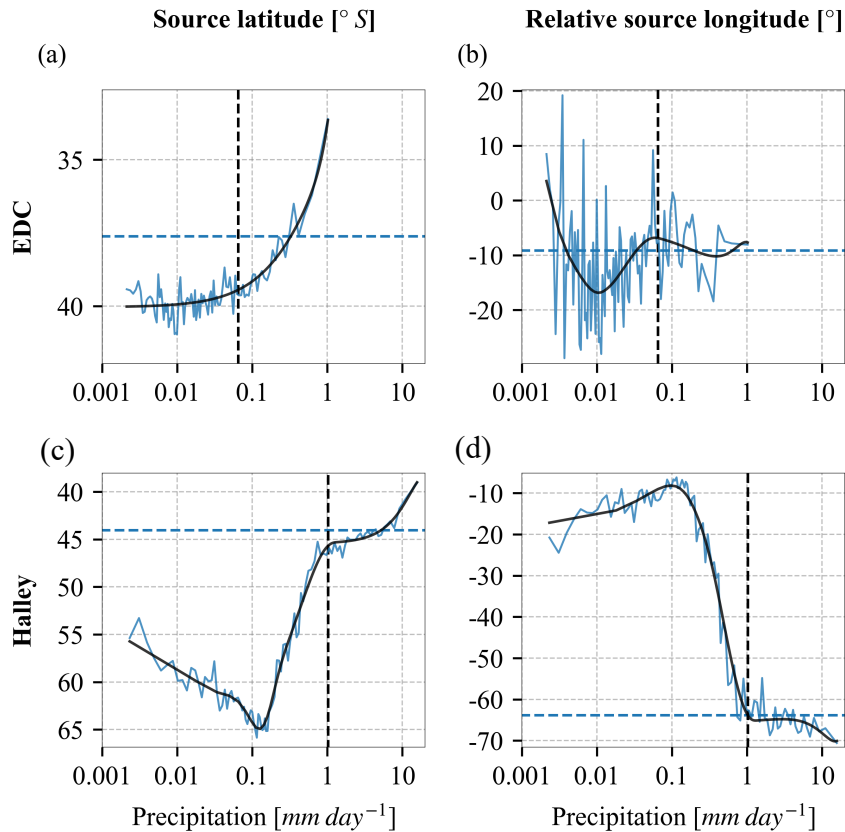


Figure 10. Variations of precipitation source properties with precipitation rates at (a-b) EDC and (c-d) Halley. Source properties include mass-weighted mean open-oceanic evaporative (a, c) source latitude and (b, d) relative source longitude. Precipitation rates are calculated for each percentile of daily precipitation rates. Horizontal dashed blue lines show annual mean source properties and vertical dashed black lines show annual mean precipitation rates. Solid black lines show spline fits to solid blue lines.

3.4 Moisture source anomalies of heavy and light precipitation

We examine now moisture source anomalies of heavy and light precipitation at two Antarctic sites and across Antarctica. We choose EDC and Halley as inland and coastal sites, respectively (Fig. B1b). After applying a precipitation threshold (see Section 2.3), daily precipitation rates at each site are divided into 100 percentiles. For each percentile, the precipitation rate and its contribution to the total precipitation amount can be estimated. The higher percentiles, with larger precipitation rates, contribute a larger proportion of the total site precipitation. As a result, sources of a few top percentiles exert a strong control on the mass-weighted average source properties of total precipitation.

Heavy precipitation over Antarctica depends mainly on intrusions of moist and warm maritime air masses. As underlying SST decreases during poleward moisture transport, surface evaporation might be suppressed (Thurnherr and Aemisegger,

2022). Consequently, heavy precipitation would derive its moisture from more remote regions than the rest of precipitation (Terpstra et al., 2021). This finding, based on a case study, is supported by [the modelling our water tracing](#) results on a climatological scale. Source-sink distance anomalies of heavy precipitation relative to the rest of precipitation are ~ 300 km over Antarctica (Fig. 9d). By sub-regions, the source-sink distance anomalies are 290 km over EAIS, 330 km over WAIS, and 670 km over AP. Source latitude anomalies of heavy precipitation are 2.9° over Antarctica, 2.9° over EAIS, 3.1° over WAIS, and 4.9° over AP (Fig. 9a). These results quantify the degree to which heavy precipitation is related to more distant (300 km) and equatorward (2.9°) sources.

Similar features can be observed at the EDC and the Halley sites. At EDC, source latitude moves equatorward with increasing precipitation rates (from 40° S for light precipitation to 36° S for heavy precipitation), though relative source longitude indicates large fluctuations (Fig. 10). In contrast, Halley experiences two distinct precipitation regimes. For daily precipitation below $\sim 0.1 \text{ mm day}^{-1}$, moisture is derived from more poleward oceans (60° S) and undergoes less eastward transport (by 15°) than the rest of precipitation, which indicates local sources. Above $\sim 1 \text{ mm day}^{-1}$, precipitation originates from more equatorward oceans (45° S) and undergoes more eastward transport (by 65°) than the rest of precipitation, which represents remote sources. See also the histograms of source properties for a different type of depiction of this behaviour (Fig. B6).

Heavy precipitation also shows notable source longitude anomalies (Fig. 9b). In particular, the degree of eastward moisture advection decreases towards the Antarctic interior, reaching a $\sim 15^\circ$ anomaly at Dome F. This is reflective of more direct atmospheric meridional flows during heavy precipitation events. In coastal regions, negative source longitude anomalies generally indicate more remote moisture sources and thus larger zonal moisture transport by westerlies.

Furthermore, source [wind10-vel10](#) of heavy precipitation is typically smaller than that of the rest of precipitation (Fig. 9c, -0.32 m s^{-1} over Antarctica, -0.36 m s^{-1} over EAIS, -0.12 m s^{-1} over WAIS, and -0.21 m s^{-1} over AP). This is likely due to heavy precipitation deriving its moisture from more equatorward oceans where [wind10-vel10](#) is generally smaller (Fig. B2), rather than that less windy conditions favour heavy precipitation.

Source property anomalies of light precipitation generally show opposite patterns to heavy precipitation: light precipitation derives moisture from more poleward regions (-2.4° over Antarctica, Fig. 9e); source longitude shows diverse regional patterns (Fig. 9f); light precipitation originates from more windy oceans over large parts of Antarctica (the differences average to 0.22 m s^{-1} over Antarctica, Fig. 9g); and light precipitation relies more on short-range moisture transport (the differences average to -290 km over Antarctica, Fig. 9h).

3.5 Impacts of SAM on moisture sources

SAM is primarily characterised by zonal winds and is thus linked to the likelihood of meridional (versus more zonal) atmospheric moisture transport (Aemisegger and Papritz, 2018). During positive SAM phases, stronger westerlies may be associated with more local storms and evaporation; whereas negative SAM favours poleward intrusions of maritime air masses from more distant sources, due to amplified Rossby waves (Stenni et al., 2010; Schlosser et al., 2016). We thus explore impacts of SAM states on Antarctic precipitation sources.

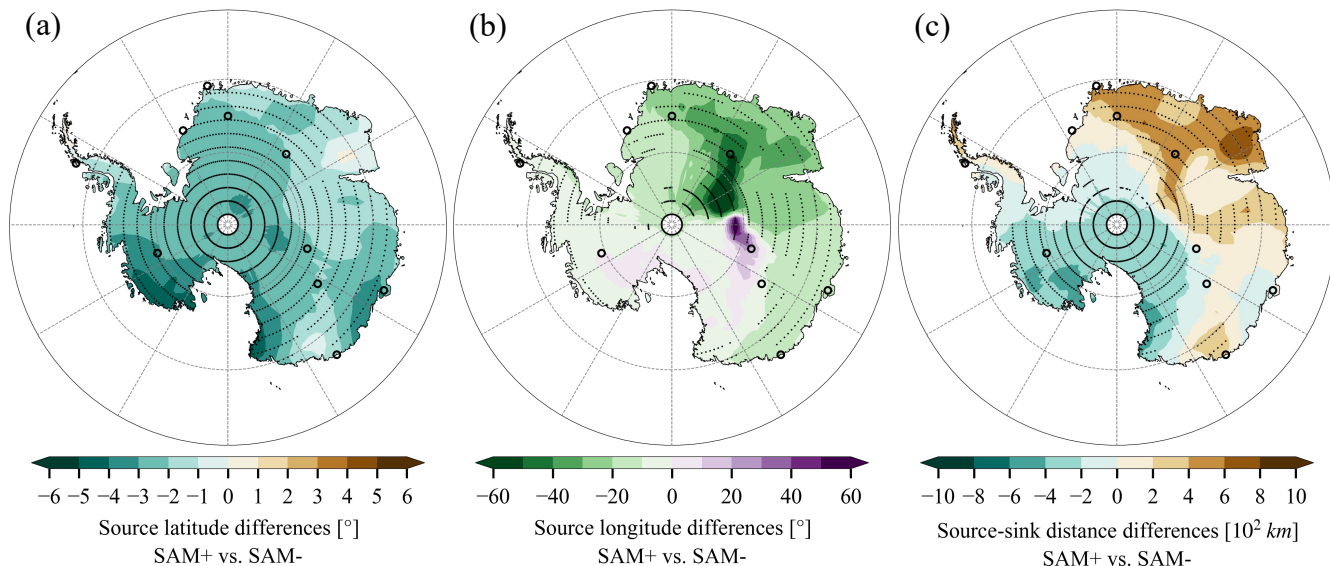


Figure 11. Differences in mass-weighted mean open-oceanic evaporative (a) source latitude, (b) source longitude, and (c) source-sink distance of precipitation between SAM+ and SAM- months. Monthly mean source latitude, relative source longitude, and source-sink distance are deducted from monthly values before analysis. Stippling points represent significant differences at 5% significance level based on statistical tests: for source latitude and source-sink distance, student's t-test with Benjamini-Hochberg Procedure controlling false discovery rates (Benjamini and Hochberg, 1995) is adopted; for source longitude, Watson-Williams F-test for circular statistics (Watson and Williams, 1956) is employed. Positive source latitude difference means more equatorward, and positive source longitude difference means more eastward.

325 We find that negative SAM polarity is linked with more equatorward sourced moisture over most of Antarctica (Fig. 11a). The difference in source latitude between SAM+ and SAM- months is $\sim -2.4^\circ$ over Antarctica (-2.2° over EAIS, -3.1° over WAIS, and -1.2° over AP). Effects of SAM polarity are also observed in source latitude of zonal mean atmospheric humidity (not shown). Above Antarctica, atmospheric humidity comes from more equatorward regions during SAM- months than SAM+ months, by up to 6° .

330 Impacts of SAM on source longitude vary considerably across Antarctica (-91° to 67° , Fig. 11b). Over large parts of Antarctica, SAM+ is linked with more eastward moisture transport by westerlies (source longitude differences: -17° , area-weighted over negative anomaly regions). In a few regions, *e.g.* near Vostok, SAM+ is connected to positive source longitude anomalies (8° , area-weighted over positive anomaly regions).

Correspondingly, differences in source-sink distance between SAM+ and SAM- months exhibit a dipole pattern (Fig. 11c, 335 -600 to 800 km). Over WAIS and southern EAIS, source latitude anomalies dominate and thus SAM+ is connected to shorter source-sink distance (-230 km, area-weighted over negative anomalies). Over northern EAIS, source longitude anomalies dominate and thus SAM+ is linked with longer source-sink distance (280 km, area-weighted over positive anomalies). Whilst SAM impacts meridional moisture fluxes, the picture is not homogenous across Antarctica (Schlosser et al., 2010, 2016).

We note that SAM- months are associated with more equatorward moisture sources than SAM+ months, and heavy precip-
340 itation derives its moisture from more northern oceans than the rest of precipitation. So, we investigated whether SAM exerts
control over the frequency or intensity of heavy precipitation. In the preindustrial simulation, there is no significant correlation
between SAM and the intensity of heavy precipitation across Antarctica, but SAM is significantly correlated with the frequency
of heavy precipitation over parts of Antarctica (not shown). Correlation patterns between SAM and heavy precipitation fre-
quency are similar to those between SAM and monthly precipitation, which means SAM can influence Antarctic precipitation
345 amount through its controls on heavy precipitation frequency.

4 Conclusions and perspectives

Antarctic precipitation plays a crucial role in determining global sea level. However, our understanding of its thermodynamic
and dynamic drivers is limited. Here we tackle some of the limits of our understanding through the development and application
of prescribed-region and scaled-flux water tracing diagnostics in the atmospheric GCM ECHAM6. These developments yield
350 a powerful tool from which we can infer evaporative source regions, locations, and properties of Antarctic precipitation [in a
climate modelling framework](#).

In the preindustrial ECHAM6 simulation, the contribution to Antarctic precipitation from the open ocean is determined to
be 89%, and 6% from sea ice. The open ocean south of 50° S contributes 28%; the Atlantic Ocean north of 50° S contributes
10%; the Pacific Ocean north of 50° S contributes 28%; and the Indian Ocean north of 50° S contributes 23%. Remaining
355 contributions come from AIS (0.6%) and other continents (4.4%). While annual cycles of these contributions are driven by
variations in meridional thermal gradients and sea ice extent, spatial patterns of the contributions are additionally influenced
by the topography. Moisture from more equatorward regions is transported at higher altitudes to more central Antarctic re-
gions, and Antarctic regions at higher elevations receive a larger proportion of precipitation from more equatorward regions
compared to lower elevation areas (Stohl and Sodemann, 2010; Bailey et al., 2019). The mass-weighted mean open-oceanic
360 evaporative source latitude of total precipitation averages to $\sim 41^\circ$ S over Antarctica. Precipitation at elevations above 2250 m
originates from more equatorward (4°) oceans than that at elevations below 2250 m (38° S vs. 42° S), and EAIS precipitation
is from more northern oceans by 3° than WAIS and AP (40° S vs. 43° S). These results are consistent with estimates based on
Lagrangian trajectories (Sodemann and Stohl, 2009), which suggests a source latitude range of 45° S to 40° S for precipitation
over Antarctic Plateau.

365 Our simulated source SST of annual mean precipitation ranges from 9.8 to 16.3°C across Antarctica, which is within the
range of existing literature estimates (Petit et al., 1991; Koster et al., 1992; Delaygue et al., 2000). Source rh2m ranges from
75.6% to 83.3%, and source [wind10-vel10](#) varies between 10.1 and 11.3 m s⁻¹, for precipitation across Antarctica. Source
properties of Antarctic precipitation are highly related to source latitude, partly because meridional gradients of SST, rh2m,
and [wind10-vel10](#) are larger than zonal gradients at mid-latitudes. Where these properties tend to decouple from each other,
370 this can indicate storm or seasonal controls on Antarctic precipitation sources.

Of the source properties we examine, [wind10-vel10](#) appears to play a particularly important role in controlling Antarctic precipitation. The narrow range of annual mean source [wind10-vel10](#) ($10.1\text{--}11.3\text{ m s}^{-1}$) is noteworthy, and it is consistently higher than annual mean [wind10-vel10](#) at precipitation source locations (by an Antarctic average value of 2.1 m s^{-1}). This is likely due to higher source wind speeds driving more evaporation and thus moisture availability. Since the wind field is linked to extratropical cyclone activities, further investigation is necessary to clarify these connections.

Heavy precipitation obtains its moisture from more equatorward sources, with an Antarctic average shift in source latitude of 2.9° further north and 300 km farther away compared to the rest of precipitation. This is consistent with the case study-based finding of Terpstra et al. (2021).

As speculated by Stenni et al. (2010) and Buizert et al. (2018), negative SAM polarity is connected to more equatorward moisture provenance than positive SAM phases by an average of 2.4° over Antarctica. These findings might explain why SAM influences heavy precipitation frequency and thus precipitation amount.

We have identified several directions for future research. ~~In addition to SAM, other large-scale atmospheric circulation indices such as zonal wave three (Raphael, 2007; Uotila et al., 2013) could be studied. Case studies combined with observations, such as water isotopes and extreme events, might also provide new insights. While this work focuses on Antarctica in preindustrial conditions, further research will explore changes in moisture sources under different climate conditions in various regions.~~ We note that the results presented here are based solely on a single model [simulation](#). To explore the model dependence of the results, we are developing similar water tracing diagnostics in another atmospheric GCM, the UK Met Office Unified Model (Brown et al., 2012). ~~Impacts of model resolution on the results also merit further study. As the coarse spatial resolution of the ECHAM6 T63 simulation might be insufficient to resolve coastal atmospheric flows and marine air intrusions, high-resolution simulations will be conducted in our future studies. While this study focuses on preindustrial conditions, moisture source changes in historical periods, paleoclimate, and future scenarios could also be investigated.~~ Finally, we note that the scaled-flux water tracing approach is applicable not only to Antarctic problems, but also to a range of questions associated with water cycle changes in the rapidly changing environment.

Code and data availability. The ERA5 reanalysis can be obtained from the Climate Data Store (<https://cds.climate.copernicus.eu>). The Antarctic accumulation reconstruction from Medley and Thomas (2018) is available here: <https://earth.gsfc.nasa.gov>. The SAM index compiled by Marshall (2003) is available here: <https://legacy.bas.ac.uk/met/gjma/sam.html>. The Bedmap2 product created by Fretwell et al. (2013) is available here: <https://www.bas.ac.uk/project/bedmap-2>. The division of Antarctica is available here: <http://imbie.org/imbie-2016/drainage-basins>. The AMIP SST and SIC dataset is available here: <https://esgf-node.llnl.gov/search/input4mips>. The ECHAM6 simulation output and data analysis scripts are available from the authors upon reasonable request.

400 Appendix A: Implementation of scaled-flux tracers in ECHAM6 and comparison with prescribed-region tracers

Here we introduce the scaled-flux water tracing approach. The basic idea of this method follows Fiorella et al. (2021, see their section 2.1), but the implementation is designed to ensure that the tracing water budget is closed.

In the scaled-flux water tracing approach, three water tracers ($wt1$, $wt2$, $wt3$) are required for each evaporative source condition (e.g. source latitude). The combination of $wt1$ and $wt2$ track the amount of water sourced from the open ocean, while $wt3$ follows water evaporated from both land and sea ice. All the water in the model is therefore tracked by the sum of these three tracers.

Upward evaporative fluxes of tracer water are scaled based on evaporation conditions. For any infinitesimal evaporative flux i from the open ocean, E_i^{ocn} , the corresponding tracer evaporative flux of $wt1$ is calculated as

$$E_i^{wt}(wt1, t_i, \lambda_i, \phi_i) = E_i^{ocn}(t_i, \lambda_i, \phi_i) \times SF(wt1, t_i, \lambda_i, \phi_i), \quad (A1)$$

410 where t denotes time, λ longitude, and ϕ latitude. The scaling factor $SF(wt, t, \lambda, \phi)$ is defined for $wt1$ as

$$SF(wt1, t, \lambda, \phi) = \begin{cases} \frac{X(t, \lambda, \phi) - X_{lower}}{X_{upper} - X_{lower}} & \text{over the open ocean,} \\ 0 & \text{over land and sea ice,} \end{cases} \quad (A2)$$

where X is the source property of interest. X_{lower} and X_{upper} are two constants set to a lower and upper limit of X to ensure SF remains in the range of (0, 1). As arithmetic operations cannot be applied to circular data directly, tracers for source longitude are scaled based on the sine and cosine of longitude. Thereafter, source longitude is estimated according to trigonometrical functions. Values of X_{lower} and X_{upper} are defined as $[-90^\circ, 90^\circ]$ for latitude, $[-1, 1]$ for sine and cosine of longitude, $[-5^\circ\text{C}, 45^\circ\text{C}]$ for SST, $[0, 160\%]$ for rh2m, and $[0, 28 \text{ m s}^{-1}]$ for [wind10vel10](#).

The second water tracer ($wt2$) is defined such that the sum of $wt1$ and $wt2$ tracks the total open ocean evaporation. Therefore, the evaporative flux for $wt2$ is given by Eq. (A1) but with the scaling factor $SF(wt2, t, \lambda, \phi)$ set as

$$SF(wt2, t, \lambda, \phi) = \begin{cases} 1 - SF(wt1, t, \lambda, \phi) & \text{over the open ocean,} \\ 0 & \text{over land and sea ice,} \end{cases}$$

420 which gives, $E_i^{wt}(wt1, t_i, \lambda_i, \phi_i) + E_i^{wt}(wt2, t_i, \lambda_i, \phi_i) = E_i^{ocn}(t_i, \lambda_i, \phi_i)$. Note, downward condensation fluxes of tracer water at the surface are proportional to normal water fluxes as in the prescribed-region water tracing approach.

For the atmospheric specific humidity $q_i^{ocn}(t, p, \lambda, \phi)$ formed from the evaporation flux $E_i^{ocn}(t_i, \lambda_i, \phi_i)$, we have the corresponding water tracer quantity,

$$q_i^{wt}(wt1, t, p, \lambda, \phi) = q_i^{ocn}(t, p, \lambda, \phi) \times SF(wt1, t_i, \lambda_i, \phi_i), \quad (A3)$$

425 where p is the pressure level. By summing up all vapour contributions in a grid box, we obtain

$$\sum_i q_i^{wt}(wt1, t, p, \lambda, \phi) = \sum_i (q_i^{ocn}(t, p, \lambda, \phi) \times SF(wt1, t_i, \lambda_i, \phi_i)). \quad (A4)$$

where $\sum_i q_i^{wt}(wt1, t, p, \lambda, \phi)$ is the atmospheric water tracked by $wt1$.

By substituting $SF(wt1, t, \lambda, \phi_i)$ from Eq. (A2) into equation Eq. (A4) and rearranging, we can obtain the following expression for the mass-weighted mean open-oceanic evaporative source property of the atmospheric water,

$$430 \quad \frac{\sum_i (q_i^{ocn}(t, p, \lambda, \phi) \times X(t_i, \lambda_i, \phi_i))}{\sum_i q_i^{ocn}(t, p, \lambda, \phi)} = \frac{\sum_i q_i^{wt}(wt1, t, p, \lambda, \phi)}{\sum_i q_i^{ocn}(t, p, \lambda, \phi)} \times (X_{upper} - X_{lower}) + X_{lower}. \quad (A5)$$

In the above equation, $\sum_i q_i^{ocn}(t, p, \lambda, \phi)$ is the atmospheric water sourced from the open ocean and can be replaced with the sum of $wt1$ and $wt2$, which gives

$$\frac{\sum_i (q_i^{ocn}(t, p, \lambda, \phi) \times X(t_i, \lambda_i, \phi_i))}{\sum_i q_i^{ocn}(t, p, \lambda, \phi)} = \frac{\sum_i q_i^{wt}(wt1, t, p, \lambda, \phi)}{\sum_i q_i^{wt}(wt1, t, p, \lambda, \phi) + \sum_i q_i^{wt}(wt2, t, p, \lambda, \phi)} \times (X_{upper} - X_{lower}) + X_{lower}. \quad (A6)$$

As passive water tracers always follow normal water proportionally after evaporation, evaporative source properties of precipitation can be obtained in the same way.

The third water tracer ($wt3$) is used to track the water evaporated from land and sea ice, hence, $SF(wt3, t, \lambda, \phi) = 0$ over the open ocean, and $SF(wt3, t, \lambda, \phi) = 1$ over land and sea ice. Therefore, the combination of the three tracers tracks all the water in the model. This allows a correction to be applied at each grid point and timestep to ensure that the sum of the three water tracers does not deviate from normal water in the model. Small deviations occur for numerical reasons related to partitioning normal water into multiple water tracers and they can accumulate and propagate. We applied corrections to atmospheric tracer water to ensure their sum equals normal water. Importantly, the proportion of each water tracer does not change after corrections. These corrections are applied to both water tracing methods. The magnitude of corrections is at an acceptable level (less than 2‰).

The atmospheric tracer water content is initialised as a product of atmospheric normal water content and the scaling factor $SF(wt, 0, \lambda, \phi)$.

Appendix B: Additional figures

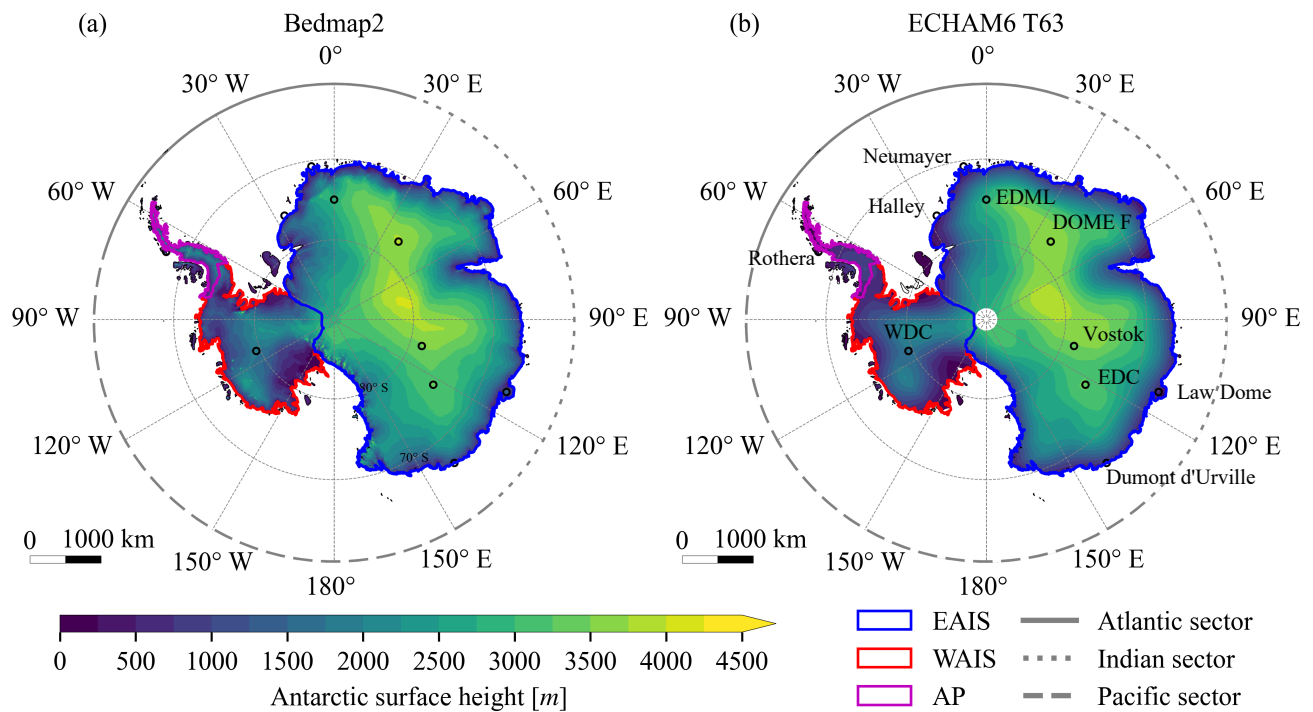


Figure B1. Antarctic surface height (a) in the observation-based Bedmap2 product (Fretwell et al., 2013) and (b) in the model simulation with T63 resolution. Definitions of EAIS, WAIS, and AP are based on the work of E. Rignot and J. Mouginot (<http://imbiie.org/>, last access date: 20 Feb 2023). Oceanic sectors are specified as below: Atlantic sector (70° W to 20° E), Indian sector (20° E to 140° E), and Pacific sector (140° E to 70° W). Locations of five inland and five coastal sites are indicated with black empty circles. EDC stands for EPICA Dome Concordia, EDML for EPICA Dronning Maud Land, Dome F for Dome Fuji, and WDC for the WAIS Divide ice core.

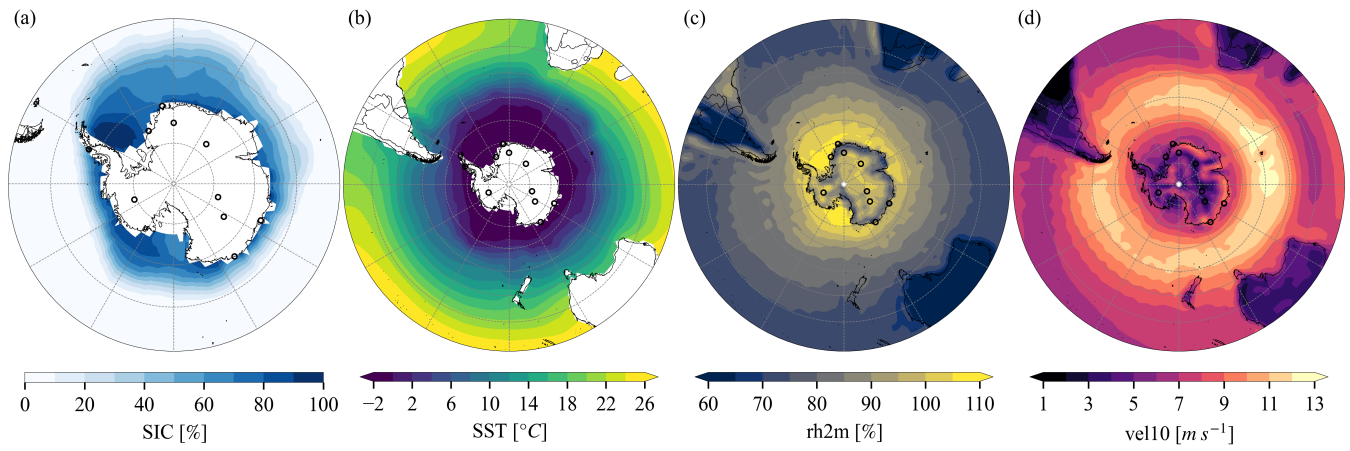


Figure B2. Annual mean (a) sea ice concentration (SIC), (b) sea surface temperature (SST), (c) 2-meter relative humidity (rh2m), and (d) 10-meter wind ~~speed-velocity~~ (~~wind10vel10~~) in the simulation.

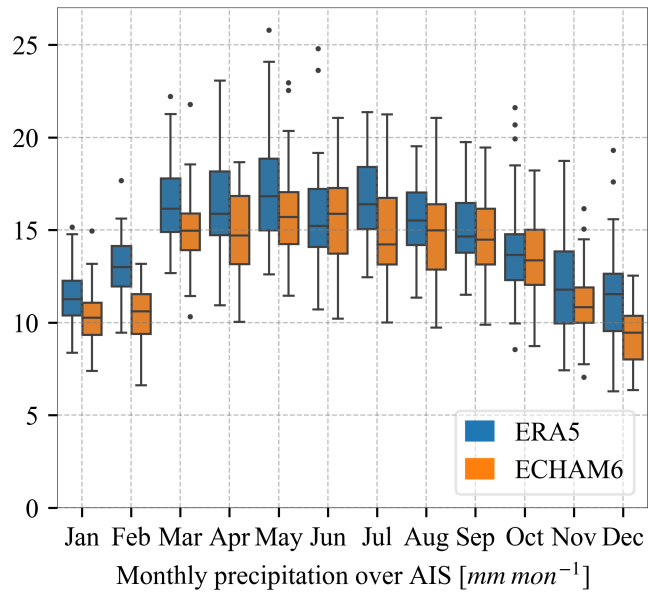


Figure B3. Monthly mean precipitation over Antarctica in ERA5 (1979-2021) and the ECHAM6 preindustrial simulation. Note that the two datasets are from slightly different climate periods.

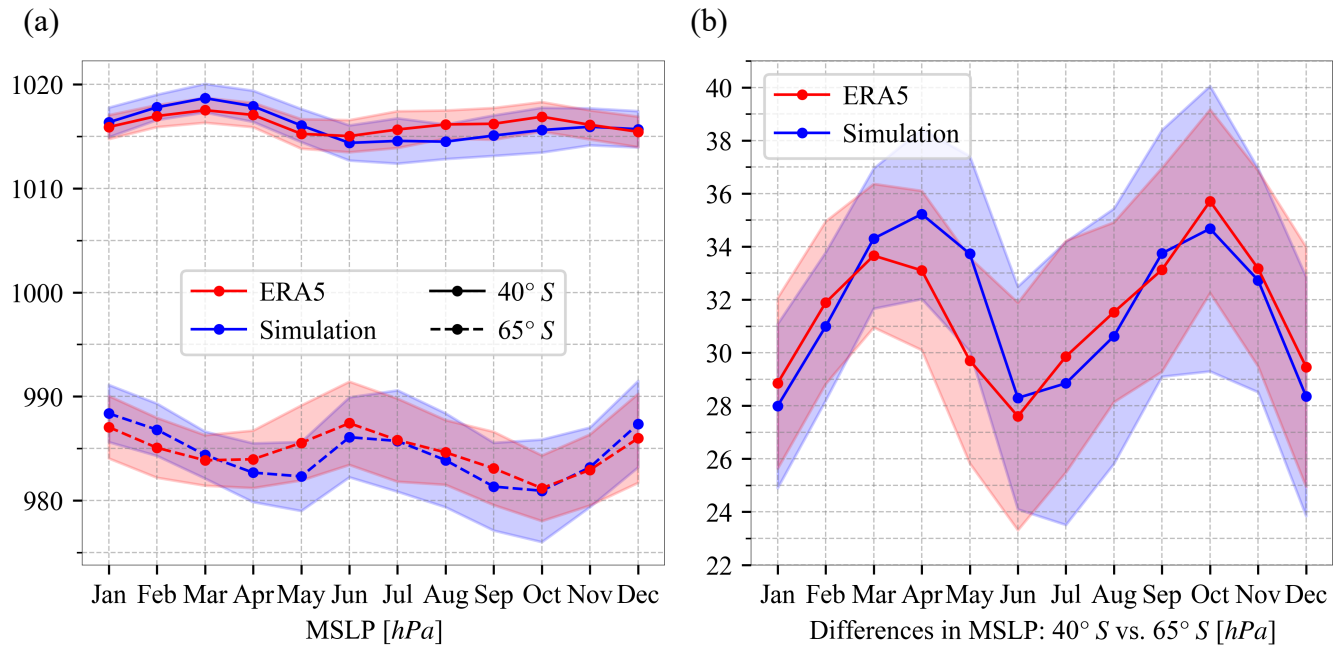


Figure B4. (a) Monthly mean zonal mean sea level pressure (MSLP) at 40° S and 65° S in ERA5 (1979-2021) and the simulation. (b) Differences in monthly mean zonal mean sea level pressure between 40° S and 65° S in two datasets. The colour shadings show one standard deviation.

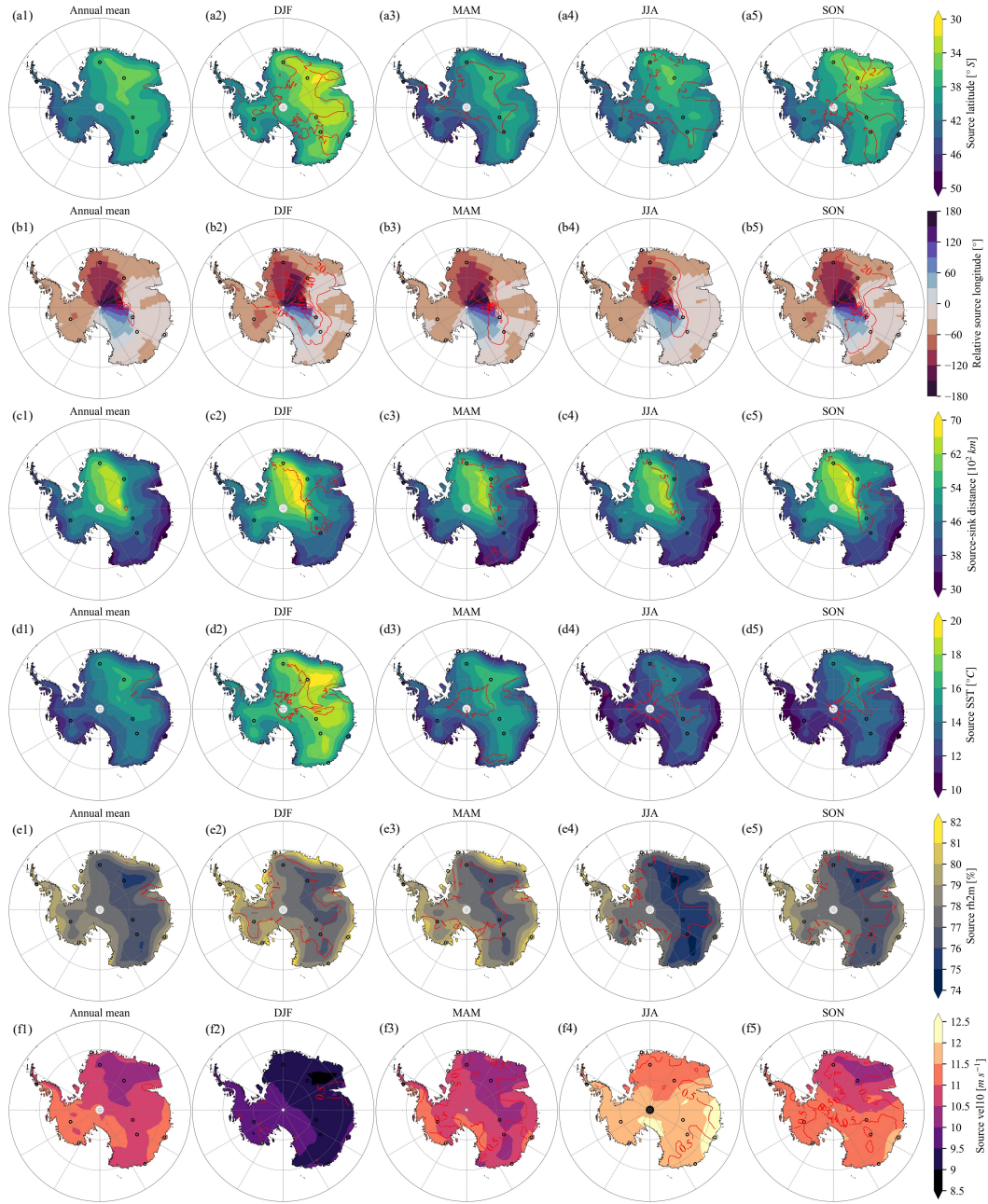


Figure B5. Mass-weighted mean open-oceanic evaporative (a) source latitude, (b) relative source longitude, (c) source-sink distance, (d) source SST, (e) source rh_{2m}, and (f) source wind10-vel10 of the annual mean (the 1st column) and seasonal mean (the 2nd to 5th columns) precipitation. Red lines show contours of one standard deviation. DJF refers to December-January-February, MAM March-April-May, JJA June-July-August, and SON September-October-November.

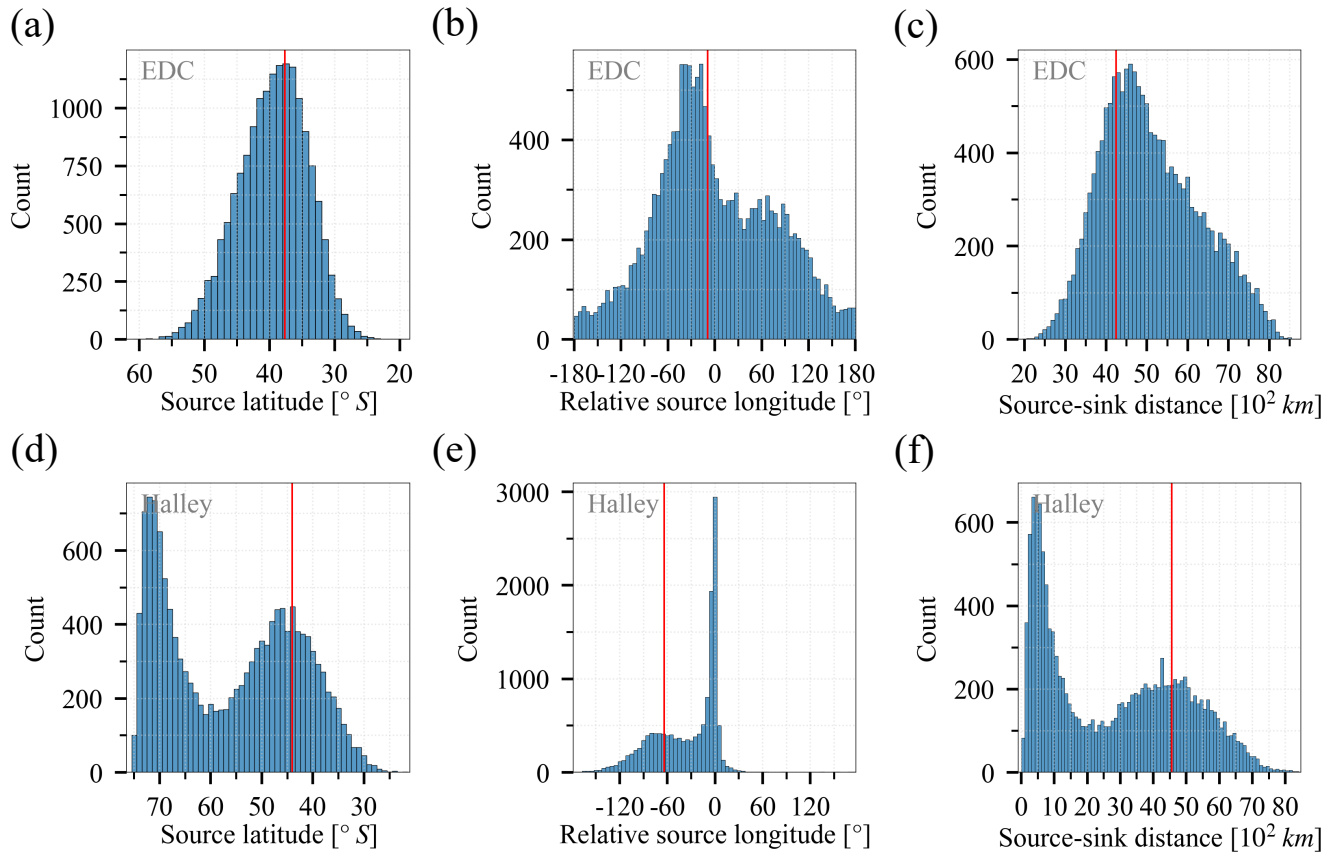


Figure B6. Histograms of source properties of daily precipitation at (a-c) EDC and (d-f) Halley. Source properties include mass-weighted mean open-oceanic evaporative (a, d) source latitude, (b, e) relative source longitude, and (c, f) source-sink distance. Vertical red lines represent source properties of annual mean precipitation.

Author contributions. QG, LCS, MW, and AM together co-led the development of this study. QG, MW, and XS implemented the water tracers in ECHAM6, with guidance from LCS and AM. QG ran the simulation, performed all data analysis and wrote with LCS the first draft of this manuscript. All authors contributed to the final draft.

450 *Competing interests.* The authors declare that they have no conflict of interest.

Acknowledgements. This publication was generated in the frame of DEEPICE project. The project has received funding from the European Union's Horizon 2020 research and innovation programme under the Marie Skłodowska-Curie grant agreement No 955750. QG and MW acknowledge the technical support and computing resources provided by the AWI Computer and Data Center in setting up and running the ECHAM6 simulations. AM and LCS were supported by: the European Union's Horizon 2020 research and innovation programme
455 under Grant agreement no. 820970 (TiPES project; this paper is TiPES contribution number 224) and LCS also from the NERC National Capability International grant SURface FluxEs In AnTartica (SURFEIT): NE/X009319/1; NE/X009386/1; and NE/P009271/1 grants. EC acknowledges the financial support from the French National Research Agency under the "Programme d'Investissements d'Avenir" (ANR-19-MPGA-0001) through the Make Our Planet Great Again HOTCLIM project. XS is supported by the National Natural Science Foundation of China (NSFC) (grant no. 42206256).

460 References

- Adusumilli, S., A. Fish, M., Fricker, H. A., and Medley, B.: Atmospheric River Precipitation Contributed to Rapid Increases in Surface Height of the West Antarctic Ice Sheet in 2019, *Geophysical Research Letters*, 48, e2020GL091076, <https://doi.org/10.1029/2020GL091076>, 2021.
- Aemisegger, F. and Papritz, L.: A Climatology of Strong Large-Scale Ocean Evaporation Events. Part I: Identification, Global Distribution, and Associated Climate Conditions, *Journal of Climate*, 31, 7287–7312, <https://doi.org/10.1175/JCLI-D-17-0591.1>, 2018.
- 465 Bailey, A., Singh, H. K., and Nusbaumer, J.: Evaluating a Moist Isentropic Framework for Poleward Moisture Transport: Implications for Water Isotopes Over Antarctica, *Geophysical Research Letters*, 46, 7819–7827, <https://doi.org/10.1029/2019GL082965>, 2019.
- Benjamini, Y. and Hochberg, Y.: Controlling the False Discovery Rate: A Practical and Powerful Approach to Multiple Testing, *Journal of the Royal Statistical Society: Series B (Methodological)*, 57, 289–300, <https://doi.org/10.1111/J.2517-6161.1995.TB02031.X>, 1995.
- 470 Bromwich, D. H.: Snowfall in high southern latitudes, *Reviews of Geophysics*, 26, 149–168, <https://doi.org/10.1029/RG026I001P00149>, 1988.
- Brown, A., Milton, S., Cullen, M., Golding, B., Mitchell, J., and Shelly, A.: Unified Modeling and Prediction of Weather and Climate: A 25-Year Journey, *Bulletin of the American Meteorological Society*, 93, 1865–1877, <https://doi.org/10.1175/BAMS-D-12-00018.1>, 2012.
- Buizert, C., Sigl, M., Severi, M., Markle, B. R., Wettstein, J. J., McConnell, J. R., Pedro, J. B., Sodemann, H., Goto-Azuma, K., Kawamura, K., Fujita, S., Motoyama, H., Hirabayashi, M., Uemura, R., Stenni, B., Parrenin, F., He, F., Fudge, T. J., and Steig, E. J.: Abrupt ice-age shifts in southern westerly winds and Antarctic climate forced from the north, *Nature*, 563, 681–685, <https://doi.org/10.1038/s41586-018-0727-5>, 2018.
- 475 Cauquoin, A., Werner, M., and Lohmann, G.: Water isotopes - climate relationships for the mid-Holocene and preindustrial period simulated with an isotope-enabled version of MPI-ESM, *Climate of the Past*, 15, 1913–1937, <https://doi.org/10.5194/cp-15-1913-2019>, 2019.
- 480 Davison, B. J., Hogg, A. E., Rigby, R., Veldhuijsen, S., van Wessem, J. M., van den Broeke, M. R., Holland, P. R., Selley, H. L., and Dutrieux, P.: Sea level rise from West Antarctic mass loss significantly modified by large snowfall anomalies, *Nature Communications* 2023 14:1, 14, 1–13, <https://doi.org/10.1038/s41467-023-36990-3>, 2023.
- DeConto, R. M. and Pollard, D.: Contribution of Antarctica to past and future sea-level rise, *Nature*, 531, 591–597, <https://doi.org/10.1038/nature17145>, 2016.
- 485 DeConto, R. M., Pollard, D., Alley, R. B., Velicogna, I., Gasson, E., Gomez, N., Sadai, S., Condrón, A., Gilford, D. M., Ashe, E. L., Kopp, R. E., Li, D., and Dutton, A.: The Paris Climate Agreement and future sea-level rise from Antarctica, *Nature*, 593, 83–89, <https://doi.org/10.1038/s41586-021-03427-0>, 2021.
- Delaygue, G., Masson, V., Jouzel, J., Koster, R. D., and Healy, R. J.: The origin of Antarctic precipitation: A modelling approach, *Tellus B: Chemical and Physical Meteorology*, 52, 19–36, <https://doi.org/10.3402/tellusb.v52i1.16079>, 2000.
- 490 Dittmann, A., Schlosser, E., Masson-Delmotte, V., Powers, J. G., Manning, K. W., Werner, M., and Fujita, K.: Precipitation regime and stable isotopes at Dome Fuji, East Antarctica, *Atmospheric Chemistry and Physics*, 16, 6883–6900, <https://doi.org/10.5194/ACP-16-6883-2016>, 2016.
- Durack, P. J., Taylor, K. E., Ames, S., Po-Chedley, S., and Mauzey, C.: PCMDI AMIP SST and sea-ice boundary conditions version 1.1.8, <https://doi.org/10.22033/ESGF/input4MIPs.16921>, 2022.

- 495 Fairall, C. W., Bradley, E. F., Hare, J. E., Grachev, A. A., and Edson, J. B.: Bulk Parameterization of Air–Sea Fluxes: Updates and Verification for the COARE Algorithm, *Journal of Climate*, 16, 571 – 591, [https://doi.org/10.1175/1520-0442\(2003\)016<0571:BPOASF>2.0.CO;2](https://doi.org/10.1175/1520-0442(2003)016<0571:BPOASF>2.0.CO;2), 2003.
- Fiorella, R. P., Siler, N., Nusbaumer, J., and Noone, D. C.: Enhancing Understanding of the Hydrological Cycle via Pairing of Process-Oriented and Isotope Ratio Tracers, *Journal of Advances in Modeling Earth Systems*, 13, e2021MS002648, <https://doi.org/10.1029/2021MS002648>, 2021.
- 500 Fogt, R. L. and Marshall, G. J.: The Southern Annular Mode: Variability, trends, and climate impacts across the Southern Hemisphere, *Wiley Interdisciplinary Reviews: Climate Change*, 11, e652, <https://doi.org/10.1002/WCC.652>, 2020.
- Fretwell, P., Pritchard, H. D., Vaughan, D. G., Bamber, J. L., Barrand, N. E., Bell, R., Bianchi, C., Bingham, R. G., Blankenship, D. D., Casassa, G., Catania, G., Callens, D., Conway, H., Cook, A. J., Corr, H. F., Damaske, D., Damm, V., Ferraccioli, F., Forsberg, R., Fujita, S., Gim, Y., Gogineni, P., Griggs, J. A., Hindmarsh, R. C., Holmlund, P., Holt, J. W., Jacobel, R. W., Jenkins, A., Jokat, W., Jordan, T., King, E. C., Kohler, J., Krabill, W., Riger-Kusk, M., Langley, K. A., Leitchenkov, G., Leuschen, C., Luyendyk, B. P., Matsuoka, K., Mouginot, J., Nitsche, F. O., Nogi, Y., Nost, O. A., Popov, S. V., Rignot, E., Rippin, D. M., Rivera, A., Roberts, J., Ross, N., Siegert, M. J., Smith, A. M., Steinhage, D., Studinger, M., Sun, B., Tinto, B. K., Welch, B. C., Wilson, D., Young, D. A., Xiangbin, C., and Zirizzotti, A.: Bedmap2: Improved ice bed, surface and thickness datasets for Antarctica, *Cryosphere*, 7, 375–393, <https://doi.org/10.5194/TC-7-375-2013>, 2013.
- 510 Frieler, K., Clark, P. U., He, F., Buizert, C., Reese, R., Ligtenberg, S. R., Van Den Broeke, M. R., Winkelmann, R., and Levermann, A.: Consistent evidence of increasing Antarctic accumulation with warming, *Nature Climate Change*, 5, 348–352, <https://doi.org/10.1038/nclimate2574>, 2015.
- Gelaro, R., McCarty, W., Suárez, M. J., Todling, R., Molod, A., Takacs, L., Randles, C. A., Darmenov, A., Bosilovich, M. G., Reichle, R., Wargan, K., Coy, L., Cullather, R., Draper, C., Akella, S., Buchard, V., Conaty, A., da Silva, A. M., Gu, W., Kim, G. K., Koster, R., Lucchesi, R., Merkova, D., Nielsen, J. E., Partyka, G., Pawson, S., Putman, W., Rienecker, M., Schubert, S. D., Sienkiewicz, M., and Zhao, B.: The Modern-Era Retrospective Analysis for Research and Applications, Version 2 (MERRA-2), *Journal of Climate*, 30, 5419–5454, <https://doi.org/10.1175/JCLI-D-16-0758.1>, 2017.
- Genthon, C., Krinner, G., and Déqué, M.: Intra-annual variability of Antarctic precipitation from weather forecasts and high-resolution climate models, *Annals of Glaciology*, 27, 488–494, <https://doi.org/10.3189/1998AOG27-1-488-494>, 1998.
- 520 Gerber, F., Sharma, V., and Lehning, M.: CRYOWRF—Model Evaluation and the Effect of Blowing Snow on the Antarctic Surface Mass Balance, *Journal of Geophysical Research: Atmospheres*, 128, e2022JD037744, <https://doi.org/10.1029/2022JD037744>, 2023.
- Gimeno, L., Drumond, A., Nieto, R., Trigo, R. M., and Stohl, A.: On the origin of continental precipitation, *Geophysical Research Letters*, 37, 13 804, <https://doi.org/10.1029/2010GL043712>, 2010.
- Gong, D. and Wang, S.: Definition of Antarctic Oscillation index, *Geophysical Research Letters*, 26, 459–462, <https://doi.org/10.1029/1999GL900003>, 1999.
- 525 Gorodetskaya, I. V., Tsukernik, M., Claes, K., Ralph, M. F., Neff, W. D., and Van Lipzig, N. P.: The role of atmospheric rivers in anomalous snow accumulation in East Antarctica, *Geophysical Research Letters*, 41, 6199–6206, <https://doi.org/10.1002/2014GL060881>, 2014.
- Gorodetskaya, I. V., Durán-Alarcón, C., González-Herrero, S., Clem, K. R., Zou, X., Rowe, P., Rodríguez Imazio, P., Campos, D., Leroy, C., Santos, D., Dutrievoz, N., Wille, J. D., Chyhareva, A., Favier, V., Blanchet, J., Pohl, B., Cordero, R. R., Park, S.-J., Colwell, S., Lazzara, M. A., Carrasco, J., Gulisano, A. M., Krakovska, S., Ralph, F. M., Dethinne, T., and Picard, G.: Record-high Antarctic Peninsula temperatures and surface melt in February 2022: a compound event with an intense atmospheric river, *npj Climate and Atmospheric Science*, 6, 1–18, <https://doi.org/10.1038/s41612-023-00529-6>, 2023.

- Hahn, L. C., Armour, K. C., Zelinka, M. D., Bitz, C. M., and Donohoe, A.: Contributions to Polar Amplification in CMIP5 and CMIP6 Models, *Frontiers in Earth Science*, 9, 725, <https://doi.org/10.3389/FEART.2021.710036/BIBTEX>, 2021.
- 535 Hersbach, H., Bell, B., Berrisford, P., Hirahara, S., Horányi, A., Muñoz-Sabater, J., Nicolas, J., Peubey, C., Radu, R., Schepers, D., Simmons, A., Soci, C., Abdalla, S., Abellan, X., Balsamo, G., Bechtold, P., Biavati, G., Bidlot, J., Bonavita, M., De Chiara, G., Dahlgren, P., Dee, D., Diamantakis, M., Dragani, R., Flemming, J., Forbes, R., Fuentes, M., Geer, A., Haimberger, L., Healy, S., Hogan, R. J., Hólm, E., Janisková, M., Keeley, S., Laloyaux, P., Lopez, P., Lupu, C., Radnoti, G., de Rosnay, P., Rozum, I., Vamborg, F., Villaume, S., and Thépaut, J.-N.: The ERA5 global reanalysis, *Quarterly Journal of the Royal Meteorological Society*, 146, 1999–2049, <https://doi.org/10.1002/qj.3803>, 2020.
- 540 Hoffmann, G., Werner, M., and Heimann, M.: Water isotope module of the ECHAM atmospheric general circulation model: A study on timescales from days to several years, *Journal of Geophysical Research: Atmospheres*, 103, 16 871–16 896, <https://doi.org/10.1029/98JD00423>, 1998.
- IPCC: Sea Level Rise and Implications for Low-Lying Islands, Coasts and Communities, in: *The Ocean and Cryosphere in a Changing Climate: Special Report of the Intergovernmental Panel on Climate Change*, pp. 321–446, Cambridge University Press, <https://doi.org/10.1017/9781009157964.006>, 2022.
- 545 Koster, R., Jouzel, J., Suozzo, R., Russell, G., Broecker, W., Rind, D., and Eagleson, P.: Global sources of local precipitation as determined by the NASA/GISS GCM, *Geophysical Research Letters*, 13, 121–124, <https://doi.org/10.1029/GL013I002P00121>, 1986.
- Koster, R. D., Jouzel, J., Suozzo, R. J., and Russell, G. L.: Origin of July Antarctic precipitation and its influence on deuterium content: a GCM analysis, *Climate Dynamics*, 7, 195–203, <https://doi.org/10.1007/BF00206861>, 1992.
- 550 Kurita, N., Hirasawa, N., Koga, S., Matsushita, J., Steen-Larsen, H. C., Masson-Delmotte, V., and Fujiyoshi, Y.: Influence of large-scale atmospheric circulation on marine air intrusion toward the East Antarctic coast, *Geophysical Research Letters*, 43, 9298–9305, <https://doi.org/10.1002/2016GL070246>, 2016.
- Lenaerts, J. T., Medley, B., van den Broeke, M. R., and Wouters, B.: Observing and Modeling Ice Sheet Surface Mass Balance, *Reviews of Geophysics*, 57, 376–420, <https://doi.org/10.1029/2018RG000622>, 2019.
- 555 Liu, W. T., Katsaros, K. B., and Businger, J. A.: Bulk Parameterization of Air-Sea Exchanges of Heat and Water Vapor Including the Molecular Constraints at the Interface, *Journal of Atmospheric Sciences*, 36, 1722 – 1735, [https://doi.org/10.1175/1520-0469\(1979\)036<1722:BPOASE>2.0.CO;2](https://doi.org/10.1175/1520-0469(1979)036<1722:BPOASE>2.0.CO;2), 1979.
- Manabe, S. and Strickler, R. F.: Thermal Equilibrium of the Atmosphere with a Convective Adjustment, *Journal of Atmospheric Sciences*, 21, 361 – 385, [https://doi.org/https://doi.org/10.1175/1520-0469\(1964\)021<0361:TEOTAW>2.0.CO;2](https://doi.org/https://doi.org/10.1175/1520-0469(1964)021<0361:TEOTAW>2.0.CO;2), 1964.
- 560 Marshall, G. J.: Trends in the Southern Annular Mode from Observations and Reanalyses, *Journal of Climate*, 16, 4134–4143, [https://doi.org/10.1175/1520-0442\(2003\)016<4134:TITSAM>2.0.CO;2](https://doi.org/10.1175/1520-0442(2003)016<4134:TITSAM>2.0.CO;2), 2003.
- Marshall, G. J., Thompson, D. W., and van den Broeke, M. R.: The Signature of Southern Hemisphere Atmospheric Circulation Patterns in Antarctic Precipitation, *Geophysical Research Letters*, 44, 580–11, <https://doi.org/10.1002/2017GL075998>, 2017.
- 565 Massom, R. A., Pook, M. J., Comiso, J. C., Adams, N., Turner, J., Lachlan-Cope, T., and Gibson, T. T.: Precipitation over the Interior East Antarctic Ice Sheet Related to Midlatitude Blocking-High Activity, *Journal of Climate*, 17, 1914 – 1928, [https://doi.org/10.1175/1520-0442\(2004\)017<1914:POTIEA>2.0.CO;2](https://doi.org/10.1175/1520-0442(2004)017<1914:POTIEA>2.0.CO;2), 2004.
- Medley, B. and Thomas, E. R.: Increased snowfall over the Antarctic Ice Sheet mitigated twentieth-century sea-level rise, *Nature Climate Change*, 9, 34–39, <https://doi.org/10.1038/s41558-018-0356-x>, 2018.

- 570 Monaghan, A. J., Bromwich, D. H., Fogt, R. L., Wang, S. H., Mayewski, P. A., Dixon, D. A., Ekaykin, A., Frezzotti, M., Goodwin, I., Isaksson, E., Kaspari, S. D., Morgan, V. I., Oerter, H., Van Ommen, T. D., Van Der Veen, C. J., and Wen, J.: Insignificant change in antarctic snowfall since the international geophysical year, *Science*, 313, 827–831, <https://doi.org/10.1126/science.1128243>, 2006.
- Mottram, R., Hansen, N., Kittel, C., Van Wessem, J. M., Agosta, C., Amory, C., Boberg, F., Van De Berg, W. J., Fettweis, X., Gossart, A., Van Lipzig, N. P., Van Meijgaard, E., Orr, A., Phillips, T., Webster, S., Simonsen, S. B., and Souverijns, N.: What is the surface mass
575 balance of Antarctica? An intercomparison of regional climate model estimates, *Cryosphere*, 15, 3751–3784, <https://doi.org/10.5194/TC-15-3751-2021>, 2021.
- Noone, D. and Simmonds, I.: Annular variations in moisture transport mechanisms and the abundance of $\delta^{18}\text{O}$ in Antarctic snow, *Journal of Geophysical Research: Atmospheres*, 107, 3–1, <https://doi.org/10.1029/2002JD002262>, 2002.
- Noone, D., Turner, J., and Mulvaney, R.: Atmospheric signals and characteristics of accumulation in Dronning Maud Land, Antarctica,
580 *Journal of Geophysical Research: Atmospheres*, 104, 19 191–19 211, <https://doi.org/10.1029/1999JD900376>, 1999.
- Pauluis, O., Czaja, A., and Korty, R.: The Global Atmospheric Circulation in Moist Isentropic Coordinates, *Journal of Climate*, 23, 3077–3093, <https://doi.org/10.1175/2009JCLI2789.1>, 2010.
- Petit, J. R., White, J. W., Young, N. W., Jouzel, J., and Korotkevich, Y. S.: Deuterium excess in recent Antarctic snow, *Journal of Geophysical Research: Atmospheres*, 96, 5113–5122, <https://doi.org/10.1029/90JD02232>, 1991.
- 585 Purich, A. and Doddridge, E. W.: Record low Antarctic sea ice coverage indicates a new sea ice state, *Communications Earth & Environment*, 4, 1–9, <https://doi.org/10.1038/s43247-023-00961-9>, 2023.
- Raphael, M. N.: The influence of atmospheric zonal wave three on Antarctic sea ice variability, *Journal of Geophysical Research: Atmospheres*, 112, 12 112, <https://doi.org/10.1029/2006JD007852>, 2007.
- Schlosser, E., Manning, K. W., Powers, J. G., Duda, M. G., Birnbaum, G., and Fujita, K.: Characteristics of high-precipitation events in
590 Dronning Maud Land, Antarctica, *Journal of Geophysical Research: Atmospheres*, 115, 14 107, <https://doi.org/10.1029/2009JD013410>, 2010.
- Schlosser, E., Stenni, B., Valt, M., Cagnati, A., Jordan, G. P., Kevin, W. M., Raphael, M., and Michael, G. D.: Precipitation and synoptic regime in two extreme years 2009 and 2010 at Dome C, Antarctica-implications for ice core interpretation, *Atmospheric Chemistry and Physics*, 16, 4757–4770, <https://doi.org/10.5194/ACP-16-4757-2016>, 2016.
- 595 Sinclair, V. A. and Dacre, H. F.: Which Extratropical Cyclones Contribute Most to the Transport of Moisture in the Southern Hemisphere?, *Journal of Geophysical Research: Atmospheres*, 124, 2525–2545, <https://doi.org/10.1029/2018JD028766>, 2019.
- Singh, H. A., Bitz, C. M., Nusbaumer, J., and Noone, D. C.: A mathematical framework for analysis of water tracers: Part 1: Development of theory and application to the preindustrial mean state, *Journal of Advances in Modeling Earth Systems*, 8, 991–1013, <https://doi.org/10.1002/2016MS000649>, 2016.
- 600 Sodemann, H. and Stohl, A.: Asymmetries in the moisture origin of Antarctic precipitation, *Geophysical Research Letters*, 36, <https://doi.org/10.1029/2009GL040242>, 2009.
- Stenni, B., Masson-Delmotte, V., Selmo, E., Oerter, H., Meyer, H., Röthlisberger, R., Jouzel, J., Cattani, O., Falourd, S., Fischer, H., Hoffmann, G., Iacumin, P., Johnsen, S. J., Minster, B., and Udisti, R.: The deuterium excess records of EPICA Dome C and Dronning Maud Land ice cores (East Antarctica), *Quaternary Science Reviews*, 29, 146–159, <https://doi.org/10.1016/J.QUASCIREV.2009.10.009>, 2010.
- 605 Stenni, B., Scarchilli, C., Masson-Delmotte, V., Schlosser, E., Ciardini, V., Dreossi, G., Grigioni, P., Bonazza, M., Cagnati, A., Karlicek, D., Risi, C., Udisti, R., and Valt, M.: Three-year monitoring of stable isotopes of precipitation at Concordia Station, East Antarctica, *Cryosphere*, 10, 2415–2428, <https://doi.org/10.5194/TC-10-2415-2016>, 2016.

- Stevens, B., Giorgetta, M., Esch, M., Mauritsen, T., Crueger, T., Rast, S., Salzmann, M., Schmidt, H., Bader, J., Block, K., Brokopf, R., Fast, I., Kinne, S., Kornblueh, L., Lohmann, U., Pincus, R., Reichler, T., and Roeckner, E.: Atmospheric component of the MPI-M Earth System Model: ECHAM6, *Journal of Advances in Modeling Earth Systems*, 5, 146–172, <https://doi.org/10.1002/JAME.20015>, 2013.
- 610 Stohl, A. and Sodemann, H.: Characteristics of atmospheric transport into the Antarctic troposphere, *Journal of Geophysical Research: Atmospheres*, 115, 2305, <https://doi.org/10.1029/2009JD012536>, 2010.
- Terpstra, A., Gorodetskaya, I. V., and Sodemann, H.: Linking Sub-Tropical Evaporation and Extreme Precipitation Over East Antarctica: An Atmospheric River Case Study, *Journal of Geophysical Research: Atmospheres*, 126, e2020JD033617, <https://doi.org/10.1029/2020JD033617>, 2021.
- 615 The IMBIE team: Mass balance of the Antarctic Ice Sheet from 1992 to 2017, *Nature*, 558, 219–222, <https://doi.org/10.1038/s41586-018-0179-y>, 2018.
- Thurnherr, I. and Aemisegger, F.: Disentangling the impact of air-sea interaction and boundary layer cloud formation on stable water isotope signals in the warm sector of a Southern Ocean cyclone, *Atmospheric Chemistry and Physics*, 22, 10353–10373, <https://doi.org/10.5194/ACP-22-10353-2022>, 2022.
- 620 Turner, J., Phillips, T., Thamban, M., Rahaman, W., Marshall, G. J., Wille, J. D., Favier, V., Winton, V. H. L., Thomas, E., Wang, Z., van den Broeke, M., Hosking, J. S., and Lachlan-Cope, T.: The Dominant Role of Extreme Precipitation Events in Antarctic Snowfall Variability, *Geophysical Research Letters*, 46, 3502–3511, <https://doi.org/10.1029/2018GL081517>, 2019.
- Uotila, P., Vihma, T., and Tsukernik, M.: Close interactions between the Antarctic cyclone budget and large-scale atmospheric circulation, *Geophysical Research Letters*, 40, 3237–3241, <https://doi.org/10.1002/GRL.50560>, 2013.
- 625 Wang, H., Fyke, J. G., Lenaerts, J. T., Nusbaumer, J. M., Singh, H., Noone, D., Rasch, P. J., and Zhang, R.: Influence of sea-ice anomalies on Antarctic precipitation using source attribution in the Community Earth System Model, *Cryosphere*, 14, 429–444, <https://doi.org/10.5194/TC-14-429-2020>, 2020.
- Watson, G. S. and Williams, E. J.: On the Construction of Significance Tests on the Circle and the Sphere, *Biometrika*, 43, 344, <https://doi.org/10.2307/2332913>, 1956.
- 630 Werner, M., Heimann, M., and Hoffmann, G.: Isotopic composition and origin of polar precipitation in present and glacial climate simulations, *Tellus B: Chemical and Physical Meteorology*, 53, 53–71, <https://doi.org/10.3402/TELLUSB.V53I1.16539>, 2001.
- Wille, J. D., Favier, V., Gorodetskaya, I. V., Agosta, C., Kittel, C., Beeman, J. C., Jourdain, N. C., Lenaerts, J. T., and Codron, F.: Antarctic Atmospheric River Climatology and Precipitation Impacts, *Journal of Geophysical Research: Atmospheres*, 126, e2020JD033788, <https://doi.org/10.1029/2020JD033788>, 2021.
- 635 Winkelmann, R., Levermann, A., Martin, M. A., and Frieler, K.: Increased future ice discharge from Antarctica owing to higher snowfall, *Nature*, 492, 239–242, <https://doi.org/10.1038/nature11616>, 2012.
- Yu, L. and Weller, R. A.: Objectively Analyzed Air–Sea Heat Fluxes for the Global Ice-Free Oceans (1981–2005), *Bulletin of the American Meteorological Society*, 88, 527–540, <https://doi.org/10.1175/BAMS-88-4-527>, 2007.