

# A model for rapid PM<sub>2.5</sub> exposure estimates in wildfire conditions using routinely-available data - rapidfire v0.1.3

true true true<sup>1</sup>, Sean Raffuse<sup>1</sup>, Susan O'Neill<sup>2</sup>, and Rebecca Schmidt<sup>3</sup>

<sup>1</sup>Air Quality Research Center, University of California Davis, Davis, CA, United States

<sup>2</sup>Pacific Northwest Research Station, USDA Forest Service, Seattle, WA, United States

<sup>3</sup>Department of Public Health Sciences, MIND Institute, University of California Davis School of Medicine, Davis, CA, United States

**Correspondence:** Sean Raffuse (sraffuse@ucdavis.edu)

**Abstract.** Urban smoke exposure events from large wildfires have become increasingly common in California and throughout the western United States. The ability to study the impacts of high smoke aerosol exposures from these events on the public is limited by the availability of high-quality, spatially-resolved estimates of aerosol concentrations. Methods for assigning aerosol exposure often employ multiple data sets that are time consuming and expensive to create and difficult to reproduce.

5 As these events have gone from occasional to nearly annual in frequency, the need for rapid smoke exposure assessments has increased. The rapidfire R package (version 0.1.3) provides a suite of tools for developing exposure assignments using data sets that are routinely generated and publicly available within a month of the event. Specifically, rapidfire harvests official air quality monitoring, satellite observations, meteorological modeling, operational predictive smoke modeling, and low-cost sensor networks. A machine learning approach (random forests regression) is used to fuse the different data sets.

10 Using rapidfire, we produced estimates of ground-level 24-hour average particulate matter for several large wildfire smoke events in California from 2017-2021. These estimates show excellent agreement with independent measures from filter-based networks.

## 1 Introduction

Changes in climate in the western United States, and elsewhere, are driving larger, more intense fires with greater smoke impacts on larger populations (Burke et al. 2021)(Burke et al., 2021), and these trends are projected to continue (Hurteau et al. 2014)-(Hurteau et al., 2014). The wildfire seasons of 2020 and 2021 produced some of the highest concentrations of particulate matter less than 2.5 microns in diameter (PM<sub>2.5</sub>) ever observed in monitoring stations around California, some for several days or weeks. Despite reductions in ambient PM<sub>2.5</sub> driven by air pollution regulations, areas of the western United States are seeing increasing concentrations (McClure and Jaffe 2018)due to wildfire smoke impacts (McClure and Jaffe, 2018).

20 There are widespread concerns about potential health consequences of wildfire exposures on vulnerable populations as the increasingly reach smoke increasingly reaches populated areas. From 2008-2012, it was estimated that over 10 million individuals in the US experienced unhealthy-unhealthy air quality levels (average daily fire-PM<sub>2.5</sub> > 35 µg m<sup>-3</sup>) associated with exposure to wildfire for more than 10 days (Rappold et al. 2017)-(Rappold et al., 2017). This number is expected to have risen several-

fold in the decade since given the increase in wildfire events across the [worldcontinent \(Childs et al., 2022\)](#). Additionally, long-range transport of wildfire PM<sub>2.5</sub> has been associated with adverse health effects in susceptible populations thousands of miles away [Le et al.\(2014\)](#).[\(Kollanus et al., 2016, Le et al. \(2014\)\)](#).

Wildfire smoke is associated with premature deaths [G. Chen et al. \(2021\)](#)[\(Johnston et al., 2012, Chen et al. \(2021a\)\)](#), and significant cardiovascular [\(H. Chen et al. 2021\)](#)[\(Chen et al., 2021b\)](#) and respiratory morbidity [\(Reid et al. 2016\)](#)[\(Reid et al., 2016\)](#), including asthma exacerbations. Certain subpopulations are more susceptible to the health impacts of air pollution and wildfire smoke, including the elderly, pregnant women, and those with underlying health conditions such as asthma [\(H. Chen et al. 2021\)](#).[\(Chen et al., 2021b\)](#). Few studies have examined long-term health outcomes in relation to chronic exposures to high concentrations of wildfire smoke. Prenatal wildfire smoke exposure has been linked to adverse birth outcomes, including preterm birth [\(Heft-Neal et al. 2022\)](#)[\(Heft-Neal et al., 2022\)](#), and lower birth weight [Abdo et al. \(2019\)](#)[\(Holstius et al., 2012, Abdo et al. \(2019\)\)](#), especially with exposure in the second or third trimester. In contrast to studies of ambient air pollution, associations between wildfire smoke and adverse birth outcomes did not differ by race, ethnicity, or income, but differed by baseline smoke exposure. Many epidemiologic studies have linked early life air pollution exposure to increased autism spectrum disorder risk [Dutheil et al. \(2021\)](#).[\(Volk et al., 2011, Volk et al. \(2013\), Dutheil et al. \(2021\)\)](#) and to cognitive functioning impairments [Chiu et al. \(2016\)](#).[\(Loftus et al., 2020, Clifford et al. \(2016\), Loftus et al. \(2019\), Chiu et al. \(2016\)\)](#).

Evidence suggests that wildfire PM<sub>2.5</sub> could induce higher toxicity than other ambient air PM<sub>2.5</sub> [Franzi et al. \(2011\)](#) [\(Wegesser et al., 2009, Kollanus et al. \(2016\)\)](#) and is associated with about 10 times higher increase in hospital admissions for respiratory health than PM<sub>2.5</sub> from other sources [\(Aguilera, Corringham, Gershunov, and Benmarhnia 2021\)](#).[\(Aguilera et al., 2021a\)](#), including in young children [\(Aguilera, Corringham, Gershunov, Leibel, et al. 2021\)](#).[\(Aguilera et al., 2021b\)](#). With climate predictions for increased occurrence and severity of wildfires, there is a growing need to understand which populations are at highest risk and PM<sub>2.5</sub> concentrations of concern to inform adverse health mitigation strategies. Yet, many gaps remain in our understanding of the linkages between wildfire smoke and human health [\(Black et al. 2017\)](#).[\(Black et al., 2017\)](#). A critical challenge is in characterizing personal or population exposures during high-intensity events. There are many methods for estimating exposure to ambient pollution, including spatial interpolation of measured values, chemical transport modeling, remote sensing, land-use regression modeling, data fusion and machine learning, and combinations of all of these approaches (e.g., [Reid et al. \(2015\)](#);[Zhang et al. \(2020\)](#);[Al-Hamdan et al. \(2014\)](#);[Cleland et al. \(2020\)](#);[Hoek et al. \(2008\)](#))[Reid et al. \(2015\)](#);[Zhang et al. \(2020\)](#);[Al-Hamdan et al. \(2014\)](#);[Cleland et al. \(2020\)](#);[Hoek et al. \(2008\)](#)). The rapidly changing conditions during wildfire smoke events can confound otherwise high-performing approaches [\(Susan M. O'Neill et al. 2021\)](#).[\(O'Neill et al., 2021\)](#). There are several barriers to the adoption of existing methods for exposure assignment. These can include data availability for the study location, data latency, and high-performance computing requirements. The combination of increasing frequency of smoke events and the proliferation of smoke exposure human health studies drives a need for exposure modeling that is quick and inexpensive.

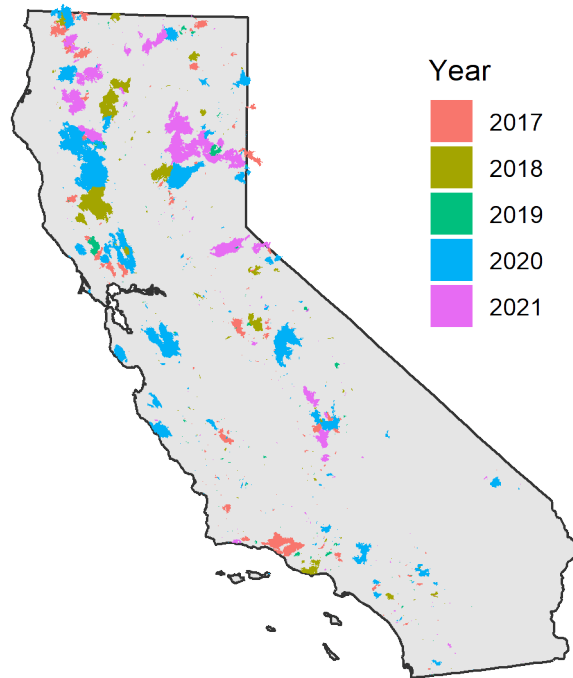
There has been a rapid proliferation of low-cost sensors for air quality within the past decade. While these sensors do not measure PM<sub>2.5</sub> with the same fidelity as the regulatory monitoring conducted by federal and local air quality agencies, they represent a new resource for PM<sub>2.5</sub> assessment with relatively dense spatial coverage. Many low-cost PM<sub>2.5</sub> sensors operate with similar principles, using a laser to count particles that scatter light in the optical range, with sensitivities peaking for

aerosols with median scattering diameter  $< 0.3 \mu\text{m}$  (~~Quimette et al. 2022~~)([Quimette et al., 2022](#)). Recent studies have shown the value of incorporating low-cost sensor networks into  $\text{PM}_{2.5}$  exposure modeling (~~Bi et al. 2020~~)([Bi et al., 2020](#)). Past work has shown that a data fusion approach that combines ground-based air quality monitors, transport modeling that incorporates wildfire emissions, satellite observations, and meteorological variables can be effective in predicting  $\text{PM}_{2.5}$  exposure during large wildfire events (~~Susan M. O'Neill et al. (2021)~~)([Zou et al., 2019, and O'Neill et al. \(2021\)](#)) and prescribed fires (~~Huang 2021 application?~~)([Huang et al., 2021](#)).

We developed methods and a suite of tools for rapidly predicting  $\text{PM}_{2.5}$  exposure, particularly during wildfire smoke events, using readily available data with low latency (less than one month). The tools are contained within a package written in the R programming language called rapidfire (relatively accurate particulate information derived from inputs retrieved easily). rapidfire adapts and builds upon the methods of ~~Zou et al. (2019) and Susan M. O'Neill et al. (2021)~~[Zou et al. \(2019\) and O'Neill et al. \(2021\)](#), replacing retrospective chemical transport modeling and other data sets developed for research with smoke forecast modeling and “off-the-shelf” data sets that are routinely available and easily acquired. A major addition is the incorporation of low-cost sensor data. This paper describes the data sets and algorithms used in the rapidfire package and presents an example case study during five recent extreme wildfire seasons in California.

## 2 [Methods](#)

In this study, datasets and algorithms are applied to time periods of large California wildfires from 2017-2021. Table 1 summarizes some of the major California wildfires and the area burned for the year. Figure 1 shows the wildfire locations, as detailed by the California Department of Forestry and Fire Protection’s Fire and Resource Assessment Program (FRAP). Extreme fire weather conditions fueled the October 2017 wine country wildfires ([~81 ha](#)) in the Napa and Sonoma counties of central coastal California (~~Mass and Ovens (2019)~~ and [\(Mass and Ovens, 2019\)](#) and over 7 million people were impacted by unhealthy levels of smoke (~~Susan M. O'Neill et al. (2021)~~)([O'Neill et al., 2021](#)). 2018 began in July with wildfires such as the Carr, Ferguson, and Mendocino Complex (~~Mueller et al. (2020)~~)([Mueller et al., 2020](#)) and extended through November with the Camp (~~Mass and Ovens (2021)~~ and [and](#) Woolsey wildfires. 2019 was a relatively low activity fire year in comparison, but the Kincade wildfire ([~31 ha](#)) again impacted the wine country in Oct-Nov. The 2020 wildfire season was relatively quiet until the middle of August when widespread lightning ignited many wildfires across central and northern California, including the coastal range south of San Francisco. 2021 burned about two-thirds the acres as in 2020, but over a longer duration, starting about a month earlier in July. These different patterns and level of smoke impacts are seen in Figure 2 which shows 24-hour average ~~PM2.5~~ [PM<sub>2.5</sub>](#) concentrations from permanent and temporary monitors across the state of California and satellite imagery of the smoke and satellite hot spot detections.



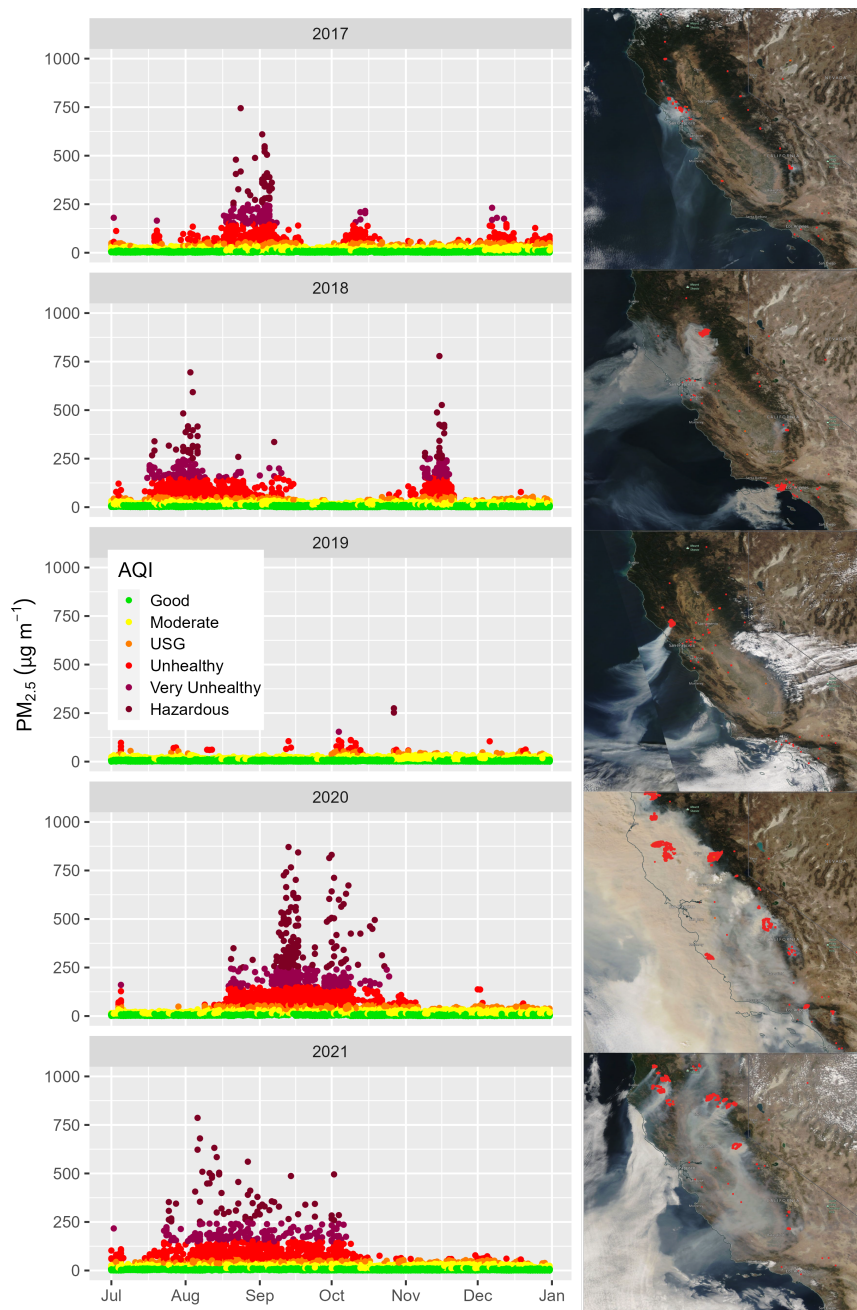
**Figure 1.** Locations of burned areas in California, 2017-2021.

**Table 1.** Modeled time periods and major ~~Northern~~ California wildfires. Annual area burned in California is from the US National Interagency Fire Center (NIFC; <https://www.nifc.gov/fire-information/statistics>)

Year	Time Period	Major <u>California</u> Fires
2017	October	Atlas, Nuns, Pocket, Redwood Valley, Tubbs
2018	July 15 - September 15; November	Carr, Mendocino, Ferguson, Camp, Woolsey
2019	October 15 - November 15	Kincade
2020	August - October	<del>August, Creek, LNU Lightning, North, SCU Lightning</del> <u>August, Apple, Creek, Dolan, Dome, LNU Light</u> <u>North, SCU Lightning, Bobcat</u>
2021	August - October	Antelope, Caldor, Dixie, Monument, River

## 2.1 Input Data Sets

Input data for rapidfire consist of ground-based monitors from three sources, aerosol optical depth from satellite instruments, and modeled meteorological and air quality data. Table 2 summarizes these data sources and the rapidfire functions used to access them and/or the location where the data can be obtained.



**Figure 2.** Temporal and area views of smoke impacts across California. Panels on the left show 24-hour  $PM_{2.5}$  concentrations from permanent and temporary monitors in California for July – November for 2017–2021. Data are color-coded by air quality index. Panels on the right show visible satellite imagery of smoke and satellite fire hot spot detections across California from NASA Worldview for October 13, 2017 during the wine country wildfires; November 9, 2018 during the Camp and Woolsey wildfires; October 27, 2019 during the Kincadee wildfire; September 9, 2020 after widespread lightning ignition of wildfires in northern and central California; and August 19, 2021 when many wildfires were burning in northern California and the Sierras.

**Table 2.** Data sources used in rapidfire and the rapidfire function to access them or the location where sample data are available.

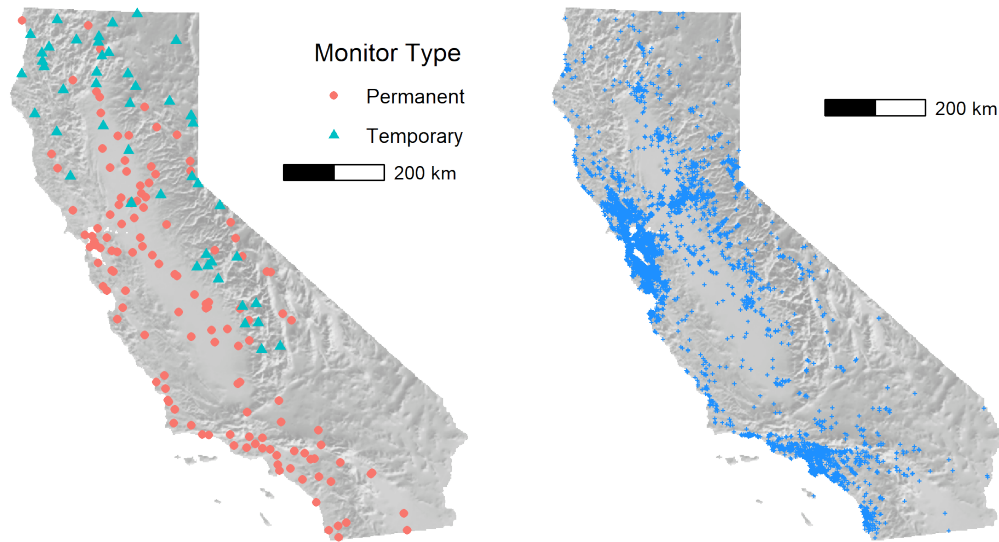
Data Source	rapidfire function or location where available	<a href="#">spatial resolution</a>
AirNow Permanent <a href="#">PM<sub>2.5</sub>-PM<sub>2.5</sub></a> Monitoring Data	rapidfire::get_airnow_daterange	<a href="#">point locations</a>
IWFAQRP Temporary <a href="#">PM<sub>2.5</sub>-PM<sub>2.5</sub></a> Monitoring Data	rapidfire::get_airstis_daterange	<a href="#">point locations</a>
PurpleAir Air Sensor Data	rapidfire::pa_sensor_history, rapidfire::openaq_get_averages	<a href="#">point locations</a>
MAIAC Aerosol Optical Depth	rapidfire::maiac_download	<a href="#">1 km</a>
Example Smoke modeling data	DOI:10.5281/zenodo.7942846	<a href="#">4 km</a>
North American Regional Analysis (NARR) Meteorology	rapidfire::get_narr	<a href="#">32 km</a>

### 2.1.1 [Permanent and Temporary Air Quality Monitoring Data](#)

Hourly PM<sub>2.5</sub> observations are available from monitoring stations across the United States via the AirNow program, which is a partnership of the U.S. Environmental Protection Agency (EPA), National Oceanic and Atmospheric Administration, National Park Service, NASA, Centers for Disease Control, and tribal, state, and local air quality agencies (<https://www.airnow.gov/>). Within California, about 117-141 monitors were operating during the study period. These permanent monitors are a mixture of federal reference method or federal equivalent method instruments; instruments of sufficient quality such that the data are used by EPA to determine attainment and non-attainment of the National Ambient Air Quality Standards (NAAQS).

During wildfires, temporary monitors are also deployed by the Interagency Wildland Fire Air Quality Response Program (IWFAQRP, ~~(Congress.gov 2019)~~ [\(Congress.gov, 2019\)](#)) and the California Air Resources Board (CARB). These monitors are Environmental Beta Attenuation Monitors (EBAM; Met One Instruments, Inc.). As discussed in [Susan M. O’Neill et al. \(2021\), laboratory \(Trent 2006\) and field \(Schweizer, Cisneros, and Shaw 2016\)](#) [O’Neill et al. \(2021\), laboratory \(Trent, 2006\) and field \(Schweizer et al., 2016\)](#) studies evaluating EBAM performance with federal reference method monitors [\(BGI Inc., PQ-200, and Met One Instruments BAM\)](#) found correlations greater than 0.9 with a tendency of the EBAM to overestimate [PM<sub>2.5</sub>](#) especially when relative humidity was greater than 40% ~~(Schweizer, Cisneros, and Shaw 2016)~~ [\(Schweizer et al., 2016\)](#). Though not as accurate as the AirNow monitors, they are deployed in regions where smoke impacts are significant and permanent monitoring is sparse or absent. The locations of permanent and temporary monitors as of September 1, 2021 are shown in Figure 3a. The permanent monitors are concentrated in the coastal and valley regions where larger populations of people are located, while temporary monitors are focused in areas of complex terrain where most wildfires and smaller communities without air quality monitoring data are located.

Hourly PM<sub>2.5</sub> concentrations from both the permanent and temporary monitors were acquired using the `rapidfire::get_airnow_daterange` and `rapidfire::get_airstis_daterange` functions. These wrap the `monitor_subset` function from the `PWFSLSmoke` R package [Mazama Science]. `rapidfire::recast_monitors` was then used to calculate daily 24-hr averages from the hourly data. At least 16 hours are required to produce an average. The daily average data from both the permanent and temporary monitors were combined into a single data set. 30% of this monitor data set was withheld for development and evaluation of the rapidfire model results. The remaining 70% were used to develop model



**Figure 3.** Map of permanent and temporary California monitor locations (left) and PurpleAir outdoor sensor locations (right); September 1, 2021.

variograms using `rapidfire::create_airnow_variograms`. These  $PM_{2.5}$  observations were then log-transformed and interpolated to estimate concentrations at locations away from the monitors using ordinary kriging (Wackernagel 1995)(Wackernagel, 1995), providing a spatially complete dataset for use in the rapidfire data fusion.

### 120 2.1.2 Low-cost Sensors

There has been a proliferation of low-cost sensors that estimate  $PM_{2.5}$  deployed by the public across the world in the last decade. We used data from the PurpleAir network, which has had grown to over 6500 outdoor sensors in California as of the end of 2021. Figure 1b shows the locations of PurpleAir sensors reporting data on September 1, 2021. Coverage in populated areas is extensive.

125 While PurpleAir estimates of  $PM_{2.5}$  concentration have been shown to be biased, and are dependent on humidity and aerosol type (Barkjohn, Gantt, and Clements 2021), (Barkjohn et al., 2021), they still correlate with  $PM_{2.5}$  observed at FEM monitors and provide invaluable spatial and temporal information that is not available with the relatively sparse network of monitors. Because these sensors are not quality controlled or validated, and their siting may be suspect, care must be taken when using them in modeling.

130 For time periods since February 2021, rapidfire acquires PurpleAir archive data using the OpenAQ application programming interface (API). OpenAQ is a non-profit data platform that aggregates air quality data from around the world (OpenAQ

2023)([OpenAQ, 2023](#)). `rapidfire::openaq_find_sites` is first run to find all sensors within a specified geographic boundary. Then, `rapidfire::openaq_get_averages` can be used to download data for those sensors over the specified time period. At the time of publication, PurpleAir data from prior to February 2021 were not available via OpenAQ. For earlier  
135 time periods, `rapidfire` queries data directly from the PurpleAir API. `rapidfire::pa_find_sensors` is used for finding all available outdoor PurpleAir sensors within a geographic bounding box. Then, `rapidfire::pa_sensor_history` can be run to acquire hourly  $PM_{2.5}$  concentration estimates from each sensor. [Note that access to historical data via the PurpleAir API now requires an API key and there is a cost for requesting larger amounts of data. There is no cost to access the data via OpenAQ.](#)

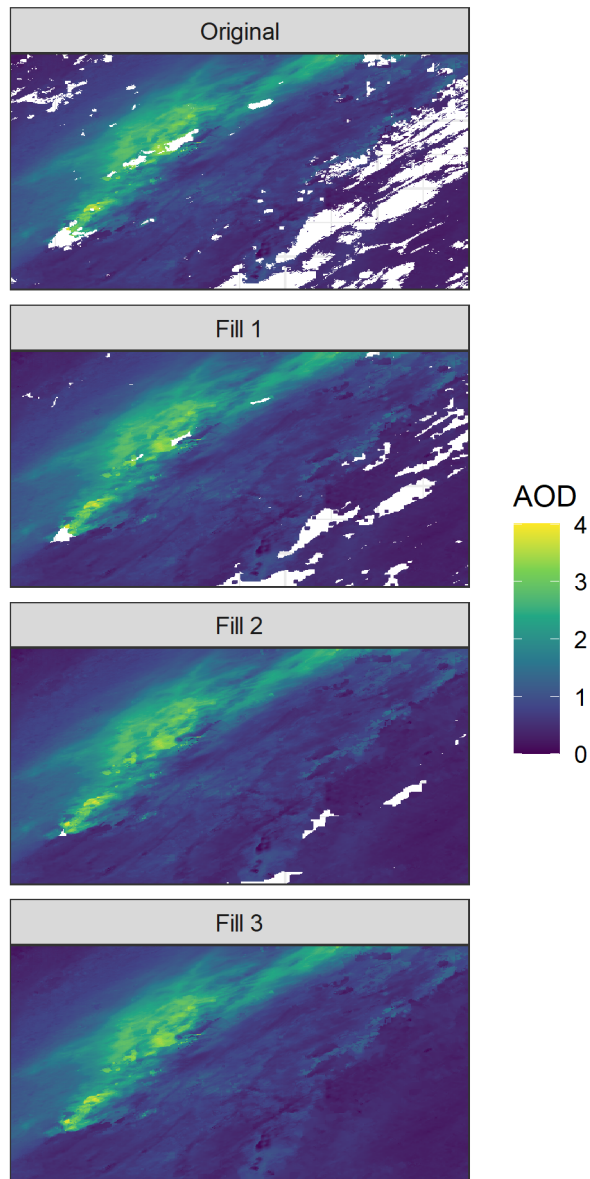
140 We employ a spatial test to remove sensors that are significantly different from their neighbors. `rapidfire::purpleair_clean_sensors`  
[clean\\_spatial\\_outliers](#) removes any sensors that are more than two standard deviations away from the median of all sites within 10km. PurpleAir estimates used in data fusion were log-transformed and then interpolated using ordinary kriging. [While it is common to apply a correction to PurpleAir data to better correlate with  \$PM\_{2.5}\$  from standard monitors, we elected not to do so. The data fusion model described below incorporates relative humidity and other meteorological parameters and is, in essence, applying a correction specific to the region and time period of the modeling domain.](#)  
145

### 2.1.3 [Satellite Aerosol Optical Depth](#)

Satellite aerosol optical depth (AOD) is a measure of the total columnar aerosol light extinction from the satellite sensor to the ground. AOD is indirectly related to  $PM_{2.5}$ , with the relationship depending on aerosol type, humidity, and aerosol vertical profile ([J. Li, Carlson, and Laciš 2015](#)). ([Li et al., 2015](#)). We used AOD from the Multi-Angle Implementation of Atmospheric  
150 Correction (MAIAC) project ([Lyapustin et al. 2011](#)). ([Lyapustin et al., 2011](#)). MAIAC is an advanced algorithm that uses time series analysis and additional processing to improve aerosol retrievals, atmospheric correction, and, importantly, cloud detection from the MODerate-resolution Imaging Spectroradiometers (MODIS) onboard NASA's Terra and Aqua satellites. Past work has shown that thick smoke is often mistaken for clouds in the standard MODIS algorithms ([van Donkelaar et al. 2011](#))([van Donkelaar et al., 2011](#)), which hampers their use in wildfire conditions. [The MAIAC algorithm reduces those errors.](#)  
155

The `rapidfire::maiac_download` function can be used to acquire the 1-km daily atmosphere product (MCD19A2) which contains AOD. Clouds prevent the retrieval of AOD, and there are sometimes clouds present even in the hot, dry conditions during California wildfires. The data fusion algorithm requires a complete data set, so a placeholder value must be used to gap-fill in locations under clouds. Previous work has used model-simulated AOD, along with meteorological variables  
160 in a data fusion approach to gap-fill satellite-observed AOD ([Zou et al. 2019](#)). ([Zou et al., 2019](#)). For this work, where clouds cover less of the domain, we took a simpler approach. Missing AOD values were filled using a three-stage focal average, available in `rapidfire::maiac_fill_gaps_complete`, and illustrated in Figure 4. In the first stage, a focal mean of a 5-by-5 pixel square (5 km) is used. In the second stage, the window is increased to 9-by-9 and to 25-by-25 in the final stage. Any values that are still missing after the final stage are filled with the median value for the entire scene.





**Figure 4.** Illustration of MAIAC AOD gap filling [showing the original scene and results of three sequential focal mean imputations \(denoted Fill 1, Fill 2, Fill 3\)](#)

#### 165 2.1.4 [Smoke Modeling](#)

Air quality models provide near-surface estimates of  $PM_{2.5}$  on an output grid. We processed daily average  $PM_{2.5}$  concentration values acquired from the BlueSky smoke prediction system (~~Larkin et al., 2009~~) ([Larkin et al., 2009](#)) developed by the USDA

Forest Service (USFS) which first became operational in 2002 and has undergone significant development in recent years. The USFS runs over 30 simulations a day predicting near-surface 1-hr average PM<sub>2.5</sub> concentrations from wildland fire across the US at a variety of spatial extents and resolutions using the HYSPLIT dispersion model (~~Stein et al. 2015~~), ([Stein et al., 2015](#)). For this work we extracted BlueSky data from the California and Nevada Smoke and Air Committee (CANSAC; <https://cansac.dri.edu/>) domain that encompass California and Nevada for the months of July-November, years 2017-2021. In 2018 and 2019 the domain was at a 2-km resolution, and for 2019-2021 the domain was at a 1.33-km resolution. On some days, the model did not run successfully. For those days, data were backfilled by using the second or third day of a previous day's 72-hr model run. We chose this air quality dataset because it is available operationally, is of a high spatial resolution, and is focused specifically on modeling smoke aerosols from wildland fires; however, other air quality modeling could be substituted.

Smoke prediction systems need to make many more assumptions than retrospective analyses and these assumptions, such as vegetation type and fuel loading, fire size and behavior, persistence of fire activity into the future, and using a meteorological forecast all have considerable implications for the quantity of emissions released from fires, and how those emissions transport and undergo chemical reactions in the atmosphere (~~Larkin et al. (2012)~~), ([O'Neill et al., 2022](#), [Kennedy et al. \(2020\)](#), [Larkin et al. \(2012\)](#)). These assumptions and associated uncertainties can result in orders of magnitude spread in the estimated downwind PM<sub>2.5</sub> concentrations (~~Y. Li et al. 2020~~), ([PM<sub>2.5</sub> concentrations \(Li et al., 2020\)](#)). Despite these issues, these systems are useful in providing information about potential smoke impacts (~~Lahm and Larkin 2020~~), ([Lahm and Larkin, 2020](#)), and the data are more available and can provide the underlying consistent dataset necessary to represent near-surface PM<sub>2.5</sub> concentrations for successful applications of machine learning and health impact analyses. Further, retrospective studies are not routinely available for long-term time periods (5-10 years or more) and maturing air quality forecasting systems when coupled with machine learning approaches such as provided here can provide the consistent high-quality datasets needed for health impact analyses.

### 2.1.5 [Meteorology](#)

Meteorological conditions can help explain the relationships between our inputs and observed PM<sub>2.5</sub>. For example, the PurpleAir sensor is sensitive to relative humidity. AOD is sensitive to humidity and planetary boundary layer height. Following ~~Zou et al. (2019)~~, ([Zou et al. \(2019\)](#)), we included several meteorological variables in our model, including daily average temperature, winds, humidity, boundary layer height, and daily rainfall. These variables were acquired from the North American Regional Reanalysis (NARR) data set (~~Mesinger et al. 2006~~), ([Mesinger et al., 2006](#)).

## 195 2.2 [Data Fusion](#)

We developed event specific models using random forests regression (RF). RF is a technique that uses a large number of randomly generated regression trees (~~Breiman 2001~~), ([Breiman, 2001](#)). Each tree is constructed using a random subset of the training data and each node uses a random subset of the potential predictive variables. New values are estimated as the mean prediction of the individual trees. For each RF run, 500 trees were grown. A single tuning parameter, the number of variables

200 selected at each node (`mtry`), was varied between 2 and 5. The model was trained using 10-fold cross-validation, withholding 30% of the monitoring data for tuning. Internally, `rapidfire::develop_model` uses the `randomForest` R package.

For the final model, 10 predictor variables were used (Table 3).  $PM_{2.5}$  from the monitors was used as both a predictor and a target variable. ~~A random subset of 30% of the monitoring data was withheld for model validation.~~ Given a list of locations and dates, the final result from `rapidfire::predict_locs` is a table with the 10 input variables plus the resulting modeled  $PM_{2.5}$  for each location and date.

**Table 3.** Predictor variables used in the rapidfire RF model.

Variable	Name	Description	Units
PM25_log_ANK	Monitors	Log-transformed, interpolated $PM_{2.5}$ from permanent and temporary monitors	$\mu g m^{-3}$
PM25_log_PAK	PurpleAir	Log-transformed, interpolated $PM_{2.5}$ estimates from PurpleAir sensors	$\mu g m^{-3}$
PM25_bluesky	BlueSky	Daily average ground-level $PM_{2.5}$ predictions from BlueSky smoke model	$\mu g m^{-3}$
MAIAC_AOD	AOD	Gap-filled daily AOD from MAIAC	unitless
air.2m	Temperature	Daily average ambient temperature at 2m above ground level from NARR	$K$
uwnd.10m	Wind u	Daily average u component of wind at 10m above ground level from NARR	$m s^{-1}$
vwnd.10m	Wind v	Daily average v component of wind at 10m above ground level from NARR	$m s^{-1}$
rhum.2m	Humidity	Daily average relative humidity at 2m above ground level from NARR	%
apcp	Precipitation	Daily total precipitation amount from NARR	$cm$
hpbl	PBL Height	Daily average height of the planetary boundary layer from NARR	$m$

### 3 Results and Discussion

#### 3.1 Model Evaluation and Comparison with Measurements

To demonstrate the performance of the rapidfire system we developed models for five large wildfire smoke events from 2017-2021 in Northern California (Table 1) ~~and evaluated the modeling against two data sets of  $PM_{2.5}$  observations, 1)~~. Six quantitative analysis metrics are used to evaluate model performance (Table 4). The model was assessed in two ways. First, a 10-fold cross-validation was performed on the permanent and temporary hourly monitors described above, and monitors. For each fold, 10% of the monitoring data was withheld prior to interpolation. For this analysis, we also developed models with three simpler methods: 1) ordinary kriging (OK) interpolation of AirNow monitors, 2) OK interpolation of PurpleAir sensors, and 3) multiple linear regression (MLR) using the same inputs as those used for the rapidfire modeling.

215 Second, rapidfire predictions using the full data set were compared against 24-hr filter-based measurements from the Interagency Monitoring of PROtected Visual Environments (IMPROVE) network and Chemical Speciation Network (CSN).

~~Six quantitative analysis metrics are used to evaluate model performance (Table 4).~~

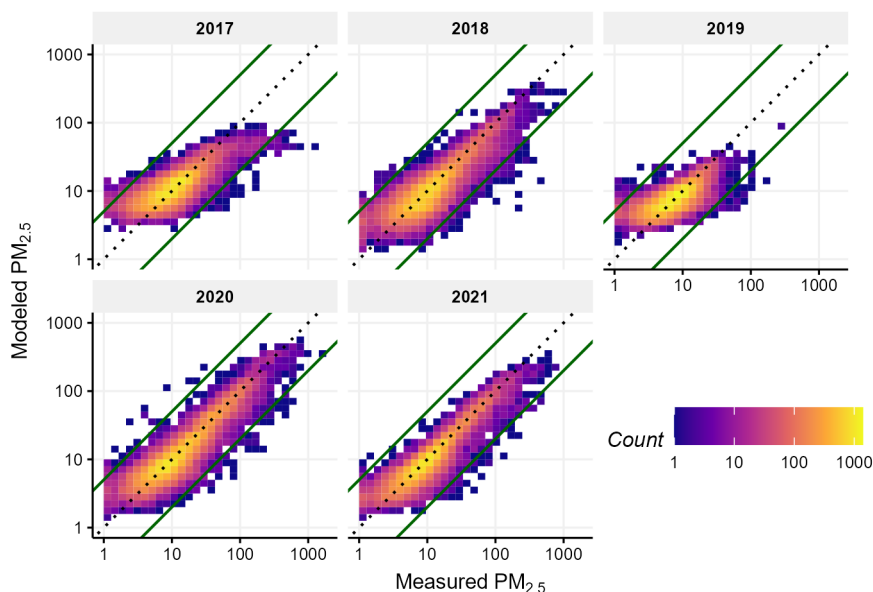
~~Model predicted  $PM_{2.5}$  values were compared against withheld measurements from the permanent and temporary monitoring networks using rapidfire and three other modeling techniques. The cross-validation results for rapidfire are shown in Figure 5.~~

**Table 4.** Definitions of quantitative analysis metrics.

Metric	Equation
$r^2$	$\frac{\sum_i (\hat{Y}_i - \bar{Y})^2}{\sum_i (Y_i - \bar{Y})^2}$
Root Mean Square Error (RMSE)	$\sqrt{1 - r^2} SD_Y$
Median Bias	$med(\hat{Y}_i - Y_i)$
Normalized Bias (%)	$100 * med\left(\frac{\hat{Y}_i - Y_i}{Y_i}\right)$
Median Error	$med\left(\frac{\hat{Y}_i - Y_i}{Y_i}\right)$
Normalized Error (%)	$100 * med(abs\left(\frac{\hat{Y}_i - Y_i}{Y_i}\right))$

220 ~~The vast majority of results are on along the~~ 1) ordinary kriging (OK) interpolation of AirNow monitors, 2) OK interpolation  
of PurpleAir sensors, and 3) multiple linear regression (MLR) using the same inputs as those used for the rapidfire modeling.  
California is a state with a relatively greater number of surface air quality monitors than many other states in the western  
US. Thus we wanted to investigate the performance of rapidfire data fusion results together with the simpler OK and MLR  
models. Comparative model performance metrics are presented: 1 line. There is a large dynamic range, with concentrations  
225 ranging from less than 1 to over 1,000 micrograms per meter cubed. The model overestimates at the lowest concentrations and  
sometimes underestimates the highest concentrations, especially in 2017. The relative paucity of low-cost sensors in 2017 may  
have contributed to poorer performance in that year.  
Model performance statistics for the cross-validation using the four methods are shown in Table 5. For these wildfire events,  
rapidfire provides good correlation with low error and bias, offering advantages-improvement over classical MLR or interpolation  
230 of the ground monitors alone. The high density of monitors in this region helps the interpolation approaches perform well; all  
of the methods are available within the rapidfire package. These results are similar to results from recent data fusion studies.  
~~Cleland et al. (2020)~~ Cleland et al. (2020) applied bias correction and data fusion methods to estimate PM2.5-PM<sub>2.5</sub> impacts  
during the 2017 wine country wildfires with a resulting correlation of 0.71. They found that temporary monitors in the more  
rural areas were critical at improving results. Similarly, ~~Zou et al. (2019)~~ Zou et al. (2019) applied several machine learning  
235 approaches including random forest, to improve PM2.5-PM<sub>2.5</sub> estimates across the Pacific Northwest (PNW) Aug-Sept 2017,  
with correlations ranging from 0.45 to 0.59. Note that the PNW region is much more sparsely populated with monitors than  
California.

Complete rapidfire results were also compared with available observations from the ~~AirNow~~, IMPROVE, and CSN networks.  
Both IMPROVE and CSN collect 24-hr integrated filter-based measurements of speciated particulate matter every third day  
240 ~~(Solomon et al. 2014)~~. (Solomon et al., 2014). IMPROVE PM<sub>2.5</sub> mass is determined gravimetrically. CSN no longer performs  
gravimetric mass analysis, but PM<sub>2.5</sub> is estimated by reconstructing total mass from the major components of PM<sub>2.5</sub>: ammonium  
sulfate, ammonium nitrate, soil, organic matter, elemental carbon, and sea salt.



**Figure 5.** [Cross-validation results by year against measured  \$PM\_{2.5}\$  from AirNow monitors.](#)

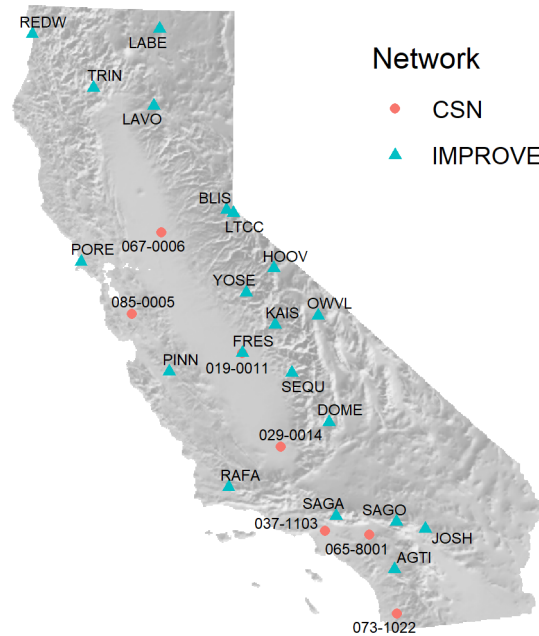
**Table 5.** Performance metrics for four modeling methods

Model	$R^2$	RMSE	Median Bias	Normalized Bias	Median Error	Normalized Error
rapidfire	<a href="#">0.74-0.87</a>	<a href="#">21.5-16.1</a>	<a href="#">0.083-0.08</a>	<a href="#">0.76-0.76</a>	<a href="#">2.13-0.008</a>	<a href="#">18.6-18.0</a>
MLR	<a href="#">0.68-0.84</a>	<a href="#">23.8-17.6</a>	<a href="#">0.056-0.01</a>	<a href="#">0.49-0.11</a>	<a href="#">2.59-0.001</a>	22.6
AirNow OK	<a href="#">0.63-0.80</a>	<a href="#">25.7-19.5</a>	<a href="#">0.133-0.03</a>	<a href="#">1.22-0.26</a>	<a href="#">2.63-0.002</a>	<a href="#">23.0-23.4</a>
PurpleAir OK	<a href="#">0.38-0.80</a>	<a href="#">33.3-19.4</a>	<a href="#">-0.095-1.69</a>	<a href="#">-1.04-15.2</a>	<a href="#">3.75-0.152</a>	<a href="#">32.8-41.1</a>

The comparison of AirNow data is shown in Figure 5. The vast majority of results are on along the 1:1 line. Concentrations for 2018, 2020, and 2021 reach into the hundreds of micrograms per meter-cubed, while concentrations in 2017 and 2019 are relatively lower. The model overestimates at the lowest concentrations and slightly underestimates the highest concentrations.

Figure 6 shows the CSN and IMPROVE monitor locations along with the identifiers used in this study. The rapidfire modeling shows excellent agreement with individual CSN and IMPROVE monitors as shown in Figure 7 and Table 6. This is somewhat surprising, as they represent a challenging test of the method. The 24-hr filter data are 100% independent of the model inputs and, for IMPROVE especially, located far from other monitors in remote locations with complex terrain. Downsides of using these data are that the networks are sparser, sampling is only every third day, and the days with the highest concentrations are

Model comparison against measured PM<sub>2.5</sub> from AirNow monitors.



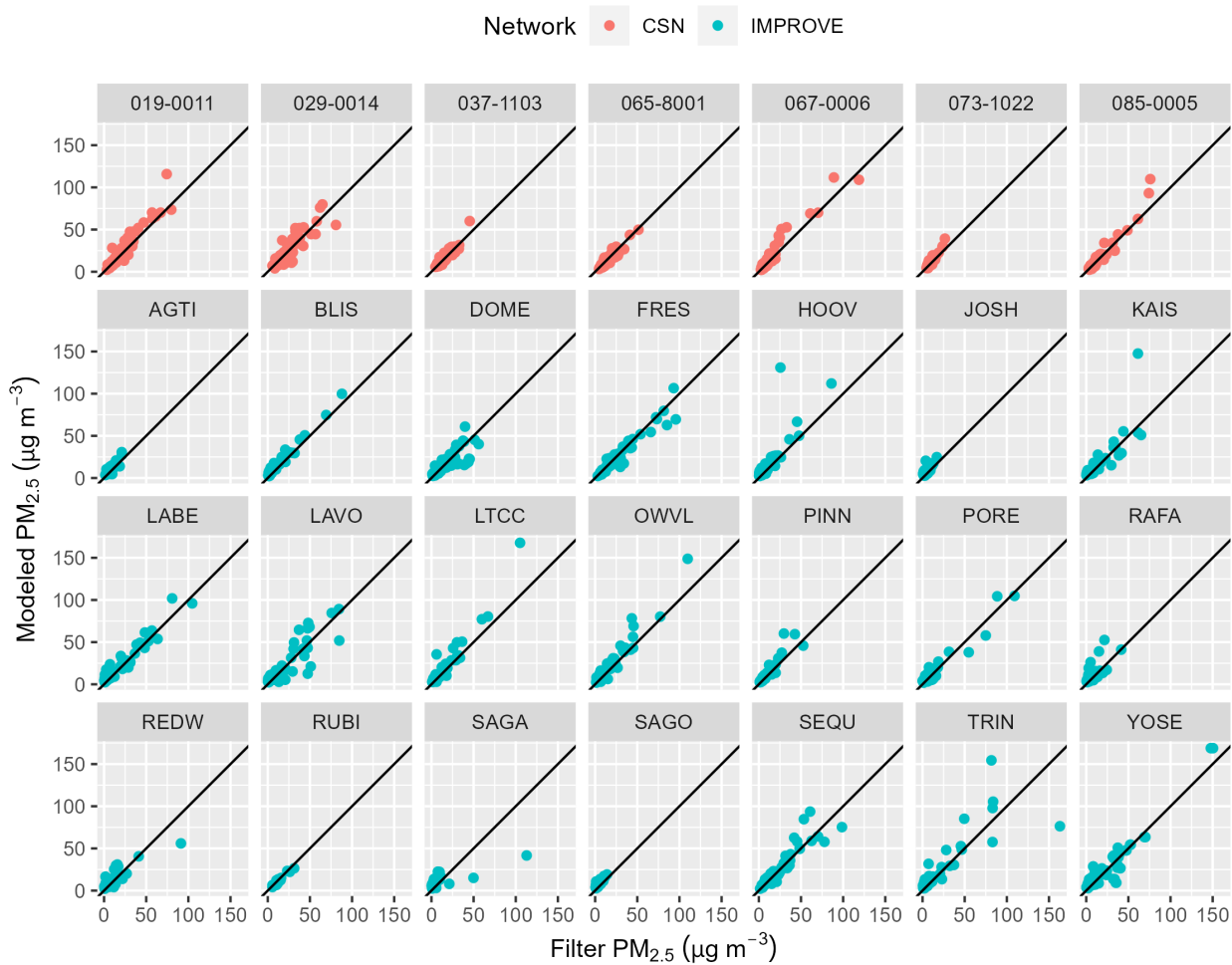
**Figure 6.** Map of CSN and IMPROVE monitoring stations used to validate model results.

often not available as the IMPROVE sampler can clog. However, the lower dynamic range of the data helps to explain the lower RMSE compared to the cross-validation analysis above. Because the IMPROVE sampler clogs in very heavy smoke situations, the highest concentrations in this data set are less than  $200 \mu\text{g m}^{-3}$ . The network is also relatively sparse and sampling is only every third day.

255 The summary of results for the three monitoring network comparisons is shown in Table 6. As expected, AirNow performance statistics are very good, as these data were partially included in the model development. While CSN data were not used in developing the model, the monitors are located in urban areas where they are close to the AirNow and PurpleAir monitors that were used in rapidfire. IMPROVE still shows good agreement, despite being far from observations used in the data fusions.

**Table 6.** Performance metrics for rapidfire at AirNow, IMPROVE, and CSN sites

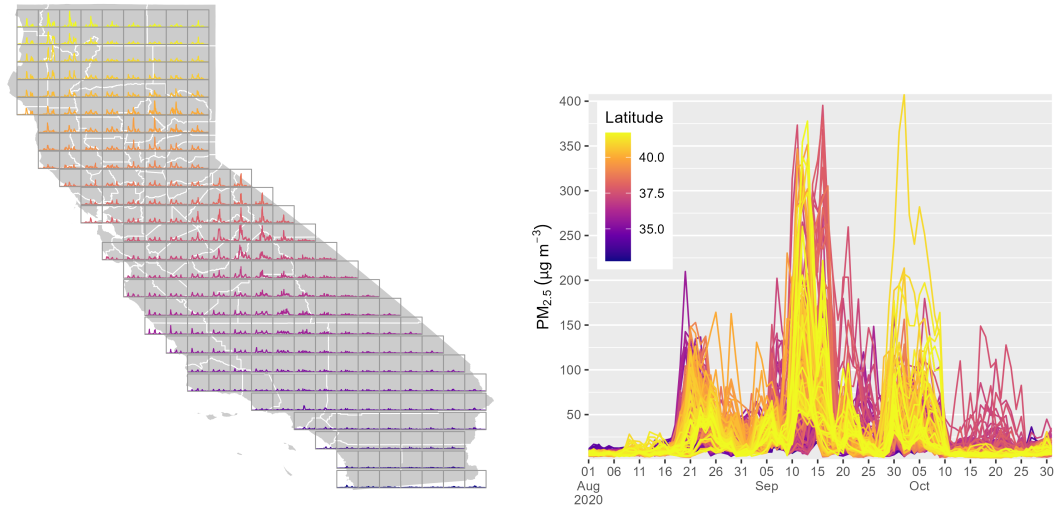
Network	R <sup>2</sup>	RMSE	Median Bias	Normalized Bias	Median Error	Normalized Error
AirNow-0.90-6.80-0.09-0.99-0.01-18.5-CSN	0.87	5.18	0.42	3.93	1.96	15.3
IMPROVE	0.81	8.47	2.48	46.5	3.19	49.6



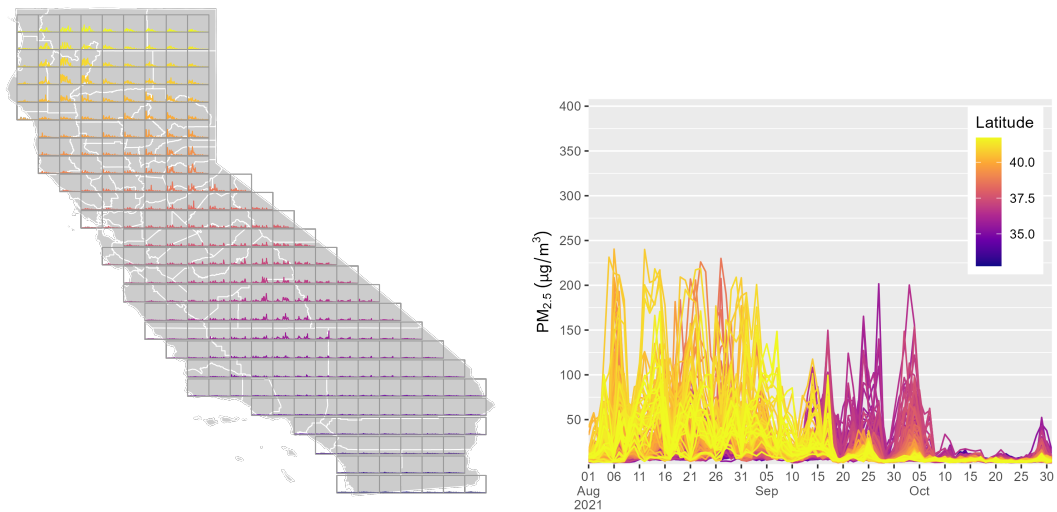
**Figure 7.** Model comparison against measured  $PM_{2.5}$  at IMPROVE and CSN monitors

### 3.2 Characterizing rapidfire results across California

260 The results are plotted across California for two wildfire seasons: August - October, 2020 (Figure 8) and August - October, 2021  
 (Figure 9). In each case, daily average  $PM_{2.5}$  reaches values greater than  $200 \mu g m^{-3}$ , with very strong spatial and temporal  
 variability. The 2020 case shows three widespread peaks, in August, September, and October. In the 2021 case, concentrations  
 were highest in northern locations in August, while values were higher further south in September and early October. These  
 two cases highlight the complexity of these smoke events, which are controlled by multiple wildfires burning in and around the  
 265 state simultaneously.



**Figure 8.** rapidfire  $PM_{2.5}$  estimates for August - October, 2020. Each box on the map shows the time series for a point at the centroid of the box and the larger plot shows all of those time series' overlaid.



**Figure 9.** rapidfire  $PM_{2.5}$  estimates for August - October, 2021. Each box on the map shows the time series for a point at the centroid of the box and the larger plot shows all of those time series' overlaid.



### 3.3 Excess mortality

As a demonstration of the utility of the rapidfire system, we adapted the methods of [\(Johnston et al. 2012\)](#) [\(Johnston et al., 2012\)](#) to estimate statewide mortality attributable to excess  $PM_{2.5}$  during the wildfire seasons of 2017-2021. Excess mortality was estimated daily at the census tract level as:

$$270 \text{ Mortality attributable to } PM_{2.5} \text{ exposure} = \sum_{d=1}^n P \times M \times (PM_{2.5,d} - \underline{15} \underline{PM_{2.5,b}}) \times RR_{SI} \quad (1)$$

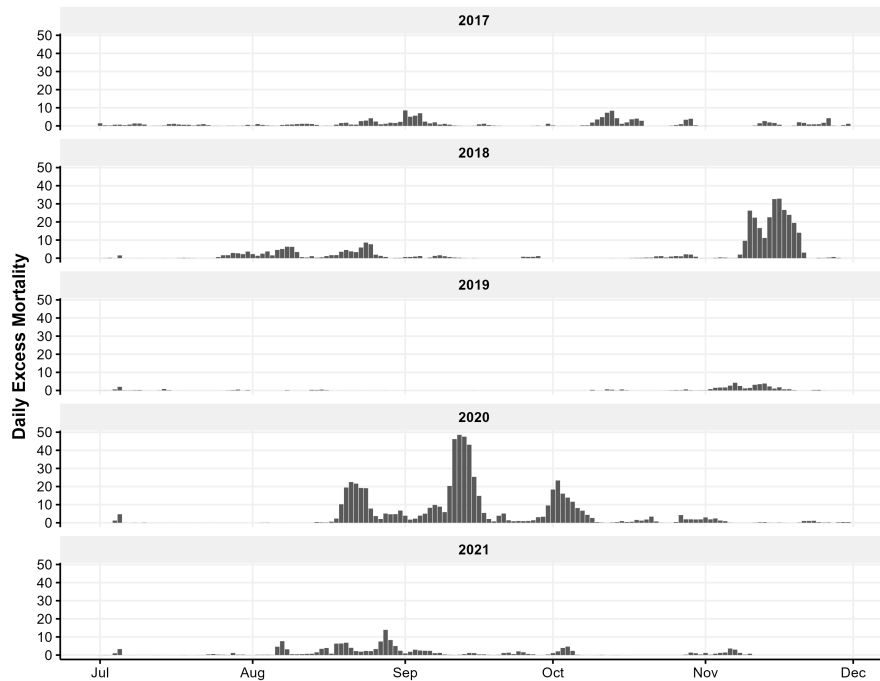
where  $PM_{2.5,d}$  is daily average  $PM_{2.5}$  concentration predicted by rapidfire at census tract centroids, with minimum and maximum values of 15 and 200  $\mu\text{g m}^{-3}$ . Much of California has a relatively high baseline average  $PM_{2.5}$  concentration during non-fire conditions. ~~The minimum value of 15 was chosen to isolate the impacts of wildfire smoke on mortality, conservatively above typical daily mean  $PM_{2.5}$  concentrations~~ We developed a conservative non-fire baseline  $PM_{2.5,b}$  concentration value by  
275 taking three lower fire activity years (2016, 2019, and 2022) and calculating the 90th percentile of daily  $PM_{2.5}$  by month an county based on AirNow monitors. Predictions were capped at 200  $\mu\text{g m}^{-3}$ , as the  $PM_{2.5}$  dose-response curve flattens at higher exposures [\(Pope III et al. 2011\)](#) [\(Pope III et al., 2011\)](#).  $M$  is the county-level, daily average mortality rate, which was acquired from the Centers for Disease Control's WONDER database [\(CDC 2023\)](#) [\(CDC, 2023\)](#), for the year 2016 (a recent, low-fire year).  $P$  is the census tract population from the 2020 Census [\(Census 2021\)](#) [\(Census, 2021\)](#).  $RR_{SI}$  is the relative risk function  
280 for multiple-cause mortality due to short-term  $PM_{PM_{2.5},2.5}$  exposure. The value of  $RR_{SI}$  was 0.11% per 1  $\mu\text{g m}^{-3}$  increase in  $PM_{2.5}$  concentration [\(Johnston et al. 2012\)](#) [\(Johnston et al., 2012\)](#).

Figure 10 shows the California-wide daily excess mortality calculated from the increment of  $PM_{2.5}$  concentrations above  ~~$15 \mu\text{g m}^{-3}$~~   $PM_{2.5,b}$ . The most significant impacts are seen in 2018 and 2020. In November 2018, the Camp wildfire produced massive  $PM_{2.5}$  emissions that transported throughout the Sacramento and San Joaquin Valleys and persisted under stagnant  
285 weather conditions. The nearly two-week period of high concentrations across a broad region of relatively high population density led to an estimated 266 excess deaths. The historic 2020 fire season was even more dramatic. Beginning in August, smoke from fires burning around the state contributed to an estimated 615 excess deaths across a three-month period. Incorporating the error in the rapidfire predictions, the range of excess deaths is 209-339 in the November 2018 period and 457-1072 in the 2020 three-month period. The spatial distribution of excess mortality for 2020 is shown in Figure 11. Impacts are shown  
290 by census tract. Though census tracts vary greatly in size, they have similar populations, with a minimum of 1,200 and and maximum of 8,000. Elevated excess mortality was widespread in the northern half of the state, especially away from the coast.

## 4 Discussion

### 4.1 Model input importance

Although the random forest model uses all of the provided predictor variables, the most explanatory variables are selected more  
295 often at each node. The relative importance of each variable can be visualized by calculating SHapley Additive exPlanations

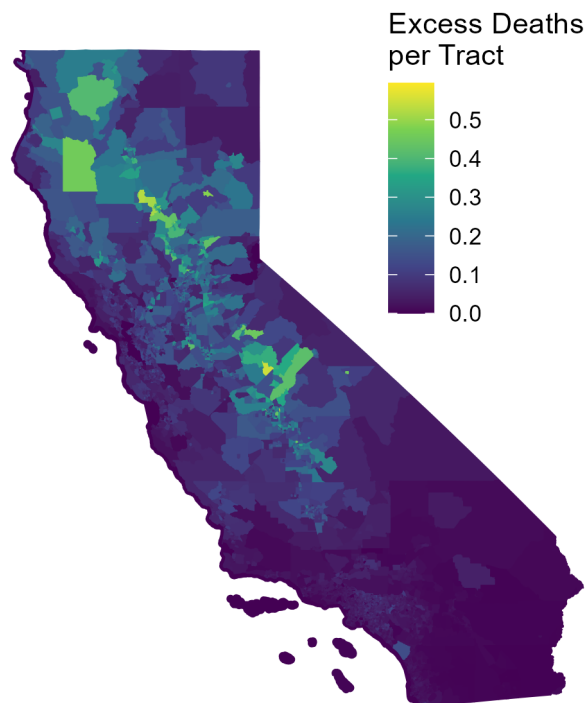


**Figure 10.** California-wide estimated daily excess mortality from  $PM_{2.5}$  concentrations above  $15\mu g m^{-3}$  for the period July-November, 2017-2021.

(SHAP) (Lundberg and Lee 2017)(Lundberg and Lee, 2017). SHAP quantifies the contribution of each predictor variable to the final model prediction. Figure 12 shows input values plotted versus SHAP for November 1-10, 2018. A single prediction, for CSN site 107-1001 on November 10, 2018, is highlighted. The SHAP values show the contributions to the final predicted concentration value from each of the model inputs. The individual component features of the model behave as expected from atmospheric dynamics. In the highlighted case,  $PM_{2.5}$  was high in the permanent and temporary monitors (Monitors), the sensor network (PurpleAir), and the smoke model (BlueSky). AOD was also elevated. By contrast, the planetary boundary layer (PBL Height) was low, as were wind speeds, humidity, and precipitation. Air temperature was moderate. The magnitude of the SHAP values in Figure 12 quantify the relative importance of the different inputs. The ground-base networks, both official monitoring and low-cost sensors are the most important variables in the model, followed by the BlueSky smoke model, planetary boundary height, and AOD. The remaining meteorological variables have a small, but coherent impact.

#### 4.2 Application for health studies

The rapidfire modeling has been applied, and is being applied, in several epidemiological studies. The ability to produce wildfire-associated  $PM_{2.5}$  measures in a timely manner (about one month post event) allows time-critical planning and implementation for epidemiological studies. For example, when each of the recent large wildfires produced smoke plumes that covered

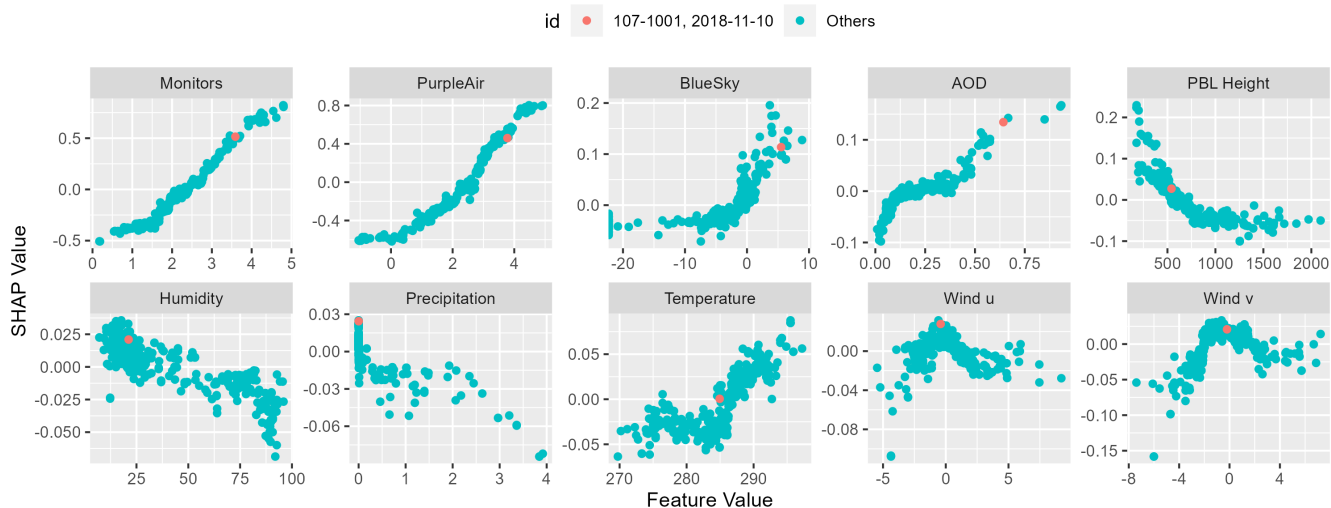


**Figure 11.** July-November 2020 excess mortality by census tract from  $PM_{2.5}$  concentrations above  $15\mu g m^{-3}$

310 urban areas of Northern California, the rapidfire modeling was used to determine the time periods and geographical areas where populations were most impacted by wildfire smoke. This information was used in two local studies, the Bio-Specimen Assessment of Fire Effects (B-SAFE) wildfire pregnancy cohort study and the WHAT-Now CA wildfire cohort study, to recruit participants from highly-affected areas to collect information and biological specimens to analyze later for wildfire-associated compounds and biologic responses as indicators of potential for downstream health impacts. Both studies also related the wildfire-associated  $PM_{2.5}$  from rapidfire modeling to reported symptoms and health outcomes of the cohort participants. In B-SAFE, the timing and concentrations of  $PM_{2.5}$  are being linked to birth outcomes of the children gestationally exposed to wildfires for the initial study, and in follow-up studies on respiratory, developmental, and other child conditions. Specimens collected in B-SAFE for those with higher versus lower modeled wildfire-associated  $PM_{2.5}$  are also being compared across various measures (e.g., metals, contaminants, cytokines) to better understand differences by degree of exposure. In WHAT-Now CA,  $PM_{2.5}$  is being examined in association with respiratory outcomes. Both studies are planning to follow these exposed cohorts forward to examine later health outcomes.

320

Other local studies, including existing cohorts not focused on wildfire exposure, like the MARBLES (Markers of Autism Risk in Babies: Learning Early Signs) pregnancy cohort study of younger siblings of children with autism ([Hertz-Picciotto et al. 2018](#)) ([Hertz-Picciotto et al., 2018](#)), also used the rapidfire modeling in order to identify mothers and infants exposed to wildfire



**Figure 12.** SHAP dependence plot at CSN and IMPROVE sites for November 1-10, 2018. Units for feature values depend on the variable and are listed in Table 3. BlueSky data were log-transformed in this plot for clarity.

325 smoke while pregnant and examine specimens being collected as part of the protocol for differences. Further, outcomes of these children, who are at higher risk of autism and other neurodevelopmental conditions, will be compared across those wildfire-exposed and unexposed.

Rapidfire modeling will be used to determine the time periods and geographical areas where populations were and will be most impacted by future wildfire smoke events for other statewide air pollution studies, including one funded by the EPA  
 330 (EPA STAR 84048401) that will link air pollution measures, including wildfire-specific air pollution, to birth outcomes and neurodevelopmental disorders, and work with the most affected communities to distribute education, materials, and tools for mitigating exposures.

### 4.3 Advantages over existing methods

There are many methods to produce spatially-resolved estimates of PM<sub>2.5</sub> for use in exposure studies. The advantages of  
 335 rapidfire include reliance on only off-the-shelf inputs with low latency, inclusion of data sets that provide improvements for wildland fire smoke, and an extensible framework with an open code base. If a new smoke event occurred, all inputs would be accessible and PM<sub>2.5</sub> modeling could be completed within one month. At present, only the NARR meteorological data is not available in near-real-time. In future work, this could be replaced by a daily operational model and the rapidfire predictions could be produced one day after an event. The addition of a low-cost sensor network has also significantly improved resulting  
 340 predictions. The rapidfire algorithm and code base has been designed to be modular so new inputs can be included as they become available. For example, the MAIAC AOD may become unavailable as the MODIS instrument reaches end of life. A new function could be added to deal with AOD from another data source.

#### 4.4 Limitations and future directions

345 The rapidfire modeling approach has some limitations. The model requires high-quality training data to produce a high-quality result. In areas without accurate PM<sub>2.5</sub> measurements at point locations within the modeling domain, there is no way to create a reliable regression, though this is true for all statistical air quality models. In this study, the monitors from the AirNow network served that purpose. However, AirNow is only present in the US, and the current rapidfire functions require data sets that are not all globally available. These data sets could be replaced by others to cover a specific region, and new handling functions could be added to rapidfire to support those data sets as needed.

350 The rapidfire methods are designed with wildfire smoke events in mind. They are best suited for regional-scale modeling at spatial resolutions of 1-km or larger. This is appropriate for smoke events, which are driven by a regional source that impacts a broad swath. rapidfire would be less suitable for modeling exposure to PM<sub>2.5</sub> from emission sources at very fine spatial scales, such as near-road emissions. Also, rapidfire is currently limited to estimates of total PM<sub>2.5</sub> only. Estimates of PM<sub>2.5</sub> composition, or specific wildfire contribution, are not supported with the currently available inputs, though this is an area of  
355 future work.

The random forests regression method has historically been seen as a black box, with potential for good prediction, but limited ability to provide insight into the drivers of the model prediction and the underlying physical phenomena. However, the advent of new metrics for explaining machine learning models, such as SHAP, makes these models more useful and transparent.

360 Several improvements could be made to enhance the algorithm and potentially improve performance. The recently released collection 6.1 of MAIAC AOD provides better spatial coverage and more accurate results in conditions of heavy smoke compared to collection 6.0 (Ye et al., 2022). The relatively simplistic gap-filling approach applied to AOD should be reviewed, especially for use in cloudier conditions. Additional transport models with modern fire emissions processing and broad coverage, such as HRRR-Smoke (<https://rapidrefresh.noaa.gov/hrrr/HRRRsmoke/>) could be tested. Other machine learning algorithms such as eXtreme Gradient Boosting (XGBoost) should be explored.

#### 365 **5 Conclusions**

The rapidfire R package was developed to model relatively accurate particulate information derived from inputs retrieved easily. It incorporates off-the-shelf data sets that are produced operationally and with low latency (< 1 month) within a machine learning framework. rapidfire takes advantage of the recent burgeoning of low-costs sensors around the world, in addition to traditional air pollution data sources such as ground-based monitoring networks and satellite-derived aerosol products.

370 The rapidfire code is available for use and contribution at <https://github.com/raffscallion/rapidfire>. We demonstrated rapidfire modeling for five recent wildfire seasons in California and validated results against fully independent filter-based measurements of PM<sub>2.5</sub>. rapidfire showed excellent performance, predicting PM<sub>2.5</sub> under heavy smoke with high accuracy, even at remote and elevated sites. An example calculation of conservative excess mortality from high PM<sub>2.5</sub> exposure in California showed large impacts, including an estimated 615 excess deaths in California over a three month period of intense wildfire smoke in 2020.  
375 rapidfire PM<sub>2.5</sub> estimates are currently being used in several health effects studies in California. In the future, we hope to

expand the methods to include data sets that are of even lower latency. At present, the input that becomes available the slowest is the NARR meteorology, which is available at the end of each month. There are several candidate meteorological data sources that are available daily, which would allow for next-day estimates of PM<sub>2.5</sub>. These low-latency estimates would be useful for rapid deployment, recruitment, and sample collection in epidemiologic studies.

380 ~~preAbdo, Mona, Isabella Ward, Katelyn O'Dell, Bonne Ford, Jeffrey R Pierce, Emily V Fischer, and James L Crooks. 2019. "Impact of Wildfire Smoke on Adverse Pregnancy Outcomes in Colorado, 2007–2015." *International Journal of Environmental Research and Public Health* 16 (19): 3720.~~

. The current version of rapidfire is available from the project website: <https://github.com/raffscallion/rapidfire> under the licence GPLv3. The exact version of the model used to produce the results used in this paper (v0.1.3) is archived on Zenodo (DOI: 10.5281/zenodo.7888562), as  
385 are input data and scripts to run the model and produce the plots for all the simulations presented in this paper (DOI: 10.5281/zenodo.7942846).

~~preAguilera, Rosana, Thomas Corringham, Alexander Gershunov, and Tarik Benmarhnia. 2021. "Wildfire Smoke Impacts Respiratory Health More Than Fine Particles from Other Sources: Observational Evidence from Southern California." *Nature Communications* 12 (1): 1493.~~

~~preAguilera, Rosana, Thomas Corringham, Alexander Gershunov, Sydney Leibel, and Tarik Benmarhnia. 2021. "Fine  
390 Particles in Wildfire Smoke and Pediatric Respiratory Health in California." *Pediatrics* 147 (4).~~

~~preAl-Hamdan, Mohammad Z., William L. Crosson, Sigrid A. Economou, Maurice G. Estes Jr, Sue M. Estes, Sarah N. Hemmings, Shia T. Kent, et al. 2014. "Environmental Public Health Applications Using Remotely Sensed Data." *Geocarto International* 29 (1): 85–98.~~

. Sean Raffuse wrote the rapidfire package, performed analysis, and wrote the manuscript. Susan O'Neill provided BlueSky data, contributed  
395 text and editing to the manuscript, and advised throughout. Rebecca Schmidt led the studies that used rapidfire and contributed text to the manuscript.

~~preBarkjohn, K. K., B. Gantt, and A. L. Clements. 2021. "Development and Application of a United States-Wide Correction for PM<sub>2.5</sub> Data Collected with the PurpleAir Sensor." *Atmospheric Measurement Techniques* 14 (6): 4617–37.~~

. The authors declare no competing interests.

400 ~~preBi, Jianzhao, Avani Wildani, Howard H. Chang, and Yang Liu. 2020. "Incorporating Low-Cost Sensor Measurements into High-Resolution PM<sub>2.5</sub> Modeling at a Large Spatial Scale." *Environmental Science & Technology* 54 (4): 2152–62.~~

~~preBlack, Carolyn, Yohannes Tesfaigzi, Jed A. Bassein, and Lisa A. Miller. 2017. "Wildfire Smoke Exposure and Human Health: Significant Gaps in Research for a Growing Public Health Issue." *Environmental Toxicology and Pharmacology* 55: 186–95~~

405 . This work was funded by a Joint Venture Agreement between The United States Department of Agriculture, Forest Service and the University of California Davis (16-JV-11261987-091). IMPROVE is a collaborative association of state, tribal, and federal agencies, and international partners. US Environmental Protection Agency is the primary funding source, with contracting and research support from the National Park Service. The Air Quality Research Center at the University of California, Davis is the central analytical laboratory, with ion analysis provided by Research Triangle Institute, and carbon analysis provided by Desert Research Institute. Partial funding provided by the  
410 US Forest Service Pacific Northwest Research Station. We thank Dr. Yufei Zou for his prior work applying machine learning to wildland fire and his helpful suggestions for this manuscript. The views expressed in this publication are those of the authors and do not represent the policies or opinions of any U.S. government agency.

~~preBreiman, L. 2001. "Random Forests." *Machine Learning* 45 (1): 5–32. .~~

~~preBurke, M., A. Driscoll, S. Heft-Neal, and M. Wara. 2021. "The Changing Risk and Burden of Wildfire in the United States." *PNAS* 118 (2): 1–6. .~~

~~preCDC. 2023. "National Vital Statistics System, Mortality." Centers for Disease Control; Prevention, National Center for Health Statistics. .~~

## References

- Abdo, M., Ward, I., O'Dell, K., Ford, B., Pierce, J. R., Fischer, E. V., and Crooks, J. L.: Impact of wildfire smoke on adverse pregnancy  
420 outcomes in Colorado, 2007–2015, *International journal of environmental research and public health*, 16, 3720, 2019.
- Aguilera, R., Corringham, T., Gershunov, A., and Benmarhnia, T.: Wildfire smoke impacts respiratory health more than fine particles from  
other sources: observational evidence from Southern California, *Nature communications*, 12, 1493, 2021a.
- Aguilera, R., Corringham, T., Gershunov, A., Leibel, S., and Benmarhnia, T.: Fine particles in wildfire smoke and pediatric respiratory health  
in California, *Pediatrics*, 147, 2021b.
- 425 Al-Hamdan, M. Z., Crosson, W. L., Economou, S. A., Jr, M. G. E., Estes, S. M., Hemmings, S. N., Kent, S. T., Puckett, M., Quattrochi,  
D. A., Rickman, D. L., Wade, G. M., and McClure, L. A.: Environmental public health applications using remotely sensed data, *Geocarto  
International*, 29, 85–98, <https://doi.org/10.1080/10106049.2012.715209>, 2014.
- Barkjohn, K. K., Gantt, B., and Clements, A. L.: Development and application of a United States-wide correction for PM<sub>2.5</sub> data collected  
with the PurpleAir sensor, *Atmospheric Measurement Techniques*, 14, 4617–4637, <https://doi.org/10.5194/amt-14-4617-2021>, 2021.
- 430 Bi, J., Wildani, A., Chang, H. H., and Liu, Y.: Incorporating Low-Cost Sensor Measurements into High-Resolution PM<sub>2.5</sub> Modeling at a  
Large Spatial Scale, *Environmental Science & Technology*, 54, 2152–2162, <https://doi.org/10.1021/acs.est.9b06046>, PMID: 31927908,  
2020.
- Black, C., Tesfaigzi, Y., Bassein, J. A., and Miller, L. A.: Wildfire smoke exposure and human health: Significant gaps in research for  
a growing public health issue, *Environmental Toxicology and Pharmacology*, 55, 186–195, <https://doi.org/10.1016/j.etap.2017.08.022>,  
435 2017.
- Breiman, L.: Random Forests, *Machine Learning*, 45, 5–32, <https://doi.org/10.1023/A:1010933404324>, 2001.
- Burke, M., Driscoll, A., Heft-Neal, S., and Wara, M.: The Changing Risk and Burden of Wildfire in the United States, *PNAS*, 118, 1–6,  
<https://doi.org/10.1073/pnas.2011048118>, 2021.
- CDC: National Vital Statistics System, Mortality, Tech. rep., Centers for Disease Control and Prevention, National Center for Health  
440 Statistics, accessed at <http://wonder.cdc.gov/ucd-border.html> on 2023-01-03, 2023.
- Census, U.: 2020 Census Redistricting Data (P.L. 94-171), accessed at <https://www.census.gov/geographies/mapping-files/time-series/geo/tiger-line-file.2020.html> on 2023-01-03, 2021.
- Chen, G., Guo, Y., Yue, X., Tong, S., Gasparrini, A., Bell, M. L., Armstrong, B., Schwartz, J., Jaakkola, J. J., Zanobetti, A., et al.: Mortality  
risk attributable to wildfire-related PM<sub>2.5</sub> pollution: a global time series study in 749 locations, *The Lancet Planetary Health*, 5, e579–  
445 e587, 2021a.
- Chen, H., Samet, J. M., Bromberg, P. A., and Tong, H.: Cardiovascular health impacts of wildfire smoke exposure, *Particle and fibre  
toxicology*, 18, 1–22, 2021b.
- Childs, M. L., Li, J., Wen, J., Heft-Neal, S., Driscoll, A., Wang, S., Gould, C. F., Qiu, M., Burney, J., and Burke, M.: Daily Local-  
Level Estimates of Ambient Wildfire Smoke PM<sub>2.5</sub> for the Contiguous US, *Environmental Science & Technology*, 56, 13 607–13 621,  
450 <https://doi.org/10.1021/acs.est.2c02934>, PMID: 36134580, 2022.
- Chiu, Y.-H. M., Hsu, H.-H. L., Coull, B. A., Bellinger, D. C., Kloog, I., Schwartz, J., Wright, R. O., and Wright, R. J.: Prenatal particulate air  
pollution and neurodevelopment in urban children: examining sensitive windows and sex-specific associations, *Environment international*,  
87, 56–65, 2016.



- Cleland, S. E., West, J. J., Jia, Y., Reid, S., Raffuse, S., O'Neill, S., and Serre, M. L.: Estimating Wildfire Smoke Concentrations during the  
455 October 2017 California Fires through BME Space/Time Data Fusion of Observed, Modeled, and Satellite-Derived PM<sub>2.5</sub>, *Environmental  
Science & Technology*, 54, 13 439–13 447, <https://doi.org/10.1021/acs.est.0c03761>, 2020.
- Clifford, A., Lang, L., Chen, R., Anstey, K. J., and Seaton, A.: Exposure to air pollution and cognitive functioning across the life course—a  
systematic literature review, *Environmental research*, 147, 383–398, 2016.
- Congress.gov: S.47 - 116th Congress (2019-2020): John D. Dingell, Jr. Conservation, Management, and Recreation Act, [https://www.  
460 congress.gov/bill/116th-congress/senate-bill/47/text](https://www.congress.gov/bill/116th-congress/senate-bill/47/text), 2019.
- Dutheil, F., Comptour, A., Morlon, R., Mermillod, M., Pereira, B., Baker, J. S., Charkhabi, M., Clinchamps, M., and Bourdel, N.: Autism  
spectrum disorder and air pollution: A systematic review and meta-analysis, *Environmental Pollution*, 278, 116 856, 2021.
- Franzi, L. M., Bratt, J. M., Williams, K. M., and Last, J. A.: Why is particulate matter produced by wildfires toxic to lung macrophages?,  
*Toxicology and applied pharmacology*, 257, 182–188, 2011.
- 465 Heft-Neal, S., Driscoll, A., Yang, W., Shaw, G., and Burke, M.: Associations between wildfire smoke exposure during pregnancy and risk of  
preterm birth in California, *Environmental Research*, 203, 111 872, 2022.
- Hertz-Picciotto, I., Schmidt, R. J., Walker, C. K., Bennett, D. H., Oliver, M., Shedd-Wise, K. M., LaSalle, J. M., Giulivi, C., Puschner, B.,  
Thomas, J., et al.: A prospective study of environmental exposures and early biomarkers in autism spectrum disorder: design, protocols,  
and preliminary data from the MARBLES study, *Environmental health perspectives*, 126, 117 004, 2018.
- 470 Hoek, G., Beelen, R., De Hoogh, K., Vienneau, D., Gulliver, J., Fischer, P., and Briggs, D.: A review of land-use regression models to assess  
spatial variation of outdoor air pollution, *Atmospheric environment*, 42, 7561–7578, <https://doi.org/10.1016/j.atmosenv.2008.05.057>,  
2008.
- Holstius, D. M., Reid, C. E., Jesdale, B. M., and Morello-Frosch, R.: Birth weight following pregnancy during the 2003 Southern California  
wildfires, *Environmental health perspectives*, 120, 1340–1345, 2012.
- 475 Huang, R., Lal, R., Qin, M., Hu, Y., Russell, A. G., Odman, M. T., Afrin, S., Garcia-Menendez, F., and O'Neill, S. M.: Application and  
evaluation of a low-cost PM sensor and data fusion with CMAQ simulations to quantify the impacts of prescribed burning on air quality  
in Southwestern Georgia, USA, *Journal of the Air & Waste Management Association*, 71, 815–829, 2021.
- Hurteau, M., Westerling, A., Wiedinmyer, C., and Bryant, B.: Projected Effects of Climate and Development on California Wildfire Emissions  
through 2100, *Environmental Science and Technology*, 48, 2298–2304, <https://doi.org/10.1021/es4050133>, 2014.
- 480 Johnston, F. H., Henderson, S. B., Chen, Y., Randerson, J. T., Marlier, M., DeFries, R. S., Kinney, P., Bowman, D. M., and Brauer, M.:  
Estimated global mortality attributable to smoke from landscape fires, *Environmental health perspectives*, 120, 695–701, 2012.
- Kennedy, M. C., Prichard, S. J., McKenzie, D., and French, N. H.: Quantifying how sources of uncertainty in combustible biomass propagate  
to prediction of wildland fire emissions, *International journal of wildland fire*, 29, 793–806, 2020.
- Kim, Y. H., Warren, S. H., Krantz, Q. T., King, C., Jaskot, R., Preston, W. T., George, B. J., Hays, M. D., Landis, M. S., Higuchi, M.,  
485 et al.: Mutagenicity and lung toxicity of smoldering vs. flaming emissions from various biomass fuels: implications for health effects from  
wildland fires, *Environmental health perspectives*, 126, 017 011, 2018.
- Kollanus, V., Tiittanen, P., Niemi, J. V., and Lanki, T.: Effects of long-range transported air pollution from vegetation fires on daily mortality  
and hospital admissions in the Helsinki metropolitan area, Finland, *Environmental Research*, 151, 351–358, 2016.
- Lahm, P. and Larkin, N.: The Interagency Wildland Fire Air Quality Response Program., *Magazine for Environmental Managers*, 2020.
- 490 Larkin, N. K., O'Neill, S. M., Solomon, R., Raffuse, S., Strand, T., Sullivan, D. C., Krull, C., Rorig, M., Peterson, J., and Ferguson, S. A.:  
The BlueSky smoke modeling framework, *International journal of wildland fire*, 18, 906–920, 2009.

- Larkin, N. K., Strand, T. M., Drury, S. A., Raffuse, S. M., Solomon, R. C., O'Neill, S. M., Wheeler, N., Huang, S., Roring, M., and Hafner, H. R.: Phase 1 of the Smoke and Emissions Model Intercomparison Project (SEMIP): Creation of SEMIP and evaluation of current models. Final report to the Joint Fire Science Program Project 08-1-6-10., 2012.
- 495 Le, G. E., Breyse, P. N., McDermott, A., Eftim, S. E., Geyh, A., Berman, J. D., and Curriero, F. C.: Canadian forest fires and the effects of long-range transboundary air pollution on hospitalizations among the elderly, *ISPRS international journal of geo-information*, 3, 713–731, 2014.
- Li, J., Carlson, B. E., and Lacis, A. A.: How well do satellite AOD observations represent the spatial and temporal variability of PM<sub>2.5</sub> concentration for the United States?, *Atmospheric Environment*, 102, 260–273, <https://doi.org/10.1016/j.atmosenv.2014.12.010>, 2015.
- 500 Li, Y., Tong, D., Ngan, F., Cohen, M., Stein, A., Kondragunta, S., Zhang, X., Ichoku, C., Hyer, E., and Kahn, R.: Ensemble PM<sub>2.5</sub> forecasting during the 2018 camp fire event using the HYSPLIT transport and dispersion model, *Journal of Geophysical Research: Atmospheres*, 125, e2020JD032768, 2020.
- Loftus, C. T., Hazlehurst, M. F., Szpiro, A. A., Ni, Y., Tylavsky, F. A., Bush, N. R., Sathyanarayana, S., Carroll, K. N., Karr, C. J., and LeWinn, K. Z.: Prenatal air pollution and childhood IQ: Preliminary evidence of effect modification by folate, *Environmental research*, 505, 176, 108505, 2019.
- Loftus, C. T., Ni, Y., Szpiro, A. A., Hazlehurst, M. F., Tylavsky, F. A., Bush, N. R., Sathyanarayana, S., Carroll, K. N., Young, M., Karr, C. J., et al.: Exposure to ambient air pollution and early childhood behavior: a longitudinal cohort study, *Environmental research*, 183, 109075, 2020.
- Lundberg, S. M. and Lee, S.-I.: A unified approach to interpreting model predictions, *Advances in neural information processing systems*, 510, 30, 2017.
- Lyapustin, A., Wang, Y., Laszlo, I., Kahn, R., Korokin, S., Remer, L., Levy, R., and Reid, J.: Multiangle implementation of atmospheric correction (MAIAC): 2. Aerosol algorithm, *Journal of Geophysical Research: Atmospheres*, 116, 2011.
- Mass, C. F. and Ovens, D.: The Northern California wildfires of 8–9 October 2017: The role of a major downslope wind event, *Bulletin of the American Meteorological Society*, 100, 235–256, 2019.
- 515 McClure, C. and Jaffe, D.: US Particulate Matter Air Quality Improves Except in Wildfire-prone Areas, *PNAS*, 115, 7901–7906, <https://doi.org/10.1073/pnas.1804353115>, 2018.
- Mesinger, F., DiMego, G., Kalnay, E., Mitchell, K., Shafran, P. C., Ebisuzaki, W., Jović, D., Woollen, J., Rogers, E., Berbery, E. H., Ek, M. B., Fan, Y., Grumbine, R., Higgins, W., Li, H., Lin, Y., Manikin, G., Parrish, D., and Shi, W.: North American Regional Reanalysis, *Bulletin of the American Meteorological Society*, 87, 343 – 360, <https://doi.org/10.1175/BAMS-87-3-343>, 2006.
- 520 Mueller, S., Tarnay, L., O'Neill, S., and Raffuse, S.: Apportioning smoke impacts of 2018 wildfires on eastern Sierra Nevada sites, *Atmosphere*, 11, 970, 2020.
- O'Neill, S. M., Xian, P., Flemming, J., Cope, M., Baklanov, A., Larkin, N. K., Vaughan, J. K., Tong, D., Howard, R., Stull, R., et al.: Profiles of Operational and Research Forecasting of Smoke and Air Quality Around the World, *Authorea Preprints*, <https://doi.org/10.1002/essoar.10512975.1>, 2022.
- 525 OpenAQ: Retrieved from <https://api.openaq.org>, <https://api.openaq.org>, 2023.
- Ouimette, J. R., Malm, W. C., Schichtel, B. A., Sheridan, P. J., Andrews, E., Ogren, J. A., and Arnott, W. P.: Evaluating the PurpleAir monitor as an aerosol light scattering instrument, *Atmospheric Measurement Techniques*, 15, 655–676, <https://doi.org/10.5194/amt-15-655-2022>, 2022.

- O'Neill, S. M., Diao, M., Raffuse, S., Al-Hamdan, M., Barik, M., Jia, Y., Reid, S., Zou, Y., Tong, D., West, J. J., Wilkins, J.,  
530 Marsha, A., Freedman, F., Vargo, J., Larkin, N. K., Alvarado, E., and Loesche, P.: A multi-analysis approach for estimating regional  
health impacts from the 2017 Northern California wildfires, *Journal of the Air & Waste Management Association*, 71, 791–814,  
<https://doi.org/10.1080/10962247.2021.1891994>, 2021.
- Pope III, C. A., Burnett, R. T., Turner, M. C., Cohen, A., Krewski, D., Jerrett, M., Gapstur, S. M., and Thun, M. J.: Lung cancer and  
535 cardiovascular disease mortality associated with ambient air pollution and cigarette smoke: shape of the exposure–response relationships,  
*Environmental health perspectives*, 119, 1616–1621, 2011.
- Rappold, A. G., Reyes, J., Pouliot, G., Cascio, W. E., and Diaz-Sanchez, D.: Community vulnerability to health impacts of wildland fire  
smoke exposure, *Environmental Science & Technology*, 51, 6674–6682, 2017.
- Reid, C. E., Jerrett, M., Petersen, M. L., Pfister, G. G., Morefield, P. E., Tager, I. B., Raffuse, S. M., and Balmes, J. R.: Spatiotemporal  
540 prediction of fine particulate matter during the 2008 northern California wildfires using machine learning, *Environmental science &  
technology*, 49, 3887–3896, <https://doi.org/10.1021/es505846r>, 2015.
- Reid, C. E., Brauer, M., Johnston, F. H., Jerrett, M., Balmes, J. R., and Elliott, C. T.: Critical review of health impacts of wildfire smoke  
exposure, *Environmental health perspectives*, 124, 1334–1343, 2016.
- Schweizer, D., Cisneros, R., and Shaw, G.: A comparative analysis of temporary and permanent beta attenuation monitors: The importance  
545 of understanding data and equipment limitations when creating PM<sub>2.5</sub> air quality health advisories, *Atmospheric Pollution Research*, 7,  
865–875, 2016.
- Solomon, P. A., Crumpler, D., Flanagan, J. B., Jayanty, R., Rickman, E. E., and McDade, C. E.: US national PM<sub>2.5</sub> chemical speciation  
monitoring networks—CSN and IMPROVE: description of networks, *Journal of the Air & Waste Management Association*, 64, 1410–  
1438, 2014.
- Stein, A., Draxler, R. R., Rolph, G. D., Stunder, B. J., Cohen, M., and Ngan, F.: NOAA's HYSPLIT atmospheric transport and dispersion  
550 modeling system, *Bulletin of the American Meteorological Society*, 96, 2059–2077, 2015.
- Trent, A.: Smoke particulate monitors: 2006 update, US Department of Agriculture, Forest Service, Technology & Development Program,  
2006.
- van Donkelaar, A., Martin, R. V., Levy, R. C., da Silva, A. M., Krzyzanowski, M., Chubarova, N. E., Semutnikova, E., and Cohen, A. J.:  
555 Satellite-based estimates of ground-level fine particulate matter during extreme events: A case study of the Moscow fires in 2010,  
*Atmospheric Environment*, 45, 6225–6232, <https://doi.org/10.1016/j.atmosenv.2011.07.068>, 2011.
- Volk, H. E., Hertz-Picciotto, I., Delwiche, L., Lurmann, F., and McConnell, R.: Residential proximity to freeways and autism in the CHARGE  
study, *Environmental health perspectives*, 119, 873–877, 2011.
- Volk, H. E., Lurmann, F., Penfold, B., Hertz-Picciotto, I., and McConnell, R.: Traffic-related air pollution, particulate matter, and autism,  
*JAMA psychiatry*, 70, 71–77, 2013.
- 560 Wackernagel, H.: Ordinary Kriging, pp. 74–81, Springer Berlin Heidelberg, Berlin, Heidelberg, [https://doi.org/10.1007/978-3-662-03098-  
1\\_11](https://doi.org/10.1007/978-3-662-03098-1_11), 1995.
- Wegesser, T. C., Pinkerton, K. E., and Last, J. A.: California wildfires of 2008: coarse and fine particulate matter toxicity, *Environmental  
health perspectives*, 117, 893–897, 2009.
- Wegesser, T. C., Franzi, L. M., Mitloehner, F. M., Eiguren-Fernandez, A., and Last, J. A.: Lung antioxidant and cytokine responses to coarse  
565 and fine particulate matter from the great California wildfires of 2008, *Inhalation toxicology*, 22, 561–570, 2010.

- Ye, X., Deshler, M., Lyapustin, A., Wang, Y., Kondragunta, S., and Saide, P.: Assessment of Satellite AOD during the 2020 Wildfire Season in the Western U.S., *Remote Sensing*, 14, <https://doi.org/10.3390/rs14236113>, 2022.
- Zhang, H., Wang, J., García, L. C., Ge, C., Plessel, T., Szykman, J., Murphy, B., and Spero, T. L.: Improving Surface PM<sub>2.5</sub> Forecasts in the United States Using an Ensemble of Chemical Transport Model Outputs: 1. Bias Correction With Surface Observations in Nonrural Areas, *Journal of Geophysical Research: Atmospheres*, 125, e2019JD032293, <https://doi.org/10.1029/2019JD032293>, 2020.
- Zou, Y., O'Neill, S. M., Larkin, N. K., Alvarado, E. C., Solomon, R., Mass, C., Liu, Y., Odman, M. T., and Shen, H.: Machine Learning-Based Integration of High-Resolution Wildfire Smoke Simulations and Observations for Regional Health Impact Assessment, *International Journal of Environmental Research and Public Health*, 16, <https://doi.org/10.3390/ijerph16122137>, 2019.
- ~~preCensus, US. 2021. "2020 Census Redistricting Data (p.l. 94-171)."United Status Census Bureau-~~
- 575 ~~preChen, Gongbo, Yuming Guo, Xu Yue, Shilu Tong, Antonio Gasparrini, Michelle L Bell, Ben Armstrong, et al. 2021. "Mortality Risk Attributable to Wildfire-Related PM2.5 Pollution: A Global Time Series Study in 749 Locations."The Lancet Planetary Health 5 (9): e579-87-~~
- ~~preChen, Hao, James M Samet, Philip A Bromberg, and Haiyan Tong. 2021. "Cardiovascular Health Impacts of Wildfire Smoke Exposure."Particle and Fibre Toxicology 18: 1-22-~~
- 580 ~~preChiu, Yueh-Hsiu Mathilda, Hsiao-Hsien Leon Hsu, Brent A Coull, David C Bellinger, Itai Kloog, Joel Schwartz, Robert O Wright, and Rosalind J Wright. 2016. "Prenatal Particulate Air Pollution and Neurodevelopment in Urban Children: Examining Sensitive Windows and Sex-Specific Associations."Environment International 87: 56-65-~~
- ~~preCleland, Stephanie E., J. Jason West, Yiqin Jia, Stephen Reid, Sean Raffuse, Susan O'Neill, and Mare L. Serre. 2020. "Estimating Wildfire Smoke Concentrations During the October 2017 California Fires Through BME Space/Time Data Fusion~~
- 585 ~~of Observed, Modeled, and Satellite-Derived PM2.5."Environmental Science & Technology 54 (21): 13439-47.-~~
- ~~preClifford, Angela, Linda Lang, Ruoling Chen, Kaarin J Anstey, and Anthony Seaton. 2016. "Exposure to Air Pollution and Cognitive Functioning Across the Life Course—a Systematic Literature Review."Environmental Research 147: 383-98-~~
- ~~preCongress.gov. 2019. "S.47 -116th Congress (2019-2020): John d. Dingell, Jr. Conservation, Management, and Recreation Act."-~~
- 590 ~~preDutheil, Frédéric, Aurélie Comptour, Roxane Morlon, Martial Mermillod, Bruno Pereira, Julien S Baker, Morteza Charkhabi, Maëlys Clinchamps, and Nicolas Bourdel. 2021. "Autism Spectrum Disorder and Air Pollution: A Systematic Review and Meta-Analysis."Environmental Pollution 278: 116856-~~
- ~~preFranzi, Lisa M, Jennifer M Bratt, Keisha M Williams, and Jerold A Last. 2011. "Why Is Particulate Matter Produced by Wildfires Toxic to Lung Macrophages?"Toxicology and Applied Pharmacology 257 (2): 182-88-~~
- 595 ~~preHeft-Neal, Sam, Anne Driscoll, Wei Yang, Gary Shaw, and Marshall Burke. 2022. "Associations Between Wildfire Smoke Exposure During Pregnancy and Risk of Preterm Birth in California."Environmental Research 203: 111872-~~
- ~~preHertz-Picciotto, Irva, Rebecca J Schmidt, Cheryl K Walker, Deborah H Bennett, McKenzie Oliver, Kristine M Shedd-Wise, Janine M LaSalle, et al. 2018. "A Prospective Study of Environmental Exposures and Early Biomarkers in Autism Spectrum Disorder: Design, Protocols, and Preliminary Data from the MARBLES Study."Environmental Health Perspectives 126 (11):~~
- 600 ~~117004-~~

- preHoek, Gerard, Rob Beelen, Kees De Hoogh, Danielle Vienneau, John Gulliver, Paul Fischer, and David Briggs. 2008. "A Review of Land-Use Regression Models to Assess Spatial Variation of Outdoor Air Pollution." *Atmospheric Environment* 42 (33): 7561–78.
- 605 preHolstius, David M, Colleen E Reid, Bill M Jesdale, and Rachel Morello-Frosch. 2012. "Birth Weight Following Pregnancy During the 2003 Southern California Wildfires." *Environmental Health Perspectives* 120 (9): 1340–45.
- preHurteau, M., A. Westerling, C. Wiedinmyer, and B. Bryant. 2014. "Projected Effects of Climate and Development on California Wildfire Emissions Through 2100." *Environmental Science and Technology* 48 (4): 2298–2304.
- preJohnston, Fay H, Sarah B Henderson, Yang Chen, James T Randerson, Miriam Marlier, Ruth S DeFries, Patrick Kinney, David MJS Bowman, and Michael Brauer. 2012. "Estimated Global Mortality Attributable to Smoke from Landscape Fires." *Environmental*  
610 *Health Perspectives* 120 (5): 695–701.
- preKennedy, Maureen C, Susan J Prichard, Donald McKenzie, and Nancy HF French. 2020. "Quantifying How Sources of Uncertainty in Combustible Biomass Propagate to Prediction of Wildland Fire Emissions." *International Journal of Wildland Fire* 29 (9): 793–806.
- 615 preKim, Yong Ho, Sarah H Warren, Q Todd Krantz, Charly King, Richard Jaskot, William T Preston, Barbara J George, et al. 2018. "Mutagenicity and Lung Toxicity of Smoldering Vs. Flaming Emissions from Various Biomass Fuels: Implications for Health Effects from Wildland Fires." *Environmental Health Perspectives* 126 (1): 017011.
- preKollanus, Virpi, Pekka Tiittanen, Jarkko V Niemi, and Timo Lanki. 2016. "Effects of Long-Range Transported Air Pollution from Vegetation Fires on Daily Mortality and Hospital Admissions in the Helsinki Metropolitan Area, Finland." *Environmental Research* 151: 351–58.
- 620 preLahm, P., and N. K. Larkin. 2020. "The Interagency Wildland Fire Air Quality Response Program." *Magazine for Environmental Managers*, no. 7.
- preLarkin, Narasimhan K, Susan M O'Neill, Robert Solomon, Sean Raffuse, Tara Strand, Dana C Sullivan, Candace Krull, Miriam Rorig, Janice Peterson, and Sue A Ferguson. 2009. "The BlueSky Smoke Modeling Framework." *International Journal of Wildland Fire* 18 (8): 906–20.
- 625 preLarkin, Narasimhan K, Tara M Strand, Stacy A Drury, Sean M Raffuse, Robert C Solomon, Susan M O'Neill, Neill Wheeler, ShihMing Huang, Miriam Roring, and Hilary R Hafner. 2012. "Phase 1 of the Smoke and Emissions Model Interecomparison Project (SEMIP): Creation of SEMIP and Evaluation of Current Models. Final Report to the Joint Fire Science Program Project 08-1-6-10."
- 630 preLe, George E, Patrick N Breysse, Aidan McDermott, Sorina E Eftim, Alison Geyh, Jesse D Berman, and Frank C Curriero. 2014. "Canadian Forest Fires and the Effects of Long-Range Transboundary Air Pollution on Hospitalizations Among the Elderly." *ISPRS International Journal of Geo-Information* 3 (2): 713–31.
- preLi, Jing, Barbara E. Carlson, and Andrew A. Lacis. 2015. "How Well Do Satellite AOD Observations Represent the Spatial and Temporal Variability of PM<sub>2.5</sub> Concentration for the United States?" *Atmospheric Environment* 102: 260–73.

- preLi, Y, DQ Tong, F Ngan, MD Cohen, AF Stein, S Kondragunta, X Zhang, C Ichoku, EJ Hyer, and RA Kahn. 2020.  
635 “Ensemble PM<sub>2.5</sub> Forecasting During the 2018 Camp Fire Event Using the HYSPLIT Transport and Dispersion Model.” *Journal of Geophysical Research: Atmospheres* 125 (15): e2020JD032768.
- preLoftus, Christine T, Marnie F Hazlehurst, Adam A Szpiro, Yu Ni, Frances A Tylavsky, Nicole R Bush, Sheela Sathyanarayana, Keeia N Carroll, Catherine J Karr, and Kaja Z LeWinn. 2019. “Prenatal Air Pollution and Childhood IQ: Preliminary Evidence of Effect Modification by Folate.” *Environmental Research* 176: 108505.
- 640 preLoftus, Christine T, Yu Ni, Adam A Szpiro, Marnie F Hazlehurst, Frances A Tylavsky, Nicole R Bush, Sheela Sathyanarayana, et al. 2020. “Exposure to Ambient Air Pollution and Early Childhood Behavior: A Longitudinal Cohort Study.” *Environmental Research* 183: 109075.
- preLundberg, Scott M, and Su-In Lee. 2017. “A Unified Approach to Interpreting Model Predictions.” *Advances in Neural Information Processing Systems* 30.
- 645 preLyapustin, Alexei, Y Wang, I Laszlo, R Kahn, Sergey Korokin, L Remer, R Levy, and JS Reid. 2011. “Multiangle Implementation of Atmospheric Correction (MAIAC): 2. Aerosol Algorithm.” *Journal of Geophysical Research: Atmospheres* 116 (D3).
- preMass, Clifford F, and David Ovens. 2019. “The Northern California Wildfires of 8–9 October 2017: The Role of a Major Downslope Wind Event.” *Bulletin of the American Meteorological Society* 100 (2): 235–56.
- 650 pre———. 2021. “The Synoptic and Mesoscale Evolution Accompanying the 2018 Camp Fire of Northern California.” *Bulletin of the American Meteorological Society* 102 (1): E168–92.
- preMcClure, C., and D. Jaffe. 2018. “US Particulate Matter Air Quality Improves Except in Wildfire-Prone Areas.” *PNAS* 115 (31): 7901–6.
- preMesinger, Fedor, Geoff DiMego, Eugenia Kalnay, Kenneth Mitchell, Perry C. Shafran, Wesley Ebisuzaki, Dušan Jović, et al. 2006. “North American Regional Reanalysis.” *Bulletin of the American Meteorological Society* 87 (3): 343–60.
- 655 preMueller, Sean, Leland Tarnay, Susan O’Neill, and Sean Raffuse. 2020. “Apportioning Smoke Impacts of 2018 Wildfires on Eastern Sierra Nevada Sites.” *Atmosphere* 11 (9): 970.
- preO’Neill, Susan M., Minghui Diao, Sean Raffuse, Mohammad Al-Hamdan, Muhammad Barik, Yiqin Jia, Steve Reid, et al. 2021. “A Multi-Analysis Approach for Estimating Regional Health Impacts from the 2017 Northern California Wildfires.” *Journal of the Air & Waste Management Association* 71 (7): 791–814.
- 660 preO’Neill, Susan M, Peng Xian, Johannes Flemming, Martin Cope, Alexander Baklanov, Narasimhan K Larkin, Joseph K Vaughan, et al. 2022. “Profiles of Operational and Research Forecasting of Smoke and Air Quality Around the World.” *Authorea Preprints*.
- preOpenAQ. 2023. “Retrieved from <https://api.openaq.org/>.”
- 665 preOuimette, J. R., W. C. Malm, B. A. Schichtel, P. J. Sheridan, E. Andrews, J. A. Ogren, and W. P. Arnott. 2022. “Evaluating the PurpleAir Monitor as an Aerosol Light Scattering Instrument.” *Atmospheric Measurement Techniques* 15 (3): 655–76.
- prePope III, C Arden, Richard T Burnett, Michelle C Turner, Aaron Cohen, Daniel Krewski, Michael Jerrett, Susan M Gapstur, and Michael J Thun. 2011. “Lung Cancer and Cardiovascular Disease Mortality Associated with Ambient Air

- Pollution and Cigarette Smoke: Shape of the Exposure–Response Relationships.” *Environmental Health Perspectives* 119 (11): 1616–21.
- 670 preRappold, Ana G, Jeanette Reyes, George Pouliot, Wayne E Cascio, and David Diaz-Sanchez. 2017. “Community Vulnerability to Health Impacts of Wildland Fire Smoke Exposure.” *Environmental Science & Technology* 51 (12): 6674–82.
- preReid, Colleen E, Michael Brauer, Fay H Johnston, Michael Jerrett, John R Balmes, and Catherine T Elliott. 2016. “Critical Review of Health Impacts of Wildfire Smoke Exposure.” *Environmental Health Perspectives* 124 (9): 1334–43.
- 675 preReid, Colleen E, Michael Jerrett, Maya L Petersen, Gabriele G Pfister, Philip E Morefield, Ira B Tager, Sean M Raffuse, and John R Balmes. 2015. “Spatiotemporal Prediction of Fine Particulate Matter During the 2008 Northern California Wildfires Using Machine Learning.” *Environmental Science & Technology* 49 (6): 3887–96.
- preSchweizer, Don, Ricardo Cisneros, and Glenn Shaw. 2016. “A Comparative Analysis of Temporary and Permanent Beta Attenuation Monitors: The Importance of Understanding Data and Equipment Limitations When Creating PM<sub>2.5</sub> Air Quality Health Advisories.” *Atmospheric Pollution Research* 7 (5): 865–75.
- 680 preSolomon, Paul A, Dennis Crumpler, James B Flanagan, RKM Jayanty, Ed E Rickman, and Charles E McDade. 2014. “US National PM<sub>2.5</sub> Chemical Speciation Monitoring Networks—CSN and IMPROVE: Description of Networks.” *Journal of the Air & Waste Management Association* 64 (12): 1410–38.
- preStein, AF, Roland R Draxler, Glenn D Rolph, Barbara JB Stunder, MD Cohen, and Fong Ngan. 2015. “NOAA’s HYSPLIT Atmospheric Transport and Dispersion Modeling System.” *Bulletin of the American Meteorological Society* 96 (12): 2059–77.
- 685 prevan Donkelaar, Aaron, Randall V. Martin, Robert C. Levy, Arlindo M. da Silva, Michal Krzyzanowski, Natalia E. Chubarova, Eugenia Semutnikova, and Aaron J. Cohen. 2011. “Satellite-Based Estimates of Ground-Level Fine Particulate Matter During Extreme Events: A Case Study of the Moscow Fires in 2010.” *Atmospheric Environment* 45 (34): 6225–32.
- preVolk, Heather E, Irva Hertz-Picciotto, Lora Delwiche, Fred Lurmann, and Rob McConnell. 2011. “Residential Proximity to Freeways and Autism in the CHARGE Study.” *Environmental Health Perspectives* 119 (6): 873–77.
- 690 preVolk, Heather E, Fred Lurmann, Bryan Penfold, Irva Hertz-Picciotto, and Rob McConnell. 2013. “Traffic-Related Air Pollution, Particulate Matter, and Autism.” *JAMA Psychiatry* 70 (1): 71–77.
- preWackernagel, Hans. 1995. “Ordinary Kriging.” In *Multivariate Geostatistics: An Introduction with Applications*, 74–81. Berlin, Heidelberg: Springer Berlin Heidelberg.
- 695 preWegesser, Teresa C, Lisa M Franzi, Frank M Mitloehner, Arantza Eiguren-Fernandez, and Jerold A Last. 2010. “Lung Antioxidant and Cytokine Responses to Coarse and Fine Particulate Matter from the Great California Wildfires of 2008.” *Inhalation Toxicology* 22 (7): 561–70.
- preWegesser, Teresa C, Kent E Pinkerton, and Jerold A Last. 2009. “California Wildfires of 2008: Coarse and Fine Particulate Matter Toxicity.” *Environmental Health Perspectives* 117 (6): 893–97.
- 700 preZhang, Huanxin, Jun Wang, Lorena Castro-García, Cui Ge, Todd Plessel, James Szykman, Benjamin Murphy, and Tanya L. Spero. 2020. “Improving Surface PM<sub>2.5</sub> Forecasts in the United States Using an Ensemble of Chemical Transport Model Outputs: 1. Bias Correction with Surface Observations in Nonrural Areas.” *Journal of Geophysical Research: Atmospheres* 125 (14): e2019JD032293.

preZou, Yufei, Susan M. O'Neill, Narasimhan K. Larkin, Ernesto C. Alvarado, Robert Solomon, Clifford Mass, Yang  
705 Liu, M. Talat Odman, and Huizhong Shen. 2019. "Machine Learning-Based Integration of High-Resolution Wildfire Smoke  
Simulations and Observations for Regional Health Impact Assessment." *International Journal of Environmental Research and  
Public Health* 16(12):.