

emIAM v1.0: an emulator for Integrated Assessment Models using marginal abatement cost curves

Weiwei Xiong^{1,2}, Katsumasa Tanaka^{1,3}, Philippe Ciais¹, Daniel J. A. Johansson⁴, Mariliis Lehtveer⁴

¹ Laboratoire des Sciences du Climat et de l'Environnement (LSCE), IPSL, CEA/CNRS/UVSQ, Université Paris-Saclay, Gif-sur-Yvette, 91191, France

² School of Economics and Management, China University of Geosciences, Wuhan, 430074, China

³ Earth System Division, National Institute for Environmental Studies (NIES), Tsukuba, 305-8506, Japan

⁴ Division of Physical Resource Theory, Department of Space, Earth, and Environment, Chalmers University of Technology, Gothenburg, 412 96, Sweden

Correspondence to: Weiwei Xiong (weiwei.xiong@lsce.ipsl.fr) and Katsumasa Tanaka (katsumasa.tanaka@lsce.ipsl.fr)

Abstract. We developed an emulator for Integrated Assessment Models (emIAM) based on a marginal abatement cost (MAC) curve approach. Drawing on the output of IAMs in the ENGAGE Scenario Explorer and the GET model, we derived an extensive array of MAC curves, encompassing ten IAMs, global and ten regions, three gases CO₂, CH₄, and N₂O, eight portfolios of available mitigation technologies, and two emission sources. We tested the performance of emIAM by coupling it with a simple climate model ACC2. Our analysis showed that the optimizing climate-economy model ACC2-emIAM adequately reproduced a majority of the original IAM emission outcomes under similar conditions. This can facilitate systematic exploration of IAMs with small computational resources. emIAM holds the potential to enhance the capabilities of simple climate models as a tool for calculating cost-effective pathways directly aligned with temperature targets.

1 Introduction

Integrated Assessment Models (IAMs) combine economic, energy, and sometimes also land-use modeling approaches and are commonly used to evaluate least-cost mitigation scenarios (Weyant, 2017). A variety of IAMs were integrated under common protocols in modeling intercomparison projects (MIPs) (O'Neill et al., 2016; Tebaldi et al., 2021) and provided input to the series of the Intergovernmental Panel on Climate Change (IPCC) Assessment Reports. However, simulating computationally expensive IAMs developed and maintained at different research institutions around the world requires large coordination efforts. Therefore, here we propose a new methodological framework to i) emulate the behavior of IAMs (i.e., emission abatement for a given carbon price) through MAC curves and then ii) reproduce the behavior of IAMs by using the MAC curves coupled with a simple climate model. We show that the MAC curves can be systematically applied to reproduce the behavior of IAMs as an emulator for IAMs (emIAM), paving a way to generate multi-IAM scenarios more easily than before, with small computational resources.

In the context of climate change mitigation, a MAC generally represents the incremental cost of reducing an additional

unit of emissions; a MAC curve illustrates these costs as the level of emission reductions increases relative to the baseline. There is a burgeoning literature on MAC curves (Jiang et al., 2020) that can broadly fall into two categories (Kesicki and Ekins, 2012): i) data-based MAC curves (bottom-up) and ii) model-based MAC curves (top-down). First, a data-based MAC curve provides a relationship between the emission abatement potential of each mitigation measure considered and the associated marginal costs, in the order of low- to high-cost measures based on individual data. A prominent example of such data-based MAC curves is McKinsey & Company (2009). Second, a model-based MAC curve provides a relationship between the amount of emission abatement and the system-wide marginal costs based on simulation results of a model (e.g., an energy system model and a computational general equilibrium (CGE) model) perturbed under different carbon prices or carbon budgets. Our work takes the second approach, building on previous studies (Nordhaus, 1991; Ellerman and Decaux, 1998; van Vuuren et al., 2004; Johansson et al., 2006; Klepper and Peterson, 2006; Johansson, 2011; Morris et al., 2012; Wagner et al., 2012; Tanaka et al., 2013; Su et al., 2017; Tanaka and O'Neill, 2018; Yue et al., 2020; Tanaka et al., 2021; Bossy et al., 2024; Su et al., 2024). While data-based MAC curves tend to be rich in the representation of technological details, they do not consider system-wide interactions that are captured by model-based MAC curves. Model-based MAC curves reflect such interactions, however, without much explicit technological detail. Advantages and disadvantages of MAC curves of different categories are discussed elsewhere (Vermont and De Cara, 2010; Kesicki and Strachan, 2011; Huang et al., 2016).

In this study, we derive a large set of MAC curves from the simulation results of IAMs (see Figure 1 and Section 3), couple them with a simple climate model as an emulator (emIAM), and validate the simulation results with the original IAM results under similar conditions. Namely, we look up the ENGAGE Scenario Explorer hosted at IIASA, Austria (<https://data.ene.iiasa.ac.at/engage>), a publicly available database from the EU Horizon 2020 ENGAGE project (Drouet et al., 2021; Riahi et al., 2021), and extract total anthropogenic CO₂, CH₄, and N₂O emission pathways until 2100 from nine IAMs under a range of carbon budget constraints. For each IAM, we derive a set of CO₂, CH₄, and N₂O MAC curves as a function of the respective emission reduction in percentage relative to the baseline at the global and regional (ten regions) levels. We then integrate the sets of MAC curves (i.e., emIAM) into a simple climate model called the Aggregated Carbon Cycle, Atmospheric Chemistry, and Climate (ACC2) model (Tanaka et al., 2007; Tanaka and O'Neill, 2018; Xiong et al., 2022). ACC2-emIAM works as a hard-linked optimizing climate-economy model that can derive an emission pathway to achieve a given climate target or carbon budget at the lowest cost. We validate to what extent the emission pathway derived from ACC2-emIAM under a given carbon budget or a temperature target can reproduce the corresponding pathway from the original IAM in the ENGAGE Scenario Explorer.

We further apply the emIAM approach to the GET model (Lehtveer et al., 2019), an IAM that did not take part in the ENGAGE project. We can directly simulate GET to derive MAC curves under different model configurations, which complements the existing data from IAMs simulated under single configurations for the ENGAGE project. We obtain global energy-related CO₂ emission pathways under a range of carbon price projections, but with several different portfolios of

Deleted: (Riahi et al., 2021; Drouet et al., 2021)

65 available mitigation technologies (e.g., differentiated Carbon Capture and Storage (CCS) capacity). We then derive a MAC
curve for each technology portfolio. Although MAC curves concern only the total emission abatement without distinguishing
individual mitigation measures, this approach allows us to explore the role of a particular mitigation measure by comparing
MAC curves with and without that mitigation measure. Note that all IAMs emulated in this study take a cost-effectiveness
approach, in which the least-cost emission pathways to achieve a climate-related target are calculated in terms of the cost of
70 mitigation without considering climate damage and adaptation.

To our knowledge, this study is one of the first attempts to apply the MAC curve approach extensively for developing
an IAM emulator: we consider ten IAMs, global and ten regions, three gases (i.e., CO₂, CH₄, and N₂O), eight technology
portfolios, and two broad sources (i.e., total anthropogenic and energy-related emissions). We demonstrate the applicability of
emIAM by implementing it to ACC2, but emIAM can also be used with other simple climate models (Joos et al., 2013; Nicholls
75 et al., 2020). Thus, emIAM allows ACC2 and potentially other simple climate models to reproduce approximately global and
regional cost-effective emission pathways from multiple IAMs under a range of given carbon budgets or temperature targets.
In recent years, there have been efforts to develop emulators of Earth System Models (ESMs) in CMIP6 and the use of ESM
emulators was exploited in the IPCC Sixth Assessment Report (AR6) (Leach et al., 2021; Tsutsui, 2022); however, no emulator
has yet been developed for IAMs contributing to the IPCC.

80 In this paper, following the common definitions of terminologies found in the literature (National Research Council,
2012; Mulugeta et al., 2018), we use “emulate” to indicate a process of identifying a reduced-complexity model (i.e., a MAC
curve) that approximates the behavior of a complex model (i.e., an IAM), “reproduce” to refer to a process of generating an
output (i.e., an emission pathway) from an emulator with the same input and constraints given to an IAM (i.e., a cumulative
carbon budget or end-of-century temperature, for example), and “validate” to indicate a process of investigating the extent to
85 which an emulator reproduces an intended outcome in comparison to the corresponding original outcome from an IAM.
Regarding the units, we use the original units of each model (i.e., US\$2010 and tCO₂-eq with 100-year Global Warming
Potential (GWP100) for all IAMs emulated here) to keep the comparability with underlying data, unless noted otherwise.

The remainder of the manuscript consists of five sections: Section 2 introduces the IAMs under consideration and
their experiments used to derive MAC curves. Section 3 describes the methodology to derive MAC curves and presents the
90 MAC curves that are derived (i.e., emIAM). Section 4 shows the validation results for ACC2-emIAM. Section 5 discusses a
specific aspect of our emulation approach: the time-independency and the time-dependency of MAC curves. The paper is
concluded in Section 6 with general remarks on the utility of emIAM. Given the substantial amount of MAC curves generated
in our analysis, results are presented only selectively in the main body of the paper; a more extensive and systematic
presentation of the results can be found in Supplement and our Zenodo repository.

Deleted: four

Deleted: 5

2 IAMs to emulate

Our study uses the output from a total of ten IAMs: nine IAMs used in the ENGAGE project and another IAM GET. The subsections below describe these IAMs and their data used to derive MAC curves.

2.1 IAMs from the ENGAGE project

We selected the following nine IAM versions available in the database of the ENGAGE Scenario Explorer: AIM/CGE V2.2, COFFEE 1.1, GEM-E3 V2021, IMAGE 3.0, MESSAGEix-GLOBIOM 1.1, POLES-JRC ENGAGE, REMIND-MAgPIE 2.1-4.2, TIAM-ECN 1.1, and WITCH 5.0 (hereafter, shorter labels indicated in Table 1 will be used). These IAMs are diverse in terms of solution concepts (general equilibrium and partial equilibrium models) and solution methods (intertemporal optimization and recursive dynamic models) (Table 1), among many other perspectives (Guivarch et al., 2022). A series of scenarios following a carbon budget ranging from 200 to 3,000 GtCO₂ (for the period of 2019-2100), as well as baseline scenarios, are available from each IAM. All scenarios incorporate second marker baseline scenario from the Shared Socioeconomic Pathways (SSP2), which reflect middle-of-the-road socioeconomic conditions (Riahi et al., 2017). The ENGAGE Scenario Explorer is now part of the larger IPCC Sixth Assessment Report (AR6) Scenario Explorer (Byers et al., 2022), which was not available at the time of our analysis. Although the use of the entire AR6 scenario dataset could be advantageous in terms of the number of IAMs and scenarios available for analyses (189 IAMs (including different model versions) and 1389 scenarios in the AR6 Scenario Explorer; 20 IAMs (including different model versions) and 231 scenarios in the ENGAGE Scenario Explorer), an advantage of using the ENGAGE Scenario Explorer is that the data from IAMs were obtained under a common experimental protocol, allowing consistent analyses.

There are two types of scenarios in the ENGAGE Scenario Explorer: i) end-of-century budget (ECB) scenarios (with “f” in the original scenario name) and ii) peak budget (PKB) scenarios (without “f” in the original scenario name) (Riahi et al., 2021). While the former type of scenarios is defined with a carbon budget till the end of this century, including a possibility of temporarily overspending it before (i.e., a possibility of achieving net negative CO₂ emissions), the latter type of scenarios is defined with a carbon budget without allowing temporal budget overspending (i.e., a possibility of achieving net-zero CO₂ emissions, but not net negative CO₂ emissions). The distinction of the two sets of scenarios may have important near-term implications (Johansson, 2021) and are considered when MAC curves are derived. For each type of scenarios, there are another two types of scenarios: i) scenarios without INDC, which only consider currently implemented national policies (indicated as “NPI2020” in the original scenario name); ii) scenarios with INDC, which further consider national emission pledges until 2030 (indicated as “INDCi2030” in the original scenario name). The availability of scenarios depends on the types of scenarios and varies across IAMs (Table S7). For each IAM, we used the NPI2100 scenario, a scenario assuming a continuation of current stated policies until 2100, as the baseline scenario for all carbon budget scenarios in our analysis. The NPI2100 scenarios, which are available for all IAMs considered here, are only slightly different from the NoPolicy scenarios assuming no climate policies at all.

The ENGAGE Scenario Explorer contains emission data for many greenhouse gases (GHGs) and air pollutants from each IAM, including CO₂, CH₄, and N₂O emissions analyzed in our study. Emission data are available at global and regional levels (for nine and five IAMs, respectively). There are two sets of regionally aggregated emission data, with one for five regions and the other for ten regions, the latter of which was used in our study: that is, China (CHN), European Union and Western Europe (EUWE), Latin America (LATAME), Middle East (MIDEAST), North America (NORAM), Other Asian countries (OTASIAN), Pacific OECD (PACOECD), Reforming Economies (REFECO), South Asia (SOUASIA), and Sub-Saharan Africa (SUBSAFR). Although all ENGAGE IAMs are regionally disaggregated, only a subset of the IAMs provides data for ten regions in the ENGAGE Scenario Explorer as shown in Table 1. Note that the GEM model provides emissions for Rest of World (ROW), one more region in addition to the ten regions, in the ENGAGE Scenario Explorer. In other IAMs, we also allocated emissions for ROW to account for the discrepancy between global emissions and the sum of regional emissions (e.g., 3% difference in CO₂ emissions in AIM/CGE V2.2). Regarding emission sources, total anthropogenic emissions and energy-related emissions (e.g., energy and industrial processes) were separately used to derive global MAC curves for three gases (only total anthropogenic emissions for regional MAC curves due to computational requirements for validating regional MAC curves). Non-energy-related emissions (e.g., agriculture, forestry, and land-use sector), the differences between the two, were not used to generate MAC curves because non-energy-related emissions did not appear to be strongly correlated with carbon prices in most IAMs in the ENGAGE project.

Deleted: regional

2.2 GET model

GET is a global energy system model designed to study climate mitigation and energy strategies to achieve long-term climate targets under exogenously given energy demand scenarios (Azar et al., 2003; Hedenus et al., 2010; Azar et al., 2013; Lehtveer and Hedenus, 2015; Lehtveer et al., 2019). It is an intertemporal optimization model that, with perfect foresight, minimizes the total cost of the energy system discounted over the simulation period till 2150 (default discount rate of 5%). To do so, various technologies for converting and supplying energy are evaluated in the model. The model considers primary energy sources such as coal, natural gas, oil, biomass, solar, nuclear, wind, and hydropower. Energy carriers considered in the model are petroleum fuels (gasoline, diesel, and natural gas), synthetic fuels (e.g., methanol), hydrogen, and electricity. End-use sectors in the model are transport, feedstock, residential heat, industrial heat, and electricity. We employed GET version 10.0 (Lehtveer et al., 2019) with the representation of ten regions.

To develop global energy-related CO₂ MAC curves reflecting different sets of available mitigation measures, we constructed the following eight technology portfolios: i) Base, ii) Optimistic, iii) Pessimistic, iv) No CCS+Carbon Capture and Utilization (CCU)+Direct Air Capture (DAC) (No cap), v) Large bioenergy (L bio), vi) Large bioenergy + Small carbon storage (L bio/S str), vii) Small bioenergy + Large carbon storage (S bio/L str), and viii) No nuclear (No nc). The Base portfolio uses the default set of assumptions associated with mitigation options available in the model. The Optimistic portfolio combines the assumptions of Large bioenergy supply, Large carbon storage potential, CCS+CCU+DAC, and Nuclear power.

Deleted: ,

Deleted: ,

Deleted: ,

Deleted: ,

The Pessimistic portfolio, in contrast, combines those of Small bioenergy supply, Small carbon storage potential, No CCS+CCU+DAC, and No nuclear power. Large and Small bioenergy cases assume 100% more and 50% less bioenergy, respectively, than the default level (134 EJ/year globally). Large and Small carbon storage cases assume 8,000 GtCO₂ and 1,000 GtCO₂, respectively (2,000 GtCO₂ by default). With each of these portfolios, we simulated the model under 22 different carbon price scenarios. In all carbon price scenarios, the carbon price grows 5% each year with a range of initial levels in 2010 (1, 2, 3, 5, 7, 10, ..., 140 US\$2010/tCO₂) (see Table S1 for details), following the principle of the Hotelling rule where there is a limit on the cumulative emissions (Hof et al., 2021). We assumed a discount rate of 5% for all portfolios and carbon price scenarios. Our analysis used a scenario with zero carbon prices as the baseline scenario. We derived only global energy-related CO₂ MAC curves from GET since the model does not explicitly describe processes related to non-energy related emissions.

Deleted: technology

3 Development of eMIAM

3.1 Deriving MAC curves

Our MAC curve approach aims to capture the relationship between the carbon price and the emission abatement in IAMs. For each IAM (i.e., ENGAGE IAMs and GET), we calculated the emission reduction level relative to the respective baseline level at each time step. Emission reductions can be expressed either in absolute terms (for example, in GtCO₂) or in percentage terms (in percentage relative to the baseline level) (Kesicki, 2013; Jiang et al., 2022), the latter of which is used in our analysis. When the emission is at the baseline level, the relative emission reduction is, by definition, 0%. When it is 100%, which can occur for CO₂, the emission is (net) zero. When it exceeds 100%, the emission becomes (net) negative. The carbon price for each case is also the relative level to the baseline scenario. If there are non-zero carbon prices in the baseline scenarios (small carbon prices can be found in baseline scenarios from some IAMs), we subtracted them from the carbon prices in the mitigation scenarios. The MAC curves were derived from the data for the period 2020-2100 in the case of ENGAGE IAMs and GET (we did not consider the data from GET after 2100).

There are three key assumptions in our approach: i) MAC curves are assumed to be time-independent, ii) abatement levels are assumed to be independent across gases, and iii) abatement levels are assumed to be independent across regions. While MAC curves are more commonly time-dependent or for a specific point in time, time-independent MAC curves have also been used for long-term pathway calculations (Johansson et al., 2006; Tanaka and O'Neill, 2018; Tanaka et al., 2021) and short-term assessments (De Cara and Jayet, 2011). The implications of the first assumption are discussed later in this section. The second assumption implies that co-reductions of GHG emissions (e.g., CO₂ and CH₄ emission reductions from an early retirement of a coal-fired power plant (e.g., Tanaka et al., 2019)) are not explicitly considered in our MAC curve approach. The third assumption implies that GHG abatements occur exclusively in each region without relying on other regions. The validity of these assumptions can be seen in Section 4. Additional conditions were applied to derive MAC curves from each model, as summarized in Table 1. These conditions were identified based on visual inspection of the data from each IAM.

Table 1. Models and data considered for emIAM. This table describes the features of models (including the versions used) and the data (gases, regions (ten regions)) that were used to derive our MAC curves. “Solution concept” and “solution method” for ENGAGE IAMs (first nine IAMs in the table) are based on Riahi et al. (2021), Guivarch et al. (2022), and IAMC wiki (2022). Total anthropogenic (and separately energy-related and non-energy-related) CO₂, CH₄, and N₂O emissions were taken from ENGAGE IAMs; only energy-related CO₂ emissions were used from GET.

Model	Label	Solution concept	Solution method	Spatial resolution	Gas	Range of carbon budget (GtCO ₂)	Number of scenarios	Data range for MAC curve fitting
AIM/CGE V2.2	AIM	General equilibrium	Recursive dynamic	Global Regional	CO ₂ CH ₄ N ₂ O	300-1,800	33	Carbon prices lower than \$100/tCO ₂ before 2040 and all data after 2040
COFFEE 1.1	COFFEE	Partial equilibrium	Intertemporal optimization	Global Regional	CO ₂ CH ₄ N ₂ O	400-2,500	52	Carbon prices lower than \$50/tCO ₂ with abatement levels below 100% under scenarios without negative emissions
GEM-E3 V2021	GEM	General equilibrium	Recursive dynamic	Global Regional	CO ₂ CH ₄ N ₂ O	400-1,800	23	All scenarios
IMAGE 3.0	IMAGE	Partial equilibrium	Recursive dynamic	Global Regional	CO ₂ CH ₄ N ₂ O	600-3,000	21	All data except: EN_INDCi2030_800f, EN_NPi2020_600f, EN_INDCi2030_1000f, EN_Npi2020_800
MESSAGEix-GLOBIOM 1.1	MESSAGE	General equilibrium	Intertemporal optimization	Global Regional	CO ₂ CH ₄ N ₂ O	200-3,000	51	All scenarios except: EN_NPi2020_450, EN_NPi2020_500
POLES-JRC ENGAGE	POLES	Partial equilibrium	Recursive dynamic	Global	CO ₂ CH ₄ N ₂ O	300-3,000	53	Carbon price below \$1,000/tCO ₂ before 2050 and below \$5,000/tCO ₂ thereafter
REMIND-MAgPIE 2.1-4.2	REMIND	General equilibrium	Intertemporal optimization	Global	CO ₂ CH ₄ N ₂ O	200-3,000	57	All scenarios except: EN_INDCi2030_700, EN_INDCi2030_800, EN_NPi2020_400, EN_NPi2020_500
TIAM-ECN 1.1	TIAM	Partial equilibrium	Intertemporal optimization	Global	CO ₂ CH ₄ N ₂ O	800-3,000	35	All scenarios
WITCH 5.0	WITCH	General equilibrium	Intertemporal optimization	Global	CO ₂ CH ₄ N ₂ O	400-3,000	53	All scenarios
GET 10.0	GET	Partial equilibrium	Intertemporal optimization	Global	Energy CO ₂	-	22	Carbon prices lower than \$5,000/tCO ₂ ; excluded data for very high abatements with disproportionately low costs (found typically after 2100)

Deleted: Riahi et al. (2021)

Deleted: 34

Deleted: 110

Deleted: 52

Deleted: 58

Deleted: 51

We fit a mathematical function $f(x)$ to the data from each IAM as a MAC curve to capture the emission abatement level for a given carbon price. In selecting the functional form of MAC curves, we had to balance the competing requirements of i) capturing complex nonlinear relationships between the carbon price and the abatement level and ii) keeping the functional form at low complexity. We therefore tested the performance of several functional forms to fit the data, some of which were based on previous studies (Johansson, 2011; Su et al., 2017; Tanaka and O'Neill, 2018). The candidate functions are summarized in Table S2, along with the ranges of parameters considered. To infer a good functional form, we further tried the symbolic regression approach by using the software HeuristicLab, but we were unable to obtain a functional form that is more satisfactory than those suggested in Table S2. Our results indicated that the polynomial function with two algebraic terms (equation (1)) gave the highest r^2 and adjusted r^2 among the equations tested in more than 50% of the cases, consistently performing best for all IAMs (see the Zenodo repository and Table S3). A polynomial function with only one algebraic term was insufficient: two distinct algebraic terms are generally needed to capture the trend of our data (sometimes with a kink like a “reversed L” shape or with a plateau as shown later).

Therefore, we used a common functional form of equation (1) to generate MAC curves for all cases (i.e., models, gases, regions, and sources in ENGAGE IAMs, and portfolios in GET) for consistency, comparability, and simplicity of use.

$$f(x) = a \times x^b + c \times x^d \quad (1)$$

a , b , c , and d are the parameters to be optimized in each case. x is the variable representing the emission abatement level in percentage relative to the assumed baseline level. The carbon price (i.e., $f(x)$ in equation (1)) is expressed in per ton of CO₂-equivalent emissions, using GWP100 (28 and 265 for CH₄ and N₂O, respectively (IPCC, 2013)) to convert CH₄ and N₂O emissions, as assumed in the IAMs emulated here (Harmsen et al., 2016). GWP100 is effectively the default emission metric used to convert non-CO₂ GHG emissions to the common scale of CO₂ and has been used for decades in multi-gas climate policies and assessments, including the Paris Agreement (Lashof and Ahuja, 1990; Fuglestedt et al., 2003; Tanaka et al., 2010; Tol et al., 2012; Levasseur et al., 2016; UNFCCC, 2018; UNFCCC, 2023). Furthermore, we calculate the confidence intervals

of the fitted curves using $\hat{y}_i \pm t_{\frac{\alpha}{2}} \times S_e \times \sqrt{1 + \frac{1}{n} + \frac{(x_i - \bar{x})^2}{\sum_{i=1}^n x_i^2 - \frac{(\sum_{i=1}^n x_i)^2}{n}}}$ (Thomson and Emery, 2014), where $S_e = \sqrt{\frac{\sum_{i=1}^n (y_i - \hat{y}_i)^2}{n-2}}$, n

is the sample size, $t_{\frac{\alpha}{2}}$ is the critical value of t-distribution, \bar{x} is the mean of samples, $\hat{y}_i = f(x_i)$, and x_i, y_i are the original abatement level and carbon price from the IAM, respectively. Uncertainty is reported in all MAC curves derived in this study. While such uncertainty is useful to indicate the confidence level of the MAC curve, it is not necessarily very obvious how to make use of the uncertainty range in reproducing scenarios by optimization from the IAM emulator (Figure S241).

In addition to deriving the MAC curves, we derived the maximum abatement level from each IAM, which reflected, for example, the limit of CCS capacity and hard-to-abate sectors. The minimum abatement level is, by definition, zero in all simulation periods, unless there is inter-sectoral emission trading that can increase emissions. We also estimated upper limits of the first and second derivatives of temporal changes in abatement levels, which account for the limits of the rate of

Deleted: is

Deleted: $f(x) = a * x^b + c * x^d$

Deleted: $\sqrt{\frac{\sum_{i=1}^n (y_i - \hat{y}_i)^2}{n-2}}$

Deleted: \hat{y}

Deleted: (x) ,

Deleted: S242

245 technological change and the socio-economic inertia (e.g., barriers to the diffusion of new technologies (Schwoon and Tol, 2006)), respectively. The limits on the first and second derivatives of abatement changes will prohibit the use of deep mitigation levels in the MAC curve in early periods. These barriers to rapid emission reductions and the associated costs could also be introduced by more complex functional forms internally in the MAC curves (Ha-Duong et al., 1997; Schwoon and Tol, 2006; De Cara and Jayet, 2011; Hof et al., 2021), but we applied such limits externally on the MAC curves. Processes and factors that can cause inertia in IAMs, including capital stock, growth rate constraints on technology expansion, availability of new technologies, learning by doing, and learning with time (Gambhir et al., 2019; Krey et al., 2019; Tong et al., 2019; Shiraki and Sugiyama, 2020), are not explicitly considered in our MAC curve approach, but are partially captured in our approach, which describes percentage reduction rates relative to rising baseline scenarios. For example, constant emission reductions in absolute terms can appear smaller over time in relative terms and thus become less costly in our approach.

255 For each IAM, we computed the rate of change in the abatement level at each time step from the previous time step (i.e., first derivatives) over the entire available period. We then approximated such data with a log-normal distribution and assumed the three-sigma level (upper side) as the maximum of the first derivative of abatement changes. Likewise, we computed the rate of change of the rate of change in the abatement level (i.e., second derivatives), approximated the data with a normal distribution, and assumed the three-sigma level (upper side) as the maximum of the second derivative of abatement changes. We further assumed that the minimum of the first and second derivatives were at the opposite sign of the maximum of the first and second derivatives, respectively. These limits are applied when MAC curves are coupled with ACC2 to generate cost-effective pathways (Section 4).

Deleted: (Ha-Duong et al., 1997; Schwoon and Tol, 2006; De Cara and Jayet, 2011; Hof et al., 2021), but we applied such limits externally on the MAC curves. “Learning by doing” and “learning with time,” which reduce the mitigation cost with abatement (endogenously) and time (exogenously), respectively (Hof et al., 2021), are not explicitly considered in our MAC curve approach, but are partially captured in our approach, which describes percentage reduction rates relative to rising baseline scenarios.

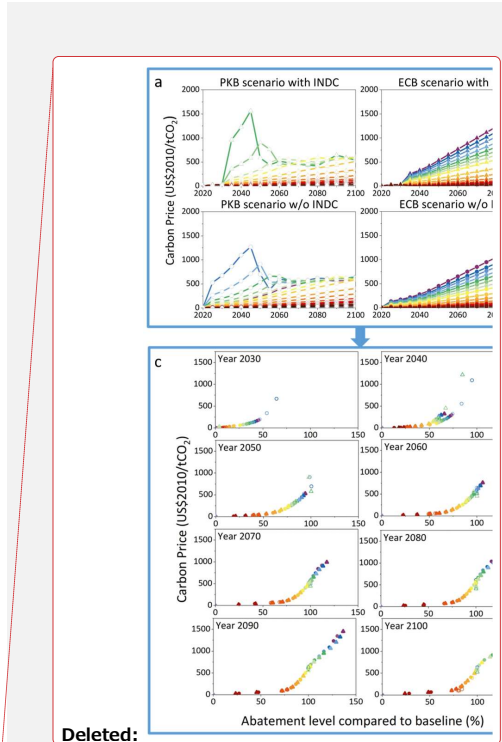
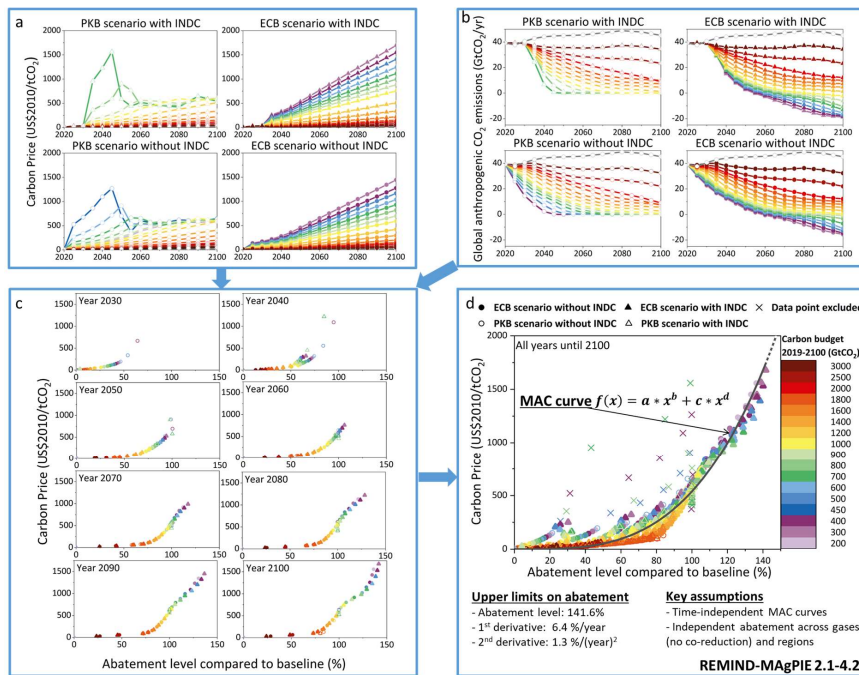


Figure 1. Overview of the methods to derive MAC curves and limits on abatement (upper limits on abatement levels and their first and second derivatives). The figure uses the data for global total anthropogenic CO₂ emissions from REMIND for illustration. The chromatic colors indicate the respective carbon budgets for the period 2019 – 2100 in GtCO₂. The gray color indicates the baseline scenario (“NPi2100” in the original scenario name). Scenarios without INDC consider currently implemented national policies (circle; indicated as “NPi2020” in the original scenario name); scenarios with INDC further consider national emission pledges until 2030 (triangle; indicated as “INDCi2030” in the original scenario name). ECB scenarios consider carbon budgets till the end of this century, with a possibility of temporal budget overspending (filled circles; with “F” in the original scenario name); PKB scenarios consider carbon budgets without allowing temporal budget overspending (open circles; without “F” in the original scenario name). Crosses indicate data points from scenarios that were not considered in the derivation of the MAC curve (i.e., EN_INDCi2030_700, EN_INDCi2030_800, EN_NPi2020_400, and EN_NPi2020_500 for REMIND (see Table 1)). In the equation of the MAC curve, a , b , c , and d are the parameters to be optimized; x is the variable representing the abatement level in percentage relative to the assumed baseline level. Note that panel c shows data only for every ten years for the sake of presentation.

In summary, we combined a MAC curve with the upper and lower limits on abatement levels and their first and second derivatives to emulate the behavior of an IAM, as illustrated in Figure 1 using the output from REMIND as an example (corresponding figures for AIM and MESSAGE in Figures S1 and S2 of Supplement). The upper two panels show the original data from REMIND: the carbon price pathways corresponding to the series of carbon budgets (Figure 1a) and the global anthropogenic CO₂ emissions (Figure 1b) from the four types of scenarios (ECB scenarios without INDC, ECB scenarios with

INDC, PKB scenarios without INDC, and PKB scenarios with INDC). These data are rearranged to show the relationship between the carbon price and the abatement level in percentage relative to baseline every ten years (original data every five years before 2060) (Figure 1c). In the near term, data points can only be seen at low abatement levels. With time, data points proceed to deeper abatement levels. Taken together over all years, Figure 1d shows a consistent relationship, providing a basis for a time-independent MAC curve. Outliers arising from very low carbon budget scenarios (crosses in Figure 1d) were identified and manually excluded from the derivation of the MAC curve (Table 1), although excluding such scenario(s) limits the range of applicability of the MAC curve.

The stable MAC curve is an interesting finding in itself because, despite the presence of time-dependent processes in this intertemporal optimization model (Campiglio et al., 2022), the same relationship persists over time between the carbon price and the abatement level. But why does this time-independent approach work so well to capture IAMs that include time-dependent processes? The use of percentage reductions in our MAC curve approach goes some way to explaining this. Since most of the baseline scenarios are rising as noted above, the same amount of emission abatement in absolute terms can become smaller with time in percentage terms, which inadvertently but effectively captures the influences from time-dependent processes in IAMs. When the underlying data are presented in absolute terms, the data distribution appears more dispersed (Figure S3 for AIM, MESSAGE, but to a lesser extent for REMIND).

Deleted: "learning by doing" and "learning with time".

3.2 MAC curves from ENGAGE IAMs

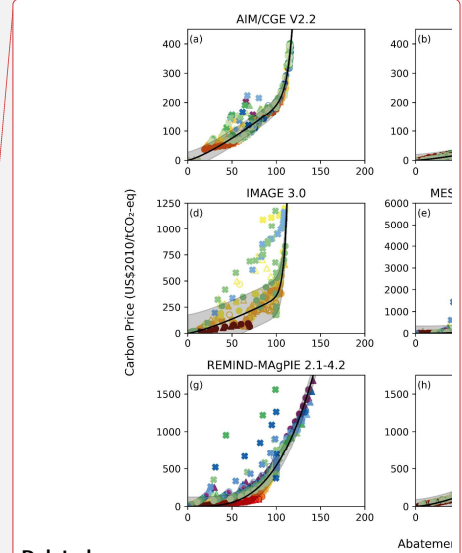
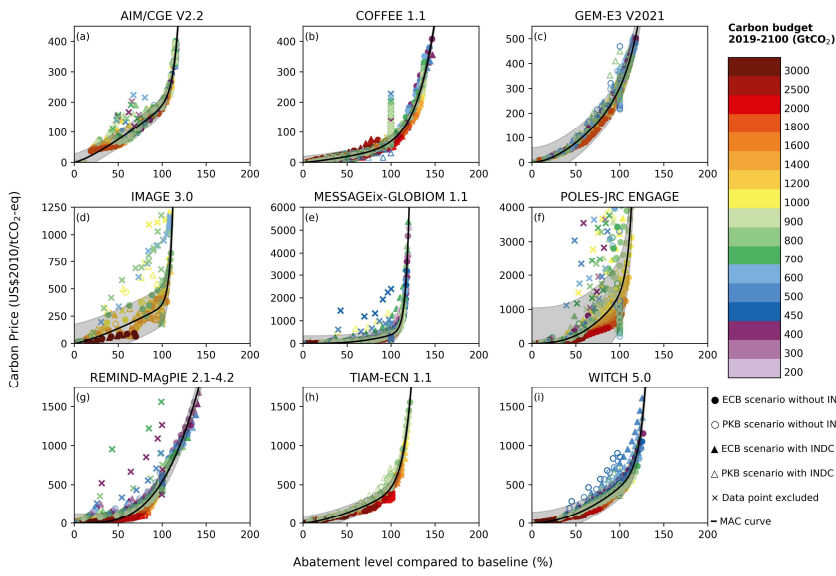
3.2.1 Carbon price and abatement level

Figure 2 shows the relationships between the carbon price and the abatement level for global total anthropogenic CO₂ emissions obtained from nine ENGAGE IAMs. Overall, the relationships between the carbon price and the CO₂ abatement level are well captured by time-independent MAC curves for most IAMs here. The results vary in terms of the range of carbon prices, the range of abatement levels, and the dispersion of data points. For example, the carbon prices of AIM and COFFEE remain below \$500/tCO₂, while the carbon prices of POLES and MESSAGE can exceed \$5,000/tCO₂. The maximum abatement levels of COFFEE and REMIND are over 150%, while most of the others are in the range of 100%-120%. AIM provides a limited amount of data at low abatement levels. IMAGE and POLES produce more dispersed data distributions than other models, which may be related to the fact that these models are recursive dynamic models (Table 1); however, the other recursive dynamic models, AIM and GEM, produce less dispersed data distributions that can be well captured by MAC curves. POLES can be seen as an example where our time-independent MAC curve approach does not work well. (See Section 5 for further discussion). The MAC curve, if taken every five years, shifts to the right over time (Figure S4). Visual inspection of the data distributions reveals little difference between the ECB scenarios and PKB scenarios (except for WITCH), indicating that the MAC curves are generally consistent for both types of scenarios in these IAMs. Note that the MAC curves are not very sensitive to the underlying sets of scenarios considered, at least for the five IAMs (COFFEE, MESSAGE, POLES, REMIND, and WITCH), which provide comparable carbon budget ranges and similar numbers of scenarios, while the distributions of

Deleted: .

scenarios are generally not homogeneous (Table S7). The MAC curves of the five IAMs are only slightly affected when we consider only a subset of scenarios whose carbon budgets are available for all five models (19 scenarios) (Figure S37). Results for other gases and for energy-related emissions are shown in Figures S5-S36.

330



Deleted:

Figure 2. Relationships between the carbon price and the global total anthropogenic CO₂ abatement level obtained from nine ENGAGE IAMs. Each panel shows the results from each ENGAGE IAM. Data were obtained from the ENGAGE Scenario Explorer and are shown in colors and markers as designated in the legend. Black lines are the MAC curves. Crosses are the data points that were not included in the derivation of MAC curves (Table 1). The shaded bands are the 95% confidence intervals of the fitted curves.

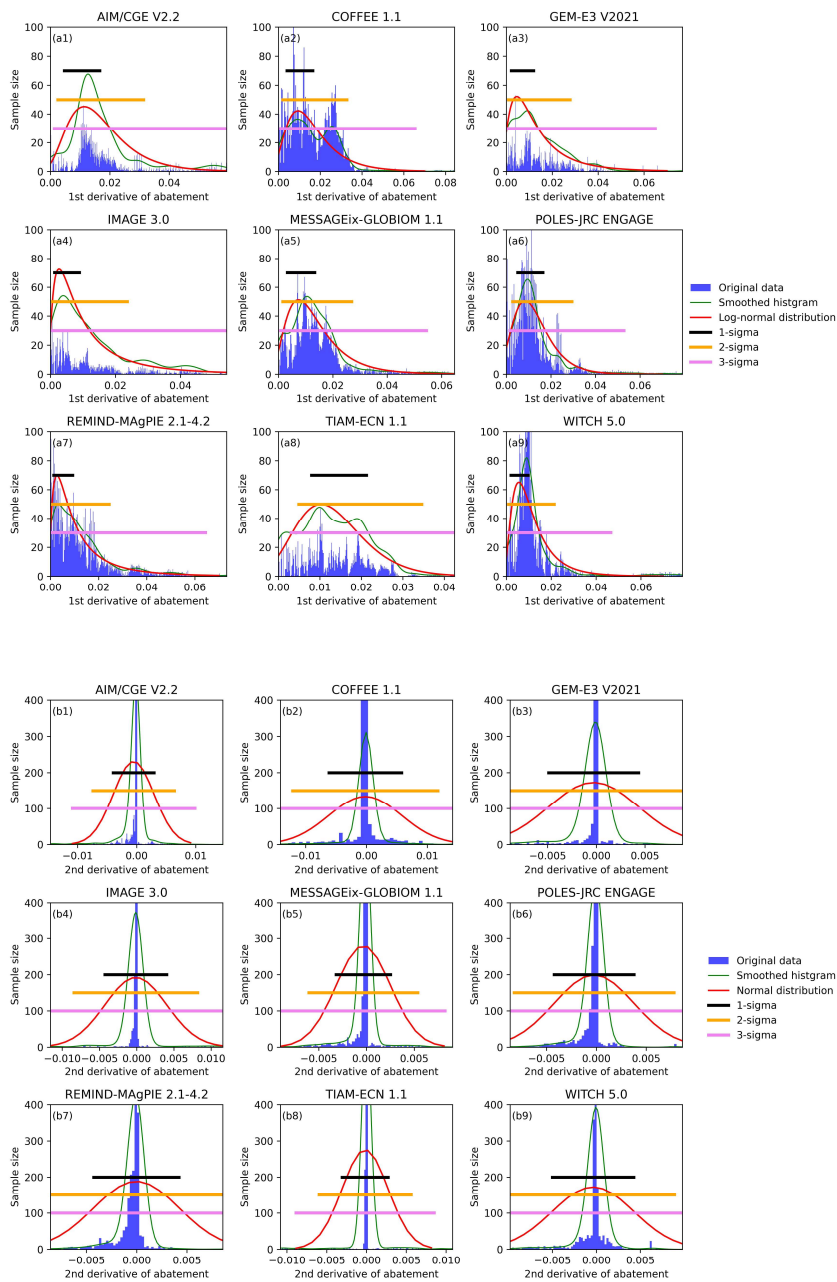
335

3.2.2 First and second derivatives of abatement changes

The first and second derivatives of temporal changes in abatement levels for global total anthropogenic CO₂ emissions from each ENGAGE IAM are shown in Figure 3. Data for the first derivatives primarily distribute on the positive side and can be best captured by log-normal distributions, among other distributions tested. On the other hand, data for the second derivatives spread on both the positive and negative sides and can be approximated by normal distributions. Based on visual inspection, we found that three-sigma ranges of distributions can largely capture data ranges. We therefore use three-sigma ranges as the limits on the first and second derivatives of abatement changes. There are outliers (now shown) originating from PKB scenarios, which we speculate are caused by sudden declines in carbon prices around the period of achieving net zero CO₂ emissions (Figure SI 1.1-6 of Riahi et al. (2021)). These outliers were effectively removed by considering three-sigma ranges (rather than the maxima and minima of the original data points). For other gases and for energy-related emissions, see Figures S38-S87.

340

345



350 **Figure 3. The first and second derivatives of temporal changes in abatement levels for the global total anthropogenic CO₂ emissions from each ENGAGE IAM. A log-normal distribution is applied to the data for the first derivatives of abatement changes**

obtained from each IAM. A normal distribution is applied to the data for the second derivatives of abatement changes obtained from each IAM.

355 The upper limits on the first and second derivatives of abatement changes estimated for ENGAGE IAMs are summarized in Table 2. Those for ACC2 were assumed to be 4.0 %/year and 0.4 %/(year)², respectively, for all three gases (CO₂, CH₄, and N₂O) (Tanaka and O'Neill, 2018; Tanaka et al., 2021). ENGAGE IAMs give higher upper limits on the first and second derivatives than ACC2 for CO₂. For the other two gases, ENGAGE IAMs also give higher upper limits on the second derivatives but tend to indicate lower upper limits on the first derivatives.

360 The upper limits on the first and second derivatives of CO₂ abatement can determine the earliest possible year of achieving net zero CO₂ emissions (i.e., 100% abatement) for each IAM. In the case of ACC2, it is the year 2050 when net zero CO₂ emissions become first possible, if the abatement can start in 2020. Figure S88 compares the earliest possible net zero years implied by the upper limits on the first and second derivatives with the years of net zero in carbon budget scenarios from each ENGAGE IAM. The figure shows that the former precedes the latter in all IAMs, indicating that the upper limits based
365 on three-sigma ranges are large enough to allow pathways to achieve net zero as shown by each IAM.

3.2.3 Global MAC curves

Figure 4 shows the global MAC curves for total anthropogenic and energy-related CO₂, CH₄, and N₂O emissions from nine ENGAGE IAMs and other studies. The parameter values of these global MAC curves and associated limits on abatement are shown in Table 2 (for total anthropogenic emissions) and Table S4 (for energy-related emissions).

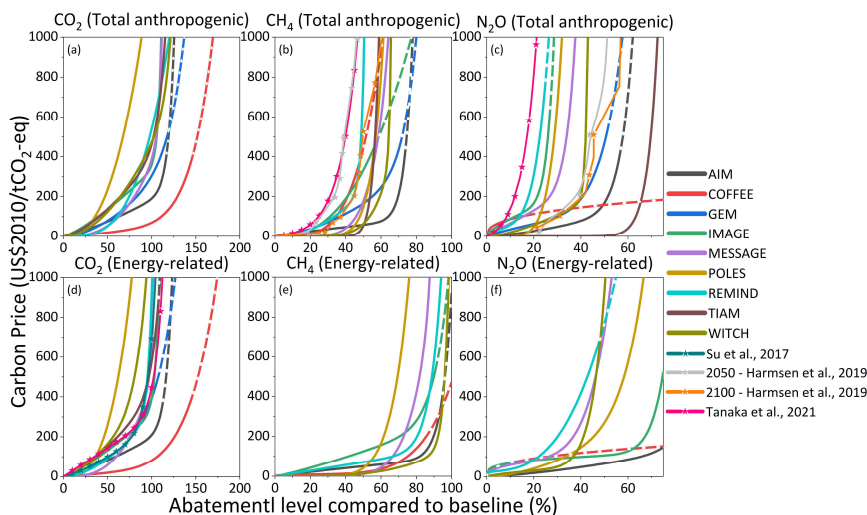
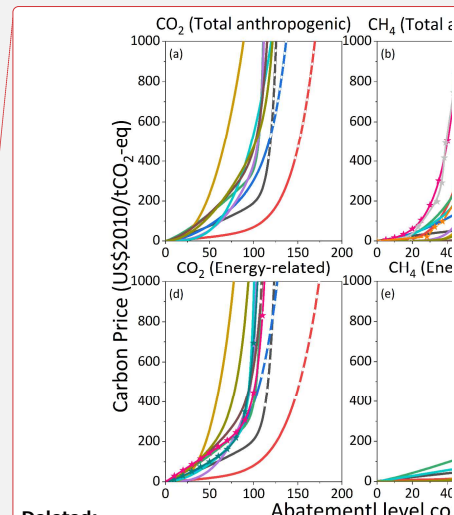


Figure 4. Global MAC curves for total anthropogenic and energy-related CO₂, CH₄, and N₂O emissions derived from nine



ENGAGE IAMs. In panels (a) to (f), the solid line indicates that the MAC curve is within the applicable range; the dashed line means that it is outside the applicable range (i.e., above the maximum abatement level indicated from underlying IAM simulation data or above the range of carbon prices considered for fitting the MAC curve; see Tables 1 and 2). Different colors indicate different IAMs. The MAC curves from selected previous studies (Su et al., 2017; Harmsen et al., 2019; Tanaka et al., 2021) are shown for comparison. The MAC curves from Harmsen et al., (2019) are time-dependent and the figure shows those for the years 2050 and 2100.

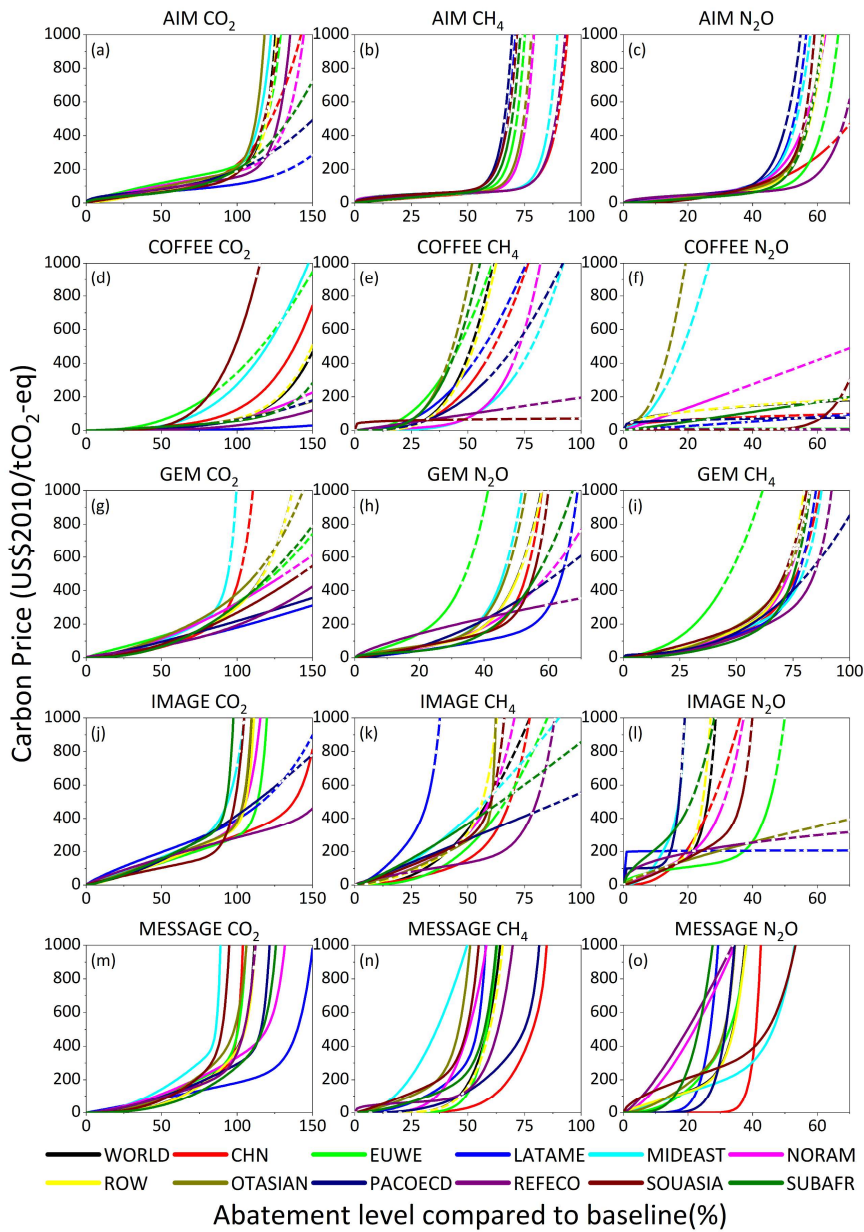
Table 2. Parameter values of global MAC curves for total anthropogenic CO₂, CH₄, and N₂O emissions derived from nine ENGAGE IAMs and associated limits on abatement. See equation (1) for parameters *a*, *b*, *c*, and *d*. MaxABL denotes the maximum abatement level (%) of each gas indicated from IAM simulation data. The units for *a* and *c* are US\$2010/tCO₂. Max1st and Max2nd represent the maximum first and second derivatives (%/year and %/(year)²), respectively, of abatement changes of each gas also derived from IAM simulation data. For those of global MAC curves for energy-related CO₂, CH₄, and N₂O emissions, see Table S4. For those of regional MAC curves, see the Zenodo repository.

Model	Gas	<i>a</i>	<i>b</i>	<i>c</i>	<i>d</i>	MaxABL	Max1st	Max2nd
AIM	CO ₂	182.14	1.27	8.68	19.71	116.2	5.9	1.0
	CH ₄	108.99	0.91	78686	17.91	73.6	6.1	1.3
	N ₂ O	282.34	1.46	243642	11.84	56.1	4.5	1.0
COFFEE	CO ₂	46.66	1.29	22.59	7.01	147.2	6.5	1.8
	CH ₄	3658.91	4.05	3658.91	4.05	47.7	2.3	1.3
	N ₂ O	102.75	0.37	102.75	0.37	20.2	3.9	1.4
GEM	CO ₂	267.14	1.76	36.85	8.53	118.2	6.5	1.4
	CH ₄	486.16	1.59	7133.48	10.70	72.0	4.6	1.1
	N ₂ O	240.14	0.83	31072	6.54	51.1	4.0	0.9
IMAGE	CO ₂	330.58	1.27	28.57	29.83	110.1	6.3	1.2
	CH ₄	959.11	2.53	959.11	2.53	58.3	3.1	0.6
	N ₂ O	426.52	0.68	1.54 × 10 ⁸	9.70	26.3	2.4	0.5
MESSAGE	CO ₂	368.79	2.78	18.30	30.24	120.9	5.4	0.8
	CH ₄	16789	6.57	3.29 × 10 ⁷	29.08	73.3	3.5	0.6
	N ₂ O	610.67	0.97	7909596	9.47	45.2	1.9	0.3
POLES	CO ₂	1347.98	2.52	144.57	21.87	147.1	5.3	1.2
	CH ₄	48160	9.36	48160	9.36	75.9	4.3	1.0
	N ₂ O	1512842	6.42	1513291	94.73	37.3	2.3	0.5
REMIND	CO ₂	269.52	3.38	269.52	3.38	136.2	5.9	1.0
	CH ₄	1002.16	2.11	1.61 × 10 ¹¹	28.11	51.2	3.4	1.2
	N ₂ O	224.21	0.65	633401	4.92	24.8	1.6	1.0
TIAM	CO ₂	384.32	1.48	78.52	13.31	121.7	5.6	0.9
	CH ₄	1.23 × 10 ⁷	17.81	157.83	100	59.5	3.9	1.0
	N ₂ O	215121	16.79	99.08	100	73.3	4.3	2.3
WITCH	CO ₂	462.12	1.89	10.13	18.05	128.2	4.7	1.4
	CH ₄	6658.29	6.72	2.78 × 10 ¹⁵	69.59	66.7	3.7	2.1
	N ₂ O	681.73	1.52	9.13 × 10 ¹⁸	43.78	42.8	3.1	1.1

MAC curves for total anthropogenic and energy-related CO₂ emissions resemble each other since total anthropogenic CO₂ emissions are predominantly energy-related CO₂ emissions. COFFEE gives the lowest carbon prices among all IAMs over a wide range of abatement levels; POLES shows the highest carbon prices. AIM has the second-lowest carbon prices at

390 abatement levels of 63% and above. REMIND gives higher carbon prices than AIM above the abatement level of 60%. The
functional form of the MAC function used by Su et al. (2017) is consistent with our study and Tanaka et al. (2021) used
equation (2) in Table S2. Harmsen et al. (2019) considered time-dependent MAC curves and no explicit function is provided.
Despite some differences in the form of the functions, the MAC curves for energy-related CO₂ used in Su et al. (2017) and
Tanaka et al. (2021) are within the range of the MAC curves from ENGAGE IAMs, but the MAC curves for CH₄ and N₂O
395 used in Tanaka et al. (2021) are higher. The CH₄ MAC curve in 2050 of Harmsen et al. (2019) is also higher than the range of
the CH₄ MAC curves from ENGAGE IAMs, but that in 2100 are close to that range. Harmsen's N₂O MAC curves are within
the corresponding range of ENGAGE IAMs and not much different between 2050 and 2100.

The difference between MAC curves for total anthropogenic and energy-related emissions is more pronounced for
CH₄ and N₂O than for CO₂ because of greater mitigation opportunities outside of the energy sector. CH₄ MAC curves generally
400 rise sharply at lower abatement levels than CO₂ MAC curves. All MAC curves for energy-related CH₄ emissions are low up
to about 50% abatement level, presumably reflecting low-cost abatement opportunities. AIM and WITCH give a low carbon
price up to 80-90% abatement level for energy-related CH₄ emissions. Due to limited N₂O abatement opportunities, N₂O MAC
curves rise steeply at low abatement levels, with the one from REMIND rising earliest.



405

Figure 5. Regional MAC curves for total anthropogenic CO₂, CH₄, and N₂O emissions derived from five ENGAGE IAMs. The solid line indicates that the MAC curve is within the applicable range; the dashed line means that it is outside the applicable range (i.e., above the maximum abatement level indicated from underlying IAM simulation data or above the range of carbon prices considered for fitting the MAC curve; see Tables 1 and 2). Different colors indicate different regions: China (CHN), European Union and Western

Europe (EUWE), Latin America (LATAME), Middle East (MIDEAST), North America (NORAM), Other Asian countries (OTASIAN), Pacific OECD (PACOED), Reforming Economies (REFECO), South Asia (SOUASIA), Sub-Saharan Africa (SUBSAFR), and Rest of World (ROW).

3.2.4 Regional MAC curves

Figure 5 shows the regional MAC curves for total anthropogenic CO₂, CH₄, and N₂O emissions from five ENGAGE IAMs. The parameter values of the regional MAC curves and associated limits on abatement can be found in our Zenodo repository.

While various inter-model and inter-regional differences can be seen in Figure 5, the regional variations of the AIM MAC curves appear to be the smallest for all three gases.

MIDEST generally shows a high CO₂ MAC curve relative to other regions. LATAM gives the lowest MAC curve at abatement levels above approximately 79% in all IAMs considered here, except for the IMAGE model with SOUASIA and REFECO being the lowest MAC curve at abatement levels of above and below 90%, respectively. LATAM also indicates very deep CO₂ abatement potentials exceeding 150% in some models. AIM's CH₄ MAC curves indicate low-cost CH₄ abatement opportunities up to abatement levels of approximately 50% in all regions, while such opportunities appear less abundant in the CH₄ MAC curves from other models. REFECO exhibits a very low CH₄ MAC curve in all five models. MIDEST gives either a high or a low CH₄ MAC curve, depending on the IAM. The N₂O MAC curves generally rise sharply earlier than the CH₄ MAC curves.

3.3 MAC curves from GET

Figure 6 shows the relationships between the carbon price and the abatement level of global energy-related CO₂ emissions and their dependency on the underlying technology portfolios considered in GET. MAC curves from different technology portfolios are compared in Figure 7. They are further compared with the global MAC curves for energy-related CO₂ emissions from ENGAGE IAMs and other studies. The parameter values of these global MAC curves and associated limits on abatement are shown in Table 3. Further details of the first and second derivatives of abatement changes from GET can be found in Figures S38 and S39.

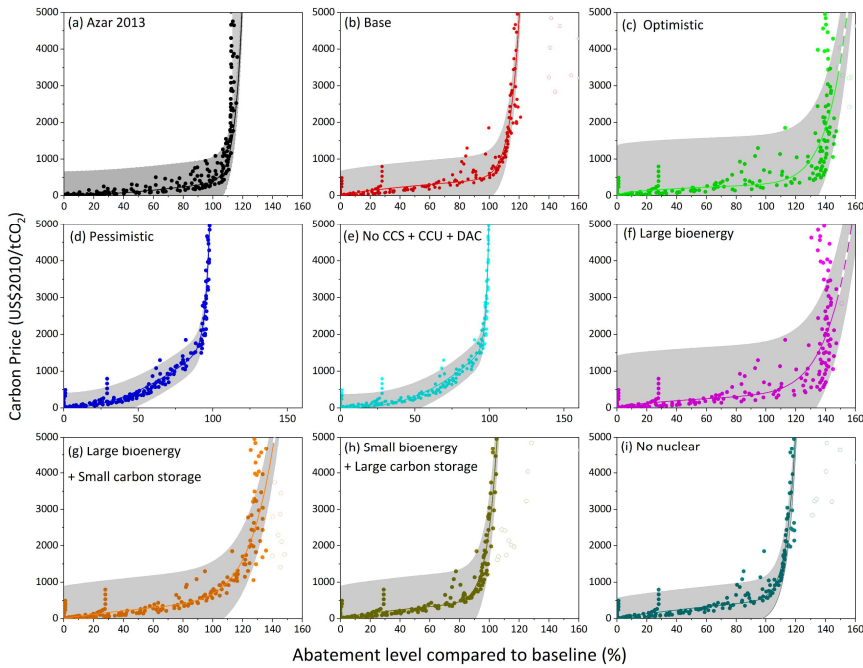


Figure 6. Relationships between the carbon price and the global energy-related CO₂ abatement level obtained from GET with different portfolios of available mitigation technologies. Panel (a) shows the results obtained from an older version of GET (Azar et al., 2013) for the sake of comparison. Panels (b) to (i) show the results from GET (Lehtveer et al., 2019) with different technology portfolios. See Section 2.2 for the definitions of technology portfolios. Points are the data obtained from GET; lines are the MAC curves calculated based on our approach. Open circles are the data that were not considered in the derivation of MAC curves (Table 1) and are typically found after 2100, in some cases above the abatement level of 160% (not shown). Note that we have converted the unit in Panel (a) from US\$2010/tC, which is used in the older version of GET, to US\$2010/tCO₂, the commonly used unit here. The shaded bands are the 95% confidence intervals of the fitted curves calculated.

Deleted: (see the caption of Figure 2).

Global MAC curves for energy-related CO₂ emissions from different technology portfolios cover a wide range. The range is almost as wide as that from ENGAGE IAMs (i.e., inter-portfolio range \approx inter-model range), if we disregard the MAC curve from COFFEE (Figure 2d). The MAC curve from the Base portfolio is generally higher than the MAC curve based on the previous version of the model (Azar et al., 2013; Tanaka and O'Neill, 2018), reflecting the biomass supply potential being smaller in the GET version used in our analysis (i.e., 134 EJ/year) than in the previous version (approximately 200 EJ/year), among other reasons. The maximum abatement level of the Base portfolio is about 120%, which is slightly higher than the estimate of 112% based on the previous model version. The Optimistic portfolio generally gives lower carbon prices and deeper mitigation potentials than the Base portfolio. Conversely, the Pessimistic portfolio shows higher carbon prices and more limited mitigation potential than the Base portfolio. The Optimistic and Large bioenergy portfolios yield more than 150%

CO₂ abatement levels at maximum. The Large bioenergy + Low carbon storage portfolio gives lower maximum abatement levels than the previous two portfolios due to the assumed lower carbon storage potential. The Low bioenergy + Large carbon storage portfolio limits the maximum CO₂ abatement levels at only slightly above 100%. With the Pessimistic portfolio, the maximum CO₂ abatement levels do not exceed 100% (i.e., no net negative CO₂ emissions) primarily because no carbon capture technologies such as CCS, CCU, and DAC are available. Likewise, the No CCS+CCU+DAC portfolio also gives a maximum abatement level below 100%. The No nuclear portfolio gives a similar relationship to the one from the Base portfolio, indicating a limited role of nuclear energy here. Finally, the results are somewhat, but not strongly, sensitive to the choice of discount rate (5% by default), as indicated by the results based on alternative discount rates of 3% and 7%, where the growth rate of carbon price is fixed at the value of the respective discount rate based on the Hotelling rule (Figure S89). The deployment of some technologies leads to a rapid increase and then a saturating increase rate of abatement price, as reflected in values of *b* less than 1 and values of *d* greater than 1 (Table 3). In general, a policy mix with more technologies leads to lower carbon costs, despite the relatively high upfront costs of technology deployment and use.

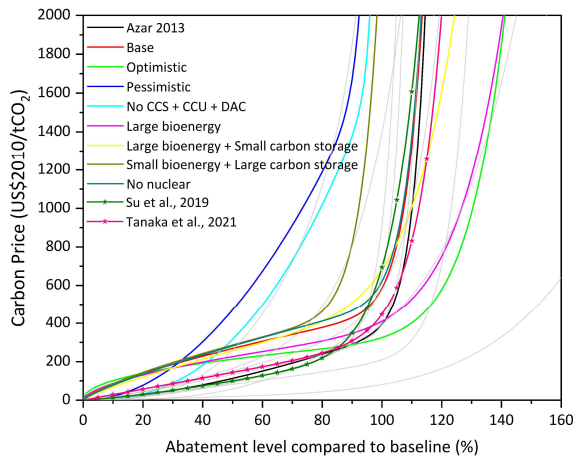


Figure 7. Global MAC curves for energy-related CO₂ emissions derived from the GET model with different portfolios of available mitigation technologies. Different colors indicate different technology portfolios (see Section 2.2 for details). Global MAC curves for energy-related CO₂ emissions from ENGAGE IAMs are shown as a comparison in gray lines, and the MAC curves from selected previous studies (Su et al., 2017; Tanaka et al., 2021) are shown in Jines with stars.

Deleted: star-shaped

Table 3. Parameter values of global MAC curves for energy-related CO₂ emissions derived from GET and associated limits on abatement. See equation (1) for parameters a , b , c , and d . The units for a and c are US\$2010/tCO₂. MaxABL denotes the maximum abatement level (%) of CO₂ indicated from GET simulation data. Max1st and Max2nd represent the maximum first and second derivatives (%/year and %/(year)²), respectively, of abatement changes.

Technology portfolio	Gas	a	b	c	d	MaxABL	Max1st	Max2nd
Azar 2013	CO ₂	338.61	1.58	57.08	24.59	112	5.6	0.9
Base	CO ₂	441.86	0.72	142.54	18.73	121	7.4	1.3
Optimistic	CO ₂	292.67	0.46	32.43	11.41	148	11.5	2.1
Pessimistic	CO ₂	1839.19	1.97	6716.35	34.62	100	4.5	0.8
No CCS + CCU + DAC	CO ₂	1775.74	2.49	3707.48	53.90	100	5.4	0.9
Large bioenergy	CO ₂	340.99	0.59	69.68	9.17	148	11.3	2.0
Large bioenergy + Small carbon storage	CO ₂	452.10	0.82	229.12	8.52	140	7.6	1.5
Small bioenergy + Large carbon storage	CO ₂	480.65	0.75	1992.76	15.93	105	6.1	1.1
No nuclear	CO ₂	489.97	0.80	131.23	19.52	120	7.2	1.3

Deleted: each gas

4. Validation of ACC2-emIAM

4.1 ACC2 model

To validate the performance of our MAC curves emulating IAM responses (i.e., emIAM), we coupled emIAM with the ACC2 model (ACC2-emIAM). ACC2 dates back to the impulse response functions of the global carbon cycle and climate system (Hasselmann et al., 1997; Hooss et al., 2001; Bruckner et al., 2003). The model was later developed to a simple climate model with a full set of climate forcings (Tanaka et al., 2007) and then to the current form (Tanaka et al., 2013; Tanaka and O'Neill, 2018; Tanaka et al., 2021): a simple climate-economy model¹ that consists of i) carbon cycle, ii) atmospheric chemistry, iii) physical climate, and iv) mitigation modules.

Deleted: couple

The representations of natural Earth system processes in the first three modules of ACC2 are at the global-annual-mean level as in other simple climate models (Joos et al., 2013; Nicholls et al., 2020). The carbon cycle module falls into the category of box models (Mackenzie and Lerman, 2006) and the physical climate module is a heat diffusion model DOECLIM (Kriegler, 2005). ACC2 covers a comprehensive set of direct and indirect climate forcings: CO₂, CH₄, N₂O, O₃, SF₆, 29 species of halocarbons, OH, NO_x, CO, VOC, aerosols (both radiative and cloud interactions), and stratospheric H₂O. The model captures key nonlinearities, for example, those associated with CO₂ fertilization, tropospheric O₃ production from CH₄, and ocean heat diffusion. Uncertain parameters are optimized (Tanaka et al., 2009a; Tanaka et al., 2009b; Tanaka and Raddatz, 2011) based on an inverse estimation theory (Tarantola, 2005). The equilibrium climate sensitivity is assumed at 3 °C, the best

Deleted: The representations of natural Earth system processes in the first three modules of ACC2 are at the global-annual-mean level as in other simple climate models (Joos et al., 2013; Nicholls et al., 2020)

¹ ACC2-emIAM (and ACC2 with the previous version of MAC curves) can be broadly viewed as an IAM, that is, a simple cost-effective IAM that considers global mitigation costs relative to an assumed baseline. In terms of the level of simplicity, ACC2-emIAM is similar to the DICE model (Nordhaus, 2017) and other simple cost-benefit IAMs that inform the social cost of carbon (Errickson et al., 2021; Rennert et al., 2022). However, ACC2-emIAM does not have an economic growth model and does not account for climate damage. In this study, ACC2-emIAM is characterized as a climate-economy model, but not an IAM, to distinguish it from the more complex IAMs emulated by the MAC curves. ACC2-emIAM also differs from these complex IAMs, which are typically not directly coupled with a climate model, with some versions of GET (Azar et al., 2013; Gaucher et al., 2023) being exceptions.

estimate of IPCC (2021). The mitigation module contains a set of global MAC curves for CO₂, CH₄, and N₂O (Johansson, 2011; Azar et al., 2013), which is a previous version of MAC curves to be replaced with the MAC curves derived in this study.

ACC2 can be used to optimize CO₂, CH₄, and N₂O emission pathways based on a cost-effectiveness approach. That is, the model can calculate least-cost emission pathways for the three gases since year 2020, while meeting a specified climate target (e.g., 2 °C warming target) with the lowest total cumulative mitigation costs in terms of the net present value. The model is written in GAMS and numerically solved using CONOPT3 and CONOPT4, the solvers for nonlinear programming or nonlinear optimization problems available in GAMS.

More specifically, ACC2 uses equation (2) to calculate the abatement costs (*ABC*) of years, regions (or global total), and gases.

$$ABC_{t,r,g} = Eb_{t,r,g} \times \int_0^x f_{t,r,g}(x) dx \quad (2)$$

where *t, r, g* represent year, region, and gas, respectively. *x* is the abatement level compared to the baseline scenario. *f_{t,r,g}(x)* is the MAC function. *Eb* is the baseline emission level for the IAM. The objective of the model is to minimize the net present value of the total abatement cost (*TABC*) such that the climate target is achieved (e.g., the temperature change is kept below a certain level such as the 2 °C level), that is:

$$\min TABC = \sum_{t,r,g} \frac{ABC_{t,r,g}}{(1+DSC)^{t-t_0}} \quad (3)$$

where *DSC* is the discount rate and *t₀* represents the base year used for abatement cost calculations (2010 in this study).

In this study, we replace the existing set of MAC curves in ACC2 with the global and regional MAC curves obtained in this study. We also replace the limits on abatement (i.e., upper limits on abatement levels and their first and second derivatives) with those obtained from this study. We assume a 5% discount rate in the validation tests, a rate commonly assumed in IAMs (Emmerling et al., 2019), which is also consistent with some of the IAMs analyzed here such as MESSAGE and GET (Figures SI 1.2-1 and 1.2-2 of Riahi et al. (2021)). But we were unable to find the discount rates used in the other IAMs. Note that a 4% discount rate was used as default in recent studies using ACC2 (Tanaka and O'Neill, 2018; Tanaka et al., 2021). We consider the mitigation costs through 2100 in scenario optimizations.

4.2 Experimental setups for the validation tests

The emission pathways of ENGAGE IAMs were generated under a series of cumulative carbon budgets (or corresponding carbon price pathways) (Section 2.1). Those of GET were calculated under a series of carbon price pathways (Section 2.2). All these pathways are not directly linked to a temperature target, which is typically used as a constraint for ACC2. Therefore, we successively validated the performance of ACC2-emIAM by applying a constraint first on the cumulative emission budget (Test 1) and then on the global-mean temperature (Tests 2 to 4). Four types of experiments were progressively performed as summarized in Table 4. Test 1 mimics the condition under which the ENGAGE IAM simulations were carried out (for CO₂) and can thus be regarded as a direct validation of MAC curves. Tests 2 to 4 are more applied validations to check how MAC

Deleted: $\int_0^x f_{t,r,g}(x) dx$

Formatted: Font: Times New Roman

Formatted: Font: Times New Roman

Deleted: ,

curves can work with a simple climate model. Tests 2 to 4 can also be seen as applications, rather than validations, of emIAM for temperature targets because the ACC2-emIAM setup takes into account the individual gas characteristics such as the short lifetime of CH₄ in deriving least-cost emission pathways, which the original IAM setups do not take into account (i.e., using GWP100 weighting instead).

540

Table 4. Experimental designs of the validation tests for ACC2-emIAM. See text for details.

	Test 1	Test 2	Test 3	Test 4
Target	Emission budget	2100 temperature	2100 temperature	2100 temperature Peak temperature
Variable	Separately gas by gas	Separately gas by gas	Simultaneously all three gases	Simultaneously all three gases

- 545

▪ Test 1: Constraint on the cumulative emission budget of each gas. We generate least-cost emission pathways with a cap on the cumulative emissions of each gas separately (total anthropogenic CO₂, CH₄, and N₂O emissions for ENGAGE IAMs; energy-related CO₂ emissions for GET). The cap on CO₂ for an ENGAGE IAM is equal to the cumulative carbon budget as specified in each ENGAGE IAM simulation. The cap on CO₂ for GET was calculated from the output of GET, which was simulated under carbon price pathways. The caps on CH₄ and N₂O for ENGAGE IAMs were obtained by calculating the respective cumulative emissions from 2019 to 2100. Note that the cumulative CH₄ budget, or an emission budget of short-lived gases in general, does not offer any useful physical interpretation, while the cumulative CO₂ budget, or an emission budget of long-lived gases, can be an indicator of the global-mean temperature change (Matthews et al., 2009; Allen et al., 2022). It should also be noted that this experiment does not directly make use of the carbon cycle, atmospheric chemistry, and physical climate modules of ACC2 (i.e., simple climate models), as these modules do not affect the results. Test 1 evaluates how the cumulative emission budget can be distributed over time, which depends on the MAC curves and the limits on abatement (i.e., upper limits on abatements and their first and second derivatives), while minimizing the total abatement costs.

555
- 560

▪ Test 2: Constraint on the end-of-century warming for one gas at a time. We first use ACC2 to calculate the temperature pathway from each carbon budget scenario of each IAM. The calculated temperature at the end of the century is used as a constraint on ACC2-emIAM. This test does not use the temperature data found in the ENGAGE Scenario Explorer, which were calculated using different simple climate models (Xiong et al., 2022). We calculate least-cost emission pathways for only one gas at a time (CO₂, CH₄, or N₂O for ENGAGE IAMs). For example, when calculating a least-cost emission pathway for CO₂, we assume the CH₄ and N₂O emissions to follow the respective pathways from the corresponding carbon budget scenario in the ENGAGE Scenario Explorer. This test validates the temporal distribution of emissions under an end-of-century warming target with global MAC curves. It also validates the trade-off among different regions with regional MAC curves; however, it does not address the trade-off among different gases.

565

570

- Test 3: Constraint on the end-of-century warming for three gases simultaneously. This test is the same as Test 2, except that it calculates least-cost emission pathways for three gases simultaneously (CO₂, CH₄, and N₂O for ENGAGE IAMs). This test validates not only the aspects described for Test 2 but also the trade-off among different gases. Note that we do not use GWP100 in ACC2-emIAM to generate least-cost pathways for CO₂, CH₄, and N₂O. In other words, abatement levels among the three gases are determined directly by the MAC curves without being constrained by GWP100. It is well-known that the use of GWP100 in an IAM leads to a deviation from the cost-effective solution (O'Neill, 2003; Reisinger et al., 2013; van den Berg et al., 2015; Tanaka et al., 2021). Although the deviation is unlikely to be very large, this can be a small source of discrepancy between the original and reproduced pathways. Note that Test 3 is, by definition, 575 equivalent to Test 2 for GET because only CO₂ emissions are emulated for this model.

580

- Test 4: Constraint on the end-of-century warming and the mid-century peak warming for three gases simultaneously. This test is the same as Test 3, except that the maximum temperature in mid-century is used as an additional constraint on ACC2-emIAM. The peak temperature was taken from the temperature calculation using ACC2 performed for Test 2. The constraint of the mid-century peak warming is intended to control near-term CH₄ emissions, which are known to have a strong effect on peak temperatures in mid-century but little effect on end-of-century temperatures (Shoemaker et al., 2013; Sun et al., 2021; McKeough, 2022; Xiong et al., 2022).

585

There are other technical notes that apply to all four tests above. For PKB scenarios, we impose a condition that prohibits net negative CO₂ emissions on ACC2-emIAM. For ECB scenarios (for Test 1 only), we assume that a carbon budget can be interpreted simply as a net budget when it is related to the final temperature through the property of the Transient climate response to cumulative carbon emissions (TCRE), as commonly assumed in the IAM community. It should, however, be noted that such an assumption may not hold for large temperature overshoot scenarios ([Tachiiri et al., 2019](#); [Melnikova et al., 2021](#); [Zickfeld et al., 2021](#); [Mastropiero et al., 2023](#)). For scenarios with INDC, which follow NDC up to 2030, we impose the 590 original scenarios up to 2030 and perform the optimization from 2030 onwards. For scenarios without INDC, on the other hand, we perform the optimization starting in 2020. Emissions scenarios for all GHGs and air pollutants other than the three gases are assumed to follow the corresponding scenarios from the ENGAGE Scenario Explore or the most proximate SSP in the case of GET. The original scenarios from GET are available from 2010, but we reproduced the GET scenarios from 2020 (as done for ENGAGE IAMs) and adopted the GET scenarios from 2010 to 2020 in ACC2-emIAM. When a scenario was 595 removed from the MAC curve fitting (Table 1), the scenario was also removed from the validation.

It is important to note that the outcome of the tests described above needs to be interpreted differently, depending on whether the IAM is an intertemporal optimization model or a recursive dynamic model (Table 1) (Babiker et al., 2009;

Deleted: It is important to note that the outcome of the tests described above needs to be interpreted differently, depending on whether the IAM is an intertemporal optimization model or a recursive dynamic model (Table 1) (Babiker et al., 2009; Guivarch and Rogelj, 2017; Melnikov et al., 2021)...

605 [Guivarch and Rogelj, 2017](#); [Melnikov et al., 2021](#)). While the temporal distribution of emission abatement is internally calculated in an intertemporal optimization model, it is typically a priori assumption in a recursive dynamic model and determined by a given carbon price pathway. In a recursive dynamic model, the underlying economic and energy-related relationships that determine the temporal distribution of emission abatement are not necessarily consistent with those used to allocate emission abatement across sectors and regions at each time step.

4.3 Results from the validation tests

610 Figure 8 provides an overview of the validation results, using REMIND as an example. Overall, ACC2-emIAM has closely reproduced the original CO₂ emission pathways from REMIND in the series of four tests. The outcomes for CH₄ and N₂O were also generally satisfactory, although not as successful as those for CO₂. For Test 1, the results were good for all three gases. The results were similarly good for Test 2, except for a minor discrepancy due to a small rise in emissions at the end of the century. A small increase in emissions is known to occur in ACC2 before a temperature target is reached after an overshoot due to the inertia of the system (Tanaka et al., 2021). However, discrepancies were found in Test 3 for the near-term CH₄ pathways in low budget cases and the late-century CH₄ and N₂O pathways in high budget cases. The discrepancy for near-term CH₄ emissions was reduced in Test 4. CH₄ abatements tend to be incentivized later in the century in the cost optimization of ACC2 with the discount rate of 5% (Tanaka et al., 2021). This effect can be offset by the additional constraint on the mid-century peak temperature, as near-term CH₄ emissions can strongly influence mid-century temperatures (Shoemaker et al., 620 2013; Sun et al., 2021; McKeough, 2022; Xiong et al., 2022). When interpreting the validation tests, it is useful to keep in mind that only Test 1 can be strictly considered as a pure validation; certain levels of discrepancies can be expected from Tests 2 to 4 due to the difference in the model setup between the original IAMs and ACC2-emIAM.

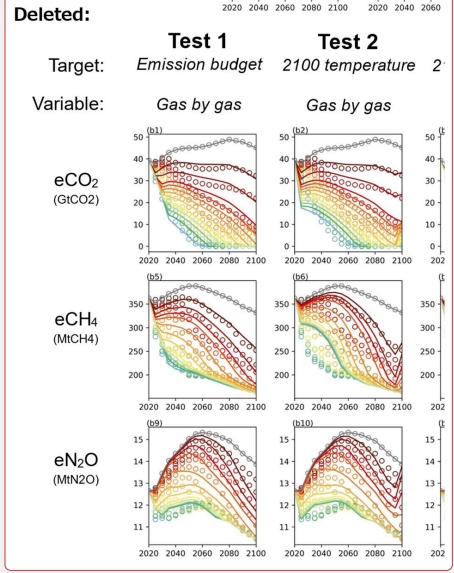
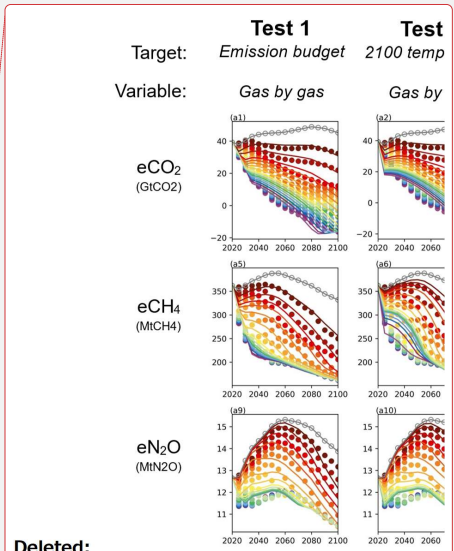
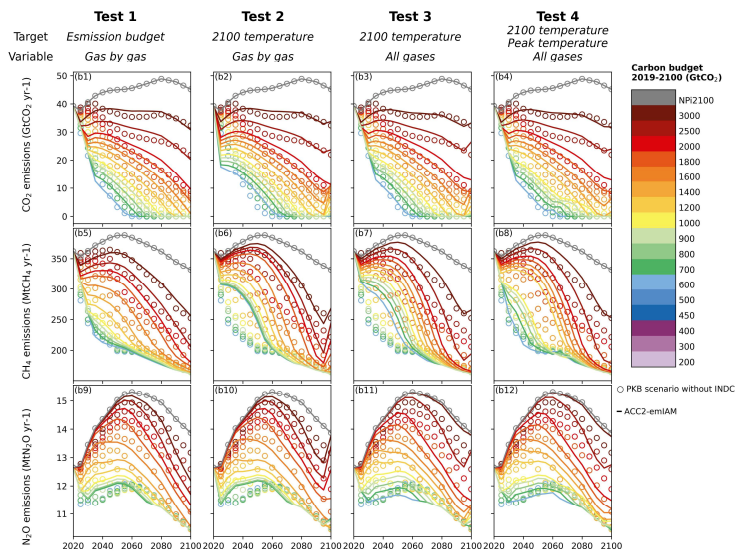
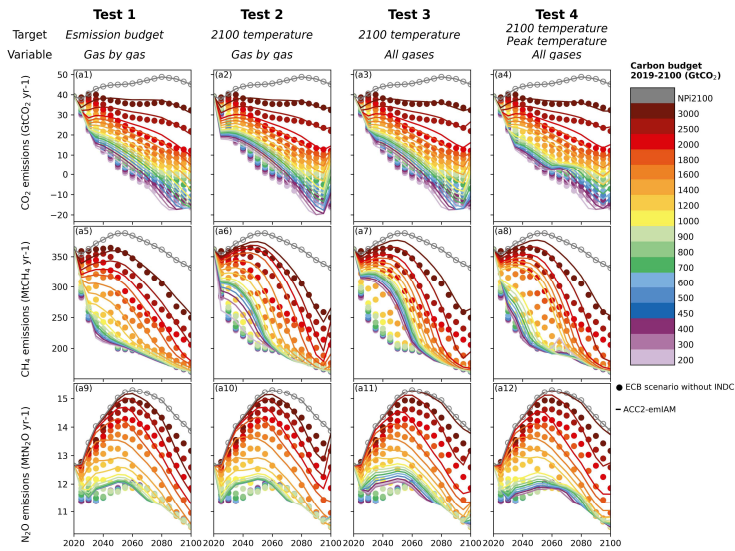


Figure 8. Overview of the validation results for ACC2-emIAM with REMIND as an example. The outcomes for ECB scenarios (filled circles) are shown in the upper set of panels; those for PKB scenarios (open circles) are in the lower set of panels. The points show the original emission pathways from REMIND obtained from the ENGAGE Scenario Explorer; the lines show the emission pathways reproduced from ACC2-emIAM. The same color is used for each pair of original and reproduced pathways. For the sake of presentation, only the outcomes of scenarios without INDC are presented; the outcomes of scenarios with INDC are not shown here. The outcomes of the full set of scenarios can be seen in Figure S90.

625

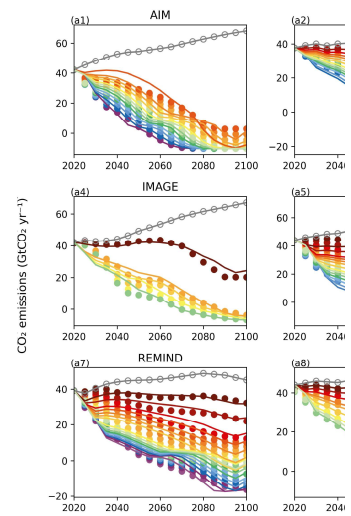
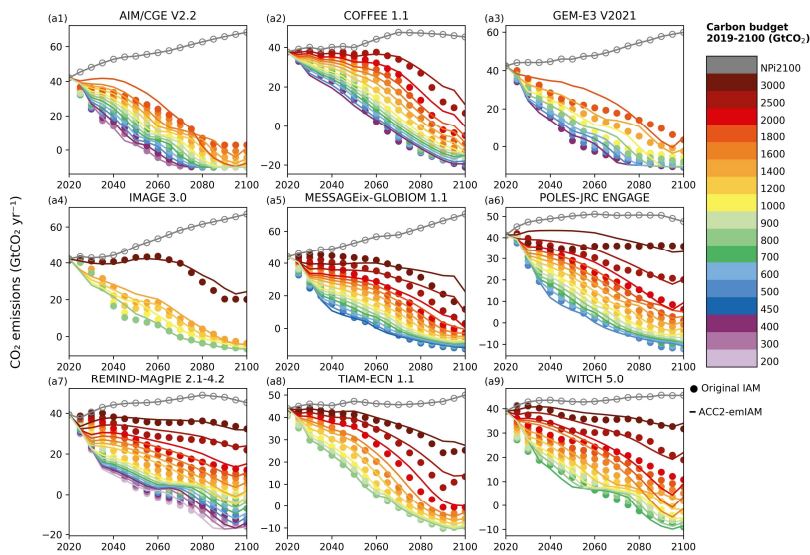
630

635

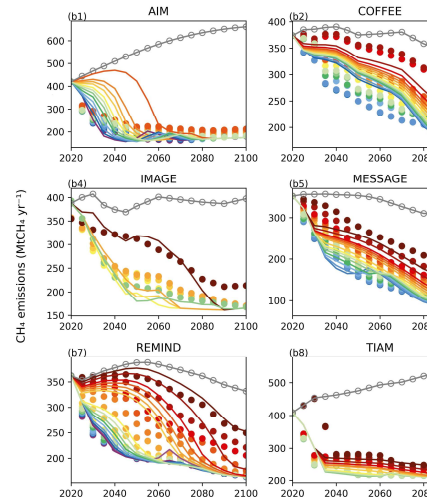
Figure 9 shows the validation results from Test 4 for all nine ENGAGE IAMs (global total anthropogenic CO₂, CH₄, and N₂O emissions) and GET with different technology portfolios (global energy-related CO₂ emissions). The full set of validation results from Tests 1 to 4 can be found in Figures S91-S109, S129-S147, S167-S184, and S203-S221, respectively. CO₂ emission pathways were generally well reproduced through ACC2-emIAM for all ENGAGE IAMs. The outcomes for CH₄ and N₂O were not as good as those for CO₂: only a subset of ENGAGE IAMs such as REMIND and WITCH was adequately captured by ACC2-emIAM. Some of the mismatches can be explained, for example, by the poor fits of N₂O MAC curves from COFFEE and TIAM (Figure S10). The general difficulty in capturing IMAGE through MAC curves (Figure S16) can be seen in the mismatches in these tests for IMAGE in Figure 9. It is also worth noting that, despite very good fits of MAC curves from GEM (Figure S15), CH₄ and N₂O emission pathways were not well reproduced. The results for GET were also generally good, but the Large bioenergy + Small carbon storage portfolio gave a relatively poor result. This may be due to the relatively poor fit of the MAC curve for this technology portfolio, compared to those from other portfolios (Figure 6).

640

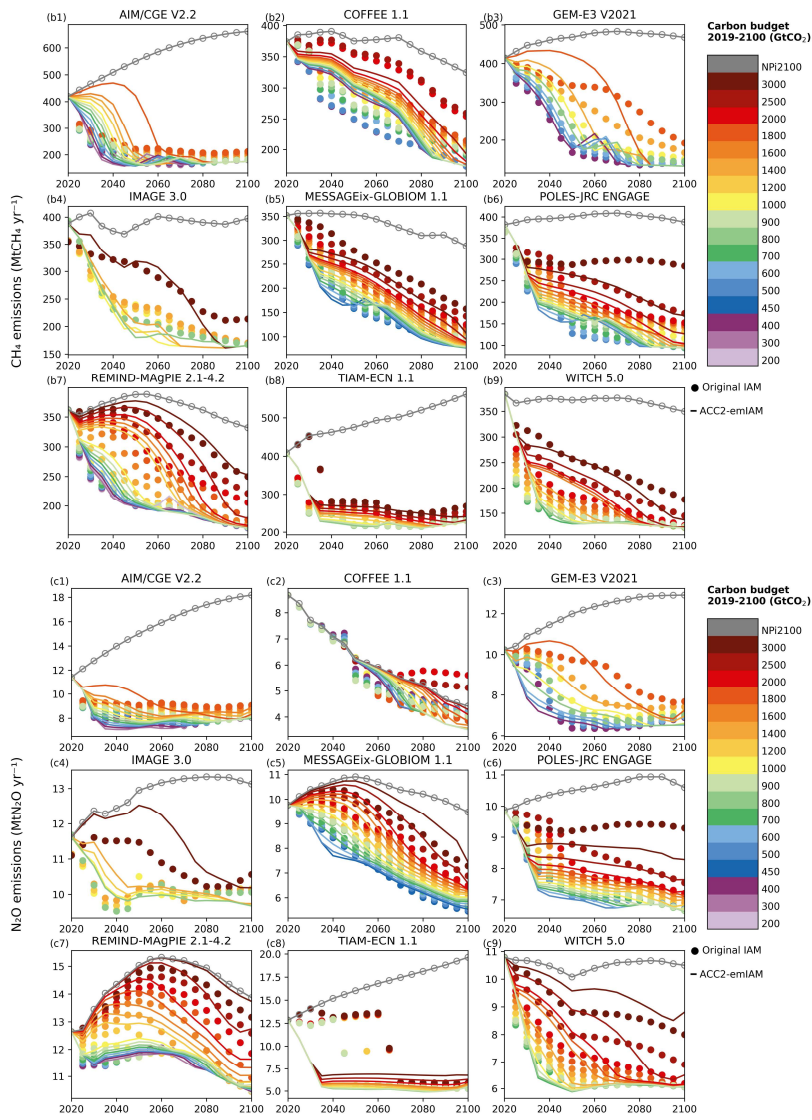
645



Deleted:



... [1]



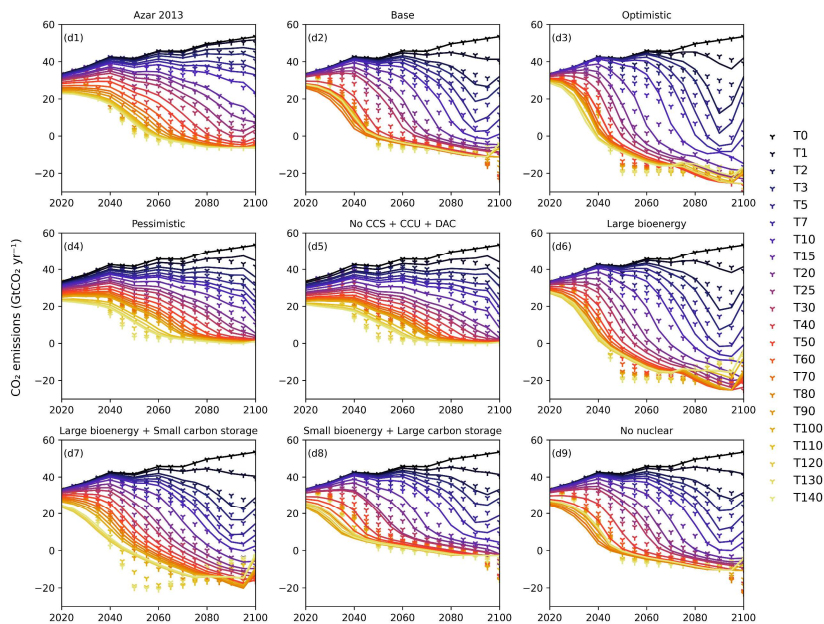
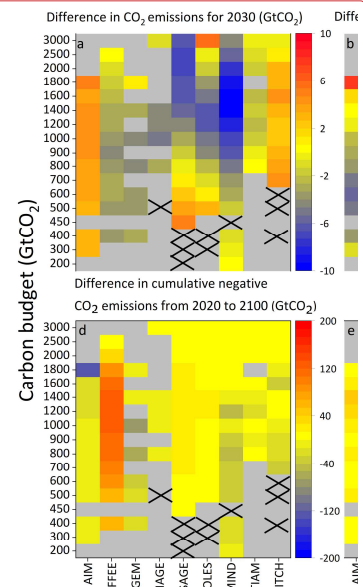


Figure 9. Original and reproduced global emission pathways from Test 4 for nine ENGAGE IAMs (total anthropogenic CO₂, CH₄, and N₂O emissions) and GET (energy-related CO₂ emissions) with different technology portfolios. The first three sets of panels are from the nine ENGAGE IAMs. For the sake of presentation, only the outcomes of ECB scenarios without INDC are presented; those of the full scenarios can be seen in Figures S204 to S206. The last set of panels is from GET with different technology portfolios. The points show the original emission pathways from ENGAGE IAMs and GET; the lines show the emission pathways reproduced from ACC2-emIAM. The same color is used for each pair of original and reproduced pathways. For the legend of the panels for GET, the number indicates the initial carbon price (US\$2010/tCO₂), from which the carbon price grows 5% each year.

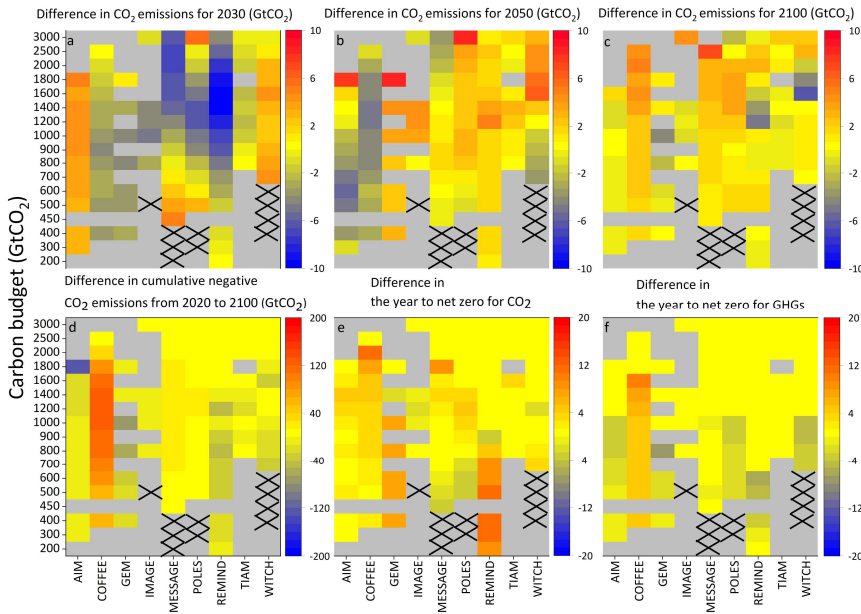
Furthermore, we examine several selected features of the original and reproduced emission pathways from Test 4 (ECB scenarios without INDC only), such as CO₂ emissions in 2030, 2050, and 2100, cumulative negative CO₂ emissions from 2020 to 2100, the year to net zero for CO₂, and that for GHG. Figure 10a-c indicates that the reproducibility of CO₂ emissions for three different points in time varies across models and carbon budgets, but it is worth noting that ACC2-emIAM nearly consistently overestimates and underestimates 2030 CO₂ emissions from AIM and REMIND, respectively. Cumulative negative CO₂ emissions are negatively underestimated for COFFEE (Figure 10d), which is related to the general overestimation of 2100 CO₂ emissions for COFFEE (Figure 10c). The year to net zero for CO₂ tends to be overestimated (later than the original year) for REMIND with the carbon budget at or below 800 GtCO₂.

Deleted: S203

Deleted: S205



Deleted:



675 **Figure 10. Differences in the pathway features between ENGAGE IAMs and ACC2-emIAM.** This figure presents the results from
 Test 4 for ECB scenarios without INDC. Panels a to c show the difference in CO₂ emissions for 2030, 2050, and 2100, respectively,
 between ENGAGE IAMs and ACC2-emIAM. Panel d shows the difference in cumulative negative CO₂ emissions. Panels e and f show
 the difference in the year to net zero for CO₂ and GHG (for CO₂, CH₄, and N₂O), respectively. Positive values indicate that ACC2-
 680 emIAM overestimates the pathway feature (i.e., the emulator gives larger emissions (panels a to c), less negative cumulative emissions
 (panel d), or later year (panels e and f), while negative values indicate the opposite). Gray boxes without black crosses indicate that the
 corresponding scenarios were not available in the ENGAGE Scenario Explorer, while those with black crosses indicate that the
 corresponding scenarios were available but not successfully reproduced by ACC2-emIAM (i.e., infeasible solutions).

4.4 Statistics of the validation tests

To measure to what extent emission pathways obtained from ACC2-emIAM, denoted as y , agree with original pathways from
 685 ENGAGE IAMs and GET, denoted as x , we calculate the following two different indicators: i) ordinary Pearson's correlation
 coefficient r_p and ii) Lin's concordance coefficient r_c . Each of these indicators is discussed below.

First, because of the prevalent use of r_p and its square form (i.e., coefficient of simple determination, so-called r^2) in
 numerous applications, we use r_p as a reference for comparison, although r_p is known to be inappropriate for testing
 agreement: it is suited to test the strength of linear relationship, but not the strength of agreement (Bland and Altman, 1986;
 690 Cox, 2006). More specifically, r_p (and r^2) shows the strength of linear regression line $\hat{y} = \alpha x + \beta$, not necessarily $\hat{y} = x$, a
 special case of agreement. Note that it is possible to calculate r^2 based on $\hat{y} = x$ by using the sum of square of residuals and
 the total sum of squares (i.e., not equation (2)); however, if $\hat{y} = x$ is a very poor regression line, r^2 can become negative (page

21 of Hayashi (2000)) and cannot be interpreted as a square of r_p . Other arguments that suggest a more restricted use of r_p can be found elsewhere (Ricker, 1973; Laws, 1997; Tanaka and Mackenzie, 2005). For our application, r_p is defined as below.

$$695 \quad r_p = \frac{\sum_{i=1}^l \sum_{j=1}^m (x_{i,j} - \bar{x})(y_{i,j} - \bar{y})}{\sqrt{\sum_{i=1}^l \sum_{j=1}^m (x_{i,j} - \bar{x})^2} \sqrt{\sum_{i=1}^l \sum_{j=1}^m (y_{i,j} - \bar{y})^2}} \quad (4)$$

where $x_{i,j}$ and $y_{i,j}$ are the original and reproduced emission, respectively, for year i (for $i = 1, \dots, l$) under scenario j (for $j = 1, \dots, m$). \bar{x} and \bar{y} are the mean of $x_{i,j}$ and $y_{i,j}$, respectively, over i and j . r_p can change between -1 and 1. When it is 1, the samples have a perfect linear relationship, which is a necessary condition for a perfect agreement. When it is 0, there is no linear relationship in the samples.

700 Second, r_c is a more appropriate indicator for measuring agreement than r_p (Lin, 1989; Barnhart et al., 2007; Lin et al., 2012). r_c is defined as follows.

$$r_c = \frac{2s_{xy}}{s_x^2 + s_y^2 + (\bar{x} - \bar{y})^2} \quad (5)$$

where s_x^2 and s_y^2 are the variance of $x_{i,j}$ and $y_{i,j}$, respectively. That is, $s_x^2 = \frac{1}{l \times m} \sum_{i=1}^l \sum_{j=1}^m (x_{i,j} - \bar{x})^2$ and $s_y^2 = \frac{1}{l \times m} \sum_{i=1}^l \sum_{j=1}^m (y_{i,j} - \bar{y})^2$, respectively. s_{xy} is the covariance of $x_{i,j}$ and $y_{i,j}$. That is, $s_{xy} = \frac{1}{l \times m} \sum_{i=1}^l \sum_{j=1}^m (x_{i,j} - \bar{x})(y_{i,j} - \bar{y})$.

705 r_c also distributes between -1 and 1. When it is 1, 0, and -1, it indicates a perfect concordance, no concordance, and a perfect discordance (or reverse concordance), respectively. r_c is commonly interpreted either similar to r_p or in the following way: >0.99, almost perfect; 0.95 to 0.99, substantial; 0.90 to 0.95, moderate; <0.90, poor (Akoglu, 2018). An underlying assumption for this parametric statistic is that the population follows Gaussian distributions.

710 Two other indicators (i.e., the root-mean-square-error (RMSE) and the mean-average-error (MAE)) are computed to provide additional insights into the magnitude of the deviations. All four indicators are reported in Figures S110-S128, S148-S166, S189-S202, and S222-S240 in Supplement.

Table 5. Statistical validation of global emission pathways reproduced from ACC2-emIAM with original emission pathways from nine ENGAGE IAMs and GET. The upper and lower panels are the results for ENGAGE IAMs (global total anthropogenic CO₂, CH₄, and N₂O emissions) and GET (global energy-related CO₂ emissions), respectively. The table shows two indicators: i) ordinary Pearson's correlation coefficient r_p and ii) Lin's concordance coefficient r_c . The higher the value of the indicator is, the darker the color of the cell is. See text for the details of these statistical indicators. This table presents the results from all scenarios. Results only from the ECB scenarios without INDC can be found in Table S5. The results for Test 3 are not reported for GET because Tests 2 and 3 are, by definition, equivalent for GET.

		AIM	COFFEE	GEM	IMAGE	MESSAGE	POLES	REMINDE	TIAM	WITCH	
r_p	Test 1	CO ₂	0.986	0.990	0.983	0.975	0.981	0.985	0.976	0.985	0.976
		CH ₄	0.962	0.977	0.964	0.973	0.975	0.967	0.986	0.927	0.985
		N ₂ O	0.921	0.966	0.948	0.875	0.985	0.964	0.962	0.466	0.977
	Test 2	CO ₂	0.984	0.994	0.982	0.979	0.984	0.987	0.962	0.997	0.973
		CH ₄	0.667	0.941	0.805	0.890	0.960	0.954	0.941	0.951	0.962
		N ₂ O	0.908	0.970	0.777	0.875	0.983	0.969	0.962	0.531	0.981
	Test 3	CO ₂	0.983	0.991	0.981	0.974	0.974	0.986	0.975	0.879	0.973
		CH ₄	0.678	0.911	0.852	0.886	0.968	0.929	0.907	0.740	0.933
		N ₂ O	0.933	0.956	0.966	0.600	0.977	0.961	0.948	0.549	0.956
	Test 4	CO ₂	0.989	0.990	0.985	0.990	0.981	0.990	0.981	0.995	0.953
		CH ₄	0.879	0.916	0.951	0.955	0.978	0.951	0.955	0.953	0.940
		N ₂ O	0.954	0.955	0.964	0.710	0.977	0.957	0.960	0.607	0.935
r_c	Test 1	CO ₂	0.981	0.985	0.981	0.974	0.980	0.985	0.976	0.983	0.968
		CH ₄	0.957	0.977	0.960	0.968	0.974	0.966	0.986	0.927	0.984
		N ₂ O	0.916	0.964	0.946	0.863	0.981	0.963	0.962	0.385	0.975
	Test 2	CO ₂	0.979	0.991	0.980	0.978	0.982	0.986	0.962	0.997	0.968
		CH ₄	0.549	0.926	0.730	0.833	0.956	0.942	0.919	0.949	0.953
		N ₂ O	0.901	0.968	0.764	0.863	0.981	0.969	0.961	0.454	0.980
	Test 3	CO ₂	0.976	0.988	0.978	0.973	0.971	0.983	0.975	0.877	0.964
		CH ₄	0.558	0.905	0.815	0.858	0.962	0.924	0.881	0.715	0.918
		N ₂ O	0.914	0.954	0.961	0.572	0.975	0.947	0.946	0.494	0.945
	Test 4	CO ₂	0.987	0.987	0.982	0.989	0.978	0.987	0.981	0.993	0.949
		CH ₄	0.852	0.911	0.934	0.930	0.964	0.933	0.944	0.946	0.935
		N ₂ O	0.935	0.954	0.956	0.697	0.972	0.940	0.960	0.482	0.920
GET technology portfolio											
r_p	Test 1	0.992	0.983	0.973	0.991	0.981	0.964	0.964	0.984	0.984	
	Test 2	0.985	0.978	0.976	0.982	0.968	0.966	0.964	0.968	0.978	
	Test 4	0.985	0.979	0.976	0.981	0.967	0.977	0.973	0.969	0.978	
r_c	Test 1	0.992	0.983	0.972	0.991	0.979	0.963	0.964	0.983	0.984	
	Test 2	0.985	0.978	0.975	0.981	0.963	0.966	0.964	0.966	0.977	
	Test 4	0.985	0.979	0.976	0.980	0.963	0.977	0.973	0.966	0.978	

		AIM	COFFEE	
r_p	Test 1	CO ₂	0.986	0.990
		CH ₄	0.962	0.977
		N ₂ O	0.921	0.966
	Test 2	CO ₂	0.984	0.994
		CH ₄	0.667	0.941
		N ₂ O	0.908	0.970
	Test 3	CO ₂	0.983	0.991
		CH ₄	0.678	0.911
		N ₂ O	0.933	0.956
	Test 4	CO ₂	0.989	0.990
		CH ₄	0.879	0.916
		N ₂ O	0.954	0.955
r_c	Test 1	CO ₂	0.981	0.985
		CH ₄	0.957	0.977
		N ₂ O	0.916	0.964
	Test 2	CO ₂	0.979	0.991
		CH ₄	0.549	0.926
		N ₂ O	0.901	0.968
	Test 3	CO ₂	0.976	0.988
		CH ₄	0.558	0.905
		N ₂ O	0.914	0.954
	Test 4	CO ₂	0.987	0.987
		CH ₄	0.852	0.911
		N ₂ O	0.935	0.954
Deleted:				

Table 6. Statistical validation of regional emission pathways reproduced from ACC2-emIAM with original emission pathways from five ENGAGE IAMs. Ordinary Pearson's correlation coefficient r_p and Lin's concordance coefficient r_c are shown in the table.

The higher the value of the indicator is, the darker the color of the cell is. This table presents the results from all scenarios. Results only from the ECB scenarios without INDC can be found in Table S6. Emissions from the ROW were not reproduced in some IAMs due to the small emission values.

Table with 16 columns: Scenario (CO2, CH4, N2O), Indicator (rp, rc), and four Test sets (Test 1-4) with sub-columns AIM, COFFEE, GEM, IMAGE, MESSAGE. Data values range from 0.000 to 1.000.

Table with 16 columns: Scenario (CO2, CH4, N2O), Indicator (rp, rc), and four Test sets (Test 1-4) with sub-columns AIM, COFFEE, GEM, IMAGE, MESSAGE. Data values range from 0.000 to 1.000. A red box labeled 'Deleted:' is present on the right side.

The statistics of the validation tests for global MAC curves are shown in Table 5. Those for regional MAC curves are in Table 6. The values of rc are generally lower than the corresponding values of rp, as expected. Reproducibility is generally higher for CO2 than for CH4 and N2O. Certain models tend to have higher values for such indicators than other models. In the global case, AIM tends to show relatively low values for CH4. IMAGE and TIAM tend to show low values for N2O. In the

regional results, these models give similar values for CO₂ for all Tests. The outcomes for CH₄ and N₂O are diverse and difficult to generalize. Finally, ROW is marked with low values in many models and from most of the Tests.

5. Deriving time-dependent MAC curves

While the time-independent assumption of MAC curves is key to simplifying our IAM emulation approach, it raises questions about what this simplification entails. Here, we test time-dependent MAC curves to better understand the limitations of our time-independent approach. Of ten IAMs analyzed in our paper, we selected three IAMs (AIM, POLES, and WITCH) for such a test because, based on our visual inspection, these models provide data suitable for time-dependent MAC curves (Figure 11).

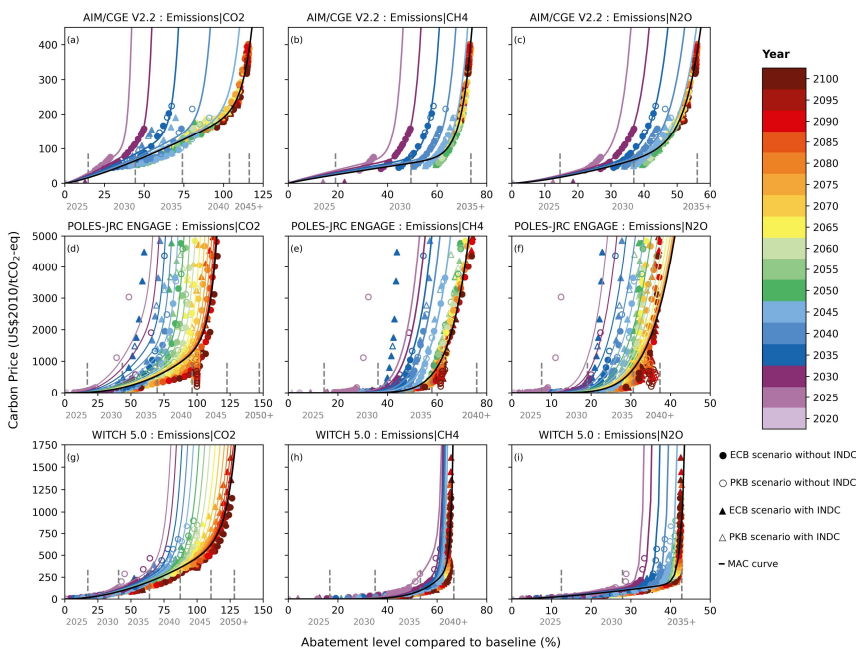


Figure 11. CO₂, CH₄, and N₂O abatement levels and carbon prices from three IAMs (AIM, POLES, and WITCH) and their time-independent (in black) and time-dependent MAC curves (in non-gray colors). For CO₂ and N₂O from POLES and CO₂ from WITCH, the MAC curves are assumed to be time-dependent till 2100. For the remaining cases, the MAC curves are assumed to be time-dependent till 2050 and time-independent from 2050 onwards (same with the time-independent MAC curves presented earlier). The vertical gray bars indicate the maximum abatement levels that can be potentially achieved at each point in time every five years (gray text), which is determined by the upper limits of the first and second derivatives of abatement changes, as well as the upper limit of the abatement level (Table 2).

We introduced the time-dependency to the MAC curves in a way that smoothly extends the time-independent MAC

- Deleted: 4.
- Deleted: Time-
- Formatted: Heading 1
- Deleted: the
- Formatted: Normal, Left, Snap to grid
- Deleted: explore
- Deleted: the
- Deleted: by introducing time-dependent MAC curves
- Deleted: . We chose AIM
- Deleted: AIM gives markedly different
- Deleted: points in early decades compared to those in later decades, especially in scenarios with low carbon budgets. REMIND, which is used in the rest of the manuscript as an illustrative case, is not
- Deleted: this exploration because the outliers mainly originate from peak-budget scenarios, which may have caused by constraints associated with the net-zero target.

Deleted: Thus, for AIM, we introduced time-dependent MAC curves for CO₂, CH₄, and N₂O before 2050, when the data points shift with time. We kept the original MAC curves after 2050 because the data points generally follow the same line after 2050. Specifically, we introduced a new parameter e and an additional term into the MAC curves before 2050 as below:

$$f(x) = \begin{cases} a * x^b + c * x^d, & t \geq 2050 \\ a * (x * (e * (t - 2050)^2))^b + c * (x * (e * (t - 2050)^2))^d, & t < 2050 \end{cases} \quad (6)$$

We kept the values of the parameters a , b , c and d , which have already been estimated. We estimated the parameter e by considering all data points from 2020 to 2045, with no data points being excluded (e is 0.00124 for CO₂, 0.00098 for CH₄, and 0.00076 for N₂O, respectively). This revised equation better captures both the near-term time-varying relationship and the longer-term stable relationship in the data points (Figure S240).

Using these time-dependent MAC curves in ACC2-emIAM, we conducted Test 1 to examine the performance of the emulator. We also varied (retained or discarded) the assumptions on the upper bounds of the first and second derivatives of abatement changes (Table 2). Because these upper bounds strongly influence the near-term mitigation levels, we performed an analysis with and without such upper bounds.

The results indicate that the revised emulator using the time-dependent MAC curves is not superior to the original emulator with the time-independent MAC curves in terms of the reproducibility (Table S8 and Figure S241). With the time-dependent MAC curves, which penalize more the near-term mitigation, the near-term abatement became more limited for all three gases. This was expected, but in fact, the mitigation up to 2040 became too limited (relative to the output from AIM) because the time-dependent MAC curves are too high at low abatement levels for each period, which makes the near-term abatement more costly than the original model. The time-dependent MAC curves play the dominant role in shaping the near-term mitigation pathways. While the results from the original emulator with time-independent MAC curves showed a high sensitivity to the upper limits of the 1st and 2nd derivatives, those from the revised emulator with time-dependent MAC curves showed almost no sensitivity.

Overall, the time-dependent MAC curves did not improve the reproducibility of the IAM emulator in our example bas... [2]

curves originally used. For AIM, the relationships between the relative abatement levels of CO₂, CH₄, and N₂O and the carbon price are adequately captured by the time-independent MAC curves from 2050 onwards. It is thus sufficient to introduce the time-dependency to the MAC curve only before 2050. Namely, we modified the time-independent functional form by introducing time-dependent terms so that the MAC curves can be shifted to the left (or shifted up) as we go back in time from 2050. Regarding the two other IAMs, we also applied a similar approach to CH₄ from POLES and CH₄ and N₂O from WITCH (i.e., time-dependent MAC curve approach till 2050). For the remaining cases (i.e., CO₂ and N₂O data from POLES and CO₂ from WITCH), on the other hand, we stretched the time-dependent MAC curve approach all the way to 2100, as it is evident that the data show a temporary shifting trend until 2100.

Hence, we extended the time-dependent MAC curve approach either to 2050 or to 2100, based on the visual inspection of the data for the relationship between the abatement level and the carbon price from each model and gas. For time-dependent MAC curves that shift until 2050, we used the following functional form for each applicable model and gas.

$$f(x_t) = \begin{cases} a \times (x_t)^b + c \times (x_t)^d, & 2050 \leq t \leq 2100 \\ a \times (x_t \times (1 + e1 \times (t - t_0)^{e2}))^b + c \times (x_t \times (1 + f1 \times (t - t_0)^{f2}))^d, & 2025 \leq t < 2050, t_0 = 2050 \end{cases} \quad (6)$$

From 2050 onwards, the equation above is equivalent to the time-independent MAC curve originally used for the respective model and gas. For time-dependent MAC curves till 2100, we used the following functional form.

$$f(x_t) = a \times (x_t \times (1 + e1 \times (t - t_0)^{e2}))^b + c \times (x_t \times (1 + f1 \times (t - t_0)^{f2}))^d, 2025 \leq t \leq 2100, t_0 = 2100 \quad (7)$$

x_t in equations (6) and (7) is the variable representing the emission abatement level in percentage relative to the assumed baseline level at each point in time t . a, b, c, d are the parameters that take the model- and gas-specific values estimated for the respective time-independent MAC curve (Table 2). We optimized the parameters $e1, e2, f1, f2$ by minimizing the squared deviations from the original price-quantity data between 2025 and 2045 (for equations (6)) or between 2025 and 2095 (for equations (7)) for each model and gas (Table 7). Note that for AIM, $e2$ and $f2$ are assumed to be 2 for the sake of simplicity (optimized for POLES and WITCH), while $e1$ and $f1$ are optimized for all three IAMs.

Table 7. Values of additional parameters used in the time-dependent MAC curves for three IAMs. For the definitions of parameters, see equations (6) and (7) and the related text.

Model	Gas	Parameter			
		$e1$	$e2$	$f1$	$f2$
AIM	CO ₂	9.991×10^{-4}	2.000	2.974×10^{-3}	2.000
	CH ₄	9.684×10^{-4}	2.000	9.610×10^{-4}	2.000
	N ₂ O	4.099×10^{-4}	2.000	9.593×10^{-4}	2.000
POLES	CO ₂	8.580×10^{-8}	3.794	4.554×10^{-5}	2.229
	CH ₄	6.353×10^{-2}	6.276×10^{-1}	0.000	0.000
	N ₂ O	1.609×10^{-7}	3.541	0.000	0.000
WITCH	CO ₂	1.091×10^{-10}	5.038	1.369×10^{-4}	1.953
	CH ₄	6.854×10^{-8}	4.573	1.851×10^{-2}	4.161×10^{-1}
	N ₂ O	1.291×10^{-4}	2.390	6.551×10^{-3}	1.192

905 The time-dependent MAC curves generally well captured the temporary shifting data from the three IAMs, compared to the time-independent MAC curves (Figure 11). The time-dependent MAC curves maintain shapes comparable to the original time-independent MAC curves and, as the time goes, converge to respective time-independent MAC curves either in 2050 or 2100. Those time-independent and time-dependent MAC curves serve as a basis to explore how the time-dependency in MAC curves contributes to reproducing scenarios.

5.1 Reproducing the IAM scenarios with the time-dependent emulator: methods

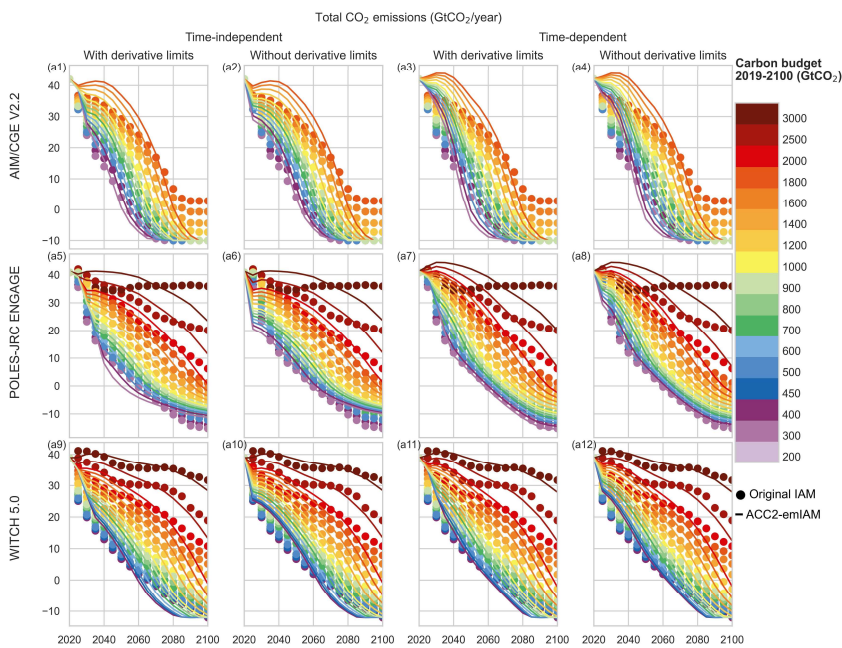
910 Now we implement the time-dependent MAC curves to the IAM emulator (simple climate-economy modeling framework ACC2). For each carbon budget pathway from the original IAMs, we imposed the same remaining carbon budget to the IAM emulator as a constraint and calculated the least-cost pathway for CO₂. This approach is equivalent to Test 1 for CO₂ discussed earlier. We focus on this test because this is the most direct and simplest way to evaluate the performance of MAC curves. In this test, our emulator derives CO₂ emission pathways in the same way as the IAMs do (i.e., with the remaining carbon budget as the constraint for intertemporal optimization models and with the carbon price pathways (exogenously computed from the remaining carbon budget) as the constraint for recursive dynamic models).

915 In this test, we also used the upper limits of the abatement level and of the first and second derivatives of abatement changes. We adopted the same upper limits used with the time-independent MAC curves (Table 2). These limits interact with the MAC curves, as they define the segment of MAC curves that can be utilized at each time step (vertical gray bars in Figure 11) (i.e., in the near term, only a low range of MAC curves can be exploited by the IAM emulator due to the first and second derivative limits). We therefore performed a sensitivity analysis with respect to those derivative limits. In sum, we have a total
920 of four cases for each IAM: time-independent or time-dependent MAC curves and with or without the abatement limits.

We focus on the end-of-century budget scenarios without INDCs, among three other sets of scenarios (the peak budget scenarios with INDCs, peak budget scenarios without INDCs, and end-of-century budget scenarios with INDCs). This set of scenarios provides the cleanest data for testing how well the MAC curves reproduce the original scenarios because this set of scenarios is free of constraints for net-zero emissions and INDC target levels, which cannot be captured by MAC curves.

Table 8. Statistical validations of CO₂ emission pathways reproduced from the IAM emulator against the original emission pathways from the three ENGAGE IAMs (AIM, POLES, and WITCH). This table compares the scenario reproducibility between the time-independent and time-dependent approaches. The statistical parameters indicating higher reproducibility are shown in red and blue for cases with and without the upper limits of first and second derivatives, respectively.

MAC curves		Time-independent	Time-dependent	Time-independent	Time-dependent
		Included		Excluded	
Upper limits of the first and second derivatives					
AIM	<i>r_p</i>	0.9859	0.9757	0.9856	0.9758
	<i>r_c</i>	0.9796	0.9648	0.9804	0.9651
	<i>MAE</i>	3.3244	4.4760	3.1482	4.4452
	<i>RMSE</i>	4.3878	5.8783	4.2717	5.8526
POLES	<i>r_p</i>	0.9891	0.9862	0.9764	0.9835
	<i>r_c</i>	0.9891	0.9831	0.9738	0.9815
	<i>MAE</i>	2.0402	2.6271	2.8913	2.7222
	<i>RMSE</i>	2.7512	3.5772	4.1323	3.7007
WITCH	<i>r_p</i>	0.9748	0.9725	0.9743	0.9724
	<i>r_c</i>	0.9625	0.9584	0.9654	0.9602
	<i>MAE</i>	3.7224	3.8778	3.4942	3.7722
	<i>RMSE</i>	4.6483	4.9326	4.4011	4.7899



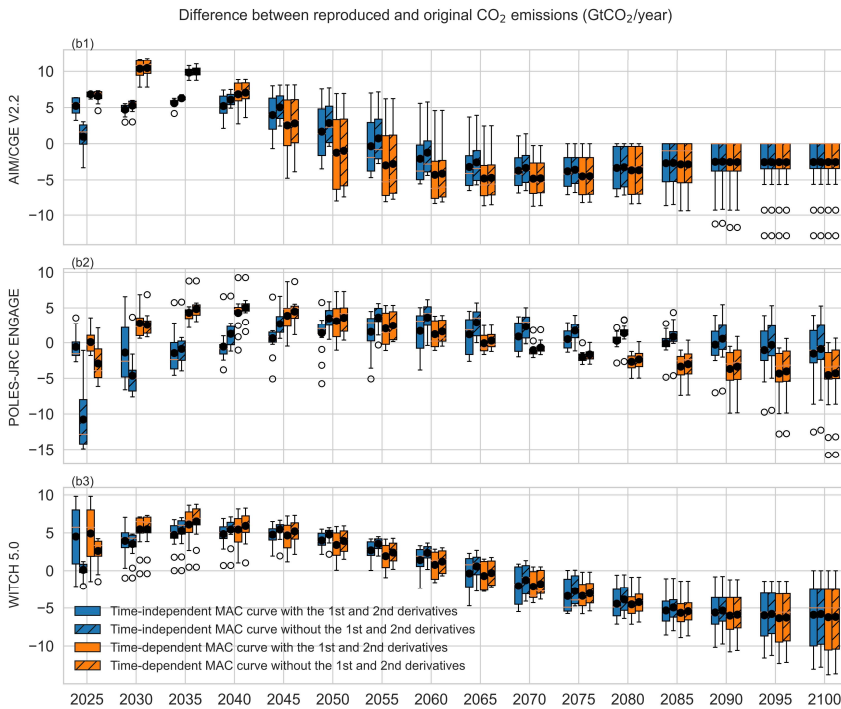


Figure 12. Comparison between the reproduced CO₂ emissions from the IAM emulator and the original emissions from the IAMs. The figure shows the end-of-century budget scenarios without INDCs. In the lower set of panels (b1 to b3), the differences are positive when reproduced emissions are higher than original emissions. The box indicates the 25-75% range, the whisker the 2 σ range, and the filled and open circles the mean and the outlier, respectively.

5.2 Reproducing the IAM scenarios with the time-dependent emulator: results

Four statistical indicators show that the use of the time-dependent MAC curves did not generally result in a higher reproducibility of emission scenarios (Table 8). For all three IAMs, the reproducibility was, in fact, slightly decreased with the introduction of the time-dependency to the MAC curves. To understand why the time-dependency did not improve the scenario reproducibility despite the better fit to the original price-quantity data from IAMs, in particular in the near term, we look into the results from each model below.

5.2.1 AIM

The time-dependent approach tends to give higher emissions in the near term and lower emissions later in the century than the time-independent approach (Figure 12). This finding can be expected from the relative positions of the time-independent and time-dependent MAC curves. Because the time-dependent MAC curves are higher than the time-independent MAC curves before 2050, mitigation becomes more costly in the near term with the time-dependent MAC curves, resulting in higher

emissions in the near term. The results are opposite later in the century. Because the same remaining carbon budget must be conserved, emissions later in the century become lower with the time-dependent MAC curves to compensate for the higher emissions earlier.

Hence, the time-independent approach overestimated the emissions in the near term and underestimated the emissions later. Those deviations were not reduced by the adoption of the time-dependent approach; it was rather increased, despite the better fit of the time-dependent MAC curves to the data than the time-independent MAC curves.

Our implicit hypothesis was that the time-dependent approach yields a higher scenario reproducibility than the time-independent approach; however, this hypothesis proved wrong in our experiments. To understand the unexpected outcome, we found that it is important to consider the carbon price. Here we refer to two different yet associated quantities from the emulator that can be characterized as the carbon price: i) the value of the MAC curve and ii) the shadow price. The shadow price is always higher than the value of the MAC curve, as the shadow price is not influenced by various model constraints. We compare both quantities with the carbon price from AIM (available in the ENGAGE Scenario Explorer) (Figure 13). We presume that the carbon price from recursive dynamic models, such as AIM and POLES, is more comparable to the MAC estimate from the emulator, whereas the carbon price from intertemporal optimization models, such as WITCH, is more comparable to the shadow price from the emulator.

We now ask why the time-independent approach overestimated the near-term CO₂ emissions and underestimated the long-term CO₂ emissions for AIM. For the period till mid-century, the emission overestimations are primarily caused by the difference in carbon prices between the emulator and the IAM. The MAC estimates are generally lower than the corresponding carbon prices of AIM, with differences depending on the carbon budget of the scenario. The generally lower MAC estimates largely explain the emission overestimations till mid-century. In later in the century, on the other hand, the MAC estimates become higher than the AIM carbon prices, resulting in the emission underestimations. The MAC estimates from different carbon budgets converge after the emissions reach the lower limit defined by the maximum abatement level (116.2% relative to the baseline (Table 2)).

The emission overestimations in 2025 stem from the upper limits of the first and second derivatives of abatement changes, which do not allow a rapid emission reduction required to follow the original AIM scenario. If these assumed upper limits are dropped, the 2025 emissions become substantially lower and better reproduce the original emission levels (the time-independent approach of Figure 12b1). Furthermore, the effects of those upper limits can be clearly seen in the MAC estimates from the time-independent approach (solid lines in Figure 13a). On the other hand, such effects are less evident in the MAC estimates from the time-dependent approach (dashed lines in Figure 13a) because the very short-term emissions are more strongly constrained by the steep MAC curves.

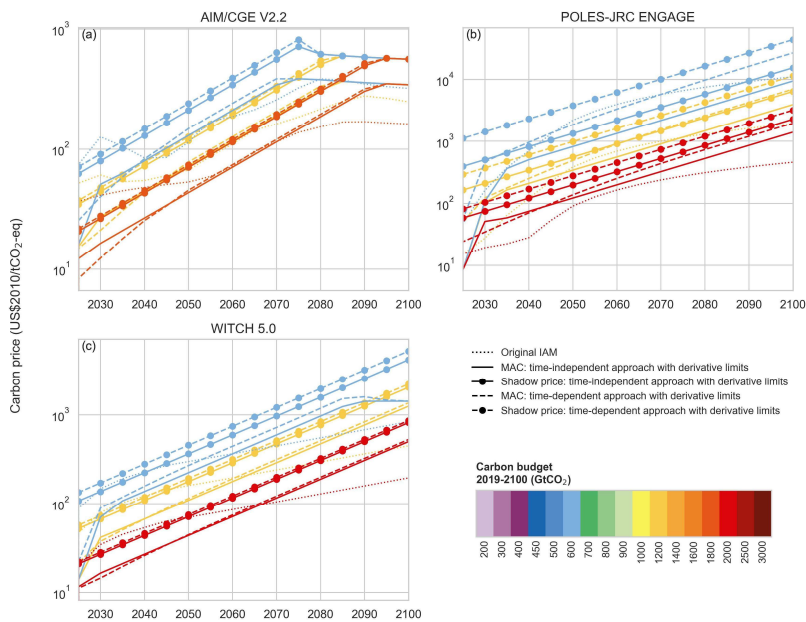


Figure 13. Carbon price pathways from the time-independent and time-dependent emulator approaches and the three IAMs. MAC indicates the value of the MAC curve at each period under each scenario. Shadow price indicates the change in the total policy cost (the area of the MAC curves) for an infinitesimal change in emissions from the optimal level. Selected three carbon budget scenarios are shown for each IAM. The upper limits of the first and second derivatives of abatement changes and of the absolute abatement level are considered. Vertical axes are on a logarithmic scale.

5.2.2 POLES

The time-independent approach slightly underestimated the emissions in the near term. Similarly to the results from AIM, the time-dependent approach overcorrected this negative discrepancy and resulted in the emission overestimations in the near term. This is a consequence of two competing factors: the higher MAC estimates (except for high scenarios) and steeper MAC curves from the time-dependent approach. Later in the century, the time-dependent approach overcorrected the discrepancy in the opposite way and resulted in the emission underestimations.

5.2.3 WITCH

The differences in the results between the time-independent and time-dependent approaches are the smallest for WITCH. This may be related to the fact that WITCH is an intertemporal optimization model, as is our IAM emulator. The results also indicate the general deviation trend seen from other models: emission overestimations in the near term and emission underestimations later in the century. This general trend can be explained by the shadow price pathways. The shadow price is somewhat lower than the carbon price in WITCH early in the century but becomes higher from mid-century onwards. Furthermore, the

comparison of the carbon prices indicates that the discount rate in WITCH may be lower than the assumed discount rate of 5% used in our emulator. As discussed earlier, in the absence of information on the discount rate used by all but a few IAMs, our emulator assumes 5% for all IAMs. The discount rate in IAM may follow the Ramsey rule, meaning that the discount rate is time-dependent, depending on the future economic growth.

5.3 Discussions

The time-dependent MAC curves better captured the IAM generated price-quantity data than the time-independent MAC curves. However, when the time-dependent MAC curves were applied to calculate least-cost emission scenarios under the respective carbon budgets, the original IAM scenarios were generally not better reproduced than the case with the time-independent MAC curves.

While the reasons for the discrepancy depend on the IAM, carbon budget, period, and abatement limits, an important factor to consider is the carbon price pathway. Ultimately, emission scenarios will be perfectly reproduced, if the following two conditions are met: first, the original IAM data (the relationship between the abatement level and the carbon price) are perfectly captured by the MAC curve; second, the carbon price pathways are also perfectly reproduced by the emulator. While the first condition can be adequately satisfied with the use of time-dependent MAC curves, the second condition cannot necessarily be met due to various constraints in the IAMs that cannot be captured by the emulator. For example, the AIM carbon price pathways have first peaks in the near term, followed by second peaks later in the century. Such complex carbon price pathways, which are exogenously given in recursive dynamic models, cannot be captured by our simple intertemporal optimization method, which internally optimizes the carbon price over time. Even for the intertemporal optimization model WITCH, the carbon price pathways are not the same as our shadow price pathways. This highlights the importance of investigating carbon price pathways to further improve the IAM emulator.

The potential benefit of using the time-dependent approach for reproducing IAM scenarios was not apparent here due to other confounding factors, most notably carbon price pathways. Nevertheless, testing the time-dependent approach was useful in clarifying the dynamics of capturing the complex behavior of IAMs through the simplified emulation approach and in identifying issues for future improvements of the IAM emulator.

6. Conclusions

We have developed emIAM, a novel modeling approach to emulating IAMs by using an extensive array of MAC curves: ten IAMs (nine ENGAGE IAMs and GET); global and ten regions; three gases (CO₂, CH₄, and N₂O); eight portfolios of available mitigation technologies; and two emission sources (total anthropogenic and energy-related). A series of four validation tests (Table 4) were performed using ACC2-emIAM, the hard-linked optimizing climate-economy model, to reproduce the original IAM outcomes. The results showed that the original emission pathways were reproduced reasonably well in the majority of cases (Tables 5 and 6), although the reproducibility varied depending on the IAM, region, gas, portfolio, source, test, and

scenario type as summarized below.

- 1030
- Certain data points were difficult to capture by MAC curves. In particular, PKB scenarios with low carbon budgets can give very large carbon prices in the near-term. Such data points tend to deviate from the trend of other data points and were manually removed from the MAC curve fitting where appropriate (Figure 1 and Table 1). Except for these “outliers,” no discernible difference in the data trend was found between ECB scenarios and PKB scenarios, supporting the use of common MAC curves for ECB and PKB scenarios. Note also that certain data points from GET at high abatement levels
- 1035
- do not follow the trend of other data points and were also removed from the MAC curve fitting where appropriate. We speculate that these data points are affected by the limit on CCS capacity assumed in GET.
 - Some IAMs were more easily emulated than other IAMs, reflecting specific model features such as solution methods, technology assumptions, and abatement inertia. The emulator can usually reproduce the emission pathways of an IAM better if the model response to carbon price is well fitted with a MAC function.
- 1040
- The validation results for the two long-lived gases CO₂ and N₂O did not strongly differ across all four tests, even though for Tests 2 to 4, there is a difference in the model setup between the original IAMs (GHG aggregation using GWP100) and ACC2-emIAM (individual gas cycle modeling without using GWP100). On the other hand, the validation results for the short-lived gas CH₄ in Tests 2 to 4 were not as good as those in Test 1. Test 4, with the additional mid-century temperature target, yielded higher reproducibility for CH₄ than Tests 2 and 3.
- 1045
- Overall, the global emissions were better reproduced than the regional emissions. CO₂ emission pathways were generally better reproduced than CH₄ and N₂O pathways. Specific pathway features such as CO₂ emissions in 2030, 2050, and 2100, cumulative negative CO₂ emissions from 2020 to 2100, the year to net zero for CO₂, and that for GHG were reproduced to varying degrees across models and carbon budgets (Figure 10). While certain biases were found for certain pathway features for some models, as reported earlier, no general conclusions can be drawn.
- 1050
- The overall good reproducibility of emIAM relies on the use of time-independent MAC curves for percentage emission reductions. The behaviors of IAMs that contain various time-dependent processes were adequately captured by the time-independent MAC curves in many cases. A plausible explanation is that the use of percentage abatement levels relative to rising baseline can offset the effect of lowering mitigation costs over time. In other words, the higher the baseline scenario is, the larger the absolute amount of emission reduction is (for the same percentage emission reduction). If
- 1055
- technology costs will not vary significantly over time, a time-independent MAC curve can be a reasonable assumption (under a stable baseline scenario).
 - For certain IAMs (AIM, POLES, and WITCH), time-dependent MAC curves provide a better fit to the price-quantity data generated from the original IAM than time-independent MAC curves. However, the use of time-dependent MAC curves does not necessarily improve the reproducibility of emission scenarios mainly due to the discrepancy in carbon price pathways between the emulator and the original IAM. The overall performance of the emulator is determined by
- 1060

Deleted: for some models

Deleted: generally well

Deleted: A time-dependent MAC curve approach should in principle improve the reproducibility of the IAM emulator; however, the actual advantages of using time-dependent MAC curves can be model- and scenario-dependent....

a complex interplay of various factors, including the MAC curves, the upper bounds of the first and second derivative limits, and carbon price pathways.

Deleted: and

Deleted: .

If one is interested in using emIAM, this could easily be done by combining the MAC curve(s), the limits on the abatement levels and their first and second derivatives, and the baseline scenario of the IAM of interest in an optimization environment such as GAMS. We do not provide specific recommendations on the appropriateness of using each MAC curve and leave it up to the user to decide which MAC curves to use because the required accuracy of the IAM emulator depends on the purpose of the application. However, the goodness of fit of the MAC curves to the original IAM data and the results of validation tests should be carefully examined. Materials needed to make such decisions are systematically presented in Supplement and our Zenodo repository, in addition to the discussion above.

Deleted: 1st

Deleted: 2nd

This study demonstrated 1) a methodological framework to generate MAC curves from multiple IAMs simulated under a range of carbon budgets and carbon price scenarios and 2) another methodological framework to assess the performance of MAC curves with a simple climate model to reproduce original IAM outcomes. Our methods are generic and transparent, providing an avenue for extending simple climate models to hard-linked climate-economy models. Future studies may emulate specific IAMs with more tailored parameterization approaches. We also open up an avenue for performing a quasi-multiple IAM analysis with low computational cost. Given the variety of IAMs available today, insights from multiple IAMs are indispensable for creating robust findings. Finally, simple models are complementary to complex models; modeling is an art that can shed light into the fundamental laws of complex systems (Yanai, 2009). In similar vein, emIAM can further pave an avenue for understanding the general behavior of IAMs.

Code availability. GAMS code (emIAM v1.0) for deriving MAC curves is archived on Zenodo with doi: 10.5281/zenodo.7478234.

Data availability. Data for the parameters in MAC curves and associated upper limits on abatement levels and their first and second derivatives are available on Zenodo with doi:10.5281/zenodo.7478234. The supplement related to this article is also available online.

Author contributions. Conceptualization of the IAM emulator, W.X. and K.T.; simulations using ACC2-emIAM, W.X. and K.T.; simulations using GET, K.T, D.J., and M.L.; analysis of simulation results, W.X., K.T., and D.J.; writing - original preparation for figures and tables, W.X.; writing - original preparation for text, K.T.; writing - revision and editing, W.X., K.T., P.C., D.J., and M.L. All authors have read and agreed to the submitted version of the manuscript.

Deleted: draft

Deleted: . and

Competing interests. The authors declare that they have no conflict of interest.

Acknowledgments. K.T. dedicates this paper to the memory of Prof. Hiroshi Yanai (1937-2021) of Keio University, Tokyo, Japan, a pioneer in the field of Operations Research and his bachelor thesis advisor, by whom K.T. was taught the fundamentals

1110 of mathematical modeling and academic writing and the joy of intellectual pursuit. We would like to thank, in particular, but
not limited to, the following individuals (in alphabetical order) for their valuable comments and related useful discussions:
Nico Bauer, Thomas Bossy, Stéphane De Cara, [Mark Dekker](#), Yann Gaucher, [Takuya Hara](#), Xiangping Hu, Stuart Jenkins,
[Irina Melnikova](#), Leon Merfort, [Yang Ou](#), Dale Rothman, Chris Smith, Xuanming Su, [Masahiro Sugiyama](#), Kiyoshi Takahashi,
Frank Venmans, Rintaro Yamaguchi, Tokuta Yokohata, [Theodoros Zachariadis](#), ~~and an anonymous reviewer~~. W.X.
1115 acknowledges financial support from the China Scholarship Council. This research was conducted as part of the Achieving the
Paris Agreement Temperature Targets after Overshoot (PRATO) project under the Make Our Planet Great Again (MOPGA)
program and funded by the National Research Agency in France under the Programme d'Investissements d'Avenir, grant
number ANR-19-MPGA-0008. We further acknowledge the European Union's Horizon Europe research and innovation
programme under Grant Agreements N° 101056939 (RESCUE – Response of the Earth System to overshoot, Climate
1120 neutrality and negative Emissions) and N° 101081193 (OptimESM – Optimal High Resolution Earth System Models for
Exploring Future Climate Changes) and the Environment Research and Technology Development Fund (JPMEERF20202002)
of the Environmental Restoration and Conservation Agency (Japan).

Deleted: and

1125 **References**

Akoglu, H.: User's guide to correlation coefficients, *Turk. J. Emerg. Med.*, 18, 91–93, <https://doi.org/10.1016/j.tjem.2018.08.001>, 2018.

Allen, M. R., Peters, G. P., Shine, K. P., Azar, C., Balcombe, P., Boucher, O., Cain, M., Ciais, P., Collins, W., Forster, P. M., Frame, D. J., Friedlingstein, P., Fyson, C., Gasser, T., Hare, B., Jenkins, S., Hamburg, S. P., Johansson, D. J. A., Lynch, J., Macey, A., Morfeldt, J., Nauels, A., Ocko, I., Oppenheimer, M., Pacala, S. W., Pierrehumbert, R., Rogelj, J., Schaeffer, M., Schleussner, C. F., Shindell, D., Skeie, R. B., Smith, S. M., and Tanaka, K.: Indicate separate contributions of long-lived and short-lived greenhouse gases in emission targets, *Npj Clim. Atmospheric Sci.*, 5, 5, <https://doi.org/10.1038/s41612-021-00226-2>, 2022.

Azar, C., Lindgren, K., and Andersson, B. A.: Global energy scenarios meeting stringent CO₂ constraints—cost-effective fuel choices in the transportation sector, *Energy Policy*, 31, 961–976, [https://doi.org/10.1016/S0301-4215\(02\)00139-8](https://doi.org/10.1016/S0301-4215(02)00139-8), 2003.

Azar, C., Johansson, D. J. A., and Mattsson, N.: Meeting global temperature targets—the role of bioenergy with carbon capture and storage, *Environ. Res. Lett.*, 8, 034004, <https://doi.org/10.1088/1748-9326/8/3/034004>, 2013.

Babiker, M., Gurgel, A., Paltsev, S., and Reilly, J.: Forward-looking versus recursive-dynamic modeling in climate policy analysis: A comparison, *Econ. Model.*, 26, 1341–1354, <https://doi.org/10.1016/j.econmod.2009.06.009>, 2009.

Barnhart, H. X., Haber, M. J., and Lin, L. I.: An [overview on assessing agreement with continuous measurements](#), *J. Biopharm. Stat.*, 17, 529–569, <https://doi.org/10.1080/10543400701376480>, 2007.

[van den Berg, M., Hof, A. F., van Vliet, J., and van Vuuren, D. P.](#): Impact of the choice of emission metric on greenhouse gas abatement and costs, *Environ. Res. Lett.*, 10, 024001, <https://doi.org/10.1088/1748-9326/10/2/024001>, 2015.

Bland, J. M. and Altman, D. G.: Statistical methods for assessing agreement between two methods of clinical measurement, *The Lancet*, 327, 307–310, [https://doi.org/10.1016/S0140-6736\(86\)90837-8](https://doi.org/10.1016/S0140-6736(86)90837-8), 1986.

Bossy, T., Gasser, T., Lecocq, F., Bednar, J., Tanaka, K., and Ciais, P.: Least-cost and 2 °C-compliant mitigation pathways robust to physical uncertainty, economic paradigms, and intergenerational cost distribution, *Environ. Res. Clim.*, 3, 025005, <https://doi.org/10.1088/2752-5295/ad34a8>, 2024.

Bruckner, T., Hooss, G., Füssel, H.-M., and Hasselmann, K.: Climate system modeling in the framework of the tolerable windows approach: The ICLIPS climate model, *Clim. Change*, 56, 119–137, <https://doi.org/10.1023/A:1021300924356>, 2003.

Byers, E., Krey, V., Kriegler, E., Riahi, K., Schaeffer, R., Kikstra, J., Lamboll, R., Nicholls, Z., Sandstad, M., Smith, C., van der Wijst, K., Al-Khourdajie, A., Lecocq, F., Portugal-Pereira, J., Saheb, Y., Stromman, A., Winkler, H., Auer, C., Brutschin, E., Gidden, M., Hackstock, P., Harmsen, M., Huppmann, D., Kolp, P., Lepault, C., Lewis, J., Marangoni, G., Müller-Casseres, E., Skeie, R., Werning, M., Calvin, K., Forster, P., Guivarch, C., Hasegawa, T., Meinshausen, M., Peters, G., Rogelj, J., Samset, B., Steinberger, J., Tavoni, M., and van Vuuren, D.: AR6 Scenarios Database, <https://doi.org/10.5281/zenodo.7197970>, 2022.

Campiglio, E., Dietz, S., and Venmans, F.: Optimal [climate policy as if the transition matters](#), *SSRN Electron. J.*, <https://doi.org/10.2139/ssrn.4307483>, 2022.

Cox, N. J.: Assessing agreement of measurements and predictions in geomorphology, *Geomorphology*, 76, 332–346, <https://doi.org/10.1016/j.geomorph.2005.12.001>, 2006.

De Cara, S. and Jayet, P. A.: Marginal abatement costs of greenhouse gas emissions from European agriculture, cost effectiveness, and the EU non-ETS burden sharing agreement, *Ecol. Econ.*, 70, 1680–1690, <https://doi.org/10.1016/j.ecolecon.2011.05.007>, 2011.

Drouet, L., Bosetti, V., Padoan, S. A., Reis, L. A., Bertram, C., Longa, F. D., Després, J., Emmerling, J., Fosse, F., Fragkiadakis, K., Frank, S., Fricko, O., Fujimori, S., Harmsen, M., Krey, V., Oshiro, K., Nogueira, L. P., Paroussos, L., Piontek, F., Riahi, K., Rochedo, P. R. R., Schaeffer, R., Takakura, J., [van der Wijst, K. I.](#), [van der Zwaan, B.](#), [van Vuuren,](#)

Deleted: Overview

Deleted: Assessing Agreement

Deleted: Continuous Measurements

Deleted: . van den,

Deleted: . van,

Deleted: . van:

Deleted: Climate Policy As If the Transition Matters

Deleted: Geomorphol.,

Deleted: .-

Deleted: .-

Deleted: .

Deleted: .

Deleted: .

Deleted: der,

D., Vrontisi, Z., Weitzel, M., Zakeri, B., and Tavoni, M.: Net zero-emission pathways reduce the physical and economic risks of climate change, *Nat. Clim. Change*, 11, 1070–1076, <https://doi.org/10.1038/s41558-021-01218-z>, 2021.

Deleted: . van,

1185 Ellerman, A. D. and Decaux, A.: Analysis of [post-Kyoto CO₂ emissions trading using marginal abatement curves](#), MIT Global Change, 1998.

Deleted: Post

Deleted: Emissions Trading Using Marginal Abatement Curves...

Emmerling, J., Drouet, L., [van der Wijst, K. I.](#), [van Vuuren, D.](#), Bosetti, V., and Tavoni, M.: The role of the discount rate for emission pathways and negative emissions, *Environ. Res. Lett.*, 14, 104008, <https://doi.org/10.1088/1748-9326/ab3cc9>, 2019.

Deleted: .-

Deleted: .

Deleted: der,

Deleted: . van,

1190 Errickson, F. C., Keller, K., Collins, W. D., Srikrishnan, V., and Anthoff, D.: Equity is more important for the social cost of methane than climate uncertainty, *Nature*, 592, 564–570, <https://doi.org/10.1038/s41586-021-03386-6>, 2021.

Fuglestedt, J. S., Berntsen, T. K., Godal, O., Sausen, R., Shine, K. P., and Skodvin, T.: Metrics of climate change: assessing radiative forcing and emission indices, *Clim. Change*, 58, 267–331, <https://doi.org/10.1023/A:1023905326842>, 2003.

1195 [Gambhir, A., Butnar, I., Li, P. H., Smith, P., and Strachan, N.: A review of criticisms of integrated assessment models and proposed approaches to address these, through the lens of BECCS, *Energies*, 12, 1747, <https://doi.org/10.3390/en12091747>, 2019.](#)

Gaucher, Y., Tanaka, K., Johansson, D., Goll, D., and Ciais, P.: Leveraging ecosystems responses to enhanced rock weathering in mitigation scenarios, <https://doi.org/10.21203/rs.3.rs-3145606/v1>, 27 July 2023.

1200 Guivarch, C. and Rogelj, J.: Carbon price variations in 2°C scenarios explored, <https://www.carbonpricingleadership.org/s/Guivarch-Rogelj-Carbon-prices-2C.pdf>, January 2017.

Guivarch, C., Kriegler, E., Portugal-Pereira, J., Bosetti, V., Edmonds, J., Fishedick, M., Havlik, P., Jaramillo, P., Krey, V., Lecocq, F., Lucena, A., Meinshausen, M., Mirasgedis, S., O'Neill, B., Peters, G. P., Rogelj, J., Rose, S., Saheb, Y., Strbac, G., Strömman, A. H., [van Vuuren, D. P.](#), and Zhou, N.: IPCC, 2022: Annex III: Scenarios and modelling methods, in: IPCC, 2022: Climate Change 2022: Mitigation of Climate Change. Contribution of Working Group III to the Sixth Assessment Report of the Intergovernmental Panel on Climate Change, Cambridge University Press, Cambridge, UK and New York, NY, USA, 2022.

Deleted: . van,

Ha-Duong, M., Grubb, M. J., and Hourcade, J. C.: Influence of socioeconomic inertia and uncertainty on optimal CO₂-emission abatement, *Nature*, 390, 270–273, <https://doi.org/10.1038/36825>, 1997.

Deleted: .-

Formatted: Not Superscript/ Subscript

1210 Harmsen, J. H. M., van Vuuren, D. P., Nayak, D. R., Hof, A. F., Höglund-Isaksson, L., Lucas, P. L., Nielsen, J. B., Smith, P., and Stehfest, E.: Long-term marginal abatement cost curves of non-CO₂ greenhouse gases, *Environ. Sci. Policy*, 99, 136–149, <https://doi.org/10.1016/j.envsci.2019.05.013>, 2019.

1215 Harmsen, M. J. H. M., Berg, M. van den, Krey, V., Luderer, G., Marcucci, A., Strefler, J., and [van Vuuren, D. P.](#): How climate metrics affect global mitigation strategies and costs: a multi-model study, *Clim. Change*, 136, 203–216, <https://doi.org/10.1007/s10584-016-1603-7>, 2016.

Deleted: . V

Deleted: v

Deleted: Study

Deleted: Optimal

Deleted: Emission Paths Using

Formatted: Subscript

Deleted: Simplified Structural Integrated Assessment Model...

Deleted: .-

Deleted: . van der,

Deleted: . van:

Deleted: Impact

Deleted: Socio-Economic Inertia

Deleted: Restrictions

Deleted: Net-Negative Emissions

Deleted: Cost-Effective Carbon Price Pathways

Hasselmann, K., Hasselmann, S., Giering, R., Ocana, V., and Storch, H. V.: Sensitivity [study of optimal CO₂ emission paths using a simplified structural integrated assessment model \(SIAM\)](#), *Clim. Change*, 37, 345–386, <https://doi.org/10.1023/A:1005339625015>, 1997.

Hayashi, F.: *Econometrics*, Princeton University Press, Princeton, 683 pp., 2000.

1220 Hedenus, F., Karlsson, S., Azar, C., and Sprei, F.: Cost-effective energy carriers for transport – The role of the energy supply system in a carbon-constrained world, *Int. J. Hydrog. Energy*, 35, 4638–4651, <https://doi.org/10.1016/j.ijhydene.2010.02.064>, 2010.

1225 Hof, A. F., [van der Wijst, K. I.](#), and [van Vuuren, D. P.](#): The [impact of socio-economic inertia and restrictions on net-negative emissions on cost-effective carbon price pathways](#), *Front. Clim.*, 3, 785577, <https://doi.org/10.3389/fclim.2021.785577>, 2021.

Hooss, G., Voss, R., Hasselmann, K., Maier-Reimer, E., and Joos, F.: A nonlinear impulse response model of the coupled carbon cycle-climate system (NICCS), *Clim. Dyn.*, 18, 189–202, <https://doi.org/10.1007/s003820100170>, 2001.

Huang, S. K., Kuo, L., and Chou, K. L.: The applicability of marginal abatement cost approach: A comprehensive review, *J. Clean. Prod.*, 127, 59–71, <https://doi.org/10.1016/j.jclepro.2016.04.013>, 2016.

Deleted: .-

1255 IAMC_wiki: https://www.iamcdocumentation.eu/index.php/IAMC_wiki, last access: 28 October 2022.

IPCC: Summary for Policymakers, in: *Climate Change 2013: The Physical Science Basis. Contribution of Working Group I to the Fifth Assessment Report of the Intergovernmental Panel on Climate Change*, Cambridge University Press, Cambridge, United Kingdom and New York, NY, USA, 2013.

1260 IPCC: Summary for Policymakers, in: *Climate Change 2021: The Physical Science Basis. Contribution of Working Group I to the Sixth Assessment Report of the Intergovernmental Panel on Climate Change*, Cambridge University Press, Cambridge, United Kingdom and New York, NY, USA, 3–32, 2021.

Jiang, H. D., Dong, K. Y., Zhang, K., and Liang, Q. M.: The hotspots, reference routes, and research trends of marginal abatement costs: A systematic review, *J. Clean. Prod.*, 252, 119809, <https://doi.org/10.1016/j.jclepro.2019.119809>, 2020.

Deleted: .

Deleted: .

1265 Jiang, H. D., Purohit, P., Liang, Q. M., Dong, K., and Liu, L. J.: The cost-benefit comparisons of China's and India's NDCs based on carbon marginal abatement cost curves, *Energy Econ.*, 109, 105946, <https://doi.org/10.1016/j.eneco.2022.105946>, 2022.

Johansson, D. J. A.: Temperature stabilization, ocean heat uptake and radiative forcing overshoot profiles, *Clim. Change*, 108, 107–134, <https://doi.org/10.1007/s10584-010-9969-4>, 2011.

1270 Johansson, D. J. A.: The question of overshoot, *Nat. Clim. Change*, 11, 1021–1022, <https://doi.org/10.1038/s41558-021-01229-w>, 2021.

Johansson, D. J. A., Persson, U. M., and Azar, C.: The cost of using global warming potentials: Analysing the trade off between CO₂, CH₄ and N₂O, *Clim. Change*, 77, 291–309, <https://doi.org/10.1007/s10584-006-9054-1>, 2006.

1275 Joos, F., Roth, R., Fuglestedt, J. S., Peters, G. P., Enting, I. G., Bloh, W. von, Brovkin, V., Burke, E. J., Eby, M., Edwards, N. R., Friedrich, T., Frölicher, T. L., Halloran, P. R., Holden, P. B., Jones, C., Kleinen, T., Mackenzie, F. T., Matsumoto, K., Meinshausen, M., Plattner, G. K., Reisinger, A., Segsneider, J., Shaffer, G., Steinacher, M., Strassmann, K., Tanaka, K., Timmermann, A., and Weaver, A. J.: Carbon dioxide and climate impulse response functions for the computation of greenhouse gas metrics: a multi-model analysis, *Atmospheric Chem. Phys.*, 13, 2793–2825, <https://doi.org/10.5194/acp-13-2793-2013>, 2013.

Deleted: .-

1280 Kesicki, F.: Marginal abatement cost curves: combining energy system modelling and decomposition analysis, *Environ. Model. Assess.*, 18, 27–37, <https://doi.org/10.1007/s10666-012-9330-6>, 2013.

Deleted: Combining

Kesicki, F. and Ekins, P.: Marginal abatement cost curves: a call for caution, *Clim. Policy*, 12, 219–236, <https://doi.org/10.1080/14693062.2011.582347>, 2012.

Kesicki, F. and Strachan, N.: Marginal abatement cost (MAC) curves: confronting theory and practice, *Environ. Sci. Policy*, 14, 1195–1204, <https://doi.org/10.1016/j.envsci.2011.08.004>, 2011.

1285 Klepper, G. and Peterson, S.: Marginal abatement cost curves in general equilibrium: the influence of world energy prices, *Resour. Energy Econ.*, 28, 1–23, <https://doi.org/10.1016/j.reseneeco.2005.04.001>, 2006.

Deleted: The

1290 [Krey, V., Guo, F., Kolp, P., Zhou, W., Schaeffer, R., Awasthy, A., Bertram, C., de Boer, H. S., Fragkos, P., Fujimori, S., He, C., Iyer, G., Keramidas, K., Köberle, A. C., Oshiro, K., Reis, L. A., Shoai-Tehrani, B., Vishwanathan, S., Capros, P., Drouet, L., Edmonds, J. E., Garg, A., Germaat, D. E. H. J., Jiang, K., Kannavou, M., Kitous, A., Kriegler, E., Luderer, G., Mathur, R., Muratori, M., Sano, F., and van Vuuren, D. P.: Looking under the hood: A comparison of techno-economic assumptions across national and global integrated assessment models, *Energy*, 172, 1254–1267, <https://doi.org/10.1016/j.energy.2018.12.131>, 2019.](https://doi.org/10.1016/j.energy.2018.12.131)

Kriegler, E.: Imprecise probability analysis for integrated assessment of climate change, Universität Potsdam, Germany,

1300 2005.

Lashof, D. A. and Ahuja, D. R.: Relative contributions of greenhouse gas emissions to global warming, *Nature*, 344, 529–531, <https://doi.org/10.1038/344529a0>, 1990.

Laws, E. A.: *Mathematical methods for oceanographers: an introduction*, Wiley, New York, 343 pp., 1997.

1305 Leach, N. J., Jenkins, S., Nicholls, Z., Smith, C. J., Lynch, J., Cain, M., Walsh, T., Wu, B., Tsutsui, J., and Allen, M. R.: FaIRv2.0.0: a generalized impulse response model for climate uncertainty and future scenario exploration, *Geosci. Model Dev.*, 14, 3007–3036, <https://doi.org/10.5194/gmd-14-3007-2021>, 2021.

Lehtveer, M. and Hedenus, F.: Nuclear power as a climate mitigation strategy – technology and proliferation risk, *J. Risk Res.*, 18, 273–290, <https://doi.org/10.1080/13669877.2014.889194>, 2015.

1β10 Lehtveer, M., Brynolf, S., and Grahn, M.: What future for electrofuels in transport? Analysis of cost competitiveness in global climate mitigation, *Environ. Sci. Technol.*, 53, 1690–1697, <https://doi.org/10.1021/acs.est.8b05243>, 2019.

Levasseur, A., Cavalett, O., Fuglestvedt, J. S., Gasser, T., Johansson, D. J. A., Jørgensen, S. V., Raugei, M., Reisinger, A., Schivley, G., Strømman, A., Tanaka, K., and Cherubini, F.: Enhancing life cycle impact assessment from climate science: review of recent findings and recommendations for application to LCA, *Ecol. Indic.*, 71, 163–174, <https://doi.org/10.1016/j.ecolind.2016.06.049>, 2016.

1β15 Lin, L., Hedayat, A. S., and Wu, W.: Continuous data, in: statistical tools for measuring agreement, Springer New York, New York, NY, 7–54, https://doi.org/10.1007/978-1-4614-0562-7_2, 2012.

Lin, L. I.-K.: A concordance correlation coefficient to evaluate reproducibility, *Biometrics*, 45, 255, <https://doi.org/10.2307/2532051>, 1989.

Mackenzie, F. T. and Lerman, A.: *Carbon in the geobiosphere: earth’s outer shell*, Springer, Dordrecht, 402 pp., 2006.

1β20 Mastropierro, M., Tanaka, K., Melnikova, I., and Ciais, P.: Testing GWP* to quantify non-CO₂ contributions in the carbon budget framework: the case under overshoot scenarios, In Review, <https://doi.org/10.21203/rs.3.rs-3206717/v1>, 2023.

Matthews, H. D., Gillett, N. P., Stott, P. A., and Zickfeld, K.: The proportionality of global warming to cumulative carbon emissions, *Nature*, 459, 829–832, <https://doi.org/10.1038/nature08047>, 2009.

1β25 McKeough, P.: A case for ensuring reductions in CO₂ emissions are given priority over reductions in CH₄ emissions in the near term, *Clim. Change*, 174, 4, <https://doi.org/10.1007/s10584-022-03428-6>, 2022.

McKinsey & Company: *Pathways to a low-carbon economy: Version 2 of the global greenhouse gas abatement cost curve*, 2009.

1β30 Melnikov, N. B., Gruzdev, A. P., Dalton, M. G., Weitzel, M., and O’Neill, B. C.: Parallel extended path method for solving perfect foresight models, *Comput. Econ.*, 58, 517–534, <https://doi.org/10.1007/s10614-020-10044-y>, 2021.

Melnikova, I., Boucher, O., Cadule, P., Ciais, P., Gasser, T., Quilcaille, Y., Shiogama, H., Tachiiri, K., Yokohata, T., and Tanaka, K.: Carbon cycle response to temperature overshoot beyond 2°C: An analysis of CMIP6 models, *Earths Future*, 9, <https://doi.org/10.1029/2020EF001967>, 2021.

1β35 Morris, J., Paltsev, S., and Reilly, J.: Marginal abatement costs and marginal welfare costs for greenhouse gas emissions reductions: Results from the EPPA model, *Environ. Model. Assess.*, 17, 325–336, <https://doi.org/10.1007/s10666-011-9298-7>, 2012.

Mulugeta, L., Drach, A., Erdemir, A., Hunt, C. A., Horner, M., Ku, J. P., Jr., J. G. M., Vadigepalli, R., and Lytton, W. W.: Credibility, replicability, and reproducibility in simulation for biomedicine and clinical applications in neuroscience, *Front. Neuroinformatics*, 12, 18, <https://doi.org/10.3389/fninf.2018.00018>, 2018.

Deleted: Future

Deleted: Electrofuels

Deleted: Transport

Deleted: Cost Competitiveness

Deleted: Global Climate Mitigation

Deleted: Review

Deleted: Data

Deleted: Statistical Tools

Deleted: Measuring Agreement

Deleted: : A Concordance Correlation Coefficient to Evaluate Reproducibility

Formatted: Not Superscript/ Subscript

Formatted: Subscript

Deleted: Extended Path Method

Deleted: Solving Perfect Foresight Models

Deleted: Abatement Costs

Deleted: Marginal Welfare Costs

Deleted: Greenhouse Gas Emissions Reductions

Deleted: Model

Deleted: Replicability

Deleted: Reproducibility

Deleted: Simulation

Deleted: Biomedicine

Deleted: Clinical Applications

Deleted: Neuroscience

1365 National Research Council: Assessing the reliability of complex models: Mathematical and statistical foundations of verification, validation, and uncertainty quantification. National Academies Press, Washington, D.C., <https://doi.org/10.17226/13395>, 2012.

1370 Nicholls, Z. R. J., Meinshausen, M., Lewis, J., Gieseke, R., Dommengen, D., Dorheim, K., Fan, C. S., Fuglestvedt, J. S., Gasser, T., Golüke, U., Goodwin, P., Hartin, C., Hope, A. P., Kriegler, E., Leach, N. J., Marchegiani, D., McBride, L. A., Quilcaille, Y., Rogelj, J., Salawitch, R. J., Samset, B. H., Sandstad, M., Shiklomanov, A. N., Skeie, R. B., Smith, C. J., Smith, S., Tanaka, K., Tsutsui, J., and Xie, Z.: Reduced complexity model intercomparison project phase 1: introduction and evaluation of global-mean temperature response, *Geosci. Model Dev.*, 13, 5175–5190, <https://doi.org/10.5194/gmd-13-5175-2020>, 2020.

1375 Nordhaus, W. D.: The cost of slowing climate change: a survey, *Energy J.*, 12, <https://doi.org/10.5547/ISSN0195-6574-EJ-Vol12-No1-4>, 1991.

1375 Nordhaus, W. D.: Revisiting the social cost of carbon, *Proc. Natl. Acad. Sci.*, 114, 1518–1523, <https://doi.org/10.1073/pnas.1609244114>, 2017.

1380 O'Neill, B. C.: Economics, natural science, and the costs of global warming potentials, *Clim. Change*, 58, 251–260, <https://doi.org/10.1023/A:1023968127813>, 2003.

1380 O'Neill, B. C., Tebaldi, C., van Vuuren, D. P., Eyring, V., Friedlingstein, P., Hurtt, G., Knutti, R., Kriegler, E., Lamarque, J. F., Lowe, J., Meehl, G. A., Moss, R., Riahi, K., and Sanderson, B. M.: The Scenario Model Intercomparison Project (ScenarioMIP) for CMIP6, *Geosci. Model Dev.*, 9, 3461–3482, <https://doi.org/10.5194/gmd-9-3461-2016>, 2016.

Reisinger, A., Havlik, P., Riahi, K., van Vliet, O., Obersteiner, M., and Herrero, M.: Implications of alternative metrics for global mitigation costs and greenhouse gas emissions from agriculture, *Clim. Change*, 117, 677–690, <https://doi.org/10.1007/s10584-012-0593-3>, 2013.

1385 Rennert, K., Errickson, F., Prest, B. C., Rennels, L., Newell, R. G., Pizer, W., Kingdon, C., Wingenroth, J., Cooke, R., Parthum, B., Smith, D., Cromar, K., Diaz, D., Moore, F. C., Müller, U. K., Plevin, R. J., Raftery, A. E., Ševčíková, H., Sheets, H., Stock, J. H., Tan, T., Watson, M., Wong, T. E., and Anthoff, D.: Comprehensive evidence implies a higher social cost of CO₂, *Nature*, 610, 687–692, <https://doi.org/10.1038/s41586-022-05224-9>, 2022.

1390 Riahi, K., van Vuuren, D. P., Kriegler, E., Edmonds, J., O'Neill, B. C., Fujimori, S., Bauer, N., Calvin, K., Dellink, R., Fricko, O., Lutz, W., Popp, A., Cuaresma, J. C., Kc, S., Leimbach, M., Jiang, L., Kram, T., Rao, S., Emmerling, J., Ebi, K., Hasegawa, T., Havlik, P., Humpenöder, F., Silva, L. A. D., Smith, S., Stehfest, E., Bosetti, V., Eom, J., Gernaat, D., Masui, T., Rogelj, J., Strefler, J., Drouet, L., Krey, V., Luderer, G., Harmsen, M., Takahashi, K., Baumstark, L., Doelman, J. C., Kainuma, M., Klimont, Z., Marangoni, G., Lotze-Campen, H., Obersteiner, M., Tabeau, A., and Tavoni, M.: The Shared Socioeconomic Pathways and their energy, land use, and greenhouse gas emissions implications: An overview, *Glob. Env. Chang.*, 42, 153–168, <https://doi.org/10.1016/j.gloenvcha.2016.05.009>, 2017.

1395 Riahi, K., Bertram, C., Huppmann, D., Rogelj, J., Bosetti, V., Cabardos, A.-M., Deppermann, A., Drouet, L., Frank, S., Fricko, O., Fujimori, S., Harmsen, M., Hasegawa, T., Krey, V., Luderer, G., Paroussos, L., Schaeffer, R., Weitzel, M., van der Zwaan, B., Vrontisi, Z., Longa, F. D., Després, J., Fosse, F., Fragkiadakis, K., Gusti, M., Humpenöder, F., Keramidas, K., Kishimoto, P., Kriegler, E., Meinshausen, M., Nogueira, L. P., Oshiro, K., Popp, A., Rochedo, P. R. R., Ünlü, G., van Ruijven, B., Takakura, J., Tavoni, M., van Vuuren, D., and Zakeri, B.: Cost and attainability of meeting stringent climate targets without overshoot, *Nat. Clim. Change*, 11, 1063–1069, <https://doi.org/10.1038/s41558-021-01215-2>, 2021.

1400 Ricker, W. E.: Linear regressions in Fishery research, *J. Fish. Res. Board Can.*, 30, 409–434, <https://doi.org/10.1139/f73-072>, 1973.

1405 Schwoon, M. and Tol, R. S. J.: Optimal CO₂-abatement with socio-economic inertia and induced technological change, *Energy J.*, 27, <https://doi.org/10.5547/ISSN0195-6574-EJ-Vol27-No4-2>, 2006.

Shiraki, H. and Sugiyama, M.: Back to the basic: toward improvement of technoeconomic representation in integrated assessment models, *Clim. Change*, 162, 13–24, <https://doi.org/10.1007/s10584-020-02731-4>, 2020.

Shoemaker, J. K., Schrag, D. P., Molina, M. J., and Ramanathan, V.: What role for short-lived climate pollutants in

- Deleted: Reliability
- Deleted: Complex Models
- Deleted: Statistical Foundations
- Deleted: Verification, Validation
- Deleted: Uncertainty Quantification
- Deleted: .-
- Deleted: Cost
- Deleted: Slowing Climate Change
- Deleted: Survey
- Deleted: Natural Science
- Deleted: Costs
- Deleted: Global Warming Potentials
- Deleted: . van,
- Deleted: .-
- Deleted: . van,
- Formatted: Not Superscript/ Subscript
- Deleted: . van,
- Deleted: .
- Deleted: . van der,
- Deleted: . van,
- Deleted: . van,
- Deleted: Regressions
- Deleted: Research
- Deleted: Socio
- Deleted: Inertia
- Deleted: Induced Technological Change
- Deleted: Role
- Deleted: Short-Lived Climate Pollutants in Mitigation Policy...

[mitigation policy?](#), Science, 342, 1323–1324, <https://doi.org/10.1126/science.1240162>, 2013.

Su, X., Takahashi, K., Fujimori, S., Hasegawa, T., Tanaka, K., Kato, E., Shiogama, H., Masui, T., and Emori, S.: Emission pathways to achieve 2.0°C and 1.5°C climate targets, Earths Future, 5, 592–604, <https://doi.org/10.1002/2016EF000492>, 2017.

[Su, X., Takahashi, K., Yokohata, T., Tanaka, K., Fujimori, S., Takakura, J., Yamaguchi, R., and Xiong, W.: Developing an integrated assessment model to explore optimal cost-benefit paths for Shared Socioeconomic Pathways scenarios.](#) <https://doi.org/10.5194/egusphere-2024-1640>, 1 July 2024.

Sun, T., Ocko, I. B., Sturcken, E., and Hamburg, S. P.: Path to net zero is critical to climate outcome, Sci. Rep., 11, 22173, <https://doi.org/10.1038/s41598-021-01639-y>, 2021.

Tachiiri, K., Hajima, T., and Kawamiya, M.: Increase of the transient climate response to cumulative carbon emissions with decreasing CO₂ concentration scenarios, Environ. Res. Lett., 14, 124067, <https://doi.org/10.1088/1748-9326/ab57d3>, 2019.

Tanaka, K. and Mackenzie, F. T.: Ecosystem behavior of southern Kaneohe Bay, Hawaii: A statistical and modelling approach, Ecol. Model., 188, 296–326, <https://doi.org/10.1016/j.ecolmodel.2005.02.018>, 2005.

Tanaka, K. and O'Neill, B. C.: The Paris Agreement zero-emissions goal is not always consistent with the 1.5 °C and 2 °C temperature targets, Nat. Clim. Change, 8, 319–324, <https://doi.org/10.1038/s41558-018-0097-x>, 2018.

Tanaka, K. and Raddatz, T.: Correlation between climate sensitivity and aerosol forcing and its implication for the “climate trap”: A Letter, Clim. Change, 109, 815–825, <https://doi.org/10.1007/s10584-011-0323-2>, 2011.

Tanaka, K., Kriegler, E., Bruckner, T., Hooss, G., Knorr, W., and Raddatz, T.: Aggregated Carbon Cycle, Atmospheric Chemistry, and Climate Model (ACC2) – description of the forward and inverse modes, 2007.

Tanaka, K., O'Neill, B. C., Rokityanskiy, D., Obersteiner, M., and Tol, R. S. J.: Evaluating global warming potentials with historical temperature, Clim. Change, 96, 443–466, <https://doi.org/10.1007/s10584-009-9566-6>, 2009a.

Tanaka, K., Raddatz, T., O'Neill, B. C., and Reick, C. H.: Insufficient forcing uncertainty underestimates the risk of high climate sensitivity, Geophys. Res. Lett., 36, 6, <https://doi.org/10.1029/2009GL039642>, 2009b.

Tanaka, K., Peters, G. P., and Fuglestedt, J. S.: Policy Update: Multicomponent climate policy: why do emission metrics matter?, Carbon Manag., 1, 191–197, <https://doi.org/10.4155/cmt.10.28>, 2010.

Tanaka, K., Johansson, D. J. A., O'Neill, B. C., and Fuglestedt, J. S.: Emission metrics under the 2 °C climate stabilization target, Clim. Change, 117, 933–941, <https://doi.org/10.1007/s10584-013-0693-8>, 2013.

Tanaka, K., Cavalett, O., Collins, W. J., and Cherubini, F.: Asserting the climate benefits of the coal-to-gas shift across temporal and spatial scales, Nat. Clim. Change, 9, 389–396, <https://doi.org/10.1038/s41558-019-0457-1>, 2019.

Tanaka, K., Boucher, O., Ciais, P., Johansson, D. J. A., and Morfeldt, J.: Cost-effective implementation of the Paris Agreement using flexible greenhouse gas metrics, Sci. Adv., 7, eabf9020, <https://doi.org/10.1126/sciadv.abf9020>, 2021.

Tebaldi, C., Debeire, K., Eyring, V., Fischer, E., Fyfe, J., Friedlingstein, P., Knutti, R., Lowe, J., O'Neill, B., Sanderson, B., [yan](#) Vuuren, D., Riahi, K., Meinshausen, M., Nicholls, Z., Tokarska, K. B., Hurtt, G., Kriegler, E., Lamarque, J.-F., Meehl, G., Moss, R., Bauer, S. E., Boucher, O., Brovkin, V., Byun, Y. H., Dix, M., Gualdi, S., Guo, H., John, J. G., Kharin, S., Kim, Y., Koshiro, T., Ma, L., Olivie, D., Panickal, S., Qiao, F., Rong, X., Rosenbloom, N., Schupfner, M., Séférian, R., Sellar, A., Semmler, T., Shi, X., Song, Z., Steger, C., Stouffer, R., Swart, N., Tachiiri, K., Tang, Q., Tatebe, H., Voldoire, A., Volodin, E., Wyser, K., Xin, X., Yang, S., Yu, Y., and Ziehn, T.: Climate model projections from the Scenario Model Intercomparison Project (ScenarioMIP) of CMIP6, Earth Syst. Dyn., 12, 253–293, <https://doi.org/10.5194/esd-12-253-2021>, 2021.

Thomson, R. E. and Emery, W. J.: Statistical [methods](#) and [error handling](#), in: Data [analysis methods](#) in [physical oceanography](#), Elsevier, 219–311, <https://doi.org/10.1016/B978-0-12-387782-6.00003-X>, 2014.

Deleted: Van

Deleted: -

Deleted: Methods

Deleted: Error Handling

Deleted: Analysis Methods

Deleted: Physical Oceanography

- 1485 Tol, R. S. J., Berntsen, T. K., O'Neill, B. C., Fuglestedt, J. S., and Shine, K. P.: A unifying framework for metrics for aggregating the climate effect of different emissions, *Environ. Res. Lett.*, 7, 044006, <https://doi.org/10.1088/1748-9326/7/4/044006>, 2012.
- 1490 [Tong, D., Zhang, Q., Zheng, Y., Caldeira, K., Shearer, C., Hong, C., Qin, Y., and Davis, S. J.: Committed emissions from existing energy infrastructure jeopardize 1.5 °C climate target, *Nature*, 572, 373–377, <https://doi.org/10.1038/s41586-019-1364-3>, 2019.](#)
- Tsutsui, J.: Minimal CMIP Emulator (MCE v1.2): a new simplified method for probabilistic climate projections, *Geosci. Model Dev.*, 15, 951–970, <https://doi.org/10.5194/gmd-15-951-2022>, 2022.
- 1495 UNFCCC: “Report of the Conference of the Parties serving as the meeting of the Parties to the Paris Agreement on the third part of its first session, held in Katowice from 2 to 15 December 2018. Addendum 2. Part two: Action taken by the Conference of the Parties serving as the meeting of the Parties to the Paris Agreement” (FCCC/PA/CMA/2018/3/ Add.2 2019), 2018.
- UNFCCC: “In-session technical workshop on findings on emission metrics contained in the Sixth Assessment Report of the Intergovernmental Panel on Climate Change” (FCCC/SBSTA/2023/INF.2), Bonn, 2023.
- 1500 Vermont, B. and De Cara, S.: How costly is mitigation of non-CO₂ greenhouse gas emissions from agriculture?, *Ecol. Econ.*, 69, 1373–1386, <https://doi.org/10.1016/j.ecolecon.2010.02.020>, 2010.
- | [van Vuuren, D. P., Vries, B. de, Eickhout, B., and Kram, T.: Responses to technology and taxes in a simulated world, *Energy Econ.*, 26, 579–601, <https://doi.org/10.1016/j.eneco.2004.04.027>, 2004.](#)
- 1505 Wagner, F., Amann, M., Borken-Kleefeld, J., Cofala, J., Höglund-Isaksson, L., Purohit, P., Rafaj, P., Schöpp, W., and Winiwarter, W.: Sectoral marginal abatement cost curves: implications for mitigation pledges and air pollution co-benefits for Annex I countries, *Sustain. Sci.*, 7, 169–184, <https://doi.org/10.1007/s11625-012-0167-3>, 2012.
- Weyant, J.: Some contributions of integrated assessment models of global climate change, *Rev. Environ. Econ. Policy*, 11, 115–137, <https://doi.org/10.1093/reep/rew018>, 2017.
- Xiong, W., Tanaka, K., Ciais, P., and Yan, L.: Evaluating China’s role in achieving the 1.5 °C Target of the Paris Agreement, *Energies*, 15, 6002, <https://doi.org/10.3390/en15166002>, 2022.
- 1510 Yanai, H.: *Mathematical models* (in Japanese), Asakura Publishing Co., Ltd., Tokyo, Japan, 2009.
- Yue, X., Deane, J. P., O’Gallachoir, B., and Rogan, F.: Identifying decarbonisation opportunities using marginal abatement cost curves and energy system scenario ensembles, *Appl. Energy*, 276, 115456, <https://doi.org/10.1016/j.apenergy.2020.115456>, 2020.
- 1515 Zickfeld, K., Azevedo, D., Mathesius, S., and Matthews, H. D.: Asymmetry in the climate–carbon cycle response to positive and negative CO₂ emissions, *Nat. Clim. Change*, 11, 613–617, <https://doi.org/10.1038/s41558-021-01061-2>, 2021.

Deleted: . van,

Page 27: [1] Deleted

weiwei xiong

2024/8/2 1:54:00



Page 34: [2] Deleted

weiwei xiong

2024/8/2 1:54:00

