

Current and future role of meltwater-groundwater dynamics in a proglacial Alpine outwash plain

Tom Müller^{1,3}, Matteo Roncoroni¹, Davide Mancini¹, Stuart N. Lane¹, and Bettina Schaefli^{2,3}

¹Institute of Earth Surface Dynamics, University of Lausanne, 1015 Lausanne, Switzerland

²Oeschger Centre for Climate Change Research (OCCR), University of Bern, 3012 Bern, Switzerland

³Institute of Geography (GIUB), University of Bern, 3012 Bern, Switzerland

Correspondence: Tom Müller (tom.muller.1@unil.ch)

Abstract.

~~Glaciated~~ Glacierized alpine catchments are rapidly evolving due to glacier retreat and consequent geomorphological and ecological changes. As more terrain becomes ice free, ~~the interactions between reworking of exposed terrain by the river as well as thawing of the top layer may lead to an increase in~~ surface and subsurface ~~waters become gradually more significant~~ water exchanges, leading to potential changes in water storage and release, which in turn may impact ecological, geomorphological and hydrological processes. In this study, we aim to understand the current and future hydrological functioning of ~~outwash plains as glaciers retreat. These constitute a fluvial aquifer which appears as a focal point for water storage and alpine ecology and their dynamics have only rarely been studied~~ a typical outwash plain in a Swiss Alpine catchment. As with many other fluvial aquifers in alpine environments, this outwash plain is located at the valley bottom where catchment-wide water and sediment fluxes tend to gather from multiple sources, may store water and provide specific habitats for alpine ecosystems. Their dynamics are however rarely studied in post little ice age proglacial zones. Based on geophysical investigations as well as year-round stream and groundwater observations, we developed a simplified physically-based 3D MODFLOW model and performed an optimized automatic calibration using PEST HP. ~~By comparing the model results to field observations, we~~ We highlight the strong interactions between the upstream river and the aquifer, with stream infiltration being the dominant process of recharge. Groundwater exfiltration occurs in the lower half part of the outwash plain, balancing out the amount of river infiltration at a daily time scale. We show that hillslope contributions from rain and snow-melt have little impact on groundwater levels. We also show that ~~outwash plain aquifers~~ the outwash plain acts as a bedrock-dammed aquifer and can maintain groundwater levels close to the surface ~~even during long dry periods. From a hydrological perspective, we finally~~ during months-long dry periods, even in the absence of glacier meltwater, but may in turn provide only limited baseflow to the stream. Finally, we explore how new outwash plains may form in the future in this catchment due to glacier recession and discuss ~~what cascading impact from a hydrological perspective what cascading impacts~~ the presence of multiple outwash plains may have ~~in such catchments. We.~~ For this case study, we estimate the total dynamic storage of future outwash plains to be about 20 mm and we demonstrate their limited capacity to ~~produce~~ provide more stream water than what they infiltrate upstream, except for very low river flows (< 150 to 200 L s^{-1}). Below this limit, they can provide limited baseflow on timescales of weeks, thus maintaining ~~some moisture~~ conditions potentially moisture conditions that may be beneficial for proglacial ecosystems. Their role in attenuating floods

also appears limited, as less than $0.5 \text{ m}^3 \text{ s}^{-1}$ of river water can be infiltrated. ~~Outwash plains appear~~ The studied outwash plain appears therefore to play an important role for alpine ecosystems but ~~have marginal hydrological effects~~ has a marginal hydrological effect on downstream river discharge.

Keywords. outwash plain, glacier forefield, hydrology, groundwater storage, MODFLOW, Alps, Switzerland

30 1 Introduction

Alpine ~~glaciated~~ glacierized catchments are rapidly evolving under the effect of rising temperatures and rapid glacier melt. Previously ice-covered glacial forefields may be impacted by ~~significant~~ substantial sediment release from the glacier and ~~deglaciated~~ deglacierized hillslopes (Mancini and Lane, 2020) as well as reworking by glacier meltwater (Carrivick and Heckmann, 2017), leading to rapid geomorphological and ecological changes. In addition, seasonal water supply is changing, with
35 more winter liquid precipitation, earlier snow-melt and ice-melt, more intense diurnal discharge cycles and reduced snow-melt supply in the later summer months (Berghuijs et al., 2014; Milner et al., 2017; Lane and Nienow, 2019). These combined climatic, hydrological and geomorphological processes are strongly modifying the hydrology of glaciated glacierized catchments, which may have ~~strong~~ implications for high-elevation hydropower production (Schaeffli et al., 2019), water-related hazards, proglacial and regional ecology (Brighenti et al., 2019b) and downstream water availability.

40 In this context, research has focused on characterizing the influence of glacier retreat on the geomorphological processes influencing sediment transport (Lane et al., 2017) and on the evolution of seasonal streamflow volumes (e.g. Huss et al. (2008); Huss and Hock (2018)). However, assessment of the role of groundwater storage and release is usually oversimplified (Vincent et al., 2019), even if it may play an important role especially during extreme drought events (Buytaert et al., 2017). Due to the complexity of landforms in glacial forefields and their susceptibility to rapid reworking, groundwater storage is likely
45 contained in different compartments such as superficial landforms or bedrock fractures with different water storage potential and retention time scales (Hayashi, 2020; Müller et al., 2022). For this reason, a sound understanding of future water availability and storage in alpine glaciated glacierized catchments can only be achieved by acquiring detailed knowledge of the hydrological functioning of different landforms and their associated water storage potential as well as of spatial groundwater recharge and exfiltration patterns (Müller et al., 2022). Some recent studies started to address this issue (Glas et al., 2018; Hayashi, 2020) by
50 characterising and mapping geomorphological landforms such as talus slopes (Muir et al., 2011; Kurylyk and Hayashi, 2017), lateral deposits (Baraer et al., 2015), moraines (Kobierska et al., 2015a; Langston et al., 2013; McClymont et al., 2011) or rock glaciers (Winkler et al., 2016; Wagner et al., 2021; Harrington et al., 2018). For a detailed review, the reader is referred to the work of Hayashi (2020).

Outwash plains have been less studied and so here we characterize the hydrological behavior of an alpine proglacial out-
55 wash plain, a type of newly-formed fluvial aquifer composed of gravelly-sandy sediments deposited in front of a glacier after subglacial erosion ~~-(Ballantyne, 2002).~~ Those landforms mainly form in glacier forefields where sediment supply from glacial erosion and rock-slope failure is substantial and in locations where the valley bottom is characterized by a low slope, where sediment deposition can occur (Maizels, 2002). The ecological importance of older Quaternary fluvial deposits has been stud-

ied, showing that their location in flat valley bottoms allows them to accumulate water, sediments and organic matter from different sources leading to a patchwork of environmental habitats essential for endemic species (Hauer et al., 2016; Crossman et al., 2011; Miller and Lane, 2018). Studies have shown the strong surface water-groundwater interactions, with infiltrated stream water extending hundreds of meters laterally beyond the stream network (Ó Dochartaigh et al., 2019; Hauer et al., 2016) and with a dominant longitudinal groundwater gradient, which leads to groundwater upwelling in downstream river sections (Ward et al., 1999). Whilst the behavior of such larger aquifers is well known, the emergence of new small alluvial floodplains after the Little Ice Age (LIA) in the Alps has not been studied from a hydrological perspective, with the exception of a series of studies in Val Roseg in the Swiss Alps (Ward et al., 1999; Malard et al., 1999). [Fluvial landforms in post-LIA proglacial zones have been shown to represent less than 5% of the area of deglaciated terrain in the European Alps \(Carrivick et al., 2018\), but their proportion may increase rapidly, with the retreat of the glaciers tongues which often occupy the flatter part of alpine catchments.](#)

The importance of further research in this field is emphasised by the fact that proglacial outwash plains will likely provide the only viable habitat for cold-water species (Brighenti et al., 2019b) and may store relatively large amounts of water. Four questions arise: (i) what is their future spatial extent and hydrological significance in ~~deglaciated~~-[deglacierized](#) terrain?; (ii) are their groundwater dynamics similar to larger Quaternary floodplains in terms of their potential to maintain shallow groundwater seasonally?; (iii) how will they respond to early-season and reduced ice- and snowmelt?; and (iv) how will vegetation feedbacks influence their stability and water and sediment storage (Roncoroni et al., 2019).

We address the first three questions by providing a detailed analysis of a selected case study in the Swiss Alps, the Otemma glacier forefield, where a large outwash plain system has been monitored for sediment, ecological and hydrological processes since 2019 (Müller et al., 2022). Based on two years of groundwater well observations and of discharge and electrical conductivity measurements, we build a 3D MODFLOW model to characterize the groundwater dynamics and the rate of stream water infiltration and groundwater exfiltration. This allows us to characterize the surface water-groundwater dynamics of a typical outwash plain, which is likely similar to other those of other alpine environments. Finally, we apply the developed model to a hypothetical future scenario where new outwash plains are formed due to glacier retreat in ~~deglaciated~~-[deglacierized](#) bedrock overdeepenings and demonstrate their overall hydrological significance.

2 Study site and experimental methods

The Otemma glacier is located in the Western Swiss Alps (45°56'03"N, 7°24'42"E) with a catchment area of 30.3 km², a mean elevation of 3005 masl (2350 masl to 3780 masl) and about 45% glacier cover in 2020 (Linsbauer et al., 2021). The glacier is characterized by a relatively flat tongue which is rapidly retreating. The outwash plain studied here was gradually uncovered between 1988 and 2020 over a length of about 1250 m in 32 years, or a glacier retreat rate of almost 40 m year⁻¹ (GLAMOS (1881-2020)).

The underlying bedrock consists of orthogneiss and metagranodiorites (Burri et al., 1999), overlain by coarse superficial sediment deposits with limited vegetation development and shallow, young soils. The outwash plain is composed of non-

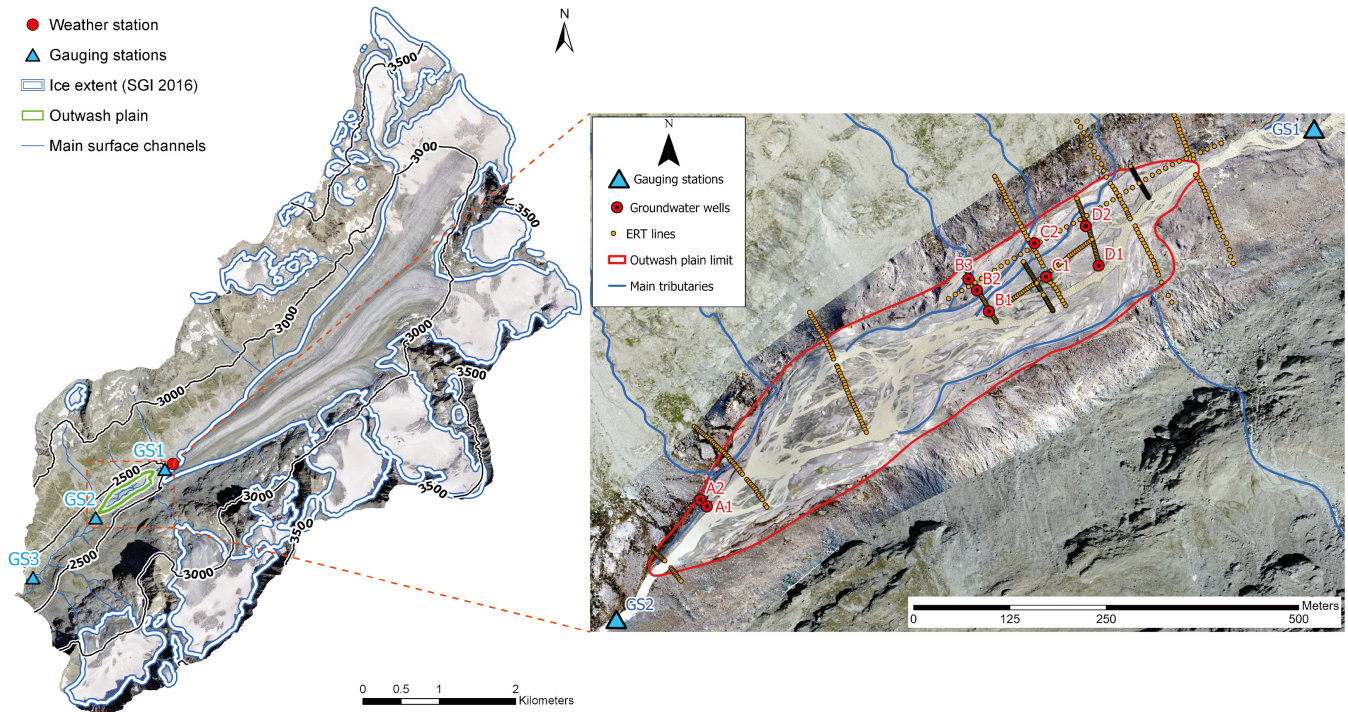


Figure 1. Overview of the Otemma catchment and the outwash plain, gauging and weather stations. The window on the right shows the braided outwash plain with the 8 groundwater wells and the main hillslope tributaries. The orthoimage was provided by SwissTopo (2020).

consolidated sandy-gravelly material forming a mosaic of bars and terraces. It covers a surface of 118'000 m² or 0.4 % of the total catchment area. The main stream network is braided in the lower part of the plain, with rapid channel modifications due to periodic high discharge, and more constrained in the upper part, where the stream is usually limited to one channel, although large channel erosion (>5 m per hours laterally) was also observed during large flood events (once a year). There is a general downslope gradient from coarser to finer sandy-silty material, typical of outwash plains (Zielinski and Van Loon, 2003; Maizels, 2002). The melt-out of buried ice is also observed, leading to the formation of “kettle holes” (Maizels, 1977). The outwash plain has a longitudinal length of about 900 m and a slope between 1 % in its lower part to 2 % upstream and a mean slope of 1.4 %. The lateral relief is variable between 2 and 3 m and associated with terraces.

100 2.1 Meteorological data

Since 2019, a meteorological station was installed near the glacier terminus at an elevation of 2450 masl and continuously measured liquid precipitation with a Davis tipping rain gauge and air temperature, relative humidity and pressure with a Decagon VP-4.

105 Additionally, winter solid precipitation was measured using the closest SwissMetNet weather station, either in Otemma (2357 masl) or in Arolla (2005 masl) for time steps where the Otemma station showed missing values (the two stations are 1.5

km and 11.5 km from the outwash plain). [Data-The data acquired for this study](#) and their description are available on Zenodo (Müller, 2022a).

2.2 Surface water data

Two gauging stations were installed in the main stream, upstream (GS1, Fig. 1) and downstream (GS2, Fig. 1) of the outwash plain in bedrock-constrained river sections. Stream temperature, water electrical conductivity (EC) and river stage were measured continuously at 10 minute intervals using an automatic sensor (Keller DCX-22AA-CTD). Sensor measurements were checked against bi-monthly manual measurements. Discharge was estimated at both sites by building a stage-discharge rating curve. Point discharge measurements were performed by dilution gauging using fluorescence dye tracing (Rhodamine WT 20 %). The dye concentration was measured with a Fluorometer (Albillia GGUN-FL30) recording at 5 second intervals following dye injection. For flows smaller than $1 \text{ m}^3 \text{ s}^{-1}$, discharge was measured using salt dilution gauging instead of dye. Dissolved salt concentration was measured using EC and a local EC to salt concentration curve was built. In total, 27 discharge measurements were performed for GS1 and 21 for GS2 in 2020, and 15 and 13 respectively in 2021. For each gauging station, we covered a wide range of discharge values, from low winter baseflow (100 L s^{-1}) to summer high flow ($10 \text{ m}^3 \text{ s}^{-1}$). The estimated mean discharge uncertainty (95 % confidence) is $0.55 \text{ m}^3 \text{ s}^{-1}$. More detailed description of the data is available in the work of Müller and Miesen (2022).

Along stream gauging was also attempted to quantify rates of surface water-groundwater interactions. This was however only successful during the autumn period when stream flow is low and less turbulent and thus streamflow measurements via salt gauging were more precise. This was the only period when the discharge measurement error was smaller than water exchange rates. On 17 September 2021, we gauged the stream at three locations : above the start of the outwash plain (GS1), at the location of well B1 and at the end of the outwash plain (100 m above GS2). At that time, all surface tributaries were visually dry so that lateral water inputs are negligible.

In addition to the main stream, small hillslope tributaries were also manually monitored for EC and water temperature. All manual measurements in this study were performed with the same device (WTW Multi 3510 IDS logger with a IDS TetraCon® 925 water conductivity probe).

2.3 Groundwater measurements

Between 2019 and 2022 we installed eight fully-screened groundwater observation wells in stable terraces of the outwash plain, consisting of three lateral transects (transect B,C,D) in the upstream part of the plain and one single well (A1) in the downstream part (Fig. 1). The wells reached a depth of about 2 m below the ground surface. Groundwater levels were measured using autonomous loggers (Seeeduino Stalker V3.1) equipped with SparkFun MS5803-14BA pressure sensors measuring with a 10 minute interval. The sensor resolution was 1 mm with an accuracy of $\pm 2 \text{ cm}$ and sensor bias was manually checked bi-monthly using manual groundwater stage measurements. The sensors functioned year-round, but groundwater stage usually fell below the sensor in winter and sometimes the sensors were damaged by winter snow accumulation. More detailed description

of the data is available in the work of Müller (2022b). Periodic point measurements of groundwater EC and temperature was also performed. Prior to measurement, groundwater wells were flushed by pumping 3 times their water volumes.

140 The aquifer porosity was estimated by measuring the saturated water content (Decagon 5TM) at five locations in first meter of saturated sediments in the outwash plain. The fine soil texture on the side of the outwash plain where early signs of vegetation appeared was measured by laser granulometry (Beckmann Coulter grain sizer).

2.4 Electrical resistivity tomography

Electrical resistivity tomography (ERT) was performed in the outwash plain in order to map sediment depth and ~~bedrock~~the
145 underlying bedrock geometry with a Syscal Pro Switch 48 from Iris Instruments. The array consisted of 48 electrodes with a spacing between 1.5 m and 4 m and we performed both dipole-dipole (DD) and Wenner-Schlumberger (WS) schemes for each measurement site. The location of each electrode was measured with a GNSS GPS (Trimble R10 GNSS) and we performed 2D
data inversion using the Open-Source pyGIMLi python library (Rücker et al., 2017). We included topography and used a robust inversion scheme (L1-norm) with a set of regularization parameters in order to assess the results sensitivity to over-fitting.

150 A total of ~~24~~12 different electrical resistivity tomography profiles were obtained between 2019 and 2021. The depth of the sediments was identified based on a sharp transition from water-saturated sediments with resistivity values between 500 and 2000 Ωm to a lower layer with resistivity of between 4000 and 7000 Ωm . The depth profiles obtained with both electrodes setups (DD and WS) were systematically compared to ~~assess any differences in the obtained depth profiles.~~check the data quality acquired. Generally, both setups led to similar bedrock depths but the results from the DD scheme were used as they
155 usually led to a better vertical resolution.

Some more resistive patches were identified, with values larger than 10000 Ωm , which we attributed to the presence of buried ice (Bosson et al., 2015). More detailed description of the data is available in the work of Müller (2022c).

3 Methods

3.1 3D MODFLOW model

160 We set-up a 3D MODFLOW model of the outwash plain aquifer using the python package Flopy (Bakker et al., 2016) with the latest MODFLOW 6.3 version (Langevin et al., 2022). The model was first initialized with a pre-defined set of parameters and, in a second phase, we calibrated the model parameters (Sect. 3.2.3) using the optimisation algorithm PEST HP, a PEST version (Doherty, 2015) optimized for Highly Parallelized (HP) environments.

The calibrated model was then used to analyse the aquifer behavior during a whole an entire year. The main packages used to
165 build the MODFLOW model are described in the following sections and the main parameter values are summarized in Table 1.

3.1.1 Temporal Discretization (TDIS)

The model is defined with an hourly time step. The time period for the calibration phase is from 15 August 2020 to 18 November 2020. This time period was considered adequate to cover both summer high flows and the autumn recession period.

3.1.2 Structured Discretization (DIS), Node Property Flow (NPF), Storage (STO)

170 The model lateral no-flow boundary corresponds to the limit of the outwash plain, which was manually digitized (Fig. 1). The surface topography was determined using Surface-from-Motion Multi-View Stereo (SfM-MVS) photogrammetry, using imagery acquired with a Dji Phantom Drone, resulting in a final DEM with a 0.25 m resolution and a ± 0.02 m precision. A detailed description of the procedure is provided in Roncoroni et al. (2022).

175 The DEM was then resampled to a model grid of 10 by 10 m. In order to estimate the elevation of the water bodies precisely, we isolated the zones in the DEM corresponding to the stream network and performed a separate resampling of these zones only. Due to the typically larger noise in the DEM of the water bodies, we then applied a smoothing filter algorithm (Savitzky–Golay) along the stream network.

The depth of the model is defined using data from the electrical resistivity tomography (ERT) measurements. We only simulated the coarse-grained sediment aquifer and defined the underlying bedrock as the no-flow model boundary. We thus 180 neglected any infiltration into the bedrock because its hydraulic conductivity is likely 3 to 4 order of magnitudes smaller (Masset and Loew, 2010) and thus negligible for the times-scales and purpose of our model. From the ERT transects, we manually drew lines of equal depth below the surface and then performed a spatial interpolation (Topo to Raster function from ArcGIS) to create the bedrock topography of the whole domain (Fig. 2).

185 The model domain is further split into 4 aquifer layers where hydraulic conductivity and porosity (specific yield) are allowed to vary ~~independently, spatially and independently from each layer~~. The unconfined aquifer is simply separated into four parts to allow parameters to vary with depth and no layer is confined. Those parameters were calibrated in a second step using PEST HP (Sect. 3.2). The top layer includes the first 2 meters below ~~the measured a sloping plane corresponding roughly to the~~ elevation of the ~~water body contour of the outwash plain~~ to the top of the DEM. The next lower layer extends from ~~-2 m to -6 m, and subsequent layers of 4 m depth are defined until bedrock is reached.~~ -2 m to -6 m, then from -6m to -10m 190 and finally from -10m to the depth of the bedrock (see Fig. 9 for illustration). This partitioning was selected as a trade-off between allowing substantial parameter variation with depth and limiting the number of calibration layers (and parameters) which increased computational costs.

The model uses the Newton-Raphson formulation which allows for a precise computation of unconfined saturated ground-water flow. Unsaturated flow above the water table is not considered so that model cells in the unsaturated zone can only to be 195 either saturated or dry.

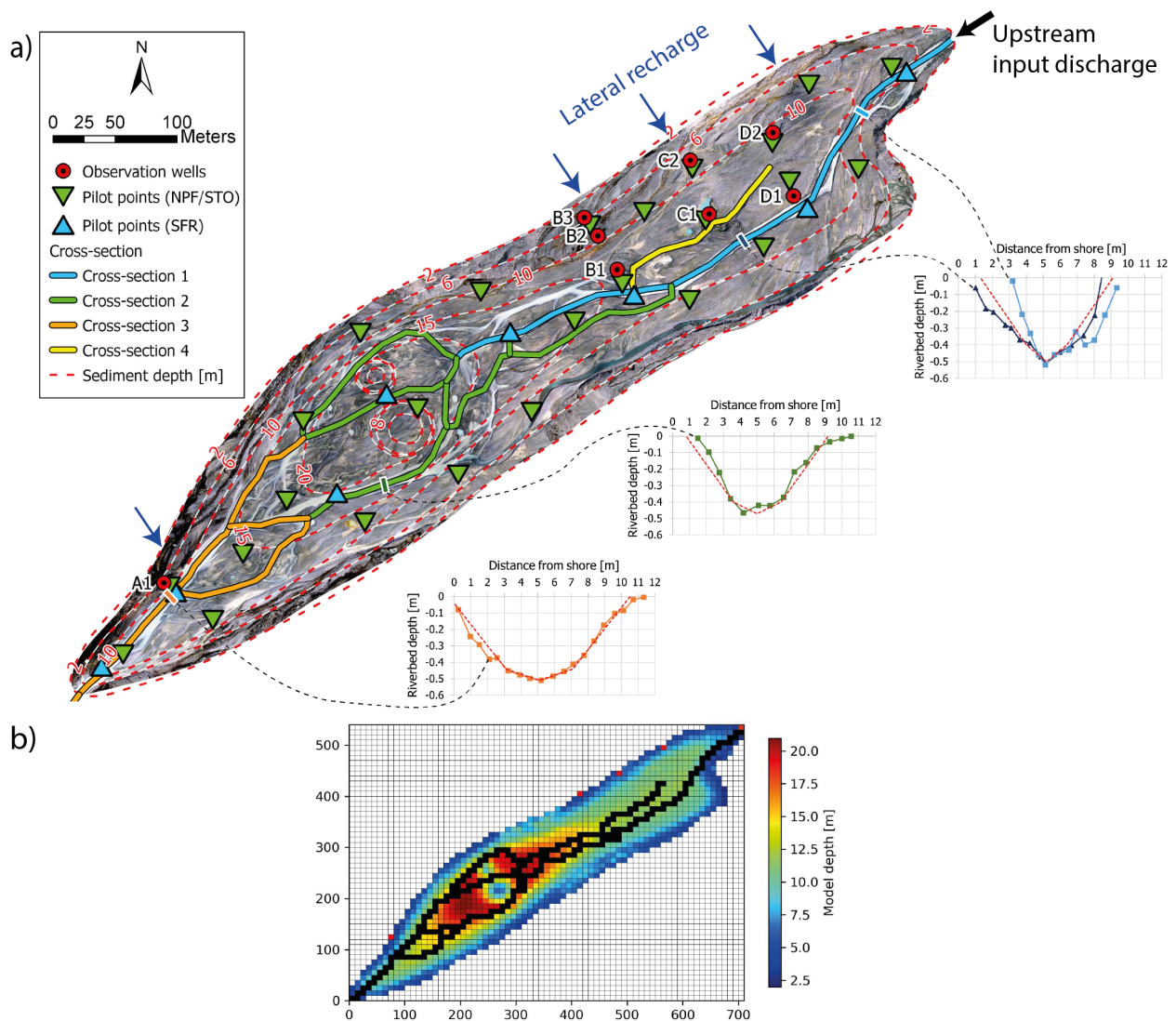


Figure 2. a) Overview of outwash plain model parameters. Six pilot points are used for streamflow (SFR) and 15 for hydraulic conductivity (NPF) and storage (STO). Observation wells are used for history-matching. Sediment depth was drawn manually based on ERT profiles and the two anomalies in the largest part of the floodplain are due to buried ice (see Sect.4.1). [The black arrow shows the upstream river discharge and the blue arrows indicate the locations of lateral surface recharge from the hillslope.](#) River cross-sections are separated in 4 classes, two bathymetric profiles are shown for Cross-section 1 (light/dark blue), one for cross-section 2 (green) and cross-section 3 (orange). The dashed red line in the graphs represents the corresponding simplified cross-section used as model input. **b)** Corresponding MODFLOW grid. The colorscale represents the maximal model depth. The stream network is shown in black and the red squares represent the location of recharge and input discharge.

3.1.3 Streamflow Routing (SFR)

The stream network was manually identified using the orthophoto from 18 August 2020 (Fig. 2). Only the main larger permanent channels were identified and were assumed not to change during the modelling period.

We use the SFR package from MODFLOW which allows for an estimation of surface water-groundwater exchanges and an estimation of river stage and width based on Manning's equation, river discharge and riverbed cross-section. For each river grid cell, the riverbed elevation was estimated using the calculated elevation from the surface DEM and an average depth for each stream segment based on a bathymetric survey performed on the 18 August 2020, where river cross-section was measured with a differential GPS Trimble R10 and a spacing between points of about 0.5 m.

~~We also~~ In the MODFLOW SFR package, river-groundwater exchanges are proportional to the difference between the aquifer head and stream stage. When the groundwater head drops below the bottom of the streambed sediments, the flux no longer depends on aquifer head and is defined as the difference between river stage and the bottom elevation of the streambed sediments (Langevin et al., 2017). This simplification may lead to underestimation of the fluxes for perched streams as no negative pressure in the dry cell below the stream is defined, as discussed in the work of Brunner et al. (2010).

A recent development in MODFLOW 6.3 is the definition of an irregular cross-section which allows the river wetted area to change with river stage and improves the estimation of the surface-groundwater fluxes. We defined a simplified cross-section for each segment consisting of a trapezoidal section. Four different cross-section categories were defined (Fig. 2). The upstream river segments (category 1) have slightly steeper channel slopes and narrower bottom width than the downstream parts (category 3); category 2 makes a transition between the upstream and downstream parts; category 4 represents a stream segment which was usually disconnected from the upstream river, but where groundwater exfiltration maintained some baseflow in summer. This segment was defined with a rectangular cross-section with a width of 2 m. MODFLOW first estimates discharge for each river cell and then calculates river stage and width based on the cross-section so that the wetted perimeter available for water exchanges varies with time. The Manning's roughness coefficient was defined as a calibration parameter in the model.

3.1.4 Hillslope recharge

In addition to the river discharge defined for the streamflow, hillslope recharge was also specified in the model. We specified four points of groundwater recharge on the side of the modelling domain (~~red squares~~ blue arrows in Fig. 2b) where a time-varying water input was applied in the first groundwater layer. Those recharge points represent the main observed ephemeral surface streams which drain the entire north-side of the hillslope above the outwash plain. We assume no diffuse recharge from the subsurface as such flux could not be observed in the study site.

The amount of recharge was estimated by building an enhanced temperature-index melt model (Gabbi et al., 2014), which computes snow accumulation and melt as well as rain for the four selected hillslope subcatchments based on averaged hourly air temperature, incoming radiation and precipitation measured at the weather station. Precipitation was provided in summer by the weather station at the glacier tongue and winter precipitation from the closest available SwissMetNet station. The model was established at the catchment scale by defining model grid cells of 200 m, where mean elevation, slope and aspect were computed

230 based on a 2m resolution digital elevation model (DEM) from SwissTopo (2019). Snow redistribution on steep slopes was defined by limiting precipitation above a calibrated slope threshold. The incoming radiation was corrected for slope and aspect using a correction function defined by two calibration parameters. Model calibration was performed automatically using PEST-HP (see Sect. 3.2), by minimizing the error on calculated and measured snow water equivalent (SWE). SWE was estimated based on snow depth measurements performed manually at 5 locations on 26 June 2020 and 92 locations on 29 May 2021 on the whole glacier main lobe (from 2500 to 3000 m. asl). Snow density was estimated by measuring the average density of the whole snow pack with a snow sampler in the centre of the glacier main lobe in 2020 and at two locations in 2021 on the same dates as snow depth. Additionally, in order to improve model performances (Hofmeister et al., 2022; Thornton et al., 2021), a second objective function was defined in PEST to minimize the error between modelled and observed presence/absence of snow in each cell. Seasonal snow cover was based on daily 3m resolution Planet images (Planet Team, 2017), where snow was identified using a K-Means unsupervised learning algorithm from Google Earth Engine (ee.Clusterer.wekaKMeans (Arthur and Vassilvitskii, 2007)). On average, one clear sky day image was available every week in the summer. Both objective functions (SWE and snow cover) were first weighted equally, so that their total initial weighted sum of residuals is equal. Based on the initial calibration results, we then decided to increase the weight of the snow cover objective function to improve the representation of the snow cover fraction, which tended to decrease too quickly in the model during the late season. This iterative adjustment of the weighting resulted in a total weight of 1 and 2.4 for the SWE and snow cover objective functions and this then matched well with the snow cover fraction over the whole season, whilst maintaining a root mean square error of about 100 mm for the estimation of the SWE.

245 Finally, for the hillslope subcatchments, the same model was applied with the established parameter calibration but we used 50 m elevation bands instead of grid cells as those subcatchments ~~where were~~ too small for such grid cells. A simple routing to convey water from each elevation bands to the subcatchment outlet was defined using a gamma distribution function, where the peak of the distribution matches the estimated transit time in the hillslope. The averaged transit time for a steep hillslope was estimated using a kinematic subsurface saturated flow equation (MacDonald et al., 2012), with a mean slope of 45° , an aquifer porosity of 0.3 and a hydraulic conductivity of $5 \times 10^{-2} \text{ m s}^{-1}$, typical for coarse talus slopes (Muir et al., 2011). The model codes and calibrated parameters are available in the supporting material.

255 Water input from the hanging glacier located on the southern hillslope (Fig. 1), either via hillslope recharge or directly via its tributary to the main network (near the end of the outwash plain) was neglected due to a lack of measurements in this part of the outwash plain.

Finally, after some preliminary modeling tests, we neglected the direct input of rainfall on the surface of the outwash plain as we could not observe any clear response from the groundwater from any rain events and including this flux tended to lead to an overestimation of the groundwater heads.

260 The implications of ~~this simplification~~ the simplifications mentioned above are detailed in the discussion.

MODFLOW parameters Value Packages TDIS/DIS Time step 1 hour Simulation length 95 days Cell size 10 meters Number of groundwater layers 4 Top elevation From DEM Bottom elevation From DEM and ERT **Packages NPF/STO** Layer hydraulic conductivity 500 m per day (10–2000) Layer specific yield 0.25 (0.2–0.3) Layer specific storage 1e-05 **Package SFR** Manning’s coefficient 0.035 s m^{-1/3} (0.01–0.05) Streambed thickness 0.5 m Streambed hydraulic conductivity 5 m per day (0.1–20) Stream gradient From DEM Reach width max. 20 m Reach length From orthophoto Reach bottom elevation From DEM and bathymetry Reach cross-section Trapezoid from bathymetry

Table 1. Summary of the main MODFLOW parameters by packages. Ranges in red indicate bounds for parameters calibrated during the calibration phase.

MODFLOW parameters		Value
Packages TDIS/DIS		
Time step		1 hour
Simulation length		95 days
Cell size		10 meters
Number of groundwater layers		4
Top elevation		From DEM
Bottom elevation		From DEM and ERT
Packages NPF/STO		
Layer hydraulic conductivity	500 m per day	(10 - 2000)
Layer specific yield	0.25	(0.2 - 0.3)
Layer specific storage	1e-05	
Package SFR		
Manning’s coefficient	0.035 s m ^{-1/3}	(0.01 - 0.05)
Streambed thickness	0.5 m	
Streambed hydraulic conductivity	5 m per day	(0.1 - 20)
Stream gradient		From DEM
Reach width		max. 20 m
Reach length		From orthophoto
Reach bottom elevation		From DEM and bathymetry
Reach cross-section		Trapezoid from bathymetry

3.2 PEST HP

PEST HP is a model-independent algorithm for parameter estimation using inverse methods; model parameters are iteratively modified such as to minimize the variance of the error between the model outputs and corresponding field observations (Doherty, 2015). PEST HP was used for calibration.

265 3.2.1 Calibration parameters and pilot points

The MODFLOW parameters selected for calibration are groundwater hydraulic conductivity (K_{gw}), groundwater specific yield (S_y), streambed hydraulic conductivity (K_{rb}) and the Manning's roughness coefficient (n). Groundwater parameters govern the rate of groundwater flow in the subsurface and are typically used for model calibration against observations of hydraulic head (Brunner et al., 2017). River-bed hydraulic conductivity was also estimated as it was shown to have a strong impact on the rate of water exchanges between surface water and groundwater (Schilling et al., 2017). Manning's roughness coefficient was also calibrated as it is recognised as an effective parameter (Lane, 2014) designed to represent a set processes not directly included especially with the hydraulic formulation in MODFLOW used here.

Parameter estimation of the whole model domain was carried out by defining a subset of pilot points for calibration on which automatic kriging was applied. An exponential variogram with a nugget of 0, sill of 1 and a range of 3 times the average distance between pilot points was built using PEST groundwater utilities (MKPPSTAT and PPCOV_SVA). For K_{gw} and S_y , we place 25 pilot points separated by approximately equivalent distance over the domain for each 4 groundwater layers. For the stream parameter K_{rb} , we use 8 pilot points along the stream (Fig. 2).

3.2.2 Parameter regularisation and initial values

To avoid unrealistically high spatial heterogeneity and overfitting in the parameter estimation, we used Tikhonov preferred value regularisation (Park et al., 2018), which adds a penalization term to the least-squares problem so as to dampen the influence of non-desired solutions. Preferred initial calibration parameter values are summarized in Table 1. For K_{gw} , the estimation was based on groundwater salt tracing and diffusive wave propagation was performed in the outwash plain in a previous work (Müller et al., 2022); there, we estimated saturated hydraulic conductivity values in the groundwater ranging from 85 to 660 m per day. We, therefore, defined here an initial value of 500 m per day with a range between 10 and 2000 m per day for K_{gw} . A similar value was also used in the work of (Schilling et al., 2017) for a Quaternary alluvial aquifer. S_y was also measured in the field with a mean porosity of 0.25. Riverbed hydraulic conductivity could not be measured in the field directly so that an initial value was estimated by manually running the model without automatic calibration, and was set to 5 m per day. Finally, Manning's roughness coefficient was set to a value $0.035 \text{ s m}^{-1/3}$, adequate for natural unvegetated gravelly streams (Phillips and Tadayon, 2006), but with a calibration range of 0.01 to 0.05.

290 3.2.3 Objective function and model calibration

We use the time period from 15 August 2020 to 18 November 2020 for model calibration. Five different reference data sets were used to build a set of objective functions to calibrate the model with PEST: i) daily averaged water heads data from all 8 wells; ~~we excluded the three first days of data from the calibration period in order to initialize the model;~~ ii) daily head differences, iii) the daily time of maximal head; iv) rate of daily head change and v) surface water-groundwater exchange fluxes along the main stream. We excluded the three first days of data from the calibration period in order to initialize the model. Such

a short initialization period was used as the aquifer rapidly reached an equilibrium with the stream due to the highly conductive nature of the sediments in the outwash plain and the generally high groundwater levels in early summer.

The transformed datasets ii) and iii) were obtained from head measurements and contained additional information compared to the raw groundwater heads. It has indeed been shown that diel head fluctuations in fluvial aquifers are due to stream level variations that propagate as a diffusive wave into the aquifer (Magnusson et al., 2014), ~~and that depend directly on the hydraulic diffusivity (D) of the aquifer, which combines~~. As suggested by Montalto et al. (2007), when the aquifer depth (b) is much larger than the water table variations, the magnitude of the diffusion depends on the mean aquifer transmissivity (T) in the whole aquifer and the aquifer porosity (S_y) in the zone where water fluctuations occur (see Eq. 1).

$$S_y \frac{\delta h}{\delta t} = T \frac{\delta^2 h}{\delta x^2} \quad (1)$$

Since $T = K_{gw} b$, the amplitude and the delay of the diffuse wave are directly proportional to the integrated mean K_{gw} ~~and aquifer depth (b) following the relationship $D = K_{gw} b / S_y$. The amplitude and timing of diel fluctuations were therefore useful estimators~~ value of the aquifer properties variation with depth between the river and the well through its entire depth. Therefore, using the groundwater fluctuations as an objective function forces the model calibration to better represent the average K_{gw} in the aquifer; that is at depth lower than the groundwater wells.

The rate of daily head changes (dataset iv) were used to put more weight onto the recession that occurs in autumn, so that the rate of the aquifer drainage was well represented. Surface-groundwater exchange fluxes (resulting from surface water infiltration and groundwater exfiltration) were obtained from streamflow measurements along the main stream and corresponding differences between upstream and downstream section ends (see Sect. 2.2 in study site). Although the measurement was performed in 2021, we observed similar flow conditions (similar discharge at GS1 and groundwater heads) the year before so that this observation of stream-groundwater exchanges gave a first-order estimate of the fluxes during low flows and contributed to a better estimation of K_{rb} .

In total, we thus had 5 reference data sets for defining a calibration objective function corresponding to a non-linear weighted least squares function. The calibration was then obtained with PEST by running the model 50 times until algorithm convergence. For all other algorithmic parameters of the PEST algorithm, the suggested default values were used and are accessible in the Supporting Material.

Following the calibration procedure, we ran the model for the entire period for which we have data, i.e. from 27 June 2020 to 15 September 2021 (445 days), which yields us additional 350 days to evaluate the model performance outside the calibration period.

3.3 Future of outwash plain storage and subglacial overdeepening mapping

Outwash plains are formed through successions of sediment aggradation and deposition which depend on sediment load, accommodation space, slope and discharge magnitude and intensity of variation (Miall, 1977; Maizels, 2002). In ~~glaciated~~ glacierized alpine catchments, valley bottoms are usually steep, so that suitable locations for the formation of outwash plains

are restricted to areas where the bedrock topography is wide and flat. This mostly occurs where overdeepenings in the bedrock occur due to glacier erosion (Otto, 2019). If sediment supply fills such depressions, a new outwash plain may form. We therefore identified potential future outwash plains by locating bedrock overdeepenings below the current Otemma glacier. The latest estimate of ice thickness distribution and corresponding bedrock topography for Switzerland was produced by Grab et al. (2021), where they used a mixed approach consisting of airborne Ground Penetrating Radar (GPR) profiles combined with glaciological modeling. Based on the digital elevation model (DEM) of bedrock topography with a resolution of 10 m, we automatically identify bedrock overdeepenings (ArcGIS Fill tool). We then manually defined a plane connecting the lower and upper edge of the identified overdeepenings, which would correspond to a theoretical outwash plain surface. We finally calculated the depth and volume of each future outwash plain by subtracting the elevation of the surface outwash plain DEM and the bedrock DEM.

Based on these results, we made the hypothesis of the emergence of additional outwash plains of similar volumes to the existing one and created a scenario where outwash plain aquifers would connect to each other and analyzed the cascading effect on river discharge and aquifer storage. The aim here was to provide a qualitative and synthetic example of the processes as well as to approximate the order of magnitude of the impact of outwash plain groundwater storage and release on stream flow in the future rather than building a realistic and precise future scenario. ~~This was obtained. We aim to only highlight the functioning of this specific landform and do not provide any projections for the entire catchment.~~

This aim was achieved by applying the developed MODFLOW model with the exact same dimensions sequentially to all identified outwash plains, where ~~streamflow-river~~ outflow from the upstream plain was used as streamflow input to the downstream plain. No future glacio-hydrological model was developed to characterize the future inflow discharge. Instead, we simply used the measured discharge provided in this study for summer 2020, and then artificially created a linear (in logarithmic scale) discharge recession from $1 \text{ m}^3 \text{ s}^{-1}$ to 0 in 30 days in order to analyze the impact both for a high discharge or severe drought scenario. Lateral inflow from hillslopes was here excluded from the model in order to only analyze the impact of the floodplain on the cascading discharge. ~~We analyzed the impact both for high discharge and severe drought situations where water supply rapidly decreases to zero.~~

4 Results

4.1 Bedrock topography

~~ERT profiles of a) line 07 (electrode spacing of 3 m), b) line 03 (electrode spacing of 4 m), c) line 02 (electrode spacing of 2 m) and d) corresponding locations of the ERT lines in the outwash plain. All lines are oriented from the hillslope to the center of the outwash plain. Red dashed lines correspond to the bedrock limit where resistivity became larger than $2000 \Omega\text{m}$ and black dotted circles highlight the location of buried dead ice with very high resistivity ($>10 \text{ k}\Omega\text{m}$). Regularisation parameter (λ) and model performance are also indicated.~~

We present here the results of three ERT lines (of a total of ~~21~~ 12 lines) collected in 2020, which cover different parts of the outwash plain (Fig. 3). The inversion results obtained are stable regardless of the chosen regularization parameter (λ);

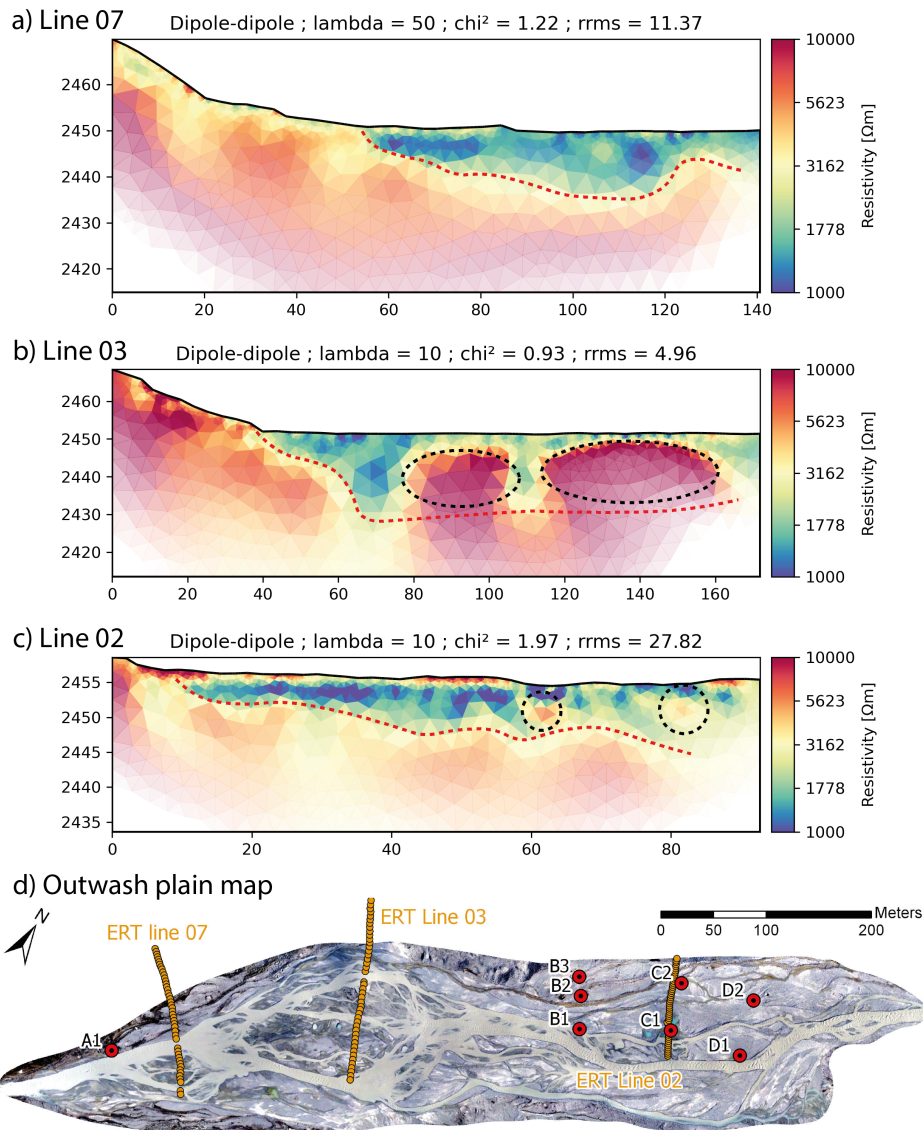


Figure 3. ERT profiles of **a)** line 07 (electrode spacing of 3 m), **b)** line 03 (electrode spacing of 4 m), **c)** line 02 (electrode spacing of 2 m) and **d)** corresponding locations of the ERT lines in the outwash plain. All lines are oriented from the hillslope to the center of the outwash plain. Red dashed lines correspond to the bedrock limit where resistivity became larger than 2000 Ωm and black dotted circles highlight the location of buried dead ice with very high resistivity (>10 k Ωm). Regularisation parameter (lambda) and model performance are also indicated.

lambda values around 1 show coarser results, likely due to over-fitting; a mild regularization (lambda values of 10 to 50) leads to smoother images. The relative root mean square error (rRMSE) of most inversions is below 20%, indicating low model misfit (Jordi et al., 2018).

We compared the results from both Wenner-Schlumberger and dipole-dipole schemes as well as intersecting ERT lines to
365 assess the robustness of the bedrock depth estimation. The corresponding results agree well in most cases, in general with less
than 10 % difference. Sediment depth increases smoothly from the hillslope edges of the outwash plain (with a depth of 2 to 5
m) towards its center. Maximum sediment depth in the lower part of the outwash plain reaches 20 to 25 m (line 03 in Fig. 3)
and 10 to 15 m in the upper part (line 02 in Fig. 3). Bedrock is also shallower at the upstream and downstream end of the
outwash plain, with sediment depth of only 2 to 5 m. The outwash plain appears therefore as a large bedrock over-deepening
370 filled with sediments and showing a surface slope of 1 % downstream to 2 % upstream.

~~a) Discharge measurements in the main stream at the glacier outlet (GS1) and at the end of the outwash plain (GS2);
the y-axis is in logarithmic scale. b) Electrical conductivity observations in the main stream and in observation wells (c,d).
Measured daily rainfall amounts are also shown in light blue in all plots.~~

Some blocks of buried ice were also detected (Fig. 3). In line 02, two more resistant areas of 1 to 2 m diameter can be
375 identified in the middle of the sediment layer. These blocks were repeatedly measured for 3 years, with a size and resistance
slowly decreasing over the years. Since they are exactly located below kettle holes, which also became larger each year, these
spots are attributed to slowly melting ice blocks, with a melting rate of less than 1 m in diameter per year. The ERT profile of
line 03 also shows two more resistive ($>10\,000\ \Omega m$) areas, which are much wider and deeper, reaching a width of 20 and 40 m.
Their elliptic shape and highly resistant nature indicate the presence of large zones of buried dead ice which fill a large part of
380 the outwash plain. The presence of such large zones was only observed at this location, although daily imagery reveals kettle
hole formation throughout the braidplain. Those two large buried ice blocks were directly included in the model as no-flow
zones (Fig. 2a). Smaller blocks were neglected as they represent a negligible volume of the aquifer.

4.2 Surface water observations and electrical conductivity

River discharge at the glacier outlet was estimated continuously from July 2020 to September 2021 (Fig. 4a). The early melt
385 season is characterized by high discharge but small diel variations, which can be explained by the incapacity of the distributed
subglacial drainage system to rapidly evacuate large snow-melt water inputs. By August, diel fluctuations are larger as snow-
line recession reduces buffering by the snow pack and the subglacial channel network has extended up most of the glacier Lane
and Nienow (2019). Discharge starts to decrease in September, but a steeper recession starts in October. By early December,
no more diel fluctuations are recognisable; discharge keeps decreasing slowly, with a minimum discharge of about $70\ \text{L s}^{-1}$,
390 until March, when the first melt events occur.

Discharge at GS2 remains slightly larger than GS1, likely due to the ungauged glacial catchment, but the difference usually
falls in the uncertainty margin of the discharge estimation. Water electrical conductivity (EC) in the stream is inversely corre-
lated with discharge (Pearson correlation of -0.84). In summer, EC varies between 10 and 25 $\mu\text{S cm}^{-1}$ at the glacier outlet
(GS1) and is about 5 to 10 $\mu\text{S cm}^{-1}$ larger at the end of the outwash plain (GS2). During discharge recession, EC increases
395 sharply, reaching values of 115 $\mu\text{S cm}^{-1}$ for GS1 and 160 $\mu\text{S cm}^{-1}$ for GS2 (Fig. 4b). This suggests that some stream
water is provided to the outwash plain also during the cold winter months and is characterized by a steadily increasing EC.
The origin of this stream water is not clear and may be due to some basal ice melt or a groundwater reservoir in the bedrock

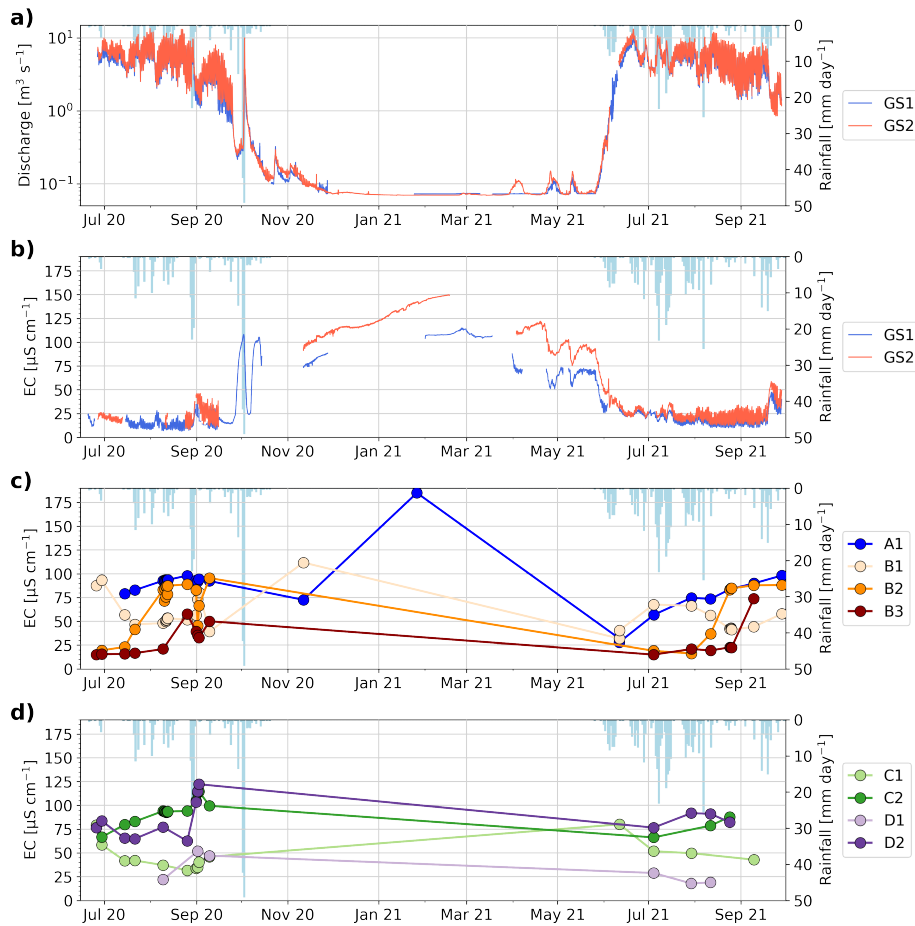


Figure 4. a) Discharge measurements in the main stream at the glacier outlet (GS1) and at the end of the outwash plain (GS2); the y-axis is in logarithmic scale. b) Electrical conductivity observations in the main stream and in observation wells (c,d). Measured daily rainfall amounts are also shown in light blue in all plots.

as suggested in the work of Müller et al. (2022). The stream EC at the end of the outwash plain in winter shows higher values, which is likely due to ground water contributions from the outwash plain area. This is further detailed in the discussion.

400 The wells close to the stream (D1,C1,B1) tend to have low EC during summer, slightly larger than the stream EC, with a gradual increase in EC from the upstream well D1 to the more downstream well B1 (Fig. 4c,d). Well A1, also located near the stream but at the lower end of the outwash plain, has much higher EC values. The low EC in upstream wells (D1,C1,B1) indicates a strong influence from the nearby stream and the EC increase from upstream to downstream suggests that groundwater tends to become older with greater distance from the upstream part of the outwash plain. In particular, the high EC values of
 405 well A1 indicate that we find here the longest groundwater flowpaths, with no direct exchanges with the nearby stream.

The wells closer to the hillslopes (D2,C2,B3) show higher EC than the wells located at the same transect near the stream. Here, high EC may be due to either (1) long groundwater flow paths from the stream reach or (2) lateral hillslope recharge from a source characterized by higher EC than the stream.

Wells B2 and B3 show very low EC values in the early melt season (Fig. 4c), which is due to a connection with an ephemeral hillslope tributary characterized by low EC values (10 to 20 $\mu\text{S cm}^{-1}$) related to snow-melt input via surface runoff. This recharge seems to be only dominant during the early snow melt at this specific location.

In summary, EC in wells is highly spatially and temporally variable due to a combination of different water sources with varying EC composition and varying degrees of connectivity with the stream. In general, EC in the wells seem to be correlated with their distance to the upstream part of the outwash plain, with well D1 showing EC very similar to the stream EC, suggesting a strong river infiltration from the upstream stream reaches. The contribution from lateral hillslope groundwater will be further assessed based on modelling results.

4.3 MODFLOW model calibration

The average calibration result obtained with PEST-HP for K_{rb} , K_{gw} , S_y and n are shown in Fig. 5; corresponding initial parameter values and calibration ranges are summarized in Table 1. K_{gw} of each layer shows some spatial variability, with zones of higher conductivity in the upper layers (400 to 1200 m per day), leading to somewhat larger average values for the top layer (Fig. 5a). Aquifer porosity (S_y) shows local variability in the top two layers, while the initial values were retained for the third and last layers (Fig. 5b). The riverbed hydraulic conductivity (K_{rb}) was estimated to have values between 3.5 and 15 m per day, with a tendency to increase in the lower half part of the braidplain (Fig. 5c). Although the Manning's roughness coefficient was on average close to the initial value of $0.035 \text{ s m}^{-1/3}$, it varied systematically and spatially between higher (up to 0.05) and lower (0.02) values. The modelled groundwater levels matched well the observations and the timing of the daily peaks have an average RMSE of 1.56 hours (Fig. 6). The median relative error of diel head amplitudes and diel head changes for each well (absolute residuals divided by the observed value) are shown in Fig. 6; they show satisfying results, with diel head amplitudes error smaller than 20% and modelled head changes showing similar trends as the measured ones.

Groundwater infiltration on 17 November in the upstream part of the catchment (until well B1) is somewhat overestimated, with 64.1 L s^{-1} compared to the observed 30 L s^{-1} ; net streamflow difference between upstream and downstream discharge is underestimated, with a net water gain to the stream of 2.5 L s^{-1} compared to an observed water gain of 8.3 L s^{-1} (Fig. 5d).

4.4 MODFLOW model validation

For the additional 12 months simulated for model evaluation, the model performance for diel head amplitudes and for the timing of diel peaks is similar to the calibration period. The daily averaged heads for three observation wells are shown for illustration purposes in Fig. 7. In addition, we also show results of a model run where all tributaries are removed so that upstream discharge is the sole water input.

Over both summers, groundwater levels appear well simulated, during both high and low flow conditions. For well D1, there is a slightly larger offset between observed and modelled heads in 2021 and the decrease in head occurring in late August to

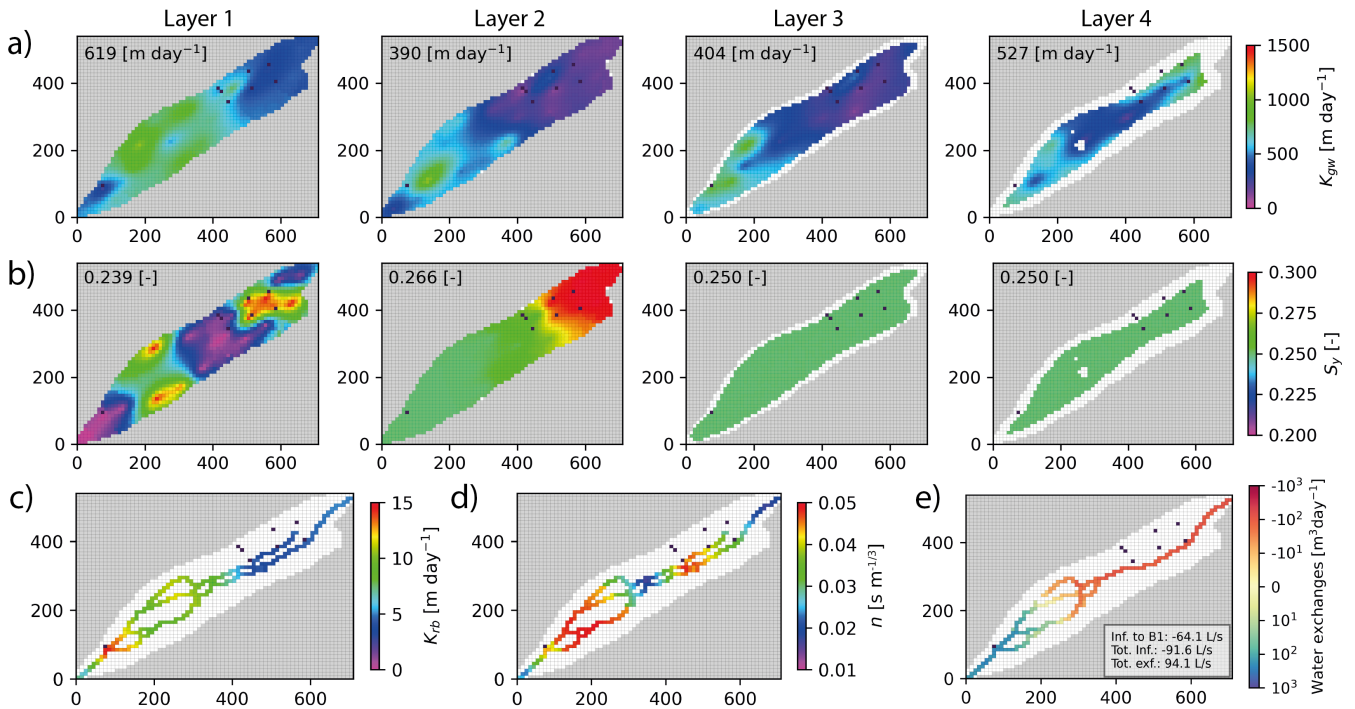


Figure 5. Results of parameter estimation using PEST-HP. **(a)** Groundwater hydraulic conductivity (K_{gw}) and **(b)** aquifer porosity (S_y) for the 4 groundwater layers. The parameter numbers correspond to the average value in the whole domain. **(c)** Parameter estimation for the riverbed hydraulic conductivity (K_{rb}). **(d)** Parameter estimation for Manning's roughness coefficient (n). **(e)** Corresponding modelled surface-groundwater exchanges on 17 November with text indicating modelled infiltration (until well B1 and total) and total exfiltration. Black dots correspond to locations of observation wells. Grey shaded areas are outside of the model domain and white indicates the area where the layer does not exist. X-Y values correspond to model grid coordinates in meters.

September 2020 and 2021 does not seem to be well modelled, although the head catches up again in October 2020. This latter
 440 phenomenon is likely due to some changes in the structure of the river channel which was not incorporated in the model. For
 both summers, wells B2 and A1 appear to match closely the observations.

During winter, the slight groundwater recession in well A1 is not fully well represented. This may be due to the lower
 bedrock edge of the outwash plain which may be somewhat deeper than modelled, constraining groundwater exfiltration in
 this lower part. For well B2, the simulated groundwater level in mid-February 2021 matches the observation, supporting the
 445 good performance of the model to simulate groundwater drainage during low winter flow. The first initial recharge event in late
 February is also well modelled but the next two short peaks (April and May 2021) are underestimated. This is likely due to an
 underestimation of the lateral hillslope recharge or due to direct snow-pack melt on the outwash plain, which was not included
 in the modelling framework.

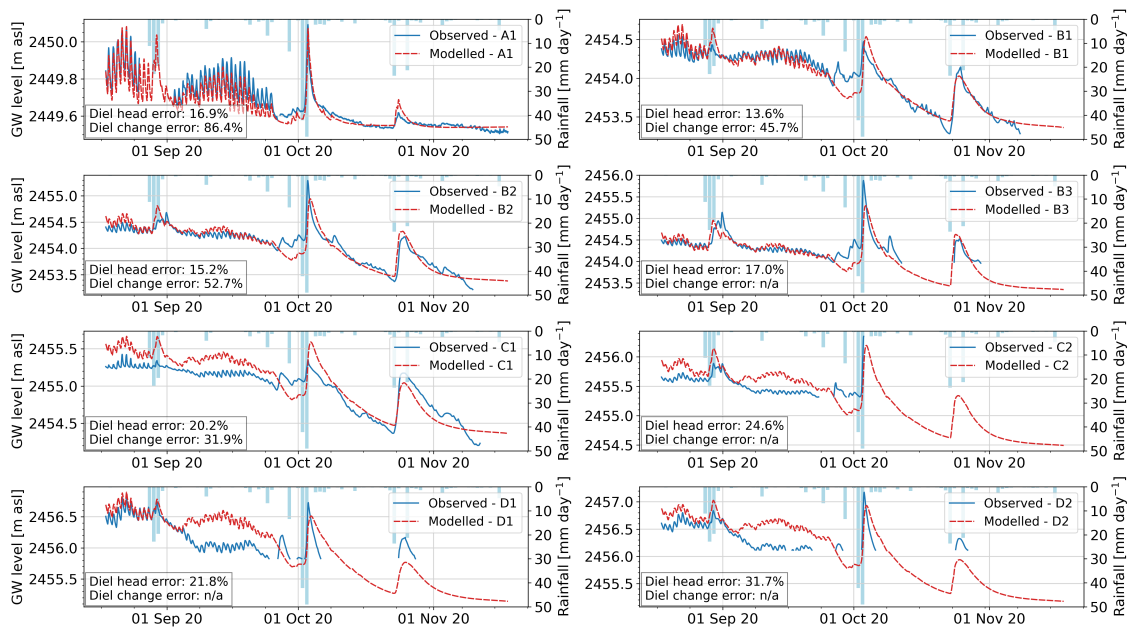


Figure 6. Observed (blue) versus modelled (dashed-red) groundwater heads for each well (A1 to D2). Mean absolute relative errors for the diel head amplitudes and diel head changes are also shown in the lower left box. No error is estimated (n/a) for the rate of change of wells where the autumn recession could not be measured.

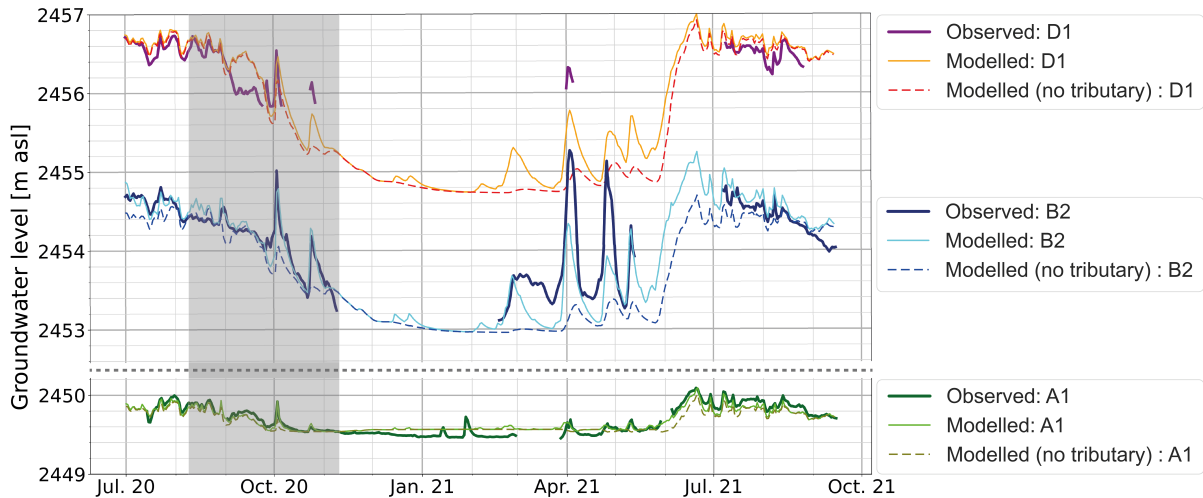


Figure 7. Observed versus modelled groundwater levels for three selected wells during a 14 months period. The dashed lines represent model results when all hillslope water input is set to zero during the entire simulation. The shaded area represents the calibration period. Note that the y-axis is cropped between well A1 and B2, but the scale is the same.

Observed versus modelled groundwater levels for three selected wells during a 14 months period. The dashed lines represent model results when all hillslope water input is set to zero during the entire simulation. The shaded area represents the calibration period. Note that the y-axis is cropped between well A1 and B2, but the scale is the same.

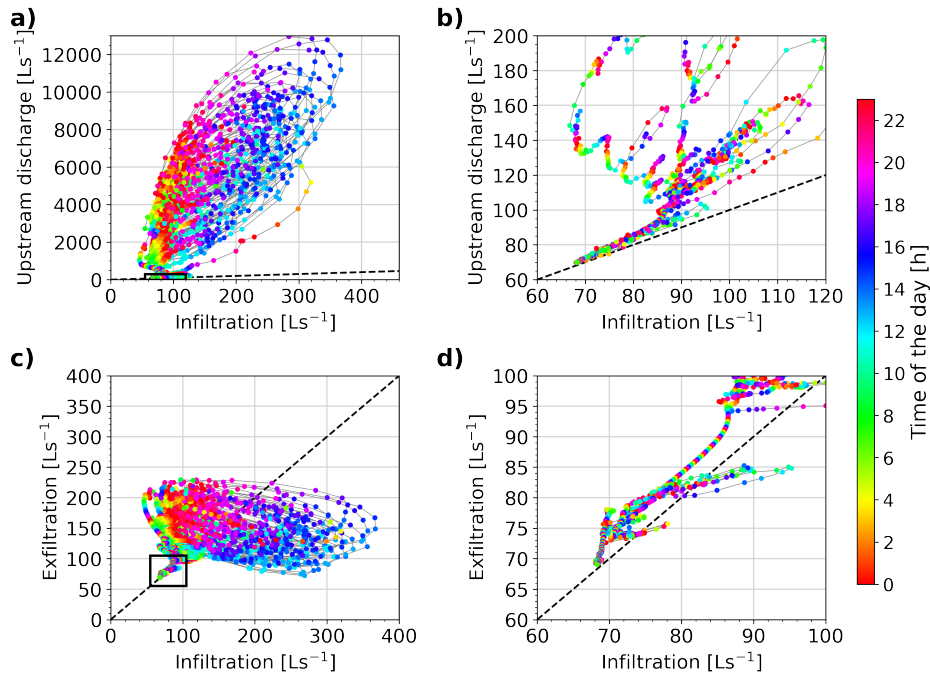


Figure 8. Surface water-groundwater exchanges. (a) Relationship between river reach infiltration and incoming upstream river discharge. (c) Relationship between river reach infiltration and groundwater exfiltration into the stream. The black rectangles indicate the zone of the zoom-in windows of the graph on the right (b) and (d). The colorscale corresponds to the hour of the day for each point. The straight dashed lines show the line of equal values.

4.5 Groundwater storage and surface water-groundwater exchanges

450 Infiltration of stream water to groundwater occurs preferentially in the upper half of the floodplain and exfiltration of groundwater to the stream occurs in the lower half (Fig. 5d) of the plain. Summer infiltration is proportional to discharge, with a maximum infiltration rate of about $400 L s^{-1}$ and a minimal rate of $60 L s^{-1}$. Some hysteresis is visible: for similar discharge, more infiltration occurs in the late morning (10:00 to 14:00) when groundwater levels are low, than in the night, when groundwater levels are high (Fig. 8a). Exfiltration-In summer, exfiltration of groundwater is also correlated with stream water
 455 infiltration: lowest exfiltration rates occur in periods with increasing infiltration rates and discharge and highest exfiltration rates occur during periods of decreasing infiltration and when groundwater levels are high (Fig. 8c).

During discharge recession in winter, discharge decreases sharply and infiltration is reduced proportionally. The decrease in infiltration is mainly due to a change in the wetted perimeter of the stream reach, limiting the surface area for water exchanges. This change is more marked for upstream stream reaches, whose channel banks are steeper than downstream sections (Fig. 2).

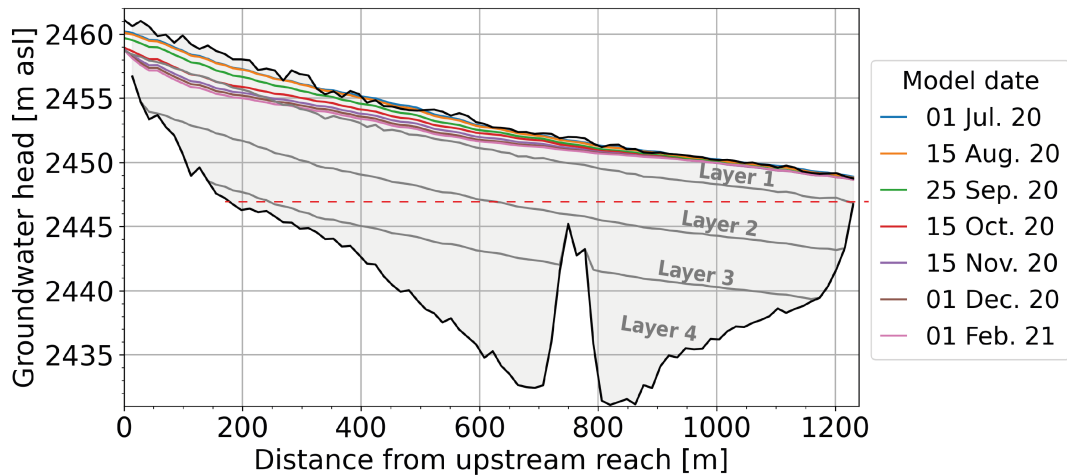


Figure 9. Modelled groundwater levels at different time steps (dates) along a vertical cross-section of the outwash plain, from the top right corner (upstream reach), to the bottom left corner (downstream reach) of the model domain. The grey area represents the whole aquifer with the 4 groundwater layers and the black lines represent the bedrock and surface limit of the model. The steep jump between a distance of 700 m to 800 m represents the location of the buried ice from ERT (Fig. 3), which is defined as bedrock in the model. The dashed red line indicates the lower limit of the dynamic storage, below which groundwater heads cannot drop.

460 When discharge decreases below than 85 L s^{-1} , most stream water infiltrates in the upper half of the outwash plain (Fig. 8b) so that the main stream retains little surface water in the central part of the outwash plain. However, at low discharge, exfiltration in the lower half part is slightly higher than infiltration (Fig. 8d), leading to more stream discharge at the end of the outwash plain than upstream.

In summer, it appears therefore that the outwash plain is only capable of infiltrating small amounts of water from the stream; 465 infiltration happens preferentially in the morning. The aquifer exfiltrates a similar amount of water with a peak during the night, so that the average daily groundwater level remains relatively constant. In winter, most of the upstream river discharge infiltrates from the stream to the aquifer, but a slightly larger amount exfiltrates from the aquifer, leading to a gradual decline of the aquifer level. The aquifer therefore sustains a higher discharge at the downstream end of the outwash plain than at the upstream end. The observed slow rate of aquifer recession throughout the winter is due to a small but constant upstream water 470 input, i.e. to upstream discharge recession.

The rate of decline is illustrated in Fig. 9. In summer, groundwater is maintained close to the surface in the entire plain, with a distance of about 0.5 to 1 m from the surface in the upstream part and of 0.1 to 0.5 m in the downstream part. The total water storage in the outwash plain in summer equals $3.0 \times 10^5 \text{ m}^3$, which is equivalent to 10.0 mm with respect to the entire catchment area (30.4 km^2). It appears clearly in Fig. 9 that a large part of the aquifer volume is located below the lowest edge 475 of the bedrock, so that this volume cannot empty. The water amount which can exfiltrate from the groundwater to maintain river discharge is hereafter defined as the dynamic storage (Staudinger et al., 2017) and corresponds to 6.7 mm (relative to the catchment area) or 67 % of the maximal total storage. In winter, the groundwater level gradually declines from the upstream

end of the outwash plain, but remains close to the surface in the lower part, where groundwater flow is constrained by bedrock and forced to exfiltrate. At the time of lowest discharge (1 February 2021), the total dynamic storage amounts to 5.4 mm, so that the aquifer has lost 1.2 mm during the recession period.

4.6 Future hydrological role of outwash plains

~~Simulated impact on stream discharge for a hypothetical chain of three outwash plains. a) Discharge estimation for high discharge and b) baseflow estimation, resulting from a theoretical input discharge (blue), and modelled outflow discharge from a first outwash plain (orange) to a second plain (green) and a third one (red). In b), the y-axis is in logarithmic scale. The secondary y-axis indicates the corresponding discharge in mm per day at the catchment scale (30.4 km²).~~

We identified five bedrock overdeepenings below the Otemma glacier main lobe (Fig 10) and quantified their dynamic storage by calculating the volume included between the sloping aquifer and the horizontal line at the lower edge of the overdeepening and using a porosity of 0.25 (Table 2). The lowest two overdeepenings show similar areas and volumes as the current outwash plain. The third one is limited to a smaller volume of sediments having a storage potential of about 10 mm. The two upper ones are characterized by much deeper depths and larger volumes.

~~Area Volume Volume Active storage m² m³ mm mm OD 1 114 000 746 354 6.1 4.8 OD 2 148 300 1 899 117 15.6 7.8 OD 3 34 200 286 527 2.4 0.8 OD 4 403 400 16 837 733 138.5 66.9 OD 5 410 600 14 527 905 119.5 16.1 Estimated volumes~~

Based on the hypothesis of the future emergence of 2 new outwash plains, we analyzed the cascading effects of a chain of 3 outwash plain aquifers. The results depicted in Fig. 11a) show that for high flows, a slight reduction of the peak discharge occurs. In the first outwash plain, river infiltration amounts to about 350 L s⁻¹ of stream water when peak discharge reaches 13 m³ s⁻¹; the aquifer simultaneously releases about 180 L s⁻¹, leading to a decrease of total discharge of about 170 L s⁻¹. At the end of the third plain, the total peak flow reduction due to infiltration is about 400 L s⁻¹. The peak is also slightly delayed and attenuated due to flood routing along the braided river system, leading to a total decrease of about 600 L s⁻¹, i.e. slightly less than 5% of the upstream water input.

For the drought scenario (Fig. 11b), after the first outwash plain, higher downstream river discharge is only maintained when the input discharge decreases below 180 L s⁻¹ (or about 0.5 mm per day) on day 10. The rate of discharge recession is fast, with the discharge decreasing by half in about 4 days and decreasing 10 times in about 25 days, leading to an emptying of 85% of the total dynamic storage. In the case where 3 outwash plains are interconnected, river discharge remains similar than with only one outwash plain before day 10. When the discharge decreases below 180 L s⁻¹, the discharge recession rate becomes slower, leading to discharge decreasing by half in 8 days and by 10 times in 54 days. Thus, slightly more discharge can be expected during droughts with a chain of outwash plains, with a discharge recession rate about twice slower.

5 Discussion

We first discuss below the limitations related to the simplifications and assumptions used here to set up the MODFLOW model. We then review the insights gained on the hydrogeological behavior of the outwash plain in Otemma and compare field

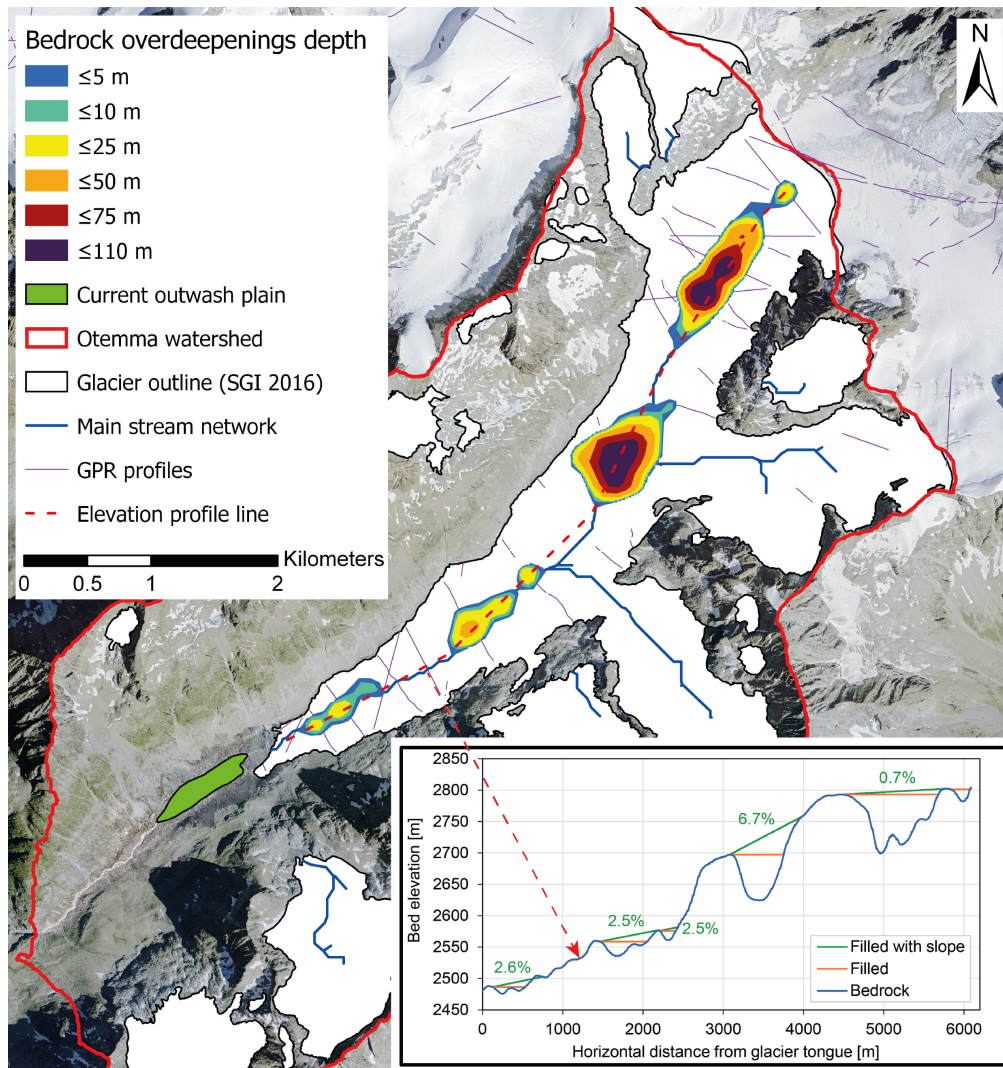


Figure 10. Mapping of the Otemma glacier overdeepenings estimate from based on the bedrock topography provided by Grab et al. (2021) with depth below a gently sloping plane connecting the lower and upper edge of the overdeepening. An elevation profile of the bedrock along the glacier main lobe is also highlighted with the dashed red line and the profile is illustrated in the bottom right graph in blue. In the graph, the green line shows the slope of the planes used to fill the bedrock overdeepenings, while the orange line represents the horizontal limit from the lower edge of the overdeepening. Airborne GPR profiles from the work of Grab et al. (2021) from which topography is estimated is also shown in violet. The main stream network was calculated using flow accumulation (Arcgis pro v2.3) based on the bedrock topography map. The current outwash plain is shown in green outside the glacier area (white area). The background [orthoimage](#) was provided by SwissTopo (2020).

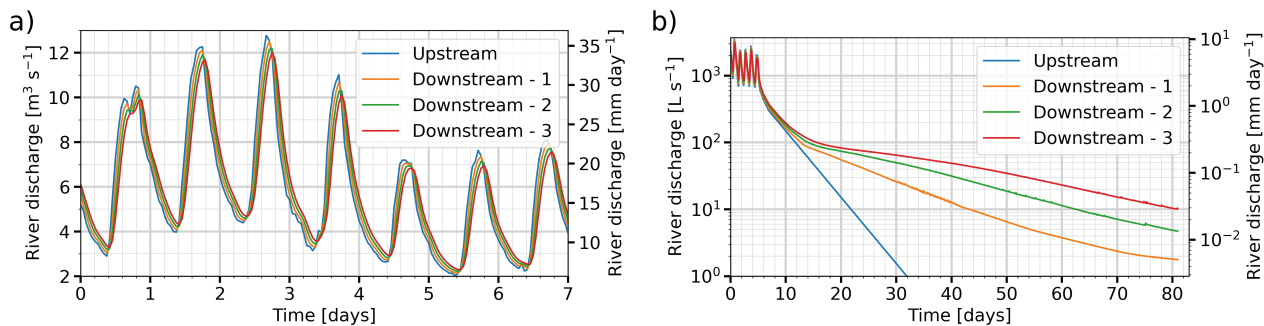


Figure 11. Simulated impact on stream discharge for a hypothetical chain of the five glacier overdeepenings three outwash plains. **a)** Discharge estimation for high discharge and **b)** baseflow estimation, resulting from a theoretical input discharge (OD blue), and modelled outflow discharge from the lowest a first outwash plain (#1 orange) to the highest a second plain (#5 green) along and a third one (red). In **b)**, the glacier main lobe of the Otemma glacier y-axis is in logarithmic scale. The volume in m^3 represents secondary y-axis indicates the total "empty" space, the volume corresponding discharge in [mm corresponds to per day] at the total potential groundwater storage relative to the catchment scale (30.4 km^2) assuming a porosity of 0.25; the active storage represents the groundwater storage above the horizontal line (Fig. 10).

Table 2. Estimated volumes of the five glacier overdeepenings (OD) from the lowest (#1) to the highest (#5) along the glacier main lobe of the Otemma glacier. The volume in m^3 represents the total "empty" space, the volume in mm corresponds to the total potential groundwater storage relative to the catchment scale (30.4 km^2) assuming a porosity of 0.25; the active storage represents the groundwater storage above the horizontal line (Fig. 10).

	Area	Volume	Volume	Active storage
	[m^2]	[m^3]	[mm]	[mm]
OD 1	114 000	746 354	6.1	4.8
OD 2	148 300	1 899 117	15.6	7.8
OD 3	34 200	286 527	2.4	0.8
OD 4	403 400	16 837 733	138.5	66.9
OD 5	410 600	14 527 905	119.5	16.1

510 observations with results from the numerical model. Finally, we discuss what future hydrological changes may be expected in the Otemma catchment when considering potential future outwash plain and in particular in the case of future droughts or high flow events. We conclude with some more general implications from both an ecological and a more methodological perspective.

5.1 MODFLOW model limitations

515 5.1.1 Model structure

We used ERT to constrain the depth to the bedrock at specific locations. Although inversion results lead to a clear transition between water-filled sediments and bedrock, an error of a few meters cannot be excluded. The bedrock depth was interpolated between the ERT profiles which leads to a larger uncertainty in areas distant from those lines. We only defined 4 aquifer layers with vertically constant parameters, while lenses of silt and sand are distributed at much smaller scales, as observed in sediment facies (Maizels, 2002). The spatial parameter interpolation between pilot points in each layer does also not allow to form specific flow paths as we used no particular training image, i.e. we did not impose any specific patterns (Mariethoz et al., 2010; Orsi et al., 2016). This leads to a clear oversimplification of the heterogeneity of such a fluvial aquifer. As a result, our parameter estimation does not allow for the formation of preferential flow paths, which may increase drainage and groundwater levels in specific parts of the outwash plain (Cozzetto et al., 2013). These limitations are at least partly mitigated by performing a calibration designed to not only fit groundwater levels, but rather a set of aquifer behaviors. As such, even though our groundwater wells are shallow (about 2 m deep), K_{gw} could be better constrained with depth by matching the amplitude of diel groundwater variations, which leads to a reliable estimate of the depth averaged value of K_{gw} (see Sect. 3.2.3). Even if preferential flow paths exist, the rate of groundwater drainage is constrained in the calibration by the rate of groundwater recession in Autumn and the measured rate of groundwater exfiltration in the lower part.

530 5.1.2 Superficial vadose zone and input fluxes

In this study, we neglected the vadose zone. The fine sediment texture was composed of more than 90% sand and usually less than 1 to 2 % clay. This leads to a soil texture dominated by large pores where the capillary effect is limited. This was tested using HYDRUS-1D (Šimůnek and van Genuchten, 2008), which solves the Richard's equation and allows accurate modelling of the interface between a saturated and unsaturated zone. It shows that the unsaturated water content above the water table drops rapidly to values close to 0.05 in the first 50 cm of unsaturated sediments. This is due to the dominance of large pores and relatively coarse sediment. Consequently, the unsaturated water content decreases rapidly when the water table drops and so does the unsaturated hydraulic conductivity, leading to a very dry soil surface, where actual evapotranspiration is strongly limited. Additionally, residual water content in the vadose zone should have a limited effect on diel groundwater fluctuations.

We also neglected the direct recharge from precipitation falling on the surface of the sediments in the outwash plain. This choice is reasonable since this water input is small compared to stream water infiltration. Indeed, on average for each day, average stream water infiltration amounts to about 100 to 150 L s⁻¹ (see Fig.8), or 10⁴ m³ day⁻¹, which is similar to an equivalent precipitation amount of 110 mm over the whole outwash plain. This indicates that the direct rain water input is only significant during days of heavy rain but does not represent a large part of the seasonal recharge as the total liquid precipitation represented only about 250 mm in 2020. Precipitation seemed indeed to only impact groundwater levels for rain events larger than 10 to mm day⁻¹ (Fig. 6), but the rapid recession of the groundwater head seem to indicate that transmission of the rain water through vadose zone is fast and water retention in the unsaturated sediments is limited after the day of the

550 event. Moreover, in our model, we only accounted for lateral recharge during such rain events but model results show a similar groundwater response as observed, suggesting that the additional input of rain water on the surface did not influence much the groundwater levels (Fig. 6). The reason for this lack of response to the rain input on the surface is likely due to the effect of the dry unsaturated zone, which partly retains the rainwater infiltration in the unsaturated zone or/and preferential flowpaths in the sediments which limit diffuse surface recharge and concentrate surface water infiltration to specific locations within the outwash plain or rapidly drain this water into the braided stream. Since the groundwater head did not respond to most rain inputs, we believe that neglecting the unsaturated zone, as well as the direct input of water from precipitation falling on the sediments, allows for an adequate simplification of the model which aims at modelling the seasonal groundwater behavior of such a system and not specific processes in the vadose zone.

560 Finally, we also neglected the contribution from the small hanging glacier on the upper south side of the outwash plain, although it clearly provides additional recharge. This choice is due to the lack of groundwater and discharge observations in this area and thus no means to quantify the input discharge. As discussed before, we have shown that the main behavior of the aquifer can be explained by the incoming upstream discharge and that any additional lateral water input likely only affects the local groundwater levels, but does not modify the seasonal-scale dynamics.

5.1.3 Stream channels and surface-subsurface processes

Geomorphological changes in the outwash plain were also not taken into account. Strong cycles of sediment deposition and aggradation modify on a daily and seasonal timescales the shape of the riverbed and the number of stream branches. Indeed, on a daily basis, some transient channels will appear during high discharge and disappear during low flow, which influences the total wetted area and thus modifies the rate of stream infiltration and groundwater exfiltration. This phenomenon appears especially important in the lower half part of the braidplain, as clearly visible in the orthoimage (Fig. 2), where we only defined three permanent channels. Using Manning's equation and a v-shaped cross-section, we estimated that a hypothetical addition of 10 ephemeral branches, would lead to an increase of 200 % of the total wetted area and a decrease of 20 % of the river stage. Such changes are not negligible but can be at least partially compensated by the calibration procedure, by adapting the riverbed hydraulic conductivity (K_{rb}) and the Manning's coefficient (n). The calibration procedure seems indeed to lead to such compensation, as both K_{rb} and n were estimated to be larger in the lower half of the plain (Fig. 5c,d), which allows for larger exchange rates between river and groundwater. Higher n values in the lower part are also expected from a geomorphological perspective due to a more irregular, meandering and larger, flatter channels (Phillips and Tadayan, 2006). n also appears lower in straighter parts of the river network and higher in zones of flow convergence where more flow turbulence may increase flow resistance and decrease velocity. The local variations in the estimation of n may however also arise more artificially from the calibration procedure which attempts to match the diel amplitude and the timing of the groundwater fluctuations. The higher estimated n value near well B1 is likely due to increased diel stream variations which have a direct impact on the nearby well and thus locally compensate for some uncertainties in the simplified river morphology.

580 ~~The~~ Some limitations regarding the coupling between surface and subsurface flow in MODFLOW has been discussed previously Brunner et al. (2010). In particular, the absence of negative pressure in cells below the streambed when the stream

585 becomes perched in winter may lead to some uncertainties in winter. Nonetheless, the estimated K_{rb} for the upstream reaches is between 3 and 15 m per day, similar to another study of a Quaternary glaciofluvial aquifer where the retained K_{rb} value was 2.4 m per day (Schilling et al., 2017). Since we mostly analyze the model results in terms of processes during the period of calibration when field observations are available, we believe that such limitations are at least partially relaxed and do not
significantly impact the results. In the lower half part of the plain however, the estimated K_{rb} values were larger, which is likely due to the calibration procedure attempting to balance the lack of some secondary channels and somewhat artificially increasing the exfiltration rate.

590 Despite the overall good performance, there are some notable differences between observations and modelled groundwater heads. For instance, during September and October 2020, wells D1 and D2 have a modelled water head about 0.5 m higher than measured (Fig. 6). This is due to a change in the stream reach at this location, which moved further away from the wells and eroded vertically, leading to a decrease in the head. This illustrates that our model fails to locally reproduce the exact depth of the groundwater and this issue is likely more important where no groundwater observations are available.

595 Our estimation of ~~groundwater—surface~~ groundwater-surface water exchanges relies on stream-flow observations at only two locations on a single day, which might in particular lead to uncertain exchange fluxes during low flows, which may reduce the capacity of our model to accurately reproduce exchanges during very dry periods.

~~Finally, we also neglected the contribution from the small hanging glacier on the upper south side of~~

5.1.4 Modeling framework

600 Contrary to many other research, our goal in this work was to focus on the hydrological functioning of a subpart of an alpine glacier forefield, the outwash plain, ~~although it clearly provides additional recharge. This choice is due to the lack of groundwater and discharge observations in this area and thus no means to quantify the input discharge. As discussed before, we have shown that the main behavior of the aquifer can be explained by the incoming upstream discharge and that any additional lateral water input likely only affects the local groundwater levels, but does not modify the seasonal-scale dynamics.~~

605 ~~Overall~~ rather than providing predictions for the entire catchment. We attempted to include all major processes that influence the seasonal groundwater dynamics of this landform, by building a complex groundwater model linked to a more simple surface hydrological model to simulate lateral recharge. Nevertheless, this approach leads to a series of assumption discussed previously. Alternatively, recent research in alpine catchments (Thornton et al., 2022) has attempted to provide fully integrated approaches such as Parflow (Maxwell and Miller, 2005) or HydroGeoSphere (Kolditz et al., 2012) which could relax some of the uncertainties discussed in this work. However, such models typically require heavily data acquisition limiting their applicability in alpine environments (Ala-aho et al., 2017). In this work, we believe that this simpler model combined with an adequate multi-objective calibration procedure, provides more control and understanding of the key processes which occur in the outwash plain aquifer specifically. Indeed, the calibration ~~procedure~~ allowed the model to reproduce the aquifer behavior ~~of the study site~~ reliably and in particular the aquifer levels throughout the year, the aquifer drainage rates and rates of infiltration

and exfiltration. In particular, even with a static definition of the geomorphology, the long model run over 14 months (Fig. 7) show that the average level of all groundwater wells could be satisfyingly reproduced.

5.2 Outwash plain groundwater dynamics

The outwash plain appears to recharge rapidly in the early melt-season, from the hillslopes and from the main stream. Hillslope recharge provides significant recharge especially in the early melt period (March to June in Fig. 7), but is rapidly drained when less melt occurs. Groundwater levels increase synchronously with stream discharge in early June and maintain a high level, even when hillslope recharge is largely reduced in later summer. Thus, although hillslope tributaries maintain locally higher groundwater heads (up to about 1 m for well B2 in Fig. 7), it is the moderate but constant river infiltration from the stream which maintains groundwater levels close to the sediment surface during the snow-free season (Fig. 7) and which drives the seasonal groundwater dynamics.

This behavior was validated by EC observations made in the groundwater wells. Wells close to the hillslope (B3, C2, D2) tend to show a gradual increase in EC from June to September (Fig. 4), which correlates with a gradual decline of hillslope discharge and a lowering of groundwater levels (Fig. 7). This suggests a transition from groundwater recharge by snow melt with low EC from hillslope tributaries towards more upstream river recharge with higher EC due to longer groundwater travel time.

The increase in EC after peak snow melt could also be explained by a hillslope recharge from an older groundwater source such as bedrock seepage. Indeed, some other studies in similar proglacial catchments have highlighted the presence of deeper, more perennial, baseflow from the hillslopes (Crossman et al., 2011). In early September 2020, a cold spell occurred, leading to a rapid decrease of stream discharge. During this event, EC in wells C2 and especially in D2 increased while the groundwater levels dropped rapidly. The increase in EC could be explained by a reduced contribution from the stream reach infiltration and an increased contribution from an older hillslope seepage. ~~Such contribution is however difficult to prove without further geochemical analysis and is beyond the purpose of this work.~~

~~Regardless of the presence of~~ In this work, we neglected diffuse subsurface lateral recharge which is unlikely to be a dominant process in summer due to the coarse and steep nature of the hillslopes and the crystalline bedrock as discussed in Müller et al. (2022). Instead, all summer melt and rainfall from the hillslopes were allocated to four main points of recharge corresponding to the main tributaries observed in the field. In winter, lateral subsurface recharge may play a more important role when melt is assumed to be very limited. In Müller et al. (2022), we previously highlighted a winter baseflow of about 0.3 mm per day, potentially maintained by deeper bedrock exfiltration. If we assume such a diffuse recharge from the bedrock below the outwash plain sediments over its entire surface, this corresponds to a recharge of 0.5 L s^{-1} . This flux appears to be a hundred times lower than the winter stream infiltration estimated for winter. A such, the presence of a deeper more perennial lateral recharge, ~~the modelling results indicate that~~ seems to play a minor role for the outwash plain and therefore the measured seasonal groundwater levels can be largely explained by upstream river reach infiltration.

During periods of high snow melt, lateral hillslope recharge via surface runoffs locally modify the groundwater stage, but this additional water recharge is rather superimposed on the groundwater originating from upstream river infiltration. Here we

suggest that hillslope water does likely not fully mix with deeper groundwater at the outwash plain edges. Groundwater may therefore be dominated by lateral infiltration in its first meter of depth, leading to an apparent water composition in shallow sampling wells resembling water from hillslope tributaries, as observed in wells B2 and B3 for instance. It is however the upstream river infiltration that maintains the groundwater levels close to ~~but still below~~ the surface so that deeper groundwater in the outwash plain may present a different geochemical composition.

~~At the daily scale, diel groundwater fluctuations were observed. These are due to the combined snow and ice melt signal which leads to strong diel river discharge variations that propagate in the aquifer laterally. Those groundwater variations are due to the diffusion of a pressure wave which is much faster than the actual groundwater flow velocity and does involve any actual transport (Magnusson et al., 2014). In fact, running the model by smoothing out these daily stream variations lead to similar daily total infiltration and exfiltration rates, with the difference that hourly rates are averaged through the day so that peak rates are reduced. The role of stream variations on the number of stream branches as well as potential preferential flow paths may to some extent modify this statement but could not be modelled in the present study.~~

The seasonal groundwater recharge can therefore be explained by stream water that enters the aquifer in the upstream half of the outwash plain. The groundwater flow follows flowpaths parallel to the stream, sinking deeper in the central part of the plain and re-emerging in the lower half where groundwater exfiltration occurs. Using the particle tracking module for MODFLOW (MODPATH v7), a median groundwater transit time of 15 to 20 days during high flow and 20 to 25 days during low winter flow can be estimated. This difference is mainly due to a decrease in the aquifer gradient due to the lowering of the groundwater head upstream (Fig. 9). In both high and low flows, the distribution is skewed towards a few longer flow paths lasting 80 to 100 days. Similar time scales were also found for a Quaternary aquifer based on radioactive natural tracers and modelling in the work of Schilling et al. (2017); Popp et al. (2021). Such groundwater flow paths is reflected in the groundwater wells (Fig. 4), with the most upstream well D1 showing an EC very close to stream water, and a gradual increase in EC in the wells more downstream (C1, B1, A1). In particular, in the downstream part, well A1 shows the highest EC although it is close to the stream, which indicates no direct contact with the nearby reach, long groundwater flow paths and thus groundwater upwelling. Such upwelling has also been discussed for other Quaternary glacio-fluvial deposits (Ward et al., 1999). During winter, EC increases significantly in well A1 but so does the EC of the upstream river (GS1, Fig. 4b), so that the difference in EC between A1 and the stream is about $85 \mu\text{S cm}^{-1}$ in winter, hardly higher than in summer (70 to $80 \mu\text{S cm}^{-1}$). This suggests that groundwater travel time changes only slightly with the lowering of the groundwater level as the change in EC remains similar and fits with our modelled median transit time. Winter groundwater EC increases therefore due to an increase of the source stream water EC which increases prior to entering the outwash plain and does not indicate arrival of deeper groundwater as also discussed in the work of (Käser and Hunkeler, 2016). For winter recharge, as also reported in another similar proglacial glaciofluvial aquifer (Malard et al., 1999), we have shown that the increasing groundwater EC in the lower part of the floodplain is dominated by an upstream change in stream water composition and that the lower groundwater levels result from the reduced rate of river infiltration due to a smaller stream wetted area.

Using the stream EC at GS1 and GS2 and EC of well A1 for groundwater (Fig. 4), a typical two components mixing model (e.g. (Kobierska et al., 2015b)) can be established to estimate the percent contribution from groundwater at the lower end of the

floodplain (GS2). During summer, for daily peak flow at around 18:00, groundwater contribution amounts to about 3 to 4 %, or an equivalent groundwater exfiltration of 300 to 350 L s⁻¹. For daily low flows at about 10:00, groundwater contribution increases up to 8 to 10 % or a groundwater discharge of about 200 L s⁻¹. Those estimations for groundwater exfiltration are similar to the modelled exfiltration rates in Fig. 8c with an estimated exfiltration of about 200 to 250 L s⁻¹. For winter, performing the same analysis leads to a groundwater contribution of about 50 % or an exfiltration rate of 35 L s⁻¹ which is about half of the modelled minimum exfiltration (Fig. 8d). This suggests that half of the stream water in winter at GS2 comes from groundwater, but also that half of the discharge comes from surface river flowing from GS1. For early summer, the analysis cannot be performed as too much snow melt contribution from hillslopes likely affects the stream EC as well as locally the groundwater EC at well A1.

Based on the above comments, the outwash plain aquifer has a limited capacity to maintain higher baseflow as a similar amount of water infiltrates upstream and is exfiltrated downstream, acting more like a buffer which collects water from different sources. Constant river recharge allows groundwater levels to be maintained close to but below the surface at average depths varying between 0.2 and 0.5 m during the whole year in its downstream part, while hillslope contributions locally superimpose a higher-more enriched groundwater layer. This conclusion needs some caution however as the river in the downstream part tends to erode vertically in late summer which would cause further groundwater drawdown.

5.3 Future hydrological changes from outwash plains

Two future glacier overdeepenings were identified where sediment filling was hypothesized. Using an estimation based on passive seismometry of current stream bedload transport at the glacier outlet for 2021 of 72000 tonnes per year (personal communication from Davide Mancini) and assuming a similar amount of suspended load (Carrivick and Heckmann, 2017), we can calculate a filling time of 10 and 25 years for the two first overdeepenings. Such overdeepenings appear therefore likely to fill in the future, although basal sediment production may decrease with recessing glacier length and volume. However, in addition to the amount of bedload transport, sediments may also be delivered following from debuttressing of unstable slopes (Mancini and Lane, 2020), by subglacial melt-out at the glacier front (Evans et al., 2006) and supraglacial sediment accumulation. It was visually observed that the Otemma glacier is characterized by a more than 5 meters thick debris-rich basal ice layer containing large volumes of coarse sediments and boulders, likely due to basal till regelation at the glacier bed (Bennett, 2009). In addition, from historical aerial imagery, the glacier front appears to accumulate sediments near its tongue which can lead to the burying of dead ice as identified by ERT in the center of the current floodplain (Fig. 3). With a depth of 20 m, these large buried dead-ice zones seem to sit on the bedrock which suggests that the current outwash plain was not filled with a thick layer of subglacial till prior to its melt.

Those observations indicate a rapid filling of the overdeepening with non-sorted, loose sediments from melt-out and fluvial deposition as well as potential dead-ice bodies. This suggests that the largest part of the outwash plain sediments are deposited by a similar process, should show similar hydraulic properties and do not sit on older less permeable subglacial till and also supports the hypothesis of the formation of new outwash plains of similar volumes in the future, even if reduced sediment production takes place.

In terms of groundwater storage from outwash plains, the current one has an estimated dynamic storage of 6.7 mm. The two future ones have a total dynamic storage of 12.5 mm, leading to a total future storage of about 20 mm. ~~The potential burial of ice blocks may occur at the glacier bed but will likely remain in the non-active storage zone, as it is the case for the current one (Fig. 9).~~ The simulation of the cascading effect of a chain of three outwash plain has shown that during high flows, the outwash plain has little effect on the total streamflow. In the case of a large flood ($>13 \text{ m}^3 \text{ s}^{-1}$), it seems that no more than $0.5 \text{ m}^3 \text{ s}^{-1}$ can be temporally infiltrated in the outwash plains. We have also shown that attenuation of the flood along the river network due to increased storage and riverbed friction may have a similar or even larger effect than the limited increased storage in the aquifers. In fact, in the case of large floods, outwash plains may be fully underwater (which was not simulated in our model), significantly increasing surface storage and likely leading to more flow attenuation. In the case of significant drought, outwash plains do not provide significantly higher baseflow discharge, as exfiltration is only slightly higher than infiltration. Nonetheless, outwash plains still maintained a minimum baseflow discharge, when upstream discharge drops below 150 to 200 L s^{-1} or 0.5 mm per day. The duration of the aquifer drainage is here largely affected by the number of outwash plains, so that baseflow is reduced by half in about 4 days with one aquifer, while recession is twice slower with three aquifers. For this analysis we excluded hillslope recharge in order to assess the impact of the cascading outwash plains on discharge exclusively. In a more realistic case however, some hillslope drainage may recharge the outwash plain aquifer in addition to the stream and thus increase downstream discharge.

6 Conclusion

We have studied ~~in this work~~ a small fluvial aquifer in a recently ~~deglaciated~~ deglacierized proglacial margin. Although representing only 0.4 % of the entire catchment, we have shown ~~its potential to store~~ that it represents a dynamic storage of about 7 mm ~~of groundwater at the catchment scale~~. Its recharge is dominated by upstream river infiltration while hillslope recharge only maintains locally higher groundwater levels and perched surface water. ~~In Lying in a bedrock overdeepening, the aquifer is bedrock-dammed, so that, in~~ its lower half, groundwater tends to flow upwards and exfiltrate to the stream ~~so that. For this reason,~~ daily surface water-groundwater exchanges are balanced, ~~which maintains and this leads to~~ a high groundwater level through the melt season. We have shown that the rate of river infiltration was not larger than about $0.4 \text{ m}^3 \text{ s}^{-1}$ or about 1 mm per day. This suggests that changes in the seasonality of snow-melt will have limited impact on the recharge of such aquifers as long as a limited ice-melt recharge maintains an upstream river discharge of 1 mm per day. Due to this limited river infiltration capacity, such outwash plain aquifers have a limited impact on stream discharge during peak flow, providing little potential to attenuate future floods. In case of severe droughts, where flow recharge falls below 150 L s^{-1} , the outwash plain in Otemma has the potential to maintain a minimum baseflow during a one month period. Such low flows are however only to be expected during the cold season as long as summer glacier melt provides ice-melt downstream.

In the future, new outwash plains are expected to form as glaciers retreat and as will likely be the case at Otemma. A total future active groundwater storage of 20 mm is estimated from those outwash plains. This volume remains smaller than the current winter catchment-scale groundwater storage which was estimated to be in the order of 40 mm (Müller et al., 2022).

750 Indeed, the observed increase in stream EC in winter at GS1 before entering the outwash plain indicate that other sources of groundwater maintain the winter baseflow, rather than the outwash plain by alone. The source of this water remains unclear but may be due to subglacial melt or exfiltration from deeper bedrock fractures. Further geochemical or natural tracers analysis could here potentially provide further details on the larger catchment-scale dynamics.

Compared to older Quaternary fluvial aquifers, the groundwater parameterization of the Otemma outwash plain aquifer
755 was in the same range (Schilling et al., 2017; Mackay et al., 2020) and a similar groundwater dynamics was also observed based on natural tracers (Malard et al., 1999; Ward et al., 1999). Although slow colonization from surface vegetation may build shallow soils, change sediment granulometry (Maier et al., 2020) and improve channel stability (Roncoroni et al., 2019), deeper aquifer characteristics seem to evolve on time-scales of thousands of years (Maier et al., 2021), making the hydrological conclusions applicable to other fluvial systems. It seems therefore that new small outwash plains behave similarly to older
760 Quaternary floodplains, with a somewhat ~~faster-higher~~ average hydraulic conductivity and smaller aquifer volumes. While hydraulic parameters may remain in a similar range for outwash plains aquifers in other locations, groundwater dynamics will likely depend on the local aquifer characteristics such as surface topography, aquifer length to depth ratio or riverbed permeability.

~~From a more technical perspective, large heterogeneities in groundwater EC were observed both in time and in space, horizontally as a function of distance to river infiltration and vertically with potential partial mixing of hillslope waters. This suggests that any groundwater quantification based on mixing models should be only performed with a prior good understanding of groundwater flowpaths and adequate sampling locations and depths~~

Whil our modelling results are specific to this site, we believe that the processes that we have highlighted are transferable to other sites. In particular : (i) most outwash plains likely form in bedrock overdeepenings and their number may increase with the glacier retreat; (ii) since they are bedrock-dammed in their lower part, a large part of the water storage remains immobile but this also maintains groundwater levels near the surface; (iii) the coarse nature of their crystalline sediments leads to large stream-groundwater fluxes; (iv) during severe droughts, if upstream discharge becomes nearly dry, outwash plains may provide some additional baseflow depending on their geometry and slope.

Finally, in addition to the impact of those fluvial aquifers on downstream river discharge, outwash plains have a central
775 ecological role for alpine landscapes. Although the modelled groundwater depth may not be fully accurate due to a lack of model adaptation to changes in the geomorphology, it appears from our model that groundwater is usually located a depth greater than a few tens of centimeters, leading to relatively dry sediments at the surface. From an ecological perspective, access to moisture is likely not promoted by the local outwash plain aquifer, but rather from other sources of surface runoff from hillslope tributaries. The origin of such sources of water may be diverse, coming either from glaciers and snow melt,
780 rock glaciers and permafrost thaw or more perennial bedrock exfiltrations. Such water sources appear therefore key to provide moisture, nutrients and DOC Fellman et al. (2015); Hood et al. (2015) for the onset of biofilm and vegetation development (Miller and Lane, 2018; Roncoroni et al., 2019) or to provide cold water environments for alpine species (Brighenti et al., 2019a). While the local groundwater outwash plain aquifer may not be key for early vegetation succession and pioneer species,

it will however play a future role in maintaining a complex mosaic of habitats essential for more complex vegetation as well as
785 aquatic and terrestrial species (Hauer et al., 2016).

Code and data availability. Weather data are available under (Müller, 2022a), piezometer data under (Müller, 2022b), river data (Müller and Miesen, 2022) and ERT data under (Müller, 2022c).

The code to build the MODFLOW model was written in Python using Jupyter Notebook and is available in the Supplementary Material. The calibration procedure using PEST-HP can be run in command line and is also provided in the Supplementary Material. The
790 codes to reproduce the hillslope drainage is also provided.

Author contributions. T.M. conducted the data collection of ERT, surface and groundwater data, data analysis and model development, produced all the figures and wrote the manuscript draft. M.R. collected the orthoimages and produced the DEM. D.M. collected the bathymetric profiles and estimated river depth. B.S. proposed the general research topic and acquired the funding. S.L. and his team organised all field work logistics. B.S. and S.L. jointly supervised the research and edited the manuscript draft version. All authors have read and agreed to the
795 current version of the manuscript.

Competing interests. At least one of the (co-)authors is a member of the editorial board of *Hydrology and Earth System Sciences*. The peer-review process was guided by an independent editor, and the authors also have no other competing interests to declare.

Acknowledgements. The authors also thank Prof. Christophe Lambiel and Prof. James Irving (University of Lausanne) for lending the ERT device as well as Dr. Emily Voytek (University of Lausanne) for acquiring the first ERT data in the Otemma forefield in 2019. T.M. thanks all
800 students and PhD students from the AlpWISE group at University of Lausanne and in particular Floreana Miesen who participated in field data collection at the Otemma glacier forefield.

References

- Ala-aho, P., Soulsby, C., Wang, H., and Tetzlaff, D.: Integrated surface-subsurface model to investigate the role of groundwater in headwater catchment runoff generation: A minimalist approach to parameterisation, *Journal of Hydrology*, 547, 664–677, 805 <https://doi.org/https://doi.org/10.1016/j.jhydrol.2017.02.023>, 2017.
- Arthur, D. and Vassilvitskii, S.: k-means++: the advantages of careful seeding, pp. 1027–1035, *Society for Industrial and Applied Mathematics*, 2007.
- Bakker, M., Post, V., Langevin, C. D., Hughes, J. D., White, J. T., Starn, J. J., and Fienen, M. N.: Scripting MODFLOW Model Development Using Python and FloPy, *Groundwater*, 54, 733–739, <https://doi.org/10.1111/gwat.12413>, 2016.
- 810 Ballantyne, C. K.: Paraglacial geomorphology, *Quaternary Science Reviews*, 21, 1935–2017, [https://doi.org/10.1016/S0277-3791\(02\)00005-7](https://doi.org/10.1016/S0277-3791(02)00005-7), 2002.
- Baraer, M., Mckenzie, J., Mark, B. G., Gordon, R., Bury, J., Condom, T., Gomez, J., Knox, S., and Fortner, S. K.: Contribution of groundwater to the outflow from ungauged glacierized catchments: A multi-site study in the tropical Cordillera Blanca, Peru, *Hydrological Processes*, 29, 2561–2581, <https://doi.org/10.1002/hyp.10386>, 2015.
- 815 Bennett, M. R.: *Glacial geology : ice sheets and landforms*, Chichester : Wiley, 2nd ed.. edn., 2009.
- Berghuijs, W. R., Woods, R. A., and Hrachowitz, M.: A precipitation shift from snow towards rain leads to a decrease in streamflow, *Nature Climate Change*, 4, 583–586, <https://doi.org/10.1038/nclimate2246>, 2014.
- Bosson, J.-B., Deline, P., Bodin, X., Schoeneich, P., Baron, L., Gardent, M., and Lambiel, C.: The influence of ground ice distribution on geomorphic dynamics since the Little Ice Age in proglacial areas of two cirque glacier systems, *Earth Surface Processes and Landforms*, 820 40, 666–680, <https://doi.org/10.1002/esp.3666>, 2015.
- Brighenti, S., Tolotti, M., Bruno, M. C., Engel, M., Wharton, G., Cerasino, L., Mair, V., and Bertoldi, W.: After the peak water: the increasing influence of rock glaciers on alpine river systems, *Hydrological Processes*, 33, 2804–2823, <https://doi.org/10.1002/hyp.13533>, 2019a.
- Brighenti, S., Tolotti, M., Bruno, M. C., Wharton, G., Pusch, M. T., and Bertoldi, W.: Ecosystem shifts in Alpine streams under glacier retreat and rock glacier thaw: A review, *Science of the Total Environment*, 675, 542–559, <https://doi.org/10.1016/j.scitotenv.2019.04.221>, 2019b.
- 825 Brunner, P., Simmons, C. T., Cook, P. G., and Therrien, R.: Modeling Surface Water-Groundwater Interaction with MODFLOW: Some Considerations, *Ground Water*, 48, 174–180, <https://doi.org/10.1111/j.1745-6584.2009.00644.x>, 2010.
- Brunner, P., Therrien, R., Renard, P., Simmons, C. T., and Franssen, H.-J. H.: Advances in understanding river-groundwater interactions, *Reviews of Geophysics*, 55, 818–854, <https://doi.org/10.1002/2017RG000556>, 2017.
- Burri, M., Allimann, M., Chessex, R., Piaz, G. V. D., Valle, G. D., Bois, L. D., Gouffon, Y., A., G., Hagen, T., Krummenacher, D., and 830 Looser, M.-O.: Chanrion (CN 1346) avec partie nord de la feuille Mont Vélán (CN 1366), *Atlas géologique de la Suisse 1:25 000*, 1999.
- Buytaert, W., Moulds, S., Acosta, L., De Bièvre, B., Olmos, C., Villacis, M., Tovar, C., and Verbist, K. M. J.: Glacial melt content of water use in the tropical Andes, *Environmental Research Letters*, 12, <https://doi.org/10.1088/1748-9326/aa926c>, 2017.
- Carrivick, J. L. and Heckmann, T.: Short-term geomorphological evolution of proglacial systems, *Geomorphology*, 287, 3–28, <https://doi.org/10.1016/j.geomorph.2017.01.037>, 2017.
- 835 Carrivick, J. L., Heckmann, T., Turner, A., and Fischer, M.: An assessment of landform composition and functioning with the first proglacial systems dataset of the central European Alps, *Geomorphology*, 321, 117–128, <https://doi.org/10.1016/j.geomorph.2018.08.030>, 2018.

- Cozzetto, K. D., Bencala, K. E., Gooseff, M. N., and McKnight, D. M.: The influence of stream thermal regimes and preferential flow paths on hyporheic exchange in a glacial meltwater stream, *Water Resources Research*, 49, 5552–5569, <https://doi.org/10.1002/wrcr.20410>, 2013.
- 840 Crossman, J., Bradley, C., Boomer, I., and Milner, A.: Water flow dynamics of groundwater-fed streams and their ecological significance in a glacierized catchment, *Arctic, Antarctic, and Alpine Research*, 43, 364–379, <https://doi.org/10.1657/1938-4246-43.3.364>, 2011.
- Doherty, J.: *Calibration and Uncertainty Analysis for Complex Environmental Models*. Watermark Numerical Computing, Brisbane, Australia, 2015.
- Evans, D., Phillips, E., Hiemstra, J., and Auton, C.: Subglacial till: Formation, sedimentary characteristics and classification, *Earth-Science Reviews*, 78, 115–176, <https://doi.org/10.1016/j.earscirev.2006.04.001>, 2006.
- 845 Fellman, J. B., Hood, E., Raymond, P. A., Hudson, J., Bozeman, M., and Arimitsu, M.: Evidence for the assimilation of ancient glacier organic carbon in a proglacial stream food web, *Limnology and Oceanography*, 60, 1118–1128, <https://doi.org/10.1002/lno.10088>, 2015.
- Gabbi, J., Carenzo, M., Pellicciotti, F., Bauder, A., and Funk, M.: A comparison of empirical and physically based glacier surface melt models for long-term simulations of glacier response, *Journal of Glaciology*, 60, 1199–1207, <https://doi.org/10.3189/2014JG14J011>, 2014.
- 850 GLAMOS (1881-2020): The Swiss Glaciers 1880-2018/19, *Glaciological Reports No 1-140*, Yearbooks of the Cryospheric Commission of the Swiss Academy of Sciences (SCNAT), published since 1964 by VAW / ETH Zurich, https://doi.org/10.18752/glrep_series.
- Glas, R., Lautz, L., McKenzie, J., Mark, B., Baraer, M., Chavez, D., and Maharaj, L.: A review of the current state of knowledge of proglacial hydrogeology in the Cordillera Blanca, Peru, *WIREs Water*, 5, e1299, <https://doi.org/10.1002/wat2.1299>, 2018.
- Grab, M., Mattea, E., Bauder, A., Huss, M., Rabenstein, L., Hodel, E., Linsbauer, A., Langhammer, L., Schmid, L., Church, G., Hellmann, S., Déléze, K., Schaer, P., Lathion, P., Farinotti, D., and Maurer, H.: Ice thickness distribution of all Swiss glaciers based on extended ground-penetrating radar data and glaciological modeling, *Journal of Glaciology*, 67, 1074–1092, <https://doi.org/10.1017/jog.2021.55>, 2021.
- Harrington, J. S., Mozil, A., Hayashi, M., and Bentley, L. R.: Groundwater flow and storage processes in an inactive rock glacier, *Hydrological Processes*, 32, 3070–3088, <https://doi.org/10.1002/hyp.13248>, 2018.
- 860 Hauer, F. R., Locke, H., Dreitz, V. J., Hebblewhite, M., Lowe, W. H., Muhlfeld, C. C., Nelson, C. R., Proctor, M. F., and Rood, S. B.: Gravel-bed river floodplains are the ecological nexus of glaciated mountain landscapes, *Science Advances*, 2, 1–14, <https://doi.org/10.1126/sciadv.1600026>, 2016.
- Hayashi, M.: *Alpine Hydrogeology: The Critical Role of Groundwater in Sourcing the Headwaters of the World*, *Groundwater*, 58, 498–510, <https://doi.org/10.1111/gwat.12965>, 2020.
- 865 Hofmeister, F., Arias-Rodriguez, L. F., Premier, V., Marin, C., Notarnicola, C., Disse, M., and Chiogna, G.: Intercomparison of Sentinel-2 and modelled snow cover maps in a high-elevation Alpine catchment, *Journal of Hydrology X*, 15, 100 123, <https://doi.org/10.1016/j.hydroa.2022.100123>, 2022.
- Hood, E., Battin, T. J., Fellman, J., O’neel, S., and Spencer, R. G.: Storage and release of organic carbon from glaciers and ice sheets, *Nature Geoscience*, 8, 91–96, <https://doi.org/10.1038/ngeo2331>, 2015.
- 870 Huss, M. and Hock, R.: Global-scale hydrological response to future glacier mass loss, *Nature Climate Change*, 8, 135–140, <https://doi.org/10.1038/s41558-017-0049-x>, 2018.
- Huss, M., Farinotti, D., Bauder, A., and Funk, M.: Modelling runoff from highly glacierized alpine drainage basins in a changing climate, *Hydrological Processes*, 22, 3888–3902, <https://doi.org/10.1002/hyp.7055>, 2008.

- Jordi, C., Doetsch, J., Günther, T., Schmelzbach, C., and Robertsson, J. O.: Geostatistical regularization operators for geophysical inverse problems on irregular meshes, *Geophysical Journal International*, 213, 1374–1386, <https://doi.org/10.1093/gji/ggy055>, 2018.
- 875 Käser, D. and Hunkeler, D.: Contribution of alluvial groundwater to the outflow of mountainous catchments, *Water Resources Research*, 52, 680–697, <https://doi.org/10.1002/2014WR016730>, 2016.
- Kobierska, F., Jonas, T., Griessinger, N., Hauck, C., Huxol, S., and Bernasconi, S. M.: A multi-method field experiment to determine local groundwater flow in a glacier forefield, *Hydrological Processes*, 29, 817–827, <https://doi.org/10.1002/hyp.10188>, 2015a.
- 880 Kobierska, F., Jonas, T., Kirchner, J. W., and Bernasconi, S. M.: Linking baseflow separation and groundwater storage dynamics in an alpine basin (Dammagletscher, Switzerland), *Hydrology and Earth System Sciences*, 19, 3681–3693, <https://doi.org/10.5194/hess-19-3681-2015>, 2015b.
- Kolditz, O., Bauer, S., Bilke, L., Böttcher, N., Delfs, J. O., Fischer, T., Görke, U. J., Kalbacher, T., Kosakowski, G., McDermott, C. I., Park, C. H., Radu, F., Rink, K., Shao, H., Shao, H. B., Sun, F., Sun, Y. Y., Singh, A. K., Taron, J., Walther, M., Wang, W., Watanabe, N., Wu, Y., Xie, M., Xu, W., and Zehner, B.: OpenGeoSys: an open-source initiative for numerical simulation of thermo-hydro-mechanical/chemical (THM/C) processes in porous media, *Environmental Earth Sciences*, 67, 589–599, <https://doi.org/10.1007/s12665-012-1546-x>, 2012.
- 885 Kurylyk, B. L. and Hayashi, M.: Inferring hydraulic properties of alpine aquifers from the propagation of diurnal snowmelt signals, *Water Resources Research*, 53, 4271–4285, <https://doi.org/10.1002/2016WR019651>, 2017.
- Lane, S. N.: Acting, predicting and intervening in a socio-hydrological world, *Hydrology and Earth System Sciences*, 18, 927–952, <https://doi.org/10.5194/hess-18-927-2014>, 2014.
- 890 Lane, S. N. and Nienow, P. W.: Decadal-Scale Climate Forcing of Alpine Glacial Hydrological Systems, *Water Resources Research*, 55, 2478–2492, <https://doi.org/10.1029/2018WR024206>, 2019.
- Lane, S. N., Bakker, M., Gabbud, C., Micheletti, N., and Saugy, J. N.: Sediment export, transient landscape response and catchment-scale connectivity following rapid climate warming and Alpine glacier recession, *Geomorphology*, 277, 210–227, <https://doi.org/10.1016/j.geomorph.2016.02.015>, 2017.
- 895 Langevin, C., Hughes, J., Banta, E., Niswonger, R., Panday, S., and Provost, A.: Documentation for the MODFLOW 6 Groundwater Flow Model: U.S. Geological Survey Techniques and Methods, book 6, chap. A55, 197 p., <https://doi.org/https://doi.org/10.3133/tm6A55>, 2017.
- Langevin, C., Hughes, J., Provost, A., Russcher, M., Niswonger, R., Panday, S., Merrick, D., and Banta, E.: MODFLOW 6 Modular Hydrologic Model version 6.3.0: U.S. Geological Survey Software Release, 4 March 2022, <https://doi.org/https://doi.org/10.5066/P97FFF9M>, 2022.
- 900 Langston, G., Hayashi, M., and Roy, J. W.: Quantifying groundwater-surface water interactions in a proglacial moraine using heat and solute tracers, *Water Resources Research*, 49, 5411–5426, <https://doi.org/10.1002/wrcr.20372>, 2013.
- Linsbauer, A., Huss, M., Hodel, E., Bauder, A., Fischer, M., Weidmann, Y., Bärtschi, H., and Schmassmann, E.: The New Swiss Glacier Inventory SGI2016: From a Topographical to a Glaciological Dataset, *Frontiers in Earth Science*, 9, 1–22, <https://doi.org/10.3389/feart.2021.704189>, 2021.
- 905 MacDonald, A. M., Maurice, L., Dobbs, M. R., Reeves, H. J., and Auton, C. A.: Relating in situ hydraulic conductivity, particle size and relative density of superficial deposits in a heterogeneous catchment, *Journal of Hydrology*, 434–435, 130–141, <https://doi.org/10.1016/j.jhydrol.2012.01.018>, 2012.
- Mackay, J. D., Barrand, N. E., Hannah, D. M., Krause, S., Jackson, C. R., Everest, J., MacDonald, A. M., and Ó Dochartaigh, B.: Proglacial groundwater storage dynamics under climate change and glacier retreat, *Hydrological Processes*, 34, 5456–5473, <https://doi.org/10.1002/hyp.13961>, 2020.
- 910

- Magnusson, J., Kobierska, F., Huxol, S., Hayashi, M., Jonas, T., and Kirchner, J. W.: Melt water driven stream and groundwater stage fluctuations on a glacier forefield (Dammagletscher, Switzerland), *Hydrological Processes*, 28, 823–836, <https://doi.org/10.1002/hyp.9633>, 2014.
- 915 Maier, F., van Meerveld, I., Greinwald, K., Gebauer, T., Lustenberger, F., Hartmann, A., and Musso, A.: Effects of soil and vegetation development on surface hydrological properties of moraines in the Swiss Alps, *Catena*, 187, 104353, <https://doi.org/10.1016/j.catena.2019.104353>, 2020.
- Maier, F., van Meerveld, I., Meerveld, I., Weiler, M., van Meerveld, I., Meerveld, I., and Weiler, M.: Long-Term Changes in Runoff Generation Mechanisms for Two Proglacial Areas in the Swiss Alps II: Subsurface Flow, *Water Resources Research*, 57, 1–30, <https://doi.org/10.1029/2021WR030223>, 2021.
- 920 Maizels, J.: Sediments and landforms of modern proglacial terrestrial environments, in: *Modern and Past Glacial Environments*, 4, pp. 279–316, Elsevier, <https://doi.org/10.1016/B978-075064226-2/50012-X>, 2002.
- Maizels, J. K.: Experiments on the Origin of Kettle-holes, *Journal of Glaciology*, 18, 291–303, <https://doi.org/10.3189/S0022143000021365>, 1977.
- 925 Malard, F., Tockner, K., and Ward, J. V.: Shifting dominance of subcatchment water sources and flow paths in a glacial floodplain, Val Roseg, Switzerland, Arctic, Antarctic, and Alpine Research, 31, 135–150, <https://doi.org/10.2307/1552602>, 1999.
- Mancini, D. and Lane, S. N.: Changes in sediment connectivity following glacial debuttressing in an Alpine valley system, *Geomorphology*, 352, 106987, <https://doi.org/10.1016/j.geomorph.2019.106987>, 2020.
- Mariethoz, G., Renard, P., and Straubhaar, J.: The direct sampling method to perform multiple-point geostatistical simulations, *Water Resources Research*, 46, 1–14, <https://doi.org/10.1029/2008WR007621>, 2010.
- 930 Masset, O. and Loew, S.: Hydraulic conductivity distribution in crystalline rocks, derived from inflows to tunnels and galleries in the Central Alps, Switzerland, *Hydrogeology Journal*, 18, 863–891, <https://doi.org/10.1007/s10040-009-0569-1>, 2010.
- Maxwell, R. M. and Miller, N. L.: Development of a Coupled Land Surface and Groundwater Model, *Journal of Hydrometeorology*, 6, 233–247, <https://doi.org/10.1175/jhm422.1>, 2005.
- 935 McClymont, A. F., Roy, J. W., Hayashi, M., Bentley, L. R., Maurer, H., and Langston, G.: Investigating groundwater flow paths within proglacial moraine using multiple geophysical methods, *Journal of Hydrology*, 399, 57–69, <https://doi.org/10.1016/j.jhydrol.2010.12.036>, 2011.
- Miall, A. D.: A review of the braided-river depositional environment, *Earth Science Reviews*, 13, 1–62, [https://doi.org/10.1016/0012-8252\(77\)90055-1](https://doi.org/10.1016/0012-8252(77)90055-1), 1977.
- 940 Miller, H. R. and Lane, S. N.: Biogeomorphic feedbacks and the ecosystem engineering of recently deglaciated terrain, *Progress in Physical Geography*, 43, 24–45, <https://doi.org/10.1177/0309133318816536>, 2018.
- Milner, A. M., Khamis, K., Battin, T. J., Brittain, J. E., Barrand, N. E., Füreder, L., Cauvy-Fraunié, S., Gíslason, G. M., Jacobsen, D., Hannah, D. M., Hodson, A. J., Hood, E., Lencioni, V., Ólafsson, J. S., Robinson, C. T., Tranter, M., and Brown, L. E.: Glacier shrinkage driving global changes in downstream systems, *Proceedings of the National Academy of Sciences*, 114, 9770–9778, <https://doi.org/10.1073/pnas.1619807114>, 2017.
- 945 Montalto, F. A., Parlange, J. Y., and Steenhuis, T. S.: A simple model for predicting water table fluctuations in a tidal marsh, *Water Resources Research*, 43, 1–22, <https://doi.org/10.1029/2004WR003913>, 2007.
- Muir, D. L., Hayashi, M., and McClymont, A. F.: Hydrological storage and transmission characteristics of an alpine talus, *Hydrological Processes*, 25, n/a–n/a, <https://doi.org/10.1002/hyp.8060>, 2011.

- 950 Müller, T.: Weather dataset from Otemma glacier forefield, Switzerland (from 14 July 2019 to 18 November 2021) (v1.2021.02), Zenodo [Data set], <https://doi.org/10.5281/zenodo.6106778>, 2022a.
- Müller, T.: Water table elevation and groundwater temperature from the outwash plain of the Otemma glacier forefield (Switzerland) from 2019 to 2021 (v1.2022.03), Zenodo [Data set], <https://doi.org/10.5281/zenodo.6355474>, 2022b.
- Müller, T.: Electrical Resistivity Tomography (ERT) datasets from the Otemma glacier forefield and outwash plain (v1.2022.03), Zenodo
955 [Data set], <https://doi.org/10.5281/zenodo.6342767>, 2022c.
- Müller, T. and Miesen, F.: Stream discharge, stage, electrical conductivity & temperature dataset from Otemma glacier forefield, Switzerland (from July 2019 to October 2021) (v1.2021.02), Zenodo [Data set], <https://doi.org/10.5281/zenodo.6202732>, 2022.
- Müller, T., Lane, S. N., and Schaeffli, B.: Towards a hydrogeomorphological understanding of proglacial catchments: an assessment of groundwater storage and release in an Alpine catchment, *Hydrology and Earth System Sciences*, 26, 6029–6054, <https://doi.org/10.5194/hess-26-6029-2022>, 2022.
960
- Ó Dochartaigh, B. É., MacDonald, A. M., Black, A. R., Everest, J., Wilson, P., Darling, W. G., Jones, L., and Raines, M.: Groundwater–glacier meltwater interaction in proglacial aquifers, *Hydrology and Earth System Sciences*, 23, 4527–4539, <https://doi.org/10.5194/hess-23-4527-2019>, 2019.
- Orsi, G., Burger, U., Marschallinger, R., and Nocker, C.: Geological model of an alpine lateral valley with implications for the design of a
965 groundwater monitoring network – the example of the padaster valley (Eastern Alps, Austria), *Austrian Journal of Earth Sciences*, 109, <https://doi.org/10.17738/ajes.2016.0003>, 2016.
- Otto, J.-C.: Proglacial Lakes in High Mountain Environments, in: *Geomorphology of Proglacial Systems. Geography of the Physical Environment.*, edited by Heckmann, T. and Morche, D., pp. 231–247, Springer, Cham, https://doi.org/10.1007/978-3-319-94184-4_14, 2019.
- Park, Y., Reichel, L., Rodriguez, G., and Yu, X.: Parameter determination for Tikhonov regularization problems in general form, *Journal of*
970 *Computational and Applied Mathematics*, 343, 12–25, <https://doi.org/10.1016/j.cam.2018.04.049>, 2018.
- Phillips, J. V. and Tadayan, S.: Selection of Manning’s roughness coefficient for natural and constructed vegetated and non-vegetated channels, and vegetation maintenance plan guidelines for vegetated channels in central Arizona, US Geological Survey, 2006.
- Planet Team: Planet Application Program Interface: In *Space for Life on Earth*, <https://api.planet.com>, 2017.
- Popp, A. L., Pardo-Álvarez, Á., Schilling, O. S., Scheidegger, A., Musy, S., Peel, M., Brunner, P., Purtschert, R., Hunkeler, D., and
975 Kipfer, R.: A Framework for Untangling Transient Groundwater Mixing and Travel Times, *Water Resources Research*, 57, 1–16, <https://doi.org/10.1029/2020WR028362>, 2021.
- Roncoroni, M., Brandani, J., Battin, T. I., and Lane, S. N.: Ecosystem engineers: Biofilms and the ontogeny of glacier floodplain ecosystems, *Wiley Interdisciplinary Reviews: Water*, 6, e1390, <https://doi.org/10.1002/wat2.1390>, 2019.
- Roncoroni, M., Mancini, D., Kohler, T. J., Miesen, F., Gianini, M., Battin, T. J., and N. Lane, S.: Centimeter-scale mapping of phototrophic biofilms in glacial forefields using visible band ratios and UAV imagery, *International Journal of Remote Sensing*, 00, 1–35,
980 <https://doi.org/10.1080/01431161.2022.2079963>, 2022.
- Rücker, C., Günther, T., and Wagner, F. M.: pyGIMLi: An open-source library for modelling and inversion in geophysics, *Computers & Geosciences*, 109, 106–123, <https://doi.org/10.1016/j.cageo.2017.07.011>, 2017.
- Schaeffli, B., Manso, P., Fischer, M., Huss, M., and Farinotti, D.: The role of glacier retreat for Swiss hydropower production, *Renewable*
985 *Energy*, 132, 615–627, <https://doi.org/10.1016/j.renene.2018.07.104>, 2019.

- Schilling, O. S., Gerber, C., Partington, D. J., Purtschert, R., Brennwald, M. S., Kipfer, R., Hunkeler, D., and Brunner, P.: Advancing Physically-Based Flow Simulations of Alluvial Systems Through Atmospheric Noble Gases and the Novel ^{37}Ar Tracer Method, *Water Resources Research*, 53, 10 465–10 490, <https://doi.org/10.1002/2017WR020754>, 2017.
- 990 Staudinger, M., Stoelzle, M., Seeger, S., Seibert, J., Weiler, M., and Stahl, K.: Catchment water storage variation with elevation, *Hydrological Processes*, 31, 2000–2015, <https://doi.org/10.1002/hyp.11158>, 2017.
- SwissTopo: swissALTI3D - The high precision digital elevation model of Switzerland. Available at <https://www.swisstopo.admin.ch/en/geodata/height/alti3d.html> (last accessed 11 May 2021), 2019.
- SwissTopo: SWISSIMAGE 10 cm - The Digital Color Orthophotomosaic of Switzerland. Federal Office of Topography (swisstopo). Available at <https://www.swisstopo.admin.ch/en/geodata/images/ortho/swissimage10.html> (last accessed 30 March 2021), 2020.
- 995 Thornton, J., Brauchli, T., Mariéthoz, G., and Brunner, P.: Efficient multi-objective calibration and uncertainty analysis of distributed snow simulations in rugged alpine terrain, *Journal of Hydrology*, 598, 126 241, <https://doi.org/10.1016/j.jhydrol.2021.126241>, 2021.
- Thornton, J. M., Therrien, R., Mariéthoz, G., Linde, N., and Brunner, P.: Simulating Fully-Integrated Hydrological Dynamics in Complex Alpine Headwaters: Potential and Challenges, *Water Resources Research*, 58, <https://doi.org/10.1029/2020WR029390>, 2022.
- Vincent, A., Violette, S., and Aðalgeirsdóttir, G.: Groundwater in catchments headed by temperate glaciers: A review, *Earth-Science Reviews*, 1000 188, 59–76, <https://doi.org/10.1016/j.earscirev.2018.10.017>, 2019.
- Wagner, T., Kainz, S., Helfricht, K., Fischer, A., Avian, M., Krainer, K., and Winkler, G.: Assessment of liquid and solid water storage in rock glaciers versus glacier ice in the Austrian Alps, *Science of The Total Environment*, 800, 149 593, <https://doi.org/10.1016/j.scitotenv.2021.149593>, 2021.
- Ward, J. V., Malard, F., Tockner, K., and Uehlinger, U.: Influence of ground water on surface water conditions in a glacial flood plain of the Swiss Alps, *Hydrological Processes*, 13, 277–293, [https://doi.org/10.1002/\(SICI\)1099-1085\(19990228\)13:3<277::AID-HYP738>3.0.CO;2-N](https://doi.org/10.1002/(SICI)1099-1085(19990228)13:3<277::AID-HYP738>3.0.CO;2-N), 1999.
- Winkler, G., Wagner, T., Pauritsch, M., Birk, S., Kellerer-Pirklbauer, A., Benischke, R., Leis, A., Morawetz, R., Schreilechner, M. G., and Hergarten, S.: Identification and assessment of groundwater flow and storage components of the relict Schöneben Rock Glacier, Niedere Tauern Range, Eastern Alps (Austria), *Hydrogeology Journal*, 24, 937–953, <https://doi.org/10.1007/s10040-015-1348-9>, 2016.
- 1010 Zielinski, T. and Van Loon, A.: Pleistocene sandur deposits represent braidplains, not alluvial fans, *Boreas*, 32, 590–611, <https://doi.org/10.1080/03009480310004170>, 2003.
- Šimůnek, J. and van Genuchten, M. T.: Modeling Nonequilibrium Flow and Transport Processes Using HYDRUS, *Vadose Zone Journal*, 7, 782–797, <https://doi.org/10.2136/vzj2007.0074>, 2008.