

Monitoring and quantifying CO₂ emissions of isolated power plants from space

Xiaojuan Lin^{1,2}, Ronald van der A^{2,4}, Jos de Laat², Henk Eskes², Frédéric Chevallier³, Philippe Ciais³, Zhu Deng¹, Yuanhao Geng⁵, Xuanren Song¹, Xiliang Ni⁶, Da Huo¹, Xinyu Dou¹, Zhu Liu^{1,*}

5 ¹Department of Earth System Science, Ministry of Education Key Laboratory for Earth System Modeling, Institute for Global Change Studies, Tsinghua University, Beijing, 100084, China

²KNMI, Royal Netherlands Meteorological Institute, De Bilt, 3730 AE, the Netherlands

³Laboratoire des Sciences du Climat et de l'Environnement, CEA-CNRS-UVSQ, UMR8212, Gif-sur-Yvette, France

⁴Nanjing University of Information Science & Technology (NUIST), Nanjing, 210044, China

10 ⁵Department of Statistics, School of Computer, Data & Information Sciences, University of Wisconsin - Madison, Wisconsin, 53706, USA

⁶Ministry of Education Key Laboratory of Ecology and Resource Use of the Mongolian Plateau & Inner Mongolia Key Laboratory of Grassland Ecology, School of Ecology and Environment, Inner Mongolia University, Hohhot, 010021, China

Correspondence to: Zhu Liu (zhuliu@tsinghua.edu.cn)

15 **Abstract:** Top-down CO₂ emission estimates based on satellite observations are of great importance for independently verifying the accuracy of reported emissions and emission inventories. Difficulties in verifying these satellite-derived emissions arise from the fact that emission inventories often provide annual mean emissions while estimates from satellites are available only for a limited number of overpasses. Previous studies have derived CO₂ emissions for power plants from OCO-2 and OCO-3 satellite observations of their exhaust plumes, but the accuracy and the factors affecting these emissions
20 are uncertain. Here we advance monitoring and quantifying point source carbon emissions by focusing on how to improve the accuracy of carbon emission using different wind data estimates. We have selected only isolated power plants for this study, to avoid complications linked to multiple sources in close proximity. We first compared the Gaussian plume model and cross-sectional flux methods for estimating CO₂ emission of power plants. Then we examined the sensitivity of the emission estimates to possible choices for the wind field. For verification we have used power plant emissions that are reported on an
25 hourly basis by the Environmental Protection Agency (EPA) in the United States. By using the OCO-2 and OCO-3 observations over the past four years we identified emission signals of isolated power plants and arrived at a total of 50 collocated cases involving 22 power plants. We correct for the time difference between the moment of the emission and the satellite observation. We found the wind field halfway the height of planetary boundary layer (PBL) yielded the best results. We also found that the instantaneous satellite estimated emissions of these 50 cases and reported emissions display a weak correlation ($R^2=0.12$). The
30 correlation improves with averaging over multiple observations of the 22 power plants ($R^2=0.40$). The method was subsequently applied to 106 power plants cases worldwide yielded a total emission of 1522 ± 501 Mt CO₂/year, estimated to be about 17% of the power sector emissions of our selected countries. The improved correlation highlights the potential for

future planned satellite missions with a greatly improved coverage to monitor a significant fraction of global power plant emissions.

35 **Keywords:** CO₂ emissions; Power plants; OCO-2; OCO-3; Gaussian plume model; XCO₂ enhancement

1. Introduction

The burning of fossil fuels for energy production has been driving the increase of atmospheric CO₂ concentrations from about 280 ppm to 410 ppm, which has dominated the observed planetary warming in the 20th and 21st centuries (IPCC, 2021). The Paris Agreement of the United Nations Framework Convention on Climate Change (UNFCCC) aims to keep global warming well within 2°C above pre-industrial average temperatures by reducing global greenhouse gas (GHG) emissions. It has led to a strengthening of the reporting obligations of GHG emissions by the UNFCCC Parties (UNFCCC, 2018). These reports are based on national fossil fuel CO₂ emission inventories that use, amongst others, input data about fossil fuel consumption, heating and carbon content of each fuel, type of combustion, and combustion efficiency. These reports are hampered by the difficulty to achieve accurate and detailed consumption data, especially for developing countries (Olivier et al., 2017; International Energy Agency, 2019; European Commission, 2019; Gilfillan and Marland, 2021). The reports are self-declarations and although reviewed by expert teams within the UNFCCC process they lack independent verification. In order to address this issue, existing satellite retrievals of the column-averaged dry air mole fraction of carbon dioxide CO₂ (XCO₂), mainly from NASA's Orbiting Carbon Observatory 2 & 3 (OCO-2 & OCO-3) and Japan's Greenhouse gases Observing SATellite (GOSAT), are increasingly explored for an independent verification of reported emissions (Nassar et al., 2017; Zheng et al., 2019; Shekhar et al., 2020; Kiel et al., 2021). Due to the promising first results of OCO-2 and GOSAT, new satellite instruments are being designed with a focus on a better sampling of the atmosphere (larger swath and / or constellation of satellites), providing an operational emission monitoring capacity in the future (Engelen, 2021; CEOS, 2022; NASA, 2022).

Satellite observations are increasingly used for top-down estimates of fossil fuel emissions (Hakkarainen et al., 2021; Kuhlmann et al., 2021; Lauvaux et al., 2022). Zheng *et al.* (2020) revealed China's CO₂ emission drops and recoveries during the COVID 19 period using TROPOspheric Monitoring Instrument (TROPOMI) NO₂ data and bottom-up inventory data, and the GEOS-Chem model to compute the sensitivity of NO₂ concentrations to emissions. Other studies used satellite observations of the total column dry-air CO₂ (XCO₂), a Bayesian inversion system and high-resolution transport model to quantify fossil fuel CO₂ (ffCO₂) emissions in urban areas (Kunik et al., 2019; Shekhar et al., 2020; Ye et al., 2020). For point source emitters, Bovensmann *et al.* (2010) introduced a conceptual technique to quantify CO₂ emissions of single power plants from XCO₂ plume enhancements. Janardanan *et al.* (2016) later connected XCO₂ enhancements observed by GOSAT with large emission sources through an atmospheric transport model in forward mode. Nassar *et al.* (2017, 2021, 2022) extended the approach and applied it in backward mode in order to quantify CO₂ emissions from individual power plants using OCO-2

and OCO-3 XCO₂ data. Reuter *et al.* (2019) used a few co-located regional enhancements of XCO₂ and NO₂ observed by OCO-2 and TROPOMI respectively to derive emission estimates for power plants, urban areas and wild fires. Zheng *et al.* (2020) used five year-worth of OCO-2 XCO₂ data to estimate emissions from urban and industrial areas in China, and compared these local emissions with MEIC (Multi-resolution Emission Inventory for China; Zheng et al., 2018), EDGAR (Emissions Database for Global Atmospheric Research; Crippa et al., 2020) and ODIAC (Open-Data Inventory for Anthropogenic Carbon dioxide; Oda et al., 2018) inventory estimations. The approach was extended to the entire globe and to OCO-3 by Chevallier *et al.* (2020, 2022).

Satellite instruments that directly detect CO₂ concentrations, such as OCO-2 and OCO-3, can be used for CO₂ emission estimates for power plants and other point sources. However, the limited track width, low revisit rate, and clouds mean these instruments only incidentally provide useful snapshot observations over a point source (see section 2.1 for details). Even fewer observations are located in the downwind direction of the point source (in the plume), which are optimal to estimate emissions (Reuter et al., 2019; Zheng et al., 2019). Hence the demonstration of the use of satellite-observed XCO₂ to quantify point source CO₂ emissions comes from only limited cases or from Observing System Simulation Experiments (OSSEs; Bovensmann et al., 2010; O'Brien et al., 2016; Broquet et al., 2018; Kuhlmann et al., 2019; Wang et al., 2020; Wu et al., 2020). For example, Nassar *et al.* (2017, 2021) manually-selected a few OCO-2 tracks that captured the emission plume of large coal plants for quantitative analysis. Other studies tried to be more systematic and iterated through the multi-year XCO₂ data and detected some of the space-time variations of anthropogenic emissions from locally-aggregated signals of emitters (Chevallier et al., 2020, 2022; Zheng et al., 2020), but it is difficult to attribute these signals to specific emission sources. Velazco *et al.* (2011) quantified errors of power plant annual emission estimates by a hypothetical CarbonSat constellation. Hill and Nassar (2019) assessed pixel size and revisit rate requirements for monitoring power plant CO₂ emissions from space. In addition, instantaneous emissions at satellite overpass times are difficult to compare with an inventory of annual emissions, because of the intermittence and variability of power production and CO₂ emissions. This is why previous studies had to use either instantaneous emission reports or temporally disaggregated inventories.

In this study, we advance the research of monitoring and quantifying point source carbon emissions by focusing on how to improve the accuracy of carbon emission using different wind data estimates, assess these emission estimates by comparing with USA EPA emission data, and identify and explore suitable cases elsewhere in the world. We compare the Gaussian plume model method with the cross-sectional flux method to estimate emission of power plants, in order to select the best method. We analyze the impact of different wind field choices on the emission accuracy by comparing with hourly-reported emissions of selected power plants. Using the selected method we extend the estimation of power plant emissions to the global scale.

This paper is organized as follows. Section 2 describes data sources for this study. In section 3, we describe XCO₂ enhancement extraction, quantification and validation method as well as uncertainty calculation. The estimated CO₂ emissions for US and global power plants are presented in Section 4. Section 5 gives summary and conclusions.

2.1. Satellite data

The Orbiting Carbon Observatory–2 (OCO-2) launched in July 2014 collects high-resolution spectra of reflected sunlight in the bands centered near 0.765 μm , 1.61 μm , and 2.06 μm (Crisp et al., 2017). OCO-2 flies on a near-polar sun-synchronous orbit and crosses the equator at a fixed local time (LT) near 13:36 with a repeat cycle of 16 days. About 10% of the approximately 1 million daily CO_2 observations are cloudless and can be used to retrieve the column-averaged dry air mole fraction of carbon dioxide (XCO_2) with the Atmospheric CO_2 Observations from Space (ACOS) algorithm at a spatial resolution of about $1.29 \times 2.25 \text{ km}^2$ across swaths which are up to 10-km wide (O'Dell et al., 2018). The Orbiting Carbon Observatory-3 (OCO-3) launched in May 2019 is mounted on the Japanese Experimental Module Exposed Facility (JEM-EF) of the International Space Station (ISS) and views the Earth at all latitudes less than about 52 degrees with a footprint size of about $1.6 \times 2.2 \text{ km}^2$. In addition to the same three observation modes (nadir, glint and target) as OCO-2, OCO-3 also collects nearly adjacent swaths of data using a new pointing mirror assembly (PMA), resulting in a snapshot area map (SAM) scan of approximately $80 \times 80 \text{ km}^2$. Since all the power plants in this study are located on land, we only exploit OCO-2 and OCO-3 measurements over land surfaces (*i.e.* surface type =1 in the OCO data). For the observations of OCO-3 SAM mode, we only analyse data on the same scan line (*i.e.* similar PMA elevation angles). We use good quality retrievals (`xco2_quality_flag = 0`) of version 10r of the OCO-2 bias-corrected XCO_2 retrievals from January 2018 to December 2021 and version 10.4r of the OCO-3 bias-corrected XCO_2 retrievals from August 2019 to November 2021 provided by the NASA Goddard Earth Sciences Data and Information Services Center (https://oco2.gesdisc.eosdis.nasa.gov/data/s4pa/OCO2_DATA/OCO2_L2_Lite_FP.10r/, https://oco2.gesdisc.eosdis.nasa.gov/data/s4pa/OCO3_DATA/OCO3_L2_Lite_FP.10.4r/).

The passive-sensing hyperspectral nadir-viewing instrument TROPOMI on the Copernicus Sentinel-5 Precursor satellite provides daily global coverage of tropospheric NO_2 vertical column densities (NO_2 TVCDs) with a spatial resolution of $3.5 \times 7 \text{ km}^2$ initially and $3.5 \times 5.5 \text{ km}^2$ since 6 August 2019. TROPOMI flies on a sun-synchronous orbit with an overpass time of 13:30 LT, same as OCO-2. Global daily NO_2 TVCDs maps were gridded to a regular longitude-latitude grid with 0.025° resolution using pixels with a cloud fraction less than 30%. In order to keep as many pixels as possible to observe as much of the plume as possible, data quality (*i.e.* “qa value”) filtering is not used. The NO_2 data we obtained is consistent with the OCO-2 and OCO-3 data of the same day in this study (<https://s5phub.copernicus.eu/>).

2.2. Power plant database

We collected reported hourly CO_2 emission data for U.S. power plants from the U.S. Environmental Protection Agency (EPA) from 2018 to 2021 (<https://www.epa.gov/airmarkets/power-sector-emissions-data>) as truth to validate the satellite estimated emission. We sorted out the list from EPA for all 1631 power plants operated during this period.

The publicly available Global Power Plant Database (GPPD, v 1.3.0) from the World Resources Institute was used to automatically identify CO₂ emission signals from power plants upwind of satellite tracks (Yin et al., 2021). The GPPD includes 34936 power plants (<https://datasets.wri.org/dataset/globalpowerplantdatabase>) with 15 fuel types, such as biomass, geothermal, hydro, nuclear and solar. In this study, we selected power plants using gas, coal, oil and pet coke as primary fuel to a subset. The resulting subset of GPPD comprises 8660 power plants of which 3998, 2330, 2320 and 12 use gas, coal, oil and pet coke as primary fuel, respectively. In order to see emission signals from as many power plants as possible, we did not delete power plants with a low generation capacity as done in other studies (Nassar et al., 2017; Beirle et al., 2021). The reason is that if a power plant with a small capacity is located in an area with less background interference - such as an area far away from cities and with low vegetation coverage - its emissions may still be detectable by satellites.

2.3. Wind fields

We used three types of wind field data in the CO₂ emission estimation procedures described in Sect. 3. Hourly horizontal wind fields u and v at 10 m are taken from the European Centre for Medium-Range Weather Forecasts (ECMWF) next-generation reanalysis ERA5 dataset ($0.25^\circ \times 0.25^\circ$) and the Modern-Era Retrospective analysis for Research and Applications version 2 MERRA-2 dataset ($0.5^\circ \times 0.625^\circ$). The effective wind speed proposed by Varon *et al.* (2018) and used by Reuter *et al.* (2019) and Hakkarainen *et al.* (2021) was calculated from the 10 m wind by applying the empirical scaling factor 1.4. Varon *et al.* (2018) derived this scaling factor from a linear fit between effective wind speed and 10 m wind speed. The effective wind speed from ERA5 (WERA) and MERRA2 (WMERRA) are derived using factor 1.4 for this study. In addition, the wind field ($0.25^\circ \times 0.25^\circ$) at half the height of the PBL (WPBL) is derived from the 3D hourly wind fields and PBL heights derived from the twice daily (0 and 12 hour) operational high-resolution forecasts of ECMWF. We use the wind vector of the model layer which contains the altitude equal to the PBL height divide by 2. These three wind field choices are used to explore the robustness of the emission estimates.

3. Methods

3.1. Extract CO₂ enhancement from isolated power plant point sources

The first step towards estimating CO₂ emissions from power plants is to extract plume XCO₂ anomalies, *i.e.* XCO₂ local enhancement. We use power plants with hourly reported emissions from the USA EPA as research objects, and search for all adjacent XCO₂ observations as candidate cases, and choose XCO₂ enhancement cases linked to isolated power plant emission plumes by the wind direction. The search range is limited to a 0.25° radius around each power plant. The selection is based on the visual identification of a plume in the downwind direction of the power plant. Power plants located in urban areas are excluded because their emission plumes are compounded by urban emissions. This selection of cases for isolated U.S. power plants allows us to verify the accuracy of estimated emissions using hourly reported emission data from EPA. For global XCO₂

data, we provide a semi-automatic detection algorithm described in Sect. 3.3.

3.2. Gaussian plume model and Cross-sectional flux method

(1) Gaussian plume model method

We use a Gaussian plume model and cross-sectional flux method for inferring power plant CO₂ emissions from XCO₂ measurements. In the Gaussian plume model (GPM) method (Bovensmann et al., 2010), the *posteriori* emission is obtained by a linear least squares fit between observed and simulated enhancements weighted by the reciprocal of the XCO₂ uncertainty. The model is based on the following equations:

$$V(x, y) = \frac{F}{\sqrt{2\pi} \cdot \beta \cdot \left(\frac{x}{1000}\right)^{0.894} \cdot u} e^{-\frac{1}{2} \left(\frac{y}{\beta \cdot (x/1000)^{0.894}}\right)^2}, \quad (1)$$

$$XCO_2 = V \cdot \frac{m_{air}}{m_{CO_2}} \cdot \frac{g}{P_{surf} - \omega \cdot g} \cdot 1000, \quad (2)$$

where V is the CO₂ vertical column at the location (x, y) downwind of the power plant (g m^{-2}), x and y are the along-wind distance and across-wind distance (m), respectively. F is the emission rate (g s^{-1}), β is the atmospheric stability parameter depending on Pasquill stability classes, which can be determined from the 10 meter wind speed and solar radiation obtained from ERA5 reanalysis data (Pasquill, 1961; Nassar et al., 2021) and u is wind speed (m s^{-1}). Formula (2) is used to convert V in g m^{-2} to XCO₂ in ppm, in which g is the gravitational acceleration (m s^{-2}), m is the molecular weight (kg mol^{-1}), P_{surf} is the surface pressure (Pa), and ω is the total column water vapor (kg m^{-2}) obtained from XCO₂ data files.

The wind direction is allowed to rotate within a range of $\pm 60^\circ$ to account for errors in the wind data. The optimal wind direction is derived by maximizing the correlation coefficient between the simulated and the observed XCO₂ enhancement. We rejected the case if the maximum correlation coefficient is less than 0.5, similar as in Nassar et al. (2021). The outline and direction of the plume can be clearly seen in NO₂ images (Figure S8, S9), showing that the optimal wind direction is reliable in those cases.

(2) Cross-sectional flux method

In the cross-sectional flux method, the emission is inferred by integrating the plume enhancement over the background. An interval of 200 km along the track, centered on the maximum XCO₂ point, is taken as the analysis window. The following function is fitted to XCO₂ data in the analysis window (Figure S1a):

$$f(l) = k \cdot l + b + \frac{A}{\sigma\sqrt{2\pi}} e^{[-(l)^2/2\sigma^2]}, \quad (3)$$

where $f(l)$ is parameterized representation of XCO₂ (ppm); l is the distance along the OCO-2 or OCO-3 tracks (km); k , b , A , and σ are parameters estimated by a nonlinear least-squares fit weighted by the reciprocal of the XCO₂ uncertainty (Zheng et al., 2020). $k \cdot l + b$ represents the background XCO₂, while the other part of Eq. (3) represents a single Gaussian shaped XCO₂ peak (Nassar et al., 2017; Reuter et al., 2019). After removing the background, the CO₂ line density is derived from

185 calculating the area under the fitted curve (Figure S1b). The cross-sectional CO₂ flux is estimated by multiplying the CO₂ line density by the wind component perpendicular to the OCO-2 or OCO-3 orbit direction at the peak position of the plume in m s⁻¹. Similarly, we allow the wind direction to rotate slightly to optimize the correlation between observations and the model simulation from Figure S1d to Figure S1c.

3.3. Detection of global power plant emission signals

190 In this study, we use the following steps to extract XCO₂ anomalies of global power plants for the estimation of their CO₂ emissions:

(1) Detect all satellite overpass data within a 0.25° radius around each power plant, and intercept all observations within the latitude range of ± 0.5° around the nearest observation from the power plant as potential cases;

195 (2) Extract the maximum value point of XCO₂ within the latitude range of ± 0.1° around the nearest observation point from the power plant, and take this maximum point as the center to retain the data within the latitude range of ± 0.04°, as the Gaussian peak of the plume, and only retain the cases where the number of observations with sufficient quality in this range is more than 10 to minimize the effect of missing data in the plume.

200 (3) Calculate the angle between the vector from the power plant location to the maximum XCO₂ point and the wind direction vector, and only retain the cases where the angle is less than 60°, to ensure that the XCO₂ enhancement is located in the downwind direction of the power plant.

(4) Retain the cases where the XCO₂ value of at least 5 observations in the Gaussian distribution are greater than the average value of the data extracted in step (1) plus 2 times the standard deviation of the data to ensure that the XCO₂ enhancement is significant.

205 (5) Extract the case where the net enhancement of XCO₂ of at least 5 observations is greater than 1.5 ppm. Here the background is defined as 90th percentile of the data extracted in step (1).

(6) Finally, the automatically identified cases of power plant plumes were further screened visually. Four examples of cases which were rejected after visual inspection is shown in Figure S10. The identification of enhanced signals seen in the OCO data as resulting from a power plant outside the swath of OCO is further validated by using TROPOMI NO₂ images for cases where a clear TROPOMI plume is available. The entire plumes observed by TROPOMI shown in Figure S8 and S9 shows that the association of the enhancement observed by OCO with the power plant was done correctly by the procedure. For the SAM data of OCO-3, only data in the same scan line are considered.

3.4. Uncertainty analysis and validation

(1) Emission uncertainties

215 The uncertainty estimates of this study are determined by three variables which are assumed to be uncorrelated. The total uncertainty is calculated by error propagation as

$$\varepsilon_{Emission} = \sqrt{\varepsilon_{XCO_2}^2 + \varepsilon_{wind}^2 + \varepsilon_{background}^2}, \quad (4)$$

where each uncertainty is derived from the standard deviation of an ensemble approach. The XCO₂ uncertainty ε_{XCO_2} on the derived emission is computed by perturbing the original XCO₂ data with the uncertainty of the retrieval as provided in the OCO-2 and OCO-3 data products. The uncertainty related to the wind ε_{wind} is calculated from an ensemble of emission estimates based on WERA, WMERRA and WPBL. There are several possible approaches to determine the background. Hakkarainen *et al.* (2019) used the daily median of all XCO₂ within the latitude range 10° band as the background to extract the XCO₂ anomalies. Nassar *et al.* (2017) determined background region from manual selection of observations outside the plume. Zheng *et al.* (2020) fitted the along-track observations by the sum of a Gaussian function and a linear function, where the linear part defined the background. We use a simple and automated way by calculating the percentile of the area defined in Sect. 3.3, step (1) and determining the background by taking the average value of all data below the percentile level. Here the background uncertainty $\varepsilon_{background}$ is computed from the spread in emission estimates using the 75th, 80th, 85th, 90th percentile to define the background values. This range of percentiles lead to the smallest difference with the reported emissions, as shown in Figure S2.

(2) Time-corrected hourly EPA reported values

The CO₂ emissions released by the power plant are transported to the satellite overpass location by the wind, and are detected as XCO₂ enhancement. EPA reports the emission value of the power plant on an hourly basis. When comparing emission estimates and hourly reported values, we need to consider the time lag between the moment when the emission is released at the stack and the moment it is detected downwind by the satellite. This time can be calculated from the distance between the power plant and the satellite crossing point and the wind speed. However, unlike the time-weighted reported emission used in Nassar *et al.* (2021), we report the release time at the stack of power plant that the detected plume is only affected by the moment when it is generated. Therefore, we produce time-corrected hourly reported values at the time of the emissions seen by the satellite overpass instead of reporting the hourly emission values closest to the overpass time.

4. Results

4.1. Comparison of estimated emissions using hourly monitoring values

Figure 1a shows an example of a power plant emission plume in the satellite observations. The Jeffrey Energy Center power plant in Kansas was in operation at about 1:30 local time on October 30, 2020, and its CO₂ plume was captured by the downwind track of OCO-2. The local enhancement appears as a peak in latitude direction which cross-section is well approximated by a Gaussian (Fig. 1b). For the entire U.S., we analyzed the 1,284 plants reported by the EPA, of which 347 were excluded because of nearby city emissions. A total of 9,950 OCO-2 and 13,427 OCO-3 tracks were recorded within a 0.25° radius of these power plants. We used observations in the latitude range of $\pm 0.5^\circ$ around the XCO₂ maximum for all

tracks (the range shown in Figure 1a) and performed a visual selection to identify cases of enhancement from plumes of isolated power plants like in Figure 1. The screening criterion is able to select a clear plume profile in the XCO₂ observations downwind of the power plant, such as in Figures 1e-1h, while other cases are rejected due to insignificant XCO₂ enhancement, missing data and emission source cluster interference, such as in Figure S10. In the end, we arrived at 50 cases where the power plant was operating and the emission plume crossed the satellite-track, including 30 cases from OCO-2 and 20 cases from OCO-3. When the distance between two adjacent power plants does not exceed the range of 1 pixel of the satellite, it was considered as a single isolated emission source, and their names are connected with commas (Table 1).

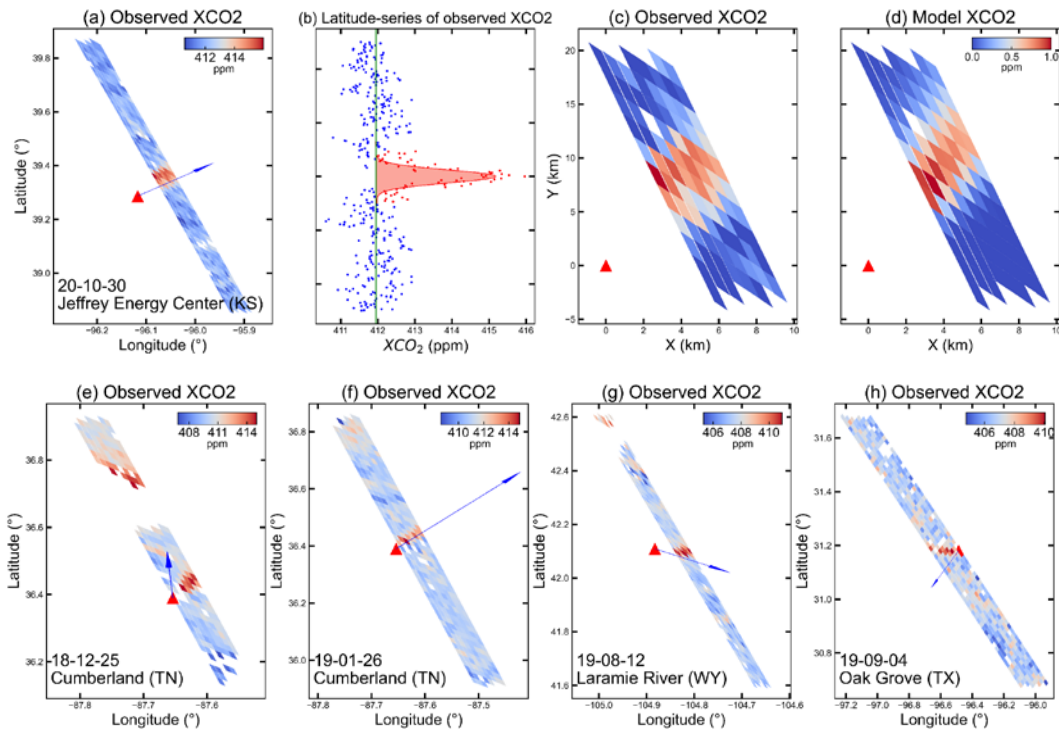


Figure 1. Estimation process of power plant emissions (a-d). (a) CO₂ plume of Jeffrey Energy Center power plant on October 30, 2020. (b) Change of XCO₂ in latitude direction from (a). The background value determined from the average of the observations below the 90th percentile (green line), background points (blue), and plume points (red). (c) Zoom-in of Figure (a) to the area of our simulation. (d) The simulated normalized XCO₂ enhancement for the same region by the GPM. (e-h) show cases of other power plant emission signals. The blue arrow represents the wind vector halfway the height of the PBL. The wind speeds in a, e, f, g and h are 2.9, 1.8, 6.1, 2.6 and 3.4 m s⁻¹, respectively.

Previous studies used various choices of wind information to approximately account for the plume spreading, such as the wind speed at the assumed average height of the chimney (250m, Nassar et al., 2017; Chevallier et al., 2022), or the assumed height of the chimney plus an assumed 250 m for typical plume rise above the stack height (Nassar et al., 2021), or at 31 m (Chevallier et al., 2020), or the average wind speed of the pressure layer near the ground as an approximation (Zheng et al., 2020; Hakkarainen et al., 2021), or calculate an effective wind (Varon et al., 2018; Reuter et al., 2019; Hakkarainen et al., 2021). In this study, we compared the estimated CO₂ emission results driven by WERA5 (Figure S3), WMERRA (Figure S4) and WPBL used for the GPM method. The correlation coefficient R of the estimated emission and time-corrected reported US EPA emission of the 50 cases of isolated power plants are 0.35, 0.28, and 0.14, for WPBL, WERA and WMERRA respectively

(Figure 2a, Figure S3a, Figure S4a). The results show that the emission estimates obtained using WPBL gives better results than the other two wind options, which suggests that it represents the spreading of CO₂ plumes in the vertical direction more accurately (Fig. 2, Fig. S3, Fig. S4). The results using MERRA2 were worse (Fig. S4) due to its low resolution, which cannot provide precise wind information for emission sources. These 50 cases contain multiple observations of 22 isolated power plants. For some power plants, we have multiple observation days. For these cases we have averaged the results. As shown in Figure 2b, the correlation coefficient R of the averaged estimated emission and the reported emission are 0.63, 0.44, and 0.22, respectively, corresponding to WPBL, WERA and WMERRA (Figure 2b, Figure. S3b, Figure S4b). We also tested the weighted average considering the uncertainty of the estimates and reach the same conclusion that WPBL has the best performance. The improved correlation illustrates the large fraction of randomness in the emission retrieval uncertainty (Chevallier et al. 2022). For the sum of the estimates of the repetitive cases of each power plant, we obtained a better correlation of 0.93, 0.89, 0.73, respectively, corresponding to WPBL, WERA and WMERRA respectively (Figure 2c, Figure S3c, Figure S4c). Therefore, we decided to use WPBL for the estimation of power plant emissions. In this study, the background for the cross-sectional flux method is determined by fitting of Eq. (3), while the background for the Gaussian plume model method (GPM) is determined by the 90th percentile. The difference in background obtained by these two methods is very small (Fig. S11a), with a maximum difference of 0.86 ppm and a minimum of 0.004 ppm (Fig. S11b). Under the two background calculation methods, the GPM method has good consistency in the estimation results driven by three wind field (Fig. S11c-e). With the background computing by Eq. (3), the conclusion that estimated emissions have better accuracy using the WPBL is still valid (Fig. S12).

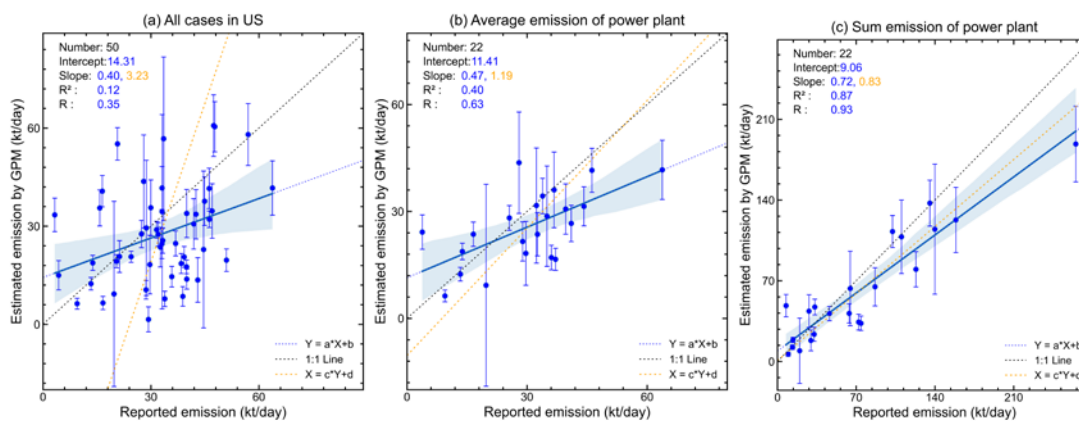
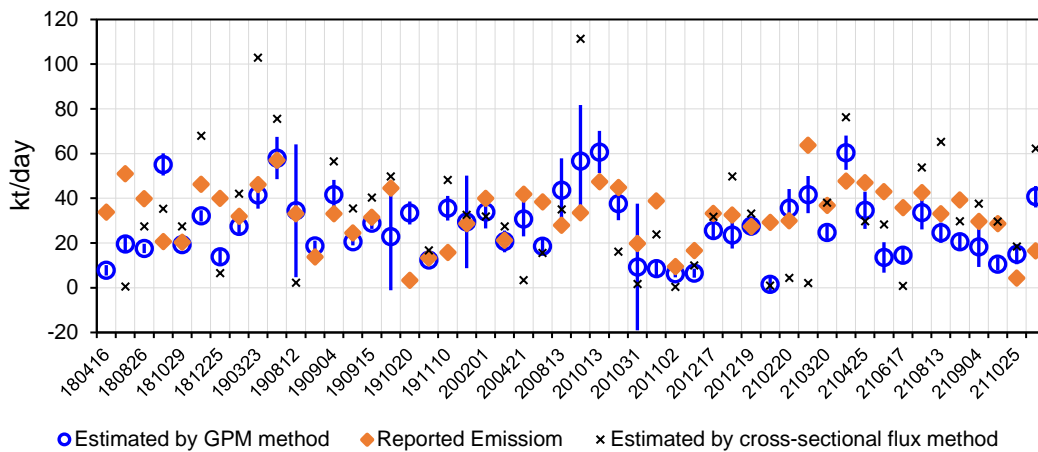


Figure 2. The emission estimation results by the GPM of all cases with WPBL are compared with the time-corrected hourly reported value from EPA (a), the average value of emission estimation results of each power plant is compared with the reported value (b), and the sum of emission estimation results of each power plant is compared with the reported value (c). The vertical error line is the total uncertainty of estimated emissions. The yellow and blue dashed lines are the fitted lines with the x-axis and y-axis swapped.

In Figure 3, we compare the GPM method and the cross-sectional flux method driven by WPBL. Among them were two cases without a result from the cross-sectional flux method because of invalid fitting. It shows that the estimates from the cross-sectional flux method fluctuate much more than the estimates from the GPM method. This is mainly because the orbits

295 of the OCO-2 and OCO3 satellites are not perpendicular to the plume, and the final step of the cross-sectional flux method uses the wind field component normal to the orbit multiplied by the line density to estimate the flux, while the GPM method derives the posteriori emission by a linear least squares fit between observed and simulated enhancements. Moreover, the OCO-2 and OCO-3 observations do not sample the entire emission plume, as shown in Figure 1f, but just the part of the plume cross section within the narrow width along the orbit. Hakkarainen *et al.* (2021) also found that the estimates from the cross-sectional flux method fluctuated greatly. Therefore, we decided to use the GPM method for the estimation of global power plant emissions. When compare plant level estimated emission with reported emission by the U.S. Energy Information Administration (EIA) from fuel consumption records (<https://www.eia.gov/electricity/data/emissions/>), Figure S6 shows that the correlation between estimated emission and reported annual emission from EIA ($R = 0.39$) is lower than that from EPA, although the reported annual emissions from EPA and EIA reveal a good correlation ($R = 0.80$). Figure 4 shows that, due to strongly hourly variations in the power plant emission, the satellite overpass time is not always representative for the annual emission of a power plant. Note that EIA reports the yearly-mean emission based on the annual fuel consumption of the power plant which will differ from the emission at the satellite overpass time.



310 **Figure 3.** Emission values of U.S. power plants estimated with the GPM (blue circles) and cross-sectional flux (black crosses) methods compared to the time-corrected reported values (orange diamonds). The x-axis is labelled with YYMMDD.

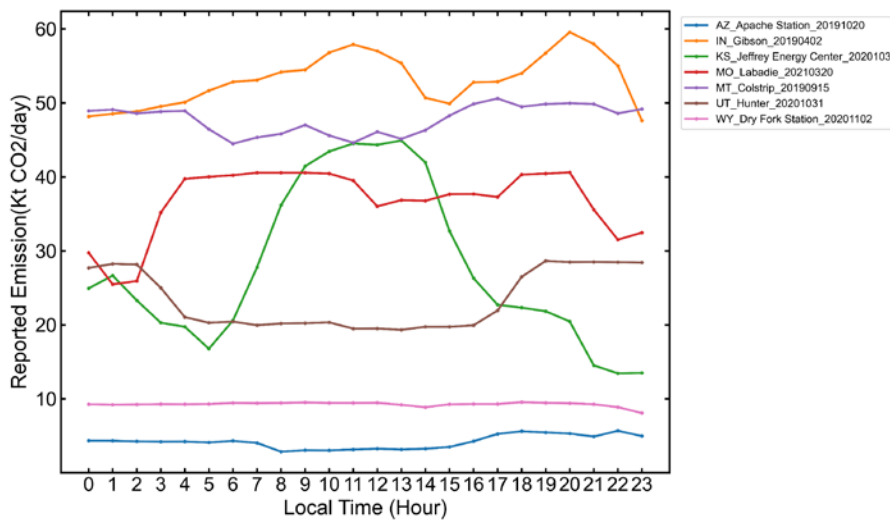


Figure 4. Hourly emission variation of 7 randomly selected power plants and dates from hourly US EPA data. The name of each curve consists of the name of the state, the name of the power plant and the YYYYMMDD day.

Table 1 lists the average estimated emissions for 22 power plants and the estimated uncertainty caused by the background, XCO₂ and wind field. The deviation of the estimated emissions and reported emissions varies between 0.47 and 22.11 kt/day, and the total uncertainty varies between 1.65 and 28.32 kt/day. The total uncertainty is comparable to the uncertainty of power plant emissions in previous studies, which ranged from 3.42 to 19.2 (Nassar et al., 2017; 2022). The uncertainty of wind speed is between 0.08 and 1.4 m s⁻¹, and the uncertainty of background varies between 0.03 and 0.1 ppm (Table S1). Among the three uncertainty components, the uncertainty caused by the wind field is the highest. From 2018 to 2021, for the XCO₂ archived data, there are 6 cases found for the Jeffrey Energy Center power plant (KS) and 4 cases for the Prairie State Generating Station power plant (IL), Colstrip (MT), Cumberland power plant (TN) and Oak Grove (TX). For a few power plants, we found that the time variability of estimated and time-corrected hourly EPA reported emissions from multiple observation cases of power plant display a good consistency (Figure S5), such as Gibson (IN) and Labadie power plants (MO). Excluding the two power plants whose uncertainties are greater than the estimated emissions, the uncertainties of the other cases are within 8 % to 51 % of the reported emissions.

Table 1. The average estimated emissions, reported emissions, uncertainty components, and number of observations from US power plants.

Name	Reported emission (kt/d)	Estimated emission (kt/d)	Uncertainty of background (kt/d)	Uncertainty of XCO ₂ (kt/d)	Uncertainty of wind (kt/d)	Total uncertainty (kt/d)	Number of observations
James H Miller Jr (AL)	63.8	41.7	1.7	1.0	8.1	8.3	1
Apache Station (AZ)	3.8	24.2	2.4	2.4	3.4	4.8	2
Arlington, Mesquite, Redhawk Facility (AZ)	13.3	12.4	0.8	0.3	1.7	1.9	1
Prairie State Generating Station (IL)	25.6	28.2	1.8	0.2	2.9	3.5	4
Gibson (IN)	36.7	36.0	1.6	1.2	10.3	10.6	3
Jeffrey Energy Center (KS)	44.2	31.4	1.5	0.4	5.1	5.5	6
Iatan (MO)	28.9	21.6	3.2	1.5	2.9	5.5	3
Labadie (MO)	41.0	26.7	1.9	0.8	4.5	5.1	3
Colstrip (MT)	35.0	28.7	1.2	0.5	13.9	14.1	4
Gerald Gentleman Station (NE)	29.7	18.3	1.3	0.4	8.9	9.0	1
Four Corners Steam Elec Station (NM)	16.6	23.6	2.3	0.5	2.5	3.4	2
Cardinal (OH)	37.1	16.6	0.9	0.6	2.9	3.1	2
Conemaugh, Seward (PA)	46.2	41.5	2.9	1.5	5.2	6.2	1
Cumberland (TN)	33.9	34.3	2.2	0.4	4.4	5.0	4
Harrington, Nichols station (TX)	28.0	43.7	2.2	0.6	14.0	14.2	1
Oak Grove (TX)	39.6	30.7	2.2	1.2	6.5	7.1	4
Parish, Carbon-Capture, Brazos Energy (TX)	36.1	17.1	1.1	0.8	3.1	3.4	2
Sam Seymour (TX)	32.6	23.6	1.3	0.0	5.9	6.1	1
Hunter (UT)	19.7	9.3	0.5	0.3	28.3	28.3	1
Intermountain (UT)	13.8	18.8	1.1	0.7	1.9	2.3	1
Dry Fork Station (WY)	9.5	6.3	0.6	0.1	1.5	1.6	1

4.2. Detection and estimation of global power plant emission signals

Figure 5 shows the number of cases retained for each processing step of automatic detection of global power plant emission signals using the GPPD. We obtained 1387 days of XCO₂ observation data from OCO-2 from January 2018 to December 2021 and 766 days of XCO₂ observation data from OCO-3 from August 2019 to November 2021. For 8660 power plants in the world, all tracks from OCO-2 and OCO-3 were scanned near the power plants. The number of cases with more than 10 observations (step 2 in Sect. 3.3) near the gaussian peak is 39365 and 42932 for OCO-2 and OCO-3. 40.71% of the XCO₂ cases are located in the downwind direction of the power plant. Among them, 24.94% of cases contain at least 5 observations that are significantly enhanced relative to the background. Among those 518 and 804 plume observations with at least 5 observation points from OCO-2 and OCO-3 have net enhancement exceeding 1.5 ppm. Finally, through visual selection (step 6 in section 3.3), 83 and 23 cases from OCO-2 and OCO-3 were considered as plumes from isolated power plants, respectively.

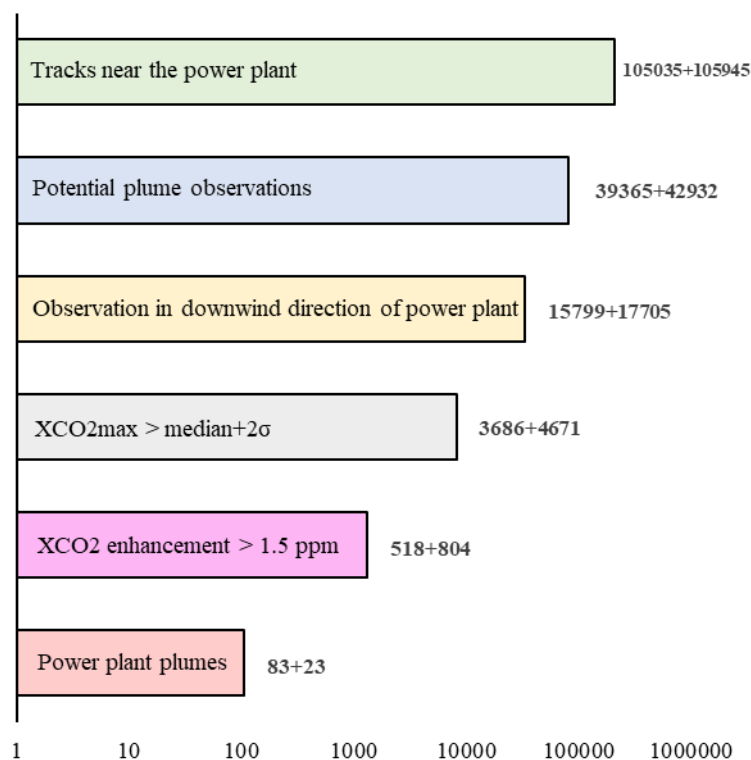
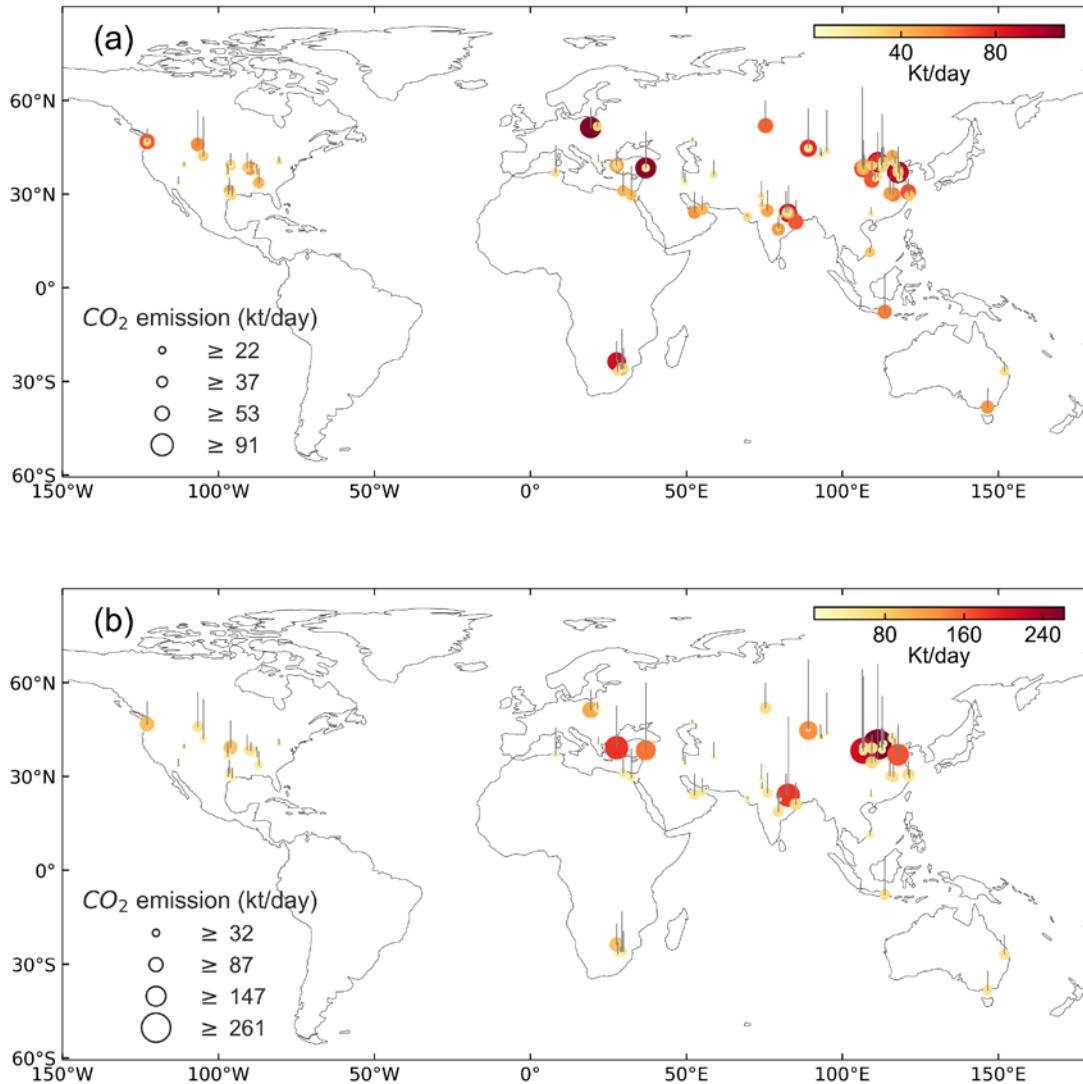


Figure 5. Statistics of the number of OCO-2/3 XCO₂ observations respectively in each processing step. The red line represents the proportion of the selected observations in the previous step.

Figure 6 shows the estimated CO₂ emissions of 106 global power plant cases calculated by the GPM method using WPBL. The estimated emissions of these power plants range from 3.2 to 109.0 kt/day. The percentiles of the estimated emissions of 25th, 50th and 75th are 19.9, 32.1 and 52.6 kt/day respectively. The uncertainties range from 1.2 to 62.6 kt/day, and the 25th, 50th

345 and 75th percentile of uncertainty in estimated emissions are 18%, 29%, 50% (Table S2). Figure 6a shows the location of these power plants and their emissions indicated by circle size and color. Figure 6b shows the sum of estimated emissions for all found observations at each power plant. The gray vertical lines are an indication of the uncertainty of the estimated emissions. Furthermore, we calculated the correlation between the integral of the observed and simulated XCO₂ enhancement from equation (1) and (2) in the latitude direction. Figure S7 shows a correlation coefficient of 0.56 for observed and simulated
350 enhancements of global power plant cases.



355 **Figure 6.** The detected global power plants with emission estimation results (a), and the sum of emission estimation results of all found observations at each power plant (b). The gray vertical lines are an indication of the uncertainty of the estimated emissions. The color and size of the circles indicate the estimated emission.

The detection algorithm reduces four-year global XCO₂ data to only 106 cases of 78 unique power plants. A large number of power plant emission cases have been discarded due to insignificant XCO₂ enhancements of less than 1.5 ppm, not enough valid observations in the plume and also by the visual check. We compare the estimated emissions with the carbon emission inventory EDGAR V6.0 for the power sector in order to understand the magnitude of the emission of detected cases. The
360 estimated emissions of detected power plants are counted by year and country (Figure 7). When assuming constant emissions

of power plants, the sum of estimated emissions of all power plants would be extrapolated to 1522 ± 501 Mt/year. According to EDGAR, this value accounts for about 17% of the power sector 2018 emissions of the countries in Figure 7b. The estimated emissions from the few observations in 2018, 2019, 2020 and 2021 account for only 2%, 5%, 6% and 4% respectively of all power sector emissions of countries showed in Figure 7a in 2018. The top three countries in terms of detected estimated emissions of power plants are China, United States and India. This illustrates the fact that OCO-2 and OCO-3 are only capable to see a fraction of the emitted CO₂ emissions due to the limited spatial coverage of the instrument and the often cloudy conditions during observation.

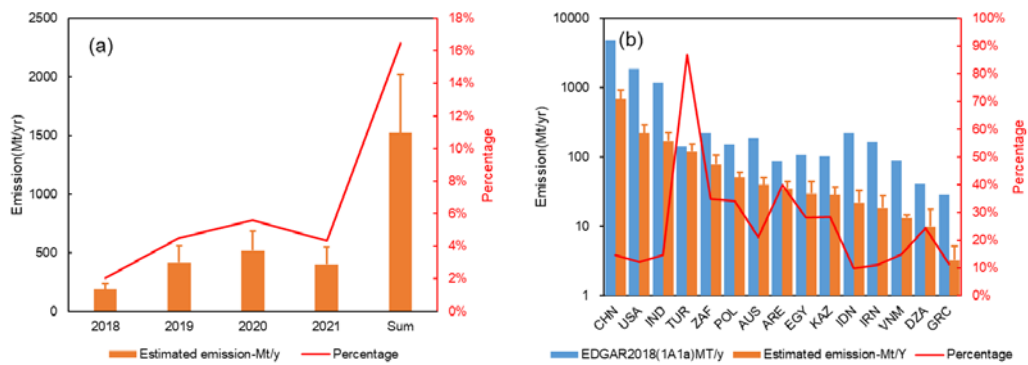


Figure 7. Estimated annual emissions of the detected global power plants, also shown as percentage of the total reported emissions of global power plants. (a) The red curve shows the proportion of annual estimated emissions to the total emissions of all countries with observations in 2018 (from EDGAR2018 V6.0 1A1a). (b) The red curve in the right figure shows the percentage of estimated emissions in comparison to the country total power plant emissions according to the inventory.

5. Summary and Conclusions

In this study, we compared two widely used methods for estimating point source emissions of power plants: the Gaussian plume model method and cross-sectional flux method. We applied the two methods to carefully selected power plant plumes in the United States observed by OCO-2 and OCO-3. The accuracy of the two methods is validated with time-corrected hourly reported emissions from EPA. We found that the cross-sectional flux method has a larger variability than the GPM method. This is because the emission rate from the cross-sectional flux method is equal to the cross-sectional flux area multiplied by the component of wind perpendicular to the orbit. The maximum error in the instability of this method comes from the component of wind perpendicular to the orbit. However, the GPM method directly simulates XCO₂ enhancements at any downwind position using the wind direction of the emission source, avoiding this issue and obtaining more stable results. We used the Gaussian plume model method to evaluate the impact of three kinds of wind field data sets (WPBL, WERA and WMERRA) on the accuracy of emission estimates of isolated power plants. The results show that, for a single case, the correlation between reported emission and estimated emission driven by WPBL is the highest. When there are multiple observations of the same power plant, the correlation between the average and total estimated emissions of the power plant and the reported emissions is significantly improved, from $R^2 = 0.40$ to 0.87. No matter what kind of wind field data is used, the Gaussian plume model has a high correlation R^2 of the total emissions from power plants from multiple observations,

which is above 0.5. In general, obtaining more observation data from more instruments can significantly reduce the uncertainty of estimated emissions of power plants.

390 Once having selected the best emission estimation method for isolated power plants, we applied this simple and fast method globally. We developed a procedure to automatically detect the emission signals of power plants, and, after a visual selection, obtained 106 global power plant emission observations of 78 power plants.

395 Unlike continuous imaging satellites, OCO-2 and OCO-3 scans cover a very limited part of the Earth's surface on a daily basis. By removing the cloud impact and only extracting the downwind emission plumes of power plants, the available observations are further reduced. The extremely limited number of cases from the existing satellites make it impossible to capture the time variability of power plants, whether diurnal or seasonal. In addition, only isolated emission hotspots are estimated here to avoid the impact of adjacent emission sources.

400 This study has only considered three sources of uncertainty. Future research may investigate additional sources, such as the assumption of steady state conditions and the plume rise, to better understand their impact on the results. With the future increase of observation sensors with improved spatial-temporal resolution, such as the planned European Carbon Dioxide Monitoring Mission (CO2M) and the Japanese Global Observing Satellite for Greenhouse gases and Water cycle (GOSAT-GW), the probability of observing a CO₂ plume will greatly increase. The abundant observation data obtained by the new generation of satellites will contribute to the monitoring of power plant emissions worldwide. The emissions of power plants in a background of other emission signals may also be monitored due to high-resolution observations and increased swath
405 width, and the uncertainty of the estimated emissions of power plants will further decrease.

Author contributions. Conceptualization and methodology: X.L., R.vd.A, J.D., F.C., Z.L., and P.C.; Data processing: X.L., H.E., Z.D., Y.G., X.S., X.N., D.H., and X.D.; Model simulation: X.L.; Formal analysis: X.L., R.vd.A, J.D.; Writing—original
410 draft: X.L.; Writing—review and editing: All authors; Visualization: X.L.; Supervision, project administration, funding acquisition: Z.L.

Competing interests. The authors declare that they have no competing interests.

Acknowledgements. This research received funding from National Natural Science Foundation of China (71874097, 41921005, 71904007 and 71904104). The support provided by China Scholarship Council (CSC) during a visit by Xiaojuan Lin to Royal
415 Netherlands Meteorological Institute (KNMI) is acknowledged.

References

- Agency, I. E. (2019). CO2 Emissions from Fuel Combustion 2019.
- 420 Beirle, S., Borger, C., Dörner, S., Eskes, H., Kumar, V., de Laat, A. and Wagner, T.: Catalog of NO_x emissions from point sources as derived from the divergence of the NO₂ flux for TROPOMI, Earth Syst. Sci. Data, 13, 2995-3012, <https://doi.org/10.5194/essd-13-2995-2021>, 2021.
- Bovensmann, H., Buchwitz, M., Burrows, J. P., Reuter, M., Krings, T., Gerilowski, K., Schneising, O., Heymann, J., Tretner, A. and Erzinger, J.: A remote sensing technique for global monitoring of power plant CO₂ emissions from space and related applications, Atmos. Meas. Tech., 3, 781-811, <https://doi.org/10.5194/amt-3-781-2010>, 2010.
- 425 Broquet, G., Breon, F.-M., Renault, E., Buchwitz, M., Reuter, M., Bovensmann, H., Chevallier, F., Wu, L. and Ciais, P.: The potential of satellite spectro-imagery for monitoring CO₂ emissions from large cities, Atmos. Meas. Tech., 11, 681-708, <https://doi.org/10.5194/amt-11-681-2018>, 2018.
- CEOS. (2022). "Pilot Top-down Carbon Dioxide and Methane Budgets." from <https://ceos.org/gst/ghg.html>.
- Chevallier, F., Broquet, G., Zheng, B., Ciais, P. and Eldering, A.: Large CO₂ Emitters as Seen From Satellite: Comparison to a Gridded Global Emission Inventory, Geophys. Res. Lett., 49, <https://doi.org/10.1029/2021gl097540>, 2022.
- 430 Chevallier, F., Zheng, B., Broquet, G., Ciais, P., Liu, Z., Davis, S. J., Deng, Z., Wang, Y., Breon, F. M. and O'Dell, C. W.: Local anomalies in the column-averaged dry air mole fractions of carbon dioxide across the globe during the first months of the coronavirus recession, Geophys Res Lett, e2020GL090244, <https://doi.org/10.1029/2020GL090244>, 2020.
- Crippa, M., Solazzo, E., Huang, G. L., Guizzardi, D., Koffi, E., Muntean, M., Schieberle, C., Friedrich, R. and Janssens-435 Maenhout, G.: High resolution temporal profiles in the Emissions Database for Global Atmospheric Research, Sci. Data, 7, <https://doi.org/10.1038/s41597-020-0462-2>, 2020.
- Crisp, D., Pollock, H. R., Rosenberg, R., Chapsky, L., Lee, R. A. M., Oyafuso, F. A., Frankenberg, C., O'Dell, C. W., Bruegge, C. J., Doran, G. B., Eldering, A., Fisher, B. M., Fu, D. J., Gunson, M. R., Mandrake, L., Osterman, G. B., Schwandner, F. M., Sun, K., Taylor, T. E., Wennberg, P. O. and Wunch, D.: The on-orbit performance of the Orbiting Carbon Observatory-2 (OCO-440 2) instrument and its radiometrically calibrated products, Atmos. Meas. Tech., 10, 59-81, <https://doi.org/10.5194/amt-10-59-2017>, 2017.
- Engelen, R. (2021). The Copernicus anthropogenic CO₂ emissions Monitoring and Verification Support capacity – a brief overview. <https://www.coco2-project.eu/sites/default/files/2021-11/REPORT%20Copernicus%20CO2MVS%20description.pdf>.
- 445 European, C., Joint Research, C., Monforti-Ferrario, F., Oreggioni, G., Schaaf, E., Guizzardi, D., Olivier, J., Solazzo, E., Lo Vullo, E., Crippa, M., Muntean, M. and Vignati, E. (2019). Fossil CO₂ and GHG emissions of all world countries : 2019 report, Publications Office.

- Gilfillan, D. and Marland, G.: CDIAC-FF: global and national CO₂ emissions from fossil fuel combustion and cement manufacture: 1751–2017, *Earth Syst. Sci. Data*, 13, 1667-1680, <https://doi.org/10.5194/essd-13-1667-2021>, 2021.
- 450 Hakkarainen, J., Ialongo, I., Maksyutov, S. and Crisp, D.: Analysis of Four Years of Global XCO₂ Anomalies as Seen by Orbiting Carbon Observatory-2, *Remote Sens.*, 11, 850, <https://doi.org/10.3390/rs11070850>, 2019.
- Hakkarainen, J., Szeląg, M. E., Ialongo, I., Retscher, C., Oda, T. and Crisp, D.: Analyzing nitrogen oxides to carbon dioxide emission ratios from space: A case study of Matimba Power Station in South Africa, *Atmos. Environ.: X*, 10, 100110, <https://doi.org/10.1016/j.aeaoa.2021.100110>, 2021.
- 455 Hill, T. and Nassar, R.: Pixel Size and Revisit Rate Requirements for Monitoring Power Plant CO₂ Emissions from Space, *Remote Sens.*, 11, 1608, <https://doi.org/10.3390/rs11131608>, 2019.
- IPCC (2021). Summary for Policymakers. *Climate Change 2021: The Physical Science Basis. Contribution of Working Group I to the Sixth Assessment Report of the Intergovernmental Panel on Climate Change*. V. Masson-Delmotte, P. Zhai, A. Pirani et al. Cambridge, United Kingdom and New York, NY, USA, Cambridge University Press: 3–32.
- 460 Janardanan, R., Maksyutov, S., Oda, T., Saito, M., Kaiser, J. W., Ganshin, A., Stohl, A., Matsunaga, T., Yoshida, Y. and Yokota, T.: Comparing GOSAT observations of localized CO₂ enhancements by large emitters with inventory-based estimates, *Geophys. Res. Lett.*, 43, 3486-3493, <https://doi.org/10.1002/2016gl067843>, 2016.
- Kiel, M., Eldering, A., Roten, D. D., Lin, J. C., Feng, S., Lei, R., Lauvaux, T., Oda, T., Roehl, C. M., Blavier, J.-F. and Iraci, L. T.: Urban-focused satellite CO₂ observations from the Orbiting Carbon Observatory-3: A first look at the Los Angeles megacity, *Remote Sens. Environ.*, 258, 112314, <https://doi.org/10.1016/j.rse.2021.112314>, 2021.
- 465 Kuhlmann, G., Broquet, G., Marshall, J., Clement, V., Loscher, A., Meijer, Y. and Brunner, D.: Detectability of CO₂ emission plumes of cities and power plants with the Copernicus Anthropogenic CO₂ Monitoring (CO₂M) mission, *Atmos. Meas. Tech.*, 12, 6695-6719, <https://doi.org/10.5194/amt-12-6695-2019>, 2019.
- Kuhlmann, G., Henne, S., Meijer, Y. and Brunner, D.: Quantifying CO₂ Emissions of Power Plants With CO₂ and NO₂ Imaging Satellites, *Frontiers in Remote Sensing*, 2, <https://doi.org/10.3389/frsen.2021.689838>, 2021.
- 470 Kunik, L., Mallia, D. V., Gurney, K. R., Mendoza, D. L., Oda, T. and Lin, J. C.: Bayesian inverse estimation of urban CO₂ emissions: Results from a synthetic data simulation over Salt Lake City, UT, *Elementa-Science of the Anthropocene*, 7, <https://doi.org/10.1525/elementa.375>, 2019.
- Lauvaux, T., Giron, C., Mazzolini, M., d'Aspremont, A., Duren, R., Cusworth, D., Shindell, D. and Ciais, P.: Global assessment of oil and gas methane ultra-emitters, *Science*, 375, 557-561, <https://doi.org/doi:10.1126/science.abj4351>, 2022.
- 475 NASA. (2022). "CMS-Relevant Missions." from <https://carbon.nasa.gov/missions.html#sub>.
- Nassar, R., Hill, T. G., McLinden, C. A., Wunch, D., Jones, D. B. A. and Crisp, D.: Quantifying CO₂ Emissions From Individual Power Plants From Space, *Geophys. Res. Lett.*, 44, 10045-10053, <https://doi.org/10.1002/2017gl074702>, 2017.

- 480 Nassar, R., Mastrogiacomo, J.-P., Bateman-Hemphill, W., McCracken, C., MacDonald, C. G., Hill, T., O'Dell, C. W., Kiel, M. and Crisp, D.: Advances in quantifying power plant CO₂ emissions with OCO-2, *Remote Sens. Environ.*, 264, 112579, <https://doi.org/10.1016/j.rse.2021.112579>, 2021.
- Nassar, R., Moeini, O., Mastrogiacomo, J.-P., O'Dell, C. W., Nelson, R. R., Kiel, M., Chatterjee, A., Eldering, A. and Crisp, D.: Tracking CO₂ emission reductions from space: A case study at Europe's largest fossil fuel power plant, *Frontiers in Remote Sensing*, 3, <https://doi.org/10.3389/frsen.2022.1028240>, 2022.
- 485 O'Brien, D. M., Polonsky, I. N., Utembe, S. R. and Rayner, P. J.: Potential of a geostationary geoCARB mission to estimate surface emissions of CO₂, CH₄ and CO in a polluted urban environment: case study Shanghai, *Atmos. Meas. Tech.*, 9, 4633-4654, <https://doi.org/10.5194/amt-9-4633-2016>, 2016.
- O'Dell, C. W., Eldering, A., Wennberg, P. O., Crisp, D., Gunson, M. R., Fisher, B., Frankenberg, C., Kiel, M., Lindqvist, H., Mandrake, L., Merrelli, A., Natraj, V., Nelson, R. R., Osterman, G. B., Payne, V. H., Taylor, T. E., Wunch, D., Drouin, B. J., 490 Oyafuso, F., Chang, A., McDuffie, J., Smyth, M., Baker, D. F., Basu, S., Chevallier, F., Crowell, S. M. R., Feng, L., Palmer, P. I., Dubey, M., García, O. E., Griffith, D. W. T., Hase, F., Iraci, L. T., Kivi, R., Morino, I., Notholt, J., Ohyama, H., Petri, C., Roehl, C. M., Sha, M. K., Strong, K., Sussmann, R., Te, Y., Uchino, O. and Velasco, V. A.: Improved retrievals of carbon dioxide from Orbiting Carbon Observatory-2 with the version 8 ACOS algorithm, *Atmos. Meas. Tech.*, 11, 6539-6576, <https://doi.org/10.5194/amt-11-6539-2018>, 2018.
- 495 Oda, T., Maksyutov, S. and Andres, R. J.: The Open-source Data Inventory for Anthropogenic CO₂, version 2016 (ODIAC2016): a global monthly fossil fuel CO₂ gridded emissions data product for tracer transport simulations and surface flux inversions, *Earth Syst. Sci. Data*, 10, 87-107, <https://doi.org/10.5194/essd-10-87-2018>, 2018.
- Olivier, J. G., Schure, K. and Peters, J.: Trends in global CO₂ and total greenhouse gas emissions, PBL Netherlands Environmental Assessment Agency, 5, 1-11, 2017.
- 500 Pasquill, F.: The Estimation of the Dispersion of Windborne Material, *Meteorol Magazine*, 90, 33-49, 1961.
- Reuter, M., Buchwitz, M., Schneising, O., Krautwurst, S., O'Dell, C., Richter, A., Bovensmann, H. and Burrows, J. P.: Towards monitoring localized CO₂ emissions from space: co-located regional CO₂ and NO₂ enhancements observed by the OCO-2 and S5P satellites, *Atmos. Chem. Phys.*, 19, 9371-9383, <https://doi.org/10.5194/acp-19-9371-2019>, 2019.
- Shekhar, A., Chen, J., Paetzold, J. C., Dietrich, F., Zhao, X., Bhattacharjee, S., Ruisinger, V. and Wofsy, S. C.: Anthropogenic 505 CO₂ emissions assessment of Nile Delta using XCO₂ and SIF data from OCO-2 satellite, *Environ. Res. Lett.*, 15, 095010, <https://doi.org/10.1088/1748-9326/ab9cfe>, 2020.
- UNFCCC, U. N. F. C. o. C. C.: Decision 18/CMA.1 Modalities, procedures and guidelines for the transparency framework for action and support referred to in Article 13 of the Paris Agreement, FCCC/PA/CMA/2018/Add.2, 2018.
- Varon, D. J., Jacob, D. J., McKeever, J., Jervis, D., Durak, B. O. A., Xia, Y. and Huang, Y.: Quantifying methane point sources 510 from fine-scale satellite observations of atmospheric methane plumes, *Atmos. Meas. Tech.*, 11, 5673-5686,

<https://doi.org/10.5194/amt-11-5673-2018>, 2018.

Velazco, V. A., Buchwitz, M., Bovensmann, H., Reuter, M., Schneising, O., Heymann, J., Krings, T., Gerilowski, K. and Burrows, J. P.: Towards space based verification of CO₂ emissions from strong localized sources: fossil fuel power plant emissions as seen by a CarbonSat constellation, *Atmos. Meas. Tech.*, 4, 2809-2822, <https://doi.org/10.5194/amt-4-2809-2011>, 2011.

Wang, Y., Broquet, G., Bréon, F.-M., Lespinas, F., Buchwitz, M., Reuter, M., Meijer, Y., Loescher, A., Janssens-Maenhout, G., Zheng, B. and Ciais, P.: PMIF v1.0: an inversion system to estimate the potential of satellite observations to monitor fossil fuel CO₂ emissions over the globe, *Geosci. Model Dev. Discuss.*, 1-27, <https://doi.org/10.5194/gmd-2019-326>, 2020.

Wu, D., Lin, J. C., Oda, T. and Kort, E. A.: Space-based quantification of per capita CO₂ emissions from cities, *Environ. Res. Lett.*, 15, 035004, <https://doi.org/10.1088/1748-9326/ab68eb>, 2020.

Ye, X., Lauvaux, T., Kort, E. A., Oda, T., Feng, S., Lin, J. C., Yang, E. G. and Wu, D.: Constraining Fossil Fuel CO₂ Emissions From Urban Area Using OCO - 2 Observations of Total Column CO₂, *J. Geophys. Res.-Atmos.*, 125, <https://doi.org/10.1029/2019jd030528>, 2020.

Yin, L., Byers, L., Valeri, L. M. and Friedrich, J. (2021). "Estimating Power Plant Generation in the Global Power Plant Database." from <https://datasets.wri.org/dataset/globalpowerplantdatabase>.

Zheng, B., Chevallier, F., Ciais, P., Broquet, G., Wang, Y., Lian, J. and Zhao, Y.: Observing carbon dioxide emissions over China's cities and industrial areas with the Orbiting Carbon Observatory-2, *Atmos. Chem. Phys.*, 20, 8501-8510, <https://doi.org/10.5194/acp-20-8501-2020>, 2020.

Zheng, B., Geng, G. N., Ciais, P., Davis, S. J., Martin, R. V., Meng, J., Wu, N. N., Chevallier, F., Broquet, G., Boersma, F., van der Ronald, A., Lin, J. T., Guan, D. B., Lei, Y., He, K. B. and Zhang, Q.: Satellite-based estimates of decline and rebound in China's CO₂ emissions during COVID-19 pandemic, *Sci. Adv.*, 6, <https://doi.org/10.1126/sciadv.abd4998>, 2020.

Zheng, B., Tong, D., Li, M., Liu, F., Hong, C., Geng, G., Li, H., Li, X., Peng, L., Qi, J., Yan, L., Zhang, Y., Zhao, H., Zheng, Y., He, K. and Zhang, Q.: Trends in China's anthropogenic emissions since 2010 as the consequence of clean air actions, *Atmos. Chem. Phys.*, 18, 14095-14111, <https://doi.org/10.5194/acp-18-14095-2018>, 2018.

Zheng, T., Nassar, R. and Baxter, M.: Estimating power plant CO₂ emission using OCO-2 XCO₂ and high resolution WRF-Chem simulations, *Environmental Research Letters*, 14, <https://doi.org/10.1088/1748-9326/ab25ae>, 2019.