

RC2

Review of “The KNMI Large Ensemble Time Slice (KNMI-LENTIS)” by Muntjewerf et al.

General comment:

The manuscript presents the KNMI Large Ensemble Time Slice, which consists of a present-day 2000-2009 and a future +2K 2075-2084 time slice with 160 ensemble members each generated by micro and macro perturbation. The manuscript is well structured and clear, with high scientific rigour, and represents an important contribution not only to the large ensemble community. I much appreciate that the authors test the assumptions they do and that limitations are discussed explicitly. The manuscript further demonstrates the added value of KNMI-LENTIS for extreme and compound event research and for climate-impact modelling. I find these application examples appealing and congratulate the authors on this manuscript. However, I do have a few comments that need to be addressed before I can recommend publication. These comments only require revision of the text.

Recommendation: Minor revisions

We thank the reviewer for their kind words and critical review. Below, we respond to their remarks in blue.

Specific comments:

I. 3: What is a re-turned version? I assume this should be “re-tuned”. Same typo in I. 376.
Changed

I. 13: The authors should add here that the tuning is done to reduce the Eurasian warming bias, and the focus region tuned for is Europe/Eurasia. This aspect should be mentioned in the Abstract and generally highlighted more in the text because it limits the usability for studying climate extremes for the large part of the globe that shows substantial model bias even on low and mid-latitude land regions (see Figure 2a).

We thank the reviewer for this point. The retuning was targeting the Northern Hemisphere, not specifically Europe, but we can see how that idea can come about. We have been very Europe-centric in the analysis and the examples in the demonstration. In the manuscript we add bias quantification of N-America and S&SE Asia regions in figure 2, table 1 and table 2. For these regions, like for Europe, the GMST bias w.r.t. ERA is quite good (<0.5K)

II. 54-60 and II. 376-381: The second lines mentioned here are a good attempt to compare the time slice approach with the large ensemble approach of transient simulations. However, the introduction misses a more elaborated comparison between the advantages and disadvantages of the two approaches. For instance, the advantage mentioned here: “This renders our data set specifically suitable to study climate variability and changes

therein between the present-day climate and a warmer future climate.” is even more true for a transient ensemble. I suggest to use the paragraph in II. 54-60 to provide more details on 1) disadvantages of the time slice approach compared to the transient approach, 2) why the authors decided to use the time slice approach (I assume computational or data storage restrictions but this is not mentioned explicitly), 3) whether there are other time slice large ensembles than from KNMI, and 4) that the approach of time slices is extensively used in paleo-climate modelling. Please revise and expand the introduction for a more complete background on the time slice approach.

1+2. Adding to paragraph in II. 54-60:

The advantage of the time slice approach is that it has much larger sample of climate variability: with 160 members of each climate, only the Max Planck Institute Grand Ensemble (MPI-GE) comes close in magnitude with its 100 members. The disadvantage of the time slice approach is that we are limited to comparing two more or less static different climates, while the transient approach allows to assess a large temporal range of climate change.

We have elaborated more on irreducible uncertainty, forced climate change and climate variability in the introduction, in section 3.5, and in the conclusion.

We disagree with the statement of the reviewer: “This renders our data set specifically suitable to study climate variability and changes therein between the present-day climate and a warmer future climate.” is even more true for a transient ensemble. Their underlying assumption is incorrect: we did not develop this design for reasons of computational or data storage limitations. KNMI-LENTIS encompasses a large amount of data (more than 120 TB). In comparing the time slice ensemble to a transient ensemble in their use to study climate variability and changes therein, we need to consider only consecutive years with equally small trend and climate change signal. If we consider the entire transient run and look at how the variability changes, we have a mixed signal: the forced change in mean climate, the forced change in internal variability and the state of climate at that moment. With the time slice ensemble the forced change in mean climate can more easily be removed, and to separate the latter two it has many more members (160) than any transient large ensemble and therefore is more suitable for these types of studies.

3. We have added 1 reference to a time slice ensemble we know, that was done with HadGCM2 in a project together with the predecessor of KNMI-LENTIS.

4. With regards to paleo modelling: as far as we understand time slices in this field are used as means to compare different glacial or interglacial periods. Paleo large ensembles are generated usually with climate models of intermediate complexity, and by perturbing model parameters rather than initial conditions. While we do see similarities with the time slice use in the paleoclimate community and appreciate the suggestion to include this topic, we see also a lot of differences and we choose not to include these remarks in the manuscript to avoid confusion.

I. 67 and I. 85: I recommend not to use the term data set ifor model simulations because data sets rather refer to observational data. I suggest to change “transient ensemble data

sets” to “transient ensemble simulations” and “data set” to “ensemble” here and in other places.

Changed

II. 83-84: It is not clear to me why the decade 2000-2009 is used for the “present-day” time slice, 2010-2019 would have better allowed for comparisons of present-day vs 2075-2084. I understand the two reasons the authors mention (historical CMIP6 forcing ending in 2014, initial condition files only every 10 years), but then the term “present-day” is misleading. I suggest to call it “past decade” or similar instead.

We appreciate the reviewer pointing out this subject and we can understand where they’re coming from in suggesting to change the name of the period. However, we do not agree the term ‘present-day’ is misleading. 2000-2009 lies in the middle of the latest WMO-defined climate normal 1991-2020, and therefore this decade can reasonably be considered present-day. We add this argument in the manuscript.

Also, we have recalculated the biases for the period 1991-2020 (instead of 1990-2019), for consistency.

II. 144-146: The manuscript misses to mention how KNMI-LENTIS can be compared to the SMHI Large Ensemble (SMHI-LENS) with EC-Earth3.3.1 by Wyser et al., 2021. I think I understood that KNMI-LENTIS is not directly comparable to that model version used for the 50-member ensemble because of the performed re-tuning but can be directly compared to the CMIP6 16-member ensemble. The authors mention that “The ECE3p5 version is a re-tuned version of the EC-Earth 3.3. release for CMIP6 (Döscher et al., 2021)”. However, the authors do not mention how exactly the re-tuning affects/prevents the comparison to SMHI-LENS, whether there are other differences than the re-tuning, e.g. from a different model version? I like to encourage the authors to elaborate on the comparability of the presented time slices with the 50-member SMHI-LENS.

The difference between SMHI-LENS and KNMI-LENTIS is that these ensembles have a different equilibrium climate: that affects the climate in the pre-industrial, historical and SSP simulations.

We include in the text calculations of ECS and TCS of EC-Earth3_p1 (from SMHI) and EC-Earth3_p5 (KNMI). The transient climate response (TCR) is 2.1 voor ECE p5 (2.3 voor ECE p1 en 2.0 voor CMIP6 multimodel mean. The model's effective climate sensitivity (ECS) is 4.0 voor ECE p5 (4.3 voor ECE p1 en 3.7 voor CMIP6 multimodel mean.)

The model version of SMHI-LENS is the CMIP6 release version of EC-Earth3: it is tuned to have the smallest possible GMST bias with respect to reanalyses and observational records (a.o.). Our version on the other hand is tuned to have the smallest possible Northern Hemisphere-MST bias.

Other than that, there are very few differences between the models: the model version used for KNMI-LENTIS (e.g., the atmosphere & ocean dynamical core, the land- and sea-ice models) is the same as EC-Earth3.3.1 that is used for SMHI-LENS.

For the overlapping years and scenario forcing, KNMI-LENTIS can be compared to SMHI-LENS like any other LENSEs with common model ancestry.

We add text to the manuscript to describe this point.

II. 159-161: I am confused here. I don't understand why the period 1985-2014 is taken to calculate the present-day mean state, not the first time slice 2000-2009 as done otherwise? Please clarify.

Answering together with the comment below.

I. 169: The authors term the period 2075-2084 as +2K in the SSP2-4.5 scenario but state here that +2K are reached in year 2073. While keeping the term +2K, please specify the exact average warming of the 10 year period compared to present-day. I am further confused by the value of annual GMST increase of 1.95K in Table 1 and in I. 208. According to the text, I understand the exact value should be above +2K. Please revise this section on the apparent difference between 1985-2014 and 2000-2009 for defining +2K.

We can understand the reviewers' confusion here. The chosen periods and the 2K SSP-forcing are the outcome of a set of choices that evolved over the process of designing the LE. We have revised the text to reflect this decision-making process better.

For the estimate of the PD climate, we took a 30-year climatology as is a common length of time to define a climate state. We chose the year 1985-2014 from the 16 ECE3_bis historical members. This period is exclusively forced by historical forcing, so we avoid blending in a SSP scenario after 2014 and nudging our analysis in a particular direction. In the analysis there were 2 things that had to align:

- 1) which SSP scenario to use while keeping the decadal climate change signal similar to the PD signal, and**
- 2) in which year to start.**

Our main criterion to make a decision was the decadal climate change trend. Further limitations are technical: the availability of initial conditions, and the need to have one forcing scenario per time slice.

Based on this, we found the best option was to use SSP2-4.5 scenario. It reaches 2K on average year 2073 (with a std.dev of 9.5 years) in the 16 ECE3_bis members.

Because the spread in timing is so large (because the forced signal is relatively small), this allowed us some flexibility to find two periods within our technical constraints.

So, we've made a best estimate of what time periods, given these technical constraints, would yield a +2K difference: shifting both PD and 2K forward a few years in a way that matched our available input files.

In table 1 we assess what deltaGMST we actually ended up with in LENTIS, after running all the simulations. It turns out that it's close to our target of 2K, namely 1.95. We are very happy with that.

Figure 7 panel b is only described at the end of the caption and it is not clear to me why the orography and bathymetry matters in the context of that application. I would suggest to remove it from Figure 7.

Yes, that is correct. We have removed figures 7a+b.

Technical corrections:

I. 4: ten years each

Changed

I. 8: specify sub-annual timescales

Changed to sub-daily

I. 47: 2x the

Changed

I. 70: simulation years

Changed

I. 153: 2x annual

Changed

I. 343: This is not a proper sentence.

Changed

The KNMI Large Ensemble Time Slice (KNMI-LENTIS)

Laura Muntjewerf¹, Richard Bintanja^{1,2}, Thomas Reerink¹, and Karin van der Wiel¹

¹Royal Netherlands Meteorological Institute (KNMI), De Bilt, The Netherlands

²University of Groningen, Energy and Sustainability Research Institute Groningen (ESRIG), Groningen, The Netherlands

Correspondence: L. Muntjewerf (laura.muntjewerf@knmi.nl)

Abstract. Large-ensemble modelling has become an increasingly popular approach to study the mean climate and the climate system's internal variability in response to external forcing. Here we present the KNMI Large ENsemble TIme Slice (KNMI-LENTIS): a new large ensemble **data-set** produced with the **re-turned-re-tuned** version of the global climate model EC-Earth3. The ensemble consists of two distinct time slices of 10 **year-years** each: a present-day time slice and a +2K warmer future time slice relative to present-day. The initial conditions for the ensemble members are generated with a combination of micro and macro perturbations. The 10-year length of a single time slice is assumed to be too short to show a significant forced climate change signal, and the ensemble size of 1600 years (160×10 years) is assumed to be sufficient to sample the full distribution of climate variability. The **time-slice-time slice** approach makes it possible to study extreme events on **sub-annual sub-daily** timescales as well as events that span multiple years such as multi-year droughts and preconditioned compound events. KNMI-LENTIS is therefore uniquely suited to study internal variability and extreme events both at a given climate state and those resulting from forced changes due to external radiative forcing. A unique feature of this ensemble is the high temporal output frequency of the surface water balance and surface energy balance variables, which are stored in 3-hourly intervals, allowing for detailed studies into extreme events. The **data-set-large ensemble** is particularly geared towards research in the land-atmosphere domain. EC-Earth3 has a considerable warm bias in the Southern Ocean and over Antarctica. Hence, users of KNMI-LENTIS are advised to make in-depth comparisons with observational or reanalysis data especially if their studies focus on ocean processes, on locations in the Southern Hemisphere or on teleconnections involving both hemispheres. In this paper, we will give some examples to demonstrate the added value of KNMI-LENTIS for extreme and compound event research and for climate-impact modelling.

Contents

20	1 Introduction	3
	2 Set-up	5
	2.1 Model description	5
	2.2 Time-slice <u>Time slice</u> choices: period and forcing scenario	7
	2.3 Initial conditions	8
25	3 Limitations	10
	3.1 Ensemble spread of temperature <u>Temperature</u> difference between present-day and +2K <u>the time slices</u>	10
	3.2 Quantification of model bias	11
	3.3 Forced climate signal within a time slice	11
	3.4 Range of sampled internal variability	13
30	3.5 Legacy of micro perturbations in simulated variability	14
	4 Demonstration	15
	4.1 Climatological context of observed extreme events	16
	4.2 Added value for extreme meteorological event research	17
	4.3 Added value for compound event research	19
35	4.4 Added value for climate-impact modelling	19
	5 Conclusions	21
	Appendix A: Ensemble label and CMIP6 variant label of KNMI-LENTIS simulations	30
	Appendix B: List of output fields	31

1 Introduction

40 Climate change is a topic of high societal interest due to its influence on weather (impacts) around the world. Further scientific understanding of the changing nature of the relationship between weather and society is required to design adequate local adaptation and mitigation strategies. Not only the climatic mean, but also the variability around the mean is subject to change. Recent studies have shown that long-term trends in climate variability can differ substantially from trends in mean climate (Brown et al., 2017; Pendergrass et al., 2017; Bintanja et al., 2020; van der Wiel and Bintanja, 2021), because physical processes
45 that govern changes in variability can differ from those that affect changes in the mean state. The effects on climate extremes can even be of the opposite sign (Schaeffer et al., 2005; van der Wiel and Bintanja, 2021), depending on [e.g. for example](#) the climate variable and the region. Climate models are important tools to examine the Earth system's response to greenhouse gas forcing and the ~~the~~ associated uncertainties. Model simulations extend and complement the comparatively short observational records. Further, simulations allow for experiments to test the impacts of specific climate feedback mechanisms, which would
50 not be possible in the real world.

Single-model initial-condition large ensemble (SMILE) climate model simulations are uniquely suited for the study of uncertainties in (changing) climate variability and of climate extremes (~~Deser et al., 2020a; Wood et al., 2021~~)([Deser et al., 2020a; Maher et al., 2019](#)). SMILEs consist of many repetitions of the same climate modelling experiment that only differ in their initial conditions. The different initial conditions lead to divergence due to the chaotic nature of the climate system, i.e. unpredictable internal
55 variability. This results in various model realisations within the internal variability of a certain average climate state. The use of SMILEs has become increasingly popular in climate science, and very recently also started to find its way into other related geosciences, (e.g. in hydrology, van der Wiel et al., 2019c; Champagne et al., 2020; Poschlod et al., 2020). Typically, large ensemble [data-sets-simulations](#) are set up following transient climate forcing scenarios, e.g. those designed for the Coupled Model Intercomparison Projects (CMIP). The choices for emission scenario, simulation length, horizontal and
60 vertical model resolution, and the number of ensemble members (e.g. Milinski et al., 2020) are often an optimisation between the available computational resources and the need or wish for more detailed simulations. Various climate modelling centres have produced large ensembles and have made efforts to make them openly available for research. Examples are the seven CMIP5-class transient ensembles collated in a centralized archive (MMLEA, Deser et al., 2020a), GCM ensemble experiments based on CMIP protocol (~~e.g. Kay et al., 2015; Maher et al., 2019; Rodgers et al., 2021; Wyser et al., 2021~~)
65 ([e.g. Kay et al., 2015; Kirchmeier-Young et al., 2017; Maher et al., 2019; Deser et al., 2020b; Rodgers et al., 2021; Wyser et al., 2021](#)) and ensembles of regional climate model runs (~~e.g. Lenderink et al., 2014; Massey et al., 2015; Ledue et al., 2019; ?~~)([e.g. Lenderink et al., 2014; Massey et al., 2015; Ledue et al., 2019; ?](#)).

In this manuscript we present and describe a recently produced large ensemble following a time slice protocol: the Royal Netherlands Meteorological Institute (KNMI) Large ENsemble Time Slice (KNMI-LENTIS). The time slice protocol is dif-
70 ferent from the transient ensemble [data-sets-simulations](#) mentioned above. We ran many simulations of a decade long for a climate state of interest rather than a number of multi-decadal or multi-centennial transient simulations. The KNMI-LENTIS

ensemble consists of two time slices: a present-day period and a future period 2 K warmer than present-day. Each time slice has 160 members of 10 ~~simulations~~ simulation years each. ~~The~~

We made the following assumptions in the design of the ensemble, which we test in Section 3: the 10 year segments are assumed to be too short to show a significant forced climate change signal. ~~Further, we assume that,~~ 1600 years of data is sufficient to sample the full distribution of climate variability. ~~Differences,~~ and differences between the two time slices can be attributed to forced climate change. With these assumptions, a single time slice can be used to investigate internal climate variability of a certain climate state, whereas the two time slices together can be applied to study differences in the mean state and the differences in variability between the two climate states.

~~The advantage of the time slice approach is that it has much larger sample of climate variability: with 160 members of each climate, only the Max Planck Institute Grand Ensemble (MPI-GE, Maher et al. (2019)) comes close in magnitude with its 100 members. The disadvantage of the time slice approach is that we are limited to comparing two more or less static different climates, while the transient approach allows to assess a large temporal range of climate change. Time slice large ensembles are not yet common in contemporary climate change modelling; we know of two earlier time slice ensembles: one with EC-Earth2 (van der Wiel et al., 2019c) and one with HadGEM2 (Blackport et al., 2019).~~

The KNMI-LENTIS design protocol is inspired by a previous time slice large ensemble produced at KNMI ~~with EC-Earth2 (van der Wiel et al., 2019c). The set-up is (van der Wiel et al., 2019c) though~~ improved based on earlier experience: longer simulation length (10 years vs. 5 yearyears), higher temporal resolution (sub-daily vs. daily output of surface hydrology and surface energy variables), improved method of micro-perturbations (perturbed initial conditions vs. stochastic perturbed physics tendencies) using the latest release of EC-Earth (CMIP6 generation vs. CMIP5) with higher resolution and improved physics in many aspects (Döscher et al., 2021). The previous large ensemble has been widely used, for example contributing to analyses of climate variability and forced trends therein (Blackport et al., 2019; van der Wiel and Bintanja, 2021; Sperna Weiland et al., 2021), analyses of changing climate extremes (Bonekamp et al., 2021; Nanditha et al., 2020), and climate attribution research (e.g. Philip et al., 2019, 2020; Kew et al., 2021). Derived ~~data sets~~ simulations, in which the ensemble was used to drive models from other geosciences disciplines, e.g. hydrological modelling (e.g. van der Wiel et al., 2019c; van Kempen et al., 2021), vegetation modelling (e.g. Tschumi et al., 2021, 2022), crop modelling (e.g. Vogel et al., 2021; Goulart et al., 2021; Zhang et al., 2022) or energy modelling (e.g. van der Wiel et al., 2019a, b), were used to assess the influence of (changing) climate variability on various natural and societal systems. Finally, the data set large ensemble was used to develop and test scientific methods (e.g. van Kempen et al., 2021; van der Wiel et al., 2021; Boulaguiem et al., 2022).

The way the ensemble is set-up and generated is described in Section 2. In Section ~~??~~ 3 we provide a description of the data and discuss the advantages and limitations of the underlying assumptions. In addition, we show examples of possible analyses using time slice large ensembles, including their value for compound event research as well as for climate-impact modelling (Section 4). Finally a short conclusion is provided (Section 5).

2 Set-up

105 KNMI-LENTIS consists of two ~~time-slices~~time slices with each 160 simulations of 10-year length. The ~~time-slices~~time slices represent the present-day climate (~~2000-2009~~2000-2009) and a +2 K warmer future climate (~~2075-2084~~2075-2084 in SSP2-4.5 in EC-Earth3) (Figure 1a). Each time slice thus consists of 1600 years of model data. In this section we describe the climate model, we elaborate on the choice of the periods and their forcing scenario, and we describe the initial conditions of the individual simulations and how they have been generated. All simulations have a unique ensemble member label that reflects
110 the forcing, the parent and the seed. Further, all simulations are labeled per the CMIP6 CMOR convention of variant labelling. In Appendix A, both the ensemble member label and the CMIP6 variant label of KNMI-LENTIS simulations are explained. The initial conditions (ICs) of the ensemble members can be characterized by two aspects: the parent simulation from which each member is branched off (macro perturbation), and the seed number which relates to a particular micro-perturbation in the initial three-dimensional atmosphere temperature field.

115 2.1 Model description

KNMI-LENTIS is generated with the model EC-Earth3. EC-Earth3 is a fully coupled, state-of-the-art global Global Climate Model that is maintained by a consortium of European weather and climate centers (Döscher et al., 2021). The model runs at a 80 km nominal resolution and has prognostic component models for atmosphere, ocean, sea ice, and land hydrology processes. The atmosphere is simulated with ECMWF's IFS cy36r4. The horizontal resolution is the TL255 spherical harmonics field,
120 which is linearly reduced in the post processing stage to a Gaussian grid equivalent of 512 x 256 grid cells in longitude/latitude. The vertical resolution is 91 levels with the top level at 0.01 hPa. The ocean model NEMO3.6 uses a tripolar grid ORCA1 which primarily has 1° horizontal resolution with meridional refinement down to 1/3° in the tropics. The grid dimensions are 362 x 292 longitude/latitude in the horizontal and 75 levels in the vertical with the top grid cell in the 0-1 m layer. The sea-ice model is LIM3, which shares the ORCA1 grid. The internal time step for both atmosphere and ocean is 45 minutes. The
125 coupling frequency between atmosphere and ocean is equal to the internal time step. Further details on the EC-Earth3 model are provided in Döscher et al. (2021).

The land surface model of EC-Earth is H-TESSSEL: Hydrology - Tiled ECMWF Scheme for Surface Exchanges over Land, with revised land surface Hydrology (van den Hurk et al., 2000; Balsamo et al., 2009; Dutra et al., 2010). H-TESSSEL computes the land surface water and energy balance at the interface of the soil and the atmospheric boundary layer. The model uses a
130 tiling approach to calculate the surface energy fluxes, the skin temperature and soil parameters. It divides each grid box into homogeneous fractions (tiles) representative of vegetated, bare soil, frozen water, and liquid water surfaces. The grid box fluxes and skin temperature values are generated as weighted averages of the tiles. Soil properties and parameterizations are not tile-specific but instead they apply to the entire grid cell, such that H-TESSSEL simulates soil moisture per grid cell.

The EC-Earth3 version that is used for the simulations of KNMI-LENTIS is the *knmi23-dutch-climate-scenarios* project
135 branch (physics index p5), from now on referred to as the 'ECE3p5 version'. The ECE3p5 version is a re-tuned version of the EC-Earth 3.3. release for CMIP6 (Döscher et al., 2021). EC-Earth 3.3 has a warm bias in the Southern Ocean and a cold bias

in the Northern Hemisphere. The KNMI re-tuning effort focused on reducing the Northern Hemisphere cold bias. This has been successful with the trade-off of increasing the Southern Ocean warm bias, therefore introducing a positive global mean surface temperature (GMST) bias (see also Section 3.2). As the main research aims of KNMI-LENTIS are oriented towards the Europe region, we have accepted this trade-off.

The re-tuning used a subset of the atmospheric cloud tuning parameters that were selected in earlier work of atmospheric tuning of EC-Earth3 (see section 2.2.1 in Döscher et al., 2021, for further details). Two tuning parameter values have been changed in the ECE3p5 version compared to the EC-Earth 3.3.3.2 release: RVICE (fall speed of ice particles) and RLCRIT-SNOW (critical autoconversion threshold for snow in large-scale precipitation). RVICE is set to 0.1328 in the re-tuning; (0.137 in EC-Earth 3.3.; 0.15 in IFS cy36r4) and RLCRITSNOW is 4.6×10^{-5} (4.0×10^{-5} in EC-Earth 3.3.; 5.0×10^{-5} in IFS cy36r4). The other tuning parameters remain the same as in Table 6 of Döscher et al. (2021).

Spinning up the model was done in parallel with the re-tuning process. The spin-up runs of the differently tuned models have been combined, because the slow ocean spin-up is believed to benefit from running more years with a set of parameter values that is very close. The initialization of the ECE3p5 version pre-industrial (PI) run was done with the restart files of year 2750 from the EC-Earth3 physics index p2 PI run. The ECE3p5 version PI ran from model year 2750 to 4585. The 16 historical simulations are branched with intervals in the initial conditions of 25 years, starting with member 1 in year model 4550, then going backwards with member 2 in 4525, member 3 in 4500, ... member 16 in 4175. This means for the member with shortest spin-up time with the ECE3p5 version, this is $4550 - 2750 = 1800$ years. Additional spin-up has taken place prior, albeit via runs with a slightly different tuning parameter sets p2 and p1 (Reerink et al., in prep). All added together, the trajectory of the ECE3p5 version spin-up covers about 6000 years.

With this version of EC-Earth, the KNMI has produced an ensemble of 16 transient simulations with CMIP6 forcing for 1850-2100 (historical, SSP1-2.6, SSP2-4.5, SSP3-7.0, SSP5-8.5). Details of these simulations and of the re-tuning procedure of ECE3p5 version are described in Reerink et al. (in prep).

The SMHI has generated a Large ENSemble (SMHI-LENS) with EC-Earth3 version 3.3.1 ('ECEp1 version' for short) (Wyser et al., 2021). This large ensemble is a transient ensemble of 50 members for the period 1970 to 2100 (historical, SSP1-2.6, SSP2-4.5, SSP3-7.0, SSP5-8.5). The model version of SMHI-LENS is the CMIP6 release version of EC-Earth3: it was tuned, among other things, to have the smallest possible GMST bias with respect to reanalyses and observational records. The ECE3p5 version on the other hand was tuned to have the smallest possible Northern Hemisphere-MST bias. Therefore, the difference between SMHI-LENS and KNMI-LENTIS/the KNMI transient simulations is that they have a different equilibrium climate: this affects the climate in the pre-industrial, historical and SSP simulations (Meehl et al., 2020). The transient climate response (TCR) is 2.1 for ECE3p5 (2.3 for ECEp1 en 2.0 for CMIP6 multimodel mean). The model's effective climate sensitivity (ECS) is 4.0 for ECE3p5 (4.3 for ECEp1 en 3.7 for CMIP6 multimodel mean). Other than that, there are very few differences between the models: the model version used for KNMI-LENTIS (the atmosphere & ocean dynamical core, the land- and sea-ice models) is the same as EC-Earth3.3.1 that is used for SMHI-LENS. For the overlapping years and scenario forcing, KNMI-LENTIS can be compared to SMHI-LENS like any two other large ensembles with common ancestry, see Knutti et al. (2013) for examples.

2.2 ~~Time-slice~~ Time slice choices: period and forcing scenario

The design of the ensemble required four choices. Two choices in the ensemble design ~~have been were~~ made a priori: the simulation length and the climatic states of interest. The length of each ~~time-slice~~ time slice was chosen at 10 years. Limiting
175 the simulations to 10 years avoids having any appreciable trend. This approach allows for studying extreme events on subannual timescales as well as events that span multiple years (e.g., multi-year droughts, preconditioned compound events as in Pascale et al. (2021); van der Wiel et al. (2022)). The climatic states of interest are the present-day (named ‘PD’), and a future world that is +2K warmer than present-day in the annual ~~annual~~ GMST (named ‘2K’).

The ~~present-day climate in KNMI-LENTIS is represented by the years 2000–2009 simulated using historical forcing. This~~
180 ~~choice was mainly governed by the availability of initial condition files (every 10 year) and the wish to use CMIP6 historical forcing (available for the years 1850–2014). In Figure 1a the PD time slice is marked by the left pink band.~~

~~The main factor in deciding the optimal scenario and years for the~~ other two choices were: 1) which years would represent
the PD and 2K climate is the periods, and 2) which SSP scenario would we used to force the 2K period. The criterion to
make this decision was based on the decadal climate change trend. ~~For the purpose of this ensemble~~ To be able to analyse
185 forced changes in climate variability between PD and 2K, it is important that the forced signal within a time slice is as small as possible. This way we can accept each individual year as a suitable representative of the respective climatic state. Given that
the decadal trend cannot be zero because there is a (observed) climate change signal in the present-day, we aim to choose a
+2K period that has a similar decadal climate change trend as PD. Choosing the years to represent the PD and 2K periods was
further limited by the availability of initial condition files: they are available every 10 years. In the historical period that is in
190 1990, 2000, 2010; and for the scenario-forced period that is 2015, 2025, 2035 etc. Finally, from a technical point, we decided
not to allow mixed forcing within a period (i.e., combining historical and SSP forcing). This prohibits the PD period to be
defined beyond 2014, as CMIP6 historical forcing covers the years 1850–2014.

We have taken the years ~~1985–2014~~ 1985–2014 from the 16 transient historical simulations with the ECE3p5 version
(described in Section 2.1) to calculate the present-day GMST. The mean present-day ~~This period is exclusively forced by~~
195 ~~historical forcing, meaning we avoid blending in a SSP scenario after 2014 and push our analysis in a particular direction. The~~
mean 1985–2014 GMST of the 16 members $\mu = 15.47^\circ\text{C}$, with an ensemble standard deviation of $\sigma = 0.15^\circ\text{C}$.

Next, we consider the future SSP1-2.6, SSP2-4.5, SSP3-7.0, SSP5-8.5 scenario simulations which each have 16 members.
We calculate in what year the annual mean GMST reaches ~~PD+2K~~ $15.47 + 2.00^\circ\text{C}$ in the scenario simulations, and ~~how much~~
~~GMST changes in the next 10 year~~ the 10-year GMST changes around this year. We find that the SSP1-2.6 scenario does not
200 reach ~~PD+2K~~ this target value before 2100. Between the SSP2-4.5, SSP3-7.0 and SSP5-8.5 ~~scenario’s~~ scenarios, the SSP2-4.5
scenario shows ~~the relatively~~ relatively the smallest forced signal in the 10-year period ~~after reaching PD~~ around the target
GMST value, therefore we chose to initialize the 2K. ~~There is variability among the ensemble members for the exact simulation~~
~~year when PD+2K is reached~~ time slice from the SSP2-4.5 scenario.

Because the forced signal is comparatively small, the SSP2-4.5 scenario shows a relatively larger spread in the timing of
205 reaching the warming target ($\sigma = 9.5$ year). ~~We consider the advantage of a small 10-year forced signal to outweigh this~~

~~downside, and therefore we choose to initialize the 2K time slice from the SSP2-4.5 scenario. The~~ The 16 member ensemble-mean simulated year when the forced signal leads to a mean state of PD+2K is year 2073 in the 15.47 + 2.00 is year 2073. Given the constraints on the availability of initial conditions and given of the large spread in timing when SSP2-4.5 scenario. ~~The~~ reached our desired GMST increase, our best estimate of years to represent the PD and 2K climate is represented in KNMI-LENTIS by the years 2075-2084 climates are the years 2000–2009 simulated using historical forcing and the years 2075–2084 of the SSP2-4.5 scenario, ~~again chosen according to the availability of restart files. In~~ Figure 1a ~~the~~ shows the timing of the two time slices in the 16 transient simulations: the PD time slice is marked by the left pink band and the 2K time slice is marked by the right pink band.

2.3 Initial conditions

215 There are several ways to generate multiple unique ensemble members. These include applying micro and macro perturbations to the initial-conditions (Deser et al., 2020a). A micro perturbation ~~means-refers to~~ adding a round-off level perturbation to an input field of the GCM, which generally is the three-dimensional atmosphere temperature field. The perturbation propagates due to the chaotic behaviour of the atmosphere model. As such this method produces a unique ensemble member for each unique micro perturbation. Macro perturbations refer to initial conditions that are more fundamentally different among each other. Usually such initial conditions are acquired by branching from a different point in the parent run (like-such as the initialization of the historical simulations described in Section 2.1). This way, the initial state is different not only in the atmosphere but in all model components. Another method to create different members is to make use of uncertainty in parameter space, for example using stochastic perturbed physics tendencies (SPPT, as used in the operational ECMWF forecast ensemble (Ollinaho et al., 2017; Lock et al., 2019) and in the previous KNMI time slice ensemble by van der Wiel et al. (2019c)).

225 For KNMI-LENTIS we use a combination of micro and macro perturbed initial conditions. We realise this may impact the ensemble variability of for example the first year; this is investigated in Section 3.5. The parents from which the simulations are branched can be considered as macro perturbed initial conditions, given that all parents are rooted in the same PI spin-up. The parents are sixteen full transient historical and SSP2-4.5 simulations made using the ECE3p5 version. The 16 historical simulations start in 1850, branched off the PI spin-up simulation. The 16 SSP2-4.5 simulations start in 2015, from the end of

230 their respective historical simulation in 2014 (Figure 1a).

Micro perturbations are applied to the initial three-dimensional temperature field of the atmosphere as in Haarsma et al. (2020). Each value in the input field is multiplied by a number from a random uniform distribution of values between -5×10^{-5} K and $+5 \times 10^{-5}$ K to yield the perturbed field. We have created nine different random distributions, using a seed from 1 to 9 to assure reproducibility. For one parent, that yields nine sets of micro-perturbed ICs. Including the original set this is ten

235 sets of ICs in total, for ten members (visualized in Figure 1b). Figure 1c visualizes the full ensemble set-up with all members: ten micro perturbations for sixteen historical and scenario macro perturbations, each simulation is run for ten years.

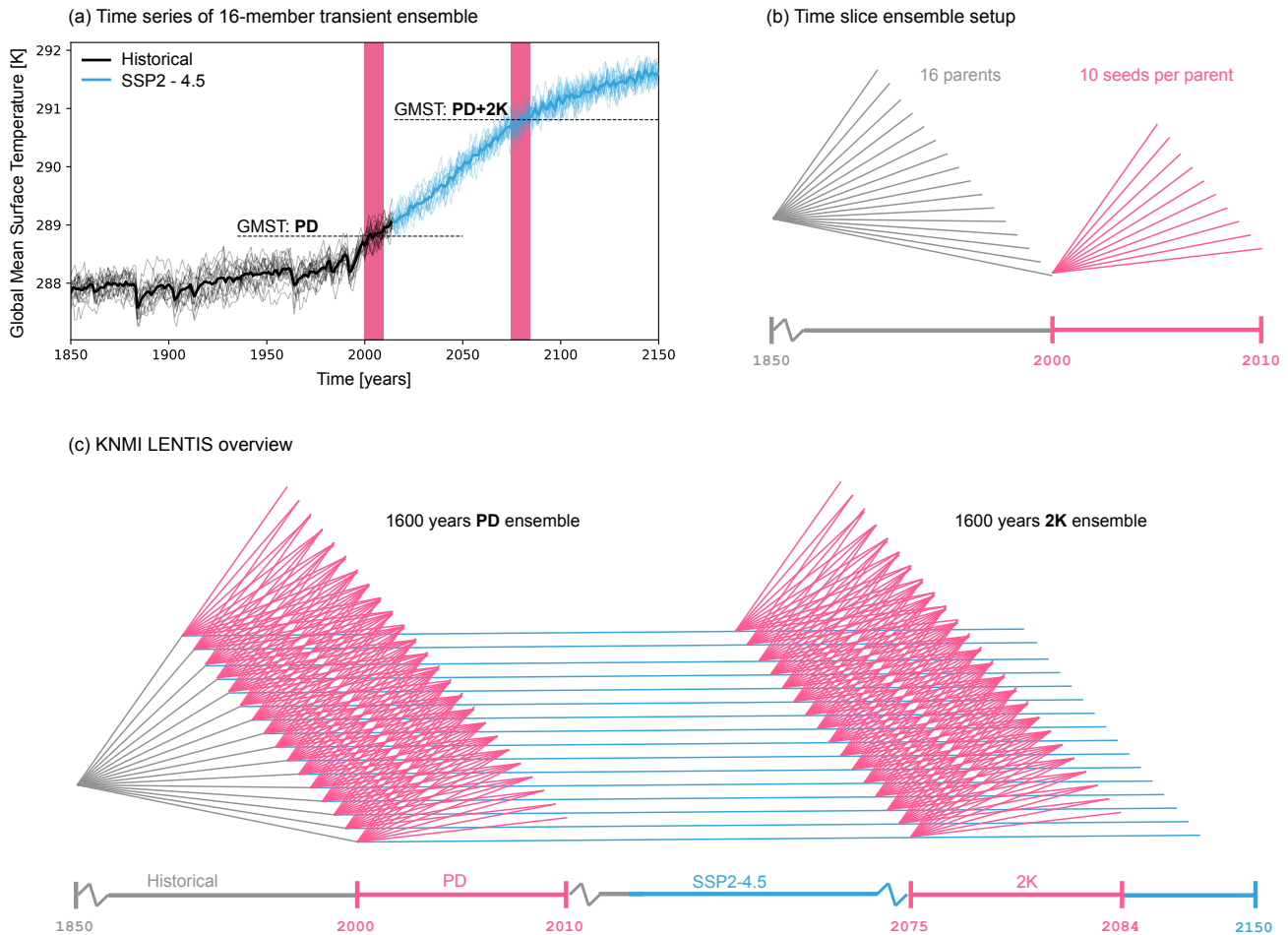


Figure 1. Overview of KNMI-LENTIS ensemble set-up. (a) Global Mean Surface Temperature (GMST) of the 16 ECE3p5 ensemble members forced with CMIP6 historical and SSP2-4.5 forcing. Pink shading shows the two time slices in KNMI-LENTIS. (b) Part of the time slice set-up. From each of the 16 parent runs (grey), 10 KNMI-LENTIS simulations (pink) are branched using unique seeds to make a micro-perturbation in the atmospheric initial conditions. (c) The full ensemble consists of two time slices of 10 years with 1600 years of data each: present-day (PD) and present-day +2K global warming (2K). The parents are visualized by the grey (historical) and blue (SSP2-4.5) lines. The KNMI-LENTIS simulations are visualized by the pink lines.

Table 1. Quantification of temperature difference and ensemble spread. Temperature difference between the time slices. Ensemble mean ~~and standard deviation in brackets~~ of the near-surface air temperature difference [K] between the 2K time slice and the PD time slice. ~~Top row: global mean~~The regions used to compute Europe, ~~middle row: Northern Hemisphere mean (180°W–180°E; 0–90°N),~~ ~~bottom row: Europe mean (10°W–40°E; 35–70°N).~~ America and S.&SE. Asia means are shown in figure 2.

	ANN	DJF	MAM	JJA	SON
Global	1.95 (1.35)	2.02 (1.51)	1.83 (1.39)	1.90 (1.23)	2.06 (1.26)
N.Hemisphere	2.52 (2.52)	2.67 (1.99)	2.29 (1.72)	2.42 (1.37)	2.72 (1.49)
Europe	2.55 (2.55)	2.40 (2.58)	2.29 (2.16)	2.81 (1.86)	2.69 (1.86)
<u>N. America</u>	<u>2.46</u>	<u>2.63</u>	<u>2.18</u>	<u>2.50</u>	<u>2.53</u>
<u>S. & SE. Asia</u>	<u>1.94</u>	<u>2.00</u>	<u>1.95</u>	<u>1.91</u>	<u>1.90</u>

3 Limitations

In this section, we evaluate and discuss several aspects of the ensemble that are important for users to consider. We quantify the ensemble temperature difference between the present-day time slice and the +2K time slice for different seasons and for several subsections of the world. We discuss the magnitude of the near-surface temperature biases in the model by making a comparison with ERA5 reanalysis data (Hersbach et al., 2020). Further, we discuss the validity of two critical assumptions:

1. Within a time slice, the 10 year segments are too short to show a significant forced climate change signal,
2. The ensemble size, 1600 years for both time slices, is sufficient to sample the full distribution of climate variability.

If true, this means that a single time slice can be used to investigate internal or natural climate variability at a given climatic state, and that any differences between the two time slices can be attributed to forced climate change. Finally, we comment on the micro and macro initialization method and the legacy effect of a common parent on variability.

3.1 ~~Ensemble spread of temperature~~ Temperature difference between present-day and +2K ~~the time slices~~

The 2K time slice is designed to be +2K warmer than the GMST of the present-day time slice, as detailed in Section 2.2. Here we quantify the ensemble spread of the ~~temperature differences~~ surface temperature difference (ΔT_{2m}) between the two time slices. The annual ~~GMST in the global mean ΔT_{2m} is close to the GMST+2K time slice is on average target: 1.95 K warmer than the PD time slice on average~~ (Table 1). ~~The standard deviation over ensemble members of the temperature difference $\sigma=1.35$, and this spread~~ The spread in GMST is shown in Figures 7a. ~~Further, the 3a and 3c. Given that global climate change has specific local and regional imprints, the temperature difference is season and region dependent. The 2K time slice shows enhanced warming in the Northern Hemisphere and Europe (+2.52 K and +2.55K, respectively) and wider ensemble spreads than the global mean values, Europa and North America. South and Southeast Asia is closer to the global value~~ (Table 1).

3.2 Quantification of model bias

The re-tuned EC-Earth3 ECE3p5 version has a known warm bias in the Southern Hemisphere (Section 2.1). In this section we quantify the magnitude of this bias and evaluate its spatial and temporal properties. The near-surface temperature of the present-day time slice of the ensemble is compared to ERA5 (Hersbach et al., 2020). We have chosen the ~~30-year reference period~~
260 ~~1990-2019~~ WMO defined Climatological Standard Normals reference period 1991-2020, to have sufficient present-day climate variability to compare with. The ERA5 data is re-gridded to the coarser EC-Earth grid using nearest neighbour interpolation.

The global annual mean surface temperature bias in the PD time slice of KNMI-LENTIS with respect to ERA5 is ~~1.32~~ 1.30 K (Table 2). This is largely due to a strong warm bias in the Southern Ocean and over Antarctica (Figure 2a). The temperature bias over land is generally smaller in magnitude and more often insignificant compared to the ocean bias. The near-surface
265 temperatures in the North Atlantic gyre and the North Pacific gyre are significantly underestimated. ~~In Europe we find a cold bias over Scandinavia, and a warm bias in the region north of the Black sea (Figure 2b).~~

The integrated annual mean temperature bias of ~~both~~ the Northern Hemisphere ~~and of Europe are~~ is 0.23 K, which is much smaller than the global bias (~~0.26 K and 0.38, respectively~~). ~~The warm bias is largest in the June-July-August and~~
270 ~~Table 2). Further, we see a stronger seasonal pronunciation of the bias in the September-October-November seasons (Northern Hemisphere, with a larger bias in the summer and fall, and a smaller bias in winter and spring. There are regional differences, with generally cold bias in mountainous regions with steep orography. In all cases in the Northern Hemisphere the bias is much smaller than the global bias. See Figures 2b-d and Table 2)for specifications for the regions of Europe, North America and South & South-East Asia.~~

This outcome is in line with the expectations of using the re-tuned ECE3p5 version, of which the global warm bias is
275 larger than that of the EC-Earth3 released version in Döscher et al. (2021), but much improved for the Northern ~~Hemisphere and Europe~~ Hemisphere. Future users of KNMI-LENTIS are advised to make in-depth comparisons with observational or reanalyses data especially if their study focuses on ocean processes, on locations in the Southern Hemisphere or on teleconnections involving both hemispheres.

3.3 Forced climate signal within a time slice

280 To quantify the relative size of the forced climate change signal to the interannual variability within the time slices (assumption 1) we investigate the linear trend of GMST (Figure 3a,c). Both time slices have an interannual ensemble standard deviation of 0.17 K for the annual mean GMST value on the 10 time slice years average. The linear trend over the 10 year simulation period is only slightly larger than this, at 0.20 K per 10 year for the PD ensemble and 0.22 K per 10 year in the 2K ensemble (black error bars in Figure 3a,c), approximately 1.25 times larger than the interannual ensemble standard deviation. At
285 the global scale, we therefore conclude this assumption holds. Locally, or for other variables, forced trends may exceed the respective trends.

In Figure 3b,d we show the ratio of the 10 yr linear trend of near-surface temperature (TAS) and the ensemble standard deviation at grid point level. Low values of this quantity are preferred. In most parts of the world, the value is smaller than one,

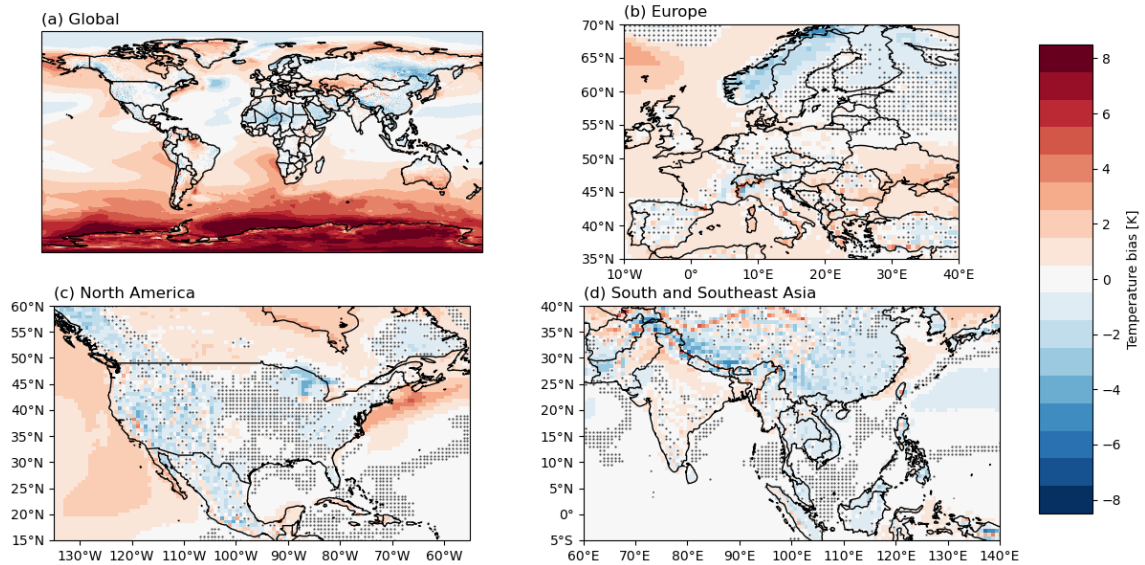


Figure 2. Model bias. Near-Surface Air Temperature bias [K] for the annual-average, ensemble-mean of the KNMI-LENTIS present-day time slice [160×(2000-2009)2000-2009] compared to ERA5 [+990-2019]1991-2020]. **Grid** For (a) Global, (b) Europe, (c) North-America, (d) South and Southeast Asia. In panels (b-d) grid cells with a non-significant difference are dotted ($p < 0.01$). For (a) Global and (b) Europe.

Table 2. Model bias: Quantification of model bias w.r.t. ERA5 1991-2020. Ensemble mean and standard deviation between brackets of the near-surface air temperature bias [K] of the KNMI-LENTIS present-day 2000-2009 time slice w.r.t. ERA5 +990-2019]1991-2020. Top row: global-mean The regions for Europe, middle row: Northern Hemisphere mean (180°W-180°E; 0-90°N), bottom row: Europe mean (10°W-40°E; 35-70°N). Standard deviation is calculated over the mean biases of all years America and all ensemble members, then averaged S. & SE. Asia are shown in figure 2.

	ANN	DJF	MAM	JJA	SON
Global	1.32 (0.97) <u>1.30</u>	1.24 (1.10) 1.22 (1.00)	1.45 (0.88) <u>1.20</u>	1.36 (0.93) <u>1.43</u>	<u>1.33</u>
N. Hemisphere	0.26 (0.26) <u>0.23</u>	0.22 (1.46) <u>0.18</u>	-0.26 (1.24) <u>-0.28</u>	0.44 (0.97) <u>0.41</u>	0.64 (1.12) <u>0.60</u>
Europe	<u>0.35</u>	-0.14	-0.06	<u>0.87</u>	<u>0.71</u>
<u>N. America</u>	0.38 (0.38)	-0.26	-0.25	<u>0.46</u>	<u>1.04</u>
<u>S. & SE. Asia</u>	-0.10 (1.99)	-0.06 (1.62) <u>-0.26</u>	0.91 (1.38) <u>-0.35</u>	0.76 (1.44) <u>0.15</u>	<u>0.06</u>

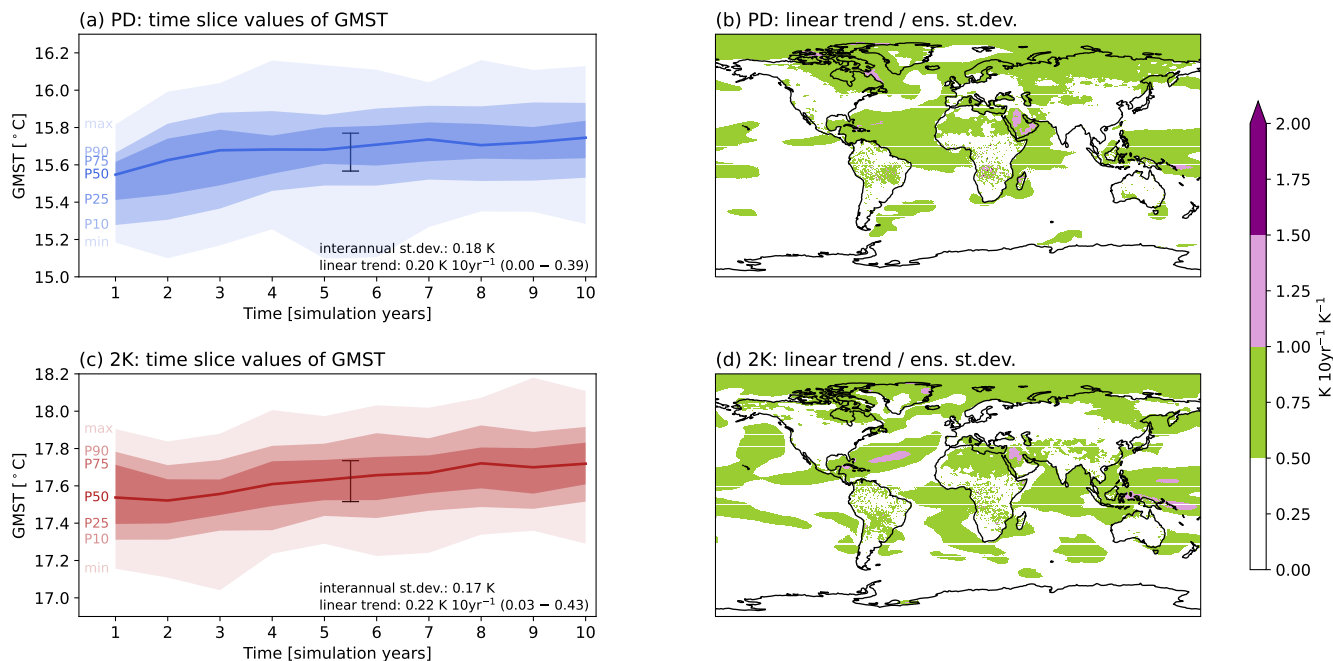


Figure 3. Quantification of assumption 1: size of forced trends within a time slice. (a,c) Ensemble spread of annual mean values of Global Mean Surface Temperature (GMST, shaded colours, percentile values denoted on the left). Ensemble interannual standard deviation and ensemble linear trend of GMST over 10 years shown in bottom right corner, including the 80% spread of this value for individual members. The black bar in the centre shows the relative size of this linear trend to the ensemble spread. (b,d) Global map of the ratio between the ensemble linear trend in near-surface temperature and the ensemble standard deviation in near-surface temperature. (a,b) show the PD time slice, (c,d) the 2K time slice.

indicating a smaller forced trend than ensemble internal variability. We acknowledge that interannual variability is different for different variables. We therefore advise future users of [the KNMI-LENTIS data set](#) to check the validity of assumption 1 on a case-by-case basis.

3.4 Range of sampled internal variability

To test whether or not the full distribution of climate variability has been sampled in a 1600 year time slice (assumption 2) we investigate daily temperature variability in a single grid point (52.3°N, 4.9°E; nearest point to De Bilt, the Netherlands). We cannot test how different the distribution would be in a second set of 1600 years. Therefore we investigate differences between two halves of the PD ensemble, each of 800 simulation years. The shape of the distribution in Figure 4a shows two peaks, which is a known phenomenon in The Netherlands due to the fairly rapid transition between the summer and winter season. The distribution of all daily temperature values in the two smaller ensembles are indistinguishable from each other, suggesting that variability has been adequately sampled in these half ensembles ([Figure see full blue line and dotted green line in Figures 4a](#)

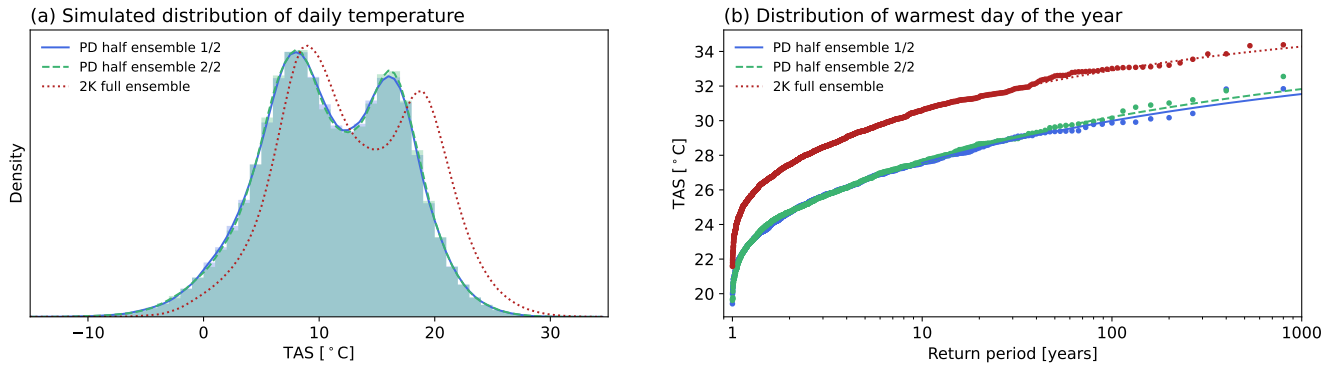


Figure 4. Quantification of assumption 2: sampling internal variability within a time slice. (a) Distribution of daily 2 m temperature (TAS) data at 52.3°N, 4.9°E, in two halves of the PD ensemble (blue and green shading and lines, each based on 800 years) and 2K ensemble (red dotted line, based on 1600 years). (b) GEV fit distribution (lines) and modelled data (dots) value plot for the warmest day of the year, using the same colours as in (a).

300 [and b](#)). Sampling adequately in the tail of the distribution, e.g. for the warmest day of the year, requires larger sampling sizes. However, also here the two halves of the PD ensemble are statistically similar (Fig 4b, differences between the generalized extreme value (GEV) fitted distributions are well within the associated error bars). Comparing the PD distributions to the distribution of the 2K ensemble, we note that forced climate change does significantly impact the shape of the distribution. We also note that variability beyond the scope of the climate model (e.g. at scales smaller or larger than resolved, missing
305 processes) is not captured by these ensembles.

3.5 Legacy of micro perturbations in simulated variability

~~Ensemble members from a common parent have large similarities in the first days/months/year of the simulation. The initial conditions of ocean~~ The way that the members of an ensemble are initialized impacts climate variability of that ensemble in the initial stages. Specifically, when multiple initialization methods are combined, like the micro and macro perturbed initial conditions in the case of KNMI-LENTIS, there can be a too large degree of similarity at the beginning between similarly initialized members. Therefore, we need to assess the differences in variability between and among members of a common macro perturbation (parent) at the beginning of the simulations, and assess the time it takes to converge to a similar level of variability.

310

In KNMI-LENTIS, the initial conditions from a common parent of the ocean state are completely the same. Only; only in the atmosphere ~~there state~~ are small differences due to the micro perturbation. The legacy of information from the initial conditions has consequences for the estimated variability. This may show a spurious peak at this (early) year 1 value. The effect of the shared parent on variability differs per location and variable. We test this with a subset of parents for local near-surface temperature (TAS) variability in De Bilt, The Netherlands, and for El Niño–Southern Oscillation (ENSO) variability. The TAS

315

variability seems to have lost the initial-condition information after around 20 simulation days (Figure 5). For the ENSO signal
320 it takes 2 or 3 years to lose the initial-condition information (Figure 6).

~~The legacy of information from the initial conditions has consequences for the estimated variability. This may show a spurious peak at this (early) year 1 value.~~

An important goal of large ensemble modelling is to be able to separate the part of the model outcome that can be attributed to a forced signal (climate change) from the part that comes from internal variability (climate variability). With this knowledge, we
325 can reduce uncertainty in climate projections. There is a part of uncertainty that cannot be reduced, which is due to the chaotic nature of the climate system, (i.e. irreducible uncertainty, see Hawkins et al., 2016; Marotzke, 2019; Singh et al., 2023). This can be sampled with the micro perturbations. For the members of different macro perturbations, the signal of common ancestry has to dissipate first. The above examples show how quickly the chaotic nature of the Earth system model takes over the initial condition micro-perturbation. However, the speed of dispersion can vary spatially. We therefore advise future users to quantify
330 this effect for their variables of interest, and if necessary remove the first days/months/year of each simulation to ensure that estimates of variability do not suffer from this effect.

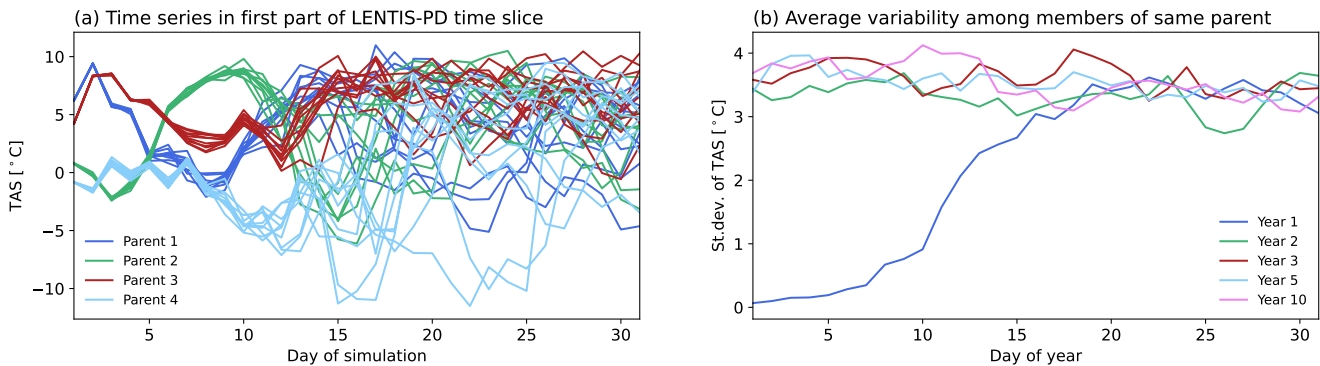


Figure 5. Test of influence of parent on variability: local TAS. (a) Time series, coloured by parent, of TAS at a grid point (52.3°N , 4.1°E) for the first 31 days of the simulations. (b) Time series of variability (estimated as the standard deviation of TAS of all members with a certain parent, then averaged over the parents) different years in the time slice.

4 Demonstration

In this section, we demonstrate the ensemble by giving examples of interesting cases. This ensemble has the unique feature of high frequency output, allowing for detailed studies into extreme events. The surface water balance and surface energy balance
335 variables are stored at 3-hourly intervals. Atmospheric variables (relative humidity, specific humidity, temperature, eastward wind, northward wind, omega) are saved daily on eight pressure levels (1000, 850, 700, 500, 250, 100, 50, 10 hPa). Additionally, a number of land, ocean, atmosphere variables is stored monthly. The variables are post processed and standardized to CMIP6 convention. The full overview of the output variables can be found in Appendix B. More information on the variables and

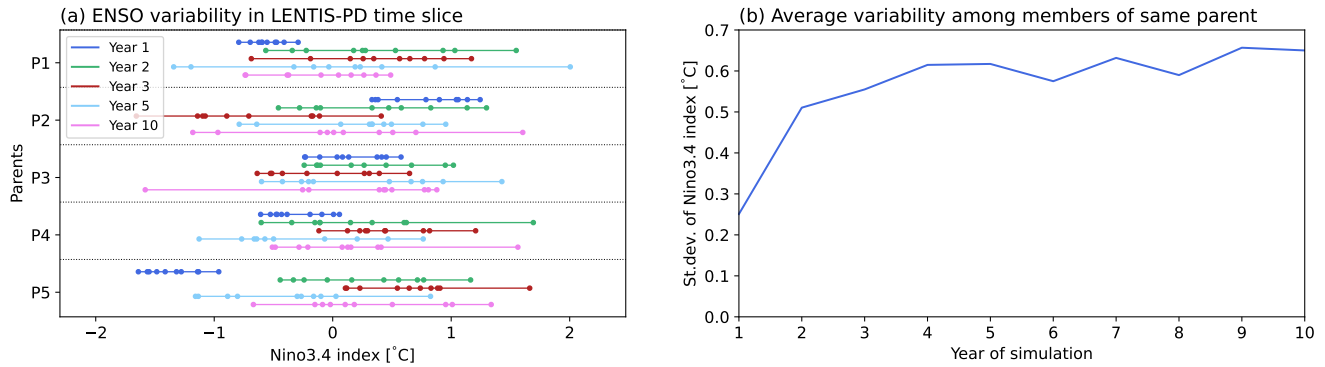


Figure 6. Test of influence of parent on variability: Niño-3.4. (a) Distribution of the annual mean Niño-3.4 index, separated by parent and simulation year. (b) Time series of variability (estimated as the standard deviation of Niño-3.4 of all members with a certain parent, then averaged over the parents) throughout the time slice.

their output dimensions is accessible via the following search tool: <https://clipc-services.ceda.ac.uk/dreq/mipVars.html>, last
 340 accessed September 19, 2022.

4.1 Climatological context of observed extreme events

Weather extremes usually take place in a point in time. This often raises questions about the climatological context of such an event and about the climate change aspects of similar events. The KNMI-LENTIS data-set can be used to determine, for example, the return interval of specific type of events. With this information we can infer the range of frequency and magnitude
 345 that can occur within the climate’s variability, and what the influence of climate change is on this (van Oldenborgh et al., 2021; van der Wiel et al., 2021).

The effect of the forced climate difference can be seen in other variables throughout the Earth system since EC-Earth is a fully coupled climate model. Figures 7e-e, 7a, 7c highlight some extreme weather/climate events that have occurred in recent past. The Greenland Ice Sheet (GrIS) has seen unprecedented melt events in the recent years (e.g. [<http://nsidc.org/greenland-today/2021/08/large-melt-event-changes-the-story-of-2021/>], last accessed: Oct 3, 2022). Figure 7e-a shows the simulated return intervals of July average snow melt rates for a grid point in the eastern part of the Greenland Ice Sheet (72°N, 30°W). The
 350 higher return intervals in the 2K time slice are due to a projected increase in future July melt event frequency.

The Southern England railroad organisation introduced speed restrictions during the 2022 heat wave in response to drying and shrinking of the clay soils, which made the train tracks prone to movement (e.g. [<https://www.networkrail.co.uk/stories/soil-moisture-deficit-on-the-railway/>], last accessed: Oct 3, 2022). Figure 7d-b shows simulated surface air temperatures in July for a grid point in Southern England (51°N, 2°W) against column integrated soil moisture content, for the PD and 2K time slices. The upward-leftward shift of the scatter cloud indicates more co-occurrences of hot temperature - soil moisture deficit
 355 events in the warmer climate.

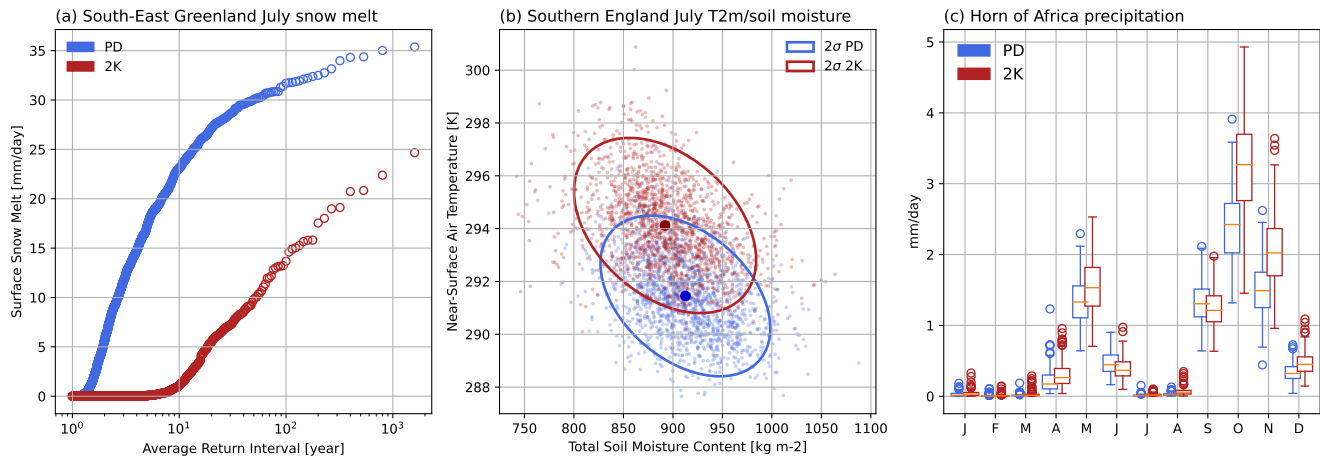


Figure 7. Ensemble climatological context. Ensemble climatology examples. For PD in blue and 2K in red: (a) **histogram of annual-mean Global Mean Surface Temperature (GMST), (c) return interval in years of surface snow melt rates in East Greenland Ice Sheet grid point (72°N, -30°E), (b) scatter plot of total column integrated soil moisture content and near-surface temperature in Southern England grid point (51°N, -2°E) with the cloud mean as dot and 2 standard deviations in the ellipse, (c) annual cycle of precipitation in Horn of Africa grid point (8°N, 48°E), with box plots for the ensemble spread defined as box: first Quartile - Median - third Quartile (Interquartile Range (IQR)), whiskers: first Quartile - 1.5×IQR and third Quartile + 1.5×IQR and outliers: values outside of these limits. EC-Earth3 fixed land surface orography and ocean bathymetry (m) in (b) is the same for both PD and 2K.**

Finally, the World Meteorological Institute foresees “a strong chance of drier than average conditions in most parts of the
 360 Horn of Africa, making this the fifth consecutive failed rainy season” for the October-December 2022 season (e.g. [https://www.africanews.com/2022/08/26/horn-of-africa-5th-consecutive-rainy-season-missed/], last accessed: Oct 3, 2022). Figure 7e-c shows the simulated seasonal cycle of precipitation in a grid point in the Horn of Africa (8°N, 48°E). In contrast to the news item, the simulated warmer climate appears to become generally wetter, with shifts in the start and intensity of the rain season. However, further analysis is required to draw conclusions on the occurrence of droughts.

365 4.2 Added value for extreme meteorological event research

Grey and blacks swans are terms for the types of extreme events that are yet unobserved or cannot even have been anticipated, respectively (Watkins, 2013; Aven and Renn, 2015). These type of events by definition have no evidence in historical observations. Robust statistical analyses are often not possible due to their sparsity, not even with large ensemble data. A recently developed technique into swan-type events is using story lines (Shepherd et al., 2018; Lloyd and Shepherd, 2021; Sillmann
 370 et al., 2021). By composing a story line the extreme event can be understood in terms of its spatial and temporal meteorological context. This can also help to gain understanding of such events in a different climate. KNMI-LENTIS provides a physically coherent **data-set-set of simulations** that allows for story-line type of research into possible extreme meteorological events in the present day and in a 2K warmer climate (van der Wiel et al., 2021).

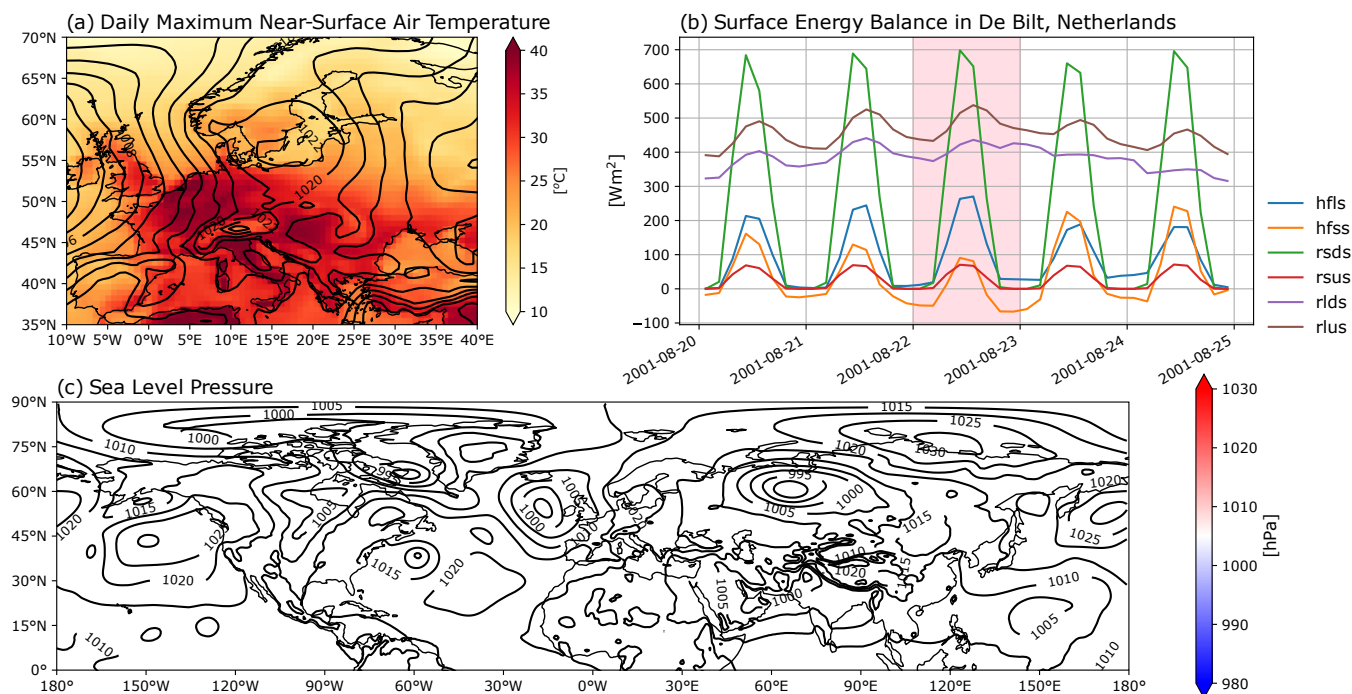


Figure 8. Hottest day in De Bilt, The Netherlands, in the PD ensemble. (a) Europe Maximum surface air temperature over Europe on the hottest day (colors) and sea level pressure (contours every 5 hPa). (b) Surface energy balance components in De Bilt, The Netherlands, during the days around the hottest day (pink shading) with the latent heat flux (hfls), sensible heat flux (hfss), downwelling shortwave radiation (rsds), upwelling shortwave radiation (rsus), downwelling longwave radiation (rlds) and upwelling longwave radiation (rlus). (c) Northern Hemisphere Sea level pressure in colors and in contours every 5 hPa.

In this example we identify the hottest day in De Bilt (52.3°N, 4.9°E), the Netherlands in the PD time slice and its meteorological circumstances. The daily maximum near-surface air temperature reaches 39°C on this day. The hottest day to date in the observed records at the KNMI was measured on 2019-07-25, with a peak temperature of 37.5 °C (<https://www.knmi.nl/over-het-knmi/nieuws/warmste-dag-van-het-jaar-nu-4-c-warmer-dan-rond-1900>, last accessed: Oct 4, 2022), demonstrating that the ensemble can indeed be used to study events beyond the observed record. Figure 8a shows very high maximum temperatures in a large area of west and central Europe and across the Mediterranean. The physical drivers of such an extreme event can be both large scale warm air advection and local land-atmosphere processes. The evolution of surface energy balance components in De Bilt (Figure 8b) do not suggest that local land-atmosphere processes are a main contributor to this heat event. The sea level pressure field over the Northern Hemisphere points to advection of hot air from the south (Figure 8c). A small low-pressure system west of the British Isles seems important in directing the flow northward. We note that temperatures in northern America are anomalously high as well (not shown). Further analysis is needed to assess whether the extremely hot weather is related to the specific configuration of high and low pressure systems that is seen in earlier studies in connection with simultaneously occurring heat waves in the Northern Hemisphere (Kornhuber et al., 2019).

4.3 Added value for compound event research

The multivariate nature of compound events, events where combinations of climate drivers and/or hazards contribute to societal or environmental risk (Zscheischler et al., 2018), requires a bottom-up approach in which all data are physically consistent. Output from climate models is by definition physically consistent, though when bias corrections or statistical extrapolations are applied this consistency may be broken (i.e., broken consistency between variables or lost consistency in time due to e.g. a no longer closed water budget). Time slice large ensembles are very suitable for the analysis of rare or extreme compound events (e.g., Kelder et al., 2022), owing to the physical consistency of the data, and the explicitly resolved extreme events due to the size of the ensemble. In this section we demonstrate this using a case study on the extreme wheat yield loss in France.

The 2016 winter wheat harvest in France was exceptionally low (28% lower than the expected value) and Ben-Ari et al. (2018) showed that this was caused by the “compound interaction between temperature in the late autumn/early winter and precipitation in the spring”. 2016 was unique in the combination of low exposure to cold days in autumn (‘vernalizing days’, days with maximum temperatures between 0 and 10°C) followed by wet spring conditions (high precipitation). The historic record, here shown through ERA5 reanalysis data (Hersbach et al., 2020; Bell et al., 2021), shows how exceptional the year 2016 was in terms of these variables and especially in their multi-variate combination (Figure 9).

The KNMI-LENTIS PD ensemble provides many more samples of winter-wheat growing conditions (1440 simulated seasons) than the observed historical record. The simulated data includes some seasons with similar or even more extreme compounding conditions than the 2016 observed event (Figure 9). This provides an opportunity to better understand the relationship between the governing variables, and investigate (remote) drivers of compounding conditions. Note that biases in the simulated data (here we find the model has a low bias in the number of vernalizing days) can impact estimates of event likelihood and process understanding.

This case study highlights the strength of time slice large ensemble data ensembles in compound event research. Also for other types of compound events (pre-conditioned events, multi-variate events, temporally compounding events and spatially compounding events; Zscheischler et al., 2020) large ensemble data can help to, for example, quantify event likelihood and identify drivers and modulators of events (Bevacqua et al., 2021).

4.4 Added value for climate-impact modelling

Climate science, apart from aiming to improve our scientific understanding of the physical Earth system, also aims to inform society and policy makers of (future) risks caused by adverse weather. It is during extreme events that such risks are highest. However, extreme weather events (e.g. the hottest or wettest days) do not necessarily link 1-to-1 to extreme impact events (highest heat stress or biggest floods, e.g. van der Wiel et al., 2020). This is due to the complex non-linear relationships between weather and impacts. In this section we demonstrate this phenomenon and show that an approach of ‘ensemble climate-impact modelling’, as for example proposed by van der Wiel et al. (2020), enhances our understanding of the weather-impact relationship and improves estimates of (changing) societal risk.

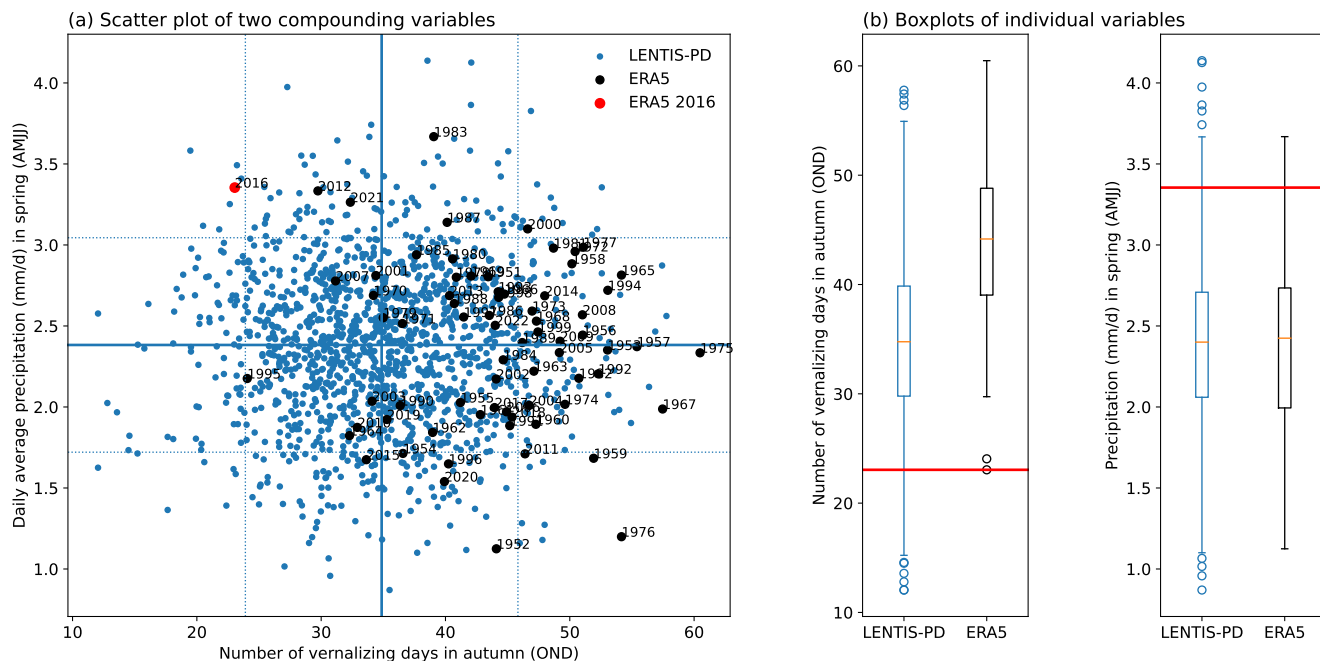


Figure 9. Example compound event research. Analysis of meteorological circumstances that lead to extreme wheat yield loss in France after (Ben-Ari et al., 2018). Presented values are the area average of the Northern part of France ($47\text{-}50^{\circ}\text{N}$, $0\text{-}7^{\circ}\text{E}$). (a) Scatter plot of number of vernalizing days in autumn (October-December) versus daily average precipitation in spring of the next year (April-July). Large black dots are ERA5 values (1950-2021), where 2016 is marked as a red dot. Small blue dots are KNMI-LENTIS-PD values, horizontal and vertical lines correspond to the average (solid lines) ± 1 standard deviation (dotted lines). (b) Box plots of the number of vernalizing days and the daily average precipitation for both KNMI-LENTIS PD and ERA5.

For this case study, we simulate electricity production from solar radiation (Photovoltaics, PV) with a relatively simple model that considers incoming solar radiation, near-surface temperatures and near-surface wind speeds (Jerez et al., 2015; van der Wiel et al., 2019b). We use daily data at a single grid point in the Netherlands (De Bilt, 52.3°N , 4.9°E). Higher values of incoming radiation in summer (sunnier conditions and relatively long daylight hours) lead to higher values of PV generation, but the heating of solar cells negatively impacts generation (heating mostly related to high temperatures, some cooling provided by wind). We computed PV potential for all days in the KNMI-LENTIS PD ensemble (1600 years, > 0.5 million days). Here, we investigate the relationship between meteorological variables and PV potential, and the timing of extreme production days.

As expected, PV potential is strongly related to incoming solar radiation (Figure 10a). The histogram shows a cluster for both DJF and JJA, indicating that solar cells work more efficiently in winter. This is due to differences in solar cell heating and daylight hours: for 100 W/m^2 incoming solar radiation, the PV potential in DJF is approximately 27% whereas in JJA it is approximately 18%. On the other hand, the large seasonal difference in incoming radiation at this latitude makes summers about 5 times more productive in terms of PV (Figure 10b). Therefore, extreme production events, i.e. days with extremely

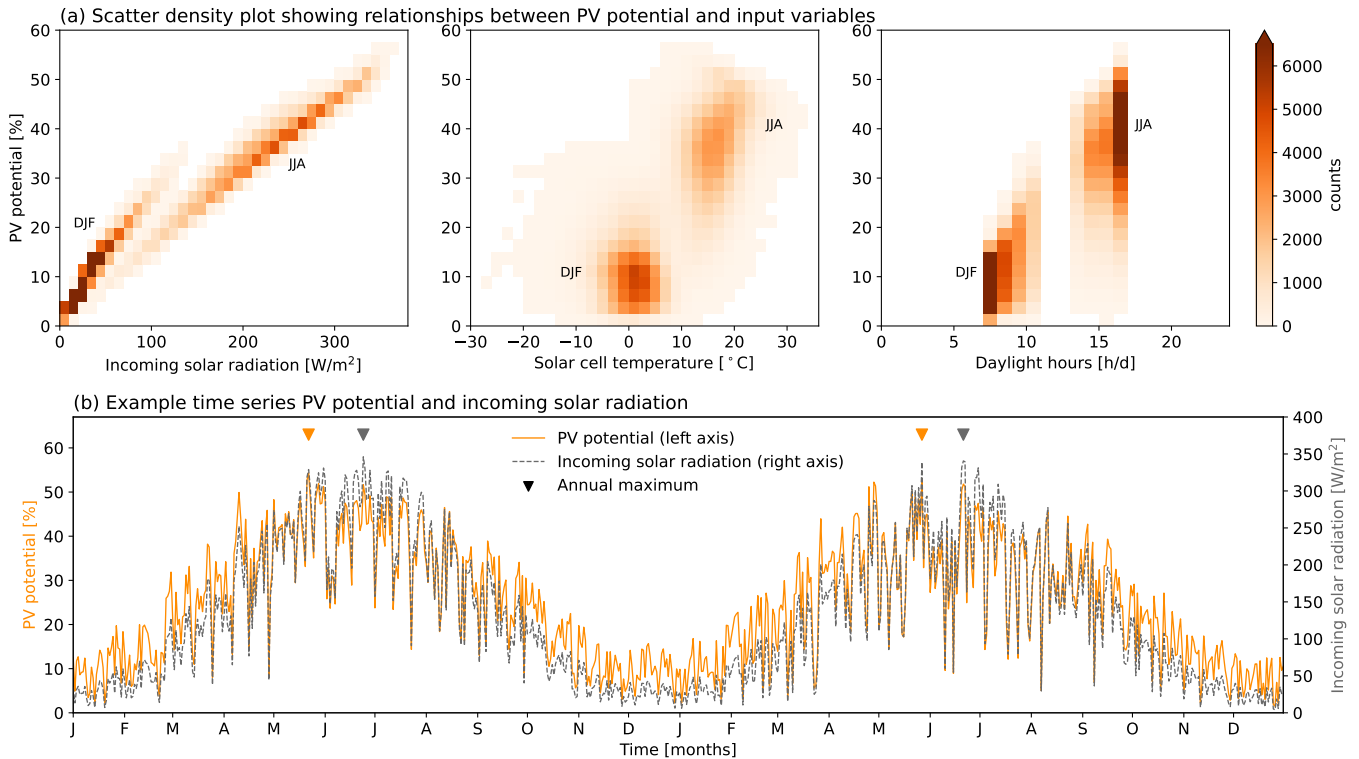


Figure 10. Example ensemble climate-impact modelling. (a) Scatter-density plots showing the relationships between [Photovoltaics \(PV\)](#) potential and other variables in DJF and JJA. From left to right: incoming solar radiation, solar cell temperature, and daylight hours. (b) Example time series of PV potential and incoming solar radiation. Triangles at the top show timing of annual maxima.

high PV potential, are expected to occur in late spring – early summer. Indeed the annual maximums of PV potential occur in early JJA, and they do not coincide with the annual maximum of incoming solar radiation (Figure 10b) which occur later.

This case study highlights some of the possibilities of ensemble climate-impact modelling. Though extreme PV production days are not likely to put society at risk, the (temporal) disconnect between weather extremes on the one hand and impact
 435 extremes on the other hand is obvious. As shown in earlier sections, large-ensemble climate modelling can considerably contribute towards understanding events in the tail of the distribution. This is true for meteorological extremes (e.g. Section 4.2) but equally so for climate-impact extremes that are more closely related to possible natural or societal impacts/risk.

5 Conclusions

We have presented the KNMI Large ENsemble Time Slice (KNMI-LENTIS): a new large ensemble **data-set** produced with
 440 the **re-turned-re-tuned** version of the global climate model EC-Earth3. The **time-slice-time slice** approach is different from the more traditional transient ensembles available from other institutions. The advantage is that the signals of natural variability

and climate change are not mixed, due to our assumption that the forced change in a slice is small. Therefore, the variability we see in a time slice is only natural variability at a given GMST level, and does not include a climate change signal. This renders our [data-set-large ensemble](#) specifically suitable to study climate variability and changes therein between the present-day climate and a warmer future climate. Furthermore, the [data-set-large ensemble](#) is particularly geared towards research into land-atmosphere interface, with 3-hourly output of the surface water balance and surface energy balance variables.

The ensemble consists of two distinct time slices: a present-day time slice and a +2K warmer future time slice relative to present-day. The present-day time slice is represented by the years [2000-2009-2000-2009](#) and forced with CMIP6 historical forcing. The +2K time slice is represented by the years [2075-2084-2075-2084](#) and forced with CMIP6 SSP2-4.5 forcing. Each time slice consists of 1600 simulated model years in 160 segments of 10 years.

The initial conditions for the ensemble members are generated with a combination of micro and macro perturbations. We have quantified the assumptions underlying the set-up, which are that the time slice simulation length is small enough so that a forced climate change signal is minor in most cases, and that the ensemble size is sufficient to sample the full distribution of climate variability. We have provided examples of how this ensemble can be used to demonstrate its added value for extreme and compound event research and for climate-impact modelling. The model and thus our [data-set-simulations](#) has a considerable warm bias in the Southern Ocean and over Antarctica. Future users of KNMI-LENTIS are advised to make in-depth comparisons with observational or reanalysis data especially when their studies focus on ocean processes, on locations in the Southern Hemisphere or on teleconnections involving both hemispheres.

Code availability. The KNMI-LENTIS production scripts are recorded on Zenodo (Muntjewerf et al., 2023b). The EC-Earth model is restricted to institutes that have signed a memorandum of understanding or letter of intent with the EC-Earth consortium and a software license agreement with the European Center for Medium-Range Weather Forecasts (ECMWF). Confidential access to the code and to the data used to produce the simulations described in this paper can be granted for editors and reviewers.

Data availability. The KNMI-LENTIS dataset description is recorded on Zenodo (Muntjewerf et al., 2023a), providing details of the layout of dataset, where it is located, how it is stored and how one gains access. At a later stage, (part of) the data may be made publicly available from the Earth System Grid Federation (ESGF) data portal.

Author contributions. LM performed the simulations; LM and TR designed the framework for the data production and validation; LM and KW performed the analyses and prepared the initial draft of the manuscript; KW, LM, RB designed the ensemble protocol; KW and RB conceptualized the study and acquired funding. All authors contributed to the final paper.

Competing interests. The authors declare there are no competing interests.

470 *Acknowledgements.* The production of the KNMI-LENTIS ensemble was funded by the KNMI multi-year strategic research funding MSO-VAREX. [We acknowledge and thank Twan van Noije for the TCS and ECS calculations in Section 2.1.](#)

References

- Aven, T. and Renn, O.: An Evaluation of the Treatment of Risk and Uncertainties in the IPCC Reports on Climate Change, Risk Analysis, 35, <https://doi.org/10.1111/risa.12298>, 2015.
- 475 Balsamo, G., Viterbo, P., Beijaars, A., van den Hurk, B., Hirschi, M., Betts, A. K., and Scipal, K.: A revised hydrology for the ECMWF model: Verification from field site to terrestrial water storage and impact in the integrated forecast system, *Journal of Hydrometeorology*, 10, <https://doi.org/10.1175/2008JHM1068.1>, 2009.
- Bell, B., Hersbach, H., Simmons, A., Berrisford, P., Dahlgren, P., Horányi, A., Muñoz-Sabater, J., Nicolas, J., Radu, R., Schepers, D., Soci, C., Villaume, S., Bidlot, J. R., Haimberger, L., Woollen, J., Buontempo, C., and Thépaut, J. N.: The ERA5 global reanalysis: Preliminary
480 extension to 1950, *Quarterly Journal of the Royal Meteorological Society*, 147, <https://doi.org/10.1002/qj.4174>, 2021.
- Ben-Ari, T., Boé, J., Ciais, P., Lecerf, R., van der Velde, M., and Makowski, D.: Causes and implications of the unforeseen 2016 extreme yield loss in the breadbasket of France, *Nature Communications*, 9, <https://doi.org/10.1038/s41467-018-04087-x>, 2018.
- Bevacqua, E., De Michele, C., Manning, C., Couasnon, A., Ribeiro, A. F., Ramos, A. M., Vignotto, E., Bastos, A., Blesić, S., Durante, F., Hillier, J., Oliveira, S. C., Pinto, J. G., Ragno, E., Rivoire, P., Saunders, K., van der Wiel, K., Wu, W., Zhang, T., and Zscheischler, J.: Guide-
485 lines for Studying Diverse Types of Compound Weather and Climate Events, *Earth's Future*, 9, <https://doi.org/10.1029/2021EF002340>, 2021.
- Bintanja, R., van der Wiel, K., van der Linden, E. C., Reusen, J., Bogerd, L., Krikken, F., and Selten, F. M.: Strong future increases in Arctic precipitation variability linked to poleward moisture transport, *Science Advances*, 6, <https://doi.org/10.1126/sciadv.aax6869>, 2020.
- Blackport, R., Screen, J. A., van der Wiel, K., and Bintanja, R.: Minimal influence of reduced Arctic sea ice on coincident cold winters in
490 mid-latitudes, *Nature Climate Change*, 9, <https://doi.org/10.1038/s41558-019-0551-4>, 2019.
- Bonekamp, P. N., Wanders, N., van der Wiel, K., Lutz, A. F., and Immerzeel, W. W.: Using large ensemble modelling to derive future changes in mountain specific climate indicators in a 2 and 3°C warmer world in High Mountain Asia, *International Journal of Climatology*, 41, <https://doi.org/10.1002/joc.6742>, 2021.
- Boulaguiem, Y., Zscheischler, J., Vignotto, E., van der Wiel, K., and Engelke, S.: Modeling and simulating spatial extremes by combining
495 extreme value theory with generative adversarial networks, *Environmental Data Science*, 1, e–5, 2022.
- Brown, P. T., Ming, Y., Li, W., and Hill, S. A.: Change in the magnitude and mechanisms of global temperature variability with warming, *Nature Climate Change*, 7, <https://doi.org/10.1038/nclimate3381>, 2017.
- Champagne, O., Altaf Arain, M., Leduc, M., Coulibaly, P., and Mckenzie, S.: Future shift in winter streamflow modulated by the internal variability of climate in southern Ontario, *Hydrology and Earth System Sciences*, 24, <https://doi.org/10.5194/hess-24-3077-2020>, 2020.
- 500 Deser, C., Lehner, F., Rodgers, K. B., Ault, T., Delworth, T. L., DiNezio, P. N., Fiore, A., Frankignoul, C., Fyfe, J. C., Horton, D. E., Kay, J. E., Knutti, R., Lovenduski, N. S., Marotzke, J., McKinnon, K. A., Minobe, S., Randerson, J., Screen, J. A., Simpson, I. R., and Ting, M.: Insights from Earth system model initial-condition large ensembles and future prospects, *Nature Climate Change*, 10, <https://doi.org/10.1038/s41558-020-0731-2>, 2020a.
- Deser, C., Phillips, A. S., Simpson, I. R., Rosenbloom, N., Coleman, D., Lehner, F., Pendergrass, A. G., Dinezio, P., and Stevenson, S.:
505 Isolating the evolving contributions of anthropogenic aerosols and greenhouse gases: A new CESM1 large ensemble community resource, *Journal of Climate*, 33, <https://doi.org/10.1175/JCLI-D-20-0123.1>, 2020b.
- Döscher, R., Acosta, M., Alessandri, A., Anthoni, P., Arneth, A., Arsouze, T., Bergmann, T., Bernadello, R., Boussetta, S., Caron, L.-P., Carver, G., Castrillo, M., Catalano, F., Cvijanovic, I., Davini, P., Dekker, E., Doblas-Reyes, F., Docquier, D., Echevarria, P., Fladrich, U.,

- Fuentes-Franco, R., Gröger, M., v. Hardenberg, J., Hieronymus, J., Karami, M. P., Keskinen, J.-P., Koenigk, T., Makkonen, R., Massonnet, F., Ménégos, M., Miller, P., Moreno-Chamarro, E., Nieradzki, L., van Noije, T., Nolan, P., O'Donnell, D., Ollinaho, P., van den Oord, G., Ortega, P., Prims, O. T., Ramos, A., Reerink, T., Rousset, C., Ruprich-Robert, Y., Le Sager, P., Schmith, T., Schrödner, R., Serva, F., Sicardi, V., Sloth Madsen, M., Smith, B., Tian, T., Tourigny, E., Uotila, P., Vancoppenolle, M., Wang, S., Wårlind, D., Willén, U., Wyser, K., Yang, S., Yepes-Arbós, X., and Zhang, Q.: The EC-Earth3 Earth System Model for the Climate Model Intercomparison Project 6, *Geoscientific Model Development Discussions*, 2021.
- 510 Dutra, E., Balsamo, G., Viterbo, P., Miranda, P. M., Beljaars, A., Schar, C., and Elder, K.: An improved snow scheme for the ECMWF land surface model: Description and offline validation, *Journal of Hydrometeorology*, 11, <https://doi.org/10.1175/2010JHM1249.1>, 2010.
- Goulart, H. M., van der Wiel, K., Folberth, C., Balkovic, J., and van den Hurk, B.: Storylines of weather-induced crop failure events under climate change, *Earth System Dynamics*, 12, <https://doi.org/10.5194/esd-12-1503-2021>, 2021.
- Haarsma, R., Acosta, M., Bakhshi, R., Bretonnière, P. A., Caron, L. P., Castrillo, M., Corti, S., Davini, P., Exarchou, E., Fabiano, F., Fladrich, U., Franco, R. F., García-Serrano, J., von Hardenberg, J., Koenigk, T., Levine, X., Meccia, V. L., van Noije, T., van Den Oord, G., Palmeiro, F. M., Rodrigo, M., Ruprich-Robert, Y., Le Sager, P., Tourigny, E., Wang, S., van Weele, M., and Wyser, K.: HighResMIP versions of EC-Earth: EC-Earth3P and EC-Earth3P-HR - Description, model computational performance and basic validation, *Geoscientific Model Development*, 13, <https://doi.org/10.5194/gmd-13-3507-2020>, 2020.
- 520 Hawkins, E., Smith, R. S., Gregory, J. M., and Stainforth, D. A.: Irreducible uncertainty in near-term climate projections, *Climate Dynamics*, 46, <https://doi.org/10.1007/s00382-015-2806-8>, 2016.
- 525 Hersbach, H., Bell, B., Berrisford, P., Hirahara, S., Horányi, A., Muñoz-Sabater, J., Nicolas, J., Peubey, C., Radu, R., Schepers, D., Simmons, A., Soci, C., Abdalla, S., Abellan, X., Balsamo, G., Bechtold, P., Biavati, G., Bidlot, J., Bonavita, M., De Chiara, G., Dahlgren, P., Dee, D., Diamantakis, M., Dragani, R., Flemming, J., Forbes, R., Fuentes, M., Geer, A., Haimberger, L., Healy, S., Hogan, R. J., Hólm, E., Janisková, M., Keeley, S., Laloyaux, P., Lopez, P., Lupu, C., Radnoti, G., de Rosnay, P., Rozum, I., Vamborg, F., Villaume, S., and Thépaut, J. N.: The ERA5 global reanalysis, *Quarterly Journal of the Royal Meteorological Society*, 146, <https://doi.org/10.1002/qj.3803>, 2020.
- Jerez, S., Thais, F., Tobin, I., Wild, M., Colette, A., You, P., and Vautard, R.: The CLIMIX model: A tool to create and evaluate spatially-resolved scenarios of photovoltaic and wind power development, <https://doi.org/10.1016/j.rser.2014.09.041>, 2015.
- Kay, J. E., Deser, C., Phillips, A., Mai, A., Hannay, C., Strand, G., Arblaster, J. M., Bates, S. C., Danabasoglu, G., Edwards, J., Holland, M., Kushner, P., Lamarque, J.-F., Lawrence, D., Lindsay, K., Middleton, A., Munoz, E., Neale, R., Oleson, K., Polvani, L., and Vertenstein, M.: The Community Earth System Model (CESM) Large Ensemble Project: A Community Resource for Studying Climate Change in the Presence of Internal Climate Variability, *Bulletin of the American Meteorological Society*, 96, 1333–1349, <https://doi.org/10.1175/BAMS-D-13-00255.1>, 2015.
- 535 Kelder, T., Wanders, N., van der Wiel, K., Marjoribanks, T. I., Slater, L. J., Wilby, R. L., and Prudhomme, C.: Interpreting extreme climate impacts from large ensemble simulations - Are they unseen or unrealistic?, *Environmental Research Letters*, 17, <https://doi.org/10.1088/1748-9326/ac5cf4>, 2022.
- 540 Kew, S. F., Philip, S. Y., Hauser, M., Hobbins, M., Wanders, N., van Oldenborgh, G. J., van der Wiel, K., Veldkamp, T. I., Kimutai, J., Funk, C., and Otto, F. E.: Impact of precipitation and increasing temperatures on drought trends in eastern Africa, *Earth System Dynamics*, 12, <https://doi.org/10.5194/esd-12-17-2021>, 2021.
- Kirchmeier-Young, M. C., Zwiers, F. W., and Gillett, N. P.: Attribution of extreme events in Arctic Sea ice extent, *Journal of Climate*, 30, <https://doi.org/10.1175/JCLI-D-16-0412.1>, 2017.
- 545

- Knutti, R., Masson, D., and Gettelman, A.: Climate model genealogy: Generation CMIP5 and how we got there, *Geophysical Research Letters*, 40, <https://doi.org/10.1002/grl.50256>, 2013.
- Kornhuber, K., Osprey, S., Coumou, D., Petri, S., Petoukhov, V., Rahmstorf, S., and Gray, L.: Extreme weather events in early summer 2018 connected by a recurrent hemispheric wave-7 pattern, *Environmental Research Letters*, 14, <https://doi.org/10.1088/1748-9326/ab13bf>, 2019.
- 550 Leduc, M., Mailhot, A., Frigon, A., Martel, J. L., Ludwig, R., Brietzke, G. B., Giguère, M., Brissette, F., Turcotte, R., Braun, M., and Scinocca, J.: The ClimEx project: A 50-member ensemble of climate change projections at 12-km resolution over Europe and north-eastern North America with the Canadian Regional Climate Model (CRCM5), *Journal of Applied Meteorology and Climatology*, 58, <https://doi.org/10.1175/JAMC-D-18-0021.1>, 2019.
- 555 Lenderink, G., van den Hurk, B. J., Klein Tank, A. M., van Oldenborgh, G. J., van Meijgaard, E., de Vries, H., and Beersma, J. J.: Preparing local climate change scenarios for the Netherlands using resampling of climate model output, *Environmental Research Letters*, 9, <https://doi.org/10.1088/1748-9326/9/11/115008>, 2014.
- Lloyd, E. A. and Shepherd, T. G.: Climate change attribution and legal contexts: evidence and the role of storylines, *Climatic Change*, 167, <https://doi.org/10.1007/s10584-021-03177-y>, 2021.
- 560 Lock, S. J., Lang, S. T., Leutbecher, M., Hogan, R. J., and Vitart, F.: Treatment of model uncertainty from radiation by the Stochastically Perturbed Parametrization Tendencies (SPPT) scheme and associated revisions in the ECMWF ensembles, *Quarterly Journal of the Royal Meteorological Society*, 145, <https://doi.org/10.1002/qj.3570>, 2019.
- Maher, N., Milinski, S., Suarez-Gutierrez, L., Botzet, M., Dobrynin, M., Kornbluh, L., Kröger, J., Takano, Y., Ghosh, R., Hedemann, C., Li, C., Li, H., Manzini, E., Notz, D., Putrasahan, D., Boysen, L., Claussen, M., Ilyina, T., Olonscheck, D., Raddatz, T., Stevens, B., and 565 Marotzke, J.: The Max Planck Institute Grand Ensemble: Enabling the Exploration of Climate System Variability, *Journal of Advances in Modeling Earth Systems*, 11, <https://doi.org/10.1029/2019MS001639>, 2019.
- Maher, N., Milinski, S., and Ludwig, R.: Large ensemble climate model simulations: Introduction, overview, and future prospects for utilising multiple types of large ensemble, *Earth System Dynamics*, 12, <https://doi.org/10.5194/esd-12-401-2021>, 2021.
- Marotzke, J.: Quantifying the irreducible uncertainty in near-term climate projections, *Wiley Interdisciplinary Reviews: Climate Change*, 10, <https://doi.org/10.1002/wcc.563>, 2019.
- 570 Massey, N., Jones, R., Otto, F. E., Aina, T., Wilson, S., Murphy, J. M., Hassell, D., Yamazaki, Y. H., and Allen, M. R.: weather@home-development and validation of a very large ensemble modelling system for probabilistic event attribution, *Quarterly Journal of the Royal Meteorological Society*, 141, <https://doi.org/10.1002/qj.2455>, 2015.
- Meehl, G. A., Senior, C. A., Eyring, V., Flato, G., Lamarque, J. F., Stouffer, R. J., Taylor, K. E., and Schlund, M.: Context for interpreting equilibrium climate sensitivity and transient climate response from the CMIP6 Earth system models, <https://doi.org/10.1126/sciadv.aba1981>, 2020.
- 575 Milinski, S., Maher, N., and Olonscheck, D.: How large does a large ensemble need to be?, *Earth System Dynamics*, 11, <https://doi.org/10.5194/esd-11-885-2020>, 2020.
- Muntjewerf, L., Bintanja, R., Reerink, T., and Van der Wiel, K.: KNMI-LENTIS large ensemble time slice dataset description, <https://doi.org/10.5281/ZENODO.7573137>, 2023a.
- 580 Muntjewerf, L., Bintanja, R., Reerink, T., and Van der Wiel, K.: KNMI-LENTIS production scripts, <https://doi.org/10.5281/ZENODO.7594694>, 2023b.

- Nanditha, J. S., van der Wiel, K., Bhatia, U., Stone, D., Selton, F., and Mishra, V.: A seven-fold rise in the probability of exceeding the observed hottest summer in India in a 2 C warmer world, *Environmental Research Letters*, 15, <https://doi.org/10.1088/1748-9326/ab7555>, 2020.
- Ollinaho, P., Lock, S. J., Leutbecher, M., Bechtold, P., Beljaars, A., Bozzo, A., Forbes, R. M., Haiden, T., Hogan, R. J., and Sandu, I.: Towards process-level representation of model uncertainties: stochastically perturbed parametrizations in the ECMWF ensemble, *Quarterly Journal of the Royal Meteorological Society*, 143, <https://doi.org/10.1002/qj.2931>, 2017.
- Pascale, S., Kapnick, S. B., Delworth, T. L., Hidalgo, H. G., and Cooke, W. F.: Natural variability vs forced signal in the 2015–2019 Central American drought, *Climatic Change*, 168, <https://doi.org/10.1007/s10584-021-03228-4>, 2021.
- Pendergrass, A. G., Knutti, R., Lehner, F., Deser, C., and Sanderson, B. M.: Precipitation variability increases in a warmer climate, *Scientific Reports*, 7, <https://doi.org/10.1038/s41598-017-17966-y>, 2017.
- Philip, S., Sparrow, S., Kew, S. F., van der Wiel, K., Wanders, N., Singh, R., Hassan, A., Mohammed, K., Javid, H., Hausteijn, K., Otto, F. E., Hirpa, F., Rimi, R. H., Saiful Islam, A. K., Wallom, D. C., and Jan Van Oldenborgh, G.: Attributing the 2017 Bangladesh floods from meteorological and hydrological perspectives, *Hydrology and Earth System Sciences*, 23, <https://doi.org/10.5194/hess-23-1409-2019>, 2019.
- Philip, S. Y., Kew, S. F., van der Wiel, K., Wanders, N., van Oldenborgh, G. J., and Philip, S. Y.: Regional differentiation in climate change induced drought trends in the Netherlands, *Environmental Research Letters*, 15, <https://doi.org/10.1088/1748-9326/ab97ca>, 2020.
- Poschlod, B., Willkofer, F., and Ludwig, R.: Impact of climate change on the hydrological regimes in Bavaria, *Water (Switzerland)*, 12, <https://doi.org/10.3390/w12061599>, 2020.
- Rodgers, K. B., Lee, S. S., Rosenbloom, N., Timmermann, A., Danabasoglu, G., Deser, C., Edwards, J., Kim, J. E., Simpson, I. R., Stein, K., Stuecker, M. F., Yamaguchi, R., Bóday, T., Chung, E. S., Huang, L., Kim, W. M., Lamarque, J. F., Lombardozzi, D. L., Wieder, W. R., and Yeager, S. G.: Ubiquity of human-induced changes in climate variability, *Earth System Dynamics*, 12, <https://doi.org/10.5194/esd-12-1393-2021>, 2021.
- Schaeffer, M., Selten, F. M., and Opsteegh, J. D.: Shifts of means are not a proxy for changes in extreme winter temperatures in climate projections, *Climate Dynamics*, 25, <https://doi.org/10.1007/s00382-004-0495-9>, 2005.
- Shepherd, T. G., Boyd, E., Calel, R. A., Chapman, S. C., Dessai, S., Dima-West, I. M., Fowler, H. J., James, R., Maraun, D., Martius, O., Senior, C. A., Sobel, A. H., Stainforth, D. A., Tett, S. F., Trenberth, K. E., van den Hurk, B. J., Watkins, N. W., Wilby, R. L., and Zenghelis, D. A.: Storylines: an alternative approach to representing uncertainty in physical aspects of climate change, *Climatic Change*, 151, <https://doi.org/10.1007/s10584-018-2317-9>, 2018.
- Sillmann, J., Shepherd, T. G., van den Hurk, B., Hazeleger, W., Martius, O., Slingo, J., and Zscheischler, J.: Event-Based Storylines to Address Climate Risk, <https://doi.org/10.1029/2020EF001783>, 2021.
- Singh, H. K., Goldenson, N., Fyfe, J. C., and Polvani, L. M.: Uncertainty in Preindustrial Global Ocean Initialization Can Yield Irreducible Uncertainty in Southern Ocean Surface Climate, *Journal of Climate*, 36, <https://doi.org/10.1175/JCLI-D-21-0176.1>, 2023.
- Sperna Weiland, R., van der Wiel, K., Selten, F., and Coumou, D.: Intransitive atmosphere dynamics leading to persistent hot-dry or cold-wet European summers, *Journal of Climate*, 34, <https://doi.org/10.1175/JCLI-D-20-0943.1>, 2021.
- Tschumi, E., Lienert, S., van der Wiel, K., Joos, F., and Zscheischler, J.: A climate database with varying drought-heat signatures for climate impact modelling, *Geoscience Data Journal*, <https://doi.org/10.1002/gdj3.129>, 2021.
- Tschumi, E., Lienert, S., van der Wiel, K., Joos, F., and Zscheischler, J.: The effects of varying drought-heat signatures on terrestrial carbon dynamics and vegetation composition, *Biogeosciences*, 19, 1979–1993, 2022.

- van den Hurk, B. J. J., Viterbo, P., Beljaars, A., and Betts, A.: Offline validation of the ERA40 surface scheme, <https://doi.org/10.21957/9aospz8>, 2000.
- van der Wiel, K. and Bintanja, R.: Contribution of climatic changes in mean and variability to monthly temperature and precipitation extremes, *Communications Earth & Environment*, 2, <https://doi.org/10.1038/s43247-020-00077-4>, 2021.
- 625 van der Wiel, K., Bloomfield, H. C., Lee, R. W., Stoop, L. P., Blackport, R., Screen, J. A., and Selten, F. M.: The influence of weather regimes on European renewable energy production and demand, *Environmental Research Letters*, 14, <https://doi.org/10.1088/1748-9326/ab38d3>, 2019a.
- van der Wiel, K., Stoop, L. P., van Zuijlen, B. R., Blackport, R., van den Broek, M. A., and Selten, F. M.: Meteorological conditions leading to extreme low variable renewable energy production and extreme high energy shortfall, *Renewable and Sustainable Energy Reviews*, 111, <https://doi.org/10.1016/j.rser.2019.04.065>, 2019b.
- 630 van der Wiel, K., Wanders, N., Selten, F. M., and Bierkens, M. F.: Added Value of Large Ensemble Simulations for Assessing Extreme River Discharge in a 2 °C Warmer World, *Geophysical Research Letters*, 46, <https://doi.org/10.1029/2019GL081967>, 2019c.
- van der Wiel, K., Selten, F. M., Bintanja, R., Blackport, R., and Screen, J. A.: Ensemble climate-impact modelling: extreme impacts from moderate meteorological conditions, *Environmental Research Letters*, 15, <https://doi.org/10.1088/1748-9326/ab7668>, 2020.
- 635 van der Wiel, K., Lenderink, G., and de Vries, H.: Physical storylines of future European drought events like 2018 based on ensemble climate modelling, *Weather and Climate Extremes*, 33, <https://doi.org/10.1016/j.wace.2021.100350>, 2021.
- van der Wiel, K., Batelaan, T. J., and Wanders, N.: Large increases of multi-year droughts in north-western Europe in a warmer climate, *Climate Dynamics*, 2022.
- van Kempen, G., van Der Wiel, K., and Anna Melsen, L.: The impact of hydrological model structure on the simulation of extreme runoff events, *Natural Hazards and Earth System Sciences*, 21, <https://doi.org/10.5194/nhess-21-961-2021>, 2021.
- 640 van Oldenborgh, G. J., van der Wiel, K., Kew, S., Philip, S., Otto, F., Vautard, R., King, A., Lott, F., Arrighi, J., Singh, R., and van Aalst, M.: Pathways and pitfalls in extreme event attribution, *Climatic Change*, 166, <https://doi.org/10.1007/s10584-021-03071-7>, 2021.
- Vogel, J., Rivoire, P., Deidda, C., Rahimi, L., Sauter, C. A., Tschumi, E., van der Wiel, K., Zhang, T., and Zscheischler, J.: Identifying meteorological drivers of extreme impacts: An application to simulated crop yields, *Earth System Dynamics*, 12, <https://doi.org/10.5194/esd-12-151-2021>, 2021.
- 645 Watkins, N. W.: Bunched black (and grouped grey) swans: Dissipative and non-dissipative models of correlated extreme fluctuations in complex geosystems, *Geophysical Research Letters*, 40, <https://doi.org/10.1002/grl.50103>, 2013.
- Wood, R. R., Lehner, F., Pendergrass, A. G., and Schlunegger, S.: Changes in precipitation variability across time scales in multiple global climate model large ensembles, *Environmental Research Letters*, 16, <https://doi.org/10.1088/1748-9326/ac10dd>, 2021.
- 650 Wyser, K., Koenigk, T., Fladrich, U., Fuentes-Franco, R., Karami, M. P., and Kruschke, T.: The SMHI Large Ensemble (SMHI-LENS) with EC-Earth3.3.1, *Geoscientific Model Development*, 14, 4781–4796, <https://doi.org/10.5194/gmd-14-4781-2021>, 2021.
- Zhang, T., van der Wiel, K., Wei, T., Screen, J., Yue, X., Zheng, B., Selten, F., Bintanja, R., Anderson, W., Blackport, R., Glomsrød, S., Liu, Y., Cui, X., and Yang, X.: Increased wheat price spikes and larger economic inequality with 2°C global warming, *One Earth*, 5, 907–916, 2022.
- 655 Zscheischler, J., Westra, S., van den Hurk, B. J., Seneviratne, S. I., Ward, P. J., Pitman, A., Aghakouchak, A., Bresch, D. N., Leonard, M., Wahl, T., and Zhang, X.: Future climate risk from compound events, <https://doi.org/10.1038/s41558-018-0156-3>, 2018.

Zscheischler, J., Martius, O., Westra, S., Bevacqua, E., Raymond, C., Horton, R. M., van den Hurk, B., AghaKouchak, A., Jézéquel, A., Mahecha, M. D., Maraun, D., Ramos, A. M., Ridder, N. N., Thiery, W., and Vignotto, E.: A typology of compound weather and climate events, <https://doi.org/10.1038/s43017-020-0060-z>, 2020.

Table A1. Naming convention of LENTIS members. The simulations are named with a 4 digit name: *kllm*. ‘k’ is a placeholder to denote the start year. Options are ‘h’ for 2000-historical and ‘s’ for 2075-SSP2-4.5. ‘ll’ is a placeholder to denote the parent. Parents run from 01 to 16, from which full transient simulation the initial conditions are taken. ‘m’ is a placeholder to denote the seed. Seeds run from 0 to 9, corresponding with the randomising seed of the micro-perturbation.

ll (parent) (→) m (seed) (↓)	k01m	k02m	...	k16m
kll0	k010	k020	...	k160
kll1	k011	k021	...	k161
...
kll9	k019	k029	...	k169

660 Appendix A: Ensemble label and CMIP6 variant label of KNMI-LENTIS simulations

All ensemble simulations have a unique name that reflects the start year and forcing, the parent and the seed (Table A1). The start year is noted in the first digit of the KNMI-LENTIS simulation name: ‘h’ for the PD time slice and ‘s’ for the 2K time slice. The parent is reflected in the second and third digit. The seed is reflected in the fourth digit.

Further, all KNMI-LENTIS simulations are labeled per the CMIP6 convention of variant labelling. A variant label is made from four components: the realization index *r*, the initialization index *i*, the physics index *p* and the forcing index *f*. Further details on CMIP6 variant labelling be found in *The CMIP6 Participation Guidance for Modelers*: <https://pcmdi.llnl.gov/CMIP6/Guide/modelers.html>, last accessed September 20, 2022).

In the KNMI-LENTIS [data-sets/simulations](#), the forcing is reflected in the first digit of the realization index *r* of the variant label. For the historical simulations, the one thousands (r1000-r1999) have been reserved. For the SSP2-4.5 the five thousands (r5000-r5999) have been reserved. The parent is reflected in the second and third digit of the realization index *r* of the variant label (~~r?01?~~~~r?16?~~rX01X-rX16X). The seed is reflected in the fourth digit of the realization index *r*: (~~r???0-r???9~~rXXX0-rXXX9). The seed is also reflected in the initialization index *i* of the variant label (i0-i9), so this is double information. The physics index p5 has been reserved for the ECE3p5 version, so all KNMI-LENTIS simulations have the p5 label. The forcing index *f* of the variant label is kept at 1 for all KNMI-LENTIS simulations. As an example, variant label r5119i9p5f1 refers to: the 2K time slice with parent 11 and randomizing seed number 9. The physics index is 5, meaning the run is done with the ECE3p5 version of EC-Earth3.

Appendix B: List of output fields

The list below contains all output variables of KNMI-LENTIS ~~data-set~~[simulations](#), sorted per output frequency. See the Supplementary file **Appendix_request-overview-CMIP-historical-including-EC-EARTH-AOGCM-preferences.pdf**