

Coastal earthquake induced landslide susceptibility during the 2016 Mw 7.8 Kaikōura earthquake, New Zealand

Colin K. Bloom¹, Corinne Singeisen¹, Timothy Stahl¹, Andrew Howell^{1,2}, Chris Massey², Dougal Mason^{1,3}

5 ¹School of Earth and Environment, University of Canterbury, Christchurch, 8014, New Zealand

²GNS Science, Lower Hutt, 5011, New Zealand

³WSP, Wellington, 6011, New Zealand

Correspondence to: Colin K. Bloom (colinkbloom@gmail.com)

Abstract. Coastal hillslopes often host higher concentrations of earthquake induced landslides than those further inland, but few studies have investigated the reasons for this occurrence. As a result, it is unclear if regional earthquake induced landslide susceptibility models trained primarily on inland hillslopes are effective predictors of coastal susceptibility. The 2016 Mw 7.8 Kaikōura earthquake on the northeast South Island of New Zealand resulted in c. 1,600 landslides > 50 m² on slopes > 15° within 1 km of the coast, contributing to an order of magnitude greater landslide source area density than inland hillslopes within 1 to 3 km of the coast. In this study, logistic regression modelling is used to investigate how landslide susceptibility differs between coastal and inland hillslopes and determine the factors that drive the distribution of coastal landslides initiated by the 2016 Kaikōura earthquake. Strong model performance (Area under the Receiver Operator Characteristic Curve or AUC of c. 0.80 to 0.92) was observed across eight models, which adopt four simplified geology types. The same landslide susceptibility factors, primarily geology, steep slopes, and ground motion are strong model predictors for both inland and coastal landslide susceptibility in the Kaikōura region. In three geology types (which account for more than 90% of landslides source areas) a 0.03 or less drop in model AUC is observed when predicting coastal landslides using inland trained models. This suggests little difference between the features driving inland and coastal landslide susceptibility in the Kaikōura region. Geology is similarly distributed between inland and coastal hillslopes and PGA is generally lower in coastal hillslopes. Slope angle, however, is significantly higher in coastal hillslopes and provides the best explanation for the high density of coastal landslides during the 2016 Kaikōura earthquake. Existing regional earthquake induced landslide susceptibility models trained on inland hillslopes using common predictive features are likely to capture this signal absent additional predictive variables. Interestingly, in the Kaikōura region, most coastal hillslopes are isolated from the ocean by uplifted shore platforms. Enhanced coastal landslide susceptibility from this event appears to be a legacy effect of past erosion from wave action, which preferentially steepened these coastal hillslopes.

1 Introduction

30 Steep rocky coastlines, which account for c. 80% of waterfront around the globe (Emery and Kuhn, 1982), are a naturally desirable location to live and recreate. A growing global population has resulted in human encroachment on coastlines with nearly one quarter of the human population now living in close proximity to the coast (Small and Nichols 2003). At the same time, global climate change and rising sea levels threaten to increase the rate of coastal landsliding and cliff retreat, in part, due to wave action overtopping protective beaches and impacting coastal cliff faces more frequently (e.g., Young et al., 2014; 35 Limber et al., 2018). The increasing frequency and intensity of these events will impact people and infrastructure near coastal hillslopes (e.g., Jibson, 2006; Dellow et al., 2017; Handwerger et al., 2019).

To help mitigate and manage these hazards, previous studies have attempted to define landslide susceptibility models for steep coastal regions using a physical understanding of the forcings that contribute to coastal mass wasting and the susceptibility 40 factors that make failure more likely (e.g., Keefer, 2000; He and Beighley, 2008; Budetta et al., 2008; Dickson and Perry, 2016; Francioni et al., 2018; Young, 2018; Limber et al., 2018). Forcings include rainfall, wave and tidal action, and storm surge whereas susceptibility factors include steep topography, geology, rock structure, hydrology, urbanization, and soil moisture among other factors (Van Jones et al., 2015; Dickson and Perry, 2016; He and Beighley, 2008). In tectonically active regions, earthquakes also act as a forcing that contribute to coastal landslides susceptibility (Griggs and Plant, 1998; Hancox 45 et al., 2002) but few models have considered the influence of strong ground motion.

Similarly, while a number of studies (e.g., Budimir et al., 2015; Parker et al., 2015; Massey et al., 2018) have attempted to define factors contributing to regional earthquake induced landslide susceptibility, few have focused specifically on coastlines. In several cases (e.g., Griggs and Plant, 1998; Collins et al., 2012; Massey et al., 2018) a significantly higher landslide density 50 was observed on coastal hillslopes as compared to inland hillslopes, but this has yet to be considered in most probabilistic landslide susceptibility assessments. Given the potential influence of increased precipitation, weathering, and soil moisture along coastlines (Mottershead, 2013), it is possible that regional earthquake induced landslide susceptibility models, primarily trained on inland hillslopes, may not effectively predict coastal landslide distributions. In this study, we explicitly test whether a landslide susceptibility model trained on landslides from inland hillslopes captures the distribution of coastal landslides. The 55 purpose of this test is to determine if existing variables can explain the difference between inland and coastal landslide densities, or if future landslide susceptibility models should consider additional coastal specific variables.

Following the 2016 M_w 7.8 Kaikōura earthquake along the northeast coast of the South Island of New Zealand (Hamling et al., 2017), Massey et al. (2018) observed an order of magnitude greater number of landslides along coastal hillslopes as 60 compared to inland hillslopes. No clear physical control on this increased landslide density was identified, although several hypotheses were presented including differing slope geometry resulting in ground motion amplification along the Kaikōura

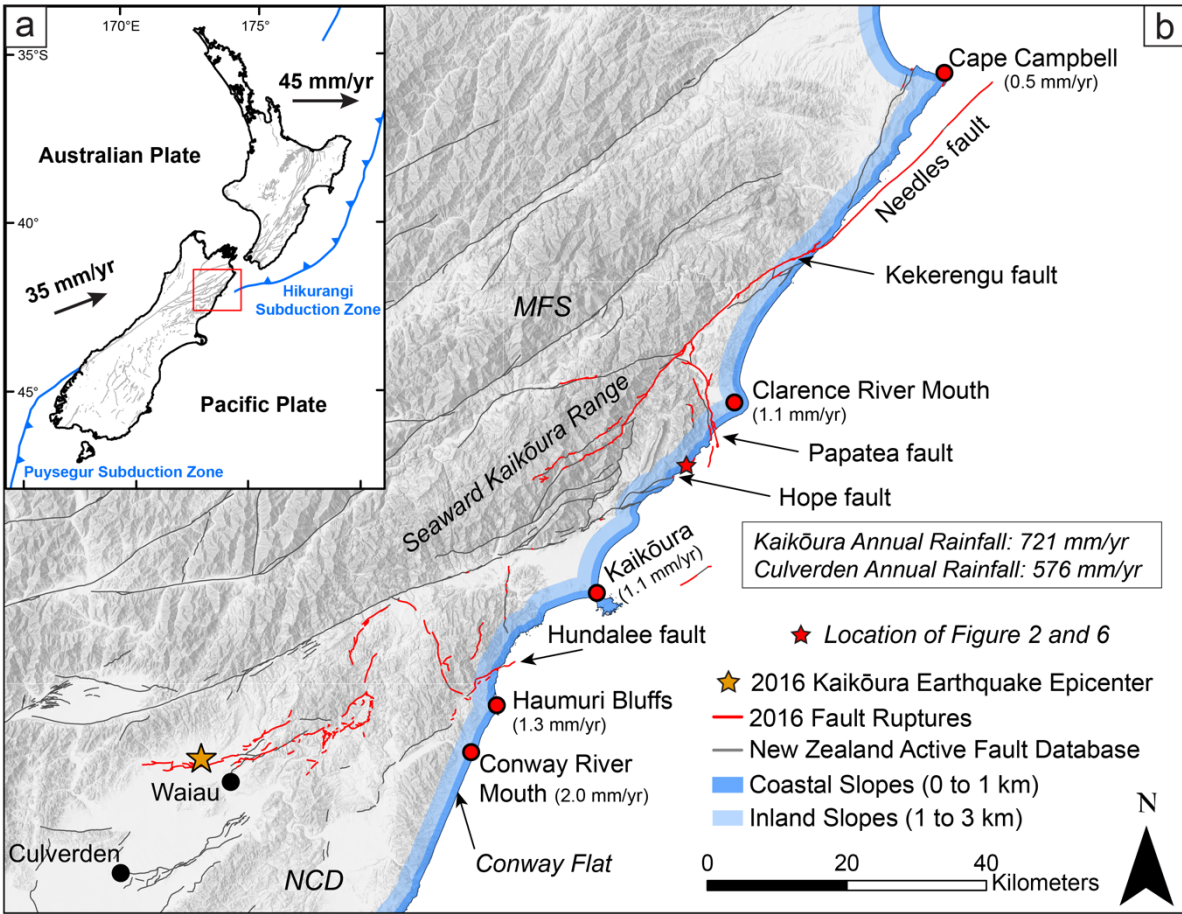
coast and reduced rock mass strength. Here, the distribution of coastal landslides from the 2016 Kaikōura earthquake is used to: 1) train comparative logistic regression earthquake induced landslide susceptibility models for coastal and inland hillslopes in the Kaikōura region; 2) evaluate factors that might contribute to an increased coastal coseismic landslide density during an earthquake; and 3) explore some of the mechanisms that resulted in increased coseismic landslide susceptibility along the Kaikōura coast in 2016.

2 Background

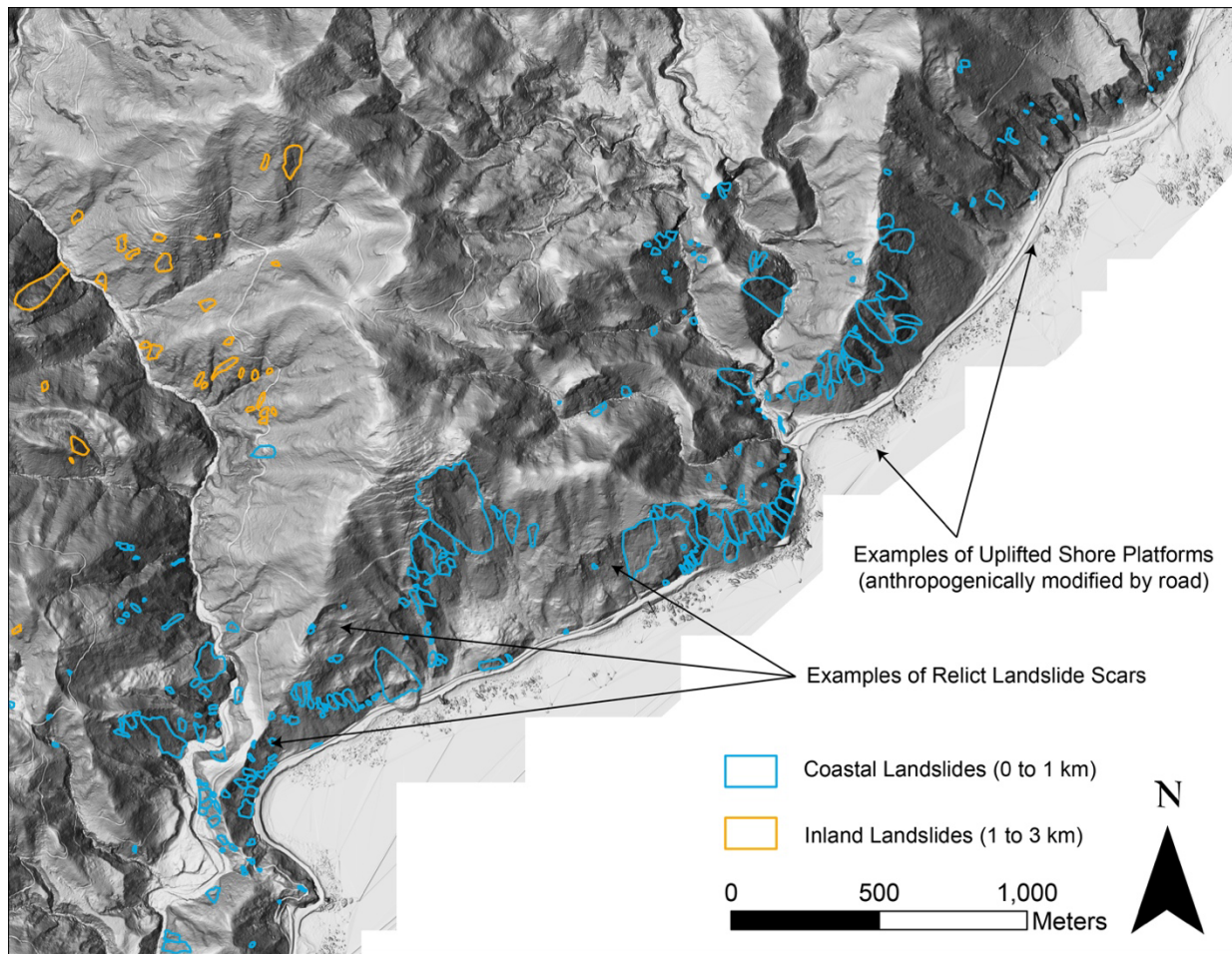
2.1 2016 Mw 7.8 Kaikōura Earthquake

The 2016 M_w 7.8 Kaikōura earthquake initiated on the Humps fault near the township of Waiau c. 40 km inland from the coast in the northeastern South Island of New Zealand (Hamling et al., 2017). The earthquake triggered a cascade of fault ruptures on more than 20 on- and off-shore faults primarily to the northeast of the epicentre (Figure 1, Litchfield et al., 2018). The earthquake, which caused complex surface deformation along c. 110 km of coastline (Clark et al., 2017), ruptured faults of both the North Canterbury Domain (NCD) and the Marlborough Fault System (MFS) tectonic domains which transfer plate motion from the Hikurangi Subduction Zone in the north to the transpressive Alpine Fault in the south (Figure 1, Litchfield et al., 2018).

The earthquake generated more than 30,000 landslides which were primarily concentrated within the steep slopes of the Seaward Kaikōura range, around surface fault ruptures, and in steep sections of coastline (Figure 1 and 2; Massey et al., 2018, 2020a; Bloom et al., 2022a). Statistical modelling by Massey et al. (2018, 2020a) found that the regional distribution of landslides from the Kaikōura earthquake was well explained by geology, slope, distance to surface fault traces, peak ground velocity (PGV), local slope relief, and elevation. While Massey et al. (2018) acknowledged a higher density of landslides along the Kaikōura coast, they did not investigate coastal landslide susceptibility, nor the underlying mechanisms involved in the distribution of coastal earthquake induced landslides. Here, we separate out coastal versus non-coastal hillslopes from this regional analysis and independently investigate the factors that might have contributed towards increased landslide susceptibility of coastal hillslopes during the 2016 Kaikōura earthquake.



90 **Figure 1: (a) Location of the Kaikōura earthquake within the tectonic setting of New Zealand. Active faults from the 1:250,000 scale**
New Zealand Active Fault Database (Langridge et al., 2016) are in grey and simplified major offshore structures are in blue. Black
arrows show the relative motion of the Pacific and Australian Plates (Beavan et al., 2002). (b) Area of the Kaikōura earthquake with
active faults of the New Zealand Active Fault Database in grey and fault ruptures from the 2016 Kaikōura earthquake in red
(Litchfield et al., 2018; Zinke et al., 2019). The shaded blue area is the focus of this study, a 3 km buffer of the coast where modelled
PGA from the Kaikōura earthquake was greater than 0.2 g. Red points identify locations where Ota et al. (1996) estimated coastal
 95 **uplift rates (noted next to labels). Major faults that cross the coastline in the Kaikōura region are labelled. MFS refers to the**
Marlborough Fault System north of the Hope fault while NCD refers to the North Canterbury Domain south of the Hope fault. The
base image is a multidirectional hillshade of the Land Information New Zealand 8 m DEM (LINZ, 2021a).



100 **Figure 2: A multidirectional hillshade of post-earthquake lidar (Massey et al., 2020b) with coastal earthquake induced landslides mapped by Massey et al. (2020a). A high density of coastal earthquake induced landslides were observed within the scars of relict landslides that are common along the coastline. Shore platforms modified by road and rail corridors buffer the base of the coastal hillslopes.**

2.2 Coastal and Geologic Setting

105 Much of the Northeast coast of New Zealand's South Island is steep and rocky (Figure 1 and 2). Coastal hillslopes are primarily composed of intensely jointed Lower Cretaceous greywacke of the Torlesse Supergroup along with younger Upper Cretaceous to Neogene sedimentary units (Rattenbury et al., 2006). These units are, in places, overlain by less consolidated Pleistocene alluvial, fluvial, and beach deposits. Portions of the region's steep coastline, primarily south of the Haumuri Bluffs at Conway Flat (Figure 1), form steep coastal cliffs c. 50 to 150 m in height, many of which are subject to wave action at high tide (Bloom et al., 2022b). North of the Haumuri Bluffs, however, most coastal hillslopes are uplifted and buffered from direct wave action
 110 by shore platforms that have, in places, been anthropogenically modified to facilitate road and rail corridors (Figure 2; Mason et al., 2017; Stringer et al., 2021).

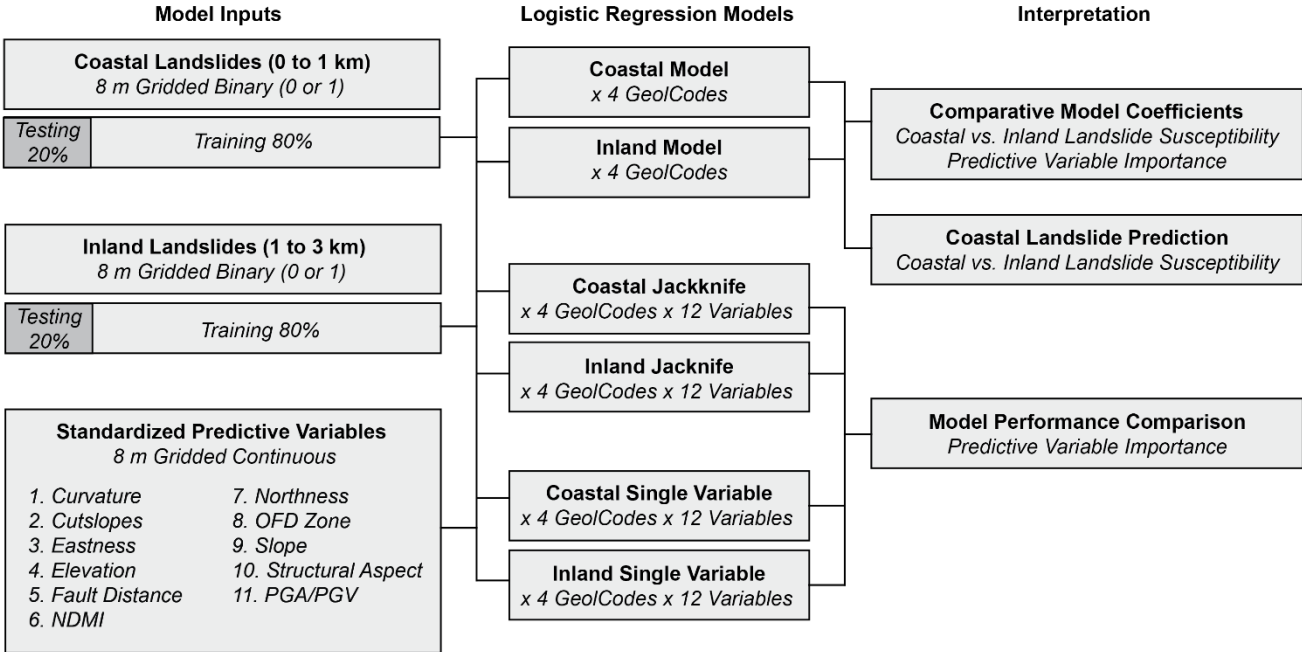
Long-term coastal uplift in the Kaikōura region is locally variable as a result of major faults, including the Hope, Kekerengu-Needles, and Hundalee, which cross-cut the coastline (Figure 1, Litchfield et al., 2018; Howell and Clark, 2022). Approximate regional estimates of uplift based on Pleistocene marine terraces suggest c. 2.0 mm yr⁻¹ of uplift at the Conway River mouth, 1.3 mm yr⁻¹ at the Haumuri Bluffs, 1.1 mm yr⁻¹ at Kaikōura township, 1.1 mm yr⁻¹ at the Clarence River mouth, and c. 0.5 mm yr⁻¹ c. 10 km south of Cape Campbell (Figure 1; Ota et al., 1996). These measurements generally align well with more recent measurements of c. 0.9 to 1.3 mm yr⁻¹ at Kaikōura (Nicol et al., 2022). Single event vertical displacement from the 2016 Kaikōura earthquake ranged from c. -2.5 to 6.5 m along the Kaikōura coast (Clark et al., 2017; Howell and Clark, 2022), but the areas that subsided in 2016 have undergone net uplift over the Holocene and Pleistocene (Ota et al., 1996; Howell and Clark, 2022).

As a result of low coastal population density, little work has been done to estimate long term coastal retreat rates for the South Island of New Zealand. The few studies that have estimated retreat (Bloom et al., 2022b; Kirk 1975, 1977) suggest highly variable rates modulated by lithology and topography. Average rainfall measured in the township of Kaikōura is c. 721 mm yr⁻¹ (Macara, 2014) but is highly spatially variable along the Kaikōura coast ranging from c. 675 to c. 1500 mm yr⁻¹ (NIWA, 2022). Over the historical record, significant landsliding along the Kaikōura coast has been observed following large storms, for example Cyclone Alison (March 1975) and ex-Tropical Cyclone Ita (April 2014), which brought high rainfall to the region over a short period of time (Massey et al., 2021a).

130 **3 Data and Methods**

To explore coastal earthquake induced landslide susceptibility in the Kaikōura region, we rely on a combination of predictive landslide susceptibility features and an earthquake induced landslide inventory produced by Massey et al. (2020a) following the 2016 Kaikōura earthquake (Figure 2). These datasets are used to examine the distribution of landslides with distance from the Kaikōura coast and provide training data for comparative inland and coastal landslide susceptibility models (Figure 3). For the purposes herein, inland hillslopes are defined as hillslopes within >1 to 3 km of the Kaikōura coast and coastal hillslopes as hillslopes within 1 km of the coastline (Massey et al., 2018). This distinction was based on three main factors. First, the observed landslide density is much higher within 1 km of the coast than within 1 to 3 km despite generally similar distributions of lithology, elevation, and vegetation. Second, hillslopes greater than 3 km from the coast capture a different proportion of lithology and alpine terrain (Figure 1) with a higher landslide density. These hillslopes are more difficult to compare with the coastal setting and may be affected by different processes. Third, the area within 1 km of the coast primarily encompass terrain up to the first topographic ridgeline (Massey et al., 2018), and is therefore more representative of ‘coastal-facing’ hillslopes than those at greater distances. The differences between the coastal and inland susceptibility models are investigated to examine

the factors contributing to an increased density of landslides on the Kaikōura coast. The following sections provide an overview of these datasets and analyses.



145

Figure 3: Logistic regression model workflow. Gridded landslide data and predictive features are used to train and test binary logistic regression models. Model results are used to compare inland and coastal landslide susceptibility and assess the importance of predictive features. NDMI stands for Normalized Difference Moisture Index while PGA/PGV stands for Peak Ground Acceleration/Velocity.

150 **3.1 2016 Kaikōura Landslide Inventory**

For this analysis, mapped source area polygons from version 2.0 of the 2016 Kaikōura earthquake induced landslide inventory (Figure 2 and 3; Massey et al., 2020a) were converted into a binary 8 m grid of landslide and non-landslide grid cells. Grid cells were assigned a value of 1 if the centre point of the grid cell fell within a landslide source area polygon and a value of 0 if it did not. Based on the size area distribution of landslides within 3 km of the Kaikōura coastline, landslides smaller than 50 m² were excluded from the analysis. This was an effort to eliminate potential bias resulting from preferential mapping of smaller failures along the Kaikōura coastal road corridor (Figure A1). Here, distance to the Kaikōura coastline was defined using the nearest Euclidean distance from the centre point of each 8 m grid cell to the coast as defined by the Land Information New Zealand (LINZ) Topo50 New Zealand Coastline (LINZ, 2021b). Investigations were limited to slopes greater than 15° which captured c. 91% of cumulative landslide source area while excluding most hillslopes unlikely to produce significant landsliding in this region. This threshold is commonly applied (e.g., Meunier et al., 2007; Kritikos et al., 2015) to confine investigations to hillslopes capable of producing landslides. Furthermore, analyses were limited to those areas where modelled PGA (Worden et al., 2020) was greater than 0.2 g (the triggering threshold for New Zealand’s earthquake induced landslide

160

response tools; Massey et al., 2021b). Areas with PGA greater than 0.2 g include c. 99% of mapped coastal landslide source areas from the 2016 Kaikōura earthquake. Finally, the c. 452,000 m² Seafront landslide was excluded from the analysis to avoid skewing descriptive statistics and modelling. The source area of the Seafront landslide occurs approximately 1 to 3 km from the coast but is located directly along a surface-rupturing fault (>9 m vertical displacement; Bloom et al., 2021). The failure is almost an order of magnitude larger than the next largest 2016 failure within 3 km of the coastline and is not representative of failures within the wider coastal region.

To supplement the landslide inventory, we reviewed the high resolution pre- and post-event digital elevation models and orthophotographs used to create the Kaikōura earthquake induced landslide inventory (Massey et al., 2020a) and manually assigned each landslide source area polygon either a ‘First Movement’ designation or one of three landslide activity designations derived from Cruden and Varnes (1996): ‘Reactivated Retrogressive Rock or Debris’, ‘Reactivated Moving Debris’, or ‘Reactivated Moving Rock’. These designations represent the landslide activity in relation to past failures. For the purposes herein, a past failure was defined as any landslide, landslide debris, or landslide scar that was apparent on the hillslope before the 2016 earthquake. First movements have no obvious link with a pre-2016 failure. Reactivated Retrogressive Rock or Debris exhibited extension of a pre-2016 landslide head scarp opposite to the failure direction. In this case we also include coastal cliff-top failures where there was evidence of past landslides. Reactivated Moving Rock exhibited remobilisation of the majority of material within an observed pre-2016 landslide. Reactivated Moving Debris exhibited minor deformation within the body of a past landslide including partial reactivation of landslide debris.

3.2 Landslide Distribution

To examine the distribution of landslides in relation to the coast, the landslide source area density, referred to herein as landslide density, was calculated at increasing distance from the coast. Landslide density is the sum of gridded landslide source area within 24 m bins at distance from the LINZ Topo50 New Zealand Coastline (LINZ, 2021b) divided by the total area within the bin. Landslide density was further broken down within five geology types (GeolCodes) simplified from the New Zealand QMAP (Rattenbury et al., 2006). GeolCode 1 represents Quaternary sands, silts, and gravels that are primarily fluvial deposits but also include alluvial fan, marine, and recent beach deposits; GeolCode 2 represents Neogene limestones, sandstones, and siltstones; GeolCode 3 represents Upper Cretaceous to Paleogene rocks including limestones, sandstones, and siltstones, GeolCode 4 represents minor undifferentiated volcanic rocks; GeolCode 5 represents Lower Cretaceous Torlesse (Pahau terrane) basement rocks that are predominantly heavily deformed sandstones and argillite, commonly referred to as greywacke in New Zealand; and finally GeolCode 6 represents undifferentiated relict landslides and hillslope deposits as defined by QMAP. It is important to note that relict landslides and hillslope deposits are not systematically mapped within QMAP (Rattenbury et al., 2006).

3.3 Landslide Susceptibility Features

195 A number of machine learning and statistical modelling techniques, for example logistic regression, random forest, or deep
neural networks, have been successfully applied to regionally estimate landslide susceptibility (Reichenbach et al., 2018). The
choice of modelling technique is largely governed by the scale and requirements of the analysis. In this study the binary logistic
regression technique is used because it 1) balances relatively high model performance with low model training times and 2)
has high ‘explainability’ allowing us to easily identify the importance of individual predictive features in trained models
200 (Figure 3; Budimir et al., 2015). The purpose of using machine learning in this study is to better understand predictive features
not to create a forecast model or susceptibility maps. Other types of models, for example deep neural networks, may result in
higher model performance more suited to forecasting but sacrifice explainability and require longer training times
(Reichenbach et al., 2018) limiting their application in this case.

205 The basic requirements for all empirical landslide susceptibility analyses are, typically, a categorical landslide dataset (defining
the presence or absence of a landslide at any given location) and one or more predictive features that can be used to train the
model (Figure 3; Budimir et al., 2015). A separate categorical landslide dataset (not used in model training) is used to test the
efficacy of the trained model (Figure 3). Model performance is optimised differently based on the modelling technique but
usually involves varying model ‘hyperparameters’ or values used to control model process, and refining the predictive features
210 used to train the model (Lombardo and Mai, 2018; Reichenbach et al., 2018). Here, we discuss the choice of predictive features
and further describe the application of the logistic regression modelling technique.

For this analysis, 25 common predictive features used in other landslide susceptibility studies (e.g., Budimir et al.,
2015) were developed. These features included a range of lithologic, topographic, and surface conditions, for example, slope
215 angle, roughness, and vegetation greenness (NDVI) (Figure A2). Of these features, 13 that produced variance inflation factor
(VIF) scores greater than 10 were excluded. VIF, defined as:

$$VIF = \frac{1}{1-R_i^2} \quad (1)$$

is an assessment of the linear relationship between any individual feature and all other potential features (R_i^2) (Kutner et al.,
2004). Excluding collinear features ensures more representative model weighting, generally improves model performance, and
220 maintains model explainability.

The various features used in this analysis (Table 1) were converted to raster format and/or aligned to the spatial resolution of
the LINZ 8 m DEM (LINZ, 2021a) using the GDAL Rasterize and Warp functions with nearest neighbour resampling. The
LINZ 8 m DEM, primarily derived from the January 2012 LINZ Topo50 20 m contours (LINZ, 2021a), was used to derive the
225 curvature, aspect, elevation, and slope features used in the analysis (Table 1). While the LINZ 8 m DEM has known limitations

for local terrain analysis, on a regional scale, it captures the majority of terrain characteristics (Appendix A) and is one of the few datasets with appropriate coverage and resolution for our analysis.

Table 1: Landslide susceptibility features.

Number	Features	Type	Description
1	Coast Distance	Continuous	Euclidean distance (GDAL) from the LINZ Topo50 New Zealand Coastline (LINZ, 2021b)
2	Curvature	Continuous	Curvature (RichDEM) derived from Land Information New Zealand (LINZ) 8 m DEM (LINZ, 2021a)
3	Cutslopes	Categorical	Modified cutslopes mapped as polygons and gridded to 8 m. Values of 1 indicate the presence of a cutslope at the grid cell centre point.
4 & 9	Aspect (Eastness and Northness)	Continuous	Eastness (Sin) and Northness (Cos) of Aspect (GDAL, Converted to Radians) produced using LINZ 8 m DEM (LINZ, 2021a)
5	Elevation	Continuous	LINZ 8 m DEM (LINZ, 2021a) primarily derived from January 2012 LINZ Topo50 20 m contours (LINZ, 2021a); Native Resolution: 8 m/pixel
6	Fault Distance	Continuous	Euclidean distance (GDAL) from 14 surface ruptured faults from 2016 by Bloom et al. (2021a)
7	Ground Motion	Continuous	PGA and PGV from USGS ShakeMap v4 (Worden et al., 2020; Kaikōura ShakeMap products accessed at https://earthquake.usgs.gov/earthquakes/eventpage/us1000778i/shakemap/intensity on September 7th 2021); Native Resolution: 336 m/pixel
8	NDMI (Normalized Difference Moisture Index)	Continuous	Derived from October 2016 Landsat 8 Imagery (U.S. Geological Survey 2022): $NDMI = (Band\ 5 - Band\ 6) / (Band\ 5 + Band\ 6)$; Native Resolution: 30 m/pixel
10	OFD (Off Fault Deformation)	Categorical	OFD zone as defined for 14 faults by Bloom et al. (2022a) as polygons gridded to 8 m. Values of 1 indicate the presence of an OFD zone at the grid cell centre point.
11	Slope	Continuous	Slope (GDAL) derived from LINZ 8 m DEM (LINZ, 2021a)
12	Structural Aspect	Continuous	Difference between aspect and dip direction of QMAP bedding measurements (Rattenbury et al., 2006; see Appendix A for additional detail)
13	Geology (GeolCode)	Categorical	Simplified from 1:250k scale New Zealand QMAP (Rattenbury et al., 2006) Classes: 1. Quaternary Sands and Gravels, 2. Neogene Sediments, 3. L. Cretaceous– Paleogene Sediments, 4. Volcanics, 5. Torlesse Greywacke (Pahau), 6. Landslide and Hillslope Deposits

230 Similar to the landslide density analysis, the extent of features (Table 1) was limited to slopes greater than 15° and areas with
 235 PGA (defined by the USGS ShakeMap; Worden et al., 2020) greater than 0.2 g. Continuous landslide susceptibility features (Figure 3, Table 1) were scaled using the standard scalar method:

$$z = \frac{x - \mu}{\sigma}, \quad (2)$$

where the standardised value (z) is the original value (x) minus the mean (μ) of all values divided by the standard deviation
 235 (σ) of all values. Using the standard scalar allows us to compare model coefficients, or the weights assigned to each feature during model training, side-by-side.

3.4 Logistic Regression Modelling

240 The predictive power of individual landslide susceptibility features during the Kaikōura earthquake was strongly modulated by geology type (Massey et al., 2018, 2020a; Singeisen et al., 2022). Separate coastal (0 to 1 km from the coast) and inland (1 to 3 km from the coast) models were, therefore, trained in four simplified geology types (GeolCodes 1, 2, 3, and 5; Figure 3) using predictive features and the sci-kit learn python library (Table 1). GeolCode 4 (Volcanics) and GeolCode 6 (Mapped Hillslope Deposits) lacked sufficient data to support a robust model and were excluded from the analysis. Additional models were trained using the combined data from inland and coastal hillslopes and these results are included in Appendix B (Figures B1 and B2).

245 Models were trained on 80% of gridded data leaving 20% of data for independent verification of the model performance (Figure 3). Across model training random 10-fold cross validation was used to evaluate model uncertainty. In K-fold cross validation, the training dataset is partitioned into K (in this case 10) parts (Hastie et al., 2017) and models are iteratively trained using all parts minus one. The remaining portion of data excluded from training in each iteration is used to validate model performance. An L1 regularization was used to penalize poor features and improve model prediction by simplifying the model (Lombardo and Mai, 2018). Using the L1 (also known as the Least Absolute Shrinkage Selection Operator or LASO; Tibshirani, 1996) allows the model to assign overly collinear or unresponsive features a coefficient of zero. The SAGA solver (Defazio et al., 2014), which supports L1 regularization, was used to weight coefficients. In all cases, models converged prior to a maximum 100 iterations. Based on hyperparameter tuning, a C (inverse of regularization strength) of 1 was applied to the models. The target datasets have a greater number of non-landslide source area (value of 0) grid cells than landslide (value of 1) grid cells (Table A1). To limit overprediction, no attempt was made to balance or otherwise weight the datasets during model training.

260 The intention of this work was not to systematically evaluate or compare model prediction. However, estimates of area under the receiver-operator characteristic curve were used to demonstrate the relatively high performance of all trained models. The receiver operator characteristic (ROC) curve (e.g., Fawcett 2006; Lombardo and Mai 2018) plots the true positive rate (TPR) against the false positive rate (FPR) at different probability thresholds. TPR, also known as ‘sensitivity,’ represents the ratio of positive predictions that were correctly classified as positive by the model, i.e. pixels modelled as failures that actually failed in 2016. FPR is calculated as $(1 - \text{specificity})$, where specificity is the true negative rate (TNR) or the ratio of negative model predictions that were correctly classified as negative. The shape of the ROC curve is used to evaluate the goodness of fit for a binary classifier – in this case, whether a grid cell represents a landslide source area or not ($Y = 1$ or $Y = 0$). The class prediction for each instance is determined based on the probability threshold. Area under the ROC curve (AUC) is calculated to quantify the shape of the curve in a single reportable value. Values of AUC close to 1 represent better model performance while values close to 0.5 represent near random results (Hosmer et al., 2013). As a final test to demonstrate the efficacy of the models, we

270 used the results of models trained on inland data to predict the coastal landslide distribution (Figure 3) and this is also reported based on AUC.

Because model features were standardised using the standard scalar method, model coefficients can be directly compared for each predictive feature to estimate feature importance (Figure 3). Following the techniques of Lombardo and Mai (2018) and
275 Williams et al. (2021), jackknife and single variable logistic regression model permutations were also trained for inland and coastal hillslopes in GeolCodes 1, 2, 3, and 5 to further assess feature importance (Figure 3). In the jackknife method, a single landslide susceptibility feature is iteratively removed during model training (Lombardo and Mai, 2018; Williams et al., 2021). Individual model results are then compared to evaluate the influence of removing each feature from the model. A more substantial drop in model AUC suggests higher importance for the removed feature. In the single variable method, models are
280 iteratively trained on each susceptibility feature separately to determine individual feature importance. In these models, a higher model AUC suggests that the feature has a greater independent explanatory value.

4 Results

4.1 Distribution of Coastal Earthquake Induced Landslides

Similar to the results of Massey et al. (2018), an order of magnitude greater earthquake induced landslide density was observed
285 across coastal hillslopes as a result of the 2016 Kaikōura earthquake (Figure 4). Within 1 km of the coast, 1,621 landslides > 50 m² were observed on slopes greater than 15° with a mean PGA greater than 0.2 g. Given these filters, on average, coastal landslides were slightly larger than inland landslides (c. 870 m² for coastal hillslopes and c. 780 m² for inland hillslopes; Table B1). Removing landslide size and slope filters results in a similar coastal landslide density. Source area density peaks at c. 7% between 0 and 100 m from the coastline and drops to c. 0.5% at 1000 m from the coastline (Figure 4). Between 1000 m from
290 the coastline and 3000 m from the coastline, landslide source area density remains generally consistent with an average density of c. 0.5% (Figure 4).

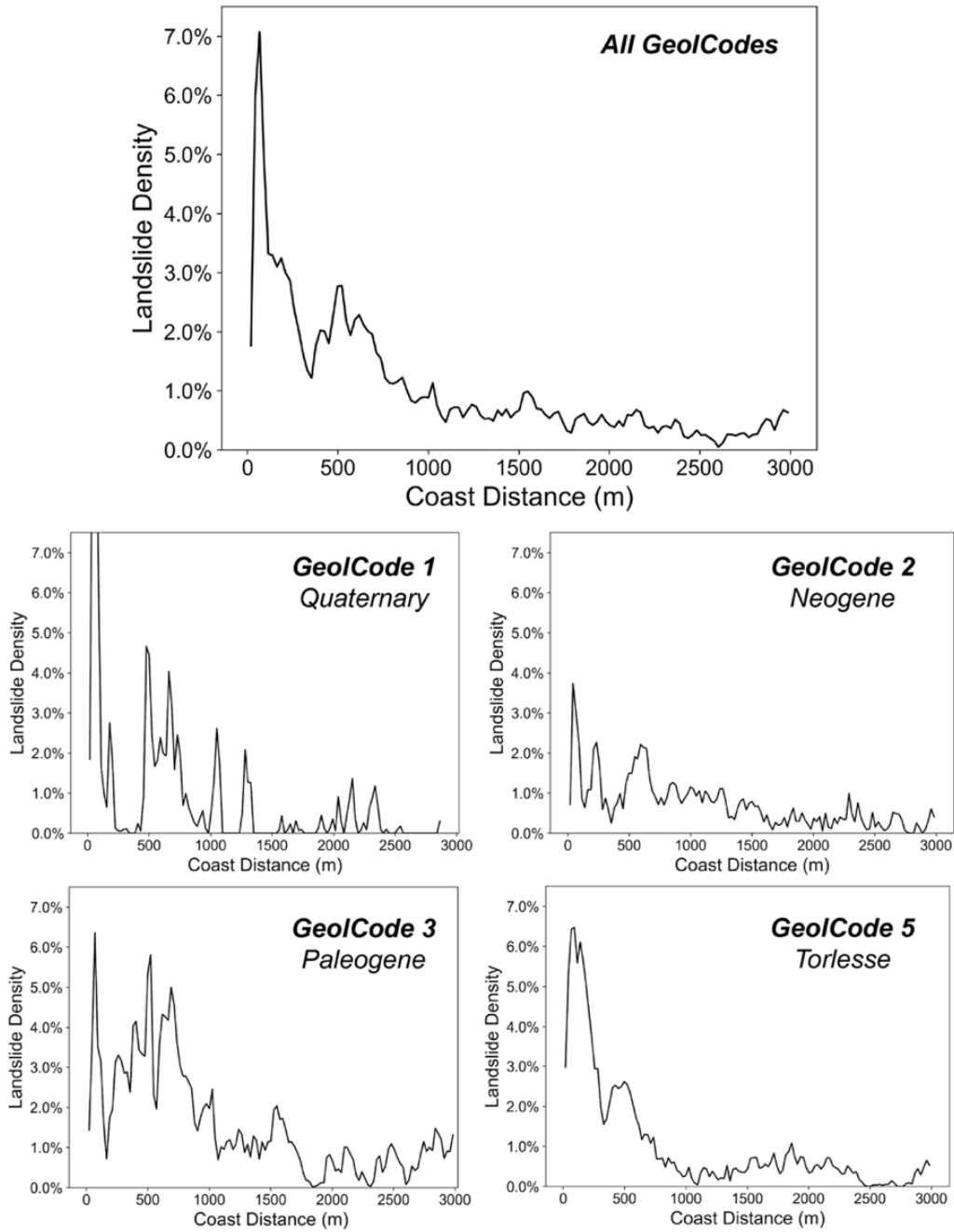


Figure 4: Overall landslide source area density (landslide density) within 24 m bins at increasing distance from the Kaikōura coast as defined by the LINZ Topo50 Coastline (LINZ, 2021b). Landslide density within GeolCodes 1, 2, 3, and 5 are presented separately in the bottom plots.

4.2 Distribution of Lithology

Most landslides from the 2016 Kaikōura earthquake occur within Torlesse greywacke (GeolCode 5), younger sedimentary units (GeolCode 2 and 3), and unconsolidated Quaternary units (GeolCode 1) (Table 2). Less than 1% of landslides were observed within volcanic rocks (GeolCode 4) or mapped pre-existing failures and hillslope deposits (GeolCode 6, which are not systematically mapped). Regional landslide density does not mirror the distribution of lithology (Table 2) and landslide source areas disproportionately occur within Upper Cretaceous to Paleogene sediments (GeolCode 3) and, along the coast, within Lower Cretaceous Torlesse greywacke (GeolCode 5). The general landslide density trends are primarily driven by these two geology types. Within c. 100 m of the coast, landslide density is as high as c. 6% in both GeolCodes 3 and 5 (Figure 4).

305 **Table 2: Distribution of lithology and landslides**

GeolCode	Geology	Percent of Coastal Area (0 to 1 km)	Percent of Coastal Landslides	Coastal Landslide Density	Percent of Inland Area (1 to 3 km)	Percent of Inland Landslides	Inland Landslide Density
1	Quaternary	7.3%	9.0%	2.5%	3.8%	2.1%	0.3%
2	Neogene	32.9%	20.1%	1.2%	21.2%	20.1%	0.5%
3	Paleogene	16.8%	25.3%	3.1%	23.8%	39.6%	0.8%
5	Torlesse	42.9%	45.6%	2.2%	51.2%	38.1%	0.4%

4.3 Landslide Activity

Of the mapped landslides from the 2016 Kaikōura earthquake, c. 13% within 1 km of the coast and c. 34% between 1 and 3 km of the coast were first movements (Table 3). The remaining failures were a combination of reactivation of relict landslides, including retrogression of pre-existing landslide head scarps and reactivation of landslide debris. Within Torlesse greywacke (GeolCode 5), c. 49% of inland landslides were first movements as compared to c. 17% of coastal failures (Table 3).

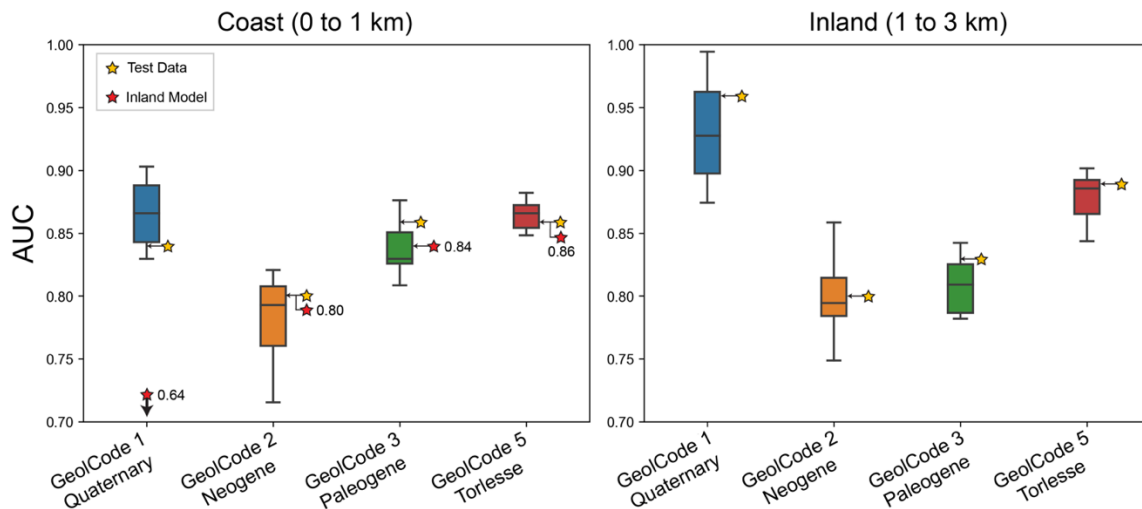
310 **Table 3: Earthquake induced landslide activity in relation to past failures**

Coast (0 to 1 km)					
GeolCode	Geology	First Movement	Reactivated Retrogressive Movement	Reactivated Moving Rock	Reactivated Moving Debris
1	Quaternary	12%	43%	3%	42%
2	Neogene	8%	54%	4%	35%
3	Paleogene	13%	33%	4%	50%
4	Volcanics	0%	0%	0%	0%
5	Torlesse	17%	28%	4%	51%
6	Relict Landslides (QMAP)	0%	39%	1%	60%
All	All	13%	38%	4%	45%
Inland (1 to 3 km)					

1	Quaternary	28%	39%	3%	30%
2	Neogene	21%	53%	4%	23%
3	Paleogene	24%	40%	4%	32%
4	Volcanics	31%	46%	8%	15%
5	Torlesse	49%	19%	2%	29%
6	Relict Landslides (QMAP)	28%	40%	4%	28%
All	All	34%	38%	3%	25%

4.4 Coastal vs. Inland Earthquake Induced Landslide Susceptibility Models

315 AUC of cross-validated coastal models is generally consistent with similar studies (e.g., Reichenbach et al., 2018; Williams et al., 2021) and ranges from c. 0.79 in coastal Neogene sediments (GeolCode 2) to c. 0.92 in coastal Quaternary sediments (GeolCode 1) with generally low variability across 10 cross-validations (Figure 5). Additionally, all model AUCs were within the range of cross-validations when independently testing model performance using 20% of data withheld from model training (Figure 5).



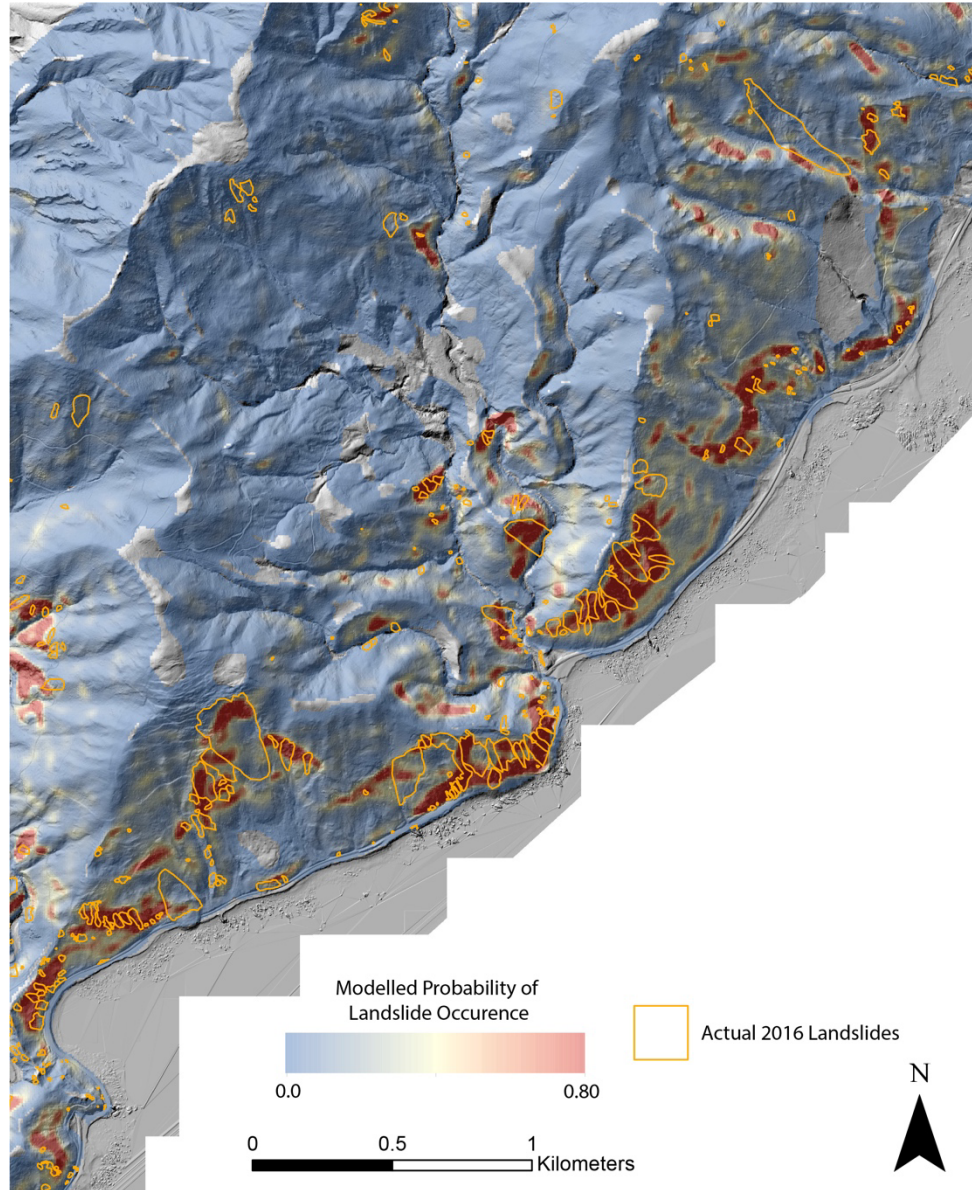
320

Figure 5: Logistic regression model performance from models trained on each geology type (GeolCode) in coastal (left) and inland (right) hillslopes. Model performance is measured by area under the receiver operator characteristic curve (AUC). Each boxplot shows the results of 10-fold cross validation using 80% of the available target dataset. Yellow stars represent model performance when applied to the 20% of data withheld from training. Red stars in the Coast results represent the performance of the inland model when applied to the coast dataset. The red star with an arrow pointing down in Coast GeolCode 1 represents an AUC beyond the extent of the plot at 0.64.

325

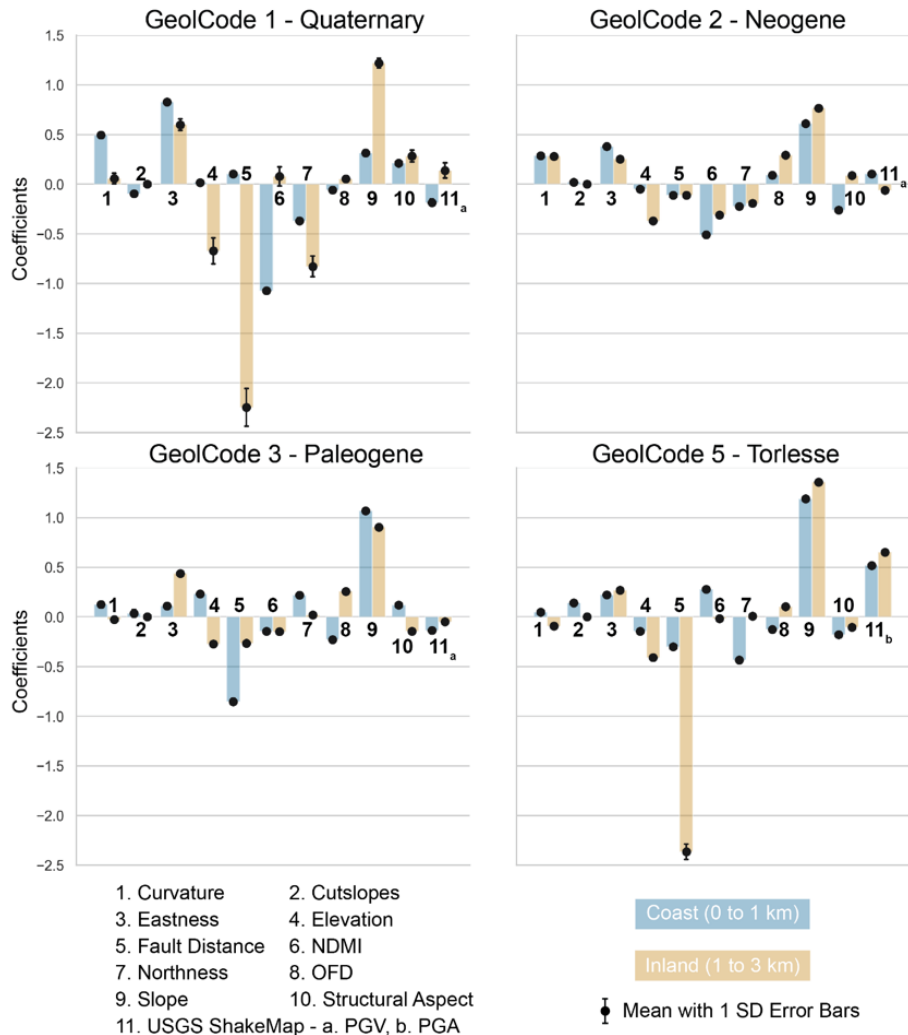
The results of inland model training were used to predict the coastal landslide distribution (Figure 5 and 6). Models trained on inland landslides and applied to coastal hillslopes generally produced the same or lower AUC values than models trained on

330 coastal hillslopes (Figure 5). There was an c. 0.20 drop in AUC in GeolCode 1, a c. 0.03 drop in GeolCode 3, and almost no drop in GeolCodes 2 and 5 (Figure 5). Visual inspection of modelled landslide probability when applying the inland trained model to coastal hillslopes also suggests relatively strong model performance (Figure 6). We generally observe higher landslide probability where coastal landslides (not included in model training) occurred during the Kaikōura earthquake.

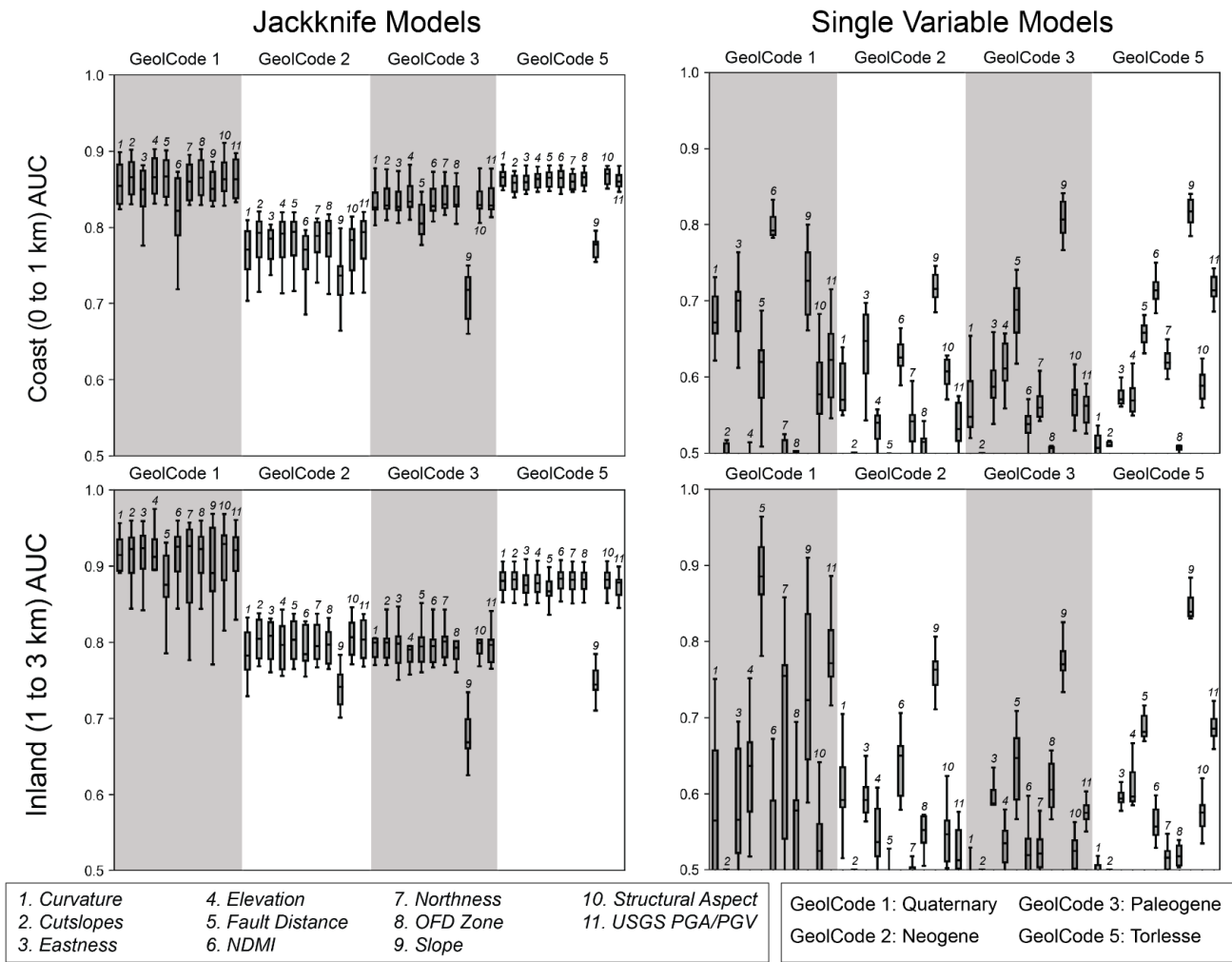


335 **Figure 6: Example of an inland (1 to 3 km from the coast) trained landslide susceptibility model applied to both inland and coastal hillslopes. The base image is a hillshade of post-earthquake lidar (Massey et al., 2020b) with actual earthquake induced landslides mapped by Massey et al. (2020a). The location is coincident with Figure 2 (location identified in Figure 1).**

340 Below, we compare and contrast model coefficients alongside the results of jackknife and single variable models for each geology type (Figure 7 and 8) to further examine the relative importance of the predictive features.



345 **Figure 7: Model coefficients for models trained on each GeolCode. Points with associated error bars represent the mean and standard deviation (SD) of the coefficient across 10-cross validations. Colour bars indicate which feature the point is associated with and the model data used to train the model (either coast or inland). In cases where no error bar is present, the standard deviation is less than 0.1. Negative coefficients result in a higher weight for small values while positive coefficients result in a higher weight for high values. For example, a negative coefficient for fault distance suggests that there is a higher landslide susceptibility closer to faults while a positive coefficient for slope suggests that a greater slope angle has higher landslide susceptibility. All features are standardised prior to model training allowing for the direct comparison of coefficients within the same model.**



350

355

Figure 8: Results of jackknife (left) and single variable (right) logistic regression models. Model performance is measured by area under the receiver operator characteristic curve (AUC). The box plot for each model shows the results of a random 10-fold cross validation. In jackknife models, a single model feature is iteratively removed from model training and a bigger drop in AUC represents higher feature importance. In single variable models, a separate model is trained using each feature and higher AUC represents higher explanatory value. AUC close to 0.5 represents near random results while AUC near 1 represents near perfect results (Hosmer et al., 2013).

4.4.1 GeolCode 1- Quaternary

360

For inland (1 to 3 km from the coast) unconsolidated Quaternary units (GeolCode 1), distance to fault and slope features had the highest model coefficients (Figure 7). For coastal hillslopes (0 to 1 km from the coast), a low model coefficient was observed for the NDMI (soil moisture) feature suggesting an inverse relationship where lower values of the soil moisture proxy predict higher landslide susceptibility. An c. 0.04 drop in AUC was observed for coastal jackknife models trained without the

365 NDMI predictor (Figure 8). In single variable models, NDMI alone produced an AUC of c. 0.79 +/- 0.03 (+/- 1 σ) in coastal hillslopes, c. 0.07 higher than the slope-only model which yielded the next highest AUC. In jackknife models of inland hillslopes, there was not a substantial drop in AUC for any model iteration and in single variable models of inland hillslopes, a number of features produced high model performance (Fault distance an AUC of c. 0.88 +/- 0.04, ShakeMap PGV an AUC of c. 0.79 +/- 0.03 and slope an AUC of c. 0.74 +/- 0.11; Figure 8).

4.4.2 GeolCode 2 - Neogene

370 In Neogene sediments (GeolCode 2), a similar distribution of coefficients for inland and coastal hillslopes were observed with the highest model coefficients for the slope feature (Figure 7). Additionally, negative coefficients for NDMI were observed in both inland and coastal hillslopes. While observations of model coefficients were largely supported by jackknife models in both inland and coastal hillslopes, the most substantial drop in AUC (c. 0.05) was seen with the exclusion of the coastal slope feature (Figure 8). Single variable models showed an AUC of c. 0.72 +/- 0.02 for coastal slope and c. 0.75 +/- 0.03 for inland slope features (Figure 8).

375 4.4.3 GeolCode 3 - Paleogene

In Paleogene sediments (GeolCode 3) a similar distribution of coefficients was again observed in inland and coastal hillslopes with the highest model coefficients for the slope and distance to fault features (Figure 7). A strong negative coefficient was also observed for mean PGA in inland hillslopes. In jackknife models there was an c. 0.13 drop in both coastal and inland model AUC with the removal of the slope feature and an c. 0.03 drop in coastal model AUC with the removal of the fault distance feature (Figure 8). In single variable models, slope showed the best model performance with an inland model AUC of c. 0.77 +/- 0.03 and a coastal model AUC of c. 0.81 +/- 0.03 (Figure 8).

4.4.4 GeolCode 5 - Lower Cretaceous

385 In Lower Cretaceous Torlesse greywacke (GeolCode 5) high model coefficients were observed for the slope and mean PGA features though these are strongly outweighed by the fault distance feature in inland hillslopes (Figure 7). An c. 0.09 drop in coastal model AUC and a c. 0.13 drop in inland model AUC was observed with the removal of the slope feature in jackknife models (Figure 8). Interestingly, only an c. 0.01 drop in inland model AUC was observed with the removal of the fault distance feature despite a high model coefficient. As a single feature, slope had the highest AUC in both inland (0.85 +/- 0.2) and coastal (0.82 +/- 0.02) models (Figure 7) while PGA had an AUC of c. 0.72 +/- 0.02.

4.5 Summary of Results

390 Despite an order of magnitude higher landslide density observed within 1 km of the Kaikōura coast (Figure 4), few significant differences were observed between modelled coefficients in inland and coastal landslide susceptibility models. Additional models trained on both coastal and inland data yielded similar model coefficients (Figure B2). Models trained on data from 1

395 to 3 km inland and applied to coastal hillslopes from 0 to 1 km were still highly predictive and only resulted in a 0.03 or less drop in AUC as compared to models trained and tested on coastal hillslopes in GeolCodes 2, 3, and 5 (Figure 5). These three geology types account for greater than 90% of coastal landslide density (Table 2).

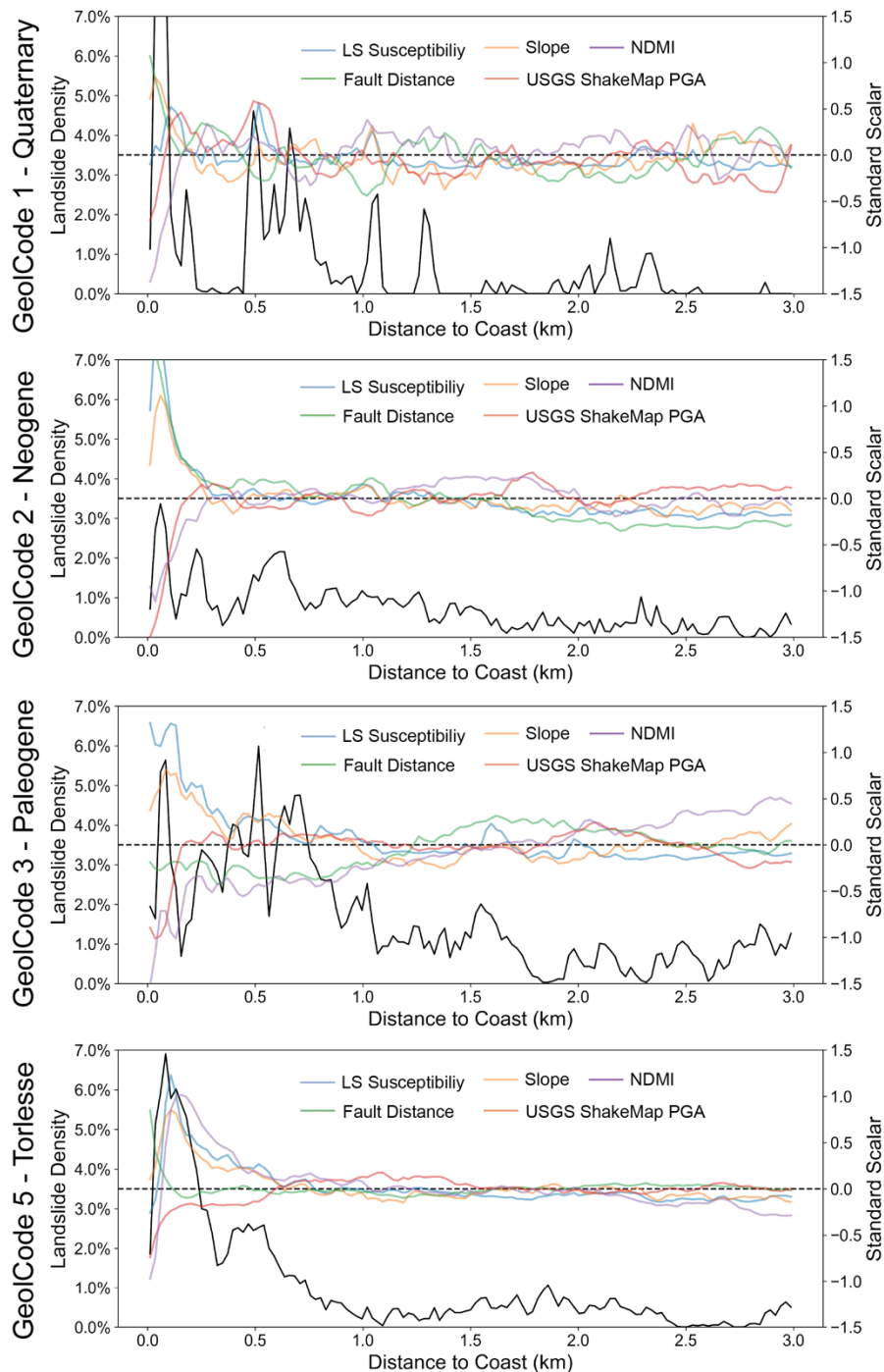
400 The larger variation in model performance (c. 0.20) between inland and coastal models of GeolCode 1 could represent a true difference between inland and coastal landslide susceptibility. Inland GeolCode 1, however, accounts for less than 4% of total inland area and c. 2% of inland landslides (Table 2). Given a slightly larger spread in AUC (Figure 5 and 8) and model coefficients (Figure 7) across 10 cross-validations, it is also possible that there is simply not enough data to train an effective model in inland GeolCode 1.

405 Some minor differences in model coefficients were observed, in particular the higher importance of fault distance in coastal GeolCode 3 and inland GeolCode 5, but these do little to explain the overall landslide density trend. Despite a high model coefficient for fault distance in inland GeolCode 5, there was only an c. 0.01 drop in AUC in jackknife models suggesting a potentially high correlation with other predictive features (likely PGA; Figure A2). Across jackknife and single variable models, slope and, in the case of GeolCode 5, PGA appear to be much stronger and more effective features than fault distance for predicting the regional landslide distribution within both inland and coastal hillslopes of the Kaikōura region.

5 Discussion

410 5.1 Factors controlling increased coastal landslide density

Modelling of landslide susceptibility successfully captures the coastal distribution of landslides from the Kaikōura earthquake but does not provide a clear explanation for the order of magnitude difference in inland and coastal landslide density. To better explain this occurrence, the distribution of several of the most important landslide susceptibility features from the modelling were further examined (Figure 9; additional features are discussed in Appendix B).



415

Figure 9: Landslide density for each GeolCode (black line) within 24 m bins at increasing distance from the Kaikōura coast plotted alongside the distribution of standardised predictive features (orange, green, purple, and red lines) and landslide (LS) susceptibility (blue line) based on a logistic regression model trained on inland data from 1 to 3 km. Standardised features and landslide susceptibility are presented as the mean of values within 24 m bins with distance from the coast.

Slope – Model coefficients and jackknife models (Figure 7 and 8) suggest that slope is one of the most important features determining the distribution of landslides from the Kaikōura earthquake in both inland and coastal slopes. Massey et al. (2018) noted a lower overall distribution of slope near the coast in the Kaikōura region, however, when hillslopes below 15° are excluded, we observe a slightly higher average slope (c. 1°) within 1 km of the coast as compared to 1 to 3 km inland (Figure 425 B3). While this difference may seem small, the variation in slope with distance from the coast largely mirrors modelled landslide susceptibility and landslide density trends across geology types (Figure 9). Steeper slopes, predominantly those occurring within c. 500 m of the coastline (Figure 9), appear to have a primary control on increased coseismic landslide density in proximity to the Kaikōura coastline.

430 *Strong Ground Motion (Mean PGA and Distance to Fault)* – Across geology types a decrease in ground motion and increase in fault distance is observed at c. 500 m from the coast. This is particularly evident in GeolCode 5 (Figure 9) and does little to explain the observed landslide density trends. It is important to note, however, that there is a large concentration of landslides on the northern Kaikōura coast where modelled ground motion is high and model coefficients suggest that, particularly for GeolCode 5, high modelled PGA is a good predictor of coastal landslide density (Figure 7). The steep decrease in modelled 435 PGA/PGV observed near the coast (Figure 9) could be a result of increasing distance from the seismic source south of Kaikōura. Here, coastal landslides concentrate within weaker actively eroded lithologies that fail at lower ground motions (Bloom et al., 2022b).

Topographic and site amplification of seismic waves (e.g., Ashford et al., 1997) likely contributed to local variability in strong 440 ground motion intensity within individual coastal and inland hillslopes during the Kaikōura earthquake. Ground motion variability is known to influence landslide susceptibility (e.g., Sepulveda, 2022; Massey et al., 2022) but remains challenging to estimate on a regional scale. Outside of applying regional ground motion intensity estimates (PGA/PGV from the USGS ShakeMap), this analysis does not investigate the role of site-specific ground motion. Given the coarse native resolution of PGA/PGV estimates from the USGS ShakeMap (336 m/pixel; Worden et al., 2020), uncharacterised ground motion variability 445 may have an influence on the distribution of landslides from the 2016 Kaikōura earthquake.

Lithology and Geologic Structure (Geology and Structural Aspect) – A similar distribution of lithology was observed in both inland and coastal hillslopes (Table 2), and it is assumed that, over short distances, geology has a relatively consistent influence on landslide susceptibility. As a result, while geology appears to strongly modulate landslide density, it does not readily explain 450 the increase in coastal landslide density from the 2016 Kaikōura earthquake. Likewise, the correlation between lithologic bedding and topographic aspect does not strongly define coastal landslide susceptibility on the Kaikōura coast. There is some correlation between bedding and aspect within GeolCode 3 along the coast north of the Clarence River mouth (Figure 1) and in coastal GeolCode 5 where landslide densities are higher. However, hillslopes within the heavily deformed GeolCode 5 may

be susceptible to failure regardless of the presence of persistent structural discontinuity. In the heavily jointed rock mass, debris
455 and rock avalanches, the dominant failure mechanism along the Kaikōura coast, can develop along cm- to m-scale
discontinuities (Singeisen et al., 2022) that are not captured by the estimation of larger scale bedding. Furthermore, field
investigations along the Kaikōura coast (e.g., Stringer et al., 2021) have shown that many failures from the 2016 earthquake,
particularly in mapped GeolCode 5, occurred as reactivations of pre-existing landslide debris or within Quaternary hillslope
deposits that were unlikely to be strongly influenced by bedding orientation. While QMAP (Rattenbury et al., 2006) provides
460 the highest resolution mapping currently available at the required extent for this regional analysis, the mapping resolution is
not high enough to sufficiently resolve these materials regionally.

Fault Zones (Distance to Fault and OFD) – Bloom et al. (2022a) observed a higher incidence of landslides within the fault
zone of ruptured faults from the 2016 Kaikōura earthquake. While there is a slightly higher density of landslides within the
465 OFD zone, there is a lower proportion of OFD area along the Kaikōura coastline as compared to inland hillslopes.
Approximately 0.6% of coastal area occurs within the OFD zone of surface fault rupture from the 2016 Kaikōura earthquake
while c. 2.5% of inland hillslopes occur within a mapped OFD zone. Landslide source areas that occur within the OFD zone,
account for c. 19% of landslide source area in inland hillslopes but only c. 1% of landslide source area along the coast.

470 OFD may partially explain the distribution of landslide source areas in inland hillslopes but does little to explain widespread
coastal failures or an order of magnitude greater number of coastal landslides. This being said, there is still some ambiguity as
to the influence of rock mass deformation from fault zones along the coast that did not rupture significantly in 2016; for
example, the Hope fault which extends just offshore in parallel to much of the north Kaikōura coast. A history of strong ground
motion and fault deformation has been shown to progressively decrease rock mass strength and increase landslide susceptibility
475 over multiple earthquakes (Parker et al., 2015; Gischig et al., 2016; Bloom et al., 2022a; Massey et al., 2022). This may result
in an increased landslide susceptibility due to amplification of strong ground motion and decreased rock mass strength. While
it is possible that damaged rock within the fault zone of the Hope fault results in a higher landslide density in the north Kaikōura
coast, there is also an increase in landslide susceptibility along the coast south of Kaikōura, where faults like the Hundalee are
present further offshore (Figure 1). This suggests that the relatively continuous zone of increased coastal landslide density is
480 not solely influenced by fault zones on the Kaikōura coast.

Anthropogenic modification of slopes (Cutslopes) – Uplifted shore platforms and marine terraces both north and south of
Kaikōura have been anthropogenically modified by cut and fill slopes to support road and rail infrastructure. Most fill slope
failures are too small and are not steep enough to be resolved in this analysis (which considers failures greater than 50 m² and
485 slopes steeper than 15°). Cutslopes only account for c. 1% of hillslopes along the Kaikōura coastline. Approximately 4% of
coastal landslides (63 of 1,621) were found to be in contact with a cutslope near the coast. Even if we consider all failures

associated with cutslopes to be a direct result of hillslope modification, this cannot fully explain the higher density of coastal landslides well beyond anthropogenic influence.

490 *Precipitation, soil moisture, and enhanced weathering (NDMI)* – NDMI, a proxy for soil moisture, is generally similar within coastal and inland hillslopes (Figure B3). In Torlesse greywacke (GeolCode 5), NDMI is on average 0.17 for coastal hillslopes and 0.13 for inland hillslopes which could indicate increased moisture along greywacke portions of the Kaikōura coast one month prior to the earthquake (Figure 9 and Figure B3). A high spatial variability in average rainfall observations (NIWA, 2022), however, makes it difficult to expand this observation out to longer timescales. It might be expected that increased rainfall and other moisture on the coast would increase chemical weathering rates leading to a reduction in rock mass strength, but it is not currently possible to characterise these influences on a regional scale. On a single-event or seasonal timescale, increased NDMI might be a proxy for increased pore water pressure along the Kaikōura coast; however, models suggest that higher NDMI, itself, does not fully explain the distribution of earthquake induced landslides. In Quaternary and Neogene units, and to a lesser extent Paleogene units, lower NDMI is actually a better predictor of landslide occurrence (Figure 7). NDMI is strongly correlated with vegetation greenness (Table A2) and less vegetation may help to explain some shallow failures. In Lower Cretaceous Torlesse greywacke, NDMI is a comparatively weak predictor of earthquake induced landslides in both inland and coastal hillslopes.

5.2 Conceptual Model Relating Coastal Hillslope Morphology and Landslide Susceptibility to Geomorphic History

Based on the distribution of landslide susceptibility features and statistical analysis, the slope feature provides much of the explanation for increased landslide density along the Kaikōura coastline (Figure 9). The distribution of slope within each GeolCode (Figure 9) reveals substantially steeper slopes (up to c. 4° higher on average) within c. 250 to 500 m of the coast particularly within GeolCodes 2, 3, and 5.

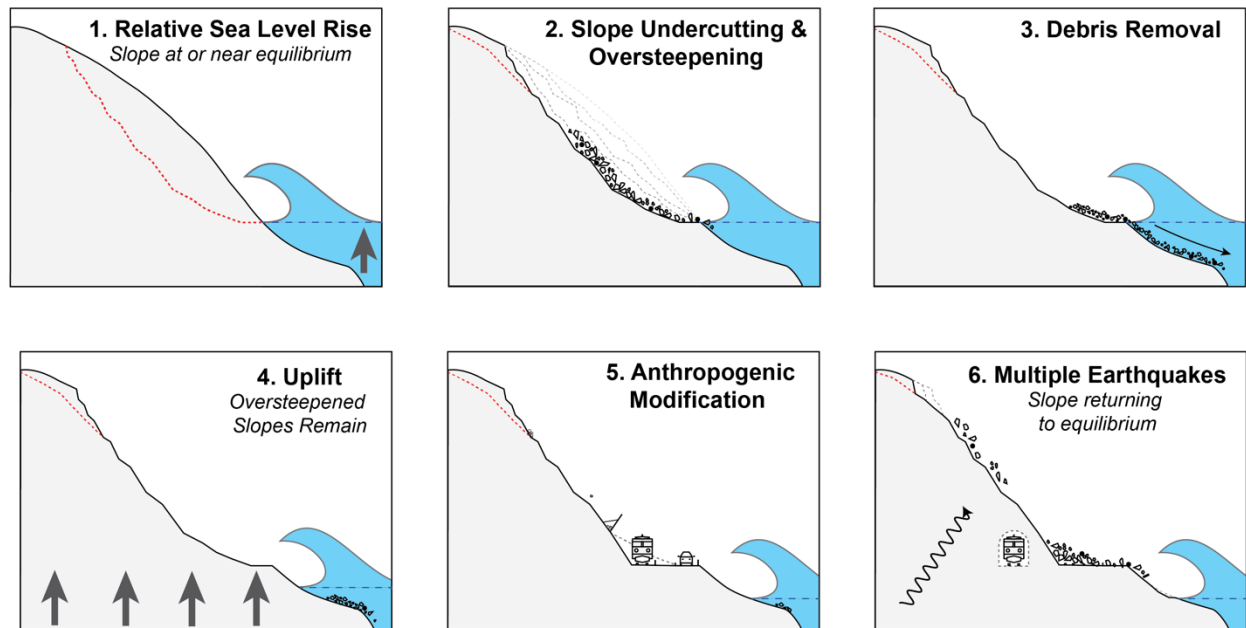
In many regions, coastal oversteepening results from a combination of uplift and wave action that actively undercuts coastal cliffs (Emery and Kuhn, 1982). In the Kaikōura region, however, most steep coastal slopes, with the exception of those at Conway Flat (Bloom et al., 2022b), are currently isolated from direct wave action by recent uplift which forms shore platforms. Ages of these uplifted platforms (Howell and Clark, 2022) suggest that this isolation has lasted for several hundred years at the least. Only 16 landslides outside of Conway Flat (c. 1% of landslides) have a direct connection with the ocean. As a result, while rapid uplift of the Kaikōura coast (Ota et al., 1996) contributes to steeper slopes, the contributions of wave erosion to long-term coastal evolution are less clear.

Increased landslide susceptibility along the coast can be traced back to physical variables associated with the geomorphic evolution of these hillslopes (Fig. 10). The primary observation is that coastal-facing slopes are generally steeper than their inland counterparts (Fig. 9). These steepened slopes also tend to coincide with pre-Kaikōura earthquake landslides –

520 approximately 83% of coastal landslides in Torlesse greywacke occurred partially to wholly within areas affected by past
landslides (Table 3), often as reactivations (retrogression) of their head scarps (Figure 2). Similar trends are observed for the
distribution of landslides within younger sedimentary units (Table 3) and these findings are in line with field observations
along the Kaikōura coast following the 2016 earthquake (e.g., Mason et al., 2017; Stringer et al., 2021). Thus, steeper coastal
525 hillslopes are more prone to failure due to larger driving forces (i.e. gravitational component due to slope), and are collocated
with rock masses at reduced or residual strength, leading to relatively low factors of safety and higher landslide susceptibility.

Relict landslides are a common observation in the hillslopes above uplifted shore platforms along the Kaikōura coast,
particularly within Torlesse greywacke (GeolCode 5; Figure 2). These relict landslides have left steep, potentially destabilised,
headscarps and, in some cases, debris within the body of failures (Stringer et al., 2021). The provenance and timing of these
530 relict failures is largely unclear but a general lack of deposited material at the base of the hillslopes (Figure 2) suggests that
they may have developed while in contact with an active erosional source, such as rivers or the ocean (Figure 10; Crozier,
2010).

In our conceptual model, wave action leads to cliff collapse and landsliding while the ocean is in direct contact with the
535 hillslope (Fig. 10-1 and 10-2). Once uplift or relative sea level fall occurs, hillslopes are buffered from wave action at the toe
but remain over-steepened, particularly within upper slopes where relict landslide headscarps are present (Figure 10-3 and 10-
4). In the case of the Kaikōura region, uplifted wave cut platforms provide ideal locations for transportation infrastructure (Fig.
10-5). While modification of lower hillslopes may not result in substantially increased landslide susceptibility on a regional
scale, over-steepened upper hillslopes may remain highly susceptible to coseismic failure over multiple earthquake events
540 (Figure 10-6; Rault et al., 2018; Singeisen et al., 2022). Increased susceptibility is likely to persist until the hillslope reaches a
state of relative equilibrium with the surrounding landscape or until active erosion recurs at the base of the slope (Crozier,
2010). With coastal uplift rates of c. 2 to 0.5 mm/year (Ota et al., 1996) along the Kaikōura coast, oversteepened slopes could
represent up to thousands of years of increased landslide susceptibility. Without an active erosional source, earthquakes and
large rainfall events may disproportionately contribute to the geomorphic evolution of these coastal hillslopes (Figure 10).



545

Figure 10: Conceptual model for the evolution of slope stability along the Kaikōura coast. Hillslopes are oversteepened by active erosion and debris is cleared from shore platforms by wave action. Following uplift, hillslopes are anthropogenically modified and earthquakes result in failures within upper hillslopes and the scars of relict landslides. Terrestrial erosion from earthquakes and rainfall work to bring the oversteepened hillslope back into equilibrium with the surrounding landscape (Crozier, 2010).

550 5.3 Implications for earthquake induced landslide susceptibility in coastal settings

Most earthquake induced landslide susceptibility models already rely heavily on lithology, strong ground motion, and slope as predictive features. As such, the findings here support the efficacy of using regionally trained models to characterise earthquake induced landslide susceptibility on the Kaikōura coast absent additional predictive features. In the Kaikōura region, a ‘near coast’ categorical feature (Figure B1 and B2) does not substantially improve model prediction. In other regions, such a feature
 555 may serve as a reasonable proxy for other underlying coastal influences but this is subject to additional study.

Findings here may be applied to rocky coastlines elsewhere but consideration should be made for potentially important site-specific conditions that may or may not be incorporated in this investigation. Of particular note, Parker et al. (2015) identified the accumulation of rock mass deformation over multiple earthquakes as a source of landscape preconditioning that results in
 560 higher susceptibility to future landslides. Similarly, the scars of relict landslides that occur within the steep hillslopes of the Kaikōura coastline suggest past susceptibility to failure and a potential accumulation of deformation that is largely unresolved by this analysis (and likely by most regional studies).

565 Previous investigations (e.g., Marc et al., 2015, 2019; Massey et al., 2022) suggest that increased landslide susceptibility decays to background levels within several years of an earthquake. It may be possible, however, that the factors discussed in this study, including oversteepened hillslopes, fault deformation, coastal weathering, repeated earthquake shaking, and topographic amplification, contribute to an accumulation of stress within the hillslope and, in turn, a longer term susceptibility to extreme event failure (Parker et al., 2015). Currently, the detailed rock mass characterisation required to fully investigate the influence of rock mass strength remains largely confined to the site-specific scale. Our understanding of coastal landslide susceptibility 570 would benefit from future studies that attempt to decouple the influence of steep slopes from rock mass deformation on a regional scale.

As a final note, since the 2016 Kaikōura earthquake, the coastal road and rail corridors north and south of Kaikōura have been fully re-established. In some cases, realignments have been made to address ongoing rockfall and other slope stability concerns 575 (NZTA, 2021). In most cases, however, the road and rail lines have been cleared, repaired, and reopened in their original alignments (as in panel 5 of Figure 10). Estimates of long-term network resilience were developed shortly after the Kaikōura earthquake and, in part, rely on quantified landslide hazard assessment (Justice et al., 2021). This hazard assessment adopts the established assumption that strong ground motion intensity plays a large role in governing the volume of coseismic landslide debris along the Kaikōura coast (Massey et al., 2019). While our study does not directly address quantified hazard, 580 the results suggest that the distribution of slope angle is generally steeper on the Kaikōura coast compared to inland hillslopes. These steeper slopes (and attendant history of slope failures) resulted in a high density of coastal landslides during the 2016 Kaikōura earthquake. In future earthquakes, increased coastal landslide susceptibility – the result of steeper slopes along the coast – will expose coastal hillslopes to more landslides than inland hillslopes given the same level of ground motion intensity. The ongoing likelihood of aftershocks and strong ground motion in the Kaikōura region will test the efficacy of mitigation 585 measures installed to reduce risk to people and infrastructure along the coast.

6 Conclusions

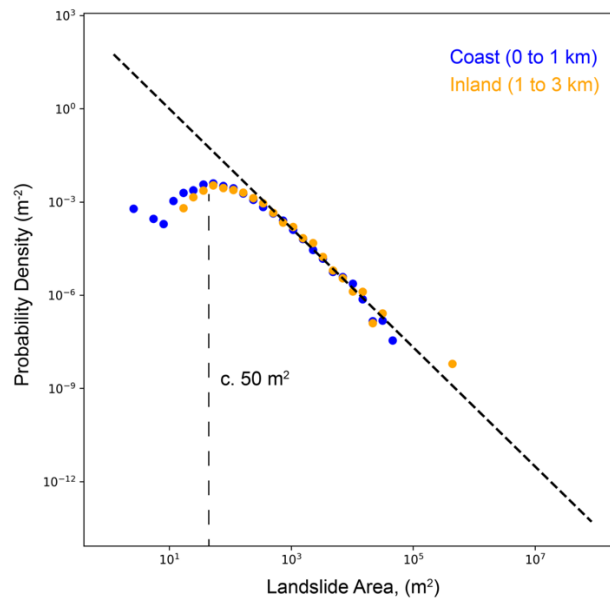
Distance to the Kaikōura coastline has a substantial influence on the distribution of landslides from the 2016 Kaikōura earthquake. An order of magnitude greater landslide density was observed within 500 m of the coastline (as high as c. 6 %) as compared to 1000 to 3000 m (c. 0.5%). Comparative logistic regression modelling suggests that the same factors, primarily 590 geology, strong ground motion, and slope, define the distribution of landslides in both coastal (within 1 km of the coast) and inland hillslopes (1 to 3 km from the coast). Regional earthquake induced landslide susceptibility models that rely on geology, strong ground motion, and slope as strong predictive features are therefore, likely to account for this increased coastal landslide susceptibility in the Kaikōura region without separate treatment. Along the Kaikōura coastline, hillslopes are generally steeper than those inland, when comparing slopes angles within similar materials. Results suggest that slope angle provides the most 595 explanatory power, and the simplest explanation, for increased coseismic landslide density at the coast. On the Kaikōura coast,

most hillslopes are currently buffered from wave action by rapidly uplifted shore platforms; coastal hillslopes host a high density of relict landslides that may have resulted from relatively recent (<1,000 years) coastal erosion. Relict landslides and proportionally steeper hillslopes maintain lower factors of safety and higher coastal landslide susceptibility as a legacy effect within hillslopes out of equilibrium with the surrounding landscape, which may persist for up to 1,000s of years.

600 Appendix A – Additional Methods and Data

Minimum Landslide Size

Prior to the 2016 Kaikōura earthquake, lidar was available for areas in close proximity (< 1 km) to the Kaikōura coastline. This pre-earthquake lidar coverage likely allowed for more detailed comparison with post-earthquake data. In order to limit any potential bias resulting from differences in the quality of landslide mapping on the Kaikōura coastline in this comparative analysis, we evaluate the size area distribution of earthquake induced landslides mapped by Massey et al. (2020a) in proximity to the Kaikōura coast (Figure A1) using the methods of Malamud et al. (2004). We observed a slightly higher distribution of small failures along the Kaikōura coast with the distribution of failures diverging around 50 m². While this may represent a real difference in landslide size along the coast, We chose to exclude failures smaller than 50 m² from the analysis. Because of the small size of failures, this exclusion is unlikely to strongly influence the final results.



610

Figure A1: Size area distribution of landslides (Malamud et al., 2004) from the Kaikōura earthquake induced landslide inventory (Massey et al., 2020a) within 0 to 1 km (Coast) and 1 to 3 km (Inland) of the coastline. The distributions diverge from one another around 50 m² and we use this as the minimum landslide size threshold.

Gridded Landslide Data

615 Landslide polygons from the inventory of Massey et al. (2020a) were gridded to the 8 m resolution of the digital elevation model (LINZ, 2021a) used to derive topographic landslide susceptibility features. Table 2 shows the percentage of landslide source area in each GeolCode. Table A1 shows the raw number of landslide (1) and non-landslide (0) grid cells used in the analysis.

620 **Table A1: Landslide (LS) density by GeolCode in all, coast, and inland hillslopes with number of 1 and 0 landslide grid cells.**

All		GeolCode 1	GeolCode 2	GeolCode 3	GeolCode 5	Total
	0	165176	841438	740592	1668137	3415343
	1	2091	6527	9942	13898	32458
	Total	167267	847965	750534	1682035	3447801
	LS Density	1.25%	0.77%	1.32%	0.83%	0.94%
Coast		GeolCode 1	GeolCode 2	GeolCode 3	GeolCode 5	Total
	0	71377	324791	162780	419017	977965
	1	1838	4106	5180	9315	20439
	Total	73215	328897	167960	428332	998404
	LS Density	2.51%	1.25%	3.08%	2.17%	2.05%
Inland		GeolCode 1	GeolCode 2	GeolCode 3	GeolCode 5	Total
	0	93799	516647	577812	1249120	2437378
	1	253	2421	4762	4583	12019
	Total	94052	519068	582574	1253703	2449397
	LS Density	0.27%	0.47%	0.82%	0.37%	0.49%

Landslide Susceptibility Features

We initially evaluated 25 common predictive features for this analysis (Figure A2). Of the 25 features we narrowed the choice of features using only those features with a variance inflation factor (VIF) score of 10 or less (Table A2). In comparative model training, the best model performance was achieved when using the USGS ShakeMap PGA (Worden et al., 2020) for models of GeolCode 5 and the USGS ShakeMap PGV for all other GeolCodes.

Table A2: Variance Inflation Factor for features used in this analysis. PGA from the USGS ShakeMap (Worden et al., 2020) is used for GeolCode 5 and PGV from the same model for all other GeolCodes.

Feature	VIF— PGV	VIF— PGA
Curvature	1.02	1.02
Cutslopes	1.00	1.00
Eastness	1.08	1.08
Elevation	3.22	3.22
Fault Distance	1.84	1.86
NDMI	3.63	3.65
Northness	1.19	1.19
OFD	1.05	1.05
Slope	9.86	9.38
Structural Aspect	3.51	3.48
USGS ShakeMap	6.67	6.05

630

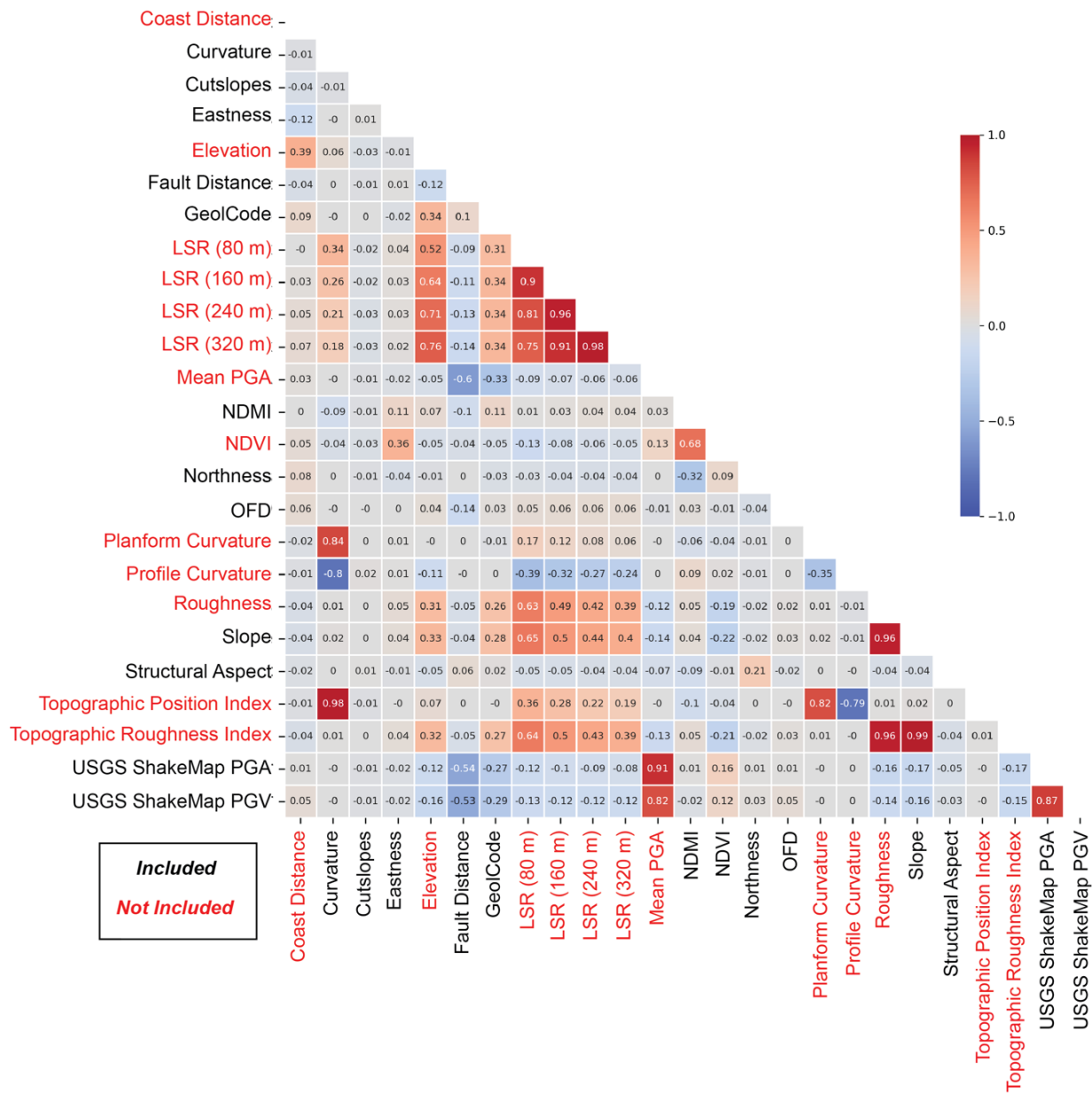


Figure A2: Pearson R2 correlation for common predictive features considered in this analysis. Red features were not included in the final modeling analysis.

635 **Deriving the Structural Aspect Feature**

To derive a correlation between the dip direction of bedding and topographic aspect, we interpolated structural bedding measurements from the New Zealand QMAP (Rattenbury et al., 2006). We corrected for the 360° direction of dip using the Sin and Cos of dip direction and used the inverse distance weighted (IDW) interpolation method in ArcGIS to produce a continuous estimate of dip direction in each geology type (GeolCode). By subtracting interpolated dip direction from topographic aspect, we get values from -360 to 360° where a value close to -360°, 0°, or 360° represents a close correlation between dip direction of bedding and topographic aspect. To make a continuous range for this analysis, we take the absolute value of the difference (0 to 360), subtract 180 (-180 to 180), and take the absolute value again to arrive at 0 to 180 where 180 represents a high correlation between dip direction and topographic aspect and 0 represents a low correlation.

645 **Efficacy of the LINZ 8 m DEM for Regional Analysis in the Kaikōura Region**

The LINZ 8 m DEM (LINZ, 2021a), interpolated from 20 m contours with post-processing and filtering, is primarily suitable for cartographic visualisation. While this may not represent the most ideal dataset with which to conduct terrain analysis, it is the highest resolution elevation dataset available with consistent coverage of the Kaikōura region prior to the 2016 Kaikōura earthquake. Given the relatively small size of many coastal landslides, using a coarser DEM would likely result in underprediction of coastal landslides and limit our ability to make robust claims about differences in landslide susceptibility between inland and coastal slopes.

The regional nature of this assessment should reduce concern about local irregularities in the underlying DEM. To examine this assumption, we downsampled a limited 1 m pre-earthquake lidar derived DEM collected along the Kaikōura coast in 2012 (LINZ, 2021c) to the 8 m resolution of the LINZ 8 m DEM (LINZ, 2021a) and compared the two datasets. Limited lidar coverage extends to c. 500 m inland along much of the Kaikōura coastline and accounts for c. 30% of the study area included in this analysis. We find a strong one-to-one correlation between the two datasets (Figure A3). While local irregularities in the LINZ 8 m DEM (LINZ, 2021a) may limit the usefulness of this dataset on a site-specific scale, on the regional scale of this analysis, the LINZ 8 m DEM and its derivations are largely characteristic of actual pre-earthquake terrain conditions.

660

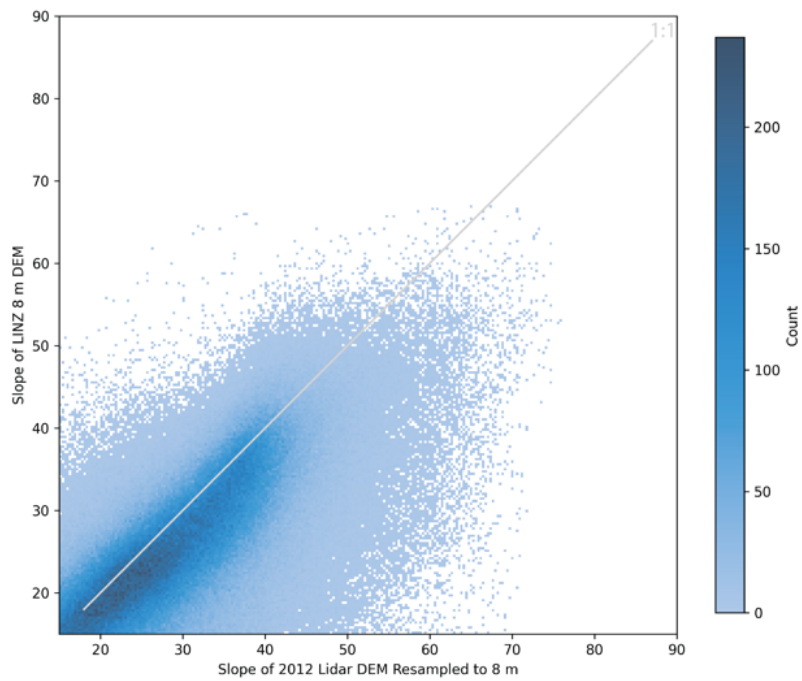
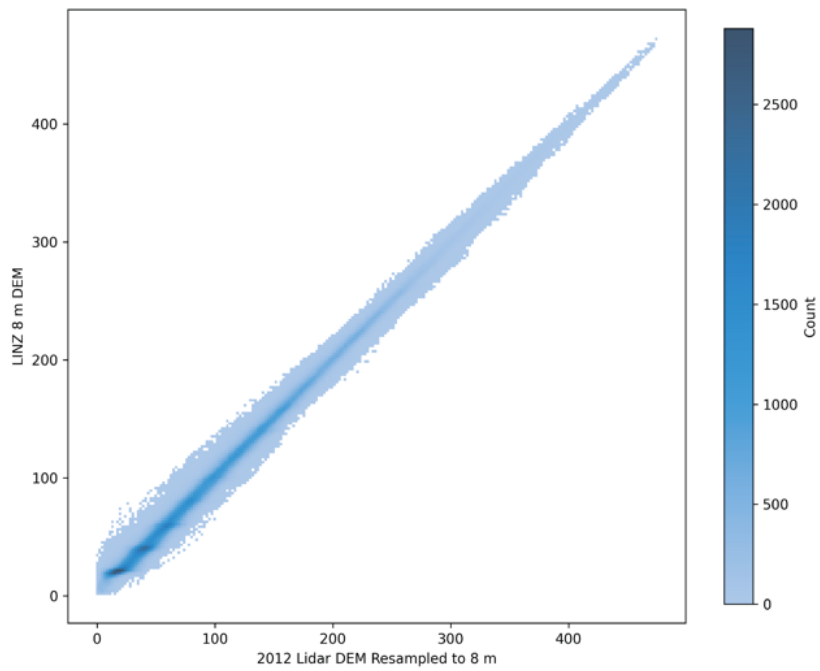
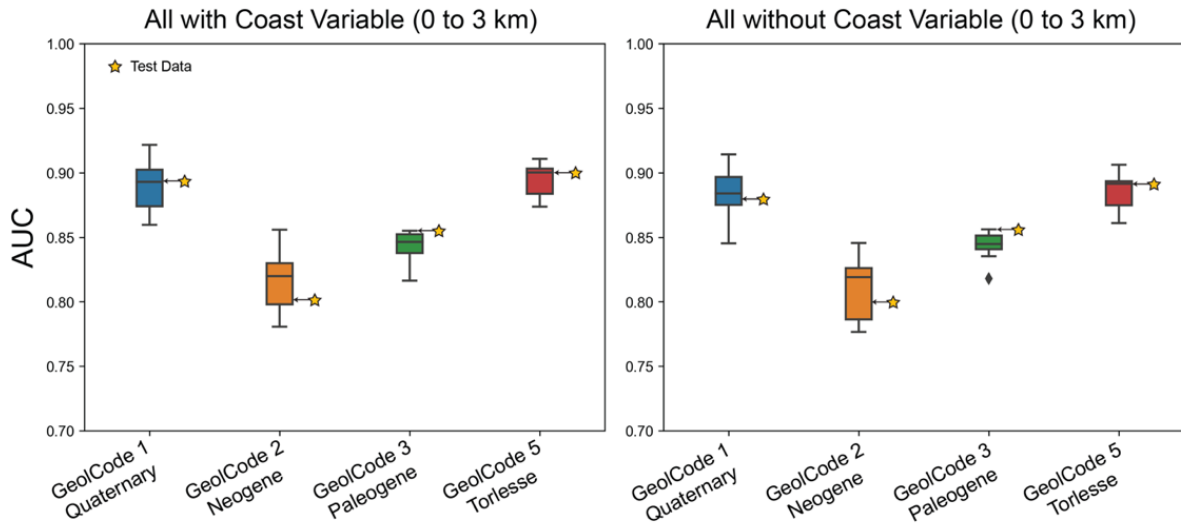


Figure A3. Relationship between LINZ 8 m DEM (LINZ, 2021a) and a 2012 Lidar DEM (LINZ, 2023).

Appendix B – Additional Results

Full Model

665 In addition to comparative models of inland and coastal hillslopes, two models were trained using 80% of both inland and coastal data. The first model matches the inland and coastal models included in the main text. The second model includes an additional binary coast feature where inland hillslopes are assigned a value of 0 and coastal hillslopes a value of 1. Both models performed well and were predictive of both inland and coastal landslides in the remaining 20% of data used for testing (Figure B1). Model coefficients from the full model were generally similar to inland and coastal models (Figure B2).



670

675 **Figure B1: Logistic regression model performance from models trained on each geology type (GeolCode) in both coastal and inland hillslopes. The model on the left includes a binary coast feature where grid cells within 1 km of the coast are assigned a value of 1 and grid cells within 1 to 3 km of the coast are assigned a value of 0. Model performance is measured by Area Under the Receiver Operator Characteristic Curve (AUC). Each boxplot shows the results of 10-fold cross validation using 80% of the available target dataset. Yellow stars represent model performance when applied to the 20% of data withheld from training.**

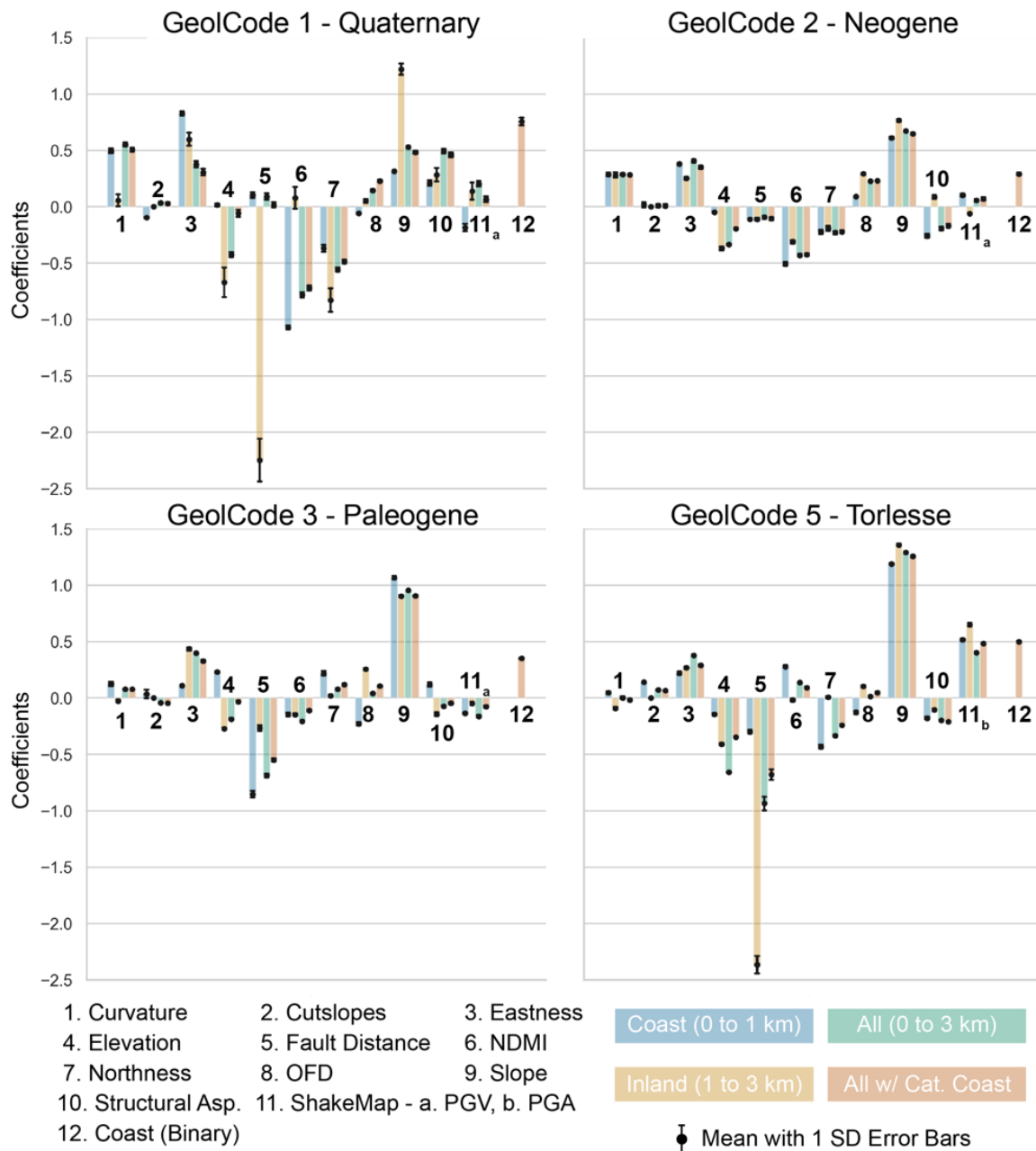


Figure B2: Model coefficients for models trained on each GeolCode. Points with associated error bars represent the mean and standard deviation (SD) of the coefficient across 10-cross validations. Colour bars indicate which feature the point is associated with and the model data used to train the model. In cases where no error bar is present, the standard deviation is less than 0.1. Negative coefficients result in a higher weight for small values while positive coefficients result in a higher weight for high values. For example, a negative coefficient for fault distance suggests that there is a higher landslide susceptibility closer to faults while a positive coefficient for slope suggests that a greater slope angle has higher landslide susceptibility. All features are standardised prior to model training allowing for the direct comparison of coefficients within the same model.

680

Coast vs Inland Features and Landslides

685 In addition to the analysis presented in the main text we also examined the distribution of predictive features within inland and coastal slopes greater than 15° (Figure B3).

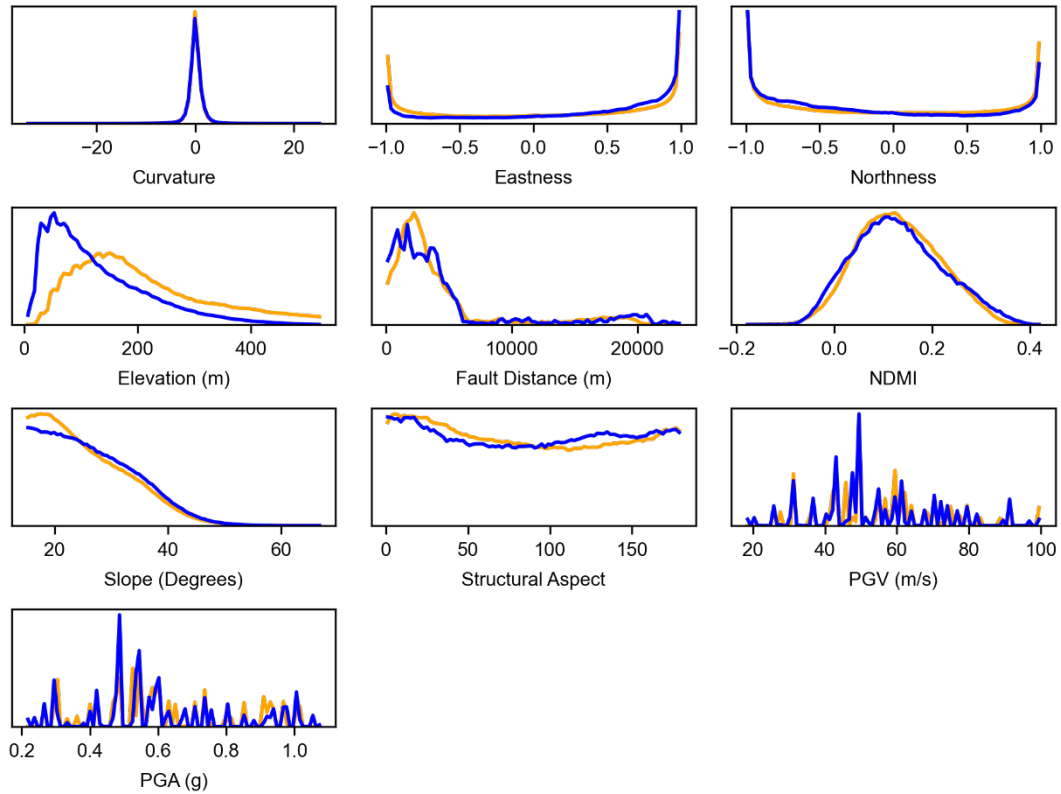
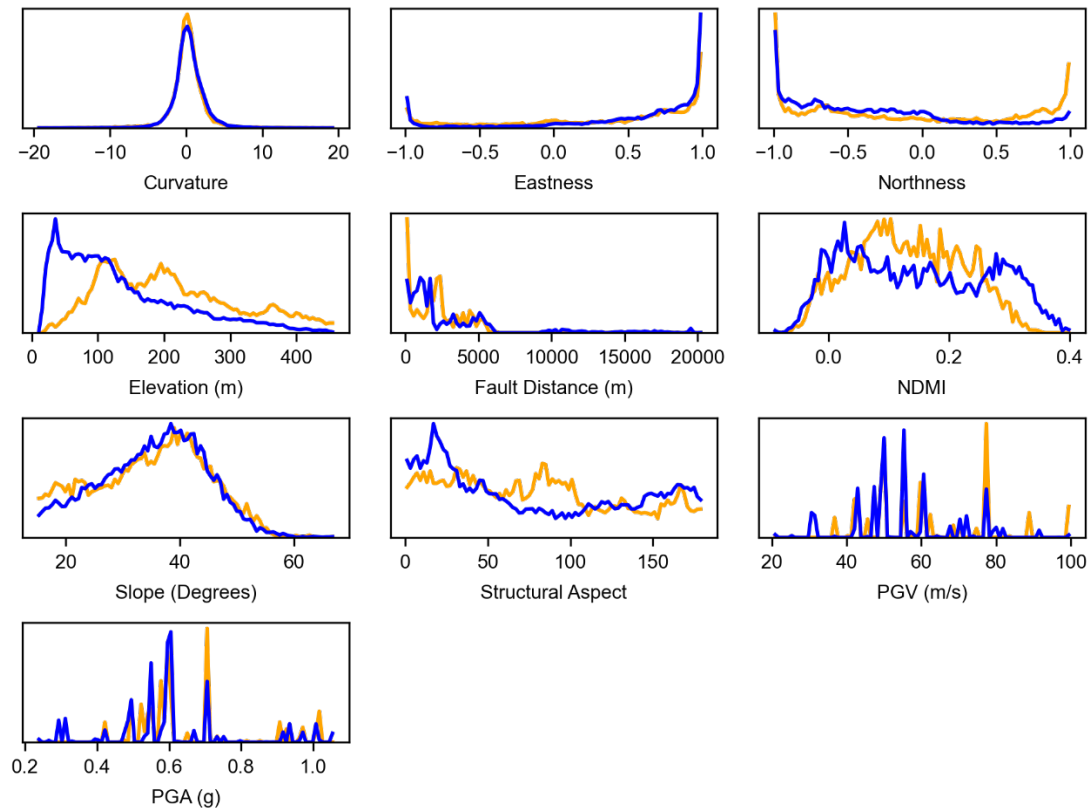


Figure B3: Distribution of predictive features in all Kaikōura inland and coastal slopes greater than 15° . Inland slopes are represented by orange lines and coastal slopes are represented by blue lines.

690

We supplement this analysis by examining the distribution of predictive features within landslide source areas in inland and coastal slopes greater than 15° (Figure B4).



695 **Figure B4: Distribution of predictive features within Kaikōura earthquake induced landslide source areas on inland and coastal slopes greater than 15°. Inland slopes are represented by orange lines and coastal slopes are represented by blue lines.**

On average, coastal landslides (within 1 km of the coast) are c. 10% larger than inland landslides (between 1 and 3 km from the coast) on slopes > 15° with PGA > 0.2 g (when excluding the Seafront landslide and landslides smaller than 50 m²; Table
 700 B1). Given the same filters, there are c. 30% more landslides in coastal hillslopes (Table B1) which make up c. 1/3 of the total study area.

Table B1: Mean landslide area in inland and coastal hillslopes where slopes > 15°, PGA > 0.2g. Inland estimates exclude the Seafront landslide.

Slopes > 15°	Landslide Count	Mean Area (m ²)	Standard Deviation (m ²)
Inland (1 to 3 km)	1099	783	2279
Coast (0 to 1 km)	1621	866	2517

705

Additional Observations

Curvature – Curvature was well distributed and few differences between inland and coastal hillslopes were observed (Figure B3 and B4).

710 *Aspect (Northness and Eastness)* – Ridgelines and valleys generally trend north-east to south-west in the Kaikōura region (Figure B3) and landslide source areas on both inland and coastal hillslopes occur disproportionately on south to south-east facing hillslopes (Figure B4). Within 1 km of the coastline, a larger proportion of south-east facing hillslopes were observed that generally correlated well with landslide density trends across geology types.

715 *Elevation* – A steady rise in elevation is observed with distance from the Kaikōura coastline. This rise in elevation, however, does not appear to directly correlate with the landslide density trend that is observed with distance from the coastline.

Acknowledgements

This work was primarily funded by the New Zealand government as part of the Ministry of Business, Innovation and Employment Endeavour-funded “Earthquake Induced Landslide Dynamics” project with further support from Toka Tū Ake, the New Zealand Earthquake Commission and QuakeCoRE: The New Zealand Centre for Earthquake Resilience. The authors would like to thank Simon Cox and Dougal Townsend at GNS Science for providing methods and insight on mapping structural domains in the Kaikōura region.

Author Contributions

CB: Conceptualization, Methodology, Formal analysis, Investigation, Visualization, Writing – original draft. CS: 725 Methodology, Investigation, Visualization, Writing – review & editing. TS: Supervision, Funding acquisition, Conceptualization, Methodology, Writing – review & editing. AH: Supervision, Methodology, Writing – review & editing. CM: Supervision, Funding acquisition, Writing – review & editing. **DM**: Methodology, Investigation, Writing – review & editing.

Competing Interests

730 The authors declare that they have no conflict of interest.

References

- Ashford, S. A., Sitar, N., Lysmer, J., and Deng, N.: Topographic effects on the seismic response of steep slopes, *Bull. Seismol. Soc. Am.*, 87, 701–709, 1997.
- 735 Beavan, J., Tregoning, P., Bevis, M., Kato, T., and Meertens, C.: Motion and rigidity of the Pacific Plate and implications for plate boundary deformation, *J. Geophys. Res. Solid Earth*, 107, ETG 19-1-ETG 19-15, <https://doi.org/10.1029/2001jb000282>, 2002.
- Bloom, C., Howell, A., Stahl, T., Massey, C., and Singeisen, C.: The influence of off-fault deformation zones on the near-fault
740 distribution of coseismic landslides, *Geology*, <https://doi.org/https://doi.org/10.1130/G49429.1>, 2022a.
- Bloom, C. K., Singeisen, C., Stahl, T., Howell, A., and Massey, C.: Earthquake Contributions to Coastal Cliff Retreat, *EGUSphere Preprint*, <https://doi.org/10.5194/egusphere-2022-643>, 2022b.
- 745 Bloom, C., Stahl, T., and Howell, A.: Distributed displacement on the Papatea fault from the 2016 Mw 7.8 Kaikōura earthquake and implications for hazard planning, *New Zeal. J. Geol. Geophys.*, <https://doi.org/10.1080/00288306.2021.1975777>, 2021.
- Budetta, P., Santo, A., and Vivenzio, F.: Landslide hazard mapping along the coastline of the Cilento region (Italy) by means of a GIS-based parameter rating approach, *Geomorphology*, 94, 340–352, <https://doi.org/10.1016/j.geomorph.2006.10.034>,
750 2008.
- Budimir, M. E. A., Atkinson, P. M., and Lewis, H. G.: A systematic review of landslide probability mapping using logistic regression, *Landslides*, 12, 419–436, <https://doi.org/10.1007/s10346-014-0550-5>, 2015.
- 755 Clark, K. J., Nissen, E. K., Howarth, J. D., Hamling, I. J., Mountjoy, J. J., Ries, W. F., Jones, K., Goldstien, S., Cochran, U. A., Villamor, P., Hreinsdóttir, S., Litchfield, N. J., Mueller, C., Berryman, K. R., and Strong, D. T.: Highly variable coastal deformation in the 2016 Mw 7.8 Kaikōura earthquake reflects rupture complexity along a transpressional plate boundary, *Earth Planet. Sci. Lett.*, 474, 334–344, <https://doi.org/10.1016/j.epsl.2017.06.048>, 2017.
- 760 Collins, B. D., Kayen, R., and Tanaka, Y.: Spatial distribution of landslides triggered from the 2007 Niigata Chuetsu-Oki Japan Earthquake, *Eng. Geol.*, 127, 14–26, <https://doi.org/10.1016/j.enggeo.2011.12.010>, 2012.

Crozier, M. J.: Landslide geomorphology: An argument for recognition, with examples from New Zealand, *Geomorphology*, 120, 3–15, <https://doi.org/10.1016/j.geomorph.2009.09.010>, 2010.

765

Cruden, D. and Varnes, D.: *Landslide Types and Processes*, Spec. Rep. Natl. Res. Council. Transp. Res. Board, 1996.

Defazio, A., Bach, F., and Lacoste-Julien, S.: SAGA: A fast incremental gradient method with support for non-strongly convex composite objectives, *Adv. Neural Inf. Process. Syst.*, 2, 1646–1654, 2014.

770

Dellow, S., Massey, C., and Cox, S.: Response and initial risk management of landslide dams caused by the 14 November 2016 Kaikoura earthquake, South Island, New Zealand, *Proc. 20th NZGS Geotech. Symp.*, 2017.

Dickson, M. E. and Perry, G. L. W.: Identifying the controls on coastal cliff landslides using machine-learning approaches, *Environ. Model. Softw.*, 76, 117–127, <https://doi.org/10.1016/j.envsoft.2015.10.029>, 2016.

775

Emery, K. O. and Kuhn, G. G.: Sea cliffs: their processes, profiles, and classification., *Geol. Soc. Am. Bull.*, 93, 644–654, [https://doi.org/10.1130/0016-7606\(1982\)93<644:SCTPPA>2.0.CO;2](https://doi.org/10.1130/0016-7606(1982)93<644:SCTPPA>2.0.CO;2), 1982.

780 Fawcett, T.: An introduction to ROC analysis, *Pattern Recognit. Lett.*, 27, 861–874, <https://doi.org/10.1016/j.patrec.2005.10.010>, 2006.

Francioni, M., Coggan, J., Eyre, M., and Stead, D.: A combined field/remote sensing approach for characterizing landslide risk in coastal areas, *Int. J. Appl. Earth Obs. Geoinf.*, 67, 79–95, <https://doi.org/10.1016/j.jag.2017.12.016>, 2018.

785

Gischig, V., Preisig, G., and Eberhardt, E.: Numerical investigation of seismically induced rock mass fatigue as a mechanism contributing to the progressive failure of deep-seated landslides, *Rock Mech. Rock Eng.*, 49, 2457–2478, <https://doi.org/10.1007/s00603-015-0821-z>, 2016.

790 Griggs, G. and Plant, N.: Coastal-bluff failures in northern Monterey Bay induced by the earthquake, in: *The Loma Prieta, California, Earthquake of October 17, 1989-Landslides US Geological Survey Professional Paper*, vol. 1551–C, 51–70, 1998.

795 Hamling, I. J., Hreinsdóttir, S., Clark, K., Elliott, J., Liang, C., Fielding, E., Litchfield, N., Villamor, P., Wallace, L., Wright, T. J., D’Anastasio, E., Bannister, S., Burbidge, D., Denys, P., Gentle, P., Howarth, J., Mueller, C., Palmer, N., Pearson, C., Power, W., Barnes, P., Barrell, D. J. A., Van Dissen, R., Langridge, R., Little, T., Nicol, A., Pettinga, J., Rowland, J., and

- Stirling, M.: Complex multifault rupture during the 2016 Mw 7.8 Kaikōura earthquake, New Zealand, *Science* (80-.), 356, <https://doi.org/10.1126/science.aam7194>, 2017.
- 800 Hancox, G. T., Perrin, N. D., and Dellow, G. D.: Recent studies of historical earthquake-induced landsliding, ground damage, and MM intensity in New Zealand, *Bull. New Zeal. Soc. Earthq. Eng.*, 35, 59–95, <https://doi.org/10.5459/bnzsee.35.2.59-95>, 2002.
- Handwerger, A. L., Huang, M. H., Fielding, E. J., Booth, A. M., and Bürgmann, R.: A shift from drought to extreme rainfall drives a stable landslide to catastrophic failure, *Sci. Rep.*, 9, 1–12, <https://doi.org/10.1038/s41598-018-38300-0>, 2019.
- 805 Hastie, T., Tibshirani, R., and Friedman, J.: *The Elements of Statistical Learning: Data Mining, Inference and Prediction*, Springer, 2017.
- He, Y. and Beighley, E. R.: GIS-based regional landslide susceptibility mapping: a case study in southern California, *Earth*
810 *Surf. Process. Landforms*, 33, 380–393, <https://doi.org/10.1002/esp.1562> Y., 2008.
- Hosmer, D. W., Lemeshow, S., and Sturdivant, R. X.: *Applied logistic regression*, third edition, John Wiley and Sons, 2013.
- Howell, A. and Clark, K. J.: Late Holocene coseismic uplift of the Kaikōura coast, New Zealand, *Geosphere*, 18, 1104–1137,
815 <https://doi.org/10.1130/GES02479.1>, 2022.
- Jibson, R. W.: The 2005 La Conchita, California, landslide, *Landslides*, 3, 73–78, <https://doi.org/10.1007/s10346-005-0011-2>, 2006.
- 820 Justice, R., Finlan, S., and Revell, T.: *Lessons Learned On The North Canterbury Transport Infrastructure Recovery Project*, NZ Geomech. News, 2021.
- Keefer, D. K.: Statistical analysis of an earthquake-induced landslide distribution - The 1989 Loma Prieta, California event, *Eng. Geol.*, 58, 231–249, [https://doi.org/10.1016/S0013-7952\(00\)00037-5](https://doi.org/10.1016/S0013-7952(00)00037-5), 2000.
- 825 Kirk, R. M.: Coastal changes at Kaikoura, 1942–74, determined from air photographs, *New Zeal. J. Geol. Geophys.*, 18, 787–801, <https://doi.org/10.1080/00288306.1975.10423528>, 1975.

- Kirk, R. M.: Rates and forms of erosion on intertidal platforms at Kaikoura Peninsula, South Island, New Zealand, New Zeal. J. Geol. Geophys., 20, 571–613, <https://doi.org/10.1080/00288306.1977.10427603>, 1977.
- 830 Kritikos, T., Robinson, T. R., and Davies, T. R. H.: Regional coseismic landslide hazard assessment without historical landslide inventories: A new approach, *J. Geophys. Res. Earth Surf.*, 120, 711–729, <https://doi.org/10.1002/2014JF003224>. Received, 2015.
- 835 Kutner, M. H., Nachtsheim, C. J., Neter, J., and Li, W.: *Applied Linear Statistical Models*, McGraw-Hill/Irwin, New York, New York, ISBN-13: 978–0073014661, 2004.
- Langridge, R. M., Ries, W. F., Litchfield, N. J., Villamor, P., Van Dissen, R. J., Barrell, D. J. A., Rattenbury, M. S., Heron, D. W., Haubrock, S., Townsend, D. B., Lee, J. M., Berryman, K. R., Nicol, A., Cox, S. C., and Stirling, M. W.: The New Zealand Active Faults Database, *New Zeal. J. Geol. Geophys.*, 59, 86–96, <https://doi.org/10.1080/00288306.2015.1112818>, 2016.
- 840 Limber, P. W., Barnard, P. L., Vitousek, S., and Erikson, L. H.: A Model Ensemble for Projecting Multidecadal Coastal Cliff Retreat During the 21st Century, *J. Geophys. Res. Earth Surf.*, 123, 1566–1589, <https://doi.org/10.1029/2017JF004401>, 2018.
- 845 LINZ: LINZ Data Service - NZ 8m Digital Elevation Model (2012), <https://data.linz.govt.nz/layer/51768-nz-8m-digital-elevation-model-2012/>, accessed March 4th, 2021a
- LINZ: LINZ Data Service - NZ Coastlines (Topo, 1:50k), <https://data.linz.govt.nz/layer/50258-nz-coastlines-topo-150k/>, accessed January 13th, 2021b
- 850 LINZ: LINZ Data Service - Canterbury - Kaikoura LiDAR 1m DEM (2012), <https://data.linz.govt.nz/layer/53542-canterbury-kaikoura-lidar-1m-dem-2012/>, accessed October 10th, 2021c
- 855 Litchfield, N. J., Villamor, P., van Dissen, R. J., Nicol, A., Barnes, P. M., Barrell, D. J. A., Pettinga, J. R., Langridge, R. M., Little, T. A., Mountjoy, J. J., Ries, W. F., Rowland, J., Fenton, C., Stirling, M. W., Kearse, J., Berryman, K. R., Cochran, U. A., Clark, K. J., Hemphill-Haley, M., Khajavi, N., Jones, K. E., Archibald, G., Upton, P., Asher, C., Benson, A., Cox, S. C., Gasston, C., Hale, D., Hall, B., Hatem, A. E., Heron, D. W., Howarth, J., Kane, T. J., Lamarche, G., Lawson, S., Lukovic, B., McColl, S. T., Madugo, C., Manousakis, J., Noble, D., Pedley, K., Sauer, K., Stahl, T., Strong, D. T., Townsend, D. B., Toy, V., Williams, J., Woelz, S., and Zinke, R.: Surface rupture of multiple crustal faults in the 2016 Mw 7.8 Kaikōura, New Zealand, earthquake, *Bull. Seismol. Soc. Am.*, 108, 1496–1520, <https://doi.org/10.1785/0120170300>, 2018.
- 860

Lombardo, L. and Mai, P. M.: Presenting logistic regression-based landslide susceptibility results, *Eng. Geol.*, 244, 14–24, <https://doi.org/10.1016/j.enggeo.2018.07.019>, 2018.

865

Macara, G. R.: *The Climate and Weather of Canterbury*, NIWA Sci. Technol. Ser., 68, 44, 2014.

Malamud, B. D., Turcotte, D. L., Guzzetti, F., and Reichenbach, P.: Landslides, earthquakes, and erosion, *Earth Planet. Sci. Lett.*, 229, 45–59, <https://doi.org/10.1016/j.epsl.2004.10.018>, 2004.

870

Marc, O., Hovius, N., Meunier, P., Uchida, T., and Hayashi, S.: Transient changes of landslide rates after earthquakes, *Geology*, 43, 883–886, <https://doi.org/10.1130/G36961.1>, 2015.

Marc, O., Behling, R., Andermann, C., Turowski, J. M., Illien, L., Roessner, S., and Hovius, N.: Long-term erosion of the Nepal Himalayas by bedrock landsliding: The role of monsoons, earthquakes and giant landslides, *Earth Surf. Dyn.*, 7, 107–128, <https://doi.org/10.5194/esurf-7-107-2019>, 2019.

875

Mason, D., Brabharan, P., and Saul, G.: Performance of road networks in the 2016 Kaikōura earthquake: observations on ground damage and outage effects, *Proc. 20th NZGS Geotech. Symp.*, 8 p., 2017.

880

Massey, C. I., Olsen, M. J., Wartman, J., Senogles, A., Lukovic, B., Leshchinsky, B. A., Archibald, G., Litchfield, N., Dissen, R., Vilder, S., and Holden, C.: Rockfall activity rates before, during and after the 2010/11 Canterbury Earthquake Sequence, *J. Geophys. Res. Earth Surf.*, <https://doi.org/10.1029/2021jf006400>, 2022.

885 Massey, C. I., Townsend, D. T., Lukovic, B., Morgenstern, R., Jones, K., Rosser, B., and de Vilder, S.: Landslides triggered by the Mw 7.8 14 November 2016 Kaikōura earthquake: an update, *Landslides*, 17, 2401–2408, <https://doi.org/10.1007/s10346-020-01439-x>, 2020a.

Massey, C. I., Townsend, D., Jones, K., Lukovic, B., Rhoades, D., Morgenstern, R., Rosser, B., Ries, W., Howarth, J., Hamling, I., Petley, D., Clark, M., Wartman, J., Litchfield, N., and Olsen, M.: Volume Characteristics of Landslides Triggered by the Mw 7.8 2016 Kaikōura Earthquake, New Zealand, Derived from Digital Surface Difference Modeling, *J. Geophys. Res. Earth Surf.*, 125, <https://doi.org/10.1029/2019JF005163>, 2020b.

895 Massey, C., Townsend, D., Rathje, E., Allstadt, K. E., Lukovic, B., Kaneko, Y., Bradley, B., Wartman, J., Jibson, R. W., Petley, D. N., Horspool, N., Hamling, I., Carey, J., Cox, S., Davidson, J., Dellow, S., Godt, J. W., Holden, C., Jones, K., Kaiser, A., Little, M., Lyndsell, B., McColl, S., Morgenstern, R., Rengers, F. K., Rhoades, D., Rosser, B., Strong, D., Singeisen, C.,

- and Villeneuve, M.: Landslides triggered by the 14 November 2016 Mw 7.8 Kaikōura earthquake, New Zealand, *Bull. Seismol. Soc. Am.*, 108, 1630–1648, <https://doi.org/10.1785/0120170305>, 2018.
- 900 Massey, C. I., Lukovic, B., Taig, T., Rosser, B., and Ries, W.: The North Canterbury Infrastructure Recovery Alliance: Pilot study for assessing landslide hazards along the road and rail corridors, *GNS Sci. Consult. Rep.*, 2017/185, 2019.
- Massey, C., de Vilder, S., Lukovic, B., Townsend, D., and Rosser, B.: District-scale landslide risk analysis of debris inundation for the Kaikōura District, *GNS Sci. Consult. Rep.*, 2021/89, 2021a.
- 905 Massey, C., Lukovic, B., Huso, R., Buxton, R., and Potter, S.: Earthquake-induced landslide forecast tool for New Zealand: Version 2.0, *GNS Sci. Consult. Rep.*, 2018/08, 2021b.
- Massey, C., Wolter, A., Huso, R., Lukovic, B., and Brideau, M.-A.: Coseismic Landslide Susceptibility and Triggering Analyses BT - Coseismic Landslides: Phenomena, Long-Term Effects and Mitigation, edited by: Towhata, I., Wang, G., Xu, Q., and Massey, C., Springer Nature Singapore, Singapore, 633–679, https://doi.org/10.1007/978-981-19-6597-5_18, 2022.
- 910 Meunier, P., Hovius, N., and Haines, A. J.: Regional patterns of earthquake-triggered landslides and their relation to ground motion, *Geophys. Res. Lett.*, 34, 1–5, <https://doi.org/10.1029/2007GL031337>, 2007.
- 915 Mottershead, D.: Coastal Weathering, *Treatise Geomorphol. Vol. 1-14*, 1–14, 228–244, <https://doi.org/10.1016/B978-0-12-374739-6.00064-6>, 2013.
- Nicol, A., Begg, J., Saltogianni, V., Mouslopoulou, V., Oncken, O., and Howell, A.: Uplift and fault slip during the 2016 Kaikōura Earthquake and Late Quaternary, Kaikōura Peninsula, New Zealand, *New Zeal. J. Geol. Geophys.*, 1–16, <https://doi.org/10.1080/00288306.2021.2021955>, 2022.
- 920 NIWA: CliFlo: NIWA’s National Climate Database on the Web, <https://cliflo.niwa.co.nz/>, 2022
- 925 NZTA: NCTIR - Kaikōura Recovery Book: Moving Mountains to Reconnect Communities, <https://www.nzta.govt.nz/projects/kaikoura-earthquake-response/publications>, 2021.
- Ota, Y., Pillans, B., Berryman, K., Beu, A., Fujimori, T., Miyauchi, T., Berger, G., Beu, A. G., and Climo, F. M.: Pleistocene coastal terraces of Kaikoura Peninsula and the Marlborough coast, South Island, New Zealand, *New Zeal. J. Geol. Geophys.*, 39, 51–73, <https://doi.org/10.1080/00288306.1996.9514694>, 1996.
- 930

Parker, R. N., Hancox, G. T., Petley, D. N., Massey, C. I., Densmore, A. L., and Rosser, N. J.: Spatial distributions of earthquake-induced landslides and hillslope preconditioning in the northwest South Island, New Zealand, *Earth Surf. Dyn.*, 3, 501–525, <https://doi.org/10.5194/esurf-3-501-2015>, 2015.

935

Rattenbury, M. S., Townsend, D. B., and Johnston, M. R.: *Geology of the Kaikoura area*, 1 pp., 2006.

Rault, C., Robert, A., Marc, O., Hovius, N., and Meunier, P.: Seismic and geologic controls on spatial clustering of landslides in three large earthquakes, *Earth Surf. Dyn.*, 7, 829–839, <https://doi.org/10.5194/esurf-7-829-2019>, 2019.

940

Reichenbach, P., Rossi, M., Malamud, B. D., Mihir, M., and Guzzetti, F.: A review of statistically-based landslide susceptibility models, *Earth-Science Rev.*, 180, 60–91, <https://doi.org/10.1016/j.earscirev.2018.03.001>, 2018.

Sepúlveda, S. A.: Earthquake-Induced Landslide Susceptibility and Hazard Assessment Approaches BT - Coseismic
945 Landslides: Phenomena, Long-Term Effects and Mitigation, edited by: Towhata, I., Wang, G., Xu, Q., and Massey, C., Springer Nature Singapore, Singapore, 543–571, https://doi.org/10.1007/978-981-19-6597-5_14, 2022.

Singeisen, C., Massey, C., Wolter, A., Kellett, R., Bloom, C., Stahl, T., Gasston, C., and Jones, K.: Mechanisms of rock slope failures triggered by the 2016 Mw 7.8 Kaikōura earthquake and implications for landslide susceptibility, *Geomorphology*, 415,
950 108386, <https://doi.org/10.1016/j.geomorph.2022.108386>, 2022.

Small, C. and Nicholls, R. J.: A global analysis of human settlement in coastal zones, *J. Coast. Res.*, 19, 584–599, 2003.

Stringer, J., Brook, M. S., and Justice, R.: Post-earthquake monitoring of landslides along the Southern Kaikōura Transport
955 Corridor, New Zealand, *Landslides*, 18, 409–423, <https://doi.org/10.1007/s10346-020-01543-y>, 2021.

U.S. Geological Survey: Earth Explorer, <https://earthexplorer.usgs.gov/>, 2022

Tibshirani, R.: Regression Shrinkage and Selection Via the Lasso, *J. R. Stat. Soc. Ser. B*, 58, 267–288,
960 <https://doi.org/10.1111/j.2517-6161.1996.tb02080.x>, 1996.

Vann Jones née Norman, E. C., Rosser, N. J., Brain, M. J., and Petley, D. N.: Quantifying the environmental controls on erosion of a hard rock cliff, *Mar. Geol.*, 363, 230–242, <https://doi.org/10.1016/j.margeo.2014.12.008>, 2015.

- 965 Williams, F., McColl, S., Fuller, I., Massey, C., Smith, H., and Neverman, A.: Intersection of fluvial incision and weak geologic structures cause divergence from a universal threshold slope model of landslide occurrence, *Geomorphology*, 389, 107795, <https://doi.org/10.1016/j.geomorph.2021.107795>, 2021.
- 970 Worden, B.C., Thompson, E.M., Hearne, M., Wald, D.J., ShakeMap Manual Online: Technical Manual, User's Guide, and Software Guide, <https://usgs.github.io/shakemap/>, 2020
- Young, A. P., Flick, R. E., O'Reilly, W. C., Chadwick, D. B., Crompton, W. C., and Helly, J. J.: Estimating cliff retreat in southern California considering sea level rise using a sand balance approach, *Mar. Geol.*, 348, 15–26, <https://doi.org/10.1016/j.margeo.2013.11.007>, 2014.
- 975 Young, A. P.: Decadal-scale coastal cliff retreat in southern and central California, *Geomorphology*, 300, 164–175, <https://doi.org/10.1016/j.geomorph.2017.10.010>, 2018.
- 980 Zinke, R., Hollingsworth, J., Dolan, J. F., and Van Dissen, R.: Three-Dimensional Surface Deformation in the 2016 Mw 7.8 Kaikōura, New Zealand, Earthquake From Optical Image Correlation: Implications for Strain Localization and Long-Term Evolution of the Pacific-Australian Plate Boundary, *Geochemistry, Geophys. Geosystems*, 20, 1609–1628, <https://doi.org/10.1029/2018GC007951>, 2019.