

# How the recursive feature elimination affects the SVM and RF for relative wildfire susceptibility in a certain area? A study case in Northern Iran

Ali Rezaei Barzani<sup>1</sup>, Parham Pahlavani<sup>1</sup>, Omid Ghorbanzadeh<sup>2</sup>, Pedram Ghamisi<sup>2,3</sup>

<sup>(1)</sup> School of Surveying and Geospatial Engineering, College of Engineering, University of Tehran, Tehran, Iran, ali.rezaeibarzani@ut.ac.ir; 5

<sup>(2)</sup> Institute of Advanced Research in Artificial Intelligence (IARAI), Landstraßer Hauptstraße 5, 1030 Vienna, Austria; omid.ghorbanzadeh@iarai.ac.at; pedram.ghamisi@iarai.ac.at;

<sup>(3)</sup> Helmholtz-Zentrum Dresden-Rossendorf, Helmholtz Institute Freiberg for Resource Technology, 09599 Freiberg, Germany 10

Correspondence to: pahlavani@ut.ac.ir

**Abstract.** This study aims to identify key fire factors via recursive feature elimination (RFE) to generate forest fire susceptibility map (FSM) using support vector machine (SVM), and random forest (RF) models. The fire zones were derived from MODIS satellite imagery from 2012 to 2017. Further validation of these data has been provided by field surveys and reviews of land records in rangelands and forests; a total of 326 fire points were determined in this study. Seventeen factors involving topography, geomorphology, meteorology, hydrology, and human factors were identified as being effective primary factors in triggering and spreading fires in the selected mountainous case study area. As a first step, the RFE models of the RF, Extra trees, Gradient boosting, and AdaBoost were used to identify important fire factors among all selected primary factors. The SVM and RF models were applied once on all factors and the second on those derived from RFE models as the key factors in FSM. Training and testing data were divided tenfold, and the model's performance was evaluated using cross-validation (CV). Different metrics were used to measure accuracy, including recall, precision, F1, accuracy, the area under the curve (AUC), Matthews correlation coefficient (MCC), and Kappa. The accuracy assessment process shows that the FSM results are further improved by leveraging RFE models to distinguish the key factors and not include unnecessary factors. The greatest improvement is for SVM, with more than 10.97% and 8.61% in the accuracy and AUC metrics, respectively. 15 20 25

## 1. Introduction

Through the production of oxygen and the absorption of CO<sub>2</sub>, forests play an important role in environmental pollution reduction (Pourtaghi et al., 2016). They also aid in regulating the water cycle, keeping soil moist and protecting against soil erosion. Trees provide essential habitat for various species of wildlife, serving as food and shelter for countless plants and animals. Furthermore, forests provide immense economic and recreational benefits for people, such as recreation opportunities, timber production, and watershed protection (Gholamnia et al., 2020). In addition to providing goods and livelihoods, forests protect plant and animal diversity, prevent soil degradation and erosion, control water flow and prevent flooding, and regulate climate by trapping carbon, which increases greenhouse gas levels (Bruinsma, 2017). Therefore, most forest fires, whether natural or induced by humans, cause many negative ecological, social, and economic impacts on forest restoration (Kolanek et al., 2021). 30 35

A forest fire is an uncontrolled, rapid, and destructive fire that spreads rapidly through a forested area caused by natural or human sources. Forest fires occur when the heat, fuel, and oxygen present in the environment combine and allow flames to erupt, spread quickly, and become difficult to control. The destruction of forests by forest fires can have disastrous impacts on local and global ecosystems (Ghorbanzadeh et al., 2019). This term is used when the area of the fire exceeds 0.5 hectares and leads to the destruction of trees (European glossary for wildfires and forest fires (2012). Fires in forests lead to a lot of environmental destruction due to the presence of combustible vegetation (Adab et al., 2013). Forest fires are considered a widespread and critical element of the earth system (Bond and Keeley, 2005). Fire destroys nearly 350 million hectares of forest every year, according to Wright et al. (Wright et al., 2002). According to Copernicus (<https://effis.jrc.ec.europa.eu>), fires have influenced Europe in many ways, including climate change, land management, and social patterns, such as immigration from rural settlements, rapid urbanization, and changes in leisure behavior. Forest fires have been considered one of the most critical natural hazards because they cause loss of life, severe infrastructure damage, and life-threatening environmental effects (Tien Bui et al., 2016). The main goal of modeling forest fires is to reduce the negative effects of fires on humans and the environment as much as possible (Hosseini and Lim, 2022). Also, by determining the areas with the possibility of fire, it leads to better management of natural hazards (Tehrany et al., 2021).

Forest fires have become a significant problem in mountainous regions of Northern Iran. Large areas of grasslands in these areas are also at risk from uncontrolled fires (Ghorbanzadeh et al., 2019). Lack of expected rain and extreme temperatures have caused several wildfires along the Southern areas of Caspian Sea. More and more of Iran's forested areas have been threatened by forest fires in recent years (Adab et al., 2015). Iran's Forest Organization estimates that 5,000 to 6,000 hectares of forest land are destroyed yearly due to frequent fires (Adab et al., 2013). Natural processes have historically caused fires in forests. However, fires in forests have accelerated directly due to the increased human-environmental interactions by igniting and suppressing fires, and indirectly by changing the vegetation structure and composition, as well as destroying the landscapes (Rogers et al., 2020). This makes it more likely to occur in the future (Valdez et al., 2017).

Many factors, such as wind, topography, and drought, play an essential role in the occurrence and spread of fires, but in many cases, human factor causes fires in forests (Sayad et al., 2019). The situation is also the same for the occurrence of this hazard in northern regions of Iran. Also, accidental fires, such as those caused by campers or smokers, are a common cause of forest fires. Buildings or debris burning, or an improperly discarded cigarette can easily start a wildfire. Intentionally set fires, such as prescribed burning, can also ignite wildfires. Lighting used for farming or grazing land, or fires used to clear land, can get out of control and cause large fires (Ghorbanzadeh et al., 2019). Therefore, the forest fires in this area are mainly due to human activities from recreational camps and land clearing to change land use and remove livestock grazing from rangelands and forests (Jahdi et al., 2014). It is important to take precautions and predict fire facilities in fire-prone areas to prevent forest fires. Therefore, preparing a fire susceptibility map (FSM) and identifying hazardous and fire-prone areas are essential (Eskandari et al., 2021).

Many studies have explored topics such as wildfire risk assessment, fire behavior prediction, and fire mapping techniques in different parts of the world. The spatial pattern of wildfire probability has been simulated and predicted using different spatial modeling strategies across different geographical regions. Several studies have

used the SVM and RF models to prepare fire risk maps. Jaafari et al. reported (Jaafari and Pourghasemi, 2019) an AUC value of 0.75% for the SVM model with nine factors in the Chaharmahal Bakhtiari Province in Iran. In their study, the random forests (RFs) model was utilized to link historical fire events to a set of wildfire causative factors to measure the importance of each factor on fire ignition. then employed support vector machines (SVMs), to produce an accurate estimate of wildfire probability across the study area. Hong et al. (Hong et al., 2018) evaluated two machine learning (ML) models, including the RF and SVM models with eight factors in China, and achieved an AUC value of 84% and 74% for the RF and SVM, respectively. this study utilizes Genetic Algorithms to obtain the optimal combination of forest fire-related variables and apply data mining methods for constructing a forest fire susceptibility map. RF and SVM are successful ML models in fire susceptibility mapping (Kalantar et al., 2020; Tavakkoli Piralilou et al., 2022). Yousefi et al. (Yousefi et al., 2020) used three ML models to produce a multi-hazard risk map for a region in Iran. For producing a wildfire susceptibility map, twelve factors were considered. The AUC value of 83% was obtained for the SVM model. Tonini et al. (Tonini et al., 2020) produced a fire susceptibility map for two seasons using the RF model. For validation, they used k-fold cross-validation. Ghorbanzadeh et al. (Ghorbanzadeh et al., 2019) examined the performance of ANN, SVM, and RF ML models with seventeen factors to predict wildfire-prone areas in Mazandaran Province, Iran, and reported AUC values of 88% and 78% for the RF and SVM models, respectively. The literature review clearly shows that most methodologies employed conditional wildfire criteria without any evaluation if they play a significant role in their selected case study area. Forest areas vary in topography, climate zone, settlement density, and human activity. There is, however, a significant gap in the literature. While some studies have used several fire conditional factors, it is unclear whether the limited derived accuracies of the resulting FSMs caused by the model limitations or the adverse impact of some not fully related factors.

The methods used to select optimal inputs are known as feature selection techniques. Feature selection may be categorized into filter and wrapper methods and embedded methods (Kohavi, 1997). Filter methods are used to identify the importance of factors (Guo et al., 2016; He et al., 2021; Jaafari et al., 2018; Ngoc Thach et al., 2018; Tehrani et al., 2019; Tien Bui et al., 2016) and rely on the characteristics of the data. These methods do not use ML algorithms.

For the purpose of predicting forest fires by identifying the optimal number of variables, Hong et al. (Hong et al., 2018) used genetic algorithms, a metaheuristic method. After determining the optimal number of variables, ML methods were used to prepare fire susceptibility maps. Jafari and Pourghasemi first identified important factors using the RF model and then applied the SVM model to obtain the fire risk map (Jaafari and Pourghasemi, 2019). Also, Eskandari, in his paper, first identified important factors using the RF model and then applied his models to these factors (Eskandari et al., 2021). Pourghasemi et al. has used the Boruta algorithm to identify the factors affecting forest fires and floods (Pourghasemi et al., 2020). Boruta algorithm has a behavior similar to the RF model in identifying the importance of variables. These methods only compare the correlation between factors, and this causes the impact of several characteristics to be ignored by putting together the occurrence of fire.

However, the wrapper methods cover this defect and consider the combination of features as effective features in the problem. The wrapper method is also called the greedy search algorithm because this method scans all possible combinations of features before selecting the one that produces the best ML algorithm performance. The

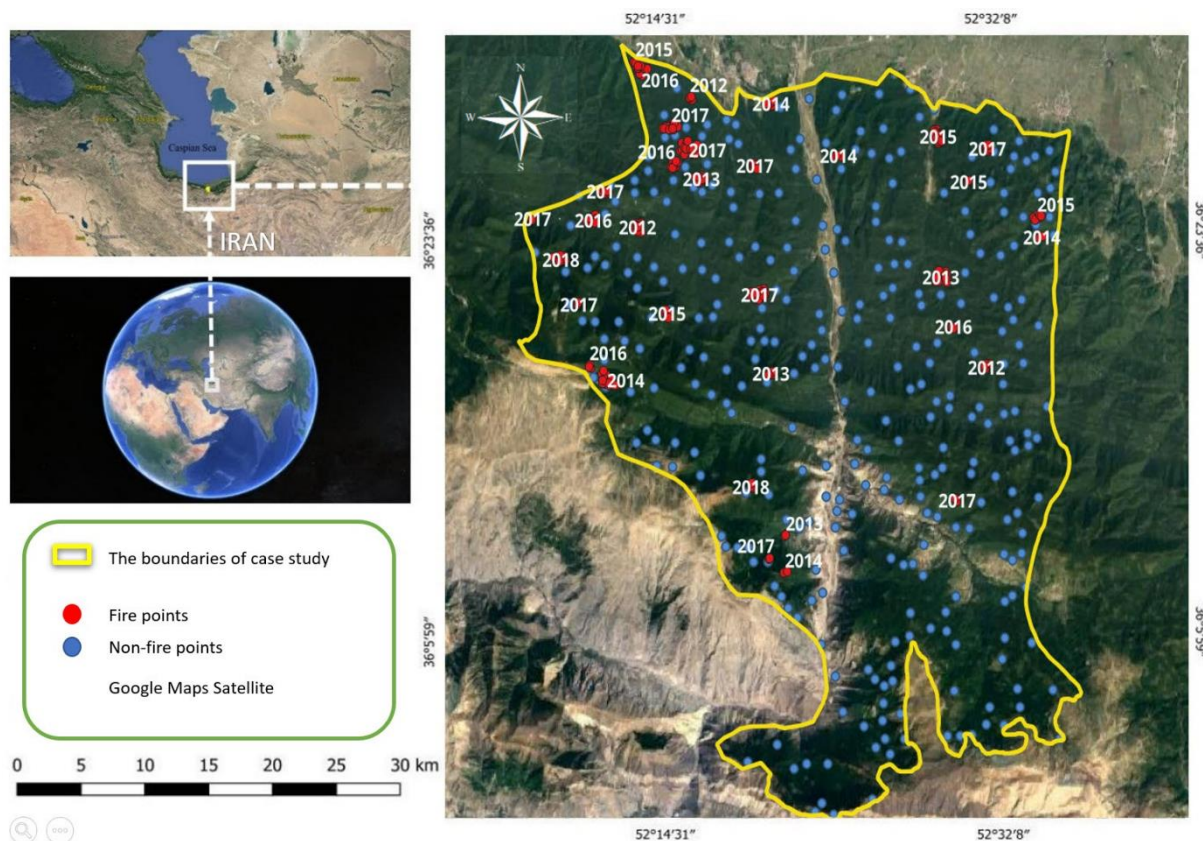
embedded methods consider the interaction between features and models as part of the feature selection process (Agrawal et al., 2021). 115

Computationally, the embedded methods cost less than wrapper methods because an analysis for the optimum feature subset and formulation of a model in an embedded method can be performed simultaneously (Remeseiro and Bolon-Canedo, 2019). Some examples of embedded methods include decision tree-based algorithms such as a random forest. Recursive feature elimination (RFE) is a hybrid between embedded and wrapper methods (Guyon et al., 2002). 120

In this study, the RFE method was used to select features. The RFE algorithm is a greedy way of finding nested subsets of features, so it is much more robust to the effects of overfitting in the data when compared to wrappers (Zeng et al., 2009). RFE tends to remove redundant and weak features and retains independent features. RFE seeks to improve generalization performance by removing the least important features whose deletion will have the least effect, on training errors (Escanilla et al., 2018). As a result of this method, the predictors are first created into a model, which is then used to calculate an importance score for each predictor based on the model. In RFE, the AdaBoost and Gradient Boosting, Random Forests, and Extra trees were used. After that, features that appear in more than two models were voted on and selected as the final features. Therefore, the objectives of this study are to present an effective feature selection method for identifying effective factors involved in forest fires, testing the proposed feature selection method against the SVM and RF models in order to determine the improvement in accuracy and improved mapping of forest fire-prone areas in the study area. 125 130

## 2. Study Area

The study area is Amol County in the Mazandaran province in northern Iran. Amol is bordered by the Caspian Sea to the west and the Mazandaran mountains to the east. The study area is located in a semi-arid climate, with cold, wet winters and hot, dry summers. The main economic activities in the county are agriculture, fishing, and forestry. This Province, with an area of approximately 23,842 km<sup>2</sup> lies on the southern shore of the Caspian Sea (see Figure 1). The Amol Forest area lies in the center of Mazandaran province, in the city of Amol. This study area is mostly mountainous and elevated and covers approximately 646 square kilometers. This Province is known to be one of the most wildfire-prone regions in northern Iran (Adab et al., 2015). This study experienced several harsh wildfires, which have impacted more than twenty settlements and villages (Gholamnia et al., 2020). The minimum and maximum altitudes in the region were 100 and 2500 m above the mean sea level. Every year, tourists visit this region, and tourism is one of the residents' primary income sources (Ghorbanzadeh et al., 2019). Therefore, protecting and maintaining forest areas is also important economically apart from the environmental discussion. 135 140



**Figure 1.** The location of the study area. The figure was drawing based on © Google Earth 2022 (<https://earth.google.com>).

### 3. Materials

#### 3.1. Forest fire inventory data set for training and testing the models

The first step in producing an FSM is to prepare an inventory dataset of historical forest fire events in the study area. This study used recorded reports, satellite imagery, and field survey to map the fires. The MODIS fire data were used that are available for free from <https://modis.gsfc.nasa.gov/data/>. The MODIS fire inventory dataset used in the analysis ranges from 2012 to 2017. Field surveys and forest organization reports verified the fire inventory dataset. Accordingly, 326 fire points were identified in the study area. In this study area, 34 polygons of fire have been identified according to previous research. However, in this study, the fire polygons provided to us by the state wildlife organization of Amol County (SWOAC), were matched and validated with the MODIS fire data, and 326 fire points were found. Although there could be more than 326 fire points, it is not certain about them, but at these 326 fire points, fires have occurred with absolute certainty. Of the 34 polygon fires, 326 fire points were extracted. For non-fire points, in areas where the fire did not occur, 326 non-fire points were randomly extracted to maintain the balance between the two classes of fire and non-fire. In non-fire zones, it was set not to have a distance of fewer than 50 meters to see a suitable distribution of points in the study area. This study used the k-fold method to test and validate the data. In this method, the datasets are divided into k-fold. At each stage of the CV process, the model is trained on k-1 folds and tested with a residual fold. This process is repeated k times, and finally, the average evaluation scores obtained from each iteration are calculated. In this study, the

150

155

160

most common number of k=10 was followed according to the literature review (Kalantar et al., 2020; Tavakkoli Piralilou et al., 2022). 165

### 3.2. Forest fire conditional factors

In order to produce FSM, 17 important factors were extracted. These factors have been extracted based on the studies that happened in the previous research, especially the studies that happened in this area. By reviewing articles (Ghorbanzadeh et al., 2019; Gigović et al., 2019; Zhang et al., 2019; Eskandari et al., 2021; Gholamnia et al., 2020; Jaafari and Pourghasemi, 2019), these 17 available factors were extracted. Factors can be classified into five categories: anthropological, topographical, vegetation, meteorological and hydrological. human factors are distance to villages, distance to the recreation area, distance to road, distance to power transmission lines, distance to mines, and Land-use. The first six factors were obtained through the state wildlife organization of Amol County (SWOAC), and the Land-use factor was obtained from Landsat satellite images. The vegetation factor in this study is the NDVI factor obtained from Landsat 8 satellite images. The extracted topography factors are the altitude, slope, aspect, landforms, topographic wetness index (TWI), and plane curvature. All of these topographic factors have been extracted from Aster Dem. Two meteorological factors used in this study are annual temperature and the wind effect obtained from Amol County (SMOC) state organization for the study area. Hydrological factors include annual rainfall and distance to the river extracted from SMOC. 170 175 180

**Table 1.** Explanatory factors were used in this study.

No	Conditioning Factor	Type	Source
1	Altitude (m)	Continuous	ASTER DEM
2	Annual temperature (°C)	Continuous	SMOAC
3	Annual rainfall (mm)	Continuous	SMOAC
4	Topographic wetness index (TWI)	Continuous	ASTER DEM
5	Landform	Categorical	ASTER DEM
6	Land use	Categorical	LANDSAT 8
7	NDVI	Continuous	LANDSAT 8
8	Distance to villages (m)	Continuous	SWOAC
9	Distance to recreation area (m)	Continuous	SWOAC
10	Distance to river	Continuous	SWOAC
11	Distance to road	Continuous	SWOAC
12	Distance to mine	Continuous	SWOAC
13	Distance to power transmission lines	Continuous	SWOAC
14	Slope	Continuous	ASTER DEM
15	Aspect	Categorical	ASTER DEM
16	Plan curvature (100/m)	Categorical	ASTER DEM

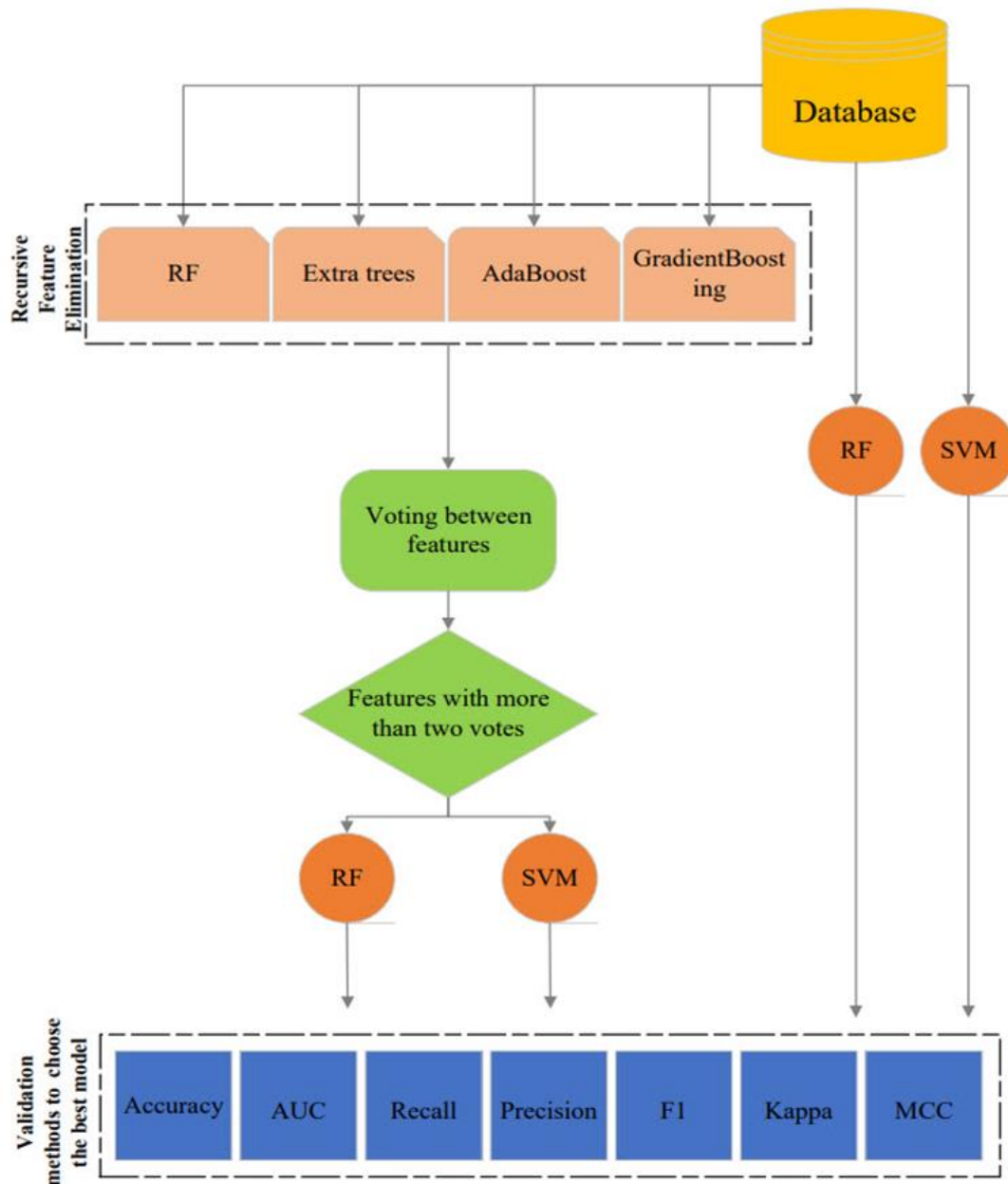
#### 4. Methods

The research process is divided into five steps, the second and third of which are devoted to our proposed approach for identifying the factors affecting forest fires:

- identifying the forest fire factors associated with the study area, 185
- developing the RFE method for choosing features according to four different models,
- voting for the best features and selecting the ultimate ones,
- using two ML models of the SVM and RF for FSM based on all factors. Then taking into account the superior factors, validate the resultant FSMs, and monitor the accuracy improvements.

The flowchart of the method used in the research is shown in Figure 2.

190



**Figure 2.** The flowchart signifies this paper's introduced approach for forest fire susceptibility modeling and mapping.

#### 4.1. Recursive Feature Elimination

Feature selection is accomplished by recursive feature elimination (RFE), one of the most popular methods of selecting features developed by Guyon et al. (Guyon et al., 2002). As a result of its simplicity and effectiveness, RFE is a popular feature selection algorithm because it can identify the feature in a training dataset that is most relevant to the prediction of the variable. In this method, the properties are selected recursively and take into account the smaller sets of features at each stage (Kuhn and Johnson, 2013). The properties in RFE are ranked based on the order of their removal from the property space. Feature selection is supervised in this method and requires labeled data for the best performance. In RFE, features are gradually removed so that only useful features remain, using the output function to determine which features are relevant and which are not. By building a model



on the entire set of problem variables, this method calculates their importance for each variable and then reverses the process to select variables inversely (Guyon et al., 2002). In the next step, the variable is removed with the lowest importance, the model is re-constructed on other remaining variables, and the importance of each variable is recalculated. Until the targeted variable number is reached, the trend continues. There is a limitation on the number of features that can be kept in the RFE, but the number of valid features is usually not known in advance. In this study, cross-validation is used to find the optimal number of features for scoring different feature subsets and choosing features with the highest score. When the full model is created, a measure of variable importance is computed that ranks the predictors from the most important to the least. Models based on linear models have coefficients, whereas models based on decision trees have feature importance. Therefore, the estimator is trained, and the features are chosen based on the coefficients or on the importance of the features. Next, the least important feature is removed, and a new ML model is built utilizing the remaining features. To determine the performance of this model using accuracy assessment metrics, the performance against the full model is compared. This procedure is continued over and over through all applied features in our training dataset. Using it, it could be possible to scan all the features in the dataset to determine which ones contributed to a significant drop in performance and should be kept and which ones should be removed. Here, the applied ML models in the RFE method are introduced and detailed.

#### 4.2. Random Forest

The RF model was created by Ho (1994) and developed by Breiman (Breiman, 2001). The RF model consists of several decision trees. Instead of relying on a decision tree, RF takes the prediction from each tree and predicts the final output based on the majority of votes. [Where the predictions of individual trees are treated as votes and the prediction of the random forest is determined by the majority of votes. It enhances the accuracy of the model and prevents the overfitting issue.](#) The RF model is also used in regression problems in addition to classification problems. The RF hyperparameters must be adjusted before training to get a good result from the model. An evaluation of a variable's importance in RF models is based on the *Gini* index (Cao et al., 2017). In this study, the grid search method (Ngoc Thach et al., 2018) was used to determine the optimum value for model hyperparameters. The grid search method obtains the maximum number of trees and the number of variables. The maximum number of variables was set on the squared root of the total number of variables in both 8 and 17 variable models. A grid search method was used to obtain the maximum of 1000 trees in the 8-variable model and 200 trees in the 17-variable RF model.

#### 4.3. Extra trees

The Extra trees is an Ensemble algorithm invented by Geurts et al. (Geurts et al., 2006). This algorithm combines the predictions of several decision trees to make the final prediction (Geurts et al., 2006). Each decision tree fits the entire training dataset in this algorithm, as opposed to the RF, which only fits a bootstrap sample of the dataset. [The bootstrap sampling method is a resampling method that uses random sampling and bootstrap sample is a smaller sample that is “bootstrapped” from a larger sample \(Efron and Tibshirani, 1993\).](#) According to the classic decision tree procedure, the algorithm makes a set of decision trees from top to bottom (Ampomah et al., 2020). The final prediction is based on a majority vote that runs between the predictions of all trees. The two main differences between this method and tree-based ensemble methods are that it splits nodes by selecting completely

random cut-points, and as the second difference, it uses a whole sample of the training dataset instead of bootstrap samples (Geurts et al., 2006). In the RF model, the cut-off points are selected optimally in order to split nodes, but in this method, these points are selected completely randomly. This randomness of the cut-off points leads to a decrease in variance. Using all dataset training samples instead of bootstrap samples reduces the bias of the problem (Ampomah et al., 2020). In this study, hyperparameters were set to 100 for the number of trees and to the rounded-up square root of the number of predictor factors for the maximum feature. 245

#### 4.4. AdaBoost Model

The AdaBoost algorithm was proposed by Freund and Schapire in 1997 (Freund and Schapire, 1997). An ensemble algorithm creates a strong classifier from a set of weak classifiers (Devi et al., 2020). By combining the weak classifiers, AdaBoost can adjust the weak errors and form a stronger final classifier. As a result, the accuracy of the strong classifier is determined by the accuracy of the weak classifier. The process reduces bias and variance, thereby improving classification ability and efficiency (Wu et al., 2020). The accuracy of the final learner may be affected by outliers in AdaBoost (He et al., 2021). The iteration number was set to 100 in this study, and the learning rate was set to 1. We also weighed the weak classifier based on the classification effect of the sample set 250 255

#### 4.5. Gradient Boosting Decision Tree

The Gradient boosting decision tree (GBDT) was proposed by Friedman in 2001, which is an approximation method using the gradient descent method (Song et al., 2018). The GBDT is an ensemble machine-learning method combining multiple decision trees based on the boosting concept (He et al., 2021). It models the data with a decision tree (DT) as the basic classifier and Gradient boosting as the training strategy (Liang et al., 2021). Whereas random forests build an ensemble of deep independent trees, GBDT builds an ensemble of shallow trees in sequence, with each tree learning and improving on the previous one. The GBDT is capable of constructing a strong classification model by combining weak classifiers after multiple iterations. By iterating, the previous model's residuals are reduced, and the results are improved (He et al., 2021). Like the previously applied machine learning models in RFE, the maximum number of iterations was set to 100, and the learning rate is considered 0.1. 260 265

#### 4.6. Voting

The next step is to vote on the superior features identified by each model and the features identified as superior by more than three models. Following that, two ML models of the SVM and RF have been used in the preparation of FSMs in this study. In this stage, these two models were trained on all factors once. Furthermore, the second time, only the superior factors obtained from the RFE method were used, and the resulting FSMs were validated to determine the extent of improvement. 270

#### 4.7. Support Vector Machine

The SVM is one of the most widely used and successful ML techniques for classification and regression (Vapnik, 1998). The type of kernel function used in the SVM model plays an important role in its performance. In modeling the natural hazard susceptibility, using SVM with radial basis function kernel is common. This method is one of 275

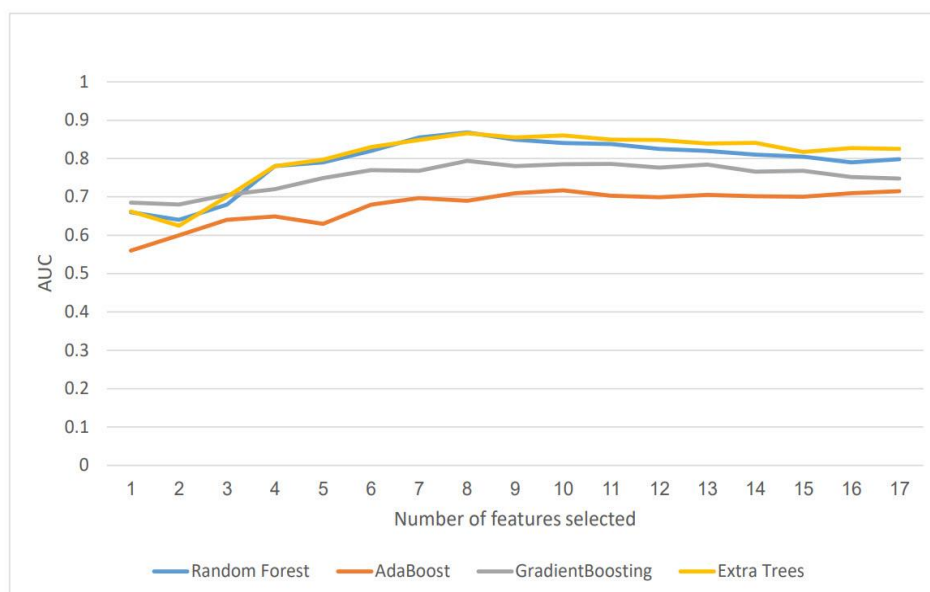
the most common approaches in the field of natural disasters that used in this study. The performance of the SVM model is influenced by the two hyperparameters. These two hyperparameters are kernel width ( $\gamma$ ) and regularization (C). Kernel width defines how far it influences the calculation of a plausible line of separation. When hyper-parameter  $\gamma$  is higher, nearby samples will have a high influence, and low  $\gamma$  means far away samples also be considered to get the decision boundary. The C tells the SVM optimization how much error is bearable. When C is high, it will classify all samples correctly; also, there is a chance to overfit. In this study, the grid search method was used to determine the desired values for C and  $\gamma$ . For SVM model with 17 factors, C = 1 and  $\gamma = 0.1$  and for SVM model with 8 factors, C = 1 and  $\gamma = 1$ .

## 5. Experimental results 285

In the following, the results of the implemented methods are given along with figures and diagrams, and the description and details of these results are discussed. All of the mentioned data were processed and used to create the FSM-related factors with ArcGIS 10.8. All methods were implemented by sklearn (Pedregosa et al., 2012), which is an open-source Python library, in the google colab environment.

### 5.1. Feature selection using the RFE method 290

In Figures 3, the Y-axis indicates the auc of the model, and the X-axis shows the number of features on which the model is prepared. It is known that the dashed line is drawn where the highest AUC has been achieved, and the number of features achieved is determined. Figure 3 shows that the RF model's highest AUC was obtained when eight features were included. Figure 3 specifies that the AdaBoost model's highest AUC occurred with ten features. Moreover, in Figure 3, it is clear that the Gradient Boosting model obtained its highest AUC with eight characteristics. Figure 3 shows that the Extra Trees model achieved its highest AUC with eight features. Accordingly, Table 2 lists all factors selected or rejected in four models based on the Recursive Feature Elimination (RFE) methodology. 295



**Figure 3.** Recursive feature elimination with cross-validation (RFECV) for the RF, AdaBoost, GBDT and ET models. 300

The score obtained by the model here is the AUC criterion. The AUC range is between 0 and 1. The AUC values are interpreted as reflecting the following model accuracies: 0.6–0.7 poor, 0.6–0.7 medium, 0.7–0.8 good, 0.8–0.9 very good, and 0.9–1 excellent (Pourghasemi et al., 2017). According to Hong's article (Hong et al., 2018), which considered the value of 0.7 for the AUC criterion as a good performance of the model, also in the article of Jafari and Pourghasemi (Pourghasemi et al., 2020), the AUC criterion equal to 0.8 is considered a very good performance for the model.

**Table 2.** Considering forest fire variables importance using recursive feature elimination (RFE).

<b>Factors</b>	<b>Random Forest</b>	<b>AdaBoost</b>	<b>Gradient Boosting</b>	<b>Extra trees</b>	<b>Voting</b>
<b>Slope</b>	Rejected	Rejected	Rejected	Rejected	Removed
<b>Altitude</b>	Confirmed	Rejected	Confirmed	Confirmed	Selected
<b>Aspect</b>	Confirmed	Confirmed	Confirmed	Confirmed	Selected
<b>Plan curvature</b>	Rejected	Rejected	Rejected	Rejected	Removed
<b>TWI</b>	Rejected	Confirmed	Rejected	Rejected	Removed
<b>Distance to river</b>	Confirmed	Confirmed	Confirmed	Confirmed	Selected
<b>Distance to road</b>	Confirmed	Confirmed	Confirmed	Confirmed	Selected
<b>Distance to recreation area</b>	Rejected	Confirmed	Rejected	Rejected	Removed
<b>Distance to power lines</b>	Confirmed	Rejected	Confirmed	Confirmed	Selected
<b>Distance to mine</b>	Rejected	Confirmed	Rejected	Rejected	Removed
<b>Rainfall</b>	Confirmed	Confirmed	Confirmed	Confirmed	Selected
<b>Temperature</b>	Confirmed	Confirmed	Confirmed	Confirmed	Selected
<b>Distance to villages</b>	Confirmed	Confirmed	Confirmed	Confirmed	Selected
<b>Wind effect</b>	Rejected	Rejected	Rejected	Rejected	Removed
<b>NDVI</b>	Rejected	Confirmed	Rejected	Rejected	Removed
<b>Landform</b>	Rejected	Rejected	Rejected	Rejected	Removed
<b>Land use</b>	Rejected	Rejected	Rejected	Rejected	Removed

## 5.2. Voting results of forest fire factors

In Figure 4, the results of voting between models are displayed as bar charts. Each factor votes for the number of models that identified that factor as an effective factor. Based on this diagram, six factors have six votes, i.e., all four models identified these six factors as effective. Figure 4 shows our final list of factors that have been identified by more than three models.

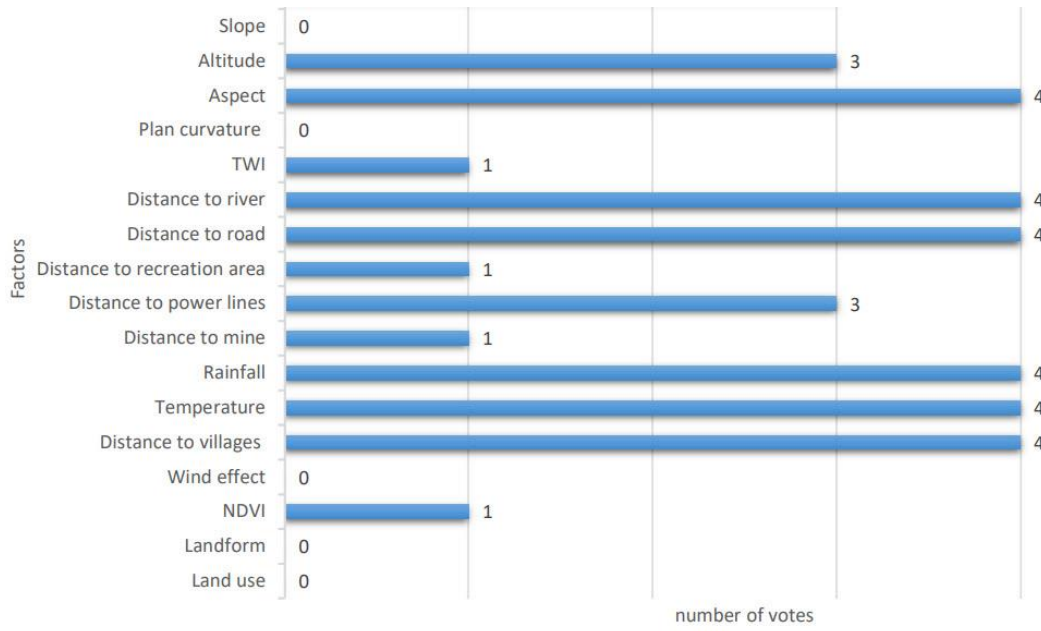


Figure 4. Votes of each factor.

### 5.3. Model Accuracy

In this study, several model validation methods were used: AUC, accuracy, recall, precision, F1, Kappa, and MCC. The ROC curve was plotted with the true positive, which represents a correctly predicted forest fire on the X-axis, and the false positive, which represents a falsely predicted forest fire on the Y-axis, as inputs. The area under the ROC curve represents AUC. Accuracy, recall, precision, F1, MCC, and Kappa criteria were calculated from Eq. (1-6) as follows (Chicco and Jurman, 2020; Pham et al., 2020):

320

$$Accuracy = \frac{TP + TN}{TP + TN + FP + FN} \quad (1) \quad 325$$

$$Recall = \frac{TP}{TP + FN} \quad (2)$$

$$Precision = \frac{TP}{TP + FP} \quad (3)$$

$$F1 = \frac{2 * Precision * Recall}{Precision + Recall} \quad (4)$$

$$MCC = \frac{TP \cdot TN - FP \cdot FN}{\sqrt{(TP + FP) \cdot (TP + FN) \cdot (TN + FP) \cdot (TN + FN)}} \quad (5)$$

$$Kappa = \frac{(TP + TN) - ((TP + FN)(TP + FP) + (FP + TN)(FN + TN))}{1 - ((TP + FN)(TP + FP) + (FP + TN)(FN + TN))} \quad (6) \quad 330$$

$$AUC = \sum_{p=1}^n (X_{p+1} - X_p) * (S_{p+1} - S_p - S_p / 2) \quad (7)$$

where true positive (*TP*) is the number of forest fire points categorized correctly as forest fire and true negative (*TN*) denotes the number of non-forest fire points correctly classified as non-forest fire points. Meanwhile, false positives (*FP*) and false negatives (*FN*) refer to the number of forest fire points that were incorrectly classified as a forest fire or non-forest fire points. In formula 7,  $X_p$  is specificity and  $S_p$  refers to the sensitivity: 335

$$\text{Sensitivity} = \frac{TP}{TP + FN} \quad (8)$$

$$\text{Specificity} = \frac{TN}{TN + FP} \quad (9)$$

The AUC criterion, which is one of the most important evaluation criteria for models, indicates that the proportion of fire and non-fire points which are correctly classified (Wang et al., 2020). The Recall measure shows how many positive examples in the sample are predicted correctly. The fraction of relevant instances in the retrieved instances. The sensitivity criterion also indicates the percentage of fire points that are properly identified. On the other hand, the specificity criterion refers to the percentage of non-fire points that are correctly classified. 340

In the form of four tables, the evaluation results of each model are displayed according to the number of factors considered in each model. Tables 3 and 5 are related to RF and SVM models in which 17 primary factors are involved, Tables 4 and 6 are related to RF and SVM models with the final eight factors selected, and the factors referred to in Table 2 are involved. 345

**Table 3** The accuracy assessment results for each fold and the CV values for RF with all factors.

Fold	Accuracy	AUC	Recall	Precision	F1	Kappa	MCC
1	0.8261	0.8987	0.7727	0.8500	0.8095	0.6502	0.6527
2	0.8913	0.9545	0.8636	0.9048	0.8837	0.7818	0.7825
3	0.8478	0.9195	0.9091	0.8000	0.8511	0.6968	0.7028
4	0.8261	0.9356	0.8182	0.8182	0.8182	0.6515	0.6515
5	0.8696	0.9318	0.9091	0.8333	0.8696	0.7396	0.7424
6	0.9348	0.9924	1.0000	0.8800	0.9362	0.8701	0.8775
7	0.8889	0.9980	1.0000	0.8148	0.8980	0.7788	0.7985
8	0.8889	0.9239	0.9545	0.8400	0.8936	0.7783	0.7853
9	0.9333	0.9545	0.8636	1.0000	0.9268	0.8662	0.8741
10	0.9556	0.9625	0.9545	0.9545	0.9545	0.9111	0.9111
Mean	0.8862	0.9472	0.9045	0.8696	0.8841	0.7724	0.7778
Std	0.0429	0.0300	0.0717	0.0622	0.0458	0.0861	0.0872

350

**Table 4.** The accuracy assessment results for each fold and the CV values for RF with eight final factors.

Fold	Accuracy	AUC	Recall	Precision	F1	Kappa	MCC
1	0.9565	0.9714	0.9048	1.0000	0.9500	0.9117	0.9153

2	0.8913	0.9545	0.9091	0.8696	0.8889	0.7826	0.7833
3	0.7826	0.9233	0.9545	0.7000	0.8077	0.5709	0.6078
4	0.9130	0.9886	0.9545	0.8750	0.9130	0.8264	0.8295
5	0.9783	0.9943	1.0000	0.9565	0.9778	0.9565	0.9574
6	0.8696	0.9413	0.9091	0.8333	0.8696	0.7396	0.7424
7	0.8444	0.9028	0.8095	0.8500	0.8293	0.6866	0.6873
8	0.9333	0.9782	0.9048	0.9500	0.9268	0.8657	0.8665
9	0.8889	0.9425	0.8095	0.9444	0.8718	0.7748	0.7819
10	0.9111	0.9821	0.9524	0.8696	0.9091	0.8225	0.8257
Mean	0.8969	0.9579	0.9108	0.8848	0.8944	0.7937	0.7997
Std	0.0535	0.0287	0.0584	0.0805	0.0496	0.1058	0.0988

**Table 5.** The accuracy assessment results for each fold and the CV values for SVM with all factors.

Fold	Accuracy	AUC	Recall	Precision	F1	Kappa	MCC
1	0.7609	0.7879	0.7273	0.7619	0.7442	0.5199	0.5204
2	0.8478	0.8523	0.8182	0.8571	0.8372	0.6945	0.6952
3	0.7826	0.8030	0.8636	0.7308	0.7917	0.5677	0.5764
4	0.7826	0.8769	0.8636	0.7308	0.7917	0.5677	0.5764
5	0.7609	0.8598	0.7273	0.7619	0.7442	0.5199	0.5204
6	0.8043	0.9375	0.9091	0.7407	0.8163	0.6116	0.6264
7	0.7778	0.8933	1.0000	0.6875	0.8148	0.5597	0.6234
8	0.7778	0.8419	0.9091	0.7143	0.8000	0.5580	0.5787
9	0.8222	0.8518	0.7727	0.8500	0.8095	0.6436	0.6461
10	0.8667	0.9545	0.9091	0.8333	0.8696	0.7337	0.7366
Mean	0.7984	0.8659	0.8500	0.7668	0.8019	0.5976	0.6100
Std	0.0345	0.0499	0.0839	0.0565	0.0362	0.0686	0.0666

355

**Table 6.** The accuracy assessment results for each fold and the CV values for SVM with eight final factors.

Fold	Accuracy	AUC	Recall	Precision	F1	Kappa	MCC
1	0.8478	0.9238	0.9048	0.7917	0.8444	0.6968	0.7028
2	0.9565	0.9527	0.9545	0.9545	0.9545	0.9129	0.9129
3	0.8043	0.9091	0.9545	0.7241	0.8235	0.6131	0.6429
4	0.8913	0.9413	0.8636	0.9048	0.8837	0.7818	0.7825
5	0.9783	0.9943	1.0000	0.9565	0.9778	0.9565	0.9574
6	0.8261	0.9242	0.8182	0.8182	0.8182	0.6515	0.6515
7	0.8667	0.9107	0.8095	0.8947	0.8500	0.7305	0.7335
8	0.8667	0.9147	0.8571	0.8571	0.8571	0.7321	0.7321
9	0.8889	0.9405	0.8095	0.9444	0.8718	0.7748	0.7819
10	0.9333	0.9940	0.9524	0.9091	0.9302	0.8665	0.8673
Mean	0.8860	0.9405	0.8924	0.8755	0.8811	0.7717	0.7765
Std	0.0531	0.0300	0.0666	0.0731	0.0524	0.1057	0.1012

#### 5.4. Model Comparison

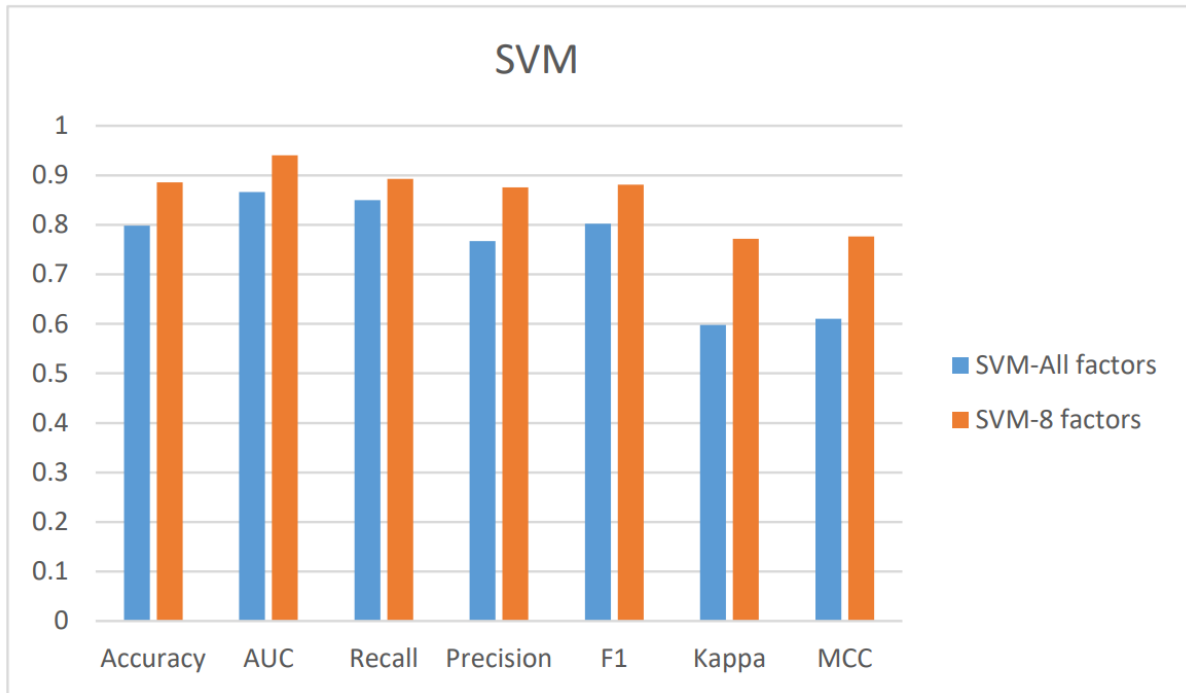
In Figure 5, the evaluation criteria for the SVM model with all factors and SVM with eight factors are displayed simultaneously to create a visual comparison. According to Figures 5 and 6, the selected factors from the voting process have improved all evaluation criteria in both models. The SVM model has a higher rate of improvement than the RF model. Also, according to the results of the RF model, it has shown better performance than the SVM model and has been able to achieve nearly 80% and above in all evaluation criteria. In most studies, the AUC criteria for evaluating models are reported; both models have been improved in this study. In the AUC criteria, in the SVM-8 factors model, 8.61% compared to the SVM-All factors model and 1.13% improvement in the RF-8

360

365

factors model compared to the RF-All factors model. However, since this criterion generally does not represent the performance of the models, in addition to AUC, six other evaluation criteria have been reported for the models. The SVM model's lowest improvement in evaluation criteria is related to the Recall criterion, which has improved by 4.98%, and the highest improvement rate is related to Kappa with 29.13%. In the RF model, the highest rate of improvement in the MCC criterion and the lowest improvement rate for the Recall criterion were 2.81% and 0.69%, respectively.

370

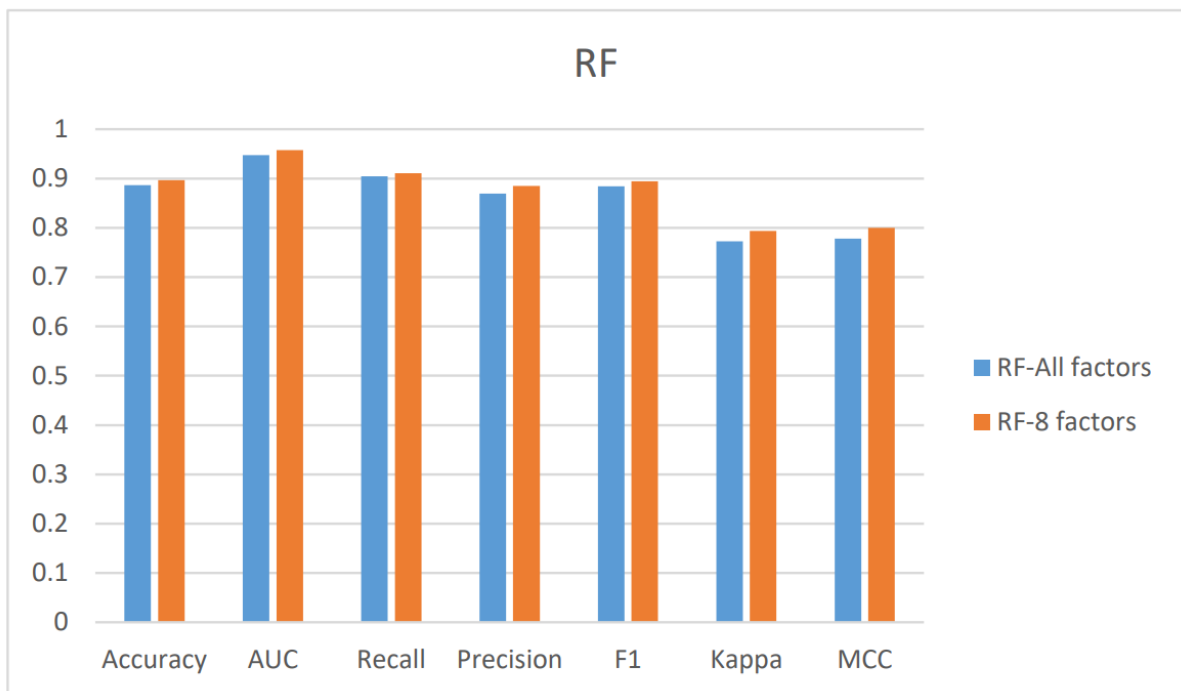


**Figure 5.** The resulting accuracy metrics for SVM.

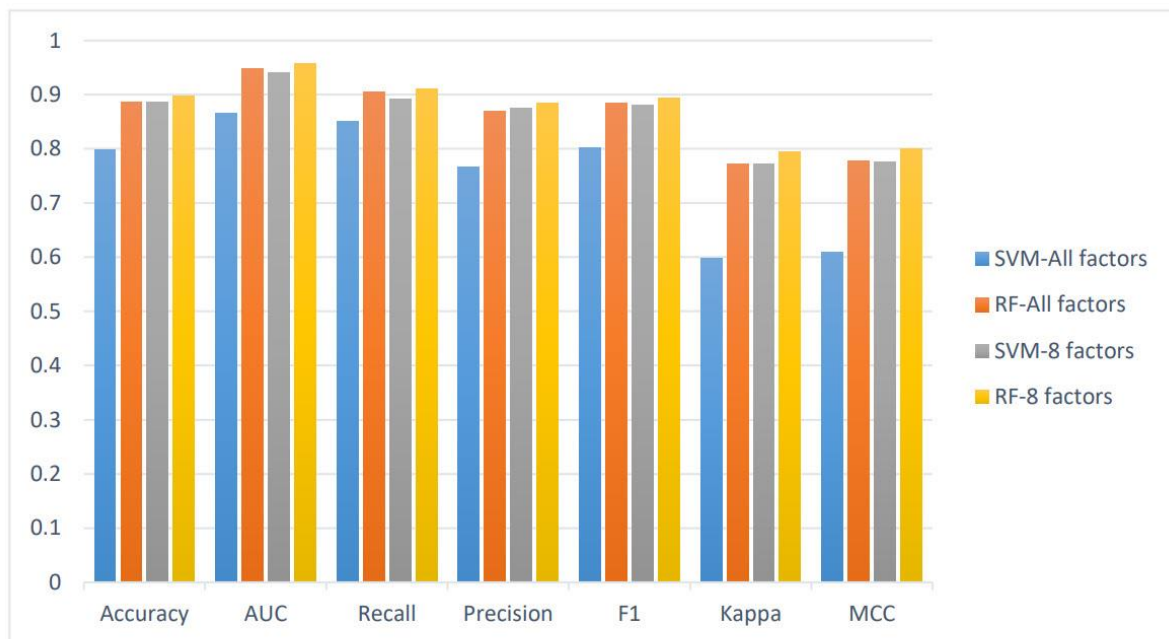
In Figure 6, the evaluation criteria for the RF model with all eight factors are displayed simultaneously to create a visual comparison. In Figure 7, all models are displayed simultaneously in the same form for all eight factors that, indicate the superiority of the RF model over the SVM model.

375





**Figure 6.** The resulting accuracy metrics for RF.



**Figure 7.** The resulting accuracy metrics for RF and SVM.

380

### 5.5. Forest fire susceptibility map (FSM)

A forest fire susceptibility map depicts areas likely to have forest fire in the future by correlating some of the principal factors that contribute to forest fire with the past distribution. The forest fire susceptibility maps represent a measure of the probability of the occurrence of wildfires for a region based on considered conditioning factors.

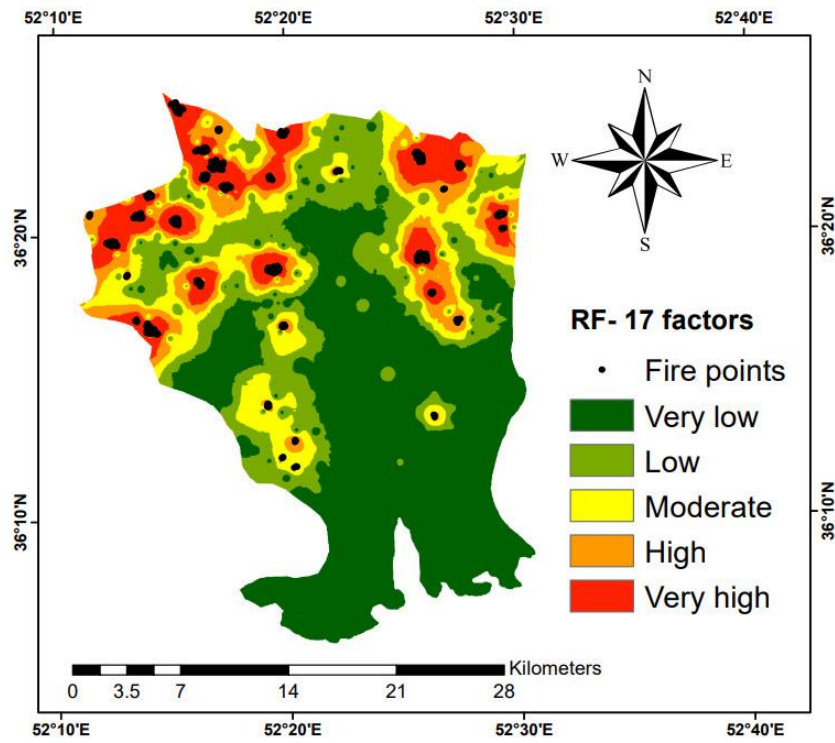
385

The natural breaks classification method (available in Arc map 10.8) was used to classify the resulting spatial prediction of wildfire susceptibility maps. This classification method is the most common method for categorizing prediction maps for interpreting values close to each class boundary (e.g., values between “High” and “Very high” susceptibility predictions). The model generates a number between 0 and 1 for each pixel according to its feature vector. Using a reclassification tool in the Spatial Analyst Tools ArcGIS 10.8 software, each final map cell is classified into five classes (very low, low, moderate, high, and very high) representing the forest fire hazard index, with the natural breaks method, all outcomes are divided into five classes.

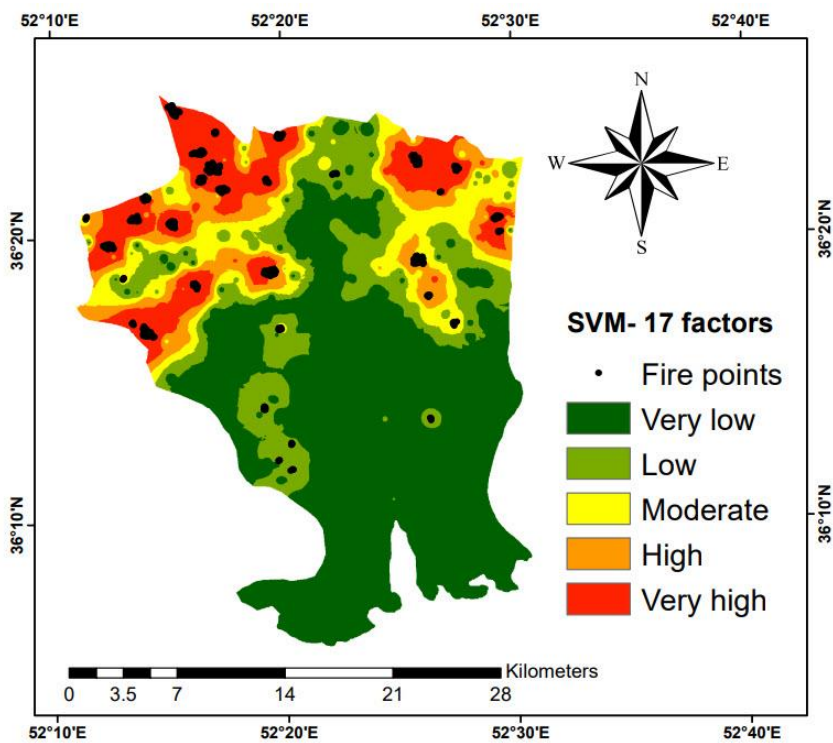
390

The fire susceptibility map was prepared in 5 classes (Figures 8, 9, 10, and 11). In Table 7, the area of each class is specified.

395



**Figure 8.** Forest fire susceptibility map for the RF model with all factors.



**Figure 9.** Forest fire susceptibility map for the SVM model with all factors.

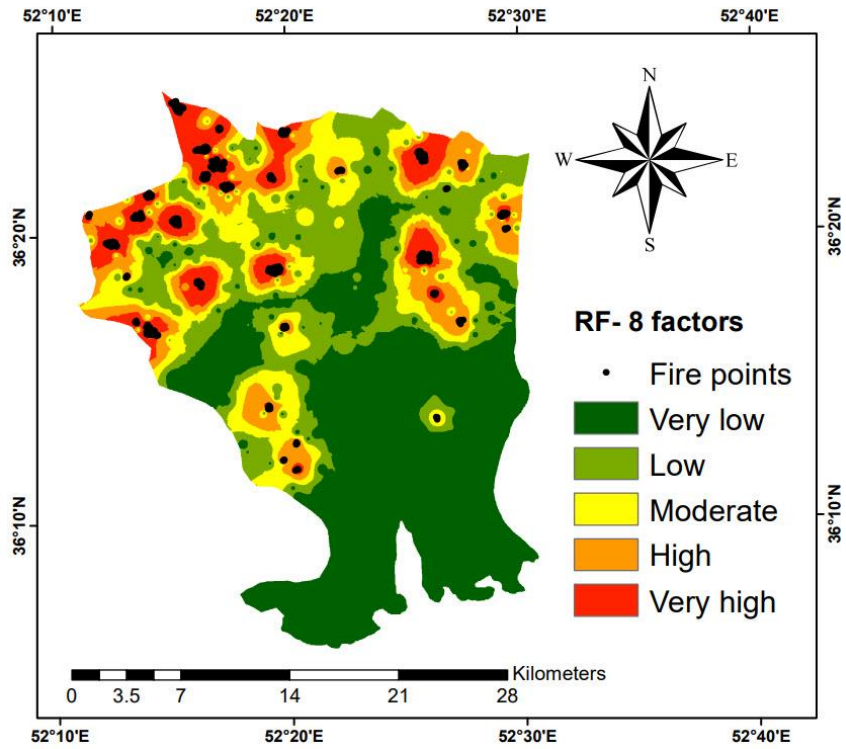


Figure 10. Forest fire susceptibility map for the RF model with eight factors.

400

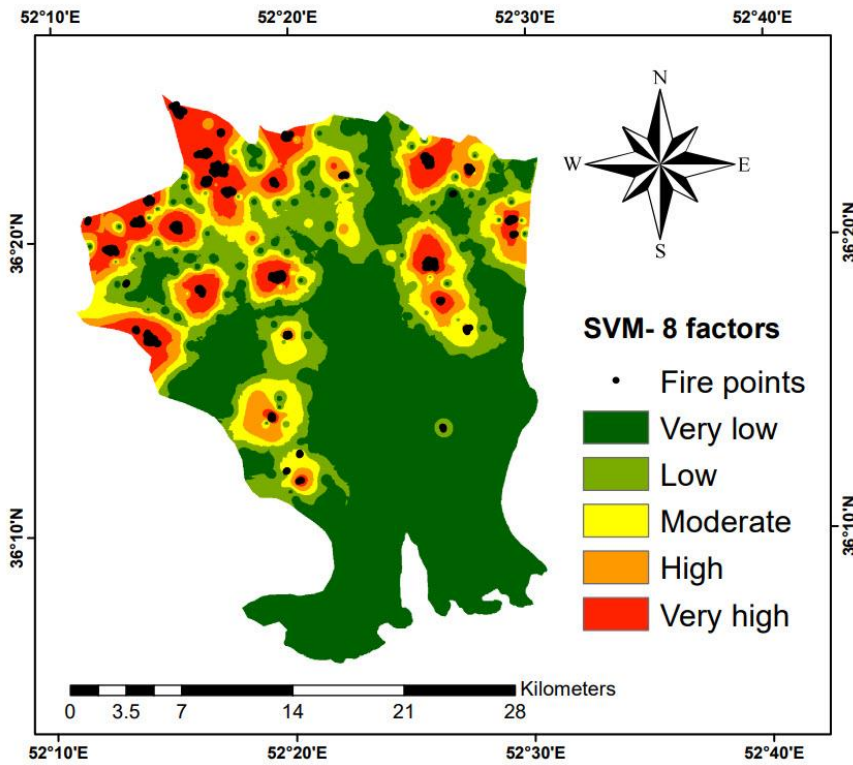


Figure 11. Forest fire susceptibility map for the SVM model with eight factors.

405

**Table 7.** Area of each class in percentage.

Class	RF-all factors	SVM-all factors	RF-8 factors	SVM-8 factors
<b>Very Low</b>	46.41	51.13	43.06	53.41
<b>Low</b>	20.55	16.98	22.78	16.99
<b>Moderate</b>	13.18	10.28	14.31	11.22
<b>High</b>	9.40	9.16	10.88	8.26
<b>Very High</b>	10.46	12.45	8.97	10.12

## 6. Discussion

It is imperative to map forest fire susceptibility and risk to address the threats they pose to people and the ecosystem. Forest fire dynamics in fire-prone areas can be better understood by identifying potential fire zones. A critical component of forest fire emergency management and mitigation planning is aimed at minimizing adverse effects. However, due to the importance of each conditioning factor in a specific case study area, developing the best FSM methodology presents a challenge. It becomes even more difficult when we have many factors that we are not fully aware of their exact impact on forest fire susceptibility in different regions. In literature studies, the SVM and RF models were found to be appropriate for modeling FSMs. Nevertheless, the accuracy of resulting FSMs will be directly related to the performance of a machine learning model that will, in turn, be affected by the training data set and fire inventory map. It is imperative that every conditional factor must be evaluated so that the training process would be effective. Many conditional factors in forest fire modeling are typically derived from various sources and have been used blindly in many machine learning-based studies. According to previous studies conducted in this specific study area, 17 forest fire conditional factors have been selected for this study. However, in this study, the RFE method was used to select more effective ones. Consequently, the SVM and RF models were first trained with all factors, then with the selected ones.

Seven evaluation criteria were used to validate the effectiveness of the application of this method. Tables 5 and 6 show that the SVM model improved by eight factors in all seven evaluation criteria compared to the SVM model by all factors. [Figure 5 displays](#) this trend. The improvement rate in the accuracy metric is 10.97%. The AUC metric increased by 8.61%, and other metrics such as recall, precision, F1, Kappa, and MCC improved by 4.98%, 14.17%, 9.87%, 29.13%, and 27.29%, respectively. Our results indicate that the final eight factors have been correctly selected for this model. Also, comparing Tables 3 and 4, the RF model with eight factors involved has improved in all seven evaluation criteria compared to the RF model in which all factors are involved. Accuracy parameter improved by 1.20%, AUC by 1.12%, Recall by 0.69%, Precision by 1.74%, F1 by 1.16%, Kappa by 2.75%, and MCC by 2.81%. [Figure 6 shows](#) this improvement process. Using this model, the final eight factors have been selected appropriately since they improved all seven factors. Since both SVM and RF models have improved evaluation parameters due to these eight factors, it can be concluded that this feature selection method selects important features of the problem. A feature selection method may be able to improve only one specific model and be unique to that model. But here, from the obtained results, it can be seen that this feature selection method has improved both models, indicating that the problem's important features have been selected by this feature selection method. These features will reduce the accuracy of another model and cannot be generalized to

other models if they are added to a second model. However, in this study, the results reveal that the selected factors improve the accuracy of both models, and this feature selection method has worked well in both models. In addition, it is necessary to mention that by comparing Tables 3, 4, 5, and 6 for the RF model in all criteria of evaluation of the model, higher values were found for the RF model in comparison with the SVM model in both cases. 440

In this regard, the first state of all factors and the second state of eight factors indicate the superiority of the RF model over the SVM model. All these results were achieved on the original dataset and with the 10-fold -cross-validation method. In Table 2, one of the outcomes of this study is identifying the distance from power transmission lines as one of eight factors affecting fire occurrence that is less discussed in other studies. Several studies have identified seven other factors as effective factors in forest fires. (Bjånes et al., 2021; Eskandari et al., 2021; Mohajane et al., 2021; Naderpour et al., 2021; Tavakkoli Piralilou et al., 2022; Valdez et al., 2017). 445

Pourghasemi et al. (Pourghasemi et al., 2020) have identified the factors of distance from rivers and residential areas, TWI, rainfall, aspect, and temperature as important factors in the Boruta algorithm and these factors have also been identified as important factors in our method. But the factors of use and slope, which are not known as important factors in the scope of our study, are known as influential factors in the scope of their study, and this indicates that in order to make a correct comparison between the methods of feature selection and To determine their performance, they should be tested in different geographical environments. 450

In fire science, the slope factor has been identified as an important factor in fire modeling (Hong et al., 2018; Pourghasemi et al., 2020) , But there are also articles that do not consider the slope factor due to the geography of the region (Satir et al., 2016; Kim et al., 2019; Cao et al., 2017). In our study area, there are many non-fire points in steep areas, so the models do not recognize this factor as an important factor in the fire forest. However, the direction of slope and height have been identified as important factors. In Table 8, the distribution of fire and non-fire points in the study area can be seen according to the slope classification. As can be inferred from the table, the distribution of fire and non-fire points in steep areas are similar, so the factor could not be recognized as an important fire factor in this study area. 455 460

**Table 8.** The number of fire and non-fire points in different slope classes.

Slope intervals	Number of fire points	Number of non-fire points
60° >	0	2
45° - 50 °	1	5
40° - 45 °	7	15
35° - 40 °	15	20
30° - 35 °	8	19
25° - 30 °	11	37
20° - 25 °	25	38
15° - 20 °	38	63
< 15 °	221	127

Also, Ghorbanzadeh et al. (Ghorbanzadeh et al., 2019), with 17 factors, achieved the AUCs of 0.79 and 0.88 for the SVM and RF models, respectively. In the current study, the achieved AUCs with eight factors were equal to 0.94 and 0.95 for the SVM and RF models, respectively. This difference in results cannot be categorically stated by choosing this feature selection method because there are differences in the process of the two studies, including the number of folds and also differences in input layers. Furthermore, since the effects of these factors are not completely clear, they cannot be categorically stated what a significant limitation of the problem is. 470

In general, the identification of high-risk areas is more important than low-risk areas. Therefore, according to Table 7, it can be seen that for the RF model with all factors, the total area of high-risk and very high-risk areas is 19.86%, and for the RF model with eight factors, this number is equal to 19.85%. Also, the SVM model with all factors has identified 21.61% of the region's area as high-risk and very high-risk areas, whereas it was 18.38 475 for the SVM model with eight factors. In this study, the model that considers all factors was compared to that that only considers a selected number of factors, and the results were very similar for both models. This shows that the selected factors are correctly identified.

## 7. Conclusions

Our first objective with the present study was to evaluate the selection of the superior forest fire conditional factors for dealing with uncertainties within FSMs using two common ML models, including SVM and RF. Identifying fire-prone areas and preparing a susceptible map for these areas is very important in preventing fires. The prevention and spread of forest fires can be significantly reduced by local and national hazard mitigation management. It is important, however, to identify the practical factors involved in forest fires before identifying areas susceptible to fires. 480 485

Therefore, this study tried to identify important factors in forest fire occurrence and prepare a fire-prone map for the study area. The influential fire factors were identified by the RFE method based on four models. Then, the most effective factors were selected by voting between factors. The results showed that the accuracy of the two models, SVM and RF, improved. Our applied approach can also be easily adapted to other regions, but factors are needed in each region. It is possible that the factors that are known as important factors in this study case, in another geographical environment, other factors are identified as important factors by this method, on the other hand, these factors that are known in this study case The factors that have been used were the ones that could be accessed, so it can be argued that there are other factors as well, but because they are not accessible, they have not been investigated. 490 495

## Author contributions

Ali Rezaei Barzani: methodology, writing – original draft, visualization. Parham Pahlavani: conceptualization, methodology, formal analysis, writing – original draft, supervision. Omid Ghorbanzadeh: conceptualization, methodology, writing – review & editing, visualization, supervision. Pedram Ghamisi: writing – review & editing, supervision, funding acquisition. 500

## Data Availability Statement

The data that support the findings of this study are available on request from the authors.

## Acknowledgments

This research was funded by the Institute of Advanced Research in Artificial Intelligence (IARAI). The authors are grateful to the anonymous referees for their valuable comments/suggestions that have helped us improve an earlier version of the manuscript. 505

## Competing interests

The authors declare that they have no conflict of interest.

## References 510

- Adab, H., Kanniah, K. D., and Solaimani, K.: Modeling forest fire risk in the northeast of Iran using remote sensing and GIS techniques, *Nat Hazards*, 65, 1723–1743, <https://doi.org/10.1007/s11069-012-0450-8>, 2013.
- Adab, H., Kanniah, K. D., Solaimani, K., and Sallehuddin, R.: Modelling static fire hazard in a semi-arid region using frequency analysis, *Int. J. Wildland Fire*, 24, 763, <https://doi.org/10.1071/WF13113>, 2015. 515
- Agrawal, P., Abutarboush, H. F., Ganesh, T., and Mohamed, A. W.: Metaheuristic Algorithms on Feature Selection: A Survey of One Decade of Research (2009-2019), *IEEE Access*, 9, 26766–26791, <https://doi.org/10.1109/ACCESS.2021.3056407>, 2021.
- Ampomah, E. K., Qin, Z., and Nyame, G.: Evaluation of Tree-Based Ensemble Machine Learning Models in Predicting Stock Price Direction of Movement, *Information*, 11, 332, <https://doi.org/10.3390/info11060332>, 2020. 520
- Bjånes, A., De La Fuente, R., and Mena, P.: A deep learning ensemble model for wildfire susceptibility mapping, *Ecological Informatics*, 65, 101397, <https://doi.org/10.1016/j.ecoinf.2021.101397>, 2021. 525
- Bond, W. and Keeley, J.: Fire as a global ‘herbivore’: the ecology and evolution of flammable ecosystems, *Trends in Ecology & Evolution*, 20, 387–394, <https://doi.org/10.1016/j.tree.2005.04.025>, 2005.
- Breiman, L.: [No title found], *Machine Learning*, 45, 5–32, <https://doi.org/10.1023/A:1010933404324>, 2001. 530
- Bruinsma, J. (Ed.): *World Agriculture: Towards 2015/2030*, 0 ed., Routledge, <https://doi.org/10.4324/9781315083858>, 2017.
- Cao, Y., Wang, M., and Liu, K.: Wildfire Susceptibility Assessment in Southern China: A Comparison of Multiple Methods, *Int J Disaster Risk Sci*, 8, 164–181, <https://doi.org/10.1007/s13753-017-0129-6>, 2017. 535
- Chicco, D. and Jurman, G.: The advantages of the Matthews correlation coefficient (MCC) over F1 score and accuracy in binary classification evaluation, *BMC Genomics*, 21, 6, <https://doi.org/10.1186/s12864-019-6413-7>, 2020.
- Devi, S. S., Solanki, V. K., and Laskar, R. H.: Recent advances on big data analysis for malaria prediction and various diagnosis methodologies, in: *Handbook of Data Science Approaches for* 540



- Biomedical Engineering, Elsevier, 153–184, <https://doi.org/10.1016/B978-0-12-818318-2.00006-4>, 2020.
- Efron, B. and Tibshirani, R. J.: *An Introduction to the Bootstrap*, Springer US, Boston, MA, <https://doi.org/10.1007/978-1-4899-4541-9>, 1993.
- Escanilla, N. S., Hellerstein, L., Kleiman, R., Kuang, Z., Shull, J., and Page, D.: Recursive Feature Elimination by Sensitivity Testing, in: 2018 17th IEEE International Conference on Machine Learning and Applications (ICMLA), 2018 17th IEEE International Conference on Machine Learning and Applications (ICMLA), Orlando, FL, 40–47, <https://doi.org/10.1109/ICMLA.2018.00014>, 2018. 545
- Eskandari, S., Pourghasemi, H. R., and Tiefenbacher, J. P.: Fire-susceptibility mapping in the natural areas of Iran using new and ensemble data-mining models, *Environ Sci Pollut Res*, 28, 47395–47406, <https://doi.org/10.1007/s11356-021-13881-y>, 2021. 550
- Freund, Y. and Schapire, R. E.: A Decision-Theoretic Generalization of On-Line Learning and an Application to Boosting, *Journal of Computer and System Sciences*, 55, 119–139, <https://doi.org/10.1006/jcss.1997.1504>, 1997.
- Geurts, P., Ernst, D., and Wehenkel, L.: Extremely randomized trees, *Mach Learn*, 63, 3–42, <https://doi.org/10.1007/s10994-006-6226-1>, 2006. 555
- Gholamnia, K., Gudiyangada Nachappa, T., Ghorbanzadeh, O., and Blaschke, T.: Comparisons of Diverse Machine Learning Approaches for Wildfire Susceptibility Mapping, *Symmetry*, 12, 604, <https://doi.org/10.3390/sym12040604>, 2020.
- Ghorbanzadeh, O., Valizadeh Kamran, K., Blaschke, T., Aryal, J., Naboureh, A., Einali, J., and Bian, J.: Spatial Prediction of Wildfire Susceptibility Using Field Survey GPS Data and Machine Learning Approaches, *Fire*, 2, 43, <https://doi.org/10.3390/fire2030043>, 2019. 560
- Gigović, L., Pourghasemi, H. R., Drobňjak, S., and Bai, S.: Testing a New Ensemble Model Based on SVM and Random Forest in Forest Fire Susceptibility Assessment and Its Mapping in Serbia’s Tara National Park, *Forests*, 10, 408, <https://doi.org/10.3390/f10050408>, 2019. 565
- Guo, F., Zhang, L., Jin, S., Tigabu, M., Su, Z., and Wang, W.: Modeling Anthropogenic Fire Occurrence in the Boreal Forest of China Using Logistic Regression and Random Forests, *Forests*, 7, 250, <https://doi.org/10.3390/f7110250>, 2016.
- Guyon, I., Weston, J., Barnhill, S., and Vapnik, V.: [No title found], *Machine Learning*, 46, 389–422, <https://doi.org/10.1023/A:1012487302797>, 2002. 570
- He, Q., Jiang, Z., Wang, M., and Liu, K.: Landslide and Wildfire Susceptibility Assessment in Southeast Asia Using Ensemble Machine Learning Methods, *Remote Sensing*, 13, 1572, <https://doi.org/10.3390/rs13081572>, 2021.
- Hong, H., Tsangaratos, P., Ilija, I., Liu, J., Zhu, A.-X., and Xu, C.: Applying genetic algorithms to set the optimal combination of forest fire related variables and model forest fire susceptibility based on data mining models. The case of Dayu County, China, *Science of The Total Environment*, 630, 1044–1056, <https://doi.org/10.1016/j.scitotenv.2018.02.278>, 2018. 575
- Hosseini, M. and Lim, S.: Gene expression programming and data mining methods for bushfire susceptibility mapping in New South Wales, Australia, *Nat Hazards*, 113, 1349–1365, <https://doi.org/10.1007/s11069-022-05350-7>, 2022. 580

- Jaafari, A. and Pourghasemi, H. R.: Factors influencing regional-scale wildfire probability in Iran: an application of random forest and support vector machine, in: *Spatial modeling in GIS and R for Earth and environmental sciences*, Elsevier, 607–619, 2019.
- Jaafari, A., Zenner, E. K., and Pham, B. T.: Wildfire spatial pattern analysis in the Zagros Mountains, Iran: A comparative study of decision tree based classifiers, *Ecological Informatics*, 43, 200–211, 585  
<https://doi.org/10.1016/j.ecoinf.2017.12.006>, 2018.
- Jahdi, R., Salis, M., Darvishsefat, A. A., Alcasena Urdirroz, F. J., Etemad, V., Mostafavi, M. A., Lozano, O. M., and Spano, D.: Calibration of FARSITE fire area simulator in Iranian northern forests, *Other Hazards (e.g., Glacial and Snow Hazards, Karst, Wildfires Hazards, and Medical Geo-Hazards)*, <https://doi.org/10.5194/nhessd-2-6201-2014>, 2014. 590
- Kalantar, B., Ueda, N., Idrees, M. O., Janizadeh, S., Ahmadi, K., and Shabani, F.: Forest Fire Susceptibility Prediction Based on Machine Learning Models with Resampling Algorithms on Remote Sensing Data, *Remote Sensing*, 12, 3682, <https://doi.org/10.3390/rs12223682>, 2020.
- Kim, S. J., Lim, C.-H., Kim, G. S., Lee, J., Geiger, T., Rahmati, O., Son, Y., and Lee, W.-K.: Multi-Temporal Analysis of Forest Fire Probability Using Socio-Economic and Environmental Variables, *Remote Sensing*, 11, 86, <https://doi.org/10.3390/rs11010086>, 2019. 595
- Kohavi, J.: Kohavi R., John GH, Wrappers for feature subset selection, *Artificial Intelligence*, 97, 273–324, 1997.
- Kolonek, A., Szymanowski, M., and Raczyk, A.: Human Activity Affects Forest Fires: The Impact of Anthropogenic Factors on the Density of Forest Fires in Poland, *Forests*, 12, 728, 600  
<https://doi.org/10.3390/f12060728>, 2021.
- Kuhn, M. and Johnson, K.: *Applied Predictive Modeling*, Springer New York, New York, NY, <https://doi.org/10.1007/978-1-4614-6849-3>, 2013.
- Liang, Z., Wang, C., Duan, Z., Liu, H., Liu, X., and Ullah Jan Khan, K.: A Hybrid Model Consisting of Supervised and Unsupervised Learning for Landslide Susceptibility Mapping, *Remote Sensing*, 13, 1464, <https://doi.org/10.3390/rs13081464>, 2021. 605
- Mohajane, M., Costache, R., Karimi, F., Bao Pham, Q., Essahlaoui, A., Nguyen, H., Laneve, G., and Oudija, F.: Application of remote sensing and machine learning algorithms for forest fire mapping in a Mediterranean area, *Ecological Indicators*, 129, 107869, 610  
<https://doi.org/10.1016/j.ecolind.2021.107869>, 2021.
- Naderpour, M., Rizeei, H. M., and Ramezani, F.: Forest Fire Risk Prediction: A Spatial Deep Neural Network-Based Framework, *Remote Sensing*, 13, 2513, <https://doi.org/10.3390/rs13132513>, 2021.
- Ngoc Thach, N., Bao-Toan Ngo, D., Xuan-Canh, P., Hong-Thi, N., Hang Thi, B., Nhat-Duc, H., and Dieu, T. B.: Spatial pattern assessment of tropical forest fire danger at Thuan Chau area (Vietnam) using GIS-based advanced machine learning algorithms: A comparative study, *Ecological Informatics*, 46, 74–85, <https://doi.org/10.1016/j.ecoinf.2018.05.009>, 2018. 615
- Pedregosa, F., Varoquaux, G., Gramfort, A., Michel, V., Thirion, B., Grisel, O., Blondel, M., Müller, A., Nothman, J., Louppe, G., Prettenhofer, P., Weiss, R., Dubourg, V., Vanderplas, J., Passos, A., Cournapeau, D., Brucher, M., Perrot, M., and Duchesnay, É.: Scikit-learn: Machine Learning in Python, <https://doi.org/10.48550/ARXIV.1201.0490>, 2012. 620
- Pham, B. T., Jaafari, A., Avand, M., Al-Ansari, N., Dinh Du, T., Yen, H. P. H., Phong, T. V., Nguyen, D. H., Le, H. V., Mafi-Gholami, D., Prakash, I., Thi Thuy, H., and Tuyen, T. T.: Performance

- Evaluation of Machine Learning Methods for Forest Fire Modeling and Prediction, *Symmetry*, 12, 1022, <https://doi.org/10.3390/sym12061022>, 2020.
- Pourghasemi, H. R., Yousefi, S., Kornejady, A., and Cerdà, A.: Performance assessment of individual and ensemble data-mining techniques for gully erosion modeling, *Science of The Total Environment*, 609, 764–775, <https://doi.org/10.1016/j.scitotenv.2017.07.198>, 2017. 625
- Pourghasemi, H. R., Kariminejad, N., Amiri, M., Edalat, M., Zarafshar, M., Blaschke, T., and Cerda, A.: Assessing and mapping multi-hazard risk susceptibility using a machine learning technique, *Sci Rep*, 10, 3203, <https://doi.org/10.1038/s41598-020-60191-3>, 2020. 630
- Pourtaghi, Z. S., Pourghasemi, H. R., Aretano, R., and Semeraro, T.: Investigation of general indicators influencing on forest fire and its susceptibility modeling using different data mining techniques, *Ecological Indicators*, 64, 72–84, <https://doi.org/10.1016/j.ecolind.2015.12.030>, 2016.
- Remeseiro, B. and Bolon-Canedo, V.: A review of feature selection methods in medical applications, *Computers in Biology and Medicine*, 112, 103375, <https://doi.org/10.1016/j.combiomed.2019.103375>, 2019. 635
- Rogers, B. M., Balch, J. K., Goetz, S. J., Lehmann, C. E. R., and Turetsky, M.: Focus on changing fire regimes: interactions with climate, ecosystems, and society, *Environ. Res. Lett.*, 15, 030201, <https://doi.org/10.1088/1748-9326/ab6d3a>, 2020.
- Satir, O., Berberoglu, S., and Donmez, C.: Mapping regional forest fire probability using artificial neural network model in a Mediterranean forest ecosystem, *Geomatics, Natural Hazards and Risk*, 7, 1645–1658, <https://doi.org/10.1080/19475705.2015.1084541>, 2016. 640
- Sayad, Y. O., Mousannif, H., and Al Moatassime, H.: Predictive modeling of wildfires: A new dataset and machine learning approach, *Fire Safety Journal*, 104, 130–146, <https://doi.org/10.1016/j.firesaf.2019.01.006>, 2019. 645
- Song, Y., Niu, R., Xu, S., Ye, R., Peng, L., Guo, T., Li, S., and Chen, T.: Landslide Susceptibility Mapping Based on Weighted Gradient Boosting Decision Tree in Wanzhou Section of the Three Gorges Reservoir Area (China), *IJGI*, 8, 4, <https://doi.org/10.3390/ijgi8010004>, 2018.
- Tavakkoli Piralilou, S., Einali, G., Ghorbanzadeh, O., Nachappa, T. G., Gholamnia, K., Blaschke, T., and Ghamisi, P.: A Google Earth Engine Approach for Wildfire Susceptibility Prediction Fusion with Remote Sensing Data of Different Spatial Resolutions, *Remote Sensing*, 14, 672, <https://doi.org/10.3390/rs14030672>, 2022. 650
- Tehrany, M. S., Jones, S., Shabani, F., Martínez-Álvarez, F., and Tien Bui, D.: A novel ensemble modeling approach for the spatial prediction of tropical forest fire susceptibility using LogitBoost machine learning classifier and multi-source geospatial data, *Theor Appl Climatol*, 137, 637–653, <https://doi.org/10.1007/s00704-018-2628-9>, 2019. 655
- Tehrany, M. S., Özener, H., Kalantar, B., Ueda, N., Habibi, M. R., Shabani, F., Saeidi, V., and Shabani, F.: Application of an Ensemble Statistical Approach in Spatial Predictions of Bushfire Probability and Risk Mapping, *Journal of Sensors*, 2021, 1–31, <https://doi.org/10.1155/2021/6638241>, 2021. 660
- Tien Bui, D., Le, K.-T., Nguyen, V., Le, H., and Revhaug, I.: Tropical Forest Fire Susceptibility Mapping at the Cat Ba National Park Area, Hai Phong City, Vietnam, Using GIS-Based Kernel Logistic Regression, *Remote Sensing*, 8, 347, <https://doi.org/10.3390/rs8040347>, 2016.

- Tonini, M., D'Andrea, M., Biondi, G., Degli Esposti, S., Trucchia, A., and Fiorucci, P.: A Machine Learning-Based Approach for Wildfire Susceptibility Mapping. The Case Study of the Liguria Region in Italy, *Geosciences*, 10, 105, <https://doi.org/10.3390/geosciences10030105>, 2020. 665
- Valdez, M. C., Chang, K.-T., Chen, C.-F., Chiang, S.-H., and Santos, J. L.: Modelling the spatial variability of wildfire susceptibility in Honduras using remote sensing and geographical information systems, *Geomatics, Natural Hazards and Risk*, 8, 876–892, <https://doi.org/10.1080/19475705.2016.1278404>, 2017. 670
- Vapnik, V.: The Support Vector Method of Function Estimation, in: *Nonlinear Modeling*, edited by: Suykens, J. A. K. and Vandewalle, J., Springer US, Boston, MA, 55–85, [https://doi.org/10.1007/978-1-4615-5703-6\\_3](https://doi.org/10.1007/978-1-4615-5703-6_3), 1998.
- Wang, Y., Sun, D., Wen, H., Zhang, H., and Zhang, F.: Comparison of Random Forest Model and Frequency Ratio Model for Landslide Susceptibility Mapping (LSM) in Yunyang County (Chongqing, China), *IJERPH*, 17, 4206, <https://doi.org/10.3390/ijerph17124206>, 2020. 675
- Wright, R., Flynn, L., Garbeil, H., Harris, A., and Pilger, E.: Automated volcanic eruption detection using MODIS, *Remote Sensing of Environment*, 82, 135–155, [https://doi.org/10.1016/S0034-4257\(02\)00030-5](https://doi.org/10.1016/S0034-4257(02)00030-5), 2002.
- Wu, Y., Ke, Y., Chen, Z., Liang, S., Zhao, H., and Hong, H.: Application of alternating decision tree with AdaBoost and bagging ensembles for landslide susceptibility mapping, *CATENA*, 187, 104396, <https://doi.org/10.1016/j.catena.2019.104396>, 2020. 680
- Yousefi, S., Pourghasemi, H. R., Emami, S. N., Pouyan, S., Eskandari, S., and Tiefenbacher, J. P.: A machine learning framework for multi-hazards modeling and mapping in a mountainous area, *Sci Rep*, 10, 12144, <https://doi.org/10.1038/s41598-020-69233-2>, 2020. 685
- Zeng, X., Chen, Y.-W., and Tao, C.: Feature Selection Using Recursive Feature Elimination for Handwritten Digit Recognition, in: *2009 Fifth International Conference on Intelligent Information Hiding and Multimedia Signal Processing, 2009 Fifth International Conference on Intelligent Information Hiding and Multimedia Signal Processing. IHH-MSP 2009, Kyoto, 1205–1208*, <https://doi.org/10.1109/IHH-MSP.2009.145>, 2009. 690
- Zhang, G., Wang, M., and Liu, K.: Forest Fire Susceptibility Modeling Using a Convolutional Neural Network for Yunnan Province of China, *Int J Disaster Risk Sci*, 10, 386–403, <https://doi.org/10.1007/s13753-019-00233-1>, 2019. 695