

Supplementary material for: Evaluation of vertically resolved longwave radiation in SPARTACUS-Urban and the sensitivity to urban surface temperatures

Megan A. Stretton¹, William Morrison^{1,2}, Robin J. Hogan^{1,3}, Sue Grimmond¹,

5 ¹Department of Meteorology, University of Reading, Reading, UK

²Chair of Environmental Meteorology, Faculty of Environment and Natural Resources, University of Freiburg, Freiburg, Germany

³European Centre for Medium-Range Weather Forecasts, Reading, UK

Correspondence to: Megan A. Stretton (m.stretton@pgr.reading.ac.uk)

10 1 Supplementary Material

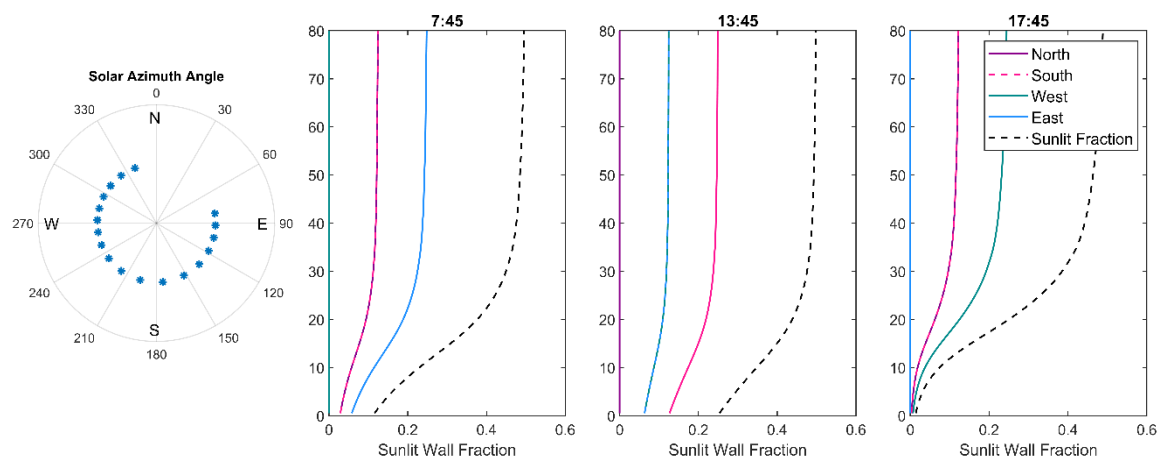
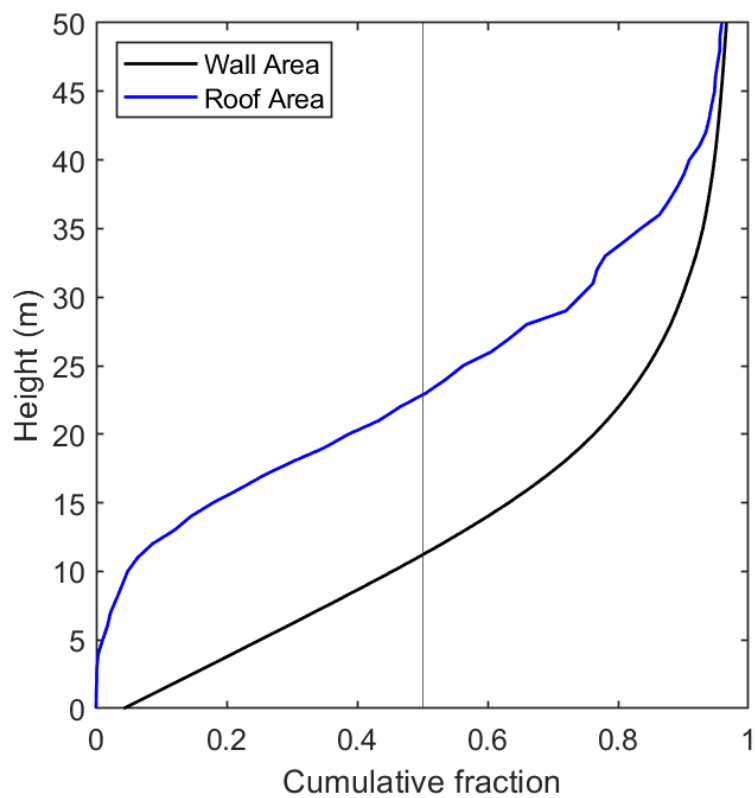


Figure SM 1: Demonstration of the T_{wall} averaging method used for SPARTACUS-Urban simulations where facets are prescribed a temperature range



15

Figure SM 2: Cumulative fractions of wall and roof area with height

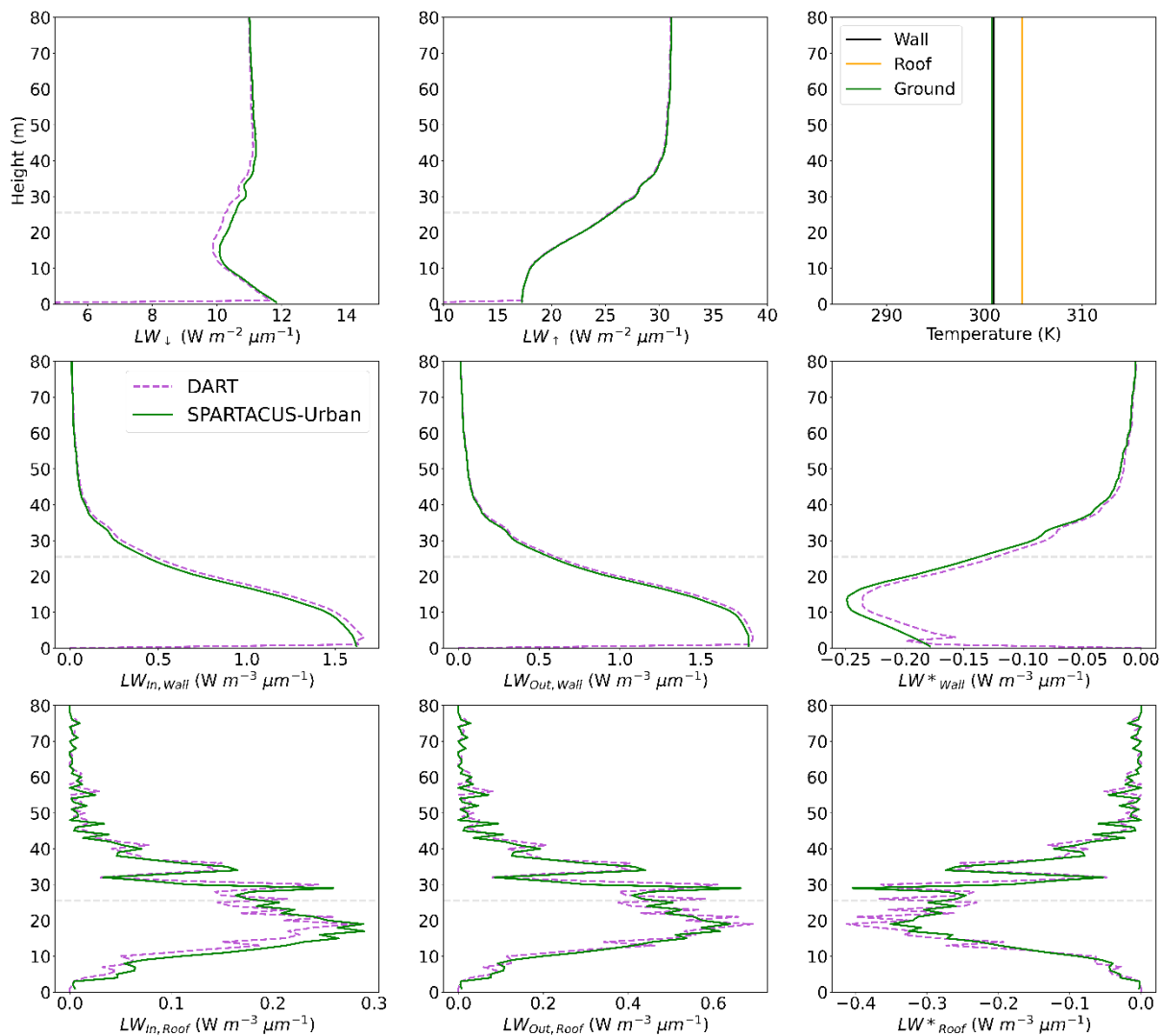


Figure SM 3: As Figure 6 but for 7:45 UTC

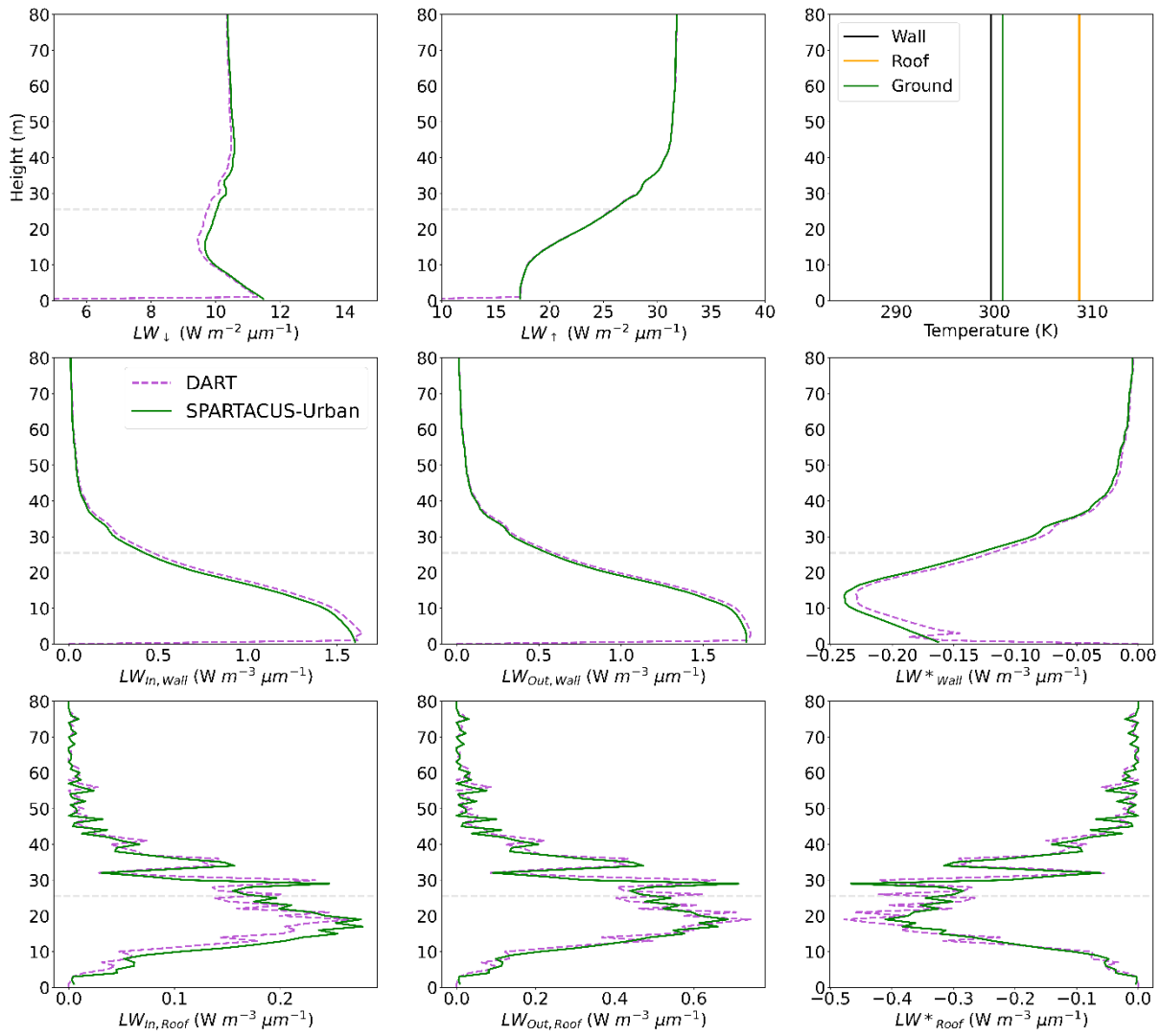


Figure SM 4: As Figure 6 but for 9:45 UTC

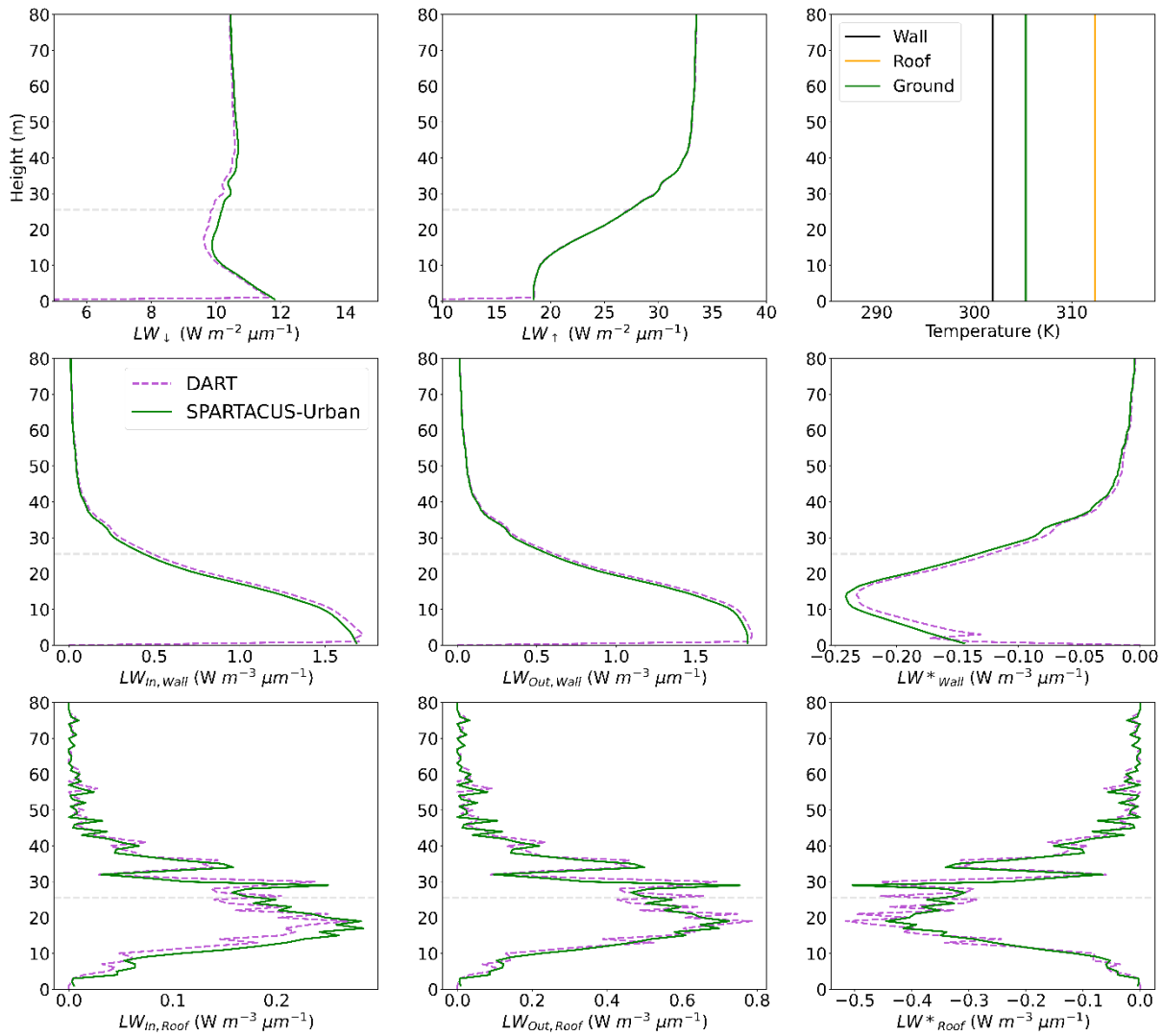


Figure SM 5: As Figure 6 but for 11:45 UTC

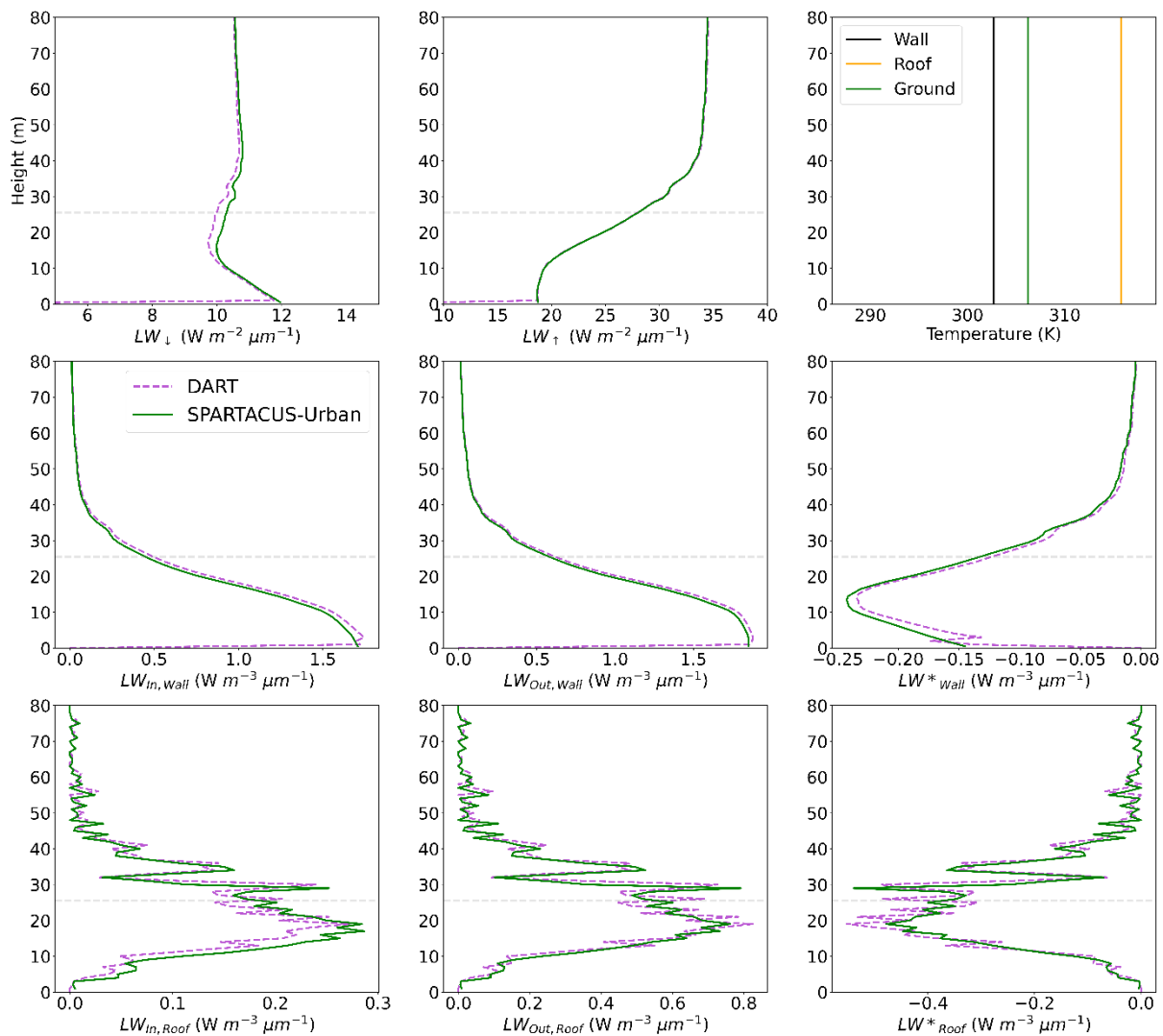
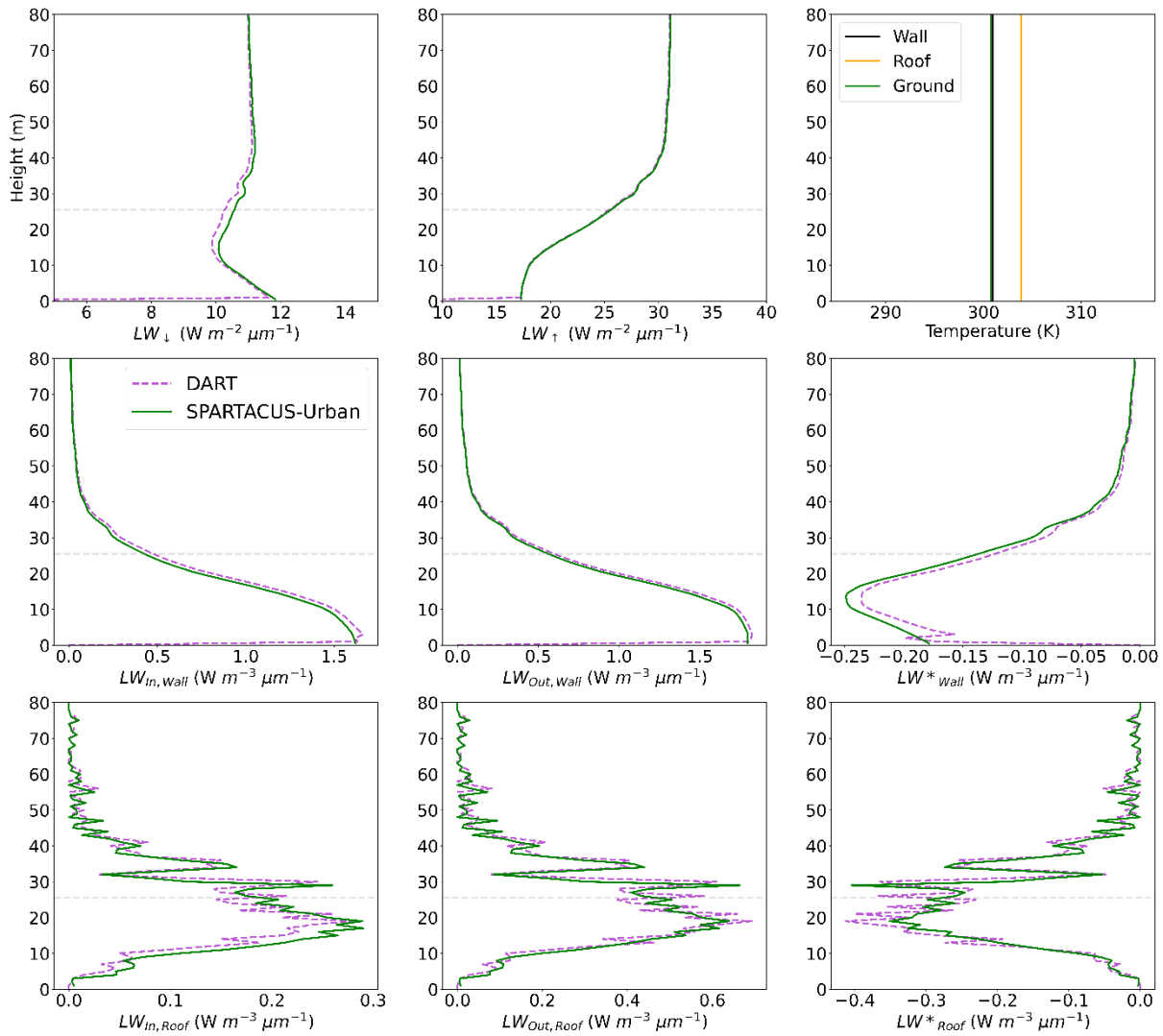


Figure SM 6: As Figure 6 but for 13:45 UTC



30 **Figure SM 7:** As Figure 6 but for 17:45 UTC

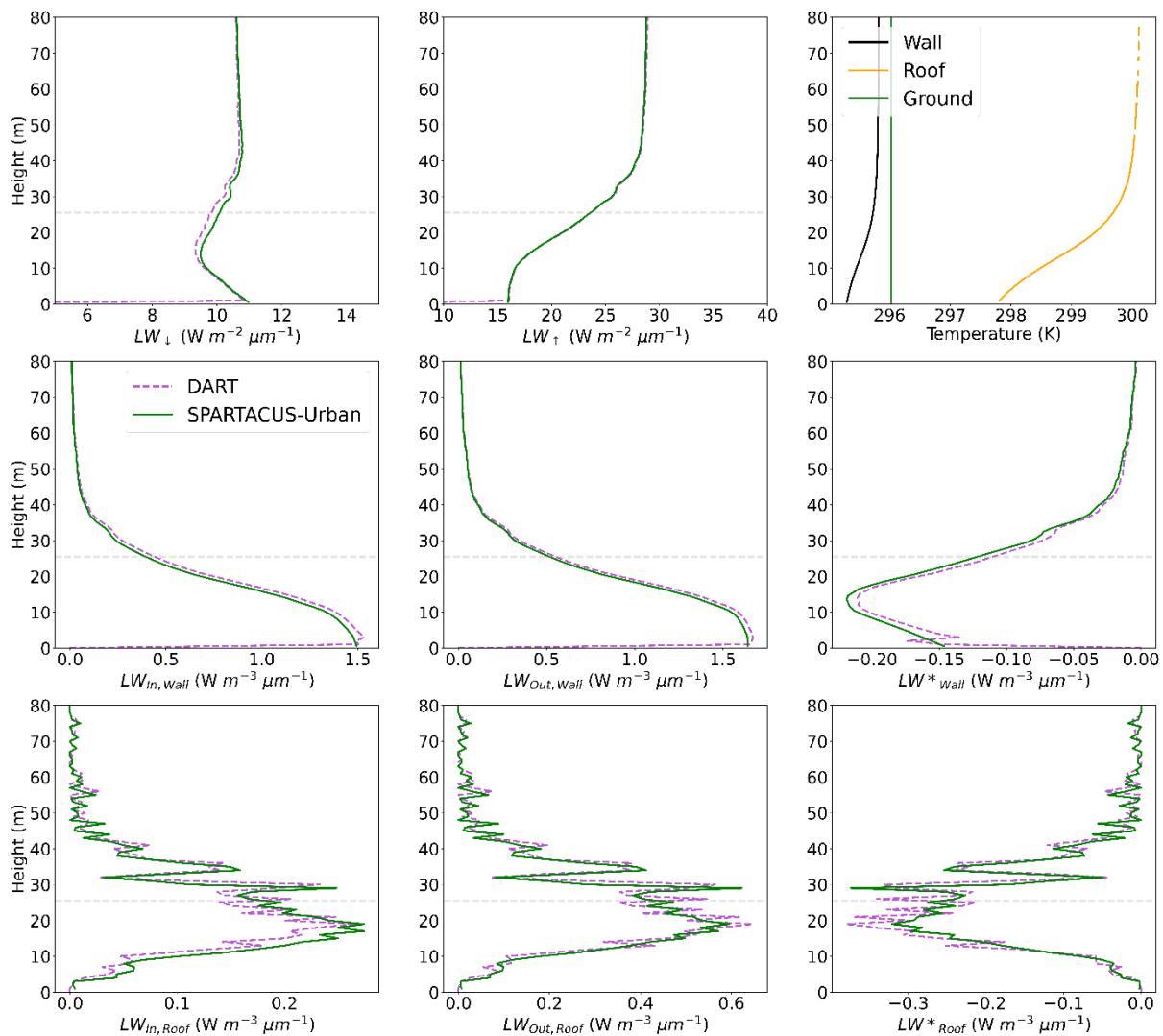


Figure SM 8: As Figure 7 but for 7:45 UTC

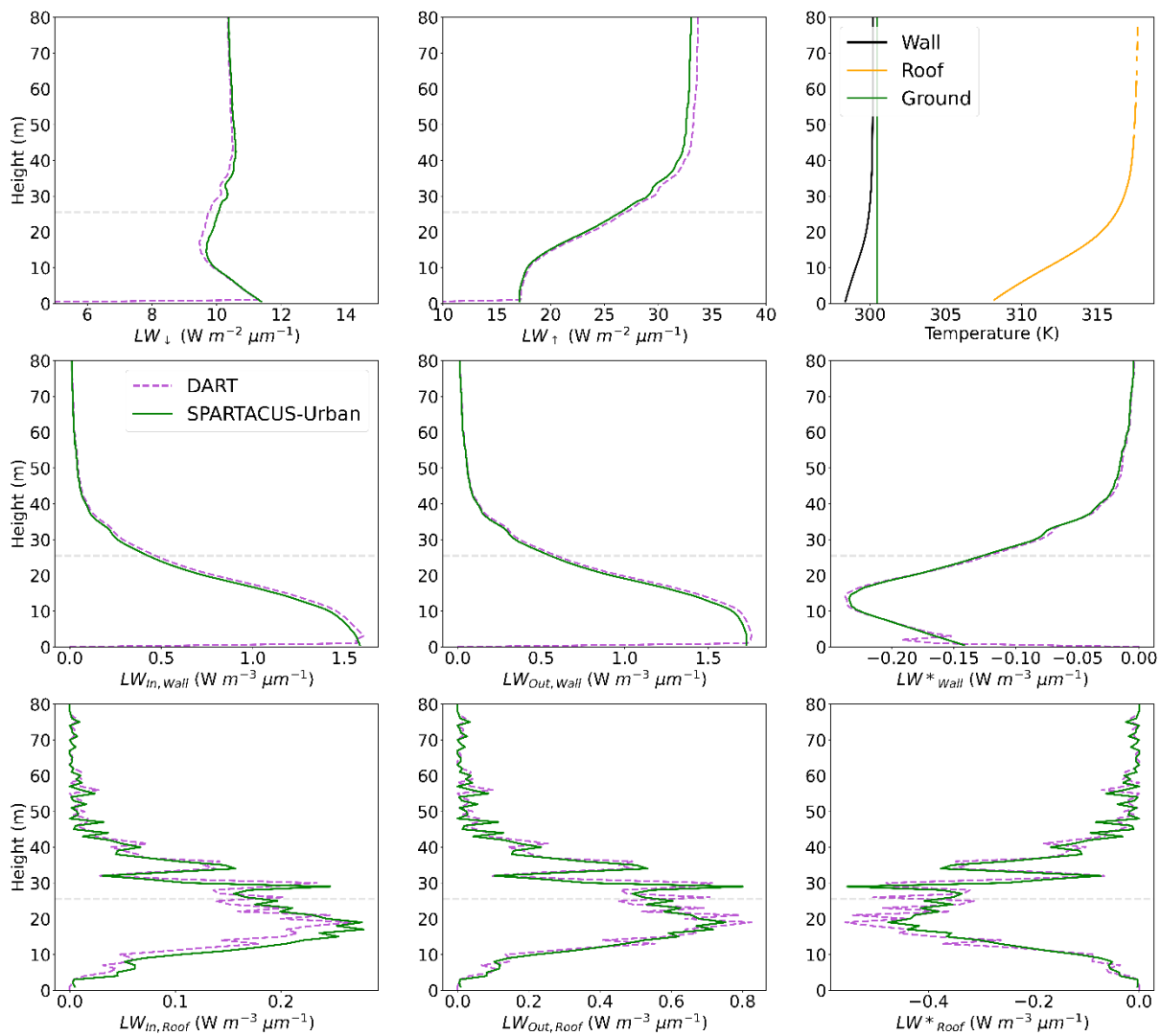


Figure SM 9: As Figure 7 but for 9:45 UTC

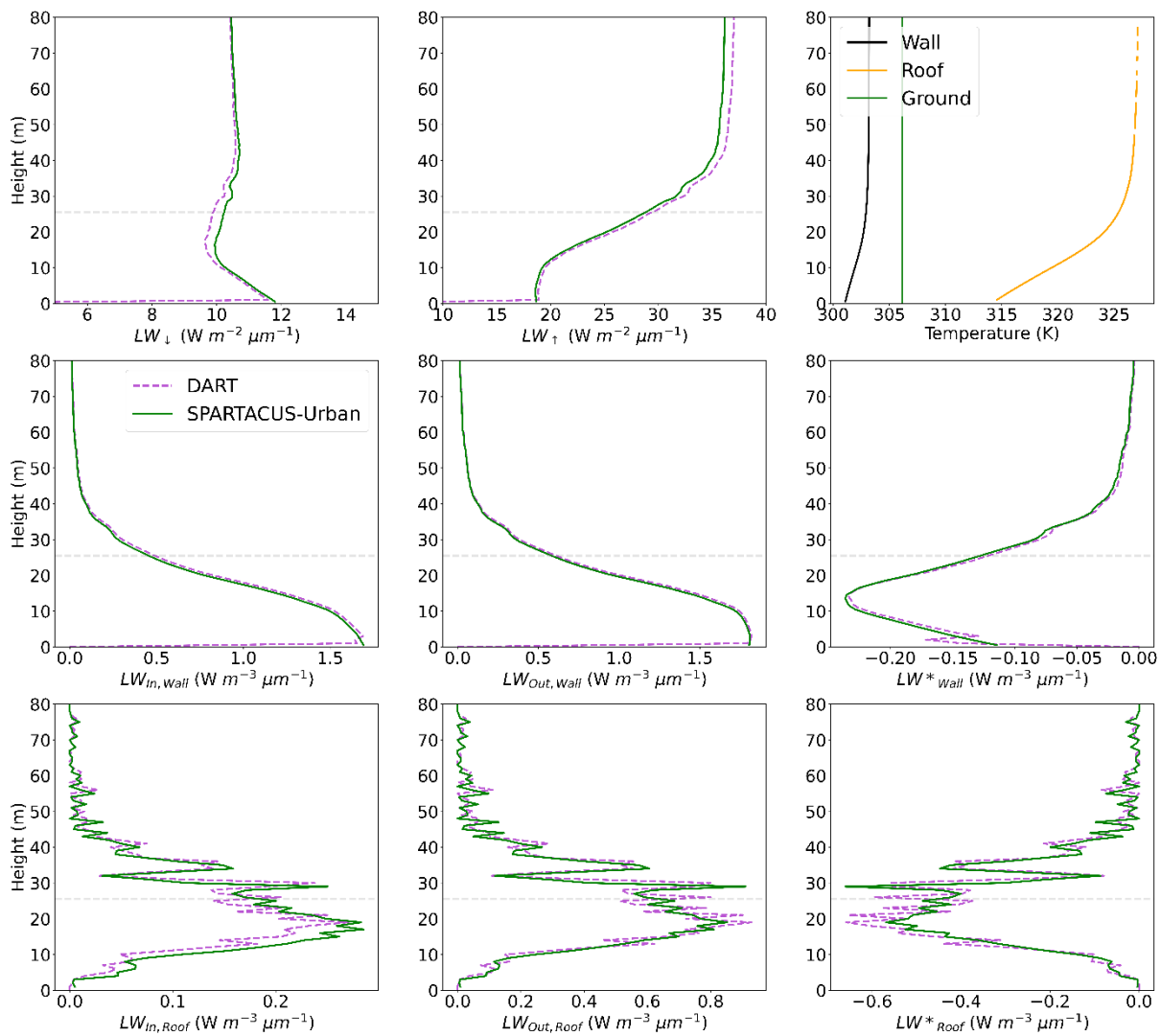


Figure SM 10: As Figure 7 but for 11:45 UTC

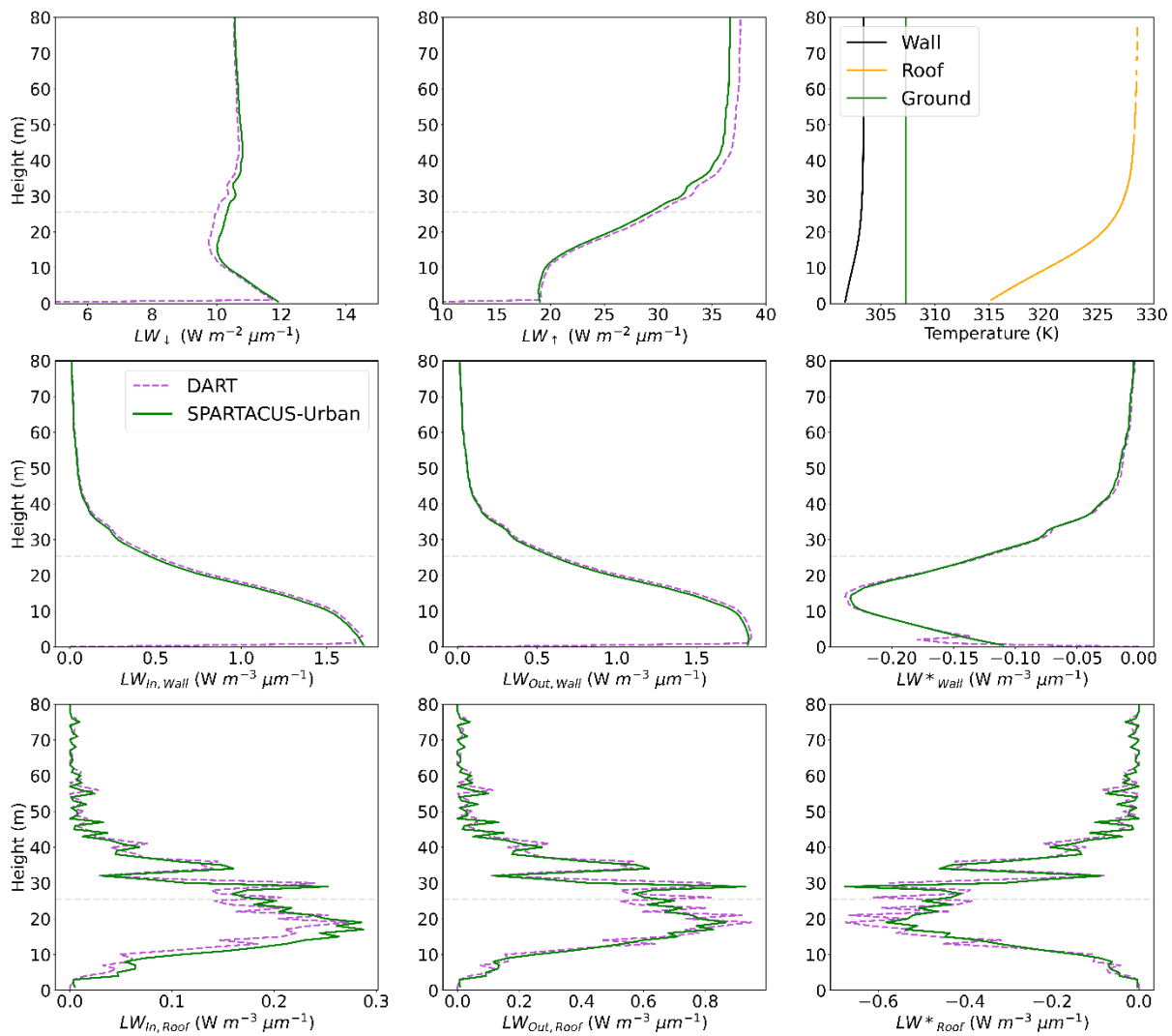


Figure SM 11: As Figure 7 but for 12:45 UTC

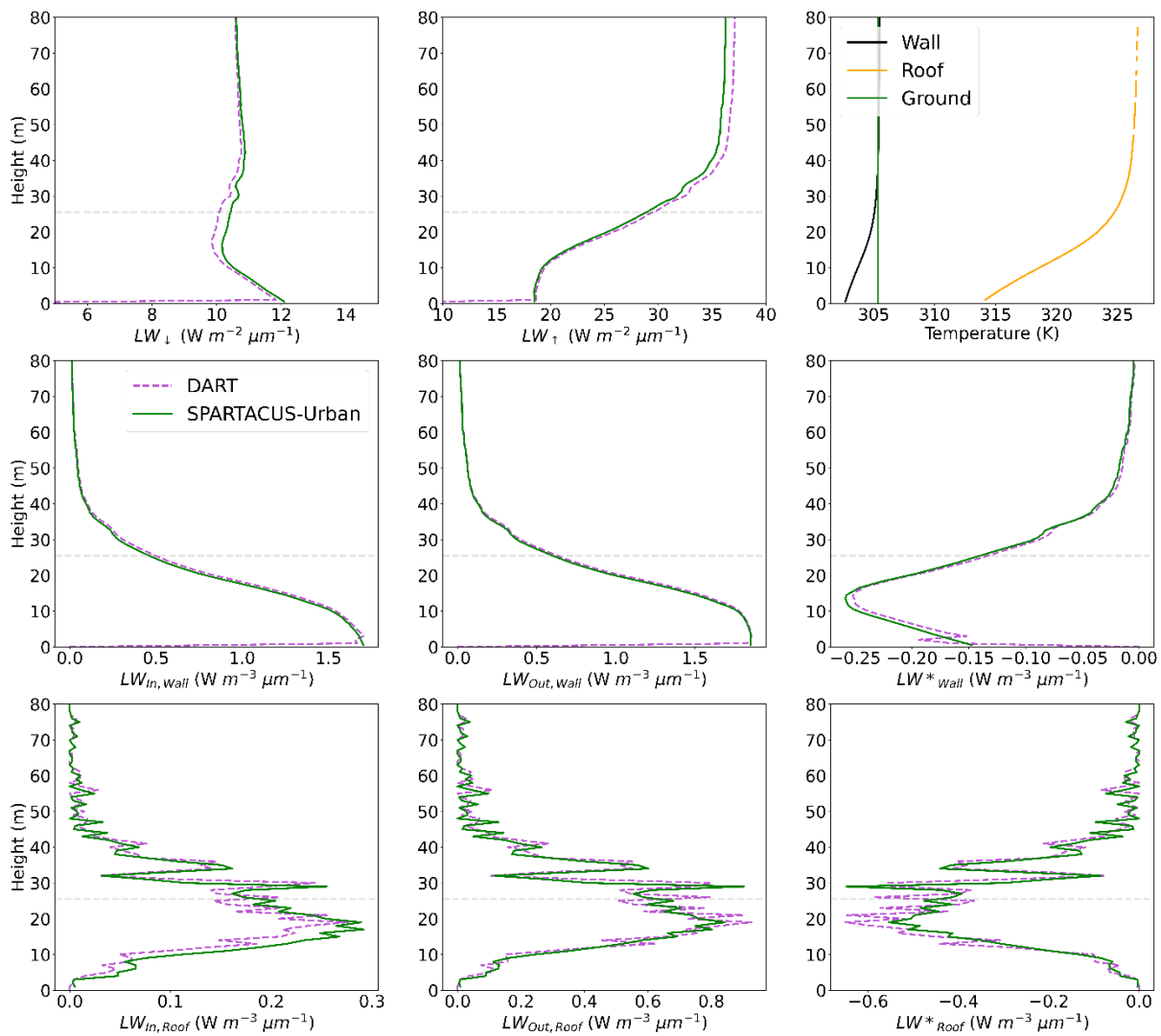


Figure SM 12: As Figure 7 but for 14:45 UTC

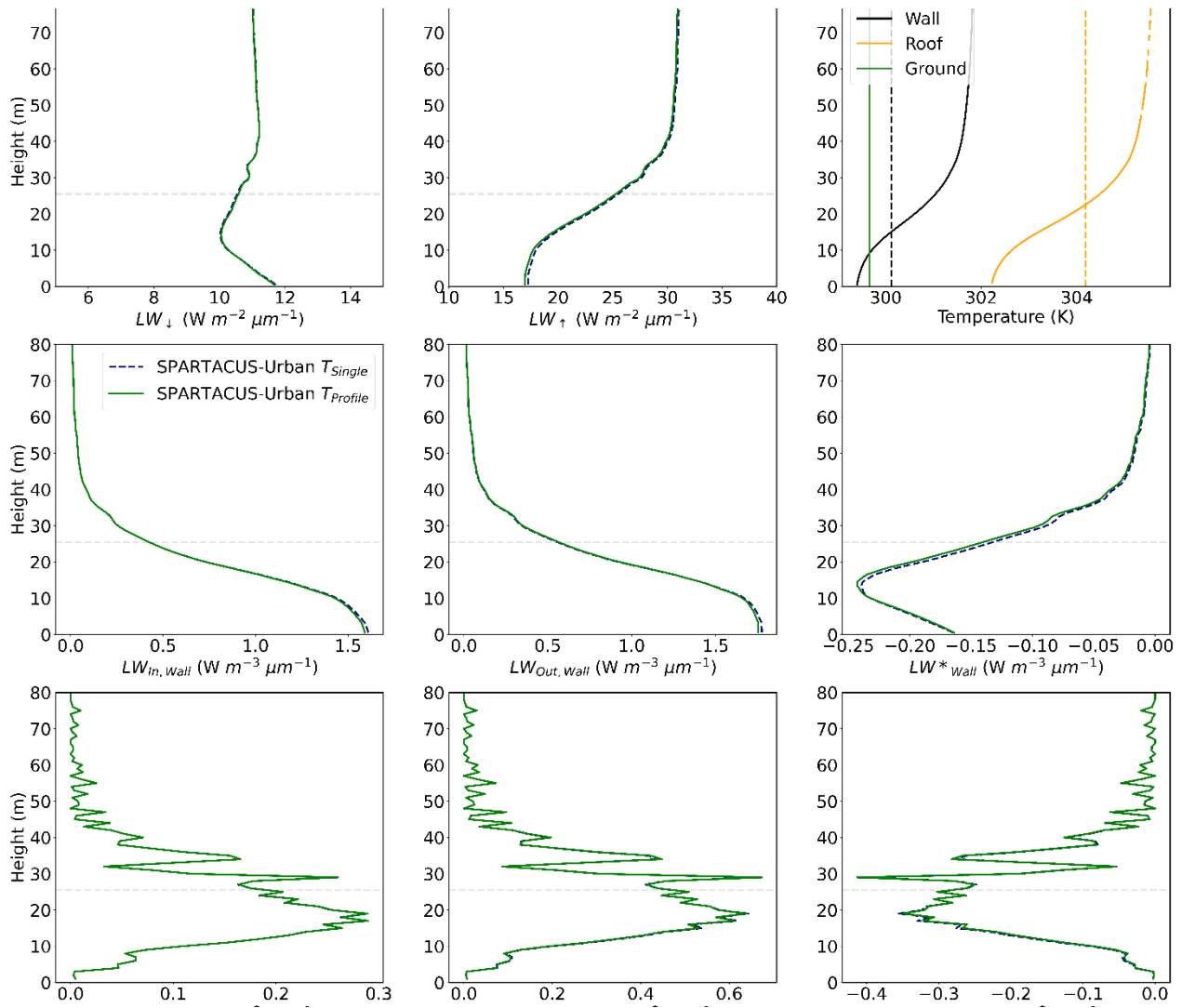
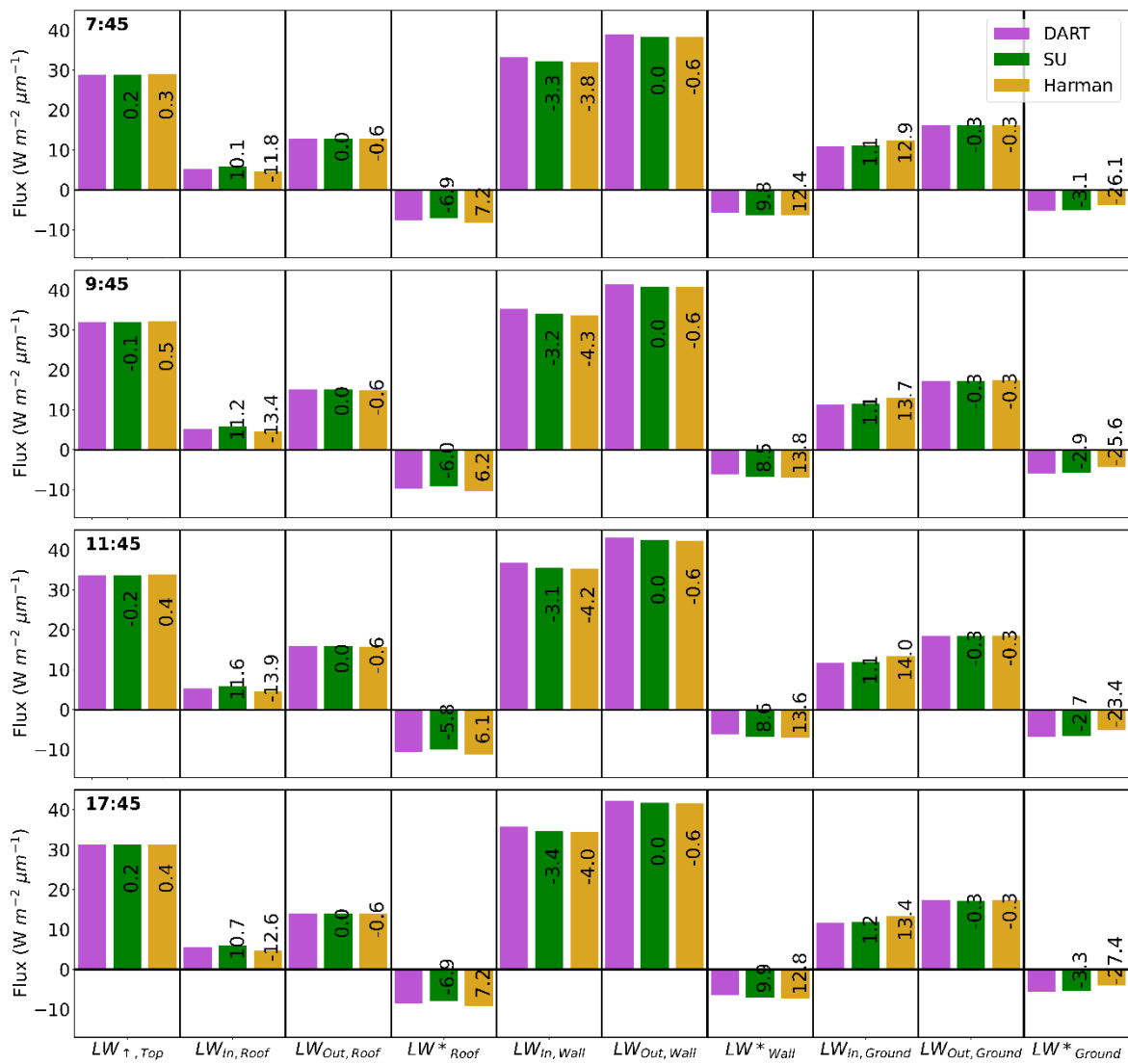


Figure SM 13: As Figure 9 but for 17:45 UTC



40 Figure SM 14: As Figure 10 but for all other time periods used.

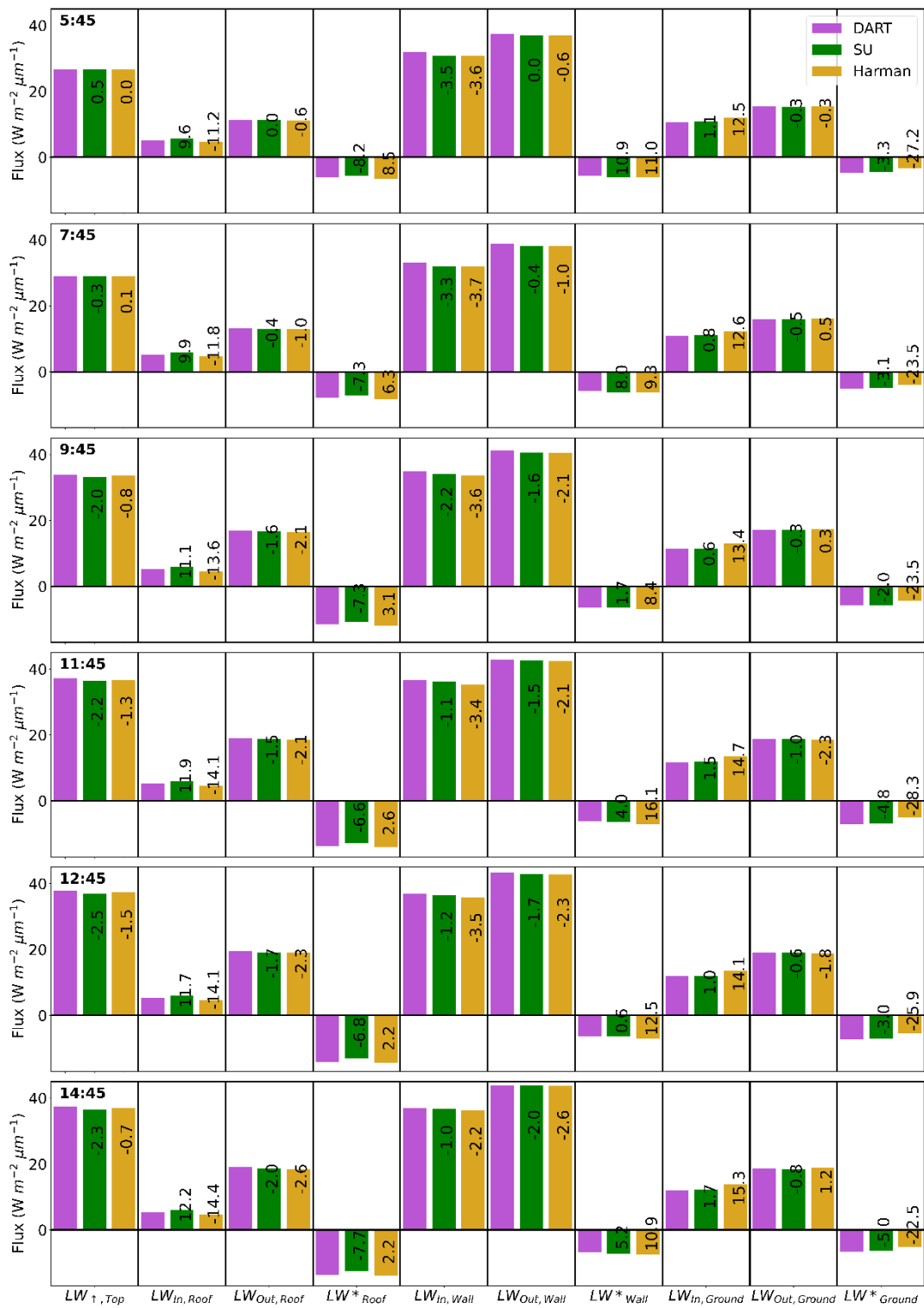


Figure SM 15: As Figure 11 but for all other time periods used.

