

Quantification of the effects of long-term straw return on soil organic matter spatiotemporal variation: A case study in typical black soil region

Yang Yan¹, Wenjun Ji^{1,2,3}, Baoguo Li^{1,2}, Guiman Wang⁴, Songchao Chen^{5,6}, Dehai Zhu^{1,2}, Zhong Liu¹

¹College of land Science and Technology, China Agricultural University, Beijing, 100193, China

²Key Laboratory of Agricultural Land Quality, Ministry of Natural Resources, Beijing, 100193, China

³State Key Laboratory of Remote Sensing Science, Aerospace Information Research Institute, Chinese Academy of Sciences, Beijing, 100101, China

⁴Lishu Metrological Bureau, Lishu, Jilin 158100, China

⁵InfoSol, INRAE, US 1106, Orléans F-4075, France

⁶ZJU-Hangzhou Global Scientific and Technological Innovation Center, Hangzhou 311200, China

Correspondence to: Wenjun Ji (wenjun.ji@cau.edu.cn)

Abstract. The straw return practice is essential to soil organic matter (SOM) accumulation in the black soil area with high carbon sequestration potential. However, due to lacking accurate spatial distribution of straw return, few studies have carried out rigorous research on the impact of long-term straw return on SOM spatiotemporal variation on a regional scale. This study was carried out across an approximately 3000 km² area in Lishu County, Northeast China, a typical agricultural plain. Based on a total of 619 soil samples and 16 environmental covariates, the study mapped the spatial distributions of SOM in 2006 and 2018 by random forest (RF) and evaluated the effects of the interaction of soil properties, land use and straw return on SOM spatial-temporal variation. The results show that in the context of long-term straw return, the mean SOM content increased from 18.93 g kg⁻¹ to 20.84 g kg⁻¹ during 2006–2018. And 74.49 % of the region had a significant increase (maximum: 24.41 g kg⁻¹) of SOM. The severest SOM loss occurred in the northwest due to the light texture and the transition from paddy fields to dryland. Nevertheless, for areas from paddy fields to dryland, the SOM loss decreased with the increased cumulative crop residue coverage. The SOM even increased by 1.79 g kg⁻¹ when the cumulative crop residue coverage reached 0.60–1.00. In addition, soil with higher initial SOM and sand content had a lower response to straw return. The study revealed that straw return is beneficial to carbon sink in farmland and is a better way to prevent a carbon source caused by the conservation of paddy field to dryland.

1 Introduction

Soil organic matter (SOM) profoundly impacts carbon contents, cationic exchange capacity, water holding capacity, soil fertility, microorganisms, and soil structure (Ciais et al., 2011). Therefore, the SOM contents' spatial-temporal variation was significant to global warming, soil quality, and ecosystem health (Ciais et al., 2011; Viscarra Rossel et al., 2014; Ondrasek et al., 2019), especially in black soil with rich SOM (Lugato et al., 2014; Amelung et al., 2020b). Recently, poor management

删除了: Wang³

删除了: Chen⁴

删除了: ⁵

设置了格式: 字体颜色: 自动设置, 英语(美国)

设置了格式: 字体颜色: 自动设置, 英语(美国)

带格式的: 缩进: 左侧: 0 厘米, 悬挂缩进: 0.5 字符, 首行缩进: -0.5 字符

删除了: ³Lishu

删除了: ⁴InfoSol

删除了: ⁶ZJU

删除了: took straw return as a variable to

删除了: y

设置了格式: 字体: (默认) Times New Roman, (中文) Times New Roman

删除了: in one of three black soil regions in the Northern Hemisphere against the backdrop of prolonged straw return policy

设置了格式: 上标

删除了: including a 10-meter-resolution straw return amount

删除了: .

删除了: the

删除了: ing

删除了:

设置了格式: 默认段落字体

删除了: amount of straw return

删除了: 84

删除了: straw return amount

删除了: %

设置了格式: 默认段落字体

删除了: change

删除了: / soil organic carbon (SOC)

practices have resulted in SOM loss in the black soil area. Previous studies have reported that soil fertility decreased in black soil areas in North America and Eastern Europe (Russell et al., 2005; Fabrizzi et al., 2003). Meanwhile, a similar decline trend occurred in the black soil area in Northeast China (Wang et al., 2018). Therefore, rapidly and accurately quantifying the heterogeneity of SOM in the black soil region is necessary.

Conventional mapping involves laboriously constructing maps by planetable and alidade (Ahrens, 2008). It is time-consuming and laborious and thus cannot satisfy the growing demand for the latest soil spatial information. Jenny (1994) described the soil as follows: $soil\ property = f(climate, organism, relief, parent\ material, age)$ (Jenny, 1994). McBratney et al. (2003) proposed the SCORPAN function model and described the soil as follows: $soil\ property = f(prior\ soil\ information, climate, organism, relief, parent\ material, age, location)$ (Mcbratney et al., 2003). Based on soil-forming theory, digital soil mapping (DSM) uses statistical and geospatial techniques to model the relationship between soil properties and environmental covariates at a high spatial resolution. By analyzing the relationships between soil properties and environmental factors, DSM models can be developed to predict the soil properties of areas where no soil data exist.

Therefore, it offers a promising solution for predicting soil properties with high precision and tremendous speed (Hengl et al., 2015; Dou et al., 2019; Liang et al., 2019; Schulze and Schütte, 2020). Moreover, DSM can also incorporate the temporal component in soil property mapping by taking time as an index and comparing soil maps at two moments to identify changes in soil properties over time. This is particularly useful in understanding the impact of land use and management practices on soil properties and identifying areas where remediation may be necessary. Thus, the DSM method with environmental factors can accurately quantify the SOM spatial-temporal variation and measure the relationship between environmental covariates and SOM variation on a regional scale (Schillaci et al., 2017; Song et al., 2018; Zhou et al., 2019).

Nowadays, SOM variation under different land-use change and management practices has attracted increasing attention (Pan et al., 2010; Muñoz-Rojas et al., 2015). Some studies have explored reducing soil organic carbon (SOC) loss by straw return (West and Post, 2002; Liu et al., 2014; Wang et al., 2015; Amelung et al., 2020). Straw return is beneficial for retaining soil moisture and preventing soil wind erosion, especially in arid and semi-arid regions. In addition, the decomposition process of straw promotes the activity of microorganisms and is conducive to SOM accumulation (Chang et al., 2014; Lu et al., 2009; Wang et al., 2015). Conversely, previous scholars have reported that the influence of straw return on SOM accumulation is non-significant (Pittelkow et al., 2015; Poeplau et al., 2015; Powlson et al., 2011). This may be because adding organic matter to the soil has no effect on its chemical, chemical, and biological properties (Sosulski et al., 2011), or this practice may contribute to the SOM mineralization process and thus reduce SOM (Šimanský et al., 2019). The opposite result may be due to the various study areas with different soil properties, initial carbon content, land-use change, and straw return (Li et al., 2017; Berhane et al., 2020). In addition, these studies were mainly conducted on a field scale. On a regional scale, it is mostly through literature citation and policy enumeration to analyze the impact of straw return on SOM variation (Han et al., 2016; Zheng et al., 2015). However, few studies took the straw return as a variable to implement rigorous research on the effect of straw return on SOM variation due to lacking accurate spatial distribution of straw return.

删除了: the

删除了: Conventional mapping involves data collection, field investigation, interpretation, field inspection, calibration, and mapping....

删除了:

删除了: the

删除了:

删除了: o

设置了格式: 字体: 10 磅, 字体颜色: 自动设置, 英语(美国)

设置了格式: 字体: 10 磅

删除了: proposed to reduce SOC loss through

删除了: b

删除了: the

删除了: .

删除了: the

设置了格式: 德语(德国)

设置了格式: 德语(德国)

设置了格式: 德语(德国)

域代码已更改

删除了: amount

设置了格式: 德语(德国)

In the study, the overall objective was to take a typical black soil area as a case to quantify the relationship between SOM accumulation and straw return on a regional scale. This study area has a long-term straw return background. Specific objectives included: a) evaluating the performance of random forest (RF) models with different groups of factors to develop the most robust model; b) analyzing the spatial-temporal variation of SOM during 2006–2018; and c) discussing the effects of long-term straw return on SOM variation under different soil types, soil texture, and land-use change.

2 Materials and methods

2.1 Study region

The study was conducted in Lishu County, Jilin Province, and its average elevation is 160 m (Fig. 1). The annual mean precipitation is 6.5 °C, the annual mean temperature is 553.5 mm, and the average yearly duration of sunshine is 2,541.4 hours. The region’s climate is classified as semi-humid. In Lishu County, the soil parent material gradually changes from weathered rocks and red sediments in the east to the loess-like sediment and loessal sub-sandy soil in the west, resulting in a regular distribution of soil type. Arenosols, Anthrosols, Phaezems, Luvisols, Cambisols, and Chernozems are the main soil types (World Reference Base for Soil Resources). Rainfall is the only source of water for crops growing in this region. The study area was located in the black soil region. However, the soil in this region was threatened by land degradation. In view of this, a research base was established in Lishu County, Jilin Province, China, in 2007, and the straw return technology was popularized.

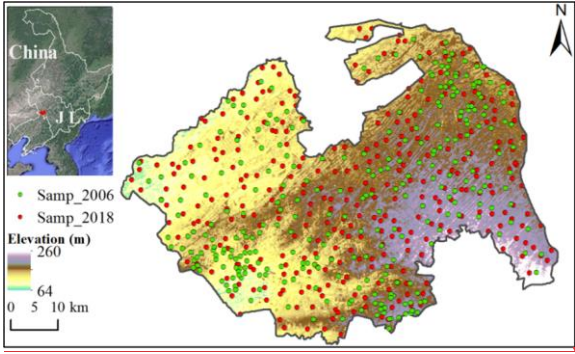
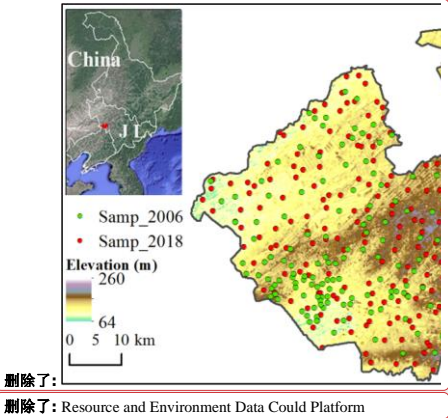


Figure 1: Schematic diagram of the geographical position of the study area and sampling sites. The background is from © Google Earth and the distribution of elevation was derived from the Resource and Environment Science and Data Center.

- 删除了: with long-term straw return demonstration
- 设置了格式: 字体: (默认) + 西文标题 (Times New Roman)
- 删除了: The specific objectives were of three fold3-folds, which include...
- 删除了: e
- 删除了: R
- 删除了: F
- 删除了: analyze
- 删除了: .
- 删除了: The
- 删除了: and annual mean temperature are
- 删除了: and
- 删除了: , respectively.
- 删除了: The mean annual sunshine duration
- 删除了: a semi-humid temperature
- 删除了: The
- 删除了: in Lishu County
- 删除了: most
- 删除了: the regularity
- 删除了: distribution
- 下移了 [2]: In addition, a research base was established in Lishu County, Jilin Province, China, in 2007, and the straw return technology was popularized continually.
- 移动了 (插入) [2]
- 删除了: In addition
- 删除了: was popularized continually



- 删除了:
- 删除了: Resource and Environment Data Could Platform

2.2 Soil data

The straw return measure has been implemented in Lishu County since 2007, so the SOM in 2006 and 2018 were selected to quantify the SOM change under the long-term straw return background. By taking into account the sample sites in the second national soil survey, local landform, and soil types, a total of 366 sampling sites in 2006 were selected. Except for considering these factors, grid sampling was combined to select 355 sampling sites in 2018. These soil samples were collected on the surface (0–20 cm) from early October to mid-November in each year (from the harvest to the freezing). The corresponding longitude and latitude were also documented. The prediction error caused by the differences in sampling designs for the years 2006 and 2018 was not considered to make full use of legacy soil data (Ou et al., 2017; Sun et al., 2017; Nguemezi et al., 2021). Three kilograms of soil at each sampling site was air-dried. During the process of air drying, the soil samples were frequently turned over, and the intrusions outside the soil were removed. Sun exposure, acid, alkali, and dust pollution were strictly prohibited. After air drying and grinding, the soil samples were thoroughly mixed and passed through a 2 mm mesh. The samples were ground and sieved to separate a particle size fraction (0.25 mm) to determine SOC concentration with the external heating potassium dichromate volumetric method, which can then be multiplied by a conversion factor of 1.724 to obtain the SOM amount (Liu et al., 1996).

2.3 Environmental covariates

The study collected the available grids on the website as environmental factors. A 30 m resolution digital elevation model (DEM) was derived from the Resource and Environment Science and Data Center (<http://www.resdc.cn/>). Other terrain variables were calculated from DEM in the SAGA GIS software (Conrad et al., 2015), including terrain relief (TR), topographic wetness index (TWI), slope, aspect, profile curvature (PRC), multi-resolution valley bottom flatness (MrVBF) and plan curvature (PLC).

Landsat 5 TM and Landsat 8 TM were used to calculate the Normalized Difference Vegetation Index (NDVI) and Enhanced Vegetation Index (EVI) in 2006 and 2018. The average reflectance of three image bands (B1 (Blue), B3 (Red) and B4 (Near-infrared)) of Landsat 5 SR and Landsat 8 SR products spanning May to September were processed to calculate the NDVI by $(B4 - B3) / (B4 + B3)$ and EVI by $2.5 \times (B4 - B3) / (B4 + 6 \times B3 - 7.5 \times B1 \times 1)$. The band calculation, and image clipping were conducted in Google Earth Engine (GEE), and the images with less than 6% of cloud coverages were selected.

Liu et al. (2021) provided a crop residue coverage map at a 10 m resolution in 2018 by combining radar indices and optical remote sensing indices. Crop residue cover refers to the ratio of the vertical projected area of crop residue in a field per unit area to the total surface area of this unit area, with value ranging from 0 to 1. Firstly, the study divided the study area into a sandy soil area and a clay soil area to reduce the influence of soil properties on radar echo and spectral reflectance. Six radar indices and five optical remote sensing indices were then calculated from a Sentinel-1 SAR image and a Sentinel-2 optical image. Finally, the optimal subset regression based on these indices and 55 observations collected from November 1, 2018 to

- 删除了: 00
- 删除了: and 319 sampling sites in 2018
- 删除了:
- 设置了格式: 字体: (默认) +西文标题 (Times New Roman)
- 删除了: surface (0–20 cm)
- 删除了: November
- 删除了: ,
- 删除了: and t
- 设置了格式: 字体: (默认) Times New Roman, 10 磅, 字体颜色: 自动设置, 英语(美国), 图案: 清除
- 设置了格式: 字体: (默认) Times New Roman, 10 磅, 字体颜色: 自动设置, 英语(美国)
- 设置了格式: 字体: (默认) Times New Roman, 10 磅, 字体颜色: 自动设置, 英语(美国)
- 删除了:
The local landform and soil type determined the sampling locations.
- 删除了: A portion of 3 kg of
- 设置了格式: 字体: (默认) +西文标题 (Times New Roman)
- 删除了: a 0.25 mm mesh
- 删除了: SOM
- 设置了格式: 字体颜色: 文字 1
- 删除了: wet oxidation method
- 删除了: We
- 删除了: Could Platform
- 设置了格式: 字体: 非加粗, 字体颜色: 文字 1
- 设置了格式: 字体颜色: 文字 1
- 删除了:
- 删除了: fl
- 删除了: r
- 设置了格式: 字体: (默认) +西文标题 (Times New Roman)
- 设置了格式: 字体: (默认) +西文标题 (Times New Roman)
- 设置了格式: 字体: (默认) +西文标题 (Times New Roman)
- 设置了格式: 字体: (默认) +西文标题 (Times New Roman)
- 设置了格式: 字体: (默认) +西文标题 (Times New Roman)
- 删除了: remove cloud processing,
- 删除了: clip
- 删除了: ,
- 设置了格式: 字体: (默认) +西文标题 (Times New Roman)
- 设置了格式: 字体: (默认) +西文标题 (Times New Roman)
- 删除了: Huang

November 11, 2018 was used to estimate the crop residue cover. The 55 observations were measured using the Line-Transect method. The best model shows high accuracy. Because Lishu County has implemented the straw return policy since 2007, the crop residue cover in 2006 can be regarded as 0. The difference between the crop residue cover in 2018 and 2006 was used as one of the variables (CRC) for modelling SOM in 2018 and to evaluate the effects of long-term straw return on SOM variation during 2006–2018. This study assumed that crop performance or crop types were the same except for CRC. The CRC was used to represent the straw return.

The resolution of land-use types is 30 m in 2005 and 2018. The land-use types in 2005 and 2018 are consistent with six major classes (farmland, woodland, grassland, waters, built-up land, and unused land) and 25 subclasses. The farmland includes upland and paddy land; the woodland includes forestland, shrubbery, open woodland, and other woodland; and the grassland includes high, medium, and low coverage grass land. The land-use data were derived by manual visual interpretation of Landsat TM images. An electronic version of soil type map in Lishu County, offered by the Agricultural Extension Station in Lishu County, was digitized and delineated for this study. The map for soil clay content at 250 m resolution was obtained from SoilGrids250m products (Hengl et al., 2015) in International Soil Reference and Information Center.

The National Earth System Science Data Center, National Science & Technology Infrastructure of China provided annual mean precipitation (AMP) in 2006 and 2018. After multivariate regression analysis of 16 variables (Table 1) and SOM content, the Variance Inflation Factors (VIF) of independent variables were less than five, indicating multicollinearity did not exist among independent variables. These environmental covariates (Table 1) were resampled to 30 m using the bilinear method in ArcGIS 10.2.

Table 1 Environmental covariates used for predicting soil organic matter (SOM).

Theme	Environmental factors	Original resolution	Source
Geographical coordinate	Y	30 m	
Terrain	DEM, m	30 m	http://www.resdc.cn/
	Slope	30 m	Calculated from DEM
	Aspect	30 m	Calculated from DEM
	TR	30 m	Calculated from DEM
	TWI	30 m	Calculated from DEM
	PLC	30 m	Calculated from DEM
	PRC	30 m	Calculated from DEM
	MrVBF	30 m	Calculated from DEM
	NDVI (2006) and NDVI (2018)	30 m	Landsat 5 and Landsat 8
Vegetation	EVI (2006) and EVI (2018)	30 m	Landsat 5 and Landsat 8

- 删除了: Liu et al. (2020) provided a crop residue coverage (CRC) map at a 10 m resolution in 2018 by combining radar indices and optical remote sensing indices. Firstly, the study divided the study area into a sandy soil area and a clay soil area to reduce the influence of soil properties on radar echo and spectral reflectance. Six radar indices and five optical remote sensing indices were then calculated from a Sentinel-1 SAR image and a Sentinel-2 optical image. Finally, the optimal subset regression based on these indices and 55 observations collected from 1 November 2018 to 10 November 2018 was used to estimate the CRC. The best model shows high accuracy offered .
- 删除了: crop residue coverage (CRC) at a 10 m resolution in 2018
- 删除了: (Huang et al., 2020). The study used the Normalized difference tillage Index (NDTI) and Simple Tillage index (STI) extracted from Sentinel-2A images and observed data to predict CRC. The accuracy R² of the model is 0.84.
- 删除了: Lishu County has implemented the straw return policy since 2007. Therefore, the amount of straw return in 2006 can be regarded as 0..
- 设置了格式: 字体: (默认) +西文标题 (Times New Roman)
- 设置了格式: 字体: (默认) Times New Roman, (中文) Times New Roman
- 删除了: The straw returning amount in 2018 minus that in 2016 is numerically equivalent to the straw returning amount in 2018, whi(...
- 删除了: The resolution of land-use types in 2005 and 2018 is 30 m
- 删除了: farmland, woodland, grassland, water, residential land ar(...
- 设置了格式: 字体: (默认) Times New Roman, (中文) Times New Roman
- 设置了格式: 字体: (默认) Times New Roman, 10 磅, 字体颜色: 自动设置, 英语(美国), 图案: 清除
- 设置了格式: 字体: (默认) Times New Roman, 10 磅, 字体颜色: 自动设置, 英语(美国), 图案: 清除
- 设置了格式: 字体: (默认) Times New Roman, (中文) Times New Roman
- 删除了: ,
- 删除了: ,
- 删除了: ,
- 设置了格式: 字体: (默认) Times New Roman, (中文) Times New Roman
- 设置了格式: 字体: (默认) Times New Roman, (中文) Times New Roman
- 删除了:
- 删除了:
- 格式化表格
- 删除了: ,
- 设置了格式: 字体: (默认) +西文标题 (Times New Roman)
- 设置了格式: 字体: (默认) +西文标题 (Times New Roman)
- 删除了: ,

		<u>Crop residue coverage, (2018)</u>	30 m	Liu et al., (2020)
255	Soil	<u>Land use, (2005) and Land use (2018)</u>	30 m	http://www.resdc.cn/
		Soil type	1:100, 000	the Second National Soil Survey
		Soil clay content, %	250 m	https://soilgrids.org/
	Climate	AMP, mm <u>(2006) and AMP, mm (2018)</u>	1000 m	http://www.geodata.cn/
255	Notes: Y, latitude; DEM, digital elevation model, m; TR, terrain relief index; TWI, topographic wetness index; PLC, plan curvature; PRC: profile curvature; MrVBF, multi-resolution valley bottom flatness; NDVI, normalized difference vegetation index; EVI, enhanced vegetation Index; AMP, annual mean precipitation, mm. <u>The number in parentheses is years of the variable</u>			

260 **2.4 Spatial predictive modeling**

260 **2.4.1 Random Forest (RF)**

Many studies have successfully predicted various soil nutrient content by using RF model (Wiesmeier et al., 2011; Guo et al., 2015; Zhang et al., 2017). First proposed by Breiman in 2001, RF (Breiman, 2001) is a tree-based ensemble model. Combined with the idea of feature selection, the approach can increase the diversity of individual decision trees and improve the generalization ability of the final RF model. The RF model combines the predictions of all the individual trees, either by taking the majority vote in the case of classification or averaging the outputs in the case of regression. This approach helps to smooth out the noise in the data and produce more accurate predictions. It includes the number of trees (ntree) and the number of variables available for selection in each split (mtry). We used ten-fold cross-validation to optimize the parameters of RF.

The study took SOM content and various environmental factors (Table 1) as the dependent and independent variables to build two RF models: consider all the variables as predictors (RF-all); consider the environmentalal variables without latitude as predictors (RF- (all-Y)); consider the environmental variables without cumulative crop residue coverage (CRC) as predictors (RF- (all-CRC)).

270 **2.4.2 Geographical detector (GE)**

GE (Wang and Xu, 2017) is a statistical method used in geographical analysis to identify the factors that contribute to spatial patterns. It is based on the idea that the variation in a dependent variable across a geographical area can be explained by a set of independent variables and their interactions. GE is effective to quantify the spatial heterogeneity of attributes between layers. The method includes factor, interaction, risk, and ecological detector. We used the factor and interaction detector to explore the driving factors for SOM prediction in the study. In the factor detector, the *q* value (from 0 to 1) and whether it passes the significance test was given. The *q* value is proportional to the effect of the independent variable on the dependent variable. The interaction detector obtained five different results by comparing the *q* values (*q*1, *q*2) for each of two factors with the *q* value (*q*3) of the two factors interaction, as presented in Table 2.

- 删除了: CRC
- 删除了: (2018)
- 删除了: -
- 删除了: types
- 删除了: ,
- 删除了: Land-use types 2018
- 删除了: ,
- 格式化表格
- 删除了: ; CRC, crop residue coverage
- 删除了: s.
- 删除了: 2.4 Spatial predictive modeling
- 设置了格式: 字体: (默认) +西文标题 (Times New Roman)
- 设置了格式: 字体: (默认) +西文标题 (Times New Roman)
- 设置了格式: 英语(美国)

- 删除了: (Wang and Xu, 2017)

Table 2 Interaction judgment in Geographical detector.

Judgment	Interaction
$q3 < \text{Min}(q1, q2)$	Nonlinear weakening
$\text{Min}(q1, q2) < q3 < \text{Max}(q1, q2)$	Single factor nonlinear weakening
$q3 > \text{Max}(q1, q2)$	Double factor enhancement
$q3 = q1 + q2$	Independent
$q3 > q1 + q2$	Nonlinear enhancement

设置了格式: 字体: (默认) +西文标题 (Times New Roman)

2.4.3 Model assessment

Independent verification was used to evaluate the performance of the model. The Lins' Concordance Correlation Coefficient (CC) and the root mean squared error (RMSE) were as evaluation metrics. The data was first randomly divided into a modelling set and a validation set according to the 7:3 ratio. In the modelling set, ten-fold cross-validation was used to obtain the best parameters of the model through RMSE as an index. The calculation of RMSE and CC is as follows:

$$RMSE = (1/n \times \sum_{i=1}^n (p_i - o_i)^2)^{1/2}, \tag{1}$$

$$CC = 2r\sigma_p\sigma_o / (\sigma_p^2 + \sigma_o^2 + (\hat{p}_i - \hat{o}_i)^2), \tag{2}$$

where p_i and o_i are the predicted value and observed value, respectively. \hat{p}_i and \hat{o}_i are the average value of all predictions and observations, respectively. n is the number of soil samples. σ_p^2 is the variances of predicted values and σ_o^2 is the variances of measured values. r is the correlation coefficient of predictions and observations. Model evaluation, descriptive analysis, and variance analysis were realized in R 4.0.2 (R Core Team, 2020). To satisfy the assumption of data independence, this study randomly selected 1/200 of the total number of pixels using the sample function and then conducted pairwise significant difference analyses using the "wilcox.test" method in the ggviolin function with the stat_compare_means setting. The RF and GE models were implemented in the "caret" and "GD" libraries, respectively.

设置了格式: 字体颜色: 文字 1

删除了: The statistical method used for significance tests for all the boxplots is Wilcoxon test, which is realized in "stat_compare_means"...

设置了格式: 字体: 倾斜, 字体颜色: 文字 1

设置了格式: 字体颜色: 文字 1

设置了格式: 字体颜色: 文字 1

设置了格式: 字体: 非加粗, 英语(美国)

3 Results and discussion

3.1 Descriptive Statistics of SOM data

As shown in Table 3, from 2006 to 2018, the average SOM content increased from 18.93 g kg⁻¹ to 20.84 g kg⁻¹, and the coefficient of variations (CV) rose slightly from 0.33 to 0.38. The CVs indicated moderate variation (Cambardella et al., 1994). The ascending CV could be attributed to more active human activities, such as popularized straw return technology in Lishu County, which is consistent with recent studies (Fan et al., 2020; Hu et al., 2014).

设置了格式: 字体: (默认) +西文标题 (Times New Roman)

设置了格式: 字体: (默认) +西文标题 (Times New Roman)

设置了格式: 字体: (默认) +西文标题 (Times New Roman)

设置了格式: 字体: (默认) +西文标题 (Times New Roman)

设置了格式: 字体: (默认) +西文标题 (Times New Roman)

Table 3 Statistical description of SOM in 2006 and 2018 in Lishu County.

	Year	N	Mean	SD	Min	Max	Skew	Kurtosis	CV
SOM (g kg ⁻¹)	2006	366	18.93	6.20	6.40	39.50	0.29	-0.45	0.33
	2018	355	20.84	7.82	2.10	64.26	0.29	1.29	0.38

Notes: SOM, soil organic matter, g kg⁻¹; N, the number of samples; SD, standard deviation; CV, coefficient of variation.

3.2 Model performance

Table 4 shows that the validation results considering all the variables as predictors (RF-all) (CC = 0.59, RMSE = 4.54 g kg⁻¹, taking 2006 as an example) (Fig. 2) performed better than those considering the environmental variables without latitude as predictors (RF- (all-Y)) did. The result indicated that geographical coordinates were significant for SOM mapping. Compared with a RF-all model to predict nematode worm distribution, Ploton et al. (2020) obtained similar results by using a RF-XY (considering the longitude and latitude as predictors) model because the RF-all model mainly depends on geographic proximity (Van Den Hoogen et al., 2019). In areas dominated by agriculture, agricultural management practices (irrigation, tillage practices, farming systems, and residual management) increased the spatial heterogeneity of SOM, so the spatial distribution of SOM cannot be accurately reflected using individual vegetation indexes or topographic factors. However, few studies integrate these agricultural activities to explain the SOM spatial distribution due to the challenge of collecting them based on remote sensing technology. This study developed RF models with and without CRC. After removing CRC, CC was reduced by 14.9%, and RMSE was increased by 0.23 g kg⁻¹ (Table 4). The results demonstrated that the RF model with CRC factor achieved a higher accuracy than the model using common environmental variables alone. Therefore, further research should consider the importance of geographic coordinates and long-term straw return in DSM.

Table 4 The performance of the random forest model.

Methods		2006		2018	
		CC	RMSE (g kg ⁻¹)	CC	RMSE (g kg ⁻¹)
RF-all	Calibration	0.55	5.04	0.44	6.99
	Validation	0.59	4.54	0.54	5.38
RF- (all-Y)	Calibration	0.50	5.22	0.38	7.18
	Validation	0.55	4.63	0.47	5.55
RF-(all-CRC)	Calibration	∧	∧	0.43	7.03
	Validation	∧	∧	0.47	5.61

Notes: RF-all: consider all the variables as predictors; RF- (all-Y), consider the environmental variables without latitude as predictors; RF-(all-CRC), consider the environmental variables without cumulative crop residue coverage (CRC) as predictors; CC, Lins' Concordance Correlation Coefficient; RMSE, root mean squared error.

设置了格式: 字体: (中文) + 中文正文 (宋体), (中文) 中文 (中国)

格式化表格

设置了格式: 字体: (中文) + 中文正文 (宋体), (中文) 中文 (中国)

设置了格式: 字体: (中文) + 中文正文 (宋体), (中文) 中文 (中国)

设置了格式: 字体: 非加粗

设置了格式: 字体: 非加粗

设置了格式: 字体: 非加粗

删除了: Table 4 shows that the RF-all (CC = 0.59, RMSE = 4.54 g kg⁻¹, taking 2006 as an example) (Fig. 2) performed better than RF- (all-Y) did.

设置了格式: 字体: (默认) + 西文标题 (Times New Roman)

设置了格式: 字体: (默认) + 西文标题 (Times New Roman)

设置了格式: 字体: (默认) + 西文标题 (Times New Roman)

设置了格式: 字体: (默认) + 西文标题 (Times New Roman)

设置了格式: 字体: (默认) + 西文标题 (Times New Roman)

设置了格式: 字体: (默认) + 西文标题 (Times New Roman)

设置了格式: 字体: (默认) + 西文标题 (Times New Roman)

设置了格式: 字体: (默认) + 西文标题 (Times New Roman)

设置了格式: 字体: (默认) + 西文标题 (Times New Roman)

设置了格式: 字体: (默认) + 西文标题 (Times New Roman)

删除了: In t

删除了: , available CRC online was utilized to

删除了:

设置了格式: 字体: (默认) + 西文标题 (Times New Roman)

设置了格式: 字体: (默认) + 西文标题 (Times New Roman)

设置了格式: 字体: (默认) + 西文标题 (Times New Roman)

设置了格式: 字体: (默认) + 西文标题 (Times New Roman)

设置了格式: 字体: (默认) + 西文标题 (Times New Roman)

设置了格式: 字体: (默认) + 西文标题 (Times New Roman)

设置了格式: 字体: (默认) + 西文标题 (Times New Roman)

设置了格式: 字体: (默认) + 西文标题 (Times New Roman), 上标

删除了: Table 4 shows that the RF-all (CC = 0.59, RMSE = 4.54 g kg⁻¹, took 2006 as example) (Fig. 2) performed better than RF- (all-Y) (CC = 0.55, RMSE = 4.63 g kg⁻¹). The result indicated

删除了: However, studies seldom took geographic coordinates as

删除了: F

设置了格式: 字体: (默认) + 西文标题 (Times New Roman)

删除了: CRC

格式化表格

删除了: CRC

删除了:

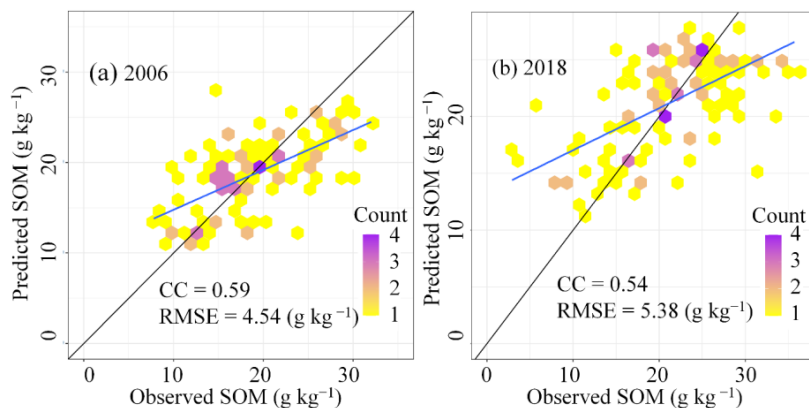


Figure 2: Performances of the random forest with all environmental covariates (RF-all) on validation data in 2006 (a) and 2018 (b). RMSE, root mean squared error; CC, Lins' Concordance Correlation Coefficient; SOM, soil organic matter.

The accuracy of the study's model was not high, which is the study's limitation. By reviewing the SOM or SOC modelling in flat farmland areas, we found that the models of these similar studies all show poor performance (Table 5). This may be because common environmental variables, such as topographic and remote sensing factors, are too homogeneous to effectively extract SOM information (Zeng et al., 2017). Compared with these studies in flat farmland areas, our prediction accuracy is comparable or even better (Table 5).

Table 5 Models' performance in soil organic matter (SOM) prediction in plain farmland areas.

Study area	Model with common environmental variables	Model performance	References	Characteristics
Cultivated land of Xuanzhou city and Langxi County	Random Forest	$R^2=0.34$	Yang et al., 2020	A typical plain rice production area
Chahe Town	Ordinary Kriging; Regression Kriging	$CC=0.15-0.24$	Wu et al., 2021	A typical plain farmland area
Agricultural soils in the north-eastern Iberian Peninsula	General Least Squares	$R^2=0.20-0.27$	Funes et al., 2019	Agricultural soils
Jiangnan plain	Stepwise Regression; Partial Least Squares Regression; Extreme learning machine	$R^2=0.14-0.53$	Guo et al., 2021	Agricultural lands in low-relief areas

设置了格式: 字体: (默认) + 西文标题 (Times New Roman), (中文) Times New Roman

设置了格式: 字体: (默认) + 西文标题 (Times New Roman), (中文) Times New Roman

设置了格式: 字体: (默认) + 西文标题 (Times New Roman), 10 磅, 字体颜色: 自动设置, 英语(美国), 图案: 清除

删除了: a

删除了:

设置了格式: 字体: (默认) + 西文标题 (Times New Roman), 10 磅, 字体颜色: 自动设置, 英语(美国), 图案: 清除

设置了格式: 字体: (默认) + 西文标题 (Times New Roman), (中文) Times New Roman

设置了格式: 字体: (默认) + 西文标题 (Times New Roman), 10 磅, 字体颜色: 自动设置, 英语(美国), 图案: 清除

删除了:)

删除了:

设置了格式: 字体: (默认) + 西文标题 (Times New Roman)

设置了格式: 字体: (默认) + 西文标题 (Times New Roman), (中文) Times New Roman

格式化表格

删除了:

删除了:

删除了:

Miandoab county, West
Azerbaijan, northern Iran

Random Forest;
Cubist; Conditional
Inference Forest;
Conditional Inference
Trees; Extreme
Gradient Boosting;
Classification and
Regression Trees

CC=0.34-0.44

Goydaragh et
al., 2021

The elevation varies
from 1292 to 1342 m
and the main land
use is agriculture

Notes: CC, Lins' Concordance Correlation Coefficient.

3.3 Importance of driving factors on SOM spatial distribution

As Fig. 3a and c prevented, the relative importance of environmental factors obtained from the RF and GE methods was comparable, proving the feasibility of the two methods. For quantifying the relative importance, GE is based on spatial relationships, while RF is based on feature importance through decision tree splits. The geographical coordinates, soil type, precipitation, clay content, DEM, MrVBF, and CRC play key roles in SOM prediction (the relative importance > 5%). The relative importance of the other factors was almost less than 5%. Moreover, these factors passed the significant test in GE model. As Fig. 3b and d presented, the explanatory strength of 16 variables' interaction in pairs was stronger than that of the single factor through nonlinear enhancement or double factor enhancement (Enhancement, bi). This finding proved that the complex interaction among different influencing factors led to the spatial distribution pattern of SOM. Fig. 3b and d also proved that y, AMP, and DEM have the greatest influence on SOM. Similar to our results, Wang et al. (2017) found that precipitation was the key climatic variable that affects the spatial distribution of SOM in Liaoning, northeastern China. Many studies have revealed the importance of terrain parameters for predicting SOM in Northeast China (Wang et al., 2018; Ma et al., 2017). This may be because DEM-based terrain parameters cause the recombination and redistribution of temperature, water, light, soil, wind speed, and wind direction, and thus affect the SOM content. At the same time, it shows the CRC was significant using the significance test with GE. CRC is not the main cause of spatial variation of SOM, but the CRC did contribute significantly to the spatial distribution of SOM.

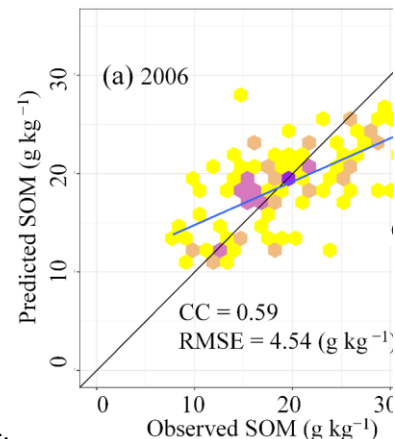
删除了:

删除了:

删除了:

Table 4 The performance of the random forest model.
Methods

删除了: Notes: RF-all: consider all the variables as predictors; RF-(all-Y), consider the environment variables without latitude as predictors; CC, Lins' Concordance Correlation Coefficient; RMSE, root mean squared error.



删除了:

Figure 2: Performances of the random forest with all environmental covariates (RF-all) on validation data in 2006 (a) and 2018 (b). RMSE, root mean squared error; CC, Lins' Concordance Correlation Coefficient; SOM, soil organic matter.

设置了格式: 字体: 非加粗

删除了: and

删除了: 10

删除了: straw return was an essential factor in SOM spatial distribution.

删除了: , MrVBF, Soil type, and Clay

设置了格式: 字体: 10 磅

删除了: ere

删除了: s

设置了格式: 字体: 10 磅

设置了格式: 字体: 10 磅

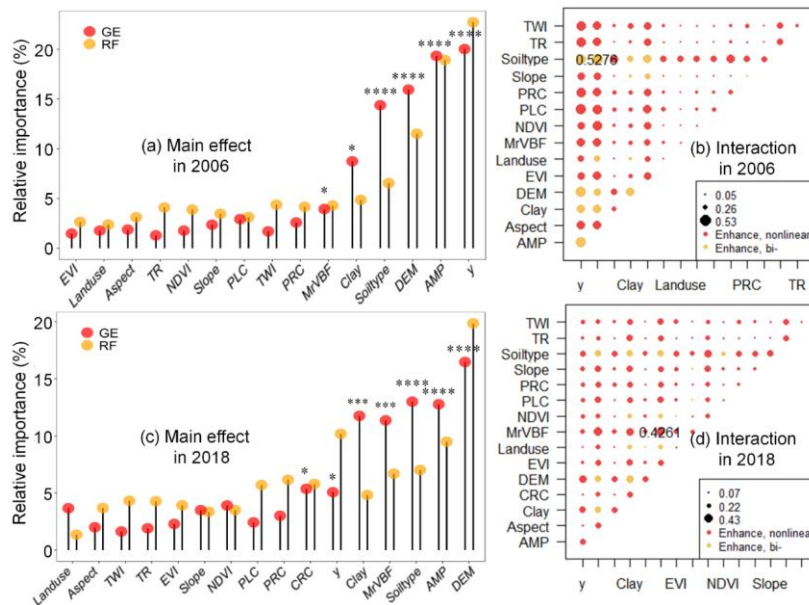


Figure 3: Relative Variables importance (a), (c) and interaction (b), (d) derived from the random forest (RF) and geographic detectors (GE) for soil organic matter (SOM) in 2006 and 2018. Notes: y, latitude; DEM, digital elevation model, m; TR, terrain relief index; TWI, topographic wetness index; PLC, plan curvature; PRC: profile curvature; MrVBF, multi-resolution valley bottom flatness; NDVI, normalized difference vegetation index; EVI, enhanced vegetation Index; CRC, cumulative crop residue coverage; AMP, annual mean precipitation, mm. *, $P < 0.05$; ***, $P < 0.001$; ****, $P < 0.0001$

3.4 Spatial variation of SOM over time

Fig. 4 presents the spatial distributions of SOM (30 m resolution) in 2006 and 2018. The general spatial pattern was clear: the SOM decreased from southeast to northwest in Lishu County each year. In 2006, SOM concentration was highest in the south of Lishu County ($22\text{--}28\text{ g kg}^{-1}$) and lowest in the western part (under 12 g kg^{-1}). The highest SOM content was concentrated in the middle and east of the study area in 2018, while low SOM content ($0\text{--}12\text{ g kg}^{-1}$) occupied a tiny area.

带格式的: 居中

设置了格式: 默认段落字体

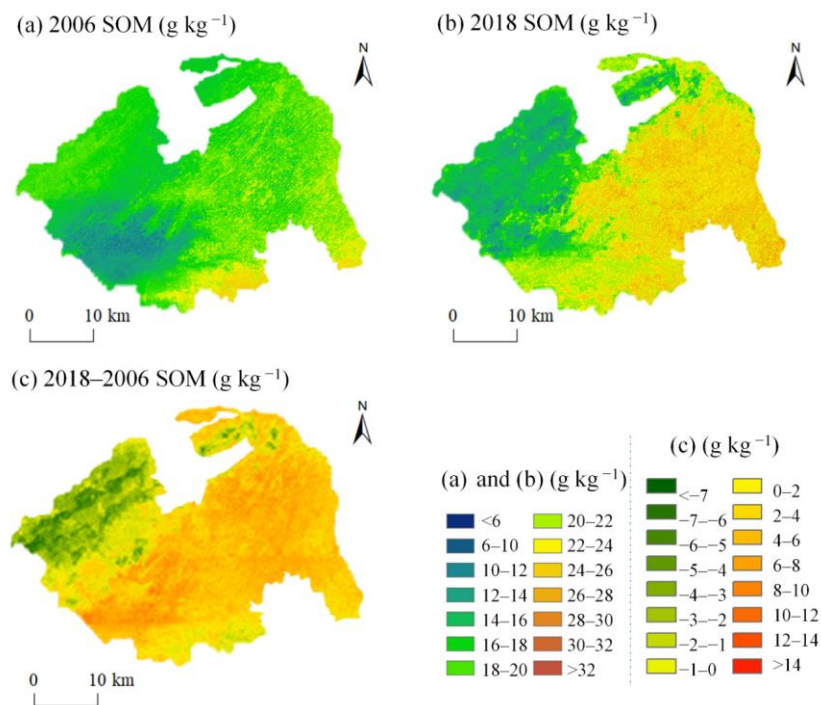


Figure 4: Prediction maps of soil organic matter (SOM) in 2006 (a), 2018 (b), and estimated SOM change between 2006 and 2018 (c) in the study area.

The overall trend of SOM content was on the rise from 2006 to 2018. Consistent with the distribution of high CRC (0.30–1.00) (Fig. 5a), the SOM content in 74.49 % areas of Lishu County displayed a significant increasing trend, especially in the eastern part of the county (Fig. 4c) with a maximum increase of 24.41 g kg^{-1} . Many studies have revealed that straw return contributes to carbon sink due to increased microbial biomass and biological activity (Han et al., 2016; Amelung et al., 2020a; Berhane et al., 2020).

删除了: the change

删除了: over the same period

删除了: straw return amount

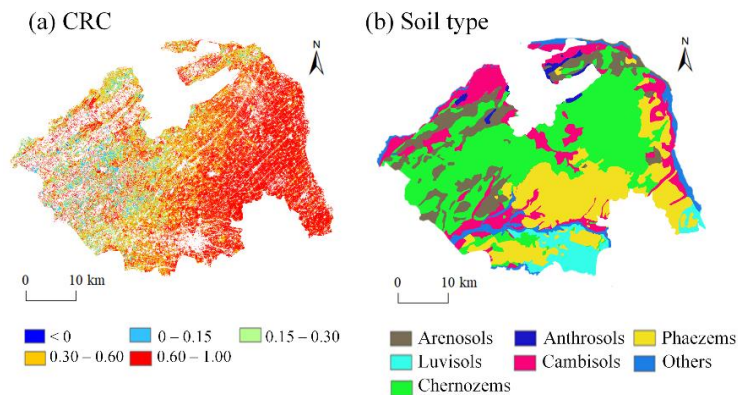


Figure 5: The spatial distribution of cumulative crop residue coverage (CRC) during 2006–2018 (a), and the spatial distribution of soil type (b) in the study area.

The decrease in SOM mainly occurred in the northwest and south of Lishu County. The SOM reduction in southern Lishu County happened to be in the area with the high initial SOM concentration (2006) (Fig. 4c). Consistent with previous research, the reduction was severe in areas with higher initial concentrations of SOC (Zhou et al., 2019). In the northwest corner, the decrease in SOM was mainly distributed on the Arenosols and Anthrosols with a marked decline of 12.70 g kg^{-1} (Figs. 4c, 5b). The phenomenon may be related to the low CRC, light-texture soil, and the change from paddy land to dryland.

3.5 Effects of straw return on SOM variation

Fig. 6 presents SOM increased by 0.74 , 2.01 , 2.68 , and 3.08 g kg^{-1} when the CRC was $0-0.15$, $0.15-0.30$, $0.30-0.60$, and $0.60-1.00$, respectively. This result proved the SOM increment was proportional to the CRC. A previous study revealed that the effect of straw return on SOM content was closely linked to soil properties, initial SOM content, land-use change, and the straw return amount (Berhane et al., 2020). Therefore, variance analysis was conducted to explore the effects of straw return on SOM variation under different land-use change, soil types, and soil texture.

删除了: variation

删除了: straw returning content (CRC)

删除了: of

删除了: initial higher

删除了: of

删除了: small amount of straw return

删除了: that

删除了: 6

删除了: 1.99

删除了: 6

删除了: straw return amount

删除了: %

删除了: %

删除了: %

设置了格式: 字体: (默认) + 西文标题 (Times New Roman)

删除了: %

删除了: straw return amount

删除了: Previous

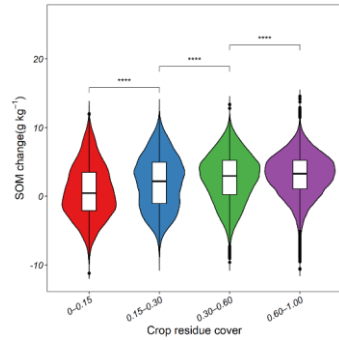


Figure 6: The soil organic matter (SOM) change for different cumulative crop residue coverage (CRC). ****, $P < 0.0001$.

3.5.1 Effects of the straw return on SOM variation under different soil types

According to Fig. 7, for Anthrosols, Cambisols, and Chernozems, SOM increment was proportionate to the CRC. For Luvisols and Phaezems, SOM variation showed a decreasing trend with the boosted CRC. This phenomenon is relevant to the initial SOM contents. As displayed in Fig. 8, the initial SOM contents were lower in Anthrosols, Cambisols, and Chernozems and higher in Luvisols and Phaezems. Berhane et al. (2020) claimed that regardless of the soil type, the response of SOC change to carbon input was weak when the initial SOC content was high. Li et al. (2018) concluded that Phaezems with the highest initial SOM content had the lowest response rate to fertilization. A possible explanation for this might be that soils with low initial SOM are far away from their saturation levels and thus have a greater potential for carbon sequestration. Except for the SOM loss in Arenosols and Anthrosols, the SOM changes in other soil types were almost all positive, (Fig. 7). This result verified that the degradation of Arenosols and Anthrosols resulted in the SOM reduction due to the light-texture soil and land-use change from the paddy land to dryland, respectively.

删除了: straw returning content

设置了格式: 字体: 倾斜

删除了: straw return amount

删除了: straw return amount

删除了: ,

删除了: the higher the initial SOC content, the lower the response of SOC change to carbon input.

删除了: (Li et al., 2018)

删除了: Except for the SOM loss that occurred in Arenosols and Anthrosols, the changes of SOM under other soil types were almost positive...

删除了: The

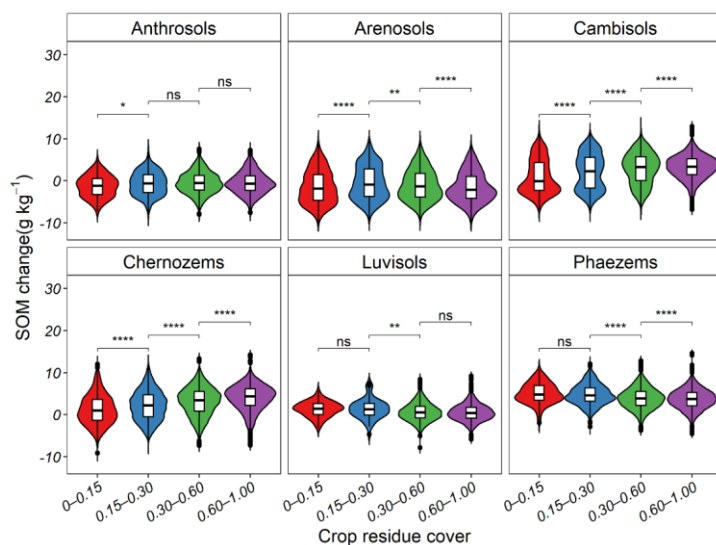


Figure 7: The soil organic matter (SOM) change for different **cumulative crop residue coverage (CRC)** under soil type. **ns**, no significance; *, $P < 0.05$; **, $P < 0.01$; ***, $P < 0.0001$.

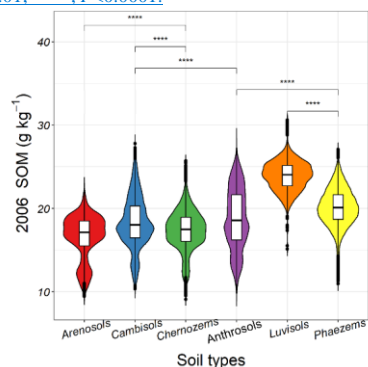


Figure 8: Initial soil organic matter (SOM) content (2006) for soil type. ****, $P < 0.0001$.

3.5.2 Effects of straw return on SOM variation under different soil texture

With the **CRC** increasing, SOM first increased and then decreased for soil with low clay content (Fig. 9). Nevertheless, SOM increases with the boosted **CRC** in soils with high and medium clay contents (Fig. 9), indicating that clay content was directly

删除了: straw returning content

删除了: straw return amount

删除了: straw return amount

proportional to the response of SOM increment to CRC . The findings are consistent with previous research, which shows that straw return results in the highest carbon chelation when clay content is high (Xia et al., 2018). One possible explanation for this observation was that soils with higher clay content have greater potential to store organic carbon (Li et al., 2020), so the SOM accumulation in clayey soils is more responsive to straw return. Moreover, the SOM increment under sandy soil declined when the CRC was 0.60–1.00, which was because sandy soil cannot be protected by mineral particles (Xia et al., 2018) and is more susceptible to the influence of microorganisms.

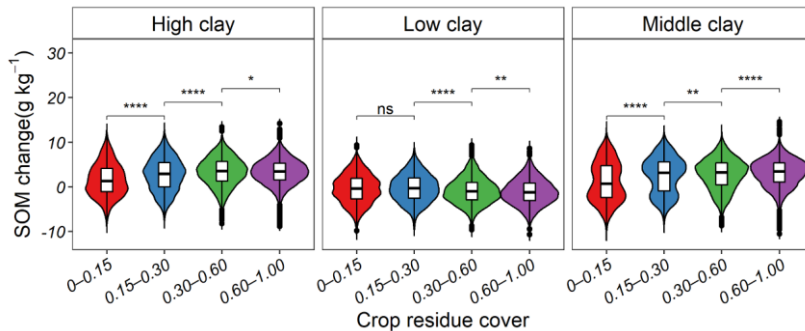


Figure 9: The soil organic matter (SOM) change for different cumulative crop residue coverage (CRC) under soil texture. ns, no significance; *, $P < 0.05$; **, $P < 0.01$; ****, $P < 0.0001$.

3.5.3 Effects of straw return on SOM variation under different land-use change

The study considered only two kinds of land-use change: a) the change from dryland to paddy land; b) the change from paddy land to dryland because the crop area accounted for over 70 % of the total sown area in Lishu County and all the samples were taken from farmland. In the two kinds of land-use change, variance analysis was carried out for the SOM variation under four levels of CRC . As shown in Fig. 10, the SOM increment increases with the boosted CRC under the change from dryland to paddy field. From paddy to dry land, the SOM dropped by 0.71 g kg^{-1} when the CRC was 0–0.15. However, with the increase in the CRC , the SOM loss gradually decreased. Even the SOM increased by 1.79 g kg^{-1} when the CRC was 0.60–1.00, indicating that straw return can reverse the carbon loss caused by the transformation of paddy to dryland. Previous studies have found that due to the transformation from anaerobic to aerobic, the conversion of paddy to dry land will cause carbon loss (Wang et al., 2014; Nishimura et al., 2008; Li et al., 2016). Some research pointed out that we can reduce the carbon loss by rewetting (Driessen et al., 2000) or cultivation of paddy fields continuously (Chen et al., 2017). The study pointed out that straw return is a way to prevent a C source caused by the conversion of the paddy field to dryland and can be carried out after that paddy is converted to dryland or when paddy is fallow.

删除了:

删除了: straw return

删除了: The findings are consistent with previous studies that straw return leads to the highest carbon chelation under the high clay content...

删除了: straw return amount

删除了: %

删除了: straw returning content

删除了: ns, no significance; ***, $P < 0.001$; ****, $P < 0.0001$.

删除了: V

删除了: in the two kinds of land-use change

删除了: different

删除了: straw return amounts

删除了: straw return amount

删除了: 59

删除了: straw return amount

删除了: %

删除了: straw return amount

删除了: 84

删除了: straw return amount

删除了: %

删除了: change

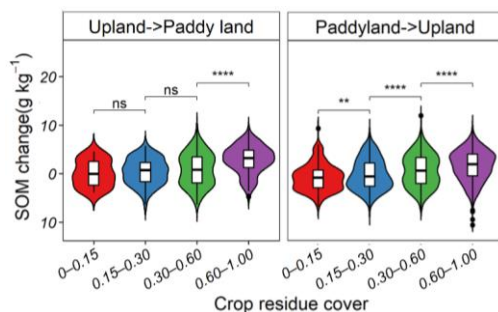


Figure 10: The soil organic matter (SOM) change for different cumulative crop residue coverage (CRC) when paddy land change to dryland. ns, no significance; **, $P < 0.01$; ****, $P < 0.0001$.

4 Conclusion

The study estimated the surface SOM content and SOM variation between 2006 and 2018 by the RF model, quantified the spatial relationship between measured SOM and predictors, and further explored the effect of the interaction of soil properties, land use, and straw return on SOM change. The results of the study were as follows:

(1) The RF model with all predictors ($CC = 0.54$, $RMSE = 5.38 \text{ g kg}^{-1}$ in 2018) performed better than RF-(all-Y) ($CC = 0.47$, $RMSE = 5.55 \text{ g kg}^{-1}$) and RF-(all-CRC) ($CC = 0.47$, $RMSE = 5.61 \text{ g kg}^{-1}$) in both 2006 and 2018. The result indicated that geographical coordinates and long-term straw return were significant for SOM mapping.

(2) The SOM content decreased from southeast to northwest during both periods. Over time, SOM increased in 74.49% of areas in Lishu County, with the eastern part showing a maximum increase of 24.41 g kg^{-1} . The northwest and south corners of the study area aggregated the SOM loss, especially in the northwest, with a significant decline of 12.70 g kg^{-1} .

(3) Straw return played the main role in SOM variation. SOM increased by 0.74 , 2.01 , 2.68 , and 3.08 g kg^{-1} with CRC of 0–0.15, 0.15–0.30, 0.30–0.60, and 0.60–1.00. The response rate of SOM to the CRC was inversely proportional to the initial SOM and the sand contents.

The study revealed that straw return is beneficial to carbon sink in farmland and is a better way to prevent a carbon source caused by the conservation of paddy fields to dryland, which can contribute to the development of strategies to ensure the sustainability of agricultural soils.

Data availability

The data that support the findings of this study are available on request from the corresponding author.

删除了: straw returning content

删除了: ns, no significance; ****, $P < 0.0001$.

删除了: 59

删除了: 4.54

删除了: 06

删除了: that with all predictors except for geographical coordinates did

删除了: 55

删除了: 4.63

删除了: The SOM contents for both periods decreased from the southeast to the northwest.

删除了: For temporal variation, the SOM in 74.49 % of areas of Lishu County existed an apparent upward trend, especially in the eastern of the county with a maximum increase of

删除了: 0.76 , 1.99 , 2.66 , and 3.08 g kg^{-1}

删除了: straw return amount

删除了: 0–15 %, 15–30 %, 30–60 %, and 60–100 %

删除了: amount of straw return

删除了: The study revealed that straw return is beneficial to carbon sink in farmland

删除了: .

删除了: This article can provide a significant reference for conservation tillage to be extended to the entire black soil region.

Author contributions

595 Conceptualization, Wenjun Ji and Yang Yan; data curation, Guiman Wang and Zhong Liu; methodology, Wenjun Ji and Yang Yan; writing-original draft preparation, Yang Yan; writing-review and editing, Wenjun Ji, Songchao Chen and Dehai Zhu; supervision, Wenjun Ji and Baoguo Li; project administration, Wenjun Ji and Baoguo Li; funding acquisition, Wenjun Ji.

Competing interests

The authors declare that they have no conflict of interest.

600 **Financial support**

This study was supported by the National Natural Science Foundation of China (Project NO. 42001048), National Key R&D Program of China (2021YFD1500201), Open Fund of State Key Laboratory of Remote Sensing Science (OFSLRSS202121), the State Key Laboratory of Resources and Environmental Information System (2020), and the Chinese Universities Scientific Fund (2020TC205).

605 **References**

Ahrens, R. J.: Digital soil mapping with limited data, Springer Science & Business Media, 2008.
Amelung, W., Bossio, D., de Vries, W., Kögel-Knabner, I., Lehmann, J., Amundson, R., Bol, R., Collins, C., Lal, R., and Leifeld, J. J. N. c.: Towards a global-scale soil climate mitigation strategy, Nature communications, 11, 1-10, 2020.
Berhane, M., Xu, M., Liang, Z., Shi, J., Wei, G., and Tian, X.: Effects of long-term straw return on soil organic carbon storage and sequestration rate in North China upland crops: A meta-analysis, Global Change Biology, 10.1111/gcb.15018, 2020.
Breiman, L.: Random forests, Machine learning, 45, 5-32, 2001.
Cambardella, C. A., Moorman, T. B., Novak, J., Parkin, T., Karlen, D., Turco, R., and Konopka, A.: Field-scale variability of soil properties in central Iowa soils, Soil science society of America journal, 58, 1501-1511, 1994.
Chang, L., Meng, L., Jun, C., Bo, L., and Changming, F.: Effects of straw carbon input on carbon dynamics in agricultural soils: a meta-analysis, Global Change Biol, 20(5), 1336-1361, 2014.
Chen, A., Xie, X., Ge, T., Hou, H., Wang, W., Wei, W., and Kuzyakov, Y.: Rapid decrease of soil carbon after abandonment of subtropical paddy fields, Plant Soil, 415, 203-214, 2017.
Ciais, P., Gervois, S., Vuichard, N., Piao, S., and Viovy, N.: Effects of land use change and management on the European cropland carbon balance, Global Change Biology, 17, 320-338, 2011.
620 Conrad, O., Bechtel, B., Bock, M., Dietrich, H., Fischer, E., Gerlitz, L., Wehberg, J., Wichmann, V., and Böhner, J.: System for automated geoscientific analyses (SAGA) v. 2.1. 4, Geoscientific Model Development Discussions, 8, 2015.
Dou, X., Wang, X., Liu, H., Zhang, X., Meng, L., Pan, Y., Yu, Z., and Cui, Y.: Prediction of soil organic matter using multi-temporal satellite images in the Songnen Plain, China, Geoderma, 356, 10.1016/j.geoderma.2019.113896, 2019.
Driessen, P., Deckers, J., Spaargaren, O., and Nachtergaele, F.: Lecture notes on the major soils of the world, 94, Food and Agriculture Organization (FAO)2000.
625 Fabrizio, K. P., Moron, A., and García, F. O.: Soil carbon and nitrogen organic fractions in degraded vs. non-degraded Mollisols in Argentina, Soil Science Society of America Journal, 67, 1831-1841, 2003.
Fan, M. M., Margenot, A. J., Zhang, L. M., Lal, R., Wu, J. T., Chang, N. J., Shaokate, M., Chen, F. R., and Gao, C.: Soil organic carbon dynamics in intensively managed agricultural landscapes of eastern China, Archives of Agronomy and Soil Science, 68, 503-515, 2020.
630 Funes, I., Savé, R., Rovira, P., Molowny-Horas, R., Alcañiz, J. M., Ascaso, E., Herms, I., Herrero, C., Boixadera, J., and Vayreda, J.: Agricultural soil organic carbon stocks in the north-eastern Iberian Peninsula: Drivers and spatial variability, Science of the Total Environment, 668, 283-294, 2019.

设置了格式: 字体:(中文) Times New Roman, 10 磅, 字体颜色: 自动设置, 检查拼写和语法

设置了格式: 字体: 非倾斜

删除了: <2017_Book_UsingRForDigitalSoilMapping.pdf>, Amelung, W., Bossio, D., de Vries, W., Kögel-Knabner, I., Lehmann, J., Amundson, R., Bol, R., Collins, C., Lal, R., and Leifeld, J.: Towards a global-scale soil climate mitigation strategy, Nature communications, 11, 1-10, 2020a.

删除了: b

640 [Goydaragh, M. G., Taghizadeh-Mehrjardi, R., Jafarzadeh, A. A., Triantafyllis, J., and Lado, M.: Using environmental variables and Fourier Transform Infrared Spectroscopy to predict soil organic carbon, *Catena*, 202, 105280, 2021.](#)
[Guo, L., Fu, P., Shi, T., Chen, Y., Zeng, C., Zhang, H., and Wang, S.: Exploring influence factors in mapping soil organic carbon on low-relief agricultural lands using time series of remote sensing data, *Soil and Tillage Research*, 210, 104982, 2021.](#)
Guo, P. T., Li, M. F., Luo, W., Tang, Q. F., Liu, Z. W., and Lin, Z. M.: Digital mapping of soil organic matter for rubber plantation at regional scale: An application of random forest plus residuals kriging approach, *Geoderma*, 237, 49-59, 10.1016/j.geoderma.2014.08.009, 645 2015.
Han, P., Zhang, W., Wang, G., Sun, W., and Huang, Y.: Changes in soil organic carbon in croplands subjected to fertilizer management: a global meta-analysis, *Scientific reports*, 6, 1-13, 2016.
Hengl, T., Heuvelink, G. B., Kempen, B., Leenaars, J. G., Walsh, M. G., Shepherd, K. D., Sila, A., MacMillan, R. A., Mendes de Jesus, J., and Tamene, L.: Mapping soil properties of Africa at 250 m resolution: Random forests significantly improve current predictions, *PLoS One*, 650 10, e0125814, 2015.
Hu, K., Wang, S., Li, H., Huang, F., and Li, B.: Spatial scaling effects on variability of soil organic matter and total nitrogen in suburban Beijing, *Geoderma*, 226, 54-63, 2014.
[Jenny, H.: Factors of soil formation: a system of quantitative pedology, Courier Corporation, 1994.](#)
655 Li, X., Toma, Y., Yeluripati, J., Iwasaki, S., Bellingrath-Kimura, S. D., Jones, E. O., and Hatano, R.: Estimating agro-ecosystem carbon balance of northern Japan, and comparing the change in carbon stock by soil inventory and net biome productivity, *Science of The Total Environment*, 554, 293-302, 2016.
Li, Y., Li, Z., Chang, S. X., Cui, S., Jagadamma, S., Zhang, Q., and Cai, Y.: Residue retention promotes soil carbon accumulation in minimum tillage systems: Implications for conservation agriculture, *Science of The Total Environment*, 740, 140147, 2020.
660 Li, Y. e., Shi, S., Waqas, M. A., Zhou, X., Li, J., Wan, Y., Qin, X., Gao, Q., Liu, S., Wilkes, A.: Long-term (≥ 20 years) application of fertilizers and straw return enhances soil carbon storage: a meta-analysis, *Mitigation adaptation strategies for global change*, 23, 603-619, 2018.
Liang, Z., Chen, S., Yang, Y., Zhao, R., Shi, Z., and Viscarra Rossel, R. A.: National digital soil map of organic matter in topsoil and its associated uncertainty in 1980's China, *Geoderma*, 335, 47-56, 10.1016/j.geoderma.2018.08.011, 2019.
665 Liu, C., Lu, M., Cui, J., Li, B., and Fang, C.: Effects of straw carbon input on carbon dynamics in agricultural soils: a meta-analysis, *Global change biology*, 20, 1366-1381, 2014.
Liu, G., Jiang, N., and Zhang, L.: Soil physical and chemical analysis & description of soil profiles, Beiing: Standards Press of China, 1996.
[Liu, Z., Liu, Z., Wan, W., Huang, J., Wang, J., and Zheng, M.: Estimation of maize residue cover on the basis of SAR and optical remote sensing image, *National Remote Sensing Bulletin*, 25\(06\), 1308-1323, 2021.](#)
[Lu, F., Wang, X., Han, B., Ouyang, Z., Duan, X., Zheng, H., and Miao, H.: Soil carbon sequestrations by nitrogen fertilizer application, straw return and no-tillage in China's cropland, *Global Change Biology*, 15\(2\), 281-305, 2009.](#)
670 Lugato, E., Panagos, P., Bampa, F., Jones, A., and Montanarella, L.: A new baseline of organic carbon stock in European agricultural soils using a modelling approach, *Global change biology*, 20, 313-326, 2014.
Ma, Y., Minasny, B. and Wu, C.: Mapping key soil properties to support agricultural production in Eastern China. *Geoderma Regional*, 10: 144-153, 2017.
675 McBratney, A. B., Santos, M. M., and Minasny, B.: On digital soil mapping, *Geoderma*, 117, 3-52, 2003.
Muñoz-Rojas, M., Doro, L., Ledda, L., Francaviglia, R., and Environment: Application of CarboSOIL model to predict the effects of climate change on soil organic carbon stocks in agro-silvo-pastoral Mediterranean management systems, *Agriculture, Ecosystems & Environment*, 202, 8-16, 2015.
680 Nguemezi, C., Tematio, P., Silatsa, F. B., Yemefack, M. J. S., and Research, T.: Spatial variation and temporal decline (1985–2017) of soil organic carbon stocks (SOCs) in relation to land use types in Tombel area, South-West Cameroon, [Soil and Tillage Research](#), 213, 105114, 2021.
Nishimura, S., Yonemura, S., Sawamoto, T., Shirato, Y., Akiyama, H., Sudo, S., and Yagi, K.: Effect of land use change from paddy rice cultivation to upland crop cultivation on soil carbon budget of a cropland in Japan, *Agriculture, Ecosystems & Environment*, 125, 9-20, <https://doi.org/10.1016/j.agee.2007.11.003>, 2008.
685 Ondrasek, G., Begić, H. B., Zovko, M., Filipović, L., Meriño-Gergichevich, C., Savić, R., and Rengel, Z.: Biogeochemistry of soil organic matter in agroecosystems & environmental implications, *Science of the total environment*, 658, 1559-1573, 2019.
Ou, Y., Rousseau, A. N., Wang, L., and Yan, B.: Spatio-temporal patterns of soil organic carbon and pH in relation to environmental factors—A case study of the Black Soil Region of Northeastern China, *Agriculture, Ecosystems*, 245, 22-31, 2017.
690 Pan, G., Xu, X., Smith, P., Pan, W., and Lal, R.: An increase in topsoil SOC stock of China's croplands between 1985 and 2006 revealed by soil monitoring, *Agriculture, ecosystems environment*, 136, 133-138, 2010.
Pittelkow, C. M., Liang, X., Linquist, B. A., Van Groenigen, K. J., Lee, J., Lundy, M. E., Van Gestel, N., Six, J., Venterea, R. T., and Van Kessel, C.: Productivity limits and potentials of the principles of conservation agriculture, *Nature*, 517, 365-368, 2015.
Poeplau, C., Kätterer, T., Bolinder, M. A., Börjesson, G., Berti, A., and Lugato, E. J.: Low stabilization of aboveground crop residue carbon in sandy soils of Swedish long-term experiments, *Geoderma*, 237, 246-255, 2015.

下移了 [1]: Huang, J., Liu, Z., Wan, W., Liu, Z., Huang, J., Wang, and Wang, S.: Remote sensing retrieval of maize residue cover on

移动了 (插入) [1]

删除了: Huang, J., Liu, Z., Wan, W., Liu, Z., Huang, J., Wang, J., and Wang, S.: Remote sensing retrieval of maize residue cover on soil heterogeneous background, *The Journal of Applied Ecology*, 31, 474-482, 2020.

设置了格式: 字体: (默认) + 西文标题 (Times New Roman)

设置了格式: 字体: (默认) + 西文标题 (Times New Roman)

设置了格式: 英语 (美国)

设置了格式: 字体: (默认) Times New Roman, (中文) Times New Roman

Powelson, D. S., Glendining, M. J., Coleman, K., and Whitmore, A. P.: Implications for Soil Properties of Removing Cereal Straw: Results from Long-Term Studies, [Agronomy journal](#), **103**, 279-287, 2011.

Russell, A. E., Laird, D., Parkin, T. B., and Mallarino, A. P.: Impact of nitrogen fertilization and cropping system on carbon sequestration in Midwestern Mollisols, *Soil Science Society of America Journal*, **69**, 413-422, 2005.

R Core Team (2020). R: A language and environment for statistical computing. R Foundation for Statistical Computing, Vienna, Austria. URL <https://www.R-project.org/>.

Schillaci, C., Acutis, M., Lombardo, L., Lipani, A., Fantappie, M., Marker, M., and Saia, S.: Spatio-temporal topsoil organic carbon mapping of a semi-arid Mediterranean region: The role of land use, soil texture, topographic indices and the influence of remote sensing data to modelling, *Science of The Total Environment*, **601-602**, 821-832, 10.1016/j.scitotenv.2017.05.239, 2017.

Schulze, R. E. and Schütte, S.: Mapping soil organic carbon at a terrain unit resolution across South Africa, *Geoderma*, **373**, 114447, <https://doi.org/10.1016/j.geoderma.2020.114447>, 2020.

Šimanský, V., Juriga, M., Jonczak, J., Uzarowicz, Ł., and Stepień, W.: How relationships between soil organic matter parameters and soil structure characteristics are affected by the long-term fertilization of a sandy soil, *Geoderma*, **342**, 75-84, 2019.

Song, X. D., Yang, F., Ju, B., Li, D. C., Zhao, Y. G., Yang, J. L., and Zhang, G. L.: The influence of the conversion of grassland to cropland on changes in soil organic carbon and total nitrogen stocks in the Songnen Plain of Northeast China, *Catena*, **171**, 588-601, 2018.

Sosulski, T., and Korc, M.: Effects of different mineral and organic fertilization on the content of nitrogen and carbon in soil organic matter fractions, *Ecological Chemistry and Engineering*, **A 18(4)**, 601-609, 2011.

Sun, X.-L., Wang, H.-L., Zhao, Y.-G., Zhang, C., and Zhang, G.-L.: Digital soil mapping based on wavelet decomposed components of environmental covariates, *Geoderma*, **303**, 118-132, 10.1016/j.geoderma.2017.05.017, 2017.

Van den Hoogen, J., Geisen, S., Routh, D., Ferris, H., Trautspurger, W., Wardle, D. A., de Goede, R. G. M., Adams, B. J., Ahmad, W., Andriuzzi, W. S., Bardgett, R. D., Bonkowski, M., Campos-Herrera, R., Cares, J. E., Caruso, T., Caixeta, L. D., Chen, X. Y., Costa, S. R., Creamer, R., Castro, J. M. D., Dam, M., Djigal, D., Escuer, M., Griffiths, B. S., Gutierrez, C., Hohberg, K., Kalinkina, D., Kardol, P., Kergunteuil, A., Korthals, G., Krashevskaya, V., Kudrin, A. A., Li, Q., Liang, W. J., Magilton, M., Marais, M., Martin, J. A. R., Matveeva, E., Mayad, E., Mulder, C., Mullin, P., Neilson, R., Nguyen, T. A. D., Nielsen, U. N., Okada, H., Rius, J. E. P., Pan, K., Peneva, V., Pellissier, L., da Silva, J. C. P., Pitteloud, C., Powers, T. O., Powers, K., Quist, C. W., Rasmann, S., Moreno, S. S., Scheu, S., Setälä, H., Sushchuk, A., Tiunov, A. V., Trap, J., van der Putten, W., Vestergaard, M., Villenave, C., Waeyenberge, L., Wall, D. H., Wilschut, R., Wright, D. G., Yang, J. I., and Crowther, T. W.: Soil nematode abundance and functional group composition at a global scale, *Nature*, **572**, 194+, 2019.

Viscarra Rossel, R. A., Webster, R., Bui, E. N., and Baldock, J. A.: Baseline map of organic carbon in Australian soil to support national carbon accounting and monitoring under climate change, *Global Change Biology*, **20**, 2953-2970, 10.1111/gcb.12569, 2014.

Wang, H., Guan, D., Zhang, R., Chen, Y., Hu, Y., and Xiao, L.: Soil aggregates and organic carbon affected by the land use change from rice paddy to vegetable field, *Ecological Engineering*, **70**, 206-211, 2014.

Wang, J. and Xu, C.: Geodetector: Principle and prospective, *Acta Geographica Sinica*, **72**, 116-134, 2017.

Wang, J., Wang, X., Xu, M., Feng, G., and Zhang, W.: Crop yield and soil organic matter after long-term straw return to soil in China, *Nutrient Cycling in Agroecosystems*, **102**, 371-381, 2015.

Wang, S., Zhuang, Q., Jia, S., Jin, X. and Wang, Q.: Spatial variations of soil organic carbon stocks in a coastal hilly area of China. *Geoderma*, **314**, 8-19, 2018.

Wang, S., Zhuang, Q., Wang, Q., Jin, X. and Han, C.: Mapping stocks of soil organic carbon and soil total nitrogen in Liaoning Province of China. *Geoderma*, **305**, 250-263, 2017.

Wang, S., Zhao, Y., Wang, J., Zhu, P., Cui, X., Han, X., Xu, M., and Lu, C.: The efficiency of long-term straw return to sequester organic carbon in Northeast China's cropland, *Journal of Integrative Agriculture*, **17**, 436-448, 10.1016/s2095-3119(17)61739-8, 2018.

West, T., and Post, W.: Soil organic carbon sequestration rates by tillage and crop rotation: a global data analysis, *Soil Science Society of America Journal*, **66**, 1930-1946, 2002.

Wiesmeier, M., Barthold, F., Blank, B., and Kogel-Knabner, I.: Digital mapping of soil organic matter stocks using Random Forest modeling in a semi-arid steppe ecosystem, *Plant Soil*, **340**, 7-24, 10.1007/s11104-010-0425-z, 2011.

Wu, Z., Liu, Y., Han, Y., Zhou, J., Liu, J., and Wu, J.: Mapping farmland soil organic carbon density in plains with combined cropping system extracted from NDVI time-series data, *Science of The Total Environment*, **754**, 142120, 2021.

Xia, L., Lam, S. K., Wolf, B., Kiese, R., Chen, D., and Butterbach-Bahl, K.: Trade-offs between soil carbon sequestration and reactive nitrogen losses under straw return in global agroecosystems, *Global change biology*, **24**, 5919-5932, 2018.

Yang, L., He, X., Shen, F., Zhou, C., Zhu, A. X., Gao, B., Chen, Z., and Li, M.: Improving prediction of soil organic carbon content in croplands using phenological parameters extracted from NDVI time series data, *Soil and Tillage Research*, **196**, 104465, 2020.

Zeng, C., Zhu, A. X., Liu, F., Yang, L., Rossiter, D. G., Liu, J., and Wang, D.: The impact of rainfall magnitude on the performance of digital soil mapping over low-relief areas using a land surface dynamic feedback method, *Ecological indicators*, **72**, 297-309, 2017.

Zhang, H., Wu, P., Yin, A., Yang, X., Zhang, M., and Gao, C.: Prediction of soil organic carbon in an intensively managed reclamation zone of eastern China: A comparison of multiple linear regressions and the random forest model, *Science of the Total Environment*, **592**, 704-713, 10.1016/j.scitotenv.2017.02.146, 2017.

删除了: l

删除了: van

设置了格式: 字体: 小五, 字体颜色: 自动设置

设置了格式: 字体: 小五, 字体颜色: 自动设置

设置了格式: 字体: 小五, 字体颜色: 自动设置

设置了格式: 字体颜色: 自动设置

设置了格式: 字体颜色: 自动设置

设置了格式: 字体: (中文) + 中文正文 (宋体), (中文) 中文 (中国)

设置了格式: 字体: 非加粗

设置了格式: 字体: 非加粗

设置了格式: 字体: 非加粗

设置了格式: 字体: 非加粗

删除了:

设置了格式: 字体: 非倾斜

设置了格式: 字体: 非倾斜

760 Zheng, L., Wu, W., Wei, Y., and Hu, K.: Effects of straw return and regional factors on spatio-temporal variability of soil organic matter in a high-yielding area of northern China, *Soil Tillage Research*, 145, 78-86, 2015.

Zhou, Y., Hartemink, A. E., Shi, Z., Liang, Z., and Lu, Y.: Land use and climate change effects on soil organic carbon in North and Northeast China, *Science of the Total Environment*, 647, 1230-1238, 2019.