

The fossil bivalve *Angulus benedeni benedeni*: a potential seasonally resolved stable isotope-based climate archive to investigate Pliocene temperatures in the southern North Sea basin

5 Nina M.A. Wichern¹, Niels J. de Winter^{2,3}, Andy L.A. Johnson⁴, Stijn Goolaerts⁵, Frank Wesselingh^{2,6},
Maartje F. Hamers², Pim Kaskes³, Philippe Claeys³, Martin Ziegler²

¹Institute of Geology and Paleontology, Westfälische Wilhelms-Universität, Münster, 48149, Germany

²Department of Earth Sciences, Utrecht University, Utrecht, 3584 CB, the Netherlands

³Analytical, Environmental, and Geochemistry, Vrije Universiteit Brussel, Brussels, 1050, Belgium

⁴School of Built and Natural Environment, University of Derby, Derby, DE22 1GB, UK

10 ⁵OD Earth & History of Life and Scientific Service of Heritage, Royal Belgian Institute of Natural Sciences, Brussels, 1000, Belgium

⁶Naturalis Biodiversity Center, Leiden, 2333 CR, the Netherlands

Correspondence to: Nina M.A. Wichern (nwichern@uni-muenster.de)

15 **Abstract.** Bivalves record seasonal environmental changes in their shells, making them excellent climate archives. However,
not every bivalve can be used for this end. The shells have to grow fast enough so that micro- to millimetre-sampling can
resolve sub-annual changes. Here, we investigate whether the bivalve *Angulus benedeni benedeni* is suitable as a climate
archive. For this, we use ca. three-million-year-old specimens from the Piacenzian collected from a temporary outcrop in the
Port of Antwerp area (Belgium). The subspecies is common in Pliocene North Sea basin deposits, but its lineage dates back to
20 the Late Oligocene and has therefore great potential as a high-resolution archive. A detailed assessment of the preservation of
the shell material by micro-X-ray fluorescence, X-ray diffraction, and electron backscatter diffraction reveals that it is pristine
and not affected by diagenetic processes. Oxygen isotope analysis and microscopy indicate that the species had a longevity of
up to a decade or more, and importantly, that it grew fast and large enough so that seasonally resolved records across multiple
years were obtainable from it. Clumped isotope analysis revealed a mean annual temperature of $13.5 \pm 3.8^\circ\text{C}$. The subspecies
25 did likely experience slower growth during winter and thus may not have recorded temperatures year-round. This reconstructed
mean annual temperature is 3.5°C warmer than the pre-industrial North Sea and in line with proxy and modelling data for this
stratigraphic interval, further solidifying *A. benedeni benedeni*'s use as a climate recorder. Our exploratory study thus reveals
that *Angulus benedeni benedeni* fossils are indeed excellent climate archives, holding the potential to provide insight into the
seasonality of several major climate events of the past ~25 million years in northwest Europe.

30

35

40

1 Introduction

Bivalves can be powerful climate archives. They add growth increments to their shells on timescales as short as to sub-daily timescales (Schöne et al., 2002) and often live for many years—up to 500 years in certain species (Butler et al., 2013).
45 Furthermore, most bivalve species precipitate their shells isotopically in near equilibrium with water and their isotopic composition is little affected by so-called “vital effects” that skew temperature calibrations (Weiner and Dove, 2003; Huyghe et al., 2022). They therefore have the potential to record environmental changes at a seasonal resolution. This is a higher temporal resolution than can be obtained from e.g. deep-sea benthic oxygen isotope curves (Westerhold et al., 2020), and resolving seasonality changes of the past is vital to our understanding of modern climate change: Climate models predict an
50 enhanced seasonal contrast in both temperature and precipitation (Seneviratne et al., 2021). Short-term events such as heatwaves and extreme precipitation have already been observed to have increased in frequency and are predicted to become even more common in the future (Seneviratne et al., 2021).

The tellinid bivalve genus *Angulus* has not previously been studied for the purpose of climate reconstruction, but it holds the potential to be a valuable climate archive. Seasonality studies have previously been carried out successfully on other tellinids,
55 such as *Donax variabilis* (Jones et al., 2005) and *Donax obesulus* (Warner et al., 2022). Here, we study a representative subspecies of this genus, *Angulus benedeni benedeni* (Nyst and Westendorp, 1839), in order to assess its suitability as a climate archive. This subspecies is the final taxon of an endemic North Sea Basin lineage that occurred from the late Oligocene to the late Pliocene (Marquet, 2004, 2005). The lineage therefore spans several major climatic events such as the Oligocene/Miocene transition, the Middle Miocene Climatic Optimum, and the mid-Piacenzian Warm Period (mPWP: Westerhold et al., 2020).
60 The generic attribution of the lineage of *A. benedeni benedeni* is still the subject of research; it may be more appropriately referred to *Tellina*. The investigated specimens either originate from the mPWP (3.264-3.025 Ma; Dowsett et al., 2010) of the Southern North Sea Basin, Belgium, or slightly post-date this period. During the mPWP, global average temperatures were 2-4°C higher than today (Haywood and Valdes, 2004; Dowsett et al., 2012; Haywood et al., 2020) and atmospheric CO₂ concentrations were 340-380 ppm (Pagani et al., 2010; de la Vega et al., 2020) While current atmospheric CO₂ concentrations
65 have already exceeded 400 ppm (Monastersky, 2013), mPWP temperatures are similar to what has been predicted for moderate IPCC pathways in 2100 (IPCC, 2021).

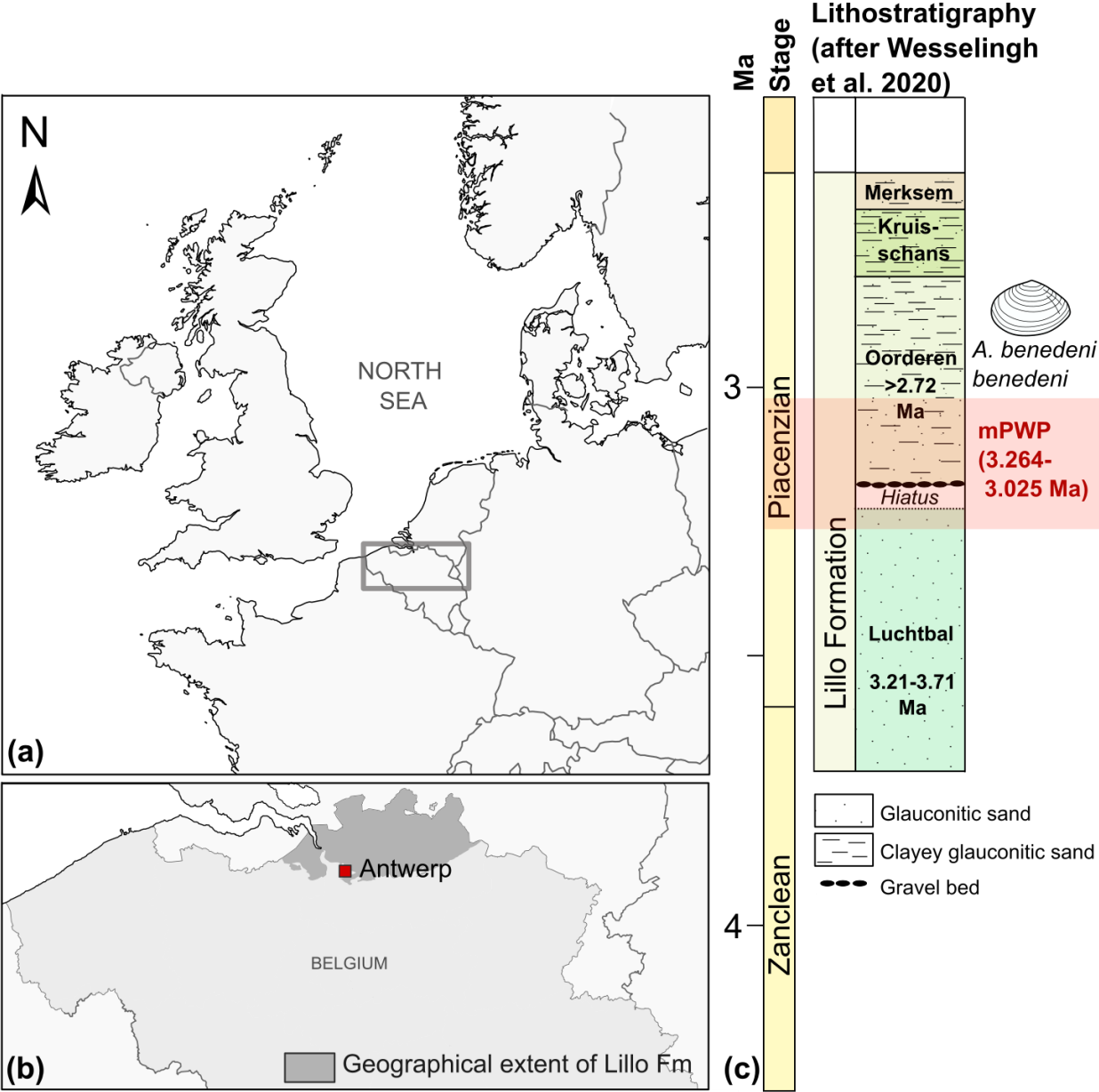
In order to extract seasonal temperature records from a bivalve shell, a high growth rate and a lifespan of several years are required. This facilitates sampling multiple datapoints per year over multiple seasons. Meeting this requirement in *A. benedeni benedeni* was achieved through oxygen isotope analysis of shells sampled at mm-resolution. Subsequent temperature
70 reconstruction was carried out through carbonate clumped isotope analysis in conjunction with oxygen isotope analysis. Clumped isotope analysis allows for temperature reconstructions without knowledge of the oxygen composition of the seawater ($\delta^{18}\text{O}_{\text{sw}}$), which is required for the more traditional palaeothermometer based only on $\delta^{18}\text{O}$ of carbonates ($\delta^{18}\text{O}_{\text{c}}$) (Ghosh et al., 2006; Schauble et al., 2006). This independence from $\delta^{18}\text{O}_{\text{sw}}$ is important in estimating temperature for the mPWP, as the size of the ice sheets—which store light ^{16}O and thus drive up the $\delta^{18}\text{O}$ of the oceans—is poorly constrained for

75 this period (Dowsett et al., 2016). It is also relevant for the shallow-marine waters in which bivalves often live, as the $\delta^{18}\text{O}_{\text{sw}}$ can be influenced by changing influxes of isotopically light river water (Schöne et al., 2004; Chauvaud et al., 2005; Johnson et al., 2009). For both high-resolution sampling and stable isotope analysis, preservation is key. Stable isotope-based temperature reconstructions necessitate the preservation of the original isotopic signal. Therefore, we applied a range of methods for analysing shell mineralogy, microstructure and chemical composition to assess how best to screen for shell preservation in *Angulus*. In addition to screening for widespread diagenetic alteration using micro-X-ray fluorescence (XRF) and X-ray diffraction (XRD), a detailed study on potential diagenetic alteration of *A. benedeni benedeni*'s shell was carried out using electron backscatter diffraction (EBSD). This method has as an additional advantage that it provides an overview of the shell's microstructures. Our results show that *A. benedeni benedeni*'s shell records well-preserved multiannual records that can be sampled at a seasonal scale, making this subspecies a promising candidate for further palaeoclimatic study.

85 2 Geological setting

Three specimens of *Angulus benedeni benedeni* (SG-125, SG-126, and SG-127) were obtained from the Pliocene sequence of Belgium in the Southern North Sea Basin. During this period, the North Sea Basin was only open to the Atlantic Ocean on the north side. Modern-day France and England were connected by the Weald-Arrtois land bridge to the south (Gibbard and Lewin, 2016). Proxy data indicate strong warming in the North Atlantic region during the mid-Piacenzian, with global mean sea-surface temperature (SST) anomalies of up to +4-7°C instead of the global +2-4°C (Dowsett et al., 2012, 2013). The specimens were collected in 2013 from a shell bed near the top of Oorderen Member of the Pliocene Lillo Formation. The exact location was the temporary outcrop for the construction of the Deurganck Dock Lock (Deurganckdoksluis), now Kieldrecht Lock (Kieldrechtsluis); 51°16'44"N 4°14'52"E, in the port of Antwerp area (Fig. 1a, b). Photos of the collecting locality with an in-situ specimen of *A. benedeni benedeni* can be found in Deckers et al. (2020)'s Fig. 6. The marine Lillo Formation (De Meuter and Laga, 1976) was deposited during the late Zanclean to the Piacenzian (ca. 3.7-2.6 Ma) in the Southern North Sea Basin (Fig. 1c). The Oorderen Member is an unconsolidated, greyish fine-grained shell-rich unit containing numerous mollusc shells. Its burial depth likely did not exceed 100 meter (Johnson et al., 2022). *Angulus benedeni benedeni* is common in upper bioturbated clayey interval. The Oorderen Member was deposited in a neritic environment (Louwey et al., 2004; De Schepper et al., 2009). Marquet (2004) estimated a water depth of 35-45 m based on bivalve depth ranges, but did not differentiate between the lower sandy (*Atrina* and *Cultellus*) and the upper clayey (*benedeni*) levels, which all differ in their lithology and sedimentary structures. Gaemers (1975) estimated a minimum depth of 10-20 m for the Oorderen Member, based on molluscs, otoliths, and sedimentary structures. The upper clayey level must have had the shallowest paleodepth at time of deposition. The Oorderen Member has previously been interpreted as having been deposited during the mPWP (Louwey and De Schepper, 2010; Valentine et al., 2011), defined as the interval from 3.264 to 3.025 Ma by Dowsett et al. (2010). However, despite ongoing efforts it remains complex to date these proximal sandy deposits. There are few reliable biostratigraphic dates available. Based on these, the Oorderen is older than 2.72 Myr, but younger than 3.21 Myr (De Schepper et al., 2009;

Vervoenen et al., 2014; Wesselingh et al., 2020). These sparse age constraints do not exclude a slightly younger age for the top of the Oorderen Member from which the shells were collected (Fig. 1c).



110 Figure 1: Location of the modern North Sea basin and the stratigraphic level from which the *A. benedeni benedeni* specimens
 115 originated. (a) Overview map of the location of Belgium and the present-day extent of the North Sea within northwest Europe. The
 dark rectangle indicates the location of map (b). Adapted after Louwye et al. (2020). (b) The geographical extent of the Lillo
 Formation in Belgium, after Louwye et al. (2020), and the location of the city of Antwerp. (c) Lithological column of the Lillo
 Formation and its members with their chronostratigraphic position, after Wesselingh et al. (2020). The Oorderen is drawn here in
 its longest possible range of deposition, bound by the age of the underlying Luchtbal Member (<3.21 Ma) and biostratigraphic
 constraints within the Oorderen itself (>2.72 Ma). Age boundaries for the mPWP are taken from Dowsett et al. (2010).

3 Methods

3.1 Light microscopy

Light microscopy was employed on all specimens to analyse the macrostructures of *A. benedeni benedeni*'s shell and to count growth increments. Two specimens (SG-126, SG-127) were partially or fully embedded in Araldite 2020 epoxy and high-polish thick (approximately 5 mm) sections were made, with a final polish using 0.3 μm aluminium oxide. These thick sections were viewed under a Keyence VHX-5000 digital microscope at x250 and x1000 magnification. Light microscopy composite images were made with the Fiji stitching ImageJ plugin (Preibisch et al., 2009). These composites were used to count the growth increments. The macrostructural layers were identified and named following Bieler et al. (2014), where M+ and M- denote layers external and internal relative to the pallial myostracum (M) (Fig. 2). The equivalent of these labels to another common naming scheme (Popov, 1986; Milano et al., 2017) is shown in Fig. 2d.

3.2 X-ray diffraction

To check for diagenetic remineralization of original aragonite into secondary calcite, powder X-ray diffraction (XRD) analysis of a representative section of one *A. benedeni benedeni* specimen (SG-125) was carried out on a Bruker D8 Advance diffractometer at Utrecht University. The *A. benedeni benedeni* pattern was compared to XRD spectra of pure aragonite and calcite samples. The calcite spectrum was recovered from the RRUFF database (Lafuente et al., 2015; RRUFF ID: R040070). For the pure aragonite spectrum, 1.12 g of shell from a modern common cockle (*Cerastoderma edule*) collected at the North Sea coast near Hoek van Holland (51°59'14" N, 4°05'56" E) was prepared and measured under the same conditions as the fossil samples. Further measurement details are found in appendix A1/Table A1. XRD spectra of specimen SG-125 as well as the *C. edule* aragonite spectrum are available in the supplementary materials (see data availability).

3.3 Micro-X-ray fluorescence

For additional screening of diagenetic alteration, concentrations of major and trace elements (including Fe, Mn and Sr) in the three specimens of *A. benedeni benedeni* (SG-125, SG-126, SG-127) were determined using non-destructive, energy-dispersive micro-X-ray fluorescence (μXRF) analysis. A benchtop Bruker M4 Tornado μXRF scanner was used for this, available at the Analytical, Environmental, and Geochemistry Research Group (AMGC) of the Vrije Universiteit Brussel (Brussels, Belgium). On-line calibration (initial quantification) of the spectra was done with the matrix-matched standard BAS-CRM393 (Bureau of Analyzed Samples, Middlesbrough, UK) in the M4 software (de Winter et al., 2017b). Following this, an off-line calibration was carried out using a set of matrix-matched carbonate standards (Vellekoop et al., 2022). Further details are found in appendix A2. Several line scans were made per shell, after which elemental concentrations were calculated for the entire shell. All major and trace element data can be found in the supplementary materials (see data availability).

3.4 Electron backscatter diffraction

To map potential early diagenesis that was not detected in bulk XRD or μ XRF analysis, as well as to determine which microstructures are present in *A. benedeni benedeni*, electron backscatter diffraction (EBSD) was carried out on thin sections (ca. 40 μ m) of all three specimens. EBSD involves the diffraction of electrons, generated by a SEM-based electron beam, off the crystal planes of a sample, forming a diffraction pattern related to the crystal lattice parameters. This allows for the precise determination of crystal orientation, shape, and size (Cusack, 2016). EBSD analysis was carried out using an Oxford Instruments Symmetry EBSD detector attached to a Zeiss Gemini 450 SEM at Utrecht University. Thin sections of the samples were mechanically polished with 0.3 μ m aluminium oxide suspension and finished with chemical Syton® polish. The thin sections were covered with a thin (several nm) carbon coating to keep charge build-up during the measurements at a minimum. Beam and map acquisition settings (voltage, beam current, dwell time, step size, high/low vacuum) were varied to obtain the optimal results for each map; the acquisition settings for the map shown here are indicated in Fig. 5. Data processing was done in the Oxford Instruments AZtecCrystal software. Data clean-up consisted of wild spike removal followed by filling in unclassified areas using an iterative nearest neighbour procedure from eight down to six nearest neighbours. The raw data of this map, as well as additional maps that are not presented here, can be found in the supplementary materials (see data availability). The grain boundary threshold was set to 10°. Contoured pole figures were plotted to visualise the main crystallite orientations (Fig. 5f). For these pole figures, multiple-of-uniform-density (MUD) values were calculated. The MUD value is an indication of the degree of clustering of the poles relative to a random distribution: the higher the MUD, the stronger the co-orientation (or preferred orientation) of the crystals.

3.5 Stable isotope analysis

3.5.1 Sample preparation

Samples of approximately 100-300 μ g each were taken from the outer surface of two specimens (SG-126 and SG-127) by drilling into it from the exterior along commarginal paths. Specimen SG-125 was not sampled for isotope analysis as there was too little material left following XRD analysis. A Dremel hand-held drill was used, which was equipped with a tungsten carbide drill bit of 0.8 mm diameter (Fig. B1). During sampling, care was taken not to drill too deep, as this would lead to mixing of material from different shell layers that was precipitated at different points in time (Fig. B2, see also section 4.1.1). The distance from the umbo to the sample track at the axis of maximum growth was measured in planar view with digital callipers (Fig. B1, Table B1). The entire shell height of specimen SG-126 was sampled (Fig. B1 a). A total of 55 samples was taken from specimen SG-126 and a total of 30 samples was taken from specimen SG-127 (Fig. B1 b). The sampling resolution was 0.10 to 1.07 mm (mean: 0.48 mm, 1 σ : 0.24 mm; no significant difference between the two specimens, $p > 0.05$). Samples were not homogenized prior to analysing.

For stable isotope analysis, multiple measurements were carried out on material from each drilled path. For clarity, the following terminology is used: One ‘sample’ refers to the total powder amount that was drilled in one sample track, which

runs parallel to the growth increments. One sample therefore represents a certain amount of time. One ‘aliquot’ represents a small amount of powder taken from a ‘sample’ which was then analysed for stable isotopes. One ‘measurement’ refers to the measurement of one such aliquot. Multiple measurements were taken from a single sample. ‘Replicates’ and ‘duplicates’ refer to different aliquots taken from the same sample.

3.5.2 Oxygen isotope mass spectrometry

Drilled samples from specimen SG-126 were first analysed for carbonate oxygen isotopes ($\delta^{18}\text{O}_\text{c}$) on a Thermo Scientific GasBench II gas preparation system coupled to a Thermo Scientific Delta V isotope ratio mass spectrometer. 50-100 μg of powdered material was weighed for each sample and standard. Two in-house standards, Naxos marble and Kiel carbonate, were used. Their accepted values are given in Table B2. Each sample was flushed with helium for 5 minutes to remove atmospheric air. The samples were reacted with 103% phosphoric acid at 70°C. A Naxos standard was measured approximately every ten samples during the run. From the bivalve samples, every tenth sample was weighed in duplicate. These duplicates were measured at the end of the run. The carbon isotope data ($\delta^{13}\text{C}_\text{c}$) are reported here only when it is relevant for the reproducibility of the analyses. All stable isotope data from GasBench analyses can be found in the supplementary materials (see data availability). Sample $\delta^{18}\text{O}_\text{c}$ data were corrected for intensity-dependent fractionation using a linear regression between $\delta^{18}\text{O}_\text{NAXOS}$ and mass 44 intensity (Fig. B3). Standard deviations and uncertainties were calculated after this correction was carried out. No significant change in the Naxos standard values over time (also called “drift”) was observed during the measurement. The $\delta^{18}\text{O}_\text{c}$ and $\delta^{13}\text{C}_\text{c}$ data are reported relative to VPDB. The internal standard deviation of conventional stable isotope analyses was 0.04‰ (1 σ) for $\delta^{13}\text{C}$ and 0.06‰ (1 σ) for $\delta^{18}\text{O}_\text{c}$ (averaged over all measurements, N=64). External reproducibility was 0.05‰ for $\delta^{13}\text{C}$ and 0.07‰ for $\delta^{18}\text{O}_\text{c}$ based on repeated measurements of the Naxos standard (N=11). The Kiel carbonate standard showed external reproducibility of 0.09‰ for $\delta^{13}\text{C}$ and 0.06‰ for $\delta^{18}\text{O}_\text{c}$ (N=4).

3.5.3 Clumped isotope mass spectrometry

Clumped isotope analysis on carbonate involves analysing the abundance of ^{18}O - ^{13}C bonds. The deviation of the occurrence of these heavy ^{18}O - ^{13}C bonds from the expected stochastic distribution is thermodynamically determined and thus independent of the isotopic composition of oxygen of the seawater ($\delta^{18}\text{O}_\text{sw}$) and carbon of the DIC ($\delta^{13}\text{C}$) (Ghosh et al., 2006; Schauble et al., 2006). This ^{18}O - ^{13}C deviation is termed Δ_{47} . Clumped isotope values (Δ_{47}) were analysed using a Kiel IV carbonate device coupled to a Thermo Scientific MAT 253 Plus isotope ratio mass spectrometer (available at Utrecht University) with a LIDI workflow (Hu et al., 2014; Müller et al., 2017) and following the protocol described by Meckler et al. (2014). For specimen SG-126, analysis was focussed on samples with $\delta^{18}\text{O}_\text{c}$ values in the ranges 2.0-3.3‰ (close to the maximum) and 0.4-1.2‰ (close to the minimum), based on the previously measured aliquots (sect. 3.5.2). From specimen SG-127, all samples were analysed. 75-95 μg of powdered material was weighed out. Carbonate standards of similar weight were measured in an approximately one-to-one ratio to the standards in each run (22 samples, 24 standards; Kocken et al., 2019). ETH-3 was measured more often as it is closest in composition to the samples (Kocken et al., 2019). These standards were two control

standards—Merck CaCO_3 (synthetic; product code 1.02059.0050) and IAEA-C2 (Bavarian travertine)—as well as ETH-1, ETH-2, and ETH-3 (Bernasconi et al., 2018, 2021). Their composition is given in Table B2. The ETH standards, which have varying Δ_{47} , $\delta^{18}\text{O}_c$, and $\delta^{13}\text{C}$ compositions, were used to transfer the sample Δ_{47} values to the ICDES-90 reference frame (Bernasconi et al., 2021). Merck and IAEA-C2 were not involved in data processing (treated as samples), but used to assess long-term measuring uncertainty.

Carbonates were reacted with 105% phosphoric acid at 70°C. The produced CO_2 gas was purified through two cryogenic traps (-170°C) and a Porapak trap (-50°C). It then entered the mass spectrometer and masses 44-49 were measured against a reference gas ($\delta^{18}\text{O} = -4.67\text{‰}$, $\delta^{13}\text{C} = -2.82\text{‰}$). To correct for negative intensity baseline in the Faraday cups of the mass spectrometer, we performed scans of the shape of the mass spectrometry peaks using reference gas measurements before each run. The baseline on masses 47, 48 and 49 was identified and corrected by regressing the size of the negative intensity outside the peak against intensity of mass 44 (He et al., 2012). The calculated δ values were then corrected for ^{17}O using the values presented in Brand et al. (2010). The Δ_{47} values were calculated and averaged over the 40 pulses as per the LIDI system. Correction of raw Δ_{47} values to I-CDES values (Bernasconi et al., 2021) was done in two steps. Initially all measurements are corrected using bracketing ETH-3 measurements in order to correct for variability during single runs (i.e., over the span of several hours). The offset of these bracketing ETH-3 raw Δ_{47} values from their I-CDES values is added to the samples. In a second step an empirical transfer function (ETF) was constructed by regressing the raw ETH-1, ETH-2, and ETH-3 values over their accepted Δ_{47} values and using the resulting linear regression line to transfer the sample Δ_{47} values to the I-CDES90°C reference frame (Fig. B4). For the ETF, 403 ETH standards from multiple runs measured over the span of two months were used for linear regression (53 ETH-1, 64 ETH-2, 286 ETH-3; Fig. B5).

The $\delta^{18}\text{O}_c$ and $\delta^{13}\text{C}$ data of the same measurements were corrected through a 15-point running average based on the ETH standards, in order to eliminate long-term trends present within the $\delta^{18}\text{O}_c$ and $\delta^{13}\text{C}$ raw data. The $\delta^{18}\text{O}_c$ and $\delta^{13}\text{C}$ data from three runs were not used for the running average correction nor were they used in the $\delta^{18}\text{O}_c$ records of *A. benedeni benedeni*. These runs show large deviations from expected values and exhibit a strong correlation between $\delta^{18}\text{O}_c$ and $\delta^{13}\text{C}$ (runs 466, 468, 489; these runs are marked in Fig. B5). It seems that mass-dependent fractionation occurred during the gas preparation. The Δ_{47} results appear not to have been influenced by this fractionation as is evidenced by the measured standards, which show no systematic Δ_{47} offset (Fig. B5). Inclusion of Δ_{47} values from these runs did not significantly alter the temperature reconstructions beyond decreasing the confidence level on the results. Final $\delta^{18}\text{O}_c$ and $\delta^{13}\text{C}$ values were reported relative to VPDB. Samples that showed a strong drift during the 40 LIDI measurement pulses, had a low intensity, a high standard deviation, or showed signs of contamination, were deemed unreliable and were removed from the dataset. The intensity cut-off was <9.0 V. The cut-off for standard deviations in Δ_{47} data within the 40 measurement pulses was >0.10‰ for both standards and samples. Contamination evident from increased intensity on the mass 49 cup was quantified using the 49 parameter—the ratio between mass 49 and mass 44 intensities—and a cut-off of >0.1 ‰ was used for standards, and >0.2 ‰ for samples. All standards used for correction, as well as the IAEA-C2 and Merck values and the samples, can be found in the supplementary materials (see data availability). After removing erroneous samples, 103 sample measurements remained. The

external reproducibility for the clumped isotope analyses was 38 ppm for IAEA-C2 (n=23) and 60 ppm for Merck (n=15). The
245 external reproducibility of IAEA-C2 was used as the standard deviation on Δ_{47} for the samples, as it is closer in composition
to the samples than Merck (Fig. B5). After corrections, most of the Δ_{47} data ranged between 0.55 and 0.70‰ for both
specimens.

For oxygen isotopes, the external reproducibility of the standards does not reflect the reproducibility of the samples based on
duplicate measurements. The samples from each sampling track were not homogeneous, as they likely contain multiple thin
250 growth increments and were not homogenised after drilling. Therefore, different aliquots from the same sample sometimes
resulted in considerable differences when measured, in both the GasBench and the MAT 253 PLUS analyses. Instead of using
the external reproducibility on the Naxos standard, the uncertainty on the shell data was determined as follows: for each sample
of which replicates were analysed, the standard deviation of these replicates results was taken, and all these standard deviations
were averaged. To this goal, $\delta^{18}\text{O}_e$ data from GasBench and MAT 253 PLUS analyses were combined. This resulted in an
255 uncertainty of 0.15‰ for SG-126 (N=28 replicates). There were not enough duplicate $\delta^{18}\text{O}_e$ measurements for SG-127, so the
value of 0.15‰ was also applied to this specimen.

3.6 Palaeotemperature reconstruction

All Δ_{47} values were compiled and converted to a mean annual temperature (MAT) using the temperature transfer function of
Meinicke et al. (2020, 2021):

260

$$\Delta_{47}[\text{‰ ICDES}_{90^\circ\text{C}}] = 0.0397 \pm 0.0011 * 10^6 * T^{-2}[\text{K}] + 0.1518 \pm 0.0128 \quad (1)$$

This temperature transfer function is based on foraminifera and therefore more suited to the low temperature range in which
bivalves live. Recently, it was shown that this clumped isotope thermometer yields the most accurate temperature
265 reconstructions in aragonitic bivalves (de Winter et al., 2022). Since the temperature function for Δ_{47} is not linear, errors
associated with the Δ_{47} data were propagated using a Monte Carlo simulation ($N = 10^5$) of uncertainty in slope and intercept
of the temperature transfer function as well as measurement uncertainty on Δ_{47} values assuming a normal uncertainty
distribution. The standard deviation, standard error, and 95% confidence level were then calculated from this normally
distributed simulated temperature dataset. All calculations can be found in the supplementary materials (see code availability).
270 Uncertainties on temperatures were calculated after temperature conversion. Since the temperature transfer function for
clumped isotopes is not linear, this introduces a bias, specifically towards warmer temperatures. The temperature means were
therefore calculated from averaging the Δ_{47} values instead, and the Monte Carlo-generated errors were transferred to these
mean temperatures.

The $\delta^{18}\text{O}$ of the seawater ($\delta^{18}\text{O}_{\text{sw}}$) was calculated from Δ_{47} -based MAT and $\delta^{18}\text{O}_e$ data using the temperature transfer function
275 for aragonite of Grossman and Ku (1986), modified by Dettman et al. (1999):

$$\delta^{18}O_{sw} [\text{‰VSMOW}] = \delta^{18}O_c [\text{‰VPDB}] - \frac{20.6 - T[^\circ\text{C}]}{4.34} + 0.2 \quad (2)$$

This average $\delta^{18}O_{sw}$, the Δ_{47} -based MAT, and minimum and maximum $\delta^{18}O_c$ values were then re-inserted into this equation to obtain $\delta^{18}O_c$ -based summer and winter temperatures.

3.7 Growth models

To gain insights into the nature of the growth of *A. benedeni benedeni*, two types of growth models were fitted to the growth data of specimen SG-126: The Von Bertalanffy growth function (VBGF), a logarithmic model, and the Gompertz equation, a logistic model. Both are widely used for estimating and analysing growth in modern species (Lee et al., 2020). The built-in `nls()` function in R (R Core Team, 2021) was used to fit the data to both growth functions (see code availability). The VBGF and the Gompertz equations are restrictive in terms of how much their shape can change, and more sophisticated approaches are available today (Lee et al., 2020). However, as this study has only one specimen available for growth model fitting, and since it concerns a fossil species, we believe that this simple approach is appropriate. The VBGF has the form of Eq. 3, where H is the body size of the specimen at time t (here: shell height measured as distance from umbo), H_{asympt} is the asymptotic height (i.e., the theoretical maximum shell height), k is the growth coefficient, t is the time (here: in years), and t_0 is the theoretical time where H equals 0.

$$H(t) = H_{asympt}(1 - e^{-k(t-t_0)}) \quad (3)$$

The Gompertz equation has the form of Eq. 4:

$$H(t) = H_{asympt}e^{-be^{-ct}} \quad (4)$$

where H is again the shell height at time t , H_{asympt} is the theoretical maximum shell height, and b and c are coefficients. Each parameter, its associated standard error (SE), and p-value were calculated.

4 Results

4.1 Light microscopy

4.1.1 Structural analysis

Angulus benedeni benedeni shells consist of 4 layers, M+2 to M-2 (Fig. 2), labelled from the outer to the inner surface. M+2 and M+1 are located outside of the pallial myostracum and form the outer shell layers. M+2 is a thin (ca. 100 µm) white-to-grey coloured layer with crescent-shaped growth increments. M+1 is a ca. 200 µm thick layer (measured at the thickest point,

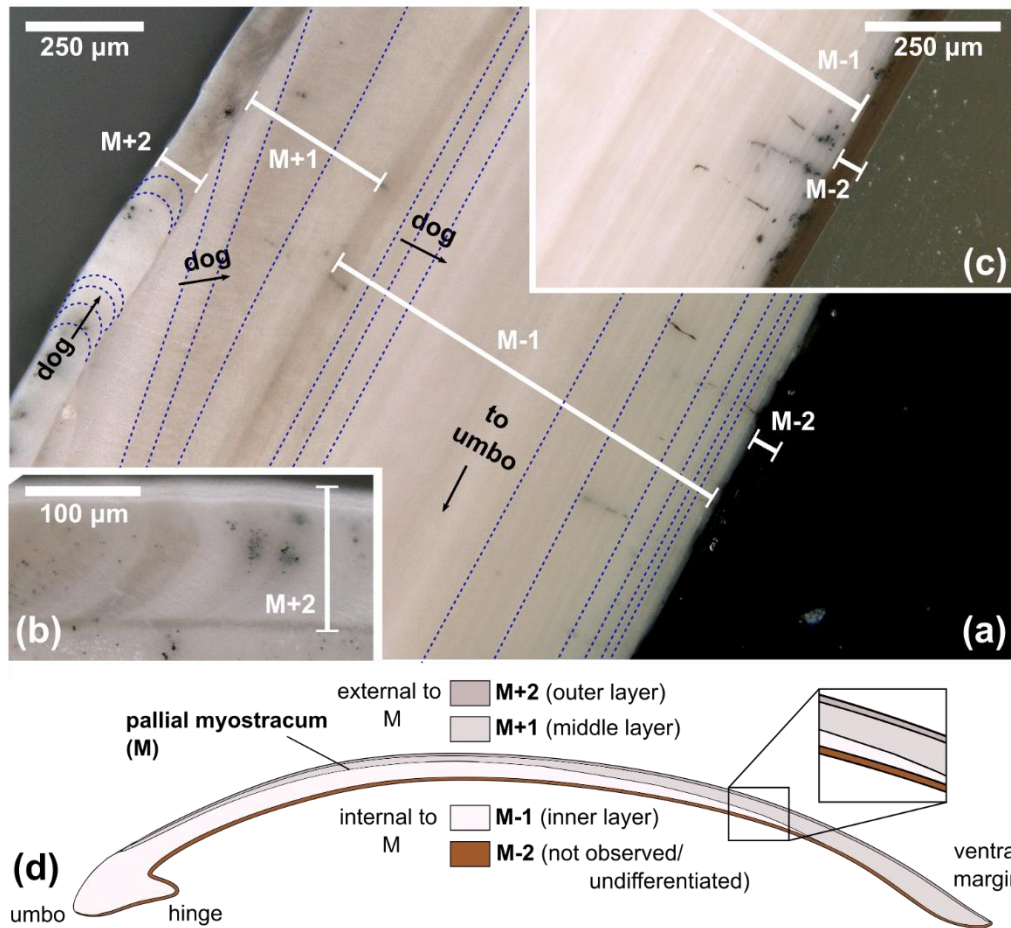


Figure 2: Digital microscopy images of shell layers in the *A. benedeni benedeni* shells. Layers are marked M+2 to M-2, growth increments are indicated with dark blue dotted lines, dog = direction of growth. (a) section of SG-127 indicating four layers, magnification of x250. From outer to inner shell, these are: layer M+2 with crescent-shaped growth increments; layer M+1 with low-angle growth increments and prism-like crystals parallel to the layer thickness; layer M-1 with horizontal, parallel growth increments; and layer M-2, dark brown with horizontal, parallel growth increments (difficult to see in image a due to a similar tone to the background). (b) section of SG-126 showing a part of layer M+2 in more detail, magnification of x500. (c) section of SG-126 showing a part of layer M-2 at a better contrast, magnification of x250. (d) schematic overview of the four shell layers and their positions relative to each other and the pallial myostracum (M). In brackets is the equivalent of the layer name in the terminology of Popov (1986, 2014).

halfway along the shell height) with low-angle growth increments and white-beige in colour. M-1 and M-2 are located inside of the pallial myostracum and form the inner shell layers. M-1 is a thick (ca. 1000 μm) layer with clear growth increments parallel to the layer boundaries and a white-beige colour. M-2 is a thin (ca. 50 μm) brown-coloured layer with horizontal, parallel growth increments similar to M-1.

320 4.1.2 Growth increments

In specimen SG-126, a maximum of 115 growth lines was counted in layer M-1 at the hinge (Fig. 3a, c). In specimen SG-127, a maximum of 130 growth lines was counted just ventral of the hinge (Fig. 3b, c), also in layer M-1. The growth lines were not all clearly visible, and in some areas in the shell, fewer growth lines could be discerned. As it was deemed easier to miss some growth lines due to the limited resolution than to overestimate the number, the microscope images with the maximum
325 counted number of growth lines are shown here. Although still an underestimate, these are thought to be the best estimate of the actual number of growth lines.

4.2 X-ray based analyses

X-ray diffraction analysis (XRD) and micro-X-ray fluorescence (μXRF) point analysis indicate that the aragonite in the shells of *A. benedeni benedeni* was not diagenetically altered. XRD analysis revealed that the shell of *A. benedeni benedeni* consists
330 of 100% original aragonite, as its spectrum is identical to that of pure aragonite (Fig. 4a). Micro-X-ray fluorescence (μXRF) point analysis supports this interpretation, as the specimen is high in Sr, while low in Fe and Mn (Fig. 4b). Higher concentrations of Fe and Mn and lower concentrations of Sr in fossil carbonates are generally associated with pore water interaction during diagenetic alteration (e.g., partial recrystallisation) of the carbonate (Brand and Veizer, 1980; Al-Aasm and Veizer, 1986; Hendry et al., 1995). The absence of high Fe and Mn concentrations and presence of high Sr suggests that this
335 process did not take place in these specimens.

4.3 Electron backscatter diffraction

4.3.1 Diagenesis assessment

Electron backscatter diffraction (EBSD) analysis shows no evidence of diagenetic alteration in the shells. In the EBSD maps, 0 to 0.2% of the area was initially classified as calcite. Upon inspection, these “calcite” grains are wild spikes that were
340 subsequently removed in the data clean-up (Fig. C1). There was no local secondary mineral growth visible in any map (e.g., Fig. 5b-e), which would have presented itself as larger crystals (“blocky calcite”) that do not follow the surrounding structures (Cusack, 2016; Casella et al., 2017). The pole figures show a clear preferred orientation (Fig. 5f), which is indicative of original growth structures (Casella et al., 2017).

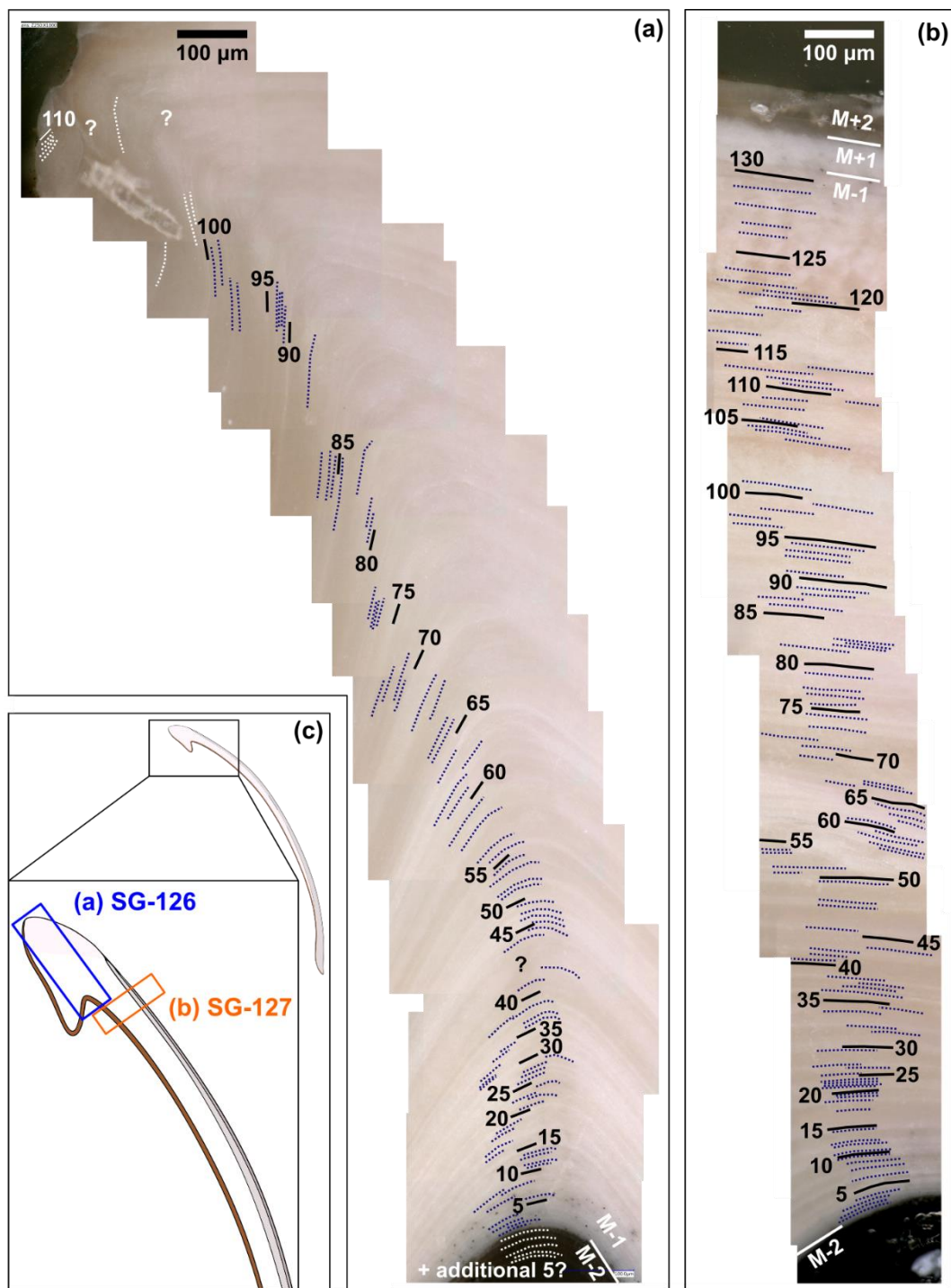
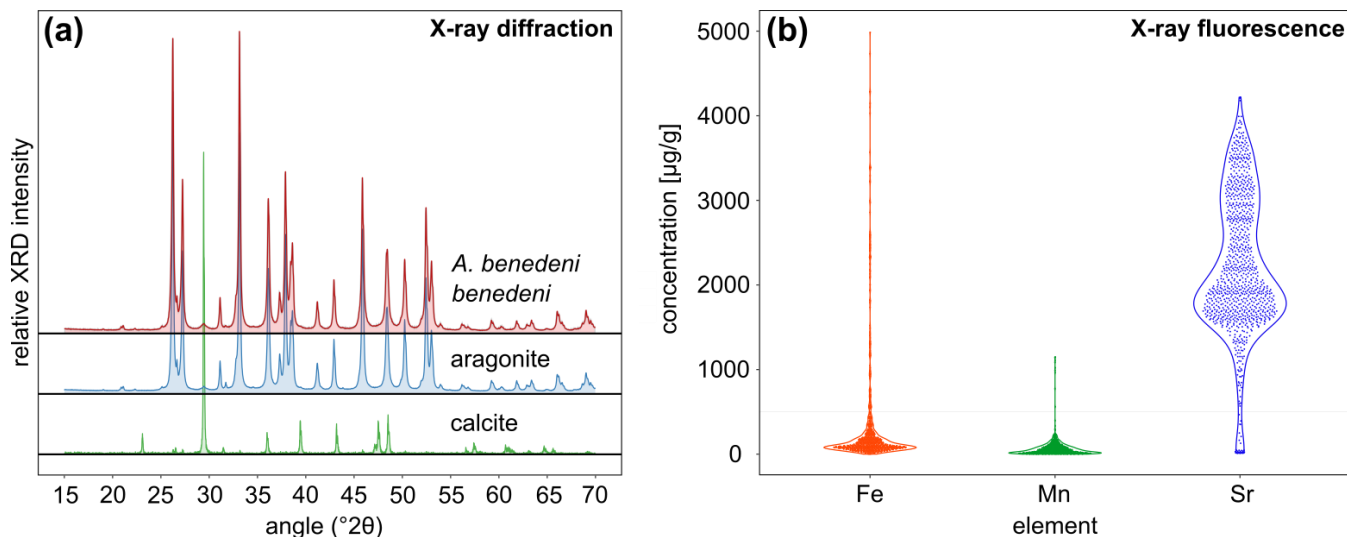


Figure 3: Growth lines in the *A. benedeni benedeni* specimens. (a) Counted growth lines in specimen SG-126, 115 in total. Counted in shell layer M-1. (b) Counted growth lines in specimen SG-127, 130 in total. Counted in layer M-1. (c) Schematic figure of the shell indicating where the growth lines were counted.



350 **Figure 4: X-ray based analysis results to assess diagenetic alteration in the specimens. (a) X-ray diffraction analysis of *A. benedeni benedeni* compared with patterns of pure aragonite and calcite, indicating an aragonitic composition of the shell. (b) Violin plot showing the results of the X-ray fluorescence analysis of *A. benedeni benedeni* for the elements Fe, Mn, and Sr. The “violin” shape depicts the kernel density function for the elemental concentration, plotted vertically and mirrored. The specimen is high in Sr, and shows a broad distribution within these higher values. While there are some datapoints with high Fe and Mn values, the distribution is strongly skewed towards low values, suggesting overall low Fe and Mn values.**
355

4.3.2 Grain size and orientation

The aragonitic shell material is fine grained and its crystals show a strong preferred orientation as well as twinning. Most grains have an area of a few μm^2 or smaller (Fig. 5g). Layer M-1 has a narrower grain size distribution than M+1 and M+2, with no grains larger than $25 \mu\text{m}^2$ present in the analysed section. The multiples-of-uniform-density (MUD) values indicate a strong preferred orientation (Fig. 5f). Layer M-1 has an increased MUD of 104.07 compared to ca. 40 for the other two layers, indicating a stronger preferred orientation (Fig. 5f). This is due to the strong preferred orientation of the 100 axis, while the 001 and 010 axes show a weaker preferred orientation compared to the other layers. The pole plots show double maxima of the 001 and 010 axes, which rotate around the 100 axes (M+2 and M+1, Fig. 5f). This is observed in layers M+2 and M+1. In layer M-1, the 001 and 010 axes form a girdle around the 100 axis rather than two distinct maxima (M-1, Fig. 5f). The rotational
365 100 axis is generally oriented parallel to the growth direction. This is especially evident from the lamellae in layer M-1 of Fig. 5b-e.

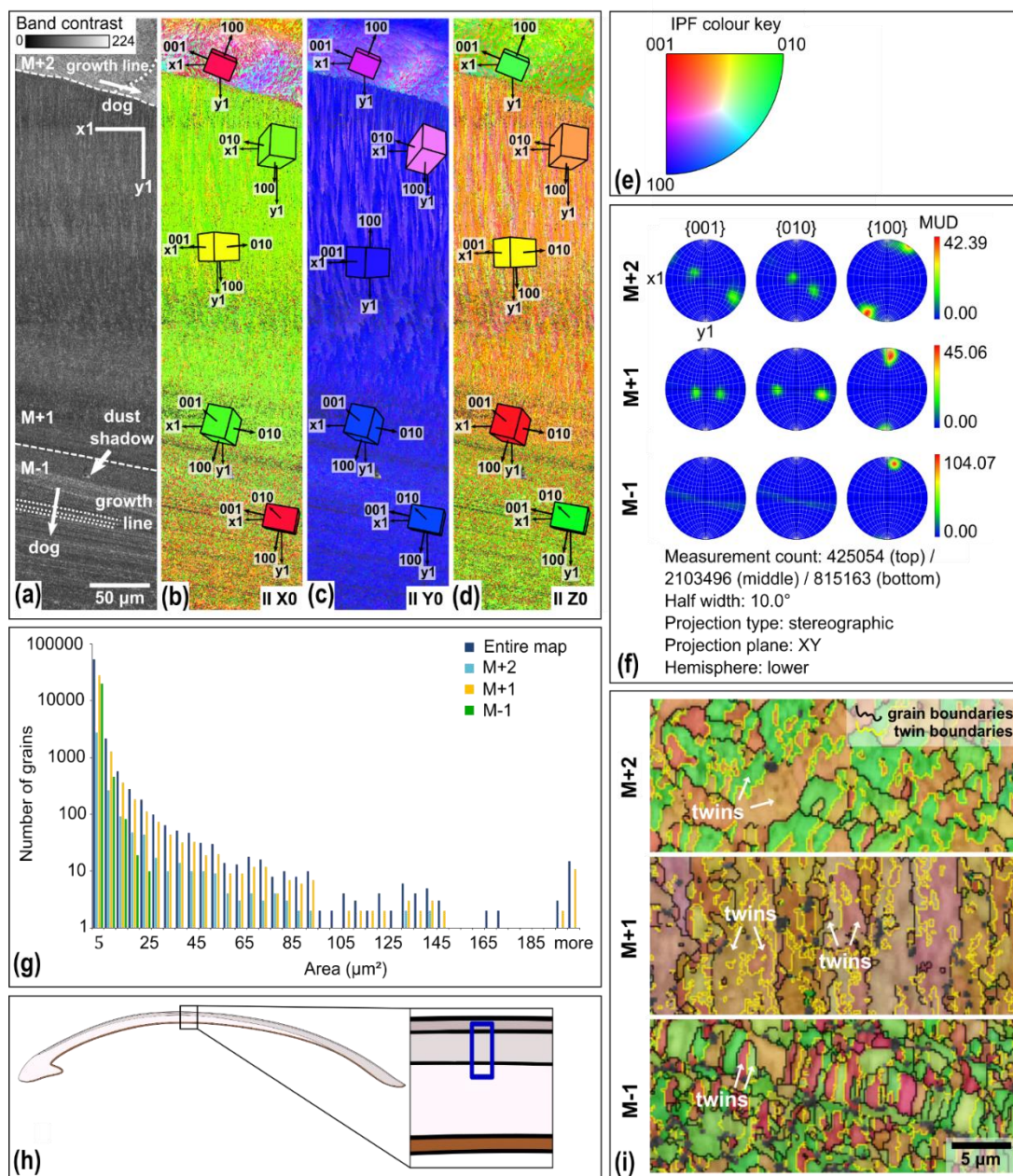


Figure 5: EBSD map of specimen SG-127. Map acquisition specifics: 20 kV, high vacuum, 0.2 μm step size. (a) Band contrast map with scale, orientation, growth lines, direction of growth (dog), and shell layers M+2, M+1, and M-1, separated by dashed lines. (b) EBSD IPF X map, showing grain orientations parallel to the X0 axis. Unit cells of aragonite with the most common orientations are shown, the colour of which corresponds to the colour coding of the map. (c) EBSD IPF Y map showing grain orientations parallel to the Y0 axis, with unit cells. (d) EBSD IPF Z map showing grain orientations parallel to the Z0 axis, with unit cells. (e) Inverse pole figure (IPF) colour key for the EBSD orientation maps. (f) Contoured pole figures for the three main crystallographic directions and the MUD, for the different shell layers. (g) Grain size distribution chart for the entire map and the different shell layers. Note the logarithmic y-axis. (h) Schematic figure indicating the approximate location of the map on the shell. (i) Shell layers from map IPF Z zoomed in and with added grain (black) and twinning (yellow) boundaries.

The angle of ca. 64° between the 001 and 010 axes is characteristic of aragonite polysynthetic (110) twinning (Griesshaber et al., 2013). Calculated twinning boundaries indicate that the two dominant orientations, as indicated by the IPF colour coding, in layers M+2 and M-1 represent twins (Fig. 5i). In layer M+1, the two dominant orientations that make up the lamellae are not a result of twinning. Instead, each of the two orientations (orange and purple) consists of their own set of twins (light and dark orange and purple, respectively; Fig. 5i).

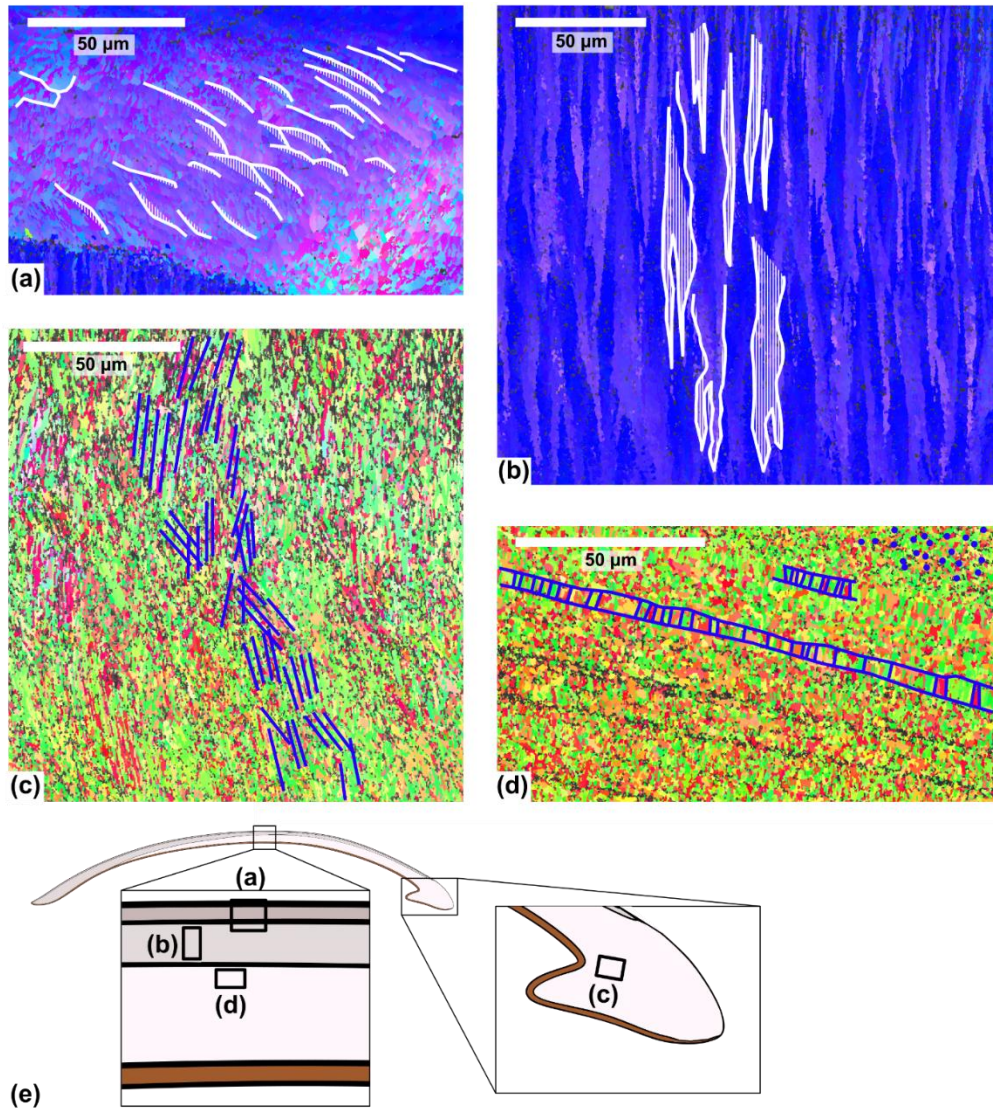


Figure 6: Different shell structures identified in the EBSD maps of specimen SG-127. (a) Compound composite prismatic structure in layer M+2. (b) Crossed lamellar structure in layer M+1. (c) Complex crossed lamellar structure in layer M-1 at the hinge of the shell. (d) Prismatic structure in layer M-1. There are also areas in this layer (e.g., top right in panel d) without a clear grain shape structure, which are interpreted as a homogeneous structure. (e) Schematic figure of the shell indicating the approximate location of the maps.

4.3.3 Microstructures

Within the EBSD maps, several different structures are observed (Fig. 6). Layer M+2 consists of a compound composite
390 prismatic structure, formed by bundles of crystals that diverge from the centre of the layer (Fig. 6a) (Popov, 2014). Layer M+1
consists of a crossed lamellar structure. This is indicated by two sets of crystal orientations that are oriented perpendicular to
the growth lines and that alternate and interfinger, similar to a zebra pattern (Fig. 6b) (Popov, 2014; Crippa et al., 2020). Layer
M-1 shows multiple structures. In the hinge region, a hatched pattern is visible (Fig. 6c), corresponding to a complex crossed
lamellar structure (Popov, 2014). In other parts of M-1, elongated, columnar crystals with their long side oriented parallel to
395 the growth direction are observed (Fig. 6d), indicative of a prismatic structure (Popov, 2014). Around this prismatic structure,
there are small grains with no clear preferred shape orientation (Fig. 6d). This has been interpreted as a homogenous structure
(Popov, 2014). However, it might also be a different structure that cannot be analysed at this resolution due to the fine-grained
nature of the aragonite. Layer M-2 was not captured on any EBSD map.

4.4 Stable isotope analysis

400 4.4.1 Oxygen isotopes

The $\delta^{18}\text{O}_c$ data of specimens reveal sinusoidal records that range between +0.3 and +3.3‰ (Fig. 7a, b) and suggest multi-
annual growth, with $\delta^{18}\text{O}_c$ peaks corresponding to winters and valleys corresponding to summers. Specimen SG-126 shows at
least 8-9 years of growth (Fig. 7a). The first and last years of this specimen may not have been recovered during sampling, as
the first and last few millimetres were not sampled. In addition, the sampling resolution was likely too coarse to capture all
405 years in the ontogenetically oldest section of the shell, as growth increments generally become thinner with age. In SG-126,
high $\delta^{18}\text{O}_c$ values generally correspond to darker bands and vice versa, which suggests that the dark-light couplets represent
the winter and summer seasons. The $\delta^{18}\text{O}_c$ variability decreases near the ventral margin of the shell. The sampled section of
SG-127 shows six cycles in $\delta^{18}\text{O}_c$ values (Fig. 7b). In contrast to SG-126, the relationship between $\delta^{18}\text{O}_c$ value and shell colour
is not consistent. There are many thin light and dark bands on SG-127, and samples likely contain material from both light and
410 dark bands (Fig. 7b; not all indicated on Fig. 7b as the exact location relative to the samples was not determined).

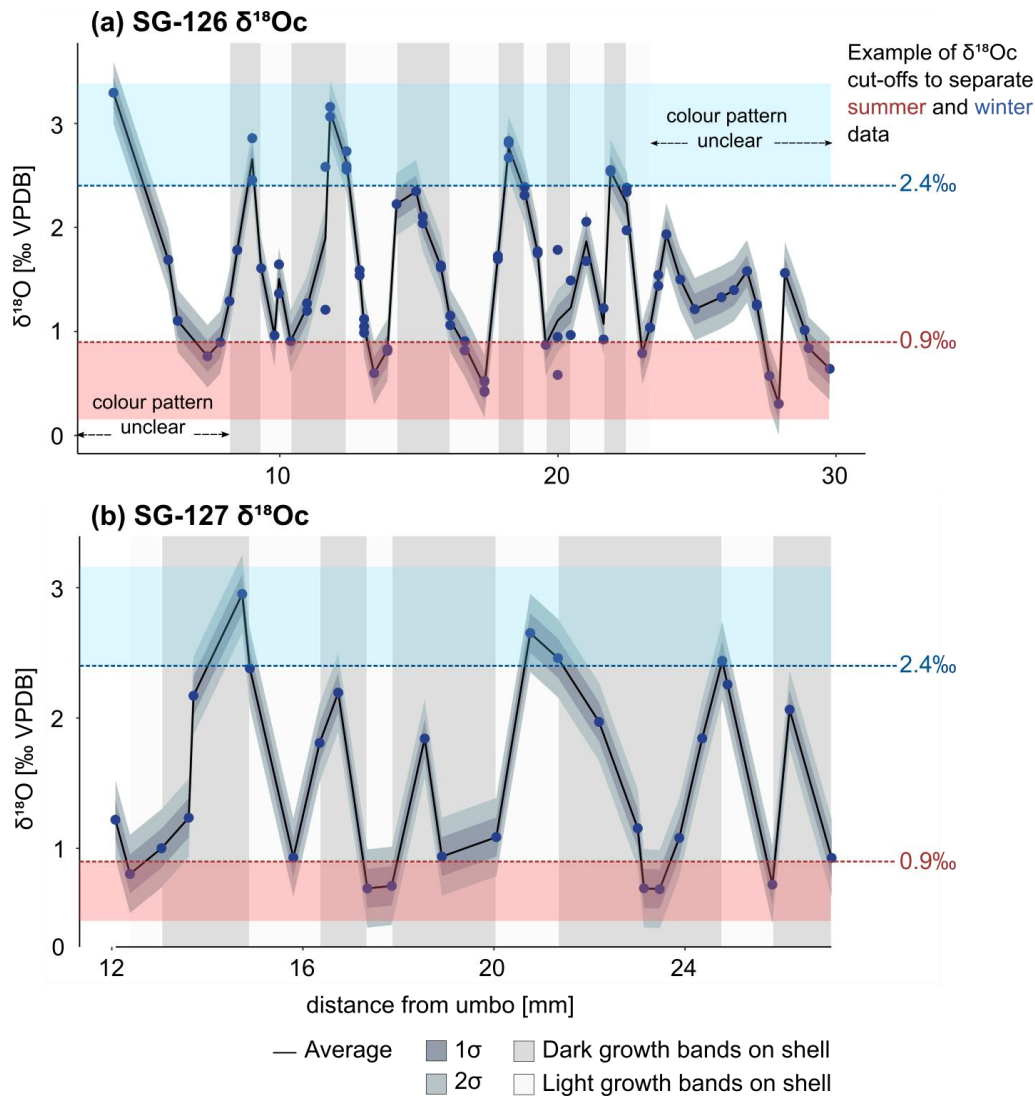


Figure 7: $\delta^{18}\text{O}_c$ records of the *A. benedeni benedeni* shells, plotted relative to the distance from the umbo. (a) Record of specimen SG-126, consisting of 55 samples each measured 1 to 3 times. (b) Record of specimen SG-127, consisting of 30 samples. The average was calculated from the different measurements of a single sample. If there was just one measurement, that value was taken. One and two standard deviations are plotted around the average. The standard deviation was calculated as described in sect. 4.4.1 (0.15‰). In the background, the approximate colour of the growth band on the outer surface of the shell is indicated (see also Fig. B1). The warm and cold $\delta^{18}\text{O}_c$ ‘bins’ are marked in red and blue bands. These bins encompass all datapoints below 0.9‰ and above 2.4‰. See also section 3.4.3 and Fig. 9. Raw data is plotted in Fig. B6.

4.4.2 Growth curves

A growth curve was reconstructed for the specimen SG-126 using the $\delta^{18}\text{O}_c$ record (Fig. 8a-b). This was not done for specimen SG-127 as only a small section of the entire shell was sampled. As there appear to be several smaller fluctuations in the $\delta^{18}\text{O}_c$ record, a ‘year’ was defined as a fluctuation that consists of 2 or more datapoints. This leaves out a small peak at 9.97 mm from the umbo, and a larger peak at 21.02 mm (Fig. 8). An alternative growth model that counts this larger peak as a year is

shown in Fig. B7. Figure 8 shows the fitted Von Bertalanffy and Gompertz growth models. For the Von Bertalanffy model, the parameters H_{asympt} , k , and t_0 were estimated to be 52.35 ± 7.64 SE ($p < 0.05$), 0.09 ± 0.02 SE ($p < 0.05$), and 0.03 ± 0.16 SE ($p > 0.05$) respectively. H_{asympt} is the estimated maximum shell height in millimetres that *A. benedeni benedeni* would have reached, ca. 52 mm. The interpretation of growth coefficient k is problematic, and besides having a large standard error and low confidence, t_0 is merely a mathematical artefact that does not have any biological meaning (Lee et al., 2020). For the Gompertz model, parameters H_{asympt} , b , and c were estimated to be 34.11 ± 1.98 SE ($p < 0.05$), 2.58 ± 0.14 SE ($p < 0.05$), and 0.29 ± 0.03 SE ($p < 0.05$), respectively. The Gompertz model thus suggests a shorter maximum shell height of 34.11 mm. The standard error on the residuals is 0.51 for the VBGF and 0.63 for the Gompertz equation. The R^2 value for both fits is 0.99, but as both functions are non-linear, this is not a reliable indicator of goodness-of-fit (Spiess and Neumeyer, 2010). This rather preliminary growth model fitting suggests a maximum size of *A. benedeni benedeni* of 34-52 mm.

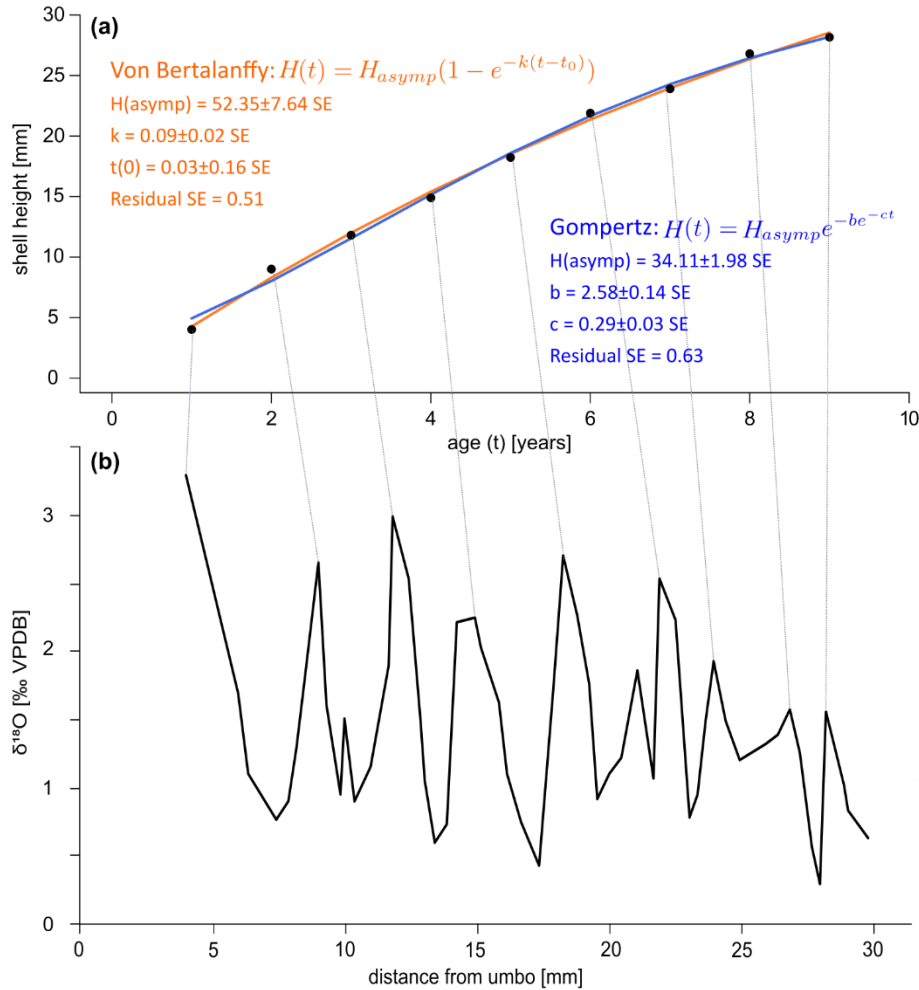


Figure 8: Growth curves for specimen SG-126. (a) Growth curves constructed by inserting the counted years versus distance-from-umbo datapoints into two different fitting algorithms: the asymptotic Von Bertalanffy growth function and the logistic Gompertz function. (b) $\delta^{18}O$ record with the inferred growth years marked by lines connecting to plot (a).

4.4.3 Δ_{47} and palaeotemperature

A mean annual temperature (MAT) of $13.5 \pm 3.8^\circ\text{C}$ has been calculated through averaging all Δ_{47} values and converting this average to a single temperature, with the 95%CL determined through Monte Carlo error propagation. Reliable Δ_{47} -based summer and winter temperatures could not be determined due to a limited amount of data. This issue is illustrated in Fig. 9.

440 To obtain summer and winter datasets, we selected samples with respectively low and high $\delta^{18}\text{O}_\text{c}$ values from both specimens, and subsequently averaged their associated Δ_{47} values (similar to the ‘optimization’ approach as discussed in de Winter et al., 2021). This grouping by $\delta^{18}\text{O}_\text{c}$ value is necessitated by the large uncertainty on individual Δ_{47} measurements, which means that Δ_{47} datapoints cannot be split into meaningful “warm” and “cold” groups directly. The choice of a cut-off value for warm and cold $\delta^{18}\text{O}_\text{c}$ values is a trade-off between signal and noise: a cut-off close to the average $\delta^{18}\text{O}_\text{c}$ value results in a higher

445 sample size and a narrower confidence interval for the resulting temperature reconstruction. However, this also results in averaging samples from a large part of the year and thus a dampening of the seasonality signal. For a cut-off that only includes the lowest and highest $\delta^{18}\text{O}_\text{c}$ values, the opposite is true. To determine whether there was an acceptable compromise between signal and noise, the average warm and cold Δ_{47} values and their associated 95% confidence levels were plotted for a range of $\delta^{18}\text{O}_\text{c}$ -based cut-offs (Fig. 9). Oxygen isotope data from both specimens were combined to improve the statistics. Combining

450 $\delta^{18}\text{O}_\text{c}$ and Δ_{47} data to reconstruct seasonality is the recommended strategy when a sampling resolution of 1 datapoint per month cannot be obtained, as was the case on the small shells of *A. benedeni benedeni* (Zhang and Petersen, 2023).

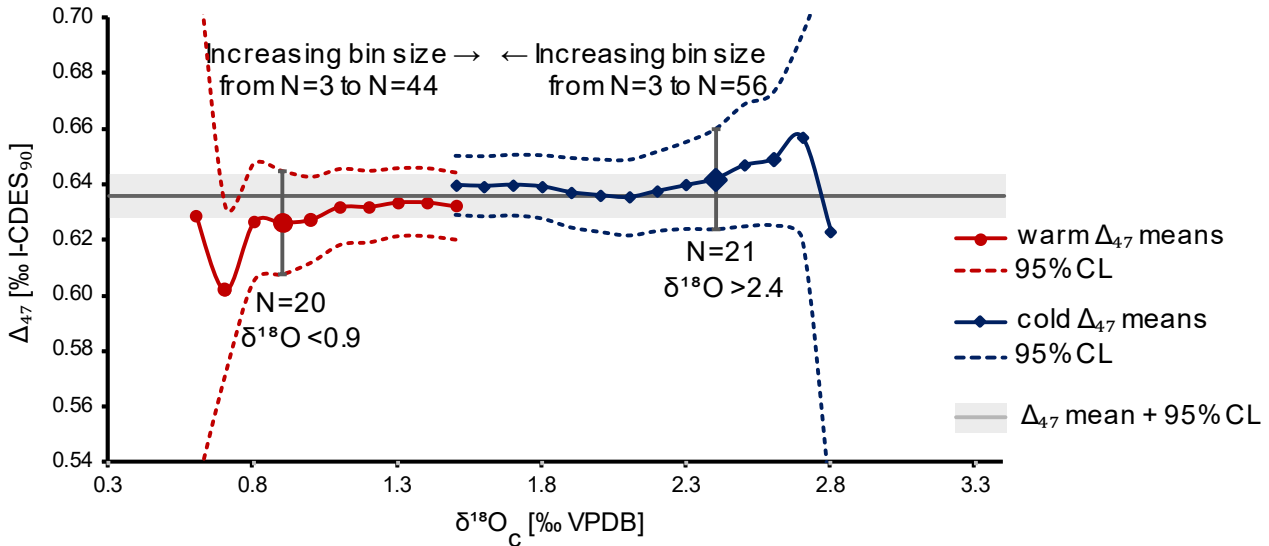


Figure 9: Overview of averages (round and diamond symbols) and 95% confidence intervals (dashed lines) for different-sized groups of summer and winter Δ_{47} aliquots. Sizes of groups increase towards the middle of the plot. The larger symbols with vertical error bars highlight the issue of having insufficient aliquot measurements. The bin sizes are small, and so they should come close to the true (non-averaged) seasonality. However, the number of aliquots is reduced to ca. 20 at this point. This translates to large errors, making these cold and warm averages statistically indistinguishable from each other.

455

Figure 9 shows that an acceptable compromise between signal and noise to resolve seasonality is not possible with the limited amount of data obtained here. The $\delta^{18}\text{O}_\text{c}$ cut-offs for $<0.9\text{‰}$ and $>2.4\text{‰}$ are highlighted to illustrate this. At these cut-off points,

which are arbitrarily chosen, the number of datapoints (N=20 and N=21, respectively) is large enough to reduce the 95% confidence level (CL) range. Further improvement within this dataset is hardly possible as the error bars plateau shortly after, corresponding to ca. N=30. However, the two datasets are not statistically different ($p>0.05$, Student's t-test) already in sample sizes starting from 20 aliquots, due to both to the wide $\delta^{18}\text{O}_c$ range included in these cut-offs and the large 95%CL range. Increasing the number of clumped isotope measurements that correspond to the more extreme $\delta^{18}\text{O}_c$ values would decrease the large errors and would allow for making the cut-offs narrower. This way, they better represent the seasonal extremes. That this approach works, is exemplified by the MAT of $13.5\pm 3.8^\circ\text{C}$. Due to the large number of measurements (N=103), the error on this temperature has been reduced to a few degrees Celsius. The same is possible for seasonal temperatures if the dataset is large enough. Besides the large analytical error associated with clumped isotopes, seasonal variability will also add to the standard deviation on the MAT. Even with more data, the degree to which this error can be reduced is therefore limited. Clumped isotope-based summer and winter temperatures are not calculated here and will not be discussed further, as the data generated in this study is not sufficient to do so in a meaningful way. Instead, we discuss an alternative approach to obtain seasonal temperatures below.

4.4.4 $\delta^{18}\text{O}_{\text{sw}}$, $\delta^{18}\text{O}_c$, and temperature

The average $\delta^{18}\text{O}_{\text{sw}}$ is $0.10\pm 0.88\text{‰}$ VSMOW (95%CL), based on the average Δ_{47} -based temperature of $13.5\pm 3.8^\circ\text{C}$ and the average $\delta^{18}\text{O}_c$ of both shells combined (1.53 ± 0.015 VSMOW, 95%CL). The Grossman and Ku (1986) equation was applied to the highest and lowest $\delta^{18}\text{O}_c$ values and the annual mean $\delta^{18}\text{O}_{\text{sw}}$ to obtain winter and summer temperatures (Fig. 10a). To obtain these highest and lowest $\delta^{18}\text{O}_c$ values, the three lowest (0.30, 0.42, 0.43‰) and highest (3.07, 3.16, 3.29‰) datapoints were averaged. These three points were chosen to capture the largest seasonal range that was recorded, while not relying on a single measurement. This resulted in summer and winter temperatures of $18.5\pm 3.9^\circ\text{C}$ and $6.4\pm 3.9^\circ\text{C}$ (95%CL, Fig. 10b). Note that this approach does not take into account seasonal changes in $\delta^{18}\text{O}_{\text{sw}}$.

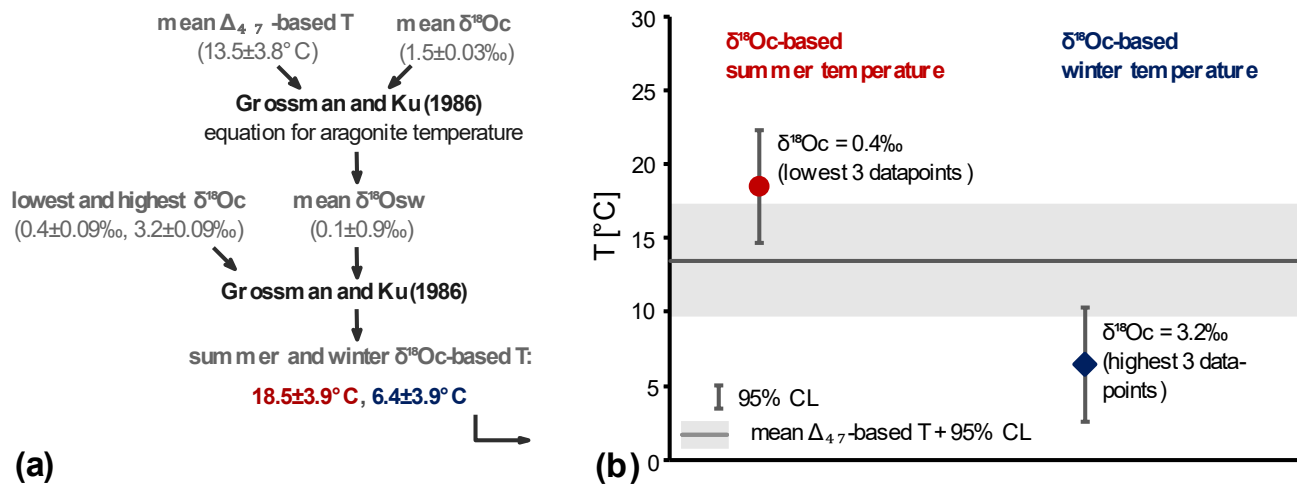


Figure 10: $\delta^{18}\text{O}_\text{c}$ -based summer and winter temperatures. (a) Schematic illustrating how the $\delta^{18}\text{O}_\text{c}$ -based temperatures have been calculated and what values were used. All values after \pm are 95%CLs. b. Mean $\delta^{18}\text{O}_\text{c}$ -based summer (red circle) and winter (blue diamond) temperatures and their 95%CL. In the background, the Δ_{47} -based mean temperature and confidence interval is shown (grey band). The $\delta^{18}\text{O}_\text{c}$ values used are the average of the lowest and highest three datapoints.

485 5 Discussion

5.1 Diagenesis

No signs of diagenesis of the shells were found through micro-X-ray fluorescence (μXRF), X-ray diffraction (XRD), and electron backscatter diffraction (EBSD) analyses. The μXRF analyses indicated that the shell material was high in Sr and low in Fe and Mn; these latter two elements are regularly used to pinpoint diagenesis (Fig. 2b; de Winter and Claeys, 2017). The XRD pattern of specimen SG-125 consisted of 100% aragonite. No blocky calcite was observed in the EBSD images of any of the three specimens (Cusack, 2016; Casella et al., 2017). This alone does not preclude diagenetic alteration, as calcite is not formed in the earliest stages of diagenesis (Cochran et al., 2010; Marcano et al., 2015; Ritter et al., 2017). Further analysis of the EBSD maps did not, however, produce any evidence for diagenetic alteration. Microstructures that are similar to those found in modern Tellinidae were observed in the EBSD maps (Popov, 2014). In altered aragonitic bivalves, the structures as observed from EBSD maps are more homogenous and have a lower MUD compared to pristine material (Casella et al., 2017; study of *Arctica islandica*). Even the homogeneous structure in *A. benedeni benedeni* (Fig. 6d) appears less chaotic than altered aragonite (Casella et al., 2017). Combined with the shallow burial depth (≤ 100 meter; Johnson et al., 2022) and the unconsolidated and fine-grained nature of the surrounding sediment, this evidence suggests that no significant diagenetic alteration took place. The isotope values presented here therefore record the formation temperature of the biogenic aragonite, assuming equilibrium fractionation, and support the interpretation of the stable isotope data in this study.

Previous studies have indicated good preservation for bivalves from the Oorderen Member (Valentine et al., 2011; Johnson et al., 2022), from other members of the Lillo Formation (Johnson et al., 2022), and from the early Pliocene Ramsholt Member of the Coralline Crag Formation (Johnson et al., 2009; Vignols et al., 2019). Pliocene shells from the North Sea basin are expected to yield reliable temperature results by geochemical analysis, as long as preservation is not obviously suspect (e.g., in the Sudbourne Member of the Coralline Crag Formation in southeast England, whose aragonitic shells have nearly all been dissolved; Balson et al., 1993). However, it remains imperative to screen for early diagenesis when analysing shells from new localities and older stratigraphic intervals. This is especially relevant for seasonality studies. During early diagenesis, the intra-shell $\delta^{18}\text{O}_\text{c}$ variations that reflect seasonal variability can be homogenised, dampening the original signal. Evidence that this has taken place is limited to subtle changes in scanning-electron microscope images (Moon et al., 2021). To the authors' knowledge, whether these changes are detectable with EBSD has not been studied yet.

Based on the results in this study as well as practical considerations, we recommend a combination of light microscopy and trace element analysis (XRF) for diagenetic screening in general, while the addition of XRD analysis is advised only for aragonitic shells (such as *A. benedeni benedeni*). While EBSD is a powerful method for observing and classifying shell microstructures and assessing their preservation, its limited accessibility and comparatively time-consuming data processing renders this method somewhat unwieldy for routine preservation screening.

5.2 *Angulus benedeni benedeni* shell structure

The shell of *A. benedeni benedeni* consists of four macrolayers, of which the outer three show microstructures that were identified using EBSD. From outer (M+2) to inner (M-1), these are compound composite prismatic, crossed lamellar, complex crossed lamellar/prismatic/homogeneous (Popov, 2014). These structures have all been described previously in other tellinid genera such as *Macoma*, *Peronidia*, and the lucinid *Megaxinus* (Popov, 2014). Tellinidae generally have three layers, sometimes with sub-layers present. The M-1 layer in Tellinidae is usually homogeneous, as it appears to be in our specimens (Popov, 2014). Beyond this, there exists a wide range of variation in tellinid bivalve shell microstructures (Popov, 2014). *Angulus benedeni benedeni* is similar in structure to the closely related *A. nysti* (Popov, 2014). Layer M-2 was not studied with EBSD here, but light microscopy suggests that it might be structurally similar to the neighbouring M-1 layer (Fig. 2). Aragonite polysynthetic (110) twinning—indicated by a 64° misorientation angle between the 001 and 010 axes—is frequently observed in bivalves (Kobayashi and Akai, 1994; Griesshaber et al., 2013; Crippa et al., 2020) and other molluscs (Schoeppler et al., 2019). It contributes to rapid shell growth as it is more efficient at filling up space than non-twinned growth (Schoeppler et al., 2019). This twinning is observed in all analysed layers of *A. benedeni benedeni*. As the double 001 and 010 maxima are stronger in the external layers M+2 and M+1 than in the internal layer M-1, twinning may be more significant in these two layers. This may, in turn, be linked to more rapid precipitation. This study supports previous investigations in highlighting the utility of EBSD for analysing shell structures in bivalves (Cusack, 2016; Checa et al., 2019; Crippa et al., 2020), which remains a rather new application of this technique.

5.3 *Angulus benedeni benedeni* growth history

Angulus benedeni benedeni experienced slower growth in winter, could live for up to a decade or longer (Fig. 7, 8), and likely reached lengths of 34-52 mm. The maximum (winter) $\delta^{18}\text{O}_c$ values decrease, while the minimum (summer) values stay similar throughout the oxygen isotope record of specimen SG-126. This amplitude reduction may reflect growth breaks during the colder months. This is supported by the correlation of high $\delta^{18}\text{O}_c$ values with dark growth bands on the shell's exterior (Fig. 7). Darker bands in bivalves often have high organic matter content related to decreased mineralisation rates (Lutz and Rhoads, 1980, cited in Carré et al., 2005). The pronounced ontogenetic growth rate decline that is often seen in bivalves (McConnaughey and Gillikin, 2008) is not apparent from the growth curve of specimen SG-126. The growth curve only becomes slightly less steep in the last few measured years, and there is no marked decrease in the wavelength of the $\delta^{18}\text{O}_c$ record (Fig. 8).

Simple growth modelling has provided a preliminary range of maximum shell height for *A. benedeni benedeni*. The VBGF yields a higher maximum shell height estimate than the Gompertz equation (52 vs 34 mm, respectively). Due to the nature of the respective models, the VBGF tends to overestimate the maximum shell height, while the Gompertz equation tends to underestimate it (Urban, 2002). These two estimates therefore yield a plausible range for the maximum shell height of *A. benedeni benedeni*. The heights of specimens SG-126 and SG-127 (30-36 mm) are close to the H_{asympt} of the Gompertz model, and the other specimens in the collection of the Royal Belgian Institute of Natural Sciences generally do not exceed 40 mm in height. The shape of the VBGF and Gompertz curves suggest that specimen SG-126 had not yet reached its maximum shell height. *A. benedeni benedeni* may have lived longer than 8-9 years.

Bivalves can form growth increments on a variety of timescales and their growth rhythm can be influenced by solar and lunar cycles (Tran et al., 2011). The number of growth lines counted in *A. benedeni benedeni* were divided by the inferred age of the specimen to determine its growth rhythm. The sampled intervals span several years: around nine years for SG-126, which represents most of the shell height, and around six years for SG-127, which represents only around one-third of the shell height. In both shells, 100+ growth lines were counted. In SG-126, the maximum number of years counted (9) and the maximum number of growth lines counted (115) correspond to ca. 13 growth lines per year. This is an interval of approximately 29 days, which matches the periodicity of the monthly synodic lunar-tidal cycle. However, both growth lines and years are likely to be underestimated. Their recordings are both limited by either the microscopy or the sampling resolution. Additionally, the shells likely experienced winter growth stops, so the growth increments do not record a full year. It is difficult to put constraints on these uncertainties due to limited data availability. These uncertainties work in different directions (underestimating the number of years results in more time represented within a growth increment; underestimating the number of growth increments and the amount of time missing due to winter stops results in less time within a growth increment). As two out of three factors push the duration of a growth increment towards lower values, each increment may represent less than 29 days. This fits with the nature of lunar-tidal forcing. There is little difference between the two spring-neap cycles within a monthly cycle (Kvale, 2006). If tides exerted influence, the fortnightly spring-neap cycle is expected to be present as well due to its larger amplitude.

Monthly lunar cycles have been observed in bivalves (Pannella and MacClintock, 1968), but these are present as bundled spring-neap tide pairs with one being more dominant than the other, not as individual growth lines as observed here. Actual monthly forcing of environmental conditions linked to growth increments is therefore unlikely.

570 It is also possible that the formation of growth lines is driven by aperiodic or quasi-periodic processes such as storms—which would skew the correlation between growth years and growth lines—or is a result of an internally controlled rhythm rather than being externally forced. Internal forcing is a strong possibility. Finally, many bivalves form growth increments on smaller timescales as well (e.g., (semi-)diurnal or circatidal; Judd et al., 2018 and references therein). We cannot rule out the presence of such ultradian cyclicity in *A. benedeni benedeni*. It must be noted that the growth increment analysis here is very simple. The primary aim of analysing its growth history was inferring whether this subspecies grew at a sufficient rate to allow for
575 sub-annual resolution sampling. Oxygen isotope analysis already confirmed this was the case. Therefore, more sophisticated techniques such as using cathodoluminescence to identify increments, or applying spectral analysis to determine their periodicity, were beyond the scope of this study. However, a more detailed sclerochronology study with more specimens would be a good avenue for further work.

5.4 *Angulus benedeni benedeni* as a climate archive

580 *Angulus benedeni benedeni* shows promise as an archive for climate reconstructions. It can live for up to a decade or longer and enables the reconstruction of multiannual climate records at a seasonal resolution. Both $\delta^{18}\text{O}_c$ and Δ_{47} analyses can be successfully applied to this subspecies and with a larger dataset it would be possible to obtain clumped isotope-based summer and winter temperatures. We estimate that 3-5 specimens would be required to obtain confidence intervals on Δ_{47} -based seasonal temperatures that are $\leq 3.0^\circ\text{C}$. As confidence intervals scale with $1/N^2$, progressively more aliquots would be needed
585 to bring down the error, and so reducing errors beyond this threshold would be challenging. The relatively thin shell in combination with the long lifespan make it somewhat challenging to sample at the required high temporal resolution. The subspecies is especially suited for reconstructions of climate in the Pliocene of the North Sea Basin, where it is common (De Meuter and Laga, 1976). However, the genus *Angulus* dates back to the Late Eocene (Marquet, 2004, 2005) and may be used to reconstruct older climates as well, given that these older specimens are well-preserved. Potential target intervals include
590 the Eocene/Oligocene transition, the Oligocene/Miocene transition, the Middle Miocene Climatic Optimum, and the mid-Piacenzian Warm Period (Westerhold et al., 2020). This first palaeoclimatological study on *Angulus* highlights the opportunities for using this genus as a climate archive and confirms earlier findings that tellinid bivalves are good subjects for palaeoclimatic research (Jones et al., 2005; Warner et al., 2022). Avenues of research are not limited to stable isotope analysis, but may extend to minor and trace elemental analyses by e.g. extended μXRF analyses and Laser-Ablation ICP-MS profiles
595 (de Winter et al., 2017a, 2020).

5.5 Clumped and oxygen isotope based palaeotemperatures

The reconstructed mean annual temperature (MAT) of $13.5 \pm 3.8^\circ\text{C}$ based on clumped isotope thermometry is 3.5°C higher than that of the pre-industrial North Sea (Mackenzie and Schiedek, 2007; Emeis et al., 2015). Our temperature reconstructions for the Piacenzian in the North Sea are similar to a previous estimate of ca. 13°C for the North Sea from the somewhat older shallow marine Coralline Crag Formation in southeast England (Dowsett et al., 2012). Although the complex stratigraphic context cannot exclude an age younger than the mid-Piacenzian Warm Period (mPWP), modelled anomalies for the mPWP North Sea area of around $+3.5^\circ\text{C}$ are in close agreement with our finding (Haywood et al., 2020). Compared to global estimates for the mPWP, a 3.5°C warming is on the higher end of the range given by proxy data ($+2$ – 4°C , sea surface temperature, Dowsett et al., 2012) and model data ($+1.7$ – 5.2°C , surface air temperature, Haywood et al., 2020). Overall, the reconstructed MAT agrees with both proxy and model data for this stratigraphic interval, supporting the validity of the clumped isotope data obtained from the shell of *A. benedeni benedeni*.

Seasonal temperature ranges based on $\delta^{18}\text{O}_\text{c}$ corrected with mean annual $\delta^{18}\text{O}_\text{sw}$ from clumped isotope analysis show a range of 12.1°C , from $6.4 \pm 3.9^\circ\text{C}$ in winter to $18.5 \pm 3.9^\circ\text{C}$ in summer (Fig. 10b). This is higher than the modern seasonal range of ca. 7 – 9°C (7 – 8°C in winter to 15 – 16°C in summer (Kooij et al., 2016). The average $\delta^{18}\text{O}_\text{sw}$ of $0.10 \pm 0.88\text{‰}$ VSMOW is within the range of ca. -0.4 to $+0.4\text{‰}$ for the modern North Sea, although it is on the heavier side for coastal areas which are closer to -0.4 to -0.2‰ (Harwood et al., 2008). Regardless of the value of temperature reconstructions from this single locality for representing the mean North Sea condition, the calculated range is likely an underestimation. This is the result of inherent limitations of both the methodology as well as the bivalve-archive itself. Limits to the sampling resolution and growth breaks or stops during winter can result in some of the highest and lowest temperatures not being analysed. Furthermore, summer stratification of the water column would have dampened summer temperatures at the seafloor where *A. benedeni benedeni* lived. The upper Oorderen stratigraphic interval from which the specimens were collected is interpreted to have been shallow and strongly influenced by tidal currents, which is inconsistent with summer stratification. Still, as the water depth is not well constrained and the thermocline depth is unknown, summer stratification cannot be ruled out. Finally, the calculated seasonal temperatures assume a constant $\delta^{18}\text{O}_\text{sw}$. A $\delta^{18}\text{O}_\text{sw}$ that varies throughout the year can either dampen or amplify the $\delta^{18}\text{O}_\text{c}$ signal. A dampening corresponds to a positive correlation between $\delta^{18}\text{O}_\text{sw}$ and temperature, e.g., due to enhanced evaporation during summer and enhanced precipitation during winter/spring. During summer, high temperatures will drive $\delta^{18}\text{O}_\text{c}$ to lower values. This is dampened by a high ambient $\delta^{18}\text{O}_\text{sw}$ due to evaporation, resulting in overall less low $\delta^{18}\text{O}_\text{c}$ values in summer. The reverse is true in the winter. High summer evaporation and high winter/spring precipitation is expected in mid-latitude settings such as the North Sea, and a strong positive correlation between $\delta^{18}\text{O}_\text{sw}$ and temperature is observed in the eastern North Sea today (Ullmann et al., 2010). These four factors—limited sampling resolution, possible growth slow-down in winter, possible stratification in summer, and possible dampening due to $\delta^{18}\text{O}_\text{sw}$ fluctuations—all contribute to a potential underestimation of the actual seasonality. With the exception of seasonal $\delta^{18}\text{O}_\text{sw}$ variability, these limitations also apply to clumped isotope seasonality reconstructions. Clumped isotope paleothermometry has the additional caveat that it will almost always be

necessary to combine many summer and winter datapoints that may not all represent ‘peak’ summer and winter. This too can lead to some degree of seasonal dampening. Any further study on bivalve-derived seasonality in the region should address these concerns. In this context, the seasonal range recorded by these *A. benedeni benedeni* specimens may have been larger than that of the North Sea today. This enhanced seasonality is in line with several bivalve-based studies of the Pliocene Southern North Sea (Johnson et al., 2009; Valentine et al., 2011; Johnson et al., 2022) and supports a more extensive study of Pliocene seasonality on *Angulus* bivalves.

6. Conclusions

Bivalves are valuable climate archives as they have the potential to record environmental changes on a seasonal scale. Here, we show that the bivalve *Angulus benedeni benedeni* shows promise as a climate archive. Based on microscopy and oxygen isotope measurements, this subspecies lived for multiple years and grew fast enough to allow for sampling its shell at a seasonal resolution. It likely experienced slower growth in winter and may not have recorded the coldest months. The reliability of the stable isotope results is confirmed by a diagenetic assessment of the shells using XRD, XRF, and EBSD, all of which attest to the pristine nature of the shell material. Furthermore, it reveals that the shell of *A. benedeni benedeni* consists of the following microstructures: compound composite prismatic, crossed lamellar, complex crossed lamellar, prismatic, and homogeneous. This is comparable to what has been observed in other tellinid bivalves. The clumped isotope analysis revealed that the mean annual temperature in the mid-Piacenzian Southern North Sea Basin was $13.5 \pm 3.8^\circ\text{C}$, 3.5°C warmer than the pre-industrial average for this region. This is in line with model and proxy estimates for the stratigraphic interval from which the specimens originated. Overall, the findings of this study open up new avenues of research into the seasonality of past climates using *A. benedeni benedeni*, as well as other *Angulus* bivalves.

Appendices

Appendix A. X-ray analyses

A1. X-ray Diffraction

660 A part of specimen SG-125 was analysed on a Bruker D8 Advance diffractometer at Utrecht University. was ground to < 10µm in a Retsch McCrone mill with zirconium oxide grinding elements prior to front-loading it into a PMMA sample holder (diameter: 25 mm; depth: 1 mm). The instrument settings are given in table A1. The instrument was calibrated with a corundum crystal.

Instrument setting	Value
Voltage [kV]	40
Ampere [mA]	40
Radiation [Å]	1.5418 (CuKα)
Divergence slit [mm]	0.165
Primary soller slit [°]	2.5
Secondary soller slit [°]	not present
Measuring range [°2θ]	15-70
Step-size [°2θ]	0.02
Counting time [s]	0.85
Sample rotation [rpm]	15

Table A1. Instrument settings for X-ray diffraction analyses.

665 A2. Micro-X-ray fluorescence

Major and trace elements were measured on specimens SG-125, SG-126, and SG-127 using µXRF linescanning. Analysis was carried out on a benchtop Bruker M4 Tornado µXRF scanner at the Analytical, Environmental, and Geochemistry Research Group (AMGC) of the Vrije Universiteit Brussel (Brussels, Belgium). The Bruker M4 Tornado is equipped with a 30 W Rh anode metal-ceramic X-ray tube operated at 50 kV and 600 µA. A polycapillary lens focuses an X-ray beam on the polished sample surface on a spot with a diameter of 25 µm (calibrated for Mo kα radiation). Fluorescing X-ray radiation is detected using two 30 mm2 silicon drift detectors with a spectral resolution of 135 eV (calibrated for Mn-kα radiation). The system is operated under near-vacuum conditions (20 mbar) to allow lower energy radiation of lighter elements (e.g., Mg) to be measured. More details on the µXRF measurement setup and acquisition are provided in de Winter and Claeys (2017) and Kaskes et al. (2021).

675 X-ray spectra were produced using a spatial resolution of 25 um and a dwell time of 60 seconds. This setting allows for enough time to reach the Time of Stable Reproducibility and provides the optimal balance between longer measurement time (resulting in better defined XRF spectra) and higher sample sizes (see discussion in de Winter et al. 2017b). Spectra were quantified using on-line calibration with the matrix-matched standard BAS-CRM393 (Bureau of Analyzed Samples, Middlesborough,

UK) in the M4 software (following de Winter et al. 2017b). After quantification, the trace element results were calibrated using an off-line calibration constructed using a set of matrix-matched carbonate standards (CCH-1; Université de Liège, Belgium, COQ-1; US Geological Survey, Denver, CO, USA, CRM393, CRM512, CRM513, ECRM782; Bureau of Analyzed Samples, Middlesborough, UK; and SRM-1d; National Institute of Standards and Technology, Gaithersburg, MD, USA; see e.g. de Winter et al. 2021).

Appendix B. Stable isotopes

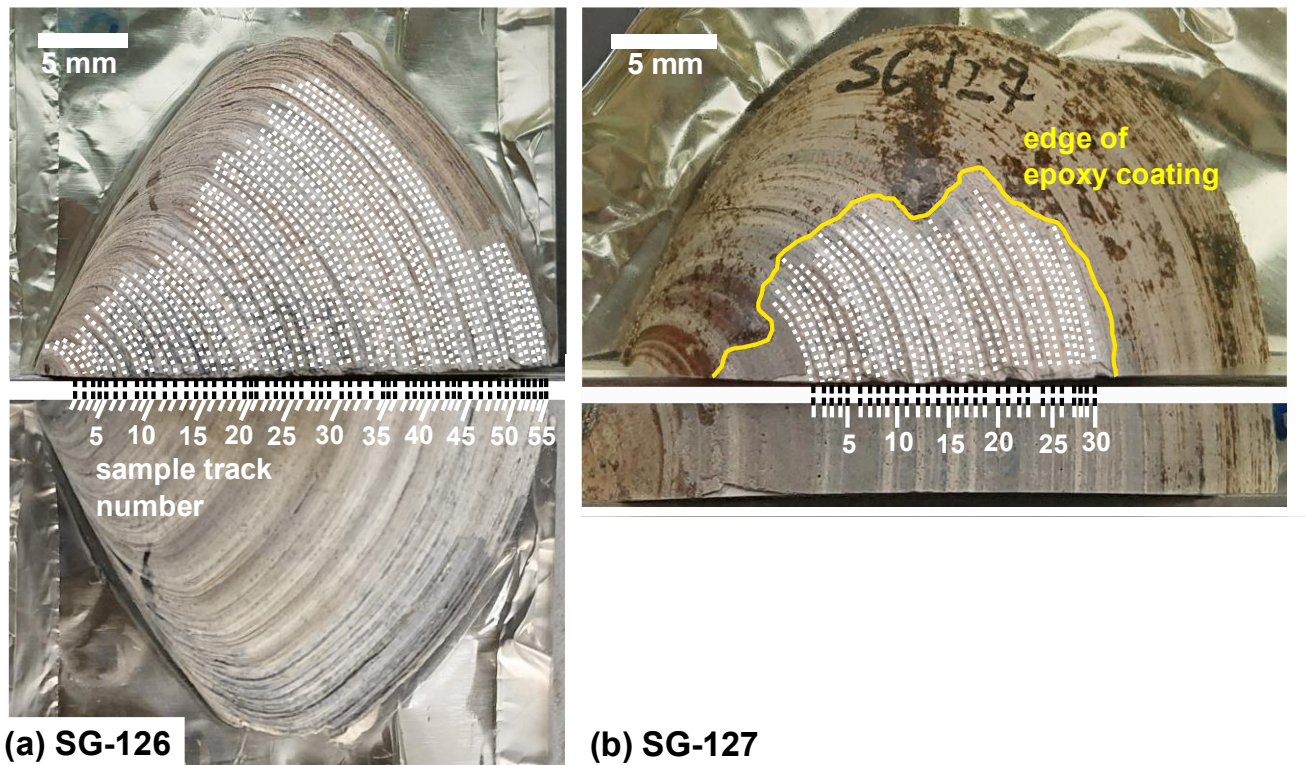


Figure B1: Sampling procedure of the shells for stable isotope analysis. (a) Sample tracks on specimen SG-126, indicated by dotted lines. 55 in total, each fifth sample track has been labelled. The figure shows the sampled half (top) and that same half prior to sampling (bottom). (b) Sample tracks on specimen SG-127, indicated by dotted lines. 30 in total. This specimen was for a large part covered by epoxy, so only a small section at the upper surface could be sampled.

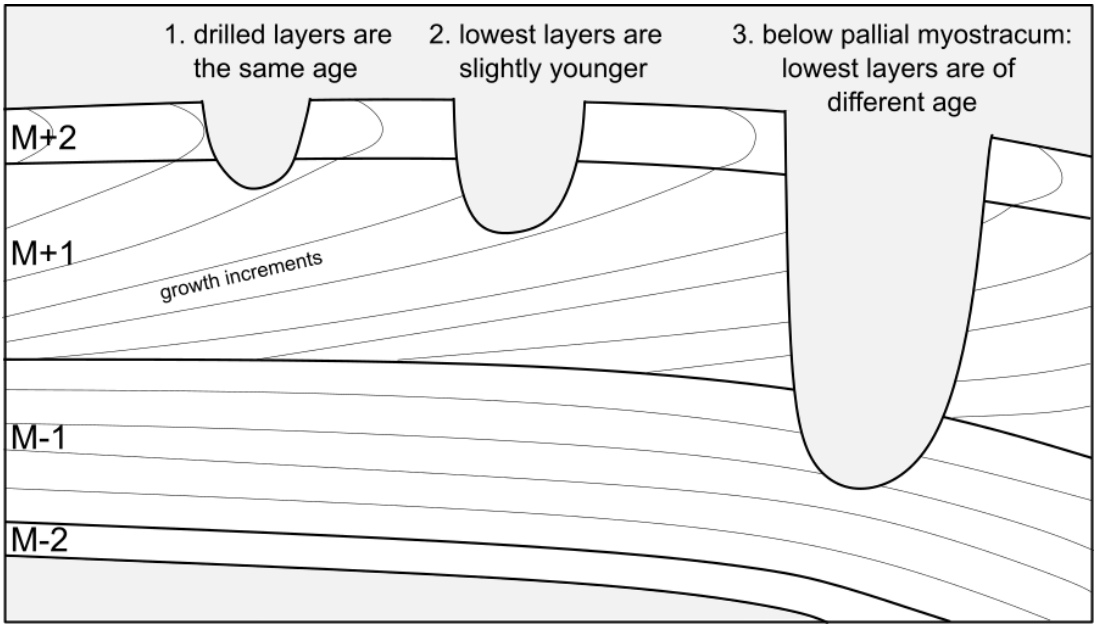


Figure B2: Illustration of the importance of not drilling too deep. In scenario 1, the two outermost layers (M+2, M+1) are drilled, whose material was precipitated at the same time. In scenario 2, slightly younger material from M+1 is drilled as well. In scenario 3, material from below the pallial myostracum which separates M+1 and M-1 is drilled. As a result of the way bivalves grow, this results in mixing materials of very different precipitation ages. In addition, in this scenario materials are precipitated from different internal fluids (dorsal and ventral of the pallial line). In this study, scenario 1 was the goal. Some sampling according to scenario 2 may have been present, but scenario 3 was avoided.

700

Specimen SG-126		Specimen SG-127	
sample ID	distance from umbo [mm]	sample ID	distance from umbo [mm]
SG-126-01	4.02	SG-127-01	12.075
SG-126-02	4.95	SG-127-02	12.38
SG-126-03	5.99	SG-127-03	13.04
SG-126-04	6.33	SG-127-04	13.61
SG-126-05	7.4	SG-127-05	13.71
SG-126-06	7.86	SG-127-06	14.73
SG-126-07	8.19	SG-127-07	14.89
SG-126-08	8.47	SG-127-07	14.89
SG-126-09	9.01	SG-127-08	15.8
SG-126-10	9.33	SG-127-08	15.8
SG-126-11	9.81	SG-127-09	16.35

SG-126-12	9.97	SG-127-09	16.35
SG-126-13	10.39	SG-127-10	16.74
SG-126-14	10.98	SG-127-10	16.74
SG-126-15	11.64	SG-127-11	17.35
SG-126-16	11.81	SG-127-11	17.35
SG-126-17	12.4	SG-127-12	17.86
SG-126-18	12.87	SG-127-12	17.86
SG-126-19	13.03	SG-127-13	18.55
SG-126-20	13.39	SG-127-14	18.91
SG-126-21	13.87	SG-127-14	18.91
SG-126-22	14.2	SG-127-15	20.05
SG-126-23	14.9	SG-127-15	20.05
SG-126-24	15.14	SG-127-16	20.33
SG-126-25	15.79	SG-127-17	20.76
SG-126-26	16.13	SG-127-17	20.76
SG-126-27	16.65	SG-127-18	21.34
SG-126-28	17.36	SG-127-18	21.34
SG-126-29	17.84	SG-127-19	22.2
SG-126-30	18.23	SG-127-19	22.2
SG-126-31	18.8	SG-127-20	23.01
SG-126-32	19.27	SG-127-20	23.01
SG-126-33	19.56	SG-127-21	23.14
SG-126-34	19.99	SG-127-21	23.14
SG-126-35	20.46	SG-127-22	23.47
SG-126-36	21.02	SG-127-22	23.47
SG-126-37	21.64	SG-127-23	23.65
SG-126-38	21.89	SG-127-24	23.88
SG-126-39	22.47	SG-127-24	23.88
SG-126-40	23.03	SG-127-25	24.36
SG-126-41	23.31	SG-127-25	24.36
SG-126-42	23.61	SG-127-26	24.78
SG-126-43	23.9	SG-127-26	24.78

SG-126-44	24.4	SG-127-27	24.89
SG-126-45	24.92	SG-127-27	24.89
SG-126-46	25.88	SG-127-28	25.83
SG-126-47	26.33	SG-127-29	26.19
SG-126-48	26.8	SG-127-30	27.07
SG-126-49	27.15		
SG-126-50	27.6		
SG-126-51	27.94		
SG-126-52	28.16		
SG-126-53	28.87		
SG-126-54	29.01		
SG-126-55	29.77		

Table B1: Position of each sample taken from specimens SG-126 and SG-127, measured from the umbo to the centre line of the shell (along the axis of maximum growth).

705

Standard	Use	$\delta^{18}\text{O}$ [‰ VPDB]	$\delta^{13}\text{C}$ [‰ VPDB]	Δ_{47} [‰ I-CDES₉₀]
Naxos marble	Oxygen isotopes (ThermoScientific MAT 253)	-6.83	2.08	-
Kiel carbonate	Oxygen isotopes (ThermoScientific MAT 253)	-16.14	-35.64	-
ETH-3	Clumped isotopes (ThermoScientific MAT 253 Plus)	-1.78	1.71	0.6132
ETH-2	Clumped isotopes (ThermoScientific MAT 253 Plus)	-18.69	-10.17	0.2085
ETH-1	Clumped isotopes (ThermoScientific MAT 253 Plus)	-2.19	2.02	0.2052
IAEA-C2	Clumped isotopes (ThermoScientific MAT 253 Plus)	-9.00	-8.25	0.6409
Merck	Clumped isotopes (ThermoScientific MAT 253 Plus)	-15.51	-42.21	0.5135

Table B2: Accepted values for stable isotope standards, both oxygen and clumped.

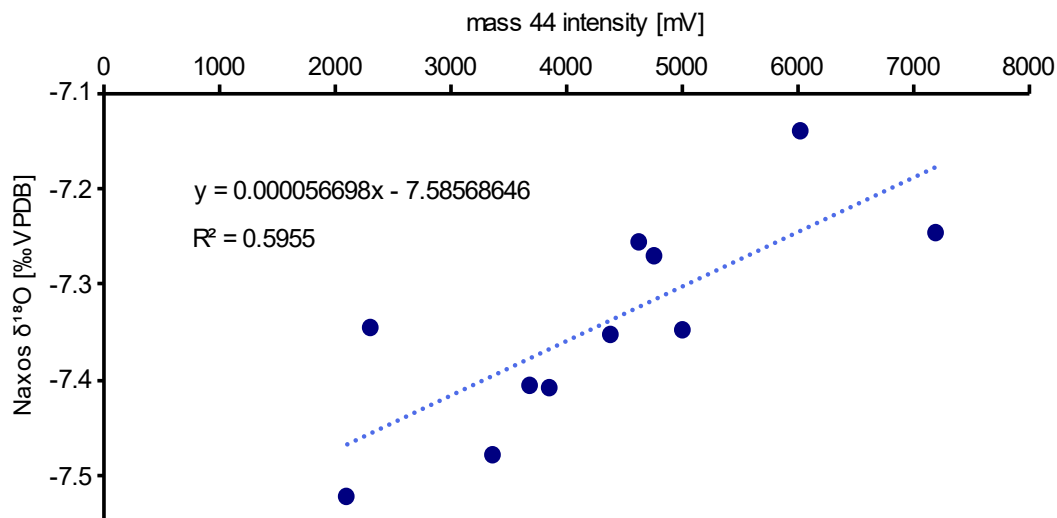


Figure B3: Linear correlation between the Naxos $\delta^{18}\text{O}$ data (11 standards measured) and the mass 44 intensity that was used to correct the $\delta^{18}\text{O}$ data. The correction was required due to the recommended weight range for each aliquot as per the laboratory's protocol was quite large (50-100 μg). This results in a broad range of M44 values as well.

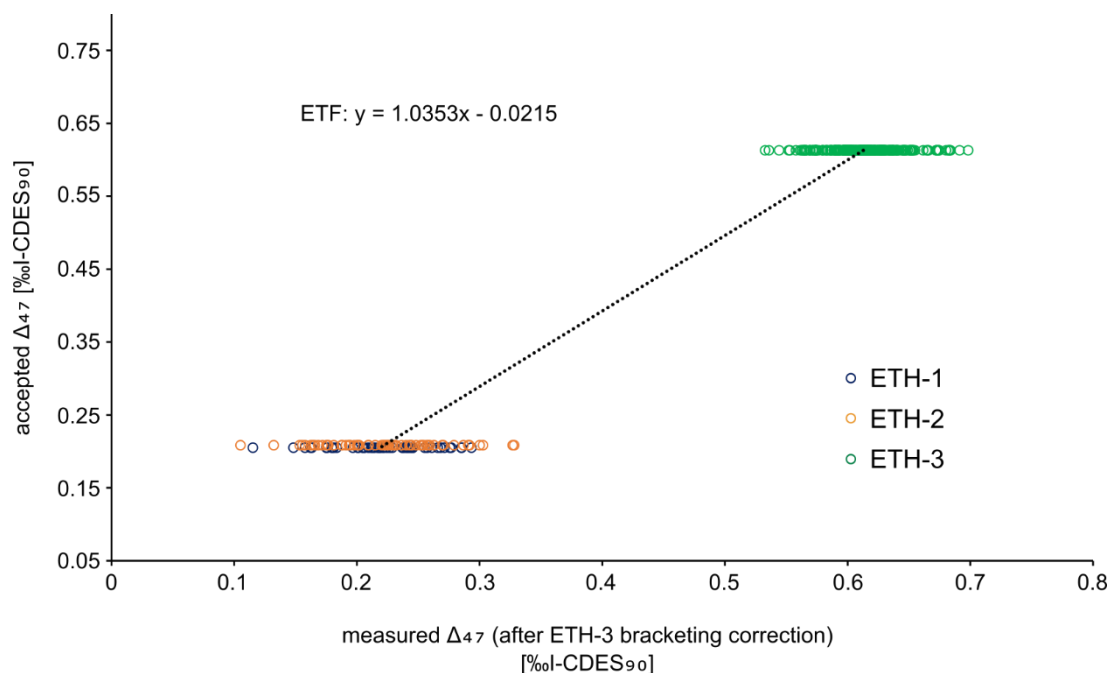
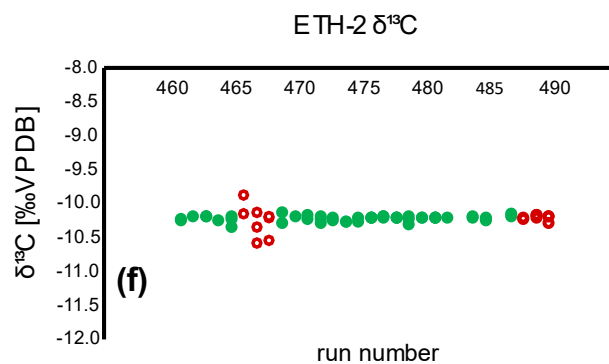
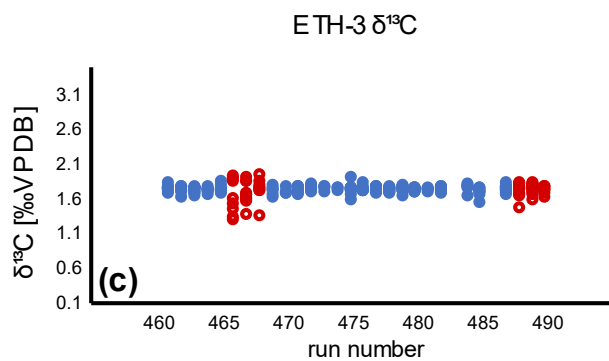
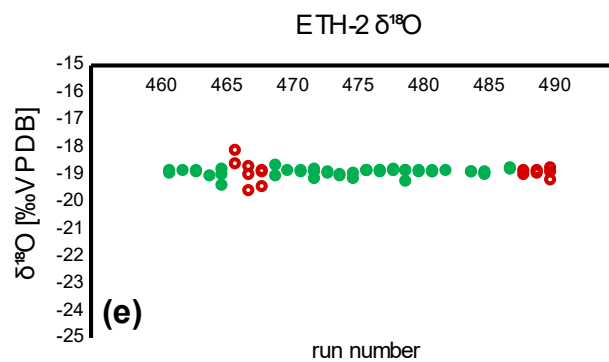
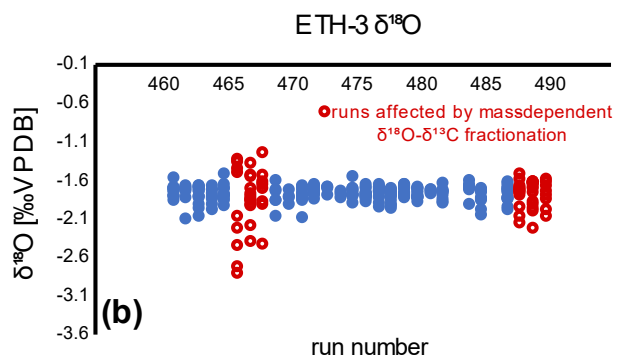
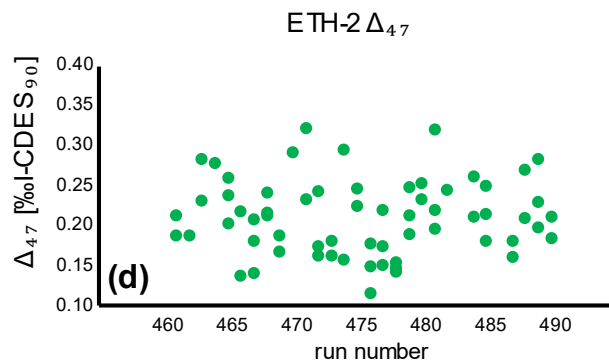
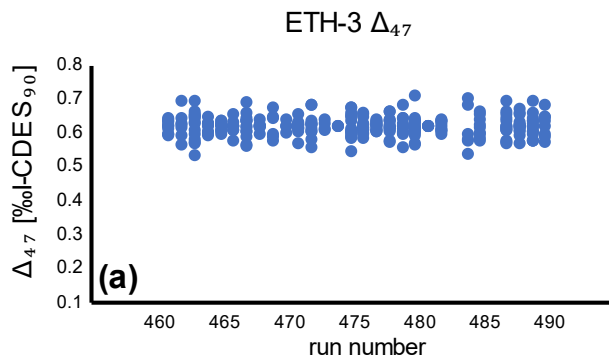
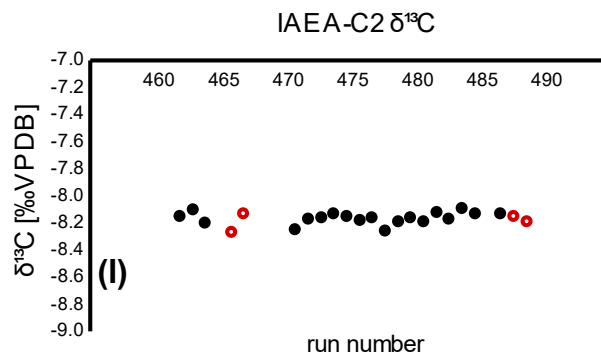
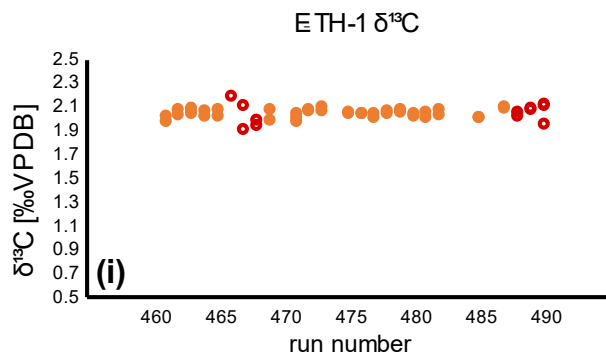
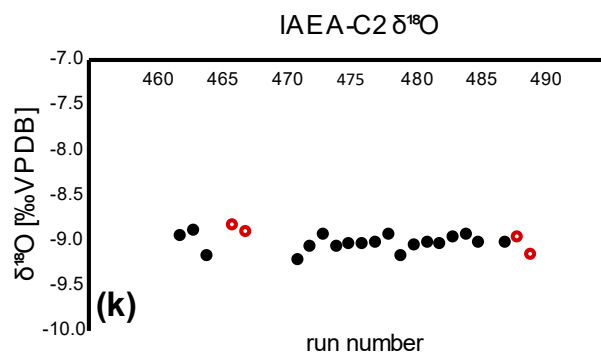
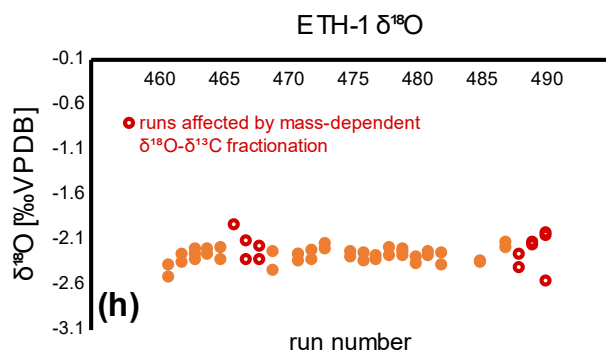
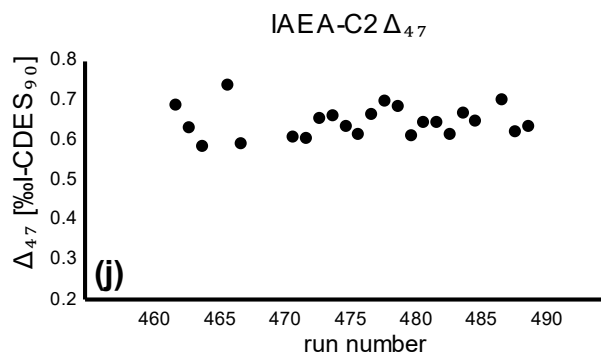
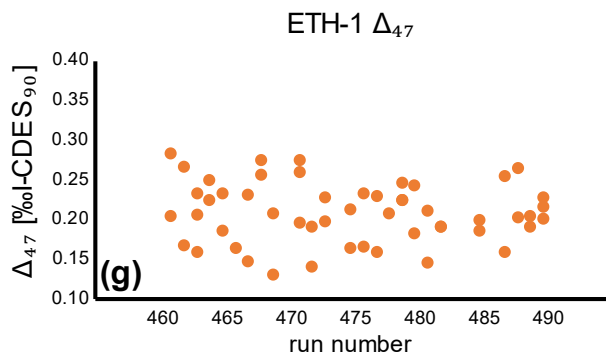
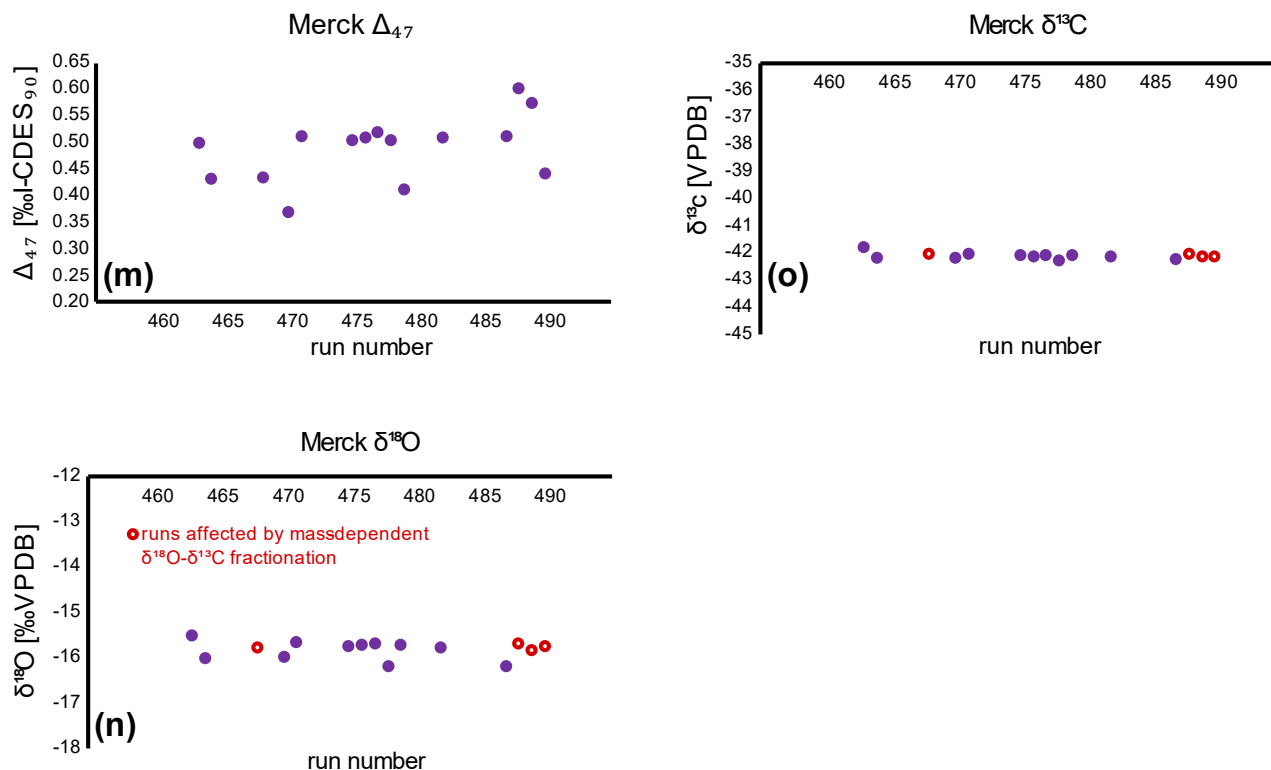


Figure B4: Empirical transfer function (ETF) constructed from a linear regression between accepted and measured Δ_{47} values from standards ETH-1, ETH-2, and ETH-3. This function was used to correct all samples and standards and transfer them to the I-CDES_{90C} reference frame. All standards plotted here have already been corrected for potential drift during the measurement by the ETH-3 bracketing correction. The standards were measured during 28 runs over a period of 2 months.







725 **Figure B5:** corrected Δ_{47} data for external (ETH-3, ETH-2, ETH-1) and internal (IAEA-C2, Merck) standards. (a)-(c): ETH-3 Δ_{47} , $\delta^{18}\text{O}$, and $\delta^{13}\text{O}$ data. Each point represents the measurement of a single aliquot. (d)-(f): ETH-2 Δ_{47} , $\delta^{18}\text{O}$, and $\delta^{13}\text{O}$ data. (g)-(i): ETH-1 Δ_{47} , $\delta^{18}\text{O}$, and $\delta^{13}\text{O}$ data. (j)-(l): IAEA-C2 Δ_{47} , $\delta^{18}\text{O}$, and $\delta^{13}\text{O}$ data. (m)-(o): Merck Δ_{47} , $\delta^{18}\text{O}$, and $\delta^{13}\text{O}$ data. Dates corresponding to the run numbers can be found in the supplementary materials. $\delta^{18}\text{O}$ and $\delta^{13}\text{O}$ measurements affected by mass-dependent fractionation are marked as red open circles (see sect. 3.5.3).

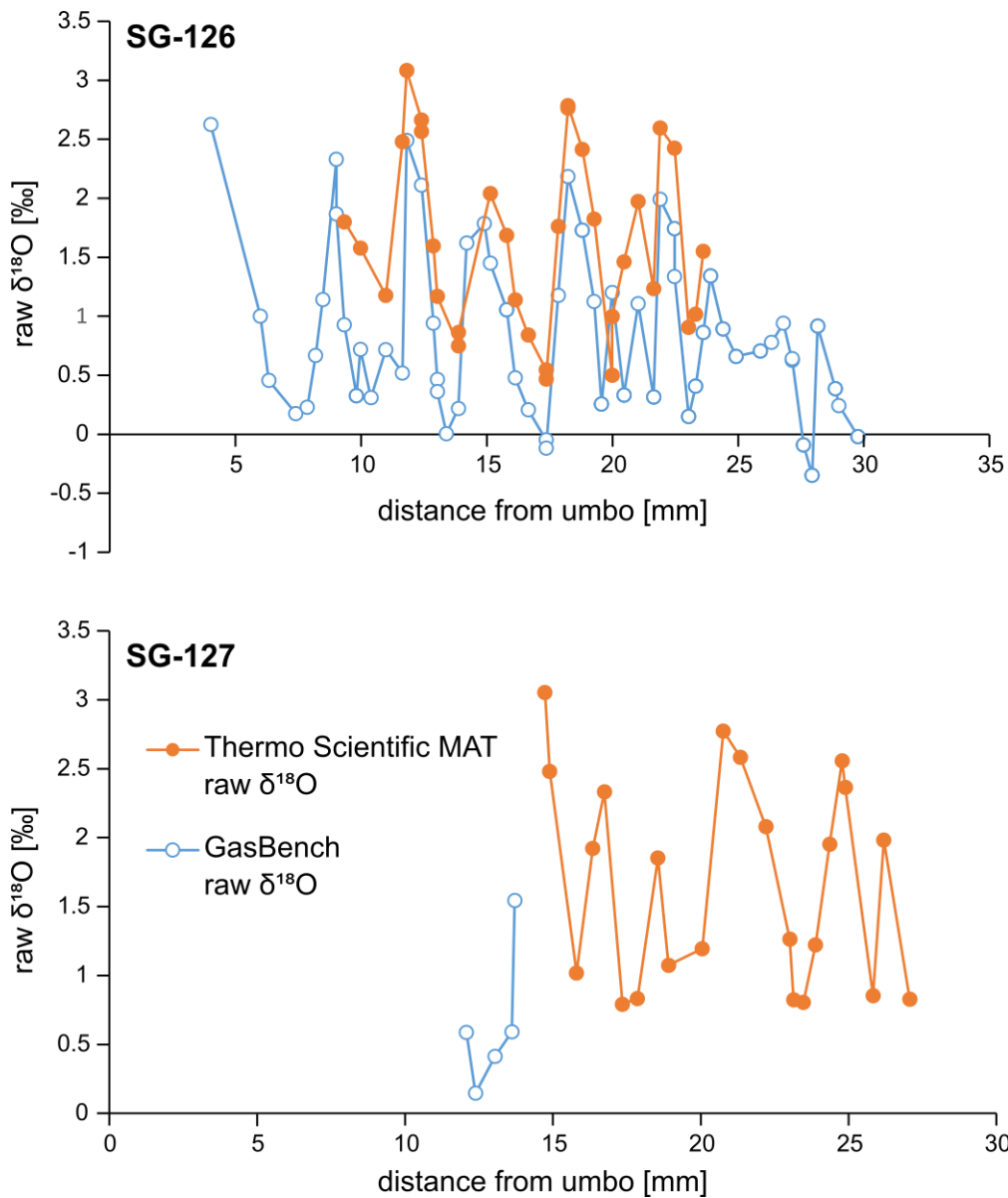


Figure B6: Raw $\delta^{18}\text{O}_c$ data for specimens SG-126 (top) and SG-127 (bottom), measured on the two different instruments as detailed in sections 3.5.2 and 3.5.3. The raw GasBench data shown here are not corrected for Mass 44 variability yet (see Fig. B3), which explains the offset between the two records. All analyses described in the main text and subsequent plots concern the corrected GasBench data.

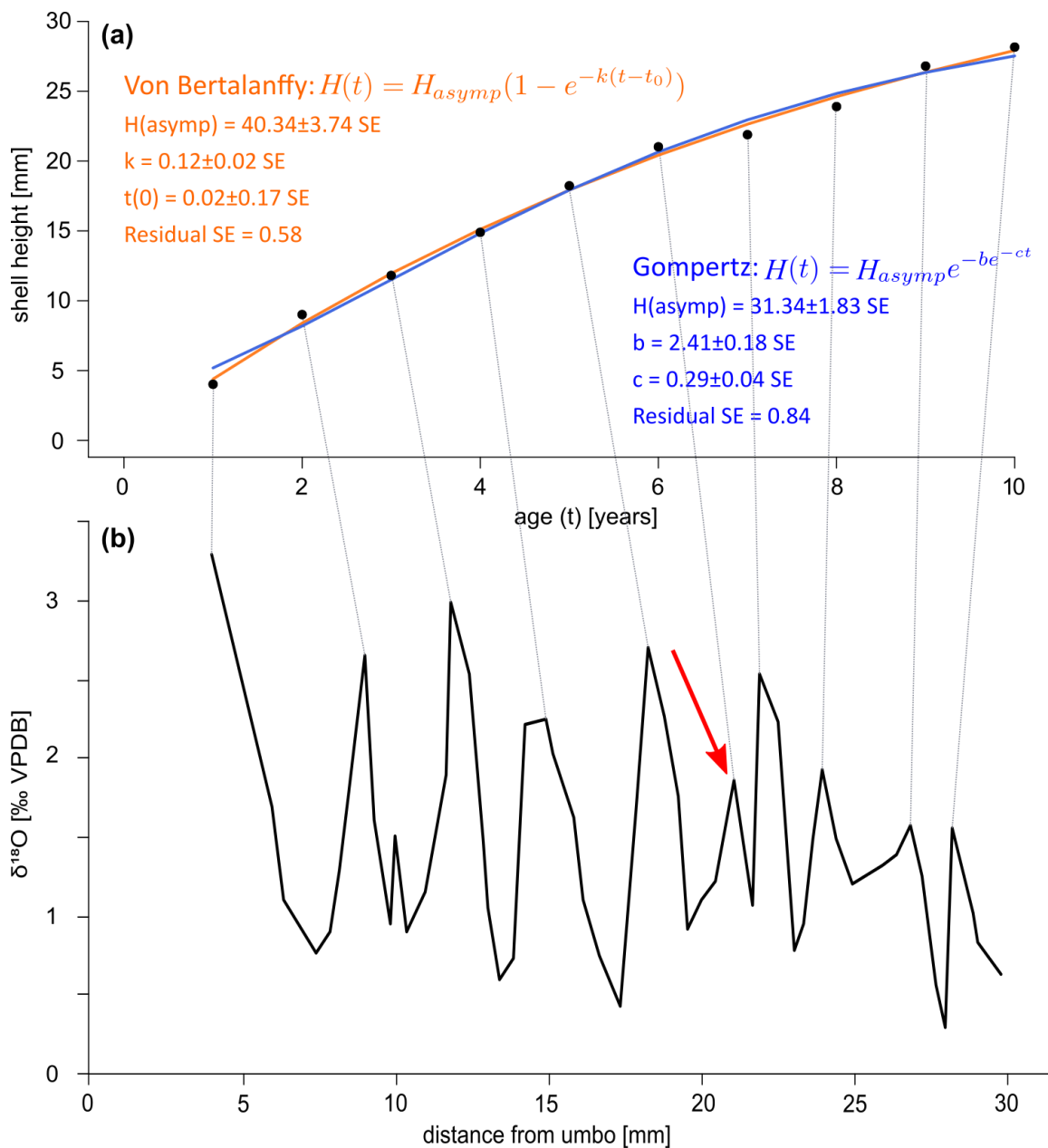
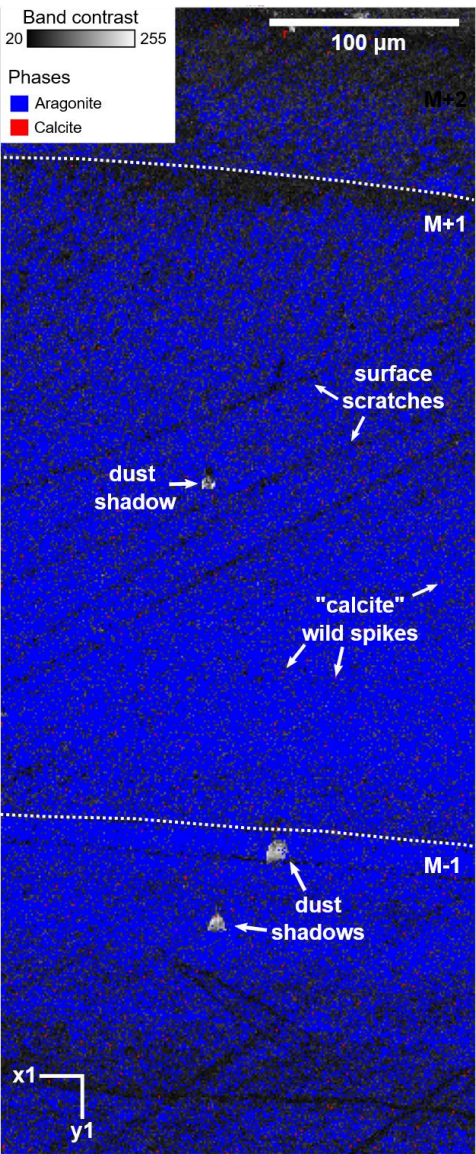


Figure B7: Alternative growth curves for specimen SG-126, counting the peak at 21 mm as a year (marked with red arrow in panel b). (a) Growth curves constructed by inserting the counted years versus distance-from-umbo datapoints into two different fitting algorithms: the asymptotic Von Bertalanffy growth function and the logistic Gompertz function. Compared to the growth curves that do not include this peak at 21 mm, the residuals are slightly worse for both models (0.51 vs 0.58 for the Von Bertalanffy model, 0.63 vs 0.84 for the Gompertz model). The estimated maximum shell height is similar for the Gompertz model (34.11 vs 31.34 mm), but significantly shorter for the Von Bertalanffy model (52.35 vs 40.34 mm). (b) $\delta^{18}O$ record with the inferred growth years marked by lines connecting to plot (a).

Appendix C. Electron backscatter diffraction



750

Figure C1: EBSD map of specimen SG-125 indicating the absence secondary calcite crystals. Map acquisition specifics: 10kV voltage, 1 μm step size. Measured at low vacuum due to excessive charging. Classification: 54.6% aragonite, 45.2% unclassified, 0.2% calcite. The map consists of the band contrast overlain by the classified pixels, which are either aragonite (blue) or calcite (red). M+2, M+1, and M-1 correspond to the shell layers as described in sect. 4.1.1. No clean-up was done on this map. The pixels identified as calcite do not show any of the characteristics of actual secondary calcite (large crystals compared to the fine-grained aragonite, breaking up the aragonitic structure), are always single pixels, and are removed through AZtecCrystal’s wild spike removal algorithm. Several dust shadows are also seen in this image; these areas are unclassified. There are also several scratches present on the surface.

755 **Code availability**

All code used was written in R. Codes for Monte Carlo error propagation (Benedeni_Monte_Carlo.R) and growth modelling (Benedeni_Growth_Model.R) are available at the Github repository at https://github.com/NMAWichern/Benedeni_benedeni.

Data availability

760 Oxygen isotope, clumped isotope, X-ray fluorescence, X-ray diffraction, and electron backscatter diffraction data are available at the PANGAEA data repository (LINK PENDING; SUBMITTED ON 19/09/2022).

Author contribution

NJW designed the study and carried out X-ray diffraction measurements. NMAW carried out stable isotope measurements, analysed all data and wrote the original manuscript. ALAJ assisted with sclerochronology and ecological and environmental interpretations. SG provided the shell material and carried out the palaeoenvironmental interpretation of the Oorderen
765 Formation. FW carried out the taxonomical analysis of the shells and assisted with ecological interpretation. PK and PC carried out micro-X-ray fluorescence measurements and analysis. MFH carried out electron backscatter diffraction analyses and assisted with their interpretation. MZ supervised the project and aided in data analysis. All authors contributed to interpreting the compiled data and editing the manuscript.

Competing interests

770 The authors declare that there are no competing interests involved in this research.

Acknowledgements

The authors gratefully acknowledge the following people for their help with this work: Leonard Bik (Utrecht University) made the polished thin sections for microscopy and EBSD work. Desmond Eefting and Arnold van Dijk (Utrecht University) provided technical assistance during isotope analyses. Lucas Lourens (Utrecht University) proof-read the original version of
775 this manuscript. Maarten Zeylmans (Utrecht University) helped produce high-resolution scans of cross sections of the specimens. Pim Kaskes is supported by a Research Foundation Flanders (FWO) PhD Fellowship (11E6621N). Philippe Claeys acknowledges the support of the FWO Hercules program for the purchase of the μ XRF instrument and that of the VUB Strategic Research Program. Stijn Goolaerts is grateful to Ir Murielle Reyns, Roger Sieckelink and Nouredine Ouifak of ‘Mobiliteit en Openbare Werken (MOW)’ for granting access to the Deurganckdoksluis construction site (2012–2014)
780 allowing to collect the study material. Andrew L. A. Johnson was funded by award RPG-2021-090 from the Leverhulme Trust.

This work is part of the UNBIAS project funded by a Flemish Research Foundation (FWO; 12ZB220N) post-doctoral fellowship (Niels J. de Winter).

References

- Al-Aasm, I. S. and Veizer, J.: Diagenetic stabilization of aragonite and low-Mg calcite; I, Trace elements in rudists., *Journal of Sedimentary Research*, 56, 138–153, <https://doi.org/10.1306/212F88A5-2B24-11D7-8648000102C1865D>, 1986.
- Balson, P. S., Mathers, S. J., and Zalasiewicz, J. A.: The lithostratigraphy of the Coralline Crag (Pliocene) of Suffolk, *Proceedings of the Geologists' Association*, 104, 59–70, [https://doi.org/10.1016/S0016-7878\(08\)80155-1](https://doi.org/10.1016/S0016-7878(08)80155-1), 1993.
- Bernasconi, S. M., Müller, I. A., Bergmann, K. D., Breitenbach, S. F. M., Fernandez, A., Hodell, D. A., Jaggi, M., Meckler, A. N., Millan, I., and Ziegler, M.: Reducing Uncertainties in Carbonate Clumped Isotope Analysis Through Consistent Carbonate-Based Standardization, *Geochemistry, Geophysics, Geosystems*, 19, 2895–2914, <https://doi.org/10.1029/2017GC007385>, 2018.
- Bernasconi, S. M., Daëron, M., Bergmann, K. D., Bonifacie, M., Meckler, A. N., Affek, H. P., Anderson, N., Bajnai, D., Barkan, E., Beverly, E., Blamart, D., Burgener, L., Calmels, D., Chaduteau, C., Clog, M., Davidheiser-Kroll, B., Davies, A., Dux, F., Eiler, J., Elliott, B., Fetrow, A. C., Fiebig, J., Goldberg, S., Hermoso, M., Huntington, K. W., Hyland, E., Ingalls, M., Jaggi, M., John, C. M., Jost, A. B., Katz, S., Kelson, J., Kluge, T., Kocken, I. J., Laskar, A., Leutert, T. J., Liang, D., Lucarelli, J., Mackey, T. J., Manganot, X., Meinicke, N., Modestou, S. E., Müller, I. A., Murray, S., Neary, A., Packard, N., Passey, B. H., Pelletier, E., Petersen, S., Piasecki, A., Schauer, A., Snell, K. E., Swart, P. K., Tripathi, A., Upadhyay, D., Vennemann, T., Winkelstern, I., Yarian, D., Yoshida, N., Zhang, N., and Ziegler, M.: InterCarb: A Community Effort to Improve Interlaboratory Standardization of the Carbonate Clumped Isotope Thermometer Using Carbonate Standards., *Geochemistry, Geophysics, Geosystems*, 22, e2020GC009588, <https://doi.org/10.1029/2020GC009588>, 2021.
- Bieler, R., Mikkelsen, P. M., Collins, T. M., Glover, E. A., González, V. L., Graf, D. L., Harper, E. M., Healy, J., Kawauchi, G. Y., Sharma, P. P., Staubach, S., Strong, E. E., Taylor, J. D., Tëmkin, I., Zardus, J. D., Clark, S., Guzmán, A., McIntyre, E., Sharp, P., and Giribet, G.: Investigating the Bivalve Tree of Life – an exemplar-based approach combining molecular and novel morphological characters, *Invert. Systematics*, 28, 32, <https://doi.org/10.1071/IS13010>, 2014.
- Brand, U. and Veizer, J.: Chemical Diagenesis of a Multicomponent Carbonate System--1: Trace Elements, *SEPM JSR*, 50, 1219–1236, <https://doi.org/10.1306/212F7BB7-2B24-11D7-8648000102C1865D>, 1980.
- Brand, W. A., Assonov, S. S., and Coplen, T. B.: Correction for the ^{17}O interference in $\delta(^{13}\text{C})$ measurements when analyzing CO_2 with stable isotope mass spectrometry (IUPAC Technical Report)., *Pure Appl. Chem.*, 82, 1719–1733, <https://doi.org/10.1351/PAC-REP-09-01-05>, 2010.
- Butler, P. G., Wanamaker Jr., A. D., Scourse, J. D., Richardson, C. A., and Reynolds, D. J.: Variability of marine climate on the North Icelandic Shelf in a 1357-year proxy archive based on growth increments in the bivalve *Arctica islandica*, *Palaeogeography, Palaeoclimatology, Palaeoecology*, 373, 141–151, <https://doi.org/10.1016/j.palaeo.2012.01.016>, 2013.
- Carré, M., Bentaleb, I., Blamart, D., Ogle, N., Cardenas, F., Zevallos, S., Kalin, R. M., Ortlieb, L., and Fontugne, M.: Stable isotopes and sclerochronology of the bivalve *Mesodesma donacium*: potential application to Peruvian paleoceanographic reconstructions., *Palaeogeography, Palaeoclimatology, Palaeoecology*, 228, 4–25, <https://doi.org/doi:10.1016/j.palaeo.2005.03.045>, 2005.

- Casella, L. A., Griesshaber, E., Yin, X., Ziegler, A., Mavromatis, V., Müller, D., Ritter, A.-C., Hippler, D., Harper, E. M., Dietzel, M., Immenhauser, A., Schöne, B. R., Angiolini, L., and Schmahl, W. W.: Experimental diagenesis: insights into aragonite to calcite transformation of *Arctica islandica* shells by hydrothermal treatment., *Biogeosciences*, 14, 1461–1492, <https://doi.org/10.5194/bg-14-1461-2017>, 2017.
- Chauvaud, L., Lorrain, A., Dunbar, R. B., Paulet, Y.-M., Thouzeau, G., Jean, F., Guarini, J.-M., and Mucciarone, D.: Shell of the Great Scallop *Pecten maximus* as a high-frequency archive of paleoenvironmental changes, *Geochemistry, Geophysics, Geosystems*, 6, <https://doi.org/10.1029/2004GC000890>, 2005.
- 825 Checa, A. G., Harper, E. M., and González-Segura, A.: Structure and crystallography of foliated and chalk shell microstructures of the oyster *Magallana*: the same materials grown under different conditions., *Scientific reports*, 8, 1–12, <https://doi.org/DOI:10.1038/s41598-018-25923-6>, 2019.
- Cochran, J. K., Kallenberg, K., Landman, N. H., Harries, P. J., Weinreb, D., Turekian, K. K., Beck, A. J., and Cobban, W. A.: Effect of diagenesis on the Sr, O, and C isotope composition of late Cretaceous mollusks from the Western Interior Seaway of North America., *American Journal of Science*, 310, 69–88, <https://doi.org/10.2475/02.2010.01>, 2010.
- 830 Crippa, G., Griesshaber, E., Checa, A. G., Harper, E. M., Simonet Roda, M., and Schmahl, W. W.: Orientation patterns of aragonitic crossed-lamellar, fibrous prismatic and myostracal microstructures of modern *Glycymeris* shells, *Journal of Structural Biology*, 212, 107653, <https://doi.org/10.1016/j.jsb.2020.107653>, 2020.
- Cusack, M.: Biomineral electron backscatter diffraction for palaeontology., *Palaeontology*, 59, 171–179, <https://doi.org/10.1111/pala.12222>, 2016.
- 835 De Meuter, F. J. and Laga, P. G.: Lithostratigraphy and biostratigraphy based on benthonic foraminifera of the Neogene deposits of northern Belgium., *Bulletin van de Belgische Vereniging voor Geologie*, 85, 133–152, 1976.
- De Schepper, S., Head, M. J., and Louwye, S.: Pliocene dinoflagellate cyst stratigraphy, palaeoecology and sequence stratigraphy of the Tunnel-Canal Dock, Belgium., *Geological Magazine*, 146, 92–112, <https://doi.org/10.1017/S0016756808005438>, 2009.
- 840 Deckers, J., Louwye, S., and Goolaerts, S.: The internal division of the Pliocene Lillo Formation: correlation between Cone Penetration Tests and lithostratigraphic type sections., *Geologica Belgica*, 23, 333–343, <https://doi.org/10.20341/gb.2020.027>, 2020.
- Dettman, D. L., Reische, A. K., and Lohmann, K. C.: Controls on the stable isotope composition of seasonal growth bands in aragonitic fresh-water bivalves (unionidae)., *Geochimica et Cosmochimica Acta*, 63, 1049–1057, [https://doi.org/10.1016/S0016-7037\(99\)00020-4](https://doi.org/10.1016/S0016-7037(99)00020-4), 1999.
- 845 Dowsett, H. J., Robinson, M., Haywood, A. M., Salzmann, U., Hill, D. J., Sohl, L., Chandler, M. A., Williams, M., Foley, K., and Stoll, D.: The PRISM3D paleoenvironmental reconstruction., *Stratigraphy*, 7, 123–139, 2010.
- Dowsett, H. J., Robinson, M. M., Haywood, A. M., Hill, D. J., Dolan, A. M., Stoll, D. K., Chan, W.-L., Abe-Ouchi, A., Chandler, M. A., Rosenbloom, N. A., Otto-Bliesner, B. L., Bragg, F. J., Lunt, D. J., Foley, K. M., and Riesselman, C. R.: Assessing confidence in Pliocene sea surface temperatures to evaluate predictive models, *Nature Climate Change*, 2, 365–371, <https://doi.org/DOI: 10.1038/NCLIMATE1455>, 2012.
- 850 Dowsett, H. J., Foley, K. M., Stoll, D. K., Chandler, M. A., Sohl, L. E., Bentsen, M., Otto-Bliesner, B. L., Bragg, F. J., Chan, W.-L., Contoux, C., Dolan, A. M., Haywood, A. M., Jonas, J. A., Jost, A., Kamae, Y., Lohmann, G., Lunt, D. J., Nisancioglu, K. H., Abe-Ouchi, A., Ramstein, G., Riesselman, C. R., Robinson, M. M., Rosenbloom, N. A., Salzmann, U., Stepanek, C.,

- 855 Strother, S. L., Ueda, H., Yan, Q., and Zhang, Z.: Sea surface temperature of the mid-Piacenzian ocean: a data-model comparison., *Scientific reports*, 3, 1–8, <https://doi.org/10.1038/srep02013>, 2013.
- Dowsett, H. J., Dolan, A. M., Rowley, D., Moucha, R., Forte, A. M., Mitrovica, J. X., Pound, M., Salzmann, U., Robinson, M., Chandler, M. A., Foley, K., and Haywood, A. M.: The PRISM4 (mid-Piacenzian) paleoenvironmental reconstruction., *Climate of the Past*, 12, 1519–1538, <https://doi.org/10.5194/cp-12-1519-2016>, 2016.
- 860 Emeis, K.-C., van Beusekom, J., Callies, U., Ebbinghaus, R., Kannen, A., Kraus, G., Kröncke, I., Lenhart, H., Lorkowski, I., Matthias, V., Möllmann, C., Pätsch, J., Scharfe, M., Thomas, H., Weisse, R., and Zorita, E.: The North Sea — A shelf sea in the Anthropocene, *Journal of Marine Systems*, 141, 18–33, <https://doi.org/10.1016/j.jmarsys.2014.03.012>, 2015.
- Gaemers, P. A. M.: Enkele paleo-ecologische opmerkingen over de Pliocene afzettingen in de tunnelput nabij Kallo, België, provincie Oost Vlaanderen, deel 2., *Mededelingen van de Werkgroep voor Tertiaire en Kwartaire Geologie*, 12, 43–49, 1975.
- 865 Ghosh, P., Adkins, J., Affek, H. P., Balta, B., Guo, W., Schauble, E. A., Schrag, D. P., and Eiler, J. M.: 13C–18O bonds in carbonate minerals: A new kind of paleothermometer, *Geochimica et Cosmochimica Acta*, 70, 1439–1456, <https://doi.org/10.1016/j.gca.2005.11.014>, 2006.
- Gibbard, P. L. and Lewin, J.: Filling the North Sea Basin: Cenozoic sediment sources and river styles (André Dumont medallist lecture 2014), *Geol. Belg.*, 19, 201–217, <https://doi.org/10.20341/gb.2015.017>, 2016.
- 870 Griesshaber, E., Schmahl, W. W., Ubhi, H. S., Huber, J., Nindiyasari, F., Maier, B., and Ziegler, A.: Homoepitaxial meso- and microscale crystal co-orientation and organic matrix network structure in *Mytilus edulis* nacre and calcite, *Acta Biomaterialia*, 9, 9492–9502, <https://doi.org/10.1016/j.actbio.2013.07.020>, 2013.
- Grossman, E. L. and Ku, T.-L.: Oxygen and carbon isotope fractionation in biogenic aragonite: temperature effects., *Chemical Geology: Isotope Geoscience Section*, 59, 59–74, [https://doi.org/10.1016/0168-9622\(86\)90057-6](https://doi.org/10.1016/0168-9622(86)90057-6), 1986.
- 875 Harwood, A. J. P., Dennis, P. F., Marca, A. D., Pilling, G. M., and Millner, R. S.: The oxygen isotope composition of water masses within the North Sea., *Estuarine, Coastal and Shelf Science*, 78, 353–359, <https://doi.org/10.1016/j.ecss.2007.12.010>, 2008.
- Haywood, A. M. and Valdes, P. J.: Modelling Pliocene warmth: contribution of atmosphere, oceans and cryosphere., *Earth and Planetary Science Letters*, 218, 363–377, [https://doi.org/doi:10.1016/S0012-821X\(03\)00685-X](https://doi.org/doi:10.1016/S0012-821X(03)00685-X), 2004.
- 880 Haywood, A. M., Tindall, J. C., Dowsett, H. J., Dolan, A. M., Foley, K. M., Hunter, S. J., Hill, D. J., Chan, W.-L., Abe-Ouchi, A., Stepanek, C., Lohmann, G., Chandan, D., Peltier, W. R., Tan, N., Contoux, C., Ramstein, G., Li, X., Zhang, Z., Guo, C., Nisancioglu, K. H., Zhang, Q., Li, Q., Kamae, Y., Chandler, M. A., Sohl, L. E., Otto-Bliesner, B. L., Feng, R., Brady, E. C., von der Heydt, A. S., Baatsen, M. L. J., and Lunt, D. J.: The Pliocene Model Intercomparison Project Phase 2: large-scale climate features and climate sensitivity, *Clim. Past*, 16, 2095–2123, <https://doi.org/10.5194/cp-16-2095-2020>, 2020.
- 885 He, B., Olack, G. A., and Colman, A. S.: Pressure baseline correction and high-precision CO₂ clumped-isotope (Δ_{47}) measurements in bellows and micro-volume modes: PBL-corrected high-precision CO₂ clumped-isotope (Δ_{47}) measurements, *Rapid Commun. Mass Spectrom.*, 26, 2837–2853, <https://doi.org/10.1002/rcm.6436>, 2012.
- Hendry, J. P., Ditchfield, P. W., and Marshall, J. D.: Two-Stage Neomorphism of Jurassic Aragonitic Bivalves: Implications for Early Diagenesis, *SEPM JSR*, 65, 214–224, <https://doi.org/10.1306/D4268077-2B26-11D7-8648000102C1865D>, 1995.

- 890 Hu, B., Radke, J., Schlüter, H.-J., Torsten Heine, F., Zhou, L., and Bernasconi, S. M.: A modified procedure for gas-source isotope ratio mass spectrometry: The long-integration dual-inlet (LIDI) methodology and implications for clumped isotope measurements., *Rapid Commun. Mass Spectrom.*, 28, 1413–1425, <https://doi.org/10.1002/rcm.6909>, 2014.
- Huyghe, D., Daëron, M., de Rafelis, M., Blamart, D., Sébilo, M., Paulet, Y.-M., and Lartaud, F.: Clumped isotopes in modern marine bivalves, *Geochimica et Cosmochimica Acta*, 316, 41–58, <https://doi.org/10.1016/j.gca.2021.09.019>, 2022.
- 895 IPCC: Summary for Policymakers., in: *Climate Change 2021: The Physical Science Basis. Contribution of Working Group I to the Sixth Assessment Report of the Intergovernmental Panel on Climate Change* [Masson- Delmotte, V., P. Zhai, A. Pirani, S. L. Connors, C. Péan, S. Berger, N. Caud, Y. Chen, L. Goldfarb, M. I. Gomis, M. Huang, K. Leitzell, E. Lonnoy, J. B. R. Matthews, T. K. Maycock, T. Waterfield, O. Yelekçi, R. Yu and B. Zhou (eds.)], Cambridge University Press, 2021.
- 900 Johnson, A. L. A., Hickson, J. A., Bird, A., Schöne, B. R., Balson, P. S., Heaton, T. H. E., and Williams, M.: Comparative sclerochronology of modern and mid-Pliocene (c. 3.5 Ma) *Aequipecten opercularis* (Mollusca, Bivalvia): an insight into past and future climate change in the north-east Atlantic region., *Palaeogeography, Palaeoclimatology, Palaeoecology*, 284, 164–179, <https://doi.org/doi:10.1016/j.palaeo.2009.09.022>, 2009.
- Johnson, A. L. A., Valentine, A. M., Schöne, B. R., Leng, M. J., and Goolaerts, S.: Sclerochronological evidence of pronounced seasonality from the late Pliocene of the southern North Sea basin and its implications, *Clim. Past*, 18, 1203–1229, <https://doi.org/10.5194/cp-18-1203-2022>, 2022.
- 905 Jones, D. S., Quitmyer, I. R., and Andrus, C. F. T.: Oxygen isotopic evidence for greater seasonality in Holocene shells of *Donax variabilis* from Florida, *Palaeogeography, Palaeoclimatology, Palaeoecology*, 228, 96–108, <https://doi.org/10.1016/j.palaeo.2005.03.046>, 2005.
- Judd, E. J., Wilkinson, B. H., and Ivany, L. C.: The life and time of clams: Derivation of intra-annual growth rates from high-resolution oxygen isotope profiles., *Palaeogeography, Palaeoclimatology, Palaeoecology*, 490, 70–83, <https://doi.org/10.1016/j.palaeo.2017.09.034>, 2018.
- 910 Kobayashi, I. and Akai, J.: Twinned aragonite crystals found in the bivalvian crossed lamellar shell structure, *Jour. Geol. Soc. Japan*, 100, 177–180, <https://doi.org/10.5575/geosoc.100.177>, 1994.
- Kocken, I. J., Müller, I. A., and Ziegler, M.: Optimizing the Use of Carbonate Standards to Minimize Uncertainties in Clumped Isotope Data, *Geochem. Geophys. Geosyst.*, 20, 5565–5577, <https://doi.org/10.1029/2019GC008545>, 2019.
- 915 Kooij, J., Engelhard, G. H., and Righton, D. A.: Climate change and squid range expansion in the North Sea, *J. Biogeogr.*, 43, 2285–2298, <https://doi.org/10.1111/jbi.12847>, 2016.
- Kvale, E. P.: The origin of neap–spring tidal cycles, *Marine Geology*, 235, 5–18, <https://doi.org/10.1016/j.margeo.2006.10.001>, 2006.
- 920 Lafuente, B., Downs, R. T., Yang, H., and Stone, N.: The power of databases: The RRUFF project, in: *Highlights in Mineralogical Crystallography*, edited by: Armbruster, T. and Danisi, R. M., De Gruyter, 1–30, <https://doi.org/10.1515/9783110417104-003>, 2015.
- Lee, L., Atkinson, D., Hirst, A. G., and Cornell, S. J.: A new framework for growth curve fitting based on the von Bertalanffy Growth Function., *Scientific reports*, 10, 1–12, <https://doi.org/10.1038/s41598-020-64839-y>, 2020.
- 925 Louwye, S. and De Schepper, S.: The Miocene–Pliocene hiatus in the southern North Sea Basin (northern Belgium) revealed by dinoflagellate cysts., *Geological Magazine*, 147, 760–776, <https://doi.org/10.1017/S0016756810000191>, 2010.

- Louwye, S., Head, M. J., and De Schepper, S.: Dinoflagellate cyst stratigraphy and palaeoecology of the Pliocene in northern Belgium, southern North Sea Basin., *Geol. Mag.*, 141, 353–378, <https://doi.org/DOI: 10.1017/S0016756804009136>, 2004.
- 930 Lutz, R. A. and Rhoads, D. C.: Growth patterns within the molluscan shell. An overview., in: *Skeletal Growth of Aquatic Organisms.*, Plenum Press, New York, 203–254, 1980.
- Mackenzie, B. R. and Schiedek, D.: Daily ocean monitoring since the 1860s shows record warming of northern European seas, *Global Change Biol*, 13, 1335–1347, <https://doi.org/10.1111/j.1365-2486.2007.01360.x>, 2007.
- 935 Marcano, M. C., Frank, T. D., Mukasa, S. B., Lohmann, K. C., and Taviani, M.: Diagenetic incorporation of Sr into aragonitic bivalve shells: Implications for chronostratigraphic and palaeoenvironmental interpretations., *The Depositional Record*, 1, 38–52, <https://doi.org/10.1002/dep2.3>, 2015.
- Marquet, R. T. C.: Ecology and evolution of Pliocene bivalves from the Antwerp Basin., *Bulletin de l’Institut royal des Sciences naturelles de Belgique, Sciences de la terre*, 74, 205–212, 2004.
- Marquet, R. T. C.: The Neogene Bivalvia (Heterodonta and Anomalodesmata) and Scaphopoda from Kallo and Doel (Oost-Vlaanderen, Belgium)., *Palaeontos*, 6, 1–142, 2005.
- 940 McConnaughey, T. A. and Gillikin, D. P.: Carbon isotopes in mollusk shell carbonates, *Geo-Mar Lett*, 28, 287–299, <https://doi.org/10.1007/s00367-008-0116-4>, 2008.
- Meckler, A. N., Ziegler, M., Millán, M. I., Breitenbach, S. F. M., and Bernasconi, S. M.: Long-term performance of the Kiel carbonate device with a new correction scheme for clumped isotope measurements: Performance and correction of Kiel clumped isotope measurements, *Rapid Commun. Mass Spectrom.*, 28, 1705–1715, <https://doi.org/10.1002/rcm.6949>, 2014.
- 945 Meinicke, N., Ho, S. L., Hannisdal, B., Nürnberg, D., Tripathi, A., Schiebel, R., and Meckler, A. N.: A robust calibration of the clumped isotopes to temperature relationship for foraminifers, *Geochimica et Cosmochimica Acta*, 270, 160–183, <https://doi.org/10.1016/j.gca.2019.11.022>, 2020.
- Meinicke, N., Reimi, M. A., Ravelo, A. C., and Meckler, A. N.: Coupled Mg/Ca and Clumped Isotope Measurements Indicate Lack of Substantial Mixed Layer Cooling in the Western Pacific Warm Pool During the Last ~5 Million Years, *Paleoceanogr Paleoclimatol*, 36, <https://doi.org/10.1029/2020PA004115>, 2021.
- 950 Milano, S., Schöne, B. R., and Witbaard, R.: Changes of shell microstructural characteristics of *Cerastoderma edule* (Bivalvia) — A novel proxy for water temperature, *Palaeogeography, Palaeoclimatology, Palaeoecology*, 465, 395–406, <https://doi.org/10.1016/j.palaeo.2015.09.051>, 2017.
- Monastersky, R.: Global carbon dioxide levels near worrisome milestone, *Nature*, 497, 13–14, <https://doi.org/10.1038/497013a>, 2013.
- 955 Moon, L. R., Judd, E. J., Thomas, J., and Ivany, L. C.: Out of the oven and into the fire: Unexpected preservation of the seasonal $\delta^{18}\text{O}$ cycle following heating experiments on shell carbonate, *Palaeogeography, Palaeoclimatology, Palaeoecology*, 562, 110115, <https://doi.org/10.1016/j.palaeo.2020.110115>, 2021.
- 960 Müller, I. A., Fernandez, A., Radke, J., van Dijk, J., Bowen, D., Schwieters, J., and Bernasconi, S. M.: Carbonate clumped isotope analyses with the long-integration dual-inlet (LIDI) workflow: scratching at the lower sample weight boundaries: LIDI as key for more precise analyses on much less carbonate material, *Rapid Commun. Mass Spectrom.*, 31, 1057–1066, <https://doi.org/10.1002/rcm.7878>, 2017.

- Nyst, P. H. and Westendorp, G. D.: Nouvelles recherches sur les coquilles fossiles de la province d'Anvers., *Bulletins de l'Académie royale des Sciences et Belles-Lettres de Bruxelles*, 6, 393–414, 1839.
- 965 Pagani, M., Liu, Z., LaRiviere, J., and Ravelo, A. C.: High Earth-system climate sensitivity determined from Pliocene carbon dioxide concentrations, *Nature Geoscience*, 3, 27–30, <https://doi.org/DOI: 10.1038/NGEO724>, 2010.
- Pannella, G. and MacClintock, C.: Biological and environmental rhythms reflected in molluscan shell growth., *Memoir (The Paleontological Society)*, 2, 64–80, <https://doi.org/10.1017/S0022336000061655>, 1968.
- Popov, S. V.: Composite prismatic structure in bivalve., *Acta Palaeontologica Polonica*, 31, 3–26, 1986.
- 970 Popov, S. V.: Formation of Bivalve Shells and Their Microstructure, *Paleontological Journal*, 48, 1519–1531, <https://doi.org/10.1134/S003103011414010X>, 2014.
- Preibisch, S., Saalfeld, S., and Tomancak, P.: Globally optimal stitching of tiled 3D microscopic image acquisitions., *Bioinformatics*, 25, 1463–1465, <https://doi.org/10.1093/bioinformatics/btp184>, 2009.
- R Core Team: R: A language and environment for statistical computing., 2021.
- 975 Ritter, A.-C., Mavromatis, V., Dietzel, M., Kwiecien, O., Wiethoff, F., Griesshaber, E., Casella, L. A., Schmahl, W. W., Koelen, J., Neuser, R. D., Leis, A., Buhl, D., Niedermayr, A., Breitenbach, S. F. M., Bernasconi, S. M., and Immenhauser, A.: Exploring the impact of diagenesis on (isotope) geochemical and microstructural alteration features in biogenic aragonite., *Sedimentology*, 64, 1354–1380, <https://doi.org/10.1111/sed.12356>, 2017.
- 980 Schauble, E. A., Ghosh, P., and Eiler, J. M.: Preferential formation of ^{13}C – ^{18}O bonds in carbonate minerals, estimated using first-principles lattice dynamics., *Geochimica et Cosmochimica Acta*, 70, 2510–2529, <https://doi.org/10.1016/j.gca.2006.02.011>, 2006.
- Schoeppler, V., Lemanis, R., Reich, E., Pusztai, T., Gránásy, L., and Zlotnikov, I.: Crystal growth kinetics as an architectural constraint on the evolution of molluscan shells, *Proc Natl Acad Sci USA*, 116, 20388–20397, <https://doi.org/10.1073/pnas.1907229116>, 2019.
- 985 Schöne, B. R., Goodwin, D. H., Flessa, K. W., Dettman, D. L., and Roopnarine, P. D.: Sclerochronology and Growth of the Bivalve Mollusks *Chione* (*Chionista*) *fluctifraga* and *C.(Chionista) cortezi*., *Veliger*, 45, 45–54, 2002.
- Schöne, B. R., Freyre Castro, A. D., Fiebig, J., Houk, S. D., Oschmann, W., and Kröncke, I.: Sea surface water temperatures over the period 1884–1983 reconstructed from oxygen isotope ratios of a bivalve mollusk shell (*Arctica islandica*, southern North Sea), *Palaeogeography, Palaeoclimatology, Palaeoecology*, 212, 215–232, <https://doi.org/10.1016/j.palaeo.2004.05.024>,
990 2004.
- Seneviratne, S. I., Zhang, X., Adnan, M., Badi, W., Dereczynski, C., Di Luca, A., Ghosh, S., Iskandar, I., Kossin, J., Lewis, S., Otto, F., Satoh, M., Vicente-Serrano, S. M., Wehner, M., and Zhou, B.: Weather and Climate Extreme Events in a Changing Climate, in: *Climate Change 2021: The Physical Science Basis. Contribution of Working Group I to the Sixth Assessment Report of the Intergovernmental Panel on Climate Change* [Masson-Delmotte, V., P. Zhai, A. Pirani, S. L. Connors, C. Péan, S. Berger, N. Caud, Y. Chen, L. Goldfarb, M. I. Gomis, M. Huang, K. Leitzell, E. Lonnoy, J. B. R. Matthews, T. K. Maycock, T. Waterfield, O. Yelekçi, R. Yu and B. Zhou (eds.)], Cambridge University Press, 2021.
- Spiess, A.-N. and Neumeyer, N.: An evaluation of R^2 as an inadequate measure for nonlinear models in pharmacological and biochemical research: a Monte Carlo approach, *BMC Pharmacol*, 10, 6, <https://doi.org/10.1186/1471-2210-10-6>, 2010.

- Tran, D., Nadau, A., Durrieu, G., Ciret, P., Parisot, J.-P., and Massabuau, J.-C.: Field chronobiology of a molluscan bivalve: how the moon and sun cycles interact to drive oyster activity rhythms., *Chronobiology International*, 28, 307–317, <https://doi.org/10.3109/07420528.2011.565897>, 2011.
- Ullmann, C. V., Wiechert, U., and Korte, C.: Oxygen isotope fluctuations in a modern North Sea oyster (*Crassostrea gigas*) compared with annual variations in seawater temperature: Implications for palaeoclimate studies, *Chemical Geology*, 277, 160–166, <https://doi.org/10.1016/j.chemgeo.2010.07.019>, 2010.
- Urban, H. J.: Modeling growth of different developmental stages in bivalves., *Mar Ecol Prog Ser*, 238, 109–114, <https://doi.org/10.3354/meps238109>, 2002.
- Valentine, A., Johnson, A. L. A., Leng, M. J., Sloane, H. J., and Balson, P. S.: Isotopic evidence of cool winter conditions in the mid-Piacenzian (Pliocene) of the southern North Sea Basin, *Palaeogeography, Palaeoclimatology, Palaeoecology*, 309, 9–16, <https://doi.org/10.1016/j.palaeo.2011.05.015>, 2011.
- de la Vega, E., Chalk, T. B., Wilson, P. A., Bysani, R. P., and Foster, G. L.: Atmospheric CO₂ during the Mid-Piacenzian Warm Period and the M2 glaciation., *Scientific reports*, 10, 1–8, <https://doi.org/10.1038/s41598-020-67154-8>, 2020.
- Vellekoop, J., Kaskes, P., Sinnesael, M., Huygh, J., Déhais, T., Jagt, J. W. M., Speijer, R. P., and Claeys, P.: A new age model and chemostratigraphic framework for the Maastrichtian type area (southeastern Netherlands, northeastern Belgium), *nos*, 101101, <https://doi.org/10.1127/nos/2022/0703>, 2022.
- Vervoenen, M., Van Nieulande, F., Fraussen, K., Wesselingh, F. P., and Pouwer, R.: Pliocene to Quaternary sinistral *Neptunea* species (Mollusca, Gastropoda, Buccinidae) from the NE Atlantic., *Cainozoic research*, 14, 17–34, 2014.
- Vignols, R. M., Valentine, A. M., Finlayson, A. G., Harper, E. M., Schöne, B. R., Leng, M. J., Sloane, H. J., and Johnson, A. L. A.: Marine climate and hydrography of the Coralline Crag (early Pliocene, UK): isotopic evidence from 16 benthic invertebrate taxa., *Chemical Geology*, 526, 62–83, <https://doi.org/10.1016/j.chemgeo.2018.05.034>, 2019.
- Warner, J. P., DeLong, K. L., Chicoine, D., Thirumalai, K., and Andrus, C. F. T.: Investigating the influence of temperature and seawater $\delta^{18}\text{O}$ on *Donax obesulus* (Reeve, 1854) shell $\delta^{18}\text{O}$, *Chemical Geology*, 588, 120638, <https://doi.org/10.1016/j.chemgeo.2021.120638>, 2022.
- Weiner, S. and Dove, P. M.: An Overview of Biomineralization Processes and the Problem of the Vital Effect, *Reviews in mineralogy and geochemistry*, 54, 1–29, 2003.
- Wesselingh, F. P., Busschers, F. S., and Goolaerts, S.: Observations on the Pliocene sediments exposed at Antwerp International Airport (northern Belgium) constrain the stratigraphic position of the Broechem fauna, *Geol. Belg.*, 23, 315–321, <https://doi.org/10.20341/gb.2020.026>, 2020.
- Westerhold, T., Marwan, N., Drury, A. J., Liebrand, D., Agnini, C., Anagnostou, E., Barnet, J. S. K., Bohaty, S. M., De Vleeschouwer, D., Florindo, F., Frederichs, T., Hodell, D. A., Holbourn, A. E., Kroon, D., Lauretano, V., Littler, K., Lourens, L. J., Lyle, M., Pälike, H., Röhl, U., Tian, J., Wilkens, R. H., Wilson, P. A., and Zachos, J. C.: An astronomically dated record of Earth's climate and its predictability over the last 66 Million Years, *Science*, 369, 1383–1387, <https://doi.org/10.1126/science.aba6853>, 2020.
- de Winter, N., Goderis, S., Dehairs, F., Jagt, J. W. M., Fraaije, R. H. B., van Malderen, S. J. M., Vanhaecke, F., and Claeys, P.: Tropical seasonality in the late Campanian (late Cretaceous): Comparison between multiproxy records from three bivalve taxa from Oman, *Palaeogeography, Palaeoclimatology, Palaeoecology*, 485, 740–760, <https://doi.org/10.1016/j.palaeo.2017.07.031>, 2017a.

- de Winter, N., Vellekoop, J., Clark, A. J., Stassen, P., Speijer, R. P., and Claeys, P.: The Giant Marine Gastropod *Campanile Giganteum* (Lamarck, 1804) as a High-Resolution Archive of Seasonality in the Eocene Greenhouse World, *Geochemistry, Geophysics, Geosystems*, 21, <https://doi.org/10.1029/2019GC008794>, 2020.
- 1040 de Winter, N. J. and Claeys, P.: Micro X-ray fluorescence (μ XRF) line scanning on Cretaceous rudist bivalves: A new method for reproducible trace element profiles in bivalve calcite., *Sedimentology*, 64, 231–251, <https://doi.org/10.1111/sed.12299>, 2017.
- 1045 de Winter, N. J., Sinnesael, M., Makarona, C., Vansteenberge, S., and Claeys, P.: Trace element analyses of carbonates using portable and micro-X-ray fluorescence: performance and optimization of measurement parameters and strategies, *J. Anal. At. Spectrom.*, 32, 1211–1223, <https://doi.org/10.1039/C6JA00361C>, 2017b.
- de Winter, N. J., Agterhuis, T., and Ziegler, M.: Optimizing sampling strategies in high-resolution paleoclimate records, *Clim. Past*, 17, 1315–1340, <https://doi.org/10.5194/cp-17-1315-2021>, 2021.
- de Winter, N. J., Witbaard, R., Kocken, I. J., Müller, I. A., Guo, J., Goudsmit, B., and Ziegler, M.: Temperature Dependence of Clumped Isotopes (Δ_{47}) in Aragonite, *Geophysical Research Letters*, 49, <https://doi.org/10.1029/2022GL099479>, 2022.
- 1050 Zhang, J. Z. and Petersen, S. V.: Clumped and oxygen isotope sclerochronology methods tested in the bivalve *Lucina pensylvanica*, *Chemical Geology*, 620, 121346, <https://doi.org/10.1016/j.chemgeo.2023.121346>, 2023.