

A turbulence data reduction scheme for autonomous and expendable profiling floats

Kenneth G. Hughes¹, James N. Moum¹, and Daniel L. Rudnick²

¹College of Earth, Ocean, and Atmospheric Sciences, Oregon State University, Corvallis, Oregon.

²Scripps Institution of Oceanography, University of California, San Diego, La Jolla, California.

Correspondence: Kenneth Hughes (kenneth.hughes@oregonstate.edu)

Abstract. Autonomous and expendable profiling float arrays such as deployed in the Argo Program require the transmission of reliable data from remote sites. However, existing satellite data transfer rates preclude complete transmission of rapidly sampled turbulence measurements. It is therefore necessary to reduce turbulence data onboard. Here we propose a scheme for onboard data reduction and test it with

5 existing turbulence data obtained with a ~~newly developed version of a modified~~ SOLO-II profiling float. ~~The scheme invokes simple power-law fits to (i) shear probe~~ First, voltage spectra are derived from shear probe and ~~(ii) fast thermistor voltage spectra signals. Then, we focus on a fixed frequency band that yield we know to be unaffected by vibrations and that approximately corresponds to a fit-value-plus-a-quality control metric~~ wavenumber band of 5–25 cpm. ~~At~~ Over the fixed frequency band, we make simple power

10 law fits that—after calibration and correction in post-processing—yield values for the turbulent kinetic energy dissipation rate ε and thermal variance dissipation rate χ . With roughly 1 m vertical ~~interval resolution~~ segments, this scheme reduces the necessary data transfer volume ~~240-fold~~ 300-fold to approximately 32.5 kB for every 100 m of a profile (when profiling at 0.2 m s^{-1}). ~~Turbulent kinetic energy dissipation rate ε and thermal variance dissipation rate χ are recovered in post-processing.~~ As a test, we

15 apply our scheme to a dataset comprising 650 profiles and compare its output to that from our standard turbulence processing algorithm. For ε , values from the two approaches agree within a factor of two 87% of the time; for χ , 78%. These levels of agreement are greater than or comparable to that between the ε and χ values derived from two shear probes and two fast thermistors, respectively, on the same profiler.

1 Introduction

20 Measurements of oceanic turbulence have been made since the 1950s using platforms and sensors of various shapes and sizes (Lueck et al. 2002). Complete resolution of the turbulence requires measuring temperature and velocity gradients at millimeter-to-centimeter scale. Hence, sampling turbulence is data intensive. Whereas conventional profiling measurements of temperature, conductivity, and pressure are typically sampled at 1 Hz (e.g., Argo floats; Roemmich et al. 2019a), a turbulence profile involves sam-
25 pling multiple sensors at 100–1000 Hz. A relatively minimal requirement of five separate signals sampled at 100 Hz and recorded at 16-bit resolution equates to 1 kB s^{-1} , or 500 kB per 100 m of profiling range at 0.2 m s^{-1} profiling speed. For floats, this is not a trivial volume of data. For example, transmitting only 3 kB of data from a Deep SOLO float takes 100–200 s (Roemmich et al. 2019b). Extended surfacings also present a danger from surface vessels and vandals. Ultimately, raw turbulence profiles are two-to-three
30 orders of magnitude too large to transmit in a reasonable amount of time.

One approach to reducing turbulence data is given by Rainville et al. (2017) who use it for multi-month glider missions. Onboard the glider, they calculate spectra of raw voltage signals reported by the shear probes and fast thermistors and then band average each of these spectra into 12 bins. After transmission, these binned values are calibrated and fit to model spectra. ~~Although we will share this~~
35 ~~strategy of postponing calibration,~~ In other words, they (i) postpone calibration and (ii) minimize the data manipulation and processing that happens onboard. These two strategies are shared by our scheme (and also shared by the reduction scheme developed for χ pods; Becherer and Moum 2017). Otherwise, however, our scheme differs from ~~Rainville et al. (2017)~~ that of Rainville et al. (2017) as it does not suit our scientific goals of measuring turbulence over the upper $\sim 120 \text{ m}$ at high vertical resolution (e.g., $\sim 1 \text{ m}$) and as
40 frequently as possible (see Sect. 2). Two shear probes and two fast thermistors would produce $(2 + 2) \times 12 = 48$ spectral values per segment. Even without considering the other profiling quantities, the spectral values could add up to $> 20 \text{ kB}$ per dive for our scenario. We would be spending as much time transmitting the data as actually measuring the ocean. Instead, we more closely follow Becherer and Moum (2017) who designed a scheme to reduce moored χ pod data by more than four orders of magnitude. Overall, our goal
45 ~~is to minimize the file size to be transmitted, and yet also minimize the amount by which we manipulate and process the data onboard.~~

Becherer and Moum (2017) showed that, for a given segment, turbulence quantities can be reconstituted from voltage quantities (means, variances, and power law fits). We adapt their approach so that it works for a vertical profiler (Our scheme is for profiling instruments that contain shear probes and, optionally, fast thermistors (Sect. 2). First, we document the necessary calibration details (Sect. 3). Next, we compress raw shear voltages by way of simple power law fits and show how ϵ is derived from these fits in post-processing (Sect. 4). A test of the scheme employing 650 profiles demonstrates that little accuracy is sacrificed in return for a large reduction in data volume (Sect. 5). A similar method and test is given for Knowing ϵ from the shear probe measurements makes possible a similar method for deriving χ from fast thermistor measurements (Sect. 6 and 7). Adapting the scheme to a different profiler requires minimal modification (Sect. 8). For our particular profiler setup, the scheme reduces the dataset size by a factor of ~ 240 : only 3300: only 2.5 kB for each 100 m of a profile (Sect. 9).

2 The Flippin' χ SOLO (FCS)

We intend our data reduction scheme to be sufficiently general to be portable to all vertical turbulence profilers that contain shear probes. It can also be used with gliders if a measure of flow speed past the sensors is available (e.g., Greenan et al. 2001; Merckelbach and Carpenter 2021). In a general sense, some of the values specified herein ought to be considered variables (Sect. 8). However, we do have a particular platform for which we are developing the scheme: the Flippin' χ SOLO (FCS), and the values used here are chosen for the objective of detailed upper ocean profiling.

FCS is a conventional descendant of the SOLO-II profiling float (Roemmich et al. 2004) with the addition of a turbulence package plus-and extra functionality. The turbulence package includes two shear probes (Osborn 1974) to measure small-scale velocity gradients from which ϵ is computed, two fast thermistors to measure small-scale temperature fluctuations from which χ is computed, as well as a pitot tube (Moum 2015), pressure sensor, and a pressure sensor from which profiling speed is derived. FCS also includes a three-axis accelerometer, and compass. The pressure sensor yields a measure of profiling speed used in our scheme. The pitot tube, accelerometer, and compass data accelerometer that is used to measure the surface wave field (although with a method not described in this paper). Accelerometer data from when FCS is profiling are not used in the turbulence data reduction scheme but have other purposes

~~such as measuring the surface wave field. When changing its buoyancy to switch our reduction scheme.~~

75 FCS and its measurements are described more completely in companion paper (Moum et al. under review)

~

To reverse profiling direction, FCS ~~also flips (adjusts buoyancy and flips~~ via internal shifting of the battery pack) ~~so that.~~ This causes the turbulence sensors to always point into undisturbed fluid. Flipping therefore permits profiling on both ~~ascent and descent~~ descent and ascent including sampling of the upper
80 5 m on the ~~upward profile. FCS and its measurements will be described more completely in a future paper.~~ ascent.

As a prototype, a ~~SOLO float without flipping capability but~~ standard (non-flipping) SOLO float with a modified χ pod (Moum and Nash 2009) attached was deployed in the Bay of Bengal to measure the suppression of turbulence by salinity stratification (Shroyer et al. 2016). ~~Two~~ This instrument—named
85 χ SOLO—did not have shear probes, and therefore could not have provided estimates of ϵ within mixed layers. (Values of ϵ can be approximated from χ , but only if there is stratification.) Nevertheless, χ SOLO's success motivated the development of the FCS units with flipping capabilities and fully integrated turbulence packages ~~were subsequently built and.~~ These new instruments retained the χ or C in their name despite their ability to also directly measure ϵ from shear probes.

90 Two FCS units were vetted over four days in May 2019 off the Oregon coast. During this period, each unit profiled from the surface to ~ 120 m and back at a typical speed of 0.2 m s^{-1} . Adding time at the surface, each dive cycle took ~ 30 minutes and we obtained 650 profiles in total.

In this 2019 experiment, one of the shear probes on one of the two units malfunctioned. Hence, the dataset for this paper contains approximately 25% fewer shear data than fast thermistor data.

95 **3 Conversion of measured voltages to physical units**

The core of our data reduction scheme uses power law fits of voltage spectra that are calculated onboard, and subsequently converted to meaningful turbulence quantities in post-processing. Additional voltage quantities are also recorded to determine temperature, pressure, and profiling speed.

3.1 Nomenclature and conventions

- 100 – All quantities measured by FCS that are discussed in this paper are sampled at 100 Hz.
- All voltage spectra are frequency spectra and denoted $\Psi_x(f)$ (where x is a label such as s for shear) with units of $V^2 \text{ Hz}^{-1}$.
- Physical spectra of shear and temperature gradient are wavenumber spectra and denoted $\Phi_x(k)$ with units of $s^{-2} \text{ cpm}^{-1}$ and $K^2 \text{ m}^{-2} \text{ cpm}^{-1}$, respectively. Figure 4 is an exception in which shear spectra
105 are frequency spectra: $\Phi_s(f)$.
- Wavenumber k has the unit cycles per meter (cpm). Expressions quoted from other papers may differ by factors of 2π for wavenumbers in radians per meter.
- The Kraichnan model spectrum Φ_{Kr} primarily depends on the dissipation rates of turbulent kinetic energy and temperature variance (ε and χ), but it also depends on the molecular viscosity ν and
110 molecular thermal diffusivity D_T . For brevity, we write $\Phi_{Kr}(k, \varepsilon, \chi)$ rather than the more complete $\Phi_{Kr}(k, \varepsilon, \chi, \nu, D_T)$. Similarly, the Nasmyth spectrum is written $\Phi_{Na}(k, \varepsilon)$ rather than $\Phi_{Na}(k, \varepsilon, \nu)$. In cases where the arguments are unambiguous or unimportant, we simply write Φ_{Na} and Φ_{Kr} .
- A pair of angle brackets, $\langle \cdot \rangle$, denotes the mean value over a segment of length $N_{\text{seg}} = 512$ data points. This equates to $\sim 1 \text{ m}$ at our nominal profiling speed of 0.2 m s^{-1} .
- 115 – To calculate spectra for a given 512-element voltage segment, we first remove the linear trend, then use three half-overlapping, Hamming-windowed, 256-element subsegments (i.e., $N_{\text{fft}} = 256, N_{\text{overlap}} = 128$).

In general, the values of N_{seg} and N_{fft} are variables. Our choices are based on the 100 Hz sampling ($\sim 500 \text{ cpm}$) and the goals of FCS, which include obtaining high-vertical-resolution turbulence data, especially near the surface. For different turbulence profilers or different scientific goals, longer segments
120 and/or more overlapping subsegments may be more appropriate (see Sect. 8).

We do not pursue the possibility of using accelerometers to decontaminate spectra (e.g., Levine and Lueck 1999); three subsegments is too few for this to work well. Rather, we focus on a frequency band that we know to be unaffected by vibration.

125 3.2 Shear calibration

The voltage reported by the shear probe V_s is linearly proportional to shear:

$$u_z = \frac{\alpha}{W^2} V_s \quad (1)$$

$$\alpha = 1/(2\sqrt{2}\rho G_s T_s S_s) \quad (2)$$

where W is the flow speed past the sensor. The overall engineering calibration α includes the seawater
130 density ρ , the analog circuit gain G_s (equal to 1 for FCS circuitry), the probe sensitivity S_s ($\sim 0.25 \times 10^{-3} \text{ V m}^2 \text{ N}^{-1}$) and the differentiator time constant T_s ($\sim 1 \text{ s}$).

The linearity in V_s admits a simple link between the physical and voltage spectra:

$$\Phi_{u_z}(k) = \frac{1}{H_s^2(k)} \frac{\alpha^2}{W^3} \Psi_s(f). \quad (3)$$

where $H_s^2(k)$ is the transfer function that accounts for (i) spatial averaging by the shear probe of high-
135 wavenumber motions and (ii) analog and digital filtering of the raw voltage signal (see Appendix A).
Note also the use above of the following relation:

$$\Psi(f) = \Psi(k) \frac{dk}{df} = \frac{\Psi(k)}{W}. \quad (4)$$

3.3 Temperature and temperature gradient calibration

Two voltage signals are recorded for each fast thermistor. V_T is the voltage output directly related to T and
140 V_{T_t} is the differentiated output, which improves resolution at high frequencies ($\gtrsim 10 \text{ Hz}$). Temperature is
related to V_T through a quadratic calibration:

$$T = C_{1T} + C_{2T} V_T + C_{3T} V_T^2 \quad (5)$$

$$\langle T \rangle = C_{1T} + C_{2T} \langle V_T \rangle + C_{3T} \left\langle V_T^2 \right\rangle \sim \quad (6)$$

where C_{1T} , C_{2T} , and C_{3T} are coefficients determined from lab calibrations. ~~Note how $\langle T \rangle$ depends on~~
145 ~~the means of both V_T and V_T^2 because of the quadratic calibration~~ Eq. (6) is technically an approximation
because it contains $\langle V_T \rangle^2$, not $\langle V_T^2 \rangle$, but over 5 s time scales this changes $\langle T \rangle$ by $\lesssim 0.001^\circ \text{C}$ (estimated
from the 2019 dataset).

The gradient of ~~this~~ the temperature calibration is

$$\frac{\partial T}{\partial V_T} = C_{2T} + 2C_{3T}V_T \underline{\underline{\approx}} \underline{\underline{=}} C_{2T} + 2C_{3T} \langle V_T \rangle. \quad (7)$$

150 ~~Over 5 s time scales, we consider V_T to be constant.~~ Consequently, the small-scale vertical temperature gradient T_z is linearly proportional to the differentiated voltage V_{Tt} . To demonstrate, we first rewrite T_z in terms of more directly measured quantities:

$$T_z = \frac{\partial T}{\partial z} = \frac{\partial T}{\partial V_T} \frac{\partial V_T}{\partial t} \frac{\partial t}{\partial z}. \quad (8)$$

The first quantity on the right-hand side is Eq. (7), the last is $1/W$, and the second is

$$155 \quad \frac{\partial V_T}{\partial t} = \frac{V_{Tt}}{C_{Tt}} \quad (9)$$

where C_{Tt} is the gain of the analog differentiator.

Rewriting Eq. (8), the aforementioned linear relationship between T_z and V_{Tt} becomes

$$T_z = \left(\frac{C_{2T} + 2C_{3T} \langle V_T \rangle}{C_{Tt}W} \right) V_{Tt}. \quad (10)$$

The relationship between physical and voltage spectra is therefore

$$160 \quad \Phi_{T_z}(k) = \frac{1}{\underline{\underline{H_{Tt}^2(k)}}} \left(\frac{C_{2T} + 2C_{3T} \langle V_T \rangle}{C_{Tt}} \right)^2 \frac{1}{W} \Psi_{Tt}(f). \quad (11)$$

Again, we have invoked Eq. (4) and the transfer function $H_{Tt}^2(k)$ is defined in Appendix A.

3.4 Pressure and profiling velocity calibration

Pressure has a linear calibration:

$$P[\text{dbar}] = \frac{C_{1P} + C_{2P}V_P}{1.45 \text{ psi dbar}^{-1}} - p_{\text{atm}}. \quad (12)$$

165 In our usage, the coefficients C_{1P} and C_{2P} are recorded in units of psi and psi V^{-1} , respectively, and calibrated under total pressure. Subtracting atmospheric pressure makes $P = 0$ at the sea surface. The constant C_{1P} must account for the vertical position of the pressure sensor on the instrument relative to

the shear probes and thermistors. Hence, C_{1P} differs between upcasts and downcasts. For the reduced dataset, we ~~want $\langle P \rangle$, which is simply Eq. (12) with $\langle V_P \rangle$ in place~~ record the last pressure voltage in each segment. For example, with $N_{\text{seg}} = 512$, we save the 512th, 1024th, and 1536th values of V_P for the first three segments. The average pressure in the second and third segment are $0.5(V_P(1024) + V_P(512))$ and $0.5(V_P(1536) + V_P(1024))$, respectively. The average pressure in the first segment is found by extrapolation.

The flow speed past the sensors, denoted W , is derived from the ~~pressure-voltage~~ rate of change. ~~Over a segment of length N , the mean of W is a scaled version of the difference between the first and N th voltage values of the pressure voltages just described:~~

$$\langle W \rangle = \frac{\partial P}{\partial t} = \frac{C_{2P}}{1.45} \underbrace{\frac{|\Delta V_P|}{N_{\text{seg}} \Delta t}}_{\text{Calculate onboard}} \quad (13)$$

where Δt is the sampling period (here 0.01 s), ~~and ΔV_P is $V_P(N) - V_P(1)$, and ΔP is $V_P(1024) - V_P(512)$ and $V_P(1536) - V_P(1024)$ for the second and third segments, respectively. Extrapolation is again used for the first segment.~~

No smoothing is necessary before calculating ΔV_P because its magnitude is so much larger than the quantization of the signal (this being the limiting factor for precision of pressure recorded by FCS). In physical units, P is precise to 0.003 dbar, which is $\mathcal{O}(300)$ times smaller than ΔP .

Wave orbitals can introduce variability when W is small ($\lesssim 0.15 \text{ m s}^{-1}$). As a diagnostic we calculate and record the minimum value of W for each segment. This also helps to identify the beginning and end of profiles as shown in Appendix B. In standard processing, we would derive $W(t)$ from the pressure signal low passed at 2 Hz. To avoid the need to low-pass filter the signal onboard, we instead make 10 estimates of $W(t)$ per segment and take the minimum of these:

$$W_{\min} = \frac{C_{2P}}{1.45} \underbrace{\min \left(\frac{|\Delta V_P(t_i)|}{50 \Delta t} \right)}_{\text{Calculate onboard}} \quad (14)$$

where $t_i = 1, 51, 101, \dots, 501$. Even with this sampling of every 50th element, which follows from subsampling a 100 Hz signal at 2 Hz, $\Delta V_P(t_i)$ is large enough that smoothing is unnecessary.

In this paper, we immediately discard all segments in which $W_{\min} < 0.05 \text{ m s}^{-1}$. This threshold is reached only at the top and bottom of profiles, if at all. Note, however, that this does not imply that a

segment with $W_{\min} > 0.05 \text{ m s}^{-1}$ is trustworthy. Even segments with W_{\min} closer to 0.15 m s^{-1} should be
 195 treated with particular caution. Signs that a segment is questionable are that $\langle W \rangle$ and W_{\min} differ by ~~more~~
~~than~~ $\sim 20\%$ or more and that spectral fit scores are low (see Sect. 4.3 and 6.3). These two issues often
co-occur because of the nonlinear relationship between shear and profiling speed (Eq. 1). Low frequency
variations in W ultimately lead to spectra that are redder than expected, and hence have low fit scores. Such
segments should be discarded. There is not a simple way to correct the spectra given the nonlinearity.

200 4 Reduction of shear data

In this section, we are ultimately going to fit measured spectra to an inertial subrange model that does not
necessarily apply at the relevant frequencies or wavenumbers. We will elaborate as we go, but we want to
emphasize in advance that measured spectra do not need to conform to an inertial subrange model for us
to obtain accurate values of ε . The inertial subrange is merely a convenient starting point.

205 4.1 Summarizing Nasmyth spectra with $f^{1/3}$ fits

Shear measurements ideally capture both the inertial and viscous subranges and hence use a wide band of
 the measured spectrum to derive values for ε . In practice, noise and sensor resolution limit how well the
 true environmental spectrum is resolved. Conventional work-arounds exploit the Nasmyth model spec-
 trum $\Phi_{\text{Na}}(k, \varepsilon)$ (Nasmyth 1970; Oakey 1982). One approach is to iterate toward a solution in which the
 210 integral of Φ_{Na} over a specific wavenumber band matches that of the measured spectrum Φ_{u_z} (e.g., Moum
 et al. 1995). Another is to find the best fit of Φ_{u_z} to Φ_{Na} by using maximum likelihood estimation together
 with a model of the expected statistical distribution of the spectral coefficients being fitted (e.g., Bluteau
 et al. 2016).

Here we develop a new and simpler two-stage approach to fitting shear spectra to Φ_{Na} . In the first stage,
 215 we use an $f^{1/3}$ power law fit over a fixed frequency range of f_l to $f_h = 1\text{--}5 \text{ Hz}$, where $f^{1/3}$ follows from
 the assumption that we are fitting over the inertial subrange. In ~~this~~ the second stage, we correct for when
this often-invalid assumption.

In the inertial subrange, shear spectra are proportional to $k^{1/3}$ and hence also $f^{1/3}$ since $f = Wk$. With
 $N_{\text{fft}} = 256$ and 100 Hz sampling (Sect. 3.1), spectral coefficients are separated by frequency increments of

220 100 Hz/256 = 0.39 Hz, so there are 10 coefficients between 1 and 5 Hz. (Our processing code will actually use bounding frequencies of 0.98 and 4.88 Hz as these are half-integer multiples of 0.39 Hz, but for brevity we will write these as 1 and 5 Hz throughout.)

Our choice of $f_l = 1$ Hz is dictated by a requirement that we avoid low frequency contamination induced by (i) advection by wave orbital motion and (ii) pitch and roll motions of the profiler. Together, these
 225 dominate below 0.3 Hz. Setting $f_l = 0.5$ Hz would add only one more spectral coefficient. Our choice of $f_h = 5$ Hz is a trade-off between maximizing the bandwidth of the fit and minimizing how much measured spectra are subject to either noise or viscous roll off. Other profilers may benefit from different frequency bounds (see Sect. 8).

Our inertial subrange assumption is often false. Indeed, ‘assumption’ is perhaps a misnomer as we
 230 do not expect it to be true; we know that viscous roll off will often occur at frequencies lower than 5 Hz (25 cpm for a nominal value of $W = 0.2 \text{ m s}^{-1}$). However, because there exists an analytical expression for the viscous roll off, we are able to derive an exact expression that quantifies how much ε is underestimated. This is the second stage of our approach. We derive an expression for the correction function F_{Na} in such a way that it can be calculated in post-processing. The benefits of this approach are that (i) we can fit
 235 uncalibrated (i.e., voltage) spectra and (ii) it simplifies the actual onboard fitting routine (Sect. 4.2).

The full Nasmyth spectra and its inertial range approximation are as follows (Lueck 2013):

$$\Phi_{\text{Na}}(k, \varepsilon) = \frac{\varepsilon^{3/4}}{\nu^{1/4}} \frac{8.05(k\eta)^{1/3}}{1 + (20.6k\eta)^{3.715}} \quad (15)$$

$$\Phi_{\text{Na}}(k \lesssim 0.02/\eta, \varepsilon) = 8.05k^{1/3}\varepsilon^{2/3} \quad (16)$$

where $\eta = (\nu^3/\varepsilon)^{1/4}$ is the Kolmogorov length scale.

240 ~~Consider an $f^{1/3}$ fit of the Nasmyth spectrum over~~ Let $\varepsilon_{\text{init}}$ denote the *initial* value of ε that comes from fitting a measured spectrum to the approximate form in Eq. (16) using the simple power-law fitting method in Appendix C, rather than fitting to the full form in Eq. (15). As noted earlier, the fit will be over the f_l – $f_h = 1$ –5 Hz ~~for two values of ε : 1×10^{-9} and $1 \times 10^{-6} \text{ W kg}^{-1}$ (Fig. 1a). With range which, given~~ our nominal value of $W = 0.2 \text{ m s}^{-1}$, ~~we get equates to k_l – $k_h = 5$ –25 cpm. For~~

245 Consider two contrasting examples of low and high turbulence with $\varepsilon = 1 \times 10^{-9}$ and $1 \times 10^{-6} \text{ W kg}^{-1}$, respectively. For now, assume the measured spectrum to be fit is itself a Nasmyth spectrum. For $\varepsilon = 10^{-6} \text{ W kg}^{-1}$ the $f^{1/3}$ fit lies on top of Φ_{Na} . Conversely, the $f^{1/3}$ fit for the smaller ε value is seemingly

meaningless: the $f^{1/3}$ fit (dashed line) does not even match the sign of the slope of Φ_{Na} . Worse yet, naively inverting this ~~initial (or ‘init’)~~ initial fit produces the underestimate $\epsilon_{\text{init}} = 1.2 \times 10^{-10} \text{ W kg}^{-1}$,
 250 ~~six-eight~~ times smaller than the true value of ϵ . However, by adjusting by a factor of $1/F_{\text{Na}}$, defined in the following paragraph, the fit (dotted line) ~~now~~ looks like a hypothetical extrapolation of the inertial subrange. Equivalently, ϵ_{init} is corrected to the true value of ϵ as

$$\epsilon = \epsilon_{\text{init}} / F_{\text{Na}}^{3/2}. \quad (17)$$

In our example, $1 \times 10^{-9} \text{ W kg}^{-1} = 1.2 \times 10^{-10} \text{ W kg}^{-1} / 0.238^{3/2}$. The value of 0.238 is the solution to
 255 an implicit equation derived below that depends on ϵ_{init} and W . For clarity, our demonstration starts by assuming we know ϵ rather than ϵ_{init} .

Nasmyth spectra can be flattened to unity over the inertial subrange with the normalization $8.05k^{1/3}\epsilon^{2/3}$ (Fig. 1b). Values of F_{Na} are based on the mean of these flattened spectra over the wavenumber range k_l – k_h ($= f_l/W - f_h/W$):

$$260 \quad F_{\text{Na}} = \frac{1}{k_h - k_l} \int_{k_l}^{k_h} \frac{\Phi_{\text{Na}}(k, \epsilon)}{8.05k^{1/3}\epsilon^{2/3}} dk. \quad (18)$$

To remove the dependence of the true value of ϵ , we substitute ~~using Eq. (17). Further, to account for the $H_s^2(k)$ factor in Eq. (3), we make the substitution~~

$$\underline{\Phi_{\text{Na}}(k, \epsilon) \rightarrow H_s^2(k) \Phi_{\text{Na}}(k, \epsilon)}.$$

~~Think of this substitution as inverting the conventional way that $H_s^2(k)$ is invoked. Usually, a measured shear spectrum is amplified at high wavenumbers by $1/H_s^2(k)$ and then fit to the model spectrum Φ_{Na} . Here, instead of amplifying the measured spectrum, we reduce the model spectrum. With this latter approach, $H_s^2(k)$ is calculated and applied only during the post-processing stage. (It changes F_{Na} by only $\sim 5\%$ since we fit over relatively low wavenumbers.) Altogether, the substitutions result in Eq. (17) to~~
 265 produce an implicit function for F_{Na} , which can be solved numerically:

$$270 \quad \frac{1}{k_h - k_l} \int_{k_l}^{k_h} \frac{H_s^2(k) \Phi_{\text{Na}}(k, \epsilon_{\text{init}} / F_{\text{Na}}^{3/2})}{8.05k^{1/3}\epsilon_{\text{init}}^{2/3} / F_{\text{Na}}} \frac{\Phi_{\text{Na}}(k, \epsilon_{\text{init}} / F_{\text{Na}}^{3/2})}{8.05k^{1/3}\epsilon_{\text{init}}^{2/3} / F_{\text{Na}}} dk - F_{\text{Na}} = 0. \quad (19)$$

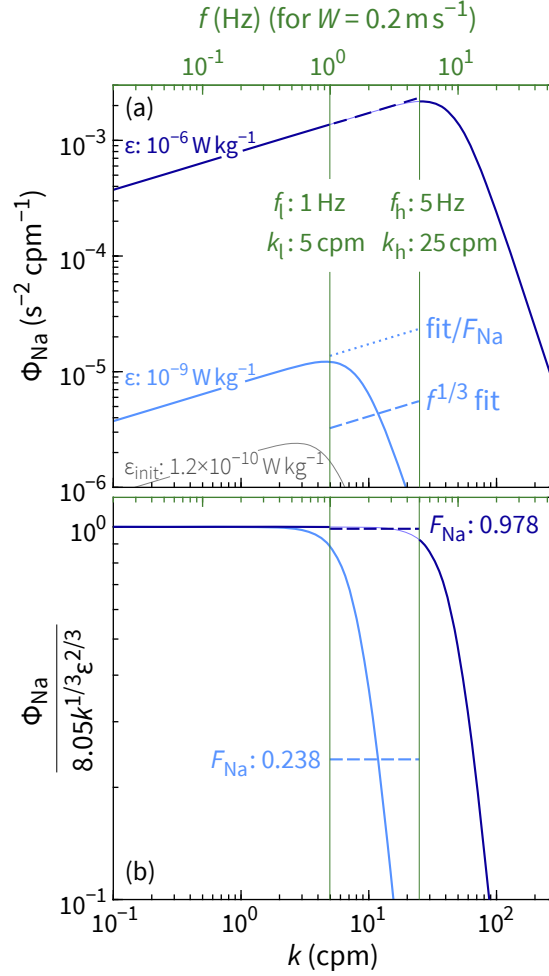


Figure 1. Calculation of the correction function F_{Na} for two values of ϵ . For $\epsilon = 1 \times 10^{-6} \text{ W kg}^{-1}$, a $k^{+1/3}$ power law is a good approximation of the Nasmyth spectrum over the frequency range f_l – f_h (1–5 Hz) for a profiling speed of $W = 0.2 \text{ m s}^{-1}$. Although the same is not true for $\epsilon = 1 \times 10^{-9} \text{ W kg}^{-1}$, we can account for the roll off with a factor of F_{Na} . F_{Na} can be defined in terms of either ϵ (Eq. (18)) or ϵ_{init} (Eq. (19)). Panel b takes the former approach. In practice, we must take the latter approach since we do not know ϵ until after it is derived from ϵ_{init} and F_{Na} .

Note how the two forms of F_{Na} (Eqs. 18 and 19) are defined with different arguments. For our example, $F_{\text{Na}}(\epsilon = 1 \times 10^{-9} \text{ W kg}^{-1}) = F_{\text{Na}}(\epsilon_{\text{init}} = 1.2 \times 10^{-10} \text{ W kg}^{-1}) = 0.238$. Hereafter, we use the latter: $F_{\text{Na}}(\epsilon_{\text{init}})$.

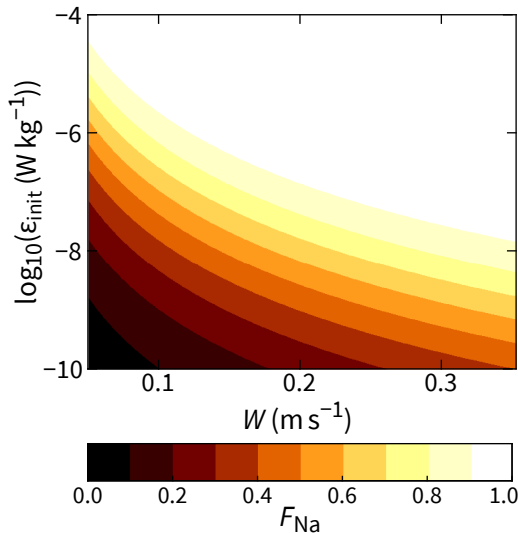


Figure 2. The correction function F_{Na} for $\nu = 1 \times 10^{-6} \text{ m}^2 \text{ s}^{-1}$ and $f_l - f_h = 1\text{--}5 \text{ Hz}$.

With f_l and f_h fixed, F_{Na} is a function of three variables: ϵ_{init} , W , and ν . F_{Na} is closer to one (less of a
 275 correction) for larger values of ϵ_{init} (Fig. 1). It is also closer to one for higher values of W (Fig. 2) since k_l
 and k_h decrease with increasing W (i.e., $k_l - k_h$ moves closer to the inertial subrange).

To simplify calculations in the upcoming section, we make one final change to Eq. (19) using the
 substitution

$$\Phi_{\text{Na}}(k, \epsilon) \rightarrow H_s^2(k) \Phi_{\text{Na}}(k, \epsilon). \quad (20)$$

280 Therefore,

$$\frac{1}{k_h - k_l} \int_{k_l}^{k_h} \frac{H_s^2(k) \Phi_{\text{Na}}(k, \epsilon_{\text{init}}/F_{\text{Na}}^{3/2})}{8.05 k^{1/3} \epsilon_{\text{init}}^{2/3} / F_{\text{Na}}} dk - F_{\text{Na}} = 0. \quad (21)$$

Think of this substitution in Eq. (20) as inverting the conventional way that $H_s^2(k)$ is invoked. Usually, a
 measured shear spectrum is amplified at high wavenumbers by $1/H_s^2(k)$ and then fit to the model spectrum
 Φ_{Na} . Here, instead of amplifying the measured spectrum, we reduce the model spectrum. With this latter
 285 approach, $H_s^2(k)$ is calculated and applied only during the post-processing stage. (It changes F_{Na} by only
 $\sim 5\%$ since we fit over relatively low wavenumbers.)

4.2 Obtaining ϵ_{init} from shear voltage spectra

Since ϵ can be reconstructed from ϵ_{init} , we require an expression linking ϵ_{init} to the shear voltage spectrum Ψ_s . Equating Eq. (3) and Eq. (16) gives

$$290 \quad \frac{\alpha^2}{W^3} \Psi_s(f) = 8.05 k^{1/3} \epsilon_{\text{init}}^{2/3} \quad (22)$$

where we have left out $H_s^2(k)$ since it has been incorporated into F_{Na} . Rearranging and substituting $k = f/W$ gives

$$\epsilon_{\text{init}}^{2/3} f^{1/3} = \frac{\alpha^2}{8.05 W^{8/3}} \Psi_s(f). \quad (23)$$

Then, to solve for ϵ_{init} , we use a least-squares fit (see Appendix C):

$$295 \quad \epsilon_{\text{init}}^{2/3} = \frac{\alpha^2}{8.05 W^{8/3}} \underbrace{\frac{\sum_f f^{1/3} \Psi_s}{\sum_f f^{2/3}}}_{\text{Calculate onboard}} \quad (24)$$

where the sums are understood to be over the range f_l – f_h . The quantities α , W , and ϵ_{init} are calculated in post-processing.

4.3 Quality control of the shear spectral fits

Measured shear spectra are often quality controlled either by manual visual inspection or, more objec-
 300 tively, by quantifying the level of mismatch between them and their associated model. Possible mismatch
 quantities include the mean absolute deviation or the variance of the ratio $\Phi_{u_z}/\Phi_{\text{Na}}$ (e.g., Ruddick et al.
 2000; Bluteau et al. 2016). We cannot calculate such quantities with our reduced scheme because we do
 not know what each spectrum should look like until we calculate its ϵ value in the post-processing stage.
 (Recall that Φ_{Na} is a function of ϵ .) By this stage, we have lost information about the spectral shape
 305 through the summing operation in Eq. (24).

To retain at least some information about the shape of each voltage spectrum, we will split the 1–5 Hz
 range and compute two fits rather than one. Doing so allows for a first-order check that the spectrum over
 the 1–5 Hz range approximately follows the expected shape.

Mathematically, there is nothing special about our choice f_l – $f_h = 1$ –5 Hz. In theory, we can split the
 310 1–5 Hz range into two (1–3 Hz and 3–5 Hz) and obtain a value of ϵ_{init} for each. These values will differ,

but so will the associated values of F_{Na} . For a measured spectrum that conforms to a Nasmyth spectrum, the two values of ε calculated with Eq. (17) will not differ (Fig. 3). We therefore calculate onboard the sums in Eq. (24) over both f_l-f_m and f_m-f_h , where the mid frequency $f_m = 3$ Hz. (In our code, f_m is actually 7.5×0.39 Hz = 2.93 Hz for the reason given in Sect. 4.1.) Hence, for each spectrum we are able
 315 to post-process to recover two independent estimates of ε , denoted ε_{l-m} and ε_{m-h} . The mean of these two provides a single, final value for ε , and their ratio quantifies the match of a measured spectrum to a Nasmyth spectrum over the range f_l-f_h :

$$\varepsilon = \text{mean}(\varepsilon_{l-m}, \varepsilon_{m-h}) \quad (25)$$

$$\varepsilon \text{ fit score} = \frac{\min(\varepsilon_{l-m}, \varepsilon_{m-h})}{\max(\varepsilon_{l-m}, \varepsilon_{m-h})}. \quad (26)$$

320 The best possible fit score is 1; the lower the score, the poorer the fit(Fig-4)-. The example spectra in Fig. 4 show that a high fit score does not necessarily imply small residuals. Rather, fits with high scores are typically those with random residuals meaning that a given measured spectral coefficient is just as likely to be above the fit as below it. Fits with low fit scores are typically those with autocorrelated residuals meaning that the sign and/or magnitude of a residual is correlated with that of its neighbors. In practice, we expect a range of ε fit scores: instantaneous and unaveraged spectra differ from the Nasmyth spectrum because they are derived from a limited sampling of a statistical process, and ~~they can also deviate~~ because of non-stationarity, anisotropy, and inhomogeneity of the turbulence.

When ε is small ($\lesssim 10^{-9}$ W kg $^{-1}$), the fit score may be consistently low if spectral coefficients in the f_m-f_h range are affected by noise and consequently $\varepsilon_{m-h} \gg \varepsilon_{l-m}$. For such cases, we choose to use only
 330 the lower-frequency fit. We would rather have a more accurate estimate of ε and forgo the fit score than have a biased-high ε value with a biased-low fit score. (Either way, the small values of ε in question will have minimal effect on any averages given that turbulence ~~is approximately lognormal~~distributions have high kurtosis, so high values dominate means.) Specifically,

$$\left. \begin{aligned} \varepsilon &= \varepsilon_{l-m} \\ \varepsilon \text{ fit score} &= - \end{aligned} \right\} \text{ if } 0.1W \left(\frac{\varepsilon_{l-m}}{v^3} \right)^{1/4} < f_m, \quad (27)$$

335 where the threshold is equivalent to $k < 0.1/\eta$ with η the Kolmogorov length scale estimated from ε_{l-m} . For reference, Φ_{Na} peaks at $k = 0.026/\eta$ and rolls off to 11% of its maximum by $k = 0.1/\eta$ (see Eq. (15)).

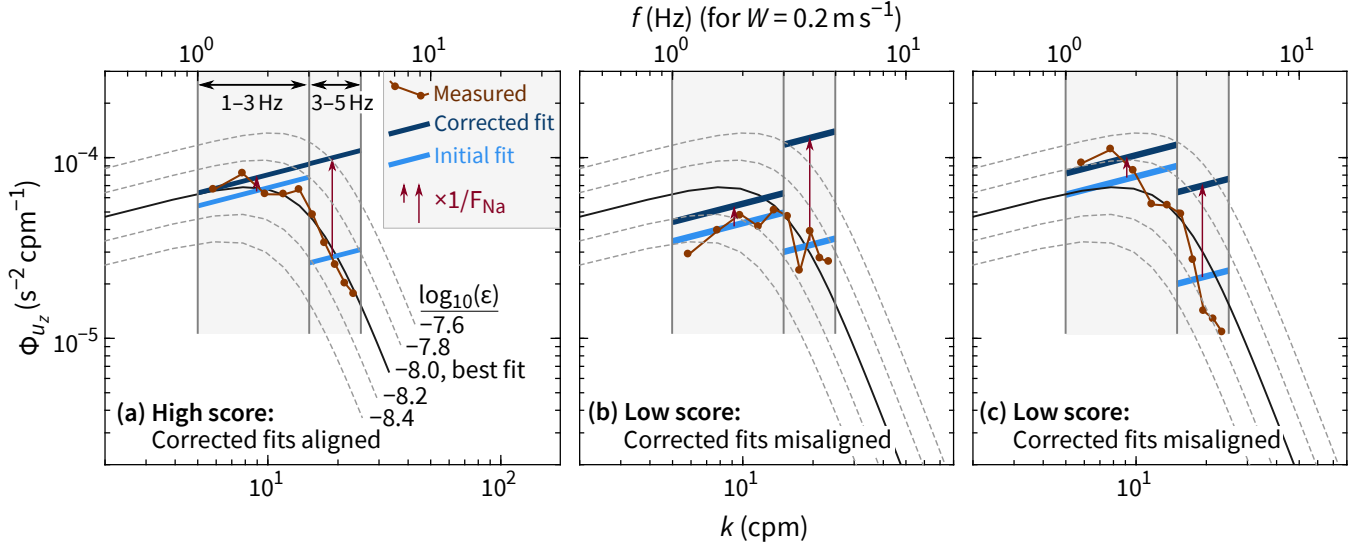


Figure 3. A visual demonstration of how the ϵ fit score (Eq. (26)) characterizes better and worse fits. For all three examples of these hypothetical spectra, ϵ values from the two fits (1–3 and 3–5 Hz) average to $\epsilon = 1 \times 10^{-8} \text{ W kg}^{-1}$. Only in panel a, however, does the measured spectrum agree well with the Nasmyth spectrum for this ϵ value. In practice, the initial fits would be undertaken on voltage spectra. Here; here, we are using physical units for simplicity. In all three examples, the kinematic viscosity is $\nu = 10^{-6} \text{ m}^2 \text{ s}^{-1}$.

5 Test of the reduction scheme for ϵ

To test the accuracy of the shear reduction scheme described in the previous section, we apply it retrospectively to the dataset from the 2019 test cruise (Sect. 2). We compare the results to those obtained
 340 with the standard processing scheme. This standard scheme (Appendix D) features a more sophisticated despiking routine than used for our reduced scheme, which employs a three standard deviation threshold filter (Appendix E).

A profile-by-profile comparison of the two schemes is shown in Fig. 5. The comparison is then extended to all 650 profiles ($>77\,000$ segments of shear), where we find that ϵ from the reduced scheme ($\epsilon_{\text{init}}/F_{\text{Na}}^{3/2}$)
 345 is within a factor of two of that from the standard scheme 87% of the time over the full range of measured values, $10^{-10} < \epsilon < 10^{-4} \text{ W kg}^{-1}$ (Fig. 6a–b). For comparison, in only 72% do we obtain a factor-of-two agreement between the two independent values of ϵ measured on the unit with two working shear probes (not shown). Further, to obtain this 87% agreement, we clearly need the correction function F_{Na} :

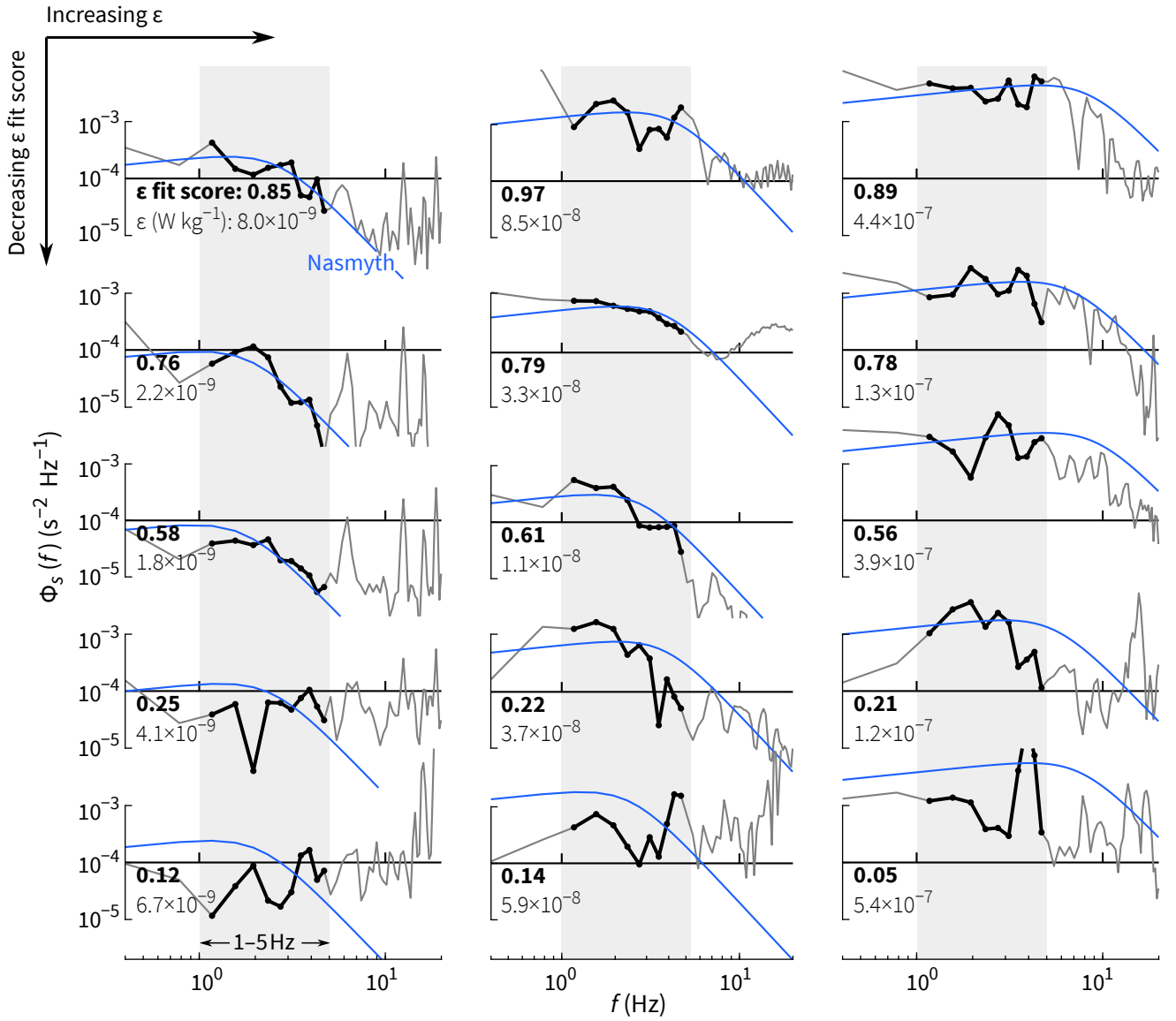


Figure 4. Examples of measured shear spectra exhibiting a range of ϵ fit scores (Eq. (26)). The best fit-is-fits are at the top with progressively worse fits (lower scores) moving downward. The examples in each column have (left) $\epsilon = 10^{-9}$ – 10^{-8} , (middle) $\epsilon = 10^{-8}$ – 10^{-7} , and (right) $\epsilon = 10^{-7}$ – 10^{-6} W kg^{-1} . Each score is only based on spectral coefficients from 1–5 Hz, but lower and higher frequencies are shown for reference.

Fig. 6c shows that the uncorrected values ϵ_{init} only have 1:1 agreement with ϵ from the standard scheme
 350 if $\epsilon \gtrsim 10^{-7} \text{ W kg}^{-1}$. For the lowest values of ϵ , the ratio is closer to 1:30.

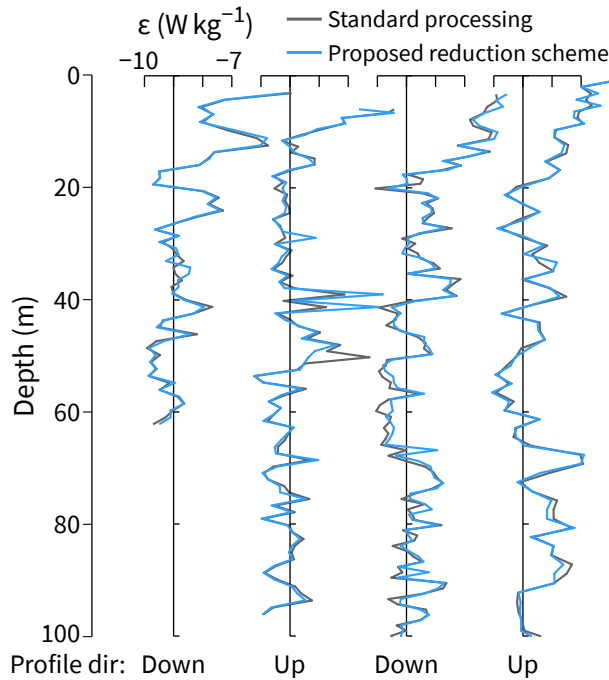


Figure 5. Testing the proposed data reduction scheme for shear measurements against the standard processing approach. One upward and one downward profile from each of the two FCS units were arbitrarily chosen for this comparison.

To demonstrate the ability of the ϵ fit score to characterize spectra, we show two-dimensional histograms of non-dimensionalized spectral coefficients from all 77 000 measured shear spectra separated into three classes based on their ϵ fit score: 0.67–1.00, 0.33–0.67, and 0.00–0.33. Only the lowest scoring class fails to collapse to the Nasmyth spectrum ([Fig. 7e](#)[Figs 7c, 7f](#)).

355 6 Reduction of fast thermistor data

The scheme to reduce fast thermistor data to enable measurement of χ is much like the scheme to reduce shear data. As in Sect. 4, we first show how we summarize a model spectrum in terms of a power law fit and a correction factor. [\(In this case, the correction factor partly depends on the values of \$\epsilon\$ calculated in Sect. 4.\)](#) Then we derive the implementation in terms of voltages and calculate a spectral fit metric.

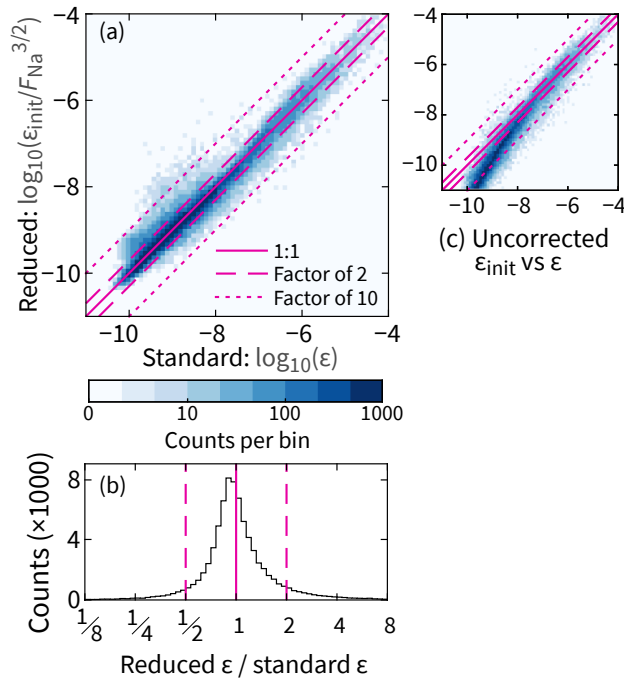


Figure 6. Statistical test of the proposed data reduction scheme for ϵ based on all 650 profiles (77 000 segments). (a) A comparison that includes the dependence on ϵ . (b) Further summarized data that exclude this dependence. (c) As for panel a, but uncorrected ($F_{\text{Na}} = 1$).

360 6.1 Summarizing Kraichnan spectra with f^1 fits

Here we take the Kraichnan spectrum Φ_{Kr} (Kraichnan 1968) as our model and for its low-wavenumber approximation we use the viscous–convective subrange, which scales as k^{+1} . In units of $\text{K}^2 \text{m}^{-2} \text{cpm}^{-1}$, Φ_{Kr} and its approximation are as follows (e.g., Peterson and Fer 2014):

$$\Phi_{\text{Kr}}(k, \epsilon, \chi) = 4\pi^2 k \chi q \sqrt{\nu/\epsilon} \exp\left(-\sqrt{6q} 2\pi k \lambda_B\right) \quad (28)$$

$$\Phi_{\text{Kr}}(k \ll \lambda_B^{-1}, \epsilon, \chi) = 4\pi^2 k \chi q \sqrt{\nu/\epsilon}. \quad (29)$$

where the Batchelor length scale $\lambda_B = (\nu D_T^2/\epsilon)^{1/4}$ and q is a constant taken to be 5.26. This expression does not include a $k^{+1/3}$ inertial–convective subrange, which we ignore here as it increases the integral of the temperature gradient spectrum from $k = 0$ to $k = \infty$ by less than 1% and therefore has negligible effect on our results.

370 A fit against Eq. (29) can be rearranged to give χ_{init} , which is related to χ through the correction function F_{Kr} as

$$\chi = \chi_{\text{init}}/F_{\text{Kr}}. \quad (30)$$

F_{Kr} is not raised to a power like F_{Na} (Eq. (17)). For small values of k , $\Phi_{\text{Kr}} \propto \chi$ whereas $\Phi_{\text{Na}} \propto \varepsilon^{2/3}$.

The derivation of F_{Kr} is equivalent to F_{Na} . We therefore present only the result:

$$375 \quad \frac{1}{k_h - k_l} \int_{k_l}^{k_h} \frac{H_{Tl}^2(k) \Phi_{\text{Kr}}(k, \varepsilon, \chi_{\text{init}}/F_{\text{Kr}})}{4\pi^2 k (\chi_{\text{init}}/F_{\text{Kr}}) q \sqrt{v/\varepsilon}} - F_{\text{Kr}} = 0. \quad (31)$$

Note that $F_{\text{Kr}}(\varepsilon, \chi_{\text{init}}, W)$ depends on the underestimate χ_{init} , but the ‘true’ or ‘corrected’ value of ε calculated in Sect. 4.

6.2 Obtaining χ_{init} from fast thermistor voltage spectra

Like we did for $\varepsilon_{\text{init}}$ in Sect. 4.2, we derive the expression for χ_{init} in three steps. First, equate the right
 380 hand sides of Eqs. 11 and 29 [\(excluding the transfer function \$H_{Ti}^2\(k\)\$, which is incorporated into Eq. \(31\)\)](#):

$$\left(\frac{C_{2T} + 2C_{3T} \langle V_T \rangle}{C_{Ti}} \right)^2 \frac{1}{W} \Psi_{Ti}(f) = 4\pi^2 k \chi q \sqrt{v/\varepsilon}. \quad (32)$$

Then, rearrange while substituting $k = f/W$ to get

$$\chi_{\text{init}} f^1 = \frac{1}{4\pi^2 q \sqrt{v/\varepsilon}} \left(\frac{C_{2T} + 2C_{3T} \langle V_T \rangle}{C_{Ti}} \right)^2 \Psi_{Ti}. \quad (33)$$

385 Finally, solve for χ_{init} using a least-squares fit (Appendix C):

$$\chi_{\text{init}} = \frac{1}{4\pi^2 q \sqrt{v/\varepsilon}} \left(\frac{C_{2T} + 2C_{3T} \langle V_T \rangle}{C_{Ti}} \right)^2 \underbrace{\frac{\sum_f f \Psi_{Ti}}{\sum_f f^2}}_{\text{Calculate onboard}}. \quad (34)$$

6.3 Quality control of the temperature gradient spectral fits

The approach to quality controlling the fast thermistor data is the same as that for shear (Sect. 4.3). That is, we fit Ψ_{Ti} over $f_l - f_m$ and $f_m - f_h$ (1–3 and 3–5 Hz). This ultimately provides two estimates of χ for

390 each spectrum, which are combined as follows:

$$\chi = \text{mean}(\chi_{l-m}, \chi_{m-h}) \quad (35)$$

$$\chi \text{ fit score} = \frac{\min(\chi_{l-m}, \chi_{m-h})}{\max(\chi_{l-m}, \chi_{m-h})}. \quad (36)$$

We do not apply a low χ threshold equivalent to Eq. (27).

7 Test of the reduction scheme for χ

395 Profiles of χ from the reduced scheme compare well to the standard processing, albeit with a small bias in one direction for low values and in the other direction for high values (Fig. 8). Across all values, the two approaches agree within a factor of two 78% of the time (Fig. 9). By comparison, 82% of segments exhibit a factor-of-two agreement between χ values from the two fast thermistors on the same unit.

Compared to shear spectra, non-dimensionalized temperature gradient spectra have lower fit scores.
400 Especially for the lowest fit scores, the measured temperature gradient spectra tend to be too high at lower frequencies and ~~vice versa (Fig. 10).~~ too high at frequencies near f_h (Fig. 10a–c). As frequency increases beyond f_h , the effects of noise and thermal response corrections (Appendix A) begin to dominate.

There are three reasons for the poorer fits to temperature gradient spectra compared to that for shear. First, shapes of temperature gradient spectra are often more variable; the best choice for non-dimensional spectral model can be debated (e.g., Sanchez et al. 2011). Second, the temperature gradient fits depend
405 on ϵ , so uncertainties in ϵ propagate into the calculation of χ . Third, for our 2019 experiment, the recorded temperature gradient signals were occasionally affected by digitization noise as a consequence of sampling mixed layers. (Shear signals were not affected by digitization noise.)

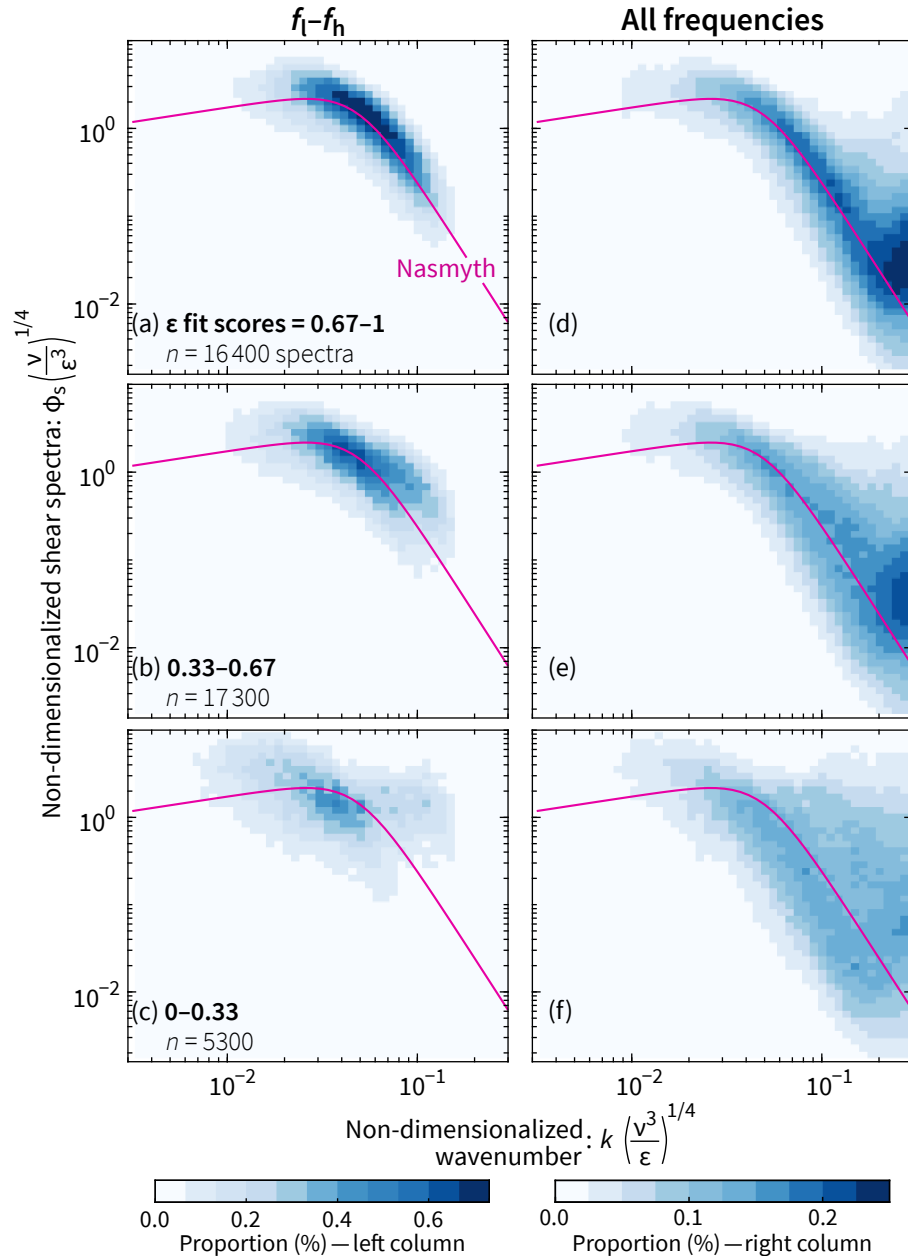


Figure 7. As the ϵ fit score decreases from top to bottom, there is a corresponding decrease in the level of agreement and tightness of spread between (i) non-dimensionalized, measured shear spectra and (ii) the Nasmyth spectrum. ~~These~~The two-dimensional histograms in the left column include only spectral coefficients with frequencies between f_l and f_h ; those in right column include all frequencies. The total number of spectra in this figure is lower than in Fig. 10 because some low- ϵ spectra do not have scores (Eq. (27)) and because one of the shear probes failed (Sect. 2).

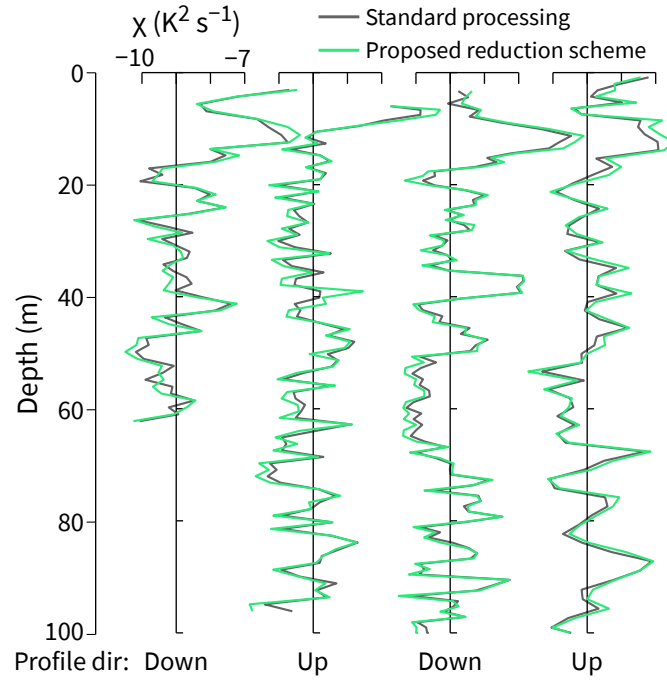


Figure 8. Testing the proposed data reduction scheme for fast thermistor measurements. The profiles used are the same as those chosen in Fig. 5.

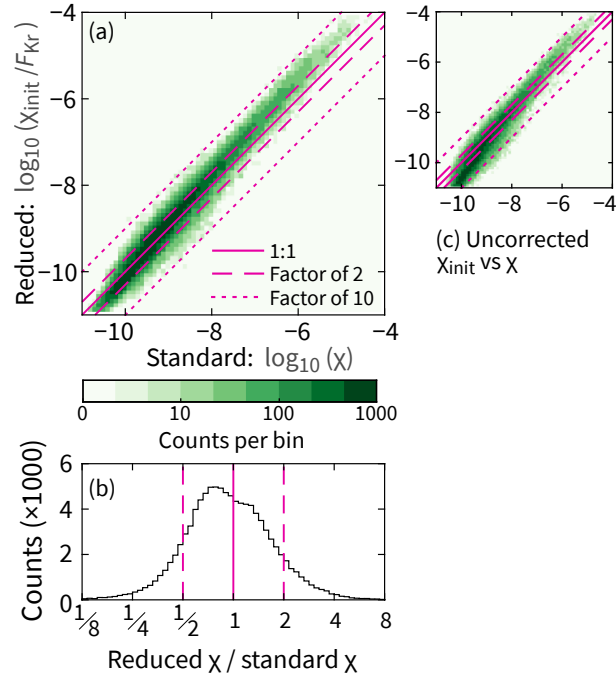


Figure 9. Statistical test of the proposed data reduction scheme for χ . Equivalent to Fig. 6 except for χ not ε . In total, there are 100 000 segments of data.

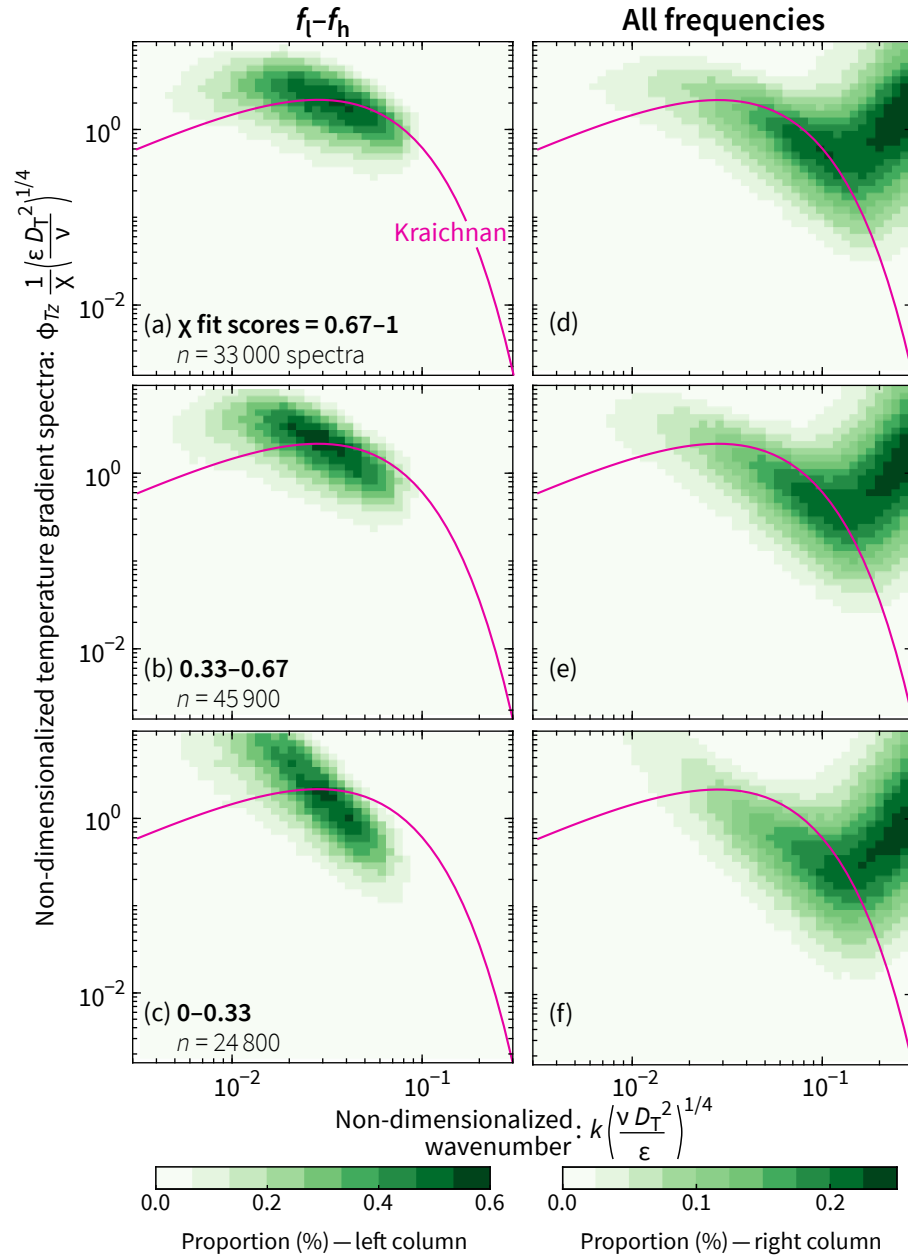


Figure 10. As for Fig. 7, but for temperature gradient rather than shear.

8 Recommendations

8.1 Setting the scheme's parameters

Our scheme requires a few user-defined parameters: f_l , f_h , N_{seg} , and N_{fft} . For this paper, we based these partly on the profiling speed and scientific goals of FCS. For a different profiler, we suggest the following:

- Choose f_h based on a typical profiling speed such that $k_h = f_h/W \approx 25$ cpm for a nominal profiling speed W . For a wide range of ε values, 25 cpm is close to, or beyond, the peak of the Nasmyth spectrum (Fig. 1). Further, ε can be sensitive to the wavenumber fitting range, but centering the fit near $k \approx 10$ –20 cpm minimizes this sensitivity (Bluteau et al. 2016). As an example, if FCS profiled at $\sim 0.5 \text{ m s}^{-1}$, we would consider setting $f_h \approx 12 \text{ Hz}$.
- Keep f_l in the range 0.5–1 Hz. Although our scheme uses the inertial subrange (i.e., low frequencies/wavenumbers) as its starting point, there is little to be gained by including frequencies of $\mathcal{O}(0.1) \text{ Hz}$. A possible exception, albeit tangential to this paper, is if the turbulence measurements come from a platform that effectively measures horizontally. In such cases, FFT segments may be many minutes or more and thereby contain useful low-frequency information (e.g., Bluteau et al. 2011; Moum 2015).
- Ensure that there are no known issues such as vibrations that are likely to adversely affect spectral coefficients within the f_l – f_h range. Although vibrational effects can be removed spectrally (Goodman et al. 2006), doing so is beyond the scope of our scheme. If, however, there are known issues within the desired frequency range, then an alternative approach (one that we did not test) is to use accelerometer signals to correct spectra that are contaminated by vibrations (Levine and Lueck 1999; Goodman et al. 2006).
- Define f_l and f_h separately for shear and temperature gradient if appropriate. Although we set them equal here, this is not necessary.
- Use more than two fitting bands if desired. We use only two bands (1–3 and 3–5 Hz) so as to minimize the file size to be transmitted, but there is nothing preventing there being three or more bands (e.g., adding a 5–7 Hz band). Indeed, this would enable improved estimates of the fit scores (Eqs. 26 and 36) and more flexibility to discard noise-affected bands as in Eq. 27. If file size is less

435 of an issue such that it is possible to send back fit values for many more than two bands, then the
Rainville et al. (2017) scheme outlined in Sect. 1 maybe a better choice than ours.

- Choose N_{seg} and N_{fft} based on scientific goals and, possibly, any logistical constraints; the data reduction scheme is agnostic to these numbers. For example, at the expense of vertical resolution, we could halve the file size of our transmitted dataset by doubling N_{seg} from 512 to 1024.
- 440 – Reasonable choices for N_{fft} are $N_{\text{seg}}/2$ or $N_{\text{seg}}/4$, which correspond to three or seven half-overlapping subsegments, respectively. There is little to be gained by diving a segment into even more subsegments so as to produce smoother spectra before fitting. As Ruddick et al. (2000) notes, the task is analogous to fitting a line to 20 points at once or first clumping them in groups of, say, five and then fitting the four averaged points.

445 8.2 Evaluating the reduced data

One step that cannot be automated is the heuristic evaluation of the reduced turbulence data after they have been converted from voltage quantities to physical ones. For this evaluation, we recommend looking into multiple quantities. First consider the fit scores (Eqs. 26 and 36). ~~These scores work well, but they~~
We recommend discarding any ϵ or χ values with an associated fit score lower than 0.33. Note, however,
450 that these scores are not a perfect measure of fit. They should be used together with other quality control checks such as comparing

- W and W_{min} (Eqs. 13 and 14) to check whether the profiling speed is constant over a segment;
- ϵ values from the two shear probes; and
- turbulent features in successive profiles.

455 The last point is most applicable for a vertical profiler cycling rapidly – for example, twice per hour for FCS. In this case, the profiler is nominally sampling the same vertical fragment of the ocean on a time scale comparable to that over which turbulence evolves. In our experience, many turbulent patches extend over 5–10 profiles.

Recall, also, that all uncertainty in ϵ propagates into the calculation of χ (Sect. 7). If ϵ for a given
460 segment cannot be trusted, neither can χ .

9 Conclusions

We have developed a data reduction scheme applicable to vertical profiling of turbulence variables in which each ~ 5 s segment is distilled to ~~15~~12 quantities (Fig. 11). In post-processing, we reconstruct estimates of ϵ and χ , associated quality control metrics, and other quantities such as the temperature and
465 profiling speed. The raw data that go into the ~~15~~12 quantities are seven different voltages (V_P ; V_T and V_{T_i} for each thermistor; and V_s for each shear probe). Hence, for each 512-element segment, we effectively reduce the data by a factor of ~~$512 \times 7 / 15 \approx 240$~~ $512 \times 7 / 12 \approx 300$.

This reduction compresses the output data file size for each dive from megabytes to kilobytes. For example, the total amount of data per dive (two profiles) can be estimated assuming our nominal dive depth and
470 profiling velocity of 120 m and 0.2 m s^{-1} . Each dive creates ~~$15 \times 2 \times 120$~~ $12 \times 2 \times 120$ m / ($0.2 \text{ m s}^{-1} \times \text{5.12 s}$) ~~≈ 350~~ ≈ 2800 quantities. Transmitting each quantity as a 16-bit ~~word~~float or integer equates to approximately ~~76~~76 kB per dive. This can be reduced by one-third if the spectral fit metrics are suitably scaled logarithmically and then transmitted as 8-bit integers.

One luxury we lose is the ability to inspect the raw signals. Typically this would help to (i) cultivate
475 faith in the data, (ii) flag which segments to discard, and (iii) inform work-arounds such as filtering out potential narrowband vibrations in shear spectra. Our scheme accounts for this constraint in two ways. First, we fit spectra over relatively low frequencies (1–5 Hz) that are unlikely to be affected by noise or vibration. Second, we reduce the data in a way that uses as little arithmetic as possible. Obviously, we cannot reverse-engineer the raw signals, but by making the onboard calculations simple we give ourselves
480 the best chance to later fix or identify any unforeseen issues.

Although the onboard reduction eliminates possibilities in how we process turbulence data, it opens up possibilities in how we obtain turbulence data. By visualizing how turbulence evolves over successive dives in near-real-time, we can concentrate on regions of interest by adapting the dive schedule to profile more frequently or to different depths. If instead we encounter quiescent periods, we might consider
485 profiling less frequently and thereby conserving battery life. Our ultimate objective is to treat FCS floats as expendable.

PRE-DEFINED PARAMETERS

$N_{\text{seg}} = 512$, $N_{\text{fft}} = 256$, $f_1, f_m, f_h = 1, 3, 5$ Hz, $C_{2P} = 77 \text{ psi V}^{-1}$ (Appendix B)

ONBOARD CALCULATIONS

Reshape raw voltage signals

Convert each 1D signal to a 2D array ($N_{\text{blk}}, N_{\text{seg}}$)

Discard non-profiling data

Use W_{min} threshold ($\propto \min |\Delta V_P(t_i)|$), Eq. 14, Appendix B)

Record T and P voltage quantities for each block

$\langle V_{T1} \rangle, \langle V_{T2} \rangle, V_P(N_{\text{seg}})$

Despike shear voltages

Apply 3σ threshold to V_{s1} and V_{s2} (Appendix E)

Calculate voltage spectra

$\Psi_{s1}(f), \Psi_{s2}(f), \Psi_{T1}(f)$, and $\Psi_{T2}(f)$

Fit shear spectra over two ranges

$$\left. \begin{array}{ll} \Sigma_f f^{1/3} \Psi_{s1}(f) / \Sigma_f f^{2/3} & \text{over } f_1-f_m \\ \text{---"---} & \text{over } f_m-f_h \\ \Sigma_f f^{1/3} \Psi_{s2}(f) / \Sigma_f f^{2/3} & \text{over } f_1-f_m \\ \text{---"---} & \text{over } f_m-f_h \end{array} \right\} \text{(Eq. 24)}$$

Fit Tt spectra over two ranges

$$\left. \begin{array}{ll} \Sigma_f f^1 \Psi_{T1}(f) / \Sigma_f f^2 & \text{over } f_1-f_m \\ \text{---"---} & \text{over } f_m-f_h \\ \Sigma_f f^1 \Psi_{T2}(f) / \Sigma_f f^2 & \text{over } f_1-f_m \\ \text{---"---} & \text{over } f_m-f_h \end{array} \right\} \text{(Eq. 34)}$$

POST-PROCESSING

Calibrate averaged voltages

T_1 and T_2 (Eq. 6), P (Eq. 12), and W (Eq. 13)

Derive viscosity and thermal diffusivity

Use measured T and P together with S from SOLO-II CTD

Calculate four ‘initial’ turbulent dissipation values

For S_1 and S_2 , get $\varepsilon_{\text{init}}$ for f_1-f_m and f_m-f_h (Eq. 24)

Repeat step above for thermal dissipation

For T_{t1} and T_{t2} , get χ_{init} for f_1-f_m and f_m-f_h (Eq. 34)

Calculate the correction factors

F_{Na} (Eq. 21) and F_{Kr} (Eq. 31)

Correct initial estimates

$\varepsilon_{\text{init}} \rightarrow \varepsilon$ (Eq. 17) and $\chi_{\text{init}} \rightarrow \chi$ (Eq. 30)

Combine f_1-f_m and f_m-f_h fit values

ε (Eqs. 25 and 27) and χ (Eq. 35)

Calculate goodness of fit of spectra

ε fit score (Eq. 26) and χ fit score (Eq. 36)

Figure 11. Summary of the data reduction scheme. Each 512-element segment of data is ultimately compressed down to the [45](#)–[12](#) highlighted quantities that are then transmitted. These are calibrated and/or converted into turbulence quantities in post-processing.

Appendix A: Transfer functions for FCS sensors

Voltage signals from shear probes and thermistors are a smoothed representation of the true environmental signal. If the smoothing is a spatial effect, it is described by a transfer function $H^2(k)$. If the smoothing is
 490 a temporal effect, it is more natural to use $H^2(f)$. We can use these interchangeably because $f = Wk$ and therefore $H^2(f) = H^2(Wk)$. For FCS, there are three components to the transfer function for each sensor:

$$H_s^2(k) = H_{SP}^2(k) H_{AA}^2(f) H_D^2(f) \quad (A1)$$

$$H_{Tl}^2(k) = H_{FT}^2(f) H_{AA}^2(f) H_D^2(f) \quad (A2)$$

where we have used the following shorthand: SP = shear probe, FT = fast thermistor, AA = anti-aliasing,
 495 and D = digital. We describe each of these in turn.

Shear probes built and calibrated by the Ocean Mixing Group are very close in dimension to those examined by Ninnis (1984) who measured their wavenumber response and represented it as

$$H_{SP}^2(k) = \sum_{n=0}^4 a_n \left(\frac{k}{k_0} \right)^n \quad (A3)$$

where $a_0 = 1.000$, $a_1 = -0.164$, $a_2 = -4.537$, $a_3 = 5.503$, $a_4 = -1.804$, and $k_0 = 170$ cpm.

500 Temporal averaging of temperature at high frequencies due to the thermal response of the fast thermistor is modeled ~~following Sommer et al. (2013) and Lien et al. (2016)~~ using a double-pole filter:

$$H_{FT}^2(f) = \frac{1}{(1 + (2\pi f \tau)^2)^2} \frac{1}{(1 + (f/f_c)^2)^2} \quad (A4)$$

where ~~$\tau = 0.01$ s~~ the cut-off frequency $f_c = 30$ Hz ~~so that $H_{FT}^2(5 \text{ Hz}) = 0.83$. Note that there is large sensor-to-sensor variation among thermistors, which means there is not one true thermal response correction (Nash et al. 1999)~~
 505 ~~. Compared to Sommer et al. (2013), other nominal corrections tend to be less aggressive (see, e.g., Bluteau et al. 2014).~~ Our reduced scheme is built in such a way that a different correction can be applied in post-processing if desired. This comes from Nash et al. (1999), who measured the frequency response for two different thermistors on an instrument profiling at 0.3 m s^{-1} and found cut-off frequencies of 25.1 and 36.7 Hz (see their Fig. A2). The 30 Hz value is the approximate mean of these two values.

510 Raw shear and thermistor voltage signals are both subject to two filters. First, an analog antialiasing filter (two-pole Butterworth) with an $f_c = 40$ Hz cut-off:

$$H_{AA}^2(f) = \frac{1}{1 + (f/f_c)^4}. \quad (A5)$$

After the analog signal is anti-aliased, it is digitized at 400 Hz. Before subsampling to the final 100 Hz output, the signal is digitally filtered. For the 2019 FCS cruise, the signal was convolved with a symmetric
515 29-element kernel in which the first 15 elements were

$$g_i = (2^{16} - 1)^{-1} \times [52, 221, 393, 427, 174, 0, 0, 0, 0, 0, \\ 1970, 5054, 8202, 10558, 11433]. \quad (A6)$$

This is a sinc kernel but with negative values set to zero. (We are currently investigating better choices for future implementations). The filter has a half-power (-3 db) point at 25 Hz.

520 **Appendix B: Identifying the start and end of a profile**

Early in our processing routine, we partition the raw voltage signals into 512-element segments. In order to discard the segments in which FCS was not profiling, we need robust (yet simple) criteria that demarcate the start and end of a profile. For the start, we search for the first three consecutive segments in which $W_{\min} > 0.05 \text{ m s}^{-1}$. For the end, we swap the inequality.

525 A drawback of this approach is the appearance of a quantity in physical units (0.05 m s^{-1}). This is the one instance where we hard code a calibration coefficient in the onboard software, rather than apply it in post-processing. Fortunately, the relevant coefficient can be approximated as constant: $C_{2P} = 76.7 \text{ psi V}^{-1}$ (barring a redesign of the circuitry or the use of a different brand or model of pressure sensor). For the two units already built, $C_{2P} = 76.81 \text{ psi V}^{-1}$ and 76.53 psi V^{-1} . By comparison, among the four shear probes
530 on the two units, the calibration coefficients vary by 30%.

At least for the initial implementation of our scheme, we do not include an algorithm to detect the surface to within centimeters. Doing so would let us work backward to put our uppermost depth bin as close to the surface as possible. However, we expect that this could be a fragile part of the scheme. Further, FCS lacks a micro-conductivity sensor, which is likely the sensor best suited for identifying the air-sea
535 interface (e.g., Ward et al. 2014).

Without surface detection, the depths of the uppermost bins will be realized randomly. In the worst cases, we would discard the top ~ 1 m (5 s at ~ 0.2 m s $^{-1}$). To alleviate this, we may use half-overlapping bins near the surface. The exact implementation will be determined later in the development.

Appendix C: Least-squares fitting of power laws

540 In this paper, we use power law fits to derive turbulence quantities: $\Psi_s = A_\epsilon f^{1/3}$ and $\Psi_{Tt} = A_\chi f^1$, where A_ϵ and A_χ are substitutes for the expressions in Eqs. 23 and 33. With only a single parameter for each fit, implementing a least-squares fit is easy.

Assume we are fitting the vector Ψ_i to the function $A f_i^n$ where n is either $1/3$ or 1 . The sum of squared residuals is therefore

$$545 \quad \sum r_i^2 = \sum (\Psi_i - A f_i^n)^2. \quad (C1)$$

The minimum with respect to A is where the derivative is zero:

$$\frac{\partial}{\partial A} \sum r_i^2 = \sum -2 f_i^n (\Psi_i - A f_i^n) = 0. \quad (C2)$$

Hence,

$$A = \frac{\sum f_i^n \Psi_i}{\sum f_i^{2n}}. \quad (C3)$$

550 We had originally intended to find A by following Becherer and Moum (2017), who were fitting $f^{1/3}$ spectra. Their simpler method, $A = \sum (\Psi_i / f_i^n)$, is equivalent to a least-squares fit except that the quantity minimized is the sum of the squares of the *adjusted* residuals, where adjusted means divided by f^n . Differences can be ignored when $n = 1/3$, but not when $n = 1$.

Appendix D: Standard processing of FCS turbulence measurements

555 The standard processing of FCS turbulence data differs from the reduced scheme in three ways. First, raw data are despiked differently (Appendix E). Second, the 100 Hz raw voltage signals are calibrated into physical quantities right away. Hence, means and spectra are calculated in physical units, not voltage units. Third, the integration of spectra occurs over a variable wavenumber band, which is found iteratively.

When integrating shear spectra (after correction; Appendix A) to find ε , we follow the approach used
 560 for the Chameleon profiler (Moum et al. 1995). A first estimate of ε is made by integrating over $k = 4$ –
 10 cpm. This value provides a first estimate of the Kolmogorov wavenumber $k_s = (\varepsilon/\nu^3)^{1/4}/2\pi$. (The
 lower limit for Chameleon is 2 cpm, but we increase this for FCS given its slower profiling speed and
 hence the possibility of contamination by waves at lower wavenumbers.) The upper integral limit is then
 set to $0.5k_s$ (with a minimum of 10 cpm and a maximum of 45 cpm). The Nasmyth spectra (Eq. (15)) is
 565 integrated over the same wavenumber range. If the measured and Nasmyth integrals are within 1%, then ε
 is set equal to the integral of the Nasmyth spectrum over all k . Otherwise, ε and k_s are adjusted iteratively
 until the two integrals agree.

A similar approach is used for integrating T_t spectra to find χ . The model spectrum is the Kraichnan
 spectrum (Eq. (28)) and, again, the lower limit of integration is 4 cpm. The upper limit is the Batchelor
 570 wavenumber $k_b = (\varepsilon/\nu D_T^2)^{1/4}/2\pi$ (with a maximum defined by $kW = 15$ Hz).

Appendix E: Identifying and removing noise and spikes in the shear signals

To properly despiking the raw output of a shear probe requires several steps. Lueck et al. (2018) describe
 a process in which the signal is high-passed, then rectified, and then low-passed to derive a measure of
 the local variance. A value is defined as a spike if it is more than eight times (or similar threshold) above
 575 the local variance. Spikes are replaced with an average based on surrounding points. This process is then
 repeated on the new signal, and so on until no spikes are identified.

In our standard processing of FCS data, we use the Lueck et al. (2018) despiking routine. For our
 data reduction scheme, we use an approach that is easier to implement and quicker to compute, albeit
 less precise. For each 512-element segment of data, a spike is defined as any data point larger than three
 580 standard deviations from the mean. These spikes are replaced by the mean of remaining values in the
 segment.

Code availability. Our Matlab implementation of the processing code is available from github.com/OceanMixingGroup/flippin-chi-solo.

Data availability. Raw and processed data for the 2019 experiment are available at doi.org/10.5281/zenodo.5719505
585 or kghughes.com/data.

Author contributions. KGH designed the reduction scheme and led the writing of the paper. All authors contributed to the final version. JNM and DLR lead the development of the FCS profiler on which much of the paper is based.

Competing interests. The authors declare that they have no conflict of interest.

Acknowledgements. This work was funded by the Office of Naval Research under grant N00014-17-1-2700 (OSU)
590 and N00014-17-1-2762 (SIO) and continued as part of the ARCTERX (Island Arc Turbulent Eddy Regional Exchange) program under grants N00014-21-1-2878 (OSU), N00014-21-1-2762, and N00014-21-1-2747 (SIO). Engineers who contributed to the design and construction of FCS and its sensors: Craig Van Appledorn, Kerry Latham, Pavan Vutukur, Mark Borgerson (all from OSU) and Ben Reineman, Kyle Grindley, Jeff Sherman from SIO. Aurélie Moulin executed initial turbulence processing, and Emily Shroyer provided many helpful comments on early
595 drafts. ~~Reviews from two anonymous reviewers helped improve many aspects of this paper~~ Thanks to the reviewers including Cynthia Bluteau and Toshiyuki Hibiya.

References

- Becherer, J. and Moum, J. N.: An efficient scheme for onboard reduction of moored χ pod data, *J. Atmos. Oceanic Technol.*, 34, 2533–2546, <https://doi.org/10.1175/JTECH-D-17-0118.1>, 2017.
- 600 Bluteau, C. E., Jones, N. L., and Ivey, G. N.: Estimating turbulent kinetic energy dissipation using the inertial subrange method in environmental flows, *Limnol. and Oceanogr. Methods*, 9, 302–321, <https://doi.org/10.4319/lom.2011.9.302>, 2011.
- Bluteau, C. E., Jones, N. L., and Ivey, G. N.: Estimating turbulent dissipation from microstructure shear measurements using maximum likelihood spectral fitting over the inertial and viscous subranges, *J. Atmos. Oceanic Technol.*, 33, 713–722, <https://doi.org/10.1175/JTECH-D-15-0218.1>, 2016.
- 605 Bluteau, C. E., Lueck, R. G., Ivey, G. N., Jones, N. L., Book, J. W., and Rice, A. E.: Determining mixing rates from concurrent temperature and velocity measurements, *J. Atmos. Oceanic Technol.*, 34, 2283–2293, <https://doi.org/10.1175/JTECH-D-16-0250.1>, 2017.
- Goodman, L., Levine, E. R., and Lueck, R. G.: On measuring the terms of the turbulent kinetic energy budget from an AUV, *J. Atmos. Oceanic Technol.*, 23, 977–990, <https://doi.org/10.1175/JTECH1889.1>, 2006.
- 610 Greenan, B. J. W., Oakey, N. S., and Dobson, F. W.: Estimates of dissipation in the ocean mixed layer using a quasi-horizontal microstructure profiler, *J. Phys. Oceanogr.*, 31, 992–1004, [https://doi.org/10.1175/1520-0485\(2001\)031<0992:EODITO>2.0.CO;2](https://doi.org/10.1175/1520-0485(2001)031<0992:EODITO>2.0.CO;2), 2001.
- Kraichnan, R. H.: Small-scale structure of a scalar field convected by turbulence, *Phys. Fluids*, 11, 945–953, <https://doi.org/10.1063/1.1692063>, 1968.
- 615 Levine, E. R. and Lueck, R. G.: Turbulence measurement from an autonomous underwater vehicle, *J. Atmos. Oceanic Technol.*, 16, 1533–1544, [https://doi.org/10.1175/1520-0426\(1999\)016<1533:TMFAAU>2.0.CO;2](https://doi.org/10.1175/1520-0426(1999)016<1533:TMFAAU>2.0.CO;2), 1999.
- Lien, R.-C., Sanford, T. B., Carlson, J. A., and Dunlap, J. H.: Autonomous microstructure EM-APEX floats, *Methods Oceanogr.*, 17, 282–295, <https://doi.org/10.1016/j.mio.2016.09.003>, 2016.
- 620 Lueck, R.: Calculating the rate of dissipation of turbulent kinetic energy, Tech. rep., Rockland Scientific, <https://rocklandscientific.com/support/knowledge-base/technical-notes/>, 2013.
- Lueck, R., Murowinski, E., and McMillan, J.: A guide to data processing: ODAS Matlab library v4.3., Tech. rep., Rockland Scientific, <https://rocklandscientific.com/support/knowledge-base/technical-notes/>, 2018.
- 625 Lueck, R. G., Wolk, F., and Yamazaki, H.: Oceanic velocity microstructure measurements in the 20th century, *J. Oceanogr.*, 58, 153–174, <https://doi.org/10.1023/A:1015837020019>, 2002.

- Merckelbach, L. M. and Carpenter, J. R.: Ocean glider flight in the presence of surface waves, *J. Atmos. Oceanic Technol.*, 38, 1265–1275, <https://doi.org/10.1175/JTECH-D-20-0206.1>, 2021.
- Moum, J. N.: Ocean speed and turbulence measurements using pitot-static tubes on moorings, *J. Atmos. Oceanic Technol.*, 32, 1400–1413, <https://doi.org/10.1175/JTECH-D-14-00158.1>, 2015.
- Moum, J. N. and Nash, J. D.: Mixing measurements on an equatorial ocean mooring, *J. Atmos. Oceanic Technol.*, 26, 317–336, <https://doi.org/10.1175/2008JTECHO617.1>, 2009.
- Moum, J. N., Gregg, M. C., Lien, R. C., and Carr, M. E.: Comparison of turbulence kinetic energy dissipation rate estimates from two ocean microstructure profilers, *J. Atmos. Oceanic Technol.*, 12, 346–366, [https://doi.org/10.1175/1520-0426\(1995\)012<0346:COTKED>2.0.CO;2](https://doi.org/10.1175/1520-0426(1995)012<0346:COTKED>2.0.CO;2), 1995.
- Moum, J. N., Rudnick, D. L., Shroyer, E. L., Hughes, K. G., Reineman, B. D., Grindley, K., Sherman, J., Vutukur, P., Van Appledorn, C., Latham, K., Moulin, A. J., and Johnston, T. M. S.: Flippin’ χ SOLO, an upper ocean autonomous turbulence profiling float, *J. Atmos. Oceanic. Tech.*, under review.
- Nash, J. D., Caldwell, D. R., Zelman, M. J., and Moum, J. N.: A thermocouple probe for high-speed temperature measurement in the ocean, *J. Atmos. Oceanic Technol.*, 16, 1474–1482, [https://doi.org/10.1175/1520-0426\(1999\)016<1474:ATPFHS>2.0.CO;2](https://doi.org/10.1175/1520-0426(1999)016<1474:ATPFHS>2.0.CO;2), 1999.
- Nasmyth, P. W.: Oceanic turbulence, Ph.D. thesis, Univ. British Columbia, <https://doi.org/10.14288/1.0302459>, 1970.
- Ninnis, R.: The effects of spatial averaging on airfoil probe measurements of oceanic velocity microstructure, Ph.D. thesis, University of British Columbia, <https://doi.org/10.14288/1.0053131>, 1984.
- Oakey, N. S.: Determination of the rate of dissipation of turbulent energy from simultaneous temperature and velocity shear microstructure measurements, *J. Phys. Oceanogr.*, 12, 256–271, [https://doi.org/10.1175/1520-0485\(1982\)012<0256:DOTROD>2.0.CO;2](https://doi.org/10.1175/1520-0485(1982)012<0256:DOTROD>2.0.CO;2), 1982.
- Osborn, T. R.: Vertical profiling of velocity microstructure, *J. Phys. Oceanogr.*, 4, 109–115, [https://doi.org/10.1175/1520-0485\(1974\)004<0109:VPOVM>2.0.CO;2](https://doi.org/10.1175/1520-0485(1974)004<0109:VPOVM>2.0.CO;2), 1974.
- Peterson, A. K. and Fer, I.: Dissipation measurements using temperature microstructure from an underwater glider, *Methods Oceanogr.*, 10, <https://doi.org/10.1016/j.mio.2014.05.002>, 2014.
- Rainville, L., Gobat, J. I., Lee, C., and Shilling, G.: Multi-month dissipation estimates using microstructure from autonomous underwater gliders, *Oceanography*, 30, 49–50, <https://doi.org/10.5670/oceanog.2017.219>, 2017.
- Roemmich, D., Riser, S., Davis, R., and Desaubies, Y.: Autonomous profiling floats: Workhorse for broad-scale ocean observations, *Mar. Technol. Soc. J.*, 38, 21–29, <https://doi.org/10.4031/002533204787522802>, 2004.

- Roemmich, D., Alford, M. H., Claustre, H., Johnson, K., King, B., Moum, J., Oke, P., Owens, W. B., Pouliquen, S., Purkey, S., Scanderbeg, M., Suga, T., Wijffels, S., Zilberman, N., Bakker, D., Baringer, M., Belbeoch, M., Bittig, H. C., Boss, E., Calil, P., Carse, F., Carval, T., Chai, F., Conchubhair, D., d'Ortenzio, F., Dall'Olmo, G., Desbruyeres, D., Fennel, K., Fer, I., Ferrari, R., Forget, G., Freeland, H., Fujiki, T., Gehlen, M., Greenan, B., Hallberg, R., Hibiya, T., Hosoda, S., Jayne, S., Jochum, M., Johnson, G. C., Kang, K., Kolodziejczyk, N., Körtzinger, A., Traon, P.-Y. L., Lenn, Y.-D., Maze, G., Mork, K. A., Morris, T., Nagai, T., Nash, J., Garabato, A. N., Olsen, A., Patabhi, R. R., Prakash, S., Riser, S., Schmechtig, C., Schmid, C., Shroyer, E., Sterl, A., Sutton, P., Talley, L., Tanhua, T., Thierry, V., Thomalla, S., Toole, J., Troisi, A., Trull, T. W., Turtun, J., Velez-Belchi, P. J., Walczowski, W., Wang, H., Wanninkhof, R., Waterhouse, A. F., Waterman, S., Watson, A., Wilson, C., Wong, A. P. S., Xu, J., and Yasuda, I.: On the future of Argo: A global, full-depth, multi-disciplinary array, *Front. Mar. Sci.*, 6, 439, <https://doi.org/10.3389/fmars.2019.00439>, 2019a.
- Roemmich, D., Sherman, J. T., Davis, R. E., Grindley, K., McClune, M., Parker, C. J., Black, D. N., Zilberman, N., Purkey, S. G., Sutton, P. J. H., and Gilson, J.: Deep SOLO: A Full-Depth Profiling Float for the Argo Program, *J Atmos. Oceanic Technol.*, 36, 1967–1981, <https://doi.org/10.1175/JTECH-D-19-0066.1>, 2019b.
- Ruddick, B., Anis, A., and Thompson, K.: Maximum likelihood spectral fitting: The Batchelor Spectrum, *J. Atmos. Oceanic Technol.*, 17, 1541–1555, [https://doi.org/10.1175/1520-0426\(2000\)017<1541:MLSFTB>2.0.CO;2](https://doi.org/10.1175/1520-0426(2000)017<1541:MLSFTB>2.0.CO;2), 2000.
- Sanchez, X., Roget, E., Planella, J., and Forcat, F.: Small-scale spectrum of a scalar field in water: The Batchelor and Kraichnan models, *J. Phys. Oceanogr.*, 41, 2155–2167, <https://doi.org/10.1175/JPO-D-11-025.1>, 2011.
- Shroyer, E. L., Rudnick, D. L., Farrar, J. T., Lim, B., Venayagamoorthy, S. K., St. Laurent, L. C., Garanaik, A., and Moum, J. N.: Modification of upper-ocean temperature structure by subsurface mixing in the presence of strong salinity stratification, *Oceanography*, 29, <https://doi.org/10.5670/oceanog.2016.39>, 2016.
- Sommer, T., Carpenter, J. R., Schmid, M., Lueck, R. G., and Wüest, A.: Microstructure sensor responses with implications for double-diffusive fluxes, *J. Atmos. Oceanic Technol.*, 30, 1907–1923, <https://doi.org/10.1175/JTECH-D-12-00272.1>, 2013.
- Ward, B., Fristedt, T., Callaghan, A. H., Sutherland, G., Sanchez, X., Vialard, J., and ten Doeschate, A.: The Air–Sea Interaction Profiler (ASIP): An autonomous upwardly rising profiler for microstructure measurements in the upper ocean, *J. Atmos. Oceanic Technol.*, 31, 2246–2267, <https://doi.org/10.1175/JTECH-D-14-00010.1>, 2014.