

1 **Using a deep neural network to detect methane point sources**
2 **and quantify emissions from PRISMA hyperspectral satellite**
3 **images**

4
5 Peter Joyce^{1,2,3}, Cristina Ruiz Villena^{4,5}, Yahui Huang^{2,3}, Alex Webb^{4,5}, Manuel Gloor¹, Fabien
6 H. Wagner^{6,7}, Martyn P. Chipperfield^{2,3}, Rocio Barrio Guilló⁴, Chris Wilson^{2,3}, and Hartmut
7 Boesch^{4,5,8}

8
9 ¹*School of Geography, University of Leeds, Leeds, United Kingdom*

10 ²*National Centre for Earth Observation, University of Leeds, Leeds, United Kingdom*

11 ³*School of Earth and Environment, University of Leeds, Leeds, United Kingdom*

12 ⁴*University of Leicester, Leicester, United Kingdom*

13 ⁵*National Centre for Earth Observation, University of Leicester, Leicester, United Kingdom*

14 ⁶*Institute of Environment and Sustainability, University of California, Los Angeles, CA, USA*

15 ⁷*Jet Propulsion Laboratory, California Institute of Technology, 4800 Oak Grove, Pasadena, CA 91109, USA*

16 ⁸*now at Institute of Environmental Physics, University of Bremen, Bremen, Germany*

17 *Correspondence to: Hartmut Boesch (hb100@leicester.ac.uk)*

18 **Abstract.** Anthropogenic emissions of methane (CH₄) make up a considerable contribution towards the Earth's
19 radiative budget since pre-industrial times. This is because large amounts of methane are emitted from human
20 activities and the global warming potential of methane is high. The majority of anthropogenic fossil methane
21 emissions to the atmosphere originate from a large number of small (point) sources. Thus, detection and accurate,
22 rapid quantification of such emissions is vital to enable the reduction of emissions to help mitigate future climate
23 change. There exist a number of instruments on satellites that measure radiation at methane-absorbing
24 wavelengths, which have sufficiently high spatial resolution that can be used for detecting **plumes of** highly
25 spatially localised methane 'point sources' (areas on the order of **m² to km²**). Searching for methane plumes in
26 methane sensitive satellite images using classical methods, such as thresholding and clustering, can be useful but

Style Definition: Normal
Style Definition: Bullets
Style Definition: EndNote Bibliography Title: Font colour: Black
Style Definition: EndNote Bibliography: Font colour: Black
Style Definition: Revision
Formatted: Left: 2.54 cm, Right: 2.54 cm, Top: 2.54 cm, Bottom: 2.54 cm, Width: 21 cm, Height: 29.7 cm, Header distance from edge: 1.25 cm, Footer distance from edge: 1.25 cm

Formatted: Superscript

27 are time-consuming and often [involve empirical decisions](#). Here, we develop a deep neural network to identify
28 and quantify methane point source emissions from hyperspectral imagery from the PRRecursore IperSpettrale della
29 Missione Applicativa (PRISMA) satellite with 30-m spatial resolution. The moderately high spectral and spatial
30 resolution as well as considerable global coverage and free access to data make PRISMA a good candidate for
31 methane plume detection. The neural network was trained with simulated synthetic methane plumes generated
32 with the Large Eddy Simulation extension of the Weather Research and Forecasting model (WRF-LES), which
33 we embedded into PRISMA images. The deep neural network was successful at locating plumes with F1-score,
34 precision and recall of 0.95, 0.96 and 0.92, respectively, and was able to quantify emission rates with a mean error
35 of 24%. The neural network was furthermore able to locate several plumes in real-world images. We have thus
36 demonstrated that our method can be effective in locating and quantifying methane point source emissions in near
37 real time from 30-m resolution satellite data which can aid us in mitigating future climate change.

Deleted: inaccurate.

38 1 Introduction

39 Methane (CH₄) is a powerful greenhouse gas with a warming potential which per unit mass emitted is 84 times
40 larger than for carbon dioxide over a 20-year period (Stocker et al., 2013). Emissions of methane as a result of
41 human activities have contributed one quarter of climate warming since preindustrial times (Etminan et al., 2016).
42 A large proportion of anthropogenic methane from industrial sources originates from point sources such as coal
43 mines and oil and gas production facilities (Saunois et al., 2020). Furthermore, these emissions are generally
44 underestimated by inventory-based approaches (Alvarez et al., 2018; Karion et al., 2013; Zavala-Araiza et al.,
45 2015). A large proportion of these anthropogenic emissions originates from a small number of strong point sources
46 due to oil and gas production equipment malfunction (Brandt et al., 2016; Duren et al., 2019; Zavala-Araiza et al.,
47 2017). Consequently, much of the methane emitted from such sources could be reduced at no net cost (IEA, 2017;
48 Ocko et al., 2021). Acting to reduce methane emissions in this sector can be one of the most cost-effective methods
49 of mitigating against further climate change.

50
51 Methane point sources from oil and gas production are typically small in extent and emissions difficult to quantify
52 and variable in time (Allen et al., 2013; Frankenberg et al., 2016; [Cusworth et al., 2021](#)). The primary challenge
53 faced when estimating methane emissions from point sources from satellite data comes from the relatively low
54 spatial resolution (in the order of kilometres) of satellite imagery from dedicated sensors such as the Greenhouse
55 Gases Observing SATellite (GOSAT) (Kuze et al., 2009) and the TROPospheric Monitoring Instrument
56 (TROPOMI) (Levelt et al., 2006). These sensors typically have high spectral resolution of methane absorption
57 bands in the shortwave infrared (SWIR) range of the electromagnetic spectrum to provide accurate measurements
58 with high precisions of around 10-20 parts per billion (ppb) (Lorente et al., 2021; Parker et al., 2020). SWIR bands
59 can also be effectively utilised to detect and quantify point sources from lower spectral-resolution sensors (Jacob
60 et al., 2016; Duren et al., 2019). Recent hyperspectral spaceborne imaging spectrometers contain hundreds of
61 spectral channels in the visible-shortwave-infrared range with spectral resolution typically around 10 nm and
62 spatial resolutions of tens of m. Due to their spatial and spectral resolution, they have been identified as useful
63 new tools for identifying and quantifying methane point source emissions. PRRecursore IperSpettrale della
64 Missione Applicativa (PRISMA), developed and operated by the Italian Space Agency (ISA) since 2019, is the

Deleted:).

67 first hyperspectral mission where the satellite imagery has been openly released to the scientific community. The
68 satellite consists of a panchromatic camera and an advanced hyperspectral instrument that measures radiances in
69 approximately 250 bands between 400 and 2500 nm. The instrument has a spatial resolution of 30 m, a swath of
70 30 km, and a 12-nm spectral resolution (Galeazzi et al., 2008). ~~PRISMA has been successful in quantifying CO₂~~
71 ~~emissions from coal and gas-fired power plants (Cusworth et al., 2021a). However, how~~ to best extract information
72 on the location and extent of methane plumes is not yet fully established. Successful detection of methane point
73 sources from PRISMA using a matched-filter retrieval technique has been reported by Guanter et al. (2021), albeit
74 with a strong dependence of detection accuracy on surface type. In particular, brightness and homogeneity of the
75 satellite images were identified to significantly influence the accuracy of methane detection techniques.

Deleted: How

76
77 Current approaches for detecting methane point sources and quantifying emission rates are time-intensive,
78 laborious, and ~~can be~~ prone to errors ~~without sufficient training~~. They typically involve a spectral analysis to infer
79 methane column mean mixing ratios (Thorpe et al., 2014) followed by a methane plume detection method (often
80 based on thresholding and clustering) and finally the integrated mass enhancement (IME) method to estimate the
81 emission (Varon et al., 2018). Previous efforts utilising spaceborne imaging spectrometers to quantify methane
82 point source emission rates have proved successful, but often with large errors of source detection and emissions
83 estimates. The IME method yielded errors between 5-12% using 50-m resolution Greenhouse Gas Satellite -
84 Demonstrator (GHGSat-D) imagery (Varon et al., 2018). However, this uncertainty estimate does not include
85 errors from unknown wind speed and direction, which are both highly uncertain, ~~where~~ uncertainties are ~~estimated~~
86 ~~to be 15-65%~~ larger. The multi-band multi-pass (MBMP) method was successful in quantifying methane point
87 source emissions from Sentinel-2 multispectral instrument (MSI) imagery with precision between 30% and 90%
88 (Varon et al., 2021). The primary limitation of this approach is surface interference (Cusworth et al., 2019) which
89 leads to artefacts and false anomalies, which can be mistakenly attributed to emission plumes. This is a major
90 disadvantage for multi and hyperspectral missions because the better the resolution (and the greater the number
91 of channels), the better the discrimination between the surface and methane absorption. (Sherwin et al., 2023)
92 ~~found comparatively lower errors, but required considerable human intervention~~. Thus, producing a model that
93 minimises errors and can automatically locate methane sources would make emission monitoring from space
94 faster, more reliable, and more scalable, thus providing an invaluable tool to aid mitigation. A first effort has also
95 been made to estimate emission rates from AVIRIS-NG data using a neural network and without utilising wind
96 speed and direction data. These estimates were subject to an error of roughly 30% of the emission rates
97 (Jongaramrungruang et al., 2019). It is apparent that the noise in the satellite data, the lack of accurate wind data,
98 and the complex structures of methane plumes make it difficult to model emission rates accurately via traditional
99 approaches.

Deleted: owing to the substantial human intervention required

Deleted: thus

Deleted: effectively much

Deleted: such

100
101 In recent years, deep neural network methods have improved rapidly. LeNet (Lecun et al., 1989) was one of the
102 earliest convolutional neural networks (CNNs) and was used successfully to identify handwritten digits. This work
103 laid the foundations for using artificial intelligence to obtain meaningful information from image data (known as
104 *computer vision*). Deep learning models entered the mainstream following considerable reductions in model
105 training time through the utilisation of graphics processing units (GPUs) (Oh and Jung, 2004). Deep learning was
106 then revolutionised for image classification with the introduction of AlexNet (Krizhevsky et al., 2012). CNNs

112 have since been applied to self-driving cars (e.g., Nugraha and Su, 2017), discovering new drug treatments (e.g.
113 Wallach et al., 2015), facial recognition (e.g. Matsugu et al., 2003), and many other applications. The ease with
114 which deep neural networks can be trained and deployed has also improved considerably in recent years, partially
115 due to the development of application programming interfaces (APIs) such as Keras (Chollet, 2015). This has
116 been supplemented by the increasing ubiquity and decreasing costs of GPUs and cloud computing servers, which
117 together have enabled deep learning models to be trained rapidly and at a relatively low cost. Currently, work
118 utilising deep neural networks has already proven to be considerably more effective than classical methods to
119 detect point source emissions of nitrogen dioxide (NO₂) (Finch et al., 2021).

120

121 More recently, a deep neural network has been used to quantify methane point source emissions using the airborne
122 AVIRIS-NG instrument (Jongaramrungruang et al., 2022). In this study, a CNN was trained on synthetic plumes
123 inserted into real images to extract features present in plumes of varying intensities and with differing wind speeds
124 to locate and quantify the emission rates of the point sources. Jongaramrungruang et al. (2022) estimated emission
125 rates of plumes with a mean absolute error of 17% for emissions larger than 40 kg hr⁻¹. The classification accuracy
126 (determining whether a plume is present in an image) was 90% when testing plumes with emission rates above
127 100 kg hr⁻¹, however, the accuracy dropped to 50% for emission rates around 50-60 kg hr⁻¹. The spatial and spectral
128 resolution of the aircraft data used in this study (AVIRIS-NG) has far higher spatial and spectral resolution than
129 PRISMA, thus making methane detection prone to lower errors. However, PRISMA data is publicly available and
130 covers a far larger spatial range with regular repeat measurements, thus making it a superior resource for rapid
131 detection of methane point source emissions across many regions on earth. Thus, a deep neural network that is
132 capable of utilising PRISMA data to detect methane emissions could be very effective in our efforts to mitigate
133 future climate change.

134

135 In this study, we produced pseudo-observations of simulated synthetic methane plumes generated with the Large
136 Eddy Simulation extension of the Weather Research and Forecasting model (WRF-LES). These simulated plumes
137 were then embedded into an array of PRISMA images and used as training data for a novel neural network
138 architecture that aimed to produce masks of the locations of methane plumes and estimate their emission rates
139 from PRISMA satellite imagery. The effectiveness of this model was then tested on images of real-world plumes.
140 The results from the neural network were then compared with a classical technique that combined PCA-based
141 retrievals with clustering using DBSCAN. The techniques utilised here can be adapted to locate and quantify
142 emission rates using any satellite imagery with suitable shortwave-infrared bands, or applied to detecting other
143 greenhouse gases, such as carbon dioxide (CO₂).

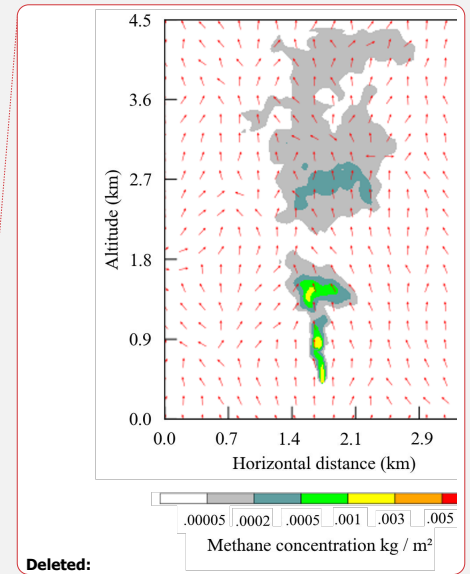
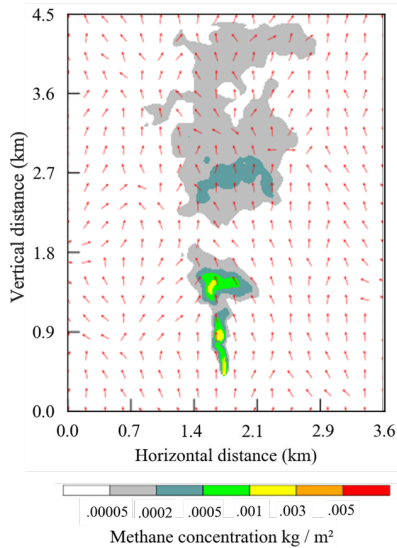
144 2 Methods

145 2.1 Simulating methane plumes with WRF-LES

146 The Weather Research and Forecasting (WRF) model system has comprehensive and multiple capabilities for
147 studying atmospheric phenomena from global down to large eddy scales. The default large eddy simulation case
148 (LES) of the WRF V4.2.2 was used and modified to simulate methane plumes for a single point source with a
149 releasing rate of 1000 kg hr⁻¹. The default LES case does not consider clouds, radiation, or topography, but

150 includes surface physics and 1.5-order TKE (Turbulent Kinetic Energy) prediction scheme (WRF model User's
 151 Guide: <https://www2.mmm.ucar.edu/wrf/users/>). A constant thermal flux of 100 W m^{-2} was applied at the surface
 152 to drive the turbulence. Two nested domains with one-way nesting were deployed in the simulations. The outer
 153 domain had a size of $5.4 \text{ km} \times 6.3 \text{ km}$ with 90 m horizontal resolution and periodic boundary conditions. The
 154 inner domain had a size of $3.6 \text{ km} \times 4.5 \text{ km}$ with 30 m horizontal grid spacing and 30 m vertical resolution, and
 155 flow-dependent boundary conditions for scalars. The plume was only released in the inner domain after a 3-hour
 156 spin-up run. The total running time is 5 hours, and the final 2-hour run was considered for the training, test, and
 157 validation data.

158
 159 We designed 15 scenarios consisting of 5 different southerly wind speeds ranging from 1 m s^{-1} to 9 m s^{-1} , each of
 160 which was uniformly applied from the surface to the model top, and 3 different patterns of potential temperature
 161 vertical profiles (Figure S1). The potential temperature in the scenarios is specified as 290 K from the surface to
 162 one of the 3 different mixing depths of 500 m , 800 m , and 1100 m (Figure S2). Above the mixing depth, there is
 163 an inversion layer of 700 m with a vertical gradient of potential temperature of 0.009 K m^{-1} applied from the top
 164 of the mixing layer to the model top. For each simulation, the CH_4 distribution is saved once every minute and
 165 thus there are 120 different scenes for a two hour simulation. Altogether there are 1800 scenes for the 15
 166 simulations in the data, where the plume was integrated over vertical columns. Figure 1 shows one snapshot of a
 167 plume with initial conditions of 3 m s^{-1} southerly wind and 800 m mixing depth 30 minutes after release.



Deleted:

168
 169 **Figure 1: Snapshot of a simulated plume 30 minutes after release for initial conditions of 3 m s^{-1} southerly wind and**
 170 **800 m mixing depths. Red arrows indicate wind direction at the moment of the snapshot.**

172 2.2 Satellite data retrieval

173 Methane absorbs solar radiation at a set of shortwave-infrared wavelengths that are well known and documented
174 in spectroscopic databases. The absorption of light by methane in the atmosphere therefore alters the reflected
175 sunlight measured by the satellite in a very predictable way that allows us to quantify the amount of methane
176 along the light path. Here we use a data-driven retrieval algorithm to estimate the methane enhancements from
177 reflected sunlight using statistical methods based on the work by Thorpe et al. (2014). This type of simple and
178 fast retrieval method is commonly used for instruments with comparably low spectral resolutions, for which a
179 more sophisticated, so-called full-physics approach provides no extra benefit.

180

181 The relationship between the spectral intensity at each point in the satellite spectra and the column enhancement
182 of methane in the scene is represented by a methane Jacobian vector, which describes the change in the logarithm
183 of the intensity I_k in band k with respect to the column enhancement of methane C_{CH_4} . The spectral variation of
184 the background of the scene (i.e. outside of the plume) is approximated by a number of Principal Components of
185 all measured spectra combined derived using the Principal Component Analysis (PCA) method. We perform the
186 PCA on the logarithm of measured spectra of the scene and select the singular vectors (principal components) that
187 best describe the spectral variability of the scene. The optimal number of singular vectors was determined by trial
188 and error, and was found to be the first three. We then concatenate these vectors with the methane Jacobian to
189 construct the matrix \mathbf{J} with dimension $4 \times$ number of PRISMA bands, which we use along with the logarithm of
190 the measured radiances, \mathbf{y} , to find a vector \mathbf{W} that minimises the cost function in a linear least squares fit for each
191 pixel:

$$192 \|\mathbf{y} - \mathbf{J}\mathbf{W}\|^2, \quad (1)$$

193

194 The modelled radiance \mathbf{F} is calculated from \mathbf{J} and \mathbf{W} as follows:

$$195 \mathbf{F} = \mathbf{J}\mathbf{W}, \quad (2)$$

196

197 We can then rewrite Eq. (2) as the sum of the background (k) and CH₄ ($c+1$) components of the radiance:

$$198 F(W, J) = \sum_{k=1}^c J_k \cdot W_k + J_{c+1} \cdot W_{c+1}, \quad (3)$$

199

200 where c is the number of singular vectors used. Thus, the modelled logarithmic radiance $F(\mathbf{W}, \mathbf{J})$ is a linear
201 combination of the singular vectors, J_k , the CH₄ Jacobian, J_{c+1} , and their weights, W_k and W_{c+1} , respectively. This
202 method is described in more detail in Thorpe et al. (2014). In order to avoid column-wise changes in the
203 instrument's radiometric response and since the wavelengths scale for each across-track pixel of a PRISMA image
204 are different, it is necessary to infer the Principal Components for each column in the across-track direction
205 separately.

206 2.3 Training data generation

207 We generated synthetic datasets to train the machine-learning model by combining PRISMA images with the
208 synthetic plumes simulated with WRF-LES (described in section 2.1). We use the SWIR spectral radiance from
209 PRISMA Level-1b data as well as the RGB bands. These datasets come with pixel quality and cloud mask

Deleted: Since

211 information, which we apply in our data preparation process. We selected 36 different PRISMA background
212 images to cover a wide range of scenes representative of places where methane plumes might be expected (Table
213 S1). These images also cover a range of different dates throughout the ~3 years of PRISMA data available in the
214 archive, to account for different illumination conditions. All the selected scenes have less than 1% cloud cover,
215 and any pixels flagged as cloudy in the PRISMA product were excluded from the analysis.

216
217 A total of 9700 image tiles were generated for training, each tile with a size of 256 x 256 pixels. The tile size was
218 deliberately selected as a power of two to optimise the model performance. Each tile was selected at random from
219 one of the 36 1000x1000-pixel PRISMA background scenes, and a synthetic methane plume subsequently
220 embedded in it. The synthetic plume was also selected randomly from the WRF-LES simulations, with the
221 following parameters also randomised following a uniform distribution:

- 222 - **Time step:** between 1 and 120 seconds (Figure S3).
- 223 - **Plume origin:** any point within the background scene tile, excluding the areas near the edges to avoid
224 missing parts of the plume.
- 225 - **Emission rate:** all simulated plumes have a 1000 kg hr⁻¹ emission rate, so we applied a scaling factor
226 between 0.1 and 10 to have a range of emissions between 100 and 10,000 kg hr⁻¹ (Figure S4).

227
228 The synthetic plumes from WRF-LES are first converted into maps of methane vertical column densities in
229 molecules cm⁻². The original plume simulations are all carried out for an emission of 1000 kg hr⁻¹ and the scenarios
230 for different emission rates are obtained by scaling the simulated concentrations. Each plume is inserted into the
231 background PRISMA image tile by modifying the PRISMA SWIR radiances according to the Beer-Lambert law
232 for absorption. Methane columns are converted into optical depth for each band using a representative methane
233 absorption cross-section for each band computed from the HITRAN database (Gordon et al., 2022) for a
234 temperature of 293K and pressure of 1 atmosphere. The use of a single temperature and pressure value is a
235 simplification that could introduce small uncertainties for vertically extended plumes. Each of the 9700 training
236 datasets contain: 38 PRISMA radiance bands (3 RGB, and 35 SWIR (2100 - 2365 nm) channels) and the synthetic
237 plume (i.e., the “true” methane enhancements to be used as labels in the model).

238 2.4 Training data processing

239 Each PRISMA sub-image (256 x 256-pixel tile) was normalised by subtracting the mean and dividing by the
240 standard deviation (std) of the whole collection of training images such that the mean of all the images was 0 and
241 the std was 1 for each band. This data normalisation step is standard when using deep neural networks as it is
242 understood to optimise the training time. Following on from this, the undefined (NaN) values present in the images
243 were changed to equal the mean value of each band in the respective image. These NaN values correspond to
244 either invalid (e.g., saturated) or cloudy pixels.

245
246 Every time an image was retrieved during the training process, data augmentations were randomly applied. The
247 augmentations were as follows: rotation by a multiple of 90°, and horizontal and vertical flipping. No brightness
248 and contrast augmentations were made because the quantification of methane plumes relies on the specific band
249 information inside the plume region. The purpose of data augmentation was to increase the data volume, to reduce

Deleted: ¶

Formatted: Indent: Left: 1.27 cm, No bullets or numbering

251 overfitting, and improve the ability of the model to produce accurate results with data that is different to the
252 training data.

253

254 To predict the methane concentration, it was first necessary to model the methane plume mask (binary
255 classification of plume/non-plume [per pixel](#)) because the vast majority of pixels in the training images did not
256 contain a plume (zero-inflated data). [To create the ground truth masks for binary segmentation, an initial methane](#)
257 [concentration threshold of \$8 \times 10^{18}\$ molecules \$\text{cm}^{-2}\$ was chosen as it was the cut-off point where the plumes were](#)
258 [no longer visible. Furthermore, training the model with a lower threshold resulted in non-convergence. After the](#)
259 [model was trained at the \$8 \times 10^{18}\$ molecules \$\text{cm}^{-2}\$ threshold, it was possible to continue training the model at a lower](#)
260 [threshold. Thus, we tested training the model at \$5 \times 10^{17}\$ molecules \$\text{cm}^{-2}\$ increments until the validation loss dropped](#)
261 [substantially. The lowest threshold where this was the case was \$4 \times 10^{18}\$ molecules \$\text{cm}^{-2}\$. This final step is important](#)
262 [because it increases the range for which the model can locate and quantify methane emissions.](#)

Deleted: An

263 2.5 Deep neural network architecture and training process

264 The training of the neural network was split into 4 steps. First, the model was trained to locate the regions of the
265 image containing a plume via [per pixel](#) binary semantic segmentation. Next, the column enhancements of methane
266 were predicted inside the region of the estimated plume mask from the first stage. Following on from this, the
267 emission rate of the plume in the image was estimated. To ensure that the emission rate estimates would equal
268 zero when no plume was present, an intermediate prediction layer was included where a [whole image](#) binary
269 classification was made regarding whether a plume was present in the image or not. At each stage of the model,
270 the input was a concatenation of the input satellite image and all the previous outputs (Figure 2). To optimise the
271 training of the model weights, each portion of the model was trained alone such that the weights in all the other
272 parts were not being updated. The parts of the model were trained in order moving downwards across the models
273 depicted in Figure 2. The loss function to predict the plume mask was as follows:

$$274 \text{Loss}_{\text{mask}} = 1 + BC - SDC, \quad (4)$$

275

276 Where BC is binary cross entropy, SDC is the Sørensen-dice coefficient defined as follows:

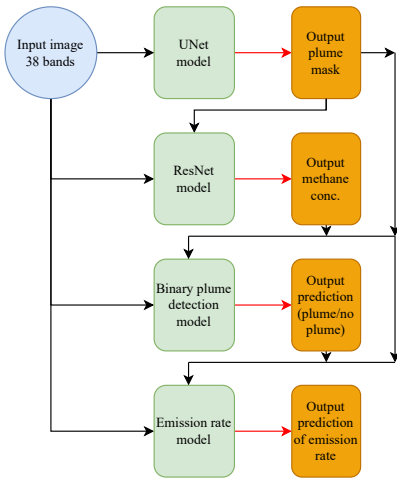
$$277 SDC = \frac{2TP}{2TP + FP + FN}, \quad (5)$$

278

279 where TP is true positive, FN is false negative, and FP is false positive. This loss function was chosen because of
280 the large number of non-plume pixels present in the image. The loss function for the mask concentration was
281 mean squared error (MSE), a standard choice for regression modelling. For the [whole image](#) binary classification
282 part of the model, binary cross-entropy was chosen, which is common for solving 1-dimensional binary problems.
283 Finally, for the emission rate part of the model, MSE was chosen as the loss function until the validation error
284 started to plateau, after which, the model was only trained on images containing plumes and mean absolute
285 percentage error was given as the loss function. This was done to ensure that the proportion error was minimised
286 rather than the absolute error. Mean absolute percentage error was not used throughout the whole training process
287 because it was important that the model was trained on some images with no plumes (so an emission rate of zero
288 could be possible) and mean absolute percentage error produced very high loss values when false positives were
289 made by the model.

291
292
293
294
295
296

For plume mask detection, a UNet model was used and for methane concentration, a ResNet model was used. For the whole image binary plume detection and emission rate estimation, however, CNNs with only an encoder branch were used. The two encoder CNNs have identical architectures except the activation function at the end of the whole image binary classification model has sigmoid activation because the predictions are constrained between 0 and 1, and the emission rate estimator has a ReLU activation function.



297
298
299
300

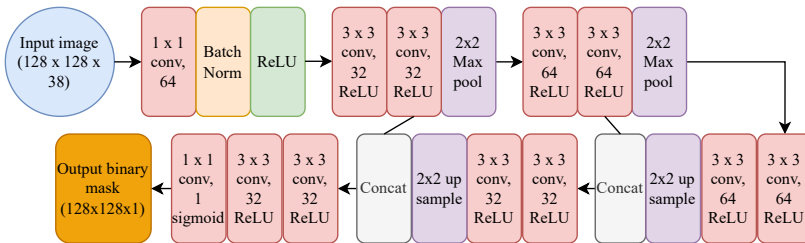
Figure 2: Structure of the neural networks used in this study. Green boxes indicate portions of the neural network, orange boxes indicate predictions made by each stage of the neural network. Black lines indicate flow of data into models, and red lines indicate predictions resulting from a model.

301 2.5.1 Estimating plume masks

302 Estimating the mask of a methane plume involved using a similar architecture to a UNet model (Ronneberger et al., 2015) (Figure 3). UNet models consist of two paths; the first is the encoder, which captures the context in the image and is composed of convolutional and max pooling layers. The second path is the decoder, which enables localisation of the features captured by the encoder and consists of convolutional and upsampling layers (Ronneberger et al., 2015). In our model architecture, there is an additional 1×1 convolutional layer with 64 filters at the beginning because methane plumes are associated with anomalies in certain SWIR bands of the PRISMA imagery. This additional convolution makes the network pay closer attention to individual pixel values in the satellite data rather than focussing more on the shapes present in the image. Methane is not absorbed in the visible bands; thus, the inclusion of the visible bands helps the neural network to distinguish between plume and non-plume by providing information on the background of the image. Methane plumes can be identified based on the typical spatial structures that form as a result of turbulence and advection in the atmosphere, as well as the variations in methane-absorbing bands compared with the background landscape. It is the latter reason why an additional 1×1 convolutional layer was deemed to be helpful in improving the accuracy of the model.

315

Deleted: their

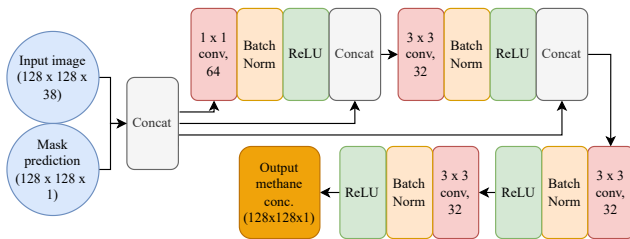


317
 318 **Figure 3: Architecture of the deep neural network for the UNet portion of the model. 1×1 conv, 64 refers to a**
 319 **convolutional filter with kernel size 1×1 and 64 filters. Batch Norm refers to a batch normalisation layer, Concat**
 320 **refers to a concatenation between the inputs to that layer, 2×2 Max pool refers to a max pooling layer with pool size**
 321 **2, and 2×2 up sample refers to upsampling layer with size 2. ReLU and sigmoid refer to the Rectified Linear Unit and**
 322 **sigmoid activation functions respectively.**

323 2.5.2 Estimating methane column enhancements inside plumes

324 Estimating the methane column enhancement within the plumes predicted in section 2.4.1 uses a concatenation
 325 of the input image and the mask predictions. This step to aid the estimation of methane concentrations is necessary
 326 because the vast majority of pixels do not contain a plume (a zero-inflated regression problem). Such problems
 327 often have the issue that the model will converge at predicting zeros everywhere. Thus, the inclusion of the mask
 328 prediction helps to prevent this. The ensuing model is composed initially of a 1×1 convolutional layer for a similar
 329 reason as its inclusion in the UNet model (see section 2.5.1). Following on from this are 2 ResNet layers (He et
 330 al., 2016), which are characterised by double-layer skip connections, ReLU activation functions, and batch
 331 normalisation (Figure 4). A ResNet architecture was selected for this portion of the model as it is known to be
 332 lightweight and powerful at regression predictions in computer vision.

Deleted: 4



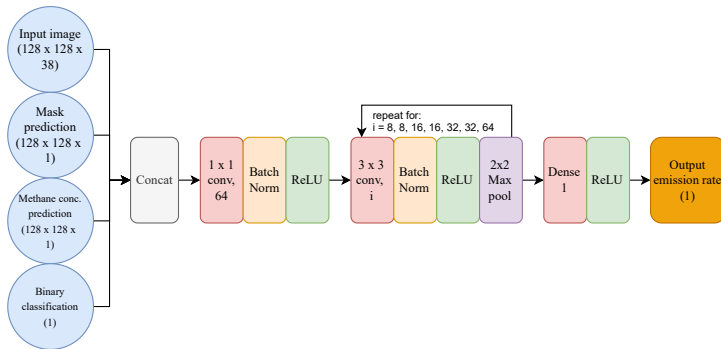
333
 334 **Figure 4: Architecture of the deep neural network for the ResNet portion of the model. 1×1 conv, 64 refers to a**
 335 **convolutional filter with kernel size 1×1 and 64 filters. Batch Norm refers to a batch normalisation layer and Concat**
 336 **refers to a concatenation between the inputs to that layer. ReLU refers to the Rectified Linear Unit activation function.**

337 2.5.3 Estimating emission rate of plumes

338 The prediction of the whole image binary classification of plume/not plume involved an architecture identical to
 339 the one presented in this section (except the final activation layer was sigmoid, not ReLU). The inputs to the

341 emission rate portion of the model are the outputs from all the previous stages of the model concatenated with the
 342 input image. The outputs of the mask prediction and whole image binary segmentation are continuous between 0
 343 and 1. The majority of the methane concentration output is also in this range because the methane concentration
 344 ground truth was pre-processed via min-max normalisation (to optimise training time). This is to ensure that more
 345 information is available to the model to accurately estimate emission rates. Following on from this is the 1×1
 346 convolutional layer, which was included for the same reason as in the previous stages of the model (see section
 347 2.5.1). This is followed by the encoder part of the model, in which a convolutional layer is followed by batch
 348 normalisation, ReLU activation, and max pooling, which is done 7 times with increasing filters every 2nd loop.
 349 These layers encode features about the methane plumes and reduce the dimensionality of the tensors. Finally,
 350 there is a dense layer and ReLU activation to collect all information obtained and output a single floating-point
 351 number as the predicted emission rate (Figure 5).

Deleted: 4
 Deleted: decoder



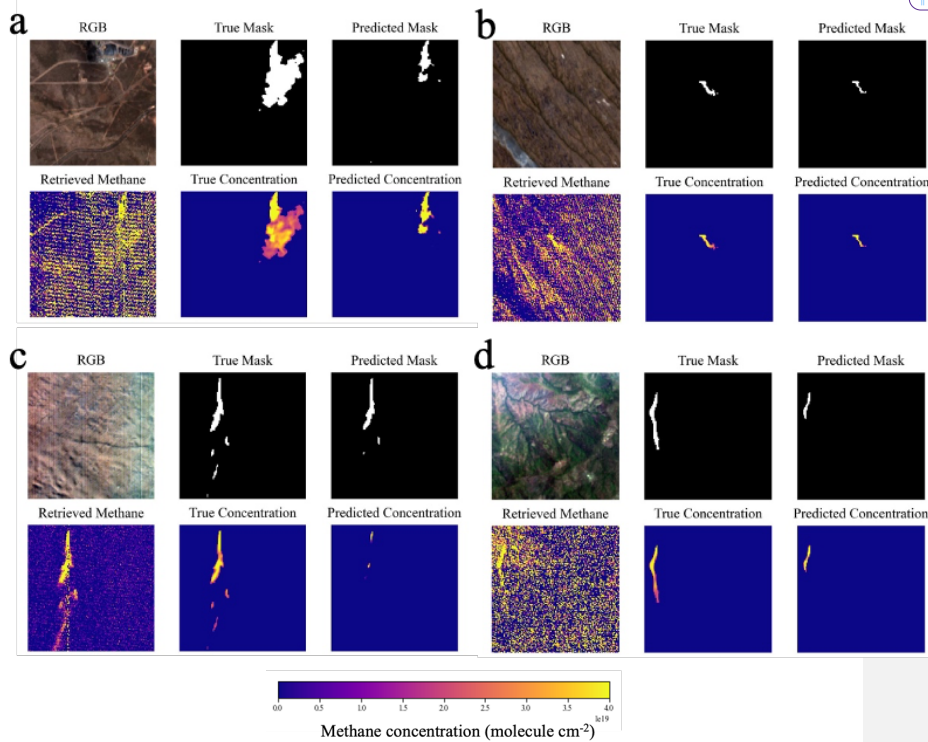
352
 353 **Figure 5: Architecture of the deep neural network for the emission rate prediction of the model. 1×1 conv, 64 refers**
 354 **to a convolutional filter with kernel size 1×1 and 64 filters. Batch Norm refers to a batch normalisation layer, Concat**
 355 **refers to a concatenation between the inputs to that layer, and 2×2 Max pool refers to a max pooling layer with pool**
 356 **size 2. ReLU refers to the Rectified Linear Unit activation function.**

357 3 Results

358 3.1 Application of neural network to simulated plumes

359 The total training/validation dataset consisted of 9700 images, 80% of which were reserved for training and the
 360 remaining 20% for validation. After each iteration of the model through the training dataset (known as an *epoch*),
 361 the model was tested on the validation dataset. If the loss of the model when tested on the validation dataset was
 362 lower than the lowest loss previously recorded, the weights of the model were updated. Thus, at the end of the
 363 training procedure, the best model was saved. Each of the stages of the model depicted in Figure 2 were trained
 364 separately in descending order, where the weights of the other stages did not vary. This was done so that the most
 365 accurate predictions were being produced from the earlier layers so that no errors from insufficient training would
 366 propagate through the model because the outputs are concatenated with the satellite data in later parts of the model.
 367

370 Once training was complete, the model was tested on an additional 2000 images not seen during training sampled
371 randomly from a uniform distribution of emission rates from 500 to 10 000 kg hr⁻¹. 36/2000 of the images had a
372 maximum methane concentration under the 4×10¹⁸ molecules cm⁻² threshold imposed during training, however
373 they were still included in the testing to determine if they can still be detected by the model. The model is able to
374 accurately locate and identify the shape of methane plumes in the test dataset (Figure 6).
375



377

378

379 Figure 6: Example images and predictions taken from the test dataset. Images are 3840x3840m composed of 128x128-
 380 pixel tiles. True emission rates and initial wind speeds are (a) 8068 kg hr⁻¹, 1 ms⁻¹, (b) 1484 kg hr⁻¹, 1 ms⁻¹, (c) 7673 kg
 381 hr⁻¹, 5 ms⁻¹, (d) 6270 kg hr⁻¹, 4 ms⁻¹. Retrieved methane comes from the retrieval described in section 2.2. RGB image
 382 courtesy of PRISMA © (Italian Space Agency).

383 The average methane column enhancement in the images was well estimated, where average estimated methane
 384 was closely correlated with the ground truth (Figure 7) with a tendency to slightly overestimate column values.
 385 This is possibly because predicted methane masks were generally smaller than the true masks, so during training,
 386 the methane concentration model overpredicted the centre of the plumes to compensate.

387

Deleted: total

Deleted: total

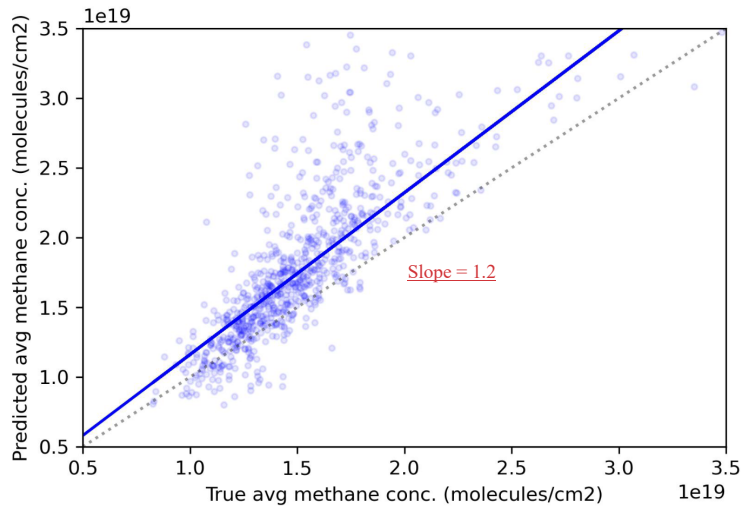


Figure 7: Scatter Plot of mean methane concentration predicted vs true. The true (predicted) average methane concentration was calculated from the average inside the true (predicted) plume.

Deleted: <object>

In the whole image binary classification part of the model, we assess its success using the F1-score, precision and recall, which are defined as follows:

$$F1 = TP / (TP + 0.5 * (FP + FN)), \tag{6}$$

$$\text{Precision} = TP / (TP + FN), \tag{7}$$

$$\text{Recall} = TP / (TP + FP), \tag{8}$$

In the whole image binary classification part of the model, the F1-score, precision, and recall were 0.95, 0.96 and 0.92, respectively (Table 1). These statistics come from predictions made on the 2000 images with plumes in, as well as an additional 1533 images with no plumes.

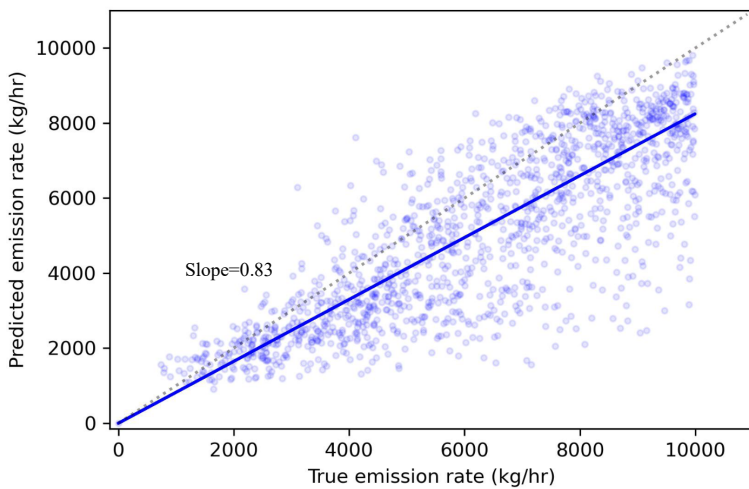
Table 1: Confusion matrix of whole image binary classification portion of the model broken down per image.

	Plume present	No plume present
Predicted plume	1846	51
Predicted no plume	154	1482

The distributions of the scene noise and methane concentrations in the cases where no plume was predicted but a plume was present (false negative) reveal slightly lower than average scene noise and much lower than average maximum methane concentration (Table S2). However, in the cases where a plume was predicted but no plume was present (false positive), scene noise is not noticeably different (Table S2).

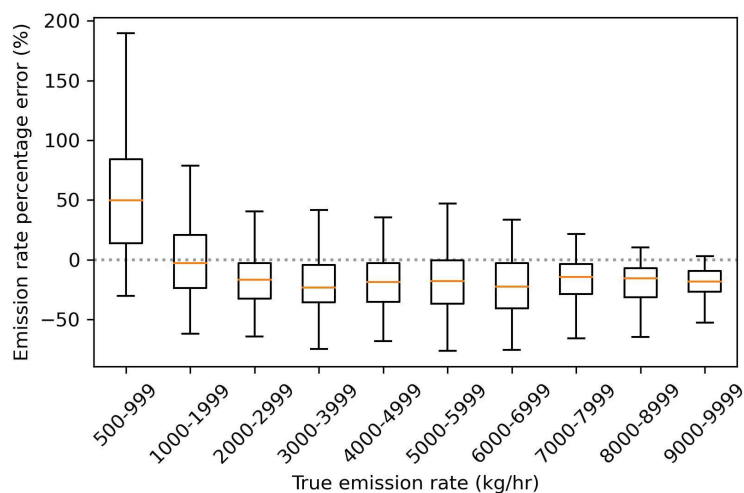
413 The actual vs predicted emission rate has a slope of 0.83 with a relatively small spread about the line of best fit
414 (std = 1447 kg hr⁻¹). This means that there is a tendency for underestimating emissions with a mean absolute
415 percentage error in emission rate of 23.7% (Figure 8). ~~Underpredictions are common in regression models~~
416 ~~especially when data points with zeros are included such as in this case because the model was trained on images~~
417 ~~without plumes as well as those containing plumes. This was a necessary step, however, because the model did~~
418 ~~not converge so well without these images and predictions were far worse at lower emission rate ranges.~~

- ~~Deleted:~~ This bias
- ~~Deleted:~~ the slope is possibly a result of training the model
- Formatted:** Font colour: Black
- Formatted:** Font colour: Black



419
420 **Figure 8: Actual vs predicted emission rate using the deep learning model. Line of best fit calculated using Huber loss**
421 **so outliers do not have an inordinate influence on the slope.**

422 The absolute emission rate error increased in magnitude as the emission rate increased (Figure 8), as one might
423 expect. The percentage error was largest in magnitude for the smallest emission rates (500-999 kg hr⁻¹), but the
424 distribution remained relatively consistent above 2000 kg hr⁻¹, with a median error of 25% and interquartile range
425 of 40% error (Figure 9). The error in percentage emission rate had a positive bias for emission rates under 1000
426 kg hr⁻¹ and a negative bias for emission rates over 2000 kg hr⁻¹ (Figure 9).
427



430

431 **Figure 9: Error in emission rate predictions from the deep learning model as a function of true emission rate. Positive**
 432 **values indicate predicted emission rates being larger than true emission rates. Top panel shows absolute emission rate**
 433 **error and bottom panel shows percentage emission rate error.**

434 **3.2 Application to real-world images**

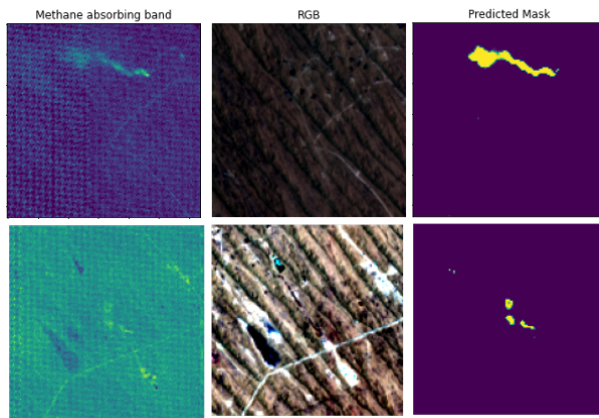
435 The model was then tested on 40 PRISMA scenes obtained during 2020-2022 in the Korpjeje oil field,
 436 Turkmenistan (37.9°N, 53.2°E - 39.4°N, 55.2°E), a well-studied area with frequent methane point source emissions
 437 plumes (Irakulis-Loitxate et al., 2022). The images were normalised in the same way that the training, test, and
 438 validation images were. 21 plumes were identified [using the neural network](#) from 15 different scenes with
 439 predicted emission rates ranging from 1112-7615 kg hr⁻¹ (Figure 10; Table S3).

440

Formatted: Font: Bold

Formatted: Normal, Space Before: 12 pt, After: 12 pt, Line spacing: single

Deleted: 3.2 Application to real-world images[†]



442
 443 **Figure 10:** Images of plumes detected by the neural network in the Korpeje oil field, Turkmenistan. Left panels depict
 444 **physics-based** methane retrievals, middle panels depict the RGB of the image, and the right panel depicts the mask
 445 prediction by the neural network. The predicted emission rates are (top) 7615 and (bottom) 2370 kg hr⁻¹. RGB image
 446 courtesy of PRISMA © (Italian Space Agency).

447
 448 Methane plume detection capability using the neural network was compared with using clustering and
 449 thresholding techniques. **The DBSCAN clustering technique was used to estimate clusters based on the output**
 450 **from the PCA retrieval method** (see section 2.2). Out of the 21 plumes, 14 were found using **the clustering and**
 451 **thresholding** approach. The neural network model took roughly 1 minute to make predictions of plume masks,
 452 methane concentrations, and emission rates of located plumes in an image of 1000x1000 pixels (900km² area)
 453 without the need for time-consuming human inspection typically needed for classical clustering approaches.

454 4 Discussion

455 Identification and reduction of methane emissions can have a considerable influence over the Earth's surface
 456 radiation budget and hence our efforts to mitigate climate change. Methods utilising classical approaches have
 457 had some success in detecting fossil fuel methane point sources and estimating their emissions, but the errors are
 458 high (roughly 50% **mean absolute** error for emission rate predictions) if no accurate local wind speed information
 459 is available and often time-consuming human judgement is necessary to separate plumes from surface effects.
 460 Within the pseudo-observation dataset produced in this study, only one quarter of the images were deemed suitable
 461 to be analysed via **visual inspection after using** clustering algorithms. **This was due to interference effects from**
 462 **surface features and** demonstrates **the limitation of this approach** for detecting methane point source emissions. In
 463 comparison, only 7.7% of the pseudo-observations were undetected by the neural network (Table 1). The **binary**
 464 **prediction** neural network presented in this study was able to accurately locate simulated methane point source
 465 plumes. **From testing the neural network on a variety of images with and without simulated plumes, it achieved a**
 466 precision and recall of 0.96 and 0.92, respectively. The estimates of emission rate did not require wind speed
 467 information, which is a major source for uncertainty in emission estimates in conventional approaches such as the

Deleted: this

Deleted: , which

Deleted: its

Deleted:

472 IME method, and had an average error of 23.7%, which is considerably lower than that obtained from our classical
473 method. The emission rate prediction error could possibly be further reduced with training on a larger dataset.

Deleted: s

474
475 The approach used in this study differs from the approach by Jongaramrungruang et al. (2022), who directly
476 predicted the emission rate from the satellite data without first estimating the plume mask. However, we found
477 that excluding these stages dramatically worsened the model prediction, where the error in emission rate was
478 greater than 50%. The model architecture presented here utilises the maximum amount of information available
479 from the training data. Possible explanations for why the model from Jongaramrungruang et al. (2022) was
480 nevertheless successful could include the large training data volume available in their study (in the order of
481 hundreds of thousands of images), which is an order of magnitude larger than that available in this study. This
482 larger training volume may have enabled the neural network to make the link between plume shapes and emission
483 rates. In addition, the spectral and spatial resolution of the aircraft imagery used in their study (AVIRIS-NG) is
484 substantially higher than that of PRISMA. Finally, the input bands for this study totalled 38, whereas in the study
485 of (Jongaramrungruang et al., 2022), only 1 band was sufficient due to the low noise in the signal in the AVIRIS-
486 NG data and high methane absorption in that band. Thus, it may have been easier for their neural network to learn
487 features in the image due to lower noise present.

488
489 When producing the training data labels for plume masks, a constant threshold was chosen for what methane
490 concentration constitutes a plume. However, the minimum methane concentration that is detectable likely varies
491 depending on scene noise and brightness. Thus, more work is necessary to quantify the most appropriate threshold.
492 However, precise estimates of the edges of a plume are of lesser importance than the initial identification of a
493 plume and its corresponding emission rate. Additional improvements could be made with a larger volume, and
494 greater variety of scenes used in training. This would greatly improve the performance of the model in different
495 surface types and atmospheric conditions.

496
497 There is a noticeable bias present in the emission rate prediction errors (Figure 8; Figure 9) which was also evident
498 in the study by Jongaramrungruang et al. (2022). This bias should be rectified, and future work is needed in fine
499 tuning the neural network training procedure to do so. Such adjustments could include modifying the emission
500 rate loss function or the model architecture. The model was trained only on images with a single methane point
501 source; thus, the model is not able to discriminate between emissions from different sources within a single
502 128x128-pixel image. The solution to this would be to add in training data with multiple sources and solve the
503 instance segmentation problem using an appropriate architecture, such as Mask-RCNN (He et al., 2020). It is
504 likely that the errors would be larger in general when using this approach owing to the increased noise present.
505 Nevertheless, the key advantage of this approach is the speed with which methane plumes can be identified with
506 little specialist training necessary.

507 5 Conclusions

508 In this study, we present a novel deep neural network model for identifying and quantifying methane point source
509 emissions from PRISMA satellite data. PRISMA data has sufficient spectral and spatial resolution to identify

511 methane plumes, while still having considerable spatial coverage and is still in operation today. These factors
512 make PRISMA an ideal tool for methane detection and the deep neural network developed here has great potential
513 to impact climate mitigation efforts. The model proved ~~successful with both identification and quantification but~~
514 ~~biases were present in the predictions~~. Rapid identification and quantification of methane point sources is a vital
515 contribution to climate change mitigation, and the approach outlined here opens the door to the capability to
516 automate methane plume detection. Our model was able to produce predictions on an area of 900 km² over real
517 PRISMA images in less than a minute. Such a capability would vastly reduce the time and costs associated with
518 reducing anthropogenic methane emissions.

Deleted: to be more

Deleted: than previous efforts using classical approaches

519 Acknowledgements

520 We acknowledge funding from the Natural Environmental Research Council (NERC). Peter Joyce, Cristina Ruiz
521 Villena, Alex Webb, Chris Wilson, Martyn P. Chipperfield, Yahui Huang, and Hartmut Boesch are funded via
522 the UK National Centre for Earth Observation (NE/R016518/1 and NE/N018079/1). Part of this work was carried
523 out at the Jet Propulsion Laboratory, California Institute of Technology, under a contract with the National
524 Aeronautics and Space Administration (NASA). Project carried out using ORIGINAL PRISMA Products - ©
525 Italian Space Agency (ASI); the Products have been delivered under an ASI Licence to Use.

526 References

527 Allen, D. T., Torres, V. M., Thomas, J., Sullivan, D. W., Harrison, M., Hendler, A., Herndon, S. C., Kolb, C. E., Fraser, M.
528 P., and Hill, A. D.: Measurements of methane emissions at natural gas production sites in the United States, *Proceedings of*
529 *the National Academy of Sciences*, 110, 17768-17773, 2013.

530 Alvarez, R. A., Zavala-Araiza, D., Lyon, D. R., Allen, D. T., Barkley, Z. R., Brandt, A. R., Davis, K. J., Herndon, S. C., Jacob,
531 D. J., and Karion, A.: Assessment of methane emissions from the US oil and gas supply chain, *Science*, 361, 186-188, 2018.

532 Brandt, A. R., Heath, G. A., and Cooley, D.: Methane leaks from natural gas systems follow extreme distributions,
533 *Environmental science & technology*, 50, 12512-12520, 2016.

534 Chollet, F., & others: Keras, 2015.

535 Cusworth, D. H., Jacob, D. J., Varon, D. J., Chan Miller, C., Liu, X., Chance, K., Thorpe, A. K., Duren, R. M., Miller, C. E.,
536 and Thompson, D. R.: Potential of next-generation imaging spectrometers to detect and quantify methane point sources from
537 space, *Atmospheric Measurement Techniques*, 12, 5655-5668, 2019.

538 [Cusworth, D. H., Duren, R. M., Thorpe, A. K., Eastwood, M. L., Green, R. O., Dennison, P. E., Frankenberg, C., Heckler, J.](#)
539 [W., Asner, G. P., and Miller, C. E.: Quantifying global power plant carbon dioxide emissions with imaging spectroscopy,](#)
540 [AGU Advances](#), 2, e2020AV000350, 2021a.

541 [Cusworth, D. H., Duren, R. M., Thorpe, A. K., Olson-Duvall, W., Heckler, J., Chapman, J. W., Eastwood, M. L., Helmlinger,](#)
542 [M. C., Green, R. O., and Asner, G. P.: Intermittency of large methane emitters in the Permian Basin,](#) *Environmental Science*
543 [& Technology Letters](#), 8, 567-573, 2021b.

544 Duren, R. M., Thorpe, A. K., Foster, K. T., Rafiq, T., Hopkins, F. M., Yadav, V., Bue, B. D., Thompson, D. R., Conley, S.,
545 and Colombi, N. K.: California's methane super-emitters, *Nature*, 575, 180-184, 2019.

546 Etminan, M., Myhre, G., Highwood, E., and Shine, K.: Radiative forcing of carbon dioxide, methane, and nitrous oxide: A
547 significant revision of the methane radiative forcing, *Geophysical Research Letters*, 43, 12,614-612,623, 2016.

550 Finch, D., Palmer, P., and Zhang, T.: Automated detection of atmospheric NO₂ plumes from satellite data: a tool to help infer
551 anthropogenic combustion emissions, *Atmospheric Measurement Techniques Discussions*, 1-21, 2021.

552 Frankenberg, C., Thorpe, A. K., Thompson, D. R., Hulley, G., Kort, E. A., Vance, N., Borchardt, J., Krings, T., Gerilowski,
553 K., Sweeney, C., Conley, S., Bue, B. D., Aubrey, A. D., Hook, S., and Green, R. O.: Airborne methane remote measurements
554 reveal heavy-tail flux distribution in Four Corners region, *Proc Natl Acad Sci U S A*, 113, 9734-9739,
555 10.1073/pnas.1605617113, 2016.

556 Galeazzi, C., Sacchetti, A., Cisbani, A., and Babini, G.: The PRISMA program, IGARSS 2008-2008 IEEE International
557 Geoscience and Remote Sensing Symposium, IV-105-IV-108,

558 Gordon, I., Rothman, L., Hargreaves, R., Hashemi, R., Karlovets, E., Skinner, F., Conway, E., Hill, C., Kochanov, R., and
559 Tan, Y.: The HITRAN2020 molecular spectroscopic database, *Journal of quantitative spectroscopy and radiative transfer*, 277,
560 107949, 2022.

561 Guanter, L., Irakulis-Loitxate, I., Gorroño, J., Sánchez-García, E., Cusworth, D. H., Varon, D. J., Cogliati, S., and Colombo,
562 R.: Mapping methane point emissions with the PRISMA spaceborne imaging spectrometer, *Remote Sensing of Environment*,
563 265, 112671, 2021.

564 He, K., Gkioxari, G., and Dollár, P.: el ta. Mask R-CNN [J], *IEEE Transactions on Pattern Analysis and Machine Intelligence*,
565 42, 386-397, 2020.

566 He, K., Zhang, X., Ren, S., and Sun, J.: Deep residual learning for image recognition, *Proceedings of the IEEE conference on*
567 *computer vision and pattern recognition*, 770-778,

568 IEA, S.: International Energy Agency, 2016, *Key World Energy Statistics*, ed, 2017.

569 Irakulis-Loitxate, I., Guanter, L., Maasackers, J. D., Zavala-Araiza, D., and Aben, I.: Satellites Detect Abatable Super-
570 Emissions in One of the World's Largest Methane Hotspot Regions, *Environmental Science & Technology*, 56, 2143-2152,
571 2022.

572 Jacob, D. J., Turner, A. J., Maasackers, J. D., Sheng, J., Sun, K., Liu, X., Chance, K., Aben, I., McKeever, J., and Frankenberg,
573 C.: Satellite observations of atmospheric methane and their value for quantifying methane emissions, *Atmospheric Chemistry*
574 *and Physics*, 16, 14371-14396, 2016.

575 Jongaramrungruang, S., Thorpe, A. K., Matheou, G., and Frankenberg, C.: MethaNet—An AI-driven approach to quantifying
576 methane point-source emission from high-resolution 2-D plume imagery, *Remote Sensing of Environment*, 269, 112809, 2022.

577 Jongaramrungruang, S., Frankenberg, C., Matheou, G., Thorpe, A. K., Thompson, D. R., Kuai, L., and Duren, R. M.: Towards
578 accurate methane point-source quantification from high-resolution 2-D plume imagery, *Atmospheric Measurement*
579 *Techniques*, 12, 6667-6681, 2019.

580 Karion, A., Sweeney, C., Pétron, G., Frost, G., Michael Hardesty, R., Kofler, J., Miller, B. R., Newberger, T., Wolter, S., and
581 Banta, R.: Methane emissions estimate from airborne measurements over a western United States natural gas field,
582 *Geophysical Research Letters*, 40, 4393-4397, 2013.

583 Krizhevsky, A., Sutskever, I., and Hinton, G. E.: Imagenet classification with deep convolutional neural networks, *Advances*
584 *in neural information processing systems*, 25, 2012.

585 Kuze, A., Suto, H., Nakajima, M., and Hamazaki, T.: Thermal and near infrared sensor for carbon observation Fourier-
586 transform spectrometer on the Greenhouse Gases Observing Satellite for greenhouse gases monitoring, *Applied optics*, 48,
587 6716-6733, 2009.

588 LeCun, Y., Boser, B., Denker, J. S., Henderson, D., Howard, R. E., Hubbard, W., and Jackel, L. D.: Backpropagation applied
589 to handwritten zip code recognition, *Neural computation*, 1, 541-551, 1989.

590 Levelt, P. F., Hilsenrath, E., Leppelmeier, G. W., van den Oord, G. H., Bhartia, P. K., Tamminen, J., de Haan, J. F., and
591 Veeckind, J. P.: Science objectives of the ozone monitoring instrument, *IEEE Transactions on Geoscience and Remote Sensing*,
592 44, 1199-1208, 2006.

593 Lorente, A., Borsdorff, T., Butz, A., Hasekamp, O., Schneider, A., Wu, L., Hase, F., Kivi, R., Wunch, D., and Pollard, D. F.:
594 Methane retrieved from TROPOMI: improvement of the data product and validation of the first 2 years of measurements,
595 Atmospheric Measurement Techniques, 14, 665-684, 2021.

596 Matsugu, M., Mori, K., Mitari, Y., and Kaneda, Y.: Subject independent facial expression recognition with robust face
597 detection using a convolutional neural network, Neural Networks, 16, 555-559, 2003.

598 Nugraha, B. T. and Su, S.-F.: Towards self-driving car using convolutional neural network and road lane detector, 2017 2nd
599 international conference on automation, cognitive science, optics, micro electro-mechanical system, and information
600 technology (ICACOMIT), 65-69,

601 Ocko, I. B., Sun, T., Shindell, D., Oppenheimer, M., Hristov, A. N., Pacala, S. W., Mauzerall, D. L., Xu, Y., and Hamburg, S.
602 P.: Acting rapidly to deploy readily available methane mitigation measures by sector can immediately slow global warming,
603 Environmental Research Letters, 16, 054042, 2021.

604 Oh, K.-S. and Jung, K.: GPU implementation of neural networks, Pattern Recognition, 37, 1311-1314, 2004.

605 Ronneberger, O., Fischer, P., and Brox, T.: U-net: Convolutional networks for biomedical image segmentation, International
606 Conference on Medical image computing and computer-assisted intervention, 234-241,

607 Parker, R. J., Webb, A., Boesch, H., Somkuti, P., Barrio Guillo, R., Di Noia, A., Kalaitzi, N., Anand, J. S., Bergamaschi, P.,
608 and Chevallier, F.: A decade of GOSAT Proxy satellite CH₄ observations, Earth System Science Data, 12, 3383-3412, 2020.

609 Saunio, M., Stavert, A. R., Poulter, B., Bousquet, P., Canadell, J. G., Jackson, R. B., Raymond, P. A., Dlugokencky, E. J.,
610 Houweling, S., and Patra, P. K.: The global methane budget 2000–2017, Earth system science data, 12, 1561-1623, 2020.

611 [Sherwin, E. D., Rutherford, J. S., Chen, Y., Aminfarid, S., Kort, E. A., Jackson, R. B., and Brandt, A. R.: Single-blind validation](#)
612 [of space-based point-source detection and quantification of onshore methane emissions, Scientific Reports, 13, 3836, 2023.](#)

613 Stocker, T., Qin, D., Plattner, G.-K., Tignor, M. M. B., Allen, S. K., Boschung, J., Nauels, A., Xia, Y., Bex, V., and Midgley,
614 P. M.: IPCC, 2013 : Climate Change 2013: The Physical Science Basis. Contribution of Working Group I to the Fifth
615 Assessment Report of the Intergovernmental Panel on Climate Change, IPCC, Geneva 2013.

616 Thorpe, A., Frankenberg, C., and Roberts, D.: Retrieval techniques for airborne imaging of methane concentrations using high
617 spatial and moderate spectral resolution: Application to AVIRIS, Atmospheric Measurement Techniques, 7, 491-506, 2014.

618 Varon, D. J., Jervis, D., McKeever, J., Spence, I., Gains, D., and Jacob, D. J.: High-frequency monitoring of anomalous
619 methane point sources with multispectral Sentinel-2 satellite observations, Atmospheric Measurement Techniques, 14, 2771-
620 2785, 2021.

621 Varon, D. J., Jacob, D. J., McKeever, J., Jervis, D., Durak, B. O., Xia, Y., and Huang, Y.: Quantifying methane point sources
622 from fine-scale satellite observations of atmospheric methane plumes, Atmospheric Measurement Techniques, 11, 5673-5686,
623 2018.

624 Wallach, I., Dzamba, M., and Heifets, A.: AtomNet: a deep convolutional neural network for bioactivity prediction in structure-
625 based drug discovery, arXiv preprint arXiv:1510.02855, 2015.

626 Zavala-Araiza, D., Alvarez, R. A., Lyon, D. R., Allen, D. T., Marchese, A. J., Zimmerle, D. J., and Hamburg, S. P.: Super-
627 emitters in natural gas infrastructure are caused by abnormal process conditions, Nature communications, 8, 1-10, 2017.

628 Zavala-Araiza, D., Lyon, D. R., Alvarez, R. A., Davis, K. J., Harriss, R., Herndon, S. C., Karion, A., Kort, E. A., Lamb, B. K.,
629 and Lan, X.: Reconciling divergent estimates of oil and gas methane emissions, Proceedings of the National Academy of
630 Sciences, 112, 15597-15602, 2015.

631 ▲

Formatted: Font: 10 pt, Font colour: Auto

Formatted: Border: Top: (No border), Bottom: (No border),
Left: (No border), Right: (No border), Between : (No border)