

Analysis of Systematic Biases in Tropospheric Hydrostatic Delay Models and Construction of Correction Model

Haopeng Fan¹, Siran Li², Zhongmiao Sun³, Guorui Xiao¹, Xinxing Li¹, Xiaogang Liu³

¹PLA Strategic Support Force Information Engineering University, Zhengzhou, 450001, China.

²Henan Economics and Trade Vocational College, Zhengzhou, 450046, China.

³Xi'an Research Institute of Surveying and Mapping, Xi'an, 710054, China.

Correspondence to: Haopeng Fan (fanhaopeng2008@163.com)

Abstract. In the fields of space geodetic techniques, such as Global Navigation Satellite System (GNSS), tropospheric zenith hydrostatic delay (ZHD) is chosen as the a priori value of tropospheric total delay. Therefore, the inaccuracy of ZHD will definitely infect parameters like the wet delay and the horizontal gradient of tropospheric delay, accompanied by an indirect influence on the accuracy of geodetic parameters, if not dealt with well at low elevation angles. In fact, however, the most widely used ZHD model currently seems to contain millimetre-level biases from the precise integral method. We explored the bias of traditional ZHD models and analysed the characteristics in different aspects on a global annual scale. It was found that biases differ significantly with season and geographical location, and the difference between the maximum and minimum values exceed 30 mm, which should be fully considered in the field of high-precision measurement. Then, we constructed a global grid correction model, which is named ZHD_crct, based on the meteorological data of year 2020 from ECMWF (European Centre for Medium-Range Weather Forecasts), and it turned out that the bias of traditional model in the current year could be reduced by ~50% when the ZHD_crct was added. When we verified the effect of ZHD_crct on the biases in the next year, it worked almost the same as the former year. The mean absolute biases (MABs) of ZHD will be narrowed within ~0.5 mm for most regions, and the STD (standard deviation) will be within ~0.7 mm. This improvement will be helpful for researches on meteorological phenomena as well.

1 Introduction

Propagation delay caused by troposphere is inevitable in space observing technologies which employ electromagnetic waves as the primary means of detection, such as Global Navigation Satellite System (GNSS), Very Long Baseline Interferometry (VLBI), Satellite Laser Ranging (SLR), Interferometric Synthetic Aperture Radar (InSAR), and other technologies (Bevis et al., 1994; Boehm et al., 2006; Tang et al., 2017; Drożdżewski and Sońnica, 2021; Xiao et al., 2021). Affected by weather conditions, such as air temperature, pressure, and water vapor content, this kind of delay varies strongly over time, geographical location and transmission path, and cannot be eliminated by multi-frequency combined observing, which has become one of the main bottlenecks restricting the accuracy of space geodetic surveying (Mendes, 1999; Alizadeh et al., 2013; Younes and Afify, 2014; Yao et al., 2018; Ma et al., 2022).

To be facilitated, the tropospheric delay is usually divided into hydrostatic and non-hydrostatic (wet) components (Davis et al., 1985). As the main influence, the hydrostatic component accounts for ~90% of the total delay, which reaches 20 m or even larger at low range of elevation angle and still remains ~2 m in the zenith direction (Niell, 1996; Chen and Herring, 1997; Penna et al., 2001). In data processing of technologies such as GNSS and VLBI, zenith hydrostatic delay (ZHD) is usually taken as the a priori value of the total zenith delay, and the estimated term as the zenith wet delay (ZWD); finally, both of them are respectively multiplied by the corresponding mapping function and then summed up to obtain a slant-path one (Mendes et al., 2002). Therefore, if the ZHD contains bias, this error will probably be transmitted to the ZWD, which furtherly exert an influence on the total delay and the final solutions. To this extent, ZHD seems to be the key at the beginning of the processing.

Fortunately, ZHD models, such as Hopfield (1971), Saastamoinen (1972), are capable of approximating the actual situation well. Moreover, with the help of succeeding researchers, uncertainties of model ZHDs have been limited in sub-millimetre level, especially using closed formulae induced from precise integral method based on hydrostatic equilibrium condition (Davis et al., 1985; Zhang et al., 2016). Thus, in fields including GNSS and VLBI, calculated figures from the ZHD models are widely used even as true values (Wang et al., 2005;Tuka and El-Mowafy, 2013; Liu et al., 2017; Feng et al., 2020), which facilitate quite a few advanced models, such as GPT series, VMF series (Boehm et al., 2006; Boehm et al., 2007; Böhm et al., 2015; Landskron and Böhm, 2018) and extrapolation models (Li et al., 2018; Hu and Yao, 2019; Li et al., 2020; Wang et al., 2022).

However, hydrostatic equilibrium will be broken if vertical wind acceleration occurs, which shall probably be influential on the accuracy of traditional ZHD models depicted by closed formulae. In fact, it has been noticed that these models show some certain systematic biases when compared with the precise integral method, which vary with locations or time yet are easily neglected (Liu et al., 2000; Chen et al., 2009; Yan et al., 2011; Dai and Zhao, 2013; Zhang et al., 2016; Feng et al., 2020). In the direction of zenith or high-altitude angle, the estimates of technologies like GNSS can hardly be affected by this kind of bias. That's because the hydrostatic mapping function is nearly equal to the wet one, and the ZHD and ZWD biases rightly offset each other. Nevertheless, when it comes to low elevation angles, the difference between mapping functions of the two components will lead to slant-path delay errors up to ~10 mm (Fan et al., 2019) and coordinate errors of ~2 mm when mapped on to the vertical direction by the rule of thumb (Boehm et al., 2006), which furtherly affects the accuracy of geodetic solutions.

In addition, biases of ZHD will be transferred to ZWD, which is often pursued by ZTD minus ZHD. Since ZWD is closely related to precipitable water vapor (PWV), roughly 0.15–0.25 times of ZWD (Yao et al., 2016), ZHD biases will cause PWV errors indirectly, which is undoubtedly unfavourable for meteorological phenomenon, studies like the atmospheric water cycle, and forecasting disastrous weather, including rainstorms and typhoons.

From the point of view of situations above, we analysed the characteristics of model ZHD biases from different aspects, and constructed a set of grid correction model to provide reliable reference for improving various solutions to space geodetic surveying data and obtaining precise meteorological parameters such as PWV.

Deleted: some

Commented [ft1]: Referee's comment:
Line 37: "To some extend..." - I suggest moving this sentence to the end/middle of the paragraph, starting at line 56. It is unclear here why the ZHD is the key to the total delay determination, and you explained it there.

Commented [ft2R1]: Thanks for your suggestion. We put an explanation before this sentence to make it more understandable.

Deleted: to determining the total delay

Formatted: English (United States)

Deleted: to

Deleted: studying

Deleted: a

70 2 Data Preparation

2.1 Profile meteorological data

The profile meteorological data were needed to calculate ZHD reference values based on the integral method, i.e., ray tracing. Data observed by radiosondes or meteorological products provided by international authorities are all suitable to achieve reference values. Our ZHD reference values were obtained mainly based on the multilayer grid meteorological data provided by the fifth generation ECMWF reanalysis (ERA5) dataset, which have been validated well in tropospheric delay calculations [and cover the whole world even the middle of oceans](#) (Abdelfatah et al., 2015; Bekaert et al., 2015; Graham et al., 2019; Sun et al., 2019; Dogan and Erdogan, 2022).

The ERA5 profile data are mostly valid at about 30–40 km high. As there still exists a small amount of air above, when the valid height of data was exceeded during experiments, they were complemented until 86 km using the American standard atmospheric model COESA 1976 (Minzner, 1977).

Given the low vertical resolution of ERA5 and COESA 1976, Equation (1)–(3) were used to interpolate air pressure, temperature and humidity between adjacent layers (Nafisi et al., 2012), where the interpolating step follows the criterion described by Rocken et al. (2001).

$$p_{\text{int}} = p_i \exp\left[-\frac{(h_{\text{int}} - h_i)g_i}{R_d T_{v,i}}\right] \quad (1)$$

$$T_{\text{int}} = T_{i+1} + \frac{T_i - T_{i+1}}{h_i - h_{i+1}}(h_{\text{int}} - h_{i+1}) \quad (2)$$

$$p_{w,\text{int}} = \begin{cases} p_{w,i} \exp\left[\frac{h_{\text{int}} - h_i}{h_{i+1} - h_i} \log(p_{w,i+1} / p_{w,i})\right], & \text{if } p_{w,i} > 0 \\ \frac{p_{w,i+1}}{h_{i+1} - h_i}(h_{\text{int}} - h_i), & \text{if } p_{w,i} = 0 \end{cases} \quad (3)$$

The subscript i in Equation (1) – (3) refers to the meteorological elements (temperature T , total air pressure p and the water vapour pressure p_w); p_{int} , T_{int} and $p_{w,\text{int}}$ represent the air pressure, temperature and water vapour pressure [respectively](#) at the interpolation height h_{int} , which locates between the i^{th} and $(i + 1)^{\text{th}}$ layer; $T_{v,i}$ means the virtual temperature and its calculation follows Equation (4) (Hofmeister, 2016).

$$T_{v,i} = \frac{T_i p_i}{p_i - 0.378 p_{w,i}} \quad (4)$$

2.2 Calculation of ZHD reference data

According to the principle of ray tracing (Thayer, 1967; Nafisi et al., 2012; Eriksson et al., 2014), ZHD can be accurately achieved by taking the integrals of refractive parameters in the sky above the study site, specifically as seen in Equation (5).

$$95 \quad \text{ZHD}_{\text{reference}} = \int_{h_0}^H [n^H(h) - 1] dh \approx \sum_{i=1}^{k-1} (n_i^H - 1) \Delta h_i = 10^{-6} \sum_{i=1}^{k-1} N_i^H \Delta h_i \quad (5)$$

Where $n^H(h)$, h_0 , H and k represent hydrostatic delay, the refractive index of hydrostatic delay at height h , geodetic height of the site, maximum tropospheric thickness, and the total number of divided tropospheric layers, respectively. n_i^H and N_i^H are the hydrostatic component refractivity and refractive index respectively, and Δh_i denotes the thickness between subdivide layers. Therein, N_i^H can be calculated through Equation (6) (Davis et al., 1985).

$$100 \quad N_i^H = k_1 \frac{p_i}{T_i} \quad (6)$$

Where k_1 is a constant (77.6890 [K/hPa]) selected from the "best average" parameters of Rüeger (2002), while p_i and T_i represent the air pressure and air temperature between the corresponding height layers, respectively. Given accurate meteorological parameters, the integral results shall naturally be of high reliability, thus serving as reference or actual values in atmospheric delay effect analysis (Hobiger et al., 2008; Hofmeister and Böhm, 2017; Osah et al., 2021). Since ECMWF possesses high-quality meteorological parameter values of profile grids at both global and yearly scales, ZHD calculated using these data were treated as the reference value in subsequent statistical analysis and modelling.

2.3 Traditional ZHD model

According to findings of pioneers (Saastamoinen, 1972; Davis et al., 1985; Penna et al., 2001; Tregoning and Herring, 2006; Leandro et al., 2008), ZHD values can be determined by closed formula as Equation (7)

$$110 \quad \text{ZHD}_{\text{Empirical}}(p_0, h_0, \varphi) = C \times \frac{p_0}{1 - 0.0026 \cos(2\varphi) - 2.8 \times 10^{-7} h_0} \quad (7)$$

Where p_0 , h_0 and φ denote the air pressure (mbar), height (m) and geodetic latitude (°) of the study site, while the constant C in most cases is set as 0.0022768, refined by Davis et al. (1985); or it could be set as 0.0022794, modified by Zhang et al. (2016), which is claimed to be able to cut bias down within 1 mm. Two values of C were both studied in the following part.

Obviously, traditional models are simpler and more practical than the integral method since only the pressure and position parameters of the site are required. In the experiments, we exploited the ECMWF surface data for meteorological inputs of traditional models.

3 Biases' Characteristics and the Correction Model

3.1 Location-specific analysis

Based on the data prepared in Section 2, we obtained the ZHD model biases by subtracting model ZHDs from reference ZHDs. Twelve sites, divided into 4 groups, were chosen to learn the time-varying characteristics, whose locations and climate types are depicted in [Figure 1](#) and [Table 1](#). Three-year (2019–2021) time series of biases of study sites were drawn

Commented [ft3]: Referee's comment:
Line 88: Put a space between "k" and "represent".

Commented [ft4R3]: Sorry for my negligence, and we revised it.

Deleted: hydrostatic component

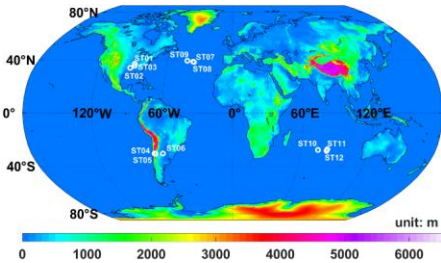
Deleted: Figure 1

Deleted: Table 1

Formatted: Font: 10 pt, Not Bold

Formatted: Font: 10 pt, Not Bold

125 according to Equation (5) and (7), and two types of constant C were used (Figure 2). Here we note Equation (7) as model
SAAS_D for $C = 0.0022768$ and model SAAS_Z for $C = 0.0022794$. Additionally, the ZHD mean absolute biases (MAB)
and standard deviation (STD) of biases for the two traditional models in each study site are displayed in Table 2. The MAB
is calculated as $\frac{1}{N} \sum_{i=1}^N |\text{Bias}_i|$, where Bias_i means the bias of the i^{th} grid point, and N means the total number of grid points.



130 Figure 1: 10 arc-minute global land topography. White circles are the locations of 12 sites, and colour bar represents global
surface fluctuations. Topography data were abstracted from ETOPO1 Ice Surface grid model (Amante and Eakins, 2009). The
colour bar denotes the altitude.

Table 1
Geodetic Coordinates of Study Areas and Corresponding Climate Types

Group	Site abbreviation	Latitude (Unit: °)	Longitude (Unit: °)	Altitude (Unit: m)	Climate type	Climate name
1	ST01	36.83	-89.17	94.9	Cfa	Humid subtropical climate
	ST02	33.80	-92.30	60.5	Cfa	Humid subtropical climate
	ST03	35.33	-88.83	136.1	Cfa	Humid subtropical climate
2	ST04	-30.50	-69.50	3094.0	BWk	Cold desert climate
	ST05	-30.67	-68.67	1014.3	BWh	Hot desert climate
	ST06	-30.50	-62.00	94.0	Cfa	Humid subtropical climate
3	ST07	38.50	-36.33	0	—	—
	ST08	38.17	-35.50	0	—	—
	ST09	39.17	-41.83	0	—	—
4	ST10	-27.83	75.17	0	—	—
	ST11	-27.33	83.33	0	—	—
	ST12	-28.50	82.83	0	—	—

135 Note: Climate type determines the general weather conditions in this area; thus, it probably keeps close relation with ZHD.
Since this, the climate type of each site is displayed here for further analysis, which complies with Köppen-Geiger climate

Deleted: Figure 2
Formatted: Font: 10 pt, Not Bold
Deleted: Table 2
Formatted: Font: 10 pt, Not Bold

Commented [ft5]: Referee comment:
1. Table 1: Although you cite the climate type in the Note below the table, I don't understand why you put them in the table. If it is important to know the climate type of the Sites, please define them in a short paragraph, probably as a Note under the table.
2. Table 1: There is no info for the Climate Type and Climate name for ST07 to ST12. Probably since they are in the middle of the ocean, this information is not available. If yes, please mention it in the text; otherwise, fill in the blanks in the table with the correct info.
Commented [ft6R5]: 1. Thanks for your advice, and we made an explanation why the climate type matters in the study.
2. You're right about it, and oceans indeed don't own any climate type in Köppen-Geiger's model. We explained that under the table.

Deleted: Climate type of each site

140 classification. For more details please refer to Peel et al. (2007) and Beck et al. (2018). ST07 to ST12 are located in the middle of ocean, which have no type attribution in Köppen-Geiger’s classification, so a “—” was left in the table above.

Deleted: , and f

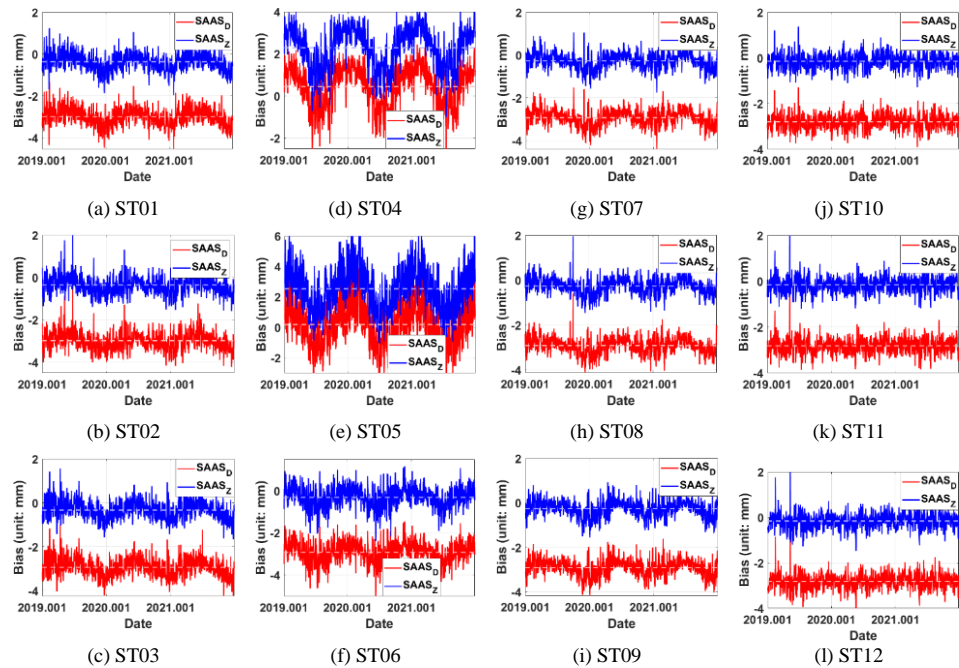


Figure 2: Bias time series of model SAAS_D and SAAS_Z. (a)–(l) represent the situations of the 12 sites respectively. Light red dot line and light blue dot line show the mean value of bias series from SAAS_D and SAAS_Z respectively.

Table 2
Mean Absolute Bias (MAB)/Standard Deviation (STD) of SAAS_D and SAAS_Z Biases (Unit: mm)

Site code	SAAS _D	SAAS _Z
ST01	2.98/0.43	0.45/0.42
ST02	2.98/0.45	0.46/0.45
ST03	2.93/0.43	0.44/0.43
ST04	0.92/0.97	2.29/0.98
ST05	1.18/1.46	2.55/1.46
ST06	2.92/0.52	0.47/0.51

ST07	2.93/0.38	0.37/0.38
ST08	2.92/0.37	0.36/0.37
ST09	2.91/ 0.38	0.36/0.39
ST10	2.80/0.33	0.28/0.33
ST11	2.82/ 0.34	0.30/0.35
ST12	2.82/0.34	0.29/0.34

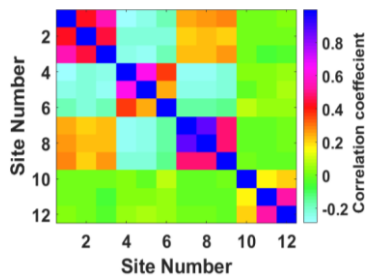
Note: Bold numbers represent minimum absolute values in row comparisons.

It can be seen from [Figure 2](#) that if no correction applied, SAAS_D model would generate about 2.5-millimetre biases; by contrast, those from SAAS_Z seem to be restricted within 0.5 mm mostly (10 sites in 12 in [Table 2](#)). Yet, in fact, there exists unknown high-frequency residual information in both two ZHD models, which might be speculated that it should be related to the vertical pressure gradient in each region. Also, it turns out that SAAS_Z only increase by ~ 2 mm overall, with the periodic trend still reserved, and the biases' STD of SAAS_Z keeps almost the same with [that of SAAS_P \(Table 2\)](#). Besides, from [Figure 2](#), the STDs in marine areas are generally smaller than those on land, and the value of STD seems to be related to the complexity of climatic condition; for example, the sites in Group 1 show little variety in STDs, while those in Group 2 experience a quite different thing.

[Since the difference between the two models is not statistically significant, and SAAS_D has been used for much longer, we took SAAS_D for an example in the following part to analyse the characteristics in further. The correlation coefficient matrix of biases of 12 sites was shown in \[Figure 3\]\(#\), as well as their spectrum analysis diagram \(\[Figure 4\]\(#\)\) and \[proportion of annual and semi-annual periodic terms in total energy spectrum\]\(#\), \(\[Figure 5\]\(#\)\).](#)

It can be inferred from [Figure 3](#) that the correlation coefficient gets larger if the two sites are closer. For instance, the coefficients of the sites within the Group are apparently [larger](#) than those between Groups; also, as ST02 is away from the other two in Group 1, the correlation appears weaker. The same phenomenon can be observed from the relationship between ST06 and the other two in Group 2. When we compare the correlation between Group 1 and Group 2, it can be seen that the correlation is also generally larger in areas with the same climate category or at similar elevation. When it comes to the sites in Group 3 and Group 4, it turns out that the biases in marine areas also varies with the location, and the correlation between them seems stronger than those between the sites with the same distance spacing on land. Combined with the spectrum diagram ([Figure 4](#)), it can be seen that the biases for most sites are generally influenced by annual and semi-annual signals, and the energy intensity varies significantly with site's location: Regions with high altitude appear more sensitive to seasons, such as ST04 and ST05, while situations for those in the ocean in south hemisphere are opposite, such as ST10–ST12 ([Figure 5](#)).

- Deleted: Figure 2
- Formatted: Font: 10 pt, Not Bold
- Deleted: Table 2
- Formatted: Font: 10 pt, Not Bold
- Deleted: z
- Deleted: Table 2
- Formatted: Font: 10 pt, Not Bold
- Deleted: Figure 2
- Formatted: Font: 10 pt, Not Bold
- Deleted: W
- Formatted: Subscript
- Deleted: Figure 3
- Deleted: Figure 4
- Formatted: Font: 10 pt, Not Bold
- Formatted: Font: 10 pt, Not Bold
- Commented [ft7]: Referee comment: Please elaborate on "half annual items in total energy". It is not clear to the reader.
- Commented [ft8R7]: Thanks for your reminder, and we changed it to another explanation.
- Deleted: percentage of annual and half annual items in total energy
- Deleted: Figure 5
- Formatted: Font: 10 pt, Not Bold
- Deleted: Figure 3
- Formatted: Font: 10 pt, Not Bold
- Commented [ft9]: Referee comment: There is a typo: lager -> larger
- Commented [ft10R9]: Sorry for the silly mistake.
- Deleted: Figure 4
- Formatted: Font: 10 pt, Not Bold
- Deleted: Figure 5
- Formatted: Font: 10 pt, Not Bold



185 Figure 3: Correlation coefficients of bias time series of the 12 sites.

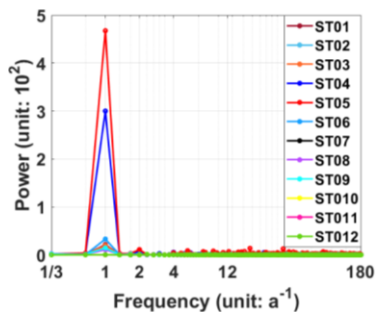
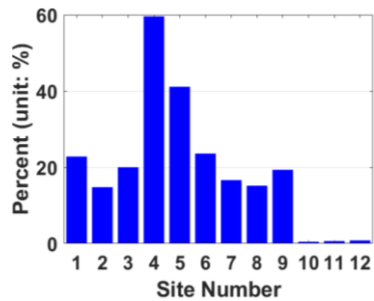


Figure 4: Temporal frequency spectrograms for ZHD biases of model SAASp.



190 Figure 5: Percentage of annual and semi-annual items in total energy for ZHD biases of model SAASp.

3.2 Global analysis

To further analyse the global distribution characteristics of ZHD systematic biases, we calculated the 1 arc-degree grid values of ZHD biases during January–December, 2020, and depicted their monthly averaged distributions (Figure 6) with statistics listed in Table 3. Herein, we have some conclusions.

1) It confirms the seasonal characteristics, which is reflected in varying degrees throughout the world. For instance, the bias values in northern hemisphere winter are averagely negative, while those in the southern hemisphere, especially in high-altitude areas, are positive. Then, with season shifting, the values in the northern hemisphere gradually become positive and those in the southern hemisphere winter go to the opposite way. This annual regression phenomenon can also be found by combining the MABs and STDs of the global monthly averaged biases in Table 3.

2) Combining with Figure 1, we find that the biases have a different sign in regions with different altitude. In the northern hemisphere in winter, there are more positive values in high-altitude areas (such as the Qinghai Tibet Plateau in Asia and the Andes Mountains in America), yet more negative ones in marine areas (such as the North Atlantic and the East Pacific) or low-altitude land (such as northwest of Eurasian continent and northeast of North America). However, this pattern is opposite in Antarctica and areas with high altitude on Greenland. The preliminary judgment may be subjected to the fact that those regions are in the polar high-pressure zone all year round, and the vertical pressure gradient force is usually less than the atmospheric gravity; at this time, the hydrostatic equilibrium is broken, and the closed formula deduced from this condition deviates. Looking back at SAAS_Z, if this model is used, biases in areas with high altitude will probably become worse.

3) By and large, biases in the southern hemisphere (except Antarctica) varies with latitude even in different seasons. Considering that the ocean area in the southern hemisphere is much larger than the land, and the meteorological condition is dominated by oceans, which is latitudinally dependent, this probably leads to the latitudinal distribution. As a counterexample, that pattern is weak in the northern hemisphere.

4) Overall, the MAB of SAAS_D over the whole year is ~0.77 mm, not that large, but it changes significantly with season and geographical location, and the difference between the maximum and minimum values exceed 30 mm, especially in the northern hemisphere in summer (Table 3). Hence, such a kind biases should be fully considered in the field of high-precision measurement.

5) Looking back at the SAAS_Z model, it is only modified in terms of the coefficient of C, which is equivalent to an overall enlargement of ~0.11% on the basis of the SAAS_D. Therefore, the SAAS_Z model will also experience biases similar to the SAAS_D, yet their variation with geographical location may differ from that of the latter model. For this reason, a correction is necessary for SAAS_Z as well.

Deleted: Figure 6

Formatted: Font: 10 pt, Not Bold

Deleted: Table 3

Formatted: Font: (Asian) 宋体, 10 pt, Not Bold, (Asian) Chinese (China)

Deleted: Table 3

Formatted: Font: (Asian) 宋体, 10 pt, Not Bold, (Asian) Chinese (China)

Deleted: Figure 1

Formatted: Font: (Asian) 宋体, 10 pt, Not Bold, (Asian) Chinese (China)

Commented [ft11]: Referee comment: Why did you consider only the SAAS_D for validation? What is the impact of your proposed correction model in SAAS_Z?

Commented [ft12R11]: Thanks for your question. We chose SAAS_D just for an example since the difference between the two models is not that large. And we added this explanation at Line 146.

Deleted: Table 3

Formatted: Font: 10 pt, Not Bold

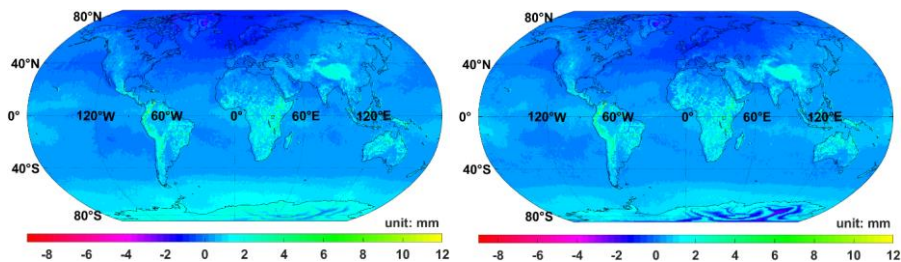
Formatted: Subscript

Formatted: Subscript

Formatted: Subscript

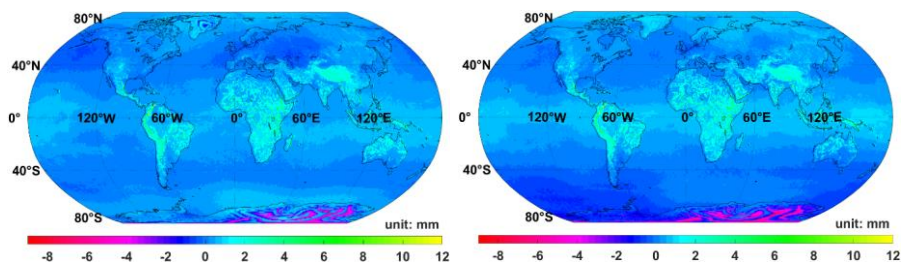
Formatted: Subscript

Formatted: Font: (Asian) +Body Asian (宋体), (Asian) Chinese (China)



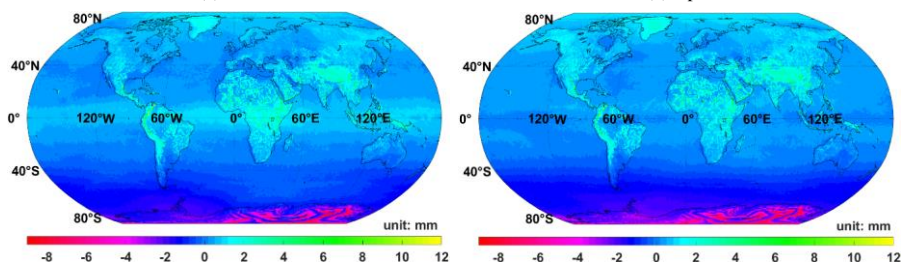
(a) January

(b) February



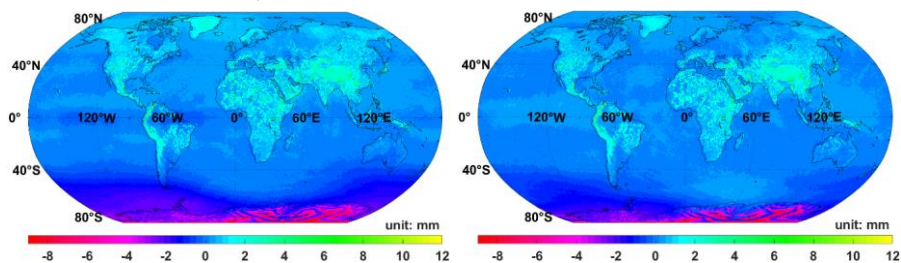
(c) March

(d) April

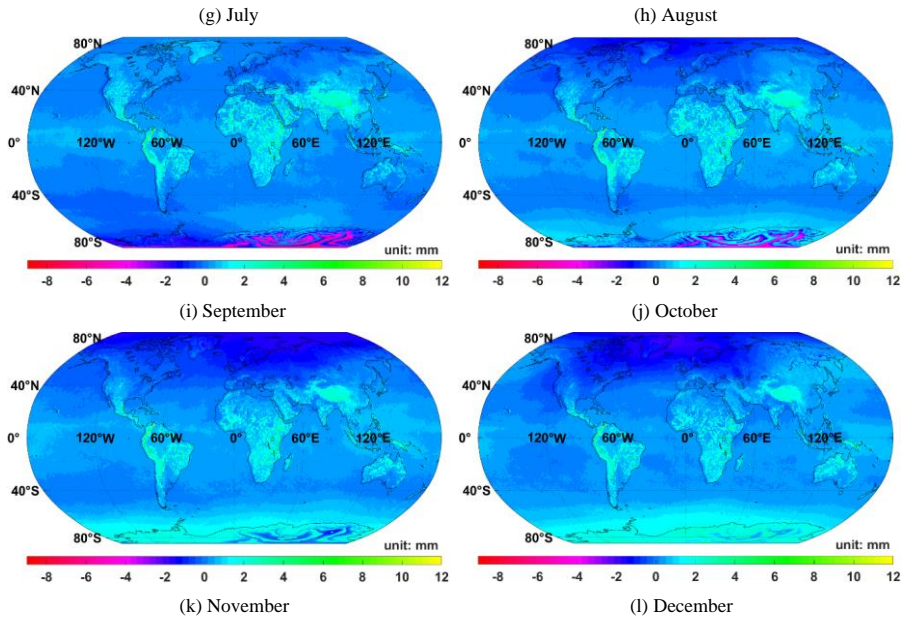


(e) May

(f) June



235



240

Figure 6: Global distribution maps of monthly averaged ZHD systematic biases between SAAS_D ZHD and integral ZHD. (a)–(l) represent the monthly averaged biases from January to December, 2020. In order to distinguish the variations between different months, we use the same scale colour bars in pictures.

Table 3
Statistics of Systematic Biases in Different Months and the Whole Year (Unit: mm)

Month	Min bias	Max bias	MAB	STD
January	-10.92	13.64	0.72	0.87
February	-7.76	13.60	0.64	0.79
March	-11.37	13.25	0.59	0.90
April	-12.11	13.23	0.68	1.09
May	-13.06	12.57	0.92	1.41
June	-14.10	12.25	1.03	1.56
July	-14.42	11.50	0.97	1.57
August	-18.00	12.09	0.80	1.47

September	-11.91	12.10	0.62	1.13
October	-10.24	12.79	0.65	0.97
November	-7.42	12.47	0.79	1.00
December	-8.90	12.65	0.82	1.03
The whole year	-18.00	13.64	0.77	1.20

Note: Bold numbers represent minimum absolute values in column comparisons.

3.3 Grid correction model

245 Based on the periodic characteristics that the biases perform in the above experiments, we approximated them using a trigonometric function as Equation (8), which contains annual and semi-annual periodic terms.

$$\delta_{\text{ZHD}} = a_0 + a_1 \cos(2\pi t / 365.25) + a_2 \sin(2\pi t / 365.25) + a_3 \cos(4\pi t / 365.25) + a_4 \sin(4\pi t / 365.25) \quad (8)$$

Where δ_{ZHD} is the approximated ZHD bias, $a_0 - a_4$ represent annual average, annual and semi-annual periodic term coefficients, respectively, and t stands for the day of year (DOY) (Böhm et al., 2015; Landskron and Böhm, 2018). The parameters were estimated using the biases of each grid point on a global scale in 2020, and the distribution of a_0 , $\sqrt{a_1^2 + a_2^2}$ and $\sqrt{a_3^2 + a_4^2}$ were depicted by Figure 7, where $\sqrt{a_1^2 + a_2^2}$ and $\sqrt{a_3^2 + a_4^2}$ denote the amplifications of annual and semi-annual periodic terms, respectively. Because of the location-related feature (based on Section 3.1), a grid correction model plus space interpolation shall be applicable to recover the bias at any position at any time during year 2020. Five model parameters ($a_0 - a_4$) will be needed for each grid point. Once the δ_{ZHD} is calculated, it will just serve as the correction of ZHD model. We call it ZHD_crct.

255 From Figure 7, we have conclusions: 1) In mid & low-latitude areas, annual average of ZHD biases clearly varies with terrain (or air pressure, since pressure generally decrease with height increasing), which is maintained between -0.2–0.4 mm in ocean and plain areas, and ranges from 1.0 to 10.0 mm in high-altitude areas like plateaus and mountains. Results seem to be reversed in cold high-latitude areas, such as Greenland (Arctic) and some of Antarctica, for annual average decreases to -4 mm or even lower.

260 2) The annual amplitudes in the mid & low-latitude marine areas are significantly smaller than those in high-latitude land areas. Therefore, if we don't ask for high accuracy, the annual variation of these areas can be directly neglected. However, on the land and in high-latitude areas, especially in Antarctica, Greenland, southern and western Asia, northeast and northwest Africa and other regions, this variation should be well considered, for the annual impact reaches ± 4 mm or more.

265 3) The amplitudes of semi-annual periodic term are insignificant, by and large, yet in areas with strong annual signal, the semi-annual effect is still obvious enough, even reaching ~ 1.6 mm. In addition, in the ocean areas near the equator, the semi-annual signal is outstanding from surroundings, which remains further study.

- Deleted: the biases
- Deleted: were
- Commented [ft13]: Referee comment: Please add a few sentences about why you have employed the Fourier function here. Is that because of other researches results, e.g., the GPT model? Please add a reference in this case.
- Commented [ft14R13]: Thanks for your suggestion, and we added 2 references after Eq. 8.
- Deleted: .
- Commented [ft15]: Referee comment: Please explain in the text why you provided global distributions of $\sqrt{a_1^2 + a_2^2}$ and $\sqrt{a_3^2 + a_4^2}$. Is there any correlation between them?
- Commented [ft16R15]: Thanks for your suggestion, and we added a description here.
- Deleted: Figure 7
- Deleted: .
- Formatted: Font: 10 pt, Not Bold
- Commented [ft17]: Referee comment: Please replace ", " with ":" after the word "conclusions".
- Commented [ft18R17]: Thanks for reminder.
- Deleted: Figure 7
- Deleted: .
- Formatted: Font: 10 pt, Not Bold
- Deleted: Western

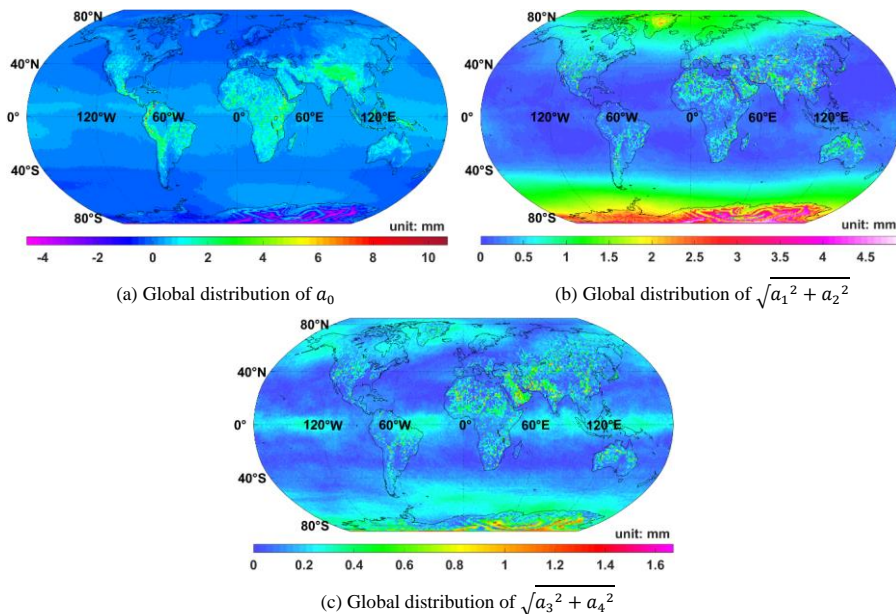


Figure 7: Global distribution of coefficients in periodic function. Changes in the constant term, annual and semi-annual amplitudes are described in (a)–(c), respectively.

4 Validation

4.1 Internal coincidence examination

We collected the residual biases of ZHD during 2020 after ZHD_crct being added to check the model's internal coincidence. As the global STD in summer in the northern hemisphere reaches the maximum, here the monthly averaged biases of July were painted out for instance by Figure 8a, as well as the distribution chart of their frequency number before and after correction by Figure 9a. Also, the annual averaged MABs and their statistical feature can be referred to Figure 8b and Figure 9b. Comparing Figure 8 and Figure 6g, it can be seen that the corrected biases are less than ± 0.5 mm in most regions of the world, even in mountainous and plateau regions; positive and negative values are nearly evenly distributed in the northern and southern hemispheres; and from Figure 9, the MABs and STDs are sharply reduced by $\sim 50\%$ both over July and the whole year. However, biases larger than ± 2 mm still exist in Antarctica, Andes Mountains and parts of Asia-Africa continent,

Deleted: for

Deleted: ing

Deleted: Figure 8

Deleted: Figure 9

Deleted: Figure 8

Formatted

Deleted: Figure 9

Deleted: Figure 8

Deleted: Figure 6

Formatted: Font: 10 pt, Not Bold

Deleted: Figure 9

Formatted: (Asian) Chinese (China)

and the improvement near equator appears not that good,compared with other places at mid & low latitude, keeping similar to the situation of semi-annual amplitudes (Figure 8b).

Deleted: worse
Deleted: than
Deleted: Figure 8
Formatted

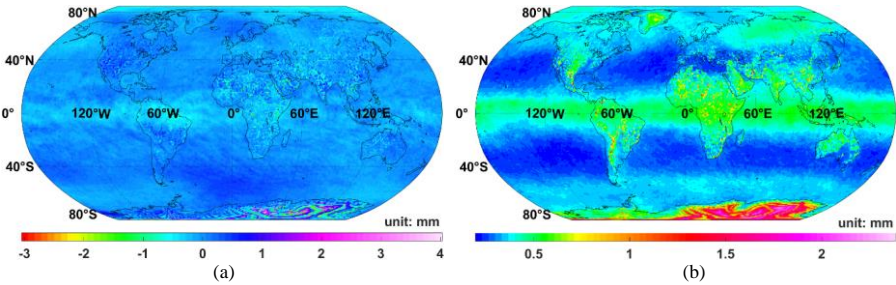
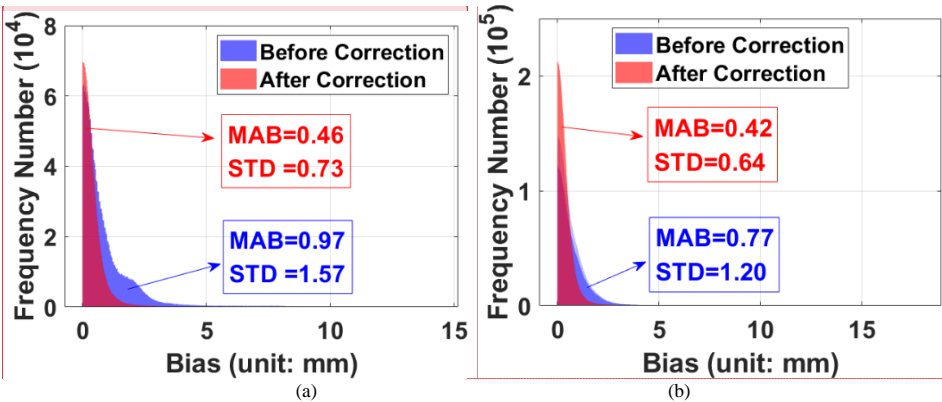


Figure 8: MAB over July (a) and the whole year (b) of 2020 after correction by grid model.



Commented [ft19]: Referee comment:
What is the power of 10 in the left figure, Y-axis?
Commented [ft20R19]: Sorry that I cut too much on the left side, and we revised it.
Commented [ft21]: Referee comment:
Are the figures for "Before Corrections" and "After Corrections" overlapped? If yes, please change the style of one of them to show it better.
Commented [ft22R21]: You're right about it. We enlarged the two figures and made the color blocks translucent, so that they can be distinguished better.

Figure 9: Frequency distribution of MABs over July (a) and the whole year (b) of 2020 before and after correction.

Figure 10 shows the MAB and STD of biases in different dimensions before and after correction, in which (a) represents the global MABs and STDs on different DOYs, (b) represents the MABs and STDs at different latitudes, (c) represents the MABs and STDs in regions with different air pressures, (d) represents the MABs and STDs in regions with different temperatures, and (e) represents the MABs and STDs in regions with different heights.

Deleted: Figure 10
Formatted: Font: 10 pt, Not Bold

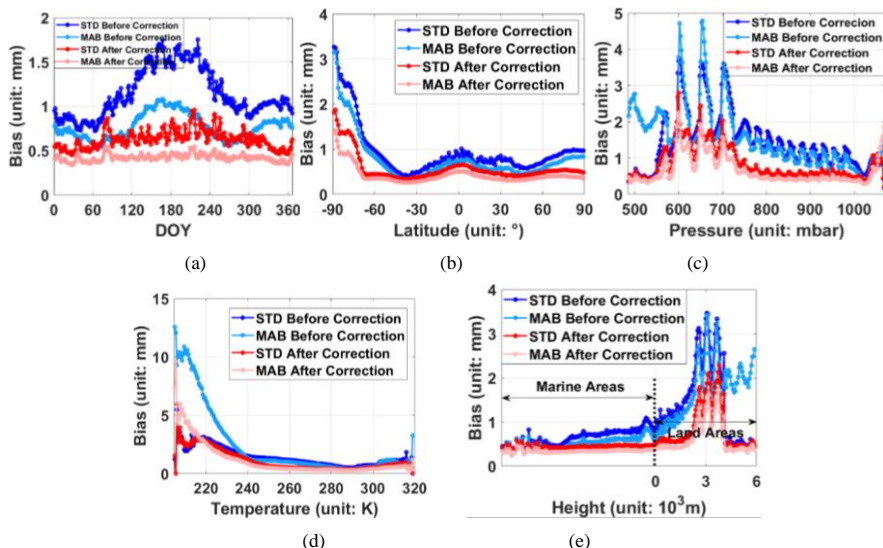


Figure 10: The MAB and STD of biases in different dimensions before and after correction over 2020. (a) represents the global MABs and STDs on different DOYs, (b) represents the MABs and STDs at different latitudes, (c) represents the MABs and STDs in regions with different air pressures, (d) represents the MABs and STDs in regions with different temperatures, and (e) represents the MABs and STDs in regions with different heights.

As can be seen from Figure 10, the corrected biases have been significantly cut down in different dimensions. Figure 10a shows that the annual and semi-annual trends of biases are basically removed. The biases are weakened the most in winter and summer, and the STDs decrease by about 50% in all periods of the year. Figure 10b shows that the improvement in high-latitude regions and those in southern hemisphere with mid & low latitudes is superior; by contrast, the reduction of STDs of biases in the Antarctic region doesn't perform well enough compared with that in others. Figure 10c shows that the reduction in the low-pressure (600–750 mbar) areas is weaker than that in other areas; these areas are mainly near the south pole, which is basically consistent with the previous conclusion. At the same time, the improvement in the high-pressure (above 1000 mbar) areas is also insignificant, which needs to be further studied. Figure 10d shows that in the low temperature (below 240K) areas (also mainly near the south pole), the improvement doesn't outstand others; although the MABs are reduced by half, the STDs are not significantly improved compared with that before correction. Figure 10e shows that the improvement is more obvious in land areas with an altitude below 3000 m or over 5000 m.

In terms of the views above, it can be summarized that if no correction is made near the south pole, the error of ZHD by SAAS_D can be as large as 10 mm or worse; in the northern hemisphere in summer, in the regions with pressure lower than

Deleted: Figure 10

Deleted: Figure 10

Formatted: Font: 10 pt, Not Bold

Formatted: Font: 10 pt, Not Bold

Deleted: Figure 10

Formatted: Font: 10 pt, Not Bold

Deleted: Figure 10

Formatted: Font: 10 pt, Not Bold

Deleted: Figure 10

Formatted: Font: 10 pt, Not Bold

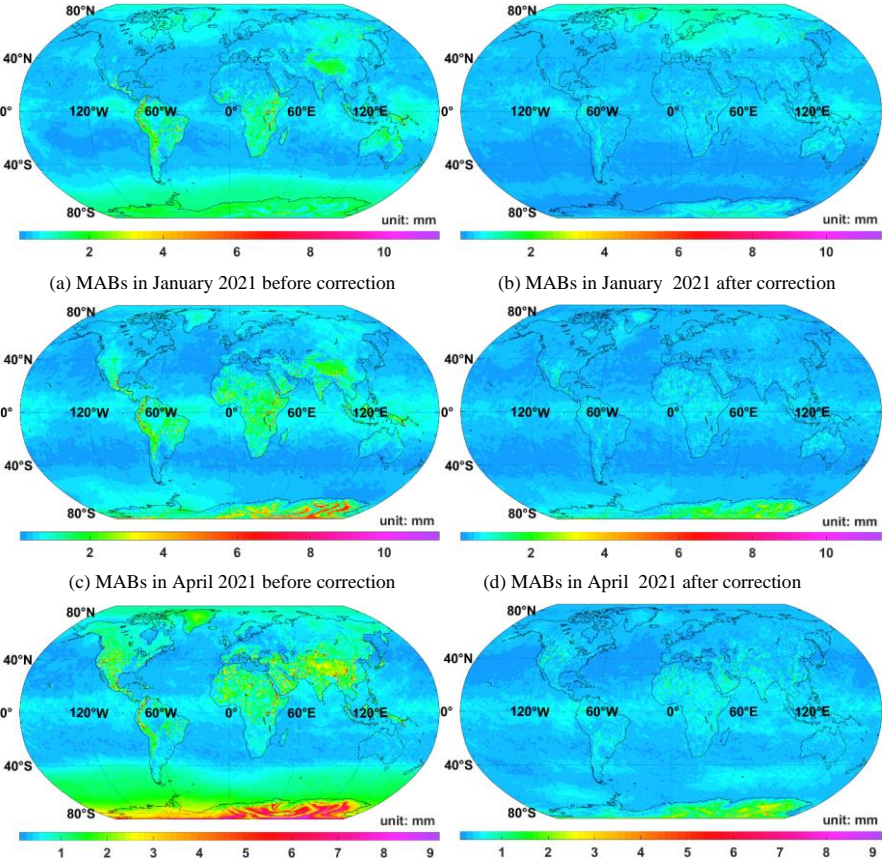
Deleted: Figure 10

Formatted: Font: 10 pt, Not Bold

750 mbar, or with the temperature lower than 260 K, or most land areas, if no correction is applied, the biases of ZHD model will be larger than 1 mm generally.

4.2 External coincidence examination

In order to learn the external coincidence of this grid model, we collected the global biases over the year 2021 before and after correction using ZHD_crct, which was fed with coefficients solved according to 2020 bias series. Results of four months' MAB were painted out for comparison (Figure 11), also the statistics of biases (Table 4) and the MAB/STD of biases in different dimensions (Figure 12) were exhibited.



- Deleted: Figure 11
- Deleted: Table 4
- Formatted: Font: 10 pt, Not Bold, (Asian) Chinese (China)
- Formatted: Font: 10 pt, Not Bold, (Asian) Chinese (China)
- Deleted: Figure 12
- Formatted: Font: 10 pt, Not Bold

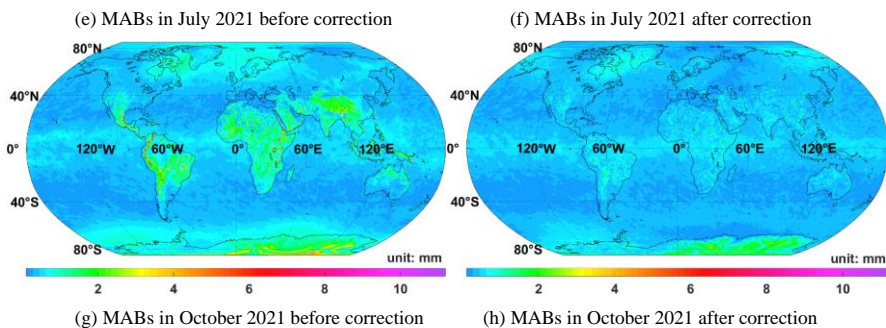
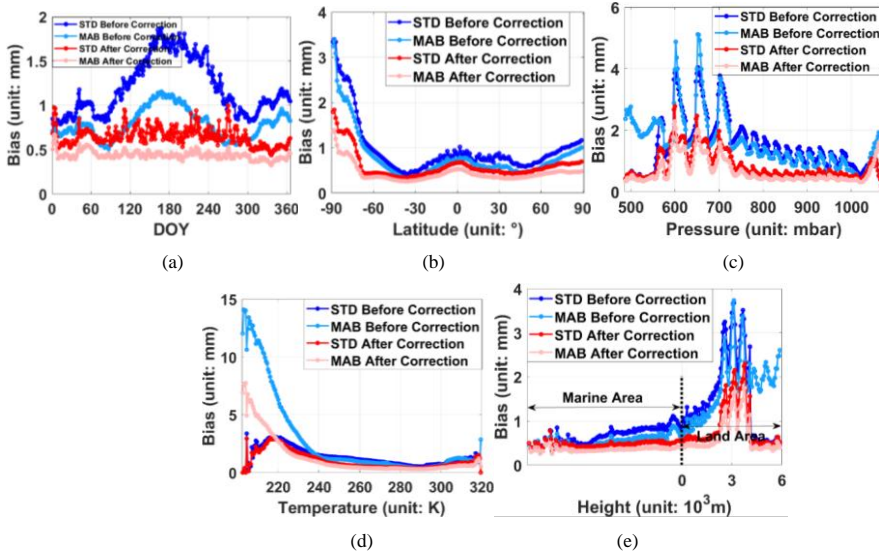


Figure 11: Global MABs before (left ones) and after (right ones) correction by grid model over January (a–b)/ April (c–d)/ July (e–f)/ October (g–h) in 2021. Please note that the colour bar of each month is different.

Table 4
Statistics of Systematic Biases Before/After Correction in Different Months and the Whole Year of 2021 (Unit: mm)

Month	Min bias	Max bias	MAB	STD
January	-9.28/ -7.44	13.27/ 8.53	0.70/ 0.47	0.84/ 0.65
February	-9.43/ -8.01	13.88/ 8.03	0.77/ 0.50	1.00/ 0.68
March	-9.70/ -6.39	13.27/ 8.57	0.59/ 0.44	0.89/ 0.63
April	-14.71/ -11.73	12.84/ 8.95	0.68/ 0.45	1.15/ 0.69
May	-14.14/ -9.64	12.73/ 10.57	0.93/ 0.45	1.42/ 0.71
June	-16.90/ -9.27	12.17/ 10.15	1.11/ 0.44	1.73/ 0.70
July	-13.75/ -8.99	11.93/ 10.45	1.03/ 0.43	1.67/ 0.68
August	-16.59/ -7.96	12.38/ 9.63	0.84/ 0.45	1.54/ 0.72
September	-12.17/ -8.16	11.58/ 8.91	0.63/ 0.43	1.18/ 0.71
October	-9.53/ -8.56	12.84/ 7.35	0.60/ 0.43	0.93/ 0.64
November	-6.16 /-8.56	12.93/ 5.11	0.74/ 0.38	0.97/ 0.52
December	-8.63 /-9.05	13.87/ 7.08	0.86/ 0.40	1.09/ 0.53
The whole year	-16.90/ -11.73	13.88/ 10.57	0.79/ 0.44	1.25/ 0.66

Note: Bold numbers represent minimum absolute values in row comparisons.



375 **Figure 12: The MAB and STD of biases in different dimensions before and after correction over 2021. (a) represents the global**
MAB and STD on different DOYs, (b) represents the MAB and STD at different latitudes, (c) represents the MAB and STD in
regions with different air pressures, (d) represents the MAB and STD in regions with different temperatures, and (e) represents
the MAB and STD in regions with different heights.

From the charts above, it is clear that the correction made according to the biases of 2020 still works in 2021, and the
 380 improvement over the two years seems alike, which means that it is feasible to use historical meteorological data to predict
 the future bias corrections.

5 Conclusions

We made a detailed analysis of the biases from the traditional ZHD model. If no correction applied, SAAS_D, one of the most
 widely used models, would generate biases at millimetre level. Although the MAB over the whole year is ~0.77 mm, biases
 385 differ significantly with season and geographical location, which reach ±10 mm or even larger, and the difference between
 the maximum and minimum values exceed 30 mm. Therefore, it should be fully considered in the field of high-precision
 measurement, especially for the regions near the south pole, and those with pressure less than 750 mbar, temperature less
 than 260 K, and most land areas.

In order to cut down the biases, a grid model, ZHD_{crct}, was constructed exploiting a periodic function based on the
 390 meteorological data of the current year from ECMWF. Generally, ZHD biases were reduced by ~50% after correction, with

annual and semi-annual terms well removed, and the model still works when used to rectify the biases in the next year, which can be inferred that this model may be possible to forecast corrections in quite a few years. Yet, unfortunately, our model only shows expert in detrending the seasonal impacts, with unknown high-frequency residuals still remained to be studied further, which is likely to be recovered by vertical velocity of air.

395 In addition, nowadays profile meteorological parameters can be provided from various organizations, such as MERRA2 data products from the NASA Global Modeling and Assimilation Office, NCEP reanalysis data products, the Integrated Global Radiosonde Archive (IGRA) from the National Climatic Data Center of America (NCDC), and the University of Wyoming Atmospheric Science Radiosonde Archive. Hence, ZHD bias correction models could be further developed based on different datasets in follow-up studies.

400 *Code and data availability.* The current version of *ZHD_crct model* and its corresponding documents are available at DOI: 10.5281/zenodo.6948148 (Fan et al., 2022). ERA5 data can be obtained from Copernicus Climate Data Store (https://cds.climate.copernicus.eu/cdsapp#!/dataset/reanalysis-era5-pressure-levels?tab=form). The U.S. Standard Atmosphere 1976 model can be referred at https://www.pdas.com/atmosTable1SI.html. ETOPO elevation dataset can be
405 downloaded at https://ngdc.noaa.gov/mgg/global/global.html.

Author contributions.
Haopeng Fan designed the research framework, writing the paper and conducted most of the code implementation and data analysis. Siran Li was involved in data collation and revising of the paper. Zhongmiao Sun was responsible for supervision.
410 The work in this paper was funded by the Programs from Guorui Xiao and Xiaogang Liu. Xinxing Li revised the paper.

References

Abdelfatah, M. A., Mousa, A. E., and El-Fiky, G. S.: Precise troposphere delay model for Egypt, as derived from radiosonde data, NRIAG J. Astron. Geophys., 4, 16-24, <https://doi.org/10.1016/j.nrjag.2015.01.002>, 2015.

415 Alizadeh, M., Wijaya, D., Hobiger, T., Weber, R., and Schuh, H.: Atmospheric Effects in Space Geodesy, in, 35-71, 10.1007/978-3-642-36932-2_2, 2013.

Amante, C. and Eakins, B. W.: ETOPO1 1 Arc-Minute Global Relief Model: Procedures, Data Sources and Analysis, National Geophysical Data Center, NOAA [dataset], doi:10.7289/V5C8276M, 2009.

Beck, H. E., Zimmermann, N. E., McVicar, T. R., Vergopolan, N., Berg, A., and Wood, E. F.: Present and future Köppen-Geiger climate classification maps at 1-km resolution, Sci. Data, 5, 180214, 10.1038/sdata.2018.214, 2018.

420 Bekaert, D. P. S., Hooper, A., and Wright, T. J.: A spatially variable power law tropospheric correction technique for InSAR data, J. Geophys. Res.: Solid Earth, 120, 1345-1356, <https://doi.org/10.1002/2014JB011558>, 2015.

Formatted: Font: 10 pt

Formatted: Space After: 1 line

Formatted: Font: 10 pt

Formatted: Font: 10 pt

Formatted: Font: 10 pt

Formatted: Font: 10 pt

Bevis, M., Businger, S., Chiswell, S., Herring, T. A., Anthes, R. A., Rocken, C., and Ware, R. H.: GPS Meteorology: Mapping Zenith Wet Delays onto Precipitable Water, *J. Appl. Meteorol. Climatol.*, 33, 379-386, 10.1175/1520-0450(1994)033<0379:Gmmzwd>2.0.Co;2, 1994.

425 Boehm, J., Heinkelmann, R., and Schuh, H.: Short Note: A global model of pressure and temperature for geodetic applications, *J. Geod.*, 81, 679-683, 2007.

Boehm, J., Werl, B., and Schuh, H.: Troposphere mapping functions for GPS and very long baseline interferometry from European Centre for Medium-Range Weather Forecasts operational analysis data, *J. Geophys. Res.: Solid Earth*, 111, <https://doi.org/10.1029/2005JB003629>, 2006.

430 Böhm, J., Möller, G., Schindelegger, M., Pain, G., and Weber, R.: Development of an improved empirical model for slant delays in the troposphere (GPT2w), *GPS Solutions*, 19, 433-441, 10.1007/s10291-014-0403-7, 2015.

Chen, G. and Herring, T. A.: Effects of atmospheric azimuthal asymmetry on the analysis of space geodetic data, *J. Geophys. Res.: Solid Earth*, 102, 20489-20502, <https://doi.org/10.1029/97JB01739>, 1997.

435 Chen, Z., Zhang, S., and Feng, H.: Research on the correction of troposphere dry delay in GPS positioning and inverting the water vapor in atmosphere, *Sci. Meteorol. Sin.*, 29, 4527-4530, 2009.

Dai, W. and Zhao, Y.: Modeling The Dry And Wet Component Of Regional Tropospheric Delay, *J. Geod. Geodyn.*, 33, 72-76+81, 10.14075/j.jgg.2013.02.010, 2013.

Davis, J. L., Herring, T. A., Shapiro, I. I., Rogers, A. E. E., and Elgered, G.: Geodesy by radio interferometry: Effects of atmospheric modeling errors on estimates of baseline length, *Radio Sci.*, 20, 1593-1607, <https://doi.org/10.1029/RS020i006p01593>, 1985.

440 Dogan, A. H. and Erdogan, B.: A new empirical troposphere model using ERA5's monthly averaged hourly dataset, *J. Atmos. Sol.-Terr. Phys.*, 105865, <https://doi.org/10.1016/j.jastp.2022.105865>, 2022.

Drożdżewski, M. and Sośnica, K.: Tropospheric and range biases in Satellite Laser Ranging, *J. Geod.*, 95, 2021.

445 Eriksson, D., MacMillan, D. S., and Gipson, J. M.: Tropospheric delay ray tracing applied in VLBI analysis, *J. Geophys. Res.: Solid Earth*, 119, 9156-9170, <https://doi.org/10.1002/2014JB011552>, 2014.

Fan, H., Sun, Z., Zhang, L., and Liu, X.: A two-step estimation method of troposphere delay with consideration of mapping function errors, *Acta Geod. Cartog. Sin.*, 48, 286-294, 2019.

Feng, P., Li, F., Yan, J., Zhang, F., and Barriot, J.-P.: Assessment of the Accuracy of the Saastamoinen Model and VMF1/VMF3 Mapping Functions with Respect to Ray-Tracing from Radiosonde Data in the Framework of GNSS

450 Meteorology, *Remote Sens.*, 12, 3337, 2020.

Graham, R. M., Hudson, S. R., and Maturilli, M.: Improved Performance of ERA5 in Arctic Gateway Relative to Four Global Atmospheric Reanalyses, *Geophys. Res. Lett.*, 46, 6138-6147, <https://doi.org/10.1029/2019GL082781>, 2019.

Hobiger, T., Ichikawa, R., Takasu, T., Koyama, Y., and Kondo, T.: Ray-traced troposphere slant delays for precise point positioning, *Earth, Planets Space*, 60, e1-e4, 10.1186/BF03352809, 2008.

455 Hofmeister, A.: Determination of path delays in the atmosphere for geodetic VLBI by means of ray-tracing, Technische Universität Wien, reposiTUM, 2016.

Formatted: Font: 10 pt

Formatted: Font: 10 pt

Formatted: Font: 10 pt

Formatted: Font: 10 pt

Formatted: Font: 10 pt

Formatted: Font: 10 pt

Formatted: Font: 10 pt

Formatted: Font: 10 pt

Formatted: Font: 10 pt

Formatted: Font: 10 pt

Formatted: Font: 10 pt

Formatted: Font: 10 pt

Hofmeister, A. and Böhm, J.: Application of ray-traced tropospheric slant delays to geodetic VLBI analysis, J. Geod., 91, 945-964, 10.1007/s00190-017-1000-7, 2017.

460 Hopfield, H. S.: Tropospheric Effect on Electromagnetically Measured Range: Prediction from Surface Weather Data, Radio Sci., 6, 357-367, <https://doi.org/10.1029/RS006i003p00357>, 1971.

Hu, Y. and Yao, Y.: A new method for vertical stratification of zenith tropospheric delay, Adv. Space Res., 63, 2857-2866, <https://doi.org/10.1016/j.asr.2018.10.035>, 2019.

Landskron, D. and Böhm, J.: VMF3/GPT3: refined discrete and empirical troposphere mapping functions, J. Geod., 92, 349-360, 10.1007/s00190-017-1066-2, 2018.

465 Leandro, R. F., Langley, R. B., and Santos, M. C.: UNB3m_pack: a neutral atmosphere delay package for radiometric space techniques, GPS Solutions, 12, 65-70, 2008.

Li, W., Yuan, Y., Ou, J., and He, Y.: IGGtrop_SH and IGGtrop_rH: Two Improved Empirical Tropospheric Delay Models Based on Vertical Reduction Functions, IEEE Trans. Geosci. Electron., 56, 5276-5288, 10.1109/TGRS.2018.2812850, 2018.

470 Li, Y., Zou, X., Tang, W., Deng, C., Cui, J., and Wang, Y.: Regional modeling of tropospheric delay considering vertically and horizontally separation of station for regional augmented PPP, Adv. Space Res., 66, 2338-2348, <https://doi.org/10.1016/j.asr.2020.08.003>, 2020.

Liu, J., Chen, X., Sun, J., and Liu, Q.: An analysis of GPT2/GPT2w+Saastamoinen models for estimating zenith tropospheric delay over Asian area, Adv. Space Res., 59, 824-832, <https://doi.org/10.1016/j.asr.2016.09.019>, 2017.

475 Liu, Y., IZ, H. B., and Chen, Y.: Precise Determination of Dry Zenith Delay for GPS Meteorology Applications, Acta Geod. Cartog. Sin., 172-180, 2000.

Ma, Y., Liu, T., Chen, P., Zheng, N., Zhang, B., Xu, G., and Lu, Z.: Global tropospheric delay grid modeling based on Anti-Leakage Least-Squares Spectral Analysis and its validation, J. Atmos. Sol.-Terr. Phys., 229, 105829, <https://doi.org/10.1016/j.jastp.2022.105829>, 2022.

480 Mendes, V.: Modeling the Neutral Atmosphere Propagation Delay in Radiometric Space Techniques, Department of Geodesy and Geomatics Engineering Technology, University of New Brunswick, Canada, 1999.

Mendes, V. B., Prates, G., Pavlis, E. C., Pavlis, D. E., and Langley, R. B.: Improved mapping functions for atmospheric refraction correction in SLR, Geophys. Res. Lett., 29, 53-51-53-54, <https://doi.org/10.1029/2001GL014394>, 2002.

Minzner, R. A.: The 1976 Standard Atmosphere and its relationship to earlier standards, Rev. Geophys., 15, 375-384, 1977.

485 Nafisi, V., Madzak, M., Böhm, J., Ardalan, A. A., and Schuh, H.: Ray-traced tropospheric delays in VLBI analysis, Radio Sci., 47, <https://doi.org/10.1029/2011RS004918>, 2012.

Niell, A. E.: Global mapping functions for the atmosphere delay at radio wavelengths, J. Geophys. Res.: Solid Earth, 101, 3227-3246, <https://doi.org/10.1029/95JB03048>, 1996.

490 Osah, S., Acheampong, A. A., Fosu, C., and Dadzie, I.: Evaluation of Zenith Tropospheric Delay Derived from Ray-Traced VMF3 Product over the West African Region Using GNSS Observations, Adv. Meteor., 2021, 8836806, 10.1155/2021/8836806, 2021.

Formatted: Font: 10 pt

Formatted: Font: 10 pt

Formatted: Font: 10 pt

Formatted: Font: 10 pt

Formatted: Font: 10 pt

Formatted: Font: 10 pt

Formatted: Font: 10 pt

Formatted: Font: 10 pt

Formatted: Font: 10 pt

Formatted: Font: 10 pt

Formatted: Font: 10 pt

Formatted: Font: 10 pt

Formatted: Font: 10 pt

Formatted: Font: 10 pt

Formatted: Font: 10 pt

Formatted: Font: 10 pt

Peel, M. C., Finlayson, B. L., and McMahon, T. A.: Updated world map of the Köppen-Geiger climate classification, *Hydrol. Earth Syst. Sci.*, 11, 1633-1644, 10.5194/hess-11-1633-2007, 2007.

Penna, N., Dodson, A., and Chen, W.: Assessment of EGNOS Tropospheric Correction Model, *J. Navig.*, 54, 37-55, 2001.

495 Rocken, C., Sokolovskiy, S., Johnson, J. M., and Hunt, D.: Improved Mapping of Tropospheric Delays, *J. Atmos. Oceanic Technol.*, 18, 1205-1213, 10.1175/1520-0426(2001)018<1205:IMOTD>2.0.CO;2, 2001.

Rüeger, J. M.: Refractive Index Formulae for Radio Waves, FIG XXII International Congress, Washington, D.C., 19-26,

Saastamoinen, J.: Contributions to the theory of atmospheric refraction, *Bull. Geod.*, 105, 279-298, 1972.

Sun, Z., Zhang, B., and Yao, Y.: An ERA5-Based Model for Estimating Tropospheric Delay and Weighted Mean Temperature Over China With Improved Spatiotemporal Resolutions, *Earth Space Sci.*, 6, 1926-1941, 500 <https://doi.org/10.1029/2019EA000701>, 2019.

Tang, W., Liao, M., Zhang, L., and Zhang, L.: Study on InSAR tropospheric correction using global atmospheric reanalysis products, *Chin. J. Geophys.*, 60, 527-540, 2017.

Thayer, G. D.: A Rapid and Accurate Ray Tracing Algorithm for a Horizontally Stratified Atmosphere, *Radio Sci.*, 2, 249-252, <https://doi.org/10.1002/rds196722249>, 1967.

505 Tregoning, P. and Herring, T. A.: Impact of a priori zenith hydrostatic delay errors on GPS estimates of station heights and zenith total delays, *Geophys. Res. Lett.*, 33, <https://doi.org/10.1029/2006GL027706>, 2006.

Tuka, A. and El-Mowafy, A.: Performance evaluation of different troposphere delay models and mapping functions, *Measurement*, 46, 928-937, <https://doi.org/10.1016/j.measurement.2012.10.015>, 2013.

510 Wang, J., Balidakis, K., Zus, F., Chang, X., Ge, M., Heinkelmann, R., and Schuh, H.: Improving the Vertical Modeling of Tropospheric Delay, *Geophys. Res. Lett.*, 49, e2021GL096732, <https://doi.org/10.1029/2021GL096732>, 2022.

Wang, J. J., Wang, J., Sinclair, D., and Lee, H. K.: Tropospheric Delay Estimation for Pseudolite Positioning, *Positioning*, Vol.01No.09, 7, 2005.

515 Xiao, R., Yu, C., Li, Z., and He, X.: Statistical assessment metrics for InSAR atmospheric correction: Applications to generic atmospheric correction online service for InSAR (GACOS) in Eastern China, *Int. J. Appl. Earth Obs. Geoinf.*, 96, 102289, <https://doi.org/10.1016/j.jag.2020.102289>, 2021.

Yan, Y., Wang, J., and Liu, X.: The Model Correction of Dry Zenith Delay of Troposphere Atmosphere in Local Region, *GNSS World Chin.*, 36, 44-46+50, 10.13442/j.gnss.2011.04.007, 2011.

Yao, Y., Guo, J., Zhang, B., and Hu, Y.: A Global Empirical Model of the Conversion Factor Between Zenith Wet Delay and Precipitable Water Vapor, *Geomatics Inf. Sci. Wuhan Univ.*, 41, 45-51, 10.13203/j.whugis20140585, 2016.

520 Yao, Y., Xu, X., Xu, C., Peng, W., and Wan, Y.: GGOS tropospheric delay forecast product performance evaluation and its application in real-time PPP, *J. Atmos. Sol.-Terr. Phys.*, 175, 1-17, <https://doi.org/10.1016/j.jastp.2018.05.002>, 2018.

Younes, S. A. M. and Afify, H. A.: Accuracy improvement of tropospheric delay correction models in space geodetic data. Case study: Egypt, *Geod. Cartog.*, 40, 148-155, 10.3846/20296991.2014.987465, 2014.

Formatted: Font: 10 pt

Formatted: Font: 10 pt

Formatted: Font: 10 pt

Formatted: Font: 10 pt

Formatted: Font: 10 pt

Formatted: Font: 10 pt

Formatted: Font: 10 pt

Formatted: Font: 10 pt

Formatted: Font: 10 pt

Formatted: Font: 10 pt

Formatted: Font: 10 pt

Formatted: Font: 10 pt

525 Zhang, D., Guo, J., Chen, M., Shi, J., and Zhou, L.: Quantitative assessment of meteorological and tropospheric Zenith
Hydrostatic Delay models, Adv. Space Res., 58, 1033-1043, <https://doi.org/10.1016/j.asr.2016.05.055>, 2016.

Deleted:

Formatted: Font: 10 pt

Formatted: Font: 10 pt

Formatted: Normal, Space After: 0 pt