

Supplementary material

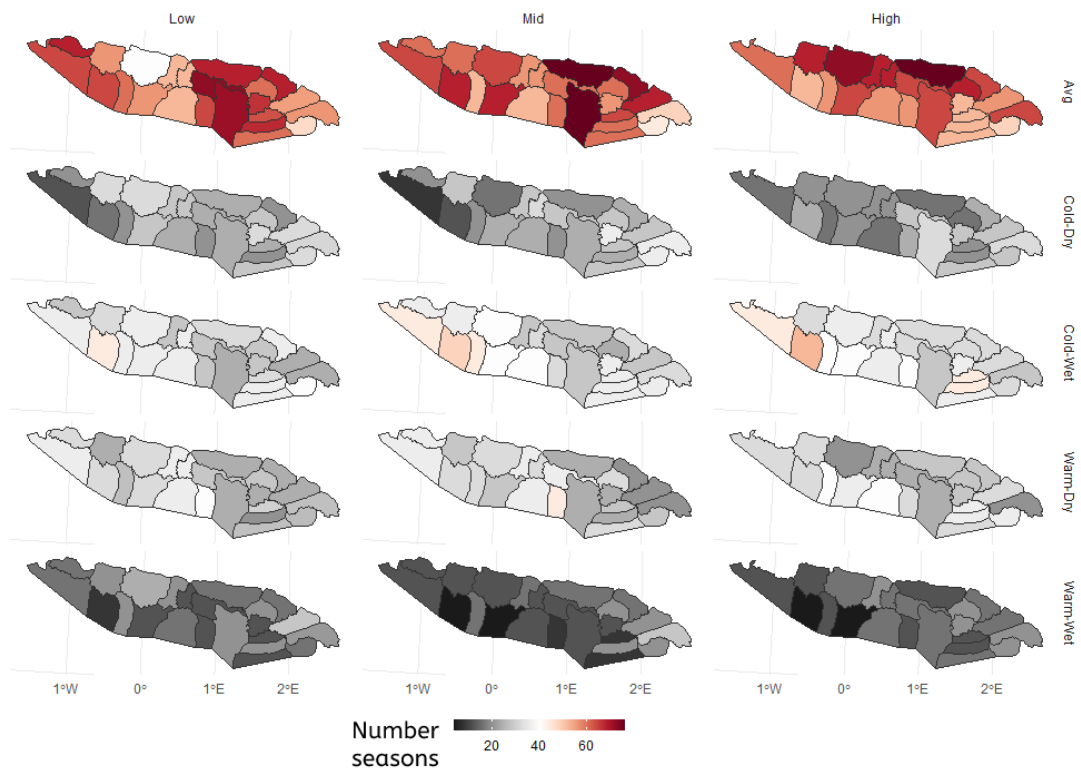


Figure S1. Number of season types by massif and elevation range.

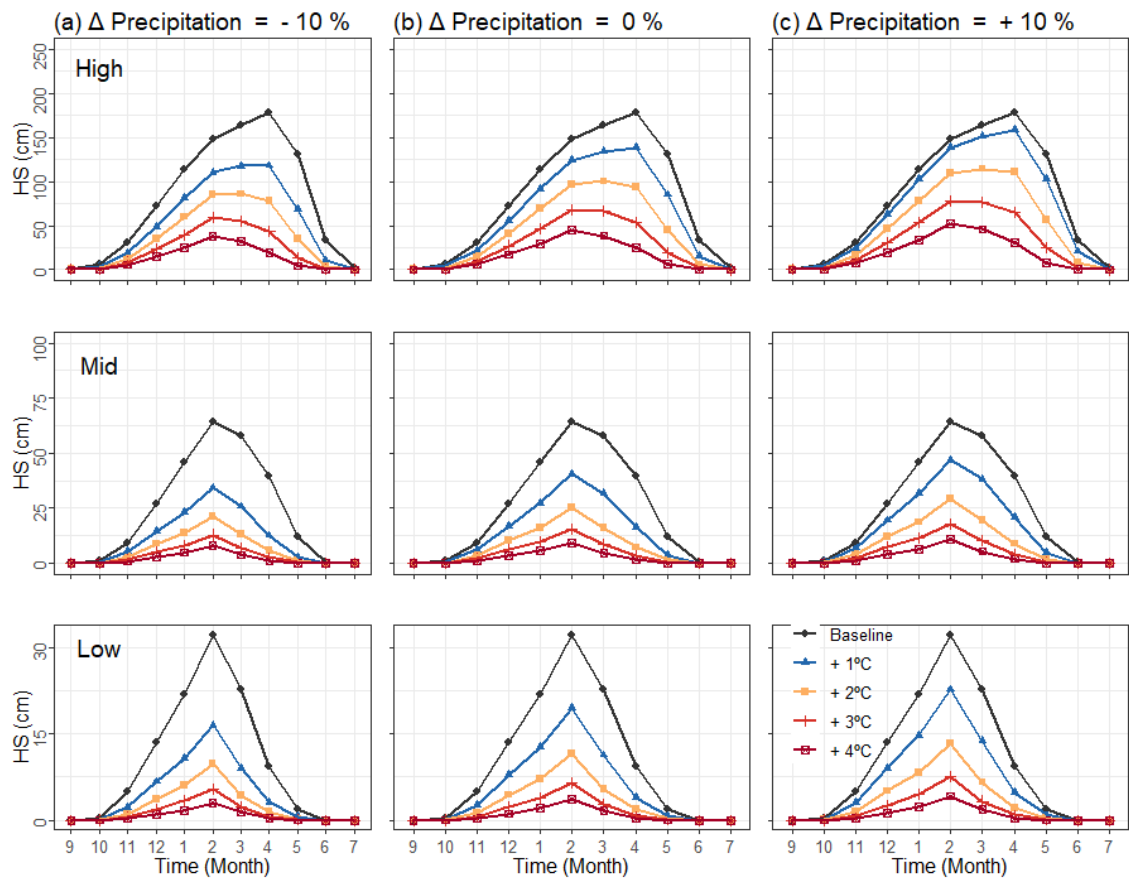


Figure S2. Modelled monthly HS values grouped by climate perturbed scenario and elevation range.

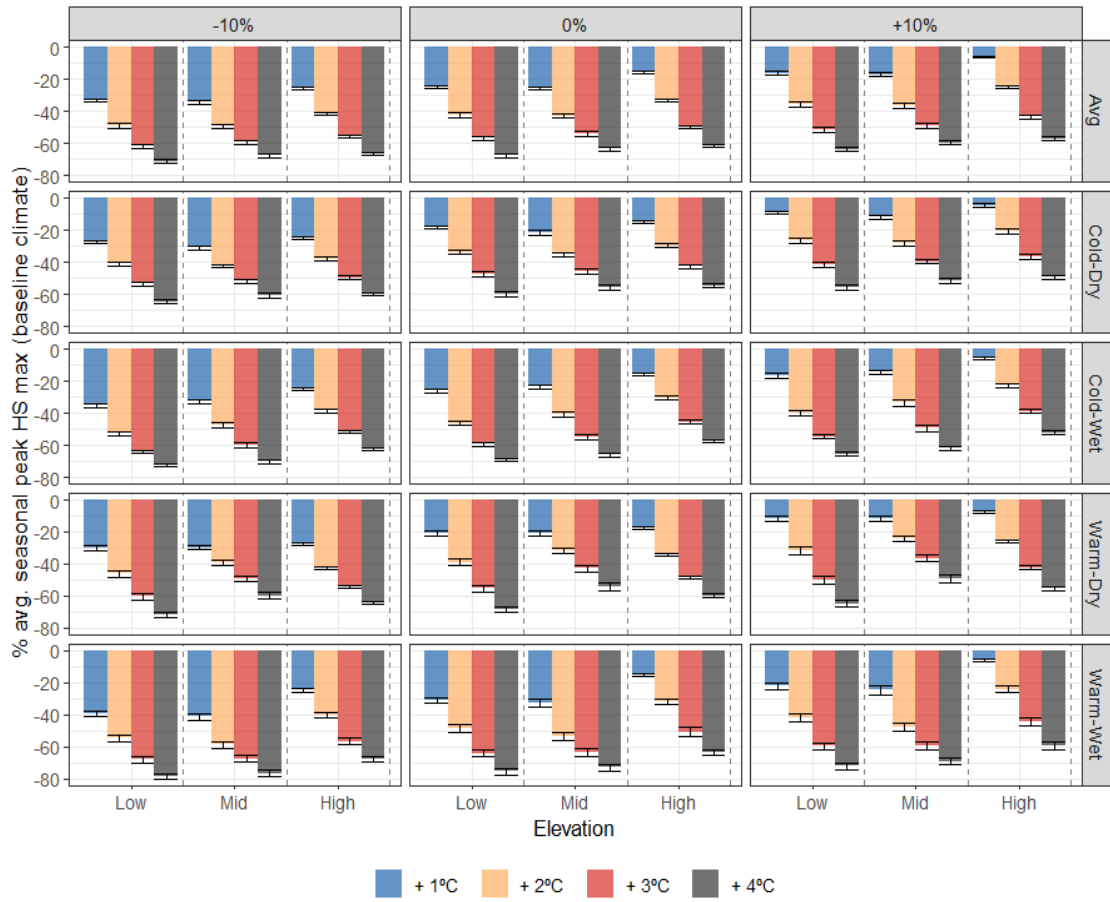


Figure S3. Peak HS max anomalies over the baseline scenario, grouped by compound temperature and precipitation extreme season (rows), precipitation perturbation (columns) and increment of temperature (colors).



Figure S4. Peak HS date anomalies over the baseline scenario, grouped by compound temperature and precipitation extreme season (rows), precipitation perturbation (columns) and increments of temperature (colors).