

1 Supplements

2 **Section 1: Radiocarbon dating**

3 **Table S1: Radiocarbon dating data including sample name and number, material, conventional age plus error, the**
4 **modelled age for correction, ventilation age, corrected age and final calibrated ages with error.**

Sample depth [cmtbsf]	Sample Name	AWI-No.	Material	Conventional ¹⁴ C age [¹⁴ C a BP]	Error of conv. ¹⁴ C age [a]	Modelled age for correction after Butzing et al. (2017) [a]	Ventilation age for correction [a]	Corrected ¹⁴ C age for calibration [a BP]	Calibrated age [cal. A BP]	Error for calibrated age [a]
190	PS97/072-1_190cm	1428.1.1	calcareous	5076	118	1076	1200	2800	2936	118
212	PS97/072-1_212cm	2744.1.1	calcareous	5246	82	1107	1200	2939	3096	82
312	PS97/072-1_312cm	1429.2.1	calcareous	6054	118	1083	1200	3771	4150	118
340	PS97/072-1_340cm	1430.1.1	calcareous	6156	52	1089	1200	3867	4291	52
451.5	PS97/072-1_451.5cm	1431.1.1	calcareous	7081	52	1142	1200	4739	5478	52
464	PS97/072-1_464cm	1432.2.1	calcareous	7329	117	1157	1200	4972	5720	117
866.5	PS97/072-1_866.5cm	7405.1.1	calcareous	12865	101	1599	1200	10066	11600	101
868.5	PS97/072-1_868.5cm	7406.1.1	calcareous	12983	100	1571	1200	10212	11903	100

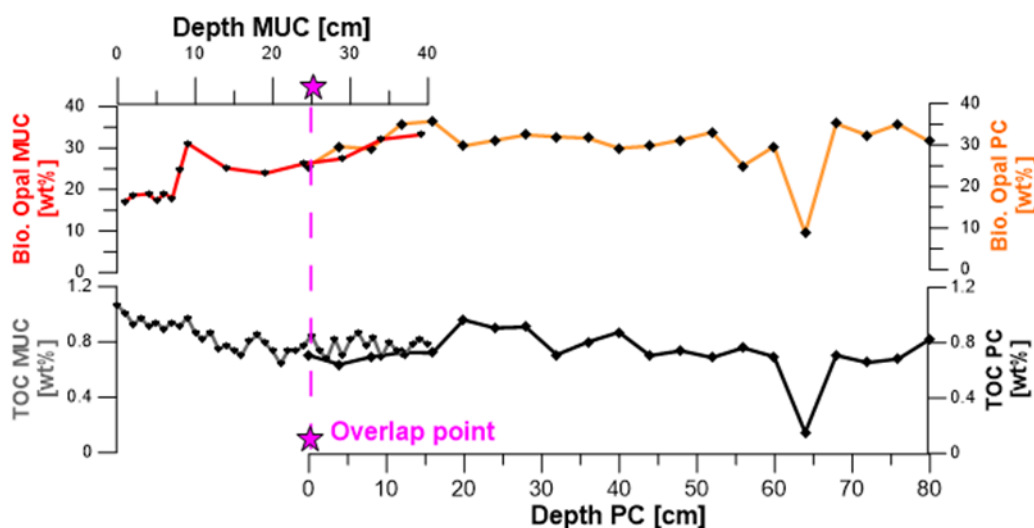
5

6

7 **Section 2: Matching piston core PS97/072-1 and short core PS97/072-2**

8 We matched the core top of piston core PS97/072-1 with the short core PS97/072-2 from the same sample site
9 (and from the same cruise) using TOC and biogenic opal data (Fig. S1). An age model for the short core was
10 already developed based on ²¹⁰Pb dating done by Vorrath et al. (2020). By overlapping the data we found that the
11 top of the piston core is likely matching with the short core in a depth of 25 cm which corresponds to the calendar
12 year 1902 in the common era. Therefore, we have set the core top of PS97/072-1 to 0.05 ka BP.

13



14 **Figure S2: Overlap point of the short sediment core (MUC) and piston core (PC) based on total organic carbon and**
15 **biogenic opal (wt%). Data from the short core from Vorrath 2020,**

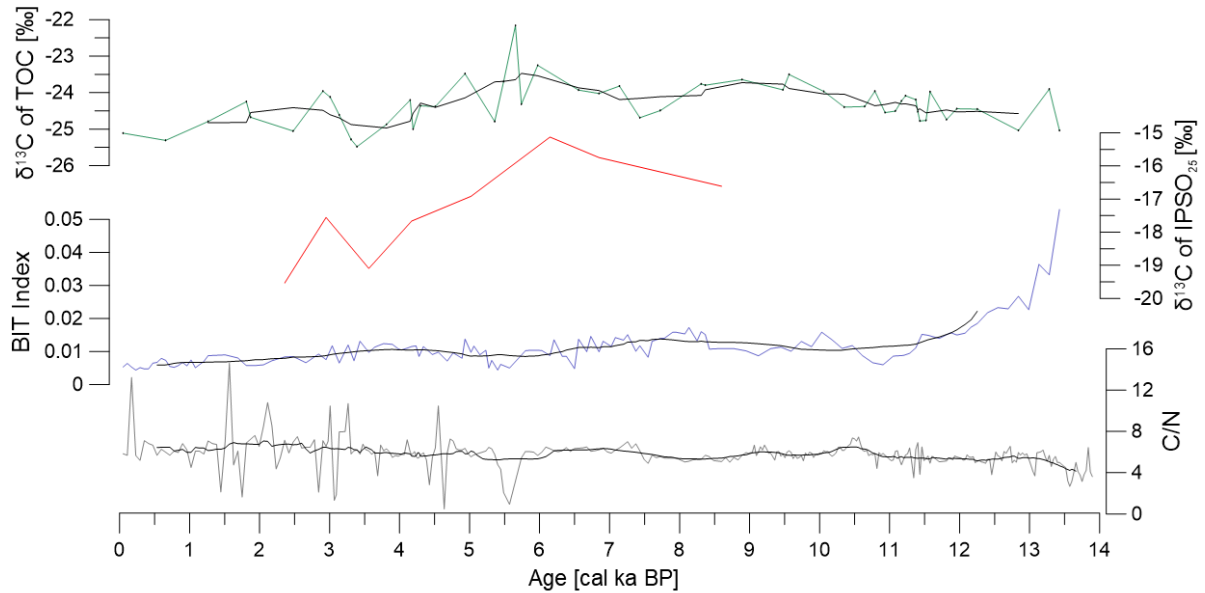
16

17

18 **Section 3: Stable isotopes of TOC and IPSO₂₅**

19 Organic carbon stable isotope ratios ($\delta^{13}\text{C}$) range between -22.2 and -25.5‰, while the stable carbon isotope
20 composition of IPSO₂₅ varies between -15.1‰ and -19.5‰ supporting its origin from sea ice algae (Massé et al.,
21 2011; Sinninghe Damsté et al., 2007). The mean molar C/N ratio below 8.5 and BIT indices below 0.05 indicate
22 a marine origin of the organic matter and that the input of terrigenous organic matter did not affect the composition
23 of GDGTs.

24

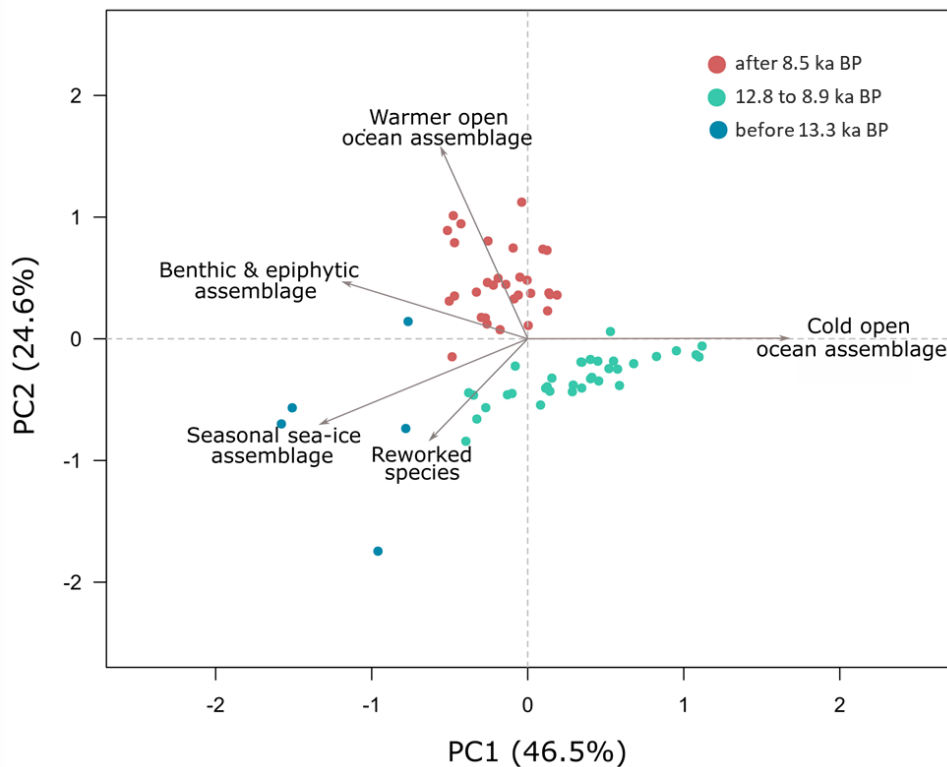


25

26 **Figure S3: The stable isotope composition of a) TOC and b) IPSO₂₅, the c) BIT index and d) C/N ratio of core PS97/72-**
27 **1.**

28

29 **Section 4: PCA of diatom assemblages**



30

31 **Figure S4: The Spearman principal component analysis (PCA) biplot shows the relationship between the five diatom**
32 **assemblages indicative for an open warmer and open colder ocean, seasonal sea-ice, benthic and reworked fossils in**
33 **core PS97/072-1. PC1 represents 45.7% and PC2 25.7% represents of the variance. Before 16.7 ka BP seasonal sea-ice**
34 **diatoms are common, between 15.8 ka and 9.8 ka BP assemblages of a colder open ocean are dominant whereas a**
35 **warmer open ocean is indicated by diatom assemblages from 9.3 ka BP until today.**

36 Section 5: Diatom concentrations

37 Table S5: Diatom concentrations (%) of species from all samples, valves per gram and grouping of seasonal sea-ice,
 38 open ocean cold, open ocean warm, fossil, benthic and epiphytic assemblages.

Event	PS97/072-1	PS97/072-1	PS97/072-1	PS97/072-1	PS97/072-1	PS97/072-1	PS97/072-1	PS97/072-1	PS97/072-1	PS97/072-1	PS97/072-1
Depth [m]	0.00	0.04	0.40	0.80	1.20	1.28	1.36	1.44	1.52	1.60	1.68
Achnanthes brevipes [%]	0.00	0.00	0.00	0.00	0.00	0.00	0.00	0.00	0.00	0.00	0.00
Amphora copulata [%]	0.00	0.00	0.00	0.00	0.00	0.00	0.00	0.00	0.00	0.00	0.00
Amphora coffeaeformis [%]	0.00	0.00	0.00	0.00	0.00	0.00	0.00	0.00	0.00	0.00	0.00
Cocconeis costata [%]	0.00	0.20	0.00	0.00	0.00	0.00	0.00	0.00	0.00	0.00	0.00
Cocconeis dalmannii [%]	0.00	0.00	0.00	0.00	0.00	0.00	0.00	0.00	0.00	0.00	0.00
Cocconeis fasciolata [%]	0.00	0.10	0.37	0.40	0.00	0.00	0.00	0.00	0.00	0.00	0.00
Cocconeis californica var californica [%]	0.00	0.10	0.00	0.00	0.00	0.00	0.17	0.00	0.00	0.00	0.00
Cocconeis californica var. kerguelensis [%]	0.00	0.00	0.00	0.00	0.00	0.00	0.00	0.00	0.00	0.00	0.00
Cocconeis melchioroides [%]	0.00	0.00	0.37	0.00	0.00	0.00	0.00	0.00	0.00	0.00	0.00
Cocconeis imperatrix [%]	0.00	0.00	0.00	0.00	0.00	0.00	0.00	0.00	0.00	0.00	0.00
Cocconeis sp. 1 [%]	0.00	0.00	0.00	0.00	0.00	0.00	0.00	0.00	0.00	0.00	0.00
Cocconeis sp. 2 [%]	0.00	0.10	0.00	0.00	0.00	0.00	0.00	0.00	0.00	0.00	0.00
Entoplia ocellata [%]	0.00	0.00	0.00	0.00	0.00	0.00	0.00	0.00	0.00	0.00	0.00
Fallacia marnieri [%]	0.00	0.00	0.00	0.00	0.00	0.00	0.00	0.00	0.17	0.00	0.00
Gomphonopsis littoralis [%]	0.20	0.00	0.00	0.00	0.00	0.21	0.00	0.00	0.17	0.00	0.00
Grammatophora angulosa [%]	0.00	0.00	0.00	0.00	0.00	0.00	0.00	0.00	0.00	0.00	0.00
Licmophora gracilis [%]	0.00	0.00	0.00	0.00	0.00	0.00	0.00	0.00	0.00	0.00	0.00
Melosira adeliae [%]	0.00	0.00	0.00	0.00	0.00	0.00	0.00	0.00	0.00	0.00	0.00
Navicula directa [%]	0.00	0.20	0.19	0.00	0.22	0.00	0.00	0.00	0.17	0.00	0.00
Navicula glaciei [%]	0.00	0.00	0.00	0.00	0.00	0.00	0.00	0.00	0.00	0.00	0.00
Navicula imperfecta [%]	0.00	0.00	0.00	0.00	0.00	0.00	0.00	0.00	0.00	0.00	0.00
Navicula perminuta [%]	0.40	0.20	0.00	0.00	0.00	0.00	0.00	0.00	0.00	0.00	0.00
Paralia sulcata [%]	0.00	0.00	0.00	0.00	0.00	0.00	0.00	0.00	0.00	0.00	0.00
Planothidium vicientii [%]	0.00	0.00	0.00	0.00	0.00	0.00	0.00	0.00	0.00	0.00	0.00
Pseudogomphonema kamtschaticum [%]	0.00	0.00	0.37	0.00	0.00	0.00	0.00	0.19	0.00	0.00	0.00
Actinocyclus actinochilus [%]	1.20	0.50	0.74	0.40	0.66	1.03	0.17	0.75	0.17	0.00	0.22
Berkeleya spp. [%]	0.00	0.00	0.00	0.00	0.00	0.00	0.00	0.00	0.00	0.00	0.00
Corethron pennatum [%]	0.40	0.20	0.00	0.20	0.22	0.00	0.00	0.94	0.33	0.00	0.00
Eucampia antarctica var. recta [%]	0.00	0.10	0.19	0.20	0.00	0.00	0.00	0.00	0.00	0.45	0.00
Fragilariopsis curta [%]	2.60	1.39	1.11	1.39	2.41	1.24	1.17	0.75	2.49	1.11	0.00
Fragilariopsis cylindrus [%]	0.00	1.09	1.48	0.59	0.00	0.00	0.33	0.19	0.33	0.22	0.22
Fragilariopsis nana [%]	0.00	0.00	0.00	0.00	0.00	0.00	0.00	0.00	0.00	0.00	0.00
Fragilariopsis obliquecostata [%]	0.40	0.00	0.00	0.59	0.22	0.41	0.00	0.19	0.00	0.22	0.00
Fragilariopsis peragallii [%]	0.20	0.00	0.00	0.00	0.00	0.00	0.00	0.19	0.00	0.00	0.22
Fragilariopsis rhombica [%]	0.20	0.40	0.00	0.20	0.00	0.21	0.17	0.19	0.17	0.00	0.00
Fragilariopsis ritscheri [%]	0.00	0.00	0.19	0.20	0.44	0.00	0.00	0.19	0.17	0.22	0.00
Fragilariopsis sublinearis [%]	0.00	0.20	0.00	0.00	0.22	0.41	0.00	0.19	0.00	0.00	0.43
Fragilariopsis sublin/obliq [%]	0.00	0.00	0.19	0.00	0.00	0.00	0.00	0.00	0.00	0.00	0.00
Fragilariopsis vanheurckii [%]	0.00	0.10	0.00	0.20	0.22	0.00	0.00	0.33	0.00	0.00	0.43
Neodenticula seminiae [%]	0.00	0.00	0.00	0.00	0.00	0.00	0.00	0.00	0.17	0.00	0.00
Nitzschia stellata [%]	0.00	0.00	0.00	0.00	0.00	0.00	0.00	0.19	0.00	0.00	0.00
N. taeniformis [%]	0.40	0.00	0.00	0.00	0.00	0.00	0.00	0.00	0.00	0.00	0.00
Odontella weissflogii [%]	1.80	1.49	0.56	2.57	0.44	1.24	0.33	0.75	0.83	0.00	0.65
Porosira glacialis [%]	0.20	0.40	0.00	0.40	0.00	0.21	0.17	0.19	0.33	0.00	0.00
Porosira pseudodenticulata [%]	0.00	0.10	0.00	0.20	0.44	0.00	0.00	0.00	0.00	0.00	0.00
Porosira spp. [%]	0.40	0.10	0.00	0.00	0.00	0.00	0.17	0.75	0.33	0.00	0.65
Stellarima microtrias (rs and veg) [%]	0.40	0.20	0.00	0.00	0.00	0.00	0.50	0.19	0.00	0.00	0.00
Synedropsis laevis [%]	0.00	0.00	0.00	0.00	0.00	0.00	0.00	0.00	0.00	0.00	0.00
Synedropsis recta [%]	0.60	0.00	0.00	0.00	0.00	0.00	0.17	0.00	0.00	0.00	0.00
Synedra/Synedropsis spp. [%]	0.00	0.00	0.00	0.00	0.00	0.00	0.00	0.00	0.00	0.00	0.00
Synedropsis sp. [%]	0.00	0.00	0.37	0.00	0.00	0.00	0.00	0.00	0.00	0.00	0.00
Thalassiosira antarctica (T1=cold) [%]	0.00	0.00	0.00	0.00	0.00	0.00	0.00	0.19	0.00	0.00	0.00
Asteromphalus hookeri [%]	0.00	0.00	0.00	0.20	0.00	0.00	0.00	0.00	0.00	0.00	0.00
Asteromphalus hyalinus [%]	0.20	0.00	0.00	0.00	0.00	0.00	0.00	0.00	0.00	0.00	0.00
Eucampia antarctica var. antarctica [%]	0.00	0.00	0.00	0.00	0.00	0.00	0.00	0.00	0.00	0.00	0.00
Fragilariopsis pseudonana [%]	0.00	0.00	0.00	0.00	0.00	0.00	0.00	0.00	0.00	0.00	0.00
Fragilariopsis separanda [%]	0.00	0.10	0.00	0.00	0.00	0.21	0.00	0.00	0.00	0.00	0.22
Proboscia inermis (winter) [%]	0.40	1.19	0.00	0.00	1.97	0.21	0.33	0.00	0.83	0.00	0.22
Proboscia inermis (spring) [%]	0.00	0.10	0.00	0.00	0.00	0.00	0.00	0.00	0.00	0.00	0.00
Proboscia alata [%]	0.00	0.10	0.00	0.00	0.00	0.00	0.00	0.00	0.00	0.00	0.00
Proboscia spp. [%]	0.00	0.00	0.37	0.40	0.00	0.00	0.00	0.00	0.00	0.45	0.00
Pseudo-nitzschia turgiduloides [%]	0.00	0.20	0.00	0.20	0.44	0.21	0.50	0.00	0.00	0.22	0.00
Rhizosolenia antennata f. antennata [%]	0.20	0.00	0.00	0.00	0.22	0.00	0.00	0.00	0.00	0.00	0.00
R. antennata f. semispina [%]	0.40	0.50	2.04	0.59	0.88	1.03	0.50	0.00	0.00	0.45	0.22
R. polydactyla f. polydactyla [%]	0.00	0.00	0.19	0.00	0.00	0.00	0.00	0.00	0.00	0.00	0.00
R. simplex [%]	0.60	0.20	0.00	0.20	0.44	1.03	0.50	0.00	0.33	0.00	0.22
Shionodiscus gracilis var. expectus [%]	0.80	1.19	0.56	0.79	0.22	1.03	1.50	0.00	0.17	0.89	0.43
Shionodiscus gracilis var. gracilis [%]	1.20	1.39	0.74	5.94	0.44	0.83	1.83	0.56	0.83	1.56	1.08
Shionodiscus frenguelliopsis [%]	1.40	1.49	0.00	0.00	0.44	1.24	0.00	1.51	0.66	0.00	0.43
Thalassiosira antarctica (veg+RS) [%]	3.60	4.37	2.78	2.38	0.66	2.89	2.17	2.82	2.82	0.45	2.59
Thalassiosira gravida [%]	0.20	0.00	0.00	0.00	0.00	0.00	0.00	0.00	0.00	0.00	0.00
Thalassiosira lentiginosa [%]	0.80	0.79	0.37	0.20	0.22	0.62	0.50	0.75	0.17	0.00	0.00
Thalassiosira maculata [%]	0.00	0.00	0.00	0.00	0.00	0.00	0.00	0.19	0.00	0.00	0.00
Thalassiosira oliverana [%]	0.00	0.00	0.00	0.00	0.00	0.00	0.00	0.00	0.00	0.00	0.00
Thalassiosira ritscheri [%]	0.00	0.00	0.00	0.20	0.00	0.00	0.17	0.19	0.17	0.00	0.00
Thalassiosira scotia [%]	0.40	0.10	0.00	0.79	0.22	0.00	0.00	0.33	0.67	0.00	0.00
Thalassiosira antarctica/scotia [%]	0.00	0.00	0.00	0.40	0.00	0.21	1.17	0.19	0.33	0.45	0.65
Thalassiosira tumida [%]	0.00	0.10	0.00	0.20	0.00	0.00	0.00	0.00	0.00	0.00	0.00
Thalassiothrix antarctica [%]	0.00	0.00	0.00	0.00	0.22	0.00	0.00	0.00	0.17	0.22	0.22
Trichotoxon reinbuldii [%]	0.00	0.00	0.00	0.00	0.00	0.21	0.17	0.00	0.33	0.00	0.00
Azpeitia tabularis [%]	0.00	0.00	0.00	0.00	0.00	0.00	0.00	0.00	0.00	0.00	0.00
Coscinodiscus acculus-irridis [%]	0.20	0.00	0.00	0.00	0.00	0.00	0.00	0.00	0.17	0.00	0.00
Fragilariopsis kerguelensis [%]	3.40	1.49	1.30	1.39	1.31	0.83	1.67	0.56	1.99	0.22	1.08
Nitzschia bicapitata [%]	0.00	0.10	0.00	0.00	0.00	0.00	0.00	0.00	0.00	0.00	0.00
Shionodiscus oestrupii [%]	0.00	0.00	0.00	0.00	0.00	0.00	0.00	0.00	0.00	0.00	0.00
Stephanopyxis turris [%]	0.00	0.00	0.00	0.00	0.00	0.00	0.00	0.00	0.00	0.00	0.00
Actinocyclus ingens [%]	0.00	0.00	0.00	0.00	0.00	0.00	0.00	0.00	0.00	0.00	0.00
Cladogramma sp. [%]	0.00	0.00	0.00	0.00	0.00	0.00	0.00	0.00	0.00	0.00	0.00
Rouxia constricta [%]	0.00	0.00	0.00	0.00	0.00	0.00	0.00	0.00	0.00	0.00	0.00
Rouxia leventerae [%]	0.00	0.00	0.00	0.00	0.00	0.00	0.00	0.00	0.00	0.00	0.00
Unidentified taxa [%]	0.80	0.20	0.56	1.39	0.22	0.62	0.67				

Event	PS97/072-1	PS97/072-1	PS97/072-1	PS97/072-1	PS97/072-1	PS97/072-1	PS97/072-1	PS97/072-1	PS97/072-1	PS97/072-1	PS97/072-1	PS97/072-1
Depth [m]	1.76	1.84	1.92	2.00	2.16	2.24	2.32	2.40	2.48	2.80	2.96	
Achnanthes brevipes [%]	0.00	0.00	0.00	0.00	0.00	0.00	0.00	0.00	0.00	0.00	0.00	
Amphora copulata [%]	0.00	0.00	0.00	0.17	0.00	0.00	0.00	0.00	0.00	0.00	0.00	
Amphora coffeaeformis [%]	0.00	0.00	0.00	0.00	0.00	0.00	0.00	0.00	0.00	0.00	0.00	
Cocconeis costata [%]	0.00	0.41	0.00	0.00	0.00	0.00	0.00	0.00	0.00	0.00	0.00	
Cocconeis dalmannii [%]	0.00	0.00	0.00	0.00	0.00	0.00	0.49	0.00	0.00	0.00	0.00	
Cocconeis fasciolata [%]	0.00	0.21	0.00	0.00	0.00	0.00	0.00	0.17	0.00	0.00	0.00	
Cocconeis californica var. californica [%]	0.00	0.00	0.18	0.00	0.00	0.00	0.33	0.00	0.00	0.00	0.00	
Cocconeis californica var. kerguelensis [%]	0.00	0.00	0.00	0.00	0.00	0.00	0.00	0.17	0.00	0.00	0.00	
Cocconeis melchioroides [%]	0.43	0.00	0.00	0.00	0.00	0.00	0.00	0.00	0.00	0.00	0.18	
Cocconeis imperatrix [%]	0.00	0.00	0.00	0.00	0.00	0.00	0.16	0.00	0.00	0.00	0.00	
Cocconeis sp. 1 [%]	0.00	0.00	0.00	0.00	0.00	0.00	0.00	0.17	0.00	0.00	0.00	
Cocconeis sp. 2 [%]	0.00	0.00	0.00	0.00	0.00	0.00	0.00	0.00	0.00	0.00	0.00	
Entopilla ocellata [%]	0.00	0.00	0.00	0.00	0.00	0.00	0.00	0.00	0.00	0.00	0.00	
Fallacia marnieri [%]	0.00	0.00	0.00	0.00	0.00	0.00	0.00	0.00	0.00	0.00	0.18	
Gomphomenopsis littoralis [%]	0.00	0.00	0.00	0.00	0.00	0.00	0.00	0.00	0.00	0.00	0.00	
Grammatophora angulosa [%]	0.00	0.00	0.00	0.00	0.00	0.00	0.00	0.00	0.00	0.00	0.00	
Licmophora gracilis [%]	0.00	0.00	0.00	0.00	0.00	0.00	0.00	0.00	0.00	0.00	0.00	
Melosira adeliae [%]	0.00	0.00	0.00	0.00	0.00	0.00	0.00	0.00	0.00	0.00	0.00	
Navicula directa [%]	0.00	0.21	0.18	0.00	0.20	0.00	0.00	0.35	0.21	0.00	0.00	
Navicula glaciei [%]	0.00	0.00	0.18	0.00	0.00	0.00	0.00	0.00	0.00	0.41	0.00	
Navicula imperfecta [%]	0.00	0.00	0.00	0.00	0.20	0.00	0.00	0.00	0.00	0.00	0.00	
Navicula perminuta [%]	0.00	0.21	0.00	0.00	0.00	0.00	0.16	0.00	0.43	0.00	0.00	
Paralia sulcata [%]	0.00	0.00	0.00	0.00	0.00	0.00	0.00	0.00	0.00	0.00	0.00	
Planothidium vicentii [%]	0.00	0.00	0.00	0.00	0.00	0.00	0.00	0.00	0.00	0.00	0.00	
Pseudogomphonema kantschaticum [%]	0.22	0.00	0.00	0.00	0.00	0.00	0.00	0.17	0.00	0.00	0.00	
Actinocyclus actinochilus [%]	0.00	0.00	0.18	0.00	0.20	0.41	0.82	0.00	0.21	0.20	0.55	
Berkeleya spp. [%]	0.00	0.00	0.00	0.00	0.00	0.00	0.00	0.00	0.00	0.00	0.00	
Corethron pennatum [%]	0.00	0.41	0.18	0.17	0.40	0.00	0.16	0.00	0.00	0.00	0.37	
Eucampia antarctica var. recta [%]	0.22	0.00	0.00	0.17	0.00	0.00	0.33	0.00	0.21	0.00	0.00	
Fragilariopsis curta [%]	0.22	0.83	0.71	0.51	0.79	0.20	1.81	1.92	1.91	1.43	1.83	
Fragilariopsis cylindrus [%]	0.22	0.41	0.18	1.19	0.00	0.00	0.00	0.52	0.00	0.20	0.92	
Fragilariopsis nana [%]	0.00	0.00	0.00	0.00	0.00	0.00	0.00	0.00	0.00	0.00	0.00	
Fragilariopsis obliquecostata [%]	0.00	0.00	0.00	0.00	0.20	0.00	0.16	0.17	0.00	0.00	0.37	
Fragilariopsis peragallii [%]	0.00	0.00	0.00	0.00	0.00	0.00	0.00	0.00	0.00	0.00	0.00	
Fragilariopsis rhombica [%]	0.43	0.00	0.18	0.17	0.59	0.61	0.33	0.35	0.64	0.00	0.00	
Fragilariopsis ritscheri [%]	0.00	0.00	0.00	0.00	0.20	0.20	0.33	0.00	0.00	0.00	0.00	
Fragilariopsis sublinearis [%]	0.00	0.00	0.35	0.00	0.00	0.00	0.33	0.00	0.21	0.20	0.00	
Fragilariopsis sublin/obliq [%]	0.00	0.00	0.00	0.17	0.00	0.00	0.00	0.00	0.00	0.00	0.00	
Fragilariopsis vanheurckii [%]	0.43	0.21	0.00	0.51	0.59	0.20	0.33	0.00	0.43	0.00	0.37	
Neodenticula seminae [%]	0.00	0.00	0.00	0.00	0.00	0.00	0.00	0.00	0.00	0.00	0.00	
Nitzschia stellata [%]	0.00	0.00	0.00	0.00	0.00	0.00	0.00	0.00	0.00	0.00	0.00	
N. taeniformis [%]	0.43	0.00	0.00	0.00	0.00	0.00	0.00	0.00	0.21	0.00	0.18	
Odontella weissflogii [%]	0.86	0.41	0.53	0.51	1.19	0.00	1.15	0.17	0.43	0.20	0.37	
Porosira glacialis [%]	0.22	0.21	0.00	0.17	0.20	0.00	0.00	0.00	0.00	0.00	0.00	
Porosira pseudodenticulata [%]	0.00	0.00	0.18	0.17	0.00	0.20	0.00	0.00	0.00	0.00	0.00	
Porosira spp. [%]	0.22	0.00	0.18	0.00	0.00	0.00	0.00	0.00	0.43	0.00	0.00	
Stellarima microtrias (rs and veg) [%]	0.00	0.21	0.53	0.17	0.00	0.00	0.16	0.00	0.00	0.00	0.18	
Synedropsis laevis [%]	0.00	0.21	0.00	0.00	0.00	0.00	0.00	0.00	0.00	0.00	0.00	
Synedropsis recta [%]	0.43	0.00	0.00	0.00	0.00	0.20	0.33	0.00	0.00	0.00	0.18	
Synedra/Synedropsis spp. [%]	0.00	0.00	0.00	0.00	0.00	0.00	0.00	0.00	0.00	0.00	0.00	
Synedropsis sp. [%]	0.00	0.00	0.00	0.00	0.00	0.00	0.00	0.00	0.00	0.00	0.00	
Thalassiosira antarctica (T1=cold) [%]	0.00	0.00	0.00	0.00	0.00	0.00	0.16	0.17	0.00	0.00	0.00	
Asteromphalus hookeri [%]	0.00	0.00	0.00	0.00	0.00	0.00	0.00	0.00	0.00	0.20	0.00	
Asteromphalus hyalinus [%]	0.00	0.00	0.00	0.00	0.00	0.00	0.16	0.00	0.00	0.00	0.18	
Eucampia antarctica var. antarctica [%]	0.00	0.00	0.00	0.00	0.00	0.00	0.16	0.00	0.00	0.00	0.00	
Fragilariopsis pseudonana [%]	0.00	0.00	0.00	0.00	0.00	0.00	0.00	0.00	0.21	0.00	0.00	
Fragilariopsis separanda [%]	0.00	0.00	0.18	0.00	0.00	0.00	0.16	0.00	0.21	0.00	0.55	
Proboscia inermis (winter) [%]	1.51	0.00	0.71	0.34	0.00	0.00	0.33	0.00	0.00	0.00	0.00	
Proboscia inermis (spring) [%]	0.00	0.00	0.00	0.00	0.00	0.00	0.49	0.00	0.00	0.00	0.00	
Proboscia alata [%]	0.00	0.00	0.18	0.17	0.00	0.00	0.00	0.00	0.00	0.00	0.00	
Proboscia spp. [%]	0.00	0.00	0.00	0.00	0.00	0.00	0.00	0.70	0.00	0.00	0.00	
Pseudo-nitzschia turgiduloides [%]	0.22	0.00	0.18	0.34	0.00	0.00	0.16	0.00	0.00	0.00	0.00	
Rhizolenia antennata f. antennata [%]	0.00	0.00	0.00	0.00	0.00	0.00	0.00	0.00	0.00	0.00	0.00	
R. antennata f. semispina [%]	0.43	0.41	0.89	0.17	0.00	0.00	0.66	0.17	0.64	0.00	0.00	
R. polydactyla f. polydactyla [%]	0.00	0.00	0.00	0.00	0.00	0.00	0.00	0.00	0.00	0.00	0.00	
R. simplex [%]	0.00	0.00	1.06	0.00	0.00	0.00	0.00	0.00	0.00	0.00	0.00	
Shionodiscus gracilis var. expectus [%]	0.86	0.62	0.89	0.00	0.40	0.20	0.49	2.44	0.85	0.41	0.37	
Shionodiscus gracilis var. gracilis [%]	0.86	0.41	0.89	0.17	0.40	0.20	1.31	0.00	0.64	0.61	0.55	
Shionodiscus frenguelliopsis [%]	0.65	0.41	0.35	0.17	0.40	0.00	0.33	0.00	1.28	0.00	0.37	
Thalassiosira antarctica (veg+RS) [%]	2.59	2.28	2.84	0.51	1.98	2.65	4.76	3.31	3.40	1.23	3.67	
Thalassiosira gravida [%]	0.00	0.00	0.00	0.00	0.20	0.00	0.00	0.00	0.00	0.00	0.00	
Thalassiosira lentiginosa [%]	0.65	0.41	0.18	0.00	0.00	0.61	0.49	0.17	0.43	0.00	0.18	
Thalassiosira maculata [%]	0.00	0.00	0.00	0.00	0.00	0.00	0.00	0.00	0.00	0.00	0.00	
Thalassiosira oliverana [%]	0.00	0.00	0.00	0.00	0.00	0.00	0.00	0.00	0.00	0.00	0.00	
Thalassiosira ritscheri [%]	0.00	0.00	0.00	0.00	0.00	0.00	0.00	0.35	0.00	0.41	0.00	
Thalassiosira scotia [%]	0.00	0.00	0.35	0.00	0.00	0.00	0.33	0.00	0.43	0.20	0.18	
Thalassiosira antarctica/scotia [%]	0.00	1.45	0.89	0.00	0.20	0.00	0.16	0.00	0.43	0.00	0.00	
Thalassiosira tumida [%]	0.43	0.00	0.00	0.00	0.00	0.00	0.49	0.00	0.00	0.00	0.00	
Thalassiothrix antarctica [%]	0.00	0.21	0.00	0.00	0.00	0.00	0.49	0.00	0.00	0.00	0.18	
Trichotoxon reinboldii [%]	0.22	0.00	0.18	0.00	0.20	0.00	0.00	0.17	0.00	0.00	0.00	
Azpeitia tabularis [%]	0.00	0.00	0.00	0.00	0.00	0.00	0.00	0.00	0.00	0.00	0.00	
Coscinodiscus acculus-irridis [%]	0.00	0.00	0.00	0.00	0.00	0.00	0.00	0.00	0.00	0.00	0.00	
Fragilariopsis kerguelensis [%]	0.65	1.86	0.35	0.34	0.00	0.61	1.64	1.22	0.43	1.02	1.65	
Nitzschia bicapitata [%]	0.00	0.00	0.00	0.00	0.00	0.00	0.00	0.00	0.00	0.00	0.00	
Shionodiscus oestrupii [%]	0.00	0.00	0.00	0.00	0.00	0.00	0.00	0.00	0.00	0.00	0.00	
Stephanopyxis turris [%]	0.00	0.00	0.00	0.00	0.00	0.00	0.00	0.00	0.00	0.00	0.00	
Actinocyclus ingens [%]	0.00	0.00	0.00	0.00	0.00	0.00	0.00	0.00	0.00	0.00	0.00	
Cladogramma sp. [%]	0.00	0.00	0.00	0.00	0.00	0.00	0.00	0.00	0.00	0.00	0.00	
Rouxia constricta [%]	0											

Event	PS97/072-1	PS97/072-1	PS97/072-1	PS97/072-1	PS97/072-1	PS97/072-1	PS97/072-1	PS97/072-1	PS97/072-1	PS97/072-1	PS97/072-1	PS97/072-1
Depth [m]	5.44	5.52	5.60	5.68	5.84	6.00	6.52	6.76	6.90	6.98	7.10	
Achnanthes brevipes [%]	0.00	0.00	0.00	0.00	0.00	0.00	0.00	0.00	0.00	0.00	0.00	
Amphora copulata [%]	0.00	0.00	0.00	0.00	0.00	0.00	0.00	0.00	0.00	0.00	0.00	
Amphora coffeaeformis [%]	0.00	0.00	0.00	0.00	0.00	0.00	0.00	0.00	0.00	0.00	0.00	
Cocconeis costata [%]	0.00	0.00	0.00	0.00	0.23	0.22	0.00	0.00	0.00	0.00	0.00	
Cocconeis dalmani [%]	0.00	0.00	0.00	0.00	0.00	0.00	0.00	0.00	0.00	0.00	0.00	
Cocconeis fasciolata [%]	0.00	0.00	0.00	0.00	0.00	0.00	0.00	0.16	0.00	0.00	0.00	
Cocconeis californica var. californica [%]	0.00	0.18	0.00	0.00	0.00	0.00	0.00	0.00	0.24	0.00	0.00	
Cocconeis californica var. kerguelensis [%]	0.00	0.00	0.00	0.00	0.00	0.22	0.00	0.00	0.00	0.00	0.00	
Cocconeis melchioroides [%]	0.00	0.00	0.00	0.00	0.00	0.00	0.00	0.00	0.00	0.17	0.14	
Cocconeis imperatrix [%]	0.00	0.00	0.00	0.14	0.00	0.00	0.00	0.00	0.00	0.00	0.00	
Cocconeis sp. 1 [%]	0.00	0.00	0.00	0.00	0.00	0.00	0.00	0.00	0.00	0.00	0.00	
Cocconeis sp. 2 [%]	0.00	0.00	0.00	0.00	0.00	0.00	0.00	0.00	0.00	0.00	0.00	
Entopilla ocellata [%]	0.00	0.00	0.00	0.00	0.00	0.00	0.00	0.00	0.00	0.00	0.00	
Fallacia marnieri [%]	0.00	0.00	0.00	0.00	0.00	0.00	0.00	0.00	0.00	0.00	0.00	
Gomphonopsis littoralis [%]	0.00	0.18	0.00	0.14	0.00	0.22	0.00	0.00	0.00	0.00	0.00	
Grammatophora angulosa [%]	0.00	0.00	0.00	0.00	0.00	0.00	0.00	0.00	0.00	0.00	0.00	
Licmophora gracilis [%]	0.00	0.00	0.00	0.00	0.00	0.00	0.00	0.00	0.00	0.00	0.00	
Melosira adeliae [%]	0.00	0.00	0.00	0.00	0.00	0.00	0.00	0.00	0.00	0.00	0.00	
Navicula directa [%]	0.20	0.18	0.00	0.14	0.00	0.22	0.00	0.00	0.00	0.00	0.00	
Navicula glaciei [%]	0.00	0.00	0.00	0.00	0.00	0.00	0.00	0.00	0.24	0.00	0.00	
Navicula imperfecta [%]	0.00	0.00	0.00	0.00	0.00	0.00	0.00	0.00	0.00	0.00	0.00	
Navicula perminuta [%]	0.00	0.00	0.00	0.00	0.00	0.22	0.00	0.00	0.00	0.00	0.00	
Paralia sulcata [%]	0.00	0.00	0.00	0.00	0.00	0.00	0.00	0.00	0.00	0.00	0.00	
Planothidium vicentii [%]	0.00	0.00	0.00	0.00	0.00	0.00	0.00	0.00	0.00	0.00	0.00	
Pseudogomphonema kantschaticum [%]	0.00	0.00	0.00	0.23	0.00	0.00	0.00	0.00	0.00	0.00	0.00	
Actinocyclus actinochilus [%]	0.40	0.72	0.43	0.14	0.23	1.52	0.23	0.32	0.00	0.17	0.14	
Berkeleya spp. [%]	0.00	0.00	0.00	0.00	0.00	0.00	0.00	0.00	0.00	0.00	0.00	
Corethron pennatum [%]	0.20	0.00	0.00	0.00	0.46	0.22	0.00	0.16	0.48	0.00	0.14	
Eucampia antarctica var. recta [%]	0.99	1.62	0.43	1.26	0.00	0.65	0.70	0.81	0.48	1.22	1.82	
Fragilariopsis curta [%]	1.58	3.42	1.74	0.14	0.92	1.30	2.10	1.13	0.24	2.62	1.54	
Fragilariopsis cylindrus [%]	0.00	0.36	1.09	0.00	0.23	0.00	0.70	0.81	0.71	0.35	0.28	
Fragilariopsis nana [%]	0.00	0.00	0.00	0.00	0.00	0.00	0.00	0.00	0.00	0.00	0.00	
Fragilariopsis obliquocostata [%]	0.00	0.18	0.00	0.00	0.23	0.22	0.70	0.32	0.00	0.17	0.28	
Fragilariopsis peragallii [%]	0.00	0.00	0.00	0.00	0.00	0.00	0.00	0.00	0.00	0.00	0.00	
Fragilariopsis rhombica [%]	0.00	0.72	0.22	0.00	0.69	0.87	0.00	0.00	0.24	0.35	0.14	
Fragilariopsis ritscheri [%]	0.20	0.00	0.43	0.14	0.00	0.22	0.00	0.16	0.24	0.17	0.00	
Fragilariopsis sublinearis [%]	0.00	0.00	0.22	0.00	0.00	0.22	0.23	0.32	0.00	0.00	0.14	
Fragilariopsis sublin/obliq [%]	0.00	0.00	0.00	0.00	0.00	0.00	0.00	0.00	0.00	0.00	0.00	
Fragilariopsis vanheurckii [%]	0.20	0.90	0.00	0.14	0.23	0.22	0.47	0.48	0.48	0.17	0.28	
Neodenticula seminiae [%]	0.00	0.00	0.00	0.14	0.00	0.00	0.23	0.00	0.00	0.00	0.14	
Nitzschia stellata [%]	0.00	0.00	0.00	0.28	0.00	0.00	0.00	0.00	0.00	0.00	0.00	
N. taeniformis [%]	0.00	0.00	0.00	0.14	0.00	0.00	0.00	0.32	0.00	0.00	0.00	
Odontella weissflogii [%]	0.79	1.44	1.52	0.14	0.00	0.43	0.47	0.81	1.19	1.57	0.14	
Porosira glacialis [%]	0.00	0.36	0.43	0.28	0.00	0.00	0.47	0.00	0.00	0.00	0.14	
Porosira pseudodenticulata [%]	0.00	0.00	0.65	0.00	0.00	0.00	0.00	0.48	0.00	0.17	0.00	
Porosira spp. [%]	0.00	0.36	0.22	0.00	0.00	0.00	0.00	0.81	0.71	0.35	0.00	
Stellarima microtrias (rs and veg) [%]	0.20	0.54	0.00	0.00	0.23	0.43	0.23	0.00	0.00	0.35	0.14	
Synedropsis laevis [%]	0.00	0.00	0.00	0.00	0.00	0.00	0.00	0.00	0.00	0.00	0.00	
Synedropsis recta [%]	0.00	0.00	0.00	0.00	0.00	0.22	0.00	0.00	0.00	0.00	0.00	
Synedra/Synedropsis spp. [%]	0.00	0.00	0.00	0.00	0.00	0.00	0.00	0.00	0.00	0.00	0.00	
Synedropsis sp. [%]	0.00	0.00	0.00	0.00	0.00	0.00	0.00	0.00	0.00	0.00	0.00	
Thalassiosira antarctica (T1-cold) [%]	0.00	0.18	0.00	0.00	0.00	0.65	0.00	0.16	0.24	0.00	0.98	
Asteromphalus hookeri [%]	0.00	0.00	0.00	0.00	0.00	0.00	0.00	0.00	0.00	0.00	0.00	
Asteromphalus hyalinus [%]	0.00	0.00	0.00	0.00	0.00	0.22	0.00	0.00	0.00	0.00	0.00	
Eucampia antarctica var. antarctica [%]	0.59	0.72	0.22	0.42	0.00	1.09	0.47	0.00	0.24	0.00	0.56	
Fragilariopsis pseudonana [%]	0.00	0.00	0.00	0.00	0.00	0.00	0.00	0.00	0.00	0.00	0.00	
Fragilariopsis separanda [%]	0.00	0.00	0.00	0.28	0.00	0.22	0.00	0.00	0.00	0.00	0.00	
Proboscia inermis (winter) [%]	0.20	0.00	0.00	0.28	0.00	0.87	0.00	0.16	0.00	0.35	0.00	
Proboscia inermis (spring) [%]	0.20	0.00	0.43	0.00	0.00	0.22	0.00	0.00	0.24	0.00	0.00	
Proboscia alata [%]	0.00	0.00	0.22	0.00	0.00	0.00	0.00	0.16	0.00	0.00	0.00	
Proboscia spp. [%]	0.20	0.00	0.00	0.00	0.00	0.00	0.00	0.00	0.00	0.00	0.42	
Pseudo-nitzschia turgiduloides [%]	0.00	0.00	0.00	0.00	0.00	0.00	0.00	0.16	0.24	0.09	0.14	
Rhizosolenia antennata f. antennata [%]	0.00	0.00	0.00	0.00	0.00	0.00	0.00	0.00	0.00	0.00	0.00	
R. antennata f. semispina [%]	0.20	1.26	0.43	0.56	0.00	0.22	0.23	0.00	0.48	0.52	0.14	
R. polydactyla f. polydactyla [%]	0.00	0.00	0.00	0.00	0.00	0.00	0.00	0.00	0.00	0.00	0.00	
R. simplex [%]	0.00	0.00	0.22	0.28	0.46	0.43	0.00	0.00	0.00	0.17	0.00	
Shionodiscus gracilis var. expectus [%]	0.59	0.00	0.00	0.00	0.00	0.00	0.47	0.16	0.24	1.22	0.42	
Shionodiscus gracilis var. gracilis [%]	0.99	0.36	0.22	0.42	0.46	0.22	0.00	0.16	1.43	0.35	1.82	
Shionodiscus frenguelliopsis [%]	0.20	0.00	0.22	0.00	0.00	0.00	0.00	0.32	1.19	0.35	0.00	
Thalassiosira antarctica (veg+RS) [%]	5.53	9.55	1.74	3.51	1.15	3.04	2.80	21.61	5.94	8.54	9.26	
Thalassiosira gravida [%]	0.00	0.00	0.43	0.00	0.00	0.00	0.00	0.00	0.00	0.17	0.00	
Thalassiosira lentiginosa [%]	0.59	0.36	0.00	0.56	0.23	0.43	0.23	0.00	0.00	0.00	0.00	
Thalassiosira maculata [%]	0.00	0.00	0.00	0.00	0.00	0.00	0.23	0.16	0.00	0.00	0.00	
Thalassiosira oliverana [%]	0.00	0.00	0.00	0.00	0.00	0.00	0.00	0.00	0.00	0.00	0.00	
Thalassiosira ritscheri [%]	0.00	0.00	0.00	0.00	0.69	0.22	0.70	0.65	0.24	0.00	0.42	
Thalassiosira scotia [%]	0.00	1.80	0.65	0.00	0.46	0.43	2.33	1.61	0.71	2.79	4.21	
Thalassiosira antarctica/scotia [%]	0.00	0.00	0.22	0.14	0.00	0.00	0.00	4.35	0.95	0.00	0.00	
Thalassiosira tumida [%]	0.00	0.00	0.00	0.00	0.00	0.22	0.23	0.00	0.24	0.17	0.14	
Thalassiothrix antarctica [%]	0.00	0.00	0.00	0.00	0.00	0.00	0.00	0.00	0.00	0.00	0.00	
Trichotoxon reinbuldii [%]	0.00	0.00	0.00	0.00	0.00	0.00	0.00	0.00	0.24	0.00	0.28	
Azpeitia tabularis [%]	0.00	0.00	0.00	0.00	0.23	0.00	0.00	0.00	0.00	0.00	0.00	
Coscinodiscus acculus-irridis [%]	0.00	0.00	0.00	0.00	0.00	0.00	0.00	0.00	0.00	0.00	0.00	
Fragilariopsis kerguelensis [%]	2.77	1.98	0.87	1.54	0.92	2.83	0.70	0.16	0.48	0.52	0.70	
Nitzschia bicapitata [%]	0.00	0.00	0.00	0.00	0.00	0.00	0.00	0.16	0.00	0.00	0.00	
Shionodiscus oestrupii [%]	0.00	0.00	0.00	0.00	0.00	0.00	0.00	0.00	0.00	0.00	0.00	
Stephanopyxis turris [%]	0.00	0.00	0.00	0.14	0.00	0.00	0.00	0.00	0.00	0.00	0.00	
Actinocyclus ingens [%]	0.00	0.00	0.00	0.00	0.00	0.00	0.00	0.00	0.00	0.00	0.00	
Cladogramma sp. [%]	0.00	0.00	0.00	0.00	0.00	0.00	0.00	0.00	0.00	0.00	0.00	
Rouxia constricta [%]	0.00	0.00	0.00	0.00	0.00	0.00	0.00	0.00	0.00	0.00	0.00	
Rouxia leventerae [%]	0.00	0.00	0.00	0.00	0.00	0.00	0.00	0.00	0.00	0.00	0.00	
Unidentified taxa [%]	0.99	2.34	0.00	0.70	0.92	0.65	1.17	1.94	1.43	2.62	0.70	
Chaetoceros resting spores [%]	82.21	70.27	86.74	87.94	90.78	80.43	83.92	60.97	80.29	74.28	74.33	
Total [%]	100.00	100.00	100.00	100.00	100.00	100.00	100.00	100.00	100.00	100.00	100.00	
diatom counted	506	555	460	713	435	435	429	620	421	574	713	
Diatom concentration [valves/g]	1.18E+08	6.07E+07	2.57E+08	6.68E+07	9.69E+07	4.49E+07	8.20E+07	6.32E+07	1.28E+08	1.06E+08	7.12E+07	
seasonal sea-ice assemblage [% without CRS]	31.40	37.35	44.64	23.96	34.18	27.32	35.00	21.59	30.29	26.58	27.27	
open ocean cold assemblage [% without CRS]	47.44	44.98	47.62	47.03	40.27	51.22	51.35	71.59	60.42	66.21	67.60	
open ocean warm assemblage [% without CRS]	12.25	7.03	2.78	19.56	17.94	13.41	4.62	1.14	2.88	1.74	1.61	
fossil species [% without CRS]	0.00	0.20	0.00	0.00	0.00	0.00						

Event	PS97/072-1	PS97/072-1	PS97/072-1	PS97/072-1	PS97/072-1	PS97/072-1	PS97/072-1	PS97/072-1	PS97/072-1	PS97/072-1	PS97/072-1	PS97/072-1
Depth [m]	7.22	7.30	7.38	7.46	7.54	7.62	7.70	7.78	7.84	7.90	7.98	
Achnanthes brevipes [%]	0.00	0.00	0.00	0.00	0.00	0.00	0.00	0.00	0.00	0.00	0.00	0.00
Amphora copulata [%]	0.00	0.00	0.00	0.00	0.00	0.00	0.00	0.00	0.00	0.00	0.00	0.00
Amphora coffeaeformis [%]	0.00	0.00	0.00	0.00	0.00	0.00	0.00	0.00	0.00	0.00	0.00	0.00
Cocconeis costata [%]	0.00	0.00	0.00	0.00	0.00	0.21	0.00	0.00	0.00	0.00	0.00	0.00
Cocconeis dalmanii [%]	0.00	0.00	0.00	0.00	0.00	0.00	0.00	0.00	0.00	0.00	0.00	0.00
Cocconeis fasciolata [%]	0.00	0.00	0.00	0.00	0.00	0.00	0.00	0.00	0.00	0.00	0.00	0.00
Cocconeis californica var. californica [%]	0.16	0.00	0.00	0.00	0.00	0.00	0.00	0.00	0.00	0.00	0.00	0.00
Cocconeis californica var. kerguelensis [%]	0.00	0.00	0.00	0.00	0.00	0.00	0.00	0.00	0.00	0.00	0.00	0.00
Cocconeis melchioroides [%]	0.00	0.00	0.00	0.00	0.00	0.00	0.00	0.00	0.00	0.00	0.00	0.00
Cocconeis imperatrix [%]	0.00	0.00	0.00	0.00	0.00	0.00	0.00	0.00	0.00	0.00	0.00	0.00
Cocconeis sp. 1 [%]	0.00	0.00	0.00	0.00	0.00	0.00	0.00	0.00	0.00	0.00	0.00	0.00
Cocconeis sp. 2 [%]	0.00	0.00	0.00	0.00	0.00	0.00	0.00	0.00	0.00	0.00	0.00	0.00
Entopilla ocellata [%]	0.00	0.00	0.00	0.00	0.00	0.00	0.00	0.00	0.00	0.00	0.00	0.00
Fallacia marnieri [%]	0.00	0.00	0.00	0.00	0.00	0.00	0.00	0.00	0.00	0.00	0.00	0.00
Gomphomenopsis littoralis [%]	0.00	0.00	0.17	0.00	0.00	0.00	0.00	0.00	0.00	0.00	0.00	0.00
Grammatophora angulosa [%]	0.00	0.00	0.00	0.00	0.00	0.00	0.00	0.00	0.00	0.00	0.00	0.00
Licmophora gracilis [%]	0.00	0.00	0.00	0.00	0.00	0.00	0.00	0.00	0.00	0.00	0.00	0.00
Melosira adeliae [%]	0.00	0.00	0.00	0.00	0.00	0.00	0.00	0.00	0.00	0.00	0.00	0.00
Navicula directa [%]	0.00	0.00	0.35	0.25	0.00	0.00	0.00	0.00	0.00	0.00	0.00	0.00
Navicula glaciei [%]	0.00	0.00	0.00	0.00	0.00	0.00	0.00	0.00	0.00	0.00	0.21	0.00
Navicula imperfecta [%]	0.00	0.00	0.00	0.00	0.00	0.00	0.00	0.00	0.00	0.00	0.00	0.00
Navicula perminuta [%]	0.00	0.00	0.17	0.00	0.00	0.00	0.00	0.00	0.00	0.00	0.00	0.00
Paralia sulcata [%]	0.00	0.00	0.00	0.00	0.00	0.00	0.00	0.00	0.00	0.00	0.00	0.00
Planothidium vicentii [%]	0.00	0.00	0.00	0.00	0.00	0.00	0.00	0.00	0.00	0.00	0.00	0.00
Pseudogomphonema kantschaticum [%]	0.00	0.00	0.00	0.00	0.00	0.00	0.00	0.00	0.00	0.00	0.00	0.00
Actinocyclus actinochilus [%]	0.33	1.58	0.70	0.49	0.65	0.43	0.17	0.55	0.39	0.85	0.00	0.00
Berkeleya spp. [%]	0.00	0.00	0.00	0.00	0.00	0.00	0.00	0.00	0.00	0.00	0.00	0.00
Corethron pennatum [%]	0.99	0.23	0.17	0.99	0.22	0.21	0.17	0.37	0.58	0.85	0.40	0.00
Eucampia antarctica var. recta [%]	0.66	1.58	0.70	0.00	0.86	0.64	0.17	0.00	0.00	0.21	0.20	0.00
Fragilariopsis curta [%]	2.64	1.13	2.80	1.72	0.65	1.28	1.32	1.83	1.35	4.48	2.20	0.00
Fragilariopsis cylindrus [%]	0.66	0.68	1.22	0.99	0.43	1.07	0.33	2.20	0.39	0.21	0.20	0.00
Fragilariopsis nana [%]	0.00	0.00	0.00	0.00	0.00	0.00	0.00	0.00	0.00	0.00	0.00	0.00
Fragilariopsis obliquecostata [%]	0.16	0.23	0.35	0.25	0.22	0.43	0.00	0.00	0.39	0.00	0.20	0.00
Fragilariopsis peragallii [%]	0.00	0.00	0.00	0.00	0.00	0.00	0.17	0.00	0.00	0.00	0.00	0.00
Fragilariopsis rhombica [%]	0.16	0.00	0.00	0.00	0.00	0.21	0.17	0.55	0.00	0.21	0.20	0.00
Fragilariopsis ritscheri [%]	0.16	0.00	0.00	0.25	0.00	0.64	0.00	0.00	0.19	0.21	0.00	0.00
Fragilariopsis sublinearis [%]	0.16	0.45	0.00	0.00	0.00	0.00	0.17	0.37	0.00	0.00	0.00	0.00
Fragilariopsis sublin/obliq [%]	0.00	0.00	0.00	0.00	0.00	0.00	0.00	0.00	0.00	0.00	0.00	0.00
Fragilariopsis vanheurckii [%]	1.15	0.45	0.35	0.49	0.22	0.43	0.00	0.37	0.39	0.64	1.00	0.00
Neodenticula seminiae [%]	0.00	0.00	0.00	0.00	0.00	0.00	0.00	0.18	0.00	0.00	0.00	0.00
Nitzschia stellata [%]	0.00	0.00	0.00	0.00	0.00	0.21	0.00	0.18	0.00	0.00	0.00	0.00
N. taeniformis [%]	0.00	0.00	0.00	0.00	0.00	0.00	0.00	0.18	0.00	0.00	0.00	0.00
Odontella weissflogii [%]	1.32	0.90	0.00	0.00	0.00	0.43	0.00	0.18	0.19	0.43	0.00	0.00
Porosira glacialis [%]	0.33	0.00	0.00	0.00	0.00	0.00	0.00	0.00	0.19	0.00	0.00	0.00
Porosira pseudodenticulata [%]	0.33	0.45	0.35	0.00	0.22	0.21	0.33	0.00	0.00	0.21	0.00	0.00
Porosira spp. [%]	0.33	0.00	1.40	1.23	0.22	0.64	0.33	0.18	0.58	0.21	0.40	0.00
Stellarima microtrias (rs and veg) [%]	0.16	0.00	0.52	0.00	0.22	0.21	0.00	0.00	0.00	0.00	0.20	0.00
Synedropsis laevis [%]	0.00	0.00	0.00	0.00	0.00	0.00	0.00	0.00	0.00	0.00	0.00	0.00
Synedropsis recta [%]	0.00	0.00	0.00	0.00	0.00	0.00	0.00	0.00	0.00	0.00	0.00	0.00
Synedra/Synedropsis spp. [%]	0.00	0.00	0.00	0.00	0.00	0.00	0.00	0.00	0.00	0.00	0.00	0.00
Synedropsis sp. [%]	0.00	0.00	0.00	0.00	0.00	0.00	0.00	0.00	0.00	0.00	0.00	0.00
Thalassiosira antarctica (T1=cold) [%]	0.00	0.00	0.17	0.25	0.43	0.43	0.00	0.18	0.19	1.07	0.20	0.00
Asteromphalus hookeri [%]	0.00	0.00	0.00	0.00	0.00	0.00	0.00	0.00	0.00	0.00	0.00	0.00
Asteromphalus hyalinus [%]	0.00	0.00	0.00	0.00	0.00	0.00	0.00	0.00	0.00	0.00	0.00	0.00
Eucampia antarctica var. antarctica [%]	0.16	0.23	0.00	0.25	0.00	0.00	0.00	0.00	0.00	0.00	0.00	0.00
Fragilariopsis pseudonana [%]	0.00	0.00	0.00	0.00	0.00	0.00	0.00	0.00	0.00	0.00	0.00	0.00
Fragilariopsis separanda [%]	0.00	0.00	0.00	0.00	0.00	0.00	0.00	0.00	0.00	0.21	0.00	0.00
Proboscia inermis (winter) [%]	0.00	0.00	0.35	0.99	0.22	0.64	0.00	0.55	0.19	0.00	0.00	0.00
Proboscia inermis (spring) [%]	0.33	0.00	0.35	0.00	0.22	0.43	0.00	0.18	0.00	0.00	0.00	0.00
Proboscia alata [%]	0.00	0.00	0.00	0.00	0.00	0.00	0.00	0.73	0.00	0.21	0.00	0.00
Proboscia spp. [%]	0.00	0.23	0.00	0.00	0.00	0.00	0.66	0.00	0.00	0.00	0.00	0.00
Pseudo-nitzschia turgiduloides [%]	0.25	0.00	0.35	0.49	0.00	0.43	0.00	0.18	0.00	0.21	0.00	0.00
Rhizosolenia antennata f. antennata [%]	0.00	0.00	0.00	0.00	0.00	0.00	0.00	0.00	0.00	0.00	0.00	0.00
R. antennata f. semispina [%]	0.16	0.00	0.17	0.25	0.00	0.00	0.00	0.00	0.00	0.21	0.20	0.00
R. polydactyla f. polydactyla [%]	0.00	0.00	0.00	0.00	0.00	0.00	0.00	0.00	0.00	0.00	0.00	0.00
R. simplex [%]	0.00	0.00	0.00	0.00	0.00	0.00	0.00	0.00	0.00	0.00	0.20	0.00
Shionodiscus gracilis var. expectus [%]	0.82	0.45	0.17	0.25	0.22	0.21	0.66	0.92	0.00	0.00	0.00	0.00
Shionodiscus gracilis var. gracilis [%]	0.49	0.00	0.17	0.00	0.22	0.21	0.17	0.73	1.16	0.21	0.20	0.00
Shionodiscus frenguelliopsis [%]	0.33	0.00	0.52	0.00	0.00	0.21	0.33	0.00	0.00	0.00	0.00	0.00
Thalassiosira antarctica (veg+RS) [%]	11.54	6.53	6.99	2.96	2.81	4.90	7.43	2.57	3.87	1.92	3.00	0.00
Thalassiosira gravida [%]	0.16	0.00	0.00	0.00	0.00	0.00	0.00	0.00	0.00	0.00	0.00	0.00
Thalassiosira lentiginosa [%]	0.00	0.00	0.00	0.25	0.00	0.43	0.33	0.18	0.00	0.43	0.00	0.00
Thalassiosira maculata [%]	0.00	0.00	0.00	0.00	0.22	0.00	0.00	0.00	0.00	0.00	0.00	0.00
Thalassiosira oliverana [%]	0.16	0.00	0.00	0.00	0.00	0.00	0.00	0.00	0.00	0.00	0.00	0.00
Thalassiosira ritscheri [%]	0.00	0.00	0.35	0.00	0.43	0.21	0.00	0.18	0.39	0.21	0.00	0.00
Thalassiosira scotia [%]	2.31	0.68	1.57	0.49	0.00	0.64	0.66	0.18	0.58	0.21	0.00	0.00
Thalassiosira antarctica/scotia [%]	0.49	0.23	0.70	0.49	0.86	0.85	1.32	0.55	0.39	0.64	0.20	0.00
Thalassiosira tumida [%]	0.16	0.00	0.35	0.00	0.00	0.00	0.17	0.00	0.00	0.00	0.00	0.00
Thalassiothrix antarctica [%]	0.00	0.00	0.00	0.00	0.00	0.00	0.00	0.00	0.00	0.00	0.00	0.00
Trichotoxon reinbuldii [%]	0.00	0.00	0.00	0.00	0.00	0.00	0.00	0.00	0.00	0.00	0.00	0.00
Azpeitia tabularis [%]	0.00	0.00	0.00	0.00	0.00	0.00	0.00	0.00	0.00	0.00	0.00	0.00
Coscinodiscus acculus-irridis [%]	0.16	0.00	0.00	0.00	0.22	0.00	0.00	0.00	0.00	0.00	0.00	0.00
Fragilariopsis kerguelensis [%]	0.33	0.00	0.17	0.00	0.22	0.43	0.17	0.37	0.39	0.00	0.00	0.00
Nitzschia bicapitata [%]	0.00	0.00	0.00	0.00	0.00	0.00	0.00	0.00	0.00	0.00	0.00	0.00
Shionodiscus oestrupii [%]	0.00	0.00	0.00	0.00	0.00	0.64	0.00	0.00	0.00	0.00	0.00	0.00

Event	PS97/072-1	PS97/072-1	PS97/072-1	PS97/072-1	PS97/072-1	PS97/072-1	PS97/072-1	PS97/072-1	PS97/072-1	PS97/072-1	PS97/072-1	PS97/072-1
Depth [m]	8.06	8.10	8.14	8.22	8.30	8.38	8.46	8.54	8.62	8.70	8.78	8.78
Achnanthes brevipes [%]	0.00	0.00	0.00	0.00	0.00	0.00	0.00	0.00	0.00	0.00	0.00	0.00
Amphora copulata [%]	0.00	0.00	0.00	0.00	0.00	0.00	0.00	0.00	0.00	0.00	0.00	0.00
Amphora coffeaeformis [%]	0.00	0.00	0.00	0.00	0.00	0.00	0.00	0.00	0.00	0.00	0.00	0.00
Cocconeis costata [%]	0.00	0.00	0.00	0.00	0.00	0.00	0.00	0.00	0.00	0.00	0.00	0.00
Cocconeis dalmannii [%]	0.00	0.00	0.00	0.00	0.16	0.00	0.00	0.00	0.00	0.23	0.00	0.00
Cocconeis fasciolata [%]	0.00	0.00	0.00	0.00	0.00	0.00	0.00	0.21	0.00	0.00	0.00	0.00
Cocconeis californica var. californica [%]	0.00	0.00	0.00	0.00	0.16	0.20	0.00	0.00	0.00	0.00	0.00	0.00
Cocconeis californica var. kerguelensis [%]	0.00	0.00	0.00	0.00	0.00	0.00	0.00	0.00	0.00	0.00	0.00	0.00
Cocconeis melchioroides [%]	0.00	0.00	0.00	0.00	0.00	0.00	0.00	0.21	0.00	0.00	0.00	0.00
Cocconeis imperatrix [%]	0.00	0.00	0.16	0.00	0.00	0.00	0.00	0.00	0.00	0.00	0.00	0.00
Cocconeis sp. 1 [%]	0.00	0.00	0.00	0.00	0.00	0.00	0.00	0.00	0.00	0.00	0.00	0.00
Cocconeis sp. 2 [%]	0.00	0.00	0.00	0.00	0.00	0.00	0.00	0.00	0.00	0.00	0.00	0.00
Entopilla ocellata [%]	0.00	0.00	0.00	0.00	0.00	0.00	0.00	0.00	0.00	0.00	0.00	0.00
Fallacia marnieri [%]	0.00	0.00	0.00	0.00	0.00	0.00	0.00	0.00	0.00	0.00	0.00	0.00
Gomphonopsis littoralis [%]	0.00	0.00	0.00	0.00	0.00	0.00	0.00	0.00	0.00	0.00	0.00	0.00
Grammatophora angulosa [%]	0.00	0.00	0.00	0.00	0.00	0.00	0.00	0.00	0.00	0.00	0.00	0.00
Licmophora gracilis [%]	0.00	0.00	0.00	0.00	0.00	0.00	0.00	0.00	0.00	0.00	0.00	0.20
Melosira adeliae [%]	0.00	0.00	0.00	0.00	0.00	0.00	0.00	0.00	0.00	0.00	0.00	0.20
Navicula directa [%]	0.00	0.00	0.16	0.00	0.00	0.40	0.00	0.00	0.24	0.00	0.00	0.00
Navicula glaciei [%]	0.00	0.00	0.00	0.00	0.00	0.20	0.00	0.00	0.24	0.00	0.00	0.00
Navicula imperfecta [%]	0.00	0.00	0.00	0.00	0.00	0.00	0.00	0.00	0.00	0.00	0.00	0.00
Navicula perminuta [%]	0.00	0.00	0.00	0.00	0.00	0.00	0.00	0.21	0.00	0.00	0.00	0.00
Paralia sulcata [%]	0.00	0.00	0.00	0.00	0.00	0.00	0.00	0.00	0.00	0.00	0.00	0.00
Planothidium vicentii [%]	0.00	0.00	0.00	0.00	0.00	0.00	0.00	0.00	0.00	0.00	0.00	0.00
Pseudogomphonema kantschaticum [%]	0.00	0.00	0.00	0.22	0.00	0.00	0.00	0.00	0.00	0.00	0.00	0.00
Actinocyclus actinochilus [%]	0.80	0.23	1.09	0.66	1.56	0.79	0.45	0.21	1.21	1.38	1.00	1.00
Berkeleya spp. [%]	0.00	0.00	0.00	0.00	0.00	0.00	0.00	0.00	0.00	0.00	0.00	0.00
Corethron pennatum [%]	0.32	0.00	0.47	0.00	0.00	0.00	0.00	0.21	0.49	0.00	0.00	0.00
Eucampia antarctica var. recta [%]	0.00	0.00	0.16	0.00	0.00	0.20	0.00	0.21	0.12	0.23	0.00	0.00
Fragilariopsis curta [%]	0.80	0.46	1.25	1.98	3.13	5.34	2.45	1.87	2.55	0.46	0.40	0.40
Fragilariopsis cylindrus [%]	0.16	0.23	0.00	0.44	0.63	1.78	0.22	0.00	1.33	0.00	0.00	0.00
Fragilariopsis nana [%]	0.00	0.00	0.00	0.00	0.00	0.00	0.00	0.00	0.00	0.00	0.00	0.00
Fragilariopsis obliquecostata [%]	0.00	0.23	0.16	0.22	0.31	0.40	0.22	0.42	0.12	0.46	0.00	0.00
Fragilariopsis peragallii [%]	0.00	0.00	0.00	0.00	0.00	0.00	0.00	0.00	0.00	0.00	0.00	0.00
Fragilariopsis rhombica [%]	0.16	0.00	0.00	0.22	0.47	0.20	0.22	0.62	0.49	0.00	0.00	0.00
Fragilariopsis ritscheri [%]	0.00	0.00	0.00	0.22	0.00	0.59	0.00	0.00	0.36	0.23	0.20	0.20
Fragilariopsis sublinearis [%]	0.00	0.00	0.16	0.22	0.31	0.20	0.22	0.62	0.61	0.00	0.00	0.20
Fragilariopsis sublin/obliq [%]	0.00	0.00	0.00	0.00	0.00	0.00	0.00	0.00	0.00	0.00	0.00	0.00
Fragilariopsis vanheurckii [%]	0.16	0.23	0.16	1.54	0.63	2.17	0.00	0.62	0.85	0.00	0.60	0.60
Neodenticula seminae [%]	0.00	0.00	0.00	0.00	0.00	0.00	0.00	0.24	0.00	0.00	0.00	0.00
Nitzschia stellata [%]	0.00	0.00	0.00	0.00	0.00	0.59	0.00	0.00	0.00	0.00	0.00	0.00
N. taeniformis [%]	0.00	0.00	0.00	0.00	0.00	0.00	0.00	0.00	0.00	0.23	0.00	0.00
Odontella weissflogii [%]	0.00	0.00	0.16	0.00	0.47	0.59	0.00	0.21	0.24	0.23	0.20	0.20
Porosira glacialis [%]	0.32	0.00	0.16	0.22	0.31	0.00	0.00	0.21	0.00	0.00	0.00	0.00
Porosira pseudodenticulata [%]	0.00	0.00	0.00	0.22	0.00	0.59	0.67	0.83	0.97	0.23	0.00	0.00
Porosira spp. [%]	0.00	0.00	0.31	0.00	0.31	0.79	0.00	0.00	0.24	0.00	0.20	0.20
Stellarima microtrias (rs and veg) [%]	0.48	0.23	0.62	0.22	0.31	0.79	0.00	0.00	0.24	0.69	1.20	1.20
Synedropsis laevis [%]	0.00	0.00	0.00	0.00	0.00	0.20	0.00	0.00	0.00	0.00	0.00	0.00
Synedropsis recta [%]	0.16	0.00	0.00	0.00	0.00	0.00	0.00	0.00	0.00	0.00	0.00	0.00
Synedra/Synedropsis spp. [%]	0.00	0.00	0.00	0.00	0.00	0.00	0.00	0.00	0.00	0.00	0.00	0.00
Synedropsis sp. [%]	0.00	0.00	0.00	0.00	0.00	0.00	0.00	0.00	0.00	0.00	0.00	0.00
Thalassiosira antarctica (T1-cold) [%]	0.64	0.23	0.62	0.00	1.25	0.79	1.34	3.74	1.46	0.92	1.40	1.40
Asteromphalus hookeri [%]	0.00	0.00	0.00	0.00	0.00	0.00	0.00	0.00	0.00	0.00	0.00	0.00
Asteromphalus hyalinus [%]	0.00	0.00	0.00	0.00	0.00	0.00	0.00	0.00	0.00	0.00	0.00	0.00
Eucampia antarctica var. antarctica [%]	0.00	0.00	0.00	0.00	0.00	0.00	0.00	0.00	0.00	0.00	0.00	0.00
Fragilariopsis pseudonana [%]	0.00	0.00	0.00	0.00	0.00	0.00	0.00	0.00	0.00	0.00	0.00	0.00
Fragilariopsis separanda [%]	0.00	0.00	0.00	0.00	0.00	0.00	0.00	0.21	0.00	0.00	0.20	0.20
Proboscia inermis (winter) [%]	0.00	0.00	0.16	0.00	0.16	0.00	0.00	0.00	0.00	0.00	0.00	0.00
Proboscia inermis (spring) [%]	0.00	0.00	0.16	0.00	0.00	0.40	0.00	0.00	0.00	0.00	0.20	0.20
Proboscia alata [%]	0.32	0.00	0.00	0.22	0.00	0.00	0.00	0.00	0.12	0.00	0.00	0.00
Proboscia spp. [%]	0.00	0.00	0.00	0.00	0.00	0.00	0.00	0.00	0.00	0.00	0.00	0.00
Pseudo-nitzschia turgiduloides [%]	0.00	0.00	0.00	0.00	0.00	0.40	0.00	0.00	0.49	0.00	0.20	0.20
Rhizosolenia antennata f. antennata [%]	0.00	0.00	0.00	0.00	0.00	0.00	0.00	0.00	0.00	0.00	0.00	0.00
R. antennata f. semispina [%]	0.00	0.00	0.16	0.00	0.16	0.20	0.00	0.00	0.00	0.00	0.20	0.20
R. polydactyla f. polydactyla [%]	0.00	0.00	0.00	0.00	0.00	0.00	0.00	0.00	0.00	0.00	0.00	0.00
R. simplex [%]	0.00	0.23	0.00	0.66	0.31	0.40	0.00	0.62	0.00	0.00	0.00	0.00
Shionodiscus gracilis var. expectus [%]	0.00	0.00	0.00	0.00	0.00	0.00	0.00	0.42	0.00	0.00	0.00	0.00
Shionodiscus gracilis var. gracilis [%]	0.00	0.00	0.16	0.22	0.16	0.20	0.22	0.83	0.12	0.23	0.40	0.40
Shionodiscus fremuillioiops [%]	0.00	0.00	0.00	0.00	0.00	0.00	0.00	0.00	0.12	0.00	0.00	0.00
Thalassiosira antarctica (veg+RS) [%]	3.18	3.87	5.92	5.49	13.44	9.49	15.81	15.80	8.13	46.31	13.63	13.63
Thalassiosira gravida [%]	0.00	0.00	0.00	0.00	0.00	0.00	0.00	0.00	0.00	0.00	0.00	0.00
Thalassiosira lentiginosa [%]	0.00	0.23	0.16	0.22	0.00	0.20	0.00	0.42	0.00	0.00	0.20	0.20
Thalassiosira maculata [%]	0.00	0.00	0.00	0.00	0.00	0.00	0.00	0.00	0.00	0.00	0.00	0.00
Thalassiosira oliverana [%]	0.00	0.00	0.00	0.00	0.00	0.00	0.00	0.00	0.00	0.00	0.00	0.00
Thalassiosira ritscheri [%]	0.00	0.00	0.00	0.00	0.00	0.00	0.00	0.00	0.00	0.00	0.00	0.00
Thalassiosira scotia [%]	0.64	0.00	0.31	0.22	0.16	1.98	0.22	1.04	1.33	0.00	0.20	0.20
Thalassiosira antarctica/scotia [%]	0.80	0.68	2.18	2.64	6.56	3.36	0.00	8.73	3.16	0.92	7.41	7.41
Thalassiosira tumida [%]	0.00	0.00	0.00	0.00	0.31	0.00	0.22	0.83	0.24	0.00	0.00	0.00
Thalassiothrix antarctica [%]	0.00	0.00	0.00	0.00	0.00	0.00	0.00	0.00	0.00	0.00	0.00	0.00
Trichotoxon reinboldii [%]	0.00	0.00	0.16	0.00	0.00	0.00	0.00	0.00	0.00	0.23	0.00	0.00
Azpeitia tabularis [%]	0.00	0.00	0.00	0.00	0.00	0.00	0.00	0.00	0.00	0.00	0.00	0.00
Coscinodiscus acculus-irridis [%]	0.00	0.00	0.00	0.00	0.00	0.00	0.00	0.00	0.00	0.00	0.00	0.00
Fragilariopsis kerguelensis [%]	0.00	0.23	0.00	0.44	0.47	1.58	1.11	0.83	0.49	1.15	0.60	0.60
Nitzschia bicapitata [%]	0.00	0.00	0.00	0.00	0.00	0.00	0.00	0.00	0.00	0.00	0.00	0.00
Shionodiscus oestrupii [%]	0.00	0.00	0.00	0.00	0.16	0.00	0.00	0.00	0.00	0.00	0.00	0.00
Stephanopyxis turris [%]	0.00	0.00	0.00	0.00	0.00	0.00	0.00	0.00	0.00	0.00	0.00	0.00
Actinocyclus ingens [%]	0.00	0.00	0.00	0.00	0.00	0.00	0.00	0.00	0.00	0.00	0.00	0.00
Cladogramma sp. [%]	0.00	0.00	0.00	0.00	0.00	0.00	0.00	0.00	0.00	0.00	0.00	0.00
Rouxia constricta [%]	0.00	0.00	0.00	0.00	0.00	0.00	0.00	0.00	0.00	0.00	0.20	0.20
Rouxia leventerae [%]	0.00	0.00	0.00	0.00	0.00	0.00	0.00	0.00	0.00	0.00	0.00	0.00
Unidentified taxa [%]	0.16	0.00	0.16	0.22	0.63	0.20	0.45	0.00	0.36	0.92	0.00	0.00
Chaetoceros resting spores [%]	90.92	92.94	84.89	83.30	67.50	64.82	76.17	59.88	73.42	44.93	70.74	70.74
Total [%]	100.00	100.00	100.00	100.00	100.00	100.00	100.00	100.00	100.00	100.00	100.00	100.00
diatom counted	628	439	642	455	640	506	449	481	824	434	499	499
Diatom concentration [valves/g]	8.29E+07	2.69E+07										

Event	PS97/072-1	PS97/072-1	PS97/072-1	PS97/072-1	PS97/072-1	PS97/072-1	PS97/072-1	PS97/072-1	PS97/072-1	PS97/072-1	PS97/072-1
Depth [m]	8.86	8.90	8.94	9.02	9.10	9.20	9.32	9.44	9.80	10.00	
Achnanthes brevipes [%]	0.00	0.00	0.00	0.00	0.00	0.00	0.00	0.00	0.00	0.00	
Amphora copulata [%]	0.00	0.00	0.00	0.00	0.00	0.00	0.00	0.00	0.00	0.00	
Amphora coffaeiformis [%]	0.00	0.00	0.00	0.00	0.00	0.00	0.00	0.00	0.00	0.00	
Cocconeis costata [%]	0.00	0.00	0.00	0.00	0.00	0.00	0.00	0.00	0.39	0.00	
Cocconeis dalmannii [%]	0.00	0.00	0.00	0.00	0.00	0.00	0.00	0.00	0.00	0.00	
Cocconeis fasciolata [%]	0.00	0.00	0.00	0.00	0.00	0.00	0.00	0.22	0.00	0.00	
Cocconeis californica var californica [%]	0.00	0.00	0.00	0.00	0.00	0.00	0.00	0.00	0.00	0.24	
Cocconeis californica var. kerguelensis [%]	0.00	0.00	0.00	0.00	0.00	0.00	0.16	0.00	0.00	0.00	
Cocconeis melchioroides [%]	0.00	0.00	0.00	0.00	0.00	0.00	0.00	0.00	0.00	0.00	
Cocconeis imperatrix [%]	0.00	0.00	0.00	0.00	0.00	0.00	0.00	0.00	0.00	0.00	
Cocconeis sp. 1 [%]	0.00	0.00	0.00	0.00	0.00	0.00	0.00	0.00	0.00	0.00	
Cocconeis sp. 2 [%]	0.00	0.00	0.00	0.00	0.00	0.00	0.00	0.00	0.00	0.00	
Entopilea ocellata [%]	0.00	0.00	0.00	0.00	0.00	0.00	0.00	0.00	0.00	0.00	
Fallacia marnieri [%]	0.00	0.00	0.00	0.00	0.00	0.00	0.00	0.00	0.00	0.00	
Gomphonopsis littoralis [%]	0.00	0.00	0.00	0.00	0.00	0.00	0.00	0.00	0.00	0.00	
Grammatophora angulosa [%]	0.00	0.00	0.00	0.00	0.00	0.00	0.00	0.00	0.00	0.00	
Licmophora gracilis [%]	0.00	0.00	0.00	0.00	0.00	0.00	0.00	0.00	0.00	0.00	
Melosira adeliae [%]	0.00	0.00	0.00	0.00	0.00	0.00	0.00	0.00	0.00	0.00	
Navicula directa [%]	0.00	0.00	0.00	0.00	0.00	0.36	0.16	0.44	0.39	1.94	
Navicula glaciei [%]	0.00	0.00	0.00	0.00	0.00	0.00	0.00	0.00	0.00	0.24	
Navicula imperfecta [%]	0.00	0.00	0.00	0.00	0.00	0.00	0.00	0.00	0.00	0.24	
Navicula perminuta [%]	0.00	0.00	0.00	0.00	0.00	0.00	0.00	0.00	0.00	0.00	
Paralia sulcata [%]	0.00	0.00	0.00	0.00	0.00	0.00	0.00	0.22	1.18	0.24	
Pianothidium vicentii [%]	0.00	0.00	0.00	0.00	0.00	0.00	0.00	0.00	0.00	0.00	
Pseudogomphonema kamtschaticum [%]	0.00	0.00	0.00	0.00	0.00	0.00	0.00	0.00	0.00	0.00	
Actinocyclus actinochilus [%]	0.00	0.48	0.63	0.00	0.42	0.91	1.91	2.19	2.35	0.00	
Berkeleya spp. [%]	0.00	0.00	0.00	0.00	0.00	0.00	0.00	0.00	0.00	0.24	
Corethron pennatum [%]	0.00	0.00	0.00	0.00	0.00	0.55	0.32	0.22	0.00	0.00	
Eucampia antarctica var. recta [%]	0.00	0.00	0.00	0.00	0.00	0.00	0.64	0.66	0.39	0.49	
Fragilariopsis curta [%]	0.17	0.72	0.31	0.88	1.17	1.82	5.57	7.02	1.96	14.08	
Fragilariopsis cylindrus [%]	0.00	0.00	0.00	0.35	0.32	0.18	1.59	0.44	0.39	0.00	
Fragilariopsis nana [%]	0.00	0.00	0.00	0.00	0.00	0.00	0.00	0.00	0.00	0.00	
Fragilariopsis obliquecostata [%]	0.52	0.00	0.31	0.35	0.11	0.73	0.80	2.41	0.39	1.46	
Fragilariopsis peragallii [%]	0.00	0.00	0.00	0.00	0.00	0.18	0.32	0.00	0.00	0.24	
Fragilariopsis rhombica [%]	0.00	0.00	0.16	0.35	0.00	0.18	1.11	0.88	0.39	0.00	
Fragilariopsis ritscheri [%]	0.17	0.00	0.16	0.35	0.11	0.18	1.43	2.41	0.00	0.24	
Fragilariopsis sublinearis [%]	0.00	0.00	0.00	0.00	0.21	0.55	0.96	2.41	1.18	2.18	
Fragilariopsis sublin/obliq [%]	0.00	0.00	0.00	0.00	0.00	0.00	0.00	0.00	0.00	0.00	
Fragilariopsis vanheurckii [%]	0.35	0.00	0.00	1.23	0.32	0.36	1.75	1.75	0.39	3.40	
Neodenticula seminae [%]	0.00	0.00	0.31	0.00	0.32	0.00	0.00	0.22	4.31	0.24	
Nitzschia stellata [%]	0.00	0.00	0.00	0.00	0.00	0.00	0.00	0.00	0.00	0.00	
N. taeniformis [%]	0.00	0.00	0.00	0.00	0.00	0.00	0.00	0.00	0.00	1.21	
Odontella weissflogii [%]	0.00	0.00	0.00	0.00	0.11	0.00	0.96	0.88	0.00	0.24	
Porosira glacialis [%]	0.00	0.00	0.00	0.00	0.00	0.00	0.00	0.00	0.00	0.49	
Porosira pseudodenticulata [%]	0.17	0.24	0.16	0.00	0.11	0.00	0.48	0.22	0.00	1.46	
Porosira spp. [%]	0.00	0.00	0.00	0.00	0.21	0.55	0.96	1.10	2.35	0.00	
Stellarima microtrias (rs and veg) [%]	0.17	0.48	0.47	0.35	0.11	0.36	1.75	1.10	3.53	0.00	
Synedropsis laevis [%]	0.00	0.00	0.00	0.00	0.00	0.00	0.00	0.00	0.00	2.91	
Synedropsis recta [%]	0.00	0.00	0.00	0.00	0.00	0.00	0.00	0.22	0.39	1.94	
Synedra/Synedropsis spp. [%]	0.00	0.00	0.00	0.00	0.00	0.00	0.00	0.00	0.00	0.00	
Synedropsis sp. [%]	0.00	0.00	0.16	0.00	0.00	0.00	0.00	0.00	0.39	0.00	
Thalassiosira antarctica (T1=cold) [%]	0.87	0.24	0.94	0.18	0.85	1.64	7.64	9.87	5.49	0.73	
Asteromphalus hookeri [%]	0.00	0.00	0.00	0.00	0.00	0.00	0.00	0.00	0.00	0.24	
Asteromphalus hyalinus [%]	0.00	0.00	0.00	0.00	0.00	0.00	0.00	0.00	0.00	0.00	
Eucampia antarctica var. antarctica [%]	0.00	0.00	0.00	0.00	0.00	0.00	0.00	0.00	0.39	0.00	
Fragilariopsis pseudonana [%]	0.00	0.00	0.00	0.18	0.00	0.00	0.00	0.00	0.00	0.00	
Fragilariopsis separanda [%]	0.00	0.00	0.00	0.00	0.00	0.00	0.00	0.00	0.00	0.00	
Proboscia inermis (winter) [%]	0.00	0.00	0.00	0.00	0.21	0.00	0.00	0.00	0.00	0.24	
Proboscia inermis (spring) [%]	0.00	0.00	0.00	0.00	0.00	0.18	0.64	0.00	0.39	0.00	
Proboscia alata [%]	0.00	0.00	0.00	0.00	0.21	0.00	0.00	0.44	0.00	0.49	
Proboscia spp. [%]	0.00	0.00	0.00	0.00	0.00	0.00	0.00	0.00	0.00	0.00	
Pseudo-nitzschia turgiduloides [%]	0.00	0.00	0.00	0.00	0.00	0.00	0.00	0.00	0.00	0.73	
Rhizosolenia antennata f. antennata [%]	0.00	0.00	0.00	0.00	0.00	0.00	0.00	0.00	0.00	0.00	
R. antennata f. semispina [%]	0.00	0.00	0.00	0.00	0.11	0.00	0.16	0.22	8.24	0.00	
R. polydactyla f. polydactyla [%]	0.00	0.00	0.00	0.00	0.00	0.00	0.00	0.00	0.00	0.00	
R. simplex [%]	0.17	0.00	0.31	0.00	0.00	0.00	0.00	0.00	1.57	0.24	
Shionodiscus gracilis var. expectus [%]	0.17	0.00	0.16	0.35	0.21	0.00	0.00	0.88	0.00	0.00	
Shionodiscus gracilis var. gracilis [%]	0.17	0.00	0.16	0.18	0.11	0.55	1.27	1.10	0.00	0.00	
Shionodiscus frenguelliopsis [%]	0.00	0.00	0.00	0.00	0.11	0.18	0.00	1.10	0.00	0.24	
Thalassiosira antarctica (veg+RS) [%]	6.45	17.83	20.31	8.23	8.49	10.20	30.10	16.45	8.24	7.28	
Thalassiosira gravida [%]	0.00	0.00	0.00	0.00	0.00	0.00	0.00	0.00	0.78	0.00	
Thalassiosira lentiginosa [%]	0.00	0.24	0.00	0.00	0.00	0.00	0.16	1.10	2.35	0.24	
Thalassiosira maculata [%]	0.00	0.00	0.00	0.00	0.00	0.00	0.00	0.00	0.00	0.00	
Thalassiosira oliverana [%]	0.00	0.00	0.00	0.00	0.00	0.00	0.16	0.00	0.39	0.00	
Thalassiosira ritscheri [%]	0.00	0.00	0.00	0.00	0.00	0.00	0.00	0.00	0.39	0.00	
Thalassiosira scotia [%]	0.35	0.00	0.00	0.00	0.11	1.09	6.85	1.97	0.00	0.00	
Thalassiosira antarctica/scotia [%]	3.83	0.00	0.00	0.35	0.42	0.73	8.60	4.82	1.18	0.00	
Thalassiosira tumida [%]	0.17	0.00	0.00	0.00	0.32	0.55	0.64	0.66	0.00	0.24	
Thalassiothrix antarctica [%]	0.00	0.00	0.00	0.00	0.00	0.00	0.00	0.00	0.00	0.00	
Trichotoxon reinbuldii [%]	0.00	0.00	0.00	0.00	0.11	0.18	0.16	0.22	3.14	0.49	
Azpeitia tabularis [%]	0.00	0.00	0.00	0.00	0.00	0.00	0.00	0.00	0.00	0.00	
Coscinodiscus acculus-irridis [%]	0.00	0.00	0.00	0.00	0.00	0.00	0.00	0.44	0.39	0.00	
Fragilariopsis kerguelensis [%]	0.17	0.24	0.00	0.53	0.11	0.18	0.64	2.41	0.78	0.73	
Nitzschia bicapitata [%]	0.00	0.00	0.00	0.00	0.00	0.00	0.00	0.00	0.00	0.00	
Shionodiscus oestrupii [%]	0.00	0.00	0.00	0.00	0.00	0.00	0.48	0.22	0.00	0.00	
Stephanopyxis turris [%]	0.00	0.00	0.00	0.00	0.00	0.00	0.00	0.00	0.00	0.00	
Actinocyclus ingens [%]	0.00	0.00	0.00	0.00	0.00	0.00	0.00	0.44	3.14	0.00	
Cladogramma sp. [%]	0.00	0.00	0.00	0.00	0.00	0.00	0.00	0.00	0.00	0.00	
Rouxia constricta [%]	0.00	0.00	0.00	0.00	0.00	0.00	0.00	0.22	2.35	0.00	
Rouxia leventerae [%]	0.00	0.00	0.00	0.00	0.00	0.00	0.00	0.00	0.78	1.21	
Unidentified taxa [%]	0.17	0.00	0.16	0.00	0.21	0.36	0.80	2.85	7.45	2.67	
Chaetoceros resting spores [%]	85.89	79.52	75.28	86.16	84.93	77.23	20.86	29.61	32.16	50.49	
Total [%]	100.00	100.00	100.00	100.00	100.00	100.00	100.00	100.00	100.00	100.00	
diatom counted	574	415	635	570	941	549	628	456	512	412	
Diatom concentration [valves/g]	3.23E+07	1.97E+07	1.86E+07	7.77E+07	5.65E+07	3.58E+07	9.79E+06	1.47E+07	8.01E+05	1.43E+06	
seasonal sea-ice assemblage [% without CRS]	14.96	13.17	12.96	30.08	28.89	31.77	35.61	47.95	34.30	73.35	
open ocean cold assemblage [% without CRS]	81.50	84.67	85.43	64.34	68.65	64.10	61.57	40.82	40.12	13.01	
open ocean warm assemblage [% without CRS]	2.36	1.30	1.01	3.72	0.61	1.32	1.41	4.10	1.74	2.56	
fossil species [% without CRS]	0.20	0.00	0.00	0.16	0.00	0.00	0.00	0.86	9.30	1.28	
benthic and epiphytic assemblage [% without CRS]	0.20	0.00	0.00	0.62	0.20	0.75	0.40	1.51	3.49	4.90	
Diatom concentration [valve/g without CRS]	3.99E+06	3.08E+06	4.84E+06	9.90E+06	7.33E+06	4.71E+06	7.75E+06	8.97E+06	5.38E+05	8.61E+05	

46 **References**

47 Massé, G., Belt, S.T., Crosta, X., Schmidt, S., Snape, I., Thomas, D.N., Rowland, S.J., 2011. Highly branched
48 isoprenoids as proxies for variable sea ice conditions in the Southern Ocean. *Antarctic Science* 23, 487–498.
49 doi:10.1017/S0954102011000381

50 Sinninghe Damsté, J.S., Rijpstra, W.I.C., Coolen, M.J.L., Schouten, S., Volkman, J.K., 2007. Rapid sulfurisation
51 of highly branched isoprenoid (HBI) alkenes in sulfidic Holocene sediments from Ellis Fjord, Antarctica.
52 *Organic Geochemistry* 38, 128–139. doi:10.1016/j.orggeochem.2006.08.003

53 Vorrath, M.-E., Müller, J., Rebolledo, L., Cárdenas, P., Shi, X., Esper, O., Opel, T., Geibert, W., Muñoz, P., Haas,
54 C., Kuhn, G., Lange, C.B., Lohmann, G., Mollenhauer, G., 2020. Sea ice dynamics in the Bransfield Strait,
55 Antarctic Peninsula, during the past 240 years: a multi-proxy intercomparison study. *Climate of the Past* 16,
56 2459–2483. doi:10.5194/cp-16-2459-2020

57