

Supplementary Information: Updated Isoprene and Terpene Emission Factors for the Interactive BVOC Emission Scheme (iBVOC) in the United Kingdom Earth System Model (UKESM)

James Weber¹, James A. King¹, Katerina Sindelarova², Maria Val Martin^{1,3}

5

¹School of Biosciences, University of Sheffield, Sheffield, S10 2TN, UK

²Department of Atmospheric Physics, Faculty of Mathematics and Physics, Charles University, Prague, Czech Republic

³Leverhulme Centre for Climate Change Mitigation, School of Biosciences, University of Sheffield, S10 2TN, Sheffield, UK

10 Correspondence to: James Weber (j.weber@sheffield.com)

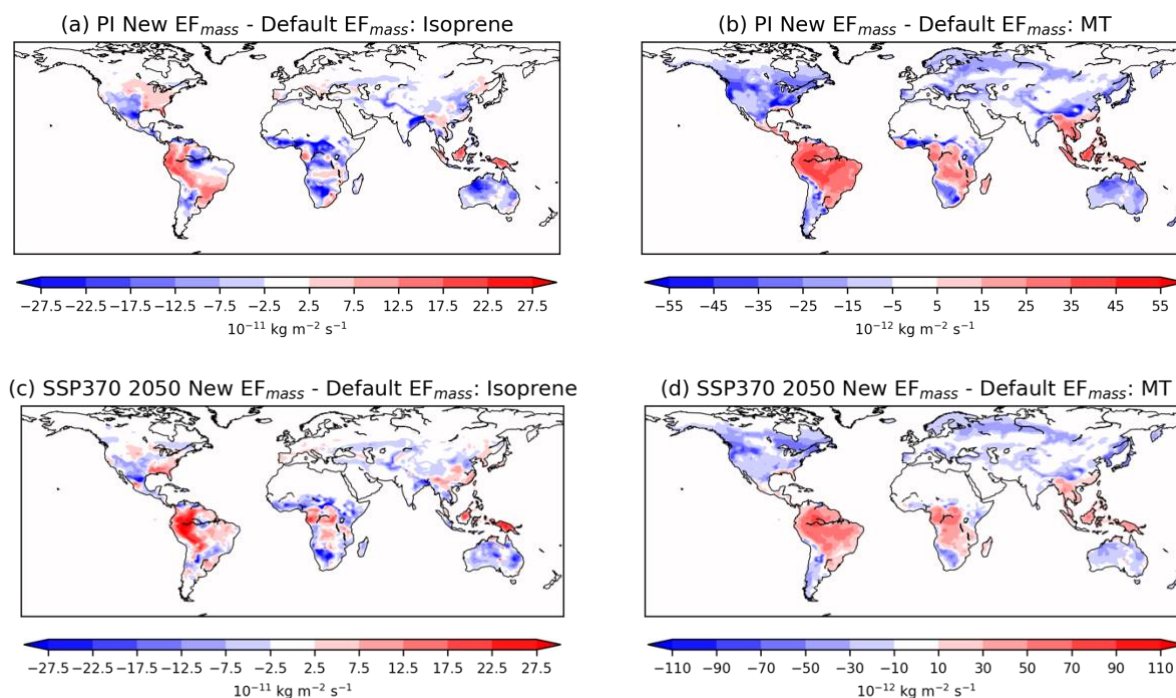


Fig S1. Change in (a, c) isoprene and (b, d) monoterpene emissions following the change in EF_{mass} values for the PI and SSP3-7.0 2050 scenarios.

15

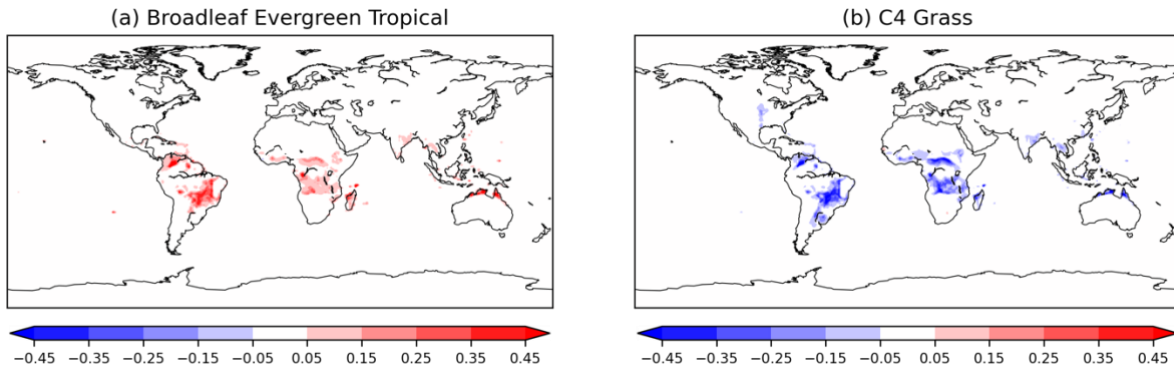


Fig S2. Change in PFT fractional coverage from 2010 to 2050 in the Maxforest scenario for (a) Broadleaf Evergreen Tropical trees and (b) C4 grass.