

Supporting Information for

Estimation of CH₄ emission based on advanced 4D-LETKF assimilation system

Jagat S. H. Bisht^{1*}, Prabir K. Patra^{1,2}, Masayuki Takigawa¹, Takashi Sekiya¹, Yugo Kanaya¹, and Naoko Saitoh², and, and Kazuyuki Miyazaki³

¹Research Institute for Global Change, JAMSTEC, Yokohama, 235-0019, Japan

²Center for Environmental Remote Sensing, Chiba University, Chiba, 263-8522, Japan

³Jet Propulsion Laboratory/California Institute for Technology, Pasadena, CA, USA,

*corresponding author's e-mail: jagatbisht@jamstec.go.jp

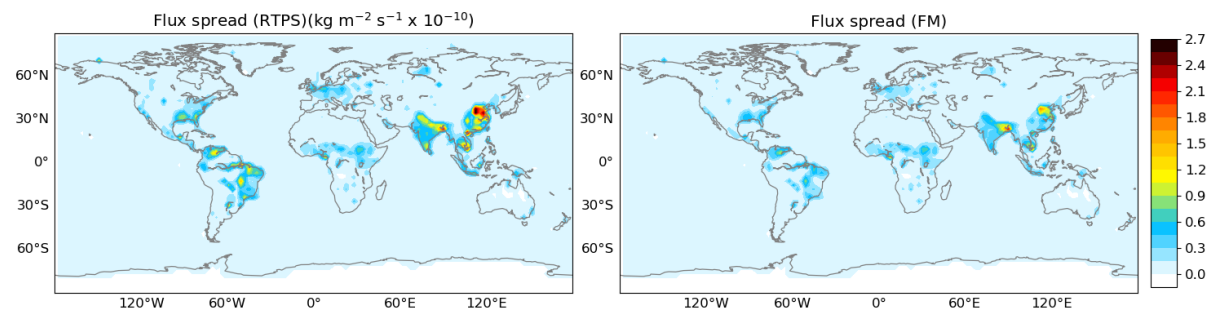


Figure S1. Initial analysis ensemble flux spread with RTPS and fixed multiplicative (FM) covariance inflation methods.

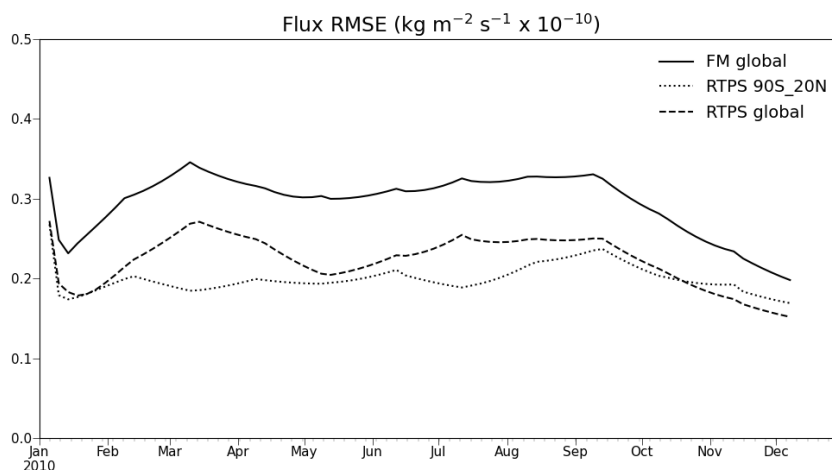


Figure S2. Time series of RMSE of surface CH₄ flux analysis, for 1 year of data assimilation at every grid using fixed multiplicative inflation and RTPS inflation methods over global landmass region.

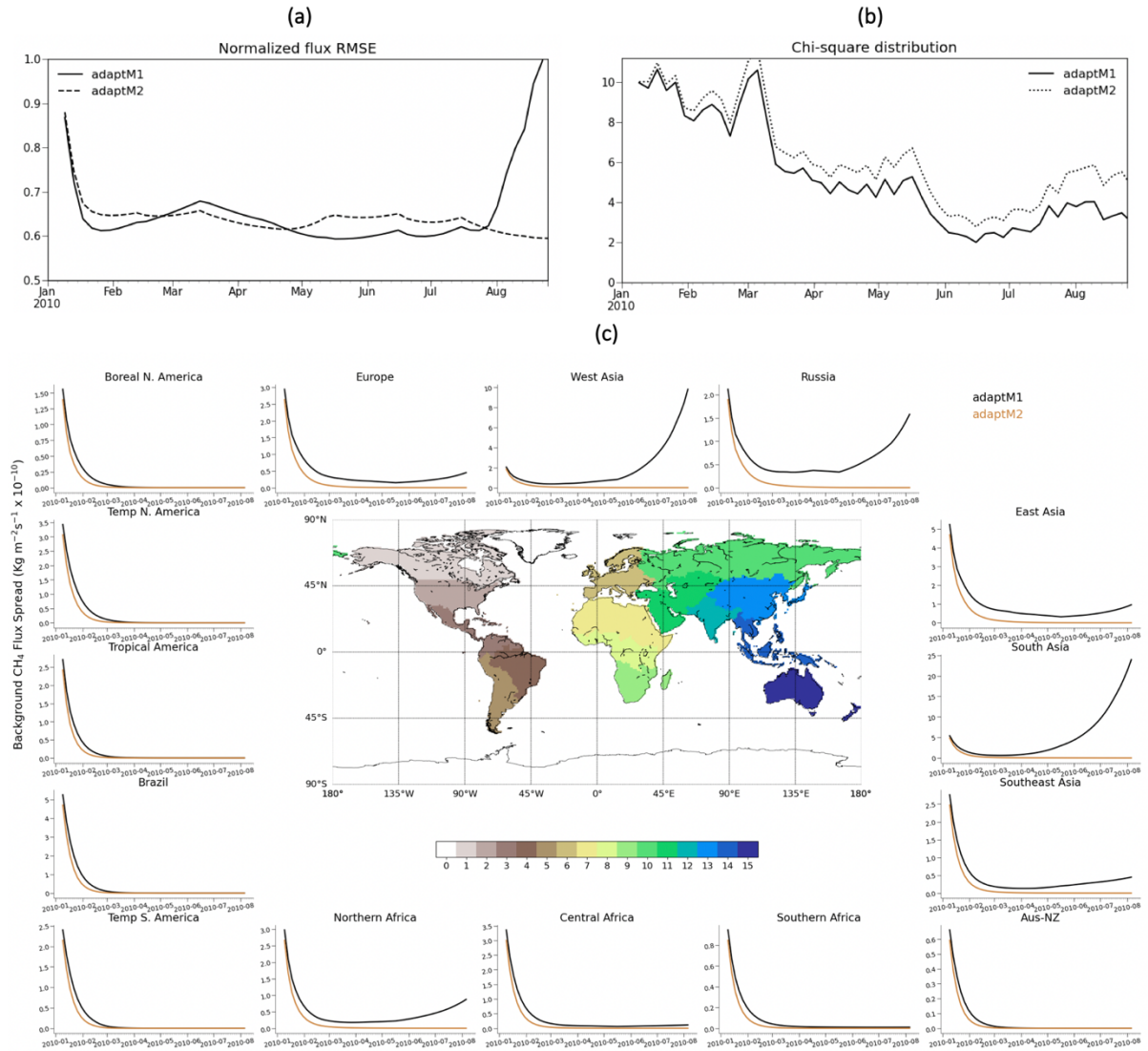


Figure S3 CH₄ LETKF flux estimation time series for; (a) normalized RMSE estimated using adaptive multiplicative inflation method in two sensitivity experiments (adaptM1; 50% initial inflation, adaptM2; 40% initial inflation), (b) chi-square distribution comparison for adaptive multiplicative sensitivity experiments (c) background error spread evolution for adaptive multiplicative inflation experiments.

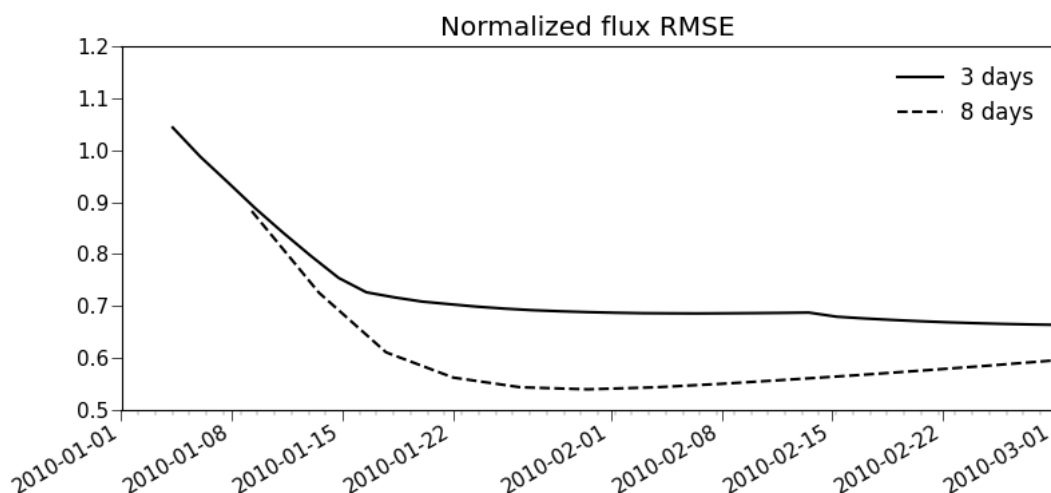


Figure S4. Time series of normalized RMSE estimated using 3 days and 8 days assimilation window for CH₄ LETKF data assimilation (inflation method: RTPS).

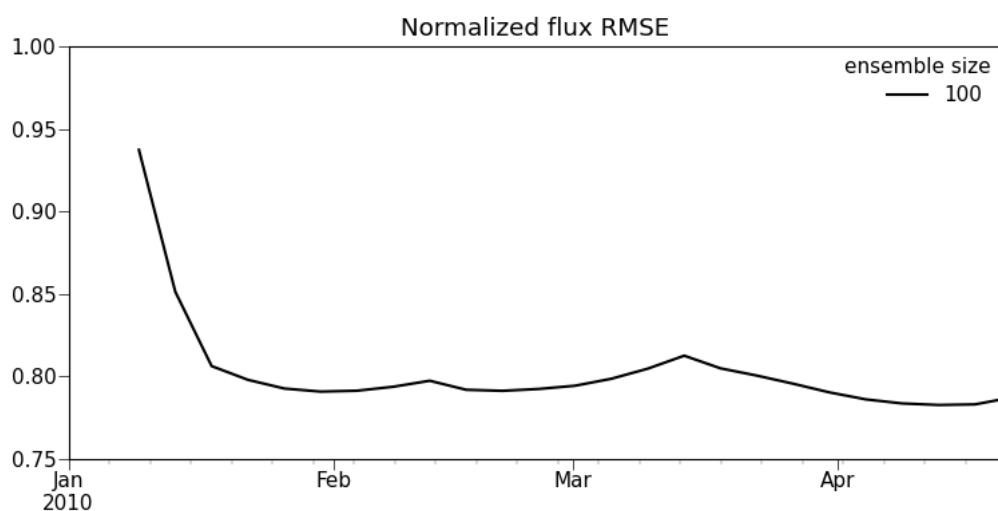


Figure S5. Time series of normalized RMSE of surface CH₄ flux analysis after assimilating GOSAT synthetic CH₄ observations shown for the period of 4 months using initial spread that is generated by considering the initial perturbation at each model grid by considering horizontal spatial error correlation between grid points among ensemble members, with a global mean correlation of 20%.

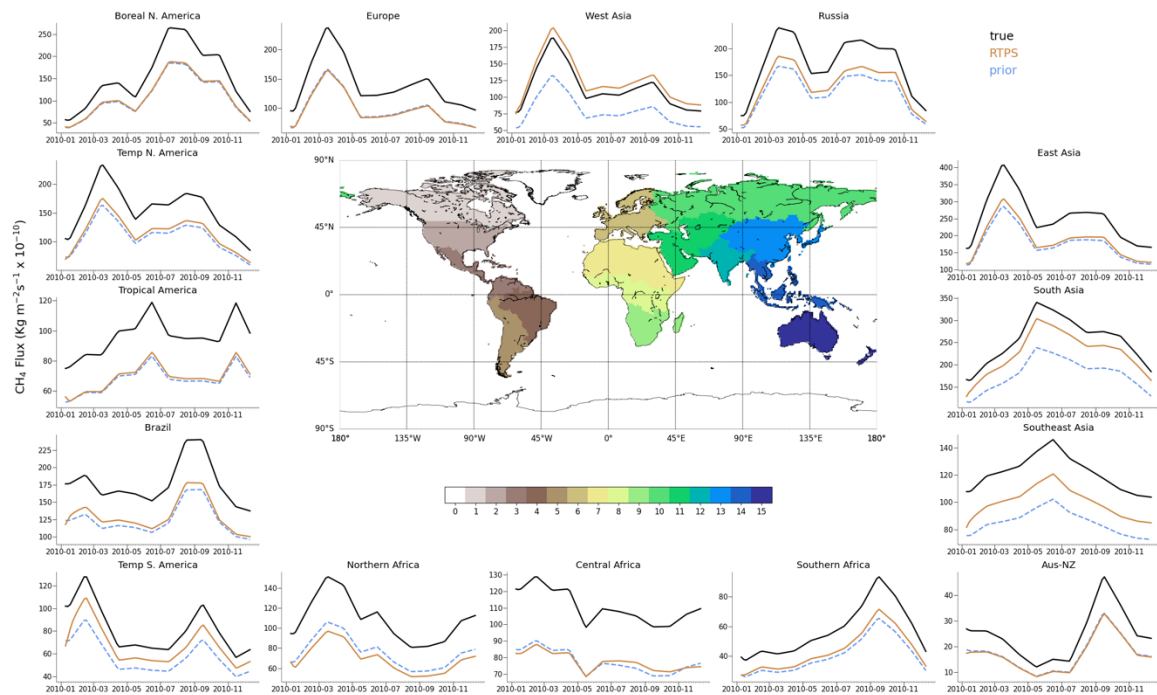


Figure S6. The 1-year CH₄ total flux seasonal cycles of true (black), prior (gray), and estimated from the LETKF (blue) in 15 regions using FM inflation method after assimilating synthetic GOSAT CH₄ observations (Fig. 6).

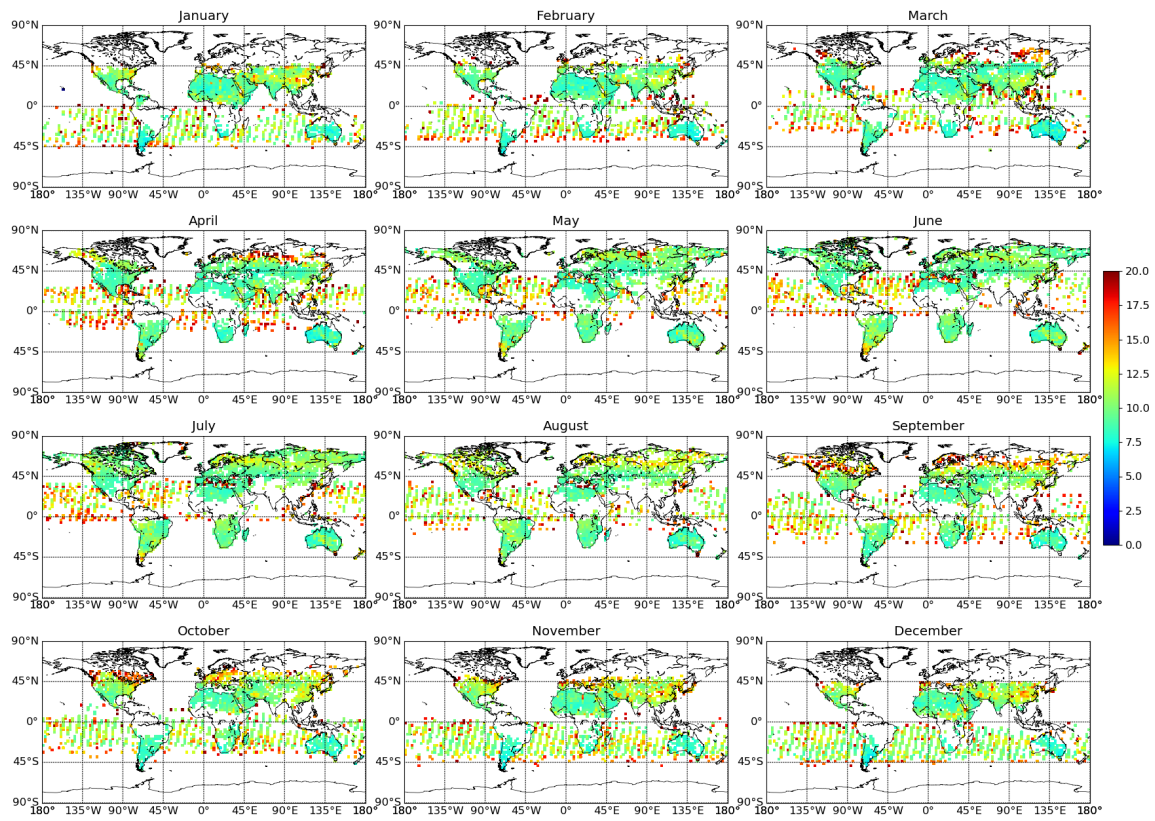


Figure S7. Monthly mean of real GOSAT observations retrieval error during the year 2010.