

Revisiting the global mean ocean mass budget over 2005-2020

Anne Barnoud¹, Julia Pfeffer¹, Anny Cazenave^{1,2}, Robin Fraudeau¹, Victor Rousseau¹, and Michaël Ablain¹

¹Magellium, 31520 Ramonville-Saint-Agne, France

²LEGOS, Toulouse, France

Correspondence: Anne Barnoud (anne.barnoud@magellium.fr)

Abstract. We investigate the ~~continuity and stability performances~~ of GRACE and GRACE Follow-On satellite ~~gravimetric missions by gravimetry missions in~~ assessing the ocean mass budget at global scale over 2005-2020, ~~focusing~~. ~~For that purpose, we focus~~ on the last years of the record (2015-2020) when GRACE and GRACE Follow-On faced instrumental problems. ~~For that purpose, we~~ We compare the global mean ocean mass estimates from GRACE and GRACE Follow-On to the sum of its
5 contributions from Greenland, Antarctica, land glaciers ~~and~~, terrestrial water storage ~~and~~ ~~atmospheric water content~~ estimated with independent observations. ~~A significant residual trend of -1.60 ± 0.36 mm/yr over 2015-2018 is observed~~ ~~Significant residuals are observed in the global mean ocean mass budget at interannual time scales. Our analyses suggest that the terrestrial water storage variations based on global hydrological model likely contributes to a large part to the misclosure of the global mean ocean mass budget at interannual time scales.~~ We also compare the ~~gravimetry-based GRACE-based~~ global mean ocean
10 mass with the altimetry-based global mean sea level corrected for the ~~thermosteric contribution~~. ~~We estimate and correct for the Argo-based thermosteric contribution (an equivalent of global mean ocean mass). After correcting for the wet troposphere drift of the wet tropospheric correction of radiometer on-board the Jason-3 altimetry mission computed from altimeter satellite, we find that mass budget misclosure is reduced but still significant. However, replacing the Argo-based thermosteric component by the ORAS5 ocean reanalysis or from CERES top of the atmosphere observations leads to closure of the mass budget over~~
15 the ~~on-board radiometer. It accounts for about 40 % of the budget residual trend beyond 2015. After correction, the remaining residual trend amounts to -0.90 ± 0.78 mm/yr over 2015-2018 and -0.96 ± 0.48 mm/yr over 2015-2020~~. ~~GRACE and GRACE Follow-On data might be responsible for part of the observed non-closure of the ocean mass budgets since 2015. However, we show that significant interannual variability is not well accounted for by the data used for the other components of the budget, including the thermosteric sea level time span. We conclude that the two most likely sources of error in the global~~
20 ~~mean ocean mass budget are the thermosteric component based on Argo and the terrestrial water storage~~. ~~Besides, missing contributions from the evolution of the deep ocean or the atmospheric water vapour may also contribute.~~ ~~contribution based on global hydrological models. The GRACE and GRACE Follow-On data are unlikely to be responsible on their own for the non-closure of the global mean ocean mass budget.~~

1 Introduction

25 The increase in ocean mass due to land ice melting ~~is~~was responsible for about two thirds of the global mean sea level rise over
2006-2018 (Fox-Kemper et al., 2021), which has major impacts for the populations living in coastal areas (e.g. IPCC, 2019;
Horwath et al., 2022). Since 2002, the Gravity Recovery and Climate Experiment (GRACE; Tapley et al., 2019) and GRACE
Follow-On (GRACE-FO; Landerer et al., 2020) satellite ~~gravimetric~~gravimetry missions allow monitoring the ocean mass
variations from space as the gravity field is directly sensitive to the redistribution of water masses on land and in the oceans.
30 These data are used to assess and understand the effects of climate change and climate variability on the Earth system, such as
variations of freshwater storage (e.g. Vishwakarma et al., 2021), ice sheet melting (e.g. Velicogna et al., 2020; Shepherd et al.,
2021), interannual variability of water mass transport (Pfeffer et al., 2022a), variations of Earth's energy imbalance (Hakuba
et al., 2021; Marti et al., 2022). Ensuring the stability of GRACE and GRACE-FO data is therefore very important for climate
and hydrological applications. Both missions have encountered some instrumental problems due to battery and accelerometer
35 failures (Bandikova et al., 2019). Moreover, the one-year gap between the GRACE and GRACE-FO missions has led to missing
data between mid-2017 (end of GRACE life) and mid-2018 (launch of GRACE-FO data). Despite these issues, no bias between
the two subsequent missions was reported by comparing GRACE and GRACE-FO data to independent estimates for specific
components such as ice sheet mass loss (Velicogna et al., 2020) or terrestrial water storage variations (Landerer et al., 2020).

However, Chen et al. (2020) reported a non-closure of the global mean sea level budget as of 2016 by comparing the global
40 mean ocean mass (GMOM) variations based on GRACE and GRACE-FO data to the altimetry-based global mean sea level
(GMSL) variations corrected for the Argo-based global mean steric sea level variations. While 40% of the non-closure was
identified as the result of errors in salinity measurements of the ~~Argo float~~Conductivity-Temperature-Depth sensors (CTDs)
of the Argo network (Barnoud et al., 2021), part of the non-closure ~~remains unexplained and is~~remained unexplained and
potentially due to other components of the sea level budget, including the GRACE and GRACE-FO-based ocean mass. ~~Here~~In
45 this study, we investigate whether the GRACE and GRACE-FO mass component ~~may~~could be responsible for the remaining
non-closure of the GMSL budget observed over the most recent years (Barnoud et al., 2021). We focus on the recent years
(beyond 2015) noting that the sea level and ocean mass budgets were successfully shown to be closed within uncertainties until
2016 (Horwath et al., 2022). Using state-of-the-art datasets, we assess the global mean ocean mass budget from January 2005.
We compare the GRACE and GRACE-FO-based GMOM with the sum of individual mass contributions from independent
50 data sources available until December 2018. These mass components include ice-mass ~~losses~~loss from the ice sheets, ice caps
and glaciers, and terrestrial water storage changes. We also compare the GMOM with the altimetry-based GMSL corrected for
thermosteric effects until December ~~2020-2020~~using three different datasets for the latter (Argo data, ORAS5 ocean reanalysis
and top of the atmosphere CERES data expressed in terms of thermosteric contribution to sea level).

2 Method

55 2.1 Global mean ocean mass budget approach

The ocean mass ~~change, or barystatic sea level change~~ (Gregory et al., 2019), ~~refers to the sea level change due to the freshwater fluxes between the oceans on the one hand and continents and atmosphere on the other hand.~~ The ocean mass budget consists in ~~assessing-comparing~~ the ocean mass change ~~from-with~~ independent observations. The global mean ocean mass change $\Delta GMOM$ can be broken down into its contributions as follows:

$$60 \quad \Delta GMOM = \Delta GIS + \Delta AIS + \Delta GIC + \Delta TWS + \Delta AWV + \epsilon_1 \quad (1)$$

~~Where-where~~ ΔGIS , ΔAIS , ΔGIC ~~and-~~ ΔTWS ~~and~~ ΔAWV refer to Greenland and Antarctica ice sheets mass loss, glaciers and ice caps melting ~~and-~~ terrestrial water storage changes ~~- ϵ and atmospheric water vapour content changes.~~ ϵ_1 accounts for other potentially negligible contributions (e.g. ~~atmospheric water vapour content and~~ permafrost thawing) and data errors.

65 GMOM variations can also be estimated from GMSL changes corrected for the global mean steric sea level change due to temperature and salinity variations. At global scale, the mean halosteric sea level change due to salinity variations is negligible (Gregory and Lowe, 2000; Llovel et al., 2019), so that the global mean steric sea level change is nearly fully accounted for by the global mean thermosteric sea level changes $\Delta GMTSL$. Therefore, the $\Delta GMOM$ can be written as:

$$\Delta GMOM = \Delta GMSL - \Delta GMTSL + \epsilon'_2 \quad (2)$$

70 where ϵ'_2 accounts for potentially negligible remaining contributions, including the nearly null global mean halosteric sea level, and errors (e.g. due to the evolution of the deep ocean not sampled by the Argo ~~float~~ network).

2.2 Data processing

To assess the ocean mass budget, we rely on time series from observations and models. To ensure the consistency between the various datasets, we apply the same processing to each of them. ~~For gridded ocean datasets, a restrictive mask is applied.~~ ~~The~~
75 ~~global means are computed from gridded datasets applying the same restrictive mask~~ so that all ~~data budget components~~ cover the same spatial extent. This mask excludes ~~polar oceans (above 66° North and below 66° South), marginal seas~~ ~~60° North and below 66° South and marginal seas~~ and a buffer zone of 200 km from the coastlines to minimise leakage effects from land mass variations estimated by GRACE and GRACE-FO data (Dobslaw et al., 2020). The mask extent is shown in Figure S1 of the ~~supplements~~ ~~Supplementary Materials~~. The global averages are weighted according to
80 the surface of sea water within each grid cell. For each time series, annual and semi-annual signals are removed by least-square fitting, a ~~three-months~~ ~~three-month~~ low-pass Lanczos filter is applied and the temporal average is removed. Some components of the budget are assessed from several available estimates. In such cases, ~~the-an~~ ensemble mean is computed as the average of the considered time series at each time step.

Uncertainties are assumed to be Gaussian and are provided as standard uncertainties, corresponding to the 68 % confidence level. When ensemble means are used to assess a component of the budget, the associated standard uncertainty σ is computed by combining the ~~standard deviation uncertainty~~ σ_{ens} from the spread of the datasets included in the ensemble (estimated as the difference between the maximal and the minimal value at each time stamp) and the standard uncertainties $\sigma_{1 \leq i \leq N}$ of the N individual time series when this information is provided, assumed independent:

$$\sigma = \sqrt{\underbrace{\sigma_{ens}^2 + \sum_{i=1}^N \sigma_i^3}_{\text{red}} \underbrace{\sigma_{ens}^2 + \sum_{i=1}^N \sigma_i^2}_{\text{blue}}} \quad (3)$$

This approach is used for the contribution of Greenland and Antarctica ice sheets melting and for the thermosteric sea level component. When assessing the budgets, the uncertainties associated with the sum of the components and with the residuals are obtained by summing the variances of the individual components involved.

All linear trends given in this article are computed by an ordinary least-squares regression. The associated uncertainties are estimated using an extended ordinary least-squares method that takes into account the data uncertainties. Trends of the various budget components are provided in Table S1 of the Supplementary Materials. The budget residuals are compared by computing their root mean square errors (RMSEs) provided in Table 1. All RMSEs and trends are computed from 1st January to 31st December of the specified years.

3 Data

3.1 GRACE/GRACE Follow-On data

We use six GRACE and GRACE-FO solutions from different processing centres, including three mass concentration (mascon) solutions and three spherical harmonics solutions. The mascon solutions are the Release 6 from the Jet Propulsion Laboratory (JPL; Watkins et al., 2015), the Center for Space Research (CSR; Save et al., 2016; Save, 2020) and the Goddard Space Flight Center (GSFC; Loomis et al., 2019). Over the oceans, the mascon solutions are provided as ocean bottom pressure data, with the ocean and atmospheric loading effects included. To obtain the ocean mass change, the spatial mean of the GAD product (Dobslaw et al., 2017), accounting for the static atmospheric surface pressure, is removed from the mascon data (Chen et al., 2019). We also use spherical harmonics solutions up to degree 60, including the Release 6 of the JPL, CSR (Bettadpur, 2018) and German Research Center for Geosciences (GZF; Bettadpur, 2018; Dahle et al., 2018, 2019). These data are provided as Stoke's coefficients of the residual gravitational potential, corresponding to anomalies with respect to modelled atmospheric and ocean effects. The ocean mass change is obtained from the Stokes' coefficients by adding the GAB product to restore the modelled contribution of the dynamic ocean. The Glacial Isostatic Adjustment (GIA) effect is already corrected in the mascon data with the ICE6G-D model (Peltier et al., 2018). We remove the same GIA model from the spherical harmonics solutions. Corrections are also applied for the degree-1 (Swenson et al., 2008; Sun et al., 2016) and degree-2, order-0 (C20) (Loomis et al., 2020) coefficients. No spatial filtering is applied before computing the global mean time series in order to keep the total ocean mass constant.

115 The individual and ensemble mean GMOM time series based on GRACE and GRACE-FO data are shown in Figure 1. The GMOM time series display [a mean trend of \$2.19 \pm 0.02\$ mm/yr over 2005-2020 as well as](#) important interannual variability mostly related to the El Niño Southern Oscillation ~~, in particular (ENSO) events. This is particularly visible~~ during the 2011 La Niña event (Fasullo et al., 2013) that caused a significant negative anomaly ~~and, and during~~ the 2015 El Niño event that caused a positive anomaly. All six solutions agree well except in early 2017 where the spherical harmonics solutions appear significantly
 120 different from the mascon solutions. This might be due to a higher noise level in the GRACE data (e.g. Fig. 2 from Chen et al., 2022) especially at low degrees ~~(e.g. abrupt changes in the C21 over mid-2016 to mid-2017, see for example Fig.7 from Dahle et al., 2019)~~ [\(e.g. abrupt changes in the degree-2, order-1 coefficient \(C21\) over mid-2016 to mid-2017, see for example Fig.7 from Dahle et al., 2019\)](#), better removed in mascon solutions using a spatially and temporally variable regularisation (e.g. Loomis et al., 2019). The difference between the mascon and spherical harmonics solutions is shown in Figure S2. No trend difference is observed between
 125 the two types of solutions over 2005-2020.

The uncertainty associated with the GRACE and GRACE-FO GMOM time series is computed from the variance-covariance matrix of the ensemble of spherical harmonics solutions constructed by Blazquez et al. (2018) by varying the processing centres and corrections applied for the geocenter motion, Earth oblateness, filtering, leakage and GIA.

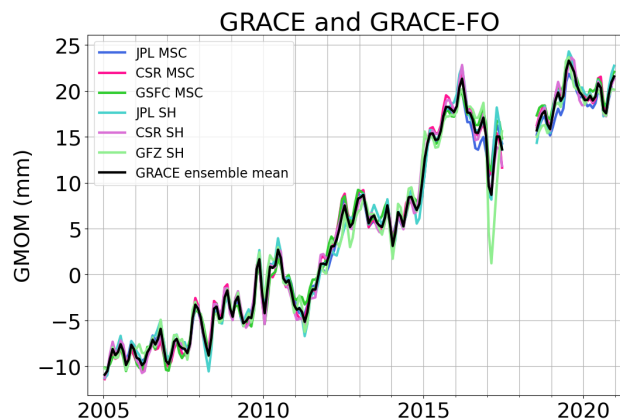


Figure 1. Global mean ocean mass time series from GRACE and GRACE-FO mascon (MSC) and spherical harmonics (SH) datasets. The black curve corresponds to the ensemble mean. Linear trends for all time series over different periods of time are provided in Table S1.

3.2 Greenland and Antarctica ice sheet data

130 The amount of ice mass changes from Greenland and Antarctic ice sheets can be estimated from three independent approaches (e.g. Shepherd et al., 2012; Hanna et al., 2013; Cazenave and the WCRP Global Sea Level Budget Group, 2018): (1) volume change estimated using altimetry data, (2) mass change estimated from gravimetric data, and (3) mass change estimated by the input-output method (IOM) using the surface mass balance from models and the ice discharge measured by InSAR data.

In this study, we consider mostly IOM and altimetry products from different datasets to estimate ice sheet mass loss independently from GRACE and GRACE-FO data. For ~~Greenland~~both Greenland and Antarctica, we use: (1) IOM estimate from Velicogna et al. (2020) ~~;~~and (2) multi-approach estimate from the Ice sheet Mass Balance Inter-comparison Exercise (IMBIE; Shepherd et al., 2021) ~~;~~(3) IOM estimate from ? and (4) altimetry estimate from ?. For Antarctica, we use: (1) IOM estimate from Velicogna et al. (2020) and (2) multi-approach IMBIE estimate (Shepherd et al., 2021).

IMBIE provides a combination of estimates obtained from the three methods and provides an uncertainty estimate from the spread of the estimates. It is worth noting that the IMBIE product is not independent from GRACE and GRACE-FO data, however, in view of the good agreement between the gravimetric and the altimetric approaches (IMBIE, 2018, 2020; Ootosaka, 2021), we choose to include these data in the global mean ocean mass budget assessment. Velicogna et al. (2020) ~~compares and~~provides estimates from the IOM and compares them with trends adjusted using GRACE data (nevertheless independent from GRACE-FO data). ~~?~~provides IOM data for Greenland only. ? provides estimates based on altimetric data (using ERS-1, ERS-2, Envisat, CryoSat-2 and Sentinel-3 missions). To obtain the sea level contribution from ice mass change, we assume that water is evenly redistributed over the global ocean. Considering a global ocean surface of $361.4 \times 10^8 \text{ km}^2$, 1 Gt of ice is equivalent to 1/361.4 mm of sea level change. In the following, we use ensemble mean time series from the above listed datasets, following the processing described in section 2.2. Figure 2 shows the time series of ocean mass contribution for the individual datasets as well as the ensemble means for Greenland and Antarctica. The ensemble means compared with a purely gravimetry estimate from Velicogna et al. (2020) shows that GRACE and GRACE-FO observations ~~allow a better time sampling rate, hence allow capturing~~capture a stronger temporal variability (Figure S3).

3.3 Land glaciers and ice caps data

To take into account the contribution ~~of~~from glaciers and ice caps to the ocean mass change, we use the recently published data from Hugonnet et al. (2021) covering the 2000-2019 period. The authors used the glacier outlines from the Global Land Ice Measurements from Space (Tielidze and Wheate, 2018) for the Caucasus Middle East region and from the Randolph Glacier Inventory 6.0 (RGI, 2017) everywhere else. They computed the glacier elevation time series using the following satellite digital elevation models (DEM): ASTER, ArcticDEM and Reference Elevation Model of Antarctica (REMA). The volume change of each glacier was computed with a weighted mean local hypsometric method (McNabb et al., 2019; Hugonnet et al., 2021). For our study, we do not include Greenland glaciers as they are already taken into account in the Greenland ice sheet data (section 3.2).

3.4 Terrestrial water storage models

Water stored on land contributes to the changes in global mean ocean mass through the exchange of water between land and oceans. The total terrestrial water storage (TWS) variations result from the water content variations in different reservoirs on land: snow, canopy, soil moisture, groundwater, lakes, reservoirs, wetland and rivers. The change in water content of these reservoirs are driven ~~both by the~~by both natural climate variability and ~~by~~human activities (e.g. construction of dams on rivers

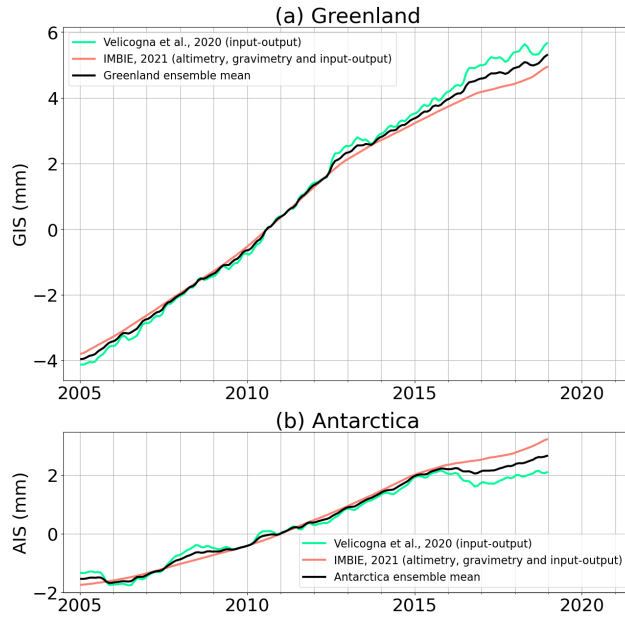


Figure 2. Contributions of (a) Greenland ice-sheet (GIS) and (b) Antarctica ice-sheet (AIS) melting to global mean ocean mass change. For each dataset, the method used to estimate the contribution (gravimetry, altimetry or input-output) is indicated in brackets. The black curves correspond to the ensemble means. Linear trends of all time series over different periods of time are provided in Table S1.

and groundwater abstraction). TWS variations can be estimated from GRACE and GRACE-FO data but here we use global hydrological models independent from gravimetric data.

We consider two hydrological models. The ISBA-CTRIP (Interaction Soil-Biosphere-Atmosphere, Total Runoff Integrating Pathways from the Centre National de Recherches Météorologiques) provides estimates until the end of 2018 (Decharme et al., 2010, 2019). The WaterGAP (Water Global Assessment and Prognosis) global hydrological model (WGHM) provides data until the end of 2016 (Döll et al., 2003, 2015; Müller Schmied et al., 2020; Müller Schmied et al., 2021). The WGHM provides four estimates of TWS, using two precipitation models and two assumptions on consumptive irrigation water use. The comparison of the ISBA-CTRIP and WGHM models is shown in Figure 3. Over 2005-2016, a trend difference of -0.41 ± 0.24 mm/yr is observed between the two models (Table S1 and Figure 3b). This is likely due to the fact that, unlike WGHM, ISBA-CTRIP does not include the human-induced contributions (HIC) to the TWS estimate. The TWS HIC has become increasingly important over the last decades, reaching a trend of 0.37 (0.30 to 0.45) mm/yr (expressed in sea level equivalent) over 2003-2016 as estimated using WGHM by Cáceres et al. (2020). Adding this trend to ISBA-CTRIP TWS reduces the trend difference between the two models to -0.04 ± 0.28 mm/yr.

In this work, as we aim at understanding the non-closure of the budget after 2016, we use the ISBA-CTRIP model which provides data beyond 2016, and account for the TWC HIC trend estimated by Cáceres et al. (2020). As standard uncertainties,

we assign the range of trends provided by Cáceres et al. (2020) over 2003-2016, i.e. 0.13 mm/yr for the climate-driven TWS and 0.15 mm/yr for the human-induced contribution.

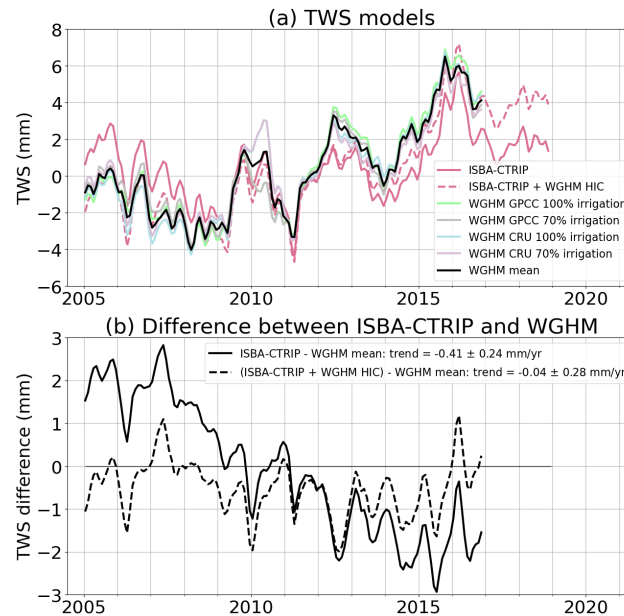


Figure 3. Comparison of ISBA-CTRIP and WGHM estimates of terrestrial water storage (TWS) variations. (a) ISBA-CTRIP and WGHM time series. The black curve corresponds to the mean of the four WGHM estimates. The red dotted curve corresponds to the sum of the ISBA-CTRIP climate contribution of the WGHM trend of human-induced contribution (HIC). (b) Difference between ISBA-CTRIP TWS and WGHM mean estimate of TWS. Linear trends of all time series over different periods of time are provided in Table S1.

3.5 ~~Altimetry-based GMTSL data~~ Atmospheric water vapour

185 The variations of water content stored in the atmosphere is estimated from the European Centre for Medium-Range Forecasts (ECMWF) atmosphere reanalysis ERA5 (Hersbach et al., 2019) providing the total column water vapour content over both land and oceans. To obtain the sea level equivalent contribution, we assume a uniform distribution of the water volume over the global ocean. Uncertainties are not provided with this component.

3.6 Altimetry-based GMSL data

190 We compute the GMSL time series from the vDT2021 sea level product operationally generated by the Copernicus Climate Change Service (C3S, <https://climate.copernicus.eu>). This dataset is dedicated to ~~the sea level stability for climate studies~~ climate-related sea level studies due to the long-term stability of the altimetry missions used to generate the data (Legeais et al., 2021). It provides daily sea level anomalies grids at a 1/4 degree spatial resolution from January 1993 until August 2021, based at any time on a reference altimeter mission (TOPEX/Poseidon, Jason-1, Jason-2, Jason-3 and Sentinel-6 Michaël Freilich),

plus a complementary mission (ERS-1,2, Envisat, Cryosat or SARAL/AltiKa depending on the time frame) to increase the spatial coverage. The GMSL time series is corrected for the GIA effect considering a value of -0.3 ± 0.05 mm/yr (Peltier, 2004) as well as for the sea floor subsidence due to the present-day ice melting with a rate of -0.13 ± 0.01 mm/yr (Frederikse et al., 2017; Lickley et al., 2018). The GMSL and GMSL trend uncertainties are computed using the uncertainty budget and computational method detailed by Ablain et al. (2019).

Barnoud et al. (2022a) showed that the wet tropospheric correction (WTC) derived from the microwave radiometer (MWR) instrument on-board the Jason-3 satellite, launched in 2016, is likely drifting. This drift was outlined from the comparison of Jason-3's radiometer WTC with a WTC derived from highly stable water vapour climate data records (Schröder et al., 2016) as well as with the radiometer's WTC from the SARAL/AltiKa and Sentinel-3A altimetry missions (Barnoud et al., 2022a; ?) (Barnoud et al., 2022a, b). The Jason-3 radiometer drift is estimated from the global mean WTC differences between Jason-3, SARAL/AltiKa, Sentinel-3A and the climate data records (Figure 4). The global mean WTC differences show similar low frequency variations. An overall trend of -0.5 mm/yr is observed, but most of the drift is occurring during the first two years of the Jason-3 mission, with a drop of almost 3 mm. This drift results in an overestimation of the GMSL rise since 2016. We compute the average of the three global mean WTC differences that we further use as correction for the GMSL over the Jason-3 period.

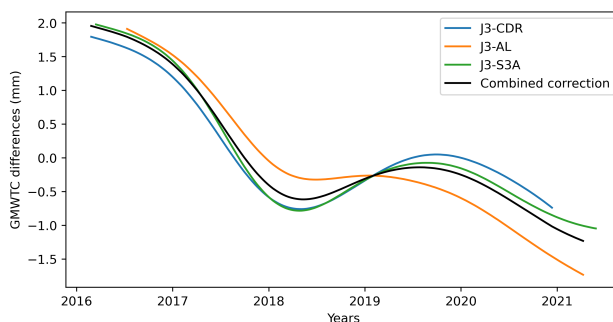


Figure 4. Differences between global mean wet tropospheric corrections (GMWTC) from Jason-3 (J3) microwave radiometer (MWR), derived from water vapour climate data records (CDRs), from SARAL/AltiKa (AL) MWR and from Sentinel-3A (S3A) MWR. The average (black curve) of these differences is used as empirical correction for the drift of Jason-3 radiometer.

3.7 Thermosteric sea level data

210 3.7.1 Argo in-situ data

The global mean thermosteric sea level (GMTSL) is computed from seven in-situ oceanographic datasets: (a) EN4.2.2 data from the Met Office Hadley Center (Good et al., 2013) with Gouretski and Reseghetti (2010) correction applied, (b) IAP (Institute of Atmospheric Physics from the Chinese Academy of Sciences) data (Cheng et al., 2017, 2020), (c) the IFREMER (Institut Français de Recherche pour l'Exploitation de la Mer) ISAS (In Situ Analysis System) 20 dataset (Gaillard et al.,

215 2016), (d) Ishii et al. (2017) data, (e) JAMSTEC (Japan Agency for Marine-Earth Science and Technology) MOAA GPV
(Grid Point Value of the Monthly Objective Analysis using the Argo data) version 2021 product data set (Hosoda et al., 2010),
(f) NOAA (National Oceanic and Atmospheric Administration) data (Levitus et al., 2012; Garcia et al., 2019) and (g) SIO
(Scripps Institute of Oceanography) data (Roemmich and Gilson, 2009). The seven datasets are mainly based on Argo data
(Argo, 2021) for our study period. It is important to note that, over the last few years, delay-mode quality-controlled Argo data
220 are not necessarily available yet, so that mostly real-time data are used in the provided datasets, even though real-time data
are not suitable for climate studies. In addition to Argo data, EN4 and IAP datasets also include MBT and XBT Mechanical
Bathythermograph (MBT) and Expendable Bathythermograph (XBT) data. JAMSTEC includes Triangle Trans-Ocean Buoy
Network (TRITON) data and additional conductivity-temperature-depth profiler data from ships.

From these datasets, we compute the thermosteric sea level change due to temperature variations between 0 and 2000 m
225 depth. A linear trend of 0.12 ± 0.03 mm/yr is added to the GMTSL to take into account the contribution of the deep ocean
(Chang et al., 2019). Figure [5-5a](#) shows the individual GMTSL time series as well as the ensemble mean.

3.7.2 Ocean reanalysis

For comparison with the in-situ thermosteric data, we use the ECMWF ocean reanalysis ORAS5. No available uncertainty
are associated with the ORAS5 GMTSL estimate. However, reanalyses have the advantage to use physical modeling in order
230 to provide data over the full ocean, including coastal areas, marginal seas and deep ocean. To enable comparison with the
Argo-based GMTSL, the same mask is applied to compute the global mean from ORAS5 data. However, the computation
integrates the full water column from 0 to 6000 m, so that we do not need to add the deep ocean linear contribution as for
the Argo-based GMTSL. The GMTSL trend from the ORAS5 reanalysis amounts to 1.77 mm/yr which is slightly higher
than the one from the Argo in-situ ensemble mean (Figure 5b). Sub-annual and inter-annual GMTSL variations show similar
235 amplitudes between in-situ data and the ORAS5 reanalysis (Figures 5a and b). The ORAS5 data allow us to compute the
deep ocean contribution to the GMTSL (Figure S4): the deep ocean thermosteric contribution is not perfectly linear, but the
variations remain negligible compared to the linear estimate from Chang et al. (2019).

3.7.3 Top of the atmosphere radiative fluxes measurements

We also use the GMTSL derived from the measurements of the radiative fluxes at the top of the atmosphere by the Clouds and
240 the Earth's Radiant Energy System (CERES) Energy Balanced and Filled (EBAF) instruments (Loeb et al., 2018; Kato et al., 2018)
. CERES-EBAF data measures the Earth's energy imbalance (EEI). Knowing that about 90 % of the excess of energy is stored
as heat into the oceans (von Schuckmann et al., 2020), the ocean heat content change can be derived from the CERES-EBAF
EEI, which in turn provides an estimate of the GMTSL (eg. Marti et al., 2022). CERES-EBAF data do not constrain well the
EEI mean, hence the GMTSL trend, but provide robust estimate of the interannual variability. In the following, we constrain
245 the trend of the CERES GMTSL to equal the ORAS5 GMTSL trend. Short-term variations (below 2 to 3 years) observed by
in-situ and reanalysis data are not recovered by CERES measurements (Figures 5c) because CERES only assess the climatic
component of thermal variations of the ocean (Palmer and McNeill, 2014). However, the interannual variations are consistent

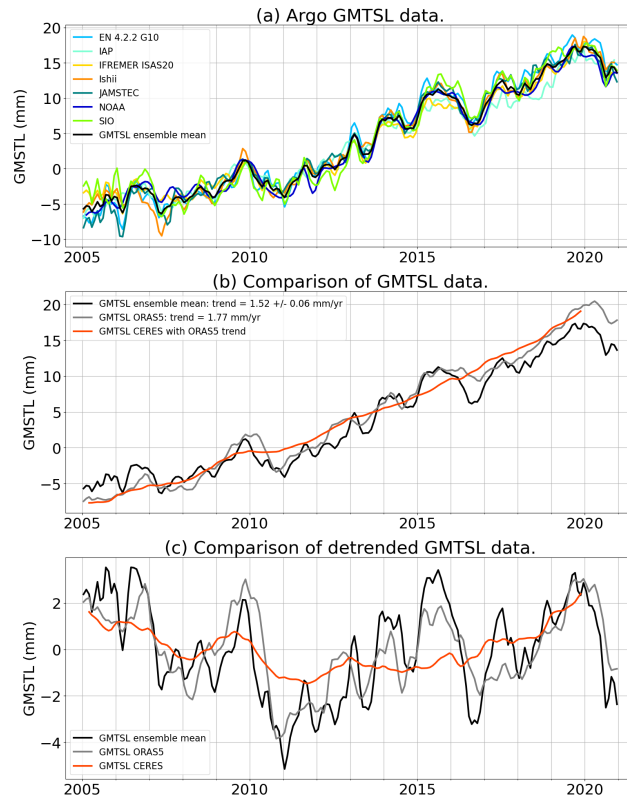


Figure 5. Global mean thermosteric sea level (GMTSL) variations time series. [\(a\) GMTSL](#) from the seven datasets [based on in-situ measurements](#) used in this study. The black curve corresponds to the ensemble mean. Linear trends of all time series over different periods of time are provided in Table S1. [\(b\) Comparison of the GMTS estimates from in-situ data, ORAS5 reanalysis and CERES observations.](#) [\(c\) Comparison of the detrended GMTSL time series.](#)

[\(Figure 5c\).](#) No uncertainty is associated with the CERES-based GMTSL estimate. As ORAS5, CERES is used in this study for comparison with the Argo-based GMTSL ensemble mean.

250 4 Resulting global mean ocean mass budgets

4.1 Budget from the sum of mass contributions

Figure 6a shows the [global mean](#) ocean mass budget comparing the GRACE-based GMOM to the sum of its contributions from ice sheets, ice caps, glaciers ~~and~~, [terrestrial water storage and atmosphere water content](#). The budget residuals are shown in Figure 6b. The drop in the gravimetry-based GMOM in early 2017 is [likely](#) linked to the processing of spherical harmonic solutions ~~and~~, [as it](#) does not appear when using mascon solutions only as shown in Figures S2 and S4. ~~No significant residual trend is observed over 2005-2018, but a significant negative residual trend estimated at -1.60~~ [S5.](#) ~~We~~

260 computed the RMSE of the residuals over two time spans, 2005-2014 and 2015-2018. These amount to 1.69 mm and 3.15 mm respectively (Table 1). While the 2015-2018 time span is very short, we also estimate a residual linear trend of -1.56 ± 0.36 mm/yr ~~is observed over 2015-2018 over these four years~~ (Table S1). ~~This residual trend~~ The ocean mass budget alone does not allow us to conclude on the stability of the observations. Indeed, the observed residuals could be due ~~to an underestimation of either to the gravimetry-based GMOM as well as to an overestimation of the freshwater input component or to any of the individual mass contributions estimated by the land ice and water storage variation models or neglected contribution from the atmospheric water vapour for instance.~~ However, recent studies have shown that global hydrological models tend to underestimate interannual and decadal variations in the terrestrial water storage when compared to GRACE and GRACE Follow-On (e.g. Scanlon et al., 2018; Pfeffer et al., 2022b). Thus it is very likely that the larger residuals reported for 2015-2018 compared to the 10-year long time span (2005-2014) reflect interannual uncertainties of the hydrological model used in this study.

Table 1. Budget residual root mean square errors (RMSE) in mm. $GMSL_{J3D}$ stands for the altimetry-based GMSL corrected for the Jason-3 WTC drift. $GMTSL_{Argo}$, $GMTSL_{ORAS5}$ and $GMTSL_{CERES}$ stand for the GMTSL estimated from the Argo ensemble mean, from the ORAS5 ocean reanalysis and from CERES observations respectively. RMSE values are computed over common periods of time to enable comparisons (from 1st January to 31st December of the specified years).

Residual RMSE (mm)	First 10 years	Last 4-6 years	Full period	Figures
	2005-2014	2015-2018	2005-2018	
$GMOM-(GIS+AIS+GLA+TWS+AWV)$	1.69 ± 0.06	3.15 ± 0.55	2.21 ± 0.09	Fig. 6b
$GMOM-(GMSL-GMTSL_{Argo})$	1.65 ± 0.46	3.15 ± 2.85	2.18 ± 0.51	Fig. S6b
$GMOM-(GMSL_{J3D}-GMTSL_{Argo})$	1.65 ± 0.46	2.46 ± 2.28	1.92 ± 0.44	Fig. 7b
$GMOM-(GMSL_{J3D}-GMTSL_{ORAS5})$	2.87 ± 0.28	1.70 ± 0.59	2.59 ± 0.19	Fig. 8b
$GMOM-(GMSL_{J3D}-GMTSL_{CERES})$	3.70 ± 0.37	2.14 ± 0.85	3.33 ± 0.25	Fig. 9b
$GMSL_{J3D}-(GMTSL_{Argo}+GIS+AIS+GLA+TWS+AWV)$	2.05 ± 0.56	5.21 ± 4.07	3.28 ± 0.71	Fig. S8b
$GMSL_{J3D}-(GMTSL_{ORAS5}+GIS+AIS+GLA+TWS+AWV)$	2.20 ± 0.17	2.58 ± 0.71	2.32 ± 0.15	Fig. 10b

4.2 Comparing with the altimetry-based GMSL corrected for the thermal expansion

270 We also compare the gravimetry-based GMOM to the altimetry-based GMSL corrected for the thermal expansion using in-situ oceanographic data. Results are shown in Figure 7a ~~with and without~~ correcting Jason-3 altimetry data for the WTC of Jason-3 MWR drift as of 2016. Figure S6 shows the comparison without the Jason-3 WTC drift correction. Correcting for the Jason-3 WTC drift (Figure 7, dotted lines), the budget residual trend amounts to -0.38 ± 0.22 mm/yr over 2005-2020 and -0.96 ± 0.48 mm/yr over 2015-2020. RMSE over 2015-2018 amounts to 2.46 mm instead of 3.15 mm without correction (Table 1). The budget residual trend RMSE is reduced by about 40% beyond 2015 compared to the case where no Jason-3 WTC drift correction is applied (residual trend of -0.52 ± 0.22 mm/yr over 2005-2020 and -1.52 ± 0.45 mm/yr over 2015-2020) 22%.

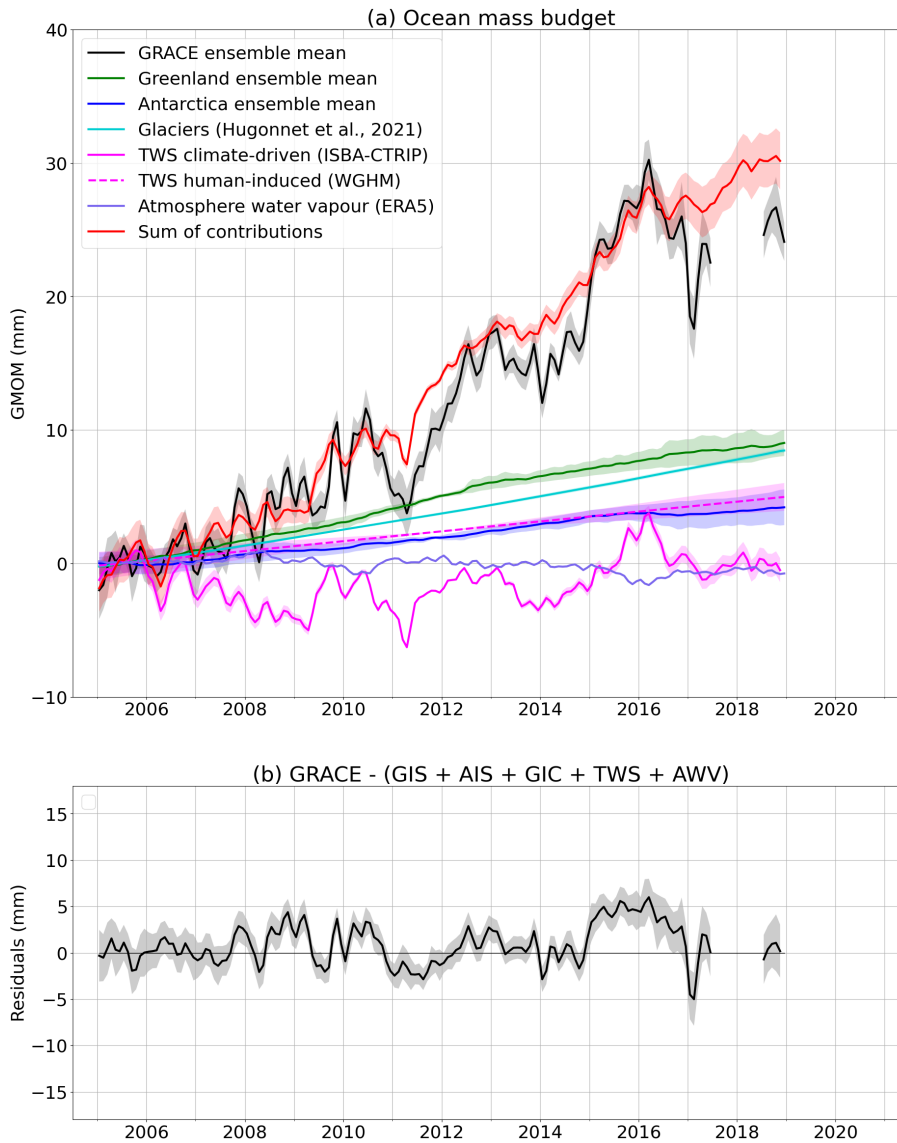


Figure 6. Ocean mass budget. (a) Budget with GRACE/GRACE-FO based global mean ocean mass (GMOM) variations and the sum of its contributions from Greenland (GIS), Antarctica (AIS), land glaciers (GIC) and terrestrial water storage (TWS) and atmospheric water vapour (AWV) variations. TWS variations are split into the climate-driven component from ISBA-CTRIP and the human-induced contribution trend estimated from WGHM (Cáceres et al., 2020). (b) Budget residuals. Linear trends of all components over different periods of time are provided in Table S1.

Although this is a significant improvement, the empirical Jason-3 WTC drift correction does not allow closing the mass budget within uncertainties, leaving an unexplained residual drift beyond 2015. **This important issue needs further investigations.**

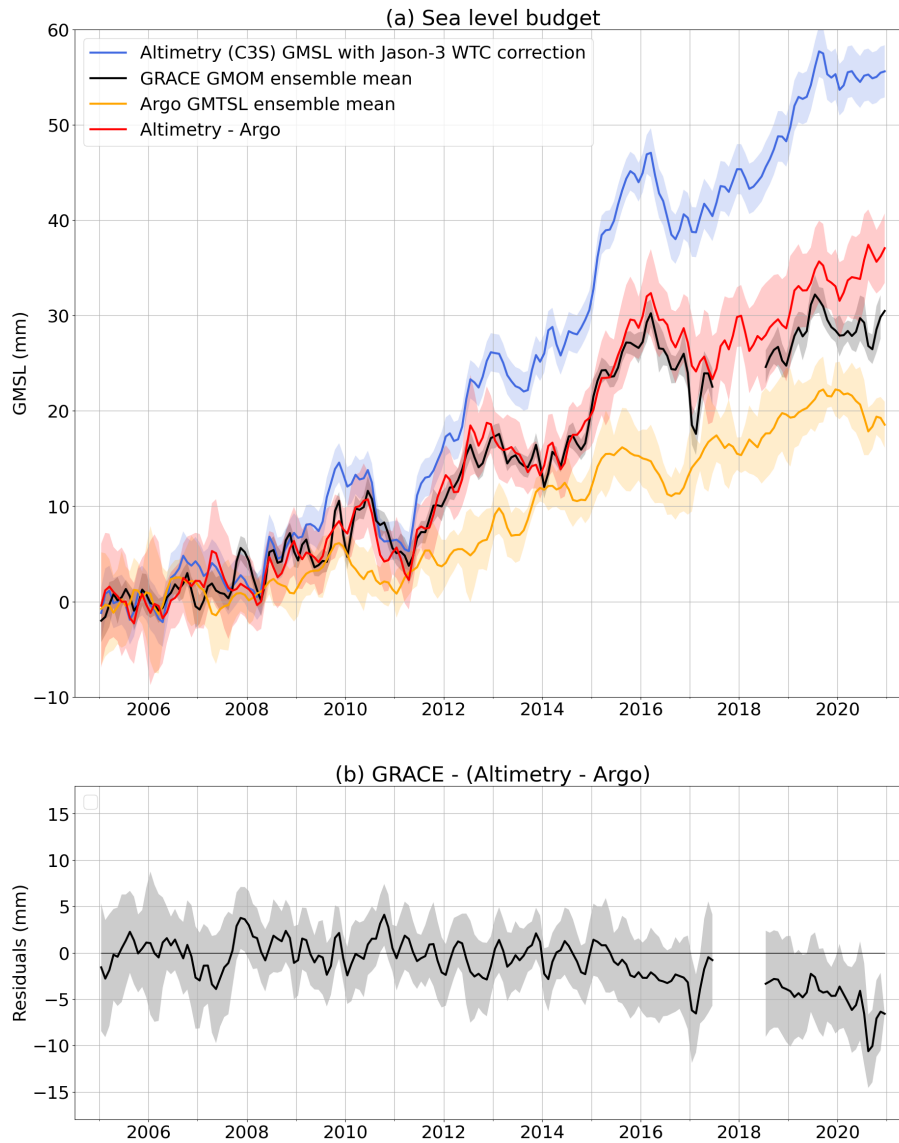


Figure 7. Sea level budget. (a) Budget with GRACE/GRACE-FO based global mean ocean mass (GMOM) variations compared to altimetry-based GMSL (corrected for the Jason-3 radiometer WTC drift) and Argo-based GMTSL. (b) Budget residuals. ~~The budget and residuals are assessed without (solid lines) and with (dashed lines) correcting for the Jason-3 radiometer drift.~~ Linear trends of all components over different periods of time are provided in Table S1.

4.3 Discussion

In section 4, we compared the GRACE and GRACE-FO based GMOM to the sum of the individual ocean mass contributions (section 4.1) and to the GMSL corrected for thermal expansion and for Jason-3 WTC drift (section 4.2). We found that

280

the GMOM budget residuals show significant trends of -1.60 ± 0.36 mm /yr over 2015-2018 with respect to the individual ocean mass contributions and of -0.96 ± 0.48 mm /yr over 2015-2020 with respect to the altimetry corrected for the thermal expansion. Note that we compute linear trends to quantify the non-closure. However, over such short time spans, we cannot exclude that ~~In order to assess the potential impact of the Argo data spatial coverage, of the lack of delay-mode quality-controlled data and of the residuals mostly result from interannual signals (instead of linear trends) not well accounted for by the data used to estimate the components of deep ocean contribution on the estimate of the thermosteric component, we reassess the sea level budget using the ORAS5 reanalysis instead of the Argo ensemble mean (Figure 8). Using ORAS5 GMTSL, the budget residual RMSE is reduced to 1.70 mm instead of 2.46 mm with the budgets. For completeness, Argo ensemble mean (Table 1). We note a long period interannual signal in the residuals (Figure 8b) leading to an increase of the RMSEs estimated over the full period (Table 1) even though the residual trend over the full period is not significant (Table S1).~~

Figure 9 shows the same budget, using CERES GMTSL (with ORAS5 overall trend). The residuals show that CERES GMTSL cannot observe extreme events such as the 2011 La Niña (Figure 9b). In fact, CERES does not observe the subannual variations of GMTSL that are not linked to the ~~altimetry-based GMSL corrected for Jason-3 WTC drift is also long-term storage of heat in the ocean. This lead to higher RMSE values than for ORAS5, but the RMSE over 2015-2018 is improved compared to the sum of the thermal expansion and of the individual ocean mass contributions (Figure 8). This is an alternative budget of sea level, independent of GRACE and GRACE-FO. Nevertheless, the residual time series still displays significant interannual variability, especially between 2015 and 2017 (Figure 8b). This means that the gravimetry-based GMOM cannot be fully responsible for the non-closure of the ocean mass budget observed budget using Argo data (Table 1). We also observe a long period interannual signal in the residuals, similar to the one observed in the budget using ORAS5 GMTSL.~~

Therefore, the sea level budget residuals (Figures 7, 8 and 9) tend to show that the budget can be closed over the last few years ~~. In an effort to understand the causes of the remaining (2015-2020) when using ORAS5 or CERES estimates instead of Argo data. This suggests that the GRACE and GRACE-FO data are unlikely responsible for the non-closure, we compare the residuals of the budgets assessed in this study (Figure 9). We have estimated three types of budget residuals: (i) the gravimetry-based GMOM minus the sum of of the budget observed in Figures 6 and 7. The non-closure of the sea level budget using the Argo-based GMTSL may be solved in the future when delay-mode quality-controlled data will be fully available and integrated in the gridded datasets.~~

For completeness, the altimetry-based GMSL corrected for ~~the thermal expansion and for Jason-3 WTC drift~~, (ii) the gravimetry-based GMOM minus is also compared to the sum of the individual mass contributions, and (iii) the altimetry-based GMSL minus the thermal expansion and the individual mass contributions. In Figure 9, we compare the residuals related to the gravimetry-based GMOM (Figure 9a), to the altimetry-GMSL corrected for the thermal expansion and for Jason-3 radiometer drift (Figure 9b) and to the land ice and water storage models (Figure 9c). Residual time series involving the GRACE and GRACE-FO-based GMOM corrected either with the sum of mass contributions or with the GMSL corrected for the thermal expansion both exhibit a significant negative linear trend over 2015-2018. The gravimetry-based GMOM might be partly responsible for this non-closure. However, significant residuals also occur when computing the residuals of the budget without using the ~~ORAS5 GMTSL contribution and of the individual ocean mass contributions (Figure 10). This is a sea level budget,~~

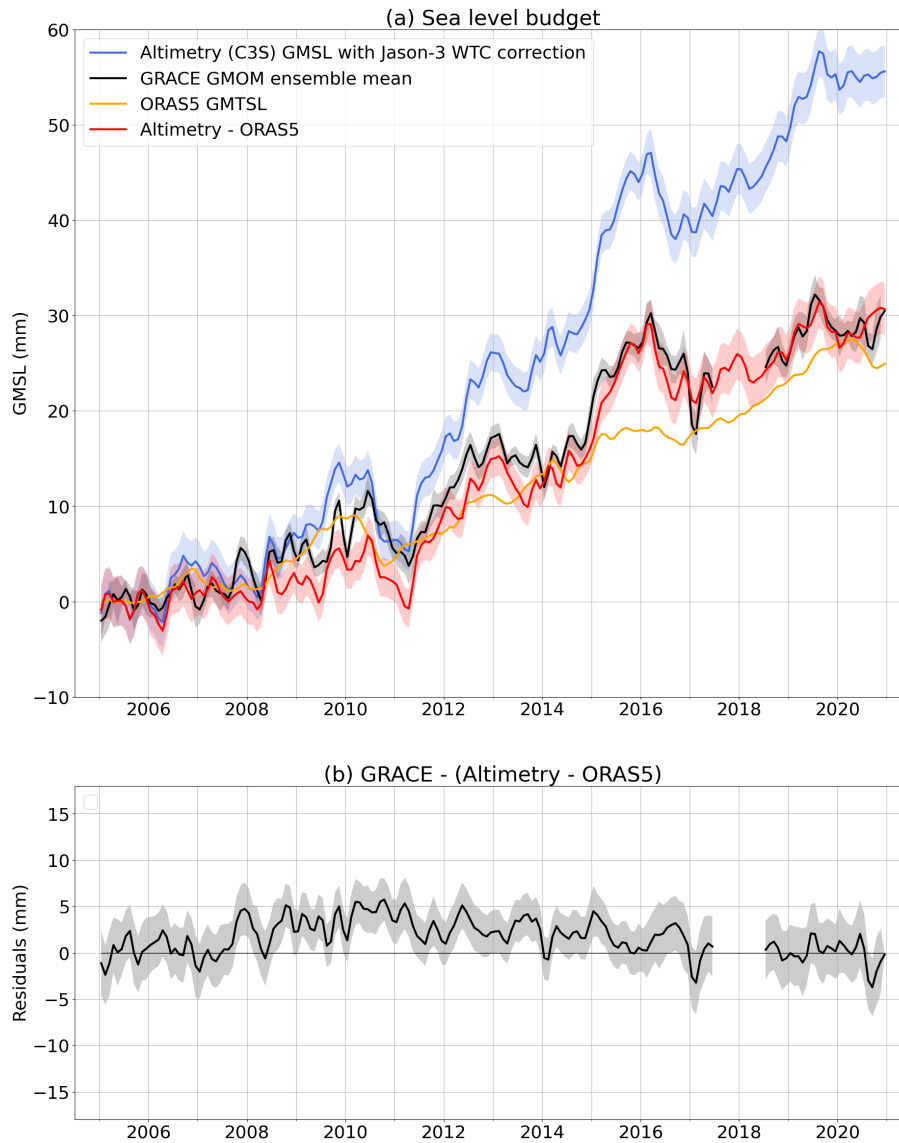


Figure 8. Sea level budget. (a) Budget with GRACE/GRACE-FO based global mean ocean mass (GMOM) variations compared to altimetry-based GMSL (corrected for the Jason-3 radiometer WTC drift) and ORAS5 GMTSL. (b) Budget residuals. Linear trends of all components over different periods of time are provided in Table S1.

independent of the GRACE and GRACE-FO based GMOM (Fig 8c). While the linear trend is lower (-0.81 ± 0.39 mm/yr), GMOM estimate. The residual time series displays some significant interannual variability is observed in the residuals around 2015-2017 (Fig. 8e). Such residuals could, especially in 2011 and in 2015-2016 during the ENSO events (Figure 10b). As mentioned in section 4.1, these residual signals may be due to issues in altimetry or steric data, or in the land ice and water

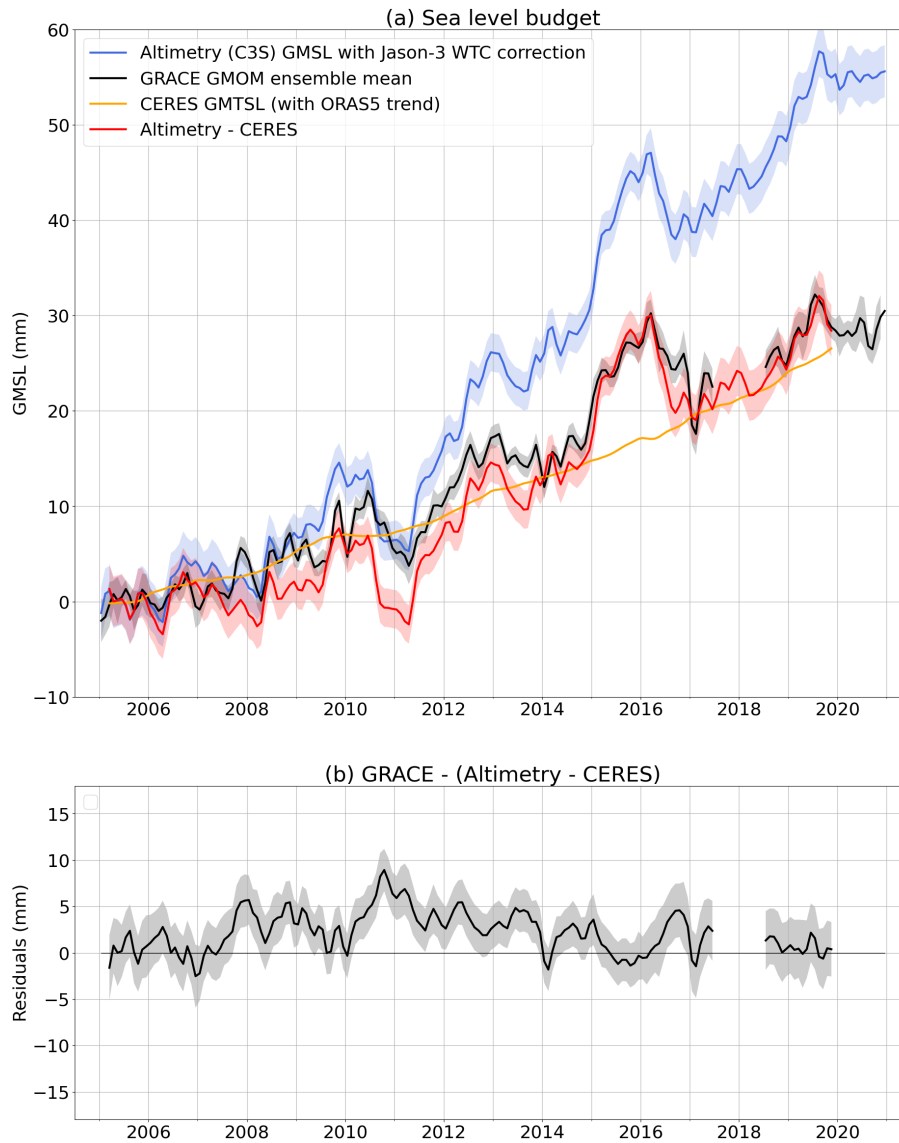


Figure 9. Sea level budget. (a) Budget with GRACE/GRACE-FO based global mean ocean mass (GMOM) variations compared to altimetry-based GMSL (corrected for the Jason-3 radiometer WTC drift) and CERES-based GMTSL (using the trend from ORAS5). (b) Budget residuals. Linear trends of all components over different periods of time are provided in Table S1.

320 storage models. In particular, high uncertainties are linked with the TWS variations provided by the hydrological models, as shown in section 3.4 an underestimation of TWS changes at interannual time scales by global hydrological models.

The ocean mass budgets show that GRACE and GRACE-FO data may explain part of the non-closure. ? explains that the different GIA and degree-1 models used to correct GRACE and GRACE-FO data lead to uncertainties on the trends. This effect

should be encompassed in the GMOM uncertainty estimated from Blazquez et al. (2018) that we use in the present study. On
325 the other hand, the significant residuals in the sea level budget calculated independently from GRACE and GRACE-FO show
that they cannot be fully responsible for the non-closure. A possible explanation is that the budget neglects some contributions
such as the evolution of the deep ocean below 2000 m depth, the atmospheric water vapour variations and the permafrost
thawing. While neglected until recently (e.g. Horwath et al., 2022), these components may have a growing contribution to the
mass budget.

330 Sea level budget using the individual ocean mass contributions. (a) Initial unclosed sea level budget. (b) Initial budget
residuals. (c) Updated sea level budget taking into account Jason-3 radiometer drift correction and human-induced TWS
contribution. (d) Updated budget residuals. Linear trends of all components over different periods of time are provided in
Table S1.

335 Comparison of the residual time series from the budgets shown in Figures 6, 7 and 8. (a) Residuals time series involving
the GRACE and GRACE-FO based GMOM. (b) Residual time series with respect to the altimetry-based GMSL corrected for
thermal expansion. (c) Residual time series with respect to the models of land ice and water storage variations.

5 Conclusions

We compared the GRACE and GRACE-FO based GMOM to the sum of the individual ocean mass contributions and to the
GMSL corrected for thermal expansion. Both budgets initially presented a significant residual trend beyond 2015.

340 The global mean ocean mass budget comparing the GRACE and GRACE-FO estimate to the sum of individual mass contri-
butions (ice mass changes from ice sheets, ice caps and glaciers and terrestrial water storage variations) shows a significant
residual trend of -1.60 ± 0.36 mm/yr over 2015-2018. We show and atmospheric water vapour variations) shows significant
interannual residuals at some periods, in particular during ENSO events (around 2011 and 2015-2016). Such residuals are
likely due to an underestimation of TWS changes by global hydrological models at interannual time scales.

345 Comparing the GMOM to the altimetry-based GMSL corrected for the thermal expansion, we showed that a drift of Jason-3
WTC drift is responsible for about 40-22 % of the non-closure of the budget beyond 2015 when comparing the GMOM to
the altimetry-based GMSL corrected for the thermal expansion budget RMSE over 2015-2018. A correction for Jason-3 WTC
drift is estimated based on the WTC from water vapour climate data records as well as from SARAL/AltiKa and Sentinel-3A
altimetry missions. After applying this correction, a significant residual trend of -0.96 ± 0.48 mm/yr over there are still some
350 significant budget residual remaining.

Using the thermosteric estimate from the ORAS5 reanalysis and CERES observations instead of Argo data, the sea level
budget residuals are significantly reduced and the budget can be closed over the last years (2015-2020 is left in the budget-) of
our study period. We conclude that recent Argo data are responsible for a major part of the sea level budget residuals, possibly
due to the lack of delay-mode quality-controlled data in the gridded products used as input for this study.

355 Finally, the sea level budget comparing the altimetry-based GMSL corrected for the thermal extension budget comparing
altimetry (with the Jason-3 WTC drift corrected) and ORAS5 with the sum of the individual mass contributions leads to

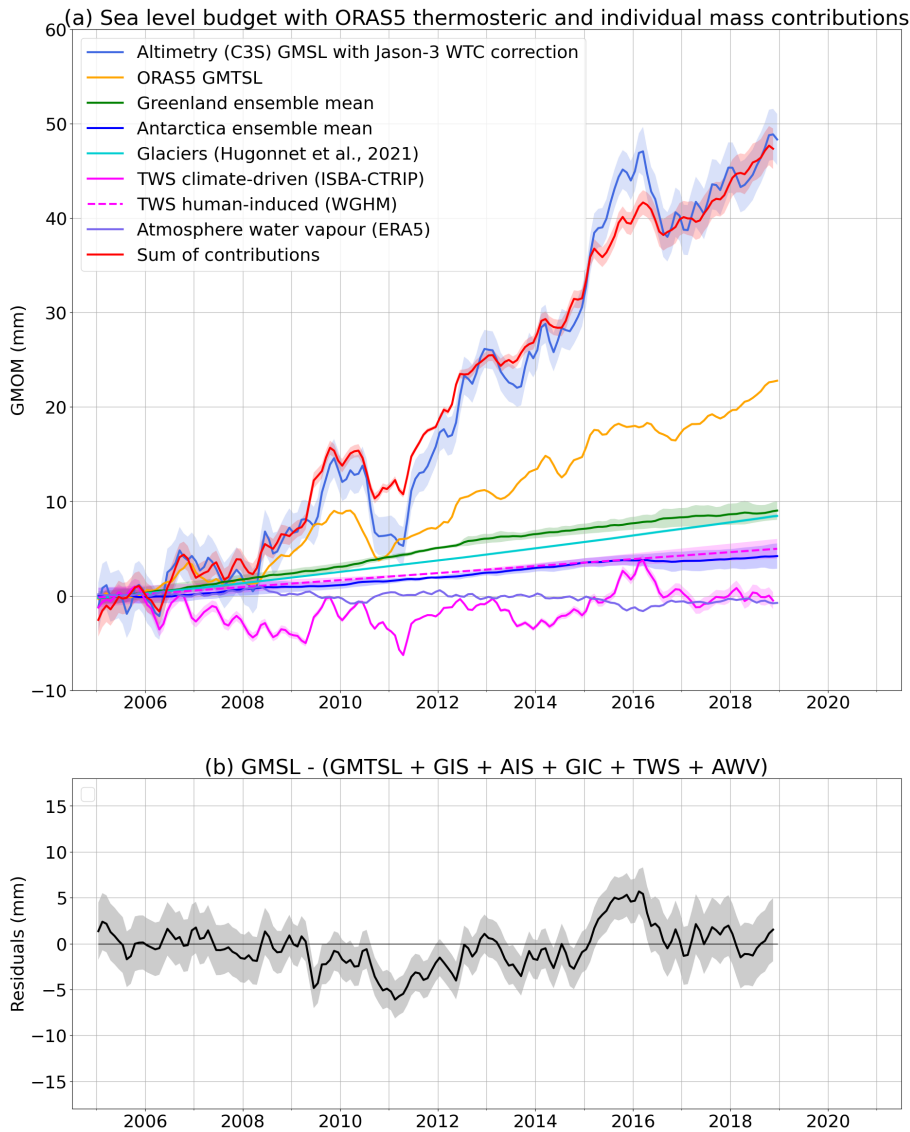


Figure 10. [Sea level budget using the individual ocean mass contributions.](#) (a) [Sea level budget using the ORAS5 GMTSL and taking into account Jason-3 radiometer drift correction.](#) (b) [Budget residuals.](#) Linear trends of all components over different periods of time are provided in [Table S1](#).

[significant interannual variability](#) [individual mass components still show some interannual signals](#) in the residuals around 2015-2017. Because the latter budget was calculated independently from gravimetric data, GRACE and GRACE-FO data cannot be fully responsible for the non-closure of the ocean mass budget. Further improving the budget closure after 2016 involves investigating unidentified errors in other components (thermosteric sea level, deep ocean contribution, neglected components such as the permafrost thawing or the atmospheric water content variations). Assessing the ocean mass budget

~~at regional scale might also help identify patterns and understand processes responsible for the non-closure at global scale~~that may be due to a lack of amplitude in the hydrological models during ENSO events.

Data availability. The GRACE/GRACE Follow-On JPL, CSR and GFZ Level 2 (Stock's coefficients) and Level 3 (mascon) Release 6 data
365 are available from <https://podaac.jpl.nasa.gov>. The GRACE/GRACE Follow-On GSFC data are available from <https://earth.gsfc.nasa.gov/geo/data/grace-mascons>. The C3S altimetry data are available from <https://cds.climate.copernicus.eu/cdsapp#!/dataset/satellite-sea-level-global?tab=overview>. The AVISO altimetry along-track data for Jason-3, SARAL/AltiKa and Sentinel-3A are available from <https://www.aviso.altimetry.fr/>. The total column water vapour REMSS climate data records are available at <https://wui.cmsaf.eu/safira/action/viewProduktDetails?eid=21864&fid=23>. Argo data were collected and made freely available by the international Argo Program and the national programs that
370 contribute to it (<https://argo.ucsd.edu>, <https://www.ocean-ops.org>). The Argo Program is part of the Global Ocean Observing System. The NOAA Argo data are available from <https://www.ncei.noaa.gov/access/global-ocean-heat-content/>. The SIO Argo climatology data are available from http://sio-argo.ucsd.edu/RG_Climatology.html. The JAMSTEC MOAA GPV data are available from http://www.jamstec.go.jp/ARGO/argo_web/argo/?page_id=83&lang=en. The EN4 Argo data are available from <http://hadobs.metoffice.com/en4/download.html>. The IAP data are available from <http://159.226.119.60/cheng/>. The IFREMER ISAS20 data are available from <https://www.seanoe.org/data/00412/52367/>. The Ishii v7.3.1 data are available from <https://climate.mri-jma.go.jp/pub/ocean/ts/v7.3.1/>. The TWS WGHM v2.2d data are
375 available from <https://doi.pangaea.de/10.1594/PANGAEA.918447?format=html#download>. The TWS ISBA-CTRIIP data are available from the authors (Decharme et al., 2019). For Greenland, Antarctica and glaciers datasets, we invite the reader to refer to the references cited in the article and the links provided therein.

Author contributions. AB conducted the study and wrote the initial version of the manuscript. AC supervised the work. JP, MA, RF and VR
380 participated in the data processing and in the discussion of the results. All authors have read, improved and agreed with the content of the manuscript.

Competing interests. The authors declare no conflict of interests.

Acknowledgements. We thank M. D. Palmer and the second anonymous reviewer for their very interesting comments that helped improve the manuscript and the robustness of the results. The research leading to these results has received funding from the European Research Council
385 (ERC) under the European Union's Horizon 2020 research and innovation program (GRACEFUL Synergy Grant agreement No 855677).

References

- Randolph Glacier Inventory - A dataset of global glacier outlines: Version 6.0, Tech. rep., RGI Consortium, https://www.glims.org/RGI/00_rgi60_TechnicalNote.pdf, 2017.
- Ablain, M., Meyssignac, B., Zawadzki, L., Jugier, R., Ribes, A., Spada, G., Benveniste, J., Cazenave, A., and Picot, N.: Uncertainty in satellite estimates of global mean sea-level changes, trend and acceleration, *Earth System Science Data*, 11, 1189–1202, <https://doi.org/10.5194/essd-11-1189-2019>, 2019.
- Argo: Argo float data and metadata from Global Data Assembly Centre (Argo GDAC), <https://doi.org/10.17882/42182>, 2021.
- Bandikova, T., McCullough, C., Kruizinga, G. L., Save, H., and Christophe, B.: GRACE accelerometer data transplant, *Advances in Space Research*, 64, 623–644, <https://doi.org/10.1016/j.asr.2019.05.021>, 2019.
- 395 Barnoud, A., Pfeffer, J., Guérou, A., Frery, M.-L., Siméon, M., Cazenave, A., Chen, J., Llovel, W., Thierry, V., Legeais, J.-F., and Ablain, M.: Contributions of altimetry and Argo to non-closure of the global mean sea level budget since 2016, *Geophysical Research Letters*, <https://doi.org/10.1029/2021gl092824>, 2021.
- Barnoud, A., Picard, B., Meyssignac, B., Marti, F., Ablain, M., and Roca, R.: Reducing uncertainties of global mean sea level, global ocean heat content and Earth’s energy imbalance using water vapour climate data records, in: *Sea level workshop*, Brest, 2022a.
- 400 Barnoud, A., Picard, B., Meyssignac, B., Marti, F., Ablain, M., and Roca, R.: Improving long term estimates of global mean sea level, global ocean heat content and Earth’s energy imbalance using CDR water vapour data, <https://doi.org/10.24400/527896/A03-2022.3403>, 2022b.
- Bettadpur, S.: Gravity Recovery and Climate Experiment Level-2 Gravity Field Product User Handbook, Tech. rep., Center for Space Research at The University of Texas at Austin, https://podaac-tools.jpl.nasa.gov/drive/files/allData/grace/docs/L2-UserHandbook_v4.0.pdf, 2018.
- 405 Blazquez, A., Meyssignac, B., Lemoine, J., Berthier, E., Ribes, A., and Cazenave, A.: Exploring the uncertainty in GRACE estimates of the mass redistributions at the Earth surface: implications for the global water and sea level budgets, *Geophysical Journal International*, 215, 415–430, <https://doi.org/10.1093/gji/ggy293>, 2018.
- Cáceres, D., Marzeion, B., Malles, J. H., Gutknecht, B. D., Schmied, H. M., and Döll, P.: Assessing global water mass transfers from continents to oceans over the period 1948–2016, *Hydrology and Earth System Sciences*, 24, 4831–4851, [https://doi.org/10.5194/hess-24-](https://doi.org/10.5194/hess-24-4831-2020)
- 410 4831-2020, 2020.
- Cazenave, A. and the WCRP Global Sea Level Budget Group: Global sea-level budget 1993–present, *Earth System Science Data*, 10, 1551–1590, <https://doi.org/10.5194/essd-10-1551-2018>, 2018.
- Chang, L., Tang, H., Wang, Q., and Sun, W.: Global thermosteric sea level change contributed by the deep ocean below 2000 m estimated by Argo and CTD data, *Earth and Planetary Science Letters*, 524, 115 727, <https://doi.org/10.1016/j.epsl.2019.115727>, 2019.
- 415 Chen, J., Tapley, B., Seo, K.-W., Wilson, C., and Ries, J.: Improved Quantification of Global Mean Ocean Mass Change Using GRACE Satellite Gravimetry Measurements, *Geophysical Research Letters*, 46, 13 984–13 991, <https://doi.org/10.1029/2019gl085519>, 2019.
- Chen, J., Tapley, B., Wilson, C., Cazenave, A., Seo, K.-W., and Kim, J.-S.: Global ocean mass change from GRACE and GRACE Follow-On and altimeter and Argo measurements, *Geophysical Research Letters*, 47, e2020GL090 656, <https://doi.org/10.1029/2020GL090656>, 2020.
- 420 Chen, J., Cazenave, A., Dahle, C., Llovel, W., Panet, I., Pfeffer, J., and Moreira, L.: Applications and Challenges of GRACE and GRACE Follow-On Satellite Gravimetry, *Surveys in Geophysics*, <https://doi.org/10.1007/s10712-021-09685-x>, 2022.

- Cheng, L., Trenberth, K. E., Fasullo, J., Boyer, T., Abraham, J., and Zhu, J.: Improved estimates of ocean heat content from 1960 to 2015, *Science Advances*, 3, <https://doi.org/10.1126/sciadv.1601545>, 2017.
- Cheng, L., Trenberth, K. E., Gruber, N., Abraham, J. P., Fasullo, J. T., Li, G., Mann, M. E., Zhao, X., and Zhu, J.: Improved Estimates of
425 Changes in Upper Ocean Salinity and the Hydrological Cycle, *Journal of Climate*, 33, 10 357–10 381, <https://doi.org/10.1175/jcli-d-20-0366.1>, 2020.
- Dahle, C., Flechtner, F., Murböck, M., Michalak, G., Neumayer, H., Abrykosov, O., Reinhold, A., and König, R.: GRACE Geopotential
GSM Coefficients GFZ RL06, https://doi.org/10.5880/GFZ.GRACE_06_GSM, 2018.
- Dahle, C., Murböck, M., Flechtner, F., Dobsław, H., Michalak, G., Neumayer, K., Abrykosov, O., Reinhold, A., König, R., Sulzbach, R., and
430 Förste, C.: The GFZ GRACE RL06 Monthly Gravity Field Time Series: Processing Details and Quality Assessment, *Remote Sensing*, 11,
2116, <https://doi.org/10.3390/rs11182116>, 2019.
- Decharme, B., Alkama, R., Douville, H., Becker, M., and Cazenave, A.: Global Evaluation of the ISBA-TRIP Continental Hydrological Sys-
tem. Part II: Uncertainties in River Routing Simulation Related to Flow Velocity and Groundwater Storage, *Journal of Hydrometeorology*,
11, 601–617, <https://doi.org/10.1175/2010jhm1212.1>, 2010.
- 435 Decharme, B., Delire, C., Minvielle, M., Colin, J., Vergnes, J.-P., Alias, A., Saint-Martin, D., Sférian, R., Sénési, S., and Voldoire, A.: Recent
Changes in the ISBA-CTRIP Land Surface System for Use in the CNRM-CM6 Climate Model and in Global Off-Line Hydrological
Applications, *Journal of Advances in Modeling Earth Systems*, 11, 1207–1252, <https://doi.org/10.1029/2018ms001545>, 2019.
- Dobsław, H., Bergmann-Wolf, I., Dill, R., Poropat, L., Thomas, M., Dahle, C., Esselborn, S., König, R., and Flechtner, F.: A new high-
resolution model of non-tidal atmosphere and ocean mass variability for de-aliasing of satellite gravity observations: AOD1B RL06,
440 *Geophysical Journal International*, 211, 263–269, <https://doi.org/10.1093/gji/ggx302>, 2017.
- Dobsław, H., Dill, R., Bagge, M., Klemann, V., Boergens, E., Thomas, M., Dahle, C., and Flechtner, F.: Gravitationally Consistent
Mean Barystatic Sea Level Rise From Leakage-Corrected Monthly GRACE Data, *Journal of Geophysical Research: Solid Earth*, 125,
<https://doi.org/10.1029/2020jb020923>, 2020.
- Döll, P., Kaspar, F., and Lehner, B.: A global hydrological model for deriving water availability indicators: model tuning and validation,
445 *Journal of Hydrology*, 270, 105–134, [https://doi.org/10.1016/s0022-1694\(02\)00283-4](https://doi.org/10.1016/s0022-1694(02)00283-4), 2003.
- Döll, P., Douville, H., Güntner, A., Schmied, H. M., and Wada, Y.: Modelling Freshwater Resources at the Global Scale: Challenges and
Prospects, *Surveys in Geophysics*, 37, 195–221, <https://doi.org/10.1007/s10712-015-9343-1>, 2015.
- Fasullo, J. T., Boening, C., Landerer, F. W., and Nerem, R. S.: Australia's unique influence on global sea level in 2010-2011, *Geophysical
Research Letters*, 40, 4368–4373, <https://doi.org/10.1002/grl.50834>, 2013.
- 450 Fox-Kemper, B., Hewitt, H. T., Xiao, C., Adalgeirsdottir, G., Drijfhout, S. S., Edwards, T. L., Golledge, N. R., Hemer, M., Kopp, R. E.,
Krinner, G., Mix, A., Notz, D., Nowicki, S., Nurhati, I. S., Ruiz, L., Sallée, J.-B., Slangen, A. B. A., and Yu, Y.: Ocean, Cryosphere and
Sea Level Change., in: *Climate Change 2021: The Physical Science Basis. Contribution of Working Group I to the Sixth Assessment Report
of the Intergovernmental Panel on Climate Change*, edited by Masson-Delmotte, V., Zhai, P., Pirani, A., Connors, S. L., Péan, C., Berger,
S., Caud, N., Chen, Y., Goldfarb, L., Gomis, M. I., Huang, M., Leitzell, K., Lonnoy, E., Matthews, J. B. R., Maycock, T. K., Waterfield, T.,
455 Yelekci, O., Yu, R., and Zhou, B., pp. 1211–1362, Cambridge University Press, Cambridge, United Kingdom and New York, NY, USA,
<https://doi.org/10.1017/9781009157896.011>, 2021.
- Frederikse, T., Simon, K., Katsman, C. A., and Riva, R.: The sea-level budget along the Northwest Atlantic coast: GIA, mass changes, and
large-scale ocean dynamics, *Journal of Geophysical Research: Oceans*, 122, 5486–5501, <https://doi.org/10.1002/2017jc012699>, 2017.

- Gaillard, F., Reynaud, T., Thierry, V., Kolodziejczyk, N., and von Schuckmann, K.: In Situ–Based Reanalysis of the Global Ocean Temperature and Salinity with ISAS: Variability of the Heat Content and Steric Height, *Journal of Climate*, 29, 1305–1323, <https://doi.org/10.1175/jcli-d-15-0028.1>, 2016.
- Garcia, H. E., Boyer, T. P., Baranova, O. K., Locarnini, R. A., Mishonov, A. V., Grodsky, A., Paver, C. R., Weathers, K. W., Smolyar, I. V., Reagan, J. R., Seidov, D., and Zweng, M. M.: World Ocean Atlas 2018: Product Documentation, Tech. rep., NOAA, <https://data.node.noaa.gov/woa/WOA18/DOC/woa18documentation.pdf>, mishonov, A., Technical Editor., 2019.
- Good, S. A., Martin, M. J., and Rayner, N. A.: EN4: Quality controlled ocean temperature and salinity profiles and monthly objective analyses with uncertainty estimates, *Journal of Geophysical Research: Oceans*, 118, 6704–6716, <https://doi.org/10.1002/2013jc009067>, 2013.
- Gouretski, V. and Reseghetti, F.: On depth and temperature biases in bathythermograph data: Development of a new correction scheme based on analysis of a global ocean database, *Deep Sea Research Part I: Oceanographic Research Papers*, 57, 812–833, <https://doi.org/10.1016/j.dsr.2010.03.011>, 2010.
- Gregory, J. M. and Lowe, J. A.: Predictions of global and regional sea-level rise using AOGCMs with and without flux adjustment, *Geophysical Research Letters*, 27, 3069–3072, <https://doi.org/10.1029/1999gl011228>, 2000.
- Gregory, J. M., Griffies, S. M., Hughes, C. W., Lowe, J. A., Church, J. A., Fukimori, I., Gomez, N., Kopp, R. E., Landerer, F., Cozannet, G. L., Ponte, R. M., Stammer, D., Tamisiea, M. E., and van de Wal, R. S. W.: Concepts and Terminology for Sea Level: Mean, Variability and Change, Both Local and Global, *Surveys in Geophysics*, 40, 1251–1289, <https://doi.org/10.1007/s10712-019-09525-z>, 2019.
- Hakuba, M. Z., Frederikse, T., and Landerer, F. W.: Earth’s Energy Imbalance From the Ocean Perspective (2005–2019), *Geophysical Research Letters*, 48, <https://doi.org/10.1029/2021gl093624>, 2021.
- Hanna, E., Navarro, F. J., Pattyn, F., Domingues, C. M., Fettweis, X., Ivins, E. R., Nicholls, R. J., Ritz, C., Smith, B., Tulaczyk, S., Whitehouse, P. L., and Zwally, H. J.: Ice-sheet mass balance and climate change, *Nature*, 498, 51–59, <https://doi.org/10.1038/nature12238>, 2013.
- Hersbach, H., Bell, B., Berrisford, P., Biavati, G., Horányi, A., Muñoz Sabater, J., Nicolas, J., Peubey, C., Radu, R., Rozum, I., Schepers, D., and Simmons, A.: ERA5 monthly averaged data on pressure levels from 1979 to present, <https://doi.org/10.24381/CDS.6860A573>, 2019.
- Horwath, M., Gutknecht, B. D., Cazenave, A., Palanisamy, H. K., Marti, F., Marzeion, B., Paul, F., Bris, R. L., Hogg, A. E., Otosaka, I., Shepherd, A., Döll, P., Cáceres, D., Schmied, H. M., Johannessen, J. A., Nilsen, J. E. Ø., Raj, R. P., Forsberg, R., Sørensen, L. S., Barletta, V. R., Simonsen, S. B., Knudsen, P., Andersen, O. B., Randall, H., Rose, S. K., Merchant, C. J., Macintosh, C. R., von Schuckmann, K., Novotny, K., Groh, A., Restano, M., and Benveniste, J.: Global sea-level budget and ocean-mass budget, with focus on advanced data products and uncertainty characterisation, *Earth Systems Science Data*, 14, 411–447, <https://doi.org/10.5194/essd-14-411-2022>, 2022.
- Hosoda, S., Ohira, T., Sato, K., and Suga, T.: Improved description of global mixed-layer depth using Argo profiling floats, *Journal of Oceanography*, 66, 773–787, <https://doi.org/10.1007/s10872-010-0063-3>, 2010.
- Hugonnet, R., McNabb, R., Berthier, E., Menounos, B., Nuth, C., Girod, L., Farinotti, D., Huss, M., Dussaillant, I., Brun, F., and Käab, A.: Accelerated global glacier mass loss in the early twenty-first century, *Nature*, 592, 726–731, <https://doi.org/10.1038/s41586-021-03436-z>, 2021.
- IMBIE: Mass balance of the Antarctic Ice Sheet from 1992 to 2017, *Nature*, 558, 219–222, <https://doi.org/10.1038/s41586-018-0179-y>, 2018.
- IMBIE: Mass balance of the Greenland Ice Sheet from 1992 to 2018, *Nature*, 579, 233–239, <https://doi.org/10.1038/s41586-019-1855-2>, 2020.

- IPCC: IPCC Special Report on the ocean and cryosphere in a changing climate, Cambridge University Press, <https://doi.org/10.1017/9781009157964>, 2019.
- Ishii, M., Fukuda, Y., Hirahara, S., Yasui, S., Suzuki, T., and Sato, K.: Accuracy of Global Upper Ocean Heat Content Estimation Expected from Present Observational Data Sets, *SOLA*, 13, 163–167, <https://doi.org/10.2151/sola.2017-030>, 2017.
- 500 Kato, S., Rose, F. G., Rutan, D. A., Thorsen, T. J., Loeb, N. G., Doelling, D. R., Huang, X., Smith, W. L., Su, W., and Ham, S.-H.: Surface Irradiances of Edition 4.0 Clouds and the Earth's Radiant Energy System (CERES) Energy Balanced and Filled (EBAF) Data Product, *Journal of Climate*, 31, 4501–4527, <https://doi.org/10.1175/jcli-d-17-0523.1>, 2018.
- Landerer, F. W., Flechtner, F. M., Save, H., Webb, F. H., Bandikova, T., Bertiger, W. I., Bettadpur, S. V., Byun, S. H., Dahle, C., Dobslaw, H., Fahnestock, E., Harvey, N., Kang, Z., Kruizinga, G. L. H., Loomis, B. D., McCullough, C., Murböck, M., Nagel, P., Paik, M., Pie,
505 N., Poole, S., Strelakov, D., Tamisiea, M. E., Wang, F., Watkins, M. M., Wen, H.-Y., Wiese, D. N., and Yuan, D.-N.: Extending the Global Mass Change Data Record: GRACE Follow-On Instrument and Science Data Performance, *Geophysical Research Letters*, 47, <https://doi.org/10.1029/2020gl088306>, 2020.
- Legeais, J.-F., Meyssignac, B., Faugère, Y., Guerou, A., Ablain, M., Pujol, M.-I., Dufau, C., and Dibarboure, G.: Copernicus Sea Level Space Observations: A Basis for Assessing Mitigation and Developing Adaptation Strategies to Sea Level Rise, *Frontiers in Marine Science*, 8,
510 <https://doi.org/10.3389/fmars.2021.704721>, 2021.
- Levitus, S., Antonov, J. I., Boyer, T. P., Baranova, O. K., Garcia, H. E., Locarnini, R. A., Mishonov, A. V., Reagan, J. R., Seidov, D., Yarosh, E. S., and Zweng, M. M.: World ocean heat content and thermosteric sea level change (0-2000 m), 1955-2010, *Geophysical Research Letters*, 39, n/a–n/a, <https://doi.org/10.1029/2012gl051106>, 2012.
- Lickley, M. J., Hay, C. C., Tamisiea, M. E., and Mitrovica, J. X.: Bias in Estimates of Global Mean Sea Level Change Inferred from Satellite
515 Altimetry, *Journal of Climate*, 31, 5263–5271, <https://doi.org/10.1175/jcli-d-18-0024.1>, 2018.
- Llovel, W., Purkey, S., Meyssignac, B., Blazquez, A., Kolodziejczyk, N., and Bamber, J.: Global ocean freshening, ocean mass increase and global mean sea level rise over 2005–2015, *Scientific Reports*, 9, <https://doi.org/10.1038/s41598-019-54239-2>, 2019.
- Loeb, N. G., Doelling, D. R., Wang, H., Su, W., Nguyen, C., Corbett, J. G., Liang, L., Mitrescu, C., Rose, F. G., and Kato, S.: Clouds and the Earth's Radiant Energy System (CERES) Energy Balanced and Filled (EBAF) Top-of-Atmosphere (TOA) Edition-4.0 Data Product,
520 *Journal of Climate*, 31, 895–918, <https://doi.org/10.1175/jcli-d-17-0208.1>, 2018.
- Loomis, B. D., Rachlin, K. E., and Luthcke, S. B.: Improved Earth Oblateness Rate Reveals Increased Ice Sheet Losses and Mass-Driven Sea Level Rise, *Geophysical Research Letters*, 46, 6910–6917, <https://doi.org/10.1029/2019gl082929>, 2019.
- Loomis, B. D., Rachlin, K. E., Wiese, D. N., Landerer, F. W., and Luthcke, S. B.: Replacing GRACE/GRACE-FO With Satellite Laser Ranging: Impacts on Antarctic Ice Sheet Mass Change, *Geophysical Research Letters*, 47, <https://doi.org/10.1029/2019gl085488>, 2020.
- 525 Marti, F., Blazquez, A., Meyssignac, B., Ablain, M., Barnoud, A., Fraudeau, R., Jugier, R., Chenal, J., Larnicol, G., Pfeffer, J., Restano, M., and Benveniste, J.: Monitoring the ocean heat content change and the Earth energy imbalance from space altimetry and space gravimetry, *Earth System Science Data*, <https://doi.org/10.5194/essd-2021-220>, 2022.
- McNabb, R., Nuth, C., Kääh, A., and Girod, L.: Sensitivity of glacier volume change estimation to DEM void interpolation, *The Cryosphere*, 13, 895–910, <https://doi.org/10.5194/tc-13-895-2019>, 2019.
- 530 Müller Schmied, H., Cáceres, D., Eisner, S., Flörke, M., Herbert, C., Niemann, C., Peiris, T. A., Popat, E., Portmann, F. T., Reinecke, R., Schumacher, M., Shadkam, S., Telteu, C.-E., Trautmann, T., and Döll, P.: The global water resources and use model WaterGAP v2.2d: model description and evaluation, *Geoscientific Model Development*, 14, 1037–1079, <https://doi.org/10.5194/gmd-14-1037-2021>, 2021.

- Müller Schmied, H., Cáceres, D., Eisner, S., Flörke, M., Herbert, C., Niemann, C., Peiris, T. A., Popat, E., Portmann, F. T., Reinecke, R., Shadkam, S., Trautmann, T., and Döll, P.: The global water resources and use model WaterGAP v2.2d - Standard model output, <https://doi.org/10.1594/PANGAEA.918447>, 2020.
- Otosaka, I. N.: Improving estimates of ice sheet elevation change derived from AltiKa and CryoSat-2 satellite radar altimetry, Ph.D. thesis, University of Leeds, School Earth and Environment, 2021.
- Palmer, M. D. and McNeall, D. J.: Internal variability of Earth's energy budget simulated by CMIP5 climate models, *Environmental Research Letters*, 9, 034 016, <https://doi.org/10.1088/1748-9326/9/3/034016>, 2014.
- Peltier, W.: GLOBAL GLACIAL ISOSTASY AND THE SURFACE OF THE ICE-AGE EARTH: The ICE-5G (VM2) Model and GRACE, *Annual Review of Earth and Planetary Sciences*, 32, 111–149, <https://doi.org/10.1146/annurev.earth.32.082503.144359>, 2004.
- Peltier, W. R., Argus, D. F., and Drummond, R.: Comment on “An Assessment of the ICE-6G_C (VM5a) Glacial Isostatic Adjustment Model” by Purcell et al., *Journal of Geophysical Research: Solid Earth*, 123, 2019–2028, <https://doi.org/10.1002/2016jb013844>, 2018.
- Pfeffer, J., Cazenave, A., and Barnoud, A.: Analysis of the interannual variability in satellite gravity solutions: detection of climate modes fingerprints in water mass displacements across continents and oceans, *Climate Dynamics*, 58, 1065–1084, <https://doi.org/10.1007/s00382-021-05953-z>, 2022a.
- Pfeffer, J., Cazenave, A., Blazquez, A., Decharme, B., Munier, S., and Barnoud, A.: Detection of slow changes in terrestrial water storage with GRACE and GRACE-FO satellite gravity missions, <https://doi.org/10.5194/egusphere-2022-1032>, 2022b.
- Roemmich, D. and Gilson, J.: The 2004–2008 mean and annual cycle of temperature, salinity, and steric height in the global ocean from the Argo Program, *Progress in Oceanography*, 82, 81–100, <https://doi.org/10.1016/j.pocean.2009.03.004>, 2009.
- Save, H.: CSR GRACE and GRACE-FO RL06 Mascon Solutions v02, <https://doi.org/10.15781/cgq9-nh24>, 2020.
- Save, H., Bettadpur, S., and Tapley, B. D.: High-resolution CSR GRACE RL05 mascons, *Journal of Geophysical Research: Solid Earth*, 121, 7547–7569, <https://doi.org/10.1002/2016jb013007>, 2016.
- Scanlon, B. R., Zhang, Z., Save, H., Sun, A. Y., Schmied, H. M., van Beek, L. P. H., Wiese, D. N., Wada, Y., Long, D., Reedy, R. C., Longuevergne, L., Döll, P., and Bierkens, M. F. P.: Global models underestimate large decadal declining and rising water storage trends relative to GRACE satellite data, *Proceedings of the National Academy of Sciences*, 115, E1080–E1089, <https://doi.org/10.1073/pnas.1704665115>, 2018.
- Schröder, M., Lockhoff, M., Forsythe, J. M., Cronk, H. Q., Haar, T. H. V., and Bennartz, R.: The GEWEX Water Vapor Assessment: Results from Intercomparison, Trend, and Homogeneity Analysis of Total Column Water Vapor, *Journal of Applied Meteorology and Climatology*, 55, 1633–1649, <https://doi.org/10.1175/jamc-d-15-0304.1>, 2016.
- Shepherd, A., Ivins, E. R., A, G., Barletta, V. R., Bentley, M. J., Bettadpur, S., Briggs, K. H., Bromwich, D. H., Forsberg, R., Galin, N., Horwath, M., Jacobs, S., Joughin, I., King, M. A., Lenaerts, J. T. M., Li, J., Ligtenberg, S. R. M., Luckman, A., Luthcke, S. B., McMillan, M., Meister, R., Milne, G., Mouginot, J., Muir, A., Nicolas, J. P., Paden, J., Payne, A. J., Pritchard, H., Rignot, E., Rott, H., Sorensen, L. S., Scambos, T. A., Scheuchl, B., Schrama, E. J. O., Smith, B., Sundal, A. V., van Angelen, J. H., van de Berg, W. J., van den Broeke, M. R., Vaughan, D. G., Velicogna, I., Wahr, J., Whitehouse, P. L., Wingham, D. J., Yi, D., Young, D., and Zwally, H. J.: A Reconciled Estimate of Ice-Sheet Mass Balance, *Science*, 338, 1183–1189, <https://doi.org/10.1126/science.1228102>, 2012.
- Shepherd, A., Ivins, E., Rignot, E., Smith, B., van den Broeke, M., Velicogna, I., Whitehouse, P., Briggs, K., Joughin, I., Krinner, G., Nowicki, S., Payne, A., Scambos, T., Schlegel, N., A, G., Agosta, C., Ahlstrøm, A., Babonis, G., Barletta, V., Bjørk, A., Blazquez, A., Bonin, J., Colgan, W., Csatho, B., Cullather, R., Engdahl, M., Felikson, D., Fettweis, X., Forsberg, R., Gallee, H., Gardner, A., Gilbert, L., Gourmelen, N., Groh, A., Gunter, B., Hanna, E., Harig, C., Helm, V., Hogg, A., Horwath, A., Horwath, M., Khan, S., Kjeldsen, K., Konrad,

- H., Langen, P., Lecavalier, B., Loomis, B., Luthcke, S., McMillan, M., Melini, D., Mernild, S., Mohajerani, Y., Moore, P., Mottram, R., Mouginit, J., Moyano, G., Muir, A., Nagler, T., Nield, G., Nilsson, J., Noël, B., Otsuka, I., Pattle, M., Peltier, W., Pie, N., Rietbroek, R., Rott, H., Sørensen, L. S., Sasgen, I., Save, H., Scheuchl, B., Schrama, E., Schröder, L., Seo, K.-W., Simonsen, S., Slater, T., Spada, G., Sutterley, T., Talpe, M., Tarasov, L., van de Berg, W. J., van der Wal, W., van Wessem, M., Vishwakarma, B. D., Wagner, T., Wiese, D., Wilton, D., Wouters, B., and Wuite, J.: Antarctic and Greenland Ice Sheet mass balance 1992-2020 for IPCC AR6 (Version 1.0) [Data set], <https://doi.org/10.5285/77B64C55-7166-4A06-9DEF-2E400398E452>, 2021.
- Sun, Y., Riva, R., and Ditmar, P.: Optimizing estimates of annual variations and trends in geocenter motion and J2 from a combination of GRACE data and geophysical models, *Journal of Geophysical Research: Solid Earth*, 121, 8352–8370, <https://doi.org/10.1002/2016jb013073>, 2016.
- 580 Swenson, S., Chambers, D., and Wahr, J.: Estimating geocenter variations from a combination of GRACE and ocean model output, *Journal of Geophysical Research: Solid Earth*, 113, <https://doi.org/10.1029/2007jb005338>, 2008.
- Tapley, B. D., Watkins, M. M., Flechtner, F., Reigber, C., Bettadpur, S., Rodell, M., Sasgen, I., Famiglietti, J. S., Landerer, F. W., Chambers, D. P., Reager, J. T., Gardner, A. S., Save, H., Ivins, E. R., Swenson, S. C., Boening, C., Dahle, C., Wiese, D. N., Dobslaw, H., Tamisiea, M. E., and Velicogna, I.: Contributions of GRACE to understanding climate change, *Nature Climate Change*, 9, 358–369, <https://doi.org/10.1038/s41558-019-0456-2>, 2019.
- 585 Tielidze, L. G. and Wheate, R. D.: The Greater Caucasus Glacier Inventory (Russia, Georgia and Azerbaijan), *The Cryosphere*, 12, 81–94, <https://doi.org/10.5194/tc-12-81-2018>, 2018.
- Velicogna, I., Mohajerani, Y., A, G., Landerer, F., Mouginit, J., Noel, B., Rignot, E., Sutterley, T., Broeke, M., Wessem, M., and Wiese, D.: Continuity of Ice Sheet Mass Loss in Greenland and Antarctica From the GRACE and GRACE Follow-On Missions, *Geophysical Research Letters*, 47, <https://doi.org/10.1029/2020gl087291>, 2020.
- 590 Vishwakarma, B. D., Bates, P., Sneeuw, N., Westaway, R. M., and Bamber, J. L.: Re-assessing global water storage trends from GRACE time series, *Environmental Research Letters*, 16, 034 005, <https://doi.org/10.1088/1748-9326/abd4a9>, 2021.
- von Schuckmann, K., Cheng, L., Palmer, M. D., Hansen, J., Tassone, C., Aich, V., Adusumilli, S., Beltrami, H., Boyer, T., Cuesta-Valero, F. J., Desbruyères, D., Domingues, C., García-García, A., Gentine, P., Gilson, J., Gorfer, M., Haimberger, L., Ishii, M., Johnson, G. C., Killick, R., King, B. A., Kirchengast, G., Kolodziejczyk, N., Lyman, J., Marzeion, B., Mayer, M., Monier, M., Monselesan, D. P., Purkey, S., Roemmich, D., Schweiger, A., Seneviratne, S. I., Shepherd, A., Slater, D. A., Steiner, A. K., Straneo, F., Timmermans, M.-L., and Wijffels, S. E.: Heat stored in the Earth system: where does the energy go?, *Earth System Science Data*, 12, 2013–2041, <https://doi.org/10.5194/essd-12-2013-2020>, 2020.
- 600 Watkins, M. M., Wiese, D. N., Yuan, D.-N., Boening, C., and Landerer, F. W.: Improved methods for observing Earth's time variable mass distribution with GRACE using spherical cap mascons, *Journal of Geophysical Research: Solid Earth*, 120, 2648–2671, <https://doi.org/10.1002/2014jb011547>, 2015.