

# River effects on sea-level rise in the Río de la Plata Estuary during the past century

Christopher G. Piecuch<sup>1</sup>

<sup>1</sup>Woods Hole Oceanographic Institution, Woods Hole, Massachusetts, USA

**Correspondence:** Christopher G. Piecuch (cpiecuch@whoi.edu)

**Abstract.** Identifying the causes for historical sea-level changes in coastal tide-gauge records is important for constraining oceanographic, geologic, and climatic processes. The Río de la Plata estuary in South America features the longest tide-gauge records in the South Atlantic. Despite the relevance of these data for large-scale circulation and climate studies, the mechanisms underlying relative sea-level changes in this region during the past century have not been firmly established. I study annual data from tide gauges in the Río de la Plata and stream gauges along the Río Paraná and Río Uruguay to establish relationships between river streamflow and sea level over 1931–2014. Regression analysis suggests that streamflow explains  $59\% \pm 17\%$  of the total sea-level variance at Buenos Aires, Argentina, and  $28\% \pm 21\%$  at Montevideo, Uruguay (95% confidence intervals). A longterm streamflow increase effected sea-level trends of  $0.71 \pm 0.35 \text{ mm yr}^{-1}$  at Buenos Aires and  $0.48 \pm 0.38 \text{ mm yr}^{-1}$  at Montevideo. More generally, sea level at Buenos Aires and Montevideo respectively rises by  $(7.3 \pm 1.8) \times 10^{-6} \text{ m}$  and  $(4.7 \pm 2.6) \times 10^{-6} \text{ m}$  per  $1 \text{ m}^3 \text{ s}^{-1}$  streamflow increase. These observational results are consistent with simple theories for the coastal sea-level response to streamflow forcing, suggesting a causal relationship between streamflow and sea level mediated by ocean dynamics. Findings advance understanding of local, regional, and global sea-level changes, clarify sea-level physics, inform future projections of coastal sea level and the interpretation of satellite data and proxy reconstructions, and highlight future research directions. [Specifically, local and regional river effects should be accounted for in basin-scale and global-mean sea-level budgets and reconstructions based on sparse tide-gauge records.](#)

## 1 Introduction

Tide-gauge records of relative sea level go back more than a century in some places, representing some of the longest instrumental time series of the Earth system (Hogarth, 2014; Talke et al., 2018; Woodworth et al., 2010). On long climate time scales, changes in global-mean sea level are informative of global ocean warming, land ice wastage, and terrestrial water storage, whereas local and regional deviations from the global average shed light on processes including ocean dynamics and gravitation, rotation, and solid-Earth deformation (Gregory et al., 2019; Horton et al., 2018; Kopp et al., 2015). Identifying the mechanisms responsible for sea-level changes observed in tide-gauge records is therefore a major goal in geophysics, oceanography, and climate science (Douglas et al., 2001; Emery and Aubrey, 1991; Lisitzin, 1974).

The nature and causes of twentieth-century sea-level changes in the South Atlantic Ocean are poorly understood compared to behavior in other ocean basins during the same time period (Dangendorf et al., 2017; Frederikse et al., 2018). This knowledge

gap reflects a lack of data—the basin has few long tide-gauge records (Hamlington and Thompson, 2015; Natarov et al., 2017). Given the basin’s large area (Thompson and Merrifield, 2014), the absence of long data records in the South Atlantic Ocean poses a particular challenge to estimates of global-mean sea-level rise (Church and White, 2011; Dangendorf et al., 2017; Frederikse et al., 2020; Hay et al., 2015; Jevrejeva et al., 2014; Ray and Douglas, 2011), but also to our understanding of circulation and climate during the past century more generally.

A recent study brings together available tide-gauge records along with other data, proxies, and models to quantify rates and mechanisms of twentieth-century South-Atlantic sea-level change (Frederikse et al., 2021). Those authors determine that sea level in the South Atlantic rose about  $0.3 \text{ mm yr}^{-1}$  faster than the rate of global-mean sea-level rise, owing to a combination of ocean dynamics and gravitational, rotational, and deformational effects from contemporary mass redistribution. Importantly, their estimate of twentieth-century sea-level rise over the South Atlantic rests heavily on a handful of long tide-gauge records in and around the Río de la Plata, which feature large sea-level trends that have been reported on previously (Aubrey et al., 1988; Brandani et al., 1985; D’Onofrio et al., 2008; Dennis et al., 1995; Douglas, 1997, 2001, 2008; Emery and Aubrey, 1991; Fiore et al., 2009; Isla, 2008; Lanfredi et al., 1988, 1998; Melini et al., 2004; Pousa et al., 2007; Verocai et al., 2016).

The Río de la Plata is a long, broad, shallow salt-wedge estuary that widens from  $\sim 50 \text{ km}$  to  $\sim 250 \text{ km}$  and deepens from  $\sim 5 \text{ m}$  to  $\sim 20 \text{ m}$  between Buenos Aires, Argentina and Punta del Este, Uruguay, before emptying out onto the shelf (Guerrero et al., 1997; Verocai et al., 2016; Figures 1, 2). The estuary is typified by a strong salinity and turbidity front at Barra del Indio Shoal between Punta Piedras, Argentina and Montevideo, Uruguay, with fresher, more turbid waters upstream to the northwest, and saltier, less turbid waters downstream to the southeast (Acha et al., 2018; Guerrero et al., 1997; Moreira and Simionato, 2019). These features, and the region’s hydrography and ecology generally, are strongly shaped by the situation of the estuary at the confluence of the Río Paraná and Río Uruguay, which are two of the world’s largest rivers by streamflow and drainage.

Streamflow into the Río de la Plata ~~is known to have increased in~~ increased over the past century (Dai, 2016; Dai and Trenberth, 2002; Dai et al., 2009; cf. Figure 3). However, the possible influence of the increased streamflow on multidecadal and centennial sea-level trends ~~remains largely unexplored~~ has not been considered. Discussions of the connection between streamflow and regional sea level are mostly qualitative, and center on interannual variability at Buenos Aires in relation to El Niño; for example, precipitation over the Plata Basin, streamflow of the Río Paraná and Río Uruguay, and sea level at Buenos Aires tend to increase in succession during El Niño events (Douglas, 2001; Frederikse et al., 2021; Isla, 2008; Meccia et al., 2009; Papadopoulos and Tsimplis, 2006; Raicich, 2008; Santamaria-Aguilar et al., 2017; Thompson et al., 2016; Verocai et al., 2016). Douglas (2001) and Thompson et al. (2016) argue that sea-level trends calculated from the Buenos-Aires tide gauge are effected by sea-level variability during the 1982–1983 El Niño. While both studies relate this variability to river effects, Douglas (2001) favors an interpretation in terms of ocean dynamics, whereas Thompson et al. (2016) appeal to gravitational, rotational, and deformational effects. ~~Alternative interpretations of regional tide-gauge trends are given by~~ Aubrey et al. (1988) and Melini et al. (2004) give alternative interpretations of regional tide-gauge trends generally in terms of continental crustal rifting and subsidence, and the sea-level response to the 1960 Valdivia earthquake, respectively. Therefore, it remains unclear what processes mediate the relationship between streamflow and sea level, how these two variables are related more broadly as a function of time, and whether such considerations are relevant for interpreting longterm sea-level trends. ~~Needed is a~~ A

dedicated comparison of long stream- and tide-gauge records that provides a physical interpretation and establishes causality [is needed](#).

Did streamflow effect longterm sea-level trends at tide gauges in the Río de la Plata? If so, what processes were involved? To answer these questions, I apply statistical analyses to annual data from stream gauges and tide gauges over the past century, and I formulate simple theories based on ocean dynamics to interpret the results. I conclude that local estuarine and coastal ocean dynamics forced by changes in streamflow had an important impact on twentieth-century sea-level rise in the Río de la Plata. Once adjusted for these effects and background late-Holocene rates, both of which contribute negligibly to changes in global-ocean water volume, the tide gauges show trends more in line with contemporary estimates of twentieth-century global-mean sea-level rise (Dangendorf et al., 2017; Frederikse et al., 2020; Hay et al., 2015). The remainder of this paper is structured as follows: in section 2, I describe the datasets; I report on results of the observational analysis, which involves correlation and regression methods applied to the data, in section 3; in section 4, I develop simple analytical models of the sea-level response to streamflow forcing to interpret observational results from section 3; finally, I conclude with a summary and discussion in section 5.

## 2 Data

### 2.1 Streamflow

I use yearly streamflow records from the Global Streamflow Indices and Metadata Archive (GSIM; Do et al., 2018; Gudmundsson et al., 2018). The GSIM database gives data from 3 stream gauges along the Río Paraná and 12 from the Río Uruguay (Table 1; Figure 3). To estimate Río de la Plata streamflow, I combine data from the two rivers. Records from the Río Paraná are long and complete. Therefore, I use the time series from Timbúes, which spans 1905–2014 and has the largest gauged area. Data from the Río Uruguay are shorter and more gappy; for example, the station with the largest drainage, Aporte Salto Grande, only gives data for 2012–2016. Since drainage area and mean streamflow are strongly correlated across stream gauges along this river (Pearson correlation coefficient  $> 0.99$ ; Table 1), I create a composite streamflow time series for the Río Uruguay covering 1931–2016 by averaging the available records after scaling each station's time series by the ratio of the total drainage area to the drainage monitored by that particular gauge. Summing the Río Paraná data at Timbúes and the composite Río Uruguay record gives a complete time series of Río de la Plata streamflow for 1931–2014 (Figure 3).

### 2.2 Relative sea level

I use annual relative sea level records from the Permanent Service for Mean Sea Level (PSMSL; Holgate et al., 2013; PSMSL, 2022). The PSMSL database extracted on 21 March 2022 provides long ( $> 50$ -year) time series reduced to a common datum for 6 tide gauges from three regions in and around the Río de la Plata: Buenos Aires and Palermo towards the head of the estuary in Argentina; Montevideo and La Paloma near the mouth of the estuary along the coast of Uruguay to the north; and Mar del Plata and Quequén outside of the estuary along coastal Argentina to the south (Table 2; Figures 1, 4). To extend record

length, and to reduce dimensionality and errors, I average adjacent pairs of tide-gauge records relative to their common period, creating longer virtual-station records (Dangendorf et al., 2017; Frederikse et al., 2021; Jevrejeva et al., 2014) at Buenos Aires (1905–2019), Montevideo (1938–2018), and Mar del Plata (1918–2019). For each station, I interrogate the period of overlap  
95 between virtual-station and stream-gauge data.

### 2.3 Late-Holocene trends

To distinguish late-Holocene trends related to background geological processes from modern rates of change due to ocean circulation and climate in the tide-gauge records, I use proxy reconstructions of relative sea level from Santa Catarina, Brazil compiled by Milne et al. (2005) and originally reported by Angulo et al. (1999) based on Vermetid snails (Table 3). These mol-  
100 lusks are sea-level indicators because they grow formations between the infra- and midlittoral zones, so formations fossilized in growth position are informative of low water (Laborel, 1986). Applying Bayesian linear regression to the data, and accounting for the relative sea level and age errors, I determine a relative sea-level trend during the past 2,000 years of  $-0.54 \pm 0.32$  mm yr<sup>-1</sup> (95% posterior credible interval); the Bayesian model is detailed in Appendix A. This negative rate of change arises from ocean siphoning and continental levering (Mitrovica and Milne, 2002), and past modeling studies of the glacial isostatic  
105 adjustment process report similar rates over the past few millennia (Caron et al., 2018; Peltier, 2004).

## 3 Results

Mean Río de la Plata streamflow is  $(2.2 \pm 0.1) \times 10^4$  m<sup>3</sup> s<sup>-1</sup> (Figure 3), which is one of the largest river flows in the world, and consistent with values in past studies (Guerrero et al., 1997). Unless otherwise indicated,  $\pm$  values identify 95% bootstrap confidence intervals. The record standard deviation of  $(4.8 \pm 1.0) \times 10^3$  m<sup>3</sup> s<sup>-1</sup> quantifies variability across interannual to  
110 multidecadal time scales, including a longterm trend of  $96 \pm 37$  m<sup>3</sup> s<sup>-1</sup> yr<sup>-1</sup>, which has been reported on previously (Dai, 2016; Dai et al., 2009). Interannual variations in streamflow partly correspond to El Niño Southern Oscillation (ENSO); the correlation coefficient between streamflow and the Niño 3.4 Index (Rayner et al., 2003) is  $0.33 \pm 0.16$ , and peak streamflow occurred during the 1982–1983 and 1997–1998 El Niños. Such relationships between streamflow and ENSO have been extensively documented (Berri et al., 2002; Cardoso and Silva Dias, 2006; Depetris et al., 1996; Grimm et al., 1998; Robertson  
115 and Mechoso, 1998; Ropelewski and Halpert, 1987). Also apparent is a regime shift from the late 1960s to early 1980s when streamflow increased substantially. This transition has been ascribed to increased precipitation and decreased evaporation over the drainage basin due to changes in land use, deforestation, and large-scale climate modes (Lawrence and Vandecar, 2015; Medvigy et al., 2011).

The virtual-station data similarly show that relative sea level varies over all periods (Figure 4). These records also exhibit  
120 spatial structure. Detrended series at Buenos Aires and Montevideo are significantly correlated with one another (correlation coefficient  $0.44 \pm 0.20$ ), but neither is correlated with the detrended record at Mar del Plata (coefficients  $-0.01 \pm 0.20$  and  $0.18 \pm 0.28$ , respectively). While the time series at Mar del Plata is uncorrelated with ENSO (correlation coefficient  $0.12 \pm 0.17$  with Niño 3.4), the records from Buenos Aires and Montevideo both show correlation with ENSO (coefficients  $0.26 \pm 0.19$

and  $0.25 \pm 0.20$  with Niño 3.4, respectively). These results are consistent with past studies (Douglas, 2001; Papadopoulos  
125 and Tsimplis, 2006; Raicich, 2008; Verocai et al., 2016), and suggest that there exist processes that drive common sea-level  
changes at Buenos Aires and Montevideo, but which do not ~~effect~~ affect sea level along Mar del Plata. Considering the longest  
time scales, I compute a longterm rate of change at Buenos Aires of  $1.46 \pm 0.36 \text{ mm yr}^{-1}$  based on ordinary least squares linear  
regression, which is larger than the trends of  $1.03 \pm 0.53$  and  $1.00 \pm 0.35 \text{ mm yr}^{-1}$  obtained for Montevideo and Mar del Plata,  
respectively (Figure 7). These values agree with previous studies of regional sea-level rise, cited in the introduction. After  
130 adjusting for a late-Holocene rate (section 2.c; Figure 5), I find an average sea-level trend across virtual stations of  $1.70 \pm 0.40$   
 $\text{mm yr}^{-1}$ , which is faster than modern estimates of twentieth-century global-mean sea-level rise, referenced earlier, and similar  
to conclusions from Frederikse et al. (2021).

Streamflow explains a substantial portion of the sea-level variation at Buenos Aires, and to a lesser extent Montevideo, and  
largely accounts for the apparent faster-than-global rate of regional sea-level rise (Figures 6–8). To quantify the influence of  
135 streamflow on sea level, I evaluate a multiple linear regression model at each virtual station, where sea level is the dependent  
variable and streamflow, time, and unity are the independent variables. The streamflow regressor explains  $59 \pm 17\%$ ,  $28 \pm 21\%$ ,  
and  $-6 \pm 9\%$  of the sea-level variance at Buenos Aires, Montevideo, and Mar del Plata, respectively (Figure 6). This suggests  
that streamflow has more of an influence on sea level closer to the mouths of the Río Paraná and Río Uruguay, generally.  
Regression coefficients between streamflow and sea level for Buenos Aires, Montevideo, and Mar del Plata are  $(7.3 \pm 1.8) \times$   
140  $10^{-6}$ ,  $(4.7 \pm 2.6) \times 10^{-6}$ , and  $(-1.1 \pm 1.6) \times 10^{-6} \text{ m m}^{-3} \text{ s}$ , respectively (Figure 7). This structure shows that sea level is more  
sensitive to streamflow closer the mouths of the rivers. Finally, linear trends computed from the virtual-station time series from  
this regression model are  $0.75 \pm 0.34$ ,  $0.56 \pm 0.58$ , and  $1.11 \pm 0.37 \text{ mm yr}^{-1}$  at Buenos Aires, Montevideo, and Mar del Plata,  
respectively (Figure 7). Compared to trends reported in the last paragraph, this implies that streamflow effected sea-level rates  
of  $0.71 \pm 0.35$ ,  $0.48 \pm 0.38$ , and  $-0.11 \pm 0.17 \text{ mm yr}^{-1}$  at the respective virtual stations (Figure 7). Averaging the streamflow-  
145 corrected sea-level trends, and adjusting for the background geologic rate, I obtain a mean rate of  $1.34 \pm 0.40 \text{ mm yr}^{-1}$ , which  
is more in line with recent global-mean sea-level trends for the past century from Hay et al. (2015), Dangendorf et al. (2017),  
and Frederikse et al. (2020).

To establish the robustness of these results, I also consider alternative regression models and analysis approaches. First, I  
evaluate the same regression model but using ridge regression. This is meant to account for collinearity between predictors  
150 (e.g., the linear trend in streamflow). Results obtained for a wide range of ridge-parameter values are essentially identical to  
the results found from ordinary least squares discussed earlier (not shown). From this, I conclude that the model is well posed,  
and that collinearity between streamflow and time does not present a serious issue. Second, I evaluate the same regression  
model using ordinary least squares but considering sea-level and streamflow data with ENSO effects removed prior to analysis.  
I remove ENSO effects by regressing the quantity of interest against the Niño 3.4 Index and its Hilbert transform to capture  
155 arbitrary phase relationships between quantities. If river effects on sea level are restricted to ENSO events, then results from  
this analysis should give no meaningful relationship between sea level and streamflow. However, in this analysis, I find very  
similar regression coefficients between sea level and streamflow [ $(6.9 \pm 1.7) \times 10^{-6}$  at Buenos Aires;  $(3.9 \pm 2.6) \times 10^{-6}$  at  
Montevideo;  $(-1.3 \pm 1.8) \times 10^{-6}$  at Mar del Plata] and sea-level variance explained by streamflow ( $55 \pm 18\%$  at Buenos Aires;

21 ± 19% at Montevideo; −7 ± 10% at Mar del Plata) as previously when I did not remove ENSO effects prior to analysis.  
 160 From this, I conclude that river effects on sea level in the Río de la Plata are not restricted to ENSO events, which have been the  
 focus of past studies cited above, but are rather more general. This conclusion is consistent with results from wavelet coherence  
 analysis (Grinsted et al., 2004). Streamflow is significantly coherent with sea level at Buenos Aires across most time periods  
 and frequency bands resolved by the data, and with sea level at Montevideo for particular periods and frequencies (e.g., decadal  
 scales generally, interannual scales during the 1990s and 2000s), but mostly incoherent with Mar del Plata sea level (Figure 8).

## 165 4 Interpretation

Findings in the preceding section are based on correlation and regression analysis. They do not necessarily demonstrate that  
 streamflow and coastal sea level are causally connected. To provide physical interpretation and establish causality, I develop  
 simple theories for the relationship between streamflow and coastal sea level based on ocean dynamics in Sections 4.1 and 4.2,  
 and compare model predictions to observational results in section 4.3. To facilitate model development, I provide a schematic  
 170 illustration of the region identifying key model quantities in Figure 9.

### 4.1 Theory for Buenos Aires

Around Buenos Aires and Palermo, the Río de la Plata is relatively shallow, narrow, and fresh (Guerrero et al., 1997; Figure 9).  
 To model sea level in this region, I use the following conservation laws

$$u_x + v_y + w_z = 0, \quad (1)$$

$$175 \quad p_z = -\rho_f g, \quad (2)$$

$$0 = -\frac{1}{\rho_f} p_x + \nu u_{zz}. \quad (3)$$

Here  $u$ ,  $v$ , and  $w$  are velocities in along-estuary ( $x$ ), across-estuary ( $y$ ), and vertical ( $z$ ) directions, respectively,  $p$  is hydrostatic  
 pressure,  $\rho_f$  is a reference fresh water density,  $g$  is acceleration due to gravity,  $\nu$  is kinematic viscosity, and  $x$ ,  $y$ , and  $z$  subscripts  
 are spatial derivatives (Figure 9). Equations (1) and (2) are familiar forms of the continuity equation and hydrostatic balance  
 180 (Gill, 1982). Equation (3) specifies along-estuary momentum conservation in terms of a balance between pressure gradient and  
 viscous forces; it omits the time tendency given the long periods under consideration; it also neglects nonlinear advection and  
 Coriolis acceleration under the assumptions of small Reynolds number and large Ekman number, which are reasonable given  
 the spatial scales of the problem.

Integrating Equation (1) over the depth  $H(x)$  and width  $W(x)$  of the estuary (Figure 9), applying kinematic boundary  
 185 conditions at the bottom and along the sides, and ignoring the time tendency gives

$$\langle \bar{u} \rangle WH)_x = 0, \quad (4)$$

where overbar and bracket are depth and across-estuary average, respectively. Integrating Equation (2) vertically, substituting into Equation (3), and averaging over depth and width yields

$$0 = -g\langle\zeta\rangle_x - \frac{C_d U}{H} \langle\bar{u}\rangle, \quad (5)$$

190 where  $\zeta$  is ocean-dynamic sea level,  $C_d$  is a drag coefficient, and  $U$  is a reference velocity scale. To obtain Equation (5), I assumed that the  $\zeta$  slope across the estuary is linear, and that

$$vu_z = C_d U \bar{u}, \quad (6)$$

along the bottom. To solve Equations (4) and (5) for  $\langle\zeta\rangle$ , I specify that along-estuary transport equals the streamflow  $q$  at the origin

$$195 \quad \langle\bar{u}\rangle WH = q \text{ at } x = 0, \quad (7)$$

and that  $\langle\zeta\rangle$  vanishes far from the source

$$\lim_{x \rightarrow \infty} \langle\zeta\rangle = 0. \quad (8)$$

Combining Equations (4) and (7), substituting for  $\langle\bar{u}\rangle$  in Equation (5), integrating along the estuary from  $x$  to  $\infty$ , and applying the boundary condition from Equation (8) gives

$$200 \quad \langle\zeta\rangle = \frac{C_d U q}{g} \int_x^\infty \frac{1}{H^2 W} dx', \quad (9)$$

for arbitrary depth and width profiles. For an estuary with exponential width and depth (Figure 2)

$$W = W_0 \exp(x/L_W), \quad (10)$$

$$H = H_0 \exp(x/L_H), \quad (11)$$

where  $W_0$  and  $H_0$  are initial values and  $L_W$  and  $L_H$  are length scales, the solution to Equation (9) is

$$205 \quad \langle\zeta\rangle = \left( \frac{2}{L_H} + \frac{1}{L_W} \right)^{-1} \frac{C_d U q}{g H^2 W}. \quad (12)$$

The  $\langle\zeta\rangle$  response is linear in  $q$ , and controlled by friction and the geometry of the estuary; it is larger for stronger friction  $C_d U$ , narrower initial width  $W_0$ , shallower initial depth  $H_0$ , longer width and depth scales  $L_W$  and  $L_H$ , and decays rapidly with distance from the origin (Figure 10).

Regression coefficients computed between sea-level and streamflow data (Figure 7) can be understood as approximate observational estimates of the derivative of the former with respect to the latter. From Equation (12), it follows that

$$\langle\zeta\rangle_q = \left( \frac{2}{L_H} + \frac{1}{L_W} \right)^{-1} \frac{C_d U}{g H^2 W}. \quad (13)$$

Below, I evaluate Equation (13) numerically and compare the values to the empirically determined regression coefficients to test whether the theory is consistent with the observations.

## 4.2 Theory for Montevideo

215 The solution for Buenos Aires [Equation (12)] is not applicable to Montevideo. The estuary becomes wider, deeper, and more saline by this point (Guerrero et al., 1997; Figures 1, 2, 9), so stratification and rotation effects cannot be neglected as they were previously. I develop a theory for the  $\zeta$  response at Montevideo based on past studies of bottom-advected (slope-controlled) plumes (Chapman and Lentz, 1994; Lentz and Helfrich, 2002; Yankovsky and Chapman, 1997). I take  $x$ ,  $y$ , and  $z$  to be the alongshore, across-shore, and vertical coordinates, respectively. As a mental model, I envision a narrow alongshore jet over a sloping bottom  $H(y)$  in thermal-wind balance with a sharp density front at a location  $y_p$  offshore (Figure 9). I imagine the jet transport includes both the fresh river water and salty ocean water brought into the plume by turbulent mixing. These features are represented by the following governing equations

$$fu = -\frac{1}{\rho_0}p_y, \quad (14)$$

$$p_z = -\rho g, \quad (15)$$

$$225 \quad Q = q + E, \quad (16)$$

$$\frac{Q}{H} \int_{-H}^0 \rho(y, z) dz = q\rho_f + E\rho_0, \quad (17)$$

where  $f = 2\Omega \sin \phi$  is the Coriolis frequency for Earth rotation rate  $\Omega$  and latitude  $\phi$ ,  $\rho_0$  is an ambient ocean density,  $Q$  is volume transport of the vertically sheared geostrophic jet, and  $E$  is entrainment flux. Equations (14) and (15) are geostrophic and hydrostatic balances, respectively. Equation (16) is a form of the continuity equation, which states that volume is conserved within the jet. Density conservation in Equation (17) is equivalent to steady state heat and salt conservation for a linear equation of state.<sup>1</sup> Boundary conditions are that alongshore velocity vanishes everywhere along the bottom, and that velocity shear is zero at the foot of the front (Chapman and Lentz, 1994; Lentz and Helfrich, 2002; Yankovsky and Chapman, 1997),

$$u = 0 \text{ at } z = -H(y), \forall y \quad (18)$$

$$u_z = 0 \text{ at } y = y_p, z = -H(y_p) \doteq -H_p. \quad (19)$$

235 A solution to Equations (14)–(19) is obtained by giving a functional form to the density field. I picture an infinitely narrow front, with ambient ocean density everywhere offshore, and a mixture of fresh river water and salty ocean water onshore of the front, which I model as (Figures 11a, 11b)

$$\rho(y, z) = \rho_0 + \frac{\rho'}{H_p} (z + H_p) [\mathcal{H}(y_p - y) - 1], \quad (20)$$

where  $\rho'$  is a density increment and  $\mathcal{H}$  is the Heaviside step function. The alongshore velocity field in thermal-wind balance with this density structure, obtained by cross differentiating Equations (14) and (15) and then integrating vertically subject to

<sup>1</sup>Strictly speaking, since its left-hand side is equivalent to  $\int \bar{\rho}udz$ , where overbar is again vertical average, Equation (17) is an approximate form of density conservation. Exact density conservation would require the left-hand side to equal  $\int \rhoudz$ . However, assuming the density and velocity profiles given in Equations (20) and (21), it can be shown that the omitted term  $\int (\rho - \bar{\rho})udz$  is a factor of  $\sim \rho'/\rho_0 \approx 10^{-2}$ – $10^{-3}$  smaller than  $\int \bar{\rho}udz$ , meaning that the approximate nature of Equation (17) is sufficiently accurate for present purposes, and the equal sign is appropriate.



the boundary conditions, is

$$u(y, z) = -\frac{g\rho'}{2\rho_0 f H_p} (z + H_p)^2 \delta(y_p - y), \quad (21)$$

where  $\delta$  is the Dirac delta (Figure 11c).

To obtain the sea-level solution corresponding to Equation (21), I integrate geostrophic balance at the surface

$$245 \quad f u = -g\zeta_y, \quad (22)$$

over all offshore locations, which gives

$$\zeta = \frac{\rho' H_p}{2\rho_0} [1 - \mathcal{H}(y_p - y)]. \quad (23)$$

That is,  $\zeta$  takes on a constant value of  $\rho' H_p / 2\rho_0$  onshore of the front, experiences a step change at the front, and vanishes offshore of the front. The  $\zeta$  solution can be written more explicitly in terms of streamflow  $q$  and river and ocean densities  $\rho_f$  and  $\rho_0$  as follows. First, I express  $Q$  in terms of  $q$  and density. Given Equation (20), the vertically averaged density within the front is

$$\frac{1}{H} \int_{-H}^0 \rho(y_p, z) dz = \rho_0 - \frac{\rho'}{4}, \quad (24)$$

which, substituting into Equation (17) and combining with Equation (16) to eliminate  $E$ , implies

$$Q = \frac{4q(\rho_0 - \rho_f)}{\rho'}, \quad (25)$$

265 which is analogous to a form of Knudsen's hydrographical theorem (Dyer, 1997). Second, I solve for  $H_p$  in terms of  $Q$  and density. Integrating both sides of Equation (21) over all depths and offshore locations and rearranging gives

$$Q = -\frac{g\rho' H_p^2}{6\rho_0 f}, \quad (26)$$

or, after rearranging and solving for  $H_p$  (and recalling that  $f < 0$  in the Southern Hemisphere),

$$H_p = \left( -\frac{6Qf\rho_0}{g\rho'} \right)^{1/2}. \quad (27)$$

260 Finally, I substitute Equation (25) for  $Q$  in Equation (27), insert the resulting expression for  $H_p$  in Equation (23), and cancel common terms to give

$$\zeta = \left[ -\frac{6fq(\rho_0 - \rho_f)}{\rho_0 g} \right]^{1/2} [1 - \mathcal{H}(y_p - y)]. \quad (28)$$

The  $\zeta$  response is nonlinear in  $q$ , and controlled by stratification and rotation; it is larger for higher latitude, stronger streamflow, and sharper density contrast (Figures 11d–11f). While there is no alongshore dependence in Equation (28), it assumes that the location of interest is downstream in the far field of the river mouth. Given Equation (28), the derivative of  $\zeta$  with respect to  $q$ , which can be evaluated numerically and compared to regression coefficients from observations, is

$$\zeta_q = \left[ -\frac{3f(\rho_0 - \rho_f)}{2\rho_0 g q} \right]^{1/2} [1 - \mathcal{H}(y_p - y)]. \quad (29)$$

### 4.3 Model-data comparison

To test whether empirical results from Section 3 are consistent with theories developed in Sections 4.1 and 4.2, I evaluate Equation (13) for Buenos Aires and (29) for Montevideo using parameter values in Table 4, and then compare the predictions to the observed values (Figure 7). See Appendix B for a discussion of the numerical values of the model parameters in Table 4. Equation (13) gives a theoretical regression coefficient between streamflow and sea level for Buenos Aires of  $(7.0 \pm 4.0) \times 10^{-6}$  m m<sup>-3</sup> s, where the error bar reflects uncertainties on the parameter values (Table 4). Multiplying this coefficient by the longterm trend in streamflow estimated earlier ( $96 \pm 37$  m<sup>3</sup> s<sup>-1</sup> yr<sup>-1</sup>), I obtain an expected sea-level trend at Buenos Aires due to streamflow of  $0.68 \pm 0.47$  mm yr<sup>-1</sup>. These theoretical estimates agree with the coefficient of  $(7.3 \pm 1.8) \times 10^{-6}$  m m<sup>-3</sup> s and the streamflow-driven sea-level trend of  $0.71 \pm 0.35$  mm yr<sup>-1</sup> found earlier from regression analysis of observed streamflow and sea level at Buenos Aires (Figure 7). Following the same approach, and evaluating Equation (29), I find a theoretical regression coefficient of  $(4.0 \pm 0.1) \times 10^{-6}$  m m<sup>-3</sup> s and an anticipated sea-level trend forced by streamflow of  $0.41 \pm 0.19$  mm yr<sup>-1</sup> for Montevideo. Again, these values from first principles are consistent with the regression coefficient of  $(4.8 \pm 2.7) \times 10^{-6}$  m m<sup>-3</sup> s and the streamflow-induced sea-level trend of  $0.48 \pm 0.38$  mm yr<sup>-1</sup> found from the observational data (Figure 7). The consistency between theory and observation suggests that the statistical connections found earlier between measured streamflow and sea level at Buenos Aires and Montevideo identify cause-and-effect relationships, which are consistent with the physics prescribed above.

The lack of a significant relation between streamflow and sea level in Mar del Plata in the data (Figures 6–8) is also consistent with the theories developed in Sections 4.1 and 4.2. The response described by Equation (12) imagines a rapid decay away from the rivers. Indeed, given its strong exponential dependence, the sea-level response predicted by this theory is vanishingly small at Mar del Plata (Figures 1, 10). The response described by Equation (28) envisions coastal sea level coupled to a buoyant longshore current in the sense of coastal waves: counter-clockwise along the Uruguay coast and then equatorward along the Brazil coast (Piola et al., 2005). In other words, given this mechanism, Mar del Plata is not downstream of the Río de la Plata, hence no signals are communicated between the two locations according to these physics.

## 5 Conclusions

The Río de la Plata estuary in South America features the longest tide-gauge records in the South Atlantic Ocean (Figures 1, 2). However, the causes of longterm relative sea-level changes in this region have not been firmly established. I interrogated data (Figures 3–5) and developed theories (Figures 8–11) to argue for cause-and-effect relationships between low-frequency streamflow and sea-level changes in the Río de la Plata over 1931–2014 (Figures 6, 7). Streamflow forcing explained one half of the sea-level variance on interannual and longer time scales observed at Buenos Aires and one-quarter of the sea-level variance at Montevideo over the study period, generally. Specifically, a trend in streamflow of  $\sim 100$  m<sup>3</sup> s<sup>-1</sup> yr<sup>-1</sup> during the past century caused sea level to rise at rates of  $\sim 0.7$  mm yr<sup>-1</sup> at Buenos Aires and  $\sim 0.5$  mm yr<sup>-1</sup> at Montevideo. These findings advance understanding of local, regional, and global sea-level changes; clarify basic sea-level physics; inform future

300 projections of coastal sea-level change as well as the interpretation of satellite data and proxy reconstructions; and highlight future research directions.

This paper complements past tide-gauge studies on mean sea-level changes in the Río de la Plata on interannual to centennial time scales (e.g., Aubrey et al., 1988; Brandani et al., 1985; D’Onofrio et al., 2008; Dennis et al., 1995; Douglas, 1997, 2001, 2008; Emery and Aubrey, 1991; Fiore et al., 2009; Frederikse et al., 2021; Isla, 2008; Lanfredi et al., 1998; Meccia et al., 305 2009; Melini et al., 2004; Papadopoulos and Tsimplis, 2006; Pousa et al., 2007; Raicich, 2008; Santamaria-Aguilar et al., 2017; Thompson et al., 2016; Verocai et al., 2016). Previous authors establish that streamflow and sea level in the Río de la Plata covary on interannual time scales during ENSO events, but they do not identify the causal mechanisms responsible for the observed statistical correlations, nor do they consider how these two variables correspond more generally on longer time scales. My paper builds on their foundation by showing that river effects on sea level are not restricted to ENSO events 310 in particular, but are also apparent more generally at multidecadal and centennial periods, and by identifying ocean-dynamic mechanisms that mediate the relationship between streamflow and sea level. These results corroborate the hypothesis due to Douglas (2001) that interannual sea-level variation at Buenos Aires over the 1982–1983 El Niño can be understood in terms of ocean-dynamic processes, but they do not necessarily falsify suggestions that contemporary gravitational, rotational, and deformational effects also played a role (Isla, 2008; Thompson et al., 2016). Likewise, while they suggest that streamflow 315 changes contributed importantly to longterm sea-level rise observed at Buenos Aires and Montevideo, these results do not rule out the possibility that other geophysical processes also effected regional sea-level trends (Melini et al., 2004; Aubrey et al., 1988).

My results have implications for twentieth-century global sea-level reconstructions and budgets (e.g., Church and White, 2011; Dangendorf et al., 2017; Frederikse et al., 2018, 2020, 2021; Hamlington and Thompson, 2015; Hay et al., 2015; Jevre- 320 jeva et al., 2014; Natarov et al., 2017; Ray and Douglas, 2011; Thompson and Merrifield, 2014; Thompson et al., 2016). The streamflow-driven sea-level effects highlighted here are local to regional in scale; they do not contribute meaningfully to sea-level changes on basin or global scales. Hence, such river effects on tide gauges in the Río de la Plata should be removed prior to analysis if the data are used in large-scale circulation and climate studies, lest this local or regional “noise” alias onto the basin or global “signal” of interest (e.g., Papadopoulos and Tsimplis, 2006; Thompson et al., 2016). Given the heavy weight 325 placed on tide gauges from the Río de la Plata, streamflow-driven ocean dynamics could contribute to the lack of sea-level-budget closure and faster-than-global trends across the South Atlantic during the twentieth century found by Frederikse et al. (2018, 2021). Since tide-gauge records in and around the Río de la Plata are the main (if not sole) data constraint in the South Atlantic prior to 1950 in twentieth-century global-mean sea-level reconstructions (Figure 1b in Hamlington and Thompson, 2015; Figure S1a in Dangendorf et al., 2017), it would be informative to estimate twentieth-century global-mean sea-level rise 330 from tide-gauge records adjusted for river effects, which are typically not considered in global budgets and reconstructions.

Theories developed here [Equations (13) and (29)] clarify relationships between streamflow and coastal sea level, the physics of which have not been well understood (Durand et al., 2019). Piecuch et al. (2018a) formulate a theory for the far-field coastal sea-level response to buoyant river discharge in the limit of a pure surface-advected plume [their Equations (5) and (6)]. This study improves upon their work in two ways. First, I developed a barotropic theory for the sea-level response within an estuary

335 [Equation (13)], where frictional effects and the shape of coastlines and bathymetry are important. Second, I formulated a far-field theory for the coastal sea-level adjustment in the alternative limit of a purely bottom-advected (or slope-controlled) plume [Equation (29)], which is more germane to the problem at hand. These new theories allow the relationship between sea level and river discharge to be studied in a wider range of settings. In a future study, I plan to develop a more general far-field theory for the buoyancy-driven sea-level response to an intermediate buoyant plume that falls between the extremes of  
340 a surface-advected plume and a bottom-advected plume (Yankovsky and Chapman, 1997; Lentz and Helfrich, 2002).

I demonstrated that the sea-level response to buoyant coastal discharge can depend sensitively on density gradients over short scales and the geometry of coastlines and bathymetry. With some exceptions (Haarsma et al., 2016), the current generation of coupled models used for climate projections are too coarsely resolved to represent such features (Holt et al., 2017). Theories developed here may be helpful in this regard. Equations (13) and (29) may be instructive for obtaining basic scales and  
345 magnitudes of future coastal sea-level changes due to streamflow, assuming that the details of coastlines and bathymetry are known, and given projected changes in continental freshwater runoff into the coastal ocean. In the future, as global climate models with improved representation of the coastal ocean and shelf seas become more widely available, numerical experiments could be performed to broadly test analytical predictions made here regarding relationships between sea level and streamflow.

Due to my focus on longterm trends, I interrogated sea-level records from tide gauges. However, streamflow-driven sea-level  
350 changes are also apparent in data from other observing systems, including satellite altimetry. Comparing annual streamflow and sea-surface-height anomaly from along-track altimetry over 1993–2014 (Birol et al., 2017), I observe a region of significant correlation between the two variables extending broadly over the Uruguay coast from Montevideo past La Paloma towards Brazil, and onshore of the  $\sim 100$ -m isobath (Figure 12a; cf. Figure 1). The shape of the region mirrors the structure of low-salinity water near the mouth of the estuary (e.g., Piola et al., 2005). Regression coefficients obtained between Río de la Plata  
355 streamflow and sea-surface-height anomaly are consistent with theoretical expectations: more upstream in the estuary, values are  $\lesssim 1 \times 10^{-5} \text{ m m}^{-3} \text{ s}$ , similar to predictions from barotropic theory developed in Section 4.1 [Equation (13)], whereas values downstream in the far field are  $\sim 4 \times 10^{-6} \text{ m m}^{-3} \text{ s}$ , consistent with values anticipated from the baroclinic theory from Section 4.2 [Equation (29)] (Figure 12b; cf. Figure 7). The offshore extent of the region of significant correlation between streamflow and sea-surface height also corroborates basic theoretical expectations: for strong slope control and large river  
360 discharge, the offshore and vertical scales of a buoyant coastal plume are expected to be  $\sim 100 \text{ km}$  and  $\sim 100 \text{ m}$ , respectively (e.g., Yankovsky and Chapman, 1997).

Findings here may have implications for proxy reconstructions of late-Holocene sea level from natural archives, which have temporal resolution of decades to centuries (e.g., Kemp et al., 2009; Khan et al., 2019). Whereas past studies reason river effects contribute to sea-level variability on interannual and shorter time scales (e.g., Durand et al., 2019; Woodworth et al., 2019), I  
365 showed that streamflow changes can be an important driver of sea-level changes over multidecadal and longer periods. This result has (at least) two important implications for proxy reconstructions. First, it implies that river effects may be important to consider when interpreting proxy sea-level reconstructions from large rivers or estuaries (e.g., Gerlach et al., 2017; Kemp et al., 2018). Second, it suggests that proxy sea-level reconstructions produced from strategic locations may inform past changes in

streamflow, and thus complement estimates from more traditional archives like tree rings (e.g., Margolis et al., 2011; Devineni  
370 et al., 2013).

Other major rivers including the Mississippi, Yenisey, and Lena have also undergone significant streamflow trends in the  
past century (e.g., Dai, 2016; Dai and Trenberth, 2002; Dai et al., 2009). However, the effect of these historical changes in  
streamflow on longterm sea-level change has not been considered. Future studies should take advantage of the growing number  
of available runoff and streamflow datasets (e.g., Do et al., 2018; Gudmundsson et al., 2018; Tsujino et al., 2018) to test the  
375 analytical models developed here and observationally constrain river effects on historical sea-level rise more globally, which  
could inform studies of ocean circulation and climate change.

*Data availability.* All data used here are publicly available. Tide-gauge data are available through the Permanent Service for Mean Sea  
Level (<https://www.psmsl.org/>). Stream-gauge data are available through the Global Streamflow Indices and Metadata Archive  
(<https://doi.pangaea.de/10.1594/PANGAEA.887470>). Proxy reconstructions are taken from the appendix of Milne et al.  
380 (2005). Bathymetry data are available through the GEBCO Compilation Group 2021 (<https://www.gebco.net/>). Altimetry data  
are from the Center for Topographic studies of the Ocean and Hydrosphere (<http://ctoh.legos.obs-mip.fr/>). Wavelet coherence  
analysis was performed using code made available by A. Grinsted (<http://grinsted.github.io/wavelet-coherence/>).

## Appendix A: Bayesian hierarchical model

I apply Bayesian linear regression to proxy reconstructions from Milne et al. (2005) to quantify late-Holocene rates of sea-  
385 level change. Bayesian linear regression is chosen over more traditional approaches like least squares or maximum likelihood  
because Bayesian methods provide a more transparent means for incorporating data errors into the formal uncertainty quan-  
tification. I design the Bayesian hierarchical model following similar algorithms developed in past studies (Ashe et al., 2019;  
Cahill et al., 2015, 2016; Walker et al., 2020). The model used here is essentially the time component of the spacetime model  
from Piecuch et al. (2018b). While I give a brief description for sake of completeness, readers are referred to Piecuch et al.  
390 (2018b) for a more detailed presentation.

Temporal Bayesian hierarchical models comprise three levels: a process level that prescribes the temporal evolution of the  
sea-level process; a data level that codifies the relationship between the uncertain proxy reconstructions and the sea-level  
process; and a parameter level where prior constraints are specified.

For the process level, I model sea level  $\mathbf{y} = [y_1, y_2, \dots, y_n]^T$  as a linear function of time  $\mathbf{x} = [x_1, x_2, \dots, x_n]^T$  according to  
395  $y_k \sim \mathcal{N}(\alpha x_k + \beta, \gamma^2)$ ,  $k \in [1, n]$ , (A1)

where  $\sim$  means “is distributed as,”  $\mathcal{N}(a, b^2)$  is the normal distribution with mean  $a$  and variance  $b^2$ , and  $\alpha$ ,  $\beta$ , and  $\gamma^2$  are un-  
certain slope, intercept, and residual variance parameters, respectively. For the data level, I represent the proxy reconstructions

of relative sea level  $\mathbf{z} = [z_1, z_2, \dots, z_n]^\top$  and age  $\mathbf{w} = [w_1, w_2, \dots, w_n]^\top$  as noisy versions of the respective processes, viz.,

$$z_k \sim \mathcal{N}(y_k, \delta_k^2), \quad (\text{A2})$$

$$400 \quad w_k \sim \mathcal{N}(x_k, \epsilon_k^2), \quad (\text{A3})$$

where  $\delta_k^2$  and  $\epsilon_k^2$  are the data error variances, which are provided (Table 3). To close the model, I assume normal priors for  $\alpha$  and  $\beta$ , and an inverse-gamma prior for  $\gamma^2$ ,

$$\alpha \sim \mathcal{N}(\tilde{\mu}, \tilde{\kappa}^2), \quad (\text{A4})$$

$$\beta \sim \mathcal{N}(\tilde{\eta}, \tilde{\sigma}^2), \quad (\text{A5})$$

$$405 \quad \gamma^2 \sim \mathcal{G}^{-1}(\tilde{\xi}, \tilde{\chi}), \quad (\text{A6})$$

where tildes identify fixed hyperparameters (see below for numerical values).

Given Bayes' rule and the model equations, I assume the posterior distribution is

$$p(\mathbf{y}, \mathbf{x}, \alpha, \beta, \gamma^2 | \mathbf{z}, \mathbf{w}) \propto p(\alpha) p(\beta) p(\gamma^2) \prod_{k=1}^n [p(z_k | y_k) p(w_k | x_k) p(y_k | x_k, \alpha, \beta, \gamma^2)], \quad (\text{A7})$$

where  $p$  is probability,  $|$  is conditionality, and  $\propto$  is proportional to. To evaluate the posterior, I use a Gibbs sampler (Gelman et al., 2013), evaluating the full posteriors (Wikle and Berliner, 2007)

$$\alpha | \cdot \sim \mathcal{N} \left( \left[ \tilde{\kappa}^{-2} + \gamma^{-2} \sum_{k=1}^n x_k^2 \right]^{-1} \left[ \tilde{\kappa}^{-2} \tilde{\mu} + \gamma^{-2} \sum_{k=1}^n x_k \{y_k - \beta\} \right], \left[ \tilde{\kappa}^{-2} + \gamma^{-2} \sum_{k=1}^n x_k^2 \right]^{-1} \right), \quad (\text{A8})$$

$$\beta | \cdot \sim \mathcal{N} \left( [\tilde{\sigma}^{-2} + n\gamma^{-2}]^{-1} \left[ \tilde{\sigma}^{-2} \tilde{\eta} + \gamma^{-2} \sum_{k=1}^n \{y_k - \alpha x_k\} \right], [\tilde{\sigma}^{-2} + n\gamma^{-2}]^{-1} \right), \quad (\text{A9})$$

$$\gamma^2 | \cdot \sim \mathcal{G}^{-1} \left( \tilde{\xi} + \frac{n}{2}, \tilde{\chi} + \frac{1}{2} \sum_{k=1}^n [y_k - \alpha x_k - \beta]^2 \right), \quad (\text{A10})$$

$$y_k | \cdot \sim \mathcal{N} \left( [\delta_k^{-2} + \gamma^{-2}]^{-1} [\delta_k^{-2} z_k + \gamma^{-2} \{\alpha x_k + \beta\}], [\delta_k^{-2} + \gamma^{-2}]^{-1} \right), \quad (\text{A11})$$

$$415 \quad x_k | \cdot \sim \mathcal{N} \left( [\epsilon_k^{-2} + \alpha^2 \gamma^{-2}]^{-1} [\epsilon_k^{-2} w_k + \gamma^{-2} \alpha \{y_k - \beta\}], [\epsilon_k^{-2} + \alpha^2 \gamma^{-2}]^{-1} \right), \quad (\text{A12})$$

where  $| \cdot$  is conditionality on all other processes, parameters, and data. I set weak, uninformative priors ( $\tilde{\mu} = 0$  mm yr<sup>-1</sup>,  $\tilde{\kappa}^2 = 0.001$  mm<sup>2</sup> yr<sup>-2</sup>,  $\tilde{\eta} = 0$  m,  $\tilde{\sigma}^2 = 100$  m<sup>2</sup>,  $\tilde{\xi} = 0.5$ ,  $\tilde{\chi} = 0.02$  m<sup>2</sup>). I discard 1 000 burn-in draws to eliminate startup transients. I reduce autocorrelation of the samples by keeping only every 10th draw of the subsequent 10 000 iterations of the Gibbs sampler. This gives a 1 000-member ensemble of posterior estimates for  $\mathbf{y}$ ,  $\mathbf{x}$ ,  $\alpha$ ,  $\beta$ , and  $\gamma^2$ . Figure 5 shows summary statistics for the posterior solution of  $\alpha x + \beta$  for  $x$  from 500 BCE to present.

## Appendix B: Model parameters

To evaluate Equations (13) and (29), numerical values need to be assigned to the various model parameters. Here I detail the rationale behind the values tabulated in Table 4.

I chose standard reference values for freshwater density  $\rho_f$ , seawater density  $\rho_0$ , gravitational acceleration  $g$ , and the Coriolis  
425 parameter at the latitude of the Río de la Plata.

Ranges on the initial estuary width  $W_0$  and depth  $H_0$ , and the width and depth scales  $L_W$  and  $L_H$  from Table 4 correspond to  
best estimates plus and minus two standard errors on these parameter values as determined by fitting exponentials in the form  
of Equations (10) and (11) to the bathymetry data in Figure 2 using nonlinear least squares as described in the Figure 2 caption.

The  $q$  value is the time-mean of the Río de la Plata streamflow time series in Figure 3 plus and minus twice its standard error.  
430 Typical values for  $C_d$  range from 0.001 to 0.003 (Adcroft et al., 2018, 2019). I selected a middle-of-the-road value of 0.002.

The velocity scale  $U$  parameterizes the influence of unresolved processes, and is typically selected to represent tidal motions  
(Adcroft et al., 2019). Regional tidal-current amplitudes are 0.5–0.8 m s<sup>-1</sup> (O’Connor, 1991; Piedra-Cueva and Fossati, 2007).  
Multiplying by a factor  $2/\pi$ , the average amplitude of a sine wave, gives the range of 0.3–0.5 m s<sup>-1</sup> used here. This is larger  
than the background mean flow from river discharge,  $\langle \bar{u} \rangle = q/H(x)W(x)$ , which is 0.12 m s<sup>-1</sup> at Buenos Aires ( $x = 65$  km),  
435 using the  $q$ ,  $H_0$ ,  $W_0$ ,  $L_H$ , and  $L_W$  values in Table 4 discussed earlier.

*Author contributions.* C. G. P. was responsible for all aspects of this study including conceptualization, formal analysis, funding acquisition,  
investigation, methodology, visualization, and writing.

*Competing interests.* No competing interests are present.

*Acknowledgements.* This work was supported by the National Aeronautics and Space Administration’s Sea Level Change Team (grants  
440 80NSSC20K1241, 80NM0018D0004) and the National Science Foundation’s Paleo Perspectives on Climate Change program (grant OCE-  
2002485). Critical reviews by F. M. Calafat, M. Passaro, and two anonymous reviewers improved the manuscript. Helpful conversations  
with R. C. Creel, C. W. Hughes, S. Jevrejeva, C. Katsman, A. C. Kemp, S. J. Lentz, K. McKeon, J. Oelsmann, K. Richter, and A. Wise are  
also acknowledged. This paper is a contribution by the International Space Science Institute (ISSI) Team on “Understanding the Connection  
Between Coastal Sea Level and Open Ocean Variability Through Space Observations” led by F. M. Calafat and S. Jevrejeva.

445 **References**

- Acha, E. M., H. Mianzan, R. Guerrero, J. Carreto, D. Giberto, N. Montoya, and M. Carignan, 2018: An overview of physical and ecological processes in the Rio de la Plata Estuary. *Continental Shelf Research*, 28, 1579–1588, <https://doi.org/10.1016/j.csr.2007.01.031>.
- Adcroft, A., J.-M. Campin, S. Dutkiewicz, E. Constantinou, D. Ferreira, G. Forget, B. Fox-Kemper, P. Heimbach, C. Hill, E. Hill, H. Hill, O. Jahn, M. Losch, J. Marshall, G. Maze, D. Menemenlis, A. Molod, 2018: MITgcm user manual, 485 pp., <http://hdl.handle.net/1721.1/117188>.
- Adcroft, A., W. Anderson, V. Balaji, C. Blanton, M. Bushuk, C. O. Dufour, J. P. Dunne, S. M. Griffies, R. Hallberg, M. J. Harrison, I. M. Held, M. F. Jansen, J. G. John, J. P. Krasting, A. R. Langenhorst, S. Legg, Z. Liang, C. McHugh, A. Radhakrishnan, B. G. Reichl, T. Rosati, B. L. Samuels, A. Shao, R. Stouffer, M. Winton, A. T. Wittenberg, B. Xiang, and R. Zhang, 2019: The GFDL global ocean and sea ice model OM4.0: Model description and simulation features. *Journal of Advances in Modeling Earth Systems*, 11, 3167–3211, <https://doi.org/10.1029/2019MS001726>.
- Angulo, R. J., P. C. F. Giannini, K. Suguio, and L. C. R. Pessendam, 1999: Relative sea-level changes in the last 5500 years in southern Brazil (Laguna-Imbituba region, Santa Catarina State) based on vermetid <sup>14</sup>C ages. *Marine Geology*, 159 (1–4), 323–339, [https://doi.org/10.1016/S0025-3227\(98\)00204-7](https://doi.org/10.1016/S0025-3227(98)00204-7).
- Ashe, E. L., N. Cahill, C. Hay, N. S. Khan, A. Kemp, S. E. Engelhart, B. P. Horton, A. C. Parnell, and R. E. Kopp, 2019: Statistical modeling of rates and trends in Holocene relative sea level. *Quaternary Science Reviews*, 204, 58–77, <https://doi.org/10.1016/j.quascirev.2018.10.032>.
- Aubrey, D. G., K. O. Emery, and E. Uchupi, 1988: Changing coastal levels of South America and the Caribbean region from tide-gauge records. *Tectonophysics*, 154, 269–284, [https://doi.org/10.1016/0040-1951\(88\)90108-4](https://doi.org/10.1016/0040-1951(88)90108-4).
- Berri, G. J., M. A. Ghietto, and N. O. García, 2002: The Influence of ENSO in the flows of the upper Paraná River of South America over the past 100 years. *Journal of Hydrometeorology*, 3, 57–65, [https://doi.org/10.1175/1525-7541\(2002\)003<0057:TIOEIT>2.0.CO;2](https://doi.org/10.1175/1525-7541(2002)003<0057:TIOEIT>2.0.CO;2).
- Biol, F., N. Fuller, F. Lyard, M. Cancet, F. Niño, C. Delebecque, S. Fleury, F. Toubou, A. Melet, M. Saraceno, and F. Léger, 2017: Coastal applications from nadir altimetry: Example of the X-TRACK regional products. *Advances in Space Research*, 59, 936–953, <https://doi.org/10.1016/j.asr.2016.11.005>.
- Brandani, A. A., E. E. D’Onofrio, and E. J. Schnack, 1985: Comparative analysis of historical mean sea level changes along the Argentine coast. In: J. Rabassa (Ed.), *Quaternary of South America and Antarctic Peninsula*. Balkema, Rotterdam, pp. 187–195.
- Cahill, N., A. C. Kemp, B. P. Horton, and A. C. Parnell, 2015: Modeling sea-level change using errors-in-variables integrated Gaussian processes. *The Annals of Applied Statistics*, 9(2), 547–571, <https://doi.org/10.1214/15-AOAS824>.
- Cahill, N., A. C. Kemp, B. P. Horton, and A. C. Parnell, 2016: A Bayesian hierarchical model for reconstructing relative sea level: from raw data to rates of change. *Climate of the Past*, 12, 525–542, <https://doi.org/10.5194/cp-12-525-2016>.
- Cardoso, A. O., and P. L. Silva Dias, 2006: The relationship between ENSO and Paraná River flow. *Advances in Geosciences*, 6, 189–193, <https://doi.org/10.5194/adgeo-6-189-2006>.
- Caron, L., E. R. Ivins, E. Larour, S. Adhikari, J. Nilsson, and G. Blewitt, 2018: GIA model statistics for GRACE hydrology, cryosphere, and ocean science. *Geophysical Research Letters*, 45, <https://doi.org/10.1002/2017GL076644>.
- Chapman, D. C., and S. J. Lentz, 1994: Trapping of a coastal density front by the bottom boundary layer. *Journal of Physical Oceanography*, 24, 1464–1479, [https://doi.org/10.1175/1520-0485\(1994\)024<1464:TOACDF>2.0.CO;2](https://doi.org/10.1175/1520-0485(1994)024<1464:TOACDF>2.0.CO;2).
- Church, J. A., and N. J. White, 2011: Sea-level rise from the late 19th to the early 21st century. *Surveys in Geophysics*, 32, 585–602, <https://doi.org/10.1007/s10712-011-9119-1>.



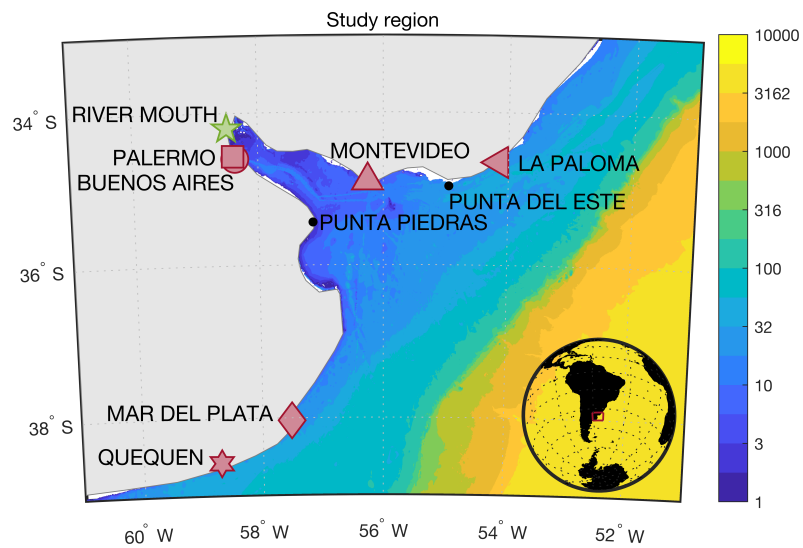
- D'Onofrio, E. E., M. M. E. Fiore, and J. L. Pousa, 2008: Changes in the regime of storm surges at Buenos Aires, Argentina. *Journal of Coastal Research*, 24 (sp1), 260–265, <https://doi.org/10.2112/05-0588.1>.
- 485 Dai, A., 2016: Historical and future changes in streamflow and continental runoff: a review. In: Q. Tang, T. Oki (Eds.), *Terrestrial Water Cycle and Climate Change: Natural and Human-Induced Impacts*. American Geophysical Union, Washington D.C., pp. 17–37.
- Dai, A., and K. E. Trenberth, 2002: Estimates of freshwater discharge from continents: latitudinal and seasonal variations. *Journal of Hydrometeorology*, 3, 660–687, [https://doi.org/10.1175/1525-7541\(2002\)003<0660:EOFDfC>2.0.CO;2](https://doi.org/10.1175/1525-7541(2002)003<0660:EOFDfC>2.0.CO;2).
- Dai, A., T. Qian, K. E. Trenberth, and J. D. Milliman, 2009: Changes in continental freshwater discharge from 1948 to 2004. *Journal of Climate*, 22(10), 2773–2792, <https://doi.org/10.1175/2008JCLI2592.1>.
- 490 Dangendorf, S., M. Marcos, G. Wöppelmann, C. P. Conrad, T. Frederikse, and R. Riva, 2017: Reassessment of 20th century global mean sea level rise. *Proceedings of the National Academy of Sciences*, 114(23), 5946–5951, <https://doi.org/10.1073/pnas.1616007114>.
- Dennis, K. C., E. J. Schnack, F. H. Mouzo, and C. R. Orona, 1995: Sea-level rise and Argentina: potential impacts and consequences. *Journal of Coastal Research*, 14, 205–223, <https://www.jstor.org/stable/25735709>
- 495 Depetris, P. J., S. Kempe, M. Latif, and W. G. Mook, 1996: ENSO-controlled flooding in the Paraná River (1904–1991). *Naturwissenschaften*, 83, 127–129, <https://doi.org/10.1007/BF01142177>
- Devineni, N., U. Lall, N. Pederson, and E. Cook, 2013: A tree-ring-based reconstruction of Delaware River Basin streamflow using hierarchical Bayesian regression. *Journal of Climate*, 26, 4357–4374, <https://doi.org/10.1175/JCLI-D-11-00675.1>.
- Do, H. X., L. Gudmundsson, M. Leonard, and S. Westra, 2018: The global streamflow indices and metadata archive (GSIM)—Part 1: the production of a daily streamflow archive and metadata. *Earth System Science Data*, 10, 765–785, [https://doi.org/10.5194/essd-10-765-](https://doi.org/10.5194/essd-10-765-2018)
- 500 2018.
- Douglas, B. C., 1997: Global sea level rise: a redetermination. *Surveys in Geophysics*, 18, 279–292, <https://doi.org/10.1023/A:1006544227856>.
- Douglas, B. C., 2001: Sea level change in the era of the recording tide gauge. In: B. C. Douglas, M. S. Kearney, and S. P. Leatherman (Eds.), *Sea Level Rise: History and Consequences*, International Geophysics Series, Volume 75. Academic Press, San Diego, pp. 37–64.
- 505 Douglas, B. C., 2008: Concerning evidence for fingerprints of glacial melting. *Journal of Coastal Research*, 24(2B), 218–227, <https://doi.org/10.2112/06-0748.1>.
- Douglas, B. C., M. S. Kearney, and S. P. Leatherman, 2001: *Sea Level Rise: History and Consequences*. International Geophysics Series, Volume 75. Academic Press, San Diego, 232 pp.
- Durand, F., C. G. Piecuch, M. Becker, F. Papa, S. V. Raju, J. U. Khan, and R. M. Ponte, 2019: Impact of coastal freshwater runoff on coastal
- 510 sea level. *Surveys in Geophysics*, 40, 1437–1466, <https://doi.org/10.1007/s10712-019-09536-w>.
- Dyer, K. R., 1997: *Estuaries: A Physical Introduction*. Wiley, Chichester, 210 pp.
- Emery, K. O., and D. G. Aubrey, 1991: *Sea Levels, Land Levels, and Tide Gauges*. Springer-Verlag, New York, 238 pp.
- Fiore, M. M. E., E. E. D'Onofrio, J. L. Pousa, E. J. Schnack, and G. R. Bértola, 2009: Storm surges and coastal impacts at Mar del Plata, Argentina. *Continental Shelf Research*, 29, 1643–1649, <https://doi.org/10.1016/j.csr.2009.05.004>.
- 515 Frederikse, T., S. Jevrejeva, R. E. M. Riva, and S. Dangendorf, 2018: A consistent sea-level reconstruction and its budget on basin and global scales over 1958–2014. *Journal of Climate*, 31, 1267–1280, <https://doi.org/10.1175/JCLI-D-17-0502.1>.
- Frederikse, T., F. Landerer, L. Caron, S. Addhikari, D. Parkes, V. W. Humphrey, S. Dangendorf, P. Hogarth, L. Zanna, L. Cheng, and Y.-H. Wu, 2020: The causes of sea-level rise since 1900. *Nature*, 584, 393–397, <https://doi.org/10.1038/s41586-020-2591-3>.

- Frederikse, T., S. Adhikari, T. J. Daley, S. Dangendorf, R. Gehrels, F. Landerer, M. Marcos, T. L. Newton, G. Rush, A. B. A. Slangen, and  
520 G. Wöppelmann, 2021: Constraining 20th-century sea-level rise in the South Atlantic Ocean. *Journal of Geophysical Research: Oceans*,  
126, e2020JC016970, <https://doi.org/10.1029/2020JC016970>.
- GEBCO Compilation Group, 2021: GEBCO 2021 Grid, <https://doi.org/10.5285/c6612cbe-50b3-0cff-e053-6c86abc09f8f>.
- Gelman, A., J. B. Carlin, H. S. Stern, D. B. Dunson, A. Vehtari, and D. B. Rubin, 2013: Bayesian Data Analysis, Third Edition. Texts in  
Statistical Science, Chapman and Hall/CRC, Boca Raton, 675 pp.
- 525 Gerlach, M. J., S. E. Engelhart, A. C. Kemp, R. P. Moyer, J. M. Smoak, C. E. Bernhardt, and N. Cahill, 2017: Reconstructing Common Era  
relative sea-level change on the Gulf Coast of Florida. *Marine Geology*, 390, 254–269, <https://doi.org/10.1016/j.margeo.2017.07.001>.
- Gill, A. E., 1982: Atmosphere-Ocean Dynamics. International Geophysics Series, Volume 30. Academic Press, San Diego, 680 pp.
- Gregory, J. M., S. M. Griffies, C. W. Hughes, J. A. Lowe, J. A. Church, I. Fukumori, N. Gomez, R. E. Kopp, F. Landerer, G. Le Cozannet,  
R. M. Ponte, D. Stammer, M. E. Tamisiea, and R. S. W. van de Wal, 2019: Concepts and terminology for sea level: mean, variability and  
530 change, both local and global. *Surveys in Geophysics*, 40, 1251–1289, <https://doi.org/10.1007/s10712-019-09525-z>.
- Grimm, A. M., S. E. T. Ferraz, and J. Gomes, 1998: Precipitation anomalies in southern Brazil associated with El Niño and La Niña events.  
*Journal of Climate*, 11, 2863–2880, [https://doi.org/10.1175/1520-0442\(1998\)011<2863:PAISBA>2.0.CO;2](https://doi.org/10.1175/1520-0442(1998)011<2863:PAISBA>2.0.CO;2).
- Grinsted, A., J. C. Moore, and S. Jevrejeva, 2004: Application of the cross wavelet transform and wavelet coherence to geophysical time  
series. *Nonlinear Processes in Geophysics*, 11, 561–566, <https://doi.org/10.5194/npg-11-561-2004>.
- 535 Gudmundsson, L., H. X. Do, M. Leonard, and S. Westra, 2018: The global streamflow indices and metadata archive (GSIM)—Part 2: quality  
control, tim-series indices and homogeneity assessment. *Earth System Science Data*, 10, 787–804, <https://doi.org/10.5194/essd-10-787-2018>.
- Guerrero, R. A., E. M. Acha, M. B. Framiñan, and C. A. Lasta, 1997: Physical oceanography of the Rió de la Plata estuary, Argentina.  
*Continental Shelf Research*, 17(7), 727–742, [https://doi.org/10.1016/S0278-4343\(96\)00061-1](https://doi.org/10.1016/S0278-4343(96)00061-1).
- 540 Haarsma, R. J., M. J. Roberts, P. L. Vidale, C. A. Senior, A. Bellucci, Q. Bao, P. Chang, S. Corti, N. S. Fuckar, V. Guemas, J. von Hardenberg,  
W. Hazeleger, C. Kodama, T. Koenigk, L. R. Leung, J. Lu, J.-J. Luo, J. Mao, M. S. Mizielinski, R. Mizuta, P. Nobre, M. Satoh, E.  
Scoccimarro, T. Semmler, J. Small, and J.-S. von Storch, 2016: High Resolution Model Intercomparison Project (HighResMip v1.0) for  
CMIP6. *Geoscientific Model Development*, 9, 4185–4209, <https://doi.org/10.5194/gmd-9-4185-2016>.
- Hamlington, B. D., and P. R. Thompson, 2015: Considerations for estimating the 20th century trend in global mean sea level. *Geophysical*  
545 *Research Letters*, 42, 4102–4109, <https://doi.org/10.1002/2015GL064177>.
- Hay, C. C., E. Morrow, R. E. Kopp, and J. X. Mitrovica, 2015: Probabilistic reanalysis of twentieth-century sea-level rise. *Nature*, 517,  
481–484, <https://doi.org/10.1038/nature14093>.
- Hogarth, P., 2014: Preliminary analysis of acceleration of sea level rise through the twentieth century using extended tide gauge data sets  
(August 2014). *Journal of Geophysical Research: Oceans*, 119, 7645–7659, <https://doi.org/10.1002/2014JC009976>.
- 550 Holgate, S. J., A. Matthews, P. L. Woodworth, L. J. Rickards, M. E. Tamisiea, E. Bradshaw, P. R. Foden, K. M. Gordon, S. Jevrejeva, and J.  
Pugh, 2013: New data systems and products at the Permanent Service for Mean Sea Level. *Journal of Coastal Research*, 29(3), 493–504,  
<https://doi.org/10.2112/JCOASTRES-D-12-00175.1>.
- Holt, J., P. Hyder, M. Ashworth, J. Harle, H. T. Hewitt, H. Liu, A. L. New, S. Pickles, A. Porter, E. Popova, J. I. Allen, J. Siddorn, and R. Wood,  
2017: Prospects for improving the representation of coastal and shelf seas in global ocean models. *Geoscientific Model Development*, 10,  
555 499–523, <https://doi.org/10.5194/gmd-10-499-2017>.

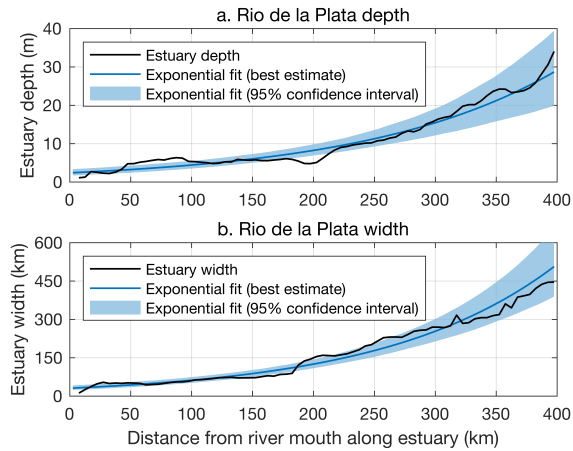
- Horton, B. P., R. E. Kopp, A. J. Garner, C. C. Hay, N. S. Khan, K. Roy, and T. A. Shaw, 2018: Mapping sea-level change in time, space, and probability. *Annual Review of Environment and Resources*, 43, 481–521, <https://doi.org/10.1146/annurev-environ-102017-025826>.
- Isla, F. I., 2008: ENSO-dominated estuaries of Buenos Aires: the interannual transfer of water from western to eastern South America. *Global and Planetary Change*, 64, 69–75, <https://doi.org/10.1016/j.gloplacha.2008.09.002>.
- 560 Jevrejeva, S., J. C. Moore, A. Grinsted, A. P. Matthews, and G. Spada, 2014: Trends and acceleration in global and regional sea levels since 1807. *Global and Planetary Change*, 113, 11–22, <https://doi.org/10.1016/j.gloplacha.2013.12.004>.
- Kemp, A. C., B. P. Horton, S. J. Culver, D. R. Corbett, O. van de Plassche, W. R. Gehrels, B. C. Douglas, and A. C. Parnell, 2009: Timing and magnitude of recent accelerated sea-level rise (North Carolina, United States). *Geology*, 37(11), 1035–1038, <https://doi.org/10.1130/G30352A.1>.
- 565 Kemp, A. C., A. J. Wright, R. J. Edwards, R. L. Barnett, M. J. Brain, R. E. Kopp, N. Cahill, B. P. Horton, D. J. Charman, A. D. Hawkes, T. D. Hill, and O. van de Plassche, 2018: Relative sea-level change in Newfoundland, Canada during the past ~ 3000 years. *Quaternary Science Reviews*, 201, 89–110, <https://doi.org/10.1016/j.quascirev.2018.10.012>.
- Khan, N. S., B. P. Horton, S. Engelhart, A. Rovere, M. Vacchi, E. L. Ashe, T. E. Törnqvist, A. Dutton, M. P. Hijma, I. Shennan, and the HOLSEA working group, 2019: Inception of a global atlas of sea levels since the Last Glacial Maximum. *Quaternary Science Reviews*, 570 220, 359–371, <https://doi.org/10.1016/j.quascirev.2019.07.016>.
- Kopp, R. E., C. C. Hay, C. M. Little, and J. X. Mitrovica, 2015: Geographic variability of sea-level change. *Current Climate Change Reports*, 1, 192–204, <https://doi.org/10.1007/s40641-015-0015-5>.
- Laborel, J., 1986: Vermetid gastropods as sea-level indicators. In: O. van de Plassche (Ed.), *Sea-level research: a manual for the collection and evaluation of data*. Free University, Amsterdam, Netherlands, pp. 281–310.
- 575 Lanfredi, N. W., E. E. D’Onofrio, and C. A. Mazio, 1988: Variations of the mean sea level in the southwest Atlantic Ocean. *Continental Shelf Research*, 8(11), 1211–1220, [https://doi.org/10.1016/0278-4343\(88\)90002-7](https://doi.org/10.1016/0278-4343(88)90002-7).
- Lanfredi, N. W., J. L. Pousa, and E. E. D’Onofrio, 1998: Sea-level rise and related potential hazards on the Argentine coast. *Journal of Coastal Research*, 14(1), 47–60, <https://www.jstor.org/stable/4298761>.
- Lawrence, D., and K. Vandecar, 2015: Effects of tropical deforestation on climate and agriculture. *Nature Climate Change*, 5, 27–36, 580 <https://doi.org/10.1038/nclimate2430>.
- Lentz, S. J., and K. R. Helfrich, 2002: Buoyant gravity currents along a sloping bottom in a rotating fluid. *Journal of Fluid Mechanics*, 464, 251–278, <https://doi.org/10.1017/S0022112002008868>.
- Lisitzin, E., 1974: *Sea-Level Changes*. Elsevier Oceanography Series, 8, Elsevier, Amsterdam, 286 pp.
- Margolis, E. Q., D. M. Meko, and R. Touchan, 2011: A tree-ring reconstruction of streamflow in the Santa Fe River, New Mexico. *Journal of Hydrology*, 397, 118–127, <https://doi.org/10.1016/j.jhydrol.2010.11.042>.
- 585 Meccia, V. L., C. G. Simionato, M. E. Fiore, E. E. D’Onofrio, and W. C. Dragani, 2009: Sea surface height variability in the Rio de la Plata estuary from synoptic to inter-annual scales: results of numerical simulations. *Estuarine, Coastal and Shelf Science*, 85, 327–343, <https://doi.org/10.1016/j.ecss.2009.08.024>.
- Medvigy, D., R. L. Walko, and R. Avissar, 2011: Effects of deforestation on spatiotemporal distributions of precipitation in South America. 590 *Journal of Climate*, 24, 2147–2163, <https://doi.org/10.1175/2010JCLI3882.1>.
- Melini, D., A. Piersanti, G. Spada, G. Soldati, E. Casarotti, and E. Boschi, 2004: Earthquakes and relative sealevel changes. *Geophysical Research Letters*, 31, L09601, <https://doi.org/10.1029/2003GL019347>.

- Milne, G. A., A. J. Long, and S. E. Bassett, 2005: Modelling Holocene relative sea-level observations from the Caribbean and South America. *Quaternary Science Reviews*, 24, 1183–1202, <https://doi.org/10.1016/j.quascirev.2004.10.005>
- 595 Mitrovica, J. X., and G. A. Milne, 2002: On the origin of late Holocene sea-level highstands within equatorial ocean basins. *Quaternary Science Reviews*, 21(20–22), 2179–2190, [https://doi.org/10.1016/S0277-3791\(02\)00080-X](https://doi.org/10.1016/S0277-3791(02)00080-X)
- Moreira, D., and C. Simionato, 2019: The Río de la Plata estuary hydrology and circulation. *Meteorologica*, 44(1), 1–30.
- Natarov, S. I., M. A. Merrifield, J. M. Becker, and P. R. Thompson, 2017: Regional influences on reconstructed global mean sea level. *Geophysical Research Letters*, 44, 3274–3282, <https://doi.org/10.1002/2016GL071523>.
- 600 O'Connor, W. P., 1991: A numerical model of tides and storm surges in the Rio de la Plata Estuary. *Continental Shelf Research*, 11(12), 1491–1508, [https://doi.org/10.1016/0278-4343\(91\)90023-Y](https://doi.org/10.1016/0278-4343(91)90023-Y).
- Papadopoulos, A., and M. N. Tsimplis, 2006: Coherent coastal sea-level variability at interdecadal and interannual scales from tide gauges. *Journal of Coastal Research*, 22(3), 625–639, <https://doi.org/10.2112/04-0156.1>.
- Peltier, W. R., 2004: Global glacial isostasy and the surface of the ice-age Earth: the ICE-5G (VM2) model and GRACE. *Annual Review of Earth and Planetary Sciences*, 32, 111–149, <https://doi.org/10.1146/annurev.earth.32.082503.144359>.
- 605 Permanent Service for Mean Sea Level (PSMSL), 2022. Tide gauge data, Retrieved 21 March 2022 from <http://www.psmsl.org/data/obtaining/>.
- Piecuch, C. G., K. Bittermann, A. C. Kemp, R. M. Ponte, C. M. Little, S. E. Engelhart, and S. J. Lentz, 2018a: River-discharge effects on United States Atlantic and Gulf coast sea-level changes. *Proceedings of the National Academy of Sciences*, 115(30), 7729–7734, <https://doi.org/10.1073/pnas.1805428115>.
- 610 Piecuch, C. G., P. Huybers, C. C. Hay, A. C. Kemp, C. M. Little, J. X. Mitrovica, R. M. Ponte, and M. P. Tingley, 2018b: Origin of spatial variation in US East Coast sea-level trends during 1900–2017. *Nature*, 564, 400–404, <https://doi.org/10.1038/s41586-018-0787-6>.
- Piedra-Cueva, I., and M. Fossati, 2007: Residual currents and corridor of flow in the Rio de la Plata. *Applied Mathematical Modeling*, 31, 564–577, <https://doi.org/10.1016/j.apm.2005.11.033>.
- 615 Piola, A. R., R. P. Matano, E. D. Palma, O. O. Möller, and E. J. D. Campos, 2005: The influence of the Plata River discharge on the western South Atlantic shelf. *Geophysical Research Letters*, 32, L01603, <https://doi.org/10.1029/2004GL021638>.
- Pousa, J., L. Tosi, E. Kruse, D. Guaraglia, M. Bonardi, A. Mazzoldi, F. Rizzetto, and E. Schnack, 2007: Coastal processes and environmental hazards: the Buenos Aires (Argentina) and Venetian (Italy) littorals. *Environmental Geology*, 51, 1307–1316, <https://doi.org/10.1007/s00254-006-0424-9>.
- 620 Raicich, F., 2008: A review of sea level observations and low frequency sea-level variability in the South Atlantic. *Physics and Chemistry of the Earth*, 33, 239–249, <https://doi.org/10.1016/j.pce.2007.04.001>.
- Ray, R. D., and B. C. Douglas, 2011: Experiments in reconstructing twentieth-century sea levels. *Progress in Oceanography*, 91, 496–515, <https://doi.org/10.1016/j.pocean.2011.07.021>.
- Rayner, N. A., D. E. Parker, E. B. Horton, C. K. Folland, L. V. Alexander, D. P. Rowell, E. C. Kent, and A. Kaplan, 2003: Global analyses of sea surface temperature, sea ice, and night marine air temperature since the late nineteenth century. *Journal of Geophysical Research*, 108(D4), 447, <https://doi.org/10.1029/2002JD002670>.
- 625 Robertson, A. W., and C. R. Mechoso, 1998: Interannual and decadal cycles in river flows of southeastern South America. *Journal of Climate*, 11, 2570–2581, [https://doi.org/10.1175/1520-0442\(1998\)011<2570:IADCIR>2.0.CO;2](https://doi.org/10.1175/1520-0442(1998)011<2570:IADCIR>2.0.CO;2).
- Ropelewski, C. F., and M. S. Halpert, 1987: Global and regional scale precipitation patterns associated with the El Niño/Southern Oscillation. 630 *Monthly Weather Review*, 115(8), 1606–1626, [https://doi.org/10.1175/1520-0493\(1987\)115<1606:GARSPP>2.0.CO;2](https://doi.org/10.1175/1520-0493(1987)115<1606:GARSPP>2.0.CO;2).

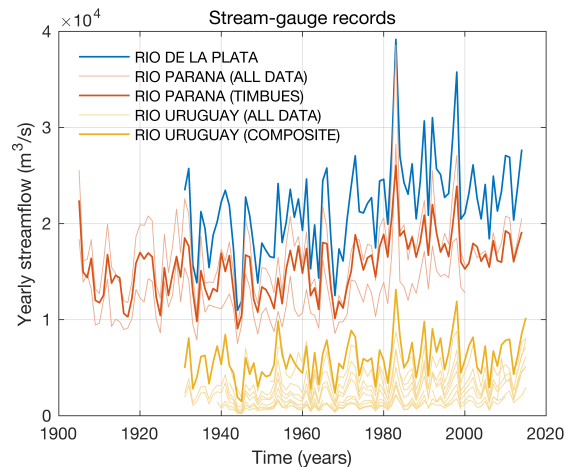
- Santamaria-Aguilar, S., M. Schuerch, A. T. Vafeidis, and S. C. Carretero, 2017: Long-term trends and variability of water levels and tides in Buenos Aires and Mar del Plata, Argentina. *Frontiers and Marine Science*, 4, 380, <https://doi.org/10.3389/fmars.2017.00380>.
- Talke, S. A., A. C. Kemp, and J. Woodruff, 2018: Relative sea level, tides, and extreme water levels in Boston harbor from 1825 to 2018. *Journal of Geophysical Research: Oceans*, 123(6), 3895–3914, <https://doi.org/10.1029/2017JC013645>.
- 635 Theiler, J., S. Eubank, A. Longtin, B. Galdrikian, and J. D. Farmer, 1992: Testing for nonlinearity in time series: the method of surrogate data. *Physica D*, 58, 77–94, [https://doi.org/10.1016/0167-2789\(92\)90102-S](https://doi.org/10.1016/0167-2789(92)90102-S).
- Thompson, P. R., and M. A. Merrifield, 2014: A unique asymmetry in the pattern of recent sea level change. *Geophysical Research Letters*, 41, 7675–7683, <https://doi.org/10.1002/2014GL061263>.
- Thompson, P. R., B. D. Hamlington, F. W. Landerer, and S. Adhikari, 2016: Are long tide gauge records in the wrong place to measure global  
640 mean sea level rise? *Geophysical Research Letters*, 43, 10403–10411, <https://doi.org/10.1002/2016GL070552>.
- Tsujino, H., S. Urakawa, H. Nakano, R. J. Small, W. M. Kim, S. G. Yeager, G. Danabasoglu, T. Suzuki, J. L. Bamber, M. Bentsen, C. W. Böning, A. Bozec, E. P. Chassignet, E. Curchitser, F. B. Dias, P. J. Durack, S. M. Griffies, Y. Harada, M. Ilıcak, S. A. Josey, C. Kobayashi, S. Kobayashi, Y. Komuro, W. G. Large, J. Le Sommer, S. J. Marsland, S. Masina, M. Scheinert, H. Tomita, M. Valdivieso, and D. Yamazaki, 2018: JRA-55 based surface dataset for driving ocean–sea-ice models (JRA55-do). *Ocean Modelling*, 130, 79–139,  
645 <https://doi.org/10.1016/j.ocemod.2018.07.002>.
- Verocai, J. E., G. J. Nagy, and M. Bidegain, 2016: Sea-level trends along freshwater and seawater mixing in the Uruguayan Rio de la Plata estuary and Atlantic Ocean coast. *International Journal of Marine Science*, 6(7), 1–18, <https://doi.org/10.5376/ijms.2016.06.0007>
- Walker, J. S., N. Cahill, N. S. Khan, T. A. Shaw, D. Barber, K. G. Miller, R. E. Kopp, and B. P. Horton, 2020: Incorporating temporal and spatial variability of salt-marsh foraminifera into sea-level reconstructions. *Marine Geology*, 429, 106293,  
650 <https://doi.org/10.1016/j.margeo.2020.106293>.
- Wikle, C. K., and L. M. Berliner, 2007: A Bayesian tutorial for data assimilation. *Physica D*, 230, 1–16, <https://doi.org/10.1016/j.physd.2006.09.017>.
- Woodworth, P. L., N. Pouvreau, and G. Wöppelmann, 2010: The gyre-scale circulation of the North Atlantic and sea level at Brest. *Ocean Science*, 6, 185–190, <https://doi.org/10.5194/os-6-185-2010>.
- 655 Woodworth, P. L., A. Melet, M. Marcos, R. D. Ray, G. Wöppelmann, Y. N. Sasaki, M. Cirano, A. Hibbert, J. M. Huthnance, S. Monserrat, and M. A. Merrifield, 2019: Forcing factors affecting sea level changes at the coast. *Surveys in Geophysics*, 40, 1351–1397, <https://doi.org/10.1007/s10712-019-09531-1>.
- Yankovsky, A. E., and D. C. Chapman, 1997: A simple theory for the fate of buoyant coastal discharges. *Journal of Physical Oceanography*, 27, 1386–1401, [https://doi.org/10.1175/1520-0485\(1997\)027<1386:ASTFTF>2.0.CO;2](https://doi.org/10.1175/1520-0485(1997)027<1386:ASTFTF>2.0.CO;2).



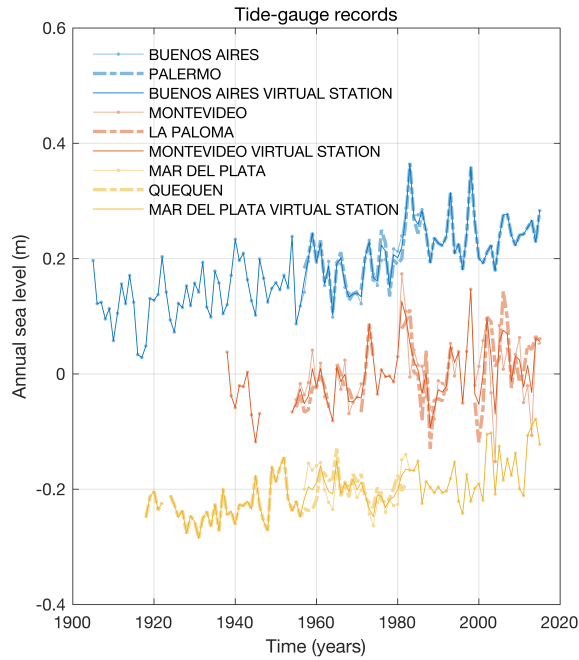
**Figure 1.** Study region. Color shading is  $\log_{10}$ -of bathymetry (m) from the GEBCO 2021 grid (GEBCO Compilation Group 2021). [Note the nonlinear color scale.](#) Red symbols locate tide gauges. Green star is the river mouth, selected as the confluence of the Río Paraná and Río Uruguay near Isla Oyarvide. Black dots identify other locations referenced in the text. Inset shows study area in global context.



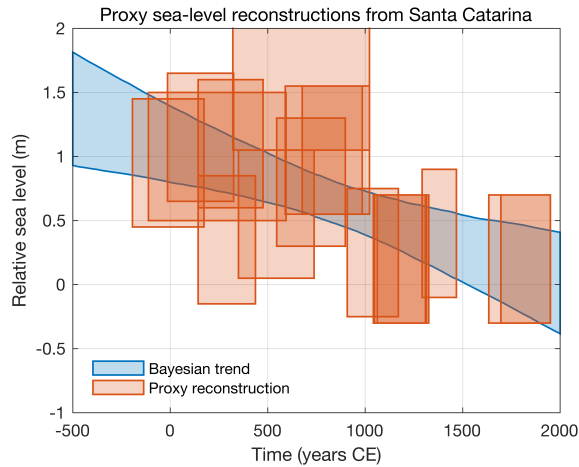
**Figure 2.** Black curves illustrate the (a.) average depth and (b.) width of the Río de la Plata as a function of distance along the estuary from the river mouth based on the GEBCO 2021 grid (GEBCO Compilation Group 2021). Values are determined by identifying all marine grid cells (depths  $< 0$ ) in successive 5-km increments from the river mouth. The average depth is computed as the arithmetic mean of all grid-cell depths, and the width is defined as the maximum distance between the marine grid cells within the given 5-km increment. Dark blue curves and light blue shading represent best estimates and 95% confidence intervals, respectively, of exponentials fit to the black curves using ordinary least squares. To account for residual autocorrelation, the uncertainties are based on the effective degrees of freedom assuming residuals are described by an order-1 autoregressive model.



**Figure 3.** Yearly river-gauge streamflow records (Table 1). The thick blue Río de la Plata time series is the sum of the thick red Río Paraná time series from Timbúes and the thick yellow composite Río Uruguay time series. Thin time series show data from individual gauges.

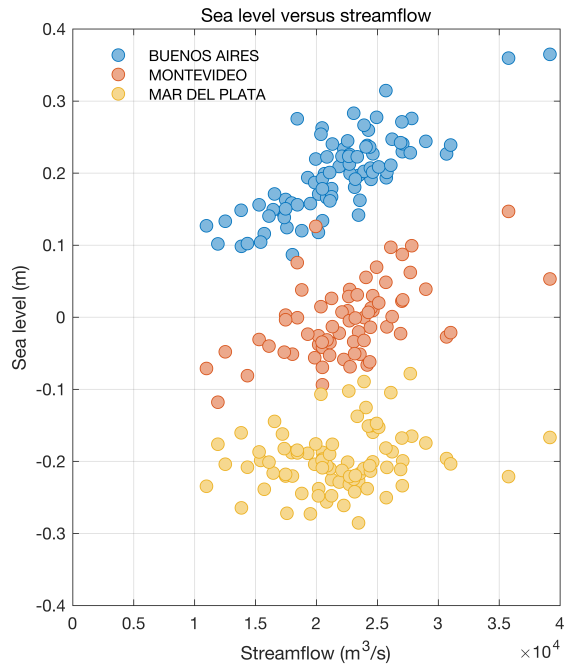


**Figure 4.** Yearly tide-gauge relative sea-level records (Figure 1, Table 2). Virtual-station time series are shown as thick lines and individual tide-gauge records are shown as thin lines. The time series are shifted vertically by an arbitrary amount for ease of visualization.

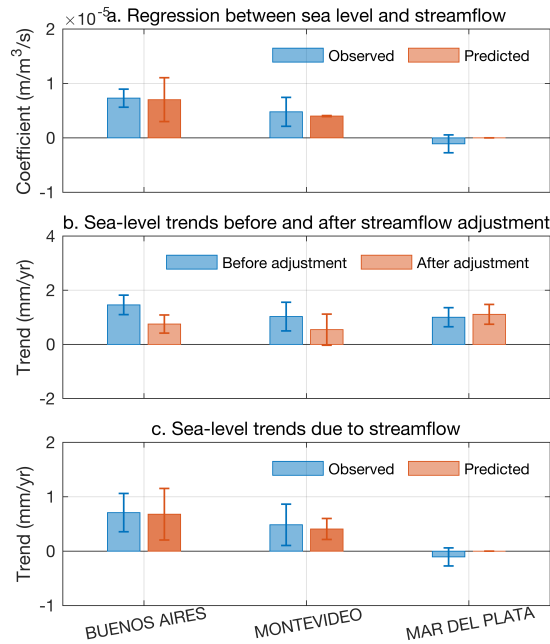


**Figure 5.** Proxy sea-level reconstructions (orange) and Bayesian linear regression (blue). Orange shading identifies best estimates plus and minus twice the standard errors. Blue shading corresponds to 95% posterior credible intervals. The Bayesian model is detailed in the Appendix.

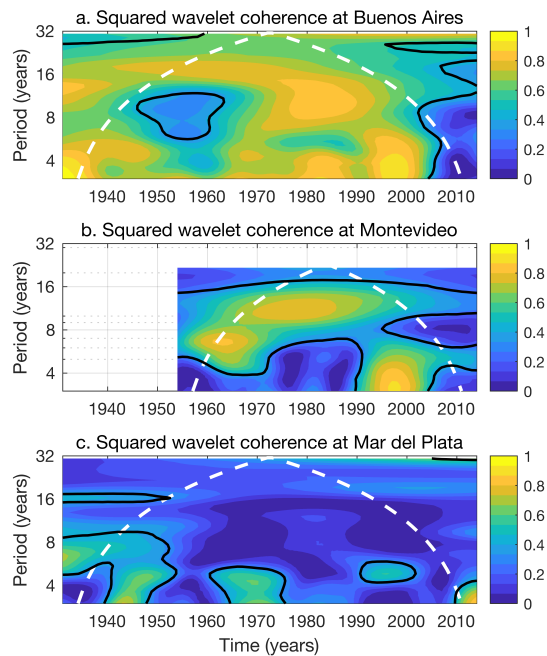




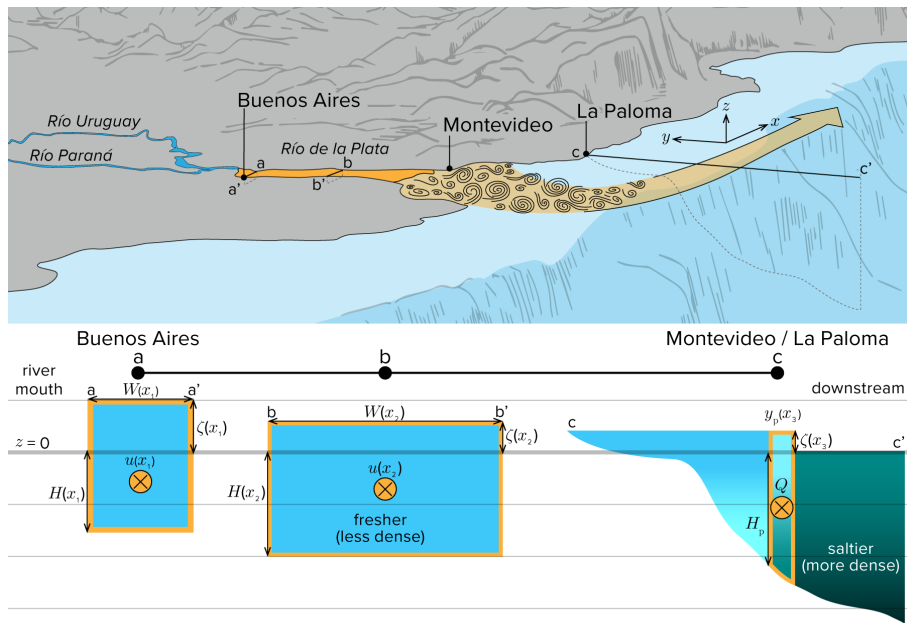
**Figure 6.** Scatter plots comparing yearly average Río de la Plata streamflow (horizontal axes) and relative sea level (vertical axes) at Buenos Aires (blue), Montevideo (orange), and Mar del Plata (yellow). Sea-level values from the different sites are shifted vertically by an arbitrary amount for ease of visualization.



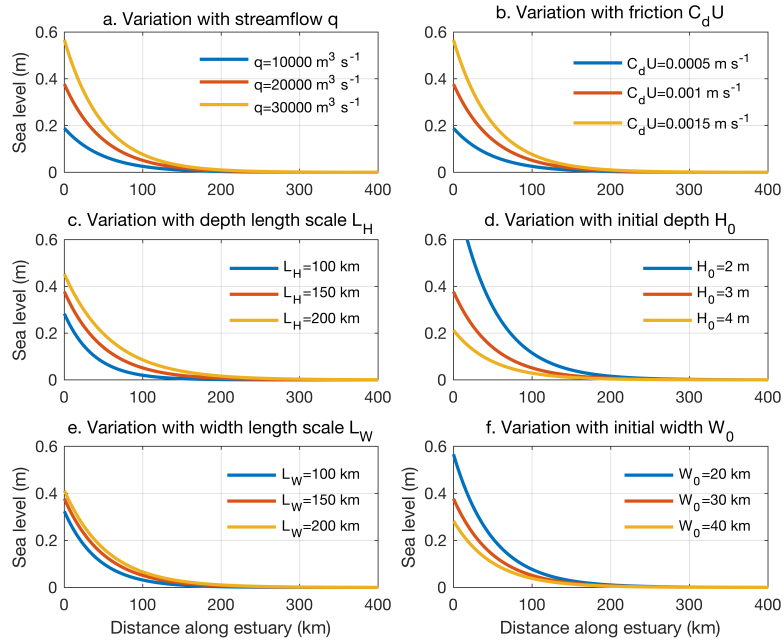
**Figure 7.** (a.) Regression coefficients between sea level and streamflow found empirically from linear regression (blue) and predicted theoretically from ocean dynamics (orange). (b.) Trend computed from tide gauges without (blue) and with (orange) adjusting for river effects. (c.) Sea-level trend due to streamflow found empirically from linear regression (blue) and predicted theoretically from ocean dynamics given the streamflow trend (orange). To evaluate predicted values at Buenos Aires, I use a value of  $x = 65$  km from the source in Equation (13).



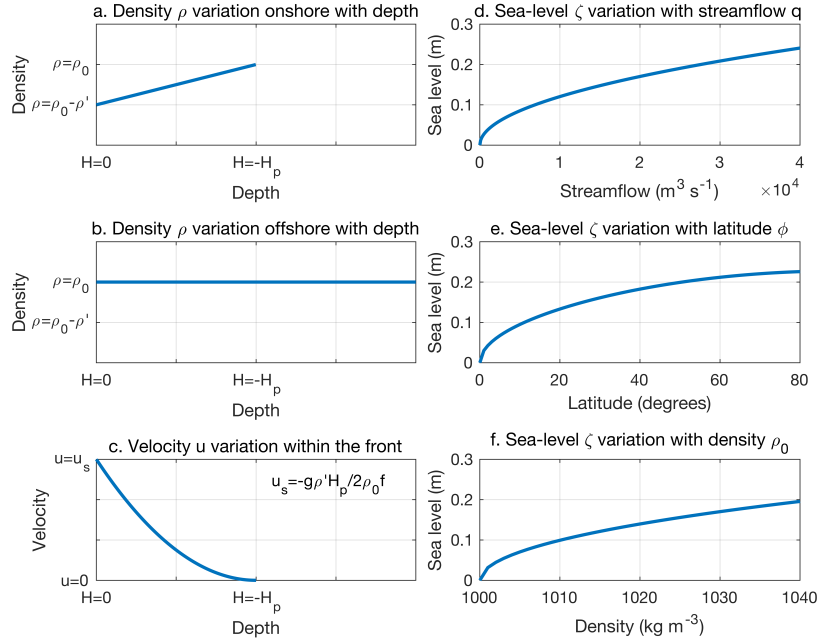
**Figure 8.** Magnitude-squared wavelet coherence between streamflow and sea level at **(a.)** Buenos Aires, **(b.)** Montevideo, and **(c.)** Mar del Plata. Solid black lines identify where values are significant at the 68% confidence level and white dashed lines mark the cone of influence. Statistical significance is determined from 1 000 simulations with phase-scrambled versions of the observational data (Theiler et al., 1992). Values are based on the analytic Morlet wavelet.



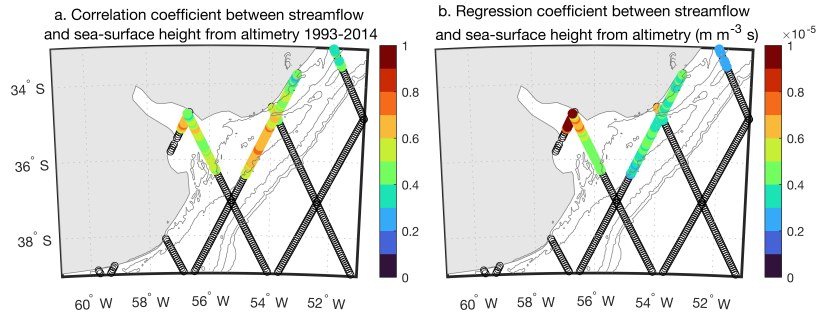
**Figure 9.** Schematic of study region with key model quantities identified. Top shows plan view of region. Bottom shows cross sections at various locations in and around the Río de la Plata. Locations a and b are upstream near Buenos Aires, where the barotropic theory developed in section 4.1 applies. Location c is downstream of Montevideo near La Paloma, where the baroclinic theory developed in section 4.2 applies. In the bottom, yellow  $\otimes$  identifies flow into the page, blue indicates fresher, less dense water, and green denotes saltier, more dense water. Other symbols and quantities are as defined in the text of sections 4.1 and 4.2. Illustration by Natalie Renier, WHOI.



**Figure 10.** Sea-level response  $\langle \zeta \rangle$  to streamflow forcing  $q$  described by Equation (12) as a function of distance along the estuary away from the mouth of the rivers for different values of **(a.)** streamflow  $q$ , **(b.)** friction  $C_d U$ , **(c.)** depth length scale  $L_H$ , **(d.)** initial depth  $H_0$ , **(e.)** width length scale  $L_W$ , and **(f.)** initial width  $W_0$ . Default values are  $q = 2 \times 10^4 \text{ m}^3 \text{ s}^{-1}$ ,  $C_d U = 0.001 \text{ m s}^{-1}$ ,  $L_H = 150 \text{ km}$ ,  $H_0 = 2 \text{ m}$ ,  $L_W = 150 \text{ km}$ , and  $W_0 = 30 \text{ km}$ .



**Figure 11.** Idealized **(a.)** density structure onshore of the front [Equation (20)], **(b.)** density structure offshore of the front [Equation (20)], and **(c.)** velocity structure within the front [Equation (21)] as a function of depth. Sea-level response  $\zeta$  described by Equation (28) as a function of **(d.)** streamflow  $q$ , **(e.)** latitude  $\phi$ , and **(f.)** ambient ocean density  $\rho_0$ . Default values:  $q = 2 \times 10^4 \text{ m}^3 \text{ s}^{-1}$ ,  $\phi = 35^\circ$ ,  $\rho_0 = 1030 \text{ kg m}^{-3}$ .



**Figure 12.** **(a.)** Correlation coefficient and **(b.)** regression coefficient ( $\text{m}^{-3} \text{ s}$ ) between annual streamflow in the Río de la Plata (Figure 3) and sea-surface-height anomaly from along-track satellite-altimetry data (Birol et al., 2017) during 1993–2014 over the study regions. Values are only shown where correlation coefficients are positive at the 95% confidence level determined through bootstrapping. Contours identify the 20-, 50-, 100-, 200-, and 500-m isobaths.

Stream-gauge location	River	GSIM ID	Lon	Lat	Span	Completeness	Area (km <sup>2</sup> )	Mean flow (m <sup>3</sup> s <sup>-1</sup> )
Posadas	Paraná	AR_0000001	55.8	27.3	1901—2000	100%	975 000	12 400
Corrientes	Paraná	AR_0000005	58.8	27.9	1904—2014	100%	1 950 000	17 200
Timbúes	Paraná	AR_0000006	60.7	32.6	1905—2014	100%	2 346 000	15 600
Marcelino Ramos	Uruguay	BR_0002884	51.9	27.4	1939—1999	100%	40 900	910
—	Uruguay	BR_0002887	52.3	27.2	1950—1997	92%	43 900	1 020
Passo Caxambu	Uruguay	BR_0002892	52.8	27.1	1940—2010	99%	52 400	1 240
—	Uruguay	BR_0002910	53.2	27.1	1941—2016	97%	61 900	1 610
Porto Lucena	Uruguay	BR_0002929	55.0	27.8	1931—2007	100%	95 200	2 290
Garruchos	Uruguay	BR_0002950	55.6	28.1	1931—2016	100%	116 000	2 830
—	Uruguay	BR_0002953	56.0	28.5	2012—2016	100%	120 000	3 690
—	Uruguay	BR_0002954	56.0	28.6	1942—2016	100%	125 000	3 450
Itaqui	Uruguay	BR_0002956	56.5	29.1	1985—2016	47%	131 000	3 590
Paso de los Libres	Uruguay	BR_0002983	57.0	29.7	2012—2016	100%	190 000	5 440
Uruguaiana	Uruguay	BR_0002984	57.0	29.7	1942—2016	99%	190 000	4 920
Aporte Salto Grande	Uruguay	BR_0002986	57.9	31.3	2012—2016	100%	242 000	6 450

**Table 1.** GSIM river-gauge records (Do et al., 2018; Gudmundsson et al., 2018; Figure 3). Lon and Lat are degrees west longitude and south latitude, respectively. Completeness is percentage of years during span featuring data. Area is the gauged drainage area. Mean flow is the time-mean streamflow over the record length.

Tide-gauge location	PSMSL ID	Lon	Lat	Span	Completeness
Buenos Aires	157	58.37	34.60	1905–1987	100%
Palermo	832	58.40	34.57	1957–2019	98%
Montevideo	431	56.25	34.90	1938–2018	80%
La Paloma	764	54.15	34.65	1955–2018	71%
Mar del Plata	819	57.52	38.03	1957–2019	95%
Quequén	223	58.70	38.58	1918–1982	99%

**Table 2.** PSMSL tide-gauge records (Holgate et al., 2013; Figures 1, 4). Lon and Lat are degrees west longitude and south latitude, respectively. Completeness is percentage of years during span that feature data.

Calendar Age (yr CE)	Age error (yr)	Relative sea level (m)	Sea level error (m)
-10.5	92	0.95	0.25
155.5	85	1.15	0.25
241	177	1	0.25
290	74	0.35	0.25
309.5	83	1.1	0.25
544	97	0.55	0.25
671.5	175	1.55	0.25
722	88	0.8	0.25
806	108	1.05	0.25
831	77	1.05	0.25
1039	66	0.25	0.25
1175.5	67	0.2	0.25
1181.5	67	0.2	0.25
1194	66	0.2	0.25
1380	44	0.4	0.25
1792	79	0.2	0.25
1823	64	0.2	0.25

**Table 3.** Proxy sea-level reconstructions for the past two millennia from Santa Catarina (Milne et al., 2005). Milne et al. (2005) give calendar ages as min-max ranges, which I take to be 95% confidence intervals. I take the center point as the best estimate, and one-quarter of the range as one standard error. I also assume sea-level errors given by Milne et al. (2005) correspond to two standard errors.



Parameter	Numerical value
$C_d$	$2 \times 10^{-3}$
$f$	$-8.3 \times 10^{-5} \text{ s}^{-1}$
$g$	$9.81 \text{ m s}^{-2}$
$H_0$	$2.4 \pm 0.9 \text{ m}$
$L_W$	$140 \pm 25 \text{ km}$
$L_H$	$160 \pm 43 \text{ km}$
$q$	$(2.2 \pm 0.1) \times 10^4 \text{ m}^3 \text{ s}^{-1}$
$\rho_f$	$1\,000 \text{ kg m}^{-3}$
$\rho_0$	$1\,030 \text{ kg m}^{-3}$
$U$	$0.4 \pm 0.1 \text{ m s}^{-1}$
$W_0$	$31 \pm 8.9 \text{ km}$

**Table 4.** Parameter values used to evaluate Equations (13) and (29). See Appendix B for a detailed discussion on how the numerical values of the model parameters were selected.