

# Pesticide transport through the vadose zone under sugarcane in the Wet Tropics, Australia

Rezaul Karim<sup>1,2</sup>, Lucy Reading<sup>1</sup>, Les Dawes<sup>3</sup>, Ofer Dahan<sup>4</sup>, Glynis Orr<sup>5</sup>

<sup>1</sup>School of Biology and Environmental Science, Queensland University of Technology, Brisbane, 4000, Australia.

5 <sup>2</sup>Department of Environmental Science and Technology, Jashore University of Science and Technology, Jashore, 7408, Bangladesh.

<sup>3</sup>School of Civil and Environmental Engineering, Queensland University of Technology, Brisbane, 4000, Australia.

<sup>4</sup>Department of Environmental Hydrology and Microbiology, Zuckerberg Institute for Water Research, Ben-Gurion University of the Negev, Sede Boqer Campus, 84990, Israel.

10 <sup>5</sup>Department of Environment and Science, Queensland Government, Cairns, 4870, Australia.

*Correspondence to:* Lucy Reading (lucy.reading@qut.edu.au)

**Abstract.** Photosystem II (PS II) pesticides, recognised as a threat to ecological health, were targeted for reduction in sugarcane farming in the Great Barrier Reef (GBR) catchments. Alternative herbicides, the non-PS II herbicides (including glyphosate, paraquat, 2,4-D, imazapic, isoxaflutole, metolachlor, and S-metolachlor), continue to be used in these catchments. However, the potential ecological fate, transport, and off-site environmental effects of non-PS II herbicides, with respect to their usage scheme, local rainfall patterns, and infiltration dynamics, has not been investigated previously. A vadose zone monitoring system, instrumented beneath a sugarcane land in a GBR catchment, was applied for real time tracing of pesticide migration across the unsaturated zone, past the root zone during 2017-2019. The monitoring of regularly applied pesticides (fluroxypyr and isoxaflutole), exhibited substantial migration through the unsaturated zone. Within one month after application of fluroxypyr, it leached to 2.87 m depth in the vadose zone, with declining concentrations with depth. Isoxaflutole, which was applied yearly, was found only once, in November 2018, at 3.28 m depth in the soil profile. Other pesticides (imazapic, metolachlor, glyphosate and haloxyfop), applied at the same period, were not detected through the vadose zone. However, imidacloprid, which was not applied at the site during the monitored period, was detected across the entire vadose zone, revealing substantial resistance to degradation. The results show no evidence of any regularly applied pesticides in the site bores at the end of the study, indicating their ultimate degradation within the vadose zone before reaching the groundwater.

## 1 Introduction

Agriculture has a considerable influence on groundwater quality as well as quantity. With continuous increases in agricultural production, agrochemicals (fertilizers and pesticides) can be transported into the environment (Adeoye et al., 2013). These agrochemicals can potentially percolate through the rhizosphere after rain and may ultimately leach to the underlying groundwater, potentially lowering the quality of the groundwater (Adeoye et al., 2013). During the past centuries,

the catchments close to the Great Barrier Reef (GBR) have been considerably changed, through the growth of agricultural activities and municipal settlement in these catchments. There is evidence that this development is resultant in water quality deterioration in the GBR waterways (Brodie et al., 2013; Armour et al., 2009; Rasiah and Armour, 2001). Despite the high level of protection in recent decades, the situation of water quality has continued to decline (Kroon et al., 2016). The key concerns for the catchments are the increasing quantity of suspended sediments, the discharge of nitrogen (Brodie et al., 2015) and the transport and potential toxic effects of pesticides from the farming areas (Smith et al., 2012). Many studies have detected increased loads of agrochemicals e.g., fertilizers and pesticides being transported to the GBR via runoff (Smith et al., 2012). Yet, there is also potential for pesticides and nutrients to be moved to the GBR via groundwater and only a few studies have focused on groundwater pathways (Rayment, 2003; Stieglitz, 2005; Armour et al., 2009; Rasiah and Armour, 2001).

In 2001, the Great Barrier Reef Marine Park Authority first reported the water condition deterioration in the GBR (Authority, 2009). In response, the Reef Water Quality Protection Plans 2003, 2009 and 2013 and lastly, the Reef 2050 Plan were designed to deal with the problem (Brodie et al., 2017). During this period 2001-2018, there has been a significant growth in the knowledge of pesticide dynamics including sources, movement, exposure and fate, and finally environmental threat of pesticides to the GBR (Devlin et al., 2015; Johnson and Ebert, 2000; Kroon et al., 2013; Shaw et al., 2010; Smith et al., 2012). Pesticides in the GBR area have been discovered in rivers and creeks (Smith et al., 2012); sediments (Haynes et al., 2000); freshwater wetlands (Devlin et al., 2015; Davis et al., 2012) and marine environments (Gallen et al., 2016; Shaw et al., 2010). Elevated pesticide concentrations were mostly found in connection with sugarcane farming in three geographical regions the Tully–Murray, Burdekin–Townsville and Mackay Whitsunday region of the GBR catchment area (Lewis et al., 2009). Pesticides were also observed in the Johnstone River (Wallace et al., 2015) and South Johnstone River (Smith et al., 2012), which are also sugarcane dominated catchments.

Five photosystem (PS) II restraining herbicides (namely tebuthiuron, ametryn, hexazinone, diuron, and atrazine) were recognised as a threat to the environmental health and resilience at the GBR catchments and targeted decrease in land management practices (Brodie et al., 2009; Davis and Pradolin, 2016; Devlin et al., 2015; Masters et al., 2013; Silburn et al., 2013; Thorburn et al., 2013; Vardy et al., 2015; Wallace et al., 2015). The pesticide reduction loads, reducing 50% of end-of-catchment loads, were introduced in agriculture primarily from cropping and sugarcane farming through the best management practices (Devlin et al., 2015). Reported management practices already in use across sugarcane farming not only in the GBR but also globally, include cropping system (Nachimuthu et al., 2016); selection of product, timing of application, precision application (García-Santos et al., 2016; Melland et al., 2016; Masters et al., 2013; Oliver et al., 2014), using a straw/trash blanket (Dang et al., 2016; Nachimuthu et al., 2016) or even switching to ‘alternative PS II or non-PS II herbicides’ (Tao and Yang, 2011; Lewis et al., 2016). The alternative/other non-PS II herbicides including 2,4-D, glyphosate, paraquat, monosodium methyarsenate (MSMA), MCPA, imazapic, trifloxysulfuron sodium, isoxaflutole, trifluralin, S-metolachlor, metolachlor, and pendimethalin, have been widely used in sugarcane farming (Davis et al., 2014).

65 At the paddock scale, pesticide loads, estimation of the mass of pesticides annually entering to the GBR from agriculture, were quantified based on monitoring data and modelling data (Government and Government, 2018). Significant advances in techniques to measure impacts in situ were applied to determine the default values through the species sensitivity distribution technique (Smith, 2018). The aquatic ecosystem protection guideline values have been developed recently for 28 pesticides, including 13 PS II herbicides, frequently utilized in the GBR catchments (King et al., 2017b, a; Smith, 2018). However, out  
70 of all pesticides detected, PS II herbicides still provide the highest loads and the highest ecological risk to the GBR (Devlin et al., 2015; Wallace et al., 2015; Gallen et al., 2016; Vardy et al., 2015). These potential risks have been supported by the detection of several PS II herbicides in soil, vadose water, and groundwater at low concentrations (Karim et al., 2021).

The vadose zone covering from the ground surface to the aquifer, is incredibly complicated in structure, governing water passage from the land surface to aquifers (Arora and Ahmed, 2011). Dahan et al. (2009) introduced the vadose zone monitoring system (VMS). The system consists of flexible TDR waveguides (FTDR) and flexible vadose zone sampling ports (VSP) which support attachment of the water content sensor and sampling units to the unusual structure of borehole walls. The VMS enables uninterrupted tracing of water percolation and chemical transport across the entire vadose zone (Rimon et al., 2007; Dahan et al., 2009; Turkeltaub et al., 2016; Aharoni et al., 2017). The installation of VMS has been tested internationally in various hydrological setups. Examples include those in largely desert and semi-arid areas in Rene,  
80 California (Dahan et al., 2003), in the hyper-arid desert, the Arava Valley, Israel (Dahan et al., 2007), in a typical desert ephemeral river, Namibia (Dahan et al., 2008), and also in the Mediterranean climate, Israel (Rimon et al., 2007). It was also applied for PS II herbicides transport across the vadose zone in the sugarcane field during 2017-2019 (Karim et al., 2021). However, this study was unable to link the water percolation and pesticide migration dynamics with application regime, as PS II herbicides (including Priority Five) were then not applied during monitoring period at the site.

85 It is important to track pesticide transport and transformation dynamics from shallow to deep vadose zone horizons, in order to achieve 'real time early warning' on pesticide pollution potential (Dahan et al., 2009) and thereby quickly detect and take steps for managing those pesticides (Lewis et al., 2016). The lag times between application to appearance of pesticides in groundwater or impact on environment may range from days to several years (Bidwell, 2000). Therefore, continuous tracking of the transport characteristics of pesticides (after immediate application) in the unsaturated zone is critical for  
90 appropriate assessment of the possible impact of pesticide usage on groundwater. The transport and transformation of pesticides in the unsaturated zone is not yet clearly understood due to complex biotransformation process that can take place in the unsaturated zone (Rivett et al., 2011). There is scarce information on the possible ecological fate and off-site environmental impacts of non-PS herbicides used in sugarcane farming catchments (Davis et al., 2014).

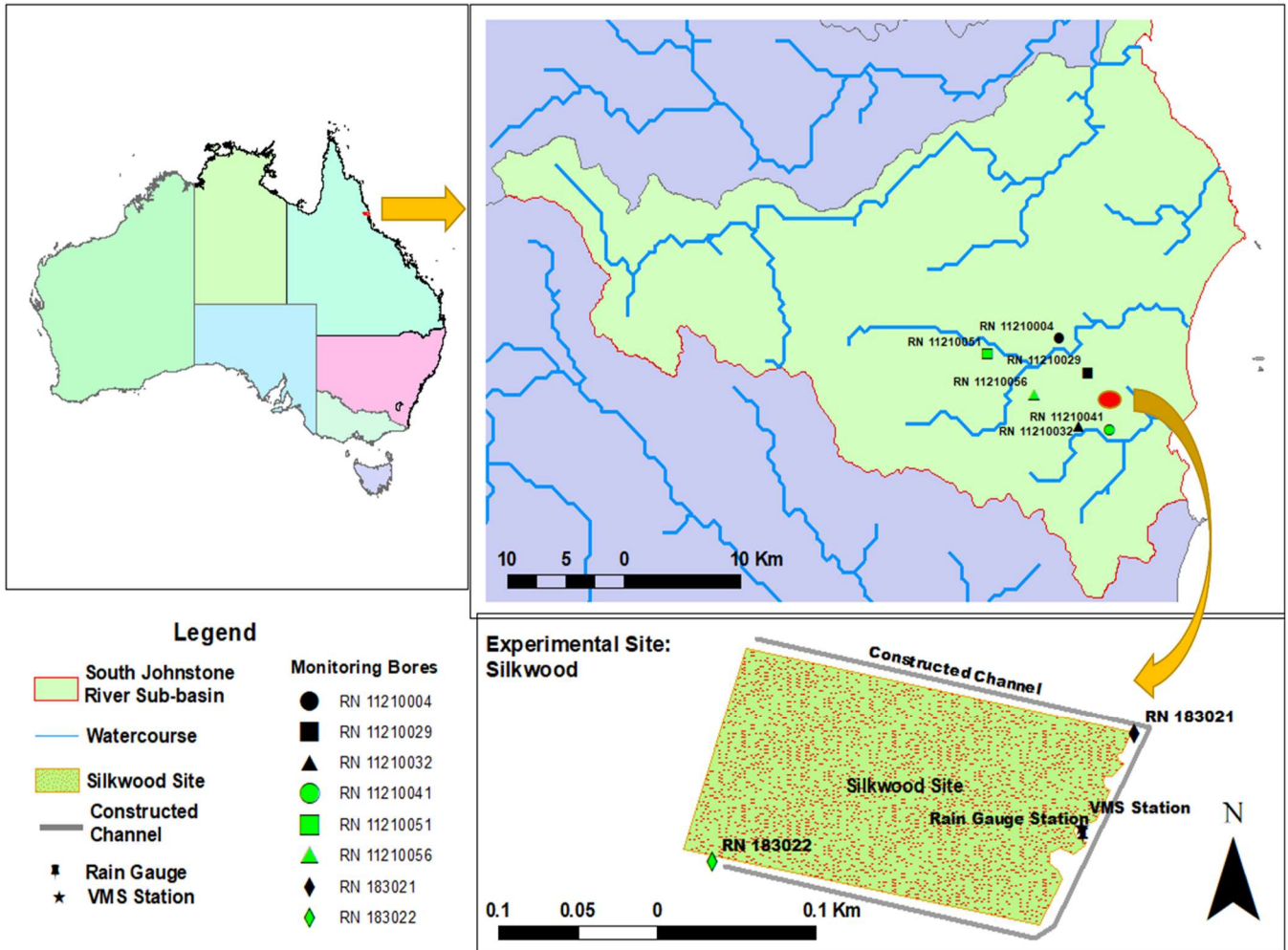
This study aims to investigate water percolation and pesticide migration dynamics (with application regime) across the  
95 vadose zone below sugarcane fields in the Wet Tropical conditions in Australia. The study was performed using continuous measurements of temporal variations in soil saturation plus measurements of the concentration of pesticides along the vadose zone profile and underlying alluvial aquifers at sugarcane fields at South Johnstone River sub-basin, Australia. A vadose

zone monitoring system was set up to enable the characterization of pesticide (non-PS II herbicides) migration with respect to pesticide application, sugarcane growing period and finally, rainwater infiltration.

## 100 2 Methods and Material

### 2.1 Monitoring site details

The study area (17°44'44.72" S 146° 2'58.76" E; Fig. 1) is in sugarcane field near Silkwood township in the centre of the South Johnstone catchment. It is owned by a commercial sugar manufacturing company, MSF, and is approximately 2.8 ha. It is isolated from the surrounding surface water run-on by a constructed channel. The channel (1–1.5 m deep) bounds the northern, eastern, and southern borders of the paddock, enabling drainage away from the site (Masters et al., 2017). The northern, eastern, and southern borders of the paddock, enabling drainage away from the site (Masters et al., 2017). The construction of channel around three sides of the paddock is not typical practice in the catchment.



**Figure 1.** Monitoring site: Silkwood, South Johnstone Sub-basin, Queensland, Australia.

110 A detailed soil survey was carried out across the monitored site to identify and map the soil types (Masters et al., 2017). The  
 dominant soil is regionally described as Bulgun series, a poorly drained alluvial soil first described by Murtha (1986) and  
 also classified as a very deep dermosolic, redoxic, humose-acidic, dermosolic, redoxic, hydrosol (Isbell, 2016). Based on the  
 world reference base for soil resources 2014 (ISUU Working Group WRB, 2022), site soil is classified as ‘Stagnic Umbrisol  
 (Pantoclayic, Sideralic, Humic)’ by Enderlin and Harms (2023). The detailed soil profile, to 4.00 m depth, was stratified into  
 five different layers, predominantly loamy textures (Fig. 2) (Karim et al., 2021). The extended profile to 12.00 m depth was  
 115 predominantly composed of clay rich layers, followed by aquifer material at 9.00 – 11.00 m depth (Stanley, 2019). These  
 loam and clay rich textures regulate the site hydrology (infiltration, runoff, and deep drainage). The organic matter content of  
 productive agricultural topsoil is usually between 3 and 6% (Fenton et al., 2008) but the present study found higher organic  
 matter, above 20% in the topsoil (0.0-0.7 m depth, Table 1), than the previous study (5.7%, 0.0-0.1 m depth) in wet  
 conditions (Masters et al., 2017).

120

**Table 1.** Soil organic matter at the site soil (Loss-On-Ignition, LOI, Method).

Depth (m)	0-0.15	0.15-0.40	0.40-0.70	0.70-1.25	1.25-2.20	2.20-2.90	2.90-3.65	3.65-3.90
Organic matter (%)	20.8	23.07	17.26	3.36	14.29	9.58	6.01	8.38

125 The study site experiences a humid tropical climate, predominantly influenced by coastal meteorological situations (Tahir et  
 al., 2019). According to the interpolated climatic data available through the Queensland Government’s SILO database from  
 2010 to 2023 (at SILO Grid point: Latitude – 17.75 and longitude - 146.05), the mean annual minimum and maximum  
 temperatures are 21°C and 29°C respectively. The average predicted potential evapotranspiration is 5.18 mm/yr, determined  
 by Morton’s potential Evapotranspiration, during 2010-2023. The annual average interpolated rainfall is 3,202 mm/yr at the  
 130 monitoring site. According to Bureau of Meteorology (BoM), the annual average rainfall is 3,092 mm/yr at the nearest BoM  
 Station–Bingil Bay (Site 032009), situated nearly 12.5 km of the site. This area typically experiences the highest rainfall in  
 the wet seasons during December -April). For regular rainfall monitoring, the site was fitted with tipping bucket rain gauges,  
 which were organized by the Queensland Government (Masters et al., 2017). The site is not irrigated, which is common in  
 the tropical conditions for sugarcane cultivation. Therefore, the local rainfall patterns govern the site hydrology with respect  
 135 to soil stratigraphy.

## 2.2 Cropping history of the monitoring site

After harvesting the previous sugarcane crop in November 2013, the site was laser-levelled to ensure a uniform slope across  
 the paddock. Then, planting beds were designed using controlled traffic farming methods in early December (Masters et al.,  
 140 2017). In the subsequent wet season 2013-14, the land was uncultivated. After the wet season, lime was applied. The cane

variety, Q183 was transplanted in July 2014. Typically, sugarcane becomes mature in spring (September- November) and is harvested at the end of this season in the Wet Tropics regions. In this article, the period from September to October will be considered as a sugarcane growing season (plant or ratoon, the new shoot springing from the base). The cropping periods will be referred to as 2014–15 (plant), 2015–16 (ratoon 1), 2016–17 (ratoon 2), 2017–18 (ratoon 3), 2018–19 (last  
 145 harvesting, ratoon 4) and 2019-2020 (the fallow, field processing for the next plantation) (Table 2).

**Table 2.** Pesticide applications during 2013-2019.

Pesticides	Units	Crop Cycle													
		Field Preparation		Plant	Ratoon 1	Ratoon 2	Ratoon 3	Ratoon 4	Fallow						
		2013-14	July 2014	Nov 2014	11 Nov 2015	Nov 2015	25 Nov 2016	Dec 2016	2 Nov 2017	18 Dec 2017	4 Oct 2018	10 Oct 2018	9 Oct 2019	21 Nov 2019	July 2020
Imidacloprid	g/ha														
Imazapic	g/ha	Bare field	Plantation	75											
Metolachlor	kg/ha			2											
Fluroxypyr	g/ha				Plant was harvested.					100					
Isoxaflutole	g/ha					150		150		150		150			
Glyphosate	L/ha	12												4	
Haloxyfop	L/ha													0.3	Fallow for the next plantation

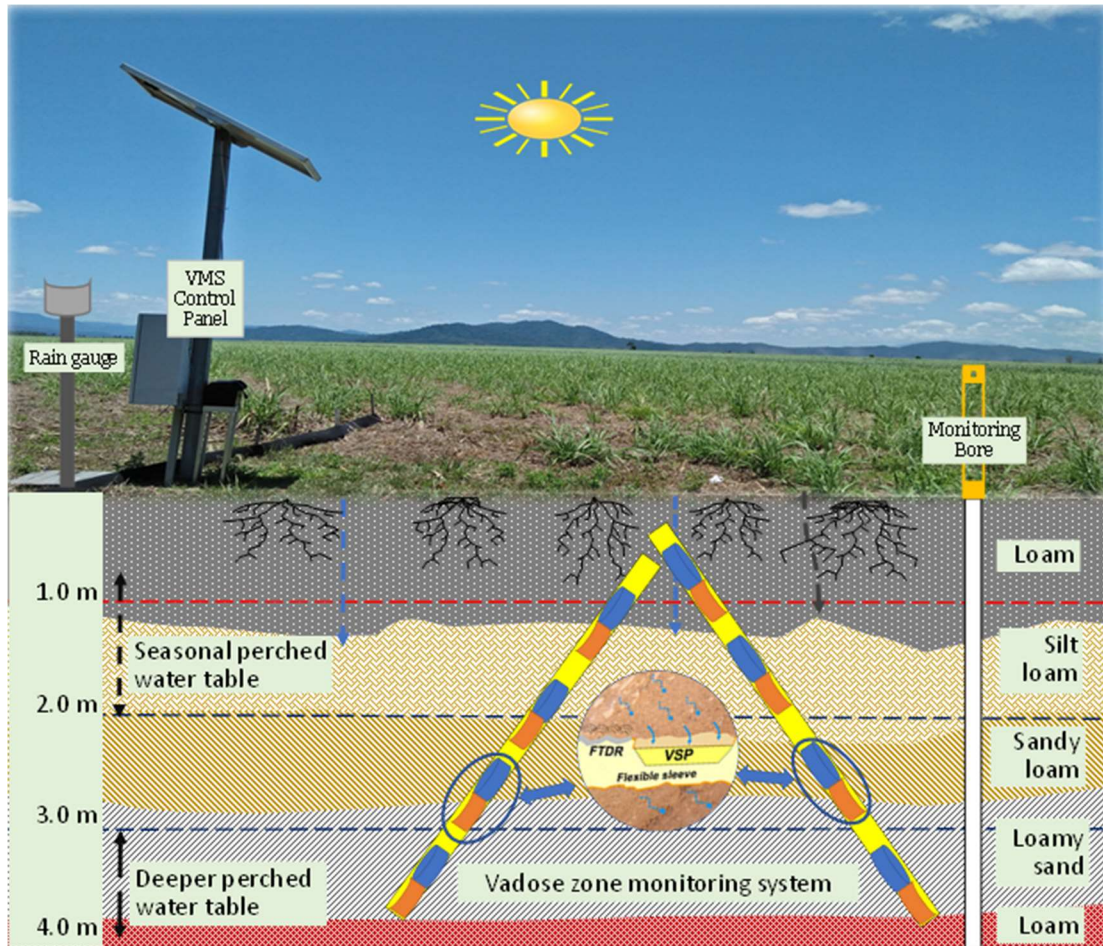
150

A succinct description of all cultivation and pest and weed management methods during the planting to harvesting is given in the Table 2. Each year, after harvesting the matured ratoon, pesticides were applied for the next ratoon at the site. Pesticide applications at the site included: imazapic and metolachlor in November 2014, fluroxypyr in November 2017, and isoxaflutole each year after harvesting. Glyphosate was applied during 2013-2014 and 2019-2020 and haloxyfop applied  
 155 once in November 2019.

## 2.3 Monitoring setup

### 2.3.1 Vadose zone monitoring system

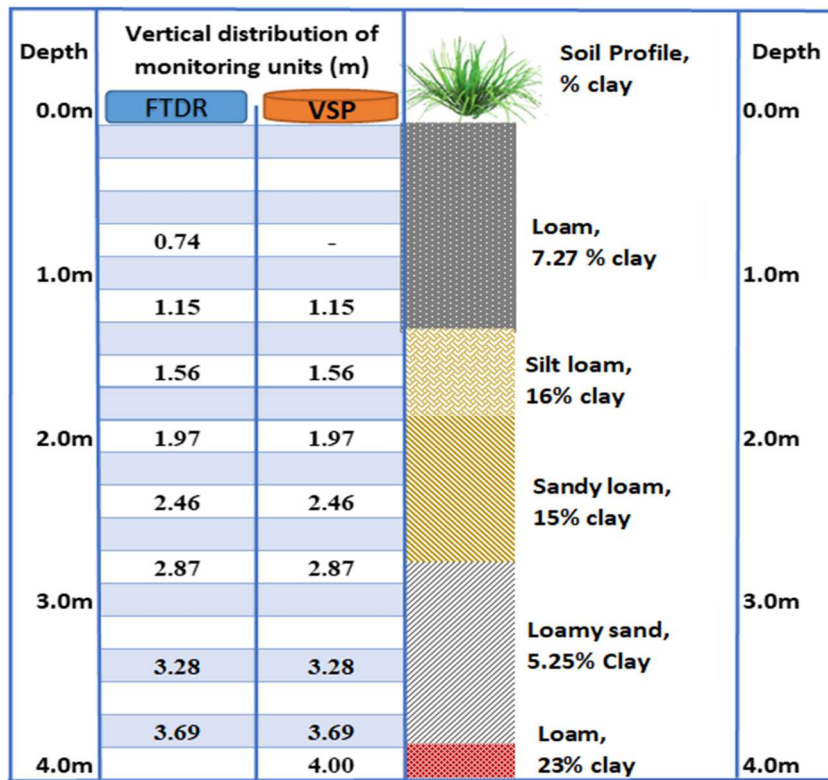
The site was instrumented with a VMS (by Sensoil Ltd, Israel) in July 2017 (Fig. 2). The detail of the VMS, installation procedures and performance have been described previously (Rimon et al., 2007). There are two sleeves (A & B) in the installed VMS at the site. Each sleeve is installed in a slanted (35° to the perpendicular) borehole. Each sleeve consists of four FTDR for constant measurements of soil water content and four VSPs for regular porewater sampling (Fig. 2) (Karim et al., 2021). The slanted holes were bored using a sonic drilling rig.



165 **Figure 2.** Schematic of the VMS installed in the monitoring site (July 2017). (VSP = Vadose zone Sampling Port and FTDR = Flexible Time Domain Reflectometry).

The vertical allocation of VMS units (FTDR and VSP) along with soil profile (texture and clay content) is given in Fig. 3. While sampling, pressurised gas ( $N_2$ ) is utilized to recover porewater to the sampling port (Dahan et al., 2009). The site VMS system was regulated with data acquisition and logging devices (e.g., CR800) (Karim et al., 2021).





170 **Figure 3.** Vertical distribution of the VMS units and soil profile with clay content. (VSP = Vadose zone Sampling Port and FTDR = Flexible Time Domain Reflectometry).

### 2.3.2 Monitoring bores

175 Six state government listed groundwater bores namely RN (registered number) 11210004, RN11210029, RN11210032, RN11210041, RN11210051 and RN11210056, were selected in the South Johnstone River sub-basin. The aquifer depth of these bores ranged from 7 to 33 m (Stanley, 2019). Additionally, two bores, RN 183021, and RN 183022 (aquifer depth, 9-11 m) were installed in the northeast and southwest corner of the paddock, respectively. The surface elevation of the installed two bores (RN 183021 & 183022) was 7-7.5 and 5-5.5 m, respectively, indicating the surface water flow from southwest to northeast directions (Masters et al., 2017). These bores were fitted with pressure transducers to monitor the ground water level (GWL) at the site. A perched aquifer at 3-4 m depth was encountered, while drilling bore RN 183021.

### 180 2.4 Sampling

Water and soil sampling at the site were scheduled from July 2017 to December 2019, considering the sugarcane growing phase and the pesticide application time. The half-lives of pesticides applied recently at the site (Table A1) were also considered for the sampling plan.



### 2.4.1 Water sampling

185 During the monitoring period, water samples (a total of 56 samples) were gathered from designated monitoring bores and from eight VSPs at different depths across the vadose zone (Table 3). For ground water sampling, each bore was expunged of 3 x volume to eliminate static bore water before sampling and confirm a more precise representation of aquifer water (Sundaram et al., 2009). Samples were stored in cool conditions at the site and kept in storage at 4°C during transport to the lab for chemical analysis.

190 **Table 3.** Water sampling regime for pesticide analysis (√ denotes samples collected on the corresponding date and X denotes dates when no samples were collected).

Sampling date	Groundwater at the regional aquifer (six bores)	Vadose water through the VSP and groundwater from two bores at the site
13, July 2017	√	X
02, November 2017	X	√
11, January 2018	X	√
9, May 2018	X	√
15, November 2018	X	√
1, December 2019	X	√

### 2.4.2 Soil sampling

195 Based on pesticide application regime (before and after), soil samples (a total of 12 samples) were collected in 2018 and 2019 (Table 4). Soil sampling cores were collected from a depth of 20 cm from the soil surface at intervals to 55 cm by hand driven auger and Geo Probe method. These were immediately cooled on ice and kept cool during transport to the laboratory.

200 **Table 4.** Soil sampling schedule for pesticide analysis (√ denotes the depths at which soil samples were collected for each of the sampling dates).

Sampling method	Sampling date	Sampling depth		
		25 cm	40 cm	55 cm
Hand auger	18, September 2018	√	√	√
Hand auger	11, November 2018	√	√	√
Geo Probe method	11, November 2019	√	√	√
Hand auger	3, December 2019	√	√	√

## 2.5 Chemical analysis

The pesticides and their possible metabolites were analysed by Queensland Health, Coopers Plains, Queensland. All collected samples (water and soil) were separated via solid phase extraction (SPE) and analysed by liquid chromatography mass spectrometry (LCMS). The analytical methodology (SPE combined with LCMS) is generally utilised by the Great Barrier Reef Catchment Loads Modelling Program (Gallen et al., 2016; Shaw et al., 2010; Vardy et al., 2015; Wallace et al., 2015). One insecticide (imidacloprid) and six herbicides namely imazapic, metolachlor, fluroxypyr, isoxaflutole, glyphosate and haloxyfop, which have been applied in recent years at the monitoring site, were tested in this study (Table 5 and Table A1).

**Table 5.** Ecotoxicity threshold value of Pesticides and their common metabolites.

Class	Pesticides (Non-PS II)	Detection limit, ( $\mu\text{g/L}$ ) <sup>a</sup>	Ecotoxicity threshold value <sup>b,*</sup> ( $\mu\text{g/L}$ )	Common metabolites <sup>d</sup>
N-acetylcholine receptor modulators	Imidacloprid	0.02	0.11	
Amino acid inhibitors	Imazapic	0.01	0.41	
Long chain fatty acid inhibitors	Metolachlor	0.005	0.71	
Auxin growth regulators	Fluroxypyr	0.005	160 <sup>c</sup>	4-amino-3,5-dichloro-6-fluoropyridin-2-ol, 4-amino-3,5-dichloro-6-fluoro-2-methoxypyridine
Meristematic tissues growth inhibitors	Isoxaflutole	0.02	0.46	2-cyano-3-cyclopropyl-1-(2-methylsulfonyl-4-tri-uoromethylphenyl) propan-1,3-dione) (DKN)
EPSP (5-enolpyruvylshikimate-3-phosphate synthase) synthase inhibitors	Glyphosate	0.7	250	Alpha-amino-3-hydroxy-5-methyl-4-isoxazole propionic acid (AMPA)
Acetyl-coenzyme A carboxylase	Haloxyfop	0.02	2000	

<sup>a</sup> The detection limits were defined by the Analysis suite for water samples, developed by QHFSS.

<sup>b</sup> King et al. (2017b), <sup>c</sup> King et al. (2017a), <sup>d</sup> Database (2021)

\* Ecotoxicity threshold value were derived using the Burrlioz 2.0 (2016) software for 95% species protection (Warne et al., 2015)

### 2.5.1 Water Analysis

There were two analytical method groups (QIS 33963 for herbicides and pesticides and QIS 33917 for Glyphosate) for water analysis used in Queensland Health Laboratory. The analysis was performed by direct injection method by filtering 1mL of sample using 0.2um filter and analysed on LCMSMS. For water herbicide analysis for Imidacloprid, Imazapic, Metolachlor, Fluroxypyr, Isoxaflutole and Haloxyfop, the method details are provided in Table A2. During analysis, there were experienced some matrix effects were experienced, and in these cases, the Limit of Reporting (LOR) was increased.

### 2.5.2 Soil Analysis

There were two analytical method groups (QIS 30814 for glyphosate and QIS 32456 for herbicides and pesticides) in soil / sediment. For, QIS 30814: Glyphosate and Amino Methyl Phosphonic Acid (AMPA) in Soil/Vegetation by LCMSMS, water was added to soil samples and shaken. The aqueous phase was filtered and analysed via direct injection on the LC-MSMS. On the other hand, QIS 32456: Determination of Herbicides in Soil and Sediment by LC-HRAM-Orbitrap, the soil/sediment sample was first shaken with acetone using a tabletop shaker for approximately 12 hours. The herbicides were then extracted using a QuEChERS method. The final extract was analysed by LC-HRAM-Orbitrap. The method details for pesticide and herbicides in soil and sediment are provided in Table A3. Imazapic showed low recovery (<40%) when it was analysed by QIS 33456 method.

## 3 Results and discussion

Increases in sediment water content are typically the outcome of water infiltration and downwards propagation of a wetting front, while decrease of water content is a consequence of either deep drainage or evapotranspiration at the shallow layers affected by the root uptake (Dahan et al., 2008). Accordingly, sequential wetting with depth represents the wetting front propagation velocity and infiltration fluxes (Rimon et al., 2011). Firstly, the site hydrology (Section 3.1) with respect to local rainfall pattern, site morphology and sugarcane growing season will be defined. Then, pesticide migration will be characterised with respect to the site hydrology (Section 3.2). Finally, the pesticide concentrations in groundwater will be reported and compared with the ecotoxicity threshold value (Section 3.3).

### 3.1 Site Hydrology (Infiltration, and GWL variations)

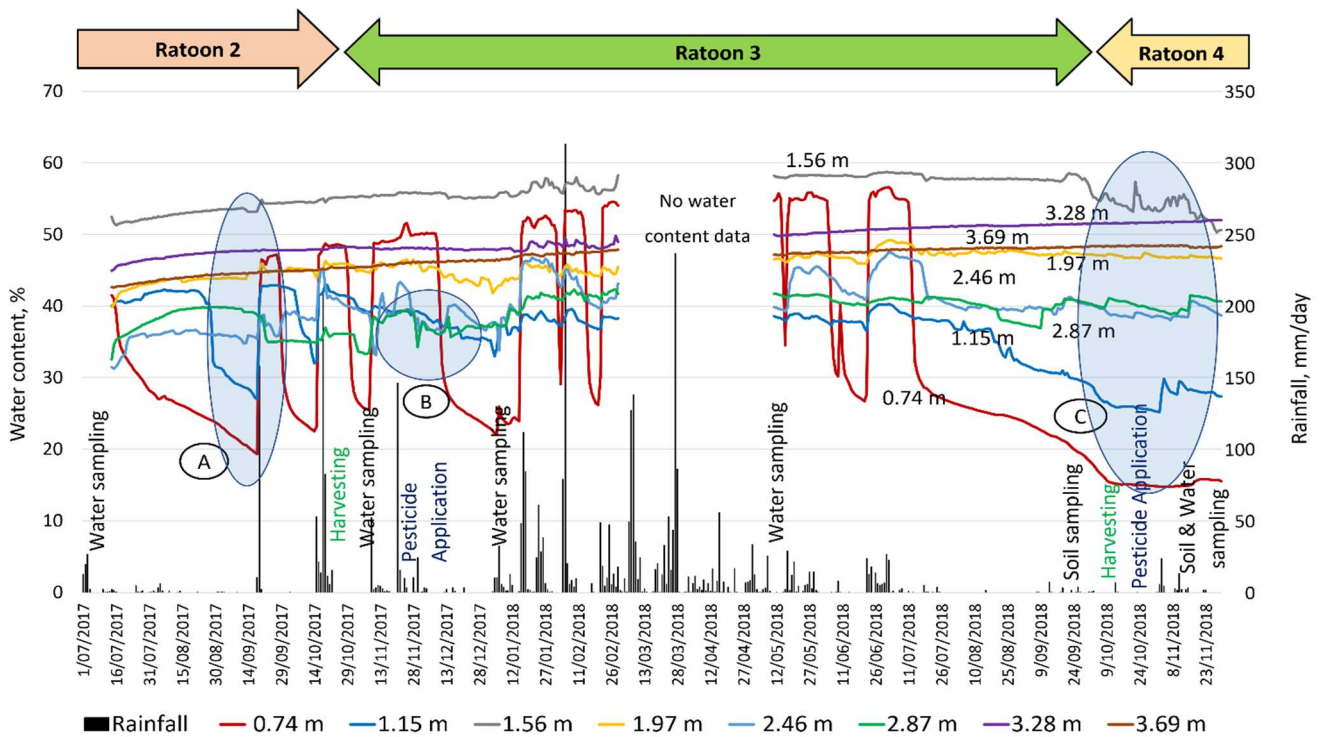
#### 3.1.1 Rainfall infiltration

Temporal changes in sediment water content through the vadose zone signifies percolation events which are well correlated to rainfall intensity and frequency (Fig. 4). Substantial increases in the measured water content of shallow sediments (0.74 m and 1.15 m) were observed immediately following all significant rainfall events. However, the next two deeper probes, at 1.56 m and 1.97 m, show high (saturated) water contents that are caused by a seasonal perched water table. Indications for

seasonal perched water table were obtained during the drilling for VMS installation. Deeper in the cross sections at depths of 2.46 m and 2.87 m, under the uppermost perching layer, the water content sensors exhibited unsaturated conditions with small fluctuations that are attributed to the rainfall events. Finally, the deepest probes (3.28 m and 3.69 m), exhibit high and steady water content values that represent saturation over the whole monitored period due to a perched layer at this depth.

250 Each significant rainfall event initiated the infiltration process by causing substantial increases in water contents, notably at shallow sediments (0.74 m and 1.15 m). The 158.4 mm rainfall event on 19 September 2017 resulted in the first sharp rise in water content, indicating the appearance of wetting front at the first probe at 0.74 m below the ground surface. This wetting front was marked as an increase in moisture content from 20% to 46% at 0.74 m (A). After this response, this probe experienced a reduction in the water content. This could have been caused by drainage, evaporation and/or water uptake by

255 mature sugarcane (ratoon 2). Sequentially, an increase from 26% to 42% was recorded at 1.15 m depth (within three hours), indicating that the wetting front propagated to that depth.



**Figure 4.** Variations in water content in the vadose zone along with rainfall.

260 The next two probes at 1.56 m and 1.97 m, exhibited high and stable water content (>50%), with no significant change over time, indicating stable soil saturation. This could be due to the existence of a seasonal perched water table around 1-2 m depth in the vadose zone (Masters et al., 2017). The responses of these probes also relate to this layer's composition, fine sediment (clay and silt, 76%).

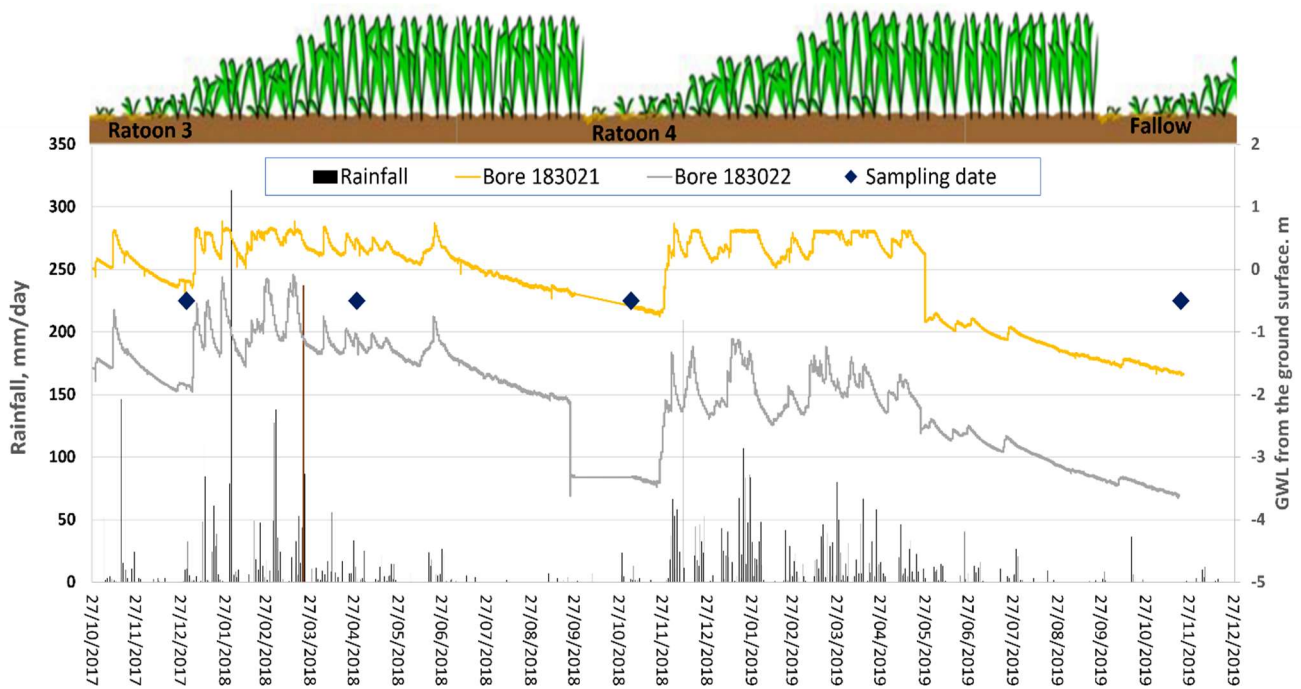
265 The probes at 2.46 m and 2.87 m, situated in the sandy loam layer, showed lower water content than the upper probes (at 1.56 m and 1.97 m), but showed large fluctuations over time, indicating unsaturated conditions under the seasonal perched water table (1-2 m depth). As the sandy loam layer has low water retention properties, it can quickly drain to the deeper layers, which was evidenced by a reduction water content over time (B).

270 As a result of the continuous deep drainage from the unsaturated layers, water contents were consistently high (~50%) at the deepest two probes (3.28 m and 3.69 m), suggesting their permanent saturation. The underlying loam layer (with 23% clay content at 3.80-4.00 m depth (Fig. 2) serves as hydrological barrier, reducing further downward water percolation. Therefore, the two probes at 3.28 m and 3.69 m recorded high-water contents, implying their location within a deeper perched layer. Indications for a perched water table (3-4 m depth) were obtained, while drilling the bore of RN 183021 at the monitoring site, near the site VMS station.

275 During the dry period (July-November 2018), all eight FTDR probes across the vadose zone (C) gradually responded with a declining trend in water content. The upper two probes reduced in water content from saturation to 15% at 0.74 m and 25% at 1.15 m depth. During the dry period, mature sugarcane can access a significant amount of water from the seasonal water table (within 1.5 m depth) (Hurst et al., 2004), significantly reducing the water content in the upper soil layers. Following this recession at 0.74 m and 1.15 m, the water content at probe at 1.56 m depth dropped from saturation to ~50% for the first time. The declines in water content in the upper layers also aided to a gradual rise (~2-3%) in the water content at the deepest 280 two probes (3.28 m and 3.69 m).

### 3.1.2 Ground water level (GWL)

285 Both bores (RN 183021 and 183022) showed a substantial fluctuation in ground water level (GWL) in response to the rainfall at the site during November 2017- December 2019 (Fig. 5). The GWL trends showed shallower depths for bore 183021 (<2 m depth and even above ground) and 2 to 3.80 m depth from the surface for bore 183022 during the monitoring period. Yet, the aquifer material (medium to coarse sand layer) of both bores is encountered at the depth of 9-11 m. The shallower GWL depth (< 4 m or even above the ground) could be due to the semi-confined nature of the aquifer at 9-11 m and regular degree of saturation of the dense clay rich layers at the site (Fig. 3).



290 **Figure 5.** Ground water level (GWL) of Bore 183021 and 183022 with respect to local rainfall (GWL was measured from the ground surface).

There was also a discrete difference in the GWL trends between bore 183021 and bore 183022. They are approximately 265m apart but showed with a 2 m difference in GWL. The previous study by Masters et al. (2017) showed ~1-2 m elevation difference based on elevation model (m) at the site. This topographic deviation could be the reason for the deviation in GWL trends. There was a distinct variation in GWL trends between wet/rainy seasons (December – April) and dry period (September – November). At the beginning of Ratoon 3, the GWL was close to surface for bore 183021 and within 2 m depth for bore 183022. Quick responses in GWL’s were observed with a significant rainfall event, for example a light rainfall event 52.2 mm, 9 Nov, and moderate rain event 146 mm/day on 22 Nov 2017, resulted in peaked GWL’s for both bores (Fig. 5). While flooding was observed at the monitoring site in March 2018, groundwater was observed to overflow, at the top of the bore casing, for 183021 and become close to the surface for 183022. The groundwater responses at this site support the infiltration data (Fig. 4) which shows the movement of wetting fronts throughout the entire vadose zone, passing through perching layers. The rapid responses observed for groundwater at this site provide evidence of the close connection between the surface and underlying groundwater.

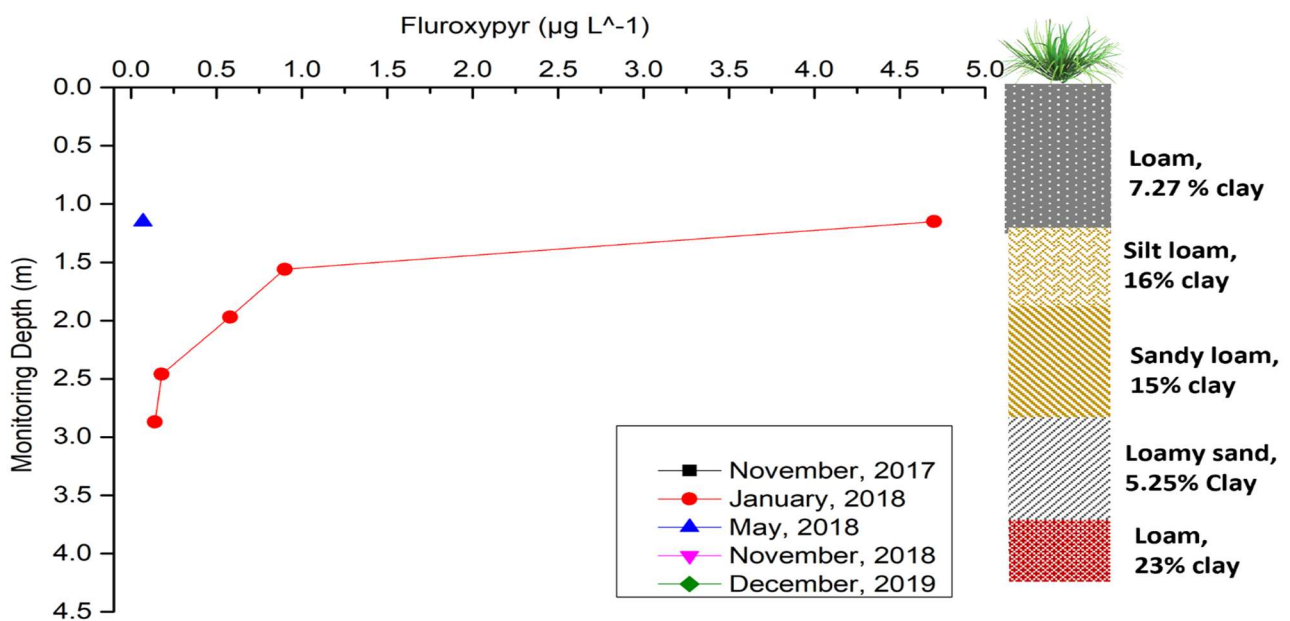
### 3.2 Pesticide transport through the vadose zone

In the present study, during 2017-19, seven commonly used non-PS II herbicides namely imidacloprid, imazapic, metolachlor, fluroxypyr, isoxaflutole, glyphosate and haloxyfop (Table 5), were analysed in the soil samples (to 50 cm) and

in vadose water sampled through the vadose zone (1.15 to 4.00 m depth). Fluroxypyr (half-life, 51 days) and isoxaflutole (half-life, 1.3 days) exhibited substantial migration through the unsaturated zone, after their application. Two non-persistent herbicides, namely metolachlor (half-life, 21 days), and glyphosate (half-life, 15 days), were not found in the soil or across the vadose zone. Haloxyfop, a moderately persistent (55 days, half-life) pesticide, was reported above the detection limit for soil samples to 50 cm depth just after application in 2019 but was not found throughout the vadose zone. The persistent imazapic (187 days, half-life) applied in 2014, was not identified in the soil or across the vadose zone during the study period. However, among the detected pesticides, the persistent imidacloprid (half-life, 187 days) was not used at the site since 2013 but found in soil samples and in the vadose water samples (Table 2). At the last sampling period (December 2019), none of seven pesticides were not detected through the vadose zone, indicating their transport beyond the vadose zone or ultimate degradation across the vadose zone.

### 3.2.1 Fluroxypyr

Fluroxypyr was transported beneath the sugarcane root zone, immediately after its application, and the decreasing trend of its concentration over time indicated its ultimate degradation within the vadose zone (Fig. 6). It was also below the detection limit through the soil, from 0-55 cm depth (Table S8 and S9). Previous studies detected small residual loads of the active ingredients of fluroxypyr with 0.03 kg a.i./ha at 30 cm depth of soil (Van Zwieten et al., 2016). Due to its natural decay, moderately persistent fluroxypyr (half-life, 51 days) was not supposed to be identified in any vadose water sampled in November 2017.



**Figure 6.** Fluroxypyr concentration over time in depth (November 2017, November 2018 and December 2019 were not shown in the figure as the results were below the detection limit).



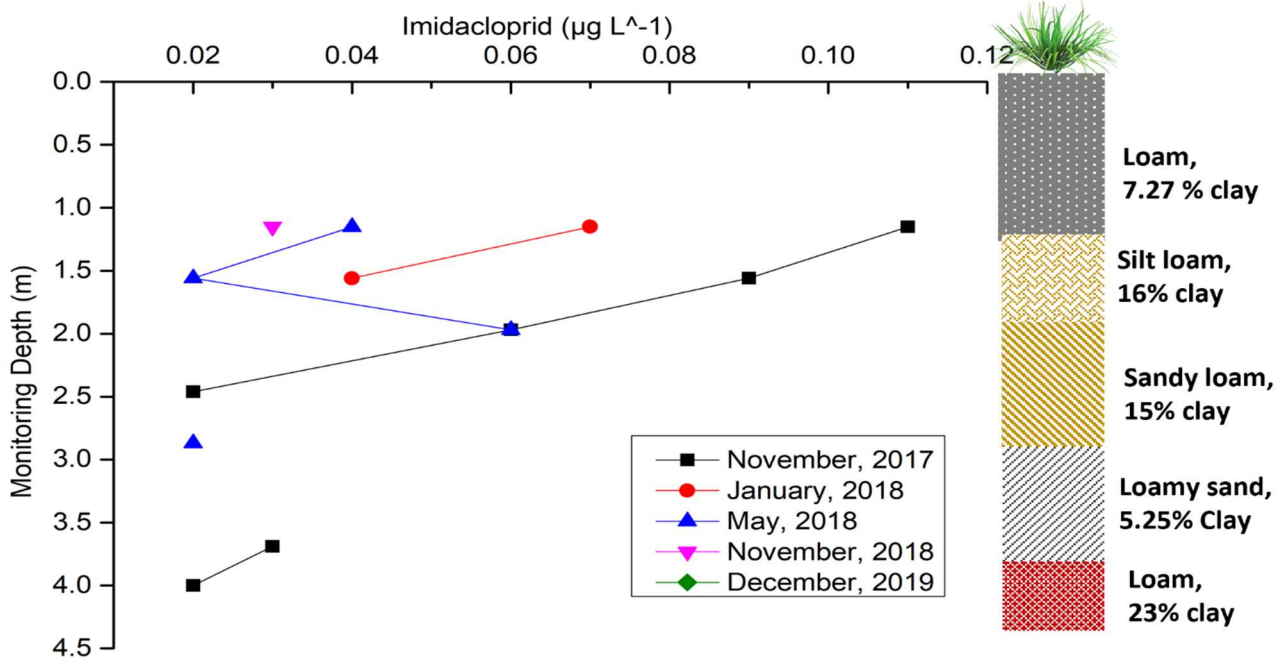
Fluroxypyr was applied once at the site in December 2017 (Table 2). Subsequent sampling in January 2018 showed the detection of fluroxypyr at the ports ranging from 1.15 to 2.87 m, but not at the deeper VSPs (Fig. 6). Following volatilization and root uptake, fluroxypyr was transported below the root zone, up to 2.87 m depth from the surface within 24 days after its application. These observations indicate the transport of fluroxypyr to a depth of at least 2.87 m below the soil surface (Fig. 6). These results provide complementary evidence that water is draining vertically downwards below the seasonal water table (perched layer) and through the entire vadose zone.

In January 2018 sampling, fluroxypyr was observed at a concentration of 4.70 µg/L at the upper port of 1.15 m depth, one month after its application (Fig. 6). The concentration levels were exceeding the detection limit (0.10 µg/L), following a sharp decreasing trend with depth, at the ports of 1.56 m, 1.96 m, 2.46 m, and 2.87 m depth. Beyond 2.87 m from the surface, it was below the detection limit (Fig. 6). The decreasing trend could be due to the loam rich layers within the soil profile at 0-55 cm, which could slow down the pesticide transport through the vadose zone and enable transformation of fluroxypyr into its metabolites (Tao & Yang, 2011). This rapid degradation could cause the absence of fluroxypyr and its metabolites in the deepest VSPs (3.69 m or 4.00 m in depth) during the monitoring period. In addition, when the soil was saturated, the lateral flow occurred before vertical leaching, below 1-2 m depth could take place (Masters, et al., 2017). This could be another potential reason for the sharp decline of concentration below 1.15 m depth.

Fluroxypyr was detected only in the topmost port (1.15 m in depth) in samples collected May 2018 (Fig. 6). As fluroxypyr and its metabolites were not found in the vadose water, it is likely that fluroxypyr and its metabolites had completely metabolized by May 2018. Additionally, from January to April 2018, high water content (> 40%) through the vadose zone (Fig. 4) and the partial flood event in March 2018 at the monitoring site (Masters et al., 2017) could also contribute to a quicker degradation of fluroxypyr within this period (Tao and Yang, 2011). Therefore, there is limited potential for the fluroxypyr to reach regional groundwater through direct vertical transport through vadose zone. This is also supported by the lack of detections of fluroxypyr within the vadose zone water sampled in November 2018, and in December 2019. Residues of fluroxypyr and its metabolites were also no longer detected in the soil profile during November 2018-December 2019 (Table S8 and S9).

### 3.2.2 Imidacloprid

During the monitoring time 2017-2019, persistent imidacloprid (half-life, 187 days) was found in the vadose water samples (Fig. 7), four times (Table S 2, 3, 4 & 5), from 1.15 m to 4.00 m depth. Although imidacloprid was not applied in the monitoring site, its transport and concentration beneath the sugarcane root zone varied with depth over time. It was possibly being released from residues present in the upper soil layers or transported imidacloprid from the neighbouring sugarcane fields. During September-November 2017, there were several medium to very high rainfall events which resulted in infiltration (Fig 4). This could have contributed to imidacloprid leaching beyond the root zone and travelling to 4.0 m depth, as it has characteristics of high solubility (610 mg/L) and high leachability (GUS Leaching Potential Index, 3.69, Table A1).



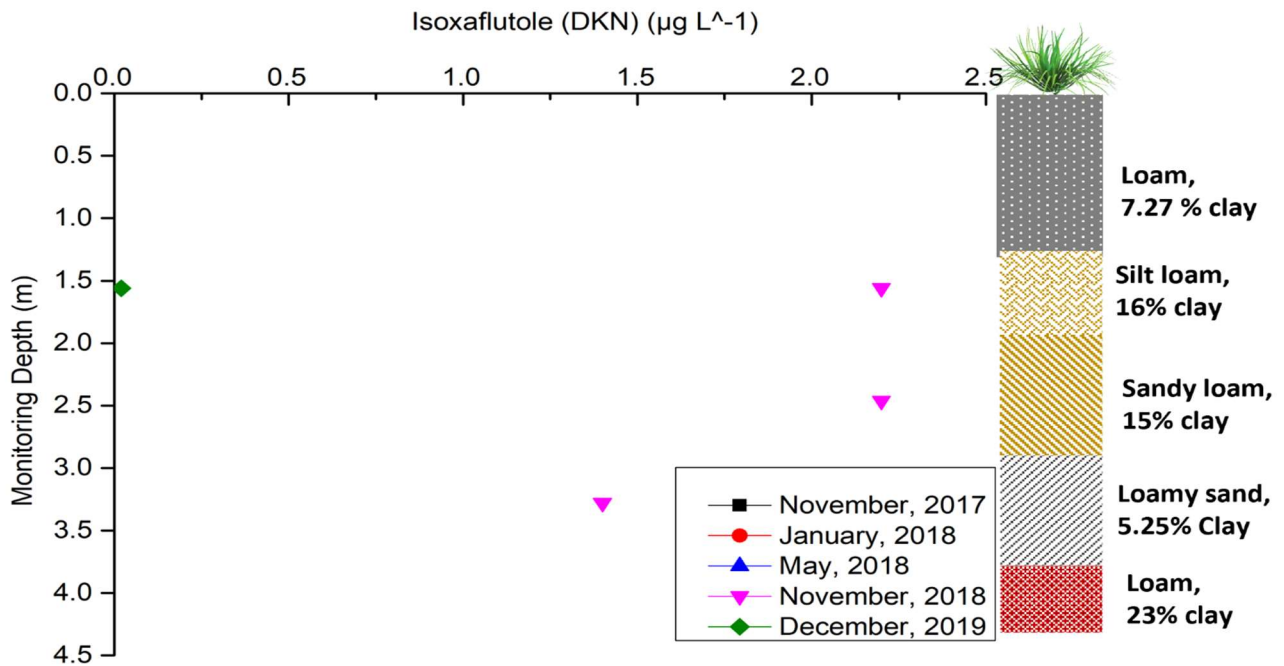
360 **Figure 7.** Imidacloprid concentration over time in depth (December 2019 was not shown in the figure as the result was below the detection limit).

After November 2017, imidacloprid was detected only in the upper vadose zone and not at the end of the vadose zone (3-4 m depth), in the proximity of the perched aquifer. Imidacloprid was found to a depth of 1.56 m depth in January 2018, to a depth of 2.96 m in May 2018 and to a depth of 1.15 m in November 2018 (Fig. 7). There was also a reduction in imidacloprid concentrations observed over time. This lowering concentration could be due to the combination of the dilution by infiltration and lateral transport after consecutive high rainfall events, as drainage water was reported to seep laterally into the neighbouring channels at the site (Masters et al., 2017). Finally, in December 2019, imidacloprid was below the detection limit throughout the vadose zone (Fig. 7). The possible explanation for the lower leaching could be its sorption onto the clay rich sediments (Oi, 1999) and lower rain events in December 2019 (Fig. 4) (Gupta et al., 2002).

370 Imidacloprid was not detected in soil samples collected in September and November 2018 (Table S8). Interestingly, persistent imidacloprid was found at upper part of the soil at 25 cm and 35 cm depth with 0.0122 kg a.i./ha (0.004 mg/Kg) and 0.010 kg a.i./ha (0.01 mg/Kg), and 0.012 kg a.i./ha (0.002 mg/Kg), respectively, in November 2019 (Table S9). It was observed only at 25 cm soil depth, with 0.0366 kg a.i./ha (0.012 mg/Kg) in December 2019. The concentration of imidacloprid at upper part of soil may indicate a source within a neighbouring sugarcane field. This imidacloprid had not yet travelled into the vadose zone till 1.15 m depth or beyond as it was not detected in vadose water sampled in November and December 2019 (Fig.7).

### 3.2.3 Isoxaflutole

380 Isoxaflutole, applied annually during 2015 to 2018, was not found through the entire depths of vadose zone during the five  
 385 sampling periods (Fig. 8). As it is quickly transferred into a diketonitrile derivative (DKN) in soils (Mougin et al., 2000), it  
 can be undetectable immediately after application. The diketonitrile derivative, an active pesticide with a longer half-life and  
 higher water solubility than the parent pesticide, undergoes rapid conversion to the inert benzoic acid analogue (Mitra et al.,  
 2000; Mougin et al., 2000). It has also been reported to bind firmly to soils with higher organic matter content and retained a  
 large portion in soil, resulting in lower leaching potential for DKN (Mitra et al., 2000). Yet, it was not found in the 0-55 cm  
 depth soil profile (Table S8 and S9), despite the high organic material content (5.7%) (Masters et al., 2017). The fact that no  
 isoxaflutole was identified in the soil profile at this site is not surprising as this pesticide is generally not found below 6 cm  
 of soil depth (Epa, 1998).



390 **Figure 8.** Isoxaflutole concentration over time in depth (November 2017, January 2018 and May 2018 were not shown in the figure as the results were below the detection limit).

The concentration of isoxaflutole metabolite (DKN) and its inactive benzoic acid derivative were below the detection limit at all depths sampled in November 2017 before it was applied in December 2017. As isoxaflutole has low half-life (1.3 days), it was not found in samples collected in January 2018 and May 2018. The scenario was different for samples collected on November 2018 (one month after isoxaflutole application) as DKN was found in the middle of the vadose zone (1.56 – 3.28 m depth). The concentration was at 2.2 µg/L at depths of 1.56 m and 2.46 m and 1.4 µg/L at 3.28 m depth. The concentrations decreased with depth but were higher than the ecotoxicity limit (0.46 µg/L). It is worth noting that

isoxaflutole was not detected at the two ports at 1.97 m and 2.87 m depth, despite their proximity. This could be due to the lateral heterogeneity. After harvesting the final ratoon in 2019, isoxaflutole was just above detection limit only at 1.56 m depth, even though it had not been applied. This indicates that isoxaflutole can be transported across the unsaturated zone and may possibly also reach groundwater. Yet, its high degradation rate makes it unlikely that it will be transported into groundwater.

### 3.2.4 Haloxyfop

Haloxyfop, a moderately persistent (55 days, half-life) pesticide, was found to be below the detection limit for soil samples in 2018 but it was reported above the detection limit just after application in 2019 (Table 3). Haloxyfop has the GUS leaching potential index, 3.70 (high leachability), indicating higher likelihood of transport through the soil (Database, 2021; Gustafson, 1989). The concentration of haloxyfop at different depths of 25 cm, 35 cm and 50 cm were 0.012 kg a.i./ha (0.004 mg/Kg), 0.043 kg a.i./ha (0.01 mg/Kg), and 0.012 kg a.i./ha (0.002 mg/Kg), respectively (Table S8 and S9). These results indicate the transport of haloxyfop to at least 50 cm soil depth. They also indicate the potential for haloxyfop to travel beyond this depth, through the vadose zone. But it was below the detection limit throughout the vadose zone. This indicates that it did not reach 1.15 m depth in short time (two weeks). The transport of haloxyfop could be reduced due to lack of infiltrating rainfall and subsequent low water content across the vadose zone in this period.

### 3.4 Pesticide concentration in groundwater

Only two pesticides were found in three of the six bores, sampled once, in the South Johnstone River sub-basin in July 2017. Imidacloprid was exposed in two bores RN11210032 and RN11210051, at concentrations with 0.60 µg/L and 0.08 µg/L, respectively. Compared to the recently developed aquatic ecosystem protection guideline values for the GBR (King et al., 2017b, a; Smith, 2018), the concentration of imidacloprid in bore RN11210031 exceeded the freshwater ecosystem health guideline (0.11 µg/L) for protection of 95% of species (Table 5). Previous studies also detected imidacloprid at 0.06 µg/L in the South Johnstone River sub-basin surface waters (Smith et al., 2012) and 1.15 µg/L in bores with in the Johnstone catchment (Masters et al., 2014). Though imazapic was not detected previously in any surface water and groundwater in the South Johnstone catchment (Masters et al., 2014; Smith et al., 2012), it was detected only in bore RN11210056. Its concentration, 0.70 µg/L, was greater than the ecotoxicity value, 0.41 µg/L (Table 5). Other herbicides, namely metolachlor, fluroxypyr, isoxaflutole, glyphosate and haloxyfop, were all below the detection limits in the six groundwater monitoring bores tested. None of these pesticides have previously been found in surface water studies in the basin (Smith et al., 2012) or in bores with in the Johnstone catchment (Masters et al., 2014). The lack of detections of these pesticides in surface and groundwater most likely relates to their limited use in recent decades combined with natural degradation of these pesticides. Overall, the pesticide results of the two site monitoring bores (RN183021 and RN183022, collected five times, at the same time as vadose water sampled through VSP) were below the detection limits for all seven pesticides tested in this study. Significantly, isoxaflutole, applied annually, was expected to be present in the soil and in the vadose zone and potentially

leached to groundwater. It has previously been reported that the annual pesticide mass leached below the root zone could range between <0.1 and 1% (sometimes higher, up to 4%) (Flury, 1996). The lack of isoxaflutole and its metabolites in the soil sample and declining concentration in the pore water with depth and time highlight limited transport through the vadose zone. This could be due to the low application dose of 150 g/ha isoxaflutole in the field trial. Additionally, the amount of isoxaflutole percolated below the root zone after plant consumption could be degraded into the soil before reaching to the groundwater. This is supported by its absence in the monitoring bores at the site.

#### 435 **4 General Discussion**

The infiltration process is exemplified by the soil moisture content in the shallow soil profile, which exhibits a seasonal perched water table at 1.56 m and 1.97 m depth (Fig. 4). Under this perched layer, unsaturated conditions occurred at depths of 2.46 m and 2.87 m. Frequent monitoring of regularly applied pesticides supported interpretation of the hydrological characteristics through the vadose zone. This was evidenced by the concentration levels of fluroxypyr exceeding the detection limit (0.10 µg/L) and following a sharp decreasing trend with depth, from 1.15 m to 2.87 (Fig. 6). The decreasing trend could be due to the combination of reduced fluroxypyr transport by the clay layer, transformation of fluroxypyr into its metabolites by carbon content (Tao & Yang, 2011), drainage by lateral flow up to 1-2 m depth at the site (Masters, et al., 2017) or dilution because of the high-water content in the perched layer.

Fluroxypyr was not identified in the deepest part of the vadose zone (3.69 m or 4.00 m in depth) where a perched aquifer layer exists. This observation supports the regulating and partitioning behaviour of the red coarse mottled structured loam layer (with 23% clay) at 3.80-4.00 m depth. This layer could control the ability of rainwater infiltration as well as pesticides to reach the more permeable aquifer material at ~9 m (ground water). However, the results of non-PS II herbicides were below the detection limit in groundwater, indicating less potential to be leached to groundwater.

Based on the PIRI (Pesticide Impact Rating Index), imidacloprid and isoxaflutole were predicted to present 'low' risk profiles and metolachlor 'high' risk to invertebrates (Davis et al., 2014). In this study, imazapic and metolachlor, last applied in 2014 at the site, were not identified in the soil profile or across the vadose zone and imidacloprid was below the detection limit through the vadose zone at the end of sampling. As this study found that those non-PS II herbicides (imidacloprid, isoxaflutole and metolachlor) were attenuated within the soil profile within in study period (about three years), this study substantiates the switch of PS II herbicides to non-PS II herbicides. Our data also supports the substitution for other herbicides (fluroxypyr and haloxyfop, which were projected to present 'medium' risk profiles) (Davis et al., 2014). The findings of glyphosate used at the study site in 2013-2014 and 2019 also supporting its substitution, yet it was predicted 'high' risk to invertebrates (Davis et al., 2014).

This study, focussing on seven non-PS II herbicides in the Wet Tropics, has provided increased knowledge of the fate, existence, and transport of these pesticides across the vadose zone. As the concentration of regularly applied pesticides in the

460 vadose zone reduces quickly following pesticide application, a shift of product choice to alternative/other non-PS II herbicides instead of PS II herbicides could also be advisable in other tropical regions with agricultural activities.

This study describes improved characterisation of pesticide movement dynamics (after immediate application) under a sugarcane field. This allows a better understanding of agrochemical impact from sugarcane farming on the groundwater environment in the tropics. Only two pesticides (imidacloprid and imazapic) were detected in three of the six bores sampled  
465 once in the South Johnstone River sub-basin, but these pesticides were not detected at the bores on the monitoring site. As there was no record of the detections of these two pesticides at the end of the monitoring period, these were ultimately degraded in the groundwater to concentrations below current detection limits. However, based on the data at one site, the study was not able to explore the potential contamination at a regional groundwater scale.

## 5 Conclusions

470 Rainwater percolation through the soil and unsaturated zone resulted in pesticide transport to deeper components of the vadose zone and into groundwater, but the extent of their transport beyond the root zone of sugarcane was attributed to the rainfall events following pesticide application. Fluroxypyr and haloxyfop are both moderately persistent with high leachability (GUI, >2.80). Fluroxypyr application followed by several rainfall events, showed substantial migration to a depth at least 2.87 m below the soil surface but haloxyfop did not, as the lack of infiltrating rainfall and subsequent low  
475 water content through the vadose zone may have reduced its transport beyond the root zone. However, two non-persistent herbicides, namely isoxaflutole and glyphosate (with low leachability, GUI, <1.80), are unlikely to reach the vadose zone. The persistent imazapic, applied in 2014, was not expected to be detected in the soil or across the vadose zone during the study period. However, among the detected herbicides, the persistent imidacloprid was not utilized in the site since 2013 but found in soil and in the vadose water. None of seven pesticides were identified within the vadose zone at the last sampling  
480 period (December 2019). Based on the data, this present study revealed the transport of the non-PS II pesticides beyond the crop root zone, but these pesticides were no longer detectable during the last sampling period. Their disappearance is due to either transformation into its metabolites by the thick carbon rich clay layer within the soil profile or dilution within the perched layer, thereby indicating their limited ability to reach groundwater. The findings of this case study support the substitution of PS II herbicides with the non-PS II pesticides (at least seven of all other pesticides). However, some non-PS II  
485 pesticides, for example, persistent imidacloprid and imazapic, were found at concentrations higher than the ecotoxicity threshold level in the regional aquifer groundwater samples, indicating that at some locations and with some products, contamination of the groundwater is occurring.

**Data availability.** To access the raw data, contact with the corresponding author.

490 **Author contributions.** Dr Lucy Reading formulated the research questions and directed the research. Professor Ofer Dahan assembled and inaugurated the vadose zone monitoring system at the monitoring site. Dr Rezaul Karim collected and analysed the data extensively and prepared the draft of the manuscript. Prof. Les Dawes, Prof. Ofer Dahan and Dr Glynis Orr reviewed and edited. Dr Karim finalized the manuscript for submission and production.

**Declaration of competing interests.** The authors have no known declaration of competing interests that could have appeared to influence the work reported in this paper.

495 **Acknowledgments.** The authors would like to convey their gratitude to Jim Stanley and Jim Yaxley, Queensland University of Technology and Star Drilling, Thomastown for assembling and inaugurated the monitoring system at the monitoring site. We thank Christian Brunk from the Queensland University of Technology and Daniel Roebuck from the Campbell Scientific Australia for their technical assistance in functioning the experimental setups. We thank the Centre for Wet Tropics Agriculture, South Johnstone. Further thanks are due to the dedicated Paddock-to-Reef project, Silkwood team for their  
500 concerted supports with sharing information, project outputs and assisting with field work. We thank to MSF Sugar Pty Ltd for giving entrance to their land and crop-pest management records. Gratitude is also expressed for the extensive laboratory analysis provided by Queensland Health, Coopers Plains.

**Financial supports.** The funding for this project was provided by the Department of Regional Development, Manufacturing and Water, Australia, and the Queensland University of Technology.

## 505 **References**

- Adeoye, P. A., Abubakar, S. K., Adeolu, A. R., El-Mohsen, A. A. A., Sabbour, M., Farhadi, A., Hamidi, R., and Pirasteh-Anosheh, H.: Effect of agrochemicals on groundwater quality: A review, *Scientia Agriculturae*, 1, 1-7, 2013.
- Aharoni, I., Siebner, H., and Dahan, O.: Application of vadose-zone monitoring system for real-time characterization of leachate percolation in and under a municipal landfill, *Waste Manage.*, 67, 203-213, 10.1016/j.wasman.2017.05.012, 2017.
- 510 Armour, J. D., Hateley, L. R., and Pitt, G. L.: Catchment modelling of sediment, nitrogen and phosphorus nutrient loads with SedNet/ANNEX in the Tully-Murray basin, *Marine and Freshwater Research*, 60, 1091-1096, 10.1071/Mf08345, 2009.
- Arora, T. and Ahmed, S.: Characterization of recharge through complex vadose zone of a granitic aquifer by time-lapse electrical resistivity tomography, *Journal of Applied Geophysics*, 73, 35-44, 10.1016/j.jappgeo.2010.11.003, 2011.
- Authority, G. B. R. M. P.: Great barrier reef outlook report 2009: In brief, Great Barrier Reef Marine Park Authority 2009.
- 515 Bidwell, V. J.: A formula for predicting advection-dispersion in the vadose zone at uneven drainage intervals, *Water Resources Research*, 36, 3077-3080, 10.1029/2000wr900192, 2000.
- Brodie, J., Lewis, S., Bainbridge, Z., Mitchell, A., Waterhouse, J., and Kroon, F.: Target setting for pollutant discharge management of rivers in the Great Barrier Reef catchment area, *Marine and Freshwater Research*, 60, 1141-1149, 10.1071/MF08339, 2009.
- Brodie, J., Baird, M., Waterhouse, J., Warne, M., Skerratt, J., Smith, R., Mann, R., Robillot, C., and Mongin, M.: Development of basin-specific ecologically relevant water quality targets for the Great Barrier Reef, *Australian Centre for Tropical Water and Aquatic Ecosystem Research*, 2017.
- Brodie, J., Burford, M., Davis, A., da Silva, E., Devlin, M., Furnas, M., Kroon, F., Lewis, S., Lönborg, C., and O'Brien, D.: The relative risks to water quality from particulate nitrogen discharged from rivers to the Great Barrier Reef in comparison to other forms of nitrogen, *TropWATER Report 14/31*, James Cook University, Townsville, QLD, 2015.
- 525 Brodie, J., Waterhouse, J., Schaffelke, B., Kroon, F., Thorburn, P., Rolfe, J., Johnson, J., Fabricius, K., Lewis, S., and Devlin, M.: 2013 Scientific Consensus Statement. Land use impacts on Great Barrier Reef water quality and ecosystem condition, 2013.
- Dahan, O., McDonald, E. V., and Young, M. H.: Flexible time domain reflectometry probe for deep vadose zone monitoring, *Vadose Zone Journal*, 2, 270-275, 2003.



- 530 Dahan, O., Shani, Y., Enzel, Y., Yechieli, Y., and Yakirevich, A.: Direct measurements of floodwater infiltration into shallow alluvial aquifers, *Journal of Hydrology*, 344, 157-170, 10.1016/j.jhydrol.2007.06.033, 2007.
- Dahan, O., Talby, R., Yechieli, Y., Adar, E., Lazarovitch, N., and Enzel, Y.: In situ monitoring of water percolation and solute transport using a vadose zone monitoring system, *Vadose Zone Journal*, 8, 916-925, 10.2136/vzj2008.0134, 2009.
- Dahan, O., Tatarsky, B., Enzel, Y., Kulls, C., Seely, M., and Benito, G.: Dynamics of flood water infiltration and ground water recharge in hyperarid desert, *Ground Water*, 46, 450-461, 10.1111/j.1745-6584.2007.00414.x, 2008.
- 535 Dang, A., Silburn, M., Craig, I., Shaw, M., and Foley, J.: Washoff of residual photosystem II herbicides from sugar cane trash under a rainfall simulator, *J. Agric. Food Chem.*, 64, 3967-3974, 10.1021/acs.jafc.5b04717, 2016.
- Database, P. P.: The PPDB: A to Z list of pesticide active ingredients, 2021.
- Davis, A. M. and Pradolin, J.: Precision Herbicide Application Technologies To Decrease Herbicide Losses in Furrow Irrigation Outflows in a Northeastern Australian Cropping System, *J. Agric. Food Chem.*, 64, 4021-4028, 10.1021/acs.jafc.5b04987, 2016.
- 540 Davis, A. M., Lewis, S. E., Brodie, J. E., and Benson, A.: The potential benefits of herbicide regulation: a cautionary note for the Great Barrier Reef catchment area, *Sci. Total Environ.*, 490, 81-92, 10.1016/j.scitotenv.2014.04.005, 2014.
- Davis, A. M., Lewis, S. E., Bainbridge, Z. T., Glendenning, L., Turner, R. D. R., and Brodie, J. E.: Dynamics of herbicide transport and partitioning under event flow conditions in the lower Burdekin region, Australia, *Mar. Pollut. Bull.*, 65, 182-193, 10.1016/j.marpolbul.2011.08.025, 2012.
- 545 Devlin, M., Lewis, S., Davis, A., Smith, R., Negri, A., Thompson, M., and Poggio, M.: Advancing our understanding of the source, management, transport and impacts of pesticides on the Great Barrier Reef 2011-2015. A report for the Queensland Department of Environment and Heritage Protection, James Cook University, Cairns, 134, 2015.
- Enderlin, N. and Harms, B.: P2Reef monitoring project site: Silkwood (P2REEF 71-2, 74-84 & 112), 2023.
- EPA: Pesticide fact sheet: Isoxaflutole, 1998.
- 550 Fenton, M., Albers, C., and Ketterings, K.: Soil organic matter Cornell University, 2008.
- Flury, M.: Experimental evidence of transport of pesticides through field soils—a review, *Journal of Environmental Quality*, 25, 25-45, 10.2134/jeq1996.00472425002500010005x, 1996.
- Gallen, C., Thompson, K., Paxman, C., Devlin, M., and Mueller, J.: Marine monitoring program: Annual report for inshore pesticide monitoring 2014-2015, The National Research Centre for Environmental Toxicology (Entox), Brisbane, QLD, 2016.
- 555 García-Santos, G., Feola, G., Nuytens, D., and Diaz, J.: Drift from the use of hand-held knapsack pesticide sprayers in Boyacá (Colombian Andes), *J. Agric. Food Chem.*, 64, 3990-3998, 2016.
- Government, A. and Government, Q.: The Reef 2050 Water Quality Improvement Plan 2017-2022, 2018.
- Gupta, S., Gajbhiye, V., and Agnihotri, N.: Leaching behavior of imidacloprid formulations in soil, *Bull. Environ. Contam. Toxicol.*, 68, 502-508, 2002.
- 560 Gustafson, D. I.: Groundwater ubiquity score: A simple method for assessing pesticide leachability, *Environ. Toxicol. Chem.*, 8, 339-357, 10.1002/etc.5620080411, 1989.
- Haynes, D., Ralph, P., Prange, J., and Dennison, B.: The impact of the herbicide diuron on photosynthesis in three species of tropical seagrass, *Mar. Pollut. Bull.*, 41, 288-293, 10.1016/S0025-326x(00)00127-2, 2000.
- Hurst, C. A., Thorburn, P. J., Lockington, D., and Bristow, K. L.: Sugarcane water use from shallow water tables: Implications for improving irrigation water use efficiency, *Agric. Water Manage.*, 65, 1-19, 10.1016/S0378-3774(03)00207-5, 2004.
- 565 Isbell, R. F.: The Australian soil classification, 2nd, CSIRO Publishing, Clayton South 2016.
- Johnson, A. K. L. and Ebert, S. P.: Quantifying inputs of pesticides to the Great Barrier Reef Marine Park – a case study in the Herbert River catchment of north-east Queensland, *Mar. Pollut. Bull.*, 41, 302-309, 10.1016/S0025-326x(00)00130-2, 2000.
- Karim, R., Reading, L., Dawes, L., Dahan, O., and Orr, G.: Transport of photosystem II (PS II)-inhibiting herbicides through the vadose zone under sugarcane in the Wet Tropics, Australia, *CATENA*, 206, 105527, 10.1016/j.catena.2021.105527, 2021.
- 570 King, O. C., Smith, R. A., Warne, M. S. J., Frangos, J. S., and Mann, R.: Proposed aquatic ecosystem protection guideline values for pesticides commonly used in the Great Barrier Reef catchment area: Part 2 - Bromacil, Chlorothalonil, Fipronil, Fluometuron, Fluroxypyr, Haloxypfop, MCPA, Pendimethalin, Prometryn, Propazine, Propiconazole, Terbutryn, Triclopyr and Terbutylazine., Department of Science, Information Technology and Innovation, Brisbane, Queensland, Australia, 2017a.
- 575 King, O. C., Smith, R. A., Warne, M. S. J., Frangos, J. S., and Mann, R.: Proposed aquatic ecosystem protection guideline values for pesticides commonly used in the Great Barrier Reef catchment area: Part 1 (amended) - 2,4-D, Ametryn, Diuron, Glyphosate, Hexazinone, Imazapic, Imidacloprid, Isoxaflutole, Metolachlor, Metribuzin, Metsulfuron-methyl, Simazine, Tebuthiuron, Department of Environment and Science, Brisbane, Queensland, Australia, 296, 2017b.
- 580 Kroon, F., Turner, R., Smith, R., Warne, M., Hunter, H., Bartley, R., Wilkinson, S., Lewis, S., Waters, D., and Carroll, C.: Scientific Consensus Statement 2013, Chapter 4: Sources of sediment, nutrients, pesticides and other pollutants in the Great Barrier Reef catchment, Queensland State Government, Reef Water Quality Protection Plan Secretariat, Brisbane, QLD, 2013.
- Kroon, F. J., Thorburn, P., Schaffelke, B., and Whitten, S.: Towards protecting the Great Barrier Reef from land-based pollution, *Global Change Biol.*, 22, 1985-2002, 10.1111/gcb.13262, 2016.

- 585 Lewis, S. E., Silburn, D. M., Kookana, R. S., and Shaw, M.: Pesticide behavior, fate, and effects in the tropics: An overview of the current state of knowledge, *J. Agric. Food Chem.*, 64, 3917-3924, 10.1021/acs.jafc.6b01320, 2016.
- Lewis, S. E., Brodie, J. E., Bainbridge, Z. T., Rohde, K. W., Davis, A. M., Masters, B. L., Maughan, M., Devlin, M. J., Mueller, J. F., and Schaffelke, B.: Herbicides: A new threat to the Great Barrier Reef, *Environ. Pollut.*, 157, 2470-2484, 10.1016/j.envpol.2009.03.006, 2009.
- Masters, B., Mortimore, C., Armour, J. a., and Silburn, D. M.: Pesticides in groundwater of the Tully-Murray and Johnstone catchments: 2012/2013 report, Wet Tropics Region, Queensland Department of Natural Resources and Mines, 41, 2014.
- 590 Masters, B., Rohde, K., Gurner, N., and Reid, D.: Reducing the risk of herbicide runoff in sugarcane farming through controlled traffic and early-banded application, *Agric., Ecosyst. Environ.*, 180, 29-39, 10.1016/j.agee.2012.02.001, 2013.
- Masters, B., Tahir, N., Fries, J., Mortimore, C., Enderlin, N., and Armour, J.: Paddock-scale water quality monitoring of nitrogen fertiliser management practices in sugarcane cropping 2014–2016 technical report, Wet Tropics region, Department of Natural Resources and Mines, Brisbane, QLD, 2017.
- 595 Melland, A. R., Silburn, D. M., McHugh, A. D., Fillols, E., Rojas-Ponce, S., Baillie, C., and Lewis, S.: Spot spraying reduces herbicide concentrations in runoff, *J. Agric. Food Chem.*, 64, 4009-4020, 10.1021/acs.jafc.5b03688, 2016.
- Mitra, S., Bhowmik, P. C., and Xing, B.: Sorption and desorption of the diketonitrile metabolite of isoxaflutole in soils, *J. Agric. Food Chem.*, 108, 183-190, 10.1016/s0269-7491(99)00192-x, 2000.
- Mougin, C., Boyer, F.-D., Caminade, E., and Rama, R.: Cleavage of the diketonitrile derivative of the herbicide isoxaflutole by extracellular fungal oxidases, *Journal of Agricultural Food Chemistry*, 48, 4529-4534, 10.1021/jf000397q, 2000.
- 600 Murtha, G.: Soils of the Tully-Innisfail area, North Queensland (Division of Soils Report No. 82), Townsville, QLD, 99, 10.4225/08/585ac669675d7, 1986.
- Nachimuthu, G., Halpin, N. V., and Bell, M. J.: Effect of sugarcane cropping systems on herbicide losses in surface runoff, *Sci. Total Environ.*, 557, 773-784, 10.1016/j.scitotenv.2016.03.105, 2016.
- 605 Oi, M.: Time-dependent sorption of imidacloprid in two different soils, *J. Agric. Food Chem.*, 47, 327-332, 10.1021/jf980658k 1999.
- Oliver, D. P., Anderson, J. S., Davis, A., Lewis, S., Brodie, J., and Kookana, R.: Banded applications are highly effective in minimising herbicide migration from furrow-irrigated sugar cane, *Sci. Total Environ.*, 466, 841-848, 10.1016/j.scitotenv.2013.07.117, 2014.
- Rasiah, V. and Armour, J. D.: Nitrate accumulation under cropping in the ferrosols of far North Queensland wet tropics, *Aust. J. Soil Res.*, 39, 329-341, 10.1071/Sr99133, 2001.
- 610 Rayment, G. E.: Water quality in sugar catchments of Queensland, *Water Science and Technology*, 48, 35-47, 2003.
- Rimon, Y., Nativ, R., and Dahan, O.: Vadose zone water pressure variation during infiltration events, *Vadose Zone Journal*, 10, 1105-1112, 10.2136/vzj2010.0061, 2011.
- Rimon, Y., Dahan, O., Nativ, R., and Geyer, S.: Water percolation through the deep vadose zone and groundwater recharge: Preliminary results based on a new vadose zone monitoring system, *Water Resources Research*, 43, 10.1029/2006wr004855, 2007.
- 615 Rivett, M. O., Wealthall, G. P., Dearden, R. A., and McAlary, T. A.: Review of unsaturated-zone transport and attenuation of volatile organic compound (VOC) plumes leached from shallow source zones, *Journal of Contaminant Hydrology*, 123, 130-156, 10.1016/j.jconhyd.2010.12.013, 2011.
- Senseman, S. A.: Herbicide handbook, 9, 632.954 W394h9, Weed Science Society of America, Lawrence, US2007.
- Shaw, M., Furnas, M. J., Fabricius, K., Haynes, D., Carter, S., Eaglesham, G., and Mueller, J. F.: Monitoring pesticides in the Great Barrier Reef, *Mar. Pollut. Bull.*, 60, 113-122, 10.1016/j.marpolbul.2009.08.026, 2010.
- 620 Silburn, D. M., Foley, J. L., and deVoil, R. C.: Managing runoff of herbicides under rainfall and furrow irrigation with wheel traffic and banded spraying, *Agric., Ecosyst. Environ.*, 180, 40-53, 10.1016/j.agee.2011.08.018, 2013.
- Smith, R., Middlebrook, R., Turner, R., Huggins, R., Vardy, S., and Warne, M.: Large-scale pesticide monitoring across Great Barrier Reef catchments—paddock to reef integrated monitoring, modelling and reporting program, *Mar. Pollut. Bull.*, 65, 117-127, 10.1016/j.marpolbul.2011.08.010, 2012.
- 625 Smith, R. A.: Ecologically relevant, quantitative methods for measuring pesticide reduction for the Great Barrier Reef, School of Mathematics Sciences, Queensland University of Technology, Brisbane, QLD, 2018.
- Stanley, J.: Groundwater chemistry and microbiology in a Wet Tropics agricultural catchment, School of Biology and Environmental Science, Queensland University of Technology, Brisbane, QLD, 2019.
- 630 Stieglitz, T.: Submarine groundwater discharge into the near-shore zone of the Great Barrier Reef, Australia, *Mar. Pollut. Bull.*, 51, 51-59, 10.1016/j.marpolbul.2004.10.055, 2005.
- Sundaram, B., Feitz, A., Caritat, P. d., Plazinska, A., Brodie, R., Coram, J., and Ransley, T.: Groundwater sampling and analysis—a field guide, *Geosci Aust Rec*, 27, 104, 2009.
- 635 Tahir, N., Fries, J., King, A., and Masters, B.: Paddock-scale water quality monitoring of nitrogen fertiliser management practices in sugarcane cropping 2016-2018, technical report, Wet Tropics region, Queensland Department of Natural Resources and Mines, Brisbane, QLD, 2019.
- Tao, L. and Yang, H.: Fluroxypyr biodegradation in soils by multiple factors, *Environ. Monit. Assess.*, 175, 227-238, 10.1007/s10661-010-1508-2, 2011.

- 640 Thorburn, P. J., Wilkinson, S. N., and Silburn, D. M.: Water quality in agricultural lands draining to the Great Barrier Reef: A review of causes, management and priorities, *Agric., Ecosyst. Environ.*, 180, 4-20, 10.1016/j.agee.2013.07.006, 2013.
- Tu, M., Hurd, C., and Randall, J. M.: Weed control methods handbook: Tools & techniques for use in natural areas, The Nature Conservancy 2001.
- Turkeltaub, T., Kurtzman, D., and Dahan, O.: Real-time monitoring of nitrate transport in the deep vadose zone under a crop field - Implications for groundwater protection, *Hydrology and Earth System Sciences*, 20, 3099-3108, 10.5194/hess-20-3099-2016, 2016.
- 645 van Zwieten, L., Rose, M., Zhang, P., Nguyen, D., Scanlan, C., Rose, T., McGrath, G., Vancov, T., Cavagnaro, T., and Seymour, N.: Herbicide residues in soils—are they an issue?, GRDC Grains Research Update Coonabarabran, 117-125,
- Vardy, S., Tumer, R. D. R., Lindemann, S., Orr, D., Smith, R. A., Huggins, R., Gardiner, R., and Warne, M. S. J.: Pesticides and nutrients in groundwater and their transport to rivers from sugar can cropping in the lower Burdekin, Department of Science, Information Technology, Innovation and the Arts, Brisbane, 2015.
- 650 Wallace, R., Huggins, R., Smith, R., Turner, R., Garzon-Garcia, A., and Warne, M. S. J.: Total suspended solids, nutrient and pesticide loads (2012–2013) for rivers that discharge to the Great Barrier Reef—Great Barrier Reef Catchment Loads Monitoring Program 2012–2013, Department of Science, Information Technology, Innovation and the Arts, Brisbane, QLD, 3, 2015.
- Warne, M. J., Batley, G., van Dam, R., Chapman, J., Fox, D., Hickey, C., and Stauber, J.: Revised Method for Deriving Australian and New Zealand water quality guideline values for toxicants, Brisbane, Queensland, 48, 2015.
- 655 WRB, I. W. G.: World reference base for soil resources, World Soil Resources Report, 103, 2022.

660 **Table A1.** Pesticides applied at the block and their properties.

Pesticide	Chemical formula <sup>a</sup>	Used for <sup>b</sup>	Mode of action <sup>b</sup>	Solubility (mg/L at 20°C) <sup>a</sup>	Adsorption (K <sub>oc</sub> ); Mobility <sup>a</sup>	Half-life (DT <sub>50</sub> ); Persistence <sup>a</sup>	GUS Leaching Potential Index <sup>a*</sup>	Degradation mechanism <sup>b</sup>
Imidacloprid	1-(6-chloro-3-pyridylmethyl)-N-nitroimidazolidin-2-ylideneamine	Sucking insect	Irreversible acetylcholine receptors blockage	610; High	moderately mobile	187; Persistent	3.69; High leachability	Rapidly broken down in water by sunlight
Imazapic	2-methyl-3-pyridinecarboxylic acid	Pre- and post-emergent grasses	AHAS enzyme, blocking protein synthesis and cell growth inhibitor	2230; High	137; Moderately mobile	232; Persistent	4.41; High leachability	Primarily by microbial metabolism; Does not volatilize
Metolachlor	2-chloro-6-ethyl-N-(2-methoxy-1-methylethyl)aceto-oxoluidide	Broadleaf and annual grassy weeds	Gibberellic acid biosynthesis inhibitor	480; Moderate	200 <sup>c</sup> ; Moderately mobile	21; Non-persistent	3.29; High leachability	Biological degradation; Moderately adsorbed by most soils
Fluroxypyr	4-amino-3,5-dichloro-6-fluoro-2-pyridyloxyacetic acid	Broadleaf weeds	Auxin growth regulator	6500; High	5 <sup>c</sup> ; Very mobile	51; Moderately persistent	3.70; High leachability	Primarily by hydrolysis; Microbial metabolism
Isoxaflutole	5-cyclopropyl isoxazol-4-yl-2-mesyl-4-trifluoromethyl phenyl ketone	Pre-emergent herbicide for grass and broad leaf weed	Carotenoid pigments inhibitor	6.2; Low	145; Moderately mobile	1.3; Non-persistent	0.24; Low leachability	Rapid degradation under field conditions
Glyphosate	N-(phosphonomethyl) glycine	Annual and perennial plants	Shikimic acid inhibitor	10500; High	1424; Slightly Mobile	15; Non-persistent	-0.29; Low leachability	Primarily slow microbial metabolism; Strongly adsorbed to soil
Haloxyfop	2-(4-((3-chloro-5-(trifluoromethyl)-2-pyridinyl)oxy) phenoxy) propanoic acid	Grass weeds	Acetyl CoA carboxylase inhibitor	1.6; Low	75; Moderately mobile	55; Moderately persistent	3.70; High leachability	Biological degradation in soil

<sup>a</sup> (Database, 2021), <sup>b</sup> Tu et al. (2001); <sup>c</sup> Senseman (2007); \* GUS values lower than 1.8 and higher than 2.8 indicate, respectively, non-leacher and leacher pesticide compounds; for GUS values between 1.8 and 2.8 the pesticide is considered in a transition zone (Gustafson, 1989).

**Table A2.** Method details for Pesticides in Water by Direct Injection using LCMSMS and QExactive Orbitrap.

Pesticide	LOR	Units	Accepted (i.e., expanded) Uncertainty (%)	Recovery (%)	Repeatability (r) (%)	Standard Uncertainty (%)
Fluroxypyr	0.05	ug/L	28	111	38	28
Haloxypop (acid)	0.02	ug/L	26	105	31	26
Hexazinone	0.01	ug/L	25	103	20	12
Imazapic	0.01	ug/L	25	101	14	10
Imidacloprid	0.02	ug/L	25	100	34	21
Imidacloprid (metabolites)	0.02	ug/L	34	108	21	34
Total Imidacloprid	0.04	ug/L	25			
Isoxaflutole metabolite (Diketonitrile)	0.02	ug/L	25	102	20	16
Metolachlor	0.01	ug/L	25	87	16	11

670 **Table A3.** Method details for Pesticides in Soil and Sediment by LCMSMS / LC-HRAM-Orbitrap.

Pesticide	Limit of reporting	Units	Recovery %
Fluroxypyr	0.001	mg/kg	55
Haloxypop (acid)	0.001	mg/kg	69
Imazapic	0.001	mg/kg	22
Imidacloprid	0.001	mg/kg	93
Total Isoxaflutole	0.001	mg/kg	56
Metolachlor	0.001	mg/kg	71
AMPA	0.005	mg/kg	93
Glyphosate	0.005	mg/kg	90