

Satellite observations of seasonality and long-term trend in cirrus cloud properties over Europe: Investigation of possible aviation impacts

Qiang Li and Silke Groß

Deutsches Zentrum für Luft- und Raumfahrt, Institut für Physik der Atmosphäre, D-82234 Oberpfaffenhofen, Germany,

Correspondence: Qiang Li (qiang.li@dlr.de)

Abstract. Linear contrails and contrail cirrus induced by global aviation have long been known to contribute to climate change by warming the atmosphere. Besides increasing global cirrus cloudiness, aviation may also alter the properties of the natural cirrus clouds by soot emissions which lead to more heterogeneous freezing. In the first COVID-19 lockdown in Europe, changes in cirrus cloud properties and occurrence were determined with the lidar measurements of CALIPSO, which are supposed to be caused by the reduction in civil aviation accordingly. In the past 10 years before the COVID-19 outbreak, however, aviation grew strongly in terms of CO₂ emissions and flight densities in Europe. In this study, 10-year lidar measurements with CALIPSO are analyzed to determine the seasonality and long-term trends in cirrus clouds as well as their correlations with the ambient temperatures and air traffic. The results show that there is a distinct seasonal cycle in the occurrence rates (OR) and particle linear depolarization ratio (PLDR) $\delta_{\overline{p}}$ of cirrus clouds. In addition, cirrus clouds appear within a broader altitude range in winter than in summer and they are characterized by larger OR and $\delta_{\overline{p}}$ PLDR values in winter than in summer. The monthly medians of $\delta_{\overline{p}}$ PLDR as well as their deseasonalized time series in the 10-year period before COVID-19 both show positive trends which are statistically significant according to the Mann-Kendall (MK) significance test. However, the occurrence rates of cirrus clouds show a negative trend, which might be connected with the background meteorological conditions. Since the cirrus $\delta_{\overline{p}}$ PLDR strongly depends on the ambient temperatures, the contributions induced by temperatures are further removed from the cirrus $\delta_{\overline{p}}$ PLDR with a simple linear regression model. The derived residuals show significant positive trends according to the MK test. To compare the cirrus $\delta_{\overline{p}}$ PLDR and air traffic (with the CO₂ emissions from aviation as a proxy), the deseasonalization of both datasets have previously been conducted since the seasonal cycles in both are not consistent. The determined deseasonalized time series of the cirrus $\delta_{\overline{p}}$ PLDR and CO₂ emissions from aviation both show increasing trends and their correlation coefficient is $r = 0.54$ at the confidence level above 99.5%. In the end, the comparisons between the cirrus $\delta_{\overline{p}}$ PLDR and aviation in every season were carried out and revealed a strong correlation in other seasons than in summer.

1 Introduction

Aviation affects the Earth's radiation budget through a combination of aviation emissions of CO₂ and non-CO₂ effects which have a warming effect on the atmosphere (Lee et al., 2021). Linear contrails and contrail cirrus induced by water vapor and soot emissions from air traffic in the upper atmosphere are expected to contribute a large part of the climate impact of aviation

25 (e.g., Burkhardt and Kärcher, 2011). Due to their climate impact and a suitable tool to monitor the mitigation of aviation,
numerous experimental and theoretical efforts have been carried out in the last years to understand contrails and to determine
their climate effect by calculating radiative forcing (e.g., Heymsfield et al., 2010; Voigt et al., 2011; Burkhardt and Kärcher,
2011; Graf et al., 2012; Schumann and Graf, 2013; Kärcher et al., 2015; Kärcher, 2018; Bock and Burkhardt, 2019; Schumann
et al., 2021a, b). However, aviation emissions and the resulting contrail formation interact with the atmosphere through a
30 complex manner which is still not fully understood.

Cirrus clouds, composed of ice crystals with a variety of forms and shapes, usually appear in the upper atmosphere above
~6 km. They have long been recognized, as studies reveal that cirrus clouds permanently cover on average 30% of the Earth's
surface with up to 70% coverage over the tropics and have a large impact on the Earth's radiation balance and climate evolution
(Liou., 1986; Wang et al., 1996; Wylie and Menzel, 1999; Sassen and Campbell, 2001; Sassen et al., 2008; Nazaryan et al.,
35 2008). Cirrus clouds influence the radiation balance by trapping the outgoing long-wave radiation from the ground and under-
lying atmosphere (warming) and reflecting the incoming short-wave solar radiation back into space (cooling). The contribution
of these two opposite effects depends on the cloud microphysical, thermal, and optical properties, that include cloud heights,
temperatures, and the shape and orientation of ice crystals (e.g., Fu and Liou, 1993; Zhang et al., 1999; Zerefos et al., 2003;
Stephens et al., 2004; Campbell et al., 2016). Overall, cirrus clouds are assumed to have a net warming effect of the climate
40 system other than the low and midlevel clouds (Chen et al., 2000).

Midlatitude cirrus clouds are of particular interest and have been intensively studied thanks to the high number of observation
sites as well as campaign-based observations (e.g., Voigt et al., 2017, 2022) at these latitudes. Nevertheless, midlatitude cirrus
clouds are induced and affected by various weather patterns and interact with the atmospheric dynamics which lead to the
difficulties of their representation in global and regional climate models (Boucher et al., 2013). Furthermore, midlatitude cirrus
45 clouds can be strongly influenced by the frequent air traffic. Besides increasing global cirrus cloudiness (Boucher, 1999;
Minnis et al., 2004; Stubenrauch and Schumann, 2005), aviation-induced contrails and contrail cirrus also alter the optical and
microphysical properties of natural cirrus clouds (e.g., Tesche et al., 2016; Urbanek et al., 2018; Li and Groß, 2021). Studies
reveal that the effect of contrails and cirrus clouds on our climate is growing significantly, which is, however, still challenging
the atmosphere community to parameterize their overall effect well (Bock and Burkhardt, 2019; Lee et al., 2021).

50 The radiative effects of cirrus clouds strongly depend on their microphysical properties, e.g., particle number concentration,
size, and shape (e.g., Stephens et al., 1990; Haag and Kärcher, 2004) which are further influenced by the ambient conditions
(e.g., temperature and supersaturation) and the nucleation mode (Heymsfield, 1977; Khvorostyanov and Sassen, 1998; Ström
and Ohlsson, 1998; Urbanek et al., 2018). Hence, an accurate estimate of ice crystal shape and orientation is very important for
the radiative transfer calculation. In the last decades, both laboratory experiments and field observations reveal a high variety
55 of habit diagrams of atmospheric ice crystals which are closely correlated with temperature and ice supersaturation (Bailey and
Hallett, 2004, 2009; Lawson et al., 2006, 2019). In natural clouds, however, ice crystals encounter varying temperature and
humidity and may grow into irregular forms (Korolev et al., 1999, 2000). Furthermore, the dependence of ice crystal habits on
temperature is also governed by mass transport (including convection and advection) and the origin region of particles (e.g.,
Bailey and Hallett, 2009; Um et al., 2015).

60 It is well known that light scattered by atmospheric ice crystals may exhibit different polarization states from the incident light. The computation of geometric ray tracing technique reveals that changes in polarization states depend on the internal ray paths and, more precisely, increase with increasing hexagonal axis ratio (= length over width) (e.g., Takano and Liou, 1989). The particle linear depolarization ratio (PLDR) $\delta_{\overline{p}}$ is a well-defined parameter to evaluate this effect and is widely used to retrieve information on ice crystal habits, i.e., particle phase, shape, and orientation. In traditional lidar applications, $\delta_{\overline{p}}$ PLDR
65 is defined as the ratio of power from both polarization components perpendicular and parallel to the transmitted laser source and can be calculated using Equation (1)

$$\text{PLDR} = \frac{\beta_{\perp}}{\beta_{\parallel}} \quad (1)$$

where β_{\perp} and β_{\parallel} are the perpendicular and parallel components of the backscatter coefficients retrieved from the ice crystals in clouds, respectively. The light backscattered by spherical particles exhibits the same orientation of polarization as the incident
70 light; while the polarization changes when the light is backscattered by non-spherical particles such as cirrus ice crystals (Sassen et al., 1989; Freudenthaler et al., 2009; Urbanek et al., 2018). As a well-established technique, polarization lidar has been widely used to provide information on aerosol profiling and to distinguish between different types of aerosols (Freudenthaler et al., 2009; Tesche et al., 2009; Groß et al., 2012, 2013, 2015). Further, this technique is also applied to unambiguously determine the cloud phase (e.g., Bühl et al., 2016) and to study ice cloud properties (e.g., Schotland et al., 1971; Sassen, 1991;
75 Ansmann et al., 2003; Groß et al., 2012; Urbanek et al., 2018). $\delta_{\overline{p}}$ PLDR is mainly determined by ice crystal shapes that are a function of temperature, supersaturation (humidity), and potentially the availability of ice nuclei during ice formation (e.g., Bailey and Hallett, 2004, 2009; Schnaiter et al., 2012; Järvinen et al., 2018). In addition, the shapes of ice crystals are strongly influenced by the internal cloud dynamics, lifetime duration, and stage (Lawson et al., 2019, and references therein). $\delta_{\overline{p}}$ PLDR is a suitable parameter used to retrieve information on ice crystal shape and hence to trace the aviation effects on the clouds.
80 Previous studies show that persistent contrails and contrail cirrus are characterized with higher values of $\delta_{\overline{p}}$ PLDR than natural cirrus clouds (Freudenthaler et al., 1996; Mishchenko and Sassen, 1998; Noel et al., 2006; Iwabuchi et al., 2012). In addition, Urbanek et al. (2018) presented that cirrus clouds with enhanced $\delta_{\overline{p}}$ PLDR values were found to be incidental to significantly lower supersaturations inside the clouds indicating more frequent heterogeneous freezing. They also carried out a backward-trajectory analysis and found that the affected ice clouds appear within areas under the influence of high aviation emissions.
85 Under soot emissions ice nucleation took place at lower supersaturation, which influences the form and size of ice crystals and further alters their optical properties (Urbanek et al., 2018). During the first COVID-19 lockdown in Europe starting from mid-March of 2020, civil air traffic was significantly reduced up to 88% in April 2020 compared to the previous year (e.g., Li and Groß, 2021). Based on the analysis of lidar measurements with CALIPSO, a significant reduction in the cirrus $\delta_{\overline{p}}$ PLDR was found in both March and April 2020 compared to the corresponding periods in the previous 6 years (Li and Groß, 2021).
90 It is known that, however, the global air traffic has been actually growing in the last decades in terms of the number of flights and CO2 emissions from aviation before the COVID-19 pandemic, which, of course, is considered as a smaller change in air traffic compared to that caused by the COVID-19 lockdown (see Figure 1 for the evolution of civil aviation in 42 European countries and regions in the last 11 years from 2010 to 2020). In this study, we extend the analyses of Li and Groß (2021) and

study the possible aviation impact on the microphysical properties of cirrus clouds in terms of seasonality and long-term trend
95 in the occurrence rate and $\delta_{\overline{p}}\text{PLDR}$ of cirrus clouds.

In Sect. 2 we will outline the CALIPSO data and methods. Sect. 3 describes our results concerning seasonal variations and long-term trends in cirrus cloud properties and occurrence based on 10-year lidar measurements from March 2010 to February 2020. The dependence of the cirrus cloud properties on the corresponding ambient temperatures as well as aviation are determined and discussed in Sect.4. Our conclusions are finally summarized in Sect.5.

100 2 Data and methods

In this study, we are focused on the same research area as Li and Groß (2021), i.e., the midlatitude regions from 35°N to 60°N and from the Atlantic Ocean (15°W) to central Europe (15°E) (for the sake of simplicity, we call this research area as Europe in the rest of this manuscript). The measurements of cirrus clouds used here were conducted with the CALIOP (Cloud-Aerosol Lidar with Orthogonal Polarization) lidar which is carried aboard the CALIPSO satellite within the A-Train constellation in
105 a sun-synchronous polar orbit (Winker et al., 2010; Stephens et al., 2018). CALIOP is a dual-wavelength elastic backscatter lidar at 532 and 1064 nm and polarization-sensitive at 532 nm (Winker et al., 2007; Hunt et al., 2009). The main datasets used here are the Level 2 5-km Cloud Profile Products of CALIOP which provide the information of scientific parameters such as particle linear depolarization ratio ($\delta_{\overline{p}}\text{PLDR}$), temperature (derived from the GEOS-5 data), ice water content (derived from the CALIOP retrieved extinction by ice cloud particles), etc.

110 CALIOP is able to observe altitude-resolved profiles of backscatter intensity from numerous geophysical entities including clouds, aerosol layers, regions of clear air, and the returns from the Earth's surface. In this study, however, we are only interested in the cirrus ice clouds. We hence perform the vertical feature mask (VFM) developed by the CALIPSO team to distinguish cirrus clouds from other entities including aerosols as well as from non-cirrus clouds (e.g., Liu et al., 2004, 2009; Hu et al., 2009; Omar et al., 2009; Vaughan et al., 2009). Furthermore, the archived data of CALIOP are classified into day- and night-
115 time. The day-time observations are affected by solar illumination, which may lead to a reduction in the signal-to-noise ratio and hence make them more difficult to interpret. However, there is an aviation fingerprint with two maxima of flight densities during morning eastbound and afternoon westbound air traffic in the North Atlantic air traffic corridor, the research area we are focusing on in this study (e.g., Graf et al., 2012; Schumann and Graf, 2013). This implies that aviation effects on cirrus clouds are expected to be stronger on day-time than night-time. Therefore, both day- and night-time observations will be analyzed
120 here to study the influence of air traffic on cirrus to the fullest extent. For the detailed description of the CALIOP data, readers refer to Li and Groß (2021) and references therein.

As a nadir-pointing lidar, CALIOP collects data only along the ground track of the CALIPSO satellite. CALIPSO flies 3-4 times each day over this area and therefore ~ 100 tracks of observations each month were collected in the years 2010-2020. Furthermore, this research area covers a large fraction of the North Atlantic flight corridor connecting central Europe with north
125 America where the generation of contrail-induced cirrus clouds and the aviation impact on cirrus clouds have been intensively

studied (e.g., Graf et al., 2012; Schumann and Graf, 2013; Voigt et al., 2017; Urbanek et al., 2018; Schumann et al., 2021a; Li and Groß, 2021).

3 Results

The cirrus morphologies and occurrence rates as well as the high degree of variability in their microphysical properties highly depend on the substantial differences in meteorological conditions. Hence, we first compare the evolution of the general meteorological conditions along the entire altitude range from 6 to 13 km including temperature, relative humidity with respect to ice (RH_i), as well as vertical updraft and wind velocity covering our research area in years 2010–2020. These parameters are directly derived from global ERA5 reanalysis data, produced by ECMWF with the Copernicus Climate Change Service (Hersbach et al., 2020), and their monthly values are shown in Figure 2. The vertical bars in the upper panels stand for all the data points of air temperature and RH_i, respectively, and in the lower panels for vertical updraft and wind velocity, respectively. The blue circles show the medians of each quantity in different month and the red lines are best-fitting lines using a simple linear regression model (i.e., least squares fit of a first-degree polynomial to data) for all 4 quantities, respectively. The derived slopes are hence considered as the long-term trends in each quantity. First of all, there is a clear seasonal cycle in the air temperatures and higher degree of variability in temperatures can be seen in winter than in summer. Further, extreme low temperatures with medians below -50 °C are seen in January and February 2012, which are indicative of the cold spell at early 2012 in Europe starting from 24 January and lasting for about three weeks (DWD, 2012). The influence of the extreme lower temperatures on the properties of cirrus clouds will be discussed below. Air temperatures show in medians an increasing trend of 0.0941 °C/yr with the confidence level at 90.0%. In addition, the year-to-year variabilities of air temperatures in different month show that temperatures increased more significantly in winter than in summer (an increasing trend of 0.0098 °C/yr in summer and 0.1183 °C/yr in winter, respectively). The seasonal cycle in RH_i, however, is not as significant as in air temperatures. For the long-term evolution, RH_i show a small decrease of medians with a trend of -0.0557%/yr at the confidence level of only 25.5%. In addition, the maxima of the monthly RH_i values show a decreasing trend of -0.2431%/yr (81.1% confidence level), whereas their minima an increasing trend of 0.9125%/yr (99.8% confidence level). I.e., the range of the RH_i distribution became narrower in the last 11 years, especially during the period from 2010 to end 2017. It is mentioned above that the vertical updrafts play a crucial role on the formation of cirrus clouds. However, monthly mean values of vertical updrafts determined from ERA5 reanalysis data are highly smoothed and can only provide a climatological reference for the background. This is also the case for the wind velocity. Figure 2 (lower panel) shows in general a small decrease in vertical updrafts (negative values for upwards) and a small decrease in wind velocity with the confidence level at 53.7% and 35.6%, respectively. In a nutshell, the meteorological and dynamical conditions over Europe in the last 11 years provide us a general picture of the background which are in general stable during the period we are focused on. With the information in mind, we can further study the seasonal variations and long-term trends in cirrus cloud occurrence and properties.

3.1 Seasonal variations of cirrus clouds

We first present the distribution of cirrus $\delta_{\bar{p}}$ PLDR in each month from January 2010 to December 2020 in Figure 3. They are derived from the observations at the typical altitudes in which cirrus clouds form from 6 to 13 km and at temperatures between -75 and -38°C. Please note that typical cruising altitudes of aircrafts over the North Atlantic and Europe lie between 8.8 and 12.5 km (https://en.wikipedia.org/wiki/North_Atlantic_Tracks, last access: 27 October 2022). However, aviation emissions over mainland take place also at lower altitudes during ascent and descent from and to the airports. In order to compare the $\delta_{\bar{p}}$ distribution of cirrus PLDR in different month, the number densities of scatter point data are normalized and visualized with different color codes with the maximum number density indicated by 1 for each individual month. February 2016 with no observations available is marked in blank. Figure 3 provides a general climatology of the PLDR distributions of $\delta_{\bar{p}}$ in Europe with the majority of $\delta_{\bar{p}}$ PLDR (> 60% of the maxima) falling within the range from 0.2 to 0.55. There are clear seasonal cycles as expected in $\delta_{\bar{p}}$ PLDR, which becomes more remarkable for them falling within the smaller range of $\delta_{\bar{p}}$ PLDR. In addition, there are clear reductions in $\delta_{\bar{p}}$ PLDR during the period of COVID-19 from March to December 2020 compared to the corresponding months in the previous years, which is consistent with the previous studies (Li and Groß, 2021; Voigt et al., 2022) and will be discussed in details below. Furthermore, the reductions in the cirrus $\delta_{\bar{p}}$ PLDR are more remarkable for the measurements made in the day time. The occurrence rates (OR) of cirrus cloud during the period of COVID-19 also show a reduction, which has been reported recently (e.g., Schumann et al., 2021a; Quaas et al., 2021; Li and Groß, 2021).

We next turn to the seasonality in cirrus cloud occurrence and $\delta_{\bar{p}}$ PLDR in more details. Figure 4 shows the cirrus OR and $\delta_{\bar{p}}$ PLDR in different month (see the legend on the plot with descriptive labels) for each 1-km altitude bin from 6 to 13 km. They are derived from both day- and night-time lidar measurements of CALIPSO within the typical altitude range of cirrus clouds at temperatures between -75 and -38°C over the last 10 years before COVID-19, i.e., from March 2010 to February 2020. The data with cirrus OR smaller than 0.1% are neglected for plotting $\delta_{\bar{p}}$ PLDR in the right panel. The profiles of cirrus OR along altitudes show that cirrus clouds mainly occurred in the height range from 9 to 11 km (with OR > 3% in every month). The cirrus occurrence follows a significant seasonal cycle in all the altitude bins. The maximum of cirrus OR, up to 11%, are found in the winter months, more precisely, in January or February below 10 km and in December above, respectively, and the minimum OR appear in July along altitudes. In addition, there is a stronger seasonality in the lower altitudes with the cirrus OR in winter more than 10 times larger than those in summer. Please note that this study concentrates on the aviation effects on cirrus clouds and thus the measurements of cirrus clouds due to deep convection are excluded applying the CALIPSO VFM which leads to a reduction in the cirrus occurrence rate, especially in summer. Furthermore, cirrus clouds in the winter months appear within the full altitude range from 6 to 13 km while in summer only from 9 to 12.5 km for the data with OR > 1% considered. For the $\delta_{\bar{p}}$ PLDR values of cirrus clouds shown in the right panel, they also follow a distinct seasonal cycle that cirrus clouds are characterized by larger $\delta_{\bar{p}}$ PLDR values in winter than in summer in each altitude bin and the difference of $\delta_{\bar{p}}$ PLDR in different months can be as large as 0.06 (~15%). The distributions of cirrus $\delta_{\bar{p}}$ PLDR along altitudes show a clear increase with altitudes in each month and the difference of the medians of $\delta_{\bar{p}}$ PLDR in each month can be as large as more than 0.1 (Urbanek et al., 2018; Li and Groß, 2021).

3.2 Long-term trend of cirrus cloud properties with significance test

In Figure 5 (upper panel) we present the $\delta_{\bar{p}}$ medians of cirrus **PLDR** in every month derived from both day- and night-time observations from 2010 to 2020 that covers the period of COVID-19 pandemic in 2020. We notice that the cirrus $\delta_{\bar{p}}$ **PLDR** shows clear reductions during the period of COVID-19 starting from March 2020 compared with the corresponding months in the previous years (shown with squares in gray in the upper panel of Figure 5). The same findings on the changes in the cirrus cloud properties and occurrence in March and April 2020 compared to the previous years have been reported by Li and Groß (2021) as well as in early summer 2020 during the BLUESKY campaign by Voigt et al. (2022). Hence, in this study only observations before the COVID-19 outbreak are considered for further analysis. In order to calculate the long-term trends in the cirrus $\delta_{\bar{p}}$ **PLDR**, we apply two methods in this study, i.e., ordinary least square (OLS) estimator and Theil-Sen estimator (TSE).

The OLS estimator is a commonly-used method to estimate the unknown parameters in a linear regression model by minimizing the sum of the squares of the differences between the observed dependent variables (here $\delta_{\bar{p}}$ **PLDR**) and those predicted by the linear function of the independent variable (time in month). However, OLS is highly affected by the presence of outliers in the time series making the estimation less efficient. The TSE method is a nonparametric estimation technique by calculating all the slopes between pairs of points and choosing the median as the estimation of the regression slope. Compared to OLS, TSE is a robust linear regression against outliers since it uses medians instead of means. The calculated long-term trends (i.e., slopes) and the regressed linear fits with both methods are shown on the plot. It is mentioned above that the aviation densities in Europe grew more strongly since 2013 (see Figure 1). We hence further calculate the trends for the observations during a shorter period from March 2013 to February 2020 and the corresponding results are also indicated in Figure 5. First of all, $\delta_{\bar{p}}$ the **PLDR values** show an increasing trend with a slope of $0.77\text{e-}3/\text{yr}$ and $1.02\text{e-}3/\text{yr}$ with both methods, respectively, in the past 10 years before the COVID-19 outbreak. We notice the exceptions that cirrus clouds are characterized by extremely large values of $\delta_{\bar{p}}$ **PLDR** in January and February 2012, which might be connected with the cold spell in Europe early 2012 (e.g., DWD, 2012). We further compare the occurrence heights of cirrus clouds in January and February 2012 with other years and find that they in distribution are higher than other years. It is the other way around that the extremely low values of $\delta_{\bar{p}}$ **PLDR** in July 2012 are correlated with the much lower occurrence heights of cirrus clouds in July 2012 than in other years. The interpretations for the results are based on the altitude dependence of the cirrus $\delta_{\bar{p}}$ **PLDR** that has been presented in Figure 4 and also reported in previous studies (e.g., Urbanek et al., 2018; Li and Groß, 2021). For the further analysis the extreme values are considered as outliers and removed. The interpolated data are then conducted with both OLS and TSE methods and the derived slopes are $0.87\text{e-}3/\text{yr}$ and $0.97\text{e-}3/\text{yr}$, respectively. These exercises imply that the TSE method is more efficient for the here-analyzed data. Comparing with the changes in aviation, we find that $\delta_{\bar{p}}$ the **PLDR values** generally increase following the increasing aviation densities. This is consistent with the previous studies showing that cirrus clouds with enhanced $\delta_{\bar{p}}$ **PLDR** values form in areas of high aviation emissions or vice versa (e.g., Urbanek et al., 2018; Li and Groß, 2021). Furthermore, larger trends are expected and derived as well from the observations in a shorter period from March 2013 with a slope of $1.18\text{e-}3/\text{yr}$ and $1.51\text{e-}3/\text{yr}$ with both methods, respectively. The same analyses are extended to the observations made only in day time (not shown here) and the corresponding results show slightly larger trends of $0.93\text{e-}3/\text{yr}$ and $1.09\text{e-}3/\text{yr}$ with both OLS and TSE, respectively, than

225 the results derived from the combined day- and night-time observations. All the results of long-term trends with the medians of total $\delta_{\bar{p}}\text{PLDR}$ values are summarized in Table 1 and 2. The comparison indicates that aviation exerts stronger impacts on cirrus clouds in the day time than in night since there is an aviation fingerprint with two maxima during morning eastbound and afternoon westbound air traffic in the north Atlantic flight corridor covering the area in this study (e.g., Graf et al., 2012; Schumann and Graf, 2013).

230 It is mentioned in the previous subsection that cirrus cloud properties ($\delta_{\bar{p}}\text{PLDR}$) and occurrence rates are dominated by seasonal cycles. Spectral analysis with Fourier transform is carried out on the time series of $\delta_{\bar{p}}\text{PLDR}$ (not shown here) and the periodogram of $\delta_{\bar{p}}\text{PLDR}$ with a dominant peak of power at the point of 12-month cycle indicates a conspicuous seasonality (aka annual cycle). This repeating cycle of seasonality may obscure the long-term trend in the data that we want to determine. We therefore deseasonalize the data by computing the monthly climatological mean, subtracting them from each monthly
235 record and finally adding the total mean of $\delta_{\bar{p}}\text{PLDR}$. The deseasonalized values of $\delta_{\bar{p}}\text{PLDR}$ are shown in the lower panel of Figure 5. The detection of seasonal anomalies of extremely large $\delta_{\bar{p}}\text{PLDR}$ values in winter and extremely small $\delta_{\bar{p}}\text{PLDR}$ values in summer are easy, but the opponent cases are not. With the deseasonalization process, an outlier of February 2018 is detected which, however, will not bias the calculation by using the TSE method. The results of long-term trends again calculated with both OLS and TSE methods and the regressed linear fits are also shown in Figure 5 (lower panel). The deseasonalized $\delta_{\bar{p}}\text{PLDR}$
240 values show a long-term trend of $0.67\text{e-}3/\text{yr}$ (with TSE) and $0.72\text{e-}3/\text{yr}$ (with TSE) for the combined day- and night-time observations in the period from March 2010 to February 2020 and in a shorter period from March 2013 to February 2020, respectively.

The significance tests of the derived trends in the cirrus $\delta_{\bar{p}}\text{PLDR}$ and the deseasonalized time series of them are carried out applying the Mann-Kendall (MK) test (Mann, 1945; Kendall, 1975). It is a rank-based nonparametric method that has
245 been widely used to statistically assess whether there is a monotonic trend in a time series of environmental and hydrological data (e.g., Yue et al., 2002) (see Appendix B). The overall results of the MK test for the long-term trends in $\delta_{\bar{p}}\text{PLDR}$ at a significance level of $p = 5\%$ are presented in Tables 1 and 2 for all the observations (including day- and night-time) and for only the day-time observations, respectively. Here, the p value returned from a MK test is a measure of the probability of rejecting or retaining the null hypothesis H_0 stating that the data are independently distributed with no trend. h is logical value
250 (0 or 1) used to give the test decision: $h = 1$ indicates a rejection of the null hypothesis (i.e., no trend) and $h = 0$ indicates a failure to reject it at the 5% significance level. From the results of the MK test, it is striking that significant increasing trends (all with $h = 1$) exist in the monthly values of $\delta_{\bar{p}}\text{PLDR}$ and their deseasonalized values in the period from March 2010 to February 2020 as well as in a shorter period from March 2013 to February 2020.

We next turn to the determination of trend in the occurrence rates of cirrus clouds. Again, we analyze the observations
255 of cirrus clouds at the altitudes from 6 to 13 km and at the temperatures from -75 to -38°C . The corresponding results are shown in Figure 6 (upper panel). Clearly, a strong seasonal cycle also exists in the occurrence rate with a monthly mean value up to 8% in the winter months and as low as 1% in summer. Following the same procedure, the deseasonalization of cirrus occurrence rate has been carried out and the corresponding results are shown in the lower panel of Figure 6. The long-term trends are calculated with the TSE method and the linear fits are overplotted in Figure 6 showing negative values. I.e., the

Table 1. Long-term trends of monthly values of particle linear depolarization ratio (PLDR) δ_p within the typical cirrus altitude range from 6 to 13 km derived from both day- and night-time data during the period from Mar. 2010 to Feb. 2020: Comparison between two methods of the ordinary least square (OLS) estimator and the Theil-Sen estimator (TSE), including Mann-Kendall (MK) significance test.

	Median	OR of cirrus (%)	Trend (/yr, OLS)	Trend (/yr, TSE)	h	p value
δ_p PLDR (03.2010-02.2020)	0.3701	4.3679	0.7732e-3	1.0170e-3	1	0.0079
Deseasonalized δ_p PLDR (03.2010-02.2020)			0.4703e-3	0.6676e-3	1	< 0.001
δ_p PLDR (03.2013-02.2020)	0.3714	4.4451	1.1754e-3	1.5084e-3	1	0.0258
Deseasonalized δ_p PLDR (03.2013-02.2020)			0.5572e-3	0.7197e-3	1	< 0.001

260 cirrus occurrence rates decrease with time in the 10 years before COVID-19. However, the significance tests with the MK test show that only a significant trend of -0.0916%/yr exists in the deseasonalized OR for the period from March 2013 to February 2020. Nevertheless, the decreasing OR of cirrus can be traced back to the changes in the meteorological conditions, i.e., with increasing temperatures and decreasing humidity, during this 10-year period (see Figure 2).

It is presented above that δ_p PLDR generally increases with altitudes. We hence determine the occurrence heights of cirrus clouds and their monthly means are shown in Figure 7. The occurrence heights of cirrus also follow a distinct seasonal cycle with larger values in the summer months than in winter which indicates that cirrus clouds in winter occur at the full altitude range from 6 to 13 km but in summer only at higher altitudes. The same procedures to calculate the long-term trends with the TSE method have been carried out and the corresponding results are shown in Figure 7. It is striking that the occurrence heights of cirrus cloud show a trend of 0.0238 km/yr (0.0447 km/yr) during the full period from 270 March 2010 to February 2020 (a shorter period from March 2013 to February 2020). After deseasonalizing the data, we reach to a long-term trend of 0.0309 km/yr (0.0508 km/yr) for the full period (a shorter period). Importantly, the trends in the deseasonalized values of cirrus occurrence heights are statistically significant according to the results with the MK test. These findings are consistent with the upward shift of the aircraft cruising altitudes in the last years due to the fact that aircrafts flying higher leads to less fuel burn and hence less CO₂ emissions (<https://www.eurocontrol.int/publication/eurocontrol-data-snapshot-21-aircraft-flying-higher-more-efficiently-and-sustainably>, last access: 27 October 2022). In contrast to this, however, an upward displacement of air traffics may lead to the increase of the contrail coverage (e.g., Fichter et al., 2005).

4 Discussion

4.1 Correlation with the ambient temperatures

280 It is mentioned that temperatures and other meteorological parameters play a decisive role in the formation and maintenance of cirrus clouds (e.g., Bailey and Hallett, 2004; Um et al., 2015). Given the scope of this study, we will only discuss the

Table 2. Same as Table 1, but for the results derived from only day-time data during the period from Mar. 2010 to Feb. 2020.

	Median	OR of cirrus (%)	Trend (/yr, OLS)	Trend (/yr, TSE)	h	p value
$\delta_{\bar{p}}\text{PLDR}$ (03.2010-02.2020)	0.4084	3.6335	0.9301e-3	1.0946e-3	1	< 0.001
Deseasonalized $\delta_{\bar{p}}\text{PLDR}$ (03.2010-02.2020)			0.8325e-3	1.0210e-3	1	< 0.001
$\delta_{\bar{p}}\text{PLDR}$ (03.2013-02.2020)	0.4106	3.6335	1.1073e-3	1.3548e-3	1	< 0.001
Deseasonalized $\delta_{\bar{p}}\text{PLDR}$ (03.2013-02.2020)			0.9082e-3	1.0483e-3	1	< 0.001

Table 3. Long-term trends of monthly occurrence rate (OR) of cirrus clouds at the typical cirrus altitude range from 6 to 13 km derived from both day- and night-time data during the period from Mar. 2010 to Feb. 2020 with the Theil-Sen estimator (TSE) method including Mann-Kendall (MK) significance test.

	Median (%)	Trend (%/yr, TSE)	h	p value	Z_{MK}
OR (03.2010-02.2020)	4.2660	-0.0017	0	0.9910	-0.0113
Deseasonalized OR (03.2010-02.2020)	4.4578	-0.0121	0	0.4466	-0.7610
OR (03.2013-02.2020)	4.3701	-0.0795	0	0.1962	-1.2923
Deseasonalized OR (03.2013-02.2020)	4.4515	-0.0916	1	0.0098	-2.5844

contributions of temperature to the cirrus cloud properties. We first compare the relationship between the cirrus $\delta_{\bar{p}}\text{PLDR}$ and the corresponding ambient temperatures in clouds. The temperatures used for this analysis are derived from the GEOS-5 (Goddard Earth Observing System, version 5) model data product provided to the CALIPSO by the GMAO (Global Modeling and Assimilation Office) data assimilation system. In Figure ??, we present a general picture of the determined relationship between both quantities with a heatmap to specify the number density of the scatter point data. A general picture of the comparisons between both quantities shows that the dependence of the cirrus $\delta_{\bar{p}}\text{PLDR}$ on the ambient temperatures shows reveals clear different variations separated at a temperature threshold of ~ -50 °C. At temperatures below -50 °C, the $\delta_{\bar{p}}\text{PLDR}$ values are roughly negatively correlated with the ambient temperatures. At temperatures warmer than -50 °C, however, $\delta_{\bar{p}}\text{PLDR}$ with the majority of values falling within the range from ~ 0.23 to 0.45 shows no clear correlation with the ambient temperatures. The same relationship was determined also from the monthly data in April from 2014 to 2020 by Li and Groß (2021)(see their Figure 7). For all the data in total, the $\delta_{\bar{p}}\text{PLDR}$ values show a negative correlation with the corresponding ambient temperatures.

We further calculate the medians of $\delta_{\bar{p}}\text{cirrus PLDR}$ of cirrus clouds in each month from March 2010 to February 2020 as well as the medians of ambient temperatures in cirrus clouds and the corresponding results are presented in the left panel of Figure 8. The scatter plots clearly show that the cirrus $\delta_{\bar{p}}\text{PLDR}$ values increase following the decreasing ambient temperatures with a correlation coefficient $r = -0.76$, which is statistically significant ($p < 0.0001$). Due to the strong influence of the ambient temperatures on the properties of cirrus clouds, an appropriate method is needed to eliminate the induced parts in cirrus

Table 4. Long-term trends of monthly occurrence height (OH) of cirrus clouds at the typical cirrus altitude range from 6 to 13 km derived from both day- and night-time data during the period from Mar. 2010 to Feb. 2020 with the Theil-Sen estimator (TSE) method including Mann-Kendall (MK) significance test.

	Median (km)	Trend (km/yr, TSE)	h	p value	Z_{MK}
OH (03.2010-02.2020)	10.06	0.0238	0	0.1202	1.5541
Deseasonalized OH (03.2010-02.2020)	9.95	0.0309	0	0.1022	1.6345
OH (03.2013-02.2020)	10.06	0.0447	1	< 0.001	4.2646
Deseasonalized OH (03.2013-02.2020)	9.96	0.0508	1	< 0.001	5.1694

δ_p PLDR by temperatures. In this study, a regression model based on linear dependence is applied to isolate the temperature-induced parts:

$$300 \quad X_{th} = b_0 + b_1 \cdot T \quad (2)$$

where the variable T stands for the ambient temperature and X_{th} for the theoretical value of δ_p PLDR regressed from temperatures. After regression analyses, the absolute deviation ΔX (i.e., the residual) of the observational data X_{obs} from the corresponding X_{th} can be calculated by

$$\Delta X = X_{obs} - X_{th} \quad (3)$$

305 Using the derived ΔX , linear trends can further be determined using a simple linear regression model:

$$\Delta X = d + m \cdot \text{time} \quad (4)$$

where "time" stands for each month, season, or year for which data are available. For this study, a linear trend coefficient (slope) m can be determined from the monthly values of δ_p PLDR medians using Equation (4).

Applying the linear dependence by Equation (2) as well as Equation (4), we derive the regressed δ_p PLDR values and the residuals (see the right panels of Figure 8). The long-term trend in the residuals is calculated with the TSE method showing an increase of 0.54e-3/yr which is above 90% confidence level according to the MK test with $p = 0.0582$. For a comparison, we also determine the regressed values according to the quadratic and cubic dependence, which, however, show no big difference from the results based on the linear dependence. The same analyses have been also carried out to the day-time observations resulting in a long-term trend of 0.69e-3/yr in the residuals of δ_p PLDR which is statistically significant with $p < 0.001$. We should note that the dependence of the cirrus δ_p PLDR on the ambient temperatures to the full extent is not linear but shows different characteristics in different temperature range (roughly separated at ~ -50 °C shown in Figure ??). However, the

315

monthly mean values of both quantities along the full altitudes of cirrus clouds can still provide a climatological relationship between them. After removing the temperature-induced parts in the cirrus $\delta_{\bar{p}}\text{PLDR}$, the residuals still show an increasing trend over this period, which are supposed to be due to other factors than the meteorological conditions.

320 It is discussed above that the occurrence heights of cirrus clouds show on average an increase over this period which, in general, corresponds to a decrease of temperatures in clouds. The altitude dependence of temperatures is assumed based on the fact that the tropopause heights are roughly 1.2 km higher than the peak of the cirrus occurrence heights (i.e., the most probable altitudes at which cirrus clouds occurred) and both parameters are highly correlated including their seasonal cycles and trends.

4.2 Correlation with the air traffic densities over Europe

325 Using the airborne lidar measurements during the ML-CIRRUS campaign in 2014 (Voigt et al., 2017), Urbanek et al. (2018) concentrated on the specific clouds and found lower supersaturation in the cirrus clouds with enhanced $\delta_{\bar{p}}\text{PLDR}$ which were traced back to be forming in areas of high aviation emissions. Recently, Li and Groß (2021) analyzed the satellite data of CALIPSO which cover the European area (i.e., the same research area as the current study) and found that strong reductions in air traffic in Europe caused by the COVID-19 pandemic led to significant changes in cirrus cloud properties in terms of
330 $\delta_{\bar{p}}\text{PLDR}$. In this study, we further study the impact of the increasing air traffic on the cirrus clouds in a longer period of 10 years before COVID-19. It is described above that the air traffic densities in the 42 European countries and regions (see Figure 1) show a clear seasonal cycle which is, however, roughly anticorrelated with the seasonality in the cirrus $\delta_{\bar{p}}\text{PLDR}$. To directly compare them, we first deseasonalize both datasets (here considering CO₂ emissions as a proxy of air traffic densities) and the results are shown in Figure 9. Please note that both number of flights and CO₂ emissions from aviation are available
335 and analyzed here. The results derived from both datasets are consistent. Hence, we will only concentrate on the effect of CO₂ emissions from aviation. According to the description above, the outliers in the deseasonalized $\delta_{\bar{p}}\text{PLDR}$ have been removed and further interpolated (see Figure 5). Furthermore, the annual mean variations of the deseasonalized $\delta_{\bar{p}}\text{PLDR}$ are derived using a 12-point moving average smooth (shown in red in Figure 9). We notice that the unexpected extreme values of $\delta_{\bar{p}}\text{PLDR}$ might significantly change the deseasonalized dataset. The low values of the deseasonalized $\delta_{\bar{p}}\text{PLDR}$ in the second half year of
340 2010 and the first half year of 2018 are supposed to be due to lower values of $\delta_{\bar{p}}\text{PLDR}$ in August and November 2010 as well as February-March 2018 compared to the corresponding months in other years, respectively, which are correlated with the lower occurring heights of cirrus as discussed above (see Figure 7). Besides the anomalies, an increasing trend can conspicuously be recognized in both parameters, especially during the period from January 2013 to February 2020. The correlation coefficients between them for a full period from January 2010 to February 2020 are calculated showing $r = 0.25$ and $r = 0.54$, respectively.
345 Larger values of the correlation coefficients ($r = 0.58$) are also derived for a shorter period from January 2013 to February 2020. The confidence levels for all the cases are above 99.5%.

With the general relationship between the cirrus $\delta_{\bar{p}}\text{PLDR}$ and air traffic in the 10-year period in mind, we may further concentrate on their correlations in different seasons. To illustrate the seasonal variations of the relationships between the cirrus $\delta_{\bar{p}}\text{PLDR}$ and air traffic, we show the comparison between both parameters in different seasons (winter: December-February, but
350 only January and February for 2010; spring: March-May; summer: June-August; autumn: September-November) in Figure 10.

Table 5. Correlation coefficients between the monthly $\delta_{\bar{p}}$ PLDR values of cirrus clouds within the altitude from 6 to 13 km and corresponding CO2 emissions from aviation as well as number of flights in Europe in different seasons.

Season	Winter (DJF)	Spring (MAM)	Summer (JJA)	Autumn (SON)
CO2 emission (03.2010-02.2020)	r = 0.18, p = 0.3211	r = 0.30, p = 0.1345	r = 0.16, p = 0.4247	r = 0.49, p = 0.0098
CO2 emission (03.2013-02.2020)	r = 0.57, p = 0.0047	r = 0.46, p = 0.0354	r = 0.05, p = 0.8216	r = 0.61, p = 0.0034
Number of flights (03.2010-02.2020)	r = 0.25, p = 0.1624	r = 0.37, p = 0.0573	r = 0.11, p = 0.5802	r = 0.40, p = 0.0373
Number of flights (03.2013-02.2020)	r = 0.49, p = 0.0170	r = 0.60, p = 0.0039	r = 0.02, p = 0.9376	r = 0.53, p = 0.0125

First of all, the cirrus $\delta_{\bar{p}}$ PLDR values in all the seasons show increasing trends in the 10 years before COVID-19. The trend in summer, however, is much smaller (10 times smaller) than those in other seasons. Strong reductions in air traffic due to the COVID-19 pandemic starting from March 2020 lead to corresponding reductions in the cirrus $\delta_{\bar{p}}$ PLDR in the spring, summer, and autumn in 2020, but a slight increase in the winter 2020 (including December 2019) (Li and Groß, 2021). The calculated correlation coefficients between both parameters are all positive, but the confidence levels are above 95% only for summer and autumn. We also calculate the correlation coefficients excluding the COVID-19 period, i.e., for winter from 2010 to 2020 and for other seasons from 2010 to 2019, showing the confidence levels above 95% only for autumn. Finally, we perform the same calculations of correlation coefficients on the monthly $\delta_{\bar{p}}$ PLDR and corresponding CO2 emissions from aviation in different seasons excluding the COVID-19 period and the results along with the corresponding p -values at the confidence level of 95% are listed in Table 5.

5 Conclusions

Motivated by the work by Li and Groß (2021) who presented the changes in cirrus cloud properties and occurrence caused by the reduced air traffic during the COVID-19 pandemic, we carry out in the current study further analyses of 10-year lidar measurements of cirrus clouds with CALIPSO before the COVID-19 outbreak. Over this period, aviation grew strongly in terms of CO2 emissions and flight densities in Europe, especially from 2013 to early 2020.

The results show that cirrus clouds follow a distinct seasonal cycle in their appearance including occurrence rate (OR) and occurrence height (OH) as well as in the particle linear depolarization ratio (PLDR) $\delta_{\bar{p}}$. Cirrus clouds in the winter months occurred within a broader altitude range from 6 to 13 km than in summer (only from 9 to 12.5 km) and their OR in winter can be more than 10 times larger than those in summer. Further, the seasonal cycles in cirrus OR are recognized along the entire altitudes where cirrus clouds form and it seems that they are more remarkable in the lower altitudes. The $\delta_{\bar{p}}$ PLDR values of cirrus show the majority of the data falling within the range from 0.2 to 0.55. Cirrus clouds are characterized by larger values of $\delta_{\bar{p}}$ PLDR in winter than in summer. In addition, $\delta_{\bar{p}}$ the PLDR values show generally a clear increase along the altitudes in each month, which is consistent with previous studies (e.g., Urbanek et al., 2018; Li and Groß, 2021).

The medians of $\delta_{\bar{p}}\text{PLDR}$ in each month were first calculated from the measurements from 2010 to 2020 and they show a significant reduction during the COVID-19 pandemic starting from March 2020 which are supposed to be caused by the reduced air traffic (Li and Groß, 2021; Voigt et al., 2022). The long-term evolution of the cirrus $\delta_{\bar{p}}\text{PLDR}$ before COVID-19 shows an increasing trend with a slope of $1.02\text{e-}3/\text{yr}$ ($1.51\text{e-}3/\text{yr}$) in the period from March 2010 to February 2020 (from March 2013 to February 2020) based on the calculation with the Theil-Sen Estimator (TSE) method. The derived trends are both above the confidence level of 95% according to the Mann-Kendall (MK) significance test. The long-term trend of $\delta_{\bar{p}}\text{PLDR}$ (a slope of $1.09\text{e-}3/\text{yr}$) was also derived from the day-time observations showing a slightly larger value than the result determined from both day- and night-time observations. Since the cirrus cloud occurrence and $\delta_{\bar{p}}\text{PLDR}$ are dominated by seasonal cycles, we further deseasonalized the time series of monthly medians of $\delta_{\bar{p}}\text{PLDR}$. The deseasonalized $\delta_{\bar{p}}\text{PLDR}$ values show a long-term trend of $0.67\text{e-}3/\text{yr}$ (with TSE) at the confidence level of 99.5%. The cirrus occurrence rates as well as the deseasonalized values, however, both show a small negative trend over this period, which is supposed to be connected with the background meteorological conditions. Furthermore, there are strong increasing trends in the cirrus occurrence heights as well as in their deseasonalized values, which is very striking since the findings correspond to the upward shift of the aircraft cruising altitudes in the last years.

To study the potential reasons for the detected trends in cirrus clouds, we first compare the relationship between the cirrus $\delta_{\bar{p}}\text{PLDR}$ values and the corresponding ambient temperatures from all the data, which show a negative correlation at temperatures below $-50\text{ }^{\circ}\text{C}$ and no clear correlation above. For the monthly medians, however, a significant linear correlation was reached between both parameters with a correlation coefficient of -0.76 . We hence regressed $\delta_{\bar{p}}\text{PLDR}$ with a simple linear regression model because of the strong dependence of $\delta_{\bar{p}}\text{PLDR}$ on the ambient temperatures and removed the temperature-induced contributions from the cirrus $\delta_{\bar{p}}\text{PLDR}$. The derived residuals reveal an increasing trend of $0.54\text{e-}3/\text{yr}$ above 90% confidence level according to the MK test, which should be induced by other factors than temperatures. Before we carry out the comparison between the cirrus $\delta_{\bar{p}}\text{PLDR}$ values and the corresponding aviation, we should first deseasonalize both datasets since they follow totally different seasonal cycles (roughly anticorrelated). In general, there is a conspicuous increasing trend in the deseasonalized time series of $\delta_{\bar{p}}\text{PLDR}$ as well as the corresponding CO₂ emissions from aviation, especially in the period from January 2013 to February 2020. The close correlation between them shows a correlation coefficient of 0.25 (0.58) in the full period from January 2010 to February 2020 (from January 2013 to February 2020), which are at the confidence level above 99.5%. We further compared the relationship between the cirrus $\delta_{\bar{p}}\text{PLDR}$ values and the corresponding CO₂ emissions from aviation in different season. Concentrating on the data before the COVID-19 outbreak, we calculated the correlation coefficients between both parameters based on their monthly values in different seasons and reached a strong correlation in winter, spring, and autumn, but a weak correlation in summer.

Code availability. Data description and example codes for handling the VFM data are available at <https://www-calipso.larc.nasa.gov/> (NASA, 2021a). The MATLAB codes for drawing the plots in this paper can be made available upon request.

Data availability. The CALIPSO data, including VFM used in this study, can be obtained via <https://subset.larc.nasa.gov/calipso/login.php> (NASA, 2021b, login required). ECMWF ERA5 data can be freely accessed from <https://www.ecmwf.int/en/forecasts/datasets/reanalysis-datasets/era5>. The reanalyzed data of cirrus parameters can be made available upon request.

Author contributions. QL collected and analyzed the data and wrote the manuscript with help from SG. Both authors discussed the results and findings and contributed to finalizing the manuscript.

Competing interests. The authors declare that they have no conflict of interest.

Appendix A: Ordinary least squares (OLS) estimator and Theil-Sen estimator (TSE)

The ordinary least square (OLS) estimator is a common technique for estimating coefficients of linear regression equations which describe the relationship between one or more independent quantitative variables and a dependent variable (simple or multiple linear regression). The OLS estimator chooses the coefficients by minimizing the sum of the squares of the differences between the observed dependent variables and the predicted values by a linear regression functions of the independent variable. The OLS estimator is highly biased by the outliers in the time series. Presence of outliers departs the distribution of errors away from a normal distribution resulting in heavy tails due to greater standard error than the expected.

The Theil-Sen estimator (or Theil-Sen regression or Sen tau method) is a nonparametric estimation technique for estimating a linear trend (i.e., only for one-variable regression), which uses median instead of mean. Hence, this estimator is not sensitive to outliers. The idea behind the estimator is simple. The slopes S between all pairwise sets of observations are computed and the medians of all these slopes are chosen as the estimate of the regression slope.

The simple linear regression model based on the observations (x_i, y_i) , is $y_i = \alpha + \beta x_i + \epsilon_i$, $i = 1, 2, \dots, n$. Where y is the dependent variable, x is the independent variable, α and β are intercept and slope parameters, respectively, and ϵ is the error term. The Theil-Sen slope estimate is obtained by taking the median of all

$$s_{ij} = \frac{y_j - y_i}{x_j - x_i}, \quad (A1)$$

where $1 \leq i < j \leq n$. The intercept b is obtained by taking the median of all the differences $(y_i - s_i x_i)$.

Appendix B: Mann-Kendall test

The Mann-Kendall (MK) trend test (Mann, 1945; Kendall, 1975) is a nonparametric test (i.e., no underlying assumption made about the distribution of the data) widely used to statistically assess whether there is a monotonic increasing or decreasing trend in a time series of climatologic and hydrologic data, even if there is a seasonal component in the time series. The null hypothesis, H_0 , states that the data are independently distributed with no trend. The alternative hypothesis, H_1 , is that the data

follow a monotonic trend. According to the test, each data value of the time series with n data points is compared with all subsequent data values. The statistic S is incremented by 1, if a data value from a later time period is higher than a data value
 435 sampled earlier, otherwise, S is decremented by 1. I.e., the MK test statistic S is calculated by:

$$S = \sum_{i=1}^{n-1} \sum_{j=i+1}^n \text{sign}(X_j - X_i) \quad (\text{B1})$$

where X_i and X_j are the values of sequence i, j ; n is the length of the time series and

$$\text{sign}(x) = \begin{cases} 1, & \text{if } x > 0 \\ 0, & \text{if } x = 0 \\ -1, & \text{if } x < 0 \end{cases} \quad (\text{B2})$$

Mann (1945) and Kendall (1975) have documented that the statistic S is approximately normally distributed when $n \geq 8$. The
 440 mean of S is $E(S) = 0$ and the variance σ^2 of S is defined by:

$$\sigma^2 = \frac{n(n-1)(2n+5) - \sum_{j=1}^m T_j(T_j-1)(2T_j+5)}{18} \quad (\text{B3})$$

where m is the number of the groups of tied ranks and T_j is the number of data points in the j th tied group. The standardized test statistic Z_{MK} is computed by

$$Z_{\text{MK}} = \begin{cases} \frac{S-1}{\sigma}, & \text{if } S > 0 \\ 0, & \text{if } S = 0 \\ \frac{S+1}{\sigma}, & \text{if } S < 0 \end{cases} \quad (\text{B4})$$

445 A positive (negative) value of the statistic Z_{MK} indicates that the data show an increase (decrease) with time. Given a significance level α , the null hypothesis is rejected (i.e., exist of a statistically significant trend in the time series) if the absolute value of Z_{MK} is larger than the theoretical value $Z_{1-\alpha/2}$ (for two-tailed test) or $Z_{1-\alpha}$ (for one-tailed test), indicating that a significant trend exists in the time series. Here $Z_{1-\alpha/2}$ denotes the 100(1- α /2)th percentile of the standard normal distribution and can be obtained from the standard normal Z -table. In this study a confidence level $1 - \alpha = 0.05$ is used. At the significance
 450 level $p = 5\%$, the null hypothesis is rejected if $|Z_{\text{MK}}| > 1.96$.

Acknowledgements. The authors acknowledge the financial support by DLR internal funding within the MABAK project (Innovative Methoden zur Analyse und Bewertung von Veränderungen der Atmosphäre und des Klimasystems). We thank the NASA Langley Research Center Atmospheric Science Data Center (ASDC) and CALIPSO science team for making the data available for research. Furthermore, we acknowledge ECMWF for providing the ERA5-data from the Copernicus Climate Change Service (C3S) Climate Data Store.

455 References

- Ansmann, A., Bösenberg, J., Chaikovsky, A., Comerón, A., Eckhardt, S., Eixmann, R., Freudenthaler, V., Ginoux, P., Komguem, L., Linné, H., Ángel López Márquez, M., Matthias, V., Mattis, I., Mitev, V., Müller, D., Music, S., Nickovic, S., Pelon, J., Sauvage, L., Sobolewsky, P., Srivastava, M. K., Stohl, A., Torres, O., Vaughan, G., Wandinger, U., and Wiegner, M.: Long range transport of Saharan dust to northern Europe: the 11-16 October 2001 outbreak observed with EARLINET, *J. Geophys. Res.*, 108(D24), 4783, <https://doi.org/10.1029/2003JD003757>, 2003.
- 460 Bailey, M. P. and Hallett, J.: Growth rates and habits of ice crystals between -20 °C and -70 °C, *J. Atmos. Sci.*, 61), 514–554, 2004.
- Bailey, M. P. and Hallett, J.: A comprehensive habit diagram for atmospheric ice crystals: Confirmation from the laboratory, AIRS II, and other field studies, *J. Atmos. Sci.*, 66, 2888–2899, <https://doi.org/10.1175/2009JAS2883.1>, 2009.
- Boucher, O., Randall, D., Artaxo, P., Bretherton, C., Feingold, G., Forster, P., Kerminen, V.-M., Kondo, Y., Liao, H., Lohmann, U., Rasch, P., Satheesh, S. K., Sherwood, S., Stevens, B., and Zhang, X. Y.: Clouds and Aerosols. In: *Climate Change 2013: The Physical Science Basis, Contribution of Working Group I to the Fifth Assessment Report of the Intergovernmental Panel on Climate Change*, edited by: Stocker, T. F., Qin, D., Plattner, G.-K., Tignor, M., Allen, S. K., Boschung, J., Nauels, A., Xia, Y., Bex, V., and Midgley, P. M., Cambridge University Press, Cambridge, United Kingdom and New York, NY, USA, 571–657, 2013.
- 465 Boucher, O.: Air traffic may increase cirrus cloudiness, *Nature*, 397, 30–31, <https://doi.org/10.1038/16169>, 1999.
- 470 Bühl, J., Seifert, P., Myagkov, A., and Ansmann, A.: Measuring ice- and liquid-water properties in mixed-phase cloud layers at the Leipzig Cloudnet station, *Atmos. Chem. Phys.*, 16, 10609–10620, doi:10.5194/acp-16-10609-2016, 2016.
- Bock, L. and Burkhardt, U.: Contrail cirrus radiative forcing for future air traffic, *Atmos. Chem. Phys.*, 19, 8163–8174, <https://doi.org/10.5194/acp-19-8163-2019>, 2019.
- Burkhardt, U., and Kärcher, B.: Global radiative forcing from contrail cirrus, *Nat. Clim. Change*, 1, 54–58, <https://doi.org/10.1038/nclimate1068>, 2011.
- 475 Burton, S. P., Ferrare, R. A., Vaughan, M. A., Omar, A. H., Rogers, R. R., Hostetler, C. A., and Hair J. W.: Aerosol classification from airborne HSRL and comparisons with the CALIPSO vertical features mask, *Atmos. Meas. Tech.*, 6, 1397–1412, doi:10.5194/amt-6-1397-2013, 2013.
- Campbell, J. R., Lolli, S., Lewis, J. R., Gu, Y., and Welton E. J.: Daytime cirrus cloud top-of-the-Atmosphere radiative forcing properties at a midlatitude site and their global consequences, *J. Appl. Meteor. Climatol.*, 55(8), 1667–1679, <https://doi.org/10.1175/JAMC-D-15-0217.1>, 2016.
- 480 Chen, J., Rossow, W. B., and Zhang, Y.: Radiative effects of cloud-type variations, *J. Climate*, 13, 264–286, [https://doi.org/10.1175/1520-0442\(2000\)013<0264:REOCTV>2.0.CO;2](https://doi.org/10.1175/1520-0442(2000)013<0264:REOCTV>2.0.CO;2), 2000.
- Corti, T., and Peter, T.: A simple model for cloud radiative forcing, *Atmos. Chem. Phys.*, 9, 5751–5758, 2009.
- 485 DWD (Deutsche Wetterdienst), Cold spell in Europe and Asia in later winter 2011/2012, issued by WMO Regional Climate Centres, 2012.
- Fichter, C., Marquart, S., Sausen, R., and Lee, D. S.: The impact of cruise altitude on contrails and related radiative forcing, *Meteorol. Z.*, 14, 563–572, 2005.
- Freudenthaler, V., Homburg, F., Jäger, H.: Optical parameters of contrails from lidar measurements: Linear depolarization, *Geophys. Res. Lett.*, 23(25), 3715–3718, 1996.

- 490 Freudenthaler, V., Esselborn, M., Wiegner, M., Heese, B., Tesche, M., Ansmann, A., Müller, D., Althaus, D., Wirth, M., Fix, A., Ehret, G., Knippertz, P., Toledano, C., Gasteiger, J., Garhammer, M., Seefeldner, M.: Depolarization ratio profiling at several wavelengths in pure Saharan dust during SAMUM 2006, *Tellus*, 61B, 165–179, 2009.
- Fu, Q., and Liou, K. N.: Parameterization of the radiative properties of cirrus clouds, *J. Atmos. Sci.*, 50, 2008–2025, 1993.
- Graf, K., Schumann, U., Mannstein, H., and Mayer, B.: Aviation induced diurnal North Atlantic cirrus cover cycle, *Geophys. Res. Lett.*, 39, L16804, doi:10.1029/2012GL052590, 2012.
- 495 Groß, S., Tesche, M., Freudenthaler, V., Toledano, C., Wiegner, M., Ansmann, A., Althausen, D., and Seefeldner, M.: Characterization of Saharan dust, marine aerosols and mixtures of biomass-burning aerosols and dust by means of multi-wavelength depolarization and Raman lidar measurements during SAMUM 2, *Tellus*, 63B, 706–724, 2011.
- Groß, S., Freudenthaler, V., Wiegner, M., Gasteiger, J., Geiß, A., and Schnell, F.: Dual-wavelength linear depolarization ratio of volcanic aerosols: Lidar measurements of the Eyjafjallaökull plume over Maisach, Germany, *Atmos. Environ.*, 48, 85–96, DOI: 10.1016/j.atmosenv.2011.06.017, 2012.
- 500 Groß, S., Esselborn, M., Abicht, F., Wirth, M., Fix, A., Minikin, A.: Airborne high spectral resolution lidar observation of pollution aerosol during EUCAARI-LONGREX, *Atmos. Chem. Phys.*, 13, 2435–2444, DOI: 10.5194/acp-13-2435-2013, 2013.
- Groß, S., Freudenthaler, V., Wirth, M., Weinzierl, B.: Towards an aerosol classification scheme for future EarthCARE lidar observations and implications for research needs, *Atmos. Sci. Lett.*, 16, 77–82, DOI: 10.1002/asl2.524, 2015.
- 505 Haag, W. and Kärcher, B.: The impact of aerosols and gravity waves on cirrus clouds at mid-latitudes, *J. Geophys. Res.*, 109, D12202, doi:10.1029/2004JD004579, 2004.
- Hersbach, H., Bell, B., Berrisford, P., Hirahara, S., Horányi, A., Muñoz-Sabater, J., Nicolas, J., Peubey, C., Radu, R., Schepers, D., Simmons, A., Soci, C., Abdalla, S., Abellan, X., Balsamo, G., Bechtold, P., Biavati, G., Bidlot, J., Bonavita, M., De Chiara, G., Dahlgren, P., Dee, D., Diamantakis, M., Dragani, R., Flemming, J., Forbes, R., Fuentes, M., Geer, A., Haimberger, L., Healy, S., Hogan, R. J., Hólm, E., Janisková, M., Keeley, S., Laloyaux, P., Lopez, P., Lupu, C., Radnoti, G., de Rosnay, P., Rozum, I., Vamborg, F., Villaume, S., and Thépaut, J. N.: The ERA5 global reanalysis, *Q. J. Roy. Meteorol. Soc.*, 146, 1999-2049, <https://doi.org/10.1002/qj.3803>, 2020.
- Heymsfield, A. J.: Precipitation development in stratiform ice clouds: A microphysical and dynamical study *J. Atmos. Sci.*, 34, 367–381, 1977.
- 515 Heymsfield, A., Baumgardner, D., Demott, P., Forster, P., Gierens, K., and Kärcher, B.: Contrail microphysics, *Bull. Amer. Meteor. Soc.*, 91, 465–472, <https://doi.org/10.1175/2009BAMS2839.1>, 2010.
- Hunt, W. H., Winker, D. M., Vaughan, M. A., Powell, K. A., Lucker, P. L., and Weimer, C.: CALIPSO lidar description and performance assessment, *J. Atmos. Oceanic Technol.*, 26, 1214–1228, 2009.
- Hu, Y., Winker, D., Vaughan, M., Lin, B., Omar, A., Trepte, C., Flittner, D., Yang, P., Nasiri, S. L., Baum, B., Holz, R., Sun, W., Liu, Z., Wang, Z., Young, S., Stamnes, K., Huang, J., and Kuehn, R.: CALIPSO/CALIOP cloud phase discrimination algorithm, *J. Atmos. Oceanic Technol.*, 26, 2293–2309, <https://doi.org/10.1175/2009JTECHA1280.1>, 2009.
- 520 Iwabuchi, H., Yang, P., and Liou, K. N., and Minnis, P.: Physical and optical properties of persistent contrails: Climatology and interpretation, *J. Geophys. Res.*, 117, D06215, doi:10.1029/2011JD017020, 2012.
- Järvinen, E., Jourdan, O., Neubauer, D., Yao, B., Liu, C., Andreae, M. O., Lohmann, U., Wendisch, M., McFarquhar, G. M., Leisner, T., and Schnaiter M.: Additional global climate cooling by clouds due to ice crystal complexity, *Atmos. Chem. Phys.*, 18, 15767–15781, <https://doi.org/10.5194/acp-18-15767-2018>, 2018.
- 525

- Kärcher, B., Burkhardt, U., Bier, A., Bock, L., and Ford, I. J.: The microphysical pathway to contrail formation, *J. Geophys. Res.: Atmos.*, 120, 7893–7927, <https://doi.org/10.1002/2015JD023491>, 2015.
- Kärcher, B.: Formation and radiative forcing of contrail cirrus, *Nat. Commun.*, 9, 1824, <https://doi.org/10.1038/s41467-018-04068-0>, 2018.
- 530 Kendall, M. G.: Rank correlation methods, 4th Edition, Charles Griffin: London, UK, 1975.
- Khvorostyanov, V. and Sassen, K.: Toward the theory of homogeneous nucleation and its parameterization for cloud models, *Geophys. Res. Lett.*, 25, 3155–3158, 1998.
- Korolev, A. V., Isaac, G. A., and Hallett, J.: Ice particle habits in Arctic clouds, *Geophys. Res. Lett.*, 26, 1299–1302, <https://doi.org/10.1029/1999GL900232>, 1999.
- 535 Korolev, A. V., Isaac, G. A., and Hallett, J.: Ice particle habits in stratiform clouds, *Quart. J. Roy. Meteor. Soc.*, 126, 2873–2902, <https://doi.org/10.1002/qj.49712656913>, 2000.
- Krämer, M., Rolf, C., Luebke, A., Afchine, A., Spelten, N., Costa, A., Meyer, J., Zöger, M., Smith, J., Herman, R. L., Buchholz, B., Ebert, V., Baumgardner, D., Borrmann, S., Klingebiel, M., Avallone, L.: A microphysics guide to cirrus clouds – Part 1: Cirrus types, *Atmos. Chem. Phys.*, 16, 3463–3483, doi:10.5194/acp-16-3463-2016, 2016.
- 540 Lawson, R. P., Baker, B., Pilson, B., and Mo, Q.: In situ observations of the microphysical properties of wave, cirrus, and anvil clouds,. Part II: Cirrus clouds, *J. Atmos. Sci.*, 63(12), 3186–3203, <https://doi.org/10.1175/JAS3803.1>, 2006.
- Lawson, R. P., Woods, S., Jensen, E., Erfani, E., Gurganus, C., Gallagher, M., Connolly, P., Whiteway, J., Baran, A. J., May, P., Heymsfield, A., Schmitt, C. G., McFarquhar, G., Um, J., Protat, A., Bailey, M., Lauce, S., Muehlbauer, A., Stith, J., Korolev, A., Toon, O. B., Krämer, M.: A review of ice particle shapes in cirrus formed in situ and in Anvils, *J. Geophys. Res.*, 124, 10049–10090, <https://doi.org/10.1029/2018JD030122>, 2019.
- 545 Lee, D. S., Fahey, D. W., Skowron, A., Allen, M. R., Burkhardt, U., Chen, Q., Doherty, S. J., Freeman, S., Forster, P. M., Fuglestedt, J., Gettelman, A., De León, R. R., Lim, L. L., Lund, M. T., Millar, R. J., Owen, B., Penner, J. E., Pitari, G., Prather, M. J., Sausen, R., Wilcox, L. J.: The contribution of global aviation to anthropogenic climate forcing for 2000 to 2018, *Atmos. Environ.*, 244, 117834, <https://doi.org/10.1016/j.atmosenv.2020.117834>, 2021.
- 550 Li, Q., and Groß, S.: Changes in cirrus cloud properties and occurrence over Europe during the COVID-19-caused air traffic reduction, *Atmos. Chem. Phys.*, 21, 14573–14590, <https://doi.org/10.5194/acp-21-14573-2021>, 2021.
- Liou, K. N.: Influence of cirrus clouds on weather and climate processes: A global perspective, *Mon. Weather Rev.*, 114, 1167–1199, 1986.
- Liu, Z., Vaughan, M., Winker, D., Hostetler, C., Poole, L., Hlavka, D., Hart, W., and McGill, M.: Use of probability distribution functions for discriminating between cloud and aerosol in lidar backscatter data, *J. Geophys. Res.*, 109, D15202, doi:10.1029/2004JD004732, 2004.
- 555 Liu, Z., Vaughan, M., Winker, D., Kittaka, C., Getzewich, B., Kuehn, R., Omar, A., Powell, K., Trepte, C., and Hostetler, C.: The CALIPSO lidar cloud and aerosol discrimination: Version 2 algorithm and initial assessment of performance, *J. Atmos. Oceanic Technol.*, 26, 1198–1213, <https://doi.org/10.1175/2009JTECHA1229.1>, 2009.
- Lopes, F. J. S., Landulfo, E., and Vaughan, M. A.: Evaluating CALIPSO’s 532 nm lidar ratio selection algorithm using AERONET sun photometers in Brazil, *Atmos. Meas. Tech.*, 6, 3281–3299, doi:10.5194/amt-6-3281-2013, 2013.
- 560 Mamouri, R. E., Amiridis, V., Papayannis, A., Giannakaki, E., Tsaknakis, G., and Balis, D. S.: Validation of CALIPSO space-borne-derived attenuated backscatter coefficient profiles using a ground-based lidar in Athens, Greece, *Atmos. Meas. Tech.*, 2, 513–522, 2009.
- Mann, H. B.: Nonparametric tests against trend, *Econometrica*, 13, 245–259, <https://doi.org/10.2307/1907187>, 1945.
- McGill, M. J., Vaughan, M. A., Trepte, C. R., Hart, W. D., Hlavka, D. L., Winker, D. M., and Kuehn, R.: Airborne validation of spatial properties measured by the CALIPSO lidar, *J. Geophys. Res.*, 112, D20201, doi:10.1029/2007JD008768, 2007.

- 565 Minnis, P., Ayers, J. K., Palikonda, R., and Phan, D.: Contrails, cirrus trends, and climate, *J. Clim.*, 17(8), 1671–1685, doi:10.1175/1520-0442(2004)017<1671:CCTAC>2.0.CO;2, 2004.
- Mishchenko, M. I., and Sassen, K.: Depolarization of lidar returns by small ice crystals: An application to contrails, *Geophys. Res. Lett.*, 25(3), 309–312, 1998.
- NASA: CALIPSO: Data User’s Guide – Data Product Description – Lidar Level 2 5 km Vertical Feature Mask (VFM) Version 3.x Product, available at: https://www-calipso.larc.nasa.gov/resources/calipso_users_guide/data_summaries/vfm/, last access: 27 September 2021a.
- 570 NASA: CALIPSO Search and Subsetting web application, NASA Langley Research Center Atmospheric Science Data Center, available at: <https://subset.larc.nasa.gov/calipso/login.php>, last access: 27 September 2021b.
- Nazaryan, H., McCormick, M. P., and Menzel, W. P.: Global characterization of cirrus clouds using CALIPSO data, *J. Geophys. Res.*, 113, D16211, doi:10.1029/2007JD009481, 2008.
- 575 Noel, V., Chepfer, H., Haeffelin, M., and Morille, Y.: Classification of ice crystal shapes in midlatitude ice clouds from three years of lidar observations over the SIRTa observatory, *J. Atmos. Sci.*, 63, 2978–2991, <https://doi.org/10.1175/JAS3767.1>, 2006.
- Omar, A. H., Winker, D. M., Vaughan, M. A., Hu, Y., Trepte, C. R., Ferrare, R. A., Lee, K.-P., Hostetler, C. A., Kittaka, C., Rogers, R. R., Kuehn, R. E., and Liu, Z.: The CALIPSO automated aerosol classification and lidar ratio selection algorithm, *J. Atmos. Oceanic Technol.*, 26, 1994–2014, <https://doi.org/10.1175/2009JTECHA1231.1>, 2009.
- 580 Pappalardo, G., Wandinger, U., Mona, L., Hiebsch, A., Mattis, I., Amodeo, A., Ansmann, A., Seifert, P., Linné, H., Apituley, A., Arboledas, L., Balis, D., Chaikovskiy, A., D’Amico, G., De Tomasi, F., Freudenthaler, V., Giannakaki, E., Giunta, A., Grigorov, I., Iarlori, M., Madonna, F., Mamouri, R.-E., Nasti, L., Papayannis, A., Pietruczuk, A., Pujadas, M., Rizi, V., Rocadenbosch, F., Russo, F., Schnell, F., Spinelli, N., Wang, X., and Wiegner, M.: EARLINET correlative measurements for CALIPSO: First intercomparison results, *J. Geophys. Res.*, 115, D00H19, doi:10.1029/2009JD012147, 2009.
- 585 Quaas, J., Gryspeerdt, E., Vautard, R., and Boucher, O.: Climate impact of aircraft-induced cirrus assessed from satellite observations before and during COVID-19, *Environ. Res. Lett.*, 16, 064051, doi:10.1088/1748-9326/abf686, 2021.
- Sassen, K., Griffin, M. K., and Dodd, G. C.: Optical scattering and microphysical properties of subvisual cirrus clouds and climatic implications, *J. Appl. Meteorol.*, 28, 91–98, [https://doi.org/10.1175/1520-0450\(1989\)028<0091:OSAMPO>2.0.CO;2](https://doi.org/10.1175/1520-0450(1989)028<0091:OSAMPO>2.0.CO;2), 1989.
- Sassen, K. and Campbell, J. R.: A midlatitude cirrus cloud climatology from the facility for atmospheric remote sensing. Part I: Macrophysical and synoptic properties, *J. Atmos. Sci.*, 58, 481–496, [https://doi.org/10.1175/1520-0469\(2001\)058<0481:AMCCCF>2.0.CO;2](https://doi.org/10.1175/1520-0469(2001)058<0481:AMCCCF>2.0.CO;2), 2001.
- 590 Sassen, K.: The polarization lidar technique for cloud research: A review and current assessment, *Bull. Amer. Meteor. Soc.*, 72, 1848–1866, [https://doi.org/10.1175/1520-0477\(1991\)072<1848:TPLTFC>2.0.CO;2](https://doi.org/10.1175/1520-0477(1991)072<1848:TPLTFC>2.0.CO;2), 1991.
- Sassen, K., Wang, Z., and Liu, D.: Global distribution of cirrus clouds from CloudSat/Cloud-Aerosol Lidar and Infrared Pathfinder Satellite Observations (CALIPSO) measurements, *J. Geophys. Res.*, 113, D00A12, doi:10.1029/2008JD009972, 2008.
- 595 Sassen, K. and Zhu, J.: A global survey of CALIPSO linear depolarization ratios in ice clouds: Initial findings, *J. Geophys. Res.*, 114, D00H07, <https://doi.org/10.1029/2009JD012279>, 2009.
- Schotland, R. M., Sassen, K., and Stone, R.: Observations by lidar of linear depolarization ratios for hydrometeors, *J. Appl. Meteorol.*, 10, 1011–1017, 1971.
- Schnaiter, M., Büttner, S., Möhler, O., Okrotzki, J., Vragel, M., and Wagner, R.: Influence of particle size and shape on the backscatter linear depolarization ratio of small ice crystals – Cloud chamber measurements in the context of contrail and cirrus microphysics, *Atmos. Chem. Phys.*, 12(21), 10,465–10,484, <https://doi.org/10.5194/acp-12-10465-2012>, 2012.
- 600

- Schumann, U. and Graf, K.: Aviation-induced cirrus and radiation changes at diurnal timescales, *J. Geophys. Res.*, 118, 2404–2421, doi:10.1002/jgrd.50184, 2013.
- Schumann, U., Poll, I., Teoh, R., Koelle, R., Spinielli, E., Molloy, J., Koudis, G. S., Baumann, R., Bugliaro, L., Stettler, M., and Voigt, C.: Air traffic and contrail changes during COVID-19 over Europe: A model study, *Atmos. Chem. Phys.*, 21, 7429–7450, <https://doi.org/10.5194/acp-21-7429-2021>, 2021.
- Schumann, U., Bugliaro, L., Dörnbrack, A., Baumann, R., and Voigt, C.: Aviation contrail cirrus and radiative forcing over Europe during 6 months of COVID-19, *Geophys. Res. Lett.*, 48, e2021GL092771, <https://doi.org/10.1029/2021GL092771>, 2021.
- Sen, P. K.: Estimates of the regression coefficient based on Kendall’s tau, *J. Amerifert*, M., Ström, J., Krejci, R., Minikin, A., Petzold, A., Gayet, J.-F., Schlager, H., Ziereis, H., Schumann, U., and Ovarlez, J.: Aerosol-cirrus interactions: a number based phenomenon at all?, *Atmos. Chem. Phys.*, 4, 293–305, <https://doi.org/10.5194/acp-4-293-2004>, 2004.
- Stephens, G. L., Tsay, S.-C., Stackhouse Jr., P. W., and Flatau, P. J., The relevance of the microphysical and radiative properties of cirrus clouds to climate and climatic feedback, *J. Atmos. Sci.*, 47, 1742–1754, 1990.
- Stephens, G. L., Wood, N. B., Gabriel, P. M.: An assessment of the parameterization of subgrid-scale cloud effects on radiative transfer. Part I: Vertical overlap, *J. Atmos. Sci.* 61, 715–732. doi: 10.1175/1520-0469(2004)061<0715:aaotpo>2.0.co;2, 2004.
- Stephens, G., Winker, D. M., Pelon, J., Treppe, C., Vane, D., Yuhas, C., L’Ecuyer, T., and Lebsock, M.: CloudSat and CALIPSO within the A-Train: Ten years of actively observing the Earth system, *Bull. Amer. Meteor. Soc.*, 99, 569–581, <https://doi.org/10.1175/BAMS-D-16-0324.1>, 2018.
- Stubenrauch, C. J., Schumann, U.: Impact of air traffic on cirrus coverage, *Geophys. Res. Lett.*, 32, L14813, <https://doi.org/10.1029/2005GL022707>, 2005.
- Ström, J. and Ohlsson, S.: In situ measurements of enhanced crystal number densities in cirrus clouds caused by aircraft exhaust, *J. Geophys. Res.*, 103, 11355–11361, 1998.
- Takano, Y. and Liou, K. N.: Solar radiative transfer in cirrus clouds. Part I: Single-scattering and optical properties of hexagonal ice crystals, *J. Atmos. Sci.*, 46, 3–19, [https://doi.org/10.1175/1520-0469\(1989\)046<0003:SRTICC>2.0.CO;2](https://doi.org/10.1175/1520-0469(1989)046<0003:SRTICC>2.0.CO;2), 1989.
- Tesche, M., Ansmann, A., Müller, D., Althausen, D., Engelmann, R., Freudenthaler, V., and Groß, S.: Vertically resolved separation of dust and smoke over Cape Verde using multi-wavelength Raman and polarization lidars during Saharan Mineral Dust Experiment 2008, *J. Geophys. Res.*, 114, D13202, doi:10.1029/2009JD011862, 2009.
- Tesche, M., Achtert, P., Glantz, P., and Noone, K. J.: Aviation effects on already-existing cirrus clouds, *Nat. Commun.*, 7(1), 12016, <https://doi.org/10.1038/ncomms12016>, 2016.
- Theil, H.: A rank-invariant method of linear and polynomial regression analysis, I. *Proc. Kon. Ned. Akad. v. Wetensch.* A53, 386–392, 1950.
- Um, J., McFarquhar, G. M., Hong, Y. P., Lee, S.S., Jung, C. H., Lawson, R. P., and Mo, Q.: Dimensions and aspect ratios of natural ice crystals, *Atmos. Chem. Phys.*, 15, 3933–3956, <https://doi.org/10.5194/acp-15-3933-2015>, 2015.
- Urbanek, B., Groß, S., Wirth, M., Rolf, C., Krämer, M., and Voigt, C.: High depolarization ratios of naturally occurring cirrus clouds near air traffic regions over Europe, *Geophys. Res. Lett.*, 45, 13,166–13,172, <https://doi.org/10.1029/2018GL079345>, 2018.
- Vaughan, M. A., Powell, K. A., Kuehn, R. E., Young, S. A., Winker, D. M., Hostetler, C. A., Hunt, W. H., Liu, Z., McJill, M. J., and Getzewich, B. J.: Fully automated detection of cloud and aerosol layers in the CALIPSO lidar measurements, *J. Atmos. Oceanic Technol.*, 26, 2034–2050, <https://doi.org/10.1175/2009JTECHA1228.1>, 2009.
- Voigt, C., Schumann, U., Jessberger, P., Jurkat, T., Petzold, A., Gayet, J.-F., Krämer, M., Thornberry, T., and Fahey, D. W.: Extinction and optical depth of contrails, *Geophys. Res. Lett.*, 38, L11806, doi:10.1029/2011GL047189, 2011.

- 640 Voigt, C., Schumann, U., Minikin, A., Abdelmonem, A., Afchine, A., Borrmann, S., Boettcher, M., Buchholz, B., Bugliaro, L., Costa, A., Curtius, J., Dollner, M., Dörnbrack, A., Dreiling, V., Ebert, V., Ehrlich, A., Fix, A., Forster, L., Frank, F., Fütterer, D., Giez, A., Graf, K., Groß, J.-U., Groß, S., Heimerl, K., Heinold, B., Hüneke, T., Järvinen, E., Jurkat, T., Kaufmann, S., Kenntner, M., Klingebiel, M., Klimach, T., Kohl, R., Krämer, M., Krisna, T. C., Luebke, A., Mayer, B., Mertes, S., Molleker, S., Petzold, A., Pfeilsticker, K., Port, M., Rapp, M., Reutter, P., Rolf, C., Rose, D., Sauer, D., Schäfler, A., Schlage, R., Schnaiter, M., Schneider, J., Spelten, N., Spichtinger, P.,
- 645 Stock, P., Walser, A., Weigel, R., Weinzierl, B., Wendisch, M., Werner, F., Wernli, H., Wirth, M., Zahn, A., Ziereis, H., and Zöger, M.: ML-CIRRUS: The airborne experiment on natural cirrus and contrail cirrus with the high-altitude long-range research aircraft HALO, *Bull. Amer. Meteor. Soc.*, 98, 271–288, <https://doi.org/10.1175/BAMS-D-15-00213.1>, 2017.
- Voigt, C., Lelieveld, J., Schlager, H., Schneider, J., Curtius, J., Meerkötter, R., Sauer, D., Bugliaro, Luca., Bohn, B., Crowley, J. N., Erbertseder, T., Groß, S., Hahn, V., Li, Q., Mertens, M., Pöhlker, M. L., Pozzer, A., Schumann, U., Tomsche, L., Williams, J., Zahn, A.,
- 650 Andreae, M., Borrmann, S., Brüner, T., Dörich, R., Dörnbrack, A., Edtbauer, A., Ernle, L., Fischer, H., Giez, A., Granzin, M., Grewe, V., Harder, H., Heinritzi, M., Holanda, B. A., Jöckel, P., Kaider, K., Krüger, O. O., Lucke, J., Marsing, A., Martin, A., Matthes, S., Pöhlker, C., Pöschl, U., Reifenberg, S., Ringsdorf, A., Scheibe, M., Tadic, I., Zauner-Wieczorek, M., Henke, R., Rapp, M.: Cleaner skies during the COVID-19 lockdown, *Bull. Amer. Meteor. Soc.*, <https://doi.org/10.1175/BAMS-D-21-0012.1>, 2022.
- Wang, P., Minnis, P., McCormick, M. P., Kent, G. S., and Skeens, K. M.: A 6-year climatology of cloud occurrence frequency from SAGE II
- 655 observations (1985–1990), *J. Geophys. Res.*, 101, 407–429, 1996.
- Winker, D. M., Vaughan, M. A., Omar, A., Hu, Y., and Powell, K. A.: Overview of the CALIPSO mission and CALIOP data processing algorithms, *J. Atmos. Oceanic Technol.*, 26, 2310–2323, <https://doi.org/10.1175/2009JTECHA1281.1>, 2009.
- Winker, D. M., Pelon, J., Coakley Jr., J. A., Ackerman, S. A., Charlson, R. J., Colarco, P. R., Flamant, P., Fu, Q., Hoff, R. M., Kittaka, C., Kubar, T. L., Le Treut, H., McCormick, M. P., Mégie, G., Poole, L., Powell, K., Trepte, C., Vaughan, M. A., and
- 660 Wielicki, B. A.: The CALIPSO Mission: A global 3D view of aerosols and clouds, *Bull. Amer. Meteor. Soc.*, 91, 1211–1229, <https://doi.org/10.1175/2010BAMS3009.1>, 2010.
- Winker, D. M., Hunt, B. H., and McGill, M. J.: Initial performance assessment of CALIOP, *Geophys. Res. Lett.*, 34, L19803, [doi:10.1029/2007GL030135](https://doi.org/10.1029/2007GL030135), 2007.
- Wylie, D. P., and Menzel, W. P.: Eight years of high cloud statistics using HIRS, *J. Clim.*, 12, 170–184, 1999.
- 665 Yue, S., Pilon, P. and Cavadias, G.: Power of the Mann-Kendall and Spearman’s rho tests for detecting monotonic trends in hydrological series, *J. Hydrol.*, 259, 254–271, [https://doi.org/10.1016/S0022-1694\(01\)00594-7](https://doi.org/10.1016/S0022-1694(01)00594-7), 2002.
- Zerefos, C. S., Eleftheratos, K., Balis, D. S., Zanis, P., Tselioudis, G., and Meleti, C.: Evidence of impact of aviation on cirrus cloud formation, *Atmos. Chem. Phys.*, 3, 1633–1644, 2003.
- Zhang, Y., Macke, A., and Albers, F.: Effects of crystal size spectrum and crystal shape on stratiform cirrus radiative forcing, *Atmos. Res.*,
- 670 52, 59–75, 1999.

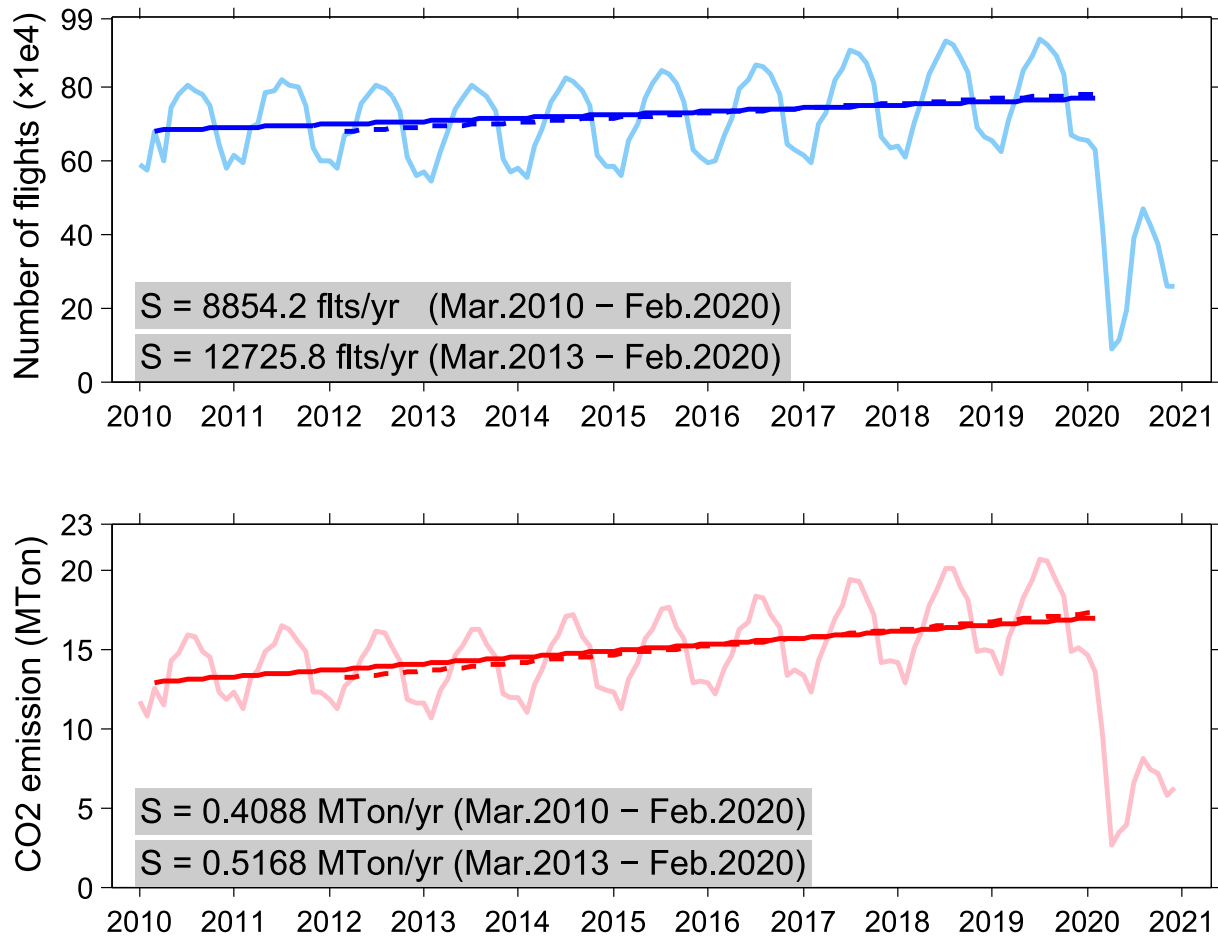


Figure 1. Number of flights and the corresponding CO₂ emissions from air traffic in different month over Europe (in total 42 countries and regions) in 11 years from 2010 to 2020. The seasonal cycle in air traffic shows more flights (as well as CO₂ emissions) in summer than in winter. The number of flights increased by about 1.30% /yr, whereas the CO₂ emissions increased by about 3.16%/yr-year in the last 10 years in Europe before the COVID-19 outbreak. During the COVID-19 pandemic, however, civil aviation in Europe was significantly reduced since March 2020 with only a partial recovery in summer 2020 and further reduction afterwards. Furthermore, we also note that there was actually a slightly decrease in the first three years from 2010 to 2013, especially in winter and early spring. The plots are reproduced based on the European flight historic data from the European Organisation for the Safety of Air Navigation (EUROCONTROL, <https://www.eurocontrol.int/covid19>, last access: 09 February 2022).

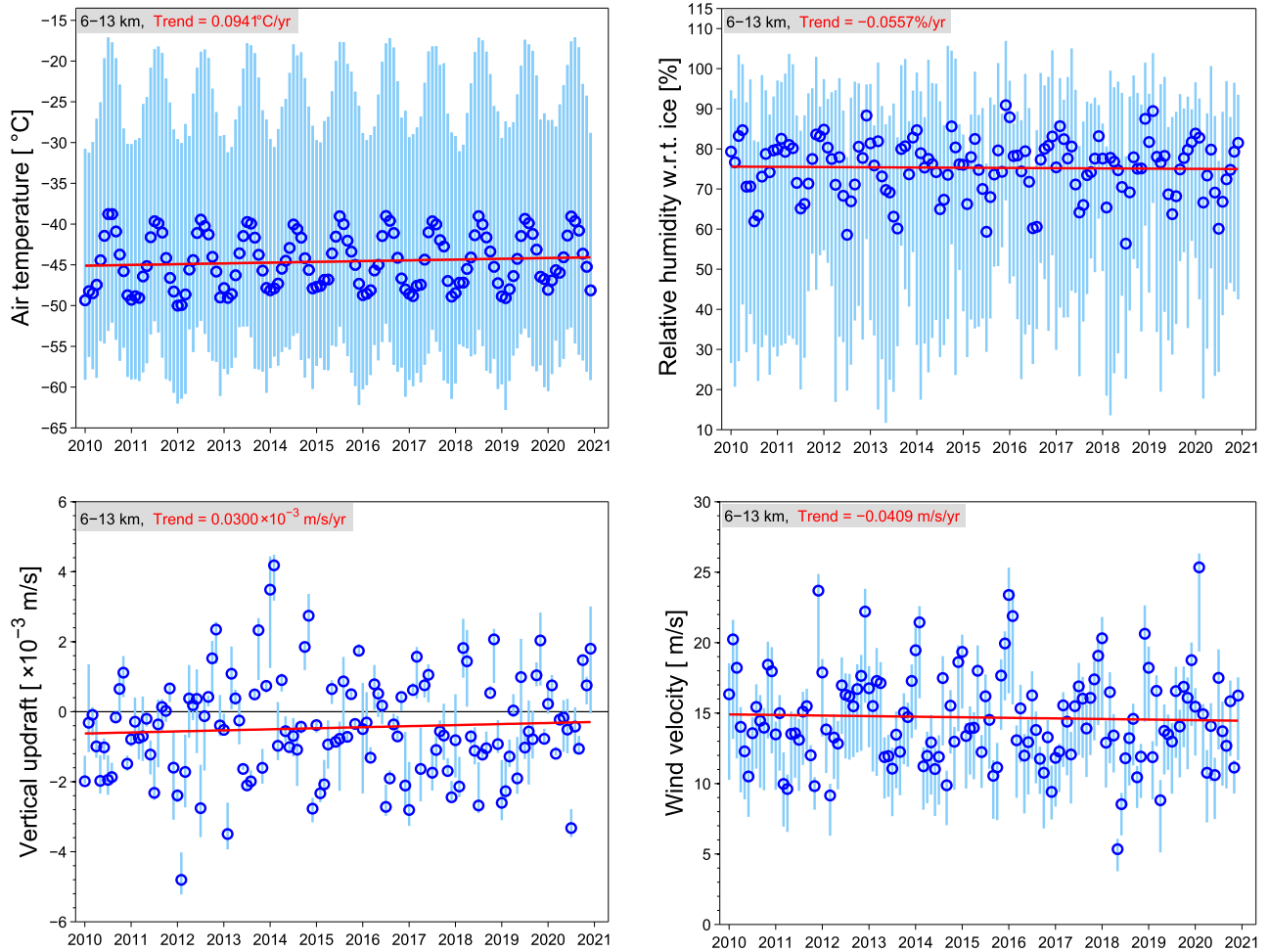


Figure 2. Monthly variations of air temperature, relative humidity with respect to ice (RH_i), vertical updraft, and wind velocity in the background at altitudes from 6 to 13 km, derived from ERA5 reanalysis data in 11 years from 2010 to 2020 over the European area (i.e., the research area for this study, Lat: 35 to 60 °N, Lon: 15°W to 15°E). The vertical bars show all the data point the value ranges for temperatures and RH_i, respectively, in the upper panel and for vertical updraft and wind, respectively, in the lower panel. The blue circles show the medians of each quantity in different month and the red lines are the best-fitting lines using the simple linear regression to data for all of them.

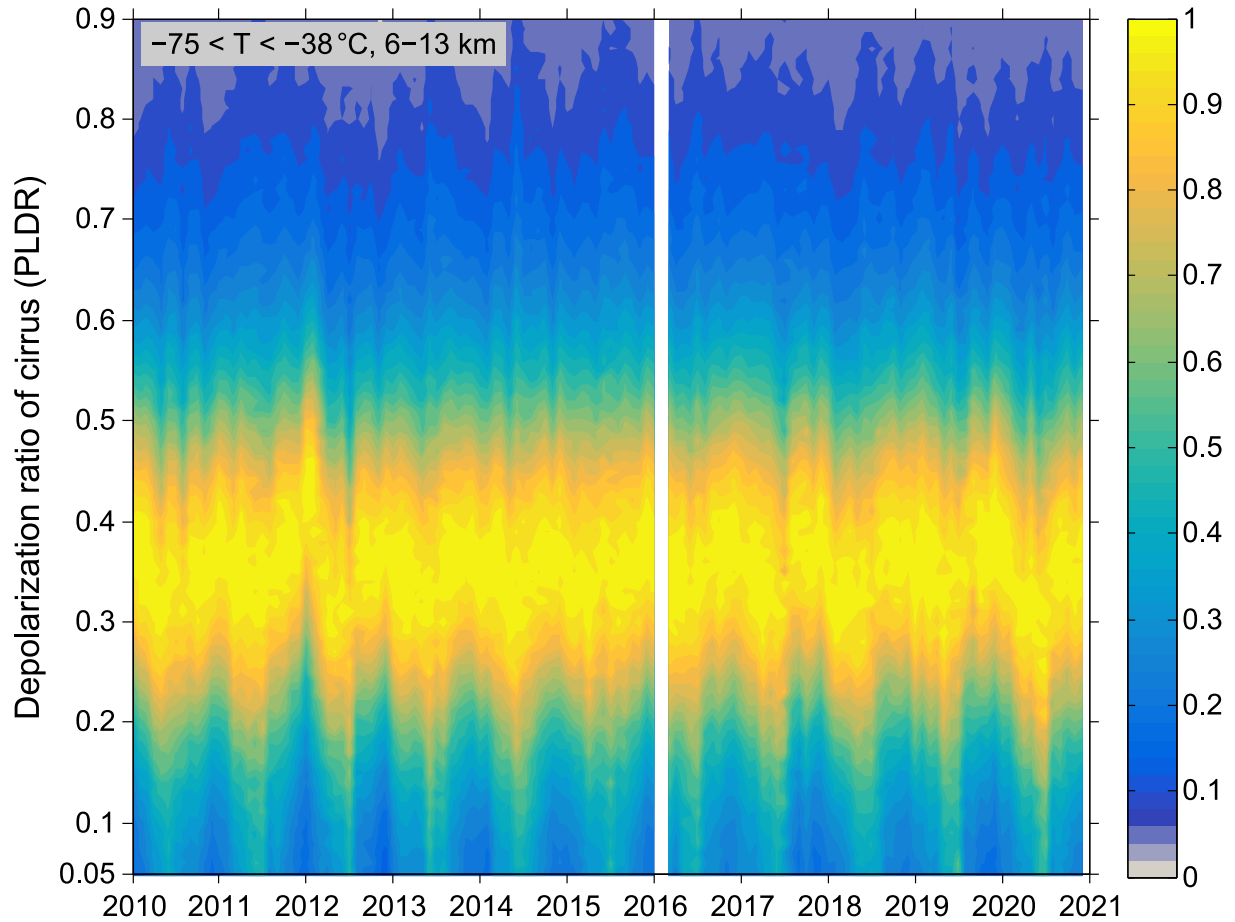


Figure 3. Number densities of the cirrus δ_p PLDR distribution normalized for each month from January 2010 to December 2020. The data are derived from the observations at the typical cirrus heights from 6 to 13 km and at temperatures between -75 and -38°C . The color codes are used to visualize the relative number densities of scatter point data, with the maximum number density indicated by 1 in the color bar.

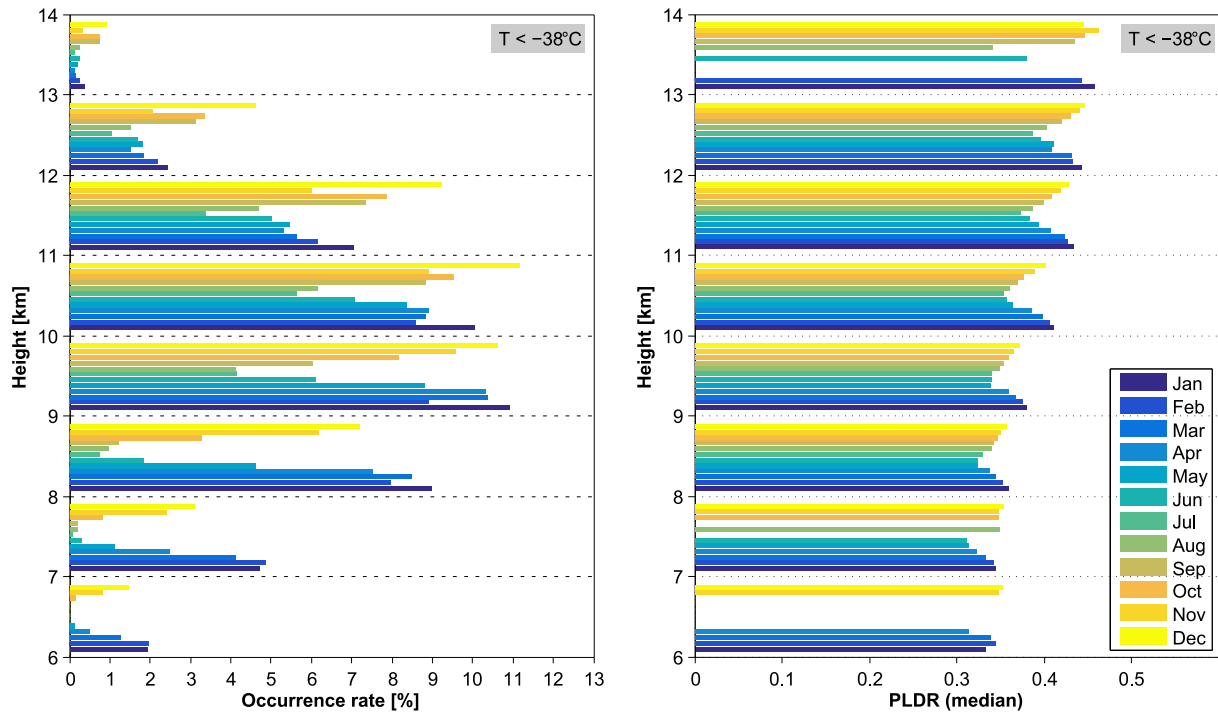


Figure 4. Distributions of the occurrence rate (OR) and δ_p PLDR of cirrus clouds in each 1-km altitude bin. The data are derived from the full altitude range of cirrus at temperatures between -75 and -38°C . The data with $\text{OR} < 0.1\%$ were neglected for plotting δ_p PLDR in the right panel. Both parameters follow a seasonal cycle: cirrus clouds in winter are characterized by larger values of δ_p PLDR and higher occurrence rates than in summer. Furthermore, cirrus clouds appear within the full altitude range from 6 to 13 km in the winter months but only within the altitudes from ~ 9 to 12.5 km in summer.

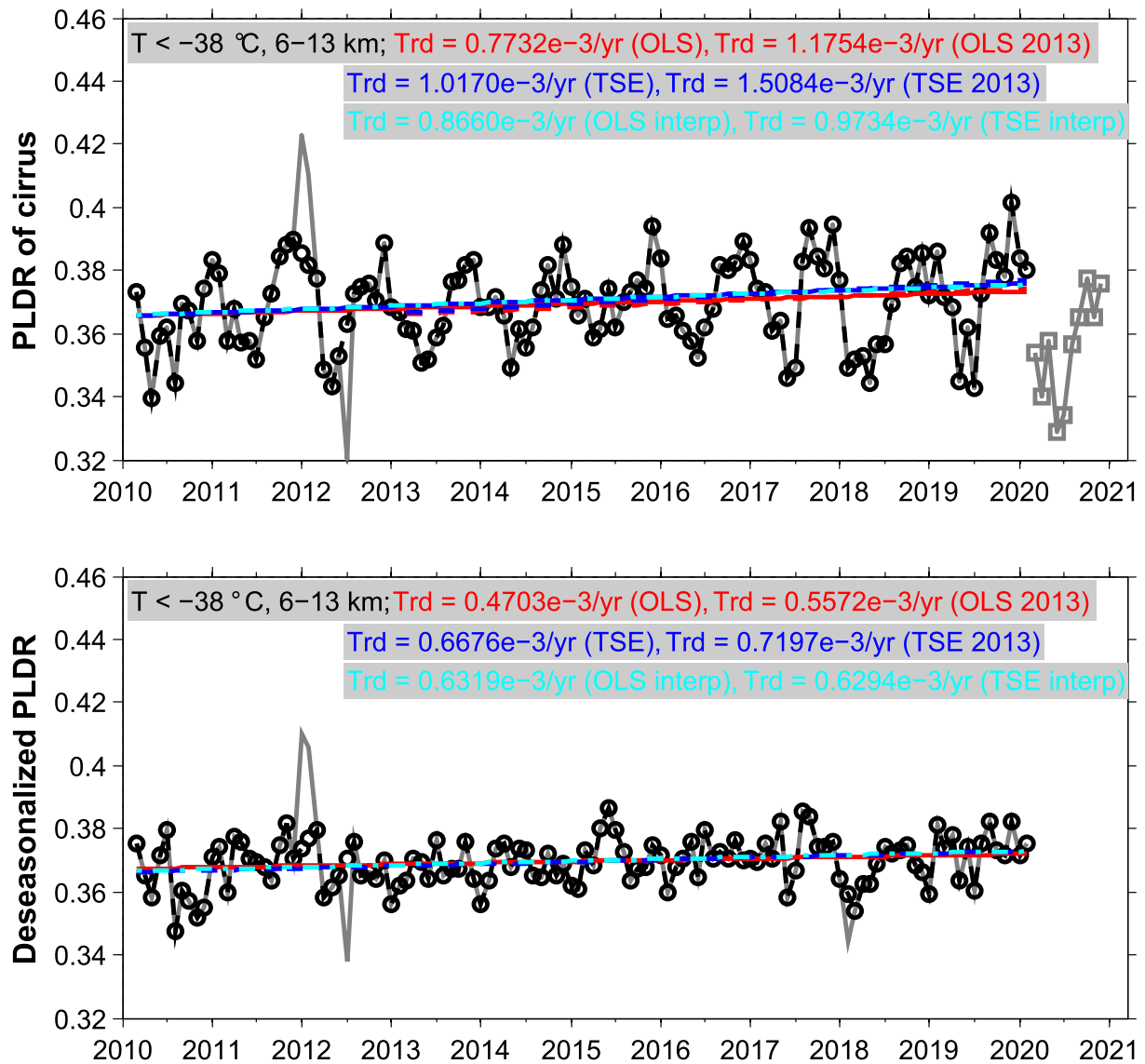


Figure 5. Upper panel: Medians of cirrus δ_p PLDR in different month from March 2010 to February 2020 shown in gray lines and during the COVID-19 pandemic starting from March 2020 shown in squares. The results are derived from both day- and night-time lidar measurements of CALIPSO. Both OLS and TSE methods are applied to determine the long-term trends (i.e., slopes) of the cirrus PLDR (medians) and the results are indicated on the plot (see text for details). Both ordinary least square (OLS) estimator and Theil-Sen estimator (TSE) methods are applied to determine the long-term trends (i.e., slopes) of the cirrus δ_p PLDR (medians) from 10-year observations and the linear fits are shown with solid lines in red and blue, respectively. Furthermore, the same calculations are also carried out on the observations during the period from March 2013 to February 2020 (indicated also in the insert of the plot), when the aviation densities grew more strongly, and the corresponding fits with dashed lines in red and blue, respectively. In addition, the outliers in January, February, and July 2012 are removed and the interpolated data sets are also conducted with the TSE method for comparisons. The estimated long-term trends for different cases are indicated on the plot (in light blue). Lower Panel: Same as Upper panel, but for The long-term trends determined from the deseasonalized time series of cirrus δ_p PLDR (medians).

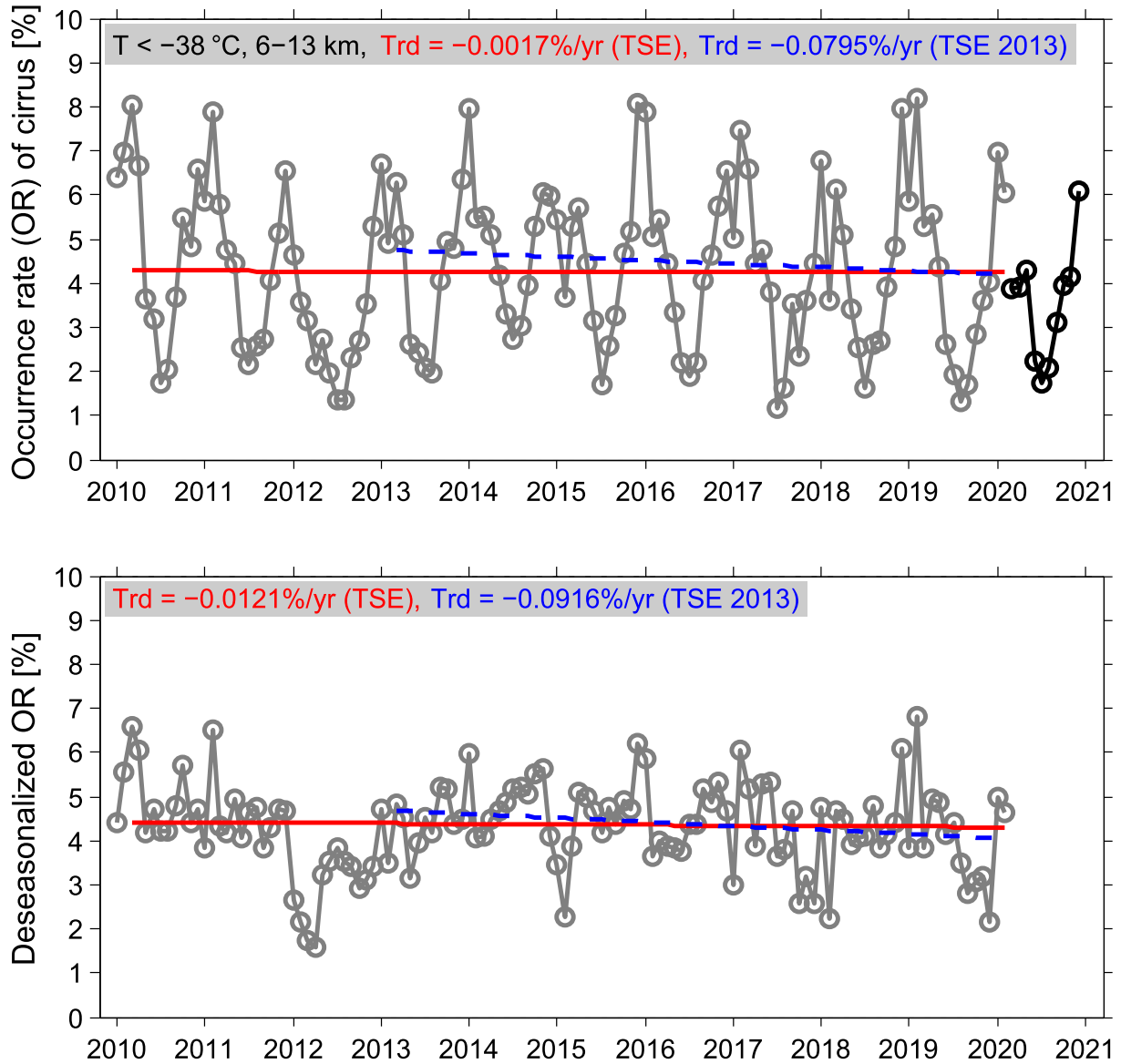


Figure 6. Long-term variations of monthly occurrence rate (OR) of cirrus clouds in years from 2010 to 2020 as well as the linear fitting for the values in the periods from March 2010 to February 2020 (in red) and from March 2013 to February 2020 (in blue). The ORs of cirrus clouds during the COVID-19 pandemic are shown in black for comparisons. The corresponding trends (i.e., the slopes) are indicated on the plot: Upper panel for the derived monthly OR from all the data including day- and night time; lower panel for the deseasonalized time series of OR.

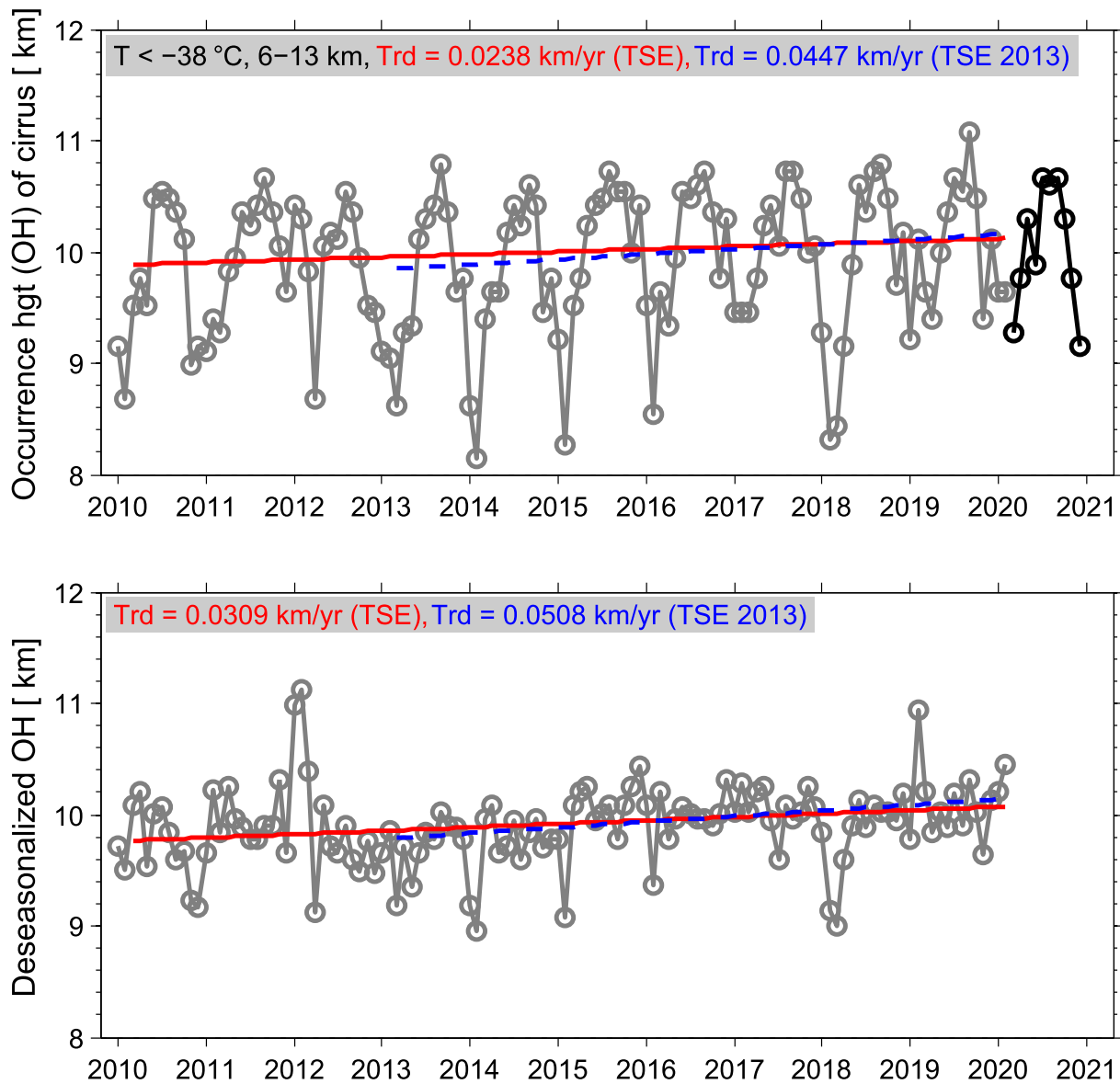


Figure 7. Same as Figure 6, but for the long-trend variations of the occurrence heights of cirrus clouds for both day- and night-time observations during the period from March 2010 to February 2020.

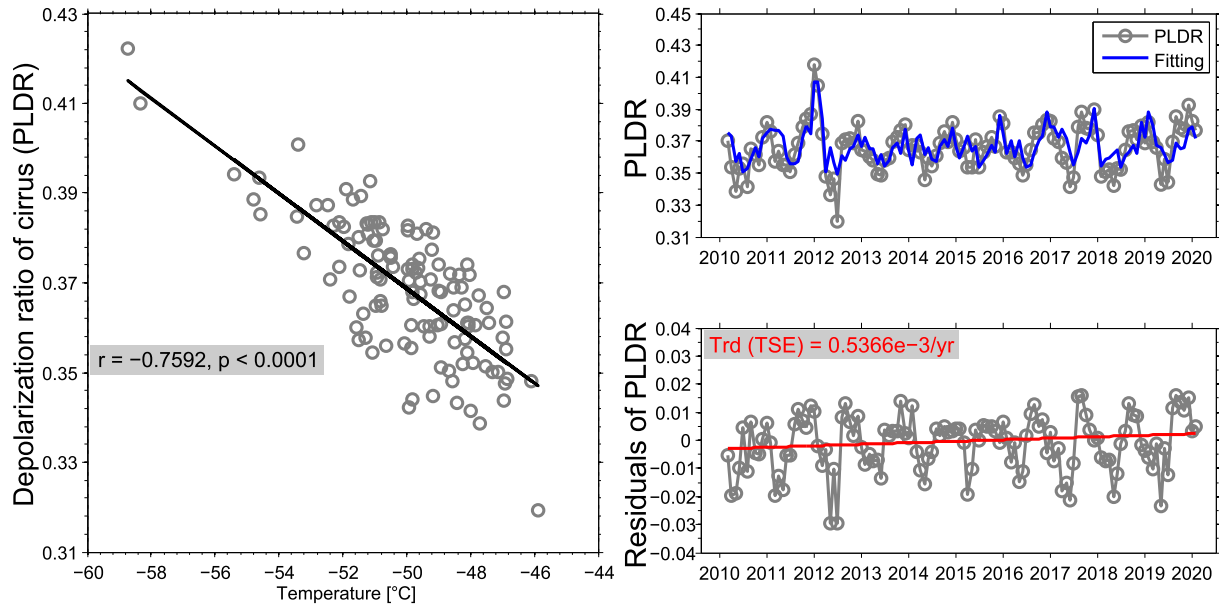


Figure 8. Left panel: The gray circles stand for the correlation between the monthly medians of cirrus $\delta_{\bar{p}}\text{PLDR}$ and the corresponding ambient temperatures and the black line for the linear fitting line derived from all data points. Right panels: the monthly medians of cirrus $\delta_{\bar{p}}\text{PLDR}$ during the period from March 2010 to February 2020 are shown in gray and the regressed values with the first degree polynomial in blue (Right-upper panel); The residuals after removing the regressed values from the monthly medians of $\delta_{\bar{p}}\text{PLDR}$ are shown in gray and the linear fitting line with the Theil-Sen estimator (TSE) method in red, with the long-term trend of $0.54\text{e-}3/\text{yr}$ indicated on the plots (Right-lower panel). However, the significance test with the Mann-Kendall trend test shows that the trend in the residuals of $\delta_{\bar{p}}\text{PLDR}$ removing the temperature contribution is at 90% confidence level (with $p = 0.0582$).

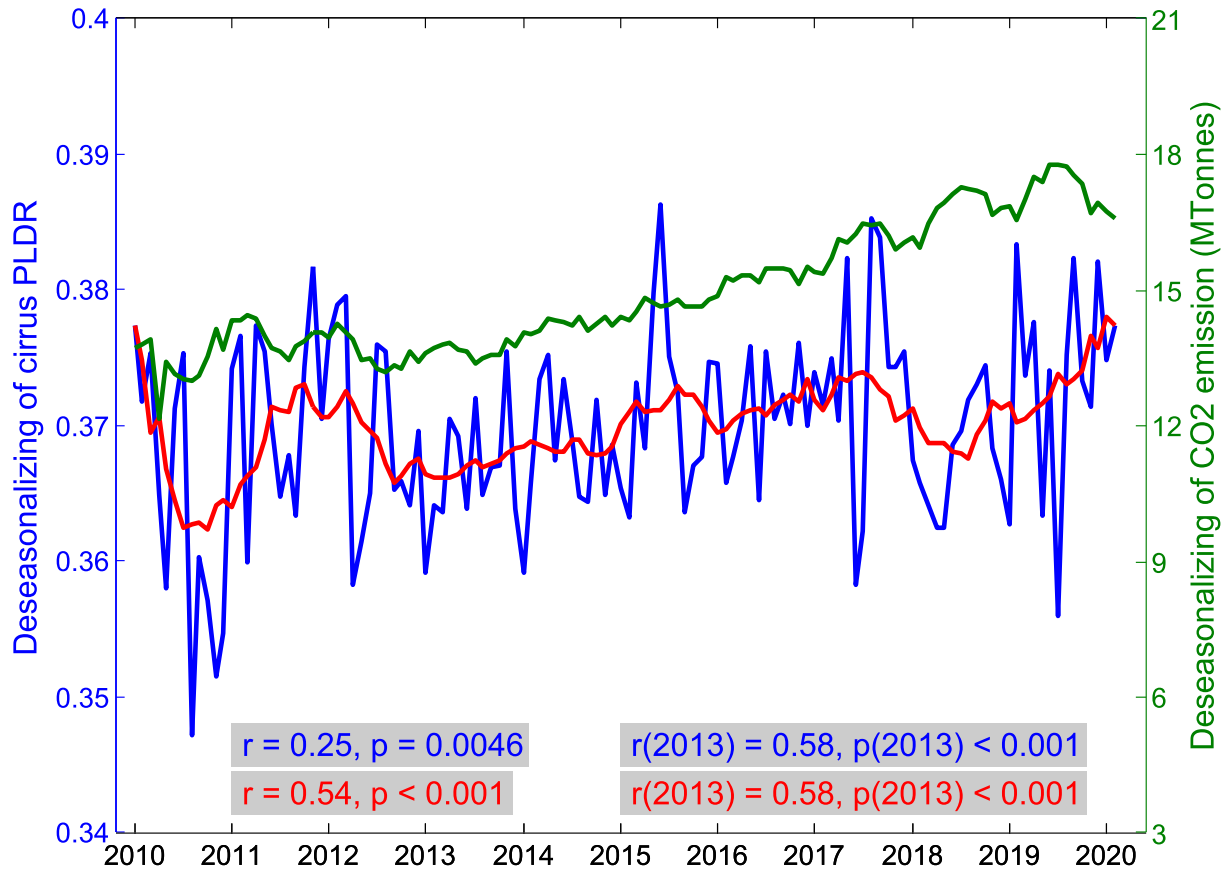


Figure 9. Comparison between the deseasonalized time series of $\delta_{\bar{p}}\text{cirrus PLDR}$ (in blue) and the corresponding deseasonalized CO2 emissions from aviation in Europe (in green). The annual mean variations of the deseasonalized $\delta_{\bar{p}}\text{PLDR}$ are overplotted with a 12-point moving average smooth. The correlation coefficients between both parameters for a full period as well as for a shorter period from January 2013 are calculated and indicated on the plot, which are all at the confidence level above 99.5%.

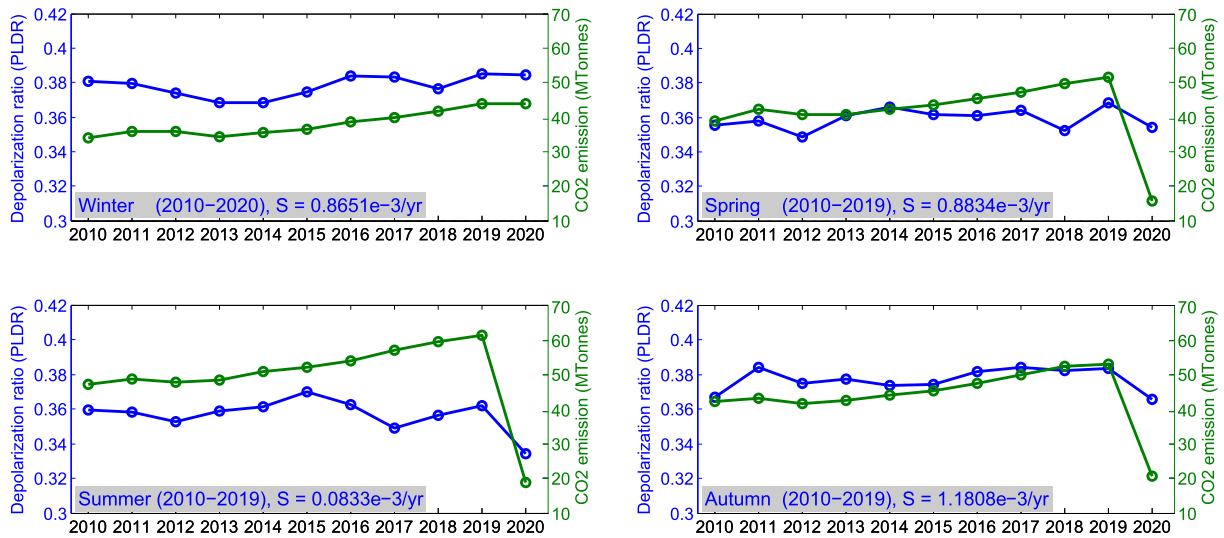


Figure 10. Long-term trends in cirrus $\delta_{\bar{p}}$ PLDR in different seasons and their correlations with the corresponding CO2 emissions from aviation in Europe. There are increasing trends in $\delta_{\bar{p}}$ PLDR as well as CO2 emissions from aviation in all seasons in the 10 years before COVID-19. The correlation analysis between both parameters shows a strong correlation in winter, spring, and autumn, but a weak correlation in summer.