

# In-Situ Calibration of the Swarm-Echo Magnetometers

Robert M. Broadfoot<sup>1</sup>, David M. Miles<sup>1</sup>, Warren Holley<sup>2</sup>, Andrew D. Howarth<sup>2</sup>

<sup>1</sup>Department of Physics and Astronomy, University of Iowa, Iowa City, 52242, United States

<sup>2</sup>Department of Physics and Astronomy, University of Calgary, Calgary Alberta, T2N 1N4, Canada

5 *Correspondence to:* Robert M. Broadfoot (robert-broadfoot@uiowa.edu)

## Abstract.

CASSIOPE/e-POP, now known as Swarm-Echo, was launched in 2013 to study polar plasma outflow, neutral escape, and the effects of auroral currents on radio propagation in the ionosphere. The e-POP suite contains an array of eight instruments which include two fluxgate magnetometers on a shared boom. Until now, the two magnetometers relied on a set of preflight calibrations which limited the accuracy of the magnetic field product and their utility for some applications. Here we present the results of an in-situ calibration performed ~~between~~ on data from January 3, 2014, to January 30, 2021, and a case study showing the improvements the calibration has made to the data utility. Periodic vector-vector calibration using the Chaos magnetic field model results achieves an estimated RMS uncertainty of 9 nT during nominal operation. This data ~~\_~~product is now openly available through the ESA Swarm repository.

## 15 1 Introduction

The CAScade Smallsat and Ionospheric Polar Explorer (CASSIOPE) containing the enhanced Polar Outflow Probe (e-POP) instrument suite (Yau and James, 2015) was launched in 2013 by the Canadian Space Agency in partnership with the University of Calgary, Communication Research Center in Ottawa, Magellan Aerospace, and MDA, the prime contractor for the mission. In 2018, the European Space Agency (ESA) adopted CASSIOPE into its Third Party Missions Programme and inducted it into the Swarm constellation (Friis-Chistensen et al., 2008) as Swarm-Echo. The original Swarm spacecraft have roughly circular orbits at ~450 km for A and C and >500 km for B. e-POP was considered to be a desirable addition to the Swarm constellation because the orbit is highly elliptical with perigee at ~330 km and apogee at ~1500 km at launch. As such, it sweeps out a broader range of altitudes than Swarm A/B/C.

The scientific mission for the e-POP instrument suite is to study the Earth's ionosphere, thermosphere, and magnetosphere while working to gain an understanding of plasma dynamics and their impact on radio propagation in the auroral ionosphere.

The e-POP suite contains an array of eight instruments which includes two fluxgate magnetometers (MGF) (Wallis et al., 2015) separated by 32 cm center-to-center on a 92.9 cm carbon fiber boom on a shared boom (Figure 1). Until recently, MGF relied on a set of pre-flight calibrations discussed in Section 2 which limited the accuracy of the magnetic field product and their utility for some applications. Fluxgate magnetometers calibrations can evolve slowly over time, particularly due to baseline drift, and the pre-flight calibrations cannot practically capture the stray fields from the spacecraft.

CASSIOPE is a three-axis stabilized spacecraft and uses reaction wheels to control the spacecraft attitude in a nominal +Z-to-nadir pointing mode (Figure 1) with magnetorquers used to periodically momentum dump the reaction wheels. Periodically, magnetorquers are used to momentum dump the reaction wheels. Originally, four reaction wheels were used to stabilize the spacecraft. However, in August 2016 one of the wheels failed and the remaining three wheels were slowed to compensate for this, and in February 2021 a second wheel failed which resulted in the remaining two being shut off while a solution to stabilize the spacecraft was investigated. Three months after re-acquiring a 3-axis stabilized attitude using two wheels, a third wheel failed in December 2021, forcing the spacecraft into a permanent spin-stabilized sun-pointing attitude. However, that time interval is beyond the scope of this manuscript.

Here we present the results of an in-situ vector calibration, performed to improve the accuracy of the MGF magnetometer data for the period comprising early mission through the failure of the second reaction wheel. We present the theory for vector magnetometer calibration, the limitations imposed by the existing pre-flight calibrations, the updates to the attitude determination software which were necessary for a successful calibration, the steps taken to select data for calibration, the results of the calibration over the entire mission length, a case study demonstrating the improved scientific utility of the MGF data, and future work planned to further improve the fidelity of the MGF data for the entire mission.

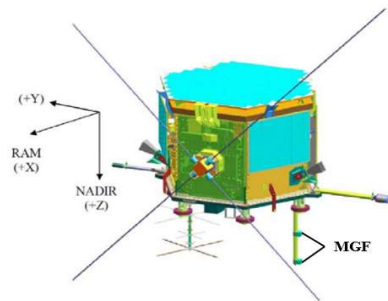


Figure 1: The CASSIOPE spacecraft showing the two MGF magnetometers mounted at different distances from the spacecraft body on a common boom. The coordinate system shown represents the Common Reference Frame (CRF) with +Z pointing nadir, +X pointing ram, and +Y completing the right-handed coordinate system.

## 2 Limitations of the pre-flight calibrations

Pre-flight calibration (Wallis, 2010) of the two MGF magnetometers was carried out from 2009-2010 at the Geomagnetic Laboratory of the Geological Survey of Canada at Anderson Road, Ottawa. An 8-foot Helmholtz Coil facility in Building 8 was used to cancel the main Earth field including local variations up to 4 Hz and apply various stimulus to characterize the sensitivity, orthogonality, instrumental zeros, and the rotation between the instruments. Additional tests were completed to

~~estimate temperature dependence and the mutual interference of the two sensors.~~ These calibrations allow a reasonable reconstruction of the magnetic field vector (Wallis et al., 2015); however, they have several limitations. There was no opportunity to attempt to estimate the stray magnetic field of the spacecraft prior to launch and, on orbit, zeros of the magnetometers are functionally the sum of the intrinsic instrumental zeros plus the static stray field of the spacecraft at the sensor position. The final deployment angle of the magnetometer boom could be estimated from a potentiometer in the joint but was insufficient to accurately rotate the measurements from the frame of each sensor to the Common Reference Frame (CRF) of the spacecraft and then into a geophysical frame. ~~Additional tests were completed to estimate temperature dependence and the mutual interference of the two sensors. Mutual interference was found to exist between the two sensors due to the modest 32 cm of separation between them. On CASSIOPE, the instruments share a common clock which mitigates any interference from the respective drive signals making the interference primarily one of gain error from the stray fields generated by each sensor's magnetic feedback. The preflight interference was characterized by calibrating the sensors against a variety of fields while powering the other sensor on and off independently. Maximum interference was found to be in the +Z direction (Wallis, 2010) with the presence of a second sensor causing an error of approximately  $-3.6 \times 10^{-4}$  nT/nT. On-orbit however, the sensors are never operated independently, so this effect is always present and is intrinsically captured by the instrument gains and then corrected by the application of the in-situ calibration.~~ The presented in-situ vector-vector calibration was developed to resolve these issues and improve the absolute accuracy of the MGF data product.

### 3 Vector calibration of magnetometers

Here we describe the process we implemented to perform a full vector calibration of a three-axis magnetometer compared against a reference magnetic field. The vector calibration performed, and notation, is based on the method used by Olsen et al., (2003).

The presented vector calibration utilizes the full vector information by minimizing the vector residuals between the measured field and a model field. Specifically, we minimize  $|\Delta \mathbf{B}| = |\mathbf{B}_{CRF} - \mathbf{B}_{ref,CRF}|$  to obtain the calibration parameters.  $\mathbf{B}_{CRF}$  is the magnetic field vector in the CRF of the spacecraft and  $\mathbf{B}_{ref,CRF}$  is a reference field in the same frame. Before the vector residuals can be minimized, we must first characterize the relationship between the raw sensor data (in a slightly non-orthogonal reference frame) and the magnetic field vector. We assume that the raw sensor data ~~have~~has error in offset ( $\mathbf{b}$ ), sensitivity ( $\mathbf{S}$ ), orthogonality ( $\mathbf{P}$ ), and rotation ( $\mathbf{R}_A$ ).

Let  $\mathbf{E}$  be the raw sensor data (in ~~engineering units, eu#F~~) that is related to the magnetic field vector  $\mathbf{B}_{CRF}$  in the common reference frame by

$$\mathbf{E} = \mathbf{S} \mathbf{P} \mathbf{R}_A \mathbf{B}_{CRF} + \mathbf{b} \quad (1)$$

where,

85

$$\mathbf{b} = \begin{pmatrix} b_1 \\ b_2 \\ b_3 \end{pmatrix} \quad (2)$$

is a vector of offsets (given in units of  $\frac{\text{eu}}{\text{nT}}$ ) comprising the superposition of the instrumental zeros and the static stray field of the spacecraft platform,

$$\mathbf{S} = \begin{pmatrix} S_{1x} & 0 & 0 \\ 0 & S_{2y} & 0 \\ 0 & 0 & S_{3z} \end{pmatrix} \quad (3)$$

90

is a diagonal matrix with each element representing a **dimensionless** scale value (often called sensitivity (given in units of  $\frac{\text{eu}}{\text{nT}}$ ) for each magnetometer axis. Based on the results of the pre-flight calibrations (Wallis, 2010) we assume that electronic cross-talk between channels is negligible and hence the non-diagonal terms can be assumed to be zero.

$$\mathbf{P} = \begin{pmatrix} 1 & 0 & 0 \\ -\sin(u_1) & \cos(u_1) & 0 \\ \sin(u_2) & \sin(u_3) & \sqrt{1 - \sin^2(u_2) - \sin^2(u_3)} \end{pmatrix} \quad (4)$$

$$\mathbf{P} = \begin{pmatrix} 1 & \theta & \theta \\ \frac{\sin(u_1)}{\cos(u_1)} & \cos(u_1) & \theta \\ \frac{\sin(u_2)\cos(u_3)}{\cos(u_1)} & \cos(u_2)\sin(u_3) & \cos(u_2)\cos(u_3) \end{pmatrix} \quad (4)$$

95

is a matrix that describes the projection of the magnetometer by angles  $u_1, u_2, u_3$  (one for each axis pair) from a non-orthogonal frame into an orthogonal one.  $\mathbf{R}_A$  is a rotation matrix (order '1-2-3' in the case of MGF) consisting of three separate Euler angles  $e_1, e_2, e_3$  which describes the rotation between the magnetometer reference frame and the common reference frame. It should be noted that the choice of rotation order is largely arbitrary as long as it is able to fully describe the rotation from the instrument reference frame into the CRF. The rotation parameters do not have any effect on the magnitude of the calibrated field, however, but are necessary for the vector calibration to ensure the alignment of the frame of the sensor data and the reference field.

100

These 12 basic calibration parameters (3 offsets, 3 sensitivities, 3 orthogonalities, and 3 Euler angles allow us to find the magnetic field vector in the common reference frame from the sensor data using

$$\mathbf{B}_{CRF} = \mathbf{R}_A^{-1} \mathbf{P}^{-1} \mathbf{S}^{-1} (\mathbf{E} - \mathbf{b}) \quad (5)$$

with,

105

$$\mathbf{S}^{-1} = \begin{pmatrix} \frac{1}{S_{1x}} & 0 & 0 \\ 0 & \frac{1}{S_{2y}} & 0 \\ 0 & 0 & \frac{1}{S_{3z}} \end{pmatrix} \quad (6)$$

and,

$$\mathbf{P}^{-1} = \begin{pmatrix} 1 & 0 & 0 \\ \frac{\sin(u_1)}{\cos(u_1)} & \frac{0}{1} & 0 \\ \frac{\sin(u_1)\sin(u_3) + \cos(u_1)\sin(u_2)}{w\cos(u_1)} & \frac{\cos(u_1)}{w\cos(u_1)} & \frac{1}{w} \end{pmatrix} \quad (7)$$

$$\mathbf{P}^{-1} = \begin{pmatrix} 1 & \theta & \theta \\ -\tan(u_1) & \frac{\pm}{\cos(u_1)} & \theta \\ \tan(u_1)\tan(u_2) & \frac{\tan(u_2)}{\cos(u_1)} & \frac{\pm}{\cos(u_2)\cos(u_2)} \end{pmatrix} \quad (7)$$

Where  $w = \sqrt{1 - \sin^2(u_2) - \sin^2(u_3)}$  and  $\mathbf{R}_A^{-1} = \mathbf{R}_A^T$  from the properties of rotation matrices.

110 The twelve calibration parameters can now be obtained by minimizing the difference of the squared residuals

$$\|\mathbf{B}_{CRF} - \mathbf{B}_{REF,CRF}\|^2 \quad (8)$$

in a least squares sense.

Obtaining the parameters this way will involve solving a set of non-linear equations which will be dependent on initial guess parameters. However, following the procedure outlined in Olsen et. al., (2020), equation (5) can be rewritten as

$$115 \quad \mathbf{R}_A^{-1}\mathbf{P}^{-1}\mathbf{S}^{-1}(\mathbf{E} - \mathbf{b}) = \mathbf{A}\mathbf{E} + \tilde{\mathbf{b}} \quad (9)$$

where  $\mathbf{A} = \mathbf{R}_A^{-1}\mathbf{P}^{-1}\mathbf{S}^{-1}$  is a 3x3 matrix and  $\tilde{\mathbf{b}} = -\mathbf{A}\mathbf{b}$ . This now allows the equation to be solved as a linear inverse problem which is no longer dependent on initial guess parameters.

The calibration parameters can then be determined by reforming the linearized results of  $\mathbf{A}$  into matrix form and decomposing using QL decomposition, which decomposes  $\mathbf{A}$  into two matrices:  $\mathbf{Q}$  and  $\mathbf{L}$ . Here  $\mathbf{Q}$  is an orthogonal matrix and  
 120  $\mathbf{L}$  is a lower triangular matrix. There are different algorithms to perform this decomposition, here we use a Matlab function (Houtzager, 2022) that performs this task. This algorithm treats  $\mathbf{Q}$  as a product of a series of elementary reflectors and uses these to reduce the matrix  $\mathbf{L}$  to lower triangular form column by column (Parlett, 1998). Other methods of matrix decomposition yield different matrix forms (QR, LQ, LU, etc). However, QL decomposition matches the form of the matrices used to originally create  $\mathbf{A}$ . As such, we can set  $\mathbf{Q} = \mathbf{R}_A^{-1}$  and  $\mathbf{L} = \mathbf{P}^{-1}\mathbf{S}^{-1}$ . From there, the three Euler angles can  
 125 be obtained from the elements of  $\mathbf{Q}$ . Since  $\mathbf{L}$  is a lower triangular matrix, which combines two separate matrices, we must use the knowledge that the three sensitivities must be positive, then the orthogonalities and sensitivities can be solved for using algebra. Lastly, the offsets can be obtained from  $\mathbf{b} = -\mathbf{A}^{-1}\tilde{\mathbf{b}}$ .

In addition to the twelve basic calibration parameters, other missions such as Cryosat-2 (Olsen et. al, 2020) and Ørsted (Olsen et. al, 2003) have had success expanding equation (9) to consider additional effects due to non-linearity and cross-talk  
 130 and expanding individual terms to take temporal variations as well as effects from external sources such as temperature and stray current from the solar panels and batteries into consideration. These additional parameters may reduce outliers in the data and improve the overall fit with the reference field as well as reduce the variability of the individual calibration

parameters. For this paper, however, we will focus on the improvements in the data fidelity from the 12 basic parameters only, with the inclusion of the additional terms and regularization being considered for future work.

#### 135 4 Required updates to CASSIOPE attitude solution

An accurate attitude solution is critical to a successful vector calibration. It is used to rotate the reference magnetic field from a geophysical coordinate system into the coordinate system of the magnetometers. Though CASSIOPE has several methods to determine spacecraft attitude, the difference between the quality of attitude sources is large. Deficiencies were found in the original attitude determination software that impacted the overall quality of the attitude solution. This section will focus on the updates that were made to the attitude determination software with Section 5 detailing the method used to select quality attitude data and rotate the reference magnetic field into the magnetometer's coordinate system. The previous attitude solution was used for versions 1.x.x of the data product whereas the improved solutions were used for 2.x.x. The current attitude file version of 1.3 should not be confused with the data product version. The Swarm-Echo attitude determination system is composed of a micro-Advanced Stellar Compass ( $\mu$ ASC) with two camera heads provided by the Technical University of Denmark, six Adcole 46300 coarse sun sensors (CSS), and two Billingsley TFM-100S magnetometers. Fine attitude knowledge is achieved via the  $\mu$ ASC, with the coarse sun sensors and magnetometers providing coarse solutions when a  $\mu$ ASC solution is not available. The  $\mu$ ASC is specified by the manufacturer to provide solutions with errors less than 2 arcseconds ( $3\sigma$ ) until end of life (Jørgensen et al., 2003), though there is a known mounting angular offset of  $\sim 0.447$  degrees to bring the two cameras into agreement, which is averaged across both cameras.~~The  $\mu$ ASC components provide solutions with errors in the range of  $< 2$  arcseconds ( $3\sigma$ ) (Jørgensen, 2003), though there is a known mounting angular offset of  $\sim 0.447$  degrees to bring the two cameras into agreement, which is averaged across both cameras.~~ The attitude solutions provided by the Attitude Determination and Control System (ADCS) derived from CSS have a known error of up to 30 degrees ( $2\sigma$ ) which makes them unsuited for calibrating or transforming the MGF instruments and these intervals are rejected during data processing. Early mission attitude data ~~was were~~ generated only as Yaw-Pitch-Roll (YPR) values using the AGI Systems Toolkit (STK) from onboard pre-processed attitude telemetry from Swarm-Echo's ADCS. The original system merged the higher-accuracy solutions generated from the star-trackers with the low-accuracy solutions from the CSS and treated it as a continuous dataset. This caused STK to reject or discard large sections of the attitude solution or provide solutions with visible steps in the data when the system would transition between attitude determination sources. Reproducibility of these events was a challenge as there is limited visibility into the STK software. Early on, this was less of an issue as the cameras were still new. However, as the cameras aged and were exposed to radiation on-orbit the individual star tracker solutions began to diverge from each other, and increasingly more data began to be rejected. The degrading quality of the data necessitated a change to the attitude determination algorithms. The revised attitude solution included improved alignment between different star camera modes, corrections for ~~ehromatic-orbital and annual~~ aberration which are caused by the relative velocity of the stars within the camera heads and thermal effects in the star cameras. These corrections

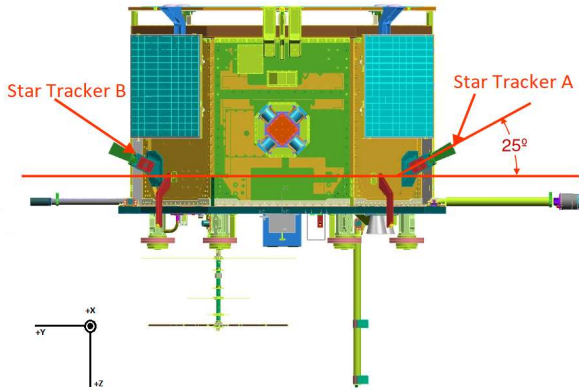
165 ~~closely follow the procedures outlined in the Swarm Level 1b Processor Algorithms (SW-RS-DSC-SY-0002).~~ Additionally, ~~corrections were made and corrections~~ to frame, location, and epoch transforms. The details of these corrections will be covered in a forthcoming publication by the CASSIOPE science operations team. Switching to a Spherical linear interpolation (Slerp) or a Spherical QUADrangle (SQUAD) (Shoemake, 1987) interpolation rather than per-element interpolation further improved the robustness of the attitude transform by enforcing continuity and smoothness of the attitude solution over multiple measurement points which is appropriate for a physical spacecraft moving in physical space. Switching to a SQUAD/SLERP interpolation rather than per-element interpolation further improved the robustness of the attitude transform.

### 5 Attitude ~~pre-processing~~ selection and reference field rotation

175 In-situ calibration of the MGF instruments requires rotating the reference magnetic field from its native North, East, Center (NEC) frame into the local CRF frame of the spacecraft by convolution against the spacecraft attitude solution. ~~In-situ calibration of the MGF instruments requires rotating the reference magnetic field into the CRF from its native North, East, Center (NEC) frame into the local frame of the spacecraft by convolution against the spacecraft attitude solution.~~ As noted above, the spacecraft attitude solution is obtained from multiple sensors that must first be rotated from their native reference frames and merged into the CRF. Each primary attitude datum is provided by an individual  $\mu$ ASC solution. The position of the camera heads is on the Y-axis of the spacecraft (Figure 2), separated by 130° in the Y-Z plane, with the optical axis 25° from the X-Y plane (Figure 2). The coordinate system that defines this spacecraft (SC) coordinate system, when spacecraft Yaw, Pitch, and Roll are zero, is +X points towards ram, +Z points nadir, +Y completes the right-handed coordinate system (Figure 1 and Figure 2).

Formatted: Heading 1 Char

185



**Figure 2: Location and orientation of the two star-tracker camera heads that provide the e-POP attitude solution.**

The highest quality secondary-source solution is the onboard-merged ‘dual’  $\mu$ ASC solution, which is considered of lower quality to ground-processed camera solutions as the algorithm used to merge them onboard cannot be separated into the separate solutions for thermal correction. Following this, attitude solutions derived from the coarse sun sensors & bus magnetometer are considered. Solutions that use calibrated solar-vector and magnetic-field steering are considered first, followed by solutions using uncalibrated vector and field estimates. These solutions are used in fine-steering dropouts of greater than 5 seconds, and 2 minutes respectively. Periods where there are no attitude sources available for extended periods of time (10 minutes) have zero-quaternion sentinel solutions placed surrounding the period. This is both to segment interpolation, and to limit the availability of incorrect solutions. The attitude solutions are then rotated ~~from the coordinate frame of the source~~ into CRF to bias interpolation towards the nominal operational attitude on CASSIOPE. These off-cadence ‘definitive’ solutions are then interpolated to 1Hz using SQUAD (Shoemaker, 1987) quaternion interpolation. ~~The CRF contains a small known offset regarding its alignment with the SC frame, and it should be noted that while both frames contain the same direction convention, CRF refers to the SC coordinate system from the perspective of the merged quaternions, including any uncertainties in the merged solution.~~ These interpolated quaternions are then rotated into the International Terrestrial Reference Frame (ITRF) with a ~~BodyCRF~~-to-ITRF transform for publication in the Swarm-Echo attitude CDF product. ~~The mathematics for the CRF-to-ITRF transformation will be detailed in the forthcoming publication mentioned in Section 4.~~ Supplementary metadata ~~is-are~~ also derived from these definitive solutions, such as Time-To-Solution & Data-Source, to allow for the accuracy of both the interpolation and the raw data source to be measured and ~~is-are~~ included in the MGF data product. One additional rotation is performed for the final MGF data product CDF which rotates the quaternions from ITRF to the North East Center (NEC) frame.

The process to perform this rotation involves generating the quaternions from the rotation matrix that describes the rotation from the ITRF position data into NEC and each matrix row is generated in reverse order (i.e. Center, East, North) and can be obtained by the following equations

$$Center = -\frac{\mathbf{r}}{|\mathbf{r}|} \quad (10a)$$

where  $\mathbf{r}$  is the ITRF position vector, then,

$$East = Center \times (0,0,1) \quad (10b)$$

and finally,

$$North = East \times Center \quad (10c)$$

which completes the right-handed coordinate system.

The matrix terms are then converted into quaternions  $q_{NEC \rightarrow ITRF}$  and multiplied with the  ~~$q_{ITRF \rightarrow CRF} q_{ITRF \rightarrow SC}$~~  to make  ~~$q_{NEC \rightarrow CRF} q_{NEC \rightarrow SC}$~~  quaternions which are included in the MGF data product and allow us to transform our reference magnetic field model, whose native coordinates are NEC, into the local CRF of the measured magnetic field data to enable vector-vector calibration.



220 [Preliminary analysis suggests that the accuracy of the ephemeris is comparable to the values determined by Montenbruck et al., 2019. The daily attitude files are in CDF format and contain the  \$q\_{ITRF \rightarrow CRF}\$  quaternions and the daily ITRF position files are in SP3 format which is a precise ephemeris format developed by the National Geodetic Survey to store orbit information. Both are publicly available at <https://epop-data.phys.ucalgary.ca/>.](#)  
225 [The daily attitude files in CDF format containing the  \$q\_{ITRF \rightarrow SC}\$  quaternions and the daily ITRF position files in SP3 format are publicly available at <https://epop-data.phys.ucalgary.ca/>.](#)

## 6 Data selection and calibration

As e-POP lacks an absolute scalar magnetometer, our in-situ calibration method requires that the data for calibration be compared against a reference magnetic field. We use the Chaos-7.7 field model (Finlay et al., 2020) which includes  
230 contributions from the core, lithospheric, and external (such as large-scale magnetosphere). We select data that falls within  $\pm 55^\circ$  geographic latitude, since the Chaos model does not contain terms to account for disturbances in the polar regions. However, before we perform the calibration, additional data selection and processing is performed to limit outliers in the calibration.

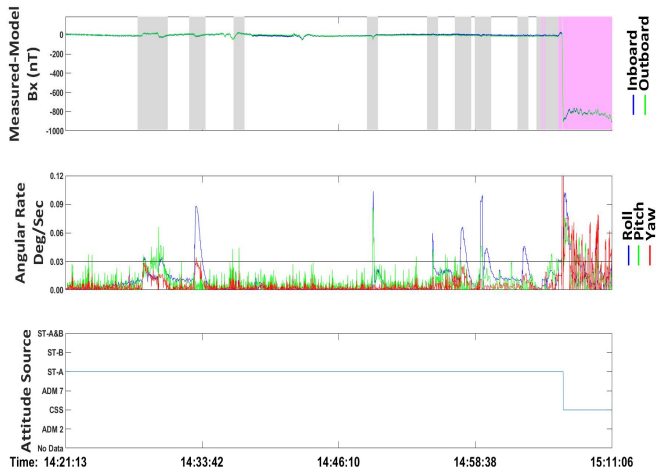
Prior to in-situ calibration, we reduce the data from its native 160 sps to 1 sps to reduce the computational burden. We bin  
235 the data into seven-day intervals, which is an experimentally determined balance of sufficient data for a robust calibration while capturing time-varying effects. There are exceptions to this rule, especially prior to the first wheel failure when data coverage in non-polar latitudes was extremely sparse.

We have found that the quality of data selected to derive the in-situ calibrations is generally more important than the quantity of data. Consequently, we cull the data used for the calibration using information from the attitude, bus telemetry, and  
240 location files, as well as conditions given by the Kp and Disturbance storm time (Dst) indices to identify intervals where the spacecraft signal is low, the geomagnetic field is undisturbed and hence well represented by the Chaos model, and we are far from likely auroral disturbances.

For calibration, we select data that fall within  $\pm 55^\circ$  latitude during geomagnetically quiet times. We consider geomagnetically quiet to be when the Kp index does not exceed 3 or the Dst index does not exceed a change of 3 nT per  
245 hour when the data were taken. From the attitude files we flag any data where the attitude solution was not generated by at least one of the star tracker cameras, due to the large (up to  $30^\circ$ ) error in solutions generated from the CSS as mentioned in section 4. We also flag any data where the signal has dropped out for greater than ten seconds or there is greater than ten seconds until the next signal is obtained due to potentially large errors when interpolating the attitude solution. Lastly, we flag any data where the rotation rate of the spacecraft exceeds 0.03 degrees/sec.

250 Figure 3 shows these flags as well as the source of the provided attitude solution and the effect they have on the data. The discrepancy of approximately -800 nT between solutions derived from a single star tracker camera (ST-A) and those derived

from the CSS justify the exclusion of attitude solutions not derived from at least one star-tracker for the data used in calibration. From the Bus telemetry files we flag any data where the magnetorquers were engaged as they suddenly produce a 6000 nT step of stray field on axis at 1 m (Wallis, 2010) which exceeds the bandwidth of MGF, rendering the data clipped and unusable. From the Bus telemetry files we flag any data where the magnetorquers were engaged while the sensors were operating. The magnetorquers saturate the sensor readings rendering the data unusable. It should be noted that even though the flagged data are excluded from the calibration process, all data and attitude flags are included in the daily MGF data product so the user can decide if the flagged data are useable.





**Figure 3: (Top)** Residuals for the  $B_x$  component for inboard (blue) and outboard (green). Areas marked in yellow represent any point where the rotation rate exceeded 0.03 deg/sec or the attitude solution was not generated by at least one star-tracker camera. The various flags applied to the sensor data. Gray represents points where the angular rotation rate of the spacecraft exceeds 0.03 degrees/sec. Pink represents places where the attitude solution was not generated by at least one star-tracker camera or where it has been longer than ten seconds since the last attitude signal has been received or it will be longer than ten seconds until the next attitude signal will be generated. (Middle) The angular rotation rate corresponding to the data in the top plot. (Bottom) The seven potential attitude sources for the data which have significantly different accuracies of solution. The potential errors in the attitude solution derived from CSS versus one of the star-tracker cameras is clearly shown by the transition from ST-A (star tracker A only) to CSS (coarse sun sensor).

After the extensive filtering described above, we use iteratively re-weighted least squares to minimize the difference in the vector residuals between the sensor data and the Chaos model for each seven-day interval.

$$\mathbf{d}^T \mathbf{W} \mathbf{d} \quad (11)$$

Where  $\mathbf{d}$  is the residual vector  $\mathbf{B}_{CRF} - \mathbf{B}_{Chaos}$ , containing all the selected data for the seven-day interval and  $\mathbf{W}$  is a weight matrix. We use Huber weights (Huber, 1981) where the elements of the weight matrix are determined by the following criteria

$$\mathbf{W} = \begin{cases} |\mathbf{r}|^{-1} & \mathbf{r} > 1 \\ 1 & \mathbf{r} \leq 1 \end{cases} \quad (12a)$$

where  $\mathbf{r}$  is determined from a combination of the residuals ( $\mathbf{d}$ ), the leverage ( $\mathbf{h}$ ), the median absolute deviation of the residuals ( $\mathbf{s}$ ), and a tuning constant ( $c$ ) and is given by

280

$$r = d(cs\sqrt{1-h})^{-1} \quad (12b)$$

with  $c = 1.345$  (Holland and Welsch 1977) as it is less sensitive to outliers in non-polar latitudes.

## 7 Results/Discussion

285

Calibrations were performed for the period of January 3, 2014 to February 4, 2021, for all data up to the second wheel failure. This resulted in a total of 323 7-day calibrations after accounting for periods with sparse coverage or an insufficient amount of quality data for the calibration to converge. A mission-averaged static calibration was calculated from the 323 results and compared with the sensitivities and orthogonalities from the preflight calibrations (Table 1). No pre-flight estimates are shown for the rotations due to the potential variability of the boom deployment. The calculated pre-flight zeros (Wallis, 2010) are included for completeness. However, it should be noted that these zeros are not the same as the offsets calculated as part of the in-situ calibration as they only represent the intrinsic zero-offsets of the sensor and electronics electronics and do not include effects from stray field from the as it was not possible to quantify those prior to integration. The large offset in  $b_1$  for the outboard sensor is likely due to a magnetized object on the boom near the sensor – the survival heater added to the boom during final integration is a potential candidate. Additionally, a sign error was discovered in the equation used to calculate the pre-flight orthogonalities, which accounts for the flipped sign of the values. No pre-flight offsets are shown since the pre-flight measurements of the instrumental zeros did not include the stray spacecraft field experienced by the sensors. The

290

After accounting for the two discrepancies mentioned in the previous paragraph, the similarities between the two give us confidence in our mission averaged result. Any 7-day interval that lacked sufficient data for calibration after culling based on the criteria from section 6 will instead rely on the mission-averaged value to provide potential scientific utility to the usable data in those sets. Additionally, the calibration values that converged were compared against the mission average (Figure 4) results for orthogonality. We determined that jumps in orthogonality larger and +/- 0.1° would be non-physical as it would cause a catastrophic failure in the physical integrity of the sensor itself. This resulted in 22 (6.8 %) of the calibrations to be replaced with the mission-averaged values.

300

-	In-situ Calibration		Preflight Calibration	
	Inboard	Outboard	Inboard	Outboard
$S_x$ [eu/nT]	1.0044	1.0024	1.0044	1.0025
$S_y$ [eu/nT]	0.9979	1.0020	0.9984	1.0029
$S_z$ [eu/nT]	1.0503	1.0534	1.0473	1.0519
$O_{xy}$ [°]	90.13	89.89	90.12	89.93
$O_{xz}$ [°]	90.29	90.12	90.10	90.02
$O_{yz}$ [°]	89.99	89.96	89.81	89.93
$e1$ [°]	-2.73	-2.68		
$e2$ [°]	0.09	-0.21		

$e_3$ [°]	2.23	1.96		
offX [nT]	1.47	-199.41		
offY [nT]	2.10	1.20		
offZ [nT]	8.33	24.22		

Table 1: Mission averaged values for the inboard and outboard sensors compared to the values obtained from the preflight calibrations. The large offset for Outboard X is likely due to a large stray field being generated from the boom near the sensor. Orthogonalities are given in degrees and displayed as 90+Orthogonality.

305

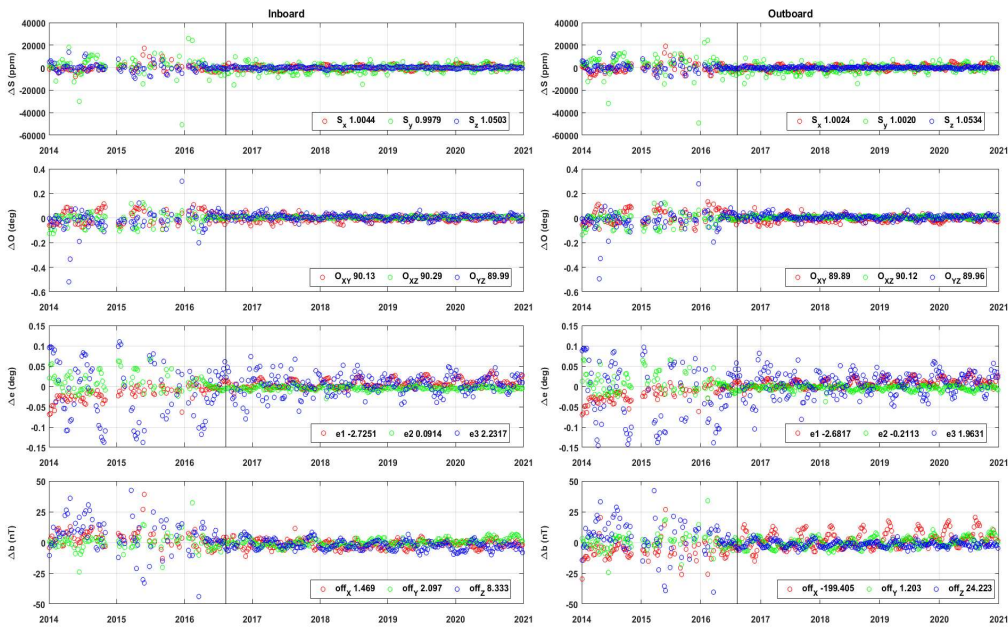
	In-situ Calibration		Preflight Calibration	
	Inboard	Outboard	Inboard	Outboard
$S_1$ [eu/nT]	1.0044	1.0024	1.0044	1.0025
$S_2$ [eu/nT]	0.9979	1.0020	0.9984	1.0029
$S_3$ [eu/nT]	1.0503	1.0534	1.0473	1.0519
$u_1$ [°]	89.87	90.11	90.12	89.93
$u_2$ [°]	89.71	89.88	90.10	90.02
$u_3$ [°]	90.01	90.04	89.81	89.93
$e_1$ [°]	2.73	2.68		
$e_2$ [°]	-0.09	0.21		
$e_3$ [°]	2.23	1.96		
$b_1$ [eu]	1.47	-199.41	1.6*	2.5*
$b_2$ [eu]	2.10	1.20	2.9*	6.6*
$b_3$ [eu]	8.33	24.22	3.6*	3.5*

Table 1: Mission averaged values for the inboard and outboard sensors compared to the values obtained from the preflight calibrations. A sign error was discovered in the original matrix used to calculate the preflight orthogonalities which is why the discrepancy between them is so large. Orthogonalities are given in degrees and displayed as 90+Orthogonality. The large offset for Outboard  $b_1$  is likely due to a magnetized object on the boom near the sensor. The pre-flight values marked with '\*' represent the instrument zeros, or the offsets that would be measured by the magnetometer in zero magnetic field and are not the same as the in-situ offsets which include effects from stray-field from the spacecraft.

310

Every rejected calibration set occurred prior to the first wheel failure in August 2016. While the sparsity of the data likely plays a significant role in the variability, the values show a noticeable decrease in variability in the calibration set immediately following the loss of the first wheel as seen in Figure 4. The larger variability in the outboard sensor is likely due to the large offset seen in the  $b_1$ , and to a lesser degree  $b_3$  components. As the numbers are much larger in comparison to the other results, the variation in those values is also proportionally larger. It should also be noted that maximum data coverage did not occur until the later years in the mission. This implies that the reaction wheel tone has a significant impact on the calibration results and that steps will need to be taking-taken to mitigate the wheel tone in future data releases and doing so should have a significant impact on the calibration results for the early mission.

315



320

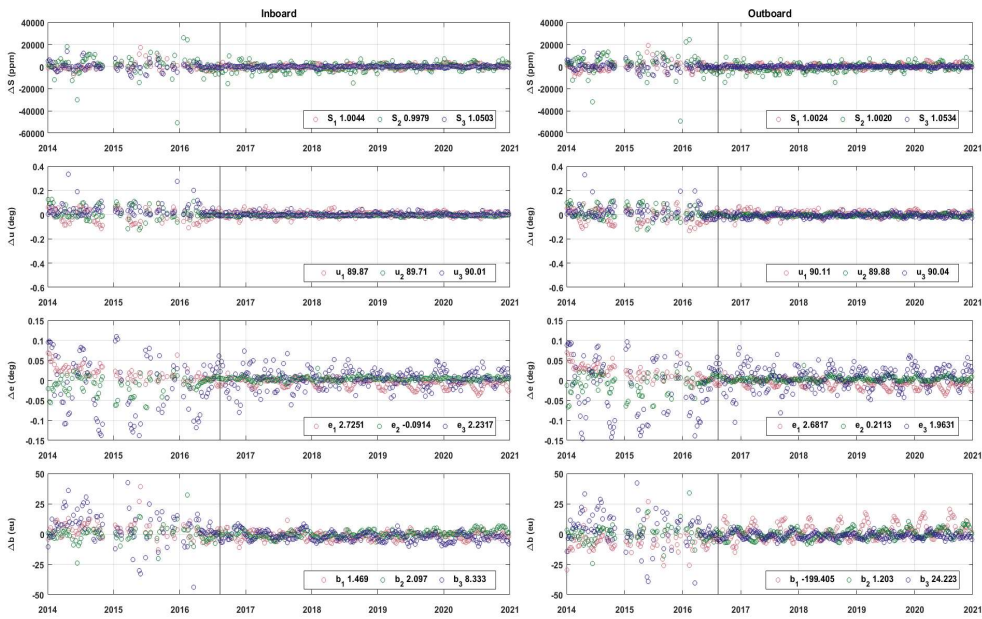


Figure 4: Deviation of individual calibration results from the mission average. Mission-averaged values shown in legends. The greatest amount of variability in the results occurs prior to the first reaction wheel failure in August 2016 which is denoted by the black vertical line in each plot. Periodic behavior seen in the results is planned to be mitigated in future data releases using regularization.

325

To further validate the calibration results we calculated the residuals for all 1-Hz data compared to the Chaos model for the calibration set until the start of 2021 (Figure 5). The results show, as expected, that the residuals in the non-polar latitudes ( $\pm 55^\circ$ ) are small and increase in the auroral latitudes. The darker area in the residuals represents the rms error for the residuals at that degree of latitude.

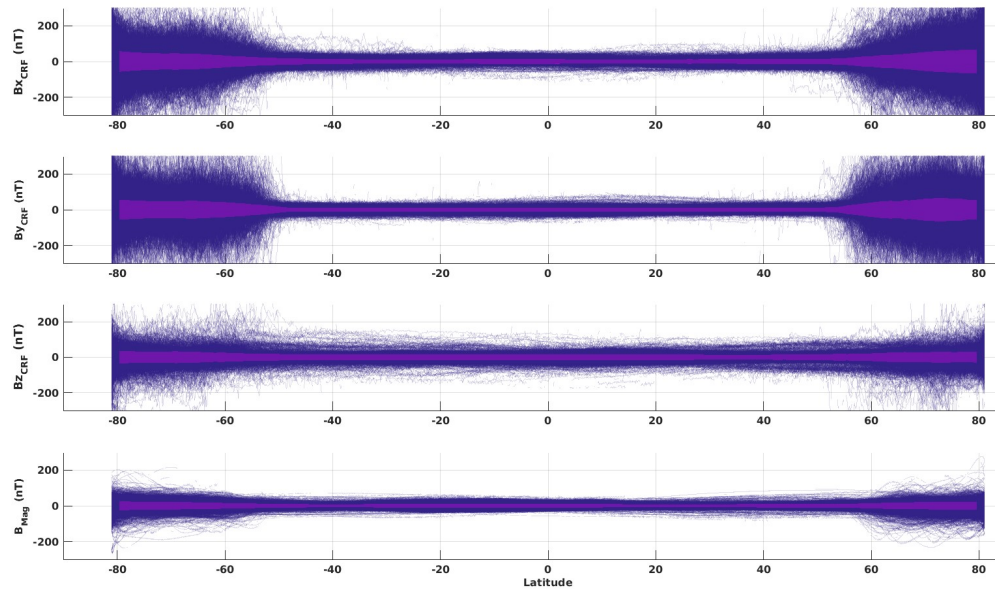
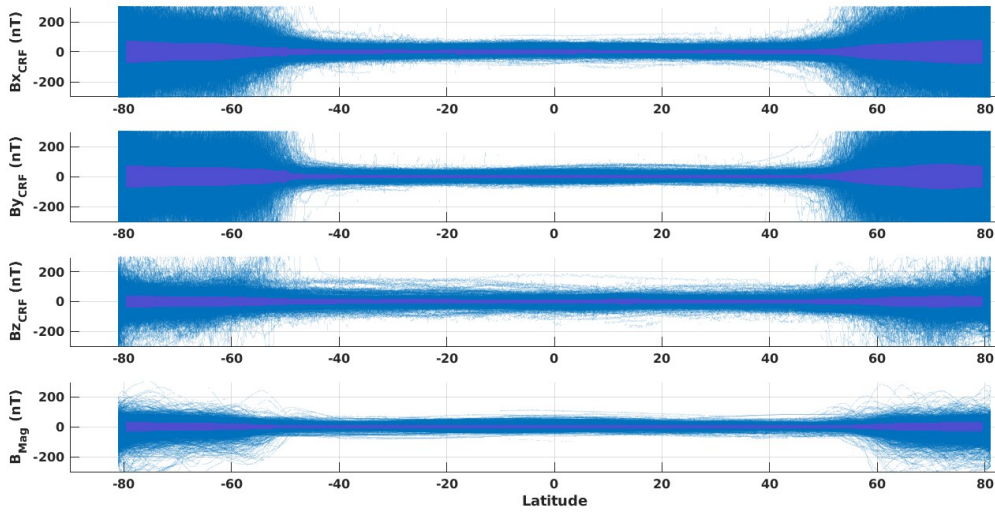




Figure 5: All calibrated 1-Hz residuals for the outboard sensor with the Chaos model versus latitude. The same data culling as in section 6 was used for this plot and any data that did not meet that criteria was not included. The darker section in the data represents the RMS error for the data binned by each degree of latitude.

335 We then calculated the average residuals and average rms error for non-polar latitudes by year (Table 2) to see to what degree the increased data coverage and loss of the first reaction wheel affected the results. As expected, the largest improvements in the averaged residuals occurred between 2015 and 2017 with the average residuals and rms error steadily improving each year. We expect to improve on these initial numbers in future data releases by adding additional terms to the calibration such as temperature and major spacecraft bus currents.

Inboard														
	2014		2015		2016		2017		2018		2019		2020	
	avg	rms	avg	rms	avg	rms	avg	rms	avg	rms	avg	rms	avg	rms
$B_x$	-2.80	13.97	-2.91	14.61	-0.21	13.73	0.61	13.23	0.40	12.79	0.33	11.65	0.26	11.58
$B_y$	0.86	20.34	-0.81	22.13	0.15	11.19	-0.04	10.64	0.16	10.30	0.27	9.91	-0.14	9.32
$B_z$	-1.53	10.71	0.75	12.12	-0.18	11.26	0.09	10.77	-0.17	10.84	0.03	11.11	0.00	10.67
$ B $	-2.80	16.21	-2.91	19.23	-0.21	9.23	0.61	9.76	0.40	9.05	0.33	8.81	0.26	8.85

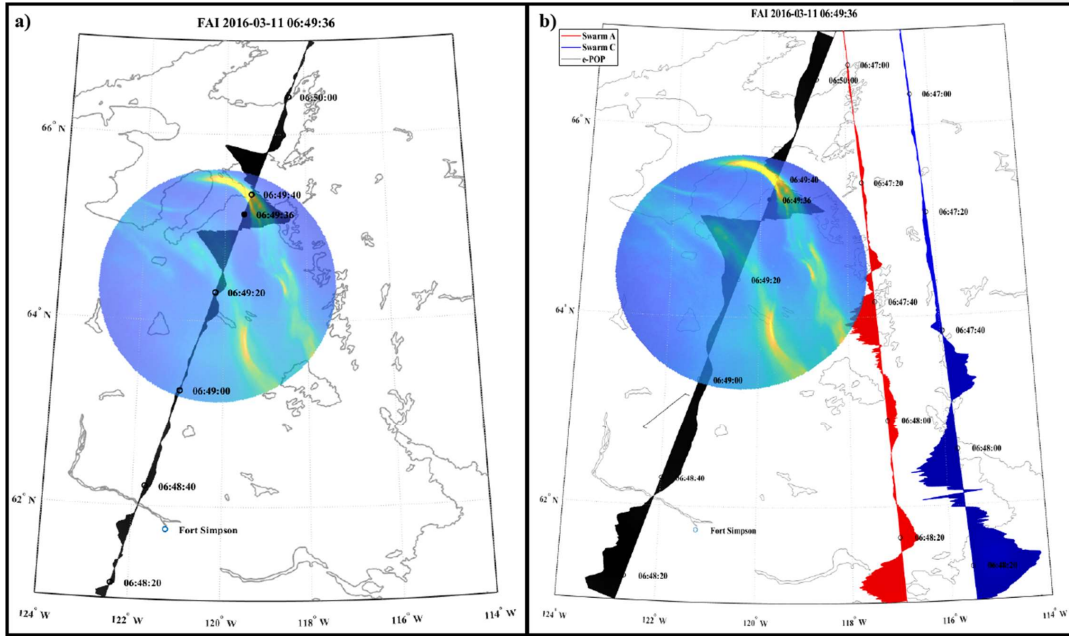
  

Outboard														
	2014		2015		2016		2017		2018		2019		2020	
	avg	rms	avg	rms	avg	rms	avg	rms	avg	rms	avg	rms	avg	rms
$B_x$	2.87	17.12	3.63	18.73	0.46	13.58	0.53	12.99	0.42	12.67	0.27	11.71	0.07	11.61
$B_y$	1.27	14.70	-1.29	14.92	0.17	11.22	-0.10	10.48	0.28	10.14	0.25	9.80	-0.10	9.17
$B_z$	-0.52	19.91	1.59	21.99	-0.39	11.00	0.13	10.40	-0.23	10.41	0.02	10.64	-0.01	10.15
$ B $	2.87	11.35	3.63	13.28	0.46	8.81	0.58	9.34	0.42	8.57	0.27	8.45	0.07	8.33

340 Table 2: Average residuals and average RMS error for non-polar latitudes by year. The largest change in average residuals occurred between 2015 and 2017, coinciding with the loss of the first reaction wheel and subsequent slowing of the remaining wheel rates. The steady improvement in the results every year after can be attributed to the increased data coverage.

To show improvements made to the data utility, we present a case study of a recreation of Figure 1 from Miles et al. 2018 (Figure 6) using the newly calibrated data and improved attitude/location data. The original publication used the spacecraft cross-track  $B_y$  component as the calibration and attitude solution were not sufficient to use the geophysical data. It can be immediately seen that the presumed non-physical features between 62° and 64° geographic latitude in the original figure were removed while features between 64° and 66° geographic latitude that correspond with aurora visible in the superimposed image were retained. The improved attitude solution and calibration successfully mitigate non-physical magnetic variation due to platform motion while preserving legitimate changes  $\tau$  in in-situ geophysical field. This plot combines the calibrated MGF data for the cross-track magnetic field along the path of the spacecraft from the outboard sensor (to reduce the effects of stray field from the spacecraft) with the Fast Auroral Imager (FAI). The black dot at 06:49:36 represents the position of the spacecraft when the overlaid auroral image was taken, and all other magnetic field readings are not associated with that image. While the purpose of this case study is to show the initial improvements made to the MGF data, it also shows one of many possible ways that scientific data from the instruments aboard Swarm-Echo can be

355 combined to explore different events. In addition to the MGF data product, data for the FAI and other instruments are also publicly available at <https://epop-data.phys.ucalgary.ca/>



360 Figure 6: a) Recreation of Figure 1 from Miles et al., 2018, but using the updated spacecraft attitude solution and vector calibration. Black shows magnetic variations in the outboard sensor NEC East component associated with the auroral currents visible in the superimposed image. b) Excerpted reproduction of Figure 1 from Miles et al, 2018 with font changed to improve visibility. Black shows the cross-track spacecraft B<sub>y</sub> component. **The red and blue traces in b) show the cross-track magnetic field for Swarm A and Swarm C respectively reproduced from the original publication. Care should be taken when interpreting the image. The solid dot at 06:49:36 represents CASSIOPE's position when the overlaid image was taken. As such, only the portion of the magnetometer data that coincides with that dot is related to what was being detected. Care should be taken when interpreting the image. The solid dot at 06:49:36 represents CASSIOPE's position when the overlaid image was taken so only the portion of the magnetometer data that coincides with that dot is related to what was being detected.**

### 8 Future Work

370 The presented calibration is robust and a significant improvement to the static pre-flight calibration used previously. However, work on improving upon the results is ongoing. The work reported in this paper only focused on using the 12 standard calibration coefficients to improve the utility of the MGF data product. [The housekeeping data from the BUS telemetry files will be used to identify when the various spacecraft subsystems turn on or off in an attempt to identify them as potential noise sources. However, the current dominant noise source is the reaction wheel tone \(Finley et al., 2022\). Once](#)

375 ~~the wheels are mitigated for data prior to the first reaction wheel failure, we expect to be able to characterize and remove the~~  
376 ~~stray fields resulting from various supply currents in the spacecraft and include those results in the next data release. The final~~  
377 ~~goal for the next data release will be to regularize the calibrations using a lasso regularization (Tibshirani, 1996) which will~~  
378 ~~reduce the variability in the individual calibration results by penalizing outlier values based on an a priori model. Looking~~  
379 ~~further ahead, Ness-style gradiometer noise removal was intended as part of the initial mission design (Wallis, 2015);~~  
380 ~~however, it was found to exacerbate the already significant reaction wheel tone. Once the wheel removal algorithms are~~  
381 ~~operational (Finely et al., 2022), we hope to revisit using this as a potential method of noise removal. The next data release~~  
382 ~~will include calibration terms with dependencies such as temperature fluctuations and time-dependant stray fields generated~~  
383 ~~from either the batteries or the solar panels. Additionally, we will explore increasing the bin size for calibration prior to the~~  
384 ~~first wheel failure to account for data sparsity and mitigating the reaction wheel tone to reduce variability in the results. The~~  
385 ~~final goal for the next data release will be to regularize the calibrations to remove any periodic effects in the results. We look~~  
forward to sharing additional improvements made to the data for the MGF instruments on Swarm-Echo.

#### Code and Data Availability

The calibration software described in this manuscript is maintained in a GitLab repository at: <https://research-git.uiowa.edu/space-physics/epop/mgftools>. Daily MGF, Attitude, BUS Telemetry, and location files are publicly available, and can be obtained at <https://epop-data.phys.ucalgary.ca/>.

#### 390 Author Contributions

RMB developed the Swarm-Echo calibration process and wrote the manuscript with contributions from all authors. The work presented here was developed at the University of Iowa under subcontract from the University of Calgary held and supervised by DMM. WH automated the improved CASSIOPE attitude solution and managed the production of Swarm-Echo data. ADH manages Swarm-Echo science operations and provided the Auroral imaging data.

#### 395 Conflicting Interests

The authors declare that there are no conflicting interests.

#### Acknowledgements

396 The authors wish to thank Christian Siemes for developing the initial algorithm for the improved e-POP attitude solution,  
397 Chris Piker for automating the Swarm-Echo data product software, and Martin Rother for his analysis of the Swarm-Echo  
400 data and suggestions for improving the calibration.

## Financial Support

This research has been supported by the European Space Agency's Third Party Mission Programme.

## 9 Common Acronyms

ADCS: Attitude Determination and Control System

405 CASSIOPE: CAScade Smallsat and Ionospheric Polar Explorer

CDF: Common Data Format

CRF: Common Reference Frame

CSS: Coarse Sun Sensor

Dst: Disturbed storm time

410 e-POP: enhanced Polar Outflow Probe

ESA: European Space Agency

FAI: Fast Auroral Imager

ITRF: International Terrestrial Reference Frame

Kp: Planetary Index

415 MGF: Fluxgate Magnetometers

NEC: North East Center reference frame

SQUAD: ~~Spherical QUADrangle Spherieal-QUADratie~~ Interpolation

YPR: Yaw Pitch Roll

μASC: micro Advanced Stellar Compass

## 420 References

Finlay, C. C., Kloss, C., Olsen, N., Hammer, M. D., Tøffner-Clausen, L., Grayver, A., and Kuvshinov, A.: The CHAOS-7 geomagnetic field model and observed changes in the South Atlantic Anomaly, *Earth Planets Space*, 72, 156, <https://doi.org/10.1186/s40623-020-01252-9>, 2020.

425 [Finley, M. G., Shekhar, S., Miles, D. M.: Identification and Removal of Reaction Wheel Interference from In-Situ Magnetic Field Data using Multichannel Singular Spectrum Analysis, \*J Earth and Space Science Open Archive\*, 28, <https://www.essoar.org/doi/abs/10.1002/essoar.10511290.1>, 2022.](https://www.essoar.org/doi/abs/10.1002/essoar.10511290.1)

Friis-Christensen, E., Lühr, H., Knudsen, D., Haagmans, R.: Swarm—an Earth observation mission investigating geospace. *Advances in Space Research.*;41(1):210-6, 2018.

430 Holland, P. W. and Welsch, R. E.: Robust regression using iteratively reweighted least-squares, *Communications in Statistics - Theory and Methods*, 6, 813–827, <https://doi.org/10.1080/03610927708827533>, 1977.

- Houtzager, I.: QR/RQ/QL/LQ factorizations (<https://github.com/iwoodsawyer/factor/releases/tag/v1.9.0.4>), GitHub. Retrieved March 2, 2022.
- Huber, P. J.: Robust Statistics, Wiley, New York, 1981.
- Jørgensen, J. L., Denver, T., Betto, M., Jørgensen, P. S., Röser, H-P. (Ed.), Sandau, R. (Ed.), & Valenzuela, A. (Ed.): The  
 435 Micro ASC, a Miniature Star Tracker. In Small Satellites for Earth Observation, 4th International Symposium of the International Academy of Astronautics (pp. 157-162), 2003.
- Miles, D. M., Mann, I. R., Pakhotin, I. P., Burchill, J. K., Howarth, A. D., Knudsen, D. J., Lysak, R. L., Wallis, D. D., Cogger, L. L., and Yau, A. W.: Alfvénic Dynamics and Fine Structuring of Discrete Auroral Arcs: Swarm and e-POP Observations, 45, 545–555, <https://doi.org/10.1002/2017GL076051>, 2018.
- 440 [Montenbruck, O., Hauschild, A., Langley, R. B., Siemes, C.: CASSIOPE orbit and attitude determination using commercial off-the-shelf GPS receivers, GPS Solut 23, 114, https://doi.org/10.1007/s10291-019-0907-2, 2019.](#)
- [Nielsen, J. B., Tøffner-Clausen, L. T.: Swarm Level 1b Processor Algorithms, Technical Report SW-RS-DSC-SY-0002, DTU Space-Technical University of Denmark, https://earth.esa.int/eogateway/documents/20142/37627/Swarm\\_Level\\_1b\\_Processor\\_Algorithms, 2019.](#)
- 445 Olsen, N., Tøffner-Clausen, L., Sabaka, T. J., Brauer, P., Merayo, J. M. G., Jørgensen, J. L., Léger, J. M., Nielsen, O. V., Primdahl, F., and Risbo, T.: Calibration of the Ørsted vector magnetometer, Earth Planet Sp, 55, 11–18, <https://doi.org/10.1186/BF03352458>, 2003.
- Olsen, N., Albin, G., Bouffard, J., Parrinello, T., and Tøffner-Clausen, L.: Magnetic observations from CryoSat-2: calibration and processing of satellite platform magnetometer data, Earth Planets Space, 72, 48, <https://doi.org/10.1186/s40623-020-01171-9>, 2020.
- 450 Parlett, B. N.: The Symmetric Eigenvalue Problem, Society for Industrial and Applied Mathematics (SIAM, 3600 Market Street, Floor 6, Philadelphia, PA 19104), 152-159, 1998.
- Shoemake, K.: Quaternion calculus and fast animation. In ACM SIGGRAPH Course Notes 10, Computer Animation: 3-D motion specification and control, number 10, 101–121. Siggraph, 1987.
- 455 [Tibshirani, R.: Regression Shrinkage and Selection via the Lasso, Journal of the Royal Statistical Society, Series B \(Methodological\), 58\(1\), 267-268, http://www.jstor.org/stable/2346178, 1996.](#)
- Wallis, D.D.: ePOP MGF<sub>C</sub> Calibrations, Technical report ePOP-4406 prepared for the University of Calgary, 2010.
- Wallis, D. D., Miles, D. M., Narod, B. B., Bennest, J. R., Murphy, K. R., Mann, I. R., and Yau, A. W.: The CASSIOPE/e-POP Magnetic Field Instrument (MGF), Space Sci Rev, 189, 27–39, <https://doi.org/10.1007/s11214-014-0105-z>, 2015.
- 460 Yau, A. W. and James, H. G.: CASSIOPE Enhanced Polar Outflow Probe (e-POP) Mission Overview, Space Sci Rev, 189, 3–14, <https://doi.org/10.1007/s11214-015-0135-1>, 2015.

Field Code Changed