

# Development of an automated pump efficiency measuring system for ozonesondes utilizing an airbag-type flowmeter

Tatsumi Nakano<sup>1, a</sup>, Takashi Morofuji<sup>2</sup>

<sup>1</sup>Aerological Observatory, Japan Meteorological Agency, 1-2, Nagamine, Tsukuba-shi, Ibaraki 305-0052, Japan

5 <sup>2</sup>Atmosphere and Ocean Department, Japan Meteorological Agency, 3-6-9, Toranomon, Minato-ku, Tokyo 105-8431, Japan

<sup>a</sup>Currently at: Fukuoka Regional Headquarters, Japan Meteorological Agency, 1-2-36, Otori, Chuo-ku, Fukuoka-shi, Fukuoka 810-0052, Japan

Correspondence to: Takashi Morofuji (morofujitakashi@met.kishou.go.jp)

**Abstract.** We here report on a system developed to automatically measure the flow rate characteristics (i.e., the pump efficiency) of pumps on ozonesondes, under various pressure levels simulating upper-air conditions. The system consists of a flow measurement unit incorporating a polyethylene airbag, a pressure control unit that reproduces low-pressure environmental conditions, and a control unit that integrates and controls these elements to enable fully automatic measurement. The Japan Meteorological Agency (JMA) has operationally measured pump efficiency for Electrochemical Concentration Cell (ECC) ozonesondes using the system since 2009, resulting in a significant ~~amount~~ of related data. Extensive measurements ~~ing~~ data collected for the same ozonesonde pump over a period of around 12 years indicate the long-term stability of the system's performance. These long-term data also show that ozonesonde pump flow characteristics differed among production lots. Evaluation of the impacts of variance in these characteristics on observed ozone concentration ~~data, as compared to reference ozone profiles,~~ indicated that the influence on total ozone estimation was up to approx. 4%, the standard deviation per lot was approx. 1%, and the standard deviation among lots was approx. 0.6%.

## 20 1 Introduction

Atmospheric ozone protects the biosphere by absorbing harmful ultraviolet radiation. In this context, the World Meteorological Organization (WMO) plays a leading role in observing ozone profiles on a global scale to monitor ozone layer deterioration caused by chemical release from human activity (Smit et al., 2021).

25 Ozonesonde observations are the only means of directly determining the actual vertical distribution of ozone from the troposphere to the lower stratosphere. The ozonesonde model used for such observations is a balloon-borne measurement sensor to be flown from the ground to a height of around 35 km, at which point the balloon bursts, ~~while~~ ambient air is taken in and ozone concentration is electrochemically measured. The downlink of the data, through the coupled radiosonde transmission, also provides pressure, temperature, humidity and position measurements.

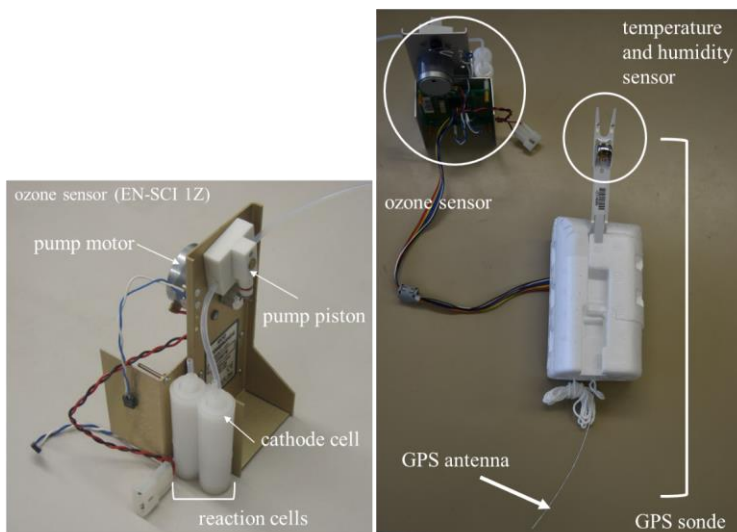
30 Since around 2008-2010 (depending on the station), the Japan Meteorological Agency (JMA) has used Electrochemical Concentration Cell (ECC)-ozonesondes developed by Komhyr (1969, 1971). These units are used worldwide, and at more than

コメントの追加【諸藤1】: Replaced.  
The following uncommented modification is simply directed to replace.

コメントの追加【諸藤2】: Removed according to comment "A third issue, raised by reviewer #3 again, is how you calculated the influence on the estimation of ozone concentration. In the modified manuscript, you explained it clearer than it was before. ...".

90% of WMO / Global Atmosphere Watch (GAW) ozone observing network stations (World Ozone and Ultraviolet Radiation Data Centre, Dataset Information: OzoneSonde). In 1968, JMA began observing vertical ozone distribution with a KI solution and carbon electrode-type (KC) ozonesondes developed at the Agency's Meteorological Research Institute (Kobayashi et al., 1966a; Kobayashi and Toyama, 1966b, 1966c; Hirota and Muramatsu, 1986).

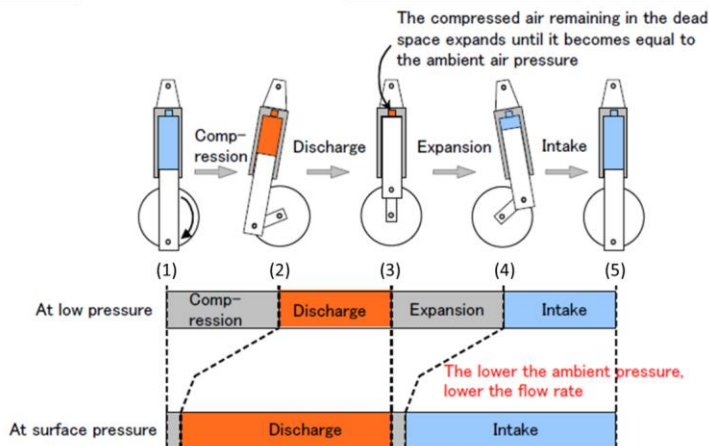
35 Ozone sounding measurement originates from an ozone sensor unit (piston pump, motor, reaction cells, tubes, etc.), and is extended with ~~measuring data~~ from a coupled radiosonde unit (pressure sensor, temperature sensor, humidity sensor, GPS antenna, etc.) as shown in Fig 1. The ozone sensor unit has a small piston pump to bubble ambient air into the reaction cell and measures the electric current generated by a chemical reaction from the potassium iodide solution in the cell and ozone in the sampled ambient air. ~~Ozone concentration is calculated from this current.~~ The ozone concentration is calculated from  
40 this electric current ~~and the volumetric flow rate and temperature of the piston pump and the volumetric flow rate of the piston pump.~~



**Figure 1: ECC-type ozonesonde ozone sensor (left) and connected GPS sonde (right).**

Figure 2 illustrates pump operation. First, ambient air taken into the pump is compressed until its pressure is balanced with the back-pressure associated with the hydraulic head pressure of the reaction cell (1). The compressed air is then discharged to the cell by the force of the piston (2). When the piston is completely pushed in, there is a dead space inside the pump (3), and the compressed air remaining in it expands until it is balanced with the ambient air pressure (4). The piston draws in a fresh sample of ambient air (5). The cycle is repeated for each pump rotation. The steady pump speeds typically range from 2,400 – 2,600

rotations per minute (RPM). Hydraulic head pressure, which is the main factor causing back-pressure, can be considered essentially uniform regardless of ambient air pressure, while the latter varies with altitude. Under these conditions, the air taken in is more compressed in step (1) and that in the dead space is more expanded in step (4). In other words, as ambient air pressure decreases, the volume of air intake (=pump flow rate) into the reaction cell also falls. Thus, the pump is affected by ambient air pressure, which governs its efficiency.



55 **Figure 2: Piston pump operation during observation, and effect of dead space on pump efficiency.**

Based on laboratory pump flow measurements (Komhyr et al., 1986, 1995; Johnson et al., 2002), Smit and the panel for ASOPOS (2014) and Smit et al. (2021) provided useful tables listing pump flow correction factors and pump flow efficiencies as a function of air pressure. These values are averaged from experiments at the time of ECC-ozonesonde development and values recommended by the manufacturer. Causes of pump flow reduction (dead volume in the pump piston, pump leakage, hydraulic head pressure of the reaction solution in the reaction cell, etc.) can vary considerably among individual ozonesondes. To eliminate such observational uncertainties, it is necessary to accurately determine the pump efficiency of individual ozonesondes in preflight preparation. However, such determination is not normal practice in ozonesonde launches, as it is considered technically difficult and time-consuming. As a result, most ozonesonde profiles are produced using average pump efficiency curves.

65 Individual pump efficiencies have already been measured by other investigators. For example, the National Oceanic and Atmospheric Administration/Climate Monitoring and Diagnostics Laboratory (NOAA / CMDL) developed a bubble flowmeter involving the use of silicone oil (Johnson et al., 2002), and showed that the conventionally used standard pump efficiency correction tables (Komhyr et al., 1986, 1995) were underestimated as compared to the pump efficiency corrections

of currently manufactured ECC-ozonesondes. The University of Wyoming also measured individual pump efficiencies using an airbag evacuation type flowmeter equipped with an airbag (Johnson et al., 2002). However, as no pump efficiency measuring systems are currently commercially available, we developed such a system at the Aerological Observatory in Tateno, Japan. Examining of various measurement methods led to the adoption of an airbag method approach for ease of control. The system was automated in order to obtain pump efficiency measurements with uniform quality, and has been installed at Tateno, Sapporo, Naha and Syowa stations in sequence since 2009. The pump efficiency of individual ozonesondes is operationally measured at these stations, which have produced a significant amount of data since installation.

In this paper, Section 2 outlines the automated pump efficiency measuring system, Section 3 details the measurement method and procedures for the airbag type system, Section 4 describes pump efficiency calculation, and Section 5 covers statistical results for pump efficiency as obtained from operational observations for the current decade and the long-term stability of the pump measurement system.

## 2 System overview

The automated pump efficiency measuring system is roughly divided into three parts: a control unit, a pressure control unit and a flow measurement unit. Figure 3 outlines the system, and Figure 4 shows its actual appearance. The control unit is designed for control of the whole system via a PC with a module that communicates directly with peripheral equipment. The pressure control unit consists of a vacuum pump, a vacuum controller, and a digital barometer. The flow measurement unit consists of an air-bag type flowmeter in a vacuum desiccator that allows various pressure conditions down to 3 hPa.

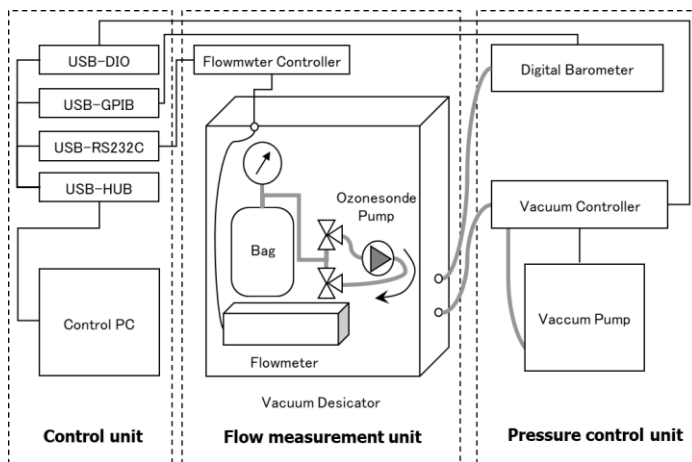


Figure 3: Automated pump efficiency measurement system for ECC ozonesondes.



**Figure 4: Actual appearance of automated measurement system of the pump efficiency for the ECC ozonesonde.**

90 The control unit consists of a Windows PC combined with various communication modules (DIO, GPIB, and RS232C) to control the entire system and collect measurement data. As these modules and the control PC are connected via USB, the system can be controlled using a general-purpose PC.

The Windows program used to adjust the pressure control unit and the flow measurement unit also enables conversion of various measurement data acquired from the flow measurement unit at regular intervals into physical values and collection of data together with other information such as digital barometer readings.

95 The pressure control unit controls air pressure in a vacuum desiccator to reproduce low-pressure environments. As ozonesondes are subjected to decreasing atmospheric pressure and low-temperature conditions (-60 to -80°C) during balloon ascent, initial efforts were made to reproduce both conditions. However, measurements for a low-temperature environment showed that temperature does not exhibit a linear relationship with pump efficiency, and even shows a negligible effect, at least in the temperature range of actual atmospheric conditions. For this reason, pump efficiency was measured only with low-pressure environmental conditions. Since the minimum pressure of the unit is less than 3 hPa, the entire pressure range of ozonesonde measurements can be reproduced.

By manipulating the degree of exhaust valve opening in the vacuum controller with the control program, the speed of the vacuum pump (equaling to the rate of decompression in the desiccator) can be adjusted. The pressurization rate can also be controlled by opening and closing the solenoid valve for atmospheric pressure release. With these adjustment functions, air pressure in the desiccator can be maintained to within approx.  $\pm 0.1$  hPa of the target by setting the decompression rate to zero during the flow measurement performed at each specified air pressure. At the start of depressurization and pressurization, a series of procedures is followed to prevent sudden air pressure changes in the desiccator, which might cause a backflow of oil from the vacuum pump to the desiccator. The control program allows safe execution of these steps.

110 The flow measurement unit consists of a vacuum desiccator, a flowmeter controller, and a control PC. Figure 5 shows the schematic diagram of the flow measurement unit.

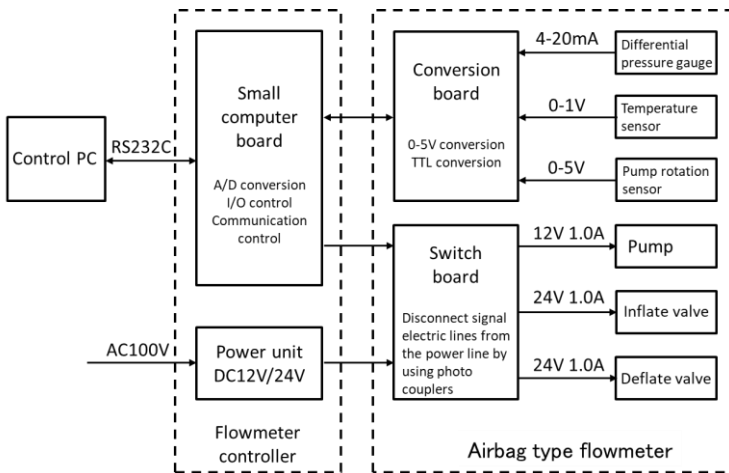


Figure 5: Schematic diagram of the flow measurement unit.

The ozonesonde pump and an airbag type flowmeter are inside the vacuum desiccator. The flowmeter controller, which is set  
 115 outside the vacuum desiccator, supplies power to the flowmeter, allows monitoring and control of status every millisecond  
 using a built-in microcomputer (H8/3052F), and enables issuance/receipt of control commands and transfer of measurement  
 data to the control PC using RS232C. This allows real-time measurement control on a millisecond scale, thereby significantly  
 reducing the control PC load.

The airbag type flowmeter has a conversion board to adapt the output of various sensors to the input of a small computer board,  
 120 and a switch board to control the power supply of the pump and solenoid valve. The power supply/signal lines are electrically  
 isolated using photo couplers to reduce noise contamination. Figure 6 shows the airbag type flowmeter piping connection. The  
 inflation and deflation valves are fluoro-resin three-way solenoid types, with NO (normally open) to COM (common)  
 communication when not powered, and NC (normally closed) to COM communication when powered, and are switched  
 alternately to pump air into and out of the airbag.

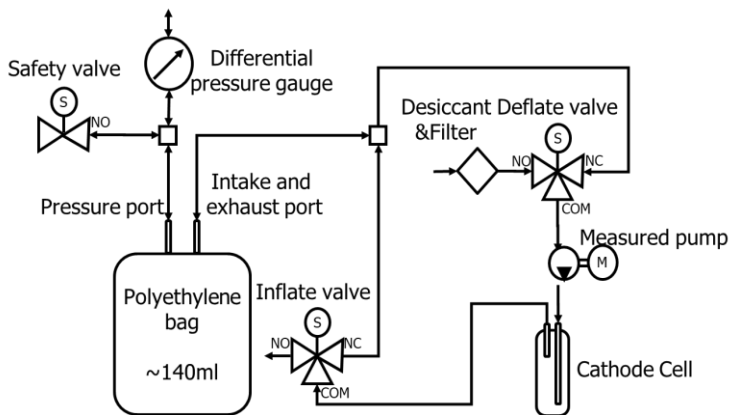


Figure 6: Airbag type flowmeter piping connection. The 140 ml. bag is made of polyethylene. The inflation and deflation of the bag is conducted by using two magnet valves. The pressure between the inside and outside of the bag is measured with a differential pressure gauge. Temperatures in the bag and pump are measured by thermometers. The revolving speed of the pump is measured by an optical instrument.

The airbag is equipped with a port for differential pressure measurement separately from the intake and exhaust ports to ensure stable differential pressure measurement. A model 265 Setra Systems pressure transducer is used as a micro differential pressure gauge with a measurement range of  $\pm 1$  hPa and an accuracy of  $\pm 1$  %FS.

The airbag material must be able to deform with very weak forces, be airtight and have little stretch and shrinkage, and should be easy to work with and manipulate. Among the available materials, polyethylene film with a thickness of 0.01 mm demonstrated optimal behavior. Since wrinkles caused by uneven deformation as the airbag repeatedly expands and contracts can cause erroneous measurements, a smaller fluoroplastic film is placed inside the bag. After repeated prototyping, an airbag with a shape similar to that of an intravenous drip bag was adopted.

The main control and measurement features of the flow measurement unit are as follows:

- Pump ON / OFF control
- Control of flow path switching via ~~valve~~ inflation/deflation ~~valve~~
- Measurement of differential pressure inside/outside the airbag (0.01hPa)
- Measurement of pump, desiccator and airbag temperature (internal thermistor) (0.1°C)
- Measurement of pump motor speed with a handmade digital tachometer attached to the ozone sensor (0.1 rpm). The tachometer shines light on the rotating part of the pump and detects reflection to determine the number of revolutions. The rotating part is partially covered with a non-reflective black sticker to indicate a full revolution ~~by the tachometer~~.
- Time interval measurement triggered by the specified differential pressure (1msec)

### 3 Method for measuring pump efficiency using the airbag method

#### 3.1 Concept

The concept of estimating the pump flow rate (pumping power) using an airbag involves timing inflation from the least to the most inflated state and vice versa. ~~The airbag internal volume  $V_{airbag}$  in its most inflated/deflated states are assumed to be constant, regardless of ambient pressure, as long as the internal/external pressure are equal. The pump flow rate~~ Assuming an airbag internal volume of  $V_{airbag}$  when the most inflated/deflated states are assumed to be constant regardless of ambient pressure, as long as internal/external pressure are equal, the pump flow rate  $S(p)$  at a given pressure  $p$  can be estimated with the average inflation and deflation time  $t(p)$  as

$$150 \quad S(p) = V_{airbag}/t(p). \quad (1)$$

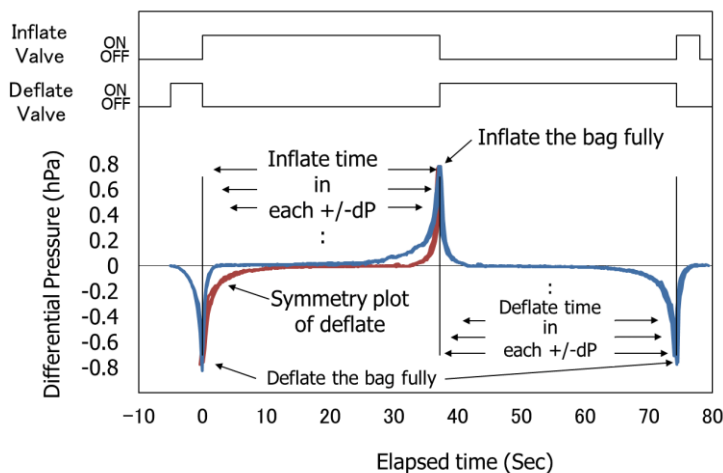
Pump efficiency  $k(p)$  at the given pressure  $p$ , defined as the ratio of the pump flow rate to that estimated at ground-level pressure  $p_0$ , can be calculated as

$$k(p) = S(p)/S(p_0) = (V_{airbag}/t(p))/(V_{airbag}/t(p_0)) = t(p_0)/t(p). \quad (2)$$

As this equation shows, the exact volume of the airbag does not need to be known.

160 Meanwhile, it is necessary to assess whether the airbag is fully inflated or deflated, which is done by evaluating its internal/external differential pressure. The threshold was set to +/- 0.8 hPa (+: inflation; -: deflation) as discussed later. The flow was switched using two valves shown in Fig. 6 when the differential pressure reached the threshold. Figure 7 shows temporal variations in differential pressure from the time of maximum deflation. A series of measurements was made when the flow was switched at ground-level pressure. Plotting of differential pressure during deflation from around the time of maximum inflation (red line) shows that the inflation and deflation times are equal, since they match at the time of maximum deflation. In addition, since the pump flow rate at ground level was stable, the elapsed time can be considered associated with the internal volume of the airbag. These results indicate that differential pressure values during inflation and deflation each represent a certain airbag volume. From the above, pump efficiency can be determined from equation (2) by measuring the time interval at which a certain differential pressure is observed.





170

Figure 7: Schematics of pressure differences between the inside and outside of the bag as a function of lapsed time. The blue line plots four-time average difference pressure values with bag inflation/deflation changed when the difference pressure reaches 0.8 hPa. The red line shows a symmetric reference of deflation to maximum inflation at an elapsed time of approx. 36 seconds. On/off lines for inflation and deflation are plotted at the top.

175 The pump correction factor (the reciprocal of the pump efficiency) is obtained only from the time required for airbag inflation and deflation, and in the case of differential pressure  $\Delta p$  is expressed from equation (2) as follows,

$$pcf_0(p, \Delta p) = \frac{1}{k(p)} = \frac{t(p, \Delta p)}{t(p_0, \Delta p)}, \quad (3)$$

where  $pcf_0(p, \Delta p)$  is the pump correction factor for differential pressure  $\Delta p$  at air pressure  $p$  and  $t(p, \Delta p)$  is the time taken to reach  $\Delta p$  at  $p$  ( $p_0$  is ground-level pressure). In practice, however, the effects of differences in differential pressure thresholds and temperature changes due to heat generated by solenoid valves and pump motors can cause measurement errors, giving rise to a need for consideration of a correction method. The details are described in section 4.

180

### 3.2 Measurement sequence and measured value

In the series of measurements, the automated pump efficiency measuring system recorded values at ground-level pressure (six times) and at 500, 200, 100, 50, 30, 20, 10, 7, 5, 4, and 3 hPa (four times each). In each case, as the first record was at the "break-in" of the airbag, values from the second time onward were taken as the actual measurements. The final pump correction factor was the average of values observed at the time of inflation and deflation. For each measurement, the system also acquired additional data on the time taken for bag's internal/external differential pressure to reach  $\pm 0.1, 0.2, 0.3, 0.4, 0.5, 0.6, 0.7, 0.8$

185

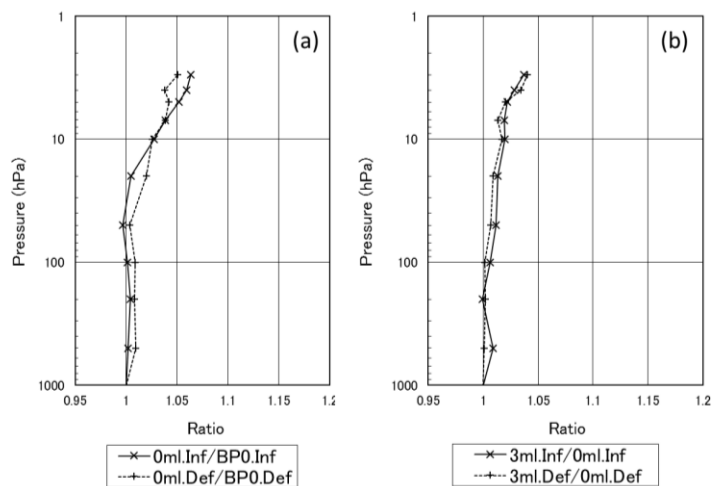
hPa (+:inflation; -: deflation), pump temperature, and bag internal temperature. After the cycle of measurements at the different pressure levels, six measurements at ground pressure were made to check the reproducibility of pump operation. The measurement pressure, the number of measurements, the differential pressure threshold, and other settings for the sequence can be changed in the control program.

### 3.3 Consideration of the back-pressure (load) effect

The ECC-ozonesonde has a Teflon rod protruding from the bottom of the reaction cathode cell allowing the tube from the pump to be guided appropriately into the reaction solution, by sliding it over the rod, which narrows air flow and produces pressure resistance. Additionally, in actual ozonesonde observation, reaction cells are filled with a solution. As, back-pressure necessarily affects pump efficiency with these conditions, the back-pressure effect of the Teflon rod and the reaction solution on pump efficiency were examined. In all measurement tests, the same ECC-type (EN-SCI 1Z) sensor was used. This section describes the outcomes.

Figure 8 (a) shows the results of comparison between cases in which the pump is directly connected to the flowmeter from its exhaust port and in which air flows through an empty reaction cell. The experiment showed that pump efficiency decreased (up to approx. -6% at 3 hPa) with connection through the cell and that the cell itself generated back-pressure, possibly due to the presence of the Teflon rod.

The relationship between the volume of the reaction solution and back-pressure was also examined. However, if pump efficiency is measured with an in-cell solution, the airbag-type flowmeter will fail due to backflow caused by boiling of the solution during flow observation, especially under low-pressure conditions. Accordingly, silicon oil with almost the same specific density as the reaction solution was used instead. Figure 8 (b) shows the results of comparison between an empty reaction cell and one with 3 ml of an ECC-type standard reaction solution indicate that the load caused by the solution also reduced pump efficiency (up to approx. -4% at 3 hPa). The solution's head pressure is considered to have produced this effect.



210 **Figure 8: (a) Ratio of pump efficiency with direct connection directly to the flowmeter from the pump exhaust port and through an empty reaction cell. (b) Ratio of pump efficiency between an empty reaction cell and one with the standard 3 ml of ECC silicon oil. Inf: inflation; Def: deflation; BP0: back-pressure 0hPa; 0ml: no reaction solution; 3ml: 3 ml of reaction solution.**

The above outcomes indicate that a filled reaction cathode cell generates back-pressure, thereby affecting pump efficiency, as

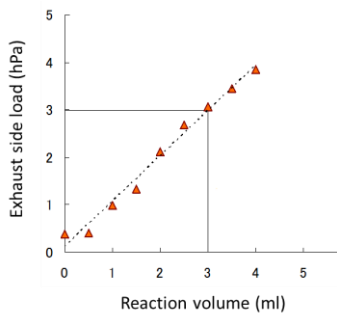
in real atmospheric conditions. The results in Fig.9 show the correlation of back-pressure and solution volume in the cell at

215 ground-level pressure. Back-pressure is approx. 3 hPa for the standard ECC-type reaction solution volume of 3 ml. To

reproduce this load, the length and diameter of the piping were adjusted, and a load of 3 hPa was applied to the exhaust side

with no solution in the cell. All further pump correction factors reported in [sectionchapters 4 and 5](#) are always measured and

determined with a 3 ml reaction solution in the cathode cell.



220 **Figure 9: Exhaust side load with a reaction cell. 3 ml of the standard reaction solution is equivalent to a load of approx. 3 hPa.**

#### 4 Pump correction factor calculation

As discussed above, a number of factors can cause observation errors in pump efficiency measurements. This section outlines correction for such errors.

##### 4.1 Correction for effects of in-pump heat generation

225 The study's series of pump efficiency measurements began with ground-level pressure and continued with lower pressure values. As the pump motor gradually heated up due to friction, the exhaled air was warmer in the later stages. Volume changes caused by the heating of inflowing air caused errors requiring correction in the results. As the heat capacity of air discharged from the pump is relatively small, it was assumed that air was warmed to the same temperature as the pump while passing through it, and the initial pump correction factor  $pcf_0(p, \Delta p)$  was adjusted as,

$$230 \quad pcf_1(p, \Delta p) = pcf_0(p, \Delta p) \frac{T_{pump}(p_0, \Delta p = 0.8)}{T_{pump}(p, \Delta p = 0.8)}, \quad (4)$$

where  $T_{pump}(p, \Delta p)$  is the pump temperature (K) at differential pressure  $\Delta p$  with air pressure  $p$  ( $p_0$  is ground-level pressure). These are temperature values at a differential pressure of 0.8 hPa (the most inflated state). Table 1 shows the average pump temperature during efficiency measurements performed by JMA from 2009 to 2022. Measurements started after 30 minutes of warm-up measurements, and the temperature typically increased by 5 -6 °C as the measurement progressed.

235

Table 1: Pump temperature measurement results for Sapporo, Tateno, and Naha from 2009 to 2022.

Pressure (hPa)	Pump Temperature (°C) [JMA 2009 - 2022]
3	37.0 ± 2.2
4	36.7 ± 2.2
5	36.4 ± 2.2
7	36.1 ± 2.1
10	35.7 ± 2.1
20	35.4 ± 2.1
30	35.1 ± 2.1
50	34.6 ± 2.1
100	33.9 ± 2.1
200	33.1 ± 2.0
1000	31.1 ± 2.0

#### 4.2 Correction for differential pressure effects

240 The measurement time is defined as that required for the pump to exhaust all air and inflate the airbag from zero volume to  $V_{airbag}$  or to deflate it similarly under atmospheric pressure  $p$ . However, the airbag is actually further inflated or deflated in relation to the differential pressure  $\pm \Delta p$  in addition to the ambient air pressure  $p$ . Differential pressure, thus enables determination of bag content and internal volume. There is a need to consider related effects on the measurement time by converting the air pressure change inside the airbag into a volume change. Using the Boyle-Charles law (assuming no change  
245 in temperature), the internal volume of the airbag,  $V_{airbag}$ , changes with the ratio of the airbag differential pressure  $\Delta p$ , to the ambient air pressure  $p$ . Accordingly, the measurement time  $t_m$  for the net measurement time  $t(p)$ , at the air pressure  $p$  is expressed as

$$t_m = t(p) \cdot (1 + \Delta p/p). \quad (5)$$

Here, it can be seen that lower ambient pressure  $p$  values produce a larger effect on the measurement time. To check the effects of this operation (referred to here as pressure correction) using  $t_m$  as the measurement time, the differential pressure threshold was varied from  $\pm 0.1$  to  $\pm 0.8$  hPa in turn, pump efficiency with this correction was determined for each pressure, and comparison to values without correction was performed. Figure 10 shows the results of comparison at an ambient pressure of 3 hPa. It can be seen that pressure correction is generally effective, but the correlation between the pump correction factor and the differential pressure threshold remains high. The effects of differential pressure can therefore be seen as another pump  
255 loading factor. Thus, if differential pressure acts as an exhaust (intake) side load when the airbag is inflated (deflated), the results can be seen as consistent with those of the previous pressure correction. However, deriving correction for this effect is

not straightforward, as loads change during measurement and each pump responds differently. Measurements at even lower differential pressure thresholds should be considered to avoid such effects, but there is a limit to the thresholds that can be set; very low differential pressures are outside the detection limit of the micro differential pressure gauge and time-interval measurement is prone to errors. However, since the pump correction factor without differential pressure correction shows a very high correlation with the differential pressure threshold, the y-intercept of the regression line can be comprehensively used as an estimate of the pump correction factor for a zero threshold. Accordingly, the pump correction factor corrected for the effects of differential pressure in actual measurement can be estimated from the regression line obtained from the time taken at each differential pressure threshold. The correction factor  $pcf_2(p)$  at zero differential pressure with this approach is

$$pcf_2(p) = pcf_1(p, \Delta p = 0). \quad (6)$$

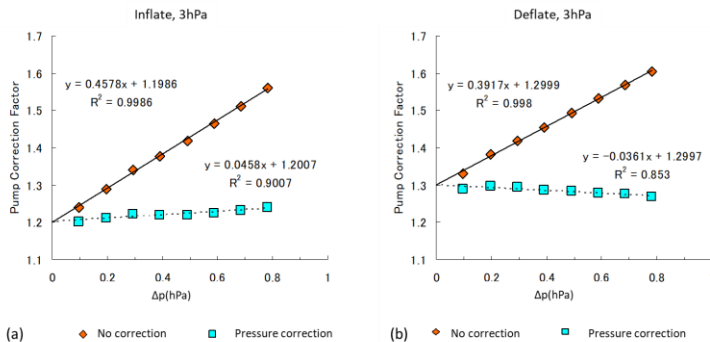


Figure 10: Pump correction factors calculated for various differential pressure thresholds. Values (representing the inverse of pump efficiency) are plotted with and without correction pressure correction. The values in (a) and (b) are based on the measurement times during expansion and contraction, respectively, at 3 hPa ambient air pressure, as determined with the pump's inlet and exhaust ports directly connected to a flowmeter.

### 4.3 Correction for temperature airbag capacity variations

As the polyethylene of the airbag used for differential pressure measurement expands and contracts with the temperature, changes in bag volume during measurement must be considered. Internal temperature gradually rises because the piping leading to the bag is heated by the solenoid valve and the circuit board inside the flowmeter housing, and the air pumped in is heated by pump friction. The temperature eventually rises by 5-6°C in a measurement sequence. The temperature eventually rises by around 5 to 10°C in a measurement sequence. Since related variations in airbag volume also cause measurement errors, pump efficiency is corrected using temperature data from thermistors near the bag.

After pump efficiency measurement with airbag internal temperature variations in a thermostatic bath, it was found that approximate halving of the temperature change rate affected the pump correction factor. We could confirm that Charles' law

280 ~~also holds Charles' law also held~~ when the pump temperature was changed using the same experimental apparatus. ~~We postulate that this apparent inconsistency might be attributed to This is attributed to~~ the effects of changes in airbag elongation and elasticity ~~due to the thermal properties of the polyethylene film, offsetting the effects of volume change due to Charles' law by about half due to the thermal properties of the polyethylene film offsetting the effects of volume change relating to Charles' law by around half.~~ The experimental results indicated that the pump correction factor after correction for temperature-

285 dependent changes in airbag capacity can be expressed as

$$pcf_3(p) = pcf_2(p) \left( 1 - 0.5 \frac{T_{airbag}(p_0, \Delta p = 0.8) - T_{airbag}(p, \Delta p = 0.8)}{T_{airbag}(p_0, \Delta p = 0.8)} \right), \quad (7)$$

where  $T_{airbag}(p, \Delta p)$  is the airbag temperature (K) at differential pressure  $\Delta p$  with air pressure  $p$  ( $p_0$  is ground-level pressure).

#### 4.4 Application of pump efficiency measurement results to ozone partial pressure calculation

Pump efficiency  $k(p)$  at atmospheric pressure  $p$  is given by Kobayashi and Toyama, 1966b as

290 
$$k(p) = 1 - K \cdot \left( \frac{1}{p} - \frac{1}{p_0} \right), \quad (8)$$

where  $p_0$  is ground-level pressure (hPa) and  $K$  is a constant. According to Steinbrecht et al. (1998), when adiabatic change occurs in the pump, a power term (specific heat ratio  $\gamma \approx 1.4$ ) should be added to the second term on the right:

$$k(p) = 1 - K \cdot \left( \frac{1}{p} - \frac{1}{p_0} \right)^{\frac{1}{\gamma}}. \quad (9)$$

295 Assuming that this is actually a polytropic change relating to the effects of heat exchange with the pump in addition to adiabatic change, the following approximate equation can be given:

$$pcf(p) = \frac{1}{k(p)} = \frac{1}{1 - K \left( \frac{1}{p} - \frac{1}{p_0} \right)^{\frac{1}{n}}} = \frac{1}{1 - c_0 \left( \frac{1}{p} - \frac{1}{p_0} \right)^{c_1}}, \quad (10)$$

where  $n$  is a polytropic index dependent on the ozone sensor,  $c_0$  is a constant dependent on the ozone sensor and  $c_1$  is  $\frac{1}{n}$ .

300 The application of pump efficiency measurement results to ozonesonde observations is based on  $pcf_3(p)$  with the corrections described in Section 4.3.  $pcf_3(p)$  is calculated from the average of three measurements for each of inflation and deflation at specified atmospheric pressure of 200 hPa or less. Using this equation,  $c_0$  and  $c_1$  in equation (10) are obtained by fitting. The pump correction factor  $pcf(p)$  at pressure  $p$  is then calculated from the same equation using the obtained constants  $c_0$  and  $c_1$ . Ground pressure data are not used because  $pcf_3(p_0)$  should be 1.

## 5 Data from JMA's automated pump efficiency measuring system

Since 2009, JMA has comprehensively evaluated EN-SCI ECC ozone sensor pump efficiency using the automated system, and pump correction factors calculated from the results are used to correct ozonesonde observations from Sapporo, Tateno and Naha. This section presents the results of these measurements made over this last 13 years.

### 5.1 Comparison of pump correction factors between JMA and other organizations

Figure 11 shows the results of pump correction factor measurements at Sapporo, Tateno, and Naha from 2009 to 2022 using sensors with similar serial numbers at each station. The values are generally consistent, with slightly larger differences at 3 hPa, where measurement accuracy is lower.

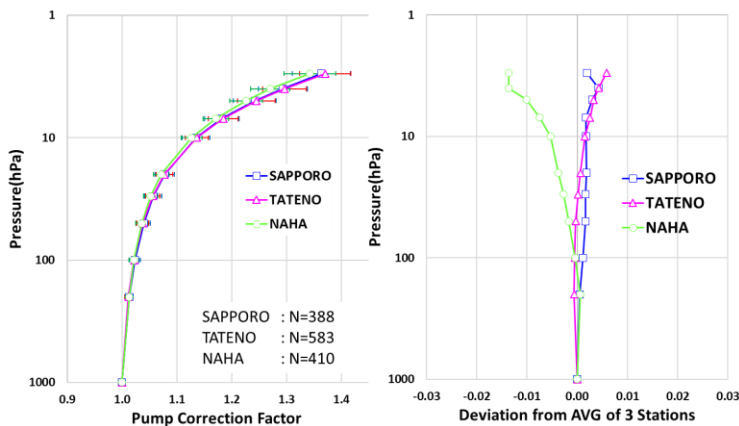


Figure 11: Pump efficiency measurement for Sapporo and Naha from 2009 to 2018, and Tateno from 2009 to 2022. The error bars in the left figure represent one-sigma standard deviation. All sites show close correspondence.

Figure 12 compares average pump correction factors for the same pump type (EN-SCI ECC) obtained by other organizations with typical JMA data. As will be illustrated in Sect. 5.3, Fig. 16, our measurements pointed to differences in the pump motor specifications of the ozonesondes delivered to JMA before 2013 (serial numbers  $\leq 24000$ ) and after 2013 (serial numbers  $> 24000$ ). More specifically, the ozonesondes with serial numbers higher than 24000 turned out to have motor speeds that depend on the air pressure and our measurements suggest that their motor speeds were unstable among production lots. The motor speed and its variability have an affect on the pump efficiency. Therefore, in Table 2, we also make a distinction between post and pre-24000 serial number samples for estimating the average JMA pump correction factors at the different pressure levels. It could thereby be noted that the average pump correction factors and their standard deviations are larger for post-24000 than

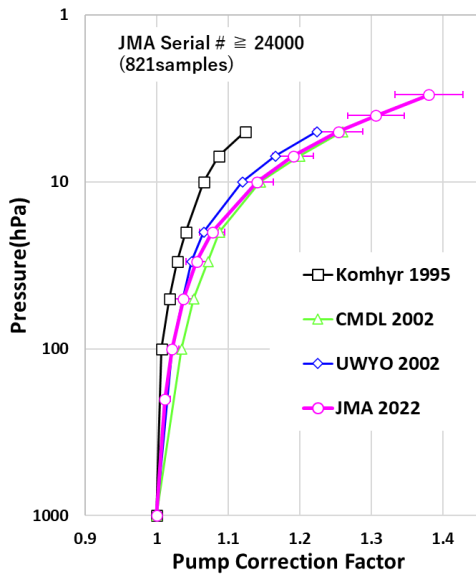
コメントの追加【諸藤3】: Replaced according to comment "My suggestion would be (please check the text) to replace lines 310-315 as..."



pre-24000 serial numbers, at almost all pressure levels. For the comparison with the average pump correction factors measured by other organizations in Fig. 12, we nevertheless plotted the average JMA pump correction factors after serial numbers 24000, as these represent the most recent ozonesondes in use in the global network. Note that the average pump correction factors from the earlier studies in this figure are obtained from measurements with much lower ozonesonde serial numbers. The pump motor specifications were different from those of post 24000 serial number ozone sensors delivered to JMA in 2013. The results indicate air pressure dependence in terms of motor speed, and suggest that speed was unstable among production lots. This is considered to have affected pump efficiency. Accordingly, as the characteristics of current ozone sensors differ from those of sensors before serial number 24000, the measurement results of later sensors are used to calculate representative JMA data. For evaluation of past observation data, pre 24000 values are shown in Table 2. The standard deviation is larger for sensors after this serial number. Stauffer et al. (2020a) also reported the discovery of an apparent instrument artifact that caused a dropoff in total ozone amounts from ozonesonde measurements at around a third that caused a fall in total ozone measurements from around a third of global stations starting in 2014 - 2016, limiting suitability for ozone trend calculation. Stauffer et al. (2022) confirmed the presence of this dropoff in total column ozone in Stauffer et al. (2020b) also noted a fall in total column ozone in various En-SCI ozonesonde sites around serial number 25250.

Measurements were conducted by the University of Wyoming with no exhaust-side loading using a reaction solution, and NOAA/CMDL made measurements with exhaust-side loading using non-evaporative oil instead of a reaction solution (Johnson et al., 2002). We replicated this work with longer tubing to simulate back-pressure from 3ml of the reaction solution. Comparison indicated that pump correction factors for the period during expansion were close to those obtained by other organizations, and that their dependence on ambient air pressure the tendency in relation to ambient air pressure was also similar. These outcomes suggest the effectiveness of the proposed measurement system.

These measured pump flow efficiencies significantly differ from those reported by Komhyr et al. (1995) because, as noted by Smit et al. (2021), the values of Komhyr et al. (1995) represent overall correction including both pump flow efficiency and estimated stoichiometry increase over the period of flight.



345

Figure 12: Comparison of pump correction factors from JMA’s airbag method with those from other experiments. Factors as a function of pressure are represented for the standard Komhyr et al. (1995) by the black line with squares, and JMA factors are represented by the pink line with circles. The error bars represent one-sigma standard deviation. NOAA/CMDL average oil bubble flowmeter values are shown by the green line with triangles, and those from the [University of Wyoming](#) bag method are shown by the blue line with rhombuses (Johnson et al., 2002).

350

355

Table 2: Average JMA pump correction factors for pre and post-24000 sensor serial numbers and for the entire time period (2009 - 2022).

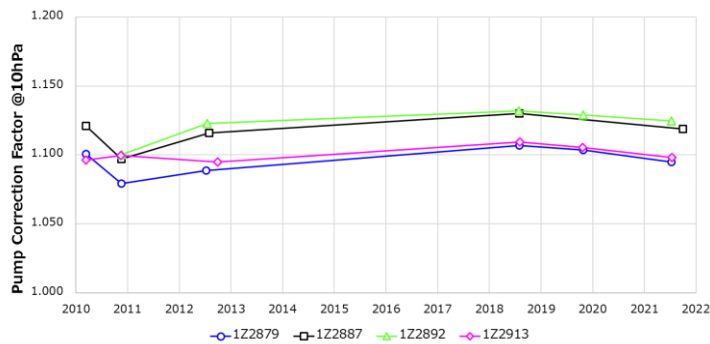
Pump Correction Factor [JMA 2009 - 2022]			
Pressure (hPa)	Serial # $\geq$ 24000 (821 samples)	Serial # < 24000 (566 samples)	ALL (1387 samples)
3	1.381 $\pm$ 0.047	1.330 $\pm$ 0.037	1.361 $\pm$ 0.050
4	1.307 $\pm$ 0.040	1.260 $\pm$ 0.026	1.288 $\pm$ 0.042
5	1.254 $\pm$ 0.034	1.216 $\pm$ 0.022	1.239 $\pm$ 0.035
7	1.191 $\pm$ 0.028	1.164 $\pm$ 0.018	1.180 $\pm$ 0.028
10	1.140 $\pm$ 0.023	1.122 $\pm$ 0.016	1.133 $\pm$ 0.022
20	1.078 $\pm$ 0.017	1.072 $\pm$ 0.013	1.076 $\pm$ 0.016
30	1.056 $\pm$ 0.015	1.054 $\pm$ 0.011	1.055 $\pm$ 0.014
50	1.038 $\pm$ 0.013	1.038 $\pm$ 0.009	1.038 $\pm$ 0.011
100	1.021 $\pm$ 0.010	1.024 $\pm$ 0.007	1.022 $\pm$ 0.009
200	1.011 $\pm$ 0.008	1.014 $\pm$ 0.005	1.012 $\pm$ 0.007

## 5.2 Long-term system stability

360 The long-term stability of the measurement system was examined using sample data collected from four pumps at the Aerological Observatory in Tateno from 2010 to 2021. In addition to the correction outlined in Section 4, for this experiment only, the pump correction factors in the experiment were adjusted in line with pump motor speed to eliminate factor biases between different uses of the same pump using

$$pcf_{corr}(p) = pcf(p) \frac{MS(p_0)}{MS(p)}, \quad (11)$$

365 where  $pcf_{corr}(p)$  is the pump correction factor after motor speed correction at atmospheric pressure  $p$ ,  $pcf(p)$  is the same before correction, and  $MS(p)$  is the motor speed at  $p$  ( $p_0$  is ground-level pressure). Figure 13 shows that flow correction factors~~Figure 13 show flow correction factors~~ for the four pumps exhibit no increasing or decreasing trends, although individual differences can be~~are~~ seen. This demonstrates the long-term stability of the measurement system and the absence of freedom from any aging degradation effect.



370

Figure 13: Pump correction factors at 10 hPa determined with the same four sensors from 2010 to 2021.

### 5.3 Decadal monitoring of individual pump efficiency

Figure 14 shows a time-series representation of individual pump correction factors at 50, 20 and 10 hPa as recorded at Sapporo, Tateno, and Naha from 2009 to 2022 (Sapporo and Naha terminated ozonesonde observations in February 2018). At all stations, ~~the pump correction factors exhibit temporal changes with~~ ~~the factor exhibits temporal changes with~~ a slightly increasing trend along different slopes. The slope is larger with lower ambient pressure values to around 2018 - 2019 (for 50 hPa: Sapporo: +1%/9 years; Tateno: +1%/decade; Naha: +1% or less /9 years. For 20 hPa: Sapporo: +2%/9 years; Tateno: +2%/decade; Naha: +2%/9 years. For 10 hPa: Sapporo: +4%/9 years; Tateno: +4%/decade; Naha: +2%/decade). The serial numbers of the ozone sensors used at each station were fairly balanced. As the pump efficiency measurement system turned out to be very stable (Section 5.2), these pump correction factor trends should be ascribed to ~~the~~ ozonesonde pumps themselves.

375

380

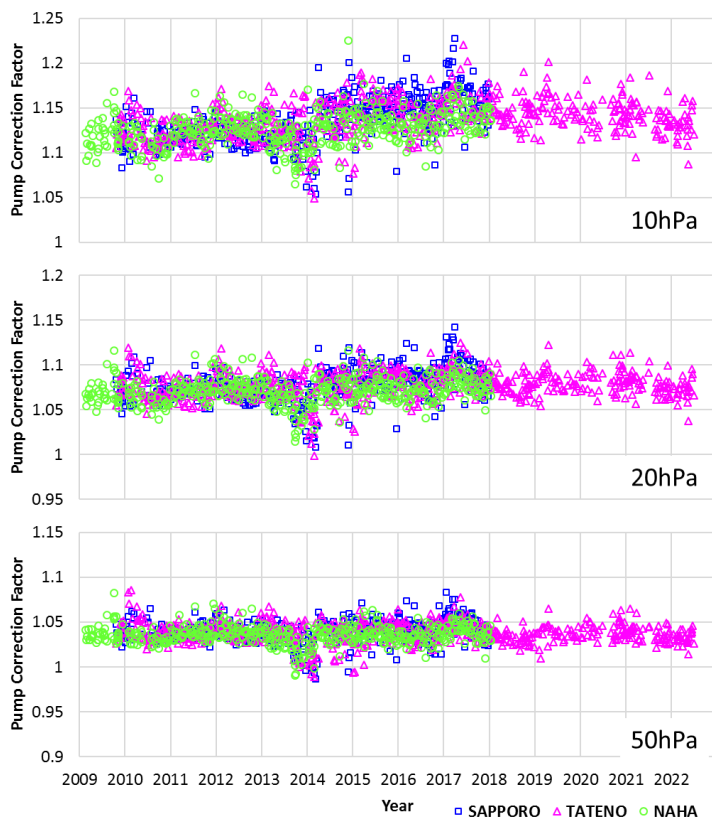
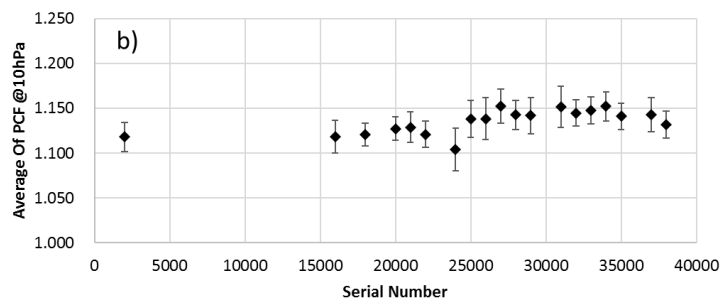
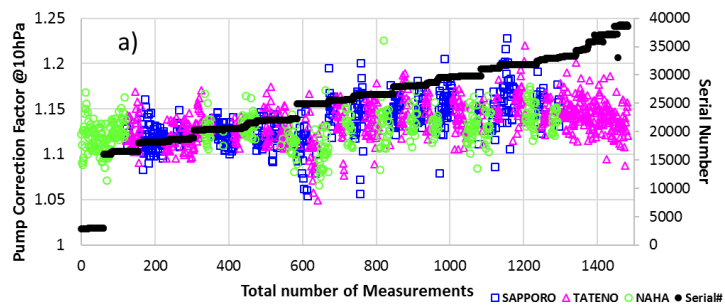


Figure 14: Pump correction factors for 2009 - 2022 (top to bottom: 10, 20 and 50 hPa). Over this 11 year period, the factor has changed by + 1% at 50hPa, + 2% at 20hPa and + 4% at 10hPa.

To investigate the extent to which this trend is caused by the pump, pump correction factors for the different stations are ordered left to right by serial numbers in Fig. 15a. The measurement numbers of the different stations are grouped together because the ozonesondes delivered to JMA were divided into three by serial number and sent to each station. Pump correction factors for the different stations are presented as a function of the ozonesonde serial number in Fig. 15a. In Fig. 15b, the factors at 10 hPa are averaged for bins of 1000 serial numbers. It can be seen that the variability of the correction factors within each production lot is rather modest (1.8%), and that differences between different production lots are mostly statistically insignificant.

コメントの追加 [諸藤4]: Replaced according to comment "A second remark, made by reviewer #3, concerns the x-axis of the top panel of Figure 15 (15a). ...".



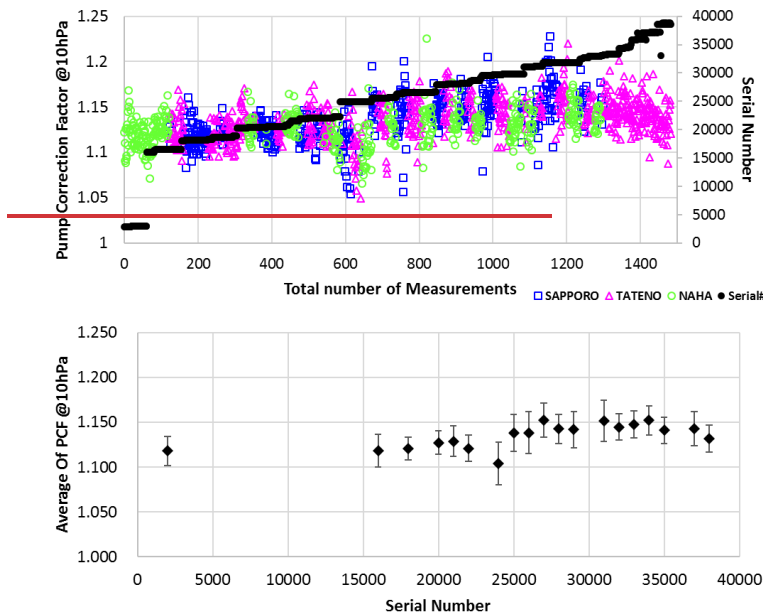


Figure 15: **a)Top:** Pump correction factors at 10 hPa from 2009 to 2022 sorted by ozone sensor serial number. **b)Bottom:** The same averaged for each bin of 1000 of ozonesonde serial numbers for 2009 - 2022. Error bars represent standard deviation.

395 Figure 16 compares the mean measured values of the pump flow rate, motor speed, and pump stroke (i.e. obtained by dividing  
the flow rate by the motor speed) at ground-level pressure and at 10 hPa. Figure 16 compares measured values of the pump flow  
rate, motor speed, and pump stroke obtained by dividing the flow rate by the motor speed at ground level pressure and 10 hPa.  
 Although there is no significant change in the measured flow rate, the pump motor speed increased by about 5 to 10% and the  
 400 pump stroke decreased by the same after serial number 24000. This indicates that a shortened pump stroke may increase the  
 relative volumetric ratio of the pump dead space to the piston volume due to different motor specifications after serial number  
 24000 (Section 5.1), which may be a deteriorating factor in pump efficiency. Focusing on deviations between ground-level  
 pressure and 10 hPa measurements, there is little change in motor speed differences but a visible trend in the pump flow rate  
 and pump stroke differences. From this, it is considered that the difference in pump flow rate changes between the ground  
 and lower pressure values; that is, the difference in measurement time changes, resulted in an increased pump correction  
 405 factor. In all parameters, motor characteristics changed discontinuously on the serial number 24000, after then, the standard  
deviations became larger, and the average values fluctuated with each group of sensor serial numbers. This is presumably  
because the motor pumps of post-24000 had larger dependency on the air pressure, as mentioned in section 5.1. Therefore, we

コメントの追加【諸藤5】: Reolaced according to comment  
 “Please also include in the text when discussing Fig. 16, that the  
 variability (standard deviations) of the flow rates, motor speeds, and  
 pump strokes in Fig. 16 (left panel) of the serial numbers post-24000  
 are larger than those for pre-24000. So, mention it, and give the  
 reason for it once again (motor speed more unstable and dependent  
 on air pressure? --> also refer to Sect. 5.1 for this discussion shortly,  
 i.e. text that I proposed here above), and state clearly which sample  
 of serial numbers (post-24000 or pre-24000) you would consider as  
 most reliable/representative.”.

consider the sample of serial numbers pre-24000 as more reliable. In all cases, motor characteristics fluctuate discontinuously after serial number 24000, and the flow rate and other characteristics of the ozone sensor change with each group of sensor serial numbers. Accordingly, the increasing trend of the pump correction factor is largely attributed to the ozonesonde sensor side.

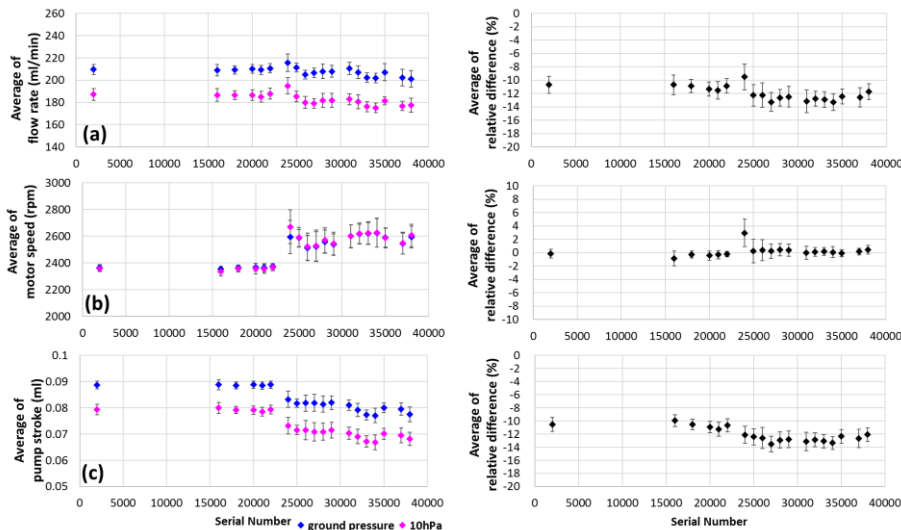


Figure 16: (a) Temporal variations in pump flow rate, (b) pump motor speed and (c) pump stroke at ground pressure and 10 hPa averaged for each serial number of ozone sensors from 2009 to 2022 (left: measurement averages; right: relative difference to values at ground pressure).

#### 5.4 Influence on the estimation of ozone concentration

This subsection discusses the effects of variability caused by changes in the characteristics of the pump flow rate outlined so far on total ozone. Fig. 17 shows impacts on total ozone values if the table values of pump correction factors measured by JMA for ozone sensor serial numbers post-24000 were used rather than measured individual pump correction factors. For each sounding, the relative differences between the total ozone calculated using the measured pump correction factors and that using the table values were determined during the period from 2009 - 2022. For calculation of the residual ozone column above balloon burst altitude, the mixing ratio was assumed as equal to the measured value at the top of the sonde profile. Fig. 17 shows impacts on total ozone integrated values if the table values of pump correction factors measured by JMA for ozone sensor serial numbers before 24000 were used rather than measured individual pump efficiency correction values. The effects were calculated using JMA average ozone partial pressure values for the period from 1994 to 2008 as a typical mid-latitude

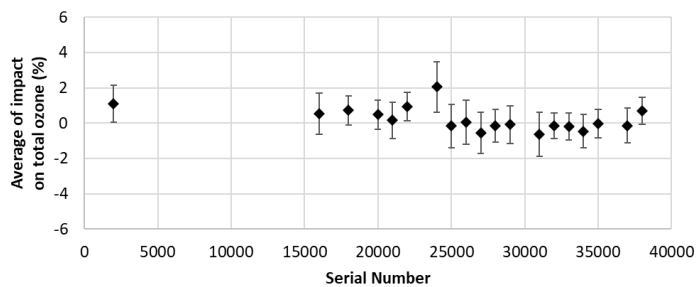
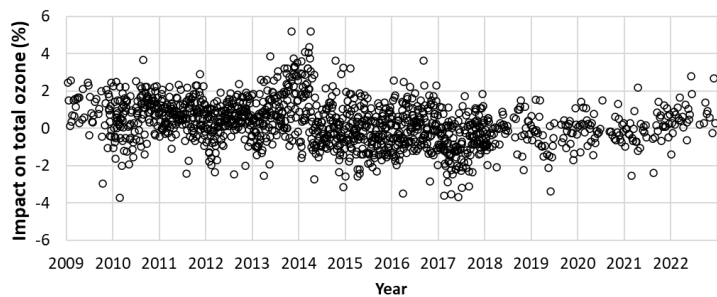
コメントの追加【諸藤6】: Replaced according to comment “A third issue, raised by reviewer #3 again, is how you calculated the influence on the estimation of ozone concentration. In the modified manuscript, you explained it clearer than it was before. …”.



profile. The ozone partial pressure obtained using table values for pump efficiency correction were obtained by dividing the average partial pressure by the measured pump correction factor and then multiplying the result by the table value. Each of these ozone partial values at each pressure level (ground level and 500, 200, 100, 50, 30, 20, 10, 7 and 5 hPa) was integrated to determine the total ozone integrated value, and the relative difference was determined for each pump efficiency measurement during the period from 2009–2022. The variation in total ozone was up to around 4%. The standard deviation in the relative differences of total ozone integrated values by lot was around 1%, and that between production lots was around 0.6%. As per Section 5.3, the pump correction factors tended to increase, but a decreasing tendency was seen with conversion to total ozone integrated values. The step observed after 2014 is consistent with the drop-off of total ozone discussed by Stauffer et al. (2020a, 2022b).

430

コメントの追加【緒藤7】: Replaced according to comment “A third issue, raised by reviewer #3 again, is how you calculated the influence on the estimation of ozone concentration. In the modified manuscript, you explained it clearer than it was before. …”.



コメントの追加【諸藤8】: Replaced according to comment "A third issue, raised by reviewer #3 again, is how you calculated the influence on the estimation of ozone concentration. In the modified manuscript, you explained it clearer than it was before. ...".

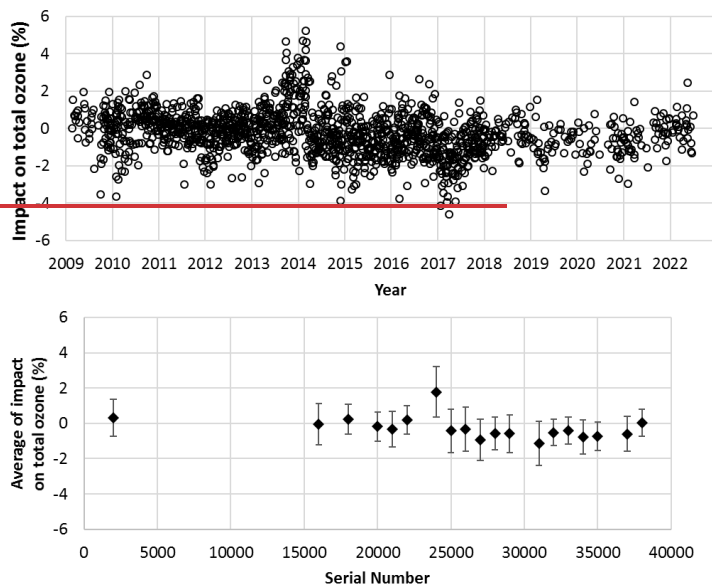


Figure 17: Top: Estimated impacts on total ozone integrated values with use of the average pump efficiency correction table. Bottom: Impacts on total ozone integrated values for each serial number lot, with error bars indicating standard deviation.

コメントの追加【晴藤9】: Replaced according to comment "A third issue, raised by reviewer #3 again, is how you calculated the influence on the estimation of ozone concentration. In the modified manuscript, you explained it clearer than it was before. ...".

## 6 Conclusion

440 The unique JMA system reported here enables fully automatic pump efficiency measurement for individual ECC ozonesondes. Time-series representations of individual pump correction factors for EN-SCI ozonesondes calculated using this approach indicate temporal changes with an increasing tendency and variations depending on the production lot. These effects can be attributed to differences in the characteristics of mechanical pumps and pump motors for each production lot. In this situation, if a table of correction values for the pump flow rate correction factor is used without individual pump efficiency measurement, 445 the total ozone value will be affected by up to around  $\pm 4\%$ .

Systematic biases in ozonesonde observations due to pump performance variations can lead to erroneous stratospheric vertical ozone trend values. To avoid the influence of lot-dependent pump correction factors in relation to EN-SCI's ozonesondes on stratospheric ozone trends and to enable accurate determination of actual atmospheric changes, it is advisable to determine the pump efficiency of each lot to pinpoint pump correction factor trends and enable adaptation to the calculation of ozone

450 concentration. Although the costs of system production may hinder introduction at present, commercialization may enable the  
use of similar systems at lower cost in the near future.

#### **Code and Data availability**

Code and data from this study are available from the authors upon request.

#### **Competing interests**

455 The authors declare an absence of competing interests.

#### **Author contribution**

TN led conceptualization and development of the automated pump efficiency measuring system. Analysis was performed and reported by TM and TN.

#### **References**

- 460 Hirota, M., and Muramatsu, H.: Performance characteristics of the ozone sensor of KC79-type ozonesonde, *J. Meteorol. Res.*,  
38, 115-118, (in Japanese), 1986.
- Johnson, B. J., Oltmans, S. J., Voemel, H., Smit, H. G. J., Deshler, T., and Kroeger, C.: ECC Ozonesonde pump efficiency  
measurements and tests on the sensitivity to ozone of buffered and unbuffered ECC sensor cathode solutions, *J. Geophys.*  
*Res.*, 107, D19 doi: 10.1029/2001JD000557, 2002.
- 465 Kobayashi, J., Kyojuka, M., and Muramatsu, H.: On various methods of measuring the vertical distribution of atmospheric  
ozone (I) – Optical-type ozone sonde, *Pap. Meteor. Geophys.*, 17, 76–96, 1966a.
- Kobayashi, J., and Toyama, Y.: On various methods of measuring the vertical distribution of atmospheric ozone (II) –  
Titration type chemical ozonesonde, *Pap. Meteor. Geophys.*, 17, 97–112, 1966b.
- Kobayashi, J., and Toyama, Y.: On various methods of measuring the vertical distribution of atmospheric ozone (III) –  
470 Carbon iodide type chemical ozonesonde–, *Pap. Meteor. Geophys.*, 17, 113–126, 1966c.
- Komhyr, W. D.: Electrochemical concentration cells for gas analysis, *Ann. Geophys.*, 25, 203-210, 1969.
- Komhyr, W. D.: Development of an ECC-Ozonesonde, NOAA Techn. Rep., ERL 200-APCL 18ARL-149, 1971.
- Komhyr, W. D.: Operations handbook - Ozone measurements to 40 km altitude with model 4A-ECC-ozone sondes, NOAA  
Techn. Memorandum ERL-ARL-149, 1986.

- 475 Komhyr, W. D., Barnes, R. A., Brothers, G. B., Lathrop, J. A., and Opperman, D. P.: Electrochemical concentration cell  
ozonesonde performance evaluation during STOIC 1989, *J. Geophys. Res.*, 100, 9231-9244, 1995.
- Smit, H. G. J., and the Panel for ASOPOS: Quality Assurance and Quality Control for Ozonesonde Measurements in GAW,  
WMO GAW Rep. 201, 94pp, [https://library.wmo.int/doc\\_num.php?explnum\\_id=7167](https://library.wmo.int/doc_num.php?explnum_id=7167), 2014.
- Smit, H. G. J., Thompson, A. M., and the ASOPOS 2.0 Panel: Ozonesonde measurement principles and best operational  
480 practices - ASOPOS 2.0 (Assessment of Standard Operating Procedures for Ozonesondes), World Meteorological  
Organization GAW Rep. 268, 172pp, [https://library.wmo.int/doc\\_num.php?explnum\\_id=10884](https://library.wmo.int/doc_num.php?explnum_id=10884), 2021.
- Stauffer, R. M., Thompson, A. M., Kollonige, D. E., Witte, J. C., Tarasick, D. W., Davies, J., Vömel, H., Morris, G. A., van  
Malderen, R., Johnson, B. J., Querel, R. R., Selkrik, H. B., Stübi, R., and Smit, H. G. J.: A Post-2013 Dropoff in Total  
Ozone at a Third of Global Ozonesonde Stations: Electrochemical Concentration Cell Instrument Artifacts?, *Geophysical  
485 Research Letters*, 47, e2019GL086791. doi: 10.1029/2019GL086791, 2020a.
- Stauffer, R. M., Thompson, A. M., Kollonige, D. E., Tarasick, D. W., van Malderen, R., Smit, H. G. J., Vömel, H., Morris, G.  
A., Johnson, B. J., Cullis, P. D., Stübi, R., Davies, J., and Yan, M. M.: An Examination of the Recent Stability of  
Ozonesonde Global Network Data, *Earth and Space Science*, Accepted Articles, e2022EA002459. doi:  
10.1029/2022EA002459, 2022**0b**.
- 490 Steinbrecht, W., Schwarz, R., and Claude, H.: New pump correction for the Brewer–Mast ozone sonde: Determination from  
experiment and instrument intercomparisons, *J. Atmos. Ocean. Tech.*, 15, 144-156, [https://doi.org/10.1175/1520-0426\(1998\)015%3C0144:NPCTFB%3E2.0.CO;2](https://doi.org/10.1175/1520-0426(1998)015%3C0144:NPCTFB%3E2.0.CO;2), 1998.
- World Ozone and Ultraviolet Radiation Data Centre: Dataset Information: OzoneSonde, <http://dx.doi.org/10.14287/10000008>.