

Characterization of atmospheric methane release in the outer Mackenzie River Delta from biogenic and thermogenic sources.

Daniel Wesley^{1,2}, Scott Dallimore³, Roger MacLeod³, Torsten Sachs⁴, David Risk¹

¹Earth and Environmental Sciences Department, St. Francis Xavier University, Antigonish, B2G 2W5, Canada

5 ²Department of Environmental Science, Memorial University, St. John's, A1C 5S7, Canada

³Geological Survey of Canada-Pacific, Natural Resources Canada, Sidney, V8L 4B2, Canada

⁴GFZ German Research Centre for Geosciences, Telegrafenberg, 14473 Potsdam, Germany

Correspondence to: Daniel Wesley (dwesley@stfx.ca)

Abstract. The Mackenzie River Delta is the second largest Arctic river delta in the world. Thin and destabilizing permafrost coupled with vast natural gas reserves at depth, high organic content soils, and a high proportion of wetlands create a unique ecosystem conducive to high rates of methane (CH₄) emission from biogenic and thermogenic sources. Hotspots are known to have a significant contribution to summertime CH₄ emissions in the region. Still, little research has been done to determine how often geologic or biogenic CH₄ contributes to hotspots in the Mackenzie River Delta. In the present study, stable carbon isotope analysis was used to identify the source of CH₄ at several aquatic and terrestrial sites thought to be hotspots of CH₄ flux to the atmosphere. Walking transects and point samples of atmospheric CH₄ and CO₂ concentrations were measured. Source stable carbon isotope ($\delta^{13}\text{C-CH}_4$) signatures were derived from keeling plots of point samples and ranged from -42 to -88 ‰ $\delta^{13}\text{C-CH}_4$, identifying both biogenic and thermogenic sources. A CH₄ source was determined for eight hotspots, two of which were thermogenic in origin (-42.5 ‰, -44.7‰), four were biogenic in origin (- 71.9‰ - -88.3‰), and two may have been produced by oxidation of biogenic CH₄ (- 53.0 ‰, -63.6 ‰), as evidenced by $\delta^{13}\text{C-CH}_4$ signatures. This indicates that the largest hotspots of CH₄ production in the Mackenzie River Delta are caused by a variety of sources.

1 Introduction

The Mackenzie River Delta (MRD) in the western Canadian Arctic is a unique setting for environmental methane (CH₄) emission to the atmosphere. Geological CH₄ occurs both at depth and within shallow surficial sediments, and there are many diverse settings in the area where biogenic methane production is actively occurring. Lakes, especially, in the MRD have been shown to be sources of biogenic CH₄ (Cunada et al., 2021; McIntosh Marcek et al., 2021). The area is characterized by a thin and destabilizing permafrost (Burn and Kokelj, 2009), high organic content soils (Schoor et al., 2008), vast amounts of deep thermogenic methane, originating from fossil hydrocarbon reservoirs (Collett and Dallimore, 1999) and over 49,000 lakes, which make up 25 - 50 % of the landscape (Emmertson et al., 2007; Lewis, 1988; Mackay, 1963). Importantly, atmospheric release of CH₄ during the summer in the MRD is thought to be characterized by localized areas with high methane flux, or 'hotspots' (Kohnert et al., 2017). Due to the potential for large contributions of geologic CH₄ and conditions where biogenic

CH₄ production and potential atmospheric release is likely to occur, it is important to understand these sources of CH₄ emissions, especially in areas of high-rate emissions.

Studies of atmospheric methane flux in the Arctic suggest that there are several factors that can influence methane dynamics in terrestrial and aquatic settings. These include environmental controls such as vegetation type, oxygen availability, soil moisture and soil temperature (including active layer regime) which can affect CH₄ and CO₂ production, oxidation, transport, and emissions (Rawlins et al., 2010; Treat et al., 2018). In addition, ecosystem heterogeneity can cause large variations in these environmental controls, all of which will be impacted by climate change (Collins et al., 2013). The MRD is characterized by a high proportion of wetlands and shallow tundra lakes (Ecosystem Classification Group, 2009, 2012;). Wetlands are considered to be the largest natural source of CH₄ globally, and wetland emissions are predicted to increase worldwide (Dean et al., 2018). Current global estimates of wetland CH₄ flux to the atmosphere range between 101-179 Tg CH₄/yr (Saunois et al., 2020). Non-wetland, freshwater systems are also significant contributors of CH₄ to the atmosphere on a global scale (Kirschke et al., 2013) which is estimated between 117-212 Tg CH₄/yr (Saunois et al., 2020). Ebullition from sediments is one path for CH₄ to enter the atmosphere from freshwater bodies (Saunois et al., 2016). In fact, a recent study showed that despite substantial winter-derived CH₄ being retained in the bottom waters of a lake in the MRD due to ice cover, CH₄ migrated to the atmosphere during the open water period (McIntosh Marcek et al., 2021). In the MRD, Arctic CH₄ the frequency of CH₄ hotspots decreases exponentially as distance to standing water increases (Elder et al., 2020; Baskaran et al., 2022). Emissions from thermokarst water bodies, such as those in the MRD, are expected to increase in the future due to longer annual ice-free periods (Wik et al., 2016; Marsh, 1990). Moreover, lakes (Kohnert et al., 2018), and natural seeps of thermogenic CH₄ (Bowen et al., 2008; Kohnert et al., 2017) are known sources of CH₄ in the MRD.

Hodson et al. (2020) found that six pingos in Svalbard had a range of annual flux rates between 76.4 and 364 kg CH₄/year and concluded that pingos require further study due to their potential contribution of CH₄ to the atmosphere. The outer MRD and the Pleistocene deposits of the Tuktoyaktuk Peninsula are home to about 2363 pingos (Wolfe et al., 2021). Release of CH₄ from pingos in the region could represent a significant, unaccounted source of CH₄ to the atmosphere making it a critical area for further study of pingos as a source of CH₄. The migration of CH₄ to the atmosphere from pingos is still poorly understood and additional studies of CH₄ production from pingos will help to improve Arctic CH₄ emission estimates.

Determining the ratios of ¹³C/¹²C or stable carbon isotope ratio ($\delta^{13}\text{C-CH}_4$) is one of the best established methods to assess CH₄ sources to the atmosphere. Globally, atmospheric CH₄ has a background stable carbon isotope ratio of approximately -47 ‰ (Allan et al., 2001; Nisbet et al., 2016). Biogenic sources are depleted in ¹³C and therefore have a lower stable carbon isotope ratio, whereas thermogenic sources are enriched in ¹³C and have a higher $\delta^{13}\text{C-CH}_4$ (Brownlow et al., 2017). However, thermogenic signatures in particular can vary significantly, even within the same field, as they are influenced by the source rocks and formation processes (Schoell, 1980). While there have been numerous hydrocarbon exploration wells drilled in the MRD area, reported thermogenic $\delta^{13}\text{C-CH}_4$ ratios in the MRD are very limited. Collett and Dallimore, (1999) reported a value of -50‰ from below ice bonded permafrost from a well in the study area. Consistent with Collett and Dallimore, (1999), we consider isotopic values > -50 ‰ to indicate thermogenic sources while values < -70 ‰, indicate

65 biogenic CH₄. Intermediate values may result from the oxidation of biogenic CH₄ or from gas which contains a mixture of biogenic and thermogenic CH₄. Oxidation of CH₄ can occur if gas migrates through an oxidizing environment such as the aerobic zone of the soil or a wetland. This can result in a higher δ¹³C-CH₄ signature due to a preference for bacteria to oxidize CH₄ containing the lighter isotope (¹²C), enriching the remaining CH₄ with ¹³C (Chanton et al., 2005).

70 Migration of CH₄ through discontinuities in the permafrost is common in regions with thin permafrost similar to the MRD as well as production in the organic-rich active layer during anoxic conditions (Barbier et al., 2012; Liebner and Wagner, 2007; Lupascu et al., 2012). Previous work has shown that thermogenic (Bowen et al., 2008; Walter Anthony et al., 2012; Walter et al., 2006) and biogenic (Zona et al., 2016; Walter Anthony et al., 2010) hotspots are present in Arctic permafrost environments, and suggest that both are present in the outer MRD (Kohnert et al., 2018). The Arctic is experiencing rapid climate change where soil temperatures are increasing in the outer MRD (Burn and Kokelj, 2009), and permafrost is warming both in the Canadian Arctic (Farquharson et al., 2019; Mamet et al., 2017) and globally (Biskaborn et al., 2019). Elder et al. (2021) observed diffusive flux averaging 48.75 mg CH₄ m⁻² hr⁻¹ and peaking at 1,008 mg CH₄ m⁻² hr⁻¹ directly over thawed permafrost on the edge of a thermokarst lake in interior Alaska. Talik formation is common below lakes in the MRD (Burn, 2002) and will increase with permafrost thaw. Terrestrial thermokarst hotspots are estimated to account for roughly 4% of the pan-Arctic CH₄ budget but make up only 0.01% of the northern permafrost land area (Elder et al., 2021). This will provide the means for greater CH₄ release from thermogenic and biogenic sources in the MRD in the future.

80 Due to the varied thermogenic and biogenic CH₄ sources in the MRD, it is important to determine the contribution of each source to the atmosphere as a basis for appraising carbon budgets. A lack of understanding of CH₄ sources in the MRD could lead to an underestimation of permafrost greenhouse gas emissions in the region and assessments of changes that could occur from ongoing and future climate change. To date, very little research has been done to appraise geologic vs biogenic CH₄ contributions both at a regional scale and for hotspots with concentrated atmospheric flux. A recent study by Kohnert et al. (2017) found that about 1% of the mapped area in the outer MRD was an extremely high source of CH₄ with flux rates above 5 mg m⁻² h⁻¹. These authors assumed that these hotspots were primarily of geologic origin (CH₄ produced beneath the permafrost, including thermogenic CH₄ from natural gas reserves that has the potential to migrate through discontinuities in the permafrost) since the inferred flux rates of the hotspots identified were significantly greater than the maximum values from studies published prior to 2017 of around 4 mg CH₄ m⁻² h⁻¹ detected for biogenic fluxes north of 61°N (Friborg et al., 2000; Sturtevant et al., 2012; Sachs et al., 2008). These fluxes also occurred in the summer period when most lakes were fully oxygenated, reducing biogenic emissions. According to a recent meta-analysis, the cut off value of 4 mg CH₄ m⁻² hr⁻¹ used by (Kohnert et al., 2017) is approximately double the mean flux rate for Arctic and boreal regions (Kuhn et al., 2021). More recent work has shown that exceptionally high flux rates averaging 48.75 mg CH₄ m⁻² hr⁻¹ can be attributed to biogenic production, with a stable carbon isotope signature of -73.8 ‰ (Elder et al., 2021; Hasson, 2022). Importantly, isotopic signatures have not been extensively used to determine the source of atmospheric CH₄ at hotspots in the outer MRD. These sources could behave differently than the current understanding of the region and other, similar Arctic environments.

The goal of this study was to undertake a first appraisal of the source of CH₄ from hotspots in the MRD with varied geology and permafrost conditions as identified by Kohnert et al (2017). This research objective was addressed by measuring the stable carbon isotope ratio of atmospheric methane emissions to determine if they were from possible thermogenic or biogenic sources. We hypothesised that the largest hotspots in the MRD include contributions of biogenic CH₄ due to the abundance of environmental settings where modern methane is being produced (Cunada et al., 2021).

2 Setting

The MRD is the second-largest Arctic river delta in the world and the largest river delta in Canada (Walker, 1998). It occurs between the higher elevation Pleistocene deposits of the Yukon coastal plain to the west and the Tuktoyaktuk coastlands to the east. The subaerial delta is thought to have formed in a glacial valley filled with late Pleistocene glacial sediments that were subsequently overlain by Holocene-aged deltaic deposits (Hill et al., 2001). A succession of Tertiary-aged hydrocarbon bearing sediments occurs at depth beneath the entire MRD region, with a number of large thermogenic hydrocarbon fields having been identified by industry (Osadetz and Chen, 2010). Deltaic sediments occurring in the near-surface consist mainly of fine sand and coarse silts which are >100 m thick in most of the MRD but can be less than 20 m thick in the extreme north-eastern areas (Dallimore et al, 1992; Mackay, 1963). Permafrost is considered to be continuous beneath land areas, but is largely absent beneath lakes which do not freeze to the bottom in winter (Nguyen et al., 2009). This landscape is a prime location for the formation of Arctic river taliks (Ensom et al., 2012) which can be sources of high-rate geologic CH₄ seeps (Sullivan et al., 2021). These river taliks can also form connecting through taliks with nearby wetlands which can create a network of discontinuous permafrost (Minsley et al., 2012). Ground ice content in deltaic sediments may exceed 50% in near-surface sediments but is substantially lower at greater depths (Collett and Dallimore, 1999; Mackay, 1963). Ground ice exists in the form of bonding cement or visible ice in excess of the pore space occurring as lenses, veins and rarely as massive ice layers (>1m in thickness).

The MRD has a variety of unique permafrost landforms including extensive areas with ice-wedge polygons and a number of isolated pingos which can range in size from just a few metres to 10-20 m high (Mackay, 1963; Wolfe et al., 2021). Bowen et al. (2008) have also identified a number of pockmark features in water bodies that are thought to be caused by geologic methane flux. The outer MRD is experiencing the ongoing effects of climate change (Burn and Kokelj, 2009), rapid coastal retreat and warming air temperatures that have risen in the past three decades at a rate that is three times the global average (GRID-Arendal, 2020).

2.1 Study Location

The study sites are shown in Fig. 1 and are superimposed on a map of concentrated areas with high CH₄ flux rates derived from published results by Kohnert et al. (2017). Eight of the nine study sites were located within the MRD and one site was located within the Tuktoyaktuk coastlands. Five study sites were located at large (about 1-5 km²) but well-defined hotspots

with methane flux rates, determined from aerial surveys by Kohnert et al. (2017) to be in excess of $5 \text{ mg hr}^{-1}\text{m}^{-2}$ (Pingo 1, 130 Pingo 2, Wetland 2, Wetland 3, Site 9). Site 9 was a tundra site vegetated mainly with shrub willows and alders. Walking transects were conducted at all of these sites due to their large and areal nature in order to increase sampling coverage. Discrete point samples were taken at each site for stable carbon isotope ratio ($\delta^{13}\text{C}\text{-CH}_4$) determination.

Four additional sites (Pingo 3, Wetland 1, Lake 1, Channel Seep) were at locations where point source, aquatic seeps where concentrated ebullitions of CH_4 flux were seen in open water in the summer, or in holes in newly formed ice in the fall. 135 Channel Seep and Lake 1 were previously known to researchers in the field party, while Pingo 3 and Wetland 1 sites were identified by holes in the ice which were observed from the helicopter while passing overhead during the fall. Discrete point samples were taken for stable carbon isotope ratio ($\delta^{13}\text{C}\text{-CH}_4$) analysis. Photographs of each site and descriptions are included in Fig. 2.

The main study sites were situated in the lower subaerial delta plain, which consists of deltaic sediments, many 140 meandering river channels and numerous thermokarst lakes (Burn and Kokelj, 2009). The permafrost in this area is typically less than 100 m thick and continuous beneath land areas (Nguyen et al., 2009; Hu et al., 2014). However, taliks, or thawed zones in the permafrost, form below most lakes and channels and often penetrate the entire permafrost interval (Burn, 2005). The high number of lakes in the area is characteristic of many Arctic and Subarctic deltas (Marsh, 1990). In the outer MRD, lakes tend to remain oxygenated and have well-established macrophyte communities by the end of the summer (McIntosh 145 Marcek et al., 2021). Many of the lakes are isolated from the flow of the channels of the Mackenzie River, except during storm surge inundation (Marsh, 1990). Terrestrial areas are dominated by mixed tundra vegetation with some areas (particularly along the edge of river channels) with well-developed shrub willow and alders, however, other areas are more sparsely vegetated with exposed delta muds and sedge vegetation (Burn and Kokelj, 2009; Gill, 1972). Many flat-lying terrestrial areas are covered by 10-40 cm of standing water during late summer. Since all sites were only accessible by helicopter, field access 150 was largely dependent on weather and ground conditions at each site.

Pingo 3 is located to the east of the MRD in an area referred to as the Tuktoyaktuk coastlands (Ecosystem Classification Group, 2012). This site was sampled in the fall in a shallow pond which formed in the crater of a collapsed pingo. Steady ebullition of CH_4 occurring in the pond maintained open holes in newly formed ice. This site is located east of the airborne eddy covariance flux surveys conducted by Kohnert et al. (2017) (Fig. 1). The surficial materials in this area are 155 characterized by glacial moraine with continuous shrub tundra vegetation. However, the pingo itself was located in a drained lacustrine basin and similar to many other pingos in the Tuktoyaktuk coastlands area in general (Ecosystem Classification Group, 2012). The permafrost of the Tuktoyaktuk Coastlands typically is more than 400 m thick and therefore through going taliks are much more rare (Hu et al., 2014).

3 Methods

160 In the present study, we investigated several aquatic and terrestrial hotspots of atmospheric CH₄ flux. Study sites visited in the summer were chosen based on areas with high methane flux rates determined from airborne eddy covariance flux surveys, conducted in the outer MRD by the German Research Centre for the Geosciences (GFZ) together with the Alfred Wegener Institute for Polar and Marine Research (AWI) (Kohnert et al., 2017). We conducted ground sampling surveys in July 2019 and 2021. The airborne eddy covariance flux surveys were conducted seven years prior, during the same month in 2012 and 165 2013. We also carried out fieldwork in October of 2019 focusing on sampling near holes in the ice forming on water bodies caused by high rate CH₄ ebullition.

3.2 Sample Collection and Analysis

Geolocated air samples were collected in the field and subsequently analysed at the Aurora Research Institute laboratory in Inuvik, Northwest Territories, Canada or at St. Francis Xavier University in Antigonish, Nova Scotia, Canada. CH₄ and CO₂ concentrations and $\delta^{13}\text{C-CH}_4$ were determined using a Picarro G2210i analyser. The Picarro G2210i analyser is accurate to 170 within 1 ‰ $\delta^{13}\text{C-CH}_4$, 0.001 ppm CH₄, and 1 ppm CO₂. All point samples were analysed for at least 5 minutes and the values averaged, which increases the Picarro G2210i analyser accuracy to 0.1 ‰ $\delta^{13}\text{C-CH}_4$, 0.0001 ppm CH₄ and 0.01 ppm CO₂. Only point samples were used for the determination of $\delta^{13}\text{C-CH}_4$ source signatures. Sample positions were recorded with a Garmin eTrex 10 handheld GPS, which has an accuracy of +/- 3.65 m. Gas mixing ratios were standardized to Ameriflux 175 FB04306 breathing grade air (benchmarked to 0.5 ppb) Five walking transects of atmospheric CH₄ and CO₂ concentrations were completed at Pingo 1, Pingo 2, Wetland 2, Wetland 3, and Site 9 in 2019 (Fig. 3). Hotspots determined by airborne eddy covariance (Kohnert et al., 2017) were typically several square kilometres in extent and therefore it was impractical to sample the entire feature. Sampling transect locations were selected within the general hotspot area where the airborne eddy covariance flux rates were highest. Samples were concentrated around features such as wetland areas or pingos that were considered 180 possible sources of CH₄. Unfortunately, this has the potential to bias sampling to the CH₄ produced in and around these features. Walking transects were carried out by filling a 30 m coil of 4 mm inside diameter aluminum Synflex tubing while walking at a steady pace across the ground. Walking transects covered a distance between 600-800 m and took approximately 20 minutes to fill a single coil. Coils of tubing were purged with nitrogen and sealed prior to sampling. A constant flow rate of 20 standard cubic centimetres per minute (CCM) was maintained by attaching a small pump and a flow controller to the coil of tubing. 185 Walking transect air samples were analysed immediately on return from the field site by feeding the sample into a Picarro G2210i analyser at the same rate at which it was filled. Concentrations of CH₄ and CO₂ were measured every 1-2 seconds as the sample was being analysed. Mixing of the air sample inside the tube between collection and analysis is limited due to the small diameter of the tubing. A similar method was used during drone-based CH₄ measurements (Andersen et al., 2018). Two walking transects were collected at Pingo 3 and Wetland 1 in 2021 using a Li-Cor LI-7810 gas analyser over an approximately 190 10 minute period and covered a distance of approximately 200-300 m. The Li-Cor LI-7810 gas analyser has an accuracy of

0.25 ppb. Sample air was drawn from approximately 1 m above ground level. Each walking transect location was selected by completing one transect upwind and one downwind of the estimated location of the highest flux concentration in order to obtain background concentrations at each site. If features that represented potential sources such as pingos or wetlands were present, then walking transects were taken upwind and downwind of the feature. Discrete point samples were taken parallel to
195 each walking transect, 3-5 m further away from the centre of the hotspot. This sampling method was designed to cover the most area, with the fewest samples, in the shortest amount of time possible. By using this method we were still only able to cover a small fraction of the hotspot (5-10% by area). By sampling near observed potential sources or near the zone of the highest flux rate, we increased the likelihood of pinpointing the source.

Discrete point samples were taken at all sites by filling 1 L Tedlar bags with ambient air from approximately 1 m
200 above ground level. At aerial eddy covariance sites point samples were taken along each walking transect. The point samples were used to measure stable carbon isotope ratios ($\delta^{13}\text{C}-\text{CH}_4$). Point samples at aquatic seep sites were taken at the seep location and additional samples were taken up to 5 m away from known sources in order to measure source and background CH_4 concentrations. At Pingo 3 and Wetland 1 point samples were taken directly over holes in the ice by throwing a buoy with tubing attached to it onto the water in the open hole in the ice and using a pump to draw air through the tubing into a sample
205 bag. At Lake 1 samples were collected from a boat which positioned the sample inlet directly above any discovered seeps. At Channel Seep samples were collected by extending a pole with the sample inlet attached to the end out over the seep from the channel bank. All samples were taken from the air less than 10 cm from the seep with the exception of the channel seep sample which was approximately 2 m from the seep. Walking transects and discrete point samples were completed at Pingo 3 and Wetland 1 in the summer of 2021 to compare overall site variation to point source samples. Wind regime at sample sites was
210 measured with a Kestrel 1000 handheld anemometer which has an accuracy of +/- 0.1 m/s.

3.3 Determination of CH_4 Source Stable Carbon Isotope Value ($\delta^{13}\text{C}-\text{CH}_4$)

Keeling plot analysis of the discrete point samples was used to determine the stable carbon isotope signature of the CH_4 source at each site. Keeling plot analysis is a common approach used to determine a source of carbon entering the atmosphere by measuring the change in $\delta^{13}\text{C}-\text{CH}_4$, or fractionation, that occurs as more carbon from that source is added (Kohler et al., 2006).
215 This analysis uses a mass balance approach and takes into account the relative difference in stable carbon isotope ratios of the atmosphere and an additional carbon source (Kohler et al., 2006; Pataki et al., 2003). The Y-intercept of a linear regression of the $\delta^{13}\text{C}-\text{CH}_4$ vs. the inverse of the CH_4 concentration will indicate the source which contributed to the increase in atmospheric CH_4 . This approach was first used by Keeling (1958, 1961) to determine the source of CO_2 contributions to the atmosphere (Pataki et al., 2003). One main assumption of Keeling plot analysis is that there are only two components being measured, the
220 source being released at the surface/atmosphere interface and the background regional atmospheric signature (Pataki et al., 2003). This assumption is challenging to achieve under field conditions as there can be multiple potential sources of CH_4 if the sampling is carried out over a broad area or in windy conditions that may cause mixing. For the walking transects described in our study, we accepted this limitation as we were attempting to appraise rather large hotspots identified by Kohnert et al.

(2017). On this basis, it seemed reasonable to accept that our atmospheric point samples, conducted within the assumed source of these six hotspots, could be representative of a blended $\delta^{13}\text{C}\text{-CH}_4$ signature as might be measured by these researchers at the elevation that the survey aircraft was flying (40-80 m above ground level). In comparison, at sites where ebullition was observed and there was a known point source of emission, samples could be collected directly over the source. This enables a high degree of certainty that only one source is being measured at Pingo 3, Wetland 1, Lake 1, and Channel Seep sites.

4.0 Results

Data obtained from walking transects at each site along with wind speed are shown in Table 1. Atmospheric CH_4 concentrations were elevated at four of five airborne eddy covariance sites where walking transects were completed (Pingo 1, Pingo 2, Wetland 2, Wetland 3). Only background atmospheric concentrations of CH_4 were observed at Site 9 (Table S1), therefore, it was not included in the main analysis. Mean background atmospheric values recorded at the Inuvik ECCC weather station for the period of fieldwork (July 8-19, 2019) were 1.995 ppm for CH_4 and 402 ppm CO_2 . The maximum CH_4 values for walking transects obtained were 8.734 ppm at Pingo 2, 6.135 ppm at Pingo 1, 2.264 ppm at Wetland 3, 2.152 ppm at Wetland 2, and background values at Site 9. During the walking transects concentrations above 2.5 ppm were recorded for 1056 of 1850 measurements at Pingo 1 and for 285 of 2013 measurements at Pingo 2. Elevated CO_2 values were also observed during walking transects at two of the eddy covariance hotspot sites with values of 603 ppm at Wetland 2 and 463 ppm at Pingo 2. Site images with CH_4 concentrations from walking transects can be seen in Figure 3. Keeling plots of stable carbon isotope signatures ($\delta^{13}\text{C}\text{-CH}_4$) are shown in Figure 4. Y-intercept values were -53.0 ‰ for Pingo 1, -63.6 ‰ for Pingo 2, -78.4‰ for Wetland 2, and -71.9 ‰ for Wetland 3.

As expected, the four sites with discrete samples in close proximity to ebullition sites had substantially elevated methane concentrations (Fig. 1). Estimates of source stable carbon isotope signatures derived from Keeling plots (Fig. 4) were -77.6‰ for Pingo 3, -42.5 ‰ for Channel Seep and -44.7 ‰ for Lake 1. Keeling plot values were -88.4‰ for Wetland 1 when sampled in the fall (October), but -56.7 ‰ when sampled in the summer (July). Pingo 3, Lake 1, and Wetland 1 were sampled in the fall with ebullitions forming holes in the newly formed ice. Channel Seep was documented during a previous field campaign. Maximum values of 2.94 ppm CH_4 and 519 ppm CO_2 were observed at Pingo 3 and values of 12.399 ppm CH_4 and 488 ppm CO_2 were observed at Wetland 1. Fluxes were measured for CH_4 and CO_2 in 2021 at Lake 1 and Pingo 3 (Table S2).

5 Discussion

250 5.1 Methane characteristics observed at airborne eddy covariance hotspot sites

Outer delta pingos

The highest CH₄ concentrations for walking transects co-located within airborne eddy covariance CH₄ hotspots were obtained in the northwestern part of the outer MRD. The elevated values measured over a dispersed area within the eddy covariance hotspots provide a basis to speculate on the possible sources for the hotspots. Estimates of source stable carbon isotope signatures ($\delta^{13}\text{C-CH}_4$) derived from Keeling plots were -53.0 (+/- 1.01) ‰ for Pingo 1 and -63.6 (+/- 1.87) ‰ for Pingo 2. These signatures are enriched in ¹³C compared to typical biogenic sources with $\delta^{13}\text{C-CH}_4 < -70$ ‰ and within 14 ‰ of our assumed threshold of -50 ‰. We conclude, therefore, that the signature at these two sites could be from oxidised biogenic CH₄ but a geologic source for the methane for each site that is made up of a mixture of thermogenic and biogenic gas from depth, perhaps with a dominance of thermogenic methane cannot be ruled out. However, while elevated values for the walking transects were observed in close proximity to the pingo features, we note that for both sites the highest values were not on the features themselves, but a short distance away in the low-lying shrub tundra terrain surrounding the pingos.

Most pingos in the Tuktoyaktuk Peninsula generally form in areas of thick permafrost with drained lacustrine basins and are therefore assumed to be closed system pingos formed from the re-freezing of a local talik beneath the drained lakes. However, because permafrost is thin in the outer MRD, the pingos in this area can be open system pingos formed from fluid migration from beneath the permafrost interval (Mackay, 1963). We conclude that the Pingo 1 and 2 features are most likely open system pingos as they have formed in a flat-lying delta plain setting with no indication of a drained lake and nearby scientific drilling indicates only about 80 m of thermally defined permafrost and perhaps only 50-60 m of ice-bonded permafrost (Dallimore et al., 1992). Methane has been shown to occur in groundwater discharges in the vicinity of open system pingos in Svalbard, although these pingos are formed in a different geologic setting than the MRD (Hodson et al., 2019). In this case, the isotope signature of CH₄ in groundwater was similar to that found below the permafrost. We note a similar relationship for the pingo sites in the outer delta where scientific drilling conducted at the Unipkat well site found an isotopic $\delta^{13}\text{C-CH}_4$ value of -53‰ dissolved methane in core samples beneath the ice-bonded permafrost interval (Collett and Dallimore, 1999). This is an identical value to Keeling plot determinations for the Pingo 1 site (-53.0 ‰) and similar to that found at Pingo 2 (-63.6‰). A point of interest, however, is that the highest CH₄ concentrations at sites Pingo 1 and Pingo 2 were measured 200-400 m (Fig. 3) away from the pingos and were only as high as 2.2 ppm directly over the pingos (Table S3). One possibility for this occurrence is that the signal from the pingo itself may have been shifted by the wind, however, measured wind velocity and direction during the survey did not seem consistent with this possibility. Given that the ice bonded permafrost in the pingo itself is likely impermeable to fluid and gas flux, we conclude that the local source is likely from the terrain surrounding the pingo where indeed open system groundwater flow may be occurring. This interpretation would be consistent with recent findings in the region that water table depth, hydrology and topography are critical factors driving emissions at hotspots in the

MRD (Elder et al., 2020; Baskaran et al., 2022; Hodson et al., 2020a, b). Further research including repeat ground sampling transects and possible permafrost geophysics is warranted to further assess this hypothesis.

285 Collapsed Pingo 3 was formed in a much different environment than Pingo 1 and 2, in the Tuktoyaktuk coastal plain where the permafrost is > 500 m thick (Todd and Dallimore, 1998). Migration of CH₄ through the permafrost is much less likely here than in the outer MRD. In this case, ebullitions of gas were emitted from a small pond with a Keeling plot stable carbon isotope source signature of -73.6 ‰ suggesting a more definitive biogenic methane source. As the permafrost is much thicker at this site, the potential for a talik penetrating the entire permafrost and providing a conduit for migration of deep thermogenic methane is much less likely.

290 **Wetland sites**

Two wetland sites were located at airborne eddy covariance identified hotspot sites that occurred in rather flat delta plain settings in the western part of the outer MRD (Fig. 1). These sites were dominated by low shrub tundra with some areas of exposed delta sediments with sparse sedges. We characterized these as wetlands as much of the surface had 10-30 cm of standing water. Atmospheric CH₄ values during walking transects at Site 9 peaked at 2.044 ppm, however, concentrations of 295 2.152 ppm were observed at Wetland 2 and 2.264 ppm at Wetland 3. At both sites modestly elevated values above background were found along most of the walking transects. Estimates of source stable carbon isotope signatures ($\delta^{13}\text{C-CH}_4$) derived from Keeling plots were -78.4‰ for Wetland 2 and -71.9 ‰ for Wetland 3. This is consistent with the knowledge that wetlands can produce significant amounts of biogenic CH₄ (McGuire et al., 2012; Wik et al., 2016; Andresen et al., 2017). Elevated CO₂ values up to 603 ppm were observed at Wetland 2. The lack of a methane signal at Site 9 and the low values at Wetlands 2 and 300 3 do not provide substantive validation of a possible source for the eddy covariance hotspots observed by Kohnert et al. (2017). However, it is reasonable to consider that these featureless delta plain areas of the MRD may be dominated by widely dispersed methane flux from mainly biogenic sources. Elevated CO₂ of 603 ppm at Wetland 2 may also support this inference since co-generation of CH₄ with CO₂ is typical of biogenic production (Chanton et al., 2005).

Discrete sampling at Wetland 1 yielded a $\delta^{13}\text{C-CH}_4$ Keeling plot source signature of -88.3 ‰ when sampled in 305 October during freeze-up and -53.4 ‰ during the summer. We conclude that this demonstrates a biogenic source during the fall since biogenic production can persist late into the cold season (Zona et al., 2016). While the sampling was carried out at the same location, methane ebullition was seen while sampling during the fall, but not during the summer. The Wetland 1 site was dominated by sedge vegetation with areas of standing water. The lack of ebullition flux at the same site during the summer and the different Keeling plot estimate suggests methane flux in this wetland setting varies seasonally. The Keeling plot source signature of -53.4 ‰ during the summer could be caused by either oxidation of a biogenic source or contributions of both 310 biogenic and thermogenic sources. Oxidation of CH₄ has been shown to be a significant source of fractionation in Arctic lakes during the summertime (Thompson et al., 2016). Groundwater inputs to lakes in permafrost areas are higher during the summer months (Olid et al., 2022), which would increase the possibility of thermogenic inputs during the summer. Seasonal shifts in

lake-produced CH₄ stable carbon isotope signatures potentially due to oxidation are known to occur but are typically observed during winter beneath the ice cover (Michmerhuizen et al., 1996; Ettwig et al., 2016), or the transition from the ice-covered to open water periods in the spring (McIntosh Marcek et al., 2021). Similar observations for seasonal variability in terrestrial sources are not well documented in the literature, although transport of CH₄ from anaerobic soils with sedge vegetation has been observed to bypass the aerobic zone, limiting oxidation during the growing season (Olefeldt et al., 2013; King et al., 1998). Therefore, it is possible that there were contributions to the atmosphere from biogenic and thermogenic sources at Wetland 1, but oxidation and varying production pathways cannot be ruled out as the reason for the signature derived during the summer sampling.

5.2 Methane from ebullition sources in the MRD and Tuktoyaktuk Coastlands

Some of the largest occurrences of atmospheric release of CH₄ in Arctic environments have been reported in association with large gas seeps of thermogenic CH₄, causing high-rate ebullition (Walter Anthony et al., 2012), but biogenic contributions from microbially produced fossil CH₄ (Sullivan et al., 2021) and young carbon can also occur at seeps with high flux rates (Elder et al., 2018). The Channel Seep sampled in this study was at the edge of a small river channel with high-rate ebullition observed during our fieldwork. This site had a δ¹³C-CH₄ Keeling plot source signature of -42.0 ‰. Lake 1 which was conducted in the immediate vicinity of a smaller ebullition stream also had a very similar source signature of -44.7 ‰. Analyses of a seep gas sample from this lake carried out in 2008 yielded values of -290 ‰ δD-CH₄/ -45 ‰ δ¹³C-CH₄ and -230 ‰ δD-CH₄/ -37 ‰ δ¹³C-CH₄ (S.R. Dallimore, personal communication, January 12th, 2023) This is well within the thermogenic isotopic field as determined by Whiticar (1999). When combined with sampling of a vigorous ebullition in a small pond by Bowen et al. (2008) with -43.3 ‰ values, three locations with similar ebullition character and isotopic values are spaced over approximately 20 km in a north-south trend. We note that the Niglingtak/Kumak hydrocarbon field, which occurs only 5 km to the east of these sites, occurs in a faulted anticline structure with the same trend. As the permafrost is less than 80 m thick in this area, it is probable that the high ebullition sites occur where taliks have formed through the permafrost creating a migration pathway for thermogenic gasses to pass through the permafrost. In addition, a common thermogenic signature at multiple sites in close proximity but different settings suggests a possible pervasive regional source.

The soil adjacent to Lake 1 was saturated with water, creating ideal conditions for biogenic production at the site. It is possible that we sampled multiple sources of CH₄ at the site; biogenic methane production in and around the lake as well as a strong thermogenic seep. This could account for the low r² value (0.48) (Fig. 4) at Lake 1 despite highly elevated CH₄.

Thermogenic seeps to the atmosphere have been documented in Arctic regions, including the Mackenzie River Delta, where thermogenic methane exists underneath the permafrost (Bowen et al., 2008; Osadetz & Chen, 2010; Walter Anthony et al., 2012). While biogenic CH₄ production typically results in ¹³CH₄ values less than -70 ‰, oxidation can result in higher δ¹³C-CH₄ signatures which are closer to that of thermogenic CH₄. This is due to a preference for bacteria to oxidize CH₄ containing the lighter isotope (¹²C), enriching the remaining CH₄ with ¹³C (Chanton et al., 2005). Values of δ¹³C-CH₄ signatures as high as -44.7 ‰, which were observed at Lake 1, are not likely to be generated through oxidation of biogenic CH₄. Values

almost as high are exceedingly rare at these latitudes, but have been observed before, in an Arctic lake (-49.2 ‰) (Thompson et al., 2016), and in a pond formed in polygonal tundra (-44.9 ‰, -52.3 ‰) (Preuss et al., 2013; Vaughn et al., 2016). Stable carbon isotope values even higher (more enriched in ^{13}C) than those reported in this study (-38.8 ‰) were observed below
350 lake ice on the north slope of Alaska (Elder et al., 2018). These higher values were attributed to oxidation of biogenic CH_4 but, were measured in an environment where high rates of oxidation are likely. In the case of Preuss et al. (2013), almost complete oxidation of CH_4 to atmospheric levels was required to increase the $\delta^{13}\text{C}\text{-CH}_4$ signature from less than -50 ‰ up to -44.9 ‰. Additionally, these two sites are at a river channel and a lake, respectively, where oxidation would be minimal as compared to a wetland. The likelihood of the permafrost thawing completely through at these two locations is also higher than at the wetland
355 locations, increasing the possibility of thermogenic migration.

6 Conclusion

To our knowledge, this is the first study to measure stable carbon isotope signatures of atmospheric methane at hotspots in the MRD. Estimates of source isotope signatures from field sites ranged from -42 ‰ to -88 ‰, indicating that the largest sites of CH_4 production in the MRD are caused by both biogenic and thermogenic sources. Of eight sites investigated in this study,
360 two were thermogenic in origin, four were biogenic in origin, and two may have been produced by oxidation of biogenic CH_4 , as evidenced by stable carbon isotope signatures and the high potential for migration of CH_4 from below the thin permafrost at the majority of these sites.

In this study, we were able to verify airborne eddy covariance hotspot locations using walking transects to measure atmospheric variation of CH_4 . These methods can still be improved on as they only provide a snapshot of methane sources to
365 the atmosphere during site visits and a true picture of annual CH_4 production cannot be established here. Future research should include year-round flux measurements at these sites, coupled with stable carbon isotope measurements. This would fully quantify the annual CH_4 emission to the atmosphere from biogenic and thermogenic sources at these sites. This study attempted to verify CH_4 hotspots identified from airborne eddy covariance surveys and determine their source at the same time. Because sites from remote sensing surveys were large and areal in nature, verification required covering large areas by foot. Not only
370 is this time-consuming but can make it difficult to pinpoint exact emission locations. Combined use of portable CH_4 analysers with flux chamber and isotopic measurements at the locations of the highest atmospheric mixing ratios of CH_4 would be a more direct and methodical way separate and quantify sources, especially at sites where both biogenic and thermogenic sources are likely.

Competing Interests

375 The authors declare that there are no competing interests.

Author Contribution

DW conceptualization, investigation, formal analysis, original draft preparation, reviewing and editing. SD funding acquisition, conceptualization, reviewing and editing. RM investigation, reviewing and editing. TS reviewing and editing. DR funding acquisition, conceptualization, reviewing and editing. All of the authors edited and approved the final version for submission.

Acknowledgements

We would like to acknowledge the following contributions to this work. The LiCor gas analyser used for sampling was kindly provided by Jacqueline Goordial. Support during fieldwork was provided by Jacqueline Goordial, Peter Morse and Isaac Ketchum. Samples from Lake 1 were collected by Julia Boike. Some sample analysis was provided by Laura Lapham. Aircraft support was provided by the Polar Continental Shelf Program granted to the Geological Survey of Canada. Field logistics, including lab facilities, were provided by the Aurora Research Institute. Fieldwork costs were supplemented by the Northern Scientific Training Program. The authors wish to acknowledge the advice and comments provided by the reviewers of this paper.

390 References

- Allan, W., Manning, M. R., Lassey, K. R., Lowe, D. C., and Gomez, A. J.: Modeling the variation of $\delta^{13}\text{C}$ in atmospheric methane: Phase ellipses and the kinetic isotope effect, *Glob. Biogeochem. Cycles*, 15, 467–481, <https://doi.org/10.1029/2000GB001282>, 2001.
- Andersen, T., Scheeren, B., Peters, W., and Chen, H.: A UAV-based active AirCore system for measurements of greenhouse
395 gases, *Atmospheric Meas. Tech.*, 11, 2683–2699, <https://doi.org/10.5194/amt-11-2683-2018>, 2018.
- Andresen, C. G., Lara, M. J., Tweedie, C. E., and Lougheed, V. L.: Rising plant-mediated methane emissions from arctic wetlands, *Glob. Change Biol.*, 23, 1128–1139, <https://doi.org/10.1111/gcb.13469>, 2017.
- Barbier, B. A., Dziduch, I., Liebner, S., Ganzert, L., Lantuit, H., Pollard, W., and Wagner, D.: Methane-cycling communities
400 in a permafrost-affected soil on Herschel Island, Western Canadian Arctic: active layer profiling of *mcrA* and *pmoA* genes, *FEMS Microbiol. Ecol.*, 82, 287–302, <https://doi.org/10.1111/j.1574-6941.2012.01332.x>, 2012.
- Baskaran, L., Elder, C., Bloom, A. A., Ma, S., Thompson, D., and Miller, C. E.: Geomorphological patterns of remotely sensed methane hot spots in the Mackenzie Delta, Canada, *Environ. Res. Lett.*, 17, 015009, <https://doi.org/10.1088/1748-9326/ac41fb>, 2022.
- Biskaborn, B. K., Smith, S. L., Noetzli, J., Matthes, H., Vieira, G., Streletskiy, D. A., Schoeneich, P., Romanovsky, V. E.,
405 Lewkowicz, A. G., Abramov, A., Allard, M., Boike, J., Cable, W. L., Christiansen, H. H., Delaloye, R., Diekmann, B., Drozdov, D., Etzelmüller, B., Grosse, G., Guglielmin, M., Ingeman-Nielsen, T., Isaksen, K., Ishikawa, M., Johannsson, M., Johannsson, H., Joo, A., Kaverin, D., Kholodov, A., Konstantinov, P., Kröger, T., Lambiel, C., Lanckman, J.-P., Luo, D., Malkova, G., Meiklejohn, I., Moskalenko, N., Oliva, M., Phillips, M., Ramos, M., Sannel, A. B. K., Sergeev, D., Seybold, C., Skryabin, P., Vasiliev, A., Wu, Q., Yoshikawa, K., Zheleznyak, M., and Lantuit, H.: Permafrost is warming at a global scale,
410 *Nat. Commun.*, 10, 264, <https://doi.org/10.1038/s41467-018-08240-4>, 2019.
- Bowen, R. G., Dallimore, S. R., Côté, M. M., Wright, J. F., and Lorenson, T. D.: Geomorphology and gas release from pockmark features in the Mackenzie Delta, Northwest Territories, Canada., 6, 2008.
- Brownlow, R., Lowry, D., Fisher, R. E., France, J. L., Lanoisellé, M., White, B., Wooster, M. J., Zhang, T., and Nisbet, E. G.: Isotopic Ratios of Tropical Methane Emissions by Atmospheric Measurement: Tropical Methane $\delta^{13}\text{C}$ Source Signatures,
415 *Glob. Biogeochem. Cycles*, 31, 1408–1419, <https://doi.org/10.1002/2017GB005689>, 2017.
- Burn, C. R.: Tundra lakes and permafrost, Richards Island, western Arctic coast, Canada., *Can. J. Earth Sci.*, 39, 1281–1298, 2002.
- Burn, C. R.: Lake-bottom thermal regimes, western Arctic coast, Canada, *Permafr. Periglac. Process.*, 16, 355–367, <https://doi.org/10.1002/ppp.542>, 2005.
- 420 Burn, C. R. and Kokelj, S. V.: The environment and permafrost of the Mackenzie Delta area, *Permafr. Periglac. Process.*, 20, 83–105, <https://doi.org/10.1002/ppp.655>, 2009.
- Chanton, J., Chaser, L., Glasser, P., and Siegel, D.: Carbon and Hydrogen Isotopic Effects in Microbial, Methane from Terrestrial Environments, in: *Stable Isotopes and Biosphere Atmosphere Interactions*, Elsevier, 85–105, <https://doi.org/10.1016/B978-012088447-6/50006-4>, 2005.
- 425 Collett, T. S. and Dallimore, S. R.: Hydrocarbon gases associated with permafrost in the Mackenzie Delta, Northwest Territories, Canada, *Appl. Geochem.*, 14, 607–620, [https://doi.org/10.1016/S0883-2927\(98\)00087-0](https://doi.org/10.1016/S0883-2927(98)00087-0), 1999.

- Collins, M., Knutti, R., Arblaster, J., Dufresne, J.-L., Fichet, T., Gao, X., Jr, W. J. G., Johns, T., Krinner, G., Shongwe, M., Weaver, A. J., Wehner, M., Allen, M. R., Andrews, T., Beyerle, U., Bitz, C. M., Bony, S., Booth, B. B. B., Brooks, H. E., Brovkin, V., Browne, O., Brutel-Vuilmet, C., Cane, M., Chadwick, R., Cook, E., Cook, K. H., Eby, M., Fasullo, J., Forest, C.
430 E., Forster, P., Good, P., Goosse, H., Gregory, J. M., Hegerl, G. C., Hezel, P. J., Hodges, K. I., Holland, M. M., Huber, M., Joshi, M., Kharin, V., Kushnir, Y., Lawrence, D. M., Lee, R. W., Liddicoat, S., Lucas, C., Lucht, W., Marotzke, J., Massonnet, F., Matthews, H. D., Meinshausen, M., Morice, C., Otto, A., Patricola, C. M., Philippon, G., Rahmstorf, S., Riley, W. J., Saenko, O., Seager, R., Sedláček, J., Shaffrey, L. C., Shindell, D., Sillmann, J., Stevens, B., Stott, P. A., Webb, R., Zappa, G., Zickfeld, K., Jousaume, S., Mokssit, A., Taylor, K., and Tett, S.: Long-term Climate Change: Projections, Commitments and
435 Irreversibility, in: *Climate Change 2013: The Physical Science Basis. Contribution of Working Group I to the Fifth Assessment Report of the Intergovernmental Panel on Climate Change*, Cambridge University Press, Cambridge, UK, 108, 2013.
- Cunada, C. L., Lesack, L. F. W., and Tank, S. E.: Methane emission dynamics among CO₂-absorbing and thermokarst lakes of a great Arctic delta, *Biogeochemistry*, 156, 375–399, <https://doi.org/10.1007/s10533-021-00853-0>, 2021.
- Dallimore, S. R., Allen, V. S., Blondheim, F., Bisson, J. G., Carron, J., Davies, E., Davidson, K., and Dixon, J.: Borehole Logs From Joint GSC - Industry Mackenzie Delta Geology / Permafrost Transect, Geological Survey of Canada, 1992.
440
- Dean, J. F., Middelburg, J. J., Röckmann, T., Aerts, R., Blauw, L. G., Egger, M., Jetten, M. S. M., de Jong, A. E. E., Meisel, O. H., Rasigraf, O., Slomp, C. P., in't Zandt, M. H., and Dolman, A. J.: Methane Feedbacks to the Global Climate System in a Warmer World, *Rev. Geophys.*, 56, 207–250, <https://doi.org/10.1002/2017RG000559>, 2018.
- Ecosystem Classification Group: Ecological regions of the Northwest Territories: Taiga Plains, Dept. of Environment and
445 Natural Resources, Govt. of the Northwest Territories, Yellowknife, NWT, 2009.
- Ecosystem Classification Group: Ecological regions of the Northwest Territories, southern Arctic, Dept. of Environment and Natural Resources, Govt. of the Northwest Territories, Yellowknife, 2012.
- Elder, C. D., Xu, X., Walker, J., Schnell, J. L., Hinkel, K. M., Townsend-Small, A., Arp, C. D., Pohlman, J. W., Gaglioti, B. V., and Czimczik, C. I.: Greenhouse gas emissions from diverse Arctic Alaskan lakes are dominated by young carbon, *Nat. Clim. Change*, 8, 166–171, <https://doi.org/10.1038/s41558-017-0066-9>, 2018.
450
- Elder, C. D., Thompson, D. R., Thorpe, A. K., Hanke, P., Anthony, K. M. W., and Miller, C. E.: Airborne Mapping Reveals Emergent Power Law of Arctic Methane Emissions, *Geophys. Res. Lett.*, 10, 2020.
- Elder, C. D., Thompson, D. R., Thorpe, A. K., Chandanpurkar, H. A., Hanke, P. J., Hasson, N., James, S. R., Minsley, B. J., Pastick, N. J., Olefeldt, D., Walter Anthony, K. M., and Miller, C. E.: Characterizing Methane Emission Hotspots From Thawing Permafrost, *Glob. Biogeochem. Cycles*, 35, <https://doi.org/10.1029/2020GB006922>, 2021.
455
- Emmerton, C. A., Lesack, L. F. W., and Marsh, P.: Lake abundance, potential water storage, and habitat distribution in the Mackenzie River Delta, western Canadian Arctic, 14, 2007.
- Ensom, T. P., Burn, C. R., and Kokelj, S. V.: Lake- and channel-bottom temperatures in the Mackenzie Delta, Northwest Territories ¹ This article is one of a series of papers published in this CJES Special Issue on the theme of *Fundamental and applied research on permafrost in Canada*. ² Polar Continental Shelf Project Contribution 03511., *Can. J. Earth Sci.*, 49, 963–978, <https://doi.org/10.1139/e2012-001>, 2012.
460
- Ettwig, K. F., Zhu, B., Speth, D., Keltjens, J. T., Jetten, M. S. M., and Kartal, B.: Archaea catalyze iron-dependent anaerobic oxidation of methane, *Proc. Natl. Acad. Sci.*, 113, 12792–12796, <https://doi.org/10.1073/pnas.1609534113>, 2016.

- Farquharson, L. M., Romanovsky, V. E., Cable, W. L., Walker, D. A., Kokelj, S. V., and Nicolsky, D.: Climate Change Drives Widespread and Rapid Thermokarst Development in Very Cold Permafrost in the Canadian High Arctic, *Geophys. Res. Lett.*, 46, 6681–6689, <https://doi.org/10.1029/2019GL082187>, 2019.
- Friborg, T., Christensen, T. R., Hansen, B. U., Nordstroem, C., and Soegaard, H.: Trace gas exchange in a high-Arctic valley: 2. Landscape CH₄ fluxes measured and modeled using eddy correlation data, *Glob. Biogeochem. Cycles*, 14, 715–723, <https://doi.org/10.1029/1999GB001136>, 2000.
- 470 Gill, D.: The Point Bar Environment in the Mackenzie River Delta, *Can. J. Earth Sci.*, 9, 1382–1393, <https://doi.org/10.1139/e72-125>, 1972.
- GRID-Arendal: Coastal and Offshore Permafrost in a Changing Arctic. In: Rapid Response Assessment of Coastal and Offshore Permafrost, Story Map, 2020.
- 475 Hasson, N.: Methane emissions show exponential inverse relationship with electrical resistivity from discontinuous permafrost wetlands in Alaska, 2022.
- Hill, P. R., Lewis, C. P., Desmarais, S., Kauppaymuthoo, V., and Rais, H.: The Mackenzie Delta: sedimentary processes and facies of a high-latitude, fine-grained delta, *Sedimentology*, 48, 1047–1078, <https://doi.org/10.1046/j.1365-3091.2001.00408.x>, 2001.
- 480 Hodson, A. J., Nowak, A., Redeker, K. R., Holmlund, E. S., Christiansen, H. H., and Turchyn, A. V.: Seasonal Dynamics of Methane and Carbon Dioxide Evasion From an Open System Pingo: Lagoon Pingo, Svalbard, *Front. Earth Sci.*, 7, 30, <https://doi.org/10.3389/feart.2019.00030>, 2019.
- Hodson, A. J., Nowak, A., Senger, K., Redeker, K., Christiansen, H. H., Jessen, S., Hornum, M. T., Betlem, P., Thornton, S. F., Turchyn, A. V., Olaussen, S., and Marca, A.: Open system pingos as hotspots for sub-permafrost methane emission in Svalbard, *The Cryosphere*, <https://doi.org/10.5194/tc-2020-11>, 2020a.
- 485 Hodson, A. J., Nowak, A., Hornum, M. T., Senger, K., Redeker, K., Christiansen, H. H., Jessen, S., Betlem, P., Thornton, S. F., Turchyn, A. V., Olaussen, S., and Marca, A.: Sub-permafrost methane seepage from open-system pingos in Svalbard, *The Cryosphere*, 14, 3829–3842, <https://doi.org/10.5194/tc-14-3829-2020>, 2020b.
- Hu, K., Chen, Z., and Issler, D. R.: Determination of geothermal gradient from borehole temperature and permafrost base for exploration wells in the Beaufort-Mackenzie Basin, <https://doi.org/10.4095/293872>, 2014.
- 490 Keeling, C. D.: The concentration and isotopic abundances of atmospheric carbon dioxide in rural areas, *Geochim. Cosmochim. Acta*, 13, 322–334, [https://doi.org/10.1016/0016-7037\(58\)90033-4](https://doi.org/10.1016/0016-7037(58)90033-4), 1958.
- Keeling, C. D.: The concentration and isotopic abundances of carbon dioxide in rural and marine air, *Geochim. Cosmochim. Acta*, 24, 277–298, [https://doi.org/10.1016/0016-7037\(61\)90023-0](https://doi.org/10.1016/0016-7037(61)90023-0), 1961.
- 495 King, J. Y., Reeburgh, W. S., and Regli, S. K.: Methane emission and transport by arctic sedges in Alaska: Results of a vegetation removal experiment, *J. Geophys. Res. Atmospheres*, 103, 29083–29092, <https://doi.org/10.1029/98JD00052>, 1998.
- 500 Kirschke, S., Bousquet, P., Ciais, P., Saunoy, M., Canadell, J. G., Dlugokencky, E. J., Bergamaschi, P., Bergmann, D., Blake, D. R., Bruhwiler, L., Cameron-Smith, P., Castaldi, S., Chevallier, F., Feng, L., Fraser, A., Heimann, M., Hodson, E. L., Houweling, S., Josse, B., Fraser, P. J., Krummel, P. B., Lamarque, J.-F., Langenfelds, R. L., Le Quéré, C., Naik, V., O’Doherty, S., Palmer, P. I., Pison, I., Plummer, D., Poulter, B., Prinn, R. G., Rigby, M., Ringeval, B., Santini, M., Schmidt, M., Shindell, D. T., Simpson, I. J., Spahni, R., Steele, L. P., Strode, S. A., Sudo, K., Szopa, S., van der Werf, G. R., Voulgarakis, A., van

- Weele, M., Weiss, R. F., Williams, J. E., and Zeng, G.: Three decades of global methane sources and sinks, *Nat. Geosci.*, 6, 813–823, <https://doi.org/10.1038/ngeo1955>, 2013.
- Kohler, P., Fischer, H., Schmitt, J., and Munhoven, G.: On the application and interpretation of Keeling plots in paleo climate research – deciphering $\delta^{13}\text{C}$ of atmospheric CO_2 measured in ice cores, 18, 2006.
- 505 Kohnert, K., Serafimovich, A., Metzger, S., Hartmann, J., and Sachs, T.: Strong geologic methane emissions from discontinuous terrestrial permafrost in the Mackenzie Delta, Canada, *Sci. Rep.*, 7, 5828, <https://doi.org/10.1038/s41598-017-05783-2>, 2017.
- Kohnert, K., Juhls, B., Muster, S., Antonova, S., Serafimovich, A., Metzger, S., Hartmann, J., and Sachs, T.: Toward understanding the contribution of waterbodies to the methane emissions of a permafrost landscape on a regional scale-A case study from the Mackenzie Delta, Canada, *Glob. Change Biol.*, 24, 3976–3989, <https://doi.org/10.1111/gcb.14289>, 2018.
- 510 Kuhn, M. A., Varner, R. K., Bastviken, D., Crill, P., MacIntyre, S., Turetsky, M., Walter Anthony, K., McGuire, A. D., and Olefeldt, D.: BAWLD- CH_4 : a comprehensive dataset of methane fluxes from boreal and arctic ecosystems, *Earth Syst. Sci. Data*, 13, 5151–5189, <https://doi.org/10.5194/essd-13-5151-2021>, 2021.
- Lewis, C. P.: Mackenzie Delta sedimentary environments and processes, Unpubl. Contract Rep. Environ. Can. Sediment Surv. Ott. Ont., 1988.
- 515 Liebner, S. and Wagner, D.: Abundance, distribution and potential activity of methane oxidizing bacteria in permafrost soils from the Lena Delta, Siberia, *Environ. Microbiol.*, 9, 107–117, <https://doi.org/10.1111/j.1462-2920.2006.01120.x>, 2007.
- Lupascu, M., Wadham, J. L., Hornibrook, E. R. C., and Pancost, R. D.: Temperature Sensitivity of Methane Production in the Permafrost Active Layer at Stordalen, Sweden: A Comparison with Non-permafrost Northern Wetlands, *Arct. Antarct. Alp. Res.*, 44, 469–482, <https://doi.org/10.1657/1938-4246-44.4.469>, 2012.
- 520 Mackay, J. R.: The Mackenzie Delta Area, N.W.T., 212, 1963.
- Mamet, S. D., Chun, K. P., Kershaw, G. G. L., Loranty, M. M., and Peter Kershaw, G.: Recent Increases in Permafrost Thaw Rates and Areal Loss of Palsas in the Western Northwest Territories, Canada: Non-linear Palsa Degradation, *Permafr. Periglac. Process.*, 28, 619–633, <https://doi.org/10.1002/ppp.1951>, 2017.
- 525 Marsh, P.: Permafrost and lakes in the Mackenzie Delta, *Proc. Fifth Can. Permafr. Conf.*, 54, 1990.
- McGuire, A. D., Christensen, T. R., Hayes, D., Heroult, A., Euskirchen, E., Kimball, J. S., Koven, C., Lafleur, P., Miller, P. A., Oechel, W., Peylin, P., Williams, M., and Yi, Y.: An assessment of the carbon balance of Arctic tundra: comparisons among observations, process models, and atmospheric inversions, *Biogeosciences*, 9, 3185–3204, <https://doi.org/10.5194/bg-9-3185-2012>, 2012.
- 530 McIntosh Marcek, H. A., Lesack, L. F. W., Orcutt, B. N., Wheat, C. G., Dallimore, S. R., Geeves, K., and Lapham, L. L.: Continuous Dynamics of Dissolved Methane Over 2 Years and its Carbon Isotopes ($\delta^{13}\text{C}$, $\Delta^{14}\text{C}$) in a Small Arctic Lake in the Mackenzie Delta, *J. Geophys. Res. Biogeosciences*, 126, <https://doi.org/10.1029/2020JG006038>, 2021.
- Michmerhuizen, C. M., Striegl, R. G., and McDonald, M. E.: Potential methane emission from north-temperate lakes following ice melt, *Limnol. Oceanogr.*, 41, 985–991, <https://doi.org/10.4319/lo.1996.41.5.0985>, 1996.
- 535 Minsley, B. J., Abraham, J. D., Smith, B. D., Cannia, J. C., Voss, C. I., Jorgenson, M. T., Walvoord, M. A., Wylie, B. K., Anderson, L., Ball, L. B., Deszcz-Pan, M., Wellman, T. P., and Ager, T. A.: Airborne electromagnetic imaging of

- discontinuous permafrost: AEM IMAGING OF PERMAFROST, *Geophys. Res. Lett.*, 39, n/a-n/a, <https://doi.org/10.1029/2011GL050079>, 2012.
- 540 Nguyen, T.-N., Burn, C. R., King, D. J., and Smith, S. L.: Estimating the extent of near-surface permafrost using remote sensing, Mackenzie Delta, Northwest Territories, *Permafr. Periglac. Process.*, 20, 141–153, <https://doi.org/10.1002/ppp.637>, 2009.
- 545 Nisbet, E. G., Dlugokencky, E. J., Manning, M. R., Lowry, D., Fisher, R. E., France, J. L., Michel, S. E., Miller, J. B., White, J. W. C., Vaughn, B., Bousquet, P., Pyle, J. A., Warwick, N. J., Cain, M., Brownlow, R., Zazzeri, G., Lanoisellé, M., Manning, A. C., Gloor, E., Worthy, D. E. J., Brunke, E.-G., Labuschagne, C., Wolff, E. W., and Ganesan, A. L.: Rising atmospheric methane: 2007–2014 growth and isotopic shift: RISING METHANE 2007–2014, *Glob. Biogeochem. Cycles*, 30, 1356–1370, <https://doi.org/10.1002/2016GB005406>, 2016.
- Olefeldt, D., Turetsky, M. R., Crill, P. M., and McGuire, A. D.: Environmental and physical controls on northern terrestrial methane emissions across permafrost zones, *Glob. Change Biol.*, 19, 589–603, <https://doi.org/10.1111/gcb.12071>, 2013.
- 550 Olid, C., Rodellas, V., Rocher-Ros, G., Garcia-Orellana, J., Diego-Feliu, M., Alorda-Kleinglass, A., Bastviken, D., and Karlsson, J.: Groundwater discharge as a driver of methane emissions from Arctic lakes, *Nat. Commun.*, 13, 3667, <https://doi.org/10.1038/s41467-022-31219-1>, 2022.
- Osadetz, K. G. and Chen, Z.: A re-evaluation of Beaufort Sea-Mackenzie Delta basin gas hydrate resource potential: petroleum system approaches to non-conventional gas resource appraisal and geologically-sourced methane flux, *Bull. Can. Pet. Geol.*, 58, 56–71, <https://doi.org/10.2113/gscpgbull.58.1.56>, 2010.
- 555 Pataki, D. E., Ehleringer, J. R., Flanagan, L. B., Yakir, D., Bowling, D. R., Still, C. J., Buchmann, N., Kaplan, J. O., and Berry, J. A.: The application and interpretation of Keeling plots in terrestrial carbon cycle research: APPLICATION OF KEELING PLOTS, *Glob. Biogeochem. Cycles*, 17, <https://doi.org/10.1029/2001GB001850>, 2003.
- 560 Rawlins, M. A., Steele, M., Holland, M. M., Adam, J. C., Cherry, J. E., Francis, J. A., Groisman, P. Y., Hinzman, L. D., Huntington, T. G., Kane, D. L., Kimball, J. S., Kwok, R., Lammers, R. B., Lee, C. M., Lettenmaier, D. P., McDonald, K. C., Podest, E., Pundsack, J. W., Rudels, B., Serreze, M. C., Shiklomanov, A., Skagseth, Ø., Troy, T. J., Vörösmarty, C. J., Wensnahan, M., Wood, E. F., Woodgate, R., Yang, D., Zhang, K., and Zhang, T.: Analysis of the Arctic System for Freshwater Cycle Intensification: Observations and Expectations, *J. Clim.*, 23, 5715–5737, <https://doi.org/10.1175/2010JCLI3421.1>, 2010.
- 565 Sachs, T., Wille, C., Boike, J., and Kutzbach, L.: Environmental controls on ecosystem-scale CH₄ emission from polygonal tundra in the Lena River Delta, Siberia, *J. Geophys. Res.*, 113, G00A03, <https://doi.org/10.1029/2007JG000505>, 2008.
- 570 Saunois, M., Bousquet, P., Poulter, B., Peregón, A., Ciais, P., Canadell, J. G., Dlugokencky, E. J., Etiope, G., Bastviken, D., Houweling, S., Janssens-Maenhout, G., Tubiello, F. N., Castaldi, S., Jackson, R. B., Alexe, M., Arora, V. K., Beerling, D. J., Bergamaschi, P., Blake, D. R., Brailsford, G., Brovkin, V., Bruhwiler, L., Crevoisier, C., Crill, P., Covey, K., Curry, C., Frankenberg, C., Gedney, N., Höglund-Isaksson, L., Ishizawa, M., Ito, A., Joos, F., Kim, H.-S., Kleinen, T., Krummel, P., Lamarque, J.-F., Langenfelds, R., Locatelli, R., Machida, T., Maksyutov, S., McDonald, K. C., Marshall, J., Melton, J. R., Morino, I., Naik, V., O’Doherty, S., Parmentier, F.-J. W., Patra, P. K., Peng, C., Peng, S., Peters, G. P., Pison, I., Prigent, C., Prinn, R., Ramonet, M., Riley, W. J., Saito, M., Santini, M., Schroeder, R., Simpson, I. J., Spahni, R., Steele, P., Takizawa, A., Thornton, B. F., Tian, H., Tohjima, Y., Viovy, N., Voulgarakis, A., van Weele, M., van der Werf, G. R., Weiss, R., Wiedinmyer, C., Wilton, D. J., Wiltshire, A., Worthy, D., Wunch, D., Xu, X., Yoshida, Y., Zhang, B., Zhang, Z., and Zhu, Q.: The global methane budget 2000–2012, *Earth Syst. Sci. Data*, 8, 697–751, <https://doi.org/10.5194/essd-8-697-2016>, 2016.

Saunio, M., Stavert, A. R., Poulter, B., Bousquet, P., Canadell, J. G., Jackson, R. B., Raymond, P. A., Dlugokencky, E. J., Houweling, S., Patra, P. K., Ciais, P., Arora, V. K., Bastviken, D., Bergamaschi, P., Blake, D. R., Brailsford, G., Bruhwiler, L., Carlson, K. M., Carrol, M., Castaldi, S., Chandra, N., Crevoisier, C., Crill, P. M., Covey, K., Curry, C. L., Etiope, G., Frankenberg, C., Gedney, N., Hegglin, M. I., Höglund-Isaksson, L., Hugelius, G., Ishizawa, M., Ito, A., Janssens-Maenhout, G., Jensen, K. M., Joos, F., Kleinen, T., Krummel, P. B., Langenfelds, R. L., Laruelle, G. G., Liu, L., Machida, T., Maksyutov, S., McDonald, K. C., McNorton, J., Miller, P. A., Melton, J. R., Morino, I., Müller, J., Murguia-Flores, F., Naik, V., Niwa, Y., Noce, S., O'Doherty, S., Parker, R. J., Peng, C., Peng, S., Peters, G. P., Prigent, C., Prinn, R., Ramonet, M., Regnier, P., Riley, W. J., Rosentreter, J. A., Segers, A., Simpson, I. J., Shi, H., Smith, S. J., Steele, L. P., Thornton, B. F., Tian, H., Tohjima, Y., Tubiello, F. N., Tsuruta, A., Viovy, N., Voulgarakis, A., Weber, T. S., van Weele, M., van der Werf, G. R., Weiss, R. F., Worthy, D., Wunch, D., Yin, Y., Yoshida, Y., Zhang, W., Zhang, Z., Zhao, Y., Zheng, B., Zhu, Q., Zhu, Q., and Zhuang, Q.: The Global Methane Budget 2000–2017, *Earth Syst. Sci. Data*, 12, 1561–1623, <https://doi.org/10.5194/essd-12-1561-2020>, 2020.

Schoell, M.: The hydrogen and carbon isotopic composition of methane from natural gases of various origins, *Geochim. Cosmochim. Acta*, 44, 649–661, [https://doi.org/10.1016/0016-7037\(80\)90155-6](https://doi.org/10.1016/0016-7037(80)90155-6), 1980.

590 Schuur, E. A. G., Bockheim, J., Canadell, J. G., Euskirchen, E., Field, C. B., Goryachkin, S. V., Hagemann, S., Kuhry, P., Laflour, P. M., Lee, H., Mazhitova, G., Nelson, F. E., Rinke, A., Romanovsky, V. E., Shiklomanov, N., Tarnocai, C., Venevsky, S., Vogel, J. G., and Zimov, S. A.: Vulnerability of Permafrost Carbon to Climate Change: Implications for the Global Carbon Cycle, *BioScience*, 58, 701–714, <https://doi.org/10.1641/B580807>, 2008.

595 Sturtevant, C. S., Oechel, W. C., Zona, D., Kim, Y., and Emerson, C. E.: Soil moisture control over autumn season methane flux, Arctic Coastal Plain of Alaska, *Biogeosciences*, 9, 1423–1440, <https://doi.org/10.5194/bg-9-1423-2012>, 2012.

Sullivan, T. D., Parsekian, A. D., Sharp, J., Hanke, P. J., Thalasso, F., Shapley, M., Engram, M., and Walter Anthony, K.: Influence of permafrost thaw on an extreme geologic methane seep, *Permafr. Periglac. Process.*, 32, 484–502, <https://doi.org/10.1002/ppp.2114>, 2021.

600 Thompson, H. A., White, J. R., Pratt, L. M., and Sauer, P. E.: Spatial variation in flux, $\delta^{13}\text{C}$ and $\delta^2\text{H}$ of methane in a small Arctic lake with fringing wetland in western Greenland, *Biogeochemistry*, 131, 17–33, <https://doi.org/10.1007/s10533-016-0261-1>, 2016.

Todd, B. J. and Dallimore, S. R.: Electromagnetic and geological transect across permafrost terrain, Mackenzie River delta, Canada, *GEOPHYSICS*, 63, 1914–1924, <https://doi.org/10.1190/1.1444484>, 1998.

605 Treat, C. C., Marushchak, M. E., Voigt, C., Zhang, Y., Tan, Z., Zhuang, Q., Virtanen, T. A., Räsänen, A., Biasi, C., Hugelius, G., Kaverin, D., Miller, P. A., Stendel, M., Romanovsky, V., Rivkin, F., Martikainen, P. J., and Shurpali, N. J.: Tundra landscape heterogeneity, not interannual variability, controls the decadal regional carbon balance in the Western Russian Arctic, *Glob. Change Biol.*, 24, 5188–5204, <https://doi.org/10.1111/gcb.14421>, 2018.

Walker, H. J.: Arctic Deltas, *J. Coast. Res.*, 14, 22, 1998.

610 Walter Anthony, K. M., Vas, Dragos. A., Brosius, L., Chapin, F. S., Zimov, S. A., and Zhuang, Q.: Estimating methane emissions from northern lakes using ice-bubble surveys: Methane bubbles in lake ice method, *Limnol. Oceanogr. Methods*, 8, 592–609, <https://doi.org/10.4319/lom.2010.8.0592>, 2010.

Walter Anthony, K. M., Anthony, P., Grosse, G., and Chanton, J.: Geologic methane seeps along boundaries of Arctic permafrost thaw and melting glaciers, *Nat. Geosci.*, 5, 419–426, <https://doi.org/10.1038/ngeo1480>, 2012.

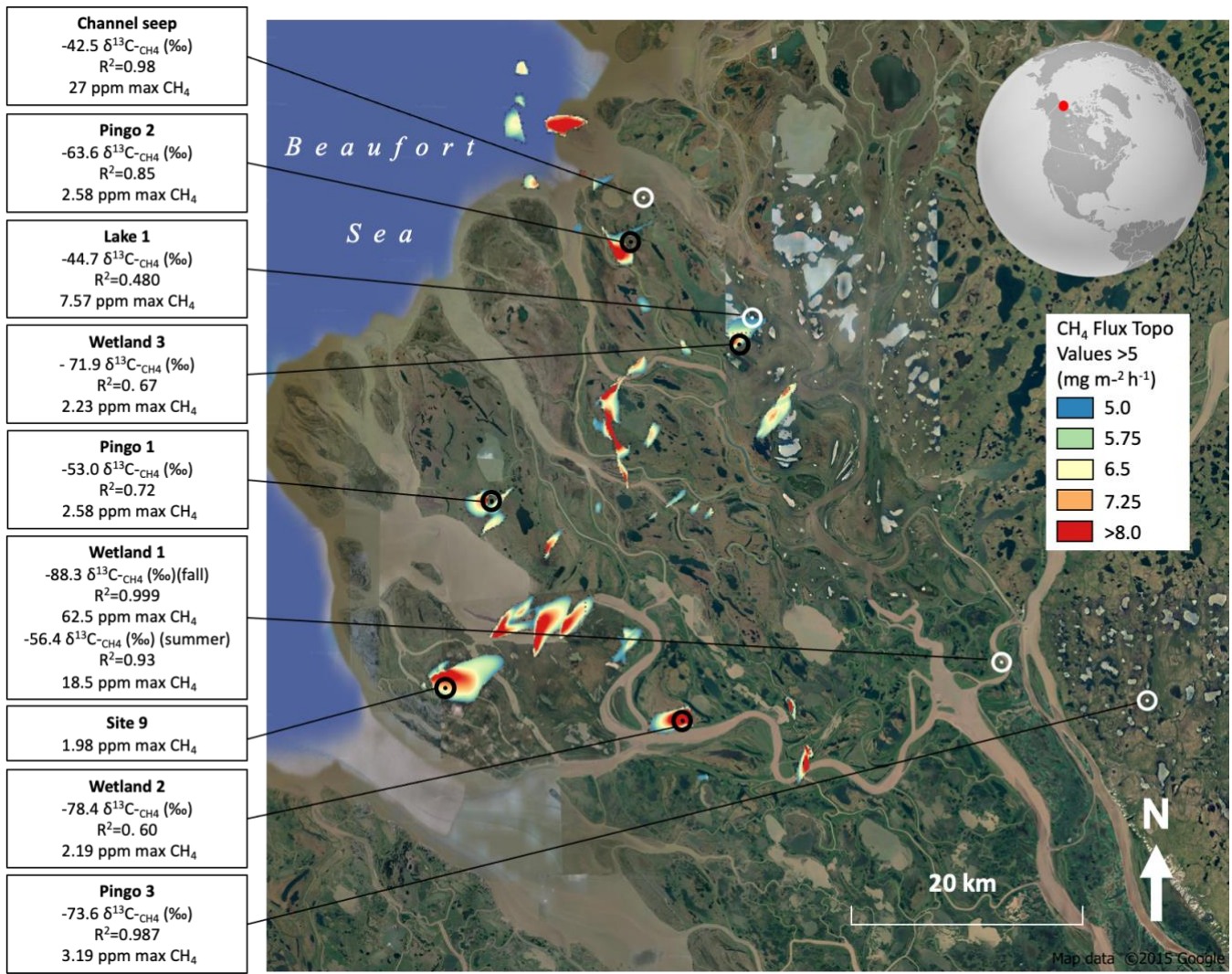
615 Walter, K. M., Zimov, S. A., Chanton, J. P., Verbyla, D., and Chapin, F. S.: Methane bubbling from Siberian thaw lakes as a positive feedback to climate warming, *Nature*, 443, 71–75, <https://doi.org/10.1038/nature05040>, 2006.

Wik, M., Varner, R. K., Anthony, K. W., MacIntyre, S., and Bastviken, D.: Climate-sensitive northern lakes and ponds are critical components of methane release, *Nat. Geosci.*, 9, 99–105, <https://doi.org/10.1038/ngeo2578>, 2016.

Wolfe, S. A., Morse, P. D., and Behnia, P.: Spatial distribution of pingos in the Tuktoyaktuk coastlands and adjacent areas, Northwest Territories, <https://doi.org/10.4095/328305>, 2021.

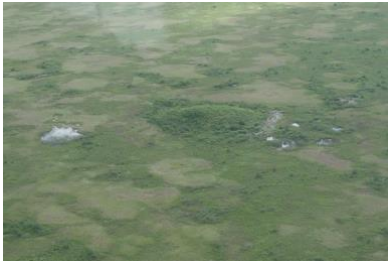
620 Zona, D., Gioli, B., Commane, R., Lindaas, J., Wofsy, S. C., Miller, C. E., Dinardo, S. J., Dengel, S., Sweeney, C., Karion, A., Chang, R. Y.-W., Henderson, J. M., Murphy, P. C., Goodrich, J. P., Moreaux, V., Liljedahl, A., Watts, J. D., Kimball, J. S., Lipson, D. A., and Oechel, W. C.: Cold season emissions dominate the Arctic tundra methane budget, *Proc. Natl. Acad. Sci.*, 113, 40–45, <https://doi.org/10.1073/pnas.1516017113>, 2016.

625



630 **Figure 1: Methane stable carbon isotope source signatures at sample sites in the Mackenzie River Delta. Locations are superimposed on a map of CH_4 flux rates published by Kohnert et al. (2017). Signatures varied from -42 to -88 ‰ $\delta^{13}\text{C}\text{-CH}_4$ indicating that the source of CH_4 varied at different sites and ranged from entirely thermogenic (indicated by less negative ‰ values) to entirely biogenic to a mixture of both biogenic and thermogenic. Source signatures were derived from regression of keeling plots which were based on point samples of atmospheric methane. Black symbols indicate sites identified by Kohnert et al. (2017). White symbols indicate sites identified by CH_4 ebullition.**

635



Pingo 1: A large (> 1 km wide) CH₄ hotspot identified by Kohnert et al. (2017). The pingo itself was approximately 95 m wide and 7.5 m high. Discrete point samples and walking transects were taken around the pingo in the area where the highest flux rates were observed by Kohnert et al. (2017).



Pingo 2: A large (> 1 km wide) CH₄ hotspot identified by Kohnert et al. (2017). The pingo was approximately 60 m wide and 6 m high with wetlands and a large lake to the southwest. The pingo was located on the very edge of the hotspot but near where the highest flux rate was observed by Kohnert et al. (2017). Discrete point samples and walking transects were taken around the pingo and to the southwest of the pingo near the wetland.



Pingo 3: A collapsed Pingo of about 80 m in diameter with a lake formed in the resulting crater. Discrete point samples were taken during the fall, close to holes in the ice and outside of the crater. Discrete point samples and walking transects were taken around the edge and outside of the crater during an additional summer field campaign. Flux chamber measurements were taken at the outlet of the lake in a sedge covered area.



Wetland 1: A sedge dominated wetland of about 80 m in diameter. Discrete point samples were taken near holes in the ice and along the edge of the lake during the fall. Discrete point samples and walking transect were taken during an additional summer field campaign in the same location as the fall samples.



Wetland 2: A broad CH₄ hotspot (~ 800 m wide) identified by Kohnert et al. (2017). The site was comprised of tussock tundra dotted by many small wetlands and a few shrubs. Field of view is approximately 10 m wide. Discrete point samples and walking transects were taken where the highest flux rates were observed by Kohnert et al. (2017).



Wetland 3: A broad (~ 600 m wide) CH₄ hotspot identified by Kohnert et al. (2017) with mixture of wetland and grassland with patches of alders. Field of view is approximately 40 m wide. Samples and walking transects were taken where the highest flux rate was observed by Kohnert et al. (2017).

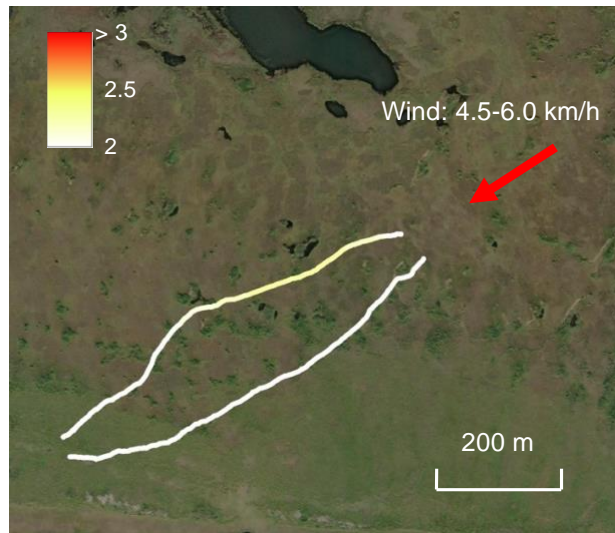
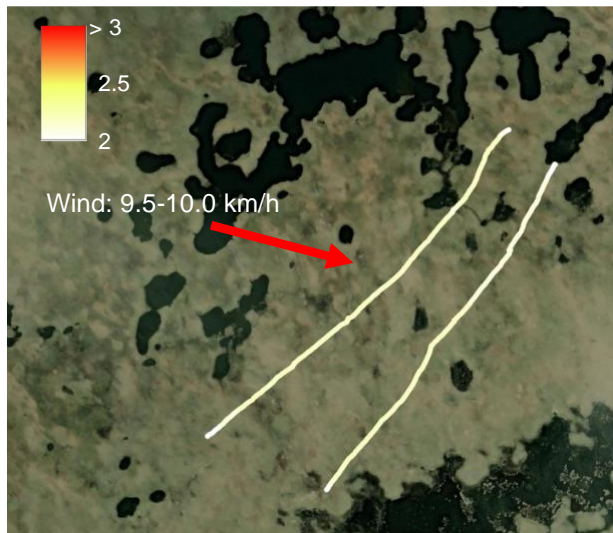
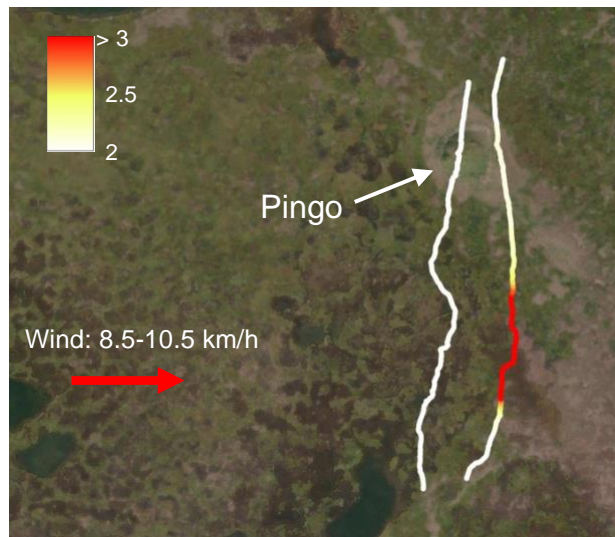
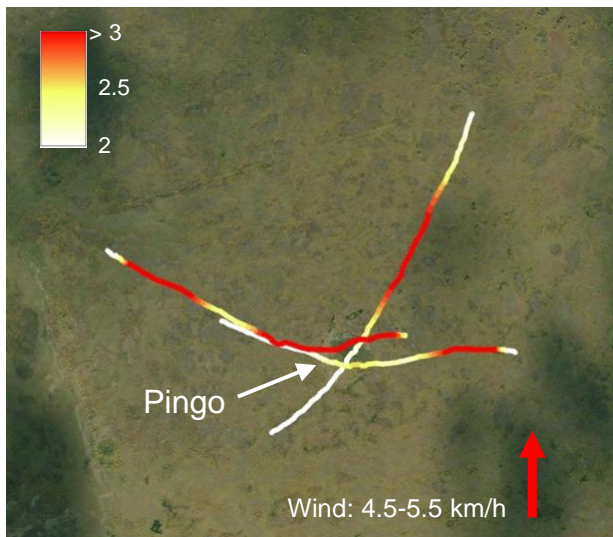


Channel Seep: A very active seep in a river channel observed during a previous field campaign. Samples were collected by extending the sample inlet on a pole over the channel and taking subsequent samples further away from the channel. No walking transects were collected at this site.



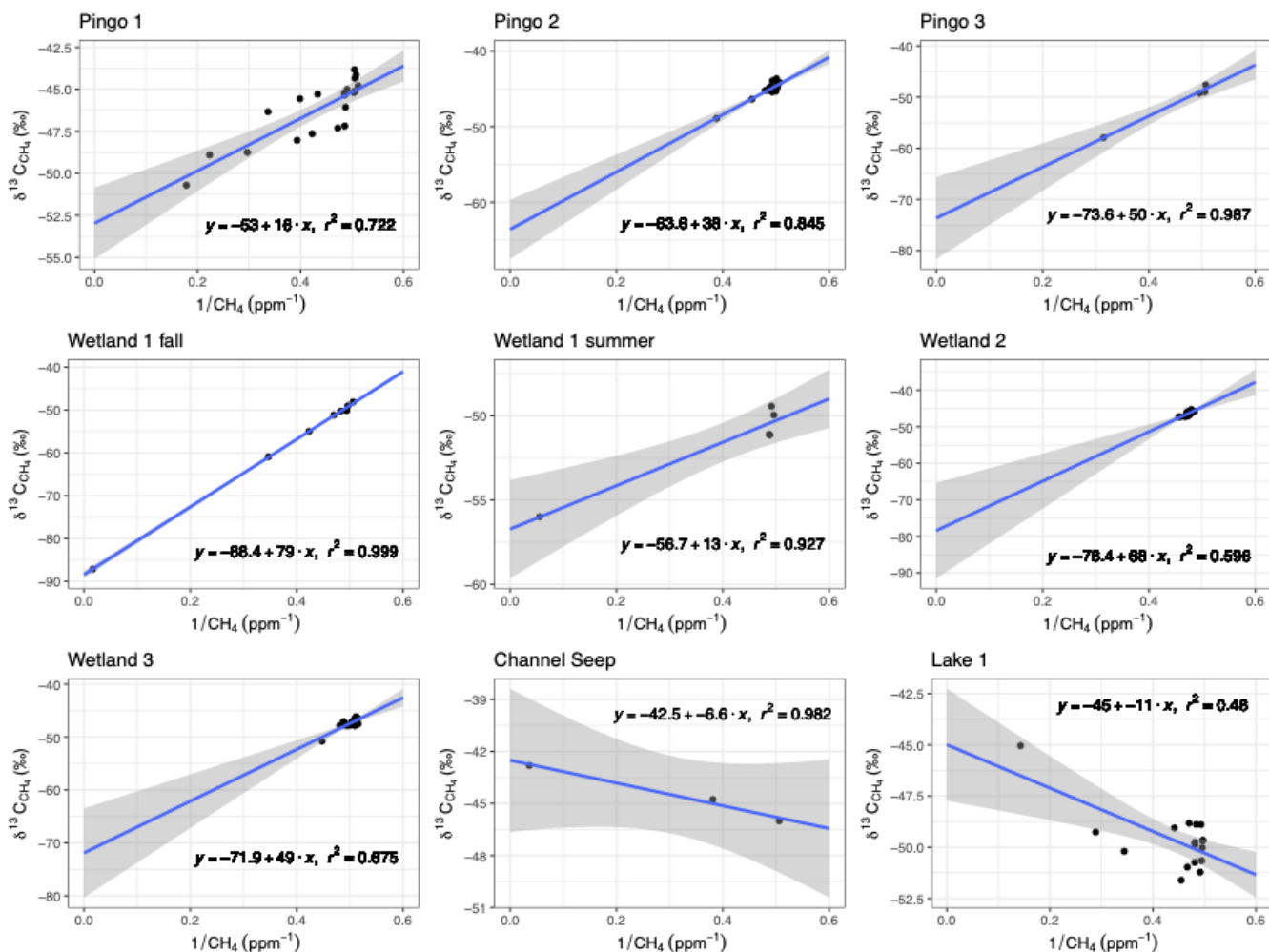
Lake 1: A large lake with prominent ebullition. During summer sampling, discrete samples were collected over the water by boat and along the shore downwind of the lake. Flux chamber measurements were taken near the lakeshore. No walking transects were taken at this site. Field of view is approximately 250 m wide.

Figure 2: Site Pictures. Pingo 1, Pingo 2, Wetland 2 and Wetland 3 were identified as hotspots of methane production during aerial surveys by Kohnert et al. (2017). Pingo 3, Wetland 1 and Lake 1 were identified by holes in the ice forming on water bodies caused by high rate CH₄ ebullition. Channel Seep was identified by anomalously high CH₄ ebullition spotted from a helicopter during the summer. Pingo 1, Pingo 3, Wetland 1 and Lake 1 were sampled twice each, once during summer and once during the fall.



640

Figure 3: Walking transects of CH₄ concentrations at sample sites, scale is in ppm. The red vector arrow indicates the constant wind direction during the sampling period. Sites are (clockwise from top left): Pingo 1, Pingo 2, Wetland 2, and Wetland 3 (© Google Earth).



645

Figure 4: Keeling plots for Pingo 2, Wetland 3, Pingo 1, Wetland 2, Channel Seep, Lake 1, Wetland 1 and Pingo 3. Source signatures ranged from -42 to -88 ‰ $\delta^{13}\text{C}_{\text{CH}_4}$, which includes both thermogenic to biogenic signatures. Channel Seep and Lake 1 had thermogenic signatures, Pingo 3, Wetland 1, Wetland 2 and Wetland 3 had biogenic signatures while Pingo 1 and Pingo 2 had signatures which could be produced from oxidation of biogenic CH_4 . The grey region indicates the 95% confidence interval of the regression line.

650

655 **Table 1: Summary statistics of CH₄ and CO₂ mixing ratios determined from walking transects. Elevated CH₄ was measured at all sites but concentrations at Pingo 1, Pingo 2, and Wetland 1 were much higher than the other three. Elevated CO₂ was observed at Wetland 2, Pingo 2, Pingo 3 and Wetland 1.**

CH₄ (ppm)						
Site	Pingo 1	Pingo 2	Pingo 3	Wetland 1	Wetland 2	Wetland 3
mean	3.047	2.479	2.045	2.596	2.093	1.980
median	2.655	1.972	2.040	2.256	2.109	1.950
min	1.971	1.676	1.974	2.061	1.628	1.707
max	6.135	8.734	2.946	12.399	2.152	2.264
sd	0.955	1.479	0.039	1.049	0.071	0.107
CO₂ (ppm)						
Site	Pingo 1	Pingo 2	Pingo 3	Wetland 1	Wetland 2	Wetland 3
mean	389	402	416	415	430	391
median	389	393	413	413	413	393
min	380	359	380	406	342	361
max	396	462	519	488	603	400
sd	5	21	9	8	43	7
wind speed (km/h)	5.5	10.5	3.6	5.0	10.0	6.0