

Supplementary material

Tables

	HNMS	CNRM	KNMI	CLMcom	SMHI	DMI	WRF_EC	ERA5	WRF_ERA_I
Alexandroupoli	21.359	4.323	3.354	5.756	5.805	0.375	16.677	18.292	19.042
Elliniko	0.816	0.198	0.088	0.6	1.17	0	0.882	1.015	0.75
Ioannina	27.03	41.64	57.811	23.778	22.731	15.336	17.447	39.387	13.989
Irakleio	0	1.146	0.353	0.289	0.022	0	0	0	0
Kalamata	2.317	5.183	19.22	8.244	2.075	0.243	0.596	0.088	0.331
Kastoria	37.908	57.216	75.153	44.511	39.521	22.951	33.136	56.421	29.038
Kerkira	2.935	0.75	0.066	0.222	0.861	0	0.044	0.066	0
Kithira	0.132	0	0.088	0.267	0.177	0.022	0.133	0	0.066
Larisa	22.882	28.178	35.438	11.044	20.788	4.656	17.492	16.88	14.276
Limnos	5.936	2.513	4.811	4.444	2.053	0.617	1.985	0.132	3.354
Methoni	0.816	0.088	4.634	2.289	0.64	0.066	0	0.177	0
Milos	0.154	0	0	0.111	0.11	0	0	0	0
Mitilini	0.838	1.124	0.442	2.6	2.118	0	0.331	0.132	0.132
Naxos	0	0	0.265	0.644	0.265	0	0.066	0	0.044
Rhodes	0	0	0	0.089	0.132	0	0	0	0
Samos	0.662	0.11	3.133	3.978	0.75	0.353	1.124	0	1.214
Skyros	0.441	0.11	0.706	1.4	1.368	0.199	0	0	0
Souda	0.044	0	0.11	0.244	0.11	0	0.044	0	0
Thessaloniki	13.636	11.846	36.078	19.556	14.168	4.855	6.661	2.471	9.069
Tripoli	29.832	46.162	43.162	20.756	17.014	8.078	23.318	19.042	20.808
Zakinthos	3.266	0.441	0.221	0.4	0.199	0	0.066	0	0.199
BIAS		-1.43	-5.435	0.942	1.854	5.393	2.429	0.805	2.795
COR		0.936	0.899	0.89	0.932	0.863	0.986	0.913	0.98

Table S1: Daily FD probability (%).

	HNMS	CNRM	KNMI	CLMcom	SMHI	DMI	WRF_EC	ERA5	WRF_ERA_I
Alexandroupoli	1.147	0.572	0.265	1.067	0.155	0	1.788	2.339	2.118
Elliniko	0.022	0	0	0.044	0.022	0	0.088	0.022	0
Ioannina	0.265	0.727	1.501	1.533	0.728	0.177	0.838	1.015	0.75
Irakleio	0	0	0	0.022	0	0	0	0	0
Kalamata	0	0	0.022	0.178	0	0	0	0	0
Kastoria	4.457	3.439	6.752	10.533	3.002	1.015	3.839	6.84	4.568
Kerkira	0	0.022	0	0	0	0	0	0	0
Kithira	0.044	0	0	0	0	0	0	0	t0
Larisa	0.552	0.396	0.508	0.978	0.177	0.022	0.154	0.132	0.331
Limnos	0.199	0.176	0.199	0.622	0.066	0.044	0.221	0	0.375

Methoni	0.044	0	0	0.022	0	0	0	0	0
Milos	0	0	0	0	0	0	0	0	0
Mitilini	0	0.066	0	0.156	0.066	0	0.022	0	0.022
Naxos	0	0	0	0.044	0	0	0	0	0
Rhodes	0	0	0	0	0	0	0	0	0
Samos	0	0	0	0.2	0.044	0	0.044	0	0
Skyros	0.022	0	0	0.089	0.066	0	0	0	0
Souda	0	0	0	0.022	0	0	0	0	0
Thessaloniki	0.331	0.506	1.634	2.289	0.331	0.11	0.706	0.154	1.456
Tripoli	0.971	2.713	3.29	3.489	0.861	0.309	2.426	0.265	3.111
Zakinthos	0.088	0	0	0	0	0	0	0	0
BIAS		-0.023	-0.287	-0.626	0.125	0.308	-0.095	-0.125	-0.219
COR		0.874	0.921	0.967	0.956	0.951	0.915	0.97	0.898

Table S2: Daily ID probability (%).

	HNMS	CNRM	KNMI	CLMcom	SMHI	DMI	WRF_EC	ERA5	WRF_ERA_I
Alexandroupoli	4.678	2.802	2.293	5.4	2.626	3.795	2.184	3.089	2.383
Elliniko	3.928	1.28	1.236	1.444	2.361	0.904	1.258	1.456	1.39
Ioannina	9.025	12.112	3.948	6.356	4.698	5.539	5.736	7.745	5.56
Irakleio	5.56	3.684	0.972	1.156	0.949	0.728	1.235	1.103	1.633
Kalamata	9.223	4.28	5.736	3.733	2.493	1.103	2.516	5.472	1.92
Kastoria	3.795	3.244	0.683	1.556	1.566	0.309	0.904	1.456	2.162
Kerkira	11.099	7.149	7.127	5.489	5.956	5.65	4.854	6.289	4.038
Kithira	6.09	2.295	1.744	0.822	6.753	4.147	1.875	2.449	2.979
Larisa	2.824	1.721	0.287	1.156	0.706	0.331	0.618	1.876	1.169
Limnos	5.141	2.67	2.007	1.822	2.493	2.03	2.493	2.03	3.508
Methoni	7.855	2.648	4.391	2.022	6.421	2.361	2.515	3.53	2.648
Milos	4.612	1.28	1.81	0.8	2.735	1.434	1.39	1.567	1.809
Mitilini	7.811	3.839	3.068	2.822	2.537	4.304	2.14	4.921	3.398
Naxos	4.214	1.699	1.656	0.756	2.227	1.875	1.235	1.236	1.324
Rhodes	7.988	2.736	3.531	2.933	2.559	2.471	3.862	7.304	4.17
Samos	9.62	3.419	7.038	2.511	11.449	8.716	2.735	6.487	3.928
Skyros	3.376	2.073	1.854	1.311	2.669	2.206	2.251	1.876	2.582
Souda	6.487	8.361	3.004	2.111	0.728	1.17	2.361	2.67	3.751
Thessaloniki	3.111	1.258	0.993	1.2	1.015	0.661	0.508	2.052	1.787
Tripoli	7.304	10.216	2.56	1.956	1.456	1.346	3.464	2.14	3.464
Zakinthos	8.01	3.771	3.662	1.622	5.274	4.523	2.14	5.252	3.508
BIAS		2.343	3.436	3.942	2.956	3.626	3.975	2.845	3.459
COR		0.569	0.914	0.611	0.6	0.674	0.78	0.84	0.712

Table S3: Daily RR20 probability (%).

	HNMS	CNRM	KNMI	CLMcom	SMHI	DMI	WRF_EC	ERA5	WRF_ERA_I
Alexandroupoli	0.177	0.044	0.022	0.156	0	0	0.11	0.265	0.309
Elliniko	0	0	0	0	0	0	0	0	0.022
Ioannina	0.221	2.427	0.684	0.4	0.132	0.198	0.221	0.971	0.463
Irakleio	0	0	0	0	0	0	0	0	0
Kalamata	0.044	0.022	0.133	0.044	0.044	0	0	0	0
Kastoria	0.75	1.147	0.375	0.733	0.221	0	0.243	0.552	0.375
Kerkira	0.044	0.044	0	0	0	0	0	0	0
Kithira	0.022	0	0	0	0	0	0	0	0
Larisa	0.132	0.132	0.044	0.044	0.044	0	0.022	0.066	0
Limnos	0.11	0.11	0.022	0.089	0.022	0.044	0.022	0	0.044
Methoni	0.044	0	0.022	0	0	0	0	0	0
Milos	0.022	0	0	0	0	0	0	0	0
Mitilini	0.022	0	0	0	0	0	0	0	0
Naxos	0	0	0	0	0	0	0	0	0
Rhodes	0	0	0	0	0	0	0	0	0
Samos	0.044	0	0.044	0	0.022	0	0	0	0.022
Skyros	0.022	0	0.022	0.044	0.022	0	0	0	0
Souda	0.044	0	0	0.022	0	0	0	0	0
Thessaloniki	0.177	0.132	0.221	0.133	0.022	0	0	0.022	0.154
Tripoli	0.552	3.42	0.552	0.467	0.132	0.11	0.507	0.199	0.662
Zakinthos	0.044	0	0	0	0	0	0	0	0
BIAS		-0.238	0.016	0.016	0.086	0.101	0.064	0.019	0.02
COR		0.715	0.728	0.963	0.917	0.365	0.836	0.602	0.823
TOTAL EVENTS	112	339	97	97	30	16	51	94	93

Table S4: RR20-FD empirical probabilities (%).

	HNMS	CNRM	KNMI	CLMcom	SMHI	DMI	WRF_EC	ERA5	WRF_ERA_I
Alexandroupoli	0	0	0	0	0	0	0.044	0.044	0.044
Elliniko	0	0	0	0	0	0	0	0	0
Ioannina	0	0	0	0.044	0	0	0	0.066	0.044
Irakleio	0	0	0	0	0	0	0	0	0
Kalamata	0	0	0	0	0	0	0	0	0
Kastoria	0.132	0.022	0.154	0.222	0.022	0	0.022	0.177	0.066
Kerkira	0	0	0	0	0	0	0	0	0
Kithira	0	0	0	0	0	0	0	0	0
Larisa	0	0	0	0	0	0	0	0	0
Limnos	0	0	0	0.022	0	0	0	0	0

Methoni	0	0	0	0	0	0	0	0	
Milos	0	0	0	0	0	0	0	0	
Mitilini	0	0	0	0	0	0	0	0	
Naxos	0	0	0	0	0	0	0	0	
Rhodes	0	0	0	0	0	0	0	0	
Samos	0	0	0	0	0	0	0	0	
Skyros	0	0	0	0	0	0	0	0	
Souda	0	0	0	0	0	0	0	0	
Thessaloniki	0.022	0.022	0.022	0	0	0	0	0.066	
Tripoli	0.066	0.11	0.156	0	0	0.132	0	0.088	
Zakynthos	0.022	0	0	0	0	0	0	0	
BIAS	0.006	-0.002	-0.011	0.011	0.012	0.002	-0.002	-0.003	
COR	0.664	0.974	0.955	0.874	NA	0.492	0.772	0.699	
TOTAL EVENTS	11	5	13	21	1	0	9	13	14

Table S5: RR20-ID empirical probabilities (%).

	HNMS	CNRM	KNMI	CLMcom	SMHI	DMI	WRF_EC	ERA5	WRF_ERA_I
Alexandroupoli	-4	0.68	1.09	-0.013	-0.024	5.06	-3.108	-3.714	-3.84
Elliniko	3	4.573	5.225	3.795	1.526	8.366	3.035	2.388	2.934
Ioannina	-4.8	-4.16	-8.763	-4.061	-2.123	-2.401	-2.979	-6.54	-2.603
Irakleio	6.4	1.456	2.963	3.708	3.74	6.591	7.86	7.764	7.938
Kalamata	1.2	0.117	-2.688	-0.815	0.821	4.49	3.593	5.413	3.864
Kastoria	-6.8	-7.227	-12.126	-8.22	-4.203	-3.816	-5.7	-10.396	-6.084
Kerkira	1	3.666	6.249	5.15	2.053	7.958	8.536	4.43	7.311
Kithira	5.6	6.568	4.876	4.971	3.963	6.445	5.064	8.39	4.578
Larisa	-4.2	-3.126	-4.953	-1.496	-1.397	0.37	-2.794	-2.968	-2.52
Limnos	-0.2	1.431	0.226	0.616	1.077	3.601	1.656	3.997	0.765
Methoni	3.2	4.727	0.48	1.508	2.361	5.292	8.69	4.934	7.712
Milos	5.4	6.799	7.891	5.127	3.893	6.568	9.079	8.453	9.408
Mitilini	2.6	3.17	4.047	1.869	0.995	7.423	3.488	4.155	4.706
Naxos	6.6	7.415	3.678	3.636	3.242	6.282	4.884	7.824	5.136
Rhodes	7.2	7.675	8.179	6.649	4.985	10.845	9.617	9.056	6.022
Samos	3	5.574	0.733	0.962	1.98	3.732	2.667	6.339	2.842
Skyros	3.2	5.224	3.039	2.808	1.557	4.795	7.084	5.943	7.049
Souda	5.4	3.736	4.584	4.18	3.181	6.644	5.021	7.267	5.311
Thessaloniki	-2	-1.434	-5.714	-3.494	-1.12	0.369	-0.314	1.133	-1.258
Tripoli	-5	-5.315	-6.961	-3.515	-1.855	-0.951	-4.177	-2.577	-4.325
Zakynthos	1	2.916	3.507	4.379	3.527	5.687	5.368	8.308	4.088
BIAS		-0.793	0.583	0.003	-0.018	-3.121	-1.846	-1.99	-1.487
COR		0.902	0.85	0.87	0.933	0.843	0.888	0.922	0.896

Table S6: TN5p thresholds (°C).

	HNMS	CNRM	KNMI	CLMcom	SMHI	DMI	WRF_EC	ERA5	WRF_ERA_I
Alexandroupoli	3	4.993	5.357	4.112	5.966	9.244	3.405	1.929	2.26
Elliniko	8.2	8.569	8.361	7.352	9.018	12.252	7.822	7.684	7.717
Ioannina	4.4	4.043	3.031	2.386	3.801	5.392	3.672	3.048	3.576
Irakleio	10.6	8.898	9.772	9.044	10.319	12.462	11.159	10.061	11.614
Kalamata	10.6	10.596	7.908	6.218	9.045	11.031	10.358	9.444	9.367
Kastoria	0.4	1.122	-0.119	-1.74	1.605	3.588	1.212	-0.718	0.167
Kerkira	10.2	8.586	9.674	8.92	9.576	11.821	10.652	8.966	9.455
Kithira	8.6	9.613	9.656	8.822	10.11	11.127	8.754	10.462	8.015
Larisa	4.4	5.48	5.807	3.796	6.548	8.06	5.739	4.878	4.808
Limnos	5	5.823	5.818	4.808	6.969	8.338	5.38	6.528	4.307
Methoni	10	9.983	9.551	9.001	10.212	11.43	11.682	10.401	10.641
Milos	8	9.621	10.12	8.78	10.103	11.749	10.372	10.37	10.717
Mitilini	6.8	7.242	7.438	5.674	8.107	11.52	5.834	7.345	7.449
Naxos	9.755	9.863	8.518	7.587	9.482	11.149	8.308	9.963	9.102
Rhodes	11.2	11.016	11.372	10.793	11.575	13.873	12.149	11.716	11.317
Samos	8.2	8.901	7.618	6.239	8.184	9.129	7.219	9.266	7.571
Skyros	6.8	7.989	7.095	6.387	7.939	9.406	8.652	8.083	8.562
Souda	9.2	8.834	9.225	8.115	10.134	12.001	9.869	9.524	9.884
Thessaloniki	4.6	5.277	3.533	2.201	5.823	7.535	4.777	4.935	3.119
Tripoli	3.11	1.813	1.346	1.512	3.648	5.113	1.887	4.21	1.146
Zakinthos	8.6	9.255	9.716	8.935	10.081	11.154	9.884	10.789	8.839
BIAS		-0.279	0.041	1.082	-0.79	-2.653	-0.339	-0.344	0.097
COR		0.946	0.914	0.92	0.932	0.889	0.948	0.94	0.952

Table S7: TX5p thresholds (°C).

	HNMS	CNRM	KNMI	CLMcom	SMHI	DMI	WRF_EC	ERA5	WRF_ERA_I
Alexandroupoli	18.89	13.366	12.468	20.147	12.541	16.103	12.595	15.619	13.335
Elliniko	16.09	8.862	9.523	9.112	11.837	7.347	8.673	8.653	10.483
Ioannina	30.9	30.22	17.189	22.353	18.496	20.738	20.876	24.547	21.055
Irakleio	22.045	16.374	8.085	7.878	7.699	5.093	8.821	10.658	10.041
Kalamata	32.69	18.249	20.914	15.986	13.189	7.685	14.059	21.011	12.323
Kastoria	16.7	14.889	7.544	11.949	11.033	4.246	9.313	11.737	14.48
Kerkira	38.09	24.365	23.205	20.335	20.751	20.816	18.654	22.036	18.283
Kithira	22.245	12.816	12.495	5.873	22.823	16.78	11.35	14.485	14.289
Larisa	14.2	9.687	4.912	8.733	6.986	2.575	6.747	12.13	10.497

Limnos	20.4	12.771	11.546	9.817	12.547	9.855	11.749	12.462	15.534
Methoni	26.845	15.283	18.606	11.779	22.593	12.201	15.007	16.763	13.682
Milos	18.545	9.77	12.589	6.179	14.738	9.518	10.255	11.377	12.649
Mitilini	30	16.351	14.568	14.468	13.592	17.636	10.478	19.719	15.849
Naxos	17.1	9.991	12.609	7.294	12.784	10.583	8.701	9.583	10.407
Rhodes	31.545	13.821	16.307	13.542	12.367	13.382	15.859	25.395	17
Samos	35	16.362	23.142	13.062	30.676	28.025	13.323	23.848	16.412
Skyros	15.3	11.628	10.693	8.467	13.483	10.986	11.117	11.122	13.402
Souda	24.4	26.337	14.363	11.271	6.659	6.243	12.705	15.044	15.882
Thessaloniki	14.4	9.114	8.074	8.56	9.646	5.38	5.864	11.712	12.381
Tripoli	27.7	27.755	12.113	11.447	10.584	6.946	15.178	12.483	16.033
Zakynthos	29.545	16.629	16.726	8.658	20.37	18.684	11.925	20.677	16.69
		7.999	10.236	12.177	9.392	11.991	11.875	8.17	9.615
COR		0.657	0.891	0.59	0.562	0.67	0.783	0.876	0.697

Table S8: RR95p thresholds (mm/day).

	HNMS	CNRM	KNMI	CLMcom	SMHI	DMI	WRF_EC	ERA5	WRF_ERA_I
Alexandroupoli	0.044	0.199	0.088	0.089	0.066	0.088	0.022	0.11	0.066
Elliniko	0.221	0.177	0.177	0.622	0.199	0.177	0.375	0.309	0.199
Ioannina	0	0.022	0.044	0.044	0.044	0.066	0.066	0.044	0.088
Irakleio	0.596	0.132	0.375	0.444	0.132	0.529	0.751	1.059	0.552
Kalamata	0.022	0.022	0.022	0.022	0.243	0.243	0.022	0.088	0.088
Kastoria	0.044	0.154	0.022	0.089	0.022	0.11	0	0.044	0.066
Kerkira	0	0.132	0.088	0.067	0.044	0.11	0.11	0.044	0.132
Kithira	0.397	0.464	0.132	0.467	0.088	0.419	0.265	0.177	0.221
Larisa	0.044	0.044	0.155	0.133	0.199	0.088	0.044	0.066	0.022
Limnos	0.088	0.242	0.154	0.244	0.088	0.419	0.331	0.331	0.243
Methoni	0.11	0.154	0.044	0.044	0.022	0.088	0.044	0.066	0.066
Milos	0.552	0.441	0.485	0.489	0.022	0.309	0.751	0.662	0.552
Mitilini	0.11	0.132	0.176	0.156	0.066	0.066	0.287	0.088	0.199
Naxos	0.243	0.64	0.155	0.289	0.11	0.265	0.331	0.552	0.199
Rhodes	0.154	0.243	0.11	0.111	0.11	0.331	0.088	0.066	0.044
Samos	0.199	0.287	0.066	0.067	0.066	0.132	0.11	0.066	0.154
Skyros	0.574	0.419	0.42	0.289	0.066	0.662	0.971	0.971	0.596
Souda	0.883	0.287	0.551	0.667	0.154	0.817	0.574	0.838	0.574
Thessaloniki	0.088	0.154	0.177	0.133	0.066	0.132	0.176	0.243	0.177
Tripoli	0.044	0.022	0.154	0.178	0.066	0.419	0.088	0.132	0.132
Zakynthos	0.044	0.198	0.022	0.133	0.088	0.243	0.154	0.199	0.132
BIAS		-0.005	0.04	-0.015	0.119	-0.06	-0.053	-0.08	-0.002
COR		0.524	0.903	0.809	0.109	0.814	0.841	0.865	0.91
TOTAL EVENTS	202	207	164	217	89	259	252	279	204

Table S9: RR95p-TN5p empirical probabilities (%).

	HNMS	CNRM	KNMI	CLMcom	SMHI	DMI	WRF_EC	ERA5	WRF_ERA_I
Alexandroupoli	0	0.221	0.044	0.044	0.088	0	0.221	0.199	0.331
Elliniko	0	0.199	0.133	0.6	0.132	0.176	0.574	0.485	0.397
Ioannina	0	0.177	0.11	0.067	0.022	0.199	0.243	0.154	0.199
Irakleio	0.11	0.706	1.39	0.756	1.147	1.478	1.347	0.883	0.927
Kalamata	0.022	0.419	0.132	0.222	0.154	0.331	0.287	0.11	0.177
Kastoria	0.022	0.221	0.552	0.222	0.199	0.618	0.463	0.397	0.11
Kerkira	0	0.221	0.11	0.111	0.044	0.022	0.066	0.088	0.199
Kithira	0.066	0.199	0.309	0.489	0.088	0.485	0.596	0.11	0.463
Larisa	0	0.397	0.883	0.311	0.265	0.596	0.53	0.816	0.221
Limnos	0	0.242	0.353	0.222	0.11	0.419	0.662	0.199	0.485
Methoni	0.044	0.221	0.221	0.2	0.132	0.463	0.265	0.221	0.132
Milos	0.066	0.199	0.287	0.489	0.11	0.662	0.64	0.552	0.419
Mitilini	0	0.022	0.066	0.022	0	0.044	0.155	0.022	0.154
Naxos	0	0.221	0.221	0.222	0.154	0.442	0.573	0.309	0.375
Rhodes	0.022	0.155	0.066	0.044	0.088	0.066	0.044	0.066	0.243
Samos	0	0.022	0.066	0.044	0.066	0.11	0.221	0.022	0.221
Skyros	0.11	0.177	0.464	0.267	0.265	0.904	0.861	0.618	0.441
Souda	0.199	0.442	1.478	1.111	1.323	1.611	1.456	0.596	1.103
Thessaloniki	0	0.331	0.573	0.289	0.243	0.773	0.684	0.397	0.221
Tripoli	0	0.155	0.463	0.422	0.176	1.258	0.529	0.662	0.441
Zakinthos	0.022	0.419	0.177	0.222	0.22	0.684	0.397	0.265	0.508
BIAS		-0.223	-0.353	-0.271	-0.207	-0.508	-0.482	-0.309	-0.337
COR		0.457	0.714	0.768	0.814	0.718	0.784	0.447	0.784
TOTAL EVENTS	31	243	367	289	228	514	490	325	352

Table S10: RR95p-TX5p empirical probabilities (%).

	HNMS	CNRM	KNMI	CLMcom	SMHI	DMI	WRF_EC	ERA5	WRF_ERA_I
Alexandroupoli	161.58	78.12	84.79	44.72	103.79	90.09	79.67	73.83	58.8
Elliniko	196.15	61.07	49.43	20.29	66.35	52.79	69.63	73.99	69.19
Ioannina	136.1	78.76	64.87	30.15	69.83	95.46	120.53	77.92	64.29
Irakleio	128.98	67.94	52.38	29.68	73.15	62.2	73.26	50.13	62.56
Kalamata	223.71	89.95	76.56	37.33	74.83	62.22	102.38	67.05	57.66
Kastoria	85.05	72.11	38.91	22.56	54.17	44.83	52.18	42.23	51.38
Kerkira	312.65	88.73	68.17	56	90.67	66.54	132.17	80	82.48
Kithira	175.95	64.57	70.86	27.26	111.59	118.03	88	53.57	105.25
Larisa	111.72	86.47	29.35	16.61	48.39	48.1	51.08	86.94	43.01
Limnos	148.77	69.58	66.45	19.31	85.34	76.54	105.2	68.61	73.72
Methoni	143.69	65.24	64.69	34.34	94.42	73.59	101.93	57.52	58
Milos	119.08	54.37	54.65	15.29	74.4	66.21	77.42	47.8	76.03
Mitilini	162.63	59.39	86.82	30.18	74.15	82.68	71.33	56.87	96.85

Naxos	100.54	72.27	54.77	15.92	74.8	72.9	99.38	49.09	58.34
Rhodes	306.83	65.95	72.66	41.28	73.24	67.1	115.23	88.41	102.96
Samos	191.35	68.52	87.07	22.57	104.76	175.05	94.01	81.66	73.75
Skyros	157.27	63.94	73.9	18.38	68.07	72.19	91.29	62.13	100.25
Souda	237.24	96.12	97.17	29.02	76.15	76.09	143.41	61.82	107.36
Thessaloniki	254.91	68.32	43.12	23.14	64.52	59.94	50.13	59.37	50.45
Tripoli	136.95	79.66	85.13	28.63	70.76	133	130.58	60.23	78.13
Zakinthos	213.53	62.33	102.08	19.7	81.84	90.78	142.49	77.25	95.39

Table S11: RR 20-year Return levels using Block Maxima (mm/day).

	HNMS	CNRM	KNMI	CLMcom	SMHI	DMI	WRF_EC	ERA5	WRF_ERA_I
Alexandroupoli	-11.84	-7.16	-7.49	-6.23	-5.92	-3.11	-13.69	-11.3	-14.1
Elliniko	-3	-2.63	-0.82	-0.2	-2.03	2.86	-5.6	-5.3	-4.18
Ioannina	-10.71	-14.51	-22.87	-9.71	-11.72	-9.17	-14.12	-19.36	-11.89
Irakleio	0.6	-2.02	-2.17	1.2	-0.18	2.18	3.32	1.44	3.2
Kalamata	-4.34	-4.68	-9.41	-6.25	-2.46	-1.4	-3.94	-0.36	-2.36
Kastoria	-20.6	-22.99	-23.74	-14.41	-19.2	-10.99	-15.73	-21.05	-16.09
Kerkira	-4.1	-4.08	-0.43	0.62	-1.59	2.42	1.72	-0.72	2.18
Kithira	-1.24	1.35	-0.83	0.18	-0.8	0.31	-0.99	3.64	-0.62
Larisa	-14.68	-11.51	-17.2	-7.01	-7.47	-6.35	-12.21	-11.15	-12.5
Limnos	-5	-3.8	-9.65	-4.92	-2.86	-3.45	-4.88	-0.95	-5.18
Methoni	-2.88	-0.86	-4.47	-2.83	-1.62	-0.66	2.89	-1.73	2.51
Milos	-1.15	1.82	2.57	1.66	-0.61	1.76	4.88	3.2	5.03
Mitilini	-2.48	-3.65	-3.33	-3.18	-3.15	0.91	-3.17	-1.18	-2.07
Naxos	1.23	2.5	-3.29	0.28	-1.28	0.8	-0.86	2.83	-1.09
Rhodes	1.12	1.5	1.9	2.93	-1	6.21	4.54	3.48	1.83
Samos	-2.4	-0.5	-5.5	-3.02	-2.55	-2.49	-5.47	1.05	-4.26
Skyros	-2.4	-0.95	-4.16	-1.05	-2.29	-1.47	1.75	1.07	2.32
Souda	-0.1	-0.09	-2.39	0.75	-0.37	1.87	0.09	0.89	0.39
Thessaloniki	-9.51	-10.08	-19.9	-9.85	-8.24	-7.71	-10.49	-4.35	-10.62
Tripoli	-14.94	-16.21	-16.56	-12.18	-12.09	-9.53	-13.83	-14.49	-12.67
Zakinthos	-7.87	-1.42	-1.78	-0.5	-1.34	0.26	-1.76	3.01	-1.33

Table S11: Daily TN 20-year Return levels using Block Maxima (Minima) (°C).

	HNMS	CNRM	KNMI	CLMcom	SMHI	DMI	WRF_EC	ERA5	WRF_ERA_I
Alexandroupoli	-4	-3.05	-3.74	-2.47	-1.97	1.41	-9.06	-5.77	-5.91
Elliniko	0.06	2.36	2.37	2.54	1.76	6.61	-2.05	1.35	-0.34
Ioannina	-2.49	-5.54	-9.34	-2.38	-3.44	-1.4	-8.82	-4.47	-5.35
Irakleio	4.75	2.89	4.13	4.41	3.94	5.62	6.13	4.59	6.68

Kalamata	2.3	3.64	1.06	0.22	2.23	4.38	3.02	3.19	3.95
Kastoria	-7.82	-10.37	-10.32	-8.31	-9.45	-4.37	-10.42	-9.67	-8.3
Kerkira	3.77	-0.27	2.84	3.91	2.7	6.54	3.92	2.92	4.43
Kithira	1.52	3.88	3.65	4.07	3.89	4.5	2.65	5.15	2.74
Larisa	-5.8	-3.55	-4.11	-2.6	-2.04	0.88	-3.74	-1.27	-2.96
Limnos	-1.86	-1.5	-2.27	-1.71	-0.51	-0.73	-2.71	0.81	-2.51
Methoni	1.13	3.71	3.32	2.48	4.19	4.75	6.9	3.89	5.93
Milos	1.61	4.53	5.01	4.24	3.87	4.82	6.96	5.02	6.92
Mitilini	0.79	-0.24	0.52	0.77	0.54	5.07	0.21	0.95	0.35
Naxos	3.87	4.99	1.56	2.59	2.73	4.57	2.3	4.61	2.87
Rhodes	4.9	4.66	5.2	6.28	4.36	10.21	8.01	6.12	6.18
Samos	2.48	2.54	0.25	0.24	0.67	1.81	-1.02	3.82	-0.38
Skyros	0.24	1.92	0.88	1.27	1.22	1.35	3.91	2.54	3.64
Souda	2.46	2.59	3.04	3.73	4.03	4.88	4.32	3.82	4.47
Thessaloniki	-2.22	-4.15	-8.73	-5.03	-2.67	-1.38	-5.96	-1.17	-5.06
Tripoli	-5.25	-6.18	-6.02	-4.99	-3.72	-2.76	-6.88	-2.66	-6.36
Zakinthos	-0.29	1.66	3.33	3.1	4.21	4.22	1.93	5.11	3.32

Table S12: Daily TX 20-year Return levels using Block Maxima (Minima) (°C).

	HNMS	CNRM	KNMI	CLMcom	SMHI	DMI	WRF_EC	ERA5	WRF_ERA_I
Alexandroupoli	165.82	75.82	75.92	99.89	101.49	86.31	74.65	69.22	57.71
Elliniko	221.51	60.97	49.85	77.87	65.6	53.35	75.84	78.1	63.6
Ioannina	140.34	77.11	63.16	79.66	67.61	94.33	109.42	78	62.6
Irakleio	130.51	65.45	52.94	51.84	78.12	63.02	86.28	49.41	59.67
Kalamata	196.31	80.18	74.33	73.88	76.23	63.98	96.4	65.88	63.28
Kastoria	86.81	69.99	36.94	46.72	52.71	41.54	51.97	42.83	48.81
Kerkira	264.6	84.84	66.98	100.53	94.88	66.11	131.75	76.93	81.48
Kithira	182.94	63.72	65.93	74.27	105.37	120.39	87.96	52.26	98.52
Larisa	107.22	83.52	29.83	69	47.55	64.1	48.75	89.02	41.13
Limnos	150.1	67.32	62.77	62.3	81.01	85.92	100	65.2	74.55
Methoni	135.56	63.38	64.65	69.99	94.95	71.87	100.29	55.9	57.21
Milos	111.96	62.67	51.02	47.23	72.47	72.33	73.81	48.78	70.03
Mitilini	167	58.07	81.97	79.81	75.48	76.38	67.84	56.91	89.64
Naxos	102.77	69.89	52.06	52.43	69.57	70.31	94.53	50.31	58.37
Rhodes	322.37	69	70.8	158.56	73.36	66.11	123.35	84.77	99.46
Samos	192.87	69.69	80.22	67.51	104.36	159.18	92.93	80.78	77.07
Skyros	144.94	68.14	71.94	84.79	68.3	79.1	94.56	61.18	89.97
Souda	275.09	95.8	94.98	115.05	70.47	82.15	125.75	61.15	109.58
Thessaloniki	213.59	60.39	42.86	79.4	56.77	68.53	51.63	60.39	50.93
Tripoli	133.89	77.57	92.66	57.81	72.1	169.78	120.08	63.25	74.63
Zakinthos	188.45	63.04	93.55	78.42	80.07	87.32	138.82	76	93.29

Table S13: Daily RR 20-year Return levels using Peaks Over 90% Threshold (mm).

	HNMS	CNRM	KNMI	CLMcom	SMHI	DMI	WRF_EC	ERA5	WRF_ERA_I
Alexandroupoli	-11.73	-6.94	-7.23	-9.09	-5.23	-3.14	-13.25	-11.46	-13.4
Elliniko	-2.88	-2.29	-0.75	-3.2	-2.36	3.29	-5.24	-4.96	-3.74
Ioannina	-10.67	-14.08	-30.34	-12.25	-11.86	-9.32	-13.83	-18.73	-11.38
Irakleio	0.75	-1.81	-1.95	-1.09	0.06	2.39	3.36	1.63	3.44
Kalamata	-4.48	-4.53	-9.63	-7.97	-2.48	-1.74	-3.64	0.08	-2.22
Kastoria	-20.25	-22.44	-22.91	-17	-24.29	-10.73	-15.65	-20.8	-15.51
Kerkira	-4.16	-3.71	-1.08	-2.06	-1.79	2.83	1.54	-0.47	2.18
Kithira	-0.74	1.55	-0.78	-2.14	-0.93	0.38	-0.68	3.78	-0.24
Larisa	-14.73	-11.6	-15.96	-10.5	-5.8	-5.91	-11.91	-11.41	-11.65
Limnos	-4.71	-3.98	-9.51	-7.21	-3.22	-2.84	-4.4	-0.75	-4.88
Methoni	-3.11	-0.83	-4.2	-4.48	-1.72	-0.7	2.91	-1.27	2.93
Milos	-0.52	1.98	2.64	-1.61	-0.79	1.93	4.83	3.41	5.39
Mitilini	-2.15	-3.43	-3.47	-6.78	-3.14	1.34	-2.87	-0.92	-1.76
Naxos	1.19	2.48	-3.16	-3.55	-1.51	1.2	-0.73	2.97	-0.58
Rhodes	1.51	1.78	2.16	-1.25	-0.88	6.46	4.35	3.84	2.04
Samos	-2.2	-0.32	-5.31	-6.77	-2.92	-1.96	-5.1	1.19	-4.02
Skyros	-2.2	-0.78	-4.22	-4.4	-2.78	-0.79	1.71	1.13	2.58
Souda	0.01	0.13	-2.08	-1.61	-0.32	1.93	0.25	1	0.63
Thessaloniki	-9.13	-9.63	-26.62	-11.32	-7.14	-7.69	-9.8	-3.83	-9.87
Tripoli	-14.25	-16.26	-17.58	-13.22	-11.09	-9.11	-13.62	-13.64	-12.03
Zakinthos	-7.54	-1.46	-1.57	-2.61	-1.34	0.65	-1.49	3.02	-1

Table S14: Daily TN 20-year Return levels using Peaks Under 10% Threshold (°C).

	HNMS	CNRM	KNMI	CLMcom	SMHI	DMI	WRF_EC	ERA5	WRF_ERA_I
Alexandroupoli	-3.88	-2.94	-3.04	-3.94	-2.01	1.96	-8.58	-6.01	-5.47
Elliniko	0.49	2.08	2.44	0.08	1.73	6.85	-1.6	1.21	0.28
Ioannina	-2.22	-5.09	-9.39	-4.55	-3.32	-1.04	-8.08	-4.22	-5.61
Irakleio	4.91	2.91	4.05	1.15	4.24	6.02	6.21	4.87	6.89
Kalamata	2.42	3.56	1.06	-2.55	2.47	4.67	3.26	3.3	3.86
Kastoria	-7.32	-9.75	-10.5	-10.85	-9.02	-4.04	-9.57	-9.15	-7.83
Kerkira	3.49	0.2	2.82	1.71	3.17	6.81	4.15	2.75	4.19
Kithira	1.6	3.89	3.6	1.34	4.03	4.65	2.92	5.23	3.16
Larisa	-5.16	-3.21	-3.96	-3.4	-1.41	1.03	-3.48	-1.06	-2.26
Limnos	-2.03	-1.36	-2.18	-3.68	-0.25	-0.15	-2.2	0.88	-2.3
Methoni	-0.64	3.88	3.38	0.34	4.02	5.03	7.13	4	6.09
Milos	2.15	4.39	4.96	1.45	3.79	5.07	6.97	5.04	7.17
Mitilini	1.05	-0.05	0.73	-3.1	0.75	5.39	0.11	1.34	0.39
Naxos	4.01	4.76	1.86	-0.7	2.63	5.06	2.3	4.77	3.21

Rhodes	5.12	4.84	5.34	2.37	4.45	10.34	8.02	6.27	6.53
Samos	2.61	2.61	0.71	-3.04	0.7	2.06	-0.86	3.96	-0.09
Skyros	0.45	1.91	1.17	-0.64	1.07	1.7	4.15	2.72	3.97
Souda	3.06	2.57	3.36	0.85	4.09	5.52	4.53	4	4.75
Thessaloniki	-2.02	-3.84	-10.82	-7.19	-2.7	-1.2	-5.45	-0.91	-4.57
Tripoli	-4.41	-6.17	-6.23	-7.35	-3.53	-2.14	-7.11	-2.63	-6.06
Zakinthos	-0.71	1.75	3.49	1.01	3.83	4.77	2.44	5.24	3.6

Table S15: Daily TX 20-year Return levels using Peaks Under 10% Threshold (°C).

	HNMS	CNRM	KNMI	CLMcom	SMHI	DMI	WRF_EC	ERA5	WRF_ERA_I
Alexandroupoli	0.3964	0.0209	0.0035	0.4149	0.0408	0.0227	0.2026	0.2522	0.2501
Elliniko	0.0268	0.0014	0.0008	0.0426	0.0187	0	0.0256	0.0111	0.0187
Ioannina	0.8588	2.2469	0.6452	0.8627	0.5159	0.772	0.8882	1.2174	0.5414
Irakleio	0	0.0289	0.0018	0.0085	0	0	0	0	0
Kalamata	0.0547	0.0461	0.2477	0.3991	0.0468	0.0036	0.0021	0.0033	0.0095
Kastoria	0.7737	1.2085	0.2268	0.7682	0.2885	0.0848	0.2641	0.544	0.392
Kerkira	0.1008	0.0016	0.0024	0.0149	0.0125	0	0.0005	0.0005	0
Kithira	0.0127	0	0.0005	0.0042	0.0013	0.0018	0.0066	0	0.0026
Larisa	0.2444	0.3318	0.0373	0.1555	0.0452	0.0304	0.0905	0.1737	0.0537
Limnos	0.1765	0.0205	0.0434	0.1172	0.0056	0.0225	0.0961	0.0045	0.087
Methoni	0.0709	0.0007	0.0474	0.0551	0.0026	0.003	0	0.0015	0
Milos	0.0285	0	0	0.002	0.0003	0	0	0	0
Mitilini	0.0334	0.0152	0.0079	0.1557	0.0152	0	0.0027	0.0042	0.0059
Naxos	0	0	0.0002	0.0088	0.001	0	0.0045	0	0.0022
Rhodes	0	0	0	0.0036	0.0004	0	0	0	0
Samos	0.0376	0.0014	0.052	0.1485	0.0311	0.0464	0.0292	0	0.0378
Skyros	0.0189	0.0073	0.001	0.0354	0.0273	0.0098	0	0	0
Souda	0.0128	0	0.0174	0.0138	0.0001	0	0.0125	0	0
Thessaloniki	0.1887	0.0627	0.146	0.2756	0.0438	0.0547	0.0371	0.0393	0.1085
Tripoli	0.992	3.932	0.693	0.6013	0.1173	0.141	1.3563	0.2838	1.077
Zakinthos	0.2396	0.0088	0.0028	0.0088	0.0027	0	0.0002	0	0.0006

Table S16: RR20-FD best-fitted Copula probabilities (%).

	HNMS	CNRM	KNMI	CLMcom	SMHI	DMI	WRF_EC	ERA5	WRF_ERA_I
Alexandroupoli	0.0138	0.0057	0.003	0.1407	0.0003	0	0.06	0.0723	0.0666
Elliniko	0.0015	0	0	0.0056	0.0007	0	0.0152	0.004	0.0065
Ioannina	0.0462	0.1801	0.0772	0.1439	0.0749	0.0154	0.1478	0.1227	0.1562
Irakleio	0	0	0	0.0009	0	0	0	0	0
Kalamata	0	0	0.0026	0.0143	0	0	0	0	0

Kastoria	0.2832	0.171	0.0622	0.2343	0.0706	0.005	0.0764	0.2881	0.1485
Kerkira	0	0.0058	0	0	0	0	0	0	0
Kithira	0.0045	0	0	0	0	0	0	0	0
Larisa	0.0278	0.0082	0.0484	0.0185	0.0022	0.0001	0.0031	0.0082	0.0097
Limnos	0.0145	0.0082	0.0046	0.0185	0.0003	0.0014	0.0247	0	0.0445
Methoni	0.0066	0	0	0.0009	0	0	0	0	0
Milos	0	0	0	0	0	0	0	0	0
Mitilini	0	0.001	0	0.0066	0.0025	0	0.001	0	0.0011
Naxos	0	0	0	0.0007	0	0	0	0	0
Rhodes	0	0	0	0	0	0	0	0	0
Samos	0	0	0	0.0125	0.0085	0	0.0076	0	0.0037
Skyros	0.0045	0	0	0.0024	0.0021	0	0	0	0
Souda	0	0	0	0.0018	0	0	0	0	0
Thessaloniki	0.0345	0.0631	0.0811	0.0431	0.0044	0.0012	0.0713	0.0064	0.0445
Tripoli	0.1403	0.63	0.1376	0.1468	0.0215	0.0092	0.2992	0.0138	0.2682
Zakinthos	0.0139	0	0	0	0	0	0	0	0

Table S20: RR20-ID best-fitted Copula probabilities (%).

	HNMS	CNRM	KNMI	CLMcom	SMHI	DMI	WRF_EC	ERA5	WRF_ERA_I
Alexandroupoli	0.0814	0.0495	0.0181	0.3344	0.0697	0.3242	0.094	0.1008	0.1127
Elliniko	0.2112	0.1453	0.1859	0.6681	0.173	0.3932	0.297	0.2046	0.2905
Ioannina	0.0571	0.0752	0.0294	0.0629	0.1009	0.2285	0.0664	0.0545	0.0698
Irakleio	0.5659	0.1775	0.1788	0.5802	0.1272	0.3287	0.7867	0.9066	0.4072
Kalamata	0.0642	0.0528	0.045	0.3252	0.2274	0.3344	0.0765	0.183	0.2753
Kastoria	0.093	0.1342	0.0521	0.287	0.105	0.3511	0.0754	0.0991	0.0845
Kerkira	0.0764	0.0237	0.1354	0.3044	0.0652	0.2351	0.1361	0.0699	0.1579
Kithira	0.3879	0.4827	0.1464	0.4573	0.0576	0.3281	0.3741	0.4023	0.2871
Larisa	0.0747	0.2228	0.0721	0.3057	0.0771	0.4624	0.119	0.116	0.0533
Limnos	0.1436	0.101	0.1163	0.3584	0.0483	0.3561	0.312	0.3997	0.1802
Methoni	0.2676	0.1122	0.0602	0.2959	0.0315	0.3386	0.1043	0.1202	0.2677
Milos	0.6154	0.5172	0.5782	0.511	0.0707	0.3387	0.6268	0.6481	0.5932
Mitilini	0.1318	0.0974	0.1528	0.4637	0.0751	0.3336	0.1287	0.1643	0.1868
Naxos	0.3269	0.6505	0.0504	0.431	0.0962	0.3551	0.3836	0.4982	0.2808
Rhodes	0.3205	0.5415	0.3214	0.3443	0.081	0.3476	0.1048	0.3224	0.0667
Samos	0.1508	0.1632	0.0583	0.3614	0.0868	0.319	0.1295	0.1929	0.1456
Skyros	0.288	0.5906	0.0562	0.462	0.1899	0.3812	0.7839	0.7055	0.6586
Souda	0.6589	0.277	0.5903	0.619	0.134	0.5259	0.8884	0.7113	0.4832
Thessaloniki	0.1022	0.096	0.0754	0.2973	0.0749	0.4137	0.1776	0.2036	0.1323
Tripoli	0.0768	0.1262	0.129	0.3868	0.0878	0.3242	0.287	0.1513	0.2929
Zakinthos	0.2286	0.1421	0.0942	0.334	0.0842	0.304	0.1193	0.3115	0.0824

Table S21: RR95p-TN5p best-fitted Copula probabilities (%).

	HNMS	CNRM	KNMI	CLMcom	SMHI	DMI	WRF_EC	ERA5	WRF_ERA_I
Alexandroupoli	0.1228	0.1042	0.1308	0.4752	0.0806	0.2239	0.2946	0.25	0.299
Elliniko	0.4247	0.1598	0.2204	0.6642	0.3193	0.4409	0.701	0.8229	0.659
Ioannina	0.3751	0.4283	0.3089	0.3673	0.431	0.3925	0.3347	0.3882	0.4014
Irakleio	0.7372	0.8647	1.3241	0.7997	1.032	1.2568	1.1552	0.8296	0.7092
Kalamata	0.5368	0.555	0.3472	0.5199	0.4082	0.4838	0.3936	0.3886	0.3704
Kastoria	0.4152	0.369	0.3683	0.3596	0.3498	0.3856	0.3463	0.6379	0.3669
Kerkira	0.399	0.4421	0.1073	0.3133	0.3391	0.2347	0.1095	0.2698	0.2917
Kithira	0.41	0.5612	0.2902	0.512	0.3123	0.4618	0.6965	0.3135	0.4723
Larisa	0.4305	0.3047	0.7778	0.3981	0.3354	0.4054	0.3412	0.7108	0.4144
Limnos	0.3022	0.3391	0.2701	0.3972	0.146	0.3757	0.5477	0.4219	0.5689
Methoni	0.4695	0.4545	0.3112	0.4951	0.3406	0.4891	0.1707	0.3871	0.2875
Milos	0.4841	0.3359	0.3369	0.5432	0.3239	0.4553	0.5914	0.5625	0.3903
Mitilini	0.3049	0.1149	0.1519	0.371	0.2974	0.348	0.3049	0.208	0.2948
Naxos	0.3702	0.0684	0.3134	0.4613	0.3401	0.4488	0.6032	0.4725	0.4351
Rhodes	0.415	0.5045	0.0961	0.3111	0.3507	0.3027	0.2737	0.2912	0.4043
Samos	0.3208	0.1337	0.1588	0.4066	0.328	0.3991	0.3047	0.1906	0.3504
Skyros	0.6614	0.3027	0.6973	0.4839	0.2896	0.4272	0.7023	0.5827	0.3595
Souda	0.7521	0.7963	1.191	0.824	1.2345	1.262	1.4129	0.6334	1.0477
Thessaloniki	0.5405	0.6801	0.4552	0.3848	0.2893	0.392	0.6719	0.3615	0.3497
Tripoli	0.4903	0.5509	0.4027	0.5231	0.4167	0.5226	0.441	0.5698	0.4142
Zakinthos	0.4848	0.4322	0.3049	0.4384	0.3331	0.4648	0.3603	0.2809	0.3862

Table S22: RR95p-TX5p best-fitted Copula probabilities (%).

Figures

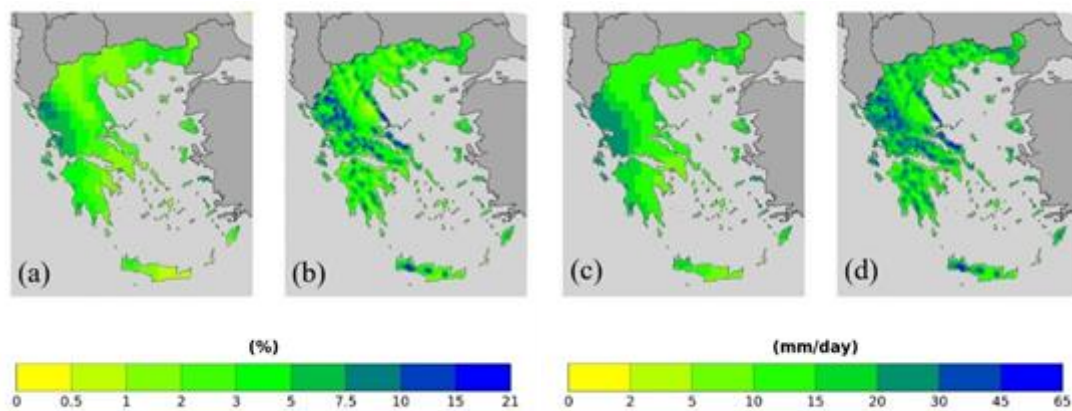


Figure S1: (a, c) ERA 5 and (b, d) WRF_ERA_I (a, b) RR20 probability and (c, d) RR95p threshold.

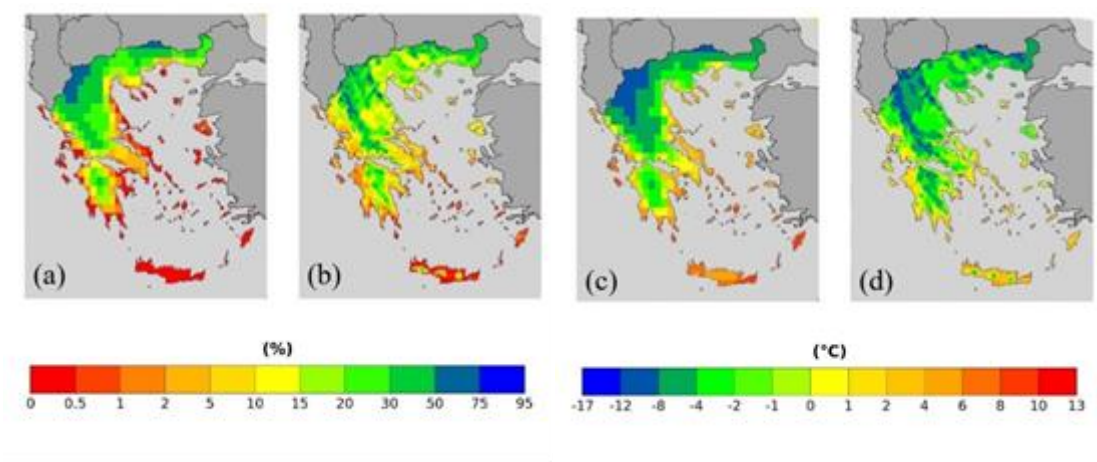


Figure S2: (a, c) ERA 5 and (b, d) WRF_ERA_I (a, b) FD probability and (c, d) TN5p threshold.

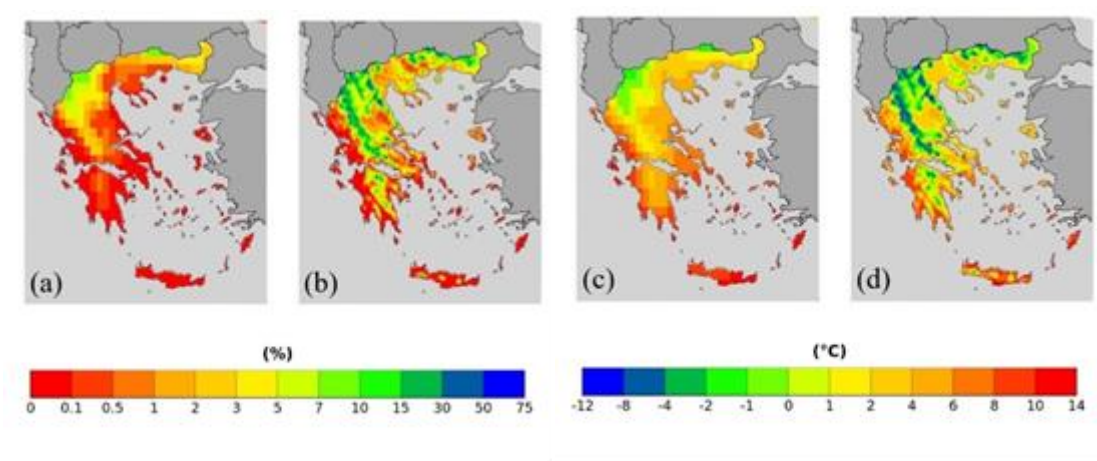


Figure S3: (a, c) ERA 5 and (b, d) WRF_ERA_I (a, b) ID probability and (c, d) TX5p threshold.

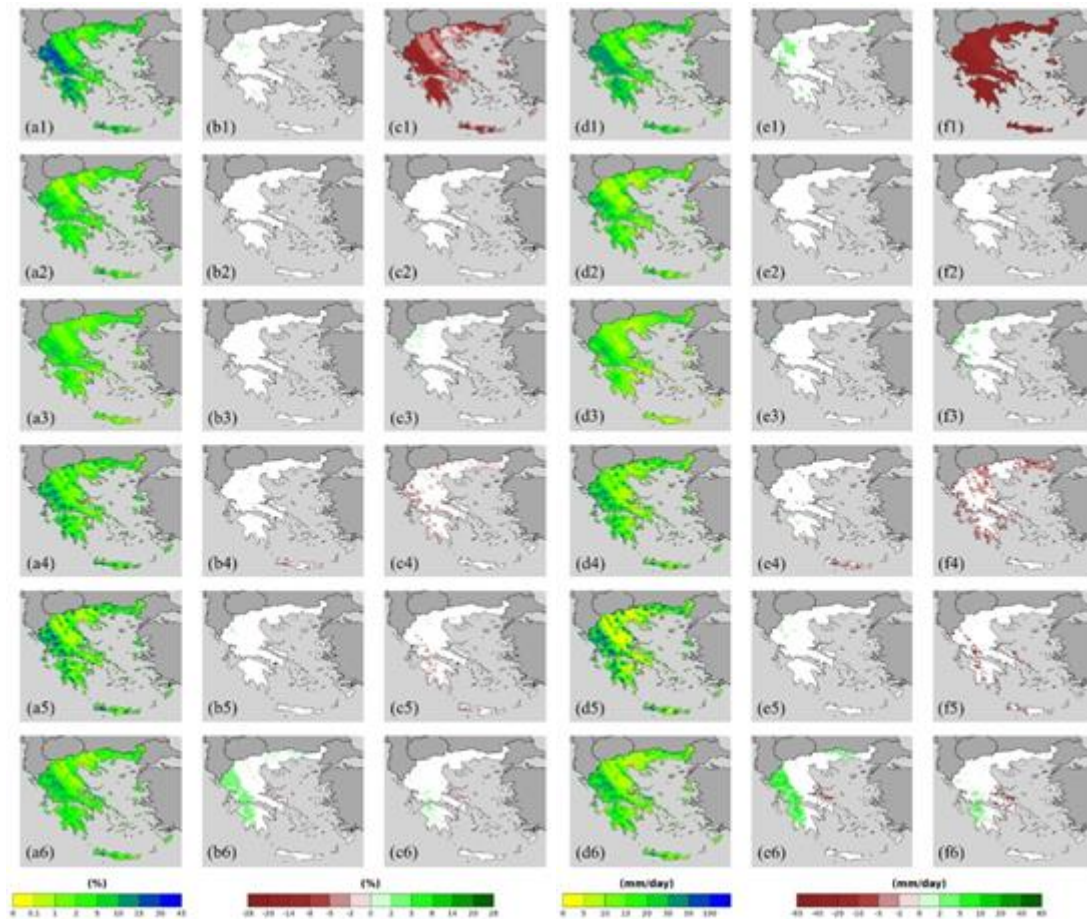


Figure S4: (a-c) RR20 probabilities and (d-f) RR95p thresholds. Models 1: CNRM, 2: KNMI, 3: CLMcom, 4: SMHI, 5: DMI, 6: WRF_EC. (a, d) 1980-2004, (b, e) (2025-2049 RCP 4.5) – (1980-2004) and (c, f) (2025-2049 RCP 8.5) – (1980-2004).

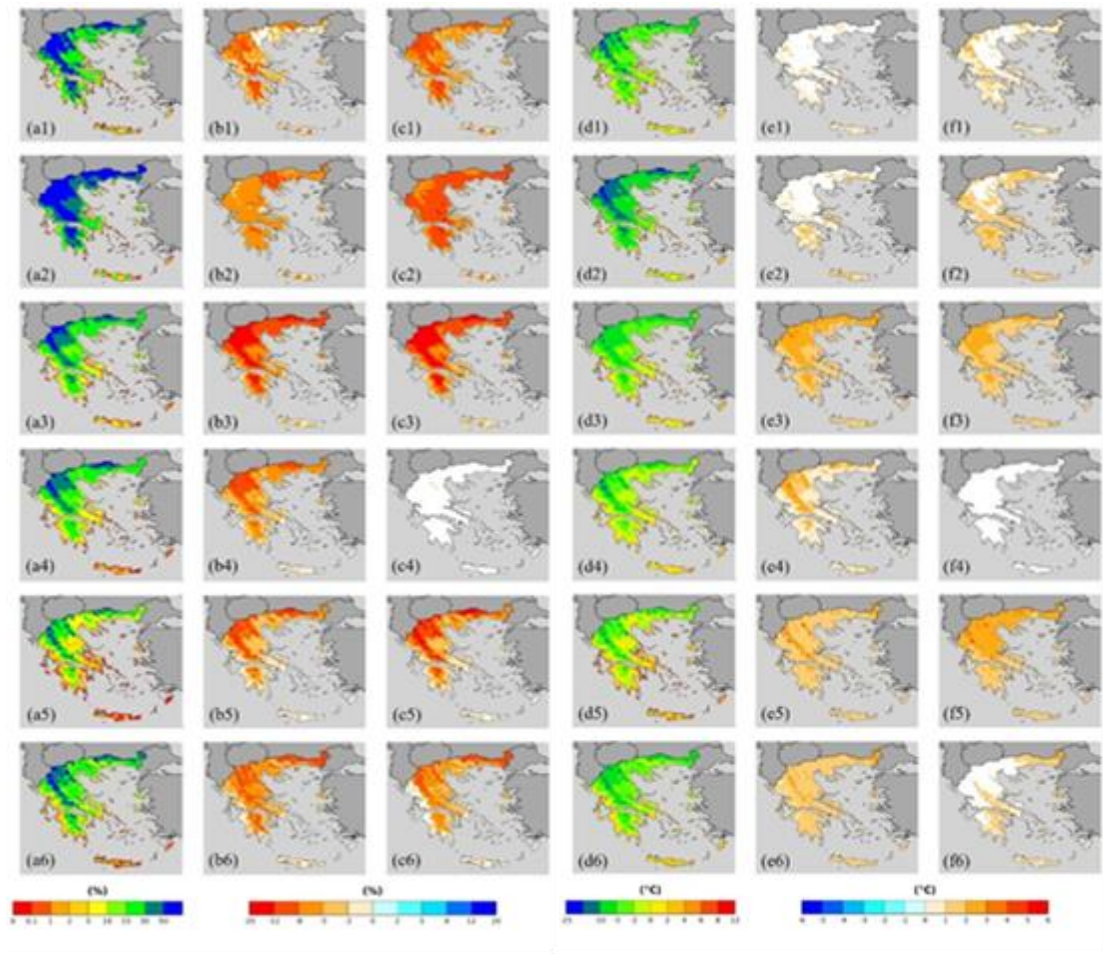


Figure S5: (a-c) FD probabilities and (d-f) TN5p thresholds. Models 1: CNRM, 2: KNMI, 3: CLMcom, 4: SMHI, 5: DMI, 6: WRF_EC. (a, d) 1980-2004, (b, e) (2025-2049 RCP 4.5) – (1980-2004) and (c, f) (2025-2049 RCP 8.5) – (1980-2004).

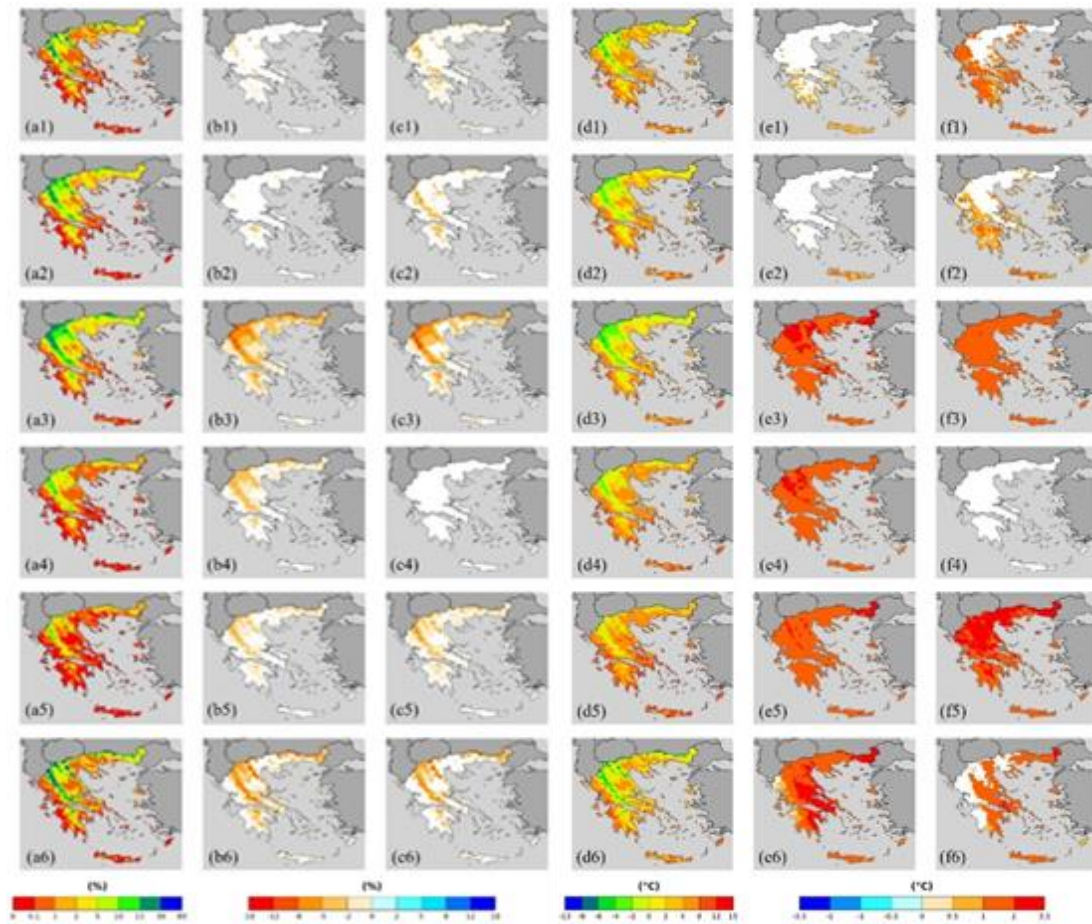


Figure S6: (a-c) ID probabilities and (d-f) TX5p thresholds. Models 1: CNRM, 2: KNMI, 3: CLMcom, 4: SMHI, 5: DMI, 6: WRF_EC. (a, d) 1980-2004, (b, e) (2025-2049 RCP 4.5) – (1980-2004) and (c, f) (2025-2049 RCP 8.5) – (1980-2004).