

Guidance on how to improve vertical covariance localization based on a 1000-member ensemble

Tobias Necker¹, David Hinger¹, Philipp Johannes Griewank¹, Takemasa Miyoshi², and Martin Weissmann¹

¹Institut für Meteorologie und Geophysik, Universität Wien, Vienna, Austria

²RIKEN Center for Computational Science, Kobe, Japan

Correspondence: Tobias Necker, tobias.necker@univie.ac.at

Abstract. The success of ensemble data assimilation systems substantially depends on localization, which is required to mitigate sampling errors caused by modeling background error covariances with undersized ensembles. However, finding an optimal localization is highly challenging as covariances, sampling errors, and appropriate localization depend on various factors. Our study investigates vertical localization based on a unique convection-permitting 1000-member ensemble simulation. 1000-member ensemble correlations serve as truth for examining vertical correlations and their sampling error. We discuss requirements for vertical localization by deriving an empirical optimal localization (EOL) that minimizes the sampling error in 40-member sub-sample correlations with respect to the 1000-member reference. Our analysis covers temperature, specific humidity, and wind correlations on various pressure levels. Results suggest that vertical localization should depend on several aspects, such as the respective variable, vertical level, or correlation type (self- or cross-correlations). Comparing the empirical optimal localization with common distance-dependent localization approaches highlights that finding suitable localization functions bears substantial room for improvement. Furthermore, we [examine approaches for achieving positive semi-definiteness for covariance localization. Finally, we](#) discuss the gain of combining different localization approaches with an adaptive statistical sampling error correction.

1 Introduction

The accuracy of the initial conditions provided by data assimilation systems strongly determines the skill of numerical weather prediction (NWP). Data assimilation (DA) relies on accurate estimates of forecast errors and error covariances that determine the weighting and spreading of observational information. However, modeling suitable error covariances is intrinsically difficult given various atmospheric processes acting on different scales, leading to situation- and flow-dependent error covariance structures. A breakthrough in estimating background errors has been the development of ensemble and hybrid data assimilation algorithms (e.g., Evensen, 1994; Bonavita et al., 2016; Bannister, 2017).

Considering the large state space of atmospheric models with a hundred million or more degrees of freedom, estimating error covariances with an ensemble forecast is demanding. Computational restrictions usually limit the number of affordable ensemble members to about 20 to 80 members (Bannister, 2017; Gustafsson et al., 2018). Ensemble systems, therefore, suffer

from severe under-sampling and sampling errors. For this reason, all ensemble and hybrid data assimilation systems require
25 some form of sampling error correction for horizontal and vertical covariances, usually referred to as localization. Localization
mitigates spurious correlations that arise from under-sampling. During the assimilation procedure, spurious correlations lead
to sub-optimal analysis increments, resulting in a sub-optimal analysis and forecast as well as an inaccurate representation of
forecast error by the ensemble. Horizontal and vertical localization are both challenging topics. Since fundamentally different
processes are acting in the horizontal and vertical direction, the two structures require different solutions. Depending on the
30 specific data assimilation algorithm, localization may also be important for other reasons, such as computational efficiency or
rank deficiency. However, in this study, we focus on mitigating sampling errors independent of algorithm-specific constraints.

In the past decade, advanced high-performance computing systems such as the Japanese K-computer (Miyoshi et al.,
2015, 2016a, b) enabled the first atmospheric ensemble simulations with thousands of ensemble members that can provide
reliable error covariances (Kunii, 2014; Miyoshi et al., 2014; Kondo and Miyoshi, 2016; Necker et al., 2020a). The assumption
35 that such large ensembles provide covariances close to true covariances allows for investigating sampling errors in smaller
subsets. Necker et al. (2020b), for example, evaluated a statistical sampling error correction method based on a 1000-member
ensemble. Preceding studies used a similar approach, but with a smaller ensemble size or lower resolution (e.g., Hamill et al.,
2001; Poterjoy et al., 2014; Bannister et al., 2017). Wu et al. (2020), for example, showed the potential of a 256-member
ensemble for studying sampling errors in a 40-member ensemble focusing on covariances of radar observations on convective
40 scales. Our present study aims to guide advances in vertical localization by analyzing vertical error correlations and the empir-
ical optimal vertical localization derived from the convection-permitting 1000-member ensemble simulation of Necker et al.
(2020a, b).

In recent years, several approaches for vertical localization have been developed. The most frequently applied localization ap-
proach is a distance-dependent localization that dampens long-range correlations (e.g., Houtekamer and Mitchell, 1998, 2001;
45 Hamill et al., 2001; Miyoshi and Yamane, 2007). For example, many data assimilation algorithms use a Gaussian-shaped taper-
ing function (Gaspari and Cohn, 1999) with a cut-off at a defined distance to damp correlations depending on the spatial
distance. However, long-distance vertical error correlations often have a physical meaning. Vertically, e.g., radiative effects
of clouds, deep convection, or hydrostatic balance can cause relevant correlations. Inappropriate localization can therefore
eliminate meaningful error correlations (Miyoshi et al., 2014; Kondo and Miyoshi, 2016) or cause imbalances in the initial
50 conditions (Kepert, 2009; Greybush et al., 2011; Lei et al., 2015).

Several studies investigated different aspects of optimal localization but often focused on horizontal localization. These
studies cover fundamental research on sampling errors and their correction (e.g., Anderson, 2007, 2012; Flowerdew, 2015).
Besides, some studies discuss suitable tapering functions for localization (e.g., Gaspari and Cohn, 1999; Gaspari et al., 2006;
Bolin and Wallin, 2016; Stanley et al., 2021). Distance-dependent localization always requires tuning of localization scales.
55 Consequently, multiple studies aim to derive optimal localization scales and functions by minimizing the error in correlations
or the subsequent analysis (e.g., Perianez et al., 2014; Anderson and Lei, 2013; Lei and Anderson, 2014; Kirchgessner et al.,
2014; Flowerdew, 2015).

Localization approaches can roughly be grouped into two categories: Adaptive and non-adaptive approaches. Non-adaptive approaches apply fixed domain- or variable-uniform localization functions and scales that do not change with time. Adaptive localization approaches, such as statistical sampling error correction methods, enable a flow- or error correlation-dependent localization (e.g., Anderson, 2007; Bishop and Hodyss, 2009a, b; Anderson, 2012; Ménétrier et al., 2015a, b). A promising adaptive localization approach is the global group ensemble filter (GGF; Lei and Anderson, 2014). The GGF enables adaptive vertical localization of satellite radiances (Lei et al., 2016, 2020). However, adaptive methods usually require additional computational resources, which can be a limiting factor in operational applications.

Current regional NWP models exhibit a grid-spacing of a few kilometers, allowing an explicit representation of deep convection (Bouttier et al., 2016; Hagelin et al., 2017; Gustafsson et al., 2018). Finding optimal localization scales or functions is challenging, particularly for convection-permitting simulations (Michel et al., 2011; Ménétrier et al., 2014; Destouches et al., 2021). In these simulations, correlations and sampling errors depend on strongly non-linear dynamics, the chaotic nature of convection, and uncertainties in microphysical processes that all contribute to rapid error growth (Hohenegger and Schaer, 2007; Ménétrier et al., 2014; Wu et al., 2020). However, little knowledge exists on the structure of short-term forecast errors in regions with atmospheric convection (Hu et al., 2022). Consequently, better understanding of optimal vertical localization for convection-permitting simulations has the potential to improve forecasts of convective precipitation and related hazards.

This paper investigates how vertical error covariances should be localized based on an existing convection-permitting 1000-member ensemble simulation (Necker et al., 2020a). Our study focuses on correlations instead of covariances as correlation sampling errors are the main contributor to covariance sampling error (Anderson, 2012). We will investigate domain-uniform vertical localization but will also partly address the potential of adaptive localization approaches by applying a statistical sampling error correction (SEC Anderson, 2012, 2016). Furthermore, we will analyze vertical correlations and empirically derive an optimal vertical localization that minimizes the sampling error in subsamples of the 1000-member ensemble. Our setup allows for general conclusions independent of a specific DA algorithm. Among different aspects of localization, we will address the following research questions:

- How do vertical error correlations for humidity, temperature, or wind behave on average?
- How should we localize vertical error correlations from small ensembles?
- How much error reduction can be achieved with a domain-uniform vertical localization or by combining different localization approaches?

The remainder of the paper is outlined as follows: Sect. 2 introduces the 1000-member ensemble, the experimental setup, and the weather period. Furthermore, we explain how vertical correlations and the empirical optimal localization are derived from the 1000-member ensemble using sub-sampling. Sect. 3.1 evaluates vertical correlations and the empirical optimal localization for single variable pairs to explore requirements for a variable-dependent localization. In Sect. 3.2, we group variables and correlations based on similar behavior to derive an empirical optimal localization for self- and cross-correlations. Sect. 3.3 evaluates the error reduction achieved by different localization approaches and settings. Finally, we summarize our results in Sect. 4 and discuss implications for improving vertical localization.

2 Methods and experiments

2.1 1000-member ensemble simulation

Our study uses an existing convective-scale 1000-member ensemble simulation described in detail by Necker et al. (2020a). The 1000-member ensemble applies the full-physics non-hydrostatic Scalable Computing for Advanced Library and Environment regional model (SCALE-RM) and the SCALE Localized Ensemble Transform Kalman Filter (SCALE-LETKF) DA system (Lien et al., 2017). Using an offline nesting approach, the 1000-member ensemble setup couples two domains with different horizontal resolutions. Ensemble forecasts in the outer domain covering Central Europe (15-km grid spacing) delivered the boundary and initial conditions for the convective-scale ensemble forecasts in the inner domain covering Germany (3-km grid spacing). High-resolution short-term forecasts from the inner domain will be analyzed to evaluate correlations and localization.

Initial and boundary conditions: The data assimilation cycling has been performed in the coarse European domain assimilating conventional observations with a LETKF (Hunt et al., 2007). A set of 1000 independent and specifically constructed ensemble boundary conditions (BC) drive the European scale forecasts. These BCs combine 1000 climatologically scaled random perturbations with a 20-member analysis ensemble of the NCEP Global Ensemble Forecast System (GEFS). The GEFS 20-member analysis ensemble is used 50 times to reach 1000 BCs and afterwards combined with 1000 random climatologically scaled perturbations. This approach yields 1000 independent BCs that ensure sufficient ensemble spread when combined with relaxation to prior spread (RTPS Whitaker and Hamill, 2012). The boundary and initial conditions for the inner and convective-scale forecast domain are downscaled from 15 to 3 km resolution based on simulations in the European domain.

Our study uses the model output from the inner model domain with a 250×230 grid area centered over Germany with a 3 km horizontal resolution. This sub-domain excludes the Alps and regions within ten grid points to the domain boundary. The model output has 30 vertical levels ranging from the surface to the model top at 16.9 km. The original vertical grid is terrain-following and has fixed height levels above the surface (in m). Due to practical reasons, we extracted temperature (T), specific humidity (Q), and horizontal zonal (U) and meridional (V) wind components on 20 vertical pressure levels (100, 150, 200, 250, 300, 350, 400, 450, 500, 550, 600, 650, 700, 750, 800, 850, 900, 925, 950, 975 hPa). Performing our analysis on this modified grid allows horizontal averaging of data on pressure levels where needed. Overall, our examination includes ten short-term forecasts that have been initialized twice per day from 29 May to 2 June at 00 and 12 UTC. The 3-h forecasts valid at 3 and 15 UTC serve as a basis to compute and investigate background error correlations.

2.2 Weather period

Atmospheric blocking over the Atlantic influenced the large-scale flow over Europe in the five-day experimental period. The blocking led to a quasi-stationary weather pattern over central Europe with an upper-level trough over western Europe and a shallow surface low over central Europe. The low-pressure system was associated with a cold and a warm front that moved over Germany during the period. A convergence zone over southern Germany caused large-scale lifting. Furthermore, mid-level winds advected warm and moist air masses from southern Europe towards Germany at the beginning of the experimental period. Combined with the convergence zone, atmospheric conditions led to intense convection and heavy precipitation, including hail.

125 Weak pressure gradients and slowly moving convective cells resulted in high local precipitation rates and flash flooding. Due to these severe weather events, several studies focused on this exceptional period (e.g., Piper et al., 2016). Necker et al. (2020a, b), Nomokonova et al. (2022), and Craig et al. (2022) provide further details on the weather situation in this period as these studies also explore the 1000-member ensemble simulation with a different purpose.

2.3 Vertical localization

130 Error covariances are a key component in data assimilation and determine how assimilated information is weighted and distributed in state space. Given a sample of state vectors x provided by a background forecast ensemble the flow-dependent sample error covariance matrix \mathbf{P} can be computed as follows

$$\mathbf{P} = \frac{1}{N-1} \sum_{n=1}^N (x^n - \bar{x})(x^n - \bar{x})^T, \quad (1)$$

where N is the ensemble size and \bar{x} is the ensemble mean state. The covariance matrix \mathbf{P} per definition is a symmetric, positive
 135 semi-definite (SPSD) matrix with variances on its diagonal and covariances on its off-diagonal entries. Each off-diagonal element contains a sample covariance cov of two state variables x_i

$$cov(x_1, x_2) = r(x_1, x_2)\sigma(x_1)\sigma(x_2) \quad (2)$$

where $r \in [-1, 1]$ is the sample correlation and σ the sample standard deviation.

Usually, the number of affordable ensemble members is limited in NWP due to a huge state space and computational
 140 restrictions. This deficit causes severe sampling errors. Consequently, all ensemble filters require a correction of sampling errors, often referred to as localization. For example Anderson (2012) highlighted that the sampling error in covariances is dominated by sampling error in the sample correlation r , not by sampling error in the variances. Therefore, our analysis will solely tackle sampling errors in sample correlations. Sample correlations are normalized with standard deviations and possess no unit. The normalization allows comparing or combining correlations of different variables facilitating the interpretation.

145 The implementation of localization depends on various factors determined by the type of ensemble filter. Usually, localization is applied directly to the background error covariance matrix using a Schur-product

$$\mathbf{P}_{loc} = \mathbf{C} \circ \mathbf{P}, \quad (3)$$

where \mathbf{C} is the localization matrix (Gaspari and Cohn, 1999; Bannister, 2008). The matrix \mathbf{C} consists of tapering factors α that are determined using the localization approach of choice. Based on the Schur product theorem (Horn and Johnson, 2012, theorem 7.5.3)
 150 , positive semi-definite matrices \mathbf{C} and \mathbf{P} guarantee positive semi-definiteness of the localized covariance matrix \mathbf{P}_{loc} . Furthermore, localization matrices should feature ones on the diagonal similar to a correlation matrix, to avoid undesired inflation of variances (Flowerdew, 2015).

Variable	Temperature (T)	Humidity (Q)	Zon. Wind (U)	Mer. Wind (V)
Temperature (T)	TT	TQ	TU	TV
Humidity (Q)	QT	QQ	QU	QV
Zon. Wind (U)	UT	UQ	UU	UV
Mer. Wind (V)	VT	VQ	VU	VV

Table 1. Analyzed correlation pairs. Self-correlations on diagonal and cross-correlations on off-diagonal of the table. The first variable of each pair represents the ensemble at the reference level.

2.3.1 Distance-dependent localization

The most common localization approach is a distance-dependent localization that determines tapering factors α based on distance (Houtekamer and Mitchell, 1998, 2001). The vertical separation distance in our study is defined in $\ln(p)$. We consider the widely used Gaussian-shaped Gaspari-Cohn function (GC; Eq. 4.10, Gaspari and Cohn, 1999) for comparison with other methods. Applying a GC function always requires the selection of the separation distance [but guarantees positive definiteness](#). The separation distance is often referred to as the localization scale, while the cut-off radius is usually twice the localization scale. In our study, we apply vertical localization according to the definition of Deutscher Wetterdienst (DWD) (Schraff et al., 2016). For DWD, the localization scale is determined by a pre-selected localization length that is multiplied by a factor of $(\sqrt{10/3})$. Operationally, the localization length of DWD is height-dependent and increases linearly in $\ln(p)$ from the surface (0.075) to 300 hPa (0.5).

In Sect. 3.3, we apply three different domain-uniform GC localization setups: a) "GC": An optimally tuned GC localization scale that applies a uniform localization scale for all variables and heights. b) "GCLEV": An height-dependent optimally tuned GC localization scale that is uniform for all variables. c) "DWD": A localization setting similar to DWD as described above that is also domain- and variable-uniform.

2.3.2 Sampling error correction (SEC)

Necker et al. (2020b) showed that an adaptive statistical sampling error correction (SEC, Anderson, 2012, 2016) substantially reduces the sampling error in sample correlations and ensemble sensitivities. The SEC is a look-up table-based approach and corrects the overestimation of correlations caused by sampling noise. The look-up table is computed offline and based on Monte Carlo simulations that consider the likelihood of the correlation r . The SEC depends on the sample correlation, the ensemble size, and the assumed prior distribution of correlations. Here, we assume a uniform default prior distribution and apply the SEC table that is provided within the Data Assimilation Research Testbed (DART; Anderson et al., 2009). In Sect. 3.3, we will compare the benefit of the SEC with different localization approaches. The comparison includes combinations of the SEC with these approaches.

2.4 Sub-sampling and vertical correlations

The sampling noise expected for zero correlation estimates and sample size N is $(\sqrt{N})^{-1}$ (Houtekamer and Mitchell, 1998). For the 1000-member ensemble ($N=1000$), this estimation yields a very small sampling noise of approximately 3%. In comparison, a 40-member ensemble reveals an expected sampling noise of approximately 16%. Throughout this study, correlations
180 computed using the full 1000-member ensemble serve as truth (r^{1000}) for the interpretation of vertical correlations and the evaluation of sampling errors and localization in smaller subsamples of the full ensemble. We focus on vertical correlations and sampling errors in 40-member subsamples as this is a typical ensemble size applied by operational weather services such as, e.g., Deutscher Wetterdienst. Preceding studies applied a similar approach for studying sampling errors (Hamill et al., 2001; Poterjoy et al., 2014; Bannister et al., 2017; Necker et al., 2020a, b).

185 The present study will adopt the sub-sampling approach from Necker et al. (2020a) and Craig et al. (2022). The 1000-member ensemble provides 25 random 40-member subsamples with unique members (illustrated in Fig. 1 (a)). We assume that the 40-member sub-ensembles of the 1000-member ensemble statically have sampling errors similar to those independent 40-member ensemble EnKF systems would have. As mentioned above, we will analyze ten 3 h forecasts. This setup results in a sample of 250 ensemble forecasts with 40 members that we can compare to the ten ensemble forecasts with 1000 members.
190 The model domain has 250×230 grid points yielding 57.500 vertical columns in our domain. We will, therefore, analyze approximately 11.5×10^6 true and 287.5×10^6 40-member vertical correlation profiles per variable pair, accounting for all 20 reference levels. This data set allows robust statistical analysis of error correlations, but it should be noted that error correlations may differ for other periods and regions.

In the present study, we will analyze four prognostic variables: temperature (T), specific humidity (Q), zonal wind (U), and
195 meridional wind (V). This setup yields 16 correlation pairs (Tab. 1) that we will inspect for different reference levels. Furthermore, we will group correlations in "self" (e.g., temperature-temperature as shown in Fig. 1) or "cross" (e.g., temperature-humidity) correlations for highlighting common behavior. Subsequently, we will use the correlation coding shown in Tab. 1. For example, "TQ" combines all temperature correlations from the reference level to specific humidity at all other vertical levels in a column. Throughout the manuscript, we will mainly present results for the U-wind component as conclusions for
200 the V-wind component are similar.

Example of vertical correlations Fig. 1 (a) shows an example of vertical self-correlations of temperature (TT) from reference level 500 hPa to all other levels in a single random vertical column. The 1000-member correlation (also referred to as true correlation) is one at the reference level and drops to half after approximately 100 hPa vertical distance. Given the true correlation, the temperature at 500 hPa weakly correlates with the temperature in the boundary layer. This weak correlation is
205 linked to cloud shadowing by mid-tropospheric clouds and resulting colder near-surface temperatures. Almost no correlation is visible to levels above the tropopause, which lies around 200 hPa. Most 40-member sample correlations strongly deviate from the true correlation, highlighting the severe under-sampling issue. Sampling errors appear to be larger with increasing distance and smaller correlation values. This behavior motivates most distance-based localization approaches with a predefined tapering

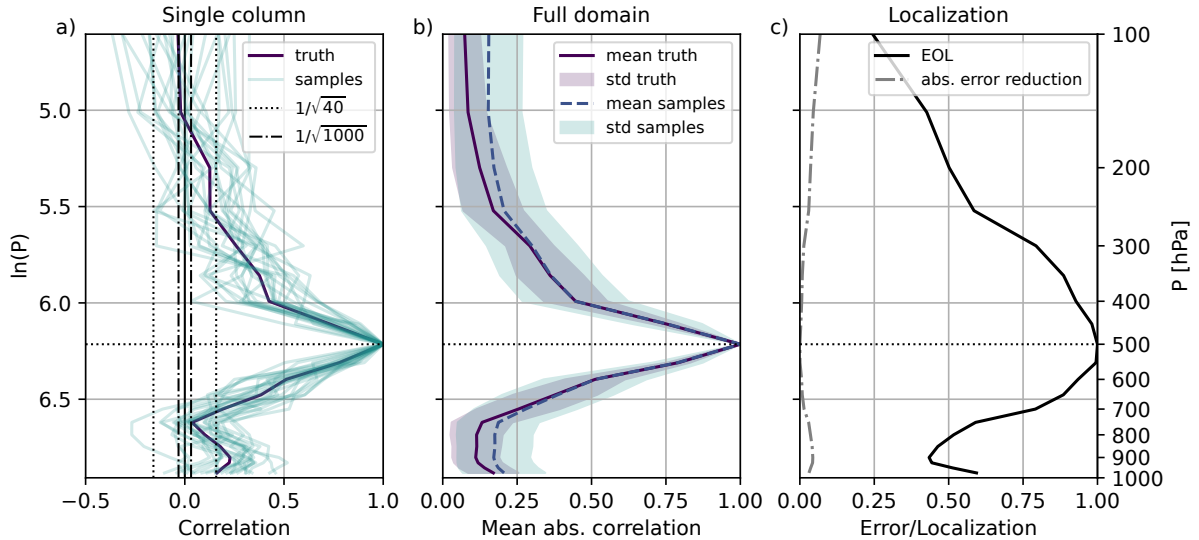


Figure 1. Vertical temperature-temperature correlations and empirical optimal localization for reference level 500 hPa on May 29, 2016, 15 UTC: (a) Single random column (b) Domain average. (c) Estimated domain-uniform EOL and absolute error reduction. The sample includes the correlations from all 25 40-member subsamples. Shading indicates spatial variability.

function that damp distant correlations. However, such an approach might cut off significant non-zero correlations, as seen for
 210 the boundary layer close to the surface in this example.

Throughout this manuscript we will analyze the 1000-member horizontally averaged absolute vertical correlation to support the discussion of the empirical optimal localization. Averaged absolute correlations are computed as follows:

$$\overline{r^{1000}}(t, z, p, A) = \frac{1}{K} \sum_{k=1}^K (|r_k^{1000}|), \quad (4)$$

where K is the number of vertical columns in the domain. This analysis will be done separately for different forecasts t , refer-
 215 ence levels z , pressure levels p , and variable pairs A .

Fig. 1 (b) displays an example of a mean absolute temperature self-correlations (TT) for reference level 500 hPa and a single
 220 date. On average, the mean absolute correlation of all 40-member subsamples well captures the shape of the true mean absolute correlation. However, 40-member ensembles overestimate the absolute correlation due to sampling error for weaker correlations and larger distances. Furthermore, the 40-member correlations reveal a larger variance. Plotted in $\ln(p)$, true and
 40-member mean absolute correlations decay nearly symmetrically with increasing vertical distance from the reference level. This behavior explains why distance-dependent vertical localization scales are defined in logarithmic pressure coordinates.

2.5 Empirical optimal localization (EOL)

Our goal is to empirically find the optimal localization factor α that minimizes the sampling error or cost function J

$$J(\alpha, t, z, p, A) = \sqrt{\sum_{s=1}^S \sum_{k=1}^K (\alpha r_{s,k}^{40} - r_k^{1000})^2}, \quad (5)$$

225 where the minimization is done separately for each forecast time t , reference level z , pressure level p , and variable pair A . This is equivalent to finding the α that minimizes

$$\sum_{s=1}^S \sum_{k=1}^K [\alpha^2 (r_{s,k}^{40})^2 - 2\alpha r_{s,k}^{40} r_k^{1000} + (r_k^{1000})^2]. \quad (6)$$

Taking a derivative with respect to α and finding the minimum gives us

$$\alpha = \frac{\sum_{s=1}^S \sum_{k=1}^K r_{s,k}^{40} r_k^{1000}}{\sum_{s=1}^S \sum_{k=1}^K (r_{s,k}^{40})^2}. \quad (7)$$

230 In other words, the empirical optimal localization (EOL) minimizes the Root Mean Square Difference (RMSD) between the 1000-member correlation and all 25 40-member sub-sample correlations for a chosen setting. For technical reasons, we minimized the cost function using the Brents method as implemented in `scipy.optimize` (Virtanen et al., 2020). Note that the range of localization is not confined to $[0, 1]$, which means that the EOL could inflate correlations if required. Values larger than one can occur when the true correlation is larger than the sample correlation. For example, this can happen when estimating
 235 the EOL after applying other localization approaches. Negative EOL values can be observed when the EOL is computed for a small correlation sample (e.g., a single vertical column), which is not the case in the present study. However, we suggest setting negative EOL values to zero in case they might occur.

Applying the EOL by construction yields a symmetric but not necessarily a positive semi-definite localization matrix. In our case, ~~the computed localization matrices are not symmetric~~ constructed localization matrices were not positive semi-definite (SPSD), ~~which can result in non-SPSD localized covariance matrices. As some DA algorithms require SPSPD covariance matrices (Gaspari and Cohn, 1999; Bannister, 2008).~~ Depending on the data assimilation algorithm, additional steps would ~~could~~ be required to apply the EOL results to ~~such algorithms~~ guarantee positive semi-definiteness of the localized covariance matrix. For this purpose, Sect. 3.4 will assess approaches for achieving positive semi-definiteness of the EOL. The assessment includes a numerical approach to approximate the EOL matrix with the nearest correlation matrix that is SPSPD.

245 Our approach for empirically estimating localization is inspired by Lei and Anderson (2014) who compare two methods: The Global Group Filter (GGF) and Empirical Localization Functions (ELF). The GGF minimizes the RMS difference between the estimated regression coefficients in subsets of the ensemble using a hierarchical ensemble filter (Anderson, 2007; Lei et al., 2016). ELFs are derived from an Observing System Simulation Experiment (OSSE) by minimizing the RMS difference between the true values of the state variables and the posterior ensemble mean (Anderson and Lei, 2013). In contrast to ELFs,
 250 the GGF and EOL purely judge localization based on ensemble sampling error without an OSSE. Furthermore, in contrast to the GGF, the EOL assumes the large ensemble correlation as truth for minimizing the sampling error. The EOL presented in

our study corresponds to a non-adaptive distant-dependent domain-uniform vertical localization that is common for operational convective-scale regional data assimilation systems.

Figure 1 (c) displays the EOL ($\alpha(p)$) as estimated for the example of TT correlations introduced above and reference level 255 500 hPa. The domain-uniform EOL equals one at the reference level 500 hPa as no correction is needed. The EOL appears broader and follows the shape of the mean absolute correlation. For example, this localization behavior was also described by Flowerdew (2015). The error reduction is largest for weak and distant correlations.

3 Results

This section presents mean absolute 1000-member vertical correlations and EOLs for various settings. First, we will evaluate 260 how vertical localization for various single variable pairs should be constructed. Afterward, we will group variable pairs based on similar behavior. Finally, at the end of the results section, we will evaluate the error reduction of all discussed localization approaches, including combinations with the SEC.

3.1 Vertical localization for single variable pairs

As discussed in Sect. 2.4, the domain-averaged absolute vertical correlation can aid the interpretation of the EOL. For this 265 reason, we will first evaluate the mean absolute vertical correlation and then the EOL. Figure 2 shows the mean absolute vertical correlation for all possible variable combinations and reference level 500 hPa. Self-correlations of the same variable all peak at the reference level. In contrast, cross-correlations are weaker and do not always exhibit a maximum correlation at 500 hPa. The TU correlation, for example, peaks around the tropopause, while the UT correlation reveals a minimum at that height. The mean vertical correlation length is variable dependent, shortest for specific humidity and longest for wind. The 270 domain-averaged absolute vertical correlation only exhibits a fairly small variability within the five-day experimental period. The variability between day to night also appears to be small. Results could, however, differ for other conditions or seasons, e.g., situations with strong atmospheric stability.

Next, we focus on the EOL derived for 40-member subsamples from all forecasts. Figure 3 displays the EOL for all variable combinations and reference level 500 hPa. The EOL depends on the prevailing correlation but has a different shape and 275 vertical extent. As seen for the single-forecast example in Sect. 2.5, weaker correlations are more affected by sampling errors and require stronger correction. Consequently, all cross-correlations require a stronger localization. The localization for cross-correlations reveals an amplitude smaller than one at the reference level. Given this behavior, tapering functions for cross-correlations should not be one at zero distance when applying a distance-dependent localization. Self-correlations are less affected by sampling error and require only a weaker correction, especially close to the reference level.

280 EOLs for humidity correlations all peak at the reference level 500 hPa (Fig. 3(a)). However, temperature and wind EOLs behave differently (Fig. 3(b,c)) and do not peak at the reference level following the correlation pattern. (Fig. 2(b,c)). For example, the TU EOL peaks around the tropopause, where winds are typically strongest. Wind correlations (e.g., UU; Fig. 3(c)) require

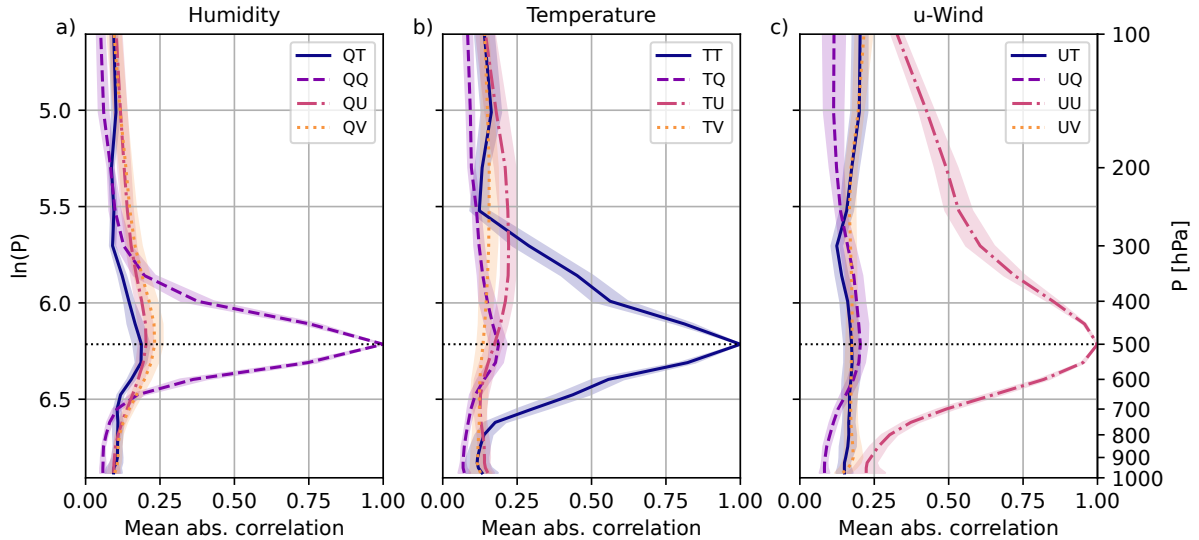


Figure 2. Domain averaged absolute 1000-member (true) vertical correlations for reference level 500 hPa and different variable pairs: (a) Humidity (b) Temperature (c) u-Wind. Mean and standard deviation over ten forecasts from May 29 to June 02, 2016.

only a small correction. The EOL for UV correlations is almost constant with height and does not show a distinct maximum. All self- and cross-correlations involving humidity peak at the reference level 500 hPa (for example, see UQ localization).

285 Overall, the variability of domain-averaged correlations from forecast to forecast is small (Fig. 2). EOLs exhibit a larger variability than domain-averaged correlations. For most variables, the variability is larger close to the surface, especially for temperature correlations (Fig. 3(b)). Results should be treated with caution where changes of the EOL with height are smaller than the variability from forecast to forecast.

Subsequently, we will discuss the EOL for two additional reference levels to highlight changes in height within the troposphere. Figure 4 shows the EOL for a reference level 300 hPa. For reference level 300 hPa, EOLs appear to be broader compared to 500 hPa. This height-dependence is in line with larger vertical correlation length scales found for the upper troposphere in contrast to the lower troposphere, boundary layer, or close to the surface. Similar to other reference levels in the middle and upper troposphere, EOLs for correlations between wind and temperature reveal a maximum (TU; Fig. 4(b)) and minimum (UT; Fig. 4(c)) above the tropopause level.

295 All reference levels within the boundary layer show similar behavior of the EOL (see, for example, Fig. 5 using reference level 900 hPa). The EOL shows a narrow optimal vertical localization for reference levels close to the surface. In contrast to higher reference levels, also the EOL of cross-correlations peaks at the reference level (Fig. 5). The EOL drops to different constant values with increasing distance. For wind and humidity, the EOL reveals an almost constant value above 550 hPa. In contrast, the EOL for temperature steadily declines with increasing distance until the domain top. Temperature self-correlations (TT) exhibit a second peak in the upper troposphere. EOLs do not converge to zero for large vertical distances. Separation

300

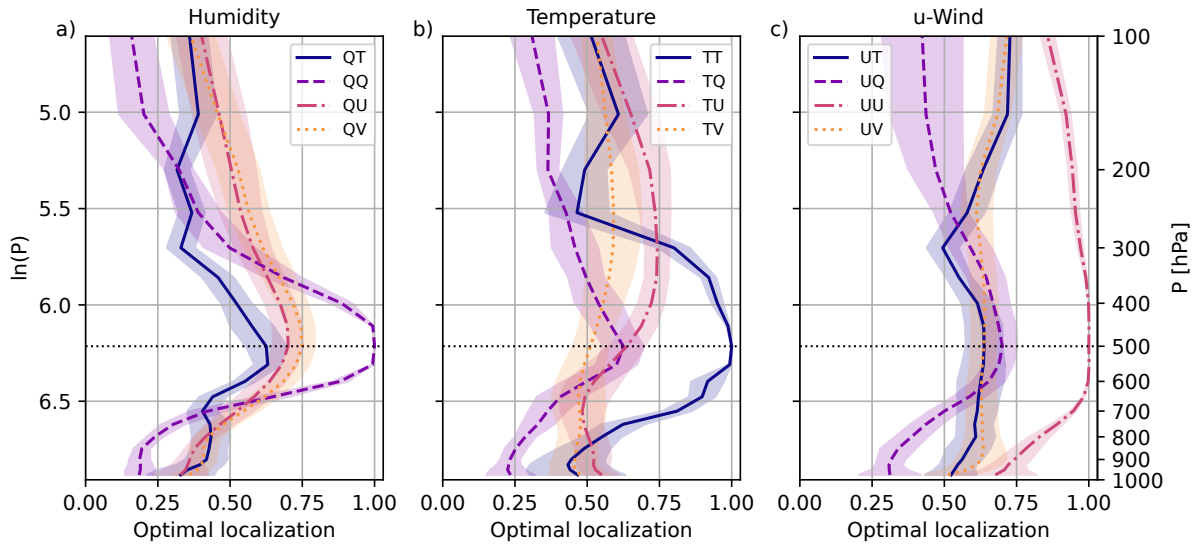


Figure 3. Empirical optimal localization (EOL) for vertical sample correlations of 40-member ensembles: (a) Humidity (b) Temperature (c) u-Wind. Mean and standard deviation over ten forecasts from May 29 to June 02, 2016.

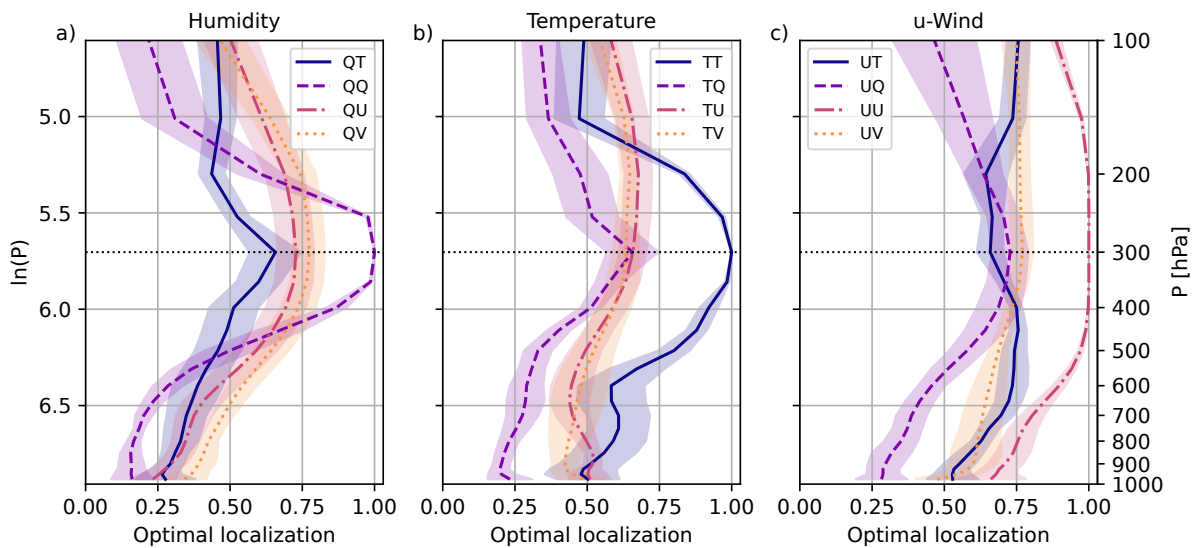


Figure 4. Same as Fig. 3 but for reference level 300 hPa.

distances where the EOL converges to a small constant value could indicate suitable cut-off distances. A common aspect of the choice of cut-off distance is the signal-to-noise ratio that depends on the ensemble size and correlation strength.

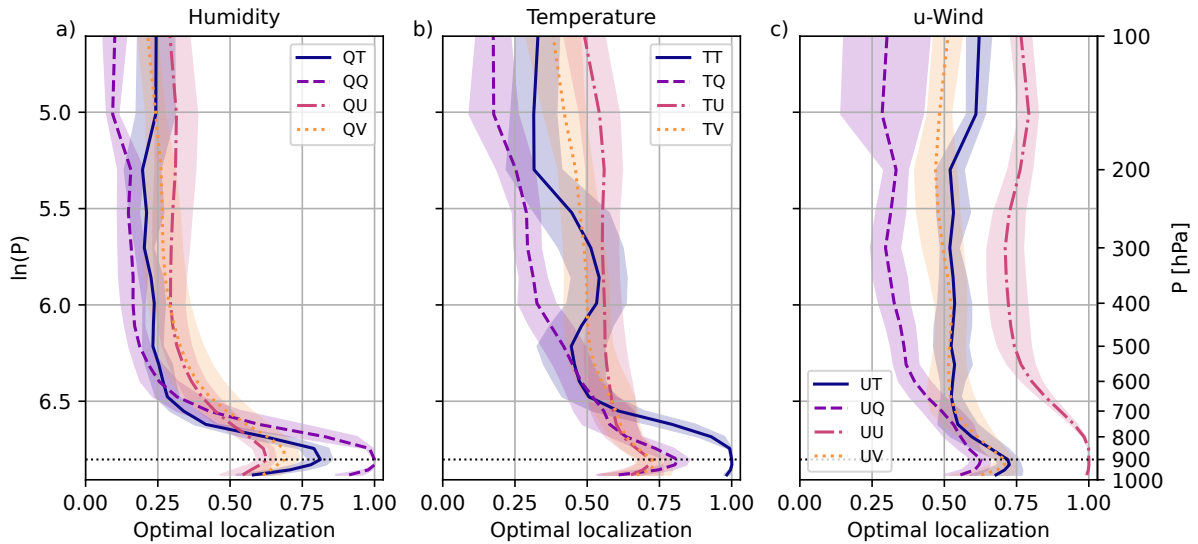


Figure 5. Same as Fig. 3 but for reference level 900 hPa.

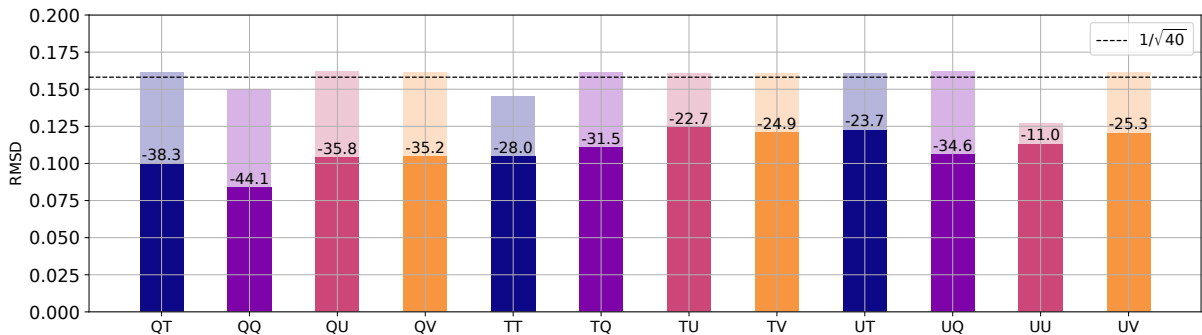


Figure 6. Root mean square difference before and after the EOL was applied to each vertical correlation. Shading and numbers (%) indicate the change in RMSD analysed for each variable pair averaged over all reference levels, columns, subsamples, and ten forecasts from May 29 to June 02, 2016. Self correlations are highlighted via hatching.

Error reduction for different variables

Assessing the EOL for single variable pairs revealed several requirements for vertical localization. Now, we evaluate the error reduction by the EOL, considering each possible correlation pair separately. The 1000-member ensemble correlation serves as truth to compute the RMSD of each 40-member sub-sample correlation. Figure 6 displays the RMSD before and after applying the EOL. The applied EOL varies for each forecast and height level for the error evaluation. The final result shows the average RMSD of all 40-member subsamples, forecasts, and height levels. The results can be interpreted as a benchmark of the maximum possible correlation error reduction achieved by a domain-uniform height and variable-dependent localization. **Note**

310 ~~that results~~ Results for optimizing the analysis may lead to different optimal localization values under some circumstances, but this analysis is beyond the scope of this paper.

The sampling error of the 40-member correlation of most correlations lies within the expected range and close to $(\sqrt{40})^{-1}$ (Fig. 6). Self-correlations exhibit a smaller sampling error as, on average, they are stronger and less affected by spurious correlations. The error reduction achieved by the EOL ranges approximately from 10 to 40%, depending on the variable pair. The
315 QQ self-correlation benefits most from localization, whereas the UU self-correlation benefits the least. Correlations involving humidity are weaker and, therefore, benefit most from localization. On the other hand, correcting temperature correlations seems most challenging. Temperature correlations exhibit the largest RMSD, even after applying the EOL. The error is larger than for wind correlations, which is surprising considering a larger correlation strength and length for wind. This result could originate from a larger variability of vertical temperature correlations within the domain, given strong convective processes and
320 associated latent heat release. Temperature correlations, consequently, could benefit from an adaptive localization that applies different localization scales within the domain depending on, e.g., vertical velocity. First tests showed promising results for such a situation-dependent approach, but a thorough evaluation will be left for subsequent study.

3.2 Vertical localization for grouped variable pairs

Some operational DA systems apply a uniform distance-based vertical localization that does not change with time, height, variable, or observation type. In this case, appropriate localization needs to meet several requirements using a suitable uniform localization approach. Results in Sect. 3.1 showed that cross-correlations systematically behave differently than self-correlations.
325 For this reason, we will now evaluate the mean absolute correlation and EOL of three groups of variables: self, cross, or all correlations combined. Derived EOLs now minimize the sampling error for all gathered correlations of each group.

Fig. 7 displays the mean absolute correlation for the three groups of correlations. The results show the average correlation and its variability over the ten forecasts. Self-correlations again highlight the height dependence of the vertical correlation length and always exhibit a peak that is one. Cross-correlations are weaker and only exhibit a narrow peak at the reference level. For all correlations combined, the peak amplitude is closer to the peak of cross-correlations as there are more cross-
330 than self-correlations. Combining all correlations or only cross-correlations results in a peak amplitude smaller than one at the reference level.

In contrast, the peak amplitude of the EOL for all correlations is closer to the peak of self-correlation (Fig. 8). The shape of EOLs substantially differs from the single variable pair cases. The EOL is weaker due to wind correlations that account for half of all correlations. The change in the shape of the EOL indicates that different tapering functions could be needed for different variables. Minimizing the error for grouped correlations, the strength of the EOL is always weaker than 0.4. Finally, domain averaged absolute correlations reveal a small variability from forecast to forecast (Fig. 7). The same applies to EOLs. Only the
340 EOL of self-correlations exhibits a slightly larger variability, especially far from the reference level (Fig. 8).

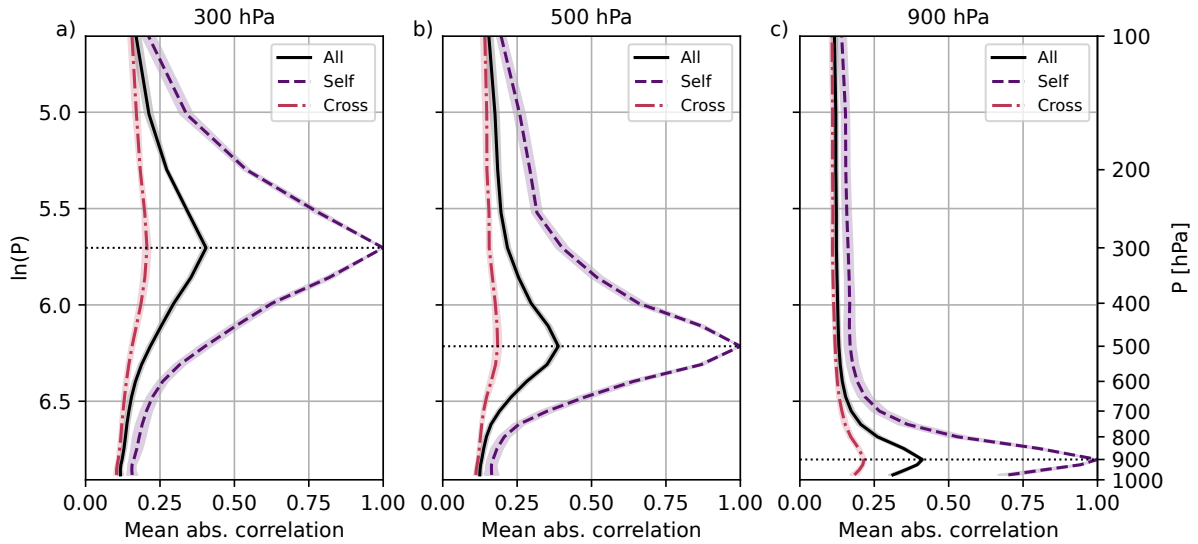


Figure 7. Domain mean absolute 1000-member (true) vertical correlations for different variable combinations (self, cross, and all): reference levels (a) 300 hPa (b) 500 hPa (c) 900 hPa. Mean and standard deviation over ten forecasts from May 29 to June 02, 2016.

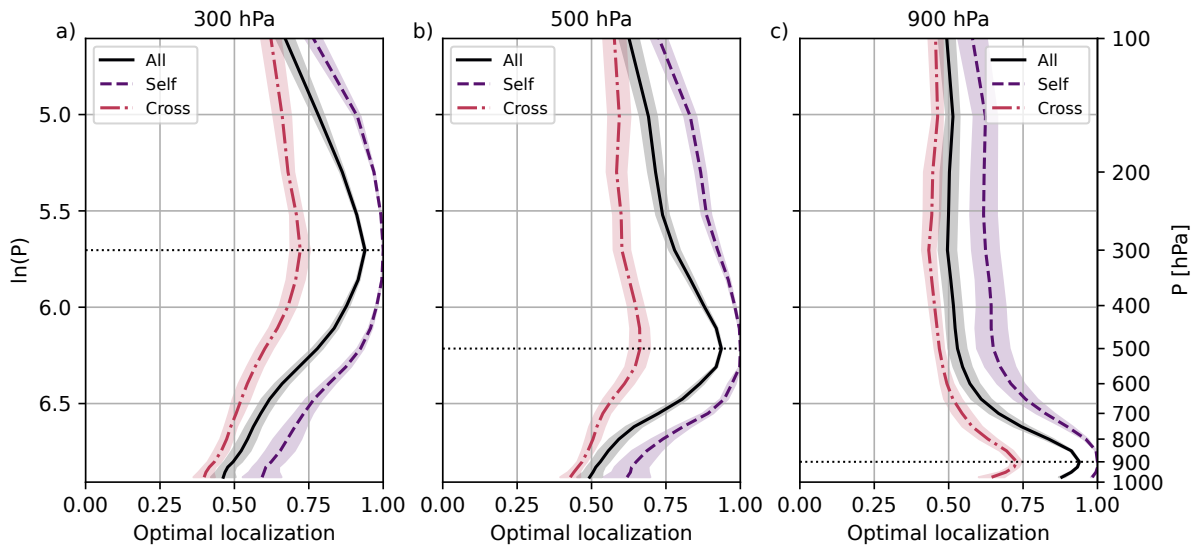


Figure 8. Empirical optimal localization (EOL) for vertical sample correlations of 40-member ensembles and different variable combinations (self, cross, and all): reference levels (a) 300 hPa (b) 500 hPa (c) 900 hPa. Mean and standard deviation over ten forecasts from May 29 to June 02, 2016.

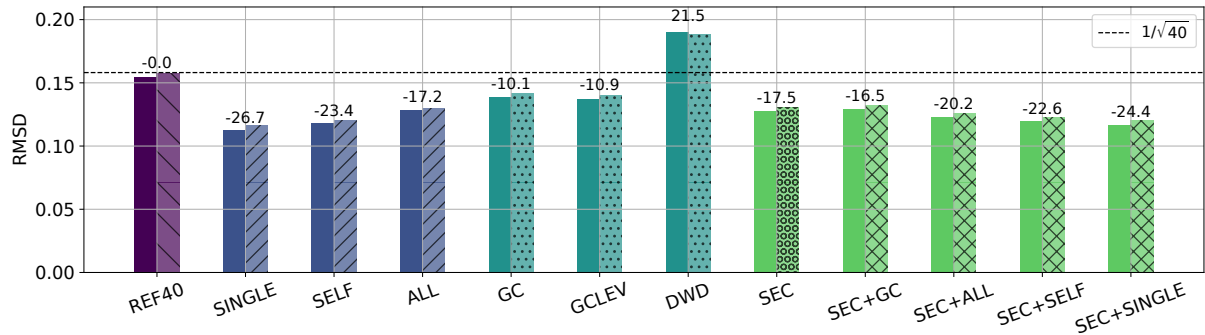


Figure 9. Root mean square difference before and after localization of 40-member vertical sub-sample correlations. EOL and Gaspari-Cohn scales are obtained and tuned using the first eight forecasts. Errors are evaluated using two independent forecasts on June 02, 2016: 3 UTC (opaque) and 15 UTC (hatched). Numbers (%) indicate the average change in RMSD analysed for different settings (x-axis labels).

3.3 Evaluation of error reduction

3.3.1 Setting

As discussed in Sect. 3.1, the maximum reduction of sampling errors achieved by an EOL ranges from 11 to 44 % depending on the variable pair. Now, we will compare the performance of the EOL with different localization setups that use two common
345 localization approaches, a distance-dependent localization using a Gaspari-Cohn tapering function (GC; Houtekammer1998, Gaspari1999) and a statistical sampling error correction (SEC; Anderson 2012). Furthermore, we investigate the benefit of combining non-adaptive localization approaches with the adaptive SEC. Compared to Sect. 3.1, the improvement will be evaluated using 1000-member correlations from independent background forecasts. Again we will analyze the improvement relative to uncorrected 40-member ensemble sub-sample correlations (*REF40*, Fig. 9). The first eight forecasts (29th May to
350 1st June 2016) serve as training data for estimating EOLs. Similarly, localization scales for distance-dependent localization are tuned using the same training period. We then verified the performance using the last two independent forecasts on 2nd June 2016.

3.3.2 Empirical optimal localization (EOL)

Figure 9 displays the error reduction achieved by all considered vertical localization setups. *REF40* shows the RMSD found
355 when modeling error correlations using small 40-member ensembles without localization. First, we will evaluate the performance of different EOL settings. Applying a different EOL for each variable pair and height (as presented in Sect. 3.1) gives the largest error reduction of all setups (*SINGLE*, 26.7 %). Only small differences are visible between day and night time. Using different EOLs only for self- and cross-correlations leads to a slightly reduced performance but still gives about 23 % error reduction (*SELF*). ~~Finally, applying~~ Applying an EOL that was estimated for all correlations at once reduces the error by 17 %
360 (*ALL*). Given these results, treating variable pairs, self- or cross-correlations differently enables substantial improvements.

Besides Finally, we tested the error reduction for applying the EOL estimated for self-correlations to both self- and cross-correlations of each variable (e.g., EOL derived from TT applied to TT, TQ, TU, and TV). For this setting, the error reduction was similar to ALL or SEC (not shown), which underlines the benefit of treating self- and cross-correlations differently.

3.3.3 Distance-dependent localization (GC)

365 Now, we will compare the performance of EOLs to three different domain-uniform distance-dependent localization approaches using Gaspari-Cohn functions (GC). Sec 2.3.1 lists details on all considered GC setups. We will first evaluate two optimal GC localization setups with tuned localization scales and then apply a localization similar to DWD. The first GC setup uses a uniform localization scale for all levels and variable pairs (*GC*), and the second setup uses a height-dependent optimal localization scale that changes with the reference level (*GCLEV*). The optimally tuned GC reduces the sampling error by about
370 10 %. Using height-dependent localization scales slightly improves the performance further by about 1 %. However, the small gain of the height-dependent localization is partly associated with a sub-optimal shape of a Gaussian-shaped tapering function, given the error reduction achieved by the uniform EOL (*ALL*). This comparison highlights that finding suitable tapering scales and functions bears great potential for improving vertical localization.

In contrast, a vertical localization constructed similar to the regional DA system of Deutscher Wetterdienst (*DWD*) increases
375 the difference of the 40-member ensemble correlation with respect to the 1000-member ensemble. The increased difference originates from the damping of meaningful error correlations. The DWD system employs a LETKF that uses observation-space localization, tuned to function in all seasons and weather situations that may differ from our investigation period. Furthermore, it needs to be considered that localization in the LETKF also affects the degrees of freedom of the analysis (Hotta and Ota, 2021). The DWD setup illustrates that an appropriate localization depends on various aspects. Consequently, our findings will
380 likely have different implications for different DA algorithms. However, the LETKF, for example, could benefit from applying different localization scales for different observed variables. Based on the results in Sect. 3.1, humidity, temperature, or wind require different vertical localization scales.

3.3.4 Sampling error correction (SEC)

Now, we will evaluate the benefit of using a look-up table-based sampling error correction (SEC) that adjusts correlations
385 based on predefined statistical assumptions. The SEC is an adaptive localization approach that corrects sampling errors as a function of the correlation value. Therefore, the SEC applies an individual correction for each correlation within the domain. An adaptive localization (*SEC*) achieves 17.5 % error reduction and outperforms a optimal domain-uniform GC localization. The SEC exhibits a similar error reduction as seen for *ALL* but can not outperform the *SELF* or *SINGLE* setup. An optimal domain-uniform localization can compete with an adaptive statistical sampling error correction for the evaluated period.

390 3.3.5 Combined approaches

Finally, we investigate the benefit of combining the statistical SEC with an EOL or a distance-dependent localization. For this analysis, EOLs have been estimated after applying the SEC to highlight the maximum error reduction achieved by combining SEC with an optimal localization. The localization scale of the distance-dependent localization is kept the same as for the *GC* setup to emphasize required changes for the localization scale. *SEC+GC* reveals a similar performance as the SEC alone but
395 outperforms the *GC* setup. Combining *SEC* with *GC* requires a re-tuning of localization scales to larger values (not shown). Combining the SEC with a uniform EOL (*SEC+ALL*) reduces the sampling error by about 20 %. However, combining the SEC with the *SELF* or *SINGLE* EOL derogates the error reduction. The poor performance could originate from sub-optimal assumptions made in the derivation of the SEC (Anderson, 2016; Necker et al., 2020b). For example, the EOL exhibited values larger than one when estimated after applying the SEC. This inflation compensated for an over-correction of sampling errors
400 by the SEC, especially close to the reference level (not shown). In this study, we apply the most general SEC look-up table as provided in the Data Assimilation Research Test (DART; Anderson et al., 2009), which assumes that each correlation value is equally likely. Studying more informed prior assumptions in the SEC may lead to better results but is beyond the scope of the present study.

3.4 Covariance localization and positive semi-definiteness

405 The EOL approach empirically yields an optimal localization by minimizing differences between sample correlations and a defined true correlation. By design, the results discussed above exclude algorithm-specific requirements to better understand how vertical localization should behave in different situations. However, further steps might be required to apply EOL results depending on the data assimilation algorithm. As mentioned in Sect. 2.5, using EOL estimates does not necessarily yield a positive semi-definite localization matrix. Consequently, EOL localization could cause non-proper mathematical covariance matrices and undermine the data assimilation process. For example, positive semi-definite covariance matrices are elemental when solving a quadratic cost function as they ensure a global minimum. For this reason, we will now discuss different approaches that allow for achieving positive semi-definiteness of the EOL.

Ménétrier et al. (2015a) applied a Gaussian fitting based on the Gaspari-Cohn function (Gaspari and Cohn, 1999) to ensure SPSD. However, fitting a correlation function restricts the localization to a specific function shape. This restriction can diminish the error reduction. In our case, the error reduction achieved by an optimally tuned Gaspari-Cohn function is substantially smaller than by the EOL, as discussed in Sect. 3.3 and Fig. 9. This finding motivates exploring other localization functions (Daley et al., 2015; Bolin and Wallin, 2016) including multivariate localization functions (Stanley et al., 2021) to improve fitting approaches.

420 Besides function fitting, re-conditioning of matrices can help achieve positive definiteness (Tabcart et al., 2019). Given its aim, a localization matrix should have similar properties to a correlation matrix, which exhibits ones on the diagonal. Higham (2002, theorem 2.5) states that for a symmetric matrix with t non-positive eigenvalues and diagonal elements ≥ 1 , the nearest correlation matrix has at least t zero eigenvalues. Following this theorem, we attempted to set all negative eigenvalues

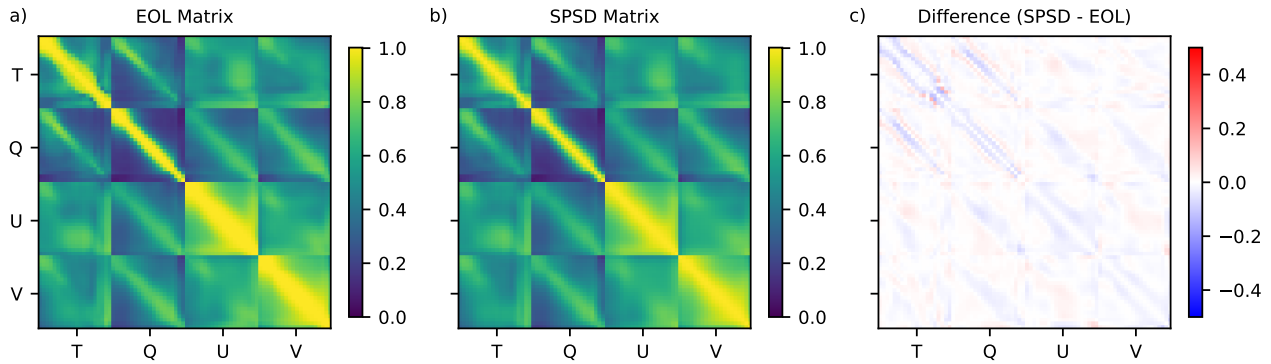


Figure 10. Examples of EOL-based localization matrices for a single vertical column: (a) matrix C constructed based on the *SINGLE* case, (b) resulting nearest correlation matrix C following the NCM algorithm, and (c) changes due to enforcing positive definiteness.

to zero using an EOL-based localization matrix and eigendecomposition. Forcing negative eigenvalues to zero ensured positive semi-definiteness but led to values larger than one on the diagonal of the matrix. Further matrix transformations were required to achieve a proper correlation matrix.

Finally, our most successful attempt in achieving positive definiteness aiming for the least changes in the EOL was by searching for the nearest correlation matrix using specifically designed mathematical algorithms. For example, Higham (2002) highlighted that the convexity properties of the problem allows for finding a unique nearest correlation matrix (NCM) for a given symmetric matrix, in our case the EOL based localization matrix. We apply the NCM algorithm (Higham, 2002) for the *SINGLE* EOL case as a proof of concept. Employing four state variables on 20 vertical levels yields an 80×80 EOL-based vertical localization matrix for one vertical column (Fig. 10 (a)). The eigenvalues of this EOL matrix range from about -0.5 to 50 with approximately half the eigenvalues being negative. The EOL localization matrix features ones on the diagonal and reconfirms that cross-correlations require stronger tapering. The nearest correlation matrix computed by the NCM algorithm exhibits small changes on off-diagonal elements compared to the EOL-based matrix (Fig. 10 (b,c)). Zooming in, the SPSP matrix appears to be smoother. Comparing the error reduction (not shown), the SPSP localization performs only marginally worse than the EOL localization. The relative difference in sampling error reduction for a test case was lower than 1%. However, the EOL achieves the larger error reduction as it is designed to minimize the sampling error without any constraints.

This example suggests that ensuring SPSP can be achieved with minor changes in the EOL estimate. However, providing a general answer on how the EOL needs to be adapted is difficult as changes will depend on the construction of the localization matrix and its unique nearest correlation matrix. NCM algorithms can iteratively determine the nearest correlation matrix for a symmetric matrix and could be a useful tool for data assimilation. Choosing the best approach to guaranteeing SPSP is likely case-dependent given changing properties of the problem and potentially very large matrices in NWP.

4 Conclusions and discussion

Current ensemble data assimilation systems suffer from severe under-sampling requiring vertical localization of error covari-
445 ances. Our study analyzes vertical correlations from an existing convection-permitting 1000-member ensemble simulation (Necker et al., 2020a, b). The 1000-member ensemble correlation is assumed as truth for studying reliable vertical correlations and optimal vertical localization in 40-member subsamples. The unique convective-scale simulation covers ten forecasts in a five-day mid-latitude summer period. Our analysis includes three prognostic variables (humidity, temperature, and wind) on 20 pressure levels. We apply the 1000-member ensemble and various 40-member subsamples to derive an empirical optimal
450 localization (EOL) for different settings. Those settings include localization for single variable pairs and variables grouped by common behavior. Presented EOLs minimize the sampling error in sample correlations assuming the 1000-member correlation as truth, and provide insights on how to construct an optimal vertical localization independent of algorithm-specific constraints.

Furthermore, we use the 1000-member ensemble to evaluate the error reduction achieved by different localization approaches. These approaches include EOLs, distance-dependent localization approaches using a Gaspari-Cohn tapering function
455 (Houtekamer and Mitchell, 1998; Gaspari and Cohn, 1999), and an adaptive statistical sampling error correction (Anderson, 2012). Overall, our results lead to the following conclusions for vertical localization:

- **Localization scales:** All investigated variables reveal different average correlation scales, which result in different EOL scales. Within the troposphere, EOL scales increase with height. Humidity requires the strongest localization with short scales. EOL scales for temperature appear to be larger than for humidity and exhibit the largest variability from forecast
460 to forecast. Given a high variability, temperature correlations could benefit most from using an adaptive localization. Our results indicate that winds can be vertically correlated throughout the troposphere, resulting in the largest localization scales. Given this outcome, it could be beneficial not to cut off wind correlations within the troposphere.
- **Localization shape:** The EOL provides insights into the required shape of localization functions. Correlations of different variable pairs require differently shaped localization functions. The shapes that we found included Gaussian,
465 exponential or linear functions. Localization functions should not necessarily be symmetric in $\ln(p)$ as seen for wind. Furthermore, the optimal center of a distance-dependent localization can deviate from the reference level. For example, correlations of temperature and wind peak below the tropopause if the reference level is above the boundary layer. The maximum vertical correlation could indicate a suitable positioning of distance-dependent tapering functions. Finally, EOLs do not reveal a clear localization cut-off distance for tropospheric correlations. However, other considerations,
470 e.g., continuity, computational efficiency or matrix rank, also may need to be considered when deciding on a cut-off.
- **Self- and cross-correlations:** Self- (e.g., temperature-temperature) and cross-correlations (e.g., temperature-humidity) should be localized differently. This fact could allow the development of correlation-dependent localization approaches. For example, self-correlations require no localization at zero distance, while the amplitude of cross-correlations should be tapered by at least 25 %. Differently treating self- and cross-correlations resulted in performance close to a variable-
475 dependent localization.

- 480
- **Domain-uniform localization:** An tuned uniform distance-dependent localization using Gaspari-Cohn functions reduces the sampling error by about 10 %. Using tapering functions with an optimal shape could improve the localization substantially. The maximum error reduction was found for domain-uniform, variable, and height-dependent EOLs with about 27 % improvement. Distinguishing between self- and cross-correlations leads to a similar but slightly smaller error reduction.
 - **Adaptive localization:** A statistical sampling error correction (SEC) achieves similar error reduction as a variable- and domain-uniform localization. Combining the SEC with a Gaspari-Cohn localization improves the error reduction. However, combining distance-dependent and statistical approaches requires re-tuning of localization scales. Combining SEC and EOLs led to an over-correction of correlations, which slightly degraded the error reduction. This change could be related to sub-optimal prior assumptions when deriving SEC, as discussed by Anderson (2016) and Necker et al. (2020b).
- 485

Our results allow a better understanding of the requirements for vertical localization. When employing these conclusions, it is important to consider the specific demands of different ensemble filter algorithms. In ensemble transform Kalman filters, localization increases the degrees of freedom of the analysis and thereby enables the assimilation of more observations (Hotta and Ota, 2021). Furthermore, our evaluation excluded considerations about the rank of the error covariance matrix and computational efficiency. Hence, our findings might need to be adapted to improve the analysis performance depending on the data assimilation system. Localization in operational NWP has many system-dependent requirements and is tuned to avoid bad signal-to-noise ratios during assimilation. For example, while we find no strong support for a vertical cut-off within the troposphere for some variables, this could be beneficial due to the reasons discussed above.

490

495 How to apply EOL estimates will vary with the data assimilation algorithm as the application of localization is highly algorithm-specific. In case of covariance localization, constructing a generally non-SPSD localization matrix based on the EOL does not guarantee a symmetric positive semi-definite localized covariance matrix. However, different approaches allow for achieving positive semi-definiteness of localization matrices. Applying an NCM algorithm (Higham, 2002) for achieving positive semi-definiteness resulted in only very minor changes of the EOL that hardly affect the error reduction.

500 For a serial filter (e.g., the Ensemble Adjustment Kalman Filter (EAKF) by Anderson (2001)), an EOL-based localization can be applied directly and it is planned to test this in follow-on studies. The EAKF does not involve a Schur product localization of a covariance matrix as each single observation is assimilated at a time, serially. Instead, the EAKF localizes the increment or gain. The gain between the observation and each state variable is multiplied by a scalar between 0 and 1. This localization factor can be provided by the EOL.

505 Our study solely judges localization based on ensemble sampling error, assuming the 1000-member ensemble correlation as truth. It is difficult to predict the number of ensembles needed to apply our method, as it will vary for differing scenarios. However, we do not expect our results to change drastically if we had a larger ensemble. Besides, it would be interesting to compare the EOL with the ELF or GGF approach. For example, comparing ELF and EOL could allow to investigate other

error sources in the assimilation that can influence localization (Anderson and Lei, 2013). However, a proper comparison would
510 require an OSSE with a sufficiently large ensemble.

We have found robust results for a mid-latitude convective summer period. The ever-increasing computational capabilities
will enable extended data sets and a higher vertical resolution that is comparatively coarse in the current setup. Furthermore, our
approach can be easily applied to other large ensemble simulations to study additional aspects, including horizontal localization.
Extending this analysis is desirable given that localization can depend on the underlying weather condition (Lei et al., 2015;
515 Destouches et al., 2021). For example, using a global simulation with a higher model top would allow studying different
geographical regions, seasons, and stratospheric correlations that are particularly important for satellite data assimilation (Lei
et al., 2018; Scheck et al., 2020).

~~For a serial filter (e.g., the Ensemble Adjustment Kalman Filter (EAKF) by Anderson (2001)), an EOL-based localization
can be applied directly and easily tested in future studies. Yet, each filter can exhibit algorithm-specific requirements for
520 localization. For example, covariances or localization matrices often need to be symmetric positive semi-definite, which the
EOL methodology might not fulfil. However, in all cases, EOL results can serve as guidance for finding better localization
functions or methods that resemble the results of the EOL but also fulfil the criteria of a symmetric positive semi-definite
matrix.~~

Code and data availability. Code and processed data such as derived empirical optimal localizations are shared on zenodo: (Necker, 2022).
525 The 1000-member ensemble data-set and derived covariances and correlations (approximately 60 TB of data) are too large for an upload but
available upon request.

Author contributions. Tobias Necker: Conceptualization, Methodology, Software, Data curation, Visualization, Writing – original draft
preparation; David Hinger: Methodology, Writing – review and editing; Philipp Johannes Griewank: Methodology, Writing – review and
editing; Takemasa Miyoshi: Resources, Writing – review and editing; Martin Weissmann: Conceptualization; Methodology; Writing – orig-
530 inal draft preparation

Competing interests. Co-author Takemasa Miyoshi is editor at the copernicus journal Nonlinear Processes in Geophysics (NPG). However,
the peer-review process was guided by an independent editor. The authors have no other competing interests to declare.

Acknowledgements. ~~Thanks~~ Many thanks to Juan Ruiz, Jago Silberbauer, Jeffrey Anderson and other colleagues at the University of Vienna,
RIKEN RCC-S in Kobe, or the LMU in Munich who contributed to this research. Furthermore, we want to thank the two reviewers and the
535 editor for helpful comments that allowed us to improve the manuscript. The open source project and Python package “xarray” ((Hoyer and
Hamman, 2017)) has been used to process ensemble data.

References

- Anderson, J.: Exploring the need for localization in ensemble data assimilation using a hierarchical ensemble filter, *Physica D: Nonlinear Phenomena*, 230, 99–111, <https://doi.org/10.1016/j.physd.2006.02.011>, 2007.
- 540 Anderson, J. and Lei, L.: Empirical Localization of Observation Impact in Ensemble Kalman Filters, *Monthly Weather Review*, 141, 4140 – 4153, <https://doi.org/10.1175/MWR-D-12-00330.1>, 2013.
- Anderson, J., Hoar, T., Raeder, K., Liu, H., Collins, N., Torn, R., and Avellano, A.: The Data Assimilation Research Testbed: A Community Facility, *Bulletin of the American Meteorological Society*, 90, 1283–1296, <https://doi.org/10.1175/2009BAMS2618.1>, 2009.
- Anderson, J. L.: An Ensemble Adjustment Kalman Filter for Data Assimilation, *Monthly Weather Review*, 129, 2884 – 2903, 545 [https://doi.org/10.1175/1520-0493\(2001\)129<2884:AEAKFF>2.0.CO;2](https://doi.org/10.1175/1520-0493(2001)129<2884:AEAKFF>2.0.CO;2), 2001.
- Anderson, J. L.: Localization and Sampling Error Correction in Ensemble Kalman Filter Data Assimilation, *Mon. Wea. Rev.*, 140, 2359–2371, <https://doi.org/10.1175/MWR-D-11-00013.1>, 2012.
- Anderson, J. L.: Reducing Correlation Sampling Error in Ensemble Kalman Filter Data Assimilation, *Mon. Wea. Rev.*, 144, 913–925, <https://doi.org/10.1175/MWR-D-15-0052.1>, 2016.
- 550 Bannister, R. N.: A review of forecast error covariance statistics in atmospheric variational data assimilation. II: Modelling the forecast error covariance statistics, *Quarterly Journal of the Royal Meteorological Society*, 134, 1971–1996, <https://doi.org/https://doi.org/10.1002/qj.340>, 2008.
- Bannister, R. N.: A review of operational methods of variational and ensemble-variational data assimilation, *Q. J. R. Meteorol. Soc.*, 143, 607–633, <https://doi.org/10.1002/qj.2982>, 2017.
- 555 Bannister, R. N., Migliorini, S., Rudd, A. C., and Baker, L. H.: Methods of investigating forecast error sensitivity to ensemble size in a limited-area convection-permitting ensemble, *Geoscientific Model Development Discussions*, 2017, 1–38, <https://doi.org/10.5194/gmd-2017-260>, 2017.
- Bishop, C. H. and Hodyss, D.: Ensemble covariances adaptively localized with ECO-RAP. Part 1: tests on simple error models, *Tellus A*, 61, 84–96, <https://doi.org/https://doi.org/10.1111/j.1600-0870.2008.00371.x>, 2009a.
- 560 Bishop, C. H. and Hodyss, D.: Ensemble covariances adaptively localized with ECO-RAP. Part 2: a strategy for the atmosphere, *Tellus A*, 61, 97–111, <https://doi.org/https://doi.org/10.1111/j.1600-0870.2008.00372.x>, 2009b.
- Bolin, D. and Wallin, J.: Spatially adaptive covariance tapering, *Spatial Statistics*, 18, 163–178, <https://doi.org/https://doi.org/10.1016/j.spasta.2016.03.003>, *spatial Statistics Avignon: Emerging Patterns*, 2016.
- Bonavita, M., Hólm, E., Isaksen, L., and Fisher, M.: The evolution of the ECMWF hybrid data assimilation system, *Quarterly Journal of the Royal Meteorological Society*, 142, 287–303, <https://doi.org/https://doi.org/10.1002/qj.2652>, 2016.
- 565 Bouttier, F., Raynaud, L., Nuissier, O., and Menetrier, B.: Sensitivity of the AROME ensemble to initial and surface perturbations during HyMeX, *Quarterly Journal of the Royal Meteorological Society*, 142, 390–403, <https://doi.org/10.1002/qj.2622>, 2016.
- Craig, G. C., Puh, M., Keil, C., Tempest, K., Necker, T., Ruiz, J., Weissmann, M., and Miyoshi, T.: Distributions and convergence of forecast variables in a 1000 member convection-permitting ensemble, *Quarterly Journal of the Royal Meteorological Society*, 570 <https://doi.org/https://doi.org/10.1002/qj.4305>, 2022.
- Daley, D., Porcu, E., and Bevilacqua, M.: Classes of compactly supported covariance functions for multivariate random fields, *Stochastic Environmental Research and Risk Assessment*, 29, 1249–1263, <https://doi.org/10.1007/s00477-014-0996-y>, 2015.

- Destouches, M., Montmerle, T., Michel, Y., and Ménétrier, B.: Estimating optimal localization for sampled background-error covariances of hydrometeor variables, *Quarterly Journal of the Royal Meteorological Society*, 147, 74–93, <https://doi.org/https://doi.org/10.1002/qj.3906>, 2021.
- 575 Evensen, G.: Sequential data assimilation with a nonlinear quasi-geostrophic model using Monte Carlo methods to forecast error statistics, *Journal of Geophysical Research: Oceans*, 99, 10 143–10 162, <https://doi.org/10.1029/94JC00572>, 1994.
- Flowerdew, J.: Towards a theory of optimal localisation, *Tellus A: Dynamic Meteorology and Oceanography*, 67, 25 257, <https://doi.org/10.3402/tellusa.v67.25257>, 2015.
- 580 Gaspari, G. and Cohn, S. E.: Construction of correlation functions in two and three dimensions, *Quarterly Journal of the Royal Meteorological Society*, 125, 723–757, <https://doi.org/https://doi.org/10.1002/qj.49712555417>, 1999.
- Gaspari, G., Cohn, S. E., Guo, J., and Pawson, S.: Construction and application of covariance functions with variable length-fields, *Quarterly Journal of the Royal Meteorological Society*, 132, 1815–1838, <https://doi.org/https://doi.org/10.1256/qj.05.08>, 2006.
- Greybush, S. J., Kalnay, E., Miyoshi, T., Ide, K., and Hunt, B. R.: Balance and Ensemble Kalman Filter Localization Techniques, *Monthly Weather Review*, 139, 511 – 522, <https://doi.org/10.1175/2010MWR3328.1>, 2011.
- 585 Gustafsson, N., Janjić, T., Schraff, C., Leuenberger, D., Weissman, M., Reich, H., Brousseau, P., Montmerle, T., Wattrelot, E., Bučánek, A., Mile, M., Hamdi, R., Lindskog, M., Barkmeijer, J., Dahlbom, M., Macpherson, B., Ballard, S., Inverarity, G., Carley, J., Alexander, C., Dowell, D., Liu, S., Ikuta, Y., and Fujita, T.: Survey of data assimilation methods for convective-scale numerical weather prediction at operational centres, *Quarterly Journal of the Royal Meteorological Society*, 144, 1218–1256, <https://doi.org/10.1002/qj.3179>, 2018.
- 590 Hagelin, S., Son, J., Swinbank, R., McCabe, A., Roberts, N., and Tennant, W.: The Met Office convective-scale ensemble, MOGREPS-UK, *Quarterly Journal of the Royal Meteorological Society*, 143, <https://doi.org/10.1002/qj.3135>, 2017.
- Hamill, T., Whitaker, J., and Snyder, C.: Distance-Dependent Filtering of Background Error Covariance Estimates in an Ensemble Kalman Filter, *Mon. Wea. Rev.*, 129, 2776–2790, [https://doi.org/10.1175/1520-0493\(2001\)129<2776:DDFOBE>2.0.CO;2](https://doi.org/10.1175/1520-0493(2001)129<2776:DDFOBE>2.0.CO;2), 2001.
- Higham, N. J.: Computing the nearest correlation matrix—a problem from finance, *IMA Journal of Numerical Analysis*, 22, 329–343, <https://doi.org/10.1093/imanum/22.3.329>, 2002.
- 595 Hohenegger, C. and Schaer, C.: Predictability and Error Growth Dynamics in Cloud-Resolving Models, *Journal of the Atmospheric Sciences*, 64, 4467–4478, <https://doi.org/10.1175/2007JAS2143.1>, 2007.
- Horn, R. A. and Johnson, C. R.: *Matrix Analysis*, Cambridge University Press, 2 edn., <https://doi.org/10.1017/9781139020411>, 2012.
- Hotta, D. and Ota, Y.: Why does EnKF suffer from analysis overconfidence? An insight into exploiting the ever-increasing volume of observations, *Quarterly Journal of the Royal Meteorological Society*, 147, 1258–1277, <https://doi.org/https://doi.org/10.1002/qj.3970>, 2021.
- 600 Houtekamer, P. L. and Mitchell, H. L.: Data Assimilation Using an Ensemble Kalman Filter Technique, *Monthly Weather Review*, 126, 796 – 811, [https://doi.org/10.1175/1520-0493\(1998\)126<0796:DAUAEK>2.0.CO;2](https://doi.org/10.1175/1520-0493(1998)126<0796:DAUAEK>2.0.CO;2), 1998.
- Houtekamer, P. L. and Mitchell, H. L.: A Sequential Ensemble Kalman Filter for Atmospheric Data Assimilation, *Mon. Wea. Rev.*, 129, 123–137, [https://doi.org/10.1175/1520-0493\(2001\)129<0123:ASEKFF>2.0.CO;2](https://doi.org/10.1175/1520-0493(2001)129<0123:ASEKFF>2.0.CO;2), 2001.
- 605 Hoyer, S. and Hamman, J. J.: xarray: N-D labeled Arrays and Datasets in Python, *Journal of Open Research Software*, 5, 1–6, <https://doi.org/10.5334/jors.148>, 2017.
- Hu, G., Dance, S. L., Bannister, R. N., Chipilski, H., Guillet, O., Macpherson, B., Weissmann, M., and Yussouf, N.: Progress, Challenges and Future Steps in Data Assimilation for Convection-Permitting Numerical Weather Prediction: Report on the Virtual Meeting Held on 10 and 12 November 2021, *Atmospheric Science Letters*, submitted, 2022.
- 610

- Hunt, B. R., Kostelich, E. J., and Szunyogh, I.: Efficient data assimilation for spatiotemporal chaos: A local ensemble transform Kalman filter, *Physica D: Nonlinear Phenomena*, 230, 112–126, <https://doi.org/10.1016/j.physd.2006.11.008>, 2007.
- Keper, J. D.: Covariance localisation and balance in an Ensemble Kalman Filter, *Quarterly Journal of the Royal Meteorological Society*, 135, 1157–1176, <https://doi.org/https://doi.org/10.1002/qj.443>, 2009.
- 615 Kirchgeessner, P., Nerger, L., and Bunse-Gerstner, A.: On the Choice of an Optimal Localization Radius in Ensemble Kalman Filter Methods, *Monthly Weather Review*, 142, 2165 – 2175, <https://doi.org/10.1175/MWR-D-13-00246.1>, 2014.
- Kondo, K. and Miyoshi, T.: Impact of Removing Covariance Localization in an Ensemble Kalman Filter: Experiments with 10 240 Members Using an Intermediate AGCM, *Mon. Wea. Rev.*, 144, 4849–4865, <https://doi.org/10.1175/MWR-D-15-0388.1>, 2016.
- Kunii, M.: The 1000-Member Ensemble Kalman Filtering with the JMA Nonhydrostatic Mesoscale Model on the K Computer, *Journal of the Meteorological Society of Japan. Ser. II*, 92, 623–633, <https://doi.org/10.2151/jmsj.2014-607>, 2014.
- 620 Lei, L. and Anderson, J. L.: Comparisons of Empirical Localization Techniques for Serial Ensemble Kalman Filters in a Simple Atmospheric General Circulation Model, *Monthly Weather Review*, 142, 739 – 754, <https://doi.org/10.1175/MWR-D-13-00152.1>, 2014.
- Lei, L., Anderson, J. L., and Romine, G. S.: Empirical Localization Functions for Ensemble Kalman Filter Data Assimilation in Regions with and without Precipitation, *Monthly Weather Review*, 143, 3664 – 3679, <https://doi.org/10.1175/MWR-D-14-00415.1>, 2015.
- 625 Lei, L., Anderson, J. L., and Whitaker, J. S.: Localizing the impact of satellite radiance observations using a global group ensemble filter, *Journal of Advances in Modeling Earth Systems*, 8, 719–734, <https://doi.org/https://doi.org/10.1002/2016MS000627>, 2016.
- Lei, L., Whitaker, J. S., and Bishop, C.: Improving Assimilation of Radiance Observations by Implementing Model Space Localization in an Ensemble Kalman Filter, *Journal of Advances in Modeling Earth Systems*, 10, 3221–3232, <https://doi.org/10.1029/2018MS001468>, 2018.
- 630 Lei, L., Whitaker, J. S., Anderson, J. L., and Tan, Z.: Adaptive Localization for Satellite Radiance Observations in an Ensemble Kalman Filter, *Journal of Advances in Modeling Earth Systems*, 12, e2019MS001 693, <https://doi.org/https://doi.org/10.1029/2019MS001693>, 2020.
- Lien, G.-Y., Miyoshi, T., Nishizawa, S., Yoshida, R., Yashiro, H., Adachi, S. A., Yamaura, T., and Tomita, H.: The Near-Real-Time SCALE-LETKF System: A Case of the September 2015 Kanto-Tohoku Heavy Rainfall, *SOLA*, 13, 1–6, <https://doi.org/10.2151/sola.2017-001>, 2017.
- 635 Michel, Y., Auligné, T., and Montmerle, T.: Heterogeneous Convective-Scale Background Error Covariances with the Inclusion of Hydrometeor Variables, *Monthly Weather Review*, 139, 2994 – 3015, <https://doi.org/10.1175/2011MWR3632.1>, 2011.
- Miyoshi, T. and Yamane, S.: Local Ensemble Transform Kalman Filtering with an AGCM at a T159/L48 Resolution, *Monthly Weather Review*, 135, 3841 – 3861, <https://doi.org/10.1175/2007MWR1873.1>, 2007.
- Miyoshi, T., Kondo, K., and Imamura, T.: The 10,240-member ensemble Kalman filtering with an intermediate AGCM, *Geophysical Research Letters*, 41, 5264–5271, <https://doi.org/10.1002/2014GL060863>, 2014.
- 640 Miyoshi, T., Kondo, K., and Terasaki, K.: Big Ensemble Data Assimilation in Numerical Weather Prediction, *Computer*, 48, 15–21, <https://doi.org/10.1109/MC.2015.332>, 2015.
- Miyoshi, T., Kunii, M., Ruiz, J., Lien, G.-Y., Satoh, S., Ushio, T., Bessho, K., Seko, H., Tomita, H., and Ishikawa, Y.: Big Data Assimilation Revolutionizing Severe Weather Prediction, *Bulletin of the American Meteorological Society*, 97, 1347–1354, <https://doi.org/10.1175/BAMS-D-15-00144.1>, 2016a.
- 645 Miyoshi, T., Lien, G., Satoh, S., Ushio, T., Bessho, K., Tomita, H., Nishizawa, S., Yoshida, R., Adachi, S. A., Liao, J., Gerofi, B., Ishikawa, Y., Kunii, M., Ruiz, J., Maejima, Y., Otsuka, S., Otsuka, M., Okamoto, K., and Seko, H.: “Big Data Assimila-

- tion” Toward Post-Petascale Severe Weather Prediction: An Overview and Progress, *Proceedings of the IEEE*, 104, 2155–2179, <https://doi.org/10.1109/JPROC.2016.2602560>, 2016b.
- 650 Ménétrier, B., Montmerle, T., Berre, L., and Michel, Y.: Estimation and diagnosis of heterogeneous flow-dependent background-error covariances at the convective scale using either large or small ensembles, *Quarterly Journal of the Royal Meteorological Society*, 140, 2050–2061, <https://doi.org/10.1002/qj.2267>, 2014.
- Ménétrier, B., Montmerle, T., Michel, Y., and Berre, L.: Linear Filtering of Sample Covariances for Ensemble-Based Data Assimilation. Part I: Optimality Criteria and Application to Variance Filtering and Covariance Localization, *Monthly Weather Review*, 143, 1622 – 1643, <https://doi.org/10.1175/MWR-D-14-00157.1>, 2015a.
- 655 Ménétrier, B., Montmerle, T., Michel, Y., and Berre, L.: Linear Filtering of Sample Covariances for Ensemble-Based Data Assimilation. Part II: Application to a Convective-Scale NWP Model, *Monthly Weather Review*, 143, 1644 – 1664, <https://doi.org/10.1175/MWR-D-14-00156.1>, 2015b.
- Necker, T.: Empirical optimal localization / Vertical covariance localization, <https://doi.org/10.5281/zenodo.6607498>, 2022.
- 660 Necker, T., Geiss, S., Weissmann, M., Ruiz, J., Miyoshi, T., and Lien, G.-Y.: A Convective-scale 1,000-member Ensemble Simulation and Potential Applications, *Q.J.R. Meteorol. Soc.*, 146, 1423–1442, <https://doi.org/10.1002/qj.3744>, 2020a.
- Necker, T., Weissmann, M., Ruckstuhl, Y., Anderson, J., and Miyoshi, T.: Sampling Error Correction Evaluated Using a Convective-Scale 1000-Member Ensemble, *Monthly Weather Review*, 148, 1229–1249, <https://doi.org/10.1175/MWR-D-19-0154.1>, 2020b.
- Nomokonova, T., Griewank, P. J., Löhnert, U., Miyoshi, T., Necker, T., and Weissmann, M.: Benefits of Doppler wind lidars to improve short-term low-level wind forecasts, *Quarterly Journal of the Royal Meteorological Society*, submitted, 2022.
- 665 Perianez, A., Reich, H., and Potthast, R.: Optimal Localization for Ensemble Kalman Filter Systems, *Journal of the Meteorological Society of Japan. Ser. II*, 92, 585–597, <https://doi.org/10.2151/jmsj.2014-605>, 2014.
- Piper, D., Kunz, M., Ehmele, F., Mohr, S., Mühr, B., Kron, A., and Daniell, J.: Exceptional sequence of severe thunderstorms and related flash floods in May and June 2016 in Germany - Part 1: Meteorological background, *Natural Hazards and Earth System Sciences*, 16, 2835–2850, <https://doi.org/10.5194/nhess-16-2835-2016>, 2016.
- 670 Poterjoy, J., Zhang, F., and Weng, Y.: The Effects of Sampling Errors on the EnKF Assimilation of Inner-Core Hurricane Observations, *Monthly Weather Review*, 142, 1609 – 1630, <https://doi.org/10.1175/MWR-D-13-00305.1>, 2014.
- Scheck, L., Weissmann, M., and Bach, L.: Assimilating visible satellite images for convective-scale numerical weather prediction: A case-study, *Quarterly Journal of the Royal Meteorological Society*, 146, 3165–3186, <https://doi.org/https://doi.org/10.1002/qj.3840>, 2020.
- 675 Schraff, C., Reich, H., Rhodin, A., Schomburg, A., Stephan, K., Perriñez, A., and Potthast, R.: Kilometre-scale ensemble data assimilation for the COSMO model (KENDA), *Quarterly Journal of the Royal Meteorological Society*, 142, 1453–1472, <https://doi.org/10.1002/qj.2748>, 2016.
- Stanley, Z., Grooms, I., and Kleiber, W.: Multivariate localization functions for strongly coupled data assimilation in the bivariate Lorenz 96 system, *Nonlinear Processes in Geophysics*, 28, 565–583, <https://doi.org/10.5194/npg-28-565-2021>, 2021.
- 680 Tabart, J. M., Dance, S. L., Lawless, A. S., Nichols, N. K., and Waller, J. A.: Improving the condition number of estimated covariance matrices, *Tellus*, 72, 1 – 19, <https://doi.org/10.1080/16000870.2019.1696646>, 2019.
- Virtanen, P., Gommers, R., Oliphant, T. E., Haberland, M., Reddy, T., Cournapeau, D., Burovski, E., Peterson, P., Weckesser, W., Bright, J., van der Walt, S. J., Brett, M., Wilson, J., Millman, K. J., Mayorov, N., Nelson, A. R. J., Jones, E., Kern, R., Larson, E., Carey, C. J., Polat, I., Feng, Y., Moore, E. W., VanderPlas, J., Laxalde, D., Perktold, J., Cimrman, R., Henriksen, I., Quintero, E. A., Harris, C. R., Archibald,

- 685 A. M., Ribeiro, A. H., Pedregosa, F., van Mulbregt, P., and SciPy 1.0 Contributors: SciPy 1.0: Fundamental Algorithms for Scientific Computing in Python, *Nature Methods*, 17, 261–272, <https://doi.org/10.1038/s41592-019-0686-2>, 2020.
- Whitaker, J. S. and Hamill, T. M.: Evaluating Methods to Account for System Errors in Ensemble Data Assimilation, *Monthly Weather Review*, 140, 3078 – 3089, <https://doi.org/10.1175/MWR-D-11-00276.1>, 2012.
- Wu, P.-Y., Yang, S.-C., Tsai, C.-C., and Cheng, H.-W.: Convective-Scale Sampling Error and Its Impact on the Ensemble Radar Data Assimilation System: A Case Study of a Heavy Rainfall Event on 16 June 2008 in Taiwan, *Monthly Weather Review*, 148, 3631 – 3652, <https://doi.org/10.1175/MWR-D-19-0319.1>, 2020.
- 690