

Dear Dr. Marshall,

Thank you very much for reviewing the manuscript. We have greatly improved the paper by addressing your valuable comments. In this document, we list our replies (in black) to each of your comments/questions (in blue) and changes (in red) that are going to be integrated into the revised manuscript:

This is a valuable, well executed study, demonstrating the ability of ultra-wideband airborne FMCW radar to measure annual accumulation layers on mountain glaciers, as well as to distinguish between dry snow and percolation/wet snow facies, and ice facies. The methodology is well described, and the combination of the radar observations with a one-dimensional physically based depth-age model is solid. The authors show good agreement between the radar-derived accumulation rate estimates and some limited field observations, lending confidence to the approach. The results are significant both in terms of the radar observation advances, and the implications of the measured accumulation rates. This will be an important paper, and just needs a bit more detail and sensitivity analysis before publication.

Thank you for your positive overview comments. To improve the paper, we added more details about data processing, comparisons with the results from the regional atmospheric climate model MAR (Modèle Atmosphérique Régional) and sensitivity analysis, see our replies to the general comments 1), 4) and 5) below.

General comments:

1) A few more details on the processing approach (i.e., what FFT windowing method was used, what kind of horizontal filtering was applied) would be helpful to add.

We added a processing flowchart in Figure 2 and greatly expanded the discussion with details:

Figure 2 shows the data processing flowchart with 8 main steps:

- 1) The GPS and radar data were synchronized using the UTC time stored in the raw radar data files. The accurate longitudes, latitudes, and elevations of the radar phase center along the flight path were computed with the position information of the radar and GPS antenna and the information of aircraft attitudes provided by the onboard IMU (Inertial Measurement Unit) system. Each trace of the raw radar data was tagged with the longitude and latitude of the radar antenna's phase center as its geolocation, and the elevation of the antenna's phase center was used as the zero reference for the two-way travel time (TWTT) from the aircraft to the surface.
- 2) The coherent noises were automatically tracked by finding the near-DC component in slow-time and were removed by subtraction. The coherent noises were caused by the feedthrough signal due to antenna coupling and undesired spurious signals generated from

active microwave components of the radar system. These noises would reduce the signal-to-noise ratio (SNR), interfere with surface tracking and deconvolution if were not removed.

- 3) A fast-time FFT (Fast Fourier Transform) was applied trace by trace with a Hanning window to reduce sidelobes. This step, analogous to pulse compression, obtained the target response as a function of range.
- 4) A deconvolution filter was applied after the fast-time FFT to further reduce sidelobes and the range resolution degradation due to any other system artifacts, such as signal reflections between radar hardware components, filter's nonlinear group delay, the digital chirp's amplitude variations and frequency nonlinearity. Minimizing sidelobe level is important because sidelobes from strong interfaces could be misinterpreted as snow layers or mask weak reflections from real interfaces. The implemented deconvolution filter was an inverse filter of the radar system impulse response which was derived using specular returns from electrically smooth surface such as the calm-water surface of a lake.
- 5) The coherent integration was performed by stacking data traces together with the averages. This process was an unfocused SAR (Synthetic Aperture Radar) processing to improve the SNR. It included hardware and software stacking. The hardware stacking was implemented in the radar's digital system and reduced the volume size of the recorded data. The software stacking was carried out after the deconvolution in data processing. The incoherent integration was carried out after the coherent software stacking by taking the average of the squared data of several traces. Incoherent integration reduced the signal fading effects and the data size of the final radar echogram. The number of traces in the coherent hardware integration was 8 and 16 in 2018 and 2021, respectively. The number of traces in the coherent software and incoherent integrations was 2 and 5 respectively in both 2018 and 2021. The PRF (Pulse Repetition Frequency) was 4000 Hz and 6250 Hz in 2018 and 2021, respectively. The combined coherent and incoherent integrations determined the spatial sampling frequency along the flight path and the along-track resolution depended on the aircraft velocity and the effective PRF which is 50 Hz and 39.0625 Hz in 2018 and 2021, respectively. At the typical velocity of 50 m/s during the surveys, the along-track resolution was 1m and 1.28 m in 2018 and 2021, respectively.

- 6) The surface was automatically tracked at this step using a threshold method. The automatic tracking usually picked the surface nicely except at the locations where the Nyquist zone changed, or the surface elevation changed very rapidly between narrow valleys. In the latter case the backscattering from both sides appeared in the leading edge of the surface and affected the threshold tracker. At these locations we corrected the surface tracking semiautomatically in our picker using manual control points.
- 7) The data was elevation compensated with accurately tracked surface to remove large aircraft elevation changes for effective data truncation, display radar echograms and post radar images. Two mostly used compensation options were WGS-84 elevation compensation and depth elevation compensation. The radar echogram or image was showing the real surface topography in WGS-84 datum after the WGS-84 elevation compensation. The surface was flattened after the depth elevation compensation to better display the depth between snow layers. The depth elevation compensation was implemented by using a low pass filter to get a smoothed version of the tracked surface in radar echograms, the smoothed surface was then used as the zero-depth reference and the radar echograms were normalized to this reference. The high-frequency texture of the surface was therefore kept after the surface flattening.
- 8) The final processed radar data and images were generated according to selected elevation compensation method.

The same processing steps and parameters were used in processing the 2018 and 2021 datasets except the above-mentioned different bandwidth, hardware stacking and PRF settings. More discussions about the data processing procedures can be found in [Panzer et al. 2013; Yan et al., 2017].

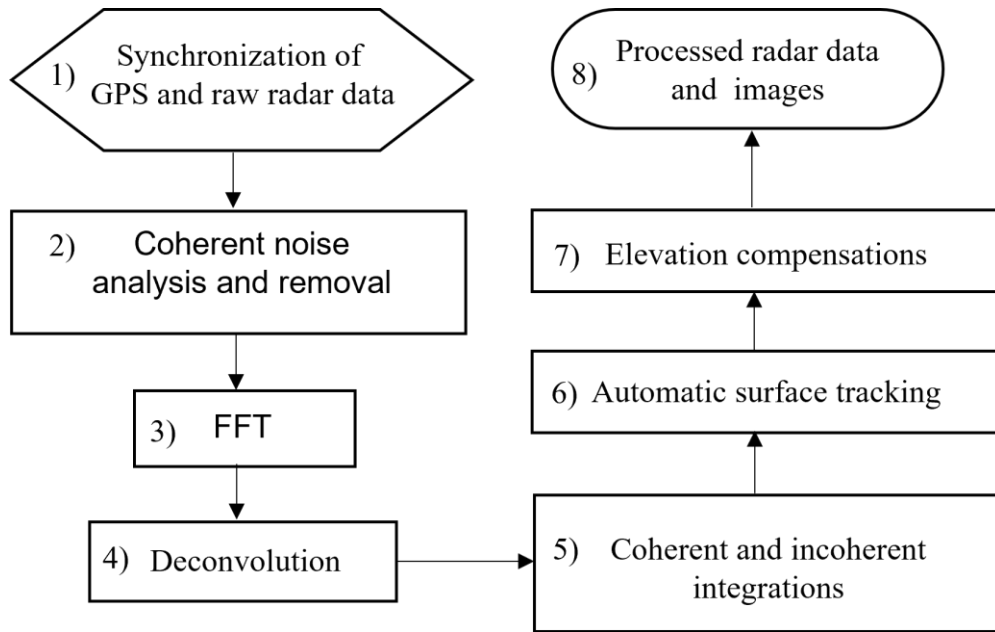


Figure 2: Flowchart of data processing main steps

2) The sensitivity of the results to the chosen permittivity should be evaluated. A relative seasonal snow permittivity of 1.89 was used, based on work on other glaciers - how does this compare to this study site? If field measurements are not available from the time of these flights, how much do results change for a conservative range of seasonal snow density/permittivity?

We added the following at the end of Section 3.1:

There are not many large-scale radar snow measurements over Alaska glaciers, yet they are very important for studies on regional hydrology and mass balance. The goal here is to present the spatial distributions of the seasonal snow our radar has detected. We kept track of the seasonal snow cover in our datasets to facilitate these studies. However, the focus of this work does not extend to these studies, which necessitate a detailed understanding of the snow density profile and its tempo-spatial fluctuations.

3) How were the layers picked? Manually? Semi-automatically with control points? Automatically? This needs more detail.

We added the following at the end of L228:

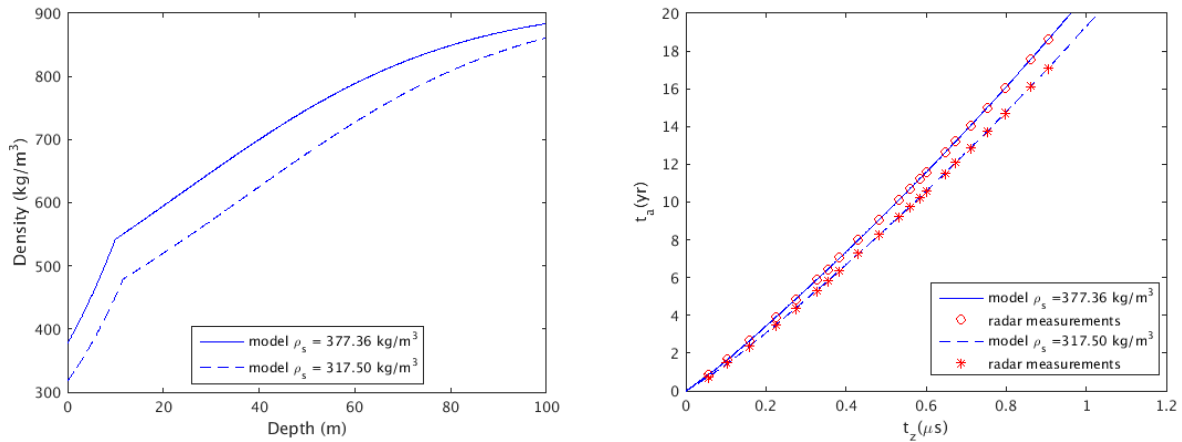
The snow layers were tracked using semiautomatic methods through the GUI (Graphic User Interface) of our picking tool. Control points were manually placed along each layer and one of the automatic linear interpolation, snake and Viterbi trackers was selected to best track the layer between these control points efficiently. The Viterbi tracker typically tracked the layer most effectively [Berger et al., 2019].

4) The model appears to produce a depth-age scale, but also a depth-density result. How does this compare to the ice core data? The authors state that although the model was tuned to Greenland, it represents the firn well - it would be useful to show this with field observations from this site, which should be available from the ice core. For example, Greenland gets a huge amount of wind influence, and the authors state that the main site is not wind effected. It's possible the assumed surface density in the model, for example is a bit too high.

The Benson's density-depth profile describe by Eq. (2) was based on the ground measurements in Greenland. Based on the measurements he later performed for the temperature, density, hardness, and stratigraphic profiles in the Mount Wrangell caldera [Benson, 1968], he stated that "facies parameters calculated for the summit area of Mount Wrangell (4,000 to 4,300 m. at 62 °N.) compare well with the same parameters near the dry-snow line on the Greenland Ice Sheet". In [Benson, 1968], the averaged snow density for the top 5 m was 390,398,390,360 kg/m³ at four locations Pit 2, Pit 3, Pit 4 and Pit 5, respectively. The average of these locations is 384.5 kg/m³. Location Pit 5 is very close to study sites, therefore with more weight on Pit 5, the value used as the surface density in this study, 377.36 kg/m³, might be reasonable for the average density of the top 5 meter. This may need to be scaled down more for the density at the surface. However, as the sensitivity study below shows, the accumulation estimation would not have significant changes.

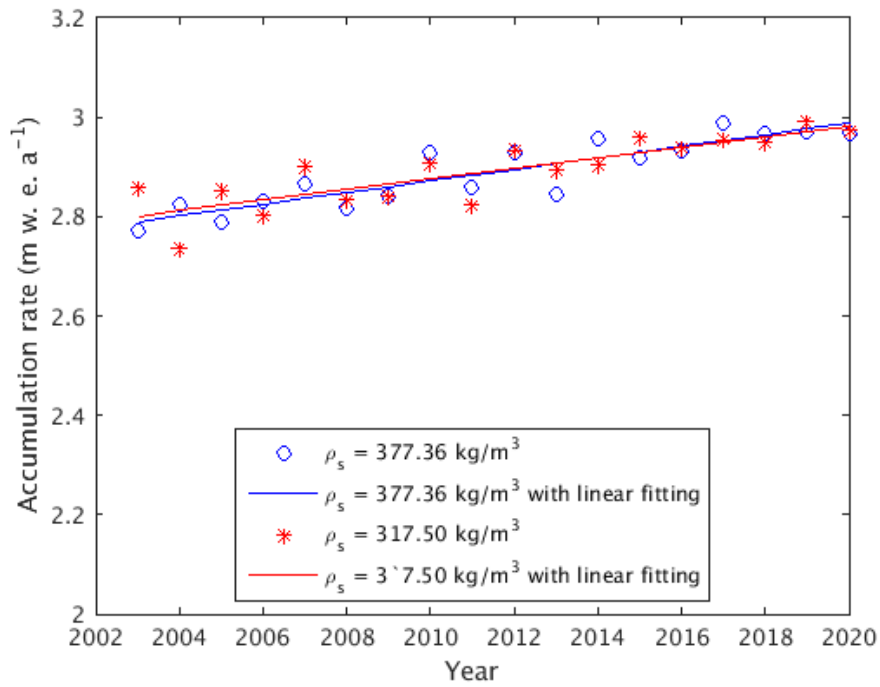
The surface density value is 317.5kg/m³ according to MAR data, we used this value to evaluate the accumulation estimation's sensitivity to the surface density values. We added the following after the paragraphs added for comparisons with MAR results (see our replies to the general comment 5):

According to MAR data, the surface density in Mount Wrangell's caldera is 317.50 kg/m³. This figure is 16% less than the value we used in the study, 377.36 kg/m³. The models' and accumulation estimations' sensitivity to the surface density values was therefore further evaluated. The discrepancies in the density-depth profiles for the two surface density values are depicted in Figure 9(a). As seen in Fig. 9(b), as depth is increased, the projected depositional ages for the tracked layers would get less due to the lower surface density. As opposed to 18.6 years for 377.36 kg/m³, the age of the deepest monitored layer is 17.10 years for 317.50 kg/m³. The variations between the annual accumulation estimates are compared in Figure 9(c). Although there are some variations in the annual accumulation rate within a given year, the linear increasing trend is nearly the same (0.011 m w.e. a⁻² for 317.56 kg/m³ against 0.012 m w.e. a⁻² for 377.36 kg/m³). This makes sense given that, for a lower snow density, the snow mass likewise decreases as the age difference between two snow layers narrows. As a result, we deduced that the linear upward trend in the annual accumulation rate seen between 2003 and 2021 is not affected much by the surface density.



(a)

(b)



(c)

Figure 9: Depth-density profiles (a), Snow layer depositional ages (b), and estimated annual accumulation rates (c) for two different surface density values.

5) This is the most important general comment -- the interpretation of the linear increase in accumulation rate is the most important result from a glaciological/snow science point of view but needs a bit more work to test this trend, and explain why it might be happening. Is this linear increase over the past several decades expected based on regional climate models? Other glacier observations? Even if we had a linear increase the last 2 decades, why would we expect this to be the case in the decade previous (which was used to extrapolate to the early 1990s)?

I'm honestly a bit worried that this trend is caused by an assumption of constant density, or some artifact in the model. Can you back this linear increase in accumulation up with any other regional data from field observations or models? Or how about the ice core - does that show a linear increase in accumulation rate? I would expect the chemistry in the ice core would have resulted in a depth-age scale, so accumulation time series should be available from that?

Related to this - your model assumes a steady state - that the accumulation rate is balanced by the melt/densification and flow divergence. You show this with the little change in surface elevation between 2018 and 2021. Then what does the increasing accumulation over time then imply? Greater basal melt to balance this increase? Or a volume flux or densification rate increase with time?

Is it possible that a bias in the densification model is leading to the linear increase in estimated accumulation? I think a sensitivity analysis is needed here, along with error bars for the plot of accumulation vs time.

We addressed this most important general comment by working with Dr. Xavier Fettweis who is an expert in the regional atmospheric climate model MAR (Modèle Atmosphérique Régional). Both Dr. Xavier Fettweis and Ibikunle Oluwanisola are now coauthors of this paper for their important contribution to MAR data analysis. We compared our results with the surface mass balance estimates using MAR data. We found the linear increasing trend from MAR data is almost the same as what inferred from radar data between 2003 and 2021, although the MAR results have larger variations from year to year. We also found MAR results do not have this linear increasing trend between 1990 and 2003.

We thought the only ground truth from the 2005 temperature sensor measurements was limited, we therefore extrapolated to 1992 based on the linear trend between 2003 and 2021 to compare with another ground truth determined from the 2004 ice core using the dating of a tephra layer from the 1992 Mount Spurr eruption mentioned in [Kanamori et al., 2008]. Although the estimated average accumulation rate for the years between 1992 and 2004 is very close to the value from the ice core, we removed the extrapolation part from the revised manuscript. Fig. 8 has been accordingly revised with the comparisons with MAR results.

After analyzing the MAR data for SMB, snowfall, rainfall, melt, runoff, surface temperature, and snow densities in the first 10 m depths between 2003 and 2021 (see the table below), we came to the conclusion that the increasing accumulation over this period was associated with the increase in snowfall and rainfall events due to global warming and was primarily balanced by an increase in densification rate, with flow divergence playing a smaller role. As shown in the table and Fig. 8 (d), the snow surface temperature at the study site increased 0.86 °C. The snowfall and rainfall contributed about 88% and 12% to the SMB increase. Respectively. There might be some melt in summer. There were no runoffs, which means the melt did not contribute to SMB and the rainfall was fully retained by snowpacks. Sublimation/evaporation was small and constant over 2003-2021.

Table: SMB process at the 2004 ice core/2005 temperature sensor tower site between 2003-2021

	SMB (m w.e.)	Snowfall (m w.e.)	Rainfall (m w.e.)	Melt (m w.e.)	Density (0-10m) (kg/m ³)	Temperature (°C)
mean	2.96	2.97	0.0078	0.0516	410.2	-15.8
std dev	0.26	0.27	0.0236	0.0556	26.8	1.0
Slope	0.012	0.011	0.0016	0.0005	1.8	0.051
change	0.205	0.180	0.0270	0.0087	21.7	0.86

The following figure shows the densification rate at the 2004 ice core/2005 temperature sensor tower site computed using the interpretation models. According to this figure, most part of the densification process happened in the first 1.5 years within the first 10 m depths. 10 m is the depth where the critical pressure is reached. According to MAR, the SMB was 2.65 m. w. e., and the mean snow density for the 0-10 m in 2021 was 417.2 kg/m³. This means the SMB was equivalent to 6.25 m of snow, and the first 9.38 meter of snow in 2021 would be totally replaced after 1.5 year. The increase of the snow density of the 0-10 m is nearly statistically significant, which is supportive evidence that the snowpacks absorbed the increased rainfall and melt. This also explains why accumulation was increasing but not the surface elevation.

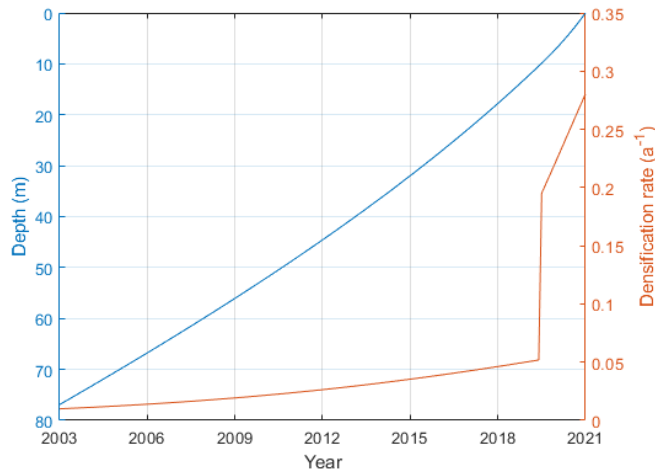


Figure: Depth and densification rate between 2003-2021 (tower site)

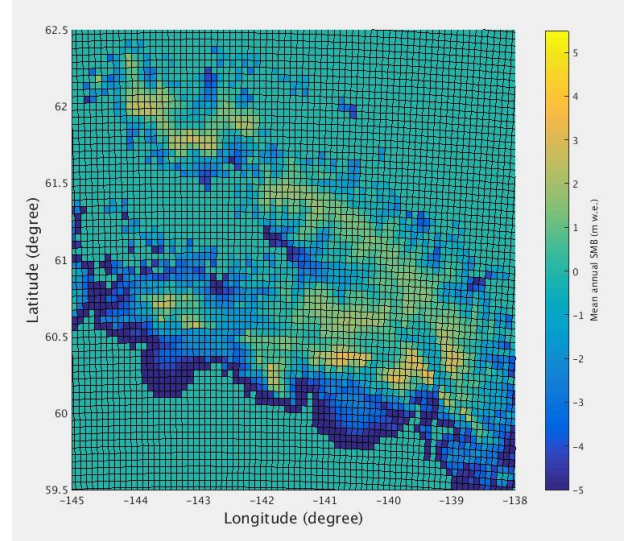
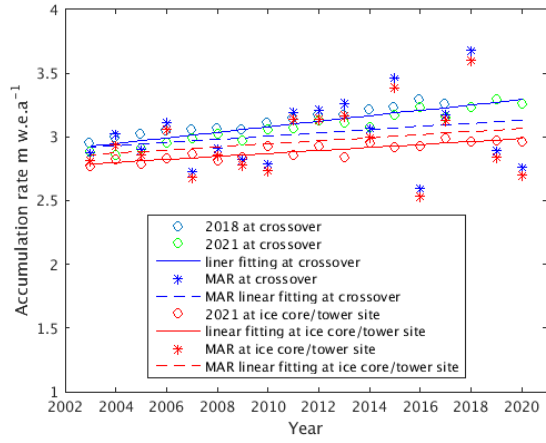
For model sensitivity analysis, see our replies to your general comment 4. We are more confident with the models, analysis method and results after we compared our results with MAR data. We added the following at the end of Section 3.2:

In addition to comparing the accumulation rates estimated from our radar data with the limited available ground truth from the temperature sensor measurements, we also compared our results with the surface mass balance (SMB) estimates using the regional atmospheric climate model MAR (Modèle Atmosphérique Régional). The MAR model simulates energy and mass flux between the atmosphere and the snowpack using EAR5 reanalysis outputs as a 6 hourly forcing dataset. As it was run here at high resolution (5 km), it replicated mesoscale meteorological processes more realistically and has been validated with in situ data and remotely sensed data over

polar ice sheets such as Greenland Ice Sheets (GrIS). Further details about the model were discussed in [Fettweis, 2007; 2020] and more recently in [Amory et al., 2021]. For our comparison, we used MAR v3.12.1 which provided over 80 climate fields such as density profiles, SMB, etc. at 5km-grid resolution across Alaskan mountains, permanent ice fields, and glaciers. We computed the annual SMB by summing the daily measurements within the same cycle used in estimating the annual accumulation rates from radar data (May-to-April). The daily SMB was the sum of snowfall and rainfall minus the sublimation, evaporation, and run-off meltwater for each day. Figure 8(b) shows the mean annual SMB over Alaska glaciers between 2016-2021 using the May-to-April cycle. For comparison, we computed the annual SMB at the crossover and the 2004 ice core/2005 temperature sensor tower sites by synchronizing the radar flightline's coordinates and the gridded MAR model output using 2D Delaunay triangulation-based interpolation.

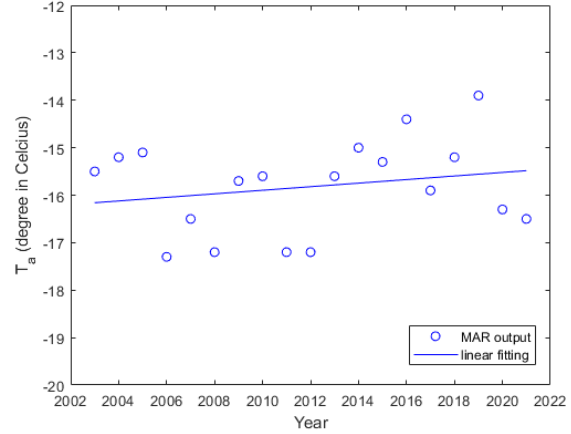
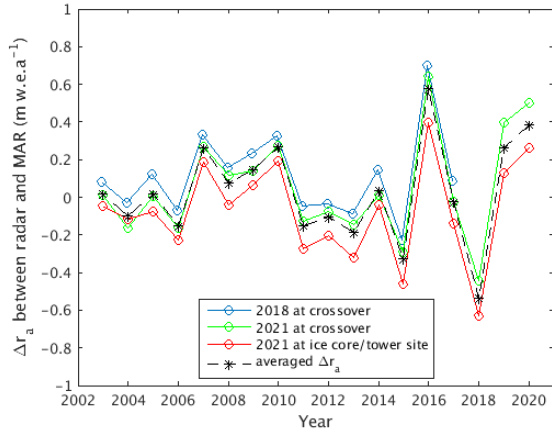
In Fig.8(a), the blue and red stars present the annual SMB values of MAR results at the crossover and the 2004 ice core/2005 temperature sensor tower sites, respectively. The blue and red dashed lines are the linear fitting of these SMB values at the two sites, showing both annual increases of $\sim 0.013 \text{ m w.e.a}^{-1}$. At the ice core/tower site, the MAR SMB between 2005 and 2006 is $2.86 \text{ m w.e.a}^{-1}$ compared to the estimated accumulation rate from radar data, which is $2.82 \text{ m w.e.a}^{-1}$. Figure 8(c) presents the differences between the annual accumulation rate r_a estimated from radar data and the SMB computed from MAR outputs, in which the black dashed line with stars shows the site-averaged differences. The absolute values of the site-averaged differences are less than $0.27 \text{ m w.e.a}^{-1}$ before 2015 and the maximum site-averaged difference is $0.58 \text{ m w.e.a}^{-1}$ in 2016. The linear increasing trend from MAR data is almost the same as what was inferred from radar data between 2003 and 2021, although the MAR results have larger variations from year to year, especially after 2015. This linear increasing trend and apparent larger temporal variability in MAR versus radar-based estimates are linked to the increase of snowfall and rainfall events as a result of global warming (see the increase of 0.86°C in 19 years in this area over 2003-2021 in Fig.8(d) according to MAR). This SMB variability driven by the presence of liquid water into the snowpack is smoothed in the radar retrieved signal due to the snowpack compaction and its ability of fully retaining the liquid water. According to MAR, the recent increase of SMB over 2003-2021 is 88% driven by the increase of snowfall accumulation and 12% by the mass gained by rainfall (that is fully retained by the snowpack). The increase of rainfall exceeded the interannual variability, and thus is more statistically significant while the increase of SMB and snowfall are within the interannual variability.

Table 3 summarizes the comparisons among the ground truth, radar, and MAR results. This is the first time that airborne radar observations, temperature sensor measurements on the ground and MAR outputs have been compared to validate annual snow accumulation over Alaska glaciers where MAR has been applied for the first time with success. The significant finding of a linear rising trend in accumulation rate between 2003 and 2021 may aid in more precisely estimating the mass loss of Alaskan glaciers and their impact to sea level rise.



(a)

(b)



(c)

(d)

Figure 8: (a) Estimated annual accumulation rates; (b) MAR map of mean annual SMB between 2016-2021 over Alaska glaciers; (c) Differences between r_a from radar data and SMB from MAR; (d) Averaged annual temperature from MAR.

Table 3: Maximum layer depth observed D_{max} , effective snow relative permittivity $\epsilon_{r_{eff}}$ and accumulation rates r_a estimated at the two study sites.

	2004/ 2005 ice core & temperature sensor tower site (61.9908°N, 144.0256°W)			2018/2021 crossover (61.9859° N, 144.0068°W)	
D_{max} (m)	78.91			70.78/80.78	
$\epsilon_{r_{eff}}$	2.96			2.89/2.96	
r_a (m w. e. a^{-1})	Radar	MAR	Temperature sensor	Radar	MAR
2005-2006	2.82	2.86	2.75 (ground truth)	2.97	2.90
2003-2021 (averaged)	2.89	2.96	NA	3.10	3.03
Linear trend (m w. e. a^{-2})	0.011	0.012	NA	0.022	0.013

We accordingly revised L19 in the abstract as:

Additionally, we discovered a linear increasing trend between the years 2003 and 2021 of $0.011 \text{ m w. e. a}^{-1}$, which was supported by comparisons with the surface mass balance (SMB) derived for the same period from the regional atmospheric climate model MAR (Modèle Atmosphérique Régional). According to MAR data, which show an increase of 0.86°C in this area for the period of 2003-2021, the linear upward trend is associated with the increase of snowfall and rainfall events because of global warming. The findings of this study confirmed the viability of our methodology, as well as its underlying assumptions and interpretation models.

We also accordingly revised L357-359 in Section 4 for summary and conclusions:

The noteworthy discovery of the linear rise trend in accumulation rate between the years 2003 and 2021 as a result of global warming was corroborated by comparisons with the SMB derived for the same period from the MAR model. The findings of this investigation confirmed the validity of our technique and the assumptions and interpretation models it was based on. Future research may extend these findings throughout the entire caldera for the geographical pattern of snow accumulation utilizing gridded observations of strata.

Detailed suggestions/edits in the attached annotated PDF.

Thank you very much for the detailed suggestions/edits in the attached annotated PDF. We addressed each item as below:

L11: Consider specifying - 60%?

We revised L11 in the abstract as:

About 34% of the depths observed in 2018 were between 3.2 m and 4.2 m, about 30% of the depths observed in 2021 were between 2.5 m and 3.5 m.

We also added the above content in L126 in Section 3.1.

L19: What is the impact of constant density assumption here? I.e., if density increased during that time, how big of an effect would that have on the result?

We did not assume a constant density here. We assumed a surface density in 2021 and Eq. (2) is the density-depth profile we used. See our replies to your general comment 4 about the surface density effect on the result.

L20: Format as a^{-1}

As suggested, we formatted all cases in the manuscript as a^{-1} .

L20-21: Is there a physical reason you would expect the accumulation rate to increase linearly over this entire time period? Does the ice core show the same linear trend?

See our replies to your general comment 5.

L38: Consider just "accumulation" since they aren't really different components.

As suggested, we revised "Snow depth and accumulation" as "**Snow accumulation**".

L68: deleted "the" as suggested.

L71: Instead of replacing "in" with "with" as suggested, we replaced "in much broader coverage" with "**across a broader region**" as suggested by Dr. Harcourt.

L74: deleted "the" and "of the study" as suggested.

L79: Consider stating along-track resolution, which is probably more useful to the reader than the size of the data.

As suggested, we revised this line as "5315 linear km with **an along-track resolution of ~1.3 m**". Please also see processing step 5.

L81: 2019?

Revised 2018 as 2019.

L83: Isn't this more of a factor of the pulse length, rather than the bandwidth? If the sweep rate is the same, then I can see that changing the bandwidth changes the maximum altitude?

The maximum beat frequency in the first Nyquist zone is $F_s/2$, so $t_{\max} = 2H_{\max}/c = F_s/2/(BW/T)$, therefore $H_{\max} = (c/2) (F_s/2)/(BW/T)$, where F_s is the sampling frequency, T is the pulse length, BW is the bandwidth and c is the speed of light in free space. We did not change T and F_s , therefore a reduction in bandwidth increased the maximum altitude. To clarify this, we added "**kept the same chirp length and sampling frequency (see Table 1)**" in L83. We also added Table 1 to list key radar system parameters (see Table 1).

L102: Windowed? Maybe mention what time of window used (e.g., hanning, hamming)?

Hanning window was used, see processing step 3.

L108: show

Revised "showing" as "show" as suggested.

L125-126: Possibly caused by a mid-winter rain event?

The distribution modal peaks were from seasonal snow over multiple glaciers. See the revisions on L124-126 below.

L126: a

We revised L124-126 according to the suggestions from Dr. Harcourt and explained the lack of a third peak in the 2021 data:

Both years have multi-modal peaks largely ranging between 1-6 m. For the 2018 data, the mean values of the three distributions are around 1.2 m, 3.7m and 5.5 m. For the 2021 data, the mean values of the two distributions are around 1.1 m and 3 m. The third distribution in 2018 were mainly from thick seasonal snow along Logan Glacier and the upper Hubbard Glacier where we did not fly over these locations in 2021 (See Fig 1(c)).

L131: Consider putting these in terms of permittivity rather than refractive index, to facilitate comparison.

Revised as suggested:

We note that the Bagley Ice Field is a temperate glacier, and previous investigations based on 135-MHz pulsed radar measurements in early summer 1994 determined the relative permittivity from 16.81 to 20.25 for the near-surface of Bagley Ice Field.

L135: Remove "-" around "and"

Revised as suggested.

L140: Do you mean is in the dry snow zone?

By “extends into dry snow zones”, we mean the lower elevation part of the summit region may be in the upper percolation zone, and the higher elevation part is in the dry snow zone.

L141: We revised “it drew the attentions of researchers to study” as “researchers have been drawn to study” as suggested by Dr. Harcourt.

L145: is an elliptical shape

We revised “the saddle area between them are 4.2 km by 2.7 km elliptical” as “the saddle between them covers a 4.2 km by 2.7 km area” suggested by Dr. Harcourt.

L155: inert “s”

Revised “layer” as “layers” as suggested.

L156: we flew

Revised "it was" as “we flew”.

L169: insert “a”

We revised “is plot” as “**shows a plot**” as suggested.

L176: Seems a little high, close to ice? Maybe the core was very dense. Would be worth stating the average core density.

No available ice core data to us at the same site. This was inferred from radar layer two-way travel times. Our results were confirmed with limited ground truth and the added comparisons with MAR data. We revised L288-289 to explain more clearly how the effective relative snow permittivity was computed (see our replies to your comment at this two lines).

L194: How well does this match surface density at the site? Seems appropriate for Greenland but maybe a bit high for seasonal snowpack?

Yes, it looks a bit high compared to MAR data. However, the sensitivity study did not show significant changes in accumulation estimation. See our replies to your general comment 4 for sensitivity study results and explanations.

L197: Assumed constant over time?

No, it is not constant over time. This is the surface mass balance dependent on the location and time of the data collection.

L205: assumed for

We revised “implied by” as “**assumed for**” as suggested.

L208: elevation changes

We revised “elevations” as “elevation **changes**” as suggested.

L221: and here the age t_a is for each of the radar horizons.

We inserted “**and here the age t_a is for each of the radar horizons**”.

L229: from

We revised “to” as “**southeast of**” as suggested by Dr. Harcourt.

L231: How were these picked? Manually? semiautomatically? automatically?

Semiautomatically. See our reply to your general comments 3).

L231: traces?

We revised “data lines” as “**traces**” as suggested.

L232: what kind?

We revised “along-track filtering” as “along-track **moving average** filtering”.

L240: This value comes from minimization of eq. 8?

Yes.

L241: consider $\epsilon = f(\rho)$

Revised “ $\epsilon \sim \rho$ ” as “ $\epsilon = f(\rho)$ ” as suggested.

Eq. (10): dz here is the depth difference between z_k and z_{k-1} ?

We added the following in L274:

and $dz = 0.1 m$ is the step used in integrating the differential Equations (1)-(3) and (5)-(7).

L288-289: If it was just this ratio, the units wouldn't work out. I think you mean the ratio is used to calculate the mean velocity, which is used to estimate effective permittivity?

Yes, I meant the ratio was used to calculate the mean velocity, which was used to estimate effective permittivity. We revised “The effective snow permittivity ϵ_{r_eff} in Table 2 is calculated as the ratio of D_{max} to the travel time from the surface to the deepest layer observed by the radar” as

“**The effective relative snow permittivity ϵ_{r_eff} in Table 2 is calculated as:**

$$\epsilon_{r_eff} = \left(\frac{c t_{z_max}}{2D_{max}} \right)^2 \quad (11)$$

where t_{z_max} is the two-way travel time from the surface to the deepest layer at the depth of D_{max} observed by the radar”.

L317: along with pooling of liquid water at storm layer interfaces

We inserted “**along with pooling of liquid water at storm layer interfaces**” as suggested.

L324: where, boundary

We revised “the snowline” as “**where the snowline defined as the boundary**”.

L330: Consider using "boundary" rather than "snowline", since snowline usually refers to the boundary between snow and glacier ice.

See the revision for the comments on L324.

L342: Consider defining CReSIS somewhere in the document

Defined CReSIS under the author list as suggested.

Figure 1: Absolute location information needed. Is this UTM? What grid? Or some local coordinate system?

Revised “Figure 1 shows...on the hillshade map” as “Figure 1 shows...on the hillshade map **in NAD83 geographic coordinate system**”.

Figure 5: respectively

Revised “reflectively” in the figure’s caption as “**respectively**” as suggested.