

Supplemental Figures

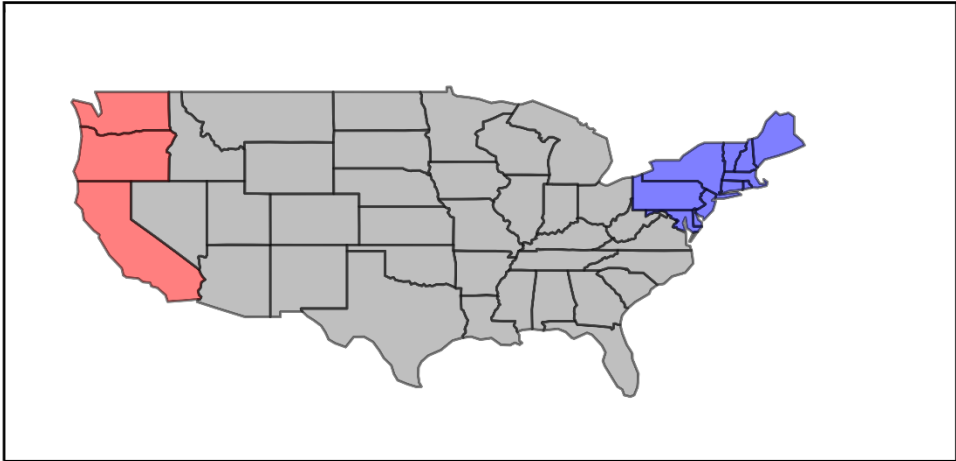
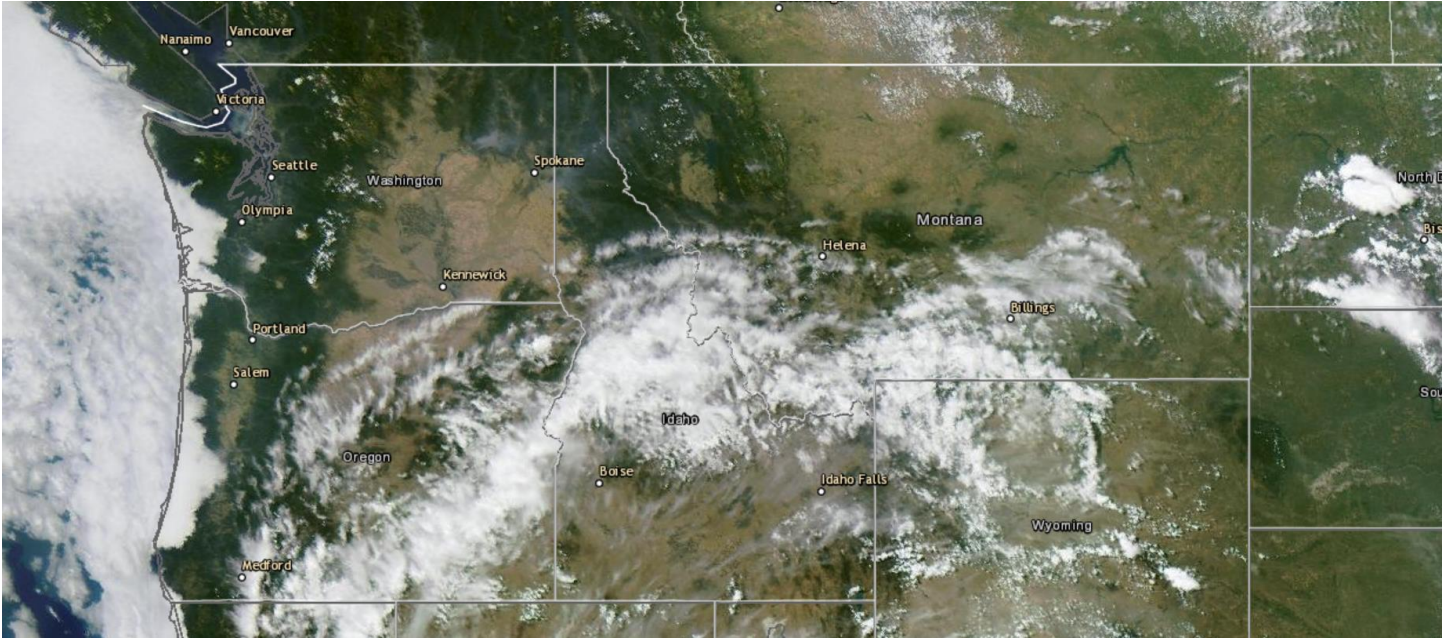


Figure S1, U.S. West (red) and Northeast (Blue) regions.

a)



b)

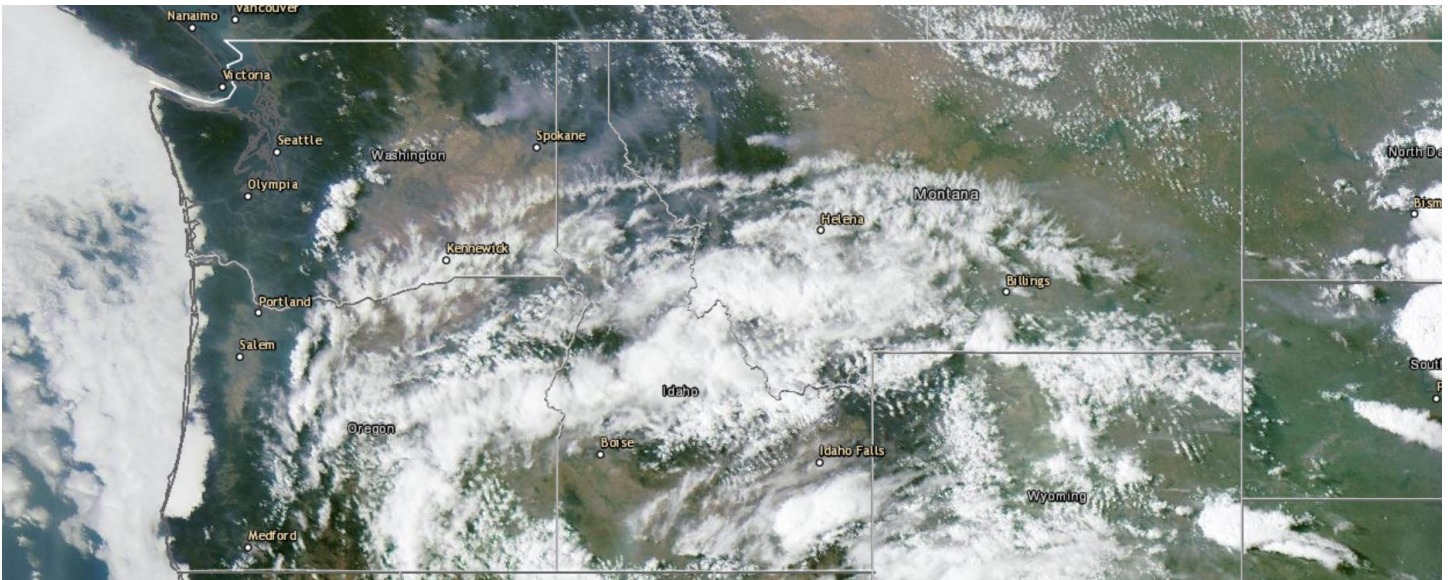


Figure S2, GOES-16 true color image (NOAA Aerosol Watch) at 19:41UTC (a), and 23:01UTC (b), 06 August, 2019

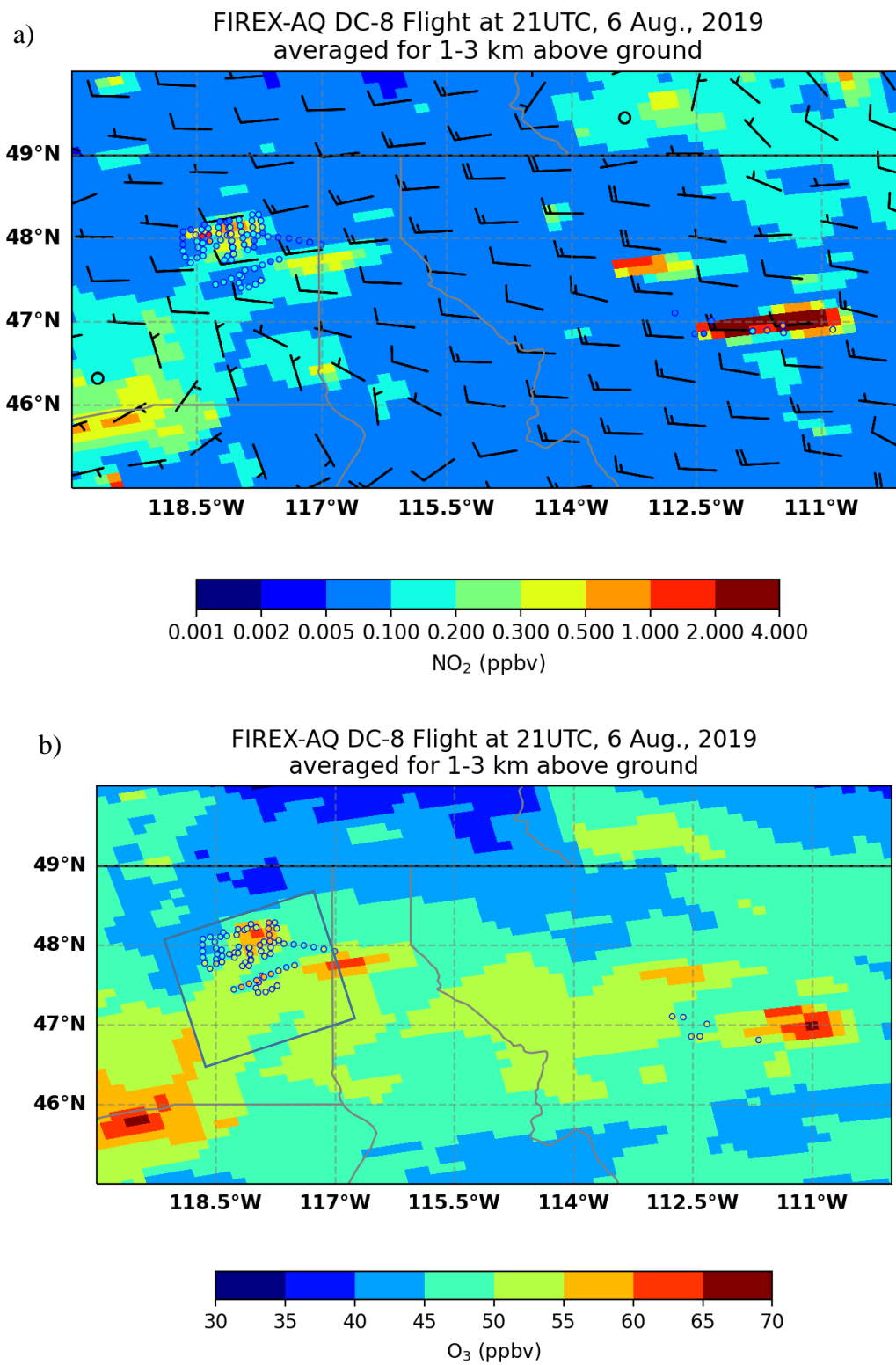


Figure S3, GFS-CMAQ vertical averaged NO₂ (a) and O₃ (b) for 1-3 km above ground at 21UTC compared to the DC-8 observations on 6 Aug., 2019. The plot a also shows the corresponding GFS wind field.