

Figure R2.1. Q/Q_{exp} (left axis, red points) and percent of non-modelled points (right axis, blue dots) over the entire dataset as a function of window size (s_{win}), maximum a-value (a_{max}) and number of PMF repeats per window (x_{PMF}). In each plot, two of these parameters are fixed at their optimum values and the third is varied: (a) s_{win} , (b) a_{max} , and (c) x_{PMF} . Optimum values are $s_{win}=14$ days, $a_{max}=0.4$, and $x_{PMF}=50$. (From Canonaco et al., 2021).

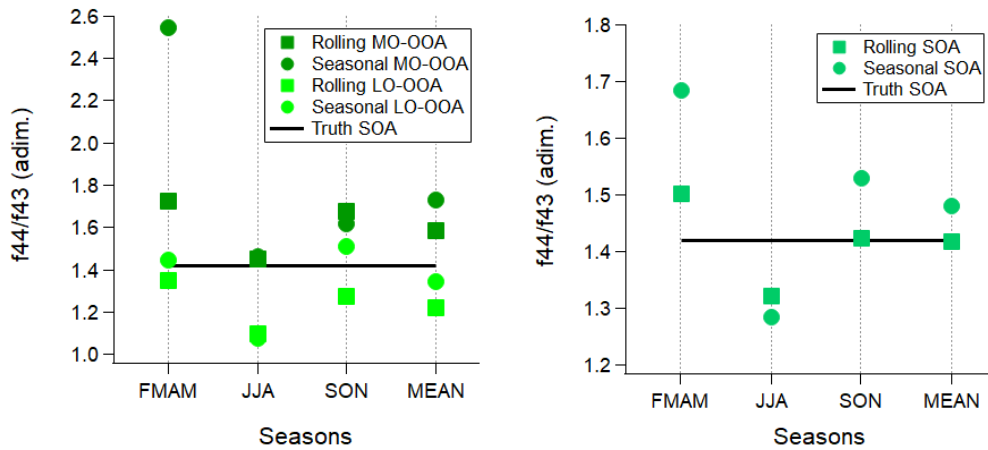
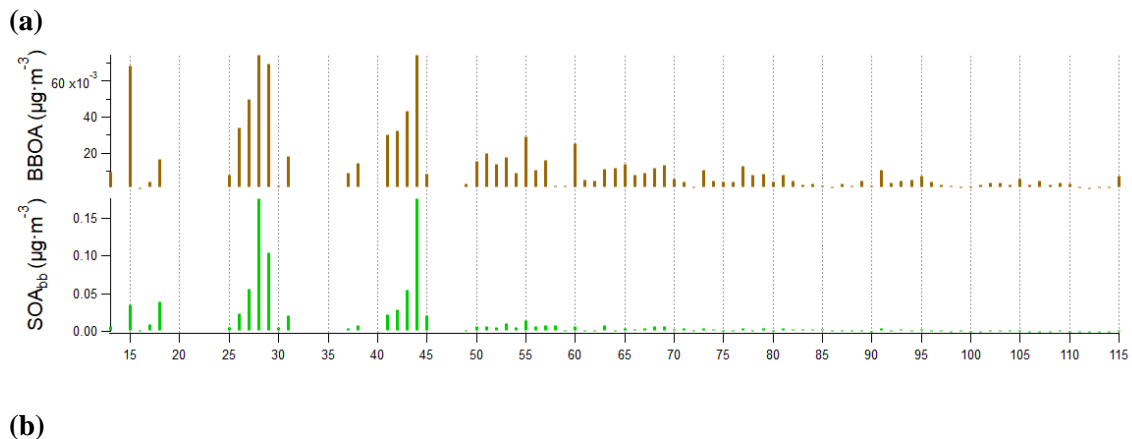


Figure R2.2. Rolling and seasonal oxidation ratio (f_{44}/f_{43}) of the secondary factors divided into LO-OOA and MO-OOA on the left and mean-weighted OOA on the right.



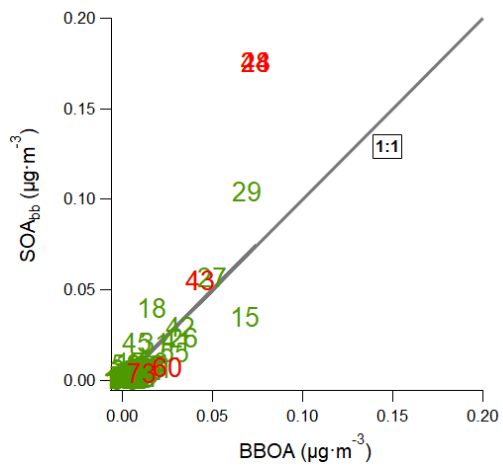


Figure R2.3. Comparison between BBOA and SOA_{bb} profiles depicted as (a) profiles (b) a scatterplot. In the scatterplot, the BBOA key ions are shown in red.

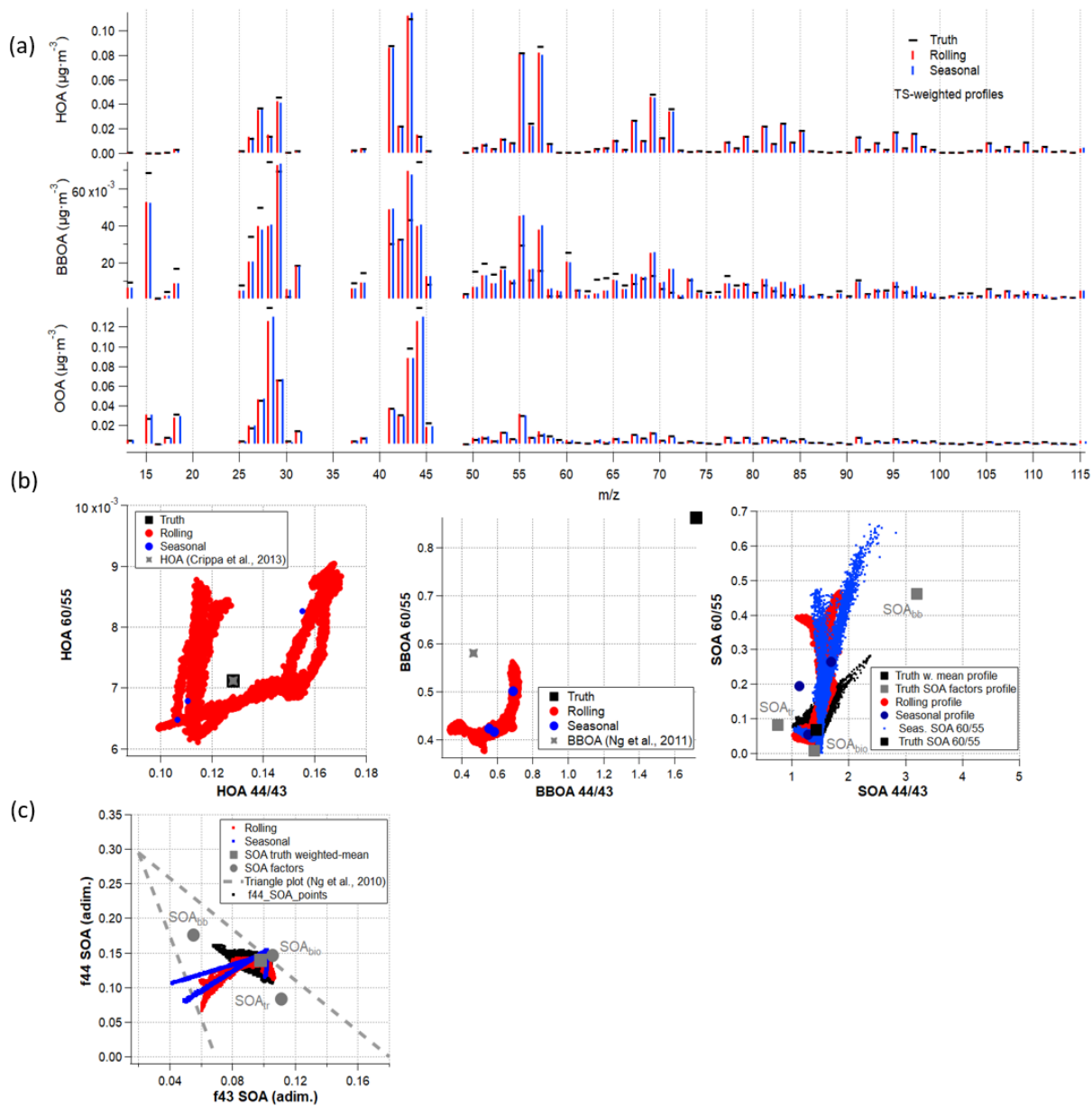


Figure R.2.4. Copy of Figure 3, improved as the reviewer suggested.