

# Early life stages of a Mediterranean coral are vulnerable to ocean warming and acidification

Chloe Carbonne<sup>1</sup>, Steeve Comeau<sup>1</sup>, Phoebe T.W. Chan<sup>1</sup>, Keyla Plichon<sup>1,2</sup>, Jean-Pierre Gattuso<sup>1,3</sup>, N ria Teixedo<sup>1,4</sup>

5 <sup>1</sup> Sorbonne Universit , CNRS, Laboratoire d'Oc anographie de Villefranche, 181 chemin du Lazaret, 06230 Villefranche-sur-mer, France

<sup>2</sup> MSc MARRES, Universit  C te d'Azur, Sophia Antipolis Campus, 06103 Nice, France

<sup>3</sup> Institute for Sustainable Development and International Relations, Sciences Po, 27 rue Saint Guillaume, F-75007 Paris, France

10 <sup>4</sup> Stazione Zoologica Anton Dohrn, Ischia Marine Centre, Department of Integrated Marine Ecology, Punta San Pietro, 80077, Ischia (Naples), Italy

Correspondence to: Chloe Carbonne (chloe.carbonne@imev-mer.fr)

**Abstract.** The ability of coral populations to recover from disturbance depends on larval dispersion and recruitment. While ocean warming and acidification effects on adult corals are well documented, information on early life stages is comparatively scarce. Here, we investigate whether ocean warming and acidification can affect the larval and recruit development of the Mediterranean azooxanthellate coral *Astroides calycularis*. Larvae and recruits were raised for 9 months at ambient (23 C) and warm (26 C) temperatures and ambient (8.0) and low pH (7.7, on the total scale). The timing of the larvae metamorphosis, growth of the recruit polyp by linear extension and budding, and skeletal characteristics of the 9-month-old polyps were monitored. Settlement and metamorphosis were more successful and hastened under a warm temperature. In contrast, low pH delayed the metamorphosis and affected growth of the recruits by reducing the calcified area of attachment to the substrate, as well as by diminishing the skeleton volume and the number of septa. However, skeleton density was higher under low pH and ambient temperature. The warm temperature and low pH treatment had a negative impact on the survival, settlement, and growth of recruits. This study provides evidence of the threat that represents ocean warming and acidification for the larval recruitment and the growth of recruits of *A. calycularis*.

## 25 1 Introduction

Anthropogenic atmospheric CO<sub>2</sub> emissions are driving major global threats for corals such as ocean warming and acidification (Kleypas et al., 2001). Under the high-CO<sub>2</sub> emission scenario SSP5 - RCP 8.5, sea surface temperature is expected to increase globally by +3.2 C and ocean pH to decrease by 0.3 units by the end of the century (Kwiatkowski et al., 2020). Ocean warming has well-documented negative impacts on tropical reefs where it can induce coral bleaching, which leads to a reduction in growth, reproduction, recruitment, and high mortality over large spatial scales (McClanahan et al., 2009; Sully et al., 2019). Ocean acidification, the change in carbonate chemistry resulting from the uptake of atmospheric CO<sub>2</sub> by the ocean (Gattuso and Hansson, 2011), is responsible for decreasing seawater pH and calcium carbonate saturation state (Orr et al., 2005). Calcifying species such as corals are perceived to be especially threatened by ocean acidification as many studies have shown a decline in adult tropical coral calcification and potential accretion with a pH reduction (Cornwall et al., 2021). Mediterranean anthozoans, including scleractinian corals (6 species) and gorgonians (7 species), have been suffering regular mass mortalities due to the increased intensity, duration and frequency of marine heatwaves (Garrabou et al., 2022). However, temperate corals seem to be more tolerant to ocean acidification than tropical corals as their calcification is rarely affected by low pH (Rodolfo-

Metalpa et al., 2011, Carbonne et al., 2021). The recovery of coral populations depends not only on adult resilience but also on successful sexual reproduction, larval development and recruitment (Bahr et al., 2020).

40 Sexual reproduction is essential for the dynamics of populations since it maintains genetic diversity and favors adaptation to  
changing environmental conditions (Bay and Palumbi, 2014). It also facilitates recovery by replenishing populations after  
disturbances and maintaining resilience of marine communities (Hughes et al., 2019). Effective sexual reproduction is a  
complex process defined by different life-history factors: (1) gamete production and fertilization leading to high pelagic larval  
45 dispersal, (2) habitat selection by recognition of suitable substrate and high recruitment by settlement, (3) and post-settlement  
growth and survival (Ritson-Williams et al., 2009, Albright et al., 2011). Although the production of larvae and early life  
stages are critical processes for rebuilding adult populations, corals in these early stages can be particularly sensitive to ongoing  
and projected environmental changes (Adjeroud et al., 2016). However, little is known on the response of coral larvae and  
recruits to ocean warming and acidification.

Ocean warming can be deleterious to coral larvae. For example, in early development, high temperatures can lead to embryonic  
50 abnormality (Woolsey et al., 2013). Furthermore, the survival of larvae and recruits is frequently reduced under ocean warming  
(Baria et al., 2015, Bahr et al., 2020). Elevated sea surface temperature is commonly related to higher metabolic rates, resulting  
in faster metamorphosis (Chua et al., 2013) and settlement (Nozawa and Harrison, 2007), increasing larval retention to the  
native population.

Unlike warming, the response of coral early life stages to ocean acidification is equivocal. In some cases, lower pH leads to  
55 decreasing larval metabolism, metamorphosis, and settlement (Albright 2011, Nakamura et al., 2011). However, Chua and  
colleagues (2013) have shown that embryonic development and metamorphosis of two coral species is differently affected by  
elevated pCO<sub>2</sub> (low pH). On the other hand, most of the literature reports little impact of acidification on the survival of larvae  
and recruits (Suwa et al., 2010; Chua et al., 2013). As for adult corals, low pH has a negative impact on post-settlement  
calcification (Suwa et al., 2010, Varnerin et al., 2020) and induces skeletal deformities in recruits (Foster et al., 2016).

60 Although studies of the effects of warming and acidification in isolation are few, even less have assessed the combined effects  
of both stressors in early-life stages. Regarding adult corals, the combined effects of both high temperature and low pH are  
generally dependent on their intensities. For example, a moderate warming can counteract the impact of acidification ending  
up with a neutral effect on calcification of adult corals (Kornder et al., 2018). Warming and acidification will have an additive  
effect (higher than the individual effects) on calcification rates under the RCP 4.5 and a synergistic effect (more than the sum  
65 of the individual effects) under RCP 8.5 for the end of the century (Cornwall et al., 2021). In the early life stages, warming  
and acidification induce divergent responses with decreased or enhanced calcification (Anlauf et al.2011, Foster et al., 2015).  
In contrast, studies have reported no effects of combined warming and acidification on larval survival, metamorphosis and  
settlement (Anlauf et al., 2011, Chua et al., 2013, Foster et al., 2015). However, most of the studies of the impact of both ocean  
warming and acidification on early life stages have focused on tropical zooxanthellate coral species (e.g., Albright et al., 2011,  
70 Baria et al., 2015), while studies on temperate corals are scarce (Caroselli et al., 2019, Varnerin et al., 2020).

Here, we assess the response of early life stages of the temperate azooxanthellate coral, *Astroides calycularis*, to the combined  
effects of elevated temperature and low pH. This colonial scleractinian coral is endemic to the Mediterranean Sea and found  
between 0 and 50 m depth, more commonly in shallow rocky habitats (Zibrowius, 1995). Colonies are gonochoric (Goffredo  
et al., 2011) and fertilization occurs from April to May, with sperm release coinciding with increasing photoperiod and water  
75 temperature (Goffredo et al., 2011). *A. calycularis* is an internal brooder as egg fertilization takes place in the coelenteron and  
female broods the embryos until they are fully developed into mature swimming larvae. Larvae are released at the beginning  
of summer when temperature increases (~23°C, Goffredo et al., 2011). Previous studies on *A. calycularis* adult colonies have

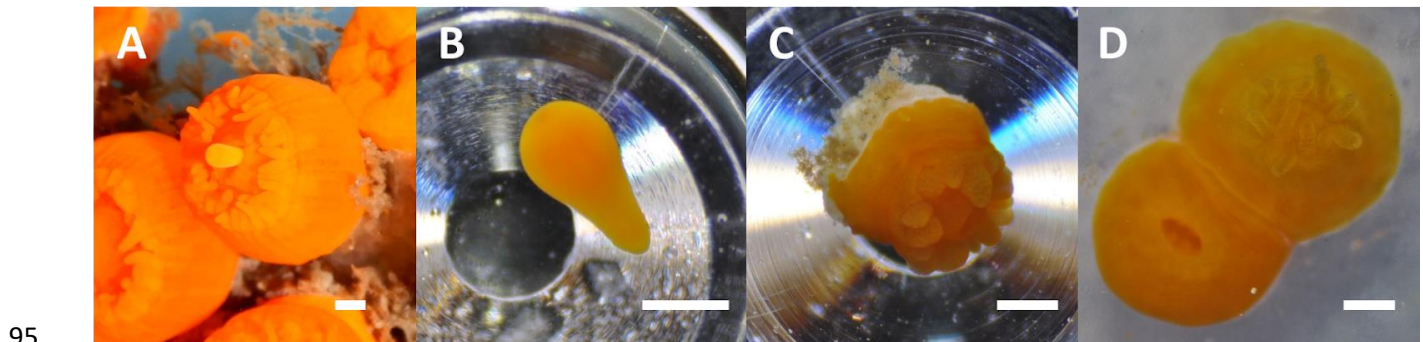
shown that this coral is tolerant to ocean warming and acidification (Movilla et al., 2016, Teixido et al., 2020; Carbonne et al., 2021).

80 In the present study, we hypothesize that elevated temperature and low pH have an additive or synergistic effect on the development of the larvae and growth by linear extension and polyp budding of recruits of *A. calycularis*. To test this hypothesis, larvae of *A. calycularis* were exposed in a fully factorial design to ambient and warm temperatures (23 and 26°C) and ambient and low pH (pH<sub>T</sub> 8.05 and 7.7). They were maintained in the laboratory for 9 months to study the impact of these conditions on the development of larval stages, growth of recruit polyps, and skeleton density of the 9-month-old polyps.

## 85 2 Materials and Methods

### 2.1 Sampling site and larval release

Fifty-six colonies of *Astroides calycularis* (~5 cm of diameter) were collected on the 1<sup>st</sup> of July 2020 by scuba diving in Ischia, Italy, at the site Sant'Angelo (40°41'31.1"N 13°53'35.0"E, Fig. S1). They were maintained in a 30-liter tank with water motion provided by a NEWA mini 606 pump and maintained in the dark. Larvae were observed by transparency in the gastrovascular cavity and tentacles of the female colonies (Fig. S2). Larvae were released from the mouth of female polyps when the body contracted or when the colonies were touched (Video S1 and Fig. 1A). The release took place on the night of 1<sup>st</sup>-2<sup>nd</sup> of July 2020; in situ seawater temperature was around 23°C. Released larvae were fully mature (Video S2). They were collected with a pipette, pooled, stored into two 300 mL airtight plastic boxes filled with seawater, and transported to the aquarium facilities of the Laboratory of Villefranche-sur-Mer, France, in less than 12h.



**Figure 1: Early life stages of *Astroides calycularis*** A) spawning of a larva from the mouth of a female polyp, B) a larva after 15 days, C) not-settled metamorphosed polyp after 1 week, and D) settled metamorphosed polyp with 2 polyps after 1 week. Scale: 1 mm. See also videos S1, S2, and S3

### 2.2 Experimental setup and treatments

100 After 72 h of acclimation to the laboratory at ambient pH (pH<sub>T</sub> = 8.05) and temperature (23°C), the 180 larvae were maintained in the laboratory under 2 constant pH and 2 constant temperature treatments for 9 months. pH treatments were “ambient pH” (pH<sub>T</sub> ~ 8.05), and a “low pH” (pH<sub>T</sub> ~ 7.70), corresponding to a decline of pH projected by the end of the century under the RCP 8.5 CO<sub>2</sub> emissions scenario (Kwiatkowski et al., 2020). The two temperature treatments were “ambient temperature” which was the in situ temperature at the time of sampling (23°C) and “warm temperature” ~26°C, which was shown to induce thermal stress of benthic species in the Mediterranean Sea (Gómez-Gras et al., 2019). The larvae were divided into 12 x 300 mL crystallizers (Duran®), as triplicates with 15 larvae for each of the four treatment conditions (2 pH x 2 temperatures). Each crystallizer was submerged in an independent 5 L experimental tank. While larvae were still swimming, water was changed

105

every day and crystallizers were covered with parafilm® to prevent changes in pH and the escape of larvae. When all larvae metamorphosed and settled, the crystallizers were covered with a 45 µm plankton net to allow water exchange with the experimental tank. The experimental tanks were gravity-fed (50 ml min<sup>-1</sup>) from six 25 L header tanks (3 at each pH treatment) continuously supplied by seawater pumped from Villefranche Bay at 5 m depth. pH was controlled using a pH controller (APEX, Neptune Systems) which regulated the delivery of pure CO<sub>2</sub>. Temperature was regulated in the experimental tanks by temperature controllers (APEX, Neptune Systems) and 300 W ThermoControl-e heater (Eheim), and both pH and temperature were measured every week (see below).

Light was provided by 24W Aquablue Special T5 (ATI). Irradiance was constant from 7 to 19h at 16 µmol photons m<sup>-2</sup> s<sup>-1</sup>. Submersible pumps (NEWA) provided water motion in each experimental tank. When recruits polyps had tentacles (approximately after a month, from the 5th of August 2020), they were fed twice a week with a 10 mL solution of freshly hatched brine shrimps (*Artemia* sp.). 24 h after feeding, the crystallizers were cleaned with a painting brush and the water changed to remove any detritus.

## 2.3 Carbonate chemistry

pH in the header and experimental tanks was measured weekly using a handheld pH-meter (826 pH mobile, Metrohm) calibrated with a seawater pH TRIS buffer (batch #T33 provided by A. Dickson, Scripps Institution of Oceanography, USA) before each set of measurements. Temperature was also measured weekly in each tank with a Traceable™ digital thermometer (FisherBrand). Salinity and total alkalinity ( $A_T$ ) data during the experiment were obtained from the weekly measurements performed in the Bay of Villefranche by the *Service d'Observation Rade de Villefranche, SO-Rade*, of the *Institut de la mer de Villefranche and the Service d'Observation en Milieu Littoral, SOMLIT/CNRS-INSU*. This was possible because we worked in an open system where seawater from the Bay of Villefranche was continuously delivered. To confirm that  $A_T$  was not altered by metabolic activity, it was measured in each experimental and header tank at the beginning and end of the experiment. It was determined by potentiometric titration using a Metrohm 888 Titrand following the method of Dickson et al. (2007). Titrations of certified reference material (Batch #186) provided by A. Dickson were used to assess the accuracy of the measurements and were within 6.5 µmol kg<sup>-1</sup> of the reference value. pH<sub>T</sub>, temperature,  $A_T$  and salinity were used to calculate the other carbonate chemistry parameters using the R package seacarb (Gattuso et al., 2021).

## 2.4 Early life-stages monitoring

The life stages of each 15 individuals (larvae) per crystallizer were recorded every 2 days when swimming larvae were present, and every week after settlement. The different stages were: “planula”, when the larvae were still swimming (Fig. 1.B, Video S3), “settled polyp” when larvae had metamorphosed and settled (Fig. 1.D), “non-settled polyp” when larvae had metamorphosed but not settled or detached from the substrate after settling (Fig. 1.C), and “dead”. Missing larvae were assumed dead as coral larvae lyse within 24 h after death (Baird et al., 2006).

Pictures of each larva from each crystallizer were taken every 2 to 3 days with a stereomicroscope (SteREO, Discovery V.12, Zeiss) coupled with a camera (D5100, Nikon) until no swimming planula was present. For each polyp attached to the glass of the crystallizer, a picture was taken every 2 weeks from below with a camera (Coolpix W300, Nikon) and a ruler used as scale (Fig. 3.A). All pictures were analyzed with ImageJ to measure the maximum length and maximum width of the larvae and the surface of the polyp base (Fig. 3.A). Polyp budding, the appearance of new polyps from one initial polyp was recorded and reported as the number of polyps in one colony (Fig. 3.C).

## 145 2.5 Skeleton analysis

After 9 months, the polyps were collected and placed in 5% sodium hypochlorite for 2 h and then rinsed with MilliQ water to remove organic tissue from the skeleton. The skeletons were dried at ambient temperature for two days. The perpendicular diameters (D and d) and the height (h) were measured using a digital caliper. The volume of the skeleton was calculated using the following equation:  $V = \pi * D * d * h$ . To count the number of septa, a picture of each skeleton was taken from the top  
150 with a stereomicroscope (SteREO, Discovery V.12, Zeiss) mounted with a camera (D5100, Nikon).

Six skeletons of each condition (total of 24) were scanned in a micro-CT scanner (GE Healthcare, eXplore Locus RS, see Micro-CT scanner setup in Supplementary materials, Fig. S3). Micro-CT imaging produced a 3D distribution of linear attenuation coefficients that was stored as an x-ray volume image for each coral specimen, defined by the coral polyp base along the X-Y in-plane axis, and the growth axis following the Z-axis (Fig. 5.A, Video S4). Sample visualization and analysis  
155 was performed using MicroView Standard 2.5.0–2702 (Parallax Innovations Inc., 2015) to reconstruct each specimen in 3D, and to digitize a region of interest (ROI delineating the region to be analyzed). Six coral specimens were imaged in every micro-CT scan, each representing one of the four laboratory treatments (temperature x pH). The ROI was plotted as a square based prism spanning the entire specimen to crop each coral sample out for individual analysis. A threshold greyscale value of 2500 HU was carefully selected to remove pore spaces from coral skeleton. This approach assured consistent sampling  
160 focused on skeletal aragonite only. Voxels with a greyscale values below the threshold of 2500 HU were deemed to be empty space and excluded from the skeletal density calculation. However, small pore spaces ( $< 20 \mu\text{m}$ ) were included in the skeletal density calculation since they were unresolvable at  $20 \mu\text{m}$  resolution. The skeletal density for each coral polyp ( $\text{mg}/\text{cm}^3$ ) was determined using the fractional mineral content of each voxel (3D pixel) above the greyscale threshold (to exclude pore spaces), averaged over all the voxels contained within each region of interest, and linearly rescaled to units of pure crystal aragonite  
165 (density =  $2.95 \text{ g}/\text{cm}^3$ ).

## 2.6 Data analysis

Linear mixed-models with a hierarchical structure were used to evaluate the treatment effects through time on the number of larvae in each life stage (planula, settled polyp, non-settled polyp, dead), and the length and width of larvae. Hierarchical linear models were used since data were compiled from repeated measures of the same pool of larvae over time. The models were  
170 fitted using the function lmer of the R package lme4 (Bates et al., 2015). The fixed factors of the models were temperature, pH and time, and crystallizers and time were assigned as random effects. The structure of the random term was selected by comparing models with different error structures using the Akaike information criterion (Table S1). For parameters that are not time-dependent, generalized linear mixed models (GLMM) were used with a Gaussian distribution to test for the effects of the treatments on the surface of the polyps' base, the skeletal density and volume, and a Poisson distribution for the number  
175 of polyps per colony and the number of septa. Temperature and pH were fixed factors and crystallizers of each condition a random factor.

## 3 Results

### 3.1 Experimental conditions

The ambient pH treatment was maintained at a mean  $\text{pH}_T$  of  $8.05 \pm 0.09$  (mean  $\pm$  SD,  $n=324$ ) and the low pH treatment at a  
180 mean  $\text{pH}_T$  of  $7.78 \pm 0.10$  (mean  $\pm$  SD,  $n=324$ , total number of weekly  $\text{pH}_T$  discrete measures in each ambient pH experimental tank, Fig. S4.B, Table 1). The *ambient temperature* treatment was maintained at  $23.5 \pm 1.6 \text{ }^\circ\text{C}$  (mean  $\pm$  SD,  $n=342$ ) and the

warm temperature treatment at  $26.6 \pm 0.8$  °C (mean  $\pm$  SD, n=342, Fig. S4.A, Table 1). Salinity and total alkalinity did not vary much during the duration of the experiment with a salinity of  $37.84 \pm 0.17$  (mean  $\pm$  SD, n=71, Table 1) and a total alkalinity of  $2548 \pm 13$   $\mu\text{mol kg}^{-1}$  (mean  $\pm$  SD, n=71, Table 1).

185 Table 1 Measured and estimated seawater physiochemical parameters of the two pH treatments in the experimental tanks for salinity (S), temperature (T), total alkalinity ( $A_T$ ), dissolved inorganic carbon ( $C_T$ ),  $\text{pH}_T$ ,  $\text{pCO}_2$ , calcite ( $\Omega_c$ ) and aragonite ( $\Omega_a$ ) saturation. Values are means  $\pm$  SD with 25th and 75th percentiles. Calculated concentrations of  $C_T$ ,  $\text{pCO}_2$ ,  $\Omega_c$  and  $\Omega_a$  are shown. 1: Parameters measured from discrete water samples. pH and temperature conditions are the experimental pH and temperature treatments.

pH condition	Temperature condition	$\text{pH}_T$	T (°C)	$A_T$ ( $\mu\text{mol kg}^{-1}$ )	$C_T$ ( $\mu\text{mol kg}^{-1}$ )	Salinity	$\text{pCO}_2$ ( $\mu\text{atm}$ )	$\Omega_c$	$\Omega_a$
low	warm	$7.77 \pm 0.11$ n=102	$26.32 \pm 0.87$ n=111	$2548^1 \pm 13$ n=71	$2350 \pm 62$ n=102	$37.84^1 \pm$ 0.17 n=71	$964.42 \pm 295.57$ n=102	$3.69 \pm 0.83$ n=102	$2.45 \pm 0.56$ n=102
ambient	ambient	$8.07 \pm 0.05$ n=102	$23.23 \pm 1.65$ n=111	$2548^1 \pm 13$ n=71	$2202 \pm 42$ n=102	$37.84^1 \pm$ 0.17 n=71	$404.43 \pm 59.18$ n=102	$5.83 \pm 0.60$ n=102	$3.84 \pm 0.41$ n=102
low	ambient	$7.76 \pm 0.10$ n=102	$23.13 \pm 1.70$ n=111	$2548^1 \pm 13$ n=71	$2375 \pm 57$ n=102	$37.84^1 \pm$ 0.17 n=71	$962.62 \pm 269.51$ n=102	$3.30 \pm 0.73$ n=102	$2.17 \pm 0.49$ n=102
ambient	warm	$8.04 \pm 0.07$ n=102	$26.51 \pm 0.76$ n=111	$2548^1 \pm 13$ n=71	$2188 \pm 54$ n=102	$37.84^1 \pm$ 0.17 n=71	$442.88 \pm 100.72$ n=102	$6.10 \pm 0.78$ n=102	$4.05 \pm 0.52$ n=102

### 190 3.2 Development of early life stages

Larvae started metamorphosing into settled and non-settled polyps after 5 days under warm temperature - ambient pH and the last larva settled after 41 days under ambient temperature - low pH condition. The proportion of larvae was significantly affected by the interaction of pH, temperature and time (Fig. 2.A,  $F_{1,145}=4.437$ ,  $p=0.035$ , Table S2), as larvae under warm temperature conditions metamorphosed faster: 50% in 15 days, while ambient temperature - ambient pH and ambient temperature - low pH conditions reached 50% of metamorphosis after 19 and 25 days, respectively (Fig. 2.A). Settlement of larvae differed between conditions, only 25% of settlement occurred in the warm temperature - low pH condition and more than 40% in the two ambient pH treatment conditions (Fig. 2.C) due to a significant interaction among the three factors pH, temperature and time ( $F_{1,397}=29.155$ ,  $p<0.001$ , Table S2, Fig. 2.C). There was a significant effect of pH, temperature and time on the proportion of metamorphosed but non-settled larvae ( $F_{1,397}=36.369$ ,  $p<0.001$ , Table S2). The two low pH treatment conditions presented an opposite outcome. The warm temperature - low pH treatment had 36% of non-settled polyps at the beginning of the experiment and almost 0% after 3 months (Fig. 2.D). On the other hand, the ambient temperature - low pH condition presented a progressive detachment of polyps as the proportion of non-settled polyps increased from 9% after a month until reaching 25% after 6 months (Fig. 2.D). Mortality of larvae and polyps increased for every condition during the first two months of the experiment, and then reached a plateau around 50% (Fig. 2.B). The warm temperature - low pH condition presented higher mortality compared to the other conditions, reaching up to 71% with a significant effect of the combined pH, temperature and time ( $F_{1,397}=110.9$ ,  $p<0.001$ , Table S2, Fig. 2.B). The treatments did not affect larval size (Fig. S7).

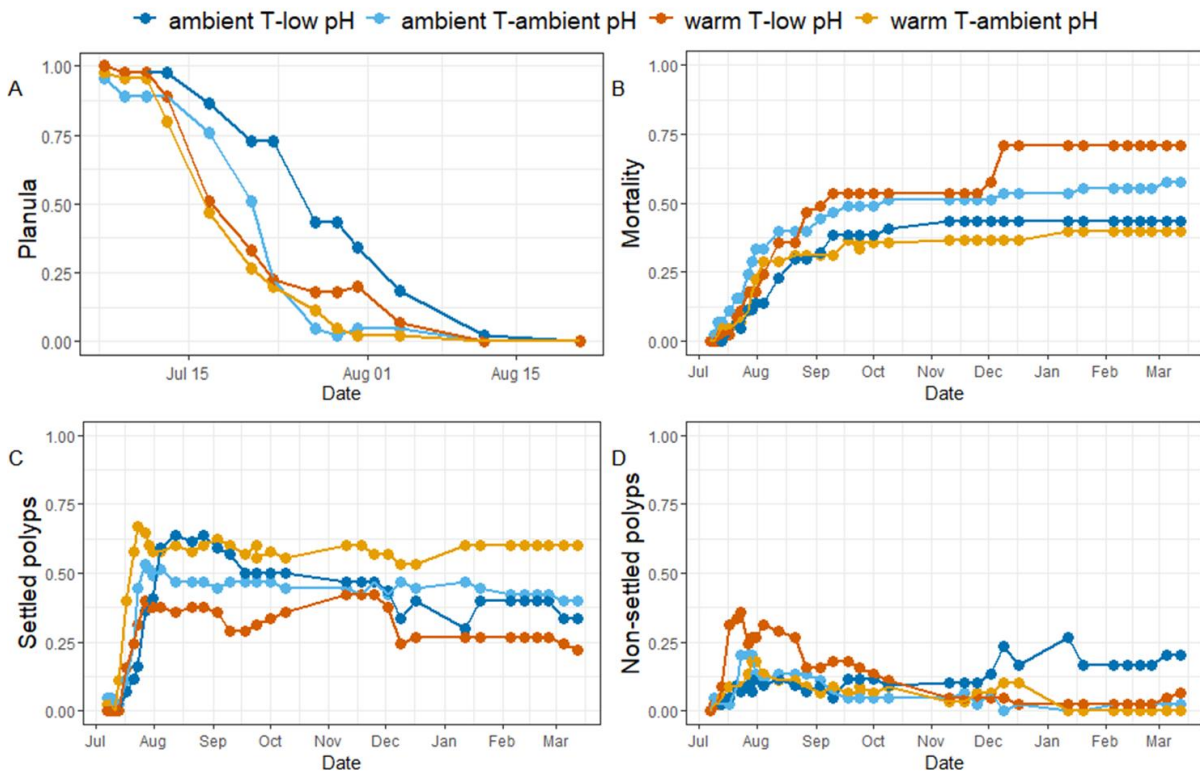
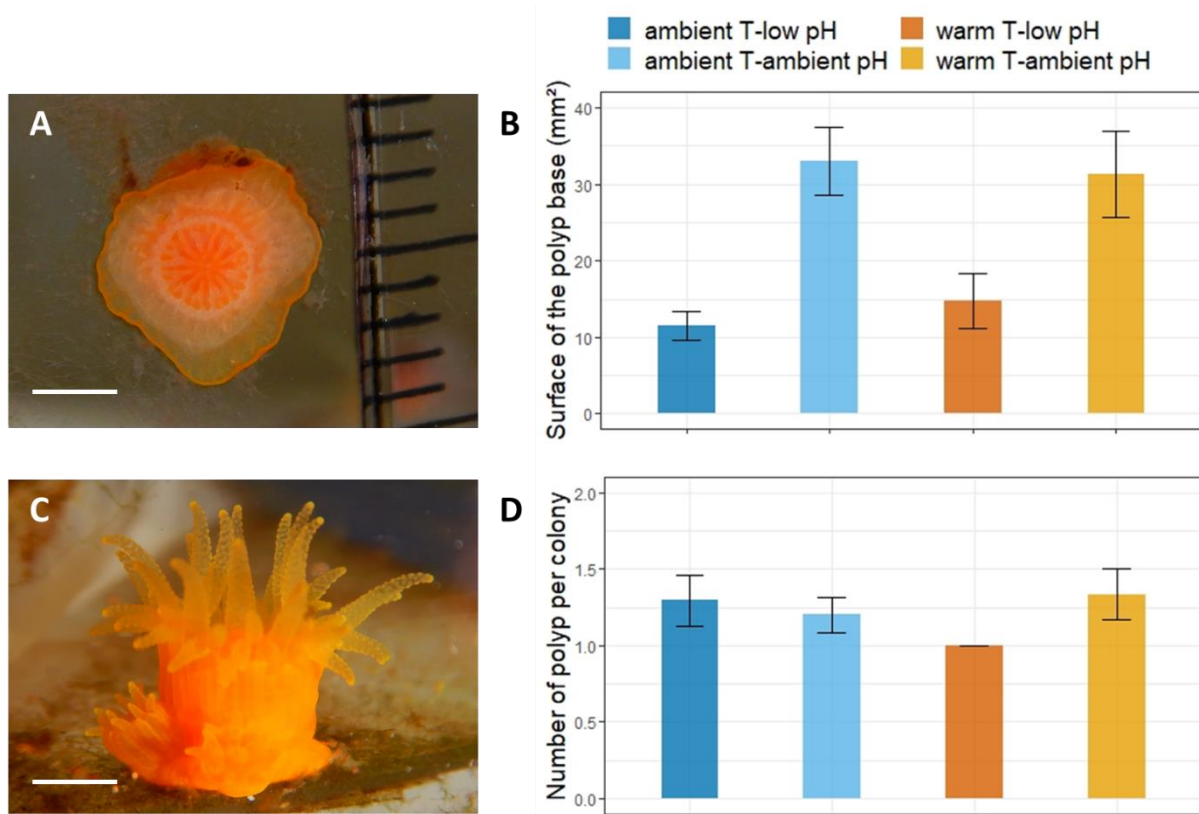


Figure 2 Proportions of four different stages of *A. calycularis* under the two temperature treatments (23°C for ambient Temperature and 26°C for warm Temperature) and the two pH treatments ( $pH_T = 8.05 \pm 0.09$  for ambient pH and  $pH_T = 7.78 \pm 0.10$  for low pH) during 9 months. Panel A) The proportion of planulas (swimming larvae), B) the proportion of mortality (dead larvae and polyps), C) the proportion of settled polyp (metamorphosed and fixed), and D) the proportion of non-settled polyp (metamorphosed but not fixed). The proportion of non-settled polyp includes when larvae metamorphosed into a free polyp and detachment of a settled polyp.  $n = 180$  original larvae, 3 replicates per temperature and pH treatments.

### 215 3.3 Growth of the recruits by linear extension

The surface of the polyp bases was significantly affected by pH ( $F_{1,35} = 23.6$ , Table S3). The base surface in the *ambient pH* treatment were significantly larger than under *low pH*, respectively reaching  $32.7 \pm 3.6 \text{ mm}^2$  (mean  $\pm$  SE,  $n=18$ ) and  $13 \pm 2 \text{ mm}^2$  ( $n=21$ ) after 9 months of experiment (Fig. 3.B, Fig. S5).



220 Figure 3. Mean surface of the recruits' base and mean number of polyps per colony of *A. calycularis* under the two temperature treatments (23°C for ambient Temperature and 26°C for warm Temperature) and the two pH treatments ( $pH_T = 8.05 \pm 0.09$  for ambient pH and  $pH_T = 7.78 \pm 0.10$  for low pH) after 9 months. Values are means  $\pm$  SE. A) Picture of the base of a recruit through the glass of the crystallizer, B) Mean surface of the recruits' base at 9-month old, C) Picture of a recruit with two new polyps on the outskirts, D) Mean number of polyps per colony. The color of the bars indicates the temperature and pH treatment. n= 9-20 per condition. Scale : 2 mm.

### 225 3.4 Development of new polyps by budding

New polyps started to bud on the periphery of the recruits at the end of December 2020 (Fig. S6). The number of polyps per colony after 9 months of experiment was not significantly different across treatments ( $F_{1,55} = 2.3, p = 0.135$ , Table S3). However, in contrast to all other treatments, recruits in the *warm temperature – low pH* treatment did not develop new polyp during the 9-month of experiment (Fig. 3.D). The recruits in the *warm temperature – ambient pH* treatment exhibited new polyps first as well as the highest number of polyps per colony at the end of the experiment with a mean of 1.33 polyps per recruit.

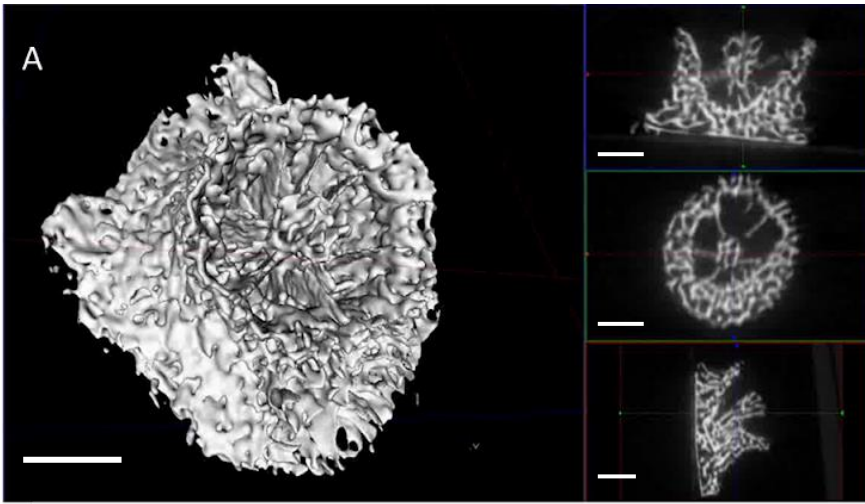
230

### 3.5 Skeleton analysis

The size of the skeleton was significantly impacted by the pH treatment ( $F_{1,46} = 4.05, p = 0.044$ , Table S3), with a mean volume of 0.12 cm<sup>3</sup> in the *ambient pH* treatment and 0.1 cm<sup>3</sup> under *low pH* treatment (Fig. 5.B). The number of septa per skeleton was significantly lower under low pH ( $F_{1,48} = 10.5, p = 0.002$ , Table S3). The skeleton had less developed septa (mean  $\pm$  SE, n=29) under low pH treatment  $8.2 \pm 0.6$  septa than under ambient pH ( $10.2 \pm 0.6$  septa, n=23, Fig. 5.C).

235





■ ambient T-low pH      ■ warm T-low pH  
■ ambient T-ambient pH      ■ warm T-ambient pH

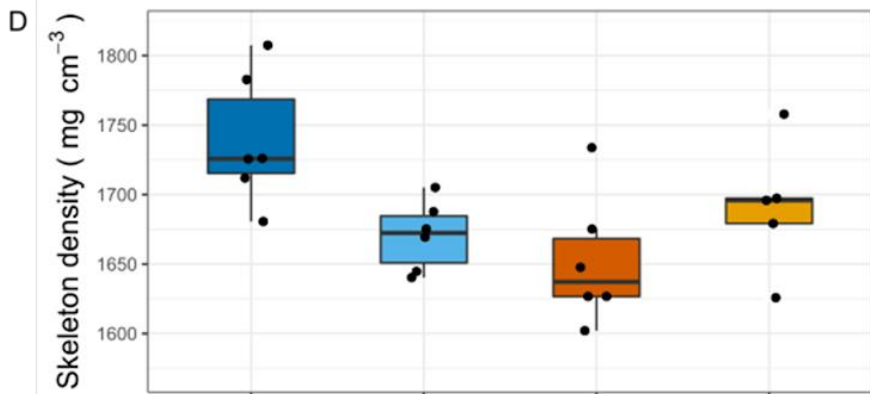
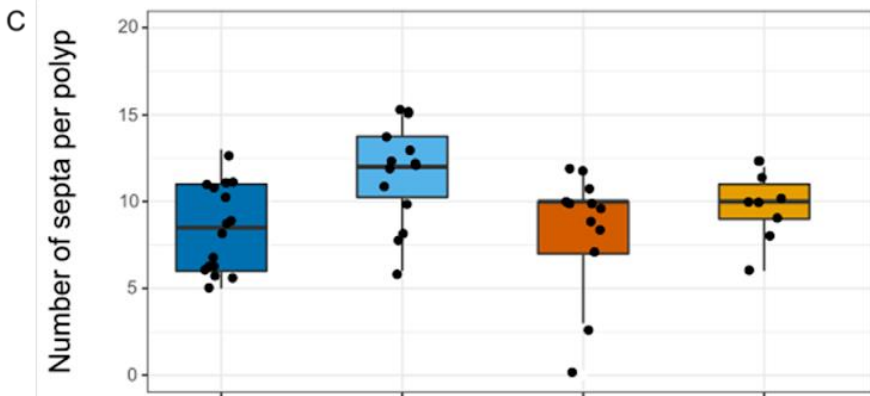
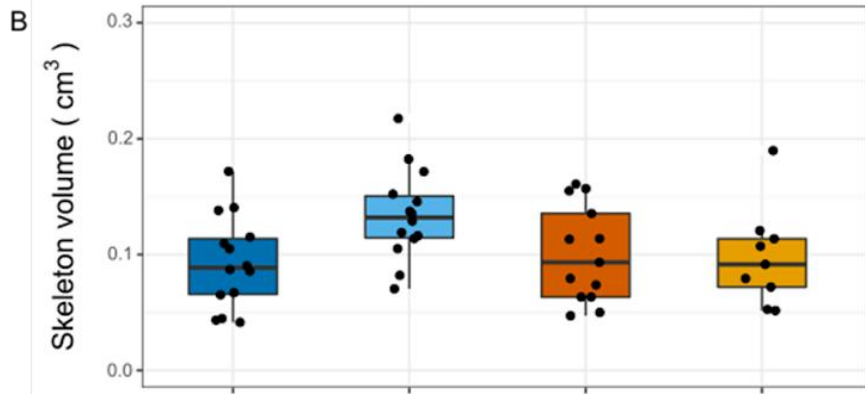


Figure 4. **9 month-recruit skeletons of *A. calycularis* under the two temperature treatments (23°C for ambient Temperature and 26°C for warm Temperature) and the two pH treatments (pH<sub>T</sub> = 8.05 ± 0.09 for ambient pH and pH<sub>T</sub> = 7.78 ± 0.10 for low pH).** A) 3D picture of a recruit skeleton by micro CT scanning, scale: 1 mm See also video S4, B) Volume of the recruit. n=9-16 per temperature and pH treatment. C) Number of septa per skeleton. n=9-16 per temperature and pH treatment. D) Skeleton density. Values have been obtained by micro CT scanning. n=6 per temperature and pH treatment. Dots represent the number of septa per recruit coral skeleton and the density of the recruit's coral skeleton and boxes represent median and 25 and 75% quartiles. The color of the boxes indicates the temperature and pH treatment.

The combined effect of pH and temperature had a significant impact on skeletal density ( $F_{1,19}=7.6$ ,  $p=0.012$ , Table S3). The skeleton of polyps exposed to *ambient temperature – low pH* condition presented a higher density with  $1739 \pm 19 \text{ mg cm}^{-3}$  (mean  $\pm$  SE, n=6) than in the other conditions in which it was lower than  $1690 \text{ mg cm}^{-3}$  (n=6, Fig. 5.A and 5.D)

#### 4 Discussion

This experiment shows that settlement and metamorphosis of the larvae are faster under warm temperatures. In contrast, low pH delayed the metamorphosis and affected the skeletal properties of the recruits. The surface of the base of the skeleton and the number of septa per polyp were lower under low pH conditions, whereas the skeleton density was higher. Both drivers combined had a negative synergistic impact on survival and settlement, and an additive impact on growth by linear extension and polyp budding. Therefore, our results suggest that both warming and acidification, individually or combined, affect the early life stages of *Astroides calycularis*.

Larvae were released by the female colonies at the beginning of summer (end of June), when the sea surface temperatures reached 23°C. Metamorphosis and settlement were accelerated in the warm treatment. Similar results were observed in the majority of similar studies in which tropical coral larval development was noticeably increased at warmer temperatures (Edmunds et al., 2001, Nozawa and Harrison, 2007, Chua et al., 2013). In contrast, few studies reported a decline in settlement and development of tropical coral larvae under warming (e.g. Randall and Szmant, 2009), possibly due to the high temperature (31°C and 33°C) that reduced larval mobility and increased mortality. Higher temperatures accelerate biochemical processes by increasing the activity of enzymes until a threshold is reached (Clarke and Fraser, 2004). As a result, metabolic rates increase, shortening the duration of the larval phase and reducing the distance of dispersal by causing metamorphosis and settlement before larvae are exported from their population of origin (O'Connor et al., 2007, Figueiredo et al., 2014). Local retention of the larvae has a direct impact on connectivity and genetic diversity, which potentially reduces the resilience to disturbances and future global change (Bay and Palumbi, 2014). Warmer temperatures are also commonly associated with an increased mortality of early life stages (Baria et al., 2015). Here, the mortality of larvae and recruits was not affected by temperature. This might be because *A. calycularis* is a known thermophilic species, with a South-Western distribution in the Mediterranean Sea. The warm temperature used for the experiment, 26°C, is the mean temperature during the summer months in Ischia (July and August, Teixido et al., 2020). The colonies of *A. calycularis* have been suffering mass mortalities in Ischia and North of Sicily in summer when temperatures reach 28°C (Gambi et al., 2018, Bisanti et al., 2022).

The surface area of the base of the skeleton was highly impacted by acidification, decreasing by 60% under *low pH* compared to the *ambient pH* treatment. The skeletal volume was also reduced by 19% under acidified conditions. Albright and Langdon (2011) also observed a decrease of post-settlement linear growth of 50% in recruits of *Porites astreoides* with a similar pH<sub>T</sub> treatment of 7.7. This difference in growth might be due to a decrease in metabolism under low pH (Albright and Langdon 2011). The formation of the skeleton was also impacted by acidification as the number of septa was less abundant and not presenting a radial symmetry under low pH. This is in agreement with other studies which have reported porous corallite walls, thinner basal plate, and asymmetric skeleton under similar low pH conditions (Foster et al., 2016). This impact on the linear

extension and skeleton structure can likely explain the increased detachment of polyps five months after the beginning of the experiment. A large number of recruits under low pH had the skeleton base exposed, retracting their tissue towards the upper section of the corallite (Fig. S8). While 17 out of 36 polyps exposed to *low pH* had an exposed skeleton at the base, none of the 33 polyps under *ambient pH* exhibited tissue retraction. The polyps were thus unable to extend their skeleton on the substrate, and the exposed skeleton was likely experiencing dissolution, as described before with *Cladocora caespitosa* by Rodolfo-Metalpa et al. (2011). This phenomenon of being more predisposed to dissolution may be compared to the loss of coenosarc (the living tissue connecting the polyps) in adult colonies of *A. calycularis* that naturally occur in a CO<sub>2</sub> vent site in Ischia, where seawater is naturally acidified. (Teixido et al., 2020). As a response to low pH, colonies in the CO<sub>2</sub> vent showed a reduction of coenosarc compared to ambient pH sites. Interestingly, while the linear extension and structure of the skeleton were affected by low pH, the density of the skeleton was higher. These results are in accordance with the higher density observed on adult colonies living in the CO<sub>2</sub> vent site in Ischia (Teixido et al., 2020). It suggests that *A. calycularis* responds to low pH by increasing the density of their skeleton, perhaps for greater resistance to mechanical stress, at the expense of other physiological parameters such as growth and skeleton structure. These results suggest that acidification mainly had repercussions on calcification of the recruits, whereas larval development and survival were not impacted, as observed by Foster et al. (2015).

The proportion of settlement of *A. calycularis* larvae was significantly lower in the warm temperature and low pH treatment. In contrast, other studies reported no effect of such treatment (e.g. Anlauf et al., 2011, Foster et al., 2015). This difference can be explained by the higher magnitude of the warming and acidification treatments used in the present study compared with other studies (+ 3 vs + 1-2°C and -0.3 vs -0.2 pH unit) (Anlauf et al., 2011, Chua et al., 2013, Bahr et al., 2020). Furthermore, all previous studies focused on tropical zooxanthellate corals which obtain additional energy by photosynthetic products translocated from their symbionts (Davy et al. 2012) and are not subject to high seasonal variability of temperature as Mediterranean species (around 14°C in winter to 26°C in summer in Ischia). The low settlement rate of *A. calycularis* under the warm and acidified treatment is related to the high number of larvae experiencing metamorphosis with no settlement during the first days of the experiment. In the first 15 days, 36% of the larvae metamorphosed without settling. After metamorphosing, the individuals floated for a week before sinking, then calcification started and the tentacles appeared. Some of them eventually attached to the bottom after three months. This phenomenon could also explain the high mortality rate observed in the *warm temperature – low pH* condition as non-settled polyps could not feed properly. Recruits were therefore less abundant, and their size was smaller than in any other condition. Warming and acidification presented an additive effect on the surface base of the recruits as the combined effects of warm and acidified waters lead to a 63% reduction in linear growth, while the low pH treatment caused a 55% decrease and the warm treatment a 6% decrease, compared to the control condition. Anlauf et al., (2011) found a synergistic effect of warming and acidification on the calcification of *Porites panamensis* recruits. The calcification of the recruits was 30% smaller in a combined warm and low pH treatment, while only a 3% decrease was observed under acidification alone and 0% under warming. For *Acropora spicifera* recruits, warming mitigated the impact of acidification as calcification was lower (-60%) under sole acidification than under both warming and acidification (-48%, Foster et al., 2015). The impact of stressors on calcification is considered species-specific (Comeau et al., 2013). However, methodological differences could also explain the range of responses observed. The duration of our experiment (9 months) was longer than previous ones (6 weeks, Anlauf et al., 2011 and 5 weeks, Foster et al., 2015). For example, in our study, the different responses to the treatments on *A. calycularis* recruits' surface base were only observed 2 months post settlement. Finally, under *warm temperature – low pH* condition, 63% of the recruits presented an exposed skeleton at the base, more than under *ambient temperature - low pH* condition. However, new polyps of *A. calycularis* bud from the tissue at the base of the recruit periphery. This particular characteristic explains why the recruits under the double stress condition were the only one not presenting new polyps. Thus, warm temperature and low pH together harmed the development of recruits into colonies.

Our findings highlight that warm temperatures and acidification have distinct impacts on the early life stages of *Astroides calycularis*. Temperature acts on larval development while pH acts on the linear growth and calcification of the recruits as observed in previous studies on tropical species (e.g. Albright and Langdon 2011, Chua et al., 2013). The combined effect of warming and acidification early life stages will negatively impact the resilience and resistance of the Mediterranean populations by decreasing dispersion, recruitment and post-settlement growth. In order to better predict the future of *A. calycularis* populations at the end of the century under global change, further research needs to be done to evaluate if acclimatization or adaptation to warming or acidification can occur in early life stages.

### Author contributions

C.C., S.C., N.T., and J.-P.G designed the study. C.C. and N.T. were involved with fieldwork. C.C., P.C. and K.P. performed the experiments. C.C., N.T. and K.P. analyzed the data. C.C. wrote the first draft of the manuscript which was then finalized by all co-authors.

### Competing interests

The authors declare that they have no conflict of interest.

### Acknowledgements

This research was supported by the French Government through the National Research Agency - Investments for the Future (“4Oceans-Make Our Planet Great Again” grant, ANR-17-MOPGA-0001) and internal funds from the Stazione Zoologica Anton Dohrn (FOE-Teixido). Thanks are due to the *Service d’Observation Rade de Villefranche* (SO-Rade) of the *Institut de la mer de Villefranche* and the *Service d’Observation en Milieu Littoral* (SOMLIT/CNRS-INSU) for their kind permission to use the Point B data. We kindly thank Christopher J.D. Norley and David W. Holdsworth from Robarts Research Institute of the University of Western Ontario (Canada) for the use and expertise of their micro-CT scanner. Thanks are also due to the Western University Earth Sciences Department's Dana Minerals Collection for the aragonite crystal used as standard for the micro-CT scanning. We thank Samir Alliouane for assistance in the laboratory, Laura Tamburello for the advices with statistical analysis, and Pietro Sorvino (ANS Diving, Ischia) and Alice Mirasole for assistance in the field.

### References

- Adjeroud, M., Kayal, M., and Penin, L.: Importance of recruitment processes in the dynamics and resilience of coral reef assemblages, in: *Marine Animal Forests*, Springer International Publishing, Cham, 1–21, [https://doi.org/10.1007/978-3-319-17001-5\\_12-1](https://doi.org/10.1007/978-3-319-17001-5_12-1), 2016.
- Albright, R.: Reviewing the effects of ocean acidification on sexual reproduction and early life history stages of reef-building corals, *J. Mar. Biol.*, 2011, 1–14, <https://doi.org/10.1155/2011/473615>, 2011.
- Albright, R. and Langdon, C.: Ocean acidification impacts multiple early life history processes of the Caribbean coral *Porites astreoides*, *Glob. Chang. Biol.*, 17, 2478–2487, <https://doi.org/10.1111/j.1365-2486.2011.02404.x>, 2011.
- Anlauf, H., D’Croz, L., and O’Dea, A.: A corrosive concoction: The combined effects of ocean warming and acidification on the early growth of a stony coral are multiplicative, *J. Exp. Mar. Bio. Ecol.*, 397, 13–20, <https://doi.org/10.1016/j.jembe.2010.11.009>, 2011.

- Bahr, K. D., Tran, T., Jury, C. P., and Toonen, R. J.: Abundance, size, and survival of recruits of the reef coral *Pocillopora acuta* under ocean warming and acidification, *PLoS One*, 15, 1–13, <https://doi.org/10.1371/journal.pone.0228168>, 2020.
- 355 Baird, A. H., Gilmour, J. P., Kamiki, T. M., Nonaka, M., Pratchett, M. S., Yamamoto, H. H., and Yamasaki, H.: Temperature tolerance of symbiotic and non-symbiotic coral larvae, in: *Proceeding of 10th International coral reef symposium*, 38–42, 2006.
- Baria, M. V. B., Kurihara, H., and Harii, S.: Tolerance to elevated temperature and ocean acidification of the larvae of the solitary corals *Fungia fungites* (Linnaeus, 1758) and *Lithophyllon repanda* (Dana, 1846), *Zoolog. Sci.*, 32, 447, <https://doi.org/10.2108/zs150036>, 2015.
- 360 Bates, D., Mächler, M., Bolker, B., and Walker, S.: Fitting Linear Mixed-Effects Models Using lme4, *J. Stat. Softw.*, 67, <https://doi.org/10.18637/jss.v067.i01>, 2015.
- Bay, R. A. and Palumbi, S. R.: Multilocus adaptation associated with heat resistance in reef-building corals, *Curr. Biol.*, 24, 2952–2956, <https://doi.org/10.1016/j.cub.2014.10.044>, 2014.
- 365 Bisanti, L., Sabata, E., Visconti, G., and Chemello, R.: Towards a local mass mortality of the Mediterranean orange coral *Astroides calycularis* (Pallas, 1766) in the Pelagie Islands Marine Protected Area (Italy), *Aquat. Conserv. Mar. Freshw. Ecosyst.*, 32, 551–557, <https://doi.org/10.1002/aqc.3772>, 2022.
- Carbonne, C., Teixidó, N., Moore, B., Mirasole, A., Guttierrez, T., Gattuso, J., and Comeau, S.: Two temperate corals are tolerant to low pH regardless of previous exposure to natural CO<sub>2</sub> vents, *Limnol. Oceanogr.*, 1–16, <https://doi.org/10.1002/lno.11942>, 2021.
- 370 Caroselli, E., Gizzi, F., Prada, F., Marchini, C., Airi, V., Kaandorp, J., Falini, G., Dubinsky, Z., and Goffredo, S.: Low and variable pH decreases recruitment efficiency in populations of a temperate coral naturally present at a CO<sub>2</sub> vent, *Limnol. Oceanogr.*, 64, 1059–1069, <https://doi.org/10.1002/lno.11097>, 2019.
- Chua, C. M., Leggat, W., Moya, A., and Baird, A.: Temperature affects the early life history stages of corals more than near future ocean acidification, *Mar. Ecol. Prog. Ser.*, 475, 85–92, <https://doi.org/10.3354/meps10077>, 2013.
- 375 Clarke, A. and Fraser, K. P. P.: Why does metabolism scale with temperature ?, *Funct. Ecol.*, 18, 243–251, 2004.
- Comeau, S., Edmunds, P. J., Spindel, N. B., and Carpenter, R. C.: The responses of eight coral reef calcifiers to increasing partial pressure of CO<sub>2</sub> do not exhibit a tipping point, *Limnol. Oceanogr.*, 58, 388–398, <https://doi.org/10.4319/lo.2013.58.1.0388>, 2013.
- 380 Cornwall, C. E., Comeau, S., Kornder, N. A., Perry, C. T., van Hooidonk, R., DeCarlo, T. M., Pratchett, M. S., Anderson, K. D., Browne, N., Carpenter, R., Diaz-Pulido, G., D’Olivo, J. P., Doo, S. S., Figueiredo, J., Fortunato, S. A. V., Kennedy, E., Lantz, C. A., McCulloch, M. T., González-Rivero, M., Schoepf, V., Smithers, S. G., and Lowe, R. J.: Global declines in coral reef calcium carbonate production under ocean acidification and warming, *Proc. Natl. Acad. Sci.*, 118, e2015265118, <https://doi.org/10.1073/pnas.2015265118>, 2021.
- 385 Dickson, A. G., Sabine, C. L., and Christian, J. R.: SOP 3a Determination of total alkalinity in sea water using an open-cell titration, in: *Guide to best practices for ocean CO<sub>2</sub> measurements*, vol. 3, North Pacific Marine Science Organization, 191, 2007.

- Edmunds, P. J., Gates, R. D., and Gleason, D. F.: The biology of larvae from the reef coral *Porites astreoides*, and their response to temperature disturbances, *Mar. Biol.*, 139, 981–989, <https://doi.org/10.1007/s002270100634>, 2001.
- 390 Figueiredo, J., Baird, A. H., Harii, S., and Connolly, S. R.: Increased local retention of reef coral larvae as a result of ocean warming, *Nat. Clim. Chang.*, 4, 498–502, <https://doi.org/10.1038/nclimate2210>, 2014.
- Foster, T., Gilmour, J. P., Chua, C. M., Falter, J. L., and McCulloch, M. T.: Effect of ocean warming and acidification on the early life stages of subtropical *Acropora spicifera*, 34, 1217–1226, <https://doi.org/10.1007/s00338-015-1342-7>, 2015.
- 395 Foster, T., Falter, J. L., McCulloch, M. T., and Clode, P. L.: Ocean acidification causes structural deformities in juvenile coral skeletons, *Sci. Adv.*, 2, <https://doi.org/10.1126/sciadv.1501130>, 2016.
- Gambi, M. C., Sorvino, P., Tiberti, L., and Teixidó, N.: Mortality Events of Benthic Organisms Along the Coast of Ischia in Summer 2017, *Biol. Mar. Mediterr.*, 25, 212–213, 2018.
- Garrabou, J., Gómez-Gras, D., Medrano, A., Cerrano, C., Ponti, M., Schlegel, R., Bensoussan, N., Turicchia, E., Sini, M., Gerovasileiou, V., Teixido, N., Mirasole, A., Tamburello, L., Cebrian, E., Rilov, G., Ledoux, J.-B., Ben Souissi, J., 400 Khamassi, F., Ghanem, R., Benabdi, M., Grimes, S., Ocaña, O., Bazairi, H., Hereu, B., Linares, C., Kersting, D. K., la Rovira, G., Ortega, J., Casals, D., Margarit, N., Pagès-Escolà, M., Capdevila, P., Verdura, J., Ramos, A., Izquierdo, A., Barbera, C., Rubio-Portillo, E., Anton, I., López-Sendino, P., Díaz, D., Vázquez-Luis, M., Duarte, C., Marbà, N., Aspillaga, E., Espinosa, F., Grech, D., Guala, I., Azzurro, E., Farina, S., Gambi, M. C., Chimienti, G., Montefalcone, M., Azzola, A., Pulido Mantas, T., Frascetti, S., Ceccherelli, G., Kipson, S., Bakran-Petricioli, T., Petricioli, D., Jimenez, C., Katsanevakis, 405 S., Tuney Kizilkaya, I., Kizilkaya, Z., Sartoretto, S., Elodie, R., Ruitton, S., Comeau, S., Gattuso, J.-P., and Harmelin, J.-G.: Marine heatwaves drive recurrent mass mortalities in the Mediterranean Sea, *Glob. Chang. Biol.*, 1–18, <https://doi.org/10.1111/gcb.16301>, 2022.
- Gattuso, J.-P. and Hansson, L.: Ocean acidification: background and history, in: *Ocean Acidification*, edited by: Gattuso, J. and Hansson, L., Oxford University Press Oxford, 1–20, 2011.
- 410 Gattuso, J.-P., Epitalon, J.-M., Lavigne, H., and Orr, J.: seacarb: Seawater carbonate chemistry. R package version 3.3.0, <https://cran.r-project.org/package=%0Aseacarb>, 2021.
- Goffredo, S., Gasparini, G., Marconi, G., Putignano, M. T., Pazzini, C., Airi, V., and Zaccanti, F.: Sexual reproduction in the Mediterranean endemic orange coral *Astroides calycularis* (Scleractinia: Dendrophylliidae), *Bull. Mar. Sci.*, 87, 589–604, <https://doi.org/10.5343/bms.2010.1068>, 2011.
- 415 Gómez-Gras, D., Linares, C., de Caralt, S., Cebrian, E., Frleta-Valiá, M., Montero-Serra, I., Pagès-Escolà, M., López-Sendino, P., and Garrabou, J.: Response diversity in Mediterranean coralligenous assemblages facing climate change: Insights from a multispecific thermotolerance experiment, *Ecol. Evol.*, 9, 4168–4180, <https://doi.org/10.1002/ece3.5045>, 2019.
- Hughes, T. P., Kerry, J. T., Baird, A. H., Connolly, S. R., Chase, T. J., Dietzel, A., Hill, T., Hoey, A. S., Hoogenboom, M. 420 O., Jacobson, M., Kerswell, A., Madin, J. S., Mieog, A., Paley, A. S., Pratchett, M. S., Torda, G., and Woods, R. M.: Global warming impairs stock–recruitment dynamics of corals, *Nature*, 568, 387–390, <https://doi.org/10.1038/s41586-019-1081-y>, 2019.

- Kleypas, J. A., Buddemeier, R. W., and Gattuso, J.-P.: The future of coral reefs in an age of global change, *Int. J. Earth Sci.*, 90, 426–437, <https://doi.org/10.1007/s005310000125>, 2001.
- 425 Kornder, N. A., Riegl, B. M., and Figueiredo, J.: Thresholds and drivers of coral calcification responses to climate change, *Glob. Chang. Biol.*, 24, 5084–5095, <https://doi.org/10.1111/gcb.14431>, 2018.
- Kwiatkowski, L., Torres, O., Bopp, L., Aumont, O., Chamberlain, M., Christian, J., Dunne, J., Gehlen, M., Ilyina, T., John, J., Lenton, A., Li, H., Lovenduski, N., Orr, J., Palmieri, J., Schwinger, J., Séférian, R., Stock, C., Tagliabue, A., Takano, Y., Tjiputra, J., Toyama, K., Tsujino, H., Watanabe, M., Yamamoto, A., Yool, A., and Ziehn, T.: Twenty-first century ocean  
430 warming, acidification, deoxygenation, and upper ocean nutrient decline from CMIP6 model projections, *Biogeosciences Discuss.*, 1–43, <https://doi.org/10.5194/bg-2020-16>, 2020.
- McClanahan, T. R., Weil, E., Cortés, J., Baird, A. H., and Ateweberhan, M.: Consequences of coral bleaching for sessile reef organisms, in: *Coral Bleaching*, edited by: van Oppen, M. J. . and Lough, J. M., Springer, Berlin, Heidelberg, 121–138, [https://doi.org/10.1007/978-3-540-69775-6\\_8](https://doi.org/10.1007/978-3-540-69775-6_8), 2009.
- 435 Movilla, J., Calvo, E., Coma, R., Serrano, E., López-Sanz, À., and Pelejero, C.: Annual response of two Mediterranean azooxanthellate temperate corals to low-pH and high-temperature conditions, *Mar. Biol.*, 163, 135, <https://doi.org/10.1007/s00227-016-2908-9>, 2016.
- Nakamura, M., Ohki, S., Suzuki, A., and Sakai, K.: Coral larvae under ocean acidification: survival, metabolism, and metamorphosis, *PLoS One*, 6, e14521, <https://doi.org/10.1371/journal.pone.0014521>, 2011.
- 440 Nozawa, Y. and Harrison, P. L.: Effects of elevated temperature on larval settlement and post-settlement survival in scleractinian corals, *Acropora solitaryensis* and *Favites chinensis*, *Mar. Biol.*, 152, 1181–1185, <https://doi.org/10.1007/s00227-007-0765-2>, 2007.
- O'Connor, M. I., Bruno, J. F., Gaines, S. D., Halpern, B. S., Lester, S. E., Kinlan, B. P., and Weiss, J. M.: Temperature control of larval dispersal and the implications for marine ecology, evolution, and conservation, *Proc. Natl. Acad. Sci.*, 104,  
445 1266–1271, <https://doi.org/10.1073/pnas.0603422104>, 2007.
- Orr, J. C., Fabry, V. J., Aumont, O., Bopp, L., Doney, S. C., Feely, R. A., Gnanadesikan, A., Gruber, N., Ishida, A., Joos, F., Key, R. M., Lindsay, K., Maier-Reimer, E., Matear, R., Monfray, P., Mouchet, A., Najjar, R. G., Plattner, G.-K., Rodgers, K. B., Sabine, C. L., Sarmiento, J. L., Schlitzer, R., Slater, R. D., Totterdell, I. J., Weirig, M.-F., Yamanaka, Y., and Yool, A.:  
450 Anthropogenic ocean acidification over the twenty-first century and its impact on calcifying organisms, *Nature*, 437, 681–686, <https://doi.org/10.1038/nature04095>, 2005.
- Randall, C. J. and Szmant, A. M.: Elevated temperature reduces survivorship and settlement of the larvae of the Caribbean scleractinian coral, *Favia fragum* (Esper), 28, 537–545, <https://doi.org/10.1007/s00338-009-0482-z>, 2009.
- Ritson-Williams, R., Arnold, S., Fogarty, N., Steneck, R. S., Vermeij, M., and Paul, V. J.: New perspectives on ecological mechanisms affecting coral recruitment on reefs, *Smithson. Contrib. Mar. Sci.*, 437–457,  
455 <https://doi.org/10.5479/si.01960768.38.437>, 2009.
- Rodolfo-Metalpa, R., Houlbrèque, F., Tambutté, É., Boisson, F., Baggini, C., Patti, F. P., Jeffree, R., Fine, M., Foggo, A., Gattuso, J.-P., and Hall-Spencer, J. M.: Coral and mollusc resistance to ocean acidification adversely affected by warming,

Nat. Clim. Chang., 1, 308–312, <https://doi.org/10.1038/nclimate1200>, 2011.

460 Sully, S., Burkepile, D. E., Donovan, M. K., Hodgson, G., and van Woesik, R.: A global analysis of coral bleaching over the past two decades, Nat. Commun., 10, 1264, <https://doi.org/10.1038/s41467-019-09238-2>, 2019.

Suwa, R., Nakamura, M., Morita, M., Shimada, K., Iguchi, A., Sakai, K., and Suzuki, A.: Effects of acidified seawater on early life stages of scleractinian corals (Genus *Acropora*), Fish. Sci., 76, 93–99, <https://doi.org/10.1007/s12562-009-0189-7>, 2010.

465 Teixidó, N., Caroselli, E., Alliouane, S., Ceccarelli, C., Comeau, S., Gattuso, J., Fici, P., Micheli, F., Mirasole, A., Monismith, S. G., Munari, M., Palumbi, S. R., Sheets, E., Urbini, L., De Vittor, C., Goffredo, S., and Gambi, M. C.: Ocean acidification causes variable trait-shifts in a coral species, Glob. Chang. Biol., 26, 6813–6830, <https://doi.org/10.1111/gcb.15372>, 2020.

Varnerin, B., Hopkinson, B., and Gleason, D.: Recruits of the temperate coral *Oculina arbuscula* mimic adults in their resilience to ocean acidification, Mar. Ecol. Prog. Ser., 636, 63–75, <https://doi.org/10.3354/meps13228>, 2020.

470 Woolsey, E., Byrne, M., and Baird, A.: The effects of temperature on embryonic development and larval survival in two scleractinian corals, Mar. Ecol. Prog. Ser., 493, 179–184, <https://doi.org/10.3354/meps10499>, 2013.

Zibrowius, H.: The “Southern” *Astroides calycularis* in the Pleistocene of the northern Mediterranean—An indicator of climatic changes (Cnidaria, scleractinia), 28, 9–16, [https://doi.org/10.1016/S0016-6995\(95\)80201-0](https://doi.org/10.1016/S0016-6995(95)80201-0), 1995.