

# 1 Upper lithospheric structure of northeastern Venezuela from joint 2 inversion of surface wave dispersion and receiver functions

3 Roberto Cabeceas<sup>1</sup>, Mariano S. Arnaiz-Rodríguez<sup>2,8</sup>, Antonio Villaseñor<sup>3</sup>, Elizabeth Berg<sup>4</sup>, Andrés  
4 Olivar-Castaño<sup>5</sup>, Sergi Ventosa<sup>3,6</sup> and Ana M. G. Ferreira<sup>7</sup>

5

6 <sup>1</sup>Geophysical Department, Spanish Navy Observatory, San Fernando, 11408, Spain

7 <sup>2</sup>Departamento de Geofísica, Facultad de Ingeniería, Universidad Central de Venezuela

8 <sup>3</sup>Institute of Marine Sciences, Pg. Marítim de la Barceloneta, 37-49, E-08003 Barcelona, Spain.

9 <sup>4</sup>Sandia National Laboratories, Albuquerque, New Mexico 87185, United States of America.

10 <sup>5</sup>Institute of Geosciences, University of Potsdam, Karl-Liebknecht-Str. 24-25. Potsdam, Germany

11 <sup>6</sup>Geosciences Barcelona, Geo3Bcn CSIC, c/ Solé Sabarís sn, Barcelona, Spain.

12 <sup>7</sup>Department of Earth Science, University College London, Gower place, WC1H 6BT London, UK

13 <sup>8</sup>Department of Physics of the Earth and Astrophysics, Universidad Complutense de Madrid (UCM). Madrid 28040, Spain

14 *Correspondence to:* Roberto Cabeceas ([rcabdia@roa.es](mailto:rcabdia@roa.es))

15

16

17 **Abstract.** We use 1.5 years of continuous recordings from an amphibious seismic network deployment in the region of  
18 northeast South America and southeast Caribbean to study the crustal and uppermost mantle structure through a joint  
19 inversion of surface wave dispersion curves determined from ambient seismic noise and receiver functions. The availability  
20 of both ocean bottom seismometers (OBSs) and land stations makes this experiment ideal to determine the best processing  
21 methods to extract reliable empirical Green's functions (EGFs) and construct a 3D shear velocity model. Results show EGFs  
22 with high signal-to-noise ratio for land-land, land-OBS and OBS-OBS paths from a variety of stacking methods. Using the  
23 EGF estimates, we measure phase and group velocity dispersion curves for Rayleigh and Love waves. We complement these  
24 observations with receiver functions, which allow us to perform an H-k analysis to obtain Moho depth estimates across the  
25 study area. The measured dispersion curves and receiver functions are used in a Bayesian joint inversion to retrieve a series  
26 of 1D shear-wave velocity models, which are then interpolated to build a 3D model of the region. Our results display clear  
27 contrasts in the oceanic region across the border of the strike-slip fault system San Sebastian - El Pilar as well as a high  
28 velocity region that corresponds well with the continental craton of southeastern Venezuela. We resolve known geological  
29 features in our new model, including the Espino Graben and the Guiana Shield provinces, and provide new information  
30 about their crustal structures. Furthermore, we image the difference in the crust beneath the Maturin and Guárico Sub-Basin.

1

2

### 3 **1 Introduction**

4 The southeastern Caribbean and northeastern Venezuela area (i.e., from 69°W to 60°W and 6°N to 14°N), located on the  
5 border between the Caribbean and South American plates, is a structurally complex area (Fig. 1) with active seismicity  
6 across multiple fault systems, the transition from oceanic to continental crust, a variety of sedimentary basins, and a  
7 continental craton.

8 The current Caribbean Plate configuration results from a transpressive deformation (e.g., Pindell et al., 1988; Meschede and  
9 Frisch, 1998; Müller et al., 1999), with a southern border dominated by strike-slip fault systems (e.g., Russo and Speed,  
10 1994; Sisson et al., 2005). This region is also located between two major subduction zones: the Lesser Antilles to the east  
11 and south, and the Middle America trench to the west. One of the most important features of Northeastern Venezuela is the  
12 Eastern Venezuela Basin (Rohr, 1991). This structure, formed by oblique compression during the Oligocene to Miocene, is  
13 one of the world's most important petroliferous basins (e.g., Yoris and Ostos, 1997). The Guiana Shield, a continental craton  
14 formed during the Proterozoic-Archean, lies to the southeast of the basin (Fig. 1) and is one of the largest, oldest and highly  
15 stable tectonic features in South America. The western part of the Guiana Shield (formed around 3-2.8 Ga, as part of the  
16 Guriense orogeny) consists of metasedimentary rocks, including granitic gneiss and granitic intrusions that have been  
17 metamorphosed to amphibolite and granulite facies (e.g., Sisson et al., 2005). The eastern section of the Guiana Shield (2 –  
18 2.7 Ga age), is primarily composed of metasedimentary rocks and mafic to felsic volcanic material, locally intruded by  
19 gabbro and diabase (Arnaiz-Rodríguez and Orihuela, 2013).

20 In terms of geodynamics, the plate interaction between the Caribbean and South American plates is evolving at a rate of 1-2  
21 cm/yr westward (e.g., Pérez et al., 2001; DeMets et al., 2010; Webber et al., 2015; Jouanne et al., 2011; Reinoza et al., 2015;  
22 Pousse-Beltrán et al., 2016), subducting the South American lithosphere beneath the Lesser Antilles (e.g., Ave Lallemand,  
23 1997; Jácome et al., 2003; J. Pindell et al., 2005). The detected seismicity in this region (as shown in Fig. 1 using data from  
24 2005 to 2020) is sparse west of 65°, however an important cluster stretches between the Peninsula of Paria and the island of  
25 Trinidad. The earthquakes in this cluster range from shallow to intermediate depths (~ 40 to 150 km), and their magnitudes  
26 vary from Mw 3 to 5, with a few relatively large events (Mw ≈ 6.5). The Paria cluster contains a gap in seismicity between  
27 36-51 km depth that Clark et al. (2008) used to conclude that the subducting and buoyant pieces of the South American Plate  
28 occur along a near-vertical tear and support a “jelly sandwich” rheology.

29 In this work, we study the structurally complex NE Venezuela region through Ambient Noise Tomography (ANT), which is  
30 a well-known tool developed in the last few decades (e.g., Shapiro et al., 2005) that is capable of imaging the crust and upper  
31 mantle. The most important step in ANT is the extraction of high-quality surface-wave empirical Green's functions (EGFs)  
32 from cross-correlations of seismic ambient noise (e.g., Bensen et al., 2007; Schimmel et al., 2011; Ventosa et al., 2019).

1 Theoretical studies have proven that the EGFs between two points can be estimated from the cross correlation of the diffuse  
2 wavefield (e.g., ambient noise, scattered coda) recorded at the two locations when noise sources are well-distributed  
3 (Harmon et al., 2007; Campillo et al., 2011). However, only a few studies, either at regional or local scales, use EGFs  
4 retrieved from Ocean Bottom Seismometers (OBSs) to obtain ANT from onshore to offshore regions (Tian et al., 2013; Lee  
5 et al., 2014; Corela et al., 2017; Ryberg et al., 2017; Hable et al., 2019). The use of ANT methodologies with OBSs presents  
6 several major difficulties in comparison with continental stations. Frequently, seismic energy recorded by the OBSs is  
7 contaminated by low-frequency oceanic infragravity waves (Webb, 1998; Bell et al., 2015; Tian and Ritzwoller, 2017).  
8 Additionally, the OBS instruments can be affected by local conditions, such as interactions of ocean currents with the sea  
9 floor that can cause tilting noise (Webb and Crawford, 1999; Deen et al., 2017)

10 The study area has previously been imaged using passive seismic techniques such as finite-frequency P wave tomography  
11 (Bezada et al., 2010), analysis of 20-100s period earthquake-derived Rayleigh waves (Miller et al., 2009) and investigation  
12 of Rayleigh wave phase velocities extracted from seismic ambient noise (Arnaiz-Rodríguez et al., 2021). Previous studies  
13 have also resolved Moho depths in this area through receiver function (RF) analysis (Niu et al., 2007) and wide angle active  
14 seismic profiling (e.g., Schmitz et al., 2008; Schmitz et al 2021, and references therein). In this work, we combine the  
15 seismic ambient noise tomography approach with the information provided by receiver functions. Our joint inversion of  
16 these two datasets provides more strongly resolved models than finite-frequency P wave tomography for the crust and upper  
17 mantle. Additionally, our joint inversion overcomes limitations of surface wave tomography alone, including non-  
18 uniqueness, poorly constrained shallow structure and poor sensitivity to interfaces, such as the Moho. These advantages  
19 enable us to gain new insights into the study region.

## 20 21 **FIGURE 1**

22  
23 Specifically, we use a joint inversion of ANT and RFs using a non-linear inversion based on the Markov Chain Monte Carlo  
24 (MCMC) methodology. Through cross-correlating 1.5 years of data, we extract 6 to 32 seconds period fundamental mode  
25 Rayleigh and Love waves recorded on 38 broadband stations. The results are discussed with reference to previous studies  
26 (Niu et al., 2007; Schmitz et al., 2008; Miller et al., 2009; Bezada et al., 2010; Arnaiz-Rodríguez et al., 2021; Schmitz et al  
27 2021), and how our findings enable us to characterize known tectonic features as well as obtaining new information.  
28

## 29 **2 Data and Methods**

30 Data for this experiment (Vernon et al., 2003) were collected with a sampling rate of 100 Hz on 27 land stations (STS-2 /  
31 Quanterra-330) and 11 broadband OBSs (Trillium-40 sec) from the Ocean Bottom Seismograph Instrument Pool (OBSIP).  
32 The minimum interstation distance is 30 km, and the aperture of the complete seismic network is approximately 1000 km.

1 Both vertical and horizontal component recordings are used from the land stations, but only the vertical component is  
2 considered from the OBSs due to contamination of the horizontal components with oceanic noise (Webb, 1998).  
3 In the following sections, we briefly describe the steps that we followed to build the EGFs from the ambient seismic noise  
4 recordings. Overall, we have closely followed the approach described by Bensen et al. (2007) but with modifications in the  
5 preprocessing stage to obtain clear, reliable results for the OBSs. Then, we discuss how we retrieved measurements of group  
6 and phase velocities for both Rayleigh and Love waves from the EGFs, which we then used to build a set of phase and group  
7 velocity maps for the studied region. Next, the computation and analysis of the receiver functions is discussed. Finally, we  
8 describe the joint inversions of the phase and group velocity maps and of the receiver functions that we performed to obtain  
9 a 3D shear-wave velocity model of the studied area.

## 11 2.1 Empirical Green Functions (EGFs)

12 In the first preprocessing step, daily seismograms are analyzed and removed if they are found to contain glitches or gaps in  
13 more than 5% of the daily record to prevent artifacts in later processing steps. Next, we down-sample the seismograms to 5  
14 Hz for computational efficiency. Then we remove the mean and deconvolve the instrument response (converting the  
15 seismograms to velocity) and rotate the horizontal components between stations to obtain the transverse component (T),  
16 except for the OBSs. This allows us to obtain estimates of the EGFs for the transverse components directly, from which we  
17 extract dispersion measurements for the Love waves. We apply absolute mean time normalization to remove unwanted  
18 earthquake contamination (Bensen et al., 2007) for each station on the vertical and transverse components independently. To  
19 form the temporal normalization function we apply a bandpass filter of 0.01-0.05 Hz and apply a running absolute mean with  
20 a window of 128 s. We divide the data from each station and component by the temporal normalization function. Next, we  
21 perform spectral whitening to expand the frequency band and balance persistent sources of noise (Ritzwoller et al., 2001; Lin  
22 et al., 2008). We divide the spectrum of each station and component by its smoothed, 0.025 Hz (20 points halfwidth),  
23 running-mean spectrum.

24 Finally, we compute cross-correlations on 4-hour segments of the preprocessed seismograms (Z-Z) and (T-T) for every pair  
25 of stations. Although the linear stack is the common approach to compute the EGFs, we prefer to consider the time-scale  
26 phase-weighted stack (ts-PWS) (Ventosa et al., 2017, 2019) to enhance the quality and increase signal-to-noise-ratio (SNR)  
27 of the EGFs. The complex frame used in the wavelet approach of the ts-PWS is a computationally efficient method for large  
28 datasets in comparison with the conventional PWS.

29 Fig. 2 displays both kinds of stacks (linear and ts-PWS) of the vertical components for different paths after filtering the  
30 EGFs with a bandpass filter (6-10 s). It is clear from Fig. 2 that, in general, the ts-PWS yields higher signal-to-noise ratio  
31 results than the linear stack, especially for noisy stations, such as OBSs or stations in areas with thick sediments (Cabieces et  
32 al., 2020).



1  
2 **FIGURE 2**  
3

4 The EGFs estimates contain two signals, the causal (positive lag time) and the acausal (negative lag time), which are  
5 symmetric in an ideal case. However, the spatial and temporal variation of the noise source distribution strongly affects the  
6 shape of the EGFs in the time domain and may also induce perturbations of the spectral energy content. Fig. 3 displays the  
7 record section of the Z-Z and T-T correlations with station CMPC, located in the Guiana shield. Many of the noise cross-  
8 correlations in the study area (e.g., OBSs and land stations placed north Orinoco River) are non-symmetric. This is generally  
9 associated with the uneven distribution of ambient noise sources in the region (e.g., Webb 1998, Arnaiz-Rodríguez et al.,  
10 2021). In this case, we expect the strongest pulses coming from the Caribbean Sea, where strong storms and hurricanes  
11 generally cross it in E-W direction. We see strong differences in amplitude between the causal and the acausal portions for  
12 both components, but broadly these are more pronounced in the T-T component. To reduce the influence of seasonal  
13 variations (Tanimoto et al., 2006; Schimmel et al., 2011) and potential impact of oceanic waves dominating the noise field  
14 (Hillers et al., 2013), we average the causal and the acausal part of the EGFs (shown in Fig. 3 for station CMPC, located in  
15 the Guiana Shield).  
16

17 **FIGURE 3**

18 **2.2 Dispersion measurements of phase and group velocity**

19 We obtain fundamental-mode phase and group velocity estimates for both Rayleigh and Love waves in a period band  
20 ranging from 6 to 32 s. We manually pick these dispersion curves using the Computer Programs in Seismology (CPS,  
21 Herrmann, 2013) software. In order to use only the most reliable EGFs, we impose several criteria, including a minimum  
22 signal-to-noise ratio ( $SNR > 40$ ) in the period band  $T \sim 0.5-100$  s to reject unstable EGFs, and a minimum interstation  
23 distance of three wavelengths (Boschi et al., 2013; Luo et al., 2015) to satisfy the far-field approximation.

24 Figure 4 summarizes the dispersion curves calculated from the vertical (Fig. 4a) and from the horizontal (Fig. 4b)  
25 components for land-land, ocean-ocean, and land-ocean cross-correlations. This includes dispersion curves from cross-  
26 correlation of ARPC to MAPC, two land stations that cross from the Guiana Shield toward the Maturin Basin and labelled in  
27 Fig. 1. The ARPC-MAPC dispersion curve shows the typical behavior of a continental region, with low velocities slowly  
28 increasing in the intermediate period range ( $T \sim 10-30$  s). Fig. 4 also shows the dispersion curve measured for the CUBA-  
29 MHTO pair, two OBS stations, in which the most interesting feature is the higher velocities in the same period range,  
30 highlighting the crustal thinning occurring towards the north of the study area and sensitivity of these measurements to the  
31 transition from the crust to the upper mantle. Finally, results for the LAPC-PINA station pair in Fig. 4 illustrate the results  
32 obtained from the cross-correlation of a land station and a OBS station, respectively. The LAPC-PINA station pair

1 dispersion curve also shows a steep gradient curve due to the path through the oceanic region, but its velocity is lowest  
2 among the other dispersion curves shown in this example.

#### 4 **FIGURE 4**

5  
6 The measurements of phase and group velocity from all station pairs in different periods can be used to form histograms that  
7 help to visualize outliers (Fig. 4 and Fig. S1 in the Supplementary Material). These histograms show that our measurements  
8 of group and phase velocity are most stable between periods of 6 and 32 seconds. The group and phase velocity values with  
9 periods outside of a maximum cut-off of three standard deviations were discarded to remove erroneous measurements that  
10 could negatively impact the tomographic inversion. For this same reason, those periods with less than 100 valid  
11 measurements are also automatically rejected.

### 13 **2.3 Phase and Group velocity maps**

14 We use the fundamental-mode Rayleigh and Love-wave group and phase velocity measurements to produce a set of  
15 isotropic group and phase velocity maps following the inversion procedure described by Barmin et al. (2001) as  
16 implemented by Olivar-Castaño et al., (2020). In this approach, we discretize surface wave velocities across the study area  
17 (phase or group) along a regular grid (10x10 km in this study) and linearize the traveltimes inversion by assuming that surface  
18 waves travel along the great circle paths between respective station pairs. We minimize the misfit to the observed traveltimes  
19 to resolve the velocity maps. We regularize the problem through multiple constraints, including a smoothing condition  
20 (controlled by a parameter  $\alpha$ ) and a penalization for deviations from the average velocity in areas of poor data coverage  
21 (controlled by a parameter  $\beta$ ). One of the advantages of this method is the ability to estimate data covariance and spatial  
22 resolution maps.

23 The traveltimes inversion procedure is performed twice to remove outliers (Barmin et al., 2001). First, the phase velocity  
24 maps are over-smoothed by setting a very high value for  $\alpha$ . Second, the observed traveltimes are compared with those  
25 computed using the over-smoothed maps. The measurements corresponding to residuals greater than three standard  
26 deviations are discarded (Moschetti et al., 2007).

27 We empirically derive the optimal inversion parameters to minimize model residuals and prevent sharp artifacts (Barmin et  
28 al., 2001). Additionally, the final choice of regularization parameters ( $\alpha = 600$ ,  $\sigma = 250$ ,  $\beta=10$ ) reproduce several smooth  
29 features that are consistent with known geological features of the study area, as shown in maps of Rayleigh (Figure 5) and  
30 Love (Figure 6) phase and group velocity results.

31 The ray-path coverage is shown in the Supplementary Material for both Rayleigh and Love waves. We highlight the ray-path  
32 coverage and velocity maps for the periods of 12, 22 and 32 seconds for the Rayleigh wave group and phase (Figs. S2 and

1 S3, respectively) measurements. We also include the Love wave group and phase (Figs S4 and S5) ray-path coverage and  
2 velocity maps for 12 and 20 s periods. We use the ray-path coverage and spatial resolution maps (Figs. S8 and S9 in the  
3 Supplementary Material) as a proxy to determine where we expect reliable group and phase velocity results. In order to  
4 further evaluate the limitations of our group and phase velocity maps, we performed a checkerboard test (Fig. S6 and S7 in  
5 the Supplementary Material). The size of the velocity anomalies that we try to recover in the checkerboard tests is period-  
6 dependent (equal to one wavelength). The results of these tests indicate stronger constraint of velocity anomalies in the south  
7 (Guarico and Maturin basins) than in the region covered by OBSs, and overall, we see higher spatial resolution for Rayleigh  
8 waves than for Love waves.

## 9 **2.4 Station orientation and Moho Depth estimation**

10 Accurate orientation of the horizontal components of the seismic stations is critical, both to obtain reliable receiver functions  
11 and Love wave velocity estimates, especially when using OBSs. The SNR of the RFs calculated in a misoriented station is  
12 generally diminished, and the peaks associated with the Moho depth can be shifted. We have oriented the OBSs used in this  
13 work following the methodology of Doran and Laske (2017). Their method takes advantage of Rayleigh wave ellipticity to  
14 orient the horizontal components. The goal is to find the maximum correlation between the Hilbert transform of the vertical  
15 component and the horizontal component in a time window that contains a Rayleigh wave generated by a shallow teleseism.  
16 Correct timing for the windows is determined using global dispersion maps of Rayleigh waves (Ma and Masters, 2014; Ma  
17 et al., 2014).

18 To perform this analysis, we use all available earthquakes with magnitudes ranging from 5.5 to 8.0, epicentral distances  
19 ranging from  $5^\circ$  to  $165^\circ$  and a maximum depth of 150 km ( $\sim 100$  events). Orientation results for the OBS stations and their  
20 associated uncertainties are shown in the Table S1 of the Supplementary Material.

21 One of the most important constraints required to obtain geologically reasonable solutions from the inversion of dispersion  
22 curves of surface waves is a reliable Moho depth estimation, as the surface waves in the period range considered in this  
23 study only weakly constrain the deeper crustal structure. We obtain Moho depth estimates across the study area through an  
24 H-k analysis of the receiver functions (Zhu & Kanamori, 2000) computed for both the land stations and the OBSs, using the  
25 Integrated Seismic Program (ISP) (Cabièces et al., 2022) as shown in section 3.2. To estimate the receiver functions, all  
26 events with  $M_w > 5.5$ , and epicentral distances ranging from  $30^\circ$  to  $90^\circ$ , from March 2004 to March 2005 ( $\sim 100$  events) were  
27 considered. Theoretical first arrival times were computed for each event and station using the TauP library (Crotwell et al.,  
28 1999), and the continuous waveforms were cut 10 s before and 80 s after the computed first arrival times.

29 First, we rotate the waveforms from the ZNE to the LQT reference system. Since the back azimuth of the P-to-S converted  
30 arrivals might deviate slightly from that of the great circle linking the event epicenter with the receiver, we investigate a suite  
31 of rotation angles following Wilde-Piórko et al. (2017). We then compute receiver functions through the water-level  
32 deconvolution technique (Langston, 1979), which suppresses instabilities in the spectral division of the L and Q components

1 via the water-level filter. We also apply a Gaussian filter in the deconvolution process to ensure that the resulting receiver  
2 functions do not suffer from misleading high-frequency content (Langston, 1979). Depending on the SNR of the resulting  
3 receiver functions, the values of the water-level parameter and Gaussian filter width used in this study range from 0.01 to  
4 0.0001 and 2 to 4, respectively.

5  
6 Finally, to incorporate the receiver functions into the joint inversion with the phase and group velocity of surface waves, we  
7 determine the isotropic component of the receiver functions via harmonic decomposition (e.g., Shen et al., 2012). The  
8 isotropic component represents the velocity contrasts directly below the recording station and is, in theory, reducing the  
9 effects of any lateral heterogeneities (Bianchi et al., 2010). Moreover, the harmonic decomposition technique allows us to  
10 estimate an uncertainty range for the receiver functions to be used in the joint inversion (see section 3.2).

## 11 **2.5 Joint Inversion for Shear Wave Velocity**

12 We perform a 1-D inversion at each point within the grid with a resolution of  $0.5^\circ \times 0.5^\circ$  (from  $68.5^\circ\text{W}$  to  $60.5^\circ\text{W}$  and from  
13  $5.5^\circ\text{N}$  to  $14.5^\circ\text{N}$ ) using the corresponding phase and group velocity dispersion curves extracted from the maps discussed in  
14 section 2.4. Next, we jointly invert the dispersion curves and the receiver functions, in the closest grid points to a station  
15 (distance  $< 0.5^\circ$ ) using the Markov Chain Monte Carlo (MCMC) Bayesian inversion tool BayHunter (Dreiling et al., 2020).  
16 This algorithm is inspired by the methodology of Bodin et al. (2012), in which the Bayesian formulation is applied to foster a  
17 posterior probability distribution, where each model parameter can be described with a full probability density function.  
18 Bayesian inversions have an important advantage over deterministic methods due to their exploration across a wide range of  
19 velocity models, making the choice of initial models less critical. Additionally, Bayesian inversions enable calculation of  
20 final model uncertainty from the posterior distribution and determination of data sensitivity to the model space (Shen et al.,  
21 2012; Berg et al., 2020). In addition to obtaining the velocity-depth structure, the BayHunter algorithm resolves the  
22 probability distribution of  $V_p/V_s$  ratio, the optimal number of layers of the model and the noise parameters (i.e., data noise  
23 correlation and amplitude) within a user-defined range.

24 In terms of inversion parametrization, we searched over a range of shear wave velocities ( $V_s$ ) from 2 to 6 km/s (based on  
25 existing geological information),  $V_p/V_s$  from 1.6 to 1.9, a maximum of 20 layers and a decreased and increased tolerance  
26 limits of  $V_s$  with respect to depth of 10% and 75%, respectively. To further reduce the non-uniqueness of the inverse  
27 problem and help to discard geologically implausible results, we restricted the Moho depths to a broad range ( $\pm 5$  km)  
28 centered in the depths estimated from the H-k stacking of the receiver functions. These constraints on the Moho depths were  
29 applied to inversions performed at geographic points closer than  $0.5^\circ$  from the seismic stations. The uncertainties amplitudes  
30  $\sigma$  Surface Wave Dispersion Curves (SWDC) and  $\sigma$  RF were set from 0 to 0.1 km/s and the correlation parameter for SWDC  
31 0.2 and for RFs 0.96.

1 While our MCMC joint inversion includes both surface wave and receiver function data with the objective of a best fit  $V_s$   
2 model, we also include a prior constraint on the Moho depth. The Moho depth is obtained in the H-k analysis of the receiver  
3 functions. At each inversion point, we ran a total of 40 Markov chains with a final distribution of 100,000 iterations per  
4 chain, keeping all models within an accepting rate of 40% to form the posterior probability distribution, with a 2:1 for the  
5 burn-in and exploration phases, respectively. We tried those range of values for the set of inversion parameters, in line with  
6 accepting rates of previous studies (e.g., Bodin et al., 2012; Dreiling et al., 2020) and we found that they led to stable results  
7 and reasonable computational efficiency.

## 8 **3. Results**

### 9 **3.1 Phase and Group Velocity Results**

10 The fundamental-mode phase and group velocity maps of Rayleigh (Fig. 5) and Love (Fig. 6) waves show patterns related to  
11 the main geologic structures, including the Maturin Basin (Moho depth  $\approx 45$  km) and Guiana Shield (Moho depth  $\approx 35$  km).  
12 Both sets of results in Figures 5 and 6 are displayed as % perturbation of the mean velocity for three representative wave  
13 periods, with the corresponding spatial resolution maps in the Supplementary Material (Figs. S8 and S9). Relatively low  
14 phase and group velocities are recovered for the Guarico and Maturin sedimentary sub-basins. These low-velocity anomalies  
15 are stronger towards the southern parts of these basins, suggesting increased sediment thickness typical of foreland basins.  
16 However, these low velocities are not observed south of the basins in the transition to the Guiana Shield (Maria Ines Jacome  
17 et al., 2003). The contrast between the lower relative velocities of the Maturin basin and the higher velocities of the Guiana  
18 Shield are especially evident in the phase and group velocity maps of Love waves (Figs. 6a-f), which are more sensitive to  
19 near-surface structure than their Rayleigh-wave counterparts (Lin et al., 2008).

20 The velocity contrast between the oceanic crust and the sedimentary basins can also be seen in the Rayleigh wave group and  
21 phase velocity maps, most prominent at longer periods (Fig. 5 b-c, e-f). However, as the depth sensitivity of the surface  
22 waves increases with increasing periods, this contrast becomes more apparent at larger periods (e.g., Fig. 5f). We also note  
23 that the San Sebastian - El Pilar fault system appears as a sharp boundary, separating regions of different velocities in the NE  
24 along the Peninsula of Paria - Trinidad and Tobago (see Figs. 5e and 5f). Overall, the spatial resolution values for the phase  
25 and group velocity maps remain stable at  $\sim 130$ -150 km in the central part of our studied area where the data coverage is high  
26 (Figs. S8 and S9 in the Supplementary Material). Some elongated features can be observed on the southeastern end of the  
27 studied area (around the Orinoco Delta), which could be interpreted as smearing effects due to the sparser data coverage in  
28 this region. Therefore, in the discussion section we will mainly focus on the features to the west of  $63^\circ$  where the phase and  
29 group velocity maps are well-resolved.

### 3.2 Receiver Functions and Moho Depth Estimation

To study the Moho depth and its gradient, we split the analysis into three separate regions, the south of the Venezuela Basin, Guarico - Maturin Basin and the Guiana shield. Fig. 7 shows the map of the Moho and the  $V_p / V_s$  ratio estimated applying the methodology of section 2.3 and Fig. 8 shows three examples of RF stacks and H-k maps for stations placed in the Venezuela Basin, Guarico - Maturin Basin and the Guiana shield (stations MHTO, PRPC and CAPC, respectively).

#### FIGURE 7

Overall, the receiver functions obtained from the OBSs stations deployed in the Venezuela Basin and the land station in Margarita Island are of poor quality, so we ensure to use only the most robust RFs in the inversion. Despite limited data, we estimate Moho depths for this area that are consistent with expected depths, which range from 20 to 32 km according to Niu et al. (2007) and around 25 to 35 km according to Schmitz et al. (2021), and we resolve a shallower Moho ( $< 20$  km) beneath the northwestern coast. We also find that the Moho depth around Margarita Island increases to approximately 40 km. In general, we find that the north Caribbean crust has a constant thickness from the north Caribbean plate to the coast. Additionally, our results reveal thin crust southwest of the Venezuela Basin (stations SHRB-PNCH-CUBA-PINA) that slightly differs from the work of Niu et al., (2007) but agrees with the expected thickness of the Venezuelan Abyssal Plain (Officer et al., 1959; Edgar et al., 1971; Romito and Mann, 2020).

Our results show Moho depths across the Guarico - Maturin Basin (Figure 8, stations STPC and PRPC) ranging from 45 km to 50 km, which agrees with the previous work of Niu et al., (2007). However, we observe an anomalously thickened crust of up to 50 km beneath the southeastern Orinoco River region (stations PRPC and PAPC) which is thicker than the  $\sim 46$  km reported by Schmitz et al. (2021). Discrepancies between active and passive seismic observations are not uncommon (e.g. Niu et al., 2007) and arise from sensitivity and resolution of different techniques. Here, we can simply agree that the Moho depth is roughly 48 km. The signature of this thickened crust can be correlated with a similar NW to SE elongated feature present in the group and phase velocity maps.

Lastly, we obtain receiver functions with the highest SNR using data from stations in the craton (Fig. 8, station CAPC). Using these high-SNR RFs, we estimate a crustal thickness of approximately 40 km, which is lower than the values recovered for the Guarico and Maturin basins to the north.

#### FIGURE 8

### 3.2 Shear velocity model

We build a 3D shear wave velocity model on a  $0.5^\circ \times 0.5^\circ$  grid with depth increments of 0.5 km from the 1D models obtained from the joint inversion of the phase and group velocities and the receiver functions. We focus on the region

1 between 68°W-61°W and 6°N-14.0°N, corresponding to the area in which the highest density of surface wave velocity and  
2 Moho depth estimates are available and well-constrained. For each grid point, we invert the phase and group dispersion  
3 curves of Rayleigh and Love waves from 10 to 40 s periods in addition to the receiver function corresponding to the nearest  
4 station. We allow a maximum distance to a grid point of 0.5° for the RFs, but we do not apply additional weights to the  
5 receiver function data according to the distance from the grid point to the nearest station.

6 Fig. 9 shows an example from a location in the Guiana Shield (65.0° W, -7.0 ° N) of the results obtained from the 1-D joint  
7 inversion of RFs and Rayleigh and Love wave phase and group velocity data. Specifically, the left panels (Fig. 9a) contain  
8 the assembled shear-velocity model obtained after the search of 100,000 possible models in each of the 40 Markov chains.  
9 Figure 9b-e displays the predicted data from the inversion of phase and group velocity data and uncertainties thereof, while  
10 Fig. 9f shows the fit to the isotropic receiver function obtained from station MAPC. We observe some discrepancy (<2%)  
11 between the different datasets, as evidenced by the difficulty to perfectly fit all the data (taking into consideration that  
12 dispersion curves and receiver functions have different sources of noise and sensitivities). However, despite some fitting  
13 errors, which cause minor perturbations in the 1D profile, we observe an overall good fit to the dispersion curves and to the  
14 RF for each gridpoint. As expected, stations in the shield have less errors than those found in the basins. OBS stations were  
15 particularly difficult to fit. An example of probability plots in two geographic points of the cross section 64.0° W is shown as  
16 examples of the inversion results (Fig. S1 in the Supplementary Material).

17 We also present a Vs Moho depth map (Fig S12 in the Supplementary Material) obtained through the Moho depth estimation  
18 (manually picked) from the Vs 1D models and the posterior interpolation to the rest region of study. The two different Moho  
19 maps (Fig. 7 and Fig. S12) overall agree well, only with some small differences. It is expected that the results from both  
20 observations do not match exactly, as there is an intrinsic tradeoff in the joint inversion, with the different datasets  
21 “competing” for the better fit.

## 22 **FIGURE 9**

23  
24  
25 Fig. 10 shows un-smoothed horizontal slices of our shear-wave velocity model at different depths ranging from 7.5 to 60 km.  
26 We also display uncertainty maps of our joint inversion, corresponding to one standard deviation of the mean MCMC joint  
27 inversion result, extrapolated for each 1D grid point model (Fig. S13 in the Supplementary Material). Furthermore, we  
28 include maps comparing the horizontal slices of the 3D model, made of MCMC joint inversion results across all 1D  
29 gridpoints with robust data, with the reference global model ak-135-f (Kennet et al., 1995) (Fig. S14 in the Supplementary  
30 Material).

31 To further explore our results with depth we include a set of south-to-north and west-to-north oriented depth cross-sections  
32 of the model at different longitudes between 61° W - 68° W and 6° N - 14° N in Figure 11. In the shallower layers of the  
33 shear-velocity model ( $\approx 15$  km), we observe sharp velocity variations and a clear contrast between the Venezuela Basin with  
34 low absolute shear velocities and the Guiana Shield with high shear velocities, which is expected for a continental craton. In

1 the Guiana Shield area (Fig. 10 a), we observe near-surface faster shear velocities. On the other hand, one of the most  
2 remarkable features we see in the cross-sections (66° W – 62°W) is the presence of a slightly low velocity anomaly from 9°  
3 N to 14° N between 8 km and 16 km depth, being the strongest in the 64°W cross-section (Fig. 11 B-B').

#### 4 5 **FIGURE 10**

6  
7 We observe a high shear velocity structure through intermediate depth slices of our modeled results (15 to 45 km depth)  
8 below the limited area surrounded by the Tortuga Island - Barcelona Bay and Margarita Island (Fig. 10 b-f). This high  
9 velocity structure persists up to approximately 45 km depth and is also prominent in the cross sections (Fig. 11 d-f) from  
10 64°W to 66°W. The deepest parts of our model do not show any remarkable features except for a persistent high-velocity  
11 anomaly in the Barcelona Bay that extends towards the SE beneath the Maturin Basin. In general, we find that shear-wave  
12 velocities increase with increasing depth for all regions, with no remarkable velocity inversions. Model cross-sections depict  
13 relatively constant Moho depths between 8° N to 12° N across the study area, with an interesting dipping structure at around  
14 10° N, suggesting a thickened crust towards the south. Additionally, we see low velocities corresponding to the thick  
15 Maturin Basin at 10°N.

16 Finally, similar to the results of Arnaiz-Rodríguez et al., (2021), we also detect an anomalous low velocity in the lithospheric  
17 mantle beneath the Peninsula of Paria that expands from 15 km to 22 km depth.

#### 18 19 20 **FIGURE 11**

#### 21 **4. Discussion**

22 Vertically and horizontally polarized dispersion measurements from ambient noise records and teleseismic receiver functions  
23 enabled us to investigate the variations of crustal thickness, seismic velocities, and Poisson's ratio in northeastern Venezuela.  
24 Robust velocity values and anomalies (Fig. 10, Fig. 11 and Fig. S13 in the Supplementary Material), as well as a detailed  
25 Moho (Fig. 7a) and Vp/Vs maps (Fig. 7b) allow us to image the region in a clearer way than in previous studies (e.g., Niu et  
26 al., 2007; Schmitz et al., 2008; Miller et al., 2009; Bezada et al., 2010; Clark et al., 2008; Arnaiz-Rodríguez et al., 2021;  
27 Schmitz et al., 2021). For the first time, we image the upper lithosphere using a joint inversion of dispersion measurements  
28 and RFs with a robust non-linear inversion. Our results are correlated to well-known geological structures and tectonic  
29 provinces and shed new insight into the crustal structure of the region. We begin our discussion by looking into the results  
30 derived from receiver function analysis and then we examine the shear-wave model product of the inversion of the  
31 dispersion curves.



#### 1 **4.1 Moho Depth from Receiver functions**

2 The estimated Moho depth in the study area ranges from 10 km to 51 km. Shallower Moho depths (<20 km) are clearly  
3 associated to the Caribbean basin at the North, while the transitional crust and inactive volcanic arcs found between the  
4 oceanic plateau and the continental shelf are characterized by a Moho depth ranging between 20 km and 30 km.  
5 Interestingly, the Serranía del Interior Mountain range appears in the map within this region in agreement with previous  
6 estimations (e.g. Niu et al., 2007) even though no stations were used inside the range in this study.

7 We find that the Moho depths on the Venezuelan continental shelf range from 30 to 51 km. We find the region with the  
8 greatest Moho depths in the southernmost Guárico Basin, with results similar to the values reported by Niu et al (2007).  
9 Notice that this section is not cover by active seismic data (Schmitz et al., 2021 and references therein). However, our results  
10 for the area with thickest crust are counter-intuitive with standard foreland basin configurations, where the depocenter of the  
11 basin is associated with the deepest flexure and the deepest Moho (e.g. Watts, 2001). In the Eastern Venezuela Basin, the  
12 deepest sediments (~10 km; Feo-Codecido et al., 1984; Di Croce et al., 1999; Clark et al., 2009; Bezada et al., 2010) are  
13 found in the Espino Graben and Maturin sub-basin located north and northeast of the region with greatest Moho depths. We  
14 find the trend and location of the thickest crust is relatively consistent with the location of the contact between the  
15 Precambrian Basement (i.e., the Guayana Shield extending beneath the sedimentary layers North of the Orinoco River) and  
16 the Cambrian basement found between the Espino Graben and the Shield (e.g., Feo-Codecido et al., 1984; Di Croce et al.,  
17 1999). We suggest this indicates the allochthonous Palaeozoic terrains accreted to the North of the Guayana Shield either  
18 had a crustal thickness larger than the shield itself, or, alternatively, that the accretion process deformed the crust in such a  
19 way that now the deepest Moho is found on this contact. Finally in the South, the Guayana shield region is characterized by  
20 Moho depths ranging between 35 and 40 km. The largest values are consistently associated with the Imataca province (3–2.8  
21 Ga, Guriense) while the Pastora province (2.7– 2 Ga, Pre-Transamazonic) corresponds to a region with the thinnest crust in  
22 the shield at an average crustal thickness of 36 km. On the one hand, these results agree with those reported by Niu et al.  
23 (2007) and, on the other, they complement the rather “flat” Moho found by Schmitz et al (2005, 2008, 2021) around the Guri  
24 Dam with a depth ranging from 46 to 47 km.

#### 26 **4.2 Vp/Vs Map**

27 Unlike previous attempts (e.g., Niu et al., 2007; Masy et al., 2015), we can consistently map the variations of the average  
28 crustal Vp/Vs in the region. In the shield we found an average value of ~1.72 Vp/Vs (roughly 0.26 in Poisson’s ratio),  
29 consistent with the global average for continental crust (Christensen and Mooney, 1995). Similar to Niu et al (2007), we find  
30 this value to be lower than expected for ancient shields (e.g., Zandt and Ammon, 1995). Niu et al. (2007) attempted to  
31 explain this anomaly by suggesting that the crust in the region presents low quantities of granulite-facies mafic rocks.  
32 Unfortunately, mafic rocks are rather common in the Imataca (Dougan, 1977) and Pastora (Ostos et al., 2005) provinces.  
33 Rather, we propose that the presence of low Vp/Vs can be attributed to the relatively large amounts of quartz in the upper

1 crust in this area, which is consistent with the commonly reported felsic volcanism across the region. Lower values of  $V_p/V_s$   
2 ( $<1.65$ ) are found in the Espino Graben and Paria Peninsula. In both regions mafic rocks have been reported as: (a) basaltic  
3 layers found inside the Espino Graben (e.g., Feo-Codecido, 1984) and (b) the dacitic rocks (porfídico rhyolite; Alvarado,  
4 2005) found in the *Serranía del Interior*. Our results appear inconsistent with the lithology of the regions, suggesting the  
5 values are most-likely related to the high density of faults in both areas.

### 6 7 **4.3 S-Wave Velocity model.**

8 The shear wave velocity structure of the Eastern Venezuelan crust and upper mantle behaves consistently with what is  
9 expected for the region. Lower velocities are found at the top of the cross sections (Fig. 11), gradually increasing with depth,  
10 with different trends associated with each of the four main terrains: (a) The Caribbean at the North, (b) The heavily faulted  
11 and deformed strike-slip dominated plated boundary, (c) the foreland basin and (d) the Guayana shield at the South. Mean  
12 crustal shear-wave velocities ( $V_s$ ) found in the continental shelf are around 3.99 km/s with a standard deviation of 0.64 km/s,  
13 which is higher than the global average ( $\sim 3.71$  km/s according to Laske et al., 2013). The average crustal values for the  
14 oceanic region are approximately 3.57 km/s with a standard deviation of 0.56 km/s, also slightly higher than the world's  
15 crustal average ( $\sim 3.383$  km/s; Laske et al., 2013).

16 At shallow depths (7.5 km - 15.0 km, Fig. 10a and Fig. 10b) our model shows higher  $V_s$  values in the Guayana shield (mean  
17 of  $\sim 3.6$  km/s) and lower values in the foreland basin (mean of  $\sim 3.1$  km/s). We note that the higher  $V_s$  of the Guayana shield  
18 extends north of the Orinoco River in agreement with results obtained from well perforations (e.g., Feo-Coecido et al.,  
19 1984). Lower  $V_s$  values found north of latitude  $9^\circ$  correspond to the foredeeps and depocenters of the basins that reach more  
20 than 10 km depth (Feo-Codecido et al., 1984; Di Croce et al., 1999; Jácome et al., 2003; Clark et al., 2009; Bezada et al.,  
21 2010). We also found a low velocity anomaly beneath the Espino Graben ( $\sim 8$  km depth), most likely associated with the  
22 large number of faults and thick sedimentary layers therein. A similar anomaly appears in the 10 km depth slice (7.5 km Fig.  
23 10a and Fig. 10b), except for the appearance of a previously unreported high velocity anomaly within the Graben, being this  
24 anomaly well resolved in our model (see also Figs S8 and S9 in the Supplementary Material for detailed Checkboard tests).  
25 We suggest that this may be the seismic expression of basaltic intrusions at upper crustal levels that mark the opening of the  
26 graben and the intrusion of mafic magmas into the continental crust during the Jurassic ( $162 \pm 8$  ma; Feo-Coecido et al.,  
27 1984).

28 At the bottom of the upper crust ( $\sim 25$  km according to Clark et al., 2009) around 22.5 km (Fig. 10c and Fig. 10d) the  
29 Guayana shield appears rather homogenous with an average  $V_s$  of  $\sim 3.6$  km/s. At this depth our model shows  $V_s$  variations  
30 that correlate well with differences in age of the different geological provinces in the basement of the Eastern Venezuela.  
31 The Precambrian terrains of the once called “the Piarra block,” a large area of uplifted Precambrian basement that occupies  
32 the Maturin Basin (Feo-Coecido et al., 1984), show higher  $V_s$  than the Cambrian allochthonous terrains beneath the Guarico  
33 Basin. Hence the petrology of these terrains is likely dissimilar. At 30 km to 37.5 km depth (Fig 10.d and Fig. 10e) we see

1 the most prominent anomaly to be the low velocity channel that perfectly aligns with the major faults of the Espino Graben  
2 major faults, congruent with the finding of Arnaiz-Rodríguez et al. (2021). Although high faulting regions appear as a low S-  
3 wave velocity region (e.g., Yudistira et al., 2017) it is unlikely that faulting is present at lower (ductile) crustal depths. Here,  
4 the original thinned/stretched crust (remnant of the Jurassic opening of the graben) has, most likely, been erased by more  
5 recent tectonics leaving a deformed and rheologically weakened lower crust that appears in our results as a low velocity  
6 zone. At this depth we also find a dichotomy within the uppermost mantle of the Caribbean basins, with relatively higher  $V_s$   
7 values ( $\sim 4.2$  km/s) beneath the Venezuela basin, whereas the Grenada basin is associated with lower  $V_s$  ( $\sim 3.9$  km/s). These  
8 variations reflect the different histories of both basins: while the Venezuela basin is a thickened remnant of the original  
9 Jurassic Caribbean crust (e.g., Ghosh et al., 1984; Diebold et al., 1999), the Grenada basin is a back-arc basin that opened  
10 due to slab roll-back during the Paleocene (e.g., Arnaiz-Rodríguez and Audemard, 2018). From our tomography model  
11 alone, it is not possible either to distinguish if the observed anomalies are related to the chemical differences or if the mantle  
12 beneath the younger basin is hotter in comparison to that of the older one. Both anomalies can be observed in the model by  
13 Arnaiz-Rodríguez et al. (2021).

14 The lower crust (from 30 km to 50 km depth) appears rather homogeneous with small localized heterogeneities (with length  
15 scale of about 7.5 km Fig 10d, 10e, 10f and 10g). One feature that stands out is the “U” shaped anomaly that aligns with the  
16 Urica strike-slip fault and the Pirital frontal thrust (south of the Serranía del Interior; e.g. Audemard, 2006). This anomaly  
17 implies that the faults extend deep into the crust and represent a major crustal limit. Finally, the uppermost mantle beneath  
18 the continental shelf shows a large high velocity anomaly (deviation of  $\sim 20\%$ , see Fig. S14). Part of this anomaly again  
19 follows the general trend of the Espino Graben, perhaps a testament of the anatexis produced by the lithospheric thinning  
20 driven by the opening of the Espino Graben. The largest anomaly, found West of the Paria Península, largely disagrees with  
21 a low velocity anomaly found by Miller et al (2009) in the same region, but agrees with another high velocity anomaly  
22 reported by Arnaiz-Rodríguez et al (2021). This anomaly is not related to any known feature in the region and could  
23 represent a chemically anomalous region in the upper mantle, so it is perhaps a remnant of the southernmost prolongation of  
24 the Antilles subduction beneath South America (e.g., VanDecar et al., 2003; Bezada et al 2010).

25 We present a detailed picture of the crustal structure across four profiles (Fig 11) containing shear-wave velocity variations  
26 as well as the Moho depth. The first profile (A-A'), along  $-66^\circ$ , shows, for the first time, the crustal structure beneath the  
27 Cuchivero Province, with an upper crustal layer of  $\sim 20$  km and with a homogeneous lower crust. The lower mantle in this  
28 section appears with a smooth velocity gradient increasing from 4.25 km/s (at the Moho) to 4.75 km/s at 60 km depth. North  
29 of the Orinoco River, the crust thickens from 40 to 50 km, with the maximum depth coinciding with the position of the  
30 Altamira Fault (the physical limit between the southern Precambrian terranes and the northern Paleozoic ones) reported by  
31 Feo-Coecido et al (1984). The crust in this area appears well differentiated into 4 layers: an upper crust of  $\sim 20$  km, a thin  
32 middle crust (thickness  $< 10$  km), and two lower crustal layers with high velocity when compared to the global average for  
33 continents of  $\sim 3.93$  km/s (Laske et al., 2013). When compared to the simpler crust found in the south of our study region,  
34 we find increasing evidence to the collision and thickening of the crust and suture of two blocks during the emplacement of

1 the Paleozoic terranes to the Guyana shield. Further to the North, Vs in the upper crust decreases near the *Cordillera de la*  
2 *Costa* range, where low Vp velocities were also reported via wide angle seismic profiling (Magnani et al., 2009). Most  
3 likely, this represents the nappe systems formed from the Paleocene to the Eocene by the collision of the Caribbean arc with  
4 northern South America. Here, the Moho gradually thins out up to the San Sebastian Fault System, which separates the  
5 extended transitional crust (originally an arc) from the continental platform (Passalacqua et al., 1995). Finally, in the  
6 northernmost section of the profile, we find the thick crust of the beneath the Bonaire Basin similar to the values reported by  
7 Bezada et al. (2010).

8 The second profile (B-B') shows a similar structure, but we highlight a few important differences. Firstly, we find possible  
9 evidence of intrusions/chemical heterogeneities at the base of the crust of the Guyana shield, in agreement with geological  
10 observations that report intrusions of different types of igneous rocks (from granitic to ultramafic) and greenstone belts rocks  
11 (Sidder, 1990) that commonly occur in the Imataca Province. On this profile, the maximum Moho depth does not correspond  
12 with any known structure but could reflect the prolongation to the east of the feature reported in profile A-A'. North, towards  
13 the *Serranía del Interior* and Margarita Island, the Moho is mostly constant within the contour of 4.25 km/s, but this changes  
14 due to a lack of data further north, where the Moho beneath the transitional crust is better defined by the Vs model than by  
15 the interpolation of the receiver functions data. Interestingly, this profile shows a high velocity anomaly and small shortening  
16 in the continental crust beneath the *Serranía del Interior* and the Maturín basin that could be consistent with a NE projection  
17 of the Espino Graben (e.g., Sánchez, 2008). Previously these features have only been ineffectively found through heavily  
18 processed aeromagnetic data interpretation (e.g., Gonzalez et al., 2017), and in our model have been found thanks to the  
19 combined analysis of the Moho depth, RFs and dispersion measurements.

20 The Espino Graben structure is better appreciated in profiles C-C' (along the axis of the graben) and D-D' (perpendicular to  
21 the structure). Low velocity anomalies are reported along the structure, as well as crustal thinning, a remnant of the opening  
22 of the graben. Also, high velocity anomalies can be appreciated in the lower crust in profiles B-B', C-C' and D-D,' most  
23 likely revealing the inclusion of mafic material during the extension process that created the Espino Graben. Most of the  
24 anomalies seem to have some smearing to the North, but as the graben area is well covered (Figs S7 and S8 in the  
25 Supplementary material, which show resolution maps) this is unlikely to be produced by limitations in ray path coverage  
26 (see also Figs S2, S3, S4 and S5 in the Supplementary Material, which show good resolution in this region). Therefore, we  
27 suggest that the master fault of the graben deepens to the North, corroborating previous findings from Arnaiz-Rodríguez et  
28 al. (2021). As high velocity anomalies consistently appear beneath the graben we cannot disprove the possibility of trapped  
29 material within the lithospheric mantle, which is a hallmark of the process disproved above. Moreover, in profile D-D' we  
30 also see the crustal structure beneath the Pastora province that clearly shows a differentiation in upper, middle and lower  
31 crust.

32 Profile E-E' (in W-E direction) shows the crustal difference between the two sub-basins that compose the Eastern Venezuela  
33 basin. Long have geologists tried to establish the difference between both, and in general the most important difference is

1 that the Guárico basin (to the West) sits on top of a Paleozoic age, while the Maturín one (to the East) formed over a  
2 Precambrian basin (the Piarra block, after Feo-Coecido, et al., 1984) where granite was found below the sediments at 4.3 km  
3 depth. Here, we show that the upper crust-lower crust transition zone and the Moho appear to be rather flat (as would be  
4 expected for an along-the-structure profile in a foreland basin). We find that the main difference is a large high velocity layer  
5 in the lower crust beneath the Maturín basin. This kind of anomaly is similar to those found at the southern end of profiles  
6 A-A' and B-B', reinforcing the long-lasting geological interpretation that the Precambrian layers of the shield extent to the  
7 North beneath the eastern section of the basin (e.g., Yoris and Oostos, 1997).

## 9 **5. Conclusions**

10 We present a new, 3D shear-wave velocity model of the SE Caribbean area built from a dense set of 1D models (spaced in a  
11  $0.5^\circ \times 0.5^\circ$  grid). The 1D models were obtained from a nonlinear joint inversion of phase and group velocities of surface  
12 waves and receiver functions, using a Markov Chain Monte Carlo algorithm (Dreiling et al., 2020). Additionally, we provide  
13 a new Moho depth map obtained from a semblance-weighted H-k stacking analysis of receiver functions, which shows  
14 remarkable tectonic features. From the interpretation of these results, we outline the following conclusions:

- 15 A. The Moho interface in the region ranges from 10 km to 51 km. Values  $< 20$  km is associated with the Caribbean crust, the  
16 transitional crust ranges between 20 km and 30 km and the Venezuelan continental shelf ranges from 30 to 51 km. A  
17 small shortening in the continental crust is reported inside the Espino Graben, testament to the opening of the Graben. A  
18 thickening of the crust, north of the Orinoco River, seems to be closely associated to the collision between Precambrian  
19 and Paleozoic basement blocks. This indicates that the collision and subsequent suture thickened the crust and this  
20 structure is now buried beneath the sediment of the foreland basin.
- 21 B. The crust of the Guiana Shield is drastically heterogeneous. Variations are related to each of the major tectonic provinces  
22 therein. From West to East, we find that: (a) the Cuchivero Province presents an upper crustal layer and a homogeneous  
23 lower crust, (b) the Imataca province shows similar upper crust to the Cuchivero Province but a heterogeneous lower one  
24 with anomalies possibly related to intrusions at the base of the crust, and (c) the Pastora province appears to show a  
25 differentiated section divided into upper, middle and lower crust.
- 26 C. The Espino Graben is associated with low values of Vs in the sedimentary layers ( $< 3.0$  km/s) and in the upper crust ( $<$   
27  $3.5$  km/s), which are related to the large number of faults in the region. Furthermore, we find several high velocity  
28 anomalies between 10 and 15 km and between 20 and 25 km ( $> 4.0$  km/s). These are likely related to the basaltic rocks  
29 that intruded the crust during the opening of the Graben in the Late Jurassic.

1 D. We report high velocity bodies as well as a thinner crust beneath the Espino Graben, remnants of the extension that  
2 formed the structure. Furthermore, we found the first seismological evidence that the graben extends beneath the Serranía  
3 del interior Range.

4 E. The Vs in the upper mantle of the Caribbean Basins in the region is drastically different:  $\sim 4.2$  km/s at the Venezuela  
5 basin, and  $\sim 3.9$  km/s at the Grenada basin. This difference arises from the different age (old and cold lithospheric keel  
6 should have a larger Vs) and geological history.

7  
8  
9 *Data.* The facilities of IRIS Data Services, and specially the IRIS Data Management Center, were used for access to seismic  
10 waveforms and related metadata.

11  
12 *Author Contribution.* The Author's contributions to the different Sections and Subsections of this study, including data  
13 analysis and interpretation, preparation of the figures and results, as well as writing, is as follows: Subsection 2.1 Empirical  
14 Green Functions (EGFs): RC, AV and SV. Subsection 2.2 Dispersion measurements of phase and group velocity: RC and  
15 AV. Subsection 2.3: AOC. Subsection 2.4: Phase and Group Velocity maps: RC, AV and AOC. Subsection 2.5 Joint  
16 Inversion for Shear Wave Velocity: RC, AF and EB. Section 4. Discussion: RC and MA. AV, EB and AF devised and  
17 finalized the original manuscript.

18  
19 *Competing interests.* The authors declare that they have no conflict of interest.

20  
21 *Acknowledgements.* Vs 3D-model, Empirical Green Functions, Receiver Functions Moho depth estimations and Dispersion  
22 Measurements can be required to the corresponding author: rcabdia@roa.es. Figs 1, 7, 10 and 11 were generated with the  
23 open-source mapping toolbox GMT (Wessel et al., 2013). Waveform data used in this work were retrieved from the Global  
24 Seismograph Network -Incorporated Research Institutions for Seismology (IRIS: [https://doi.org/10.7914/SN/XT\\_2003](https://doi.org/10.7914/SN/XT_2003)).  
25 Dataset including EGFs, dispersion measurements, Moho depth and Vs 3D model can be freely found at  
26 <https://doi.org/10.5281/zenodo.7188334>.

1

2 **References**

3

4 Alvarado A. (2005). Integración geológica de la península de Araya, estado Sucre. *GEOS*, 38, 11-13.

5 Arnaiz-Rodríguez, M. S., and Orihuela, N. (2013). Curie point depth in Venezuela and the Eastern Caribbean.  
6 *Tectonophysics*, 590, 38–51. <https://doi.org/10.1016/j.tecto.2013.01.004>

7 Arnaiz-Rodríguez, M. S., Zhao, Y., Sánchez-Gamboa, A. K., and Audemard, F. (2021). Crustal and upper-mantle structure  
8 of the Eastern Caribbean and Northern Venezuela from passive Rayleigh wave tomography. *Tectonophysics*.  
9 <https://doi.org/10.1016/j.tecto.2020.228711>

10 Audemard, F. A., Singer, A., & Soulas, J. P. (2006). Quaternary faults and stress regime of Venezuela. *Revista de la*  
11 *Asociación Geológica Argentina*, 61(4), 480-491.

12 Ave Lallemand, H. G. (1997). Transpression, displacement partitioning, and exhumation in the eastern Caribbean / South  
13 American plate boundary zone. *Tectonics*. <https://doi.org/10.1029/96TC03725>

14 Barmin, M. P., Ritzwoller, M. H., and Levshin, A. L. (2001). A fast and reliable method for surface wave tomography. *Pure*  
15 *and Applied Geophysics*, 158(8), 1351–1375.

16 Bell, S. W., Forsyth, D. W., and Ruan, Y. (2015). Removing Noise from the Vertical Component Records of Ocean-Bottom  
17 Seismometers: Results from Year One of the Cascadia Initiative. *Bulletin of the Seismological Society of America*, 105(1),  
18 300–313. <https://doi.org/10.1785/0120140054>

19 Bensen, G. D., Ritzwoller, M. H., Barmin, M. P., Levshin, A. L., Lin, F., Moschetti, M. P., et al. (2007). Processing seismic  
20 ambient noise data to obtain reliable broad-band surface wave dispersion measurements. *Geophysical Journal International*.  
21 <https://doi.org/10.1111/j.1365-246X.2007.03374.x>

22 Berg, E. M., Lin, F. C., Allam, A., Schulte-Pelkum, V., Ward, K. M., & Shen, W. (2020). Shear velocity model of Alaska  
23 via joint inversion of Rayleigh wave ellipticity, phase velocities, and receiver functions across the Alaska Transportable  
24 Array. *Journal of Geophysical Research: Solid Earth*, 125(2), e2019JB018582.

- 1 Bezada, M. J., Levander, A., and Schmandt, B. (2010). Subduction in the southern Caribbean: Images from finite-frequency  
2 P wave tomography. *Journal of Geophysical Research: Solid Earth*. <https://doi.org/10.1029/2010JB007682>
- 3 Bianchi, I., Park, J., Piana Agostinetti, N., & Levin, V. (2010). Mapping seismic anisotropy using harmonic decomposition  
4 of receiver functions: An application to Northern Apennines, Italy. *Journal of Geophysical Research: Solid Earth*, 115(B12).
- 5 Bodin, T., Sambridge, M., Rawlinson, N., and Arroucau, P. (2012). Transdimensional tomography with unknown data noise.  
6 *Geophysical Journal International*, 189(3), 1536–1556. <https://doi.org/10.1111/j.1365-246X.2012.05414.x>
- 7 Boschi, L., Weemstra, C., Verbeke, J., Ekström, G., Zunino, A., and Giardini, D. (2013). On measuring surface wave phase  
8 velocity from station-station cross-correlation of ambient signal. *Geophysical Journal International*, 192, 346–358.  
9 <https://doi.org/10.1093/gji/ggs023>
- 10 Bouysse, P. (2002). Opening of the Grenada back-arc Basin and evolution of the Caribbean plate during the Mesozoic and  
11 Early Paleogene. *Tectonophysics*, 149, 121–143.
- 12 Cabieces, R., Krüger, F., Garcia-Yeguas, A., Villaseñor, A., Buforn, E., Pazos, A., Olivar-Castaño, A & Barco, J. (2020).  
13 Slowness vector estimation over large-aperture sparse arrays with the Continuous Wavelet Transform (CWT): application to  
14 Ocean Bottom Seismometers. *Geophysical Journal International*, 223(3), 1919-1934.
- 15 Cabieces, R., Olivar-Castaño, A., Junqueira, T. C., Relinque, J., Vackár, J., Rösler, B., Fernandez-Prieto, L., Barco, J.,  
16 Pazos, A., and García-Martínez L. (2021). Integrated Seismic Program (ISP): A new Python GUI-based software for  
17 earthquake seismology and seismic signal processing. *Seismological Research Letters*. <https://doi.org/10.1785/0220210205>
- 18 Deen, M.; Wielandt, E., Stutzmann, E., Crawford, W., Barruol, G. and Sigloch, K. (2017). First observation of the Earth's  
19 permanent free oscillations on ocean bottom seismometers. *Geophysical Research Letters*, 44(21), 10.988-10.996.  
20 <http://dx.doi.org/10.1002/2017GL074892>
- 21 Campillo, M., Sato, H., Shapiro, N. M., and van der Hilst, R. D. (2011). New developments on imaging and monitoring with  
22 seismic noise. *Comptes Rendus Geoscience*, 343(8–9), 487–495. <https://doi.org/10.1016/j.crte.2011.07.007>
- 23 Christensen, N. I., and W. D. Mooney (1995), Seismic velocity structure and composition of the continental crust: A global  
24 view, *J. Geophys. Res.*, 100, 9761– 9788.
- 25 Clark, S. A., Zelt, C. A., Magnani, M. B., and Levander, A. R. (2008). Characterizing the Caribbean–South American plate  
26 boundary at 64°W using wide-angle seismic data. *Journal of Geophysical Research*, 113(B7), B07401.  
27 <https://doi.org/10.1029/2007JB005329>



- 1 Corela, C., Silveira, G., Matias, L., Schimmel, M., and Geissler, W. H. (2017). Ambient seismic noise tomography of SW  
2 Iberia integrating seafloor- and land-based data. *Tectonophysics*. <https://doi.org/10.1016/j.tecto.2017.02.012>
- 3 Crotwell, H. P., T. J. Owens, and J. Ritsema (1999). The TauP Toolkit: Flexible seismic travel-time and ray-path utilities,  
4 *Seismological Research Letters* 70, 154–160
- 5 DeMets, C., Gordon, R. G., and Argus, D. F. (2010). Geologically current plate motions. *Geophysical Journal International*,  
6 181(1), 1–80. <https://doi.org/10.1111/j.1365-246X.2009.04491.x>
- 7 Di Croce, J. (1995). Eastern Venezuela Basin: sequence stratigraphy and structural evolution. Tesis doctoral. Rice  
8 University. Houston, Estados Unidos.
- 9 Doran, A. K., and Laske, G. (2017). Ocean-Bottom Seismometer Instrument Orientations via Automated Rayleigh-Wave  
10 Arrival-Angle Measurements. *Bulletin of the Seismological Society of America*, 107(2), 691–708.  
11 <https://doi.org/10.1785/0120160165>
- 12 Dougan, Th.W, 1977, The Imataca Complex near Cerro Bolivar, Venezuela (a calc-alkaline Archean protolith. *Precambrian*  
13 *Research*, v. 4:pp. 237- 268.
- 14 Dreiling, J., Tilmann, F., Yuan, X., Haberland, C., and Seneviratne, S. W. M. (2020). Crustal Structure of Sri Lanka Derived  
15 From Joint Inversion of Surface Wave Dispersion and Receiver Functions Using a Bayesian Approach. *Journal of*  
16 *Geophysical Research: Solid Earth*. <https://doi.org/10.1029/2019JB018688>
- 17 Edgar, N., Ewing, J. & Hennion, J., 1971. Seismic refraction and reflection in Caribbean Sea, *Am. Assoc. Petrol. Geol. Bull.*,  
18 55, 823–870.
- 19 Feo-Codecido, G., Smith Jr., F.D., Aboud, N., Di Giacomo, E., 1984. Basement and Paleozoic rocks of the Venezuelan  
20 Llanos basins. In: Bonini, W., Hargraves, R.B., Shagam, R. (Eds.), *The Caribbean–South America Plate Boundary and*  
21 *Regional Tectonics*, *Memoir: Geol. Soc. Am.*, 162, pp. 175–188.
- 22 Gonzalez W., Mario Sigismondi, Maria Jácome, Carlos Izarra, and Victor Graterol, 2017. Magnetic characterization and  
23 signature of the basement of eastern Venezuela: SEG Technical Program Expanded Abstracts 2017. August 2017, 1859-  
24 1864
- 25 Hable, S., Sigloch, K., Stutzmann, E., Kiselev, S., and Barruol, G. (2019). Crustal tomography of the western Indian Ocean  
26 from land and OBS noise cross-correlations. *Geophysical Journal International*. <https://doi.org/10.1093/gji/ggz333>

- 1 Harmon, N., Forsyth, D., and Webb, S. (2007). Using ambient seismic noise to determine short-period phase velocities and  
2 shallow shear velocities in young oceanic lithosphere. *Bulletin of the Seismological Society of America*, 97(6), 2009–2023.
- 3 Herrmann, R. B. (2013). *Computer Programs in Seismology: An Evolving Tool for Instruction and Research*. *Seismological*  
4 *Research Letters*, 84(6), 1081–1088. <https://doi.org/10.1785/0220110096>
- 5 Hillers, G., Campillo, M., Ben-Zion, Y., and Landès, M. (2013). Interaction of microseisms with crustal heterogeneity: A  
6 case study from the San Jacinto fault zone area. *Geochemistry, Geophysics, Geosystems*. <https://doi.org/10.1002/ggge.20140>
- 7 Jácome, Maria I., Kuszniir, N., Audemard, F., and Flint, S. (2003). Formation of the Maturín foreland basin, eastern  
8 Venezuela: Thrust sheet loading or subduction dynamic topography. *Tectonics*. <https://doi.org/10.1029/2002tc001381>
- 9 Jácome, María Inés, Kuszniir, N. J., Audemard, F. E., and Flint, S. (2003). Formation of the Maturín Foreland Basin, eastern  
10 Venezuela: Thrust sheet loading or subduction dynamic topography. *Tectonics*, 22(5), 1046.  
11 <https://doi.org/10.1029/2002TC001381>
- 12 Kennett B.L.N., E.R. Engdahl and R. Buland. 1995. “Constraints on seismic velocities in the earth from travel times”  
13 *Geophysical Journal International* 122, 108–124. <https://doi.org/10.1111/j.1365-246X.1995.tb03540.x>
- 14 Langston, C. A. (1979). Structure under Mount Rainier, Washington, inferred from teleseismic body waves. *Journal of*  
15 *Geophysical Research: Solid Earth*, 84(B9), 4749–4762.
- 16 Lee, E.-J., Chen, P., Jordan, T. H., Maechling, P. B., Denolle, M. A. M., and Beroza, G. C. (2014). Full-3-D tomography for  
17 crustal structure in Southern California based on the scattering-integral and the adjoint-wavefield methods. *Journal of*  
18 *Geophysical Research: Solid Earth*, 119(8), 6421–6451. <https://doi.org/10.1002/2014JB011346>
- 19 Lin, F. C., Moschetti, M. P., and Ritzwoller, M. H. (2008). Surface wave tomography of the western United States from  
20 ambient seismic noise: Rayleigh and Love wave phase velocity maps. *Geophysical Journal International*.  
21 <https://doi.org/10.1111/j.1365-246X.2008.03720.x>
- 22 Luo, Y., Yang, Y., Xu, Y., Xu, H., Zhao, K., and Wang, K. (2015). On the limitations of interstation distances in ambient  
23 noise tomography. *Geophysical Journal International*, 201(2), 652–661. <https://doi.org/10.1093/gji/ggv043>
- 24 Magnani, M. B., Zelt, C. A., Levander, A., and Schmitz, M. (2009), Crustal structure of the South American–Caribbean  
25 plate boundary at 67°W from controlled source seismic data, *J. Geophys. Res.*, 114, B02312, doi:10.1029/2008JB005817.

- 1 Masy, J., Niu, F., Levander, A. & Schmitz, M., 2015. Lithospheric expres-  
2 rifting and the Precambrian Shield in Venezuela, Earth planet. Sci. Lett., 410, 12–24.
- 3 Meschede, M., and Frisch, W. (1998). A plate-tectonic model for the Mesozoic and Early Cenozoic history of the Caribbean  
4 plate. *Tectonophysics*, 296(3–4), 269–291.
- 5 Miller, M. S., Levander, A. R., Niu, F., and Li, A. (2009). Upper mantle structure beneath the Caribbean-South American  
6 plate boundary from surface wave tomography. *Journal of Geophysical Research*, 114(B1), B01312.  
7 <https://doi.org/10.1029/2007JB005507>
- 8 Moschetti, M. P., Ritzwoller, M. H., and Shapiro, N. M. (2007). Surface wave tomography of the western United States from  
9 ambient seismic noise: Rayleigh wave group velocity maps. *Geochemistry Geophysics Geosystems*, 8(8), Q08010.  
10 <https://doi.org/10.1029/2007GC001655>
- 11 Müller, R. D., Royer, J.-Y., Cande, S. C., Roest, W. R., and Maschenkov, S. (1999). New constraints on the Late  
12 Cretaceous/Tertiary plate tectonic evolution of the Caribbean. In *Sedimentary basins of the world* (Vol. 4, pp. 33–59).  
13 Elsevier.
- 14 Niu, F., Bravo, T., Pavlis, G., Vernon, F., Rendon, H., Bezada, M., and Levander, A. (2007). Receiver function study of the  
15 crustal structure of the southeastern Caribbean plate boundary and Venezuela. *Journal of Geophysical Research: Solid Earth*.  
16 <https://doi.org/10.1029/2006JB004802>
- 17 Officer, C.B, Ewing, J.I., Hennion, J.F., Harkinder, D.G. & Miller, D.E., 1959. Geophysical investigations in the eastern  
18 Caribbean: summary of the 1955 and 1956 cruises, in *Physics and Chemistry of the Earth*, Vol. 2, pp. 17–109, eds Ahrens,  
19 C.H., Press, F., Rankama, K. & Runcorn, S.K., Pergamon Press.
- 20 Olivar-Castaño, A., Pilz, M., Pedreira, D., Pulgar, J. A., Díaz-González, A., González-Cortina, J. M. (2020). Regional  
21 Crustal Imaging by Inversion of Multimode Rayleigh Wave Dispersion Curves Measured From Seismic Noise: Application  
22 to the Basque-Cantabrian Zone (N Spain). *Journal of Geophysical Research: Solid Earth*, 125, e2020JB019559.  
23 <https://doi.org/10.1029/2020JB019559>
- 24 Ostos, M., F. Yoris, and H. G. Ave Lallemand (2005), Overview of the southeast Caribbean-South America plate boundary  
25 zone, in: *Caribbean-South American Plate Interactions*, Venezuela, H. G. Ave Lallemand, and V. B. Sisson (Eds.), *Geol. Soc.*  
26 *Am. Special Paper 394*, Boulder CO, pp. 53– 89.

- 1 Pérez, O. J., Bilham, R., Bendick, R., Velandia, J. R., Hernández, N., Moncayo, C., et al. (2001). Velocity field across the  
2 Southern Caribbean plate boundary and estimates of Caribbean/South-American plate motion using GPS geodesy 1994-  
3 2000. *Geophysical Research Letters*. <https://doi.org/10.1029/2001GL013183>
- 4 Passalacqua, H., F. Fernandez, Y. Gou, and F. Roure (1995), Crustal archi- tecture and strain partitioning in the eastern  
5 Venezuelan ranges, *AAPG Mem.*, 62, 667–679.
- 6 Pindell, J., Kennan, L., Maresch, W. V., Stanek, K. P., Draper, G., and Higgs, R. (2005). Plate-kinematics and crustal  
7 dynamics of circum-Caribbean arc-continent interactions: Tectonic controls on basin development in Proto-Caribbean  
8 margins. *Special Paper of the Geological Society of America*. <https://doi.org/10.1130/0-8137-2394-9.7>
- 9 Pindell, J. L., Cande, S. C., Pitman, W. C., Rowley, D. B., Dewey, J. F., Labrecque, J., and Haxby, W. (1988). A plate-  
10 kinematic framework for models of Caribbean evolution. *Tectonophysics*. [https://doi.org/10.1016/0040-1951\(88\)90262-4](https://doi.org/10.1016/0040-1951(88)90262-4)
- 11 Ritzwoller, M. H., Shapiro, N. M., Levshin, A. L., and Leahy, G. M. (2001). Crustal and upper mantle structure beneath  
12 Antarctica and surrounding oceans. *Journal of Geophysical Research*, 106(B12), 30645–30670.
- 13 Romito, S.; Mann, P. (2020). Tectonic terranes underlying the present-day Caribbean plate: Their tectonic origin,  
14 sedimentary thickness, subsidence histories, and regional controls on hydrocarbon resources. *Geological Society, London,*  
15 *Special Publications*, (), SP504-2019-221–. doi:10.1144/SP504-2019-221
- 16 Rohr, G. M. (1991). Exploration potential of Trinidad and Tobago. *Journal of Petroleum Geology*.  
17 <https://doi.org/10.1111/j.1747-5457.1991.tb00316.x>
- 18 Russo, R. M., and Speed, R. C. (1994). Spectral analysis of gravity anomalies and the architecture of tectonic wedging, NE  
19 Venezuela and Trinidad. *Tectonics*. <https://doi.org/10.1029/94TC00052>
- 20 Ryberg, T., Geissler, W., Jokat, W., & Pandey, S. (2017). Uppermost mantle and crustal structure at Tristan da Cunha  
21 derived from ambient seismic noise. *Earth and Planetary Science Letters*, 471, 117–124.
- 22 Schimmel, M.; Stutzmann, E. and Gallart, J. (2011). Using instantaneous phase coherence for signal extraction from ambient  
23 noise data at a local to a global scale. *Geophysical Journal International*, 184(1), 494-506. <https://doi.org/10.1111/j.1365-246X.2010.04861.x>
- 25 Shapiro, N. M., Campillo, M., Stehly, L., and Ritzwoller, M. H. (2005). High-resolution surface-wave tomography from  
26 ambient seismic noise. *Science*, 307(5715), 1615–1618. <https://doi.org/10.1126/science.1108339>

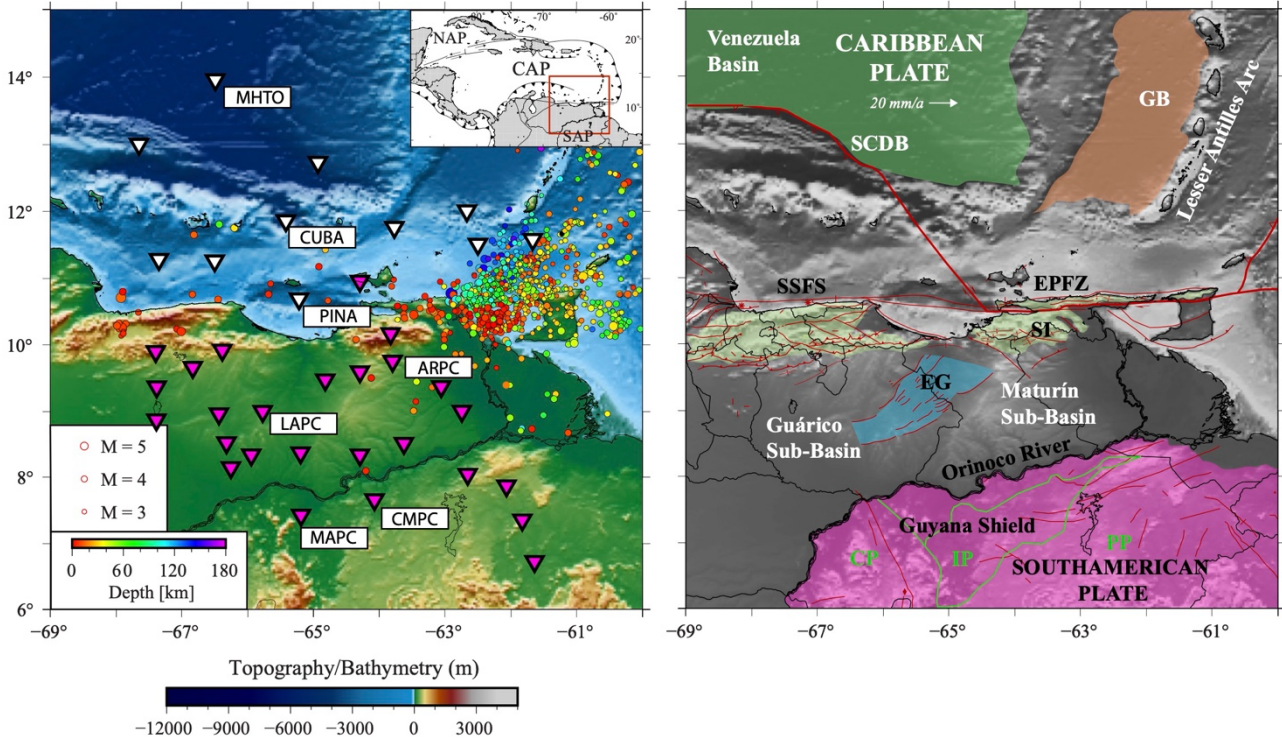
- 1 Shen, W., Ritzwoller, M. H., Schulte-Pelkum, V. & Fan-Chi, L., 2012. Joint inversion of surface wave dispersion and  
2 receiver functions: a Bayesian Monte-Carlo approach. *Geophysical Journal International*, 192 (2), 807-836.  
3 doi:[10.1093/gji/ggs050](https://doi.org/10.1093/gji/ggs050)
- 4 Sidder, G. B. (1990). *Geologic province map of the Venezuelan Guiana Shield*. [Menlo Park, CA] : [Denver, Colo.]: U.S.  
5 Dept. of the Interior, Geological Survey.
- 6 Sisson, V. B., Avé Lallemant, H. G., Ostos, M., Blythe, A. E., Snee, L. W., Copeland, P., et al. (2005). Overview of  
7 radiometric ages in three allochthonous belts of Northern Venezuela: Old ones, new ones, and their impact on regional  
8 geology. *Special Paper of the Geological Society of America*. <https://doi.org/10.1130/0-8137-2394-9.91>
- 9 Tanimoto, T., Ishimaru, S., and Alvizuri, C. (2006). Seasonality in particle motion of microseisms. *Geophysical Journal*  
10 *International*, 166(1), 253–266. <https://doi.org/10.1111/j.1365-246X.2006.02931.x>
- 11 Tian, Y., and Ritzwoller, M. H. (2017). Improving ambient noise cross-correlations in the noisy ocean bottom environment  
12 of the Juan de Fuca plate. *Geophysical Journal International*, 210(3), 1787–1805. <https://doi.org/10.1093/gji/ggx281>
- 13 Tian, Y., Shen, W., and Ritzwoller, M. H. (2013). Crustal and uppermost mantle shear velocity structure adjacent to the Juan  
14 de Fuca Ridge from ambient seismic noise. *Geochemistry Geophysics Geosystems*, 14(8), 3221–3233.  
15 <https://doi.org/10.1002/ggge.20206>
- 16 Ventosa, S., Schimmel, M., and Stutzmann, E. (2017). Extracting surface waves, hum and normal modes: Time-scale phase-  
17 weighted stack and beyond. *Geophysical Journal International*. <https://doi.org/10.1093/gji/ggx284>
- 18 Ventosa, S., Schimmel, M., and Stutzmann, E. (2019). Towards the Processing of Large Data Volumes with Phase  
19 Cross-Correlation. *Seismological Research Letters*, 90(4), 1663–1669. <https://doi.org/10.1785/0220190022>
- 20 Vernon, F., Pavlis, G., Levander, A., & Wallace, T. (2003). Crust-mantle interactions during continental growth and  
21 high-pressure rock exhumation at an oblique arc-continent collision zone: SE Caribbean margin [Data set] *International*  
22 *Federation of Digital Seismograph Networks*. [https://doi.org/10.7914/SN/XT\\_2003](https://doi.org/10.7914/SN/XT_2003)
- 23 Watts, A.B., 2001, *Isostasy and Flexure of the Lithosphere*: Cambridge: Oxford University Press, 480 pp.
- 24 Webb, S. C. (1998). Broadband seismology and noise under the ocean. *Reviews of Geophysics*.  
25 <https://doi.org/10.1029/97RG02287>

- 1 Webb, S. C., and Crawford, W. C. (1999). Long-period seafloor seismology and deformation under ocean waves. *Bulletin of*  
2 *the Seismological Society of America*.
- 3 Webber, A. P., Roberts, S., Mills, R. A., Connelly, D. P., Murton, B. J., and Hodgkinson, M. R. S. (2015). Talc-dominated  
4 seafloor deposits reveal a new class of hydrothermal system. *Nature Communications*, 6, 10150.  
5 <https://doi.org/10.1038/ncomms10150>
- 6 wessel, P., Smith, W.H., Scharroo, R., Luis, J. & Wobbe, F., 2013. Generic mapping tools: improved version released, *EOS*,  
7 *Trans. Am. geophys. Un.*,94, 409–410.
- 8 Wilde-Piórko, M., Grycuk, M., Polkowski, M., and Grad, M. (2017). On the rotation of teleseismic seismograms based on  
9 the receiver function technique. *Journal of Seismology*, 21(4), 857–868.[https://doi.org/10.1007/s10950-017-9640-](https://doi.org/10.1007/s10950-017-9640-x)  
10 [xhttps://doi.org/10.1007/s10950-017-9640-x](https://doi.org/10.1007/s10950-017-9640-x)
- 11 Yoris, F., Ostos, M., 1997, *Geología de Venezuela: Geología General y Cuencas Petrolíferas*, en Singer, J. (ed.), WEC 1997  
12 *evaluación de Pozos: Texas*, Jolley Printing Schlumberger - Surencó C.A., pp. 24-44.
- 13 Yudistira, T., Paulssen, H., Trampert, J., 2017. The crustal structure beneath The Netherlands derived from ambient seismic  
14 noise. *Tectonophysics* 721, 361–371. <https://doi.org/10.1016/j.tecto.2017.09.025>.
- 15 Zandt, G., and C. J. Ammon (1995), Continental crust composition constrained by measurement of crustal Poisson's ratio,  
16 *Nature*, 374, 152– 154.
- 17 Zhu, L., and Kanamori, H. (2000). Moho depth variation in southern California from teleseismic receiver functions. *Journal*  
18 *of Geophysical Research: Solid Earth*, 105(B2), 2969–2980.

19  
20  
21  
22  
23  
24  
25  
26  
27  
28

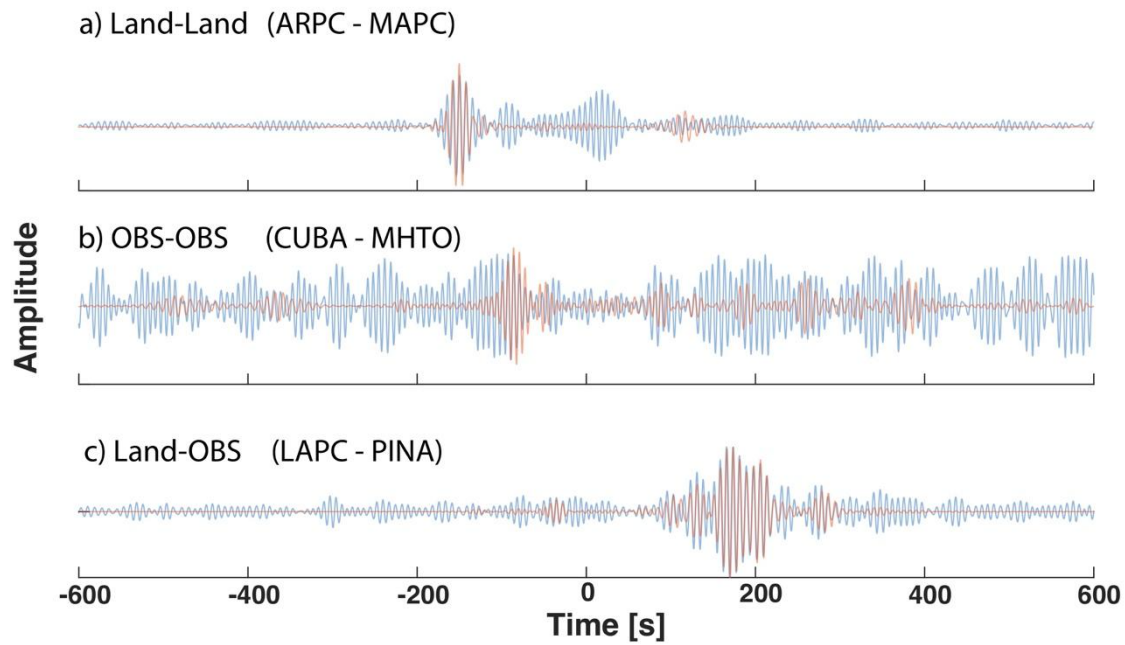
1  
2  
3  
4  
5

## Figures



6  
7  
8  
9  
10  
11  
12  
13  
14  
15

**Figure 1.** (Left) Topographic map of the studied area overlaid with stations (triangles) from the BOLIVAR project (2004 – 2005). The local seismicity (circles) from 2005-2020 ( $M_w > 3.0$ ) is shown to illustrate the tectonic background and complexity of the study region (see main text). On the top right is a view of the general context of the Caribbean Plate and Northern South America. Blue triangles represent stations inland, while white triangles represent OBS. Labeled stations are later used to illustrate methodology and results. (Right) Simplified geologic map of the studied region. The Precambrian shield is shown in purple, the Jurassic Espino Graben (EG) in blue, in green the Serranía del Interior (SI), in dark green the Cretacic Venezuela Basin and in brown the Grenada Basin. In red we show active faults as presented by Audemard et al (2006). Other abbreviations include: SSFS (San Sebastian Fault System), EPFS (El Pilar Fault System), Trinidad and Tobago (TT), Peninsula of Paria (PoP), Cuchivero Province (CP), Imataca Province (IP) and Pastora Province (PP).

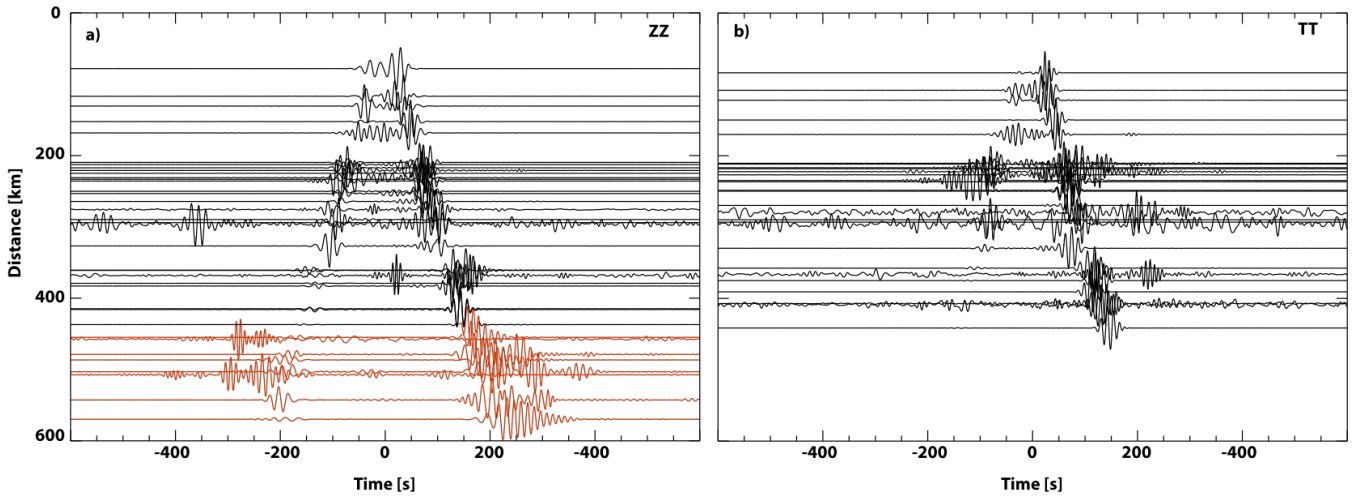


1  
2  
3  
4  
5  
6  
7  
8  
9  
10  
11  
12  
13  
14  
15  
16  
17  
18

**Figure 2.** EGFs from three different cross-correlation pairs (EGFs) determined via linear stacking of cross-correlograms (blue) and ts-PWS stacking of the cross-correlograms (red). All EGFs are bandpass filtered over 6-10 s. This includes (a) EGFs from land stations ARPC to MAPC, (b) OBS stations CUBA to MHTO, and (c) LAPC to PINA, land to OBS stations, respectively. See Figure 1 for station locations.

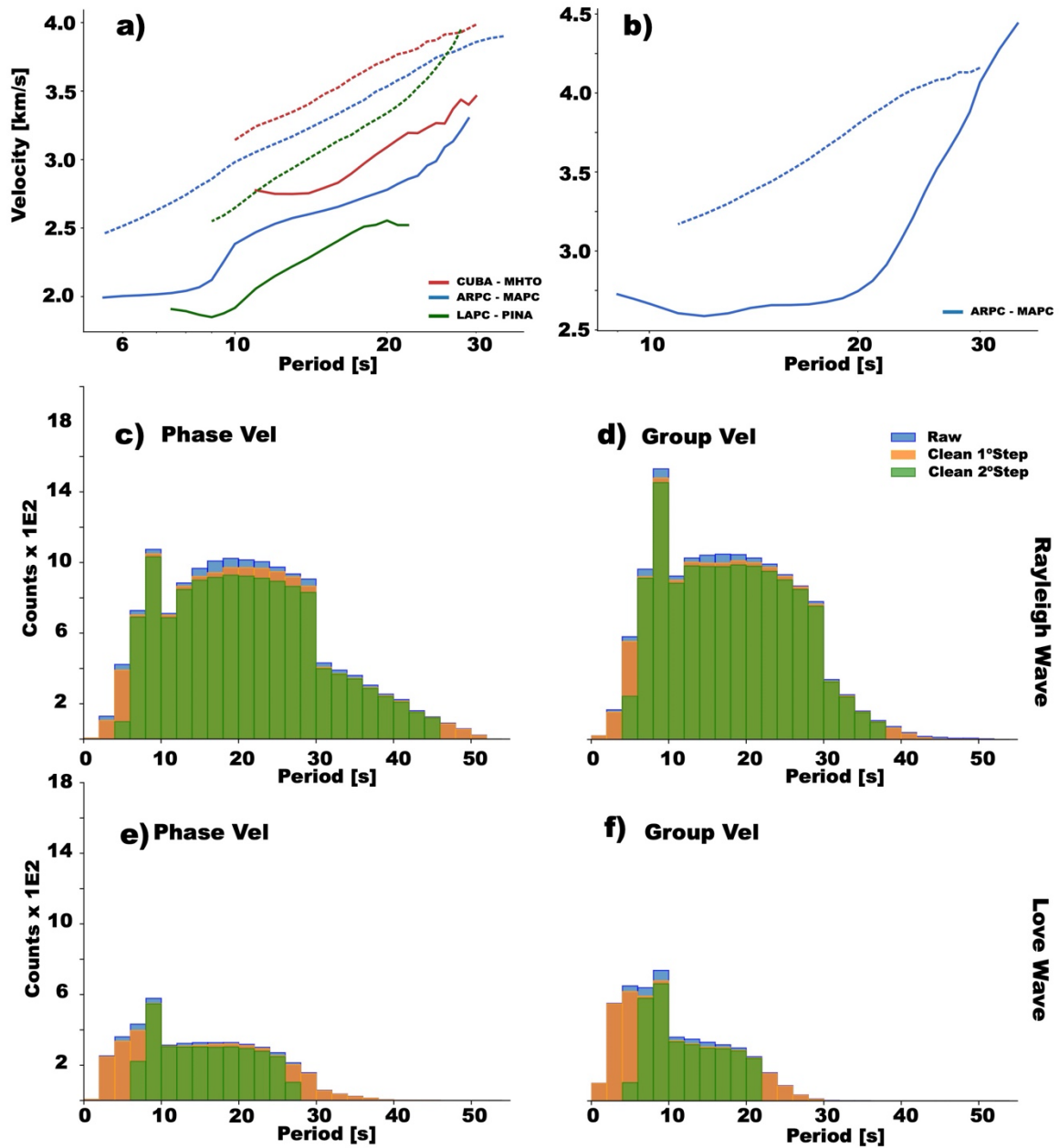


1  
2



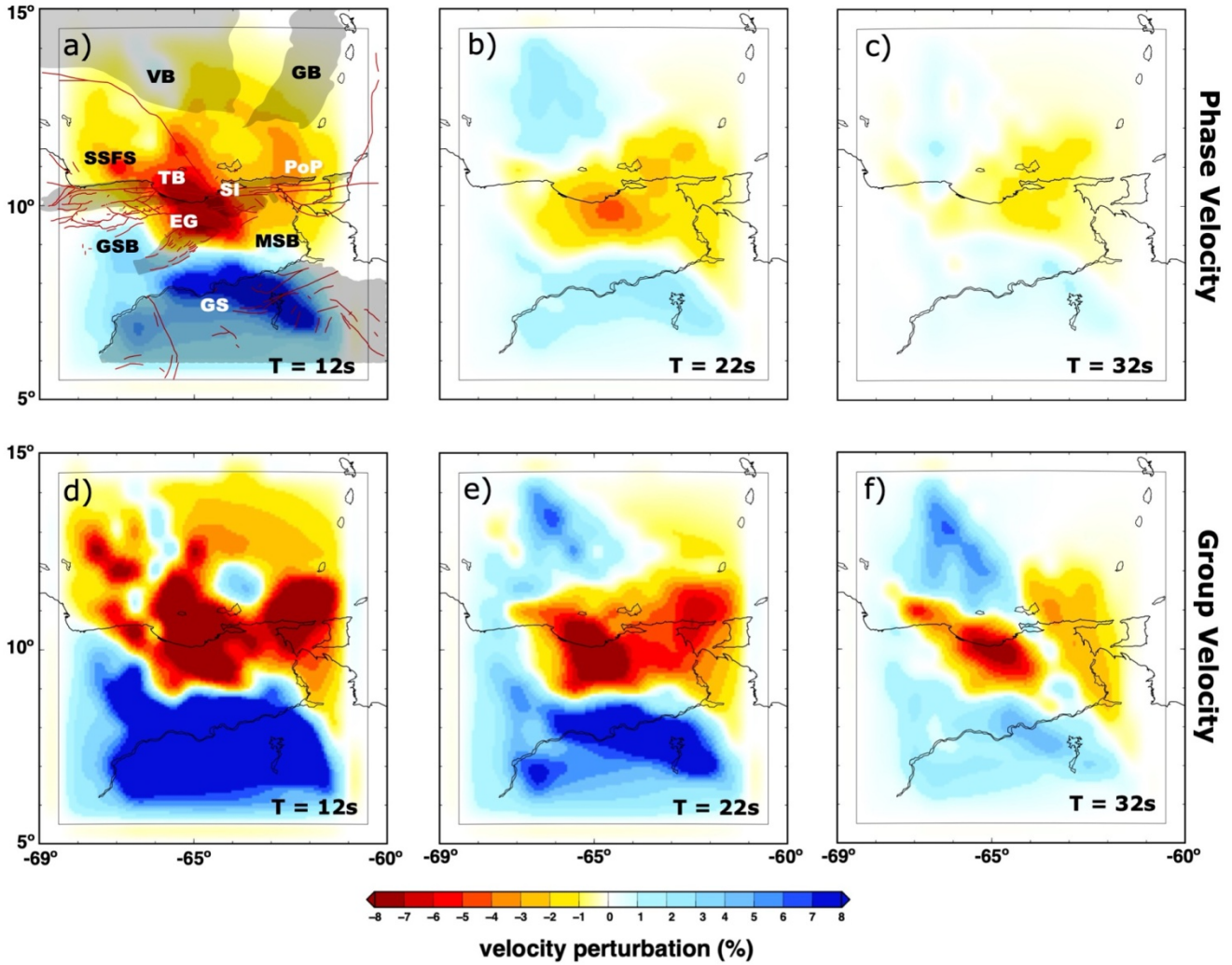
3  
4  
5  
6  
7  
8  
9  
10  
11  
12  
13  
14  
15  
16  
17  
18  
19  
20  
21

**Figure 3.** Record section of Guiana Shield station CMPC (see Figure 1). Specifically, we show the non-symmetric, stacked EGFs between CMPC and all of the rest of the stations. (a) Vertical-vertical (Z-Z) component where EGFs from CMPC to land stations are shown as black lines and EGFs from CMPC to OBSs as red lines. (b) Same as (a), but for the Transverse-Transverse (T-T) component EGFs.



1  
2 **Figure 4.** Dispersion curves for multiple EGFs, station pair waveforms corresponding to those shown in Figure 2 (see Figure 1 for station  
3 locations). a) Rayleigh wave dispersion curves for phase velocity (dashed lines) and group velocity (solid lines). b) Love wave dispersion  
4 curves for phase velocity (dashed lines) and group velocity (solid lines). Note that only land-land stations are viable for Love wave  
5 dispersion analysis. c) and e) Phase velocity histograms of dispersion measurements for Rayleigh and Love waves, respectively. d) and f)  
6 Love velocity histograms of dispersion measures for Rayleigh and Love waves, respectively. Blue bars correspond to raw measurements,  
7 orange bars correspond to measurements obtained after cleaning by smoothing the phase/group dispersion maps ( $\alpha = 2000$ ) and green  
8 bars are the final measurements obtained after excluding outliers that are outside of three standard deviations for a given wave period.

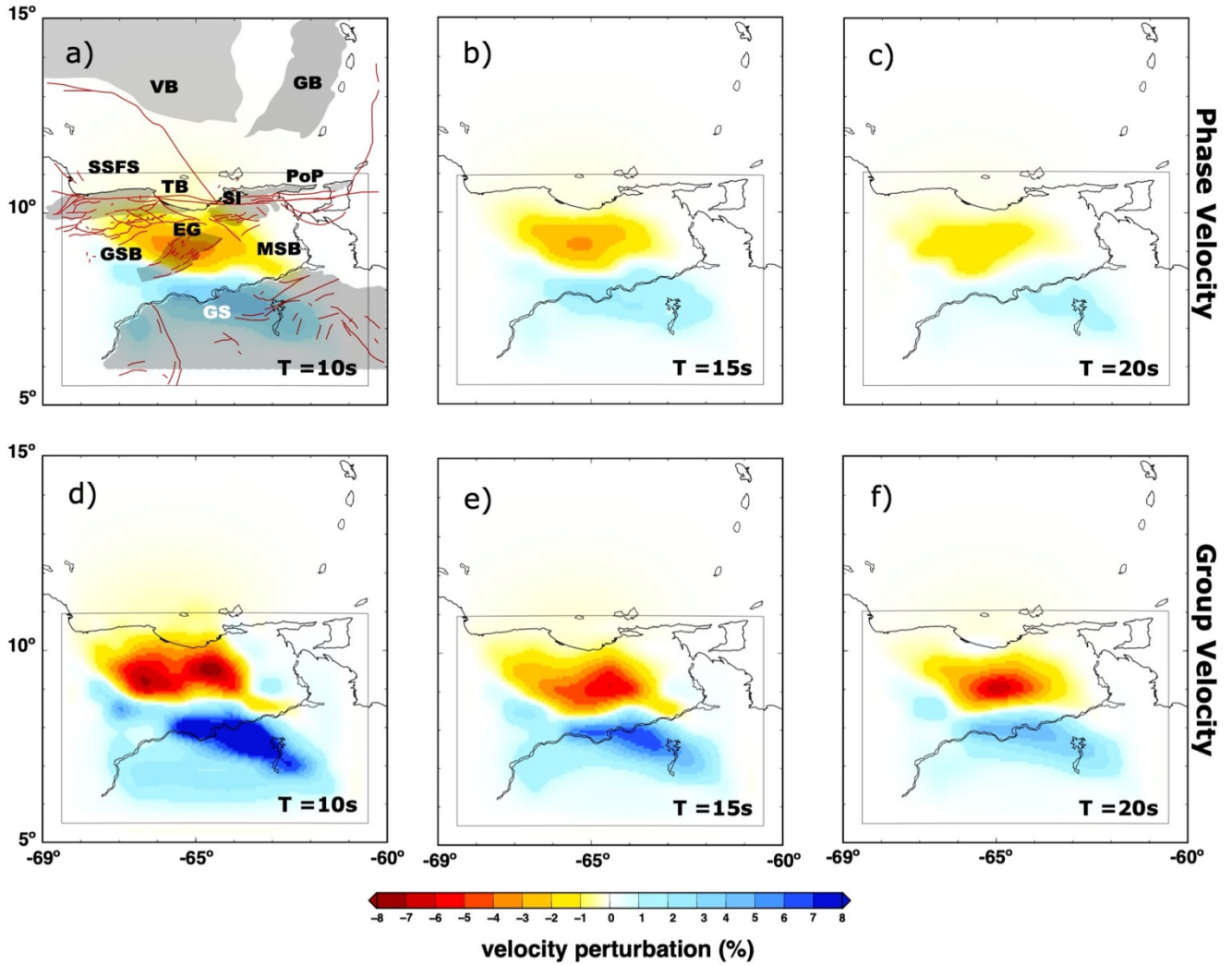
1  
2  
3  
4  
5



6  
7  
8  
9  
10  
11  
12  
13

**Figure 5.** Rayleigh wave phase (upper panels, a-c) and group velocity (lower panels, d-f) maps for wave periods of T 12, 22 and 32 s. The gray box denotes the area with reliable measurements based on ray-path coverage. In red we show active faults as presented by Audemard et al (2006). Abbreviations stand for: VB (Venezuela Basin), GS (Guiana Shield), MSB (Maturin Sub-Basin), GSB (Guarico Sub-Basin), SI (Serrania del Interior), EG (Espino Graben), TB (Turtle Island-Barcelona Bay), PoP (Peninsula of Paria) and SSFS (San Sebastian Fault System). VB, GB, SSFS, EG, SI, PoP and GS regions are highlighted with shaded areas.

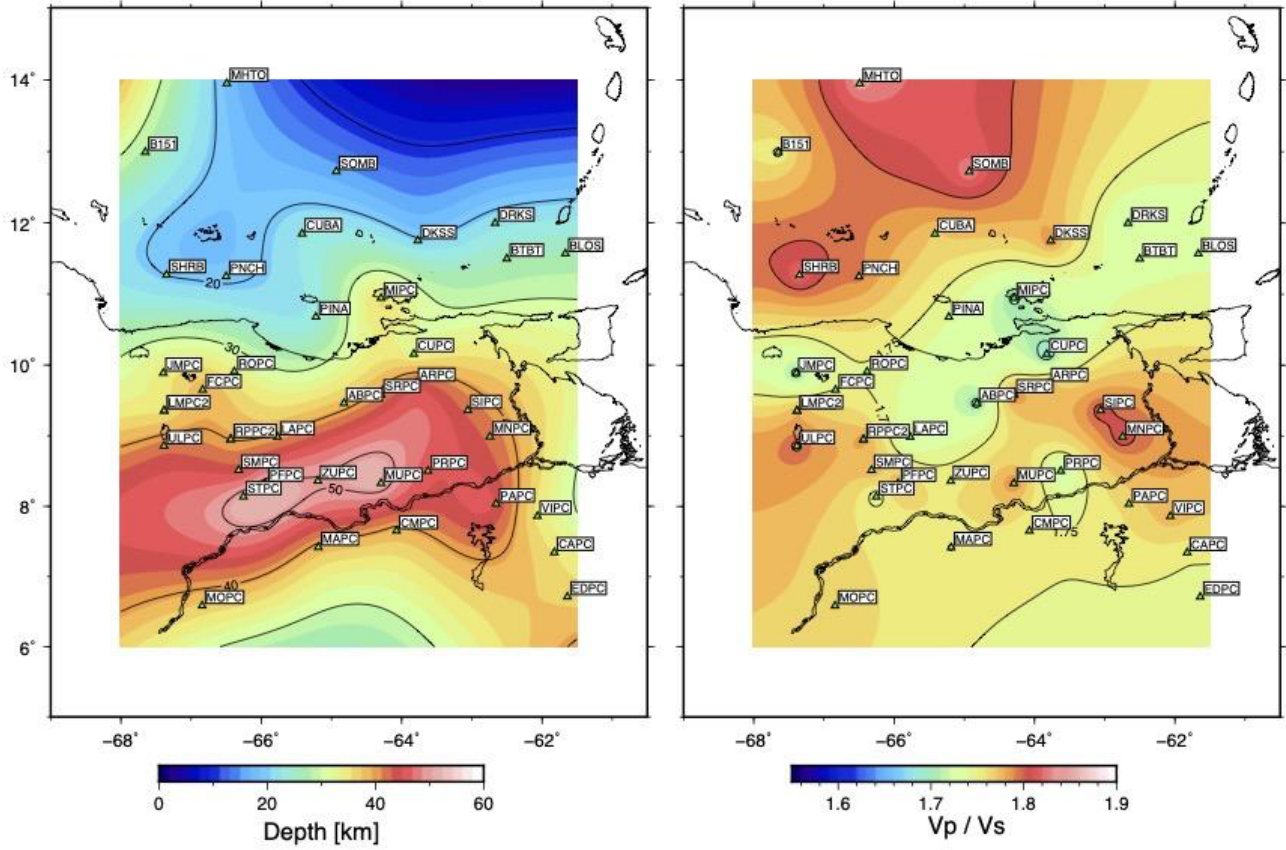
1  
2  
3



4  
5  
6  
7  
8  
9  
10  
11

**Figure 6.** Similar for Figure 5, but for Love wave phase and group velocity maps for wave periods 10, 15 and 20 s. In red we show active faults as presented by Audemard et al (2006). Abbreviations stand for: VB (Venezuela Basin), GS (Guiana Shield), MSB (Maturin Sub-Basin), GSB (Guarico Sub-Basin), SI (Serrania del Interior), EG (Espino Graben), TB (Turtle Island-Barcelona Bay), PoP (Peninsula of Paria) and SSFS (San Sebastian Fault System). VB, GB, SSFS, EG, SI, PoP and GS regions are highlighted with shaded areas.

1  
2  
3  
4  
5  
6  
7

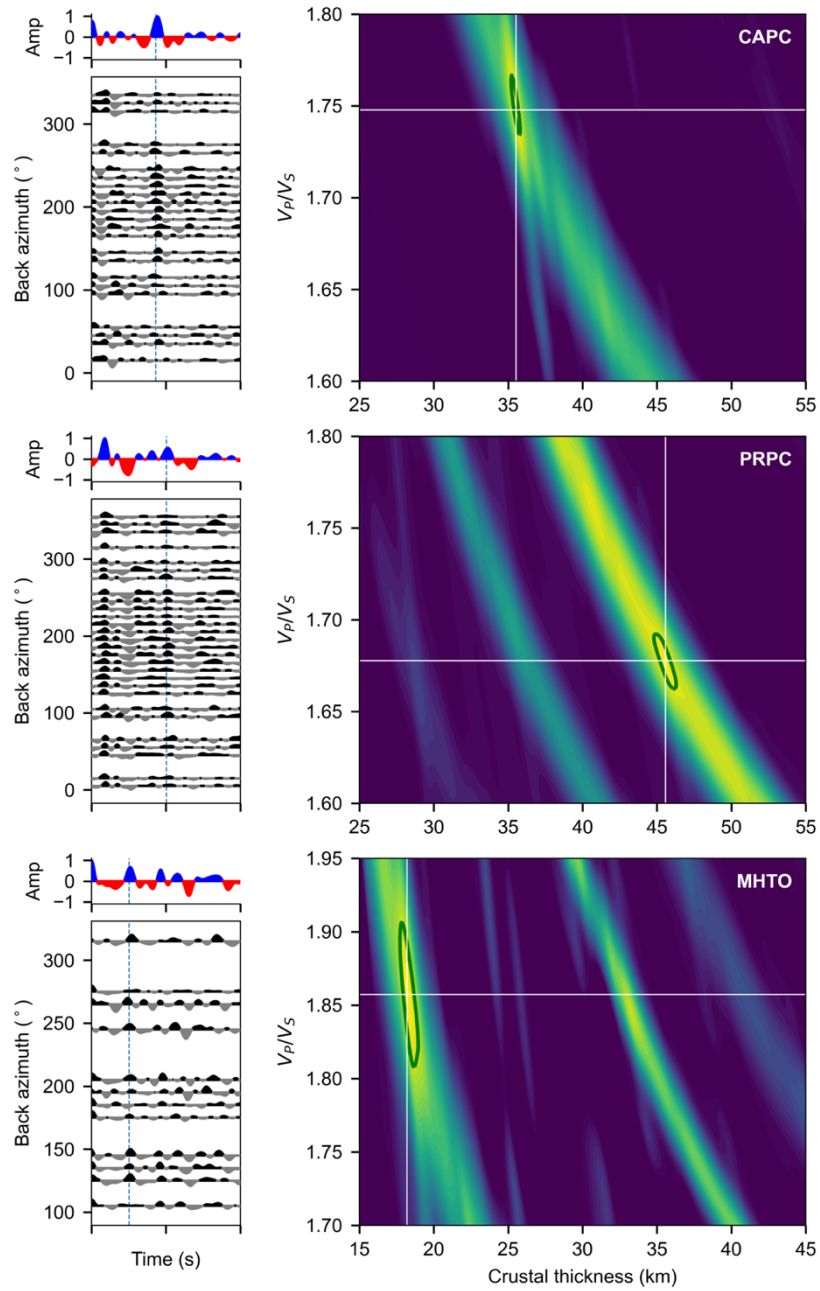


8  
9

10  
11  
12

**Figure 7.** Map of the Moho depth estimation (left panel) and ratio  $V_p/V_s$  (right panel). Green triangles show the stations used to estimate the Moho depth and the  $V_p/V_s$  ratio. Contour lines every 20 km for the Moho depth and in steps of 0.1 for the  $V_p/V_s$  ratio. The inter-station Moho depth has been retrieved through neighboring algorithm interpolation.

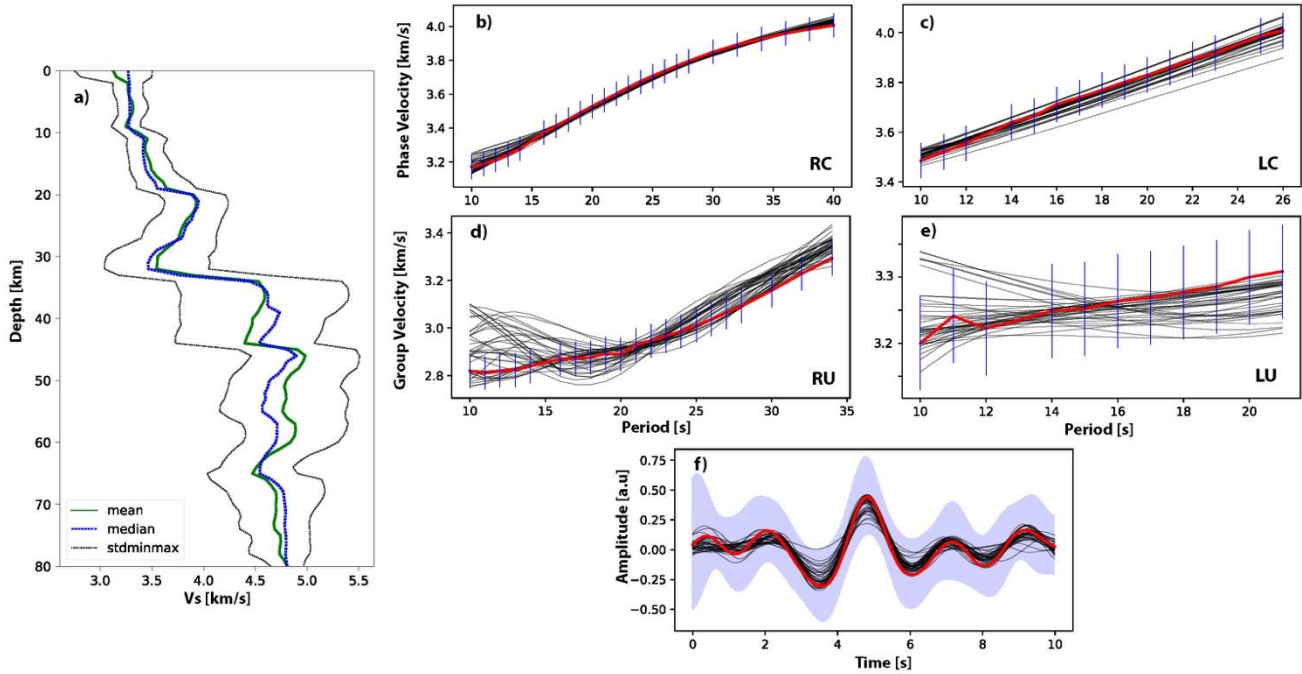




1  
2  
3  
4  
5

**Figure 8.** H-k and Receiver Function estimation for CAPC, STPC and PRCPC stations. Left panels: RFs of teleseismic earthquakes (black and white) used to obtain the RFs stack (blue and red). Right panels: H-k maps highlighting the maximum power corresponding to the optimal crustal thickness.

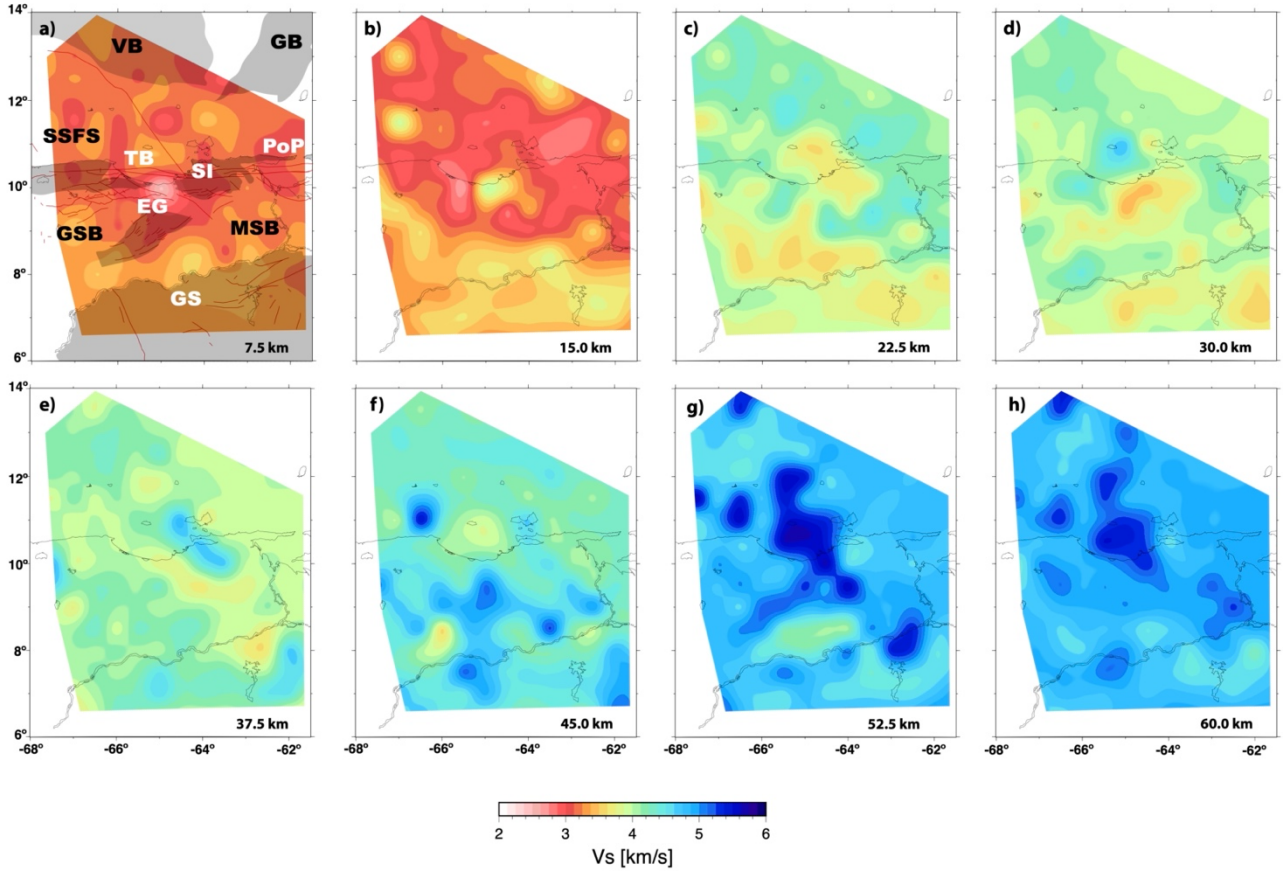
1  
2  
3  
4  
5



6  
7  
8  
9  
10  
11  
12  
13  
14  
15  
16  
17  
18  
19  
20

**Figure 9.** Illustrative example of 1D shear wave velocity inversion. a) green line represents the mean, the blue dots the median and the grey lines the standard deviation estimated for 1D shear wave velocity model in ( $65.0^\circ$  W  $-7.0^\circ$  N, corresponding to the Guiana Shield) from the ensemble of the best models per chain b) and d) phase and group velocity fit (grey line is the fit per chain) of the Rayleigh wave), e) phase and group velocity fit of the Love wave f) Receiver Function of station MAPC which was used to do the 1D shear wave inversion. Red line the observed dispersion curves and receiver function, blue bars correspond to an error of three standard deviations and purple shadow is the associated error of the receiver function.

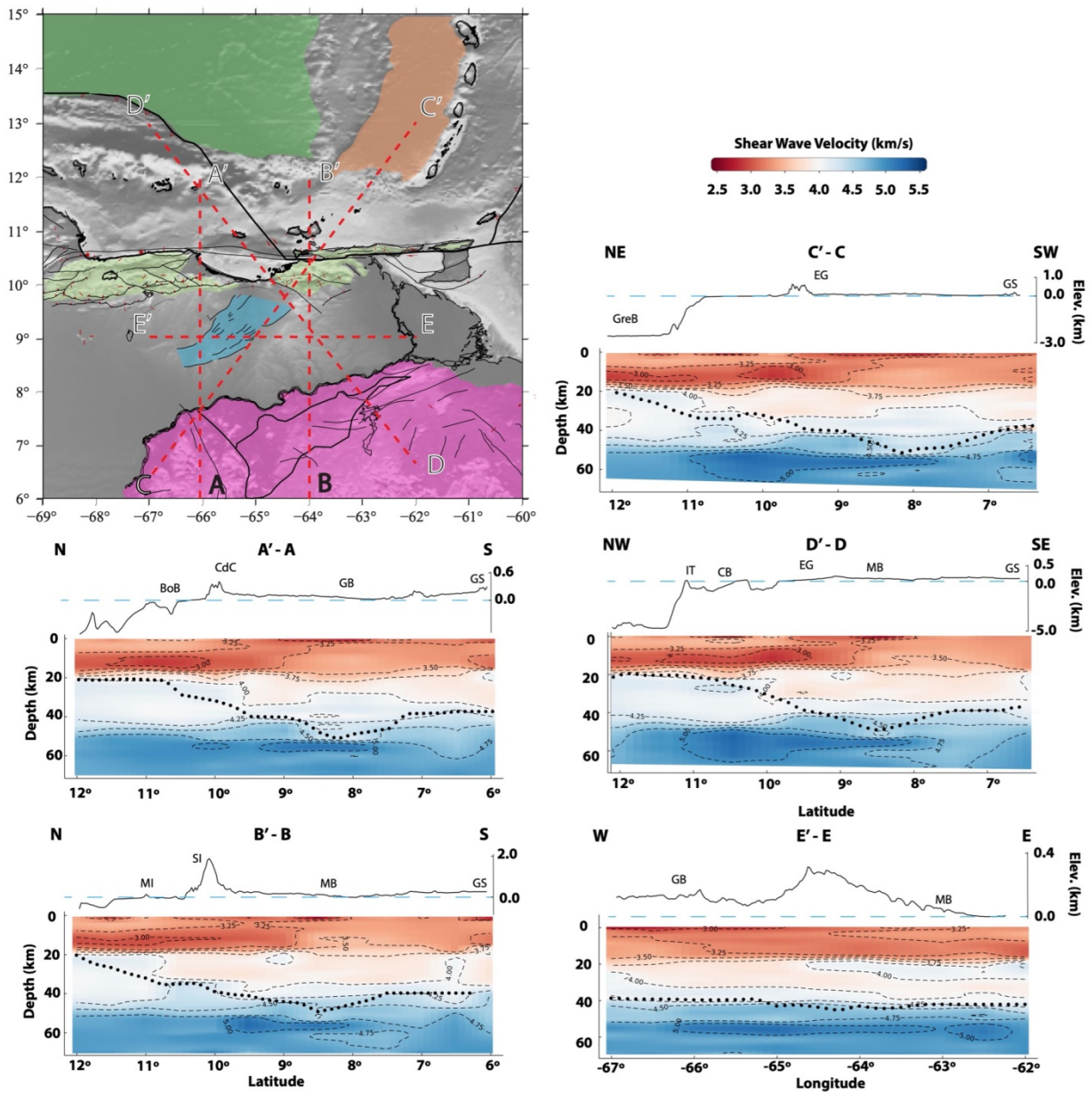
1  
2  
3



4  
5  
6  
7  
8  
9

**Figure 10.** Horizontal slices of the 3D shear wave velocity model obtained in this study. From a) to h) increasing depth in steps of 7.5 km until 60 km depth. In red we show active faults as presented by Audemard et al (2006). Abbreviations stand for: VB (Venezuela Basin), GS (Guiana Shield), MSB (Maturin Sub-Basin), GSB (Guarico Sub-Basin), SI (Serrania del Interior), EG (Espino Graben), TB (Turtle Island-Barcelona Bay), PoP (Peninsula of Paria) and SSFS (San Sebastian Fault System). VB, GB, SSFS, EG, SI, PoP and GS regions are highlighted with shaded areas.





1

2

3

4

5

6

7

8

**Figure 11.** Profiles show the  $V_s$  variations across the studied area. On the top left a map displaying the location of each profile. Each profile shows the  $V_s$  structure of the final model and the Moho depth (black dotted line) interpolated with the nearest neighbor algorithm. On the top, the topography and bathymetry from GEBCO 2021 (blue dashed line is 0 m.a.s.l.). Contours every 0.25 km/s. In thin black lines, we show active faults as presented by Audemard et al (2006). Abbreviations stand for: BoB (Bonaire Basin), CdC (Cordillera de la Costa), GB (Guárico Basin), GS (Guiana Shield), MI (Margarita Island), SI (Serranía del Interior), MB (Maturín Basin), IT (Isla La Tortuga), CB (Cariaco Basin), EG (Espino Graben) and GreB (Grenada Basin).