

Brief Communication: An Autonomous UAV for Catchment-Wide Monitoring of a Debris Flow Torrent

Fabian Walter^{1,2}, Elias Hodel^{2,1}, Erik S. Mannerfelt^{2,1}, Nicolas Ackermann³, Kristen Cook⁴, Michael Dietze^{5,4}, Livia Estermann⁶, Michaela Wenner^{2,1}, Daniel Farinotti^{2,1}, Martin Fengler⁷, Lukas Hammerschmidt⁷, Flavia Hänsli⁶, Jacob Hirschberg^{1,6}, Brian McArdell¹, and Peter Molnar⁶

¹Swiss Federal Institute for Forest, Snow and Landscape Research WSL, 8903 Birmensdorf, Switzerland

²Laboratory of Hydraulics, Hydrology and Glaciology, ETH Zurich, 8093 Zurich, Switzerland

³Swiss Federal Railways SBB, 3000 Bern, Switzerland

⁴GFZ German Research Centre for Geosciences, 14473 Potsdam, Germany

⁵Faculty of Geosciences and Geography, Georg-August-University Göttingen, 37077 Göttingen, Germany

⁶Institute of Environmental Engineering, ETH Zurich, 8093 Zurich, Switzerland

⁷Meteomatics AG, 9014 St. Gallen, Switzerland

Correspondence: Fabian Walter (fabian.walter@wsl.ch)

Abstract.

Debris flows threaten communities in mountain regions worldwide. Combining modern photogrammetric processing with autonomous unoccupied aerial vehicle (UAV) flights at sub-weekly intervals allows mapping of sediment dynamics in a debris-flow catchment. This provides important information for sediment disposition that pre-conditions the catchment for debris flow occurrence. At the Illgraben debris-flow catchment in Switzerland, our autonomous UAV launched nearly 50 times in the snow-free periods in 2019-2021 with typical flight intervals of 2-4 days, producing 350-400 images every flight. The observed terrain changes resulting from debris flows exhibit preferred locations of erosion and deposition, including memory effects as previously deposited material is preferentially removed during subsequent debris flows. Such data are critical for the validation of geomorphological process models. Given the remote terrain, the mapped short-term erosion and deposition structures are difficult to obtain with conventional measurements. The proposed method thus fills an observational gap, which ground-based monitoring and satellite-based remote sensing cannot fill as a result of limited access, reaction time, spatial resolution, or involved costs.

1 Introduction

Water discharge peaks can mobilize sediments in steep torrents, which subsequently move in the form of debris flows toward channel outlets. Warning systems often rely on rapid detection of debris flows via monitoring precipitation, ground unrest or flow depth (e.g. Badoux et al., 2009). However, repeated catchment surveillance is also important for assessing debris flow hazards. In this way, water-damming deposits from previous debris flows or landslides can be identified, whose breaching may be particularly difficult to predict since it is not related to meteorological parameters (Godt and Coe, 2007). Similarly, repeated digital elevation models (DEMs) can reveal temporal exhaustion of sediments available in debris flow source areas.

20 This "supply limitation" temporarily lowers the debris flow hazard, in contrast to sudden slope failures whose deposits in
torrent beds suddenly increase the hazard (Bovis and Jakob, 1999). Such variations in sediment availability may explain why
rainfall thresholds tend to perform poorly in terms of warning (Cannon et al., 2008; Kean et al., 2012; Gregoretti et al., 2016;
Rengers et al., 2016). However, the spatial coverage and the temporal resolution (typically on the order of tens of km² and days
25 to weeks, respectively) needed to reliably monitor an entire catchment requires costly surveillance flights or time demanding
site visits.

Here we introduce a new approach for monitoring sediment changes in catchments that are prone to debris flows. Using an
autonomous unmanned aerial vehicle (UAV) performing flights at intervals as low as a few days, we generate time series of
DEM differences for a Swiss torrent. We employ a recently developed photogrammetric processing scheme to identify terrain
changes in the hillslope-channel area with decimeter precision, showing erosion and deposition patterns related to debris flows
30 and to lateral slope failures. We propose to integrate the system into multisensing monitoring approaches to optimize the
assessment of debris flow hazards in otherwise difficult-to-access mountainous regions.

2 Study Site: Illgraben, Switzerland

This study focuses on the Illgraben torrent in Switzerland's Canton Valais (VS), which drains a 9 km² catchment (Figure
1) and produces around 5 debris flows per year on average reaching the channel outlet at the Rhône River (Badoux et al.,
35 2009). With little sediment discharge outside debris flow episodes, Illgraben delivers annually some 10⁵ m³ of material to the
Rhône (Hirschberg et al., 2021a). Mobilized into debris flows during intense summer precipitation, sediment deposits within
the upper channel sections are supplied from frost-weathering slope failures (Bennett et al., 2013; Hirschberg et al., 2021b, a).
Probabilistic modelling indicates that sediment supply limitations affect the formation of large debris flows, although there are
no direct observations to confirm this (Bennett et al., 2014; Hirschberg et al., 2021a).

40 Entrainment and positive feedback between sediment motion in the channel and on lateral slopes result in debris flow
volumes that may exceed 10⁵ m³ and thus the volumes of individual rockfalls and landslides feeding the channel (Schlunegger
et al., 2009; Berger et al., 2011; Burtin et al., 2014). As an exception, in 1961 a rock avalanche filled the upper channel section
with 3.5 × 10⁶ m³ of sediments (Gabus et al., 2008). A series of 30 check dams were constructed in response to this event
downstream of the deposits to hold back debris flow discharge into the Rhône River and to stabilize the channel (Lichtenhahn,
45 1971). Since the check dam construction, debris flows have rarely overtopped the channel banks and have caused little damage.
However, a risk to tourists traveling on popular hiking trails crossing the channel remains. Additionally, many parts of the
Susten village, which lies on Illgraben's debris fan, are threatened by events with long return periods (Badoux et al., 2009).
As a result, an alarm system signals in-torrent detection of mass movements at the Illgraben mouth (Figure 1; Badoux et al.,
2009). Additional instrumentation near the channel outlet includes flow depth gauges, a force plate for instantaneous flow
50 weight measurements, automatic cameras, infrasound microphones, and seismometers (e.g., McArdell et al., 2007; Marchetti
et al., 2019; Schimmel et al., 2018; Chmiel et al., 2021).

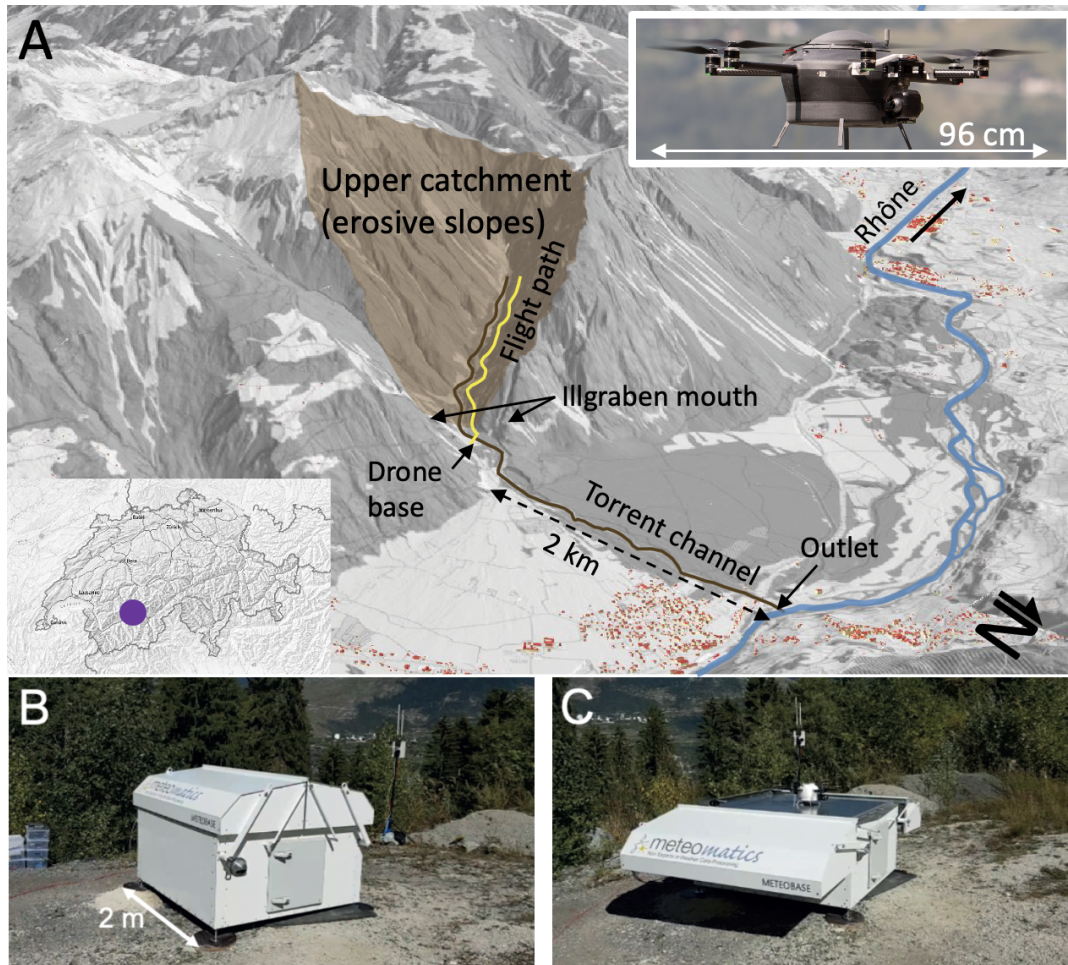


Figure 1. Overview of Illgraben's upper catchment area, where high erosion on lateral slopes deposits material in the torrent channel (brown line), which mobilizes to debris flows. Yellow line denotes the UAV flight path. Blue line represents the Rhône river and map inset indicates Illgraben's location within Switzerland (purple dot). Photograph inset shows the hexacopter Meteor drone MM-670 with a size of 96 cm measured between two most distant propeller tips. Red symbols depict buildings. (B-C) UAV base with open (C) and closed (B) lid. The hexacopter used for acquiring the airborne imagery is visible in panel C, at the center of the take-off and landing area. Hillshade in Panel A from Swiss Federal Office of Topography swisstopo.

Repeated topographic surveys generating DEMs have been used to study the controls on erosion and deposition by debris flows at Illgraben: a terrestrial laser scanner has been used over a 300 m long reach of the main Illgraben channel for 14 events occurring between 2007 and 2009 (Schürch et al., 2011) and a UAV over a 3 km long channel section mainly on the fan, which was flown before and after six debris flows in 2018 and 2019 (de Haas et al., 2020). These studies provided highly resolved topographic data between individual debris flows and provided insights into the roles of channel geometry, check dams and debris-flow characteristics in erosion and deposition processes. For example, debris flows tend to erode at locations where the previous event was depositional, and to deposit where previous events were erosional (de Haas et al., 2020). To study variability in sediment production, four aerial images recorded over 2008 and 2009 were sufficient to identify a downslope-directed sediment cascade at the seasonal scale (Berger et al., 2011). Sediment dynamics were also studied over decadal time scales (42 years in total) but at a coarser temporal resolution (6-20 years). Aerial images showed, for example, an increase in the Illgraben erosion rate from the 1980s, likely due to decreased snow cover and enhanced weathering (Bennett et al., 2013). While these studies were helpful in describing patterns of sediment supply from hillslopes and its relation to sediment yield, the mass movement initiation mechanism remains difficult to identify. Similarly difficult is the assessment of sediment budgets at the event scale, since some eroded areas may be masked in the aerial images and since the reconstructions from older images are affected by uncertainties of up to 5 m (Bennett et al., 2013).

3 Autonomous UAV

To monitor sediment dynamics in the upper catchment, where access on foot and in-torrent instrumentation is limited, we deployed an autonomous UAV near the Illgraben mouth for several months during summers 2019-2021 (Figure 1, Table 1). The system was developed by the company "Meteomatics" (www.meteomatics.com) and consists of (i) an autonomous UAV home-base called the Meteobase and (ii) a hexacopter called the Meteodrone (Figure 1). The Meteobase (type MM-B4) has a lid that opens automatically, and is of size $1.6 \times 1.8 \times 1.3$ m (length, width, height) when closed and of $3.3 \times 1.8 \times 1.3$ m in its open state. This creates an effective landing area of 1.5×1.5 m. The Meteobase was deployed in combination with Meteodrones of type MM-670B or MM-670C. The Meteodrone MM-670B weighs about 4.8 kg and has a diameter of less than 1 m. The UAV is equipped with a safety parachute system and redundant Inertial Measurement Unit, Global Navigation Satellite System (GNSS) and compass instruments. The GNSS receiver accepts real-time kinematic (RTK) corrections via the Global System for Mobile Communications (GSM) network, and serves as the main navigation instrumentation. For landing, the UAV relies on RTK GNSS in combination with an infrared and vision-based tracking system. The Meteobase was connected to a 220 V power supply and recharged the Meteodrone automatically through a specific charging port. The latter automatically connects to the UAV from a hole in the landing platform, which is sealed prior to and after charging. One fully charged battery yields about 30 min of flight time. Batteries were charged with a current of 20 A at 24 V whose power was provided to the Meteobase via a continuous external line power supply. A power generator has been employed in previous installations of the Meteobase. A combination of solar-panels and batteries would also be feasible but has yet to be implemented. The external line power supply also feeds the other electric consumers, such as the air conditioning unit used for climatizing the Meteobase's

85 interior during very hot or cold days. The Meteobase also acts as an operational relay between Meteodrone and operator, which remotely supervises the flights as demanded by regulations. The Meteobase also ensures that procedures such as charging, data upload and download, UAV positioning on the landing platform, or climatizing, are performed automatically. Meteodrone and Meteobase communicate through radio connection, whereas the base and the remote operator communicate via a combination of 4G GSM and Local Area Network internet connections.

90 As payload, the UAV carried a Yuneec E90, 20 megapixel, nadir-oriented photcamera with an electronic shutter and a 1-inch Complementary Metal Oxide Semiconductor sensor. The camera view included mainly the torrent channel and therefore lateral slopes were only surveyed near the channel. Pictures were taken every 2 seconds leading to an overlap of 70 to 80 %. Synchronization of RTK geolocation and camera shutter was not implemented for technical reasons. This synchronization is planned in future deployments. Other technical challenges included limited GNSS and GSM reception, as well as limited
95 durability of components which required replacement. These were parts that were susceptible to environmental conditions and which needed adaptations or a replacement for more robust versions. One example is the compass, which failed at the beginning of the campaign due to direct sunlight radiation and developing heat and was replaced with a more reliable version. Fixing such simple yet critical technical glitches was the reason why more maintenance was necessary in the beginning of the project, compared to the end of the project when inspections were carried out about once every two months. In general, the Meteodrone
100 requires maintenance on the motors after 150 flight hours, exchange of the battery after 150 recharging cycles and parachute replacement after 12 months. In total, the setup allowed for 41 autonomous flights during July-October 2020 and July-August 2021 after a test period in 2019 (Table 1).

In Switzerland, remote UAV operation beyond visual line of sight (BVLOS) falls into a specific flight regulation category and requires a Specific Operation Risk Assessment (SORA)¹. The SORA was requested from the Federal Office of Aviation
105 (FOCA) and contained both the remote operation surveyed from a control center in St. Gallen (Switzerland) and autonomous BVLOS flights into the Illgraben. At present, FOCA requires redundancy for flight-critical instruments and sensors, as well as strict geofencing. In addition, a surveillance webcam was installed next to the Meteobase, enabling the operator to check for a cleared landing area.

Interventions of the operator were limited to Abort Missions, e.g. due to strong wind, or changing weather conditions. The
110 operator has different options to intervene, depending on the situation. In case the UAV is still capable of flight, the operator can abort the mission or return to launch. The operator was also allowed to hold the flight or descent to a safe altitude. The parachute rescue system is either launched automatically upon recognition of a problem by the onboard systems or at any time by the operator. This means that also during the starting and landing phase the operator can “kill” the system should it be necessary to prevent harm. The operator can observe the landing and starting site through the surveillance camera, ensuring
115 nobody is in the immediate vicinity. We decided against a fenced base station for this project, but this may be appropriate in the future to protect the Meteobase and Meteodrone from vandalism.

Catchment-wide flights refer to the along-channel section between the Meteobase and the head of the Illgraben channel. This extent was covered by 6 km-long round-trip flights taking approximately 20 minutes each. The UAV flew at 100 m altitude

¹<https://www.bazl.admin.ch/bazl/en/home/good-to-know/drohnen/wichtigsten-regeln/bewilligungen/sora.html>, last accessed 05.04.2022

above the torrent channel with a speed of 5-7 m/s, taking between 350 and 400 photographs along its way. The average ground
120 sampling distance amounted to ca. 10 cm per pixel.

	2019	2020	2021
Dates (dd.mm)	01.10.-17.10.	03.06.-21.08.	03.05.-02.08.
Number of catchment-wide flights	9	10	17
Number of sub-catchment flights	4	8	1
Typical flight interval (days)	~2	~3	~4
Average number of images per flight	407	313	308

Table 1. Autonomous UAV operation at Illgraben for the years 2019, 2020, and 2021.

4 Photogrammetric Processing & Results

Only 2 usable Ground Control Points were collected in the accessible section of the channel, 500-1000 m upstream of the UAV base. This means that the GNSS coordinates acquired by the UAV were the only reliable georeferencing information. Initially, the autonomous imagery was processed by using the built-in functionalities of the software Agisoft Metashape version
125 1.7.0. Images were aligned for each survey individually, using their full resolution, rolling shutter compensation, an image location accuracy of 20 cm, and otherwise default parameters. However, the accuracy of the RTK GNSS positions proved to be insufficient: tie-point residual errors never converged to sub-pixel levels, which indicates a faulty camera model, most likely resulting from poor georeferencing (James et al., 2017). We attribute this inaccuracy to the insufficient synchronization between the internal clock of the camera and the clock of the GNSS receiver, leading to incorrect matches with the GNSS
130 track (c.f. Girod et al., 2017). To lower the georeferencing and tie point residual errors to reasonable levels, a more advanced alignment technique was therefore needed.

We opted for the "co-alignment" approach, proposed by Cook and Dietze (2019) for processing surveys for change detection. In this workflow, the images from two or more surveys are pooled during Agisoft Metashape's image alignment and model optimization processing steps. After the model geometry is set, the dense clouds are then calculated separately for each survey.
135 The identification of common tie points in stable areas visible in photographs from different surveys results in a model that fixes the different surveys with a common geometry. While this approach does not improve the accuracy of global georeferencing, the high comparative precision between co-aligned surveys makes the approach effective for constraining geomorphic change (Hendrickx et al., 2020; Watson et al., 2020). Autonomous surveys are particularly suited for this type of co-alignment approach, as the photographs show a high consistency in orientation, altitude, and location from survey to survey. For our
140 imagery, calculated elevation differences of stable terrain indicated a height error of 0.2 m for the co-alignment processing. The processing of one flight took about four hours on a 12-core 3 GHz Intel Zeon central processing unit without graphics processing unit acceleration.

Figure 2 shows an example of a selection of DEM differences from flight pairs that include one or more debris flows, which reached the channel outlet. At the foot of lateral tributary gullies, upstream erosion during winter months left deposits within the channel, with thicknesses of more than 2 m (Section A in Figure 2). Subsequent debris flows preferentially eroded these deposits, which is a manifestation of a “memory effect” that had previously been observed behind Illgraben’s check dams on the debris fan (de Haas et al., 2020). In the upper catchment part surveyed in the present study, check dams are also subject to this memory effect (Section B in Figure 2). Also apparent are typical lateral levee deposits (e.g. Johnson et al., 2012), and erosion within the channel flow center (Section C in Figure 2).

150 5 Discussion and Conclusion

The UAV-based monitoring of a debris flow catchment proposed here allows detection of changes in sediment deposits on meter scales or less. Larger slope failures, significantly changing sediment supply and debris flow hazards can thus be accurately detected. We argue that this approach can also be applied to map terrain changes in other contexts, like fluvial erosion during flood events, snow avalanches, or shallow and deep-seated landslides. Indeed, all of these mass movements may demand timely reaction with post-event intervention.

This investigation has shown that quantitative information on catchment-wide sediment dynamics can be obtained on timescales of hours, i.e. on timescales that are only constrained by UAV battery charge and flight times. This fills a critical gap left by costly airborne sensing and satellite-based methods, which have multi-day return periods.

Although the main channel was surveyed far upstream, debris-flow initiation areas and the triggering mechanism could not be identified unambiguously. It is clear, however, that lateral tributaries deliver significant amounts of sediments to the main channel, where they are temporarily stored. The re-mobilization of these deposits may contribute to debris-flow formation and subsequent supply-limitations (Berger et al., 2011). Currently, our flight planning and the nadir-looking camera view do not allow quantification of the individual tributary contributions to debris flow volumes and dynamics. However, it is possible to approximately date relevant tributary activity and study its controls, which will be subject of future systematic research using the entire present data set. We also envision the application of our method for constraining geomorphological models that describe sediment movement in response to short-term meteorological forcing.

Our application of an autonomous UAV leverages recent success of photogrammetry for monitoring geomorphological processes. UAV-based photogrammetry combined with the structure-from-motion algorithm (Smith et al., 2016), which was also used in our co-alignment approach (Cook and Dietze, 2019), offers the unique advantage of mapping extended portions of changing terrain. This is a valuable alternative to DEM differences derived from terrestrial laser scanning (TLS), which has also been used in debris flow catchments to study erosion patterns in relation to debris flow dynamics (Dietrich and Krautblatter, 2019), process domains of debris flow initiation (Staley et al., 2014) and channel response to climate signals (Bonneau et al., 2022). Whereas topography derived from UAV-based photogrammetry and TLS agrees within a few decimeters (Cook, 2017), the former method has the advantage of mapping poorly accessible terrain where TLS equipment cannot be installed.

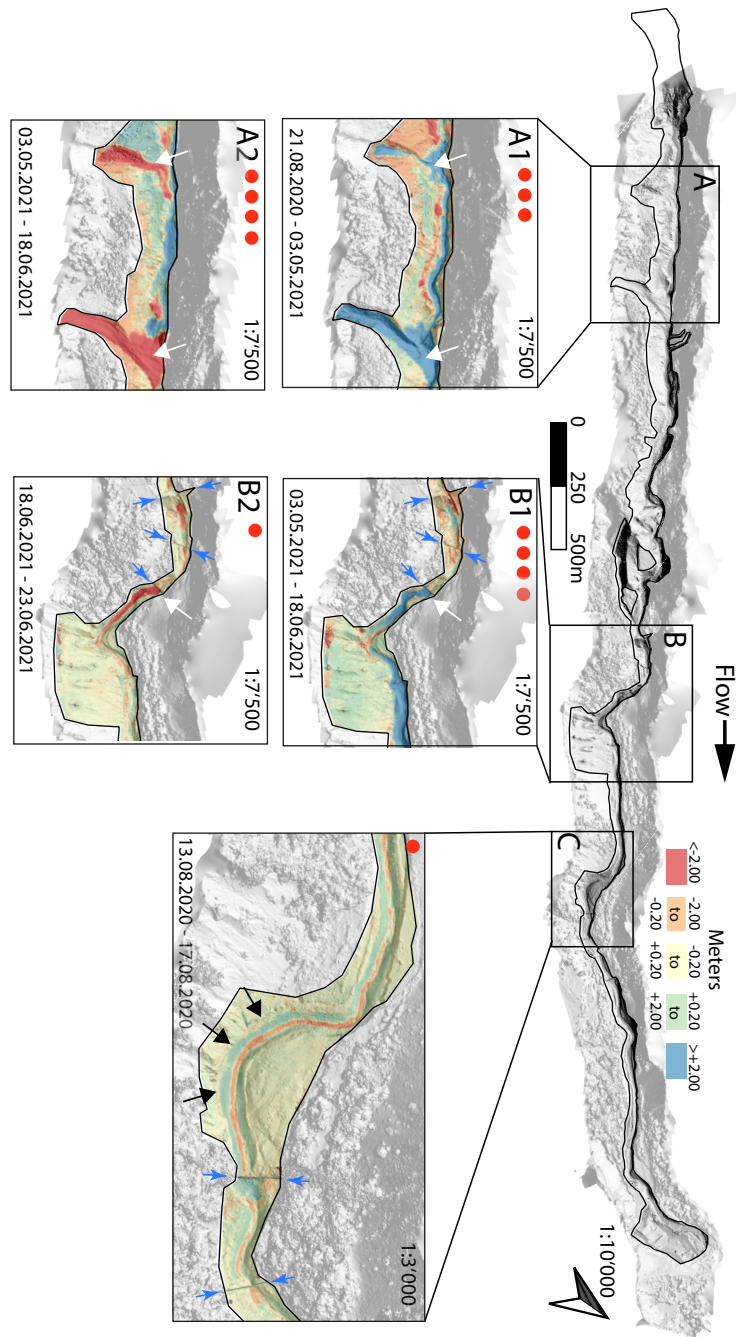


Figure 2. Hillshade of Illgraben section covered by autonomous UAV flights. Black solid outlines enclose areas mapped by DEM differencing. Zoom boxes focus on erosion and deposition features, as shown by DEM differences. Times of flight pairs are indicated at the bottom of each zoom box. Red dots represent the number of debris flows occurring between flights, as registered by the debris flow observatory of the Swiss Federal Institute for Forest, Snow and Landscape Research WSL (Badoux et al., 2009). Boxes A and B illustrate memory effects, with erosion concentrated in areas of previous deposition (white arrows). A and B show the cases for tributary deposition within the channel and debris flow deposition behind a check dam, respectively. Box C highlights lateral levee formation and in-channel erosion (black arrows). Color map gives erosion (-) and deposition (+) in meters. Note that scaling factors are relative among zoom boxes. In Boxes B1, B2 and C, thin blue arrows indicate the location of check dams.

175 Despite its advantages, UAV-based photogrammetry has difficulty in resolving terrain changes for certain types of surfaces,
in particular vegetation cover (Cook, 2017). This disadvantage, however, may be negligible for active debris flow catchments,
whose sediment dynamics allow for little or no sustained vegetation growth. Moreover, our application of co-alignment reduces
the dependence on ground control points which are also difficult to obtain in poorly accessible terrain. Consequently, the main
constraints of our proposed sediment dynamics monitoring with an autonomous UAV are the dependence on a reliable power
180 and internet connection for the UAV base as well as GNSS signal and radio connection between the base and the UAV.

In the future, autonomous UAV operation can be linked to other sensor systems: The UAV could be sent to map runout
and damage immediately after an event, which could be detected by seismic or infrasound sensors, for example. These latter
methods have the advantage of a large radius of sensitivity. However, accurate event location and volume estimates like UAV-
derived DEM differences provide, are often unavailable for seismic and infrasound monitoring. In the spirit of an "Internet
185 of Things (IoT)" approach, the UAV system could be integrated within autonomous multi-sensing platforms that leverage the
strengths of individual sensor components. The aftermath of the 2017 rock-avalanche at Piz Cengalo, Switzerland, underlined
the urgent need for such post-event monitoring: within 1-2 weeks, unstable rock avalanche deposits subject to high pore
pressures produced 15 debris flows destroying parts of the village of Bondo (Walter et al., 2020). Such rapid secondary effects
of the rock avalanche were not expected but in the future could be monitored and warned against with a quickly deployable
190 autonomous UAV.

Rapid technological developments and increasing sensor coverage targeting rapid mass movements are currently preparing
the ground for autonomous monitoring and warning systems for Alpine hazards. For our specific case, BVLOS flight permis-
sions still required a human to follow the UAV operation from a remote location. Apart from legal constraints, this type of
surveillance was not necessary from a technical and operational point of view. We thus anticipate that it is only a question of
195 time until the presented technology will find its way into IoT monitoring solutions for natural hazards in Alpine terrain.

Data availability. UAV images are archived a WSL and access can be granted by the authors.

Author contributions. FW, NA, MW and DF planned the autonomous UAV operation at Illgraben. EH, EM, KC and MD tested conventional
and co-alignment processing of the photogrammetric data. LE, FH and EH applied the co-alignment processing to all available images and
together with FW, BM, JH and PM interpreted the results in terms of torrential activity. MF and LH lead the UAV deployment and operation.

200 *Competing interests.* The authors declare no competing interests.

Acknowledgements. This project was financed by WSL, SBB, Meteomatics and Amberg Loglay. We thank the Burgerschaft Leuk for permission to install and operate the UAV base at Illgraben and the FOCA for granting BVLOS permission. Pierre Huguenin and Mauro Marty helped with ground control points.

References

- 205 Badoux, A., Graf, C., Rhyner, J., Kuntner, R., and McArdell, B. W.: A debris-flow alarm system for the Alpine Illgraben catchment: design and performance, *Natural hazards*, 49, 517–539, 2009.
- Bennett, G., Molnar, P., McArdell, B., and Burlando, P.: A probabilistic sediment cascade model of sediment transfer in the Illgraben, *Water Resources Research*, 50, 1225–1244, 2014.
- Bennett, G. L., Molnar, P., McArdell, B. W., Schlunegger, F., and Burlando, P.: Patterns and controls of sediment production, transfer and yield in the Illgraben, *Geomorphology*, 188, 68–82, <https://doi.org/10.1016/j.geomorph.2012.11.029>, 2013.
- 210 Berger, C., McArdell, B. W., and Schlunegger, F.: Sediment transfer patterns at the Illgraben catchment, Switzerland: Implications for the time scales of debris flow activities, *Geomorphology*, 125, 421–432, 2011.
- Bonneau, D., Hutchinson, D. J., McDougall, S., DiFrancesco, P.-M., and Evans, T.: Debris-flow Channel Headwater Dynamics: Examining Channel Recharge Cycles with Terrestrial Laser Scanning, *Frontiers in Earth Science*, p. 1204, 2022.
- 215 Bovis, M. J. and Jakob, M.: The role of debris supply conditions in predicting debris flow activity, *Earth surface processes and landforms*, 24, 1039–1054, 1999.
- Burtin, A., Hovius, N., McArdell, B., Turowski, J., and Vergne, J.: Seismic constraints on dynamic links between geomorphic processes and routing of sediment in a steep mountain catchment, *Earth Surface Dynamics*, 2, 21–33, 2014.
- Cannon, S. H., Gartner, J. E., Wilson, R. C., Bowers, J. C., and Laber, J. L.: Storm rainfall conditions for floods and debris flows from recently burned areas in southwestern Colorado and southern California, *Geomorphology*, 96, 250–269, 2008.
- 220 Chmiel, M., Walter, F., Wenner, M., Zhang, Z., McArdell, B. W., and Hibert, C.: Machine learning improves debris flow warning, *Geophysical Research Letters*, 48, e2020GL090874, 2021.
- Cook, K. L.: An evaluation of the effectiveness of low-cost UAVs and structure from motion for geomorphic change detection, *Geomorphology*, 278, 195–208, 2017.
- 225 Cook, K. L. and Dietze, M.: A simple workflow for robust low-cost UAV-derived change detection without ground control points, *Earth Surface Dynamics*, 7, 1009–1017, 2019.
- de Haas, T., Nijland, W., de Jong, S. M., and McArdell, B. W.: How memory effects, check dams, and channel geometry control erosion and deposition by debris flows, *Scientific Reports*, 10, 1–8, <https://doi.org/10.1038/s41598-020-71016-8>, 2020.
- Dietrich, A. and Krautblatter, M.: Deciphering controls for debris-flow erosion derived from a LiDAR-recorded extreme event and a calibrated numerical model (Roßbichelbach, Germany), *Earth Surface Processes and Landforms*, 44, 1346–1361, 2019.
- 230 Gabus, J., Weidmann, M., Bugnon, P.-C., Burri, M., Sartori, M., and Marthaler, M.: Atlas géol. Suisse 1:25 000, 2008.
- Girod, L., Nuth, C., Käab, A., Etzelmüller, B., and Kohler, J.: Terrain changes from images acquired on opportunistic flights by SfM photogrammetry, *The Cryosphere*, 11, 827–840, <https://doi.org/10.5194/tc-11-827-2017>, 2017.
- Godt, J. W. and Coe, J. A.: Alpine debris flows triggered by a 28 July 1999 thunderstorm in the central Front Range, Colorado, *Geomorphology*, 84, 80–97, 2007.
- 235 Gregoretti, C., Degetto, M., Bernard, M., Crucil, G., Pimazzoni, A., De Vido, G., Berti, M., Simoni, A., and Lanzoni, S.: Runoff of small rocky headwater catchments: Field observations and hydrological modeling, *Water Resources Research*, 52, 8138–8158, 2016.
- Hendrickx, H., De Sloover, L., Stal, C., Delaloye, R., Nyssen, J., and Frankl, A.: Talus slope geomorphology investigated at multiple time scales from high-resolution topographic surveys and historical aerial photographs (Sanetsch Pass, Switzerland), *Earth Surface Processes and Landforms*, 45, 3653–3669, 2020.
- 240

- Hirschberg, J., Badoux, A., McArdell, B. W., Leonarduzzi, E., and Molnar, P.: Evaluating methods for debris-flow prediction based on rainfall in an Alpine catchment, *Natural Hazards and Earth System Sciences*, 21, 2773–2789, 2021a.
- Hirschberg, J., Fatichi, S., Bennett, G. L., McArdell, B. W., Peleg, N., Lane, S. N., Schlunegger, F., and Molnar, P.: Climate change impacts on sediment yield and debris-flow activity in an alpine catchment, *Journal of Geophysical Research: Earth Surface*, 126, e2020JF005 739, 2021b.
- 245 James, M. R., Robson, S., d'Oleire Oltmanns, S., and Niethammer, U.: Optimising UAV topographic surveys processed with structure-from-motion: Ground control quality, quantity and bundle adjustment, *Geomorphology*, 280, 51–66, <https://doi.org/10.1016/j.geomorph.2016.11.021>, 2017.
- Johnson, C., Kokelaar, B., Iverson, R. M., Logan, M., LaHusen, R., and Gray, J.: Grain-size segregation and levee formation in geophysical mass flows, *Journal of Geophysical Research: Earth Surface*, 117, 2012.
- 250 Kean, J. W., Staley, D. M., Leeper, R. J., Schmidt, K. M., and Gartner, J. E.: A low-cost method to measure the timing of postfire flash floods and debris flows relative to rainfall, *Water Resources Research*, 48, 2012.
- Lichtenhahn, C.: Zwei Betonmauern: die Geschieberückhaltesperre am Illgraben [Wallis] und die Staumauer des Hochwasserschutzbeckens an der Orlegna im Bergell [Graubünden], 1971.
- 255 Marchetti, E., Walter, F., Barfucci, G., Genco, R., Wenner, M., Ripepe, M., McArdell, B., and Price, C.: Infrasonic array analysis of debris flow activity and implication for early warning, *Journal of Geophysical Research: Earth Surface*, 124, 567–587, 2019.
- McArdell, B. W., Bartelt, P., and Kowalski, J.: Field observations of basal forces and fluid pore pressure in a debris flow, *Geophysical research letters*, 34, 2007.
- Rengers, F. K., McGuire, L., Kean, J. W., Staley, D. M., and Hobbey, D.: Model simulations of flood and debris flow timing in steep catchments after wildfire, *Water Resources Research*, 52, 6041–6061, 2016.
- 260 Schimmel, A., Hübl, J., McArdell, B. W., and Walter, F.: Automatic identification of alpine mass movements by a combination of seismic and infrasound sensors, *Sensors*, 18, 1658, 2018.
- Schlunegger, F., Badoux, A., McArdell, B. W., Gwerder, C., Schnydrig, D., Rieke-Zapp, D., and Molnar, P.: Limits of sediment transfer in an alpine debris-flow catchment, Illgraben, Switzerland, *Quaternary Science Reviews*, 28, 1097–1105, 2009.
- 265 Schürch, P., Densmore, A. L., Rosser, N. J., and McArdell, B. W.: Dynamic controls on erosion and deposition on debris-flow fans, *Geology*, 39, 827–830, <https://doi.org/10.1130/G32103.1>, 2011.
- Smith, M. W., Carrivick, J. L., and Quincey, D. J.: Structure from motion photogrammetry in physical geography, *Progress in physical geography*, 40, 247–275, 2016.
- Staley, D. M., Wasklewicz, T. A., and Kean, J. W.: Characterizing the primary material sources and dominant erosional processes for post-fire debris-flow initiation in a headwater basin using multi-temporal terrestrial laser scanning data, *Geomorphology*, 214, 324–338, 2014.
- 270 Walter, F., Amann, F., Kos, A., Kenner, R., Phillips, M., de Preux, A., Huss, M., Tognacca, C., Clinton, J., Diehl, T., et al.: Direct observations of a three million cubic meter rock-slope collapse with almost immediate initiation of ensuing debris flows, *Geomorphology*, 351, 106 933, 2020.
- Watson, C. S., Kargel, J. S., Shugar, D. H., Haritashya, U. K., Schiassi, E., and Furfaro, R.: Mass loss from calving in Himalayan proglacial lakes, *Frontiers in Earth Science*, 7, 342, 2020.
- 275