

Biogenic calcium carbonate as evidence for life

Sara Ronca¹, Francesco Mura², Marco Brandano¹, Angela Cirigliano³, Alessandro Grottoli⁴, Massimo Reverberi⁵, Daniele Federico Maras⁶, Rodolfo Negri⁷, Ernesto Di Mauro³ & Teresa Rinaldi⁷

¹Department of Earth Sciences, Sapienza University of Rome, Italy

²CNIS-Center for Nanotechnology Applied to Industry of La Sapienza, 00185, Sapienza University of Rome, Rome, Italy

³Istituto di Biologia e Patologia Molecolari, CNR, Rome, Italy

⁴SARA EnviMob s.r.l., Rome, Italy

⁵Department of Environmental Biology, Sapienza University of Rome, Rome, Italy

⁶Soprintendenza Archeologia, Belle Arti e Paesaggio per la Provincia di Viterbo e l'Etruria Meridionale, Ministero della Cultura, Rome, Italy

⁷Department of Biology and Biotechnology, Sapienza University of Rome, Rome, Italy

Correspondence to: Teresa Rinaldi (teresa.rinaldi@uniroma1.it)

Abstract. The history of Earth is a story of co-evolution of minerals and microbes: not only numerous rocks arisen from life, but the life itself may have formed from rocks. To understand the strong association between microbes and inorganic substrates, we investigated the moonmilk, a calcium carbonate deposits of microbial origin, occurring in the Iron Age Etruscan Necropolis of Tarquinia, in Italy. These tombs provide a unique environment where the hypogeal walls of the tombs are covered by this speleothem. To study moonmilk formation, we investigated the bacterial community in the rock in which the tombs were carved: calcarenite and hybrid sandstone. We present the first evidence that moonmilk precipitation is driven by microbes within the rocks and not only on the rock surfaces. We also describe how the moonmilk produced within the rocks contributes to rock formation and evolution. The microbial communities of the calcarenite and hybrid sandstone displayed, at the phylum level, the same microbial pattern of the moonmilk sampled from the walls of the hypogeal tombs, suggesting that the moonmilk originates from the metabolism of endolytic bacterial community. The calcite moonmilk is the only known carbonate speleothem on Earth with undoubted biogenic origin, thus representing a robust and credible biosignature of life. Its presence in the inner parts of rocks adds to its characteristics as a biosignature.

1 Introduction

Whether other planets witnessed life like what is seen on Earth remains a complete mystery. The search for traces of extra-terrestrial life suffers from the lack of durable and credible biosignatures. Some breakthroughs may happen soon from the current planetary explorations. The NASA Perseverance rover successfully landed on planet Mars in the Jezero Craters in 2021 and has been collecting many specimens. Future missions are planned to retrieve those specimens, although not before 2031, hence opening the possibility to search for evidence of life from the first-ever samples returned from Mars. The European Space Agency (ESA) ExoMars programme is also planning to address the question of whether life has ever existed on Mars.

Formatted: Italian

Deleted: speleothem of

Deleted: present

Deleted: present

Deleted: are

Deleted: pointing out

Deleted: speleothem

Deleted: is

Earth has evolved through a long process of co-evolution between minerals and microbes (Cosmidis and Benzerara, 2022; Grosch et al., 2015; Cuadros, 2017; Hazen et al., 2008) and terrestrial rocks constitute an ideal system for the investigation of durable signs of life. Carbonates are good candidates as host-rock because, on Earth, they are largely of biogenic origin. Nevertheless, they did not receive the attention needed because of limited and sporadic evidence on Mars: lithologies revealed the presence of carbonates in the Nili Fossae Region (Ehlmann et al., 2008), at the Mars Phoenix landing site (Boynnton, et al., 2009), in the Columbia Hills of Gusev crater (Morris et al., 2010), and in deep rocks exposed by meteor impacts (Michalski et al., 2010). Recently, the analysis of weathering profiles revealed the widespread distribution on Mars of carbonates associated with hydrated minerals, providing evidence of past liquid water presence (Bultel et al., 2019). Carbonates were also detected in asteroids and meteorites, contributing to the understanding of the formation and evolution of our solar system (Lee et al., 2014; Kaplan et al., 2020; Pílorget et al., 2021; Voosen, 2020).

Carbonate rocks on Earth are of abiogenic or biogenic origin and arose since the early Archean (> 3 giga annum, Ga) Eon when hydrothermal systems were ubiquitous. At that time, the carbonate rocks originated by massive carbonatization, silicification and potassium (K) (±Sodium) metasomatism of intermediate to ultramafic silicate precursors (Veizer et al., 1989).

In contrast, Lower Archean marine carbonates are rare, they occur as very thin, discontinuous, and extensively mineralized beds generally replaced by chert as result of intense microbial iron (Fe) cycling (Pomar, 2020). The 3.4 Ga old stromatolite structures (sensu Riding, 2011) are widely regarded as among the oldest biotic carbonate production associated with carbon dioxide (CO₂) sequestration (Allwood et al. 2006). During the Proterozoic eon (<2.4 Ga), shallow water carbonate production expanded favoring the development of carbonate platforms where abiotic and biotic carbonate precipitation took place (Grotzinger et al., 2000). The seawater was supersaturated with both calcite and aragonite as evidenced by the well preserved pseudomorphs of ‘abiotic’ aragonite and calcite (Pomar, 2020). According to Sumner and Grotzinger (1996), the rise in oxygen concentration at 2.2–1.9 Ga led to the removal of Fe²⁺, a strong calcite-precipitation inhibitor, from seawater and resulted in a shift from Archean to Proterozoic carbonates that are dominated by microbial activity (Pomar, 2020). Starting from the Cambrian Period, the benthic microbialites (sensu Riding 2011), the prime carbonate factory since the Late Archean, were still important but progressively decreased, while the biologically controlled carbonates appeared and expanded. The calcification of sessile, mostly colonial, metazoans and algae promoted the accumulation of biogenic carbonate sediments and the appearance and expansion of reefs (Pomar, 2020).

Carbonates are common constituents of the near-surface Earth crust, although carbonate phases may also occur deep in the mantle. They are compounds formed by the anionic complex, carbonate (CO₃)²⁻ combined with metal ions such as calcium (Ca), magnesium (Mg), iron, manganese, sodium, barium, aluminium, zinc, copper, lead, uranium, or rare-earth elements. Uncommonly, carbonate phases are hydrated and contain hydroxyl or halogen ions or may include silicate, sulphate or phosphate radicals. Due to the large availability of Ca and Mg in crustal reservoirs (Hartmann et al., 2012), the CaCO₃ polymorphs, calcite and aragonite, and dolomite (CaMg(CO₃)₂) are the most widespread carbonate minerals, whose formation on Earth near-surface environments is widely related to biogenic or bio-mediated processes (Görger et al., 2021).

Deleted: Benzerara, 2022; Cuadros, 2017;

Deleted: principally

Deleted: More r

Formatted: No underline, Underline colour: Auto

Deleted: Pílorget et al., 2021;

Deleted: ; Lee et al., 2014

Formatted: No underline, Underline colour: Auto

Deleted: occurred

Deleted: (Allwood et al. 2006)

Formatted: Highlight

Deleted: The oldest known biotic carbonate production associated with carbon dioxide (CO₂) sequestration are stromatolite structures (sensu Riding 2011) 3.4 Ga old (Allwood et al. 2006)

Deleted:)

Deleted: The oldest known carbonate production associated with biotic carbon dioxide (CO₂) sequestration are stromatolite structure 3.7 Ga old (Nutman et al., 2016); Successively,

Deleted: d

Deleted: and/or stromatolites (specificare)

Deleted:

Carbonate biomineralization results in the formation of several mineral phases, the most common of which are: the CaCO_3 anhydrous polymorphs calcite, aragonite and vaterite, the last being a metastable transitional phase, the hydrated forms monohydrocalcite ($\text{CaCO}_3 \cdot \text{H}_2\text{O}$) and ikaite ($\text{CaCO}_3 \cdot 6\text{H}_2\text{O}$), and various amorphous phases (ACC). Moreover, in specific environments (saline lakes, coastal lagoons) (Diloreto et al., 2021; Kaczmarek et al., 2017), microbial activity may promote the formation of dolomite (ordered phase $\text{CaMg}(\text{CO}_3)$) by passing through the precursor phases of high Mg-calcite (disordered 4–36 mol % MgCO_3), disordered dolomite (disordered >36 mol % MgCO_3) and proto-dolomite (weakly ordered >36 mol % MgCO_3). Carbonate mineral formation seems to proceed from amorphous or disordered phases towards the more stable and ordered forms (Asta et al., 2020); crystal growth and morphologies are controlled by the medium composition, the microbial extracellular polymeric substances (EPS), the Mg/Ca ratio and the presence of other ions. Thus, the mineral phases resulting from abiogenic or biogenic activity are indistinguishable, and the identification of irrefutable biosignature, evidence of past or present life, remains absent (Changela et al., 2021; Javaux, 2019).

Carbonate rocks, being mostly of biogenic origin, could be considered in this perspective as possible biosignature but, even if specific analyses could discriminate between biotic and abiogenic carbonate rocks (Blanco et al., 2013), the attempt to unequivocally distinguish between carbonates of biogenic or abiogenic origin remains vacuous, especially in a search for evidence for life on other planets. So far, the presence of organic materials in carbonate has not been an incontrovertible indicator of biogenicity (Berg et al., 2014).

Consideration for calcium carbonate minerals as possible biosignatures can be found by the study of a secondary calcite deposit, called moonmilk, formed by nanofibers of calcite, commonly found on karst caves surfaces. Calcium carbonate deposits, consisting of thin fiber crystals, have been observed in various vadose environments (soils, karstic caves and other hypogean spaces), and an exhaustive classification of calcite fibers morphology is presented in (Cailleau et al., 2009). Although widely studied, the origin of such deposits is still a debated matter, being attributed to physicochemical processes (Kolesár and Čurlík 2015; Jones & Peng, 2014) or to various biogenic processes (Canaveras et al., 2006; Millièrè et al., 2019). In the past, inorganic precipitation mechanisms were thought, either to be controlled by climatic variations, as in the case of the Caverne de L'Ours (Lacelle et al., 2004) in Canada, or from the heterogeneous nucleation of calcite from supersaturated fluids as in the Staloti cave (Borsato et al., 2000). More recently, many authors discussed the biogenicity of the moonmilk (Baskar et al., 2011; Braissant et al., 2012; Cacchio et al., 2014; Kondratyeva et al., 2020; Maciejewska et al., 2017; Portillo & Gonzalez 2011) reporting that the moonmilk precipitation is promoted by the metabolic activities of a microbial community living in environments rich in calcium content (Banks et al., 2010; Cailleau et al., 2009; Cirigliano et al., 2018; Portillo et al., 2011).

Nevertheless, direct evidence that bacteria promote the precipitation of nanofibers of calcite is still lacking. This evidence is essential to define the moonmilk as a *bona fide* biosignature.

Recently, the moonmilk speleothem was discovered in the hypogean ancient Etruscan tombs of the Monterozzi Necropolis (Tarquinia, Central Italy) (Cirigliano et al., 2018; Tomassetti et al., 2017). This finding provides a unique opportunity to compare the moonmilk which covers the walls and ceilings collected from 12 tombs excavated in two types of rock, the

Deleted: ; Diloreto et al., 2021

Deleted: is still

Deleted: lacking

Deleted: ,

Deleted: Hence, its necessity;

Deleted: the goal of the present analysis is to show that calcium carbonate structured as nanofibers formed inside the rocks (calcarene and sandstone) are of biological origin and a possible biosignature..

Deleted:

Deleted: ,

Deleted:

Deleted: Potential interest on the

Formatted: Space After: Auto

Deleted: (speleothem)

Deleted: (Borsato et al., 2000),

Commented [ZPA3]: ??? I am not sure what you mean here?

Formatted: Not Highlight

Formatted: Not Highlight

Deleted: issue

Moved down [1]: The moonmilk precipitation is promoted by the metabolic activities of a microbial community living in environments with high calcium content (Banks et al., 2010; Cailleau et al., 2009; Cirigliano et al., 2018; Portillo et al., 2011).

Deleted: proposed,

Formatted: Not Highlight

Moved (insertion) [1]

Deleted: T

Deleted: with high

Deleted: ,

Deleted: ,

Deleted:

Deleted: n

Deleted: N

Deleted: these

Deleted: was

Deleted: ¶

Formatted: Font colour: Black, English (UK)

calcarenite and hybrid sandstone. We provided insight into the formation of moonmilk, which can occur rapidly, i.e. between 10 and 50 years, and we reported that this speleothem originates from, and harbours, a microbial community able to induce carbonate precipitation (Cirigliano et al., 2021a; Cirigliano et al, 2021b). Here, we propose that the nanofiber calcite deposit (moonmilk) developing inside the rocks (calcarenite and sandstone) is promoted by a microbial community and by the physio-chemical features of the host rock. We present an example of an ongoing symbiotic co-evolution between rocks and microorganisms: the moonmilk contributes to the evolution of the rock rich in calcium carbonate, while the physio-chemical features of the host rock shape the resident microbial community which induces the moonmilk deposition.

2 Materials and Methods

2.1 Site description and sampling

Samples representative of the bedrock were collected from the ancient Etruscan Necropolis of Tarquinia, a UNESCO World Heritage site (Viterbo, Italy), in which more than 200 painted hypogeal tombs (dated from the 7th to the 2nd century B.C.) were discovered. The tombs were excavated in a sedimentary bedrock belonging to a middle to upper Pliocene formation known as *Macco* consisting of yellowish bioclastic calcarenites interbedded with hybrid sandstones (Supplementary Fig 1. shows the map of the Necropolis in Tarquinia and the sampling locations). From each location, rock samples were collected and kept in plastic bags on ice and transported to the laboratory for analyses. With sterile hammer and chisel, surface material, samples from outdoor and indoor rocks were first removed to a depth of 3 to 5 cm. The interior of the rock samples was processed for DNA extraction or geological experiments.

2.2 DNA extraction procedures and sequencing of rock and moonmilk samples

For each sample, rock material was collected aseptically using a sterile rock hammer or chisel and stored in sterile collection bags. All samples intended for DNA extractions were collected by discarding the top 3-5 cm layer and then crushing the inner part with a sterile rock hammer and further reducing it to a powder by grinding with a sterile mortar and pestle. Genomic DNA extraction was performed using the DNeasy PowerMax Soil Kit (QIAGEN) following the *manufacture* manual method using about 10g of collected material. Spectrophotometric quantification was performed using a ThermoScientific NanoDrop spectrophotometer (Thermoscientific), and DNA purity was assessed through the evaluation of 260/280 and 260/230 absorbance ratios. PCR amplification was performed on about 50 ng of DNA of each sample as described by Grottolli et al., (2020). Amplicon sequencing was performed on PCR products deriving from the 16S rRNA samples regions. PCR products were sequenced through Oxford Nanopore Technologies (ONT) by a MinION sequencer. A total amount of 200 ng of PCR products for samples were used for sequencing. Rapid barcoding of PCRs was carried out following the protocol released by ONT (SQK-RBK004) and sequenced by a Flongle flozell (FLO-FLG001). Total run produced ~15 Mb of data (~34 k reads)

Deleted: highly active

Deleted: (

Deleted: Thus, the moonmilk formation requires the presence of microorganisms and it is formed by nanofibers of calcite, a less common crystal habit for calcium carbonate, suggesting that this speleothem could be proposed as a sign of life. In order to consider the moonmilk as a biosignature, one needs to find a strong association with the rocks from which it is originated, i.e. the moonmilk deposition should be a geological process, and not just a phenomenon of biomineralization in which the microorganisms use the rocks as a physical substrate. Hence, the need of a deeper analysis of the mineralogy and of the endolytic microbial community of these rocks to directly demonstrate the biogenesis of the moonmilk

Deleted: .

Deleted: The goal of the present work is to

Deleted: vide evidence

Deleted: needle

Deleted: of biogenic origin. Its growth is promoted

Deleted: ¶
Here

Deleted: w

Deleted: : Macco s.s. (red dots) and Hybrid sandstone (blue dots)

Deleted: manufactor

including: ~2.8 Mb (~4 k reads) for Moonmilk of *Tomba Maggi 2*, ~2.8 Mb (~4 k reads) for Moonmilk of *Tomba degli Scudi*,
210 ~2.7 Mb (~11 k reads) for hybrid sandstone and ~6.4 Mb (~15 k reads) for calcarenite, respectively. Kraken2 system (Wood
et al., 2019) produced a taxonomic classification of 98.83%, 96.65%, 44.02% and 62.29% of total reads for each sample,
Moonmilk of *Tomba Maggi 2*, Moonmilk of *Tomba degli Scudi*, hybrid sandstone and calcarenite, respectively.

Formatted: Font: Italic

Formatted: Font: Italic

Formatted: Font: Italic

Formatted: Font: Italic

Formatted: Font: Italic

2.3 Petrophysical analysis

Polarized light microscopy (PLM) observations of rock samples and moonmilk speleothems have been carried out on thin-
215 sections at the Dipartimento di Scienze della Terra of Sapienza University of Rome by means of Olympus BX50 (Japan) and
Zeiss Axiophot (Germany) transmitted polarized light microscopes, under plane-polarized light and crossed polars, at 25×,
40×, 100 ×, 200 ×, 400 × magnifications. Microscopic images were obtained by using a digital camera. Polished thin sections
(28 mm x 48mm) were prepared from the samples vacuum impregnated with epoxy resin before cutting and thinning. Density
and porosity were measured using Ultra-pyc 5000 helium pycnometer from Anton Paar with an accuracy of 0.02% and
220 repeatability of 0.01%. Bulk density was obtained by dividing the dry mass of sample by its total volume. Grain density results
from the calculation of the mass / measured volume ratio of the pulverised matrix. Both total and effective (open) porosity was
measured. The latter was obtained by dividing the difference between the geometric volume and the volume measured by
pycnometer of the sample (Ruggieri and Trippetta, 2020; Trippetta et al., 2020). All laboratory measurements were made in
the Earthquake Physics Laboratory at Sapienza Earth Sciences Department. Bulk rock major and trace element compositions
225 were obtained by lithium metaborate/tetraborate fusion ICP-AES and ICP-MS, at Activation Laboratories Inc. (Ontario,
Canada) according to the Code 4Litho code package on solutions prepared with lithium metaborate fusion. Loss on Ignition
(LOI) was measured according to standard gravimetric procedures. Details on the precision and accuracy of the analyses are
reported in www.actlabs.com.

The calcium carbonate content was assessed by gasometric measurements using a Dietrich-Fruhling calcimeter measuring one
230 gram of the bulk sediment following Siesser et al., (1971).

2.4 Scanning Electron microscopy analysis

Scanning Electron Microscopy (SEM) was performed on the Moonmilk samples and on the rock thin sections using a Field
Emission Scanning Electron Microscopy (FESEM) Zeiss Auriga 405, with a chamber room that maintains a pressure of about
10–5 to 10–6 mbar. Before mounting the samples inside the microscope, the specimens were coated with 20 nm of chromium
235 using a Quorum Q150T sputter. Chromium has a high X-ray K α value (5.145 keV), so does not interfere with lighter elements
during the EDX analysis. EDX spectra were obtained using a Bruker Quantax detector in point mode for 30 s, with the electron

microscope acceleration voltage set at 10 kV and working distance of 6 mm to optimize the number of the incoming X-ray signal.

3 Results and Discussion

3.1 Lithology, mineralogy and geochemical characterization of the bedrock

The area of the Monterozzi Necropolis offers a favourable chance to investigate the role of bedrock in the genesis of the moonmilk. To this purpose, we analysed samples of bedrock taken from different areas of the Necropolis with special focus on the sites *where* *Tomba dei Vasi dipinti*, *Tomba Maggi 2*, *Tomba delle Pantere* and *Tomba degli Scudi* were carved (Supplementary Fig. 1). The hypogeal tombs of the Monterozzi Necropolis, located on a flat elevated area, are excavated within a sedimentary substrate of Middle to Upper Pliocene age known as *Macco* formation consisting of two main lithofacies showing lateral and vertical heteropic relationships. *Macco* s.s. lithofacies is a bioclastic calcarenite represented by packstone to rudstone and floatstone composed of small volume (<5-10%) of micrite matrix, coralline algal branches, bryozoans, bivalves (pectinids and oysters), echinoids, benthic foraminifers, and skeletal debris. Rare non-carbonate grains are present. In the inner walls of the intergranular voids microsparite cement precipitation and/or recrystallization often occurs, due to diagenetic processes of dissolution. The second lithofacies is represented by a poorly cemented, crudely stratified, hybrid sandstone. It is fine to medium grain-sized and grain-supported, with small amount of micrite matrix (< 10% vol) and nearly devoid of carbonate cement. This lithofacies is characterised by abundant bioturbation, the skeletal assemblage is dominated by small benthic foraminifers, echinoids, serpulids and bivalves (mainly oysters). Planktonic foraminifers are common. The terrigenous fraction mainly consists of monocrystalline grains of quartz, sedimentary lithoclasts, and subordinate detrital micas and feldspar along with rare glaucony grains and opaques. Calcimetric analyses from the two lithofacies revealed that calcium carbonate contents range from 90 to 98% in the *Macco* s.s. calcarenite and from 49 to 59 % in the hybrid sandstone. Moreover, whole rock major oxide and trace element compositions highlight the geochemical difference between the two lithofacies (Table 1), mostly related to the higher proportion of terrigenous fraction in the hybrid sandstone. Helium pycnometry revealed a high open porosity in both lithofacies (~43% for *Macco* s.s.; ~42% for hybrid sandstone). The *Macco* s.s. lithofacies shows a dominance of vuggy porosity, abundant intraparticle, interparticle and mouldic porosity. The main porosity of hybrid sandstone is represented by interparticle porosity, rarely by mouldic porosity. Thus, despite the differences in composition, the calcarenite and the hybrid sandstone show two essential characteristics required for moonmilk formation: high calcium content, which activates the microbial metabolism leading to biomineralization, and high porosity, necessary for the exchange of fluids and nutrients in an oligotrophic environment, also providing the space for microbial colonization. Noteworthy, the characteristics of bedrock porosity indicate that the dissolution processes prevail on those of inorganic carbonate precipitation; indeed, meteoric cements as well as speleothems in the largest cavities are absent. Moreover, the bedrock where the tombs are carved is located in the shallow vadose zone (few meters below the surface) and it is barely susceptible to dissolution-reprecipitation processes, being composed by prevalent calcite and only subordinate aragonite. It is to be noted that the area

Formatted: Font: (Default) +Headings (Times New Roman), Font colour: Black

Formatted: Normal

Deleted: to

Deleted: on which

Formatted: Font: (Default) +Headings (Times New Roman), Font colour: Black

Formatted: Font: (Default) +Headings (Times New Roman), Font colour: Black

Deleted:

Formatted: Font: (Default) +Headings (Times New Roman)

Formatted: Font: (Default) +Headings (Times New Roman), Font colour: Black

Deleted:

Deleted:

Formatted: Font: (Default) +Headings (Times New Roman), Font colour: Black

Deleted: lacking

Deleted: must also consider

Deleted: study

Formatted: Font: Not Italic

under investigation, lies on a high flat relief, where the infiltrated water mostly derives from rainfall, without any groundwater input. Consequently, the infiltrated water can be reasonably assumed undersaturated with respect to calcite.

3.2 First report of inner location of moonmilk

Mostly, moonmilk biogenic deposits develop indifferently within the two distinct lithofacies constituting the bedrock of the Etruscan necropolis of Monterozzi (Mura et al., 2021). Fig. 1a shows an example of hypogeal walls of tombs carved in calcarenite and hybrid sandstone, and the walls covered by moonmilk in the *Tomba degli Scudi* and *Tomba Maggi 2* (Fig. 1b). The moonmilk layer originated from hybrid sandstone is thinner than the one observed on a calcarenite substrate, but the scanning electron micrographs of the moonmilk sampled from the walls of *Tomba degli Scudi* and *Tomba Maggi 2* showed the same nanofiber structure (Fig. 1c). X-ray powder diffraction analysis (XRD) revealed that moonmilk is composed of calcite (Mura et al., 2020).

So far, the moonmilk has only been considered as a deposition covering rock surfaces (Borsato et al., 2000), but the analysis with transmitted polarized light microscopy of thin sections showed that the moonmilk is present inside the calcarenite in the vuggy and moldic porosity of the calcarenite in *Tomba Maggi 2* (Fig. 2a) and in intergranular and moldic pores of the hybrid sandstone bedrock collected inside the *Tomba degli Scudi* (Fig. 2b). The presence of moonmilk inside the rocks is a general phenomenon, because it is observed in all samples, irrespective of the type of rock, calcarenite or hybrid sandstone, and collection site, (outdoor or indoor) (Supplementary Fig. 2, 3 and 4). These results are also supported by the discovery of moonmilk deep inside a calcarenite rock sampled at the entrance of the *Tomba dei Vasi Dipinti* (Supplementary Fig. 5). The analysis of the rock substrate sampled outdoor the *Tomba dei Vasi Dipinti* also suggests that the moonmilk may be contributing to the authigenic carbonate growth in the host rock, covering the inner walls of the voids (Fig. 3).

3.3 Co-evolution of rocks and microorganisms

If the moonmilk observed inside the rocks (a location that was not reported before) is of biogenic origin, traces of biomineralization would be expected. Indeed, the SEM analysis on the thin sections of calcarenite sampled outdoor of the *Tomba dei Vasi Dipinti* revealed many structures corresponding to biomineralization (Fig. 4 and Supplementary Fig. 6). Bacterial biomineralization was also detected in the sandstone sampled indoor the *Tomba degli Scudi* (Supplementary Fig. 7) and in calcarenite sampled outdoor of the *Tomba delle Pantere* and indoor of *Tomba Maggi 2* (Supplementary Fig. 8), suggesting that this is a common phenomenon. Such bacterial biomineralization is also known as “entombment” and it is easily observed in laboratory settings when bacterial strains are subjected to environmental conditions favoring calcium carbonate precipitation (Supplementary Fig. 9a, b, c). In plates, the precipitation of calcium carbonate occurs even at a considerable distance from the bacterial colony, possibly by the diffusion of extracellular enzymes known to be involved in calcium carbonate metabolism (Dhami et al., 2014; Rodríguez-Navarro et al., 2019) (Supplementary Fig. 9d). It remains unclear how

Deleted: insists

Deleted: in which

Formatted: Font: Not Italic

Formatted: Font: Not Italic

Deleted: m

Deleted: ¶

Formatted: Font: Not Italic

Formatted: Font: (Default) +Headings (Times New Roman), Font colour: Black

Formatted: Font: (Default) +Headings (Times New Roman), Font colour: Black

Formatted: Font: (Default) +Headings (Times New Roman), Font colour: Black

Deleted: ¶

Formatted: Normal, Left, None, Space Before: 0 pt, After: 0 pt, Line spacing: single

Deleted: Although with some differences,

Deleted: m

Deleted: ¶

Deleted: By now

Deleted: regardless

Deleted: where were collected

Deleted: ,

Deleted: ¶

Deleted: could

Deleted: te

Deleted: that was

the moonmilk nanofibers are produced in natural environmental conditions because to date it has been impossible to reproduce its formation in the laboratory. In fact, bacterial strains cultured from rocks represent only a negligible fraction of the total microorganisms present in the rocks. Instead, the entire microbial community, with a metabolism that sustains the growth in the rock environment, is needed to precipitate and/or dissolve calcium carbonate. Indeed, under laboratory conditions, we have evidence that the grinded calcarenite, with its entire microbial community, when present in a medium containing urea and CaCl₂ produced calcite. In the same conditions, calcium carbonate is not produced with sterile (autoclaved) grinded calcarenite (Benedetti et al. 2023). These and previous results (Banerjee, & Joshi, 2014), showed that inactivated (dead) cells were unable to precipitate CaCO₃ in laboratory, suggesting that cells need to be metabolically active for calcification and that cell structure alone is not sufficient to promote bioprecipitation. In natural environments, bacteria are centers of nucleation for nanofibers formation. They do not control the mineralization process directly but induce the precipitation of calcium carbonate by changing the chemistry of the environment as a consequence of their metabolic activity, and also serving as nuclei for crystallization. This mechanism is a result of pH increase, a direct effect of the negatively charged bacterial surface, and the presence of a metabolic ureolytic process. These three events are intimately connected and are not untangled in the present analysis.

Overall, our results underscore the role of microorganisms in promoting moonmilk deposition, contributing to the rock formation processes. Nevertheless, to propose the moonmilk as part of a geological process, the microbial communities of the rocks and those contributing to the moonmilk deposition should have a similar composition. Aiming to identify the rock microbial communities, samples from calcarenite and hybrid sandstone were analyzed together with the corresponding moonmilk samples from *Tomba Maggi 2* and *Tomba degli Scudi*. The results of the 16S SSU rRNA amplicon sequencing showed a high abundance of Actinobacteria, Bacteroidetes, Cyanobacteria, Firmicutes and Proteobacteria (Fig. 5 and supplementary data).

Bacterial community diversity was measured by inverse Simpson index and Shannon index for moonmilk (*Tomba degli Scudi* and *Tomba Maggi 2*) and rocks (calcarenite and hybrid sandstone). The indices do not show any significant differences between the samples (Mann Whitney test, $P > 0.05$) (Supplementary Fig. 10). These results show that in moonmilk and rocks the microbial composition is similar, irrespective of rock type (calcarenite and hybrid sandstone) or the environment where the samples were collected (outdoor or indoor). It should be noted that 16S SSU rRNA analysis does not provide information about metabolic activity, thus these data do not identify microorganisms that are active in CaCO₃ deposition, but the overall data demonstrate that the endolytic community of the rocks is promoting moonmilk deposition; the results presented also revealed the presence of biomineralization and calcite nanofibers that originate from bacterial entombment, not only on the surface, but inside the rocks, strongly suggesting the biogenic origin of the moonmilk. The presence of a resident microbial community deep within the rocks, possibly evolved with the rocks through geological time. Therefore, no habitat should be considered as extreme for the resident microbial community, and the rocks should not be considered as a 'refuge' for escaping extreme environmental conditions. Biological research should focus on microbial community evolution with respect to the

Formatted: Subscript

Deleted: , t

Deleted: c

Deleted: consists of

Deleted: causes

Deleted: these and our previous results deadunderwhen present

Deleted: analysed

Deleted: 16S rRNA

Deleted: ¶

Deleted: 16S RNA analyses

Deleted: ¶
it is

Deleted: demonstrating

geologic substrate in which they are living, considering the natural co-evolution of microbes and rocks, and possibly abstaining from the consideration of the microbial metabolism as an adaptation to ~~adverse~~ environmental conditions.

370 **3.4 Moonmilk as a biosignature**

The search for traces of extra-terrestrial life is a complex task often ending with inconclusive results. The co-evolution of minerals and microorganisms has implications for the quest of evidence for life on other planets. The discovery of minerals of undisputable biological origin, rather than organic remains, may provide the most robust signs of biological activity (Hazen et al., 2008). Coevolution of life and minerals throughout Earth history lays the ~~foundation~~ for an inclusive search for the presence of life, because not only rocks ~~arose~~ from life but also because life itself may have formed from rocks (Bizzarri et al., 2021; Marshall, 2020; Saladino et al., 2018). Thousands of earth's minerals owe their existence to the development of life on the planet and calcium carbonate phases that are massively produced on earth by microorganisms, are the best example (Hazen et al., 2008).

380 ~~In this work, we~~ have focused on the calcium carbonate ~~nanofibers~~ (moonmilk). Given the tight association and co-evolution between rocks and microbial communities that results in the observed biomineralization, calcite nanofibers are of interest in the field of astrobiology and are considered as a potential sign of life. ~~The moonmilk production contributed to rock formation by filling the pores and the cracks in the rocks, while the rock composition and the porosity shaped a microbial community that copes with high calcium content producing calcite nanofibers. The moonmilk is mainly found in karst caves, but there are examples of moonmilk bioprecipitation also in hypogeal environments carved in different geologic substrates, such as granitoid rocks or sandstone (Miller et al., 2018; Saladino et al., 2018). The moonmilk has also been found in lava tubes where the microbial communities are similar to those present in the moonmilk that originated from calcarenite (Gonzalez-Pimentel et al., 2021; Miller et al., 2020), raising the possibility of positing the moonmilk as a biosignature also beyond the Earth calcium carbonate rocks.~~

390 *Acknowledgements.* This work is dedicated to the memory of prof. Laura Frontali and the restorer Franco Adamo. The authors would like to thank Simone De Amicis for sharing sampling of the ~~macco~~ quarry of Tarquinia, Dr. Carlo Smriglio for the identification of the fossil showed in Suppl. Fig. 5, Domenico Mannetta for the carefully and professional preparation of thin sections and J.E. Hallsworth, for discussion and help while preparing the manuscript. We deeply thank Prof. Pierre Zalloua for manuscript revision and scientific advice. A.C. was awarded of the grant Regione Lazio PR FSE 2021-2027. This work

395 was supported by ~~Ateneo Sapienza 2021 (S. Ronca) and DTC Lazio PERGAMO Project 305-2020-35549 (T. Rinaldi).~~

Author contributions. S.R., M.B., A.C. and F.M. performed the experiments; M.B., S.R., T.R. collected samples; R.N., A.G. and M.R. supervised and performed the nucleic acid analysis; D.F.M supervised the sampling in the Etruscan tombs; T.R. and E.D.M. conceived the study and T.R. wrote the paper with contributions from S.R., M.B and E.D.M.

410 **References**

Allwood, A. C., Walter, M. R., Kamber, B. S., Marshall, C. P., & Burch, I. W.: Stromatolite reef from the Early Archaean era of Australia, *Nature*, 441, 7094, 714-718, <https://doi:10.1038/nature04764>, 2006.

Asta, M.P., Fernandez-Martinez, A., Alonso, J., Charlet, L., Findling, N., Magnin, V., Ruta, B., Sprung, M., and Westermeier, F.: Nanoscale Ion Dynamics Control on Amorphous Calcium Carbonate Crystallization: Precise Control of Calcite Crystal Sizes, *J. Phys. Chem. C*, 124, 25645-25656, <https://doi.org/10.1021/acs.jpcc.0c08670>, 2020.

Banerjee, S., & Joshi, S. R.: Ultrastructural analysis of calcite crystal patterns formed by biofilm bacteria associated with cave speleothems, *Journal of Microscopy and Ultrastructure*, 2(4), 217-223, 2014.

Banks, E.D., Taylor, N.M., Gulley, J., Lubbers, B.R., Giarrizzo, J.G., Bullen, H.A., Hoehler, T.M., and Barton, H.A.: Bacterial calcium carbonate precipitation in cave environments: a function of calcium homeostasis. *Geomicrobiology Journal*, 27, 5, 444-454, <https://doi.org/10.1080/01490450903485136>, 2010.

Baskar, S., Baskar, R., & Routh, J.: Biogenic evidences of moonmilk deposition in the Mawmluh cave, Meghalaya, India, *Geomicrobiology Journal*, 28, 3, 252-265, <https://doi: 10.1080/01490451.2010.494096>, 2011.

Benedetti F., Kratter, M., Atanasio, P., Mura, F., Beccaccioli, M., Scifo, J., di Sarcina, I., Tomassetti, M.C., Schneider, K., Rossi, M., Cemmi, A., Nigro, L., and Rinaldi T.: Isolation of carbonatogenic bacteria for biorestoreation “on demand”, *Journal of Cultural Heritage*, under review, 2023.

Berg, B.L., Ronholm, J., Applin, D.M., Mann, P., Izawa, M., Cloutis, E.A., and Whyte, L.G.: Spectral features of biogenic calcium carbonates and implications for astrobiology, *Int. J. Astrobiol.*, 13, 353, <https://doi.org/10.1017/S1473550414000366>, 2014.

Bizzarri, B.M., Saladino, R., Delfino, I., García-Ruiz, J.M., and Di Mauro, E.: Prebiotic organic chemistry of formamide and the origin of life in planetary conditions: What we know and what is the future, *Int. J. Mol. Sci.*, 22, 917, <https://doi.org/10.3390/ijms22020917>, 2021.

Blanco, A., Orofino, V., D’Elia, M., Fonti, S., Mastandrea, A., Guido, A., and Russo, F.: Infrared spectroscopy of microbially induced carbonates and past life on Mars, *Icarus*, 226, 119-126, <https://doi.org/10.1016/j.icarus.2013.05.016>, 2013.

Deleted: ¶

Formatted: Heading 1

Moved down [3]: Allwood, A. C., Walter, M. R., Kamber, B. S., Marshall, C. P., & Burch, I. W.: Stromatolite reef from the Early Archaean era of Australia, *Nature*, 441, 7094, 714-718, <https://doi:10.1038/nature04764>, 2006.¶

Moved (insertion) [3]

Deleted: (

Deleted:)

Deleted: (

Deleted:)

Formatted: English (US)

Formatted: English (US)

Formatted: English (US)

Formatted: English (US)

Formatted: English (US)

Formatted: English (US)

Formatted: English (US)

Formatted: English (US)

Formatted: English (US)

Formatted: English (US)

Formatted: English (US)

Formatted: English (US)

Formatted: English (US)

Formatted: Font: Italic

Formatted: English (US)

Formatted: English (US)

Borsato, A., Frisia, S., Jones, B., and Van Der Borg, K.: Calcite moonmilk: crystal morphology and environment of formation in caves in the Italian Alps, *J. Sediment. Res.*, 70, 1171-1182, <https://doi.org/10.1306/032300701171>, 2000.

455 Boynton, W.V., Ming, D.W., Kounaves, S.P., Young, S.M.M., Arvidson, R.E., Hecht, M.H., Hoffman, J., Niles, P.B.; Hamara, D.K.; Quinn, R.C.; Smith, P.H.; Sutter, B.; Catling, D.C. and Morris, R.V.: Evidence for calcium carbonate at the Mars Phoenix landing site, *Science*, 325, 61-64, <https://doi.org/10.1126/science.1172768>, 2009.

Braissant, O., Bindschedler, S., Daniels, A. U., Verrecchia, E. P., & Cailleau, G.: Microbiological activities in moonmilk
460 monitored using isothermal microcalorimetry (cave of vers chez le Brandt, Neuchatel, Switzerland). *Journal of Cave and Karst Studies*, 74, 116-126, <https://doi.org/10.4311/2011JCKS0213>, 2012.

Bultel, B., Viennet, J.C., Poulet, F., Carter, J., and Werner, S.C.: Detection of carbonates in Martian weathering profiles. *J. Geophys. Res. Solid Earth*, 124, 989–1007, <https://doi.org/10.1029/2018JE005845>, 2019.

465 Cacchio, P., Ferrini, G., Ercole, C., Del Gallo, M., & Lepidi, A.: Biogenicity and characterization of moonmilk in the grotta nera (Majella National Park, Abruzzi, Central Italy), *Journal of Cave and Karst Studies*, 76, 88, <https://doi.org/10.4311/2012MB0275>, 2014.

470 Cailleau, G., Verrecchia, E.P., Braissant, O., and Emmanuel, L.: The biogenic origin of needle fiber calcite, *Sedimentology*, 56, 1858-1875, <https://doi.org/10.1111/j.1365-3091.2009.01060.x>, 2009.

Cañaveras, J. C., Cuezva, S., Sanchez-Moral, S., Lario, J., Laiz, L., Gonzalez, J. M., & Saiz-Jimenez, C.: On the origin of fiber calcite crystals in moonmilk deposits, *Naturwissenschaften*, 93, 27-32, <https://doi.org/10.1007/s00114-005-0052-3>, 2006.

475 Changela, H.G., Chatzitheodoridis, E., Antunes, A., Beaty, D., Bouw, K., Bridges, J.C., Capova, K.A.; Cockell, C.S., Conley, C.A., Dadachova, E., Dallas, T.D., de Mey, S., Dong, C., Ellery, A., Ferus, M., Foing, B., Fu, X., Fujita, K., Lin, Y., Jheeta, S., Hicks, L.J., Hu, S., Kereszturi, A., Krassakis, A., Liu, Y., Oberst, J., Michalski, J.,Ranjith, P.M., Rinaldi, T., Rothery, D., Stavarakakis, H.A., Selbmann, L., Sinha, R.K., Wang, A., Williford, K., Vací, Z., Vago, J.L.,Waltemathe, M., and Hallsworth, J.E.: Mars: new insights and unresolved questions, *Int. J. Astrobiology*, 20, 394-426, <https://doi.org/10.1017/S1473550421000276>, 2021.

Cirigliano, A., Mura, F., Cecchini, A., Tomassetti, M.C., Maras, D.F., Di Paola, M., Meriggi, N., Cavalieri, D., Negri, R., QuagliarIELLO, A., Hallsworth, J.E., and Rinaldi, T.: Active microbial ecosystem in Iron-Age tombs of the Etruscan civilization,
485 *Appl. Environ. Microbiol.*, 23, 3957-3969, <https://doi.org/10.1111/1462-2920.15327>, 2021a.

Deleted: (

Deleted:)

Deleted: (

Deleted:)

Moved down [2]: Cailleau, G., Verrecchia, E.P., Braissant, O., and Emmanuel, L.: The biogenic origin of needle fiber calcite, *Sedimentology*, 56, 1858-1875, <https://doi.org/10.1111/j.1365-3091.2009.01060.x>, 2009.

Moved (insertion) [2]

Formatted: English (US)

Formatted: English (US)

Formatted: English (US)

495 Cirigliano, A., Mura, F., Quagliarello, A., Negri, R., and Rinaldi, T.: Calcium carbonate of microbial origin in the Etruscan
tombs of Tarquinia, 1st Italian Space Agency Workshop on Astrobiology. *Memorie della Società Astronomica Italiana/ Journal*
of the Italian Astronomical Society. Fabrizio Serra Editore, Pisa-Roma. 92, 64-66, 2021b.

Deleted: .

Cirigliano, A., Tomassetti, M.C., Di Pietro, M., Mura, F., Maneschi, M.L., Gentili, M.D., Cardazzo, B., Arrighi, C., Mazzoni,
500 C., Negri, R., and Rinaldi, T.: Calcite moonmilk of microbial origin in the etruscan Tomba degli Scudi in Tarquinia, Italy, *Sci.*
Rep., 8, 1-10, <https://doi.org/10.1038/s41598-018-34134-y>, 2018.

Compère, P., Carnol, M., Barton, H.A. & Rigali, S.: Assessment of the potential role of *Streptomyces* in cave moonmilk
formation, *Frontiers in microbiology*, 8, 1181, <https://doi.org/10.3389/fmicb.2017.01181>, 2017.

505 Cosmidis, J., and Benzerara, K.: Why do microbes make minerals?, *Comptes Rendus. Géoscience*, 354, 1-39,
<https://doi.org/10.5802/crgeos.107>, 2022.

Cuadros, J.: Clay minerals interaction with microorganisms: A review, *Clay Miner*, 52, 235-261,
510 <https://doi.org/10.1180/claymin.2017.052.2.05>, 2017.

Dhami, N.K., Reddy, M.S., and Mukherjee, A.: Synergistic role of bacterial urease and carbonic anhydrase in carbonate
mineralization, *Biotechnol. Appl. Biochem*, 172, 2552-2561, <https://doi.org/10.1007/s12010-013-0694-0>, 2014.

515 Dilorieto, Z.A., Garg, S., Bontognali, T.R., and Dittrich, M.: Modern dolomite formation caused by seasonal cycling of
oxygenic phototrophs and anoxygenic phototrophs in a hypersaline sabkha, *Sci. Rep.*, 11, 4170,
<https://doi.org/10.1038/s41598-021-83676-1>, 2021.

Deleted:

Ehlmann, B. L., Mustard, J.F., Murchie, S.L., Poulet, F., Bishop, J.L., Brown, A.J., Calvin, W.M., Clark, R.N., Des Marais,
520 D.J., Milliken, R.E., Roach, L.H., Roush, T.L., Swayze, G.A., and Wray, J.J.: Orbital identification of carbonate-bearing rocks
on Mars, *Science*, 322, 1828–1832, <https://doi.org/10.1126/science.1164759>, 2008.

Gonzalez-Pimentel, J.L., Martin-Pozas, T., Jurado, V., Miller, A.Z., Caldeira, A.T., Fernandez-Lorenzo, O., Sanchez-Moral,
S., and Saiz-Jimenez, C. Prokaryotic communities from a lava tube cave in La Palma Island (Spain) are involved in the
525 biogeochemical cycle of major elements, *PeerJ*, 9, e11386, <https://doi.org/10.7717/peerj.11386>, 2021.

530 Görden, S., Benzerara, K., Skouri-Panet, F., Gugger, M., Chauvat, F., and Cassier-Chauvat, C.: The diversity of molecular mechanisms of carbonate biomineralization by bacteria, *Discov. Mater.* 1, 2, <https://doi.org/10.1007/s43939-020-00001-9>, 2021.

535 Grosch, E.G., and Hazen, R.M. Microbes, mineral evolution, and the rise of microcontinents—origin and coevolution of life with early earth, *Astrobiology*, 15, 922-939, <https://doi.org/10.1089/ast.2015.1302>, 2015.

Grottoli, A., Beccaccioli, M., Zoppis, E., Fratini, R.S., Schifano, E., Santarelli, M.L., Uccelletti, D., and Reverberi, M. Nanopore sequencing and bioinformatics for rapidly identifying cultural heritage spoilage microorganisms, *Front. Mater. Sci.* 7, 14, <https://doi.org/10.3389/fmats.2020.00014>, 2020.

540 Grotzinger, J.P., and James, N.P. Precambrian carbonates: evolution of understanding. In: Grotzinger, J.P. & James, N.P. (eds) *Carbonate Sedimentation and Diagenesis in the Evolving Precambrian World*. Society for Sedimentary Geology Special Publications. 67, 3–22. 2000.

545 Hartmann, J., Dürr, H.H., Moosdorf, N., Meybeck, M., and Kempe, S.: The geochemical composition of the terrestrial surface (without soils) and comparison with the upper continental crust, *Int. J. Earth. Sci., (Geol Rundsch)* 101, 365–376, <https://doi.org/10.1007/s00531-010-0635-x>, 2012.

Hazen, R.M., Papineau, D., Bleeker, W., Downs, R.T., Ferry, J.M., McCoy, T.J., Sverjensky, D.A., and Yang, H.: Mineral evolution, *Am. Mineral.*, 93, 1693-1720, <https://doi.org/10.2138/am.2008.2955>, 2008.

550 Javaux, E. J.: Challenges in evidencing the earliest traces of life, *Nature*, 572, 451-460, <https://doi.org/10.1038/s41586-019-1436-4>, 2019.

555 [Jones, B., & Peng, X.: Abiogenic growth of needle-fiber calcite in spring towers at Shiqiang, Yunnan Province, China, *Journal of Sedimentary Research*, 84, 11, 1021-1040, https://doi.org/10.2110/jsr.2014.82, 2014.](https://doi.org/10.2110/jsr.2014.82)

Kaczmarek, S.E., Gregg, J.M., Bish, D.L., Machel, H.G., Fouke, B.W., MacNeil, A., Lonnee, J., and Wood, R.: Dolomite, very high-magnesium calcite, and microbes – Implication for the microbial model of dolomitization. In: Macneil A.J., Lonnee J., Wood R. (Eds) *Characterization and Modeling of Carbonates–Mountjoy Symposium 1*, SEPM (Society for Sedimentary Geology) 109, 2017.

560

- Kaplan, H.H., Lauretta, D.S., Simon, A.A., Hamilton, V.E., Della Giustina, D.N., Golish, D.R., Reuter, D.C., Bennett, C.A., Burke, K.N., Campins, H., Connolly Jr., H.C., Dworkin, J.P., Emery, J.P., Glavin, D.P., Glotch, T.D., Hanna, R., Ishimaru, K., Jawin, E.R., McCoy, T.J., Porter, N., Sandford, S.A., Ferrone, S., Clark, B.E., Li, J.-Y., Zou, X.-D., Daly, M.G., Barnouin, O.S., Seabrook, J.A., and Enos, H.L.: Bright carbonate veins on asteroid (101955) Bennu: Implications for aqueous alteration history, *Science*, 370, <https://doi.org/10.1126/science.abc3557>, 2020.
- Kolesár, M. & Čurlík, J.: Origin, distribution and transformation of authigenic carbonates in loessic soils, *Eurasian Journal of Soil Science*, 4, 1, 38-43, <https://doi.org/10.18393/ejss.50910>, 2015.
- Kondratyeva, L. M., Shadrina, O. S., Litvinenko, Z. N., & Golubeva, E. M.: Biogeochemical investigations of the speleothem moonmilk in the karst Proschalnaya cave (far east, Russia), *Journal of Cave & Karst Studies*, 82(2), <https://doi:10.4311/2019MB0106>, 2020.
- Lacelle, D., Lauriol, B., & Clark, I. D.: Seasonal isotopic imprint in moonmilk from Caverne de l'Ours (Quebec, Canada): implications for climatic reconstruction. *Canadian Journal of Earth Sciences*, 41, 12, 1411-1423, <https://doi.org/10.1139/e04-080>, 2004.
- Lee, M.R., Lindgren, P., and Sofe, M.R.: Aragonite, breunnerite, calcite and dolomite in the CM carbonaceous chondrites: High fidelity recorders of progressive parent body aqueous alteration, *Geochim. Cosmochim. Acta.*, 144, 126-156, <https://doi.org/10.1016/j.gca.2014.08.019>, 2014.
- Maciejewska M., Adam D., Naômé A., Martinet L., Tenconi E., Całusinska M., Delfosse P., Hanikenne M., Baurain D., Compère P., Carnol M., Barton H.A. and Rigali S: Assessment of the Potential Role of *Streptomyces* in Cave Moonmilk Formation, *Front. Microbiol.* 8:1181, <https://doi.org/10.3389/fmicb.2017.01181>, 2017.
- Marshall, M.: The water paradox and the origins of life, *Nature*, 588, 210-213, <https://doi.org/10.1038/d41586-020-03461-4>, 2020.
- Michalski, J.R., and Niles, P.B.: Deep crustal carbonate rocks exposed by meteor impact on Mars, *Nat. Geosci.*, 3, 751-755, <https://doi.org/10.1038/ngeo971>, 2010.
- Miller, A.Z., García-Sánchez, A.M., L. Coutinho, M., Costa Pereira, M.F., Gázquez, F., Calaforra, J.M., Forti, P., Martínez-Frías, J., Toulkeridis, T., Caldeira, A.T., and Saiz-Jimenez, C.: Colored microbial coatings in show caves from the Galapagos Islands (Ecuador): first microbiological approach, *Coatings*, 10, 1134, <https://doi.org/10.3390/coatings10111134>, 2020.

Deleted: Kondratyeva, L. M., Shadrina, O. S., Litvinenko, Z. N., & Golubeva, E. M.: Biogeochemical investigations of the speleothem moonmilk in the karst Proschalnaya cave (far east, Russia), *Journal of Cave & Karst Studies*, 82(2), <https://doi:10.4311/2019MB0106>, 2020

Formatted: English (US)

Deleted: Maciejewska, M., Adam, D., Naômé, A., Martinet, L., Tenconi, E., Całusińska, M., Delfosse, P., Hanikenne, M., Baurain, D.,

Deleted:

605 Miller, A.Z., Garcia-Sanchez, A.M., Martin-Sanchez, P.M., Costa Pereira, M.F., Spangenberg, J.E., Jurado, V., Dionísio, A.,
Afonso, M.J., Iglésias Chaminé, H.I., Hermosin, B., and Saiz-Jimenez, C.: Origin of abundant moonmilk deposits in a
subsurface granitic environment, *Sedimentology*, 65, 1482-1503, <https://doi.org/10.1111/sed.12431>, 2018.

610 [Millière, L., Gussone, N., Moritz, T., Bindschedler, S., & Verrecchia, E. P.: Origin of strontium and calcium in pedogenic
needle fibre calcite \(NFC\), *Chemical Geology*, 524, 329-344, <https://doi.org/10.1016/j.chemgeo.2019.06.022>, 2019.](#)

Morris, R.V., Ruff, S.W., Gellert, R., Ming, D.W., Arvidson, R.E., Clark, B.C., Golden, D.C., Siebach, K., Klingelhöfer, G.,
Schröder, C., Fleischer, I., Yen, A.S., and Squyres, S.W.: Identification of carbonate-rich outcrops on Mars by the Spirit rover,
Science, 329, 421-424, 1189667, <https://doi.org/10.1126/science.1189666>, 2010.

615 Mura, F., Cirigliano, A., Bracciale, M.P., and Rinaldi, T.: Characterization of Nanostructured Calcium Carbonate found in two
ancient Etruscan tombs, *AIP Conference Proceedings*, 2257, <https://doi.org/10.1063/5.0023677>, 2020.

620 Mura, F., Cirigliano, A., Maras, D., and Rinaldi, T.: Analysis of moonmilk nanofibers in the etruscan tombs of Tarquinia, In
AIP Conference Proceedings, 2416, <https://doi.org/10.1063/5.0068804>, 2021.

Pilorget, C., Okada, T., Hamm, V., Brunetto, R., Yada, T., Loizeau, D., Riu, L., Usui, T., Moussi-Soffys, A., Hatakeda, K.,
Nakato, A., Yogata, K., Abe, M., Aléon-Toppani, A., Carter, J., Chaigneau, M., Crane, B., Gondet, B., Kumagai, K., Langevin,
Y., Lantz, C., Le Pivert-Jolivet, T., Lequertier, G., Lourit, L., Miyazaki, A., Nishimura, M., Poulet, F., Arakawa, M., Hirata,
625 N., Kitazato, K., Nakazawa, S., Namiki, N., Saiki, T., Sugita, S., Tachibana, S., Tanaka, S., Yoshikawa, M., Tsuda, Y.,
Watanabe, S., and Bibring, J.P.: First compositional analysis of Ryugu samples by the MicrOmega hyperspectral microscope,
Nat. Astron., 6, 1-5, <https://doi.org/10.1038/s41550-021-01549-z>, 2021.

Pomar L. Carbonate systems Regional Geology and Tectonics: Principles of Geologic Analysis, Elsevier, 1, 235-311,
630 <https://doi.org/10.1016/B978-0-444-64134-2.00013-4>, 2020.

Portillo, M.C., and Gonzalez, J.M.: Moonmilk deposits originate from specific bacterial communities in Altamira Cave
(Spain), *Microb. Ecol.*, 61, 182-189, <https://doi.org/10.1007/s00248-010-9731-5>, 2011.

635 [Riding, R.: Microbialites, Stromatolites, and Thrombolites, In: Reitner, J., Thiel, V. \(eds\) Encyclopedia of Geobiology.
Encyclopedia of Earth Sciences Series, pp. 635-654, Springer, Dordrecht. \[https://doi.org/10.1007/978-1-4020-9212-1_196\]\(https://doi.org/10.1007/978-1-4020-9212-1_196\),
2011.](#)

Formatted: English (US)

Rodriguez-Navarro, C., Cizer, Ö., Kudłacz, K., Ibañez-Velasco, A., Ruiz-Agudo, C., Elert, K., Burgos-Cara, A., and Ruiz-Agudo, E.: The multiple roles of carbonic anhydrase in calcium carbonate mineralization, *Cryst. Eng. Comm.*, 21, 7407-7423, <https://doi.org/10.1039/C9CE01544B>, 2019.

Ruggieri, R., and Trippetta, F.: Petrophysical properties variation of bitumen-bearing carbonates at increasing temperatures from laboratory to model, *Geophysics*, 85(5), ISO-Z24, <https://doi.org/10.1190/geo2019-0790.1>, 2020.

Saladino, R., Botta, L., and Di Mauro, E.: The prevailing catalytic role of meteorites in formamide prebiotic processes, *Life*, 8, 6, <https://doi.org/10.3390/life8010006>, 2018.

Siesser, W.G., and Rogers, J.: An investigation of the suitability of four methods used in routine carbonate analysis of marine sediments, *Deep-Sea Res.*, 16, 135–139, [https://doi.org/10.1016/0011-7471\(71\)90021-0](https://doi.org/10.1016/0011-7471(71)90021-0), 1971.

Sumner, D.Y., and Grotzinger, J.P.: Herringbone calcite: petrography and environmental Significance, *J. Sediment. Res.*, A66, 419-429, <https://doi.org/10.1306/D4268360-2B26-11D7-8648000102C1865D>, 1996.

Tomasetti, M. C., Cirigliano, A., Arrighi, C., Negri, R., Mura, F., Maneschi, M. L., Gentili, M.D., Stirpe, M., Mazzoni, C. and Rinaldi, T.: A role for microbial selection in frescoes' deterioration in Tomba degli Scudi in Tarquinia, Italy. *Sci. Rep.* 7, 6027, <https://doi.org/10.1038/s41598-017-06169-0>, 2017.

Trippetta, F., Ruggieri, R., Brandano, M., and Giorgetti, C.: Petrophysical properties of heavy oil-bearing carbonate rocks and their implications on petroleum system evolution: Insights from the Majella Massif, *Mar. Pet. Geol.*, 111, 350-362, <https://doi.org/10.1016/j.marpetgeo.2019.08.035>, 2020.

Veizer, J., Hoefs, J., Ridler, R.H., Jensen, L.S., and Lowe, D.R.: Geochemistry of Precambrian carbonates: I. Archean hydrothermal systems, *Geochim. Cosmochim. Acta.*, 53, 845-857, [https://doi.org/10.1016/0016-7037\(89\)90030-6](https://doi.org/10.1016/0016-7037(89)90030-6), 1989.

Voosen, P. NASA mission set to sample carbon-rich asteroid, *Science*, 370, 158, <https://doi.org/10.1126/science.370.6513.158>, 2020.

Wood, D.E., Lu, J., and Langmead, B.: Improved metagenomic analysis with Kraken 2, *Genome. Biol.* 20, 257, <https://doi.org/10.1186/s13059-019-1891-0>, 2019.

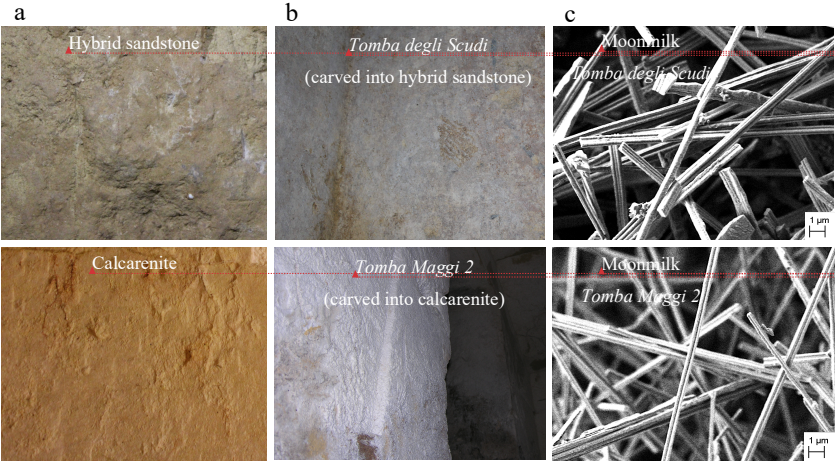
Deleted: ¶

675

680

685

690



695

700

705

Deleted: ¶

Deleted: ¶

¶

Formatted: Font: 10 pt

Formatted: Font: 10 pt

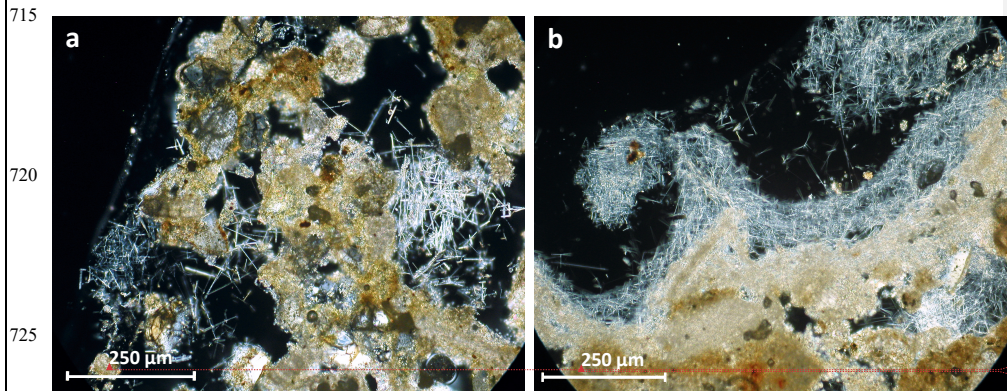
Formatted: Font: 10 pt

Formatted: Font: 10 pt

Formatted: Font: 10 pt

Formatted: Font: 10 pt, Italian

Formatted



Formatted: Font: 11 pt

Formatted: Font: 11 pt

Fig. 2. The moonmilk is present on the surface and inside the calcarenite and sandstone rocks.

Optical microscope thin-section micrographs in crossed-polarized transmitted light. a: calcarenite sample collected inside the Tomba Maggi 2; b: hybrid sandstone sample collected inside the Tomba degli Scudi.

Formatted

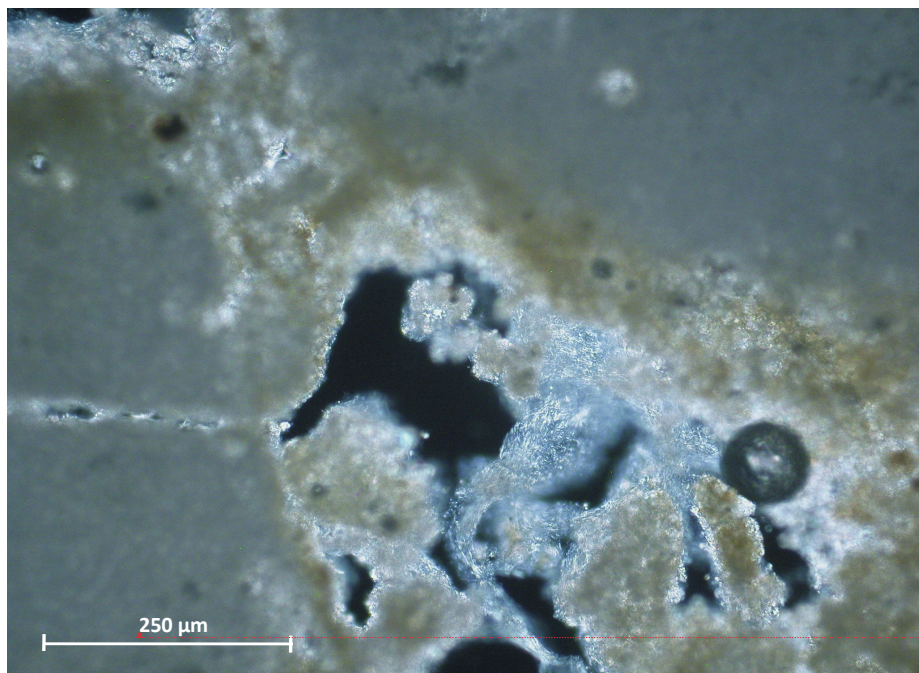
745

750

755

760

765



Formatted: Font: 12 pt

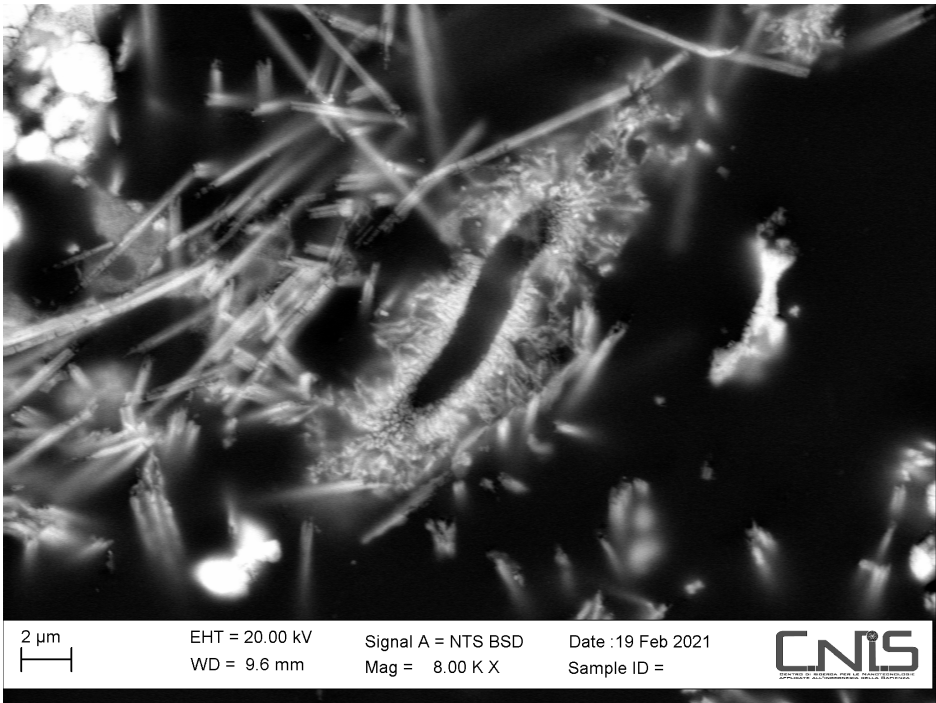
770

Fig. 3. The moonmilk contributes to the lithogenic processes. Optical microscope thin-section micrographs (crossed polarized transmitted light) of the moonmilk speleothems grown into the calcarenite sampled outdoor of *Tomba dei Vasi Dipinti*.

Formatted

775

780



785

Fig. 4. Bacterial biomineralization in the calcarenite. Scanning electron micrograph of a thin-section of the calcarenite sampled outdoor of the *Tomba dei Vasi Dipinti*.

790

Formatted

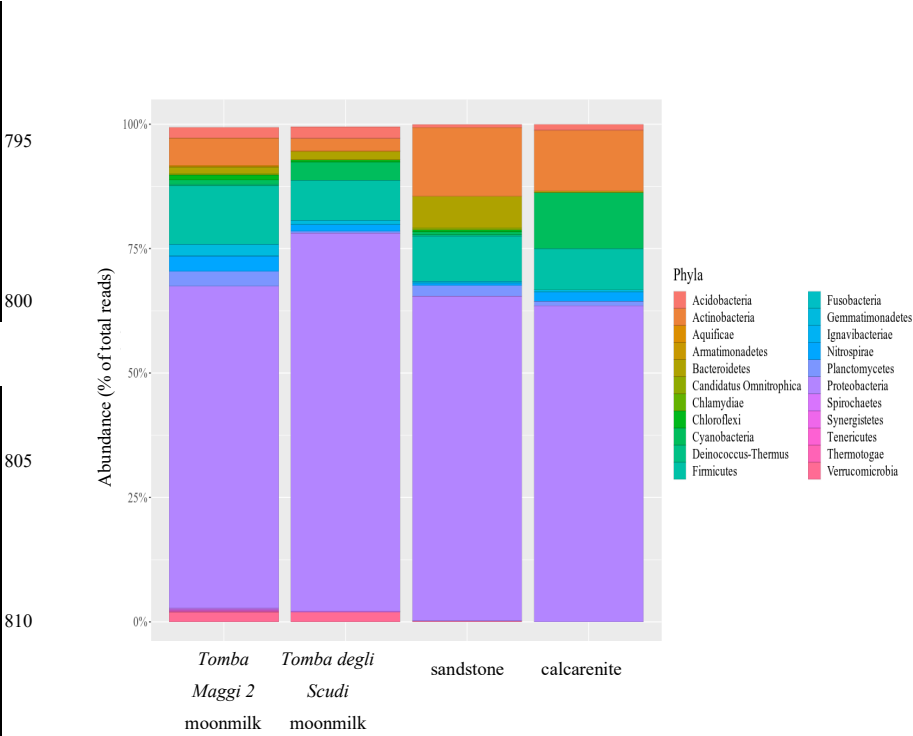


Fig. 5. Phyla present in the microbial community from moonmilk samples of Tomba Maggi 2, Tomba degli Scudi and their corresponding rocks (calcarenite and hybrid sandstone). a: The histogram shows the Phylum relative abundance (%) for the analysed samples. Community structure was determined by targeted amplicon sequencing of bacterial 16S rRNA genes. All samples show a high abundance of Actinobacteria, Bacteroidetes, Cyanobacteria, Firmicutes and Proteobacteria.

Formatted