

Significant contribution of inland ships to the total NO_x emissions along the Yangtze River

Xiumei Zhang^{1,2}, Ronald van der A^{1,2}, Jieying Ding², Xin Zhang¹, Yan Yin¹

¹KNMI-NUIST Center for Atmospheric Composition, Nanjing University of Information Science and Technology (NUIST), Nanjing 210044, China

²Royal Netherlands Meteorological Institute (KNMI), Department of Satellite Observations, De Bilt, the Netherlands

Correspondence to: Yan Yin (yinyan@nuist.edu.cn) and Xiumei Zhang (xiumeizhang2019@outlook.com)

Abstract. Despite the large number of domestic inland river vessels in China, information on inland ship emissions is very limited, since legislation for shipping emission control is limited and there is no monitoring infrastructure. Taking the Yangtze River in the region of Nanjing as research area, we compiled a ship emission inventory based on real-time information received from Automatic Identification System (AIS) signals combined with ship-related data provided by the China Classification Society (CCS) database. The total ship emissions we derived for the Jiangsu section of the Yangtze River from September 2018 to August 2019 for NO_x, SO₂, PM₁₀ and PM_{2.5} were 83.5, 0.04, 0.006 and 0.005 kton per year, respectively. This ship emission inventory we constructed was compared with the Multi-resolution Emission Inventory for China (MEIC), the Shipping Emission Inventory Model (SEIM) and the satellite-derived emissions using the Daily Emissions Constrained by Satellite Observations (DECISO) algorithm. The results show a consistent spatial distribution with riverine cities having high NO_x pollution. With this comparison we analyzed the relative impact of ship emissions on densely populated regions along the river. Inland ship emissions of NO_x are shown to contribute significantly, with accounting for at least 40 %, to air pollution close to the river.

1 Introduction

Maritime transport plays an essential role in national trade, and as the number of ships increases, so does the amount of emissions they emit into the air. The main pollutants emitted by ships are sulfur dioxide (SO₂), nitrogen oxides (NO_x = NO + NO₂), particulate matter (PM) and volatile organic compounds (VOCs) (Endresen, 2003; Moldanová et al., 2009; Tzannatos,

2010), all of which can affect regional air quality and human health (Capaldo et al., 1999; Dalsøren et al., 2009; Papanastasiou
25 and Melas, 2009; Eyring et al., 2010). In addition to direct pollution from ship emissions, the secondary generation of fine
particulate matter, sulfate and ozone further contributes to atmospheric pollution (Corbett, 1997). These pollutants are also
transported to large inland areas with sea and land breezes, seriously endangering human health and ecosystems (Dalsøren et
al., 2007; Endresen et al., 2007; Collins et al., 2009; Eyring et al., 2010; Fan et al., 2016). Ship emissions have direct and
indirect effects on the radiation balance of the atmosphere. For example, O₃ chemically produced by NO_x from ship emissions
30 can have positive radiative effects, while SO₂ emissions have a negative radiative effect and the sulfate produced by its
conversion also has a negative radiative effect at the Earth's surface (Endresen, 2003; Eyring et al., 2007, 2010; Lauer et al.,
2007).

According to the World Shipping Council (<https://www.worldshipping.org/>, last access: 27 February 2023), China possesses 7
of the world's top 10 biggest ports. The large number of ships in the ports have exacerbated air pollution in the local and
35 surrounding areas and increased traffic in the connected rivers. Ship emissions in the YRD are much higher than those in the
Bohai Bay and Pearl River Delta (PRD), reaching about 50% of the total emissions in these three regions (Chen et al., 2017;
Wan et al., 2020). Shipping emissions affecting air quality in the YRD region are mainly within 12 nautical miles of the
coastline (Li et al., 2018). They can contribute between 30 % and 90 %, for example, over 75 % of ship-related SO₂
concentrations and 50 % of ship-related PM_{2.5} concentrations (Lv et al., 2018; Feng et al., 2019). The data from the Ministry
40 of Transport of China show that by the end of 2021, the number of inland river transport vessels is 11.36 million vessels, which
is higher than the sum of coastal transport and ocean transport in China (MOT, 2022). As one of the most economically
developed regions in the east of China, the YRD region is the busiest inland river ship transportation corridor in China.
Therefore, we focus on inland river ships in the Jiangsu section of the Yangtze River as an important area for China to
investigate the contribution of inland river ships to air pollution.

45 Methods of creating ship emission inventories have been developed and improved over the last decades, from the early method
of calculating emissions based on ship fuel consumption data (Streets, 1997; Corbett et al., 1999; Streets et al., 2000; Endresen,
2003; Endresen et al., 2005, 2007; Psaraftis and Kontovas, 2009; Trozzi, 2010) to the method of calculating emissions based
on high temporal resolution ship navigation data provided by the Automatic Identification System (AIS). Wang et al. (2008)

pointed out that regional emissions obtained from the fuel-consumption method are often underestimated. For example, in
50 North America, Europe and other regions, the values were only 20-70 % of the regional emissions established from the AIS
method. Because AIS data include detailed information of real-time ship speed, direction, location and many other parameters,
it allows for accurate calculation of pollution emitted by ships. Jalkanen et al. (2009, 2012) firstly developed the ship traffic
emission assessment model (STEAM) using AIS system to study the effects of ship emissions on regional air quality.
Nowadays, the AIS method has been applied to many maritime regions, such as major European seas, seas around Australia
55 and other countries (Jalkanen et al., 2009, 2012, 2016; Kalli et al., 2013;; Goldsworthy and Goldsworthy, 2015; Jonson et al.,
2015; Johansson, 2017; Dragović et al., 2018). Georgoulas et al. (2020) firstly combined observations from the TROPOspheric
Monitoring Instrument onboard the Sentinel 5 Precursor satellite (TROPOMI/S5P) with AIS data to measure NO₂ plumes that
could be detected and attributed to individual ships. Studies based on the method of combining satellite data with AIS data
have been carried out mostly over seas (Kurchaba et al., 2022; Riess et al., 2022) but seldom over rivers.
60 Studies have also been conducted on ship emissions in Chinese ports such as the ports of Shanghai (Yang et al., 2007), Tianjin
(Chen et al., 2016), Qingdao (Liu et al., 2011), Hong Kong (Ng et al., 2013), Xiamen (Wang et al., 2020) and Shenzhen (Yang
et al., 2015). These studies were mainly based on fuel consumption methods. Currently, studies based on AIS methods to
establish ship inventories are gradually being carried out in China because the accuracy of this approach is higher than that for
the fuel-based method. These studies are focusing on shipping emissions at coastal regions and ports (Song, 2014; Fan et al.,
65 2016; Li et al., 2016; Huang et al., 2020) because the Ministry of Transport in China started the control of ship emissions in
2016 (MOT, 2015). Domestic Emission Control Areas (DECAs) were set-up in the waters of Bohai Bay, YRD and PRD to
control, for example the sulfur content of the fuel. In addition, equipment with AIS is becoming a mandatory requirement for
ships of 100 gross ton and above. By the end of 2018, DECAs were expanded from the major ports to 12 nautical miles outside
the coastline. The range of the Yangtze River covered by the DECAs was also raised from the original offshore cities to stretch
70 from Shuifu in Yunnan to Liuhekou in Jiangsu (MOT, 2018). Li et al. (2018) and Wang et al. (2021) showed that the latest
control policies have been effective in reducing ship emissions. However, Li et al. (2016) and Weng et al. (2020) concluded
that studies based on AIS methods over inland river ship emissions showed a higher uncertainty than for coastal and ocean-
going ships, especially for SO₂ and PM₁₀ emissions.

The total amount of air pollutants emitted by inland river vessels in the Yangtze River is higher than those emitted by seaport
75 vessels in Jiangsu province (Xu et al., 2019; Zhu et al., 2019). In contrast to the studies for ships on seas and in ports, studies
on inland river vessel emissions are still limited. Normally, those studies use estimations for the engine power and the
maximum design speed. For example, Zhu et al. (2017) assumed that ship length is related to ship tonnage and power. However,
these methods require a large amount of initial ship data, which is often difficult to obtain. Moreover, the ship emission factors
for the Jiangsu section of the Yangtze River used in the various studies show significant differences. Their emission factors
80 and the main engine fuel adjustment factors are usually based on the international literature. Their applicability in China, as
well as in Jiangsu province, needs to be validated. In addition, current studies of inland ship emissions have yet to explore the
relative contribution of ship emissions to air pollution.

For the missing information on engine power in AIS data, our study proposes a method to reduce the difficulty in deriving
emissions based on parameters directly provided by AIS. We set up an AIS receiver in Nanjing University of Information
85 Science and Technology (NUIST) to collect ship information including ship name, ship type, position, length, speed and
heading. Because of the large number of inland river ships in China and the limited range of the antenna detection, we propose
a method based on the length of the river per grid cell to extend the emission estimates to larger regions.

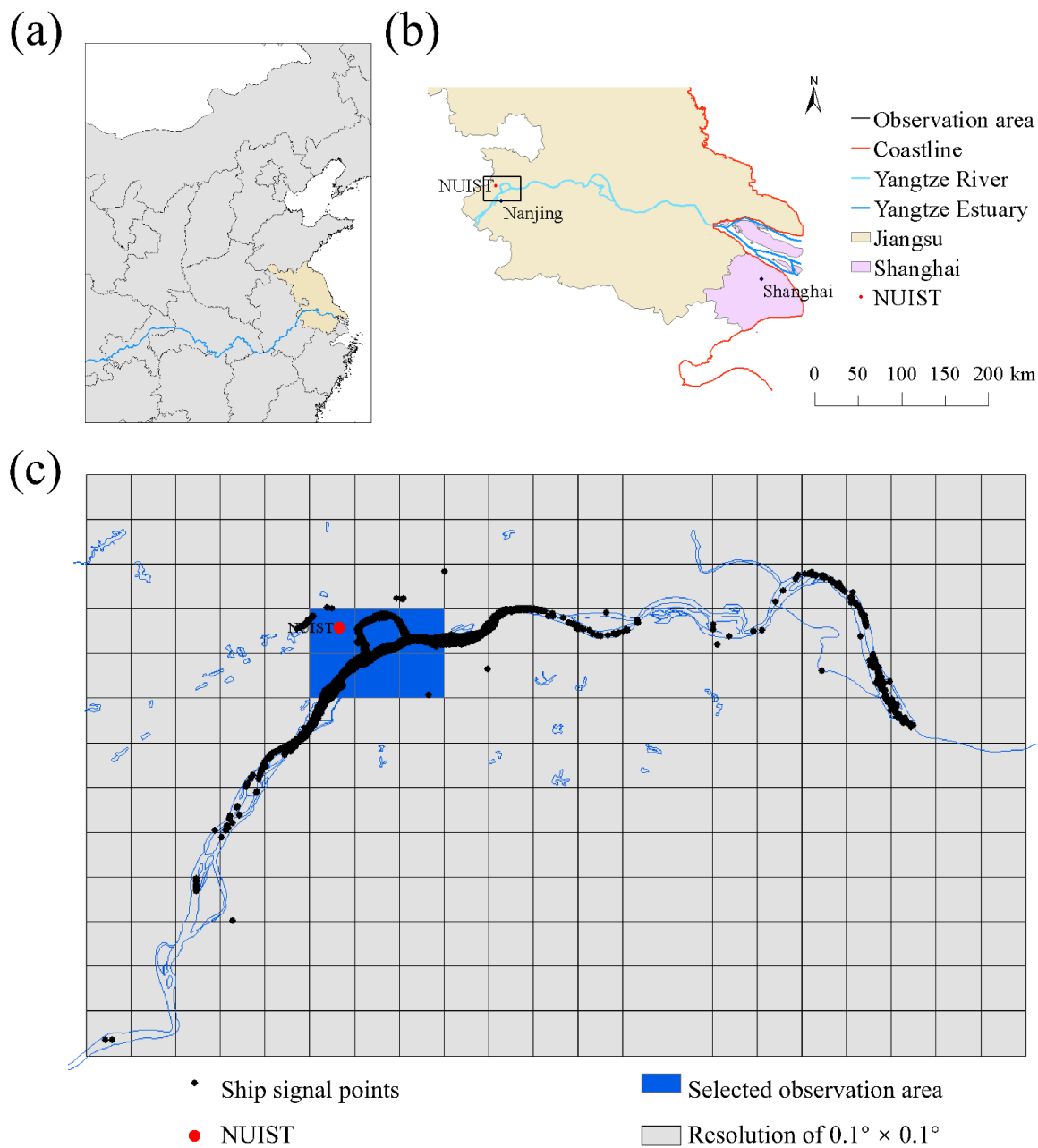
In this study, we compile a ship emission inventory of NO_x , SO_2 , PM_{10} , and $\text{PM}_{2.5}$ for the Jiangsu section of the Yangtze River
using a bottom-up approach based on one year of AIS data from September 2018 to August 2019. We calculate the emission
90 of each vessel at regular intervals (usually a few seconds) and sum up all emissions of the 588,591 ships movement during one
year. Emission characteristics such as ship type dependency, monthly variation and spatial distribution will be discussed. A
comparison with the Multi-resolution Emission Inventory for China (MEIC) model, Shipping Emission Inventory Model
(SEIM) and the Daily Emissions Constrained by Satellite Observations (DECISO) method is performed to check the relative
contribution of ship emissions to the total emissions. These results are important for the policy-makers to formulate and
95 evaluate emission reduction policies and for ship companies in choosing the best emission reduction measures.

2 Methodology

2.1 AIS observations

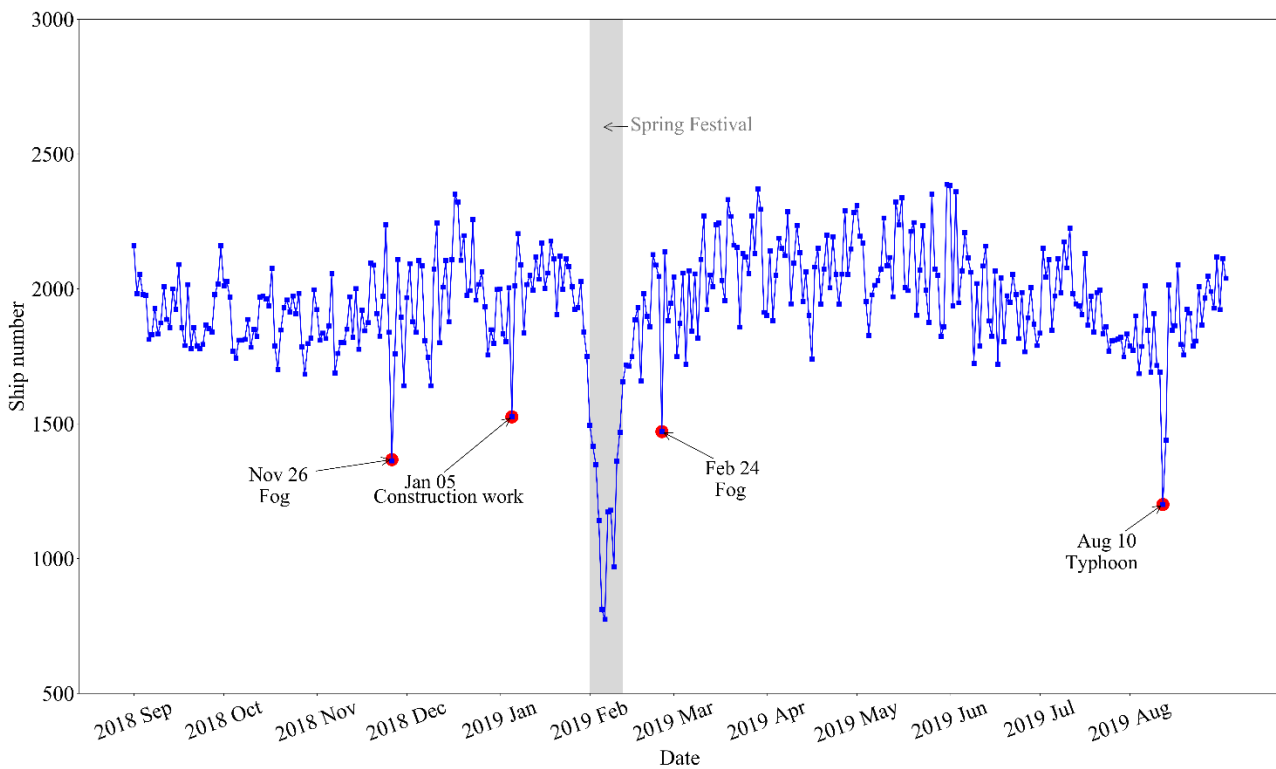
The Automatic Identification System (AIS) is a transponder technology on board ships to enhance safety by broadcasting ship information via VHF (Very High Frequency) channels. It works in conjunction with the Global Positioning System (GPS) to broadcast information such as ship position, speed and heading, together with static ship information such as ship name, ship length and ship type. Each AIS-equipped vessel is identified by a unique Maritime Mobile Service Identity (MMSI) number, which is also part of the AIS data.

We have set up an observation location in Nanjing, where an AIS receiver is located on the roof of the meteorological building in NUIST. Ships transmit AIS signals at intervals varying from every 3 seconds to a few minutes to provide information on their position. The black dots in Fig. 1c are an example of the locations of ships according to the AIS signals received in a time interval of 4 hours. We see that the antenna can receive signals within at least a 50 km radius. A region with a longitude of less than 118.95° E and a latitude of more than 32.05° N was selected as the area where all ships, including those with weak AIS transmitter can be tracked under all conditions. AIS data were collected for 365 days from September 2018 to August 2019. Based on the AIS information, ships were classified into seven types: cargo ships, tankers, passenger ships, tugboats, dredgers, patrol vessels, and others. Cargo ships include container ships, bulk carriers, Ro-Ro (Roll-on/Roll-off) vessels (excluding passenger ships); tankers comprise liquid chemical tankers, liquefied gas tankers and oil tankers; passenger ships consist of ferries and Ro-Ro passenger ships. Patrol vessels are classified separately because of their small size in combination with high speed.



115 **Figure 1.** The map of the study area. (a) Map of the Yangtze River. (b) Schematic map of the Jiangsu section of the Yangtze River. (c) Ship locations that were received by AIS in a 4 hour interval shown on a grid with a resolution of $0.1^\circ \times 0.1^\circ$. The black dots are the ship locations received by AIS, which demonstrates the range of the AIS receiver. The blue box is the selected observation area with a longitude between 118.65° E and 118.95° E and latitude between 32.05° N and 32.25° N.

The AIS data show that approximately 2,000 boats pass through the observation area each day, with a drop in the number of ships on specific days. Figure 2 shows the number of unique ships per day over a year. The grey box in Fig. 2 shows the Chinese New Year period when the number of vessels dropped sharply. The decrease in the number of ships on other days is usually related to the weather conditions. On 26 November 2018, very thick fog occurred, and the travel of both ships and vehicles was disrupted. On 24 February 2019, the local meteorological bureau issued a fog warning, so the number of passing vessels decreased. On 10 August 2019, Typhoon Lekima made landfall and brought catastrophic damage to Southeast China. The number of ships coming from the typhoon region was greatly reduced, as was the number of local vessels in Nanjing. On 5 January 2019, the Jiangsu Maritime Bureau issued a navigational warning for construction work in the Baguazhou branch of the Yangtze River in Nanjing.



130 **Figure 2. Number of ships per day. The grey shaded area represents the Spring Festival period. The red dots indicate days with strongly reduced ship numbers.**

2.2 Ship emission estimation

To estimate shipping emissions from the Yangtze River, we adopt the AIS method to obtain high-resolution ship information and emission factors. Equation (1) is used for calculating the emissions of various pollutants such as NO_x, SO₂, PM_{2.5}, and PM₁₀ from a single ship based on its main power (Jalkanen et al., 2012). We only considered the emissions of the main engine of the ship, while ignoring the relatively lower emissions from the auxiliary engines and boilers.

$$E = P \cdot L \cdot f_{EF} \cdot f_{LLAM} \cdot f_F \cdot f_C \cdot T \quad , \quad (1)$$

where

E is the emission from the main ship engine;

P is the main engine power of the ship (See Section 2.2.1);

L is the main engine load factor (See Section 2.2.2);

f_{EF} is the emission factor;

f_{LLAM} is the low load adjustment multiplier of the main engine;

f_F is the fuel correction factor;

f_C is the control factors for implementation of greener technology;

T is the sailing time.

Below we will further discuss each element of this equation.

The emission factor (f_{EF}) refers to the mass of pollutants emitted per unit of work done by a single vessel in one hour (g kW⁻¹ h⁻¹). It is an essential parameter for calculating ship emissions and has not yet been studied for China. For example, the emission factors used by Wan et al. (2020) for Beijing-Tianjin-Hefei, Yangtze River Delta, and Pearl River Delta were taken from literature referred to Europe and the US (USEPA, 2000; Entec, 2002; EPA, 2009). Ship emission factors used by Fan et al. (2016) for the Yangtze River Delta and the East China Sea were based on an EPA report (2009) and on Goldsworthy and Goldsworthy (2015), the latter being a study for the Australian region. The emission factors used by Fu et al. (2012) for the Shanghai port were taken from the air pollutant emission inventory of the Port of Los Angeles (Archana et al., 2013). Lacking studies for ships of the Chinese fleet, our study also relies on emission factors for other regions, following the scheme in Table

1.

The low load adjustment factor (f_{LLAM}) is used when the main engine load factor is less than 0.2. When the load factor is below 0.2, there is an increase in emission intensity due to the inefficient engine use at low speed. Hence, the emissions from low-load vessels were multiplied by the low-load adjustment factor (EPA, 2009). The low load adjustment multipliers for the main engine are shown in Table S1.

160 The fuel correction factor (f_F) is correcting the emission factors according to sulfur content of the fuel used by the ships. Ordinary inland vessels typically use general diesel oil (GDO), while larger inland ships and direct river and sea vessels use Marine fuel oil (MFO). MFO includes residual oil (RO) and marine distillates (MD). The sulfur content requirements for various fuels are shown in Table S2. The emission factors mentioned above are obtained based on the assumption that marine fuel is heavy oil with a sulfur content of 2.7 % (EPA, 2009). In October 2018, the DECAs began responding to a new policy
 165 that the sulfur content of inland marine fuel cannot be higher than 0.001 % in 2019 (Wang et al. 2021). In our study, the actual inland ship emissions are calculated based on the sulfur content of 0.001 %, for which a fuel correction factor is needed. In addition, we will calculate ship emissions for an average fuel sulfur content of 1.5 % (Xu et al.,2019) for a scenario where the new policy would be absent. The fuel correction factor f_F for each air pollutant is shown in Table 2.

The control factor f_c is to potentially correct for higher quality marine diesel engines, or the availability of emission reduction
 170 facilities on the ships as a result of emission control policy. There is currently limited legislation to control ship emissions in inland waterway zones in China and insufficient monitoring infrastructure for enforcement, therefore the control factor is set to 1.

Table 1. Emission factor (f_{EF}) in g (kWh)⁻¹ of the main engine reported in literature. (SSD is slow speed diesel; MSD is medium speed diesel. ≤1999, 2000-2010, 2011-2015 are the years of the ship built.)

Engine type	NO _x	SO ₂	PM _{2.5}	PM ₁₀	Reference
SSD	≤1999: 18.1				
	2000-2010: 17.0	10.5	0.96	1.05	(Entec, 2002)
	2011-2015: 15.3				
	17.0	10.5	1.2	1.5	(Archana et al., 2013)
	18.1	10.3	1.22	1.378	(EPA, 2009)

	≤1999: 14.0				
	2000-2010: 13.0	11.5	1.02	1.11	(Entec, 2002)
MSD	2011-2015: 11.2				
	13.0	11.5	1.2	1.5	(Archana et al., 2013)
	14.0	11.31	1.22	1.193	(EPA, 2009)
HSD	12.7	11.31	0.50	0.650	(EPA, 2009)

Table 2. Fuel correction factor (f_F) used in this study

Fuel type	Sulfur content (%)	NO _x	SO ₂	PM _{2.5}	PM ₁₀
Unregulated marine fuel	1.5 %	0.9	0.56	0.47	0.47
Regulated marine fuel	0.001%	0.9	0.0005	0.0007	0.0007

2.2.1 Engine power

180 Since the engine power is missing in the AIS data, we develop a method to relate the engine power to the ship type, length and speed. Those parameters are available in the AIS data unlike the engine power.

The supplied power by ship engines (P_{ship}) for transport should be at least equal to the dragging force (F_{drag}) of the water resistance multiplied by the speed (v) of the ship. According to fluid dynamics, the resistance force is proportional to the area (A_s) experiencing the water resistance multiplied by the speed square. Hence, the supplied power of a ship engine is
185 proportional to the area times the cubic of the speed: $P_{\text{ship}} \sim A_s v^3$. This is known as the propeller law (Theotokatos and Tzelepis, 2015).

For each ship type, the length-width-height dimension ratios of the boats are not expected to vary much, especially because ship design is focused on efficiency as fuel is a dominant cost in shipping. Logically, ship designs are expected to be relatively similar. Hence, the ship area A_s (width times height) is to the first order expected to be proportional to the square of the ship
190 length ($A_s \sim L_s^2$). Therefore, we assume the relation of engine power of a ship with its length and its speed as: $P \sim L_s^2 v^3$. The

China Classification Society (CCS, <https://www.ccs.org.cn/ccswz/>, last access: 27 February 2023) database of Chinese domestic ships provides data such as ship type, main engine power, maximum ship designed speed, ship length and construction year of the ship. Using these ship parameters, we can derive the average regression relationship for each category of ship by linear fitting of this proxy ($P \sim L_s^2 v^3$). The fitted linear relation between $L_s^2 v^3$ and the engine power P of the main engine is shown in Table 3 for each ship category. Figure S1 shows the fitted linear relationship between main engine power at full speed and the proxy $L_s^2 v^3$ at maximum speed v_{max} .

Table 3. Regression analysis between main engine power and the square of the vessel's length multiplied by the cube of the real-time speed (The slope refers to the ratio between power (P_{max}) and $L^2 v_{max}^3$). When the tug's length is more than 40 meters, the power of the main engine is assumed to be constant (1800 kW).

Type	Slope (Mg m ⁻³)	R ²	Sample size
Cargo	$4.755 \cdot 10^{-5}$	0.87	744
Tanker	$8.692 \cdot 10^{-5}$	0.91	487
Passenger	$4.260 \cdot 10^{-5}$	0.88	226
Tug $L_s \leq 40\text{m}$	$5.408 \cdot 10^{-4}$	0.96	213
Dredger	$1.258 \cdot 10^{-4}$	0.94	10
Patrol	$4.869 \cdot 10^{-5}$	0.93	37
Others	$6.906 \cdot 10^{-5}$	0.85	184

2.2.2 Load factors

The load factor L reflects the actual output power of the main engine as a percentage of the rated main engine power. The ship's main engine works according to the characteristics of a propeller, and the engine load factor is estimated using the propeller law, which means that the main engine load varies as the third power of the ratio of the ship's actual speed to the ship's designed speed. So the load factor is calculated as:

$$L = \left(\frac{v}{v_{max}}\right)^3, \quad (2)$$

where v is the actual sailing speed of the ship and v_{max} is the maximum speed of the ship using its full power.

For inland waterway ships, the maximum designed speed is often unknown and cannot be obtained directly from AIS data. To
210 obtain a maximum sailing speed per ship type we used the median of all maximum speeds (per selected ship type) registered
in the CCS ship database (see Table 4).

Table 4. Maximum speed per ship category (The maximum speed value is based on the statistics of the maximum speed of about 1,900 different river vessels.)

	Cargo	Tanker	Passenger	Tug	Dredger	Patrol	Others
v_{max} (km h ⁻¹)	15.33	12.00	14.30	13.35	10.76	19.80	12.80

215

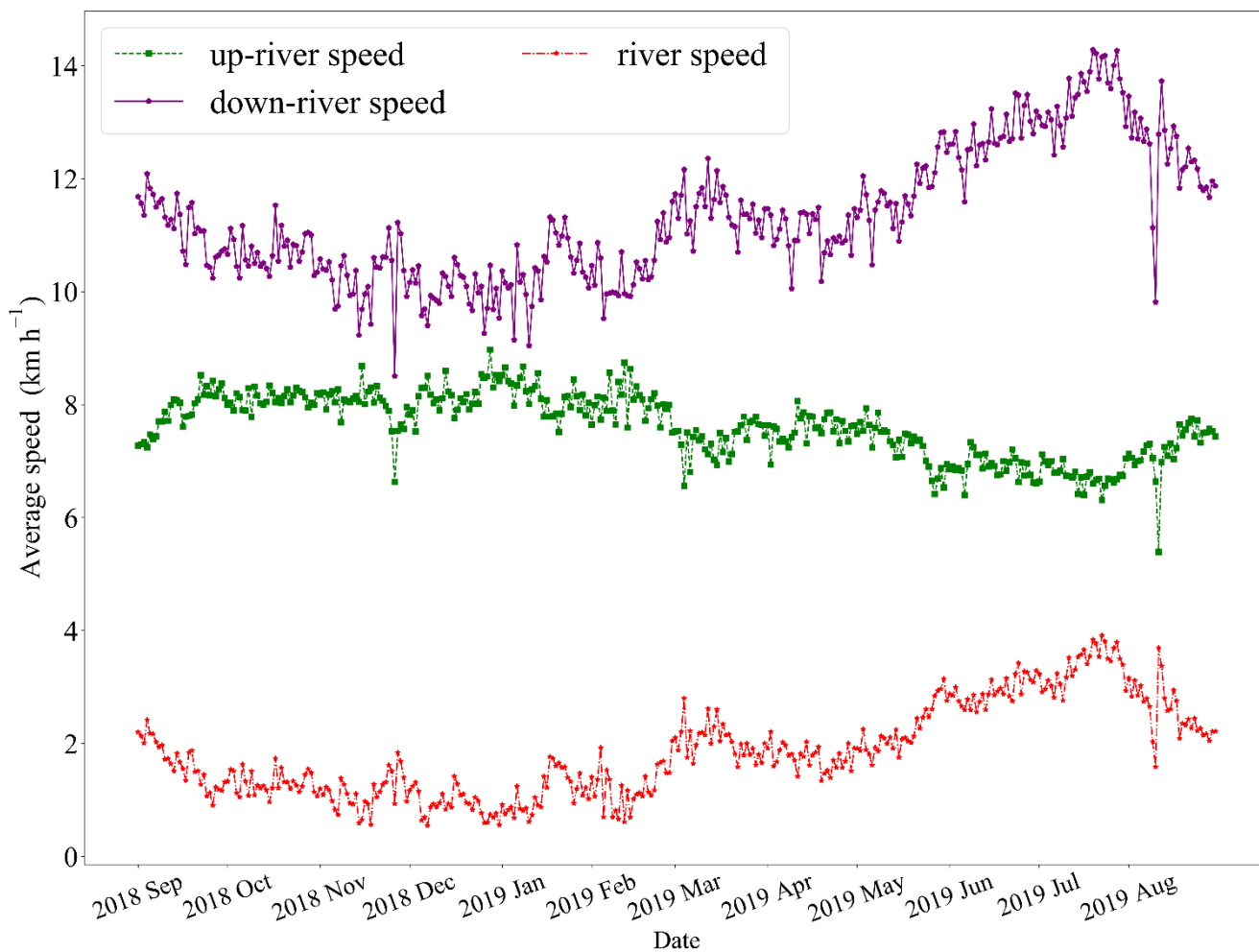
2.2.3 Correction of ship velocity for river flow

From the previous equations for calculating ship emissions, we see that the ship's real-time speed is critical. The speed related
to the delivered power by the ship is the speed relative to the water, rather than the ship speed over ground, which is given in
the AIS signal. Therefore, a correction for the vessel speed is required.

220

Assuming that the ships use similar engine power going upriver or downriver, the average speed difference between ships
going downstream and upstream has been used to derive the speed of the water flow. Then the actual speed of a ship is obtained
by correcting the speed with the actual river flow. When the obtained speed for an individual ship is negative, this ship is
assumed to be at anchor and the sailing speed of the ship is set to 0. Figure 3 shows the derived daily average speed of the river
flow during a year. It is clear from Fig. 3 that the water speed is higher in summer than in winter, because of the difference in
225 rain and melting water over the year. This is confirmed by a hydrological study of Chen et al. (2016), concluding that monthly
precipitation and discharge in the Yangtze River basin are highest in July and August, with January, February and December
being the lowest months. The quick change in river flow on August 10, 2019, happened during the landfall of typhoon Leikma.
The actual ship speed after correction for water speed tends to be rather constant throughout the year. The actual engine power
is calculated using the corrected speed as discussed above.

230 It is worth noting that there are some limitations of our method. For example, some ships would reduce their speed when going downstream, or some increase their speed when going upstream to compensate for the actual speed. In this case, our method may slightly underestimate the river's speed, especially in July and August.



235 **Figure 3. Average daily river speed (red line) and ship speed over a year. Up-river speed and down-river speed of the ships are coming directly from AIS data. The river speed is based on the average difference between downstream speed and upstream speed.**

2.3 Emission inventories for the Yangtze River Delta

To evaluate the emissions derived using our method, we compared them to three other emission inventories in the YRD, including the satellite-derived NO_x inventory DECSO (Daily Emission derived Constrained by Satellite Observations) and the following bottom-up inventories for East Asia: MEIC (Multi-resolution Emission Inventory for China) and SEIM (Shipping Emission Inventory Model).

2.3.1 MEIC

The Multi-resolution Emission Inventory for China (MEIC, <http://meicmodel.org/>, last access: 27 February 2023), developed by Tsinghua University, is an emission inventory of air pollutants from anthropogenic sources in China with a spatial resolution of 0.25°. Emissions of NO_x, SO₂, PM₁₀, PM_{2.5}, CO₂, OC and BC are calculated for four sectors from 2008 to 2017: energy, industry, transport and residential. For road motor vehicle emission sources, MEIC uses an emission characterization model that includes parameters such as temperature, humidity and combines meteorological fields with motor vehicle emission factor models to construct a high-resolution dynamic motor vehicle emission inventory. However, the transport sector of MEIC does not include ship emissions (Zheng et al., 2014). Li et al. (2017) and Zheng et al. (2018) presented more details of the latest version MEIC v1.3. Here, the MEIC v1.3 for 2017 is used.

2.3.2 SEIM

The Shipping Emission Inventory Model (SEIM) developed by Tsinghua University has been used to construct the East Asia ship emission inventory. The model has been developed based on high-precision AIS information of ocean-going ships and encompassing worldwide international fleet activity. It provides gridded annual ship emission data with a 0.1° spatial resolution for the seas in the East Asia region in 2017, covering SO₂, NO_x, CO, VOC, PM_{2.5}, OC and BC, a total of seven species (Liu et al., 2016, 2019). However, emissions over inland rivers, except for the delta region, are not included. Emissions from ocean-going vessels, coastal vessels and river vessels were calculated in the latest version of SEIM (SEIM v2.0) (Wang et al., 2021). Here, we use SEIM v1.0, since only this version is publicly available.

2.3.3 DECSO

260 Daily Emission estimates Constrained by Satellite Observations (DECSO) is an inverse modeling method to update daily emissions of NO_x based on an extended Kalman filter (Mijling and van der A, 2012). NO_x emissions are constrained by combining simulated NO₂ column concentrations of a regional chemical transport model (CTM) with satellite observations. The latest version is referred to as DECSO v6.1 and has a spatial resolution of 0.1° using NO₂ observations from TROPOMI (TROPOspheric Monitoring Instrument). In addition, the algorithm captures the seasonality of NO_x emissions and reveals the

265 trajectory of ships near the Chinese coast (Ding et al., 2018). DECSO provides monthly emissions with a maximum error of approximately 20 % for each grid cell. We selected NO_x emissions in the Yangtze River Delta region for 2019, the earliest year that is available from DECSO for this region.

3 Inland ship emissions

We calculated the emissions of NO_x, SO₂, PM₁₀, and PM_{2.5} for the area considered (118.65°-118.95° E and 32.05°-32.25° N, the purple box in Fig. 1) from September 2018 to August 2019 based on AIS data. The total ship emissions of NO_x, SO₂, PM₁₀ and PM_{2.5} in this area are 6,679 and 2.98, 0.43 and 0.39 ton per year, respectively.

3.1 Yearly emissions per ship category

We analyzed the collected AIS data from September 2018 to August 2019 and concluded that the number of ships for each defined type was stable throughout the time period. Detailed data on the number of vessels per month are listed in Table S3. Figure 4 shows the contribution of NO_x, SO₂, PM₁₀ and PM_{2.5} from different ship types. Emissions from cargo ships are higher than for other types of ships, followed by tankers and tugs, with dredgers and patrol boats making the lowest contribution to the emissions. Cargo ships contribute to more than 58 % of the ship emissions of all species in the Nanjing section of the Yangtze River. This is because cargo ships are the dominant vessel type in this region and their number account for about 81 % of the total.

280 Dividing the total emissions from each ship type by the number of ships of that type we obtained and analyzed average ship emissions per ship type. For a single vessel, tugs emit more pollutants (Fig. S2). This is related to the higher power needed for

the engine of a tugboat, which was also concluded by Xu and Bai (2017). Compared with cargo ships, tankers have a relatively higher contribution to SO₂. The sulfur content of tanker fuel is slightly higher than the sulfur content of diesel fuel for cargo ships (Zhu et al., 2019). Because SO₂ emissions are directly related to the sulfur content of fuel oil, tankers will emit more SO₂.

285

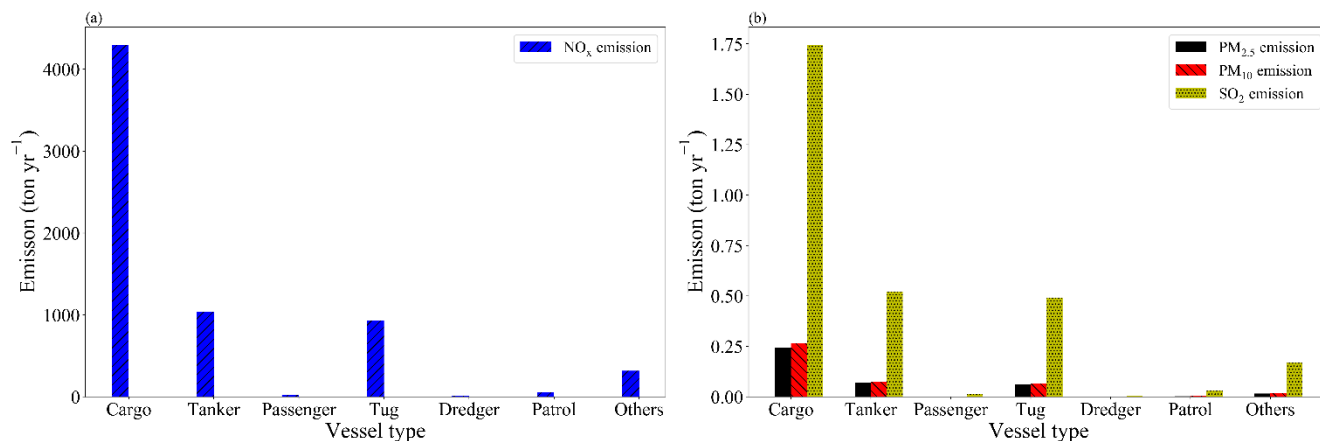


Figure 4. Emissions from different ship categories

Table 5. Number of ships and NO_x emissions for the various ship categories

	Ship number	Share	Rank	NO _x emissions (kton yr ⁻¹)	Share	Rank
Cargo	571013	81.0 %	1	4.3	64.4 %	1
Tanker	96888	13.7 %	2	1.0	15.5 %	2
Tug	12128	1.7 %	3	0.9	13.9 %	3
Others	10932	1.5 %	4	0.3	4.8 %	4
Passenger	7971	1.1 %	5	0.027	0.41 %	6
Patrol	5652	0.8 %	6	0.057	0.86 %	5
Dredger	346	0.05 %	7	0.001	0.16 %	7

290 **3.2 Monthly variation of ship emissions in the observational area**

We calculated the monthly emissions from the AIS data in the observational area, as is shown in Table 6. Since the same calculation method is adopted for all four pollutants, their spatial and temporal variations are consistent. Figure 5 shows the monthly variations of NO_x emissions from ships from September 2018 to August 2019. We see that, except for the sharp decrease in the number of ships in February, the number in other months has basically stabilized at around 60,000. The monthly emissions are highly related to the number of ships and the speed of ships.

Ship emissions peaked in July, followed by June and August. In July the emissions are the highest due to the high river speed and therefore more engine power (proportional to v^3) is needed for upstream ships. From November to February, the emissions have been lower, possibly because the water flow of the Yangtze River is lower at this period and ship activities during Spring Festival are reduced. In February, the number of ships dropped sharply, but the emissions from ships in February were similar to that from ships in January. This is due to the higher activity of tugs in February, which have larger engines and emit higher levels of emissions (Fig. S3). From February to March, we see that pollutant emissions increased due to the increase in the number of ships. This is closely related to the resumption of factory work and human activities after the holiday.

Table 6. Ship emissions (ton yr⁻¹) in our study region around Nanjing from September 2018 to August 2019

Month	NO _x	SO ₂	PM ₁₀	PM _{2.5}
Jan	465	0.21	0.03	0.03
Feb	452	0.21	0.03	0.03
Mar	590	0.27	0.04	0.04
Apr	575	0.26	0.04	0.03
May	634	0.29	0.04	0.04
Jun	694	0.30	0.05	0.04
Jul	787	0.33	0.05	0.05
Aug	680	0.30	0.04	0.04

Sep	497	0.22	0.03	0.03
Oct	467	0.21	0.03	0.03
Nov	406	0.18	0.03	0.02
Dec	432	0.19	0.03	0.02

305

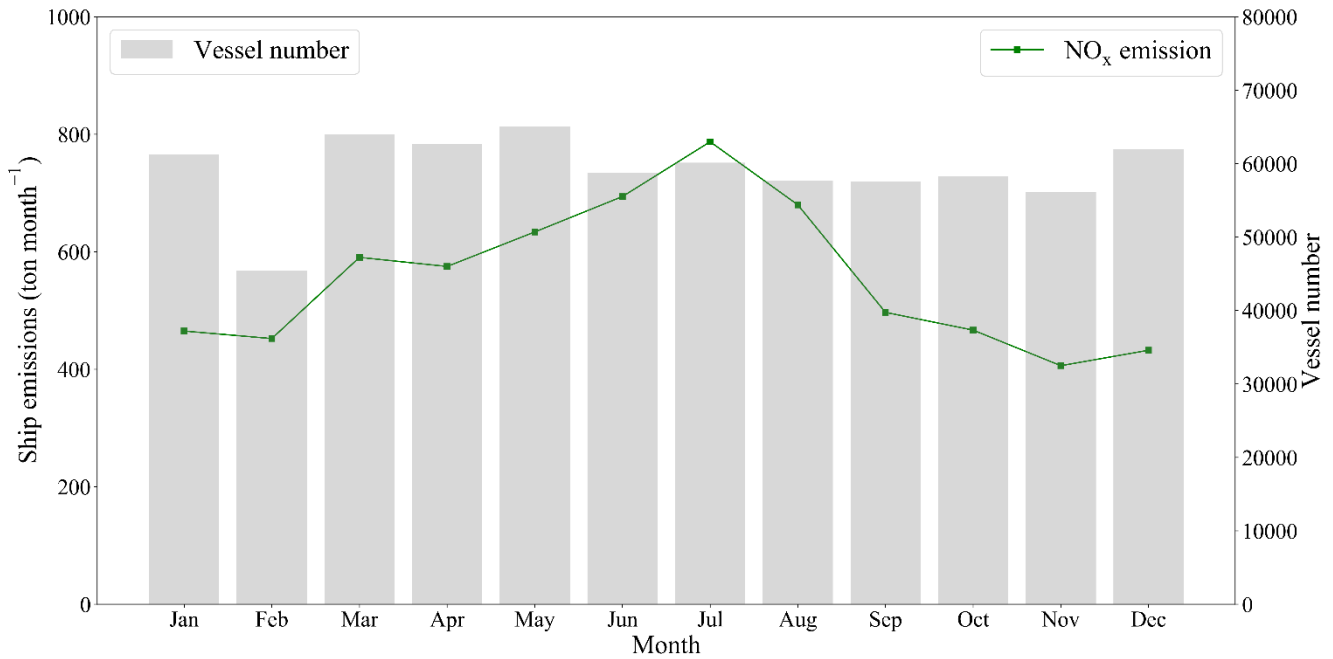


Figure 5. Monthly changes in the emissions from inland river ships. The grey bars show the number of ships per month.

3.3 Spatial distribution of NO_x emissions

3.3.1 Spatial distribution of NO_x emissions in the observational area

310

The spatial distributions of emissions from different air pollutants are the same as they are based on the shape of the river. Here we choose NO_x as an example to present our results. Figure 6 shows the calculated ship emissions with a spatial resolution of 0.01° in the observational area, not only over the main channel, but also over some very small branches of the Yangtze River, such as the Chu River and Ma Cha River. The observational area also includes a slightly wider branch of the Yangtze River,

known as the Jia Jiang River. On these branches, ship emissions are much smaller than from ships on the main Yangtze River.

315 The Yangtze River is around 2-3 km wide.

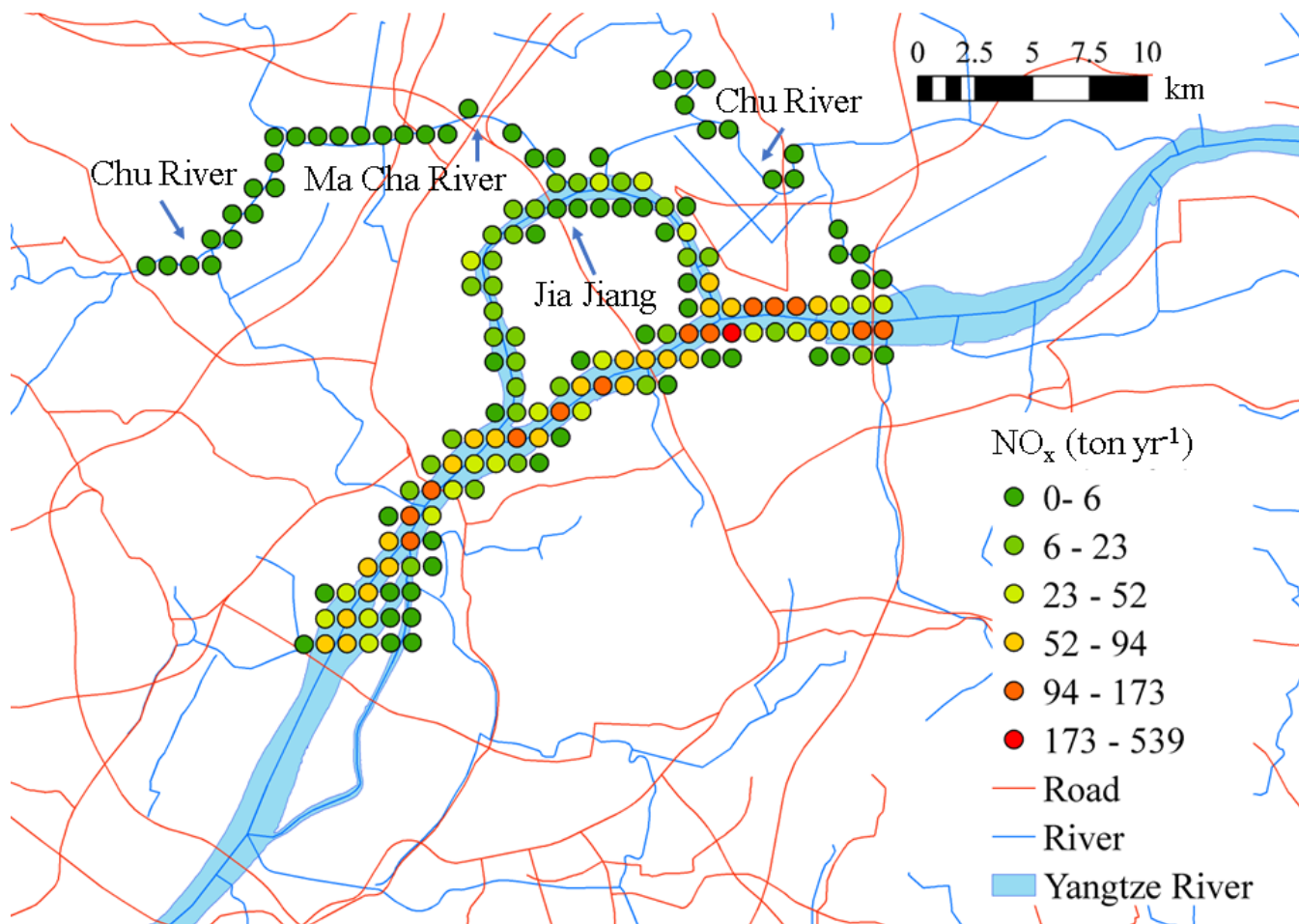


Figure 6. Spatial distribution of ship emission in the observation area on a resolution of $0.01^\circ \times 0.01^\circ$

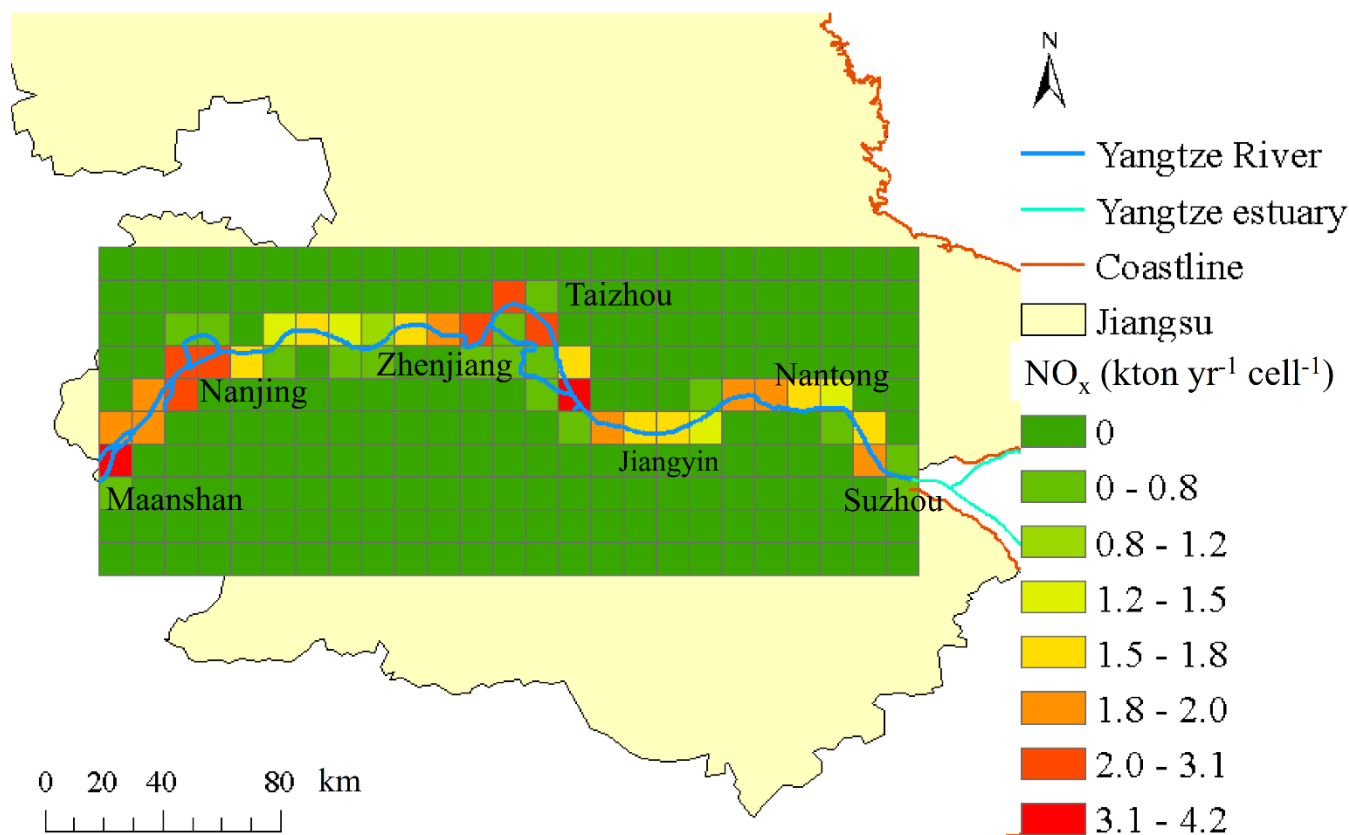
3.3.2 Spatial distribution of NO_x emissions in the YRD region

320 Due to the limits of the observation area, we propose a new river length-based method to estimate ship pollution in a larger region. Emissions in inventories are often presented per grid cell. Figure 1 shows that the river width is much smaller than the size of a grid cell and emissions from ships are more closely related to river length per grid cell than river width. Therefore, inland river ship emissions can be seen as line sources, assigning pollution to each kilometer of the river. First, we calculate

the emissions per km length of the river. Once we have this quantity, we can calculate the ship emissions per grid cell for any part of the river based on the length of the river in that particular grid cell. For parts of the Yangtze River having parallel branches, the ship emissions are distributed by the corresponding proportion of the number of ships per branch.

We allocated the total ship emissions E_{all} in the observational area to the length L_{river} of the mainstream river only: $E_{\text{all}}/L_{\text{river}}$. The length of the main channel of the observational area can be inferred by analyzing the distance traveled by ships in downstream and upstream directions (Fig. S4) using the location, speed and time of the ships from the AIS data. We only calculated the distance for vessels that have fully passed through the mainstream channel with a speed of more than 3 knots downstream and more than 1 knot upstream for the entire journey. The downstream side of the river is approximately 30 km and the upstream side is around 32 km. The average length of the main channel was calculated to be 30.9 km, weighted by ships navigating in both directions. We can now obtain the ship emissions within each grid cell by multiplying the river's length within the grid cell by the calculated emissions per kilometer of the river: $E_{\text{all}}/L_{\text{river}}$ ($\text{kton yr}^{-1} \text{ km}^{-1}$). The Jia Jiang River has been ignored in this calculation since only 0.04 % of all ships pass this side river.

According to the above method, we extrapolate our emissions per km to the river outside our study area assuming that the ship density and speed is rather constant in this region. Figure 7 shows the spatial distribution of ship emissions in the Jiangsu section of the Yangtze River with a spatial resolution of 0.1 degree. The spatial distribution of our ship emissions depends only on the length of the river within the grid cell.



340 **Figure 7. Spatial distribution of NO_x emissions in the Jiangsu section of the Yangtze River**

3.4 Uncertainty

In this section we will discuss the uncertainty on our emission inventory. Our calculations have been based on the main engine only. However, during the navigation of a ship, the main engine and auxiliary engine of the ship are working at the same time. For a moored ship, the main engine stops working. On average, 17 % of the ships in the observational area are in dock every day, and this part of the ship emissions have not taken into account, but the auxiliary engines are still working. Based on the study of Weng et al. (2020) in the Yangtze estuary, we estimate that our emissions show an underestimation of about 12 % because of ignoring the auxiliary engine and boiler emissions at berth and underway.

345

However, the locations of high ship emissions are consistent with previous studies. Zhu et al. (2019) pointed out that the distribution of ship emissions in the Jiangsu section of the Yangtze River in 2017 was uneven, with the emission rates in the Nanjing section of the Yangtze River and the Jiangyin section of the Yangtze River being relatively high. Xu et al. (2019) noted that for ports along the river, Nanjing port had the highest rate of ship emissions.

As the Yangtze River becomes wider when getting closer to the sea, the speed of the river will be reduced and thus the emissions from ships can be lower. In the extreme cases of stagnant water, ship emissions can be reduced by a maximum of 3-33 % depending on the month. We estimate that this may lead to an overestimation of about 10 % in the ship emissions outside our study area around Nanjing.

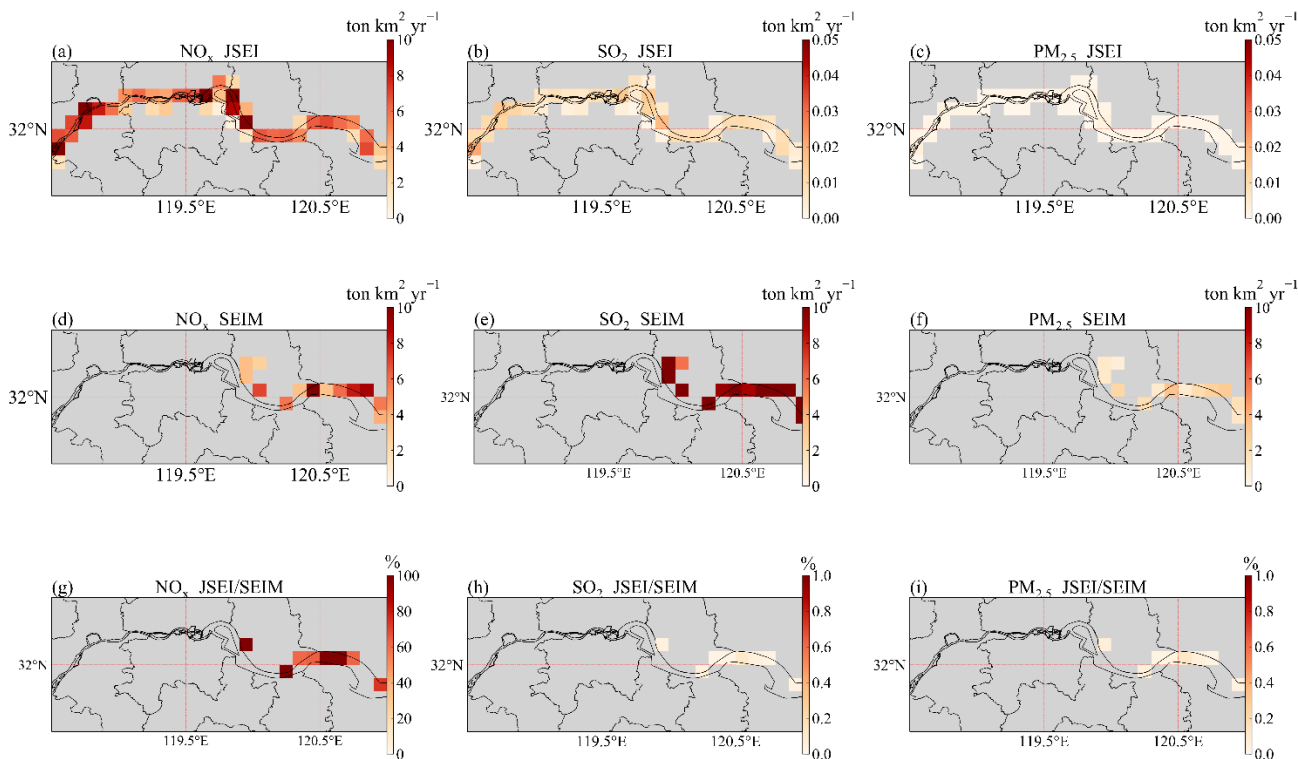
Currently, the AIS-based approach is considered as the best practice for ship inventories. However, there is still a lack of reliable local emission factors, auxiliary engine power ratings and fuel correction factor in the YRD region, which contributes largely to the uncertainties in this study. The selection of accurate emission factors is critical to the calculation of the ship emission inventory and the uncertainty that comes with it. The emission factors are closely related to the age and rotation of the ship's engine as well as the engine load, and the fuel correction factor depends on the sulfur content of the marine fuel. Earlier heavy oil was a fuel of low quality with a sulfur content of about 2.7 %. In contrast, the fuel sulfur content in this study is only 0.001 %, while in the beginning of time period the fuel sulfur content may be as high as 1.5 %. For the scenario that the sulfur content is not regulated, we have calculated that the SO₂ and PM emissions would be about a factor 700-1000 higher. In conclusion, our derived emissions have an underestimation of 12 % due to ignoring the auxiliary engines and boilers and an overestimation in some regions of about 10 % due to the slower river flow. Adding this to the uncertainties in emission factors we estimate the total uncertainty to be 5-15 %.

4 Contribution of inland ship emissions relative to emissions from other sources

We constructed a Jiangsu Ship Emission Inventory (JSEI) over the Jiangsu section of the Yangtze River (118.5°-121° E and 31.5°-32.5° N) on different resolutions to compare it with other regional inventories. For the comparison and calculating the contribution of ship emissions to the total emissions of air pollutants along the river, we only selected the emissions from the grid cells containing the Yangtze River.

4.1 A comparison of the ship emission inventories

To verify the calculated emissions of JSEI, we compared them with the ship emissions of SEIM for the overlapping region. Figure 8 shows the spatial distribution of the ship emissions of NO_x , SO_2 and $\text{PM}_{2.5}$ for JSEI and SEIM and the ratio of JSEI to SEIM. JSEI and SEIM only calculate ship emissions, and they overlap for less than half of the domain. When comparing the overlapping grid cells, JSEI accounts for in average about 99 %, 0.05 % and 0.06 % of the SEIM emissions for NO_x , SO_2 and $\text{PM}_{2.5}$, respectively. The average emissions from inland ships over rivers (JSEI) compare well with average emissions of sea-going ships (SEIM) for NO_x . SEIM has higher values than JSEI for SO_2 and $\text{PM}_{2.5}$ because SEIM calculated the emissions for 2017, when only major ports needed to strictly control the sulfur content of marine fuel. The sulfur content of marine fuel was 0.001 % in our study. In comparison, the sulfur content of ocean-going marine fuel in 2017 was about 2.7 %, much higher than that of inland river ship fuel. Ship pollutants that are greatly affected by the sulfur content of marine fuel, such as SO_2 and PM, will be reduced with the reduction of sulfur content. This shows that from 2017 to 2019, the policy was of a great significance for the ship emissions, effectively reducing the emissions of SO_2 and PM. For NO_x emissions both inventories compare remarkably well.



385

Figure 8. Spatial distribution of ship emissions for JSEI and SEIM.

4.2 Contribution of ship emissions compared to MEIC and DECISO

Here JSEI is added to the MEIC inventory to represent the value of total air pollutants, as the MEIC inventory does not include emissions from ships. Figure 9 shows the spatial distribution of the contribution of the river emissions JSEI over the total emissions (MEIC+JSEI) for NO_x, SO₂, PM_{2.5} and PM₁₀ along the river. SO₂ ship emissions along the river account for an average of 0.14 % of total SO₂ emissions, and only 0.82 % in the highest areas. PM emissions from ships along the river contribute on average 0.01% of the total PM emissions.

Even in a scenario where there is no policy regulation, PM emissions from ships account for only a relatively low proportion of total PM, with a maximum of 20 % and an average of 5 % in riverine areas, with PM_{2.5} accounting for a slightly higher proportion than PM₁₀. In this scenario, SO₂ emissions from ships contribute to around 40 % of the total SO₂ pollution on

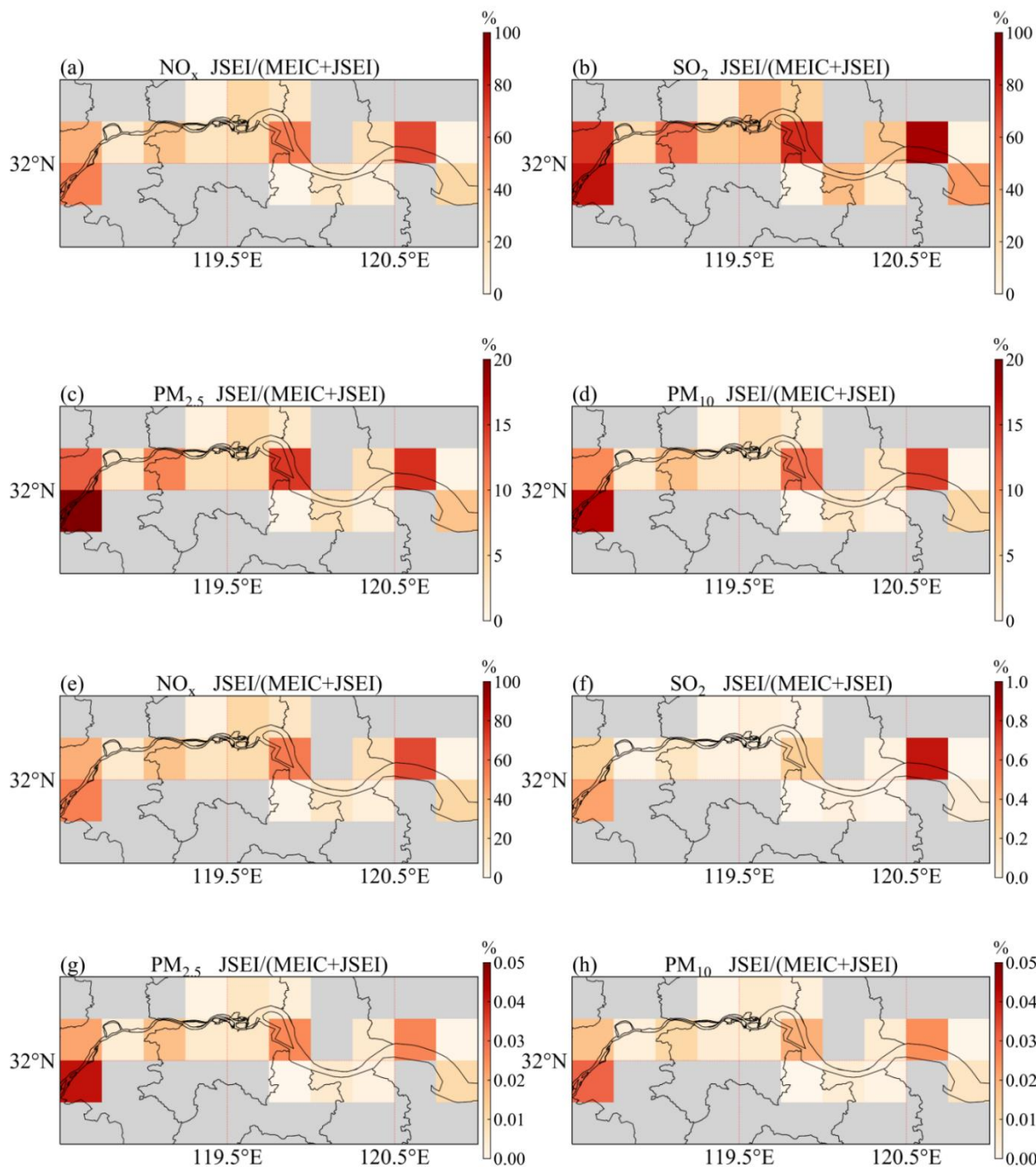
395

average, while it can reach 83 % in some areas. Under the regulation of the new policy, the SO₂ and PM emitted from ships are greatly reduced. Therefore, it is important to set up control zones for sulfur emissions from ships.

We integrated JSEI to 0.1° resolution and 0.25° resolution to compare with DECSO and MEIC, respectively. Because DECSO only covers NO_x emissions, we focus on the contribution of NO_x emissions from ships to the total emissions. Figure 10 shows the spatial distribution of NO_x emissions derived from JSEI, MEIC and DECSO in the Jiangsu section of the Yangtze River. MEIC does not include ship emissions and has a coarser resolution than the other inventories.

When compared to DECSO, NO_x emissions from ships account for 6.1-74.5 % of the total emissions (Fig. 11). From Fig. 11, we see that the width of the Yangtze River varies from region to region. The width of the Yangtze River increases significantly in Taizhou, Changzhou and the sections of the river close to the estuary of the Yangtze River (red box), where the river flow slows down. Because of the lower river speed, ship emissions in these areas might be overestimated.

The JSEI NO_x emissions contribute to about 28 % of total NO_x emissions of MEIC in a region of 10-25 km around the river (Table 8). Compared to DECSO, the JSEI accounts for 42.9 % of total NO_x emissions in the region of 5-10 km from the river. The MEIC grid cells are larger than the DECSO grid cells and therefore include more emissions than for DECSO, so the share of ship emissions for MEIC is nearly half of that for DECSO. Even on the coarser grid of MEIC, the comparison shows that ship emissions from riverine areas account for at least 25 % of the total emissions, so ship emissions should not be ignored in NO_x emission inventories. When comparing the total ship emissions with the total non-vessel anthropogenic emissions in Jiangsu Province in 2017, NO_x emissions from ships still account for 5 % of the total non-vessel anthropogenic NO_x in Jiangsu Province given by the MEIC inventory (Table S4).



415

Figure 9. Spatial distribution of the contribute of the river emissions (JSEI) to the total emissions (MEIC+JSEI) for NO_x , SO_2 , $\text{PM}_{2.5}$ and PM_{10} . (a), (b), (c), (d) are based on a scenario where there is no sulfur content regulation, (e), (f), (g), (h) are based on the actual situation with the sulfur content of 0.001 %.

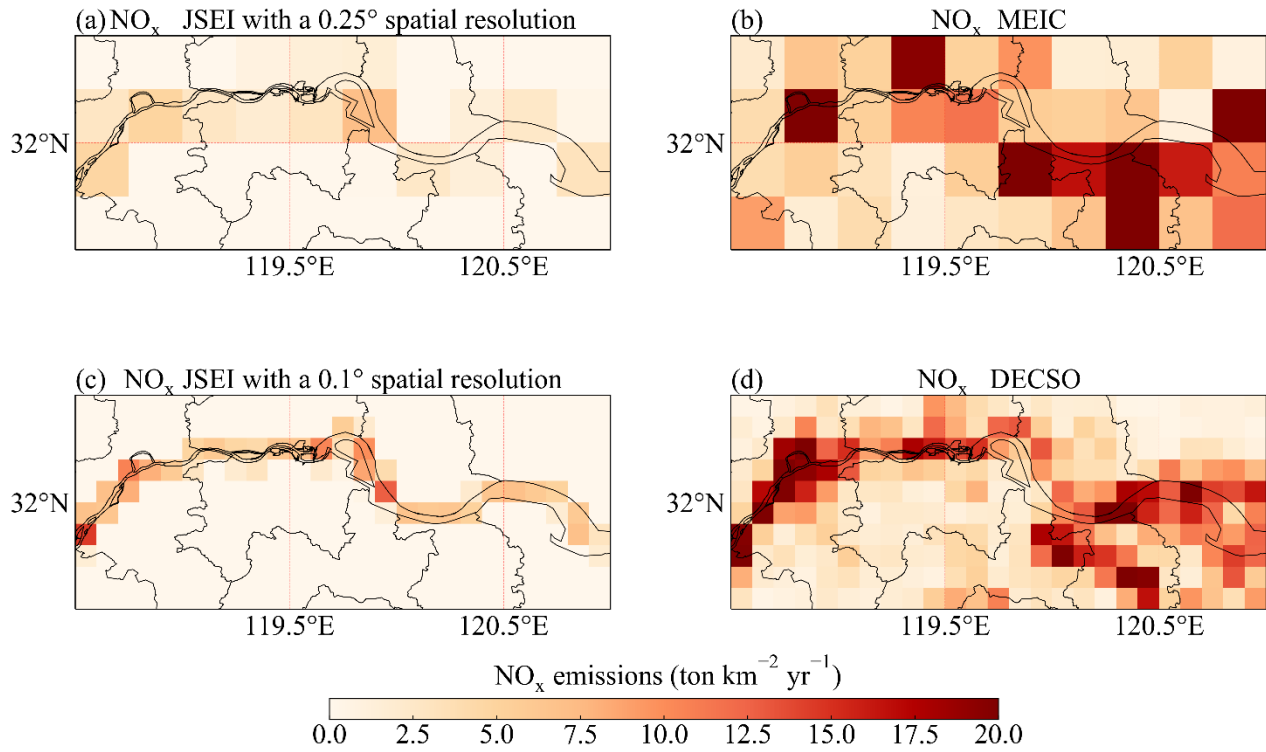
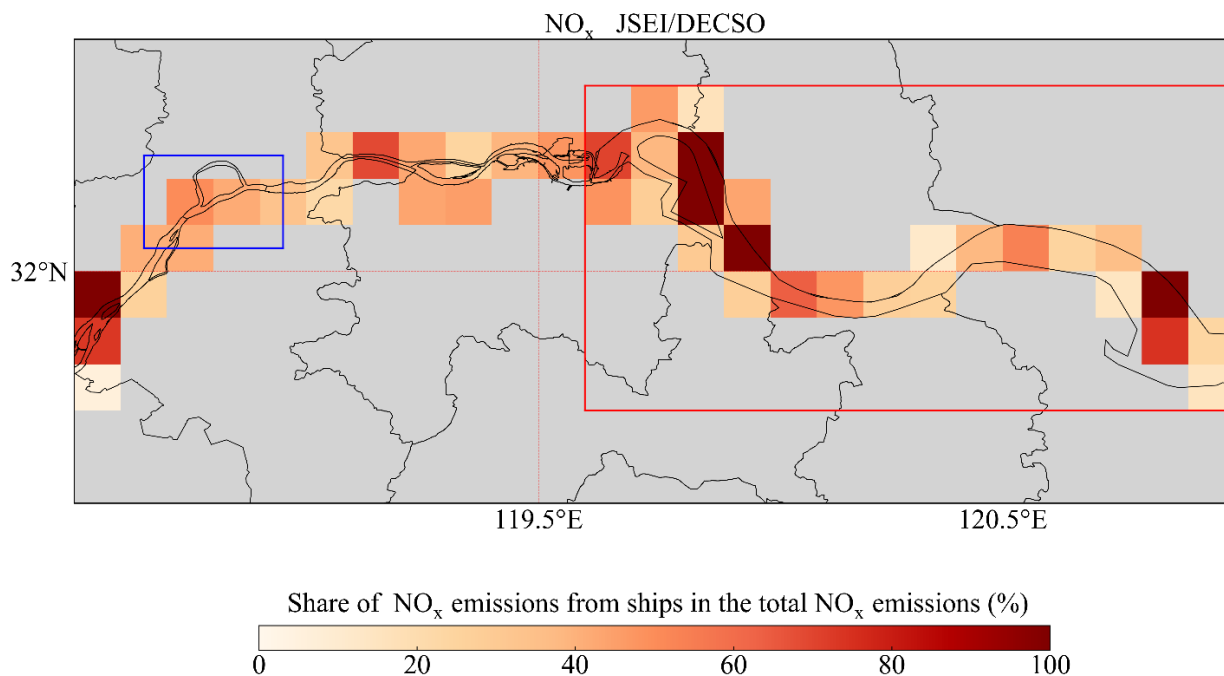


Figure 10. Spatial distribution of NO_x emissions for JSEI of 0.25° (a) and 0.1° (c) resolution, MEIC (b) and DECSO (d).



420

Figure 11. Spatial distribution of the contribution of ship emissions (JSEI) to the total emissions (DECSO) for NO_x on a 0.1 × 0.1 resolution. The blue box is the AIS observation area. The red box represents the section of the river with a broader width.

Table 8. The total emissions in the selected river grid cells

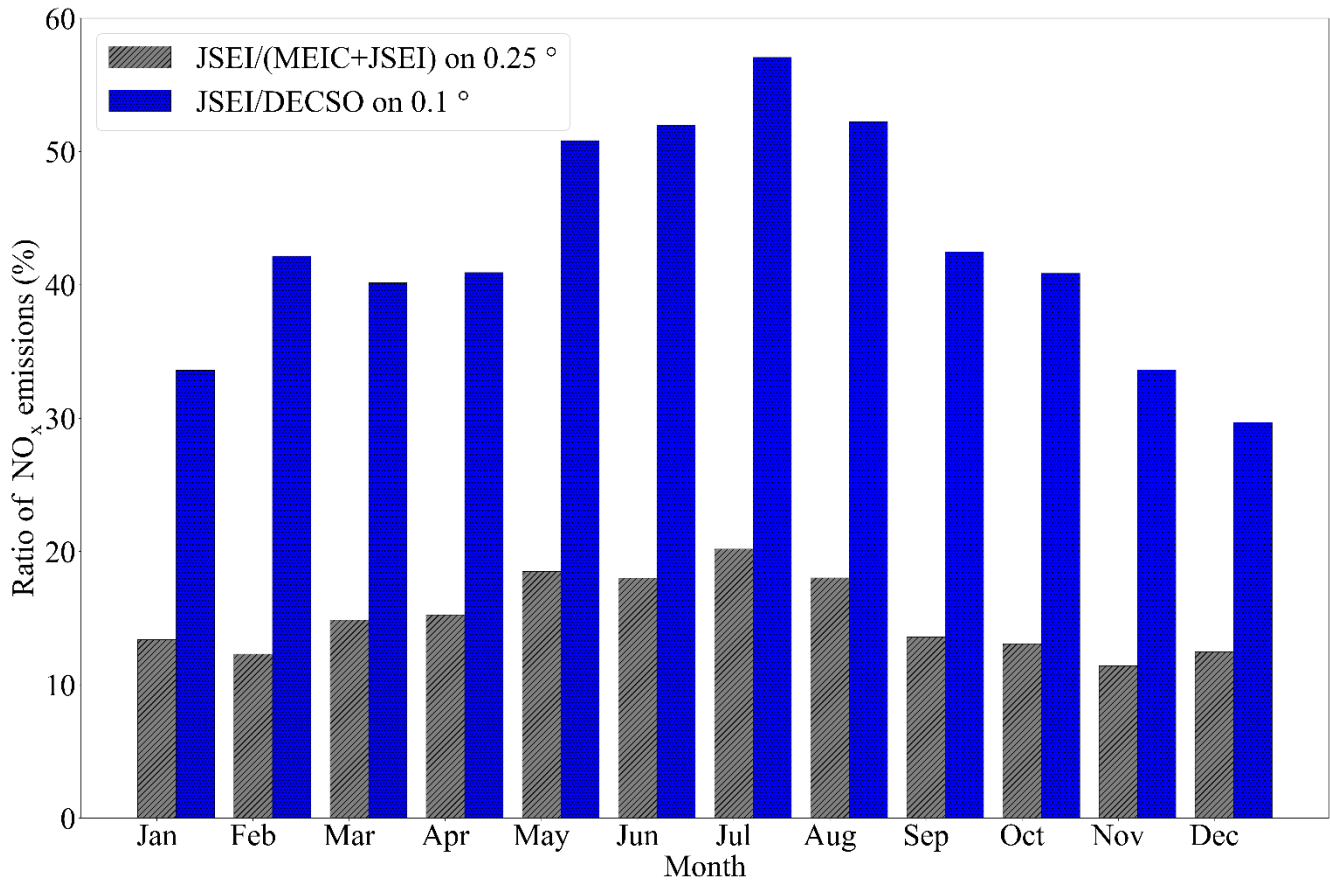
	Year	Resolution (°)	NO _x (kton yr ⁻¹)	Share (JSEI/Inventory)
JSEI	2018	0.1	25.4	100 %
MEIC	2017	0.25	91.3	27.8 %
DECSO	2019	0.1	59.2	42.9 %

425

4.3 Comparison of the monthly emissions in the selected river grid cells

Because SEIM is an annual emission inventory, we only compare the monthly variation of JSEI with MEIC and DECSO. Since the ship emissions for all species show similar monthly variability, we focus here only on NO_x. We see that the share of NO_x

emissions from ships in total NO_x regardless of the inventory, is highest in the summer (Fig. 12). For the MEIC inventory, NO_x emissions from ships can account for 17 % to 28 % of the NO_x total emissions, and for DECSO, NO_x emissions from ships account for 29 % to 57 % of the NO_x total emissions. The JSEI/(MEIC+JSEI) ratio tends to coincide with the monthly variation in ship emissions, as there is no significant monthly variation in emissions of the MEIC inventory. For DECSO, ship emissions accounted for more than 40 % of the total emissions in February, which shows that the pollution caused by ship activities during Spring Festival is quite significant in a time period of lower emissions in general.



435 **Figure 12. Monthly contribution of NO_x ship emissions to the total emissions (MEIC + JSEI, DECSO) for the grid cells including the river. The resolution of JSEI/(MEIC + JSEI) is 0.25 °, the resolution of JSEI/(DECSO) is 0.1 °.**

5 Conclusions

Ship emissions are calculated per ship based on the real-time information reported by AIS. Since the AIS information is in general insufficient to support emission calculations, we propose a method to link the engine power and maximum speed to vessel type, length and speed to effectively supplement the missing ship data. In addition, we have presented a method using the river length per grid cell to extrapolate ship emissions along the river. Based on this method we have compiled a ship emission inventory with a resolution of 0.1° in the Jiangsu section of the Yangtze River.

The results show that the total ship emissions of NO_x , SO_2 , PM_{10} , and $\text{PM}_{2.5}$ in the Jiangsu section of the Yangtze River from September 2018 to August 2019 were 83.5, 0.04, 0.006 and 0.005 kton, respectively. Cargo ships are the largest emitting ship type, followed by tankers and tugs. These three ship types account for 93 % of the total emissions. Tugs have the highest single-ship emissions. The monthly ship emissions are higher in the summer and lower in the winter, especially during the Spring Festival. Ship emissions are mainly concentrated in the main channel of the Yangtze River. Ship emissions in the side rivers are minimal, accounting for only 0.1 % of the total emissions, which is negligible.

Under the regulation of the sulfur content policy starting in 2019, the SO_2 and PM emitted from ships are strongly reduced. Atmospheric emissions from ships are dominated by NO_x . Vessel traffic in the observation area is important because NO_x emissions account for 46 % of the total NO_x emissions compared to the DECSO inventory (grid of about 10×10 km). Our NO_x results are similar to the SEIM inventory, up to 99 %, which shows the credibility of the results. Even if compared with the coarse resolution of the MEIC inventory (grid of about 25×25 km), the emissions from vessels along the Yangtze River (118.5°-121° E and 31.5°-32.5° N) account for approximately 28 % of the total NO_x emissions, respectively. Compared with the DECSO inventory (grid of about 10×10 km) based on satellite data, NO_x emissions from ships along the Yangtze River account for 60 % of the total NO_x emissions, which indicates that NO_x along the river mainly comes from ship emissions, which are even higher than the emissions from the power plants or industries. Our study indicates that riverine NO_x ship emissions contribute significantly to air pollution. Riverine ship emissions can adversely affect the health of people living along the Yangtze River and have a negative impact on eco-system, biodiversity and eutrophication.

In the future, the ship emission inventory can be applied in a chemical transport model to explore in detail the impact of inland river ship emissions on air pollution of cities along the Yangtze River. The reliability of the air quality results can be verified

with observations from existing in situ stations or ground-based Differential Optical Absorption Spectroscopy (DOAS) observations along the river (Cheng et al., 2019, Krause et al., 2021). This can provide a monitoring tool for policies such as the regulation of emission control standards for ships.

Data availability. The ship databases were obtained from the China Classification Society (CCS, <https://www.ccs.org.cn/ccswz/>, last access: 27 February 2023). The Multi-resolution Emission Inventory for China version 1.3 (MEIC v1.3) is available from <http://meicmodel.org/> (last access: 27 February 2023). The Shipping Emission Inventory Model (SEIM) can be download from http://meicmodel.org.cn/?page_id=1770. Daily Emission estimates Constrained by Satellite Observations version 6.1 (DECSO v6.1) are published on <https://www.temis.nl/emissions/data.php> (last access: 27 February 2023). The monthly Jiangsu Ship Emission Inventory (JSEI) can be download from https://www.temis.nl/emissions/region_asia/datapage.php (last access: 14 March 2023).

Author contributions. RvdA and YY planed the campaign; Xiumei Zhang and RvdA performed the measurements; Xin Zhang provided the ship data; Xiumei Zhang, RvdA and JD analyzed the data; Xiumei Zhang wrote the paper; all authors provided input on paper for revision before submission.

Competing interests. The authors declare that they have no conflict of interest.

Acknowledgements. We would like to thank the China Classification Society and Nanjing Maritime Bureau for their assistance. This research has received funding from the National Natural Science Foundation of China (grant no. 42075176) and the program of China Scholarship Council (no. 202109040001).

References

- 485 Archana, A., Guiselle, A., and Anderson, B.: Port of Los Angeles air emissions inventory-2009, Starcrest Consulting Group, LLC, United States, 2013.
- Capaldo, K., Corbett, J. J., Kasibhatla, P., Fischbeck, P., and Pandis, S. N.: Effects of ship emissions on sulphur cycling and radiative climate forcing over the ocean, *Nature*, 400, 743–746, <https://doi.org/10.1038/23438>, 1999.
- Chen, D., Zhao, Y., Nelson, P., Li, Y., Wang, X., Zhou, Y., Lang, J., and Guo, X.: Estimating ship emissions based on AIS data for port of Tianjin, China, *Atmos. Environ.*, 145, 10–18, <https://doi.org/10.1016/j.atmosenv.2016.08.086>, 2016a.
- 490 Chen, D., Wang, X., Nelson, P., Li, Y., Zhao, N., Zhao, Y., Lang, J., Zhou, Y., and Guo, X.: Ship emission inventory and its impact on the PM_{2.5} air pollution in Qingdao Port, North China, *Atmos. Environ.*, 166, 351–361, <https://doi.org/10.1016/j.atmosenv.2017.07.021>, 2017.
- Chen, J., Finlayson, B. L., Wei, T., Sun, Q., Webber, M., Li, M., and Chen, Z.: Changes in monthly flows in the Yangtze River, China – With special reference to the Three Gorges Dam, *J. Hydrol.*, 536, 293–301, <https://doi.org/10.1016/j.jhydrol.2016.03.008>, 2016b.
- 495 Cheng, Y., Wang, S., Zhu, J., Guo, Y., Zhang, R., Liu, Y., Zhang, Y., Yu, Q., Ma, W., and Zhou, B.: Surveillance of SO₂ and NO₂ from ship emissions by MAX-DOAS measurements and the implications regarding fuel sulfur content compliance, *Atmos. Chem. Phys.*, 19, 13611–13626, <https://doi.org/10.5194/acp-19-13611-2019>, 2019.
- Collins, B., Sanderson, M. G., and Johnson, C. E.: Impact of increasing ship emissions on air quality and deposition over Europe by 2030, *Meteorol. Z.*, 18, 25–39, <https://doi.org/10.1127/0941-2948/2008/0296>, 2009.
- 500 Corbett, J. J.: Emissions from Ships, *Science*, 278, 823–824, <https://doi.org/10.1126/science.278.5339.823>, 1997.
- Corbett, J. J., Fischbeck, P. S., and Pandis, S. N.: Global nitrogen and sulfur inventories for oceangoing ships, *J. Geophys. Res.*, 104, 3457–3470, <https://doi.org/10.1029/1998JD100040>, 1999.
- Dalsøren, S. B., Endresen, Ø., Isaksen, I. S. A., Gravir, G., and Sørsgård, E.: Environmental impacts of the expected increase in sea transportation, with a particular focus on oil and gas scenarios for Norway and northwest Russia, *J. Geophys. Res.*, 505 112, D02310, <https://doi.org/10.1029/2005JD006927>, 2007.
- Dalsøren, S. B., Eide, M. S., Endresen, Ø., Mjelde, A., Gravir, G., and Isaksen, I. S. A.: Update on emissions and environmental impacts from the international fleet of ships: the contribution from major ship types and ports, *Atmos. Chem. Phys.*, 8, 18323–18384, 2009.
- 510 Ding, J., van der A, R. J., Mijling, B., Jalkanen, J.-P., Johansson, L., and Levelt, P. F.: Maritime NO_x emissions over Chinese seas derived from satellite observations, *Geophys. Res. Lett.*, 45, 2031–2037, <https://doi.org/10.1002/2017GL076788>, 2018.
- Dragović, B., Tzannatos, E., Tselentis, V., Meštrović, R., and Škurić, M.: Ship emissions and their externalities in cruise ports, *Transp. Res. D Transp. Environ.*, 61, 289–300, <https://doi.org/10.1016/j.trd.2015.11.007>, 2018.
- 515 Endresen, Ø.: Emission from international sea transportation and environmental impact, *J. Geophys. Res.*, 108, <https://doi.org/10.1029/2002JD002898>, 2003.
- Endresen, Ø., Bakke, J., Sørsgård, E., Flatlandsmo Berglen, T., and Holmvang, P.: Improved modelling of ship SO₂ emissions—a fuel-based approach, *Atmos. Environ.*, 39, 3621–3628, <https://doi.org/10.1016/j.atmosenv.2005.02.041>, 2005.

- Endresen, Ø., Sørsgård, E., Behrens, H. L., Brett, P. O., and Isaksen, I. S. A.: A historical reconstruction of ships' fuel consumption and emissions, *J. Geophys. Res.*, 112, D12301, <https://doi.org/10.1029/2006JD007630>, 2007.
- Entec: Quantification of Emissions from Ships Associated with Ship Movements between Ports in the European Community, Entec UK Limited, UK, 2002.
- Environmental Protection Agency (EPA): ICF International: Current methodologies in preparing mobile source port-related emission inventories, Final Report, April 2009, U.S. Environmental Protection Agency, United States, 2009.
- 525 Eyring, V., Stevenson, D. S., Lauer, A., Dentener, F. J., Butler, T., Collins, W. J., Ellingsen, K., Gauss, M., Hauglustaine, D. A., Isaksen, I. S. A., Lawrence, M. G., Richter, A., Rodriguez, J. M., Sanderson, M., Strahan, S. E., Sudo, K., and Szopa, S.: Multi-model simulations of the impact of international shipping on Atmospheric Chemistry and Climate in 2000 and 2030, *Atmos. Chem. Phys.*, 7, 757–780, 2007.
- 530 Eyring, V., Isaksen, I. S. A., Berntsen, T., Collins, W. J., Corbett, J. J., Endresen, O., Grainger, R. G., Moldanova, J., Schlager, H., and Stevenson, D. S.: Transport impacts on atmosphere and climate: Shipping, *Atmos. Environ.*, 44, 4735–4771, <https://doi.org/10.1016/j.atmosenv.2009.04.059>, 2010.
- Fan, Q., Zhang, Y., Ma, W., Ma, H., Feng, J., Yu, Q., Yang, X., Ng, S. K. W., Fu, Q., and Chen, L.: Spatial and seasonal dynamics of ship emissions over the Yangtze River Delta and East China Sea and their potential environmental influence, *Environ. Sci. Technol.*, 50, 1322–1329, <https://doi.org/10.1021/acs.est.5b03965>, 2016.
- 535 Feng, J., Zhang, Y., Li, S., Mao, J., Patton, A. P., Zhou, Y., Ma, W., Liu, C., Kan, H., Huang, C., An, J., Li, L., Shen, Y., Fu, Q., Wang, X., Liu, J., Wang, S., Ding, D., Cheng, J., Ge, W., Zhu, H., and Walker, K.: The influence of spatiality on shipping emissions, air quality and potential human exposure in the Yangtze River Delta/Shanghai, China, *Atmos. Chem. Phys.*, 19, 6167–6183, <https://doi.org/10.5194/acp-19-6167-2019>, 2019.
- 540 Fu, Q., Shen, Y., Zhang, J.: A study of ship air pollutant emission inventories in Shanghai port, *J. Saf. Environ.* (in Chinese), 12, 57–64, 2012.
- Georgoulias, A. K., Boersma, K. F., van Vliet, J., Zhang, X., van der A, R., Zanis, P., and de Laat, J.: Detection of NO₂ pollution plumes from individual ships with the TROPOMI/S5P satellite sensor, *Environ. Res. Lett.*, 15, 124037, <https://doi.org/10.1088/1748-9326/abc445>, 2020.
- 545 Goldsworthy, L. and Goldsworthy, B.: Modelling of ship engine exhaust emissions in ports and extensive coastal waters based on terrestrial AIS data – An Australian case study, *Environ. Model. Softw.*, 63, 45–60, <https://doi.org/10.1016/j.envsoft.2014.09.009>, 2015.
- Huang, L., Wen, Y., Zhang, Y., Zhou, C., Zhang, F., and Yang, T.: Dynamic calculation of ship exhaust emissions based on real-time AIS data, *Transp. Res. D Transp. Environ.*, 80, 102277, <https://doi.org/10.1016/j.trd.2020.102277>, 2020.
- 550 Jalkanen, J.-P., Brink, A., Kalli, J., Pettersson, H., Kukkonen, J., and Stipa, T.: A modelling system for the exhaust emissions of marine traffic and its application in the Baltic Sea area, *Atmos. Chem. Phys.*, 9, 9209–9223, 2009.
- Jalkanen, J.-P., Johansson, L., Kukkonen, J., Brink, A., Kalli, J., and Stipa, T.: Extension of an assessment model of ship traffic exhaust emissions for particulate matter and carbon monoxide, *Atmos. Chem. Phys.*, 12, 2641–2659, <https://doi.org/10.5194/acp-12-2641-2012>, 2012.
- 555 Jalkanen, J.-P., Johansson, L., and Kukkonen, J.: A comprehensive inventory of ship traffic exhaust emissions in the European sea areas in 2011, *Atmos. Chem. Phys.*, 16, 71–84, <https://doi.org/10.5194/acp-16-71-2016>, 2016.

- Johansson, L.: Global assessment of shipping emissions in 2015 on a high spatial and temporal resolution, *Atmos. Environ.*, 167, 403–415, 2017.
- Jonson, J. E., Jalkanen, J. P., Johansson, L., Gauss, M., and Denier van der Gon, H. A. C.: Model calculations of the effects of present and future emissions of air pollutants from shipping in the Baltic Sea and the North Sea, *Atmos. Chem. Phys.*, 15, 783–798, <https://doi.org/10.5194/acp-15-783-2015>, 2015.
- 560
- Kalli, J., Jalkanen, J.-P., Johansson, L., and Repka, S.: Atmospheric emissions of European SECA shipping: long-term projections, *WMU J. Marit. Aff.*, 12, 129–145, <https://doi.org/10.1007/s13437-013-0050-9>, 2013.
- Krause, K., Wittrock, F., Richter, A., Schmitt, S., Pöhler, D., Weigelt, A., and Burrows, J. P.: Estimation of ship emission rates at a major shipping lane by long-path DOAS measurements, *Atmos. Meas. Tech.*, 14, 5791–5807, <https://doi.org/10.5194/amt-14-5791-2021>, 2021.
- 565
- Kurchaba, S., van Vliet, J., Verbeek, F. J., Meulman, J. J., and Veenman, C. J.: Supervised Segmentation of NO₂ Plumes from Individual Ships Using TROPOMI Satellite Data, *Remote Sens.*, 14, 5809, <https://doi.org/10.3390/rs14225809>, 2022.
- Lauer, A., Eyring, V., Hendricks, J., Jockel, P., and Lohmann, U.: Global model simulations of the impact of ocean-going ships on aerosols, clouds, and the radiation budget, *Atmos. Chem. Phys.*, 7, 5061–5079, 2007.
- 570
- Li, C., Yuan, Z., Ou, J., Fan, X., Ye, S., Xiao, T., Shi, Y., Huang, Z., Ng, S. K. W., Zhong, Z., and Zheng, J.: An AIS-based high-resolution ship emission inventory and its uncertainty in Pearl River Delta region, China, *Sci. Total Environ.*, 573, 1–10, <https://doi.org/10.1016/j.scitotenv.2016.07.219>, 2016.
- Li, C., Borken-Kleefeld, J., Zheng, J., Yuan, Z., Ou, J., Li, Y., Wang, Y., and Xu, Y.: Decadal evolution of ship emissions in China from 2004 to 2013 by using an integrated AIS-based approach and projection to 2040, *Atmos. Chem. Phys.*, 18, 6075–6093, <https://doi.org/10.5194/acp-18-6075-2018>, 2018.
- 575
- Li, M., Liu, H., Geng, G., Hong, C., Liu, F., Song, Y., Tong, D., Zheng, B., Cui, H., Man, H., Zhang, Q., and He, K.: Anthropogenic emission inventories in China: a review, *Natl. Sci. Rev.*, 4, 834–866, <https://doi.org/10.1093/nsr/nwx150>, 2017.
- Liu, H., Fu, M., Jin, X., Shang, Y., Shindell, D., Faluvegi, G., Shindell, C., and He, K.: Health and climate impacts of ocean-going vessels in East Asia, *Nat. Clim. Change*, 6, 1037–1041, <https://doi.org/10.1038/nclimate3083>, 2016.
- 580
- Liu, H., Meng, Z.-H., Lv, Z.-F., Wang, X.-T., Deng, F.-Y., Liu, Y., Zhang, Y.-N., Shi, M.-S., Zhang, Q., and He, K.-B.: Emissions and health impacts from global shipping embodied in US–China bilateral trade, *Nat. Sustain.*, 2, 1027–1033, <https://doi.org/10.1038/s41893-019-0414-z>, 2019.
- Liu, J., Wang, J., Song, C., Qin, J.: Establishment and application of air pollution discharge inventory for ships in Qingdao port, *Environ. China Monit. (in Chinese)*, 27, 50–53, <https://doi.org/10.19316/j.issn.1002-6002.2011.03.014>, 2011.
- 585
- Lv, Z., Liu, H., Ying, Q., Fu, M., Meng, Z., Wang, Y., Wei, W., Gong, H., and He, K.: Impacts of shipping emissions on PM_{2.5} pollution in China, *Atmos. Chem. Phys.*, 18, 15811–15824, <https://doi.org/10.5194/acp-18-15811-2018>, 2018.
- Mijling, B. and van der A, R. J.: Using daily satellite observations to estimate emissions of short-lived air pollutants on a mesoscopic scale: daily emission estimates from space, *J. Geophys. Res.*, 117(D17), n/a-n/a, <https://doi.org/10.1029/2012JD017817>, 2012.
- 590
- Ministry of Transport (MOT): Notice of the Ministry of Transport on printing and distributing the implementation plan of ship emission control zone in the waters of Pearl River Delta, Yangtze River Delta and Bohai Rim (Beijing Tianjin Hebei),

available at: https://xxgk.mot.gov.cn/2020/jigou/haishi/202006/t20200630_3319179.html (last access: 27 February 2023), 2015.

- 595 Ministry of Transport (MOT): Notice of the Ministry of Transport on printing and distributing the implementation plan for the control area of air pollutant emission from ships, available at: http://www.gov.cn/zhengce/zhengceku/2018-12/31/content_5444672.html (last access: 27 February 2023), 2018.
- Ministry of Transport (MOT): Statistical bulletin on the development of the transport sector in 2021, available at: https://xxgk.mot.gov.cn/2020/jigou/zhghs/202205/t20220524_3656659.html (last access: 27 February 2023), 2022.
- 600 Moldanová, J., Fridell, E., Popovicheva, O., Demirdjian, B., Tishkova, V., Faccinnetto, A., and Focsa, C.: Characterisation of particulate matter and gaseous emissions from a large ship diesel engine, *Atmos. Environ.*, 43, 2632–2641, <https://doi.org/10.1016/j.atmosenv.2009.02.008>, 2009.
- Ng, S. K. W., Loh, C., Lin, C., Booth, V., Chan, J. W. M., Yip, A. C. K., Li, Y., and Lau, A. K. H.: Policy change driven by an AIS-assisted marine emission inventory in Hong Kong and the Pearl River Delta, *Atmos. Environ.*, 76, 102–112, <https://doi.org/10.1016/j.atmosenv.2012.07.070>, 2013.
- 605 Papanastasiou, D. K. and Melas, D.: Climatology and impact on air quality of sea breeze in an urban coastal environment, *Int. J. Climatol.*, 29, 305–315, <https://doi.org/10.1002/joc.1707>, 2009.
- Psaraftis, H. N. and Kontovas, C. A.: CO₂ emission statistics for the world commercial fleet, *WMU J. Marit. Aff.*, 8, 1–25, <https://doi.org/10.1007/BF03195150>, 2009.
- 610 Riess, T. C. V. W., Boersma, K. F., van Vliet, J., Peters, W., Sneep, M., Eskes, H., and van Geffen, J.: Improved monitoring of shipping NO₂ with TROPOMI: decreasing NO_x emissions in European seas during the COVID-19 pandemic, *Atmos. Meas. Tech.*, 15, 1415–1438, <https://doi.org/10.5194/amt-15-1415-2022>, 2022.
- Song, S.: Ship emissions inventory, social cost and eco-efficiency in Shanghai Yangshan port, *Atmos. Environ.*, 82, 288–297, <https://doi.org/10.1016/j.atmosenv.2013.10.006>, 2014.
- 615 Streets, D. G.: Sulfur dioxide emissions and sulfur deposition from international shipping in Asian waters, *Atmos. Environ.*, 10, 1573–1582, 1997.
- Streets, D. G., Guttikunda, S. K., and Carmichael, G. R.: The growing contribution of sulfur emissions from ships in Asian waters, 1988–1995, *Atmos. Environ.*, 34, 4425–4439, [https://doi.org/10.1016/S1352-2310\(00\)00175-8](https://doi.org/10.1016/S1352-2310(00)00175-8), 2000
- Theotokatos, G. and Tzelepis, V.: A computational study on the performance and emission parameters mapping of a ship propulsion system, *Proc. Inst. Mech. Eng. M-J. Eng.*, 229, 58–76, <https://doi.org/10.1177/1475090213498715>, 2015.
- 620 Trozzi, C.: Emission estimate methodology for maritime navigation, U.S. Environmental Protection Agency, United States, 2010.
- Tzannatos, E.: Ship emissions and their externalities for the port of Piraeus – Greece, *Atmos. Environ.*, 44, 400–407, <https://doi.org/10.1016/j.atmosenv.2009.10.024>, 2010.
- 625 USEPA: Analysis of Commercial Marine Vessels Emissions and Fuel Consumption Data, U.S. Environmental Protection Agency, 2000.
- Wan, Z., Ji, S., Liu, Y., Zhang, Q., Chen, J., and Wang, Q.: Shipping emission inventories in China’s Bohai Bay, Yangtze River Delta, and Pearl River Delta in 2018, *Mar. Pollut. Bull.*, 151, 110882, <https://doi.org/10.1016/j.marpolbul.2019.110882>, 2020.

- 630 Wang, C., Corbett, J. J., and Firestone, J.: Improving spatial representation of global ship emissions inventories, *Environ. Sci. Technol.*, 42, 193–199, <https://doi.org/10.1021/es0700799>, 2008.
- Wang, J., Huang, Z., Liu, Y., Chen, S., Wu, Y., He, Y., Yang, X.: Air Pollutant Emission Inventory and Pollution Characteristics of Xiamen Ship Control Area, *Environ. Sci.* (in Chinese), 1–18, <https://doi.org/10.13227/j.hjcx.202001067>, 2020.
- 635 Wang, X., Yi, W., Lv, Z., Deng, F., Zheng, S., Xu, H., Zhao, J., Liu, H., and He, K.: Ship emissions around China under gradually promoted control policies from 2016 to 2019, *Atmos. Chem. Phys.*, 21, 13835–13853, <https://doi.org/10.5194/acp-21-13835-2021>, 2021.
- Weng, J., Shi, K., Gan, X., Li, G., and Huang, Z.: Ship emission estimation with high spatial-temporal resolution in the Yangtze River estuary using AIS data, *J. Clean. Prod.*, 248, 119297, <https://doi.org/10.1016/j.jclepro.2019.119297>, 2020.
- 640 Xu, W., Yin, C., Xu, X., Zhang, W.: Emission Inventory and Characteristics of Air Pollutants from Inland Waterway Vessels in Jiangsu Province, *Environ. Sci.* (in Chinese), 40, 2595–2606, <https://doi.org/10.13227/j.hjcx.201810207>, 2019.
- Xu, X. and Bai, G.: Fuzzy Classification and Implementation Methods for Tugboat Main Engine Fault, *MATEC Web Conf.*, 95, 11003, <https://doi.org/10.1051/mateconf/20179511003>, 2017.
- Yang, D., Kwan, S. H., Lu, T., Fu, Q., Cheng, J., Streets, D. G., Wu, Y., and Li, J.: An Emission Inventory of Marine Vessels in Shanghai in 2003, *Environ. Sci. Technol.*, 41, 5183–5190, <https://doi.org/10.1021/es061979c>, 2007.
- 645 Yang, J., Yin, P., Ye, S., Wang, S., Zheng, J., Qu, J.: Ship Emission Inventory and Temporal and Spatial Characteristics of Shenzhen City, *Environ. Sci.* (in Chinese), 36, 1217–1226, 2015.
- Zheng, B., Huo, H., Zhang, Q., Yao, Z. L., Wang, X. T., Yang, X. F., Liu, H., and He, K. B.: High-resolution mapping of vehicle emissions in China in 2008, *Atmos. Chem. Phys.*, 14, 9787–9805, <https://doi.org/10.5194/acp-14-9787-2014>, 2014.
- 650 Zheng, B., Tong, D., Li, M., Liu, F., Hong, C., Geng, G., Li, H., Li, X., Peng, L., Qi, J., Yan, L., Zhang, Y., Zhao, H., Zheng, Y., He, K., and Zhang, Q.: Trends in China’s anthropogenic emissions since 2010 as the consequence of clean air actions, *Atmos. Chem. Phys.*, 18, 14095–14111, <https://doi.org/10.5194/acp-18-14095-2018>, 2018.
- Zhu, Q., Liao, C., Wang, L.: Refined ship emission inventory method based on AIS data, *China Environ. Sci.* (in Chinese), 037, 4493–4500, <https://doi.org/10.3969/j.issn.1000-6923.2017.12.011>, 2017.
- 655 Zhu, Y., Lei, Z., Feng, X., Yuan, S., Liang, W.: A Study on the Emission Inventory of Air Pollutants from Ships in Jiangsu Section of Yangtze River Based on AIS Big Data, *Environ. Sci. Tech.* (in Chinese), 32, 41–46, 2019.