

Aerosol-cloud impacts on aerosol detrainment and rainout in shallow maritime tropical clouds

Gabrielle R. Leung¹, Stephen M. Saleeby¹, G. Alexander Sokolowsky¹, Sean W. Freeman¹, and Susan C. van den Heever¹

5 ¹Department of Atmospheric Science, Colorado State University, Fort Collins, 80521, USA

Correspondence to: Gabrielle R. Leung (gabrielle.leung@colostate.edu)

Abstract. This study investigates how aerosol-induced changes to cloud properties subsequently influence the overall aerosol budget through changes to detrainment and rainout. We simulated an idealized field of shallow maritime tropical clouds using the Regional Atmospheric Modeling System (RAMS) and varied the aerosol loading and type between 16 simulations. The full aerosol budget was tracked over the course of the 48-hour simulation, showing that increasing the aerosol loading leads to an increase in aerosol regeneration and detrainment aloft at the expense of aerosol removal via rainout. Under increased aerosol loadings, cloud droplets are smaller and more likely to evaporate before they form precipitation-sized hydrometeors. As a result, the aerosol particles contained inside these droplets are released into the environment rather than being removed to the surface via rainout. However, the few raindrops which do happen to form under increased aerosol loadings tend to be larger since the cloud water available for collection is divided among fewer raindrops, and thus raindrops experience less evaporation. Thus, in contrast to previous work, we find increases in aerosol loading lead to decreases in aerosol rainout efficiency even without a decrease in the overall precipitation efficiency. We further used *tobac*, a package for tracking and identifying cloud objects, to identify shifts in the overall cloud population as a function of aerosol loading and type, and found contrasting aerosol effects in shallow cumulus and congestus clouds. Shallow cumulus clouds are more sensitive to the increase in cloud edge/top evaporation with increased aerosol loading, and thereby tend to rain less and remove less aerosol via rainout. On the other hand, larger congestus clouds are more protected from evaporation and are thereby able to benefit from warm-phase invigoration. This leads to an increase in rain rates but not in domain-wide aerosol rainout, as the domain-total rainfall becomes concentrated over a smaller horizontal area. Trends as a function of aerosol loading were remarkably consistent between the different aerosol types tested. These results represent a pathway by which a polluted environment not only has higher aerosol loadings than a pristine one, but is also less able to regulate those loadings by removal processes, instead transporting aerosols to the free troposphere where they remain available for reactivation and further aerosol-cloud interactions.

Deleted: model runs

Deleted: to create a 16-member ensemble

1 Introduction

Clouds play an important role in governing the atmospheric aerosol budget through a number of simultaneous processes that transport, modify, and remove aerosols. One example of such a process occurs when aerosols are transported between the boundary layer and the free troposphere in cloud updrafts and downdrafts (Cotton et al., 1995; Engström et al., 2008; Chen et al., 2012; Twohy et al., 2017; Savre, 2021; Bardakov et al., 2022). Another such process involves aerosol particles being removed from the free atmosphere and undergoing heterogeneous chemistry when they are activated as cloud condensation nuclei (CCN) or are otherwise intercepted by hydrometeors (i.e., impaction) (Feingold and Kreidenweis, 2000; Hegg et al., 2004; Ervens et al., 2018). Cloud processes near cloud tops and cloud edges may further impact the aerosol budget through the evaporation of hydrometeors, which detrains aerosol particles and impacts aerosol number concentrations and vertical distributions (Herbener et al., 2016; Corr et al., 2016; Leung and van den Heever, 2022). Alternatively in regions where different microphysical processes are dominant, hydrometeors may grow to become precipitation-sized and fall to the surface,

thus removing aerosol particles from the atmosphere via wet deposition (i.e., rainout or washout) (Radke et al., 1980; Kipling et al., 2016).

While clouds transport and remove aerosols, aerosols can in turn influence cloud properties both directly and indirectly. Aerosol particles scatter and/or absorb radiation (direct effect), which can alter cloud development through changes to surface fluxes and atmospheric stability (McCormick and Ludwig, 1967; Atwater, 1970; Kim et al., 2014; Grant and van den Heever, 2014; Lee et al., 2014; Park and van den Heever, 2022; Sokolowsky et al., 2022). Aerosol particles have also been found to influence the microphysical properties of clouds (indirect effect) with impacts on cloud lifetimes, cloud types, and the overall cloud fraction (Twomey, 1977; Albrecht, 1989; Tao et al., 2012) as well as precipitation efficiency (Jiang et al., 2010; Dagan et al., 2015). [Perturbations to the aerosol environment can also drive changes in the atmospheric circulation, with local, regional, and global impacts on cloud regimes](#) (van den Heever et al., 2011; Haywood et al., 2013; Grant and van den Heever, 2014; Kim et al., 2016; Herbert et al., 2021; Williams et al., 2022; Dagan, 2022; Park and van den Heever, 2022; [Leung and van den Heever, 2023](#)).

Assessing the overall change to the aerosol budget for a given perturbation to aerosol-cloud interactions is complex. [Aerosols may induce changes to clouds and precipitation, however these changes to clouds and precipitation may, in turn, influence the aerosol field](#), although findings in the literature appear to be mixed. For example, Cui and Carslaw (2006) found that increases in aerosol loading led to decreases in the efficiency of both precipitation and wet scavenging by deep convective clouds. On the other hand, while Lee and Feingold (2010) found similar trends for stratiform clouds, they determined that aerosol loading had only a minor impact on convective precipitation and scavenging efficiencies. Discrepancies such as these are difficult to resolve given the numerous cloud and aerosol processes involved. Furthermore, differences in simulated environment, aerosol type, and cloud types may also influence aerosol-cloud interactions (Khain et al., 2008; Fan et al., 2009; van den Heever et al., 2011; Altaratz et al., 2014; Grant and van den Heever, 2014; Gryspeerdt et al., 2014; Glassmeier and Lohmann, 2016; Jiang et al., 2018; Dagan and Stier, 2020). Despite these uncertainties, understanding how aerosol-cloud interactions impact the many processes controlling the aerosol budget—as well as which of those impacts are most relevant for a given cloud scene—is essential for representing realistic aerosol distributions and thus for assessing the ultimate aerosol impacts on weather and climate (Haywood and Boucher, 2000; Samset and Myhre, 2011; Boucher et al., 2013).

In this work, our goal is to examine how aerosol impacts on shallow maritime tropical clouds feed back on the aerosol budget via changes to aerosol rainout and aerosol detrainment. More specifically, we aim to answer the following two questions: (1) How does the proportion of aerosol particles rained-out versus those detrained aloft change as aerosol loading increases? and (2) How do the changes to the aerosol budget arising from rainout and detrainment vary as a function of aerosol type? We address these questions using a large set of high-resolution simulations of an idealized cloud field under a range of aerosol loadings and types, as described in Sect. 2. Trends in domain-wide aerosol budget, cloud properties, and microphysical process rates are presented in Sect. 3, while a state-of-the-art cloud tracking package is used to separate trends among different cloud types in Sect. 4. Finally, the role of aerosol type is discussed in greater detail in Sect. 5.

Deleted:

Deleted: {Citation}

Deleted: ¶

Deleted: Aerosol-induced changes to clouds may feed back to how clouds and precipitation influence the aerosol field

Deleted: ¶

Deleted: ensemble

2 Model description and analysis approach

2.1 Model description and configuration

The Regional Atmospheric Modelling System (RAMS; version 6.3.03) is a three-dimensional, non-hydrostatic, cloud-resolving model with a two-moment bin-emulating microphysics scheme (Pielke et al., 1992; Cotton et al., 2003; Saleeby and van den Heever, 2013). Details of the model grid configuration, initial conditions, and parameter settings are described in **Table 1**. The RAMS model configuration used here was identical to that in Leung and van den Heever (2022), though the vertical grid is extended to reach from the surface to ~23 km in altitude. The high horizontal, vertical, and temporal resolution ($\Delta x = 100m$, $\Delta z = 50 - 300m$, $\Delta t = 0.75s$) allowed the model to resolve large turbulent eddies and represent a wide range of convection over the two diurnal cycles (48 hours) that were simulated. The domain was located entirely over the ocean, and the simulation was initialized using a combination of dropsonde observations from the Cloud, Aerosol, and Monsoon Processes Philippines Experiment (CAMP²Ex) (Reid et al. 2022) and [ECMWF Reanalysis-5 \(ERA-5\)](#) data as described in Leung and van den Heever (2022). After initialization, the model was allowed to evolve freely without additional large-scale forcing, [though the solar insolation varied according to the diurnal cycle](#). As such, these simulations serve as an idealized representation of the microphysical, dynamical, and radiative processes driving maritime tropical convection.

Table 1: RAMS model parameters used in the simulation.

Model Aspect	Setting
Grid	Arakawa C grid
	1000 x 1000 points, $\Delta x = \Delta y = 100m$
	120 vertical levels, $\Delta z = 50 - 300 m$
Time integration	48-hour simulation duration, $\Delta t = 0.75s$
Initialization	Horizontally homogenous thermodynamic and wind profile, averaged from ERA-5 and CAMP ² Ex dropsonde (between 8-9°N, 119-120°E) Random potential temperature perturbations within the lowest 500m above ground level (AGL) of the domain, with a maximum perturbation of 0.1K
Surface scheme	All-ocean surface with spatially and temporally uniform sea surface temperature (SST=29°C) Land Ecosystem-Atmosphere Feedback 3 (LEAF-3) (Walko et al., 2000)
Boundary conditions	Periodic in zonal and meridional directions
Microphysics scheme	Two-moment bulk microphysics (Meyers et al., 1997)
	8 hydrometeor classes (Saleeby and Cotton, 2004)
	Heterogeneous ice nucleation (DeMott et al., 2010)
Radiation scheme	Two-stream, hydrometeor sensitive (Harrington, 1997)
	Updated every 5 minutes

Deleted: -

Deleted: -

	<u>Solar insolation varied with diurnal cycle</u>
Aerosol treatment	Maximum concentration at the surface and exponentially decreasing with altitude with scale height of 7km
	Aerosol-radiation interactions on
	Aerosol sources and sinks on, with full aerosol budget tracking (Saleeby and van den Heever 2013)

100

The aerosol field was initialized homogenously in the horizontal direction at the first model timestep but decays exponentially in the vertical direction with a scale height of 7 km. In all simulations, ice-nucleating particles (INP) were also initialized with concentrations starting at 0.01 # cm⁻³ at the surface and the same vertical structure as the aerosol field. Both aerosol-radiation and microphysics-radiation interactions (liquid and ice phase) were included in the simulation. The aerosol budget capabilities in RAMS allowed for the tracking of aerosol number and mass in the following categories: (1) unactivated, (2) in-hydrometeor, (3) regenerated, and (4) wet-deposited/rained-out aerosol (Saleeby and van den Heever, 2013). A schematic depicting the processes governing the exchange between these categories is shown in **Figure 1**. Upon initialization, all aerosol particles are initially categorized as unactivated aerosol, i.e., aerosol particles which have not yet been activated in cloud droplets. Over time, the aerosol number and mass concentration fields changed freely as particles were advected around the domain. If the aerosol particles were entrained into an updraft and encountered sufficient supersaturations to activate and serve as CCN/INP, they were transferred to the in-cloud aerosol category. As water mass was transferred between hydrometeor species (i.e., cloud, drizzle, rain, ice, snow, aggregates, hail, graupel), a corresponding fraction of aerosol was also transferred. Under subsaturated conditions, the hydrometeors evaporated and the aerosol particles acting as CCN/INP were returned to the environment as regenerated aerosol. Finally, if aerosol particles were contained within raindrops which fell to the ground (either because they were activated as CCN or because they were intercepted by a hydrometeor), they were transferred to a category tracking the accumulated aerosol mass reaching the surface via wet deposition or rainout.

105

110

115

Formatted: Superscript

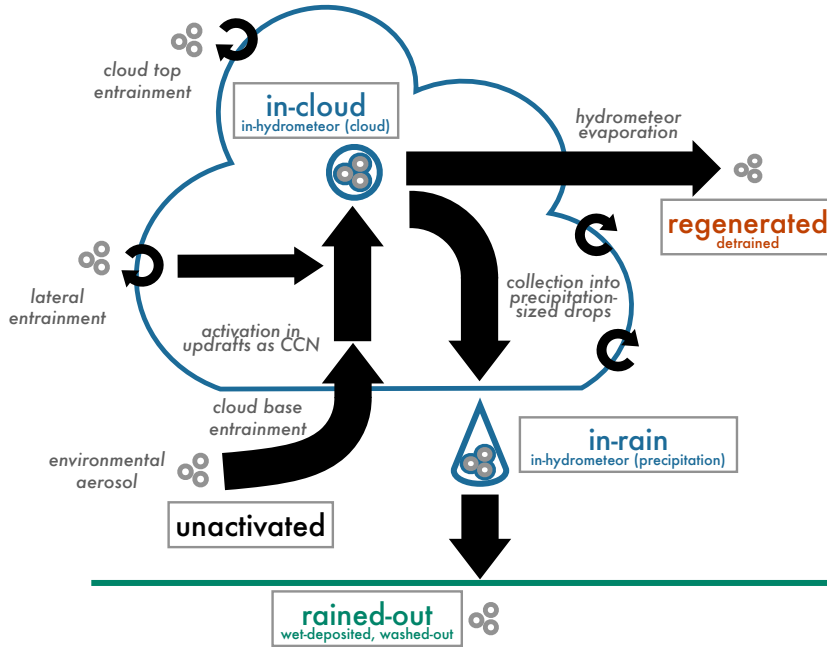
Deleted: A

Deleted: were initialized in the

Deleted:

Deleted: category

Deleted: As water mass was transferred between hydrometeor species (i.e., cloud, drizzle, rain, ice, snow, aggregates, hail, graupel), a corresponding fraction of aerosol was also transferred.

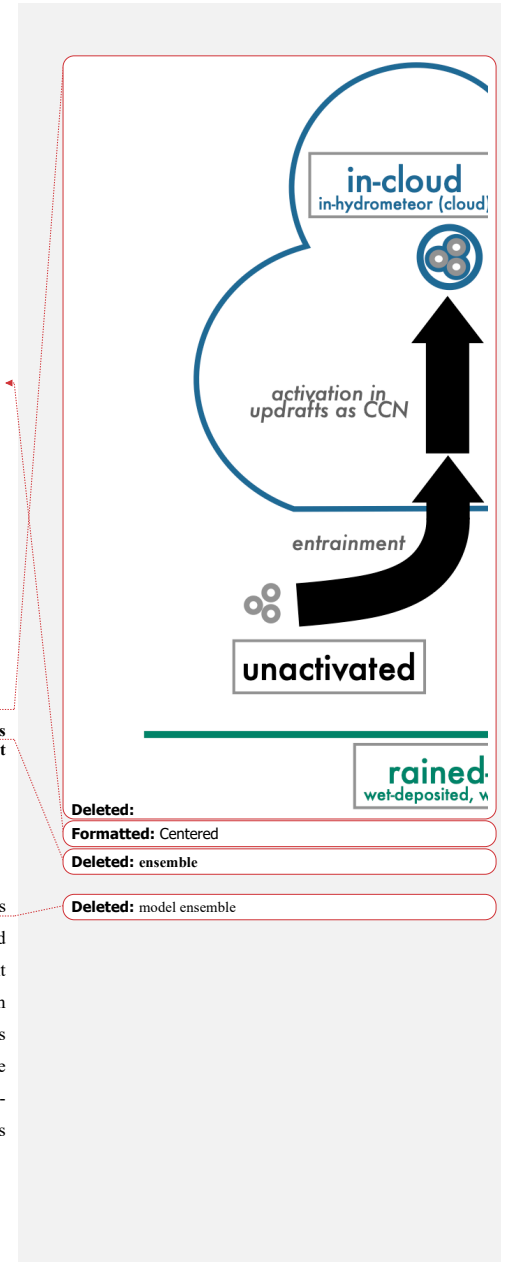


125 Figure 1: Schematic of processes involving aerosol transfer represented in the set of RAMS simulations. The aerosol budget terms described in text are depicted in gray boxes. Black arrows depict the transfer of aerosol number and mass between the different budget terms.

2.2 Experiment set-up

130 The full set of simulations presented here consists of sixteen simulations in which four aerosol loadings and four aerosol types were varied (Table 2). The four aerosol loadings tested span the observed range of aerosol loadings during the CAMP²Ex field campaign, from clean to highly polluted environments (Reid et al., 2022). Throughout the rest of this paper, the different aerosol loading runs are denoted by the initial aerosol number concentration at the surface (which was also the maximum aerosol number concentration initialized in each column), which are 100, 500, 1000, and 1500 cm⁻³. The four aerosol types tested were ammonium sulphate, sea salt, mineral dust, and absorbing carbon. These aerosol types have varying median particle sizes, solubility and hygroscopicity, and radiative properties. The aerosol size distribution was represented as a single log-normal mode with a shape factor of 1.8 (Reid et al., 2022), with the median particle size depending on the aerosol type as

135



Deleted:

Formatted: Centered

Deleted: ensemble

Deleted: model ensemble

specified in **Table 2**. Other key properties of the different aerosol types are also listed in **Table 2**, and corresponding aerosol optical depths (AOD) are provided in **Figure S1**.

Deleted: .

145 **Table 2: Key aerosol parameters for different aerosol types in RAMS. Radiative parameters are given for RH 80%, size bin 14 (particle diameter 0.16 μm), radiation band 3 (visible; 245-700nm, band midpoint 472.5nm).**

Aerosol Type	Median Particle Diameter (μm)	Solubility Fraction	Density (kg m^{-3})	Hygroscopicity	Qext	Qscat	SSA
Ammonium Sulphate	0.18	0.9	1857.1	0.651	2.07630	2.01450	0.97
Sea Salt	0.2	1	2165	1.334	2.06070	2.06070	1
Absorbing Carbon	0.1	0.05	2605.95	0.053	2.08970	1.13680	0.544
Mineral Dust	0.1	0.05	2463.45	0.050	2.09050	1.43280	0.685

2.3 Cloud identification and tracking

Individual cloud updrafts in each simulation were identified and tracked using the Tracking and Object-Based Analysis of Clouds (*tobac*; version 1.5.0 release candidate 1) package (Heikenfeld et al., 2019; Sokolowsky et al., 2022). We provide a basic description of how *tobac* works (feature identification, tracking, and segmentation), but for a more comprehensive description, we direct readers to the two papers cited above. We use the term “feature” to refer to an updraft region at a given timestep, and “cell” to refer to a given cloud feature tracked across time. First, updraft features were identified at each analysis timestep (at a frequency of 5 minutes) based on the three-dimensional vertical velocity field. Regions of local maximum vertical velocity were identified as features at three threshold values (1, 3, and 5 m s^{-1}), and a centroid position was assigned to each feature. Secondly, features in subsequent timesteps were linked based on their inferred motion to create a cell with a trajectory over time. Any cells which had a lifetime of less than 5 minutes (i.e., cells which were tracked for only a single analysis timestep) were excluded from the analysis as part of the quality control (QC). Finally, a contiguous three-dimensional cloudy region (where cloud condensate was above 0.01 g kg^{-1}) was identified around each updraft feature using the *tobac* watershed segmentation technique. We excluded any updraft features that were not associated with a cloudy region as part of the QC. Cloud top and base altitudes, as well as cloud areas and volumes, were calculated based on the size of this cloudy region. Similar segmentation was performed on the two-dimensional surface precipitation and aerosol rainout rates in order to identify the size of the raining/rainout area associated with each cloud. Based on these identified features and cells, the mean and maximum values for variables such as rain rate, aerosol rainout rate, and updraft velocity were calculated for

each cloud over a given timestep and over its entire lifetime. Other studies have used previous versions of *tobac* to effectively track cloud objects in a similar manner (e.g. Marinescu et al., 2021), but recent improvements to *tobac* (Sokolowsky et al., 2022) have specifically allowed for cloud objects to be identified and tracked in three-dimensions and across periodic boundaries as was necessary for this study.

170 It should be noted that in this work, we are tracking on updrafts, meaning that clouds at the very beginning or end of their life cycles with updrafts weaker than 1 m s^{-1} are necessarily excluded from the analysis. This is a limitation of tracking packages that use a physically informed threshold to detect features; however, since *tobac* allows for setting multiple thresholds, we have set a fairly low minimum threshold in order to capture the majority of the cloud lifetime. Although there are numerous updrafts with maximum vertical velocities below 1 m s^{-1} present in the simulation, we found that such weak updrafts do not contribute significantly to the precipitation or aerosol budget, accounting for less than 2% of precipitation and aerosol rainout. Furthermore, after applying all our QC thresholds, we found that a vast majority of the falling rain and rained out aerosol (75-80%) could be attributed to the remaining features, and that this was consistent across all these simulations.

175

3 Aerosol impacts on domain properties

In this section, we examine the differences in domain-wide properties as a function of aerosol loading and type. Qualitatively similar cloud fields develop in all sixteen simulations (Figure S1), consisting primarily of shallow cumulus (with cloud tops ~2-4 km AGL) and congestus (with cloud tops ~4-7 km AGL). Clouds begin to form in the simulations after 6-7 hours and the cloud field develops a variety of cloud morphology and degrees of organization over the next 48 hours (e.g., linear groups, scattered/isolated clouds, arc clouds associated with cold pools). Deep convection (with cloud tops >7 km AGL) occurs only sporadically in a handful of the simulations and does not persist in any of them. An example of the cloud scenes typically simulated is shown in Figure 2.

180

185

Deleted: -

Deleted: W

Deleted: >

Deleted: *tobac*-tracked cloud

Deleted: meeting our QC thresholds

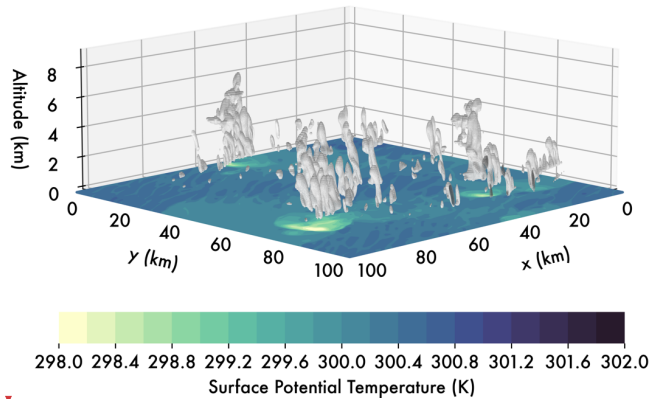
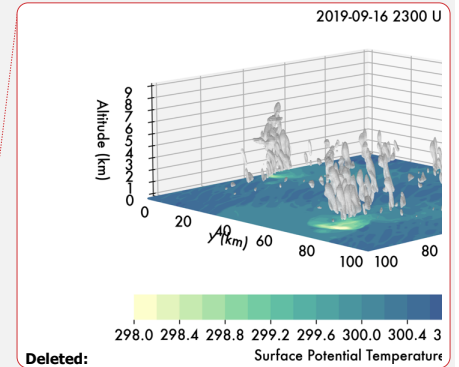


Figure 2: Three-dimensional rendering of simulated cloud field at 23:00UTC (7:00 LT) for the control sea salt simulation (initial number concentration of 100 cm^{-3} at the surface). Gray isosurfaces are 0.01 g kg^{-1} of cloud condensate. Surface colours are the potential temperature (K) at the lowest model level above the surface, with lighter colours highlighting the development of cold pools associated with the clouds.



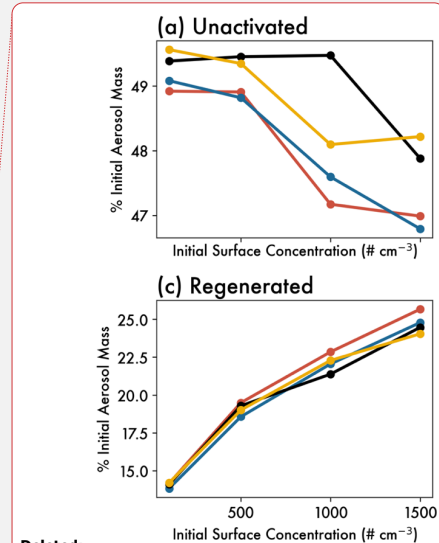
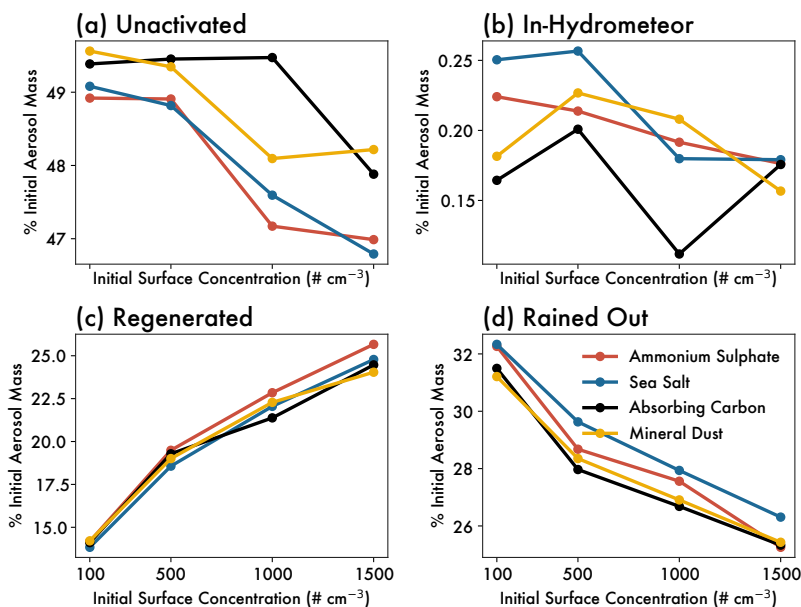
Formatted: Superscript

3.1 Domain-wide aerosol budget

The domain-wide trends in the aerosol mass budget are presented in Figure 3. For each simulation, we integrate the amount of aerosol mass in each of the four budget categories (namely unactivated, in-hydrometeor, regenerated, and rained-out) after 48 hours of simulation time, and then normalize this mass by the total initial mass at the beginning of the model run. In this manner, we quantify the *percentage* of aerosol mass that is apportioned to each budget category, thus providing a fairer comparison between simulations of different initial aerosol loading. If changes to the aerosol loading have no impacts on the cloud field and cloud processes impacting aerosol particles, then we would expect the same distribution of aerosol mass across the budget categories, irrespective of aerosol loading. We have chosen here to present an aerosol mass budget rather than a number budget, since aerosol mass is conserved after activation and subsequent regeneration of aerosol particles whereas all aerosol number is not conserved when multiple aerosol particles are collected by a single hydrometeor (i.e., it is assumed that interstitial aerosol that are collected by a droplet cohere with the original activated particle). Considering aerosol mass therefore allows us to specifically account for all the transfers between aerosol budget categories. Over the course of the simulation, we found that less than 5% of the aerosol mass is not tracked and is treated as a residual that is lost due to dry deposition (which is represented in RAMS, but not tracked in the RAMS aerosol budget) and/or numerical diffusion; this residual proportion is very similar across all our simulations (Figure S2).

Deleted: , and

Deleted: ensemble members.



Deleted:

Deleted: ensemble

Deleted: members

Figure 3: Domain aerosol mass budget after 48 hours of simulation time represented as a function of the initial aerosol surface concentration ($\# \text{ cm}^{-3}$) and aerosol type. Each aerosol budget term is the domain-integrated aerosol mass in a given category normalized by the total aerosol mass at initialization time, shown for (a) unactivated, (b) in-hydrometeor, (c) regenerated, and (d) rained-out aerosol. See the text for explanations of each aerosol category.

Across all the simulations, about half of the initial aerosol mass serves as CCN at some point in time, while the other half remains unactivated (Figure 3a) for the duration of the simulation. As aerosol loading increases, the fraction of unactivated aerosol generally decreases (the fraction of activated aerosol increases), though changes are fairly small compared to the trends in the other aerosol budget categories. At first glance, this appears to contradict classic cloud parcel theory, wherein the activated fraction decreases (unactivated fraction increases) as aerosol number concentration goes up for a given updraft speed (Reutter et al., 2009). In this scenario, the increased CCN number concentrations lead to increases in cloud droplets competing to consume the available supersaturation. Thus, that parcel's maximum supersaturation is lower compared to a parcel with fewer aerosol particles and an identical updraft speed, and it is therefore unable to activate the smallest aerosol particles, which subsequently drives down the activated aerosol fraction. However, it is important to note that the results we present in Figure 3 are not from a single cloud parcel, but rather integrated over the whole cloud field, and therefore incorporate any aerosol

235 effects that lead to changes in the updraft speed, ambient relative humidity, and cloud types. We discuss these changes to the broader cloud population in greater detail in **Sect. 4**. There is also a slight decrease in the aerosol mass found inside cloud droplets or embedded in drizzle or raindrops (**Figure 3b**), though the trend is non-monotonic and inconsistent between aerosol types. However, the in-hydrometeor category comprises a relatively small percent of the overall aerosol budget at any given timestep and the trends in this category vary temporally (Figure S1), since aerosol particles are only apportioned to it temporarily before being transferred to the regenerated or rained-out category.

240 The clearest and most temporally persistent trends in the domain-wide aerosol budget as a function of aerosol loading are seen in the proportion of aerosol mass that is regenerated (**Figure 3c**) or rained-out (**Figure 3d**). It is clear from these figures that the proportion of regenerated aerosol mass is enhanced while the proportion of rained-out aerosol mass is decreased with increasing aerosol loading. While Figure 3 shows a snapshot in time, these trends are largely consistent throughout the course of the simulation (full timeseries shown in Figure S2). The opposing trends between the increases in regenerated aerosol and decreases in rained-out aerosol with increasing aerosol loading have similar magnitudes, and are on the order of 7-10% of the initial aerosol mass. These trends are remarkably consistent with aerosol type, as will be discussed further in **Sect. 5**. We emphasize here that the aerosol mass budgets we present are normalized by the initial aerosol loading—in the highest-aerosol loading case, there is not only a greater absolute mass of aerosol that is regenerated and detrained back into the environment, but also actually a larger percentage of mass involved. The changes to rainout, which is the only major aerosol sink in the budget examined here, suggests a positive feedback mechanism by which increases in aerosol loading may actually inhibit the removal of aerosol particles by clouds.

Formatted: Font: Bold

3.2 Cloud and rain microphysics

To investigate the mechanisms by which increased aerosol loading leads to aerosol regeneration being favoured over rainout, we examine trends in the cloud and rain droplet size distributions (**Figure 4**). For all aerosol types, increasing the aerosol loading produces more numerous and smaller cloud droplets (**Figure 4a-b**), which is consistent with the first indirect effect that has been demonstrated in many observational and modelling studies (Twomey, 1977; Tao et al., 2012). On the other hand, increasing aerosol loading produces fewer and larger raindrops (**Figure 4c-d**). This effect has been demonstrated in multiple modelling studies (Berg et al., 2008; Li et al., 2013; Altaratz et al., 2014; Sheffield et al., 2015) with more limited observational support (Berg et al., 2008; May et al., 2011).

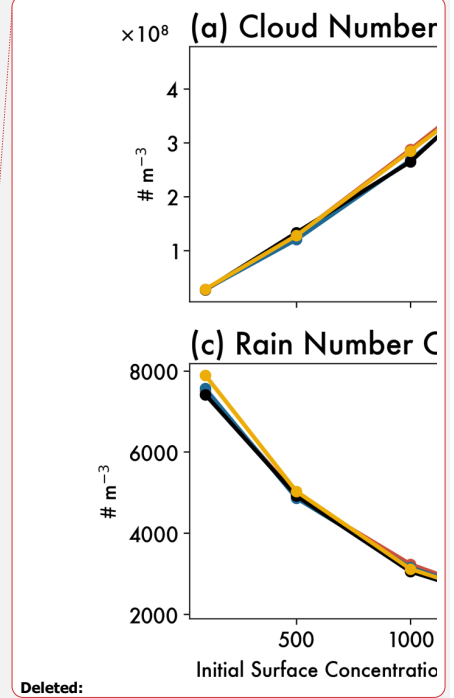
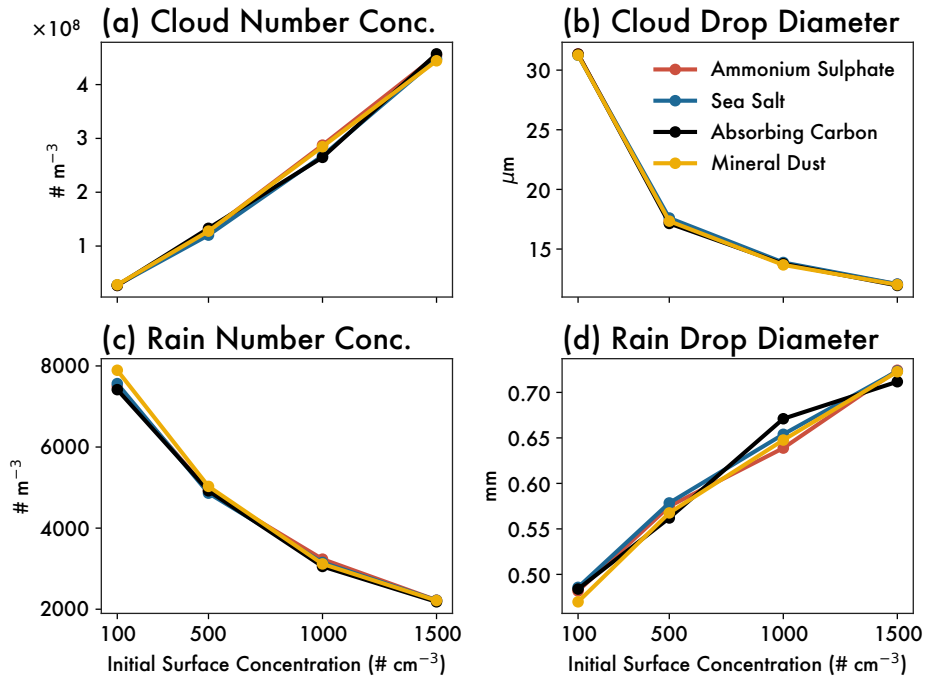


Figure 4: In-cloud mean microphysical size distribution properties as a function of initial aerosol surface concentration ($\# \text{ cm}^{-3}$) and aerosol type: (a) cloud droplet number concentration ($\# \text{ m}^{-3}$), (b) cloud droplet diameter (μm), (c) rain drop number concentration ($\# \text{ m}^{-3}$), and (d) rain drop diameter (mm). Values are spatially and temporally averaged over cloudy (cloud condensate $> 0.01 \text{ g kg}^{-1}$) updraft (vertical velocity $> 1 \text{ m s}^{-1}$) grid points.

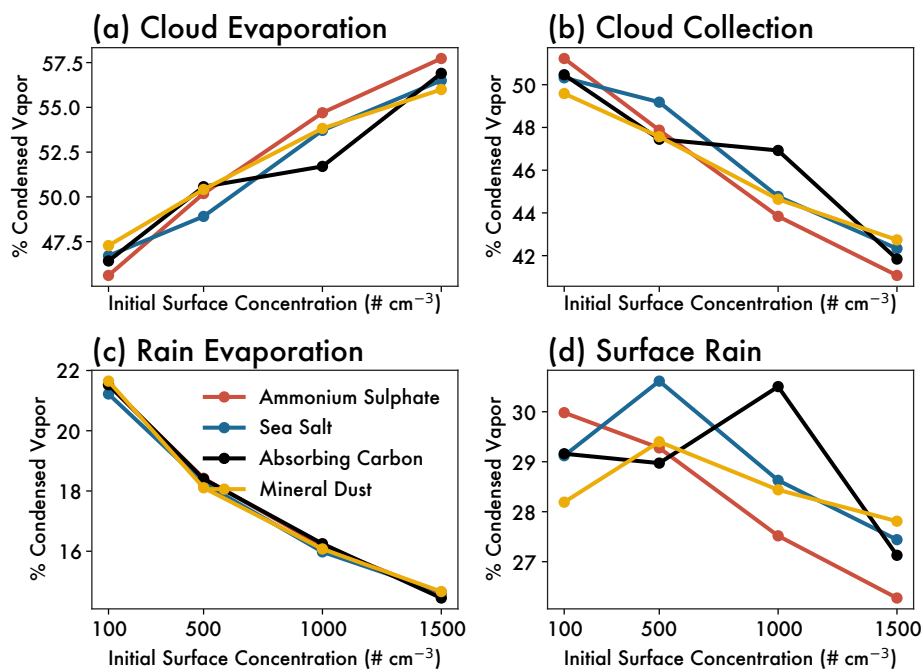
260

265

These trends in the droplet size distributions can be more easily connected to the aerosol budget by examining trends in the microphysical process budget, as shown in **Figure 5**. Each term in this figure represents a different sink for cloud water and is given as an efficiency relative to the mass of water vapor transferred to liquid in cloud droplets. The value given is the percent of condensed water vapor that ends up in a particular cloud water sink. As aerosol loading increases, the cloud droplets are smaller and thus evaporate more readily (**Figure 5a**) and are also less likely to be collected into rainwater (**Figure 5b**). This explains the trends in the aerosol budget under increased aerosol loadings to first order: although a similar proportional mass of aerosol particles is activated and enters cloud droplets, those cloud droplets are smaller and tend to evaporate more

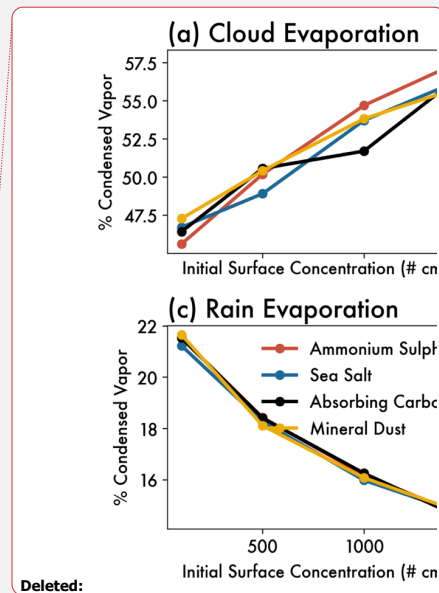
270

275 quickly, which favours regeneration. Simultaneously, those smaller cloud droplets are less likely to be collected as rainwater, and thus the CCN contained within them are less likely to be washed out within precipitation.



280 Figure 5: Domain total microphysical process rates as a function of initial aerosol surface concentration ($\# \text{ cm}^{-3}$) and aerosol type. Each panel shows the process efficiency (in %), defined as the domain- and time-integrated process rate normalized by the domain- and time-integrated condensation rate (water vapor to liquid water), shown for (a) cloud water evaporation, (b) cloud water collection into rain, (c) rainwater evaporation, and (d) surface-accumulated rain (i.e., precipitation efficiency).

285 In the polluted aerosol environment, although cloud water is less likely to be collected by rain, the cloud water which is collected is distributed among fewer raindrops. These raindrops are thus larger in size (Figure 4d) and have a lower surface area-to-volume ratio compared to raindrops forming in pristine aerosol environments, in keeping with past model results (Storer and Heever, 2013; Altartaz et al., 2014; Saleeby et al., 2015). As a result, even though increasing aerosol loading leads to less efficient collection of cloud water into rainwater, it also leads to decreases in rainwater evaporation (Figure 5c). These



Deleted:

Deleted: less

290 two trends partially offset one another, leading to mixed trends in the percentage of cloud water that falls to the surface as rain
(**Figure 5d**), sometimes defined as the precipitation efficiency (Cui and Carslaw, 2006; Jiang et al., 2010; Lee and Feingold,
2010; Lutsko et al., 2021; Li et al., 2022). These decreases with increasing aerosol loading are not monotonic for all aerosol
types, and it is a smaller relative trend compared to those of cloud evaporation and collection. Although increasing the aerosol
loading in the domain causes clouds to become less efficient at removing aerosol via rainout (**Figure 3d**), it does so without
295 necessarily impacting the precipitation efficiency itself (**Figure 5d**). Earlier results by Cui and Carslaw (2006) and Lee and
Feingold (2010) showed similar decreases in the aerosol rainout efficiency (or aerosol precipitation efficiency or scavenging
efficiency, as they respectively referred to it), but these decreases were closely coupled with decreases in precipitation
efficiency. That is to say, they showed that increased aerosol loading caused less efficient rain formation and therefore less
efficient aerosol removal through rainout. Our results add to this and show that the reduced efficiency in aerosol removal
300 through rainout can occur even without changes to the domain-wide precipitation efficiency.

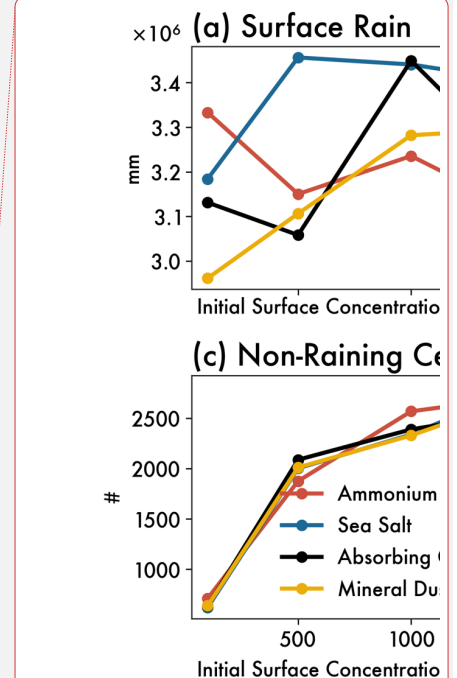
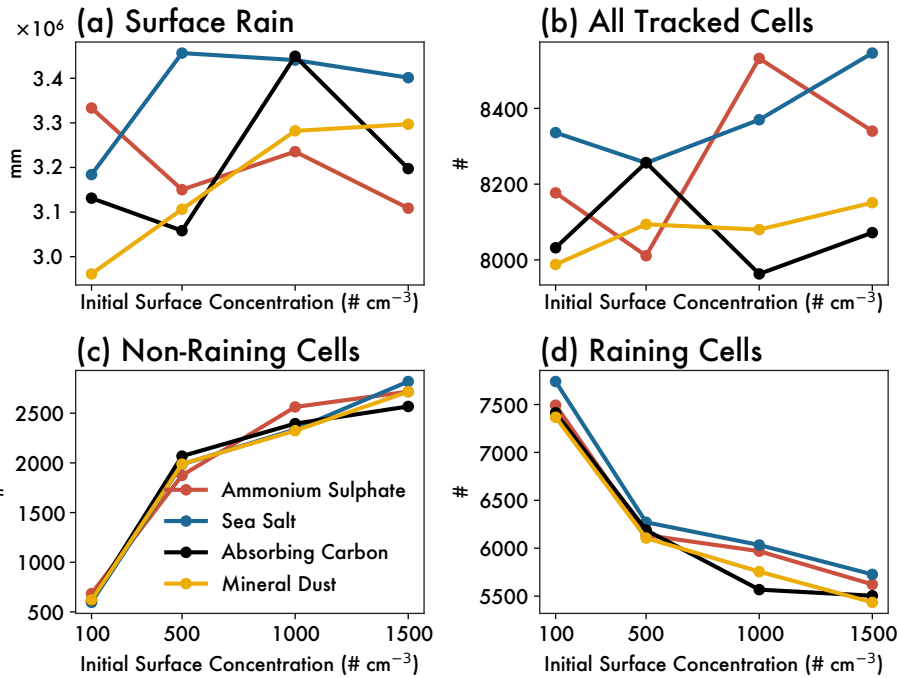
4 Aerosol impacts on cloud population distributions

4.1 Trends in cloud numbers and median cloud properties

Given the complexity surrounding the number of processes impacting rain formation, which often have opposing trends as a
function of aerosol loading, we find that increasing aerosol loading does not necessarily lead to decreases in precipitation
305 efficiency (**Figure 5d**) or the domain-wide accumulated precipitation (**Figure 6a**). For some aerosol types (e.g., mineral dust),
the increase in aerosol loading actually leads to an increase in the accumulated precipitation between the lowest and highest
aerosol loadings tested in our [set of simulations](#). The trends in the total number of tracked clouds are similarly non-monotonic
and mixed, as shown in **Figure 6b** and suggest that aerosol loading does not have a clear impact on domain cloudiness for
[these simulations](#) of maritime tropical clouds. That being said, tracking the clouds over their full lifetime with the use of *tobac*
310 allows us to further subdivide clouds into those that precipitate and those which do not (**Figure 6c-d**). To differentiate raining
and non-raining clouds, we find the area-mean rain rate associated with each cloud feature at each point in its lifetime, and
then take the lifetime-maximum of those rain rates such that non-raining clouds are those which never reach an area-mean rain
rate of $0.0001 \text{ mm hr}^{-1}$. Clearly, the mixed trend in the total number of clouds as a result of increasing aerosol loading arises
as a result of two opposing trends: increases in the number of non-precipitating clouds and decreases in the number of
315 precipitating ones. This is further consistent with the general picture of aerosol impacts on the cloud field from the process
rates, as described above: although clouds still do form in environments with higher aerosol loadings, the cloud droplets
evaporate more readily before the cloud is able to produce precipitation-size particles, and thus a greater fraction of clouds
never rain throughout their whole lifetime. Non-raining clouds still activate aerosol particles and regenerate them aloft as the
cloud dissipates, but they do not remove them from the domain via rainout, which contributes to aerosol regeneration at the
320 expense of rainout.

Deleted: ensemble

Deleted: his ensemble



325 **Figure 6:** (a) Total accumulated rain, and (b-d) number of updraft cells tracked over 48 hours of simulation using *tobac* as a function of initial aerosol surface concentration (# cm⁻³) and aerosol type. Total numbers of tracked cloud cells are shown in (b), while (c) shows only non-raining updrafts and (d) shows only raining updrafts. Raining updrafts are defined as those which have a mean rain rate of at least 0.0001 mm/hr for any timestep during their lifetime.

330 We can use *tobac* to aggregate the raining clouds (Figure 7) to see how the median properties of these clouds evolve under different aerosol environments. Although increasing aerosol loading leads to fewer raining clouds, those which *do* rain are invigorated with higher rain rates (Figure 7a). This is further compounded by the decrease in the median area covered by each raining cloud (Figure 7b). Overall, we find that under higher aerosol loadings, surface rainfall becomes more concentrated amongst fewer clouds with a higher median rain rate. However, this is contrasted by the trends in aerosol rainout rate (Figure 7c). The aerosol impact is non-monotonic, but there is a decrease in the strength of aerosol rainout between the 335 lowest and highest aerosol loadings for all aerosol types. We conclude that *the median cloud rains more under higher aerosol*

loadings but rains out less aerosol. Shifts in the behaviour of the overall cloud population as well as potential explanations for this behaviour are discussed in the following subsection.

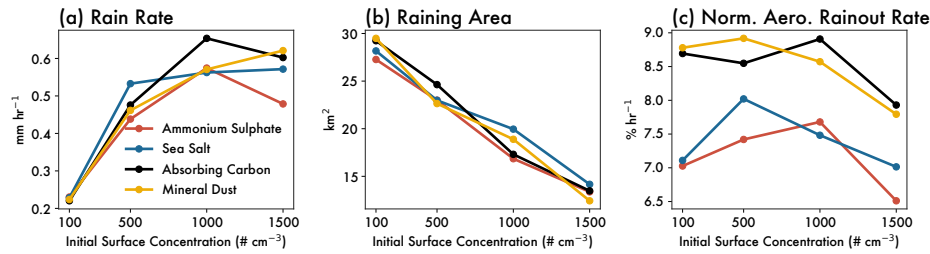
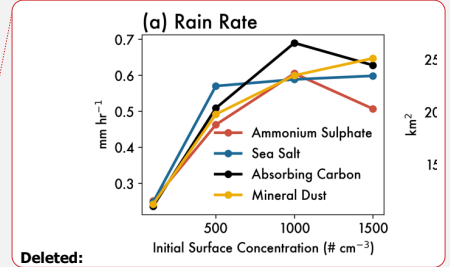


Figure 7: Median updraft properties for raining updrafts as a function of initial aerosol surface concentration ($\# \text{ cm}^{-3}$) and aerosol type. Panels show (a) rain rate (mm hr^{-1}), (b) raining area (km^2), and (c) normalized wet deposition rate ($\% \text{ hr}^{-1}$). The normalized wet deposition rate is the percent of initial aerosol mass integrated over a given column that is lost to rainout over a given time period.



4.2 Shifts in cloud population distributions

An advantage of cell tracking over prior analysis methods is the ability to examine trends and characteristics of evolving cloud population distributions as opposed to merely aggregating properties. We construct two-dimensional histograms according to cloud top height (CTH) and either rain rate (Figure 8) or normalized aerosol rainout rate (Figure 9), such that the value in each bin is the number of raining clouds with a given CTH and rain rate/rainout rate. The CTH, rain rate, and normalized aerosol rainout rate are defined by taking the lifetime-maximum value for each tracked cloud cell, such that they represent the “peak” maturity for a given cloud. This approach has the benefit of being able to separately identify cloud modes according to different CTHs; in this case, the shallow cumulus mode is clearly visible as a hotspot of clouds with CTHs of ~ 2 km, as is the congestus mode with CTHs of ~ 4 km (e.g., Figure 8a) This is particularly important due to our focus on tropical convection, which is known to consist of three separate cloud modes (Johnson et al., 1999; Posselt et al., 2008).

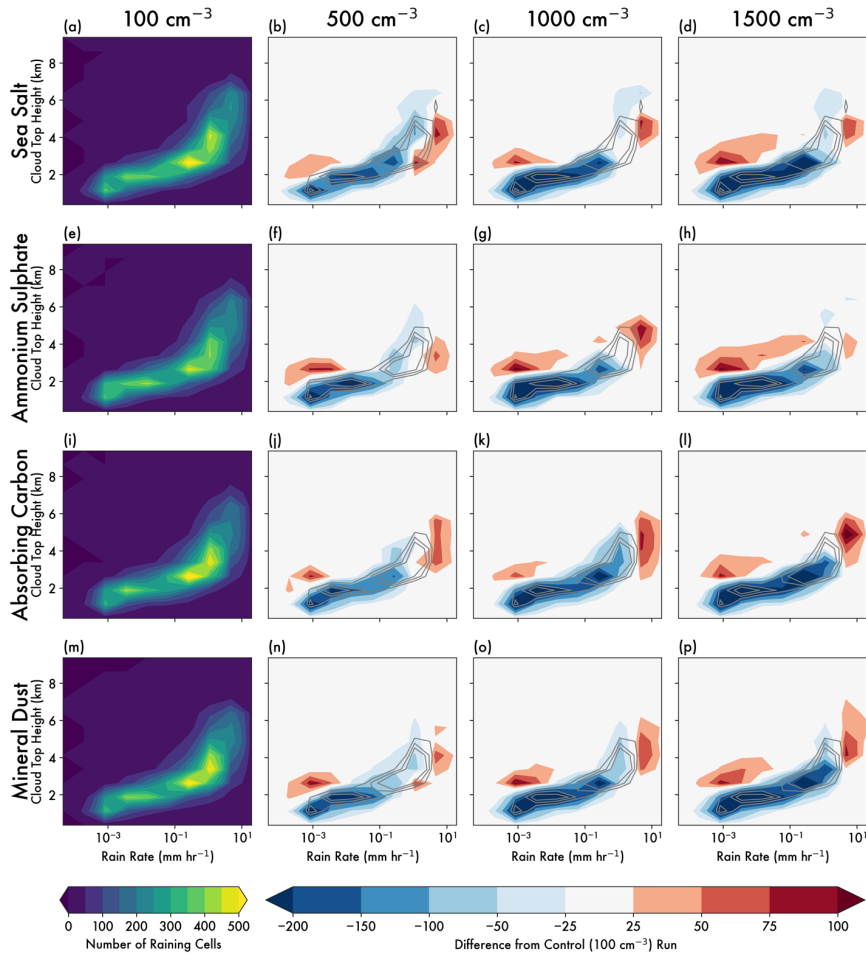


Figure 8: Two-dimensional histogram of cloud top height (km) and rain rate (mm hr^{-1}) for all tracked raining clouds. Each row is a different aerosol type: (a-d) sea salt, (e-h) ammonium sulphate, (i-l) absorbing carbon, and (m-p) mineral dust. The leftmost column (a,e,i,m) is the control run with the lowest aerosol loading, and coloured contours indicate the number of raining cloud cells in each joint probability bin. The other three columns are given as a difference in number of cloud cells relative to the control run of the same aerosol type. The overlaid gray contours correspond to $n=250, 300, 350$ in the respective control runs, and are drawn to facilitate comparison between the different simulations.

365 Generally, there is a positive correlation between CTH and precipitation rate, with taller clouds tending to have
stronger rain rates than shallower clouds do (Adler and Mack, 1984; Smalley and Rapp, 2020). Moving from left to right in
each row in **Figure 8** allows one to see the impact of increasing aerosol loadings on the CTH-rain rate distribution, such that
negative values (blue regions) are portions of the cloud population that become less frequent with increasing aerosol loading,
and vice-versa for positive values (red regions). Notably, increased aerosol loadings impact shallow cumulus and congestus
370 clouds in opposite ways, emphasizing that median cloud properties over all types of clouds are insufficient for quantifying the
magnitude of the aerosol effect. Shallow cumulus clouds tend to grow taller, with the modal CTH being closer to 3 km in the
highest aerosol simulations, but they do so with reduced rain rates (e.g., **Figure 8d**), in a manner that is similar to the
precipitation suppression effect described in many past studies (e.g. Xue et al., 2008; Spill et al., 2019). On the other hand,
congestus clouds also grow slightly taller, but have much stronger modal rain rates, which is consistent with previous findings
375 on the warm-phase invigoration of this tropical cloud mode (Li et al., 2013; Sheffield et al., 2015). These results suggest that
the smaller shallow cumulus clouds are more sensitive to the increase in evaporation (**Figure 5a**), whereas congestus clouds
with larger areas are more able to protect the interior of the cloud core from evaporation thereby benefitting from the increase
in latent heating or warm-phase invigoration associated with increased cloud droplet formation (**Figure 4a**). Furthermore, this
shows that the impact of increasing aerosol on precipitation efficiency is dependent on cloud type. This may explain differences
380 between this study and recent studies such as Dagan (2022), which saw monotonic increases in precipitation efficiency with
increasing aerosol. The latter study used a coarser grid spacing that was not resolving the shallow cumulus cloud field which
we find in this work to have decreasing precipitation efficiency with increasing aerosol.

Deleted: (

Deleted: .

Deleted:)

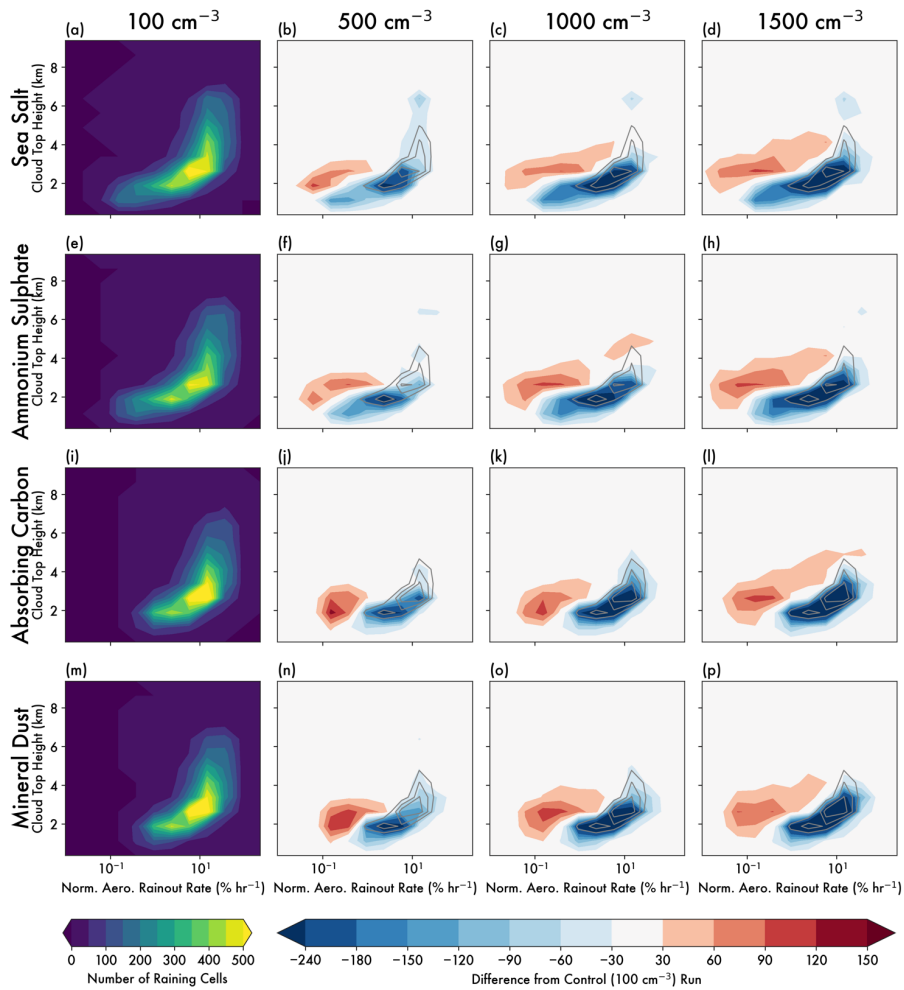


Figure 9: As in Figure 8, but for normalized aerosol rainout rate. The normalized aerosol rainout rate is the percent of initial aerosol mass integrated over a given column that is lost to rainout over a given time period. The overlaid gray contours in the three rightmost columns are $n=300, 400, 500$ in the respective control runs.

390

The CTH-aerosol rainout rate distribution in **Figure 9** clearly shows deeper clouds being associated with more aerosol rainout compared to shallower clouds. This relationship is consistent with trends in rain rate with cloud top height as discussed previously. For shallow cumulus, increased aerosol loading leads to a decrease in their ability to remove aerosol via rainout, which follows closely with the decrease in their rain rates. However, although congestus clouds tend to produce stronger rainfall in higher aerosol environments, they do not see a corresponding increase in their ability to rainout aerosol, which has no change or even decreases slightly for the highest aerosol loadings. These results suggest that unlike rain rates, which can be enhanced by warm-phase invigoration, there is something of a “saturation effect” for rainout. At a certain point, stronger rain rates can no longer increase the amount of aerosol being rained-out since the aerosol available to rainout in those areas has already been removed to the surface. Because the surface rainfall from these clouds becomes concentrated over smaller horizontal areas where the cloud droplets are sufficiently protected from the environment such that they can form precipitation-sized hydrometeors, there are increasing areas of clear-sky or very light precipitation that is not sufficient to remove aerosol particles to the surface. Thus, the overall aerosol impact on rainout is dominated by the decrease in rainout from shallow clouds which either have weaker rain rates or stop raining altogether. These findings provide strong process-level evidence for a potential mechanism to explain recent results from GCMs showing that frequent, light precipitation is more important than strong precipitation in regulating the amount of wet deposited aerosol (Wang et al., 2021a, b).

405

5 Influence of aerosol type

We have shown throughout this paper that the influence of aerosol type on the overall aerosol budget and cloud populations is relatively small. Regardless of aerosol type, increasing aerosol loading leads to similar trends in cloud microphysics, precipitation rates, and the domain-wide aerosol budget and vary only in terms of magnitude. The different aerosol median sizes and hygroscopicities (**Table 2**) do influence the magnitude of the aerosol rainout, although only minimally, and they do not affect the overall trends. For example, the cloud field overall tends to be more efficient at raining out ammonium sulphate and sea salt (**Figure 3d**), both of which have larger particle sizes, which is consistent with these particles having a higher activation fraction all else being equal (Reutter et al., 2009). Note that comparing among the median cloud in each simulation (**Figure 7c**) shows lower normalized aerosol rainout rates for ammonium sulphate and sea salt. This is driven by the tail of the distribution shown in **Figure 9**—since the clouds are more efficient at raining out ammonium sulphate and sea salt, cumulus clouds with low rainout rates are still able to show appreciable and trackable values. However, the integrated impact of all clouds in the field is more accurately shown in **Figure 3d** or by looking at the full distribution in **Figure 9**, which emphasizes the importance of evaluating changes across the whole cloud distribution and not merely in medians or means across different cloud modes.

420

We found that cloud properties depend more strongly on the magnitude of aerosol loading rather than the aerosol type. The lack of variation in the cloud population distribution as a function of aerosol type (as can be observed by comparing

across each column in **Figure 8** and **8**) was observed despite the strong differences in clear-sky radiative heating rates as a function of aerosol type (**Figure 10**). The differences in heating rates are driven by differences in the absorbing/scattering properties of each aerosol type, with more scattering aerosol, like ammonium sulphate or sea salt, driving cooling trends with increased aerosol, and more absorbing aerosol, like absorbing carbon and mineral dust, driving warming and stronger stratification of the stable layers in the domain. However, these differences in radiative heating do not appear to feed back on cloud properties within the domain—at least not on the timescales of our simulation (48 hours) — as there is not sufficient time for these differences in direct aerosol effects to influence the overall cloud field. These differences may eventually lead to divergence between aerosol types as the system moves towards radiative-convective equilibrium (RCE), though there is some debate about whether the relatively short lifetimes of these shallow cumulus and congestus clouds allows for such equilibration, and longer-term and realistically forced simulations would be necessary to test this (Dagan et al., 2018). Some past research also suggests this may be sensitive to the update timescale used for the radiation parameterization (Matsui et al., 2020). We would also expect that the radiative differences between aerosol types would be amplified over a land surface where aerosol-induced differences in the feedbacks to the surface fluxes could play a role, in contrast to the ocean surface (here, we have fixed the SST, though we would not expect large aerosol-induced changes in SST over the 48 hours of simulation time even if a fully interactive ocean surface were utilized).

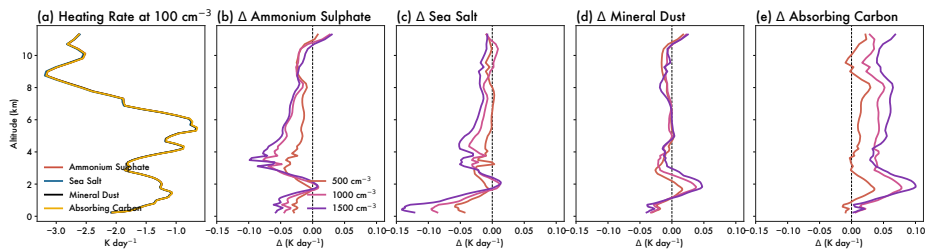
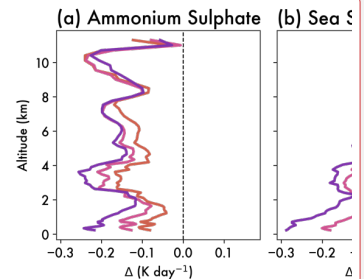


Figure 10: (a) Vertical profile of domain-mean clear-sky radiative heating rates for the lowest-aerosol loading simulation (initial concentration of 100 \# cm^{-3} at the surface). Differences relative to the lowest-aerosol loading simulation are given for each aerosol type: (b) ammonium sulphate, (c) sea salt, (d) mineral dust, and (e) absorbing carbon. Coloured lines indicate different initial aerosol concentrations.

6 Summary and discussion

Aerosol-cloud interactions are a key uncertainty both on the overall climate forcing and on weather timescales. They are especially challenging to unravel given the large number of processes and feedbacks involved. Here, we have aimed to examine how aerosol impacts on shallow maritime tropical clouds (cumulus, congestus) feed back to the aerosol budget, specifically through the removal of aerosol via rainout versus the regeneration of aerosol particles via detrainment aloft. By combining a suite of high-resolution simulations with a comprehensive apportionment of an aerosol budget facilitated by the *tobac* tracking

Deleted: -



Deleted:

Deleted: for different aerosol types:

Deleted: (

Deleted: a

Deleted: b

Deleted: c)

Deleted: d

Deleted: All profiles are given as a different relative to the lowest-aerosol loading simulation (initial concentration of 100 \# cm^{-3} at the surface).

package, we were able to track both domain-wide trends and the processes driving those trends in different modes of the
460 tropical cloud population as a function of aerosol loading and aerosol type.

First, we examined trends in the domain-wide aerosol budget and cloud microphysical processes. We found that
regardless of aerosol type, increasing the aerosol loading enhances aerosol regeneration at the expense of rainout. This
effectively hinders the cloud field's ability to remove aerosol, and thus represents a positive feedback by which increased
aerosol loadings may strengthen with time. The increased aerosol regeneration is driven by a decrease in the size of cloud
465 droplets and thus an increase in evaporation. Cloud droplets are therefore increasingly likely to evaporate before the cloud has
the chance to form rain and hence remove aerosol through surface deposition. Although there are fewer raindrops that form,
those which do form through stochastic collisions with other droplets then each have more cloud water available for collection,
since a similar amount of cloud water is being divided among fewer raindrops. As a result, these raindrops can be larger and
thus experience less evaporation. Previous work has shown increasing aerosol loadings to be associated with decreases in
470 precipitation efficiency and aerosol rainout efficiency (Cui and Carslaw, 2006; Lee and Feingold, 2010)—here, we show that
the decrease in the cloud field's efficiency at removing aerosol via rainout can occur even without a corresponding decrease
in the overall precipitation efficiency. In other words, even when clouds produce a similar amount of precipitation under higher
aerosol loadings due to compensating changes to cloud and rain microphysics, the ability of clouds to remove aerosol via
rainout is still hampered because it depends primarily on changes to cloud water collection. Instead, the aerosol particles are
475 regenerated aloft, where they form an aerosol detrainment layer (or potentially, in the case of multilayer clouds, detrainment
layers) that can serve as an aerosol source for future midlevel and multilayer clouds (Leung and van den Heever, 2022).

Additionally, we used *tobac* to track clouds over the course of their lifetime and generate statistics of cloud properties.
We found that increases in aerosol loading lead to more non-raining clouds and fewer raining clouds; this again is in keeping
with the idea that precipitation is suppressed and clouds tend to dissipate before they can form rain. Those clouds which do
480 rain tend to have stronger rain rates over a smaller horizontal area, such that precipitation is increasingly concentrated among
fewer clouds that are warm phase invigorated under high aerosol conditions. Although these clouds then have stronger rain
rates, this does not lead to more aerosol rainout overall, due to the smaller horizontal area covered by rain leaving a larger
clear-sky region where aerosol particles can remain in the atmosphere. This further validates our initial domain-wide analysis
showing decreases in aerosol rainout efficiency without changes to precipitation efficiency.

485 Finally, we examined changes caused by varying aerosol environments as a function of different cloud types and
found that a mixed domain-wide trend in rain amounts that is driven by contrasting aerosol effects in shallow cumulus and
congestus clouds. With increasing aerosol loading, shallow cumulus clouds tend to grow taller and rain less or not at all,
whereas congestus clouds only grow slightly taller and tend to have higher rain rates. These changes in rain intensity lead to
shallow cumulus clouds being less able to remove aerosol via rainout. Despite congestus having higher rain rates with increased
490 aerosol, there is a "saturation effect" such that the more intense rain no longer increases the efficiency with which aerosol is
rained-out, since the rainfall depletes most of the available aerosol even before the rain rates intensify. As a result, the decreases
in shallow cumulus precipitation dominate the aerosol effect on the overall amount of aerosol which is removed by rainout.

495 Furthermore, these results underscore that aerosol-cloud interactions can be highly dependent on cloud type, given that the balance between susceptibility to evaporation and warm-phase invigoration depends on the cloud size and dominant microphysical processes, and ultimately determines the sign of the precipitation response.

500 In general, we found that the magnitude of aerosol loading tested in our ~~simulations~~ had a stronger impact on aerosol-cloud impacts than did the aerosol type, despite the clear differences in the radiative heating rates brought about by the latter. We suggest that the differences in the aerosol direct effect between different aerosol types may pose a stronger impact over longer timescales and/or over land surfaces that have more rapid surface flux feedbacks, and recommend future work be undertaken to investigate these scenarios. We also caution that while these results are robust over this ~~set~~ of simulations with varied aerosol environments, the simulated meteorology only captures a particular maritime tropical environment, and the strength of the aerosol budget response may depend on other factors including the large-scale meteorology. However, the consistent trends in aerosol impacts on the microphysical processes, the whole cloud population distribution and the domain aerosol budget, suggest that the aerosol-cloud interactions described here may be significant. These interactions represent a pathway by which *a polluted environment not only has higher aerosol loadings than a pristine one, but is actually less able to regulate those loadings by removing aerosol—instead, the aerosol is convectively transported from the boundary layer to the free troposphere*, where aerosol particles remain available for reactivation and further aerosol-cloud interactions.

Deleted: ensemble

Deleted: suite

Data and code availability

510 The source code for RAMS, namelist files, and other information and analysis scripts necessary to reproduce the simulations will be made available through: <https://github.com/grleung/aerobudget> (Leung and van den Heever, 2022). Source code for the *tobac* package is available through: <https://github.com/tobac-project/tobac>.

Author contributions

515 GRL and SCvdH designed the experiments. GRL conducted the RAMS simulations. SMS made developments to RAMS to facilitate the analysis presented here. SWF and GAS made developments to and assisted in the implementation of *tobac* for the cloud identification and tracking used in the analysis. GRL and SCvdH performed the data analysis and prepared the paper, with contributions and edits from all co-authors.

Competing interests

The authors declare that they have no conflict of interest.

Acknowledgements

This research was supported by NASA CAMP²Ex Grant 80NSSC18K0149. [The authors also thank two anonymous reviewers for their insights and feedback, which greatly improved this quality of this paper.](#)

References

- 525 Adler, R. F. and Mack, R. A.: Thunderstorm Cloud Height–Rainfall Rate Relations for Use with Satellite Rainfall Estimation Techniques, *Journal of Climate and Applied Meteorology*, 23, 280–296, 1984.
- Albrecht, B. A.: Aerosols, Cloud Microphysics, and Fractional Cloudiness, *Science*, 245, 1227–1230, <https://doi.org/10.1126/science.245.4923.1227>, 1989.
- Altaratz, O., Koren, I., Remer, L. A., and Hirsch, E.: Review: Cloud invigoration by aerosols—Coupling between microphysics and dynamics, *Atmospheric Research*, 140–141, 38–60, <https://doi.org/10.1016/j.atmosres.2014.01.009>, 2014.
- Atwater, M. A.: Planetary Albedo Changes Due to Aerosols, *Science*, 170, 64–66, 1970.
- Bardakov, R., Krejci, R., Riipinen, I., and Ekman, A. M. L.: The Role of Convective Up- and Downdrafts in the Transport of Trace Gases in the Amazon, *Journal of Geophysical Research: Atmospheres*, 127, e2022JD037265, <https://doi.org/10.1029/2022JD037265>, 2022.
- 535 Berg, W., L'Ecuyer, T., and van den Heever, S.: Evidence for the impact of aerosols on the onset and microphysical properties of rainfall from a combination of satellite observations and cloud-resolving model simulations, *Journal of Geophysical Research: Atmospheres*, 113, <https://doi.org/10.1029/2007JD009649>, 2008.
- Boucher, O., Randall, D. A., Artaxo, P., Bretherton, C. S., Feingold, G., Forster, P., Kerminen, V.-M., Kondo, Y., Liao, H.-T., Lohmann, U., Rasch, P. J., Satheesh, S. K., Sherwood, S. C., Stevens, B., and Zhang, X. Y.: Clouds and Aerosols, in: *Climate Change 2013: The Physical Science Basis. Contribution of Working Group I to the Fifth Assessment Report of the Intergovernmental Panel on Climate Change*, Cambridge University Press, Cambridge, 571–658, <https://doi.org/10.1017/CBO9781107415324.016>, 2013.
- 540 Chen, G., Xue, H., Feingold, G., and Zhou, X.: Vertical transport of pollutants by shallow cumuli from large eddy simulations, *ACP*, 12, 0238, <https://doi.org/10.5194/acp-12-11319-2012>, 2012.
- 545 Corr, C. A., Ziemba, L. D., Scheuer, E., Anderson, B. E., Beyersdorf, A. J., Chen, G., Crosbie, E., Moore, R. H., Shook, M., Thornhill, K. L., Winstead, E., Lawson, R. P., Barth, M. C., Schroeder, J. R., Blake, D. R., and Dibb, J. E.: Observational evidence for the convective transport of dust over the Central United States, *Journal of Geophysical Research: Atmospheres*, 121, 1306–1319, <https://doi.org/10.1002/2015JD023789>, 2016.
- 550 Cotton, W. R., Alexander, G. D., Hertenstein, R., Walko, R. L., McAnelly, R. L., and Nicholls, M.: Cloud venting — A review and some new global annual estimates, *Earth-Science Reviews*, 39, 169–206, [https://doi.org/10.1016/0012-8252\(95\)00007-0](https://doi.org/10.1016/0012-8252(95)00007-0), 1995.
- Cotton, W. R., Pielke Sr., R. A., Walko, R. L., Liston, G. E., Tremback, C. J., Jiang, H., McAnelly, R. L., Harrington, J. Y., Nicholls, M. E., Carrio, G. G., and McFadden, J. P.: RAMS 2001: Current status and future directions, *Meteorol Atmos Phys*, 82, <https://doi.org/10.1007/s00703-001-0584-9>, 2003.

- 555 Cui, Z. and Carslaw, K. S.: Enhanced vertical transport efficiency of aerosol in convective clouds due to increases in tropospheric aerosol abundance, *Journal of Geophysical Research: Atmospheres*, 111, <https://doi.org/10.1029/2005JD006781>, 2006.
- Dagan, G.: Equilibrium climate sensitivity increases with aerosol concentration due to changes in precipitation efficiency, *Atmospheric Chemistry and Physics*, 22, 15767–15775, <https://doi.org/10.5194/acp-22-15767-2022>, 2022.
- 560 Dagan, G. and Stier, P.: Ensemble daily simulations for elucidating cloud–aerosol interactions under a large spread of realistic environmental conditions, *Atmospheric Chemistry and Physics*, 20, 6291–6303, <https://doi.org/10.5194/acp-20-6291-2020>, 2020.
- Dagan, G., Koren, I., and Altaratz, O.: Aerosol effects on the timing of warm rain processes, *Geophysical Research Letters*, 42, 4590–4598, <https://doi.org/10.1002/2015GL063839>, 2015.
- 565 Dagan, G., Koren, I., Altaratz, O., and Lehahn, Y.: Shallow Convective Cloud Field Lifetime as a Key Factor for Evaluating Aerosol Effects, *iScience*, 10, 192–202, <https://doi.org/10.1016/j.isci.2018.11.032>, 2018.
- DeMott, P. J., Prenni, A. J., Liu, X., Kreidenweis, S. M., Petters, M. D., Twohy, C. H., Richardson, M. S., Eidhammer, T., and Rogers, D. C.: Predicting global atmospheric ice nuclei distributions and their impacts on climate, *Proceedings of the National Academy of Sciences*, 107, 11217–11222, <https://doi.org/10.1073/pnas.0910818107>, 2010.
- 570 Engström, A., Ekman, A. M. L., Krejci, R., Ström, J., Reus, M. de, and Wang, C.: Observational and modelling evidence of tropical deep convective clouds as a source of mid-tropospheric accumulation mode aerosols, *Geophysical Research Letters*, 35, <https://doi.org/10.1029/2008GL035817>, 2008.
- Ervens, B., Sorooshian, A., Aldhaif, A. M., Shingler, T., Crosbie, E., Ziemba, L., Campuzano-Jost, P., Jimenez, J. L., and Wisthaler, A.: Is there an aerosol signature of chemical cloud processing?, *Atmos. Chem. Phys.*, 18, 16099–16119, <https://doi.org/10.5194/acp-18-16099-2018>, 2018.
- 575 Fan, J., Yuan, T., Comstock, J. M., Ghan, S., Khain, A., Leung, L. R., Li, Z., Martins, V. J., and Ovchinnikov, M.: Dominant role by vertical wind shear in regulating aerosol effects on deep convective clouds, *Journal of Geophysical Research: Atmospheres*, 114, <https://doi.org/10.1029/2009JD012352>, 2009.
- Feingold, G. and Kreidenweis, S.: Does cloud processing of aerosol enhance droplet concentrations?, *Journal of Geophysical Research: Atmospheres*, 105, 24351–24361, <https://doi.org/10.1029/2000JD900369>, 2000.
- Glassmeier, F. and Lohmann, U.: Constraining Precipitation Susceptibility of Warm-, Ice-, and Mixed-Phase Clouds with Microphysical Equations, *Journal of the Atmospheric Sciences*, 73, 5003–5023, <https://doi.org/10.1175/JAS-D-16-0008.1>, 2016.
- 585 Grant, L. D. and van den Heever, S. C.: Aerosol-cloud-land surface interactions within tropical sea breeze convection, *Journal of Geophysical Research: Atmospheres*, 119, 8340–8361, <https://doi.org/10.1002/2014JD021912>, 2014.
- Gryspeerd, E., Stier, P., and Partridge, D. G.: Satellite observations of cloud regime development: the role of aerosol processes, *Atmos. Chem. Phys.*, 14, 1141–1158, <https://doi.org/10.5194/acp-14-1141-2014>, 2014.
- Haywood, J. M. and Boucher, O.: Estimates of the direct and indirect radiative forcing due to tropospheric aerosols: A review, *Reviews of Geophysics*, 38, 513–543, <https://doi.org/10.1029/1999RG000078>, 2000.

- 590 Haywood, J. M., Jones, A., Bellouin, N., and Stephenson, D.: Asymmetric forcing from stratospheric aerosols impacts Sahelian rainfall, *Nature Clim Change*, 3, 660–665, <https://doi.org/10.1038/nclimate1857>, 2013.
- van den Heever, S. C., Stephens, G. L., and Wood, N. B.: Aerosol Indirect Effects on Tropical Convection Characteristics under Conditions of Radiative–Convective Equilibrium, *Journal of the Atmospheric Sciences*, 68, 699–718, <https://doi.org/10.1175/2010JAS3603.1>, 2011.
- 595 Hegg, D. A., Covert, D. S., Jonsson, H., Khelif, D., and Friehe, C. A.: Observations of the impact of cloud processing on aerosol light-scattering efficiency, *Tellus B*, 56, 285–293, <https://doi.org/10.1111/j.1600-0889.2004.00099.x>, 2004.
- Heikenfeld, M., Marinescu, P. J., Christensen, M., Watson-Parris, D., Senf, F., van den Heever, S. C., and Stier, P.: tobac 1.2: towards a flexible framework for tracking and analysis of clouds in diverse datasets, *Geosci. Model Dev.*, 12, 4551–4570, <https://doi.org/10.5194/gmd-12-4551-2019>, 2019.
- 600 Herbener, S. R., Saleeby, S. M., van den Heever, S. C., and Twohy, C. H.: Tropical storm redistribution of Saharan dust to the upper troposphere and ocean surface: TROPICAL CYCLONE REDISTRIBUTES SAL DUST, *Geophys. Res. Lett.*, 43, 10,463–10,471, <https://doi.org/10.1002/2016GL070262>, 2016.
- Herbert, R., Stier, P., and Dagan, G.: Isolating Large-Scale Smoke Impacts on Cloud and Precipitation Processes Over the Amazon With Convection Permitting Resolution, *Journal of Geophysical Research: Atmospheres*, 126, e2021JD034615, <https://doi.org/10.1029/2021JD034615>, 2021.
- 605 Jiang, H., Feingold, G., and Sorooshian, A.: Effect of Aerosol on the Susceptibility and Efficiency of Precipitation in Warm Trade Cumulus Clouds, *Journal of the Atmospheric Sciences*, 67, 3525–3540, <https://doi.org/10.1175/2010JAS3484.1>, 2010.
- Jiang, J. H., Su, H., Huang, L., Wang, Y., Massie, S., Zhao, B., Omar, A., and Wang, Z.: Contrasting effects on deep convective clouds by different types of aerosols, *Nat Commun*, 9, 3874, <https://doi.org/10.1038/s41467-018-06280-4>, 2018.
- 610 Johnson, R. H., Rickenbach, T. M., Rutledge, S. A., Ciesielski, P. E., and Schubert, W. H.: Trimodal Characteristics of Tropical Convection, *JOURNAL OF CLIMATE*, 12, 22, 1999.
- Khain, A. P., BenMoshe, N., and Pokrovsky, A.: Factors Determining the Impact of Aerosols on Surface Precipitation from Clouds: An Attempt at Classification, *Journal of the Atmospheric Sciences*, 65, 1721–1748, <https://doi.org/10.1175/2007JAS2515.1>, 2008.
- 615 Kim, D., Wang, C., Ekman, A. M. L., Barth, M. C., and Lee, D.-I.: The responses of cloudiness to the direct radiative effect of sulfate and carbonaceous aerosols, *Journal of Geophysical Research: Atmospheres*, 119, 1172–1185, <https://doi.org/10.1002/2013JD020529>, 2014.
- Kim, M. J., Yeh, S.-W., and Park, R. J.: Effects of sulfate aerosol forcing on East Asian summer monsoon for 1985–2010, *Geophysical Research Letters*, 43, 1364–1372, <https://doi.org/10.1002/2015GL067124>, 2016.
- 620 Kipling, Z., Stier, P., Johnson, C. E., Mann, G. W., Bellouin, N., Bauer, S. E., Bergman, T., Chin, M., Diehl, T., Ghan, S. J., Iversen, T., Kirkevåg, A., Kokkola, H., Liu, X., Luo, G., van Noije, T., Pringle, K. J., von Salzen, K., Schulz, M., Seland, Ø., Skeie, R. B., Takemura, T., Tsigaridis, K., and Zhang, K.: What controls the vertical distribution of aerosol? Relationships between process sensitivity in HadGEM3–UKCA and inter-model variation from AeroCom Phase II, *Atmospheric Chemistry and Physics*, 16, 2221–2241, <https://doi.org/10.5194/acp-16-2221-2016>, 2016.

- 625 Lee, S. S., Feingold, G., McComiskey, A., Yamaguchi, T., Koren, I., Martins, J. V., and Yu, H.: Effect of gradients in biomass burning aerosol on shallow cumulus convective circulations, *Journal of Geophysical Research: Atmospheres*, 119, 9948–9964, <https://doi.org/10.1002/2014JD021819>, 2014.
- Lee, S.-S. and Feingold, G.: Precipitating cloud-system response to aerosol perturbations, *Geophysical Research Letters*, 37, <https://doi.org/10.1029/2010GL045596>, 2010.
- 630 Leung, G. R. and van den Heever, S. C.: Controls on the Development and Circulation of Terminal versus Transient Congestus Clouds and Implications for Midlevel Aerosol Transport, *Journal of the Atmospheric Sciences*, 79, 3083–3101, <https://doi.org/10.1175/JAS-D-21-0314.1>, 2022.
- Li, R. L., Studholme, J. H. P., Fedorov, A. V., and Storelvmo, T.: Precipitation efficiency constraint on climate change, *Nat. Clim. Chang.*, 12, 642–648, <https://doi.org/10.1038/s41558-022-01400-x>, 2022.
- 635 Li, X., Tao, W.-K., Masunaga, H., Gu, G., and Zeng, X.: Aerosol Effects on Cumulus Congestus Population over the Tropical Pacific: A Cloud-Resolving Modeling Study, *Journal of the Meteorological Society of Japan*, 91, 817–833, <https://doi.org/10.2151/jmsj.2013-607>, 2013.
- Lutsko, N., Sherwood, S. C., and Zhao, M.: Precipitation Efficiency and Climate Sensitivity (Invited Chapter for the AGU Geophysical Monograph Series “Clouds and Climate”), *Climatology (Global Change)*, 640 <https://doi.org/10.1002/essoar.10507822.1>, 2021.
- Marinescu, P. J., van den Heever, S. C., Heikenfeld, M., Barrett, A. I., Barthlott, C., Hoose, C., Fan, J., Fridlind, A. M., Matsui, T., Miltenberger, A. K., Stier, P., Vie, B., White, B. A., and Zhang, Y.: Impacts of Varying Concentrations of Cloud Condensation Nuclei on Deep Convective Cloud Updrafts—A Multimodel Assessment, *Journal of the Atmospheric Sciences*, 78, 1147–1172, <https://doi.org/10.1175/JAS-D-20-0200.1>, 2021.
- 645 Matsui, T., Zhang, S. Q., Lang, S. E., Tao, W.-K., Ichoku, C., and Peters-Lidard, C. D.: Impact of radiation frequency, precipitation radiative forcing, and radiation column aggregation on convection-permitting West African monsoon simulations, *Clim Dyn*, 55, 193–213, <https://doi.org/10.1007/s00382-018-4187-2>, 2020.
- May, P. T., Bringi, V. N., and Thurai, M.: Do We Observe Aerosol Impacts on DSDs in Strongly Forced Tropical Thunderstorms?, *Journal of the Atmospheric Sciences*, 68, 1902–1910, <https://doi.org/10.1175/2011JAS3617.1>, 2011.
- 650 McCormick, R. A. and Ludwig, J. H.: Climate Modification by Atmospheric Aerosols, *Science*, 156, 1358–1359, <https://doi.org/10.1126/science.156.3780.1358>, 1967.
- Meyers, M. P., Walko, R. L., Harrington, J. Y., and Cotton, W. R.: New RAMS cloud microphysics parameterization. Part II: The two-moment scheme, *Atmospheric Research*, 45, 3–39, [https://doi.org/10.1016/S0169-8095\(97\)00018-5](https://doi.org/10.1016/S0169-8095(97)00018-5), 1997.
- 655 Park, J. M. and van den Heever, S. C.: Weakening of tropical sea breeze convective systems through interactions of aerosol, radiation, and soil moisture, *Atmospheric Chemistry and Physics*, 22, 10527–10549, <https://doi.org/10.5194/acp-22-10527-2022>, 2022.
- Pielke, R. A., Cotton, W. R., Walko, R. L., Tremback, C. J., Lyons, W. A., Grasso, L. D., Nicholls, M. E., Moran, M. D., Wesley, D. A., Lee, T. J., and Copeland, J. H.: A comprehensive meteorological modeling system—RAMS, *Meteorol. Atmos. Phys.*, 49, 69–91, <https://doi.org/10.1007/BF01025401>, 1992.
- 660 Posselt, D. J., van den Heever, S. C., and Stephens, G. L.: Trimodal cloudiness and tropical stable layers in simulations of radiative convective equilibrium, *Geophysical Research Letters*, 35, <https://doi.org/10.1029/2007GL033029>, 2008.

- Radke, L. F., Hobbs, P. V., and Eltgroth, M. W.: Scavenging of Aerosol Particles by Precipitation, *Journal of Applied Meteorology* (1962-1982), 19, 715–722, 1980.
- 665 Reutter, P., Su, H., Trentmann, J., Simmel, M., Rose, D., Gunthe, S. S., Wernli, H., Andreae, M. O., and Poschl, U.: Aerosol- and updraft-limited regimes of cloud droplet formation: influence of particle number, size and hygroscopicity on the activation of cloud condensation nuclei (CCN), *Atmos. Chem. Phys.*, 14, 2009.
- 670 Saleeby, S. M. and Cotton, W. R.: A Large-Droplet Mode and Prognostic Number Concentration of Cloud Droplets in the Colorado State University Regional Atmospheric Modeling System (RAMS). Part I: Module Descriptions and Supercell Test Simulations, *Journal of Applied Meteorology and Climatology*, 43, 182–195, [https://doi.org/10.1175/1520-0450\(2004\)043<0182:ALMAPN>2.0.CO;2](https://doi.org/10.1175/1520-0450(2004)043<0182:ALMAPN>2.0.CO;2), 2004.
- Saleeby, S. M. and van den Heever, S. C.: Developments in the CSU-RAMS Aerosol Model: Emissions, Nucleation, Regeneration, Deposition, and Radiation, *Journal of Applied Meteorology and Climatology*, 52, 2601–2622, <https://doi.org/10.1175/JAMC-D-12-0312.1>, 2013.
- 675 Saleeby, S. M., Herbener, S. R., Heever, S. C. van den, and L'Ecuyer, T.: Impacts of Cloud Droplet–Nucleating Aerosols on Shallow Tropical Convection, *Journal of Atmospheric Sciences*, 72, 1369–1385, <https://doi.org/10.1175/JAS-D-14-0153.1>, 2015.
- Samset, B. H. and Myhre, G.: Vertical dependence of black carbon, sulphate and biomass burning aerosol radiative forcing, *Geophysical Research Letters*, 38, <https://doi.org/10.1029/2011GL049697>, 2011.
- 680 Savre, J.: Formation and maintenance of subsiding shells around non-precipitating and precipitating cumulus clouds, *Quarterly Journal of the Royal Meteorological Society*, 147, 728–745, <https://doi.org/10.1002/qj.3942>, 2021.
- Sheffield, A. M., Saleeby, S. M., and van den Heever, S. C.: Aerosol-induced mechanisms for cumulus congestus growth, *Journal of Geophysical Research: Atmospheres*, 120, 8941–8952, <https://doi.org/10.1002/2015JD023743>, 2015.
- Smalley, K. M. and Rapp, A. D.: The Role of Cloud Size and Environmental Moisture in Shallow Cumulus Precipitation, *Journal of Applied Meteorology and Climatology*, 59, 535–550, <https://doi.org/10.1175/JAMC-D-19-0145.1>, 2020.
- 685 Sokolowsky, G. A., Freeman, S. W., and van den Heever, S. C.: Sensitivities of Maritime Tropical Trimodal Convection to Aerosols and Boundary Layer Static Stability, *Journal of the Atmospheric Sciences*, 79, 2549–2570, <https://doi.org/10.1175/JAS-D-21-0260.1>, 2022.
- Spill, G., Stier, P., Field, P. R., and Dagan, G.: Effects of aerosol in simulations of realistic shallow cumulus cloud fields in a large domain, *Atmos. Chem. Phys.*, 19, 13507–13517, <https://doi.org/10.5194/acp-19-13507-2019>, 2019.
- 690 Storer, R. L. and Heever, S. C. van den: Microphysical Processes Evident in Aerosol Forcing of Tropical Deep Convective Clouds, *Journal of the Atmospheric Sciences*, 70, 430–446, <https://doi.org/10.1175/JAS-D-12-076.1>, 2013.
- Tao, W.-K., Chen, J.-P., Li, Z., Wang, C., and Zhang, C.: Impact of aerosols on convective clouds and precipitation, *Reviews of Geophysics*, 50, <https://doi.org/10.1029/2011RG000369>, 2012.
- 695 Twohy, C. H., Anderson, B. E., Ferrare, R. A., Sauter, K. E., L'Ecuyer, T. S., van den Heever, S. C., Heymsfield, A. J., Ismail, S., and Diskin, G. S.: Saharan dust, convective lofting, aerosol enhancement zones, and potential impacts on ice nucleation in the tropical upper troposphere, *Journal of Geophysical Research: Atmospheres*, 122, 8833–8851, <https://doi.org/10.1002/2017JD026933>, 2017.

Twomey, S.: The Influence of Pollution on the Shortwave Albedo of Clouds, *Journal of the Atmospheric Sciences*, 34, 1149–1152, [https://doi.org/10.1175/1520-0469\(1977\)034<1149:TlOPOT>2.0.CO;2](https://doi.org/10.1175/1520-0469(1977)034<1149:TlOPOT>2.0.CO;2), 1977.

700 Wang, Y., Xia, W., Liu, X., Xie, S., Lin, W., Tang, Q., Ma, H.-Y., Jiang, Y., Wang, B., and Zhang, G. J.: Disproportionate control on aerosol burden by light rain, *Nat. Geosci.*, 14, 72–76, <https://doi.org/10.1038/s41561-020-00675-z>, 2021a.

Wang, Y., Xia, W., and Zhang, G. J.: What rainfall rates are most important to wet removal of different aerosol types?, *Atmos. Chem. Phys.*, 21, 16797–16816, <https://doi.org/10.5194/acp-21-16797-2021>, 2021b.

705 Williams, A. I. L., Stier, P., Dagan, G., and Watson-Parris, D.: Strong control of effective radiative forcing by the spatial pattern of absorbing aerosol, *Nat. Clim. Chang.*, 12, 735–742, <https://doi.org/10.1038/s41558-022-01415-4>, 2022.

Xue, H., Feingold, G., and Stevens, B.: Aerosol Effects on Clouds, Precipitation, and the Organization of Shallow Cumulus Convection, *Journal of the Atmospheric Sciences*, 65, 392–406, <https://doi.org/10.1175/2007JAS2428.1>, 2008.

710

715

720