

# Evaluation of total ozone measurements from Geostationary Environmental Monitoring Satellite (GEMS)

Kanghyun Baek<sup>1</sup>, Jae Hwan Kim<sup>2</sup>, Juseon Bak<sup>3</sup>, David P. Haffner<sup>4</sup>, Mina Kang<sup>5</sup>, Hyunkee Hong<sup>6</sup>

<sup>1</sup> Department of Atmospheric Science, Pusan National University, Busan, Republic of Korea

5 <sup>2</sup> Institute of Environmental Studies, Pusan National University, Busan, Republic of Korea

<sup>3</sup> NASA Goddard Space Flight Center, Greenbelt, MD 20771, USA

<sup>4</sup> Department of Atmospheric Science and Engineering, Ewha Woman's University, Seoul, Republic of Korea.

<sup>5</sup> National Institute of Environmental Research, Incheon, Republic of Korea.

10 *Correspondence to:* Jae Hwan Kim (jaekim@pusan.ac.kr)

**Abstract.** ~~As all life on earth depends crucially on atmospheric ozone, low earth orbiting (LEO) satellites have been used to monitor atmospheric ozone to reduce its impact on the environment and public health.~~ The continued interest in air pollution and stratospheric ozone variability has motivated the development of a geostationary environmental monitoring satellite (GEMS) for hourly ozone monitoring. This paper provides the atmospheric science community with the world's first assessment of GEMS total column ozone (TCO) retrieval performance and diurnal ozone variation. The algorithm used for GEMS is a more advanced version of its predecessor, the TOMS-V8 ~~algorithm. In addition to calculating total ozone, the algorithm has the advantage of providing ozone profile and retrieval error information, that incorporates several improvements, including a new look-up table, a simple Lambert equivalent reflectivity model, and a spectral dependence correction. The GEMS algorithm also uses the optimal estimation method (OEM) to make error analysis more accessible and robust. The~~ estimated retrieval errors range from 1.5 to 2 DU in September and 2 DU in December, with a constant DFS of 1 in September and a variable DFS of 1.25 to 1.4 in December throughout the day, depending on SZA. To assess the performance of the GEMS algorithm, the hourly GEMS total ozone was compared with ground-based measurements from ~~four~~ Pandora instruments and other satellite platforms from TROPOMI and OMPS. ~~AGEMS has a high correlation of 0.91 or more with GEMS97 and small RMSE values compared to Pandora TCO at Seoul, Busan, and Yokosuka but a low correlation of 0.83 at Ulsan, which is significantly smaller than at other sites. Root-mean-squared error (RMSE) showed satisfactory small values, with the lowest RMSE of 2.06 DU. Positive mean biases (MBs) were observed at all sites. This agreement suggests Seoul. It is notable that the despite exhibiting seasonal dependence in the mean bias of GEMS hourly with Pandora, GEMS is capable of observing daily variations in ozone monitoring allows for continuous updates about stratospheric ozone and its related atmospheric changes. The quantitative that are highly consistent with Pandora measurements, with a bias of approximately 1%. The comparison of~~ GEMS TCO data with TROPOMI and OMPS TCO data shows a high correlation ~~coefficient greater than 0.98 and a low RMSE of less than 1.8 DU over clear sky conditions. GEMS TCO underestimates by -0.14% (0.4 DU) with a standard deviation of 2.0% relative of 0.99 and low RMSE compared to TROPOMI and overestimates by +0.1% (0.3 DU) OMPS TCO~~

data, but has a negative bias of -2.38% and -2.17% with a standard deviation deviations of 2.3% relative 1.33% and 1.57%, respectively. Similar to OMPS. It shows that, the influence of SO<sub>2</sub> from volcanic eruptions is not properly removed in some regions, leading to GEMS overestimating TCO agrees very well in those areas. The mean biases of GEMS TCO data with the TROPOMI and OMPS TCO are within  $\pm 1\%$  at low latitudes but become negative at mid-latitudes with an increasingly negative dependence on latitude. Furthermore, this dependence becomes more prominent from summer to winter. The empirical correction applied to the GEMS irradiance data improves the dependence of mean bias on season and latitude, but a consistent bias still remains, and a marginal positive trend was observed in December. Therefore, further investigation into correction methods is needed. The results are a meaningful scientific advance by providing the first validated, hourly UV ozone retrievals from a satellite in geostationary orbit. This experience can be used to advance research with future geostationary environmental satellite missions, including incoming TEMPO and Sentinel-4.

## 1 Introduction

Stratospheric ozone is responsible for absorbing the sun ultraviolet (UV) radiation, protecting the Earth's surface from harmful UV rays. Ozone in the troposphere is a toxic air pollutant that affects human health via harmful respiratory and cardiovascular effects, and negatively affects vegetation growth (Crutzen, 1979; Jacob et al., 1999). Global ozone monitoring is therefore essential for both public health and environmental protection to provide valuable information about the state of the atmosphere and identify areas where public action is needed to reduce impacts on human health and the environment (Engel et al., 2018; Scientific Assessment of Ozone Depletion, 2014). Satellite remote sensing is a powerful tool for monitoring atmospheric ozone with high spatial and temporal coverage of global observations (Fishman et al., 2008; Fishman and Larsen, 1987). Global ozone monitoring by Total Ozone Monitoring Spectrometer (TOMS) aboard the Nimbus-7 satellite in 1978 was the first mission dedicated to creating detailed maps of atmospheric ozone from space (Bhartia et al., 1996). Since then, the Global Ozone Monitoring Experiment (GOME) (ESA 1995), SCanning Imaging Absorption spectroMeter for Atmospheric CHartographY (SCIAMACHY) (Bovensmann et al., 1999), Ozone Monitoring Instrument (OMI) (Levelt et al., 2006), Ozone Mapping and Profiler Suite Nadir Mapper (OMPS) (Flynn et al., 2014), and TROPospheric Monitoring Instrument (TROPOMI) (Veefkind et al., 2012), which all built on the success of TOMS, have provided a continuous and consistent mapping of atmospheric ozone.

The continued interest in air pollution and stratospheric ozone variability has motivated the development of new satellite missions with improved capabilities for hourly monitoring of atmospheric composition. The geostationary Air Quality (Geo-AQ) constellation missions such as Geostationary Environmental Monitoring Satellite (GEMS), Sentinel-4, and Tropospheric Emissions: Monitoring of Pollution (TEMPO) were designed to provide high-quality measurements of atmospheric composition throughout the day from geostationary orbit (Ingmann et al., 2012; Zoogman et al., 2017; Kim et al., 2020). These new missions will provide more accurate and timely information about air quality and stratospheric ozone for supporting air

서식 지정함: 글꼴 색: 자동

65 quality forecasts and policy making. The Geo-Kompsat-2B satellite carrying the GEMS sensor was the first mission of the  
Geo-AQ constellation, which was launched on 18 February 2020 (Kim et al., 2020). GEMS is a UV-visible spectrometer that  
measures direct solar irradiance and radiance backscattered from the Earth's surface and atmosphere covering the Asia-Pacific  
region (Kim et al., 2020).

70 Since GEMS is the first Geo-AQ mission, it is necessary to introduce the algorithm process and new data products to provide  
information for users. Here we focus on the GEMS total ozone (O3T) algorithm for retrieving total column ozone (TCO) from  
GEMS Level-1B (L1B) radiance spectra, and validation of these data using ground-based Pandora TCO measurements, and  
other satellite TCO measurements from OMPS and TROPOMI. The GEMS-O3T algorithm has several improvements over  
previous algorithms, such as the use of a new look-up table (LUT), simple Lambert equivalent reflectivity (LER) model, and  
75 correction for spectral dependence of LER, and the use of GEMS Level-2 (L2) Cloud product. The algorithm is now flexible  
enough to handle additional wavelengths and more readily employ different sources of a priori profile information without  
significant changes to the design of the algorithm. The GEMS-O3T algorithm also uses the optimal estimation method (OEM)  
to make error analysis more accessible and robust.

This paper consists of five Sections: Section 2 describes the GEMS instrument and Level-1B data; Section 3 explains the  
differences and advantages of the GEMS algorithm from its predecessor, the TOMS algorithm; Section 4 discusses the results  
80 of retrieval characteristics and error analysis; Section 5 presents the validation results of the new TCO product with respect to  
ground-based Pandora TCO measurements and other satellite TCO measurements from OMPS and TROPOMI; Section 6  
discusses the impact of the new algorithm on global TCO observations, and is followed by a conclusion in Section 7.

## 2. Data and Method

### 2.1 The GEMS Mission

85 GEMS is a UV-visible spectrometer developed for Korea's next-generation geostationary multi-purpose satellite program,  
which consists of two satellites, Geo-Kompsat-2A (GK-2A) and Geo-Kompsat-2B (GK-2B). They are collocated at 128.2 E  
over the equator. The GK-2A satellite is equipped with an Advanced Meteorological Imager (AMI) to provide high-resolution  
images of the Earth's surface and atmosphere for weather forecasting, while GK-2B has two payloads: one with the GEMS  
sensor to monitor the atmospheric composition and air quality, and another with Geostationary Ocean Color Imager (GOCI)-  
90 II to monitor ocean color.

GEMS is designed to use the same optical path for direct solar radiation and radiance backscattered from the Earth's surface  
and atmosphere. Using the same optical path for solar irradiance and radiance backscattered from Earth has several benefits.  
First, it minimizes calibration uncertainty in algorithms using the ratio of radiance to solar irradiance because sensor errors  
common to the radiance and irradiance measurements cancel. The measured light passes through the same calibration assembly  
95 and scan mirror, telescope, spectrometer, and detectors, which minimizes the possibility of inconsistency between

서식 지정함: 글꼴 색: 자동

measurements. However, a diffuser is used for solar irradiance measurements, and is located in front of the scan mirror, and introduces a source of calibration error that does not cancel in the radiance to irradiance ratio. The magnitude of this error is difficult to quantify and requires both in-flight calibration measurements and theoretical calculations. We will discuss the impact of this error on retrieval and how to correct it in Section 4.

서식 지정함: 글꼴 색: 자동

100 GEMS measures Earth radiance in the 300-500 nm wavelength range with a high spectral sampling of 0.2 nm and spectral resolution of 0.6 nm. The spatial resolution of the instrument is 3.5 km × 7 km over Seoul, and the overall field of regard (FOR) is from 5° S to 45° N latitude and between 75° E to 145° E, longitude every hour from 09:00 to 17:00 Korea Standard Time (KST). Solar irradiance is measured over the same wavelength range once per day in the nighttime darkness. The incident light from the telescope is dispersed onto a single two-dimensional charge-coupled device (CCD), which has 1033 spectral pixels and 2048 pixels in the spatial dimension. A two-axis mirror scans from east to west with a fixed north-south field of view, during 30-minute observation periods which collect measurements across the entire FOR

서식 지정함: 글꼴 색: 자동

서식 지정함: 글꼴 색: 자동

서식 지정함: 글꼴 색: 자동

서식 지정함: 글꼴 색: 자동

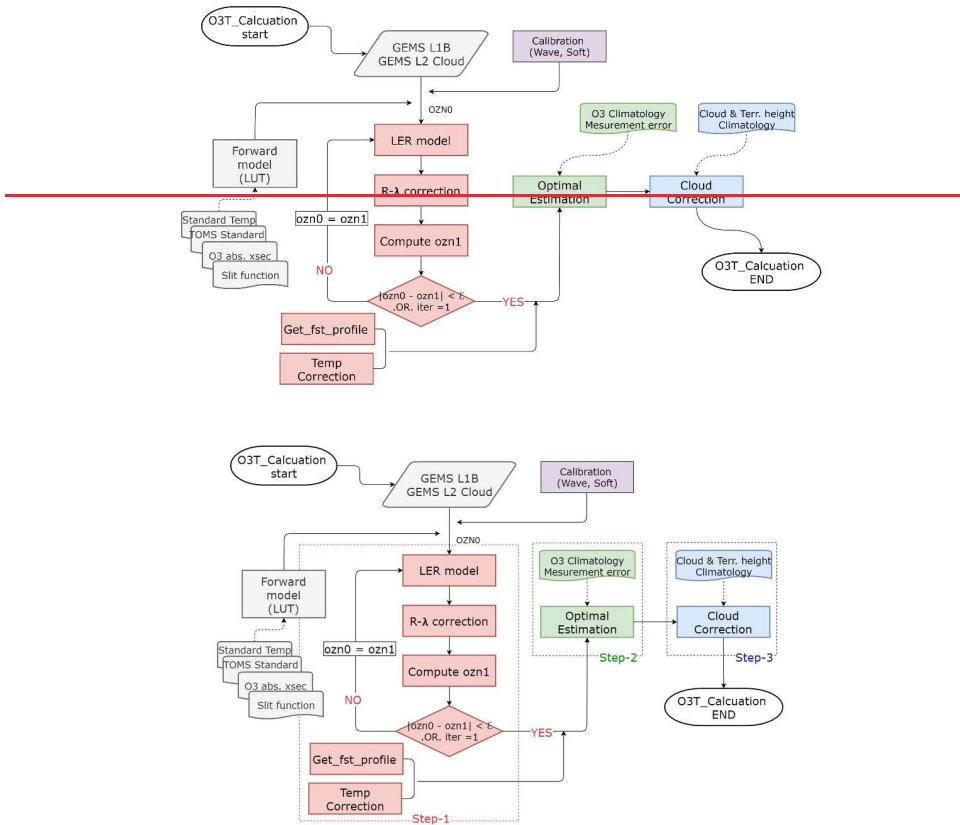
서식 지정함: 글꼴 색: 자동

서식 지정함: 글꼴 색: 자동

## 2.2 The GEMS algorithm

A major objective of this study was to obtain total ozone data from geostationary orbit for the first time using the UV spectrum. The GEMS-O3T algorithm was developed based on the well-researched NASA TOMS algorithm, which is the oldest and most proven method of satellite total ozone retrieval algorithms developed by Dave and Mateer (1967). Since several others have documented earlier versions of the TOMS algorithm over a half-century of development (Bhartia and Haffner, 2012; Bhartia, 2002; Dave and Mateer, 1967; Haffner et al., 2015; Haffner et al., 2022; Klenk et al., 1982; Mcpeters et al., 1996)(Bhartia and Haffner, 2012; Bhartia and Wellemeyer 2002; Dave and Mateer, 1967; Haffner et al., 2015; Haffner et al., 2022; Klenk et al., 1982; Mcpeters et al., 1996), the important goals of using the TOMS algorithm for GEMS is to obtain the most stable and reliable total ozone output. Because the TOMS algorithm was only applied to total ozone retrievals from a sun-synchronous orbiting satellite, we conducted a series of studies to improve the total ozone data quality with the GEMS-O3T algorithm. The flowchart represents the total ozone retrieval process from the improved GEMS-O3T algorithm in Figure 1. The algorithm consists of two main components: a forward model that calculates the top of atmosphere (TOA) radiance and an inverse model that derives total ozone from the measured radiance.

120



**Figure 1. Flowchart of GEMS total ozone-O3T retrieval algorithm, consisting of a forward model for TOA radiance calculation and an inverse model for total ozone derivation. Step 1-3 are highlighted with pink, green, and blue color, respectively.**

### 2.2.1 Forward model

The radiance in the six wavelengths (312.5, 317.34, 331.02, 340, and 380 nm) observed from the satellite as reflected by the atmosphere and a reflecting surface is calculated by the VLIDORT radiative transfer model (RTM) (Spurr, 2008). We used a

pre-calculated lookup table since it is very time-consuming to perform the VLIDORT calculations online. The pre-calculated radiances are obtained at different solar zenith angles, satellite viewing angles, and reflecting surface conditions (land/ocean, clouds, and aerosols) for 21 ozone profiles that vary with latitude band and total ozone amount (Wellemeyer et al., 1997). The surface underlying satellite viewing geometry is assumed to have the simple Lambert equivalent reflectivity (SLER) which treats surfaces, clouds, and aerosols as Lambertian reflectors at surface pressure (Ahmad, 2004). VLIDORT calculates radiances taking into account polarized Rayleigh scattering and the gas absorption (e.g., O<sub>3</sub> and O<sub>4</sub>) with temperature-dependent gaseous absorption cross sections. This study used the BDM ozone absorption cross section (Daumont et al., 1992; Brion et al., 1993; Malicet et al., 1995) and TOMS standard ozone profiles (Wellemeyer et al., 1997). VLIDORT is also used when calculating the look-up-table (LUT) for Jacobians, which are needed to perform the retrieval using optimal estimation. We used a single US standard temperature profile to optimize the table size for radiances and Jacobians. Calculated radiances are then adjusted using a zonal mean temperature climatology via a temperature correction in the algorithm.

The top-of-atmosphere radiance at the five wavelengths (312.5, 317.34, 331.02, 340, and 380 nm) is calculated by the VLIDORT radiative transfer model (RTM) (Spurr, 2008). We used a pre-calculated radiance lookup table since performing the VLIDORT calculations online is time-consuming for an operational algorithm. The pre-calculated radiances are obtained at different solar zenith angles, satellite viewing angles, and reflecting surface conditions (land/ocean, clouds, and aerosols) for TOMS standard ozone profiles that vary with latitude band and total ozone amount (Bhartia and Wellemeyer, 2002; Wellemeyer et al., 1997). Due to the limited observational range of GEMS, which covers only low and mid-latitude regions, we employed a reduced set of 11 ozone profiles out of the 21 TOMS standard profiles in our radiance calculations. The surface underlying the atmosphere is assumed to have the Lambert equivalent reflectivity (LER) which treats surfaces, clouds, and aerosols as Lambertian reflectors at surface pressure (Ahmad, 2004). Our VLIDORT radiance calculations consider polarized Rayleigh scattering and the O<sub>3</sub> absorption with temperature-dependent gaseous absorption cross-sections. This study used the BDM ozone absorption cross-section (Daumont et al., 1992; Brion et al., 1993; Malicet et al., 1995). VLIDORT is also used when calculating the look-up-table (LUTs) for Jacobians, which are needed to perform the retrieval using optimal estimation. We used a single US standard temperature profile to optimize the table size for radiances and Jacobians. Calculated radiances are then adjusted using a zonal mean temperature climatology via a temperature correction in the algorithm. Supplementary sections provide an elaborate account of the radiance lookup tables (LUTs) used in the GEMS-O3T algorithm, as well as an evaluation of the errors that arise during LUTs interpolation.

### 2.2.2 Inverse Model

An inverse model in the GEMS-O3T algorithm is a mathematical tool that helps to convert the measured radiance into geophysical parameters, such as total ozone and ozone profile. The model proceeds in three steps. In Step 1, the reflectivity is derived at 380 nm, then corrected by the method suggested by Dave (1978), followed by the first guess estimate of ozone with 317.34 nm, and finally, residuals and jacobians are calculated. Step 2 is a straightforward implementation of an optimal

estimation method to estimate the ozone profiles using inputs derived in Step 1 and a set of radiances (312, 317, and 331 nm) and *a priori* ozone profiles and their covariance matrix. This process, which is not present in the TOMS-V8 algorithm, is the core of the GEMS-O3T algorithm because it provides the error amount for retrieved total ozone and the degree of freedom that shows the independent vertical information of the ozone profile. The correction for clouds and terrain height is made in the final process of Step 3.

Step 1 process starts with the computation of reflectivity using the measured BUUV radiance at 380 nm based on the simple Lambert Equivalent reflectivity (SLER) model. The initial assumptions are that the spectral dependence of reflectivity ( $R$ ) is zero (i.e.,  $dR/d\lambda = 0$ ). However, this assumption can no longer be valid in the presence of absorbing aerosol, sea glint, and clouds ( $dR/d\lambda \neq 0$ ). The algorithm accounts for radiative effects of aerosols and surface reflectance by using the calculated spectral slope of  $dR/d\lambda$  obtained from reflectivity at 340 nm and 380 nm with negligible ozone absorption cross-sections in Eq. equation (1).

$$R = R_{380} + \frac{dR}{d\lambda} (\lambda_{317} - \lambda_{380}) \quad (1)$$

This calculation updates the estimated reflectivity ( $R$ ) derived after each iteration proposed by Dave (1978). However, in the presence of high amounts of UV-absorbing aerosols,  $dR/d\lambda$  cannot be linear and results in a significant error in the derived reflectivity. This data is flagged during the quality control process. The dependence of the backscattered radiance on ozone is approximately exponential. A quantity called the N-value is defined to reduce the dynamic range of the total ozone dependence (Klenk et al., 1982). The N-value is defined as:

$$N = -100 \log_{10} \frac{I}{F} \quad (2)$$

where  $F$  is the extraterrestrial solar irradiance. The amount of total ozone is determined when the measured N-value ( $N_m$ ) at 317 nm is equal to the calculated one ( $N_c$ ) with the total ozone amount corresponding to the TOMS standard ozone profile at a given satellite viewing geometry, solar zenith angle, surface reflectivity, and surface pressure (Bhartia and Wellemeyer 2002).

The interpolation entails using three to ten ozone profiles, each with a different range of total ozone amounts for latitude. Therefore, the ozone profile shape corresponding to the retrieved total ozone is obtained by this process.

The OEM approach proposed by Roger (2000) is applied in step 2 to retrieve a coarse ozone profile, estimated from a set of radiances at three wavelengths with different amounts of ozone absorption (312.34, 317.35, and 331.06 nm) using *a priori* profiles and their error covariance matrices. The use of optimal estimation allows smooth transition between the use of the different wavelengths, and thereby eliminates the discontinuities associated with TOMS ozone distribution that occurs when the solar angle is large. Optimal estimation also provides information about total ozone retrieval error, degree of freedom, averaging kernel and column weighting kernel (CWK,  $w_i$ ).

$$\hat{x} = x_a + S_a K^T (K S_a K^T + S_e)^{-1} [(N_m - N_1) + K(x_1 - x_a)];$$

서식 지정함: 글꼴 색: 자동

서식 지정함: 글꼴 색: 자동

서식 지정함: 글꼴: 기울임꼴 없음, 글꼴 색: 자동

서식 지정함: 글꼴 색: 자동

서식 지정함: 글꼴 색: 자동, 강조 없음

서식 지정함: 글꼴: 기울임꼴 없음, 글꼴 색: 자동, 강조 없음

서식 지정함: 글꼴 색: 자동, 강조 없음

서식 지정함: 글꼴 색: 자동

서식 지정함: 글꼴: +본문(Times New Roman), 글꼴 색: 자동

서식 지정함: 글꼴 색: 자동

서식 지정함: 글꼴: 기울임꼴

서식 지정함: 글꼴 색: 자동

서식 지정함: 글꼴 색: 자동

서식 지정함: 글꼴 색: 자동

서식 지정함: 글꼴 색: 자동

서식 지정함: 글꼴 색: 자동

서식 지정함: 무늬: 지우기 (사용자 지정 색(RGB(248,249,250)))

$$\begin{aligned}
195 \quad \mathbf{G} &= \mathbf{S}_a \mathbf{K}^T (\mathbf{K} \mathbf{S}_a \mathbf{K}^T + \mathbf{S}_e)^{-1}; \\
\mathbf{A} &= \mathbf{G} \mathbf{K}; \\
\hat{\mathbf{S}} &= \mathbf{S}_a - \mathbf{S}_a \mathbf{K}^T (\mathbf{K} \mathbf{S}_a \mathbf{K}^T + \mathbf{S}_e)^{-1} \mathbf{K} \mathbf{S}_a
\end{aligned}
\tag{3}$$

where  $\hat{\mathbf{x}}$  is the optimized ozone profile consisting of 11 Umkehr layers. The pressure at the bottom of these layers decreases  
 200 by a factor of 2 starting from the mean sea-level pressure (1013.25 hPa) to 0.99 hPa. The top layer goes from 0.99 hPa to  
 infinity.  $\mathbf{x}_1$  is the ozone profile retrieved in Step 1. The  $\mathbf{x}_a$  is the a-priori ozone profile obtained from ML climatological  
 profiles (McPeters and Labow, 2012) consisting of 12-month and 18 latitudinal bands with 10-degree intervals from 90° S to  
 90° N. The  $\mathbf{S}_a$  is a-priori error covariance matrix (11 × 11 covariance matrix) derived from the ML climatological profile,  
 where correlation is limited to one layer from the diagonal entry.  $\mathbf{N}_m$  is the measurement radiance vector consisting of three  
 205 elements from 312, 317, and 331 nm, and  $\mathbf{N}_1$  is the N-value calculated from  $\mathbf{x}_1$ .  $\mathbf{S}_e$  is the measurement error covariance matrix,  
 and is assumed to be a diagonal matrix where the elements are the squares of the assumed measurement errors. We assume the  
 measurement error of 0.12 % according to GEMS SNR corresponding to 320 nm is 720.  $\mathbf{K}$  is the Jacobian matrix, defined as  
 $dN_j/dx_i$  for each layer  $i$  and wavelength  $j$ , representing partial derivatives of the forward model to the ozone. The gain matrix,  
 $\mathbf{G}$ , measures how sensitive the retrieved profile is to measurement errors, and the averaging kernel matrix,  $\mathbf{A}$ , provides the  
 210 sensitivity of the retrieval to a change in true ozone profile and a vertical resolution of the retrieved profile. The covariance  
 matrix  $\hat{\mathbf{S}}$  measures the degree of error in the retrieved ozone profile. It contains the measurement and smoothing errors  
 propagated through the  $\mathbf{G}$  and  $\mathbf{A}$  matrices, respectively. The optimal estimation technique also offers crucial parameters for  
 error analysis, including the degrees of freedom for signal (DFS), retrieved column's estimated error, and column weighting  
 functions (CWFs). The supplement section furnishes a comprehensive elucidation of these variables.

215 The total ozone obtained from Step 2 assumes that the reflecting surface is at sea level. If the surface is at a different elevation  
 or a cloud is present, we must account for that in the total ozone calculation. After adjusting the column-weighting kernel  
 (CWFs) ( $w$ ) for the profile used, the final Step 3 total ozone is calculated by subtracting the amount of ozone corresponding to the  
 difference between the topography (or cloud) height and the ground surface from the Step 2 total ozone. Since the ozone  
 column below the cloud pressure ( $p_c$ ) is relatively small, we use a relatively simple method to correct it. If reflectivity ( $R$ ) from  
 220 380 nm is less than 0.05 ( $R_s$ ) or snow or ice is present, no cloud is assumed. If  $R$  is greater than 0.4 ( $R_c$ ), we assume the entire  
 pixel is covered with clouds. For  $R_s < R < R_c$ , the pixel was assumed to be partial cloud cover, and the cloud fraction was  
 determined by equation (4) as follows:

$$f_c = (R - R_s) / (R_c - R_s). \tag{4}$$

225 We assume that this fraction ( $f_c$ ) is approximately the fraction of the measured radiance signal reflected by clouds within  
 the instrument field-of-view. We first estimate the ozone between the cloud and terrain pressure in each layer  $l$ , and then set  
 the ( $w$ ) in layers below  $p_c$  to zero in equation (5)

서식 지정함: 영어(미국)

서식 지정함: 글꼴 색: 자동

서식 지정함: 글꼴 색: 자동

서식 지정함: 글꼴 색: 자동

서식 지정함: 글꼴 색: 자동

서식 지정함: 글꼴 색: 자동

서식 지정함: 글꼴 색: 자동

서식 지정함: 글꼴 색: 자동

서식 지정함: 글꼴 색: 자동

서식 지정함: 글꼴 색: 자동

서식 지정함: 글꼴 색: 자동

서식 지정함: 글꼴 색: 자동

서식 지정함: 글꼴 색: 자동

서식 지정함: 글꼴 색: 자동

서식 지정함: 글꼴 색: 자동

서식 지정함: 글꼴: +본문(Times New Roman), 글꼴 색: 자동

서식 지정함: 글꼴 색: 자동

서식 지정함: 글꼴 색: 자동

서식 지정함: 글꼴 색: 자동

서식 지정함: 글꼴: 기울임꼴

서식 지정함: 글꼴 색: 자동



$$\begin{aligned} \mathbf{x}_l^* &= \hat{\mathbf{x}}_l(1 - f_c) + \mathbf{x}_{a,l}f_c, \\ \mathbf{w}_l^* &= \mathbf{w}_l(1 - f_c), \end{aligned} \quad (5)$$

230

where  $\hat{\mathbf{x}}_l$  and  $\mathbf{x}_{a,l}$  are the ozone amount in layer  $l$  of the profile obtained from step 2 and from a priori profile respectively. Then, the correction to the total column is obtained by

$$\delta\Omega = \sum_{l=0}^{l_{pc}} \mathbf{x}_l^* (1 - \mathbf{w}_l^*) - \hat{\mathbf{x}}_l (1 - \mathbf{w}_l^*). \quad (6)$$

### 235 2.3 Correlative Satellite Measurements

OMPS was launched in October 2011 on the Suomi National Polar-orbiting Partnership (SNPP) satellite and includes both nadir- and limb-viewing modules. OMPS NM total ozone data (OMPS NMTO3) were used in this study. The OMPS NM is a hyperspectral imaging push-broom sensor with a  $110^\circ$  cross-track field of view (FOV), and 35 cross-track positions. OMPS NM has a  $50 \times 50 \text{ km}^2$  spatial resolution at the nadir and measures solar backscattered ultraviolet radiation in the spectral range from 300 to 380 nm. The OMPS total ozone algorithm is based on the NASA version 8 total ozone algorithm (Bhartia and Wellemeyer, 2002). In our study operational OMPS-NM Level 2 (L2) version 2.1 were used. As validated in McPeters et al. (2019), the maturity of this product is high with biases of less than 0.2 % when compared to ground-based measurements in the Northern Hemisphere.

TROPOMI was launched in October 2017 on the Sentinel-5 Precursor (S5P) satellite. TROPOMI aboard S5P is a nadir viewing spectrometer that provides measurements in the ultraviolet, visible, near-infrared, and shortwave infrared spectral bands. TROPOMI has a swath width of 2600 km (roughly  $104^\circ$  wide) with a ground pixel resolution of  $3.5 \text{ km} \times 7 \text{ km}$  (Veeffkind et al., 2012). S5P/TROPOMI offline (OFFL) total ozone column products were used in this study which are obtained using the GODFIT version 4 retrieval (Lerot et al., 2020). The algorithm directly compares with simulated radiances through nonlinear least-squares inversion using the sun-normalized measured radiance from 325 to 335 nm. The calculated radiances and Jacobians are obtained with the RTM LIDORT (Spurr et al., 2008). A validation for S5P/TROPOMI OFFL TOC with global ground-based measurements from April to November 2018 was found to be well within acceptable limits, with mean biases (MB) ranging from 0% to 1.5% and standard deviations between 2.5% and 4.5% for monthly mean co-locations (Garane et al., 2019).

### 255 2.4 Correlative Ground-based Measurements

The Pandora TCO retrieval algorithm utilizes a modified version of the Differential Optical Absorption Spectroscopy (DOAS) technique to determine the concentration of atmospheric constituents. In the case of TCO, the DOAS method compares direct solar spectra measured by the Pandora spectrometer to an independent extraterrestrial reference spectrum, which represents the expected solar spectrum in the absence of atmospheric absorption. Through spectral analysis of the measured and reference

spectra within the 305 to 328.6 nm wavelength range, the Pandora algorithm retrieves TCO values using a spectral fitting approach, wherein fitting parameters are optimized to minimize the difference between the measured and modeled spectra. Additionally, the Pandora algorithm accounts for the effects of Rayleigh scattering and atmospheric absorption species such as NO<sub>2</sub> and O<sub>3</sub>. Technical details about the retrieval algorithm and configuration settings are available in the software manual (Cede et al., 2021). The TCO used in this study was processed and retrieved by using Blick software Suite (version 1.7).

서식 지정함: 글꼴: +본문(Times New Roman)

### 3. Results and Discussion

서식 지정함: 글꼴 색: 자동

#### 3.1 GEMS hourly total ozone distribution

The GEMS sensor onboard a geostationary satellite has the advantage of measuring ozone over current Low Earth Orbiting (LEO) satellite sensors because it provides hourly observations throughout the data, which helps to improve our understanding of ozone. GEMS V2.0 total ozone products are used in our analysis. To assess the performance of the GEMS total ozone algorithm, the hourly GEMS total ozone on 29 March 2021 is shown in Figure 2. This figure shows the eight hourly GEMS total ozone measurements from 09 Korea Standard Time (KST) to 16 KST. Because GEMS measures backscattered UV radiation when the solar zenith angle is not large, daytime hourly observation time and area vary depending on the season (NIER, 2020). Figure 2(a) shows the hemisphere east (HE) mode at 9:00 KST, Figure 2(b) shows the hemisphere Korea (HK) mode at 10:00-11:00 KST, Figure 3(c)-(d) shows the full central (FC) mode at 11:00-12:00 KST, and Figure 2(e)-(h) shows the full west (FW) mode at 13:00-16:00 KST. The GEMS observation usually takes 30 minutes, running from 15-minutes before the hour to 15-minute after the hour.

서식 지정함: 글꼴 색: 자동

서식 지정함: 글꼴 색: 자동

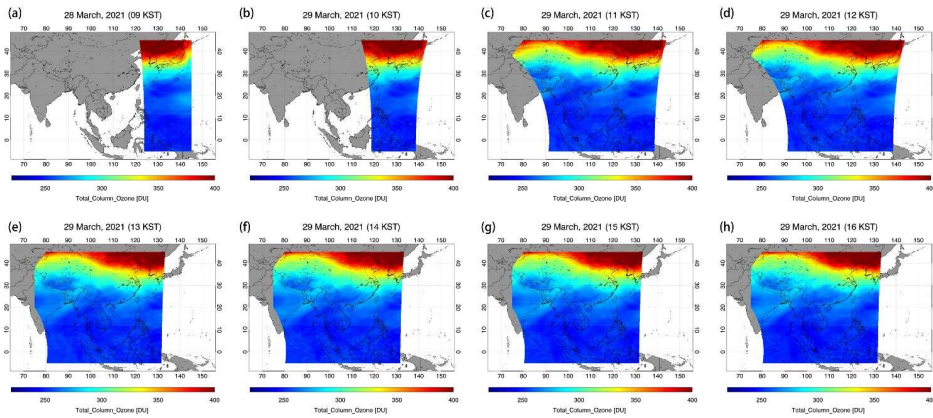
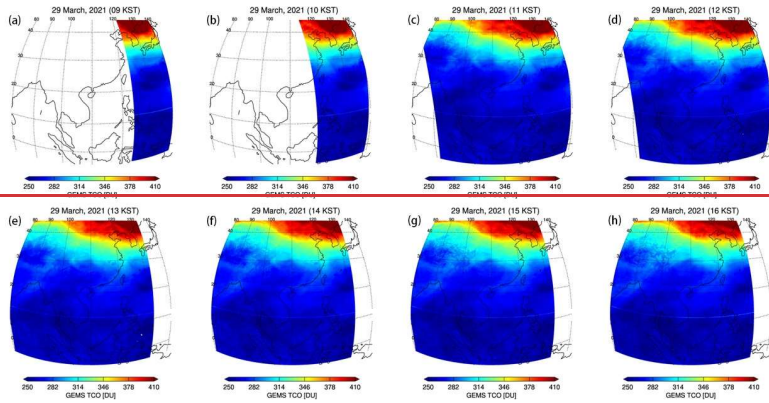


Figure 2. Hourly GEMS total ozone distribution on 29 March 2021.

280

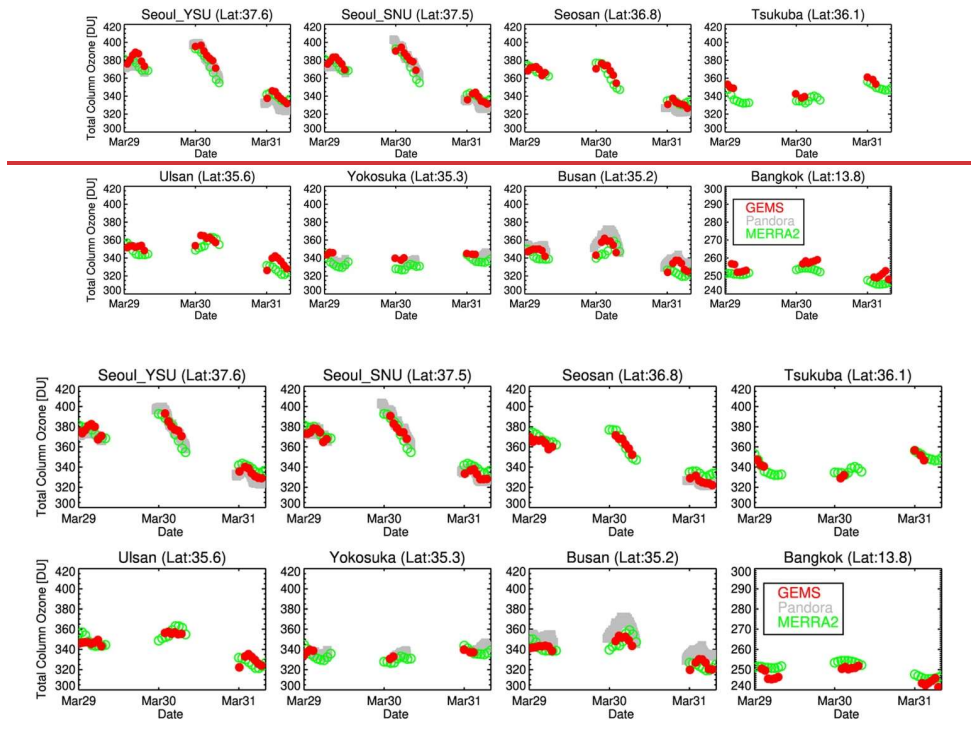
The total ozone distribution ranging from 250 to 400 DU shows a typical distribution in March: High values at high latitudes, followed by a sharp decrease in the middle latitudes and gradually decreasing toward the equator. Because the scale bar is so large, changes in hourly values are not clearly seen. This The GEMS hourly ozone monitoring allows for system provides continuous updates about on stratospheric ozone and its related associated atmospheric changes. It can also provide information about how the situation may develop in predict future hours developments in the ozone state.

285

- 서식 지정함: 글꼴 색: 자동
- 서식 지정함: 글꼴 색: 자동, 무늬: 지우기
- 서식 지정함: 글꼴 색: 자동, 무늬: 지우기
- 서식 지정함: 글꼴 색: 자동, 무늬: 지우기
- 서식 지정함: 글꼴 색: 자동, 무늬: 지우기
- 서식 지정함: 글꼴 색: 자동, 무늬: 지우기
- 서식 지정함: 글꼴 색: 자동

Figure 3 compares the hourly GEMS TCO with Pandora TCO observed over eight ground sites and satellite TCO for three consecutive days from 29 to 31 March 2021. The hourly total ozone distribution in Figure 3 showed significant diurnal ozone changes of up to 40 DU. This indicates that the ozone undergoes significant diurnal change primarily due to changes in stratospheric ozone, and is evidence of why hourly ozone monitoring is important to track dynamic ozone changes. Pandora TCO varies considerably over time, and the diurnal variation of GEMS is in good agreement with that of Pandora. The GEMS data for diurnal ozone change offers advantages over TROPOMI (blue) and OMPS (green) ozone data, which are observed once per day.

서식 지정함: 글꼴 색: 자동



295 **Figure 3.** Comparison of GEMS TCO with Pandora, TROPOMI, and OMPS TCO from 29 to 31 March 2021 over eight Pandora sites.

### 3.2 Validation of GEMS total-ozone: Total Ozone Measurements with Pandora

Satellite measurements are subject to instrument measurement errors and retrieval errors from ill-posed problems. Therefore, validation is essential for scrutinizing satellite retrieval accuracy and providing confidence in the final results. The GEMS total ozone data was validated by comparing it with ground-based Pandora and other satellite measurements from OMPS and TROPOMI. For accurate validation, we used GEMS TCO between August and December 2020, a stable initial operation period with accurate Image Navigation and Registration (INR) information. The available Pandora observations during this period were over Busan, Ulsan, Seoul, and Yokosuka. Table 1 presents detailed Pandora site information. Since GEMS switches to Full West mode at 13 KST in November and December, there is no GEMS measurement at Yokosuka in Japan from this time, so we used only data before this time for validation. GEMS takes 30 minutes to complete an observation over the FOR, whereas Pandora collects each measurement in 2 minutes several times per day. For temporal coincidence, we used the average of Pandora observation data before and after 15 minutes of the local GEMS observation. For spatial coincidence, we used the closest GEMS data to the Pandora site. To exclude Pandora data contaminated by clouds and aerosols, we used data with the normalized root-mean-square (RMS) of weighted spectral fitting residuals less than 0.05 % and the estimated error in TCO less than 2 DU as suggested by (Tzortziou et al., 2012). We take GEMS data with a solar zenith angle of less than 75-deg. to avoid GEMS errors that may occur due to the high solar zenith angle of GEMS data.

Table 1 Pandora observation sites over the GEMS comparison domain.

Site name	Longitude	Latitude	Period
Busan, Korea	129.1	35.2	2020/08/01 ~ 2020/12/28
Ulsan, Korea	129.2	35.6	2020/080108/01 ~ 2020/110411/04
Seoul, Korea	127.0	37.5	2020/081808/18 ~ 2020/12/31
Yokosuka, Japan	139.7	35.3	2020/10/29 ~ 2020/12/31

Figure 4 represents the comparison of GEMS, TROPOMI, and OMPS with Pandora TCO at the sites. The comparison between GEMS and Pandora was performed at 0345 and 0445 UTC, which correspond to the overpass time of TROPOMI/OMPS, in order to exclude potential errors that vary throughout the day and were not taken into account in this comparison. Figure 4(a) shows a high correlation of 0.9497 or more with GEMS and Pandora TCO at Seoul, Busan, and Yokosuka, but a low correlation of 0.8390 at Ulsan, which is significantly smaller than at other sites. RMSE showed satisfactory small values, with the lowest RMSE of 2.061.3 DU. Positive mean biases (MBs) As mentioned earlier, because GEMS operates

서식 지정함: 글꼴: +본문(Times New Roman)

서식 지정함: 글꼴 색: 자동

서식 지정함: 글꼴 색: 자동

서식 지정함: 글꼴 색: 자동

서식 지정함: 글꼴 색: 자동

서식 지정함: 글꼴 색: 자동, 무늬: 지우기

서식 지정함: 글꼴 색: 자동, 무늬: 지우기

서식 지정함: 글꼴 색: 자동

서식 지정함: 무늬: 지우기 (사용자 지정 색(RGB(248,249,250)))

서식 있음: 들여쓰기: 첫 줄: 0.42 cm

서식 지정함: 글꼴 색: 자동

서식 지정함: 글꼴 색: 자동

서식 지정함: 글꼴 색: 자동

서식 지정함: 글꼴 색: 자동

서식 지정함: 글꼴 색: 자동

서식 지정함: 글꼴 색: 자동

in Full West mode starting at 13 KST during November and December, and there are no GEMS measurements at the overpass time of TROPOMI/OMPS in Yokosuka, Japan. Mean biases (MBs) ranging from -1.36 to 0.76% were observed at all sites, with the highest positive MBs occurring in August. The high correlation at Yokosuka appears due to the absence of data for August. However, the MBs showed a distinctly high value in August (summer) with 5.183.30% in Busan and 3.682.87% in Seoul, then decreased to 1.610.54% and -1.133.6% in December (winter), respectively. The MBs in Yokosuka show a slightly higher value in November and December than in October, which differs from the two stations. However, it does not seem appropriate to draw any conclusions by comparing GEMS with Yokosuka with 24 data for 5 months. Overall, it is important to note that the GEMS TCO decreases markedly mean biases (MBs) of GEMS-Pandora decrease significantly over time, decreasing from August to October before slightly increasing in December.

- 서식 지정함: 글꼴 색: 자동
- 서식 지정함: 글꼴 색: 자동
- 서식 지정함: 글꼴 색: 자동
- 서식 지정함: 글꼴 색: 자동
- 서식 지정함: 글꼴 색: 자동
- 서식 지정함: 글꼴 색: 자동, 영어(미국), 무늬: 지우기
- 서식 지정함: 글꼴 색: 자동, 영어(미국), 무늬: 지우기
- 서식 지정함: 글꼴 색: 자동, 영어(미국)

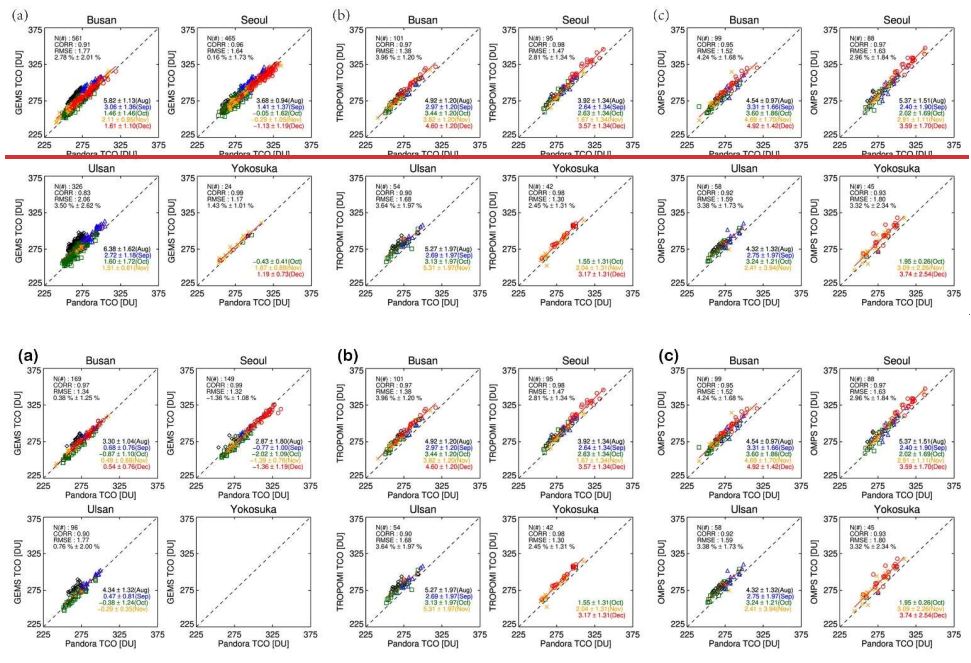


Figure 4. Scatter plots of Pandora TCO with (a) GEMS TCO, (b) TROPOMI TCO, and (c) OMPS TCO at Busan, Seoul, Ulsan, and Yokosuka. A linear fit representing a 1:1 ratio is shown in black dotted lines. The legends of N, CORR, RMSE and the number in percentage represent the number of data points, correlation coefficient, RMSE, and mean bias with standard deviation, respectively. The number on the bottom right is the percentage bias for each month. The comparison between GEMS and Pandora was conducted at the overpass time of TROPOMI/OMPS to eliminate potential errors that vary over the course of the day and were not included in this comparison. As mentioned earlier, because GEMS operates in Full West mode starting at 13 KST during November and December, and there are no GEMS measurements at the overpass time of TROPOMI/OMPS in Yokosuka, Japan.

340

Figures 4(b) and 4(c) show the comparison of Pandora with other satellite data, ~~OMPS and TROPOMI and OMPS~~. Their correlation is ~~higher than similar to~~ that of GEMS and Pandora. The correlation of ~~GEMS Pandora~~ with OMPS and TROPOMI is the lowest in Ulsan, 0.92 and 0.90, respectively. ~~The RMSE between Pandora and both satellites were less than 2 DU, as in GEMS. The difference in the overall MB between GEMS and TROPOMI is less than 1.2%, and that between GEMS and OMPS is less than 1.9% for the GEMS domain. Although GEMS and OMPS use the same BDM, the interesting point is that MB between these two and Pandora is as large as that of TROPOMI and Pandora. This large MB might seem to have a fundamental problem in GEMS measurement itself. We will discuss this problem in more detail at the end of this section. The RMSE between Pandora and both satellites were less than 2 DU, as in GEMS.~~

345

Although no monthly trend was observed as distinct as GEMS, the MB in TROPOMI and OMPS increased in August (summer) and December (winter). The reason for this is that, as ~~Herman et al., (2015)~~ showed, the satellite retrieval methods perform temperature correction for the temperature-sensitive ozone absorption coefficient, whereas Pandora uses a fixed-temperature ozone absorption coefficient. Therefore, comparisons of satellite and Pandora data may show seasonal dependence. However, the seasonal variability shown in the comparison of GEMS and Pandora differs from those between TROPOMI (OMPS) and Pandora in magnitude and seasonal dependence.

350

Figure 5 is a time series showing the percentage difference between ~~Pandora and three satellite observations. (GEMS, TROPOMI, and OMPS.) and Pandora~~. The overall mean bias for ~~TROPOMI-Pandora-TROPOMI and OMPS-Pandora-OMPS~~ is within 3.8 % for all stations, which is consistent with the previous studies (Herman et al., 2015). As for the mean standard deviation, TROPOMI has lower variability in comparison to OMPS. This could be due to the lower spatial resolution of OMPS at 50 km by 50 km compared to TROPOMI at 7.5km by 3.5 km. In the case of Ulsan, both comparisons of TROPOMI and OMPS with Pandora showed a low correlation (~0.90) and a high standard deviation (~1.8 %) compared to other stations. ~~Even mean biases appear to be dependent on time. For example, the MB of Pandora-TROPOMI in August is observed to be ~-6%, but the MB after September increases to -3%.~~ These comparison results suggest the Pandora measurement at Ulsan suffers from problems in the accuracy of total ozone measurement which may be due to some form of instrument error. Therefore, we have excluded the Pandora measurements at Ulsan from a reference dataset for further GEMS validation at this time. ~~The mean bias of GEMS with Pandora is 0.11% with a standard deviation of 2.17% for all stations, and the comparison with Pandora observations in the Yokosuka area shows a slightly lower bias of -2.96% than the comparison results in other areas. However, it is not appropriate to draw any conclusions by comparing GEMS with Yokosuka using only 24 data points over 5 months.~~

355

360

365

서식 지정함: 글꼴 색: 자동  
 서식 지정함: 글꼴 색: 자동  
 서식 지정함: 글꼴 색: 자동  
 서식 지정함: 글꼴 색: 자동  
 서식 지정함: 글꼴 색: 자동

서식 지정함: 글꼴 색: 자동, 무늬: 지무기 (사용자 지정 색(RGB(248,249,250)))  
 서식 지정함: 글꼴 색: 자동  
 서식 지정함: 글꼴 색: 자동  
 서식 지정함: 글꼴 색: 자동

서식 있음: 들여쓰기: 첫 줄: 0.5 글자  
 서식 지정함: 글꼴 색: 자동  
 서식 지정함: 글꼴 색: 자동  
 서식 지정함: 글꼴 색: 자동

서식 지정함: 영(미국)

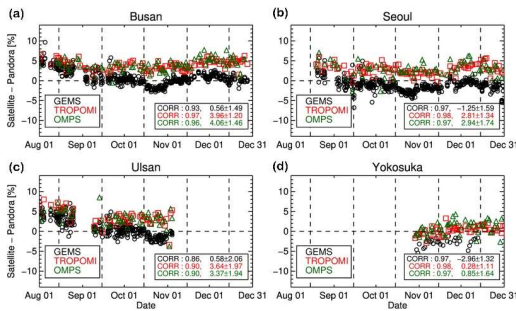
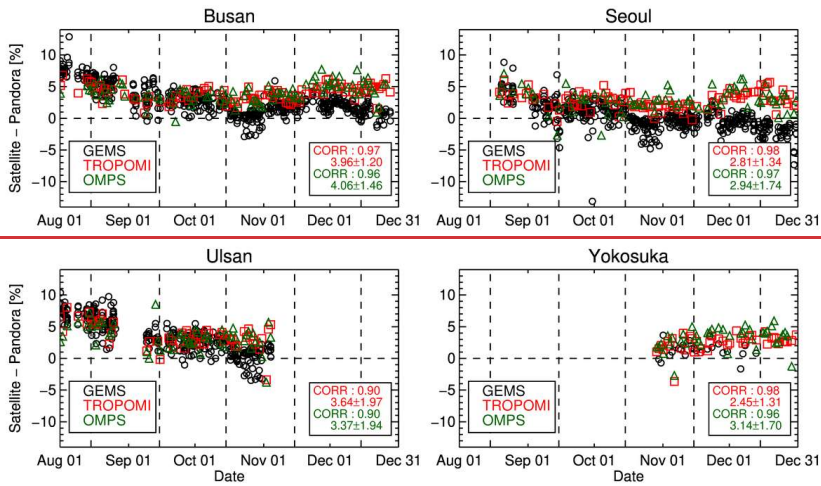


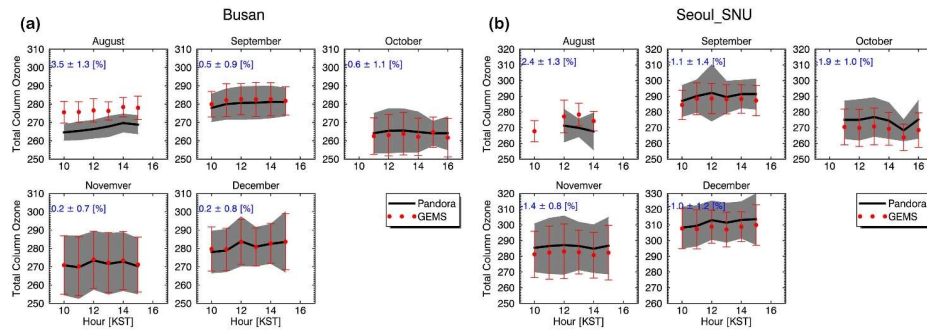
Figure 5. Time series of the daily percentage difference between Pandora and three satellite observations (with GEMS in black, TROPOMI in red and OMPS in green) at Busan, Seoul, Ulsan, and Yokosuka from August to December, 2020.

Figure 6 In Busan and Seoul, the mean bias (MBs) is highest in August, with 3.5% and 2.1%, respectively. The MBs then decreases from September to October before slightly increasing again in December. This seasonal pattern, although slightly overestimated in August, is similar to the MBs of TROPOMI and OMPS (Figure 4b, Figure 4c). GEMS overestimates by ~0.85% in Busan and underestimates by -1.25% in Seoul compared to Pandora over the entire analysis period. The significant bias observed in August does not appear to have a substantial impact on the average bias due to the reduced sample size

서식 지정함: 영미(미국)



380 resulting from cloud filtering. The comparison of the temporal distribution of GEMS and Pandora in Figure 6 shows that GEMS can observe ozone daily variations that are nearly identical to Pandora within a similar range of errors although GEMS has a bias of approximately 1% compared to Pandora.



385 **Figure 6.** Time variation of monthly mean values of GEMS (red filled circles) and Pandora (a black solid line) in Busan and Seoul covering the period from August to December. The standard deviation of Pandora TCO is represented by the gray shading, while the standard deviation of GEMS TCO is indicated by the bars.

### 3.3 Validation of GEMS total ozone with other satellites

390 **Figure 7** shows the spatial distribution of TCO from GEMS, TROPOMI, and OMPS in the GEMS domain on 30 November 2020. This figure shows that the spatial distribution of TCO observed from the three satellites is in good agreement. It shows a typical ozone distribution pattern that increases from low to high latitudes.

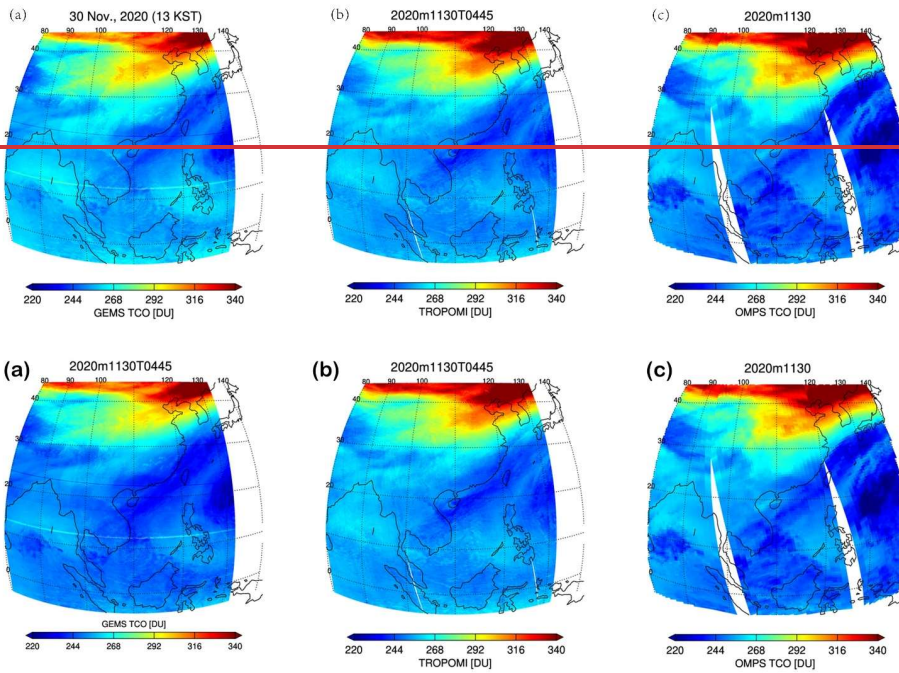


Figure 7. Maps of Total Column Ozone from (a) GEMS, (b) TROPOMI, and (c) OMPS on 30 November 2020.

395 The distribution of wave patterns at high latitudes appears to be caused by atmospheric dynamics associated with meteorological phenomena. The horizontal striping in GEMS found around 10° and 20° latitudes is an error caused by the bad pixels of the GEMS detector. These bad pixels ~~caused the quality flagare expected to be removed properly in the future by using an improved bad pixel mask variable~~ in the GEMS level 1C data ~~to be not properly removed~~. Significantly lower ozone from OMPS is observed in the high reflectivity region associated with clouds shown in Figure 78. The strong anti-correlation between total ozone and cloud occurs due to the cloud height difference between actual and assumed by the OMPS algorithm because the OMPS algorithm determines the cloud height from cloud climatology (Joiner and Vasilkov, 2006). This difference in cloud height affects TCO retrieval as follows. The UV measurements over the cloudy scene can provide ozone information presented in the upper part of the cloud. Only the amount of ozone present in the upper part of the cloud can be retrieved from

400

the UV radiance measured by the satellite over the cloudy scene. The ozone produced in this case is column ozone from cloud height to the top of the atmosphere. Since ozone below the cloud cannot be observed, the final TCO is calculated by adding the climatological ozone corresponding to this value's lower part of the cloud height. As shown in Figure 8, the climatology cloud height is remarkably low in the region where actual clouds exist. Therefore, since a lower cloud height is applied, the amount of ozone added below the cloud is reduced, resulting in a smaller amount of OMPS TCO.

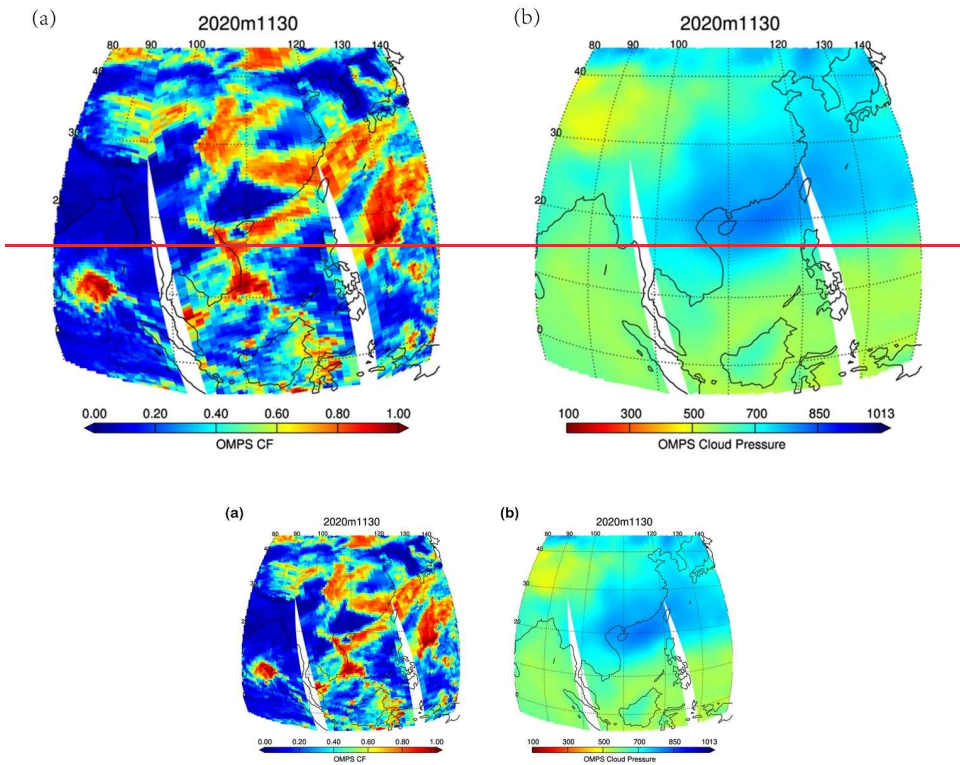


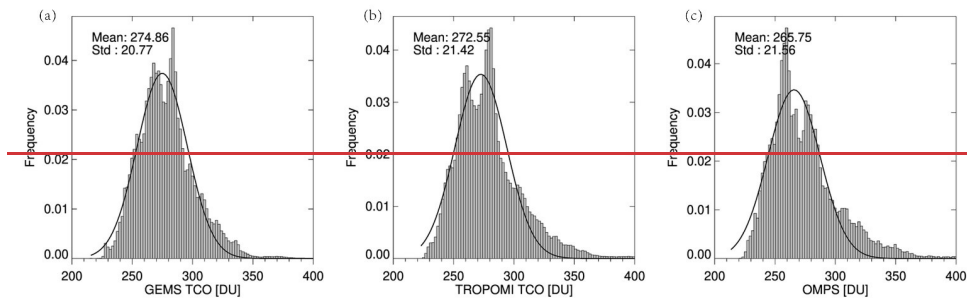
Figure 8 Maps of (a) cloud fraction (CF) and (b) cloud pressure climatology from OMPS on 30 November 2020.

The histogram analysis was performed to compare the data sets with different spatial and temporal resolutions over the GEMS domain from August to December 2020 (Figure 89). The histogram of all satellite data is similar to the normal distribution showing good agreement with each other. Especially, the distribution shape of GEMS with an average of

서식 지정함: 글꼴 색: 자동

274.9267.3 DU and TROPOMI with an average of 272.6 DU are very similar. However, the average of OMPS is smaller than the two-satellite data, and the peak is also tilted to a lower side than the average. This appears to be due to low ozone in cloudy pixels, as mentioned earlier.

서식 지정함: 글꼴 색: 자동



420

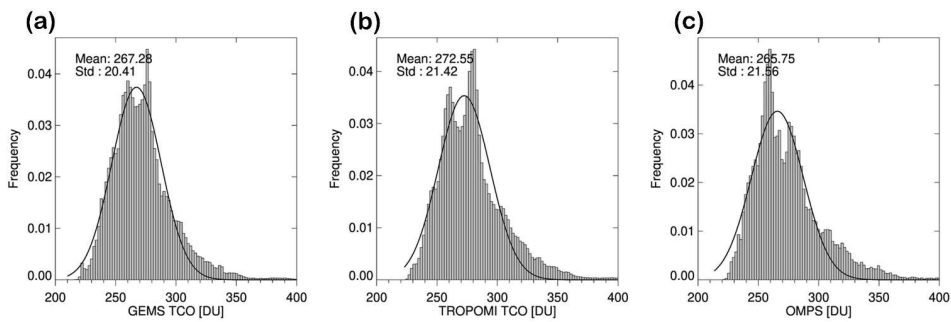


Figure 9. Histogram distribution of TCO from (a) GEMS, (b) TROPOMI, and (c) OMPS from August 01 to December 31, 2020, with their corresponding Gaussian fitting lines (black).

425 Since TROPOMI and OMPS have different observation times and fields of view relative to GEMS, it is necessary to match the spatial and temporal correspondence of the two data for quantitative comparison. For temporal consistency, the observation time difference between the polar orbit satellite and GEMS is less than 30 minutes. For spatial consistency, we selected the

closest points within 10 km of the observation point of the two satellites. In addition, to use good quality data for comparison, we used only data satisfying the quality control conditions presented in Table 2.

430

Table 2. Summary of validation data and methods

	TROPOMI	OMPS
Validation product	GEMS total column ozone	
Validation region	East Asia (75°E - 140°E, 5°S - 45°N)	
Validation period	2020.08.01 ~ 2020.12.31	
Quality control	<p><u>TROPOMI data used in this study must meet the following criteria:</u></p> <ul style="list-style-type: none"> <li>• <math>0 &lt; \text{TCO} &lt; 1008.52</math></li> <li>• <math>180\text{K} &lt; \text{To3} &lt; 260\text{K}</math></li> <li>• Ring scale factor <math>&lt; 0.15</math></li> <li>• <math>-0.5 &lt; \text{effective albedo} &lt; 1.5</math></li> <li>• <math>\text{CF} &lt; 0.2</math></li> </ul>	<p><u>Quality Flag OMPS data used: algorithm flag = 0, -CF or 1, cloud fraction &lt; 0.2</u></p> <p><u>Excluded data: cross-track position of positions between 1 and 35 is excluded.</u></p>
Quality control (GEMS product)	<ol style="list-style-type: none"> <li>1. cloud filtering (CF &lt; 0.2 from GEMS L2 CLOUD product)</li> <li>2. <u>Final Use GEMS products correspond to final algorithm flag is equal to 0 or 1.</u></li> <li>3. Exclude <u>GEMS products correspond to GEMS L1C bad pixel mask equal to 1.</u></li> </ol>	
Co-location method	Distance difference within 10 km. Time difference < 10 min	Distance difference within 25 km. Time difference < 30 min

서식 있음: 다단계 번호 매기기 + 수준:1 + 번호 스타일: 글머리 기호 + 맞춤 위치: 0.63 cm + 탭 간격: 1.27 cm + 들여쓰기 위치: 1.27 cm

서식 지정함: 영어(미국)

서식 지정함: 영어(미국)

Figure 910 shows the quantitative comparison of GEMS TCO data with TROPOMI and OMPS TCO data for five months. It shows a high correlation coefficient greater than 0.98 and a low RMSE of less than 1.8 DU over clear sky conditions. GEMS TCO underestimates by -0.14% (0.42 DU) with a standard deviation of 2% relative Compared to TROPOMI and overestimates by +0.OMPS, GEMS shows underestimation with a negative bias of -2.38% (6.5 DU) and a standard deviation of 1% (0.3,33%, and a negative bias of -2.17% (6 DU) withand a standard deviation of 2.3% relative to OMPS:1.57%, respectively. It shows that the GEMS TCO agrees very well with the TROPOMI and OMPS TCO. However, in the red circle in Figure 910(a), a distinctly high value for the GEMS TCO is observed compared to the TROPOMI TCO. The reason for this is that we did not remove the amount of SO<sub>2</sub> ejected by the volcanic eruption of Nishinoshima (27.247° N, 140.874° E) in Japan between August 1 and 5 from the GEMS TCO, which resulted in a high GEMS TCO. There will be a further discussion about this in Figure 4011. Figure 910(b) shows the correlation between GEMS and OMPS. The abnormal deviation shown in

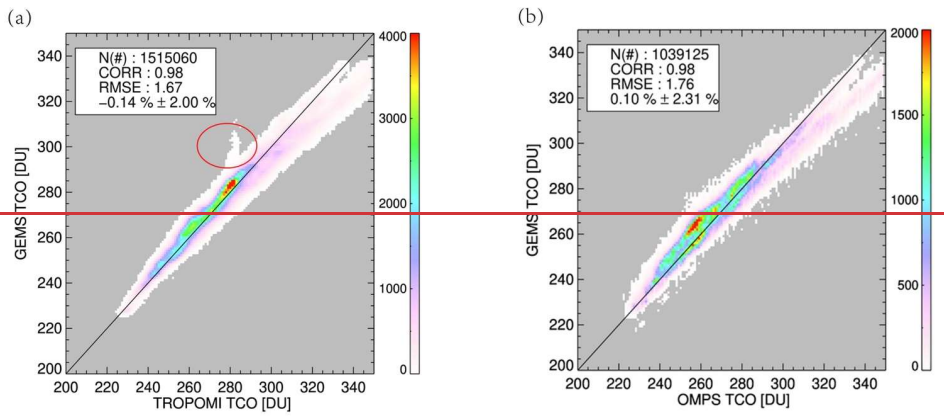
435

440

서식 지정함: 글꼴 색: 자동

Figure 910(a) was not observed. Probably, the SO<sub>2</sub> influence was not removed because OMPS and GEMS use a similar algorithm.

서식 지정함: 글꼴 색: 자동  
 서식 지정함: 글꼴 색: 자동, 무늬: 지우기



445

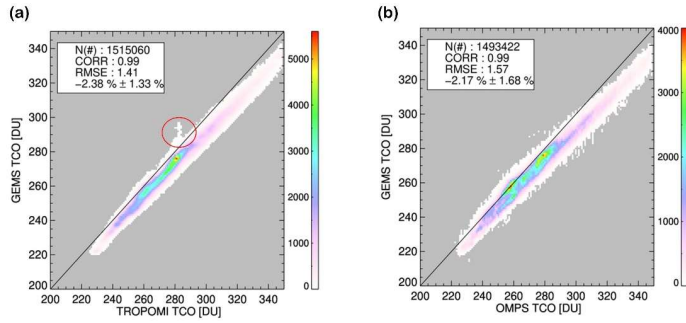
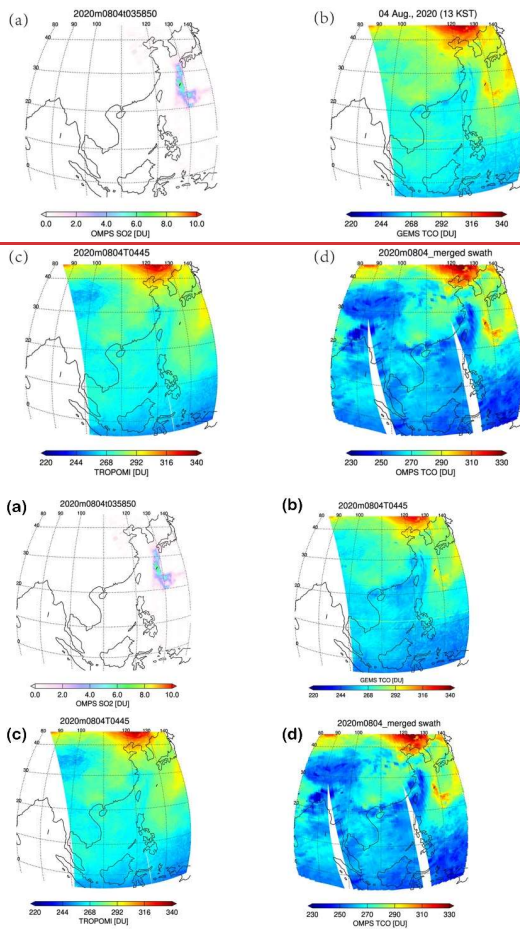


Figure 10. The comparison of GEMS TCO with (a) TROPOMI and (b) OMPS TCO from August 1 to December 31, 2020.

450

Figure 1011 shows the distribution of satellite TCO and SO<sub>2</sub> on 4 August 2020, the day after the volcanic eruption of NakashimaNishinoshima in Japan. GEMS and OMPS show high TCO in regions with high SO<sub>2</sub> over 6 DU, but no distinctly

high values from the TROPOM TCO are observed. At a wavelength of 317.5 nm, which TOMS-based GEMS and OMPS algorithms use for ozone measurement, SO<sub>2</sub> also has a strong absorption line. Therefore, if the SO<sub>2</sub> effect was not properly removed, TCO will be overestimated (Fisher et al., 2019; Krueger et al., 2008). However, since the TROPOMI direct-fitting algorithm derives the TCO using a 325-335 fitting window with a weak SO<sub>2</sub> absorption band, the SO<sub>2</sub> interference is negligible (Spurr et al., 2021).



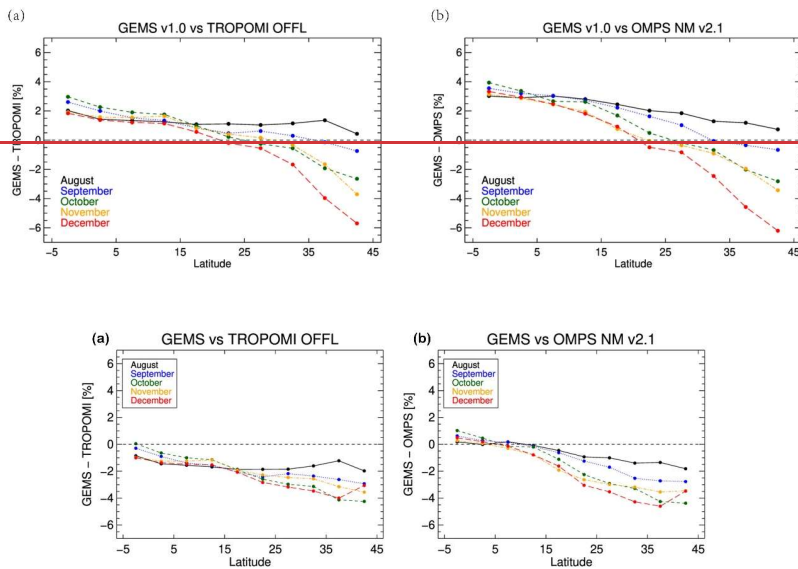
460 Figure 11. The map of (a) OMPS SO<sub>2</sub>, (b) GEMS TCO, (c) TROPOMI TCO, and (d) OMPS TCO in the case of the volcanic eruption of Nishinoshima on 4 August 2020.

Figure 11.2 shows the MBs between GEMS and TROPOMI, as well as between GEMS and OMPS with as a function of latitude for all months. The MBs of GEMS TCO and the TCO observed by OMPS and each month. GEMS, TROPOMI are small and positive and GEMS-OMPS exhibit mean biases (MBs) of less than 1% at low latitudes, but at mid-latitudes, the MB

- 서식 지정함: 무늬: 지우기
- 서식 지정함: 글꼴 색: 자동, 무늬: 지우기
- 서식 지정함: 글꼴 색: 자동, 무늬: 지우기
- 서식 지정함: 글꼴 색: 자동, 무늬: 지우기
- 서식 지정함: 글꼴 색: 자동, 무늬: 지우기
- 서식 지정함: 글꼴 색: 자동, 무늬: 지우기
- 서식 지정함: 글꼴 색: 자동



465 becomes both MBs become negative and tend to exhibit an increasingly negative dependence on latitude. In addition, to increase at higher latitudes. This is this dependence becomes stronger it progresses from August to December. The most dramatic significant change occurs at 40°N, where the MB mean bias changes from approximately 1.1% in August to -6.4% in December.



470 Figure 12. Mean Bias in TCO between GEMS and TROPOMI (left) and GEMS and OMPS as a function of Latitude and months from August 2020 to December 2020. GEMS retrievals with the algorithm flag equal to 0, or 1 and SZA and VZA <70°.

475 Kang et al. (2022) noticed a problem in GEMS Level 1C irradiance because the Bidirectional Transmittance Distribution Function (BTDF) of the GEMS diffuser changes depending on the sun illumination angle. They compared the daily GEMS irradiance to the solar reference spectrum, which was obtained from the convolution of the KNMI spectrum (Dobber et al., 2008) with the GEMS spectral response functions (SRF) (Kang et al., 2020). The GEMS irradiance was 20 % smaller than that of the reference spectrum and showed distinct spatial and seasonal variability. An empirical correction was applied to the BTDF to correct the GEMS irradiance by using the azimuthal angle and temporal variation of the GEMS instrument (Kang et al., 2022). Figure 11 shows we conducted an analysis on the GEMS TCO after calculating this correction to data calculated using the solar-corrected GEMS irradiance. The MB of GEMS TCO relative to OMPS and TROPOMI TCO are compared data, following the same analysis method as shown in Figure 12. Figure 12.13 shows that a significant reduction in MB was

- 서식 지정함: 글꼴 색: 자동
- 서식 지정함: 글꼴 색: 자동
- 서식 지정함: 글꼴 색: 자동, 무늬: 지우기
- 서식 지정함: 글꼴 색: 자동, 무늬: 지우기
- 서식 지정함: 글꼴 색: 자동, 무늬: 지우기
- 서식 지정함: 글꼴 색: 자동, 무늬: 지우기
- 서식 지정함: 글꼴 색: 자동, 무늬: 지우기
- 서식 지정함: 글꼴 색: 자동, 무늬: 지우기
- 서식 지정함: 글꼴 색: 자동, 영어(미국), 무늬: 지우기

- 서식 지정함: 글꼴 색: 자동
- 서식 지정함: 글꼴 색: 자동
- 서식 지정함: 글꼴 색: 자동
- 서식 지정함: 글꼴 색: 자동
- 서식 지정함: 글꼴 색: 자동
- 서식 지정함: 글꼴 색: 자동
- 서식 지정함: 글꼴: 바탕, 글꼴 색: 자동
- 서식 지정함: 글꼴 색: 자동
- 서식 지정함: 글꼴 색: 자동
- 서식 지정함: 글꼴 색: 자동
- 서식 지정함: 글꼴 색: 자동

clearly observed the MBs of TROPOMI and OMPS, which were 1% and 0% respectively, at low latitudes, to -3% and nearly reaches zero, -2%. The apparent decrease seen in mid-latitudes in Figure 11, 12 was also significantly reduced. However, the Although the overall negative bias compared to TROPOMI and OMPS remained consistent, the distinct negative trend has only decreased slightly: the -6% MB seen at 40°N in Figure 12 for different latitudes and seasons was improved. However, for December in Figure 12 has reduced the latitude range of 30°N to -4%. Judging from these differences, more study 45°N, there is a sudden positive bias trend increasing to -0.5%, which is not found for different months. Therefore, to improve the accuracy of the GEMS irradiance measurement to zone algorithm, more research is needed not only on bias correction but also on the performance is needed of GEMS irradiance measurements.

485

490

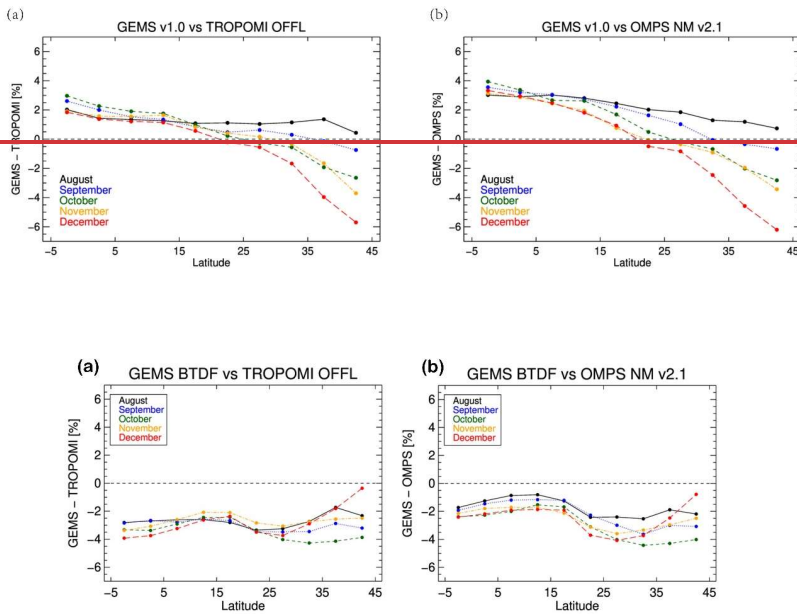


Figure 13. The Mean Bias (MB) in TCO between GEMS applied with BTDF correction and TROPOMI (on the left), and between GEMS with BTDF correction and OMPS (on the right), as a function of latitude and month from August 2020 to December 2020. GEMS retrieval with the algorithm flag equal to 0 or 1, both SZA and VZA < 70°.

495

- 서식 지정함: 글꼴 색: 자동
- 서식 지정함: 글꼴 색: 자동
- 서식 지정함: 글꼴 색: 자동
- 서식 지정함: 글꼴 색: 자동
- 서식 지정함: 글꼴: +본문(Times New Roman), 글꼴 색: 자동
- 서식 지정함: 글꼴: +본문(Times New Roman), 글꼴 색: 자동
- 서식 지정함: 글꼴: +본문(Times New Roman), 글꼴 색: 자동
- 서식 지정함: 글꼴: +본문(Times New Roman), 글꼴 색: 자동
- 서식 지정함: 글꼴: +본문(Times New Roman), 글꼴 색: 자동
- 서식 지정함: 글꼴: +본문(Times New Roman), 글꼴 색: 자동, 영어(미국)

#### 4. Conclusion

The launch of the first geostationary environmental satellite, GEMS, has marked an important milestone in providing hourly monitoring of stratospheric ozone and air pollution, which significantly impact humans and ecosystems. This paper provides the atmospheric science community with the world's first assessment of GEMS total ozone retrieval performance and diurnal ozone variation. The algorithm used for GEMS is a more advanced version of its predecessor, the TOMS-V8 algorithm. In addition to calculating total ozone, it has the advantage of providing ozone profile and retrieval error information.

To assess the performance of the GEMS algorithm, the hourly GEMS TCO was compared with the ground-based TCO measurements from Pandora that vary considerably through the day. The diurnal variation of GEMS total ozone captures this variability and shows good agreement with that of Pandora. This indicates that the ozone undergoes significant diurnal change, primarily due to changes in stratospheric ozone, and is evidence of why hourly ozone monitoring is important to track dynamic ozone changes.

For further validation of GEMS TCO, we performed cross-comparisons between GEMS, four Pandora TCO and other satellite sensors, OMPS and TROPOMI. The GEMS shows a high correlation between of 0.97 and low RMSE compared to Pandora and two satellite TCO datasets was slightly higher than at Busan and Seoul, and exhibits daily variations in ozone that are highly consistent with GEMS. All RMSE values were less than about 2 DU. All satellite TCO Pandora measurements were higher than Pandora. However, MB of GEMS showed a distinctly high value in August (summer) in Busan (5.2%) and in Seoul (3.7%), which then decreased to, with a bias of approximately 1.6% and -1.1% in December (winter), respectively. In contrast, no, despite exhibiting seasonal change was observed dependence, in the MB of OMPS and TROPOMI TCO with the mean bias of GEMS Pandora TCO.

The GEMS TCO agrees very well with the TROPOMI and OMPS TCO. A quantitative. The comparison of GEMS TCO data with TROPOMI and OMPS TCO data from August to December 2020 shows a high correlation ( $> 0.98$ ) and a low RMSE ( $\leftarrow$  shows a high correlation of 0.99 and low RMSE, but a negative bias of -2.38% and -2.17%, respectively, with standard deviations of 1.33% and 1.57%. The influence of SO<sub>2</sub> from volcanic eruptions is not properly removed in some regions, leading to GEMS overestimating TCO in those areas, similar to OMPS. The mean biases of GEMS TCO data with TROPOMI and OMPS TCO are less than 1.8 DU for clear sky conditions. GEMS TCO is 0.14% (0.42 DU) lower than TROPOMI with a standard deviation of 2% and 0.1% (0.3 DU) higher than OMPS, with a standard deviation of 2.3%. As MB with GEMS and Pandora showed a seasonal trend, MB with two satellites showed a latitudinal trend. The MBs of GEMS TCO and the TCO observed by the two satellites are small and positive% at low latitudes, but become negative at mid-latitudes, MB becomes negative and tends to be larger at higher latitudes. This decrease grows dramatically from August to December over which time the MB decreases to -6% in the extreme, at 40° N.

with an increasingly negative dependence on latitude. Furthermore, this dependence becomes more prominent from summer to winter. GEMS solar irradiance is 20% lower than the Dobber et al., (2008) reference spectrum, and shows distinct spatial and seasonal variability. An empirical correction factor applied to the GEMS removes the trend in irradiance data improved

서식 지정함: 글꼴 색: 자동

서식 지정함: 글꼴 색: 자동

서식 있음: 들여쓰기: 첫 줄: 0.5 글자

서식 지정함: 글꼴 색: 자동

서식 지정함: 글꼴 색: 자동

서식 지정함: 글꼴 색: 자동

서식 지정함: 글꼴 색: 자동

서식 지정함: 글꼴 색: 자동

서식 지정함: 글꼴 색: 자동

서식 지정함: 글꼴 색: 자동

서식 지정함: 글꼴 색: 자동

서식 지정함: 글꼴 색: 자동

서식 지정함: 글꼴 색: 자동

서식 지정함: 글꼴 색: 자동

서식 지정함: 글꼴 색: 자동

서식 지정함: 글꼴 색: 자동

서식 지정함: 글꼴 색: 자동

서식 지정함: 글꼴: +본문(Times New Roman), 무늬: 지우기 (사용자 지정 색(RGB(248,249,250)))

서식 지정함: 글꼴: +본문(Times New Roman), 무늬: 지우기 (사용자 지정 색(RGB(248,249,250)))

서식 지정함: 글꼴: +본문(Times New Roman), 글꼴 색: 자동, 무늬: 지우기 (사용자 지정 색(RGB(248,249,250)))

서식 지정함: 글꼴: +본문(Times New Roman), 글꼴 색: 자동, 무늬: 지우기 (사용자 지정 색(RGB(248,249,250)))

서식 지정함: 글꼴: +본문(Times New Roman), 글꼴 색: 자동, 무늬: 지우기 (사용자 지정 색(RGB(248,249,250)))

서식 있음: 들여쓰기: 첫 줄: 0 cm

서식 지정함: 글꼴 색: 자동

서식 지정함: 글꼴 색: 자동

서식 지정함: 글꼴 색: 자동

530 the ~~dependence of mean bias on season and latitude-direction of the irradiance measurement, but the seasonal tendency~~  
535 ~~consistent bias still remains. Judging from these differences, the calibration of the GEMS solar irradiance needs further work,~~  
~~and a marginal positive trend was observed in December.~~

Improvements in GEMS sensor characterization should improve the quality of GEMS total ozone retrieval. Nevertheless, the  
535 results presented in this work that have been achieved thus far are a meaningful scientific advance by providing the first  
validated, hourly UV ozone retrievals from a satellite in geostationary orbit. This experience can be used to advance research  
with future geostationary environmental satellite missions, including TEMPO and Sentinel-4 which are planned to launch in  
2023.

#### **Code availability.**

540 All input data including GEMS measurement and validation measurements related to this paper are available from the  
corresponding author on reasonable request (jaekim@pusan.ac.kr).

#### **Data availability.**

545 1) The GEMS total column ozone can be accessed by contacting the corresponding author (jaekim@pusan.ac.kr). TROPOMI  
total column ozone is available at <https://tropomi.gesdisc.eosdis.nasa.gov/> (Spurr GEMS data are available through the  
GEMS Users Data Hub (<https://nesc.nier.go.kr/product/>). Accessed: [last access: 5 February 2023]. The GEMS V2.0 data  
used in our study. At present, the NIER website (<https://nesc.nier.go.kr/product/>). only provides GEMS V2.0 data from  
November 2021 onwards. However, data production for the period prior to that is expected to be reproduced and made  
available soon. In the meantime, if you request GEMS V2.0 data for the period August 2020 to December 2020, we can  
provide it to you personally.

550 2) Copernicus Sentinel data processed by ESA, German Aerospace Center (DLR) (2020), Sentinel-5P TROPOMI Total  
Ozone Column 1-Orbit L2 5.5km x 3.5km, Greenbelt, MD, USA, Goddard Earth Sciences Data and Information Services  
Center (GES DISC), Accessed: [last access: 5 February 2023], 10.5270/S5P-ft13p57.

3) Richard McPeters (2017), OMPS-NPP NMTO3 L2 V2.1, Greenbelt, MD, USA, Goddard Earth Sciences Data and  
Information Services Center (GES DISC), Accessed [last access: 5 February 2023], doi: 10.5067/0WF4HAAZ0VHK.

555 4) Pandora data are available through the website <http://data.pandonia-global-network.org/>. Accessed [last access: 5 February  
2023].

~~et al., 2021). OMPS total column ozone is available at <https://snpp-omps.gesdisc.eosdis.nasa.gov/> (Flynn et al., 2014). Pandora  
data used in this investigation is available through the Pandonia online archive (<http://data.pandonia-global-network.org/>).~~

서식 지정함: 글꼴 색: 자동

서식 있음: 들여쓰기: 첫 줄: 0 글자

서식 지정함: 글꼴 색: 자동

서식 지정함: 글꼴 색: 자동

서식 지정함: 글꼴: +본문(Times New Roman)

### Author contributions

560 Jae Hwan Kim designed the research and managed this paper. Kanghyun Baek conducted the algorithm development and validation, and writing of the original draft. Juseon Bak contributed to the analysis of errors. David Haffner worked on the development of the GEMS algorithm. Mina Kang substantially contributed to the analysis of GEMS level-1 data. Hyunkee Hong curated a variety of data sources. All the co-authors provided comments and contributed to editing the manuscript and figures.

565

### Competing interests.

The contact author has declared that none of the authors has any competing interests.

### Special issue statement.

570 This article is part of the special issue “GEMS: first year in operation (AMT/ACP inter-journal SI)”. It is not associated with a conference.

### Acknowledgements.

575 We thank the NASA GSFC support staff and funding for establishing and maintaining the sites of the PGN used in this investigation. We acknowledge TROPOMI and OMPS science teams for making TROPOMI and OMPS Level 2 data publicly available. We also thank the reviewers and editors for their invaluable comments, which have improved the manuscript.

### Financial support.

580 This work was supported by the National Institute of Environmental Research (NIER) of Korea (NIER-2022-04-02-036) and the National Research Foundation of Korea (NRF) grant funded by the Korea government (MSIT) (No. NRF-2020R1C1C1014522).

### References

- Ahmad, Z.: Spectral properties of backscattered UV radiation in cloudy atmospheres. J. Geophys. Res. 109, D01201. <https://doi.org/10.1029/2003JD003395>, 2004.
- 585 Bhartia, P., Haffner, D.: Highlights of TOMS Version 9 Total Ozone Algorithm, in: Quadrennial Ozone Symposium. Toronto, Canada, 2012.
- Bhartia, P.K.: and C. Wellemeyer: OMI Algorithm Theoretical Basis Document, NASA-OMI, Washington, DC, ATBD-OMI-02, version 2.0, 2002.

서식 지정함: 글꼴 색: 자동

서식 있음: 제목 1

서식 지정함: 글꼴 색: 자동

서식 지정함: 글꼴: +본문(Times New Roman), 글꼴 색: 자동

서식 지정함: 글꼴: +본문(Times New Roman), 글꼴 색: 자동

서식 지정함: 글꼴 색: 자동

서식 지정함: 글꼴 색: 자동

서식 지정함: 글꼴 색: 자동

- Bhartia, P.K., McPeters, R.D., Mateer, C.L., Flynn, L.E., Wellemeyer, C.: Algorithm for the estimation of vertical ozone profiles from the backscattered ultraviolet technique. *J. Geophys. Res. Atmos.* 101, 18793–18806. <https://doi.org/10.1029/96JD01165>, 1996.
- 590 Bovensmann, H., Burrows, J.P., Buchwitz, M., Frerick, J., Noël, S., Rozanov, V. V., Chance, K. V., Goede, A.P.H.: SCIAMACHY: Mission Objectives and Measurement Modes. *J. Atmos. Sci.* 56, 127–150. [https://doi.org/10.1175/1520-0469\(1999\)056](https://doi.org/10.1175/1520-0469(1999)056), 1999.
- 595 Brion, J., Chakir, A., Daumont, D., Malicet, J., Parisse, C.: High-resolution laboratory absorption cross section of O<sub>3</sub>. Temperature effect. *Chem. Phys. Lett.* 213, 610–612. [https://doi.org/10.1016/0009-2614\(93\)89169-I](https://doi.org/10.1016/0009-2614(93)89169-I), 1993.
- [Cede, A., Huang, L.-K., McCauley, G., Herman, J., Blank, K., Kowalewski, M., et al \(2021\). Raw EPIC Data Calibration. Front. Remote Sens. doi:10.3389/frsen.2021.702275](https://doi.org/10.3389/frsen.2021.702275)
- 600 Crutzen, P.J.: THE ROLE OF NO AND N<sub>2</sub>O IN THE CHEMISTRY OF THE TROPOSPHERE AND STRATOSPHERE, *Ann. Rev. Earth Planet. Sci.*, 1979.
- Daumont, D., Brion, J., Charbonnier, J., Malicet, J.: Ozone UV Spectroscopy I: Absorption Cross-Sections at Room Temperature, 1992.
- Dave, J. V.: EFFECT OF AEROSOLS ON THE ESTIMATION OF TOTAL OZONE IN AN ATMOSPHERIC COLUMN FROM THE MEASUREMENTS OF ITS ULTRAVIOLET RADIANCE. *J. Atmos. Sci.* 35, 899–911. <https://doi.org/10.1175/1520-0469,1978>.
- 605 Dave, J. V., Mateer, C.L.: A Preliminary Study on the Possibility of Estimating Total Atmospheric Ozone from Satellite Measurements. *J. Atmos. Sci.* 24, 414–427. [https://doi.org/10.1175/1520-0469\(1967\),1967](https://doi.org/10.1175/1520-0469(1967),1967).
- Dobber, M., Voors, R., Dirksen, R., Kleipool, Q., Levelt, P.: The high-resolution solar reference spectrum between 250 and 550 nm and its application to measurements with the ozone monitoring instrument. *Sol. Phys.* 249, 281–291. <https://doi.org/10.1007/s11207-008-9187-7>, 2008.
- 610 Engel, A., Rigby, M., Burkholder, J.B., Fernandez, R.P., Froidevaux, L., Hall, B.D., Hossaini, R., Saito, T., Vollmer, M.K., Yao, B.: Update on Ozone-Depleting Substances (ODSs) and Other Gases of Interest to the Montreal Protocol, Global Ozone Research and Monitoring Project-Report, 2018.
- Fisher, B.L., Krotkov, N.A., Bhartia, P.K., Li, C., Carn, S.A., Hughes, E., Leonard, P.J.T.: A new discrete wavelength backscattered ultraviolet algorithm for consistent volcanic SO<sub>2</sub> retrievals from multiple satellite missions. *Atmos. Meas. Tech.* 12, 5137–5153. <https://doi.org/10.5194/amt-12-5137-2019>, 2019.
- 615 Fishman, J., Bowman, K.W., Burrows, J.P., Richter, A., Chance, K. V., Edwards, D.P., Martin, R. V., Morris, G.A., Pierce, R.B., Ziemke, J.R., Al-Saadi, J.A., Creilson, J.K., Schaack, T.K., Thompson, A.M.: Remote Sensing of Tropospheric Pollution from Space. *Bull. Am. Meteorol. Soc.* 89, 805–822. <https://doi.org/10.1175/2008BAMS2526.1>, 2008.
- 620 Fishman, J., Larsen, J.C.: Distribution of total ozone and stratospheric ozone in the tropics: implications for the distribution of tropospheric ozone. *J. Geophys. Res.* 92, 6627–6634. <https://doi.org/10.1029/JD092ID06P06627>, 1987.
- Flynn, L., Long, C., Wu, X., Evans, R., Beck, C.T., Petropavlovskikh, I., McConville, G., Yu, W., Zhang, Z., Niu, J., Beach, E., Hao, Y., Pan, C., Sen, B., Novicki, M., Zhou, S., Seftor, C.: Performance of the Ozone Mapping and Profiler Suite (OMPS) products. *J. Geophys. Res. Atmos.* 119, 6181–6195. <https://doi.org/10.1002/2013JD020467>, 2014.
- 625 [Garane, K., Koukouli, M.-E., Verhoelst, T., Lerot, C., Heue, K.-P., Fioletov, V., Balis, D., Bais, A., Bazureau, A., Dehn, A., Goutail, F., Granville, J., Griffin, D., Hubert, D., Keppens, A., Lambert, J.-C., Loyola, D., McLinden, C., Pazmino, A., Pommerehne, J.-P., Redondas, A., Romahn, F., Valks, P., Van Roozendael, M., Xu, J., Zehner, C., Zerefos, C., and Zimmer, W.: TROPOMI/S5P total ozone column data: global ground-based validation and consistency with other satellite missions. \*Atmos. Meas. Tech.\*, 12, 5263–5287. <https://doi.org/10.5194/amt-12-5263-2019>, 2019.](https://doi.org/10.5194/amt-12-5263-2019)
- 630 Haffner, D.P., McPeters, R.D., Bhartia, P.K., Labow, G.J., Haffner, D.P., McPeters, R.D., Bhartia, P.K., Labow, G.J.: The TOMS V9 Algorithm for OMPS Nadir Mapper Total Ozone: An Enhanced Design That Ensures Data Continuity, in: AGU Fall Meeting, San Francisco, CA, United States, 2015.
- Haffner, D.P et al.: Total Ozone Mapping Spectrometer (TOMS) Version 9 Algorithm, Manuscript in preparation. Manuscript in preparation, 2022.
- 635 Herman, J., Evans, R., Cede, A., Abuhassan, N., Petropavlovskikh, I., McConville, G.: Comparison of ozone retrievals from the Pandora spectrometer system and Dobson spectrophotometer in Boulder, Colorado. *Atmos. Meas. Tech.* 8, 3407–3418. <https://doi.org/10.5194/amt-8-3407-2015>, 2015.

- Ingmann, P., Veihelmann, B., Langen, J., Lamarre, D., Stark, H., Courrèges-Lacoste, G.B.: Requirements for the GMES Atmosphere Service and ESA's implementation concept: Sentinels-4/-5 and -5p. *Remote Sens. Environ.* 120, 58–69. <https://doi.org/10.1016/J.RSE.2012.01.023>, 2012.
- 640 Jacob, D.J., Logan, J.A., Murti, P.P.: Effect of rising Asian emissions on surface ozone in the United States, JULY. American Geophysical Union. <https://doi.org/10.1029/1999GL900450>, 1999.
- [Jaross, G.: OMPS-NPP L2 NM Ozone \(O3\) Total Column swath orbital V2. Greenbelt, MD, USA, Goddard Earth Sciences Data and Information Services Center \(GES DISC\), https://doi.org/10.5067/0WF4HAAZ0VHK, 2017](https://doi.org/10.5067/0WF4HAAZ0VHK)
- 645 Joiner, J., Vasilkov, A.P.: First results from the OMI rotational raman scattering cloud pressure algorithm. *IEEE Trans. Geosci. Remote Sens.* 44, 1272–1281. <https://doi.org/10.1109/TGRS.2005.861385>, 2006.
- Kang, M., Ahn, M.H., Liu, X., Jeong, U., Kim, J.: Spectral calibration algorithm for the geostationary environment monitoring spectrometer (Gems). *Remote Sens.* 12, 1–17. <https://doi.org/10.3390/rs12172846>, 2020.
- Kang, M et al.: On-Orbit Calibration of Bi-directional Transmittance Distribution Function (BTDF) for Geostationary Environment Monitoring Spectrometer (GEMS). Manuscript in preparation, 2022.
- 650 Kim, J., Jeong, U., Ahn, M.H., Kim, J.H., Park, R.J., Lee, Hanlim, Song, C.H., Choi, Y.S., Lee, K.H., Yoo, J.M., Jeong, M.J., Park, S.K., Lee, K.M., Song, C.K., Kim, Sang Woo, Kim, Y.J., Kim, Si Wan, Kim, M., Go, S., Liu, X., Chance, K., Miller, C.C., Al-Saadi, J., Veihelmann, B., Bhartia, P.K., Torres, O., Abad, G.G., Haffner, D.P., Ko, D.H., Lee, S.H., Woo, J.H., Chong, H., Park, S.S., Nicks, D., Choi, W.J., Moon, K.J., Cho, A., Yoon, J., Kim, S. kyun, Hong, H., Lee, K., Lee, Hana, Lee, S., Choi, M., Veeckind, P., Levelt, P.F., Edwards, D.P., Kang, M., Eo, M., Bak, J., Baek, K., Kwon, H.A., Yang, J., Park, J., Han, K.M., Kim, B.R., Shin, H.W., Choi, H., Lee, E., Chong, J., Cha, Y., Koo, J.H., Irie, H., Hayashida, S., Kasai, Y., Kanaya, Y., Liu, C., Lin, J., Crawford, J.H., Carmichael, G.R., Newchurch, M.J., Lefer, B.L., Herman, J.R., Swap, R.J., Lau, A.K.H., Kurosu, T.P., Jaross, G., Ahlers, B., Dobber, M., McElroy, C.T., Choi, Y.: New era of air quality monitoring from space: Geostationary environment monitoring spectrometer (GEMS). *Bull. Am. Meteorol. Soc.* 101, E1–E22. <https://doi.org/10.1175/BAMS-D-18-0013.1>, 2020.
- 660 Klenk, K.F., Bhartia, P.K., FLEIG, A.J., Kaveeshwar, V.G., McPeters, R.D., Smith, P.M.: Total ozone determination from the BUUV experiment. *J. Appl. Meteorol.* 21, 1672–1684, 1982.
- Krueger, A., Krotkov, N., Carn, S.: El Chichon: The genesis of volcanic sulfur dioxide monitoring from space. *J. Volcanol. Geotherm. Res.* 175, 408–414. <https://doi.org/10.1016/J.JVOLGEORES.2008.02.026>, 2008.
- 665 [Lerot, C., Heue, K.-P., Romahn, F., Verhoelst, T., and Lambert, J.-C.: S5P Mission Performance Centre Readme OFFL Total Ozone, Tech. 430 Rep. V02.01.04, 2.1, http://www.tropomi.eu/documents/prf, 2020.](https://www.tropomi.eu/documents/prf)
- Levelt, P.F., Van Den Oord, G.H.J., Dobber, M.R., Mälkki, A., Visser, H., De Vries, J., Stammes, P., Lundell, J.O.V., Saari, H.: The ozone monitoring instrument. *IEEE Trans. Geosci. Remote Sens.* 44, 1093–1100. <https://doi.org/10.1109/TGRS.2006.872333>, 2006.
- 670 Malicet, J., Daumont, D., Charbonnier, J., Parisse, C., Chakir, A., Brion, J.: Ozone UV spectroscopy. II. Absorption cross-sections and temperature dependence. *J. Atmos. Chem.* 1995 213 21, 263–273. <https://doi.org/10.1007/BF00696758>, 1995.
- McPeters, R.D., Bhartia, P.K., Krueger, A.J., Herman, J.R., Schlesinger, B.M., Wellemeyer, C.G., Seftor, C.J., Jaross, G., Taylor, S.L., Swisler, T., Torres, O., Labow, G., Byerly, W., Cebula, R.P.: Nimbus-7 Total Ozone Mapping Spectrometer (TOMS) Data Products User's Guide, NASA Reference Publication 1384, Washington, DC, 1996.
- 675 McPeters, R.D., Labow, G.J.: *Climatology 2011: An MLS and sonde derived ozone climatology for satellite retrieval algorithms.* *J. Geophys. Res. Atmos.* 117. <https://doi.org/10.1029/2011JD017006>, 2012.
- [McPeters, R., Frith, S., Kramarova, N., Ziemke, J., and Labow, G. \(2019\). Trend Quality Ozone from NPP OMPS: the Version 2 Processing. Atmos. Meas. Tech. 12, 977–985. doi:10.5194/amt-12-977-2019.](https://doi.org/10.5194/amt-12-977-2019)
- 680 National Institute of Environmental Research (NIER): GEMS Level-1 User Guide V1.0, Incheon, Republic of Korea, Environmental Satellite Center, <https://nesc.nier.go.kr/product/document?page=1&limit=10> (accessed 10.25.22), 2020.
- Scientific Assessment of Ozone Depletion: Global Ozone Research and Monitoring Project Report No. 55 World Meteorological Organization (2015). URL <https://public.wmo.int/en/media/news/scientific-assessment-of-ozone-depletion-published> (accessed 3.25.21), 2014.
- 685 Spurr, R.: LIDORT and VLIDORT: Linearized pseudo-spherical scalar and vector discrete ordinate radiative transfer models for use in remote sensing retrieval problems, in: *Light Scattering Reviews 3.* Springer Berlin Heidelberg, pp. 229–275. [https://doi.org/10.1007/978-3-540-48546-9\\_7](https://doi.org/10.1007/978-3-540-48546-9_7), 2008.

- Spurr, R., Loyola, D., Roozendaal, M. Van, Lerot, C.: S5P / TROPOMI Total Ozone ATBD. Dtsch. Zent. für Luft und Raumfahrt 67, 2021.
- 690 Tzortziou, M., Herman, J.R., Cede, A., Abuhassan, N.: High precision, absolute total column ozone measurements from the Pandora spectrometer system: Comparisons with data from a Brewer double monochromator and Aura OMI. *J. Geophys. Res. Atmos.* 117. <https://doi.org/10.1029/2012JD017814>, 2012.
- 695 Veefkind, J.P., Aben, I., McMullan, K., Förster, H., de Vries, J., Otter, G., Claas, J., Eskes, H.J., de Haan, J.F., Kleipool, Q., van Weele, M., Hasekamp, O., Hoogeveen, R., Landgraf, J., Snel, R., Tol, P., Ingmann, P., Voors, R., Kruizinga, B., Vink, R., Visser, H., Levelt, P.F.: TROPOMI on the ESA Sentinel-5 Precursor: A GMES mission for global observations of the atmospheric composition for climate, air quality and ozone layer applications. *Remote Sens. Environ.* 120, 70–83. <https://doi.org/10.1016/j.rse.2011.09.027>, 2012.
- 700 Wellemeyer, C.G., Taylor, S.L., Seftor, C.J., McPeters, R.D., Bhartia, P.K.: A correction for total ozone mapping spectrometer profile shape errors at high latitude. *J. Geophys. Res. Atmos.* 102, 9029–9038. <https://doi.org/10.1029/96JD03965>, 1997.
- 705 Zoogman, P., Liu, X., Suleiman, R.M., Pennington, W.F., Flittner, D.E., Al-Saadi, J.A., Hilton, B.B., Nicks, D.K., Newchurch, M.J., Carr, J.L., Janz, S.J., Andraschko, M.R., Arola, A., Baker, B.D., Canova, B.P., Chan Miller, C., Cohen, R.C., Davis, J.E., Dussault, M.E., Edwards, D.P., Fishman, J., Ghulam, A., González Abad, G., Grutter, M., Herman, J.R., Houck, J., Jacob, D.J., Joiner, J., Kerridge, B.J., Kim, J., Krotkov, N.A., Lamsal, L., Li, C., Lindfors, A., Martin, R.V., McElroy, C.T., McLinden, C., Natraj, V., Neil, D.O., Nowlan, C.R., O'Sullivan, E.J., Palmer, P.I., Pierce, R.B., Pippin, M.R., Saiz-Lopez, A., Spurr, R.J.D., Szykman, J.J., Torres, O., Veefkind, J.P., Veihelmann, B., Wang, H., Wang, J., Chance, K.: Tropospheric emissions: Monitoring of pollution (TEMPO). *J. Quant. Spectrosc. Radiat. Transf.* 186, 17–39. <https://doi.org/10.1016/j.jqsrt.2016.05.008>, 2017.